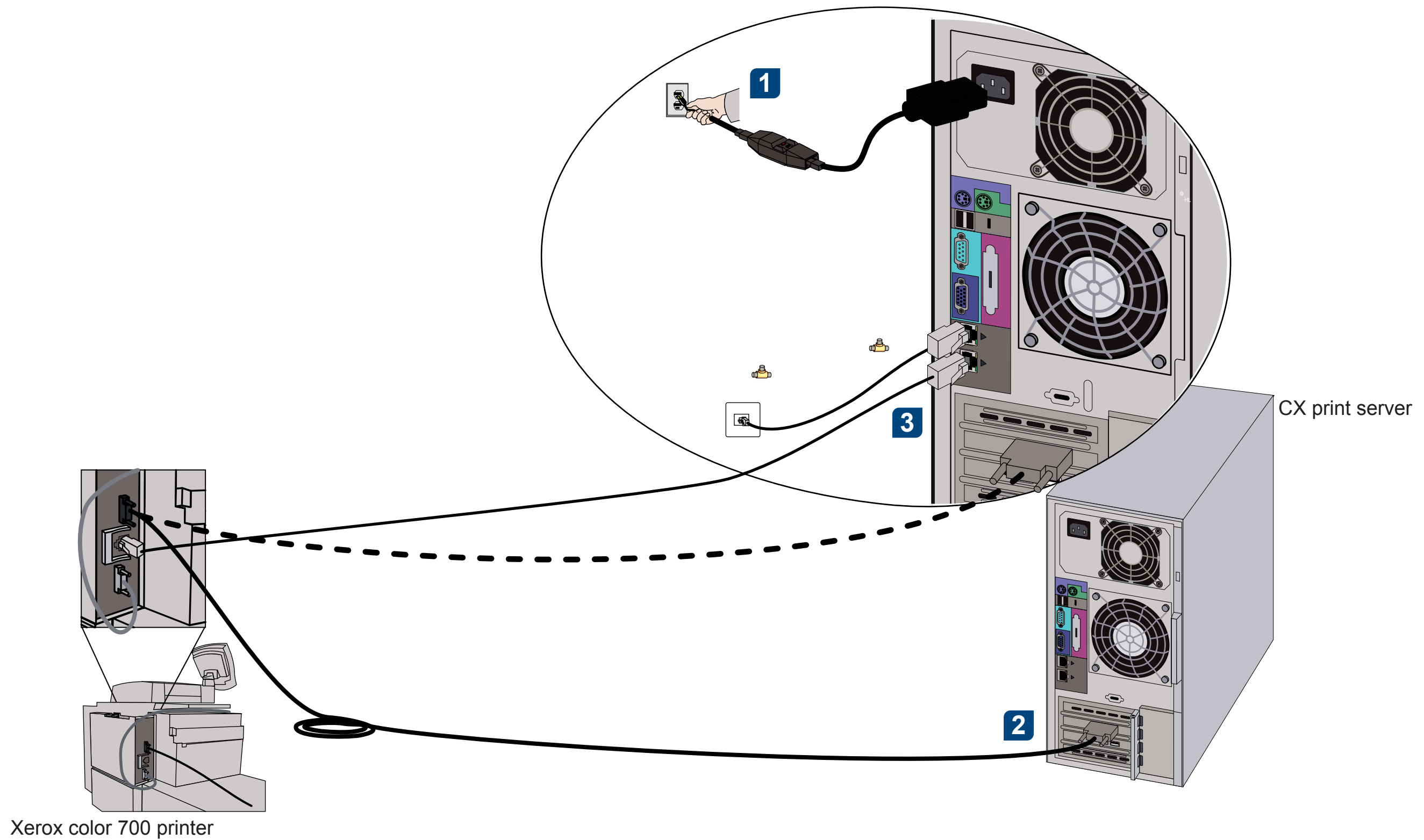




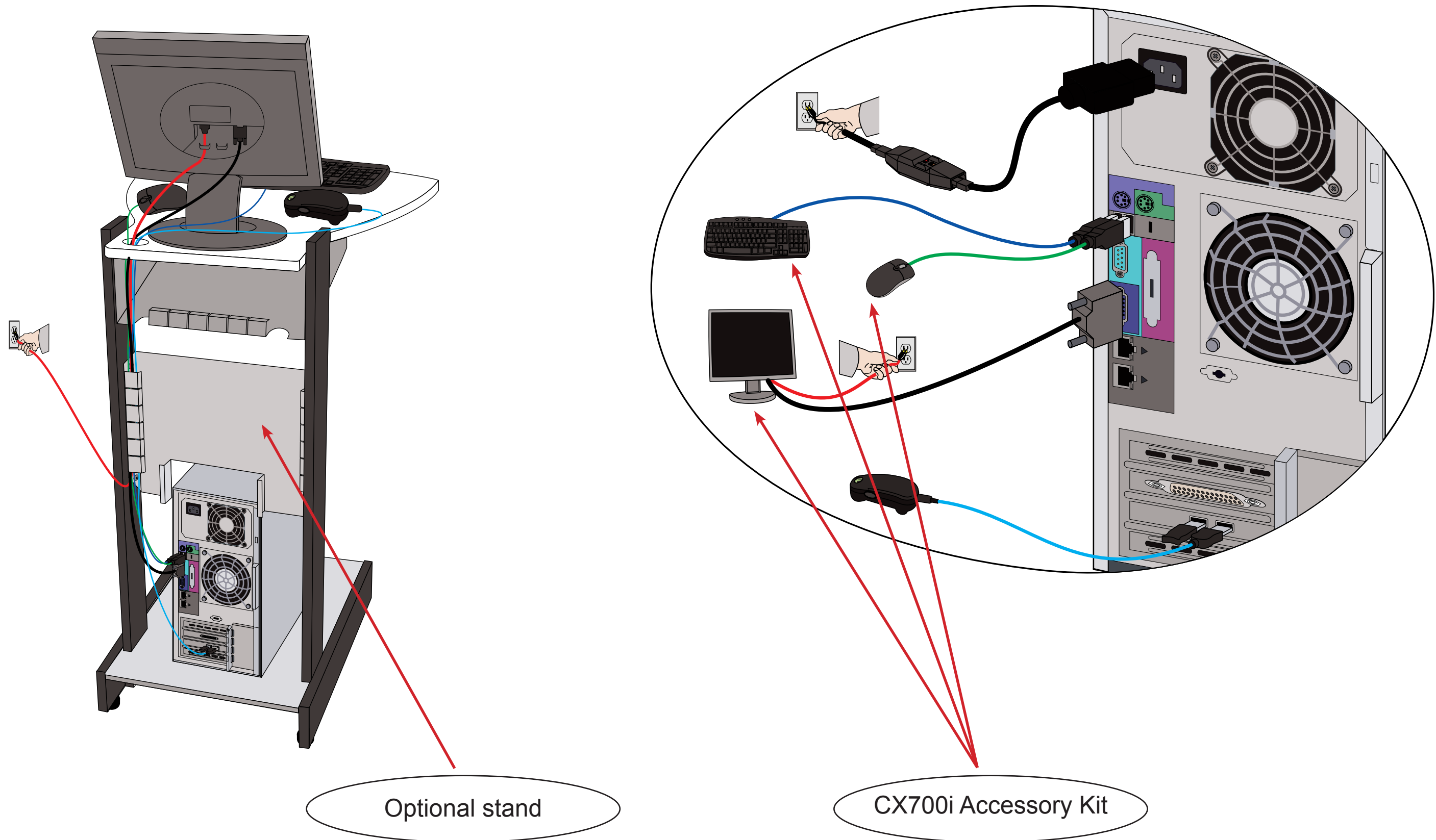
Visual Reference Guide

Xerox CX Print Server
Powered by Creo Color Server Technology
for the Xerox Color 700 Printer

Cable connections for the CX print server computer

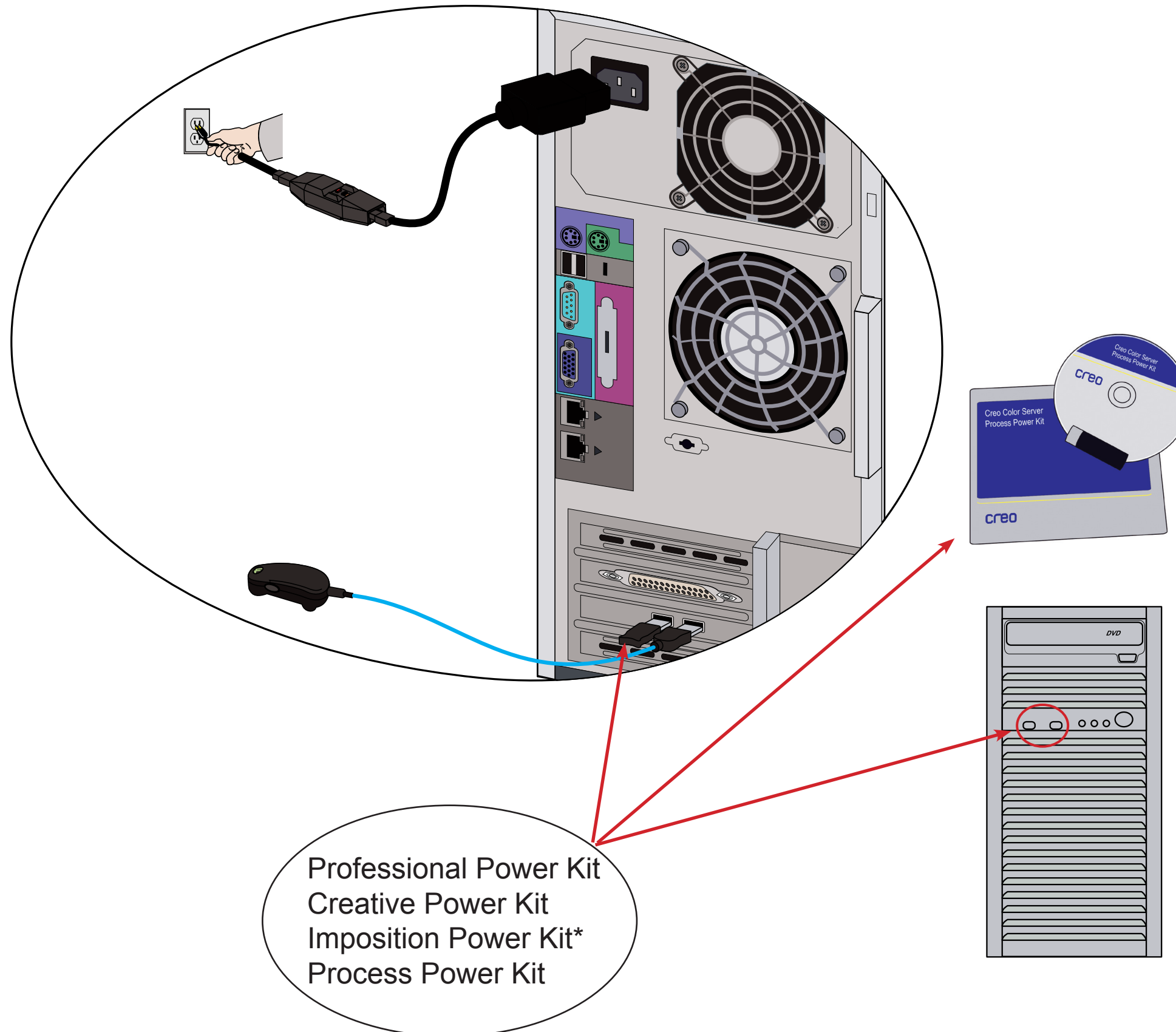


CX700i Accessory Kit



Optional kits for the CX print server

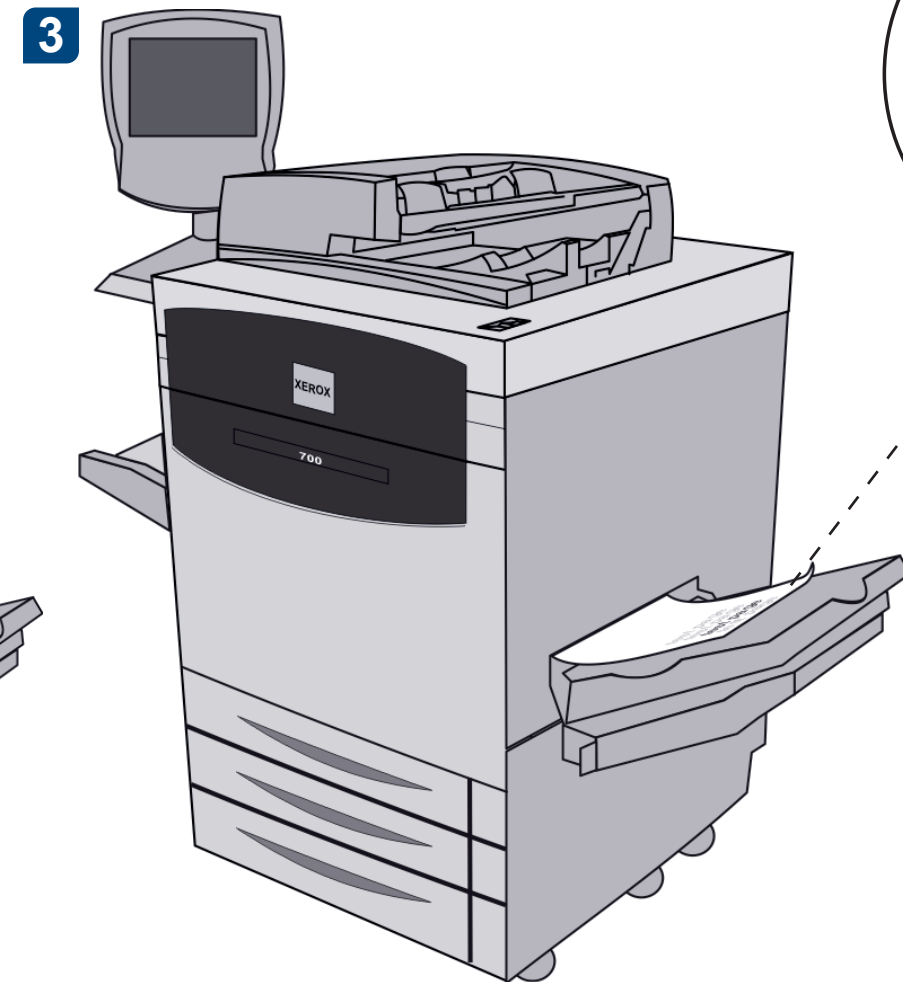
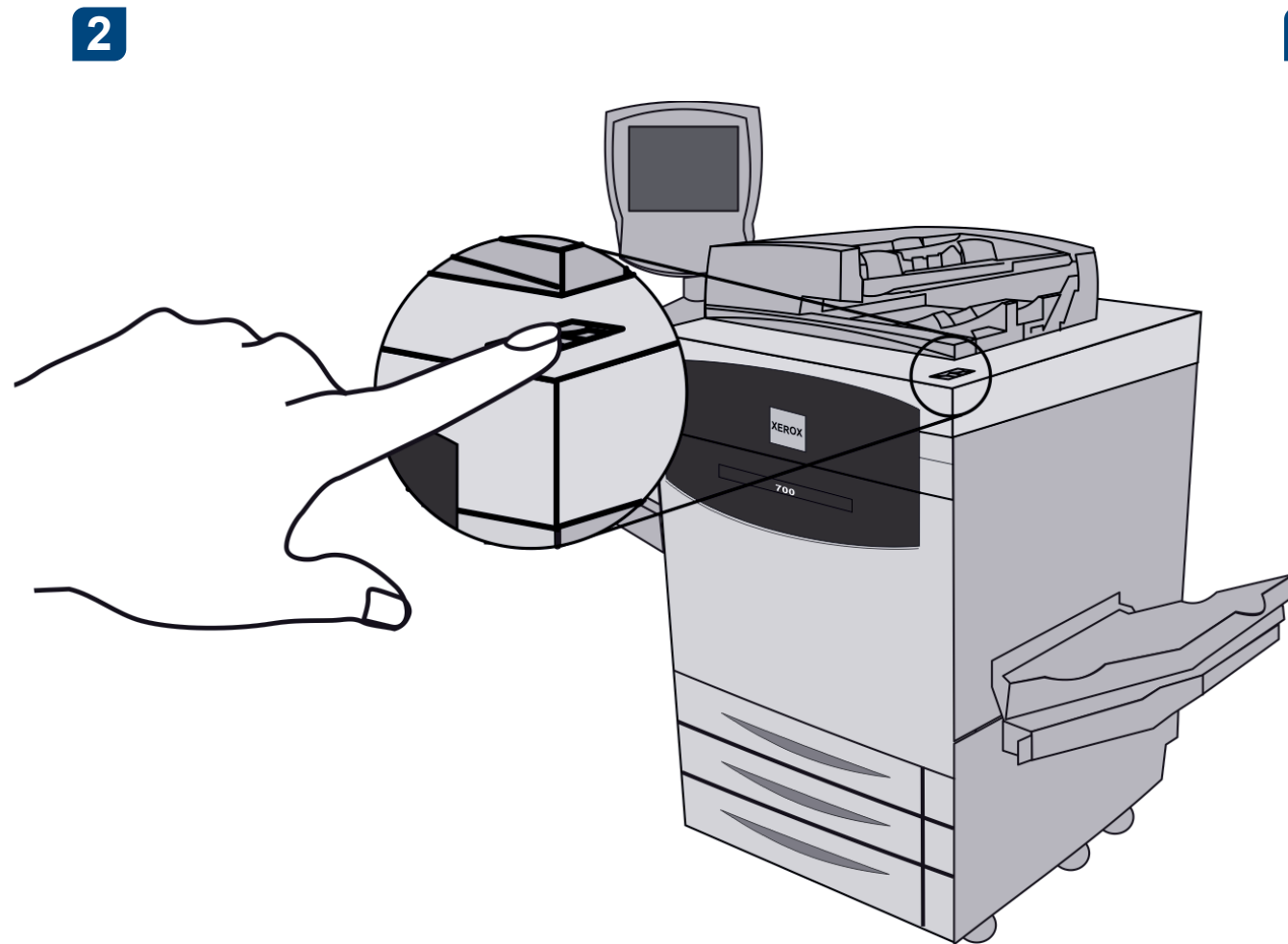
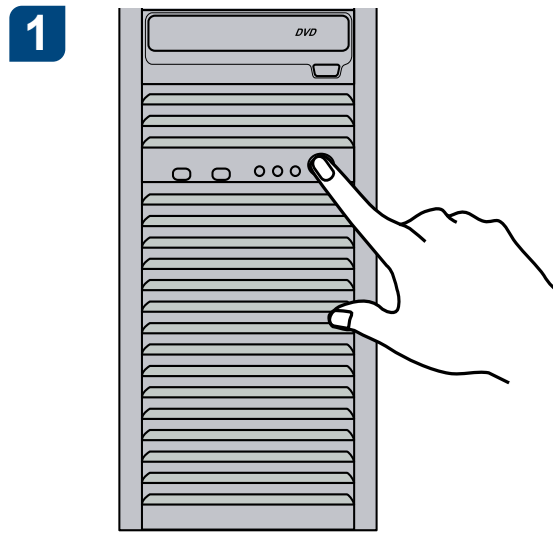
The CX print server provides three optional kits each of which requires a USB dongle.



Professional Power Kit
Creative Power Kit
Imposition Power Kit*
Process Power Kit

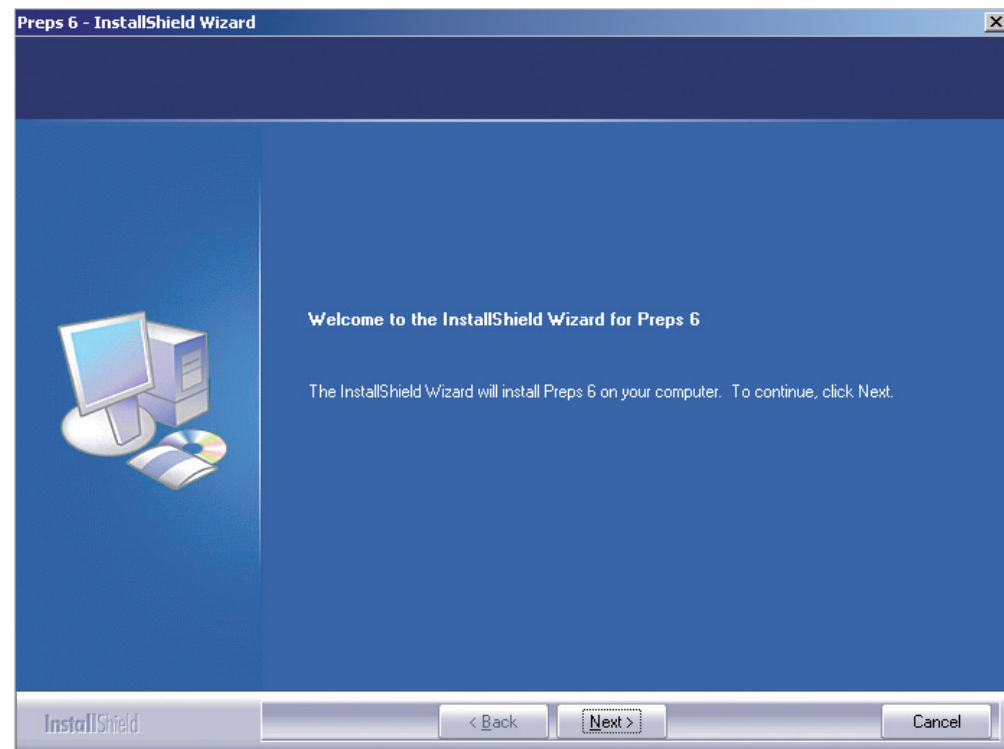
* The Imposition Power Kit should be installed by the customer.

Turning on the CX print server and turning on the printer



Installing the Imposition Power Kit

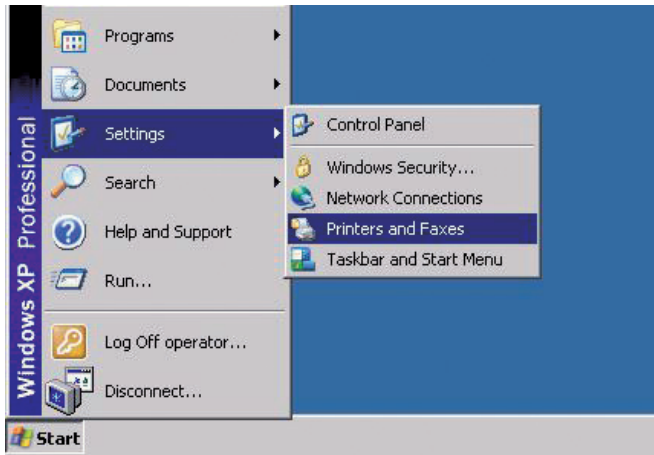
- 1 Log onto your computer as an Administrator.
- 2 Obtain the software files. The **Preps_6-0-0_Win_Installer.exe** file is available on the DVD.
- 3 Insert the DVD, and double-click the **.exe** file.
- 4 Click **Install** and follow the onscreen instructions until the installation is complete.
- 5 When the iKey driver Window appears, type your license key to complete the installation.



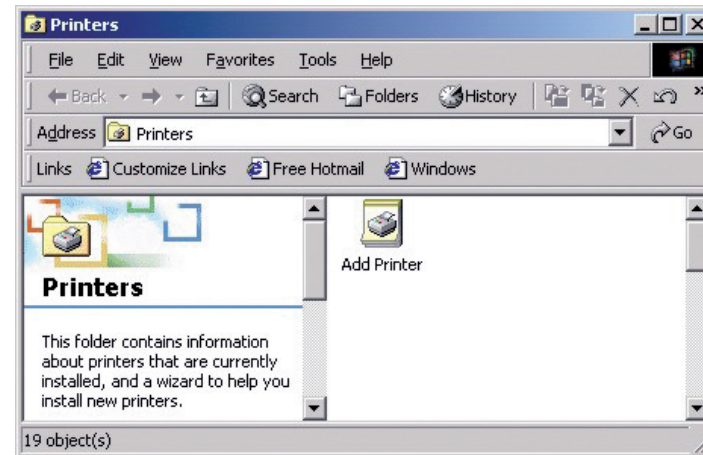
Setting up a network printer - Windows Server 2008/2003/XP

This procedure applies to Windows Server 2008, Windows Server 2003, and XP.

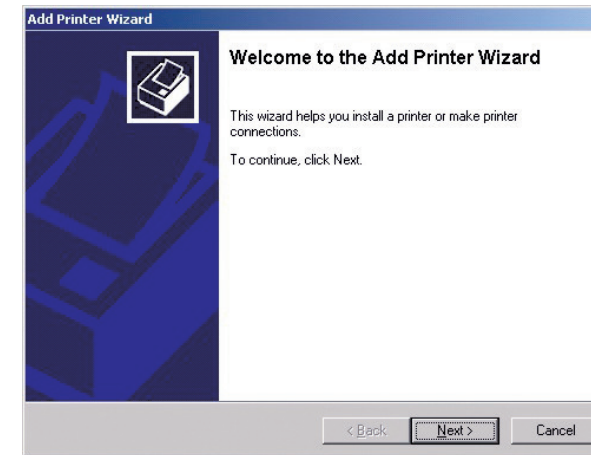
- 1** Select **Start > Settings > Printers and Faxes**.



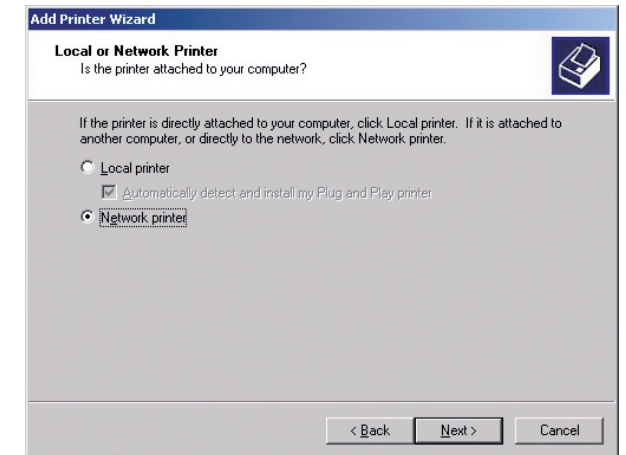
- 2** Double-click **Add Printer**.



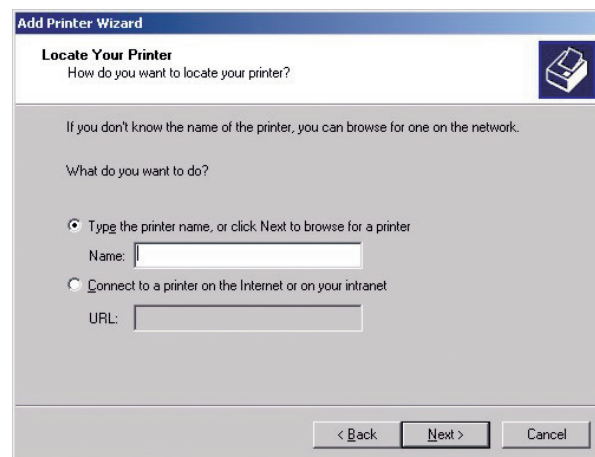
- 3** In the Add Printer Wizard, click **Next**.



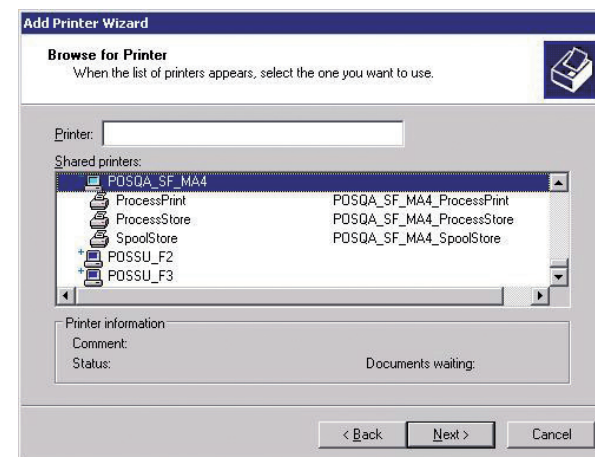
- 4** Select **Network printer**, and then click **Next**.



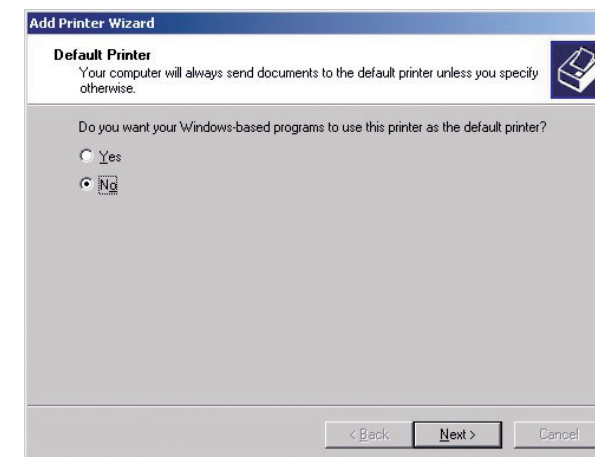
- 5** Type the CX print server name, or click **Next** and locate the server.



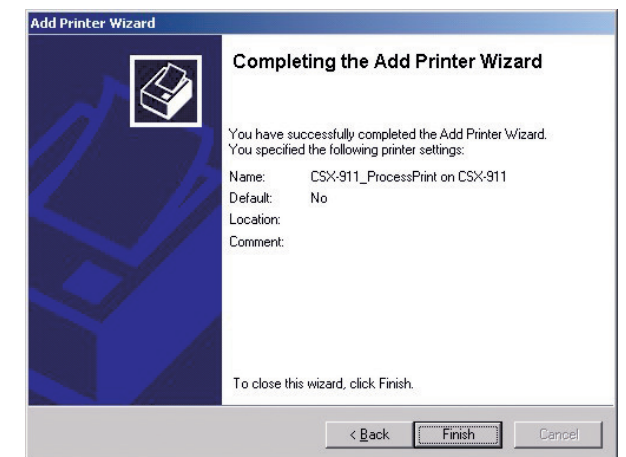
- 7** Select one of the network printers, for example—**ProcessPrint**—and then click **Next**.



- 8** Select whether you want this to be the default printer, and then click **Next**.



- 9** Click **Finish** to complete the setup.



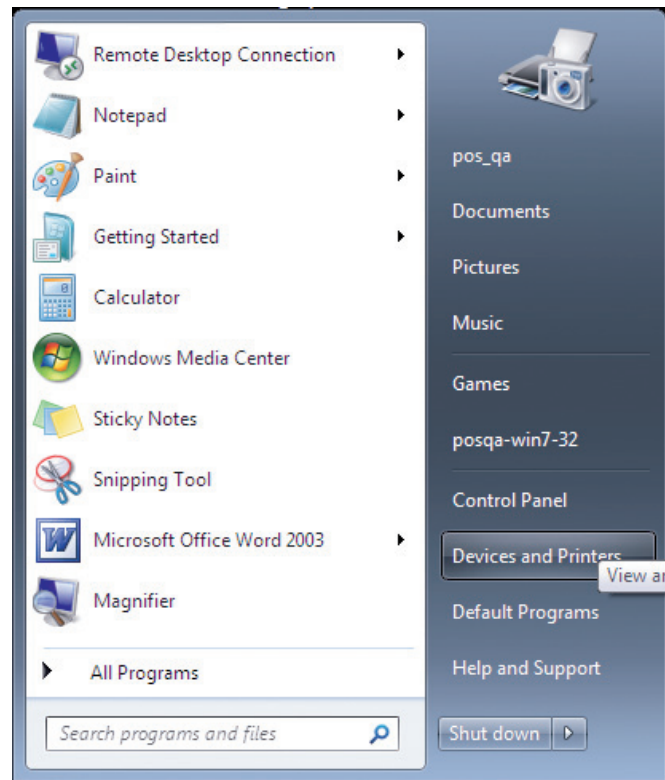
- 6** In the **Shared printers** area, double-click the server name to display the list of network printers.

Note:When you add a network printer, the Print Driver software is installed on your computer.

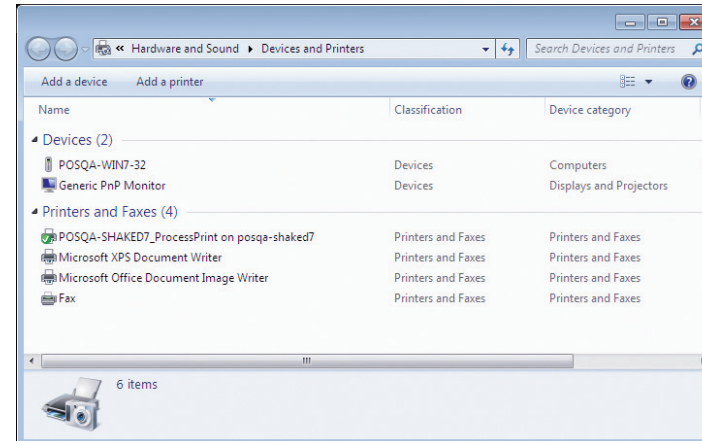
Setting up a network printer - Windows 7/Vista

This procedure applies to Windows 7 and Vista.

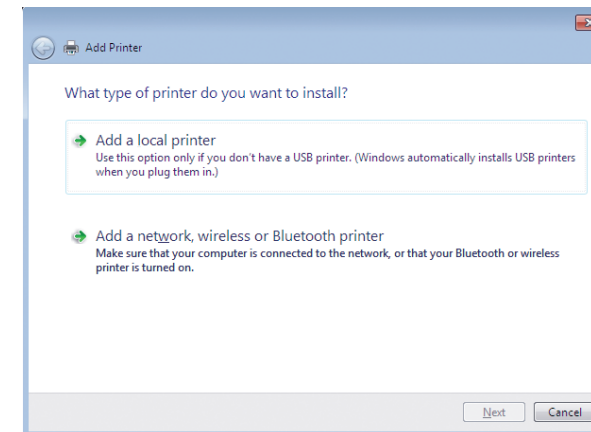
- 1** From the **Start** menu, select **Devices and Printers**.



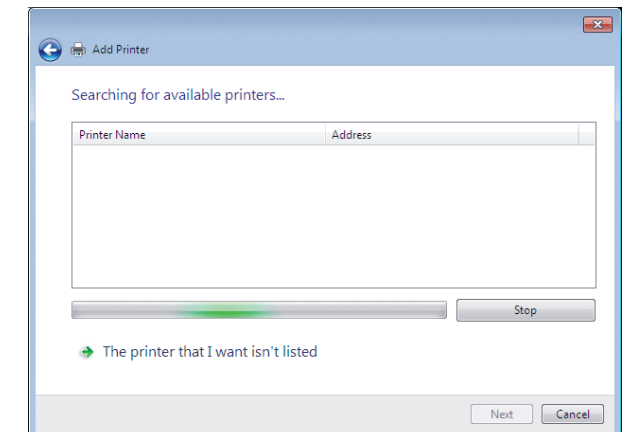
- 2** Select **Add a printer**.



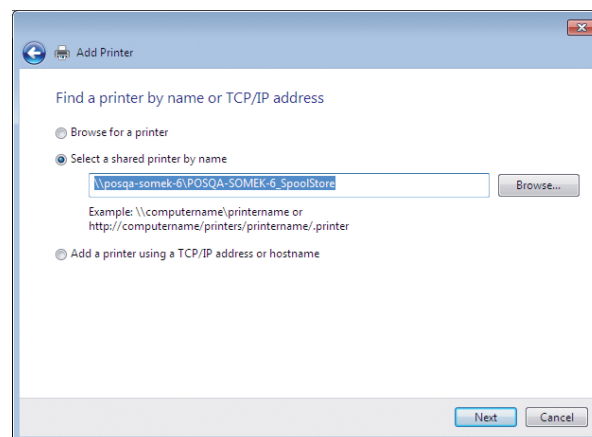
- 3** In the Add Printer wizard select **Add a network, wireless or Bluetooth printer**.



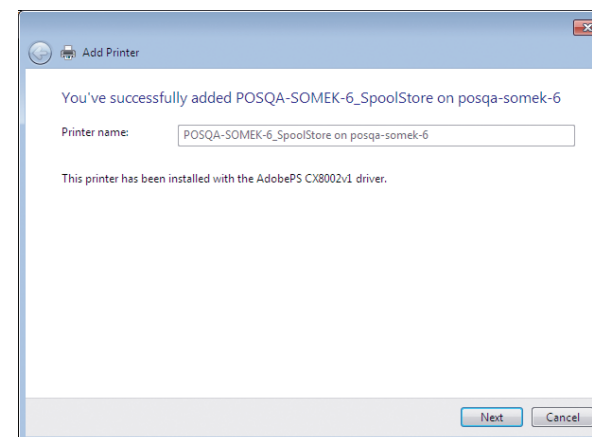
- 4** Select **The printer that I want isn't listed**.



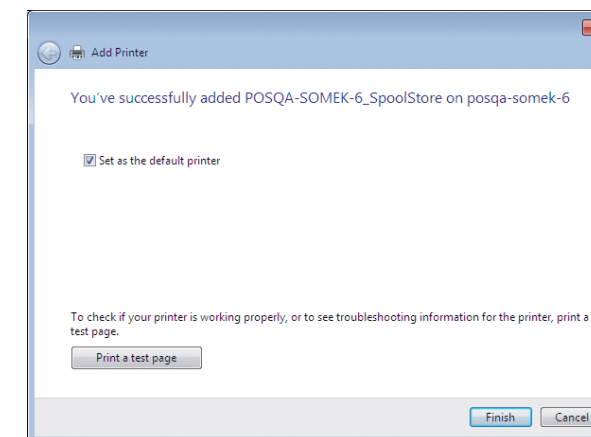
- 5** In the **Select a shared printer by name** box, type the CX print server name, and click **Next**.



- 6** Click **Next**.



- 7** Select whether you want this to be the default printer, and then click **Finish** to complete the setup.

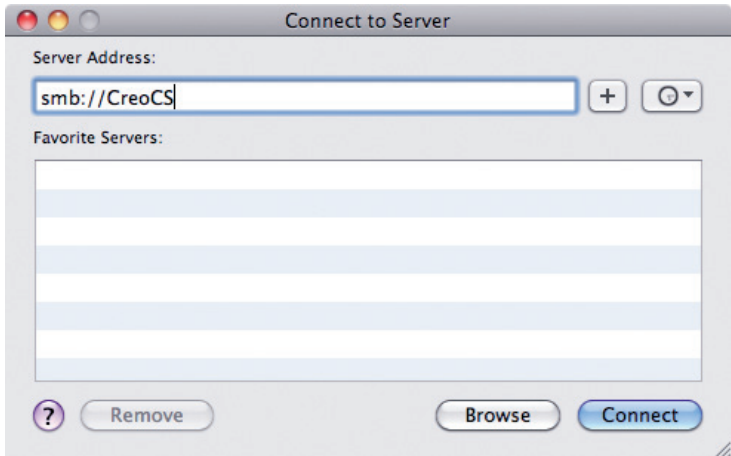


Note:When you add a network printer, the Print Driver software is installed on your computer.

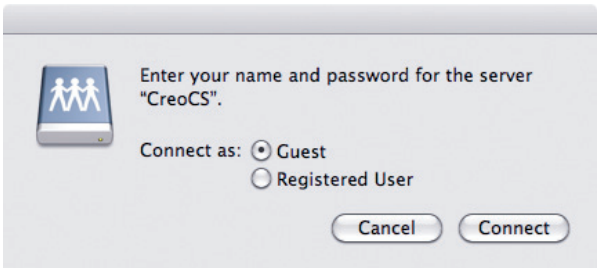
Installing the Print Driver software on Mac OS X 10.4.x

1 Choose **Go > Connect to Server**.

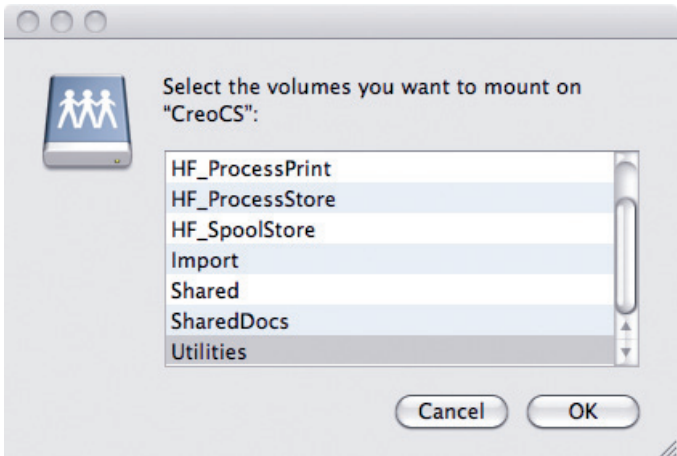
2 In the **Server Address** box, type your server address, and click **Connect**.



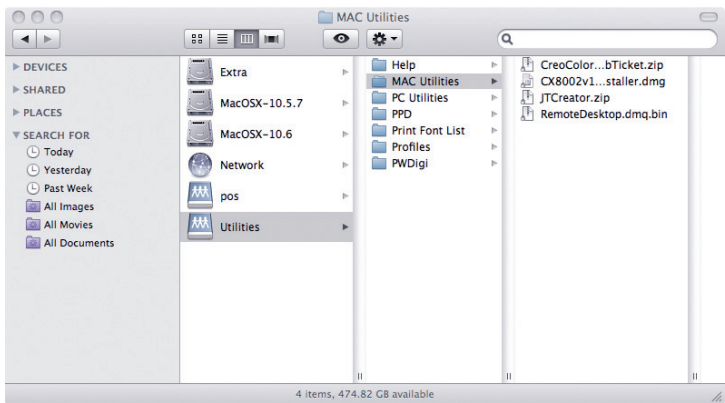
3 Select **Guest** and then click **Connect**.



4 Select **Utilities**, and click **OK**.

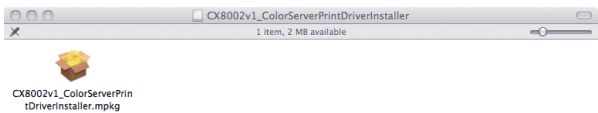


5 Select the **Mac Utilities** folder.



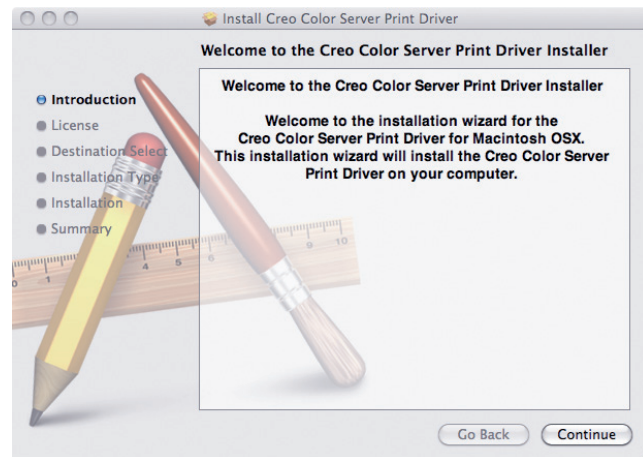
6 Double-click the relevant **ColorServerPrintDriverInstaller.dmg** file.

7 Double-click the relevant **ColorServerPrintDriverInstaller.mpkg** file.



Installing the Print Driver software on Mac OS X 10.4.x (cont.)

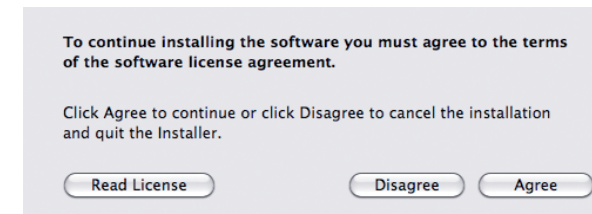
8 Click **Continue**.



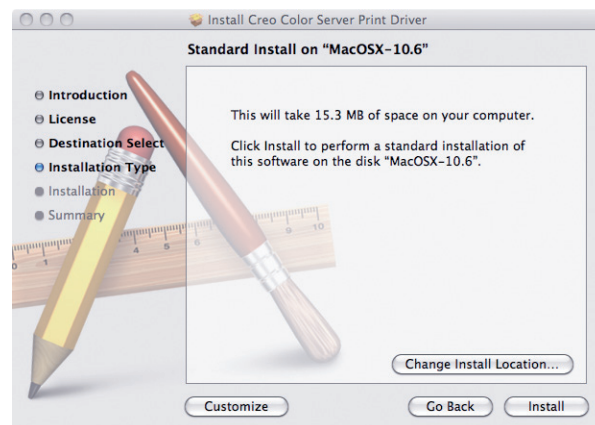
9 In the Software License Agreement window, click **Continue**.



10 Click **Agree** to agree to the terms and continue with the installation procedure.



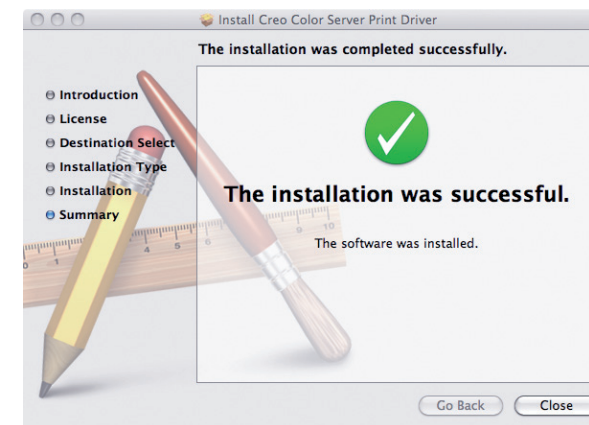
11 Click **Install**.



12 Type your name (if necessary) and password, and click **OK**.



13 Click **Close**.



The Print Driver software is installed.

Defining a printer with the Print Driver software in Mac OS X 10.4.x

During the installation of the Print Driver software, the PPD file is automatically copied to your computer.

Requirements:

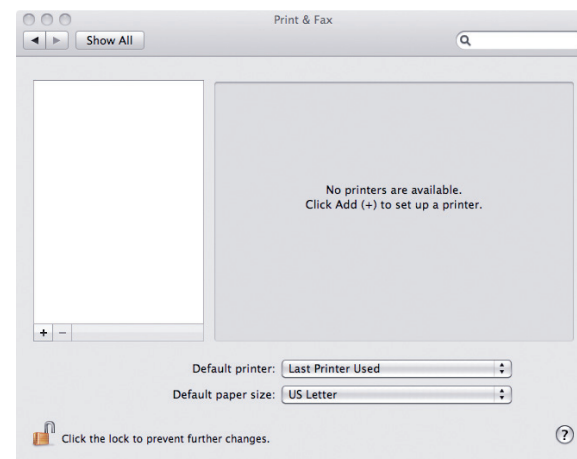
Have the following information available before performing this procedure:

- The IP address and computer name of your CX print server
- The name of the virtual printer that you want to use with the Print Driver software

1 On your Mac computer, open the System Preferences window and double-click **Print & Fax**.

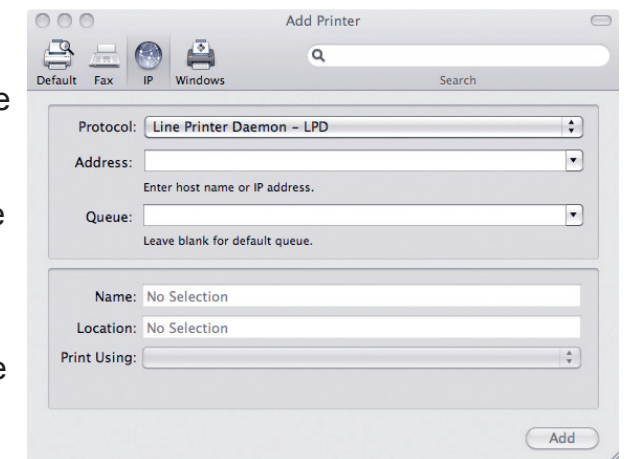


2 In the Print & Fax window, click the **Add (+)** button.

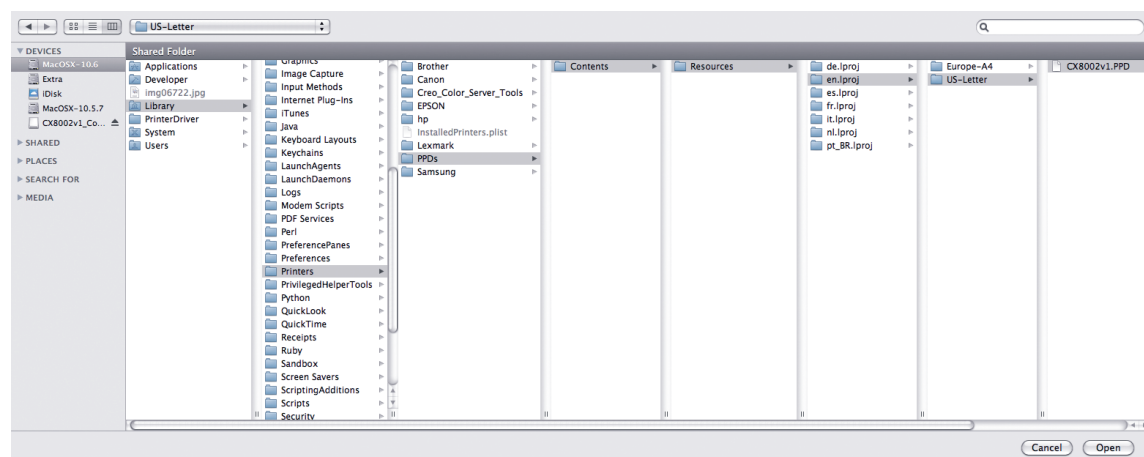


3 In the Add Printer window, enter the following information:

- In the **Address** box, type the host name (or IP address) of your CX print server. In the **Queue** box, type the name of the CX print server and the exact name of the virtual printer that you want to use with the Print Driver software—for example—CreoCS_Process.
- In the **Name** box, type exactly the same name as in the **Queue** box.
- In the **Print Using** list, select **Other**.

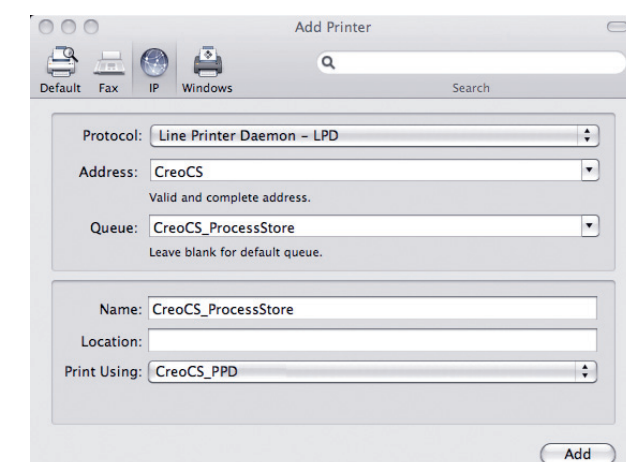


4 Locate the `en.lproj` folder in **Library/Printers/PPDS/Contents/Resources**; select either the **Europe-A4** or **US-Letter** folders, and then select the PPD file.



5 Click **Open**.

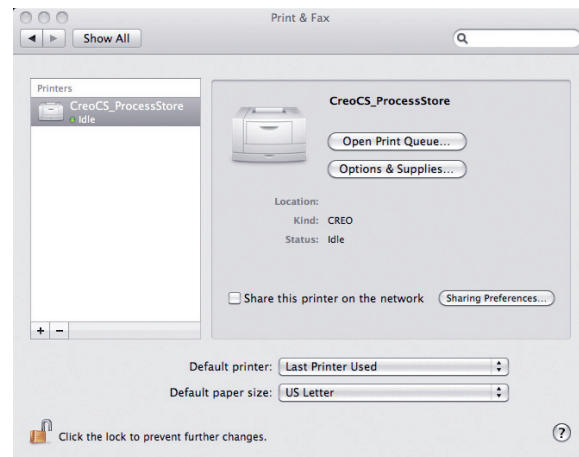
6 Click **Add**.



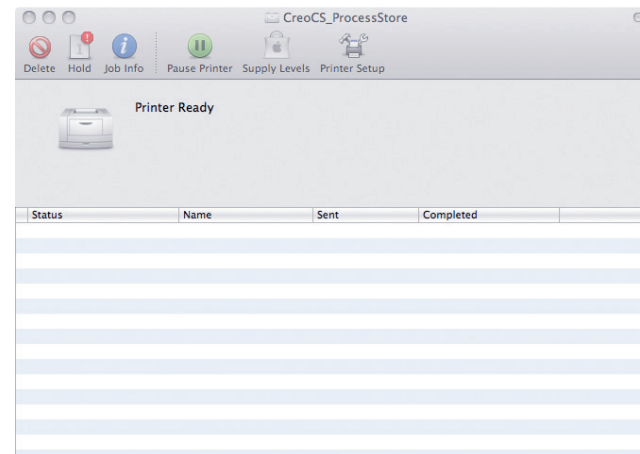
The new printer is added.

Defining a printer with the Print Driver software in Mac OS X 10.4.x (cont.)

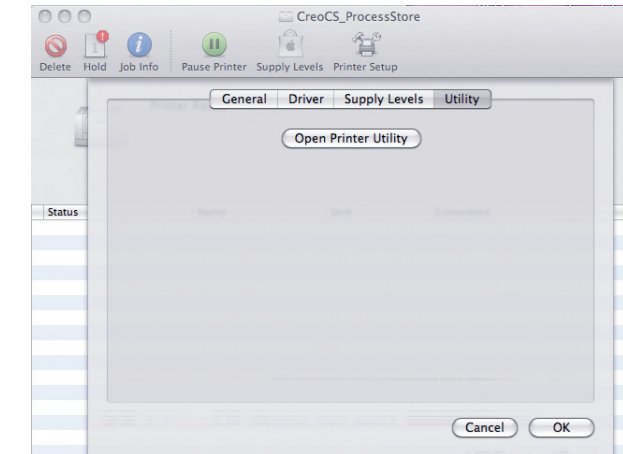
- 7** In the Print & Fax window, select the printer and click **Open Print Queue**.



- 8** Click **Printer Setup**.



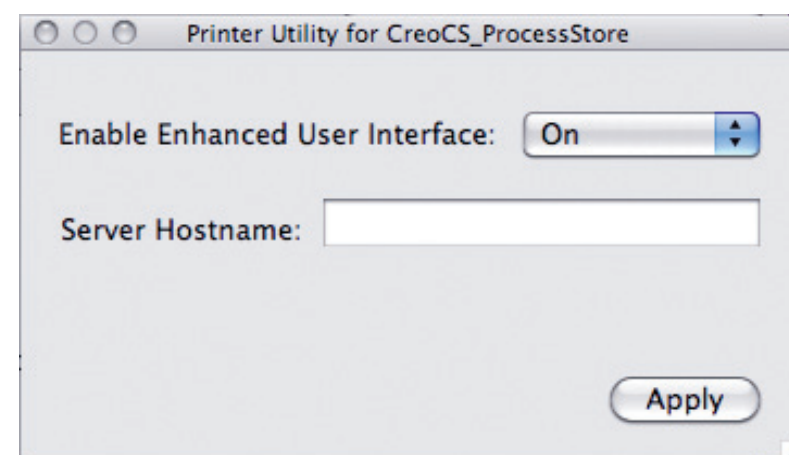
- 9** Click **Utility**, and then click **Open Printer Utility**.



- 10** In the **Enable Enhanced User Interface** list, make sure that **On** is selected.

- 11** In the **Server Hostname** box, type the IP address of the server.

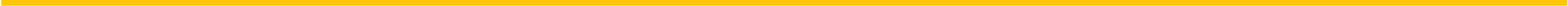
- 12** Click **Apply**.



- 13** Close the Printer Utility dialog box.

- 14** Click **OK**.

- 15** Close all printer windows.



For more information about **Creo** Branded Products, contact your local representative or visit www.creoservers.com.

Americas	Israel	EMEA and Asia Pacific
42-06A Bell Blvd.	Ha'Tnufa 7 St.	Rue Général de Gaulle 62
Box 101	P.O. Box 10193	B-1310 La Hulpe, Belgium
Bayside, NY 11361, USA	Petach Tikva 49002, Israel	T.+32.2.352.2878
T.+1.866.793.4178	T.+972.3.916.7222	F.+32.2.357.3111
info-us@creoservers.com	F.+972.3.928.6000	info-eu@creoservers.com
	info@creoservers.com	

