



EX700i Print Server/Integrated Fiery Color Server

Welcome



© 2011 Electronics For Imaging, Inc. The information in this publication is covered under *Legal Notices* for this product.

45099409
22 June 2011




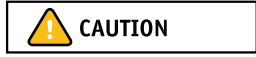

WELCOME

This *Welcome* document provides system requirements and an overview of how to set up the EX700i Print Server/Integrated Fiery Color Server so that you can begin printing. It describes the initial tasks you must perform and points you to sections in the user documentation where the procedures are described in detail.

This document assumes that you have already installed the digital press components. Details about the digital press, network, remote computers, software applications, and Microsoft Windows are beyond the scope of this document.

Terminology and conventions

This document uses the following terminology and conventions.

Term or convention	Refers to
Aero	EX700i (in illustrations and examples)
Digital press	Xerox 700 Digital Color Press
EX700i	EX700i Print Server/Integrated Fiery Color Server
Titles in <i>italics</i>	Other documents in this set
Windows	Microsoft Windows XP, Windows Vista, Windows Server 2003/2008/2008 R2, Windows 7
	Topics for which additional information is available by starting Help in the software
	Tips and information
 WARNING	A warning concerning operations that may lead to death or injury to persons if not performed correctly. To use the equipment safely, always pay attention to these warnings.
 CAUTION	A caution concerning operations that may lead to injury to persons if not performed correctly. To use the equipment safely, always pay attention to these cautions.
 IMPORTANT	Operational requirements and restrictions. Be sure to read these items carefully to operate the equipment correctly, and avoid damage to the equipment or property.

About the documentation

This document is part of a set provided to users and system administrators of the EX700i. The following comprise the documentation set for your EX700i:

- *Quick Setup* describes how to quickly set up and connect the EX700i for printing.
- *Welcome* provides an introduction to the EX700i and the user documentation.
- *Configuration and Setup* explains configuration and administration of the EX700i for supported platforms and network environments. It also includes guidelines for providing printing services to users.
- *Printing* describes how to install the printer drivers on Windows and Apple Mac OS computers, establish printing connections for different networks, and print from users' computers. This document describes print options and features that you access from the printer driver, Command WorkStation job overrides, and Hot Folders Job Properties.
- *Utilities* describes how to install, configure, and use the software utilities included on the User Software DVD.
- *Color Printing* explains how to manage color output on the EX700i. This document provides information about how to calibrate the EX700i and set color print options from Windows and Mac OS computers.
- *Fiery Color Reference* provides an overview of color management concepts and workflows, and describes how to manage color from various applications.
- *Fiery Graphic Arts Package* addresses the specific needs and requirements of graphic arts professionals and commercial print shops. It explains the Fiery Graphic Arts Package, Premium Edition features.
- *Workflow Examples* explains complicated printing scenarios and provides cross-references to relevant information in the documentation set.
- *Variable Data Printing* supplements the information in *Workflow Examples* with reference information about VDP (variable data printing). This document provides an overview of FreeForm and where to set FreeForm options.
- *Customer Release Notes* provide last-minute product information and workarounds for some of the problems you may encounter.

About Help



Most of the user software, utilities, and printer drivers contain Help that is accessible from Help buttons or the main toolbar menus. Help provides detailed procedures on using the application and, in some cases, provides additional detail. The documentation refers you to Help for more information, as appropriate.

BASIC STEPS TO PRINT

The following section includes a basic workflow for setting up your EX700i in order to print documents. It takes you from configuring Setup to installing printer drivers to print a job. Detailed instructions for all of these procedures are found in other documents in the documentation set. For a summary of supported EX700i documents, see [page 4](#).

These instructions assume that the EX700i has been unpacked and connected to a network and that the EX700i and digital press are powered on. In some cases, initial print device settings may be required. See *Configuration and Setup*.

The following steps assume that you are adding the EX700i to a TCP/IP network that includes Windows XP user computers. Although this example is specific to a Windows XP TCP/IP environment, users in other computer environments may also benefit from these instructions.

Step 1

Print a Configuration page from the digital press touch panel

Print the Configuration page and note the available Setup options. You can change the EX700i name and IP address during Setup ([page 7](#)). When you perform EX700i Setup and install the printer driver, you will need to reference this information.

- 1 Press **Services Home** on the digital press.
- 2 On the digital press touch panel, press **All Services**, and then press **Web Applications**.
- 3 Press the **Info** tab, and then press **Print Pages**.
- 4 Press **Configuration**.
- 5 Press **Yes**.

The Configuration page prints.



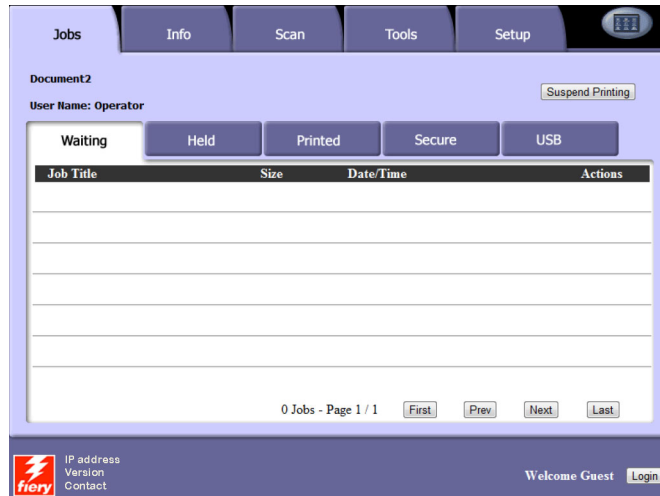
- 6 Review the default EX700i settings on the printed page and determine if they are compatible with your network environment.

If you change these settings, print another Configuration page to verify the changes.

Step 2

Set up the EX700i

- 1 Press Services Home on the digital press.
- 2 On the digital press touch panel, press All Services and then press Web Applications.



- 3 Make sure that the EX700i is Idle.

If Printing or RIPping appears, the EX700i is processing. You must wait until the system finishes and reaches the Idle state.

- 4 Press the Setup tab.
- 5 Press the Password field, and use the keyboard on the digital press touch panel to enter the Administrator password.
- 6 Press Enter, and then press Login.
- 7 Perform Setup.

This is the minimum required for initial Setup. Later, you can complete the remaining Setup menus, from a network computer. Make note of the EX700i name and IP address defined in Setup. You will need to reference this information when you install the printer driver.

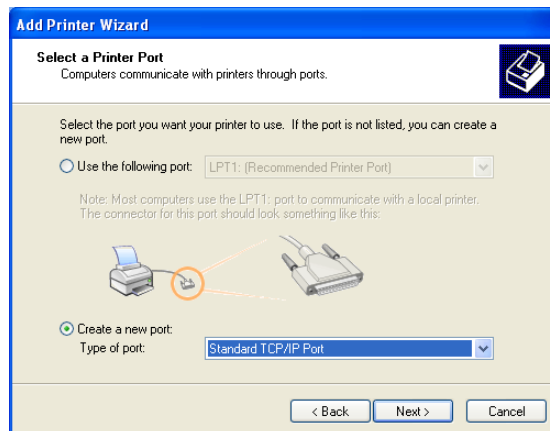
The EX700i must reboot in order for the changes in Setup to take effect.

Step 3

Install PostScript printer drivers on user computers for TCP/IP printing

From a user's Windows XP computer:

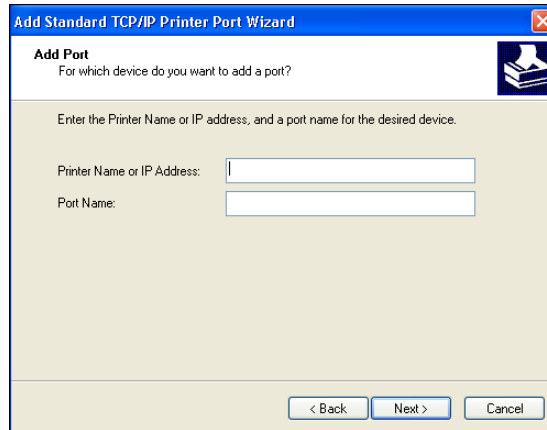
- 1 Click Start and choose Printer and Faxes.
- 2 Click Add a printer.
- 3 Click Next.
- 4 Select "Local printer attached to this computer" and click Next.
- 5 Select Create a new port, choose Standard TCP/IP Port, and then click Next.



The Add Standard TCP/IP Printer Port Wizard dialog box appears.

- 6 Click Next.

- 7 Type the IP address or EX700i DNS name and click Next.



- 8 Make sure that Generic Network Card is selected as Standard for Device Type and click Next.
- 9 Click Finish.
- 10 Click Have Disk in the dialog box displaying lists of manufacturers and printers.
- 11 Insert the User Software DVD into your computer.
The automatic Installer starts.
- 12 Click Cancel to exit the automatic Installer.
- 13 Browse to the Print Drivers\Ps_drvr folder on the User Software DVD.
Make sure that Oemsetup.inf or Oemsetup is selected, click Open, and then click OK.
- 14 Select the EX700i printer driver as your printer and click Next.
- 15 If needed, type a name for the EX700i in the Printer Name field, indicate whether you want to make it the default printer, and then click Next.
- 16 Select Do not share this printer and click Next.
- 17 Select No to print a Test Page, click Next, and then click Finish.

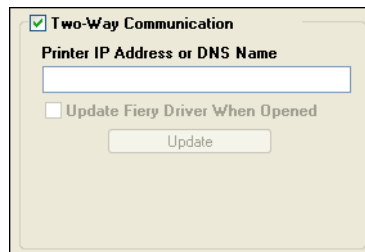
The necessary files are installed to your hard disk drive. When installation is complete, the Printers window appears, with an icon for the newly installed printer.

Step 4

Configure the printer driver to include EX700i and digital press installed options

From a user's Windows XP computer:

- 1 Click Start and choose Printers and Faxes.
- 2 In the Printers window, select the EX700i printer driver icon.
- 3 Choose Properties from the File menu.
- 4 Click the Accessories tab.
- 5 Select Two-Way Communication.



- 6 Type the EX700i IP Address or DNS Name.
- 7 Select Update Fiery Driver When Opened to display the printer's current default settings when the printer driver is opened.
- 8 Click Update.

Options such as finishing units that are installed on the Xerox 700 Digital Color Press are displayed in the printer driver and are available the next time you print a job.

- 9 Click OK.



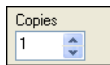
For more information about installing printer drivers, see printer driver Help.

Step 5

Print a job

From a user's Windows XP computer:

- 1 From your application, choose **Print** from the **File** menu.
- 2 Select the EX700i printer driver and click **Properties**.
- 3 Specify EX700i job options, such as **Copies** and finishing options, and then click **OK**.



- 4 Click **OK** again.

For information about printing jobs from a computer, see [Printing](#).



After completing the basic steps to print, you may want to explore these additional topics, depending on your printing environment:



- Creating secure user groups and assigning user passwords (see [Configure Help](#))
- Managing and editing jobs submitted to the EX700i using utilities, such as [Command WorkStation](#) (see [Utilities](#))
- Calibrating your digital press to simulate a different printing environment or optimize color output (see [Color Printing](#))

System requirements for user computers and mobile devices

To install the EX700i user software on a Windows or Mac OS computer, the computer must be equipped with a built-in or external DVD-ROM drive. The following table lists the minimum system requirements.

Minimum requirements for	Windows	Mac OS
Operating system	<p>The following Windows versions (with latest service packs) are supported for printer drivers:</p> <ul style="list-style-type: none"> Windows 2000 Professional, Server, Advanced Server <p>The following Windows versions (with latest service packs) are supported for printer drivers and Fiery applications:</p> <ul style="list-style-type: none"> Windows XP (32- and 64-bit) Home, Professional Windows Vista (32- and 64-bit) Home Basic Edition, Home Premium Edition, Ultimate Edition, Business Edition, Enterprise Edition Windows Server 2003 (32- and 64-bit) Standard Edition, Enterprise Edition, Datacenter Edition Windows Server 2003 SP1 (64-bit), R2 (32- and 64-bit) Windows 7 (32- and 64-bit) Home Premium, Professional, Ultimate Windows Server 2008 (32- and 64-bit) Standard Edition, Enterprise Edition, Datacenter Edition, Web Server (32 and 64-bit) Windows Server 2008 R2 (64-bit) Foundation Edition, Standard Edition, Enterprise Edition, Datacenter Edition, Web Server, Itanium-Based <p>NOTE: Job monitor is not supported on 64-bit operating systems.</p>	<p>The following Mac OS versions are supported for printer drivers:</p> <ul style="list-style-type: none"> Mac OS v10.3.9 and later (Power PC Mac OS computers) Mac OS v10.4 and later (PowerPC and Intel-based Mac OS computers) Mac OS v10.5.x (PowerPC and Intel-based Mac OS computers) Mac OS v10.6 (Intel-based Mac OS computer) <p>Mac OS versions supported for Fiery applications:</p> <ul style="list-style-type: none"> Mac OS v10.4.11 and later (Intel-based Mac OS computers) Mac OS v10.5.x (PowerPC G5 and Intel-based Mac OS computers) Mac OS v10.6 (Intel-based Mac OS computer) (printer drivers not supported through AppleTalk) <p>NOTE: Hot Folders is only supported on PowerPC G5 and Intel-based Mac OS computers.</p>
Memory for printing and utilities (except Command WorkStation)	500MB (2GB recommended)	500MB (1GB recommended)
HDD space (except Command WorkStation)	1GB (2GB recommended)	500MB (1GB recommended)
Networking protocol	TCP/IP	TCP/IP, EtherTalk, AppleTalk, Bonjour NOTE: Mac OS v10.6 is not supported over AppleTalk.

Minimum requirements for	Windows	Mac OS
WebTools	<p>Java-enabled Web browser:</p> <ul style="list-style-type: none"> • Mac OS X: Safari v5.0, Firefox v3.5 • Windows: Internet Explorer 6, 7, and 8, Firefox v3.5 <p>NOTE: Frequent Java updates may affect Configure. Because support cannot be guaranteed for all versions, use the version specified for best results.</p> <p>NOTE: Microsoft releases frequent updates to Internet Explorer. Because support cannot be guaranteed for all versions, use the versions specified for best results.</p> <p>NOTE: Some versions of Firefox on Mac OS X may not allow passwords to be entered into Configure. In this case, use Safari instead.</p> <p>A monitor and video memory that supports 16-bit color at a minimum resolution of 800x600</p> <p>A TCP/IP-enabled network and the EX700i IP address or DNS name</p> <p>Web Services enabled on the EX700i</p>	
Command WorkStation	1.0GHz or greater Pentium 4 processor	1.6GHz or greater Macintosh G5
	3GB hard disk space for installation	
	1GB of RAM or more recommended	
	1024x768 display with 16-bit video card TCP/IP networking protocol installed	
SeeQuence (Impose and Compose) on Command WorkStation	<p>In addition to requirements for Command WorkStation:</p> <ul style="list-style-type: none"> • Dongle to be installed on USB port for every client workstation • Acrobat/PitStop software 	
Online Help	<p>The Help files for Fiery utilities are developed for use with Microsoft Internet Explorer v5.5 through v7.0. If you use other browsers, such as Safari or other versions of Internet Explorer, the Help might not display properly.</p> <p>If your browser uses a pop-up blocker, it may block Help files. If this occurs, temporarily disable your pop-up blocker to display Help files.</p> <p>If your browser has the advanced Internet option enabled to display notifications about script errors, it might display a warning window before displaying a Help file. To avoid the warning window, clear the “Display a notification about every script error” option on the Advanced tab in the Internet Options dialog box. A warning message might also appear in the Status bar, but the content of the Help file is not affected by this error.</p>	

Minimum requirements for	Mobile device
Direct Mobile Printing	<p>Direct Mobile Printing supports the following Apple iOS 4.2 or later mobile devices with print functionality:</p> <ul style="list-style-type: none"> • iPad • iPhone (3GS,4G) • iPod touch (3rd generation or later)

Starting, shutting down, rebooting, and restarting the EX700i

This section describes how to start, shut down, reboot, and restart the EX700i when necessary.

TO START THE EX700I PRINT SERVER

- 1 Make sure that the power cable is attached and that the power switch (if present) is in the ON position.
- 2 Press the power button on the front panel.
- 3 Check the Activity light on the EX700i Print Server.

TO START THE INTEGRATED FIERY COLOR SERVER

- 1 Make sure that the power switch on the Integrated Fiery Color Server back panel is set to ON (I), and then press the power button once to power on the Integrated Fiery Color Server.
- 2 Wait approximately 1 minute as the Integrated Fiery Color Server completes the startup sequence.
- 3 After the Integrated Fiery Color Server LED display reaches and remains at 00, power on the digital press using the main power switch on the front of the digital press.

TO SHUT DOWN, RESTART, OR REBOOT THE EX700I FROM THE DIGITAL PRESS TOUCH PANEL

- 1 Press Services Home on the digital press.
- 2 On the digital press touch panel, press All Services, and then press Web Applications.
- 3 Press the Info tab, and then press Restart Server.
- 4 Enter logon information, if prompted.
- 5 Select Reboot System, Restart Server, or Shut Down System.

Wait for the EX700i to shut down, reboot, or restart.