

**Xerox CX Print Server, Powered by Creo Color Server
Technology,
for the Xerox 700 Digital Color Press**

Version 2.0

Copyright

Eastman Kodak Company, 2011. All rights reserved.

This document is also distributed in PDF (Portable Document Format). You may reproduce the document from the PDF file for internal use. Copies produced from the PDF file must be reproduced in whole.

Trademarks

Creo, InSite, Kodak, and Prinergy are trademarks of Kodak.

Acrobat, Adobe, Distiller, Illustrator, Photoshop, and PostScript are trademarks of Adobe Systems Incorporated.

Apple, AppleShare, AppleTalk, iMac, ImageWriter, LaserWriter, Mac OS, Power Macintosh, and TrueType are registered trademarks of Apple Inc. Macintosh is a trademark of Apple Inc., registered in the U.S.A. and other countries.

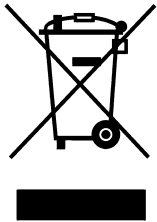
Hexachrome, PANTONE, PANTONE Goe, PANTONE Hexachrome, and PANTONE MATCHING SYSTEM are the property of Pantone, Inc.

Xerox and the sphere of connectivity design are trademarks of Xerox Corporation in the United States and/or other countries.

FCC Compliance

Any Creo branded equipment referred to in this document complies with the requirements in part 15 of the FCC Rules for a Class A digital device. Operation of the Creo branded equipment in a residential area may cause unacceptable interference to radio and TV reception, requiring the operator to take whatever steps are necessary to correct the interference.

Product Recycling and Disposal



If you are managing the disposal of your Xerox product, please note that the product contains perchlorate, lead, mercury, and other materials whose disposal may be regulated due to environmental considerations in certain countries or states. The presence of perchlorate, lead and mercury is fully consistent with global regulations applicable at the time that the product was placed on the market.

Application of this symbol on your equipment is confirmation that you must dispose of this equipment with agreed national procedures.

In accordance with European legislation, end of life electrical and electronic equipment subject to disposal must be managed within agreed procedures.

For the proper treatment, recovery, and recycling of old products and used batteries, please take them to applicable collection points in accordance with your national legislation and directives 2002/96/EC and 2006/66/EC. By disposing of these products and batteries correctly, you will help save valuable resources and prevent any potential negative effects on human health and the environment that could otherwise arise from inappropriate waste handling. In accordance with national legislation, penalties may be applicable for incorrect disposal of this waste.

Xerox operates a worldwide equipment take back and reuse/recycle program. Contact your Xerox sales representative (1-800-ASK-XEROX) to determine whether this Xerox product is part of the program. For more information about Xerox environmental programs visit <http://www.xerox.com/environment>.

For perchlorate disposal information, contact your local authorities. In the United States, you may also refer to the California Department of Toxic Substances Control (DTSC) or see <http://www.dtsc.ca.gov/hazardouswaste/perchlorate>.



REACH

This electronic information product complies with Standard SJ/T 11363 - 2006 of the Electronics Industry of the People's Republic of China.

Please consult www.kodak.com/go/REACH for information about the presence of substances included on the candidate list according to article 59(1) of Regulation (EC) No. 1907/2006 (REACH).

Limitation of Liability

The product, software or services are being provided on an "as is" and "as available" basis. Except as may be stated specifically in your contract, Kodak and its subsidiaries, and affiliates expressly disclaim all warranties of any kind, whether express or implied, including, but not limited to, any implied warranties of merchantability, fitness for a particular purpose and non-infringement.

You understand and agree that, except as may be stated specifically in your contract, Kodak and its subsidiaries, and affiliates shall not be liable for any direct, indirect, incidental, special, consequential or exemplary damages, including but not limited to, damages for loss of profits, goodwill, use, data or other intangible losses (even if Kodak has been advised of the possibility of such damages), resulting from: (i) the use or the inability to use the product or software; (ii) the cost of procurement of substitute goods and services resulting from any products, goods, data, software, information or services purchased; (iii) unauthorized access to or alteration of your products, software or data; (iv) statements or conduct of any third party; (v) any other matter relating to the product, software, or services.

The text and drawings herein are for illustration and reference only. The specifications on which they are based are subject to change. Kodak may, at any time and without notice, make changes to this document. Kodak, for itself and on behalf of its subsidiaries, and affiliates, assumes no liability for technical or editorial errors or omissions made herein, and shall not be liable for incidental, consequential, indirect, or special damages, including, without limitation, loss of use, loss or alteration of data, delays, or lost profits or savings arising from the use of this document.

www.creoservers.com

Internal 739-00642A-EN Rev A

Revised June 2011

Contents

Introduction	1
What Is in These Release Notes.....	1
Printing This Document.....	1
General	2
Software kit contents.....	2
DVD 1.....	2
DVD 2.....	2
DVD 3.....	2
Power Up.....	3
Installation.....	3
Default print mode.....	3
Auto duplex support for 300gsm paper weight.....	3
Apple Bonjour support.....	3
New features	4
Profiling tool.....	4
PANTONE PLUS color dictionary.....	4
Improving quality of flattened transparencies.....	4
Color sets.....	4
Printing samples of color sets.....	5
Adobe PDF Print Engine 2.0.....	5
Photo Touch-Up.....	6
Measuring a spot color with the X-Rite i1 spectrophotometer.....	7
Resubmitting several jobs to a virtual printer.....	7
Parallel RIP.....	7
Remote Workspace for Mac.....	7
Remote Site Manager.....	8
Easy VDP File Creator tool.....	8
Text message and e-mail notifications.....	8
Light on-line help.....	8
Near-line finisher support.....	8
Optional kits.....	9
Limitations	10
General.....	10
Native PDF workflow.....	11
Known Problems	12
Using the CX Print Server software	13
General.....	13
Font Substitution is off by default.....	13
Gallop.....	13
Printing.....	13
Admin page.....	13

Introduction

Welcome to the Xerox CX print server, powered by Creo color server technology, for the Xerox 700 digital color press release notes. This document describes general information, limitations, known problems, and tips about the CX print server.

What Is in These Release Notes

The release notes include the following sections:

- *General* lists general information about the CX print server release.
- *New features* describes the new features for this CX print server release.
- *Limitations* lists the limitations for this CX print server release.
- *Known Problems* lists known problems for this CX print server release.
- *Using the CX Print Server software* lists tips about using the CX print server software.

Printing This Document

Change the paper size to print this document on any printer.

1. Open the PDF file in Adobe Acrobat.
2. From the **File** menu, select **Print**.

The Print dialog box appears.

3. Select the desired paper size, for example, A4 or letter.
4. In the **Page Scaling** list, select **Fit To Printable Area** or **Shrink To Printable Area**.

Note: The names in the Page Scaling list vary according to the version of the Adobe Acrobat software.

5. Click **OK**.

This document is printed on either A4 or letter size paper.

General

This section lists general information about the CX print server software.

For more information about consumable status, refer to the Xerox 700 digital color press PC-UI for messages—for example, booklet maker full, waste bottle, corotrons, and so on.

For more information about printing mixed documents, see *Printing mixed documents on the CX Print Server for the Xerox Color Printer (734-01102A-EN Rev A)*.

The Imposition Power Kit requires software installation from the DVD. For instructions, see the *Visual Reference Guide*.

Software kit contents

The software kit includes three DVDs (DVD 1, DVD 2, and DVD 3). Each DVD is described below.

DVD 1

DVD 1 includes the Microsoft Windows XP Professional operating system with a customized menu for reinstalling the CX print server.

DVD 2

DVD 2 includes the CX print server software (setup files, PPD files, printer drivers, and utilities). The CX print server was successfully tested with McAfee VirusScan 8.5 for Windows XP Professional server antivirus software.

DVD 3

DVD 3 includes the utilities, and the customer and service documentation. The DVD has both Macintosh and Windows partitions and can be mounted on both platforms. You can copy the user guide to any client workstation that has a DVD-RW drive and send the guides to any printer for printing.

Power Up

The correct powering up sequence is to first power up the Xerox 700 digital color press, and then power on the CX print server.

Installation

You need to connect a monitor, keyboard and mouse or use a remote desktop connection for the initial setup.

Default print mode

The default print mode for the Xerox 700 digital color press has changed from simplex to duplex head-to-head.

Auto duplex support for 300gsm paper weight

The Xerox 700 digital color press is now capable of duplexing 300 gsm paper weight.

Apple Bonjour support

The CX print server supports Apple Bonjour. Bonjour is a service for publishing printers. When you create a shared virtual printer, it will automatically be published as a Bonjour printer.

New features

Profiling tool

Note: The Profiling tool is available only with the Creative Power Kit.

The Profiling tool enables you to create destination profiles that define the color space of your printer and are based on the combinations of paper and toner that you are using.

PANTONE PLUS color dictionary

The CX print server now includes the PANTONE PLUS library and in addition still supports the legacy PANTONE library values. You can use both libraries.

Improving quality of flattened transparencies

Note: This option is available only for the CPSI RIP.

This option improves the quality of transparencies that are flattened in PDF files.

Color sets

Note: The Color Set feature is available only with the Creative Power Kit.

The Color Set feature includes four predefined color sets. Each color set provides you with the best color and quality settings for a specific data type or a printed products characteristics.

The Color Set options are:

- **Outdoor photos color set:** recommended for jobs that include mainly photos of landscapes
- **Photos of People color set:** recommended for jobs such as a family photo album
- **Commercial materials color set:** recommended for jobs that include both graphics and photos, such as advertising materials
- **Corporate documents color set:** recommended for jobs that are mostly office documents, such as presentation files, Web pages, and files with charts and logos.

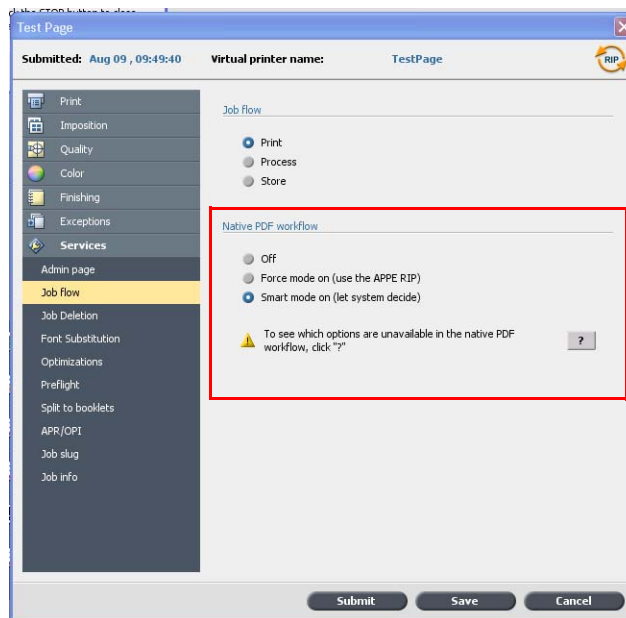
Printing samples of color sets

This option enables you to proof your job or pages within your job using the Color Set options. After you send a copy of your job to print, look at the print out and select the best print. When you send the entire job for printing, use this color set.

Adobe PDF Print Engine 2.0

The CX print server supports the native PDF workflow. This workflow processes PDF files natively using the Adobe PDF Print Engine (APPE). The APPE RIP ensures that complex designs and effects, including transparencies, are reproduced quickly and correctly.

You can apply native PDF workflow options in the job parameters window under **Services > Job flow**.



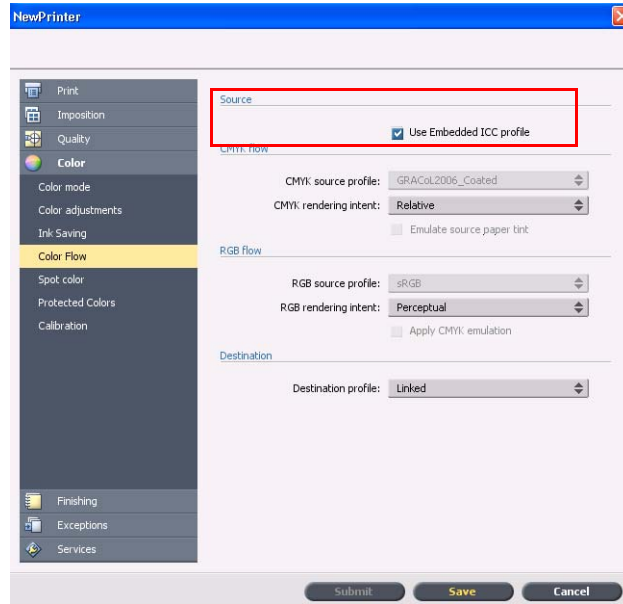
The following options are available:

- **Off**—(default setting) Always uses the CPSI RIP (even for PDF files)
- **Force mode on**—Always uses the APPE RIP for native PDF files. All other file types are processed using the CPSI RIP.
- **Smart mode on**—Enables the Smart Mode algorithm. This algorithm determines whether or not a PDF file requires the native PDF workflow and then applies it accordingly—for example, transparencies and overprint PDF files require the native PDF workflow. Text files without transparencies do not require the native PDF workflow. When a PDF file does not require the native PDF workflow, the CPSI RIP is applied.

In addition, a new check box, **Use Embedded ICC Profile**, is available in the job parameters window. One of the advantages of using the native PDF workflow is that the PDF file includes color management options—for example, embedded source profiles. When you select the **Use Embedded ICC Profile** check box, the CX print

server honors the PDF color profiles per object. If some or all of the elements do not include a profile, the default profiles are applied. By default, the source profile and destination profile that is selected in the job parameters window is used with the native PDF workflow.

Note: In some cases, results for CPSI RIP and APPE RIP will not be identical.



Some of the image quality and color options in the job parameters window are not applicable when you are working with the native PDF workflow. You can view the list of these options in the **Native PDF workflow** area.

Photo Touch-Up

Note: The Photo Touch-Up feature is available only with the Process Power Kit.

This feature enables you to touch-up or correct jpeg images within PDF files. The following options are available:

- **Exposure and color cast:** Correct underexposure, overexposure, and minor color-cast problems in photos.
- **Image noise:** Reduce noise (such as granularity caused by high ISO settings) in a photo.
- **Shadows and highlights:** Bring out details in the dark and light areas of a photo.
- **Red eye:** Remove the red-eye effect in photos taken with a flash.
- **JPEG artifacts:** Remove JPEG artifacts often found in low-quality or highly compressed JPEG files, particularly in gradient and vignette areas and around the edges of objects.

Measuring a spot color with the X-Rite i1 spectrophotometer

Note: The color picker feature is available only with the Creative Power Kit.

Use the spectrophotometer to obtain spot color values from printed material, fabric, and so on, and then save the equivalent CMYK values in the custom color dictionary.

Resubmitting several jobs to a virtual printer

Apply a modified set of parameters to selected jobs, and then resubmit the jobs for processing and printing.

Parallel RIP

Note: The Parallel RIP feature is available only with the Process Power Kit.

This feature enables you to process two files simultaneously.

Remote Workspace for Mac

You can install the Remote Workspace tool on a computer running Mac OS and have almost the same capabilities as when the Remote Workspace tool is installed on Windows. When the Remote Workspace tool is installed on a Mac computer, you can perform almost any operation as if you were working on the CX print server locally.

Notes:

- You can't perform calibration with the X-Rite i1 spectrophotometer when you are using the Remote Workspace tool.
- Eclipse help is not available when you access a Creo color server via the remote workspace.

Remote Site Manager

The Remote Site Manager enables you to monitor the status of multiple CX print servers and other Creo color servers connected to a printer on your network.

The Remote Site Manager includes the Remote Workspace and the EZ Connect utility:

- Remote Workspace: Opens an actual workspace for the selected server and enables you to import jobs, print jobs, and perform certain workflows. Several users can connect to the same server simultaneously from different remote workstations and you can switch from one server to another.
- EZ Connect: Enables you to view updated printer status information.

Easy VDP File Creator tool

The Easy VDP File Creator tool is a web-based, template-driven page composition engine that can be used for creating a typical variable data job and submit it for printing on the CX print server.

Text message and e-mail notifications

In this version the CX print server supports configuring your mail SMTP server account, SMS SMTP server account, and adding users who can receive predefined email and text message notifications about the press' status.

Light on-line help

In this version the CX print server provides an HTML-based help that enables you to quickly locate topics on a specific subject in the documentation. You can also narrow the scope of the search by selecting only those sections in which you are interested.

Near-line finisher support

Enables you to select one of the near-line finishing devices, Duplo DC-645 or DSF-2000.

Optional kits

- Creative Power Kit, which increases your color and image quality capabilities and includes:
 - X-Rite i-1 spectrophotometer
 - Import device link profile
 - Advanced calibration information
 - Spot color based on destination profiles
 - Color picker
 - Predefined color sets
 - Print color set samples
 - Profiling Tool

Note: A dongle is required for this package.
- Accessory Kit, which includes the keyboard, mouse, and monitor
- Universal stand
- Professional Power Kit, which extends the feature set of the CX print server with an emphasis on the capabilities requested by graphic arts and commercial print providers. This kit includes:
 - Dynamic page exceptions
 - Imposition Template Builder
 - Enfocus PitStop
 - Archive and retrieve VDP files
 - Spot color variation
 - Print mode—progressive, separations and custom printing
 - Test-printing spot colors
 - VDP Management tool
 - Job slug

Note: A dongle is required for this package.
- Process Power Kit, which enables faster processing and shorter job turnaround. This kit includes:
 - Photo Touch-up
 - Parallel RIP

Note: A dongle is required for this package.
- Imposition Power Kit, which enables you to build custom signatures, and define where marks or groups of marks are placed on a sheet. In addition, there is an interactive job ganging option.

Note: A dongle is required for this package.

Limitations

This section lists limitations in the CX print server software.

General

- If you open the online help or one of the tutorials on the CX print server software, and then open the workspace, the online help and tutorials are hidden behind the workspace.
- In the **Color Set** parameter, if you select the **None** option after having selected one of the color set options, the parameter doesn't revert to the default setting.
- If the user disk is full, a message indicating that the job failed in the Process queue appears without an indication that the user disk is full.
- The PPD file does not include the entire list of job parameters. To work with all of the options in the job parameters window, install the Print Driver software.
- In the Easy VDP File Creator, the **Company Name** field is not displayed in the sample preview.
- Sometimes, on the CX print server Printer Status pane, Tray 5 appears as empty even though there is paper loaded in the tray.

Workaround: Remove the paper from Tray 5, and then reinsert it. After the tray window is displayed on the Xerox 700 digital color press user interface, reconfirm the correct paper size and type. Once you reconfirm the correct paper size and type, it will be displayed correctly on the CX print server Printer Status pane.

- On Mac OS 10.6.7, when you print multiple copies of a one page job, the page is printed as duplex.
- If there is a printer fault that requires you to turn off and then turn on the press, you also need to turn off and then turn on the CX print server to reestablish connection successfully.

Native PDF workflow

- The **Run immediately** option can't be used with the native PDF workflow.
- Native PDF workflow options are not available via the Print Driver software.
- Native PDF workflow supports CMYK workflow only.
- In the Native PDF workflow, the following options will not be applied:
 - PDF optimization
 - Graphics Quality High
 - Use protected CMYK values
 - Use protected RGB values
 - Use protected gray values
 - CMYK auto rendering intent (Switch to Relative)
 - RGB auto rendering intent (Switch to Perceptual)
 - Split to booklets
 - Font Substitution

Known Problems

- When working from Prinergy Digital Submit, and using the Creo Job Ticket software, some parameters are not mapped correctly to the CX print server.
- When using resume printing, the job starts printing from the beginning.
- Sometimes error 045-360 occurs when the first connection is made between the CX print server and the press.
- When using the near-line finisher, barcode and corner marks will not be printed.
- Some queries fail when working with JDF/JMF submission.

Using the CX Print Server software

This section provides tips about using the CX print server software.

General

Font Substitution is off by default

To prevent a job failing due to missing fonts, select the **Use Font Substitution** check box in the job parameters window.

Gallop

Gallop enables you to start printing a long job, usually VDP, while the job is still processing. The **Gallop** parameter is usually used for large or complex jobs that take longer to RIP.

Printing

Admin page

If you choose to print an admin page with a Z-fold half sheet job, the admin page prints as a Z-fold half sheet.

