

# Xerox® AltaLink® Product Enhancement Document for Version 103.xxx.031.32310

Description of new features and enhancements to the products specified below.

Release Date: November 30, 2021

dc21rn4064

Product Model	System Software	Network Controller
<a href="#">Xerox® AltaLink® C8070</a>	103.003.031.32310	103.003.32310
<a href="#">Xerox® AltaLink® C8045/55</a>	103.002.031.32310	103.002.32310
<a href="#">Xerox® AltaLink® C8030/35</a>	103.001.031.32310	103.001.32310
<a href="#">Xerox® AltaLink® B8045/B8090</a>	103.008.031.32310	103.008.32310
<a href="#">Xerox EC8036</a>	103.022.031.35100	103.022.35100
<a href="#">Xerox EC8056</a>	103.023.031.35100	103.023.35100

## Contents

Firmware 103.xxx.031.35100 (R21-11) January 2022(EC8036 &56 Only) .....	6
1. Various Bug Fixes.....	6
Firmware 103.xxx.031.32310 (R21-11) December 2021.....	6
1. Various Bug Fixes.....	6
Firmware 103.xxx.021.22300 (R21-08) September 2021.....	6
1. SMTP password length increase to 256 characters.....	6
2. Added SNMPv3 MIB Objects enabling Remote Management .....	6
3. Addition of DHCP IPv6 Unique Identifier (DUID) to Configuration Sheet .....	6
4. Detailed Configuration Report .....	6
Firmware 103.xxx.011.14100 (R21-05) June 2021 .....	8
1. Various Bug Fixes.....	8
Firmware 103.xxx.001.05400 (R21-02) March 2021 .....	8
1. Customize the Supported Smart Cards List .....	8
2. Support for Single Sign-On for One Drive and O365 App Gallery App .....	8
3. Various Bug Fixes.....	9
Firmware 103.xxx.030.32000 (R20-11) December 2020.....	9
1. Configure Smart Card Type.....	9
2. Various Bug Fixes.....	9
Firmware 103.xxx.020.23120 (R20-08) September 2020.....	10
1. Support for Gemalto DL 128K v2 SCP03 PIV card.....	10
2. Extend EIP PrintFromURL API .....	10
3. Security .....	10
4. Various Bug Fixes.....	10
Firmware 103.xxx.010.14010 (R20-05) June 2020 .....	11
1. Blackboard Card Reader MRD5 .....	11
2. Support for Modernized CAC and SIPRNet cards. ....	11
3. Ability to Print Edge to Edge for PCL .....	11
4. EIP SNMP Web Service improvement .....	11
5. Various Bug Fixes.....	11
6. Security Improvements .....	12
Firmware 103.xxx.000.06000/09000 (R20-02) March/April 2020 .....	12
1. Increase parallel URL print connections from 9 to 32.....	12
2. Various Bug Fixes.....	12
3. Screen Saver Feature.....	12
Firmware 101.xxx.109.33800 (R19-11) December 2019.....	15
1. Remote Card Reader Update.....	15
2. Additional Smart Cards Supported .....	15
3. Various Bug Fixes.....	15
Firmware 101.xxx.099.28200 (R19-09) October 2019 .....	15
1. Agentless Cloud Authentication for XWC.....	15

2.	California Password Law .....	15
3.	Energy Star 3.0.....	15
4.	Various Fixes.....	15
Firmware 101.xxx.089.22600 (R19-08) September 2019.....		15
1.	Improved reliability after upgrade with pre-upgrade patch .....	15
2.	Enablement of Cherry TC-1100 Card Reader .....	16
3.	Enablement of Blackboard Card Reader .....	16
4.	Gemalto MD cards are now compliant with FIPS 140-2 security level 1 .....	16
5.	SHAC Support for SafeNet SHAC SC 650 Card .....	16
Firmware 101.xxx.069.20900 August 2019 .....		16
1.	Low Power Mode.....	16
Firmware 101.xxx.069.17810 July 2019 .....		16
1.	Xerox® Lockdown Security Solution .....	16
2.	Oberthur ID-One PIV V8 Card Supported when using Smart Card Authentication.....	16
3.	Additional Fixes Included in this Version.....	16
Firmware 101.xxx.059.13300 May 2019 .....		17
1.	Card Reader .....	17
Firmware 101.xxx.059.12100 May 2019 .....		17
1.	EIP Peripheral API updates .....	17
2.	EIP ability to request LDAP user attributes to include in user session data.....	17
3.	Translations added for B&W Output Color setting Auto.....	17
4.	Xerox® Lockdown Security Solution .....	17
5.	General Fixes .....	18
Firmware 101.xxx.029.03810 March 2019.....		18
1.	User Permissions .....	18
2.	Restricted access to print color .....	18
Firmware 101.xxx.009.00300 January 2019.....		18
1.	B&W saved jobs.....	18
2.	Safenet SC650 v4.0 SIPRNet tokens .....	18
3.	Group Fax Improvements.....	18
Firmware 101.xxx.028.32100 December 2018.....		18
1.	Color Quality Improvements .....	18
2.	Various bug fixes.....	18
3.	Enablement of SecuraKey ET4-AUS-D-WR8 Proximity Card Reader .....	18
4.	Mixed Size Originals Feature support for Oficio Media (8.5x13.4) .....	18
5.	Support for Croatian and Ukrainian languages. ....	18
6.	Security.....	18
7.	Re-Introduced Support for Gemalto IDPrime MD 3810 and 830b cards .....	19
Firmware 101.xxx.008.27400 Nov 2018 .....		19
1.	PCL Printing Improvement.....	19
2.	Fax Confirmation Sheet .....	19
Firmware 100.xxx.068.26100 Sept 2018 .....		19
1.	Image Quality Improvements .....	19

2.	Support for Gemalto IDPrime MD 3810 and 830b cards .....	19
3.	Secure Print with smartcard user identification.....	19
4.	PKCS12 certificate installation.....	19
Firmware 100.xxx.058.22800 Aug 2018 .....		19
1.	Image Quality Improvements .....	19
2.	General fixes for Authentication and Connectivity. ....	19
Firmware 100.xxx.048.17300 July 2018 .....		20
1.	Enablement for POP3 Over Secured Connection (TLS). ....	20
2.	Image Quality Improvements .....	20
3.	General fixes for Copy, Print and Output functionality.....	20
Firmware 100.xxx.038.10200 April 2018.....		20
1.	Hide Network Troubleshooting .....	20
2.	Ability to Edit Device Address Book for Server Fax on the LUI (On The Fly) .....	21
3.	Image Quality Improvements .....	25
4.	Authentication.....	25
5.	General fixes for Copy, Print and Output functionality.....	25
Firmware 100.xxx.028.05200 March 2018.....		25
1.	Image Quality Improvements .....	25
2.	Scanning.....	25
3.	Authentication.....	25
4.	General fixes for Copy, Print Output, and EIP functionality.....	25
Firmware 100.xxx.018.01610 January 2018.....		26
1.	Image Quality Improvements .....	26
2.	SMB Scanning .....	26
3.	Xerox Dropbox App blank screen .....	26
4.	Scanning CAC/PIV/Smartcard Authentication.....	26
5.	General fixes for Accounting, Copy, Print Output and EIP functionality.....	26
Firmware 100.xxx.107.34110 December 2017.....		26
1.	Image Quality Improvements .....	26
2.	Xerox Dropbox App blank screen .....	26
Firmware 100.xxx.107.28600 October 2017 .....		27
1.	ThinPrint Protocol Support.....	27
2.	Ability to hide username or IDs for Security .....	28
3.	Xerox® Lockdown Security Solution / Healthcare Lockdown Solution.....	29
Firmware 100.xxx.077.17900 & (.17010 for B8045/B8090) July 2017 .....		30
1.	Custom Administrator Solution .....	30
2.	Cloning Webservice .....	31
3.	EIP Authentication .....	31
4.	Disable Print Submission of Clone Files.....	31
5.	Disable SNMP Sets.....	32
6.	XML Configuration Report.....	32
7.	Support Log Tab.....	32
8.	Network Troubleshooting Log Feature .....	32



# Latest release information:

## Firmware 103.xxx.031.35100 (R21-11) January 2022( **EC8036 &56 Only**)

### 1. Various Bug Fixes

- Fax SW Version 3.16.05 release
- Toner is not compatible at install

## Firmware 103.xxx.031.32310 (R21-11) December 2021

### 1. Various Bug Fixes

- Security: CVE-2020-25710
- Add loss of 24VDC to all Office LX finisher motors causing 12-282 codes

## Firmware 103.xxx.021.22300 (R21-08) September 2021

### 1. SMTP password length increase to 256 characters

- Introduces ability to support SMTP password length longer than 60 Characters for Outgoing SMTP Authentication. SMTP password length max supported is 256 characters.
- Many mail server applications now begin enforcing MFA on all User accounts and starting to use API key (essentially a 69 Character password) for SMTP Authentication.

### 2. Added SNMPv3 MIB Objects enabling Remote Management

- Added access to SNMPv3 MIB objects enabling XDM 6.8 Set Feature to remotely read/write the values.

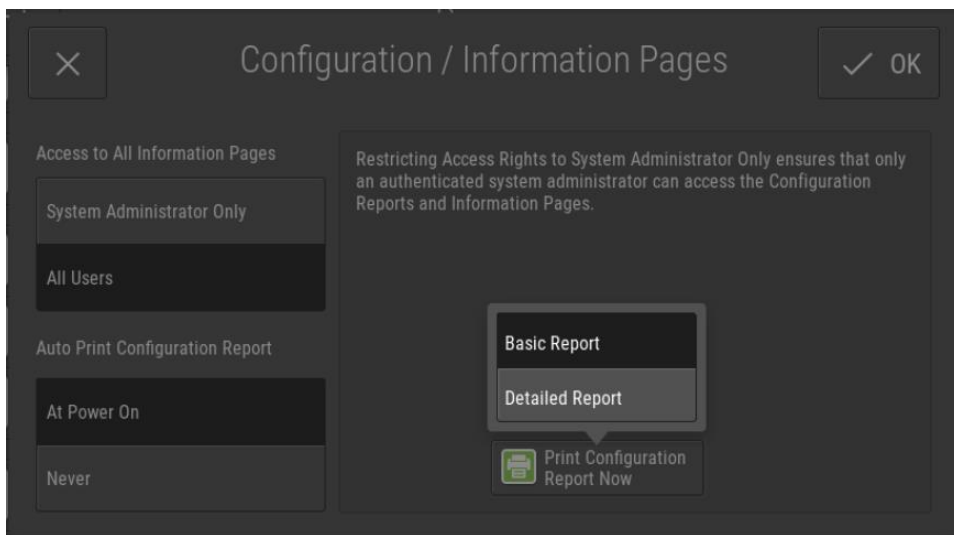
### 3. Addition of DHCP IPv6 Unique Identifier (DUID) to Configuration Sheet

- The DHCP IPv6 Unique Identifier (DUID) in Link Layer format will be displayed on the printed configuration sheet
- when IPv6 is enabled. The DUID information is labeled "DUID (DHCP Unique Identifier)" under the Protocols heading. Additionally, the DUID identifier can be obtained from the EWS Configuration Report when IPv6 is enabled.

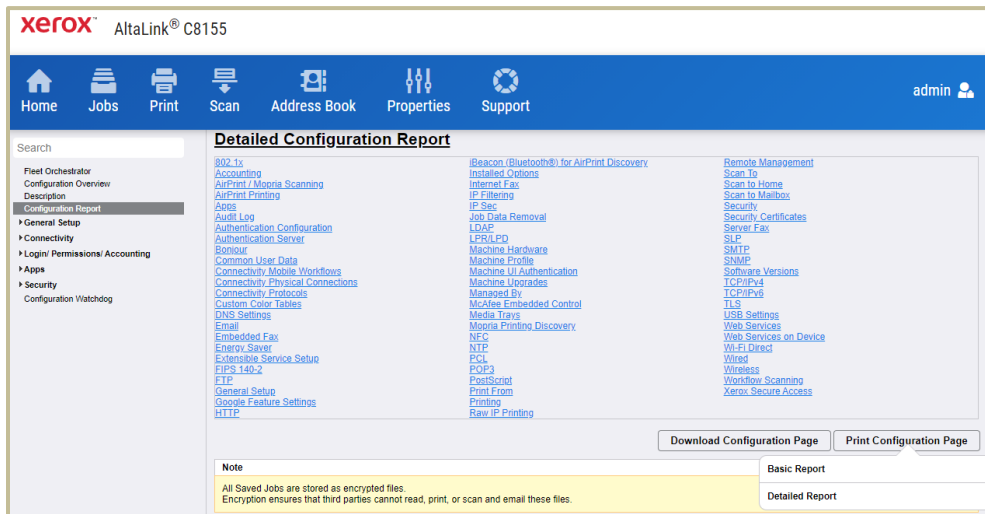
### 4. Detailed Configuration Report

Introduces new Configuration Report options of Basic and Detailed. Both versions of the report can be printed by the Admin or guest user if access is configured. The Configuration Reports are accessible through the EWS and Local UI.

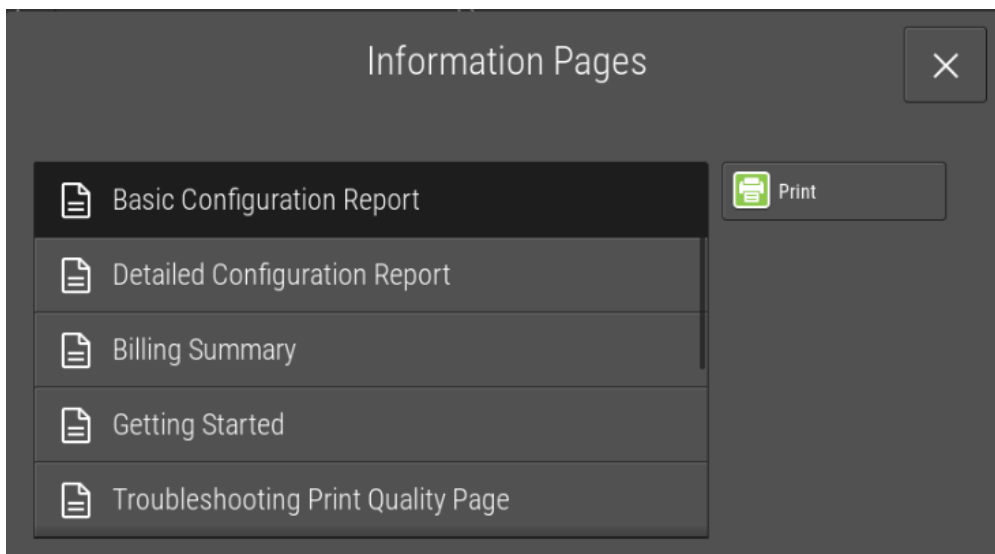
From the LUI, the Admin can configure the device to control access to the Basic and Detailed configuration reports. (Device App -> Tools -> Configuration / Information Pages). Printing of the reports is also available by selecting "Print Configuration Report Now" & selecting the Basic or Detailed Report.



Printing of the configuration reports from EWS:  
 Properties -> Configuration Report -> Print Configuration Page -> Select the Basic or Detailed Report



Printing of the configuration reports from the LUI:  
 Select Device App -> Information Pages -> Select Basic or Detailed Configuration Report -> Print



## Firmware 103.xxx.011.14100 (R21-05) June 2021

### 1. Various Bug Fixes

- Security: Pages vulnerable to XSS attack
- Security: Audit log improvements
- Fixed the issue with device changes domain for print jobs instead of using the domain in the job ticket (XCPT)

## Firmware 103.xxx.001.05400 (R21-02) March 2021

### 1. Customize the Supported Smart Cards List

Enables the Xerox Analyst, Solution Architect or Service Engineer to customize the supported smart card list on the device to add a new smart card for use in environments where more than one smart card type is in use.

The following information are necessary to enable a new smart card:

- Smart card ATR (eg: 3B 7F 96 00 00 80 31 80 65 B0 84 56 51 10 12 0F FE 82 90 00 )
- Smart card Manufacturer / Series / Model / Applet (eg: Gemalto IDPrime MD 830b v4.3.5 Applet)

Once the customized supported smart card list has been created, it is uploaded to the device via the Web UI and validation tested to ensure that all smart card related functions work properly.

The customized supported smart card list can then be deployed to other similar devices by either cloning, Fleet orchestrator or XDM deployment of the clone file.

### 2. Support for Single Sign-On for One Drive and O365 App Gallery App

This feature enables single sign-on for access to Office 365 or One Drive cloud solutions when using Kerberos authentication at the MFP. Kerberos authentication can be performed using either smartcard or network authentication. This feature is to be used with App Gallery SSO apps for Office 365 and One Drive.

The feature is enabled and configured on the device Web UI.

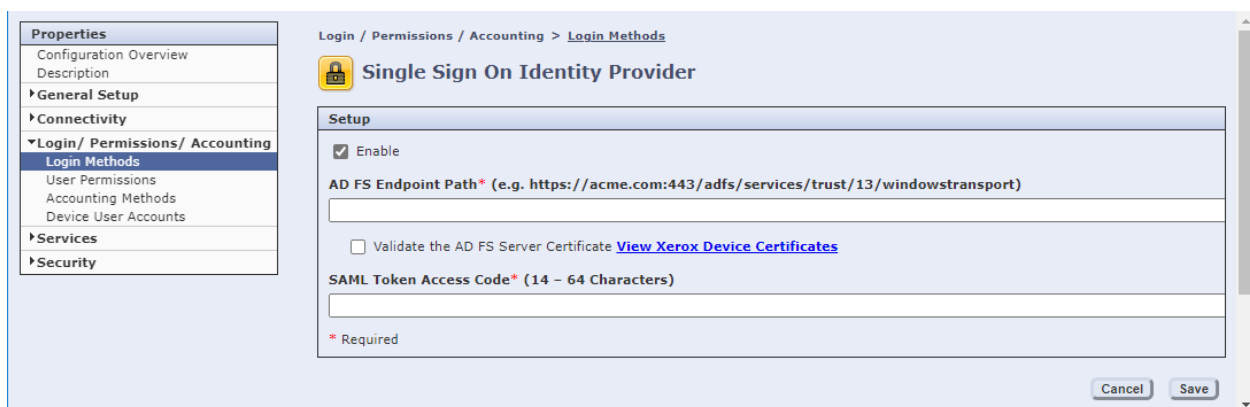
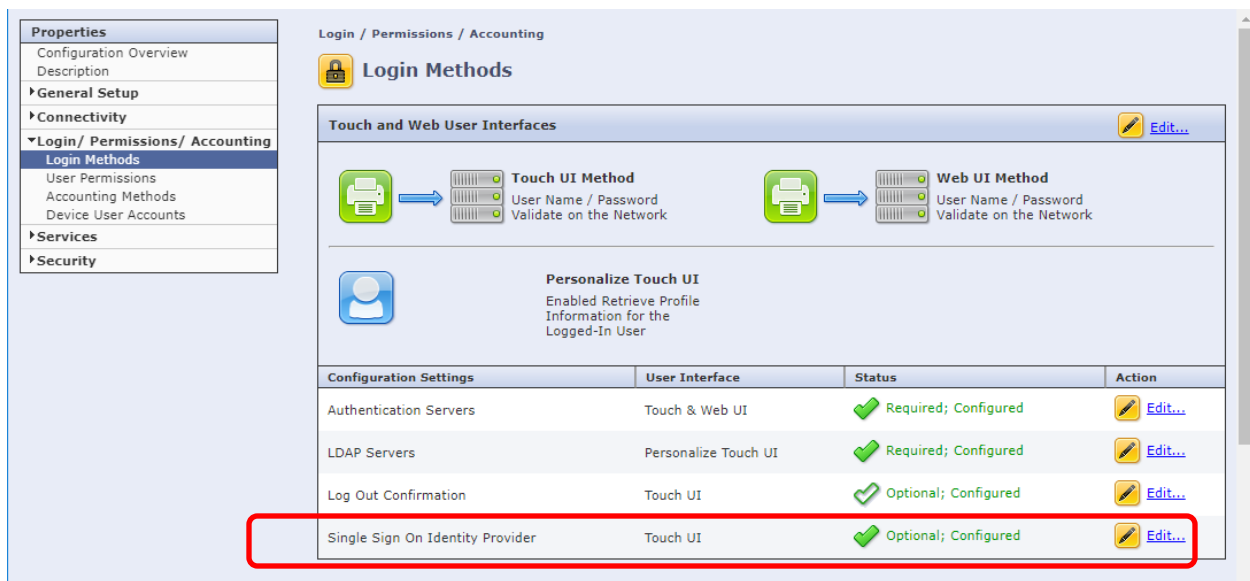
- Under the settings for Smartcard or Network Authentication select Edit for Single Sign-On Identity Provider (see pictures below).
- Check the Enable Box
- Enter of the url for the ADFS server windowstransport endpoint
- Enter the SAML Token Access Code. The SAML Access Token Code can be any string, 14 – 64 characters that the admin wants to use. Note that SAML Token Access Code entry must match the entry made at App Gallery when configuring and downloading the App Gallery SSO apps.
- Select Save. Note that if you go back into the setup and change any setting you will need to re-enter the SAML Access Token Code

This feature requires that the Job Management setting for “Allow Open Access to Job Information” be enabled.

- This setting can be found on CWIS>Properties>Connectivity>HTTP>WebServices.

To configure the SSO App Gallery app,

- Open App Gallery and Log on
- Scroll down to Cloud Apps and select the One Drive or 365 App
- By the App icon on the left side select “Configurable”
- Enter the “Tenant ID” (this is provided by Microsoft)
- Enter the “Advanced Custom Configuration (uncommon)”. The “Advances Custom Configuration (uncommon)” entry needs to be the same entry as the entry on the MFP for the “SAML Access Token Code”.



### 3. Various Bug Fixes

- The device now works successfully with smtp-relay.gmail.com when TLS encryption is enabled.
- When using an EIP ID Card Copy application, the copy now prints as expected.
- Editing and saving of the local address book now works correctly.

## Firmware 103.xxx.030.32000 (R20-11) December 2020

### 1. Configure Smart Card Type

Enable ability to set a single smart card type when the device Login Method is configured for Control Panel Login using Smart Card. The selections are:

- **All Supported Smart Cards:** This is current device behavior used in environments where users have multiple different smart card types.
- **CAC & PIV Cards:** For use in environments where all users have CAC or PIV cards.
- **IDPrime MD cards:** For use in environments where all users have IDPrime MD cards.
- **SafeNet SC cards:** For use in environments where all users have SafeNet SC cards.  
**Note: This selection is only available when the Safenet SHAC FIK key has been installed and FIPS has been disabled**

### 2. Various Bug Fixes

- Message Security certificate untrusted no longer appears when user attempts to login with Equitrac 5.6

- 2K LCSS mixed size print or copy job improvements result in properly stack output and reduces 312-151 faults.

## Firmware 103.xxx.020.23120 (R20-08) September 2020

### 1. Support for Gemalto DL 128K v2 SCP03 PIV card

Support is provided for the following PIV smart card:

Gemalto DL 128K v2 SCP03 PIV smart card, ATR: 3B 7F 96 00 00 80 31 80 65 B0 84 23 27 E5 12 0F FE 82 90 00

### 2. Extend EIP PrintFromURL API

Provides a fully encrypted document content from submission device (workstation) to printer through the Xerox Workplace Cloud (XWC) platform and by utilizing the EIP PrintFromURL API.

A key encipherment certificate needs to be installed on the device via the Embedded Web Server:

**Xerox® AltaLink® B8045**

admin-Logout

Home Jobs Print Scan Address Book Properties Support

Search

Fleet Orchestrator  
Configuration Overview  
Description  
Configuration Report  
General Setup  
Connectivity  
Login/Permissions/Accounting  
Apps  
Security  
Password Policies  
Installation Policies  
Mobile Embedded Control  
Secure Print  
Authentication (Login)  
Encryption  
Logs  
Certificates

**Security Certificates**

Reset to Machine/Device Factory Default

Xerox Device Certificate CA-Signed Device Certificate(s) Root/Intermediate Trusted Certificate(s) Domain Controller Certificate(s)

Device certificates that have been digitally signed by a Trusted Certificate Authority (CA). These can be generated either from a CSR or independently.  
Create a CSR file that can be processed by a Trusted Certificate Authority (CA)

Create Certificate Signing Request (CSR)

If you have received a signed digital certificate from your Certificate Authority, you may upload it here.

Install Certificate

Friendly Name	Purpose	Key Usage	Status	Expires	Action
<input type="checkbox"/> linux-dev149.sdp.mc.xerox.com	HTTPS Server, 802.1X Client, Email Signing, Email Encryption, OCSP Signing	Digital Signature, Non Repudiation, Key Encipherment, Key Agreement	Valid	21-Jan-2021	<a href="#">View/Export</a>
<input type="checkbox"/> XWCTEST	HTTPS Server, Email Encryption, OCSP Signing	Key Encipherment	Valid	09-Aug-2025	<a href="#">View/Export</a>

Delete Selected

Note

A valid device certificate is recommended to access some device webpages. The Xerox Generic Root Certificate Authority can be used by client browsers to create a valid certificate chain of trust for the Xerox Device Certificate. Installing the Xerox Generic Root Certificate Authority will resolve most 'untrusted certificate' web browser errors.

[Download the Xerox Generic Root Certificate Authority](#)

Xerox Generic Root Certificate Authority installation instructions

©2017-2019 Xerox Corporation. All Rights Reserved.  
Xerox®, Xerox and Design® and AltaLink® are trademarks of Xerox Corporation in the United States and / or other countries.  
[Home](#) | [Status](#) | [Site Map](#) | [Help...](#)

**NOTE : The Xerox Workplace Cloud enablement to support this device firmware will be available in the 24<sup>th</sup> October 2020 solution XWC 5.6.0xx release.**

### 3. Security

- The ability to set WebUI configuration attributes has been removed.
- SQL injection attack has been addressed
- Removed Guest and ForceOnBoxLogin accounts as option to login from any interface.

### 4. Various Bug Fixes

- Scan to home failing with "an error occurred during authentication process" when using CAC.
- Improvements made to reduce the number of 377-212 faults

# Firmware 103.xxx.010.14010 (R20-05) June 2020

## 1. Blackboard Card Reader MRD5

Blackboard Card Reader MRD5 USB Smartcard Reader is supported in this release.

## 2. Support for Modernized CAC and SIPRNet cards.

Following Modernized CAC cards supporting existing capabilities with reduced/realigned certificates are supported in this release,

IDEMIA Cosmo V8.0 (formerly Oberthur card system) with V2.7.4 Applets T=0/T=CL communication protocol. ATR: 3B D8 18 00 80 1F 07 80 31 C1 64 08 06 92 0F DF

Gemalto IDCore 3020 v2.1 (formerly Gemalto TOP DL GX V2.1) 144K with V2.7.4 Applets. ATR: 3B 7D 96 00 00 80 31 80 65 B0 75 49 17 0F 83 00 90 00

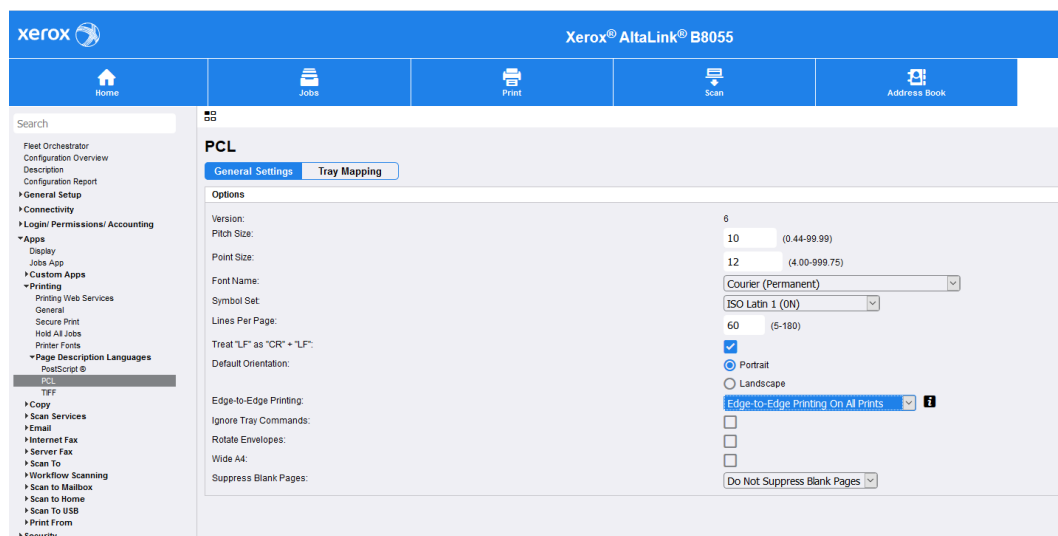
The following SIPRNet cards are supported in this release:

Safenet SC650 v4.0 card: ATR: 3b ff 14 00 ff 81 31 fe 45 80 25 a0 00 00 00 56 57 53 43 36 35 30 04 00 3c

Safenet SC650 v3.3c card: ATR: 3b ff 14 00 ff 81 31 fe 45 80 25 a0 00 00 00 56 57 53 43 36 35 30 03 03 38.

## 3. Ability to Print Edge to Edge for PCL

Ability to select Edge to Edge printing for PCL jobs has been made available and can be set through the Web UI interface (Properties -> Apps -> Printing -> Page Languages -> PCL). This setting will be applied to all PCL jobs. The feature can be disabled on a per job basis by using @PJL SET EDGETOEDGE=NO. This requires knowledge of PJL and how to add it to a print stream.



## 4. EIP SNMP Web Service improvement

Enabling only SNMP v3 on the device no longer impacts the use of the EIP SNMP Web service.

## 5. Various Bug Fixes

Improvements have been made for the following issues:

- Some B80xx devices showing false 05-331 jams.
- Machine not using newly installed certificate for 802.1x authentication.
- When printing a file of approximately 100 pages, the printer pauses after about 50 for about 10 seconds with no message as to why. A message will now appear to inform the user adjustments are being made.
- Enabling only SNMP v3 on the device no longer impacts the use of the EIP SNMP Web service.
- Machine randomly crashes with error 316-xxx in the fault history.

## 6. Security Improvements

- Clone file handling improvements. Additional options for clone file handling have been added to the web page under Properties>Security>Installation Policies. The selections are:

Clone files cannot be installed
Only encrypted clone files can be installed
Both encrypted and unencrypted clone files can be installed

- Encryption improvements for the /opt partition and other partitions.
- Embedded system accounts such as diag and CSE are now displayed in the User Database (Properties>Login/Permission/Accounting>Device User Accounts)
- The ability to disable McAfee Embedded Control has been removed.

## Firmware 103.xxx.000.06000/09000 (R20-02) March/April 2020

### 1. Increase parallel URL print connections from 9 to 32.

When submitting jobs using the Print App with Xerox Workplace Cloud, the printer will accept and process up to 32 simultaneous requests. This will improve performance and ensure that larger print jobs that take longer to submit do not hold up other jobs.

### 2. Various Bug Fixes

- Improvements to card reader availability when exiting power saver mode.
- Custom blocking screen correctly displays the & character.
- Copying custom sizes in the DADF will now present a message informing with instructions to correctly copy the job.
- Encryption of passwords managed by the device has been improved
- Dropbox button is no longer grayed out when user adds userid and password in Connect 2.0 for Dropbox. **Caveat:** "In addition to this new software release, there is a ConnectKey 2.0 for Dropbox app-side fix that is required as well. There is no ETA as to when this app will be back in the Xerox App Gallery. Please check the Xerox App Gallery periodically to see if this app reappears for download."

### 3. Screen Saver Feature

Screen savers are a common software utility for changing the image on a monitor when not being used. After a defined period of time a screen saver blanks the screen and fills it with moving images or patterns when the computer is not in use to prevent unwanted image burn-in.

When the device is in screen saver mode, it is not in power saver mode. The machine is fully awake and the UI displays a moving pattern.

Notes about screen saver:

- The Screen saver feature is available in version 103.xxx.000.06000 and above.
- The feature is disabled by default.
- This setting can be set by cloning & MIB.
- Starting with R20-05(103.00X.010.14010) SPAR release, the screen saver timer value can be changed to 5, 10, 15, 20, 25 in minutes. Min value is 5 and max value is 25. Based on the timer value configured, the screen saver would be launched if the device is idle for that particular time period.
- 

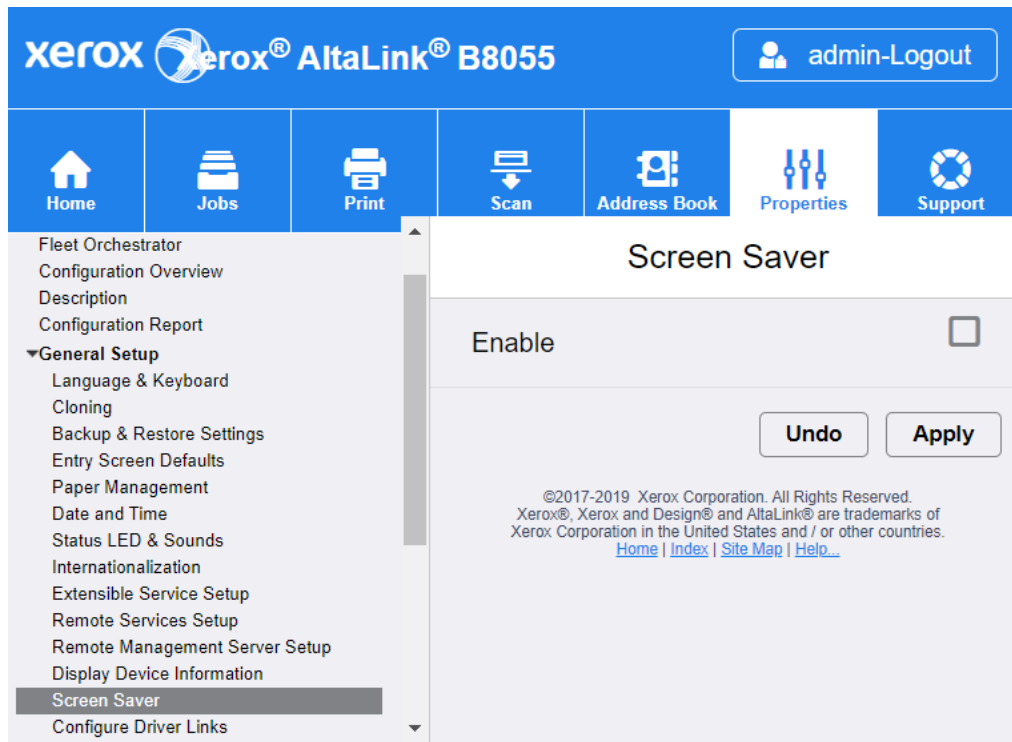
#### Enabling the screen saver

The screen saver can be enabled from two methods on the printer's web page.

#### **Method 1: Screen Saver Web Page**

- a. Go to WebUI → Properties → General Setup → Screen Saver

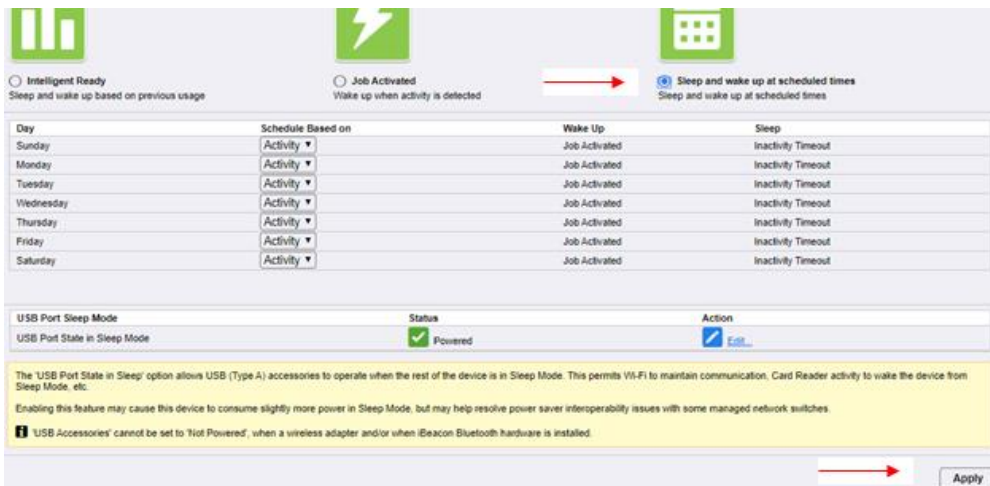
- a. Select the enable check box, then select Apply.



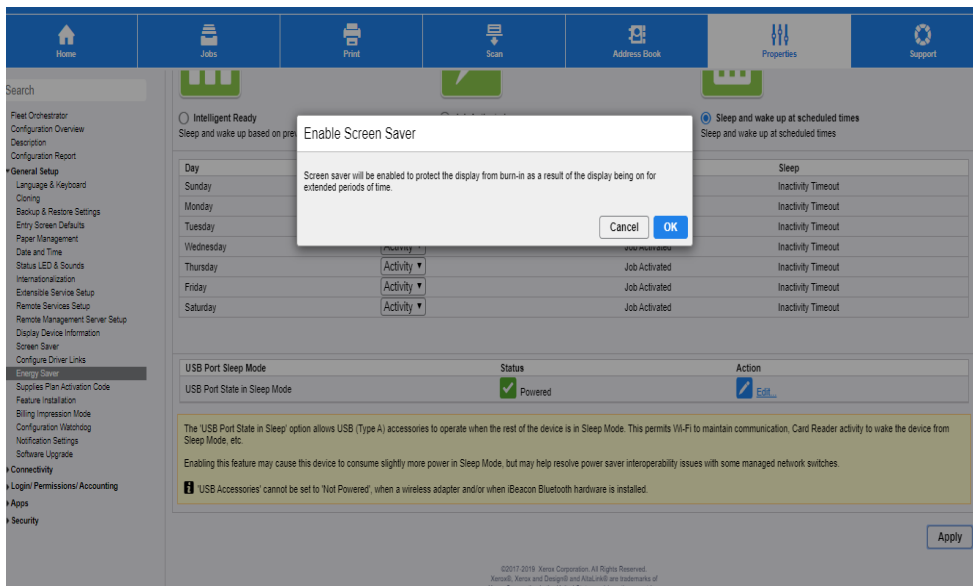
## Method 2: Energy Saver Web Page

**prerequisite:** Screen saver should be in “Intelligent Ready” or “Job Activated” mode

- a. Go to Web UI → Properties → General Setup → Energy saver -> Select “Sleep and wakeup at scheduled times” → Apply

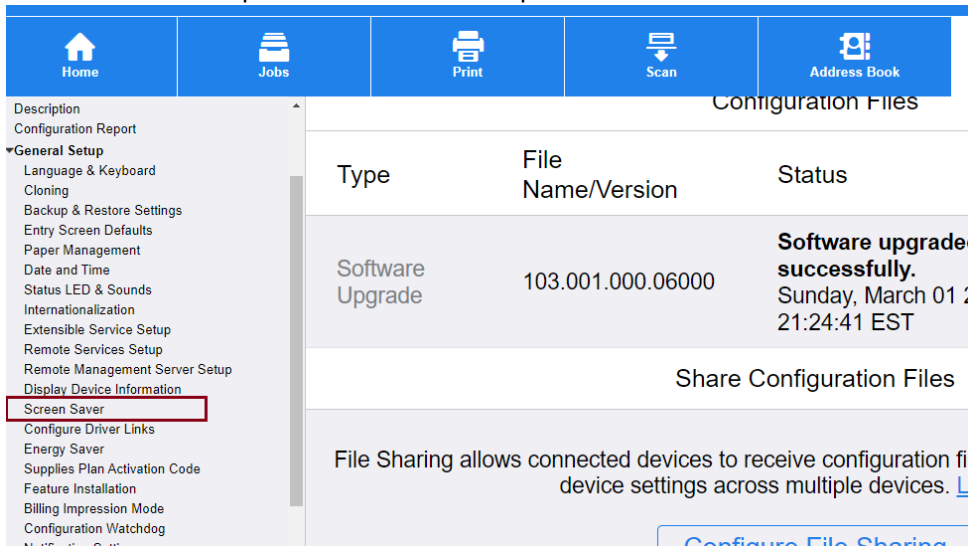


- b. The WebUI displays the “Enable Screen Saver” popup and Select “OK”

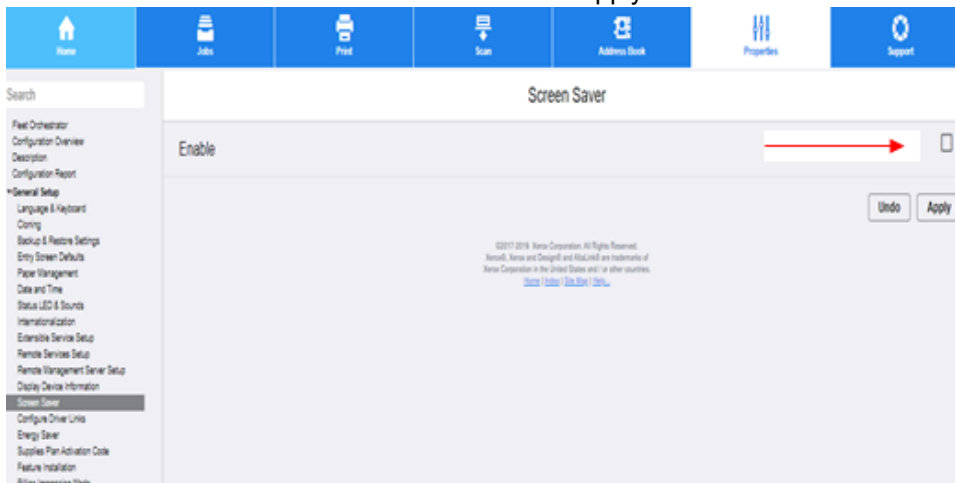


## Disabling the screen saver

- a. Go to WebUI → Properties → General Setup → Screen Saver



- b. Un-Check the “Enable” box from Screen Saver and “Apply”



## Firmware 101.xxx.109.33800 (R19-11) December 2019

### 1. Remote Card Reader Update

This release enables the ability to remotely perform firmware updates for certain card readers. Card readers currently supported are Elatec TWN4 proximity card reader. The device also displays the card reader firmware version and the date it was last updated. Contact your card reader manufacturer or your analyst that supports your device.

### 2. Additional Smart Cards Supported

Giesecke & Devrient SmartCafe Expert v7.0 144K DI smart card with CAC 2.7.6 Applet (STOPGAP)

Giesecke & Devrient Sm@rtCafe Expert v7.0 144K DI smart card with PIV Applet is now supported.

IDEMIA Cosmo v8 (NEATS) Smartcard Support

### 3. Various Bug Fixes

- Fixed an issue from 101.xxx.099.28200 that resulted in envelopes printing rotated 180 degrees.
- Fixed a problem that resulted in rolling reboots, then “call for service” after the 5<sup>th</sup> reboot. This occurred when sending a dlm, such as an upgrade DLM, clone DLM, or Patch dlm to the device while it was in a sleep state.
- Fixed a problem that resulted in Software Verification Test failing. This occurred because an NVM initialization had been performed on the device and a necessary file was removed and not recreated correctly.

## Firmware 101.xxx.099.28200 (R19-09) October 2019

### 1. Agentless Cloud Authentication for XWC

MFP support to allow the device to authenticate directly with the XWC without the need to use an on-prem agent. See XWC documentation version 5.4 for how to set up this capability.

### 2. California Password Law

Updates to comply with 2020 California Password law (SB-327).

This software release supports the California password law SB-327 effective January 1, 2020. The device admin password and SNMP private string will be the device serial number if a forced altboot reload is performed. The password is case sensitive.

### 3. Energy Star 3.0

This software release ensures our products will continue to meet Energy Star. Energy Star 3.0 means more stringent power efficiency and conservation requirements and is going into effect October 2019. This software release provides the necessary updates to meet these new specifications for all models except the C8030 220v device.

### 4. Various Fixes

- Device creates csr with an Alternate DNS name of (printer-host-name). local and customer certificate authority rejects the printer csr.
- Device is trying to send data Home (13.13.56.127 - usa0300xmg002-ext.epn.useastgw.xerox.com) every 2 minutes.
- PC shows an error message when inserting a USB thumb drive that was used on a device for scan to USB

## Firmware 101.xxx.089.22600 (R19-08) September 2019

### 1. Improved reliability after upgrade with pre-upgrade patch

Included in the zip file with the software is pre-upgrade patch 1057305v11. This patch is required when using the smaller binary differential compression (BDC) files and fixes some issues that resulted in configuration changes or inability to reconnect to an 802.1x network when upgrading from a 100.xxx release to a 101.xxx release.

Follow the Installation Instructions to ensure the pre-upgrade patch is used correctly.

The pre-upgrade patch provides the following improvements.

- Required to support BDC file upgrades.
- Fixed an issue that results in postscript error messages after applying the pre-upgrade patch on some 100.xxx versions.
- Added improved version checking to ensure patch would only install on versions that required the pre-upgrade patch.
- Auto Upgrade Settings are retained properly.
- 802.1x authentication mode is no longer set back to default EAP-MD5. This ensures the device can connect to the network after upgrade.
- 802.1x username is no longer missing on web UI after upgrading from 100.xxx to 101.xxx. This ensures the device can connect to the network after upgrade.

## **2. Enablement of Cherry TC-1100 Card Reader**

The TC-1100 Cherry Card Reader is now supported.

## **3. Enablement of Blackboard Card Reader**

The PS4101-USB Blackboard Card Reader is now supported.

## **4. Gemalto MD cards are now compliant with FIPS 140-2 security level 1**

Gemalto MD 3810 and 830b smart cards now support FIPS 140-2 security level 1. Email Signing no longer fails when FIPS 140-2 is enabled

## **5. SHAC Support for SafeNet SHAC SC 650 Card**

SHAC middleware support is provided for SafeNet SC650 v4.1 (3v) smart card ATR: 3b ff 14 00 ff 81 31 fe 45 80 25 a0 00 00 00 56 57 53 43 36 35 30 04 01 3d is now supported. Enablement requires the following steps:

1. FIPS must be disabled
2. Feature Key must be installed
  - Install Key: 227334773923
  - Uninstall Key: 227434773923
3. A Cherry TC-1100 Card Reader must be connected. (This is the recommended Reader)

# **Firmware 101.xxx.069.20900 August 2019**

## **1. Low Power Mode**

This release fixes an issue found in version 101.xxx.069.17810 where the device would not wake up when in Low Power mode even though the user pressed the Power Saver button. Print jobs would wake the device successfully.

# **Firmware 101.xxx.069.17810 July 2019**

## **1. Xerox® Lockdown Security Solution**

This release introduces other languages in support for this feature.

## **2. Oberthur ID-One PIV V8 Card Supported when using Smart Card Authentication**

Oberthur ID-One PIV cards are now supported when using smart card authentication.

## **3. Additional Fixes Included in this Version**

- Applying the clone file to a machine using a customer certificate no longer causes the device to revert to the self-signed certificate.
- Improvements made during the boot process to eliminate DHCP error when connecting to an 802.1x network
- Machine will now reliably exit from power saver mode and no longer need to be unplugged to become active.
- If Remote Services is disabled, the audit log will no longer display "remote Service.sh crash" messages.
- Additional improvements made to prevent the message "Card Reader Detected" from appearing.

## Firmware 101.xxx.059.13300 May 2019

### 1. Card Reader

This release fixes an issue reintroduced in AltaLink software versions 101.xxx.008.27400 – 101.xxx.059.12100 where a “Card Reader Detected” Pop Up message appears on the device local user interface after wake up from sleep mode. This issue is fixed whether the card reader is plugged into the front or back USB port and whether the card reader is directly connected to the device or is connected using a USB splitter cable.

## Firmware 101.xxx.059.12100 May 2019

### 1. EIP Peripheral API updates

The EIP Peripheral API has been updated to provide more information on TWN 4 card readers attached to an AltaLink device. The EIP Peripheral API previously communicated the card reader Vendor ID, Product ID, and Interface Type (keyboard). The new capability also provides Serial Number, Firmware version, Interface protocol and interface class. This information can be retrieved by Xerox Device Manager and used by Xerox Service Manager and PLM for asset tracking of the card readers.

Refer to the latest version of EIP DDK or SDK for more information on the EIP Peripheral API.

### 2. EIP ability to request LDAP user attributes to include in user session data

Added the EIP ability to request sAMAccountName & userPrincipalName from LDAP as part of the `xrxSessionGetSessionInfo()` call in the Session Web service to include in the user session data.

This method allows a client to retrieve information about the currently logged in user. It returns a block of XML data that is defined by the `SessionInfoSchema.xsd`. An optional parameter can be passed in to request a list of LDAP attributes from the MFD.

**Note:** Other LDAP values may become available in the future, but for now only sAMAccountName & userPrincipalName are available.

Note: For the `GetSessionInformation` request to return info for sAMAccountName & userPrincipalName the following must be true on the MFD being used:

- The EIP version must be 4.1.4+ or 3.5.7+ (EIP 3.7.X not supported)
- LDAP must be configured on the MFD
- LDAP Personalization must be completed successfully for the user logged in at the MFD Local UI

Refer to the latest version of EIP DDK or SDK for more information on the EIP Peripheral API.

### 3. Translations added for B&W Output Color setting Auto

Language Translations have been provided for the B&W Saved Jobs feature provided in a previous release (101.xxx.009.00300). Full translations for "Auto" are now available in the Print From app.

### 4. Xerox® Lockdown Security Solution

This release introduces the Xerox® Lockdown Security Solution previously known as Xerox® Healthcare Lockdown Solution, initially introduced with Firmware 073.xxx.197.2850 October 2017. (This release includes English language only. Other language translations will be added in a future release.)

**Note:** The Xerox® Lockdown Security Solution kit part number 301K33790 can be ordered by contacting your Xerox® account representative.

Installation of this release enables a device Administrator to install the purchasable Xerox® Lockdown Security Solution on a device. While the Solution content is contained in this release, the feature is hidden until it is activated by purchase of the kit and installation of a Feature Installation Key (FIK).

The Xerox® Lockdown Security Solution permanently enhances certain security aspects of the Xerox® WorkCentre® Devices by encrypting the hard drive, overwriting hard drive data immediately after use, preventing jobs from being stored on or printed from USB devices, recording who has used the device and how they used it and providing additional controls designed to protect specific Xerox® networked and non-networked devices against malicious attacks.

Refer to description in Firmware 100.xxx.107.28600 October 2017 for more details.

## 5. General Fixes

Implemented a fix to include the 1 gigabyte option on the CWIS page.

## Firmware 101.xxx.029.03810 March 2019

### 1. User Permissions

User permissions of Allow Only Secure Print is now working.

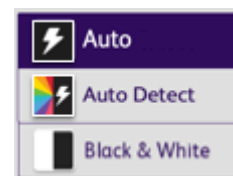
### 2. Restricted access to print color

Restricted access to print color for non-logged in users is no longer printing in color instead of black and white.

## Firmware 101.xxx.009.00300 January 2019

### 1. B&W saved jobs

After installing this release: in the "Print From" app, the default "Output Color" for saved jobs will be "Auto," meaning saved jobs will print as defined by their submitted color attributes. If they were saved as a B/W image, they will print as a B/W image. If they were saved as color images, they will print as color images. The previous default "Auto Detect" is still available. "Auto Detect" will print jobs according to their image composition. If color pixels are detected in the image, it will print in color. (Note: USA English only. Other languages will be delivered in a future release.)



### 2. Safenet SC650 v4.0 SIPRNet tokens

Added support for the SafeNet SC650 v4.0 SIPRNet card to this release.

### 3. Group Fax Improvements

The group fax application can now send to a large number of faxes successfully. It will no longer fail and lockup.

## Firmware 101.xxx.028.32100 December 2018

### 1. Color Quality Improvements

Many color quality improvements for Scan, Copy, and Print are included in this release above and beyond previous releases. After installing this release, ensure a copy and print calibration have been performed. If quality is still not acceptable, contact Xerox Customer Technical Support.

### 2. Various bug fixes

- When opening and closing the envelope tray, the message will be correctly cleared.
- Sending tabloid size PDF documents using IPP protocol no longer results in job shrinking to fit on Letter size paper.
- Fax Forward fields can now be cleared and reset to default.

### 3. Enablement of SecuraKey ET4-AUS-D-WR8 Proximity Card Reader

SecuraKey card reader model: ET4-AUS-D-WR8 is supported in this release.

### 4. Mixed Size Originals Feature support for Oficio Media (8.5x13.4)

When the setting under WebUI General Setup > Paper Management > Required Paper Policies / Default Legal Size is set to default size as "8.5 x 13.4" (Mexican Legal – Oficio), then the Mixed Size Original Feature will allow scanning of "8.5 x 13.4" size paper with 8.5x11 documents.

### 5. Support for Croatian and Ukrainian languages.

Support has been added for Croatian and Ukrainian languages. This includes the user interface language as well as help screens and embedded web pages.

### 6. Security

- Various cross scripting vulnerabilities (XSS) have been addressed.
- Vulnerabilities found in OpenSSL (CVE-2016-2109 CVE-2016-2105 CVE-2016-2106 CVE-2016-2176 CVE-2016-2107)

## **7. Re-Introduced Support for Gemalto IDPrime MD 3810 and 830b cards**

Support for Gemalto IDPrime MD 3810 and 830b cards are being reintroduced because the General Release 101.xxx.008.27400 did not include support for these cards.

Gemalto has discontinued the Gemalto IDPrime .Net 510 cards and replaced them with the new Gemalto IDPrime MD 3810 and MD830b cards. These new cards are now supported in the 101 firmware release.

Note: A Caveat for this release: Email signing feature with FIPS 140-2 mode enabled will not function. If both Email signing and FIPS 140-2 are required please contact Xerox customer support.

## **Firmware 101.xxx.008.27400 Nov 2018**

### **1. PCL Printing Improvement**

The device now uses 8 Bit PCL for all standard PCL printing, which delivers the best image quality for PCL mode.

### **2. Fax Confirmation Sheet**

The fax confirmation sheet will no longer stop working intermittently.

## **Firmware 100.xxx.068.26100 Sept 2018**

### **1. Image Quality Improvements**

Implemented functionality to improve PCL print quality in default Standard mode. To enable these improvements, the patch 1284222v4 is included in the 100.xxx.068.26100 software installation zip file and must be installed using the instructions provided.

### **2. Support for Gemalto IDPrime MD 3810 and 830b cards**

Gemalto has discontinued the Gemalto .Net 510 cards and replaced them with the new Gemalto IDPrime MD 3810 and MD830b cards. These new cards are supported in this release.

Note: A Caveat for this release: Email signing feature with FIPS 140-2 mode enabled will not function. If both Email signing and FIPS 140-2 are required please contact Xerox customer support.

### **3. Secure Print with smartcard user identification**

Implemented Fix that applies the correct user's username for secure print job release.

### **4. PKCS12 certificate installation**

Implemented a fix that corrects incomplete installation of PKCS12 formatted private key and chain of trust certificates.

## **Firmware 100.xxx.058.22800 Aug 2018**

### **1. Image Quality Improvements**

Implemented functionality to improve PCL print quality in default Standard mode. To enable these improvements, the patch 1284222v3 is included in the 100.xxx.058.22800 software installation zip file and must be installed using the instructions provided.

### **2. General fixes for Authentication and Connectivity.**

Implemented a fix to eliminate a case where, after logging in with a Smartcard, a Network Address Book search resulted in an error message that read "The device cannot process results from Network Address Book, device decoding error (e.g. out of memory).

Fixed a CAC card Login failure with "KRB5KDC\_ERR\_POLICY NT Status: Unknown error code 0xc00002fa".

Corrected a defect where the device was placing a dot (.) character at the end of the domain name resulting in the DNS Server's inability to resolve the Printer's Host Name.

Placing a dot (.) at the end of the domain name is now an optional setting that is settable by the System Administrator. When the 'Complete domain name(s) with dot character' option is selected, the device will automatically append a dot (.) to the end of domain names. This setting ensures that domain names are interpreted as absolute domain names, which can improve DNS resolution. In order to change the setting:

1. Navigate to the printer's WebUI
2. Select Properties
3. Select Connectivity
4. Select Setup
5. Select the "Edit" link to edit the "Wired Connection" setting
6. Select the "Edit" link to edit the "Internet Protocol" setting
7. Select the "Show DNS Settings" button
8. Select/de-select the "Complete domain name(s) with dot character" as desired
9. Select the "Apply" button at the bottom of the page
10. Select the "OK" button on the change confirmation pop-up window
11. Select the "Close" button on the "Updating IP Settings" page
12. Select the "Close" button on the "Wired Profile" page to return to the <Properties/Connectivity/Setup> page
13. Close the Browser or continue configuring the device as required.

## Firmware 100.xxx.048.17300 July 2018

### 1. Enablement for POP3 Over Secured Connection (TLS).

Office 365 Servers require TLS encryption for POP3 traffic over Port 995. To support receiving emails from Office 365 POP3 Over Secure Connection (TLS) has been added.

To Enable POP3 Over Secure Connection (TLS) simply do the following:

- a. Using the device IP address, log onto the CWIS as Admin.
- b. Go to **Properties>Connectivity>Setup**
- c. Select **Edit** for POP3.
- d. Check the **Pop3 Over Secure Connection (TLS)** checkbox and notice that the **Validate Server Certificate** checkbox is automatically checked, and the POP3 Server port value has defaulted to Port 995.  
**Note:** A port value of 995 is not permitted with an unsecure connection. It is recommended to upload Trusted Root /Intermediate certificates to the device for certificate validation.
- e. Enter your POP3 Server **IPv4 Address** or **Host Name**.
- f. Enter **Login Name** and **Password**.
- g. Enter password again under **Retype password** and check the **Select to save new password** checkbox.
- h. Select **Save**

### 2. Image Quality Improvements

Implemented a fix to Copy and SCAN in B&W mode for better reproduction of yellow colors.

Implemented fixes in Copy B&W mode. Light and dark Grey halftones are reproduced correctly.

### 3. General fixes for Copy, Print and Output functionality.

Implemented a fix to eliminate a case where colored lines appeared in the process direction and a fault was declared when printing or copying on plain, glossy or cardstock paper, or when the bypass tray empties while in use.

Fixed a device reboot during workflow scanning with single touch scan + meta data when pressing X to close the metadata prompt window.

Fixed incorrect stacking on the 2KLCSS finisher when printing multiple consecutive single-page documents

Fixed an issue where the permission roles to control user access to Web UI were not functioning as expected.

## Firmware 100.xxx.038.10200 April 2018

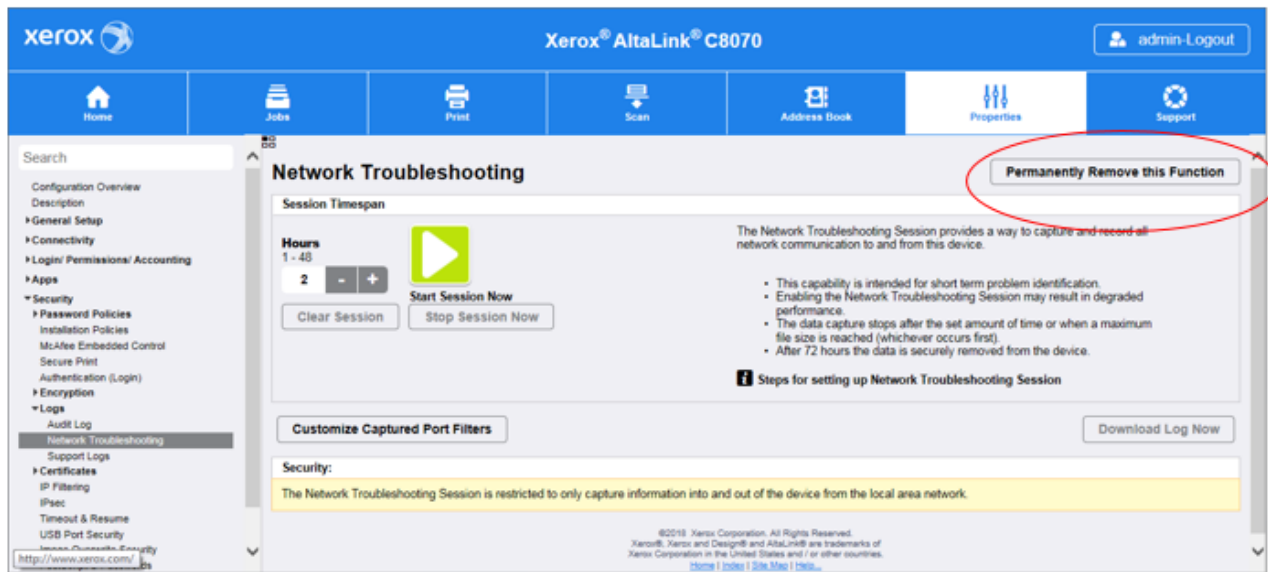
### 1. Hide Network Troubleshooting

**Overview:** AltaLink Devices have added the ability to permanently remove the Network Troubleshooting feature.

**Note:** The will permanently remove the Network Troubleshooting feature from the device.

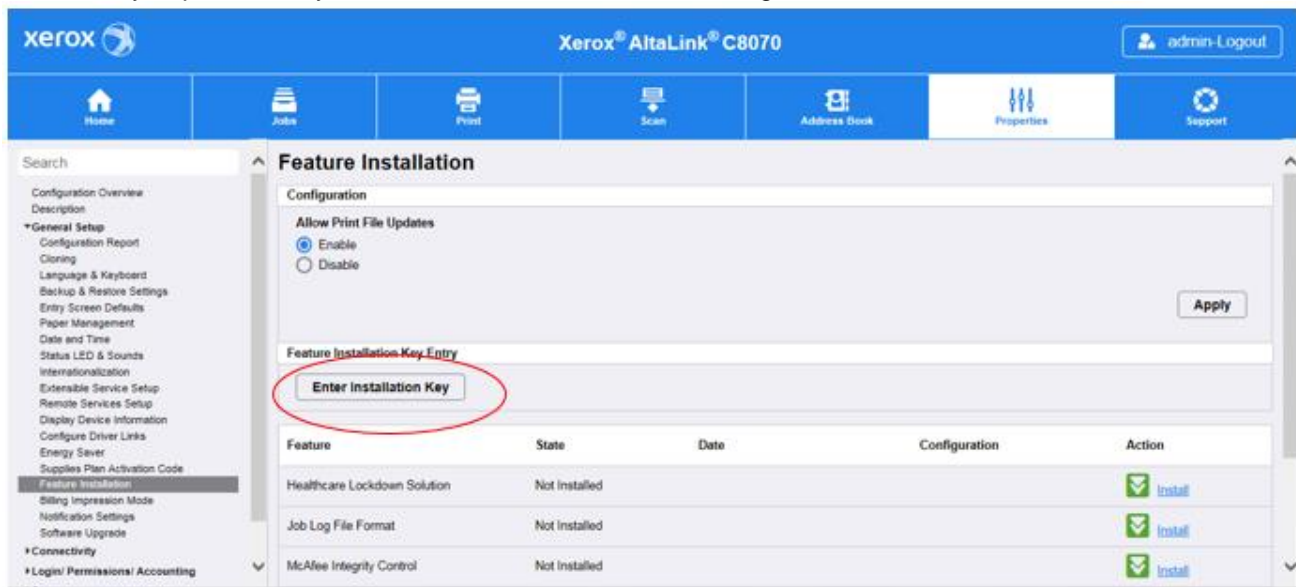
There are two methods to remove the feature from the device.

There is a button called permanently remove Network Troubleshooting page that will allow an Administrator to “hide” the feature. The button is on the Properties, Security, Log, Network Troubleshooting page. Below is an image of the button.



The second method is to install a FIK Key on Properties, General Setup, Feature Installation page by selecting Enter Installation Key.

The FIK key to permanently remove the Network Troubleshooting feature is **468854198391**



Permanently removing the Network Troubleshooting feature can be cloned.

There is also support of a MIB to Hide and Unhide the Network troubleshooting feature (using FIK OID).

The Network troubleshooting Feature will be available by default.

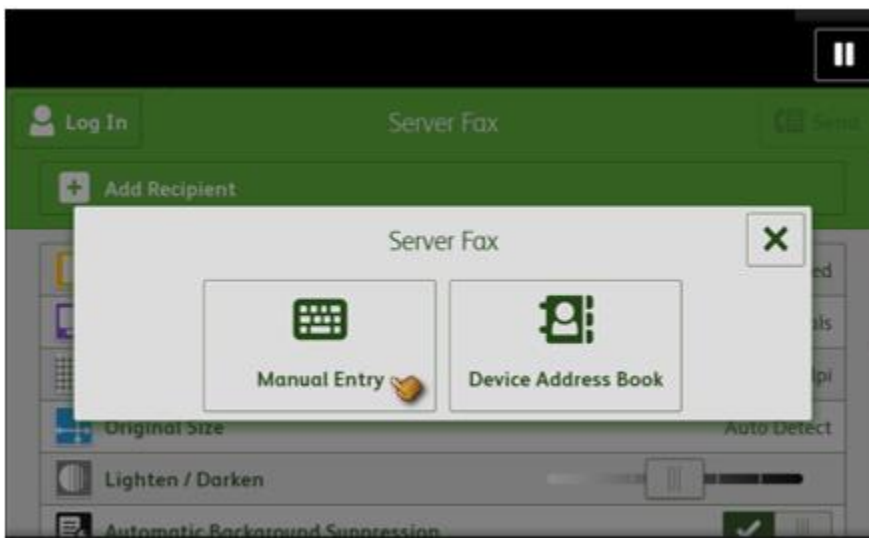
Only a user with Administrator privileges can remove the Network troubleshooting feature.

## 2. Ability to Edit Device Address Book for Server Fax on the LUI (On The Fly)

**Overview:** On The Fly is a feature which allows the user to create a new contact or add to an existing contact to the Device Address Book for Server Fax right from the LUI.

### Creating From Server Fax 'Enter Recipient' Screen:

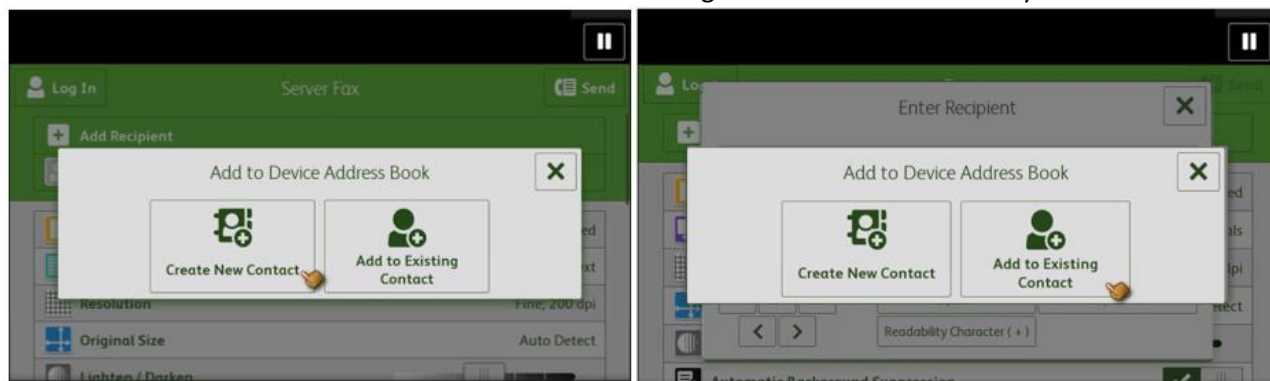
When creating a New or Existing Contact to Add to the Device Address book from the Server Fax App, simply select 'Manual Entry'.



Enter recipient fax number and then select the 'On The Fly' icon to add to address book.

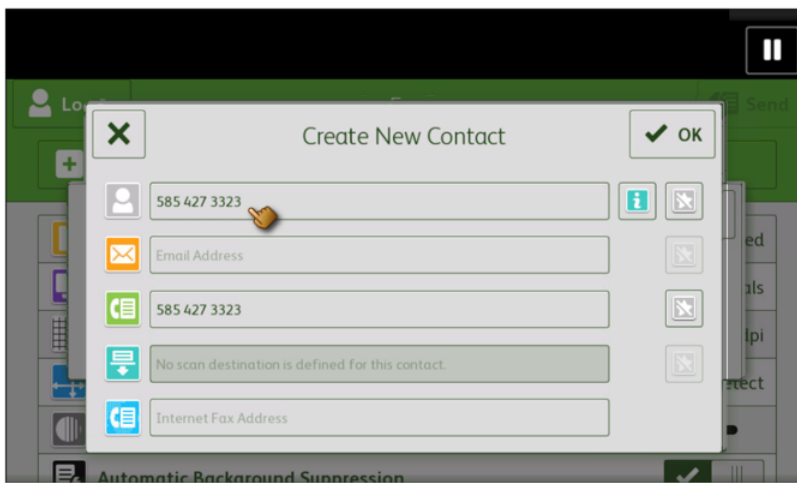


Select 'Create New Contact' if new or select 'Add to Existing Contact' if contact already exists.



When Creating New Contact:  
 Edit 'Display Name' and select 'OK'.  
 Edit 'Email Address' and select 'OK'.  
 On the 'New Contact Card' pop up select 'OK'.

Note: Display name and a current service destination field are required and cannot be empty..

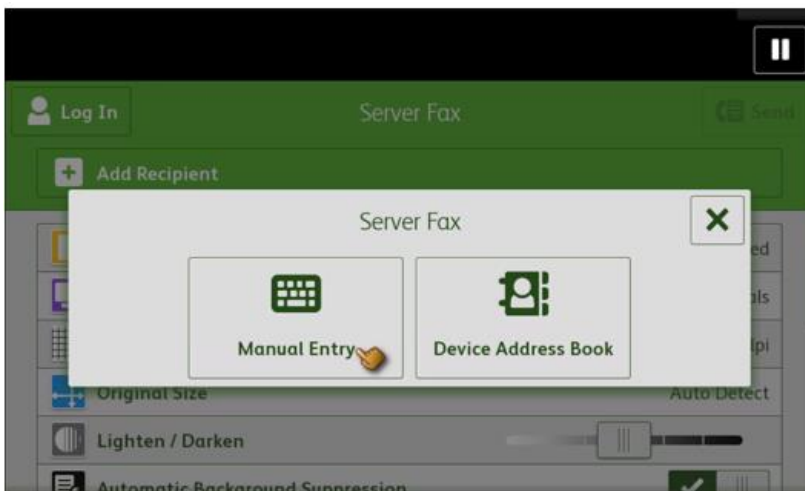


When Adding from Existing Contact Select the desired contact to add and select 'OK'

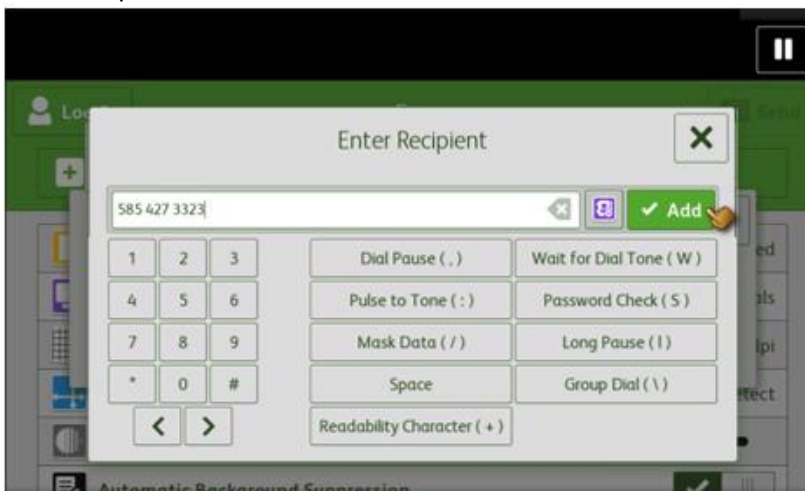
Contact is now added to the address book and recipient list.

### Creating From Server Fax Recipient List:

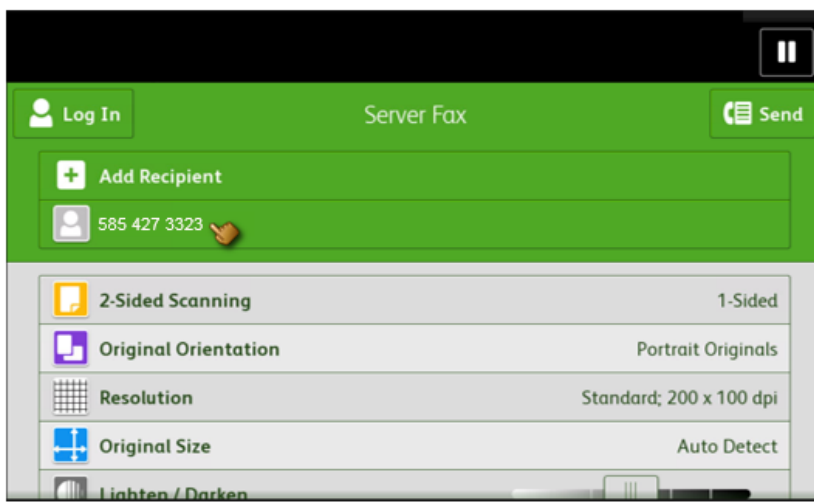
When creating a New Contact to Add to the Device Address book from the Server Fax App, simply select 'Manual Entry'.



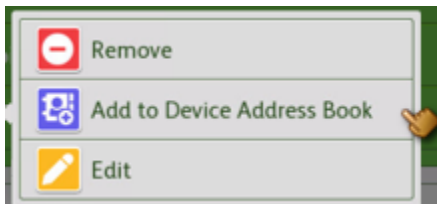
Enter recipient fax number and select 'Add'.



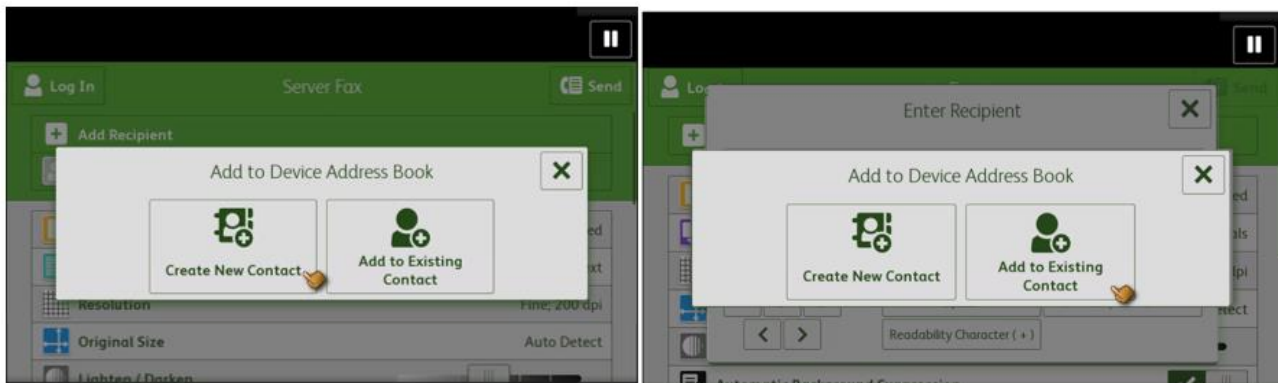
Add 'Display Name' and 'Email Address' to the Device Address Book by selecting the field with the Fax number just added.



Then Select 'Add to Device Address Book'

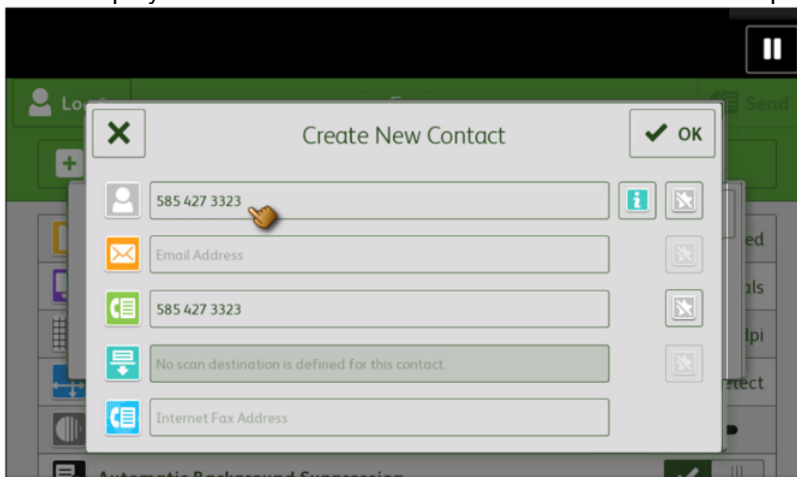


Select 'Create New Contact' if new or select 'Add to Existing Contact' if contact already exists.



When Creating New Contact:  
 Edit 'Display Name' and select 'OK'.  
 Edit 'Email Address' and select 'OK'.  
 On the 'New Contact Card' pop up select 'OK'.

Note: Display name and a current service destination field are required and cannot be empty.



When Adding from Existing Contact Select the desired contact to add and select 'OK'

Contact is now added to the address book and recipient list.

### **3. Image Quality Improvements**

Implemented a fix to eliminate faded print output in PostScript mode.

Eliminated intermittent yellow bands, appearing in the inboard to outboard direction of output after reloading an empty bypass tray.

If color output is still not acceptable after upgrading to this release, ensure that Print Calibration and Copy Calibration routines have been run. If quality is still not acceptable contact Xerox Customer Technical Support.

### **4. Authentication.**

Fixed an authentication failure where the printer used the wrong certificate ID when attempting to authenticate with CAC authentication.

Fixed an email failure where the device sent the incorrect domain component during an SMTP authentication.

Email authentication no longer fails when a single quote ( ' ) is in the user name.

### **5. General fixes for Copy, Print and Output functionality.**

- The Altalink device no longer interprets some postscript grayscale pages as color.
- Several fixes were implemented for better keyboard functionality and some special characters not being available on the keyboard.
- A fix was implemented where the printer would reset after accessing the list of multiple secure print jobs on the local user interface.
- Machine no longer crashes when performing Booklets with the BR finisher.
- Machine no longer can switch to copy mode only when installing the C/Z trifold finisher module
- Fixed an issue where the permission roles to control user access to Web UI were not functioning as expected

## **Firmware 100.xxx.028.05200 March 2018**

### **1. Image Quality Improvements**

A fix was implemented for the symptom of lines and stripes across the output page and fault codes 319-409 and 319-410.03 are displayed when copying or scanning.

If color output is still not acceptable after upgrading to this release, ensure that Print Calibration and Copy Calibration routines have been run. If quality is still not acceptable contact Xerox Customer Technical Support.

### **2. Scanning**

A fix was implemented to prevent the incorrect image size output on the last two segments when using the build job feature for Scan to file.

A fix was implemented to eliminate incorrect file naming when using the '1 file per page' setting along with a custom naming convention in a scan workflow.

### **3. Authentication**

Fixed an issue of a "Server login error" displayed on the MFD LUI after an open user session is already started.

### **4. General fixes for Copy, Print Output, and EIP functionality.**

A problem was fixed in a scenario where a secure job is sent to an Altalink device, a user is not able to release it using the Job Management Client API, even when they correctly supply a pin code.

Fixed an MFD reboot during a copy job, when the user selects the legal size tray, places a legal document on the platen, selects Reduce/Enlarge>More>Independent with Y set to 97% and X to 99%. After pressing start, the display

indicates "Scanning your job" but the start button is grayed out and the document is never scanned and MFD eventually reboots.

## **Firmware 100.xxx.018.01610 January 2018**

### **1. Image Quality Improvements**

This software update includes image quality improvements for the C80xx devices.

Text Original Type image quality parameters have been improved for all speeds and walkup mode parameters have been improved for the C8070.

PostScript Standard IQ improvements have been made. This change improves color reproduction consistency and coherency between the different models.

The "rainbow" or color banding effect that could be seen when making many rapid successive copies or scans has been fixed.

Improvements have been made to provide more stable color rendition after software upgrade and over time as the environment changes.

If color output is still not acceptable after upgrading to this release, ensure that Print Calibration and Copy Calibration routines have been run. If quality is still not acceptable contact Xerox Customer Technical Support.

### **2. SMB Scanning**

A fix has been implemented to prevent a login failure when scanning to Netapp Filer(NAS) over SMB

#### **Special Instructions**

The customer administrator should log into the upgraded printer and then:

Select Properties > Connectivity > SMB Filing, then select Edit and de-select SMB2 and SMB3 then check SMB1. Apply the selection change.

### **3. Xerox Dropbox App blank screen**

The functionality for the patch file that was included in the 100.xxx.107.34110 software installation zip file, which corrected a malfunction when initiating the Xerox Dropbox, has been implemented in this release. The patch is no longer required when upgrading to this release.

### **4. Scanning CAC/PIV/Smartcard Authentication**

Fixes have been implemented to prevent Scan to Home failures when CAC/PIV/Smartcard is used for Authentication

### **5. General fixes for Accounting, Copy, Print Output and EIP functionality.**

## **Firmware 100.xxx.107.34110 December 2017**

### **1. Image Quality Improvements**

This software update improves the image quality of copied pages primarily for the C8070 devices. Improvements have been made for Photo mode and Text mode when copies are made. Fine lines have been improved as well when using Postscript printing.

When installing updated software, a print calibration process for PCL will not be performed unless required by other component changes. This will provide more consistent PCL print quality through the software upgrade process. Additionally, print quality has been made more consistent for all speeds within the Color AltaLink product line

If color output is still not acceptable after upgrading to this release, ensure that Print Calibration and Copy Calibration routines have been performed. If quality is still not acceptable, contact Xerox Customer Technical Support.

### **2. Xerox Dropbox App blank screen**

There is an additional patch file included in the software installation zip file. This patch corrects a malfunction when initiating the Xerox Dropbox App.

**Firmware 100.xxx.107.28600 October 2017**

## 1. ThinPrint Protocol Support

ThinPrint is a Third Party solution that saves network bandwidth by allowing print data to be compressed at the server and decompressed at the Print device before being printed out on a printer. The ThinPrint solution also supports print data encryption prior to sending to the print device. Xerox® has added the ability to accept this compressed (and encrypted if configured) print data, process the ThinPrint data, and print on the Xerox® AltaLink® products.

**Note:** The ThinPrint Engine/Server output queue and the Xerox® AltaLink® device ThinPrint settings must both be set to TLS encryption for print jobs to be encrypted (see more on next page).

## ThinPrint Embedded Web Server

**xerox**

## Xerox® AltaLink® C8045

admin Logout

- Home
- Jobs
- Print
- Scan
- Address Book
- Properties
- Support

Search

- Configuration Overview
- Description
- General Setup
- \*Connectivity**
- Setup
- Login Permissions Accounting
- Apps
- Security

### Connectivity

The device uses either the wireless or the wired network connection. Activating one will deactivate the other.

Active	Profile	Status	Action
<input checked="" type="checkbox"/>	Wired Connection	IPv4 is active	<a href="#">Edit...</a>
<input type="checkbox"/> Make Active	Xerox Wireless Network Interface	Xerox Wireless Hardware not installed.	
	Wi-Fi Direct®	Xerox Wireless Hardware not installed.	
<b>Mobile Workflows</b>		<b>Status</b>	<b>Action</b>
	Google Cloud Print™ Service	Enabled	<a href="#">Edit...</a>
	Mopix™ Discovery	Enabled	<a href="#">Edit...</a>
<b>USB Settings</b>		<b>Status</b>	<b>Action</b>
	USB Connection Mode	Software Tools	<a href="#">Edit...</a>
	USB Port State in Sleep Mode	Not Powered (Default)	<a href="#">Edit...</a>
<b>Protocol</b>		<b>Status</b>	<b>Action</b>
	FTP/SFTP Filing	Enabled	<a href="#">Edit...</a>
	HTTP	Enabled	<a href="#">Edit...</a>
	IPP	Enabled	<a href="#">Edit...</a>
	LDAP	Enabled	<a href="#">Edit...</a>
	LPR/LPD	Enabled	<a href="#">Edit...</a>
	NTP	Enabled	<a href="#">Edit...</a>
	Raw TCP/IP Printing	Enabled	<a href="#">Edit...</a>
	SMB Filing	Enabled	<a href="#">Edit...</a>
	SMTP (Email)	Enabled	<a href="#">Edit...</a>
	SNMP	Enabled	<a href="#">Edit...</a>
	ThinPrint	Enabled	<a href="#">Edit...</a>
	WSO (Web Services on Devices)	Enabled	<a href="#">Edit...</a>
	NFC	NFC Hardware is not installed	
	PCPS	Disabled	<a href="#">Edit...</a>
	Proxy Server	Disabled	<a href="#">Edit...</a>
	SLP	Disabled	<a href="#">Edit...</a>

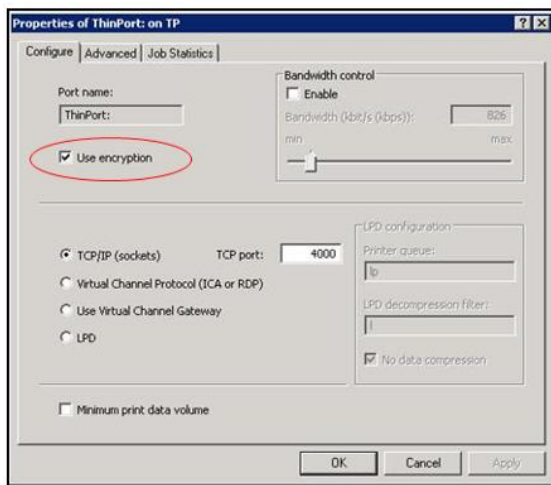
©2017 Xerox Corporation. All Rights Reserved.  
Xerox®, Xerox and DesignMark and AltaLink are trademarks of  
Xerox Corporation in the United States and/or in other countries.  
©2017 Xerox | ESR-000000-000000

Once the ThinPrint Protocol is enabled the Admin has access to the settings below. The port must be enabled. The default port number for ThinPrint communication is 4000.

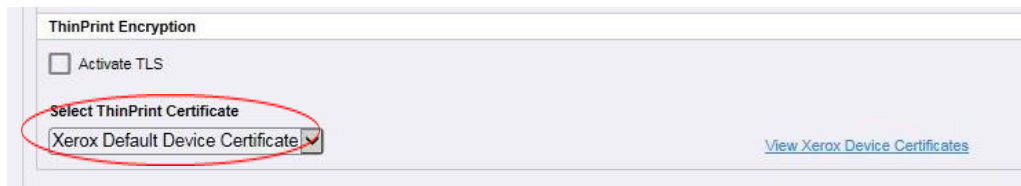
The screenshot displays the 'ThinPrint' configuration page for a Xerox AltaLink C8045 printer. The page is part of a web-based management interface. At the top, there's a blue navigation bar with the Xerox logo and the printer model name. Below this, a secondary navigation bar contains icons for Home, Jobs, Print, Scan, Address Book, Properties, and Support. The main content area is titled 'ThinPrint' and contains several sections: 'ThinPrint Printing' with an 'Enabled' checkbox (highlighted by a red circle), 'Printer Name' (set to 'Not Defined'), 'Printer Class' (empty), 'Packet Size' (set to 'Auto - Allow ThinPrint Server to Choose'), 'TCP Port' (set to '4000'), and 'ThinPrint Encryption' (with 'Activate TLS' unchecked). A yellow callout box points to the 'Printer Name' field, stating: 'The Printer Name (Device Name) is returned to the ThinPrint server and is defined here: LinkURL @ Properties > Description > Device Name >'. The left sidebar shows a search bar and a list of configuration categories: Configuration Overview, Description, General Setup, Connectivity (selected), Logins/Permissions/Accounting, Apps, and Security. At the bottom right, there are buttons for 'Default All', 'Cancel', and 'Apply'.

**Note:** Although a different port number can be configured, it is important not enter a port number that is already in use. ThinPrint requires a certificate to be loaded on the device when running with TLS encryption. This is located in Properties > Connectivity> ThinPrint Settings.

**Note:** The ThinPrint Engine/Server output queue and the Xerox® AltaLink® device ThinPrint settings must both be set to TLS encryption for print jobs to be encrypted (see more on next page).  
ThinPrint Server Setting for Encryption



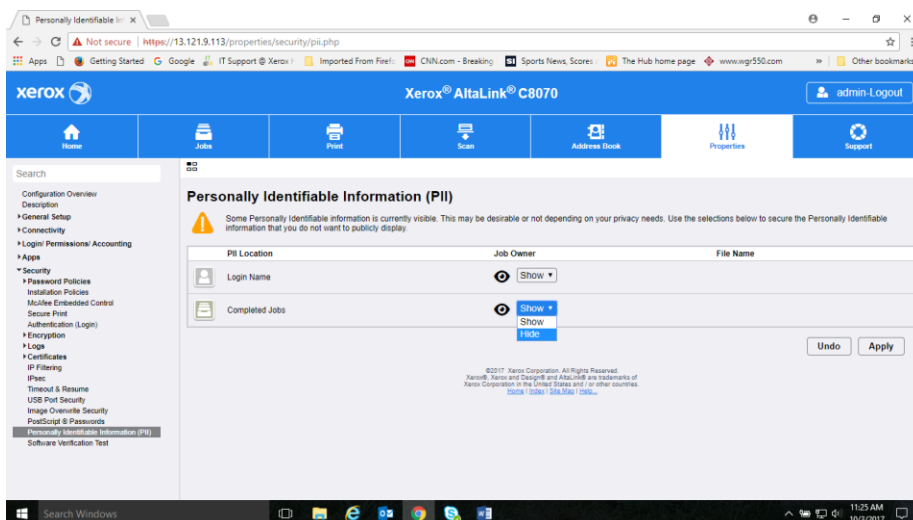
**ThinPrint Device Settings** (see entire web page above)



**Note:** Unencrypted print jobs from the server will not be accepted by ThinPrint protocol when TLS encryption is enabled on the print device.

## 2. Ability to hide username or IDs for Security

Xerox® AltaLink® device Admins will be able hide the Job Owner on the completed Jobs tab of the LUI for security reasons. This can be accomplished by browsing to the following web page on the device Embedded Web Server. Then select "Hide" for Completed Jobs and apply



### 3. Xerox® Lockdown Security Solution / Healthcare Lockdown Solution

The Xerox® Lockdown Security Solution was previously known as Xerox® Healthcare Lockdown Solution, initially introduced with Firmware 100.xxx.107.28600 October 2017.

**Note:** The Xerox® Lockdown Security Solution kit part number 301K33790 can be ordered by contacting your Xerox® account representative.

Installation of this release enables a device Administrator to install the purchasable Xerox® Lockdown Security Solution on a device. While the Solution content is contained in this release, the feature is hidden until it is activated by purchase of the kit and installation of a Feature Installation Key (FIK).

The Xerox® Lockdown Security Solution permanently enhances certain security aspects of the Xerox® WorkCentre® Devices by encrypting the hard drive, overwriting hard drive data immediately after use, preventing jobs from being stored on or printed from USB devices, recording who has used the device and how they used it and providing additional controls designed to protect specific Xerox® networked and non-networked devices against malicious attacks.



As the name implies, it “Locks down” a set of security settings on the printer, making them unchangeable to anyone including the system administrator and raises the bar on printer security. The security settings that Xerox® Lockdown Security Solution permanently controls:

- User Data Encryption is enabled which AES encrypts all partitions of the hard drive that may contain customer data.
- Immediate Job Overwrite is enabled which deletes and overwrites disk sectors that temporarily contained electronic image data conforming to NIST Special Publication 800-88 Rev1.
- Scheduled Disk Overwrite is enabled on a daily basis at a time that is selectable. This deletes and overwrites every sector of any partitions of the hard drive that may contain customer data.
- McAfee® Embedded Control is set to Enhanced Security (or McAfee® Integrity Control™ if this option has been purchased) to protect against threats to confidential data by use of whitelisting technology that allows only approved files to run.
- Audit Log is set to record information about who has used the device and how they have used it, as well as the chronology to help track the events that have occurred.

- f) Print from USB is disabled preventing the printing of any files that are stored on a USB Flash Drive from the USB port on the printer control panel.
- g) Scan to USB is disabled preventing scanning of a document and storing the scanned file on a USB drive.

**Note:** Front USB Port is no longer disabled in this version.

In addition, the solution:

- Monitors these security settings on a daily basis to ensure that they have not been changed maliciously.
- Restores any of these settings automatically back to the compliant state if the Monitor found any to be non-compliant.
- Reports the compliance state of the machine via email and/or printed reports:
  - a. At the scheduled time on a daily basis.
  - b. When the Monitor function has found any non-compliance.
  - c. When Restore has been completed.
  - d. When “check now” is selected.
- Records all of these activities in the Printer Audit Log.

Once the Feature Installation Key is installed, a Lockdown control panel is made available and added to the list of Security functions for the MFP via both Embedded Web Server and Local UI.

The Administrator can determine the time of day the Monitor will run, the frequency of printed and emailed confirmation reports, set the action text that appears on the printed confirmation reports that directs the user where to deliver the printed reports and perform Monitor “Check Now” and Error Simulation” to test the operation.

## Firmware 100.xxx.077.17900 & (.17010 for B8045/B8090) July 2017

### 1. Custom Administrator Solution

Custom Administrator Solution provides a new level of device Administrator. The Administrator can create a Custom Administrator role, assign users to the role and select from a list of 21 permissible features that the Custom Admin has permission to modify.

Custom Administrators rights are determined by the Admin. The Custom Admin is allowed to create/manage logged-in user roles, but they cannot create/modify roles with Admin permissions or device management roles. If you are enabling the Healthcare Lockdown Solution then you will want this feature enabled as well.

#### Note

- Custom Administrators permissions are determined by the Admin.
- Administration of the Custom Admin role can only be performed via the Embedded Web Server.
- A Custom Admin is allowed to create/manage logged-in user roles, but they cannot create/modify roles with Admin permissions or device management roles.

- Creating a Custom Admin role will delete the default “Logged-in user” Role if no other custom roles have been previously created. See section 4 below to re-create the default “Logged-in user” Role

**Note:** The Custom Admin role Administration can only be performed via the Embedded Web Server.

**Note:** Creating a Custom Admin role will delete the default “Logged-in user” Role if no other custom roles have been previously created. See section 4 below.

- Create a new Custom Administrator role
- Login to the device Embedded Web Server as Admin
- Select Properties > Login / Permissions / Accounting > User Permissions
- On User Permission Roles row, select **Edit**
- On User Permission Roles page, select **Device Management** tab
- On Device Management tab, select **Add New Role**
  - Type in **Role Name** (e.g. Custom Admin Role) and **Description** (e.g. Some settings are Read Only)
  - Select **Create**
- Assign permissions to the Custom Administrator role
- On Add Management Role page, select Properties tab
- If **Forbid All** is selected, this role will not have rights to change any of these settings.
  - To give users in this role the rights to change a particular setting, set the pulldown in the status column to **Allowed**.
- Assign users to the Custom Administrator role
- On Add Management Role page, select Assign Users to Role tab
- Select Add New User
- On **Add New User** page, define the corporate wide **user** and **password**
  - Type in **User Name** (e.g. HealthAdmin) and **Friendly Name** (e.g. HealthAdmin)
  - Type in **New Password** and **Retype password** (e.g.1234 or other unique password)
  - Select **Save**
- On Add Management Role page, Assign Users to Role tab
- Select the **check box** in front of the new user (e.g. HealthAdmin)
- Select **Apply**
- Creating a logged-in user role (optional)
- Login to the machine as Admin or Custom Admin
- Select Properties > Login > Permissions > Accounting > User Permissions
- On User Permission Roles row, select Edit
- On User Permission Roles page, select Logged-in Users tab
- On Device Management tab, select Add New Role
  - Type in **Role Name** – “Logged-in user” and **Description** – “Allow logged-in users unrestricted access to all features except Tools”

## 2. Cloning Webservice

Xerox® AltaLink® devices will accept clone files from Centware Web via a Cloning Webservice with a Network User ID and password. This CWW functionality will be released in the next CWW release slated for summer 2017.

Centware Web will deliver compatible software for this Xerox® AltaLink® solution that will Import, export and manage clone files. CWW and Xerox® AltaLink® devices will authenticate Network Users and verify User is in appropriate Active Directory Group for device administration. CWW will schedule and push clone files to individual and multiple Xerox devices with the user’s Network User ID and clone file description.

## 3. EIP Authentication

For EIP web service calls requiring administrator credentials, the Xerox® AltaLink® devices will now add the ability to authenticate the credentials against the Device Configuration for Network Authentication and for the Device Administrator privileges. The authentication could be network (LDAP, Kerberos or SMB), or the device user database, or ‘admin’.

## 4. Disable Print Submission of Clone Files

Xerox® AltaLink® devices will be able to disable the delivery of Clone files through the Print Submission path. This setting is located on the Embedded Web Server under Properties> Security> Installation Policies

## 5. Disable SNMP Sets

The Xerox® AltaLink® devices will also allow System Admins the ability to disable SNMP Sets (Writes) while still allowing SNMP Gets (Reads) on the device. This setting is located on the Embedded Web Server under Properties> Connectivity > Setup> SNMP.

## 6. XML Configuration Report

Xerox® AltaLink® device Admins will be able to download the Configuration Report in XML format. This capability is on the Embedded Web Server, under Properties> General Setup> Configuration Report.

## 7. Support Log Tab

The previous Network Log functionality on the Embedded Web Services will now be called Support Logs. Support Logs are located under the Embedded Web Services under the Support tab> Troubleshooting> Support Logs and can be found under the Properties tab> Security> Logs> Support Logs.

## 8. Network Troubleshooting Log Feature

This new feature allows a device administrator to capture network communications directed to the device. This feature is disabled by default, and only captures communications between the device and another network node. It does not capture broadcast information or communications between other devices. Additionally, it can be limited to specific protocols. Note this data may contain authentication credentials or other sensitive information. The feature enables administrators to analyze network traffic which can help diagnose communications problems.

The Capability can be accessed through the Properties> Security> Logs> Network Troubleshooting OR under Support> Troubleshooting> Network Troubleshooting tabs as shown below.

Note: File size of the Network Trace capture is limited to 10 MB.

### Settings:

1. Settings shown above include setting the number of hours of capturing the trace from 1 to 48 hours.
2. Start Session Now begins the process of capturing network packet data.
3. Clear Session can be selected to clear the trace data and start a trace over.
4. Stop Session can be selected to stop a trace at a point in time but save the existing trace data.
5. Download Log Now can be selected to download the existing log file.
6. Maximum packet size can be customized, default is 1514 bytes
7. Customize Captured Port Filters can be selected to limit the trace selection to select Protocol, Ports or limit to a specific Destination IP Address as shown below.
8. Be sure to select Save before beginning data capture.
9. Encrypted communications will not be decrypted in the log.
10. Downloaded file has .pcap extension,
11. Default All can be selected to return the Customize Capture Port Filters to their Default values.

The screenshot displays the Xerox® AltaLink® C8035 Embedded Web Server interface. The top navigation bar includes links for Home, Jobs, Print, Scan, Address Book, Properties, and Support. The left sidebar shows a search bar and a list of configuration categories, with 'Network Troubleshooting' highlighted under the 'Logs' section. The main content area is titled 'Network Troubleshooting' and features a 'Session Timespan' section where the duration is set to 2 hours. It includes buttons for 'Start Session Now', 'Clear Session', and 'Stop Session Now'. A descriptive text box explains the session's purpose and limitations. Below this, there are buttons for 'Customize Captured Port Filters' and 'Download Log Now'. A 'Security' section at the bottom contains a warning message: 'The Network Troubleshooting Session is restricted to only capture information into and out of the device from the local area network.'

Each Protocol can be edited to customize protocol name or select a specific port.  
Additional custom protocols can be added.

Customize Captured Port Filters

Download Log Now

Customize Captured Port Filters - This Limits Port Captures to Only the Protocols Selected Below

☐ Optional Destination IPv4 Address Filter
 

Packet Size  
 96-65535 (Bytes)  
 65000 - +

.  .  .

Enable	Service	Typical Port	Action
<input type="checkbox"/>	FTP	21	<a href="#">Edit...</a>
<input type="checkbox"/>	HTTP	80	<a href="#">Edit...</a>
<input checked="" type="checkbox"/>	HTTPS	443	<a href="#">Edit...</a>
<input type="checkbox"/>	Kerberos	88	<a href="#">Edit...</a>
<input type="checkbox"/>	LDAP	389	<a href="#">Edit...</a>
<input type="checkbox"/>	LDAPS	636	<a href="#">Edit...</a>
<input type="checkbox"/>	NTP	123	<a href="#">Edit...</a>
<input type="checkbox"/>	POP3	110	<a href="#">Edit...</a>
<input type="checkbox"/>	SFTP	22	<a href="#">Edit...</a>
<input type="checkbox"/>	SMB	445	<a href="#">Edit...</a>
<input type="checkbox"/>	SMTP (Email)	25	<a href="#">Edit...</a>
			<a href="#">+ Add...</a>

Default All

Undo

Save

2020 Xerox Corporation. All rights reserved. Xerox® and Xerox and Design® and AltaLink® are trademarks of Xerox Corporation in the United States and/or other countries. BR22626  
Other company trademarks are also acknowledged.  
Document Version: 1.0 (January 2020).

