

A User Safety

Your system and the recommended supplies have been designed and tested to meet strict safety requirements. Attention to the following information will ensure the continued safe operation of your system.

Electrical Safety

- Use the power cord supplied with your system.
- Plug the power cord directly into a properly grounded electrical outlet. If you do not know if an outlet is grounded, ask an electrician to check the outlet.
- Do not use a ground adapter plug to connect the system to an electrical outlet that does not have a ground connection terminal.
- Do not use an extension cord or power strip.

Warning

Avoid the potential of electrical shock by ensuring that the system is properly grounded. Electrical products may be hazardous if misused.

- Do not place the system in an area where people might step on the power cord.
- Do not place objects on the power cord.
- Do not block the ventilation openings. These openings are provided to prevent overheating of the system.
- Do not drop paper clips or staples into the system.

Warning

Do not push objects into slots or openings on the system. Making contact with a voltage point or shorting out a part could result in fire or electrical shock.

If you notice noises or odors that are not associated with your normal system operation:

1. Turn off the system immediately
2. Disconnect the power cord from the electrical outlet
3. Call an authorized service representative to correct the problem.

The power cord is attached to the system as a plug-in device on the side of the system. If it is necessary to disconnect all electrical power from the system, disconnect the power cord from the electrical outlet.

Warning

Do not remove the covers or guards that are fastened with screws unless you are installing optional equipment and are specifically instructed to do so. Power should be **OFF** when performing these installations. Disconnect the power cord when removing covers and guards for installing optional equipment. Except for user-installable options, there are no parts that you can maintain or service behind these covers.

The following are hazards to your safety:

- The power cord is damaged or frayed.
- Liquid is spilled into the system.
- The system is exposed to water.

If any of these conditions occur:

1. Turn off the system immediately.
2. Disconnect the power cord from the electrical outlet.
3. Call an authorized service representative.

Maintenance Safety

- Do not attempt any maintenance procedure that is not specifically described in the documentation supplied with your system.
- Do not use aerosol cleaners. The use of supplies that are not approved may cause poor performance and could create a hazardous condition.
- Do not burn any consumables or routine maintenance items. For information on Xerox supplies recycling programs, go to www.xerox.com/gwa.

Operational Safety

Your system and supplies were designed and tested to meet strict safety requirements. These include safety agency examination, approval, and compliance with established environmental standards.

Your attention to the following safety guidelines helps to ensure the continued, safe operation of your system.

System Supplies

- Use the supplies specifically designed for your system. The use of unsuitable materials may cause poor performance and a possible safety hazard.

- Follow all warnings and instructions marked on, or supplied with, the system, options and supplies.

Caution

Use of other than Genuine Xerox WorkCentre C2424 Solid Ink may affect print and copy quality and system reliability. It is the only ink designed and manufactured under strict quality controls by Xerox for specific use with this system. The Xerox Warranty, Service Agreements, and Total Satisfaction Guarantee do not cover damage, malfunction, or degradation of performance caused by use of non-Xerox supplies or consumables, or the use of Xerox supplies not specified for this system.

Note

The Total Satisfaction Guarantee is available in the United States and Canada. Coverage may vary outside these areas; please contact your local representative for details.

System Location

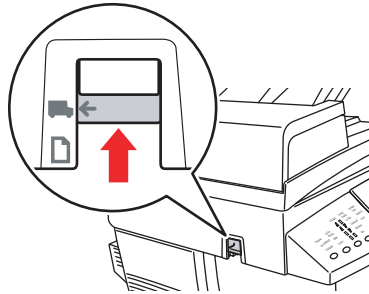
- Place the system in a dust-free area within a temperature range of 50 degrees F to 90 degrees F (10 degrees C to 32 degrees C) and a relative humidity range of 10 percent to 80 percent.
- Place the system in an area where there is adequate space for ventilation, operation, and servicing. The recommended minimal spacing is:
 - 30 cm (11.8 in.) above, measuring from the top of the document feeder
 - 24 cm (9.5 in.) behind
 - 10 cm (3.9 in.) on the left side of the system
 - 37 cm (14.6 in.) on the right side of the system, to allow access to the maintenance unit and waste tray.
- Do not block or cover the slots and openings on the system. The system may overheat without adequate ventilation.
- For optimum performance, use the system at elevations below 2,438 m (8,000 ft.).
- Do not place the system on a carpeted location such as a carpeted floor. Airborne carpet fibers can be pulled into the system and cause print- and copy-quality problems.
- Do not place the system near a heat source.
- Do not place the system in direct sunlight.
- Do not place the system in line with the cold air flow from an air conditioning system.
- Place the system on a level, solid non-vibrating surface with adequate strength for the weight of the system. It should be within 2 degrees of horizontal with all four feet in solid contact with the surface. The base system weight without any packaging materials is approximately 42 kg (93 lbs.).

Moving the System

Caution

Parts of the system are hot. To avoid personal injury or damage to the system, allow the ink to solidify. Run the shut-down procedure to cool the system quickly. Wait at least **30 minutes** for the system to cool completely before moving or packing it.

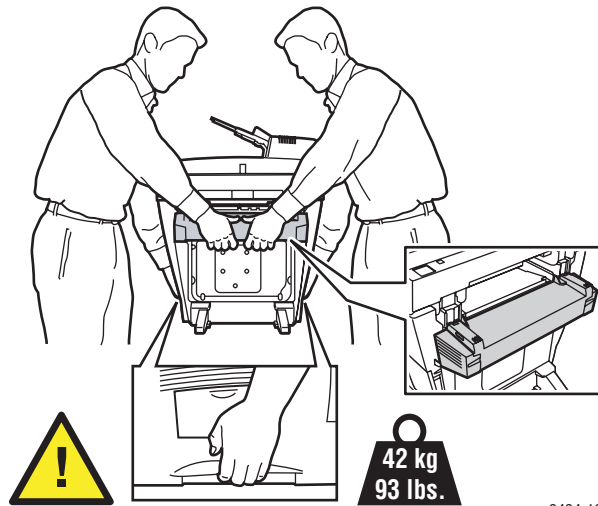
- Always allow the system to cool before it is moved to avoid ink spills which can damage the system.
- Use the shut-down procedure at the control panel (**Shut Down for Moving System**) for best results.
- Never move the system if you receive a **Power Down Error-Head not Parked** message at the system's control panel. This message means the system is not ready to be moved. If the printhead is not locked, the system can be damaged during shipment.
- Always turn off the system using the power switch, located under the interface cover on the right side of the system, and unplug all cables and cords. Do not turn off the system by pulling the power cord or using a power-strip with an on/off switch.
- Always secure the scanhead shipping restraint on the left side of the scanner to lock the scanhead before removing the scanner portion of the system. Shipping the scanner with the scanhead unlocked can damage the scanner.



2424-107

- Always remove the document feeder before shipping the system.
- Always remove the scanner before shipping the system.

- The system is heavy and **must** be lifted by **two** people. The illustration below shows the proper technique for lifting the system.



- Always move the system separately from optional Trays 3 and 4.

When shipping the system, repack the system using the original packing material and boxes or a Xerox repackaging kit. Additional instructions for repacking the system are provided in the repackaging kit. If you do not have all the original packaging, or are unable to repackage the system, contact your local Xerox service representative.

Caution

Failure to repackage the system properly for shipment can result in damage to the system. Damage to the system caused by improper moving is not covered by the Xerox warranty, service agreement, or Total Satisfaction Guarantee. The Total Satisfaction Guarantee is available in the United States and Canada. Coverage may vary outside these areas; please contact your local representative for details.

Operating Safety Guidelines

- Keep hands, hair, neckties, etc., away from the exit and feed rollers.
- Do not remove the paper source tray that you selected in either the printer driver or control panel.
- Do not open the doors while the system is busy.
- Do not move the system while busy.

Symbols Marked on the System



Danger, high voltage.



Use caution (or draws attention to a particular component). See the manual(s) for information.



Avoid pinching fingers in the system. Use caution to avoid personal injury.



Keep hands clear to avoid personal injury.



Hot surface on or in the system. Use caution to avoid personal injury.
