

Xerox® Color C60/C70 Printer

Simple Image Quality Adjustment Tool Installation and Adjustments Guide



©2014 Xerox Corporation. All rights reserved. Xerox® and Xerox and Design® are trademarks of Xerox Corporation in the United States and/or other countries. BR10941

Freeflow® is a trademark of Xerox Corporation in the United States and/or other countries. Product status, build status, and/or specifications are subject to change without notice.

Microsoft, Windows®, Windows® XP, Windows® Vista, Internet Explorer, and Word are registered trademarks of Microsoft Corporation in the United States and/or other countries.

Fieri® and PrintMe® are registered trademarks of Electronics For Imaging, Inc. GBC® and AdvancedPunch™ are trademarks or registered trademarks of General Binding Corporation.

Document Version: 1.1 (October 2014)

Table of Contents

1	Simple Image Quality Adjustment (SIQA) Tool Overview	1-1
	When to Use the SIQA Tool.....	1-1
	Adjustment Procedure Definitions	1-1
	Auto Alignment Adjustment.....	1-1
	Density Uniformity Adjustment.....	1-1
	Image Orientation Definitions.....	1-2
2	SIQA Software Installation	2-1
	System Requirements.....	2-1
	Installing the SIQA Tool Software on a PC	2-2
	Printing the SIQA Black Paper Image File	2-7
	Setting Up Communication between the SIQA Application and the Print Engine.....	2-8
	Setting Up and Running SIQA Software on a Third-Party PC Through DMP Controller.....	2-8
	Setting Up and Running SIQA Software on an EX Print Server.....	2-10
	Setting Up and Running SIQA Software on a PC via an EX Print Server or Integrated Fiery Color Server	2-13
	Setting Up and Running SIQA Software on a PC when a FreeFlow Print Server is Installed	2-16
3	Accessing C60/C70 SIQA Through EFI (Bustle and Standalone) ...	3-1
	System Requirements.....	3-1
	Procedure.....	3-1
4	Accessing C60/C70 SIQA Through FFPS (Bustle)	4-1
	System Requirements.....	4-1
	Procedure.....	4-1
5	Auto Alignment Adjustment	5-1
	Performing Auto Alignment Adjustment	5-1
	Assigning a Type to a Paper Tray	5-18
	Modifying a Type.....	5-21
	Deleting a Type	5-23
6	Density Uniformity Adjustment	6-1
7	Uninstalling the SIQA Tool	7-1

Table of Contents

Uninstalling the SIQA Tool Using Windows® Vista/7	7-1
Uninstalling the SIQA Tool Using Windows® 8.1	7-5
8 Troubleshooting	8-1
If the Connection Between SIQA and the Machine is Lost	8-1
If the Connection Between SIQA and the Machine is Unsuccessful	8-2
If the Adjustment Values are not Saved to the Machine.....	8-5
If SIQA Cannot Make the Adjustments.....	8-6

Simple Image Quality Adjustment (SIQA) Tool Overview

When to Use the SIQA Tool

Use the SIQA Tool in the following instances:

- When image alignment on duplex output requires correction
- When within page image density requires uniformity adjustment

Adjustment Procedure Definitions

Auto Alignment Adjustment

The Auto Alignment Adjustment procedure allows for correction of image placement between side 1 and side 2 images in duplex output. You can store up to 20 alignment adjustment profiles (Types) for use across all input trays. You can assign a different Type to each of the input trays, if desired.

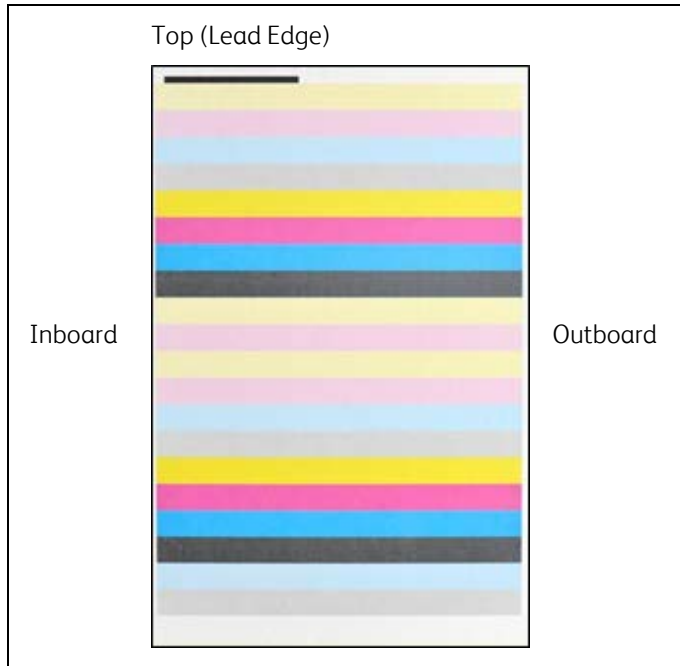
Density Uniformity Adjustment

The Density Uniformity Adjustment procedure allows for uniform ink coverage between the inboard and outboard (see note below) sides of the printed output. Unlike Auto Alignment Adjustment, the profile you select applies to all input trays.

Image Orientation Definitions

Inboard and outboard are as follows:

- On the machine, **inboard** refers to the rear of the machine (the side farthest from you as you are using the machine) and **outboard** refers to the front (the side nearest you).
- On the printed output, as you hold the sheet with the top facing up, **inboard** refers to the left side of the sheet and **outboard** refers to the right side. The short black line indicates the top of the sheet.



SIQA Software Installation

Important

The SIQA software must be installed before the Auto Alignment Adjustment and Density Uniformity Adjustment procedures can be performed.

The SIQA software installation process consists of the following:

- Installing the SIQA software on a PC
- Setting up communication between the SIQA software application and the print engine
This varies depending on the print server attached to your machine and whether or not a third-party PC is being used. For more information, refer to [Setting Up Communication between the SIQA Application and the Print Engine](#) on page 2-8.

System Requirements

The following requirements must be met before installing the SIQA software:

- A client PC with one of the following supported operating systems: Windows® Vista SP2, Windows® 7 SP1, or Windows® 8.1

The SIQA software must be installed on a separate Windows-based PC for the following:

- Xerox® standalone printer
- Xerox® EX Print Server, powered by Fiery® (standalone)
- Integrated Fiery® Color Server
- SIQA software media
 - The SIQA software either on a USB drive or a DVD
 - The SIQA Black Page PDF files, which reside either on the USB drive or the DVD

Note

The Power Save Mode timer should be set to a minimum of 60 minutes so the machine will not enter Sleep Mode during this procedure.

Installing the SIQA Tool Software on a PC

1. Connect the USB drive or insert the DVD into the target PC.
2. On the removable media, locate the file **SIQA_ENG_v0104.zip** or download it from www.xerox.com.
3. Copy the .zip file to PC or server desktop.
4. Open the .zip file and extract (copy) the PDF files to the folder location of your choice.

Note

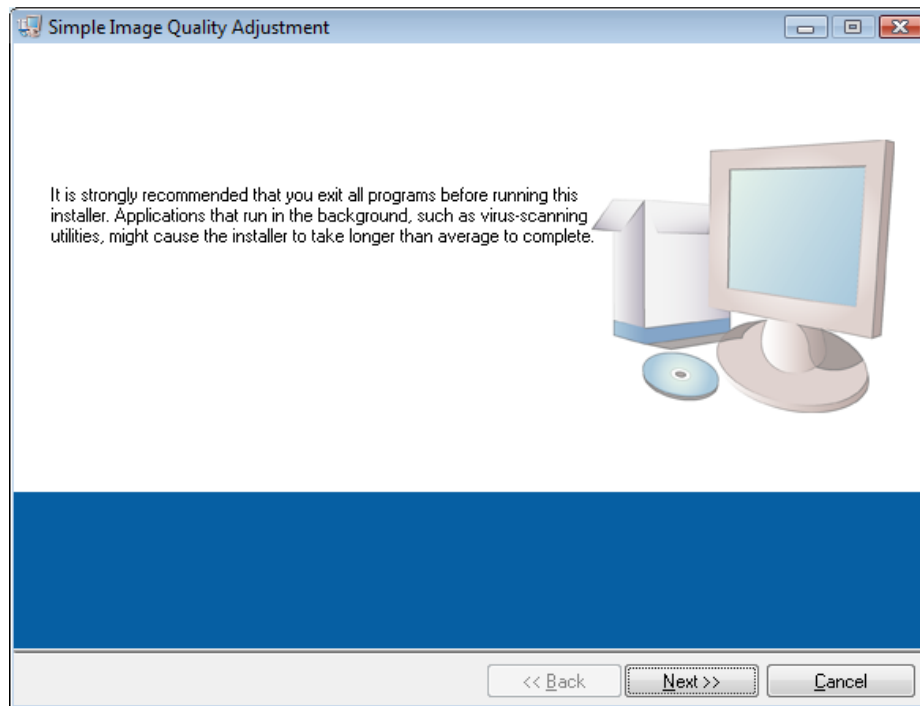
It is recommended that you create a new folder for the extracted files.

5. In the folder containing the extracted files, locate and double-click on the **setup.exe** file.

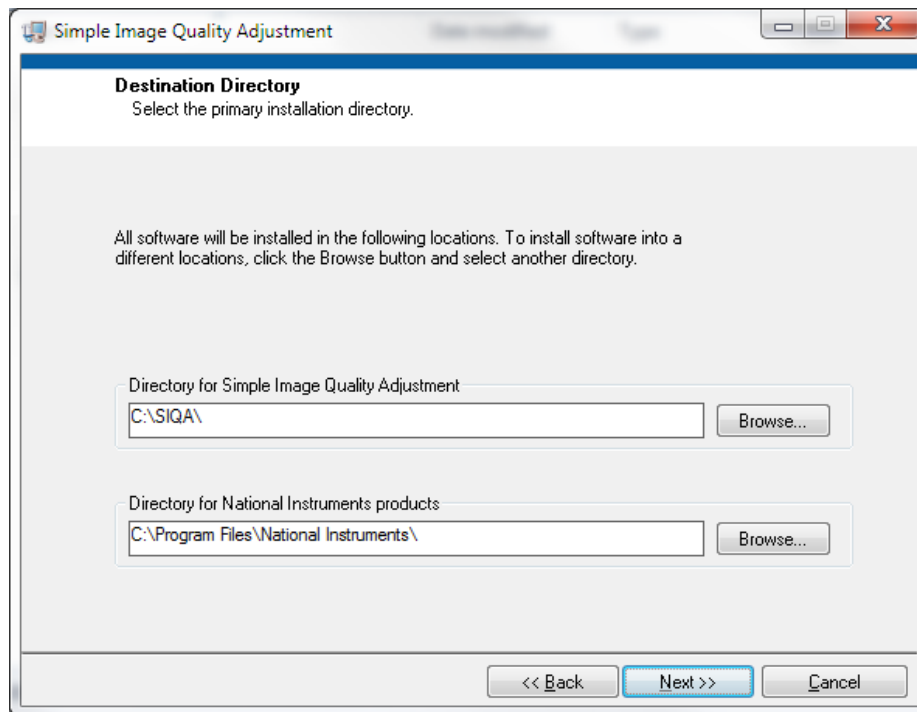
Note

If prompted to allow the program to make changes to the computer, select **Yes**.

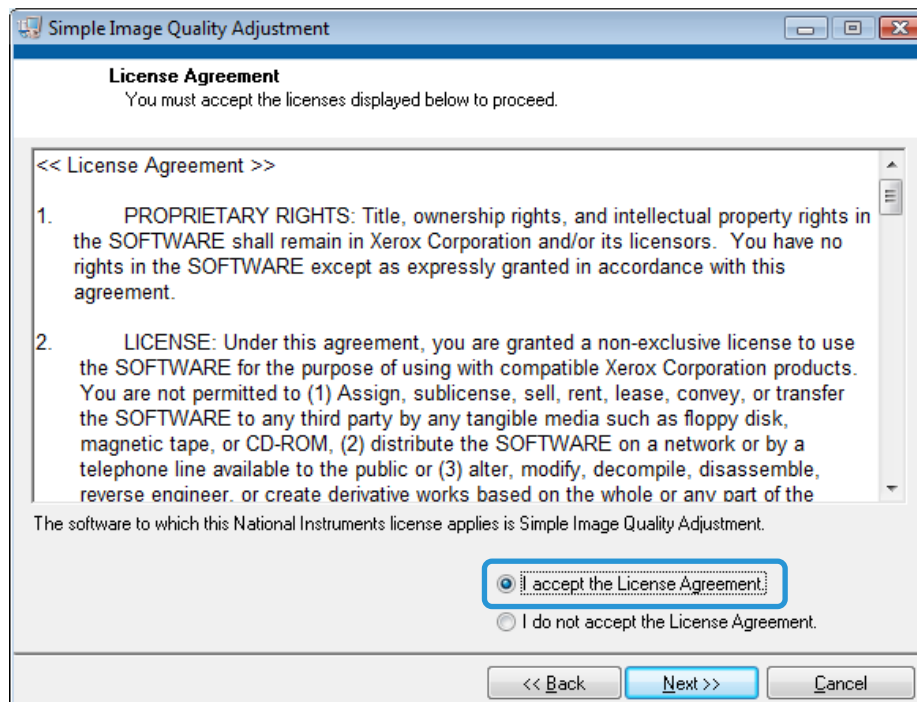
The screen below may display. If it does, select **Next** to continue.



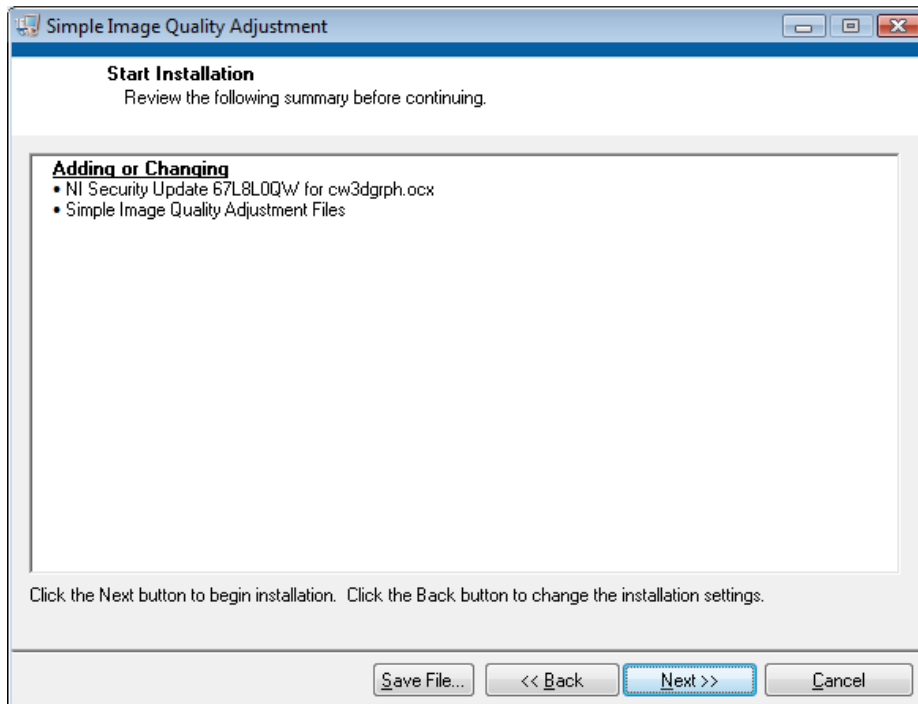
6. Click **Next** to accept the default destination directory.



7. At the License Agreement screen, select **I accept the License Agreement(s)**. radio button, and then select **Next**.

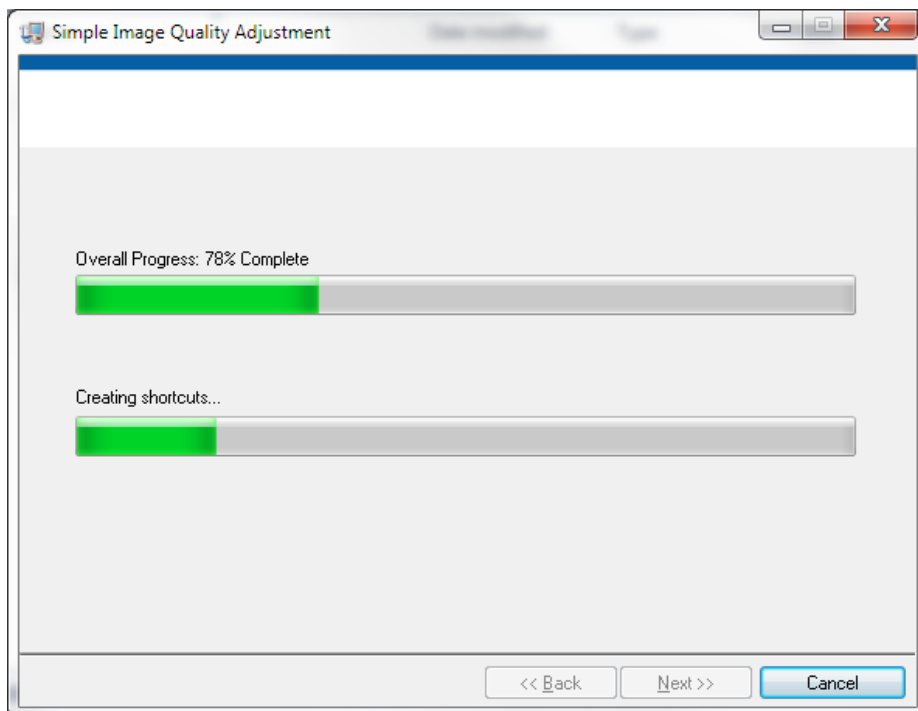


The Start Installation window displays.

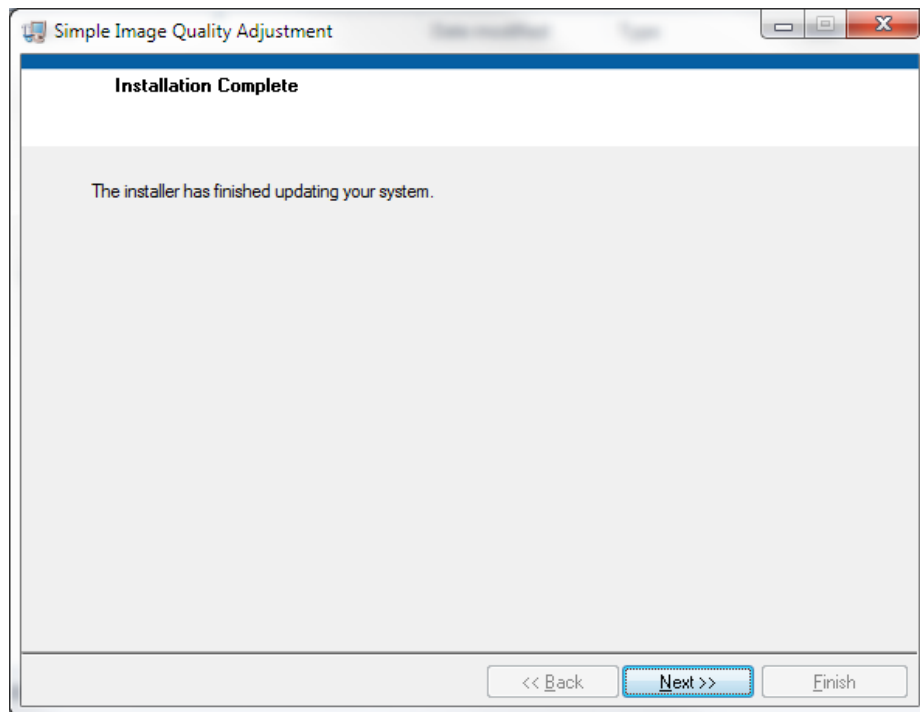


8. Click **Next** to continue.

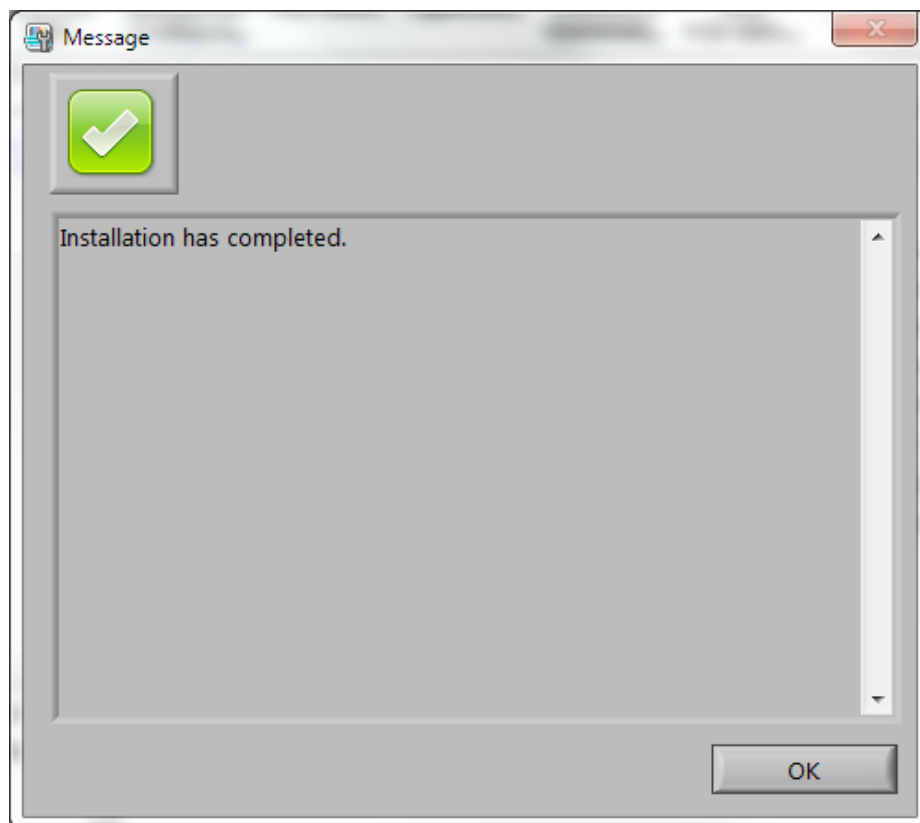
A window displays the progress of the installation.




9. At the Installation Complete window, select **Next**.



10. At the Message window, select **OK**.



11. If prompted to restart the computer to complete installation, select **Restart**. Otherwise, go to step 13.
12. If you restarted the PC, enter a username and password, if required.
13. Create a shortcut to the SIQA Tool on the PC desktop:
 - a. Windows® Vista/7
 - i) From the **Start** menu, select **All Programs > Simple Image Quality Adjustment > SIQA**.
 - ii) Drag the **SIQA** icon to the desktop to create the shortcut.
 - b. Windows® 8.1
 - i) Press the Windows key  and the **Q** key simultaneously.
 - ii) Type **SIQA** in the search box.
 - iii) Select the **SIQA** file from the results and select **Open file location** from the options at the bottom of the screen.
 - iv) Right-click on the file and select **Send to > Desktop (create shortcut)**.

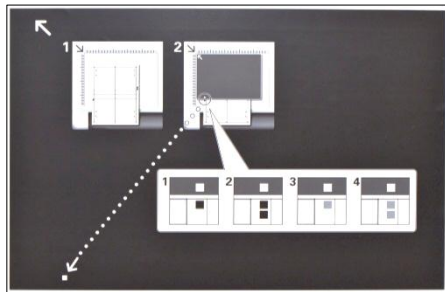
Printing the SIQA Black Paper Image File

The SIQA Black Paper image files must be printed before using the Auto Alignment Adjustment procedure. These files are located on the CD-ROM or DVD-ROM or you may download them from www.xerox.com.

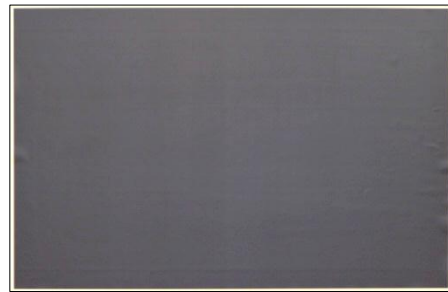
1. Open the PDF file **SIQA Black Paper for Adjustment A3.pdf** or **SIQA Black Paper for Adjustment Tabloid.pdf**.
2. Using **duplex mode**, print the image onto A3 or tabloid (11"x17") paper with a media weight of 105 gsm or 163 gsm.

The printed output appears as follows:

Tabloid (11"x17")

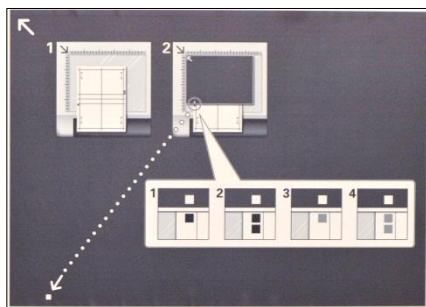


Side 1



Side 2

A3



Side 1



Side 2

Setting Up Communication between the SIQA Application and the Print Engine

Setting up communication between the SIQA software application and the print engine varies depending on the print server that is attached to the machine and whether or not a third-party PC is being used. The procedures provided here include how to set up and run the SIQA software on the following:

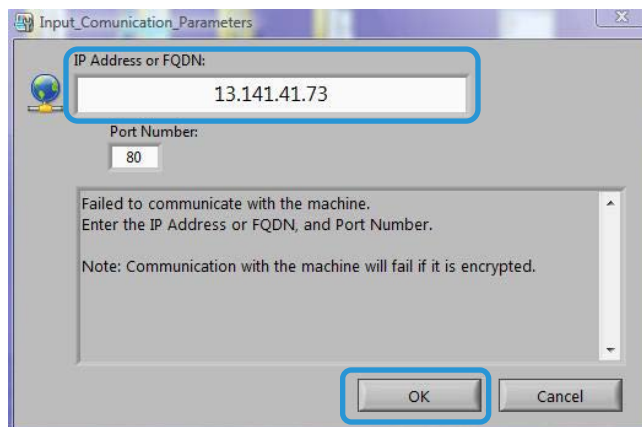
- Third-party PC through DMP Controller
- EX Print Server (Fiery standalone)
Requires keyboard, monitor and mouse options.
- Third-party PC via an EX Print Server or an Integrated Fiery Color Server
- Third -party PC when a FreeFlow Print Server is installed

Note

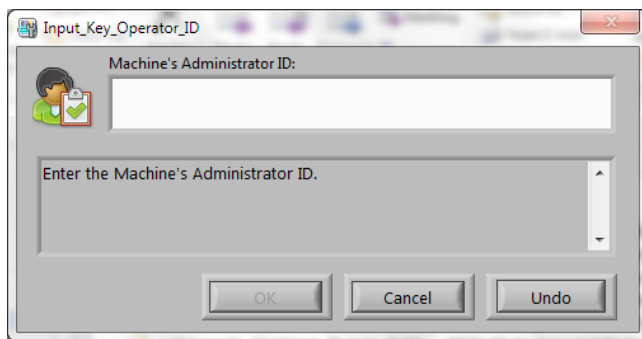
For more information on connectivity, refer to [Troubleshooting](#) on page 8-1.

Setting Up and Running SIQA Software on a Third-Party PC Through DMP Controller

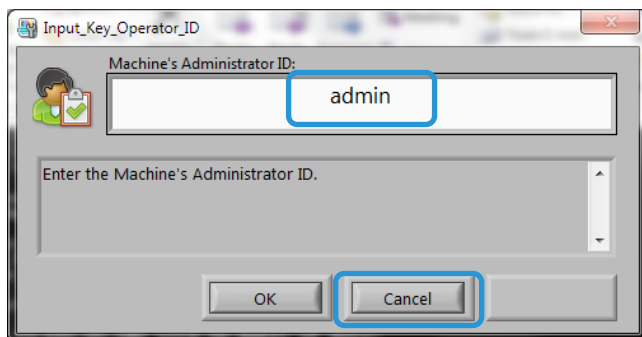
1. At the print engine UI record the machine's IP address by selecting **Machine Status > Device Information**.
2. From the PC desktop, double-click the **SIQA** icon.
The Input_Communication_Parameters window displays.
3. If necessary, enter the printer IP address, and then select **OK**.



The Input_Key_Operator_ID window displays.

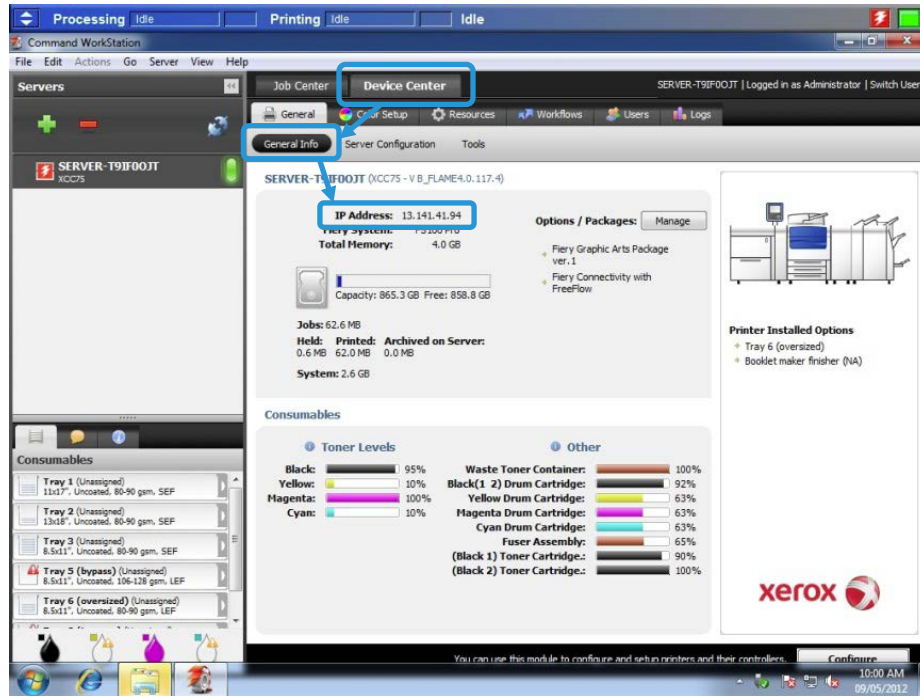


4. Enter **admin** as the key operator ID and select **OK**.



Setting Up and Running SIQA Software on an EX Print Server

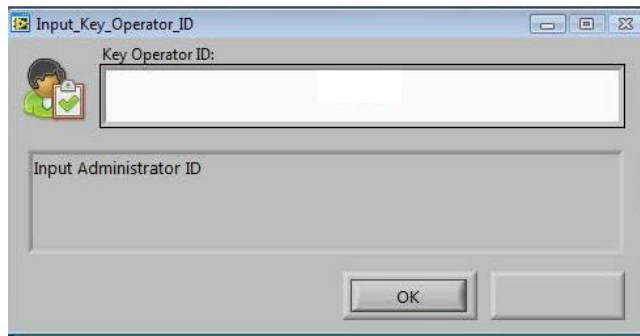
1. Ensure that the cross-over Ethernet cable is installed and connected between the EX Print Server and the print engine.
2. From the EX Print Server locate the printer IP address by selecting **Command Workstation > Device Center > General Info**.
3. Record the print server IP address.



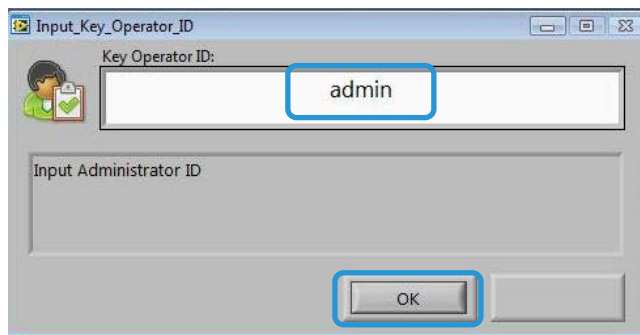
4. From the print server desktop, double-click the **SIQA** icon. The Input_Communication_Parameters window displays.
5. If necessary, enter the printer IP address, and then select **OK**.



The Input_Key_Operator_ID window displays.



6. Enter **admin** as the key operator ID and select **OK**.



The window below displays indicating that the connection between the SIQA Tool and the machine was successful and that a folder has been created on the print engine hard drive.



Note

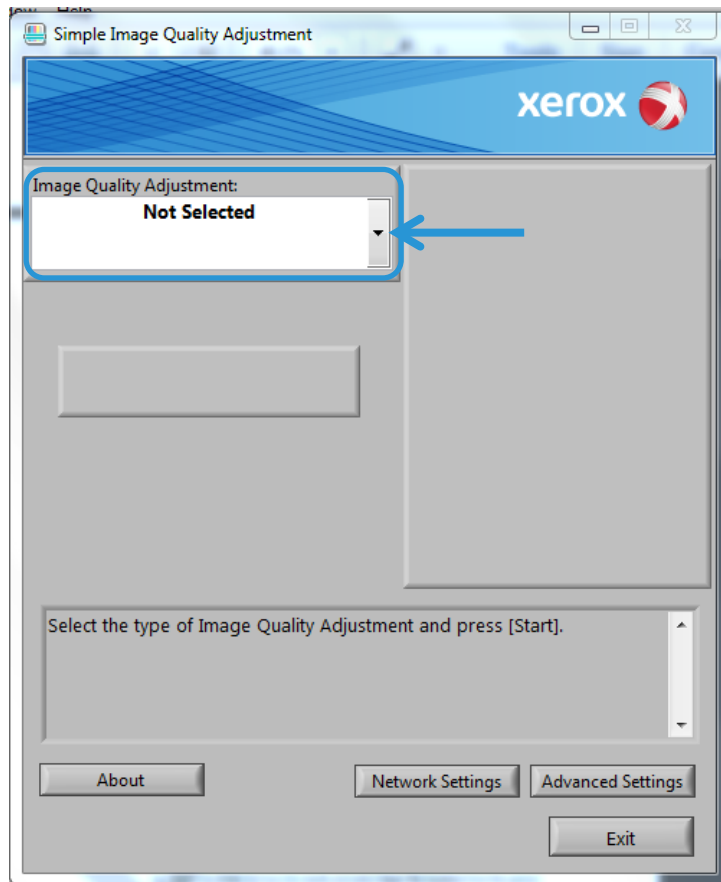
To confirm the folder creation, go to the printer and select **Send from Folder** on the home screen and select **<folder 190>**. The newly-created folder name is **SYSTEM-IQ-AUTO**. If the folder does not exist in **Send from Folder**, repeat steps 4 through 6 above.

Note

If the Tool displays the message: “Failed to communicate with the machine. Do you want to try again?” click **No** and follow the instructions in [If the Connection Between SIQA and the Machine is](#) on page 8-1.

7. Select **OK**.

The main SIQA window displays. The Auto Alignment Adjustment and/or Density Uniformity Adjustment procedures are now available. Use the down arrow in the Image Quality Adjustment box to select a procedure.

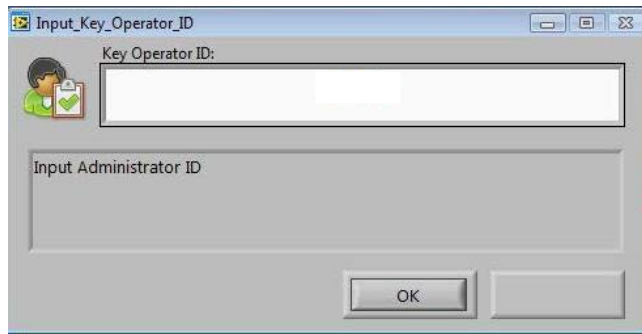


Setting Up and Running SIQA Software on a PC via an EX Print Server or Integrated Fiery Color Server

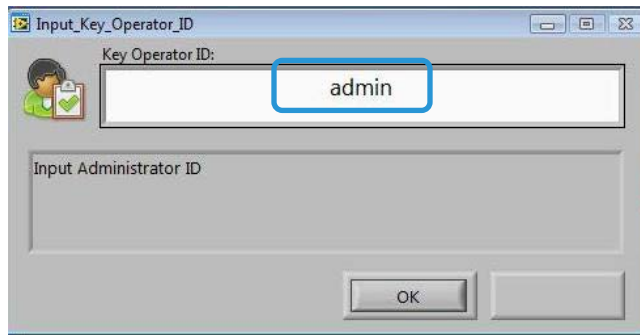
1. Ensure that the cross-over Ethernet cable is installed and connected between the print server and the print engine.
2. From the print server, access and record the IP address of the EFI server.
3. From the PC desktop, double-click the **SIQA** icon.
The Input_Communication_Parameters window displays.
4. Enter the printer IP address and select **OK**.



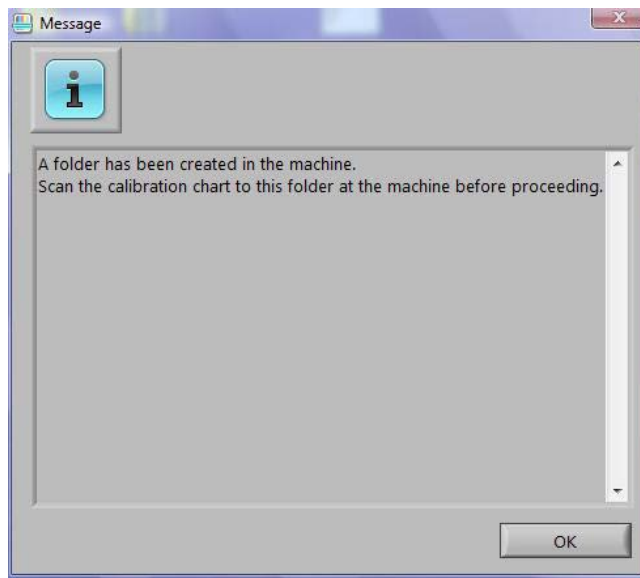
The Input_Key_Operator_ID window displays.



5. If necessary, enter **admin** as the key operator ID, and then select **OK**.



The window below displays indicating that the connection between the SIQA Tool and the machine was successful and that a folder has been created on the print engine hard drive.



Note

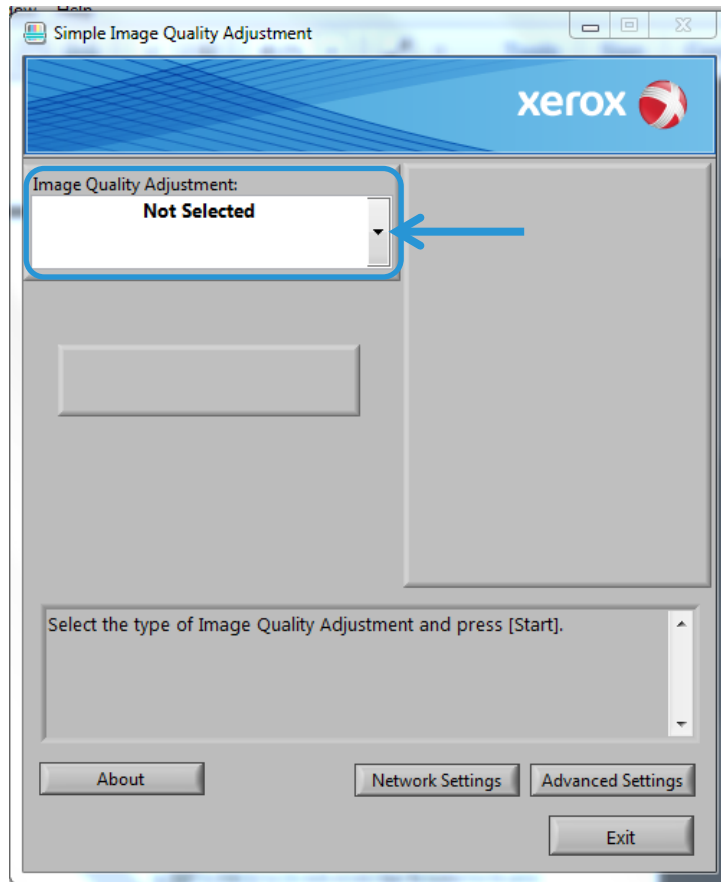
To confirm the folder creation, go to the printer and select **Send from Folder** on the home screen and select **<folder 190>**. The newly-created folder name is **SYSTEM-IQ-AUTO**. If the folder does not exist in **Send from Folder**, repeat steps 3 through 5 above.

Note

If the Tool displays the message: *"Failed to communicate with the machine. Do you want to try again?"* click **No** and follow the instructions in [If the Connection Between SIQA and the Machine is Unsuccessful](#) on page 8-1.

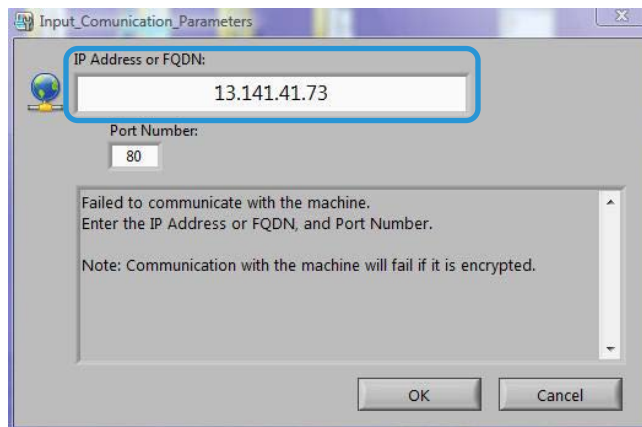
6. Select **OK**.

The main SIQA window displays. The Auto Alignment Adjustment and/or Density Uniformity Adjustment procedures are now available. Use the down arrow in the Image Quality Adjustment box to select a procedure.

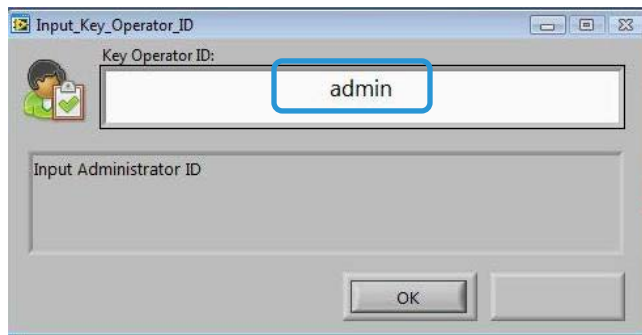


Setting Up and Running SIQA Software on a PC when a FreeFlow Print Server is Installed

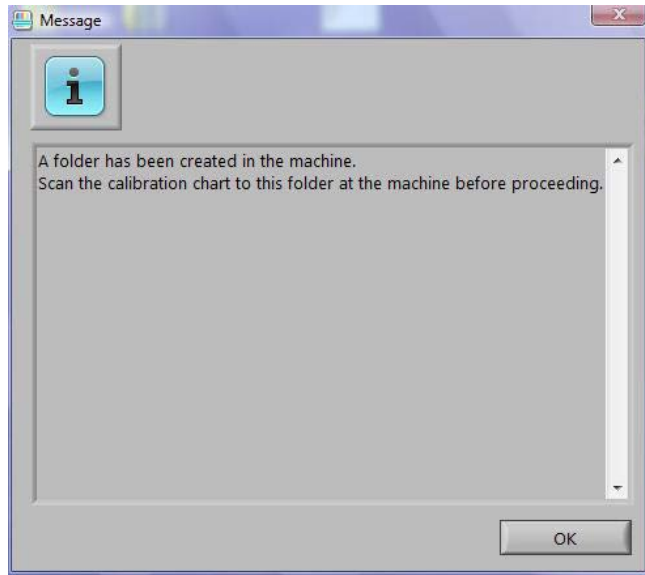
1. Ensure that the hub is installed and that the three Ethernet cables are connected to the following:
 - One cable from the wall drop to the hub
 - One cable from the hub to the FreeFlow Print Server
 - One cable from the hub to the print engine
2. At the print engine UI record the machine's IP address by selecting **Machine Status > Machine Information**.
3. From the PC desktop, double-click the **SIQA** icon.
The Input_Communication_Parameters window displays.
4. Enter the printer IP address and select **OK**.



5. If necessary, enter **admin** as the key operator ID, and then select **OK**.



The window below displays indicating that the connection between the SIQA Tool and the machine was successful and that a folder has been created on the print engine hard drive.



Note

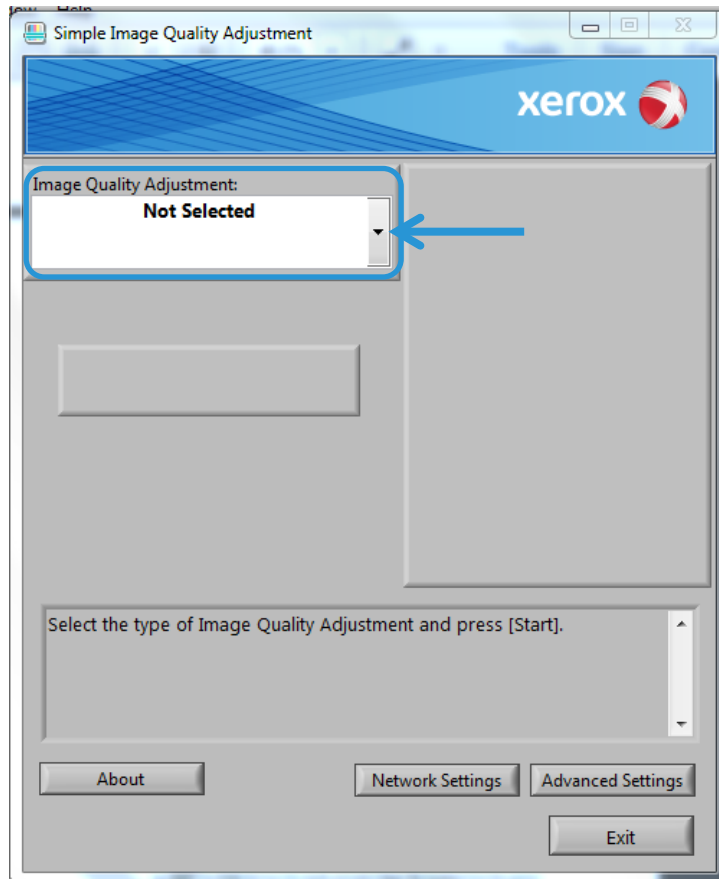
To confirm the folder creation, go to the printer and select **Send from Folder** on the home screen and select **<folder 190>**. The newly-created folder name is **SYSTEM-IQ-AUTO**. If the folder does not exist in **Send from Folder**, repeat steps 3 through 5 above.

Note

If the Tool displays the message: *"Failed to communicate with the machine. Do you want to try again?"* click **No** and follow the instructions in [If the Connection Between SIQA and the Machine is Unsuccessful](#) on page 8-1.

6. Select **OK**.

The main SIQA window displays. The Auto Alignment Adjustment and/or Density Uniformity Adjustment procedures are now available. Use the down arrow in the Image Quality Adjustment box to select a procedure.



Accessing C60/C70 SIQA Through EFI (Bustle and Standalone)

Once the SIQA Tool has been installed on a client PC, you can access the C60/C70 through EFI Bustle or EFI Standalone with via the bustle or standalone IP address.

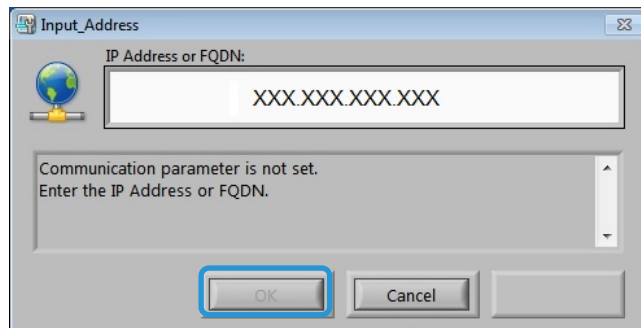
System Requirements

A client PC with one of the following supported operating systems:

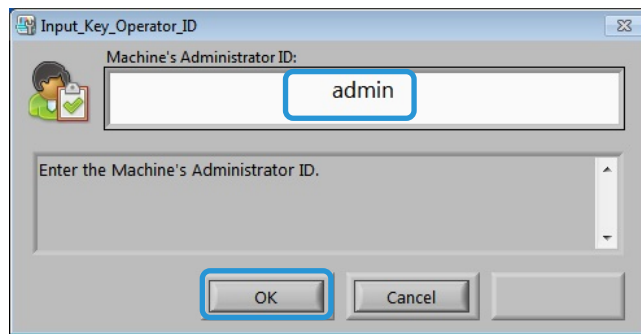
- Windows® Vista SP2
- Windows® 7 SP1
- Windows® 8.1

Procedure

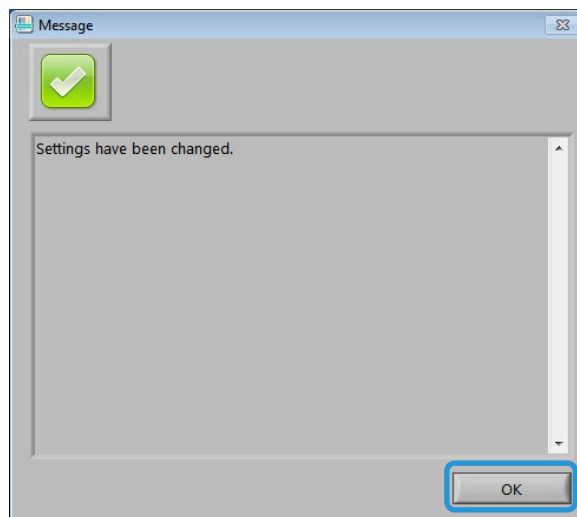
1. Install the SIQA Tool. Refer to [Installing the SIQA Tool Software on a PC](#) on page 2-2.
2. Obtain the IP address from the EFI (Bustle or Standalone) from the EX-I Fiery Color Server configuration sheet.
3. Launch the SIQA tool.
4. Enter the IP address, and then select **OK**.



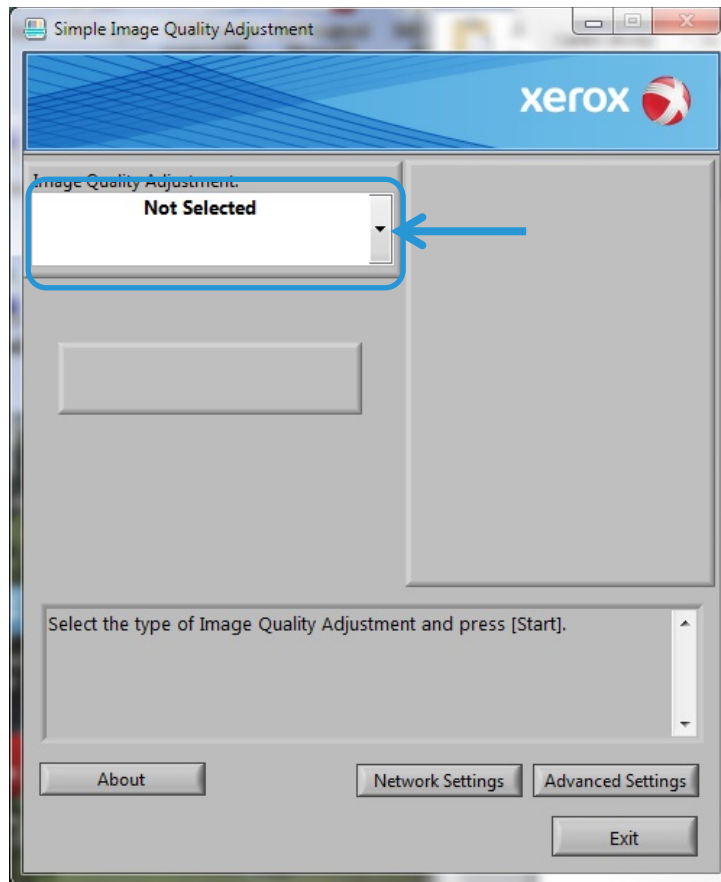
5. Enter **admin** as the Machine Administrator's ID, and select **OK**.



6. Click **OK** at the Message screen.



7. The main SIQA window displays. The Auto Alignment Adjustment and/or Density Uniformity Adjustment procedures are now available. Use the down arrow in the Image Quality Adjustment box to select a procedure.



For more information, refer to [Auto Alignment Adjustment](#) on page 5-1 or [Density Uniformity Adjustment](#) on page 6-1.

Accessing C60/C70 SIQA Through FFPS (Bustle)

The Simple Image Quality Adjustment (SIQA) Tool is already installed on the FFPS. Use Remote Desktop to access the SIQA Tool.

System Requirements

A client PC with one of the following supported operating systems:

- Windows[®] Vista SP2
- Windows[®] 7 SP1
- Windows[®] 8.1

Procedure

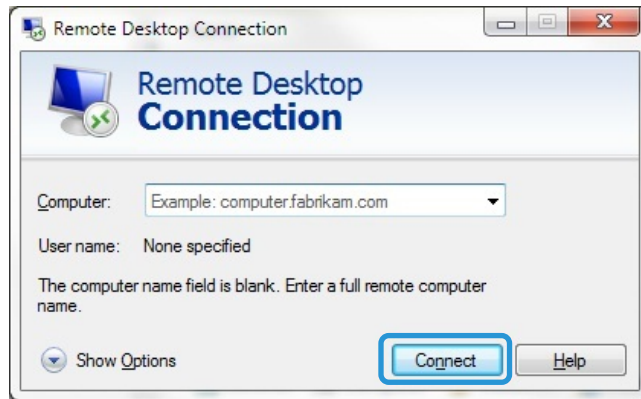
1. Enable Remote Desktop on the client PC.
 - a. Locate the Remote Desktop application at **C:\Windows\System32\mstsc.exe**.
 - b. Double-click **mstsc.exe** to launch the application.

For information on Remote Desktop, refer to <http://windows.microsoft.com/en-us/windows/connect-using-remote-desktop-connection#connect-usingremote-desktop-connection=windows-7>

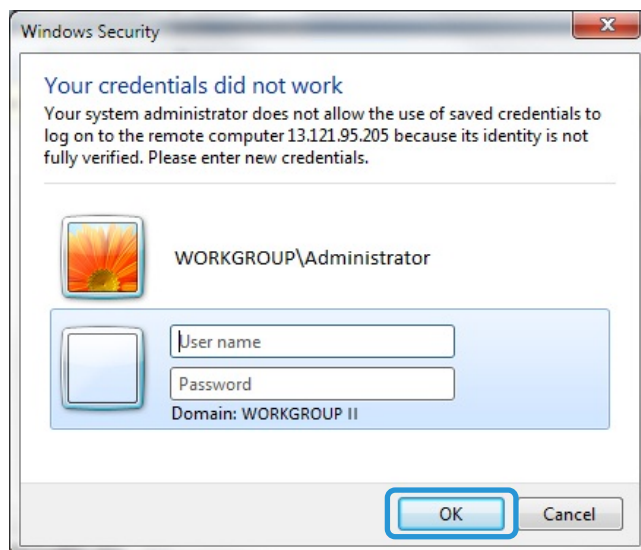
2. Enter the IP address from the FFPS and click **Connect**.

Note

The IP address is located on the C60/C70 UI at the bottom of the service screen.




3. At the Windows Security screen, do the following:
 - a. Enter **Administrator** as the user name.
 - a. Enter the password you used to set up the FFPS.
 - b. Click **OK**.

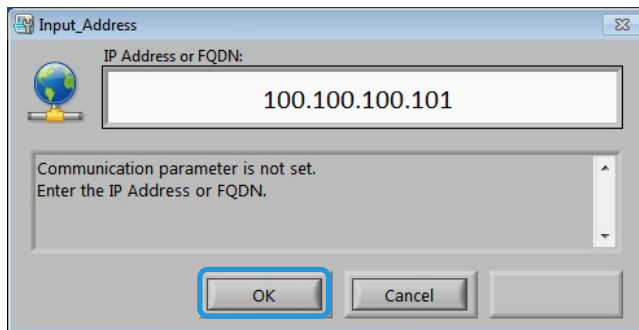


Note

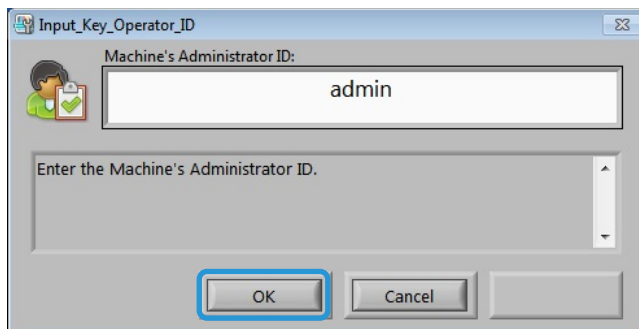
If the Remote Desktop Connection screen displays, mark the checkbox labeled “Don’t ask me again for connecting to this computer” and click **Yes**.

4. For convenience, create a shortcut to the SIQA Tool on the FFPS desktop:
 - a. Windows® Vista/7
 - i) From the **Start** menu, select **All Programs > Simple Image Quality Adjustment > SIQA**.
 - ii) Drag the **SIQA** icon to the desktop to create the shortcut.

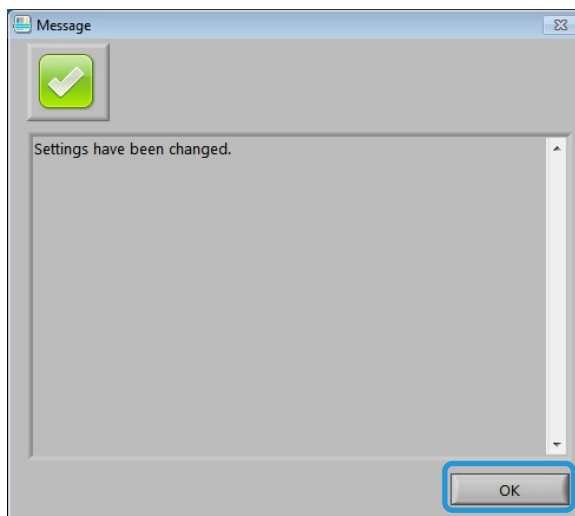
- b. Windows® 8.1
 - i) Press the Windows key  and the **Q** key simultaneously.
 - ii) Type **SIQA** in the search box.
 - iii) Select the **SIQA** file from the results and select **Open file location** from the options at the bottom of the screen.
 - iv) Right-click on the file and select **Send to > Desktop (create shortcut)**.
5. Open the SIQA Tool using the shortcut you just created.
6. Enter **100.100.100.101** and select **OK**.



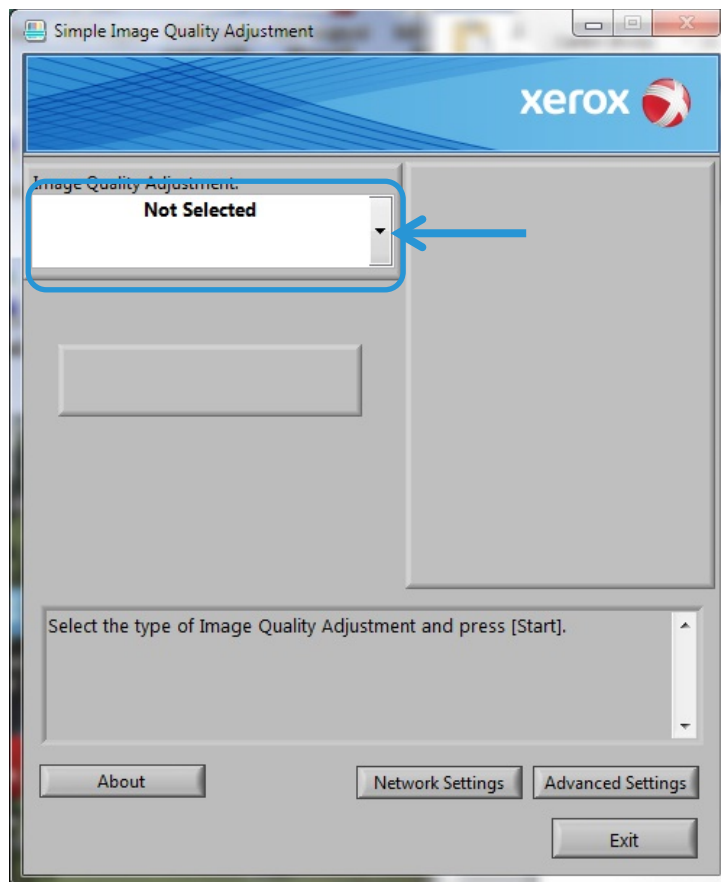
7. Enter **admin** as the Machine Administrator's ID, and select **OK**.



8. Click **OK** at the Message screen.



9. The main SIQA window displays. The Auto Alignment Adjustment and/or Density Uniformity Adjustment procedures are now available. Use the down arrow in the Image Quality Adjustment box to select a procedure.



For more information, refer [Auto Alignment Adjustment](#) on page 5-1 or [Density Uniformity Adjustment](#) on page 6-1.

Auto Alignment Adjustment

Use this procedure to correct misalignment of the printed output. The Auto Alignment Adjustment uses an application called Simple Image Quality Adjustment (SIQA), and it allows the user to make adjustments easily and quickly and to correct any misalignment on the printed output.

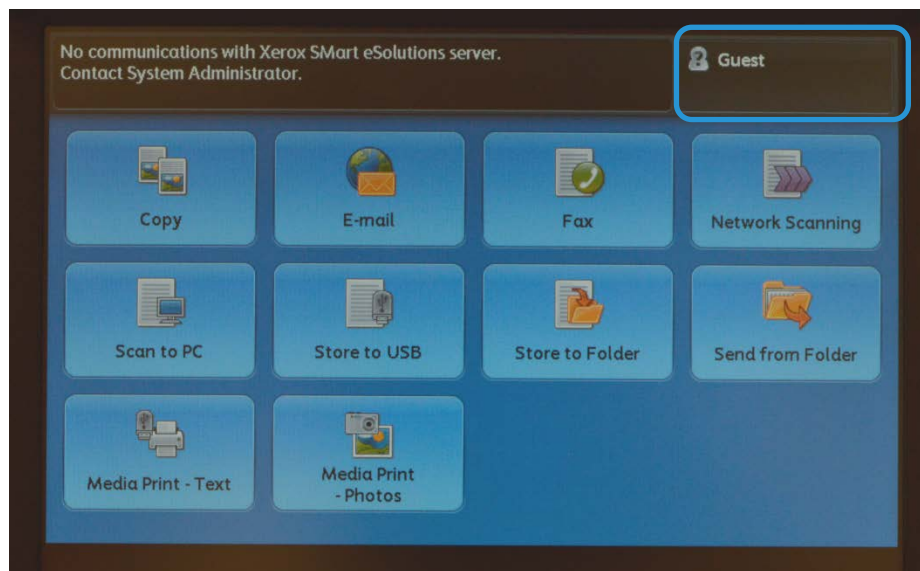
The procedure requires the installation of the SIQA application on a Windows® PC.

Notes

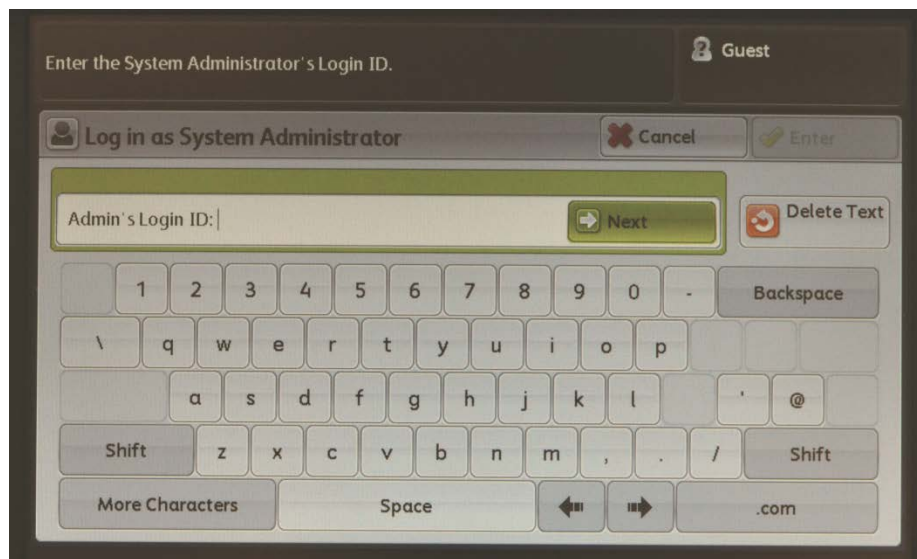
- If your print server is a Windows-based PC, the SIQA application may be installed on it; otherwise a third-party PC is required. Contact the Customer Support Center for more information. This procedure also requires the black background pattern file, which is located in the SIQA install folder.
- Record the IP address. It will be used later in the procedure.

Performing Auto Alignment Adjustment

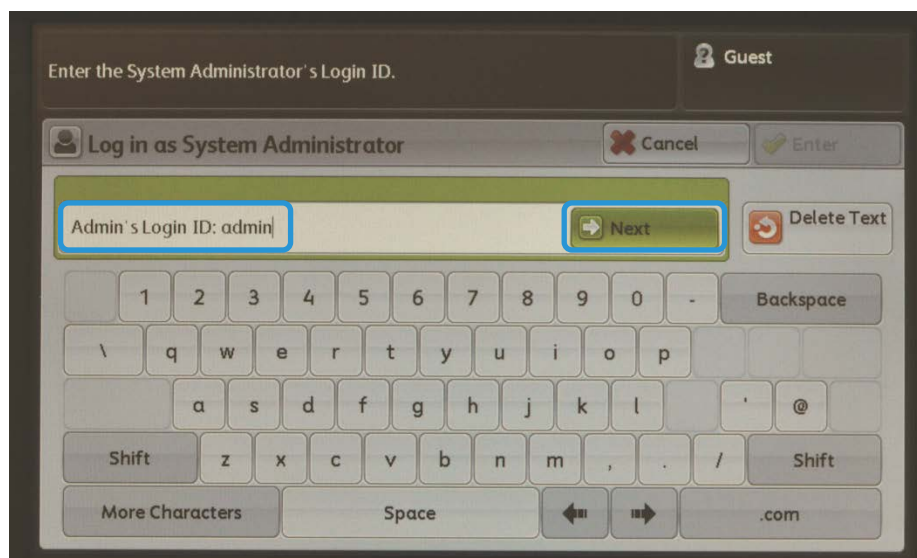
1. Go to the machine UI and select the **Guest** button to enter administrator mode from home page screen.



The System Administration Login screen displays.

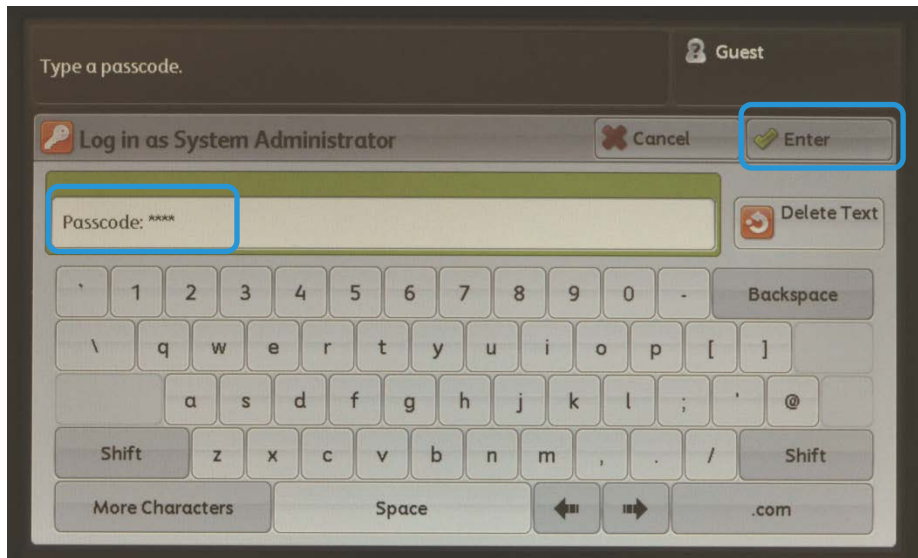


2. Type **admin** as the Admin's Login ID and select **Next**.



Auto Alignment Adjustment

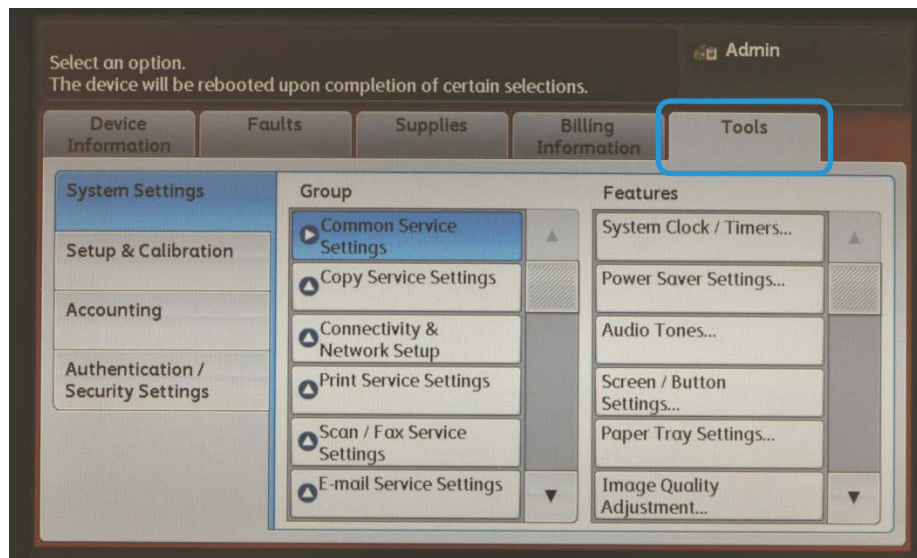
3. Enter **1111** as the password and select **Enter**.



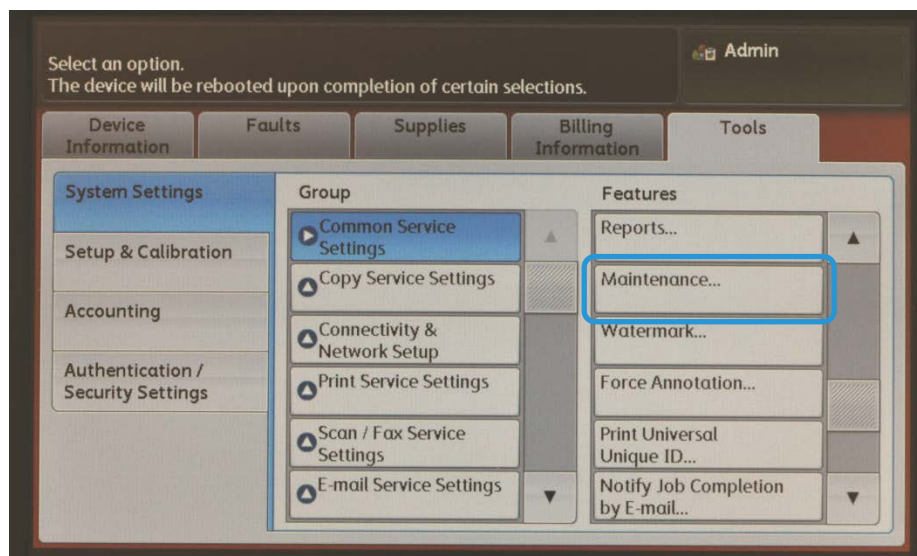
4. Press the **Machine Status** button on the printer's UI.



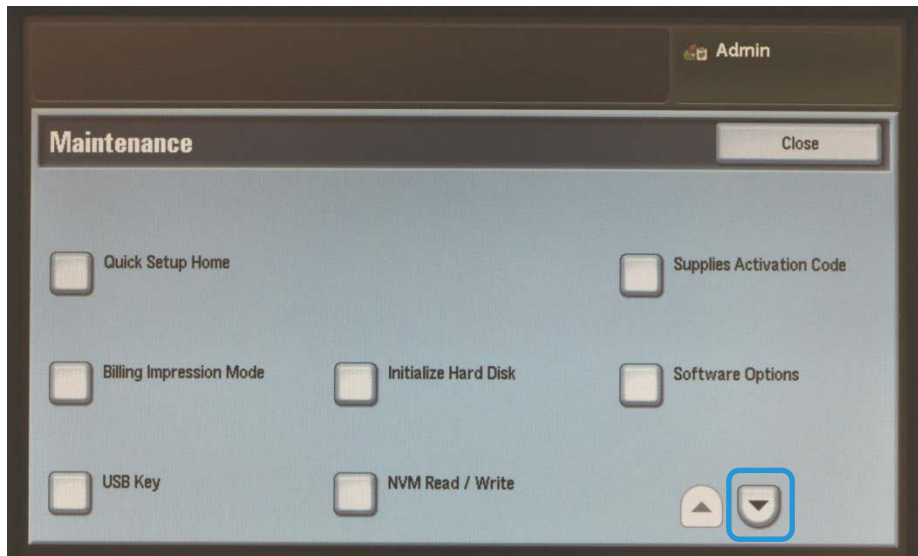
5. On the Admin screen, select the **Tools** tab.



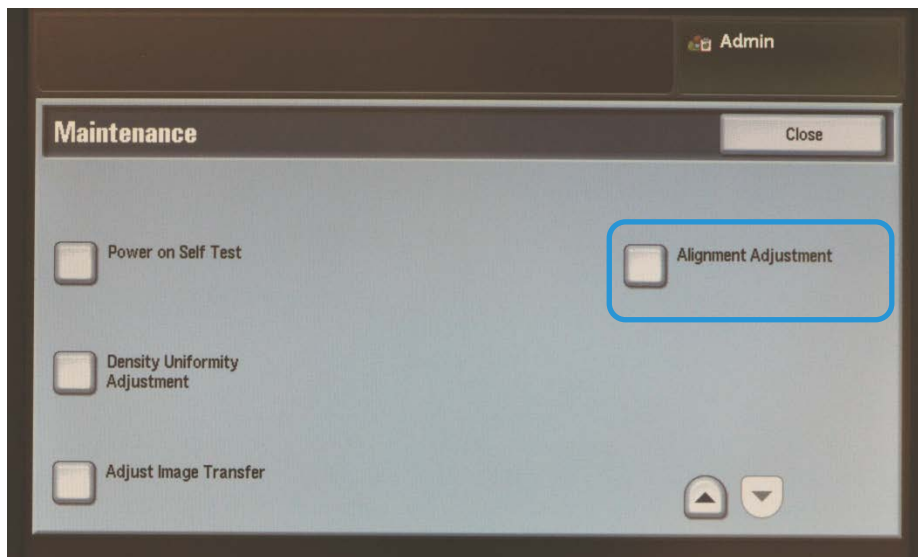
6. Scroll down the **Features** group and select **Maintenance**.



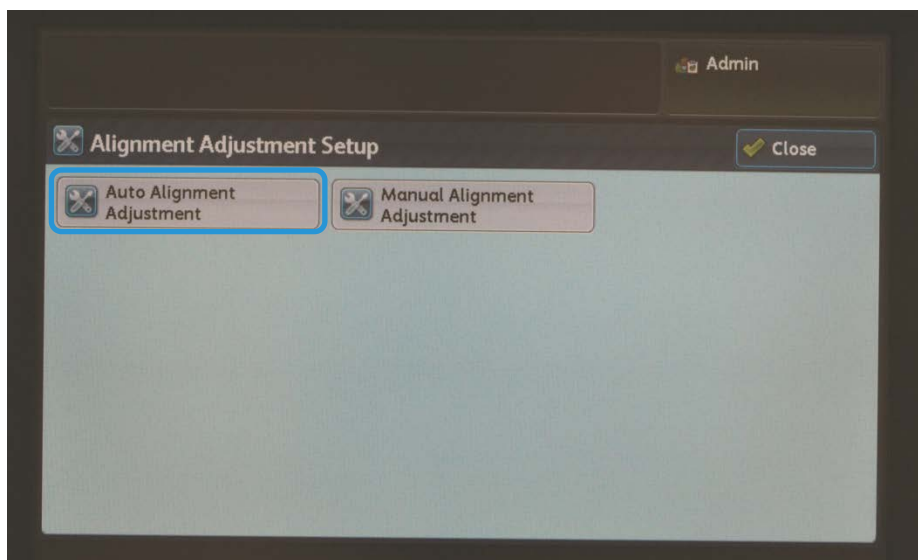
7. On the Maintenance screen, touch the Scroll Down button to display Page 2.



8. Select **Alignment Adjustment**.



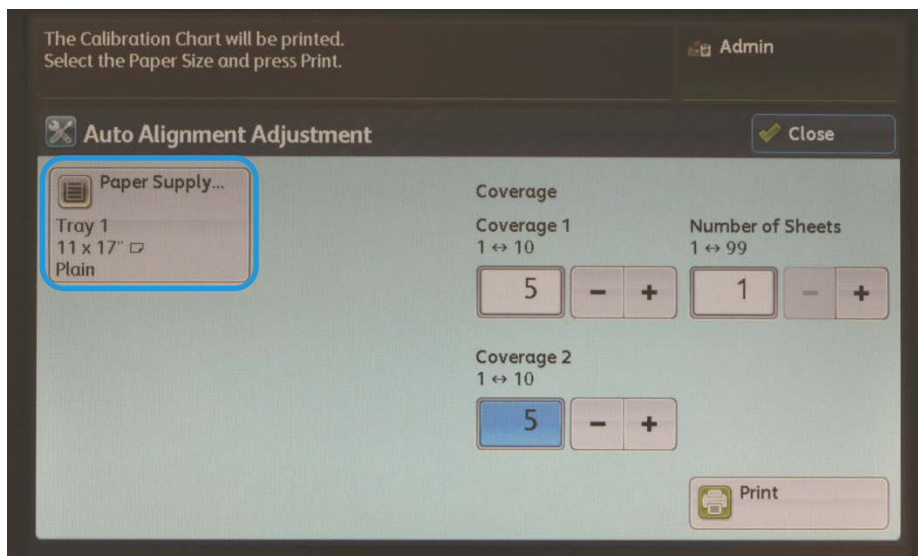
9. At the Alignment Adjustment Setup screen, Select **Auto Alignment Adjustment**.



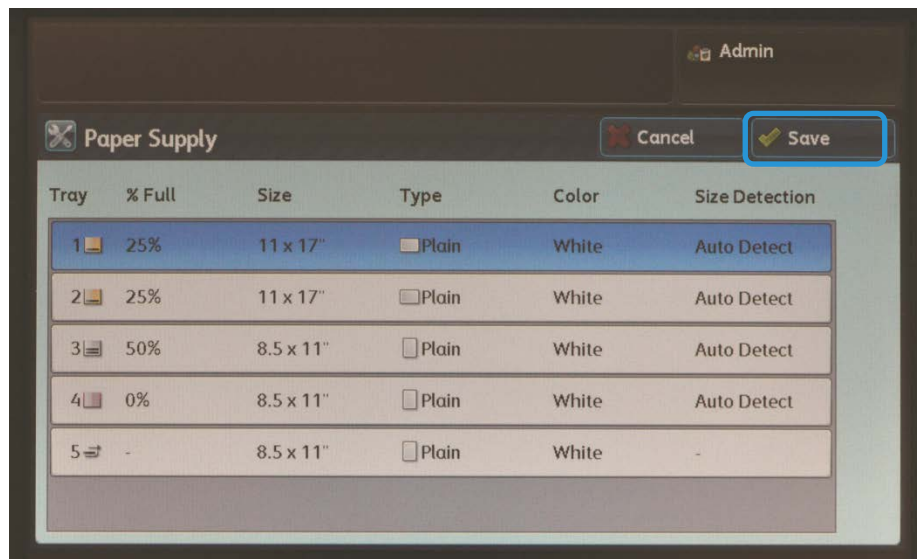
Note

If “Invalid operation” displays, it means that the SYSTEM-IQ-AUTO folder was not created during SIQA installation. Repeat steps 4 through 6 on p. 2-10.

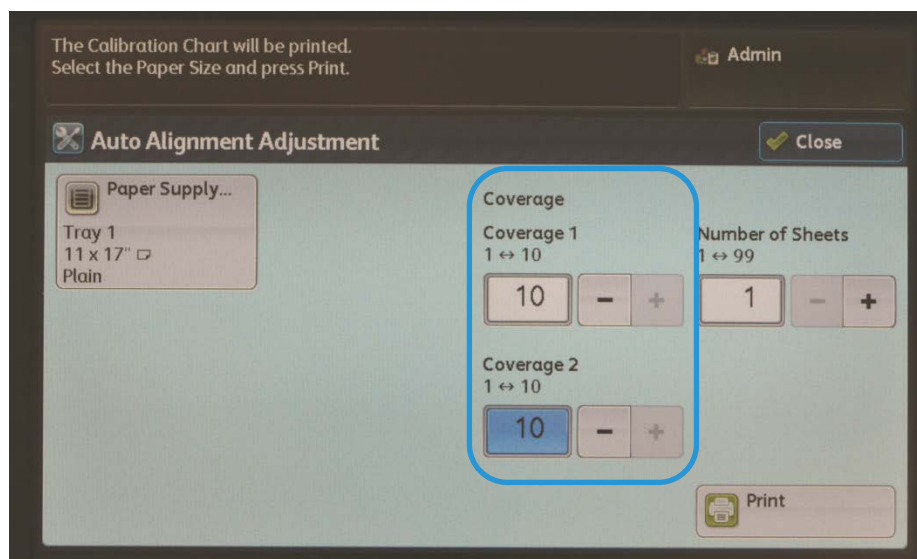
10. Select **Paper Supply** to show the available paper trays.



11. Select the paper tray for which you want to perform the alignment adjustment, and then select **Save**.



12. Select a number between **1** and **10** for image area coverage for a typical print job for side 1 and side 2. (Refer to the table below to help you choose appropriate coverage values.)



Note

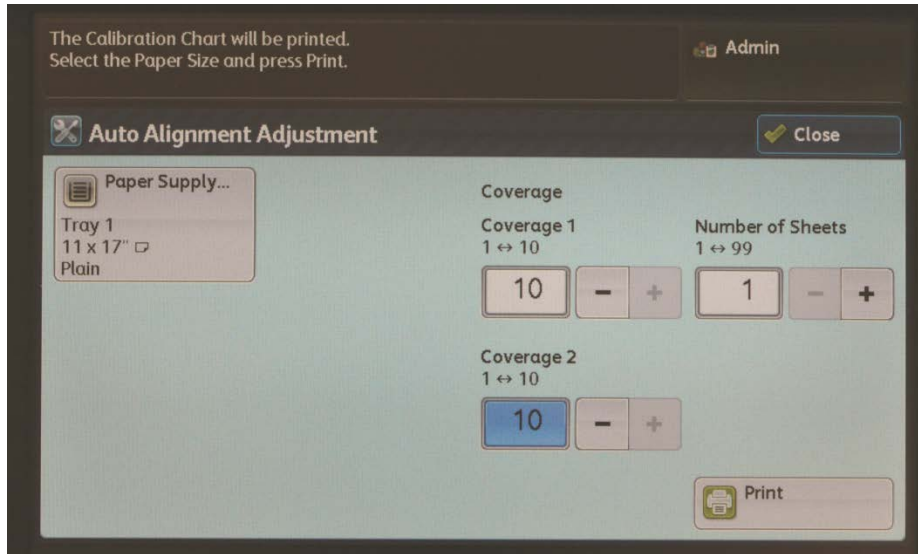
Area coverage can be one of the factors that changes the alignment. To adjust a specific area coverage level, set a value from **1** to **10**. Set higher values for heavier area coverage. However, for most cases setting the value to **1** is adequate. You can also select different settings for side 1 and side 2 if the area coverage is heavier on one side than the other.

Coverage Value	Area Coverage Reference
1	Low Area Coverage – text only
5	Medium Area Coverage – equal mixture of text and graphic images
10	High Area Coverage – entire page is primarily graphic images

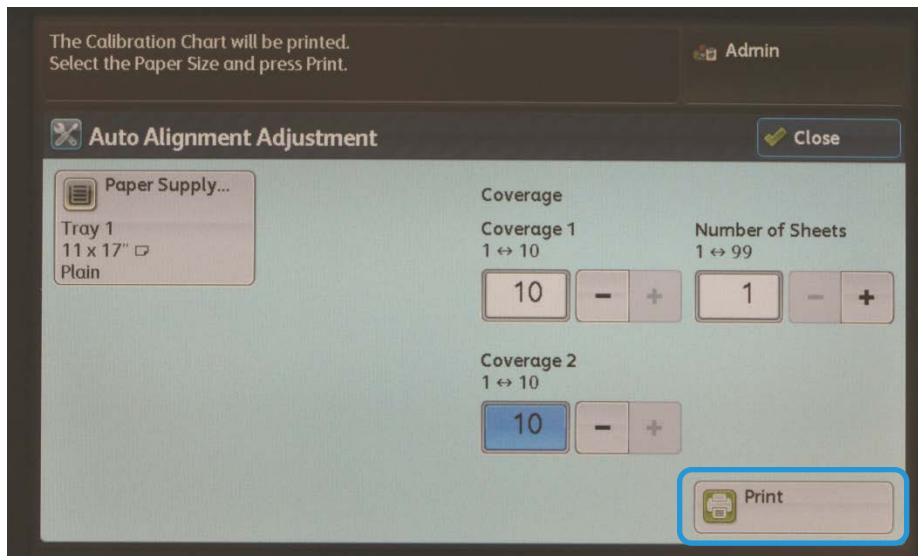
13. Select the number of sample sheets you want to use.

Note

With multiple samples, the software uses the average volume for the adjustment. This means that the variation between the sheets is reduced.

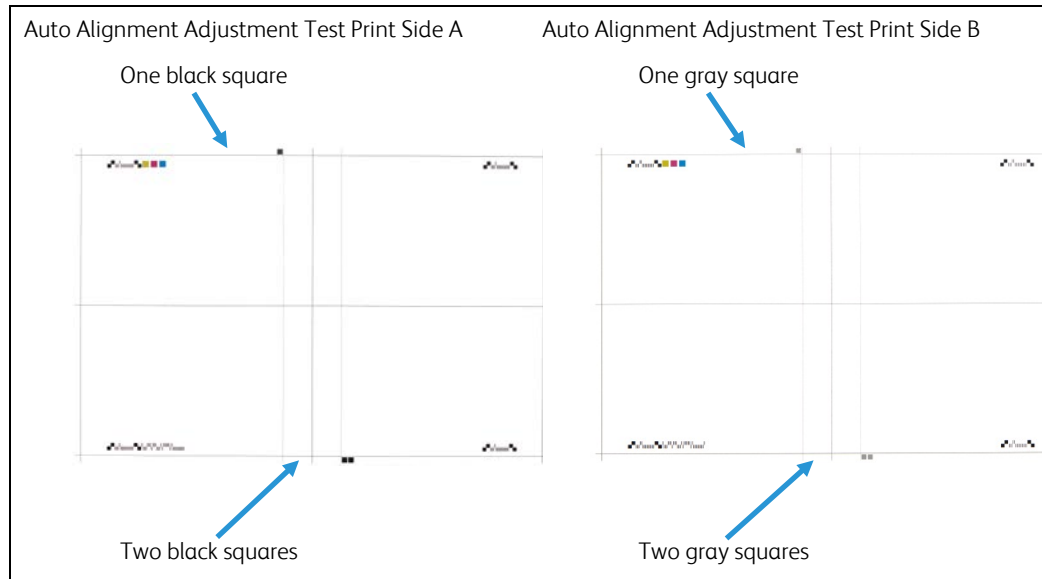


14. Select **Print**.



Auto Alignment Adjustment

The sample sheet prints. In the example below the coverage value was set to **1** for both sides.



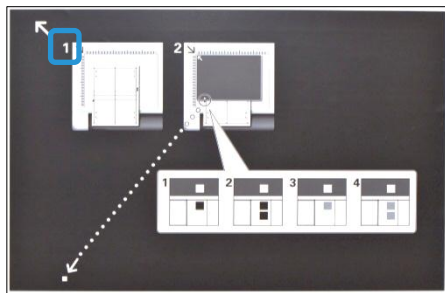
15. To correct the misalignment, scan each of the four sides of sample chart, lead edge and trail edge for each front and back side. Follow the instructions on the Auto Alignment Adjustment screen.

Note

You may scan the sides of the sample sheet in any order.

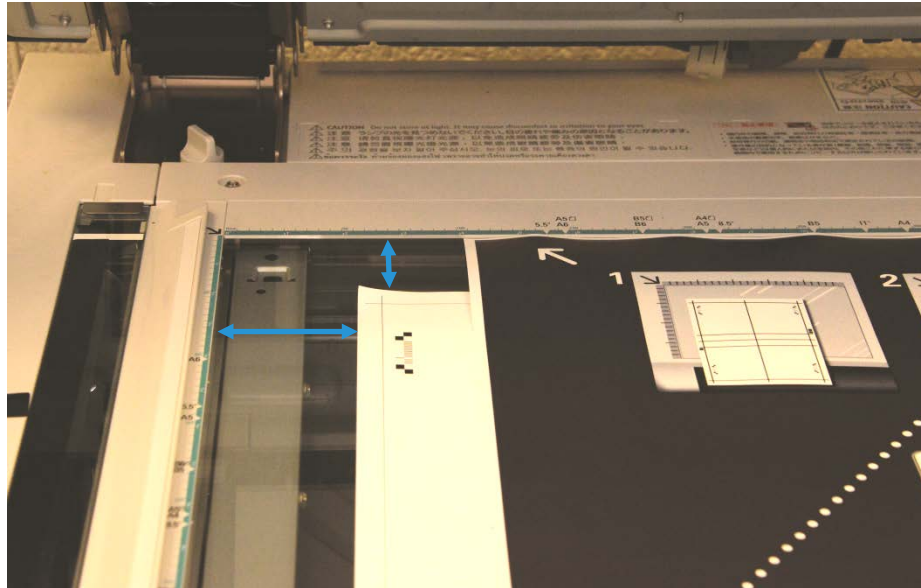
- a. Place the sample print onto the document glass (shown in step 1 on the image below).

Side 1 of black paper (Refer to p. 2-7 for printing instructions.)

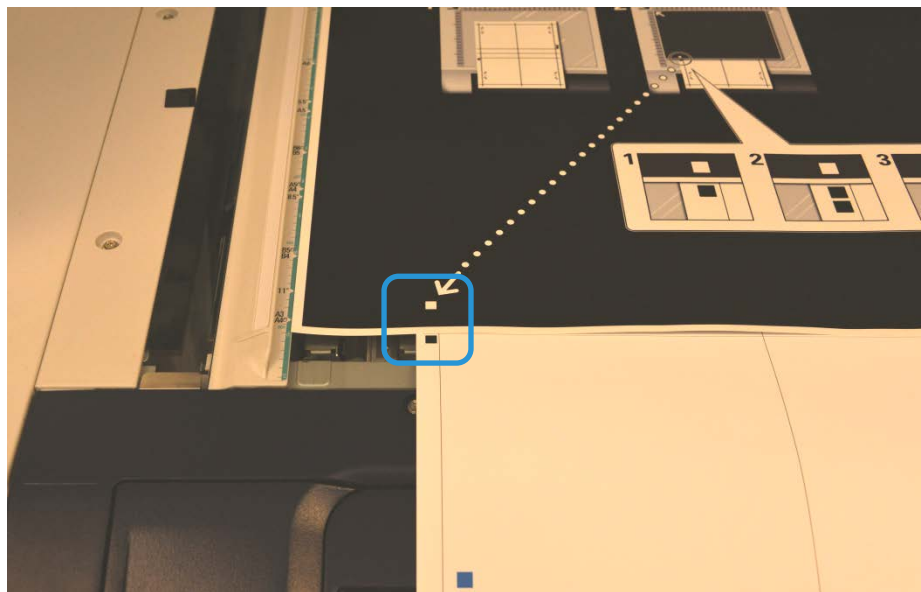


Important

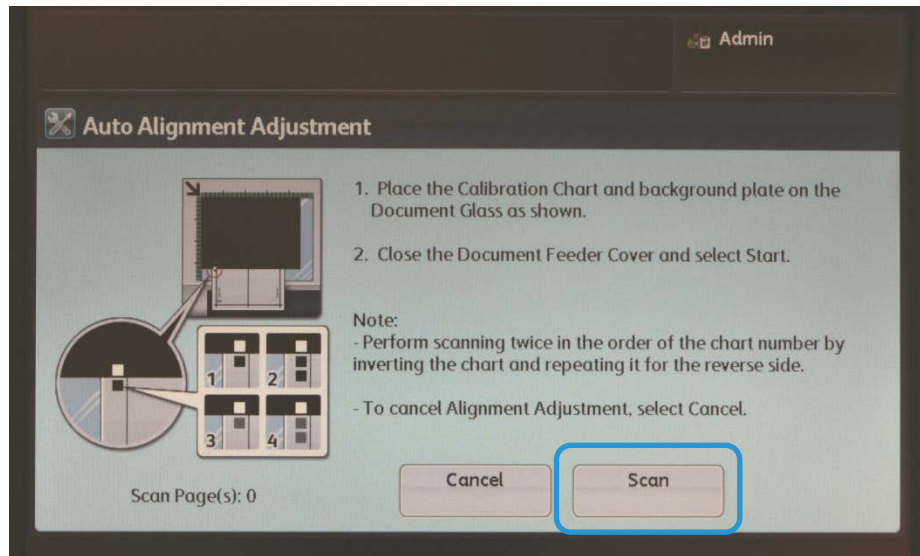
- The sample sheet must not be placed against the registration edge (20 mm minimum clearance) and not skewed more than 15 degrees.
- Ensure that there is space between the document glass edge and the test pattern.



- b. Cover the sample sheet with the black paper and align the white mark with the black or gray sample sheet mark as shown below.

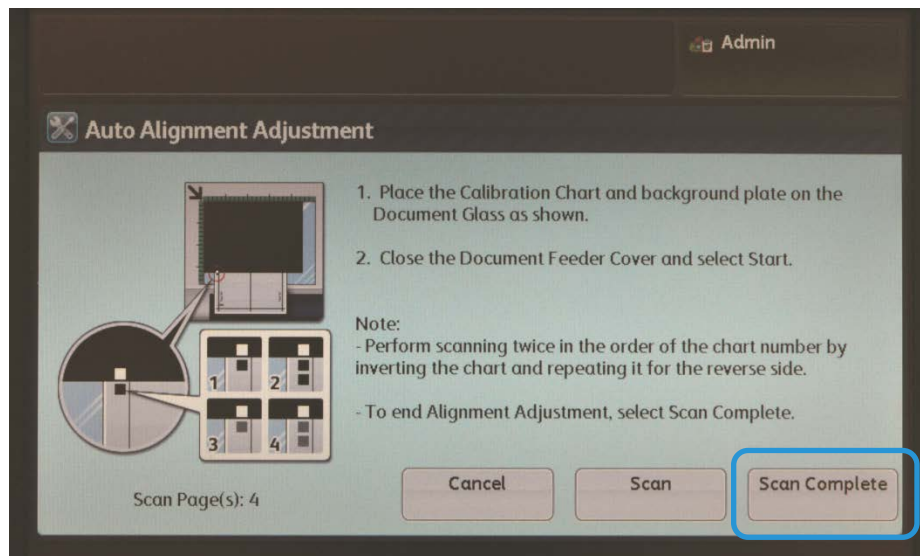


16. Select **Scan**.

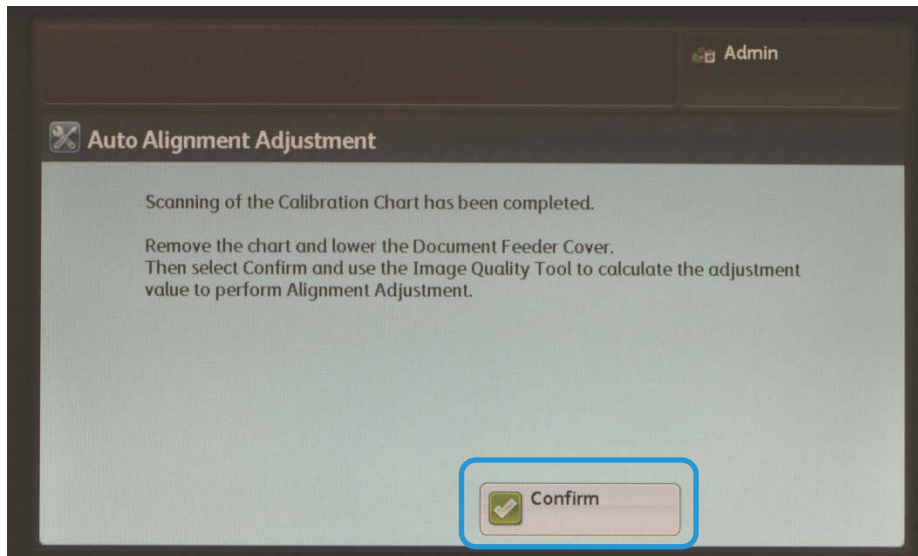


17. If you selected multiple sample sheets in step 13, repeat the scanning process (steps 15 and 16) for each sample sheet. When all sample sheets have been scanned, continue to step 18.

18. After scanning four times per sample sheet, select **Scan Complete**.



19. Follow the instructions on the screen and select **Confirm** to exit.

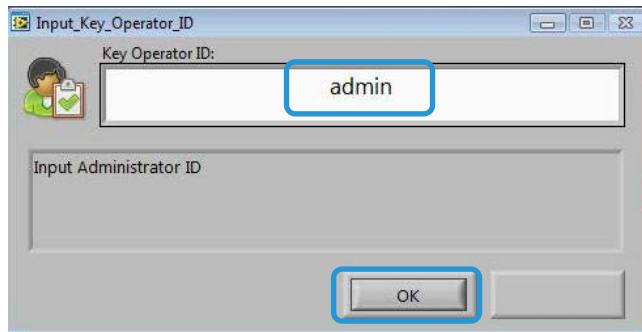


20. Go to the PC where SIQA was installed and double-click the shortcut you created (see p. 2-6) to open the SIQA Tool application.

Note

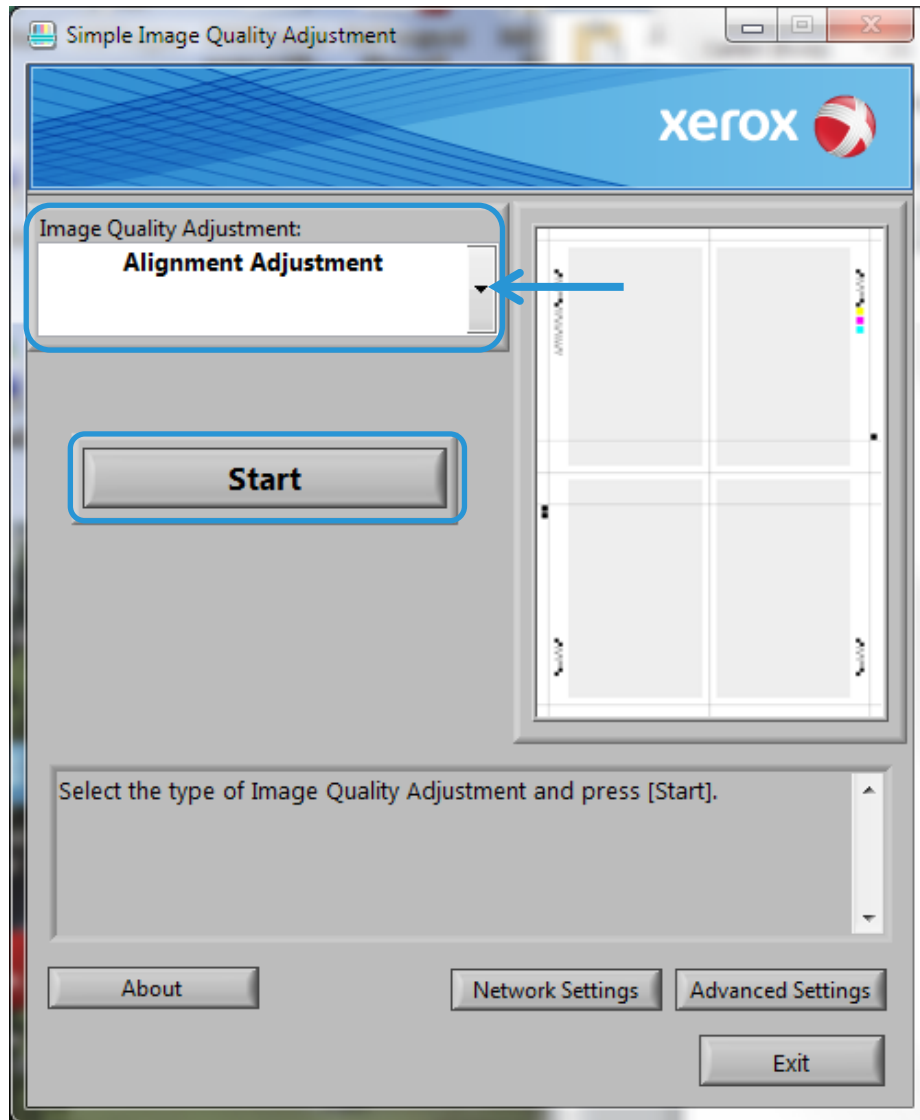
If the SIQA application fails to launch, refer to the Problem Solving chapter in the System Administration Guide.

21. Enter **admin** as the key operator ID and select **OK**.



The Simple Image Quality Adjustment screen displays.

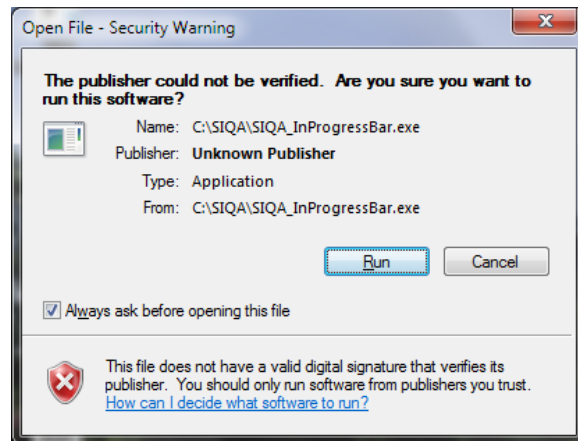
22. Select **Alignment Adjustment** from the Image Quality Adjustment menu, and then select **Start**.



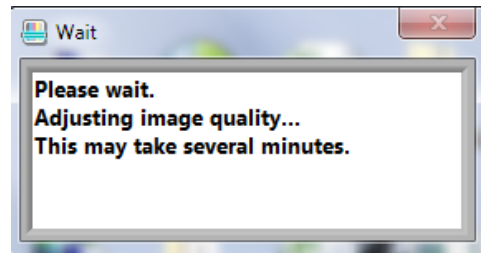
23. At the Input Address window, confirm or enter the machine's IP Address, and then click **OK**.

Note

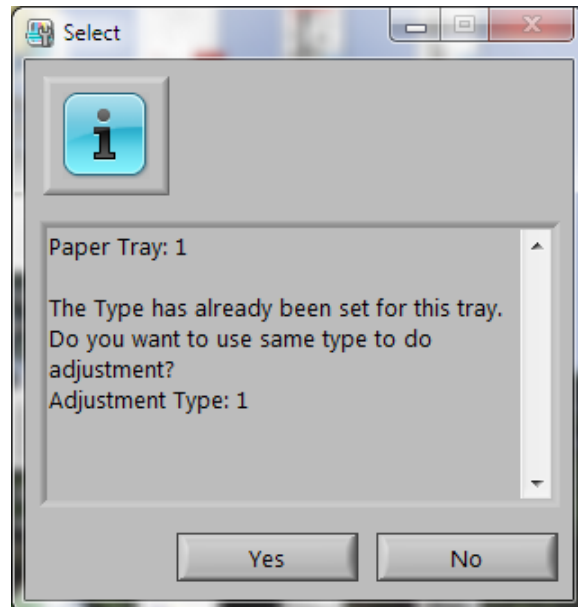
If the Open File - Security Warning window displays, click **Run**.



The Wait window displays during the adjustment.

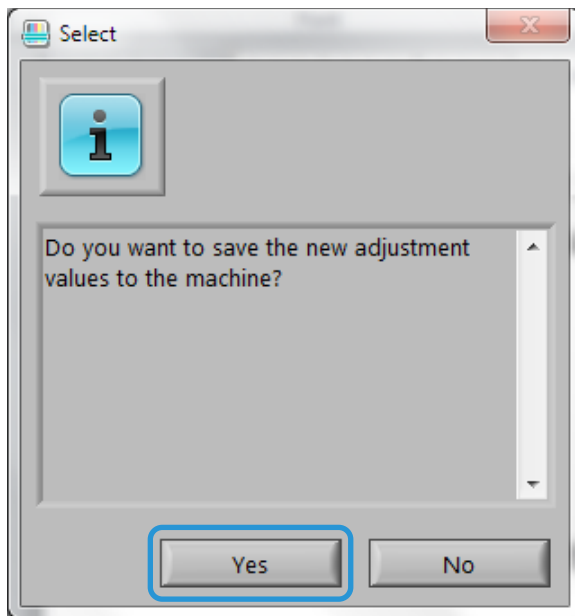


24. If the screen below displays, select **Yes** to proceed using the currently-applied Type or select **No** to choose a different Type.



25. Select **Yes** to save the adjustment values.

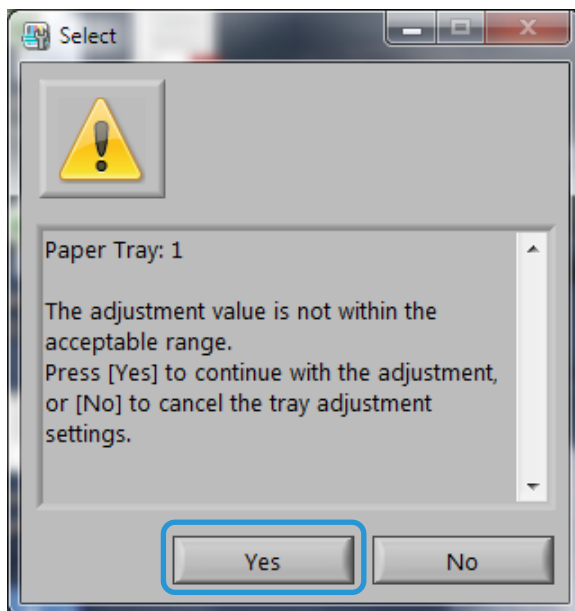
The SIQA application accesses and reads the scanned image data from the printer folder/Mail Box, analyzes the data, and automatically calculates the adjustment values.



A progress indicator screen displays.

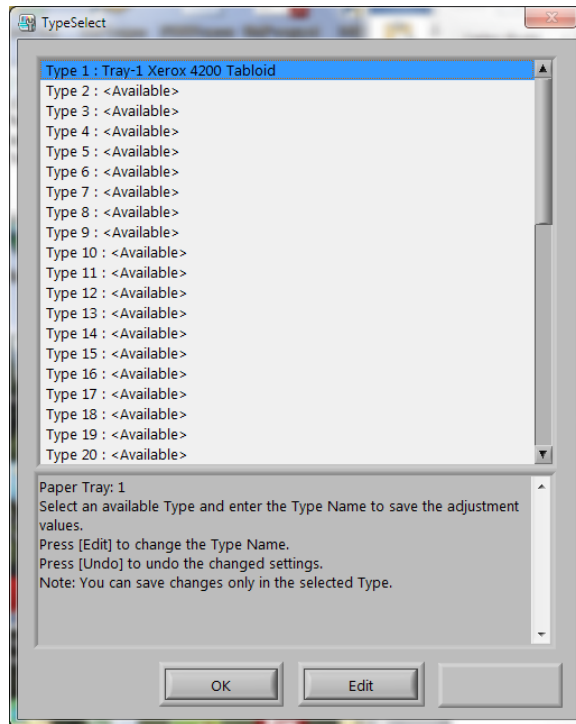
Note

If the warning window below displays, select **Yes** and continue to [Assigning a Type to a Paper Tray](#) on p. 5-18.



At the end of the [Assigning a Type to a Paper Tray](#) section (p. 5-18), print some samples for evaluation. If they are unacceptable, contact Xerox to have the machine serviced.

26. From the TypeSelect window, do the following:
- There are 20 Types available for use across all paper trays. Select the line (Type 1, Type 2, etc.), up to Type 20, where you want to save the calculated adjustment values as a profile (Type).



- Using the **Edit** button, rename the Type.
In the example above, **Type 1** was renamed **Tray-1 Xerox 4200 Tabloid**.

Note

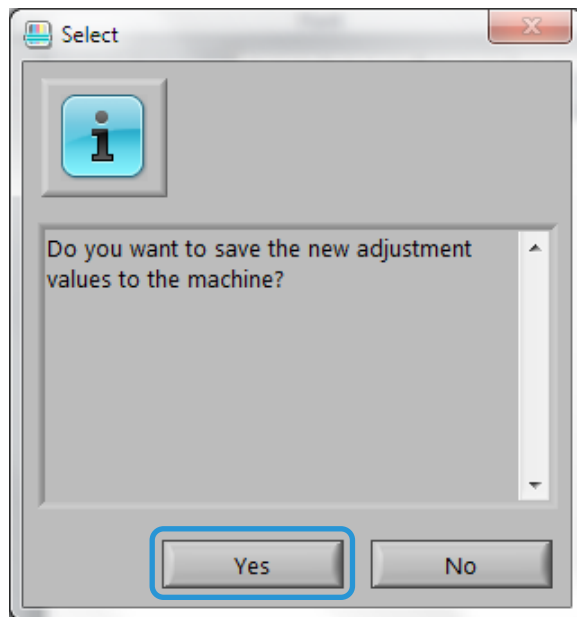
It is preferable to use a meaningful naming convention for your profiles.

Suggested elements for naming Types:

- Input tray number
- Media type
- Media weight
- Media size

- Select **OK** to save the name change.
27. Select **OK** at the TypeSelect window.

28. Select **Yes** to save the new adjustment value to the selected Type.



The message “Adjustment has been successfully completed” displays.

29. Click **OK**.

Assigning a Type to a Paper Tray

Note

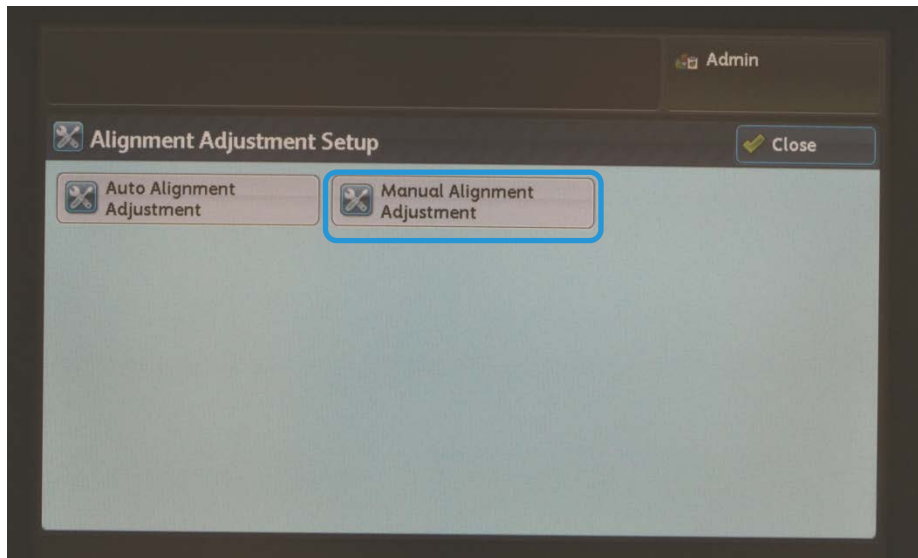
If the warning screen in step 0 displayed, print some samples before continuing. If they are unacceptable, contact Xerox to have the machine serviced.

30. At the printer, access the Alignment Adjustment Setup screen.

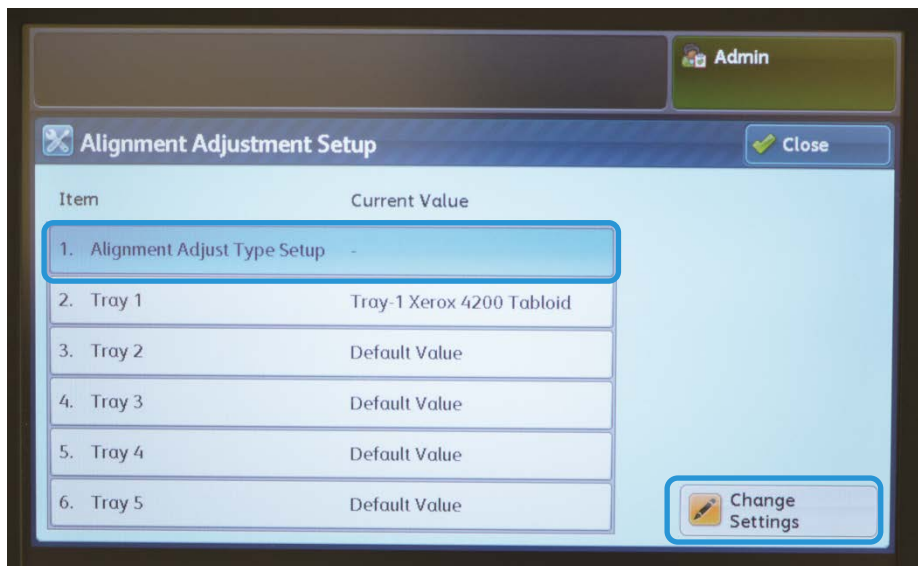
Note

If the machine is out of Tools mode, repeat steps 1 to 9 on p. 5-1.

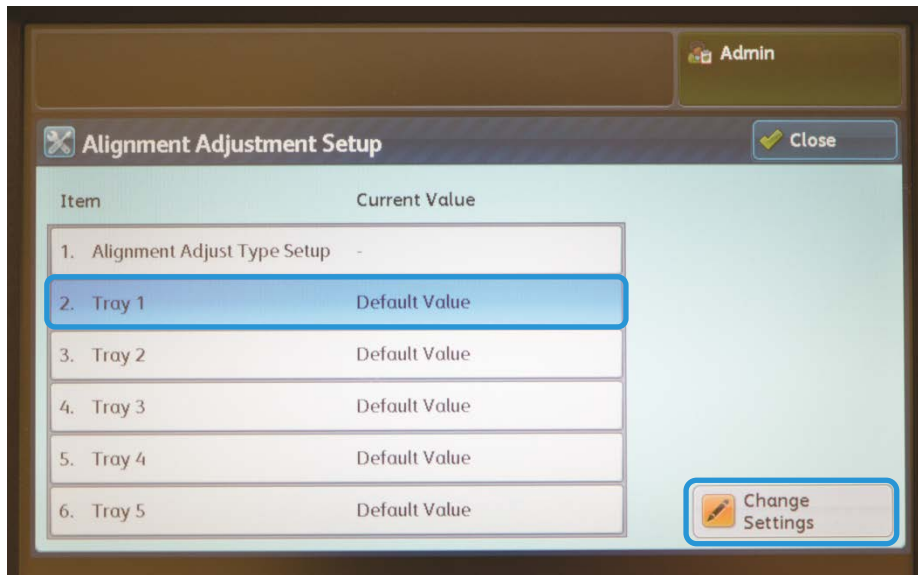
31. Select **Manual Alignment Adjustment**.



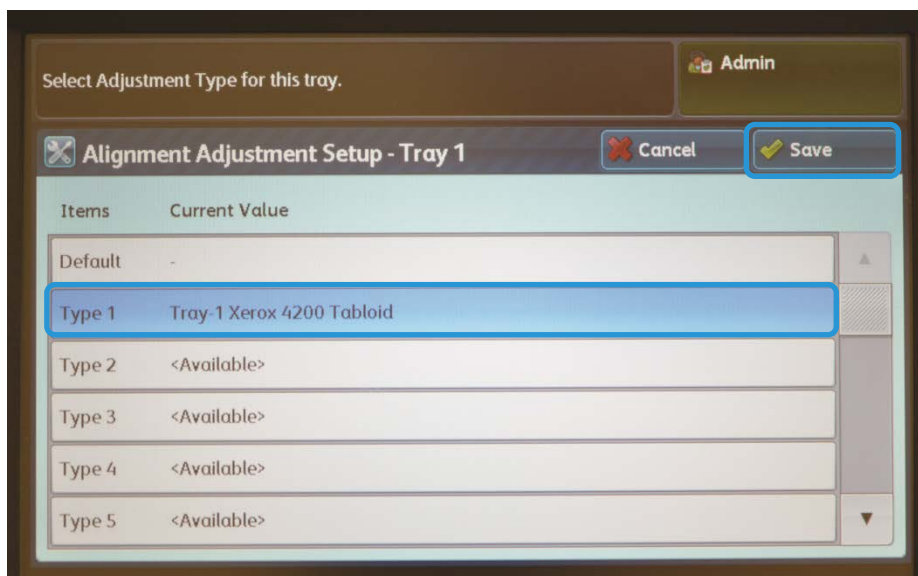
32. Select **Alignment Adjustment Type Setup**, and then select **Change Settings**.



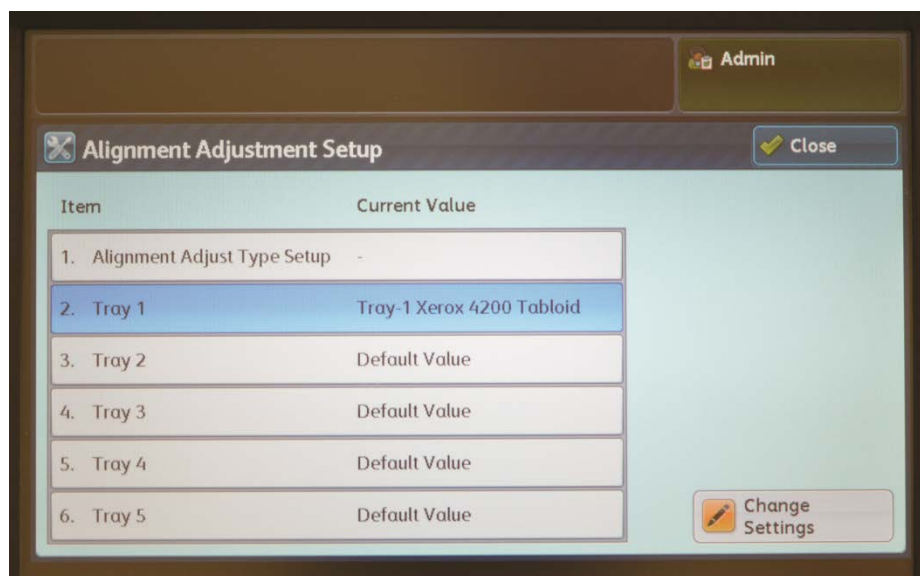
33. Select a paper tray, and then select **Change Settings**.



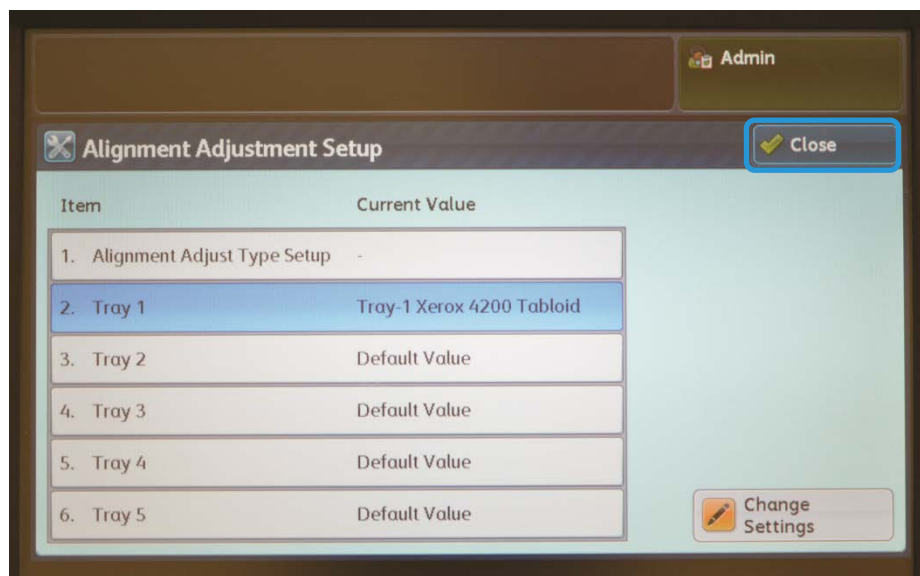
34. Select a Type from the list, and then select **Save**.



The Type is now assigned to the paper tray selected in step 33.



35. Select **Close** three times to exit, and then log out of Admin mode.



Note

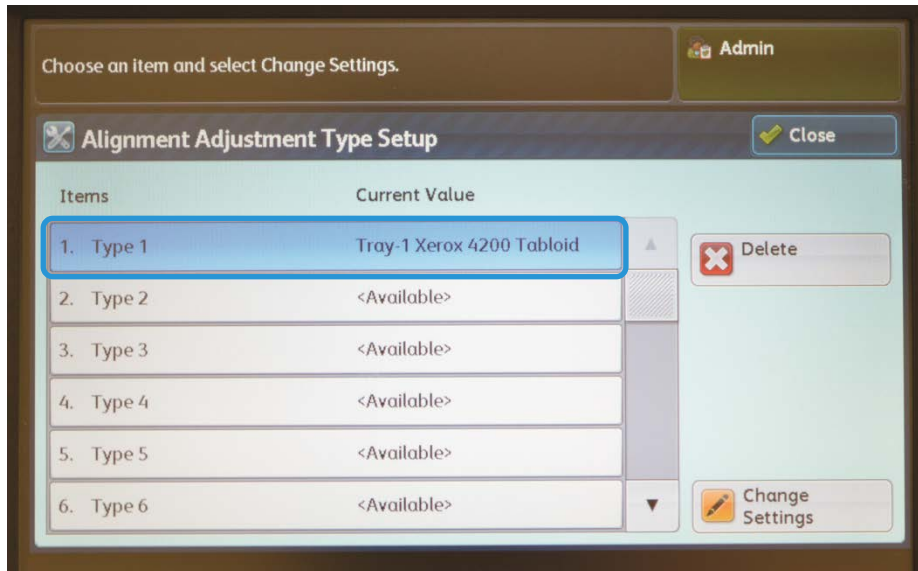
To add more Types, repeat steps 9 through 35.

Modifying a Type

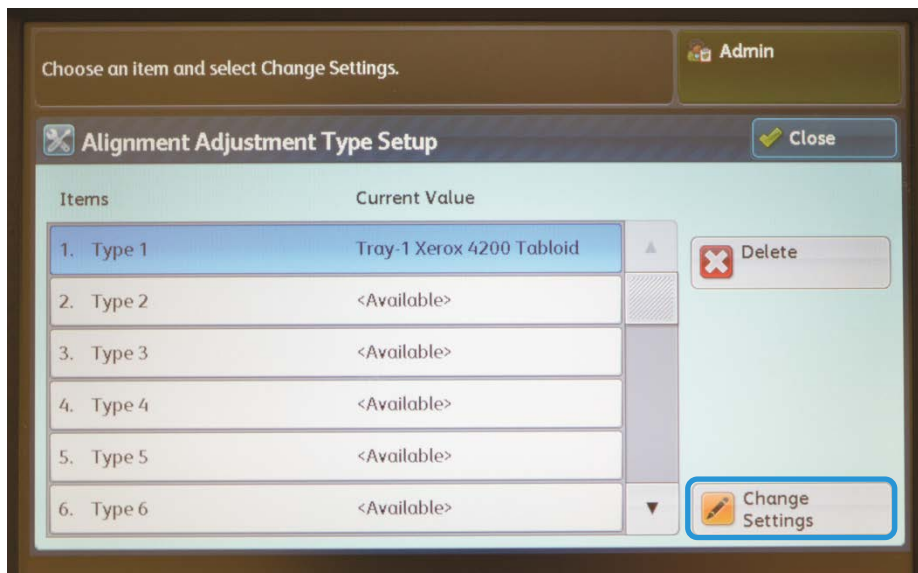
1. From the Alignment Adjustment Type Setup screen, select the Type you wish to modify.

Note

If the machine is out of Tools mode, repeat steps 1 to 9 on p. 5-1.

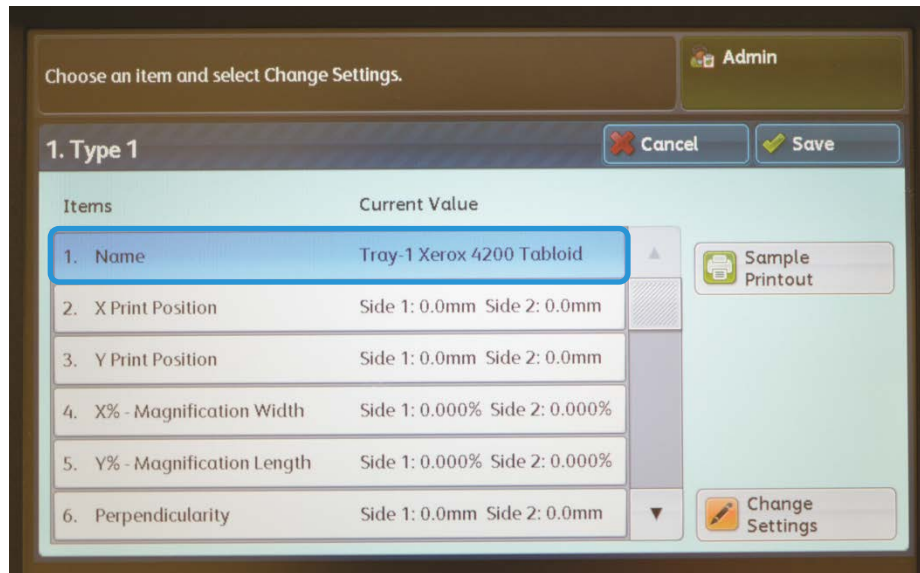


2. Select **Change Settings**.



To change the Type name

3. Select **Name**.



4. Select **Change Settings**.
5. Edit the name as you wish, and then select **Save**.
6. Select **Sample Printout** to print a sample to verify the adjustment.

To make changes to other elements

To make other changes to the adjustment, refer to the Alignment Adjustment Procedure in the System Administrator Guide.

The following items may be modified:

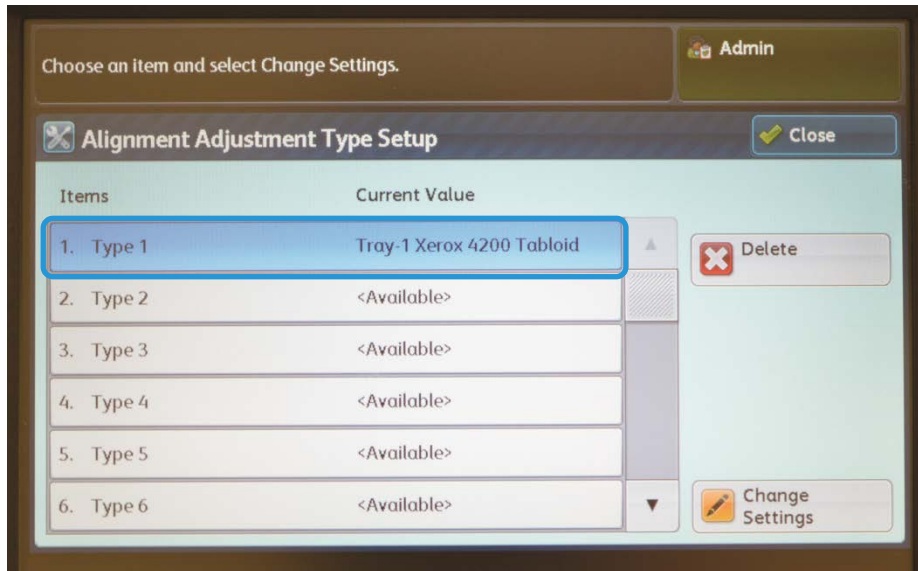
- Item 2: **X Print Position**: Adjusts X-Axis Position Alignment.
 - Item 3: **Y Print Position**: Adjusts Y-Axis Position Alignment
 - Item 4: **X%- Magnification Width**: Adjusts X-Axis True 100 % R/E.
 - Item 5: **Y%- Magnification Length**: Adjusts X-Axis True 100 % R/E.
 - Item 6: **Perpendicularity**: Adjusts trapezoid effect on the image.
 - Item 7: **Skew**: Adjusts image position with respect to the paper.
7. Select **Sample Printout** to print a sample to verify the adjustment. If the print requires more adjustment, then repeat the steps in [Performing Auto Alignment Adjustment](#) on p. 5-1.
 8. Exit Tools mode.

Deleting a Type

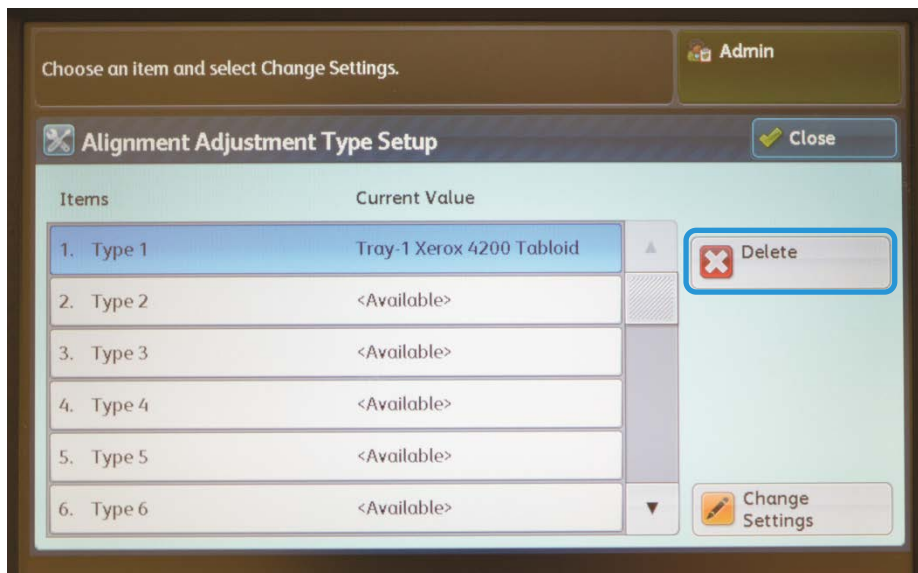
1. From the Alignment Adjustment Type Setup screen, select the Type you wish to delete.

Note

If the machine is out of Tools mode, repeat steps 1 to 9 on p. 5-1.



2. Select **Delete**.



Note

Only one Type may be deleted at a time.

3. Exit Tools mode.

Density Uniformity Adjustment

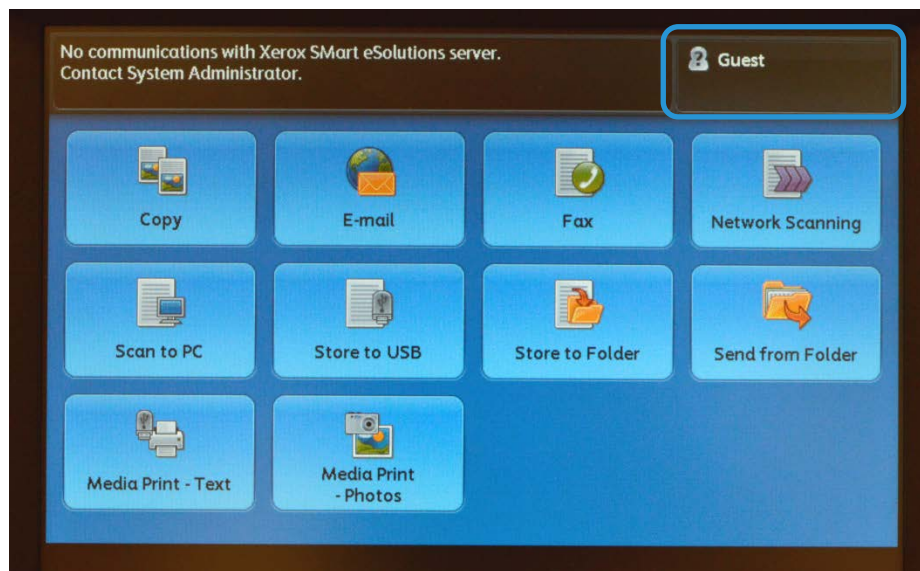
Use the Density Uniformity Adjustment feature to correct image quality on the printed output when that image quality is not consistent throughout the entire print, for example, the image is lighter or heavier on one side of the print than the other.

Using the Simple Image Quality Adjustment (SIQA) Tool, you can make adjustments easily and quickly to correct these image quality issues.

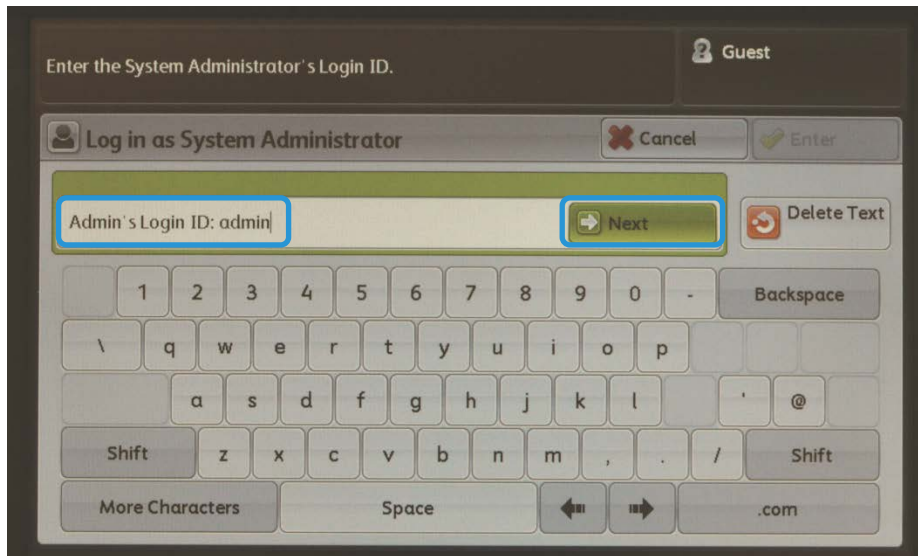
The procedure requires the installation of the SIQA application on a Windows® PC.

Notes

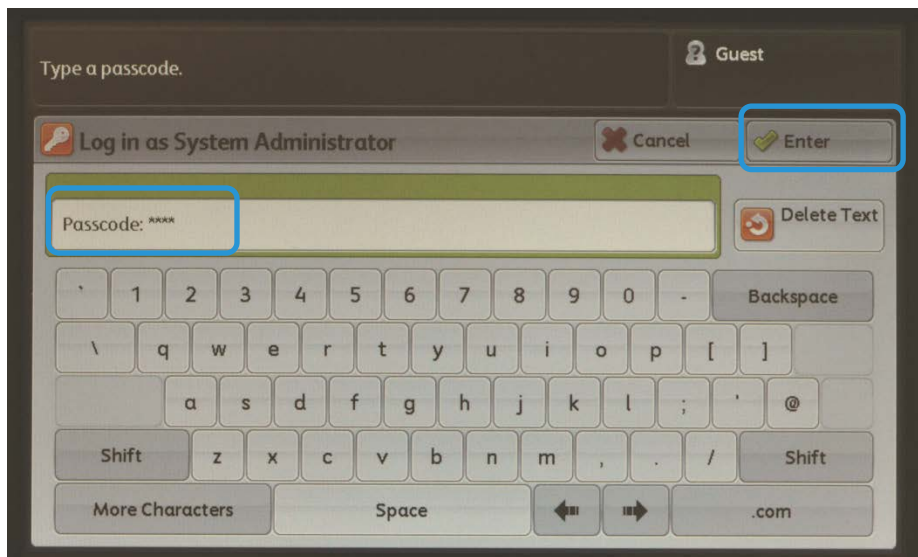
- If your print server is a Windows-based PC, the SIQA application may be installed on it; otherwise a third-party PC is required. Contact the Customer Support Center for more information.
 - Record the IP address. It will be used later in the procedure.
1. At the machine, select **Guest**.



2. At the System Admin Login screen, type **admin** as the Admin's Login ID and select **Next**.



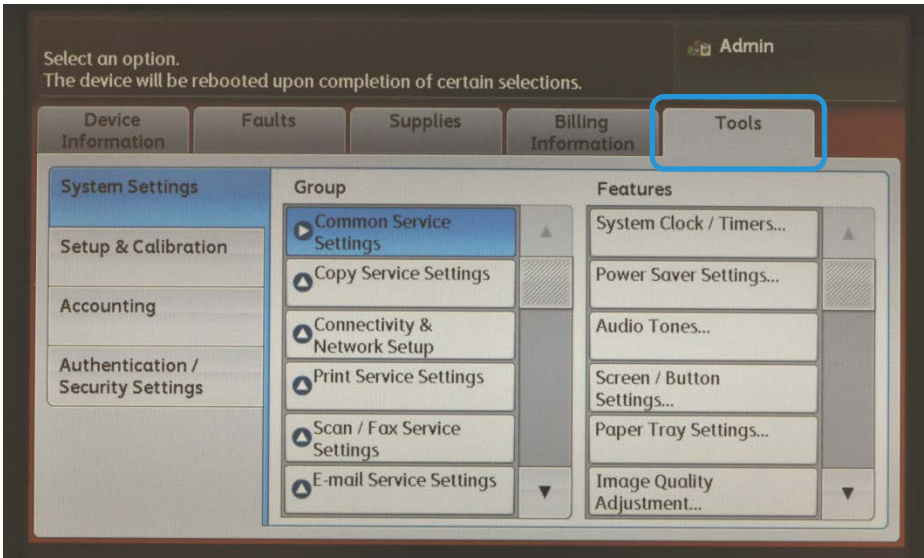
3. Enter **1111** as the password and select **Enter**.



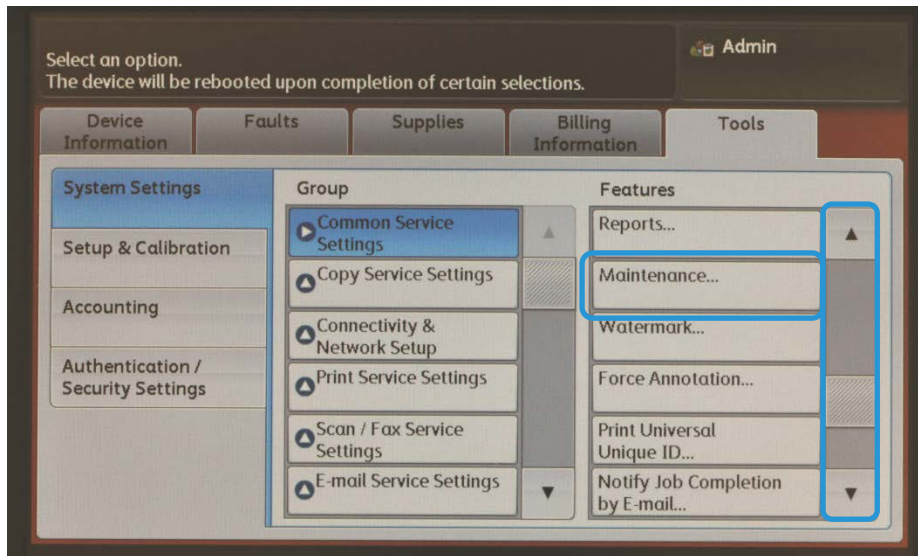
4. Press the **Machine Status** button on the printer's UI.



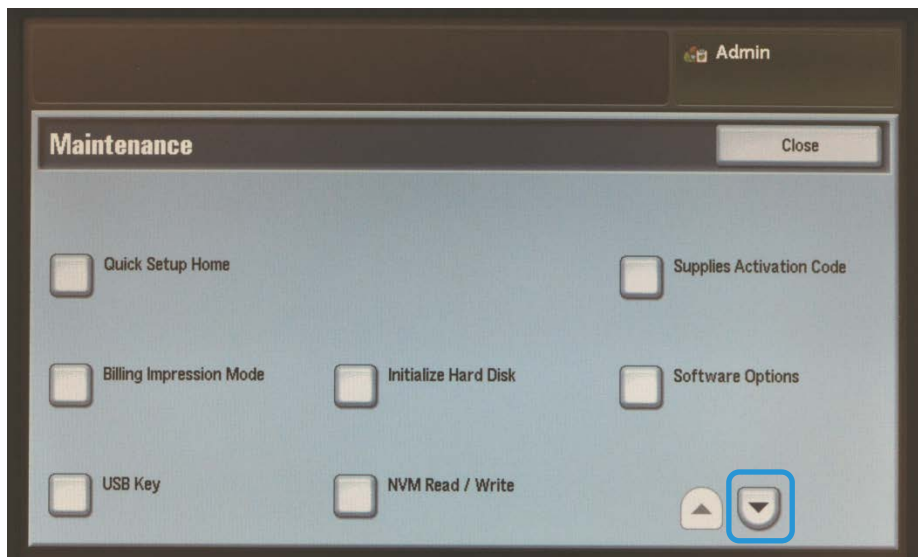
5. On the Admin screen, select the **Tools** tab.



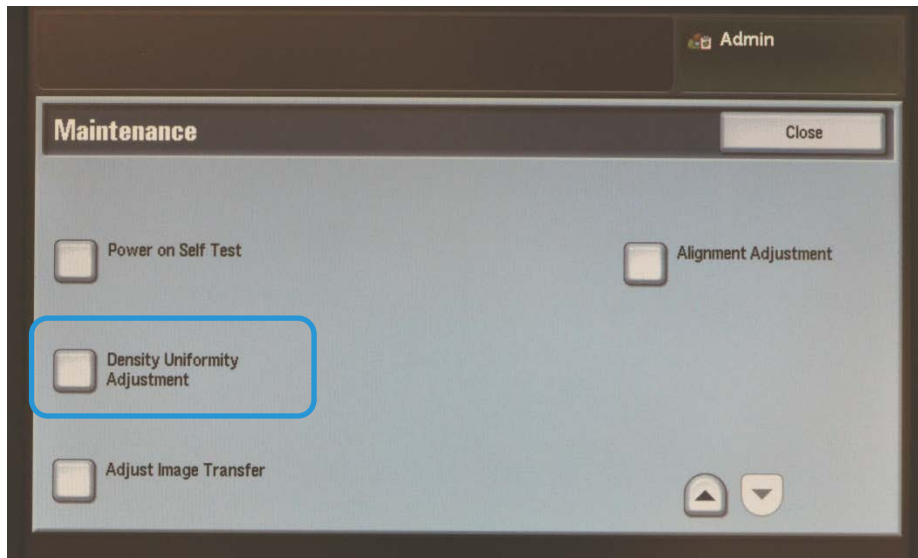
6. Scroll down the **Features** group and select **Maintenance**.



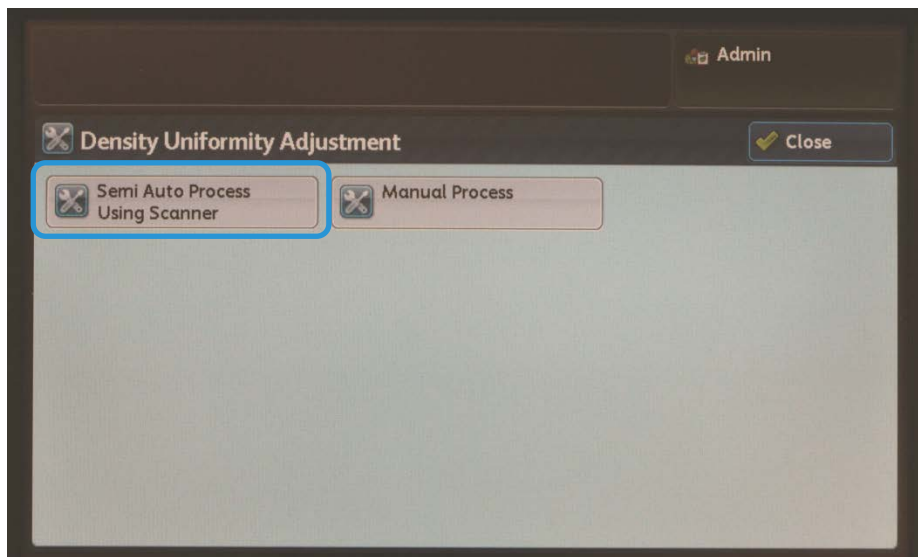
7. On the Maintenance screen, touch the Scroll Down button to display Page 2.



8. Select **Density Uniformity Adjustment**.



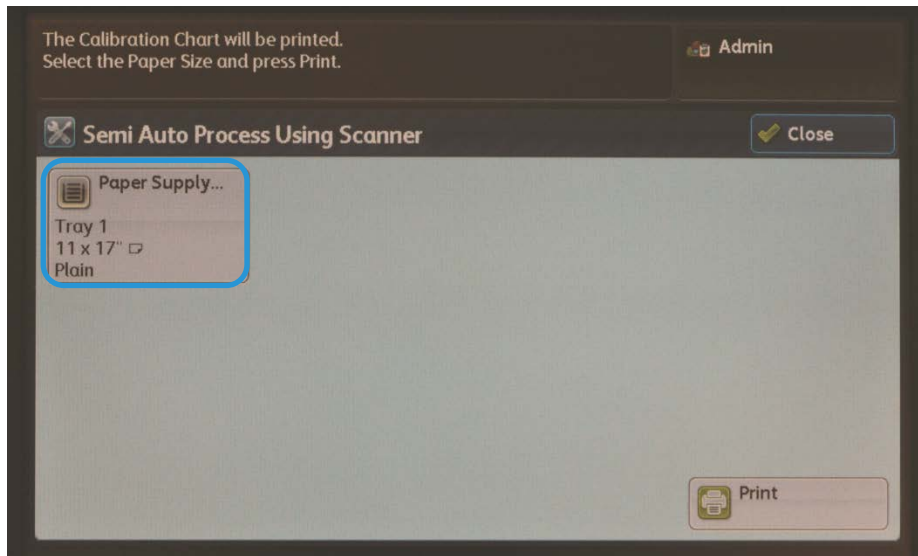
1. At the Density Uniformity Adjustment screen, select **Semi Auto Process Using Scanner**.



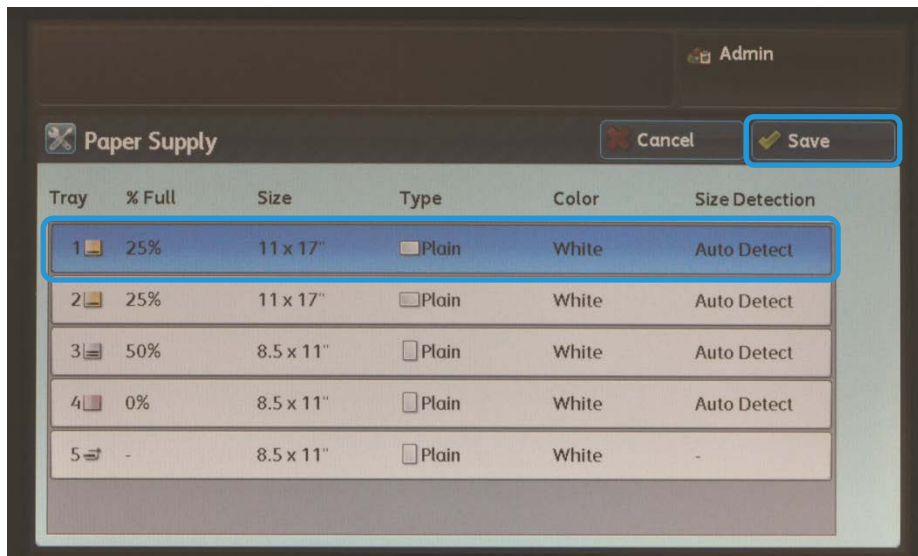
Note

If "Invalid operation" displays, it means that the SYSTEM-IQ-AUTO folder was not created during SIQA installation. Repeat steps 4 through 6 on p. 2-10.

2. Select **Paper Supply**.



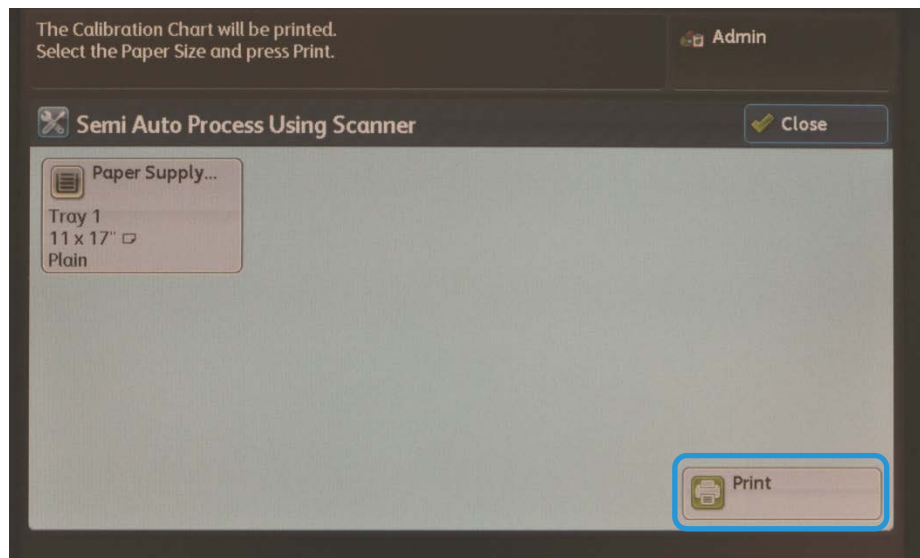
3. Select a frequently-used tray loaded with A3 or Tabloid (11" x 17") size paper, and select **Save**.



Notes

- This adjustment must be performed using only A3 or Tabloid (11" x 17") paper.
- Only one profile may be created, which will be used for all paper trays, so it is recommended to use the most frequently-used paper tray for this adjustment.

4. Select **Print** to produce the test pattern prints.



The two test patterns print.

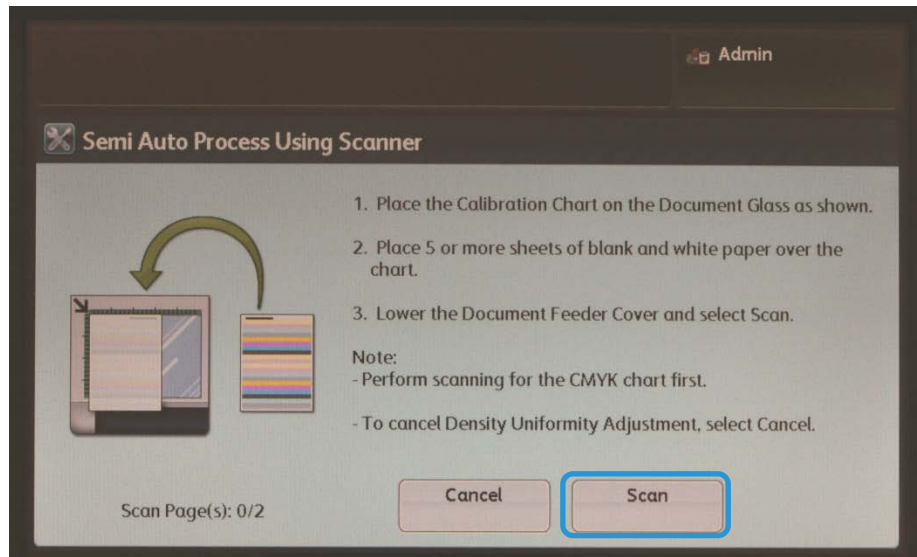
Sheet 1: CMYK output



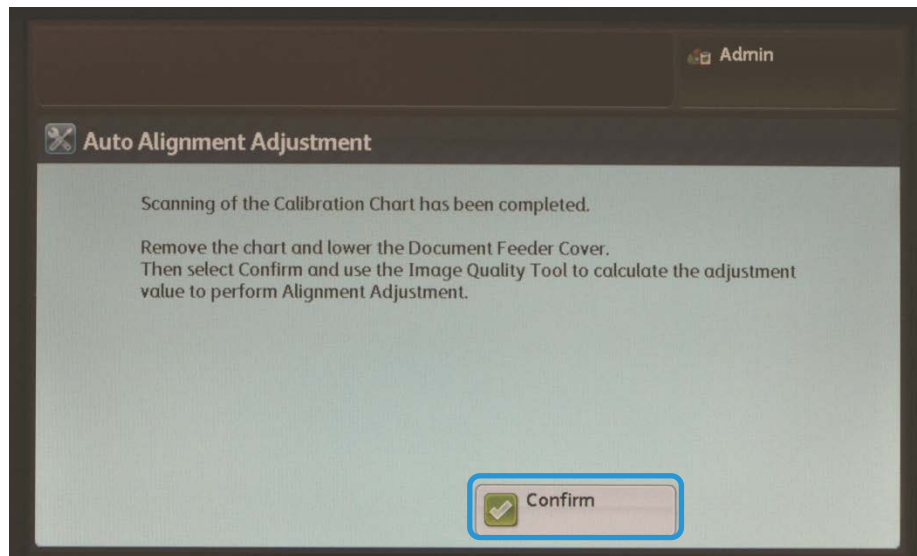
Sheet 2: RGB&3CK output



5. Place the CMYK sheet onto the platen glass according to the on-screen instructions and select **Scan**.



6. Place the RGB&3CK sheet onto the platen glass according to the instruction on the UI and select **Scan**.
7. Follow the on-screen instructions and select **Confirm**.

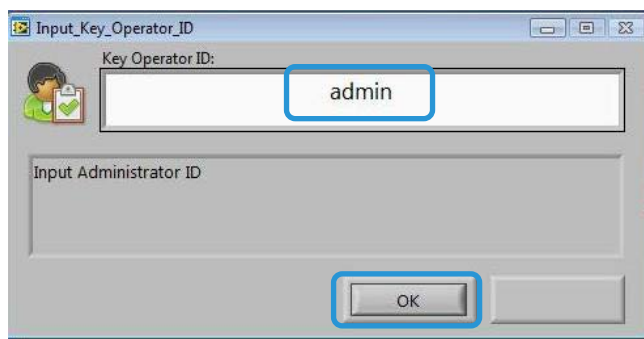


8. Go to the PC where SIQA was installed and double-click the shortcut you created (see p. 2-6) to open the SIQA Tool application.

Note

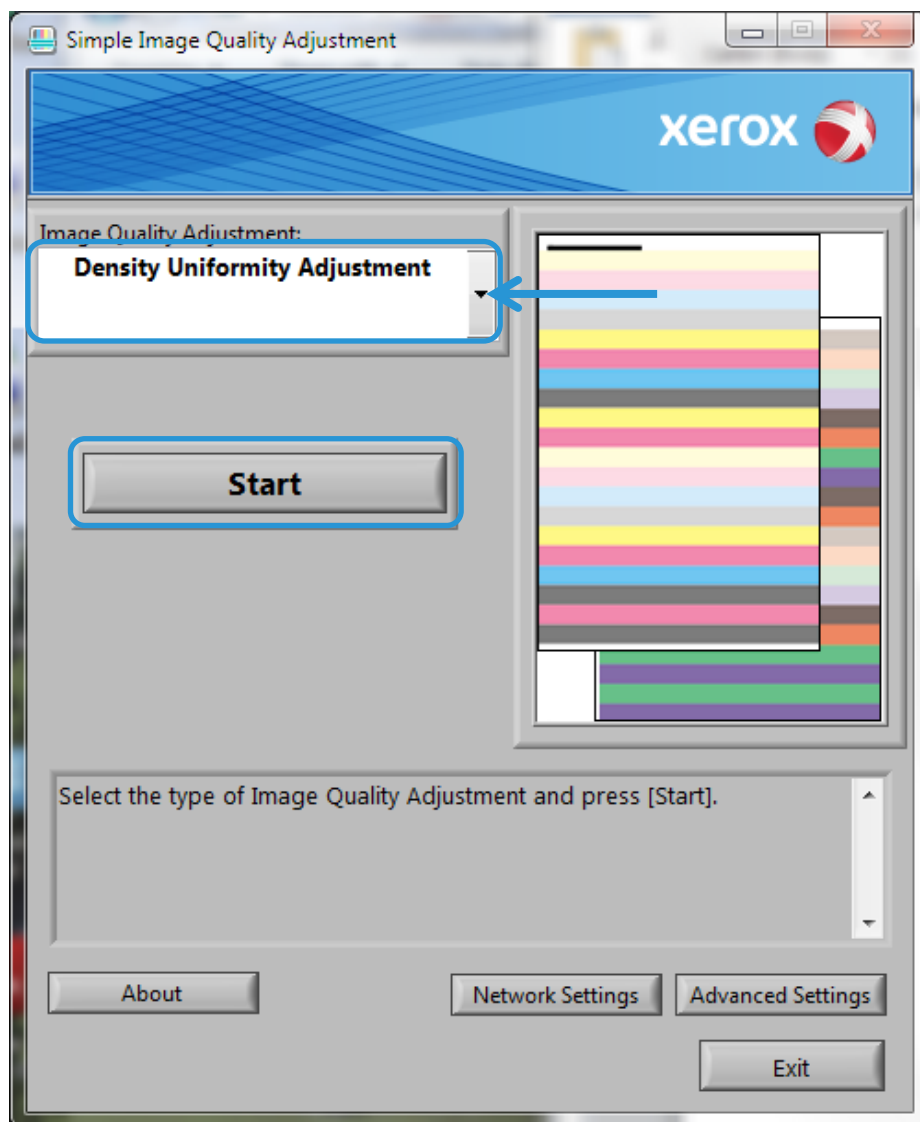
If the SIQA application fails to launch, refer to the Problem Solving chapter in the System Administration Guide.

9. Enter **admin** as the key operator ID and select **OK**.



The Simple Image Quality Adjustment screen displays.

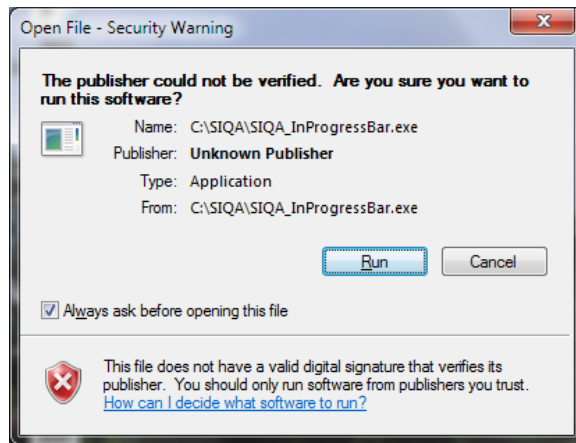
10. Select **Density Uniformity Adjustment** from the Image Quality Adjustment menu, and then select **Start**.



11. At the Input Address window, confirm or enter the machine's IP Address, and then click **OK**.

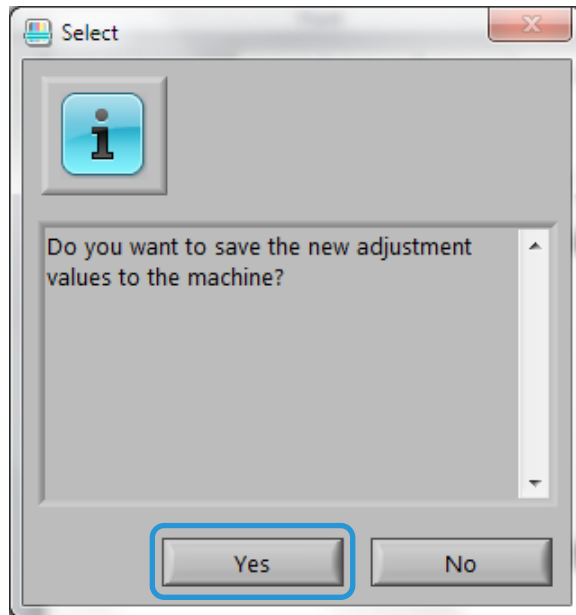
Note

If the Open File - Security Warning window displays, click **Run**.



12. Select **Yes** to save the adjustment values.

The SIQA application accesses and reads the scanned image data from the printer folder/Mail Box, analyzes the data, and automatically calculates the adjustment values.

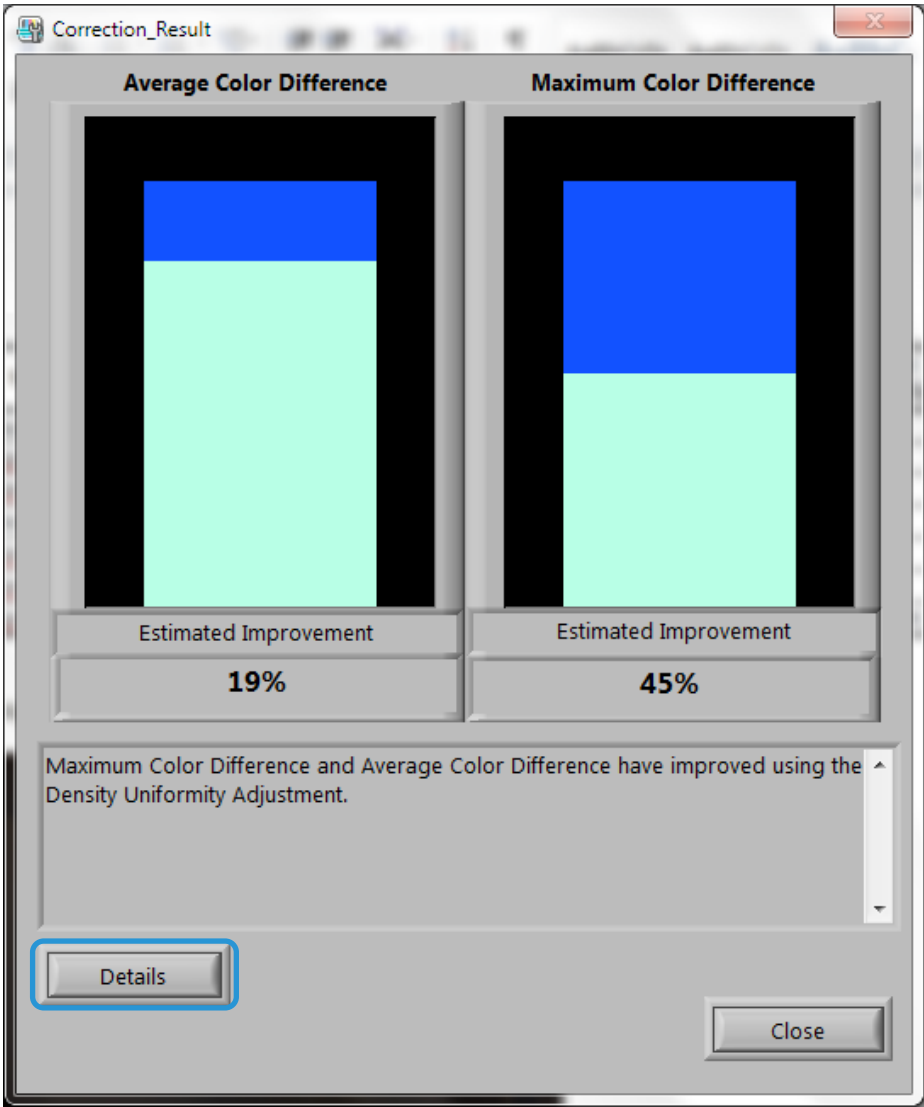


A progress indicator screen displays.

13. Review the information displayed on the Correction_Result screen.

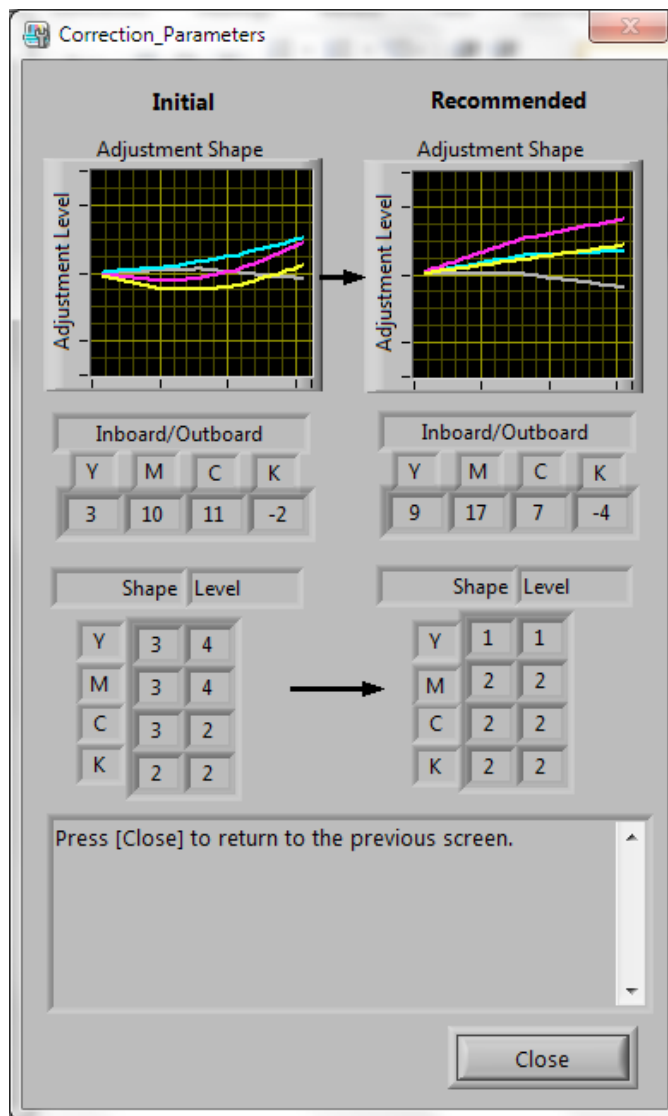
This screen displays after the analysis and calculation processes have completed. The Correction Result information displays the possible improvement to correct inboard-to-outboard density variation.

14. Select **Details**.



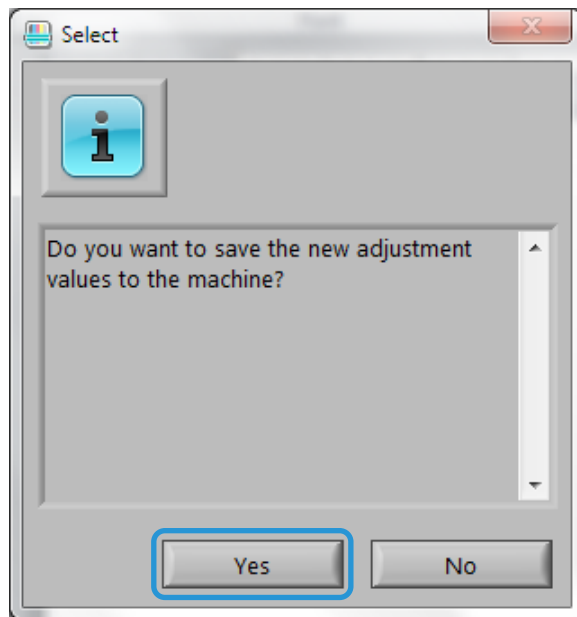
Density Uniformity Adjustment

The Correction_Parameters screen displays the specifics of the adjustment.



15. Select **Close** twice to exit the Correction_Parameters and Correction_Result screens.

16. Select **Yes** to save the adjustment values.

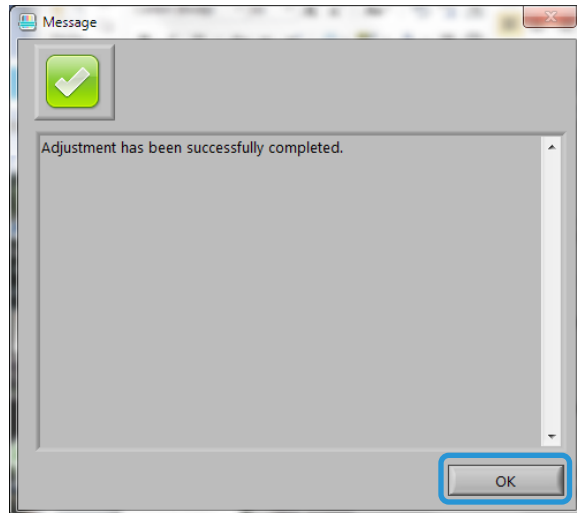


A progress screen displays.

Important

Do not power off the machine while the adjustment values are being saved.

17. Upon completion, select **OK** to exit the SIQA application.



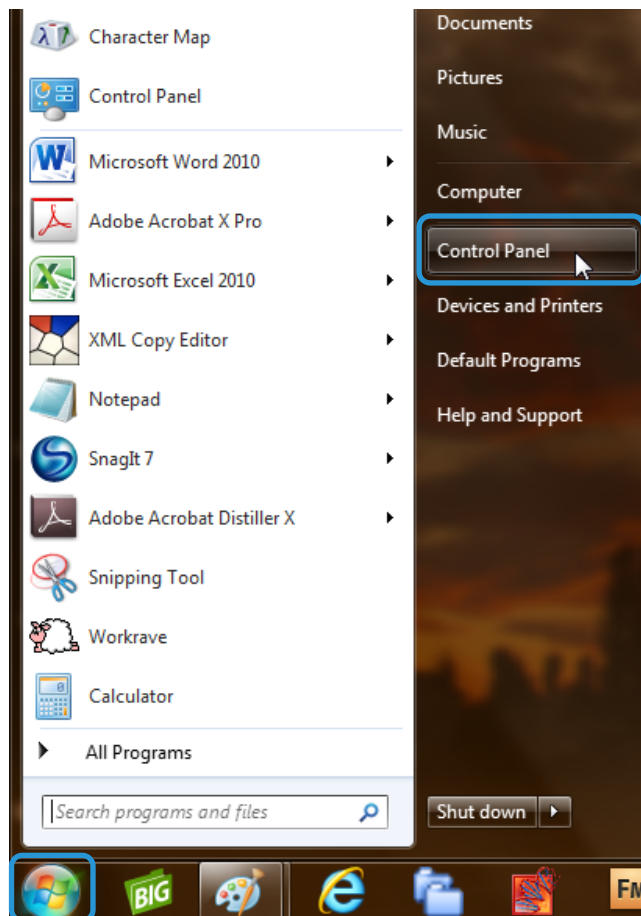
Note

If the density uniformity is unacceptable, you may repeat the test procedure (steps 1 to 17) up to three times to further improve the density uniformity.

Uninstalling the SIQA Tool

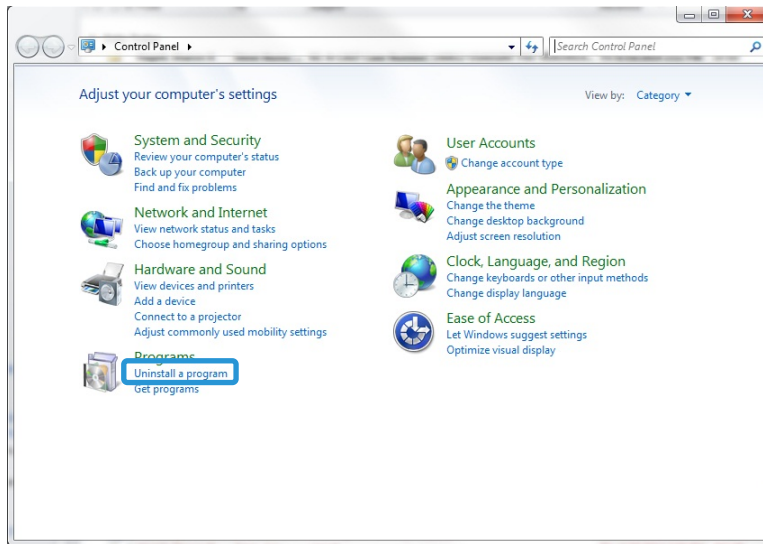
Uninstalling the SIQA Tool Using Windows® Vista/7

1. From the Windows **Start** menu, select **Control Panel**.

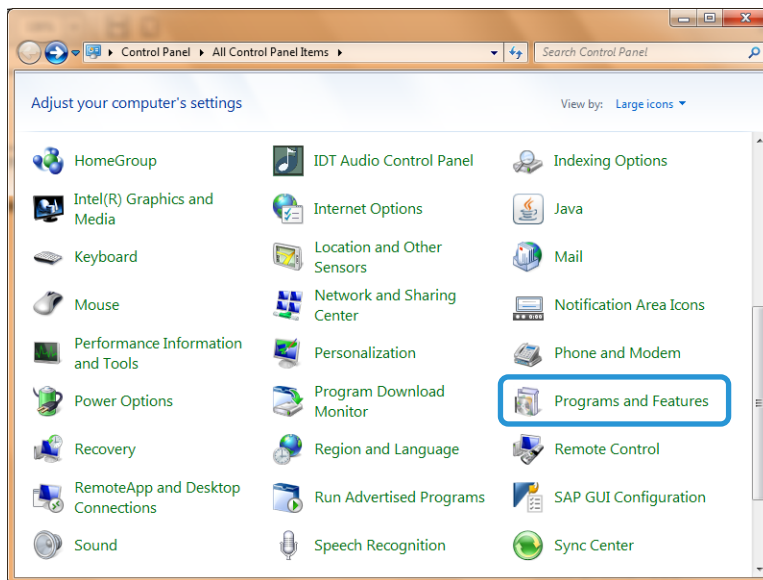


2. Depending on the way you have Windows folder options configured, do one of the following:

- In the **Programs** section, select **Uninstall a program**.

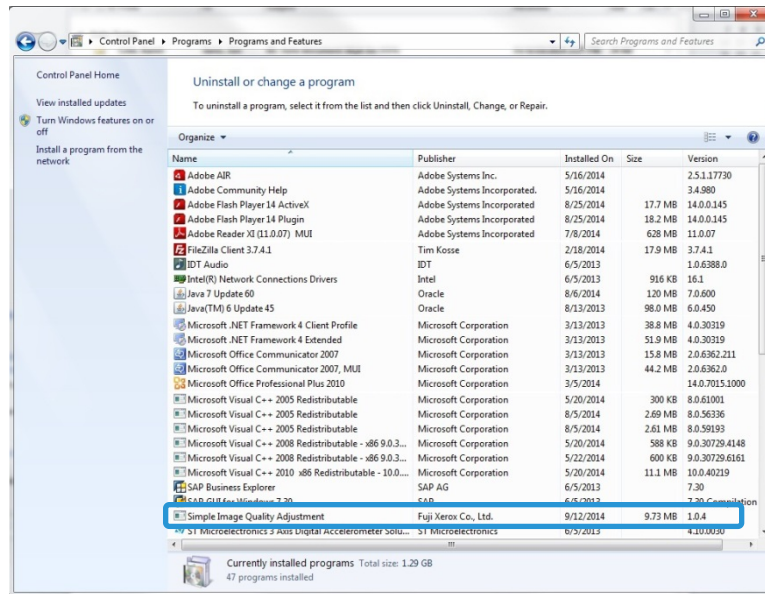


- Select **Programs and Features**.

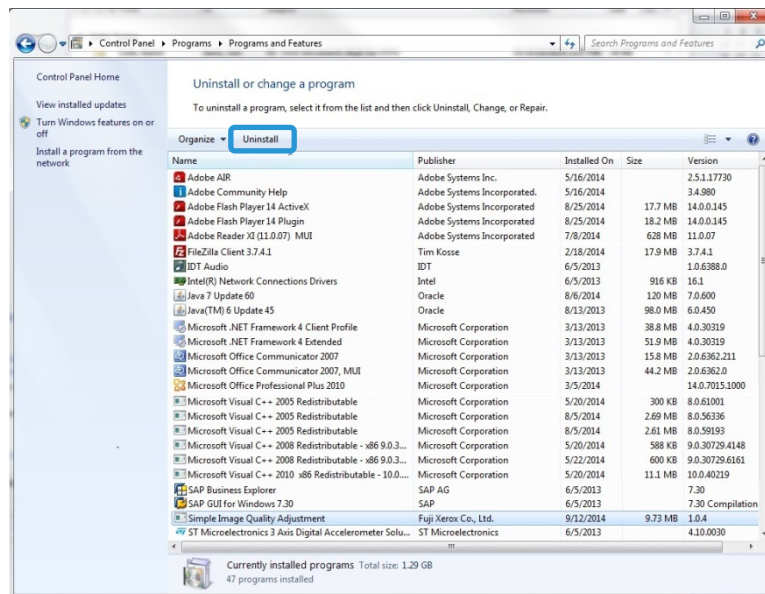


Uninstalling the SIQA Tool

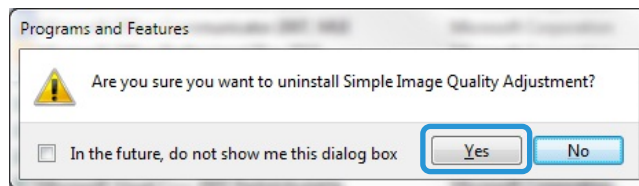
3. Locate and select **Simple Image Quality Adjustment**.



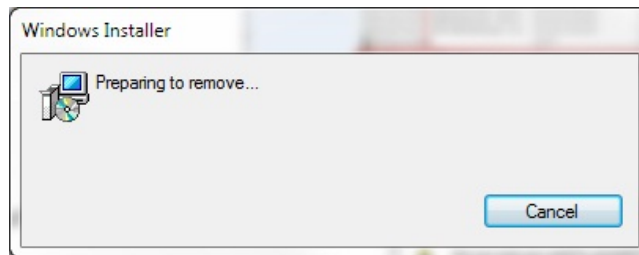
4. Click **Uninstall**.



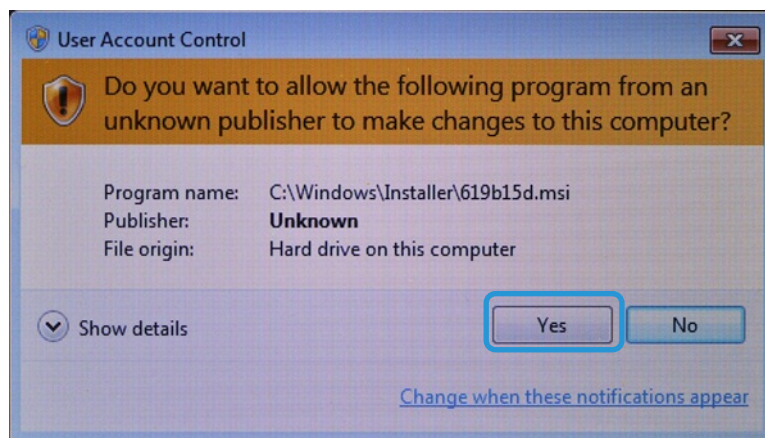
5. At the Programs and Features screen, click **Yes**.



The Windows Installer screen displays.



6. At the User Account Control screen, click **Yes** to complete uninstallation.

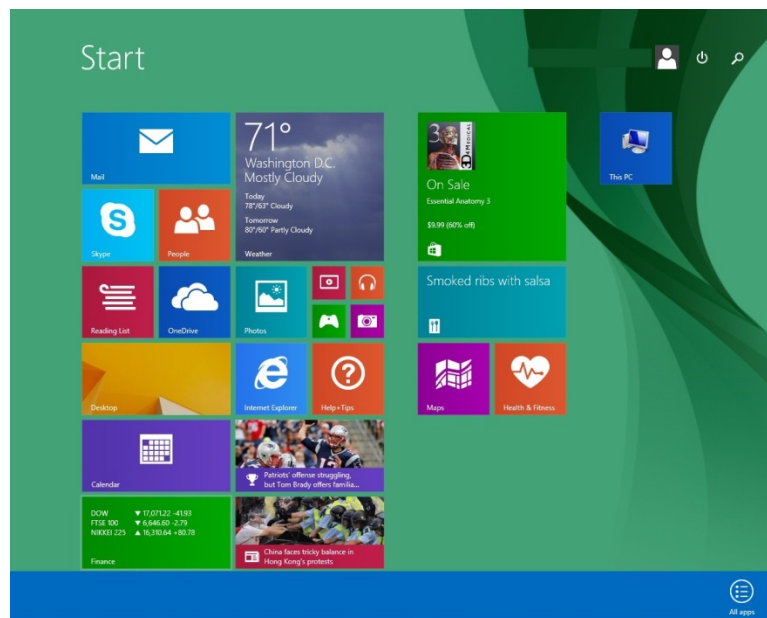


Uninstalling the SIQA Tool Using Windows® 8.1

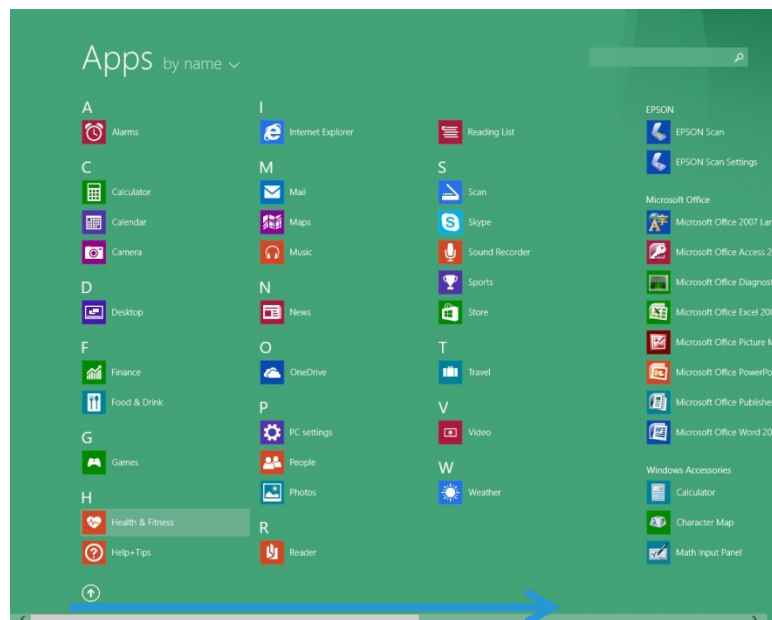
1. Open the Control Panel.
 - a. Right-click anywhere on the Start screen background.



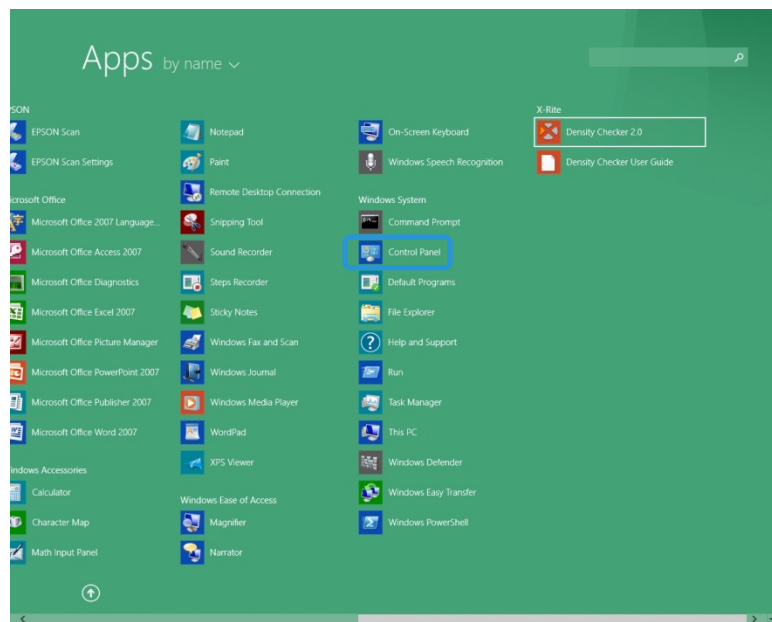
- b. Select the **All Apps** icon that displays at the bottom right corner of the screen.



The Apps screen displays.

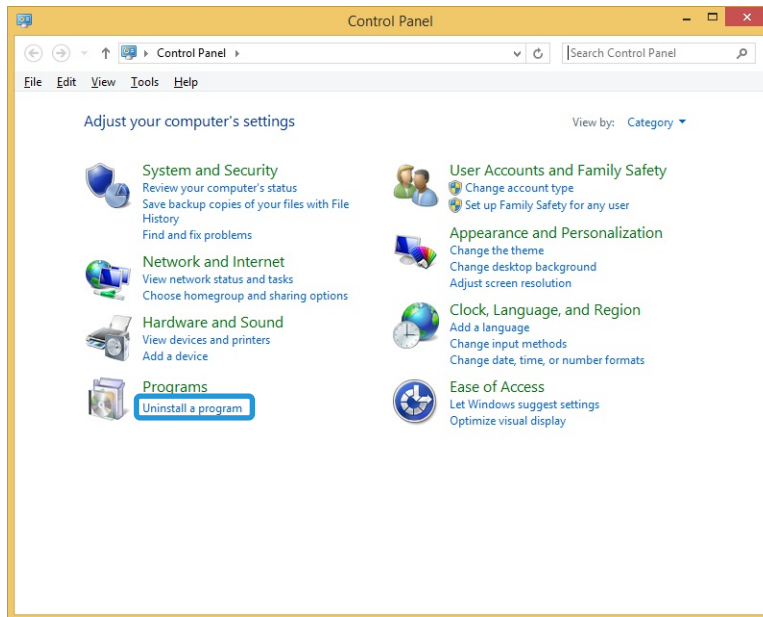


- c. Scroll to the right on the Apps screen to locate the Windows System section.
- d. Select **Control Panel**.

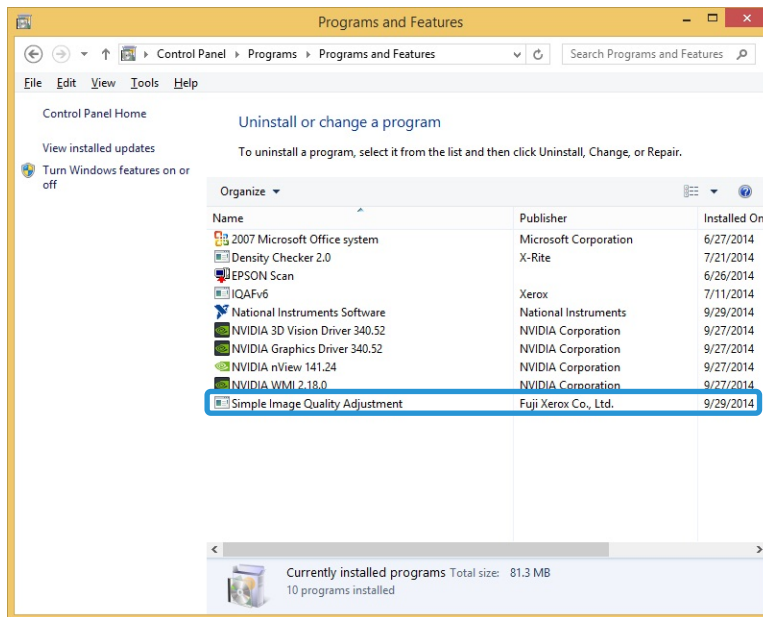


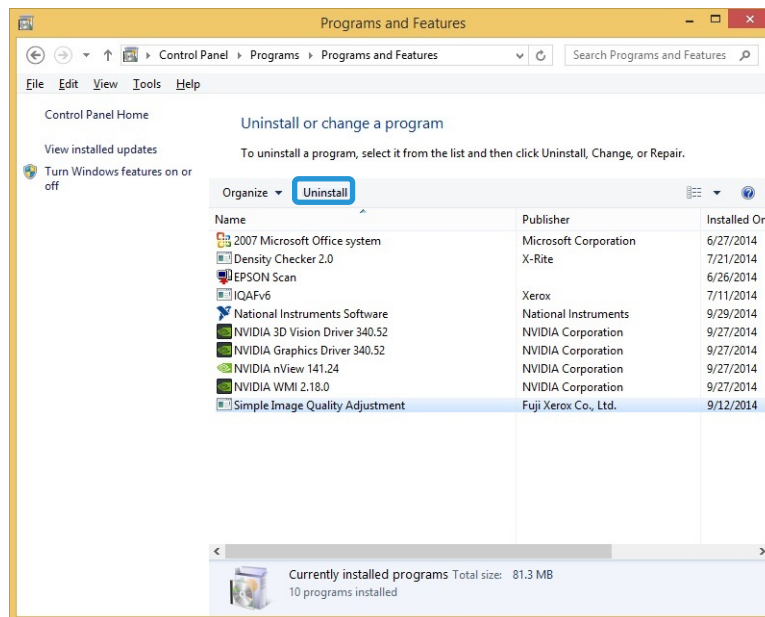
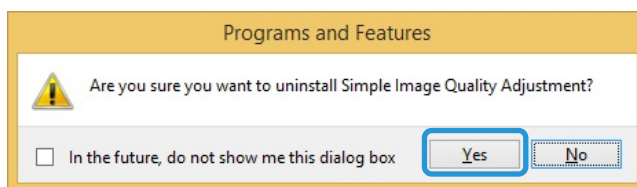
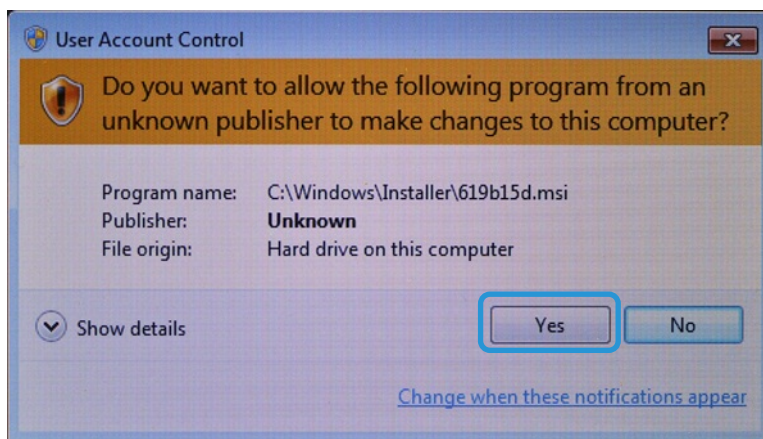
Uninstalling the SIQA Tool

2. Select **Programs and Features** or select **Uninstall a program** from the Programs section.



3. Locate and select **Simple Image Quality Adjustment**.



4. Click **Uninstall**.5. At the Programs and Features screen, click **Yes**.6. At the User Account Control screen, click **Yes** to complete uninstallation.

Troubleshooting

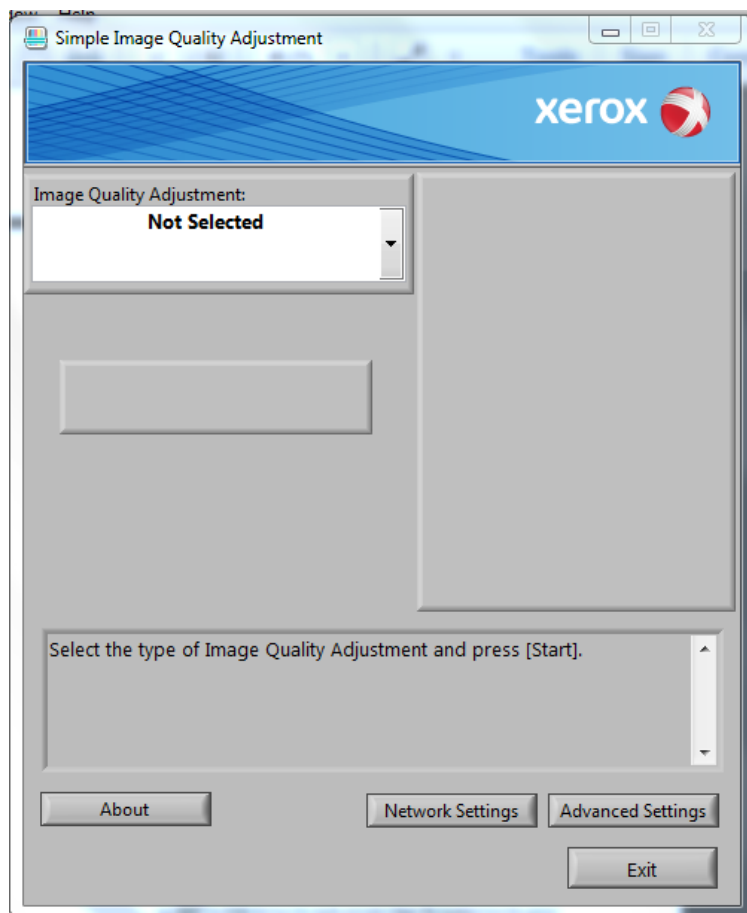
If the Connection Between SIQA and the Machine is Lost

Any time the connection between the SIQA Tool and the printer is lost, press the **C** button on the UI twice, then **Confirm** to restore the connection.

If the connection is not restored, do one of the following:

- Open a command prompt in Windows and type **Ping xxx.xxx.xxx.xxx** (machine IP address).
- Go to the **Start** menu and type **Ping xxx.xxx.xxx.xxx** (machine IP address) into the search box, then press the **Enter** key.

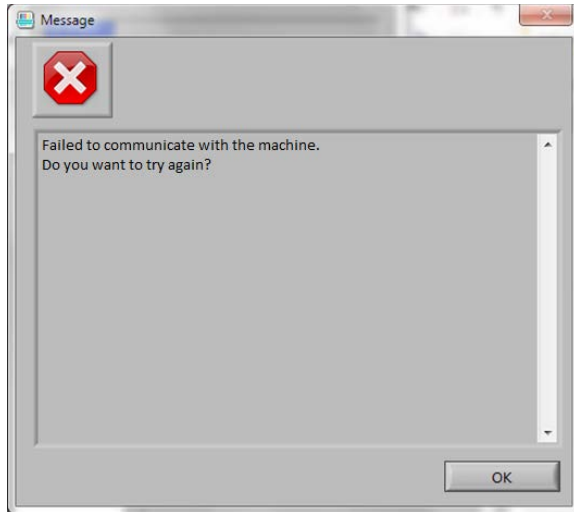
A response indicates communication has been established between the PC and the machine and the following screen displays:



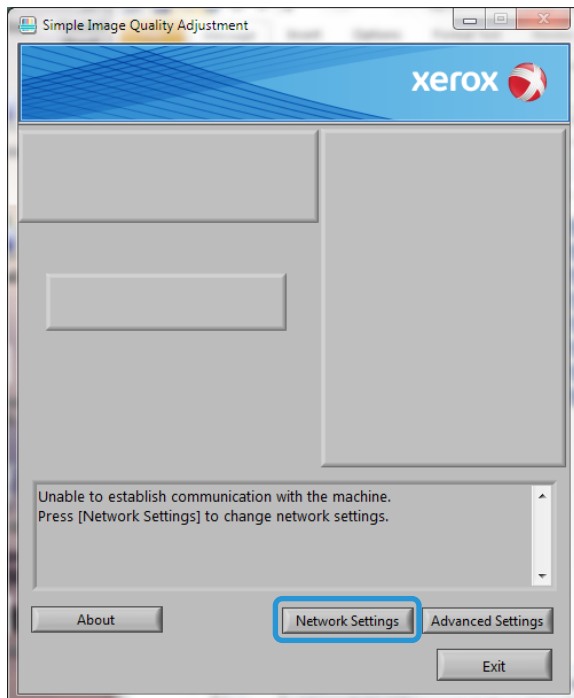
If the Connection Between SIQA and the Machine is Unsuccessful

If the connection between the printer and the PC is unsuccessful, follow the steps below.

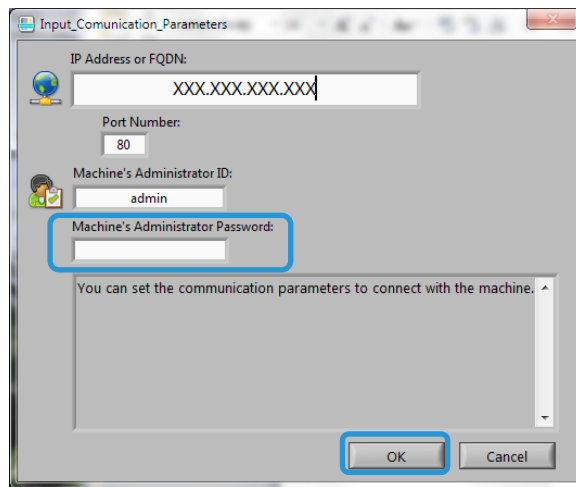
1. At the Message screen, click **OK**.



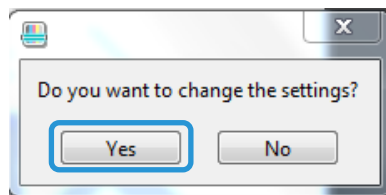
2. Select **Network Settings**.



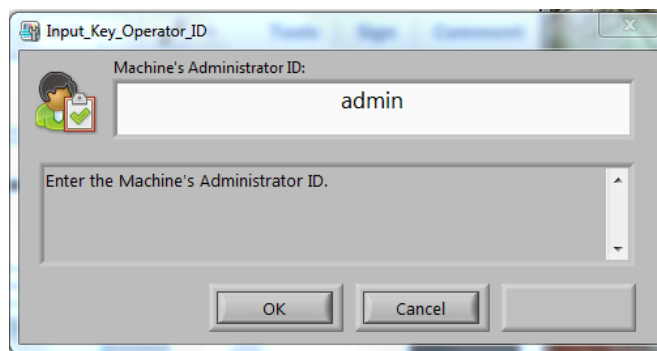
3. Enter the admin password **1111** (default), and then select **OK**.



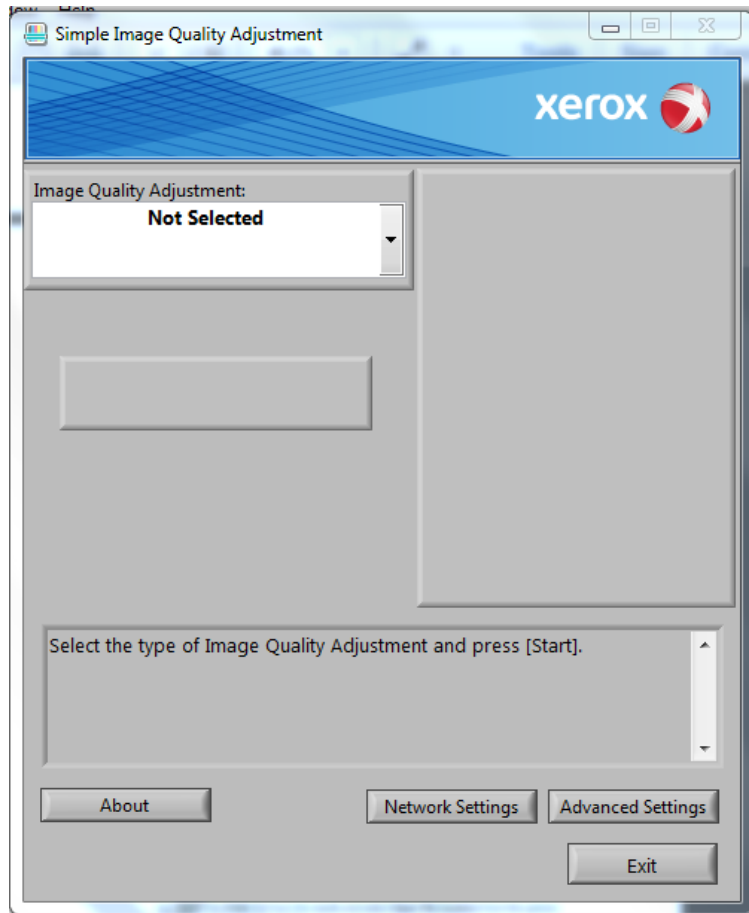
4. Click **Yes**.



5. Click **OK** to accept the Machine Administrator ID.



Communication is restored between the printer and the PC. The SIQA main screen displays.

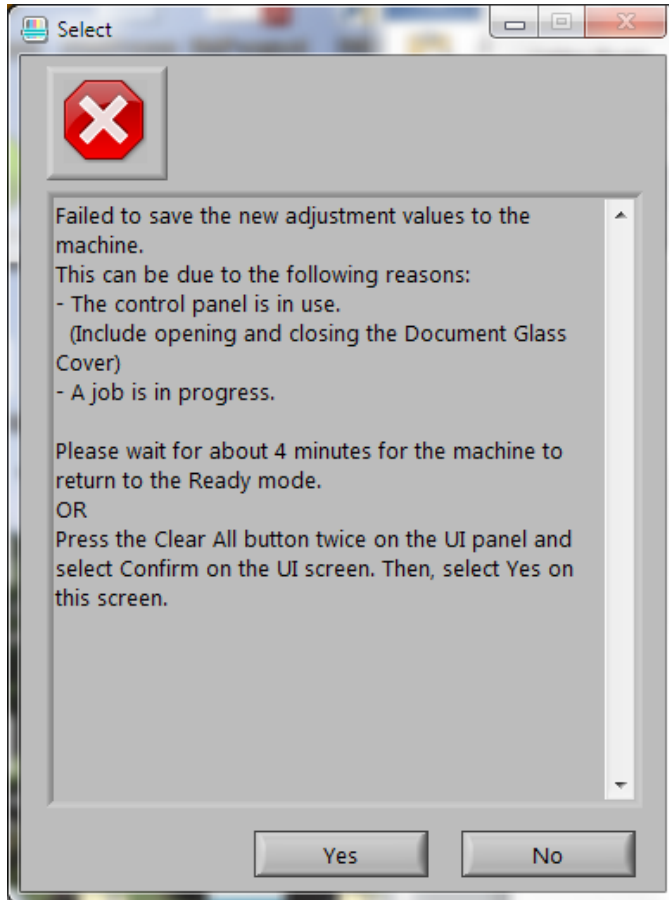


Note

If connectivity issues persist, contact your system administrator.

If the Adjustment Values are not Saved to the Machine

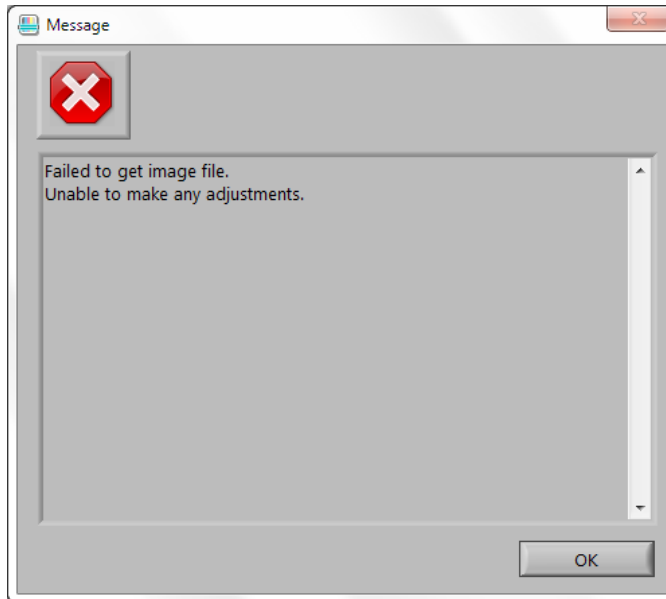
If the screen below displays when saving the adjustment values to a Type, follow the steps below.



1. At the printer follow the steps below:
 - a. Press the **Clear All** button on the machine UI twice.
 - b. Select **Confirm** on the screen.
2. At the PC, select **Yes** at the screen shown above.
3. At the printer, delete the Type. (Refer to [Modifying a Type](#) on p. 5-21.)
4. Power down the machine, and then power it back on.
5. Repeat the procedure beginning on p. 5-1.

If SIQA Cannot Make the Adjustments

If the screen below displays, it is possible that the Type already exists.



1. Click **OK**.
2. At the printer, delete the Type. (Refer to [Modifying a Type](#) on p. 5-21.)
3. Power down the machine, and then power it back on.
4. Repeat the procedure beginning on p. 5-1.

