



Xerox[®] Copier Assistant Software Installation Guide

© 2017 Xerox Corporation. All rights reserved. Xerox®, Xerox and Design®, CopyCentre®, Document Centre®, WorkCentre®, CopyCentre®, ColorQube® and AltaLink® are trademarks of Xerox Corporation in the United States and/or other countries. BR21503

Other company trademarks are also acknowledged.

Document Version: 1.4 (April 2017).

Dear Valued Xerox Customer,

Thank you for purchasing Xerox® Copier Assistant software.

The Xerox® Copier Assistant software installation instructions contain important information about installing the application. It is highly recommended that you review all the information.

If you have any questions, please contact Xerox through your local representative or through the Xerox Welcome Centre.

A USB connection is required to use the Xerox® Copier Assistant with the following multifunctional devices:

- Xerox® CopyCentre® C35/C45/C55
- Xerox® Document Centre® 555/545/535
- Xerox® WorkCentre® M35/M45/M55
- Xerox® WorkCentre® Pro 35/45/55
- Xerox® WorkCentre® M165/M175
- Xerox® WorkCentre® Pro 32/40 Color
- Xerox® CopyCentre® C2128/C2636/C3545
- Xerox® WorkCentre® Pro C2128/C2636/C3545
- Xerox® CopyCentre® C165/C175
- Xerox® WorkCentre® M165/M175
- Xerox® WorkCentre® Pro 165/175
- Xerox® WorkCentre® 7655/7665/7675
- Xerox® WorkCentre® 5030/5050
- Xerox® WorkCentre® 5632/5638/5645/5655/5665/5675
- Xerox® CopyCentre® 232/238/245/255
- Xerox® CopyCentre® 265/275
- Xerox® WorkCentre® 232/238/245/255
- Xerox® WorkCentre® 265/275
- Xerox® WorkCentre® 232/238/245/255 +PS
- Xerox® WorkCentre® 265/275 +PS
- Xerox® WorkCentre® Pro 232/238/245/255
- Xerox® WorkCentre® Pro 265/275
- Xerox® ColorQube® 9201/9202/9203
- Xerox® ColorQube® 9301/9302/9303

- Xerox® WorkCentre® 7755/7765/7775
- Xerox® WorkCentre® 5135/5150
- Xerox® WorkCentre® 5735/5740/5745/5755/5765/5775/5790
- Xerox® WorkCentre® 7830/7835/7845/7856
- Xerox® WorkCentre® 7220/7225
- Xerox® WorkCentre® 5845/5855/5865/5875/5890
- Xerox® WorkCentre® 5945/5955
- Xerox® WorkCentre® 7970
- Xerox® AltaLink® C8030/C8035/C8045/C8055/C8070
- Xerox® AltaLink® B8045/B8055/B8065/B8075/B8090

Contents

Hardware Requirements	1-1
1. Install Software	1-2
2. Connect Cables.....	2-8
3. Installing USB Port Drivers	3-12
4. Ready to Use	4-21
5. Screen Readers	5-22
6. Using the Xerox® Copier Assistant	6-23
7. Launching the Xerox® Copier Assistant application	7-25

Hardware Requirements

These are the minimum PC requirements needed to run the software:

Computer/Processor	466 MHz or higher Pentium® compatible
Memory Hard Disk	128 MB of RAM 50 MB or free space
CDROM	4 x Speed
Operating System	Microsoft® Windows® 7 Professional with Narrator or Microsoft® Windows® 8 Professional with Narrator or Microsoft® Windows® 10 Professional with Narrator
Connectivity	USB Port (v1.1 type B Cable)
Monitor	15” Display of larger
Keyboard	Standard with Function Keys
Audio	Sound Card and Speakers
Input Devices	Mouse or similar pointing device
Certification	Computer must conform to FCC/CISPR B certification

1. Install Software

To install the software, follow the instructions below. If needed, turn on a Screen Reader like **JAWS** or **Narrator**.

NOTE: Some Xerox® Copiers use the serial port of the device. Check with your System Administrator or in the Xerox® Copier User Guide to determine if a USB port is available.

1. Insert the CD-ROM into your CD-ROM Drive.
2. The CD is setup to AutoRun. If it does not:
 - a. Click **Start** on the Taskbar.
 - b. Click **Run**.
 - c. On the command line, type g:\setup.exe. If g:\ is not your CD-ROM drive, substitute the correct drive letter for your CD-ROM drive.
 - d. Click **OK**.
3. The First Dialog is the **Language Selection** screen. When this dialog is opened, choose either **English (United States)** or **French (Standard)** then select **OK**.
4. The Second Setup Dialog is the **Welcome** screen. Select **Next**.

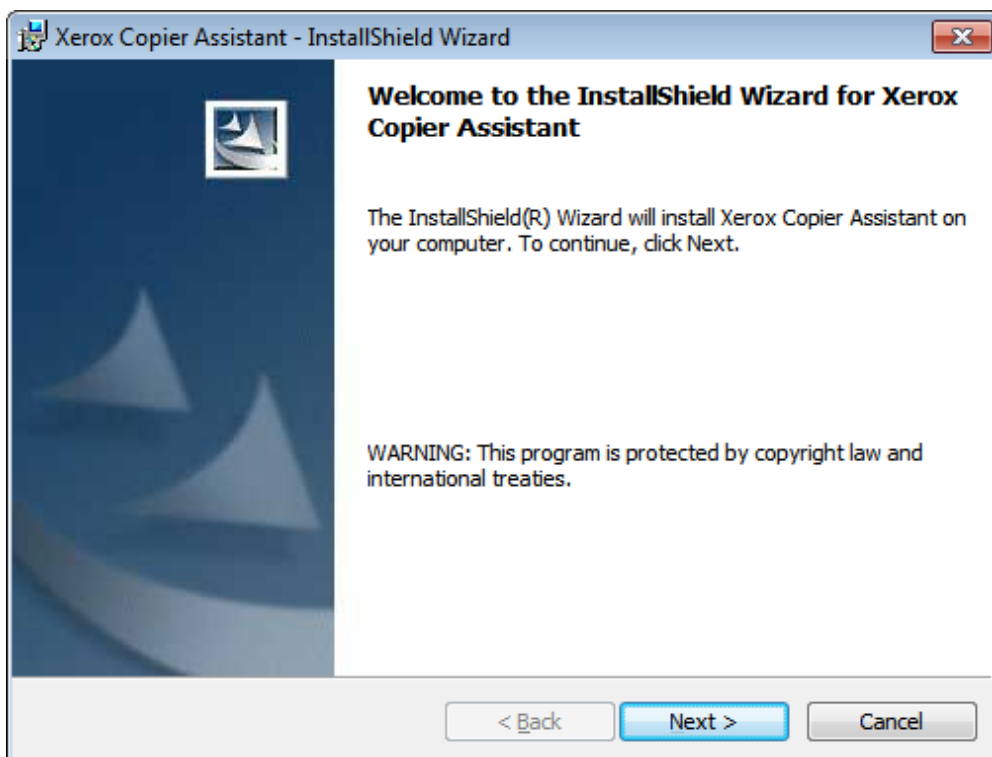


Figure 1: Setup Dialog

NOTE: To choose a button, use the **Tab** key to move to the button or select with a pointing device.

5. The Third Dialog contains the **License Agreement**. When this dialog is opened, choose **I accept the terms in the License Agreement** then select **Next**.
6. The Fourth Dialog asks for **Customer Information**. This dialog contains two fields, with the first field being User Name. Enter the **User Name**, then move to the second field. The second field is Organization. Enter the **Organization** then select **Next**.

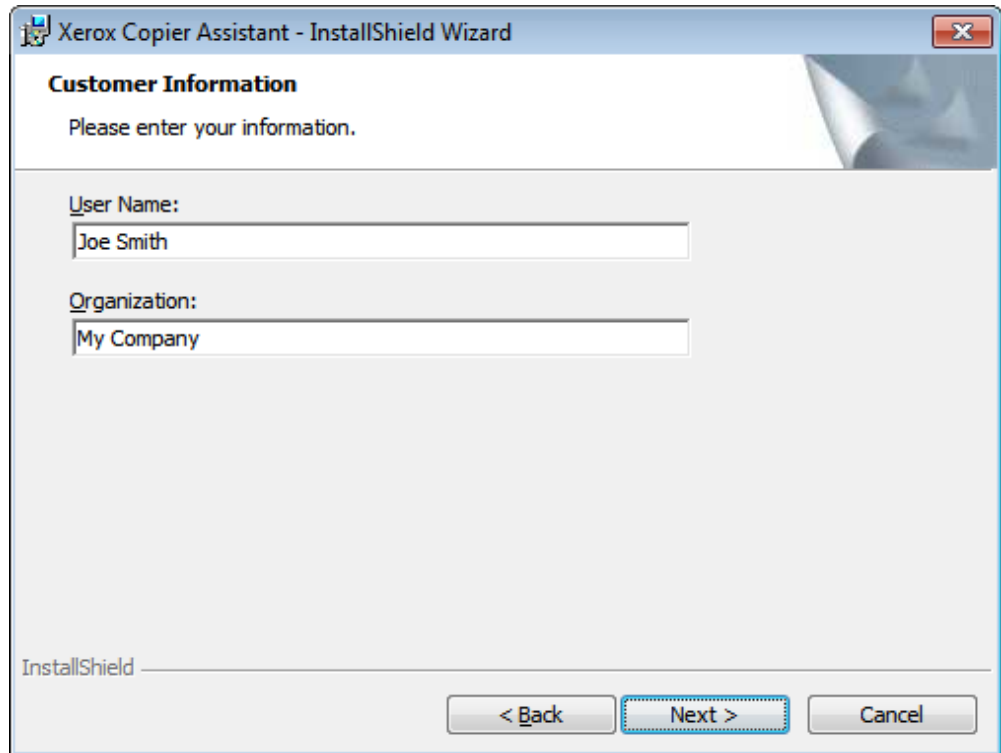


Figure 2: Customer Information Dialog

7. The Fifth Dialog asks for the **Destination Directory**. It is recommended to use the default destination for this dialog. Select **Next**.

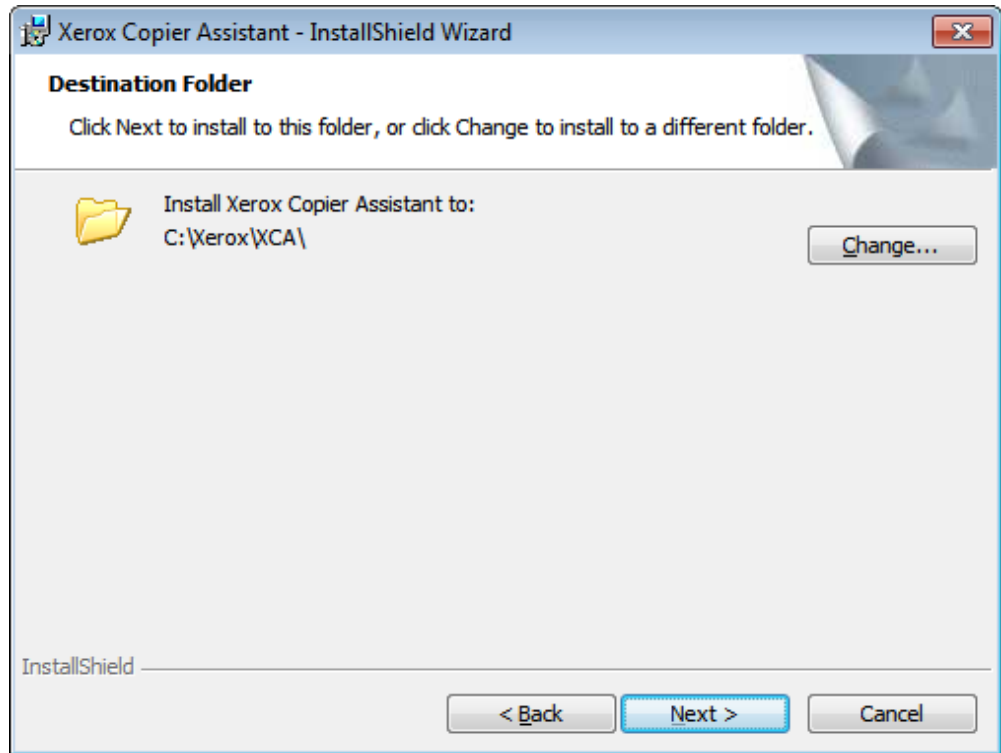


Figure 3: Destination Directory Dialog

- NOTE:** If you would like to specify a different directory in which to install the Xerox® Copier Assistant, click **Change** and browse to the desired location.
8. The Sixth Dialog contains **Device Configuration** information, including three separate fields. The first field is a combo box that contains the Xerox® Copier **products** that are supported. Use the **Arrow** keys to make the appropriate selection, then **Tab** to the next field. The second field is a grouping that selects the type of **connection**. The options are **USB Port** and **Serial Port**. Select the appropriate connection type by using the **Spacebar**. The third field is a combo box for the **COM** port and will not be an available option if you chose USB Port. If you have chosen Serial Port, then choose the appropriate COM Port. Finally, Select **Next**.

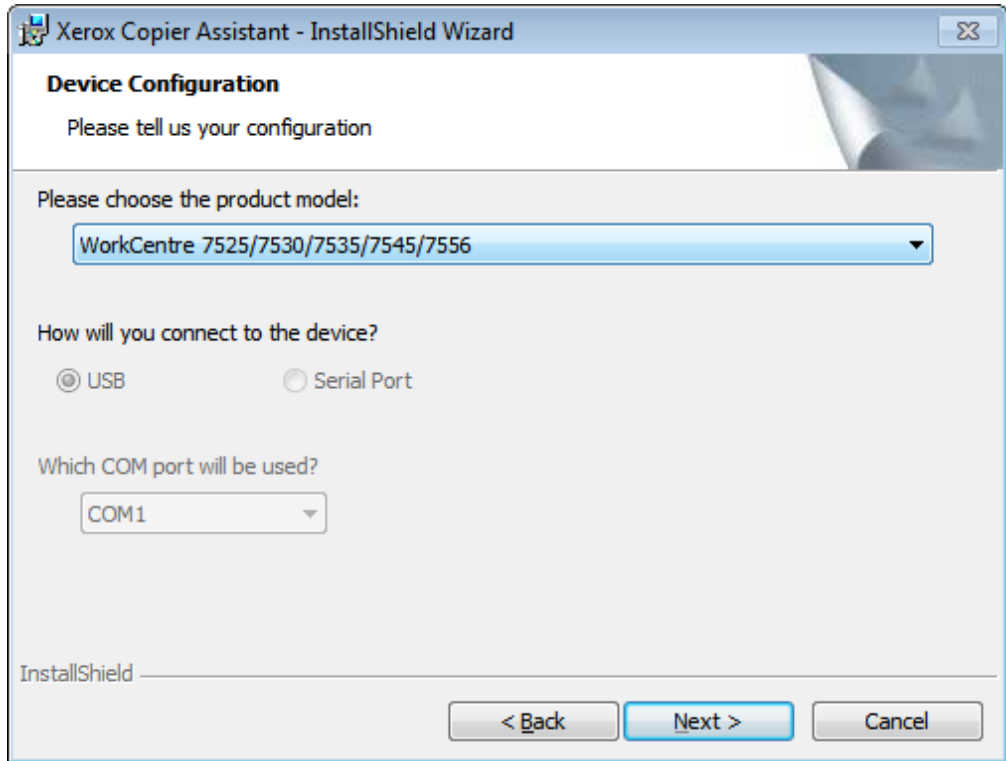


Figure 4: Device Configuration Dialog

9. The Xerox® Copier Assistant is now ready for install the software. Select **Install**.

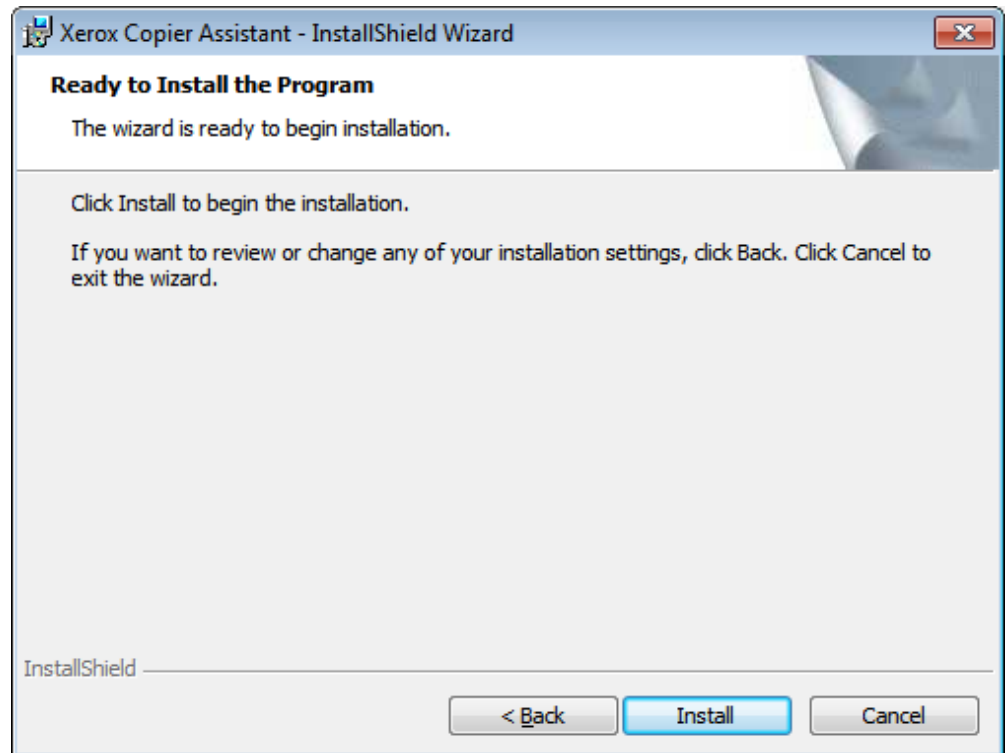


Figure 5: Ready to Install Dialog

10. The program will begin to load on the computer. This process will take a few minutes.

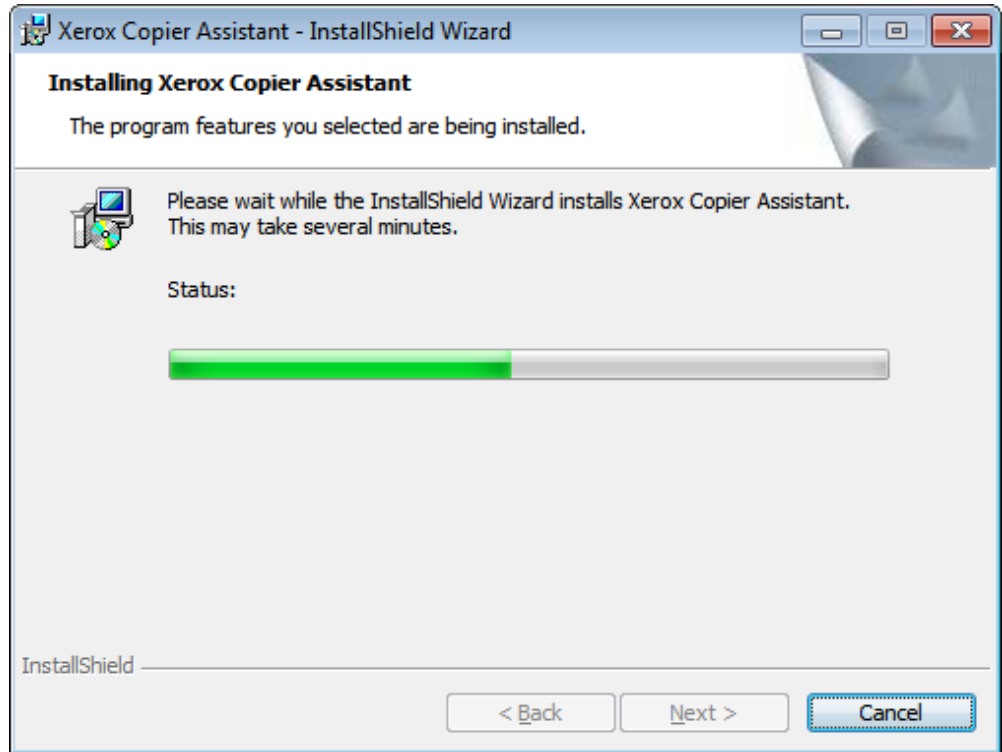


Figure 6: Installation Progress Dialog

11. When the install is complete, select **Finish**.

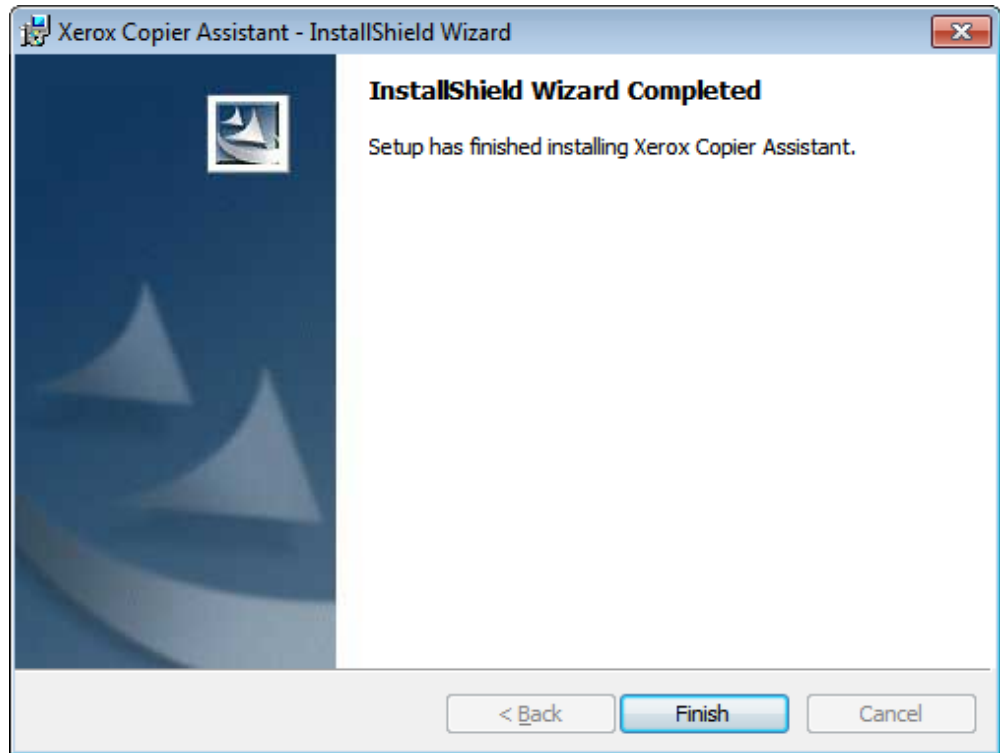


Figure 7: Wizard Completed Dialog

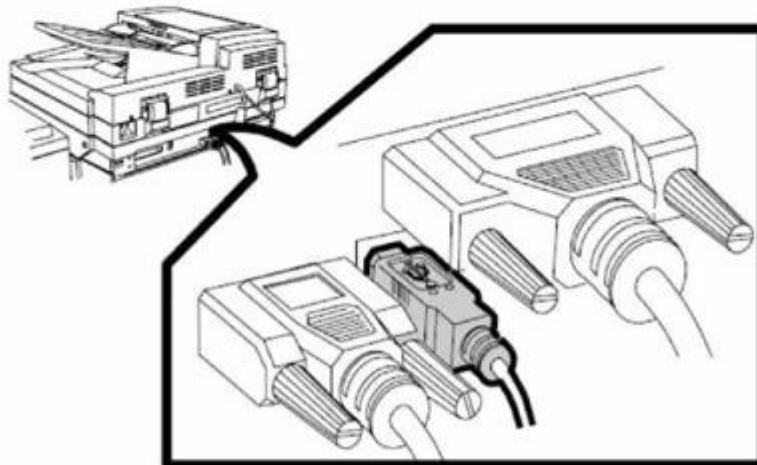
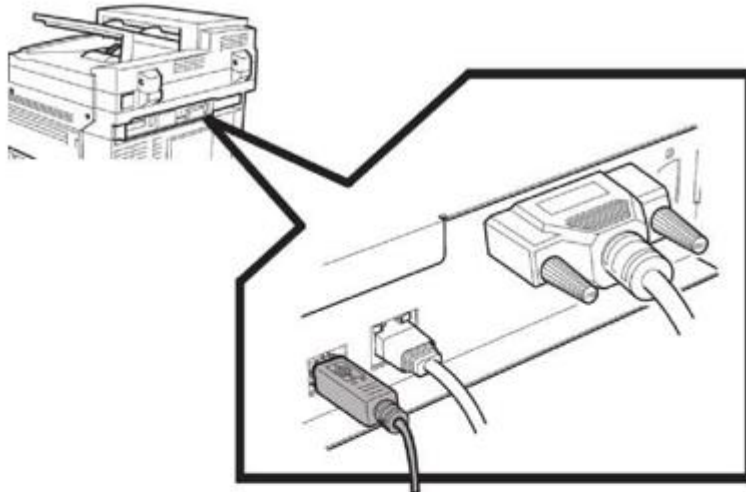
- NOTE:** You may get a message box indicating that the installed driver has not passed Windows Logo testing to verify compatibility. Select **Continue Anyway** to continue with installation.
12. You will not need to restart your computer for the changes to take effect. Select **NO**.

NOTE: The Xerox® Copier Assistant is designed as a standalone application.

2. Connect Cables

Hook up the cable to the device. Windows will now present you with the **Microsoft Hardware Wizard**.

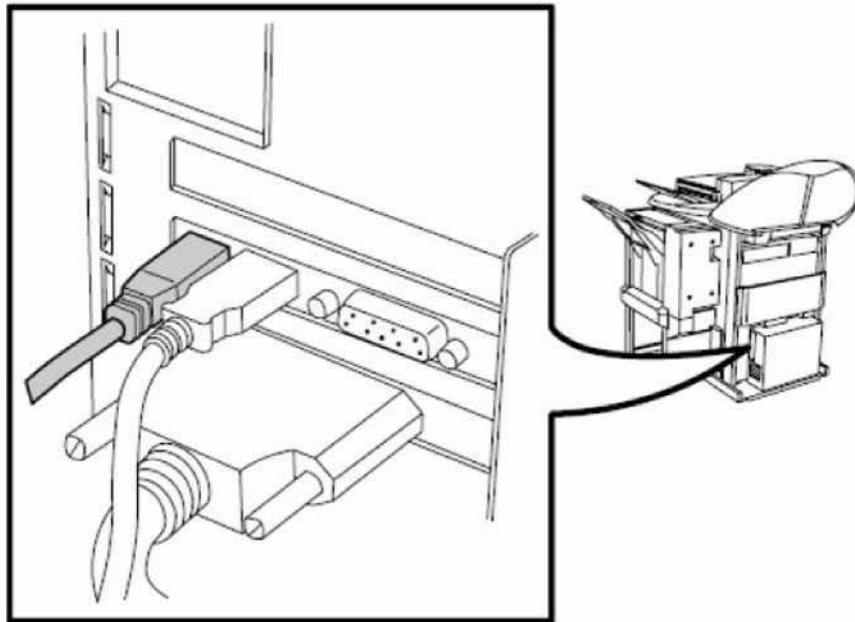
The following figures shows you how to correctly connect the cable to the devices listed below:



- CopyCentre® C35/C45/C55
- Document Centre® 555/545/535
- WorkCentre® M35/M45/M55
- WorkCentre® Pro 35/45/55
- CopyCentre® C165/C175
- WorkCentre® M165/M175

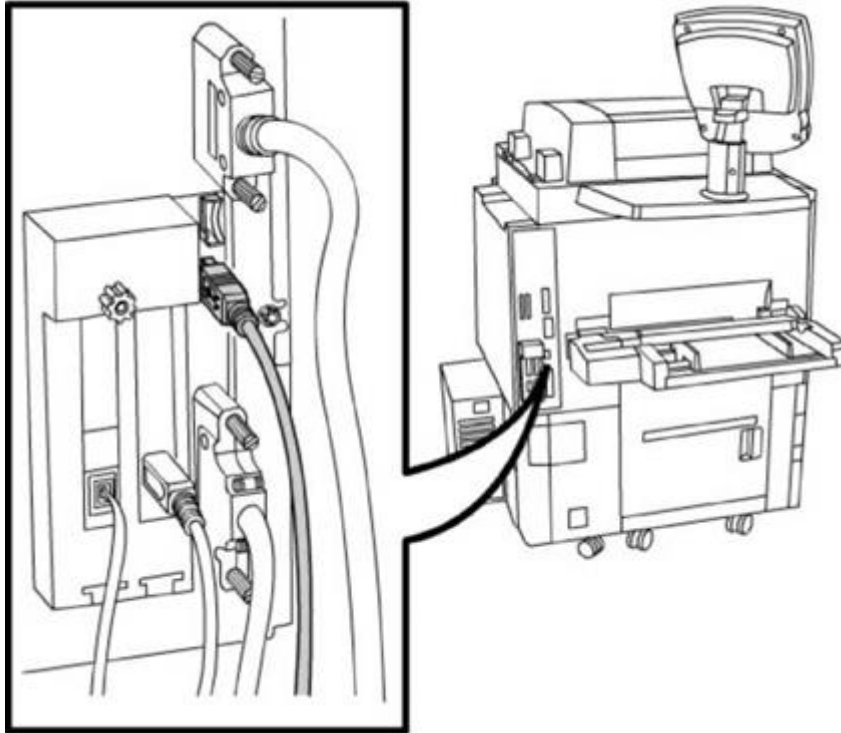
- WorkCentre® Pro 165/175
- CopyCentre® 232/238/245/255
- CopyCentre® 265/275
- WorkCentre® 232/238/245/255
- WorkCentre® 265/275
- WorkCentre® 5030/5050
- WorkCentre® 5632/5638/5645/5655/5665/5675
- WorkCentre® 232/238/245/255 +PS
- WorkCentre® 265/275 +PS
- WorkCentre® Pro 232/238/245/255
- WorkCentre® Pro 265/275

The following figure shows the correct way to connect the cable to the devices listed below:



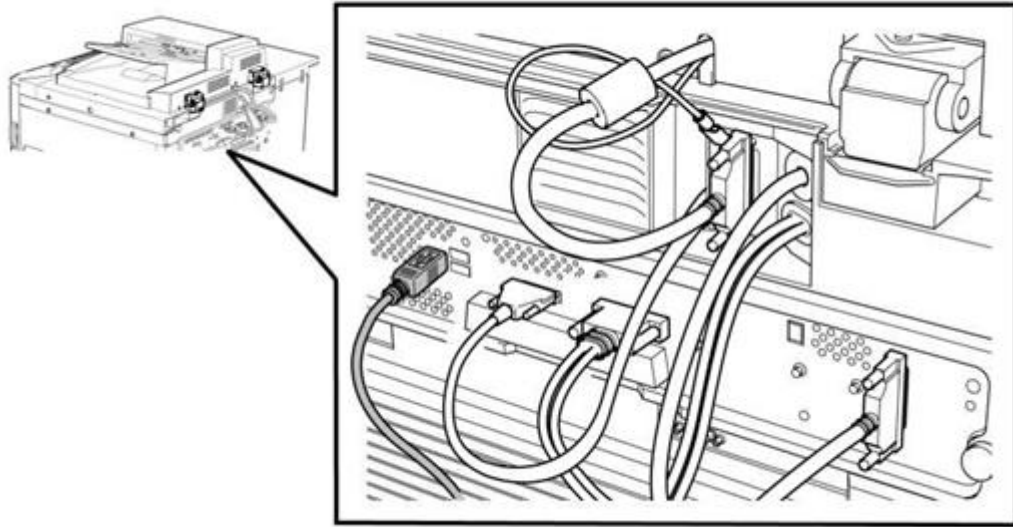
- WorkCentre® Pro 32/40 Color
- CopyCentre® C2128/C2636/C3545
- WorkCentre® Pro C2128/C2636/C3545
- WorkCentre® M165/M175

The following figure shows the correct way to connect the cable to the device listed below:



- WorkCentre® 7655/7665/7675
- WorkCentre® 7755/7765/7775
- WorkCentre® 7830/7835/7845/7856
- WorkCentre® 7220/7225
- WorkCentre® 7970
- AltaLink® C8030/C8035/C8045/C8055/C8070
- AltaLink® B8045/B8055/B8065/B8075/B8090

The following figure shows the correct way to connect the cable to the device listed below:



- ColorQube® 9201/9202/9203
- ColorQube® 9301/9302/9303
- WorkCentre® 5845/5855/5865/5875/5890
- WorkCentre® 5945/5955

3. Installing USB Port Drivers

Before connecting cables, check the Xerox® Printer/Copier display. If the user interface displays “Machine self-test in progress” wait before continuing.

Make sure the copier is powered on and in a ready state. If this is not possible, contact customer support.

To check if the Printer/Copier is in a normal state:

Place a sheet of paper in the document feeder and press Start on the copier User Interface.

If a copy is produced, it is in the correct state to continue installation of the Xerox® Service Port driver.

WARNING: Interaction between some computers’ USB hardware, Windows and the Printer/Copier may cause unusual behavior of the computer, the Printer/Copier, or both during installation of the USB driver.

For Windows 10 PCs ONLY

Windows 10 PCs need to disable driver signature enforcement in order to continue and install the Xerox® Service Port driver used by this application.

Follow the below steps to **Disable driver signature enforcement:**

1. Hold down **Shift** on keyboard while selecting **Restart** (to enter the **Boot Options Menu**)

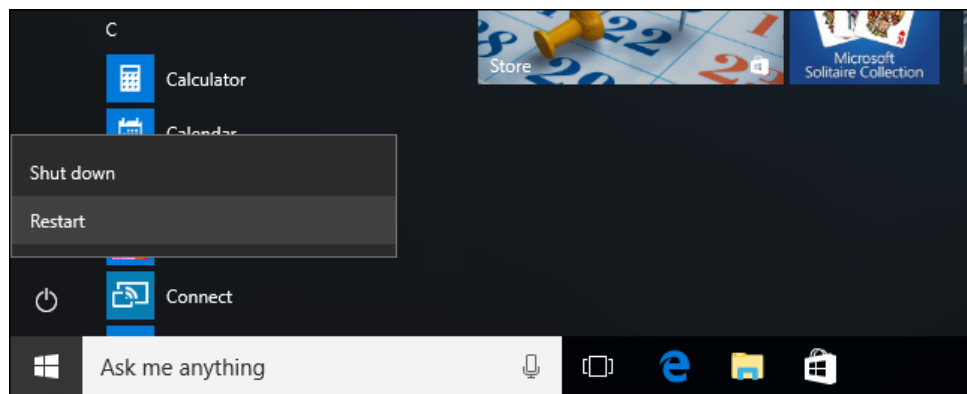


Figure 8: Reboot

2. Select **Troubleshoot** on the **Boot Options Menu**

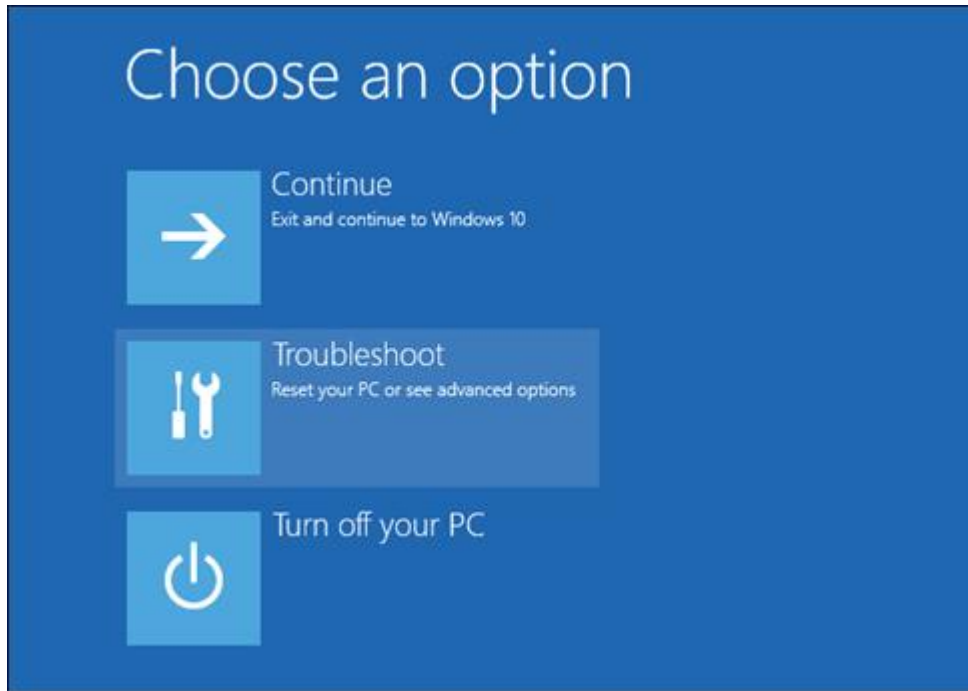


Figure 9: Boot Options Menu

3. Select **Advanced Options**

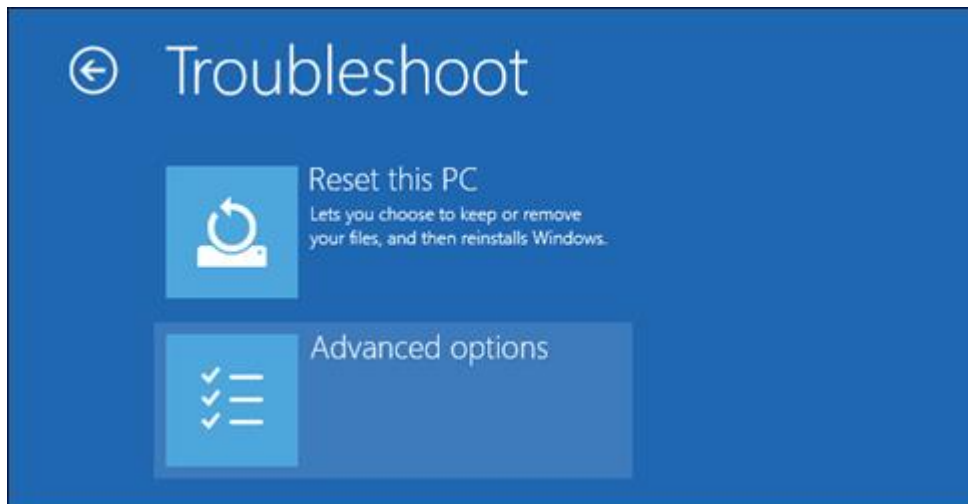


Figure 10: Troubleshoot Menu

4. Select **Startup Settings**

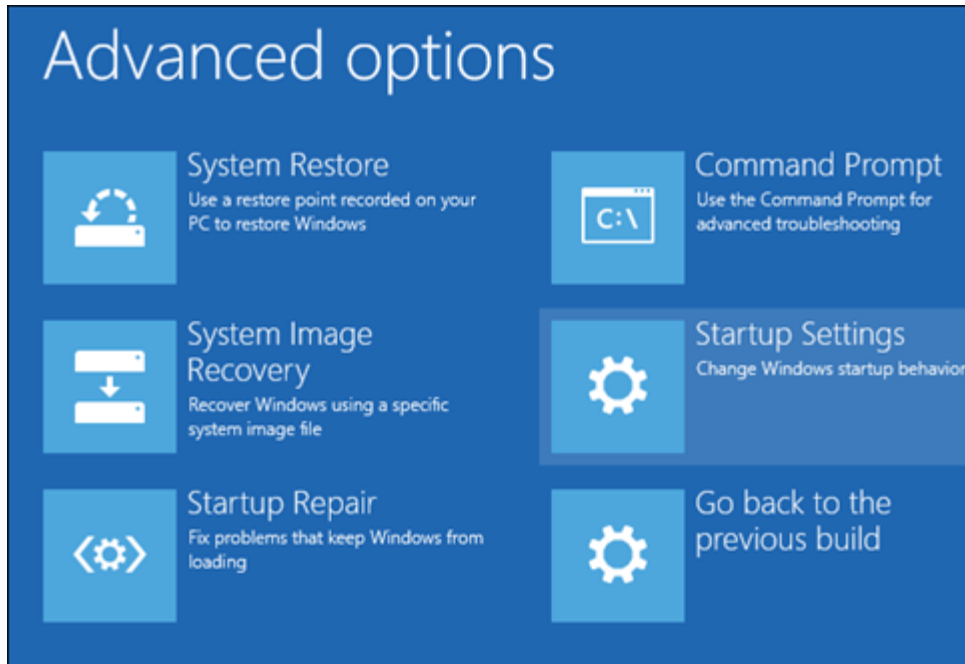


Figure 11: Advanced Options Menu

5. Select **Restart**

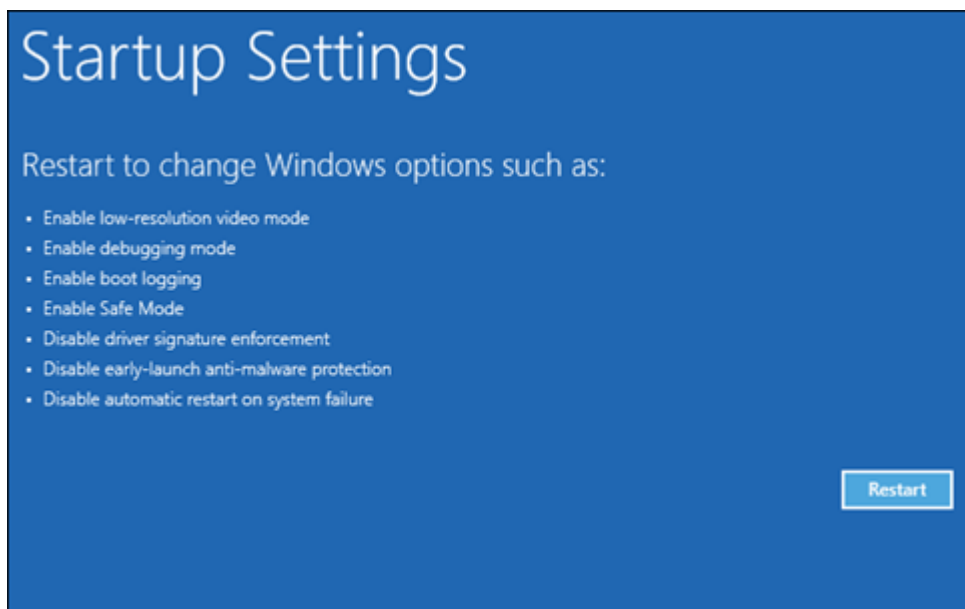


Figure 12: Startup Settings Reboot

6. Type **7** on keyboard at the Startup Settings screen to activate the **Disable driver signature enforcement**

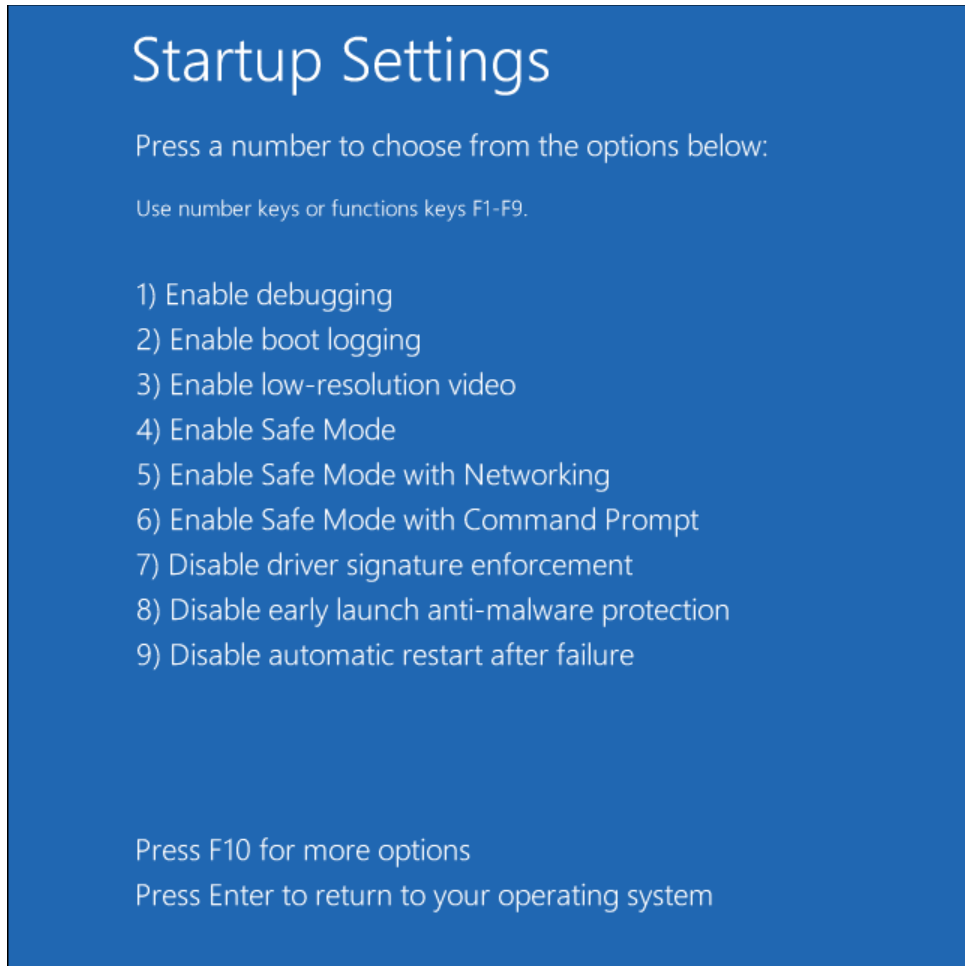


Figure 13: Startup Settings Menu

7. **NOTE:** An additional reboot will default your system back to **Enable Driver signature enforcement**, but any unsigned drivers you installed while driver signature enforcement was disabled will remain.

For All Windows PCs

Follow the below steps to install the Xerox® Service Port driver:

1. When the cables have been correctly connected, the **Microsoft Driver Software Installation Wizard** is launched automatically. See this in your System Tray in the lower right corner of your PC.

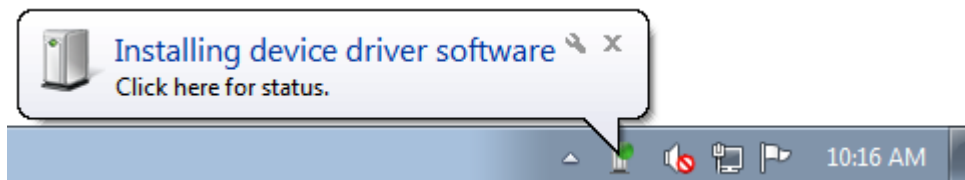


Figure 14: Microsoft Driver Software Installation Wizard Dialog

2. After opening the **Microsoft Driver Software Installation Wizard**, choose to **Skip obtaining driver software from Windows Update** and **Close** when the dialog displays “**X** No driver found”.

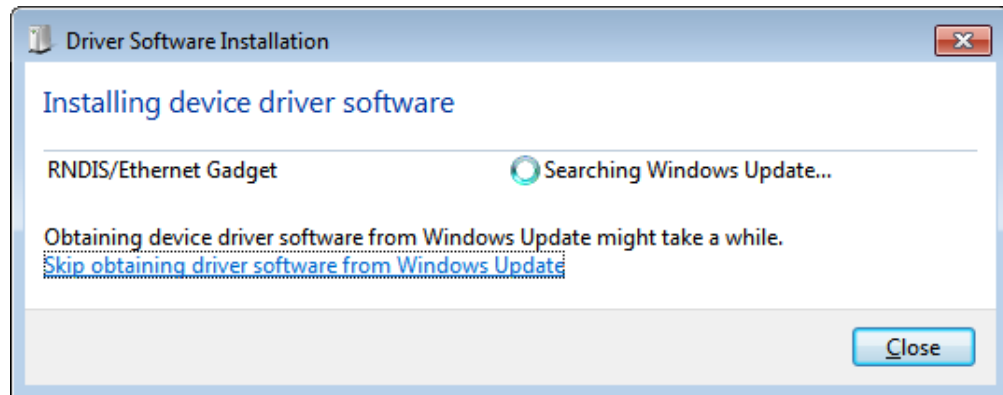


Figure 15: Driver Software Installation Wizard Dialog

3. Open the **Device Manager** (Control Panel\System and Security\System\Device Manager) and expand “Other Devices”. Right click on the **RNDIS/Ethernet Gadget** and select **Update Driver Software...**

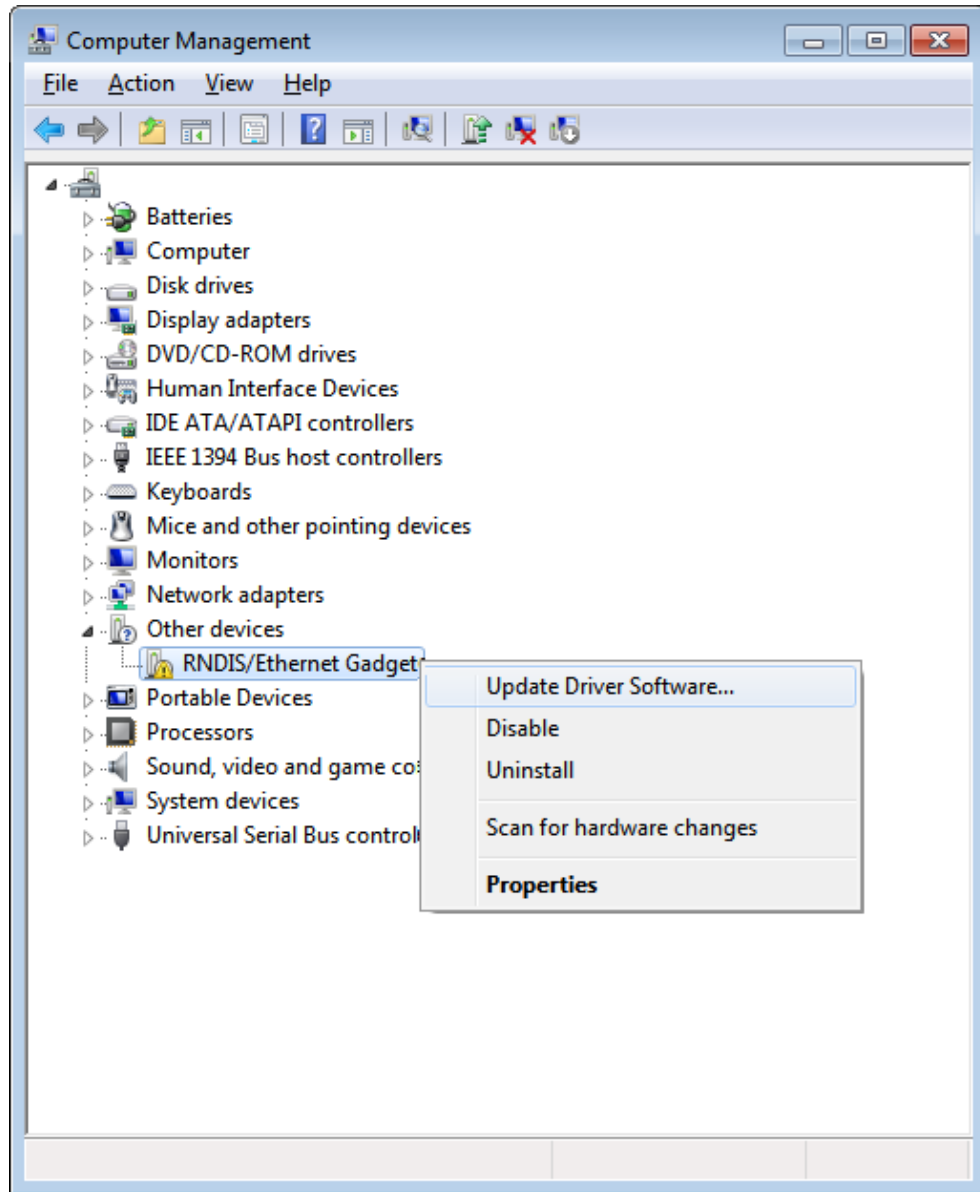


Figure 16: Device Manager Dialog

4. In the **Update Driver Software** dialog select **Browse my computer for driver software**.

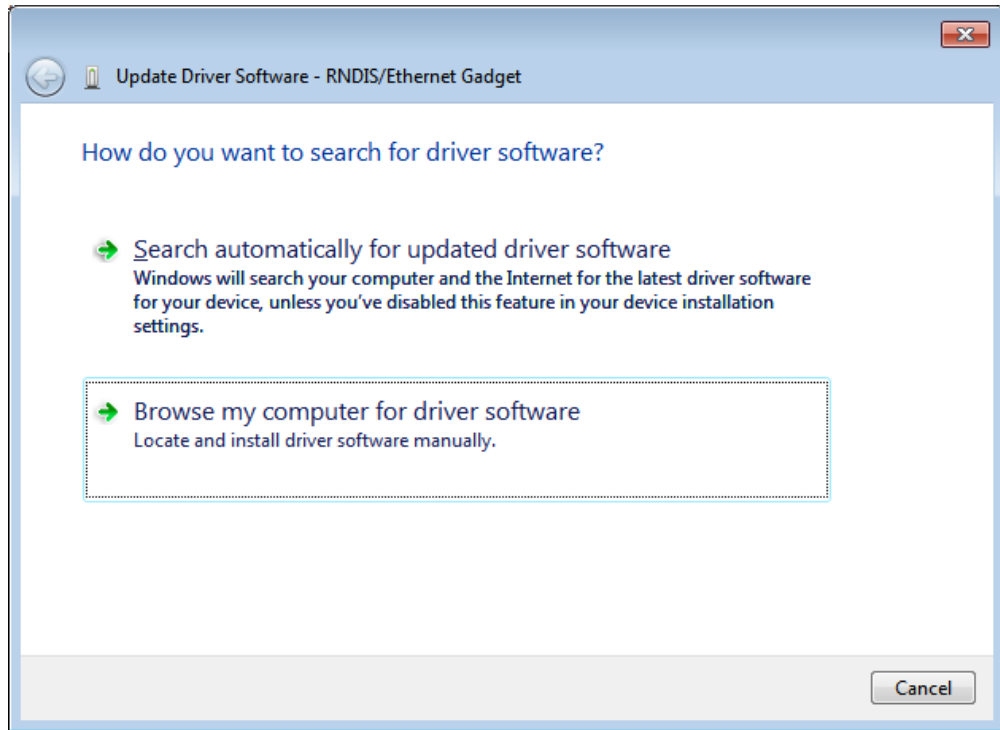


Figure 17: Update Driver Software Wizard Dialog

5. **Browse to “C:\Xerox®\XCA\Support” and select Next.**

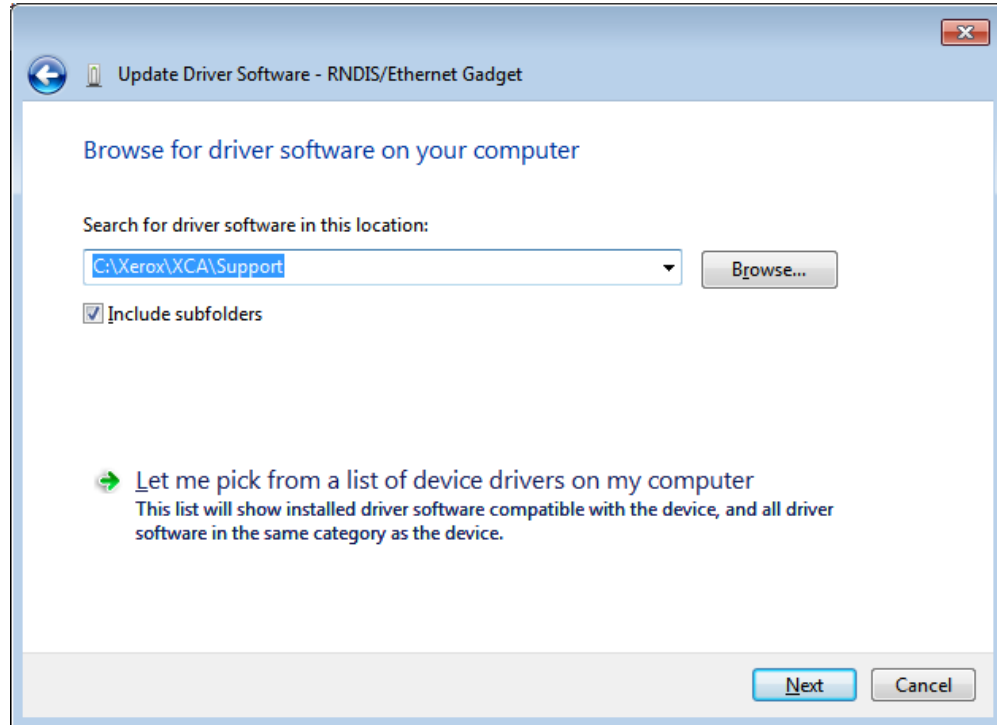


Figure 18: Wizard Browse Dialog

NOTE: You may see a Windows Security message saying Windows can't verify the publisher of this driver software. If you do, select **Install this driver software anyway**.

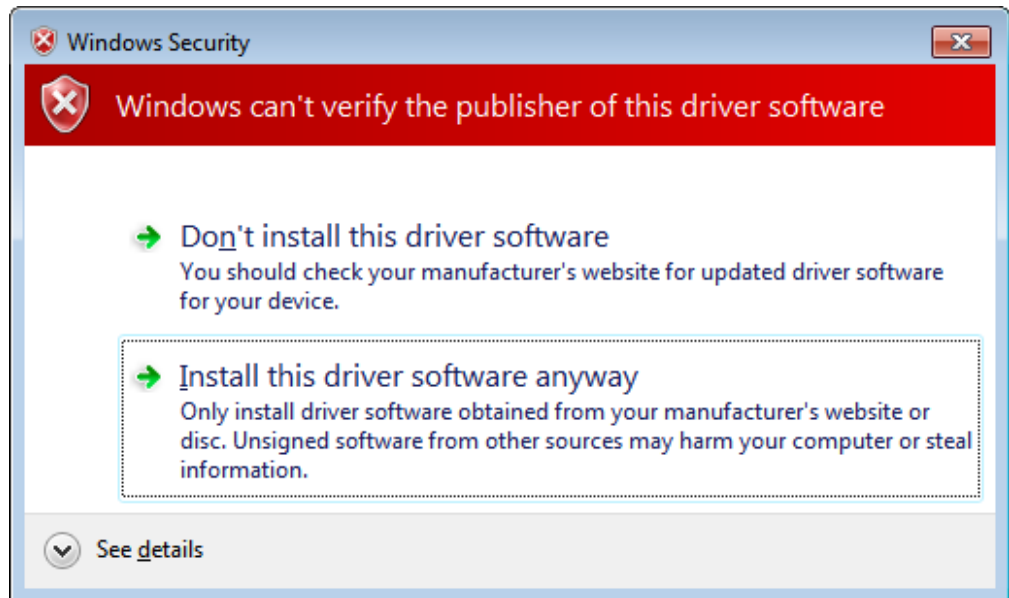


Figure 19: Windows Security Dialog

6. The driver will take some time to install ...

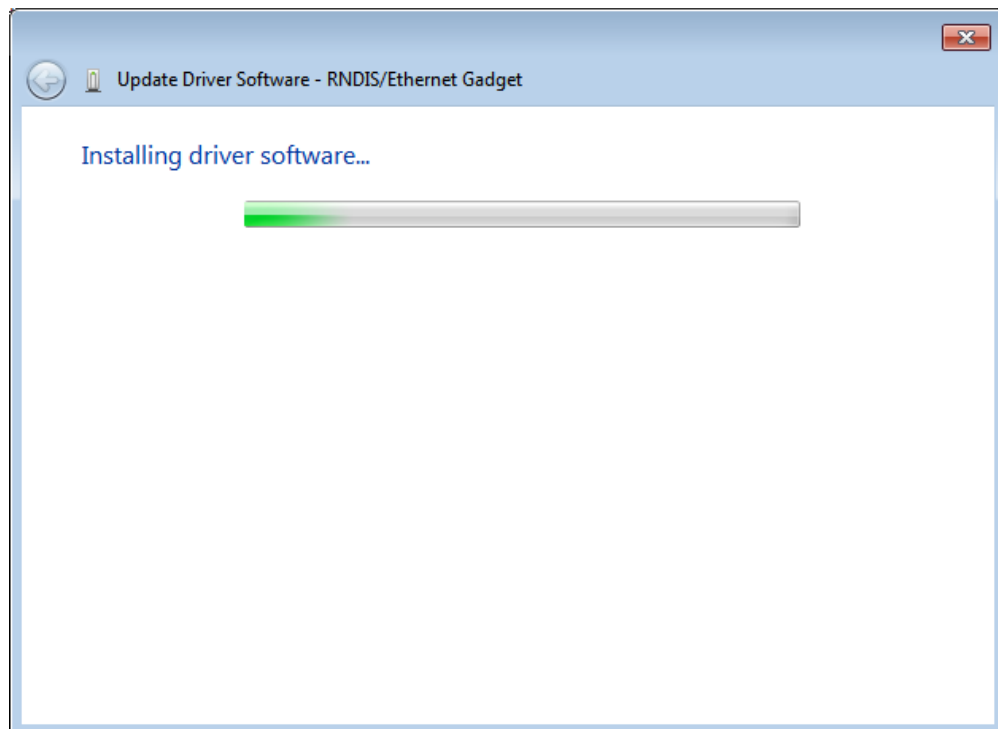


Figure 20: Driver Installation Dialog

7. Select **Close** when the driver software is successfully updated to the **Xerox® Service Port**.

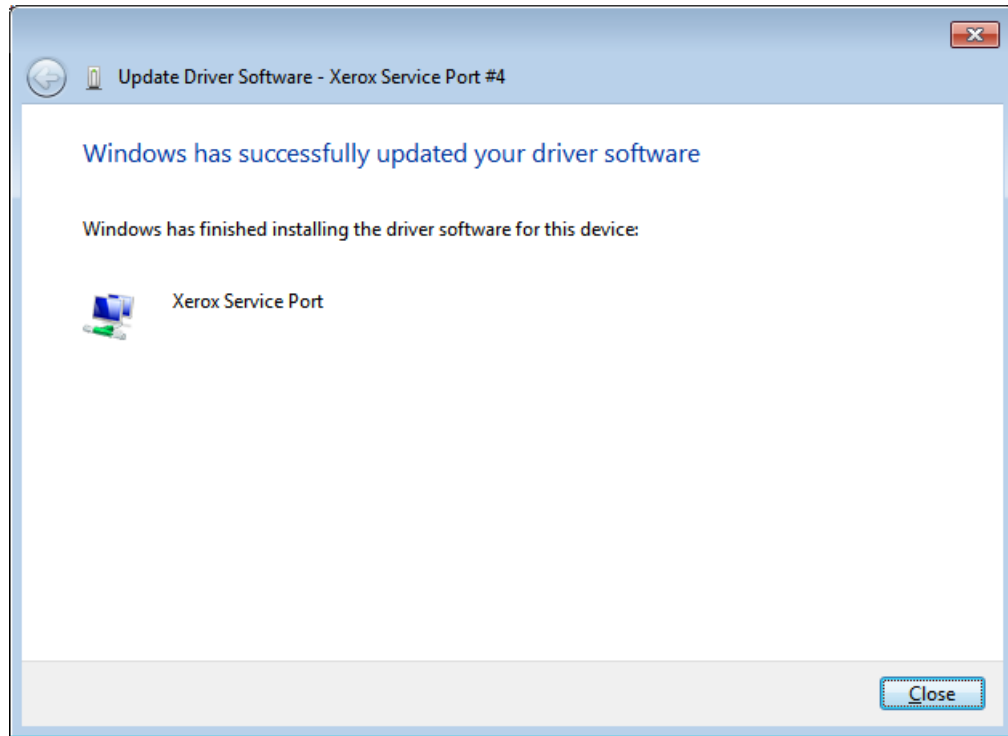


Figure 21: Wizard Completed Dialog

NOTE: If you have installed the Xerox® Service Port driver for multiple ports on your PC you will notice a number following the Xerox® Service Port.

4. Ready to Use

The Xerox® Copier Assistant is now ready to use. A Xerox® Copier Assistant icon has been placed on your Windows desktop to launch the application. **Double click** the icon or Tab to the icon and press **Enter** to start the application.

NOTE: The application will also start up on a reboot of the PC.

5. Screen Readers

Turn off any screen readers (JAWS, Narrator, etc).

Recommended Settings for Xerox® Copier Assistant Software

The Xerox® Copier Assistant is designed to be used as a standalone application.

- To utilize the Xerox® Copier Assistant embedded Text-to-Speech feature, use Control + S to turn the Speech feature on. If you choose to not use the embedded Text to Speech feature, then turn it off using the Preferences option. Although the Xerox® Copier Assistant will work with other Screen Reader Programs, Xerox® makes no claim to their effectiveness.
- Disable the Xerox® Copier's Power Saver mode.
- The recommended screen resolution is 800 x 600. A Screen Magnifier Program can be used but is not a requirement.
- The recommended Windows display setting is to be High Contrast White.

6. Using the Xerox[®] Copier Assistant

When using the Xerox[®] Copier Assistant, you will be able to use a combination of keyboard keys to navigate through the appropriate screens. Each screen has Hot Keys that can be used to select the desired feature. The following are the most commonly used keys.

F2	Say current control's value
F3	Say current control's name
F4	Say help for current control
F5	Say information about current control's value
F6	Recite the job settings for all tabs (main)
F6	Recite dialog settings (sub-dialogs)
Shift+F6	Recite the job settings for the current tab (main)
F7	Recite list of shortcuts for current tab
F9	Default All (main)
F10	Start copying (main)
F11	Recite status (main)
F12 or Ctrl+S	Stop speaking
Shift+F12	Stop speaking current sentence
Tab	Move to next control
Shift+Tab	Move to previous control
Esc	Undo change to current control

Alt+1	Basic Copying Tab (main)
Alt+2	Image Adjustment Tab (main)
Alt+3	Output Format Tab (main)

7. Launching the Xerox® Copier Assistant application

The main screen includes the following three separate tabs:

1. The Basic Copying Tab
2. The Image Adjustment Tab
3. The Output Format Tab

These three tabs are described in detail in the User Guide.

Moving Between Tabs

Use the left and right arrow keys on the keyboard to navigate between the three tabs on the main screen. Individual tabs can also be selected by pressing the Alt key and the appropriate Number Key associated with each tab. For example,

- **Alt** and **1** moves the cursor to the Basic Copying Tab.
- **Alt** and **2** moves the cursor to the Image Adjustment Tab.
- **Alt** and **3** moves the cursor to the Output Format Tab.

The following images help you to familiarize yourself with the various options available on the tabs.

Basic Copying

Navigate to the Basic Copying Tab by pressing the **Alt** and **1** key. The Basic Copying Tab on the main screen includes the following six fields: Quantity, Duplex, Tray, Staples, Collation, Reduce / Enlarge.

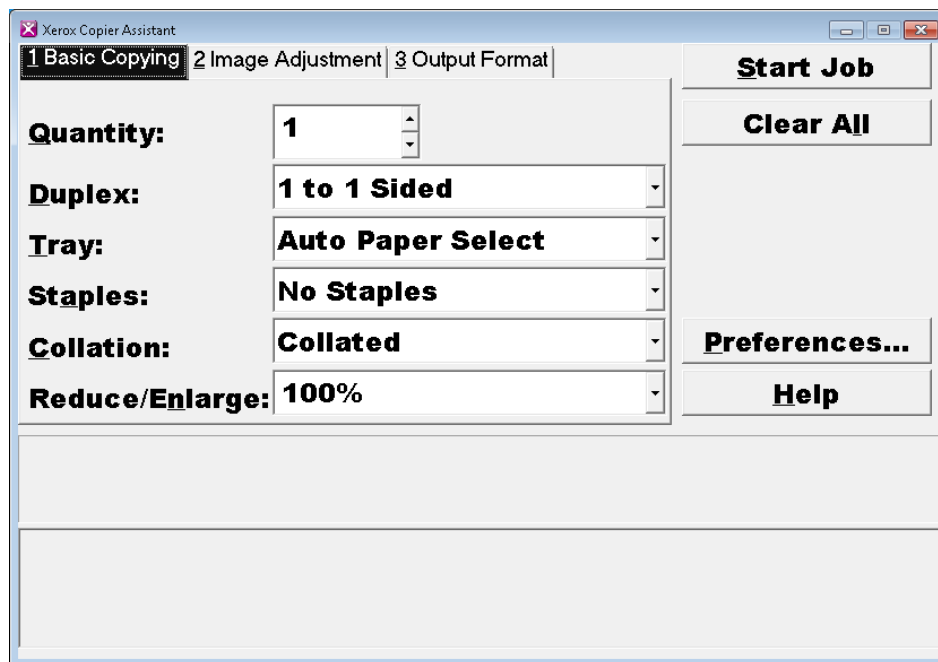


Figure 22: Basic Copy

Image Adjustment

The Image Adjustment Tab is the second of three tabs on the main screen. Navigate to the Image Adjustment Tab by pressing the **Alt** and **2** keys. The Image Adjustment Screen contains the Original Input options.

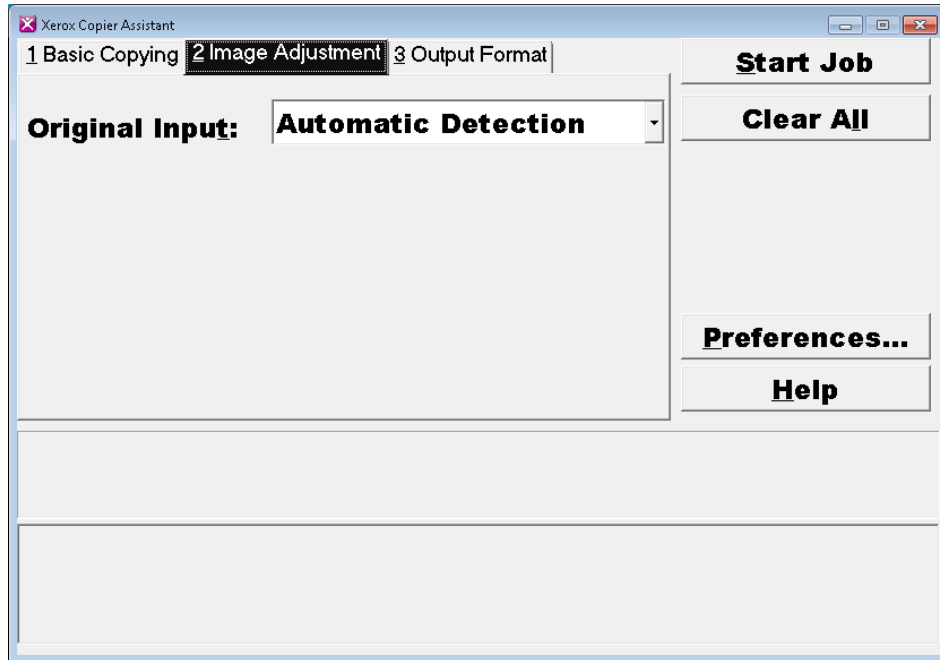


Figure 23: Image Adjustment

Output Format

The Output Format Tab is the third of three tabs on the main screen. Navigate to the Output Format Tab by pressing the **Alt** and **3** keys. The Output Format Screen allows you to select Transparency Dividers and /or Covers feature for your output.

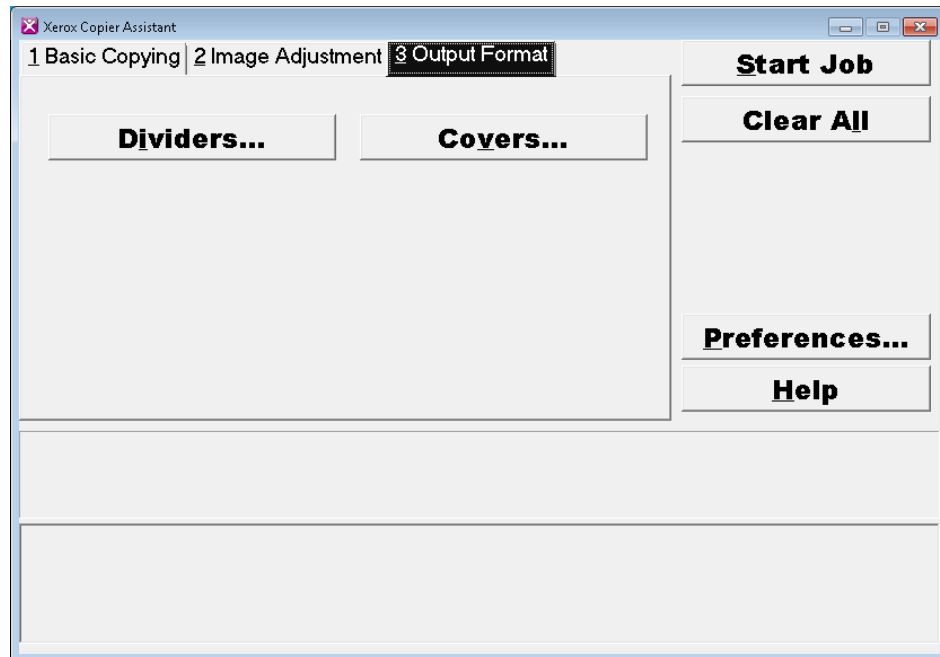


Figure 24: Output Format