



Software for the  
**Xerox CSX 2000**  
Version 1.0

---

## **Release Notes**

CreoScitex Catalog Number: 399Z1P969A

CreoScitex Part Number: 501S3D646

Xerox Part Number: 97N1057

Software Version: 1.0

Date: February 22, 2001

## **Contents:**

<b>Software Kit Contents.....</b>	<b>3</b>
<b>Application Notes .....</b>	<b>4</b>
<b>Tips and General Information.....</b>	<b>11</b>

Formed in April 2000 by uniting the digital prepress and print-on-demand initiatives of Creo Products Inc. and Scitex Corporation Ltd., CreoScitex is a world leader in solutions for the graphic arts industry. Core product lines include image capture systems; inkjet proofers; thermal imaging devices for films, plates, and proofs; professional color and copydot scanning systems; and workflow management software. CreoScitex is also an Original Equipment Manufacture (OEM) supplier of imaging technology for on-press imaging equipment. CreoScitex is a division of Creo Products Inc., which trades on NASDAQ (CREO) and on the Toronto Stock Exchange (CRE).

# Software Kit Contents

**Windows NT Server Version 4.0 Fast Install (CD # 1):** This CD includes Windows NT Server Version 4.0 operating system with a customized menu for reinstalling the CSX 2000.

**CSX 2000 Multi-Lingual Application Software – (CD #2)**

This CD includes all the CSX 2000 software (Setup, PPDs, printer drivers and utilities).

**CSX 2000 Documentation and Utilities – (CD #3)**

---

**Note:** The CD has both Macintosh and PC partitions so it can be mounted on both platforms.

---

This CD contains client utilities and the CSX 2000 Installation and Printing Guides in PDF format in the following languages: English, French, German, Spanish, Italian, Portuguese and Dutch.

**Note:** The Installation and Printing Guides reside on a CD #3 which can be inserted on any client with a CD-ROM drive and submitted to print on any printer. They can also be submitted to print via the CSX2000 and sent to print on the DocuColor 2045/2060.

To print the CSX 2000 Installation and Printing Guides on a DocuColor 2045/2060 using the CSX 2000:

1. Insert the CSX 2000 Documentation and Utilities CD #3 into the CSX 2000's CD-ROM drive.
2. Ensure that the CSX 2000 application workspace is open. From the File menu, select Import Job.
3. Browse the CD-ROM and select the document you wish to print.
4. Click on Add to List. The file appears on the right hand side of the Import Job dialog box.
5. Click on Submit. The Installation and Printing Guides are now submitted to the CSX 2000 where they will be processed and then printed.

# Application Notes

## General

### *Process Indication*

- There is no indication when some operations take place on big jobs. The operations are: duplicate, archive, retrieve, delete, message viewer (with many messages).

### *Error Reporting*

- Alert messages may not provide sufficient details to identify the error. It is recommended that the Job History be review for additional details on the error.

## Set Up

### *Software Requirements*

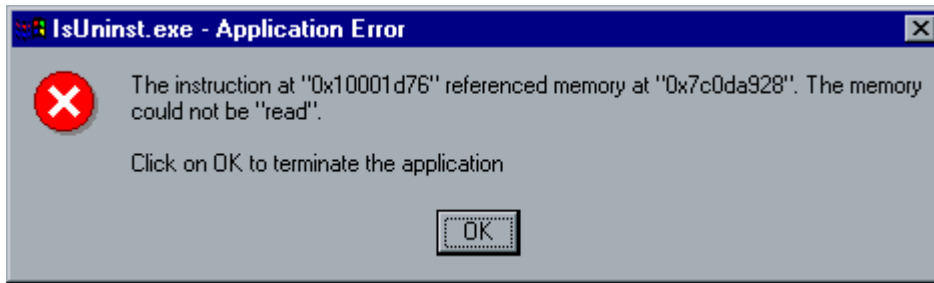
- The supported Macintosh OS is 8.51 and higher. The recommended print driver depends on the Macintosh OS that is being used. Unknown problems may occur if other drivers are used.

<u>MAC OS</u>	<u>Recommended Print Driver</u>
8.51-8.xx	LaserWriter 8.6.1
9.0-9.x	LaserWriter 8.7

- Adobe Downloader - 5.05
- Adobe PostScript Driver for Win NT (5.1.2), Win 95& Win 98 (4.3.1). Adobe PostScript Driver 1.0.2 can also be used with all Win versions.

### *System Loading Instructions*

- Full system installation (“cold start”) involves re-installation of the WindowsNT operating system and re-installation of the CSX2000 application. There are two methods for this operation: complete overwrite and preservation. Both methods require running the “Format Image Disk” utility (accessed from Start → CSX2000 → CSX2000 Tools).
- When updating the CSX2000 application there is no need to run the “Format Image Disk” utility. All the Storage Folder jobs, together with all the user settings are saved.
- Before updating the system to a new version, a removal of the existing version is required. At the end of the removal procedure the following message may appear. However, the reported error does not affect the application removal.



- When full system installation is not required the software update procedure can be used. System upgrade involves removing the old software version and installing the new one. To install a new version after removing the old one follow these steps:
  1. Double click on the CD icon in “My Computer”
  2. Open the “CSX2000\_1.0” Folder
  3. Double click on the Setup.exe file.

### *Job Settings*

- Some 3rd party applications do not transfer the image to paper orientation parameter correctly. This may cause the image to print with the wrong orientation (print default is 'Portrait').
- Jobs should not contain mixed attributes (different page orientations, page sizes etc.)
- Jobs will fail to process or print when illegal imposition settings are applied. Corrective actions may include reducing the size or number of pages on the sheet, removing crop marks, adjusting Trim Size, reducing margin size or choosing a larger paper size. It is recommended that the job be checked using the dynamic template viewer in the Imposition tab/“Template” parameter before submitting the job to the process queue.
- When jobs are sent from an NT client, a print notification will be displayed at the CSX Color Server. To disable this message at the CSX Color Server, select: Start → Settings → Control Panel → Services → Messenger → and select disable. Then shutdown and restart the CSX Color Server.
- Jobs will abort from the processing queue when disk space is fully utilized.
- Long VI jobs need to be run with the Gallop and Deletion Policy set to delete completed jobs, otherwise the Printer Disks will fill up and the job will not print successfully.
- Unauthorized software should not be loaded onto the CSX Color Server system.
- Images larger than 11.7 inches in the cross printing direction will be cropped.
- The default APR path for locating the High Resolution files is D:\Shared\HiRes. To set a new APR path (from the Job Programming window/Services/APR) use the “new path” button in the “APR Editor” window to select the location of High Resolution images (i.e. do not type the APR path in the APR window).

- When using Step&Repeat imposition method, enter sets in the “number of copies” field located in the Print Settings tab of the Job Parameters window. The total number of copies of the finished document printed and not the number of sheets of paper at the output. The CSX Color Server automatically calculates the number of sheets that it needs to print and images will be added to complete partially utilized sheets of paper. Therefore, the "number of copies" may not match the total number of printed images on the sheets.
- A job name should not contain more than 80 characters.

### *High Capacity Stacker*

- Some page sizes cannot be stacked on the High Capacity Stacker and must be sent to the top tray. Refer to the High Capacity Stacker documentation for more information.
- When a job is programmed to stack a custom paper size on the High Capacity Stacker, the paper should be placed in the input tray before the job is being processed to ensure correct processing and stacking.
- The icon of the top tray of the High Capacity Stacker in the Printer Monitor window does not reflect the visual appearance of the actual HCS top tray.

### *Color Calibration*

- Do not execute automatic calibration during processing or printing of other jobs.

## **Workflow**

### *Using System Resources Effectively*

- Importing from a CD, Archive and Retrieve operations should not be performed when the system is printing or processing data.
- Archiving jobs that are larger than 256MB requires free space of at least 768MB in drive D.
- The Accounting log should not be printed during processing.

### *Mounting the DFE Shared Volume on a MAC Client*

- A maximum of five client station users can concurrently mount the shared volume of the DFE.

### *CSX 2000 PPD*

- Use the PPD supplied with the most current software (CSX2000.ppd). Other PPDs from previous software versions may cause orientation and processing problems.

### *Job Editor*

- In merged jobs created in the Preview/Job Editor, job parameters that would require a reRIP (e.g. color emulation, orientation change, image quality and imposition templates) cannot be changed.

### *Print Progress Bar*

- The Print progress bar counts the number of pages and not the number of sheets.

### *Color*

- Documents created with vignettes plus curves should use the Original CMYK emulation setting in the Color Tab of the Job Parameters window, to avoid the stepping effect.

### *Importing jobs*

- Jobs must have the appropriate PDL name extension (e.g. \*.ps, \*.pdf, etc.) to be imported to the DFE.

### *Accounting*

- Click on “All” to deselect a row in the accounting log.

### *CMYK Emulation*

- The ICC profiles imported to the system for CMYK emulation should be based on CIE Lab values.

### *Process Queue*

- The process queue cannot be suspended between sets while running “Gallop” mode.

### *Backup Configuration*

- Backup configuration does not include backup of the virtual printers setup. When restoring the system configuration, the virtual printers should be reset manually.

### *Printing Transparencies*

- It is recommended to use Xerox transparencies with the strip of paper on the long edge of the transparency to feed the transparency properly. Select A4 or Letter size only. Although the PPD within some applications may permit A4 SEF or Letter SEF, they are not valid selections.

### *Displaying “Number of Copies”*

- The number of copies may not be displayed correctly in the CSX Color Server Process queue. The correct number of copies is displayed in the Print queue and in the Storage Folder.

### *Running Out of Paper*

- When a duplex job printed with 64-80 gsm paper stops printing prior to completion of the job due to an out of paper condition, the order of the pages within the job may be incorrect. Avoid an out of paper condition when printing with 64-80 gsm paper.

## Variable Information (VI)

### *Reference Documentation*

- Please refer to the Variable Information Customer Expectations Document for the DocuColor 2045/2060CSX specific to the VI application for complete information.

### *VPS orientation*

- Changing the orientation of a VPS job does not change the orientation of the shared elements.
- Letter Duplex VPS files printed in Face Down orientation print Face Up on a per record basis, resulting in a page output sequence of 19, 20, 17, 18, ...etc. The workaround is to select Face Up orientation in the Job Parameter window.

### *VPS Process*

- In some cases, while processing a very complex VI job, the print engine speed may be faster than the RIP speed (i.e., Letter, 100% Variable Image content, Simplex Mode). In this case, the CSX Color Server Gallop mode may be adjusted to allow for uninterrupted printing. It is recommended to allow a sufficient number of records to be processed by increasing the Gallop setup parameter prior to start of print run.
- In general, the DocuColor 2045/2060CSX is capable of efficiently handling variable data jobs in segmented run lengths. Large complex jobs should always be segmented into smaller run lengths to achieve maximum throughput. The exact size of the run length will vary based on the amount of variable coverage and element demographics (size and percentage of variable text vs. images/graphics). As a matter of good practice, customers should always perform regular disk maintenance to ensure trouble free operation.
- VPS files can be processed with high-resolution APR images only.

### *VPS Printing*

- Darwin does not support trapping of VI elements.
- Gallop should be used with “Face Down” print option.

### *VI Print Range*

- Print Range under Print settings tab in the Job Programming window does not support Pre-RIP variable information jobs (both VPS and VIPP format). Once the VI job is processed, the Print Range command can set the range of the printed Ready To Print pages.

### *VPS Image Files*

- EPS files with a clipping path need to have “Use APR Mask from High Res” selected at the CSX Color Server. This is the default. In APR parameter on the Services tab, *Hi-Res* should be checked in the *Use APR Mask from* group box.



- Supported file types utilizing CreoScitex APR feature and CreoScitex PrintXT extension include EPS, TIFF & CT.

**Note:** General Postscript errors may result when CreoScitex PrintXT Xtension is set to perform Image Swap on unsupported file types (i.e. PDF, LZW compressed TIFF, grayscale bitmaps).

- **TIFF with clipping path** for both static and variable images is not supported. Clipping path does not show.
- **TIFF with LZW Compression** - At this time, TIFF with LZW compression images for static and variable elements are not supported, as they print and preview black. VPS Tiff images will be printed blacked out from Darwin.

**Note:** Resave all TIFF files as a PhotoShop TIFFs in MAC byte order with no LZW compression.

### *VI Job Thumbnails*

- Do not attempt to view “Thumbnails” with a multi record VI jobs, as no other jobs can be selected until “Thumbnails” have been generated on all the pages of the of the selected VI job. Do not open thumbnails for VIPP and/or VPS jobs that have been RIPPed and are being held in the Storage folder, unless the user desires to view the “Thumbnails” of the entire VI job.

### *Fonts*

- When changing a Font parameter in Darwin, the user must select the << >> marks along with selected text. Otherwise, the change will not take effect.

### *File Naming Convention*

- Follow all naming conventions as established in the CreoScitex User Manual. Note that improper characters and file names with spaces may cause errors. Examples of improper characters include the following: ! @ # \$ % ^ & \* ( ) - / ? > < ‘ “ ; : ] [ { } \ |. This includes image and job files. In some cases, the CSX Color Server will substitute an underbar ( \_ ) in file names that contain the aforementioned characters, which will result in an inability to call out the Hi-Res image when using APR. As a matter of good practice, all image files and the database file should be scanned for these and fixed prior to creating any Darwin VPS file. It is suggested to use the 8 dot 3 naming convention.

## **Applications**

### *Windows/office*

- Custom page sizes cannot be defined in Microsoft Word for Windows NT and 2000. The value defaults back to Letter size. In case the image is larger than Letter (8.5x11"), the image will be cropped when printed.
- Jobs with Quarto page size (8X10"), landscape orientation, arrive to the CSX Color Server with a portrait orientation and vice versa.

## *QuarkXpress*

- The CSX2000 PPD supports QuarkXpress version 4.0 and higher.
- Jobs with Quarto page size (8X10”), landscape orientation, arrive to the CSX Color Server with a portrait orientation and vice versa.
- To print transparencies from QuarkXpress, first select the page size (A4 or Letter) both in the Page Setup window and from the PPD options. Only then select the media type: Transparency.
- QuarkXpress layout dimensions that are perfectly square (e.g. custom document size 6"x6") and of portrait orientation may either print out Head to Toe (HTT) or have an image shift on the duplex side. The workaround is to select a standard page size in the PPD setup, then to apply Imposition parameters including custom Trim size equal to custom document size in the DFE.

## *PageMaker*

- Landscape PageMaker jobs print Head to Head (HTH) when sent head to toe and vice versa. Also, submit HTH jobs with HTT imposition and vice versa.
- Jobs arrive at the CSX Color Server with the full path name as the job title.
- All operating systems enable selecting custom paper size and transparency, although the printer can only print transparencies in A4 and Letter sizes.
- All operating systems enable selecting custom paper size and tray 1 or 2, although the printer can only print custom paper sizes from tray 3 or 4.
- Custom page sizes cannot be defined in PageMaker for the Macintosh operating system. The value defaults back to Letter size. If the image is larger than Letter, the image will be cropped.

## *Freehand*

- All the values of the PPD parameters sent from the PC version of the application are ignored by the DFE. The default values of the virtual printer are used instead.

## *Adobe Acrobat*

- Adobe Acrobat converts any Landscape file it prints to Portrait (i.e. rotates the file's pages 90 degrees). If the file's orientation needs to be preserved, the file should be printed from the original application in which the file was created (e.g. QuarkXpress).
- When using imposition with a landscape PDF file, the job's images are printed cropped, although the dynamic imposition view in the job ticket shows a legal layout. To obtain the desired output, import the PDF file to the Storage Folder and preview it. In Adobe Acrobat rotate the job pages (Document menu → Rotate Pages...) by 90 degrees and save the file. Submit the file to the Process queue again and it will print correctly.

# Tips and General Information

## *DISK Management*

- The procedure to maintain the image drives is described in the CSX Color Server Installation and Printing Guides. This procedure may be required periodically to delete VI, RTP and associated files from the Image drives, or if the drives become fragmented.
- To format the Image drives, first delete all jobs in the CSX Color Server storage folder and exit the CSX Application. Click on Start and scroll up to CSX 2000 → CSX 2000 Tools → Format Image Drives. Follow the on-screen prompts.
- After three days of running and deleting VI jobs, it is good practice to “clean up” the storage folder by running the 3-minute "Format Image Disks" software routine. It will remove any file fragments that remain and will also delete all jobs resident in the storage folder.

## *Error Reporting: If a Postscript File Fails to Process*

- If PS files fail to RIP, try these steps to determine where the problem is:
  - First, try to preview the PS file. Adobe Acrobat will open and preview the image.
  - If the image does not preview and Adobe displays an error, then the PS file is incorrect. Make sure the job was sent using the correct printer drivers and PPD.
  - If the job previews OK but still fails in RIP, verify that there are no conflicting job parameters.

## *Font Substitution*

- When a font substitution is performed the message appears in the job history of the specific file.

## *Embedded ICC Profiles*

- Adobe and the CSX Color Server do not support ICC profiles embedded within an RGB TIFF. Use EPSF or PhotoShop CT file format to handle the color conversions.

## *Preview*

- To preview PS or PDF files from the CSX Color Server, use the file/import function in the CSX Color Server workspace, once the file is imported it can be previewed and printed.

## *Cached VI Elements*

- This procedure can be used to delete cached elements at the CSX Color Server User Disk. When resubmitting a job with VI elements that have previously been cached, the cached VI elements do not rotate along with orientation changes that have been made at the client. This procedure is also described in detail in The CSX Color Server Installation and Printing Guides.
  1. At the CSX workspace, click on the Admin icon.
  2. Click on Resource Manager.
  3. Click on VI Elements.
  4. Delete or archive the job directory containing the relevant cached elements.

## *Imposition*

- Margins may not be adjusted independently for each side of the document. It is a universal adjustment.
- Ordering of VI elements through the stack (i.e. numbered or serialized documents) on Step and Repeat imposition jobs is not automatically implemented in any of the templates. A potential workaround is to impose the document in Quark and add fields to the database file, (containing serial numbers, etc...), which can then be assigned to a particular layout placement on the sheet.