



LPR Printing

Spire Color Servers

Document Author: Jane Rosen

Date: December 2000

Description: How to Configure LPR Printer in Windows NT 4.0

Configuring an LPR Printer on Windows NT 4.0

The following procedure describes how to configure an LPR printer in Windows NT 4.0 for printing to the Spire Color Servers. This procedure is suitable for all Spire Color Server platforms (CSX130 & CSX2000).

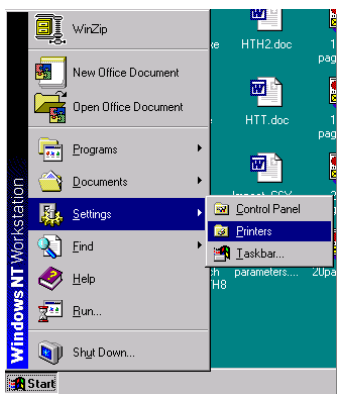


Before you begin:

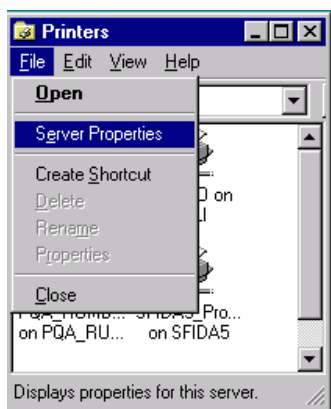
The following items must be installed and configured on the Windows NT 4.0 client workstation (Server or Workstation version) before you begin:

- TCP/IP protocol
- Microsoft TCP/IP Printing service
- Latest Adobe PS Printer Driver (you can download the latest version free from www.adobe.com).

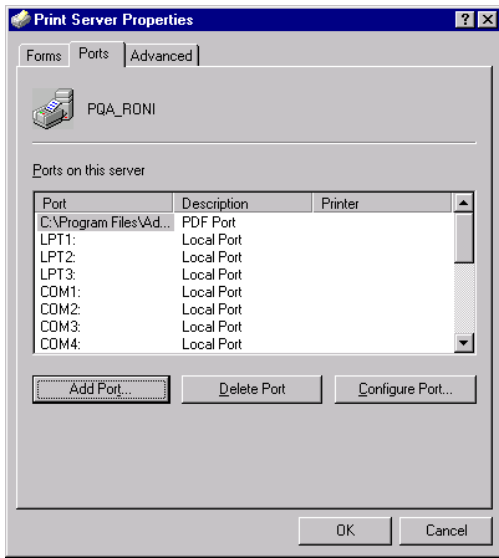
1. From the **Start** menu, select **Settings** → **Printers**.



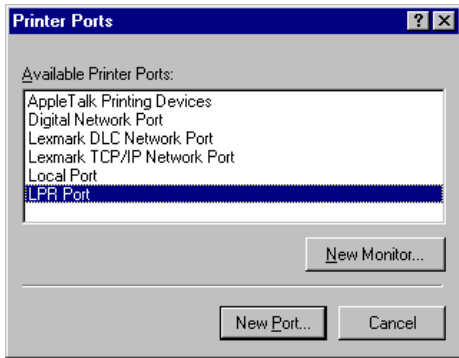
2. From the **File** menu, select **Server Properties**.



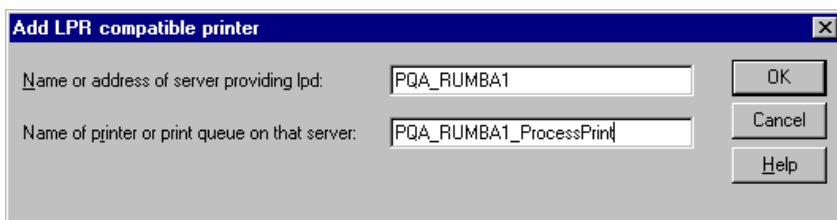
3. Select the **Ports** tab and then click **Add Port**.



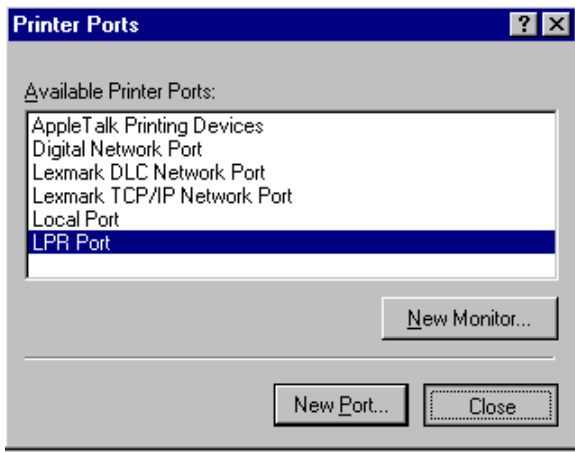
4. From the list of available ports select **LPR Port**.



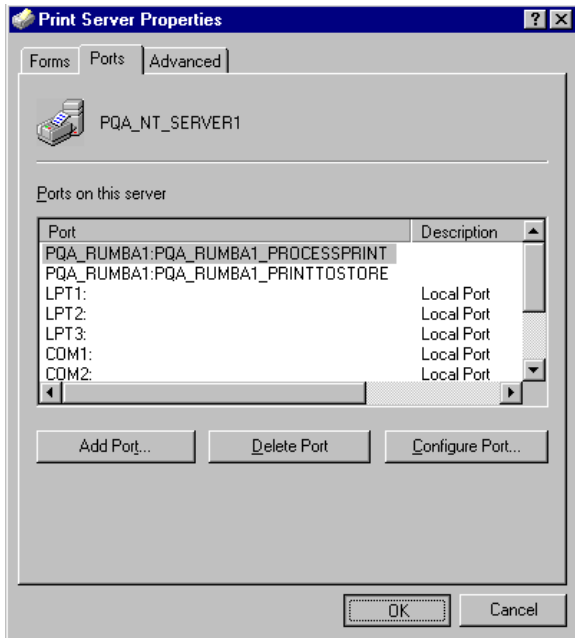
5. Enter the exact name of the Spire Color Server (this field is case-sensitive), for example, PQA_RUMBA1 in the **Name or address of server providing lpd:** field. Then enter the exact name of the Virtual Printer you wish to print to (you can view the exact name of the printer on the Spire Color Server, under Admin → Resource Manager → Virtual Printers). In this example enter the Virtual Printer name, PQA_RUMBA1_ProcessPrint. Click **OK** when you are done.



6. When you have finished click **Close**.



7. You will now see the port added in the list. Click **OK** to close the Print Server Properties window.

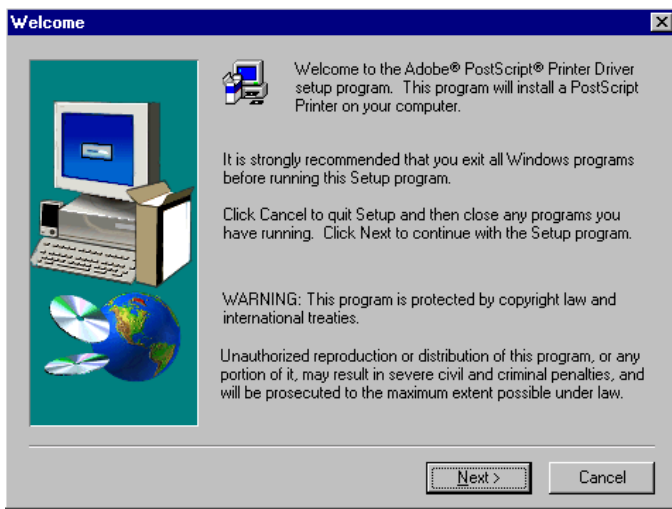


The next step is to define the LPR printer using the Adobe PostScript Printer driver application.

1. Launch the Adobe PostScript Driver application (you can download this application from Adobe's Web site at www.adobe.com).



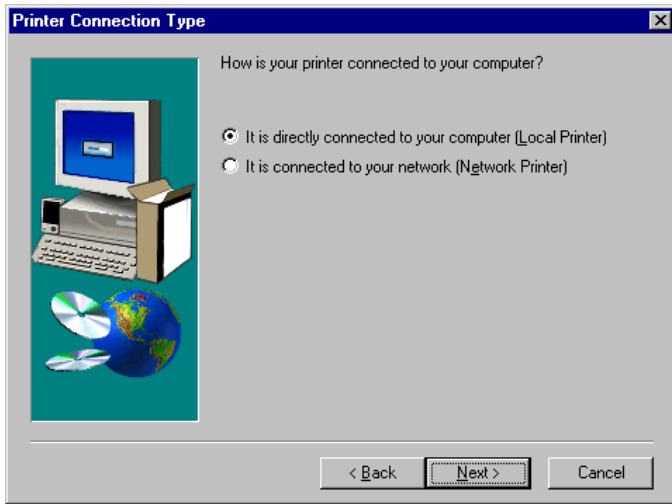
2. When the welcome message appears on the screen click **Next**.



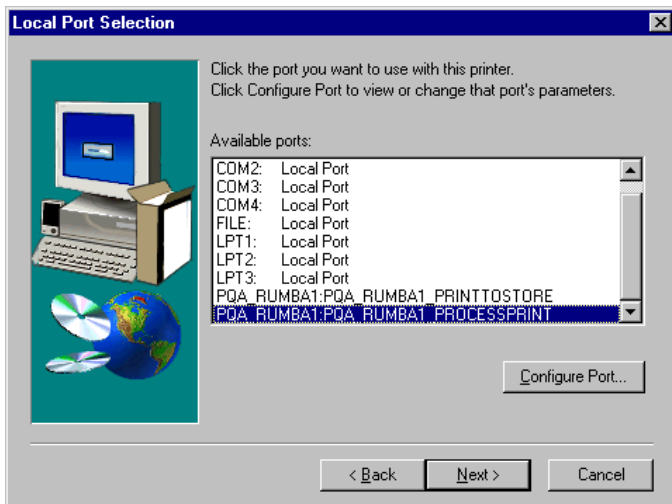
3. Click **Accept** to accept the license agreement



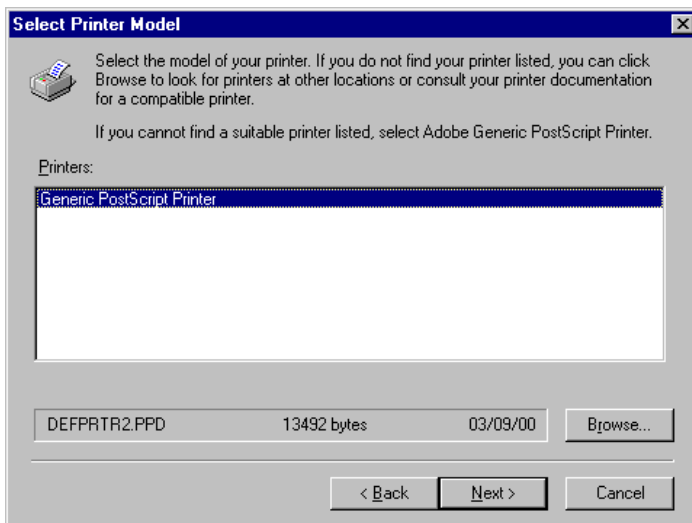
4. Select *It is directly connected to your computer (Local Printer)*, then click **Next**.



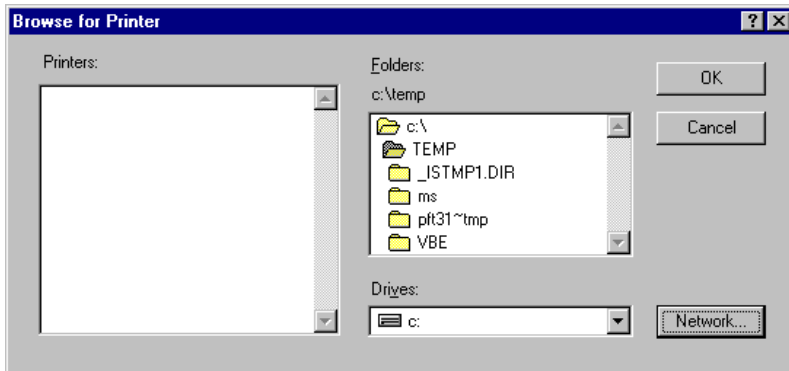
5. Select the LPR port you defined earlier on, e.g., PQA_RUMBA1, and then click **Next**.



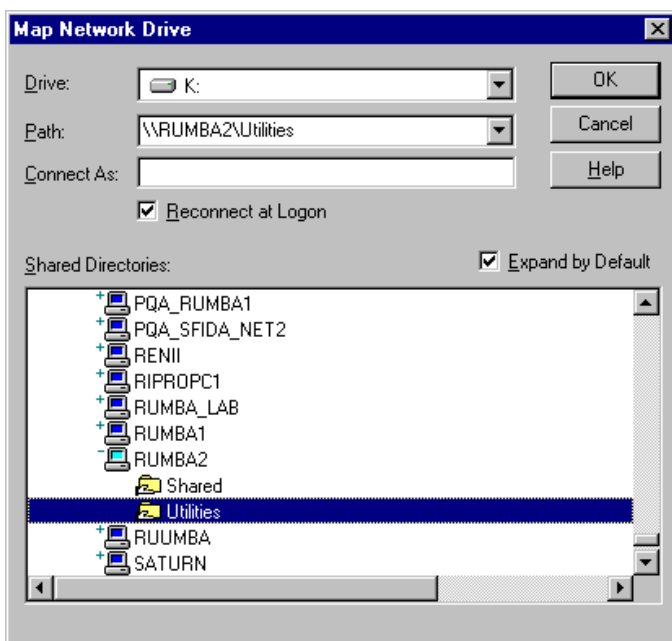
6. The next step is to configure the printer with the Spire PPD. The Spire PPD (CSX2000 or Impact CSX) is located in a shared folder on the Spire Color Server. When the following window appears click **Browse**.



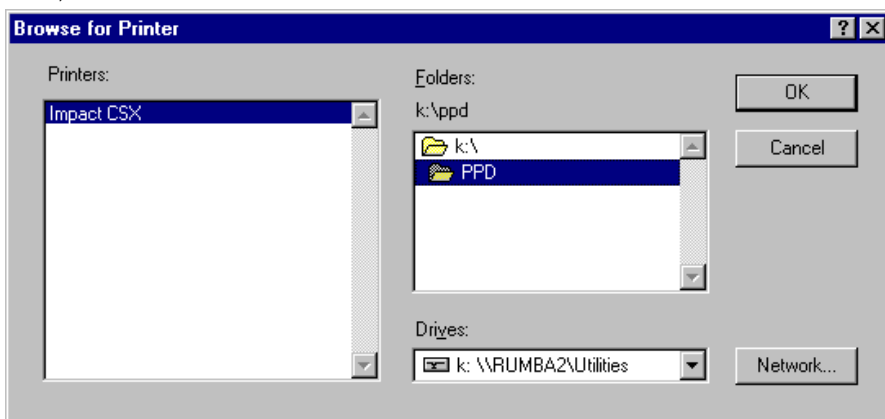
7. Click **Network** and browse to your Spire Color Server.



8. Once you have located the Spire Color Server, double click on the server icon and then double click on the Utilities folder. Click **OK** when you are done.

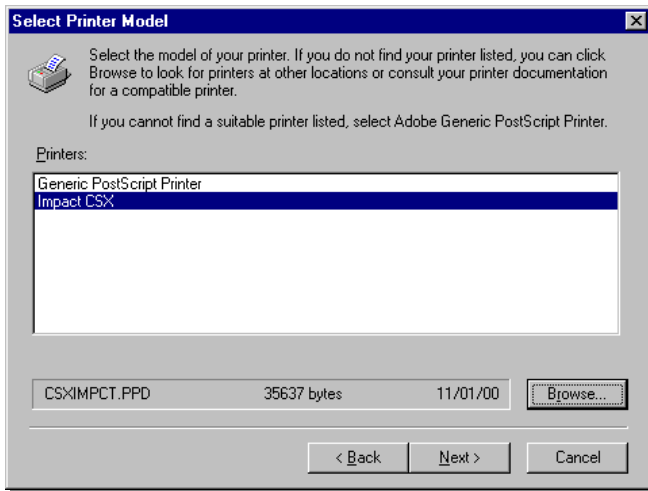


9. Double click on the PPD folder and then select the Spire PPD (CSX2000 or Impact CSX)

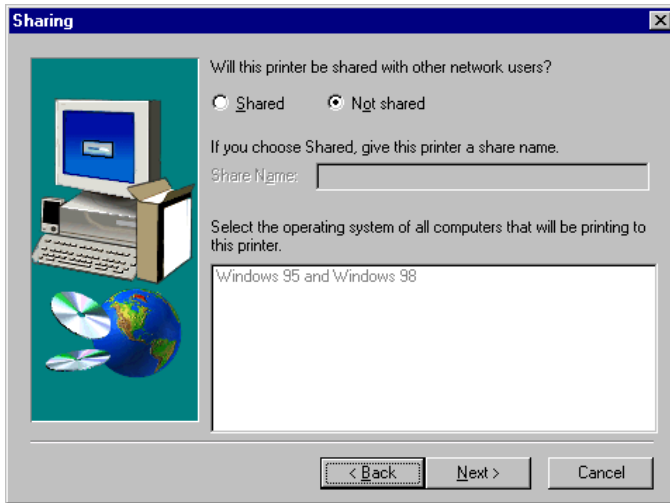


10. Click **OK** when you are done.

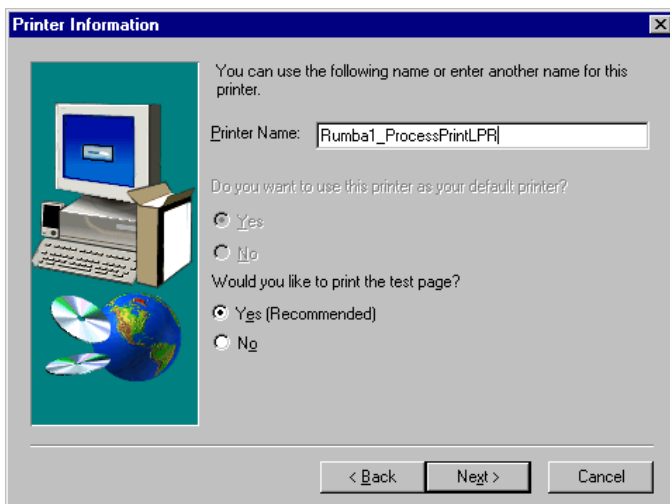
11. In the list of Printer Models select the Spire PPD (CSX2000 or Impact CSX) and then click **Next**.



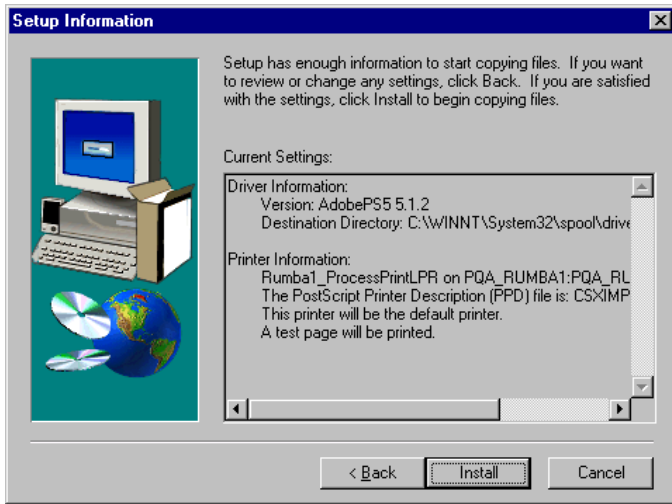
12. Select **Not Shared** and then click **Next**.



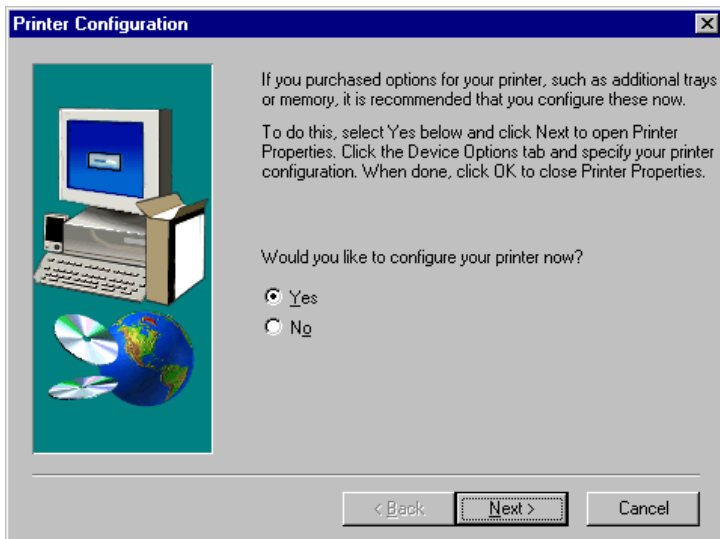
13. Enter a name for the printer which you will be able to identify on the client workstation, for example Rumba1-ProcessPrintLPR. Select Yes if you want to print a test page or select No, then click **Next**.



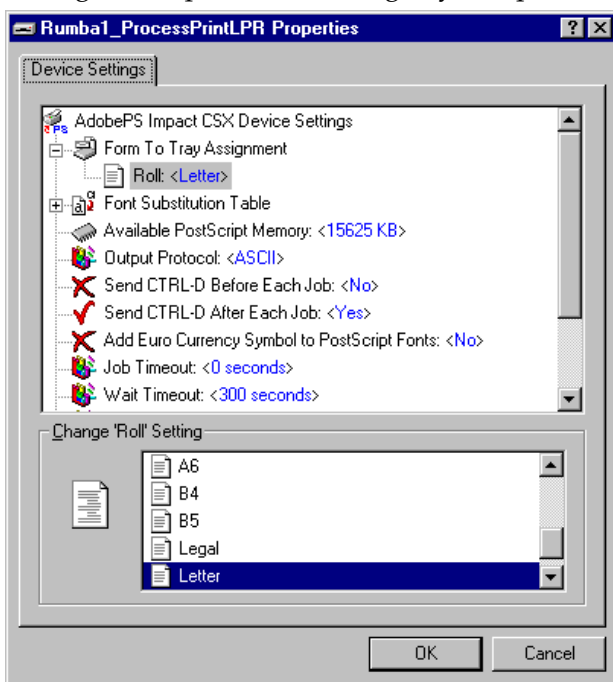
14. Click **Install** to install the LPR printer with the Spire PPD.



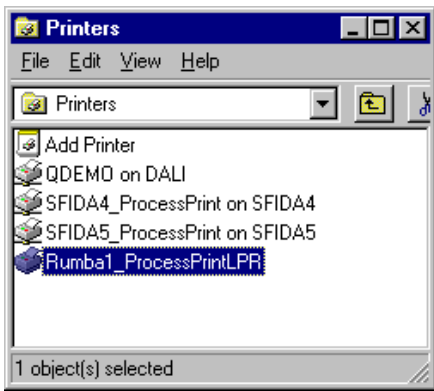
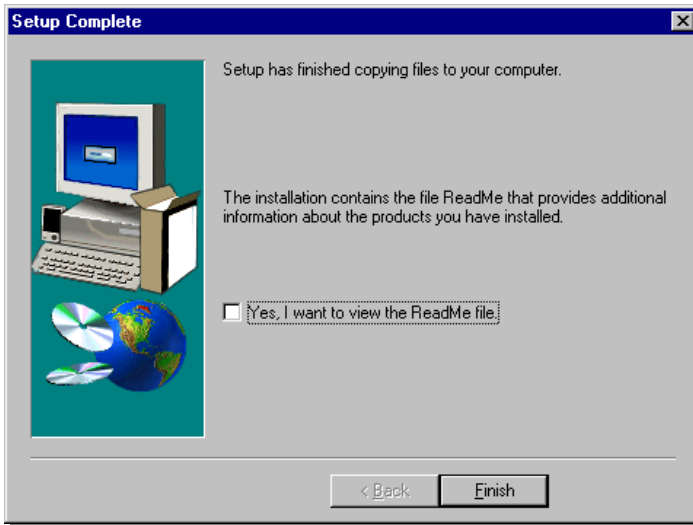
15. When prompted to configure the printer, click **Yes** and then click **Next**.



16. Configure the printer according to your specifications and then click **OK**.



17. Click **Finish** to complete the setup.



18. The new LPR printer is now listed with your other printers on the Windows NT client workstation. You are now ready to print to the Spire Color Server using LPR.