



# Release Notes

English

## **Spire CXP8000 Color Server for Xerox DocuColor 8000 Digital Press**

**Version 1.0**

This page intentionally left blank

## Copyright

Copyright © 2004 Creo Inc. All rights reserved.

No copying, distribution, publication, modification, or incorporation of this document, in whole or part, is permitted without the express written permission of Creo. In the event of any permitted copying, distribution, publication, modification, or incorporation of this document, no changes in or deletion of author attribution, trademark legend, or copyright notice shall be made.

The text and drawings herein are for illustration and reference only. The specifications on which they are based are subject to change. Creo Inc. may, at any time and without notice, make changes to this document. Creo Inc., for itself and on behalf of its subsidiaries, assumes no liability for technical or editorial errors or omissions made herein, and shall not be liable for incidental, consequential, indirect, or special damages, including, without limitation, loss of use, loss or alteration of data, delays, or lost profits or savings arising from the use of this document.

No part of this document may be reproduced, stored in a retrieval system, published, used for commercial exploitation, or transmitted, in any form by any means, electronic, mechanical, photocopying, recording, or otherwise, without the express written permission of Creo Inc.

This document is also distributed in Adobe Systems Incorporated's PDF (Portable Document Format). You may reproduce the document from the PDF file for internal use. Copies produced from the PDF file must be reproduced in whole.

## Trademarks

The Creo wordmark, Creo logo, and the names of the Creo products and services referred to in this document are trademarks of Creo Inc.

Adobe, Acrobat, the Acrobat logo and PDF are registered trademarks of Adobe Systems Inc., and are registered in the US Patents and Trademark Office and may be registered in other jurisdictions.

Apple, AppleTalk, AppleShare, EtherTalk, LocalTalk, Macintosh, and Laserwriter are trademarks of Apple Computer Inc. Microsoft, Microsoft Windows NT, Microsoft Windows 2000, and Windows are trademarks or registered trademarks of Microsoft Corp.

XEROX®, The Document Company®, the digital X®, and DocuColor are trademarks of XEROX CORPORATION.

Other brand or product names are the trademarks or registered trademarks of their respective owners.

## FCC Compliance

The Creo equipment referred to in this document complies with the requirements in Part 15 of FCC Rules for a Class A computing device. Operation of the Creo equipment in a residential area may cause unacceptable interference to radio and TV reception, requiring the operator to take whatever steps are necessary to correct the interference.

## Limitation of Liability

The product, software or services are being provided on an "as is" and "as available" basis. Except as may be stated specifically in your contract, Creo Inc. expressly disclaims all warranties of any kind, whether express or implied, including, but not limited to, any implied warranties of merchantability, fitness for a particular purpose and non-infringement.

You understand and agree that Creo Inc. shall not be liable for any direct, indirect, incidental, special, consequential or exemplary damages, including but not limited to, damages for loss of profits, goodwill, use, data or other intangible losses (even if Creo has been advised of the possibility of such damages), resulting from: (i) the use or the inability to use the product or software; (ii) the cost of procurement of substitute goods and services resulting from any products, goods, data, software, information or services purchased; (iii) unauthorized access to or alteration of your products, software or data; (iv) statements or conduct of any third party; (v) any other matter relating to the product, software, or services.

Creo Inc.  
3700 Gilmore Way  
Burnaby, B.C., Canada  
V5G 4M1  
Tel: (1) (604) 451-2700  
Fax: (1) (604) 437-9891  
<http://www.creo.com>

739-00095A-EN  
August 2004

## Patents

This product is covered by one or more of the following U.S. patents:

RE37376	5247174	5420702	5625766	5854883	6031932	6181362
4456924	5247352	5420722	5636330	5861904	6043865	6181439
4500919	5249067	5459505	5649220	5861992	6060208	6186068
4558302	5283140	5473733	5650076	5864651	6063528	6189452
4743091	5291273	5481379	5652804	5875288	6063546	6191882
4992864	5296935	5488906	5680129	5894342	6072518	6204874
5049901	5313278	5497252	5691823	5900981	6090529	6208369
5079721	5323248	5508828	5691828	5934196	6096461	6214276
5081617	5325217	5509561	5696393	5942137	6098544	6217965
5103407	5331439	5517359	5699174	5946426	6107011	6252522
5111308	5333064	5519852	5699740	5947028	6112663	6260482
5113249	5339176	5526143	5708736	5958647	6115056	6266080
5122871	5343059	5532728	5713287	5966504	6121996	6266134
5124547	5355446	5561691	5739819	5969872	6130702	6267054
5132723	5359451	5568595	5742743	5973801	6134393	6268948
5150225	5359458	5576754	5764374	5986819	6136509	6283589
5153769	5367360	5579115	5764381	5995475	6137580	6295076
5155782	5367388	5592309	5771794	5996499	6147789	
5157516	5384648	5594556	5785309	5998067	6158345	
5177724	5384899	5600448	5802034	6003442	6159659	
5208818	5412491	5608822	5813346	6014471	6164637	
5208888	5412737	5615282	5818498	6016752	6180325	

## Contents

Software Kit Contents.....	1
Software Installation.....	1
New Features .....	2
Windows XP Operating System .....	2
New Acrobat Version (6.0).....	2
PDF 1.5 .....	2
Job Info from PPD .....	2
New Printer Screens .....	3
Windows Logo Certification (WHQL).....	3
Job Definition Format Support .....	3
OpenType Font Downloads.....	4
VIPP 5.1 .....	4
Sharpening Edges .....	4
Custom Paper Profiles .....	5
OCT Offset .....	6
Job Title Recognition.....	7
Connectivity to FreeFlow Prepress Suite .....	8
Enhanced Brisque Connectivity .....	9
Tips for Using the Spire CXP8000 Color Server.....	10
Running Antivirus Software.....	10
Printing a DCS File.....	10
Setting Collation Options .....	10
Reverting to the Default Normal or Saturated Calibration Table .....	11
Embedded ICC Profiles .....	11
CMYK Emulation.....	11
Ensuring Font Substitution .....	11
Selecting Staple Options.....	12
Setting the Image Size to Trim Size Ratio in Imposition .....	12
Printing From a Macintosh Computer: Driver Requirements.....	12
Printing From Windows: Driver Requirements.....	12
Choosing a System Disk for Operations.....	13

---

Creo Spot Colors XT Version 2.3.1.....	13
Deactivating OPI .....	13
Printing an Area of 12 × 18 inches .....	13
Web Viewer .....	13
Spire DC8000_COM Destination Profile .....	13
Spire Printing Over TCP/IP From Macintosh .....	14
Coated Paper .....	14
Spire CXP8000 Color Server Limitations .....	14
Admin Page .....	14
Merged RTP Jobs .....	15
Progressive JPEG Images .....	15
Hot Folders .....	15
Exceptions for Imposed Jobs .....	15
Mapping Option in Profile Manager.....	15
Dynamic Page Exceptions Support .....	16
Imposed Sheet Range .....	16
Image Noise.....	16
Imposed Sheet View .....	16
Export as Insite .....	16
Novell Banner Page .....	16
Image Scale.....	17
Fit to Sheet Size in Imposition.....	17
LPR Printing .....	17
Mixed Paper Size in a Job .....	17
Front and Back Cover for Saddle Stitch .....	17
Backup and Restore Configuration.....	17
Variable Information (VI).....	18
Retrieving Jobs .....	19

This page intentionally left blank

---

## Software Kit Contents

The software kit includes three CD-ROMs (CD-ROM #1A, CD-ROM #1B, CD-ROM #2, and CD-ROM #3). Each CD is described below.

### CD-ROM #1 (A&B)

This CD includes the Microsoft® Windows® XP® Professional operating system with a customized menu for reinstalling the Spire™ CXP8000 color server.

**Note:** This version includes Internet Explorer 6.0 and Service Pack 1.0.

### CD-ROM #2

This CD contains the Spire CXP8000 color server software (setup files, PPD files, printer drivers, and utilities).

### CD-ROM #3

This CD contains the utilities, and the *Spire CXP8000 Color Server for Xerox DocuColor 8000 Digital Press User Guide*.

The CD has both Macintosh® and Windows partitions and can be mounted on both platforms. You can copy the *Spire CXP8000 Color Server for Xerox DocuColor 8000 Digital Press User Guide* to any client workstation that has a CD-ROM drive and send the guides to any printer.

**To print the Spire CXP8000 Color Server for Xerox DocuColor 8000 Digital Color Press User Guide using the Spire CXP8000 color server software:**

1. Make sure that the Spire CXP8000 color server workspace is open; then insert CD-ROM #3 (*Spire CXP8000 Color Server Documentation and Utilities*) into the Spire CXP8000 color server CD-ROM drive.
2. From the **Job** menu, select **Import Job**.
3. Locate the CD, and select a file.
4. Click **Add to List**, using the Green Arrow button  
The file appears on the lower side of the **Import** dialog box.
5. Click **Import**.  
The selected file is submitted to the Spire CXP8000 color server to print.

## Software Installation

For Spire color server software issues, contact your customer service and technical support.

## New Features

### Windows XP Operating System

The Spire CXP8000 color server now runs on the Windows XP Professional operating system.

**Note:** It is highly recommended that a technical engineer perform all operating system and system administration activities—for example, reinstallation and system backup and restore.

### New Acrobat Version (6.0)

The Spire CXP8000 color server includes the new Adobe® Acrobat® version 6.0 standard edition.

### PDF 1.5

The Spire CXP800 color server now supports the Adobe PDF 1.5 file format.

### Job Info from PPD

You can now enter free text to the following fields from the Spire color server PPD file (Windows client workstations only):

- Account
- Recipient
- Comments

When you submit the job to the Spire color server, the added text will automatically be copied to the relevant fields in the **Job Info** parameter (Job Parameters window).

#### **Limitations:**

- Job Info is not available for Adobe PageMaker® software that runs on Windows XP and Windows 2000.

- Job Info fields can contain up to 127 characters.

## New Printer Screens

The new printer screens are: Dot 150, Dot 200, Dot 300, Dot 600, Line 200, and Stochastic screens. These are available both in the Job Parameters window (**Color** tab > **Screening**) and in the Settings Window under **Preferences** > **Color**.

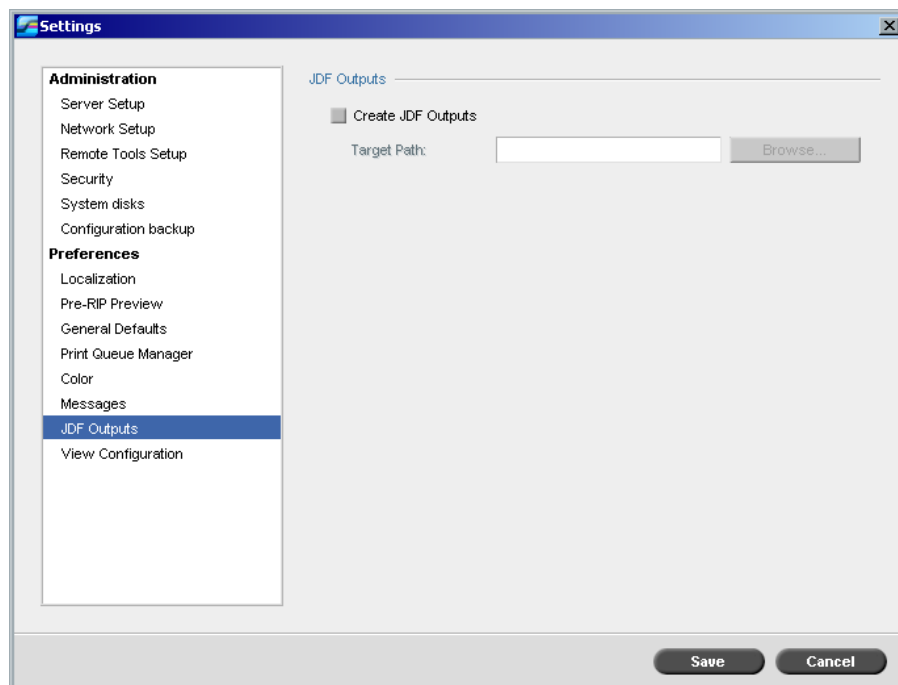
## Windows Logo Certification (WHQL)

The Spire CXP8000 color server is now certified in the Microsoft Windows logo program, and is registered in the software program site.

## Job Definition Format Support

The Spire CXP8000 color server now supports Interoperability Conformance Specification (ICS) level 1 Job Definition Format (JDF) input. JDF allows third-party software to create custom workflows via JDF programming. More information on how to connect to the Spire color server via JDF is available through Creo channels.

The output path is set via the Settings window.



## OpenType Font Downloads

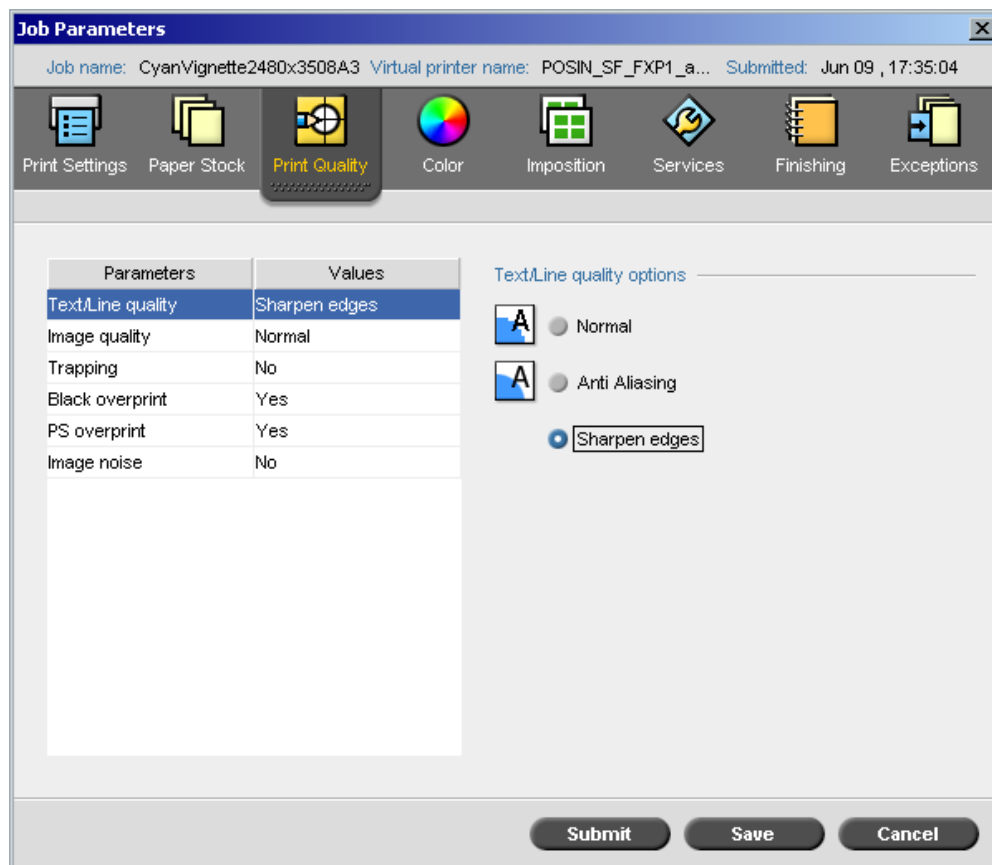
The Spire CXP8000 color server now supports downloading of the cross platform OpenType™ font format.

## VIPP 5.1

The Spire CXP8000 color server supports variable information jobs in Xerox® VIPP version 5.1 format.

## Sharpening Edges

The Spire CXP8000 color server now provides an additional method to sharpen the edges of text and graphics. This method is mutually exclusive to the current anti-aliasing method, and uses a different technology to achieve smooth text results.



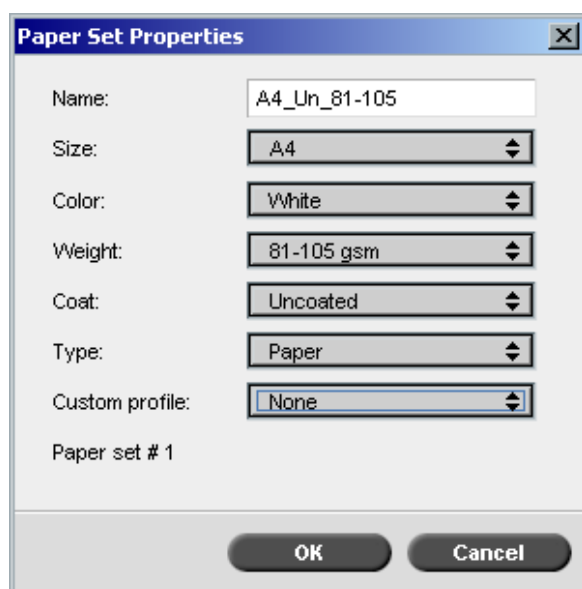
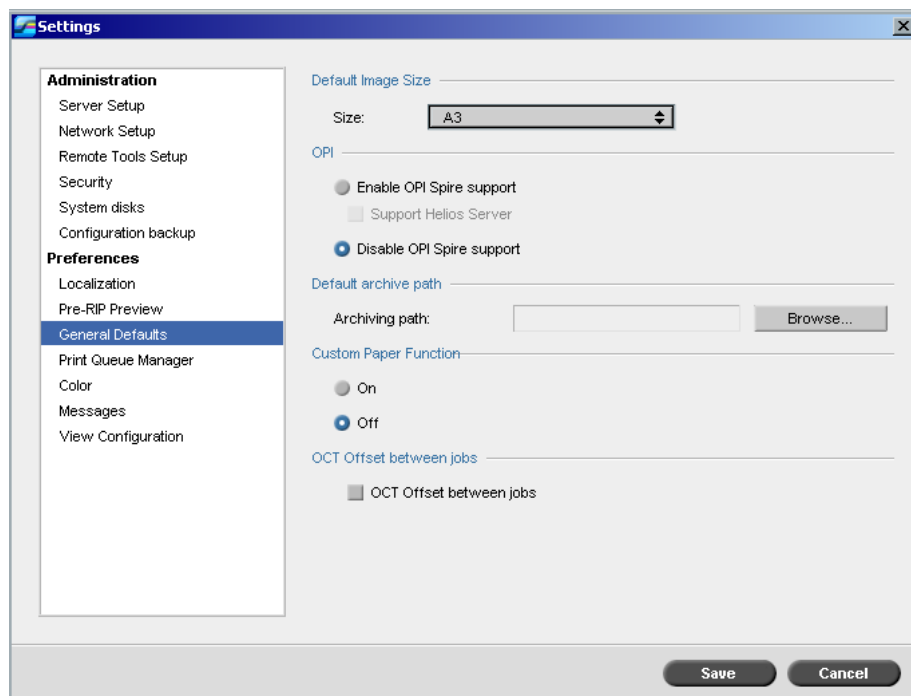
## Custom Paper Profiles

The Spire CXP8000 color server supports the DocuColor custom paper profiles, and enables you to map a custom paper profile to a paper set. Select the **Off** option in the Settings window to clear the **Custom Paper Function**.

When you define custom profiles, make sure that the **Coating** and **Weight** parameters that you select in the Job Parameters window correspond to the same values in the profile. This ensures that the correct profile is applied.

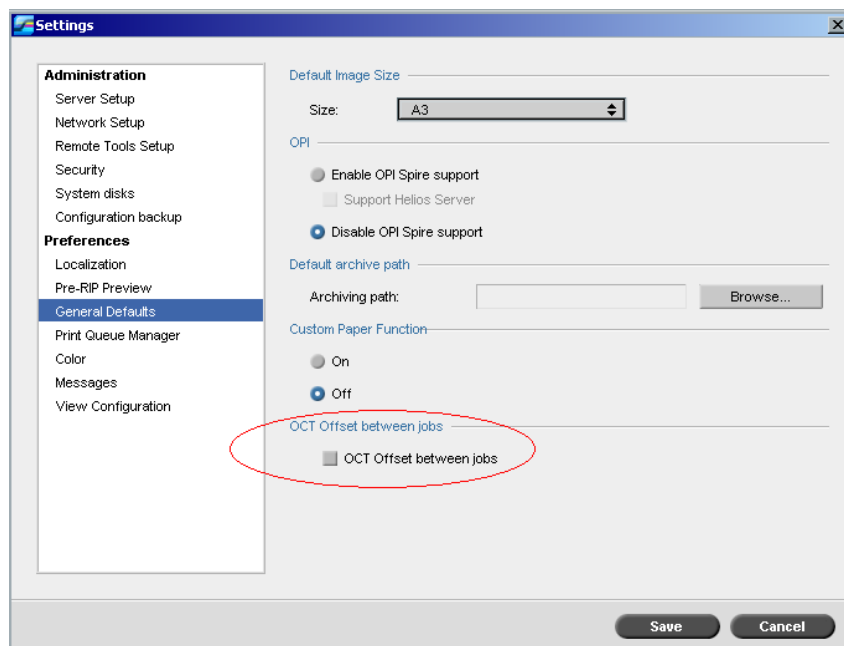
Make sure that the parameters you select from the printer are from **Base Range of Paper Type**.

For more information on Custom Paper Profiles, see the *DocuColor 8000 System Administration Manual*.



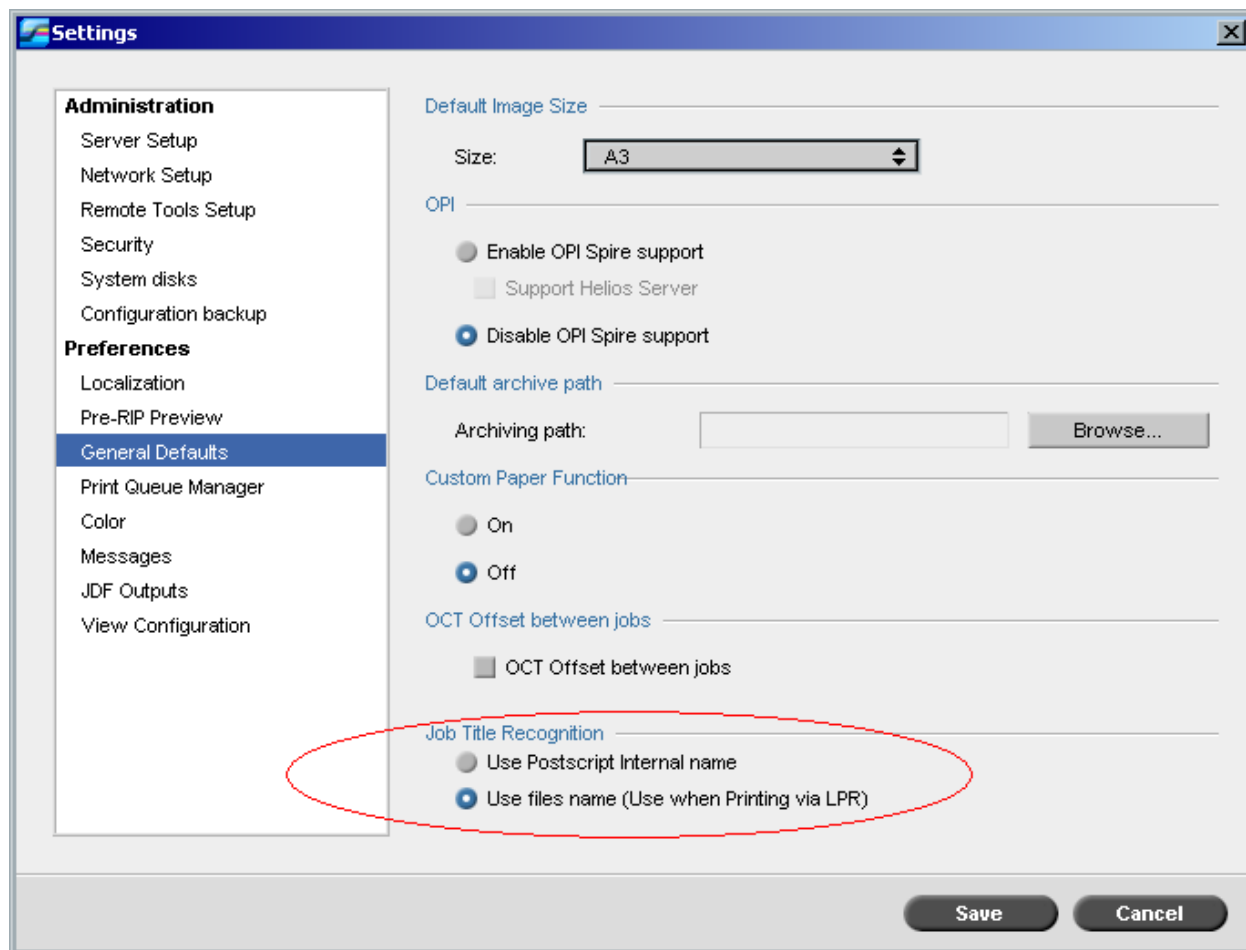
## OCT Offset

The Spire CXP8000 color server enables you to control the offset function in the Offset Catch Tray (OCT) either between jobs on a system level or inside one job between sets. This feature is available both in the Job Parameters window and in the Settings window.



## Job Title Recognition

When you submit files to be printed via the LPR mechanism, the Spire CXP8000 color server enables you to control the job name generation. The job name is created either from the file name or from the Adobe Postscript<sup>®</sup> code. Select either option in the Settings window under **Preferences > General Defaults**.



## Connectivity to FreeFlow Prepress Suite

In the FreeFlow™ Makeready, Web Services or Process Manager applications, you can set job parameters, and then submit the file directly to the Spire color server.

The Spire color server receives the FreeFlow job parameters and automatically converts it to the Spire job parameters.

The parameters that are available on the FreeFlow include for example—number of copies, duplex printing, image position, paper stock properties, finishing devices, page exceptions, covers and inserts.

## Enhanced Brisque Connectivity

In addition to being able to import a Brisque job to the Spire color server (either through the Import window or by dragging a file to one of the Spire hot folders), you can now submit jobs directly from the Brisque to the Spire color server.

The Brisque Spire Atom enables you to submit Brisque jobs (including Brisque impojob) directly from the Brisque to the Spire color server.

This workflow is based on Unix connectivity and requires the installation of Microsoft Service for Unix software (SFU).

After the SFU installation is complete, the **Send** option from the Brisque File Manager is available to the Spire color server hot folders or shared volumes.

### Notes:

- The Spire color server does not support PSM (Brisque station on Mac platforms).
- The Brisque Spire Atom feature is available with Brisque version 5.1

---

## Tips for Using the Spire CXP8000 Color Server

### Running Antivirus Software

The Spire CXP8000 color server was successfully tested with McAfee® VirusScan® 7.0 for Windows XP Professional server antivirus software. Avoid using the automatic scanning mode and activate the antivirus software only when the Spire CXP8000 color server application is closed.

Before you install the Spire CXP8000 color server, make sure that you close all other applications, including antivirus applications.

**Note:** McAfee VirusScan is not included in the software kit.

### Printing a DCS File

The Spire CXP8000 color server can process input files with embedded DCS1 or DCS2 (Adobe Photoshop®) format files.

**To print a DCS file:**

1. Place the DCS file in a desktop publishing application, such as QuarkXPress® or Macromedia FreeHand® software.
2. Copy the DCS file to the Spire CXP8000 color server **High Res** folder (**D:\Shared\High Res**).
3. In the Job Parameters window or in the PPD, select the **Print Quality** tab.
4. In the **PS Overprint** options, select **Yes**.
5. Print the file in composite mode.

**Note:** You can use a different path for the high-resolution DCS files. Make sure you add the path to the Creo APR search paths on the **Services** tab in the Job Parameters window.

### Setting Collation Options

Most printer drivers and Microsoft Office applications support a collation option. To receive properly collated or stapled output, clear the **Collate** option in both the print driver and the application, and then select the **Collate** option in the PPD file.

## Reverting to the Default Normal or Saturated Calibration Table

If the **Normal** or **Saturated** calibration table has been edited, and you wish to revert to the Spire CXP8000 color server default calibration table, perform the following steps:

1. From the **Tools** menu, select **Calibration**.  
The Calibration window appears.
2. From the **Calibration Name** list, select **SpireNormal** or **SpireSaturated**.
3. Click **Edit**.  
The Edit Calibration window appears.
4. Click **Save As**.  
The Save As dialog box appears.
5. In the **File Name** box, type Normal or Saturated.
6. Click **OK**.  
A message appears.
7. Click **Yes**.

## Embedded ICC Profiles

Adobe and the Spire CXP8000 color server support PostScript color management, CSA and CRD workflows. The CSA is extracted from the ICC profile only when you select PostScript color management in your DTP application. The Spire CXP8000 color server uses the embedded CSA when you set the **RGB Workflow** or **CMYK Workflow** parameters to **Use Source CSA** (Job Parameters window > **Color** tab).

## CMYK Emulation

Avoid ICC profile names that contain spaces or the improper characters. Examples of invalid characters are as follows: ! @ # \$ % ^ & \* ( ) - / ? > < ' " ; : ] [ { } \

## Ensuring Font Substitution

If the Spire CXP8000 color server fails to substitute fonts and aren't printed in the output, clear the **Font Substitution Off** check box in the virtual printer.

## Selecting Staple Options

Regardless of whether the image orientation is set to Portrait or Landscape, the available staple options include both Portrait and Landscape. Be sure to select the staple orientation option that matches your image orientation. If you do not, the image might be cropped.

## Setting the Image Size to Trim Size Ratio in Imposition

Make sure that the ratio of image size to trim size is less than 3.0. If the value is greater, the job might fail to print. For example, do not place two tabloid size images that are trimmed to letter size on a tabloid size sheet.

## Printing From a Macintosh Computer: Driver Requirements

The supported Mac OS® is 9.x. and later. The recommended printer driver depends on the version of the operating system that you use. Unknown problems can occur if other drivers are used.

<b>Mac</b>	<b>Recommended Printer Driver</b>
9.x. and higher	LaserWriter 8.7

The Spire CXP8000 color server does not require any driver installation for Mac OS X. To print to the Spire CXP8000 color server from Macintosh OS X, use the Print Center application, and then select **Add** to add the virtual printer.

## Printing From Windows: Driver Requirements

<b>Windows</b>	<b>Recommended Printer Driver</b>
Windows NT®, 2000®, XP	Adobe PostScript Driver 5.2.1
Windows ME®	Adobe PostScript Driver 4.5.2

Windows NT and 2000 clients may be required to log on to the Spire CXP8000 color server printer after rebooting or when logging on as a different user. The default logon name is *operator* and the password is *spire*.

---

## Choosing a System Disk for Operations

Do not perform any operations, such as archiving, on disk C. Perform these operations on disk D.

## Creo Spot Colors XT Version 2.3.1

It is recommended not to work with Creo Spot Colors XT version 2.3.1XTension when you use QuarkXPress.

## Deactivating OPI

When you use Creo APR in the Spire CXP8000 color server make sure that the OPI XTension in QuarkXPress is not active. Alternatively, in the Settings window > **Preferences** > **General Defaults**, clear the **Enable OPI Spire Support** check box.

## Printing an Area of 12 × 18 inches

Use paper that is 12.6 × 19.2 inches to print a full print area of 12 × 18 inches.

## Web Viewer

To connect to the Spire CXP8000 color server from a Macintosh client workstation, use the Spire CXP8000 color server IP address. You can obtain the IP address from the Spire CXP8000 by clicking on the **DFE Monitor** > **Network** tab.

The Web Viewer runs only on Explorer 5.0 browsers and higher and is suitable for both Macintosh and Windows platforms.

## Spire DC8000\_COM Destination Profile

If a job that contains shades of blue does not print to your satisfaction—for example, the blue shades appear too purple—use the predefined SpireDC8000\_COM destination profile, and then use the required emulation.

---

## Spire Printing Over TCP/IP From Macintosh

The Spire over TCP/IP connection enables Macintosh clients to print jobs to the Spire CXP6000 color server over a TCP/IP protocol. This connection allows a significantly higher spooling speed.

To set up TCP/IP printing from the Macintosh, download the **Choose Spire Over IP** installer from the Spire CXP8000 color server **D:\Utilities** folder. For more information see the *Spire CXP8000 Color Server User Guide*.

To enable the Spire Over TCP/IP connection, a Macintosh OS version 9.x or higher, with an installed LaserWriter application version 8.6 or higher, or AdobePS 8.8 or higher is required. If you do not have a compatible LaserWriter application installed, you can download this application from the Spire CXP8000 color server, under D:\Utilities\Mac utilities folder.

## Coated Paper

Be sure the coated paper media weight programmed in the Job Ticket or ppd matches the actual weight set in the DocuColor Digital Press.

## Spire CXP8000 Color Server Limitations

### Admin Page

- When you print the **Admin Page**, the **Color Server Name** box displays the name of the color server as it appears on a Macintosh client workstation and displays the client workstation name as it appears on a Windows client workstation.
- When you print the **Admin Page**, the **Sender Name** box displays the owner name as it appears on the Macintosh OS 9.x client workstation and displays the user name as it appears on Macintosh OS X.
- In imposition, when you select the **Fit to Page** option for the **Admin Page**, the image scale changes.
- The **Admin Page** is printed only in English.
- Updates to the Admin page will require the job to be re-processed after making changes in the Job ticket parameters.

---

## Merged RTP Jobs

After you merge jobs in the **Job Preview & Editor** tool, do not change any job parameters that require re-RIPing, such as **Color Emulation**, or **Image Quality**, or **Imposition template** changes that require a 90 degree rotation.

## Progressive JPEG Images

Progressive JPEG images are not supported.

## Hot Folders

- You cannot import TIFF files to the Spire Color Server via a hot folder.
- Submit Brisque jobs under **foldername.job** and not just the **.assign** file.
- Submit single pages of a Brisque job under **foldername.p**.
- In Windows 98, if the printer name is more than eight characters; the hot folder name and icon do not appear.
- In Windows ME, if the printer name is more than 11 characters; the hot folder name and icon do not appear.

**Note:** You may save these virtual printers under a shorter name and use their corresponding hot folders instead.

## Exceptions for Imposed Jobs

- When you use the **Step & Repeat** template with the **Cut & Stack** option, the **Exceptions** tab is unavailable.
- In imposition, you cannot set paper size as an exception.
- In imposition, do not use the **Front cover** or **Back cover** parameters to print front or back covers. Instead, use the **Exceptions** tab in the Job Parameters window, and specify sheet number one as an exception in the job.

## Mapping Option in Profile Manager

The Mapping feature doesn't always function as expected in this version; destination profiles that are assigned to specific paper colors do not take effect on the print results.

## Dynamic Page Exceptions Support

If you print a job using a dynamic page exceptions virtual printer, the **Imposition** tab in the Job Parameters window is unavailable.

## Imposed Sheet Range

This feature is available only for imposed RTP jobs.

For imposed, non-VI RTP files, the **Page Range** is automatically changed to **Imposed Sheet Range**. An exception is that for such step-and-repeat files, the print range is **Page Range** and not **Imposed Sheet Range**.

For imposed VI RTP files, the print range is **Booklet Range**. For cut-and-stack files, however, the print range parameter is unavailable.

A sheet refers to one side of the physical piece of paper. In duplex printing, each sheet is counted twice, for example—sheet 1 would have side A and side B.

## Image Noise

Image noise affects only continuous tone (CT) elements.

## Imposed Sheet View

The **Imposed Sheet** tab is available only for imposed RTP jobs.

If you merge an imposed RTP job, you need to save the newly merged job. Then you can preview the new imposed sheet with the **Job Preview & Editor** tool.

## Export as Insite

Export as InSite is available only for non-VI RTP files.

**Note:** Synapse InSite is an Internet portal that provides customer interaction via Web UI, uploads or downloads, and track Job activities, and add Job notes and approval cycle.

## Novell Banner Page

A banner page in a Novell network is not supported.

## Image Scale

The **PDF Optimization** utility does not support the **Image Scale** parameter. If you select the **Image Scale** parameter, PDF optimization is automatically disabled.

The **Image Scale** parameter cannot be applied to VI jobs.

## Fit to Sheet Size in Imposition

The **Fit to Sheet Size** check box, located on the **Imposition** tab (**Template** parameter) does not support VI jobs.

The **Fit to Sheet Size** check box, located on the **Imposition** tab (**Template** parameter) cannot be used with the **PDF Optimization** utility.

## LPR Printing

All LPR commands that are related to job programming such as **Print Method** or **Number of Copies** are not supported.

## Mixed Paper Size in a Job

To print a job that uses mixed paper sizes, make sure that you place all of the paper in the same feed direction—for example, if you print a job that uses 11x17 and letter stocks, place the letter stock SEF.

## Front and Back Cover for Saddle Stitch

If a cover is added to a file that has the **saddle stitch** option selected, the middle page of the booklet will be printed on the paper stock used for the cover.

## Backup and Restore Configuration

When restoring configuration from backup, note that not all user define resources (e.g. Virtual printer, custom profiles) are restored back properly, also Paper set list can't be restored.

## External CD

Avoid importing files directly from a CD or defining a high-res path to a CD. Copy related files to a shared folder.

## Variable Information (VI)

### Variable Print Specification Process

It is recommended that you use the Creo Darwin application version 4.5 or later.

In general, the DocuColor 8000 handles variable information jobs efficiently in segmented run lengths. You should always break down large complex jobs into smaller run lengths to achieve maximum throughput. The exact size of the run length depends on the amount of variable coverage and the element's demographics (the size and percentage of variable text as compared to images and graphics).

You should perform regular disk maintenance to ensure trouble-free operation.

### Printing Retrieved VIPP Jobs

If you want to print a retrieved VIPP job, clear the **Print Range** parameter. If you don't clear this parameter, the job might fail in the **Print Queue** and then the following message appears:

```
Job Failed in Print. Please try to resubmit the job.
```

After the job is RIPPed, you can select the **Print Range** option again.

### VI Job Thumbnails

- If you use the **Job Preview & Editor** to view thumbnails of VI jobs that include multiple records, the generation of all the thumbnails on the pages of the selected VI job can take some time. While the thumbnails are being generated, no other job can be selected.
- Open the thumbnails of VIPP or Variable Print Specification jobs that have already been RIPPed and are in the Storage window only if you want to view thumbnails of the entire VI job.

### File-Naming Convention

Make sure that you follow the naming conventions specified in the *CXP8000 Printing Guide*. Improper characters and file names with spaces can cause problems.

- Avoid using the following characters in image and job file names : ! @ # \$ % ^ & \* ( ) - / ? > < ' " ; : ] [ { } \ |. In some cases, the Spire CXP8000 color server substitutes an underscore ( \_ ) in file names that contain these characters. As a result, the high-resolution images cannot be used when Creo APR is in use.
- Do not enter a space at the beginning or end of a file name.

- 
- Before you create any Darwin Variable Print Specification file, it is recommended that you check the database file and all image files for invalid characters and then edit the files.

### Variable Print Specification Image Files

The Spire application supports file types that use the Creo APR (Automatic Picture Replacement) feature and the Synapse PrintXT extension. The supported file types are EPS, TIFF, and CT.

**Note:** General PostScript errors may result when Synapse PrintXT is set to perform image swapping on unsupported file types (PDF, LZW compressed TIFF, and grayscale bitmaps).

### Print Shop Mail Jobs

- Print Shop Mail jobs that contain VI elements in landscape orientation are processed and printed in portrait orientation.
- Print Shop Mail supports EPS images only.
- Variable Print Specification files that are generated from Print Shop Mail version 4.36 for Macintosh and version 4.1 ~build 72 for Windows are not imposed correctly in the Spire CXP8000 color server.

### Retrieving Jobs

You can't retrieve a job if the host name and the virtual printer name together have more than 21 characters.

If you archive a job from another Spire color server such as the CXP52525 or CXP6060, and then retrieve the job into the Spire CXP8000 color server, some of the job parameters may change. Other Spire products do not support all of the CXP8000 features. In such cases, default parameters from the CXP8000 ProcessPrint virtual printer are used. In addition, if resources such as gradations, emulations, or paper sets don't exist in the CXP8000, you will be prompted to change these parameters.