

## Customer Release Notes

### Fiery EXP250 Color Server version 1.1 for DocuColor 240/250

This document contains information about the Fiery EXP250 Color Server version 1.1 and supplements the Fiery EXP250 version 1.0 Customer Release Notes. Before using the Fiery EXP250 Color Server with version 1.1, make copies of these *Customer Release Notes* and distribute them to all users.

**NOTE:** This document uses the term “Fiery EXP250” to refer to the Fiery EXP250 Color Server. The term “copier” is used to refer to the DocuColor 240/250 copier.

## Installing software from the DVD

### Installing user software on a Windows computer

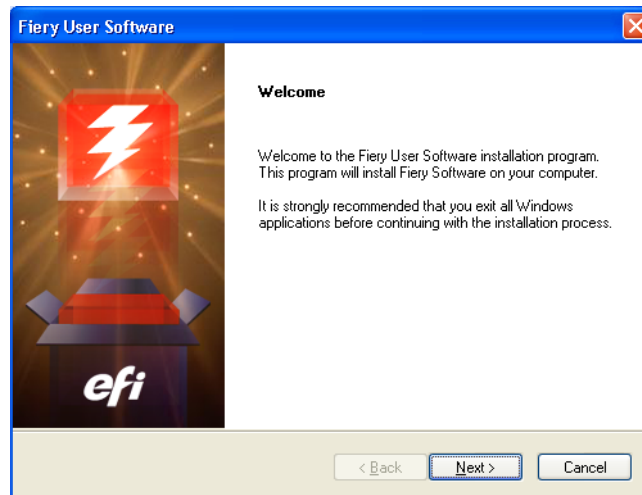
The procedures below describe installing user software from the DVD and also modifying the user software.

---

#### TO INSTALL USER SOFTWARE ON A WINDOWS COMPUTER FROM THE USER SOFTWARE DVD

##### 1 Insert the User Software DVD into the DVD drive of your computer.

The Welcome screen of the installer is displayed.



##### 2 Follow the on-screen instruction

If you want to modify or remove any user software after you have installed it on your computer, you can do so using the Fiery User Software Installer. The procedure is described below.

---

**TO MODIFY USER SOFTWARE ON A WINDOWS COMPUTER USING THE FIERY USER SOFTWARE INSTALLER**

- 1 **Insert the User Software DVD into the DVD drive of your computer.**
- 2 **In the window that is displayed, select Modify, Repair, or Remove.**
- 3 **Follow the on-screen instructions.**

If your computer does not have a DVD drive, you can install the user software from the Fiery EXP250 over the network. See “Installing software over the network” on page 8. Ask your network administrator for the IP address or the DNS server name of the Fiery EXP250.



Do not attempt to install user software by opening the individual folders for the applications. Always use the Fiery User Software Installer.

The only applications that are not installed by the Fiery User Software Installer are Adobe Acrobat and PitStop for use with Impose. For more information, see *Utilities*.

**Installing user software on a Mac OS computer**

Installation of user software on a Mac OS computer is done separately for each application.

---

**TO INSTALL USER SOFTWARE ON A MAC OS COMPUTER FROM THE USER SOFTWARE DVD**

- 1 **Insert the User Software DVD into the DVD drive of your computer.**
- 2 **Browse to the OSX folder.**
- 3 **Double-click the installer icon for the application you want to install.**
- 4 **Follow the on-screen instructions.**

### Installing Windows 2000/XP/Server 2003 printer drivers

The following procedures describe installing the printer driver from the User Software DVD.

To install the printer driver on a Windows Server 2003 computer, select the same PPD file as for Windows 2000 and Windows XP, described in the following procedure.

To use the printer driver on Windows 2000/XP/Server 2003, you must select the following options in the Advanced tab of the printer driver after installation is complete:

- Spool print documents
- Start printing immediately
- Print spooled documents first

Clear the following option:

- Enable advanced printing features

**NOTE:** The following procedures use Windows XP illustrations.

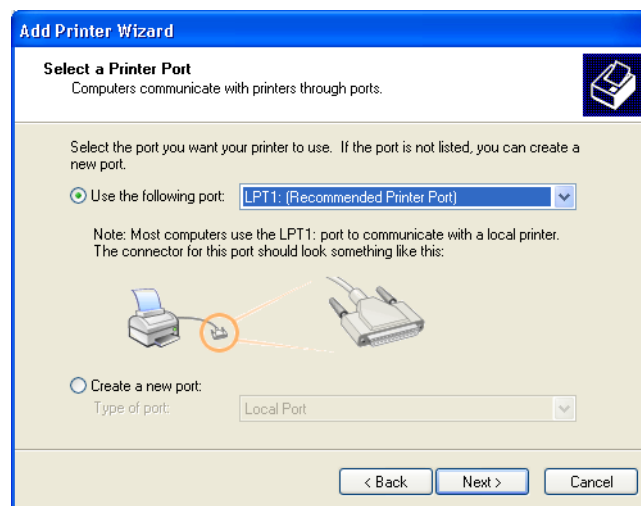
---

#### TO INSTALL THE PRINTER DRIVER FOR WINDOWS 2000/XP/SERVER 2003

- 1 **Windows 2000: Click Start, choose Settings, and then choose Printers.**  
**Windows XP: Click Start and choose Printers and Faxes.**  
**Windows Server 2003: Click Start, choose Control Panel, and then choose Printers and Faxes.**
- 2 **Windows 2000/XP: Double-click the Add Printer icon and click Next.**  
**Windows Server 2003: Choose Add a printer and click Next.**
- 3 **Specify printing using a local printer, clear the “Automatically detect and install my Plug and Play printer” box, and click Next.**

This procedure describes the installation of a local printer. You can modify the connection later, according to your network type.

- 4 **Select LPT1: and click Next.**



**5 Click Have Disk in the dialog box displaying lists of manufacturers and printers.**

The Install From Disk dialog box prompts you for the disk.

**6 Insert the User Software DVD into the DVD drive, type the name of the DVD drive (for example, D:\), and click Browse. Browse to the English\Prntdrv\Ps\_drvr\Win\_2K\_XP folder.**

**7 Make sure that Oemsetup.inf or Oemsetup is selected and click Open.**

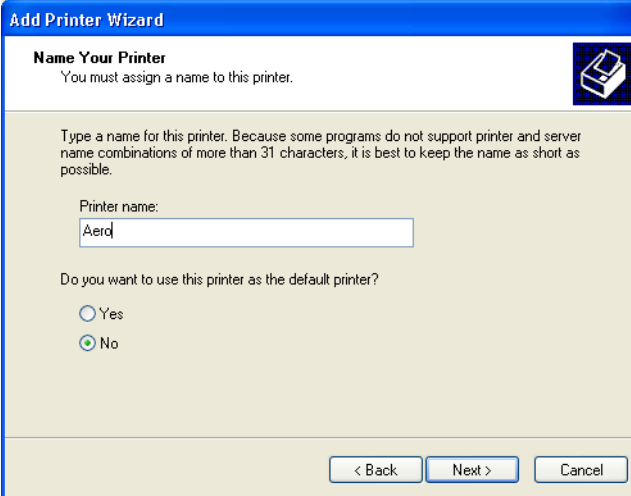
The path is copied to the Install From Disk dialog box.

**8 Verify that the path is correct and click OK.**

**9 In the Printers box, select the Fiery EXP250 as your printer and click Next.**

**10 Type a name for the Fiery EXP250 in the Printer name field, indicate whether you want to make it the default printer, and click Next.**

This name is used in the Printers window and the queues window.



The screenshot shows the 'Add Printer Wizard' dialog box, specifically the 'Name Your Printer' step. The title bar reads 'Add Printer Wizard'. Below the title bar, the text says 'Name Your Printer' and 'You must assign a name to this printer.' There is a printer icon in the top right corner. The main text area contains the instruction: 'Type a name for this printer. Because some programs do not support printer and server name combinations of more than 31 characters, it is best to keep the name as short as possible.' Below this is a text input field labeled 'Printer name:' with the text 'Aero' entered. Underneath the input field is the question 'Do you want to use this printer as the default printer?' with two radio button options: 'Yes' (which is unselected) and 'No' (which is selected). At the bottom of the dialog box are three buttons: '< Back', 'Next >', and 'Cancel'.

**11 Follow the on-screen instructions.**

Do not share the printer and do not print a Test Page at this time. Continue with the printer driver installation and at the last screen, click Finish.

The necessary files are installed on your hard disk. When installation is complete, the Printers window appears with an icon for the newly installed printer.

### Installing Mac OS X printer drivers and printer description files

The User Software DVD contains the following software for Mac OS X (see the OS X: Printer Driver folder):

- **OSX Installer:** Installs the PostScript Printer Description files (PPDs) and PPD plug-ins required to print from Mac OS X.
- **Language folders:** Printer description files that are installed by OSX Installer. You do not need to open these folders or install them manually on your computer. The appropriate files are installed by OSX Installer.

#### TO INSTALL THE PRINTER DESCRIPTION FILES FOR MAC OS X

- 1 Quit all open applications.**
- 2 Make sure that the Printer Setup Utility (or Print Center) is not running on your computer.**

Printer Setup Utility (or Print Center) updates the list of available printers when it restarts. If a printer description file is added while Printer Setup Utility (or Print Center) is running, you cannot select the associated printer model until you restart.

- 3 Insert the User Software DVD into the DVD drive.**
- 4 Open the OS X: Printer Driver folder on the User Software DVD.**

**If you are installing from the files you downloaded using the Downloads tab in WebTools, browse to the Printer Driver folder on your desktop.**

**If you are installing from the folder you downloaded from the Fiery EXP250 over the network, browse to the Printer Driver folder on your desktop.**

- 5 Double-click the OSX Installer icon to start installing the printer driver.**

**NOTE:** The PPD files are installed in the following locations:

On an English system: en.lproj under  
<Startup disk>: Library: Printers: PPDs: Contents: Resources

On a non-English system: de.lproj, es.lproj, fr.lproj, and it.lproj under  
<Startup disk>: Library: Printers: PPDs: Contents: Resources

If the PPD files are not successfully installed, manually copy the PPD files to the appropriate folder or folders.

- 6 Follow the on-screen instructions.**

The OSX Installer installs the printer driver files that correspond to the Fiery EXP250.

- 7 When copying is complete, click Quit.**

## Fonts

The fonts on the User Software DVD include screen and printer fonts that correspond to the 136 built-in PostScript printer fonts on the Fiery EXP250. The screen fonts must be installed on Mac OS X to be available to applications.

**NOTE:** In the System: Library: Fonts folder, when displayed by Kind, screen fonts appear as type “Font Suitcase” and PostScript printer fonts appear as type “PostScript font.”

---

### TO INSTALL SCREEN AND PRINTER FONTS ON MAC OS X V10.2.X

- 1 **Insert the User Software DVD into the DVD drive of the Mac OS X computer.**
  - 2 **Open the OSX folder on the DVD.**
  - 3 **Open the Fonts folder and copy the fonts to the following location:**
    - For your personal use: Users/account name/Library/Fonts
    - For shared use: Library/Fonts
- 

### TO INSTALL SCREEN AND PRINTER FONTS ON MAC OS V10.2.X OVER THE NETWORK

- 1 **Choose Connect to Server from the Go menu.**
- 2 **Type smb:// followed by the IP address of the Fiery EXP250 and click Connect.**

If you cannot locate the Fiery EXP250, contact your network administrator.
- 3 **Type the user name and password if required.**

Check with your network administrator to see if this is required.
- 4 **Double-click the icon for the Mac\_User\_SW directory, or select Mac\_User\_SW and click OK.**
- 5 **Open the OSX folder.**
- 6 **Open the Fonts folder, and then copy the fonts to the following location:**
  - For your personal use: Users/account name/Library/Fonts
  - For shared use: Library/Fonts

---

**TO INSTALL SCREEN AND PRINTER FONTS ON MAC OS X V10.3.X**

- 1 Insert the User Software DVD into the DVD drive of the Mac OS X computer.**
- 2 Start the Font Book application in Applications/Font Book.**
- 3 Choose Add Fonts from the File menu.**
- 4 Choose User Software/OSX/Fonts/Albertus MT.**
- 5 Choose Select All from the Edit menu.**
- 6 Choose one of the following from Install fonts:**
  - For your personal use: for yourself only
  - For shared use: for all users of this computer
  - For Classic: for Mac OS X Classic
- 7 Click Open.**
- 8 Exit the Font Book application.**

---

**TO INSTALL SCREEN AND PRINTER FONTS ON MAC OS V10.3.X OVER THE NETWORK**

- 1 Choose Connect to Server from the Go menu.**
- 2 Type smb:// followed by the IP address of the Fiery EXP250 and click Connect.**

If you cannot locate your Fiery EXP250, contact your network administrator.
- 3 Type the user name and password if required.**

Check with your network administrator to see if this is required.
- 4 Double-click the icon for the Mac\_User\_SW directory, or select Mac\_User\_SW and click OK.**
- 5 Start the Font Book application in Applications/Font Book.**
- 6 Choose Add Fonts from the File menu.**
- 7 Choose User Software/OSX/Fonts/Albertus MT.**
- 8 Choose Select All from the Edit menu.**
- 9 Choose one of the following from Install fonts:**
  - For your personal use: for your use only
  - For shared use: for all users of this computer
  - For Classic: for Mac OS X Classic
- 10 Click Open.**
- 11 Exit the Font Book application.**

## Installing software over the network

Documentation, user software, and printer drivers are installed over the network in a shared folder during system software installation. Users can connect to the shared folder over the network to download documentation, software, and printer drivers.

For information on system software installation, see the *Installation and Service Guide*.

### User Documentation

Documentation can be installed on the Fiery EXP250 by an administrator and then shared over the network.

#### TO INSTALL USER DOCUMENTATION ON THE FIERY EXP250

**1 Insert the User Documentation CD into the CD-ROM drive.**

A message appears asking if you want to install the user documentation on the Fiery EXP250 server.

**2 Click Yes to install the documentation. If you click No, the contents of the User Documentation CD are displayed, but not installed.**

**3 If you click Yes, the documentation is copied to a shared folder that can be accessed from the Fiery EXP250 or from client computers over the network.**

**NOTE:** If the User Documentation CD is inserted after the documentation has been installed, the contents of the documentation folder are displayed.

#### TO INSTALL USER DOCUMENTATION ON A WINDOWS CLIENT OVER THE NETWORK

**1 Browse for the Fiery EXP250 over the network, using either the IP address or the DNS server name.**

**2 Type the user name and password, if required.**

Check with your network administrator to see if this is required.

**3 Browse to the User\_Docs folder.**

**4 Browse to the language folder you want.**

**5 Copy the folder to your hard drive.**

If there is an Acrobat link, click the Acrobat link to download the documentation from the internet.

#### TO INSTALL USER DOCUMENTATION ON A MAC OS X CLIENT OVER THE NETWORK

**1 Choose Connect to Server from the Go menu.**

**2 Type smb:// followed by the IP address of the Fiery EXP250 and click Connect.**

If you cannot locate the Fiery EXP250, contact your network administrator.

**3 Type the user name and password if required.**

Check with your network administrator to see if this is required.



- 4 **Browse to the User\_Docs folder.**
- 5 **Browse to the language folder that you want.**
- 6 **Copy the folder to your hard drive.**

If there is an Acrobat link inside the folder, click the Acrobat link to download the documentation from the internet.

### **Printer Drivers**

You can download printer driver files to your computer directly from the Fiery EXP250 over the network and then install them following the procedures in *Printing from Windows* and *Printing from Mac OS*.

#### **TO DOWNLOAD PRINTER DRIVER FILES ON A WINDOWS CLIENT OVER THE NETWORK**

- 1 **Right-click Network Neighborhood or My Network Places, and select Find Computer or Search for Computers.**
- 2 **Type the name or IP address of the Fiery EXP250 and click Search Now.**

If you cannot locate your Fiery EXP250, contact your network administrator.

- 3 **Double-click the name of the Fiery EXP250.**

The enabled print connections are displayed along with a folder called FieryUserSW.

- 4 **Double-click the PC\_User\_SW folder and browse to the English\Prntdrvr\Ps\_drvr folder.**
- 5 **Copy the Win\_2K\_XP folder to your desktop.**

For information about installing Windows printer drivers, see *Printing from Windows*.

#### **TO DOWNLOAD PRINTER DRIVER FILES ON A MAC OS X CLIENT OVER THE NETWORK**

- 1 **Click the Go menu and choose Connect to Server.**
  - 2 **Enter smb:// followed by the IP address of the Fiery EXP250 and click Connect.**
- If you cannot locate your Fiery EXP250, contact your network administrator.
- 3 **Select Mac\_User\_SW and click OK.**
  - 4 **Open the folder for your operating system and copy the Printer Driver folder to your desktop.**
  - 5 **Install the appropriate printer driver for your operating system.**

For information about installing Mac OS printer drivers, see *Printing from Mac OS*.

## User Software

You can install user software to your computer directly from the Fiery EXP250 over the network.

---

### TO INSTALL USER SOFTWARE ON A WINDOWS COMPUTER OVER THE NETWORK

- 1 **Click Start, choose Run, and type either "\\IP address" or "\\DNS server name" of the Fiery EXP250.**
- 2 **Type the user name and password, if required.**  
Check with your network administrator to see if this is required.
- 3 **Double-click the PC\_User\_SW directory.**
- 4 **Double-click the Master Installer icon.**
- 5 **Follow the on-screen instructions.**

---

### TO INSTALL USER SOFTWARE ON A MAC OS COMPUTER OVER THE NETWORK

- 1 **Choose Connect to Server from the Go menu.**
- 2 **Type smb:// followed by the IP address of the Fiery EXP250 and click Connect.**  
If you cannot locate the Fiery EXP250, contact your network administrator.
- 3 **Type the user name and password, if required.**  
Check with your network administrator to see if this is required.
- 4 **Double-click the icon for the Mac\_User\_SW directory, or select Mac\_User\_SW and click OK.**
- 5 **Open the OSX folder.**
- 6 **Double-click the installer icon for the application that you want to install.**
- 7 **Follow the on-screen instructions.**

## Setup

### Start Page

The copyright year on the Start Page is incorrect. The Start Page should display 2006 as the copyright year.

### Tray 5 Media Protection

Enabling and disabling the Tray 5 Media Protection option is only available from the Fiery EXP250 Control Panel and from systems that have the Fiery Advanced Controller Interface.

## Printing

### Custom page sizes with imposed jobs

Custom page sized jobs do not print with the specified page size when the job is imposed.

### Tray 6 (Oversized)

Manual duplex jobs may not output correctly with Tray 6 (Oversized).

### Booklet jobs with Tray 5

Postscript and PCL booklet jobs sent from Windows computers with Cover Source set to front and back covers printed on both sides from Tray 5 do not print correctly when Tray 5 Media Protection is set to On in Setup.

Postscript and PCL booklet jobs sent from Windows computers with Cover Source set to front cover printed on front and back cover printed on back from Tray 5 print with extra blank sheets when Tray 5 Media Protection is set to On in Setup.

### Light font characters may not print

If you calibrate the copier to allow light colors to print, some light font characters may not print and others will print even when all characters are equally visible from ImageViewer. The same characters do not print regardless of whether you print the page Long Edge Feed or Short Edge Feed.

### Media Type and Tray 6 (Oversized)

Tray 6 (Oversized) with Tab Stock 1 or Tab Stock 2 is not supported.

The Fiery EXP250 will not print if you specify Tab Stock 1 or Tab Stock 2 for the media type with Tray 6 (Oversized). To print thick media from Tray 6 (Oversized), set Media Type to Heavyweight 1, Heavyweight 2, Coated 1, or Coated 2.

## Print options

### Spot Color Matching and Combined Separations

Setting Spot Color Matching to Off with Combined Separations set to On is not supported from Mac OS 10.4, even though you can select this combination from the printer driver.

### Use Tray 5 (Bypass) for Tab Stock 1 or Tab Stock 2 media types

Printing a job with Media Type set to Tab Stock 1 or Tab Stock 2 is not supported when printing from Tray 6 (Oversized). Use Tray 5 (Bypass) to print with Tab Stock 1 or Tab Stock 2. To print thick media from Tray 6 (Oversized), set Media Type to Heavyweight 1, Heavyweight 2, Coated 1, or Coated 2.

### Fiery PPD for 64-bit Windows XP/Server 2003 printer driver

The PPD for the 64-bit version of Windows XP or Windows Server 2003 (available on the User Software DVD) allows you to use the standard Windows printer driver to send jobs to the Fiery EXP250. You can access the PPD options when you print from an application by clicking Advanced in the Printer Properties window. The PPD options are available under Printer Features.

Some print options are not available or are only partially functional, including:

- Tray Alignment
- Centering Adjustment
- Scale
- Preview Master
- Print Mode
- Group Name
- Group Password
- Instructions
- Notes
- Orientation
- Mixed Media Front or Back Cover
- FreeForm

Constraints between two or more settings are indicated with yellow warning icons, but you are not prevented from printing a job with settings that conflict.

Two-Way Communication is not available when using this PPD with the standard Windows printer driver. You must manually configure the printer driver with any installed options. For instructions, see *Printing from Windows*.

## WebTools

### Enable Windows Printing option

If you do not make any changes in WebTools Setup and click Save from the Service 2 tab, the Enable Windows Printing option changes from the default setting of On to Off. To work around this, select Enable Windows Printing (setting it back to On) from WebTools Setup and click Save again.

### Accessing WebTools

The Fiery EXP250 version 1.1 WebTools uses 127.0.0.1 for the IP address and does not default to Blank. Microsoft XP SP2 security settings prevent the Fiery EXP250 from using localhost to access WebTools.

## Remote Scan

### Help

Disregard the information in Remote Scan Help about initiating a scan from the Initiate Tab. You can only initiate a scan from the copier control panel, as stated in *Utilities*. Remote Scan only allows you to retrieve the scan remotely.

## Command WorkStation

### Notes field

The Command WorkStation search field displays Notes 1 and Notes 2 fields. However, the Fiery EXP250 printer driver only has one Notes field.

### Group and Password settings are not applied across two servers

If you set up two different groups on two servers and send a job to the first server with the correct group information set, and then connect to the second server and select the job and send it to server two, the job will print. However, the job should not print because the group settings do not match the second server's group settings.

## Hot Folders

### Untranslated options

Some options in Mac OS Hot Folders only appear in English, regardless of the language of the operating system you are using. Some of the English-only options that display are 1-up Full Bleed, 2-up Perfect, Scale to Fit, Custom, and any options under the Finishing tab. In addition, some text and tabs may not display at all because the Hot Folders window is not proportioned correctly.

## Applications

### Adobe Freehand

Gradients do not overprint from Freehand on Windows XP.

### Adobe InDesign and Mirror

Printing from Adobe InDesign using the Mirror printer driver option is not supported. If you print from InDesign with this setting enabled, the job is printed without the setting enabled. To work around this, use the InDesign Mirror option instead.

### Adobe Acrobat Professional

If you print a .pdf file from Adobe Acrobat Professional, the job does not print. It remains processing in the queue, and you must restart the Fiery EXP250. To work around this, select Print Image in the printer driver, and the .pdf file will print.

### Microsoft Word

If you print a Word document with default print options, you receive an error message and the job does not print. However, the job prints if you send the job from Publisher.

## Mac OS X printer drivers

### Two versions of Mac OS X printer driver

The following information replaces the Mac OS X printer drivers section in the Fiery EXP250 version 1.0 SP1 User Addendum.

When you install the Mac OS X printer driver for version 1.1, you can install a Fast version, which does not check for incompatible print option settings but runs faster, or a Comprehensive version, which prevents you from choosing incompatible print option settings at the expense of some processing time. A dialog box in the OS X installer lets you choose the version.



The Fast version addresses issues on Mac OS X with folding and stapling. Use the Fast version if the copier is configured with a finisher and you want to print folded and/or stapled jobs. Be aware that if you choose incompatible print option settings, your job might not print as expected.

If you install the Comprehensive version and then later decide to install the Fast version, you must remove the Comprehensive version first, using the procedure described in the Fiery EXP250 version 1.0 SP1 User Addendum.