



Fig. 1
Press **All Services**.

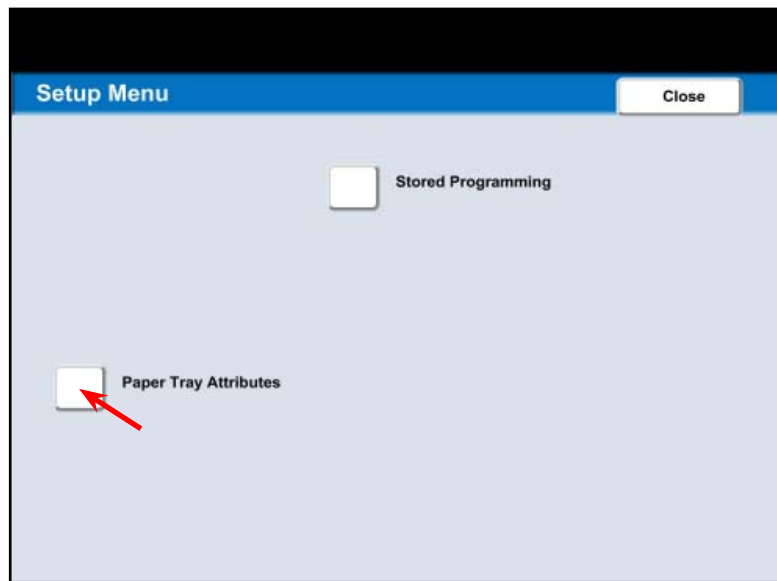


Fig. 3
Press **Paper Tray Attributes**.

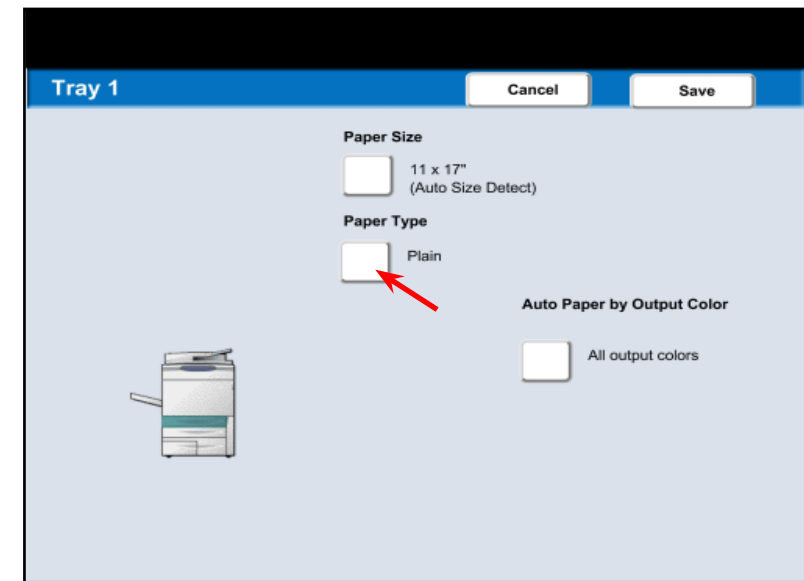


Fig. 5
Press **Paper Type**.

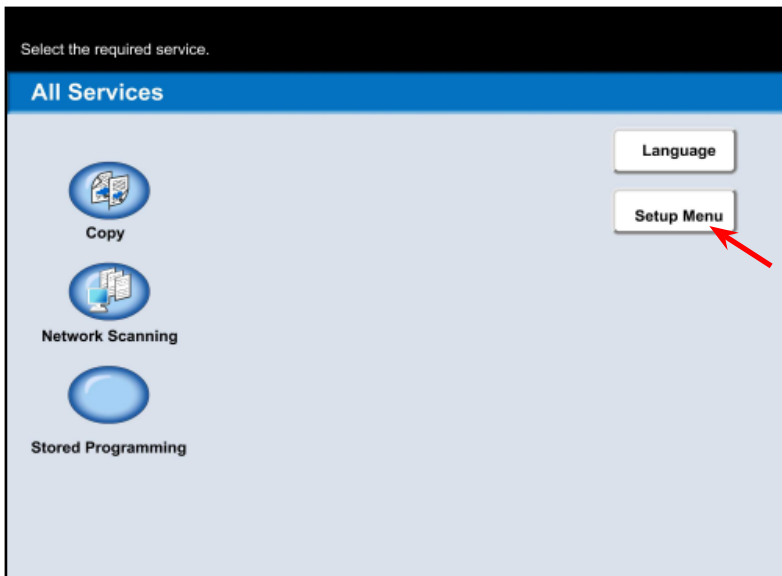


Fig. 2
Press **Setup Menu**.

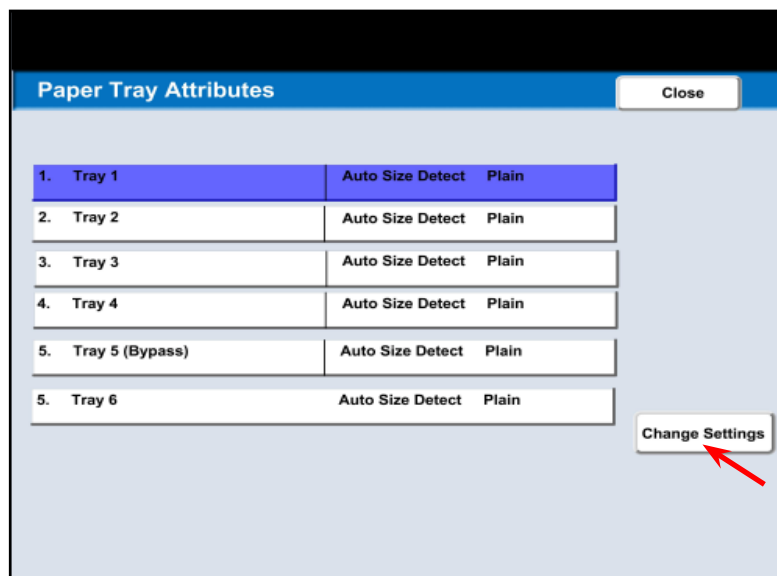


Fig. 4
Select **1. Tray 1**. Press **Change Settings**.

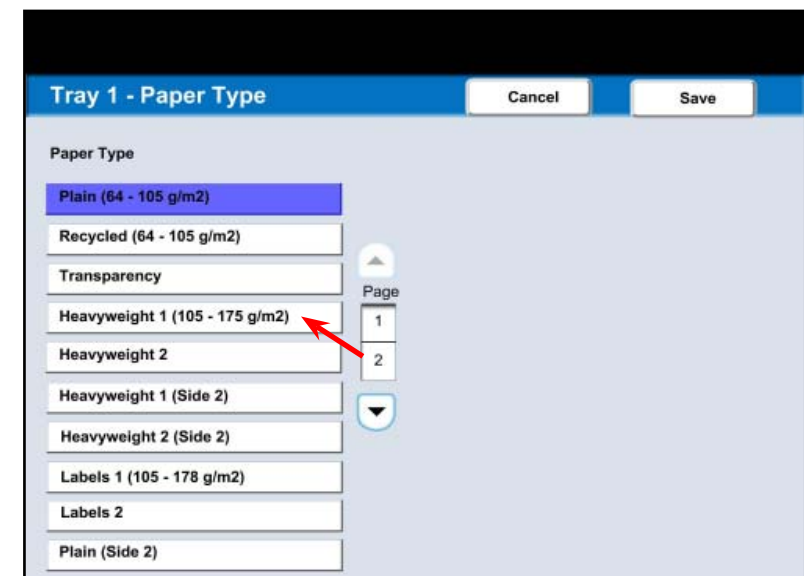


Fig. 6
Select **Heavyweight 1**.

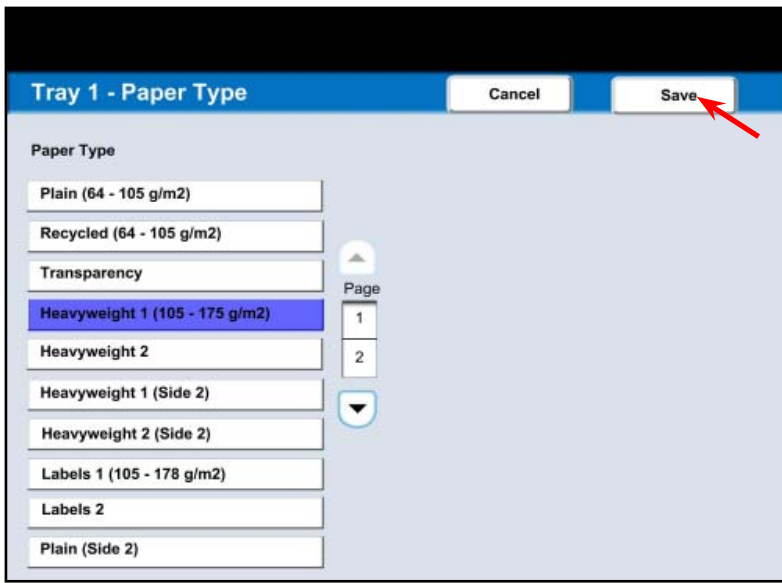


Fig. 7
Press **Save**.

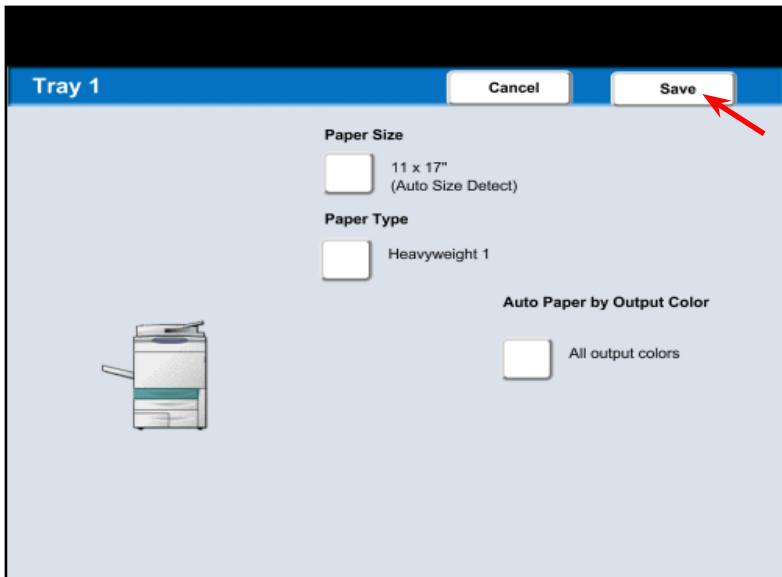


Fig. 8
Press **Save**.

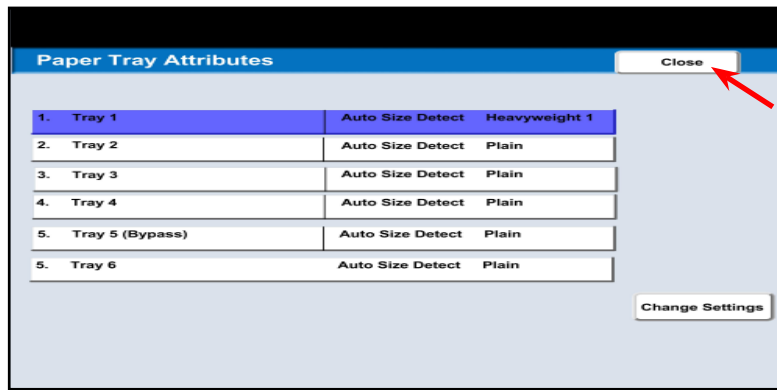


Fig. 9
Press **Close**.

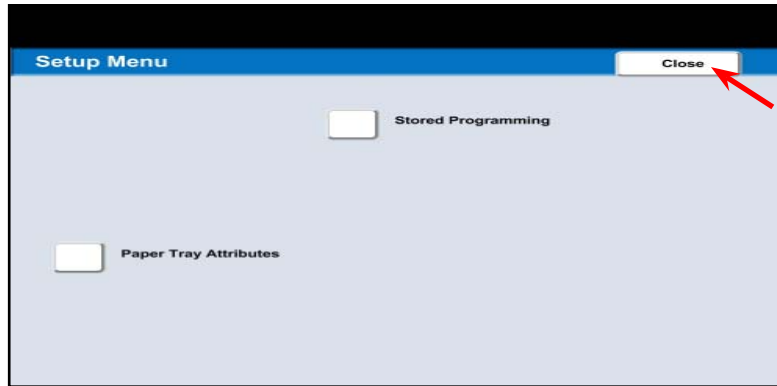


Fig. 10
Press **Close**.

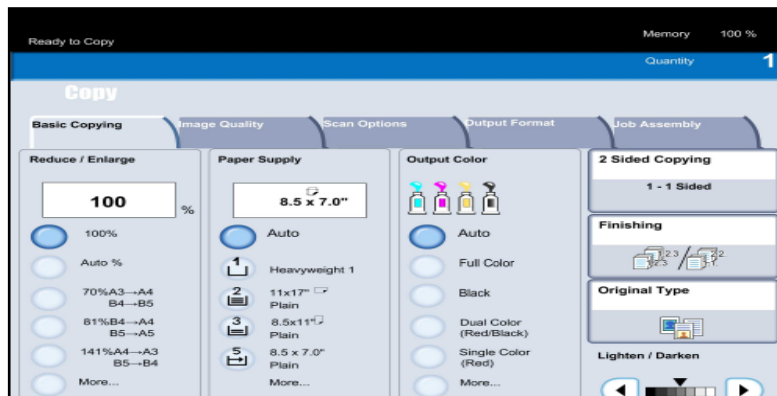


Fig. 11
The selected changes have been made.

XEROX®

DocuColor 240 / 250

Quick Start Guide



Changing Paper Tray Attributes