



Getting Started

© 2006 Electronics for Imaging, Inc. The information in this publication is covered under *Legal Notices* for this product.

45054825

05 May 2006

CONTENTS

INTRODUCTION	5
Contents of this kit	5
Terminology and conventions	6
About the documentation	6
Overview of the Splash RPX-i	7
About the Splash RPX-i software	7
Server system requirements	9
Client computer requirements	10
Networking support	10
Preparing to print	11
Connecting the Splash RPX-i to the Fiery	13
Connecting the Splash RPX-i using Direct Connect	13
Connecting the Splash RPX-i using Network Connect	16
INSTALLING THE SPLASH RPX-I SERVER SOFTWARE	18
Installing the Splash RPX-i Server Software	18
Configuring Mac OS X for the Splash RPX-i	22
Labeling the Splash RPX-i	26
Calibrating the Splash RPX-i	26
INSTALLING USER SOFTWARE ON A MAC OS COMPUTER	27
Installing the Splash Server Remote from the User Software and Documentation CD	27
Installing Splash Remote Scan from the User Software and Documentation CD	28
Configuring Splash Remote Scan	28
Installing the Apple Printer Utility from the User Software and Documentation CD	29
Copying CopyCal Target files from the User Software and Documentation CD	29

INSTALLING USER SOFTWARE ON A WINDOWS COMPUTER	30
Installing Splash Remote Scan from the User Software and Documentation CD	30
Configuring Splash Remote Scan	30
Installing the Splash Printer Delete Utility from the User Software and Documentation CD	31
Copying CopyCal Target files from the User Software and Documentation CD	32
INSTALLING USER SOFTWARE WITH FILE SHARING	33
INSTALLING AND USING ADOBE READER	37
Installing Adobe Reader	37
Using Adobe Reader	37
INDEX	39

INTRODUCTION

Getting Started explains how to connect the Splash RPX-i Color Server and provides installation instructions for the Splash RPX-i Color Server server software. It also explains how to install client software utilities.

The Splash RPX-i Color Server does *not* require a qualified technician to install, connect, and set up the hardware and software.

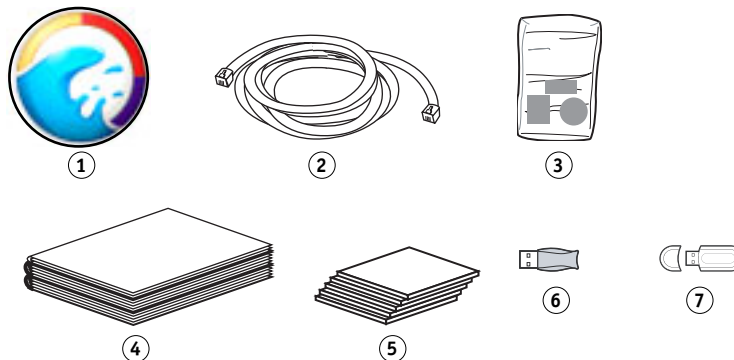
This document assumes that the Fiery Network Controller for the DocuColor 240/250 has already been installed by a certified service technician.

NOTE: Detailed information about the Apple Macintosh computer is beyond the scope of this document. For more information specifically about operating, servicing, and troubleshooting the Macintosh computer, see the *Power Mac G5 User's Guide*.

Contents of this kit

The Splash RPX-i kit contains the following:

- 1 Mouse pad
- 2 Ethernet crossover cable
- 3 Logo labels, bagged
- 4 Printed materials
- 5 Media pack
- 6 Dongle
- 7 Direct Connect Activation Key



The media pack includes:

- Splash RPX-i Server Software DVD
- Splash RPX-i User Software and Documentation CD
- Kodak Grayscale

Terminology and conventions

This document uses the following terminology and conventions.

Term or convention	Refers to
Copier	DocuColor 240/250
Fiery	Fiery Network Controller
Mac OS	Apple Mac OS 9, OS X
Splash RPX-i	Splash RPX-i Color Server
Titles in <i>italics</i>	Other documents in this set
Windows	Microsoft Windows 2000, Windows XP, Windows Server 2003

About the documentation

The Splash RPX-i documentation consists of the following:

- *Getting Started* provides instructions for installing and connecting the Splash RPX-i. It also explains how to install client software utilities.
- The *Configuration Guide* explains the basic configuration and administration of the Splash RPX-i for the supported platforms and network environments.
- The *Job Management Guide* explains the Splash RPX-i print features, functions, and job management options. It also describes the utilities provided for use with the Splash RPX-i.
- The *Color Guide* explains how to manage color output on the Splash RPX-i. It provides information on how to calibrate the Splash RPX-i and set color print options from Windows and Mac OS computers.
- The *Printing Guide* describes how to install the printer drivers on Windows and Mac OS computers, establish printing connections for different networks, and begin printing from users' computers.
- The *Troubleshooting Guide* provides information to help troubleshoot the Splash RPX-i.
- Printed *Customer Release Notes* provide last-minute product information and workarounds for some of the problems you may encounter.

Overview of the Splash RPX-i

The following sections describe the software and documentation included with the Splash RPX-i.

About the Splash RPX-i software

The Splash RPX-i Server Software DVD contains the following software:

Splash RPX-i server software enables Splash RPX-i functions, such as monitoring jobs and managing color output.

For instructions on installing the Splash RPX-i server software, see [page 18](#).

The Splash RPX-i Client Software and Documentation CD contains the following software:

Splash Mac OS Client allows you to print to the Splash RPX-i from Macintosh client computers. Splash Mac OS Client includes the following:

- Printer drivers allow you to print files to the Splash RPX-i.
- Splash Remote Scan and Twain plug-in enables the Splash RPX-i to operate as a high-resolution color scanner.
- Splash Server Remote allows you to view and manage the Splash RPX-i server remotely from a Mac OS X computer.
- Apple Printer Utility allows you to download fonts from the Splash RPX-i server to a Mac OS 9 computer.
- CopyCal Target files allows you to copy these files to your computer for Splash RPX-i calibration.
- Adobe Acrobat Reader allows you to view and print the PDF files in the Splash Online Documentation folder.

Splash Windows Client allows you to print to the Splash RPX-i from Windows client computers. Splash Windows Client includes the following:

- Printer drivers allow you to print files to the Splash RPX-i.
- Splash Remote Scan and TWAIN plug-in enables the Splash RPX-i to operate as a high-resolution color scanner.
- Splash Printer Delete Utility allows you to remove printer drivers from Windows computers.
- CopyCal Target files allow you to copy these files to your computer for Splash RPX-i calibration.
- Adobe Acrobat Reader allows you to view and print the PDF files in the Splash Online Documentation folder.

For instructions on how to install printer drivers, see the [Printing Guide](#).

For instructions on installing Mac OS user software, see “[Installing User Software on a Mac OS Computer](#)” on page 27.

For instructions on installing Windows user software, see “[Installing User Software on a Windows Computer](#)” on page 30.

For instructions on installing Adobe Acrobat Reader, see “[Installing and using Acrobat Reader](#)” on page 37.

Server system requirements

The Splash RPX-i requires the following minimum system configuration:

- Processor
Power Mac G5 or Mac-Intel
- Operating system
Mac OS v10.4.3 or later
- CPU
Single or dual 2GHz processor(s)
- Memory
1.0 GB SDRAM minimum
For memory installation instructions, see the *Power Mac G5 User's Guide*.
- Hard disk drive
60 GB minimum
- Media drive
Combo (DVD-R/CD-RW) or SuperDrive (DVD-RW/CD-RW)
- Monitor
Apple-compatible color display with 1024x768 resolution
- Built-in Ethernet connection(s)
two (for Direct Connect)
one (for Network Connect)

Client computer requirements

The Splash RPX-i user software requires the following minimum system configurations

Minimum requirements for	Mac OS	Windows 2000/XP/Server 2003
Operating system	Mac OS v9.2 or later Mac OS X v10.2.4 or later	Windows 2000 Professional with Service Pack 4 Windows XP (recommended with Service Pack 2)
Splash Remote Scan	Mac OS v10.2.4 or later	Windows Server 2003 Standard Edition, Enterprise Edition, or Datacenter Edition (must be the 32-bit version)
Splash Printer Delete Utility	<i>Not supported</i>	
Apple Printer Utility	Mac OS 9.2 or later Mac OS X Classic only	<i>Not supported</i>
Splash Server Remote	Mac OS X v10.4 or later	<i>Not supported</i>

Networking support

The Splash RPX-i Server can receive and process jobs received from clients on the following networks:

- AppleTalk (EtherTalk)
- UNIX and Windows (via TCP/IP LPD)
- Bonjour (via TCP/IP LPD)
- Novell NetWare 5 and 6 via TCP/IP (NDS Print Queue, NDPS)

NOTE: TCP/IP support via Novell LPR gateway.

Preparing to print

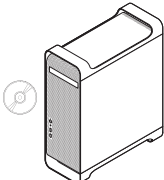
If your configuration requires that you have a direct connection to the Fiery, make sure that the Fiery is installed and that a Startup page has been printed. You also need to connect the Splash RPX-i to the Fiery using the Ethernet crossover cable. This connection is described as Direct Connect.

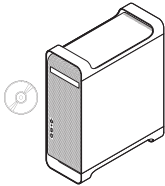
If you do not require Direct Connect, the Splash RPX-i and the Fiery are connected to your network independently. This connection is described as Network Connect.

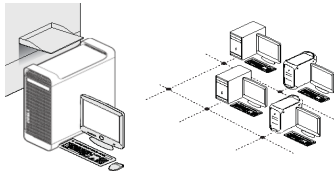
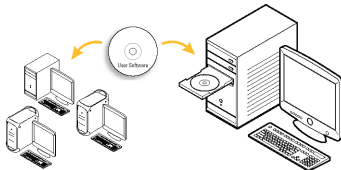
For more information about Direct Connect and Network Connect, see [“Connecting the Splash RPX-i to the Fiery”](#) on page 13.

For either connection, perform the following tasks to set up the Splash RPX-i for printing:

Step	Task		Reference
1	Connect the Power Mac by Direct Connect or Network Connect.	<p>For Direct Connect, attach the Ethernet crossover cable from the Splash RPX-i to the Fiery.</p> <p>NOTE: If your configuration does not require Direct Connect and uses Network Connect, the Fiery may already be installed on the network.</p>	For more information, see “ Connecting the Splash RPX-i to the Fiery ” on page 13.
2	Install Splash RPX-i server software.	<p>Install the Splash RPX-i server software on the Splash RPX-i server computer.</p> <p>Configure the Power Mac for Splash RPX-i.</p>	“ Configuring Mac OS X for the Splash RPX-i ” on page 22.





Step	Task	Reference	
3	Configure network settings for the Splash RPX-i printing environment. 	For information about configuring network settings, see the <i>Configuration Guide</i> .	
4	Prepare users for printing. 	<p>At each computer from which users print:</p> <ul style="list-style-type: none">• Install client software and copy color files.• Install the appropriate printer files and connect to one or more print connections.	<p>See “Installing User Software on a Mac OS Computer” on page 27.</p> <p>See “Installing User Software on a Windows Computer” on page 30.</p> <p>For information about installing printer drivers and printing from client computers, see the <i>Printing Guide</i>.</p>

For information about configuring the Splash RPX-i for optimal printing in your particular environment, see the *Printing Guide* and *Color Guide*.

Connecting the Splash RPX-i to the Fiery

The Splash Server supports either a direct connection to the Fiery or a connection over the network. After the initial connection is made, the Splash Server automatically reconnects to the same Fiery each time it is started.

If you prefer not to expose the Fiery on the network, follow the procedure for Direct Connect. If you want to expose the Fiery on the network, follow the procedure for a non-dedicated print environment.

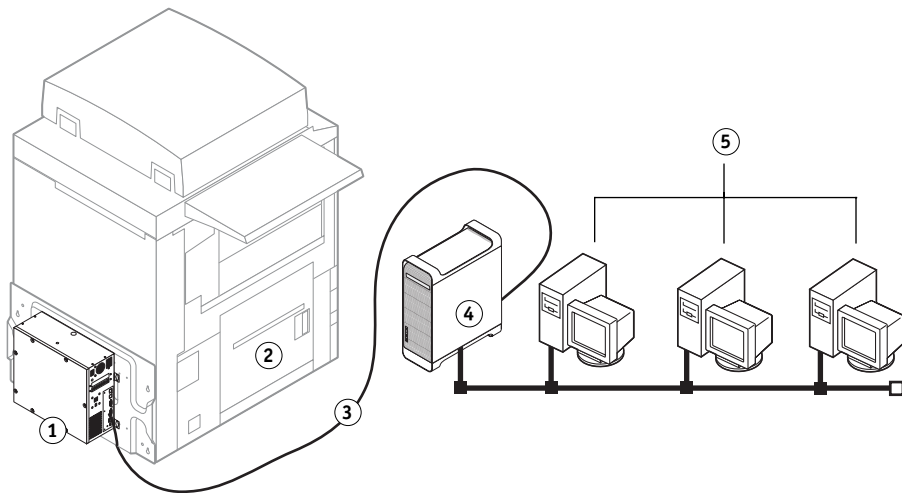
Connecting the Splash RPX-i using Direct Connect

Direct Connect allows the Splash RPX-i to access the Fiery via an Ethernet crossover cable provided with the Splash RPX-i. Use Direct Connect if you want the Splash RPX-i (but not the Fiery controller) to be visible on the network, thus providing a dedicated print environment. Direct Connect provides higher and more consistent Splash performance than Network Connect.

NOTE: Two built-in Ethernet ports are required to use Direct Connect.

TO CONNECT THE SPLASH RPX-I TO THE FIERY VIA DIRECT CONNECT

- 1 Fiery
- 2 DocuColor 240/250
- 3 Ethernet crossover cable
- 4 Splash RPX-i
- 5 Networked computers or workstations

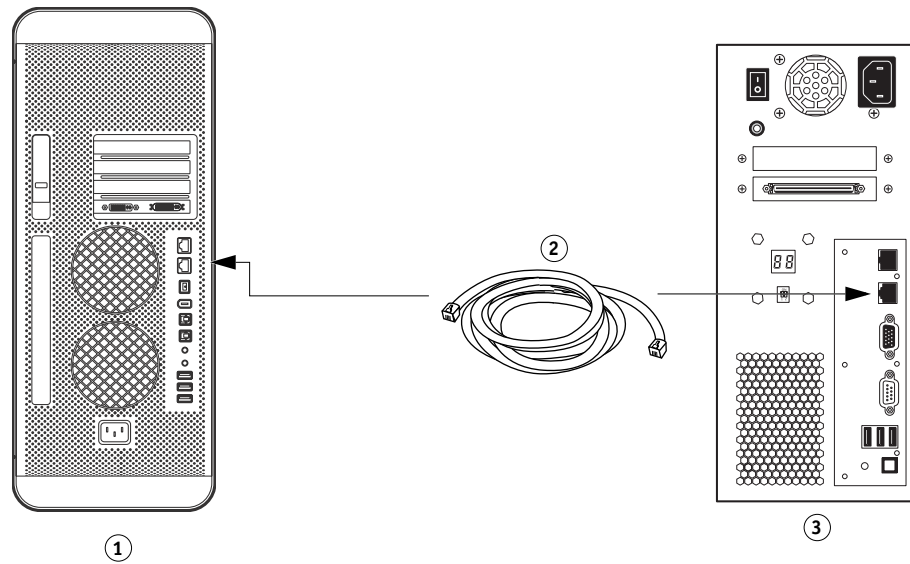


- 1 Make sure the DocuColor 240/250 LEDs are not reporting errors.
- 2 Connect the Splash RPX-i to the Ethernet network as described in the *Power Mac (G5) User's Guide* using the Built-in Ethernet Port 1.
- 3 Locate the Ethernet crossover cable provided with the Splash RPX-i.
- 4 Connect one end of the Ethernet crossover cable to the Built-in Ethernet port 2 on the Splash RPX-i.

- 5 Connect the other end of the Ethernet crossover cable to the Ethernet port marked “Net” on the Fiery.

NOTE: The network cable may look similar to the Ethernet crossover cable. The cables are not interchangeable. Do not swap them. The Ethernet crossover cable is labeled to help you identify it. Ensure that you attach the correct cable to the Splash RPX-i and the Fiery.

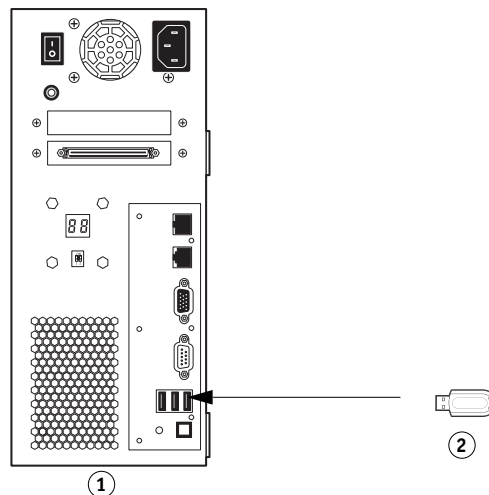
- 1 Power Mac (Splash RPX-i) back panel
- 2 Ethernet crossover cable
- 3 Fiery



- 6 Attach the Direct Connect Activation Key to an available USB port on the Fiery.

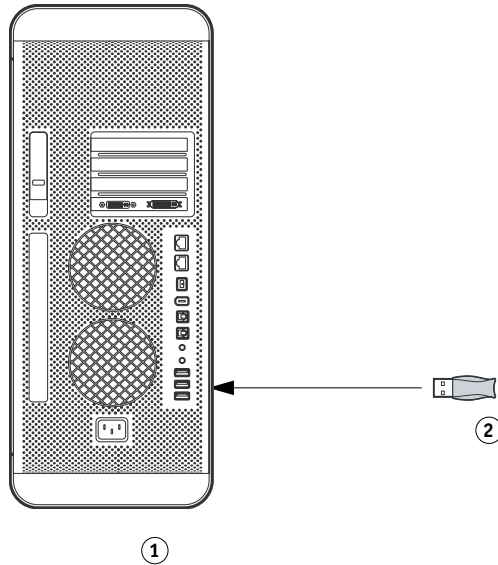
The Direct Connect Activation Key configures the Fiery Network Setup and allows Splash RPX-i to communicate with the Fiery using the Ethernet crossover cable. It also downloads an enabler for Splash RPX-i.

- 1 Fiery
- 2 Direct Connect Activation Key



7 Attach the dongle to an available USB port on the back of the Splash RPX-i.

- 1 Power Mac (Splash RPX-i)
back panel
- 2 Dongle



You are now ready to install Splash RPX-i server software. To install server software, see [“Installing the Splash RPX-i server software”](#) on page 18.

NOTE: Before installing the Splash software, make sure that the Fiery startup page prints, and that the TCP/IP settings for the Fiery are configured correctly. For more information, see [Troubleshooting](#).

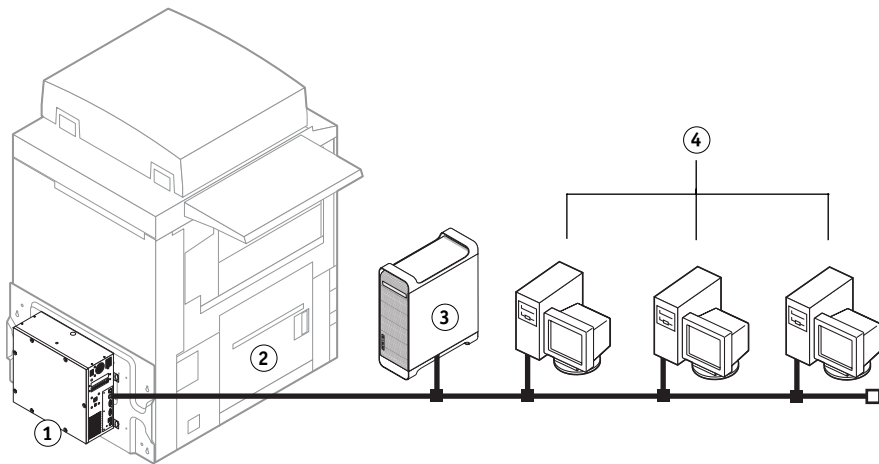
Connecting the Splash RPX-i using Network Connect

Network Connect allows the Splash RPX-i to access the copier over the network, providing a non-dedicated print environment. Use Network Connect to use the features and workflow of the Splash RPX-i and Fiery at the same time. If you do not include the Fiery on your network, certain Fiery functions, such as Command Workstation, may not be available.

To optimize performance using Network Connect, the configuration of the Fiery and Splash RPX-i should be located on the same Gigabit switch.

TO CONNECT THE SPLASH RPX-I TO THE NETWORK VIA NETWORK CONNECT

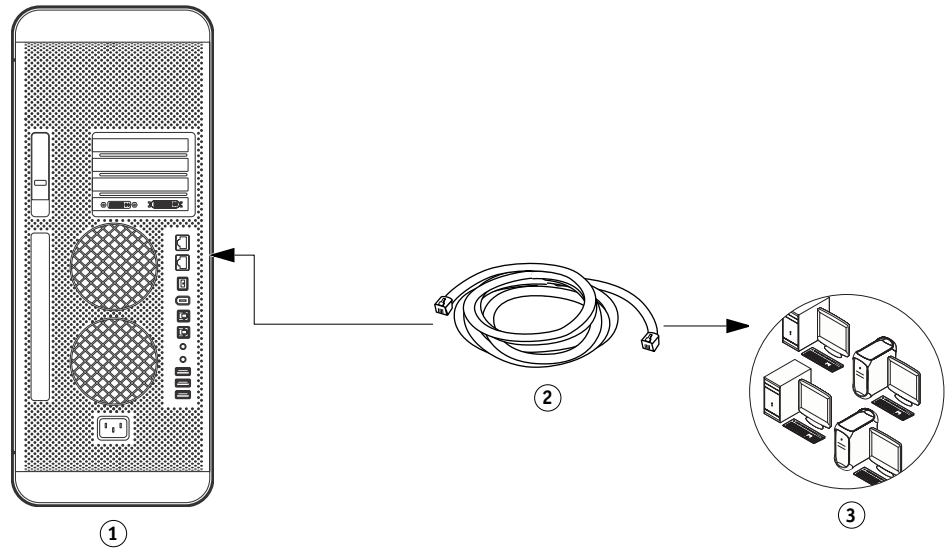
- 1 Fiery
- 2 DocuColor 240/250
- 3 Splash RPX-i
- 4 Networked computers or workstations



- 1 Make sure that the DocuColor 240/250 LEDs are not reporting errors.
- 2 Print the Fiery System Settings list for future reference. The Splash Server may download a software update that will reset the system settings.
- 3 Locate the network Ethernet cable.
- 4 Connect one end of the network Ethernet cable to the Ethernet port on the Splash RPX-i. Use port 1 if the Power Mac has two Ethernet ports.

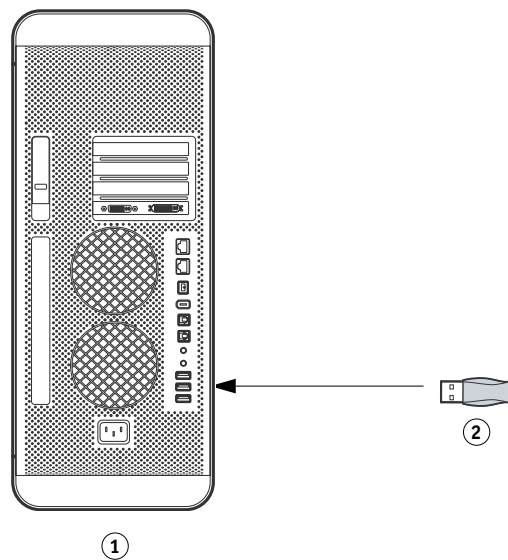
- 5 Connect the other end of the network ethernet cable to the ethernet network as described in the *Power Mac (G5) User's Guide*.

- 1 Power Mac (Splash RPX-i) back panel
- 2 Network ethernet cable
- 3 Network



- 6 Attach the dongle to an available USB port on the back of the Splash RPX-i.

- 1 Power Mac (Splash RPX-i)
- 2 Dongle



You are now ready to install Splash RPX-i server software. To install server software, see [“Installing the Splash RPX-i server software”](#) on page 18.

INSTALLING THE SPLASH RPX-I SERVER SOFTWARE

This chapter describes how to convert the Power Mac into a Splash RPX-i Color Server by installing server software.

Installing the Splash RPX-i server software

The procedures in this section describe how to install the Splash RPX-i server software.

NOTE: If this is the first time you are using a Power Mac, use the Setup Assistant to set up an account on your system.

TO INSTALL THE SPLASH RPX-I SERVER SOFTWARE

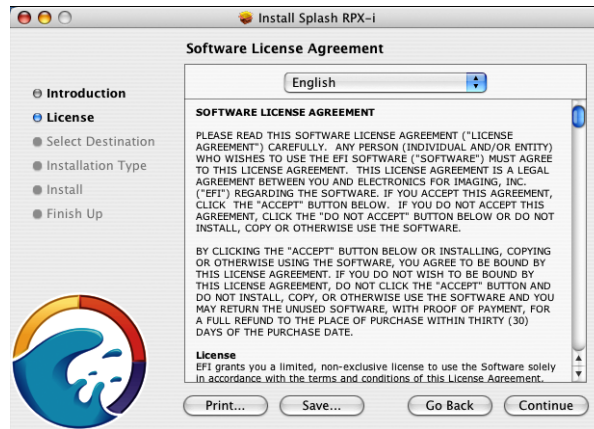
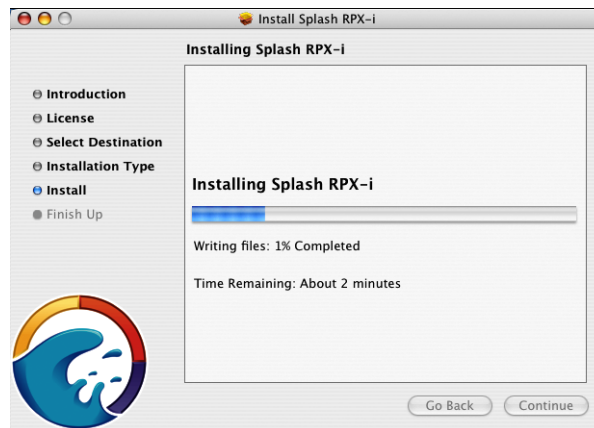
- 1 Make sure that the Splash RPX-i is turned on. If you just finished connecting, restart the Splash RPX-i.
- 2 Insert the Splash RPX-i Server Software DVD into the DVD drive of the Splash RPX-i.
- 3 Double-click the Splash RPX-i Server icon that appears on the desktop.
- 4 Double-click the Splash RPX-i 240-250.pkg icon.

The Splash RPX-i installer screen appears.



5 Click Continue.

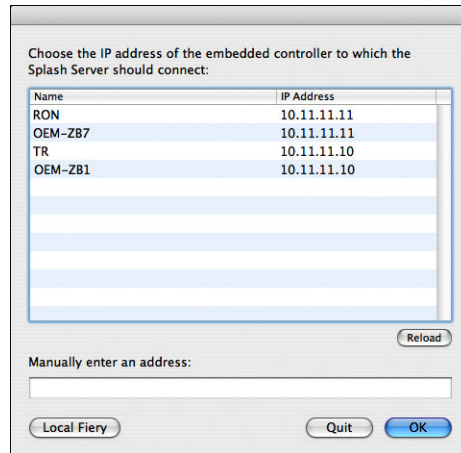
The Software License Agreement screen appears.

**6 Click Continue and then click Agree.****7 Choose the Power Mac hard disk drive (by default named Macintosh HD) as the volume on which to install the Splash RPX-i Server, and then click Continue.****8 In the Install screen, click Install.**

The Splash folder installs automatically in the Applications folder on the Splash RPX-i hard disk. Installation may take several minutes.

9 When you are prompted, click Restart.

10 Select the Fiery or enter the IP address manually if you are prompted.



NOTE: For Direct Connect, you are already connected to the Fiery and do not need to select the Fiery. If the Direct Connect configuration is incorrect, the following window may appear.



If this window appears and you have problems connecting to the Fiery, see the *Troubleshooting Guide*.

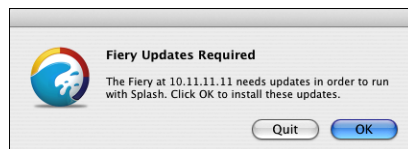
- 11 After you successfully connect to the Fiery, click OK in the dialog box that appears.



- 12 If required, you are prompted to update the Fiery software. Click OK.

Before the update begins, the Splash Server prints a Fiery System Settings page in case you need to restore any Fiery settings after the update.

NOTE: If updates for the Splash Server are available, the Auto Update service prompts you to install the updates. For more information on Auto Update, see the [Configuration Guide](#).



The updates may take several minutes. When the updates are complete, the Splash Server user interface appears, and the Startup page prints automatically.

You have successfully converted the Power Mac into a Splash RPX-i Print Server. To configure your system, proceed to “[Configuring Mac OS X for the Splash RPX-i](#)” on page 22.

Configuring Mac OS X for the Splash RPX-i

To set up the Splash RPX-i Print Server, configure System Preferences to optimize the efficiency of the Splash RPX-i server software. The following lists the default configuration settings for Splash RPX-i.

- **Energy Saver:** Never put the computer to sleep
- **Account/Login items:** Auto launch Splash RPX-i
- **Built-In Ethernet 1:** Apple Talk on
- **Built-In Ethernet 2:** Direct Connect only
Set to 192.168.0.1/255.255.255.0
- **File Sharing:** File Sharing and Windows Sharing are On

For more information see [“Installing User Software with File Sharing”](#) on page 33.

Unless File Sharing or Appletalk is enabled, the System Preferences are already configured correctly, except for Dock Size settings. Use the following procedure to configure the Dock Size.

TO CONFIGURE DOCK SETTINGS

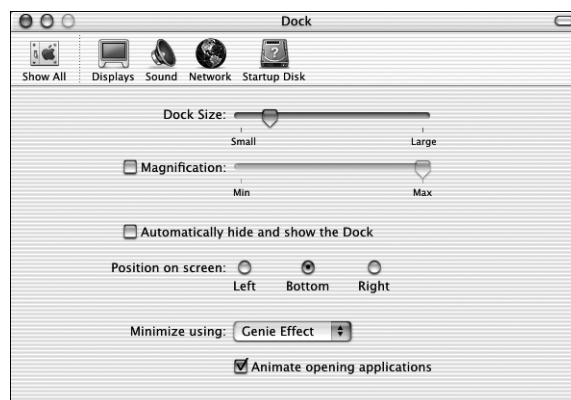
- 1 **Choose System Preferences from the Apple menu.**
- 2 **Click Show All, and then click the Network icon.**
- 3 **Click Show All, and then click the Dock icon.**

The Dock window appears.

- 4 **If necessary, resize the Dock window.**

If the Dock Size is set to Large, it obscures the bottom of the Dock window when it is displayed on the desktop.

- 5 **Drag the Dock Size slider to the approximate position shown in the following illustration.**

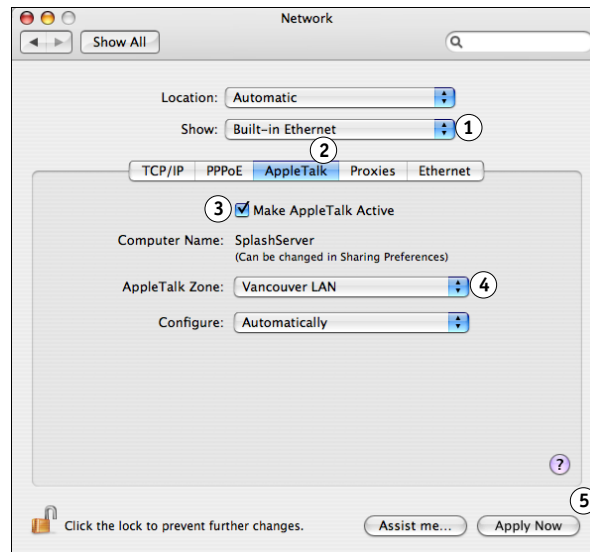


TO CONFIGURE APPLE TALK PRINTING SETTINGS**1 Choose Built-in Ethernet from the Show menu.**

The current Ethernet settings are displayed.

2 Click the AppleTalk tab and select Make AppleTalk Active.**3 If more than one zone is displayed, choose the appropriate AppleTalk zone.****4 Click Apply Now.**

- 1 Choose Built-in Ethernet
- 2 AppleTalk tab
- 3 Make AppleTalk Active check box
- 4 AppleTalk Zone
- 5 Click Apply Now

**5 To verify these settings, print a Configuration page (see [page 25](#)).**

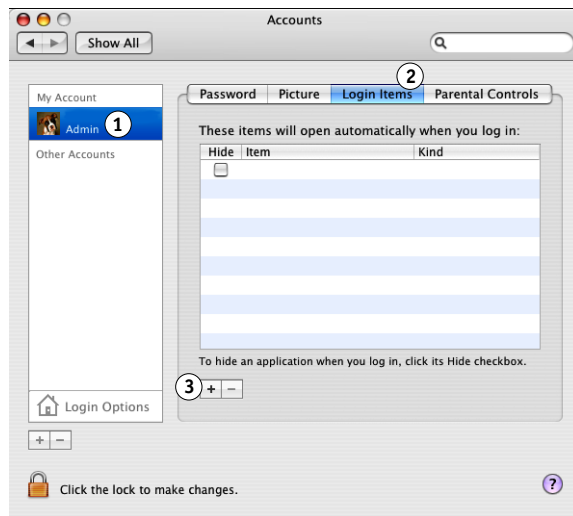
TO CONFIGURE THE SPLASH RPX-I TO LAUNCH ON STARTUP**1 Choose System Preferences from the Apple Menu.**

The System Preferences window appears.

2 Select Accounts.

The Accounts window appears.

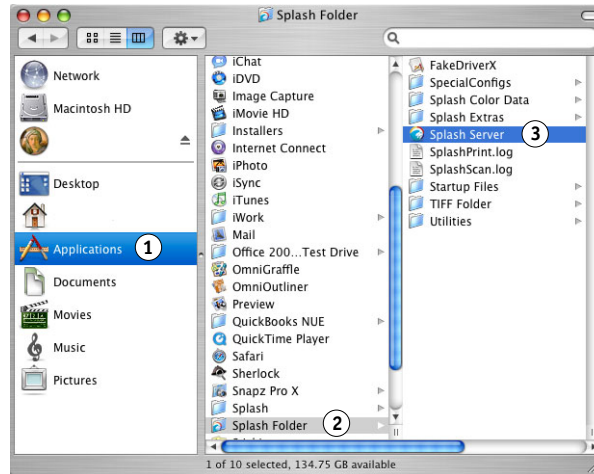
- 1 Splash Server user
- 2 Login Items
- 3 '+' icon

**3 Select the Splash Server user.****4 Click Login Items.**

5 Click the '+' icon.

The file browser appears.

- 1 Applications
- 2 Splash Folder
- 3 Splash Server



6 Select Applications, Splash Folder, and then Splash Server.

7 Click Add.

8 Choose Quit System Preferences from the System Preferences menu.

TO PRINT A CONFIGURATION PAGE

- 1 If it is not already on, power on the Fiery and allow it to warm up.
- 2 If it is not already on, power on the Splash RPX-i.
- 3 Log in as Administrator, and then Choose Login from the Server menu.

The Login dialog box appears.

4 Type the administrator password and click OK.

NOTE: By default, no password is assigned and the Password field is blank. If a password is required, consult the Splash RPX-i administrator.

5 Choose Print Configuration Page from the File menu.

The Splash RPX-i sends the Configuration page to the Fiery.

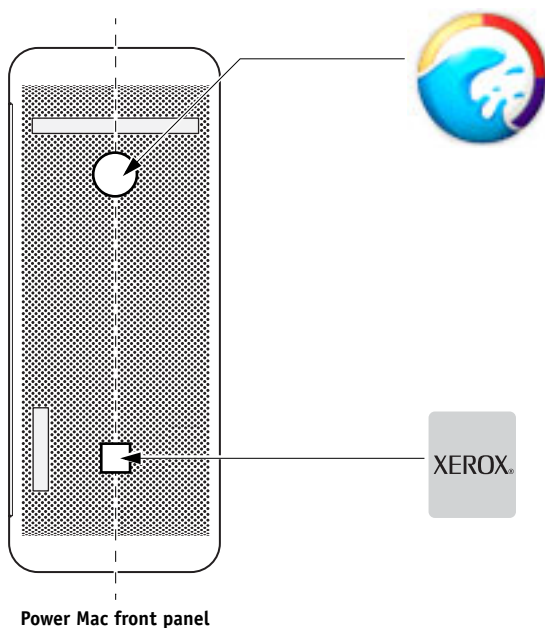
Labeling the Splash RPX-i

When you finish configuring the Splash RPX-i Print Server, place the labels included in the Splash RPX-i media pack on the Power Mac. The labels help distinguish that the Power Mac is now a Splash RPX-i Print Server.

TO PLACE LABELS ON THE SPLASH RPX-I

- Place the labels provided with this kit in the locations shown in the following illustration.

NOTE: The following illustration is an example. The label locations may not be appropriate for all Power Mac computers.



Calibrating the Splash RPX-i

For optimal color printing results, calibrate the Splash RPX-i at least once daily. For information about calibrating the Splash RPX-i, see the [Color Guide](#).

INSTALLING USER SOFTWARE ON A MAC OS COMPUTER

This chapter describes installing and configuring Mac OS computers with the Splash RPX-i user software. It also describes how to copy color files on computers where users will use them.

For information about installing printer drivers, see the *Printing Guide*.

NOTE: The installation of software is similar for Mac OS 9 and Mac OS X. Differences are noted in the following procedures.

Installing the Splash Server Remote from the User Software and Documentation CD

The following procedures describe how to install the Splash Server Remote from the Splash RPX-i User Software and Documentation CD. To install the software by file sharing, see “Installing User Software with File Sharing” on page 33.

NOTE: Splash Server Remote is only supported on Mac OS X computers running v10.4 or later.

TO INSTALL THE SPLASH SERVER REMOTE FROM USER SOFTWARE AND DOCUMENTATION CD

- 1 Insert the Splash RPX-i User Software and Documentation CD into the CD-ROM drive on your computer.
- 2 Select the Splash Server Remote icon in the Remote Utilities folder and copy it to the Applications folder on your computer.

Splash Server Remote is now installed on your computer. To configure Splash Server Remote, use the following procedure.

TO CONFIGURE SPLASH SERVER REMOTE

- 1 Double-click the Splash Server Remote icon that you copied to your computer.
- 2 Select the Splash RPX-i and enter the Splash RPX-i IP address or select it from the list, if available.
- 3 Click Connect.

For information about using Splash Server Remote, see the *Job Management Guide*.

Installing Splash Remote Scan from the User Software and Documentation CD

The following procedures describe how to install the Splash Remote Scan application and TWAIN plug-in from the Splash RPX-i User Software and Documentation CD. To install the software by file sharing, see “[Installing User Software with File Sharing](#)” on page 33.

TO INSTALL SPLASH REMOTE SCAN AND THE TWAIN PLUG-IN FROM THE USER SOFTWARE AND DOCUMENTATION CD

- 1 Insert the Splash RPX-i User Software and Documentation CD in the CD-ROM drive on your computer.
- 2 Double-click the **Splash Remote Scan.pkg** installer in the **Remote Utilities** folder.
- 3 Follow the on-screen instructions.

For information about using Splash Remote Scan and the TWAIN plug-in, see the *Job Management Guide*.

Configuring Splash Remote Scan

The first time you start Splash Remote Scan, you must configure the connection to the Splash RPX-i. Before you configure the connection, you must have the correct IP address. Make sure the Splash RPX-i is registered in a Domain Name Server (DNS) on your network.

NOTE: Splash Remote Scan is not supported on Mac OS 9.

TO CONFIGURE THE CONNECTION TO THE SPLASH RPX-I

- 1 **Start Splash Remote Scan.**
The Configuration window appears.
- 2 **In the Server Name (or IP Address) field, type the IP address or DNS name of the Splash RPX-i.**
- 3 **Select Use Nickname and type another name to distinguish the Splash RPX-i.**

This name does not have to match the actual Server Name of the Splash RPX-i.

- 4 **Type the name of the device connected to the Splash RPX-i.**

NOTE: The device name is case-sensitive. Ask your network administrator for this name. For more information, see the *Configuration Guide*.

- 5 **Click the green arrow to add the Splash RPX-i to My Splash List.**
- 6 **Click OK.**

Installing the Apple Printer Utility from the User Software and Documentation CD

The following procedures describe how to install the Apple Printer Utility from the Splash RPX-i User Software and Documentation CD. To install the software by file sharing, see “[Installing User Software with File Sharing](#)” on page 33.

NOTE: The Apple Printer Utility is only supported on Mac OS 9 computers or Mac OS X computers with Classic installed.

TO INSTALL APPLE PRINTER UTILITY FROM THE USER SOFTWARE AND DOCUMENTATION CD

- 1 Insert the Splash RPX-i User Software and Documentation CD into the CD-ROM drive on your computer.
- 2 From the Utilities folder, double-click the Apple Printer Utility folder, and then double-click Apple Printer Utility.
- 3 Follow the on-screen instructions.

For information about using the Apple Printer Utility, see the [Configuration Guide](#).

Copying CopyCal Target files from the User Software and Documentation CD

You can copy CopyCal Target color files from the Splash RPX-i User Software and Documentation CD to your hard disk. Use the CopyCal Targets files to calibrate the copier.

TO COPY COPYCAL TARGET FILES FROM THE USER SOFTWARE AND DOCUMENTATION CD

- 1 Insert the Splash RPX-i User Software and Documentation CD into the CD-ROM drive on your computer.
- 2 From the Utilities folder, double-click the CopyCal Target folder and select the CopyCal Targets files.
- 3 Copy the files to your computer.

For information about using CopyCal Target files, see the [Color Guide](#).

INSTALLING USER SOFTWARE ON A WINDOWS COMPUTER

This chapter describes installing and configuring Windows computers with the Splash RPX-i user software. It also describes how to copy color files on client computers where users can access them.

For information about installing printer drivers, see the *Printing Guide*.

NOTE: Before installing the software, close all other applications.

Installing Splash Remote Scan from the User Software and Documentation CD

The following procedures describe how to install the Splash Remote Scan application and TWAIN plug-in from the Splash RPX-i User Software and Documentation CD. To install the software by file sharing, see “Installing User Software with File Sharing” on page 33.

TO INSTALL SPLASH REMOTE SCAN AND THE TWAIN PLUG-IN FROM THE USER SOFTWARE AND DOCUMENTATION CD

- 1 **Insert the Splash RPX-i User Software and Documentation CD into the CD-ROM drive on your computer.**

The CD-ROM contains a .zip file of the utility: Remote Utilities\SplashRemoteScan-Windows.zip.

- 2 **Double-click the zip file on your desktop and run the installer.**
- 3 **Click setup.exe located in Splash Remote Scan\Splash Remote Scan.**
- 4 **Follow the on-screen instructions.**

For information about using Splash Remote Scan and the TWAIN plug-in, see the *Job Management Guide*.

Configuring Splash Remote Scan

The first time you start Splash Remote Scan, you must configure the connection to the Splash RPX-i. Before you configure the connection, you must have the correct IP address. Make sure the Splash RPX-i is registered in a Domain Name Server (DNS) on your network.

NOTE: Splash Remote Scan cannot be used over the parallel port. It requires a network connection. For information about supported networking protocols, see the *Configuration Guide*.

TO CONFIGURE THE CONNECTION TO THE SPLASH RPX-I**1 Start Splash Remote Scan.**

The Configuration window appears.

2 In the Server Name (or IP Address) field, type the IP address or DNS name of the Splash RPX-i.**3 Select Use Nickname and type another name to distinguish the Splash RPX-i.**

This name does not have to match the actual server name of the Splash RPX-i.

4 Type the device name connected to the Splash RPX-i.

NOTE: The device name is case-sensitive. Ask your network administrator for this name. For more information, see the [Configuration Guide](#).

5 Click the green arrow to add the Splash RPX-i to My Splash List.**6 Click OK.**

Installing the Splash Printer Delete Utility from the User Software and Documentation CD

The following procedures describe how to install the Splash Printer Delete Utility from the Splash RPX-i User Software and Documentation CD. To install the software by file sharing, see “[Installing User Software with File Sharing](#)” on page 33.

TO INSTALL THE SPLASH PRINTER DELETE UTILITY FROM THE USER SOFTWARE AND DOCUMENTATION CD**1 Insert the Splash RPX-i User Software and Documentation CD into the CD-ROM drive on your computer.**

The CD-ROM contains a .zip file of the utility: Remote Utilities\SplashPrinterDeleteUtility-Windows.zip.

2 Double-click the zip file on your desktop and run the installer.**3 Click setup.exe located in Splash Printer Delete Utility\Splash Printer Delete Utility.****4 Follow the on-screen instructions.**

For information about using the Splash Printer Delete Utility, see the [Printing Guide](#).

Copying CopyCal Target files from the User Software and Documentation CD

You can copy CopyCal Target color files from Splash RPX-i User Software and Documentation CD to your hard disk. Use the CopyCal Targets files to calibrate the copier.

TO COPY COPYCAL TARGET FILES FROM THE USER SOFTWARE AND DOCUMENTATION CD

- 1 **Insert the Splash RPX-i User Software and Documentation CD into the CD-ROM drive on your computer.**
- 2 **Click Utilities, double-click the CopyCal Target folder, and then select the CopyCal Targets files.**
- 3 **Copy the files to your computer.**

For information about using CopyCal Target files, see the *Color Guide*.

INSTALLING USER SOFTWARE WITH FILE SHARING

The following procedures describe how to configure the Splash RPX-i for Mac OS software installation by file sharing the Splash folder, and how to access that folder by connecting to File Sharing.

Once you connect to file sharing, the following software archives are available for download:

Mac OS X

- RPX-i MacOS X Drivers.zip: Installer for printer drivers for Mac OS X clients
- SplashServerRemote.zip: Splash Server Remote application
- SplashRemoteScan.pkg.zip: Installer for Splash Remote Scan application

Windows

- RPX-i Windows Drivers.zip: Printer drivers for Windows clients
- SplashRemoteScan-Windows.zip: Installer for Splash Remote Scan application
- SplashWinPrinterDelete.zip: Uninstall tool for Windows printer drivers

Mac OS 9

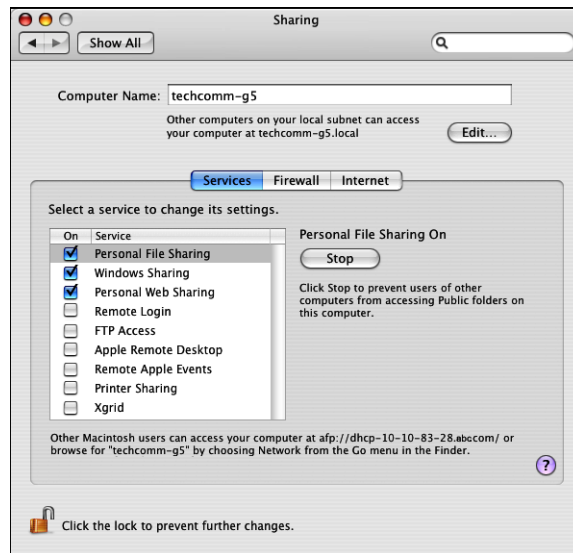
- RPX-i MacOS 9 Client.bin: Installer for standard print driver
- RPX-i MacOS 9 Client SA.bin: Installer for Secure Access print driver

TO CONFIGURE THE SPLASH RPX-I FOR MAC OS SOFTWARE INSTALLATION BY FILE SHARING

- 1 **Choose System Preferences from the Apple menu on the Splash RPX-i and click the Sharing folder.**

The Sharing dialog box appears.

- 2 **Select Personal File Sharing, Windows Sharing, and Personal Web Sharing, and then click Start.**



- 3 **Close the Sharing dialog box.**

Mac OS users can now download and install Splash client installers through the Apple file sharing network. Windows users can download and install client installers through a Windows network.

TO CONNECT TO FILE SHARING FOR ACCESS TO THE SPLASH FOLDER (MAC OS X)

- 1 **Choose Connect to Server from the Finder “Go” menu.**
- 2 **In the Connect to Server dialog box, type the IP address of the Splash RPX-i or browse to the Splash RPX-i.**
- 3 **Select Guest in the File Server Connect dialog box and click Connect.**

The Splash RPX-i Mac OS computer name appears in the list of available shared systems.

- 4 **Select the shared system and click OK.**

NOTE: Multiple volumes may appear in the list of available shared systems. Select the volume that contains the Splash RPX-i.

- 5 **Click the newly created icon on your desktop.**

All installable software is listed in the Splash Installer Downloads folder.

- 6 **Choose the software or files you want to install over the network.**

Repeat this installation procedure for each Mac OS X computer connected to the network.

For information about installing software on your Mac OS X computer, see [“Installing User Software on a Mac OS Computer”](#) on page 27.

TO CONNECT TO FILE SHARING FOR ACCESS TO THE SPLASH FOLDER (MAC OS 9)

- 1 **Select Chooser from the Apple menu.**

The Chooser dialog box appears.

- 2 **Click the AppleShare icon and choose the appropriate AppleTalk Zone and the Splash RPX-i, or click Server IP Address and type the IP address of the Splash RPX-i.**

The Splash RPX-i Mac OS computer name appears in the list of available shared systems.

- 3 **Click OK.**
- 4 **Choose Guest in the File Server Connect dialog box and click Connect.**
- 5 **Select the Splash RPX-i and click OK.**
- 6 **Click the newly created icon on your desktop.**

All installable software is listed in the Splash Installer Downloads folder.

- 7 **Choose the software or files that you want to install over the network.**

Repeat this installation procedure for each Mac OS 9 computer connected to the network.

For information about installing software on your Mac OS 9 computer, see [“Installing User Software on a Mac OS Computer”](#) on page 27.

TO CONNECT TO FILE SHARING FOR ACCESS TO THE SPLASH FOLDER (WINDOWS)

- 1 Double-click or right-click My Network Places.**
- 2 Click Search for computers.**
- 3 Type the Splash RPX-i IP address in the Computer name field and click Search.**
- 4 Double-click the Splash RPX-i.**

If you are prompted to do so, enter the Splash RPX-i administrator name and password.

All installable software is listed in the Splash Installer Downloads folder.

- 5 Choose the software or files that you want to install over the network.**

Repeat this installation procedure for each Windows computer connected to the network.

For information about installing software on your Windows computer, see [“Installing User Software on a Windows Computer”](#) on page 30.

INSTALLING AND USING ADOBE READER

For your convenience, the Adobe Acrobat Reader version 6.0 for Windows and Mac OS is included on the Splash RPX-i User Software and Documentation CD. This version features enhanced capabilities for full rules-based search across the entire documentation set.

Installing Acrobat Reader

We strongly recommend that you install this version of Acrobat Reader (or a later version, if available), unless you have already installed the equivalent version.

To install Acrobat Reader, refer to the [GetAcrobatReader.html](#) found on the User Software and Documentation CD.

Using Acrobat Reader

The PDF files provided on the User Software and Documentation CD can be viewed or printed using Acrobat Reader (or Acrobat). Once Acrobat Reader is installed, double-click a file with a PDF icon to open the file. Because of the advanced search capability of the version of Acrobat Reader that is provided on the User Software and Documentation CD, you can search for a word or phrase across all of the Splash RPX-i documentation by examining all of the documents within the specific language folder on the User Software and Documentation CD. For information about using the features of Acrobat Reader, see the application's online Help.

NOTE: You can view the documentation from the CD or copy the language folder to your computer. If you copy the files to your computer, keep all the files in the language folder and do not rename the files, otherwise the cross-reference links will not work properly.

INDEX

A

- Acrobat Reader
 - installing 37
 - using with online documentation 37
- Apple Printer Utility 10, 29

C

- calibrating 26
- configuring
 - Mac OS X system preferences 22
 - server for File Sharing 34
 - Splash Remote Scan 28
- connecting
 - Direct Connect 13
 - Network Connect 13
- CopyCal Target files
 - Mac OS 29
 - Windows 32

D

- Direct Connect
 - about 13
 - connecting 13
- Dock Size 22
- documentation 6
 - about 6

F

- File Sharing 33
- File Sharing connecting on
 - Mac OS 9 35
 - Mac OS X 35
 - Windows 36

I

- installing
 - Apple Printer Utility 29
 - server software 18
 - Splash Printer Delete Utility 31
 - Splash Remote Scan 30
 - Splash Server Remote 27
 - user software on Mac OS 27
 - user software on Windows 18
 - with File Sharing 33

K

- kit contents 5

L

- labeling 26

M

- Mac OS X, configuring 22
- media package 5

N

- Network Connect
 - about 13
 - connecting 13
- network support 10
- Networking support 10

O

- overview
 - client software 7
 - server software 7

P

- preparing
 - Splash RPX-i 11
 - to print 11

R

- Remote Scan 10
- requirements
 - client computer 10
 - server system 9

S

server software install 18

server startup 24

software overview 7

Splash Printer Delete Utility 10, 31

Splash Remote Scan 28, 30

Splash Server Remote 10, 27

T

terminology 6

W

Windows, installing user software 18