

WELCOME LETTER

Xerox FreeFlow Print Server 6.0

For DocuColor 5000, 7000, 8000

701P46844 Version 6.0 X86

Welcome!

Congratulations! You have the latest software and documentation package for your Xerox FreeFlow Print Server. The changes will impress you. The new interface and workflow options will raise the bar on your productivity. The additional color options and new features will enable new ways for you to grow your business.

Take a glance through these summary pages and we think you'll agree----The Xerox FreeFlow Print Server 6.0 delivers an impressive array of great features!

Prepress, Administrators and Operators will all enjoy the updates immediately.

- ✓ A powerful at-a-glance user interface.
- ✓ Customized screens plus layout options and shortcuts.
- ✓ Great new color and job management options such as Preflight, Soft Proof and Export PDF.
- ✓ Expanded support for the Pantone support. Additional color emulations such as EuroScale and full Device Link Profiles.



What's in this letter?

Section I: Customize Your Screens!

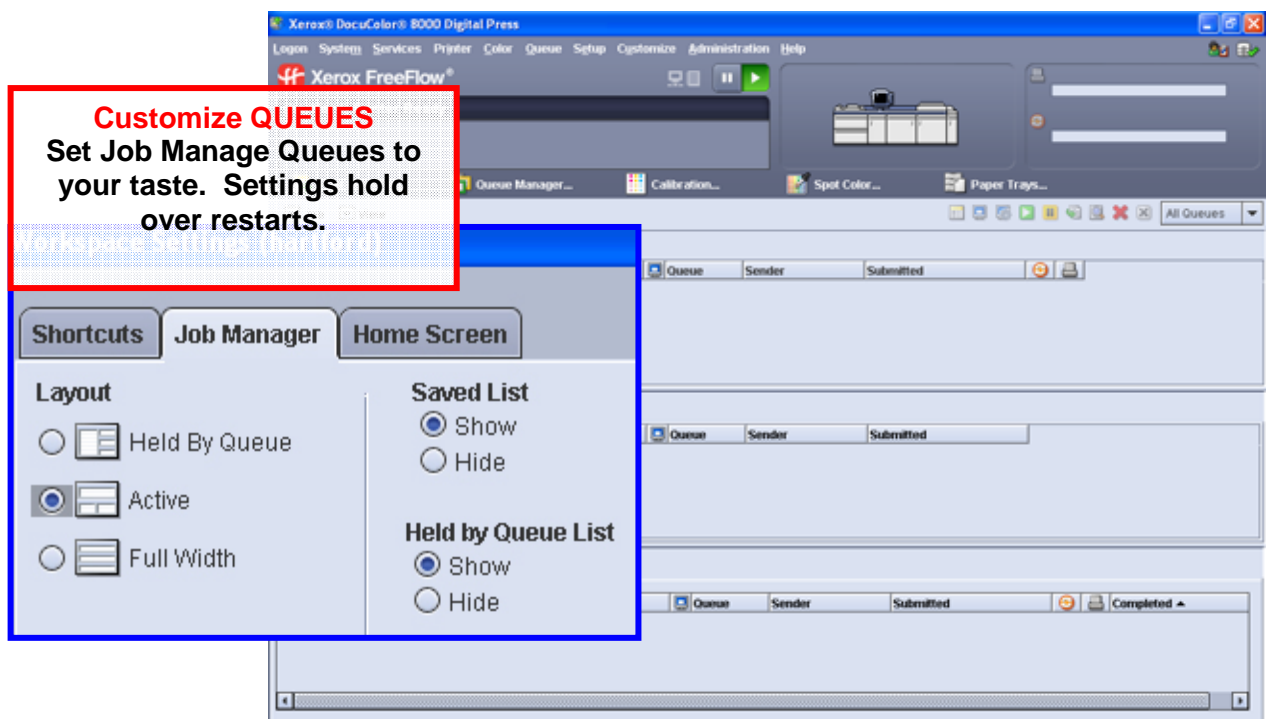
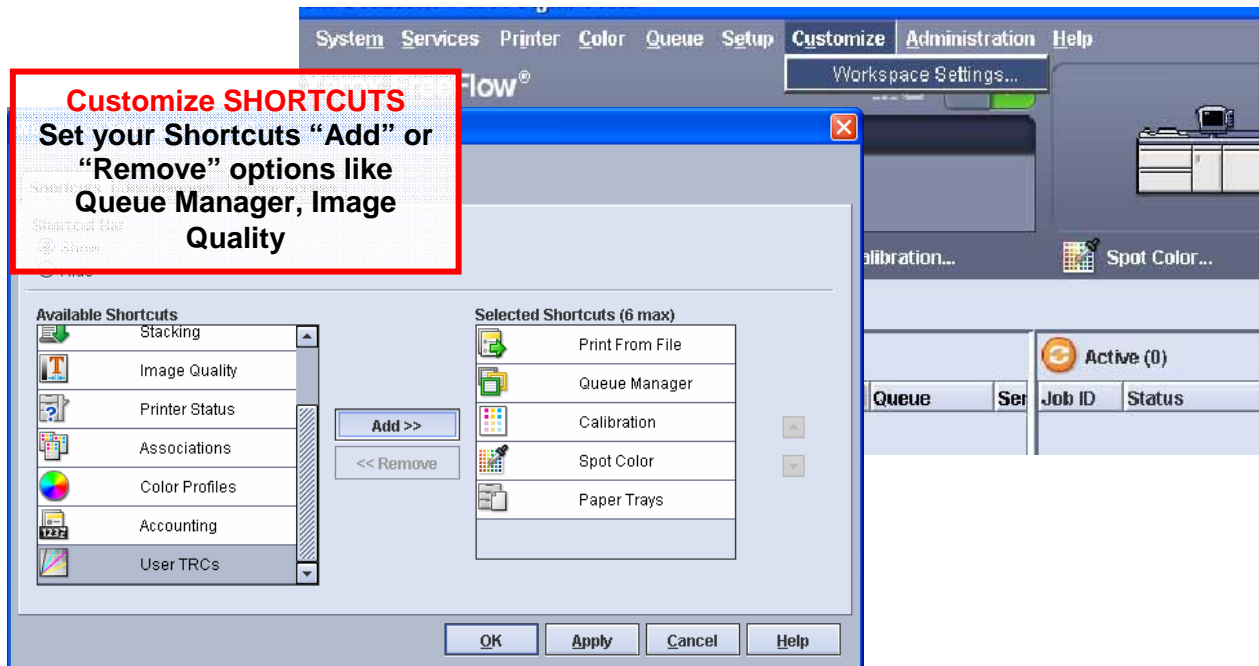
Section II: Quick Guide to New Features!

Section III: Limits and Considerations

Section IV: Job Submission Guide

Section I: Customize Your FreeFlow Server!

The new FreeFlow Server allows you to customize the user interface. Choose your Shortcuts, Queue Alignment and other options. Most settings now retain between restarts, reboots etc.

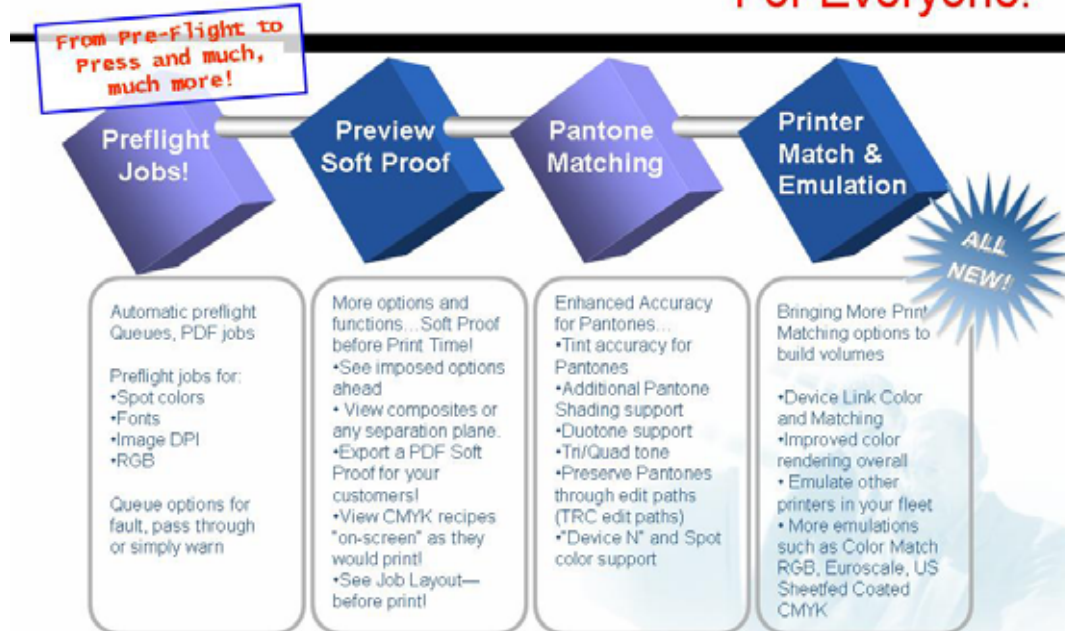


Section II: Quick Guide to New Features

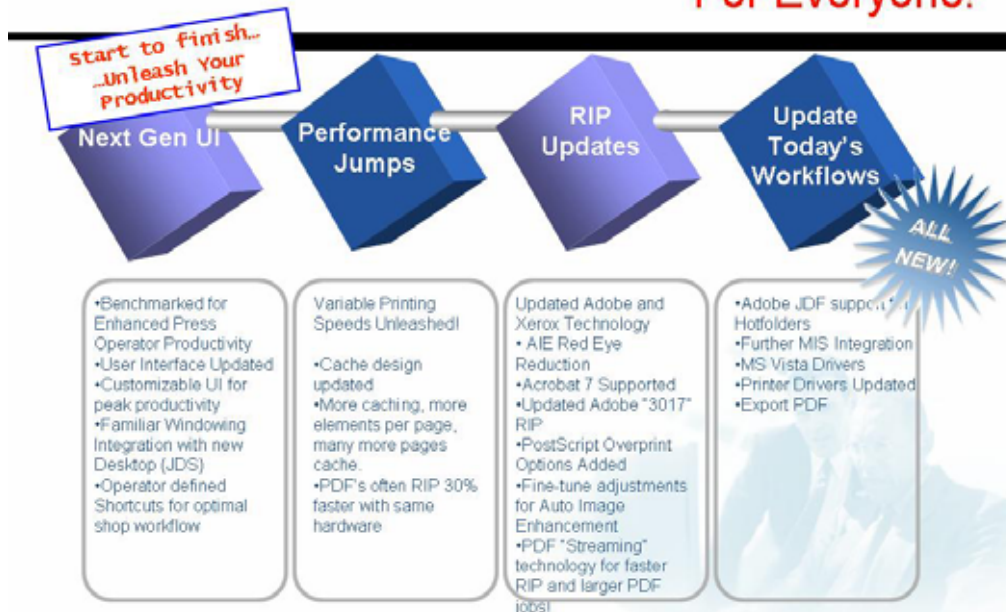
Xerox FreeFlow Print Server 6.0



Impressive Color Updates--- For Everyone!



Improved Productivity--- For Everyone!



Preflight / Flight Check

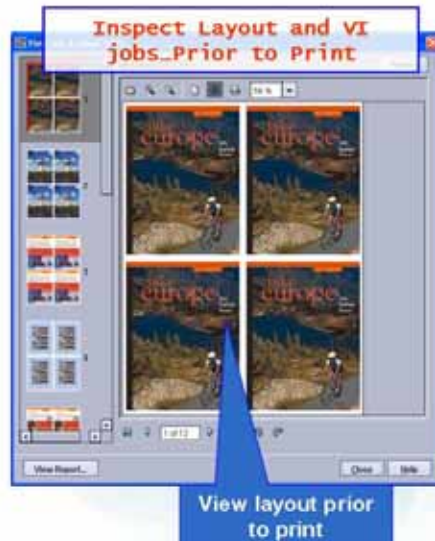
- Quick and Automatic Prepress Checks
 - Fonts
 - Spot Colors – Validate your Pantone Licensed corporate colors are inside with genuine Pantone checking
 - RGB color space – protect your CMYK and press workflow
 - Low/High Res – Check for IQ problems and excessive DPI jobs. Why waste operator and RIP time on 4800 dpi images or 72 dpi?
- Create shop policies on Queue-by-Queue Basis! Provides a flexible choice for specific workflows at a site.
- Flexibility to Process, Error or Hold!
- Export detailed reports for customer or pre-press feedback.



Preview & Soft Proof

Bringing Preview to a higher level

- Soft Proof your job prior to running on the digital press
- Send (export) the RIP'ed PDF for upstream soft proof approvals!
- Validate layout and imposition--prior print--on any job type.
- Visual inspect VI record alignment before going to press
- Inspect the Pages!
 - View composite CMYK or any separation/plate individually.
 - Use eyedropper & zoom on any object's CMYK formula.
 - See job attributes linked with a "click"



Pantone Matching

There's a lot to say about Pantone color matching...

- Licensed Pantones preserved even when using popular Color Mgt tools (e.g. TRC Editor!)
- Tints were fine-tuned for better accuracy. Highlights tuned to match Pantone hue (vs. raw percentages).
- More Pantone Shading and Gradation Support... Sweeps hit the spot!
- Duotone, Tri-tone and Quad-tone support!
 - Blend two corporate spot colors and maintain genuine Pantone prints. Now you can feel free to colorize your images with your corporate color!
- Popular "Custom Spot Colors" Supported Known as "Device N" support by Adobe.

Pantone matching for the most creative (and critical!) customers!

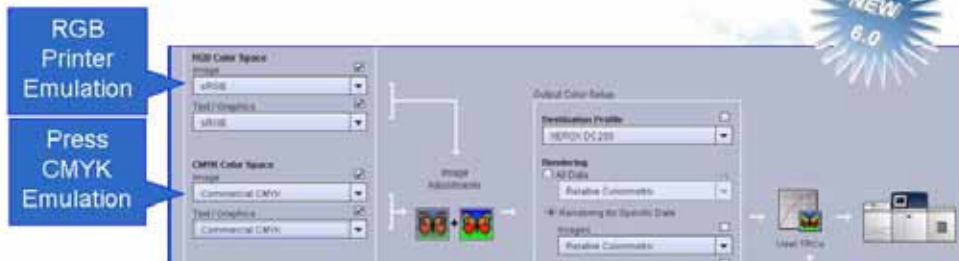


Creatively add Pantone Licensed sweeps, tints, blends, duotones--- gaudtones too!

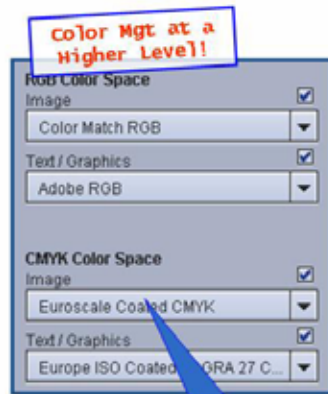
Device Link & Printer Matching

- FreeFlow Print Server automatically generates Device Links for Better Overall Matching
- Ensures faster Press-to-Press match
- Optimal CMYK matching between presses
- Emulate difficult RGB workflows between presses
- *Shop-wide* color management enabler!

Transfer offset jobs with better accuracy and speed



Device Link & Printer Matching (Cont)



Expand flexibility, better proofs and quick job turnaround...

- o Achieve closer matching between a DocuColor 250 and Xerox iGen3 in RGB
- o Achieve closer matching between presses
- o Emulate Offset Press look with wider gamut RGB data. For example, print digital photos (RGB) to match a particular digital press look.
- o Preserve black (K) pathway when moving between printers and color management.

Many Standards & Emulations have been Updated...

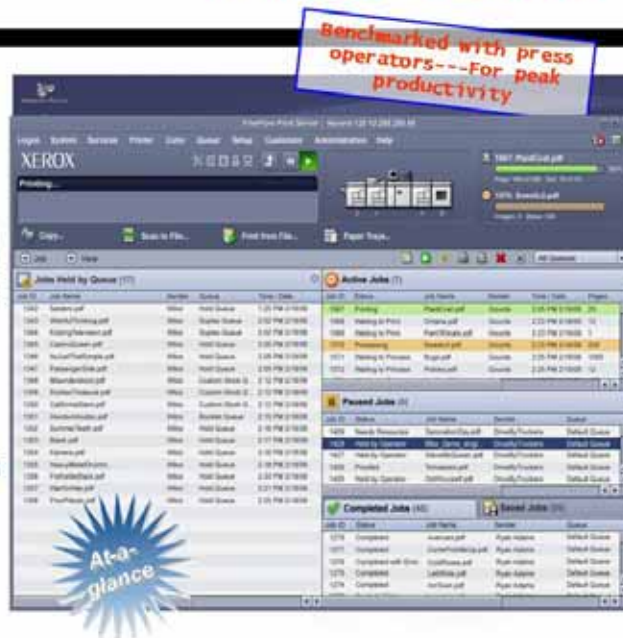
On-board support for Graphic Art emulations such as Euroscale, Color Match RGB, US Sheefed coated CMYK



Next Gen Interface

Next generation Xerox FreeFlow Print Server Interface...

- Intuitive Drop/Drag job mgt. and submissions!
- Refreshing "at-a-glance" approach to job flow and production management
- Define your own shortcuts—For quick access to your favorites like "Print from File".
- Customizable Views & Arrangements—Allows a custom fit for every operator and site workflow!





Personalize Shortcuts

Progress Bar
status

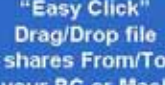
few queues at a glance

Drag/Drop job

Complete/Save
Jobs all visible

Value:
Quick workflow
Integration

- Familiar Windowing
Integration with fresh new Desktop
- "Easy Click" shares and site environments
 - Set Window *Shares* with a mouse click
 - Share either direction with mouse clicks
- Integrated functions---Web Browser, File Manager etc.



Performance

- An intense focus raised the bar on VI performance...
 - Heavy investment enabled more VI jobs through the server's variable cache path. A technical re-design boosted valid cache jobs...
 - Impressive results with hundreds of customer jobs...
 - More objects, more complex pages and more work... more VI.
- Xerox and Adobe teamed to upgrade the PDF printing capability.
- Continued expansion of RIP hardware options... Dual core AMD technology, Parallel RIP technology...

Today's VI apps demand peak performance--



---Run variable in 6.0 without compromise!

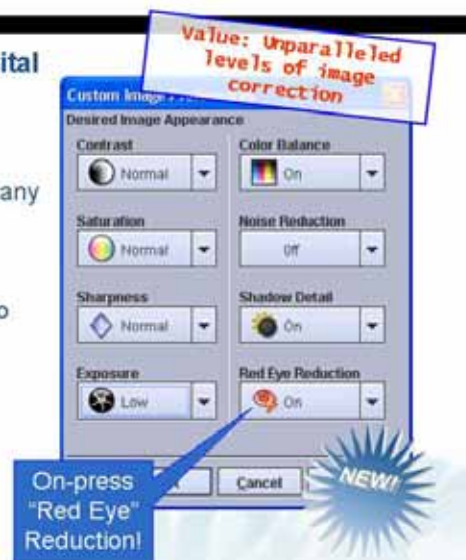
Adobe & Xerox RIP updates

Great New Xerox Technology for Digital Photos and other applications!

- Automatic Image Enhancement
 - Fine-Tune Adjustments
 - One-button settings or customize to any queue or workflow
 - Automatic Red Eye Reduction!!
- PostScript Overprint Options Added – Popular press option in apps and used to specify trapping composite color files.

Updates from Adobe

- Integrated rev. 3017 Adobe RIP
- Acrobat 7 supported



Updating Today's Workflows

- Adobe JDF support with Hotfolder support
- Microsoft Vista Printer Drivers (see xerox.com)
- Windows Certified WHQL drivers (32/64 bit)



Updating Today's Workflows ...Ordered Stock Support

- Bring Smart DocuTech
Ordered/Pre-Cut workflow to
your entire DocuColor family!
- Track and purge pre-cut tabs
 - Proper tray order automatically
between sets, jams and jobs!!
 - Combine with an excellent
Page Exception legacy---and
you have a real time-saver for
complex publishing jobs!

**Value: DocuTech style
Pre-cut tab operation**

Size / Color 12 x 18"; White	Type Pre-Cut Tab
Type / Weight Pre-Cut Tab; 90.0	<input type="checkbox"/> Drilled
Coating Uncoated	Sequence 5 1 - 254
	Weight 90 gsm 60 - 300

Enter Pre-Cut tab
sequence...and automatic
recovery is enabled!



III. Limits and Considerations

Make sure you go to the “CUSTOMIZE” window/pulldown. You can set and align your queues to your taste. You can, for example, set your queues in a Wide format or a Left/Right format (Default). Changing these queue alignments keeps over reboots and is a popular item with operators.

The Microsoft Vista Driver should be downloaded from Xerox.com for the latest version.

The mainframe language support, IPDS, is available through a separate kit. See Xerox for specifics.

The Remote Workflow software can not connect to a 5.1 system, only to a 6.0 software version.



IV. Job Submission Guide

Web Submissions: Pointing most browsers to the FreeFlow Print Server's address will result in an easy method to submit print-ready files (e.g, PDF, PS)

<http://192.12.233.56/>

<http://myprintername/>

Hotfolder Drag/Drop Submits

Right click on any queue and select Enable Hotfolder. Then you can drag and drop print ready files to that same queue (e.g, PostScript, PDF etc). The line below show one example!

<\\192.12.233.56\\>

<\\myprintername\\>

Printer Driver

Remember to use the CentreWare Printer Drivers for job submissions from applications! See the CentreWare driver documents and software included here. Please visit xerox.com for updated drivers. In particular, the Vista OS driver will be available at xerox.com

Print from File

On the main screen of the FreeFlow Server, "Print-from-File" provides an easy and popular way to submit Print Ready files such as PDF. In 6.0, you can submit batches of jobs from your USB drive with ease.



FreeFlow Print Server DocuSP Network Quick Connect Guide

Purpose:

Refer to this guide to modify the Digital Front End (DFE) network settings at the DFE Local User Interface (UI). For complete instructions refer to the DocuSP documentation.

Note: A Network Administrator is required to ensure that the DFE is configured properly. To properly configure the DFE, the Network Administrator must supply an IP Address, a Subnet Mask, and a Gateway Address if applicable (as well as a Cat 5 Ethernet drop cable). For complete instructions to configure the DFE on a Novell network refer the DocuSP Customer documentation.

Procedure:

This product was designed to connect to most networks with minimal changes. Connect the DFE to the network. Step 1 provides the machine default settings. Steps 2 - 5 provide instructions on how to modify the machine settings and connect clients for printing

Step 1 Default Server and Network Settings

Default Port Settings	Default Network Settings
Web Services - Enabled (DHCP).	IP Address: Get IP Address

LPD - Enabled	Server Name: The default server name is
Windows Printing - Enabled	"XRX_hostID"
Netware - Enabled	

IPP - Enabled	Print Queues:
---------------	---------------

AppleTalk - Enabled	XRX_hostID_Print
Socket - Disabled	XRX_hostID_Save
	XRX_hostID_Hold

Step 2 IP Protocol Setup - using the Local UI

Note: If you intend to use a Name Service (NIS, NIS+ etc) then please reference the Customer Documentation. The Name Service options are not addressed in this quick setup guide.

Auto IP (DHCP): No action required.

Static IP Configuration: Follow this procedure to make changes.

If no changes are required, continue to Step 3.

Local UI

1. Make sure the DocuSP status displays "printer ready".
2. Select Logon from the pull-down menu on the DocuSP.
3. Login in as System Administrator. Enter the password. The default password is 'administ' and is case sensitive.
4. Click OK.
5. Click Setup > Network Configuration.
6. Select the "Configuration Method" from the IP Address tab.
7. Enter the Hostname, Default Gateway, IP Address, and Subnet Mask
8. Click OK.
9. Select System > Shutdown.
10. Click Yes.

11. After the system has completely shutdown, wait 5 seconds and then press the power button to bring the DocuSP back up.

The Network Configuration dialog box has a title bar 'Network Configuration'. It contains a checkbox 'Enable IP' which is checked, and a 'Restore Defaults' button. Below is a dropdown menu for 'IP Configuration Method' set to 'Enable DHCP'. There are several tabs: 'IP Address', 'DNS', 'WINS', 'NIS / NIS+', 'ADS', 'SMB / FTP', and 'Connections'. The 'IP Address' tab is active, showing fields for 'Hostname' (containing 'Terrance'), 'Default Gateway', 'IP Address', and 'Subnet Mask'. At the bottom are buttons for 'OK', 'Apply', 'Reset', 'Cancel', and 'Help'.

The Information dialog box has a title bar 'Information'. It contains an information icon and text: 'The system must be shutdown for the new settings to take effect. Go to the System Menu and select Shutdown.' At the bottom is an 'OK' button.

Step 3 Load Print Drivers - installation information for printing using LPR

Note: Win 95/98/Me/NT are NOT supported.

Windows 2000, Windows XP, and Server 2003

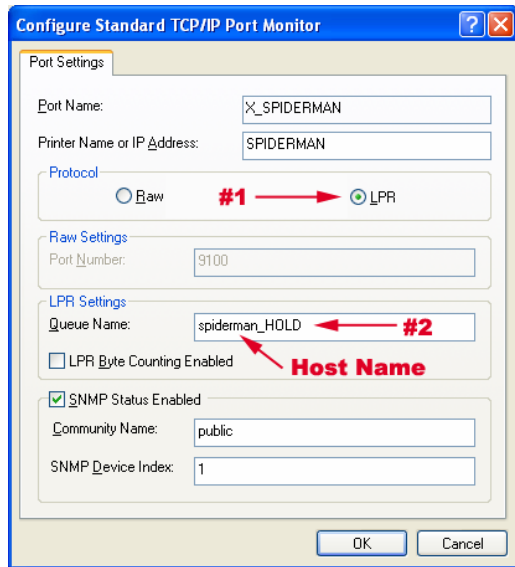
1. Insert the "CentreWare Services 6.20 Network Print Drivers CD in the client CD-ROM drive.
2. Select "Install Drivers".
The "License Agreement" frame is displayed.
Select "I Agree".

The driver install routine will search for DocuSP DocuColor printers.

3. If the correct DFE is not found automatically, enter the correct IP manually.

Note: The default driver will be the Post Script Driver. Select the "Options" button if PCL is desired.

4. Select "Install" and follow the prompts.
5. An "Installation Complete" window will now open and Print Test Page will be checked. Uncheck it if you do not want to print a test page upon clicking "Finish".
6. Select "Close" to exit the installation utility.
7. Eject the CD.
8. On a Windows client, click Start > Settings > Printers and Faxes.
9. Right click on the printer just created, and select "Properties".
10. Select the "Ports" tab. In the list pick your printer and click "Configure Port" to bring up the "Port Settings" window. "Protocol" setting default is "Raw", if using LPR, please select "LPR" (#1) and then type in a Queue Name in the LPR Settings area (#2). See Configure Standard TCP/IP Port Monitor screen shot below.



Note: Refer to the Configuration Information on the CentreWare Services Network Print Drivers CD (Guides and Tutorials > User Guide) for complete instructions on loading drivers.

Note: For complete instructions on setting up a Windows computer to print without a Windows server (also known as SMB), refer to the DocuSP documentation

Print Driver Installation Information - printing using AppleTalk Install Xerox Printer Driver

1. Insert the "CentreWare Services 6.20 Network Print Drivers CD, and click on the CD Icon that appears on the desktop.
2. Click on the Mac folder and select the appropriate version you wish to install. (OS9.x_Custom, or OSX_Custom)
3. Double-click the "Custom_Xv10.x" folder.
4. Double-click on the ".dmg" file that pertains to your printer (e.g. DocuColor 8000_7000.dmg) (*The disk image will verify and another window will open*).
5. Double-click on the ".mpkg" file.
6. The Installer will begin. Click "continue" for "program needs to run" message.
7. Follow steps on the screen to install.
- Installation takes about 1 minute.
8. When message displays, "The software has successfully installed", select "Close".
9. Eject the DocuColor.dmg disk image.
10. Eject the Centerware Services 6.20 Network Print Drivers CD.
11. Continue to the appropriate Mac operating system to install the print driver.

Configure Mac OS10 – Print Driver

1. In your Printer Setup Utility select Add.
2. Select the appropriate Network Protocol, and input appropriate information for your DFE. For example if using AppleTalk, select your printer from the AppleTalk network, if using IP Printing input your IP address, and so on.
3. Under the printer model pull-down select Xerox, and select the ppd file that corresponds to your printer type.
4. Click Add.
5. Your Printer is added.
6. Quit the Printer Setup Utility.

Configure Mac OS9 – Print Driver

1. When install has completed, double click the Chooser icon.
2. Double click the "Adobe PS" icon in the chooser window.
3. Locate the printer you want to set up in the displayed list, and double-click on that printer.
4. Click the "Select PPD" icon in the window.
5. A list of installed PPDs will open. Double-click on the appropriate PPD.
6. Close the window, and exit Chooser.