



Fiery® EXP8000/50 Color Server



Utilities

© 2007 Electronics for Imaging, Inc. The information in this publication is covered under *Legal Notices* for this product.

45059266

09 February 2007

CONTENTS

INTRODUCTION	7
Terminology and conventions	8
About this document	9
About Help	9
Preparing for installation on Windows computers	10
Preparing for installation on Mac OS computers	11
Fonts	11
Installing user software	13
Installing user software on a Windows computer	13
Installing user software on a Mac OS computer	15
COMMAND WORKSTATION, WINDOWS EDITION	17
Installing Command WorkStation, Windows Edition	18
Configuring the connection to the Fiery EXP8000/50	19
Using Command WorkStation, Windows Edition	22
Additional features	23
User Authentication	23
Align Trays	23
Mixed Media	25
Insert Tabs	30
Tray and Paper Association	30
Virtual Printers	32
Soft Proofing	34
ImageViewer	34
Troubleshooting	35
Command WorkStation cannot connect to the Fiery EXP8000/50	35
Command WorkStation does not respond	36

IMPOSE	37
Installing and enabling Impose	37
Installing Impose	37
Installing Adobe Acrobat and Enfocus PitStop	38
Using Impose	39
PRODUCTION PRINTING PACKAGE	40
Installing Production Printing Package	41
Using Production Printing Package	42
Compose	42
Paper Catalog	43
Preflight	45
Reorder Jobs	47
Job Mismatch	48
Rush Printing	48
Schedule Printing	48
Insert Tabs	49
Quick Doc Merge	52
Microsoft Office filters for Hot Folders	55
Specifying filter settings for a Hot Folder	55
COMMAND WORKSTATION, MACINTOSH EDITION	57
Installing Command WorkStation, Macintosh Edition	57
Configuring the connection to the Fiery EXP8000/50	58
Using Command WorkStation, Macintosh Edition	61
Additional Features	62
User Authentication	62
Mixed Media	62
Insert Tabs	65
Schedule Printing	66

Troubleshooting	67
Command WorkStation cannot connect to the Fiery EXP8000/50	67
Command WorkStation does not respond	68
HOT FOLDERS	69
Installing Hot Folders	69
Using Hot Folders	70
About Hot Folders filters	70
VDP RESOURCE MANAGER	71
Installing VDP Resource Manager	71
Configuring the connection to the Fiery EXP8000/50	72
Using VDP Resource Manager	74
WEBTOOLS	75
Setting up WebTools	75
Accessing the WebTools home page	76
Using WebTools	77
Home	77
Downloads	77
Docs	77
Configure	77
INDEX	79

INTRODUCTION





The Fiery EXP8000/50 Color Server media pack includes a set of software utilities that allow you to manage the Fiery EXP8000/50 Color Server, as well as the print workflow and content of jobs on the Fiery EXP8000/50 Color Server.

This document provides an overview of how to install, configure, and use the following Fiery EXP8000/50 utilities:

- Command WorkStation, Windows Edition
- Impose
- Command WorkStation, Macintosh Edition
- Production Printing Package
- Hot Folders
- VDP Resource Manager
- WebTools

Terminology and conventions

This document uses the following terminology and conventions.

Term or convention	Refers to
Aero	Fiery EXP8000/50 (in illustrations and examples)
Digital press	DocuColor 8000/7000/5000 digital press
Fiery EXP8000/50	Fiery EXP8000/50 Color Server
Mac OS	Apple Mac OS X
Titles in <i>italics</i>	Other documents in this set
Windows	Microsoft Windows 2000, Windows XP, Windows Server 2003
	Topics for which additional information is available by starting Help in the software
	Tips and information
	Important information
	Important information about issues that can result in physical harm to you or others

About this document

This document covers the following topics:

- **Command WorkStation, Windows Edition:** Monitoring and managing the print workflow of jobs on the Fiery EXP8000/50 (Windows only).
- **Impose:** Applying imposition layouts to jobs for custom printing, binding, and cutting purposes (Windows only).
- **Command WorkStation, Macintosh Edition:** Monitoring and managing the print workflow of jobs on the Fiery EXP8000/50 (Mac OS X only).
- **Production Printing Package:** Additional job management features accessed through Command WorkStation, Windows Edition (standard for the Fiery EXP8000, available as an option for the Fiery EXP50, Windows only). Includes Compose and Paper Catalog applications.
- **Hot Folders:** Storing and reusing frequently used print options when printing PostScript and PDF files on the Fiery EXP8000/50.
- **VDP Resource Manager:** Finding and deleting global objects used in variable data printing.
- **WebTools:** Managing your Fiery EXP8000/50 remotely from the Internet or your company's intranet.



For more information about installing, configuring, and using ColorWise Pro Tools, see [Color Printing](#).



About Help

Detailed instructions on using most Fiery EXP8000/50 utilities are provided in Help. Wherever appropriate, this document refers you to Help for additional information and explains how to access Help for each utility.

Preparing for installation on Windows computers

Before installing Fiery EXP8000/50 software on a Windows computer, be sure to complete the following:

- To use Fiery EXP8000/50 user software on a Windows computer, the Sun Java file, Java Runtime Environment (JRE), provided in the Common Utilities folder on the User Software DVD, must be installed on your computer. If the correct Sun Java file is not installed, the Fiery User Software Installer installs it automatically before installing the Fiery EXP8000/50 software.

NOTE: JRE, SE v1.5.0_01 (the recommended version) is provided on the User Software DVD.

- To install the Fiery EXP8000/50 software, you must have Service Pack 4 installed on a Windows 2000 computer, and Service Pack 2 installed on a Windows XP computer. If not, a warning message alerts you to install the required Service Pack.

After installation of Sun Java JRE, a Java Web Start shortcut is created on your computer desktop. The shortcut is not intended for use with Fiery EXP8000/50 software and can be deleted.



Different versions of Sun Java JRE can be installed on your computer. The Fiery EXP8000/50 software automatically finds the correct version, so you do not need to uninstall other versions of Sun Java JRE required for third-party applications.

Preparing for installation on Mac OS computers

On a Mac OS X computer, you must install screen and printer fonts.

Fonts

The Fonts on the User Software DVD include screen fonts that correspond to the 136 built-in PostScript and True Type printer fonts on the Fiery EXP8000/50. To be available to applications, the screen fonts must be installed on Mac OS X.

TO INSTALL SCREEN FONTS ON MAC OS X v10.4.x

- 1 Insert the User Software DVD into the DVD drive of the Mac OS X computer.
- 2 Start the Font Book application in Applications/Font Book.
- 3 Choose Add Fonts from the File menu.
- 4 Choose User Software/OSX/Fonts/Albertus MT.
- 5 Choose Select All from the Edit menu.
- 6 Choose one of the following from Install fonts:
 - For your personal use: for yourself only
 - For shared use: for all users of this computer
 - For Classic: for Mac OS X Classic

NOTE: You must first select User, Computer, or Classic Mac OS in Preferences/Default Install Location of Font Book.

- 7 Click Open.
- 8 Exit the Font Book application.

TO INSTALL SCREEN FONTS ON MAC OS v10.4.X OVER THE NETWORK

- 1 Choose Connect to Server from the Go menu.**
- 2 Type smb:// followed by the IP address of the Fiery EXP8000/50 and click Connect.**
If you cannot locate your Fiery EXP8000/50, contact your network administrator.
- 3 Type the user name and password if required.**
Check with your network administrator to see if this is required.
- 4 Double-click the icon for the Mac_User_SW directory, or select Mac_User_SW and click OK.**
- 5 Start the Font Book application in Applications/Font Book.**
- 6 Choose Add Fonts from the File menu.**
- 7 Choose User Software/OSX/Fonts/Albertus MT.**
- 8 Choose Select All from the Edit menu.**
- 9 Choose one of the following from Install fonts:**
 - For your personal use: for your use only
 - For shared use: for all users of this computer
 - For Classic: for Mac OS X Classic

NOTE: You must first select User, Computer, or Classic Mac OS in Preferences/Default Install Location of Font Book.

- 10 Click Open.**
- 11 Exit the Font Book application.**

Installing user software

You can install Fiery EXP8000/50 user software in the following ways:

- From the User Software DVD
- Over the network
- From the Fiery EXP8000/50, using the Internet or intranet

If you have installed any Fiery EXP8000/50 user software previously on your computer, the installer allows you to uninstall those applications during the process.

Installing user software on a Windows computer

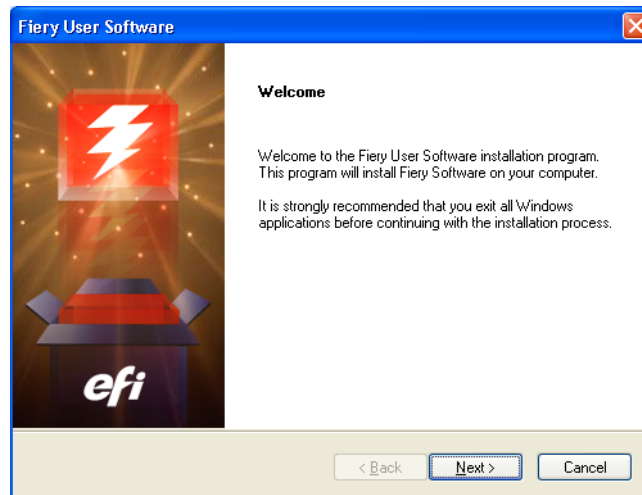
All installation of user software on a Windows computer is done through the Fiery User Software Installer. The following procedures describe installing from the User Software DVD, over the network, or over the Internet, and modifying the user software.

The only applications that are not installed by the Fiery User Software Installer are Adobe Acrobat and Enfocus PitStop for use with Impose. For more information, see [“Installing Adobe Acrobat and Enfocus PitStop”](#) on page 38.

TO INSTALL USER SOFTWARE ON A WINDOWS COMPUTER FROM THE USER SOFTWARE DVD

1 Insert the User Software DVD into the DVD drive of your computer.

The Welcome screen of the installer appears.



2 Follow the on-screen instructions.



Do not attempt to install user software by opening the individual folders for the applications. Always use the Fiery User Software Installer.

To modify or remove user software after you have installed it on your computer, use the User Software DVD. See the following procedure.



Do not delete the Fiery EXP8000/50 application folders directly from your computer in an attempt to remove the installed software. Always use the Fiery User Software Installer.

TO MODIFY USER SOFTWARE USING THE USER SOFTWARE DVD INSTALLER

- 1 **Insert the User Software DVD into the DVD drive of the computer.**
- 2 **In the window that appears, select Modify, Repair, or Remove.**
- 3 **Follow the on-screen instructions.**

If your computer does not have a DVD drive, you can install the user software from the Fiery EXP8000/50 over the network. Ask your network administrator for the IP address or the DNS server name of the Fiery EXP8000/50.

You can also install the user software from the Fiery EXP8000/50 over the Internet. Ask your network administrator for the IP address of the Fiery EXP8000/50.

Use your Internet browser to access WebTools. For complete information about browser and system requirements, see [Welcome](#).

TO INSTALL USER SOFTWARE ON A WINDOWS COMPUTER OVER THE NETWORK

- 1 **Click Start, choose Run, and type either “\\IP address” or “\\DNS server name” of the Fiery EXP8000/50.**
- 2 **Type the user name and password, if required.**
Check with your network administrator to see if this is required.
- 3 **Double-click the PC_User_SW directory.**
- 4 **Double-click the Master Installer icon.**
- 5 **Follow the on-screen instructions.**



Do not attempt to install user software by opening the individual folders for the applications. Always use the Fiery User Software Installer.

TO INSTALL USER SOFTWARE ON A WINDOWS COMPUTER OVER THE INTERNET

- 1 **Start your Internet browser.**
- 2 **Type the IP address or DNS name of the Fiery EXP8000/50.**
The Fiery EXP8000/50 home page appears.
- 3 **Click the tab for Downloads.**
- 4 **Click the link for the software that you want to install.**
- 5 **Choose Run to open the file or Save to save it to your computer.**

- 6 If you choose Run, proceed to [step 9](#).
- 7 If you choose Save, browse to the location where you want to save the USERSWMI.exe file and click Save.

The file is downloaded from the Fiery EXP8000/50.

- 8 Double click the USERSWMI.exe file.
- 9 Choose to open the file or save it to your computer.

If you choose to save the USERSWMI.exe file to your computer, locate the file icon, and then double-click the icon to launch the installer.

- 10 Follow the on-screen instructions.



For complete instructions on how to use Downloads, see Downloads Help.

For more information about WebTools and Downloads, see [WebTools](#).

Installing user software on a Mac OS computer

Installation of user software on a Mac OS computer is done separately for each application.

TO INSTALL USER SOFTWARE ON A MAC OS COMPUTER FROM THE USER SOFTWARE DVD

- 1 Insert the User Software DVD into the DVD drive of your computer.
- 2 Browse to the OSX folder.
- 3 Double-click the installer icon for the application that you want to install.
- 4 Follow the on-screen instructions.

TO INSTALL USER SOFTWARE ON A MAC OS COMPUTER OVER THE NETWORK

- 1 Choose Connect to Server from the Go menu.
- 2 Type smb:// followed by the IP address of the Fiery EXP8000/50 and click Connect.
If you cannot locate the Fiery EXP8000/50, contact your network administrator.
- 3 Type the user name and password, if required.
Check with your network administrator to see if this is required.
- 4 Double-click the icon for the Mac_User_SW directory, or select Mac_User_SW and click OK.
- 5 Open the OSX folder.
- 6 Double-click the installer icon for the application that you want to install.
- 7 Follow the on-screen instructions.

You can also install the user software from the Fiery EXP8000/50 over the Internet. Ask your network administrator for the IP address of the Fiery EXP8000/50.

Use your Internet browser to access WebTools. For complete information about browser and system requirements, see [Welcome](#).

TO INSTALL USER SOFTWARE ON A MAC OS COMPUTER OVER THE INTERNET

- 1 Start your Internet browser.**
- 2 Type the IP address or DNS name of the Fiery EXP8000/50.**

The Fiery EXP8000/50 home page appears.

- 3 Click the tab for Downloads.**
- 4 Click the link for the software that you want to install.**

The osxutils.dmg file is downloaded to your computer and a virtual disk appears on your desktop.

- 5 Follow the on-screen instructions.**



For complete instructions on how to use Downloads, see Downloads Help.

For more information about WebTools and Downloads, see “[WebTools](#)” on page 75.

COMMAND WORKSTATION, WINDOWS EDITION

Command WorkStation, Windows Edition allows Fiery EXP8000/50 operators (or users with Operator or Administrator privileges) to monitor and manage the print workflow of jobs on the Fiery EXP8000/50. Command WorkStation, Windows Edition allows you to do the following:

- View the print status of jobs on the Fiery EXP8000/50
- Hold, process, and print jobs
- Override user-assigned print option settings
- Preview the page content of a job
- Reorder pages in a job and combine pages from different jobs
- Create and use FreeForm master files for variable data printing
- Archive job files
- View job logs of recent print activity

Installing Command WorkStation, Windows Edition

Install Command WorkStation, Windows Edition on a Microsoft Windows computer that has a network connection to the Fiery EXP8000/50. For a complete list of system requirements, see [Welcome](#).

The installer for Command WorkStation, Windows Edition is provided on the User Software DVD. In addition to the Command WorkStation software, the installer installs the Java files required to use Setup from Command WorkStation. For more information about using Fiery Setup, see [Configuration and Setup](#).



Before you install the utility, read the guidelines described in “[Preparing for installation on Windows computers](#)” on page 10.

To install Command WorkStation, see “[Installing user software on a Windows computer](#)” on page 13.

Configuring the connection to the Fiery EXP8000/50

The first time you start Command WorkStation, you are prompted to configure the connection to the Fiery EXP8000/50.

You can also edit the configuration whenever there is any change to your Fiery EXP8000/50 server or network, such as a changed server name or IP address. If you change Fiery EXP8000/50 Setup information, do so before you reconfigure the connection. For more information about reconfiguring the connection, see [“To modify the configuration for Command WorkStation, Windows Edition”](#) on page 21.

BEFORE YOU BEGIN

- **Print the Fiery EXP8000/50 Configuration page.**

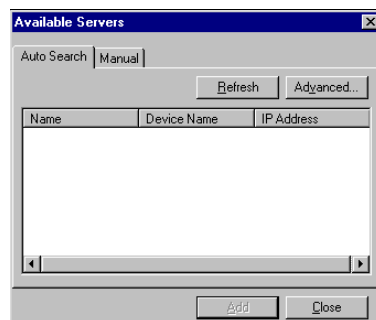
For instructions on printing the Configuration page, see [Configuration and Setup](#).

This page contains information you need when configuring the connection, such as the IP address of the Fiery EXP8000/50. For TCP/IP installations, you can use the DNS name instead of the IP address. Make sure the Fiery EXP8000/50 is already registered in a Domain Name Server (DNS) on your network. For more information, contact your network administrator.

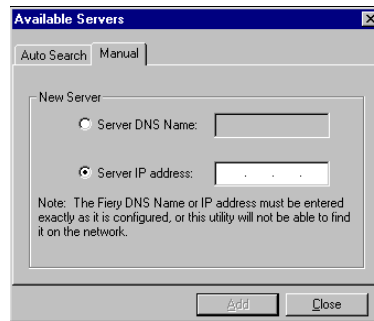
TO CONFIGURE THE CONNECTION FOR COMMAND WORKSTATION, WINDOWS EDITION

- 1 **Choose Start> Programs> Fiery > Command WorkStation to start the utility.**

The Available Servers dialog box appears and displays all servers found in the local subnet.



- 2 If no Fiery EXP8000/50 servers were found, click the Manual tab to search by DNS name or IP address. Type the DNS name or IP address and click Add to add the server to the Available Servers list.

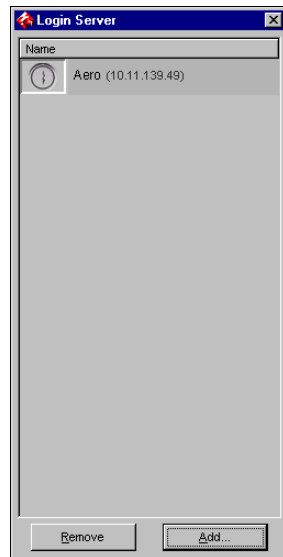


If no Fiery EXP8000/50 servers were found by Manual search, click the AutoSearch tab, and then click Advanced to search by a range of IP addresses or by the IP address and subnet mask.

All available servers appear in the Available Servers list.

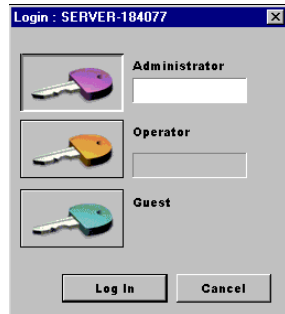
- 3 Select the Fiery EXP8000/50 server that you want to use and click Add.

The selected Fiery EXP8000/50 is added to the Login Server dialog box.



- 4 Click the button to the left of the server name.

The Login dialog box appears.



- 5 Click the key to the left of Administrator, Operator, or Guest and type the appropriate password, if required.
- 6 Click Log In.

For more information about setting passwords and the default Administrator password for the Fiery EXP8000/50, see [Configuration and Setup](#).

Command WorkStation is now connected to the Fiery EXP8000/50.

TO MODIFY THE CONFIGURATION FOR COMMAND WORKSTATION, WINDOWS EDITION

- 1 Start Command WorkStation.

The Login Server dialog box appears.

- 2 Select the Fiery EXP8000/50 server for which you want to modify the configuration and click Remove.
- 3 Repeat ["To configure the connection for Command WorkStation, Windows Edition"](#) on page 19.

Using Command WorkStation, Windows Edition

After you install and configure Command WorkStation, you can begin using it to monitor and manage jobs on the Fiery EXP8000/50.



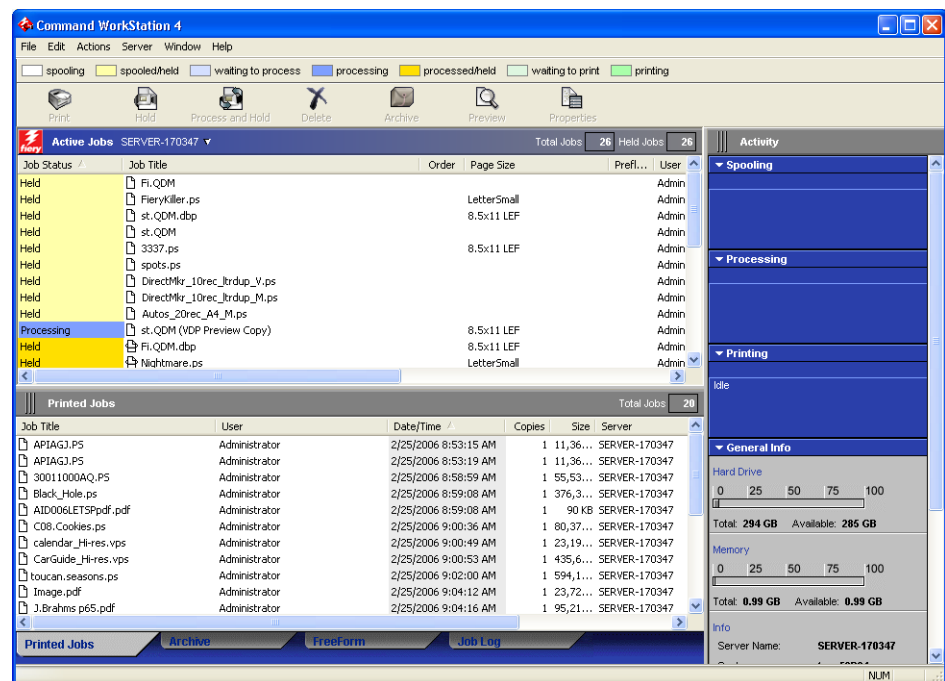
For complete instructions on using the standard Command WorkStation features, see Command WorkStation Help. Additional features are described in the sections starting on [page 23](#). Features offered by the optional Production Printing Package are described in [Production Printing Package](#).

TO ACCESS COMMAND WORKSTATION HELP

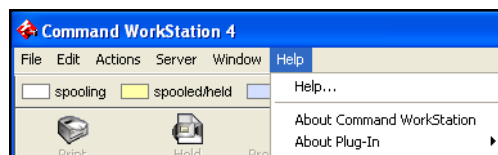
1 Start Command WorkStation.

Select the Fiery EXP8000/50 from the Server List dialog box and log on to the server.

For more information about setting passwords and the default Administrator password for the Fiery EXP8000/50, see [Configuration and Setup](#).



2 Choose Help from the Help menu.



Additional features

The following sections describe how to use additional features of Command WorkStation that are not discussed in Command WorkStation Help.

User Authentication

If user authentication is enabled in Fiery EXP8000/50 Setup, users may have to enter a user name and password in the printer driver to send a job to the Fiery EXP8000/50. Management of the job in Command WorkStation is determined by how you have logged on to the Fiery EXP8000/50, as Administrator, Operator, or Guest.

For more information about setting up Users and Groups and enabling user authentication in the Configure WebTool, see *Configuration and Setup*. For more information about User Authentication in the printer driver, see *Print Options*.

Align Trays

The Align Trays feature allows you to adjust the placement of text and images on the page so they are correctly aligned on a sheet of paper. This ensures that both sides of a duplex sheet have exactly the same alignment.



To perform tray alignment, you must do the following:

- Log on to the Fiery EXP8000/50 with Administrator privileges and enable tray alignment in Fiery EXP8000/50 Setup.
- Enable Tray Alignment in the Media area of the Fiery EXP8000/50 printer driver.
- Select the correct paper tray before printing.



NOTE: For Tray Alignment to work when printing a job, select the tray that you have aligned in the Media area before printing. If you later print a job using the auto tray selection, the alignment does not work.

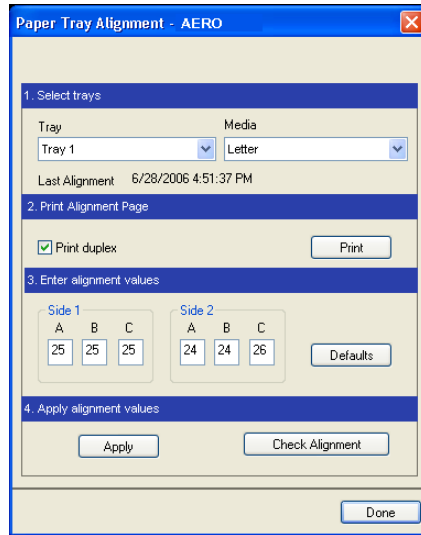
TO ALIGN PAGES FOR PRINTING

- 1 **In the Active Jobs window, select the connected Fiery EXP8000/50 for which you want to perform tray alignment.**

If the Active Jobs window is hidden, choose Active Jobs from the Window menu to display it.

- 2 **Choose Align Trays from the Server menu.**

A dialog box containing the Tray Alignment options appears.



- 3 Choose the tray that you want to align from the Tray menu.
- 4 Choose the paper size loaded in the tray from the Media menu.

NOTE: The alignment is specific to the combination of tray and paper size specified. If you align a given tray with Letter paper, and then load Legal paper in that tray, the alignment is wrong. You must perform a new alignment for each combination of tray and paper size.

- 5 In the Print Alignment Page area, select the Print duplex option to print a duplex page, or clear the option to print a single-sided page.
- 6 Click Print.
- 7 After the Alignment Page is printed, follow the instructions on the page.

Fold the page exactly in half horizontally, unfold it, and then fold it in half vertically. When you unfold the sheet, observe that the fold lines cross three scales on three sides of the page. Determine which number on the scale each fold line crosses.

- 8 In the Enter alignment values area, enter the value that appears where the fold crosses each of the three scales, marked A, B, and C, for Side 1. If you choose to align for duplex printing, enter the values for the three scales on Side 2 of the page as well.

NOTE: If you enter different values in A and C, the image rotates, leading to uneven areas on printed output. If this occurs, enter the same value in A and C.

- 9 After you have entered the alignment values, click Apply, and then click Check Alignment to print the new alignment page.
- 10 To remove the alignments, select a tray and click Defaults in the Enter alignment values area.
- 11 Click Done.

Mixed Media

The Mixed Media feature allows you to define the chapter divisions of a job, print ranges of pages on varying types of media, insert blank media between pages, and insert tab media containing text labels.



The following guidelines and restrictions apply to Mixed Media settings:

- The Mixed Media dialog box restricts you from specifying settings that conflict with any media, page size, or finishing settings that have been specified for the job in the Job Properties dialog box or printer driver.
- When two or more Mixed Media settings are in conflict with each other, the Mixed Media dialog box highlights the setting names in red, signaling you to resolve the conflict.
- When you specify print options (in the Job Properties dialog box or printer driver) after specifying Mixed Media settings, certain print options may conflict with the page-specific Mixed Media settings. You must resolve the conflict by choosing different print options or removing certain Mixed Media specifications.
- Mixed Media settings affect the use of output color profiles when the “Use media defined profile” option is selected in ColorWise Pro Tools. For more information, see [Color Printing](#).
- If counters are configured for the digital press, blank media inserted between pages count as printed pages.

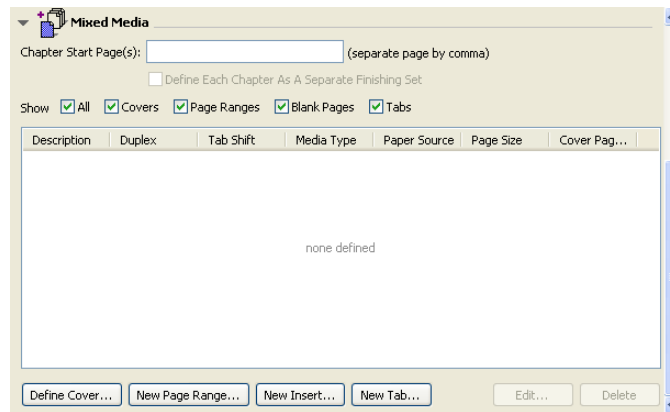


Basic instructions for accessing and using Mixed Media are provided in Command WorkStation Help. Features specific to the Fiery EXP8000/50 are described in the following procedures.

TO DEFINE MIXED MEDIA SPECIFICATIONS

- 1 Select or right-click a spooled/held job in the Active Jobs window and choose Properties from the Actions menu or double-click a job.
- 2 Click the Media icon and scroll down to Mixed Media.

The Mixed Media dialog box lists any previously defined media settings and includes buttons for defining, modifying, and removing settings.



- 3 For Chapter Start Page(s), type the page numbers on which you want to start new chapter sections.

Type page numbers as comma-separated values (for example: 4,9,17) to designate the start of each new chapter. This feature forces each starting page to use a right-side page, adding a preceding left-sided blank, if required.

NOTE: It is not necessary to type the first page. Page numbers refer to the numbering of the original document. If you use the Chapter Start Page(s) feature, all media specified in the Paper menu per chapter must share the same dimensions (for example, all Letter, all Tabloid, or all A4).

- 4 To apply finishing options (for example, stapling or sorting) to each chapter created using the Chapter Start feature, select the “Define Each Chapter As A Separate Finishing Set” option.

NOTE: You can use the Define Each Chapter As A Separate Finishing Set function to define subset finishing styles when the finishing style is the same for the entire set. For example, if you specify stapling with a 10-page document with Chapter Start Page(s) as 3,6, the pages are divided into 1–2, 3–5 and 6–10 groups and each group is stapled. Use can also use Chapter subsets to specify Multi-Center Fold and Fold and Staple finishing options.

NOTE: Not all finishing options can be applied to chapters that contain mixed sizes of media (for example, Letter and A4).

- 5 To define properties for front and back covers, click Define Cover.

For more information, see [“To define cover media settings”](#) on page 27.

6 To define properties for individual pages or page ranges, click New Page Range.

For more information, see [“To define media for specific pages”](#) on page 28.

7 To insert blank pages, click New Insert.

For more information, see [“To insert blank pages”](#) on page 29.

8 To insert tab media, click New Tab.

The Insert Tab dialog box appears. For more information about defining tab settings, see [page 30](#).

NOTE: The Insert Tab feature is not available for imposed jobs.

9 To modify or delete a current definition, select it in the Mixed Media Definition list, and click Edit or Remove.

If you click Edit, enter new settings for the definition and click Modify.

10 After you finish defining Mixed Media settings, click OK to close the Mixed Media dialog box and Job Properties.

The Mixed Media settings are applied to the job.

NOTE: You can save up to 100 different settings for the Selection list in the Mixed Media dialog box.

TO DEFINE COVER MEDIA SETTINGS

1 In the Mixed Media dialog box, click Define Cover.

The Cover Media dialog box appears.

Cover Media

☐ Apply the same settings for both front and back cover

☐ Front Cover

Duplex: Document Setting Cover Page Mode: Print on Front Only

Tab Shift: None Media Type: Document Setting

Paper Source: Document Setting Page Size: 8.5 x 11 Letter LEF

Paper Catalog: none defined Custom...

Details...

☐ Back Cover

Duplex: Document Setting Cover Page Mode: Print on Front Only

Tab Shift: None Media Type: Document Setting

Paper Source: Document Setting Page Size: 8.5 x 11 Letter LEF

Paper Catalog: none defined Custom...

Details...

OK Cancel

- 2 To define identical front cover and back cover media, select the “Apply the same settings for both front and back cover” option.
To define media settings for the front or back cover individually, select the Front Cover or Back Cover option.
- 3 Define Tab Shift as required.
- 4 Choose other settings as required.
- 5 Select your desired media from the Paper Catalog menu.
- 6 You can also click the Details or Select button to open the Paper Catalog window, select your desired media, and click OK.

For more information about Paper Catalog, see “Paper Catalog” on page 43.

- 7 Click OK to return to the Mixed Media dialog box.



Cover Media settings take precedence over settings defined in the Page/Page Range Media dialog box.

TO DEFINE MEDIA FOR SPECIFIC PAGES

- 1 In the Mixed Media dialog box, click New Page Range.

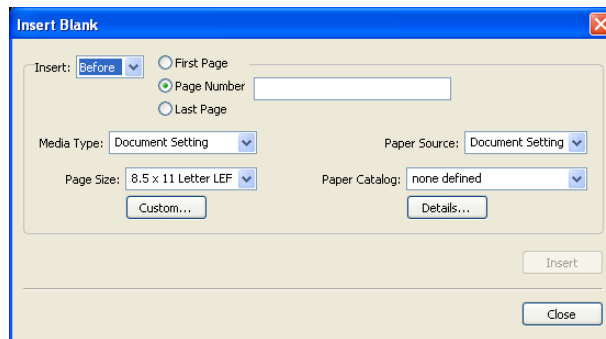
The Page/Page Range Media dialog box appears.

- 2 Type pages and page ranges as comma-separated values (for example: 3,9–14,18).
- 3 Choose other settings, as required.
If you assign a new media type to the back side of a duplexed sheet, a blank page is inserted to force the assigned page content to the front side of the next sheet.
- 4 Select your desired media from the Paper Catalog menu.
- 5 You can also click the Details or Select button to open the Paper Catalog window, select your desired media, and click OK.
For more information about Paper Catalog, see “Paper Catalog” on page 43.
- 6 Click Add Definition after each media setting you define.
- 7 Click Close to return to the Mixed Media dialog box.

TO INSERT BLANK PAGES

- 1 In the Mixed Media dialog box, click New Insert.

The Insert Blank dialog box appears.



- 2 Indicate whether to insert the blank before or after the target page. Define the target page as either the first or last page in the document, or as a specific numbered page.
 - 3 Choose other settings, as required.
 - 4 Select your desired media from the Paper Catalog menu.
 - 5 You can also click the Details or Select button to open the Paper Catalog window, select your desired media, and click OK.
- For more information about Paper Catalog, see “[Paper Catalog](#)” on page 43.
- 6 Click Insert after each blank page you define.
 - 7 Click Close to return to the Mixed Media dialog box.

Insert Tabs

The Insert Tabs feature allows you to automatically insert tab pages throughout a job. This feature accommodates various sizes and types of tab media stock. Users can insert the tab text and override text attributes on a per-job basis.

The Insert Tabs feature is accessed from the Mixed Media dialog box and is part of the Production Printing Package. For more information, see [“Insert Tabs”](#) on page 49.

Tray and Paper Association

Tray and Paper Association is a feature available from Command WorkStation that allows you to assign a paper catalog entry to a print engine tray. Use this feature to allow the print engine to automatically pull specific paper catalog assigned media for a job that uses a particular paper catalog entry.

Assigning media to a tray

When you load media on your print engine, use Tray and Paper Association to define the media assigned to your print engine trays.

Paper Catalog filters the entries shown for each tray by the paper attributes reported from the Print Server.

TO ASSIGN MEDIA TO A TRAY

- 1 In the main Command WorkStation window, choose Server>Paper/Tray Association.**

If you are logged on as an administrator, you can also go to Server>Paper Catalog>Tools>Paper/Tray Association.

All installed trays are displayed in the main Tray and Paper Association window.

- 2 Place your cursor over a tray to display the tray association details. An unassigned tray displays “unassigned”. A tray that is assigned displays a summary of the paper catalog entry.**
- 3 Click a tray from the list on the left.**

All available entries are listed for that tray. If the tray does not recognize any paper catalog information, the entire paper catalog list is displayed.

- 4 Select one paper catalog entry.**
- 5 Click OK.**

Monitoring media status in a tray

If your print engine supports reporting media levels in each tray, you can check the status from the Tray and Paper Association window.

TO MONITOR MEDIA STATUS IN A TRAY

- 1 In the main Command WorkStation window, choose **Server>Paper/Tray Association**.

Each tray displays a percentage amount of the media loaded.

- 2 Click **Cancel** to close the window and not apply any Tray and Paper Association changes.

Troubleshooting: Job prints with wrong media

Check to make sure that the correct Paper Catalog entry is associated with the correct print engine tray.

If a Paper Catalog entry associated with a tray is not updated when the media in the tray is changed, the job prints with the loaded media.

Check to make sure that the desired paper catalog entry assigned to your job has not been deleted.

Virtual Printers

Virtual printers give users a method of printing to the Fiery EXP8000/50 using predefined settings to configure the print job. The Fiery EXP8000/50 administrator can create virtual printers and publish them so that users can access them on the network. The SMB, LPR, and FTP services are supported.

NOTE: By default, three virtual printers are already set up to correspond to the print, hold, and direct queues. These virtual printers cannot be modified.

The administrator specifies job settings for the virtual printer. The administrator can apply an imposition template to a virtual printer. Imposition settings override job property settings.

The Fiery EXP8000/50 administrator can view the available virtual printers and published queues, publish a virtual printer, and delete, duplicate, or edit a virtual printer.

To configure virtual printers, you must be logged on with Administrator privileges.

TO CONFIGURE A VIRTUAL PRINTER

- 1 In the Command WorkStation Server menu, choose **Virtual Printers**.
- 2 Click **New**.
- 3 Specify the following:
 - **Virtual Printer Name:** Type an alphanumeric name.
 - **Comments:** Add comments to help define the virtual printer for the user, for example, “duplex company brochure”.
 - **Printing:** Select one of the standard Fiery EXP8000/50 actions available from Command WorkStation, including Hold, Process and Hold, Print, and Print and Hold.
 - **Use Custom Job Properties:** Access and choose Job Properties.
 - **Apply Imposition Settings:** Access and choose Impose settings.
- 4 Click **OK**.

TO MANAGE VIRTUAL PRINTERS

- 1 **Choose Server>Virtual Printers.**
- 2 **Select a virtual printer in the list and click Edit, Duplicate, or Delete.**

NOTE: After a virtual printer is created, its name cannot be changed, although the print settings can be changed.

Printing to a virtual printer using SMB

Virtual printers are published on the network. To print to a published virtual printer from a client computer over SMB, do the following:

TO PRINT TO A VIRTUAL PRINTER USING SMB

- 1 **Right-click Network Neighborhood or My Network Places, and select Find Computer or Search for Computers.**
- 2 **Type the name of the Fiery EXP8000/50 that you are looking for and click Search Now.**
If you cannot locate the Fiery EXP8000/50, contact your network administrator.
- 3 **Double-click the name of the Fiery EXP8000/50 to display published virtual printers.**
- 4 **Double-click the virtual printer that you want to connect to.**

You must install the printer driver from the User Software DVD as described in *Printing from Windows*.

The virtual printer appears in Settings>Printers and Faxes.

Printing to a virtual printer using LPR on Windows

To print to a virtual printer from a client computer using an LPR connection on Windows, you must configure a standard TCP/IP port for LPR printing and install the Fiery EXP8000/50 printer drivers. When you configure the port, select LPR for the protocol and type the name of the virtual printer for the queue name.

For more information, see *Printing from Windows*.

Printing to a virtual printer using LPR on Mac OS

To print to a virtual printer from a client computer using an LPR connection on Mac OS, follow the instructions for setting up the Fiery EXP8000/50 on Mac OS X using IP printing. For Queue Name, enter the name of the virtual printer.

For more information, see *Printing from Mac OS*.

Printing to a virtual printer using FTP

If the administrator has enabled FTP services, the Fiery EXP8000/50 can function as an FTP server. For more information about Setup, see [Configuration and Setup](#).

To print to a virtual printer using FTP, use your FTP client software and connect to the Fiery EXP8000/50 as you would any FTP server. Ask your network administrator for the following information:

- IP address or DNS name of the Fiery EXP8000/50
- User name and password, if required
- The name of the virtual printer

For more information about FTP printing, see [Printing from Windows](#) and [Printing from Mac OS](#).

Soft Proofing



Soft Proofing allows you to view accurate color previews of print jobs on a monitor.

For more information about using Soft Proofing, see [Graphic Arts Package](#).

ImageViewer



If the Graphic Arts Package, Premium Edition is installed and enabled on the Fiery EXP8000/50, you can use ImageViewer to preview and edit jobs. For more information about using ImageViewer, see [Graphic Arts Package](#).



The Graphic Arts Package, Premium Edition, is standard for the Fiery EXP8000, and optional for the Fiery EXP50.

NOTE: When available, ImageViewer replaces the standard full-screen preview window described in Command WorkStation Help.

Troubleshooting



When troubleshooting basic connection and software problems with Command WorkStation, see the following sections. For additional troubleshooting information, see Command WorkStation Help.

Command WorkStation cannot connect to the Fiery EXP8000/50

If you cannot connect to the Fiery EXP8000/50 or locate the Fiery EXP8000/50 from your computer, contact the network administrator. The administrator may need to troubleshoot your network connections and check settings on the servers that you print to. If settings have changed, it may be necessary to reconfigure the Fiery EXP8000/50 (see *Configuration and Setup*).

If you can connect to the Fiery EXP8000/50 with another utility, you may need to reconfigure the Command WorkStation connection to the Fiery EXP8000/50 (see [page 19](#)).

If you configured the Fiery EXP8000/50 and set up client computers and network servers according to the instructions in *Configuration and Setup*, print a Test Page. If you can print the Test Page but still cannot print a document from a remote computer, contact your network administrator to troubleshoot the network connection.

If you cannot connect and cannot print a Test Page, check the digital press for error information.

Command WorkStation does not respond

If Command WorkStation is unresponsive, use the following troubleshooting guidelines.

IF THE COMMAND WORKSTATION WINDOWS DO NOT UPDATE

- 1 Log off and then quit Command WorkStation.**
- 2 Restart Command WorkStation or restart the computer.**

If the Command WorkStation windows do not update or no jobs are displayed, and the mouse has no effect (you cannot select a job or a window, use a right mouse command, or select a menu item), the Fiery EXP8000/50 is offline or network communication has failed.

TO FORCE AN EXIT FROM COMMAND WORKSTATION

- 1 Press Ctrl-Alt-Delete and use the Program Manager to close Command WorkStation.**
- 2 At the Fiery EXP8000/50, disconnect and reconnect the network cable, and then try printing a Test Page or Configuration page.**
- 3 If printing fails, restart the Fiery EXP8000/50.**

IMPOSE

Impose is a utility that you access from Command WorkStation, Windows Edition. Impose allows you to do the following:

- Apply imposition layouts to jobs for custom printing, binding, and cutting
- Apply impositions to variable data jobs
- Save the imposed job as a PDF file

Installing and enabling Impose

The following sections describe how to install and enable Impose.

Installing Impose

The Impose software is automatically installed when you install Command WorkStation, Windows Edition from the User Software DVD.



Do not attempt to install Impose manually from the User Software DVD (by starting the Setup.exe from the Impose folder). Impose is automatically installed when you install Command WorkStation. Installing Impose separately from Command WorkStation can cause unpredictable results.

To enable Impose on a client workstation, you must:

- Install Adobe Acrobat and the Enfocus PitStop plug-in module.

NOTE: The Adobe Acrobat/Enfocus PitStop CD(s) are provided in the Impose Media Pack.

- Install the Impose software protection key (dongle) into the correct port of the client workstation.



If you see a dongle installed on the workstation, Impose has already been enabled and is ready for use. If the dongle is not installed, see the documentation that accompanies the Impose kit. Without a dongle installed, you can use Impose in Demo mode. Demo mode allows you to impose documents and save them, but all printed output displays a “Demo” watermark.

NOTE: The protection key (dongle) may be either a parallel port type or a USB type dongle. For more information, see the documentation that is provided in the Impose kit.

Installing Adobe Acrobat and Enfocus PitStop

To use Impose, you must install Acrobat and PitStop (a plug-in for Acrobat for use with Impose) from the Adobe Acrobat and Enfocus PitStop installers provided in your Impose kit. Impose is installed when you install Command WorkStation, and is accessed from Command WorkStation.

NOTE: If you install Acrobat after Command WorkStation, you may need to restart Command WorkStation in order to use Impose.

For more information about Acrobat, see the ReadMe file in the Acrobat folder on the Adobe Acrobat/Enfocus PitStop CD(s).



We recommend that you install the version of Acrobat provided in your Impose kit and remove any other versions of Acrobat installed on your computer.

TO INSTALL ADOBE ADOBE 7.0 AND PITSTOP 6.5.2

1 Uninstall all versions of Acrobat that are currently installed on the computer.

- Close all open applications.
- Follow the Windows instructions for removing programs.

Make sure to delete not only the main folder for the application but also the associated Acrobat folder located, by default, in C:\Program Files\Common Files\Adobe. (The exact drive letter may vary, depending on the computer.)

2 Restart the computer after you finish uninstalling earlier versions of Acrobat.

3 Close all software applications that are currently running on the computer.

4 Insert the Adobe Acrobat/Enfocus PitStop CD into the CD-ROM or DVD drive.

5 If the installer does not start automatically, browse to the location of the CD-ROM or DVD drive and double-click the Setup.exe icon.

NOTE: Use only Setup.exe on the root level of the CD. Do not navigate inside any of the folders on the CD. Using Setup.exe from any of these folders can result in an incomplete installation and cause system problems.

6 At the message reminding you to close all applications, click Yes.

7 At the next installation screen, make sure “Adobe Acrobat” and “PitStop” are both selected, and then click Next.

Wait while the installer copies software files to the computer and displays progress bars.

8 At the message indicating a successful installation, click OK.

9 At the next screen, click Finish.

If the latest version of Command WorkStation is already installed on the workstation, Impose is now fully enabled. If Command WorkStation is not yet installed, install Command WorkStation as described on [page 18](#).

Using Impose



Complete instructions on how to use Impose are provided in Command WorkStation, Windows Edition Help.

TO ACCESS IMPOSE HELP

- 1 Start Command WorkStation, Windows Edition.
- 2 Choose Help from the Help menu.
- 3 Use the Contents, Index, or Search panes to navigate to the Impose Help topics.

PRODUCTION PRINTING PACKAGE

The Production Printing Package (standard for Fiery EXP8000, available as an option for Fiery EXP50) offers Fiery EXP8000/50 operators (or users with Operator or Administrator privileges) various additional features to monitor and manage the print workflow of jobs on the Fiery EXP8000/50. All the features are accessible from Command WorkStation, Windows Edition. Schedule Printing and Preflight are also accessible from Command WorkStation, Macintosh Edition. The additional features are listed below:

- Compose
- Paper Catalog
- Preflight (also available from Command WorkStation, Macintosh Edition)
- Reorder Jobs
- Suspend on Mismatch
- Rush Printing
- Schedule Printing (also available from Command WorkStation, Macintosh Edition)
- Insert Tabs (also available from Command WorkStation, Macintosh Edition)
- Quick Doc Merge
- Microsoft Office filters for Hot Folders

Installing Production Printing Package

Production Printing Package is installed with Command WorkStation and is enabled on the Fiery EXP8000/50, if supported. The features are only available in Command WorkStation when the client workstation is connected to the Fiery EXP8000/50 on which the Production Printing Package features are enabled.

NOTE: Production Printing Package is standard for Fiery EXP8000 and optional for Fiery EXP50.



In addition to enabling the Production Printing Package on the Fiery EXP8000/50, you must enable Compose with a separate dongle installed on each client workstation where you want to use Compose. Production Printing Package must be enabled before you enable Compose.

For more information about enabling Production Printing Package, see the documentation that accompanies the Production Printing Package kit. For more information about enabling Compose, see the documentation that accompanies the Compose kit.

NOTE: An authorized service/support technician should enable Production Printing Package on the Fiery EXP8000/50. The user changes the installable options in the printer driver. For more information, ask the authorized service/support technician.

For more information about installing Command WorkStation, Windows Edition, see [“Installing Command WorkStation, Windows Edition”](#) on page 18. For more information about configuring Command Workstation, see [“Configuring the connection to the Fiery EXP8000/50”](#) on page 19.

For more information about installing Command WorkStation, Macintosh Edition, see [“Installing Command WorkStation, Macintosh Edition”](#) on page 57. For more information about configuring Command Workstation, see [“Configuring the connection to the Fiery EXP8000/50”](#) on page 58.



For complete instructions on how to use the standard Command WorkStation features, see Command WorkStation Help. For instructions on how to access Command WorkStation, Windows Edition Help, see [“To access Command WorkStation Help”](#) on page 22. For instructions on how to access Command WorkStation Help, Macintosh Edition, see [“To access Command WorkStation Help”](#) on page 61.

Using Production Printing Package

The following sections describe how to access and use the features of the Production Printing Package.

Compose

The Compose application allows you to define the chapter divisions of a job, print ranges of pages on varying types of media, insert blank media between pages, and insert tab media containing text labels. You can also preview the job as thumbnails and full screen previews, and edit documents using Acrobat and PitStop.

A special dongle must be installed on each workstation that runs Compose. For more information about the dongle and installing it, see the document that accompanies the Compose kit.

To use Compose, you must also install Acrobat and PitStop on the client workstation. Installers for Acrobat and PitStop are provided in the Compose kit. For more information about installing Acrobat and PitStop, see the document that accompanies the Compose kit, or see “[Installing Adobe Acrobat and Enfocus PitStop](#)” on page 38.



For complete instructions on how to use Compose, see Compose Help.

TO ACCESS COMPOSE AND COMPOSE HELP

- 1 **Select a spooled/held job in the Active Jobs window and choose Compose from the Actions menu, or right-click the job and choose Compose from the menu that appears.**
- 2 **Choose Help from the Help menu.**



If you have the Compose feature, we recommend that you use it instead of Mixed Media.

Paper Catalog

Paper Catalog is a system-based paper warehouse database that stores attributes of any media available for printing from the Fiery EXP8000/50. You can then select media from those listed in the database for your job.

You can access Paper Catalog in a number of different ways from the following interfaces:

- Command WorkStation
- Compose
- Mixed Media Setup
- Job Properties
- Hot Folders
- Printer driver (see *Print Options*)

The following sections describe how to access and use Paper Catalog from each of these interfaces.

TO ACCESS PAPER CATALOG FROM COMMAND WORKSTATION

- **To open Paper Catalog from Command WorkStation, select a spooled/held job in the Active Jobs window and choose Paper Catalog from the Server menu.**



For more information about using Paper Catalog, open Paper Catalog Help from the Paper Catalog Help menu or press the F1 key on your keyboard. Only administrators can configure and edit Paper Catalog entries and settings.

TO ACCESS PAPER CATALOG FROM COMPOSE

- **Select a spooled/held job in the Active Jobs window and choose Compose from the Actions menu. Choose Paper Catalog from the Compose File menu.**



For more information about using Compose, see Compose Help. Compose Help also provides information about how to apply Paper Catalog entries to your job.

TO ACCESS PAPER CATALOG FROM MIXED MEDIA SETUP

- 1 Select a spooled/held job in the Active Jobs windows and choose Properties from the Command WorkStation Actions menu.
- 2 Click the Media icon and scroll down to Mixed Media. If necessary, click the arrow to display the Mixed Media window.
- 3 In the Define Cover, New Page Range, or New Insert windows, select your desired media from the Paper Catalog menu.
- 4 You can also click the Details or Select button to open the Paper Catalog window, select your desired media, and click OK.

For more information about Mixed Media Setup, see [“Mixed Media”](#) on page 25.

TO ACCESS PAPER CATALOG FROM JOB PROPERTIES

- 1 Select a spooled/held job in the Active Jobs window and choose Properties from the Command WorkStation Actions menu.
- 2 In the Job Properties dialog box, click the Media icon, and then select your desired media from the Paper Catalog drop-down menu.
- 3 You can also click Details or Select to open the Paper Catalog window, select your desired media, and click OK.
- 4 Click OK in the Job Properties window.

The media you have selected appears in the Media area.

TO ACCESS PAPER CATALOG FROM HOT FOLDERS

- 1 In the Folder Properties dialog box, select Job Settings and click Define.
- 2 In the Job Properties dialog box, click the Media icon, and then select your desired media from the Paper Catalog drop-down menu.
- 3 You can also click Details or Select to open the Paper Catalog window, select your desired media, and click OK.
- 4 Click OK to return to the Hot Folders Properties window.

Preflight

The preflight feature performs a simple check of the most common error areas. This check ensures that the job prints successfully and to the expected quality on the selected printing device.

NOTE: This feature is accessible from Command WorkStation on both Windows and Mac OS X computers.

TO PREFLIGHT A JOB

- 1 Select a spooled/held job in the Active Jobs window and choose **Actions>Preflight**.
- 2 Set a notification level for each error or use the default Preset.

For more information, see [“Setting preflight checks”](#) on page 46 and [“Setting notification levels”](#) on page 46.

- 3 Click **Save** to save the settings as a new preset if you want to use them again.
- 4 Click **Preflight** to perform the Preflight check.
- 5 Click **Save** to save the report as a PDF.
- 6 Click **Print Report** to print the report.
- 7 Click **Preflight Again** to repeat the preflight check.
- 8 Click **Close** to exit Preflight.

Supported file formats for preflight

The following file formats are supported for preflight:

- PostScript
- Adobe Acrobat PDF
- EPS
- PPML

NOTE: TIFF is *not* supported for Preflight checks.

Setting preflight checks

You can set preflight checks for the following:




- **Fonts:** When missing and when substituted
- **Spot Colors:** When missing
- **Low-Res Images:** When image resolution is less than specified dpi
- **VDP Resources:** When not found


You can choose to Preflight individual VDP resources.

- **Hairlines:** When line width is less than specified point size
- **Overprint:** When overprint is detected
- **Postscript:** When any Postscript error is found
- **Halt preflight on first error:** When any error is found

Setting notification levels

For each preflight category, you can specify a notification level:

- **Critical:** Marks any errors with Critical icon .
- **Warning:** Marks any errors with Warning icon .
- **Message:** Marks any error with Message icon  and provides information.
- **Ignore:** Skips check of that category.

A category with no errors is marked with a Pass icon .

Reorder Jobs

The Fiery EXP8000/50 processes and prints batches of selected jobs in the order of each job's place in the queue. The Reorder Jobs feature allows you to control the processing or printing priority by reordering the job queue. When you promote jobs in the queue, these jobs take priority over the rest of the jobs on the Fiery EXP8000/50.

For example, you can reorder the queue to group jobs with similar print options, such as media or tray selections. When you select the jobs and apply the Print command, batches of jobs with similar options are printed together.

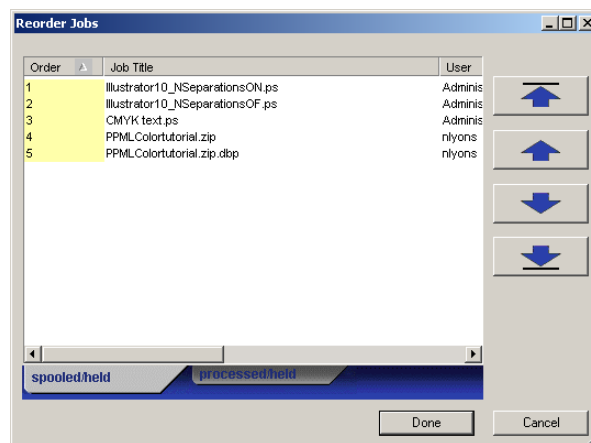


To reorder jobs, you must log on to the Fiery EXP8000/50 with Administrator privileges.

TO REORDER JOBS

1 Choose Reorder Jobs from the Server menu.

The Reorder Jobs dialog box appears.



2 Click the tab for the type of job that you want to reorder.

The Fiery EXP8000/50 supports the reordering of spooled/held jobs, processed/held jobs, and jobs that are waiting to process.

3 Select the job(s) that you want to reorder.

Hold down Ctrl and click to select multiple jobs. Hold down Shift and click to select a range of jobs.

4 Reorder the selected job(s).

To shift the job priority up or down, click the Move Up or Move Down button. To move the job(s) to top or bottom priority, click the Move to Top or Move to Bottom button.

Jobs at the top of the list take priority over jobs at the bottom.

5 When you finish defining the order, click Done.

Job Mismatch

When Job Mismatch is enabled, the Fiery EXP8000/50 detects if a job can print based on the media available on the digital press. If the media is unavailable, the job is removed from the list of currently printing jobs so that other jobs can continue to print.

Job Mismatch is enabled in Server Setup. For more information, see *Configuration and Setup*.

In setup, the Administrator can set Job Mismatch to do the following:

- Cancel a mismatched job so that the job moves to the Printed queue with an error describing the correct media to be loaded.
- Suspend a mismatched job so that the job is placed in a suspended state with an error describing the correct media to be loaded.
- Set a time-out that specifies how long the job waits for the media to be loaded.

Rush Printing

The Rush Printing feature allows you to print a job immediately, bypassing other jobs in the print queue. To rush print a job, you must first place the job in the Hold queue, and then select Rush Printing from the Actions menu.

The following restrictions apply:

- You cannot interrupt a single set print job. With variable data printing or other record partition jobs, you can interrupt between records.
- You cannot interrupt a job in RIPping process.
- You cannot interrupt another Rush Print job.

Schedule Printing

The Schedule Printing feature allows you to set a specific date and time for printing a job. This feature is accessible from Command WorkStation on both Windows and Mac OS X computers.

Assign Schedule Printing settings to a job from the following areas:

- Printer driver on a Windows computer only (see *Print Options*)
- Job Properties window in Command WorkStation
- Active Jobs window in Command WorkStation

Command WorkStation also allows you to search for jobs that have been scheduled for printing.

The following procedures describe accessing Schedule Printing from Command WorkStation, Windows Edition. To access Schedule Printing from Command WorkStation, Macintosh Edition, see [page 66](#).

TO SCHEDULE A JOB FOR PRINTING FROM THE ACTIVE JOBS WINDOW

- 1 Select a job in the Active Jobs window and choose Schedule Printing from the Actions menu.
- 2 In the dialog box that appears, specify the date and time when you want the job printed, and click OK.

TO SCHEDULE A JOB FOR PRINTING FROM THE JOB PROPERTIES WINDOW

- 1 Select a job in the Active Jobs window and choose Properties from the Actions menu.
- 2 Click the Job Info icon and scroll down to Destination.
- 3 Select Schedule Printing, specify the date and time when you want the job printed and the destination, and click OK.

NOTE: Display the scheduled date and time by adding a Schedule Printing information column to the Active Jobs window. For more information about adding information columns, see Command WorkStation Help.



TO FIND SCHEDULED JOBS

- Choose Find Scheduled Jobs from the Edit menu.

A window displays the search results.

Insert Tabs

The Insert Tabs feature allows you to create and insert tabs directly into documents. You can input text for each tab and specify the location of the tab within the document. This feature accommodates various sizes and types of tab media stock.

Insert Tabs is only supported if the digital press supports tab printing.

NOTE: The Insert Tabs feature is not available for imposed jobs.

NOTE: When you configure counters for the digital press, printed tab pages count as black-and-white pages, provided colors are calibrated to use pure black toner. Expelled tabs are not counted as printed pages.

Insert Tabs is accessed from the Mixed Media dialog box. For more information about using other Mixed Media features, see [page 25](#) and [page 62](#).

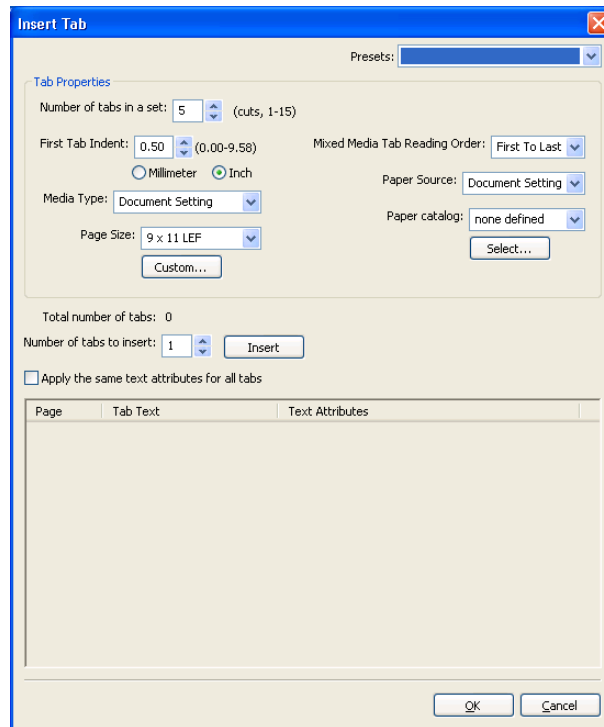
The illustrations in the procedure below show a Windows computer, but the procedures for Windows and Mac OS X are similar.

TO INSERT TAB PAGES

- 1 Select or right-click a spooled/held job in the Active Jobs window and choose Properties from the Actions menu or double-click a job.
- 2 Click the Media icon and scroll down to Mixed Media.

3 In the Mixed Media dialog box, click New Tab.

The Insert Tab dialog box appears.

**4 Enter the number of tab positions included in a complete tab set in the “Number of tabs in a set” field.**

This specification ensures that tab text is printed in the correct tab positions. For example, tab positions in a set consisting of ten tabs are distinct from tab positions in a set consisting of five tabs.

5 Choose other settings as required for the tab stock.

Page Size values refer to the dimensions of the stock, including the tabbed portion.

NOTE: Neither the Fiery EXP8000/50 nor the digital press can recognize the tab positions. You must create documents and select items so that the print image is not positioned outside the tab area.

6 Select your desired media from the Paper Catalog drop-down menu.**7 You can also click Details or Select to open the Paper Catalog window, select your desired media, and click OK.**

For more information about Paper Catalog, see [page 43](#).

- 8 To specify attributes for the tab text, enter the number of tabs in the “Number of tabs to insert” field and click Insert.

Insert Tab

Tab Properties

Number of tabs in a set: 5 (cuts, [1..15])

Duplex: Document Setting Punched Paper: Document Setting

Paper Type: Document Setting Paper Weight: Document Setting

Input Tray: AutoSelect Paper Size: 8 1/2x11 Tab

Paper Catalog: none defined

Details...

Total number of tabs: 1

Number of tabs to insert: 1 **Insert**

☒ Apply the same text attributes for all tabs

Page	Tab Text	Text Attributes
1		Font: Helvetica Size: 12 Text Rotation: 0 Text Alignment: Left

☒ Before

OK Cancel

- 9 If you want all tabs to use the same text attributes, select “Apply the same text attributes for all tabs”.
- 10 In the Text Attributes area, click the arrows to display the menus for font, size, text rotation, and text alignment, and select the attributes you want from each menu.
- 11 Indicate where you want each tab inserted in the document.

- In the Page field, type the page number where you want the tab inserted.
- Select Before to insert the tab before the page number or click to clear the checkbox.

NOTE: If you define a tab to be inserted between an odd-numbered page and an even-numbered page in a duplex job, the tab is inserted after the odd-numbered page on the first sheet, and the even-numbered page is printed on the next sheet.

- 12 Enter the desired tab text for each tab in the Tab Text field.

If desired, specify individual text attributes for each tab.

- 13 After you finish specifying tab text, click OK to close the Insert Tab dialog box.

The Mixed Media dialog box displays the current tab settings in the Mixed Media definition list.

- 14 To modify media settings for the tabs, select the tab description in the Mixed Media definition list, and click Edit.

- 15 To apply your Insert Tab settings to the document, click OK to close the Mixed Media dialog box and Job Properties.

Quick Doc Merge

The Quick Doc Merge feature allows you to merge multiple files or jobs together so they can be printed as a single job on the Fiery EXP8000/50.

Documents to be merged into one job in Quick Doc Merge must be in either PostScript or PDF (Portable Document Format) format. When merged into one job on the Fiery EXP8000/50, the job becomes VDP format.

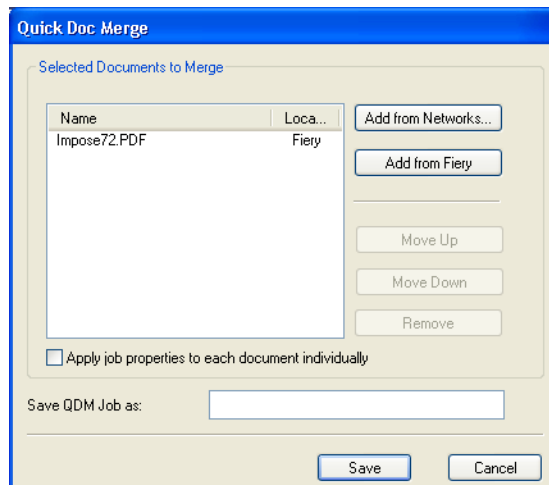


NOTE: When documents are merged into a Quick Doc Merge job, all Job Properties settings for the individual documents are overwritten and default to the Fiery EXP8000/50 default settings. You must set Job Properties after you have combined the separate documents into the single Quick Doc Merge job.

TO USE QUICK DOC MERGE

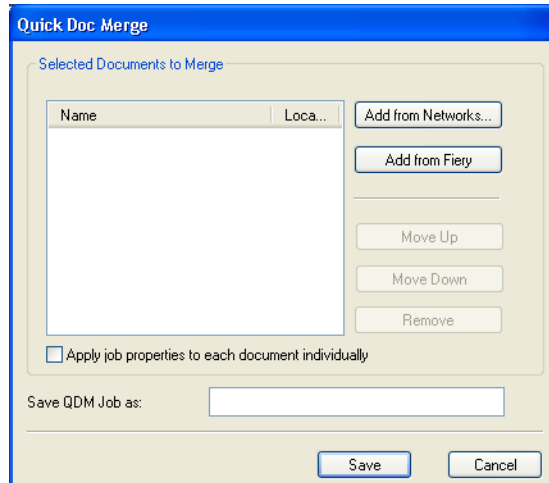
- 1 To open Quick Doc Merge, select a job in the Active Jobs window and right-click, or choose Quick Doc Merge from the Actions menu.

The selected job is listed.



Or choose **File>Import>Import Quick Doc Merge**.

No selected jobs are listed.



- 2 Click **Add from Networks** to browse and select PostScript or PDF files to import.

Click **Add from Fiery** to display a list of all PostScript and PDF files in the Hold queue on the Fiery EXP8000/50.

- 3 When the jobs you selected are listed, click **Move Up** or **Move Down** to change the order in which they are printed. Click **Remove** to remove a job.

- 4 Choose whether or not to select **"Apply job properties to each job individually"**.

This option applies to the job properties you set after creating and saving the Quick Doc Merge job. For more information, see ["Applying job properties to Quick Doc Merge jobs"](#) on page 54.

- 5 Type a name for the merged document in the **"Save QDM job as"** field.

- 6 Click **Save**.

The job is created and listed in the Active Jobs window.

- 7 Specify job properties for the new Quick Doc Merge job.

Applying job properties to Quick Doc Merge jobs

When a Quick Doc Merge job is created, any previous job properties set for the individual documents revert to the default Fiery EXP8000/50 settings. After creating and saving the Quick Doc Merge job, you must specify job properties for it. The option, “Apply job properties to each job individually”, applies to those job properties.

If you select “Apply job properties to each job individually,” job properties are applied individually to each separate document that has been combined into the Quick Doc merge job. If you clear the option, job properties are applied to the Quick Doc Merge job as a single job. The following table lists the settings that apply depending on whether this option is selected or not:

“Apply job properties to each job individually” option

	Selected	Not selected
Finishing attributes	Applied individually to each separate document	Applied to the merged job as a single job
Duplex	First page of each document is printed on the front side of the sheet	Duplex printing is continuous throughout the merged job
Mixed Media settings	Applied separately to each document in merged job	Applied to the merged job as a single job
Imposition	Each document is treated as a separate record of a VDP job	Merged document is treated as a single record of VDP job



NOTE: When imposing a Quick Doc Merge job, Impose sets the page size for the entire job based on the first page of the Quick Doc Merge job. If the Quick Doc Merge job contains mixed page sizes, those pages with sizes different from the first page are imposed as if they were the size of the first page (clipping performed as necessary).

Microsoft Office filters for Hot Folders

The Microsoft Office filters for Hot Folders feature allows you to convert certain MS Office file formats to PostScript. File conversion takes place on your computer within Hot Folders, which saves Fiery EXP8000/50 resources. You can print files directly from Hot Folders filters without starting the application from which they were created.

The Microsoft Office filters have no configurable options; however, you must have the following versions of each application, and have a PostScript printer or Acrobat Distiller installed to convert the files to PostScript files.

- Microsoft Excel 2000 or later
- Microsoft Publisher 2002 or later
- Microsoft PowerPoint 2000 or later
- Microsoft Word 2000 or later

Specifying filter settings for a Hot Folder

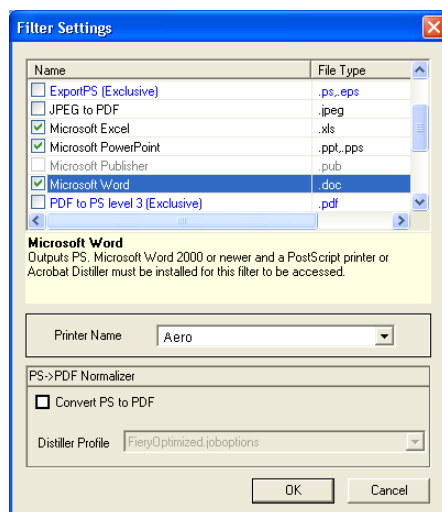
After specifying the filter settings and options for your Hot Folder, drag and drop the proper file formats onto your Hot Folder to begin the conversion process.

Open the Filter Settings dialog box from the Folder Properties dialog box.

TO SELECT A FILTER SETTING

- 1 From the Hot Folders Control Panel, select the Hot Folder and click Properties.
- 2 Select Filter Settings and click Define.

The Filter Settings dialog box appears, allowing you to select the filter.



For Windows, filters are color-coded. Exclusive filters are blue and Non-exclusive filters are black.

If you select an Exclusive filter, you cannot select any other filter. Microsoft Office filters are non-exclusive filters, so you can select as many of them as you wish.

3 To convert all PostScript files to PDF automatically, select Convert PS to PDF and a job option from the Distiller Profile menu in the PS->PDF Normalizer pane.

4 Click OK.

For more information about Hot Folders, see [“Hot Folders”](#) on page 69.

For more information about Hot Folders Filters, see [Graphic Arts Package](#).

For more information about using the Hot Folders application, see Hot Folders Help.



COMMAND WORKSTATION, MACINTOSH EDITION

Command WorkStation, Macintosh Edition allows operators of the Fiery EXP8000/50, or users with Operator or Administrator privileges, to monitor and manage the print workflow of jobs on the Fiery EXP8000/50.

Command WorkStation, Macintosh Edition, enables you to do the following:

- View the print status of jobs on the Fiery EXP8000/50
- Hold, process, and print jobs
- Override user-assigned print option settings
- Preview the page content of a job
- Create and use FreeForm master files for variable data printing
- Archive job files
- View job logs of recent print activity

Installing Command WorkStation, Macintosh Edition

Install Command WorkStation, Macintosh Edition on a Mac OS X computer that has a network connection to the Fiery EXP8000/50. For complete system requirements, see *Welcome*.



Before installing the utility, complete the preliminary procedures described in “Preparing for installation on Mac OS computers” on page 11.

To install Command WorkStation, Macintosh Edition, see “Installing user software on a Mac OS computer” on page 15.

Configuring the connection to the Fiery EXP8000/50

The first time you start Command WorkStation, you are prompted to configure the connection to the Fiery EXP8000/50.

You can also edit the configuration whenever there is any change to your Fiery EXP8000/50 server or network, such as a changed server name or IP address. If you change Fiery EXP8000/50 Setup information, do so before you reconfigure the connection.

BEFORE YOU BEGIN

- **Print the Fiery EXP8000/50 Configuration page.**

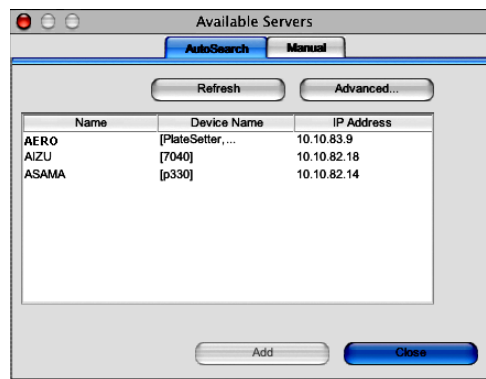
For instructions on printing the Configuration page, see [Configuration and Setup](#).

This page contains information you need when configuring the connection, such as the IP address of the Fiery EXP8000/50. For TCP/IP installations, you can use the DNS name instead of the IP address. Make sure the Fiery EXP8000/50 is already registered in a Domain Name Server (DNS) on your network. For more information, see the documentation that accompanies your network system.

TO CONFIGURE THE CONNECTION FOR COMMAND WORKSTATION, MACINTOSH EDITION

- 1 **Open the Applications: Fiery: CWS Macintosh Edition folder on the Mac OS X hard disk. Double-click the CWS Macintosh Edition file to start the application.**

The Available Servers dialog box appears. All servers found in the local subnet are displayed.



- 2 If no Fiery EXP8000/50 servers were found, click the Manual tab to search by DNS name or IP address. Click Add to add the server to the Available Servers list.

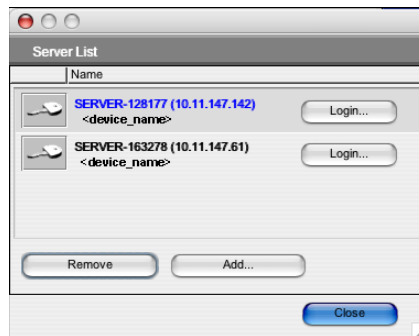


If no Fiery EXP8000/50 servers were found in the Manual search, click the AutoSearch tab, and then click Advanced to search by a range of IP addresses or the IP address and subnet mask.

All available servers are displayed in the Available Servers list.

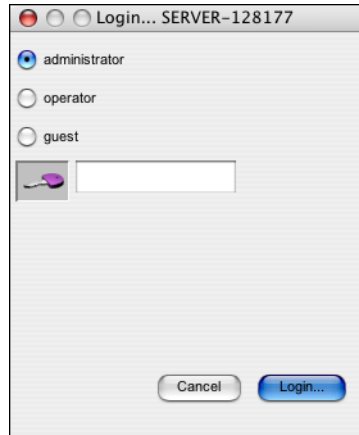
- 3 Select the Fiery EXP8000/50 server that you want to use and click Add.

The selected Fiery EXP8000/50 server is displayed in the Server List dialog box.



- 4 Click the server name to select it, and then click the key or the Login button.

The Login dialog box appears.



- 5 Select administrator, operator, or guest, type the password next to the key, and then click Login.

Your computer is connected to the server.

For more information about setting passwords and the default Administrator password for the Fiery EXP8000/50, see *Configuration and Setup*.

To modify the Command WorkStation connection to the Fiery EXP8000/50, you must remove the server from the Login Server list and follow the procedure for configuring the connection.

Using Command WorkStation, Macintosh Edition

After you install and configure Command WorkStation, you can begin using it to monitor and manage jobs on the Fiery EXP8000/50.



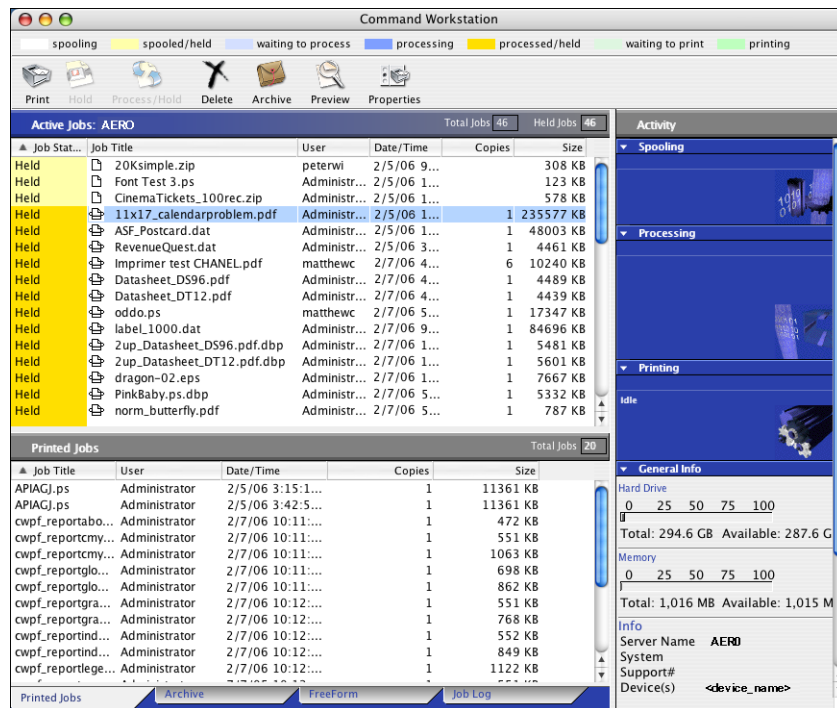
Complete instructions on how to use the Command WorkStation features are provided in Command WorkStation Help.

TO ACCESS COMMAND WORKSTATION HELP

1 Start Command WorkStation.

Select the Fiery EXP8000/50 in the server list and log on to the server.

For more information about setting passwords and the default Administrator password for the Fiery EXP8000/50, see *Configuration and Setup*.



2 Choose Help from the Help menu.

Additional Features

The following sections describe how to use additional features of Command WorkStation that are not discussed in Command WorkStation Help.

User Authentication

If user authentication has been enabled in Fiery EXP8000/50 Setup, users may need to enter a user name and password in the printer driver to send a job to the Fiery EXP8000/50.

Management of the job in Command WorkStation is determined by how you log on to the Fiery EXP8000/50, as administrator, operator, or guest.

For more information about setting up Users and Groups and enabling user authentication in the Configure WebTool, see *Configuration and Setup*. For more information about User Authentication in the printer driver, see *Print Options*.

Mixed Media

The Mixed Media feature allows you to define the chapter divisions of a job, print ranges of pages on varying types of media, insert blank media between pages, and insert tab media containing text labels.

The following guidelines and restrictions apply to Mixed Media settings:

- The Mixed Media dialog box restricts you from specifying settings that conflict with any media, page size, or finishing settings that have been specified for the job in the Job Properties dialog box or printer driver.
- When two or more Mixed Media settings conflict with each other, the Mixed Media dialog box highlights the setting names in red, and you must resolve the conflict.
- When you specify print options (in the Job Properties dialog box or printer driver) after specifying Mixed Media settings, certain print options may conflict with the page-specific Mixed Media settings. You must resolve the conflict by choosing different print options or removing certain Mixed Media specifications.
- If counters are configured for the digital press, blank media inserted between pages count as printed pages.

Features specific to the Fiery EXP8000/50 are described in the following procedures.

NOTE: The procedures for defining Mixed Media settings in Command WorkStation, Windows Edition are similar to those in Command WorkStation, Macintosh Edition, but include illustrations. For more information, see [page 25](#).

TO DEFINE MIXED MEDIA SPECIFICATIONS

- 1 **Select or right-click a spooled/held job in the Active Jobs window and choose Properties from the Actions menu, or double-click a job.**

- 2 **Click the Media icon and scroll down to Mixed Media.**

The Mixed Media dialog box lists any previously defined media settings and includes buttons for defining, modifying, and removing settings.

- 3 **For Chapter Start Page(s), type the page numbers on which you want to start new chapter sections.**

Type page numbers as comma-separated values (for example: 4,9,17) to designate the start of each new chapter. This feature forces each starting page to use a right-side page, adding a preceding left-sided blank, if required.

NOTE: It is not necessary to type the first page. Page numbers refer to the numbering of the original document. If you use the Chapter Start Page(s) feature, all media specified in the Paper menu per chapter must share the same dimensions (for example, all Letter, all Tabloid, or all A4).

- 4 **To apply finishing options (for example, stapling or sorting) to each chapter created using the Chapter Start feature, select the “Define Each Chapter As A Separate Finishing Set” option.**

NOTE: Not all finishing options can be applied to chapters that contain mixed sizes of media (for example, Letter and A4).

- 5 **To define properties for front and back covers, click Define Cover.**

For more information, see [“To define cover media settings”](#) on page 64.

- 6 **To define properties for individual pages or page ranges, click New Page Range.**

For more information, see [“To define media for specific pages”](#) on page 64.

- 7 **To insert blank pages, click New Insert.**

For more information, see [“To insert blank pages”](#) on page 65.

- 8 **To insert tab media, click New Tab.**

The Insert Tab dialog box appears. For information about defining tab settings, see [page 30](#).

NOTE: The Insert Tab feature is not available for imposed jobs.

- 9 **To modify or delete a current definition, select it in the Mixed Media Definition list, and click Edit or Remove.**

If you click Edit, enter new settings for the definition and click Modify.

- 10 **After you finish defining Mixed Media settings, click OK to close the Mixed Media dialog box and Job Properties.**

The Mixed Media settings are applied to the job.

NOTE: You can save up to 100 different settings for the Selection list in the Mixed Media dialog box.

TO DEFINE COVER MEDIA SETTINGS

- 1 In the Mixed Media dialog box, click **Define Cover**.

The Cover Media dialog box appears.

- 2 To define identical front cover and back cover media, select the “**Apply the same settings for both front and back cover**” option.
To define media settings for the front or back cover individually, select the **Front Cover** or **Back Cover** option.

- 3 Define **Tab Shift** as required.

- 4 Choose other settings as required.

- 5 Select your desired media from the **Paper Catalog** menu.

- 6 You can also click the **Details** or **Select** button to open the Paper Catalog window, select your desired media, and click **OK**.

For more information about Paper Catalog, see “[Paper Catalog](#)” on page 43.

- 7 Click **OK** to return to the Mixed Media dialog box.



Cover Media settings take precedence over settings defined in the Page/Page Range Media dialog box.

TO DEFINE MEDIA FOR SPECIFIC PAGES

- 1 In the Mixed Media dialog box, click **New Page Range**.

The Page/Page Range Media dialog box appears.

- 2 Type pages and page ranges as comma-separated values (for example: 3,9–14,18).

- 3 Choose other settings, as required.

If you assign a new media type to the back side of a duplexed sheet, a blank page is inserted to force the assigned page content to the front side of the next sheet.

- 4 Select your desired media from the **Paper Catalog** menu.

- 5 You can also click the **Details** or **Select** button to open the Paper Catalog window, select your desired media, and click **OK**.

For more information about Paper Catalog, see “[Paper Catalog](#)” on page 43.

- 6 Click **Add Definition** after each media setting you define.

- 7 Click **Close** to return to the Mixed Media dialog box.

TO INSERT BLANK PAGES

- 1 In the Mixed Media dialog box, click New Insert.

The Insert Blank dialog box appears.

- 2 Indicate whether to insert the blank page before or after the target page. Define the target page as either the first or last page in the document, or as a specific numbered page.
- 3 Choose other settings, as required.
- 4 Select your desired media from the Paper Catalog menu.
- 5 You can also click the Details or Select button to open the Paper Catalog window, select your desired media, and click OK.

For more information about Paper Catalog, see “[Paper Catalog](#)” on page 43.

- 6 Click Insert after each blank page you define.
- 7 Click Close to return to the Mixed Media dialog box.

Insert Tabs

The Insert Tabs feature allows you to automatically insert tab pages throughout a job. This feature accommodates various sizes and types of tab media stock. Users can insert the tab text and override text attributes on a per-job basis.

The Insert Tabs feature is accessed from the Mixed Media dialog box and is part of the Production Printing Package. For more information, see “[Insert Tabs](#)” on page 49.

Schedule Printing

The Schedule Printing feature allows you to set a specific date and time for printing a job. Assign Schedule Printing settings to a job from the following areas:

- Job Properties window in Command WorkStation, Macintosh Edition (see Command WorkStation Help and the following procedures)
- Active Jobs window in Command WorkStation, Macintosh Edition (see the following procedures)

TO SCHEDULE A JOB FOR PRINTING FROM THE ACTIVE JOBS WINDOW

- 1 Select a job in the Active Jobs window and choose Schedule Printing from the Actions menu.
- 2 Specify the date and time when you want the job to print and click OK.

TO SCHEDULE A JOB FOR PRINTING FROM THE JOB PROPERTIES WINDOW

- 1 Select a job in the Active Jobs window and choose Properties from the Actions menu.
- 2 Click the Job Info icon and scroll down to Destination.
- 3 Open the Destination menu.
- 4 Select Schedule Printing, specify the date and time you want the job to print and the destination, and then click OK.

NOTE: Display the scheduled date and time by adding Schedule Printing information to the Active Jobs window. For more information about adding information columns, see Command WorkStation Help.

Troubleshooting



When troubleshooting basic connection and software problems with Command WorkStation, see the following sections. For additional troubleshooting information, see Command WorkStation Help.

Command WorkStation cannot connect to the Fiery EXP8000/50

If you cannot connect to the Fiery EXP8000/50 or locate the Fiery EXP8000/50 from your computer, contact the network administrator. The administrator may need to troubleshoot your network connection and check settings on the servers that you print to. If settings have changed, it may be necessary to reconfigure the Fiery EXP8000/50.

If you are able to connect to the Fiery EXP8000/50 with another utility, you may need to reconfigure the Command WorkStation connection to the Fiery EXP8000/50 (see [page 58](#)).

If you configured the Fiery EXP8000/50 and set up client computers and network servers according to the instructions in *Configuration and Setup*, print a Test Page. If you can print the Test Page but still cannot print a document from a remote computer, contact your network administrator to troubleshoot the network connection.

If you cannot connect and cannot print a Test Page, check the digital press for error information.

Command WorkStation does not respond

If Command WorkStation is unresponsive, use the following troubleshooting guidelines.

IF COMMAND WORKSTATION WINDOWS DO NOT UPDATE

- 1 Log off and then quit Command WorkStation.
- 2 Restart Command WorkStation or restart the computer.

If the Command WorkStation windows do not update, or no jobs are displayed, and the mouse has no effect (you cannot select a job or a window, use a Control-click command, or select a menu item), the Fiery EXP8000/50 is offline or network communication has failed.

TO FORCE AN EXIT FROM COMMAND WORKSTATION

- 1 Press Command-Option-Escape and use the Force Quit Applications dialog box to close Command WorkStation.
- 2 At the Fiery EXP8000/50, disconnect and reconnect the network cable, and then try printing a Test Page or Configuration page.
- 3 If printing fails, restart the Fiery EXP8000/50.

HOT FOLDERS

Hot Folders is a utility that allows you to store and reuse frequently used print options when printing PostScript and PDF files on the Fiery EXP8000/50. With Hot Folders, you can do the following:

- Create special folders (hot folders) that assign specific print settings and print queues to jobs.
- Print jobs to the Fiery EXP8000/50 by dragging and dropping them onto hot folders on your computer's desktop.
- Monitor the status of jobs sent to hot folders.

Installing Hot Folders

To install and use Hot Folders, you must have a Windows computer with a network connection. For detailed system requirements, see [Welcome](#).

The Hot Folders installer is located on the User Software DVD.



Before installing the utility, complete the preliminary procedures described in “[Preparing for installation on Windows computers](#)” on page 10.

To install Hot Folders on a Windows computer, see “[Installing user software on a Windows computer](#)” on page 13. To install Hot Folders on a Mac OS computer, see “[Installing user software on a Mac OS computer](#)” on page 15.

Using Hot Folders

Complete instructions on how to use the standard Hot Folders features are provided in Hot Folders Help.

TO ACCESS HOT FOLDERS HELP



- 1 Start Hot Folders.
- 2 Choose **Help** > **EFI Hot Folders Help**.

About Hot Folders filters

Hot Folders filters allow you to convert certain file formats to PostScript or PDF or to preflight files for conformity. File conversion and preflighting take place on your computer within Hot Folders, which saves Fiery EXP8000/50 resources. You can print files directly from Hot Folders filters without starting the application from which they were created.



If the Graphic Arts Package, Premium Edition is installed and enabled on the Fiery EXP8000/50, you can use additional file format filters with Hot Folders. For more information about using these file format filters, see [Graphic Arts Package](#).

Microsoft Office filters for Hot Folders are offered as part of the Production Printing Package. For more information, see “[Microsoft Office filters for Hot Folders](#)” on page 55.

Using the PDF to PS filter

The PDF to PS filter is standard. The PDF to PS filter accepts PDF (v1.2 to v1.6) files and outputs PostScript files.

NOTE: The filter converts any PDF v1.2 files to PDF v1.6 files, and then to PostScript Level 3 files before submitting them to the Fiery EXP8000/50.

VDP RESOURCE MANAGER

VDP Resource Manager allows you to do the following:

- Search for global objects used in variable data printing
- Delete global objects used in variable data printing

Installing VDP Resource Manager

To install and use VDP Resource Manager, you must have a Windows or Mac OS computer. For detailed system requirements, see [Welcome](#).

The installer for VDP Resource Manager is located on the User Software DVD.



Before installing the utility, complete the preliminary procedures described in “[Preparing for installation on Windows computers](#)” on page 10 and “[Preparing for installation on Mac OS computers](#)” on page 11.

To install VDP Resource Manager on a Windows computer, see “[Installing user software on a Windows computer](#)” on page 13. To install VDP Resource Manager on a Mac OS computer, see “[Installing user software on a Mac OS computer](#)” on page 15.

Configuring the connection to the Fiery EXP8000/50

The first time you start VDP Resource Manager, you must configure the connection to the Fiery EXP8000/50.

BEFORE YOU BEGIN

- **Print the Fiery EXP8000/50 Configuration page.**

For more instructions on printing the Configuration page, see *Configuration and Setup*.

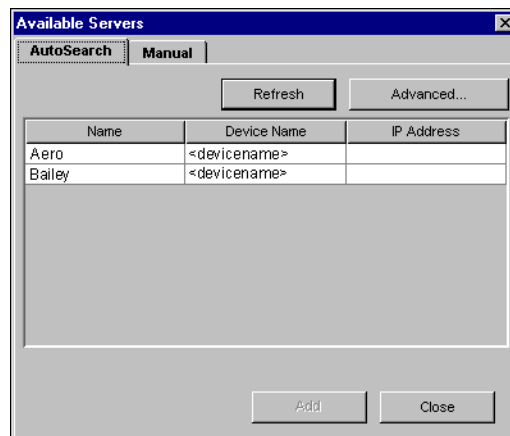
This page contains information you need when configuring the connection, such as the IP address of the Fiery EXP8000/50. For TCP/IP installations, you can use the DNS name instead of the IP address. Make sure the Fiery EXP8000/50 is already registered in a Domain Name Server (DNS) on your network. For more information, see the documentation that accompanies your network system.

TO CONFIGURE THE CONNECTION FOR FIERY VDP RESOURCE MANAGER

- 1 **On a Windows computer, click Start, choose Programs, and then click Fiery VDP Resource Manager in the Fiery folder.**

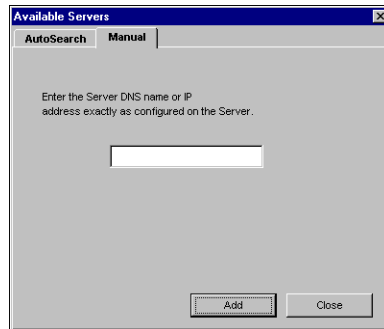
On a Mac OS X computer, click Go, choose Applications, and then click Fiery VDP Resource Manager in the Fiery folder.

The Available Servers dialog box appears with all Fiery EXP8000/50 servers in the local subnet displayed.

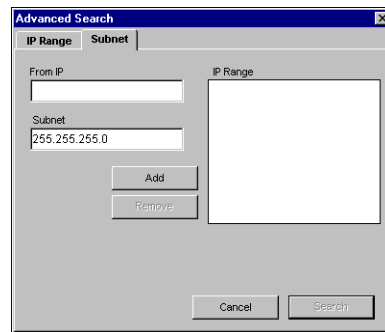
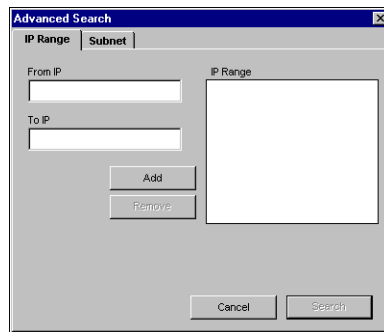


- 2 To locate a server by its IP address, click the Manual tab, type the IP address, and then click Add.

The server appears in the Available Servers dialog box.



- 3 To locate the Fiery EXP8000/50 either by a range of IP addresses or by the IP address and subnet mask, click the AutoSearch tab, and then click Advanced.
- 4 Click the IP Range tab or the Subnet tab.



- 5 To search by a range of IP addresses using the IP Range tab, enter the information in the From IP and To IP fields, click Add, and then click Search.

To search by IP address and subnet mask using the Subnet tab, enter the information in the From IP and Subnet fields, click Add, and then click Search.

All available servers are displayed in the Available Servers dialog box.

- 6 Select the servers you want and click Add.

All connected servers are displayed in the Fiery Servers list in the Fiery VDP Resource Manager dialog box.

TO MODIFY THE CONFIGURATION FOR FIERY VDP RESOURCE MANAGER

- 1 On a Windows computer, click Start, choose Programs, and then click Fiery VDP Resource Manager in the Fiery folder.

On a Mac OS X computer, click Go, choose Applications, and then click Fiery VDP Resource Manager in the Fiery folder.

All servers you connected to previously are displayed.

- 2 To remove a server, select the server that you want to remove, and then choose Disconnect from the Server menu.
- 3 To add a server, choose Connect from the Server menu and follow the procedure [“To configure the connection for Fiery VDP Resource Manager”](#) on page 72.

Using VDP Resource Manager

Complete instructions on how to use VDP Resource Manager are provided in VDP Resource Manager Help.



TO ACCESS VDP RESOURCE MANAGER HELP

- 1 Launch VDP Resource Manager.
- 2 Choose Help>Fiery VDP Resource Manager Help.

WEBTOOLS

WebTools allow you to manage your Fiery EXP8000/50 remotely from the Internet or your company's intranet. The Fiery EXP8000/50 has its own home page where you can select the following WebTools:

- **Home** provides current information about the jobs processing and printing on the Fiery EXP8000/50.
- **Downloads** allows remote users to download installers (for drivers, PPDs, and other software) directly from the Fiery EXP8000/50.
- **Docs** allows remote users to access jobs on the Fiery EXP8000/50 over the Internet or intranet.
- **Configure** allows the Fiery EXP8000/50 administrator to view and modify Setup options remotely from a Windows computer.

Setting up WebTools

WebTools are resident on the Fiery EXP8000/50 hard disk and do not require special installation. However, WebTools do require initial Setup by the Fiery EXP8000/50 administrator.

To enable network users to access and use WebTools, the administrator must set specific options in Network Setup and Printer Setup. For more information about these specific Setup options, see *Configuration and Setup*.

The administrator also must prepare each user's computer to communicate with the Fiery EXP8000/50 over the Internet or intranet.

TO SET UP CLIENT COMPUTERS TO USE WEBTOOLS

- 1 **Enable TCP/IP networking.**
- 2 **Make sure that the workstation has a valid, unique IP address.**
- 3 **Make sure that a supported Internet browser is installed on the computer.**

For more information about supported browsers, see *Welcome*.

- 4 **Make sure that Java is enabled in your Internet browser.**



In addition, make sure that you have completed the preliminary procedures described in “Preparing for installation on Windows computers” on page 10.

NOTE: If the client computer is running Windows XP with Service Pack 2 (SP2) installed, Pop-up Blocker is turned on by default. With this function turned on, a warning message appears when you access WebTools, and your access is denied. To gain access, do one of the following:

- Change the Pop-up Blocker setting by clicking the warning message and choosing from one of the selections that appears.
- Turn off Pop-up Blocker in Internet Explorer from the Tools menu or in Internet Options.

For more information, see Internet Explorer Help, or the documentation that accompanies Windows.

Accessing the WebTools home page

Use your Internet browser to access WebTools. For complete information about browser and system requirements, see [Welcome](#).

- 1 Start your Internet browser.**
- 2 Type the IP address or DNS name of the Fiery EXP8000/50.**

The Fiery EXP8000/50 home page appears.

If the home page for the digital press appears instead of the WebTools page, click the WebTools link.

- 3 Click the tab for the WebTool that you want to use.**

Using WebTools

The following sections describe how to use the WebTools.

Home

Home lets you view jobs that are currently processing and printing on the Fiery EXP8000/50. Printing and processing information is updated every 30 seconds.



For complete instructions on how to use Home, see WebTools Home Help.

Downloads

The Downloads WebTool allows you to download installers (for drivers, PPDs, and other Fiery EXP8000/50 software) directly from the Fiery EXP8000/50.



For complete instructions on how to use Downloads, see WebTools Downloads Help.

Docs

Docs allows you to access jobs on the Fiery EXP8000/50 over the Internet or intranet. You can:

- Manage and distribute jobs in your mailbox.
Mailboxes are set up in the Configure WebTool.
- Control and modify jobs.
- Submit jobs to the Print Server.



For complete instructions on how to use Docs, see WebTools Docs Help.

Configure

Configure allows the Fiery EXP8000/50 administrator to view and modify Setup options remotely from a Windows computer. For more information about using Configure, see *Configuration and Setup*.



Before using Configure, make sure you have completed the Configure preparation procedure described in “[Preparing for installation on Windows computers](#)” on page 10.



For complete instructions on how to use Configure, see WebTools Configure Help.

INDEX

A

Adobe Acrobat 38
Align Trays 23

C

chapter definition for jobs 26, 63
Configure 77
configuring
 Command WorkStation, Macintosh Edition 58
 Command WorkStation, Windows Edition 19
 server 77
 VDP Resource Manager 72
 virtual printers 32
 WebTools 75
conventions 8
cover media 27, 64
CT/LW to PS Filter
 about 70
 configuring 70

D

DCS 2.0 to PS Filter
 about 55
 configuring 55
deleting virtual printers 33
demoting jobs 47
DNS name 19, 58, 72
Docs webtool 77
Domain Name Server, *see* DNS name
dongle 37
downloading software 77
Downloads WebTool 77
drag-and-drop printing 69
duplicating virtual printers 33

E

editing virtual printers 33
EFI ImageViewer 34
Enfocus PitStop plug-in 38

F

Fiery Graphic Arts Package, Premium Edition
 file format filters 70
File Filters
 selecting settings 55
 specifying 55
file format filters 70
FTP printing 34
full-screen preview 34

G

global objects, in VDP 71
Graphic Arts Package, Premium Edition
 ImageViewer 34

H

Home WebTool 77

I

icons, in documentation 8
ImageViewer 34
imposing jobs 37
imposition layouts 37
Insert Tabs 49
inserting tabs 49
installing
 Acrobat 38
 Impose 37
 PitStop 38
 VDP Resource Manager 71

J

Java 18, 75
Java JRE 10
job queue, reordering 47
job reordering 47
jobs
 chapter definitions 26, 63
 cover media 27, 64
 mixed media definitions 25
 rush printing 48
 scheduling 48, 66
 VDP 37

L

- LPR printing
 - on Mac OS 33
 - on Windows 33

M

- media definitions 25
- Mixed Media 25

P

- paper definitions 25
- PitStop plug-in 38
- preview window 34
- printing, print options 69
- promoting jobs 47

R

- remote setup 77
- Reorder Jobs 47
- Rush Printing 48

S

- Schedule Printing 48, 66
- server setup 77
- software protection key 37
- Sun Java JRE 10

T

- tab
 - insertion 49
 - media 49
- TCP/IP 19, 58, 72
- terminology 8
- tray alignment 23
- troubleshooting
 - Command WorkStation, Macintosh Edition 67
 - Command WorkStation, Windows Edition 35

U

- user authentication 23, 62
- users and groups 23, 62

V

- variable data printing, *see* VDP jobs
- VDP jobs
 - imposing 37
 - managing global objects 71
- virtual printers
 - configuring 32
 - FTP printing 34
 - LPR printing 33
 - Mac OS 33
 - overview 32
 - printing to 33

W

- WebTools
 - Configure 77
 - Docs 77
 - Downloads 77
 - Home 77
 - home page 14, 16, 76