



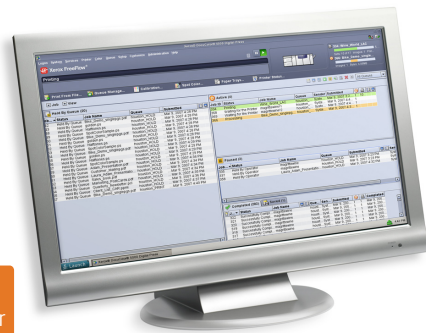
Xerox FreeFlow® Print Server for the DocuColor® 5000AP/ 7000AP/8000AP Digital Presses.

The sleek, simple, and smart way to enhance production performance.

Now you can automate more job steps, optimize your workflows, and enable new applications on your Xerox DocuColor 5000AP/7000AP/8000AP Digital Presses with the Xerox FreeFlow Print Server. Built and refined based on experience and feedback from users of more than 35,000 Xerox DocuSP® Servers, the FreeFlow Print Server retains all the advantages of the DocuSP product line while adding exciting enhancements to meet your daily needs and expand your opportunities.

Simplicity—to help you get the work done.

The user-friendly Graphical User Interface (GUI) enables a smooth and fast operator experience—while training or working. Job processing is as simple as click, drag, and drop, making it easy to manage multiple print jobs from multiple queues. From the interface, you can hold, interrupt, proof, reprogram, and forward jobs to maximize print engine productivity. Process jobs through hot folders and JDF job tickets to efficiently manage your print schedule. You'll also benefit from two levels of preview capabilities that allow you to preview static and Variable Information (VI) jobs before scheduling.



FreeFlow®
Digital Workflow Collection

Print
Server

ConfidentColor Technology—prepress through production.

Streamline prepress processes—even when color correction is needed—and drive consistent high-quality output for all your jobs with ConfidentColor Technology, a built-in suite of tools for enhanced color management. The FreeFlow Print Server builds custom RGB and CMYK DeviceLink ICC profiles in real time, so you can emulate any printing device you choose. Automatic Image Enhancement (AIE) enables “one click” photo enhancements for less-than-optimal originals without lengthy prepress time. As part of the only PANTONE®-licensed solution that includes the server and the digital color press, the FreeFlow Print Server offers enhanced color matching, including tints and highlights, Duotones, Tri-tones, Quad-tones, “Custom Spot Colors”, and “Device N” support.

Outstanding VI features—to enable new applications.

Handle more objects, more complex pages, and more VI thanks to parallel job RIPping, variable caching, and other performance features. All data is kept intact using a native format without file conversion. The FreeFlow Print Server is the logical printing solution for both transactional printers using mainframe data streams such as AFP/IPDS, LCDS, or a VIPP® workflow, and commercial printers using graphic-intensive VI workflows.

Benchmark security—because it truly matters.

Benefit from multiple security levels, all based on super-secure UNIX® which is not susceptible to attack from email viruses or worms. Encrypted job-submission modes provide for public and private key encryption. Security profiles offer custom setups, a print mode that limits duplicate page printing, and more. Rest assured, you are working with a very secure system.

Xerox FreeFlow® Print Server for the DocuColor® 5000AP/7000AP/8000AP Digital Presses.

Hardware/Platform

- 17-inch flat-screen monitor (minimum)
- Keyboard and mouse
- X-Rite® DTP20 Spectrophotometer (DocuColor® 5000AP)
- X-Rite® DTP41 Spectrophotometer (DocuColor® 7000AP/8000AP)
- Solaris™ 10
- System 6.0 software

Hardware Configuration

- Two Single Core AMD Opteron™ 2.6 GHz processors (or equivalent) for the DocuColor® 5000AP
- Two Dual Core AMD Opteron™ 2.6 GHz processors for the DocuColor® 8000AP family
- 4 GB memory
- 2 x 73 GB hard disk or greater
- DVD-ROM/DVD-RW
- 10/100/1000 Base T Ethernet ports
- Four USB ports, one serial port, one parallel port

ConfidentColor Technology

- Easy-to-expert color-management tools
- ICC and DeviceLink Workflow support
- PANTONE®-licensed and spot-color matching
- Key color emulations such as SWOP, Euroscale, FOGRA, Japan Color
- Color/Gray-balanced-based calibration
- Tone Reproduction Curve Editor (TRCs)
- Automatic Image Enhancement (AIE) for “one button” color correction for poor-quality photographs
- In-RIP trapping, adjustable Gray Color Removal (GCR), anti-aliasing, overprinting, and selectable halftones

Workflow

- True Adobe® PostScript®/PDF printing for accurate, repeatable results
- Familiar FreeFlow® Print Server experience from office to production
- Simultaneous receiving, selecting, processing, and printing of jobs
- Wide flexibility with queue management
- Job settings at page, job, and queue levels
- Preflight, preview, and soft proof for job accuracy
- PDF export

- Layout/Imposition standard (e.g., booklet, 4-up)
- Hot folder drag-and-drop support for Windows®, Macintosh®, Linux and Unix®
- JDF job tickets via hot folders
- FreeFlow® Remote Print Server for remote fleet management
- Supports Specialty Imaging Text

Client and Remote Support

- Xerox fully featured printer drivers
- Windows® 2000/XP/Vista full-featured drivers
- Microsoft® Windows® WHQL (Windows Hardware Quality Labs) printer drivers with dynamic tray and status reporting
- Macintosh® OS 10.3.9 or higher for drivers
- Adobe® PostScript® Printers Descriptions (PPD)
- HTTP and HTTPS browser submission support
- FreeFlow® Print Manager (FFPM optional)
- IPP for job submission and system status

File Format Support

- Adobe® PostScript® Level 1, 2, 3
- Adobe® Acrobat® 7.0, PDF 1.6, PDF/X
- TIFF, PCL5c, PCL6XL

Security

- Solaris™ 10 OS
- Four security profile modes and levels
- Fully customizable profiles
- Encrypted job-submission modes
- Secure print mode (restricts page reprints)
- Address access filtering
- Strong password support
- Data overwrite option

Variable Data Printing Support

- VIPP®, Line Mode, Database Mode, Native
- PPML v2.1 Graphic Arts
- Optimized PostScript® and optimized PDF
- Parallel RIP architecture standard
- Color background form support
- Indefinite job size support
- Dynamic cache architecture
- Transactional data options:
 - IPDS
 - LCDS (DocuColor® 5000AP/7000AP/8000AP)

Network Environment/Protocols

- TCP/IP, Novell® NDS® IPX/SPX, IPP, AppleTalk®, IPP
- DHCP
- SNMP MIB II support for third-party administration tools

Dimensions/Weight

- Height 17.5 in. (445 mm) x Width 8.25 in. (210 mm) x Depth 19 in. (482 mm)
- Weight 40 lb (18.2 kg)

Options

- Stand:
 - Height 38.5 in. (973 mm) x Width 30 in. (720 mm) x Depth 30 in. (720 mm)
- Removable hard drive
- Disk overwrite
- IPDS
- LCDS spectrum (DocuColor® 5000AP/7000AP/8000AP only through XSYS)
- Xerox Enhanced Accounting Reporter
- Automated Color Quality Suite (DocuColor® 7000AP/8000AP)

Power

- 90-264 VAC RMS, single phase, automatically configured, 15 AMP, 47-63 Hz
- Power consumption is 150 watts (max.)

Regulatory Agency Approval

Meets or exceeds the following requirements:

- IPDS
- Safety – UL 1950, CSA C22.2 No. 950, TUV EN 60950
- RFI/EMI – FCC Class A, DOC Class A, EN 55022 Class A, EN 61000-3-2
- Immunity – EN 50082-1
- CE Mark

For more information on the Xerox® FreeFlow® Print Server, call 1-800 ASK XEROX or visit us on the Web at: www.xerox.com.



FreeFlow®
Digital Workflow Collection

Print
Server



© 2008 Xerox Corporation. All rights reserved. Xerox®, the sphere of connectivity design, DocuColor®, DocuSP®, FreeFlow®, and VIPP® are trademarks of, or licensed to Xerox Corporation in the United States and/or other countries.

PANTONE® is a trademark of Pantone, Inc. Adobe®, Acrobat®, and PostScript® are trademarks of Adobe Systems Incorporated in the U.S. and/or other countries. X-Rite® is a trademark of X-Rite, Inc. Solaris™ is a trademark of Sun Microsystems, Inc. Macintosh® is a trademark of Apple Computer, Inc. Microsoft® and Windows® are trademarks of Microsoft Corporation. UNIX® is a trademark of The Open Group. Novell® and NDS® are trademarks of Novell, Inc. AMD Dual Opteron™ is a trademark of Advanced Micro Devices, Inc. Product appearance, build status, and/or specifications are subject to change without notice. 04/08