

Software Version 7.0 SP1
September 2008
701P49129



FreeFlow[®] Print Server

What's New



© 2008 Xerox Corporation. All rights reserved. Xerox[®], FreeFlow[®], DocuSP, and the sphere of connectivity design are trademarks of Xerox Corporation in the US and/or other countries.

Microsoft, Windows, Windows 2000, Windows XP, and Windows Vista are registered trademarks of Microsoft Corporation.

PANTONE[®] is a registered trademark of Pantone, Inc.

Macintosh is a registered trademark of Apple Computer, Inc., registered in the US and other countries. Elements of Apple's Technical User Documentation used by permission from Apple Computer, Inc.

Adobe, Acrobat, Distiller, Illustrator, InDesign, and Photoshop are registered trademarks of Adobe Systems, Inc. PostScript is an Adobe registered trademark used with the Adobe PostScript Interpreter, the Adobe pagedescription language, and other Adobe products. This product is not endorsed or sponsored by Adobe Systems, publisher of Adobe Photoshop.

Table of Contents

1 How this document is organized	5
2 Common features	7
Update Manager	7
Exception and insert page ranges	9
Saved tab job list filter	10
Using the Saved Jobs List - Select Paths window	11
Password expiration	13
3 Color features	15
TRC editing	15
The User TRCs window	15
User TRC menus	16
Opening the User TRCs Edit window	17
Color Management	18
About Color Management	18
PDF/X	26
About PDF/X	26
PDF/X limitations and considerations	27
Spot color editing	27
About spot colors	27
About the Spot Color List window	29
About the Spot Color Editor window	31
JPEG plug-in	33
JPEG printing sizes and layouts	34
4 IPDS features	35
IPDS Rasterized Presentation Objects (RPO)	35
IPDS Manager in FreeFlow Remote Print Server	35
AFP color support for IPDS	36

How this document is organized

This document describes the new features included with FreeFlow Print Server® 7.0 Service Pack 1. The features are grouped as follows:

- Common features describes new features that apply to all systems. This section begins with *Update Manager* on page 7.
- Color features describes new features that apply to color systems. This section begins with *The User TRCs window* on page 15.
- IPDS features describes new features for systems supporting IPDS. This section begins with *IPDS Rasterized Presentation Objects (RPO)* on page 35.

Common features

Update Manager

Update Manager notifies you of updates available for the Print Server and allows you to download and install them.

When updates are available, the Update Manager icon appears at the top right corner of the default screen. Clicking the icon opens the **Update Manager** window:

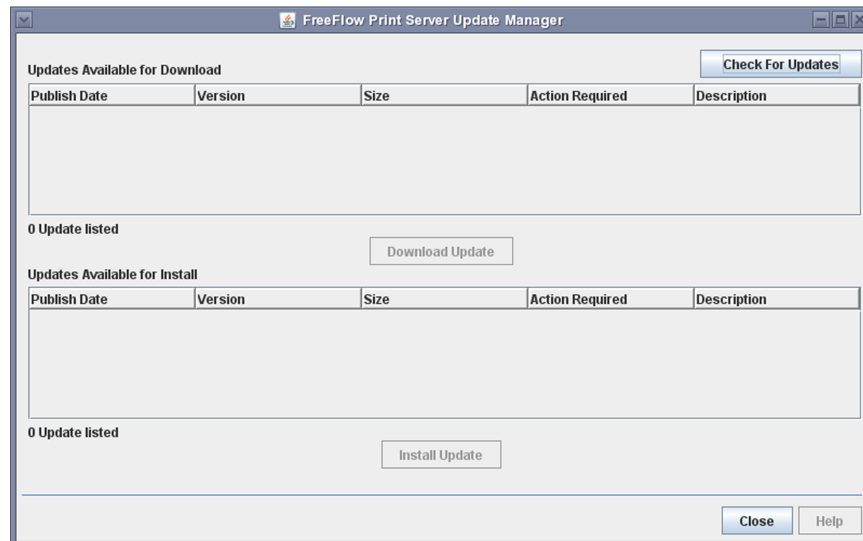


Figure 1: Update Manager

- Check For Updates displays any available updates in the Updates Available for Download list.
- Download Update downloads an update selected in the Updates Available for Download list to the Print Server. Once downloaded, the update appears in the Updates Available for Install list.

Only the System Administrator can download updates.

- Install Update installs an update selected in the Updates Available for Install list to the Print Server.

Only the System Administrator can install updates.

After installing an update, we recommend that you restart the FreeFlow Print Server, as requested by the **Update Manager**.

Exception and insert page ranges

Exception Page Range

The Exception Page Range box allows you to enter any combination of single pages and page ranges. Ranges can overlap. You can also set page options to apply to the set of exception pages.

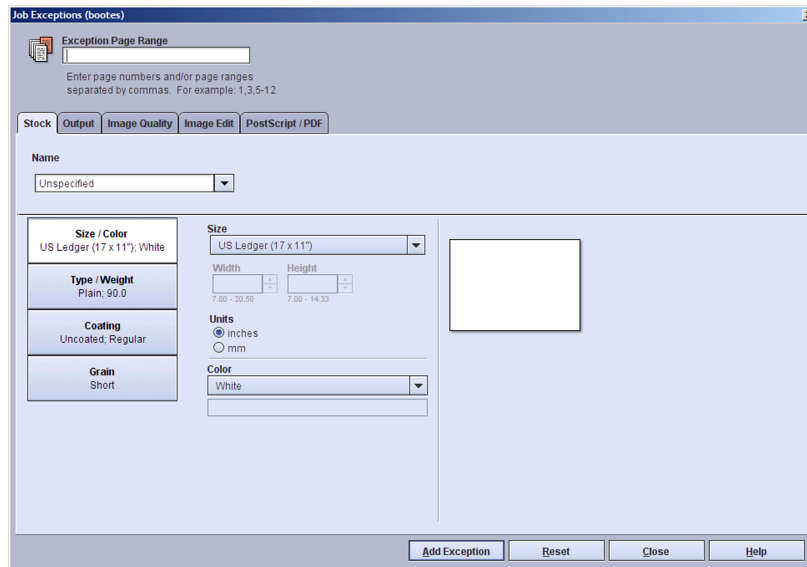


Figure 2: Exception Page Range box

After you select the Add Exception button, each exception or exception range is added to the Special Pages tab, where you can work with them individually.

Insert page range

The After Page(s) box allows you to enter any combination of single pages and page ranges. Ranges can overlap. Use the Insert Quantity box to choose the number of inserts after each page or range. You can also set page options to apply to the set of inserts.

Figure 3: After Page(s) box for insert page ranges

After you select the Add Insert button, each exception or exception range is added to the Special Pages tab, where you can work with them individually.

Saved tab job list filter

The **Saved Jobs List - Select Paths** window provides a mechanism to specify which directories should be included when listing saved jobs in the Saved tab of the default screen. If there are many saved jobs, specifying which directories to include can speed listing of saved jobs and simplify your choices. You may elect to display only the Saved Job repository, specific directories in addition to the Saved Job repository, or specific directories instead of the Saved Job repository.

Using the Saved Jobs List - Select Paths window

1. Open the **Saved Jobs List** window:
 - a) Select **Customize > Workspace Settings**.
The **Workplace Settings** window opens.

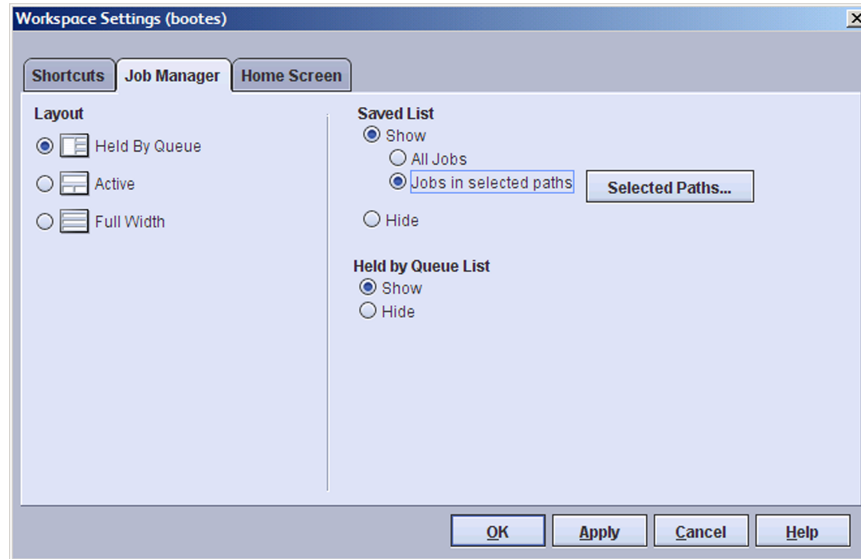


Figure 4: Workplace Settings window

- b) Select the **Job Manager** tab.
 - c) In the **Saved List** area, select **Show**.
 - d) Select **Jobs in selected paths**.
 - e) Select **Selected Paths...**
The **Saved Job List - Select Paths** window opens.

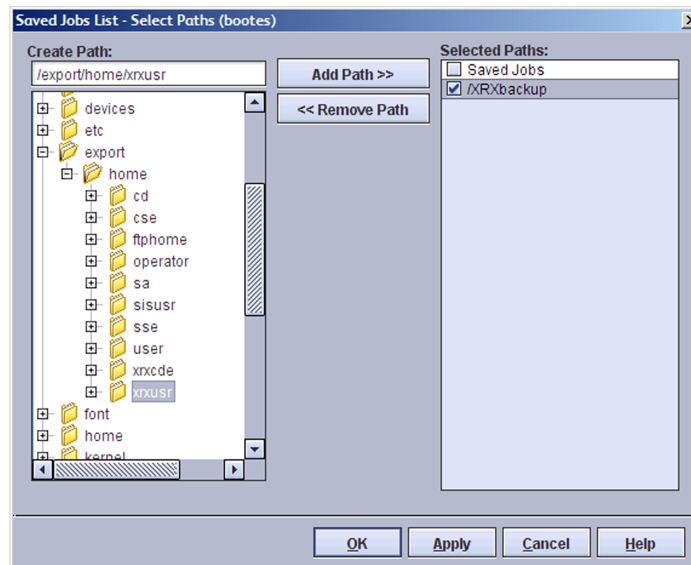


Figure 5: Saved Job List - Select Paths window

2. From the **Create Path** directory list select a directory to be included in the search for Saved Jobs.

3. Select **Add Path >>**.

The directory added appears in the Selected Paths area. The path checkbox is selected and jobs in the path will appear in the Saved Jobs tab.

Any number of directories can be added to the Selected Paths area but only one directory can be added at a time.

4. To prevent a path in the **Selected Paths** area from appearing in the **Saved** tab, clear the path checkbox.

5. To permanently remove a path from the **Selected Paths** area, select the path and then select **<< Remove Path**.

The Saved Jobs directory cannot be removed from the Selected Paths area, but it can be disabled by clearing by clearing the checkbox.

6. Select **OK** to save the changes to the selected paths.

Password expiration

Password expiration is available only when strong passwords are enabled. You configure password expiration by editing the file `/etc/default/passwd`.

Only the UNIX super user can edit the `/etc/default/passwd` file.

The following parameters are supported in the `/etc/default/passwd` file:

- `MAXWEEKS=` - the maximum number of weeks that a password can be used before a user must change it.
- `MINWEEKS=` - minimum number of weeks before a user is allowed to change a password
- `HISTORY=` - the number of past passwords per user that are retained in the system history. A changed password cannot match any previous passwords in the history for that user.

For example, with strong passwords enabled and the following as the contents of the `/etc/default/passwd` file, a user cannot change the password any more frequently than once every two weeks, and must change the password after 13 weeks to a value different from the previous seven passwords that the user used:

```
MAXWEEKS=13
```

```
MINWEEKS=2
```

```
HISTORY=7
```

Whenever a number is not included in the `/etc/default/passwd` file, the parameter is ignored. For example, with the following as the contents of the `/etc/default/passwd` file, a user can change passwords at any time, and must change the password after 13 weeks to a value different from the previous seven passwords that the user used:

```
MAXWEEKS=13
```

```
MINWEEKS=
```

```
HISTORY=7
```


Color features

TRC editing

The User TRCs window

The **User TRCs** window enables you to manage all custom Tone Reproduction Curves (TRCs). You can import, export, delete, copy, print, and create new and edit existing TRCs. The New and Edit functions are best used with a specific job as the only valid test of a color adjustment is a proof print.

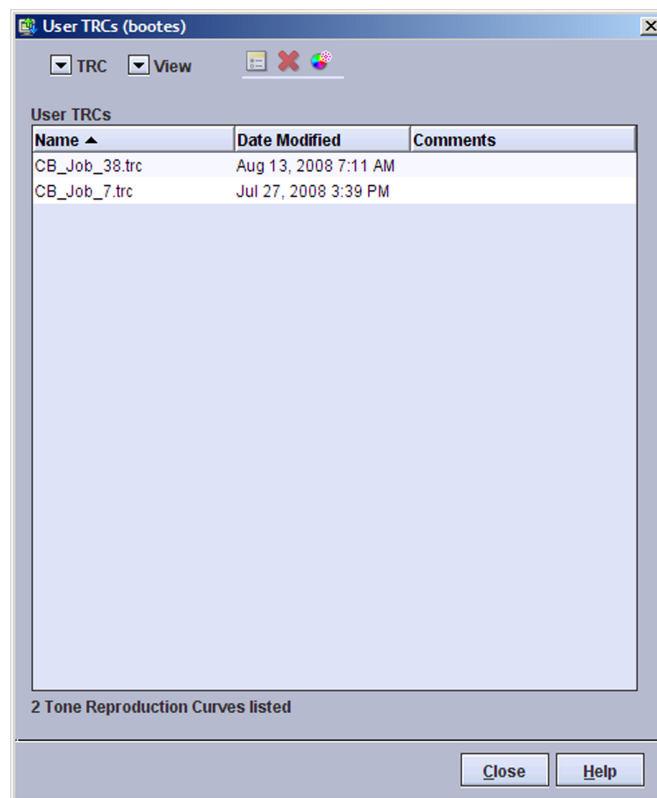


Figure 6: User TRCs window

The table listing of TRCs can be sorted by either name or the file modified date by clicking the column heading.

User TRC menus

Selecting Color > User TRCs will display a list of available TRCs.

Within the TRC menu, which appears when you right-click on a TRC, or alternatively by accessing a pull down menu, are the following selections:

- Edit...: The selected TRC can be edited using this selection.
- Copy...: The selected TRC opens in the Edit/Preview window. A copy must be saved with a different name prior to or after editing.
- Delete: Selecting this option will delete the TRC.
- Print...: The selected TRC can be printed using this selection.
- New...: To create a new User TRC you may choose this option.
- Import...: A User TRC may be imported from another DocuSP or FreeFlow Print Server using this option.
- Export...: A User TRC can be exported to another FreeFlow Print Server using this option.
- Redisplay: This menu option enables you to refresh the display.

Opening the User TRCs Edit window

User TRCs can be applied to a job or page to adjust the color output of a specific job. They can also be applied to a queue to adjust the color for all jobs in the queue.

The User TRCs Edit window can be opened by using one of the following methods:

Changes made to User TRCs using any of the methods listed below appear in all the other methods.

- From the Home Screen: Double-click a job, select the Image Quality tab and the Color Adjustments FAB. From the Adjustment Type menu, select a User TRC and click Edit / Preview.
- From the Services menu: Select Services > Print From File. Select the Image Quality tab and the Color Adjustments FAB. From the Adjustment Type menu, select a User TRC and click Edit / Preview.
- From the Queue menu: Select Queue > Queue Manager. Double-click a queue, select the Image Quality tab and the Color Adjustments FAB. From the Adjustment Type menu, select a User TRC and click Edit / Preview.
- From the Color menu: Select Color > User TRCs and double-click a User TRC.

In this dialog, TRCs can be selected, edited, and previewed but cannot be applied to a job, page, or queue.

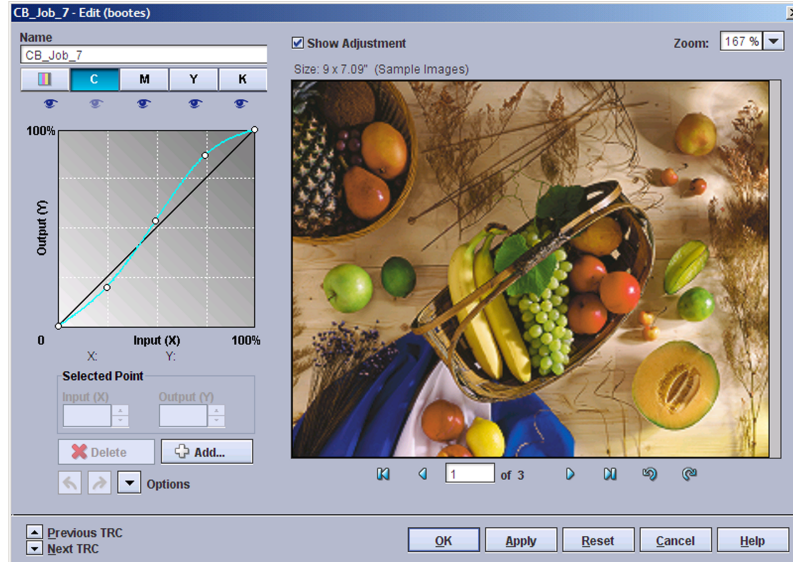


Figure 7: Edit window

Color Management

About Color Management

Color Management tools are used to assist with matching color for printing. Color Management tools can include hardware devices such as spectrophotometers and colorimeters, and software such as color profiles, Tone Reproduction Curves (TRCs), and color space transformations.

Devices such as the spectrophotometer measure the printed output of a printer; this data is then used to calibrate the printer and/or create appropriate TRCs which can adjust for any color matching problems caused by the printer itself.

Color matching software is used to convert between device dependent RGB and CMYK color spaces to a device independent color space in order to match colors by adjusting for differences between device color gamuts.

Color Management tools can be used by users of all knowledge levels:

- **Skilled:** If you are knowledgeable about color workflows and colorimetry you may choose to make specific Image Quality settings in the **Color Management** window in order to fine tune the system to your preferences. You can access the **Color Management** window by selecting the Color Management button from the Image Quality tab.

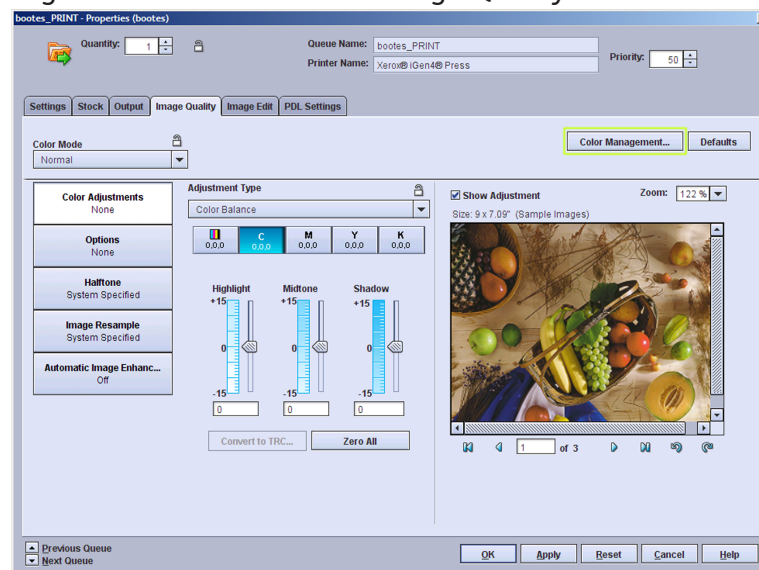


Figure 8: Color Management button in the Image Quality tab

- **Novice:** If you are unfamiliar with color workflows, simpler color management options available from the Image Quality tab allow you to make a collection of settings based on standard defaults.

About the CMYK tab

The CMYK tab appears in the **Color Management** window. It can be accessed by selecting the Color Management button on the Image Quality tab of Print From File, Saved Job, job, and queue Properties dialogs.

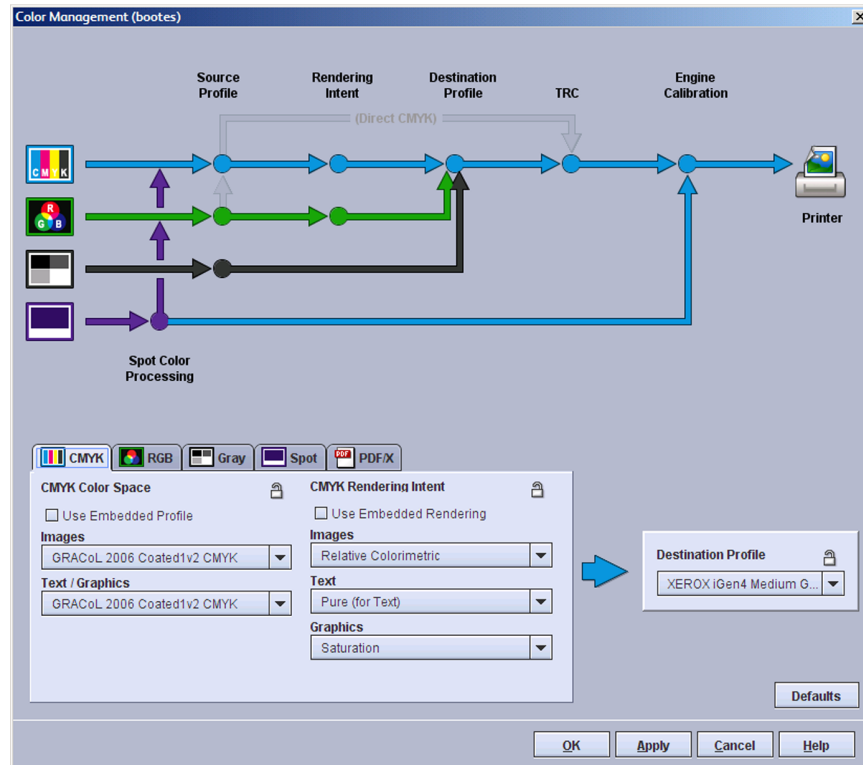


Figure 9: CMYK tab

The tab is divided into two areas: CMYK Color Space and CMYK Rendering Intent. Each area has a checkbox that can be selected to use embedded profile or rendering information in the job or cleared to ignore embedded information.

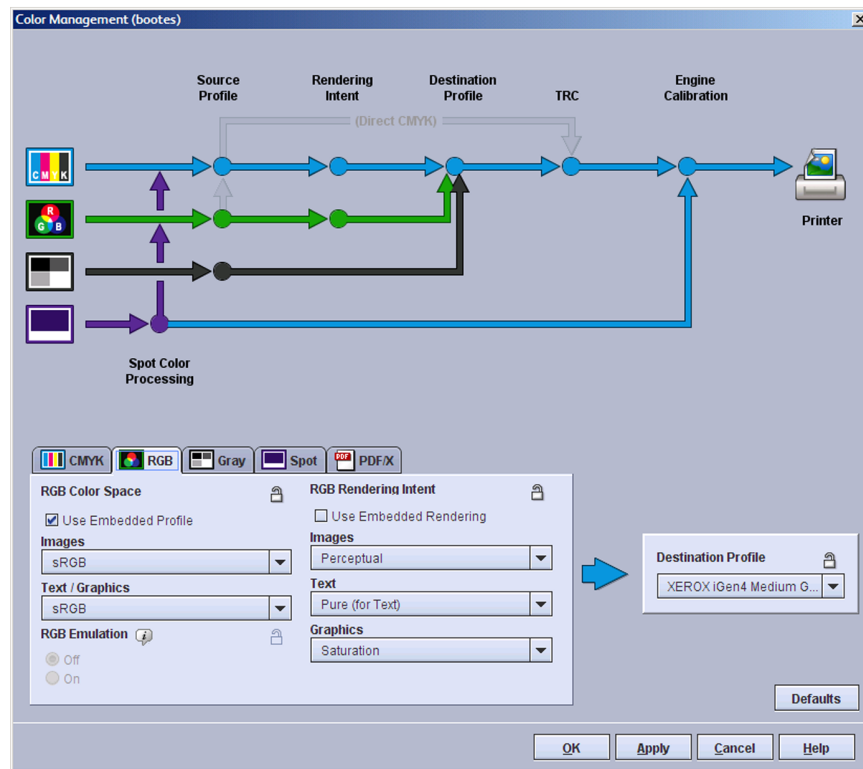
If the tab is viewed from a queue Properties dialog, one or two override icons are available at the top of the tab. Click the override icon to lock (override) or unlock the settings in the tab. When an override icon is locked the settings associated with the override take precedence over what has been programmed in the job. The CMYK Color Space area contains two menus: Images and Text / Graphics. The CMYK Rendering Intent area contains three menus: Images, Text, and Graphics. These menus allow separate adjustments to be made to allow the system to perform specific optimizations for CMYK.

In the CMYK Color Space area, selecting Direct CMYK in both the Images and Text / Graphics menus bypasses any Rendering Intent and Destination Profile settings.

About the RGB tab

The RGB tab appears in the **Color Management** window. It can be accessed by selecting the Color Management button on the Image Quality tab of Print From File, Saved Job, job, and queue Properties dialogs.

Figure 10: RGB tab



The tab is divided into two areas: RGB Color Space and RGB Rendering Intent. Each area has a checkbox that can be selected to use embedded profile or rendering information in the job or cleared to ignore embedded information.

If the tab is viewed from a queue Properties dialog, one or two override icons are available at the top of the tab. Click the override icon to lock (override) or unlock the settings in the tab. When an override icon is locked the settings associated with the override take precedence over what has been programmed in the job.

The RGB Color Space area contains two menus: Images and Text / Graphics. The RGB Rendering Intent area contains three menus: Images, Text, and Graphics. These menus allow separate adjustments to be made to allow the system to perform specific optimizations for RGB.

The RGB Emulation area lets you control emulation processing. The default setting for RGB Emulation is Off. When On, RGB processing follows the CMYK path, as reflected in the data flow diagram. If you are trying to match an industry standard and your file contains RGB and CMYK input, turn RGB emulation on so

your RGB and CMYK elements will match. Also turn RGB emulation on if you have a document that contains RGB and CMYK data and want all of the data to match. The RGB data will get converted to CMYK via the CMYK color space chosen in the CMYK tab. When RGB Emulation is set to On:

- The RGB Rendering Intent adjustments are unavailable since the RGB emulation is enabled via the auto-generation of RGB-to-CMYK DeviceLink ICC profiles and image adjustment is applied on the Lab color space.
- Some settings are unavailable in the Image Quality tab.

About the Gray tab

The Gray tab appears in the Color Management window. It can be accessed by selecting the Color Management button on the Image Quality tab of Print From File, Saved Job, job, and queue Properties dialogs.

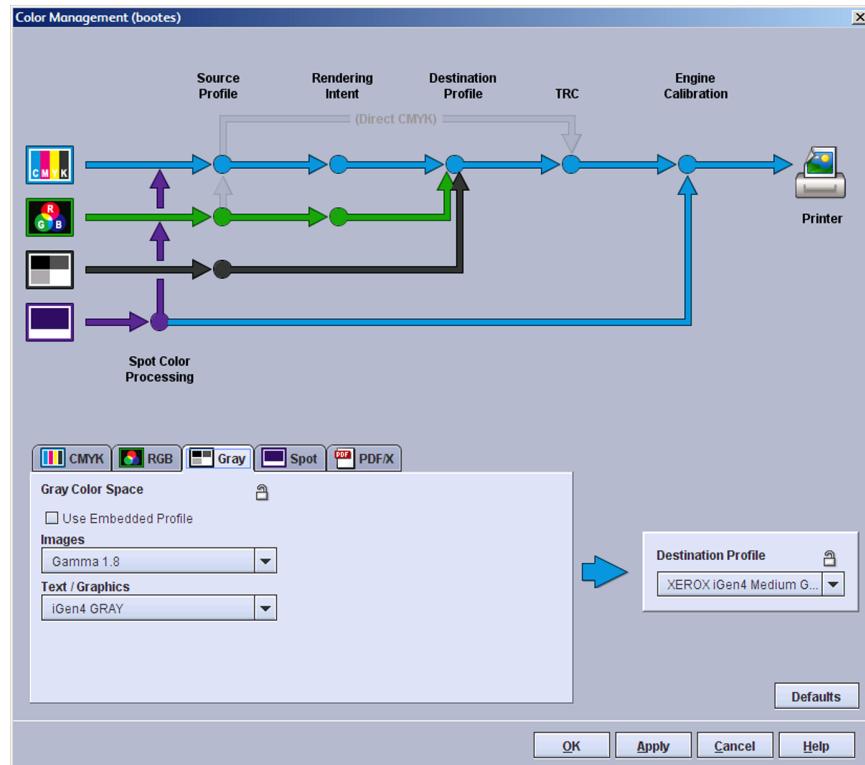


Figure 11: Gray tab

The tab contains a single area, Gray Color Space. The area has a checkbox that can be selected to use embedded profile or embedded rendering information in the job or cleared to ignore embedded information.

If the tab is viewed from a queue Properties dialog, an override icon is available at the top of the tab. Click the override icon to lock (override) or unlock the settings for the tab. When the override icon is locked, the settings associated with the override take precedence over what has been programmed in the job.

The Gray Color Space area contains two menus: Images and Text / Graphics. These menus allow separate adjustments to be made to allow the system to perform specific optimization for Gray.

About the Spot tab

The Spot tab appears in the color Management window. It can be accessed by selecting the Color Management button on the Image Quality tab of Print From File, Saved Job, job, and queue Properties dialogs.

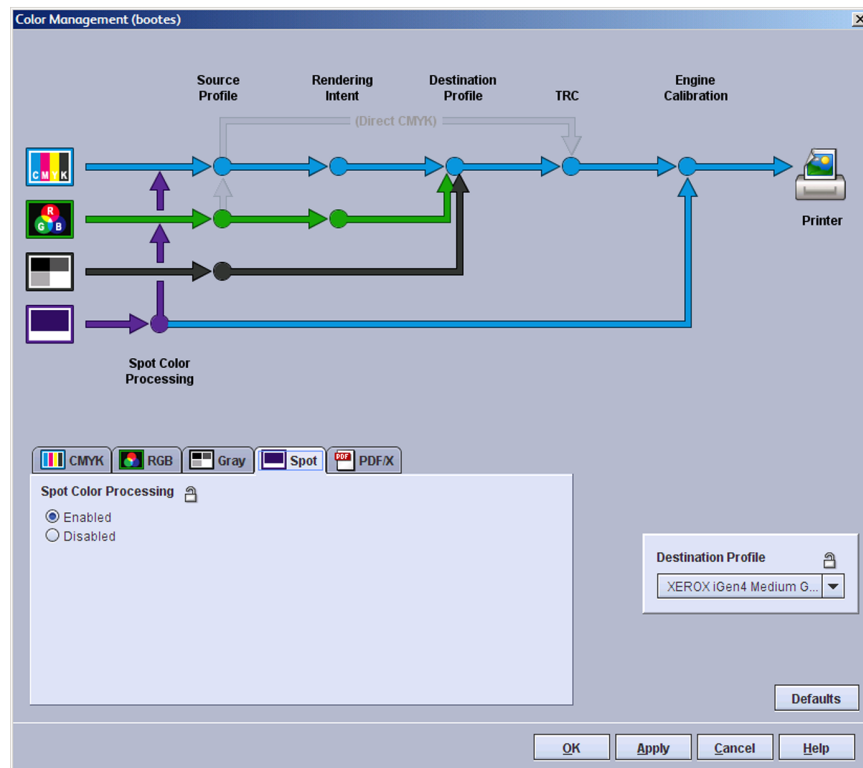


Figure 12: Spot tab

If the tab is viewed from a queue Properties dialog, one or two override icons are available at the top of the tab. Click the override icon to lock (override) or unlock the settings in the tab. When an override icon is locked the settings associated with the override take precedence over what has been programmed in the job.

Spot Color Processing can be Enabled or Disabled. When the color path is disabled, the alternative color space is used instead of the spot colors.

The Print Server honors all PANTONE® and spot colors that are defined in the spot color table. The spot colors in PostScript and PDF files can be specified by the PostScript setcustomcolor operators as well as the separation and DeviceN color operators. The alternative color spaces get utilized in case the spot color is not found in the spot color table.

As an example of why this feature can be valuable, consider the following scenario: you may want to print a document that contains spot color text, graphics, and images. When you view the document onscreen, the spot color data is honored. When the document is printed, however, the colors can look very different from what was seen onscreen. The Print Server does not support spot

color processing for images. You might prefer to disable spot color processing and eliminate this problem.

An additional example is if you have spot color objects and CMYK objects next to each other and they are supposed to match. If you disable spot color processing the spot color data will go through the CMYK path and the objects will look the same.

About the PDF/X tab

The PDF/X tab is in the color Management window. It can be accessed by selecting the Color Management button on the Image Quality tab of Print From File, Saved Job, job, and queue Properties dialogs.

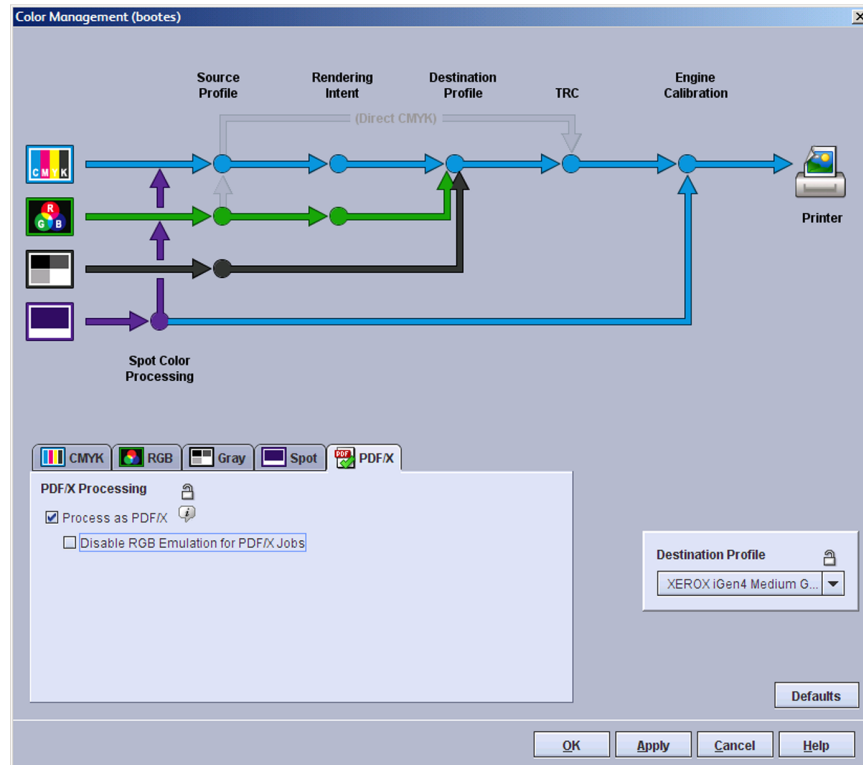


Figure 13: PDF/X tab

If the tab is viewed from a queue Properties dialog, one or two override icons are available at the top of the tab. Click the override icon to lock (override) or unlock the settings in the tab. When an override icon is locked the settings associated with the override take precedence over what has been programmed in the job.

PDF/X processing can be enabled by selecting Process as PDF/X. When enabled, the Output Intent profile specified in a PDF/X job will be applied. Some settings on the CMYK and RGB tabs will be ignored as they are incompatible with PDF/X. PDF jobs that are not PDF/X compliant will print normally using the color settings specified in the **Color Management** window.

If Disable RGB Emulation for PDF/X Jobs is selected, the Destination Profile will only be applied to Device CMYK colors.

The Queue Mode must be set to normal to enable PDF/X support. When the Queue Mode is set to Grayscale, Xerox Consistent Color, or the native device color option, the PDF/X controls are automatically cleared and are not available.

PDF/X

About PDF/X

PDF/X is a subset of PDF that has been designed to allow for reliable interchange of prepress data. There are two types of PDF/X jobs that can be submitted:

- PDF/X-1a jobs must have all fonts embedded and all color objects must be either spot color or CMYK
- PDF/X-3 jobs accept attached calibrated RGB colors and ICC source profiles.

For the print server to process PDF/X files, the source colors in the file must be in the Device RGB or Device CMYK color space, or in the ICC-based color space with an RGB variant. Colors in other spaces will not have the Output Intent profile applied to them.

In a PDF/X-1a or PDF/X-3 file, the Output Intent profile is used to specify the printed ICC profile that was used to prepare the file. If the file was prepared using a profile for another printer or some industry standard CMYK color space like SWOP Coated CMYK, that profile will then be applied before the destination printer profile for the Xerox printer is applied. If

Disable RGB emulation for PDF/X jobs is not selected, then RGB colors will also have the Output Intent profile applied.

PDF/X processing can be enabled or disabled for a queue or a job.

PDF/X limitations and considerations

Limitations

- The output intent profile must be present in the DestOutputProfile key or the job will fault.
- The OutputContentIdentifier entry in the OutputIntent dictionary must be present and must have a value that can be used as a filename or the output intent profile will not be applied.
- Source colors in the PDF/X file must be in one of the following color spaces:
 - DeviceRGB
 - DeviceCMYK
 - ICCBased with an RGB variant
 - DeviceN or Separation if the components are a subset of C, M, Y, and K

Other considerations

- RGB emulation is automatically enabled. It can be disabled by selecting Disable RGB Emulation for PDF/X Jobs in the PDF/X tab of the **Color Management** window.
- Color space profiles are treated differently for RGB and CMYK:
 - For colors in the DeviceRGB color space, color space profiles selected under the RGB tab are applied.
 - For colors in the DeviceCMYK color space, color space profiles selected under the CMYK tab are ignored; the output intent profile replaces it.
- Rendering intents for both RGB and CMYK are ignored for PDF/X.
- For RGB, the Use Embedded Profile check box is ignored if an ICCBased 3-component RGB profile is embedded.
- For CMYK, the Use Embedded Profile check box is honored. An embedded ICCBased profile and output intent profile cannot both be used. If the check box is checked, the 4-component ICCBased profile is applied. If the check box is cleared, the output intent profile is applied.

Spot color editing

About spot colors

Spot colors are specific named colors that are processed separately by the print server to help ensure that the printed output color matches a physical standard reference color.

Spot colors are simulated in the printed output by mixing specific amounts of cyan (C), magenta (M), yellow (Y), and black (K) process colors. The print server displays CMYK recipes for spot colors in the **Spot Color List** window.

Spot color processing

When spot color processing is enabled, and a color recipe has been defined on the print server with exactly the same name as the spot color defined in the file, the color is printed using the CMYK color recipe on the print server. No source profile, rendering intent, destination profile, or user TRC is applied to the spot color.

If no matching color name is found in the spot color list, or when spot color processing is disabled, the spot color is rendered using an alternate color space (CMYK or RGB) defined in the input file. Any source profile, rendering intent, destination profile, or user TRC applied to the rest of the color path is also applied to the spot color.

In some cases you may wish to disable spot color processing. For example:

- If a job contains spot colors for text, graphics, and images you may wish to disable spot color processing to avoid the text and graphic spot color looking different from the image spot color.
- If a job contains spot color data adjacent to CMYK or RGB data that should match, you may wish to disable spot color processing so that both are processed in the CMYK or RGB color space.

PANTONE® colors

PANTONE® is one color reference system for spot colors. Recipes for printing PANTONE® spot colors on coated and uncoated paper stocks are included in the **Spot Color List**.

If you edit a PANTONE® color, it retains the same name, but it is re-categorized as a custom color. The original recipe for the PANTONE® color is always retained, and you can revert to the original recipe and PANTONE® category at any time.

Limitations

There are many variables in process reproduction of colors generated by the FreeFlow Print Server, any one of which may affect the quality of the spot color simulation, including:

- type of paper used
- effective final resolution
- dot structures and halftones
- non-Xerox toner or colorant

The FreeFlow Print Server supports spot color simulation for text and graphics. It does not support spot color processing for images.

About the Spot Color List window

The **Spot Color List** window organizes your PANTONE® and custom spot colors, and allows you to create, modify, delete, and print spot colors.

You can access functions to manage spot colors by right-clicking any spot color, or by selecting a color in the list and then using the buttons in the **Spot Color List** window.

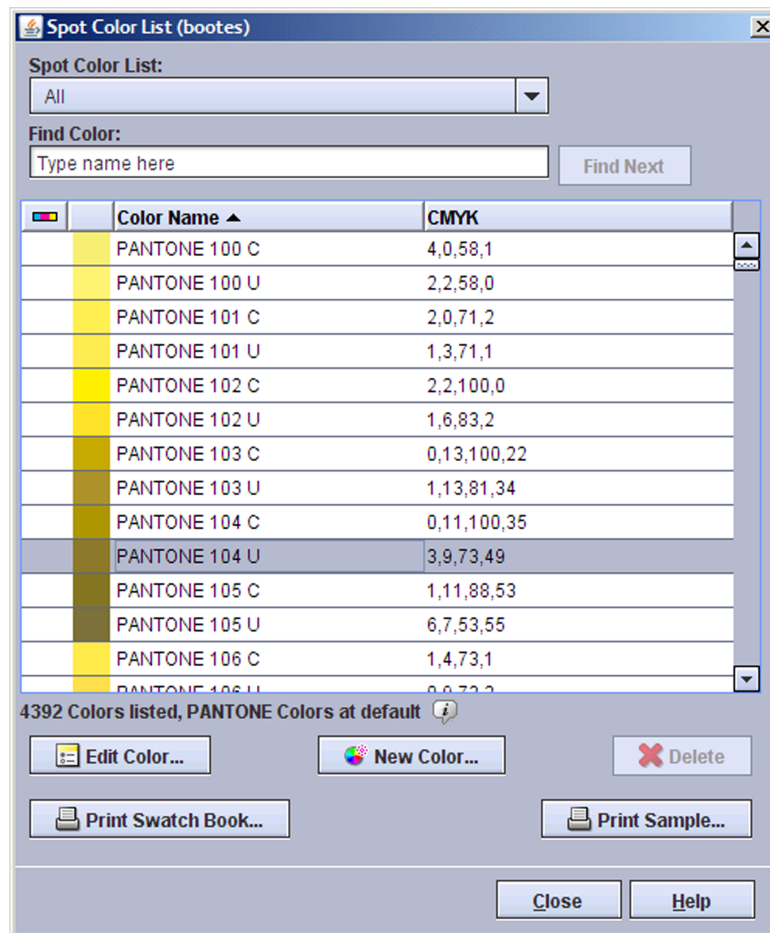


Figure 14: Spot Color List window

If the spot color list has been updated with a halftone profile, you can remove profile updates from the PANTONE® colors by selecting Defaults. If halftone profile updates have not been applied to the spot color list, the Defaults button does not appear.

The Spot Color List control changes which spot color types are displayed in the list. The choices are:

- All
- PANTONE Coated
- PANTONE Uncoated
- Custom - only colors that you created (New Color) or PANTONE® colors that you modified (Modified Color) are displayed.

You can find a particular color in the list by typing part of its name in the Find Color field, then selecting Find Next. Entries in the Find Color field are not case sensitive.

The list of spot colors can be sorted by clicking any of the labeled headings. The headings are:

- Custom Color (icon) - displays icons to indicate colors that you created (New Color) or PANTONE® colors that you modified (Modified Color).
- Color Name - the name of the spot color.
- CMYK - the numerical values corresponding to the respective values of Cyan, Magenta, Yellow, and Black for each spot color.
- Preview (unlabeled) -an approximation of each spot color.

About the Spot Color Editor window

The **Spot Color Editor** window allows you to select from an array of color variations to change the cyan, magenta, yellow and black (C, M, Y, and K) values of a spot color recipe.

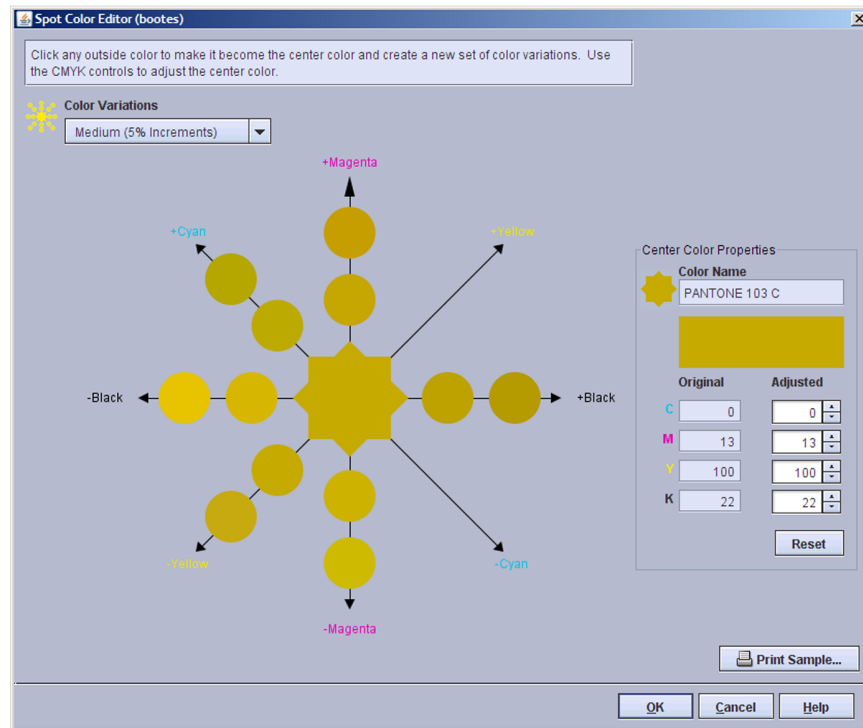


Figure 15: Spot Color Editor window

The center color in the diagram in the window shows the current spot color. Color variations are arranged around the center color along a line for each process color. Along each line, each color varies from its neighbor by the percentage selected in the Color Variations list. Medium (5 % increments) is the default selection. As you get closer to the desired color, you may wish to adjust the color variation increments for finer control.

When you place the pointer over one of the colors, the C, M, Y, and K values of the color are displayed and the Adjusted color swatch temporarily shows that color. When you click any color that color becomes the new center color from which new color variations are generated.

When editing an existing color you can select Reset to change the Adjusted C, M, Y, and K values back to the Original values.

By selecting Print Sample... you can print the adjusted spot color along with its variations to help you match the printed output to your desired color. Selecting OK applies the adjustments to the spot color without printing. Selecting Cancel closes the **Spot Color Editor** window without applying any changes.

JPEG plug-in

With the JPEG plug-in for the FreeFlow Print Server, you can submit single JPEG images or zipped multiple JPEG images directly to the Print Server and automatically apply scaling, imposition, and color adjustments

JPEG images or zipped multiple JPEG images can be submitted automatically to the Print Server from a PC by dragging and dropping onto a JPEG drop box. Each drop box submits to a specific queue. Submission from a Mac is through lpr.

Windows drag and drop JPEG printing requires LPR. On Windows Vista, LPR is not enabled by default. You may need to enable it to use drag and drop JPEG printing.

The queues are preconfigured to scale images to a specific size, and lay out the images in a specific imposition on one stock size. The preconfigured queues combine one photo size, page size, imposition, and stock size.

When the supplied JPEG images do not match the proportions of the photo, by default images are scaled, not cropped, so that none of the image is lost.

JPEG printing sizes and layouts

Photo size	Layout	Stock size
3.5 x 5 in. / 76.2 x 127 mm	4-up	letter or A4
4 x 6 in. / 101.6 x 152.4 mm	2-up	letter or A4
5 x 7 in. / 127 x 177.8 mm	2-up	letter or A4
8 x 10 in. / 203.2 x 254 mm	1-up	letter or A4
Full-page	1-up	letter, ledger, 12 x 18 in, A4, A3 or SRA3
1.277 x 1.693 in. / 32.436 x 43.002 mm (index)	25-up	letter or A4
1.077 x 1.437 in. / 27.356 x 36.5 mm (index)	36-up	letter or A4

IPDS features

IPDS Rasterized Presentation Objects (RPO)

FreeFlow Print Server supports Rasterized Presentation Object (RPO) commands in the IPDS stream.

Rasterized Presentation Objects can improve print performance, particularly for complex or repeated objects, by rasterizing the object before it is included on the page.

IPDS Manager in FreeFlow Remote Print Server

The IPDS Manager is accessible when using FreeFlow Remote Print Server by selecting IPDS Manager....

AFP color support for IPDS

At the start of an IPDS session, the IPDS host and the FreeFlow Print Server can exchange color management information with IPDS hosts that support Advanced Functional Presentatoion (AFP) color management.

To enable the FreeFlow Print Server to report its color support capabilities to IPDS hosts, select Enable Host Color Management in the **System Configuration** window of **IPS Manager**. Many IPDS hosts do not yet recognize APF color support information. To avoid problems with these hosts, Enable Host Color Management is cleared by default.

The Use Embedded Profile and Use Embedded Rendering check boxes in the **Color Management** window are not supported for IPDS. To enable the FreeFlow Print Server to use color management information that is embedded in the IPDS stream, clear all Use Embedded Profile and Use Embedded Rendering check boxes in the CMYK, RGB, and Gray tabs and disable (unlock) their overrides.

The FreeFlow Print Server accepts the following from the IPDS host and acts on them:

- Audit Color Conversion Color Management Resources (CMRs)
- Instruction Color Conversion CMRs
- Audit Tone Transfer Curve CMRs
- Rendering Intent

The FreeFlow Print server accepts the following from the IPDS host but does not act on them:

- Instruction Tone Transfer Curve CMRs
- Audit Halftone CMRs
- Instruction Haftone CMRs
- Generic CMRs

The FreeFlow Print server informs the IPDS host that it does not support the following:

- Link Color Conversion CMRs
- Indexed CMRs