



# Xerox EX8002 Print Server, Powered by Fiery®

## Printing



© 2009 Electronics for Imaging, Inc. The information in this publication is covered under *Legal Notices* for this product.

45086057  
07 July 2009

# CONTENTS

<b>INTRODUCTION</b>	7
<b>Terminology and conventions</b>	7
<b>About this document</b>	8
<b>User software</b>	9
<b>System requirements</b>	9
<b>PRINTING FROM MAC OS X</b>	10
<b>Installing the Mac OS X printer files</b>	10
Installing from the User Software DVD	10
Downloading printer drivers using WebTools	11
<b>Downloading printer drivers from the EX8002</b>	12
<b>Setting up the EX8002 for printing</b>	13
Setting up printing with Mac OS X v10.5	13
Setting up printing with Mac OS X v10.4.x	17
Configuring Installable Options	21
Using Desktop Printer (optional)	21
<b>Printing from Mac OS X computers</b>	21
Selecting the EX8002 in the Printer List	22
Setting print options and printing from Mac OS X applications	24
Defining and printing custom page sizes	31
Viewing the digital press status	31

<b>PRINTING FROM WINDOWS</b>	32
<b>Installing Windows printer drivers</b>	32
Installing printer drivers by Point and Print	33
Setting up installable options in printer drivers	35
Downloading printer drivers using WebTools	36
Downloading printer drivers from the EX8002	37
Installing printer drivers from the User Software DVD	38
Installing and connecting to a virtual printer	41
Uninstalling printer drivers	43
<b>Setting up the EX8002 for printing</b>	44
Setting up printing connections	44
Completing the SMB printing connection	45
Completing Standard TCP/IP Port (Raw or LPR) printing connections	45
Completing IPP connections	49
Configuring installable options	51
<b>Printing from Windows computers</b>	52
Setting print options and printing from Windows applications	53
Customizing the Basic icon	58
Defining and printing custom page sizes	59
Viewing the digital press status	59
Saving files to print at a remote location	59
<b>PRINTING METHODS</b>	60
<b>Configuring and using Job Monitor</b>	61
Configuring the connection	61
Using Job Monitor	61
<b>E-mail Service</b>	62
Printing using an e-mail client	63
Managing print jobs with e-mail commands	65
<b>Printing from a USB device</b>	66
<b>FTP printing</b>	67

<b>PRINT OPTIONS</b>	68
<b>About printer drivers and printer description files</b>	68
<b>Setting print options</b>	69
Print option override hierarchy	69
<b>Print options and default settings</b>	70
Job Info options	71
Media options	73
Layout options	75
Color options	80
Image options	84
Finishing options	85
Variable Data Printing (VDP) options	86
Stamping/Watermark options	87
<b>Overriding print option settings</b>	88
<b>Additional information</b>	89
Auto Trapping	89
Booklet Maker	89
Collation	91
Document size and Paper size	92
Duplex printing	93
Gang-up printing	94
Image Shift	95
Mixed Media	96
Paper Catalog	98
Paper Source	98
Scale	99
Scale to Fit	99
User Authentication	100
<b>INDEX</b>	101



## INTRODUCTION

This document describes how to install the printer drivers and printer description files for the Xerox EX8002 Print Server, Powered by Fiery, set up the EX8002 for printing, and print from Apple Mac OS and Microsoft Windows computers. It also provides information about the EX8002 print options and describes several printing methods that can be used to print to the EX8002.





For information about setting up network servers and clients to use the EX8002, see [Configuration and Setup](#). For general information about using the color digital press, your computer, application software, or network, see the documentation that accompanies those products.



For information about supported operating systems and system requirements, see [Welcome](#).

### Terminology and conventions

This document uses the following terminology and conventions.

Term or convention	Refers to
Aero	EX8002 (in illustrations and examples)
Digital press	DocuColor 8002/7002 digital press
EX8002	Xerox EX8002 Print Server, Powered by Fiery
Titles in <i>italics</i>	Other documents in this set
Mac OS	Mac OS X
Windows	Windows 2000, Windows XP, Windows Vista, Windows Server 2003, Windows Server 2008
	Topics for which additional information is available by starting Help in the software
	Tips and information
	Important information
	Important information about issues that can result in physical harm to you or others

## About this document

This document covers the following topics:

- Installing printer files on Mac OS computers
- Setting up the EX8002 for printing from Mac OS computers
- Printing from Mac OS computers
- Installing printer files on Windows computers
- Setting up the printing connections on Windows computers
- Printing from Windows computers
- EX8002 print options
- Using other printing methods to print to the EX8002



## User software

The following table lists the user software that is described in this document. This is the user software you need for setting up basic printing on the EX8002. Other documents may describe other user software depending on what you are trying to accomplish.

User software	Description
PostScript Printer Description (PPD) file and associated files (for Windows)	Files that provide information about the EX8002 and your particular digital press model to your application and printer driver.
PostScript Printer Description (PPD/Plugin) files (for Mac OS X)	Files used with the PostScript printer driver that allow the EX8002 to appear in the Print and Page Setup dialog boxes of popular applications. The EX8002 PPDs provide information about the digital press to your application and printer driver.
PageMaker PPD files	Files that allow you to print to the EX8002 from Adobe PageMaker. You must install the appropriate PPD in PageMaker. See the PageMaker documentation for instructions.
PostScript screen fonts (for Mac OS X)	PostScript/TrueType screen fonts that correspond to the printer fonts installed on the EX8002. For a complete list of PostScript/TrueType fonts installed on the EX8002, print a Font List. For more information, see Command WorkStation Help.
Job Monitor (for Windows)	Monitor the status of connected EX8002s and print jobs sent to them. Job Monitor is automatically installed when the printer driver is installed on a Windows computer.  For more information, see <a href="#">“Configuring and using Job Monitor”</a> on page 61.
Printer Delete Utility (for Windows)	Uninstall the Windows printer driver.  For more information, see <a href="#">“Uninstalling printer drivers”</a> on page 43.



When you install user software on a Windows computer, you use the Fiery User Software Installer.

## System requirements

For detailed system requirements, see [Welcome](#), provided in your media pack.

## PRINTING FROM MAC OS X

To set up the EX8002 as a PostScript printer on a Mac OS X computer, install the printer driver files that correspond to your digital press and set up the EX8002 for printing. Printer drivers provide a way to communicate information about print jobs between your applications, the EX8002, and the digital press.

For the location of each procedure, see the following table.

Procedure	See
Installing the Mac OS X printer files	<a href="#">page 10</a>
Setting up the EX8002 for printing	<a href="#">page 13</a>
Printing from Mac OS X computers	<a href="#">page 21</a>

### Installing the Mac OS X printer files

The Mac OS X printer driver files are provided on the User Software DVD or can be downloaded from the EX8002 over the network or using WebTools. The following sections describe how to install the printer files for the EX8002.

#### Installing from the User Software DVD

The User Software DVD provides the following software for Mac OS X (see the OSX:Printer Driver folder):

- **OSX Installer:** Installs the printer driver files required to print from Mac OS X.
- **Language folders:** Printer description files that are installed by OSX Installer. You do not need to open these folders or install them manually on your computer. The appropriate files are installed by OSX Installer.

**NOTE:** The following procedure is for Mac OS X v10.5 and Mac OS X v10.4.x.

---

**TO INSTALL THE PRINTER DRIVER FILES FOR MAC OS X****1 Quit all open applications.****2 Mac OS X v10.4.x: Make sure that the Printer Setup Utility is not running on your computer.**

Printer Setup Utility updates the list of available printers when it starts. If a printer description file is added while Printer Setup Utility is running, you cannot select the associated printer model until you restart.

**3 Insert the User Software DVD into the DVD drive.****4 Open the OSX: Printer Driver folder on the User Software DVD.**

If you are installing from a folder you downloaded from WebTools or the EX8002, browse to the Printer Driver folder on your desktop.

**5 Double-click the OSX Installer icon to start installing the printer driver.****6 Follow the on-screen instructions.**

The OSX Installer installs the printer driver files that correspond to the EX8002.

**7 When copying is complete, click Quit.****Downloading printer drivers using WebTools**

WebTools allows you to download installers for printer drivers to your computer directly from the EX8002.

Before you download the printer driver files, the administrator must enable Internet access to the EX8002.

For more information about setting up and starting WebTools, see [Utilities](#).

---

**TO DOWNLOAD PRINTER DRIVERS WITH WEBTOOLS**

- 1 **Start your Internet or intranet browser and type the DNS name or IP address of the EX8002.**
- 2 **Click the Downloads tab.**
- 3 **Click the link for the printer drivers that you want to install (Printer Files for Mac OS X).**

A file named OSX.dmg is downloaded to your desktop. The file contains a folder named Printer Driver in a compressed format. If your Internet browser is equipped with an expander utility, such as StuffIt Expander, the folder decodes and decompresses automatically.

If the Printer Driver folder does not automatically decode and decompress, double-click the file to start the utility that performs that function.

- 4 **Open the OSX : Printer Driver folder.**
- 5 **Double-click the OSX Installer icon to start installing the printer driver.**

Follow the on-screen instructions.

For instructions on installing the printer driver for Mac OS X, see [page 11](#).

## Downloading printer drivers from the EX8002

You can download printer driver files to your computer directly from the EX8002 over the network.

---

**TO DOWNLOAD PRINTER DRIVER FILES FROM THE EX8002**

- 1 **In the Finder, choose Connect to Server from the Go menu.**
- 2 **Type SMB:// followed by the name or IP address of the EX8002 and click Connect.**  
If you cannot locate your EX8002, contact your administrator.
- 3 **Type the user name and password in the SMB/CIFS File System Authentication dialog box.**

The “Guest” account can be used as the default. The Guest account does not require a password. If the Guest account cannot be used, ask your network administrator for an account.

- 4 **Select the Mac\_User\_SW folder from the shared volume list and click OK.**
- 5 **Open the OSX : Printer Driver folder.**
- 6 **Double-click the OSX Installer icon to start installing the printer driver.**

Follow the on-screen instructions.

For instructions on installing the printer driver for Mac OS X, see [page 11](#).

## Setting up the EX8002 for printing

The following section describes how to set up the EX8002 on a Mac OS X computer.

**NOTE:** The steps for setting up the EX8002 on a computer with Mac OS X v10.5 and Mac OS X v10.4.x are different. Any differences are noted in the following sections.

### Setting up printing with Mac OS X v10.5

Use the following procedures to set up the EX8002 on a computer with Mac OS X v10.5.

---

#### TO SET UP THE EX8002 FROM THE PRINT DIALOG BOX

- 1 **Open a file in your application.**
- 2 **Choose Print from the File menu.**

The Print dialog box appears.

- 3 **Select Add Printer from the Printer list.**

In the dialog box that appears, select a printer connection. Use one of the printer connections in the following table to add a printer.

---

#### TO SET UP THE EX8002 USING PRINT & FAX

- 1 **Choose System Preferences from the Apple menu, and then choose Print & Fax.**

The Print & Fax dialog box appears.

- 2 **Click the “+” button to add a printer.**

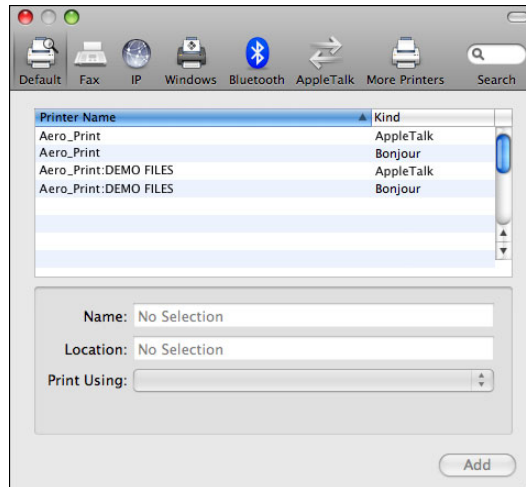
In the dialog box that appears, select a printer connection. Use one of the following connections to add a printer.

Printing connection	See
Default (Bonjour or AppleTalk)	<a href="#">page 14</a>
IP Printer	<a href="#">page 15</a>
AppleTalk	<a href="#">page 16</a>

## TO ADD A PRINTER WITH THE DEFAULT (BONJOUR OR APPLETALK) CONNECTION

### 1 Click the Default icon in the dialog box.

The Default pane appears.



The names of printers with default connections are listed. The Virtual Printers that are configured at the EX8002 are also listed.

**NOTE:** The names of the Virtual Printers appear as <printer name:Virtual Printer name> in the Printer Name list.

### 2 Select the EX8002 from the list.

The information about the selected printer appears at the bottom of the Default pane. The appropriate PPD file for the EX8002 is automatically selected. If your administrator configured the Secure Access printing at the EX8002, the PPD file for Secure Access printing is selected.

### 3 Click Add.

**AppleTalk:** The EX8002 name appears in the Printer List of the Print & Fax dialog box.

**Bonjour:** The Installable Options pane in the Print & Fax dialog box appears. Click Continue to return to the Print & Fax dialog box. The EX8002 name appears in the Printer List.

### 4 Choose EX8002 from the Printer List.

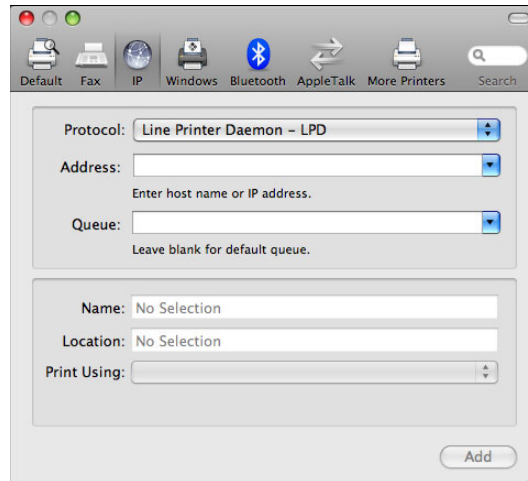
### 5 Click Options & Supplies, and then click the Driver tab.

### 6 Specify the installable option settings, and then click OK.

## TO ADD A PRINTER WITH THE IP PRINTER CONNECTION

- 1 Click the IP icon in the dialog box.

The IP pane appears.



- 2 **LPD printing:** Select Line Printer Daemon - LPD from the Protocol list, type the EX8002 IP address or DNS name in the Address field, and then type the print connection (print, hold or direct) in the Queue field. Proceed to [step 6](#).

**IP printing:** Select Internet Printing Protocol - IPP from the Protocol list and type the EX8002 IP address or DNS name in the Address field. Proceed to [step 3](#).

The IP address or DNS name appears in the Name field.

- 3 Type "ipp/" followed by the print connection (print, hold, direct, or name of virtual printer) in lowercase letters in the Queue field.

**NOTE:** The EX8002 requires a queue name. Do not leave the Queue field empty.

- 4 Choose "Select a driver to use" from the Print Using menu.
- 5 Type EX8002 in the search filter to narrow the search, and then select the PPD file from the list.
- 6 Click Add.

The Installable Options pane in the Print & Fax dialog box appears.

- 7 Click Continue.

The EX8002 with its IP address appears in the Printer List.

- 8 Choose EX8002 from the Printer List.
- 9 Click Options & Supplies, and then click the Driver tab.
- 10 Specify the installable option settings, and then click OK.



For information about configuring installable options, see printer driver Help.

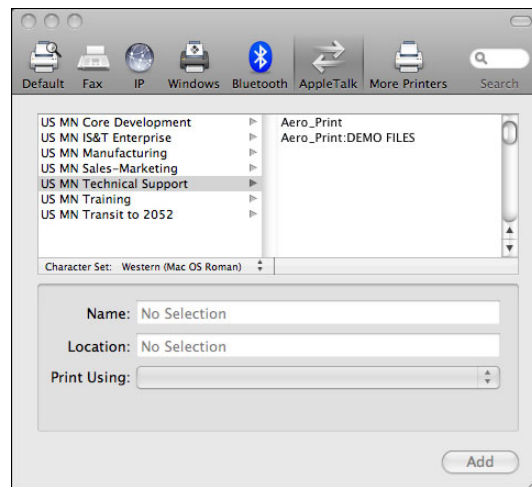
---

**TO ADD A PRINTER WITH THE APPLETalk CONNECTION**

**NOTE:** Use this procedure if the EX8002 is in a different AppleTalk zone than your computer. If the EX8002 is in the same zone, it is displayed as a default following the procedure on [page 14](#).

**1 Click the AppleTalk icon in the dialog box.**

The AppleTalk pane appears.

**2 Select the AppleTalk zone for the EX8002 from the list.**

The AppleTalk printers in the specified zone are listed. The Virtual Printers that are configured at the EX8002 are also listed.

**NOTE:** The names of the Virtual Printers appear as <printer name:Virtual Printer name> in the Name list.

**3 Select the EX8002 name in the Printer List and click Add.**

The EX8002 name appears in the Printer List of the Print & Fax dialog box.

**4 Choose EX8002 from the Printer List.****5 Click Options & Supplies, and then click the Driver tab.****6 Specify the installable option settings, and then click OK.**



## Setting up printing with Mac OS X v10.4.x

Use the following procedures to set up the EX8002 on a computer with Mac OS X v10.4.x.

---

### TO SET UP THE EX8002 FROM THE PRINT DIALOG BOX

- 1 **Open a file in your application.**
- 2 **Choose Print from the File menu.**
- 3 **Select the Add Printer from the Printer list.**

The Print dialog box appears.

In the dialog box that appears, select a printer connection. Use one of the printer connections in the table below to add a printer.

---

### TO SET UP THE EX8002 USING PRINTER SETUP UTILITY

- 1 **In the Finder, choose Utilities from the Go menu.**
- 2 **Start Printer Setup Utility.**
- 3 **Click Add.**

The Printer List dialog box appears.

In the dialog box that appears, select a printer connection. Use one of the printer connections in the following table to add a printer.

---

### TO SET UP THE EX8002 USING PRINT & FAX

- 1 **Choose System Preferences from the Apple menu, and then choose Print & Fax.**
- 2 **Click the “+” button to add a printer.**

The Print & Fax dialog box appears.

In the dialog box that appears, select a printer connection. Use one of the following connections to add a printer.

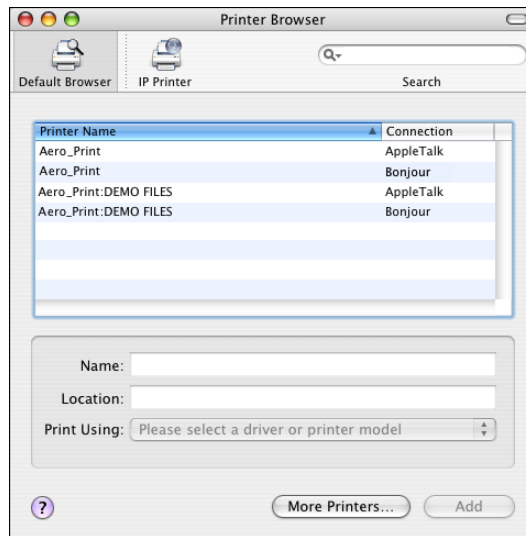
Printing connection	See
Default Browser (Bonjour or AppleTalk)	<a href="#">page 18</a>
IP Printer	<a href="#">page 19</a>
AppleTalk	<a href="#">page 20</a>

### TO ADD A PRINTER WITH THE DEFAULT BROWSER (BONJOUR OR APPLETALK) CONNECTION

**NOTE:** Bonjour printers are available to Mac OS X v10.4.x computers only if Bonjour is enabled on the EX8002.

#### 1 Click Default Browser in the Printer Browser dialog box.

The Default Browser pane appears.



The names of printers with default connections are listed. The Virtual Printers that are configured at the EX8002 are also listed.

If the printer is not listed in the Printer Name list, click More Printers.

**NOTE:** The names of the Virtual Printers appear as <printer name:Virtual Printer name> in the Name list.

#### 2 Select the EX8002 from the list.

The information about the selected printer appears at the bottom of the Default Browser pane. The appropriate PPD file for the EX8002 is automatically selected.

#### 3 Click Add.

**AppleTalk:** The EX8002 name appears in the Printer List of the Print & Fax dialog box.

**Bonjour:** The Installable Options pane in the Printer Browser dialog box appears. Click Continue to return to the Print & Fax dialog box. The EX8002 name appears in the Printer List.

#### 4 Choose EX8002 from the Printer List and click Show Info.

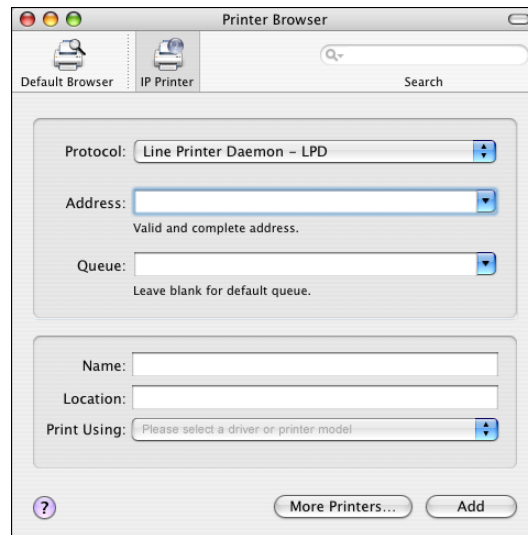
#### 5 In the Printer Info dialog box, choose Installable Options, specify the installable option settings, and then click Apply Changes.

#### 6 Close the Printer Info dialog box.

### TO ADD A PRINTER WITH THE IP PRINTER CONNECTION

- 1 Click IP Printer in the Printer Browser dialog box.

The IP Printer pane appears.



- 2 **LPD printing:** Select Line Printer Daemon - LPD from the Protocol list, type the EX8002 IP address or DNS name in the Address field, and then type the print connection (print, hold or direct) in the Queue field. Proceed to [step 6](#).

**IP printing:** Select Internet Printing Protocol - IPP from the Protocol list and type the EX8002 IP address or DNS name in the Address field. Proceed to [step 3](#).

The IP address or DNS name appears in the Name field.

- 3 Type “ipp/” followed by the print connection (print, hold, direct, or name of virtual printer) in lowercase letters in the Queue field.

**NOTE:** The EX8002 requires a queue name. Do not leave the Queue field empty.

- 4 **Print Using:** Choose the appropriate manufacturer name or model, and then select the file for the EX8002 PPD.
- 5 Click Add.

The Installable Options pane in the Printer Browser dialog box appears.

- 6 Click Continue to return to the Print & Fax dialog box.

The EX8002 with its IP address appears in the Printer List.

- 7 Choose EX8002 from the Printer List and click Show Info.
- 8 In the Printer Info dialog box, choose Installable Options, specify the installable option settings, and then click Apply Changes.

For information about configuring installable options, see printer driver Help.

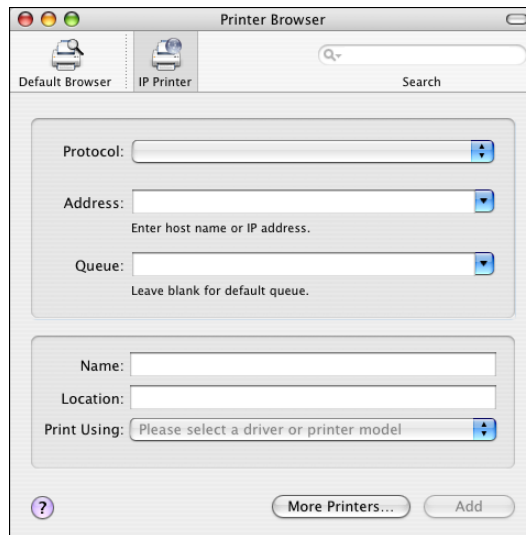
- 9 Close the Printer Info dialog box.



---

**TO ADD A PRINTER USING THE APPLETalk CONNECTION**

**NOTE:** Use this procedure if the EX8002 is in a different AppleTalk zone than your computer. If the EX8002 is in the same zone, it is displayed as a default following the procedure on [page 18](#).

**1 Click Default Browser or IP Printer in the Printer Browser dialog box.****2 Click More Printers.**

The dialog box with a list of other connections appears.

**3 Select AppleTalk from the connection list.**

The AppleTalk pane appears.

**4 Select the AppleTalk zone for the EX8002 from the list.**

The AppleTalk printers in the specified zone are listed. The Virtual Printers that are configured at the EX8002 are also listed.

**NOTE:** The names of the Virtual Printers appear as <printer name:Virtual Printer name> in the Name list.

**5 Select the EX8002 name in the Name list and click Add.**

The EX8002 name appears in the Printer List of the Print & Fax dialog box.

**6 Choose EX8002 from the Printer List and click Show Info.****7 In the Printer Info dialog box, choose Installable Options, specify the installable option settings, and then click Apply Changes.****8 Close the Printer Info dialog box.**

## Configuring Installable Options

To use the print options for the digital press and EX8002 appropriately, you must configure the EX8002 from your computer for the options that are installed on the digital press. Configure the options manually.



For information about configuring installable options, see printer driver Help.

## Using Desktop Printer (optional)

After adding EX8002 to the Printer List in Print & Fax or the Printer Setup Utility, you can create and use the Desktop Printer feature.



For information about Desktop Printer feature, see printer driver Help.

## Printing from Mac OS X computers

You can print to the EX8002 just as you would print to any other printer from a Mac OS X application. Select the EX8002 as the current printer in the Printer List and print the file from within the application. In addition to this method, you can download files to the EX8002 using Hot Folders or the Docs WebTool, and print documents using Command WorkStation (see [Utilities](#)).

After you install the EX8002 printer driver files using the OSX Installer and set up the EX8002 for printing, you can print directly from most Mac OS X applications. Using the appropriate PPD file, you can control the EX8002 printing features by specifying print options from the Print dialog boxes. For more information about the EX8002 print options, see [page 70](#).



To achieve optimal printing results from specific applications, see [Color Printing](#), [Fiery Color Reference](#), and Command WorkStation Help.

## Selecting the EX8002 in the Printer List

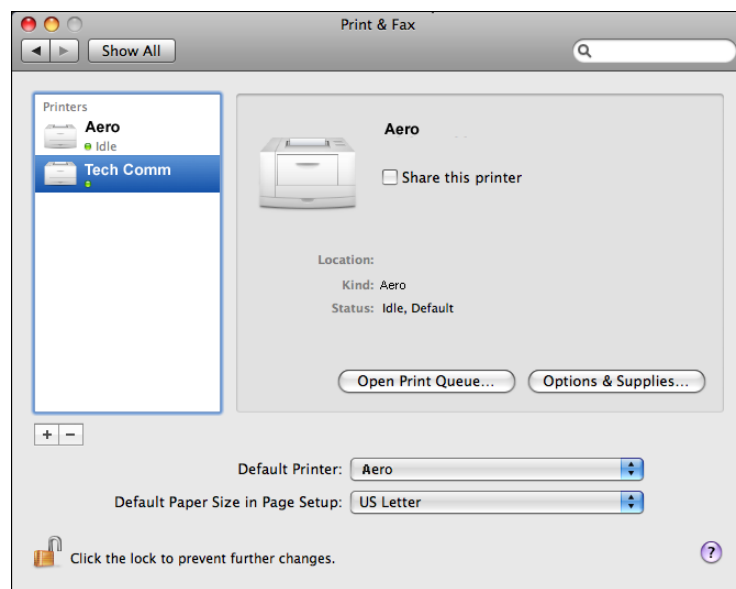
Before you print a job, you must select the EX8002 from the Printer List. Use the following procedure to select the EX8002 as your default printer.

---

### To SELECT THE EX8002 AS THE DEFAULT PRINTER WITH MAC OS X v10.5

- 1 Make sure that the EX8002 is connected to the network and turned on.
- 2 Choose System Preferences from the Apple menu and then choose Print & Fax.

The Print & Fax dialog box appears.



The printers that are set up for printing are listed. The Virtual Printers that are configured at the EX8002 and set up for printing are also listed.

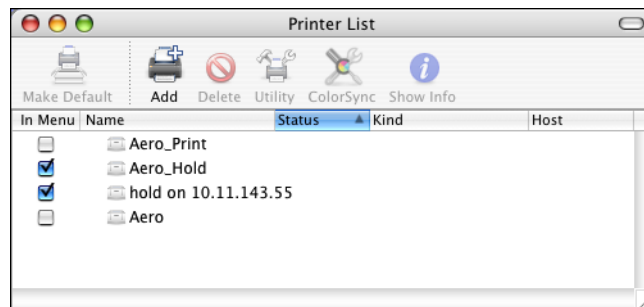
- 3 To make the EX8002 the default printer, select it from the Default Printer menu.
- 4 Close the window.

---

**TO SELECT THE EX8002 AS THE DEFAULT PRINTER WITH MAC OS X v10.4.x**

- 1 Make sure that the EX8002 is connected to the network and turned on.**
- 2 In the Finder, choose Utilities from the Go menu.**
- 3 Start Printer Setup Utility.**

The Printer List dialog box appears.



The printers that are set up for printing are listed. The Virtual Printers that are configured at the EX8002 and set up for printing are also listed.

- 4 Select the EX8002 in the Printer List to specify it as your current printer.**
- 5 Click the Make Default icon.**

The EX8002 is now your default printer.

## Setting print options and printing from Mac OS X applications

In Mac OS X applications, print options are set from the Page Setup dialog box and the Print dialog box. For information about specific print options, see [Print Options](#).

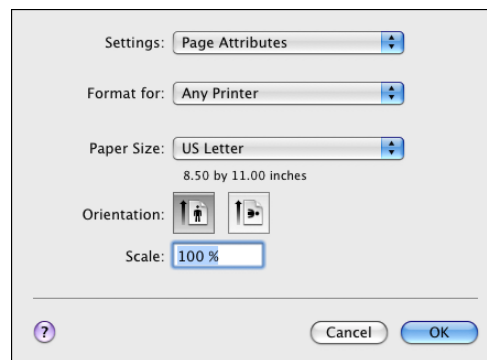
**NOTE:** Some default print options are set by your administrator during Setup. For information about the current server default settings, contact your administrator or the operator.

**NOTE:** The following procedure uses Mac OS X v10.5 illustrations.

---

### TO SET PRINT OPTIONS AND PRINT FROM MAC OS X

- 1 **Open a file and choose Page Setup from the application's File menu.**
- 2 **For Settings, choose Page Attributes. For Format for, choose the EX8002.**



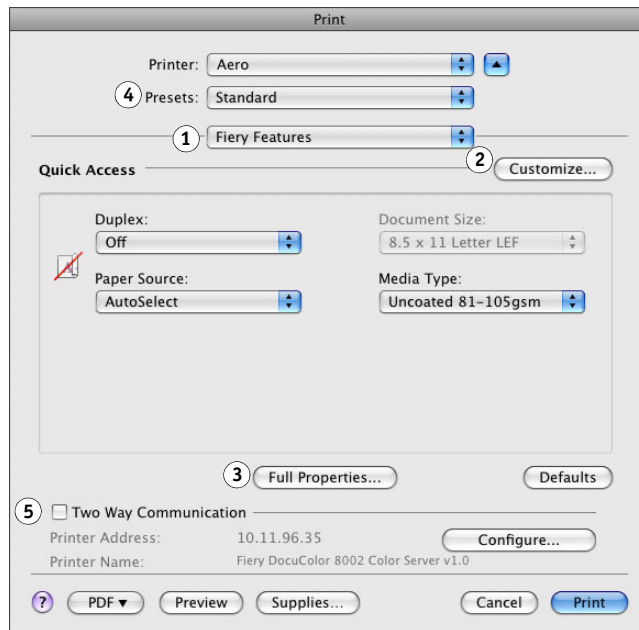
The Paper Size option in the Page Setup dialog box is the same as the Document Size print option on the Fiery Features Media tab. Document Size is the page size defined in your original application's Print setup (or Page Setup) dialog box.

The Paper Size print option on the Fiery Features Media tab is the size of the actual sheet of paper on which your job will print. The default value of the actual paper size is the paper size set in the Page Setup dialog box.



- 3 Select the Page settings for your print job.
- 4 Click OK.
- 5 Choose Print from the application's File menu.
- 6 Choose the EX8002 as your printer.
- 7 Choose Fiery Features from the drop-down list.

- 1 Fiery Features
- 2 Customize button
- 3 Full Properties button
- 4 Presets
- 5 Two-Way Communication



**NOTE:** For information about Two-Way Communication, see [page 31](#).

For information about using presets, see printer driver Help.



**8 Click Customize to specify the options shown in the Quick Access window.**

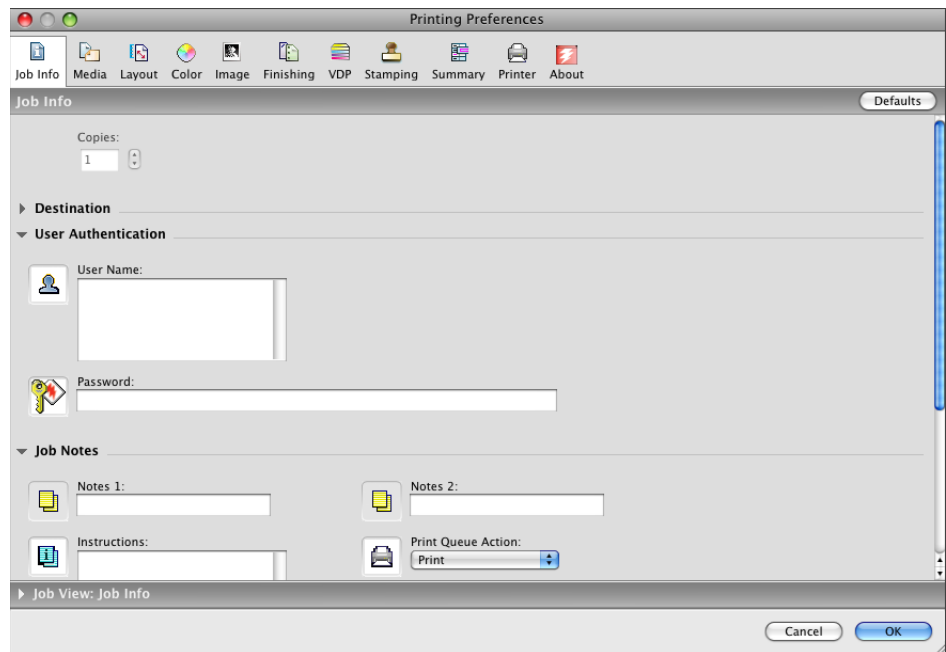
You can select a shortcut from the Available Shortcuts list and add it to the Current Shortcuts list, as well as removing a shortcut from the Current Shortcuts list. Click OK to save your changes.



For information about customizing the Quick Access view, see printer driver Help.

**9 Click Full Properties in the Quick Access window.**

The Job Info tab is displayed in the Printing Preferences dialog box.



**10 Type your user name or domain\user name in the User Name field if User Authentication is enabled on the EX8002 under User Authentication.**

**11 Type your local password or domain password in the Password field if User Authentication is enabled on the EX8002 under User Authentication.**

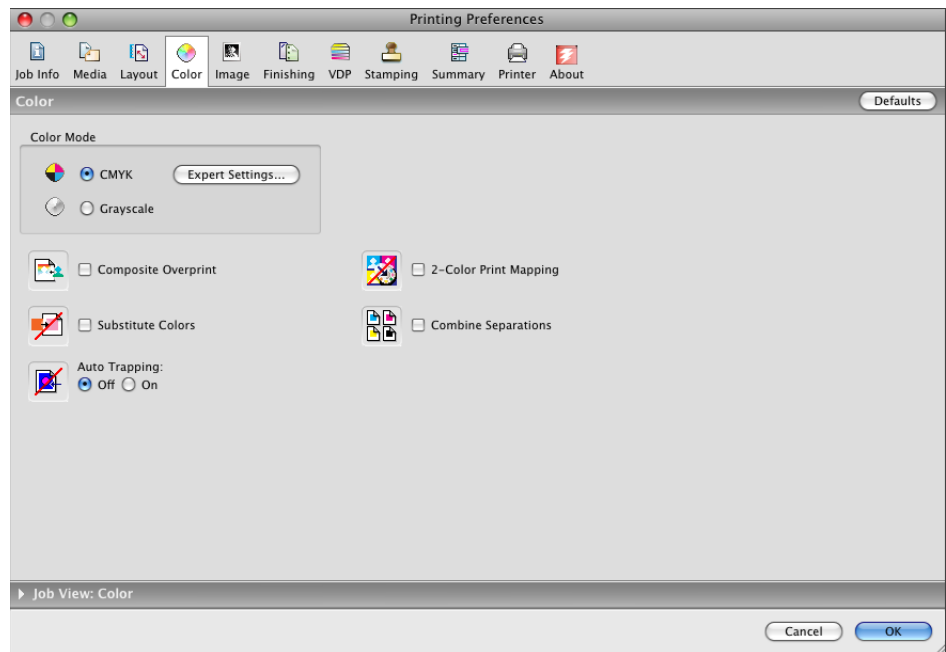
- 12 **Type information in the Notes 1 and Notes 2 fields under Job Notes.**
- 13 **Type instructions to the operator about the job in the Instructions field.**

These instructions can be displayed in Command WorkStation but do not appear in the Job Log. These instructions can be edited by the operator.

- 14 **Type values for the other fields, as required.**

For information about these fields, see [page 70](#).

- 15 **Click the Color icon.**
- 16 **Specify color print options for the job.**



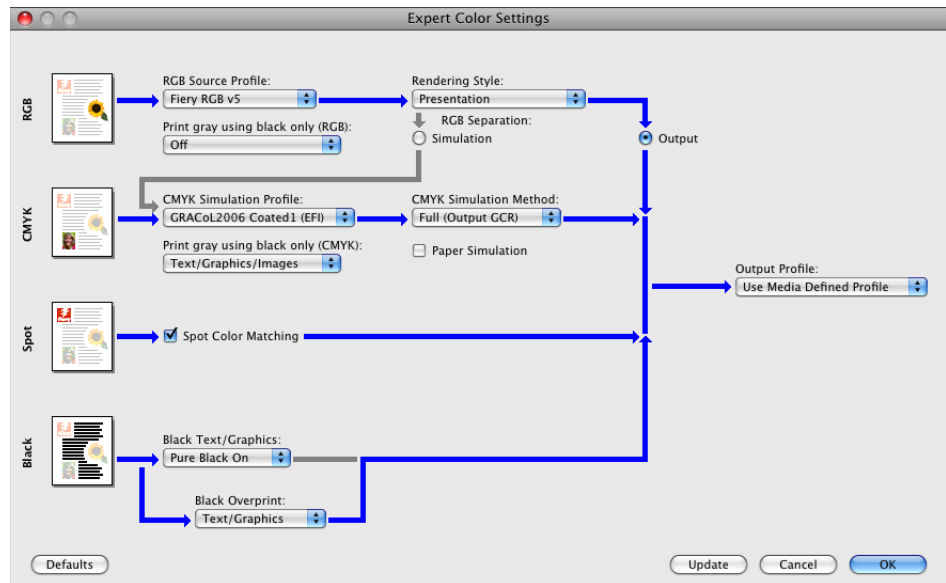
- 17 To use advanced color management features, such as Rendering Style, click **Expert Settings**.

The Expert Color Settings dialog box appears.

**NOTE:** To display the color settings from the EX8002 in this dialog box, make sure that Two-Way Communication is selected. For information about enabling Two-Way Communication, see printer driver Help.



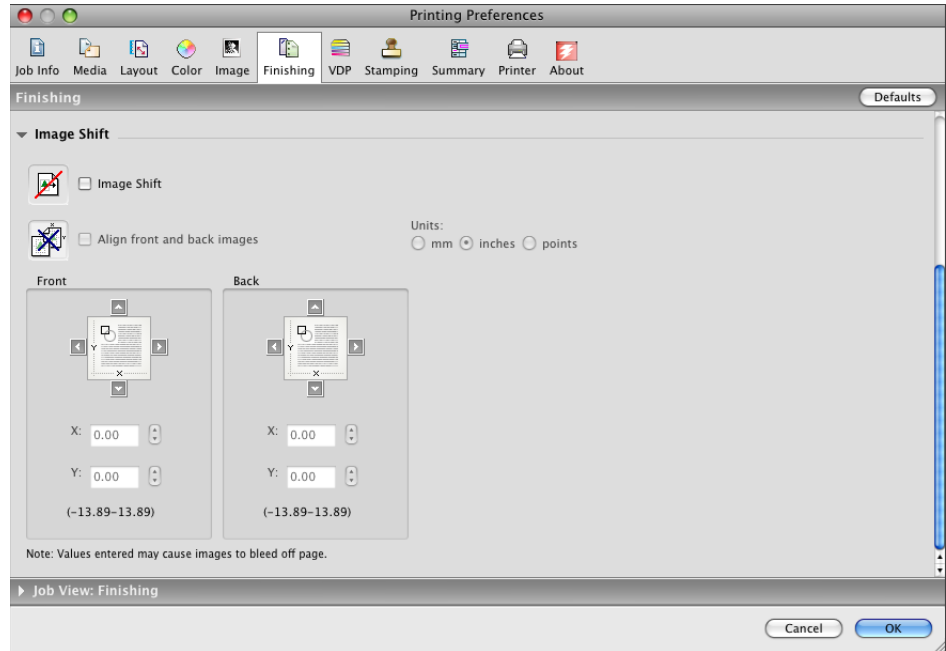
#### Two-Way Communication On



To set the Output Profile option to Use Media Defined Profile, you must first make sure that Two-Way Communication is not enabled, and then you can select Use Media Defined Profile from the drop-down list for Output Profile. Enable Two-Way Communication if you want to be able to select specific downloaded output profiles.

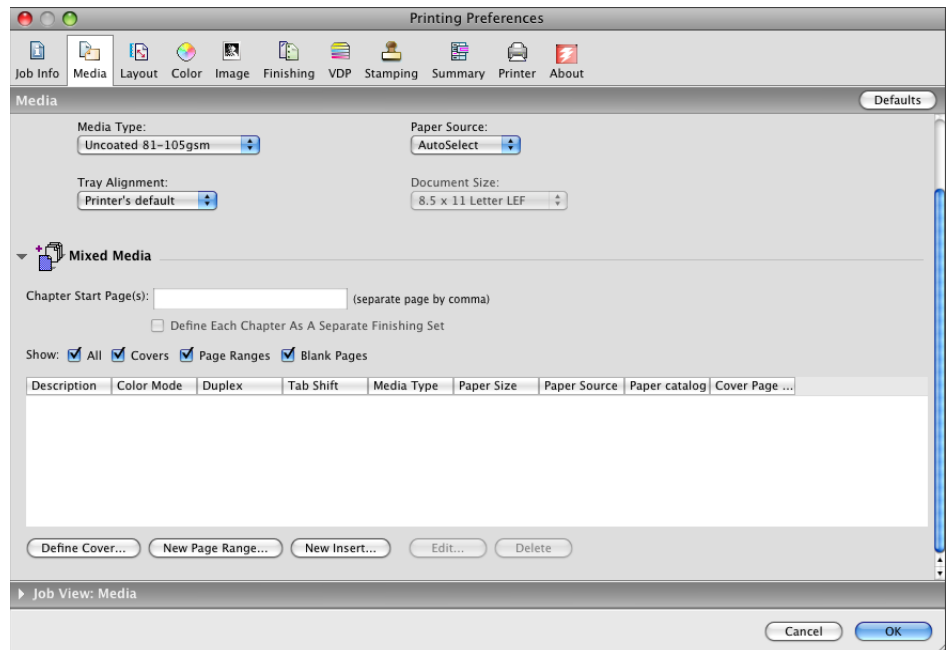
- 18 Specify the color settings for the print job and click **OK**.

- 19 To shift the position of the print image on the page, click the Finishing icon and select Image Shift to specify the shift distances.

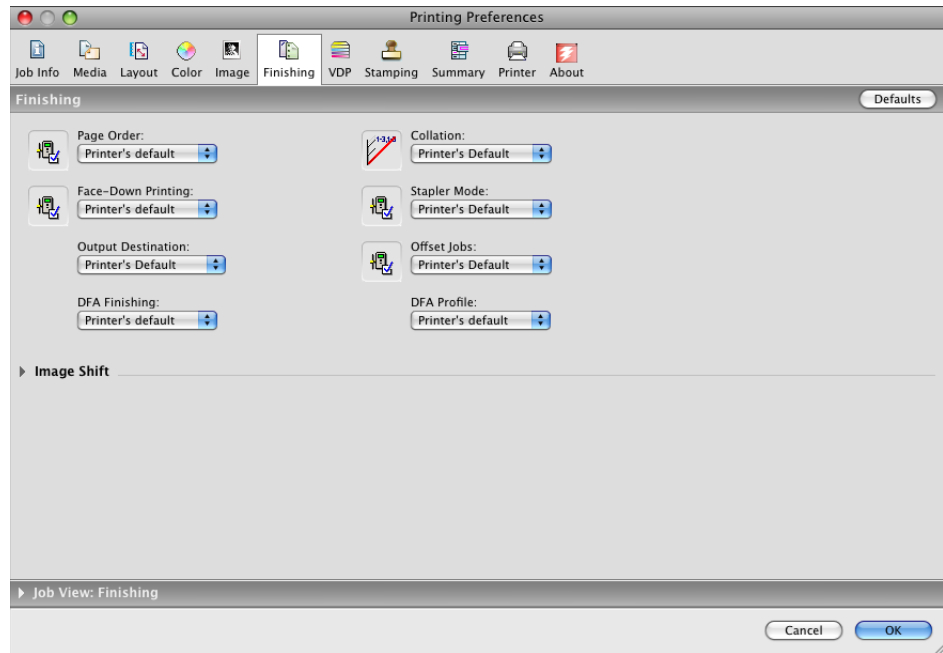


You might need to shift the print image to allow for binding, for example.

- 20 To define Mixed Media, click the Media icon and choose Mixed Media.



## 21 Choose other printer-specific options.



These print options are specific to the EX8002 and the digital press. These options override settings in EX8002 Printer Setup but can be changed from Command WorkStation.

If you choose Printer's default, the job prints according to the settings specified in Setup.

For more information about these options and overrides, see [Print Options](#).

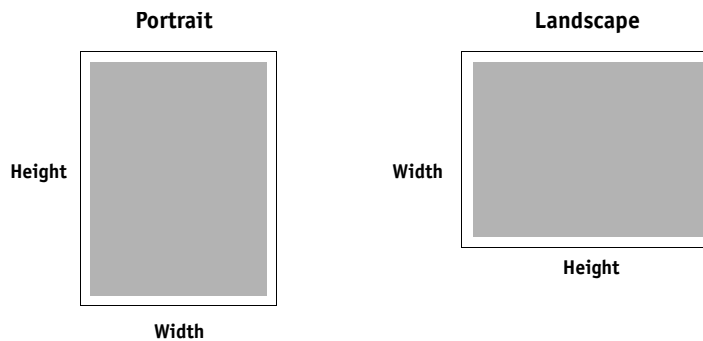
Some print options that are selectable from an application or are provided by Mac OS are similar to the print options that are specific to the EX8002 and the digital press. In these cases, use the print options specific to the EX8002 and the digital press that appear in the Fiery Features menu. The application may not set up the file properly for printing on the EX8002, resulting in unexpected finishing, printing errors, or longer processing time. When you print to your selected digital press, make sure to clear the Collated check box in the Copies & Pages pane of the Mac OS X v10.4 or earlier printer driver or in the main pane of the Mac OS X v10.5 printer driver.

If you select an invalid setting or combination of settings when printing a document, no error message appears. For example, you may be able to select duplex printing on transparency media. Invalid settings and combinations are ignored by the EX8002.

## 22 Click Print.

## Defining and printing custom page sizes

With custom page sizes, you define the dimensions of a printed page. After you define a custom page size, you can use it from within an application without redefining it each time you print. When you create custom page sizes, specify Width dimensions to correspond with the shorter side of your job and specify Height dimensions to correspond with the longer side of your job. Set custom page sizes in this way, regardless of the orientation settings in the application.



**NOTE:** Custom page sizes are not supported with Imposition jobs.



For information about defining and printing custom pages sizes, see printer driver Help.

## Viewing the digital press status

If you enabled a TCP/IP network, you can retrieve digital press status and color settings from the EX8002 and display them in the printer driver using the Two-Way Communication option. The digital press status includes the current paper and toner levels. You can set the color settings on the EX8002 using Command WorkStation. For more information about color print options, see [Color Printing](#) or Command WorkStation Help.



For information about enabling Two-Way Communication, see printer driver Help.

## PRINTING FROM WINDOWS

To set up the EX8002 as a digital press on a Windows computer, install the printer driver files that correspond to your digital press and set up the EX8002 for printing. Printer drivers provide a way to communicate information about print jobs between your applications, the EX8002, and the digital press.

For the location of each procedure, see the following table.

Procedure	See
Installing Windows printer drivers	<a href="#">page 32</a>
Setting up the EX8002 for printing	<a href="#">page 44</a>
Printing from Windows computers	<a href="#">page 52</a>

### Installing Windows printer drivers

Installing printer drivers and printer description files is the first step in setting up the EX8002 as a PostScript printer.

You can install printer drivers as follows:

- From the EX8002 through Point and Print using SMB printing.
- From WebTools, using the Downloads tab to download the printer driver files before installing the printer driver.

**NOTE:** WebTools is available if the administrator has enabled Internet access to the EX8002.

- From the EX8002 by downloading the printer driver files over the network before installing the printer driver.
- From the User Software DVD.

**NOTE:** If the EX8002 printer driver is already installed, you must uninstall it before you install a new driver (see [“Uninstalling printer drivers”](#) on page 43).



For the location of each procedure, see the following table.

Procedure	See
Installing printer drivers by Point and Print	<a href="#">page 33</a>
Downloading printer drivers using WebTools	<a href="#">page 36</a>
Downloading printer drivers from the EX8002	<a href="#">page 37</a>
Installing printer drivers from the User Software DVD	<a href="#">page 38</a>
Installing and connecting to a virtual printer	<a href="#">page 41</a>
Uninstalling printer drivers	<a href="#">page 43</a>

## Installing printer drivers by Point and Print

SMB printing (also known as Windows or WINS printing) allows you to install PostScript printer drivers on your computer from the EX8002 using Point and Print, and print to a particular connection (Print queue, Hold queue, Direct connection, or virtual printer).

Each connection (print, hold, direct or virtual printer) requires a separate installation. Repeat the procedure for each connection.

When you install the printer driver using Point and Print, you cannot configure installable options manually. The installed options are displayed as the EX8002 configuration in the printer driver. For more information, see “[Configuring installable options](#)” on page 51.

### BEFORE YOU BEGIN

Ask your administrator to do the following in Setup on the EX8002:

- **Assign the EX8002 a valid IP address.**

Ask your administrator for the IP address or DNS name required in the following procedure.

- **Configure the EX8002 for SMB printing.**

**NOTE:** SMB printing is referred to as Windows Printing in Setup and on the Configuration page.

For more information, see [Configuration and Setup](#) or WebTools Configure Help.



---

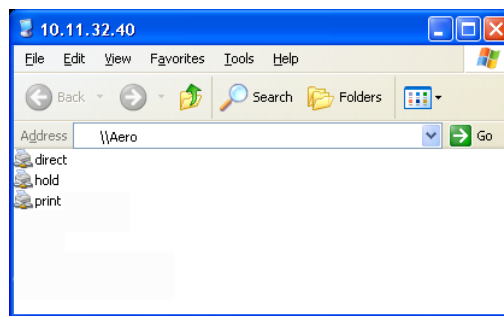
**TO SET UP SMB PRINTING ON WINDOWS COMPUTERS**

- 1 **Windows 2000/XP/Server 2003:** Right-click Network Neighborhood or My Network Places, and select Find Computer or Search for Computers.  
**Windows Vista/Server 2008:** Click the Start button, choose Control Panel, double-click Network and Sharing Center, and then click the View computers and devices link.
- 2 **Windows 2000/XP/Server 2003:** Type the name or IP address of the EX8002 and click Search Now or Search.  
**Windows Vista:** Type the name of the EX8002 in the Search field and click Enter.  
**Windows Server 2008:** Type the name or \\IP address of the EX8002 in the Search field and click Enter.

If you cannot locate the EX8002, contact your EX8002 administrator.

- 3 **Double-click the name of the EX8002 to display enabled print connections.**

**NOTE:** For a description of each print connection, see [Configuration and Setup](#).



- 4 **Double-click the connection that you want to set up (print, hold, direct, or virtual printer).**

The files are installed on your computer.

**NOTE:** You may receive a message that you are about to connect to a printer on the EX8002, which will automatically install a printer driver on your machine. Click Yes to continue.

- 5 **Windows 2000:** Click Start, choose Settings, and then choose Printers.  
**Windows XP:** Click Start and choose Printers and Faxes.  
**Windows Server 2003:** Click Start, choose Control Panel, and then choose Printers and Faxes.  
**Windows Vista:** Click the Start button, choose Control Panel, and then double-click Printers.  
**Windows Server 2008:** Click the Start button, choose Control Panel, and under Classic View, double-click Printers.

The printer is displayed in the Printers or Printers and Faxes window.

- 6 **Right-click the EX8002 icon and choose Properties.**
- 7 **Click Print Test Page on the General tab.**

If the Test Page prints successfully, you are ready to print from the computer.

- 8 **Repeat the previous steps for the other connections that you want to set up.**

## Setting up installable options in printer drivers

To view correct installation options in the Point and Print printer drivers, you must set up the EX8002.

---

### TO SET UP THE EX8002 TO VIEW INSTALLABLE OPTIONS

- 1 Log on to the EX8002 using the Windows XP Remote Desktop.

For information about enabling Remote Desktop, see [Configuration and Setup](#).

- 2 Right-click the Print queue.
- 3 Select Properties.
- 4 Click the Installable Options tab.
- 5 Verify that the Printer IP address is localhost.
- 6 Click Update.
- 7 Click OK to close the Printer Properties dialog box.
- 8 Repeat steps 2–7 to set up the Hold queue and to set up direct connection printing.

For more information on configuring and setting up the EX8002, see [Configuration and Setup](#).

## Downloading printer drivers using WebTools

WebTools allows you to download installers for printer drivers to your computer directly from the EX8002.

Download the printer driver files from the EX8002 using WebTools, and then follow the procedures on [page 38](#) to install the printer driver. Before you download the printer driver files, the administrator must set specific EX8002 options in Setup. You must also prepare each client computer to communicate with the EX8002 over the Internet or intranet.

For more information about Setup, see [Configuration and Setup](#).

For more information about setting up and starting WebTools, see [Utilities](#).

---

### TO DOWNLOAD PRINTER DRIVER FILES WITH WEBTOOLS

- 1 **Start your Internet or intranet browser and type the DNS name or IP address of the EX8002.**
- 2 **Click the Downloads tab.**
- 3 **Click the link for the item that you want to install.**

For Windows printer drivers, click the Printer Files link under the Windows heading.

- 4 **If a dialog box prompts you to open the file or save it to disk, choose to save it to disk.**
- 5 **Browse to the location where you want to save the PRNTDRVE.EXE file and click Save.**

The file is downloaded from the EX8002. This compressed file is an archive that contains multiple files.

- 6 **Double-click the PRNTDRVE.EXE file to extract the files.**

Depending on your operating system, you might be prompted to select a location to extract the files to.

Follow the instructions for your operating system to install the printer driver. The procedures are the same as for installing from the DVD, except that after you click Have Disk, you browse to the location where you extracted the files, rather than to the DVD.

For instructions on installing the Windows printer driver, see [“To install and complete the print connection for Windows”](#) on page 38.

For more information, see WebTools Downloads Help.



## Downloading printer drivers from the EX8002

You can download printer drivers files to your computer directly from the EX8002 over the network, and then install them following the procedures in [“Installing printer drivers from the User Software DVD”](#) on page 38.

---

### TO DOWNLOAD PRINTER DRIVER FILES FROM THE EX8002

- 1 Windows 2000/XP/Server 2003: Right-click Network Neighborhood or My Network Places, and select Find Computer or Search for Computers.  
Windows Vista/Server 2008: Click Start, choose Control Panel, double-click Network and Sharing Center, and then click the View computers and devices link.**
- 2 Windows 2000/XP/Server 2003: Type the name or IP address of the EX8002 and click Search Now or Search.  
Windows Vista/Server 2008: Type the name or \\IP address of the EX8002 in the Search field and click Enter.**

If you cannot locate your EX8002, contact your administrator.

- 3 Double-click the name of the EX8002.**

A folder called PC\_User\_SW is displayed along with the enabled print connections.

- 4 Double-click the PC\_User\_SW folder and browse to the English\Prntdrv\Ps\_drvr folder.**

Follow the instructions for your operating system to install the printer driver. The procedures are the same as for installing from the DVD, except that after you click Have Disk, you browse to the Win\_2K\_XP\_VISTA folder on your desktop, rather than to the DVD.

## Installing printer drivers from the User Software DVD

The following procedures describe installing the printer driver from the User Software DVD.

To install the printer driver on a Windows Server 2003/Server 2008 computer, select the same PPD (oemsetup.inf) file as for Windows 2000/XP/Vista, described in the following procedure.

**NOTE:** The following procedures use Windows XP illustrations.

This procedure describes the installation of a local printer (Port9100). You can modify the printing protocol later, according to your network type.

---

### TO INSTALL AND COMPLETE THE PRINT CONNECTION FOR WINDOWS

- 1 **Windows 2000:** Click Start, choose Settings, and then choose Printers.  
**Windows XP:** Click Start and choose Printers and Faxes.  
**Windows Server 2003:** Click Start, choose Control Panel, and then choose Printers and Faxes.  
**Windows Vista:** Click Start, choose Control Panel, and then double-click Printers.  
**Windows Server 2008:** Click Start, choose Control Panel, and under Classic View, double-click Printers.
- 2 **Windows 2000/XP:** Double-click the Add Printer icon and click Next.  
**Windows Server 2003:** Double-click the Add a printer icon and click Next.  
**Windows Vista/Server 2008:** Click Add a printer.
- 3 **Windows 2000/XP/Server 2003:** Specify printing using a Local printer, clear the “Automatically detect and install my Plug and Play printer” option, and then click Next.  
**Windows Vista/Server 2008:** Select Add a local printer.
- 4 Select Create a New Port, choose Standard TCP/IP Port from the Type of port menu, and then click Next.
- 5 **Windows 2000/XP/Server 2003:** Click Next in the Welcome to the Add Standard TCP/IP Printer Port Wizard dialog box.  
  
The Add Standard TCP/IP Printer Port Wizard dialog box appears. Proceed to [step 6](#).  
  
**Windows Vista/Server 2008:** Select the Device Type, type the Hostname or IP address of the EX8002, and then click Next. Proceed to [step 9](#).
- 6 **Type the printer name or IP address of the EX8002 and click Next.**  
  
**Windows 2000/Server 2003:** Proceed to [step 7](#).  
  
**Windows XP:** Select the Device Type and click Next.
- 7 **Windows 2000/XP/Server 2003:** Make sure that Generic Network Card is selected as Standard for Device Type and click Next.

**8 Windows 2000/XP/Server 2003: Click Finish to close the Add Standard TCP/IP Printer Port Wizard dialog box.**

**NOTE:** If the device is not found on the network, the device is displayed instead of the Finish button. If a device is not found on the network, that could be for one of the following reasons:

- EX8002 is not powered on.
- Network is not connected.
- EX8002 is not configured properly.
- IP address is not correct.

If you encounter one of the situations mentioned, you can continue to set up the port by configuring the port manually. See “[To set up Standard TCP/IP Port \(Raw or LPR\) for Windows](#)” on page 46 and follow steps 11 to 14 before proceeding step 9.

**9 Click Have Disk in the dialog box displaying lists of manufacturers and printers.**

The Install From Disk dialog box prompts you for the disk.

**10 Insert the User Software DVD into the DVD drive, type the name of the DVD drive (for example, D:\), and then click Browse. Browse to the English\Prntdrv\Ps\_drvr\Win\_2K\_XP\_VISTA folder.**

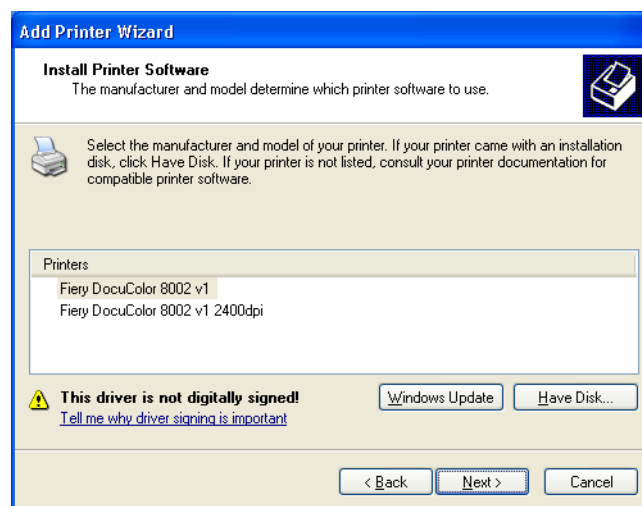
If you are installing from the files you downloaded from the EX8002 using the Downloads tab in WebTools, browse to prntdrv\Prntdrv\Ps\_drvr\Win\_2K\_XP\_VISTA and click Open.

**11 Make sure that “oemsetup.inf” or “oemsetup” is selected and click Open.**

The path is copied to the Install From Disk dialog box.

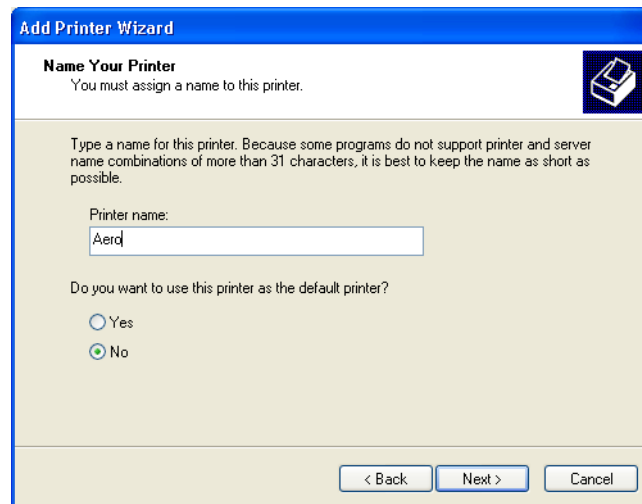
**12 Verify that the path is correct and click OK.**

**13 In the Printers box, select the EX8002 printer driver as your printer and click Next.**



- 14 **Type a name for the EX8002 in the Printer name field, indicate whether you want to make it the default printer, and then click Next.**

This name is used in the Printers window and the queues window.



- 15 **Follow the on-screen instructions.**

Do not share the printer and do not print a Test Page at this time. Continue with the printer driver installation and at the last screen, click Finish.

The necessary files are installed on your hard disk. When installation is complete, the Printers window appears with an icon for the newly installed printer.

Now you are ready to configure the installable options (see [“Configuring installable options”](#) on page 51).

If you want to set up a connection other than port 9100, proceed to [“Setting up printing connections”](#) on page 44.

To use the printer driver, you must select the following options in the Advanced tab of the printer driver after installation is complete:

- Spool print documents
- Start printing immediately
- Print spooled documents first



## Installing and connecting to a virtual printer

A virtual printer allows you to print to the EX8002 using a predefined set of job settings. You do not have to set print options manually. Before you can print to a virtual printer, the administrator must create and configure the virtual printer using Command WorkStation. After the virtual printer is set up, you can install the printer driver and printer description files on your computer from the EX8002 using Point and Print.

For more information about setting up virtual printers, see [Utilities](#).

When you install the printer driver using Point and Print, you cannot configure installable options manually. Installable options are configured automatically. The installed options are displayed in the printer driver when you select the Two-Way Communication option.

---

### TO SET UP A VIRTUAL PRINTER ON WINDOWS COMPUTERS USING POINT AND PRINT

- 1 Windows 2000/XP/Server 2003: Right-click Network Neighborhood or My Network Places, and select Find Computer or Search for Computers.  
Windows Vista/Server 2008: Right-click Network and choose Open from the menu.**
- 2 Windows 2000/XP/Server 2003: Type the name or IP address of the EX8002 and click Search Now or Search.  
Windows Vista: Type the name of the EX8002 in the Search field and click Enter.  
Windows Server 2008: Type the name or \\IP address of the EX8002 in the Search field and click Enter.**

If you cannot locate the EX8002, contact your network administrator.

- 3 Double-click the EX8002 name to display enabled print connections.**

Virtual printers are listed along with the Print queue, Hold queue, and Direct connection (if those connections are enabled). Virtual printers usually have names that indicate the type of job they are set up for.

- 4 Right-click the virtual printer that you want and choose Connect.**

The files are installed on your computer.

- 5 Windows 2000: Click Start, choose Settings, and then choose Printers.  
Windows XP: Click Start and choose Printers and Faxes.  
Windows Server 2003: Click Start, choose Control Panel, and then choose Printers and Faxes.  
Windows Vista: Click Start, choose Control Panel, and then double-click Printers.  
Windows Server 2008: Click Start, choose Control Panel, and under Classic View, double-click Printers.**

The virtual printer is displayed in the Printers or Printers and Faxes window.

You can print to a virtual printer as you would print to the EX8002. Depending on how the virtual printer is configured, you may not be able to set some print options.

You must enable Two-Way Communication to automatically update your printer driver to reflect the options currently installed on the digital press.

---

**TO ENABLE TWO-WAY COMMUNICATION**

- 1 **Windows 2000:** Click Start, choose Settings, and then choose Printers.  
**Windows XP:** Click Start and choose Printers and Faxes.  
**Windows Server 2003:** Click Start, choose Control Panel, and then choose Printers and Faxes.  
**Windows Vista:** Click Start, choose Control Panel, and then double-click Printers.  
**Windows Server 2008:** Click Start, choose Control Panel, and under Classic View, double-click Printers.
- 2 **Right-click the EX8002 icon and choose Properties.**
- 3 **Click the Installable Options tab.**
- 4 **Select Two-Way Communication.**
- 5 **Type the EX8002 IP address or DNS name.**
- 6 **Select Update Fiery Driver When Opened to display the printer's current default settings when the printer driver is opened.**
- 7 **Click Update.**  
  
**NOTE:** To confirm that Two-Way Communication is enabled, click the About tab and check that the EX8002 name and other server information are displayed.
- 8 **Click OK.**

## Uninstalling printer drivers

All installation of user software on a Windows computer is done through the Fiery User Software Installer. The procedures in [Utilities](#) describe installing from the User Software DVD.

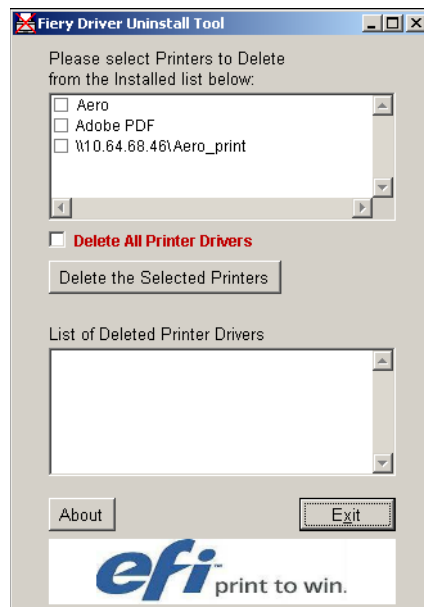
The Printer Delete Utility is installed and used locally. You do not need to connect to the EX8002 before you use the software.

---

### TO USE PRINTER DELETE UTILITY

- 1 Click **Start**, choose **Programs**, and then choose **Fiery**.
- 2 Click **FieryPrinterDeleteUtility**.

The Fiery Driver Uninstall Tool dialog box appears. Any EX8002 printer drivers found on your computer are listed.



- 3 To delete a printer, select the check box next to the printer name and click **Delete the Selected Printers**.
- To delete all the installed printer drivers, select the **Delete All Printer Drivers** check box.
- 4 Click **OK** to delete the selected printer driver(s).
- 5 When you finish deleting printer drivers, click **Exit** and restart your computer.

## Setting up the EX8002 for printing

To print from Windows computers, you or the administrator must perform the following tasks to set up a connection other than port 9100:

- Set up network servers, if any.
- Set up the EX8002 to accept print jobs from your computer.
- Configure a port on each Windows computer for the network type.

### Setting up printing connections

The EX8002 supports the following printing connections:

- SMB
- Standard TCP/IP (RAW or LPR)
- IPP or IPP over SSL

For the location of each procedure, see the following table.

Procedure	See
Completing the SMB printing connection	<a href="#">page 45</a>
Completing Standard TCP/IP Port (Raw or LPR) printing connections	<a href="#">page 45</a>
Completing IPP connections	<a href="#">page 49</a>
Configuring installable options	<a href="#">page 51</a>

## Completing the SMB printing connection

If your network does not have a Windows server, Windows computers can still print to the EX8002. This method of printing is SMB printing (also known as Windows or WINS printing). When users send print jobs, computers running Windows operate in a peer-to-peer environment and communicate directly with the EX8002.

Enabling SMB printing allows the EX8002 to be listed on the network, so that Windows clients can print to a particular print connection (Print queue, Hold queue, Direct connection or virtual printer) on the EX8002 without using other networking software. Windows printing runs via TCP/IP. You must configure TCP/IP on the EX8002 and on all computers that use SMB printing.

After you enable SMB printing on the EX8002, you can set up the Windows or SMB connection and install the printer driver in one procedure. For more information, see [“Installing printer drivers by Point and Print”](#) on page 33.

## Completing Standard TCP/IP Port (Raw or LPR) printing connections

After you install the PostScript and printer driver files, you can add or configure the Setup for the Standard TCP/IP Port (Raw or LPR) connection as follows:

- Prepare the EX8002 to accept print jobs using Standard TCP/IP Port (Raw or LPR) protocols.
- Enable LPD or Port 9100 on the EX8002.
- Configure the computer for the TCP/IP connection.



For more information about Setup, see WebTools Configure Help.

Before you complete the following procedure, contact your system administrator for the IP address assigned to the EX8002.

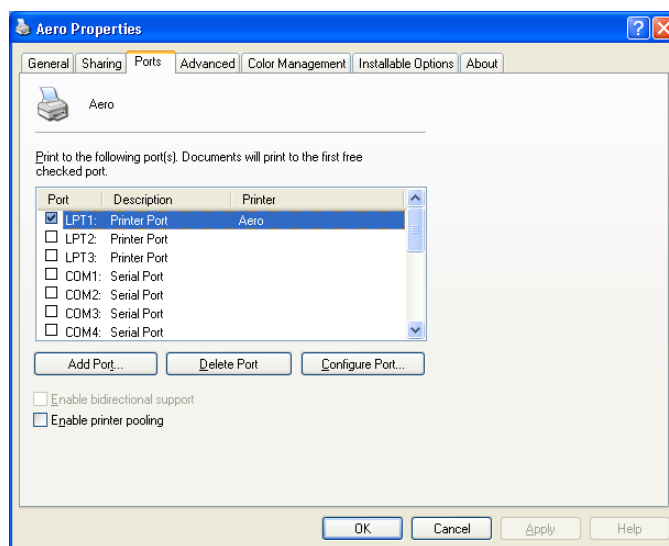
The TCP/IP protocol should be installed as a default on the Windows computer. For Port 9100, you can set up the connection and install the printer driver in one procedure.

**NOTE:** You can also set up the LPR Port connection by installing Print Services for UNIX, which is supplied as an add-on Windows component. For more information, see the documentation that accompanies Windows.

### TO SET UP STANDARD TCP/IP PORT (RAW OR LPR) FOR WINDOWS

**NOTE:** The following procedures use Windows XP illustrations.

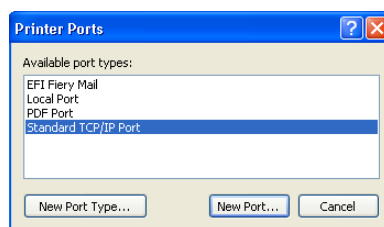
- 1 **Windows 2000:** Click Start, choose Settings, and then choose Printers.  
**Windows XP:** Click Start and choose Printers and Faxes.  
**Windows Server 2003:** Click Start, choose Control Panel, and then choose Printers and Faxes.  
**Windows Vista/Server 2008:** Click Start, choose Control Panel, and then double-click Printers.
- 2 Right-click the EX8002 icon and choose Properties.
- 3 Click the Ports tab.



- 4 To add a new port, click Add Port.

To change the port settings, proceed to step 11.

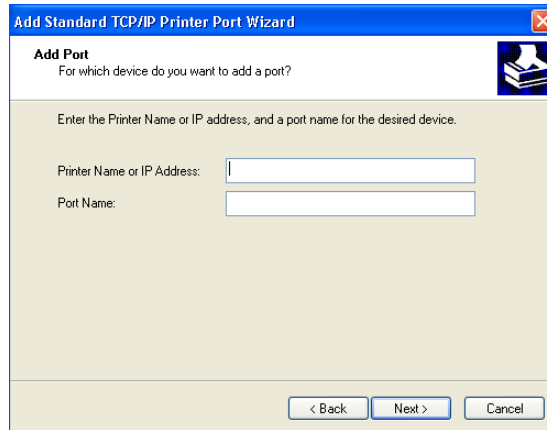
- 5 **Windows 2000/XP/Server2003:** Select Standard TCP/IP Port from the list of Available port types and click New Port Type.  
**Windows Vista/Server 2008:** Double-click Standard TCP/IP Port from list.



The Add Standard TCP/IP Printer Port Wizard dialog box appears.

- 6 Click Next.

**7 Type the EX8002 IP address.**



The image shows the 'Add Standard TCP/IP Printer Port Wizard' dialog box. The title bar reads 'Add Standard TCP/IP Printer Port Wizard'. The main area is titled 'Add Port' with the subtitle 'For which device do you want to add a port?'. Below this, it says 'Enter the Printer Name or IP address, and a port name for the desired device.' There are two text input fields: 'Printer Name or IP Address:' and 'Port Name:'. At the bottom, there are three buttons: '< Back', 'Next >', and 'Cancel'.

**8 Click Next.**

**9 Make sure that Generic Network Card is selected as Standard for Device Type and click Next.**

**10 Click Finish to close the Add Standard TCP/IP Printer Port Wizard dialog box, and then click Close in the Printer Ports dialog box.**

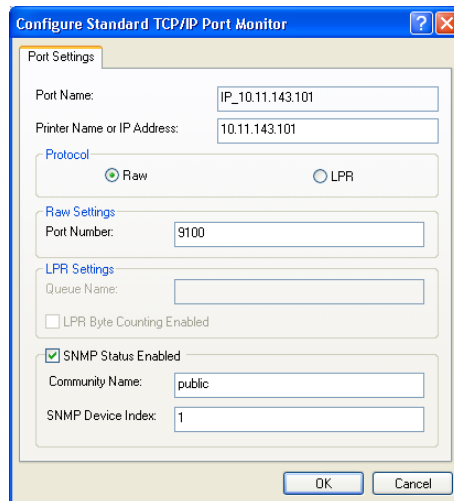
To change the default setting, proceed to [step 11](#).

If you do not want to change the default setting, the setting is now completed.

**NOTE:** Port 9100 was set as the default setting in the preceding procedure.

**11 Click Configure Port on the Ports tab of the Properties dialog box.**

The Configure Standard TCP/IP Port Monitor dialog box appears.



The image shows the 'Configure Standard TCP/IP Port Monitor' dialog box. The title bar reads 'Configure Standard TCP/IP Port Monitor'. The 'Port Settings' tab is selected. It contains several fields: 'Port Name:' with the value 'IP\_10.11.143.101', 'Printer Name or IP Address:' with the value '10.11.143.101', and a 'Protocol' section with 'Raw' selected (radio button) and 'LPR' unselected. Below this is a 'Raw Settings' section with 'Port Number:' set to '9100'. There is also an 'LPR Settings' section with 'Queue Name:' (empty), 'LPR Byte Counting Enabled' (unchecked), and 'SNMP Status Enabled' (checked). The 'SNMP Status Enabled' section includes 'Community Name:' set to 'public' and 'SNMP Device Index:' set to '1'. At the bottom, there are 'OK' and 'Cancel' buttons.

- 12 **To use LPR printing, select LPR in the Protocol area and LPR Byte Counting Enabled in the LPR Settings area.**

**NOTE:** You can also proceed without selecting LPR Byte Counting Enabled.

**To use Port 9100 printing, select Raw in the Protocol area.**

The port number 9100 automatically appears in the Raw Settings area. This is the default port number. You can print to the printer connection selected for Port 9100 printing on the EX8002.

To specify a specific port number, see the following step.

- 13 **Type the name of the print connection.**

For LPR, enter print or hold for Queue Name or published virtual printer name. The Direct connection is not supported for LPR printing.

For Port 9100, type the following port numbers for each print connection in the Raw Settings area:

EX8002 default: 9100

direct: 9101

print: 9102

hold: 9103

**NOTE:** Type the number *exactly* as shown.

- 14 **Click OK to close the Configure Standard TCP/IP Port Monitor dialog box.**

**NOTE:** The EX8002 supports printing in the IPv6 environment on Windows Server 2008 and Windows Vista.

**NOTE:** LPR printing in the IPv6 environment is supported on the Windows XP/Server 2003 computer from a command line, but other methods may work.

- 15 **Click Apply in the EX8002 Properties dialog box, and then click OK.**



## Completing IPP connections

With Internet Printing Protocol (IPP), print jobs are sent to the EX8002 over the Internet.

Before you begin, perform the following tasks:



- Make sure that the EX8002 is configured for TCP/IP printing and IPP printing.

For more information, see WebTools Configure Help.

- Specify the printing destination on your computer.

**NOTE:** IPP over SSL connections is supported.

---

### TO SET UP IPP PRINTING WITH WINDOWS

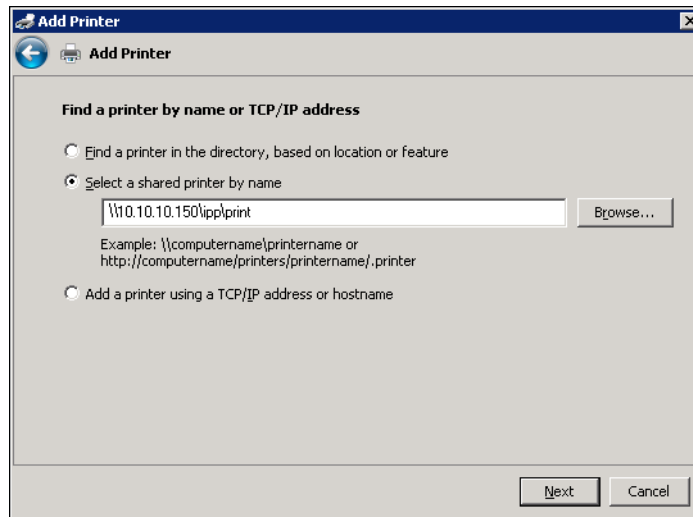
- 1 **Windows 2000:** Click Start, choose Settings, and then choose Printers.  
**Windows XP:** Click Start and choose Printers and Faxes.  
**Windows Server 2003:** Click Start, choose Control Panel, and then choose Printers and Faxes.  
**Windows Vista:** Click Start, choose Control Panel, and then double-click Printers.  
**Windows Server 2008:** Click Start, choose Control Panel, and under Classic View, double-click Printers.
- 2 **Windows 2000/XP:** Double-click the Add Printer icon and click Next.  
**Windows Server 2003:** Double-click the Add a printer icon and click Next.  
**Windows Vista/Server 2008:** Click Add a printer.
- 3 **Windows 2000/XP/Server 2003:** Select Network printer and click Next.  
**Windows Vista:** Select Add a network printer.  
**Windows Server 2008:** Select Add a network, wireless, or Bluetooth printer.
- 4 **Windows 2000/XP/Server 2003/Vista:** Select Connect to a printer on the Internet or on your intranet.  
**Windows Server 2008:** If the printer search takes a long time, click Stop, and then click "The printer that I want isn't listed."

- 5 **Windows 2000/XP/Server 2003/Vista:** In the URL field, type the IP address or DNS name of the EX8002, followed by “ipp/” and then the name of the connection (hold, direct, or print).

For example, `http://10.10.10.150/ipp/print` or `http://DNS name of the EX8002/ipp/print` sends the job to the Print queue on the EX8002.

For IPP over SSL, type `https`, instead of `http`.

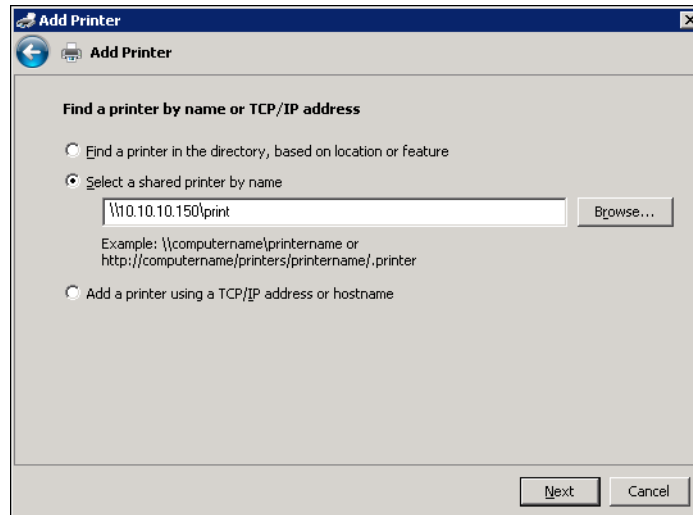
**NOTE:** The `ipp/print` in the example is case sensitive.



**Windows Server 2008:** Click **Select a printer by name**, and in the URL field, type the IP address or DNS name of the EX8002, followed by the name of the connection (hold, direct or print).

**NOTE:** For example, `http://10.10.10.150/ipp/print` or `http://DNS name of EX8002/ipp/print` sends the job to the Print queue on the EX8002.

**NOTE:** The URL for the printer is not case-sensitive.



- 6 Windows 2000/XP/Server 2003/Vista: Click Next.**

The Connect to Printer dialog box appears.

**Windows Server 2008: Click Next.**

- 7 Windows 2000/XP/Server 2003/Vista: Click OK.**

The Add Printer Wizard dialog box appears.

**Windows Server 2008: Click Install driver.**

- 8 If you are installing the PostScript printer for the first time, follow the procedure “To install and complete the print connection for Windows” on page 38, step 9.**
- 9 Indicate whether you want to make the EX8002 the default printer and click Next.**
- 10 Click Finish.**

## Configuring installable options

After you complete the printer driver installation, you must configure the EX8002 for the options installed on the digital press to allow the EX8002 to take advantage of the digital press options. Configure the options manually, or, for TCP/IP network connections, use the Two-Way Communication option to configure the options automatically.

For information about specifying installable options, see printer driver Help.



## Printing from Windows computers

You can print to the EX8002 just as you would print to any other printer from a Windows application. You can print from a networked Windows computer or a computer using Windows (WINS) printing.

The following table includes other methods to print to the EX8002 and the location in which to find more information.

For more information	See
Downloading certain types of files to the EX8002 using the Docs WebTools	<a href="#">Utilities</a>
Printing documents using Hot Folders	<a href="#">Utilities</a>
Printing documents using E-mail Services	<a href="#">“E-mail Service”</a> on page 62
Setting up the Windows environment for printing with Windows servers connected to the EX8002	<a href="#">Configuration and Setup</a>

After you install the EX8002 printer driver and configure the proper port, you can print directly from most Windows applications. Set the print options for the job and choose Print from your application.



To achieve optimal printing results from specific applications, see [Color Printing](#), [Fiery Color Reference](#), and Command WorkStation Help.

**NOTE:** The following procedures use Windows XP illustrations unless specified.

For the location of each procedure, see the following table.

Procedure	See
Setting print options and printing from Windows applications	<a href="#">page 53</a>
Customizing the Basic icon	<a href="#">page 58</a>
Defining and printing custom page sizes	<a href="#">page 59</a>
Viewing the digital press status	<a href="#">page 59</a>
Saving files to print to a remote location	<a href="#">page 59</a>

## Setting print options and printing from Windows applications

To print from Windows platforms, install the PostScript printer driver. For instructions, see [“Installing Windows printer drivers”](#) on page 32. Be sure to configure the options on the Advanced tab of the printer driver after installation is complete, as described on [page 38](#).

If you print to a virtual printer, you may not be able to set some print options, depending on how the virtual printer is configured.

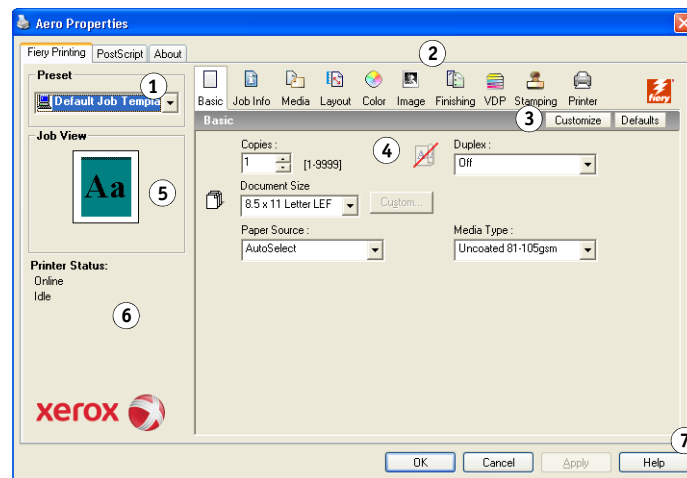
The following procedures explain how to use the printer driver to specify print options for a particular job and print it to the EX8002. You can also set default print settings using the driver. For information about specific print options, see [Print Options](#).

**NOTE:** The following procedures use Windows XP illustrations.

### TO SET PRINT OPTIONS FOR A SPECIFIC WINDOWS PRINT JOB USING THE PRINTER DRIVER

- 1 Choose Print in your application.
- 2 Select the EX8002 as your printer and click Properties.
- 3 Click the Fiery Printing tab.

- 1 Presets (Job Templates), see Help
- 2 Print Option icons
- 3 Customize (Shortcuts), see Help
- 4 Active area
- 5 Job View
- 6 Printer Status
- 7 Help



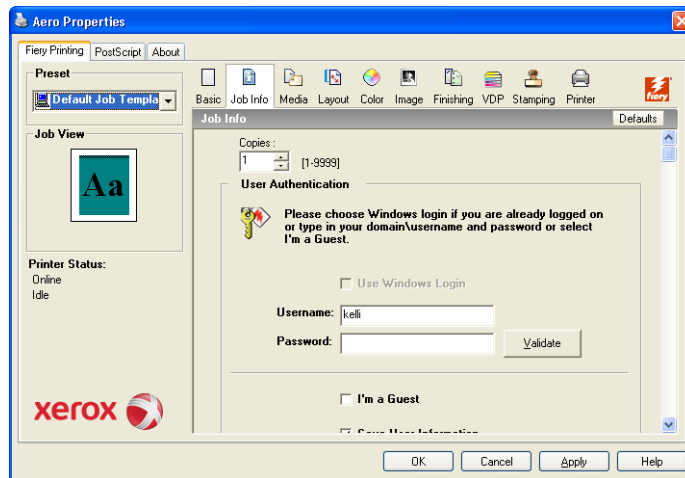
The Fiery Printing tab serves as the control center for all frequently used printing functions.

For information about using presets, see printer driver Help.

**NOTE:** For a list of print options, see [page 70](#).



#### 4 Click the Job Info icon.



#### 5 Type information in the Notes1 and 2 fields.

Type user and job identification information for managing purposes, or other information that is required at your site.

The information that you type in this field can be viewed and edited by the operator in Command WorkStation and also appears in the Job Log.

For more information about Command WorkStation, see [Utilities](#).

#### 6 Type instructions to the operator about the job in the Instructions field.

These instructions are displayed in Command WorkStation, but do not appear in the Job Log. These instructions can be edited by the operator.

#### 7 Type a user name and password in the User Authentication area.

The user name that you type in the User Authentication area can be your network domain\user name or a local user name. Check with your system administrator about the requirements for your system.

If you do not have a user name and password or if you want to send jobs as a public user, select the I'm a Guest option. The EX8002 must be configured to allow guest printing. Otherwise, clear the I'm a Guest option.

If you are not using a network user name and password, you can type your domain\user name and password in the fields provided. Click Validate to validate the user name and password.

When the Use Windows Login option is selected, the LDAP domain user name and password are used as an authenticated user name. This is available only if the user is logged on to the Windows computer as a domain user.

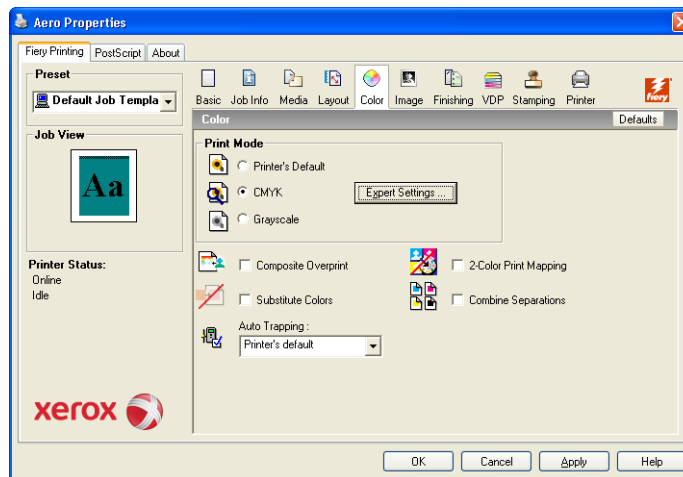
Select the Save User Information option to save your user name and password.

**8 Type values for the other fields, as required.**

For information about these fields, see [page 70](#).

**9 Click the Color icon and specify the color profile options for the job.**

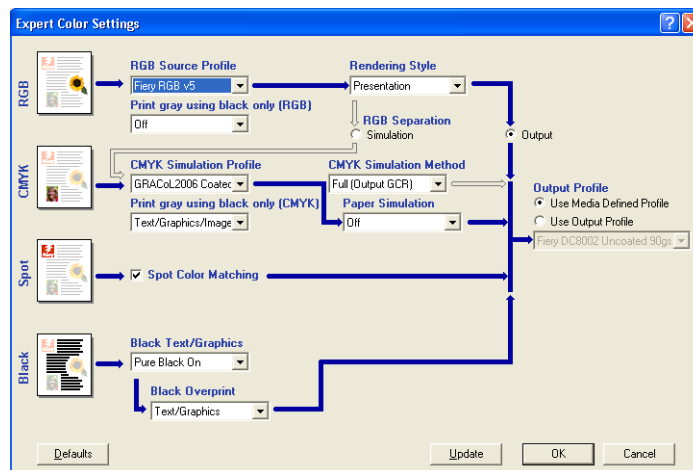
In the Print Mode area, select a color mode for the job. To use advanced color management features, such as Rendering Style, click Expert Settings and proceed to [step 10](#). Otherwise, proceed to [step 11](#).



**10 In the Expert Color Settings dialog box, click Update to display the current EX8002 settings.**

If the Update button does not appear, make sure that the Two-Way Communication option is selected, as described in “[Viewing the digital press status](#)” on page 59.

**Two-Way Communication On**



- 11 Specify the color settings for the print job and click OK.**

- 12 Click the Stamping icon to specify a watermark for the print job.**



For more information about watermarks, see printer driver Help.

- 13 Click the Printer icon to view digital press status.**



For more information about monitoring digital press status, see printer driver Help.

- 14 Click the remaining print option icons to specify the appropriate settings for the print job and click OK.**

The settings that you make for these print options override settings that the administrator specified in EX8002 Printer Setup, but can be overridden from Command WorkStation. For information about these options and overrides, see [page 69](#). For more information about Command WorkStation, see [Utilities](#).

Some print options are available only if a particular installable option has been configured. For information about configuring installable options, see “[Configuring installable options](#)” on [page 51](#).

If you choose Printer’s default, the job prints according to the settings that the administrator specified in Setup. For more information, see [page 69](#).

**NOTE:** If you specify incompatible print settings, the Conflict dialog box provides instructions to resolve the conflict.

- 15 From your application, click OK to send your print job.**

Make sure that the EX8002 is selected as your current printer.

**NOTE:** Some print options that are selectable from an application are similar to print options that are specific to the EX8002 and the digital press. In these cases, use the print options specific to the EX8002 and the digital press. These options appear in the Fiery Printing tab. The application may not set up the file properly for printing on the EX8002, resulting in unexpected finishing, printing errors, or longer processing time.

**NOTE:** With the E-mail Notification feature enabled in the printer driver, you receive an e-mail notification after your job is printed or when a printing error occurs.



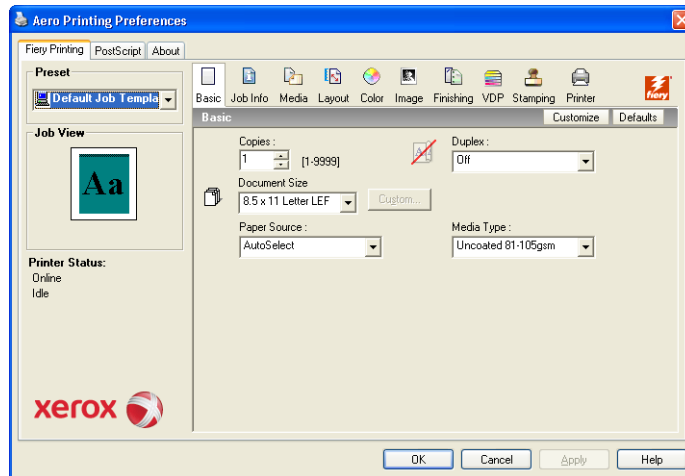
For more information about the E-mail Notification feature, see printer driver Help.



---

**TO SET DEFAULT PRINT OPTIONS FOR WINDOWS PRINT JOBS USING THE POSTSCRIPT PRINTER DRIVER**

- 1 **Windows 2000:** Click Start, choose Settings, and then choose Printers.  
**Windows XP:** Click Start and choose Printers and Faxes.  
**Windows Server 2003:** Click Start, choose Control Panel, and then choose Printers and Faxes.  
**Windows Vista/Server 2008:** Click Start, choose Control Panel, and then double-click Printers.
- 2 Right-click the EX8002 icon and choose Printing Preferences.
- 3 If the Fiery Printing tab is not displayed, click it.



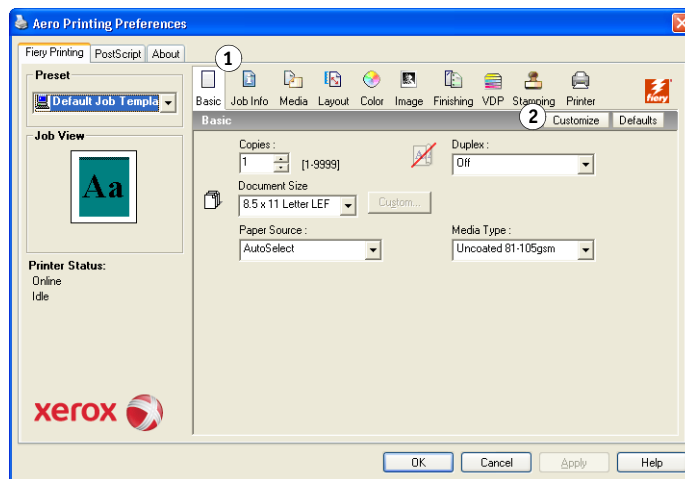
- 4 Specify the default settings for your print job, as described on [page 53](#).
- 5 Click OK to close the dialog box.

## Customizing the Basic icon

The Basic icon is on the Fiery Printing tab. You can customize it with the print options you use frequently. This saves time because you do not have to open all of the other print option icons if you only want to set the options in Basic. Basic initially contains a default group of print options. You can remove these options and add others.

**NOTE:** When you place a print option in Basic, it still appears under its appropriate print option icon. You can set the option from either location.

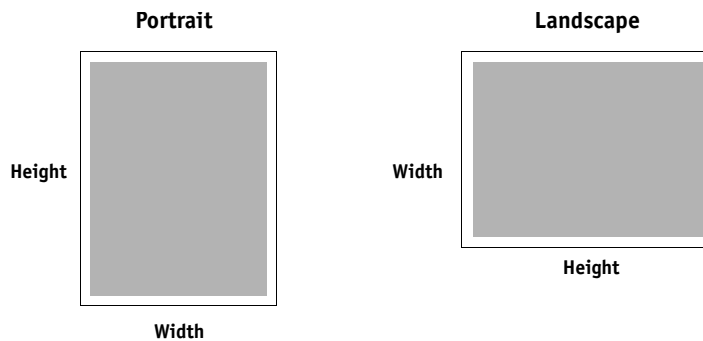
- 1 Basic icon
- 2 Customize (Shortcuts)



For more information about customizing the Basic icon, see printer driver Help.

## Defining and printing custom page sizes

With custom page sizes, you define the dimensions of a printed page. After you define a custom page size, you can use it from within an application without redefining it each time you print. When you create custom page sizes, specify Width dimensions to correspond with the shorter side of your job and specify Height dimensions to correspond with the longer side of your job. Set custom page sizes in this way, regardless of the orientation settings in the application.



**NOTE:** Custom page sizes are not supported with Imposition jobs.



For more information about defining and printing custom page sizes, see printer driver Help.

## Viewing the digital press status

If you enabled a TCP/IP network, you can retrieve digital press status and color settings from the EX8002 and display them in the printer driver using the Two-Way Communication feature. If you have enabled Two-Way Communication for your digital press, you can monitor the status of the digital press, including the levels of consumable materials, such as paper and toner.



For more information enabling Two-Way Communication, see printer driver Help.

## Saving files to print at a remote location

If you do not have an EX8002 onsite and are preparing files to take to a service bureau or other location, print the final files to the File port (as opposed to one of the local ports). You can also print to the File port to create a file to download using the Docs WebTool. For instructions on printing to the File port, see the documentation that accompanies Windows.

## PRINTING METHODS

In addition to printing jobs from the EX8002 printer driver, you can print jobs using the following utilities:

- **Job Monitor** displays information about the jobs sent to the EX8002 and reprints them.
- **E-mail Service** submits jobs to the EX8002 as e-mail attachments.
- **USB device** prints files saved on a USB drive.
- **FTP printing** prints to the EX8002 using the FTP protocol.

For the location of each procedure, see the following table.

Procedure	See
Configuring and using Job Monitor	<a href="#">page 61</a>
E-mail Service	<a href="#">page 62</a>
Printing from USB device	<a href="#">page 66</a>
FTP printing	<a href="#">page 67</a>


## Configuring and using Job Monitor

Use Job Monitor to monitor the status of EX8002 and view information about the print jobs sent to them.

**NOTE:** Job Monitor is not supported on Windows 2008, Windows XP/Server 2003/Vista 64-bit version or Mac OS X.

### Configuring the connection

When you send your first print job to the EX8002, Job Monitor opens and establishes a connection to the EX8002. If you have installed and configured printer drivers for more than one digital press, Job Monitor automatically establishes connections to all the EX8002 digital presses.

The Job Monitor icon () appears on the desktop and in the Windows taskbar of your computer.

Job Monitor is automatically installed when you choose the printer driver to install on your computer. To use Job Monitor, you must enable it in the printer driver.

---

#### TO ENABLE JOB MONITOR

- Select the **Monitor my Print Job** check box on the **Printer** tab of the printer driver.

---

#### TO DISABLE JOB MONITOR

- Clear the **Monitor my Print Job** check box on the **Printer** tab of the printer driver.

### Using Job Monitor



For information about using Job Monitor, see Job Monitor Help and printer driver Help.

## E-mail Service

E-mail Service allows you to control the EX8002 using your current e-mail infrastructure, print to remote locations, and bypass firewalls. E-mail Service is not application-specific. You can use any e-mail infrastructure.

**NOTE:** E-mail Service is not supported on Mac OS X.

The EX8002 supports internal address books. Administrators can retrieve, add, delete, and clear addresses from the address books by sending requests through e-mail. For more information about address books, see [Configuration and Setup](#).



To set up E-mail Service, see WebTools Configure Help.

Use E-mail Service in the following ways:

- Print a job from an e-mail application.

To print with an e-mail client, you send a file as an e-mail attachment. E-mail Service extracts the file and sends it to the EX8002. The attachment can be in any format the EX8002 recognizes (PostScript, PDF, or TIFF).

**NOTE:** E-mail Service does not process files with .vbs, .exe, or .bat extensions.

- Manage jobs using an e-mail application.

You can manage your print jobs by submitting e-mail commands to the EX8002 using e-mail.

- Scan to E-mail

You can scan a document and send it to an e-mail address as an attachment or URL. For more information about Scan to E-mail, see [Utilities](#).

## Printing using an e-mail client

You can submit print jobs to the EX8002 in the form of an e-mail attachment using your e-mail application. When you send an e-mail with an attachment, E-mail Service extracts the file and sends it to the EX8002 Print queue. The file format must be one supported by the EX8002.

By default, anyone can print with an e-mail client, unless the Print address book has been set up by the administrator. If the Print address book has been set up and your e-mail address is not in it, you cannot send files to the EX8002 via e-mail. For more information about address books, see [Configuration and Setup](#).

When User Authentication is enabled on the EX8002, the e-mail attachment must have the appropriate user name and password when it is printed through e-mail printing. As part of creating the e-mail attachment with the EX8002 printer driver, type the appropriate user name and password in the Job Info tab of the printer driver. The user name and password must match those defined by the administrator in the Users and Groups section of Configure. For information about Users and Groups, see WebTools Configure Help.



**NOTE:** The Direct connection is not supported by the e-mail client feature.

**NOTE:** The following illustrations depict the Microsoft Outlook e-mail application.

---

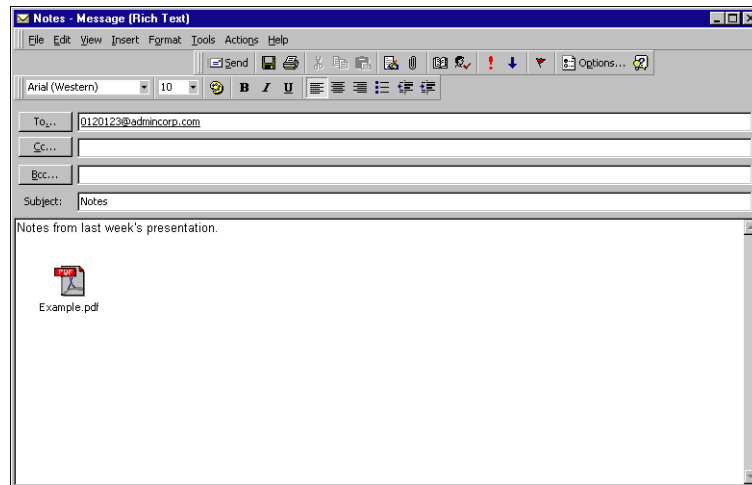
### TO PRINT USING AN E-MAIL CLIENT

- 1 **Open your e-mail application.**
- 2 **Type the EX8002 e-mail address in the To: line.**
- 3 **Type text in the Subject line or leave the Subject line blank.**

#### 4 Attach the file that you want to print.

The attachment can be in any format the EX8002 recognizes (PostScript, PDF, or TIFF).

**NOTE:** If your attachment exceeds the file size limitation set by your e-mail system administrator, the e-mail is not sent.



#### 5 Optionally, you can type text in the body of the message. The text is printed with the file.

**NOTE:** HTML-formatted e-mail messages are not supported, and might not print as they appear on the remote workstation. Send e-mail messages in plain text format.

#### 6 Send the e-mail.

The file is sent to the EX8002 and the job is printed. After the EX8002 receives the job, you receive an e-mail notification that the print job was accepted. The e-mail provides a job identification (ID). Use the job IDs to manage jobs with e-mail commands (see [“Managing print jobs with e-mail commands”](#) on page 65). The e-mail notification indicates any current error at the digital press.

After the job has been printed, you are sent a second e-mail notification that indicates the job printed successfully.



## Managing print jobs with e-mail commands

You can manage your print jobs by submitting commands to the EX8002 using e-mail. You can cancel a job, check job status, and get help on a job. When you send a command, the EX8002 returns an e-mail response.

---

### TO MANAGE PRINT JOBS WITH E-MAIL COMMANDS

**1 In your e-mail application, type the EX8002 e-mail address in the To: line.**

**2 Type one of the following commands in the Subject line:**

**To check the status of a job, type #JobStatus<job id> in the Subject line.**

You receive a reply to your job status query. You can only get the status of the job if you sent the job or are an administrator.

**To cancel a job, type #CancelJob<job id> in the Subject line.**

You receive a notification indicating that the job has been cancelled and did not print to the EX8002. You can only cancel a job if you sent the job or are an administrator.

**To get help, type #Help in the Subject line.**

You receive an e-mail response that contains links that allow you to cancel jobs, check job status, and search and manage address books. Click any of the links to perform a command.

**3 Send the e-mail to the EX8002.**

## Printing from a USB device

You can print files on a USB device to the EX8002. To do so, save files to the USB device and download them directly to the EX8002. You can print files that originated on Mac OS X or Windows computers.

You can print files automatically from a USB device to one of the standard print queues on the EX8002 (Print, Hold, or Direct) or to published virtual printers (if supported). Verify with your administrator that these connections are published in Setup. For more information about virtual printers, see [Utilities](#).

Before you print files from a USB device, ask your administrator to configure the appropriate options. For more information about configuring the appropriate options, see [Configuration and Setup](#) or WebTools Configure Help.



### Automatic printing

To print automatically to Print, Hold, or Direct queues, or to published virtual printers with the Print All setting, set up folders on your USB device with the names print, hold, direct, and the names of any published virtual printers. When you plug the USB device into a USB port on the EX8002, the files in those folders are sent automatically to the corresponding queues.

---

#### TO PRINT FILES FROM THE USB DEVICE

- 1 **Configure the USB printing options in Setup.**
- 2 **Create folders at the top (root) level of the USB device named print, hold, direct, and virtual printer.**
- 3 **Save the files (PS, EPS, TIFF, and PDF) from the user's computer to the USB device.**

Files copied to the print, hold, direct, or virtual printer folders are downloaded to the corresponding print connection on the EX8002 automatically when you connect the USB device to the EX8002. Files copied to the root level of the USB device are downloaded to the Print queue.

- 4 **Remove the USB device from the computer and connect it to the USB connector on the EX8002.**



Make sure that the USB device is properly stopped before you disconnect it from the computer.

For the location of the USB port, see [Configuration and Setup](#).

## FTP printing

If FTP Services are enabled on the EX8002, the EX8002 is set up as an FTP server. You can send jobs to the EX8002 using FTP printing. For more information about configuring FTP Services, see [Configuration and Setup](#).

You can use any FTP client software. Before you use FTP printing, the FTP client software requires the following information (see your administrator):

- IP address or DNS name for the EX8002
- Directory or path to send the job to, such as the Print queue, Hold queue, or published virtual printers (if supported)

**NOTE:** You cannot print to the Direct connection using FTP printing.

- User name and password (if required)

You can send PostScript (PS), Tagged Image File Format (TIFF), and Portable Document Format (PDF) files to the EX8002. Encapsulated PostScript (EPS) files are not supported for FTP printing.

---

### TO PRINT FILES TO THE EX8002 USING THE FTP PROTOCOL

#### 1 Connect to the EX8002 with your FTP client software.

Folders corresponding to the Print queue and Hold queue are displayed. Folders for any published virtual printer are also displayed.

#### 2 Navigate to the folder representing the print connection or published virtual printer.

#### 3 Upload your job to the folder that you want.

After the job is printed, it is deleted from the EX8002.

## PRINT OPTIONS

This chapter describes printer drivers and PPD (PostScript Printer Description) files, EX8002 print options, and where to set print options.

### About printer drivers and printer description files

The EX8002 receives files from computers on the network, processes (RIPs) the files, and then sends them to the digital press. Windows and Mac OS computers communicate with the EX8002 by means of a printer driver and PPD files. The driver allows you to use special features of the EX8002 from the Print dialog box.

A printer driver manages printing communication between your application and the printer. It interprets the instructions generated by the application, merges those instructions with printer-specific options you set, and then translates all information into Adobe PostScript, a language the printer understands. In other words, the printer driver writes a PostScript file based on your original file and the options you set from the Print dialog box.

A printer driver also allows you to select print options for your digital press. To do this, the printer driver must be matched with a PostScript Printer Description (PPD) file for your EX8002. A PPD file contains information about the features and capabilities of a particular device (for example, what paper sizes and media types are supported). The printer driver reads the information in the PPD file and presents the information to you in the form of options you select in the Print dialog box. The PPD file for the EX8002 includes information about the features of both the digital press and the EX8002. For information about the specific print options for the EX8002, see the tables that begin on [page 71](#).

## Setting print options

Print options give you access to the special features of your digital press and the EX8002. You can specify print options in these areas:

- Setup

Some settings are specified during Setup by the administrator. For information about the current default server settings, contact the administrator or the operator.

- Applications

With the printer drivers provided, you can specify job settings when you print a job.

For more information, see [“Setting print options and printing from Windows applications”](#) on page 53 and [“Setting print options and printing from Mac OS X applications”](#) on page 24.

- Color Setup

Set the default CMYK Simulation Profile, CMYK Simulation Method, RGB Source Profile, RGB Separation, Output Profile, Rendering Style, Spot Color Matching, Print Gray using Black Only, Black Text/Graphics, and Black Overprint settings.

For information about using Color Setup, see [Color Printing](#).

- Hot Folders

Assign a group of print options to a Hot Folder. When you specify print options for a Hot Folder, the print options are assigned to all jobs sent through that Hot Folder. These print options override any default options.



For information, see Hot Folders Help.

- Overrides in Command WorkStation

To change job settings from Command WorkStation, double-click a job to display the Properties dialog box.



For information, see Command WorkStation Help.

### Print option override hierarchy

The override hierarchy is as follows:

- A user's printer driver settings override the EX8002 Setup settings.
- Settings assigned to Hot Folders override the user's printer driver settings.
- Settings made from the job management tools (Command WorkStation Job Properties) override the user's printer driver settings.

## Print options and default settings

If you do not use the printer driver interface to configure a particular option, the EX8002 prints the job with the default setting. For options that you configure in Setup from the digital press control panel, Command WorkStation, or the Configure WebTool, choosing Printer's default results in the EX8002 printing the job with the factory default. For options that cannot be configured in Setup, the EX8002 prints the job with a preconfigured Printer's default setting. When you select the printer driver for US, the default Document Size is Letter or for International, the default Document Size is A4. For more information, see the following tables.

To determine the current Setup defaults, print the Configuration page from Command WorkStation or the digital press control panel. For information about how to print a Configuration page, see [Configuration and Setup](#).

The print option tables are organized according to the printer driver icons (tabs). Use the following links for quick access:

Printer driver icon	See
Basic or Quick Access (shortcuts)	<a href="#">page 24</a> or <a href="#">page 58</a>
Job Info	<a href="#">page 71</a>
Media	<a href="#">page 73</a>
Layout	<a href="#">page 75</a>
Color	<a href="#">page 80</a>
Image	<a href="#">page 84</a>
Finishing	<a href="#">page 85</a>
Variable Data Printing (VDP)	<a href="#">page 86</a>
Stamping/Watermark	<a href="#">page 87</a>

## Job Info options

Option	Information
<b>Copies</b>	The maximum number of copies is 9999.
<b>Print Range</b>	<p>Specify the page range or odd/even pages to print.</p> <p>For VDP jobs, a range of Records can be selected for printing. For imposed VDP jobs, a range of Records &amp; Sheets can be printed.</p> <p>For imposed jobs, a range of Sheet IDs can be selected for printing.</p> <p>This option is only accessible from Command WorkStation.</p>
<b>Schedule Printing</b>	<p>Specify if you want to perform advance print scheduling based on date and time. If you select On, select the date and time for the print job.</p> <p>The job is printed based on the date and time set on the EX8002, not the client workstation.</p> <p>If multiple jobs are selected and defined with the same date and time setting, job order is based on alphabetic order of the file names.</p>
<b>User Authentication: Username</b>	If User Authentication is enabled on the EX8002, specify your User Name to print a job. Type your user name or domain\user name for user authentication.
<b>User Authentication: Password</b>	If User Authentication is enabled on the EX8002, specify your User Password to print a job. Type your local password or domain password for user authentication.
<b>User Authentication: Use Windows Login</b>	<p>If you are logged on to your Windows computer, select Use Windows Login for user authentication.</p> <p>This option appears when you log on to your domain on your Windows computer.</p> <p>For more information, see <a href="#">Configuration and Setup</a>.</p>
<b>User Authentication: Save User Information</b>	Select On to save the user name and password information or the guest option for user authentication in subsequent sessions.
<b>User Authentication: I'm a Guest</b>	<p>Select On to allow guest printing. Guest printing must be set to On at the EX8002.</p> <p>In Command WorkStation, the management of jobs is determined by how you log on to the EX8002.</p>
<b>Notes 1/Notes 2</b>	Specify information about the job. This field has a 31-character (alphanumeric and special characters) limit.
<b>Instructions</b>	Specify instructions for the operator about the job. This field has a 127-character (alphanumeric and special characters) limit.
<b>Print Queue Action</b>	<p>Select the job action associated with a published queue.</p> <p>Select Print to send the file directly to printing.</p> <p>Select Print and Hold to save the raster file after printing.</p> <p>Select Process and Hold to RIP (process), but not print a job.</p> <p>This option is invalid if your job is sent to the Direct connection.</p>

Option	Information
<b>Control Bar</b>	<p>Specify On to print a Control Bar (for print job identification) in the margin.</p> <p>This option is available as part of the Fiery Graphic Arts Package, Premium Edition. For more information, see <a href="#">Fiery Graphic Arts Package</a>.</p> <p>Printer's default reflects the setting specified in ColorWise Pro Tools setup.</p>
<b>Progressives</b>	<p>Specify On to enable the Progressives feature, a diagnostic tool used to show toner separations.</p> <p>This feature uses the Progressives values specified in ColorWise Pro Tools Setup.</p> <p>This option is available as part of the Fiery Graphic Arts Package, Premium Edition. For more information, see <a href="#">Fiery Graphic Arts Package</a>.</p> <p><b>NOTE:</b> The Progressives and Postflight features cannot be used at the same time,</p>
<b>Postflight</b>	<p>Specify whether or not you want to use the Postflight feature, a diagnostic tool that allows you to analyze how data is processed by the EX8002.</p> <p>This option is available as part of the Fiery Graphic Arts Package, Premium Edition. For more information, see <a href="#">Fiery Graphic Arts Package</a>.</p> <p><b>NOTE:</b> The Progressives and Postflight features cannot be used at the same time,</p>



## Media options

Option	Information
<b>Paper Catalog</b>	<p>Click Select Media to access the Paper Catalog utility, which retrieves all paper information from the digital press.</p> <p>For information about using Paper Catalog, see <a href="#">Utilities</a> and Paper Catalog Help.</p> <p>Access to Paper Catalog requires Two-Way Communication. For information about establishing Two-Way Communication, see printer driver Help.</p>
<b>Document Size</b>	<p>Document Size is the page size defined in your application's Print setup (or Page setup) dialog box.</p> <p>In cases when printing one document page per sheet of paper, Document Size is usually the same as Paper Size. However, it may differ when printing booklets or imposing multiple document pages on a single sheet.</p> <p>Document Size may also differ from Paper Size when you use the Scale or Scale to Fit options, in which case the document page size is scaled at a given percent to fit a certain paper size.</p> <p>Select from the list of available sizes in the Document size menu. (SEF stands for Short Edge Feed; LEF stands for Long Edge Feed.)</p> <p><b>NOTE:</b> The default is Letter in the US and A4 elsewhere.</p> <p>For more information about Document size and Paper size, see <a href="#">page 92</a>.</p> <p>For information about Scale and Scale to fit, see <a href="#">page 99</a>.</p> <p>For information about printing custom page sizes, see <a href="#">page 31</a> and <a href="#">page 59</a>.</p>
<b>Paper Size</b>	<p>Paper Size defines the size of the sheet of paper on which your job prints. It is the size of the physical sheet of paper in the digital press tray. To assign Paper Size, do one of the following:</p> <ul style="list-style-type: none"><li>• Select the size from the available list.</li><li>• Select Define custom size to select a non-standard paper size.</li><li>• Select Same as Page Size to print one document page per sheet of paper.</li></ul> <p>The default size is Letter in the US and A4 elsewhere. For more information, see <a href="#">page 92</a>.</p>
<b>Paper Source</b>	<p>Specify the paper source that contains the paper to use for the print job. For more information, see <a href="#">page 98</a>.</p> <p>For information about setting your choice of media in the Bypass, see the documentation that accompanies your digital press.</p>

Option	Information
<b>Media Type</b>	<p>Choose the media type for your print job.</p> <p>Media types that appear in gray indicate that Face-Down Printing must be set to Off. (A Conflict pane alerts you and automatically changes this setting.)</p> <p>For information about media types and paper specifications, see the documentation that accompanies the digital press.</p>
<b>Tray Alignment</b>	<p>Specify Enable to adjust the image on the page to achieve alignment on both sides of a page when printing duplex. For more information about tray alignment, see <a href="#">Utilities</a>.</p>
<b>Mixed Media</b>	<p>Click Define to specify different media types, paper source, and chapter-based finishing for pages, or ranges of pages, within a print job.</p> <p>For more information, see <a href="#">page 96</a>. For information about using Mixed Media in Command WorkStation, see <a href="#">Utilities</a>.</p>

## Layout options

The Driver has three layout modes:

- Normal - use these options for printing standard documents, from 1 to 16 document pages per sheet ([page 75](#))
- Booklet - use these options for printing documents in booklet layout ([page 76](#))
- Gang-up print - use these options for speed printing imposition modes ([page 79](#))

### Normal

Option	Information
<b>Scale</b>	Specify an increase or decrease in the scale of your print job. When using the manual Scale option, you cannot specify Scale to Fit.  For more information, see <a href="#">page 99</a> .
<b>Scale to Fit</b>	Specify whether to scale your job to fit to a paper size. When using the Scale to Fit option, you cannot use the manual Scale option.  For more information, see <a href="#">page 99</a> .
<b>Orientation</b>	Specify the orientation of the document.  This option is not available from the Mac OS X printer driver.
<b>Rotate 180 (check box)</b>	Specify On to rotate the pages of a <i>landscape</i> job 180 degrees.  This option is not available from the Mac OS X printer driver.
<b>Mirror</b>	Print the mirror image of your job, with text and image reversed (as if viewed in a mirror).  This option is not available from the Mac OS X printer driver.
<b>Pages per sheet</b>	Specify the number of document pages per sheet of paper for your print job. <b>NOTE:</b> This option is invalid if your job is sent to the Direct connection.
<b>Print Border</b>	Select On to print borders around each page in your print job.
<b>Page Order</b>	Specify the layout direction when the Pages per sheet option is set to 2-up or greater.
<b>Duplex</b>	Specify Off for simplex (single-sided) printing.  Specify Head to Head or Head to Toe for duplex (double-sided) printing by specifying the orientation of printed pages.  For more information, see <a href="#">page 93</a> .
<b>Booklet</b>	Specify how to arrange the pages of the job in special layouts for folding or cutting after printing.  For a list of options and available settings, see the table on <a href="#">page 76</a> . For additional information, see <a href="#">page 89</a> .
<b>Gang-up</b>	For a list of options and available settings, see the table on <a href="#">page 79</a> . For additional information, see <a href="#">page 94</a> .

## Booklet options

Option	Information
<b>Booklet type: Booklet Type</b>	<p>Booklet Type is a combination of binding method, which determines how the signatures of the booklet are folded and imposed, and binding edge, which determines the location of the spine of the booklet.</p> <p>For more information, see Booklet Maker Help.</p>
<b>Booklet type: Cover</b>	<p>The initial Cover option (Saddle only) prepares a cover for your booklet.</p> <p>In Basic mode, you will define Cover options and media in final steps.</p> <p>If you select Cover is prepared for the booklet, you will define the Cover content, Cover media, and Booklet Cover Source in the final steps of the booklet process.</p> <p>If you select Cover is not prepared, Booklet Maker skips the remaining Cover options.</p> <p>For more information, see Booklet Maker Help.</p>
<b>Paper size: Paper Size for 2-up</b>	<p>Paper Size for 2-up defines the size of the sheet of paper (unfolded) on which your booklet will print.</p> <p>To select a Paper size for your booklet, do one of the following:</p> <ul style="list-style-type: none"> <li>• Select from the list of available sizes in the Paper Size for 2-up menu.</li> <li>• Select from Paper Catalog to access a dynamic database that stores the media attributes of any paper available for printing from the EX8002.</li> <li>• Select Define custom size to create a non-standard Paper size.</li> </ul> <p>The default Paper Size is Letter in the US and A4 elsewhere.</p> <p>For more information, see <a href="#">page 92</a> and Booklet Maker Help.</p> <p>For information about Paper Catalog, see <a href="#">Utilities</a>.</p> <p>For information about printing custom page sizes, see <a href="#">page 31</a> and <a href="#">page 59</a>.</p>
<b>Paper size: Document size</b>	<p>Document size is the page size defined in your application's Print setup (or Page setup) dialog box.</p> <p>Select from the list of available sizes in the Document size menu.</p> <p>To override Document size, select from the list of available sizes or choose Define custom size.</p> <p>The default Document size is Letter in the US and A4 elsewhere.</p> <p>For information about Paper size and Document size in booklets, see Booklet Maker Help.</p> <p>When you access Booklet Maker from Command WorkStation Job Properties, Document size is not an option.</p>
<b>Number of sheets in a subset (saddle)</b>	<p>When Nested Saddle is selected, use this option to specify the number of sheets in each subset.</p> <p>This option appears only when Nested Saddle is selected.</p>

Option	Information
<b>Paper size: Shrink to fit</b>	<p>Shrink to fit automatically scales down the document page to fit the paper size specified from the Paper size menu.</p> <p>When Shrink to fit is set to Off, page content prints at 100%.</p> <p>Shrink to fit only reduces or scales down the document page size. Shrink to fit does not scale up or enlarge.</p> <p>For information about Shrink to fit, see Booklet Maker Help.</p> <p>The Shrink to fit option is available only in Advanced mode.</p>
<b>Page alignment: Align pages Align pages (Win) Centering Adjustment (Mac &amp; CWS)</b>	<p>Align pages positions page content in relation to the center of one-half the paper size or the spine, the center of the sheet where the fold occurs.</p> <p>At the center positions page content in the center of <i>one-half</i> the specified paper size.</p> <p>At the spine aligns page content with the spine or center fold of your booklet.</p> <p>For information about page alignment, see Booklet Maker Help.</p>
<b>Page alignment: Increase gutter by 0/-50–50 mm (0.1 mm increments) 0/-1.97–1.97 in (.005 inch increments)</b>	<p>Increase gutter by controls the amount of space between adjacent pages to adjust for binding or other finishing options.</p> <p>Specify a positive value to increase the amount of blank space between adjacent pages.</p> <p>Specify a negative value to decrease the amount of blank space between adjacent pages.</p> <p>For information about gutters in booklet printing, see Booklet Maker Help.</p>
<b>Page alignment: Compensate creep for</b>	<p>Compensate creep for adjusts the position of the page content to counteract the shift that occurs when sheets are folded to create Saddle and Nested Saddle booklets.</p> <p>Select Plain when printing Saddle or Nested Saddle booklets with a large number of pages.</p> <p>Select Thick when printing Saddle or Nested Saddle booklets on heavyweight paper.</p> <p>For information about creep compensation, see Booklet Maker Help.</p>
<b>Cover Content: Content input</b>	<p>Select None (use insert) to insert a pre-printed cover that will be added to the body pages from an inserter tray.</p> <p>Select As Separate Pages to include cover content (individual pages in your document) as part of your booklet print job.</p> <p>For information about Cover options, see Booklet Maker Help.</p>

Option	Information
<b>Cover Content: Front Cover</b>	<p>When As Separate Pages is selected, use the Front Cover option to define how the content of the front cover is printed.</p> <p>Select Print on outside to print only on the outside of the front cover (the inside of the front cover will be blank).</p> <p>Select Print on inside to print only on the inside of the front cover (the outside of the front cover will be blank).</p> <p>Select Print on both sides to print on both the inside and outside of the front cover.</p> <p>Select Do not print if you do not want any content printed on the front cover.</p> <p>When you add a cover, blank pages may be inserted depending on the allocation of pages to signatures.</p> <p>For information about cover options, see Booklet Maker Help.</p>
<b>Cover Content: Back Cover</b>	<p>When As Separate Pages is selected, use the Back Cover option to define how the content of the back cover is printed.</p> <p>Select Print on outside to print only on the outside of the back cover (the inside of the back cover will be blank).</p> <p>Select Print on inside to print only on the inside of the back cover (the outside of the back cover will be blank).</p> <p>Select Print on both sides to print on both the inside and outside of the back cover.</p> <p>Select Do not print if you do not want any content printed on the back cover.</p> <p>When you add a cover, blank pages may be inserted depending on the allocation of pages to signatures in the job.</p> <p>For information about cover options, see Booklet Maker Help.</p>
<b>Cover Media: Cover Media</b>	<p>Cover Media (Saddle only) specifies the media for your booklet print job.</p> <p>Choose Same as body to use the same media as the body pages of your job.</p> <p>Choose Select from Paper Catalog to access the Paper Catalog utility, which retrieves all paper information from the digital press.</p> <p><b>NOTE:</b> Cover Media is not an option for Mac OS.</p> <p>For information about using Paper Catalog, see <a href="#">Utilities</a> and Paper Catalog Help.</p>
<b>Cover Media: Booklet Cover Source</b>	<p>Booklet Cover Source (Saddle only) selects the tray that contains the Cover media for your booklet.</p>

## Gang-up print

Option	Information
<b>Gang-up type</b>	<p>Select Step &amp; repeat to speed print a job by printing two document pages on each sheet. When the printed sheets are cut in half, the result is two complete sets of the same document.</p> <p>Select Cut &amp; stack to speed print a job by printing two document pages side by side. When the printed sheets are cut in half and stacked together, the result is one complete set of the document (in faster printing time).</p> <p>For more information, see <a href="#">page 94</a>.</p>
<b>Paper size</b>	<p>Select from the list of available sizes in the Paper size menu.</p> <p>Select Define custom size to select a non-standard Paper size.</p> <p>Select from Paper Catalog to access a dynamic database that stores the media attributes of any paper available for printing from the EX8002.</p> <p>For information about Paper size and Document size, see <a href="#">page 92</a>.</p> <p>For information about printing custom page sizes, see <a href="#">page 31</a> and <a href="#">page 59</a>.</p> <p>For information about Paper Catalog, see <a href="#">Utilities</a>.</p>
<b>Document size</b>	<p>Document size is the page size defined in your original application's Print setup (or Page setup) dialog box.</p> <p>To override specified Document size, select from the list of available sizes or choose Define Custom size.</p> <p>The default Document size is Letter in the US, and A4 elsewhere.</p> <p>For more information, see <a href="#">page 92</a>.</p>
<b>Orientation</b>	<p>Orientation displays the aspect ratio (portrait or landscape) defined in your original application's Print setup (or Page setup) dialog box. Use this option to override if necessary.</p>
<b>Shrink to fit</b>	<p>Shrink to fit scales down document pages to fit the paper size you select, and only reduces or scales down the document page size. It does not scale up or enlarge.</p> <p>When Shrink to fit is set to Off, page contents print at 100%.</p>
<b>Increase gutter by</b> <b>0/-50–50 mm</b> <b>(0.1 mm increments)</b> <b>0/-1.97–1.97 in</b> <b>(.005 inch increments)</b>	<p>Increase gutter by controls the amount of space between adjacent pages on a sheet to adjust for trimming or other finishing options.</p> <p>Specify a positive value to increase the amount of blank space between adjacent pages.</p> <p>Specify a negative value to decrease the amount of blank space between adjacent pages.</p>
<b>Duplex</b>	<p>Select Off for single-sided printing.</p> <p>Specify Head to Head for duplex (double-sided) printing with both sides using the same top edge.</p> <p>Specify Head to Toe for duplex printing with the back side upside down.</p> <p>For more information, see <a href="#">page 93</a>.</p>

## Color options

Option	Information
<b>Color Mode (Mac and CWS) Print Mode (Win)</b>	<p>Specify the color mode for the current print job.</p> <p>Select CMYK for a full-color document.</p> <p>Select Grayscale for a grayscale or black-and-white document.</p> <p>Choose Expert Settings to set other color print options and settings, including Black Overprint, Black Text/Graphics, and Print Gray using Black Only.</p> <p>For information about Expert Settings, see <a href="#">page 81</a>.</p>
<b>Auto Trapping</b>	<p>Specify whether the job should automatically reduce white gaps for text and graphics.</p> <p>For more information, see <a href="#">page 89</a>.</p> <p>Setting this option to On may result in graphics or text surrounded with borders.</p>
<b>Combine Separations</b>	<p>When printing separations from supported desktop publishing applications:</p> <p>Select On to combine separations on a single page.</p> <p>Select Off to view separations as four individual black-and-white pages, each representing one color plate.</p> <p>For more information, see <a href="#">Color Printing</a>.</p>
<b>Composite Overprint</b>	<p>Select On to overprint objects that are specified in the source PostScript or PDF file.</p> <p>Design applications are typically set to knock out objects. To overprint, you must first change the settings in the <i>source</i> application. When the Composite Overprint option is then set to On, the overprinting commands specified in the source application take place, provided the output is composite and consistent with the separations output.</p> <p>For more information, see <a href="#">Color Printing</a>.</p>
<b>Substitute Colors</b>	<p>Select On to use the Substitute Color Values defined in the Spot-On module.</p> <p>For more information, see <a href="#">Color Printing</a>.</p>
<b>2-Color Print Mapping</b>	<p>Specify if you want to replace spot colors with generic colors when you are creating a print job.</p> <p>This option is available as part of the Fiery Graphic Arts Package, Premium Edition.</p> <p>For more information, see <a href="#">Fiery Graphic Arts Package</a>.</p>



### Expert Settings options

To access the following options, click Expert Settings.

Option	Information
<b>Black Overprint</b>	<p>Select Text to overprint black text. Select Text/Graphics to overprint black text and graphics.</p> <p>For more information, see <a href="#">Color Printing</a>.</p>
<b>Black Text/Graphics</b>	<p>Select Normal to print black text and graphics as a four-color black using C, M, Y, and K toner, and to use normal PostScript rendering.</p> <p>Select Pure Black On to print black text and graphics as a one-color black, using black toner only.</p> <p>Select Rich Black On to print black text and graphics as richer looking black, by layering a small amount of Cyan toner underneath the black toner to make the black even darker.</p> <p>This option is automatically set to On if the Black Overprint option is enabled.</p> <p>For more information, see <a href="#">Color Printing</a>.</p>
<b>CMYK Simulation Method</b>	<p>Specify the simulation method for CMYK print jobs.</p> <p>Select Full (Source GCR) for a more complete and accurate simulation. Full (Source GCR) applies colorimetric transformations that adjust hue as well as output density and produces output that maintains the same amount of black as the source document.</p> <p>Select Full (Output GCR) to apply the same simulation method as Full (Source GCR), except that the output produced contains a black amount determined by the Output Profile.</p> <p>Select Quick to use one-dimensional transfer curves to adjust density output of individual color channels.</p> <p>For more information, see <a href="#">Color Printing</a>.</p>
<b>CMYK Simulation Profile</b>	<p>Specify the simulation goal to be used for the current print job.</p> <p>If Two-Way Communication is enabled, Simulation 1–Simulation 10 do not appear in the list of profiles and the profile names differ slightly.</p> <p>For more information, see <a href="#">Color Printing</a>.</p>
<b>Output Profile</b>	<p>Specify the output profile to use for the current print job.</p> <p>For information about output profiles, see <a href="#">Color Printing</a>.</p>
<b>Paper Simulation</b>	<p>Specify to adjust the color according to the shade of the paper stock used as printable CMYK values in the output color space.</p> <p>This option is available as part of the Fiery Graphic Arts Package, Premium Edition. For more information, see <a href="#">Fiery Graphic Arts Package</a>.</p>

Option	Information
<b>Print Gray using Black Only (CMYK)</b>	<p>Select these settings to print a CMYK job using black toner instead of process black.</p> <p>This option renders the selected object types (Text/Graphics or Text/Graphics/Images) in grayscale using black only, when C=M=Y=0 and K=n, where n is not zero. Graphics refer to vector graphics and Images refer to raster images.</p> <p>This option is designed to use black efficiently, by using only black toner (rather than four-color process black).</p> <p>For more information, see <a href="#">Color Printing</a>.</p>
<b>Print Gray using Black Only (RGB)</b>	<p>Select these settings to print an RGB job using black toner instead of process black.</p> <p>This option renders the selected object types (Text/Graphics or Text/Graphics/Images) in grayscale using black only, when R=G=B. Graphics refer to vector graphics and Images refer to raster images.</p> <p>This option is designed to use black efficiently, by using only black toner (rather than four-color process black).</p> <p>For more information, see <a href="#">Color Printing</a>.</p>
<b>Rendering Style</b>	<p>Specify a default CRD (color rendering dictionary) for color conversion when printing RGB images, objects, and text.</p> <p>Select Presentation to print files with artwork, graphics and text. The result is similar to Photographic, with well-rendered flesh tones and more saturated colors.</p> <p>Select Photographic to print photographs, including scanned and digital camera images. The result is less saturated than Presentation style.</p> <p>Select Relative Colorimetric when color matching is important, but you also want to print white as paper white. The white point transformation eliminates borders between blank spaces and white objects.</p> <p>Select Absolute Colorimetric when exact colors are required and visible borders are not distracting. There is no white point transformation.</p> <p>For more information, see <a href="#">Color Printing</a>.</p>
<b>RGB Separation</b>	<p>Select Simulation for RGB jobs for which you want to simulate an output device other than the device to which you are printing.</p> <p>Select Output for RGB jobs that you are printing to the final output device.</p> <p>If Two-Way Communication is not enabled, this option is set to Printer's default, which reflects the setting specified in Color Setup. For more information, see <a href="#">Color Printing</a>.</p>
<b>RGB Source Profile</b>	<p>Specify a source color space definition for printing RGB images, objects, and text.</p> <p>If Two-Way Communication is enabled, Source 1–Source 10 do not appear in the list of profiles and the profile names differ slightly.</p> <p>For more information, see <a href="#">Color Printing</a>.</p>

Option	Information
<b>Spot Color Matching</b>	<p>Select Off to print specified PANTONE colors in your job using the current CMYK Simulation and CMYK Simulation Method.</p> <p>Select On to activate the PANTONE Lookup Table. The EX8002 prints specified PANTONE colors in your job by matching the CMYK print blend to the same color from the PANTONE library.</p> <p>If Two-Way Communication is not enabled, this option is set to Printer's default, which reflects the setting specified in ColorWise Pro Tools. For more information, see <a href="#">Color Printing</a>.</p>
<b>Use PDF/X Output Intent</b>	<p>Specify On to enable the PDF/X Output Intent feature to use the embedded output intent for PDF/X compliant print jobs.</p> <p>To use PDF/X Output Intent, you must set the RGB Source Profile to None.</p> <p>For information about the PDF/X Output Intent feature, see <a href="#">Color Printing</a>.</p> <p>This option is only accessible from Command WorkStation.</p>

## Image options

For information about options specified in Setup, see [Configuration and Setup](#).

Option	Information
<b>Halftone Simulation</b>	<p>Specify a halftone screening method for your print job.</p> <p>Select Application Defined to use the screening set by the application.</p> <p>Select Newsprint if you want a look similar to that of a newspaper.</p> <p>Select User Defined 1-3 to use the screening set by the EX8002. The User Defined Screen 1-3 settings reflect the setting specified in EX8002 Setup.</p> <p>For more information, see <a href="#">Fiery Graphic Arts Package</a>.</p>
<b>Image Smoothing</b>	Select On to minimize grainy output when printing low-resolution images.
<b>Brightness</b>	Select 85% for a substantially lighter image, 115% for a substantially darker image, or use one of the settings in between.
<b>Text/Graphics Enhancement</b>	Specify if you want to sharpen the appearance of text or vector graphics.
<b>Image Quality</b>	<p>Specify the type of image quality for the job.</p> <p>The Image Quality option affects the fineness of images in the job; there is a trade-off with processing speed.</p>
<b>Digital Press Mode</b>	<p>Specify to select the different screens that are available on the digital press when printing a job.</p> <p>Specify Defined by Output Profile for the EX8002 to look at the calibration set associated with the output profile set for a job. The EX8002 will use the Digital Press Mode setting that is associated with that calibration set. This ensures that the screen applied during calibration is the same screen applied for the job, and that the calibration adjustment will be accurate.</p> <p><b>NOTE:</b> For Mixed Media jobs, the Digital Press Mode is automatically set to 200 Dot Rotated.</p>
<b>Text/Graphics Quality</b>	<p>Use this option to enhance the resolution of text and graphics.</p> <p>Select Normal to provide a good quality, sharpened image at high print speed.</p> <p>Select Best for higher resolution and more sharpened output quality, which may affect printing speed.</p>

## Finishing options

Option	Information
<b>Page Order</b>	<p>Select From 1-N to print the pages of your job from first to last.</p> <p>Select From N-1 to print the pages of your job from last to first.</p>
<b>Collation</b>	<p>Specify how to output multiple-page/multiple-copy jobs.</p> <p>For more information, see <a href="#">page 91</a>.</p>
<b>Face-Down Printing</b>	<p>Select On to print your document on the bottom of the sheet of paper (the document outputs from the digital press with the text facing down).</p> <p>Select Off to print your document on the top of the sheet of paper.</p>
<b>Stapler Mode</b>	Specify whether and how to staple the job.
<b>Output Destination</b>	<p>Specify the output location of the printed job.</p> <p><b>NOTE:</b> When you choose AutoSelect, print jobs are output to the top tray closest to the digital press. HCS stands for “High Capacity Stacker”; CSS for “Common Stacker Stapler”; AOS for “Auto Output Switching”.</p> <p>Certain output trays are optional and require installation. For information about installable options, see printer driver Help.</p>
<b>Offset Jobs</b>	Specify that different print jobs be offset in the digital press tray.
<b>DFA Finishing</b>	<p>Specify functional modes of your DFA device.</p> <p>For information, see the documentation that accompanies the DFA device.</p>
<b>DFA Profile</b>	<p>Specify a profile to control your DFA device behavior.</p> <p>The profiles must be programmed at the digital press.</p> <p>For information, see the documentation that accompanies the digital press and DFA device.</p>
<b>Image Shift</b>	<p>Adjust an image for duplex printing by shifting the image horizontally, in the direction of paper travel, relative to the leading edge.</p> <p>For more information, see <a href="#">page 95</a>.</p>

## Variable Data Printing (VDP) options

The EX8002 is compatible with the following variable data printing languages:

- FreeForm and FreeForm 2
- Personalized Print Markup Language (PPML)
- Creo Variable Print Specification (VPS)
- Xerox Variable Data Intelligent PostScript Printware (VIPP)

When creating VDP documents, the following settings for the master document and variable document must match:

- Color Mode (Mac OS) or Print Mode (Windows)
- Combine Separations
- Duplex
- Orientation
- Page Size
- Stapler Mode

The following setting for the variable document overrides the corresponding settings in the master document:

- Media Type
- Page Order
- Paper Source

Option	Information
<b>FreeForm: Create Master</b>	To create a FreeForm master from this job, specify a number to assign to the FreeForm master file. Command WorkStation allows you to select up to 100 FreeForm Masters. For more information, see <a href="#">Variable Data Printing</a> .
<b>FreeForm: Use Master</b>	For variable data print jobs, specify a FreeForm master number to be used for the job. Command Workstation allows you to select up to 100 FreeForm Masters. For more information, see <a href="#">Variable Data Printing</a> .
<b>FreeForm: Preview Master</b>	Click to generate a low-resolution image of your master page.

Option	Information
<b>Print Master</b>	<p>Use this option to verify or confirm your Master page.</p> <p>For more information, see <a href="#">Variable Data Printing</a>.</p> <p>Printer's default reflects the setting specified in EX8002 Setup.</p>
<b>Remove White PPT Background</b>	<p>Select On when using PowerPoint to create variable data in conjunction with FreeForm.</p>
<b>File Search Path</b>	<p>Some PPML and other types of jobs do not contain all of the variable data job resources in a single file. In these cases, on a job per job basis, specify the location of the variable data job external resources so that the EX8002 can access them.</p> <p>For more information, see <a href="#">Variable Data Printing</a>.</p>
<b>Pages Per Record</b>	<p>Use this option to define record-based (rather than job-based) finishing, based on the number entered.</p> <p>This option is used with the Define Record Length option.</p> <p>For more information, see <a href="#">Variable Data Printing</a>.</p>
<b>Define Record length</b>	<p>This feature allows you to process a PDF or PostScript file like a variable data print job, and to apply record-based finishing.</p> <p>This option is used in connection with the Pages Per Record option.</p> <p>For more information, see <a href="#">Variable Data Printing</a>.</p>
<b>Use PDF XObjects</b>	<p>Specify On to use PDF XObjects, a feature that recognizes objects (text, images, vectors) within a PostScript or PDF file and caches the image, reducing need to reRIP (re-process) image data for faster printing.</p> <p>For more information, see <a href="#">Variable Data Printing</a>.</p> <p>This option is only accessible from Command WorkStation.</p>

## Stamping/Watermark options

Option	Information
<b>Watermarks</b>	<p>Select standard text for your watermark from the pull-down menu.</p> <p>To create your own watermark, click New.</p> <p>To modify a standard watermark, select from the pull-down menu and click Edit.</p> <p>To remove a watermark from the list, select from the pull-down menu and click Delete.</p> <p>For more information about using watermarks, see printer driver Help.</p>
<b>Print Watermarks: First Page Only</b>	<p>Use this option print watermarks on only the first page. For more information about using watermarks, see printer driver Help.</p>

## Overriding print option settings

Print option settings that were specified in the printer driver can be overridden in Command WorkStation Job Properties.

### TO OVERRIDE JOB PROPERTIES

- 1 In Command WorkStation, right-click a held job in the Active Jobs queue.
- 2 Choose Properties from the pop-up menu.
- 3 Specify the number of copies to print, and then click Print.

You can override most print options in the printer driver and Command WorkStation Job Properties. Exceptions are listed in the following table:

Printer driver tab	Option	Driver Win	CWS Win	Driver Mac	CWS Mac
JOB INFO	Print Range		x		x
	Print Queue Action	x		x	
	User Authentication: Username	x		x	
	User Authentication: Password	x		x	
	User Authentication: Use Windows Login	x			
	User Authentication: Save User Information	x			
	User Authentication: I'm a Guest	x			
MEDIA	Document Size	x		x	
LAYOUT: Normal	Mirror	x			
	Orientation	x		x	
	Rotate 180 (check box)	x		x	
LAYOUT: Booklet	Paper size: Document size	x			
LAYOUT: Gang-up	Document size	x			
	Orientation	x			
EXPERT SETTINGS	Use PDF/X Output Intent		x		x
VARIABLE DATA PRINTING	FreeForm: Preview Master	x	x		
	Use PDF XObjects		x		x
STAMPING/WATERMARK	Watermarks	x	x	x	
	Print Watermarks: First Page Only	x	x	x	



## Additional information

The following sections provide additional information about print options. For more information about options, see the tables that begins on [page 70](#).

### Auto Trapping

Trapping is a technique to print some objects slightly larger or smaller than specified in an application, in order to prevent white edges around the objects. These white edges, or “halos,” can be caused by factors such as misregistration, the physical properties of the toners, and the stiffness of the media. The Auto Trapping feature provides you with advanced trapping settings and gives you full control over their values. For more information, see [Color Printing](#).

### Booklet Maker

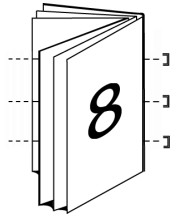
Booklet Maker is the imposition tool that allows you to quickly print documents in booklet format, without the need for more involved page imposition programs. Booklet Maker provides advanced settings, while streamlining the booklet-making process by displaying only the options and controls relevant to your selections. Booklet Maker is capable of imposing jobs from nearly any application.

Booklet Maker can be accessed in the printer driver when you print a job or in Command WorkStation Job Properties, where you can modify a job's properties.

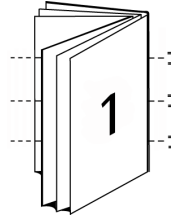
**NOTE:** Mixed media jobs, and variable data jobs are not supported when using Booklet Maker.

The following booklet layouts are available:

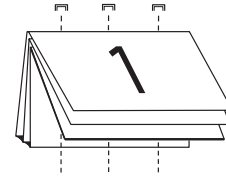
**Saddle binding:** In Saddle binding, signatures are folded together as a group, and then stapled or stitched along the center fold, which forms the spine of the booklet.



**Saddle (left) binding**

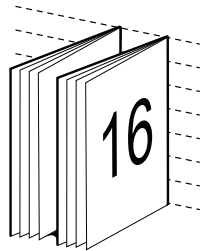


**Saddle (right) binding**

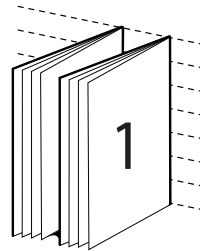


**Saddle (top) booklet**

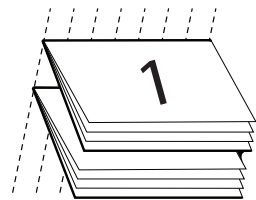
**Nested Saddle:** The Nested Saddle binding method combines saddle and perfect binding methods by stacking two or more saddles (also called “groups” or “subsets”) together along the common fold, then gluing them together at the fold to form the spine.



**Nested Saddle (left) binding**

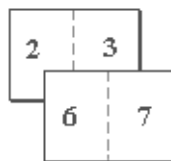


**Nested Saddle (right) binding**

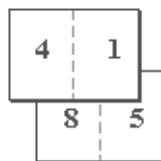


**Nested Saddle (top) binding**

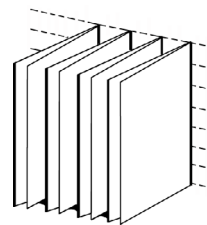
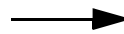
**Perfect binding:** In Perfect binding, separate folded pages are printed and stacked in booklet order. Finished pages are stitched adjacent to one another for trimming or gluing.



**Front**



**Back**



**Perfect booklet**

For Booklet Maker options and available settings, see the table that begins on [page 76](#).

For information about using Booklet Maker options, see Booklet Maker Help.



---

**TO ACCESS BOOKLET MAKER FROM THE WINDOWS PRINTER DRIVER**

- 1 In your application, choose File > Print.
- 2 Select the EX8002 as your digital press, and then click Properties.
- 3 In the printer driver, click the Layout icon, select the Booklet option, and then click Settings.

---

**TO ACCESS BOOKLET MAKER FROM THE MAC OS X PRINTER DRIVER**

- 1 In your application, choose File > Print.
- 2 Select the EX8002 as your digital press, and then choose Fiery Features from the drop-down list.
- 3 Click Full Properties in the Quick Access pane.
- 4 In the printer driver, click the Layout icon, select the Booklet option, and then click Settings.

---

**TO ACCESS BOOKLET MAKER FROM COMMAND WORKSTATION**

- 1 Double-click your print job in the Active Jobs window; or right-click the job and select Properties from pull-down menu.
- 2 Select the Layout icon in the Job Properties window.
- 3 Select the Booklet option, and then click Settings.

## Collation

Use this option to specify sorting options.

**Collated:** Copies of a complete job are sorted as 1-N, 1-N.

**Uncollated:** Copies of a complete job are sorted as 1,1, 2,2, 3,3.

**NOTE:** The Collation of Mixed Media and Variable Data Printing (VDP) jobs is handled differently. For mixed media jobs, copies of a complete job are sorted according to finishing set. For variable data printing jobs, copies of a complete job are sorted per record.







For more information about VDP, see [Variable Data Printing](#); and for information about Mixed Media, see [Utilities](#).

Document size and Paper size

Document size is the page size defined in your application's Print setup (or Page setup) dialog box. Paper size is the size of the actual sheet of paper on which your job is printed. It may be useful to think of Document size as digital *input* (the page size defined in your original document) and Paper size as the physical *output* (the actual size of the paper in the digital press tray).

In cases when you print one document page per sheet of paper, Document size is usually the same as the Paper size. However, Document size may differ from Paper size when you print booklets or impose multiple document pages on a single sheet.

The following illustrations show examples of possible relationships between Document size and Paper size. Note that the orientation of all pages shown is Landscape.

	Document size (input)	Paper size (output)
Document size is the same as Paper size. Scaling is 100%.	Letter 	Letter 
Tabloid Document size scaled to fit on Letter Paper size. Scaling is 50%.	Tabloid 11x17 	Letter 
A4 Document size scaled to fit on A3 Paper size. Scaling is 141%.	A4 	A3 

Document size may also differ from Paper size when using the Scale or Scale to Fit options. The Scale option reduces or enlarges the document page at a specified percent. The Scale to Fit option automatically reduces or enlarges the document image to fit the selected Paper size.

For information about Scale and Scale to Fit, see [page 99](#).



For information about Document size and Paper size in booklet printing, see Booklet Maker Help.

## Duplex printing

To PRINT DUPLEX (DOUBLE-SIDED) PAGES

- 1 In your application, choose File > Print and do one of the following.

**Mac OS X:** Select the EX8002 as your digital press, choose Fiery Features from the drop-down list, click Full Properties in the Quick Access pane, and then select Normal on the Layout tab.

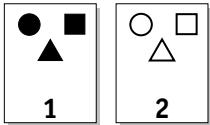
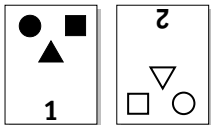
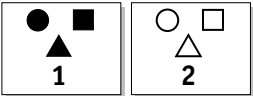
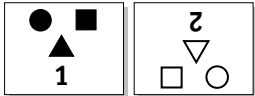
**Windows:** Select the EX8002 as your digital press, click Properties, click the Layout icon, and then select Normal.

- 2 Choose one of the Duplex settings:

**Head to Head:** Prints the top of the image on Side 1 on the same edge of the page as the top of the image on Side 2.

**Head to Toe:** Prints the top of the image on Side 1 on the opposite edge of the page from the top of the image on Side 2.

The following table shows how the Duplex settings correspond to printed output.

	Head to Head	Head to Toe
Portrait		
Landscape		

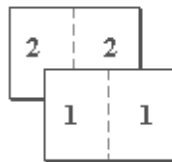
- 3 Print the job.

## Gang-up printing

The EX8002 includes two speed-printing options:

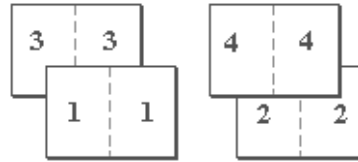
**Step & repeat:** Select this option to speed print a job so that the first page of your document is printed twice on the first sheet. The next sheet duplicates the data on the second page, the next sheet duplicates the data on the third page, and so on. When the printed sheets are cut in half, the result is two complete sets of the same document.

### Single-sided



Front only

### Duplex (double-sided)

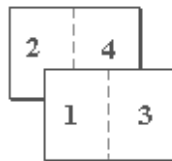


Front

Back

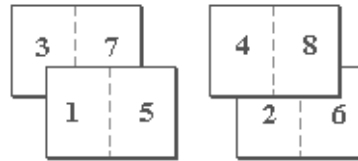
**Cut & stack:** Select this option to speed print a job so that when the sheets are stacked and cut from the central position, the job is numbered in order and separated as two stacks. The print order is such that when the sheets are cut in half, you can combine them to form a single complete set of the document, in faster printing time.

### Single-sided



Front only

### Duplex (double-sided)



Front

Back

For available options and settings, see the table on [page 79](#).

#### TO ACCESS GANG-UP PRINT FROM WINDOWS PRINTER DRIVER

- 1 In your application, choose File > Print.
- 2 Select the EX8002 as your digital press and click Properties.
- 3 In the printer driver, click the Layout icon, select Gang-up print, and then click Settings.

#### TO ACCESS GANG-UP PRINT FROM MAC OS X PRINTER DRIVER

- 1 In your application, choose File > Print.
- 2 Select the EX8002 as your digital press and choose Fiery Features from the drop-down list.
- 3 Click Full Properties in the Quick Access pane.
- 4 In the printer driver, click the Layout icon, select Gang-up Print, and then click Settings.

## Image Shift

Image Shift allows you to specify how much the image on each page should be shifted relative to the X (horizontal) and Y (vertical) axis. Moving the job content in this manner enables you to allow for various finishing options, such as stapling and binding. Image Shift prevents the image from being clipped.

**NOTE:** This option is available in the printer drivers or Command WorkStation.

**NOTE:** This option is effective only for jobs in which Pages per sheet is set to 1-up.

---

### TO DEFINE IMAGE SHIFT FOR A PRINT JOB

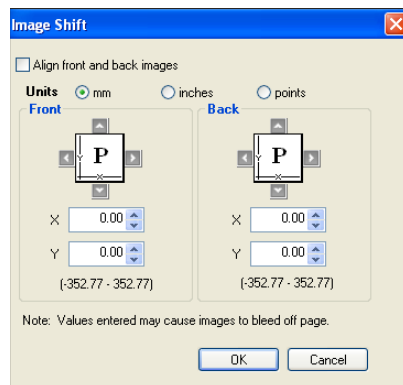
- 1 In your application, choose File > Print and do one of the following.

**Mac OS X:** Select the EX8002 as your digital press, choose Fiery Features from the drop-down list, click Full Properties in the Quick Access pane, and then click the Finishing tab.

**Windows:** Select the EX8002 as your digital press, click Properties, and then click the Finishing icon.

- 2 Mac OS X: Enable Image Shift.

**Windows:** Enable Image Shift and then click Image Shift Options.



- 3 Select the units of measurement.
  - 4 Type the Front and Back image shift settings in the X and Y axis fields. You can also use the arrow buttons to shift the image settings.
- NOTE:** The maximum value for both X and Y axes is 999.99 points/13.89 inches/352.77 mm.
- 5 To align front and back images proportionately, select Align front and back images.
  - 6 Click OK.

## Mixed Media

The Mixed Media feature allows you to define the chapter divisions of a print job and to print certain pages, or ranges of pages, on varying types of medias. For example, you can use this option to add blank pages or to specify duplex pages within a single print job. You can also use Mixed Media to specify chapter-based finishing options, which treat each chapter as a separate finishing or duplexing set.



You can access Mixed Media from Command WorkStation or the printer driver. Instructions for accessing and using Mixed Media are provided in the Command WorkStation online Help. Features specific to the EX8002 are described in [Utilities](#).

The following procedure describes how to access and print using Mixed Media from the printer drivers.

---

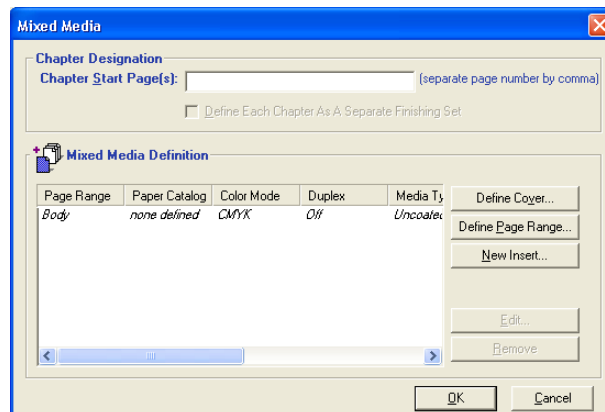
### TO ACCESS MIXED MEDIA FROM THE PRINTER DRIVER

- 1 Select **Print** from your application, and click **Properties**.

**Mac OS X:** Select the EX8002 as your digital press, choose **Fiery Features** from the drop-down list, click **Full Properties** in the Quick Access pane, and then click the **Media** icon.

**Windows:** Select the EX8002 as your digital press, click **Properties**, and then click the **Media** icon.

- 2 Select **Media** from the **Fiery Printing** tab, and then click **Mixed Media Define**.



The Mixed Media dialog box appears.



### 3 Select from the following options:

**Chapter Start Page(s):** Use this option to designate chapter divisions, using comma-separated values (for example: 4,9,17) to designate the start of each new chapter.

**NOTE:** It is not necessary to type the first page; page numbers refer to the numbering of the original document.

**Define Each Chapter As A Separate Finishing Set:** Select this option to apply finishing options (such as stapling) or double-sided printing to each chapter created with the Chapter Start Page(s) option. For double-sided printing, using this option forces each starting page to use a right-side page, adding a preceding left-sided blank, if necessary.

**NOTE:** If you use the Chapter Start Page(s), Define Cover, or Define Each Chapter As A Finishing Set, *all* media specified in the Paper Size per chapter must share the same dimensions (for example, all Letter, all Tabloid, or all A4).

**Define Cover:** Use this option to assign page attributes (Color Mode, Cover Page Mode, Duplex, Media Type, Paper Size, Paper Source, Paper Catalog, and Tab Shift) to front and back cover pages.

**Define Page Range:** Use this option to assign page attributes (Color Mode, Duplex, Media Type, Paper Size, Paper Source, Paper Catalog, and Tab Shift) to specific pages, or ranges of pages. After you set page attributes, select Add Definition to save your settings.

**Insert Blank:** Use this option to assign page attributes (Media Type, Paper Size, Paper Source, and Paper Catalog) to blank pages.

### 4 After you set page attributes, click Add Definition (for Page Range) or Insert (for Blank pages).

### 5 Click OK.

**NOTE:** You can save up to 100 different settings for the Selection List in the Mixed Media dialog box.

The way you define Mixed Media in the Windows and Mac OS X printer drivers is similar to the way you define it in Command WorkStation. For more information and detailed procedures, see [Utilities](#).

## Paper Catalog

Paper Catalog is a system-based paper warehouse database that stores the attributes of any media that is available for printing from the EX8002. After the media types have been added at the digital press control panel, you can select media from those listed for your job.

The following procedure describes how to access Paper Catalog from the printer driver.

---

### TO ACCESS PAPER CATALOG FROM THE PRINTER DRIVER



- 1 **Establish Two-Way Communication between your computer and the EX8002 by entering the IP Address or DNS name in Properties.**

For information about establishing Two-Way Communication, see printer driver Help.

- 2 **Select Print from your application and click Properties.**
- 3 **Click the Media tab and select the required media from the Paper Catalog pull-down menu.**
- 4 **Click Select Media to view the entire database and the full descriptions of paper attributes.**

For information about accessing Paper Catalog from Command WorkStation and Hot Folders, see [Utilities](#).

## Paper Source





The Paper Source option allows you to select a specific tray for your job. If you choose the AutoSelect setting, the digital press prints from any tray containing the paper size necessary for the job. This setting also allows the digital press to automatically switch between trays, if the current tray becomes empty, while continuing to print.

Scale

The operator can specify a scaling override in Command WorkStation, but the override is applied to any scaling value already set in the active job. For example, if a user sends a job with a scaling value of 50% and the operator specifies a Scale override of 300%, the job is printed at 150% of the original document size, that is, 50% of 300%.

Scale to Fit

The Scale to Fit option allows you to scale a job to a Paper size different from the Document size. When you set this option to On, the image is increased or reduced in size to fit the paper size you select from the Paper Size menu. When you set this option to Off, the original document size is printed without any scaling, even if you select a larger paper size.

	Document size Letter	Paper size 11 x 17
Scale to Fit set to On		
Scale to Fit set to Off		

## User Authentication

If user authentication has been enabled in the EX8002 setup, you must enter a valid user name and password to send a print job to the EX8002. In Command WorkStation, the management of jobs is determined by how you have logged on to the EX8002.

**For Mac OS X:** Select the Job Info icon and type login information in the User Name and Password fields.

**Use Windows Login:** Choose this option if you are already logged on to a Windows computer. Otherwise, type your Windows network logon information in the Username and Password fields.

**Save User Information:** Select this option to save Windows logon information. By default, this option is activated.

**Validate:** Click to validate user authorization and to confirm printing privileges. To validate, Two-Way Communication must to be activated. For information on establishing Two-Way Communication, see printer driver Help.

**I'm a guest:** Choose this option to activate guest printing privileges. By default, guest printing is permitted.

For information about enabling user authentication in the Configure WebTool, see [Configuration and Setup](#).

For information about the *digital press's* user authentication, see the documentation that accompanies your digital press.

# INDEX

## Numerics

2-Color Print Mapping option 80

## A

AppleTalk connection, Mac OS X 16, 20

Auto Trapping option 80, 89

## B

binding method 76

Black Overprint option 81

Black Text/Graphics option 81

Booklet Maker

Align pages option 77

Back Cover option 78

binding method 76

Booklet Cover Source option 78

Cover Content option 77

Cover is prepared for the booklet 76

Cover Media option 78

Creep compensation 77

Document size 76

Front Cover option 78

Gutter option 77

Increase gutter by option 77

Nested Saddle booklets 90

Page Alignment 77

Paper size 76, 79

Shrink to fit option 77

Booklet option 89

Booklet printing 75

Booklet type, binding method 76

Brightness option 84

## C

CMYK Simulation Method option 81

CMYK Simulation Profile option 81

Collation option 85, 91

Color mode *see* Print mode

Color print options

setting 27

Color Setup, job overrides 69

Combine Separations option 80

Command WorkStation, printing files from 21

Composite Overprint option 80

Control Bar 72

Copies option 71

Cover Content Input option 77

Cover Media option 78

Create Master option 86

Creep compensation 77

custom page size, *see* defining a custom page size,  
printing a custom page size

## D

Default Browser connection 14, 18

default print options 24, 57

Define Record Length 87

defining a custom page size, Windows 59

defining Image Shift 95

DFA Finishing option 85

DFA Profile option 85

Digital Press Mode option 84

Docs tab in WebTools 21, 52

Document Size option 73, 88

Downloads tab in WebTools 11, 36

Duplex (double-sided) option 75, 79, 93

duplex printing *see* Duplex (double-sided) option

## E

E-mail Service

about 62

Manage print jobs 65

Expert Color mode *see* Print mode

Expert Color Settings dialog box 28

## F

Face-Down Printing option 85

Fiery Features 25

File port, saving files to 59

File Search Path 87

FreeForm

Create Master option 86

Preview Master option 86, 88

Print Master option 87

Use Master option 86

FTP Printing 67

**G**

Gang-up print  
     Cut & stack 94  
     Document size 79  
     Gang-up type 79  
     Gutter option 79  
     Increase gutter by option 79  
     Orientation 79  
     Shrink to fit option 79  
     Step & repeat 94  
 Gang-up printing 75  
 Gang-up type 79  
 Grayscale mode *see* Print mode  
 gutters 77, 79

**H**

Halftone Simulation 84  
 Hot Folders 21  
     job overrides 69

**I**

I'm a Guest 71, 88, 100  
 Image Quality option 84  
 Image Shift option 85  
 Image Shift, defining 95  
 Image Shift, setting options 29  
 Image Smoothing option 84  
 installing  
     Job Monitor 61  
     printer driver from User Software DVD 38  
     printer drivers from server 37  
     printer drivers using Point and Print 33  
     virtual printers using Point and Print 41  
 installing printer drivers 12  
 Instructions field 27, 71  
 IP Printer connection 15, 19  
 IPP connection 49

**J**

Job Info icon 54  
 Job Monitor  
     configuring connection 61  
     installing 61  
     on User Software DVD 9  
     using 61

## job overrides

2-Color Print Mapping option 80  
 Auto Trapping option 80  
 Black Overprint option 81  
 Black Text/Graphics option 81  
 Brightness option 84  
 CMYK Simulation Method option 81  
 CMYK Simulation Profile option 81  
 Collation option 85  
 Combine Separations option 80  
 Composite Overprint option 80  
 DFA Finishing option 85  
 DFA Profile option 85  
 Digital Press Mode option 84  
 Face-Down Printing option 85  
 Image Quality option 84  
 Image Shift option 85  
 Image Smoothing option 84  
 Media Type option 74  
 Offset Jobs option 85  
 Output Destination option 85  
 Page Order option 85  
 Paper Simulation option 81  
 Paper Size option 92  
 Print Queue Action option 71, 88  
 print settings 69  
 Rendering Style option 82  
 RGB Separation option 82  
 RGB Source Profile option 82  
 Save User Information option 71, 88  
 Scale to Fit option 75  
 Schedule Printing option 71  
 Stapler Mode option 85  
 Substitute Colors option 80  
 Text/Graphics Enhancement option 84  
 Tray Alignment option 74  
 Use PDF/X Output Intent 83  
 Use Windows Login option 71, 88

**L**

Language folders 10  
 Layout option *see* Pages per sheet  
 Line Printer Daemon - LPD 15, 19  
 LPR connection 46

**M**

Mac OS X  
     AppleTalk connection 16, 20  
     Default Browser connection 14, 18  
     IP Printer connection 15, 19  
     Line Printer Daemon - LPD 15, 19  
     PPD 21  
     printer driver installation 10  
     printer driver setup 13  
     selecting printers 22  
 Mac OS X applications, printing from 21  
 Manage print jobs with e-mail commands 65  
 managing print jobs 65  
 Media Type option 74  
 Mirror option 75  
 Mixed Media 74, 96  
 Mixed Media, setting options 29

**N**

Nested Saddle booklets 90  
 Notes field 27, 54  
 Notes option 71

**O**

Offset Jobs option 85  
 Orientation option 75  
 OSX Installer 11, 21  
 Output Destination option 85  
 Output Profile option 81  
 overrides, of job settings 69  
 overriding Printer Setup settings 56

**P**

Page Order option 75, 85  
 Page Setup dialog box 24  
 Pages Per Record 87  
 Pages per sheet option 75  
 Paper Catalog 73, 98  
 Paper Simulation option 81  
 Paper Size option 73, 92  
 Paper Source option 73  
 Password 71, 88  
 Perfect booklet setting 90  
 Point and Print 33  
 Postflight 72  
 PostScript fonts 9  
 PostScript Printer Description file, *see* PPD  
 PostScript printer description files, *see* PPDs

PostScript printer driver  
     deleting 43  
     download using WebTools 36  
     installing from User Software DVD 38  
     installing using Point and Print 33  
 PostScript printer drivers, explained 68  
 PPD  
     Mac OS X 21  
     overview 9  
     Windows 39  
 PPDs (PostScript printer description files)  
     options 69  
 Preview Master option 86, 88  
 Print Border option 75  
 Print dialog box 24  
 Print Gray using Black Only (CMYK) option 82  
 Print Gray using Black Only (RGB) option 82  
 Print Master option 87  
 Print Mode 80  
 print options 53  
     in Full Properties of Quick Access  
         window 26  
     setting 24  
 Print Queue Action option 71, 88  
 Print Range option 71  
 printer default settings, where to set 69  
 Printer Delete Utility 43  
     on User Software DVD 9  
 printer drivers  
     downloading with WebTools 12  
     installing 10  
     setting up 13  
 Printer Setup Utility 11  
 Printer's default 56  
 printing  
     from an application 53  
     from Mac OS X applications 21  
     to File port 59  
     using an E-mail client 63  
 printing a custom page size, Windows 59  
 printing connections, supported types 44  
 Prntdrv.exe file 36  
 Progressives 72  
 Pure Black *see* Black Text/Graphics

**Q**

Quick Access window, customizing 26

**R**

Remove White PPT Background option 87  
 Rendering Style option 82  
 RGB Separation option 82  
 RGB Source Profile option 82  
 Rich Black *see* Black Text/Graphics  
 RIPping 68

**S**

Save User Information option 71, 88, 100  
 Scale option 75, 99  
 Scale to Fit option 75, 99  
 Schedule Printing option 71  
 selecting printers, Mac OS X 22  
 Shrink to fit 77, 79  
 SMB printing  
     completing connection 45  
     setup 34  
 speed printing *see* Gang-up print  
 Spot Color Matching option 83  
 Standard Booklet setting 90  
 Stapler Mode option 85  
 Step & repeat 94  
 Substitute Colors option 80

**T**

TCP/IP connection 46  
 Text/Graphics Enhancement option 84  
 Text/Graphics Quality option 84  
 Tray Alignment option 74  
 Two-Way Communication 55

**U**

USB device 66  
     automatic printing 66  
     printing files from 66  
 Use Master option 86  
 Use PDF XObject 87, 88  
 Use PDF/X Output Intent 83  
 Use Windows Login 100  
 Use Windows Login option 71, 88

User Authentication 54, 100  
     for Mac OS 100  
     I'm a Guest 100  
     Password 100  
     Password option 71, 88  
     password option 26  
     Save User Information option 71, 88, 100  
     Use Windows Login 100  
     Use Windows Login option 71, 88  
     user name option 26  
     Username 100  
     Username option 71, 88  
 User Software DVD, installing printer driver files  
     from 10  
 Username option 71, 88

**V**

Variable Data Printing  
     Define Record Length 87  
     Pages Per Record 87  
 Variable Data Printing (VDP)  
     Create Master option 86  
     Preview Master option 86, 87, 88  
     Use Master option 86  
     Use PDF XObjects 87, 88  
 virtual printers  
     installing using Point and Print 41  
     setting up 41

**W**

Watermarks option 87  
     First Page Only setting 87  
 WebTools  
     Docs tab 21, 52  
     Downloads tab 11, 36  
 Windows  
     IPP connection 49  
     LPR or Port 9100 connection 46  
     printer driver, installing from User Software  
         DVD 38  
     TCP/IP connection 46