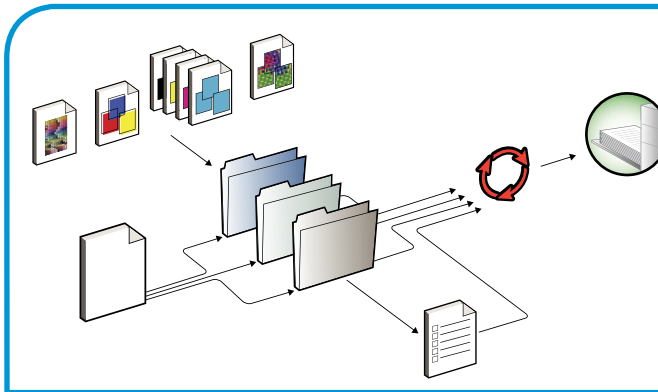




Xerox EX8002 Print Server, Powered by Fiery®

Utilities



© 2009 Electronics for Imaging, Inc. The information in this publication is covered under [Legal Notices](#) for this product.

45086065
07 July 2009

CONTENTS

INTRODUCTION	7
Terminology and conventions	8
About this document	9
About Help	9
Preparing for installation on Windows computers	10
Preparing for installation on Mac OS X computers	11
Fonts	11
Installing user software	12
Installing user software on a Windows computer	12
Installing user software on a Mac OS computer	14
COMMAND WORKSTATION, WINDOWS EDITION	16
Installing Command WorkStation, Windows Edition	17
Configuring the connection to the EX8002	17
Using Command WorkStation, Windows Edition	20
Additional features	21
User Authentication	21
Align Trays	21
Mixed Media	23
Insert Tabs	28
Virtual printers	31
ImageViewer	33
Troubleshooting	34
Command WorkStation cannot connect to the EX8002	34
Command WorkStation does not respond	34

IMPOSE	35
Installing and enabling Impose	35
Installing Impose	35
Installing Adobe Acrobat and Enfocus PitStop	36
Using Impose	38
COMMAND WORKSTATION, MACINTOSH EDITION	39
Installing Command WorkStation, Macintosh Edition	39
Configuring the connection to the EX8002	39
Using Command WorkStation, Macintosh Edition	42
Additional features	43
User Authentication	43
Mixed Media	43
Insert Tabs	46
Troubleshooting	48
Command WorkStation cannot connect to the EX8002	48
Command WorkStation does not respond	48
PAPER CATALOG	49
Installing Paper Catalog	49
Specifying Paper Catalog media for jobs	49
Setting up Paper Catalog	51
Managing Paper Catalog entries	51
Managing catalogs	53
Setting display options	55
Specifying media attributes for Paper Catalog	56
Assigning profiles	56
Specifying custom paper sizes	57
Description of media attributes	58

Using Paper/Tray Association	63
Associating catalog entries with trays	63
Monitoring media status in trays	63

PRODUCTION FEATURES

Installing the production features	64
Using the production features	65
Compose	65
Preflight	66
Reorder Jobs	68
Job Mismatch	69
Rush Printing	69
Schedule Printing	69
Print Next	71
Process Next	71
Quick Doc Merge	71

HOT FOLDERS

Installing Hot Folders	74
Using Hot Folders	74
Additional features	75
Preserve Document Setting	75
About Hot Folders filters	75
Using the PDF to PS filter	75
Microsoft Office filters for Hot Folders	75
Specifying filter settings for a Hot Folder	76

VDP RESOURCE MANAGER	77
Installing VDP Resource Manager	77
Configuring the connection to the EX8002	78
Using VDP Resource Manager	80
WEBTOOLS	81
Setting up WebTools	81
Accessing the WebTools home page	82
Using WebTools	83
Home	83
Downloads	83
Docs	83
Configure	83
INDEX	85

INTRODUCTION





The Xerox EX8002 Print Server, Powered by Fiery media pack includes a set of software utilities that allow you to manage the Xerox EX8002 Print Server, Powered by Fiery, as well as the print workflow and content of jobs on the Xerox EX8002 Print Server, Powered by Fiery.

This document provides an overview of how to install, configure, and use the following EX8002 utilities:

- Command WorkStation, Windows Edition
- Impose
- Command WorkStation, Macintosh Edition
- Paper Catalog
- Additional production features
- Hot Folders
- VDP Resource Manager
- WebTools

Terminology and conventions

This document uses the following terminology and conventions.

Term or convention	Refers to
Aero	EX8002 (in illustrations and examples)
Digital press	DocuColor 8002/7002 digital press
EX8002	Xerox EX8002 Print Server, Powered by Fiery
Mac OS	Apple Mac OS X
Titles in <i>italics</i>	Other documents in this set
Windows	Microsoft Windows 2000, Windows XP, Windows Vista, Windows Server 2003, Windows Server 2008
	Topics for which additional information is available by starting Help in the software
	Tips and information
	Important information
	Important information about issues that can result in physical harm to you or others

About this document

This document covers the following topics:

- **Command WorkStation, Windows Edition:** Monitoring and managing the print workflow of jobs on the EX8002.
- **Impose:** Applying imposition layouts to jobs for custom printing, binding, and cutting purposes (Windows only).
- **Command WorkStation, Macintosh Edition:** Monitoring and managing the print workflow of jobs on the EX8002.
- **Paper Catalog:** Defining and storing the attributes of printing media in a system-based paper warehouse database.
- **Production Features:** Using additional job management features accessed through Command WorkStation, including the Compose application.
- **Hot Folders:** Storing and reusing frequently used print options when printing PostScript and PDF files on the EX8002.
- **VDP Resource Manager:** Finding and deleting global objects used in variable data printing.
- **WebTools:** Managing your EX8002 remotely from the Internet or your company's intranet.



For information about installing, configuring, and using ColorWise Pro Tools, see [Color Printing](#).



About Help

Detailed instructions on using most EX8002 utilities are provided in Help. Wherever appropriate, this document refers you to Help for additional information and explains how to access Help for each utility.

Preparing for installation on Windows computers

Before installing EX8002 software on a Windows computer, complete the following:

- To use EX8002 user software on a Windows computer, the Sun Java file, Java Runtime Environment (JRE), provided in the Common Utilities folder on the User Software DVD, must be installed on your computer. If the correct Sun Java file is not installed, the Fiery User Software Installer installs it automatically before installing the EX8002 software.

NOTE: The recommended version of JRE is provided on the User Software DVD.

- To install the EX8002 software, you must have Service Pack 4 installed on a Windows 2000 computer, and Service Pack 2 installed on a Windows XP computer. If you do not, a warning message alerts you to install the Service Pack.



Different versions of Sun Java JRE can be installed on your computer. The EX8002 software automatically finds the correct version, so you do not need to uninstall other versions of Sun Java JRE required for third-party applications.

Preparing for installation on Mac OS X computers

Before installing EX8002 software on a Mac OS X computer, you must install printer fonts.

Fonts

The Fonts on the User Software DVD include screen and printer fonts that correspond to the 136 built-in PostScript printer fonts on the EX8002. To be available to applications, the screen fonts must be installed on Mac OS X.

TO INSTALL SCREEN AND PRINTER FONTS ON MAC OS X v10.4 AND v10.5

- 1 **Insert the User Software DVD into the DVD drive of the Mac OS X computer.**
- 2 **Start the Font Book application in Applications : Font Book.**
- 3 **Choose Add Fonts from the File menu.**
- 4 **Choose User Software : OSX : Fonts : Albertus MT.**
- 5 **Choose Select All from the Edit menu.**
- 6 **Choose one of the following from Install fonts:**
 - For your personal use: for your use only
 - For shared use: for all users of this computer
 - For Classic: for Mac OS X Classic

NOTE: For Mac OS X v10.4, you must select User, Computer, or Classic Mac OS in Preferences : Default Install Location of Font Book.

NOTE: For Mac OS X v10.5, you must select User or Computer in Preferences : Default Install Location of Font Book.

- 7 **Click Open.**
- 8 **Exit the Font Book application.**

Installing user software

You can install EX8002 user software in the following ways:

- From the User Software DVD
- From the EX8002, over the network
- From the EX8002, using the Internet or intranet

If you previously installed any EX8002 user software on your computer, the installer allows you to uninstall those applications.

Installing user software on a Windows computer

All installation of user software on a Windows computer is done through the Fiery User Software Installer. The following procedures describe installing from the DVD, over the network, or over the Internet, and also modifying the user software.

The only applications that are not installed by the Fiery User Software Installer are Adobe Acrobat and Enfocus PitStop, for use with Impose. For more information, see [“Installing Adobe Acrobat and Enfocus PitStop”](#) on page 36.

TO INSTALL USER SOFTWARE ON A WINDOWS COMPUTER FROM THE USER SOFTWARE DVD

1 Insert the User Software DVD into the DVD drive of your computer.

The installer Welcome screen appears.



2 Follow the on-screen instructions.



Do not attempt to install user software by opening the individual folders for the applications. Always use the Fiery User Software Installer.

To modify or remove any user software after you install it on your computer, use the User Software DVD and the following procedure.

TO MODIFY USER SOFTWARE USING THE USER SOFTWARE DVD INSTALLER

- 1 Insert the User Software DVD into the DVD drive of your computer.
- 2 On the window that appears, select **Modify, Repair, or Remove**.
- 3 Follow the on-screen instructions.

If your computer does not have a DVD drive, you can install the user software from the EX8002 over the network. Ask your network administrator for the IP address or DNS server name of the EX8002.

You can also install the EX8002 user software over the Internet. Ask your network administrator for the IP address of the EX8002.

Use your Internet browser to access WebTools. For complete information about browser and system requirements, see [Welcome](#).

TO INSTALL USER SOFTWARE ON A WINDOWS COMPUTER OVER THE NETWORK

- 1 Click **Start**, choose **Run**, and type the IP address or DNS server name of the EX8002.
- 2 Type the user name and password, if required.
Check with your network administrator to see if a password is required.
- 3 Double-click the **PC_User_SW** directory.
- 4 Double-click the **Master Installer** icon.
- 5 Follow the on-screen instructions.

TO INSTALL USER SOFTWARE ON A WINDOWS COMPUTER OVER THE INTERNET

- 1 Start your Internet browser.
- 2 Type the IP address or DNS name of the EX8002.
The EX8002 home page appears.
- 3 Click the **Downloads** tab.
- 4 Click the link for the software that you want to install.
- 5 Choose **Run** to open the file or **Save** to save it to your computer.
- 6 If you choose **Run**, proceed to [step 9](#).
- 7 If you choose **Save**, browse to the location where you want to save the **USERSWMI.exe** file, and then click **Save**.

The file is downloaded from the EX8002.

- 8 Double-click the **USERSWMI.exe** file.

- 9 Choose to open the file or save it to your computer.
- 10 Type the EX8002 URL, `http://<IP address>`, when prompted.
- 11 Follow the on-screen instructions.



For complete instructions on how to use Downloads, see Downloads Help.

For more information about WebTools and Downloads, see [WebTools](#).



Do not attempt to install user software by opening the individual folders for the applications. Always use the Fiery User Software Installer.

Installing user software on a Mac OS computer

Installation of user software on a Mac OS computer is done separately for each application.

TO INSTALL USER SOFTWARE ON A MAC OS COMPUTER FROM THE USER SOFTWARE DVD

- 1 Insert the User Software DVD into the DVD drive of your computer.
- 2 Browse to the OSX folder.
- 3 Double-click the installer icon for the application that you want to install.
- 4 Follow the on-screen instructions.

TO INSTALL USER SOFTWARE ON A MAC OS COMPUTER OVER THE NETWORK

- 1 Choose **Connect to Server** from the **Go** menu.
- 2 Type `smb://` followed by the IP address of the EX8002, and then click **Connect**.
If you cannot locate the EX8002, contact your network administrator.
- 3 Type the user name and password, if required.
Consult your network administrator to see if a password is required.
- 4 Select the smb shared volume that you want to connect to.
- 5 Select `Mac_User_SW` and click **OK**.
- 6 Open the OSX folder.
- 7 Double-click the installer icon for the application that you want to install.
- 8 Follow the on-screen instructions.

You can also install the EX8002 user software from the Internet. Consult your network administrator for the IP address of the EX8002.

Use your Internet browser to access WebTools. For complete information about browser and system requirements, see [Welcome](#).

TO INSTALL USER SOFTWARE ON A MAC OS COMPUTER OVER THE INTERNET

- 1 Start your Internet browser.**
- 2 Type the IP address or DNS name of the EX8002.**
- 3 Click the Downloads tab.**
- 4 Click the link for Mac OSX Client Software Installer.**

The osxutils.dmg file is downloaded to your computer and a virtual disk appears on your desktop.

- 5 Follow the on-screen instructions.**



For complete instructions on using Downloads, see WebTools Downloads Help.

For more information about WebTools and Downloads, see [WebTools](#).

COMMAND WORKSTATION, WINDOWS EDITION

Command WorkStation, Windows Edition allows EX8002 operators (or users with Operator or Administrator privileges) to monitor and manage the print workflow of jobs on the EX8002. Command WorkStation, Windows Edition allows you to do the following:

- View the print status of jobs on the EX8002.
- Hold, process, and print jobs.
- Override user-assigned print option settings.
- Preview the page content of a job.
- Reorder pages in a job and combine pages from different jobs.
- Create and use FreeForm master files for variable data printing.
- Archive job files.
- View job logs of recent print activity.
- Define virtual printers.
- Manage fonts.
- Access Impose, Compose, and Quick Doc Merge.

Installing Command WorkStation, Windows Edition

Install Command WorkStation, Windows Edition on a Microsoft Windows computer that has a network connection to the EX8002. For a complete list of system requirements, see [Welcome](#).

The installer for Command WorkStation, Windows Edition is provided on the User Software DVD. In addition to the Command WorkStation software, the installer installs the Java files required to use Fiery Setup from Command WorkStation. For information about using Fiery Setup, see [Configuration and Setup](#).

NOTE: ColorWise Pro Tools is installed automatically when you install Command WorkStation. For information about using ColorWise Pro Tools, see [Color Printing](#).



Before you install the utility, read the guidelines described in “[Preparing for installation on Windows computers](#)” on page 10.

To install Command WorkStation, see “[Installing user software on a Windows computer](#)” on page 12.

Configuring the connection to the EX8002

The first time you start Command WorkStation, you are prompted to configure the connection to the EX8002.

You can also edit the configuration whenever there is any change to your EX8002 or network, such as a changed server name or IP address. If you change EX8002 Setup information, do so before you reconfigure the connection. For information about reconfiguring the connection, see “[To modify the configuration for Command WorkStation, Windows Edition](#)” on page 20.

BEFORE YOU BEGIN

- **Print the EX8002 Configuration page.**

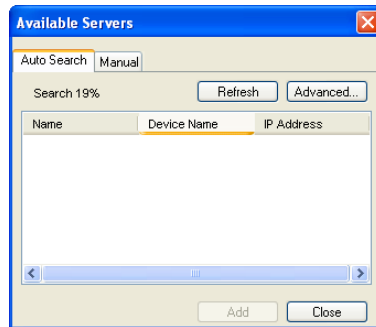
For instructions on printing the Configuration page, see [Configuration and Setup](#).

This page contains information you need when configuring the connection, such as the IP address of the EX8002. For TCP/IP installations, you can use the DNS name instead of the IP address. Make sure that the EX8002 is registered in a Domain Name Server (DNS) on your network. For more information, contact your network administrator.

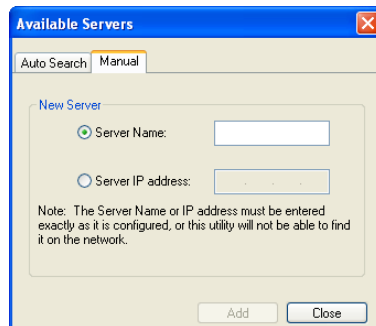
TO CONFIGURE THE CONNECTION FOR COMMAND WORKSTATION, WINDOWS EDITION

- 1 Choose **Start > Programs > Fiery > Command WorkStation** to start the utility.

The Available Servers dialog box appears and displays all servers found in the local subnet.



- 2 If no EX8002s are found, click the **Manual** tab to search by DNS name or IP address. Type the DNS name or IP address and click **Add** to add the server to the Available Servers list.

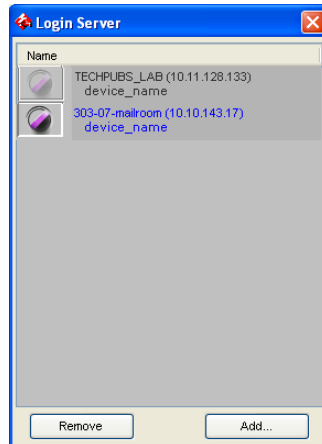


If no EX8002s are found by Manual search, click the **Auto Search** tab, and then click **Advanced** to search by a range of IP addresses or by the IP address and subnet mask.

All available servers appear in the Available Servers list.

3 Select the EX8002 that you want to use and click Add.

The selected EX8002 is added to the Login Server window.



4 Click the button to the left of the server name.

The Login dialog box appears.



5 Click the key to the left of Administrator, Operator, or Guest and type the appropriate password, if required.

6 Click Log In.

For information about setting passwords and the default Administrator password for the EX8002, see [Configuration and Setup](#).

Command WorkStation is now connected to the EX8002.

TO MODIFY THE CONFIGURATION FOR COMMAND WORKSTATION, WINDOWS EDITION

1 Start Command WorkStation.

The Login Server window appears.

2 Select the EX8002 for which you want to modify the configuration and click Remove.

3 Repeat “To configure the connection for Command WorkStation, Windows Edition” on page 18.

Using Command WorkStation, Windows Edition

After you install and configure Command WorkStation, you can begin using it to monitor and manage jobs on the EX8002.



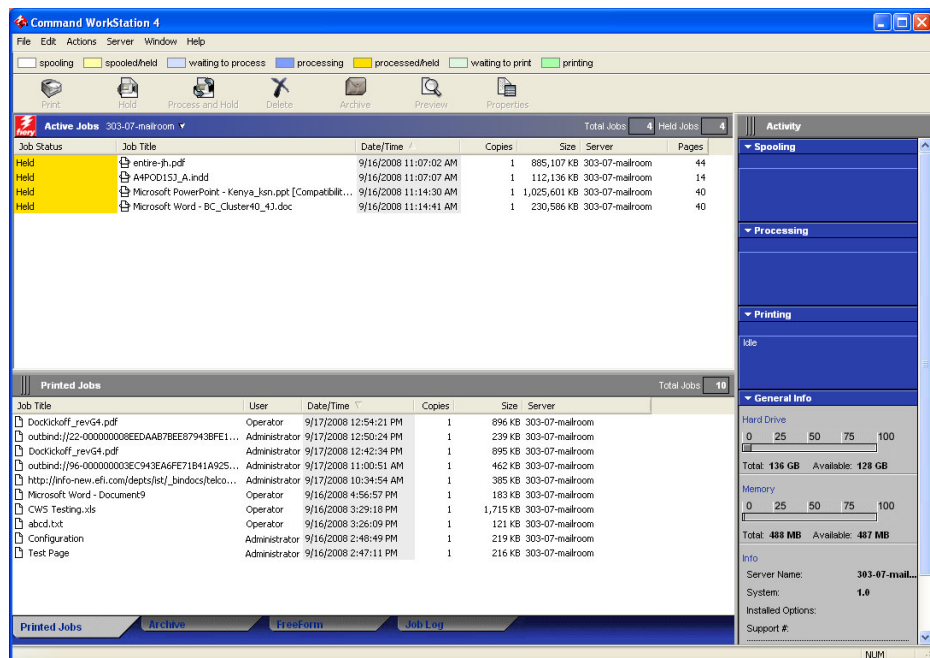
For complete instructions on using the standard Command WorkStation features, see Command WorkStation Help. Additional features are described in the sections starting on [page 21](#).

TO ACCESS COMMAND WORKSTATION HELP

1 Start Command WorkStation.

Select the EX8002 from the Server List dialog box and log on to the server.

For information about setting passwords and the default Administrator password for the EX8002, see [Configuration and Setup](#).



2 Choose Help from the Help menu.

Additional features

The following sections describe how to use additional features of Command WorkStation that are not discussed in Command WorkStation Help.

User Authentication

If user authentication is enabled in EX8002 Setup, users may need to type a user name and password in the printer driver to send a job to the EX8002. Management of the job in Command WorkStation is determined by how you log on to the EX8002 (as Administrator, Operator, or Guest).

For information about setting up Users and Groups and enabling user authentication in the Configure WebTool, see [Configuration and Setup](#). For information about User Authentication in the printer driver, see [Printing](#).

Align Trays

The Align Trays feature allows you to adjust the placement of text and images on the page so that they are correctly aligned on a sheet of paper. This ensures that both sides of a duplex sheet have exactly the same alignment.

You can also perform tray alignment from the EX8002 digital press control panel by choosing Tray Alignment from the Functions menu.



To perform tray alignment, you must do the following:

- Log on to the EX8002 with Administrator privileges and enable tray alignment in EX8002 Setup.
- Enable Tray Alignment in the Media area of the printer driver.
- Select the correct paper tray before printing.



NOTE: For Tray Alignment to work when printing a job, select the tray that you have aligned in the Media tab before printing. If you later print a job using the auto tray selection, the alignment does not work.

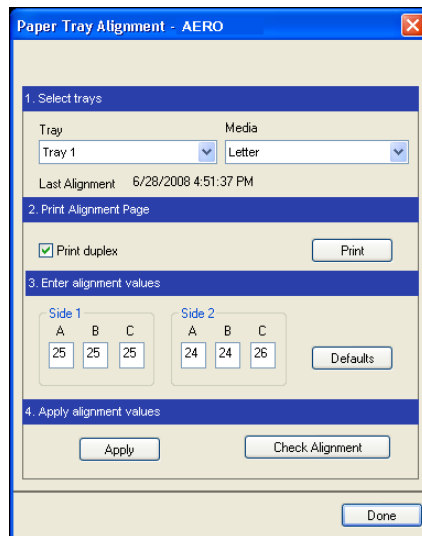
TO ALIGN PAGES FOR PRINTING

- 1 **In the Active Jobs window, select the connected EX8002 for which you want to perform tray alignment.**

If the Active Jobs window is hidden, choose Active Jobs from the Window menu to display it.

- 2 **Choose Align Trays from the Server menu.**

A dialog box containing the Tray Alignment options appears.



3 Choose the tray that you want to align from the Tray menu.

4 Choose the paper size loaded in the tray from the Media menu.

NOTE: The alignment is specific to the combination of tray and paper size specified. If you align a given tray with Letter paper, and then load Legal paper in that tray, the alignment is wrong. You must perform a new alignment for each combination of tray and paper size.

5 In the Print Alignment Page area, select the Print Duplex option to print a duplex page, or clear the option to print a simplex page.

6 Click Print.

7 After the Alignment Page is printed, follow the instructions on the page.

Fold the page exactly in half horizontally, unfold it, and then fold it in half vertically. When you unfold the sheet, observe that the fold lines cross three scales on three sides of the page. Determine which number on the scale each fold line crosses.

8 In the Enter alignment values area, enter the value that appears where the fold crosses each of the three scales, marked A, B, and C, for Side 1. If you choose to align for duplex printing, enter the values for the three scales on Side 2 of the page, as well.

NOTE: If you enter different values in A and C, the image rotates, leading to uneven areas on printed output. If this occurs, enter the same value in A and C.

9 After you enter the alignment values, click Apply, and then click Check Alignment to print the new alignment page.

10 To remove the alignments, select a tray and click Defaults in the Enter alignment values area.

11 Click Done.

Mixed Media

The Mixed Media feature allows you to define the chapter divisions of a job, print ranges of pages on varying types of media, insert blank media between pages, and insert tab media containing text labels.



The following guidelines and restrictions apply to Mixed Media settings:

- The Mixed Media dialog box restricts you from specifying settings that conflict with any media, page size, or finishing settings that have been specified for the job in the Job Properties dialog box or printer driver.
- When two or more Mixed Media settings are in conflict with each other, the Mixed Media dialog box highlights the setting names in red, signaling you to resolve the conflict.
- When you specify print options (in the Job Properties dialog box or printer driver) after specifying Mixed Media settings, certain print options may conflict with the page-specific Mixed Media settings. You must resolve the conflict by choosing different print options or removing certain Mixed Media specifications.
- Mixed Media settings affect the use of output color profiles when the “Use media defined profile” option is selected in ColorWise Pro Tools. For more information, see [Color Printing](#).
- If counters are configured for the digital press, blank media inserted between pages count as printed pages.

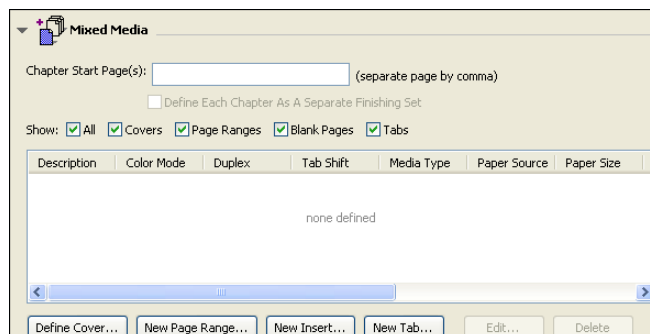


Basic instructions for accessing and using Mixed Media are provided in Command WorkStation Help. Features specific to the EX8002 are described in the following procedures.

TO DEFINE MIXED MEDIA SPECIFICATIONS

- 1 **Select or right-click a spooled/held job in the Active Jobs window and choose Properties from the Actions menu, or double-click a job.**
- 2 **Click the Media icon and scroll down to Mixed Media.**

The Mixed Media dialog box lists any previously defined media settings and includes buttons for defining, modifying, and removing settings.



- 3 **For Chapter Start Page(s), type the page numbers on which you want to start new chapter sections.**

Type page numbers as comma-separated values (for example: 4,9,17) to designate the start of each new chapter. This feature forces each starting page to use a right-side page, adding a preceding left-sided blank, if required.

NOTE: It is not necessary to type the first page, and page numbers refer to the numbering of the original document. If you use the Chapter Start Page(s) feature, all media specified in the Paper menu per chapter must share the same dimensions (for example, all Letter, all Tabloid, or all A4).

- 4 **To apply finishing options (for example, stapling or sorting) to each chapter created using the Chapter Start feature, select the “Define Each Chapter As A Separate Finishing Set” option.**

NOTE: Not all finishing options can be applied to chapters that contain mixed sizes of media (for example, Letter and A4).

- 5 **To define properties for front and back covers, click Define Cover.**

For more information, see [“To define cover media settings”](#) on page 25.

- 6 **To define properties for individual pages or page ranges, click New Page Range.**

For more information, see [“To define media for specific pages”](#) on page 26.

- 7 **To insert tab media, click New Tab.**

The Insert Tab dialog box appears. For information about defining tab settings, see [page 28](#).

NOTE: The Insert Tab feature is not available for imposed jobs.

- 8 **To insert blank pages, click New Insert.**

For more information, see [“To insert blank pages”](#) on page 27.

- 9 **To modify or delete a current definition, select it in the Mixed Media Definition list, and click Edit or Remove.**

If you click Edit, enter new settings for the definition and click Modify.

- 10 **After you finish defining Mixed Media settings, click OK to close the Mixed Media dialog box and Job Properties.**

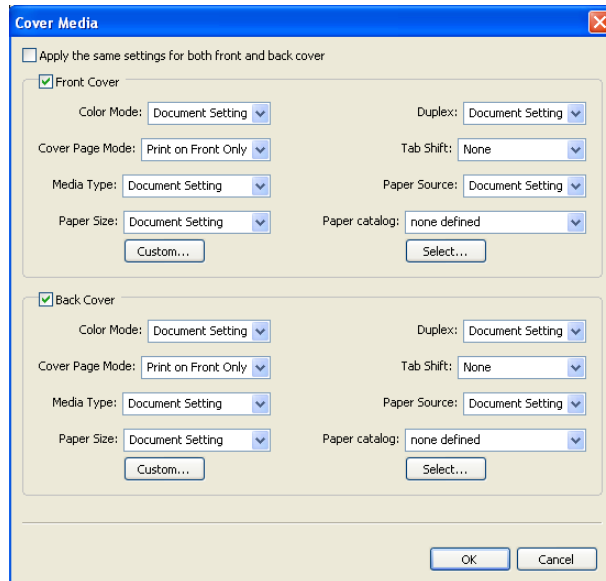
The Mixed Media settings are applied to the job.

NOTE: You can save up to 100 different settings for the Selection list in the Mixed Media dialog box.

TO DEFINE COVER MEDIA SETTINGS

- 1 In the Mixed Media dialog box, click Define Cover.

The Cover Media dialog box appears.

The image shows the 'Cover Media' dialog box. At the top, there is a checkbox labeled 'Apply the same settings for both front and back cover'. Below this, there are two sections: 'Front Cover' and 'Back Cover', each with a checked checkbox. Each section contains several settings: 'Color Mode' (Document Setting), 'Duplex' (Document Setting), 'Cover Page Mode' (Print on Front Only), 'Tab Shift' (None), 'Media Type' (Document Setting), 'Paper Source' (Document Setting), 'Paper Size' (Document Setting), and 'Paper catalog' (none defined). There are 'Custom...' and 'Select...' buttons for each section. At the bottom right, there are 'OK' and 'Cancel' buttons.

- 2 To define identical front cover and back cover media, select the “Apply the same settings for both front and back cover” option. To define media settings for the front or back cover individually, select the Front Cover or Back Cover option.
- 3 Choose other settings, as required.
- 4 Choose the required media from the Paper Catalog menu.

You can also click the Select button to open the Paper Catalog window, select the required media, and then click OK.

The media that you selected appears in the main Cover Media window.

For more information about Paper Catalog, see [page 49](#).

- 5 Click OK to return to the Mixed Media dialog box.

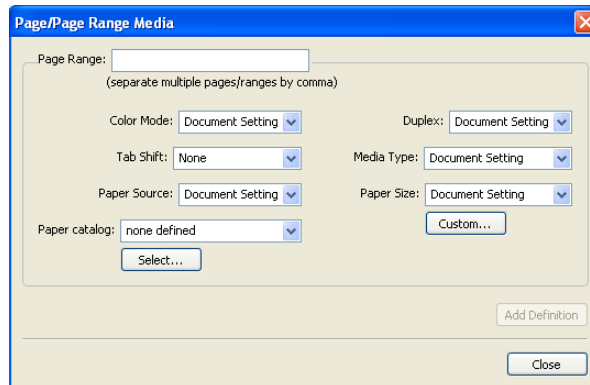


Cover Media settings override settings defined in the Page/Page Range Media dialog box.

TO DEFINE MEDIA FOR SPECIFIC PAGES

- 1 In the Mixed Media dialog box, click **New Page Range**.

The Page/Page Range Media dialog box appears.



- 2 Type pages and page ranges as comma-separated values (for example: 3,9–14,18).
- 3 Choose other settings, as required, from the pull-down menus.

If you assign a new media type to the back side of a duplexed sheet, a blank page is inserted to force the assigned page content to the front side of the next sheet.

- 4 Choose the required media from the Paper Catalog menu.

You can also click the **Select** button to open the Paper Catalog window, select the required media, and then click **OK**.

The media that you selected appears in the main Page Range window.

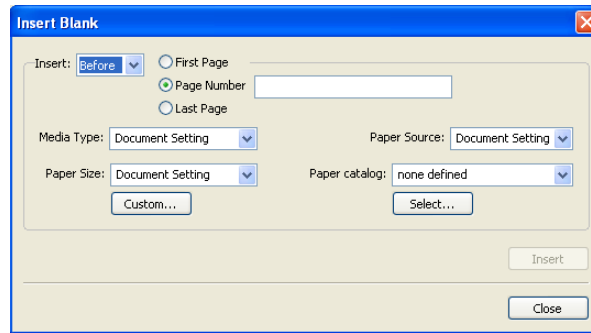
For more information about Paper Catalog, see [page 49](#).

- 5 Click **Add Definition** after each media setting that you define.
- 6 Click **Close** to return to the Mixed Media dialog box.

To INSERT BLANK PAGES

- 1 Click **New Insert** in the **Mixed Media** dialog box.

The Insert Blank dialog box appears.



- 2 Indicate whether to insert the blank before or after the target page. Define the target page as the first or last page in the document, or as a specific numbered page.
- 3 Choose other settings, as required, from the pull-down menus.
- 4 Choose the required media from the Paper Catalog menu.

You can also click the **Select** button to open the Paper Catalog window, select the required media, and then click **OK**.

The media that you selected appears in the main Insert Blank window.

For more information about Paper Catalog, see [page 49](#).

- 5 Click **Insert** after each blank page that you define.
- 6 Click **Close** to return to the **Mixed Media** dialog box.

Insert Tabs

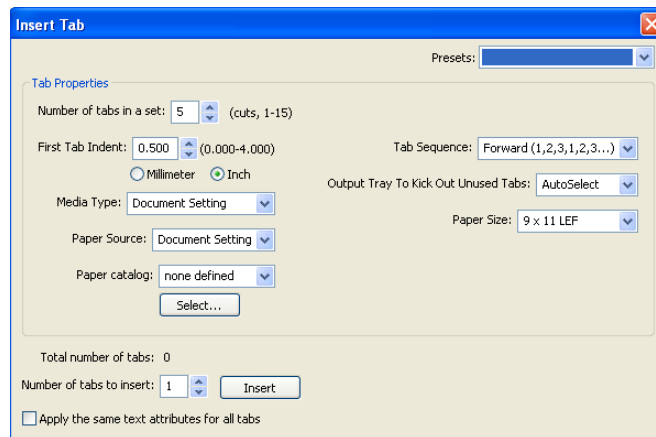
The Insert Tabs feature allows you to automatically insert tab pages throughout a job. This feature accommodates various sizes and types of tab media stock. You can insert the tab text and override text attributes on a per-job basis.

NOTE: When you configure counters for the digital press, printed tab pages count as black-and-white pages, provided colors are calibrated to use pure black toner. Expelled tabs are not counted as printed pages.

TO INSERT TAB PAGES

- 1 Select or right-click a spooled/held job in the Active Jobs window and choose Properties from the Actions menu, or double-click a job.
- 2 Click the Media icon and scroll down to Mixed Media.
- 3 Click New Tab in the Mixed Media dialog box.

The Insert Tab dialog box appears.



- 4 Type the number of tab positions included in a complete tab set in the “Number of tabs in a set” field.

This specification ensures that tab text is printed in the correct tab positions. For example, tab positions in a set consisting of 10 tabs are distinct from tab positions in a set consisting of 5 tabs.

- 5 Specify other settings, as required, for the tab stock.

Paper Size values refer to the dimensions of the stock, including the tabbed portion.

6 Choose the required media from the Paper Catalog menu.

You can also click the **Select** button to open the Paper Catalog window, select the required media, and then click **OK**.

The media that you selected appears in the main Insert Tab window.

For more information about Paper Catalog, see [page 49](#).

7 To specify attributes for the tab text, type the number of tabs in the “Number of tabs to insert” field, and then click Insert.

Use the following procedure to define the tab text.

Total number of tabs: 6

Number of tabs to insert: 1

☐ Apply the same text attributes for all tabs

Page	Tab Text	Text Attributes
1	<input checked="" type="checkbox"/> Before	Font: Helvetica Size: 10 Text Rotation: AB Text Alignment: Left
2	<input checked="" type="checkbox"/> Before	Font: Helvetica Size: 10 Text Rotation: AB Text Alignment: Left
3	<input checked="" type="checkbox"/> Before	Font: Helvetica Size: 10 Text Rotation: AB Text Alignment: Left

OK Cancel

TO SPECIFY TAB TEXT

- 1 In the Tabs Text dialog box, select the “Apply the same text attributes for all tabs” option if you want all the tabs to use the same text attributes.**
- 2 Click Insert.**
- 3 Click Text Attributes.**

Specify the rotation, alignment, font, and size attributes of the tab text, and then click OK.

- 4 Indicate where you want each tab inserted in the document.**

- In the Page field, type the page number where you want the tab inserted.
- Select Before to insert the tab before the page number, or clear this check box.

NOTE: If you define a tab to be inserted between an odd-numbered page and an even-numbered page in a duplex job, the tab is inserted after the odd-numbered page on the first sheet, and the even-numbered page is printed on the next sheet.

- 5 Type the tab text for each tab in the Tab Text field.**

To define text attributes for each tab individually, click Text Attributes for that tab.

- 6 After you type the tab text, click OK to close the Tabs Text dialog box.**

The Mixed Media dialog box displays the current tab settings in the Mixed Media Definition list.

- 7 To modify media settings for the tabs, select the tab description in the Mixed Media Definition list, and then click Edit.**
- 8 To apply your Insert Tab settings to the document, click OK to close the Mixed Media dialog box and Job Properties.**

Virtual printers

Virtual printers offer users a method of printing to the EX8002 using predefined settings to configure the print job. The EX8002 administrator can create virtual printers and publish them so that users can access them on the network. SMB, LPR, and FTP services are supported. You can also access virtual printers through the File > Import function in Command WorkStation and through the USB Media Server. For more information about USB Media Server and printing from a USB device, see [Printing](#).

NOTE: By default, three virtual printers are already set up to correspond to the Print queue, Hold queue, and Direct connection. These virtual printers cannot be modified.

The administrator specifies job settings for the virtual printer. The administrator can apply an imposition template to a virtual printer. Imposition settings override job property settings.

The administrator can view the available virtual printers and published queues, publish a virtual printer, and delete, duplicate, or edit a virtual printer.

You must log on with Administrator privileges to configure virtual printers.

TO CONFIGURE A VIRTUAL PRINTER

- 1 **Choose Virtual Printers from the Command WorkStation Server menu.**
- 2 **Click New.**
- 3 **Specify the following:**
 - **Virtual Printer Name:** Type an alphanumeric name.
 - **Comments:** Add comments to help define the virtual printer for the user, for example, “duplex company brochure”.
 - **Printing:** Select one of the standard EX8002 actions available from Command WorkStation, including Hold, Process and Hold, Print, or Print and Hold.
 - **Use Custom Job Properties:** Access and choose Job Properties.
 - **Apply Imposition Settings:** Access and choose Impose settings.

NOTE: Only users with access to printer drivers with the Two-Way Communication option enabled can see and override the job settings.

- 4 **Click OK.**

TO MANAGE VIRTUAL PRINTERS

- 1 **Choose Server > Virtual Printers.**
- 2 **Select a virtual printer in the list and click Edit, Duplicate, or Delete.**

NOTE: After a virtual printer is created, its name cannot be changed, although the print settings can be changed.

Printing to a virtual printer using SMB

Virtual printers are published on the network. To print to a published virtual printer from a client computer over SMB, do the following:

TO PRINT TO A VIRTUAL PRINTER USING SMB

- 1 **Right-click Network Neighborhood or My Network Places, and select Find Computer or Search for Computers.**
- 2 **Type the name of the EX8002 that you are looking for and click Search Now.**
If you cannot locate the EX8002, contact your network administrator.
- 3 **Double-click the name of the EX8002 to display published virtual printers.**
- 4 **Double-click the virtual printer that you want to connect to.**

You must install the printer driver from the User Software DVD, as described in [Printing](#).

The virtual printer appears in Settings > Printers and Faxes.

Printing to a virtual printer using LPR on Windows

To print to a virtual printer from a client computer using an LPR connection on Windows, you must configure a standard TCP/IP port for LPR printing and install the EX8002 printer drivers. When you configure the port, select LPR for the protocol and type the name of the virtual printer for the queue name.

For information, see [Printing](#).

Printing to a virtual printer using LPR on Mac OS

To print to a virtual printer from a client computer using an LPR connection on Mac OS, follow the instructions for setting up the EX8002 on Mac OS X using IP printing. For Queue Name, type the name of the virtual printer.

For information, see [Printing](#).

Printing to a virtual printer using FTP

If enabled in Server Setup, the EX8002 can function as an FTP server. For information about Setup, see [Configuration and Setup](#) and WebTools Configure Help.

To print to a virtual printer using FTP, use your FTP client software and connect to the EX8002 as to any FTP server. Ask your network administrator for the following information:

- IP address or DNS name of the EX8002
- User name and password, if required
- Name of the virtual printer

For more information about FTP printing, see [Printing](#).

ImageViewer



If the Fiery Graphic Arts Package, Premium Edition is installed and enabled on the EX8002, you can use ImageViewer to preview and adjust colors. For information about ImageViewer, see [Fiery Graphic Arts Package](#).

NOTE: When available, ImageViewer replaces the standard full-screen preview window described in Command WorkStation Help.

Troubleshooting



When troubleshooting basic connection and software problems with Command WorkStation, see the following sections. For additional troubleshooting information, see Command WorkStation Help.

Command WorkStation cannot connect to the EX8002

If you cannot connect to the EX8002 or locate the EX8002 from your computer, contact the network administrator. The administrator may need to troubleshoot your network connections and check settings on the servers that you print to. If settings have changed, it may be necessary to reconfigure the EX8002 (see [Configuration and Setup](#)).

If you can connect to the EX8002 with another utility, you may need to reconfigure the Command WorkStation connection to the EX8002 (see [page 17](#)).

If you configured the EX8002 and set up client computers and network servers according to the instructions in [Configuration and Setup](#), print a Test Page. If you can print the Test Page but still cannot print a document from a remote computer, contact your network administrator to troubleshoot the network connection.

If you cannot connect and cannot print a Test Page, check the digital press control panel for error information.

Command WorkStation does not respond

If Command WorkStation is unresponsive, use the following troubleshooting guidelines.

IF THE COMMAND WORKSTATION WINDOWS DO NOT UPDATE

- 1 Log off and then quit Command WorkStation.
- 2 Restart Command WorkStation or restart the computer.

If the Command WorkStation windows do not update or no jobs are displayed, and the mouse has no effect (you cannot select a job or a window, use a right mouse command, or select a menu item), the EX8002 is offline or network communication has failed.

TO FORCE AN EXIT FROM COMMAND WORKSTATION

- 1 Press Ctrl-Alt-Delete and use the Program Manager to close Command WorkStation.
- 2 At the EX8002, disconnect and reconnect the network cable, and then try printing a Test Page or Configuration page.
- 3 If printing fails, restart the EX8002.

IMPOSE

Impose is a utility (available as an option) that you access from Command WorkStation, Windows Edition. Impose allows you to do the following:

- Apply imposition layouts to jobs for custom printing, binding, and cutting.
- Apply impositions to variable data jobs.
- Save the imposed jobs as PDF files.

Installing and enabling Impose

The following sections describe how to install and enable Impose.

Installing Impose

The Impose software is automatically installed when you install Command WorkStation, Windows Edition. All EX8002 user software is installed using the Fiery User Software Installer. During the installation process, you choose which utilities to install. For more information about installing EX8002 software, see [“Installing user software on a Windows computer”](#) on page 12.



Do not attempt to install Impose manually from the User Software DVD (by starting the setup.exe from the Impose folder). It is automatically installed when you install Command WorkStation. Installing Impose separately from Command WorkStation can cause unpredictable results.

To enable Impose on a client computer, you must:

- Install Adobe Acrobat and Enfocus PitStop Professional.

NOTE: The Adobe Acrobat/Enfocus PitStop DVD is provided in the Impose Media Pack.

- Install the Impose software protection key (dongle) into the correct port of the client computer.



If you see a dongle installed on the computer, Impose has already been enabled and is ready for use. If the dongle is not installed, see the documentation that is provided in the Impose kit. Without a dongle installed, you can use Impose in Demo mode. Demo mode allows you to impose documents and save them, but all printed output displays a “Demo” watermark.

NOTE: The protection key (dongle) is a USB type dongle.

Installing Adobe Acrobat and Enfocus PitStop

To use Impose, you must install the Acrobat and the PitStop Professional plug-in for Acrobat for use with Impose from the installer DVD provided in your Impose kit. Impose is installed when you install Command WorkStation, and is accessed from Command WorkStation.

NOTE: If you install Acrobat after Command WorkStation, you may need to restart Command WorkStation in order to use Impose.

Instructions are provided in your Impose kit for installing Acrobat and PitStop Professional. We recommend that you follow those instructions.

NOTE: To install Acrobat and PitStop on a Windows 2000 computer, you must have Internet Explorer 6.0 or higher installed on the computer. If it is not installed, install Internet Explorer 6.0 before attempting to install Acrobat and PitStop.



We recommend that you install the version of Acrobat provided in your Impose kit and remove any other versions of Acrobat installed on your computer.

TO INSTALL THE PDF SUPPORT APPLICATIONS

1 Uninstall all versions of Acrobat that are currently installed on the computer.

- Close all open applications.
- Follow the Windows instructions for removing programs.

Make sure to delete not only the main folder for the application but also the associated Acrobat folder located, by default, in C:\Program Files\Common Files\Adobe. (The exact drive letter may vary, depending on the computer.)

2 Restart the computer after you uninstall earlier versions of Acrobat.

3 Close all software applications that are currently running on the computer.

4 Insert the Adobe Acrobat/Enfocus PitStop DVD into the DVD drive.

5 If the installer does not start automatically, browse to the location of the DVD drive and double-click the PDF_Applications icon.

6 At the message reminding you to close all applications, click Yes.

7 At the next installation screen, make sure "Adobe Acrobat" and "PitStop" are both selected, and then click Next.

Wait while the installer copies software files to the computer and displays progress bars.

8 At the message indicating a successful installation, click Finish.

You can now start Acrobat and configure the recommended program settings, as described in the following procedure.

TO CONFIGURE ADOBE SETTINGS

NOTE: We recommend that you configure the following settings when starting Acrobat for the first time. These are the recommended Acrobat settings for use with Impose.

1 Double-click the Acrobat program icon to start the application.

By default, the Acrobat program icon is located in C:\Program Files\Adobe\Acrobat 8.0. (The exact drive letter may vary, depending on the computer.)

2 At the License Agreement window, choose a language for displaying the agreement, and then click Accept.

3 At the Activate Adobe Acrobat 8 Standard window, do one of the following:

- To activate Acrobat over the Internet, click the Activate button. Wait for the activation process to finish.
- To activate Acrobat over the telephone, click “Other activation options.” Select “Over the Telephone,” and then click OK to display the Phone Activation window.

Call the telephone number listed for your location, and follow the voice instructions. When prompted, use the telephone keypad to enter the serial number and activation number listed in the Phone Activation window. Listen carefully for the authorization code, and enter it into the Authorization Code fields on the Phone Activation window. Click the Activate button to complete the activation process.



You must complete the activation process upon first starting Acrobat in order to use Acrobat with Impose. *Do not* choose the Activate Later option if it appears on the screen.

4 When the activation process is finished, click Done.

5 At the Getting Started window, select “Do not show at startup,” and then close the Getting Started window.

You can access the window later by choosing Getting Started from the Help menu.

6 Close the Acrobat application to save your configuration settings.

If the latest version of Command WorkStation is already installed on the computer, Impose is now fully enabled. If Command WorkStation is not yet installed, install Command WorkStation, as described on [page 17](#).

Using Impose



Complete instructions on how to use Impose are provided in Command WorkStation, Windows Edition Help.

TO ACCESS IMPOSE HELP

- 1 Start Command WorkStation, Windows Edition.
- 2 Choose Help from the Help menu.
- 3 Use the Contents, Index, or Search panes to navigate to the Impose Help topics.

COMMAND WORKSTATION, MACINTOSH EDITION

Command WorkStation, Macintosh Edition allows operators of the EX8002, or users with Operator or Administrator privileges, to monitor and manage the print workflow of jobs on the EX8002.

Command WorkStation, Macintosh Edition, enables you to do the following:

- View the print status of jobs on the EX8002.
- Hold, process, and print jobs.
- Override user-assigned print option settings.
- Preview the page content of a job.
- Create and use FreeForm master files for variable data printing.
- Archive job files.
- View job logs of recent print activity.

Installing Command WorkStation, Macintosh Edition

Install Command WorkStation, Macintosh Edition on a Mac OS X computer that has a network connection to the EX8002. For complete system requirements, see [Welcome](#).



Before installing the utility, complete the preliminary procedures described in [“Preparing for installation on Mac OS X computers”](#) on page 11.

To install Command WorkStation, Macintosh Edition, see [“Installing user software on a Mac OS computer”](#) on page 14.

Configuring the connection to the EX8002

The first time you start Command WorkStation, you are prompted to configure the connection to the EX8002.

You can also edit the configuration whenever there is any change to your EX8002 server or network, such as a changed server name or IP address. If you change EX8002 Setup information, do so before you reconfigure the connection.

BEFORE YOU BEGIN

- **Print the EX8002 Configuration page.**

For instructions on printing the Configuration page, see [Configuration and Setup](#).

This page contains information that you need when configuring the connection, such as the IP address of the EX8002. For TCP/IP installations, you can use the DNS name instead of the IP address. Make sure that the EX8002 is registered in a Domain Name Server (DNS) on your network. For more information, see the documentation that accompanies your network system.

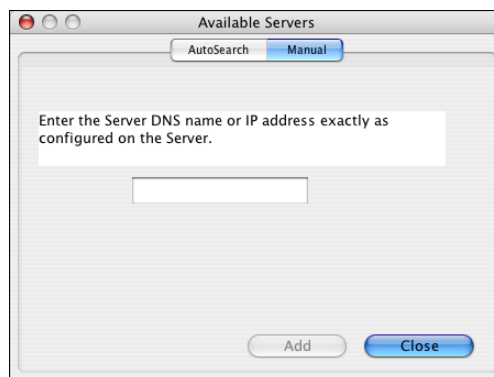
TO CONFIGURE THE CONNECTION FOR COMMAND WORKSTATION, MACINTOSH EDITION

- 1 **Open the Applications: Fiery: CWS Macintosh Edition folder on the Mac OS X hard disk drive. Double-click the CWS Macintosh Edition file to start the application.**

The Available Servers dialog box appears, displaying all servers found in the local subnet.



- 2 **If no EX8002s were found, click the Manual tab to search by DNS name or IP address. Click Add to add the server to the Available Servers list.**

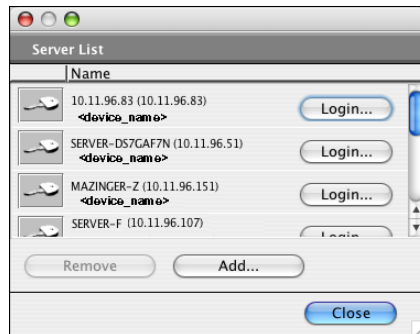


If no EX8002s were found in the Manual search, click the Auto Search tab, and then click Advanced to search by a range of IP addresses or the IP address and subnet mask.

All available servers are displayed in the Available Servers list.

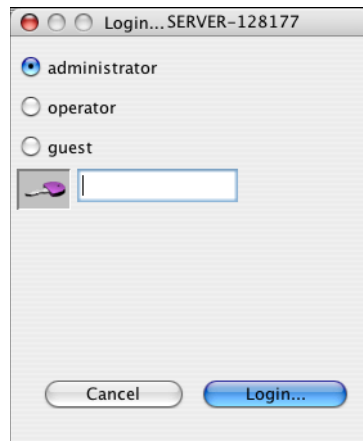
3 Select the EX8002 that you want to use and click Add.

The selected EX8002 is displayed in the Server List dialog box.



4 Click the server name to select it, and then click the key icon or Login button.

The Login dialog box appears.



5 Click administrator, operator, or guest, type the password in the field next to the key, and then click Login.

Your computer is connected to the server.

For more information about setting passwords and the default Administrator password for the EX8002, see [Configuration and Setup](#).

To modify the Command WorkStation connection to the EX8002, you must remove the server from the Login Server list and follow the procedure for configuring the connection.

Using Command WorkStation, Macintosh Edition

After you install and configure Command WorkStation, you can begin using it to monitor and manage jobs on the EX8002.



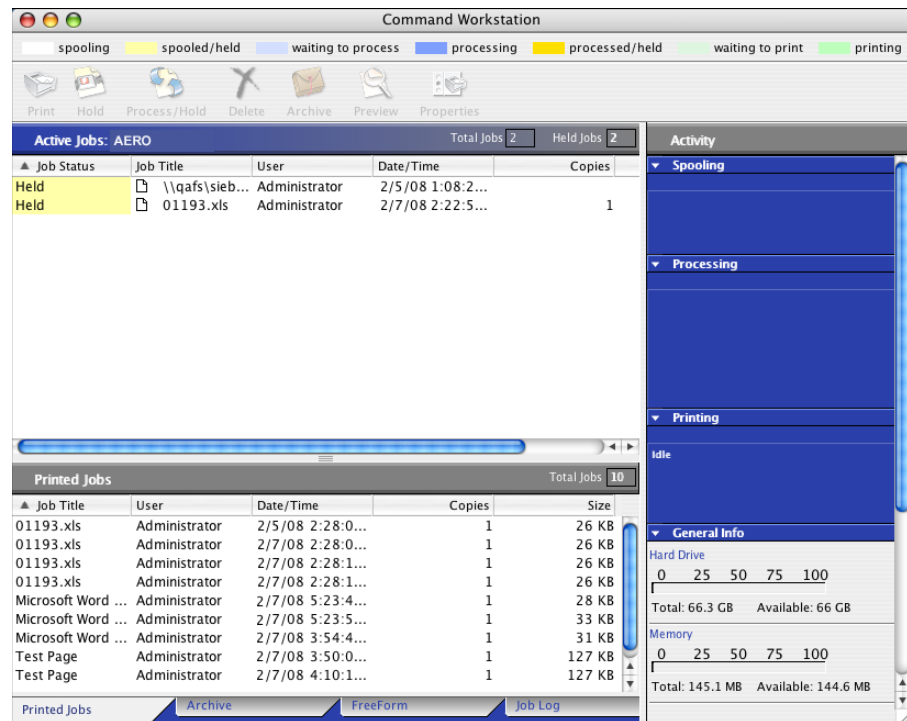
Complete instructions on how to use the Command WorkStation features are provided in Command WorkStation Help.

TO ACCESS COMMAND WORKSTATION HELP

1 Start Command WorkStation.

Select the EX8002 in the server list and log on to the server.

For more information about setting passwords and the default Administrator password for the EX8002, see [Configuration and Setup](#).



2 Choose Help from the Help menu.

Additional features

The following sections describe how to use additional features of Command WorkStation that are not discussed in Command WorkStation Help.

User Authentication

If user authentication is enabled in EX8002 Setup, users may need to enter a user name and password in the printer driver to send a job to the EX8002. Management of the job in Command WorkStation is determined by how you log on to the EX8002, as Administrator, Operator, or Guest.

For information about setting up Users and Groups and enabling user authentication in the Configure WebTool, see [Configuration and Setup](#). For information about User Authentication in the printer driver, see [Printing](#).

Mixed Media

The Mixed Media feature allows you to define the chapter divisions of a job, print ranges of pages on varying types of media, insert blank media between pages, and insert tab media containing text labels.

The following guidelines and restrictions apply to Mixed Media settings:

- The Mixed Media dialog box restricts you from specifying settings that conflict with any media, page size, or finishing settings that have been specified for the job in the Job Properties dialog box or printer driver.
- When two or more Mixed Media settings are in conflict with each other, the Mixed Media dialog box highlights the setting names in red, signaling you to resolve the conflict.
- When you specify print options (in the Job Properties dialog box or printer driver) after specifying Mixed Media settings, certain print options may conflict with the page-specific Mixed Media settings. You must resolve the conflict by choosing different print options or removing certain Mixed Media specifications.
- If counters are configured for the copier/printer, blank media inserted between pages count as printed pages.

Features specific to the EX8002 are described in the following procedures.

NOTE: The procedures for defining Mixed Media settings in Command WorkStation, Windows Edition are similar to those in Command WorkStation, Macintosh Edition, but include illustrations. For information, see [page 23](#).

TO DEFINE MIXED MEDIA SPECIFICATIONS

- 1 Select or right-click a spooled/held job in the Active Jobs window and choose Properties from the Actions menu, or double-click a job.**

- 2 Click the Media icon and scroll down to Mixed Media.**

The Mixed Media dialog box lists any previously defined media settings and includes buttons for defining, modifying, and removing settings.

- 3 For Chapter Start Page(s), type the page numbers on which you want to start new chapter sections.**

Type page numbers as comma-separated values (for example: 4,9,17) to designate the start of each new chapter. This feature forces each starting page to the right side, adding a preceding left-sided blank, if required.

NOTE: It is not necessary to type the first page. Page numbers refer to the numbering of the original document. If you use the Chapter Start Page(s) feature, all media specified in the Paper menu per chapter must share the same dimensions (for example, all Letter, all Tabloid, or all A4).

- 4 To apply finishing options (for example, stapling or sorting) to each chapter created using the Chapter Start feature, select the “Define Each Chapter As A Separate Finishing Set” option.**

NOTE: Not all finishing options can be applied to chapters that contain mixed sizes of media (for example, Letter and A4).

- 5 To define properties for front and back covers, click Define Cover.**

For more information, see [“To define cover media settings”](#) on page 45.

- 6 To define properties for individual pages or page ranges, click New Page Range.**

For more information, see [“To define media for specific pages”](#) on page 45.

- 7 To insert tab media, click New Tab.**

The Insert Tab dialog box appears. For information about defining tab settings, see [page 46](#).

NOTE: The Insert Tab feature is not available for imposed jobs.

- 8 To insert blank pages, click New Insert.**

For more information, see [“To insert blank pages”](#) on page 46.

- 9 To modify or delete a current definition, select it in the Mixed Media Definition list, and then click Edit or Remove.**

If you click Edit, enter new settings for the definition and click Modify.

- 10 After you finish defining Mixed Media settings, click OK to close the Mixed Media dialog box and Job Properties.**

The Mixed Media settings are applied to the job.

NOTE: You can save up to 100 different settings for the Selection list in the Mixed Media dialog box.

TO DEFINE COVER MEDIA SETTINGS

- 1 In the Mixed Media dialog box, click **Define Cover**.

The Cover Media dialog box appears.

- 2 To define identical front cover and back cover media, select the “Apply the same settings for both front and back cover” option. To define media settings for the front or back cover individually, select the **Front Cover** or **Back Cover** option.
- 3 Choose other settings, as required.
- 4 For **Cover Page Mode**, define how you want the content printed on the cover. You can specify printing on the front side only, back side only, or both sides of the cover page.
- 5 Choose the required media from the **Paper Catalog** menu.

You can also click the **Select** button to open the **Paper Catalog** window, select the required media, and then click **OK**.

The media that you selected appears in the main **Cover Media** window.

For more information about **Paper Catalog**, see [page 49](#).

- 6 Click **OK** to return to the Mixed Media dialog box.



Cover Media settings take precedence over settings defined in the **Page/Page Range Media** dialog box.

TO DEFINE MEDIA FOR SPECIFIC PAGES

- 1 Click **New Page Range** in the Mixed Media dialog box.

The **Page/Page Range Media** dialog box appears.

- 2 Type pages and page ranges as comma-separated values (for example: 3,9–14,18).
- 3 Specify other settings, as required.

If you assign a new media type to the back side of a duplexed sheet, a blank page is inserted to force the assigned page content to the front side of the next sheet.

- 4 Choose the required media from the **Paper Catalog** menu.

You can also click the **Select** button to open the **Paper Catalog** window, select the required media, and then click **OK**.

The media that you selected appears in the main **Page Range** window.

For more information about **Paper Catalog**, see [page 49](#).

- 5 Click **Add Definition** after each media setting that you define.
- 6 Click **Close** to return to the Mixed Media dialog box.

TO INSERT BLANK PAGES

- 1 Click **New Insert** in the **Mixed Media** dialog box.

The Insert Blank dialog box appears.

- 2 Indicate whether to insert the blank before or after the target page. Define the target page as the first page in the document, the last page in the document, or a specific numbered page.
- 3 Specify other settings, as required, for the blank page.
- 4 Choose the required media from the **Paper Catalog** menu.

You can also click the **Select** button to open the **Paper Catalog** window, select the required media, and then click **OK**.

The media that you selected appears in the main Insert Blank window.

For more information about Paper Catalog, see [page 49](#).

- 5 Click **Insert** after each blank page that you define.
- 6 Click **Close** to return to the **Mixed Media** dialog box.

Insert Tabs

The Insert Tabs feature allows you to automatically insert tab pages throughout a job. This feature accommodates various sizes and types of tab media stock. Users can insert the tab text and override text attributes on a per-job basis.

NOTE: The Insert Tabs feature is not available for imposed jobs.

NOTE: When you configure counters for the digital press, printed tab pages count as black-and-white pages, provided colors are calibrated to use pure black toner. Expelled tabs are not counted as printed pages.

TO INSERT TAB PAGES

- 1 Select or right-click a spooled/held job in the **Active Jobs** window and choose **Properties** from the **Actions** menu, or double-click a job.
- 2 Click the **Media** icon and scroll down to **Mixed Media**.
- 3 Click **New Tab** in the **Mixed Media** dialog box.

The Insert Tab dialog box appears.

- 4 Enter the number of tab positions included in a complete tab set in the “**Number of tabs in a set**” field.

This specification ensures that tab text is printed in the correct tab positions. For example, tab positions in a set consisting of 10 tabs are distinct from tab positions in a set consisting of 5 tabs.

5 Specify settings for the tab stock, as required.

Paper Size values refer to the dimensions of the stock, including the tabbed portion.

NOTE: Neither the EX8002 nor the digital press recognizes the tab positions. You must create documents and select items so that the print image is not positioned outside of the tab area.

6 Choose the required media from the Paper Catalog menu.

You can also click **Select** to open the Paper Catalog window, select the required media, and then click **OK**.

For more information about Paper Catalog, see [page 49](#).

7 To specify attributes for the tab text, enter the number of tabs in the “Number of tabs to insert” field and click Insert.

8 To use the same text attributes for all tabs, select the “Apply the same text attributes for all tabs” option.

9 In the Text Attributes area, click the arrows to display the menus for font, size, text rotation, and text alignment, and choose the attributes that you want from each menu.

10 Indicate where you want each tab inserted in the document.

- In the Page field, type the page number where you want the tab inserted.
- Select **Before** to insert the tab before the page number, or clear the option.

NOTE: If you indicate that a tab is to be inserted between an odd-numbered page and an even-numbered page in a duplex job, the tab is inserted after the odd-numbered page on the first sheet, and the even-numbered page is printed on the next sheet.

11 Type the tab text for each tab in the Tab Text field.

If required, specify text attributes for each tab individually.

12 After you type the tab text, click OK to close the Insert Tab dialog box.

The Mixed Media dialog box displays the current tab settings in the Mixed Media definition list.

13 To modify media settings for the tabs, select the tab description in the Mixed Media definition list, and then click Edit.

14 To apply your Insert Tab settings to the document, click OK to close the Mixed Media dialog box and Job Properties.

Troubleshooting



When troubleshooting basic connection and software problems with Command WorkStation, see the following sections. For additional troubleshooting information, see Command WorkStation Help.

Command WorkStation cannot connect to the EX8002

If you cannot connect to the EX8002 or locate the EX8002 from your computer, contact the network administrator. The administrator may need to troubleshoot your network connection and check settings on the servers that you print to. If settings have changed, it may be necessary to reconfigure the EX8002.

If you are able to connect to the EX8002 with another utility, you may need to reconfigure the Command WorkStation connection to the EX8002 (see [page 39](#)).

If you configured the EX8002 and set up client computers and network servers according to the instructions in [Configuration and Setup](#), print a Test Page. If you can print a Test Page, but still cannot print a document from a remote computer, contact your network administrator to troubleshoot the network connection.

Command WorkStation does not respond

If Command WorkStation is unresponsive, use the following troubleshooting guidelines.

IF THE COMMAND WORKSTATION WINDOWS DO NOT UPDATE

- 1 Log off and then quit Command WorkStation.
- 2 Restart Command WorkStation or restart the computer.

If the Command WorkStation windows do not update, or no jobs are displayed, and the mouse has no effect (you cannot select a job or a window, use a Control-click command, or select a menu item), the EX8002 is offline or network communication has failed.

TO FORCE AN EXIT FROM COMMAND WORKSTATION

- 1 Press Command-Option-Escape and use the Force Quit Applications dialog box to close Command WorkStation.
- 2 At the EX8002, disconnect and reconnect the network cable, and then try printing a Test Page or Configuration page.
- 3 If printing fails, restart the EX8002.

PAPER CATALOG

Paper Catalog is a system-based paper warehouse database that stores attributes of any media available for printing from the EX8002. Paper Catalog allows you to define custom catalog entries based on any combination of attributes you desire. You can customize any of the media attributes that are available for a catalog entry. You can then select media for your job from those listed.

Installing Paper Catalog

Paper Catalog is installed by default with Command WorkStation.

For information about installing Command WorkStation, Windows Edition, see [page 17](#). For information about configuring Command Workstation, see “[Configuring the connection to the EX8002](#)” on page 17.



For complete instructions on how to use the standard Command WorkStation features, see Command WorkStation Help. For instructions on how to access Command WorkStation Help, see [page 20](#).

Specifying Paper Catalog media for jobs

This section describes how to specify Paper Catalog media for use with a print job. You can specify Paper Catalog media from the following interfaces:

- Command WorkStation, Windows Edition
- Job Properties in Command WorkStation
- Mixed Media Setup in Command WorkStation
- Hot Folders
- Compose
- Printer driver (for instructions, see [Printing](#))

NOTE: The following procedures assume that one or more Paper Catalog entries have already been defined by an administrator. For information about how to define Paper Catalog entries, see “[Setting up Paper Catalog](#)” on page 51.

TO ACCESS PAPER CATALOG FROM COMMAND WORKSTATION, WINDOWS EDITION

- To open Paper Catalog from Command WorkStation, Windows Edition, select a spooled/held job in the Active Jobs window and choose Paper Catalog from the Server menu.

TO SPECIFY PAPER CATALOG MEDIA FROM JOB PROPERTIES

- 1 Select a spooled/held job in the Active Jobs window and choose Properties from the Command WorkStation Actions menu.
- 2 Click the Media icon in the Job Properties dialog box.
- 3 Choose the required media from the Paper Catalog menu.

NOTE: If you specify a paper catalog entry and then use Job Properties to change the page size (or another attribute associated with the paper catalog entry), the Paper Catalog assignment is canceled. Job Properties subsequently displays “none defined” for Paper Catalog.

TO SPECIFY PAPER CATALOG MEDIA FROM MIXED MEDIA SETUP

- 1 Select or right-click a spooled/held job in the Active Jobs window and choose Properties from the Actions menu, or double-click a job.
- 2 Click the Media icon in Job Properties and scroll down to Mixed Media.
- 3 Choose the desired Paper Catalog entry in the New Page Range or New Insert windows.

For more information about Mixed Media Setup, see [“Mixed Media”](#) on page 23.

TO SPECIFY PAPER CATALOG MEDIA FROM COMPOSE

- Select a spooled/held job in the Active Jobs window, choose Compose from the Actions menu, and then choose Paper Catalog from the Compose File menu.



For information about using Compose, see Compose Help. Compose Help also includes information about how to apply Paper Catalog entries to your job.

TO SPECIFY PAPER CATALOG FROM HOT FOLDERS

- 1 In the Folder Properties dialog box, select Job Settings and click Define.
- 2 In the Job Properties dialog box, click the Media icon and choose the required media from the Paper Catalog menu.
- 3 You can also click Select to open the Paper Catalog window, choose the required media, and then click OK.
- 4 Click OK to return to the Hot Folders Properties window.

Setting up Paper Catalog

The following sections describe how to use the features of Paper Catalog.

NOTE: Only administrators can configure and edit Paper Catalog entries and settings.


Managing Paper Catalog entries

The following procedure describe how to create, duplicate, edit, and delete catalog entries.

TO CREATE A NEW CATALOG ENTRY

- 1 In Command WorkStation, choose Paper Catalog from the Server menu.

The main Paper Catalog window is displayed.

- 2 Choose File > New Paper or click the New icon  .

- 3 In the New Media window, specify the attributes for the new catalog entry.

Highlight the desired attribute line in the window, and then click the right-hand column of that attribute line to access the drop-down menu or text field.

For information about setting a specific attribute, see [“Specifying media attributes for Paper Catalog”](#) on page 56.


- 4 Click OK.

The new entry appears with a white background in the Paper Catalog window.

TO DUPLICATE A CATALOG ENTRY

- 1 In Command WorkStation, choose Paper Catalog from the Server menu.

- 2 Select the catalog entry that you want to duplicate.

- 3 Choose File > New Paper or click the New icon  .

The duplicated entry appears at the bottom of the list.

To customize your catalog entry, see the following procedure.

TO EDIT A CATALOG ENTRY WITHIN THE MAIN PAPER CATALOG WINDOW

- 1 In Command WorkStation, choose Paper Catalog from the Server menu.
- 2 Highlight the entry that you want to edit.

Editable entries appear with a white background.

- 3 Click on an attribute in the entry line to display the drop-down menu or text field for that attribute, and then choose the new attribute setting or enter the new attribute value as desired.


All changes are automatically saved.

For information about setting a specific attribute, see [“Specifying media attributes for Paper Catalog”](#) on page 56.

TO EDIT A CATALOG ENTRY WITHIN THE EDIT MEDIA WINDOW

- 1 In Command WorkStation, choose Paper Catalog from the Server menu.
- 2 Highlight the entry that you want to edit.

Editable entries appear with a white background.

- 3 Choose Edit > Paper Properties, or click the Properties icon .

The Edit Media window appears.

- 4 In the Edit Media window, highlight the attribute line that you want to edit, and then click the right-hand column of that attribute line to access the drop-down menu or text field.


Choose the new attribute setting or enter the new attribute value as desired.

For information about setting a specific attribute, see [“Specifying media attributes for Paper Catalog”](#) on page 56.

Repeat steps 2 and 3 for any other attribute that you wish to edit.

- 5 Click OK.

TO DELETE A CATALOG ENTRY

- 1 In Command WorkStation, choose Paper Catalog from the Server menu.
- 2 Highlight the catalog entry that you want to delete.
- 3 Choose Edit > Delete or click the Delete icon .

An alert message asks if you want to delete the entry.

- 4 Click Yes.

Managing catalogs

You can manage catalogs of media entries by doing the following:

- Replace the current catalog of entries with another catalog of entries.
- Merge the current catalog of entries with another catalog of entries imported from a different location.
- Export the current catalog of entries to another location.
- Reset the current catalog to the factory default entries and attributes.

TO REPLACE THE CATALOG WITH ANOTHER CATALOG

NOTE: Before you replace the catalog, be sure to archive the current catalog entries by using the Export command.

- 1 In Command WorkStation, choose Paper Catalog from the Server menu.
- 2 Choose File > Replace Catalog.
- 3 Navigate to the replacement catalog file (.xml file format) on your computer or network, and click Open.

An alert message asks if you want to replace your current catalog.

- 4 Click Yes.

TO MERGE THE CATALOG WITH AN IMPORTED CATALOG

- 1 In Command WorkStation, choose Paper Catalog from the Server menu.
- 2 Choose File > Merge Catalog.
- 3 Navigate to the catalog file (.xml file format) on your computer or network that you want to import, and click Open.

The current catalog is now merged with the one you just imported.

NOTE: When you merge catalogs, all color profile associations in the imported catalog are discarded. If the imported catalog contains an entry that has the identical attributes as an entry in the original database, the new entry is not imported and the original entry remains intact in the merged catalog.

Repeat the procedure for additional catalogs of entries that you want to merge into the current catalog.

TO EXPORT THE CATALOG

- 1 In Command WorkStation, choose Paper Catalog from the Server menu.**
- 2 Choose File > Export.**
- 3 Navigate to the location on your computer or network where you want to save the exported catalog file.**
- 4 Enter a name for the catalog file, and click Save.**

The exported catalog is saved as an .xml file. The exported catalog can be imported back into the main Paper Catalog window by using the Merge Catalog command.

TO RESTORE THE CATALOG TO FACTORY DEFAULTS

NOTE: Any added or edited catalog entries are lost when you reset the catalog to factory defaults. To save your customized entries, use the Export command to archive the catalog before resetting it to factory defaults.

- 1 In Command WorkStation, choose Paper Catalog from the Server menu.**
- 2 Choose File > Reset to Factory Defaults.**

An alert message asks if you want to reset the catalog to its factory defaults.

- 3 Click Yes.**

Setting display options

The preferences dialog box specifies the units of measurements used to display attributes such as custom page sizes. This preference setting does not affect predefined page size values. The setting applies to Paper Catalog only and overrides the units setting specified in Command WorkStation preferences.

You can also customize the display of attribute columns in the main Paper Catalog window.

TO SET THE UNIT OF MEASUREMENT FOR PAPER CATALOG

- 1 In Command WorkStation, choose **Paper Catalog** from the **Server** menu.
- 2 Choose **Edit > Preferences**.
- 3 Specify the desired **Size Units**.
- 4 Click **OK**.

TO CUSTOMIZE THE DISPLAY OF ATTRIBUTE COLUMNS

- 1 In Command WorkStation, choose **Paper Catalog** from the **Server** menu.
- 2 Do any of the following:
 - To sort the catalog entries according to a particular attribute, click the column title bar for that attribute.
 - To add an attribute column to the display, right-click the title bar of a column, click **Add** and choose the attribute that you want to add as a column.

The new column is added immediately to the right of the column that you right-clicked.
 - To change the display order of a column, click and drag the title bar of the column.
 - To remove a column from the display, right-click the title bar of the column and click **Delete**. Alternatively, you can drag the title bar of the column off the Paper Catalog window to remove it.

NOTE: Attribute columns removed by an administrator will not display in Paper Catalog or Paper/Tray Association for any users connected to the EX8002. These columns can only be restored by an administrator.

Specifying media attributes for Paper Catalog


The following sections describe how to specify media attributes for entries in Paper Catalog.


Assigning profiles

You can associate a color output profile with a catalog entry. Any default or custom color profile managed by ColorWise Pro Tools is available as a media attribute.

TO ASSIGN A COLOR PROFILE TO A CATALOG ENTRY

1 In Command WorkStation, choose **Paper Catalog** from the **Server** menu.

2 Choose **File > New Paper** or click the **New** icon .

Or, to edit an existing catalog entry, highlight the entry and click the **Properties** icon .

3 In the **New Media** (or **Edit Media**) window, specify the appropriate profile options for your catalog entry:

- **Media Color Profile:** the default color profile that will be applied to both the front and back sides of the media. This attribute can be overridden by specifying a different color profile in Job Properties.
- **Media Front Color Profile:** the default color profile that will be applied only to the front side of the media. This attribute can be overridden by specifying a different color profile in Job Properties.
- **Media Black Color Profile:** the default color profile that will be applied only to the back side of the media. This attribute can be overridden by specifying a different color profile in Job Properties.

NOTE: When you specify an individual profile for either Media Front Color Profile or Media Back Color Profile, the Media Color Profile column in the Paper Catalog window displays the individual profiles in the format: <front color profile>/<back color profile>. You may need to widen the Media Color Profile column to see the entire display.


4 Click **OK**.


Specifying custom paper sizes

You can define a custom paper size when creating or editing a catalog entry.

TO SPECIFY A CUSTOM PAPER SIZE FOR A CATALOG ENTRY

1 In Command WorkStation, choose **Paper Catalog** from the **Server** menu.

2 Choose **File > New Paper** or click the **New** icon  .

Or, to edit an existing catalog entry, highlight the entry and click the **Properties** icon  .

3 In the **New Media** window, click the **Paper Size** field and enter the custom page values for that catalog entry.

Enter custom page values using the format “m x n”, for example “8 x 10”.

If you do not specify a unit of measurement (such as in, mm, or pt), Paper Catalog uses the default unit specified in Preferences.

If a unit measurement other than the default is specified, the value is converted and displayed in default measurement units.

Description of media attributes

The following table describes the media attributes that you can specify for catalog entries.

Attribute names appear in the column titles of the main Paper Catalog window. Mandatory attributes appear with populated fields. You cannot leave the field for a mandatory attribute empty.

Media attribute	Description
Back Coating	Indicates the type of pre-process coating applied to the back side of the media sheet.
Back Gloss Value	The percentage of light reflected by the back side of the media when it is viewed under illumination with a 75-degree angle of incidence. A higher percentage of reflection indicates a higher gloss value.
Brightness	Light reflectance of the media used. Enter a value from 0% (low reflectance) to 100% (high reflectance).
CIE Lab Color	The device-independent color of the media. Specify the color using CIE L*a*b* values.
CIE Tint	Describes how neutral, unsaturated, or non-chromatic the media is. Specify the media tint using values in the CIE xyz coordinate system. A coordinate of (0, 0, 0) indicates a perfectly neutral tint.
CIE Whiteness	Describes the amount of overall light reflected by the media, as measured across the entire visible spectrum. Specify the reflection amount using values in the CIE xyz coordinate system. A coordinate of (100, 100, 100) indicates perfect whiteness.
Color Name	Color of the media used. To indicate translucent media, choose a “Clear” color option.
Custom Color Name	Custom color of the media used. Use this attribute if your desired color does not appear in the Color Name menu. Type the name of your custom color into this field.
Description	Additional descriptive information for the catalog entry, such as the manufacturer, model, part number, and type of media used. Type the desired description into this field.
Feed Direction	Specifies how the media sheet is fed into the printer. Choose between Long Edge Feed and Short Edge Feed.
Front Coating	Indicates the type of pre-process coating applied to the front side of the media sheet.
Front Gloss Value	The percentage of light reflected by the front side of the media when it is viewed under illumination with a 75-degree angle of incidence. A higher percentage of reflection indicates a higher gloss value.
Grade	The surface quality of the media, expressed as a grade level from 1 and 5. Use the following guidelines: <ol style="list-style-type: none"> 1 Gloss-coated paper 2 Matte-coated paper 3 Gloss-coated web paper 4 Uncoated white paper 5 Uncoated yellowish paper

Media attribute	Description
Grain Direction	Direction of paper grain on the media used. Choose from the following options: Short Grain runs parallel to the short edge of the media, as defined by Paper Size. Long Grain runs parallel to the long edge of the media, as defined by Paper Size.
Hole Type	Pattern of punched holes (if any) on the media used.
Imageable Sides	Specifies which side(s) of the media support print imaging.
Media Color Profile	See “Assigning profiles” on page 56.
Media Front Color Profile	See “Assigning profiles” on page 56.
Media Back Color Profile	See “Assigning profiles” on page 56.
Media Unit	The physical format of the media that is fed into the print device. Choose from the following options: Sheet Individually cut sheets. Roll Media that is continuously connected and wrapped around a spindle. Continuous Media that is continuously connected and folded, as in a fan-folded format.
Name	Descriptive name for the catalog entry, such as “Special_A4”. Type the desired name into this field.
Opacity	The level of transparency of the media. Choose from the following options: Opaque The media is opaque. If the media is printed on both sides, the image on the other side does not show through under normal lighting conditions. Translucent The media is partially transparent, under certain lighting conditions such as back-lit viewing. Transparent The media is fully transparent, under all lighting conditions.
Opacity Level	The media’s percentage of opacity. 0% represents full transparency, and 100% represents full opacity.
Paper Size	Width and height dimensions of the media used. For information about specific Paper Size options, see Printing . For information about setting a custom paper size, see “Specifying custom paper sizes” on page 57.
Pre-Printed	Indicates whether the media contains pre-printed content. Choose from the following options: False The media is not pre-printed. True The media contains pre-printed content (for example, stationery paper with a pre-printed letterhead).
Product ID	Part number, item code, article number, or other identifier for the media used, as defined by a Management Information System (MIS). Enter the desired product identifier into the field.
Set Count	Defines the number of pieces in a grouped media set. For example, tab stock with five pre-cut tabs has a Set Count of “5”.

Media attribute	Description
Texture	Surface texture of the media used. Choose from the following, or type in a custom description:
Antique	Surface that is rougher than vellum.
Calendered	Extra-smooth or polished uncoated paper.
Cockle	Surface that has a rough, wrinkled, irregular finish.
Dull	Machine-worn finish without gloss or luster.
Eggshell	Surface that has a texture similar to that of an eggshell.
Embossed Linen	Surface resembling coarse woven cloth, with a pronounced embossed texture.
English	Surface that is smoother than Machine Finished, but rougher than Super Calendered.
Felt	Finish applied by a special marking felt.
Laid	Surface with a pattern of vertical and horizontal lines.
Light Cockle	Surface that has a rough, wrinkled, irregular finish, with less pronounced wrinkles than in Cockle.
Linen	Surface that has the texture of coarse woven cloth.
Luster	Shiny surface.
Machine Finished	Extra-smooth or polished uncoated paper, rougher than English.
Matte	Dull finish without gloss or luster.
Mottled	Finish that shows diverse spots or blotches.
Parchment	Finish that resembles the appearance of parchment paper.
Satin	Smooth, dull finish that resembles satin fabric.
Semi-Vellum	Slightly rough finish, smoother than Vellum.
Silk	Smooth, dull finish that resembles silk fabric.
Smooth	Surface that has a smooth finish.
Stipple	Fine, pebbled finish.
Suede	Smooth, dull finish that resembles suede fabric.
Super Calendered	Smoothest, most polished, uncoated paper.
Super Smooth	Very flat and even finish. Smoother than Ultra Smooth.
Traditional Laid	Surface with a heavier pattern of vertical and horizontal lines than Laid.
Ultra Smooth	Very flat and even finish, but not as smooth as Super Smooth.
Uncalendered	Rough, unpolished, and uncoated finish.
Vellum	Slightly rough and dull finish.
Velvet	Smooth, dull finish that resembles velvet fabric.
Wove	Soft, smooth finish.

Media attribute	Description
Thickness	Thickness of the media used, measured in microns.
Type	<p>Stock type of the media used. Choose from the following options:</p> <p>Paper Standard fiber-based paper stock.</p> <p>Transparency Transparent media stock designed to be viewed through projection.</p>
Type Details	<p>Additional details describing the stock type of the media used. Choose from the following options:</p> <p>Plain Choose this option if your media stock does not require a special description.</p> <p>Cardboard Media made from cardboard stock.</p> <p>Continuous Long Opaque media composed of sheets continuously connected along the long edge, as defined by Paper Size.</p> <p>Continuous Short Opaque media composed of sheets continuously connected along the short edge, as defined by Paper Size.</p> <p>Envelope Media that can be used for conventional mailing purposes. Can either be plain envelopes or envelopes with transparent address windows.</p> <p>Envelope Plain Envelopes that are not pre-printed and do not have address windows.</p> <p>Envelope Window Envelopes that have transparent windows for addressing purposes.</p> <p>Full Cut Tabs Media with a single long tab that extends along the full length of the sheet.</p> <p>Labels Adhesive label stock, such as a sheet of peel-off labels.</p> <p>Letterhead Cut sheets of opaque media that contain a pre-printed letterhead.</p> <p>Multi-Part Form Media designed for use as a multi-layer form. Individual layers of the form are detached from one another and may be drawn from separate paper trays.</p> <p>Photographic Cut sheets of opaque media designed to support photographic-quality images.</p> <p>Pre Cut Tabs Media with two or more tabs that extend along an edge of the sheet.</p> <p>Stationery Cut sheets of opaque media. Generic paper falls under this category.</p> <p>Tab Stock Media with one or more tabs. Can be either Full Cut Tabs or Pre Cut Tabs.</p>
US Basic Size	Type of media stock (measured in inches), as defined by US industry standards.

Media attribute	Description
Weight (gsm)	<p>Weight of the media used, measured in grams per square meter (gsm).</p> <p>The basis weights of most North American stock types are measured in pounds (lb.). To convert to gsm, multiply the basis weight by the appropriate conversion factor for the stock type:</p> <ul style="list-style-type: none"> • For bond, ledger, manifold, onion skin, duplicator, or safety; multiply by 3.76. • For blotter, multiply by 3.08. • For cover papers, multiply by 2.70. • For blanks, multiply by 2.28. • For printing bristol or wedding bristol, multiply by 2.19. • For index bristol, multiply by 1.81. • For tagboard or newsprint, multiply by 1.63. • For uncoated book, coated book, text book, or label; multiply by 1.48. <p>For example, the metric weight of 50lb bond stock is calculated as follows:</p> <p>Basis Weight x Conversion Factor = 50 x 3.76 = 188gsm</p>
% Recycled Content	The percentage of recycled material in the media.

Using Paper/Tray Association

Paper/Tray Association allows you to associate a Paper Catalog entry with a particular paper tray on the digital press. This feature instructs the digital press to pull the appropriate media for a job that uses a particular Paper Catalog entry.

Associating catalog entries with trays

After loading media stock on the digital press, use Paper/Tray Association to define the tray location of that media stock. You must first define the media stock as a Paper Catalog entry, as described in [“Managing Paper Catalog entries”](#) on page 51.

TO ASSOCIATE A CATALOG ENTRY WITH A TRAY

- 1 In the main Command WorkStation window, choose **Server > Paper/Tray Association**.

NOTE: If you are logged in as an administrator, you can also go to **Server > Paper Catalog > Tools > Paper/Tray Association**.

All installed trays are displayed in the main Tray and Paper Association window.

Position the cursor over a tray to display the association details. An unassociated tray is labeled “unassigned.” An associated tray is displayed with a summary of the associated catalog entry.

- 2 Click a tray from the list on the left.

All available catalog entries are listed for that tray. If the tray does not recognize any Paper Catalog information, all catalog entries are displayed.

- 3 Select a catalog entry.

- 4 Click **OK**.

Monitoring media status in trays

If the digital press is able to report the amount of media remaining in each tray, you can monitor media status from the Tray and Paper Association window.

TO MONITOR THE MEDIA STATUS IN A TRAY

- 1 In the main Command WorkStation window, choose **Server > Paper/Tray Association**.

Each tray displays the amount of remaining media, expressed as a percentage.

- 2 Click **Cancel** to close the window without applying any Tray and Paper Association changes.

PRODUCTION FEATURES

The EX8002 offers additional production features for EX8002 operators (or users with Operator or Administrator privileges) to monitor and manage the print workflow of jobs on the EX8002. All the features are accessible from Command WorkStation, Windows Edition. Schedule Printing and Preflight are also accessible from Command WorkStation, Macintosh Edition. The features available are:

- Compose
- Preflight (also available from Command WorkStation, Macintosh Edition)
- Process Next/Print Next
- Reorder Jobs
- Suspend on Mismatch
- Rush Printing
- Schedule Printing (also available from Command WorkStation, Macintosh Edition)
- Quick Doc Merge

Installing the production features

The additional production features are installed with Command WorkStation.

For information about installing Command WorkStation, Windows Edition, see [page 17](#).

For information about configuring Command Workstation, see [“Configuring the connection to the EX8002”](#) on page 17.

For information about installing Command WorkStation, Macintosh Edition, see [page 39](#).

For information about configuring Command Workstation, see [“Configuring the connection to the EX8002”](#) on page 39.



For complete instructions on how to use the standard Command WorkStation features, see Command WorkStation Help. For instructions on how to access Command WorkStation, Windows Edition Help, see [page 20](#), and to access Command WorkStation, Macintosh Edition Help, see [page 42](#).

Using the production features

The following sections describe how to access and use the additional production features of the EX8002.

Compose

The Compose application allows you to define the chapter divisions of a job, print ranges of pages on varying types of media, insert blank media between pages, and insert tab media containing text labels. You can also preview the job as thumbnails and full screen previews, and edit documents using Acrobat and PitStop.

A special dongle must be installed on each computer that runs Compose. For more information about the dongle and installing it, see the document that accompanies the Compose kit.

To use Compose, you must also install Acrobat and PitStop on the client computer. Installers for Acrobat and PitStop are provided in the Compose kit. For information about installing Acrobat and PitStop, see the document that accompanies the Compose kit, or see [“Installing Adobe Acrobat and Enfocus PitStop”](#) on page 36.



For complete instructions on how to use Compose, see Compose Help.

TO ACCESS COMPOSE AND COMPOSE HELP

- 1 **Select a spooled/held job in the Active Jobs window and choose Compose from the Actions menu, or right-click the job and choose Compose from the menu that appears.**
- 2 **Choose Help from the Help menu.**



If you have the Compose feature, we recommend that you use it instead of Mixed Media.

Preflight

The preflight feature performs a simple check of the most common error areas. This check ensures that the job prints successfully and to the expected quality on the selected printing device.

NOTE: This feature is accessible from Command WorkStation on both Windows and Mac OS X computers.

TO PREFLIGHT A JOB

1 Select a spooled/held job in the Active Jobs window and choose Actions>Preflight.

2 Set a notification level for each error or use the default Preset.

For more information, see [“Setting preflight checks”](#) on page 67 and [“Setting notification levels”](#) on page 67.

3 Click Save to save the settings as a new preset if you want to use them again.

4 Click Preflight to perform the Preflight check.

5 Click Save to save the report as a PDF.

6 Click Print Report to print the report.

7 Click Preflight Again to repeat the preflight check.

8 Click Close to exit Preflight.

Supported file formats for preflight

The following file formats are supported for preflight:

- PostScript
- Adobe Acrobat PDF
- EPS
- PPML
- VPS
- VIPP

NOTE: TIFF is *not* supported for Preflight checks.

Setting preflight checks

You can set preflight checks for the following:




- **Fonts:** When missing and when substituted
- **Spot Colors:** When missing
- **Low-Res Images:** When image resolution is less than specified dpi
- **VDP Resources:** When not found


You can choose to Preflight individual VDP resources.

- **Hairlines:** When line width is less than specified point size
- **Overprint:** When overprint is detected
- **PostScript:** When any PostScript error is found
- **Halt preflight on first error:** When any error is found

Setting notification levels

For each preflight category, you can specify a notification level:

- **Critical:** Marks any errors with Critical icon .
- **Warning:** Marks any errors with Warning icon .
- **Message:** Marks any error with Message icon  and provides information.
- **Ignore:** Skips check of that category.

A category with no errors is marked with a Pass icon .

Reorder Jobs

The EX8002 processes and prints batches of selected jobs in the order of each job's position in the queue. The Reorder Jobs feature allows you to control the processing or printing priority by reordering the job queue. When you promote jobs in the queue, these jobs take priority over the rest of the jobs on the EX8002.

For example, you can reorder the queue to group jobs with similar print options, such as media or tray selections. When you select the jobs and apply the Print command, batches of jobs with similar options are printed together.

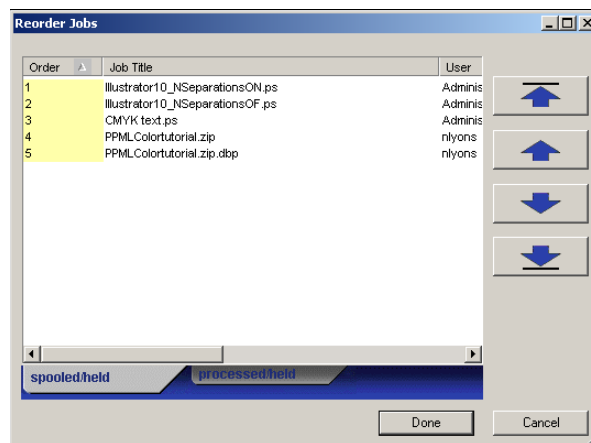


To reorder jobs, you must log on to the EX8002 with Administrator privileges.

TO REORDER JOBS

1 Choose Reorder Jobs from the Server menu.

The Reorder Jobs dialog box appears.



2 Click the tab for the type of job that you want to reorder.

The EX8002 supports the reordering of spooled/hold jobs, processed/hold jobs, and jobs that are waiting to process.

3 Select the job(s) that you want to reorder.

Hold down Ctrl and click to select multiple jobs. Hold down Shift and click to select a range of jobs.

4 Reorder the selected job(s).

To shift the job priority up or down, click the Move Up or Move Down button. To move the job(s) to top or bottom priority, click the Move to Top or Move to Bottom button.

Jobs at the top of the list take priority over jobs at the bottom.

5 After you define the order, click Done.

Job Mismatch

When Job Mismatch is enabled, the EX8002 detects if a job can print based on the media available on the digital press. If the media is unavailable, the job is removed from the list of currently printing jobs so that other jobs can continue to print.

Job Mismatch is enabled in Server Setup. For more information, see [Configuration and Setup](#).

In Setup, the administrator can set Job Mismatch to do the following:

- Cancel a mismatched job so that the job moves to the Printed queue with an error describing the correct media to be loaded.
- Suspend a mismatched job so that the job is placed in a suspended state with an error describing the correct media to be loaded.
- Set a time-out that specifies how long the job waits for the media to be loaded.

Rush Printing

The Rush Printing feature allows you to print a job immediately, bypassing other jobs in the print queue. To rush print a job, you must first place the job in the Hold queue, and then select Rush Printing from the Actions menu.

The following restrictions apply:

- You cannot interrupt a single set print job. With variable data printing or other record partition jobs, you can interrupt between records.
- You cannot interrupt a job in RIPping process.
- You cannot interrupt another Rush Print job.

Schedule Printing

The Schedule Printing feature allows you to set a specific date and time for printing a job. This feature is accessible from Command WorkStation on both Windows and Mac OS X computers.

Assign Schedule Printing settings to a job from the following areas:

- Printer driver on a Windows computer only (see [Printing](#))
- Job Properties window in Command WorkStation
- Active Jobs window in Command WorkStation

Command WorkStation also allows you to search for jobs that have been scheduled for printing.

The procedures below describe accessing Schedule Printing from Command WorkStation, Windows Edition, and Command WorkStation, Macintosh Edition.

TO SCHEDULE A JOB FOR PRINTING FROM THE ACTIVE JOBS WINDOW

- 1 Select a job in the Active Jobs window and choose Schedule Printing from the Actions menu.
- 2 In the dialog box that appears, specify the date and time when you want the job printed, and then click OK.

TO SCHEDULE A JOB FOR PRINTING FROM THE JOB PROPERTIES WINDOW

- 1 Select a job in the Active Jobs window and choose Properties from the Actions menu.
- 2 Click the Job Info icon and scroll down to Destination.
- 3 Select Schedule Printing, specify the date and time when you want the job printed, and then click OK.



NOTE: Display the scheduled date and time by adding a Schedule Printing information column to the Active Jobs window. For information about adding information columns, see Command WorkStation Help.

TO FIND SCHEDULE PRINTING JOBS

- 1 Choose Find from the Edit menu.
- 2 Select Active Jobs.
- 3 Click the Advanced tab.
- 4 Scroll down and select Schedule Printing.
- 5 Click Find (Mac OS X) or Search (Windows).
- 6 To print the results of your search, click Print Window.
- 7 To save the results of your search, click Export Window, specify a file name and destination, and then click Save.
- 8 Close the search results dialog box.

NOTE: You can also search for scheduled jobs by choosing the Find Scheduled Jobs command in the Edit menu in Command WorkStation, Windows Edition.

TO FIND SCHEDULED JOBS IN WINDOWS

- 1 Choose Find Scheduled Jobs from the Edit menu.
A window displays the search results.
- 2 To print the results of your search, click Print Window.
- 3 To save the results of your search, click Export Window, specify a file name and destination, and then click Save.
- 4 Close the search results dialog box.

Print Next

The Print Next feature moves the selected job immediately to the printing queue. If another job is currently printing, the selected job for Print Next is printed immediately after.

Process Next

The Process Next feature moves the selected job immediately to the processing queue. If another job is currently processing, the selected job for Process Next is processed immediately after.

Quick Doc Merge

The Quick Doc Merge feature allows you to merge multiple files or jobs so that they can be printed as a single job on the EX8002.

Documents to be merged into one job in Quick Doc Merge must be PostScript or PDF format. When merged into one job on the EX8002, the job becomes VDP format.

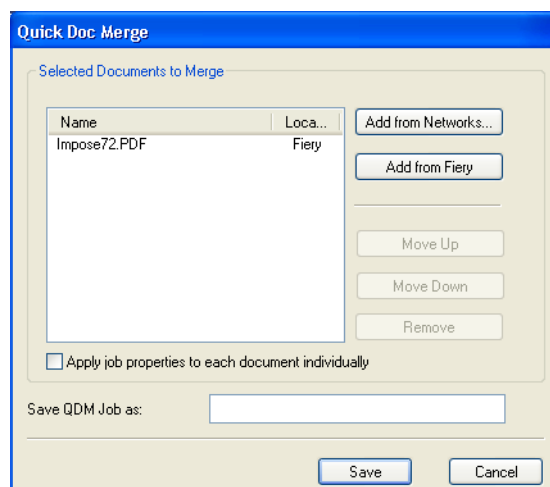


NOTE: When documents are merged into a Quick Doc Merge job, all Job Properties settings for the individual documents are overwritten and default to the EX8002 default settings. You must set Job Properties after you combine the separate documents into a single Quick Doc Merge job.

TO USE QUICK DOC MERGE

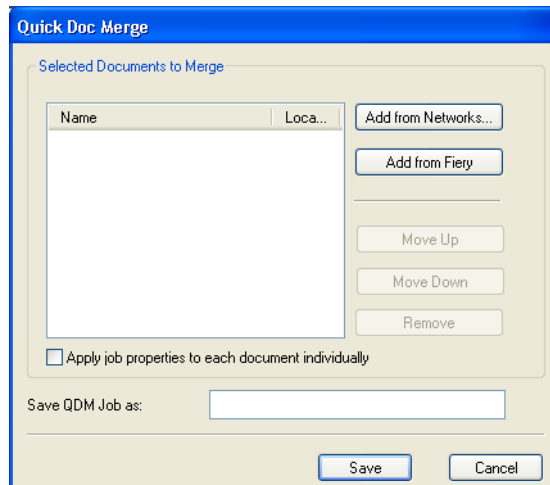
- 1 To open Quick Doc Merge, right-click a job in the Active Jobs window or choose Quick Doc Merge from the Actions menu.

The selected job is listed.



Or choose **File > Import > Import Quick Doc Merge**.

No selected jobs are listed.



- 2 Click **Add from Networks** to browse and select PostScript or PDF files to import.

Click **Add from Fiery** to display a list of all PostScript and PDF files in the Hold queue on the EX8002.

- 3 When the jobs you selected are listed, click **Move Up** or **Move Down** to change the order in which they are printed. Click **Remove** to remove a job.
- 4 Choose whether or not to select **“Apply job properties to each job individually.”**

This option applies to the job properties you set after creating and saving the Quick Doc Merge job. For more information, see [“Applying job properties to Quick Doc Merge jobs”](#) on page 73.

- 5 Type a name for the merged document in the **“Save QDM job as”** field.
- 6 Click **Save**.

The job is created and listed in the Active Jobs window.

- 7 Specify job properties for the new Quick Doc Merge job.

Applying job properties to Quick Doc Merge jobs

When a Quick Doc Merge job is created, any previous job properties set for the individual documents revert to the default EX8002 settings. After creating and saving the Quick Doc Merge job, you must specify job properties for it. The option, “Apply job properties to each job individually,” applies to those job properties.

If you select “Apply job properties to each job individually,” job properties are applied individually to each separate document that has been combined into the Quick Doc Merge job. If you clear the option, job properties are applied to the Quick Doc Merge job as a single job. The settings that apply depending on whether this option is selected or not are described in the following table:

“Apply job properties to each job individually” option

	Selected	Not selected
Finishing attributes	Applied individually to each separate document	Applied to the merged job as a single job
Duplex	First page of each document is printed on the front side of the sheet	Duplex printing is continuous throughout the merged job
Mixed Media settings	Applied separately to each document in merged job	Applied to the merged job as a single job
Imposition	Each document treated as a separate record of a VDP job	Merged document treated as a single record of VDP job



NOTE: When imposing a Quick Doc Merge job, Impose sets the page size for the entire job based on the first page of the Quick Doc Merge job. If the Quick Doc Merge job contains mixed page sizes, those pages with sizes different from the first page are imposed as if they were the size of the first page (clipping performed as necessary).

HOT FOLDERS

The Hot Folders utility allows you to store and reuse frequently used print options when printing PostScript and PDF files on the EX8002. With Hot Folders, you can do the following:

- Create special folders (hot folders) that assign specific print settings and print queues to jobs.
- Print jobs to the EX8002 by dragging and dropping them onto hot folders on your computer's desktop.
- Monitor the status of jobs sent to hot folders.

Installing Hot Folders

The installer for Hot Folders is located on the User Software DVD.



Before installing the utility, make sure that you complete the preliminary procedures described on [page 10](#).

To install Hot Folders on a Windows computer, see [“Installing user software on a Windows computer”](#) on page 12. To install Hot Folders on a Mac OS computer, see [“Installing user software on a Mac OS computer”](#) on page 14.

Using Hot Folders

Complete instructions on how to use the standard Hot Folders features are provided in Hot Folders Help.



If the Fiery Graphic Arts Package, Premium Edition is installed and enabled on the EX8002, you can use additional file format filters with Hot Folders. For information about using these file format filters, see [Fiery Graphic Arts Package](#).

TO ACCESS HOT FOLDERS HELP

- 1 **Start Hot Folders.**
- 2 **Choose Help > EFI Hot Folders Help.**



Additional features

The following section describes additional features of Hot Folders that are not discussed in Hot Folders Help.

Preserve Document Setting

When you define Job Settings for a new Hot Folder and open the Job Properties window, the default for many settings is displayed as Preserve Document Setting. This setting allows you to keep the job properties you set when creating the original job in the application.

About Hot Folders filters

Hot Folders filters allow you to convert certain file formats to PostScript or PDF or to preflight files for conformity. File conversion and preflighting take place on your computer within Hot Folders, which saves EX8002 resources. You can print files directly from Hot Folders filters without starting the application in which they were created.

Using the PDF to PS filter

The PDF to PS filter is standard. The PDF to PS filter accepts PDF (v1.2 through v1.7) files and outputs PostScript files.

NOTE: The filter converts any PDF v1.2 files to PDF v1.7 files, and then to PostScript Level 3 files before submitting to the EX8002.

NOTE: This filter is not supported on Mac OS X.

Microsoft Office filters for Hot Folders

The Microsoft Office filters for Hot Folders feature allows you to convert certain MS Office file formats to PostScript. File conversion takes place on your computer within Hot Folders, which saves EX8002 resources. You can print files directly from Hot Folders filters without starting the application from which they were created.

NOTE: These filters are not supported on Mac OS X.

The Microsoft Office filters have no configurable options; however, you must have the following versions of each application, and have Acrobat Distiller installed to convert the files to PostScript files.

- Microsoft Excel 2000 or later
- Microsoft Publisher 2002 or later
- Microsoft PowerPoint 2000 or later
- Microsoft Word 2000 or later

Specifying filter settings for a Hot Folder

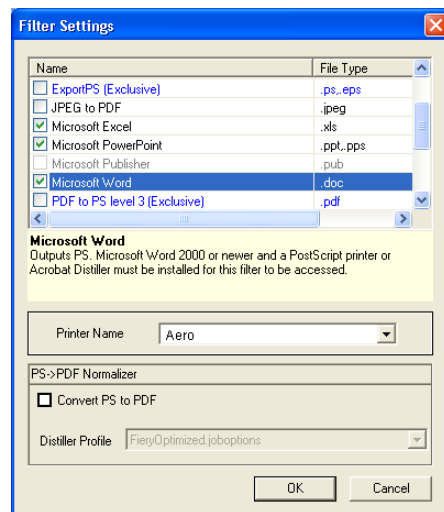
After specifying the filter settings and options for your Hot Folder, drag and drop the proper file formats onto your Hot Folder to begin the conversion process.

Open the Filter Settings dialog box from the Folder Properties dialog box.

TO SELECT A FILTER SETTING

- 1 From the Hot Folders Control Panel, select the Hot Folder and click Properties.
- 2 Select Filter Settings and click Define.

The Filter Settings dialog box appears, allowing you to select the filter.



For Windows, filters are color-coded. Exclusive filters are blue and Non-exclusive filters are black.

If you select an Exclusive filter, you cannot select any other filter. Microsoft Office filters are non-exclusive filters, so you can select as many of them as you wish.

- 3 To convert all PostScript files to PDF automatically, select Convert PS to PDF and a job option from the Distiller Profile menu in the PS->PDF Normalizer pane.
- 4 Click OK.

VDP RESOURCE MANAGER

VDP Resource Manager allows you to do the following:

- Search for global objects used in variable data printing.
- Delete global objects used in variable data printing.

Installing VDP Resource Manager

To install and use VDP Resource Manager, you must have a Windows or Mac OS computer that can connect to the EX8002. For detailed system requirements, see [Welcome](#).

The installer for VDP Resource Manager is located on the User Software DVD.



Before installing the utility, complete the preliminary procedures described in “[Preparing for installation on Windows computers](#)” on page 10 and “[Preparing for installation on Mac OS X computers](#)” on page 11.

To install VDP Resource Manager on a Windows computer, see “[Installing user software on a Windows computer](#)” on page 12. To install VDP Resource Manager on a Mac OS computer, see “[Installing user software on a Mac OS computer](#)” on page 14.

Configuring the connection to the EX8002

The first time you start VDP Resource Manager, you must configure the connection to the EX8002.

NOTE: The Windows and Mac OS versions of VDP Resource Manager are similar. The following illustrations show the Windows version.

BEFORE YOU BEGIN

- **Print the EX8002 Configuration page.**

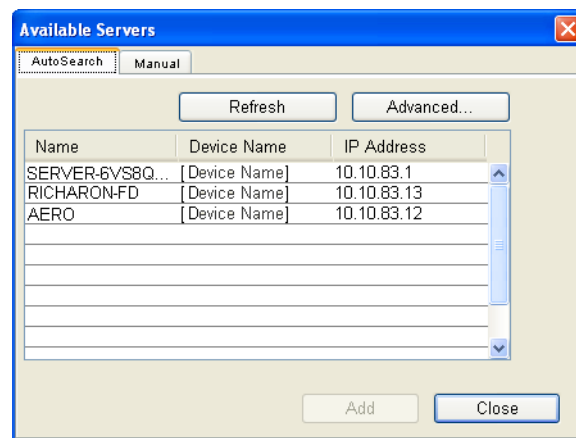
For instructions on printing the Configuration page, see [Configuration and Setup](#).

This page contains information you need when configuring the connection, such as the IP address of the EX8002. For TCP/IP installations, you can use the DNS name instead of the IP address. Make sure that the EX8002 is already registered in a Domain Name Server (DNS) on your network. For more information, see the documentation that accompanies your network system.

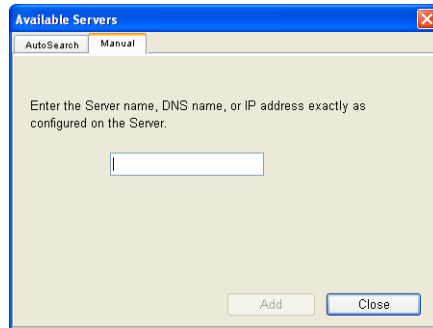
TO CONFIGURE THE CONNECTION FOR FIERY VDP RESOURCE MANAGER

- 1 **Click Start, choose Programs, and then click Fiery VDP Resource Manager in the Fiery folder.**

The Available Servers dialog box appears, with all EX8002 servers in the local subnet displayed.

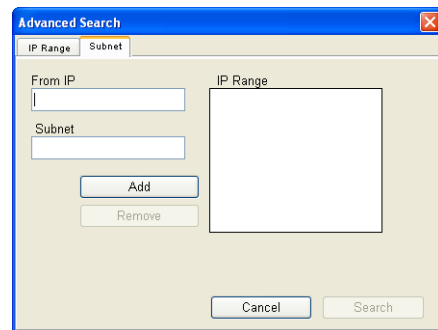
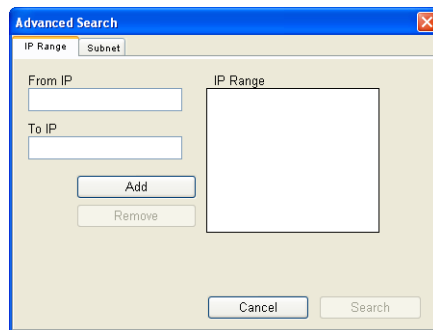


- 2 To locate a server by its IP address, click the Manual tab, type the IP address, and then click Add.



The server appears in the Available Servers dialog box.

- 3 To locate the EX8002 either by a range of IP addresses or by the IP address and subnet mask, click the Auto Search tab, and then click Advanced.
- 4 Click the IP Range tab or the Subnet tab.



- 5 To search by a range of IP addresses, enter the information in the From IP and To IP fields, click Add, and then click Search.

To search by IP address and subnet mask, enter the information in the From IP and Subnet fields, click Add, and then click Search.

All available servers are displayed in the Available Servers dialog box.

- 6 Select the servers that you want and click Add.

All connected servers are displayed in the Fiery Servers list in the Fiery VDP Resource Manager dialog box.

TO MODIFY THE CONFIGURATION FOR FIERY VDP RESOURCE MANAGER

- 1 Click Start, choose Programs, and then click Fiery VDP Resource Manager in the Fiery folder.
All servers you connected to previously are displayed.
- 2 To remove a server, select the server that you want to remove, and then choose Disconnect from the Server menu.
- 3 To add a server, choose Connect from the Server menu and follow the procedure [“To configure the connection for Fiery VDP Resource Manager”](#) on page 78.

Using VDP Resource Manager

Complete instructions on how to use VDP Resource Manager are provided in VDP Resource Manager Help.

TO ACCESS VDP RESOURCE MANAGER HELP

- 1 Start VDP Resource Manager.
- 2 Choose Help > Fiery VDP Resource Manager Help.

WEBTOOLS

WebTools allow you to manage your EX8002 remotely from the Internet or your company's intranet. The EX8002 has its own home page, where you can select the following WebTools:

- **Home** provides current information about the jobs processing and printing on the EX8002.
- **Downloads** allows remote users to download installers (for drivers, PPDs, and other software) directly from the EX8002.
- **Docs** allows remote users to access jobs on the EX8002 over the Internet or intranet.
- **Configure** allows the EX8002 administrator to view and modify Setup options remotely from a Windows computer.

Setting up WebTools

WebTools are resident on the EX8002 hard disk and do not require special installation. However, WebTools do require initial setup by the EX8002 administrator.

To enable network users to access and use WebTools, the administrator must set specific options in Network Setup and Printer Setup. For information about these specific Setup options, see [Configuration and Setup](#).

The administrator also must prepare each user's computer to communicate with the EX8002 over the Internet or intranet.

TO SET UP CLIENT COMPUTERS TO USE WEBTOOLS

- 1 **Enable TCP/IP networking.**
- 2 **Make sure that the computer has a valid, unique IP address.**
- 3 **Make sure that a supported Internet browser is installed on the computer.**

For more information about supported browsers, see [Welcome](#).

- 4 **Make sure that Java is enabled in your Internet browser.**



In addition, make sure that you have completed the preliminary procedures described in “[Preparing for installation on Windows computers](#)” on page 10.

NOTE: If the client computer is running Windows XP with Service Pack 2 (SP2) or Service Pack 3 (SP3), or Windows Vista, installed, Pop-up Blocker is turned on by default. With this function turned on, a warning message appears when you access WebTools, and your access to WebTools is denied. To gain access, do one of the following:

- Change the Pop-up Blocker setting by clicking the warning message and choosing from one of the selections that appears.
- Turn off Pop-up Blocker in Internet Explorer from the Tools menu or in Internet Options.

For more information, see Internet Explorer Help, or the documentation that accompanies Windows.

Accessing the WebTools home page

Use your Internet browser to access WebTools. For complete information about browser and system requirements, see [Welcome](#).

TO ACCESS THE WEBTOOLS HOME PAGE

- 1 **Start your Internet browser.**
- 2 **Type the IP address or DNS name of the EX8002.**

The EX8002 home page appears.

If the home page for the digital press appears instead of the WebTools page, click the WebTools link.

- 3 **Click the tab for the WebTool that you want to use.**

Using WebTools

The following sections describe how to use the WebTools.

Home

Home lets you view jobs that are currently processing and printing on the EX8002. Printing and processing information is updated every 30 seconds.



For complete instructions on how to use Home, see [WebTools Home Help](#).

Downloads

The Downloads WebTool allows you to download installers (for drivers, PPDs, and other EX8002 software) directly from the EX8002.



For complete instructions on how to use Downloads, see [WebTools Downloads Help](#).

Docs

Docs allows you to access jobs on the EX8002 over the Internet or intranet. You can:

- Manage and distribute jobs in your mailbox.
Mailboxes are set up in the Users and Groups area of the Configure WebTool.
- Control and modify jobs.
- Submit jobs to the Print Server.



For complete instructions on how to use Docs, see [WebTools Docs Help](#).

Configure

Configure allows the EX8002 administrator to view and modify Setup options remotely from a Windows computer. For information about using Configure, see [Configuration and Setup](#).



Before using Configure, make sure you have completed the Configure preparation procedure described in [“Preparing for installation on Windows computers”](#) on page 10.



For complete instructions on how to use Configure, see [WebTools Configure Help](#).

INDEX

A

Align Trays 21
Antique 60

B

basis weight 62
Booklet option 58

C

Calendared 60
Cardboard 61
chapter definition for jobs 24, 44
Cockle 60
columns
 changing 55
 deleting 55
Configure 83
configuring
 Command WorkStation, Macintosh
 Edition 40
 Command WorkStation, Windows
 Edition 18
 server 83
 VDP Resource Manager 78
 virtual printers 31
 WebTools 81, 82
Continuous format 59
Continuous Long 61
Continuous Short 61
conventions 8
cover media 25, 45
CT/LW to PS Filter
 about 75
 configuring 75
custom page size 57

D

DCS 2.0 to PS Filter
 about 75
 configuring 75
deleting virtual printers 32
demoting jobs 68
DNS name 17, 40, 78
Docs webtool 83
Domain Name Server, *see* DNS name
dongle 35
downloading software 83
Downloads WebTool 83
drag-and-drop printing 74
Dull 60
duplicating virtual printers 32

E

editing virtual printers 32
EFI ImageViewer 33
Eggshell 60
Embossed Linen 60
English 60
Envelope 61
Envelope Plain 61
Envelope Window 61

F

Felt 60
Fiery Graphic Arts Package, Premium Edition
 file format filters 74
 ImageViewer 33
File Filters
 selecting settings 76
 specifying 76
file format filters 74
fonts for Mac OS 11
FTP printing 33
Full Cut Tabs 61
full-screen preview 33

G

global objects, in VDP 77

H

Home WebTool 83

I

icons in documentation 8

ImageViewer 33

imposing jobs 35

imposition layouts 35

Insert Tabs 28, 46

inserting tabs 28, 46

installing

 Impose 35

 VDP Resource Manager 77

J

Java 17, 82

Java JRE 10

job queue, reordering 68

job reordering 68

jobs

 chapter definitions 24, 44

 cover media 25, 45

 mixed media definitions 23

 rush printing 69

 scheduling 69

 VDP 35

L

Labels 61

Laid 60

Letterhead 61

Light Cockle 60

Linen 60

Long grain 59

LPR printing

 on Mac OS 33

 on Windows 32

Luster 60

M

Mac OS, fonts 11

Machine Finished 60

Matte 60

media definitions 23

Mixed Media 23

Mottled 60

Multi-Part Form 61

O

Opaque 59

P

paper definitions 23

Photographic 61

Plain 61

Pre Cut Tabs 61

preview window 33

printing frequently used print options 74

profiles, assigning 56

promoting jobs 68

R

remote setup 83

Reorder Jobs 68

Roll format 59

Rush Printing 69

S

Satin 60

Schedule Printing 69

Semi-Vellum 60

server setup 83

Sheet format 59

Short grain 59

Silk 60

software protection key 35

Stationery 61

Stipple 60

stock types 62

Sun Java JRE 10

Super Calendared 60

Super Smooth 60

T

- tab
 - insertion 28, 46
 - media 28, 46
- Tab Stock 61
- TCP/IP 17, 40, 78
- terminology 8
- Traditional Laid 60
- Translucent 59
- Transparent 59
- tray alignment 21
- troubleshooting
 - Command WorkStation, Macintosh Edition 48
 - Command WorkStation, Windows Edition 34

U

- Ultra Smooth 60
- Uncalendared 60
- user authentication 21, 43
- users and groups 21, 43

V

- variable data printing, *see* VDP jobs
- VDP jobs
 - imposing 35
 - managing global objects 77
- Vellum 60
- Velvet 60
- virtual printers
 - configuring 31
 - FTP printing 33
 - LPR printing 32
 - Mac OS 33
 - overview 31
 - printing to 32

W

- WebTools
 - Configure 83
 - Docs 83
 - Downloads 83
 - Home 83
 - home page 13, 15, 82
- Wove 60

