



Xerox EX8002 Print Server,  
Powered by Fiery®

Welcome



© 2009 Electronics for Imaging, Inc. The information in this publication is covered under *Legal Notices* for this product.

45086041  
07 July 2009





## WELCOME

This *Welcome* document provides system requirements and an overview of how to set up the Xerox EX8002 Print Server, Powered by Fiery so that you can begin printing. It describes the initial tasks you must perform and points you to sections in the user documentation where the procedures are described in detail. This document also provides a description of the user documentation on the User Documentation CD and instructions on printing documents.

This document assumes that you have already installed the digital press components. Details about the digital press, network, remote computers, software applications, and Microsoft Windows are beyond the scope of this document.

### Terminology and conventions

This document uses the following terminology and conventions.

Term or convention	Refers to
Aero	EX8002 (in illustrations and examples)
Digital press	DocuColor 8002/7002 digital press
EX8002	Xerox EX8002 Print Server, Powered by Fiery
Mac OS	Apple Mac OS X
Titles in <i>italics</i>	Other documents in this set
Windows	Windows 2000, Windows XP, Windows Vista, Windows Server 2003, Windows Server 2008
	Topics for which additional information is available by starting Help in the software
	Tips and information
	Important information
	Important information about issues that can result in physical harm to you or others

## About the documentation

This document is part of a set provided to users and system administrators of EX8002 on the User Documentation CD, in PDF (Portable Document Format). These files can be viewed online from your computer or printed using Adobe Reader. When viewed online, these files contain links and cross-references that allow you to quickly and easily locate needed information.

The following comprise the documentation set for your EX8002:

- *Welcome* provides an introduction to the EX8002 and the user documentation.
- *Configuration and Setup* explains configuration and administration of the EX8002 for supported platforms and network environments. It also includes guidelines for providing printing services to users.
- *Printing* describes how to install the printer drivers on Windows and Mac OS computers, establish printing connections for different networks, and print from users' computers. This document describes print options and features that you access from the printer driver, Command WorkStation job overrides, and Hot Folders job properties.
- *Utilities* describes how to scan and how to install, configure, and use the software utilities included on the User Software DVD.
- *Color Printing* explains how to manage color output on the EX8002. This document provides information about ColorWise Pro Tools, including how to calibrate the EX8002 and set ColorWise print options from Windows and Mac OS computers.
- *Fiery Graphic Arts Package* addresses the specific needs and requirements of graphic arts professionals and commercial print shops. It explains the Fiery Graphic Arts Package (FGAP) and FGAP Premium Edition features.
- *Fiery Color Reference* provides an overview of color management concepts and workflows, and describes how to manage color from various applications.
- *Workflow Examples* explains complicated printing scenarios and provides cross-references to relevant information in the documentation set.
- *Variable Data Printing* supplements the information in *Workflow Examples* with reference information about VDP (variable data printing). This document provides an overview of FreeForm and where to set FreeForm options.
- *Customer Release Notes* provide last-minute product information and workarounds for some of the problems you may encounter.

## Installing user documentation

You can install user documentation directly from the User Documentation CD.

**NOTE:** You can view user documentation from the CD or copy the language folder that you want to your desktop. If you copy the files to your computer, keep all the files in the language folder. Do not rename the files. The cross-reference links will not work properly.

---

### TO INSTALL USER DOCUMENTATION ON A CLIENT COMPUTER FROM THE USER DOCUMENTATION CD

#### 1 Insert the User Documentation CD into the CD-ROM drive.

The contents of the CD are displayed. On Mac OS X, the disk icon is displayed and you must click it to display the contents of the CD.

#### 2 Browse to the language folder that you want to access.

You can then choose to copy the documents that you want to your hard disk drive, or if there is an Acrobat link inside the folder, click the Acrobat link to download the documentation from the Internet.

## Viewing user documentation

View or print the PDF files provided using Reader or Acrobat. For information about installing Reader, visit the Adobe web site. Once you install Reader, double-click a PDF icon to open the file. You can search for a word or phrase across the EX8002 documentation set by examining all the documents within a specific language folder on the User Documentation CD. For information about using this and other features of Reader, see the Help that accompanies the application.

**NOTE:** You can view the documentation from the CD or copy the language folder to your desktop. If you copy the files to your computer, keep all the files in the language folder and do not rename the files, or the cross-reference links will not work properly.

## About Help



Most of the user software, utilities, and printer drivers contain Help that is accessible from Help buttons or the main toolbar menus. Help provides detailed procedures on using the application and, in some cases, provides additional detail. The documentation refers you to Help for more information, as appropriate.

## BASIC STEPS TO PRINT

The following section includes a basic workflow for setting up your EX8002 in order to print documents. It takes you from printing a Configuration page and configuring Setup to installing printer drivers to print a job. Detailed instructions for all of these procedures are found in other documents in the documentation set. For a summary of supported EX8002 documents, see [page 4](#).

These instructions assume that a service technician has unpacked and connected the EX8002 and that the EX8002 and digital press are powered on. In some cases, initial print device settings may be required. See *Configuration and Setup*.

The following steps assume that you are adding the EX8002 to a TCP/IP network that includes Windows XP user computers. Although this example is specific to a Windows XP TCP/IP environment, users in other computer environments may also benefit from these instructions.

## Step 1

### Print a Configuration page from the Fiery Advanced Controller Interface

Print the Configuration page and note the EX8002 name and IP address. When you perform EX8002 Setup and install the printer driver, you will need to reference this information.

- 1 **Right-click the FieryBar at the top of the EX8002 monitor, and choose Print Pages.**

The Print Pages submenu displays the list of available EX8002 pages.

- 2 **Choose Configuration from the submenu.**
- 3 **The EX8002 sends the selected page to the digital press.**



- 4 **Review the default EX8002 settings on the printed Configuration page and determine if they are compatible with your network environment.**

If you change these settings, print another Configuration page to verify the changes.

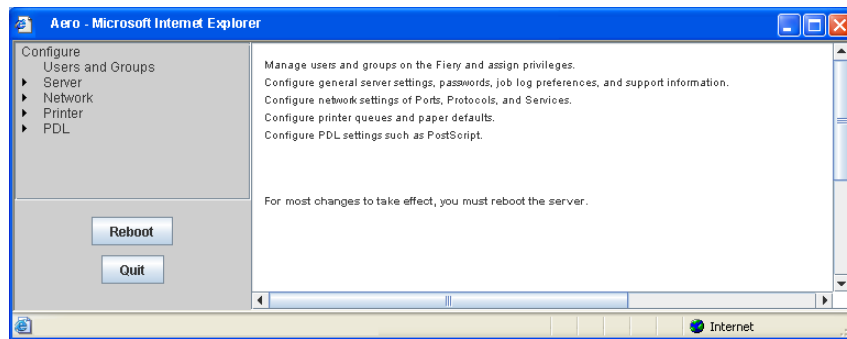
## Step 2

### Set up the EX8002 with Configure

#### 1 Access Configure in any of the following ways:

- Start your Internet browser and type the EX8002 IP address, click the Configure tab, click Launch Configure, and log on with Administrator privileges.
- Start Command WorkStation, Windows Edition, log on with Administrator privileges, and choose Setup from the Server menu.

The Setup window appears.



#### 2 Perform Server, Network, and Printer Setup, in that order.

If your network uses DHCP, the EX8002 acquires the IP address automatically. Otherwise, type the EX8002 IP address.

#### 3 Click Save.

Print a Configuration page to confirm changes to Setup. (See [Step 1](#).)

For information about setting up the EX8002 on a different network, see [Configuration and Setup](#).

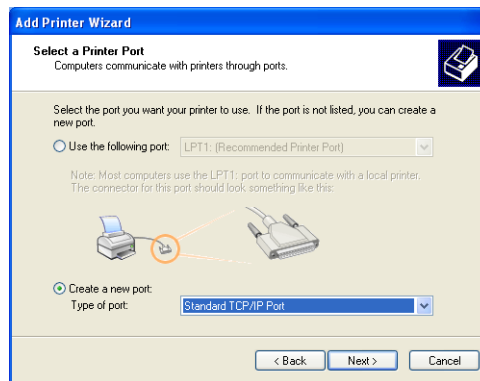


## Step 3

### Install PostScript printer drivers on user computers for TCP/IP printing

From a user's Windows XP computer:

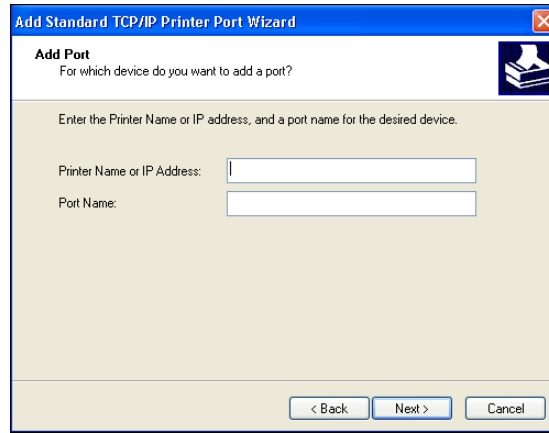
- 1 Click Start and choose Printer and Faxes.
- 2 Click Add a printer.
- 3 Click Next.
- 4 Select "Local printer attached to this computer" and click Next.
- 5 Select Create a new port, choose Standard TCP/IP Port, and then click Next.



The Add Standard TCP/IP Printer Port Wizard dialog box appears.

- 6 Click Next.

- 7 Type the IP address or the EX8002 DNS name and click Next.



- 8 If the Standard TCP/IP Port Wizard window appears, select the Device Type and click Next.

- 9 Click Finish.

- 10 Click Have Disk in the dialog box displaying lists of manufacturers and printers.

- 11 Insert the User Software DVD into your computer and browse to the English\Prntdrv\Ps\_drvr\Win\_2K\_XP folder.

Make sure that Oemsetup.inf or Oemsetup is selected, click Open, and then click OK.

You can also download printer drivers from the Download WebTool.

- 12 Select the EX8002 printer driver as your printer and click Next.

- 13 Type a name for the EX8002 in the Printer name field, indicate whether you want to make it the default printer, and then click Next.

- 14 Select Do not share this printer and click Next.

- 15 Select No to print a test page, click Next, and click Finish.

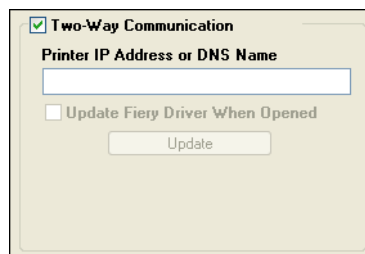
The necessary files are installed to your hard disk. When installation is complete, the Printers window appears, with an icon for the newly installed printer.

## Step 4

### Update the printer driver to include EX8002 options

From a user's Windows XP computer:

- 1 Click Start and choose Printers and Faxes.
- 2 In the Printers window, select the EX8002 printer driver icon.
- 3 Choose Properties from the File menu.
- 4 Click the Installable Options tab.
- 5 Select Two-Way Communication.



- 6 Type the EX8002 IP address or DNS name.
- 7 Select Update Fiery Driver When Opened to display the printer's current default settings when the printer driver is opened.
- 8 Click Update.

Options such as finishing units that are installed on the EX8002 are displayed in the printer driver and are available the next time you print a job.

- 9 Click OK.



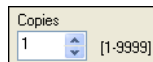
For more information about installing printer driver options, see printer driver Help.

## Step 5

### Print a job

From a user's Windows XP computer:

- 1 From your application, choose **Print** from the **File** menu.
- 2 Select the **EX8002** printer driver and click **Properties**.
- 3 Specify **EX8002** job options, such as **Copies** and finishing options, and then click **OK**.



A screenshot of a 'Copies' dialog box. The title bar says 'Copies'. Inside the box, there is a text field containing the number '1' and a range indicator '[1-9999]' to its right. There are small up and down arrow icons next to the number '1'.

- 4 Click **OK** again.



After completing the basic steps to print, you may want to explore these additional topics, depending on your printing environment:



- Creating secure user groups and assigning user passwords (see [WebTools Configure Help](#))
- Managing and editing jobs submitted to the EX8002 using utilities, such as [Command WorkStation](#) and [ColorWise Pro Tools](#) (see [Utilities](#) and [Color Printing](#))
- Calibrating your digital press to simulate a different printing environment or optimize color output (see [Color Printing](#))

## System requirements for user computers

To install the EX8002 user software on a Windows or Mac OS computer, the computer must be equipped with a built-in or external DVD-ROM drive. The following table lists the minimum system requirements.

Minimum requirements for	Windows	Mac OS
Operating system	<p>The following Windows versions (with latest service packs) are supported:</p> <ul style="list-style-type: none"> <li>• Windows 2000 Professional</li> <li>• Windows 2000 Server</li> <li>• Windows 2000 Advanced Server</li> <li>• Windows XP Home, 32-bit</li> <li>• Windows XP Professional, 32- and 64-bit</li> <li>• Windows Server 2003, Standard Edition, 32-bit</li> <li>• Windows Server 2003, Enterprise Edition, 32-bit</li> <li>• Windows Server 2003, Datacenter Edition, 32-bit</li> <li>• Windows Server 2003 SP1, 64-bit</li> <li>• Windows Vista, Home Basic Edition, 32- and 64-bit</li> <li>• Windows Vista, Home Premium Edition, 32- and 64-bit</li> <li>• Windows Vista, Ultimate Edition, 32- and 64-bit</li> <li>• Windows Vista, Business Edition, 32- and 64-bit</li> <li>• Windows Vista, Enterprise Edition, 32 and 64-bit</li> </ul>	<p>Mac OS X v10.3.9 or later</p> <ul style="list-style-type: none"> <li>• Mac OS v10.3.9 (for PowerPC-based Mac OS computers)</li> <li>• Mac OS v10.4.x (for PowerPC and Intel-based Mac OS computers)</li> <li>• Mac OS v10.5.x (for PowerPC and Intel-based Mac OS computers)</li> </ul>
Memory for printing and utilities	256MB of RAM for printing and to operate utilities (512 recommended)	
Networking protocol	TCP/IP	TCP/IP
Networking protocol for Fiery utilities	TCP/IP	TCP/IP (EtherTalk and AppleTalk supported)

Minimum requirements for	Windows	Mac OS
WebTools	<p>Java-enabled web browser:</p> <ul style="list-style-type: none"> <li>• Internet Explorer v6.0 and v7.0 for Windows, 32-bit versions</li> <li>• Firefox v2.0 or later for Windows</li> <li>• Safari v2.0 or later for Mac OS</li> </ul> <p><b>NOTE:</b> Portions of WebTools require Java JVM v1.4.2 browser support.</p> <p><b>NOTE:</b> Microsoft releases frequent updates to Internet Explorer. Because support cannot be guaranteed for all versions, use the versions specified for best results.</p> <p>A monitor and video memory that supports 16-bit color at a minimum resolution of 800x600</p> <p>A TCP/IP-enabled network and the EX8002 IP address or DNS name</p> <p>Web Services enabled on the EX8002</p>	
Command WorkStation	Windows-based computer with a 1.0GHz or greater Pentium III processor	800MHz or greater Macintosh G3
	200MB available hard disk space for installation	80MB available hard disk space for installation  1GB is recommended for writing full previews of raster files and handling large PS or PDF files
	256MB of RAM	
	A monitor that supports 16-bit color at a minimum resolution of 1024x768  Video adapter card with 2MB of video memory  TCP/IP networking protocol installed	
	DVD-ROM drive	
Impose on Command WorkStation (Windows only)	<p>In addition to requirements for Command WorkStation:</p> <ul style="list-style-type: none"> <li>• Windows-based computer with 333-MHz Pentium processor</li> <li>• Dongle to be installed on USB port for every client workstation</li> <li>• Acrobat and PitStop software included with Impose</li> </ul> <p><b>NOTE:</b> Impose is not supported on Windows Vista or Intel-based Mac OS computers.</p>	

## Other network requirements

---

UNIX (TCP/IP) workstation	Standard TCP/IP connectivity
	TCP/IP printing software that conforms to RFC1179 (Berkeley lpd protocol)
	Sun OS 4.1.3 or later
	Red Hat Linux 9 or later
	Turbolinux 7
	Solaris 9 or later

---

## Shutting down and restarting the EX8002

You may have to shut down the EX8002 for service. When you do, network access to the digital press is interrupted. Before you remove or attach any cables to the EX8002 to perform service, shut down the EX8002. If necessary, you can restart the EX8002. Restarting the EX8002 from FieryBar resets the EX8002 system software without restarting the system entirely. Rebooting the EX8002 from the Windows Start menu restarts the system entirely.

---

### To SHUT DOWN THE EX8002

**1 Make sure that the EX8002 is not receiving, processing, or printing any files.**

Wait until no processing or printing jobs appear in the Command WorkStation Active Jobs window, or FieryBar indicates Idle in the RIPping and Printing areas.

If the system has just finished processing, wait at least five seconds after the system reaches Idle before beginning the shutdown procedure.

**NOTE:** Before you remove the EX8002 from the network, notify the network administrator.

**2 Shut down and turn off the digital press.**

For instructions, see the documentation that accompanies your digital press.

**3 Close all open applications except FieryBar.**

**4 Choose Shut Down from the Windows Start menu.**

**5 Select Shut Down and click OK.**

Before you access internal components, make sure that all cables are disconnected from the back of the EX8002.

---

**To RESTART THE EX8002**

- 1 Make sure that the EX8002 is not receiving, processing, or printing any files.**

Wait until no processing or printing jobs appear in the Command WorkStation Active Jobs window, or FieryBar indicates Idle in the RIPping and Printing areas.

- 2 Close all open applications except FieryBar.**

**NOTE:** If you use a USB thumb drive, remove it before rebooting. Otherwise, the EX8002 does not reboot.

- 3 Right-click FieryBar and choose Restart Fiery from the menu that appears.**

A confirmation message appears.

- 4 Click OK.**

Wait for the EX8002 software to shut down and restart. You may have to wait one minute or more. FieryBar displays an Exited status while the server is restarting.