



Fiery® EX8000AP Color Server



Configuration and Setup

© 2007 Electronics for Imaging, Inc. The information in this publication is covered under *Legal Notices* for this product.

45064741
15 May 2007

CONTENTS

INTRODUCTION	7
Terminology and conventions	7
About this document	8
CONNECTING TO THE NETWORK	9
Fiery EX8000AP on the network	9
Stages of installation on the network	10
Summary of Fiery EX8000AP network installation	11
Network server setup requirements	12
Windows networks	12
AppleTalk networks	12
UNIX networks	12
PREPARING FOR FIERY EX8000AP SETUP	14
Levels of access and control	14
Users and Groups	14
Fiery EX8000AP print connections	16
WebTools	16
Additional security features	17
Controlling E-mail access to the Fiery EX8000AP	17
Restricting IP addresses and ports	18
LDAP authentication	18
Connecting network cable to the Fiery EX8000AP	19
Back view of the Fiery EX8000AP	19
Ethernet connection	19
About Setup	20

SETTING UP THE FIERY EX8000AP FROM A NETWORK COMPUTER	21
Accessing Configure from a network computer	21
Using Configure	22
SETUP OPTION REFERENCE	23
Setup options	23
CONFIGURING WEBTOOLS	26
Configuring the Fiery EX8000AP and clients for WebTools	26
ADMINISTERING THE FIERY EX8000AP	27
Administrator functions	27
Setting passwords	29
Passwords from a network computer	29
Changing the Windows XP system password	29
Updating system software	30
Clearing the Fiery EX8000AP	31
Restoring Fiery EX8000AP settings	32
Saving and restoring Fiery EX8000AP configuration	32
USB printing	33
Managing e-mail address books	34
Printing the Configuration page	37
Maintaining optimal Fiery EX8000AP performance	37
Shutting down, rebooting, and restarting the Fiery EX8000AP	38
Shutting down the Fiery EX8000AP	38
Rebooting or restarting the Fiery EX8000AP	38

TROUBLESHOOTING	40
Troubleshooting the Fiery EX8000AP	40
Safe Print	40
Runtime error messages	40
Cannot connect to the Fiery EX8000AP with utilities	41
Cannot connect to the Fiery EX8000AP with Command WorkStation	41
INDEX	43

INTRODUCTION

This document describes how to set up network servers and user computers to use the Fiery EX8000AP Color Server so that users can print to it as a high-performance networked printer. For general information about using the digital press, your computer, your software, or your network, see the documentation that accompanies those products.







Setting up the network environment correctly requires the presence and active cooperation of the network administrator. Detailed instructions for configuring networks is beyond the scope of this document. For information, see your network documentation.



For information about supported operating systems and system requirements, see [Welcome](#).

Terminology and conventions

This document uses the following terminology and conventions.

Term or convention	Refers to
Aero	Fiery EX8000AP (in illustrations and examples)
Digital press	DocuColor 8000AP digital press
Fiery EX8000AP	Fiery EX8000AP Color Server
Mac OS	Apple Mac OS X
Windows	Microsoft Windows 2000, Windows XP, Windows Server 2003
Titles in <i>italics</i>	Other documents in this set
	Topics for which additional information is available by starting Help in the software
	Tips and information
	Important information
	Important information about issues that can result in physical harm to you or others

About this document

This document covers the following topics:

- Network connectors on the Fiery EX8000AP
- Information specific to the Fiery EX8000AP about setting up network servers

NOTE: For information about network servers, see your network documentation.

- System security through access levels and passwords
- Setup of the Fiery EX8000AP from a network computer
- Setup the Fiery EX8000AP to allow users to use WebTools
- Administration of the Fiery EX8000AP
- Troubleshooting

Administrator functions described in other documentation are summarized on [page 27](#).

CONNECTING TO THE NETWORK

This chapter summarizes the stages in setting up the Fiery EX8000AP.

Fiery EX8000AP on the network

When the Fiery EX8000AP is connected to a network, it behaves as a networked printer. The Fiery EX8000AP supports the following network protocols (rules that enable computers on a network to communicate with each other):

- AppleTalk
- TCP/IP, which also includes the BOOTP, DHCP, FTP, HTTP, IMAP, IPP, IPv4, IPv6, LDAP, LPD, NBT, POP3, Port 9100, SMB, SMTP, SNMP, SNTF, and SSL/TLS protocols

These protocols can run concurrently on the same cable. Computers that use other protocols can print through a server that uses one of the supported protocols. The Fiery EX8000AP is auto-sensing, and handles all connections simultaneously.

Stages of installation on the network

Installation can be performed by a network or printing administrator. The stages of a successful installation are:

1 Configuring the network environment

Configure network servers to provide users with access to the Fiery EX8000AP as a networked printer. For information about configuring network servers in Windows and UNIX network environments as they relate specifically to the Fiery EX8000AP, see [page 12](#). For information about using your network, see your network documentation.

2 Physically connecting the Fiery EX8000AP to a functioning network

Prepare a network node for the Fiery EX8000AP. Obtain cable, route it to the location where the Fiery EX8000AP is to be installed (near the digital press), and attach the cable to the network connector of the Fiery EX8000AP. For details, see [page 19](#).

3 Setting up the Fiery EX8000AP

Configure the Fiery EX8000AP for your printing and network environment (see [Setting up the Fiery EX8000AP from a network computer](#)).

4 Preparing user computers for printing

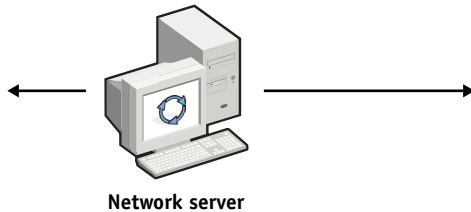
Install the files needed for printing, install user software, and connect the user computers to the network. The software installation is described in *Printing from Windows* and *Printing from Mac OS*.

5 Administering the Fiery EX8000AP

Monitor and maintain system performance and troubleshoot problems that may arise (see [Administering the Fiery EX8000AP](#)).

Summary of Fiery EX8000AP network installation

Network server configuration



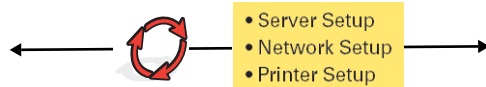
Configure network servers to specify Fiery EX8000AP print queues and Fiery EX8000AP users.

Connection



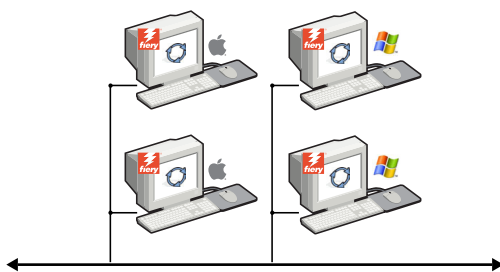
Prepare a network node. Connect the Fiery EX8000AP to the network. If you use the Fiery Advanced Controller Interface, connect it to the network.

Fiery EX8000AP Setup



Configure at a minimum, Server Setup, Network Setup, and Printer Setup. Later, configure the remaining Setup menus.

Client computer Setup



At computers where users print to the Fiery EX8000AP:

- Install the appropriate printer files and connect to one or more print connections.
- Install utilities and an Internet browser on computers where users will use them.
- Verify the Fiery EX8000AP in the list of printers.

Fiery EX8000AP available on the network

Network server setup requirements

This section provides basic information about configuring the Fiery EX8000AP and using it on the network. It does not explain network functions for printing in general. Only information specific to the Fiery EX8000AP is presented. Setting up the network environment correctly requires the presence and active cooperation of the network administrator. Detailed instructions for configuring networks is beyond the scope of this manual. For information, see your network documentation.

Configure the network and servers, and ensure that there is a live network connection *before* you configure Fiery EX8000AP network settings in Setup. This allows the Fiery EX8000AP to query the network for zones, servers, and server-based queues.

Whenever you change the configuration of the Fiery EX8000AP, digital press, or network at your site, alter the settings to correspond to the changed environment. Changing network or port settings may require that you make changes to other Setup options, as well.

Windows networks

- **The Fiery EX8000AP requires a valid IP address, subnet mask, and gateway address.**

Enter these addresses manually or use DHCP or BOOTP protocols to assign them dynamically. Make sure the Fiery EX8000AP name and address are listed in a domain name server (DNS) or hosts name database used by your system.

If more than one Fiery EX8000AP print connection is published (for example, if both the Print queue and the Hold queue are published), consider creating a printer for each print connection, so that users can print to each connection directly.

- **Configure the Fiery EX8000AP with the correct Windows domain name.**

This is especially important for Windows printing, also known as SMB printing.

To use Microsoft Active Directory, you must assign the Fiery EX8000AP to a domain. If you assign the Fiery EX8000AP to a workgroup, you cannot use Active Directory.

AppleTalk networks

AppleShare servers require no special configuration.

UNIX networks

- **When you configure a UNIX workstation with the lpr protocol and connect to the Fiery EX8000AP over a TCP/IP network, you can print directly to the Fiery EX8000AP.**
- **Setting up UNIX workstations requires an administrator with root privileges. After the initial configuration, UNIX users submit print jobs to a named printer.**
- **The Fiery EX8000AP is a printer controller that understands lpr protocols.**

- **The Fiery EX8000AP has a remote printer name you must use in order to communicate with it successfully.**

Regardless of the UNIX system you use, the name you use for the remote printer (or rp in the /etc/printcap file) in configuring the network for the Fiery EX8000AP must be one of the following:

print
hold
direct

Computers on a TCP/IP network can print directly to the Fiery EX8000AP as a remote printer, or can print to a Windows 2000/Server 2003 server or UNIX workstation acting as a print server.

PREPARING FOR FIERY EX8000AP SETUP

To prepare for printing at your site, you must do some initial Fiery EX8000AP configuration (or “Setup”) to specify the network environment and the types of printing you do. Before you perform Setup, decide the levels of access to implement, such as passwords and other security features that the Fiery EX8000AP offers. Because many of these security features are interconnected, review the information in this chapter to plan for an effective security system, and then perform Setup accordingly.

Levels of access and control

When you configure the Fiery EX8000AP during Setup, you (as system administrator) implement a particular level of control by configuring these elements:

- Users and Groups
- Print connections
- Access to WebTools

Users and Groups

With the Configure application, you create users, assign passwords to users, create groups with particular privileges, and assign users to the groups. Several groups are provided by default, and you can create new groups. All users in a group have the same privileges.

In addition to assigning the users that you have created to a group, you can add users from your organization’s global address list if you have LDAP services enabled on the Fiery EX8000AP. For more information, see Configure Help.

Passwords

When you create new users, you assign passwords to them. In addition, you can also set passwords for these areas:

- Default admin user in Administrators group
- Default operator user in Operators group
- Windows system password

NOTE: The Administrator and Operator passwords are separate from the Windows system password.



By default, the default Administrator password is set on the Fiery EX8000AP. Change the Administrator password periodically to protect the Fiery EX8000AP from random or accidental changes to Setup. For more information, see “[Setting passwords](#)” on page 29.

Users in the Administrators and Operators groups have privileges in addition to the explicit ones that you set when you create groups. Examples of these privileges are provided below.

Administrator privileges

Users in the Administrators group have the highest level of control. Administrator privileges include:

- Configuring the Fiery EX8000AP from the Configure WebTool
- Adding and deleting groups
- Adding and deleting users
- Setting and changing passwords for users
- Deleting, printing, exporting, and viewing the Job Log
- Deleting, viewing, and modifying users’ print jobs
- Clearing the Fiery EX8000AP of all job data
- Printing in black-and-white or color
- Publishing print connections
- Deleting fonts
- Controlling print jobs from the job management tools
- Overriding job settings
- Setting default settings for print options
- Calibrating the Fiery EX8000AP

Operator privileges

Users in the Operators group control print jobs from the job management tools, including the following:

- Viewing the Job Log
- Deleting, viewing, and modifying other users’ print jobs
- Printing in black-and-white or color

Guest privileges (no password)

A user does not need a password to log in as a Guest from the job management tools. A Guest can view the status of active jobs but cannot make changes to jobs or to the Fiery EX8000AP state.

Fiery EX8000AP print connections

The Fiery EX8000AP supports three print connections: Hold queue, Print queue, and Direct connection. You enable or “publish,” these print connections to users on the network when you configure Printer Setup. All published connections are constantly checked for the presence of jobs. The Print queue and Direct connection give remote users more direct access to the Fiery EX8000AP than the Hold queue. Therefore, do not publish the Print queue and the Direct connection in environments where maximum control is required.

In addition, you can enable the Printed queue, which is a storage area for the most recent jobs from the Print queue. The Printed queue allows you to reprint those jobs. In Setup, enable the Printed queue and specify the maximum number of jobs to retain in the queue. To reprint jobs in the Printed queue, use the job management tools (Command WorkStation).

NOTE: To use the utilities and WebTools, you must enable at least one print connection.

Hold queue

Jobs sent to the Hold queue are spooled to the Fiery EX8000AP hard disk for printing at a later time, or for reprinting. Because the Hold queue is a storage area, jobs sent to it cannot proceed through the printing process until the operator intervenes using the job management tools.

Print queue

The Print queue is the standard Fiery EX8000AP queue. Jobs sent to the Print queue are processed and printed in the order in which they are received. Jobs prioritized by an operator with the job management tools and jobs sent via the Direct connection take priority over jobs sent to the Print queue.

Direct connection

The Direct connection transmits jobs directly to the Fiery EX8000AP, but only when the Fiery EX8000AP is idle. If the Fiery EX8000AP is busy, the job remains at the user’s computer until the Fiery EX8000AP is ready. The job is then processed as soon as the previous job is finished and before the next queued job is processed.

Jobs sent to the Direct connection are not stored on the Fiery EX8000AP hard disk, and cannot be selected for reprinting, moving, or deletion. Therefore, the Direct connection provides a measure of security for sensitive files. Jobs sent to the Direct connection *do* appear in the Job Log, for accounting purposes.

NOTE: To download fonts to the Fiery EX8000AP, you must publish the Direct connection.

WebTools

The Fiery EX8000AP supports Internet or intranet access with WebTools from Windows and Mac OS computers. To enable use of WebTools, see “Configuring WebTools” on page 26.

Home

Home provides you with current information about the jobs processing and printing on the Fiery EX8000AP. To use this WebTool, you do not need a password. For more information, see *Utilities*.

Downloads

Downloads allows users to download installers for printer drivers and other software directly from the Fiery EX8000AP. To use this WebTool, you do not need a password. For more information, see *Printing from Windows*, *Printing from Mac OS*, and *Utilities*.

Docs

Docs allows users to access, manage, and modify jobs in their mailboxes on the Fiery EX8000AP, and submit jobs to the Fiery EX8000AP. For more information, see WebTools Docs Help.



Configure

Configure allows you to view and modify Fiery EX8000AP options from a network computer. This function requires an Administrator password. For more information, see [page 21](#).

Additional security features

In addition to the traditional security features such as passwords, you can use these features to keep the Fiery EX8000AP secure:

- E-mail access
- IP addresses and ports
- LDAP authentication

Controlling E-mail access to the Fiery EX8000AP

Because you can allow users to print file attachments in e-mail messages sent to the Fiery EX8000AP, the Fiery EX8000AP accepts only valid attachments, for example, PostScript or PDF files. Typically, viruses transmitted via e-mail require execution by the receiver. Attachments that are not valid files are discarded by the Fiery EX8000AP. Because file types such as .BAT, .VBS, and .EXE could launch harmful virus activity, the Fiery EX8000AP does not process these file types. The Fiery EX8000AP also ignores e-mails in RTF (Rich Text Format) or HTML (Hypertext Markup Language) format, and any included JavaScript code.

You can define a list of authorized e-mail addresses on the Fiery EX8000AP. Any e-mail that the Fiery EX8000AP receives from an e-mail address not in the authorized list is deleted. For more information, see [page 34](#).

Restricting IP addresses and ports

To restrict unauthorized connections to the Fiery EX8000AP, you can permit only users whose IP addresses are within a defined range. You can also close unnecessary ports to reject inbound access from the network. Commands or jobs sent from unauthorized IP addresses or ports are ignored by the Fiery EX8000AP.

LDAP authentication

When you enable LDAP communication to retrieve names and other information for people at your organization, you can specify the type of authentication. For more information, see [WebTools Configure Help](#)

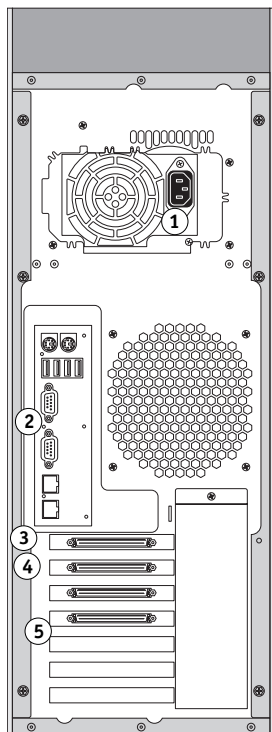


Connecting network cable to the Fiery EX8000AP

This section includes an illustration of the Fiery EX8000AP back panel, and provides information about connecting the Fiery EX8000AP to the network.

Back view of the Fiery EX8000AP

- 1 Power connector
- 2 USB connectors
- 3 Network connector (10/100/1000BaseT)
- 4 Not used
- 5 Printer interface connectors



Ethernet connection

For Ethernet connections, the Fiery EX8000AP supports Unshielded Twisted Pair (UTP) cabling for these network speeds:

- 10BaseT: Category 3 or higher
- 100BaseTX: Category 5 or higher (4-pair/8-wire, short-length)
- 1000BaseT: Category 5e or higher (4-pair/8-wire, short-length)

TO CONNECT TO THE NETWORK

- **Connect the cable from the network to the appropriate network connector (RJ-45) on the back of the Fiery EX8000AP.**

About Setup

Setup configures the Fiery EX8000AP to communicate with other devices and to manage print jobs. Perform Setup the first time you turn on the Fiery EX8000AP after new system software is loaded, or any time Server software is reinstalled. When the network or user printing environment changes, change the options accordingly.

NOTE: You cannot access Setup functions from Command WorkStation, Macintosh Edition.

To set up the Fiery EX8000AP from a network computer, use Configure. You can access Configure from either WebTools or Command WorkStation, Windows Edition.

SETTING UP THE FIERY EX8000AP FROM A NETWORK COMPUTER

To specify network settings and print option default settings, you must perform Setup. To use any of the Setup applications, you must enter the Fiery EX8000AP Administrator password.

Accessing Configure from a network computer

To set up the Fiery EX8000AP from a network computer, use Configure. You can access Configure in these ways:

- WebTools from a supported Internet browser
- Command WorkStation, Windows Edition

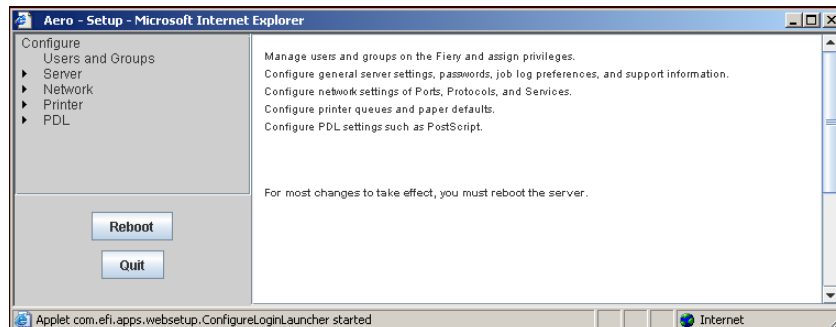
TO ACCESS CONFIGURE FROM AN INTERNET BROWSER

- 1 Start your Internet browser and type the IP address of the Fiery EX8000AP.
- 2 Click the Configure tab on the Fiery EX8000AP home page.
- 3 Click Launch Configure.
- 4 Log on as Administrator with the appropriate password.

TO ACCESS CONFIGURE FROM COMMAND WORKSTATION, WINDOWS EDITION

- 1 Start Command WorkStation.
- 2 Log on as Administrator with the appropriate password.
- 3 Choose Setup from the Server menu.

Regardless of the method you use, the following dialog box appears.



Using Configure



For information about using Configure and setting default options, see Configure Help.

SETUP OPTION REFERENCE

This chapter describes the default settings that you can set for PS (PostScript) Setup.

For more information about these options, see *Print Options*.

Setup options

To determine the current Setup defaults, print the Configuration page from Command WorkStation.

Option	Settings (default is underlined)	Description
Allow Courier Substitution	<u>Yes</u> , No	Specify whether to substitute Courier for fonts that are unavailable when you download files to the Fiery EX8000AP, or when you print a document for which you do not have the corresponding printer font. If this option is set to No, jobs with fonts that are unavailable on the Fiery EX8000AP hard disk generate a PostScript error and do not print. This setting does not apply to PDF files; font substitution occurs automatically in PDF files.
Brightness	85% - 115%	Select the brightness of output.
CMYK Simulation Profile	SWOP-Coated (EFI), DIC (EFI), Euroscale (EFI), ISO Coated, ISO Uncoated, JMPA ver.2 (EFI), Japan Color 2001 type1 (EFI), Enterprise CMYK by Splash, TOYO Offset Coated 2.0, None, ColorWise OFF Default is SWOP-Coated (EFI) in North America, Euroscale (EFI) elsewhere.	CMYK simulation allows color correction to simulate printed output on a commercial press, so that the Fiery EX8000AP output can be used for proofing. The SWOP-Coated standard is used in the United States, DIC in Japan, and Euroscale in Europe. Custom simulations are user defined and named. The simulations provided with the Fiery EX8000AP have the designation "EFI" after their names. If users create and load custom simulations on the Fiery EX8000AP with ColorWise Pro Tools, these also appear in the list of simulations. A custom simulation can be selected as the default simulation. For more information about custom simulations, see <i>Color Printing</i> .
Collation	<u>Collated</u> , Uncollated	Specify how to output multiple-page or multiple-copy jobs.
Convert Paper Sizes	<u>No</u> , Letter/Tabloid->A4/A3, A4/A3->Letter/Tabloid	Converts paper sizes in documents automatically to the default paper sizes specified. For example, if you select Letter/11x17->A4/A3, a letter size document is automatically printed on A4 paper. This option works in conjunction with the Default Paper Sizes option. For example, if Convert Paper Sizes is set to Letter/11x17->A4/A3, and Default Paper Sizes is set to US, then jobs are printed A4/A3 size. This also includes Fiery EX8000AP system pages such as the Start Page, Test Page, and Job Log.

Option	Settings (default is underlined)	Description
Default Paper Sizes	US, Metric (default is US in the United States, Metric elsewhere)	Prints on US paper sizes (for example, Letter, Legal, 11x17), or Metric paper sizes (for example, A4 or A3) by default. When no page size is defined within a PostScript file, jobs are printed on Letter paper if you selected US; or A4 paper if you selected Metric.
DFA Finishing	<u>None</u> , Function 1, Function 2, Both	Specify the default finishing function to use.
DFA Profile	<u>None</u> , Profile 1, Profile 2, Profile 3, Profile 4, Profile 5	Specify the default finishing profile to use.
Digital Press Mode	150 Dot Rotated, <u>200 Dot Rotated</u> , 300 Dot Rotated, 600 Dot 90 deg Fixed, 200 Line Rotated, Stochastic	Specify the screen to use for your print job.
Duplex	<u>Off</u> , Head to Head, Head to Toe	Use this option to print on both sides of the paper. For more information about duplex (2-sided) printing, see <i>Print Options</i> .
Face-Down Printing	<u>On</u> , Off	Specify how output should exit the digital press.
Halftone Simulation	<u>Off</u> , Application Defined, Newsprint, User Defined Screen 1, User Defined Screen 2, User Defined Screen 3	Specify a halftone simulation method. See <i>Color Printing</i> .
Image Quality	Best, <u>Normal</u>	Specify the type of image quality to use as the Fiery EX8000AP default. If you select Best, while image quality improves, processing time may become longer, and the size of the processed job may be larger.
Image Smoothing	<u>Automatic</u> , Off, On, Below 90 ppi, Below 150 ppi, Below 200 ppi, Below 300 ppi	<p>Select On to minimize grainy output when printing low resolution images. When you select On, Image Smoothing is applied to all images.</p> <p>Select Automatic to use smoothing only when it makes a visible difference. When the image is below 150 ppi, image smoothing is applied automatically.</p> <p>Select one of the “ppi” choices (pixels per inch) to apply image smoothing to those images whose effective resolution is below the specified ppi value.</p>
Offset Jobs	Yes, <u>No</u>	Specify whether to have jobs offset after they are printed. You must have a finisher installed.
Output Destination	Destination options vary according to the accessories installed.	Specify where to output the job.
Page Order	<u>From 1 to N</u> , From N to 1	Select From 1 to N to print the pages of your job from first to last. Select From N to 1 to print the pages of your job from last to first.

Option	Settings (default is underlined)	Description
Print Cover Page	Yes, <u>No</u>	Prints a cover page (job summary) containing the name of the user who sent the job, document name, server name, time the job was printed, number of pages printed, and status of the job. Specify whether to print before or after the job, or both. If a PostScript error occurs and the Print to PS Error option is set to Yes, the cover page lists the PostScript error message instead of the job status.
Print Master	<u>Yes</u> , No	Select Yes to print a FreeForm master when created and printed to the Fiery EX8000AP. The master is retained on the Fiery EX8000AP after printing unless deleted later. Select No only to process and hold a FreeForm master on the Fiery EX8000AP.
Print to PS Error	Yes, <u>No</u>	Specify whether the Fiery EX8000AP should print the available portion of a print job when it encounters a PostScript error. Select Yes to print the portion of the job that was processed before the error occurred. Select No to cancel the print job entirely when a PostScript error is encountered. Leave this option at No unless you encounter printing problems.
Scale to Fit	On, <u>Off</u>	Specify whether to scale a document to a selected paper size if the document size is different from the paper size. With the Off setting, if the document size is larger than the selected paper size, the document is cropped to the paper size when printed.
Stapler Mode	<u>Off</u> , Front, Rear, Dual	This option staples collated copies. Specify where to place the staple on stapled copies. You can specify this option when the finisher is attached. For more information about Stapling settings, see <i>Print Options</i> .
Tray Alignment	Enable, <u>Disable</u>	Specify whether to allow users to align the media trays.
Use PDF XObjects	<u>On</u> , Off	Specify whether images in PDF files are cached to reduce the need to reprocess the same image in a file.

CONFIGURING WEBTOOLS

WebTools allow you to manage your Fiery EX8000AP remotely from the Internet or from your company's intranet. The Fiery EX8000AP has its own home page, from which you can select the WebTool that you want to use.

For information about using WebTools, see *Utilities*.

Configuring the Fiery EX8000AP and clients for WebTools

WebTools provide access to many Fiery EX8000AP functions via the Internet (or intranet), providing additional flexibility in remote management. After they are enabled, you can access the WebTools from a network computer.

TO SET UP THE FIERY EX8000AP TO ACCESS WEBTOOLS

- 1 In **Network Setup** on the Fiery EX8000AP, enable **TCP/IP**.
- 2 Set a valid, unique IP address, subnet mask, and gateway address (if required) for the Fiery EX8000AP.
- 3 In **Services Setup**, enable **Web Services**.
If you want to use WebTools for printing, follow the remaining steps.
- 4 In **Port Filtering**, make sure that port 515 (LPD) is enabled.
- 5 In **Printer Setup**, confirm that the **Print queue** is published.

TO SET UP A COMPUTER TO ACCESS WEBTOOLS

- 1 **Enable TCP/IP networking**.
- 2 **Assign the computer a valid, unique IP address, subnet mask, and gateway address, if required.**
- 3 **Install an Internet browser that supports the Java language and frames.**

Make sure Java is enabled. For more information about supported browsers and WebTools requirements, see *Welcome*.

TO ACCESS WEBTOOLS

- 1 **Start your Internet browser and type the IP address or DNS name of the Fiery EX8000AP.**
The Fiery EX8000AP home page appears.
- 2 **Click the tab corresponding to the WebTool that you want to use.**

ADMINISTERING THE FIERY EX8000AP

This chapter provides tips on managing Fiery EX8000AP printing, performance, and security.

Administrator functions

Administration features are included with the user software and are built into the Fiery EX8000AP. The following table describes where to find information about these features.

For this information	See
Address books for E-mail Printing	page 34
Administrator and Operator passwords	page 29
Clearing the Fiery EX8000AP	page 31
Configuration page	page 37
Connecting the Fiery EX8000AP to the network	page 19
Network servers, setting up to manage and share printing services	Documentation for your network servers
Network servers, setting up with information specific to the Fiery EX8000AP	page 9
Optimizing Fiery EX8000AP performance	page 37
Printer default settings	page 23 <i>Printing from Windows</i> <i>Printing from Mac OS</i>
Publishing the Direct connection, Print queue, or Hold queue to users	WebTools Configure Help
Restoring the Fiery EX8000AP to factory defaults	page 32
Saving and restoring Fiery EX8000AP configuration settings	page 32
Setting up printing, installing printer drivers, installing user software	<i>Printing from Windows</i> <i>Printing from Mac OS</i>
Shutting down, rebooting, and restarting the Fiery EX8000AP	page 38
System software updates	page 30
Troubleshooting Fiery EX8000AP Setup	page 40
USB printing	page 33

For this information**See**

WebTools

[page 26](#)

Windows XP system password

[page 29](#)

Setting passwords

You can set or change the passwords for users of the Fiery EX8000AP. Anyone who is a member of the Administrators group can modify the Setup options and control the flow and order of print jobs with the job management tools.



To create users, assign passwords, and add users to groups, use Configure. For more information, see Configure Help.



Keep track of the passwords that you set.

Passwords from a network computer



You can change the Administrator and Operator passwords from remote Setup, using the Configure application. For more information, see Configure Help.

Changing the Windows XP system password

The Fiery EX8000AP is set with a Windows XP system password. To ensure network security in your environment, the administrator must change the password.

TO CHANGE THE WINDOWS XP PASSWORD FOR THE FIERY EX8000AP

- 1 **Press Ctrl+Alt+Delete on the Windows keyboard.**

The Windows Security dialog box appears.

NOTE: If you are using the Welcome screen on Windows XP, the Windows Task Manager dialog box appears. To access the Windows Security dialog box, you must disable the Welcome screen. From the Windows XP control panel, access User Accounts, select the Change the way users log on or log off option, and then clear the Use the Welcome screen option.

- 2 **In the Windows Security dialog box, click Change Password, and then type the following. For example, to change to “Fiery.2”:**

User name: administrator

Log on to: \\Aero

Old Password: Fiery.1

New Password: Fiery.2

Confirm New Password: Fiery.2

- 3 **Click OK.**

The new password, Fiery.2, is now set.

Updating system software

The Fiery EX8000AP uses unique system software to receive and process jobs and send job data to the digital press. Resident on the Fiery EX8000AP, system software processes and controls the spooling, rasterizing, and printing of jobs, as well as job accounting (the Job Log), storage, and retrieval.

You can check for system software updates from a secure site on the Internet. Updates to user software may also be available.



To check for software updates or to configure the Fiery EX8000AP to receive updates automatically, see [Configure Help](#).

Clearing the Fiery EX8000AP

The Clear Server command allows you to clear all queued print jobs from the Fiery EX8000AP Print, Hold, and Printed queues. Jobs can also be deleted, either individually or as a group, using Command WorkStation. Clear Server also clears all jobs archived on the Fiery EX8000AP hard disk, the index of archived jobs, and all FreeForm masters.

TO CLEAR THE FIERY EX8000AP FROM COMMAND WORKSTATION

- In Command WorkStation, choose **Clear Server** from the **Server** menu.



For more information, see [Command WorkStation Help](#).

Back up your original data on your own media at the same time you store and save data on the Fiery EX8000AP hard disk. Never damage or reset the Fiery EX8000AP hard disk, and do not turn off the system while accessing the hard disk. For instructions on how to turn on and turn off the Fiery EX8000AP, see [page 38](#).

If the Fiery EX8000AP hard disk or system software experiences technical difficulties, data stored and saved on the Fiery EX8000AP hard disk may be irretrievably lost. If problems with the hard disk occur, extended storage of the following data cannot be assured:

- Third-party fonts
- Print jobs
- Color profiles, including profiles downloaded or edited with Spot-On
- Job notes and instructions
- Scanned image data
- Jobs edited with Impose
- Variable data documents
- E-mail Service Address Book
- Fiery EX8000AP configuration information (list of all the settings in effect for the current Setup)

Restoring Fiery EX8000AP settings

You can restore the Fiery EX8000AP to default settings or to a group of settings that you have already saved.

Saving and restoring Fiery EX8000AP configuration

You can save the current configuration of the Fiery EX8000AP and restore it later, if necessary. The following settings are saved (if your Fiery EX8000AP supports them):

- Settings made in Setup (except Server Name)
- Impose templates saved in the default directory for these files on the Fiery EX8000AP
- Address books
- Virtual Printer settings
- Users and Groups information (login names and passwords)
- Custom spot colors



To save and restore settings, use Configure. For information, see Configure Help.

USB printing

You can save PS, EPS, TIFF, and PDF files to a USB device and print those files on the Fiery EX8000AP. To print files automatically when you connect the USB drive to the Fiery EX8000AP, save the files to specific folders or to the root level on the USB drive.

For more information about printing, see *Printing from Windows* and *Printing from Mac OS*.

TO SET UP THE USB DRIVE FOR AUTOMATIC PRINTING

- 1 **Configure the USB printing options in Setup.**
- 2 **Create folders at the top (root) of the USB device named Print, Hold, and Direct.**
- 3 **Save the files from the user's computer to the USB drive.**

Files copied to the Print, Hold, and Direct folders are downloaded to the corresponding print connection on the Fiery EX8000AP automatically when you connect the USB drive to the Fiery EX8000AP. Files copied to the root level of the drive are downloaded to the Print queue.

- 4 **Remove the USB device from the user's computer and connect it to the USB port on the Fiery EX8000AP.**

For the location of the USB port, see [page 19](#).



Make sure the USB device is properly stopped before you disconnect it from the computer.

Managing e-mail address books

The E-mail Service feature allows you to import a list of e-mail/Internet Fax addresses to the Fiery EX8000AP. To import the list of addresses, you send e-mail messages in a particular format to the Fiery EX8000AP.

The list is added to the address books. Users use the address books to send attachment files to a particular e-mail/Internet Fax address, and the administrator uses the address books to control access to E-mail Services.

NOTE: E-mail messages can be sent only from an administrator account.

The Fiery EX8000AP supports the following address books:

Admin includes users with administrative access. Administrative access allows you to modify the address book, get the current address book from the Fiery EX8000AP, and cancel or status any print job.

Print includes users who have print access. Only users whose e-mail addresses are in the Print address book are authorized to submit jobs via e-mail to the Fiery EX8000AP. Unauthorized users receive an e-mail reply that their job was not accepted by the Fiery EX8000AP for printing.

User includes users who have scanning access.

Fax is used for Scan to Internet FAX. This address book is used for sending scan files via Internet FAX to the Fiery EX8000AP. You cannot use addresses in the address book to send an e-mail to the Fiery EX8000AP.

Corporate is an LDAP address book used for Scan to E-mail. It allows users to send files with Remote Scan to a list of addresses registered on an LDAP server.

NOTE: Perform LDAP Setup before setting this address book.

E-mail Service also allows the administrator to overwrite the address book, add new addresses, remove addresses, and retrieve current addresses on the Fiery EX8000AP.

When a print job is submitted via e-mail, the Fiery EX8000AP first checks the Print address book. If the user's e-mail address does not match any entry in the Print address book, the job does not print. Instead, the user will receive an e-mail stating that the print job was not accepted.

The default wildcard character "@" is stored in the Print address book. This allows any user to print to the Fiery EX8000AP until the administrator adds the first entry in the Print address book.

The administrator can manage the address books by sending an e-mail to the Fiery EX8000AP with command codes in the Subject and Message fields. The Fiery EX8000AP responds by e-mail to these commands with information about each request. When managing address books, see the following table.



To add or remove more than one address at a time, list the addresses on separate lines in the message field of the e-mail.

Task	Administrator subject field	Administrator message field	Fiery e-mail response subject field	Fiery e-mail response message field
To retrieve a specific address book	#GetAddressBook <i>name of address book</i> For example: #GetAddressBook Admin		Address Book <i>name of address book</i> For example: Address Book Admin	List of addresses in the specified address book
To add an address to an address book	#AddAddressTo <i>name of address book</i> For example: #AddAddressTo Print	name@domain or "display name" <name@domain>	Added to Address Book <i>name of address book</i> For example: Added to Address Book Print	List of addresses added to the address book The Fiery EX8000AP also lists any addresses that cannot be added and includes the reason
To clear an address book	#ClearAddressBook <i>name of address book</i> For example: #ClearAddressBook User		Address Book <i>name of address book</i> cleared or Address Book <i>name of address book</i> not cleared For example: Address Book User cleared	If the address book is not cleared, the reason is given
To delete an address from an address book	#DeleteAddressFrom <i>name of address book</i> For example: #DeleteAddressFrom User	name@domain or "display name" <name@domain>	Removed from Address Book <i>name of address book</i> For example: Removed from Address Book User	Deleted Address 1 Deleted Address 2 The Fiery EX8000AP also lists any addresses that cannot be deleted and includes the reason
To receive help for Fiery EX8000AP e-mail services	#Help		RE: Help	Provides troubleshooting e-mail syntax

TO RETRIEVE AN ADDRESS BOOK FROM THE FIERY EX8000AP

- 1 **Start your e-mail application.**
- 2 **Open a new message window.**
- 3 **Type the e-mail address of your print server in the To line.**
- 4 **Type the command of a specified address in the Subject line.**

For the User, type “#GetAddressBook User.” For the Administrator, type “#GetAddressBook Admin” or “#GetAddressBook Print.”

- 5 **Send the message.**

The return message includes the addresses of the specified address book.

- 6 **Copy the addresses as a text file or save the message for your record.**
-

TO RESTORE AN ADDRESS BOOK TO THE FIERY EX8000AP

- 1 **Start your e-mail application.**
- 2 **Open a new message window.**
- 3 **Type the e-mail address of your print server in the To line.**
- 4 **Type the command of a specified address in the Subject line.**

For the User, type “#GetAddressTo User.” For the Administrator, type “#GetAddressTo Admin” or “#GetAddressTo Print.”

- 5 **Copy the addresses retrieved and save it in the body of the e-mail.**

You can include nicknames. However, when a nickname or address is longer than one line, edit it to fit on one line.

- 6 **Send the message.**
- 7 **Review the returned message of notification, and confirm that the addresses were restored correctly.**

Printing the Configuration page

The Configuration page lists the settings in effect for the current Setup. After you perform Setup, print a Configuration page to confirm your settings. Post the current Configuration page near the Fiery EX8000AP for quick reference. Users need the information on this page, such as the current printer default settings.

TO PRINT THE CONFIGURATION PAGE FROM COMMAND WORKSTATION

- 1 In Command WorkStation, choose **Print Pages from the Server** menu.
- 2 Click **Configuration**.
- 3 Click **Print**.

Maintaining optimal Fiery EX8000AP performance

The Fiery EX8000AP does not require maintenance. Beyond the obvious requirements of servicing and maintaining the digital press and replenishing consumables, you can improve the overall performance of your system by doing the following:

- **Make the best use of your network connections.**

Publish only connections that will be used. The Fiery EX8000AP constantly checks all published connections, even if they are inactive. Match the number of queues or connections to the demand for printing.

Review the published connections by printing a Configuration page. Eliminate the connections that are not being used. It is easy to re-establish them when needed.

- **Leave less urgent jobs to times when there is less network traffic or printing.**

You can print recurring print jobs or jobs that are not urgent to the Hold queue. At low-traffic times, the administrator or a user of the job management tools with Operator privileges can move (or copy) all the Hold queue jobs to the Print queue for printing.

- **Reduce unnecessary network communication.**

Large numbers of users running Fiery utilities, especially with frequent updates, may have a significant effect on Fiery EX8000AP performance.

- **Make sure you have adequate disk space on the Fiery EX8000AP.**

Periodically review the list of jobs in the Hold queue and the number of jobs being retained in the Printed queue.

An administrator can print or delete jobs in the Printed queue and Hold queue. Consider printing or offloading inactive jobs. If disk space on the Fiery EX8000AP is frequently low, you can disable the Printed queue (in Server Setup) and choose not to publish the Hold queue (in Printer Setup).

To move or remove queued jobs, use the job management tools. When you free up disk space by removing inactive jobs, new jobs are spooled and printed more quickly.

Shutting down, rebooting, and restarting the Fiery EX8000AP

Generally, you can leave the Fiery EX8000AP and the digital press running all the time. This section describes how to shut down, reboot, and restart the Fiery EX8000AP when necessary.

Shutting down the Fiery EX8000AP

When you need to shut down the Fiery EX8000AP, fonts downloaded to the Fiery EX8000AP are not deleted. Jobs in the Hold and Print queues and jobs that have been processed, but not printed, are not deleted and are available for printing when you reboot or restart the Fiery EX8000AP.

TO SHUT DOWN THE FIERY EX8000AP

- 1 **Verify that the Fiery EX8000AP is not receiving, processing, or printing any files.**

If necessary, wait until Command WorkStation shows no processing or printing jobs in the Active Jobs window, or the Fiery Bar shows Idle in both the RIPping and Printing areas. If the system has just finished processing, wait at least five seconds after the system reaches Idle before beginning the shutdown procedure.

- 2 **On the Fiery Advanced Controller Interface, close all open applications except FieryBar.**
- 3 **From the Windows Start menu, choose Shut Down.**
- 4 **Choose Shut Down and click OK.**

Rebooting or restarting the Fiery EX8000AP

Restarting the Fiery EX8000AP resets the Fiery EX8000AP system software, but does not reboot the entire system. Network access to the Fiery EX8000AP is temporarily interrupted and all currently processing jobs are terminated.



If you use a USB thumb drive, remove it before rebooting. Otherwise, the Fiery EX8000AP does not reboot.

TO REBOOT THE FIERY EX8000AP

- 1 **Verify that the Fiery EX8000AP is not receiving, processing, or printing any files.**

If necessary, wait until Command WorkStation shows no processing or printing jobs in the Active Jobs window, or the FieryBar shows Idle in both the RIPping and Printing areas.

- 2 **Close all open applications except FieryBar.**
- 3 **Click Start in the Windows taskbar, and then choose Shut Down.**
- 4 **Select Restart and click OK.**

Wait for the system to reboot.

- 5 At the Log On to Windows dialog box, type Administrator in the user name field, type the password, and then press Enter.**

The password is case-sensitive and must be entered exactly.

- 6 Wait for FieryBar to appear on the monitor and reach Idle.**

The Fiery EX8000AP takes approximately three minutes to power on and reach Idle.

TO RESTART THE FIERY EX8000AP

- 1 Verify that the Fiery EX8000AP is not receiving, processing, or printing any files.**

If necessary, wait until Command WorkStation shows no processing or printing jobs in the Active Jobs window, or FieryBar shows Idle in both the RIPPING and Printing areas.

- 2 Close all open applications except FieryBar.**
- 3 Right-click FieryBar and choose Restart Fiery from the menu that appears.**
- 4 Click OK when the confirmation message appears**

Wait for the Fiery EX8000AP server software to close down and restart. You may need to wait one minute or more for the server software to restart. FieryBar displays the Exited status while the server software restarts.

TROUBLESHOOTING

This chapter provides troubleshooting tips.

Troubleshooting the Fiery EX8000AP

Startup diagnostics are described in the documentation for service technicians. Contact your authorized service/support center if you see startup error messages on Command WorkStation or if the Fiery EX8000AP does not reach the Idle state.

Safe Print

Safe Print is a diagnostic feature that allows the Fiery EX8000AP to detect any internal errors that arise as a result of a difference between the raster output of the internal RIP and the raster sent from the Fiery EX8000AP to the digital press. When such errors are detected, the Fiery EX8000AP does not print the job, and the error reported is an under-run.



Runtime error messages

For error messages related to canceling jobs and printing, including the Disk Full message and alerts to load media, see Command WorkStation Help.

You can turn on PostScript error reporting as a print option from Mac OS applications.

Printer not found

Most failures to find a printer on the network are due to conflicting or missing name or address settings for the Fiery EX8000AP. You must enter names in specific places. The required names are:

- TCP/IP host name (also known as the DNS name), which is defined by your organization.
Enter the host name as the Server Name in Fiery EX8000AP Setup.
- Remote printer (internal machine) name. Use one of the following:
print
hold
direct

NOTE: If you change the DNS name (TCP/IP host name) of the Fiery EX8000AP, you must reconfigure one of the utilities on each computer.

For the appropriate name, see the following table.

In this location	For this item	TCP/IP networks	See
Server Setup	Server Name option	Administrator defines name	Configure Help
Windows hosts file	host name	DNS name (TCP/IP host name)	page 9
Windows setup for TCP/IP	lpd host name	DNS name (TCP/IP host name)	page 9
	Name of printer on lpd host machine	print, hold, or direct	
UNIX /etc/printcap file (BSD)	rp line	print, hold, or direct	page 12
Solaris	lpadmin queuename	print, hold, or direct	
Add New Server dialog box, when configuring a utility	New Device	DC8000AP	<i>Utilities</i>
	Server Name	DNS name (TCP/IP host name)	

Cannot connect to the Fiery EX8000AP with utilities

If users cannot connect to the Fiery EX8000AP, check the following:

Fiery EX8000AP Setup: The appropriate network protocol must be enabled, with the correct parameters (for example, for TCP/IP, the IP address), and you must publish either the Print queue or Hold queue.

You can check these settings quickly by printing a Configuration page.

On the client computer: The appropriate network protocols must be loaded.

Cannot connect to the Fiery EX8000AP with Command WorkStation

If there is a problem connecting to the Fiery EX8000AP, an error message is displayed.

The problem can occur when:

- The Fiery EX8000AP is initially turned on
- The Fiery EX8000AP restarts
- You have changed settings affecting the server address and have not reconfigured the connection to the server

If you experience this problem, try the following solutions, in this order:

- A remote computer running utilities or WebTools may be interfering by obtaining status information. If possible, close the remote application, and try to connect again.
- Restart the Command WorkStation software and try to connect again.
- Restart the Fiery EX8000AP.

INDEX

Numerics

- 1000BaseT 19
- 100BaseTX 19
- 10BaseT 19

A

- access levels, setting 14
- Active Directory 12
- administrator
 - functions 27
 - installing the server 10
 - password 29
 - privileges 15
- Allow Courier Substitution option 23
- AppleTalk
 - networks, about configuring 12
 - support of 9

C

- changing
 - Administrator password 29
 - host name or DNS name 40
- Clear Server command 31
- client setup
 - overview 10
 - WebTools 26
- CMYK Simulation Profile option 23
- Command WorkStation
 - Configuration page 37
 - problems connecting to server 41
 - Setup from 21
- Configuration page
 - printing 37
 - troubleshooting connection problems 41
- Configure (WebTool) 17
- connecting network cable 19
- Convert Paper Sizes option 23
- Courier font, substitution with 23
- cover page, printing at end of job 25

D

- Default Paper Sizes option 24
- device name 41

- Direct connection
 - described 16
 - required for downloading fonts 16
- disk space 37
- DNS (Domain Name Server)
 - implications of changing 40
 - listing server name 12
- Docs WebTool 17
- downloading fonts, Direct connection requirement 16
- Downloads WebTool 17
- Duplex option 24

E

- error messages
 - cover page list PostScript error 25
 - runtime 40
- Ethernet connector 19

F

- fonts, substitution 23
- FreeForm master 25

H

- Halftone Simulation option 24
- Hold queue, described 16
- Home (WebTool) 17
- host name
 - database 12
 - DNS (Domain Name Server), listing 12
 - TCP/IP host name, about changing 40

I

- Image Quality option 24
- Image Smoothing option 24
- improving server performance 37
- installing server on network 10
- Internet, accessing server with WebTools 16

J

- Java to support Internet browser 26
- Job Log, clearing jobs from 31
- job management tools, deleting jobs with 31

L

LPR (TCP/IP), UNIX 12

M

maintaining server performance 37

N

naming the server 40

network

installation summary 10, 11

protocols supported 9

TCP/IP 11

O

Operator password privileges 15

P

Page Order option 24

paper size used by default 24

passwords

Administrator privileges 15

Administrator, changing 29

Operator privileges 15

setting 14

PDF files, font substitution in 23

PostScript error 25

Print Cover Page option 25

Print Master option 25

Print queue, described 16

Print to PostScript Error option 25

Printed queue 16

printer

connection failure 40

not found 40

not in Chooser 40

printing

connections 16

cover page for each job 25

reprinting previously printed jobs 16

protocols

network 9

See also AppleTalk,

TCP/IP

publishing connections, overview 16

Q

queues, clearing all 31

R

reprinting jobs 16

RJ-45 connector 19

S

Scale to Fit option 25

server

back view showing connectors 19

maintaining and improving performance 37

Server Setup 20

Setup from a network computer 21

system software, updating 30

T

TCP/IP

host name 40

with UNIX workstations 12

terminology, general 7

Tray Alignment option 25

troubleshooting

Command WorkStation connection

problems 41

connection to printer fails 40

Printer not found in the selection list of
utilities 41

Printer not found on TCP/IP networks 40

twisted pair cable 19

U

UNIX

on TCP/IP network 12

printcap file 41

remote printer name 41

USB printing 33

Use PDF XObjects option 25

W

WebTools

Configure 17

Docs 17

Downloads 17

Home 17

Windows printing, domain issues 12