

Xerox FreeFlow[®]
Print Server v. 7.0 SP-3
Customer Welcome Package for
DocuColor 8080 Digital Color Press



©2011 Xerox Corporation. All rights reserved. Xerox® and the sphere of connectivity design, FreeFlow® and DocuColor® are trademarks of or licensed to Xerox Corporation in the United States and/or other countries.

Printed in the United States of America.

Changes are periodically made to this document. Changes, technical inaccuracies, and typographic errors will be corrected in subsequent editions.

Document Version: 1.0 (July 2011)

Contents

Welcome and Congratulations	2
Simplified powerful job management.....	2
Confident Color Technology.....	2
Color Rendering Standards Updated	2
Color Sliders and Spot Colors.....	2
Outstanding VI features and More.....	2
“Getting Started” Multimedia Program for FreeFlow Print Server	3
Summary	3
This one hour program will kick start your learning.	3
New Features for FFPS 7.0-SP3.....	4
Easy Color Adjustment Features	4
TRC Enhancements.	5
Enhanced Spot Color Editing Capability	5
Enhanced Spot Color Editor.	6
Advanced Color Workflow Display	6
FFPS supports PDF/X.....	7
Additional Color Management And Emulations	7
Exceptions and Insert Page Range.	8
ACQS- Automated Color Quality Suite for FreeFlow Print Server	9
Automated Color Calibration	9
Spot Color Calibration	9
Advanced Profiling	9

Welcome and Congratulations

This is the latest software and documentation package for your Xerox FreeFlow Print Server. Whether you're starting out in digital color or already delivering color-critical jobs, this sleek, simple and smart new software will help you get the job done.

FreeFlow Print Server brings the most sophisticated blend of office and production workflows together. The FreeFlow Print Server delivers production level capabilities such as robust queue management support while honoring all of the office capabilities the machine has to offer.

Simplified powerful job management.

An easy-to-use interface gives you access to extensive job management capabilities—including a print configuration page, dry ink level display, and network status—making it easy to monitor your workflow for greater efficiency. RIP and hold a job to proof before a long print run to save time on reprocessing. Plus, you can set up customized print workflows according to the job or customer with the power of 250 queues, and then use them over and over without having to re-program.



Confident Color Technology – delivers great results every time.

FFPS 7 makes easy work of both traditional CMYK and digital-age RGB workflows. Whatever your color workflow, there is something in FreeFlow Print Server v. 7. Whether you are looking for great results with built-in or customizable color controls, the FreeFlow Print Server has it. Color calibration is not only reliable but also easy, quick and very accurate. And with Xerox® Consistent Color Mode—an easy, one-button selection to “normalize” color across multiple print engines combined with Xerox’s advanced profiling technology and the highly refined calibration techniques—the FreeFlow Print Server provides you with a benchmark in simple, built-in color management for consistency across devices and time

Color Rendering Standards Updated.

Color emulations and standards have been updated and improved. Additions include:

- CMYK press emulation GRACoL.
- PDF/X1-a, PDF/X-3 supported with a “one click” option.
- Pantone GOE spot colors are supported as well (Please note: this may require a Service Pack update on some DocuColor models).

Color Sliders and Spot Colors.

The on-board color correction tools have been improved as well. You will be impressed with the redesigned highlight, mid-tone and shadow color adjustments and innovative new Spot color editor. Both popular tools are now much faster and easier to use!

Outstanding VI features and More...

From simple to complex, the FreeFlow Print Server can handle your variable data printing needs, thanks to variable caching, background forms and other performance features. All data is kept intact using a native format without file conversion—so you can feel confident that your job will print quickly and correctly. There are other changes such as the ability to now pick Page Exceptions/Mixed Media on multiple ranges on a single job and queue. Plus, general updates such as Internet Protocol Version 6. Take a glance through these summary pages and be more productive today!

“Getting Started” Multimedia Program for FreeFlow Print Server

Summary

Xerox now offers a resource designed to help you learn the basic operation of the FreeFlow Print Server to get you printing as quickly as possible with your new Xerox printing system. If you are a new user or have not used the FreeFlow Print Server much, the Getting Started resource is the perfect place for you to start.

This one hour program will kick start your learning.

Where

Getting Started is multimedia based and available for download from <http://www.xerox.com/freeflowgettingstarted>

The multimedia version will also be available on the “Customer Documentation” CD-ROM, inside the folder named “Getting Started FreeFlow Print Server Multi-media Program.”

What

Getting Started with the FreeFlow Print Server covers topics including:

Basic Printing

- Print Server Tour and Job Flow
- How to Submit Jobs
- How to Manage Jobs
- How to Customize your Screen

Managing Color

- Calibrating Color for Your System
- Color Management Flow
- Adjusting Color Balance

What’s New with FreeFlow Print Server:

- Changes to the User Interface
- New Features
- Enhanced Features
- Performance Improvements

How Long?

Getting Started with the FreeFlow Print Server will take approximately one hour to complete. At the end there are exercises that you can print and take to your system so you’ll be able to start using the FreeFlow Print Server to print and manage basic jobs quickly.



New Features for FFPS 7.0 SP-3

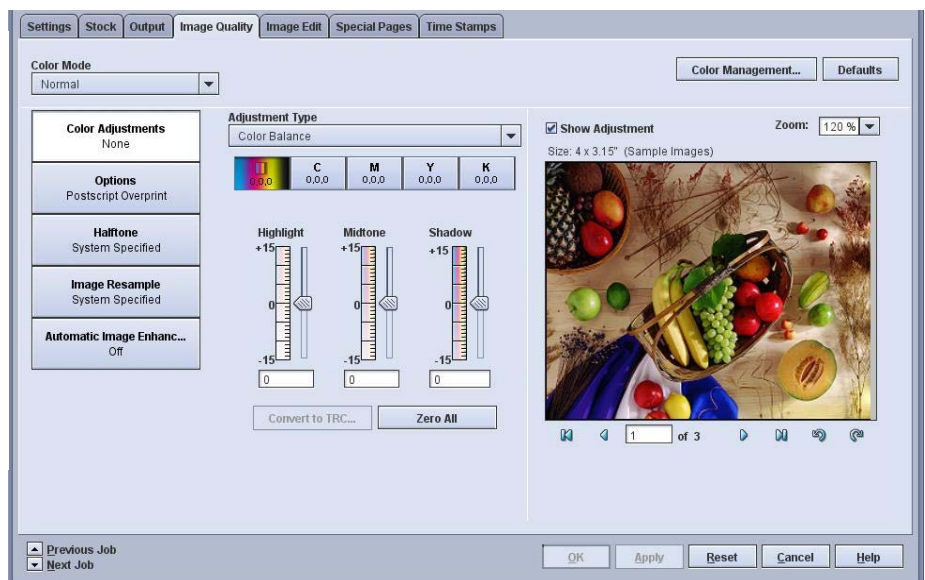
All new features introduced in the FreeFlow Print Server 7.0 software are also included in 7.0-SP3. Those features are described in the “What’s New” for 7.0 document that can be found on the “Customer Documentation” CD-ROM in the Xerox FreeFlow Print Server Software and Documentation Kit for DocuColor 8080 Digital Color Press”.

Below are the new features added in FreeFlow Print Server 7.0. Please refer to the “Customer Documentation” disk for general features and functions.

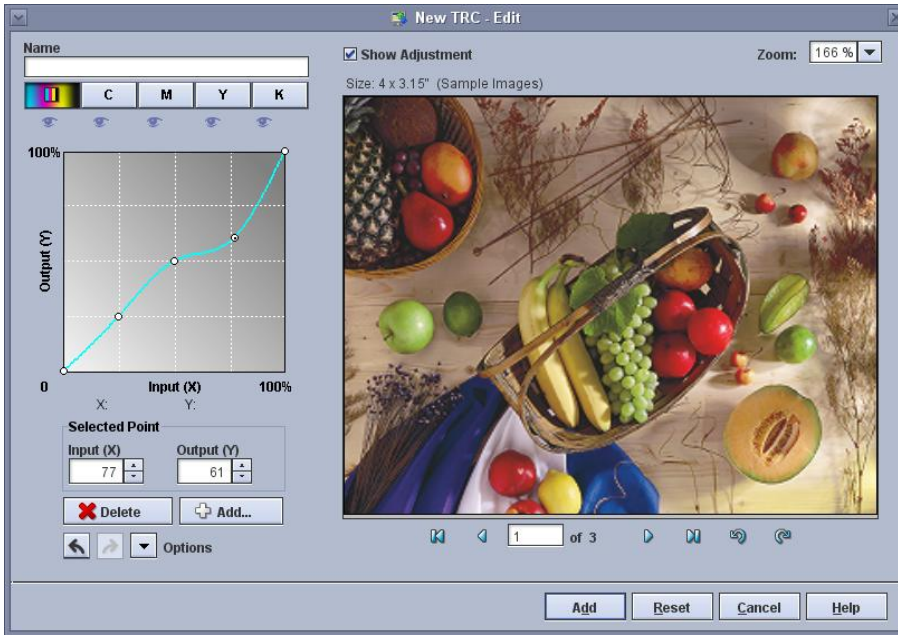
Easy Color Adjustment Features

As of the initial version 7.0 SP3 (73.B0.73.xsis.03), the FreeFlow Print Server supports the following:

- ✚ Color Adjustment Controls for Highlight, Midtone, and Shadow Areas for All or Individual Separations that produce a User TRC.
- ✚ Color changes shown on-screen.
- ✚ Does not impact RIP Performance.
- ✚ Does not change Pantone spot colors.



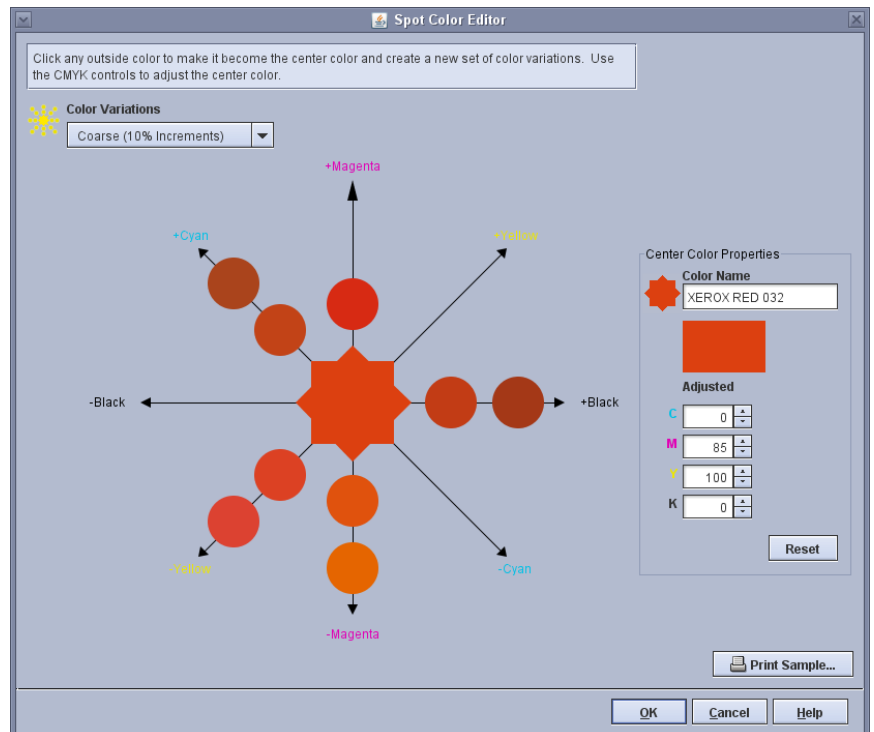
Tone Reproduction Curves (TRC Enhancements)



- ✚ Select the Convert to TRC option to Add the Color Adjustment TRC to the TRC Library for Applying to other Jobs.
- ✚ View the New TRC and its impacts on any Job when used in Job Manager.
- ✚ There are 3 static images that are used for Viewing New TRC and its Impacts when Applied in Queue Manager.

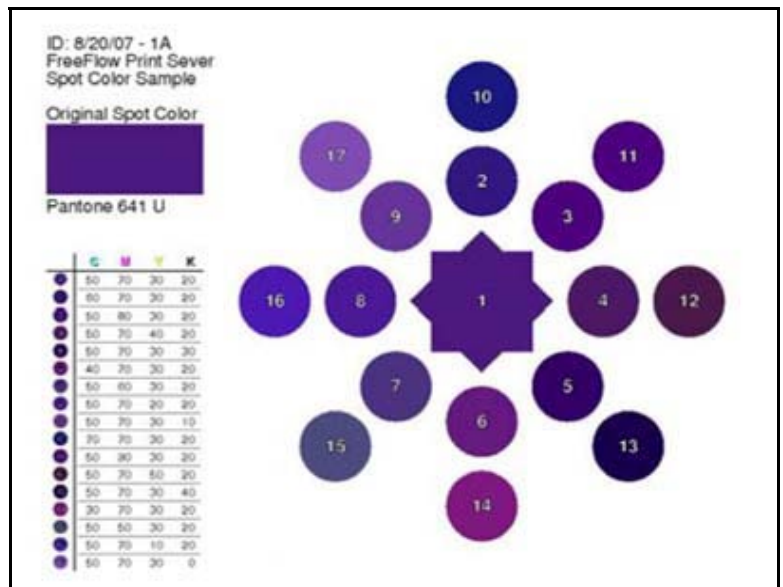
Enhanced Spot Color Editing Capability

- ✚ The New Spot Color Editor provides the user a New Color Picker to select a New Color from.
- ✚ The Color Picker provides + / Progressions for each Separation Based on the % Color Variation Setting.
- ✚ The User can Modify the Color Variation Values to increase or decrease the %.

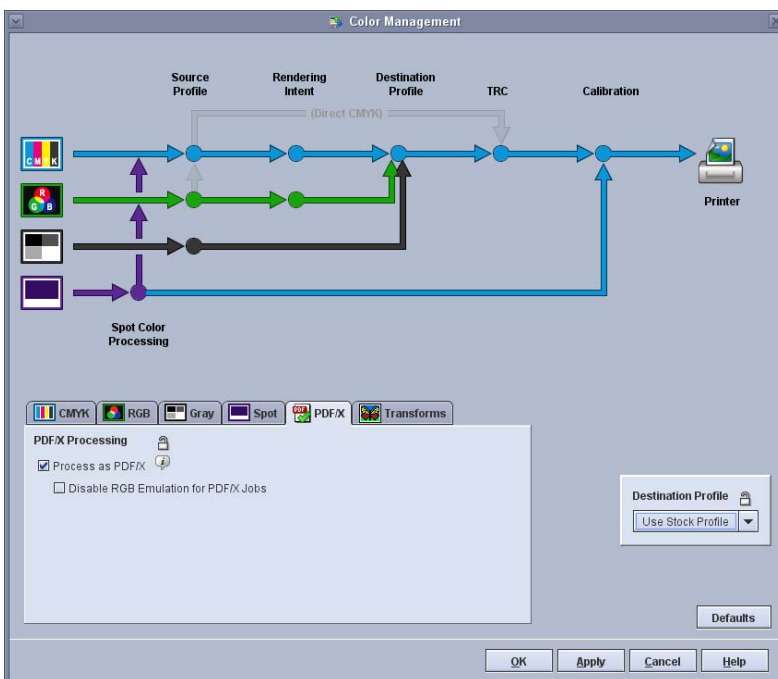


Enhanced Spot Color Editor: Print Sample

- CMYK Recipes provided for Each Color Generated by the New Color Picker.



Advanced Color Workflow Display







Advanced Color Workflow paths and options displayed on-screen.

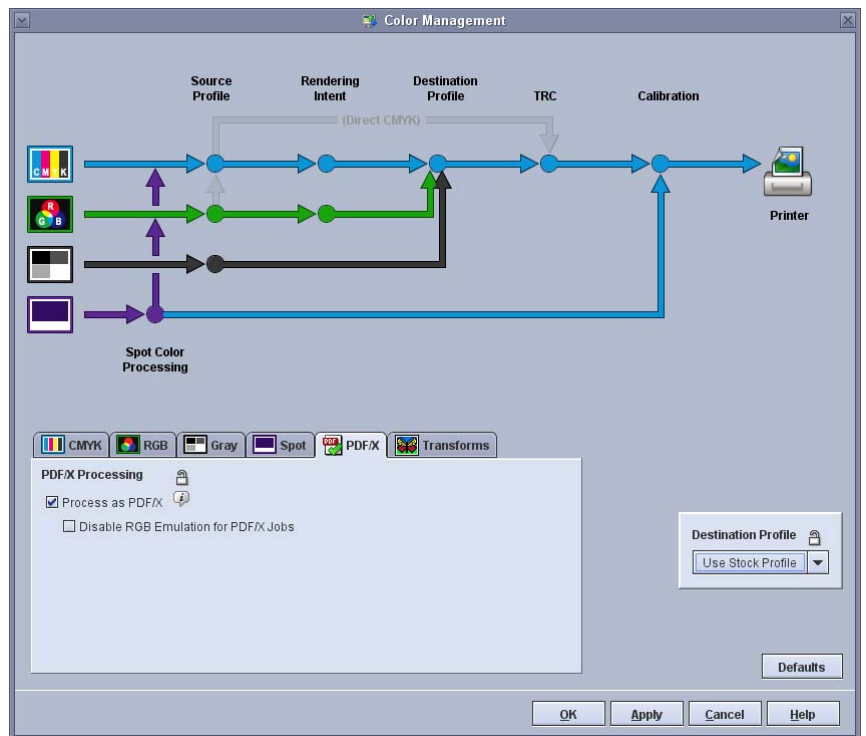
- Displays optional paths and displays the path as adjusted.
- Clear layout of the system's RGB, CMYK, Spot workflow options.

FFPS supports both PDF/X – 1a & PDF/X – 3a Formats


Simple “one-button” PDF/X enablement (PDF/X tab)

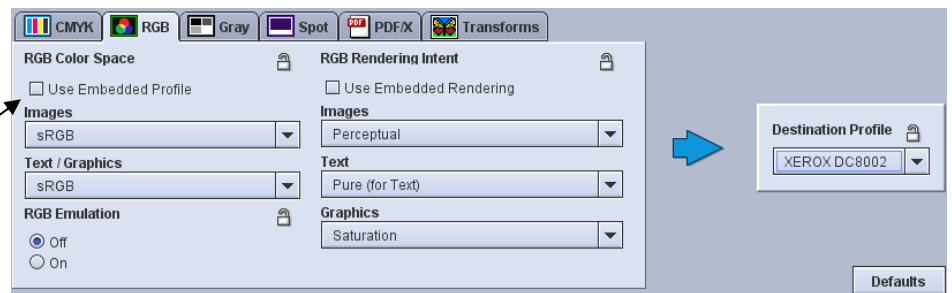
PDF/X 1-a


-  CMYK color spaces
-  PDF/X 3-a
-  RGB
-  CMYK
-  CieLab
-  Color-managed




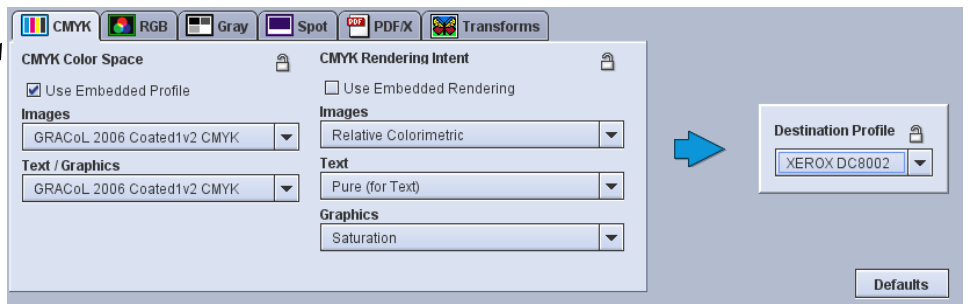
Additional Color Management and Emulations

 Use Embedded Profile – For easier Color managed workflows.



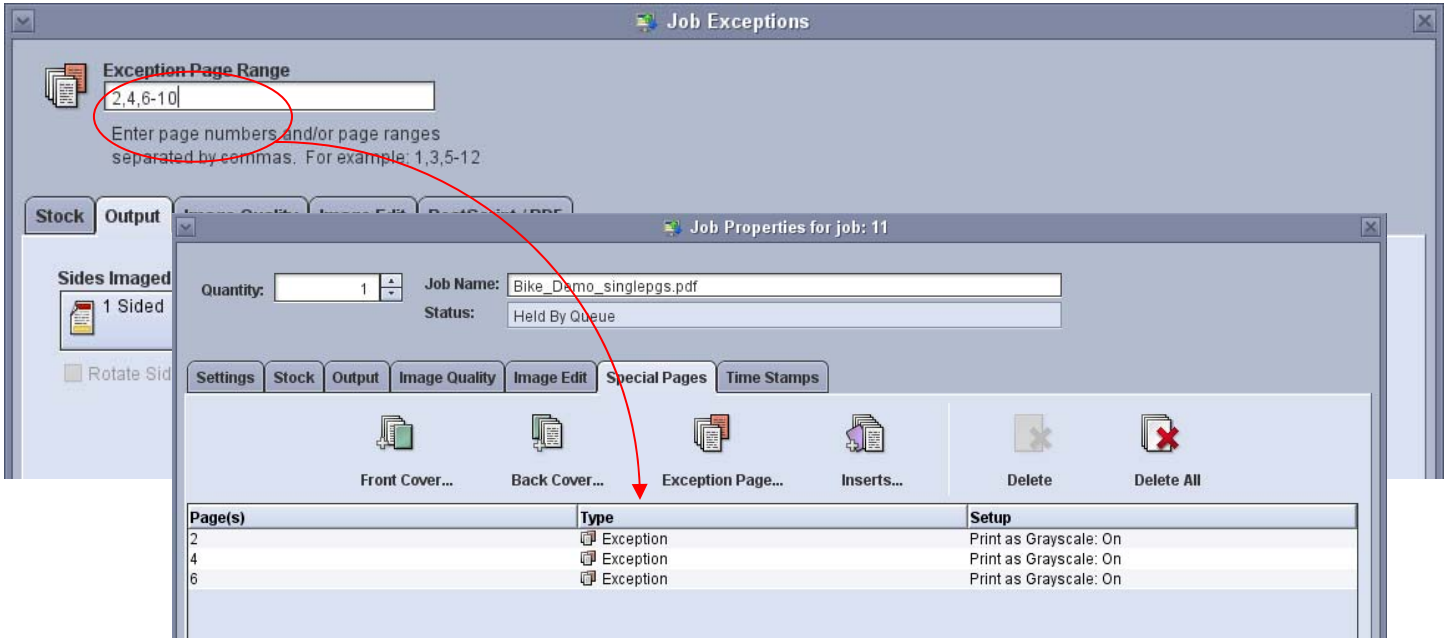
 “Direct CMYK” – For bright vibrant color and matching “GRACoL.”

 A fantastic update for emulation of an offset press.



Exceptions and Insert Page Range

This new capability enables faster programming as it allows the user to submit multiple Insert or Exception Pages with the same programming with a single-click.



New – ACQS: Automated Color Quality Suite for the FreeFlow Print Server

Automated Color Calibration

This feature provides you with the ability to calibrate the Press from the FreeFlow Print Server Graphical User Interface (FreeFlow GUI) without feeding calibration charts (also known as "calibration targets") manually. You can do this "now" or at practically any time via a schedule. This option helps you maintain tighter control over the output of your system.

Spot Color Calibration

This feature provides you with the ability to automatically check the quality of a particular color. You can use Spot Color Calibration to test and/or fine-tune the accuracy of particular PANTONE® colors before the job prints.

Advanced Profiling

This feature provides you with the ability to create a custom profile. This allows you to further fine-tune your print jobs beyond what is provided by the standard profiles in FreeFlow Print Server.

Please refer to the **DC7002_8002_8080_ACQS_Operator_Guide** located on the Customer Documentation CD for additional information on the Automatic Color Quality Suite.