



Xerox® EX Print Server, Powered by Fiery®,
for the DocuColor® 8080 Digital Press

Printing



© 2011 Electronics for Imaging, Inc. The information in this publication is covered under [Legal Notices](#) for this product.

45097175

18 February 2011

CONTENTS

INTRODUCTION	7
Terminology and conventions	7
About this document	8
User software	9
System requirements	9
PRINTING FROM MAC OS X	10
Installing the Mac OS X printer driver files	10
Installing from the User Software DVD	11
Downloading printer drivers using WebTools	11
Downloading printer drivers from the EX Print Server	12
Uninstalling printer driver files	13
Setting up the EX Print Server for printing	14
Setting up printing with Mac OS X v10.5.x or v10.6.x	15
Setting up printing with Mac OS X v10.4.x	19
Setting up printing with Mac OS X v10.3.9	23
Adding a non-English printer on Mac OS X v10.5 and v10.6	25
Configuring installable options	25
Using Desktop Printer (optional)	25
Printing from Mac OS X computers	26
Selecting the EX Print Server in the printer list	27
Setting print options and printing from Mac OS X applications	29
Defining and printing custom page sizes	36
Viewing the digital press status	36

PRINTING FROM WINDOWS	37
Installing Windows printer drivers	37
Installing printer drivers by Point and Print	38
Downloading printer drivers using WebTools	42
Downloading printer drivers from the EX Print Server	43
Installing printer drivers from the User Software DVD	44
Installing and connecting to a virtual printer	47
Uninstalling printer drivers	49
Setting up the EX Print Server for printing	50
Setting up printing connections	50
Completing the SMB printing connection	50
Completing Standard TCP/IP Port (Raw or LPR) printing connections	51
Completing IPP connections	54
Configuring installable options	57
Printing from Windows computers	58
Setting print options and printing from Windows applications	59
Specifying default print options for print jobs	65
Customizing the Quick Access icon	66
Defining and printing custom page sizes	67
Viewing the digital press status	67
Saving files to print at a remote location	67
PRINTING METHODS	68
Configuring and using Job Monitor	69
Configuring the connection	69
Using Job Monitor	69
E-mail Service	70
Printing using an e-mail client	70
Managing print jobs with e-mail commands	72

Printing from a USB device	73
FTP printing	74
Job Batching	75
Cancelling batch jobs	75
Using Command WorkStation Print Next and Rush Print commands with batch jobs	75
Accounting batch jobs	75
Adobe PDF Print Engine (APPE)	76
Printing with the APPE workflow	76
Printing multiple files with APPE	78
PRINT OPTIONS	79
About printer drivers and printer description files	79
Setting print options	80
Print option override hierarchy	80
Print options and default settings	81
Job Info options	82
Media options	84
Layout options	86
Color options	91
Image options	95
Finishing options	97
Variable Data Printing (VDP) options	98
Stamping/Watermark options	99
Overriding print option settings	100

Additional information	101
Auto Trapping	101
Booklet Maker	101
Booklet Maker in the printer driver	103
Booklet Maker in Job Properties	104
Collation	108
Document size and Paper size	109
Duplex printing	110
Gang-up printing	111
Image Enhance	112
Image Shift	114
Mixed Media	115
Output Delivery	117
Paper Catalog	118
Scale	119
Scale to Fit	119
Stapler Mode	120
User Authentication	120
 INDEX	 121

INTRODUCTION

This document describes how to install the printer drivers and printer description files for the Xerox EX Print Server, Powered by Fiery, for the DocuColor 8080, set up the EX Print Server for printing, and print from Apple Mac OS and Microsoft Windows computers. It also provides information about the EX Print Server print options and describes several printing methods that can be used to print to the EX Print Server.



For information about setting up network servers and clients to use the EX Print Server, see [Configuration and Setup](#). For general information about using the color digital press, your computer, application software, or network, see the documentation that accompanies those products.





For information about supported operating systems and system requirements, see [Welcome](#).

Terminology and conventions

This document uses the following terminology and conventions.

Term or convention	Refers to
Aero	EX Print Server (in illustrations and examples)
Digital press	Xerox DocuColor 8080
EX Print Server	Xerox EX Print Server, Powered by Fiery, for the DocuColor 8080
Titles in <i>italics</i>	Other documents in this set
Windows	Microsoft Windows XP, Windows Vista, Windows Server 2003/2008/2008 R2, Windows 7
	Topics for which additional information is available by starting Help in the software
	Tips and information

Term or convention	Refers to
 WARNING	A warning concerning operations that may lead to death or injury to persons if not performed correctly. To use the equipment safely, always pay attention to these warnings.
 CAUTION	A caution concerning operations that may lead to injury to persons if not performed correctly. To use the equipment safely, always pay attention to these cautions.
IMPORTANT	Operational requirements and restrictions. Be sure to read these items carefully to operate the equipment correctly, and avoid damage to the equipment or property.

About this document

This document covers the following topics:

- Installing printer driver files on Mac OS X computers
- Setting up the EX Print Server for printing from Mac OS X computers
- Printing from Mac OS X computers
- Installing printer driver files on Windows computers
- Setting up the EX Print Server for printing from Windows computers
- Printing from Windows computers
- Using other printing methods to print to the EX Print Server
- EX Print Server print options

User software

The following table lists the user software that is described in this document. This is the user software you need for setting up basic printing on the EX Print Server. Other documents may describe other user software depending on what you are trying to accomplish.

User software	Description
PostScript Printer Description (PPD) file and associated files (for Windows)	Files that provide information about the EX Print Server and your particular digital press model to your application and printer driver.
PostScript Printer Description (PPD/Plugin) files (for Mac OS X)	Files that are used with the PostScript printer driver that allow the EX Print Server to appear in the Print and Page Setup dialog boxes of popular applications. The EX Print Server PPDs provide information about the digital press to your application and printer driver.
PageMaker PPD files	Files that allow you to print to the EX Print Server from Adobe PageMaker. You must install the appropriate PPD in PageMaker. See the PageMaker documentation for instructions.
PostScript screen fonts (for Mac OS X)	PostScript/TrueType screen fonts that correspond to the printer fonts installed on the EX Print Server. For a complete list of PostScript/TrueType fonts installed on the EX Print Server, print a Font List. For more information, see Command WorkStation Help.
Job Monitor (for Windows)	Monitor the status of connected EX Print Servers and print jobs sent to them. Job Monitor is automatically installed when the printer driver is installed on a Windows computer. For more information, see “Configuring and using Job Monitor” on page 69.
Printer Delete Utility (for Windows)	Uninstall the Windows printer driver. For more information, see “Uninstalling printer drivers” on page 49.
Fiery Software Uninstaller Utility (for Mac OS X)	Uninstall the Mac OS X printer and associated printer driver files. For more information, see “Uninstalling printer driver files” on page 13.



When you install user software on a Windows computer, you use the Fiery User Software Installer.

System requirements

For information about supported operating systems and system requirements, see [Welcome](#).

PRINTING FROM MAC OS X

To set up the EX Print Server as a PostScript printer on a Mac OS X computer, install the printer driver files that correspond to your digital press and set up the EX Print Server for printing. Printer drivers provide a way to communicate information about print jobs between your applications, the EX Print Server, and the digital press.

For the location of each procedure, see the following table.

Procedure	See
Installing the Mac OS X printer files	page 10
Setting up the EX Print Server for printing	page 14
Printing from Mac OS X computers	page 26

Installing the Mac OS X printer driver files

The Mac OS X printer driver files are provided on the User Software DVD or can be downloaded from the EX Print Server over the network or using WebTools. The following sections describe how to install the printer files for the EX Print Server.

You can install printer drivers as follows:

- From the User Software DVD
- From WebTools, using the Downloads tab to download the printer driver files before installing the printer driver

NOTE: WebTools is available if the administrator has enabled Internet access to the EX Print Server.

- From the EX Print Server by downloading the printer driver files over the network before installing the printer driver

For the location of each procedure, see the following table.

Procedure	See
Installing printer drivers from the User Software DVD	page 11
Downloading printer drivers using WebTools	page 11
Downloading printer drivers from the EX Print Server	page 12
Uninstalling printer driver files	page 13

Installing from the User Software DVD

The User Software DVD provides the following software for Mac OS X (see the OSX: Printer Driver folder):

- **OSX Installer:** Installs the printer driver files required to print from Mac OS X.
- **Language folders:** Printer description files that are installed by OSX Installer. You do not need to open these folders or install them manually on your computer. The appropriate files are installed by OSX Installer.

TO INSTALL THE PRINTER DRIVER FILES FOR MAC OS X

- 1 **Quit all open applications.**
- 2 **Mac OS X v10.3.9 and v10.4.x: Make sure that the Printer Setup Utility is not running on your computer.**

Printer Setup Utility updates the list of available printers when it starts. If a printer description file is added while Printer Setup Utility is running, you cannot select the associated printer model until you restart.

Mac OS X v10.5.x and v10.6.x: Proceed to [step 3](#).

- 3 **Insert the User Software DVD into the DVD drive.**
- 4 **Open the OSX: Printer Driver folder on the User Software DVD.**

If you are installing from a folder you downloaded from WebTools or the EX Print Server, browse to the Printer Driver folder on your desktop.

- 5 **Double-click the OSX Installer icon to start installing the printer driver.**
- 6 **Follow the on-screen instructions.**

The OSX Installer installs the printer driver files that correspond to the EX Print Server.

- 7 **When copying is complete, click Quit.**

Downloading printer drivers using WebTools

WebTools allows you to download installers for printer drivers to your computer directly from the EX Print Server.

Before you download the printer driver files, the administrator must enable Internet access to the EX Print Server.

For more information about setting up and starting WebTools, see [Utilities](#).

TO DOWNLOAD PRINTER DRIVERS WITH WEBTOOLS

- 1 **Start your Internet or intranet browser and type the DNS name or IP address of the EX Print Server.**
- 2 **Click the Downloads tab.**
- 3 **Click the link for the printer drivers that you want to install (Printer Files for Mac OS X).**

A file named OSX.dmg is downloaded to your desktop. The file contains a folder named Printer Driver in a compressed format. If your Internet browser is equipped with an expander utility, such as StuffIt Expander, the folder decodes and decompresses automatically.

If the Printer Driver folder does not automatically decode and decompress, double-click the file to start the utility that performs that function.

- 4 **Open the OSX: Printer Driver folder.**
- 5 **Double-click the OSX Installer icon to start installing the printer driver.**

Follow the on-screen instructions.

For instructions on installing the printer driver for Mac OS X, see [page 11](#).

Downloading printer drivers from the EX Print Server

You can download printer driver files to your computer directly from the EX Print Server over the network.

TO DOWNLOAD PRINTER DRIVER FILES FROM THE EX PRINT SERVER

- 1 **In the Finder, choose Connect to Server from the Go menu.**
- 2 **Type SMB:// followed by the name or IP address of the EX Print Server and click Connect.**
- 3 **Type the user name and password in the SMB/CIFS File System Authentication dialog box.**

If you cannot locate your EX Print Server, contact your administrator.

The “Guest” account can be used as the default. The Guest account does not require a password. If the Guest account cannot be used, ask your network administrator for an account.

- 4 **Select the Mac_User_SW folder from the shared volume list and click OK.**
- 5 **Open the OSX: Printer Driver folder.**
- 6 **Double-click the OSX Installer icon to start installing the printer driver.**

Follow the on-screen instructions.

For instructions on installing the printer driver for Mac OS X, see [page 11](#).

Uninstalling printer driver files

The Fiery Software Uninstaller utility is installed and used locally. You do not need to connect to the EX Print Server before you use the software.

The Fiery Software Uninstaller is available from the OSX folder of the User Software DVD. You can also download it to your computer directly from the EX Print Server over the network.

TO INSTALL AND USE THE FIERY SOFTWARE UNINSTALLER UTILITY

- 1 **Copy the Fiery Software Uninstaller.dmg file to your desktop from the User Software DVD or the Mac_User_SW folder from the shared volume list on the EX Print Server.**
- 2 **Double-click Fiery Software Uninstaller.dmg.**

The Fiery Software Uninstaller opens in the Finder, displaying the Fiery Software Uninstaller icon and an arrow pointing to a link to the Applications folder.
- 3 **Select the Fiery Software Uninstaller icon on the left and drag it onto the Applications folder to install.**
- 4 **Browse to the Applications folder and double-click the Fiery Software Uninstaller icon.**
- 5 **Click the Printers tab if it is not already selected.**
- 6 **Select a printer from the Installed Printers list and do one of the following:**
 - Click **Remove Printer and Driver** to remove the printer along with its printer driver files.

If you want to remove the printer and the associated printer driver, you can select only one printer at a time.
 - Click **Remove Printer** to remove only the printer from the Installed Printers list, but leave the printer driver installed.

The utility can remove only printers that are not currently in use or open on the Dock.
- 7 **To confirm that you wish to delete the printer, type your password in the dialog box and click OK.**
- 8 **Click the Drivers tab to view the installed printer drivers.**
- 9 **Close the Fiery Software Uninstaller dialog box.**

TO DELETE THE FIERY SOFTWARE UNINSTALLER UTILITY

- **Delete the Fiery Software Uninstaller icon from the Mac OS X Applications folder.**

Setting up the EX Print Server for printing

The following section describes how to set up the EX Print Server on a Mac OS X computer.

NOTE: The steps for setting up the EX Print Server on a computer with Mac OS X v10.6.x, Mac OS X v10.5.x, Mac OS X v10.4.x, and Mac OS X v10.3.9 are different. Any differences are noted in the following sections.

For the location of each procedure, see the following table.

Procedure	See
Setting up printing with Mac OS X v10.5.x or v10.6.x	page 15
Setting up printing with Mac OS X v10.4.x	page 19
Setting up printing with Mac OS X v10.3.9	page 23
Adding a non-English printer on Mac OS X v10.5 and v10.6	page 25
Configuring Installable Options	page 25
Using Desktop Printer (optional)	page 25

Setting up printing with Mac OS X v10.5.x or v10.6.x

Use the following procedures to set up the EX Print Server on a computer with Mac OS X v10.5.x or v10.6.x.

TO SET UP THE EX PRINT SERVER FROM THE PRINT DIALOG BOX

- 1 **Open a file in your application.**
- 2 **Choose Print from the File menu.**

The Print dialog box appears.

- 3 **Select Add Printer from the Printer list.**

In the dialog box that appears, select a printer connection. Use one of the printer connections in the following table to add a printer.

TO SET UP THE EX PRINT SERVER USING PRINT & FAX

- 1 **Choose System Preferences from the Apple menu, and then choose Print & Fax.**

The Print & Fax dialog box appears.

- 2 **Click the “+” button to add a printer.**

In the dialog box that appears, select a printer connection. Use one of the following connections to add a printer.

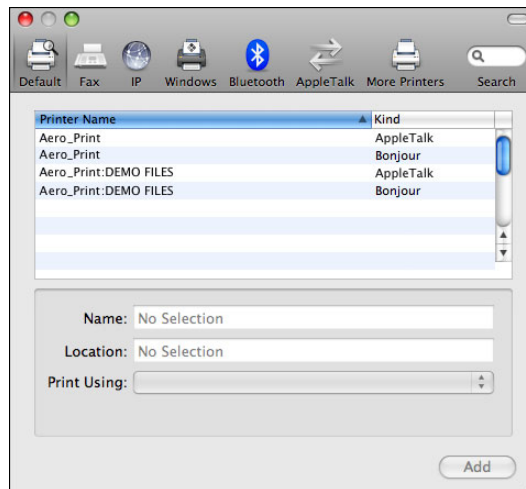
Printing connection	See
Default (Bonjour or AppleTalk)	page 16
IP Printer	page 17
AppleTalk	page 18

TO ADD A PRINTER WITH THE DEFAULT (BONJOUR OR APPLETALK) CONNECTION

NOTE: Bonjour printer setup works only if the EX Print Server is on the same LAN as the client Mac OS X computer.

1 Click the Default icon in the dialog box.

The Default pane appears.



The names of printers with default connections are listed. The virtual printers that are configured at the EX Print Server are also listed.

NOTE: The names of the virtual printers appear as <printer name: virtual printer name> in the Printer Name list.

2 Select the EX Print Server from the list.

The information about the selected printer appears at the bottom of the Default pane. The appropriate PPD file for the EX Print Server is automatically selected.

3 Click Add.

AppleTalk: The EX Print Server name appears in the Printer List of the Print & Fax dialog box.

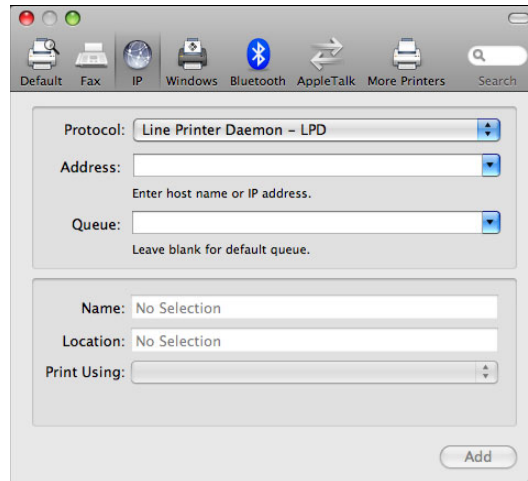
Bonjour: The Installable Options pane in the Print & Fax dialog box appears. Click Continue to return to the Print & Fax dialog box. The EX Print Server name appears in the Printer List.

4 Choose the EX Print Server from the Printer List.**5 Click Options & Supplies, and then click the Driver tab.****6 Specify the installable option settings, and then click OK.**

TO ADD A PRINTER WITH THE IP PRINTER CONNECTION

- 1 Click the IP icon in the dialog box.

The IP pane appears.



- 2 **LPD printing:** Select Line Printer Daemon - LPD from the Protocol list, type the EX Print Server IP address or DNS name in the Address field, and then type the print connection (print, hold or direct) in the Queue field. Proceed to [step 4](#).

IP printing: Select Internet Printing Protocol - IPP from the Protocol list and type the EX Print Server IP address or DNS name in the Address field. Proceed to [step 3](#).

The IP address or DNS name appears in the Name field.

- 3 Type "ipp/" followed by the print connection (print, hold, direct or name of virtual printer) in lowercase letters in the Queue field.

NOTE: The EX Print Server requires a queue name. Do not leave the Queue field empty.

- 4 For Mac OS X v10.5.x: Choose "Select a driver to use" from the Print Using menu.

For Mac OS X v10.6.x: Choose "Select Printer Software" from the Print Using menu.

- 5 Type Xerox in the search filter to narrow the search, and then select the PPD file from the list.
- 6 Click Add.

The Installable Options pane in the Print & Fax dialog box appears.

- 7 Click Continue.

The EX Print Server with its IP address appears in the Printer List.

- 8 Choose the EX Print Server from the Printer List.
- 9 Click Options & Supplies, and then click the Driver tab.
- 10 Specify the installable option settings, and then click OK.



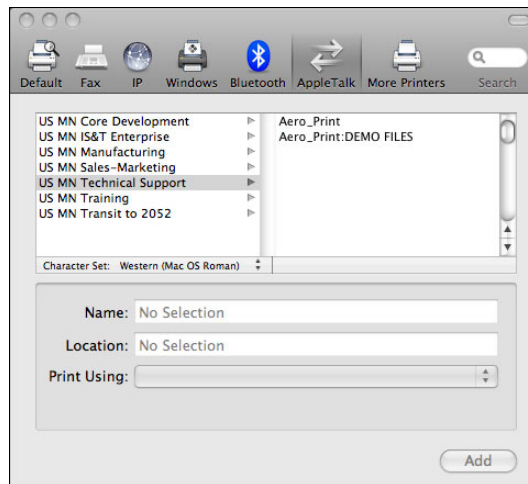
For information about configuring installable options, see printer driver Help.

TO ADD A PRINTER WITH THE APPLETalk CONNECTION

NOTE: Use this procedure if the EX Print Server is in a different AppleTalk zone than your computer. If the EX Print Server is in the same zone, it is displayed as a default following the procedure on [page 16](#).

- 1 Click the AppleTalk icon in the dialog box.

The AppleTalk pane appears.



- 2 Select the AppleTalk zone for the EX Print Server from the list.

The AppleTalk printers in the specified zone are listed. The virtual printers that are configured at the EX Print Server are also listed.

NOTE: The names of the virtual printers appear as <printer name: virtual printer name> in the Name list.

- 3 Select the EX Print Server name in the Printer List and click Add.

The EX Print Server name appears in the Printer List of the Print & Fax dialog box.

- 4 Choose the EX Print Server from the Printer List.
- 5 Click Options & Supplies, and then click the Driver tab.
- 6 Specify the installable option settings, and then click OK.

Setting up printing with Mac OS X v10.4.x

Use the following procedures to set up the EX Print Server on a computer with Mac OS X v10.4.x.

TO SET UP THE EX PRINT SERVER FROM THE PRINT DIALOG BOX

- 1 **Open a file in your application.**
- 2 **Choose Print from the File menu.**

The Print dialog box appears.

- 3 **Select Add Printer from the Printer list.**

In the dialog box that appears, select a printer connection. Use one of the printer connections in the following table to add a printer.

TO SET UP THE EX PRINT SERVER USING PRINTER SETUP UTILITY

- 1 **In the Finder, choose Utilities from the Go menu.**
- 2 **Start Printer Setup Utility.**

The Printer List dialog box appears.

- 3 **Click Add.**

In the dialog box that appears, select a printer connection. Use one of the printer connections in the following table to add a printer.

TO SET UP THE EX PRINT SERVER USING PRINT & FAX

- 1 **Choose System Preferences from the Apple menu, and then choose Print & Fax.**

The Print & Fax dialog box appears.

- 2 **Click the “+” button to add a printer.**

In the dialog box that appears, select a printer connection. Use one of the following connections to add a printer.

Printing connection	See
Default Browser (Bonjour or AppleTalk)	page 20
IP Printer	page 21
AppleTalk	page 22

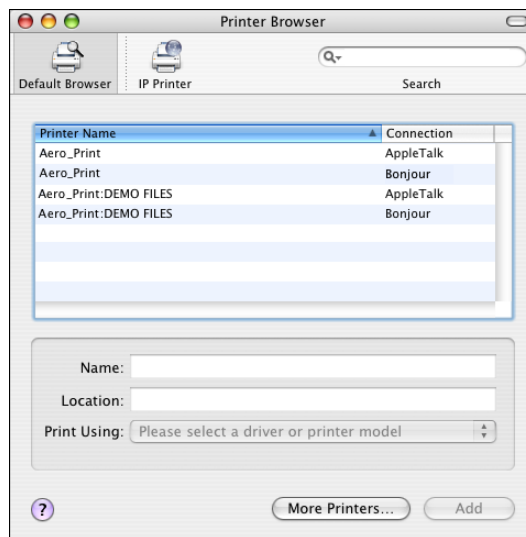
TO ADD A PRINTER WITH THE DEFAULT BROWSER (BONJOUR OR APPLETALK) CONNECTION

NOTE: Bonjour printers are available to Mac OS X v10.4.x computers only if Bonjour is enabled on the EX Print Server.

NOTE: Bonjour printer setup works only if the EX Print Server is on the same LAN as the client Mac OS X computer.

1 Click Default Browser in the Printer Browser dialog box.

The Default Browser pane appears.



The names of printers with default connections are listed. The virtual printers that are configured at the EX Print Server are also listed.

If the printer is not listed in the Printer Name list, click More Printers.

NOTE: The names of the virtual printers appear as <printer name: virtual printer name> in the Name list.

2 Select the EX Print Server from the list.

The information about the selected printer appears at the bottom of the Default Browser pane. The appropriate PPD file for the EX Print Server is automatically selected.

3 Click Add.

AppleTalk: The EX Print Server name appears in the Printer List of the Print & Fax dialog box.

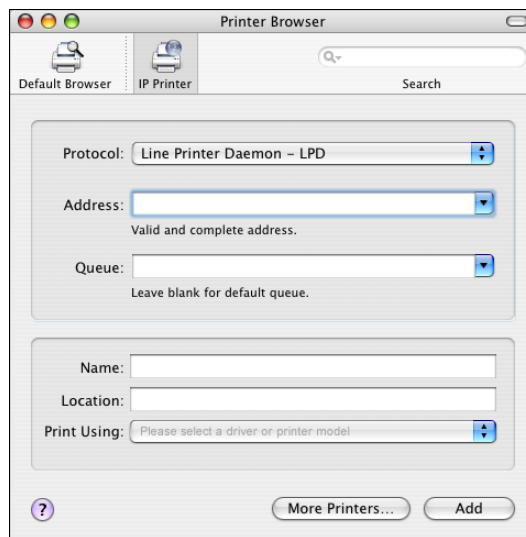
Bonjour: The Installable Options pane in the Printer Browser dialog box appears. Click Continue to return to the Print & Fax dialog box. The EX Print Server name appears in the Printer List.

- 4 Choose the EX Print Server from the Printer List and click Show Info.
- 5 In the Printer Info dialog box, choose Installable Options, specify the installable option settings, and then click Apply Changes.
- 6 Close the Printer Info dialog box.

TO ADD A PRINTER WITH THE IP PRINTER CONNECTION

- 1 Click IP Printer in the Printer Browser dialog box.

The IP Printer pane appears.



- 2 **LPD printing:** Select Line Printer Daemon - LPD from the Protocol list, type the EX Print Server IP address or DNS name in the Address field, and then type the print connection (print, hold or direct) in the Queue field. Proceed to [step 6](#).

IP printing: Select Internet Printing Protocol - IPP from the Protocol list and type the EX Print Server IP address or DNS name in the Address field. Proceed to [step 3](#).

The IP address or DNS name appears in the Name field.

- 3 Type "ipp/" followed by the print connection (print, hold, direct or name of virtual printer) in lowercase letters in the Queue field.

NOTE: The EX Print Server requires a queue name. Do not leave the Queue field empty.

- 4 **Print Using:** Choose the appropriate manufacturer name or model, and then select the file for the EX Print Server PPD.
- 5 Click Add.

The Installable Options pane in the Printer Browser dialog box appears.

- 6 Click Continue.

The EX Print Server with its IP address appears in the Printer List.

- 7 Choose EX Print Server from the Printer List and click Show Info.
- 8 In the Printer Info dialog box, choose Installable Options, specify the installable option settings, and then click Apply Changes.



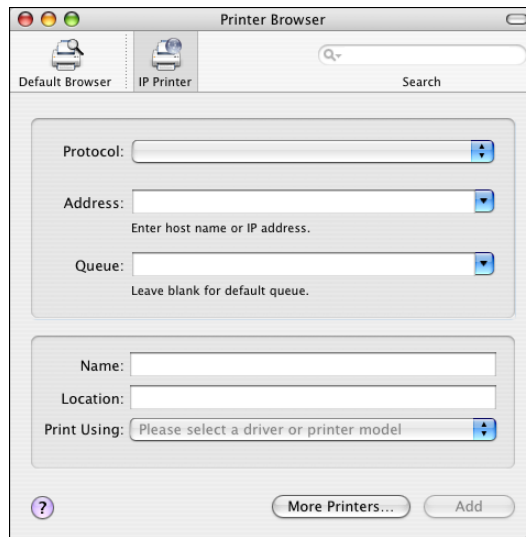
For information about configuring installable options, see printer driver Help.

- 9 Close the Printer Info dialog box.

TO ADD A PRINTER USING THE APPLETalk CONNECTION

NOTE: Use this procedure if the EX Print Server is in a different AppleTalk zone than your computer. If the EX Print Server is in the same zone, it is displayed as a default following the procedure on [page 20](#).

- 1 Click Default Browser or IP Printer in the Printer Browser dialog box.



- 2 Click More Printers.

The dialog box with a list of other connections appears.

- 3 Select AppleTalk from the connection list.

The AppleTalk pane appears.

- 4 Select the AppleTalk zone for the EX Print Server from the list.

The AppleTalk printers in the specified zone are listed. The virtual printers that are configured at the EX Print Server are also listed.

NOTE: The names of the virtual printers appear as <printer name: virtual printer name> in the Name list.

- 5 Select the EX Print Server name in the Name list and click Add.

The EX Print Server name appears in the Printer List dialog box.

- 6 Choose EX Print Server from the Printer List and click Show Info.
- 7 In the Printer Info dialog box, choose Installable Options, specify the installable option settings, and then click Apply Changes.
- 8 Close the Printer Info dialog box.

Setting up printing with Mac OS X v10.3.9

Use the following steps to set up the EX Print Server on a computer with Mac OS X v10.3.9.

TO SET UP THE EX PRINT SERVER FOR PRINTING

- 1 In the Finder, choose Utilities from the Go menu.
- 2 Start Printer Setup Utility or Print Center.

The Printer List dialog box appears.

- 3 Click Add.

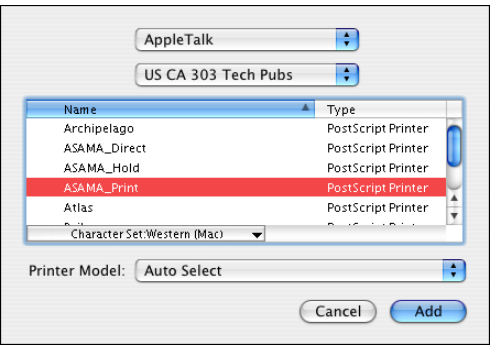
In the dialog box that appears, select a printer connection. Use one of the following connections to add a printer.

Printing connection	See
AppleTalk	page 23
LPD/LPR	page 24

TO ADD A PRINTER WITH THE APPLETALK CONNECTION

- 1 Select AppleTalk from the list.

The AppleTalk pane appears.



- 2 Select the AppleTalk zone for the EX Print Server from the zone pop-up list.

The AppleTalk printers in the specified zone are listed. The virtual printers that are configured at the EX Print Server are also listed.

NOTE: The names of the virtual printers appear as <printer name: virtual printer name> in the Name list.

3 Select the EX Print Server name in the Name list.

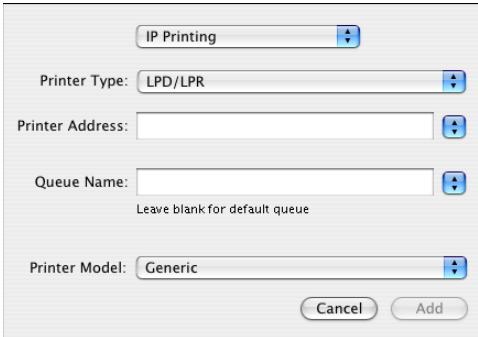
4 Click Add.

The appropriate PPD file for the EX Print Server is automatically selected. The EX Print Server name appears in the Printer List.

TO ADD A PRINTER WITH THE LPD/LPR CONNECTION

1 Select IP Printing from the list.

The IP Printing pane appears.



2 Select LPD/LPR from the Printer Type list.

3 Type the EX Print Server IP address in the Printer Address field.

4 Type the virtual printer name in the Queue Name field or leave it blank for the default queue.

5 Select the appropriate model from the Printer Model list.

The Model Name pane appears in the dialog box.

6 Select the PPD file from the Model Name list.

7 Click Add.

The EX Print Server with its IP address appears in the Printer List.

Adding a non-English printer on Mac OS X v10.5 and v10.6

When adding a non-English EX Print Server printer on Mac OS X v10.5 and v10.6, you must navigate to Other to select the correct printer driver for your language.

TO ADD A NON-ENGLISH PRINTER

1 Open the Add Printer dialog box.

The list of available Bonjour printers is displayed.

2 Select the EX Print Server from the list.

3 Choose Other from the Print Using menu.

4 On your computer, navigate to Library > Printers > PPDs > Contents > Resources and open the language folder that corresponds to the language that you are using.

5 Select the EX Print Server from the list.

6 Click Open, and then click Add.

Configuring installable options

To use the print options for the digital press and EX Print Server appropriately, you must configure the EX Print Server from your computer for the options that are installed on the digital press. Configure the options manually.



For information about configuring installable options, see printer driver Help.

Using Desktop Printer (optional)

After adding the EX Print Server to the Printer List in Print & Fax or the Printer Setup Utility, you can create and use the Desktop Printer feature.



For information about the Desktop Printer feature, see printer driver Help.

Printing from Mac OS X computers

You can print to the EX Print Server just as you would print to any other printer from a Mac OS X application. Select the EX Print Server as the current printer in the printer list and print the file from within the application. In addition to this method, you can download files to the EX Print Server using Hot Folders or the Docs WebTool, and print documents using Command WorkStation (see [Utilities](#)).

After you install the EX Print Server printer driver files using the OSX Installer and set up the EX Print Server for printing, you can print directly from most Mac OS X applications. Using the appropriate PPD file, you can control the EX Print Server printing features by specifying print options from the Print dialog boxes. For more information about the EX Print Server print options, see [page 81](#).

To achieve optimal printing results from specific applications, see [Color Printing](#), [Fiery Color Reference](#), and Command WorkStation Help.



For the location of each procedure, see the following table.

Procedure	See
Selecting the EX Print Server in the printer list	page 27
Setting print options and printing from Mac OS X applications	page 29
Defining and printing custom page sizes	page 36
Viewing the digital press status	page 36

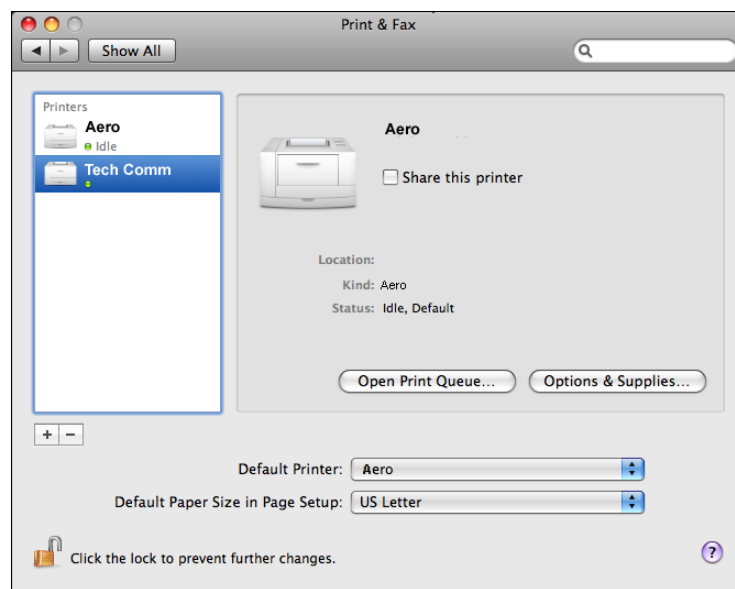
Selecting the EX Print Server in the printer list

Before you print a job, you must select the EX Print Server from the printer list. Use the following procedure to select the EX Print Server as your default printer.

TO SELECT THE EX PRINT SERVER AS THE DEFAULT PRINTER WITH MAC OS X v10.5 OR MAC OS X v10.6

- 1 Make sure that the EX Print Server is connected to the network and turned on.
- 2 Choose System Preferences from the Apple menu, and then choose Print & Fax.

The Print & Fax dialog box appears.



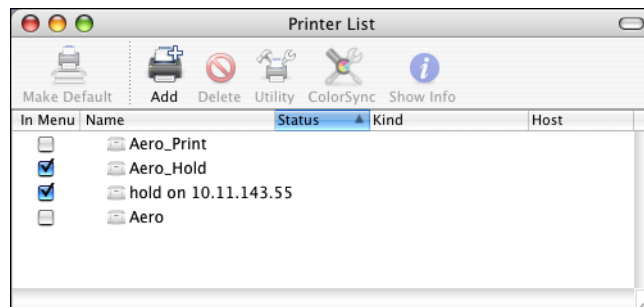
The printers that are set up for printing are listed. The virtual printers that are configured at the EX Print Server and set up for printing are also listed.

- 3 To make the EX Print Server the default printer, select it from the Default Printer menu.
- 4 Close the window.

TO SELECT THE EX PRINT SERVER AS THE DEFAULT PRINTER WITH MAC OS X v10.4.x

- 1 Make sure that the EX Print Server is connected to the network and turned on.
- 2 In the Finder, choose Utilities from the Go menu.
- 3 Start Printer Setup Utility.

The Printer List dialog box appears.



The printers that are set up for printing are listed. The virtual printers that are configured at the EX Print Server and set up for printing are also listed.

- 4 Select the EX Print Server in the list to specify it as your current printer.
- 5 Click the Make Default icon.

The EX Print Server is now your default printer.

Setting print options and printing from Mac OS X applications

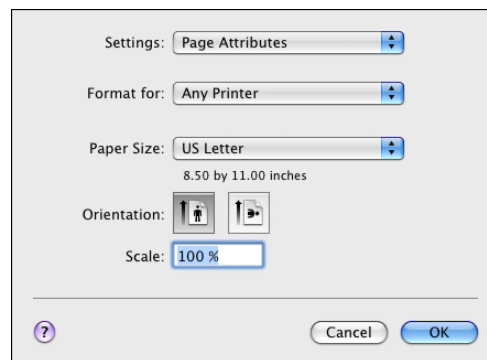
In Mac OS X applications, print options are set from the Page Setup dialog box and the Print dialog box. For information about specific print options, see [Print Options](#).

NOTE: Some default print options are set by your administrator during Setup. For information about the current server default settings, contact your administrator or the operator.

NOTE: The following procedure uses Mac OS X v10.5 illustrations.

TO SET PRINT OPTIONS AND PRINT FROM MAC OS X

- 1 **Open a file and choose Page Setup from the application's File menu.**
- 2 **For Settings, choose Page Attributes. For Format for, choose the EX Print Server.**



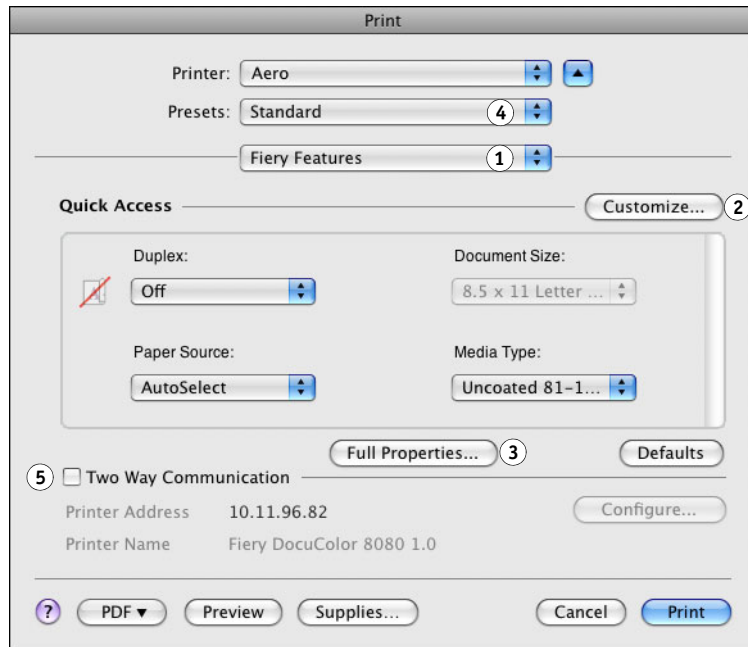
The Paper Size option in the Page Setup dialog box is the same as the Document Size print option on the Fiery Features Media tab. Document Size is the page size defined in your original application's Print setup (or Page Setup) dialog box.

The Paper Size print option on the Fiery Features Media tab is the size of the actual sheet of paper on which your job will print. The default value of the actual paper size is the paper size set in the Page Setup dialog box.

- 3 **Select the Page settings for your print job.**
- 4 **Click OK.**
- 5 **Choose Print from the application's File menu.**
- 6 **Choose the EX Print Server as your printer.**

7 Choose Fiery Features from the drop-down list.

- 1 Fiery Features
- 2 Customize button
- 3 Full Properties button
- 4 Presets
- 5 Two-Way Communication



NOTE: For information about Two-Way Communication, see [page 36](#).

For information about using presets, see printer driver Help.

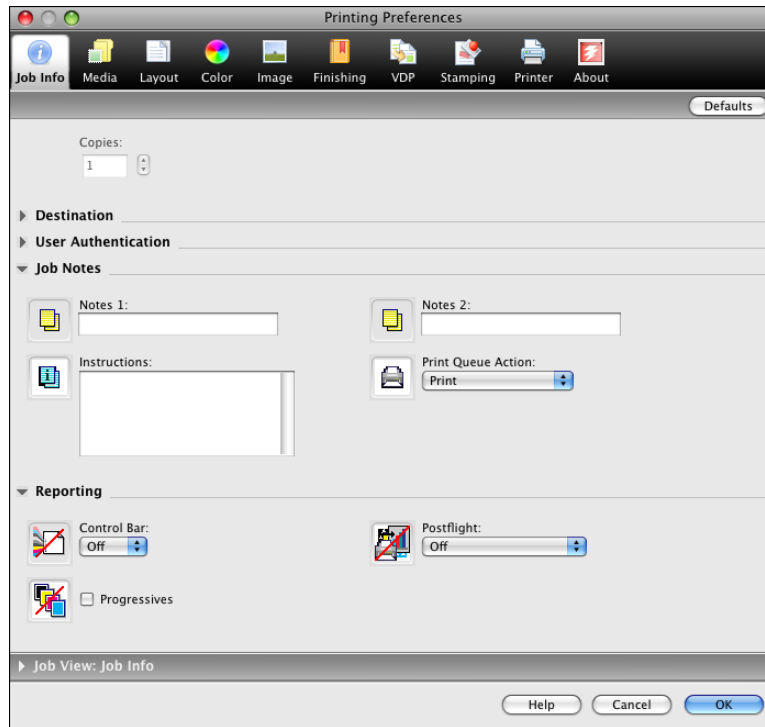
8 Click Customize to specify the options shown in the Quick Access window.

You can select a shortcut from the Available Shortcuts list and add it to the Current Shortcuts list, as well as remove a shortcut from the Current Shortcuts list. Click OK to save your changes.

For information about customizing the Quick Access view, see printer driver Help.

9 Click Full Properties in the Quick Access pane.

The Job Info tab is displayed in the Printing Preferences dialog box.



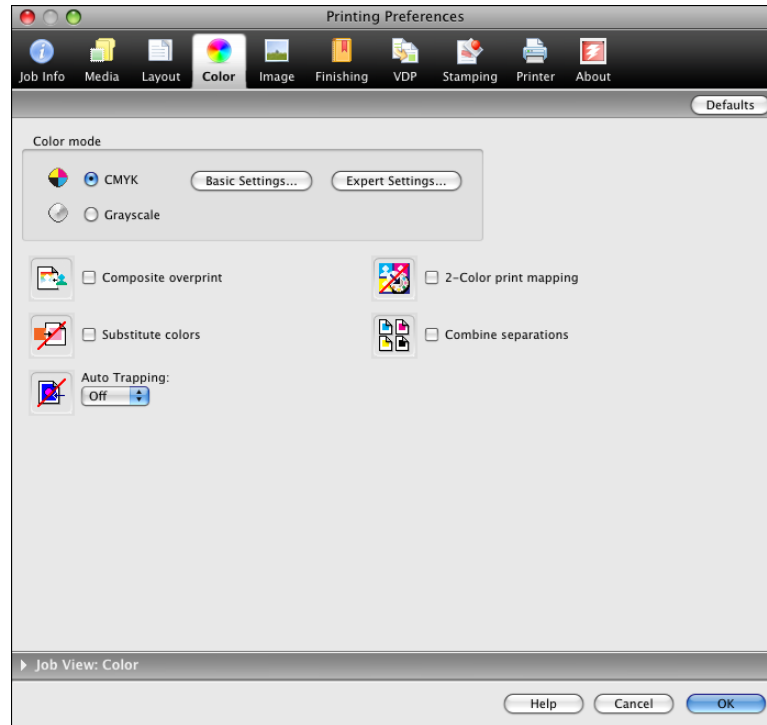
- 10 Type your user name or domain\user name in the User Name field if User Authentication is enabled on the EX Print Server under User Authentication.**
- 11 Type your local password or domain password in the Password field if User Authentication is enabled on the EX Print Server under User Authentication.**
- 12 Type information in the Notes 1 and Notes 2 fields under Job Notes.**
- 13 Type instructions to the operator about the job in the Instructions field.**
 These instructions can be displayed in Command WorkStation, but do not appear in the Job Log. These instructions can be edited by the operator.
- 14 Type values for the other fields, as required.**

For information about these fields, see [page 81](#).

15 Click the Color icon and specify the color profile options for the job.

In the Color Mode area, select a color mode for the job.

NOTE: To view the basic and expert color settings from the EX Print Server in this dialog box, make sure that Two-Way Communication is enabled. For information about enabling Two-Way Communication, see printer driver Help.

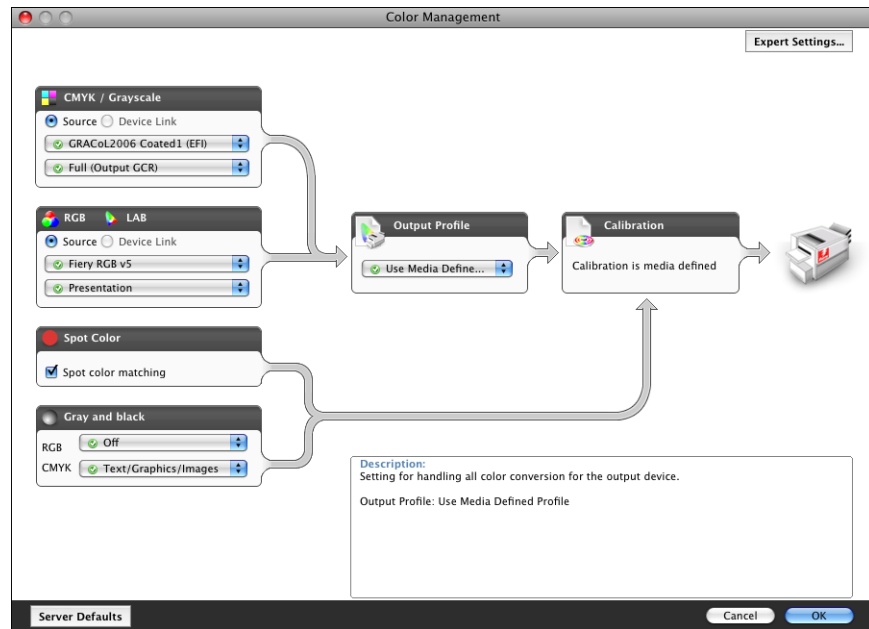


- 16 To use basic color management features, such as the digital press color settings, click **Basic Settings**.

To revert to the EX Print Server default color settings, click **Server Defaults**.

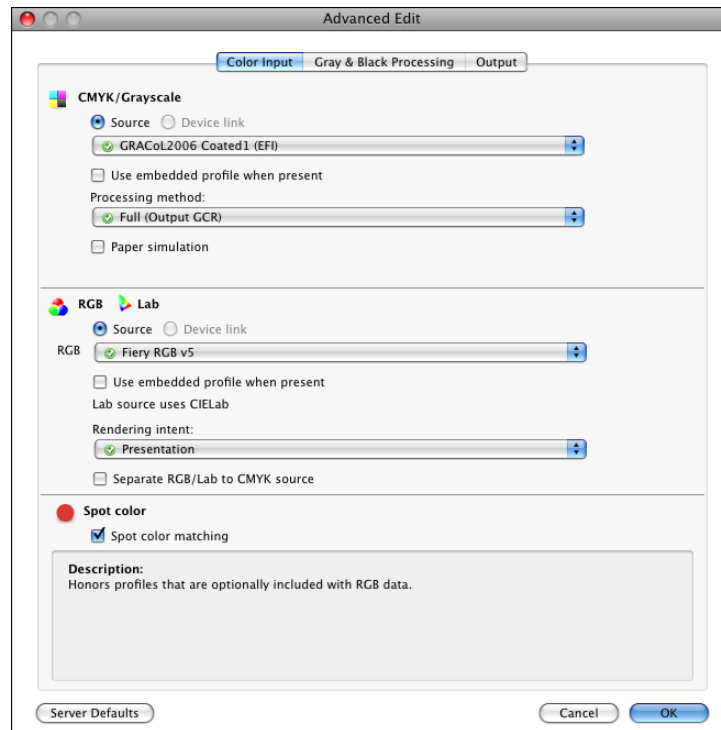
To edit advanced color management features, such as RGB/Lab Rendering Intent, click **Expert Settings** and proceed to [step 17](#). Otherwise, proceed to [step 19](#).

Two-Way Communication On



- 17 To edit the advanced color management features, such as RGB/Lab Rendering Intent, click Expert Settings.

The Expert Color Settings Advanced Edit dialog box appears.

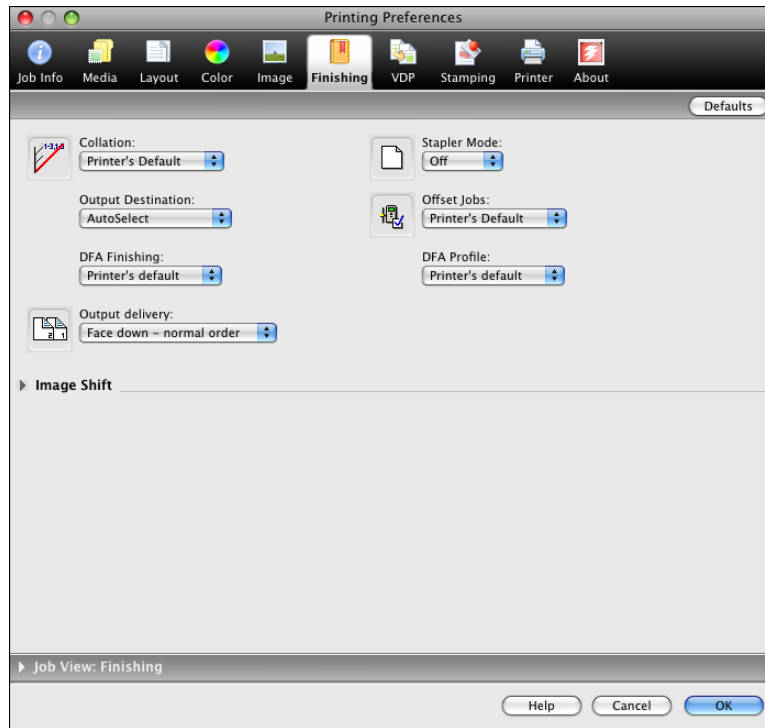


The advanced edit controls are divided into three tabbed categories: Color Input, Gray & Black Processing, and Output.

- 18 After you edit the expert settings, click OK.

To revert to the EX Print Server default color settings, click Server Defaults.

- 19 Specify the color settings for the print job and click OK.

20 Choose other printer-specific options.

These print options are specific to the EX Print Server and the digital press. These options override settings in EX Print Server Printer Setup but can be changed from Command WorkStation.

If you choose Printer's default, the job prints according to the settings specified in Setup.

For more information about these options and overrides, see [Print Options](#).

Some print options that are selectable from an application or are provided by the Mac OS are similar to the print options that are specific to the EX Print Server and the digital press. In these cases, use the print options specific to the EX Print Server and the digital press that appear in the Fiery Features menu. The application may not set up the file properly for printing on the EX Print Server, resulting in unexpected finishing, printing errors, or longer processing time. When you print to your selected digital press, make sure to clear the Collated check box in the Copies & Pages pane of the Mac OS X v10.4 or earlier printer driver or in the main pane of the Mac OS X v10.5 or later printer driver.

If you select an invalid setting or combination of settings when printing a document, no error message appears. For example, you may be able to select duplex printing on transparency media. Invalid settings and combinations are ignored by the EX Print Server.

21 Click the VDP icon to specify variable data printing options.

For more information about VDP print options, see [page 98](#).



- 22 Click the Stamping icon to specify a watermark for the print job.

For more information about watermarks, see printer driver Help.



- 23 Click the Printer icon to view digital press status.

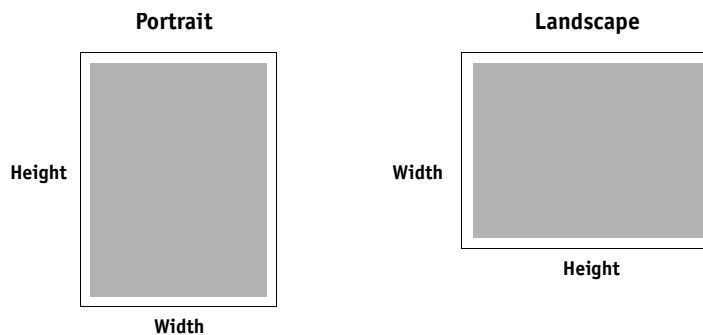
For more information about monitoring digital press status, see printer driver Help.

- 24 Click the remaining print option icons to specify the appropriate settings for the print job and click OK.

- 25 From your application, click Print to send your print job.

Defining and printing custom page sizes

With custom page sizes, you define the dimensions of a printed page. After you define a custom page size, you can use it from within an application without redefining it each time you print. When you create custom page sizes, specify Width dimensions to correspond with the shorter side of your job and specify Height dimensions to correspond with the longer side of your job. Set custom page sizes in this way, regardless of the orientation settings in the application.



NOTE: Custom page sizes are not supported with Imposition jobs.



For information about defining and printing custom pages sizes, see printer driver Help.

Viewing the digital press status

If you enabled a TCP/IP network, you can retrieve digital press status and color settings from the EX Print Server and display them in the printer driver using the Two-Way Communication option. The digital press status includes the current paper and dry ink levels. You can set the color settings on the EX Print Server using Command WorkStation. For more information about color print options, see [Color Printing](#) or Command WorkStation Help.



For information about enabling Two-Way Communication, see printer driver Help.

PRINTING FROM WINDOWS

To set up the EX Print Server as a digital press on a Windows computer, install the printer driver files that correspond to your digital press and set up the EX Print Server for printing. Printer drivers provide a way to communicate information about print jobs between your applications, the EX Print Server, and the digital press.

For the location of each procedure, see the following table.

Procedure	See
Installing Windows printer drivers	page 37
Setting up the EX Print Server for printing	page 50
Printing from Windows computers	page 58

Installing Windows printer drivers

Installing printer drivers and printer description files is the first step in setting up the EX Print Server as a PostScript printer.

You can install printer drivers as follows:

- From the EX Print Server through Point and Print using SMB printing
- From WebTools, using the Downloads tab to download the printer driver files before installing the printer driver

NOTE: WebTools is available if the administrator enabled Internet access to the EX Print Server.

- From the EX Print Server by downloading the printer driver files over the network before installing the printer driver
- From the User Software DVD

NOTE: Windows Vista, Windows 7, and Windows Server 2008 R2 have a User Account Control (UAC) feature. You must be the administrator or a user with administrator privileges to install printer drivers.

NOTE: If the EX Print Server printer driver is already installed, you must uninstall it before you install a new driver (see [“Uninstalling printer drivers”](#) on page 49).

For the location of each procedure, see the following table.

Procedure	See
Installing printer drivers by Point and Print	page 38
Downloading printer drivers using WebTools	page 42
Downloading printer drivers from the EX Print Server	page 43
Installing printer drivers from the User Software DVD	page 44
Installing and connecting to a virtual printer	page 47
Uninstalling printer drivers	page 49

Installing printer drivers by Point and Print

SMB printing (also known as Windows or WINS printing) allows you to install PostScript printer drivers on your computer from the EX Print Server using Point and Print, and print to a particular connection (Print queue, Hold queue, Direct connection or Virtual Printer).

Each connection (print, hold, direct or any published virtual printer) requires a separate installation. Repeat the procedure for each connection.

When you install the printer driver using Point and Print, you cannot configure installable options manually. The installed options are displayed as the EX Print Server configuration in the printer driver. For more information, see “[Configuring installable options](#)” on page 57.

BEFORE YOU BEGIN

Ask your administrator to do the following in Setup on the EX Print Server:

- **Assign the EX Print Server a valid IP address.**

Ask your administrator for the IP address or DNS name required in the following procedure.

- **Configure the EX Print Server for SMB printing.**

NOTE: SMB printing is referred to as Windows Printing in Setup and on the Configuration page.

For more information, see [Configuration and Setup](#) or Configure Help.



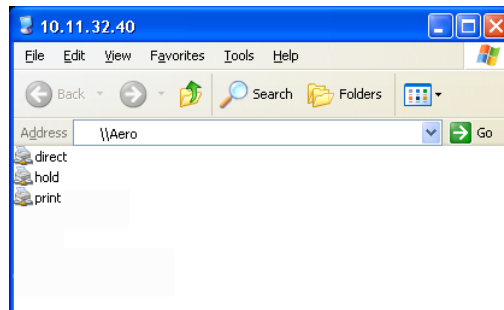
TO SET UP SMB PRINTING ON WINDOWS COMPUTERS

- 1 **Windows 2000/XP/Server 2003:** Right-click Network Neighborhood or My Network Places, and select Find Computer or Search for Computers.
Windows Vista/Server 2008: Click Start, choose Control Panel, double-click Network and Sharing Center, and then click the View computers and devices link.
Windows 7/Server 2008 R2: Click Start, choose Control Panel, choose Network and Internet, and then under the Network and Sharing Center heading, click the View network computers and devices link.
- 2 **Windows 2000/XP/Server 2003:** Type the name or IP address of the EX Print Server and click Search Now or Search.
Windows Vista/Windows 7/Server 2008 R2: Type the name of the EX Print Server in the Search field and click Enter.
Windows Server 2008: Type the name or \\IP address of the EX Print Server in the Search field and click Enter.

If you cannot locate the EX Print Server, contact your EX Print Server administrator.

- 3 **Double-click the name of the EX Print Server to display enabled print connections.**

NOTE: For a description of each print connection, see [Configuration and Setup](#).



- 4 **Double-click the connection that you want to set up (print, hold, direct or any published virtual printer).**

The files are installed on your computer.

NOTE: You may receive a message that you are about to connect to a printer on the EX Print Server, which will automatically install a printer driver on your machine. Click Yes to continue.

- 5 **Windows 2000:** Click Start, choose Settings, and then choose Printers.
Windows XP: Click Start and choose Printers and Faxes.
Windows Server 2003: Click Start, choose Control Panel, and then choose Printers and Faxes.
Windows Vista: Click Start, choose Control Panel, and then double-click Printers.
Windows Server 2008: Click Start, choose Control Panel, and under Classic View, double-click Printers.
Windows 7/Server 2008 R2: Click Start and choose Devices and Printers.

The printer is displayed in the Printers or Printers and Faxes window.

- 6 **Right-click the EX Print Server icon and choose Properties.**

- 7 **Click Print Test Page on the General tab.**

If the Test Page prints successfully, you are ready to print from the computer.

- 8 **Repeat the previous steps for the other connections that you want to set up.**

Viewing installable options in printer drivers

If installable options are not reflected on the Installable Options tab from printer driver Properties, confirm that the installable options are installed on the shared digital press from the FACI or from a Windows computer using Remote Desktop.

To view correct installation options in printer drivers installed by Point and Print, you must first set up the EX Print Server.

TO SET UP THE EX PRINT SERVER TO VIEW INSTALLABLE OPTIONS

- 1 **Log on to the EX Print Server using the Command WorkStation Remote Desktop.**

For information about enabling Remote Desktop, see [page 41](#).

- 2 **Open Printers and Faxes from the Control Panel.**
- 3 **Right-click the Print queue.**
- 4 **Select Properties.**
- 5 **Click the Installable Options tab.**
- 6 **Verify that the Printer IP address is localhost.**
- 7 **Click Update.**
- 8 **Click OK to close the Printer Properties dialog box.**
- 9 **Repeat Steps 2-7 to set up the Hold queue and Direct connection printing.**



For more information about configuring and setting up the EX Print Server, see Configure Help.

Enabling Remote Desktop

Remote Desktop is a Microsoft application that allows client computers to manage and control the Windows desktop features of the EX Print Server.

Remote Desktop must be enabled in EX Print Server Setup and on the client computer, as described in the following procedures.

TO ENABLE REMOTE DESKTOP

- 1 Open a web browser, type the IP address or DNS name of the EX Print Server, and then press Enter.**
- 2 Click the Configure tab, and then click Launch Configure.**
- 3 Log on with Administrator privileges.**
- 4 Choose Configure > Server > General.**
- 5 Select Enable Remote Desktop.**
- 6 Click Apply.**
- 7 Click Reboot.**

TO ENABLE REMOTE DESKTOP ON THE CLIENT COMPUTER

- 1 Choose Start > All Programs > Accessories > Remote Desktop Connection.**
- 2 Make sure that the EX Print Server is Idle, type the IP address or DNS name of the EX Print Server, and then click Connect.**
- 3 If prompted, type the Administrator password.**

Downloading printer drivers using WebTools

WebTools allows you to download installers for printer drivers to your computer directly from the EX Print Server.

Download the printer driver files from the EX Print Server using WebTools and follow the procedures on [page 44](#) to install the printer driver. Before you download the printer driver files, the administrator must set specific EX Print Server options in Setup. You must also prepare each client computer to communicate with the EX Print Server over the Internet or intranet.

For more information about Setup, see [Configuration and Setup](#).

For more information about setting up and starting WebTools, see [Utilities](#).

TO DOWNLOAD PRINTER DRIVER FILES WITH WEBTOOLS

- 1 **Start your Internet or intranet browser and type the DNS name or IP address of the EX Print Server.**
- 2 **Click the Downloads tab.**
- 3 **Click the link for the item that you want to install.**

For Windows printer drivers, click the Printer Files link under the Windows heading.

- 4 **If a dialog box prompts you to open the file or save it to disk, choose to save it to disk.**
- 5 **Browse to the location where you want to save the PRNTDRVE.EXE file and click Save.**

The file is downloaded from the EX Print Server. This compressed file is an archive that contains multiple files.

- 6 **Double-click the PRNTDRVE.EXE file to extract the files.**

Depending on your operating system, you might be prompted to select a location to extract the files to.

Follow the instructions for your operating system to install the printer driver. The procedures are the same as for installing from the DVD, except that after you click Have Disk, you browse to the location where you extracted the files, rather than to the DVD.

For instructions on installing the Windows printer driver, see [“To install and complete the print connection for Windows”](#) on page 44.

For more information, see WebTools Downloads Help.



Downloading printer drivers from the EX Print Server

You can download printer drivers files to your computer directly from the EX Print Server over the network and install them following the procedures in [“Installing printer drivers from the User Software DVD”](#) on page 44.

TO DOWNLOAD PRINTER DRIVER FILES FROM THE EX PRINT SERVER

- 1 **Windows 2000/XP/Server 2003:** Right-click **Network Neighborhood** or **My Network Places**, and select **Find Computer** or **Search for Computers**.
Windows Vista/Server 2008: Click **Start**, choose **Control Panel**, double-click **Network and Sharing Center**, and then click the **View computers and devices** link.
Windows 7/Server 2008 R2: Click **Start**, choose **Control Panel**, choose **Network and Internet**, and then under the **Network and Sharing Center** heading, click the **View network computers and devices** link.
- 2 **Windows 2000/XP/Server 2003:** Type the name or IP address of the EX Print Server and click **Search Now** or **Search**.
Windows Vista/Windows 7/Server 2008 R2: Type the name of the EX Print Server in the **Search** field and click **Enter**.
Windows Server 2008: Type the name or \\IP address of the EX Print Server in the **Search** field and click **Enter**.

If you cannot locate your EX Print Server, contact your administrator.

- 3 **Double-click the name of the EX Print Server.**
A folder called **PC_User_SW** is displayed along with the enabled print connections.
- 4 **Double-click the PC_User_SW folder and browse to the English\Prntdrv\Ps_drvr folder.**

Follow the instructions for your operating system to install the printer driver. The procedures are the same as for installing from the DVD, except that after you click **Have Disk**, you browse to the **Win_2K_XP_VISTA** folder on your desktop, rather than to the DVD.

Installing printer drivers from the User Software DVD

The following procedures describe installing the printer driver from the User Software DVD.

To install the printer driver on a Windows Server 2003/Server 2008/Server 2008 R2 or Windows 7 computer, select the same PPD (oemsetup.inf) file as for Windows 2000/XP/Vista, described in the following procedure.

NOTE: The following procedures use Windows XP illustrations.

This procedure describes the installation of a local printer (Port 9100). You can modify the printing protocol later, according to your network type.

TO INSTALL AND COMPLETE THE PRINT CONNECTION FOR WINDOWS

- 1 **Windows 2000:** Click Start, choose Settings, and then choose Printers.
Windows XP: Click Start and choose Printers and Faxes.
Windows Server 2003: Click Start, choose Control Panel, and then choose Printers and Faxes.
Windows Vista: Click Start, choose Control Panel, and then double-click Printers.
Windows Server 2008: Click Start, choose Control Panel, and under Classic View, double-click Printers.
Windows 7/Server 2008 R2: Click Start and choose Devices and Printers.
- 2 **Windows 2000/XP:** Double-click the Add Printer icon and click Next.
Windows Server 2003: Double-click the Add a printer icon and click Next.
Windows Vista/Server 2008/Server 2008 R2/Windows 7: Click Add a printer.
- 3 **Windows 2000/XP/Server 2003:** Specify printing using a Local printer, clear the “Automatically detect and install my Plug and Play printer” option, and then click Next.
Windows Vista/Server 2008/Server 2008 R2/Windows 7: Select Add a local printer.
- 4 Select Create a New Port, choose Standard TCP/IP Port from the Type of port menu, and then click Next.
- 5 **Windows 2000/XP/Server 2003:** Click Next in the Welcome to the Add Standard TCP/IP Printer Port Wizard dialog box.

The Add Standard TCP/IP Printer Port Wizard dialog box appears. Proceed to [step 6](#).

Windows Vista/Server 2008/Server 2008 R2/Windows 7: Select the Device Type, type the Hostname or IP address of the EX Print Server, and then click Next. Proceed to [step 9](#).

- 6 **Type the printer name or IP address of the EX Print Server and click Next.**
Windows 2000/Server 2003: Proceed to [step 7](#).
Windows XP: Select the Device Type and click Next.
- 7 **Windows 2000/XP/Server 2003:** Make sure that Generic Network Card is selected as Standard for Device Type and click Next.

8 Windows 2000/XP/Server 2003: Click Finish to close the Add Standard TCP/IP Printer Port Wizard dialog box.

NOTE: If the device is not found on the network, the device is displayed instead of the Finish button. If a device is not found on the network, that could be for one of the following reasons:

- EX Print Server is not powered on
- Network is not connected
- EX Print Server is not configured properly
- IP address is not correct

If you encounter one of the situations mentioned, you can continue to set up the port by configuring the port manually. See “[To set up Standard TCP/IP Port \(Raw or LPR\) for Windows](#)” on page 51 and follow steps 11 to 14 before proceeding to step 9.

9 Click Have Disk in the dialog box displaying lists of manufacturers and printers.

The Install From Disk dialog box prompts you for the disk.

10 Insert the User Software DVD into the DVD drive, type the name of the DVD drive (for example, D:\), and then click Browse. Browse to the English\Prntdrv\Ps_drvr\Win_2K_XP_VISTA folder.

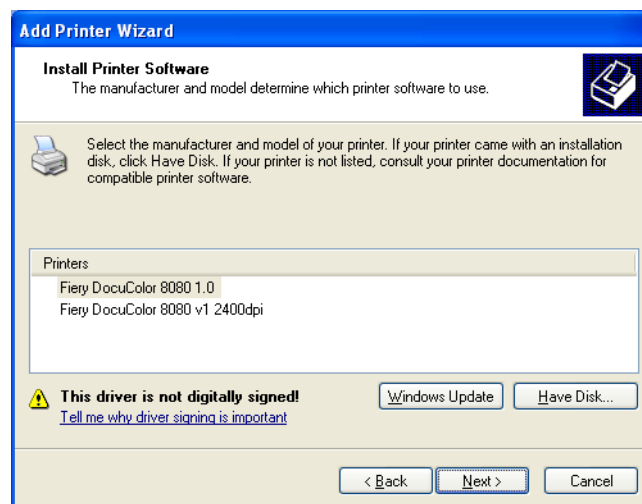
If you are installing from the files you downloaded from the EX Print Server using the Downloads tab in WebTools, browse to prntdrv\Prntdrv\Ps_drvr\Win_2K_XP_VISTA and click Open.

11 Make sure that “oemsetup.inf” or “oemsetup” is selected and click Open.

The path is copied to the Install From Disk dialog box.

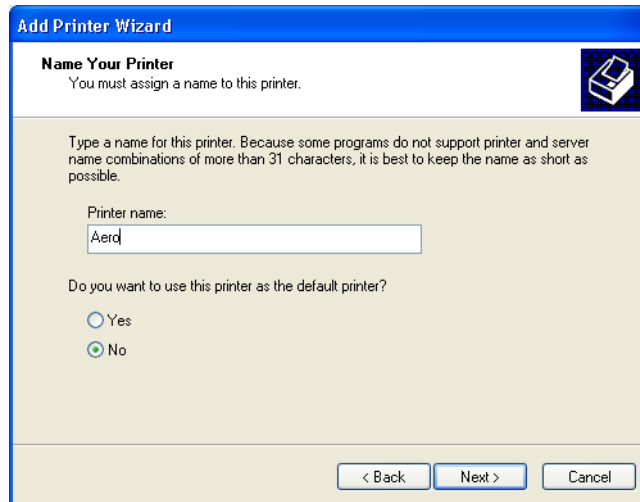
12 Verify that the path is correct and click OK.

13 In the Printers box, select your printer and click Next.



- 14 Type a name for the EX Print Server in the Printer name field, indicate whether you want to make it the default printer, and then click Next.**

This name is used in the Printers window and the queues window.



- 15 Follow the on-screen instructions.**

Do not share the printer and do not print a Test Page at this time. Continue with the printer driver installation and at the last screen, click Finish.

The necessary files are installed on your hard disk. When installation is complete, the Printers window appears with an icon for the newly installed printer.

Now you are ready to configure the installable options (see [“Configuring installable options”](#) on page 57).

To set up a connection other than port 9100, proceed to [“Setting up printing connections”](#) on page 50.

To use the printer driver, you must select the following options on the Advanced tab of the printer driver after installation is complete:

- Spool print documents
- Start printing immediately
- Print spooled documents first

Installing and connecting to a virtual printer

A virtual printer allows you to print to the EX Print Server using a predefined set of job settings. You do not have to set print options manually. Before you can print to a virtual printer, the administrator must create and configure the virtual printer using Command WorkStation. After the virtual printer is set up, you can install the printer driver and printer description files on your computer from the EX Print Server using Point and Print.



For more information about setting up virtual printers, see Command WorkStation Help.

When you install the printer driver using Point and Print, you cannot configure installable options manually. Installable options are configured automatically. The installed options are displayed in the printer driver when you select the Two-Way Communication option.

TO SET UP A VIRTUAL PRINTER ON WINDOWS COMPUTERS USING POINT AND PRINT

- 1 **Windows 2000/XP/Server 2003:** Right-click **Network Neighborhood** or **My Network Places** and select **Find Computer** or **Search for Computers**.
Windows Vista/Server 2008: Right-click **Network** and choose **Open** from the menu.
Windows 7/Server 2008 R2: Click **Start**, choose **Control Panel**, choose **Network and Internet**, and then under the **Network and Sharing Center** heading, click the **View network computers and devices** link.

- 2 **Windows 2000/XP/Server 2003:** Type the name or IP address of the EX Print Server and click **Search Now** or **Search**.
Windows Vista/Windows 7/Server 2008 R2: Type the name of the EX Print Server in the **Search** field and click **Enter**.
Windows Server 2008: Type the name or \\IP address of the EX Print Server in the **Search** field and click **Enter**.

If you cannot locate the EX Print Server, contact your network administrator.

- 3 **Double-click the EX Print Server name to display enabled print connections.**

Virtual printers are listed along with the **Print queue**, **Hold queue**, and **Direct connection** (if those connections are enabled). Virtual printers usually have names that indicate the type of job they are set up for.

- 4 **Right-click the virtual printer that you want and choose **Connect**.**

The files are installed on your computer.

- 5 **Windows 2000:** Click **Start**, choose **Settings**, and then choose **Printers**.
Windows XP: Click **Start** and choose **Printers and Faxes**.
Windows Server 2003: Click **Start**, choose **Control Panel**, and then choose **Printers and Faxes**.
Windows Vista: Click **Start**, choose **Control Panel**, and then double-click **Printers**.
Windows Server 2008: Click **Start**, choose **Control Panel**, and under **Classic View**, double-click **Printers**.
Windows 7/Server 2008 R2: Click **Start** and choose **Devices and Printers**.

The virtual printer is displayed in the **Printers** or **Printers and Faxes** window.

You can print to a virtual printer as you would print to the EX Print Server. Depending on how the virtual printer is configured, you may not be able to set some print options.

Enabling Two-Way Communication

You must enable Two-Way Communication to automatically update your printer driver to reflect the options currently installed on the digital press.

NOTE: You must log on with Administrator privileges to add or change the installable options after the Windows Vista, Windows 7, or Windows Server 2008 R2 printer driver is installed. For more information, see [“Configuring installable options for Windows Vista/Windows 7/Server 2008 R2 printer driver”](#) on page 57.

TO ENABLE TWO-WAY COMMUNICATION

- 1 **Windows 2000:** Click Start, choose Settings, and then choose Printers.
Windows XP: Click Start and choose Printers and Faxes.
Windows Server 2003: Click Start, choose Control Panel, and then choose Printers and Faxes.
Windows Vista: Click Start, choose Control Panel, and then double-click Printers.
Windows Server 2008: Click Start, choose Control Panel, and under Classic View, double-click Printers.
Windows 7/Server 2008 R2: Click Start and choose Devices and Printers.
- 2 **Windows 2000/XP/Server 2003/Server 2008/Vista:** Right-click the EX Print Server icon and choose Properties.
Windows 7/Server 2008 R2: Right-click the EX Print Server icon and choose Printer properties.
- 3 Click the Installable Options tab.
- 4 Select Two-Way Communication.
- 5 Type the EX Print Server IP address or DNS name.
- 6 Select Update Fiery Driver When Opened to display the printer’s current default settings when the printer driver is opened.
- 7 Click Update.

NOTE: To confirm that Two-Way Communication is enabled, click the About tab and check that the EX Print Server name and other server information are displayed.

- 8 Click OK.

Uninstalling printer drivers

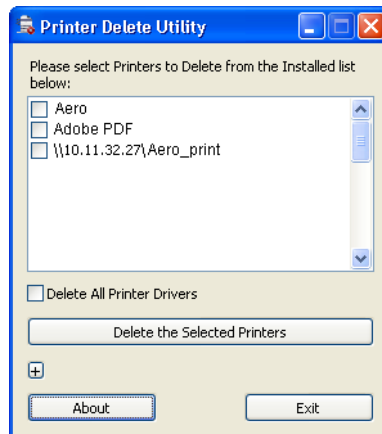
All of the installation of user software on a Windows computer is performed through the Fiery User Software Installer. The procedures in [Utilities](#) describe installing from the User Software DVD.

The Printer Delete Utility is installed and used locally. You do not need to connect to the EX Print Server before you use the software.

TO USE PRINTER DELETE UTILITY

- 1 Click **Start**, choose **Programs** or **All Programs**, and then choose **Fiery**.
- 2 Choose **PrinterDeleteUtility**.

The Printer Delete Utility dialog box appears. Any EX Print Server printer drivers found on your computer are listed.



- 3 To delete a printer, select the check box next to the printer name and click **Delete the Selected Printers**.

To delete all the installed printer drivers, select the **Delete All Printer Drivers** check box.

- 4 Click **OK** to delete the selected printer driver(s).
- 5 When you finish deleting printer drivers, click **Exit** and restart your computer.

Setting up the EX Print Server for printing

To print from Windows computers, you or the administrator must perform the following tasks to set up a connection other than port 9100:

- Set up network servers, if any.
- Set up the EX Print Server to accept print jobs from your computer.
- Configure a port on each Windows computer for the network type.

Setting up printing connections

The EX Print Server supports the following printing connections:

- SMB
- Standard TCP/IP (RAW or LPR)
- IPP or IPP over SSL

For the location of each procedure, see the following table.

Procedure	See
Completing the SMB printing connection	page 50
Completing Standard TCP/IP Port (Raw or LPR) printing connections	page 51
Completing IPP connections	page 54
Configuring installable options	page 57

Completing the SMB printing connection

If your network does not have a Windows server, Windows computers can still print to the EX Print Server. This method of printing is SMB printing (also known as Windows or WINS printing). When users send print jobs, computers running Windows operate in a peer-to-peer environment and communicate directly with the EX Print Server.

Enabling SMB printing allows the EX Print Server to be listed on the network, so that Windows clients can print to a particular print connection (Print queue, Hold queue, Direct connection, or Virtual Printer) on the EX Print Server without using other networking software. Windows printing runs via TCP/IP. You must configure TCP/IP on the EX Print Server and on all computers that use SMB printing.

After you enable SMB printing on the EX Print Server, you can set up the Windows or SMB connection and install the printer driver in one procedure. For more information, see [“Installing printer drivers by Point and Print”](#) on page 38.

Completing Standard TCP/IP Port (Raw or LPR) printing connections

After you install the PostScript and printer driver files, you can add or configure the Setup for the Standard TCP/IP Port (Raw or LPR) connection as follows:

- Prepare the EX Print Server to accept print jobs using Standard TCP/IP Port (Raw or LPR) protocols.
- Enable LPD or Port 9100 on the EX Print Server.
- Configure the computer for the TCP/IP connection.



For more information about Setup, see Configure Help.

Before you complete the following procedure, contact your system administrator for the IP address assigned to the EX Print Server.

The TCP/IP protocol should be installed as a default on the Windows computer. For Port 9100, you can set up the connection and install the printer driver in one procedure.

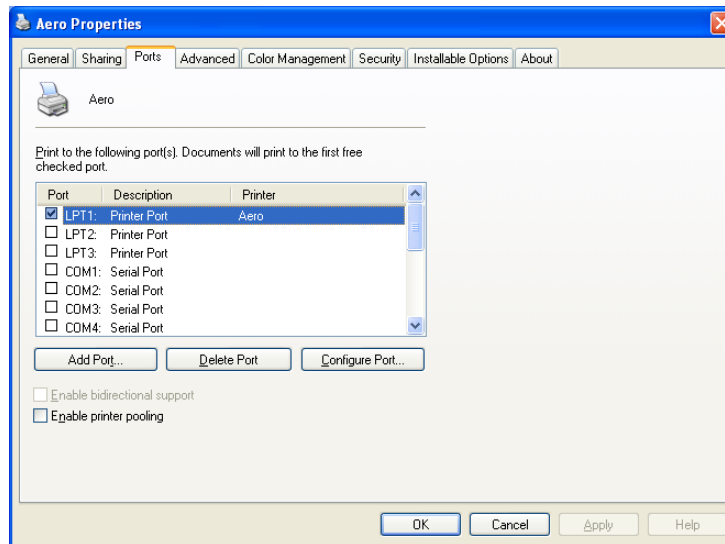
NOTE: You can also set up the LPR Port connection by installing Print Services for UNIX, which is supplied as an add-on Windows component. For more information, see the documentation that accompanies Windows.

TO SET UP STANDARD TCP/IP PORT (RAW OR LPR) FOR WINDOWS

NOTE: The following procedures use Windows XP illustrations.

- 1 **Windows 2000:** Click **Start**, choose **Settings**, and then choose **Printers**.
Windows XP: Click **Start** and choose **Printers and Faxes**.
Windows Server 2003: Click **Start**, choose **Control Panel**, and then choose **Printers and Faxes**.
Windows Vista/Server 2008: Click **Start**, choose **Control Panel**, and then double-click **Printers**.
Windows 7/Server 2008 R2: Click **Start** and choose **Devices and Printers**.
- 2 **Windows 2000/XP/Server 2003/Server 2008/Vista:** Right-click the EX Print Server icon and choose **Properties**.
Windows 7/Server 2008 R2: Right-click the EX Print Server icon and choose **Printer properties**.

3 Click the Ports tab.



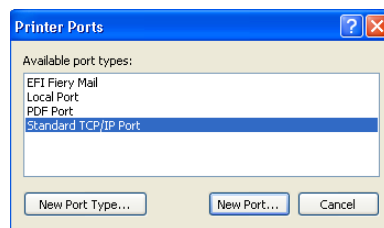
4 To add a new port, click Add Port.

To change the port settings, proceed to step 11.

5 Windows 2000/XP/Server2003: Select Standard TCP/IP Port from the list of Available port types and click New Port Type.

Windows Vista/Server 2008: Double-click Standard TCP/IP Port from list.

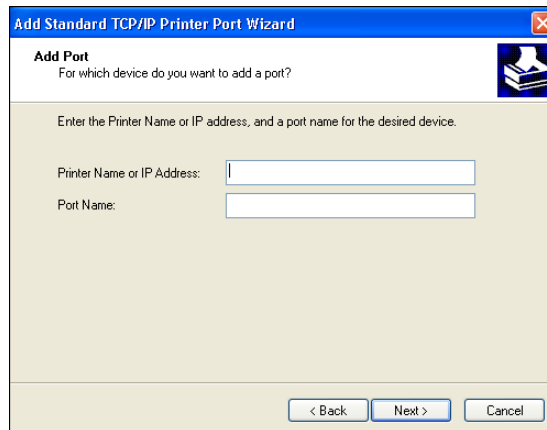
Windows 7/Server 2008 R2: Select Standard TCP/IP Port from the list of Available port types and click New Port.



The Add Standard TCP/IP Printer Port Wizard dialog box appears.

6 Click Next.

7 Type the EX Print Server IP address.



The image shows the 'Add Standard TCP/IP Printer Port Wizard' dialog box. The title bar reads 'Add Standard TCP/IP Printer Port Wizard'. The main area is titled 'Add Port' with the subtitle 'For which device do you want to add a port?'. Below this, it says 'Enter the Printer Name or IP address, and a port name for the desired device.' There are two input fields: 'Printer Name or IP Address:' and 'Port Name:'. At the bottom, there are three buttons: '< Back', 'Next >', and 'Cancel'.

8 Click Next.

9 Make sure that Generic Network Card is selected as Standard for Device Type and click Next.

10 Click Finish to close the Add Standard TCP/IP Printer Port Wizard dialog box, and then click Close in the Printer Ports dialog box.

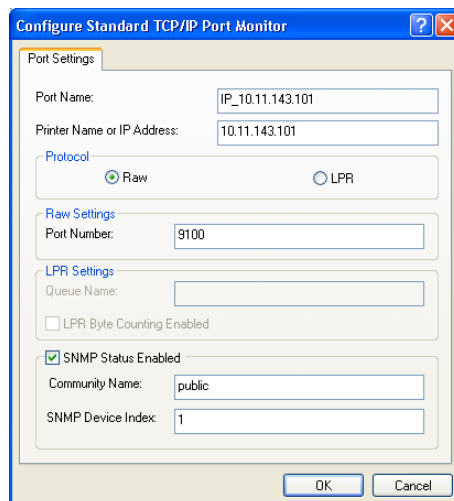
To change the default setting, proceed to [step 11](#).

If you do not want to change the default setting, the setting is now completed.

NOTE: Port 9100 was set as the default setting in the preceding procedure.

11 Click Configure Port on the Ports tab of the Properties dialog box.

The Configure Standard TCP/IP Port Monitor dialog box appears.



The image shows the 'Configure Standard TCP/IP Port Monitor' dialog box. The title bar reads 'Configure Standard TCP/IP Port Monitor'. The 'Port Settings' tab is selected. It contains several fields: 'Port Name:' with the value 'IP_10.11.143.101', 'Printer Name or IP Address:' with the value '10.11.143.101', and a 'Protocol' section with 'Raw' selected (radio button) and 'LPR' unselected. Below this is a 'Raw Settings' section with 'Port Number:' set to '9100'. There is also an 'LPR Settings' section with 'Queue Name:' (empty), 'LPR Byte Counting Enabled' (unchecked), and 'SNMP Status Enabled' (checked). The 'SNMP Status Enabled' section includes 'Community Name:' set to 'public' and 'SNMP Device Index:' set to '1'. At the bottom, there are 'OK' and 'Cancel' buttons.

- 12 To use LPR printing, select LPR in the Protocol area and LPR Byte Counting Enabled in the LPR Settings area.**

NOTE: You can also proceed without selecting LPR Byte Counting Enabled.

To use Port 9100 printing, select Raw in the Protocol area.

The port number 9100 automatically appears in the Raw Settings area. This is the default port number. You can print to the printer connection selected for Port 9100 printing on the EX Print Server.

To specify a specific port number, see the following step.

- 13 Type the name of the print connection.**

For LPR, enter print or hold for Queue Name or published virtual printer name. The Direct connection is not supported for LPR printing.

For Port 9100, type the following port numbers for each print connection in the Raw Settings area:

EX Print Server default: 9100

direct: 9101

print: 9102

hold: 9103

NOTE: Type the number *exactly* as shown.

- 14 Click OK to close the Configure Standard TCP/IP Port Monitor dialog box.**

NOTE: The EX Print Server supports printing in the IPv6 environment on Windows Server 2008/Server 2008 R2, Windows 7, and Windows Vista.

NOTE: LPR printing in the IPv6 environment is supported on the Windows XP/Server 2003 computer from a command line, but other methods may work.

- 15 Click Apply in the EX Print Server Properties dialog box, and then click OK.**

Completing IPP connections

With Internet Printing Protocol (IPP), print jobs are sent to the EX Print Server over the Internet.

Before you begin, perform the following tasks:

- Make sure that the EX Print Server is configured for TCP/IP printing and IPP printing.
For more information, see Configure Help.
- Specify the printing destination on your computer.

NOTE: IPP over SSL connections is supported.



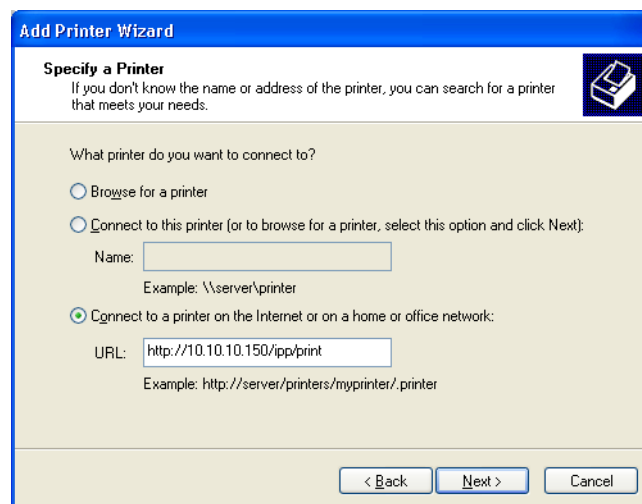
TO SET UP IPP PRINTING WITH WINDOWS

- 1 **Windows 2000:** Click Start, choose Settings, and then choose Printers.
Windows XP: Click Start and choose Printers and Faxes.
Windows Server 2003: Click Start, choose Control Panel, and then choose Printers and Faxes.
Windows Vista: Click Start, choose Control Panel, and then double-click Printers.
Windows Server 2008: Click Start, choose Control Panel, and then double-click Printers under Classic View.
Windows 7/Server 2008 R2: Click Start and choose Devices and Printers.
- 2 **Windows 2000/XP:** Double-click the Add Printer icon and click Next.
Windows Server 2003: Double-click the Add a printer icon and click Next.
Windows Vista/Server 2008/Server 2008 R2/Windows 7: Click Add a printer.
- 3 **Windows 2000/XP/Server 2003:** Select Network printer and click Next.
Windows Vista: Select Add a network printer.
Windows Server 2008/Server 2008 R2/Windows 7: Select Add a network, wireless, or Bluetooth printer.
- 4 **Windows 2000/XP/Server 2003/Vista:** Select Connect to a printer on the Internet or your intranet.
Windows Server 2008/Server 2008 R2/Windows 7: If the printer search takes a long time, click Stop, and then click "The printer that I want isn't listed."
- 5 **Windows 2000/XP/Server 2003/Vista:** In the URL field, type the IP address or DNS name of the EX Print Server, followed by "ipp/" and then the name of the connection (hold, direct, print, or name of virtual printer).

For example, `http://10.10.10.150/ipp/print` or `http://DNS name of the EX Print Server/ipp/print` sends the job to the Print queue on the EX Print Server.

For IPP over SSL, type `https`, instead of `http`.

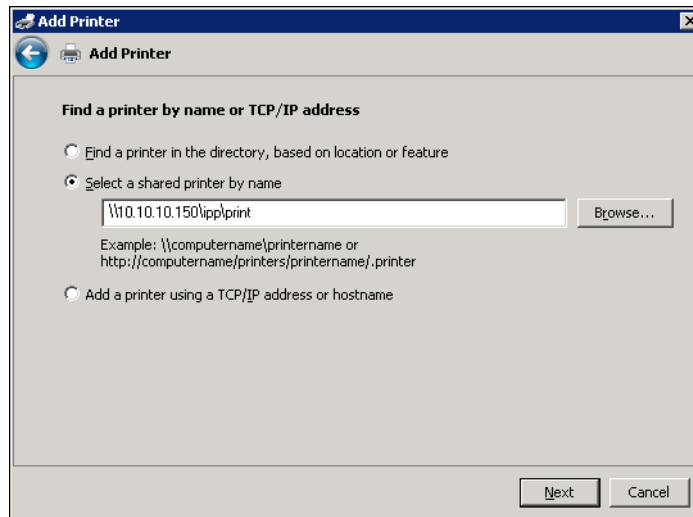
NOTE: The `ipp/print` in the example is case sensitive.



Windows Server 2008/Server 2008 R2/Windows 7: Click **Select a printer by name**, and in the **URL** field, type the IP address or DNS name of the EX Print Server, followed by the name of the connection (hold, direct, print, or name of virtual printer).

NOTE: For example, `http://10.10.10.150/ipp/print` or `http://DNS name of EX Print Server/ipp/print` sends the job to the Print queue on the EX Print Server.

NOTE: The URL for the printer is not case-sensitive.



6 Windows 2000/XP/Server 2003/Vista: Click **Next**.

The **Connect to Printer** dialog box appears.

Windows Server 2008/Server 2008 R2/Windows 7: Click **Next**.

7 Windows 2000/XP/Server 2003/Vista: Click **OK**.

The **Add Printer Wizard** dialog box appears.

Windows Server 2008/Server 2008 R2/Windows 7: Click **Install driver**.

8 If you are installing the PostScript printer for the first time, follow the procedure [“To install and complete the print connection for Windows”](#) on page 44, step 9.

9 Indicate whether you want to make the EX Print Server the default printer and click **Next**.

10 Click **Finish**.

Configuring installable options

After you complete the printer driver installation, you must configure the EX Print Server for the options installed on the digital press to allow the EX Print Server to take advantage of the digital press options. Configure the options manually, or for TCP/IP network connections, use the Two-Way Communication option to configure the options automatically.



For information about specifying installable options, see printer driver Help.

Configuring installable options for Windows Vista/Windows 7/Server 2008 R2 printer driver

Windows Vista, Windows 7, and Windows Server 2008 R2 have a User Account Control (UAC) feature. You must log on with Administrator privileges to add or change the installable options after the printer driver is installed.

TO CHANGE INSTALLABLE OPTIONS

- 1 **Windows Vista: Open the Printers Control Panel.**
Windows 7/Server 2008 R2: Open the Devices and Printers Control Panel.
- 2 **Windows Vista: Right-click the EX Print Server printer icon, choose Run as administrator, and then choose Properties.**
Windows 7/Server 2008 R2: Right-click the EX Print Server printer icon, choose Run as administrator, and then choose Printer properties.

The User Account Control dialog box opens.
- 3 **Choose the User that has administrator privileges, type the password, and then click OK.**
- 4 **Windows Vista: Right-click the EX Print Server printer icon again and choose Properties.**
Windows 7/Server 2008 R2: Right-click the EX Print Server printer icon again and choose Printer properties.
- 5 **Click the Installable Options tab and make your selections.**
- 6 **Click Apply, and then click OK.**

Printing from Windows computers

You can print to the EX Print Server just as you would print to any other printer from a Windows application. You can print from a networked Windows computer or a computer using Windows (WINS) printing.

The following table includes other methods to print to the EX Print Server and the location in which to find more information.

For more information	See
Downloading certain types of files to the EX Print Server using the Docs WebTool	Utilities
Printing documents using E-mail Services	“E-mail Service” on page 70
Printing documents using Hot Folders	Utilities
Setting up the Windows environment for printing with Windows servers connected to the EX Print Server	Configuration and Setup

After you install the EX Print Server printer driver and configure the proper port, you can print directly from most Windows applications. Set the print options for the job and choose Print from your application.



To achieve optimal printing results from specific applications, see [Color Printing](#), [Fiery Color Reference](#), and Command WorkStation Help.

NOTE: The following procedures use Windows XP illustrations, unless specified.

For the location of each procedure, see the following table.

Procedure	See
Setting print options and printing from Windows applications	page 59
Specifying default print options	page 65
Customizing the Quick Access icon	page 66
Defining and printing custom page sizes	page 67
Viewing the digital press status	page 67
Saving files to print to a remote location	page 67

Setting print options and printing from Windows applications

To print from Windows platforms, install the PostScript printer driver. For instructions, see [“Installing Windows printer drivers”](#) on page 37. Be sure to configure the options on the Advanced tab of the printer driver after installation is complete, as described on [page 44](#).

If you print to a virtual printer, you may not be able to set some print options, depending on how the virtual printer is configured.

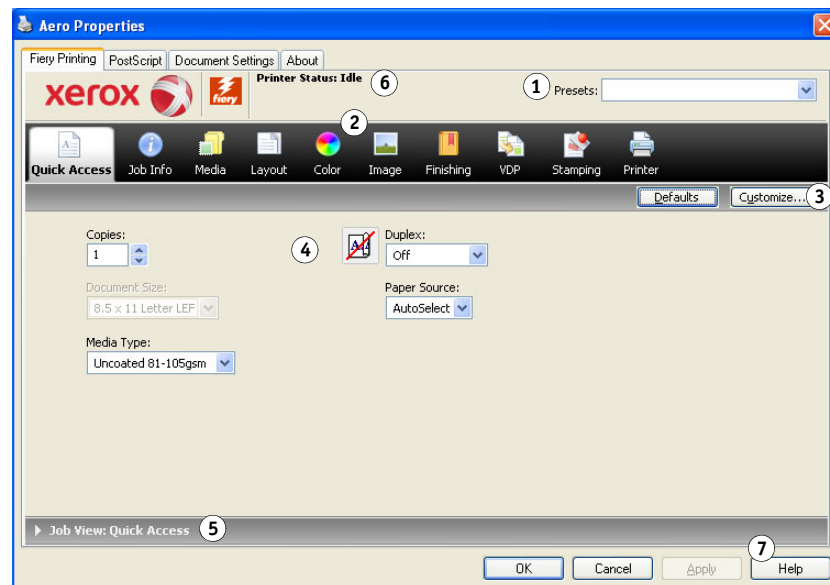
The following procedures explain how to use the printer driver to specify print options for a particular job and print it to the EX Print Server. You can also set default print settings using the driver. For information about specific print options, see [Print Options](#).

NOTE: The following procedures use Windows XP illustrations.

TO SET PRINT OPTIONS FOR A SPECIFIC WINDOWS PRINT JOB USING THE PRINTER DRIVER

- 1 Choose Print in your application.
- 2 Select the EX Print Server as your printer and click Properties.
- 3 Click the Fiery Printing tab.

- 1 Presets (Job Templates), see Help
- 2 Print Option icons
- 3 Customize (Shortcuts), see Help
- 4 Active area
- 5 Job View
- 6 Printer Status
- 7 Help



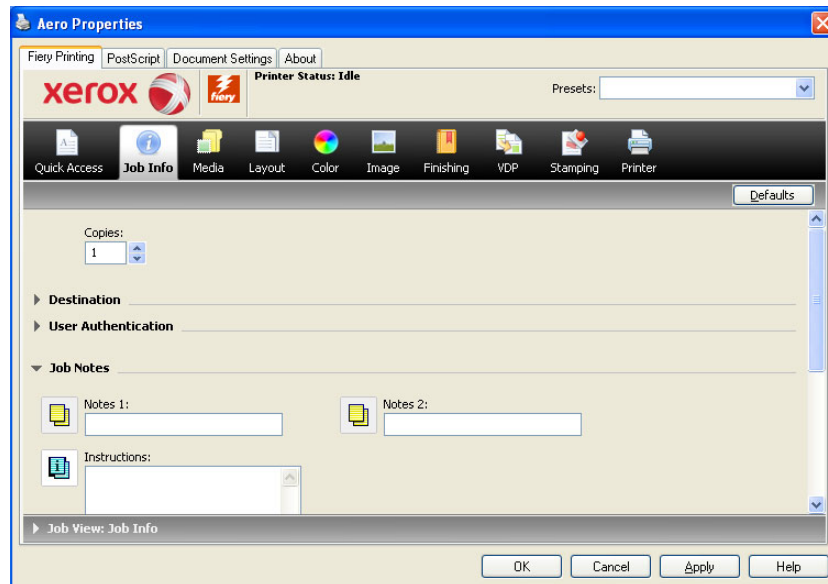
The Fiery Printing tab serves as the control center for all frequently used printing functions.

For information about using presets, see printer driver Help.

NOTE: For a list of print options, see [page 81](#).



4 Click the Job Info icon.



5 Type a user name and password in the User Authentication area.

The user name that you type in the User Authentication area can be your network domain\user name or a local user name. Check with your system administrator about the requirements for your system.

If you do not have a user name and password or you want to send jobs as a public user, select the I'm a Guest option. The EX Print Server must be configured to allow guest printing. Otherwise, clear the I'm a Guest option.

If you are not using a network user name and password, you can type your domain\user name and password in the fields provided. Click Validate to validate the user name and password.

When the Use Windows Login option is selected, the LDAP domain user name and password are used as an authenticated user name. This is available only if the user is logged on to the Windows computer as a domain user.

6 Type information in the Notes 1 and 2 fields.

Type user and job identification information for managing purposes, or other information that is required at your site.

The information that you type in this field can be viewed and edited by the operator in Command WorkStation and also appears in the Job Log.



For more information about Command WorkStation, see [Utilities](#) and Command WorkStation Help.

7 Type instructions to the operator about the job in the Instructions field.

These instructions are displayed in Command WorkStation, but do not appear in the Job Log. These instructions can be edited by the operator.

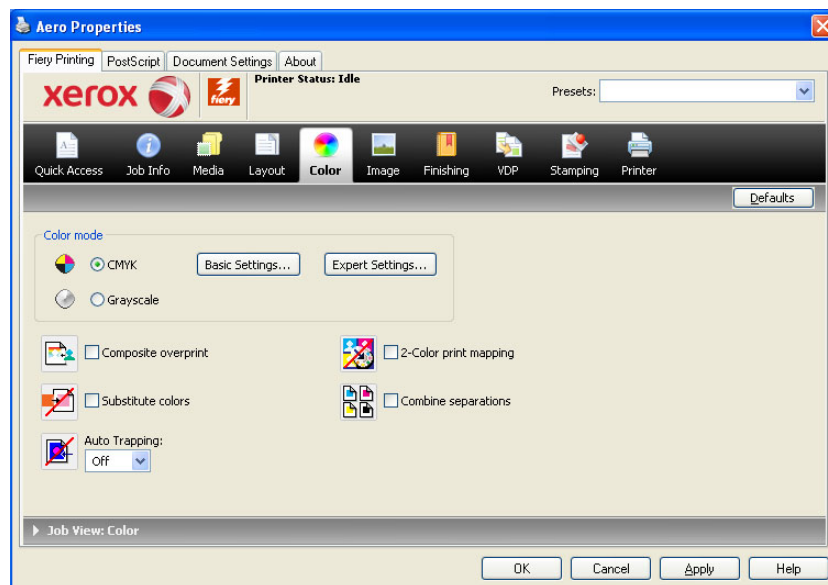
8 Type values for the other fields, as required.

For information about these fields, see [page 81](#).

9 Click the Color icon and specify the color profile options for the job.

In the Color Mode area, select a color mode for the job.

NOTE: To display the basic and expert color settings from the EX Print Server in this dialog box, make sure that Two-Way Communication is enabled. For information about enabling Two-Way Communication, see printer driver Help.

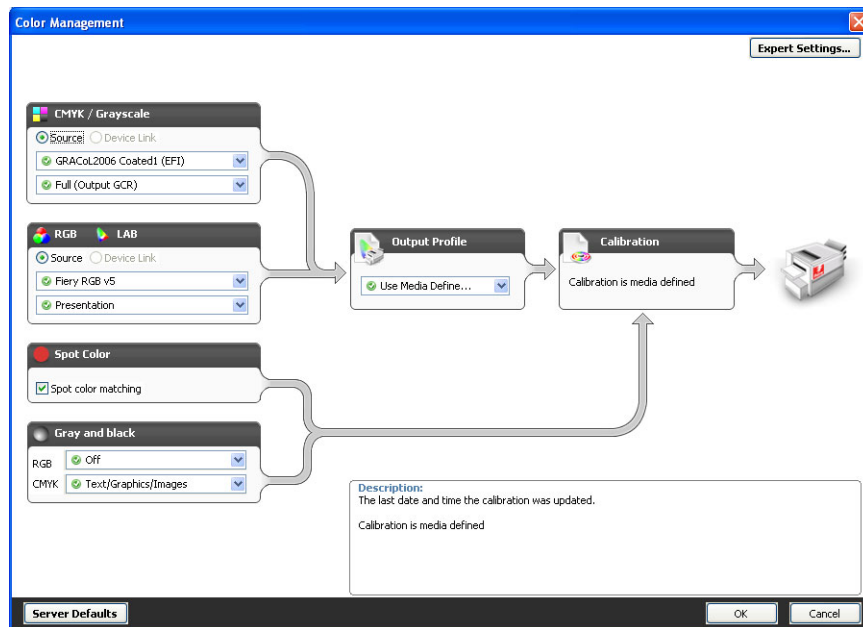


- 10 To use basic color management features, such as digital press color settings, click **Basic Settings**.

To revert to the EX Print Server default color settings, click **Server Defaults**.

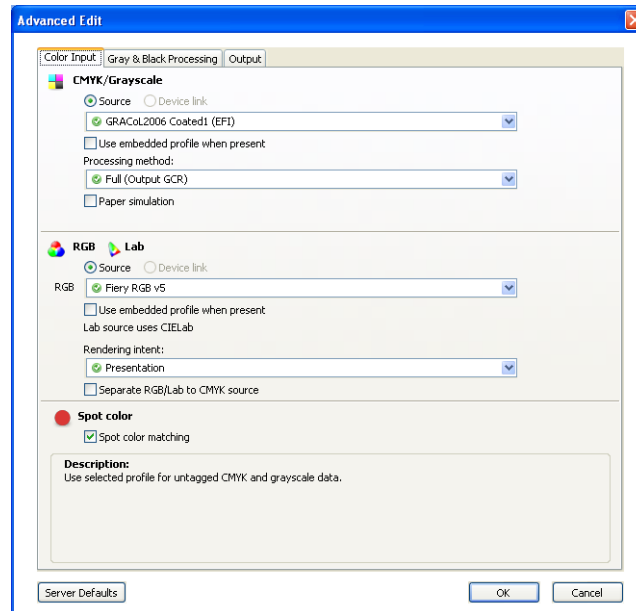
To edit advanced color management features, such as RGB/Lab Rendering Intent, click **Expert Settings** and proceed to [step 11](#). Otherwise, proceed to [step 13](#).

Two-Way Communication On



- 11 To edit advanced color management features, such as RGB/Lab Rendering Intent, click Expert Settings.

The Expert Color Settings Advanced Edit dialog box appears.



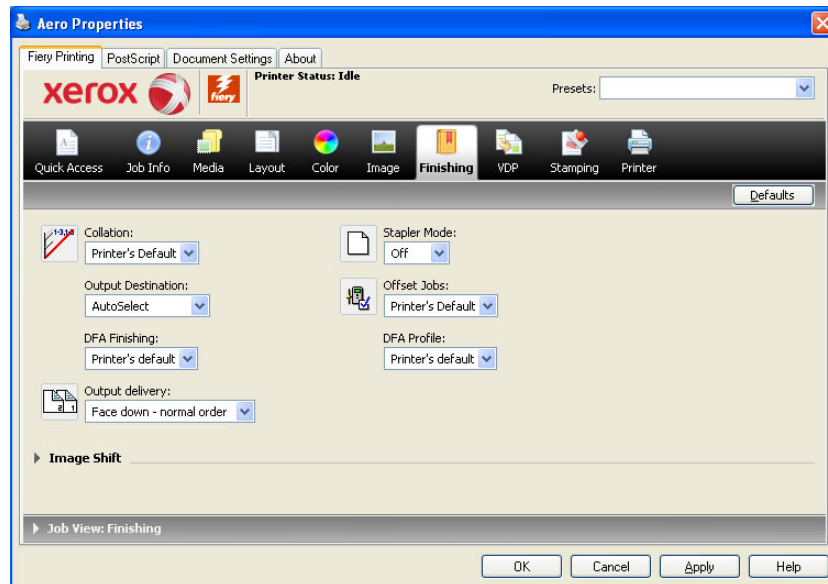
The advanced edit controls are divided into the following categories: Color Input, Gray & Black Processing, and Output.

- 12 After you edit the expert settings, click OK.

To revert to the EX Print Server default color settings, click Server Defaults.

- 13 Specify the color settings for the print job and click OK.

14 Choose other printer-specific options.



15 Click the VDP icon to specify variable data printing options.

For more information about VDP print options, see [“Variable Data Printing \(VDP\) options”](#) on page 98.

16 Click the Stamping icon to specify a watermark for the print job.

For more information about watermarks, see printer driver Help.

17 Click the Printer icon to view digital press status.

For more information about monitoring digital press status, see printer driver Help.

18 Click the remaining print option icons to specify the appropriate settings for the print job and click OK.

The settings that you make for these print options override settings that the administrator specified in EX Print Server Printer Setup, but can be overridden from Command WorkStation. For information about these options and overrides, see [page 80](#). For more information about Command WorkStation, see [Utilities](#) and Command WorkStation Help.

Some print options are available only if a particular installable option has been configured. For information about configuring installable options, see [“Configuring installable options”](#) on page 57.

If you choose Printer's default, the job prints according to the settings that the administrator specified in Setup. For more information, see [page 80](#).

NOTE: If you specify incompatible print settings, the Conflict dialog box provides instructions to resolve the conflict.

19 From your application, click OK to send your print job.

Make sure that the EX Print Server is selected as your current printer.

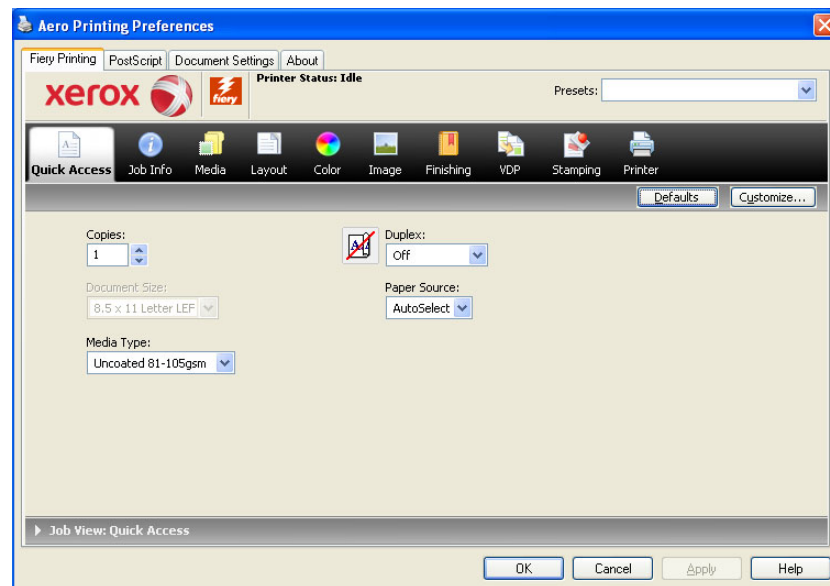
NOTE: Some print options that are selectable from an application are similar to print options that are specific to the EX Print Server and the digital press. In these cases, use the print options specific to the EX Print Server and the digital press. These options appear in the Fiery Printing tab. The application may not set up the file properly for printing on the EX Print Server, resulting in unexpected finishing, printing errors, or longer processing time.

Specifying default print options for print jobs

To set default print options, use the following procedure.

TO SET DEFAULT PRINT OPTIONS FOR WINDOWS PRINT JOBS USING THE POSTSCRIPT PRINTER DRIVER

- 1 Windows 2000:** Click Start, choose Settings, and then choose Printers.
Windows XP: Click Start and choose Printers and Faxes.
Windows Server 2003: Click Start, choose Control Panel, and then choose Printers and Faxes.
Windows Vista/Server 2008: Click Start, choose Control Panel, and then double-click Printers.
Windows 7/Server 2008 R2: Click Start and choose Devices and Printers.
- 2 Right-click the EX Print Server icon and choose Printing Preferences.**
- 3 If the Fiery Printing tab is not displayed, click it.**



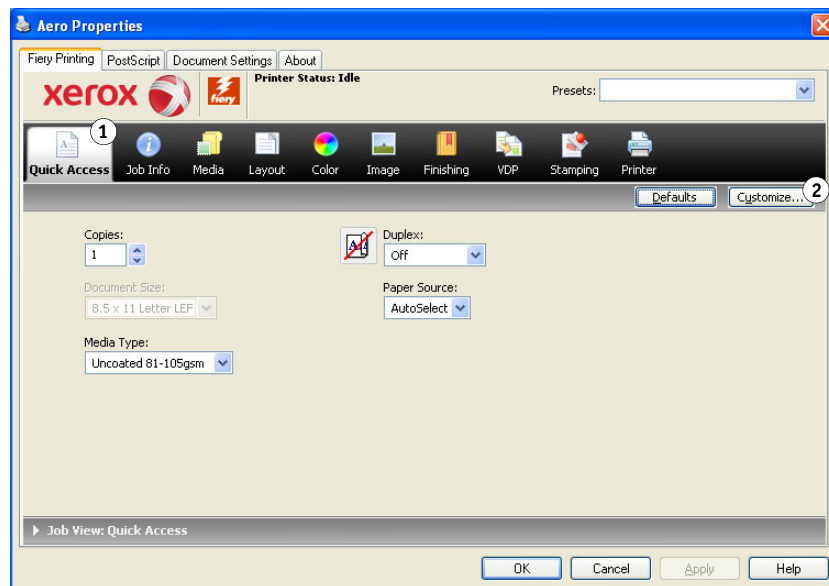
- 4 Specify the default settings for your print job, as described on [page 59](#).**
- 5 Click OK to close the dialog box.**

Customizing the Quick Access icon

The Quick Access icon is on the Fiery Printing tab. You can customize it with the print options you use frequently. This saves time because you do not have to open all of the other print option icons if you only want to set the options in Quick Access. Quick Access initially contains a default group of print options. You can remove these options and add others.

NOTE: When you place a print option in Quick Access, it still appears under its appropriate print option icon. You can set the option from either location.

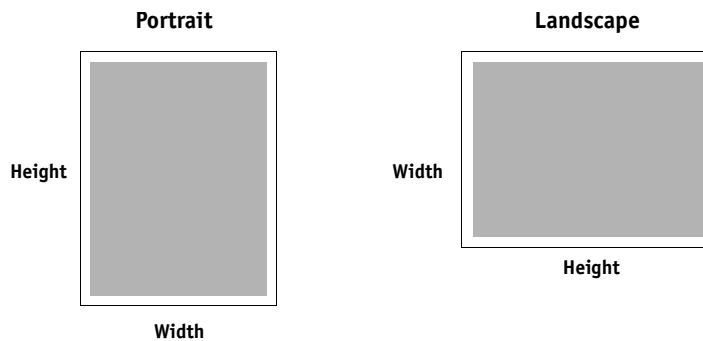
- 1 Quick Access icon
- 2 Customize (Shortcuts)



For more information about customizing the Quick Access icon, see printer driver Help.

Defining and printing custom page sizes

With custom page sizes, you define the dimensions of a printed page. After you define a custom page size, you can use it from within an application without redefining it each time you print. When you create custom page sizes, specify Width dimensions to correspond with the shorter side of your job and specify Height dimensions to correspond with the longer side of your job. Set custom page sizes in this way, regardless of the orientation settings in the application.



NOTE: Custom page sizes are not supported with Imposition jobs.



For more information about defining and printing custom page sizes, see printer driver Help.

Viewing the digital press status

If you enabled a TCP/IP network, you can retrieve digital press status and color settings from the EX Print Server and display them in the printer driver using the Two-Way Communication option. If you have enabled Two-Way Communication for your digital press, you can monitor the status of the digital press, including the levels of consumable materials, such as paper and dry ink.



For more information about enabling Two-Way Communication, see printer driver Help.

Saving files to print at a remote location

If you do not have an EX Print Server onsite and are preparing files to take to a service bureau or other location, print the final files to the File port (as opposed to one of the local ports). You can also print to the File port to create a file to download using the Docs WebTool. For instructions on printing to the File port, see the documentation that accompanies Windows.

PRINTING METHODS

In addition to printing jobs from the EX Print Server printer driver, you can print jobs using the following methods:

- **Job Monitor** displays information about the jobs sent to the EX Print Server and reprints them.
- **E-mail Service** submits jobs to the EX Print Server as e-mail attachments.
- **USB device** prints files saved on a USB drive.
- **FTP printing** prints to the EX Print Server using the FTP protocol.
- **Job Batching** prints a collection of print jobs as a single job in the digital press job list and accounting information.
- **Adobe PDF Print Engine (APPE)** is an additional interpreter that allows native PDF processing and rendering without the need for the EX Print Server to convert the job from PDF to PostScript.

For the location of each procedure, see the following table.

Procedure	See
Configuring and using Job Monitor	page 69
E-mail Service	page 70
Printing from a USB device	page 73
FTP printing	page 74
Job Batching	page 75
Adobe PDF Print Engine (APPE)	page 76

Configuring and using Job Monitor


Use Job Monitor to monitor the status of EX Print Server and view information about the print jobs sent to them.

Job Monitor is supported on Windows 2000, as well as Windows Server 2003/2008/2008 R2, Windows XP/Vista, and Windows 7 32-bit version.

NOTE: Job Monitor is not supported on Windows Server 2003/2008/2008 R2, Windows XP/Vista, Windows 7 64-bit version, or Mac OS X.

Configuring the connection

When you send your first print job to the EX Print Server, Job Monitor opens and establishes a connection to the EX Print Server. If you installed and configured printer drivers for more than one digital press, Job Monitor automatically establishes connections to all the EX Print Server digital presses.

The Job Monitor icon () appears on the desktop and in the Windows taskbar of your computer.

Job Monitor is automatically installed when you choose the printer driver to install on your computer. To use Job Monitor, you must enable it in the printer driver.

TO ENABLE JOB MONITOR

- Select the Monitor my Print Job check box on the Printer tab of the printer driver.

TO DISABLE JOB MONITOR

- Clear the Monitor my Print Job check box on the Printer tab of the printer driver.

Using Job Monitor



For information about using Job Monitor, see Job Monitor Help and printer driver Help.

E-mail Service

E-mail Service allows you to control the EX Print Server using your current e-mail infrastructure, print to remote locations, and bypass firewalls. E-mail Service is not application-specific. You can use any e-mail infrastructure.

NOTE: E-mail Service is not supported on Mac OS X.

The EX Print Server supports internal address books. Administrators can retrieve, add, delete, and clear addresses from the address books by sending requests through e-mail. For more information about address books, see [Configuration and Setup](#).



To set up E-mail Service, see Configure Help.

Use E-mail Service in the following ways:

- Print a job from an e-mail application.

To print with an e-mail client, you send a file as an e-mail attachment. E-mail Service extracts the file and sends it to the EX Print Server. The attachment can be in any format the EX Print Server recognizes (PostScript, PDF, or TIFF).

NOTE: E-mail Service does not process files with .vbs, .exe, or .bat extensions.

- Manage jobs using an e-mail application.

You can manage your print jobs by submitting e-mail commands to the EX Print Server using e-mail.

Printing using an e-mail client

You can submit print jobs to the EX Print Server in the form of an e-mail attachment using your e-mail application. When you send an e-mail with an attachment, E-mail Service extracts the file and sends it to the EX Print Server Print queue. The file format must be one supported by the EX Print Server.

By default, anyone can print with an e-mail client, unless the Print address book has been set up by the administrator. If the Print address book has been set up and your e-mail address is not in it, you cannot send files to the EX Print Server via e-mail. For more information about address books, see [Configuration and Setup](#).

When User Authentication is enabled on the EX Print Server, the e-mail attachment must have the appropriate user name and password when it is printed through e-mail printing. As part of creating the e-mail attachment with the EX Print Server printer driver, type the appropriate user name and password in the Job Info tab of the printer driver. The user name and password must match those defined by the administrator in the Users and Groups section of Configure. For information about Users and Groups, see Configure Help.



NOTE: The Direct connection is not supported by the e-mail client feature.

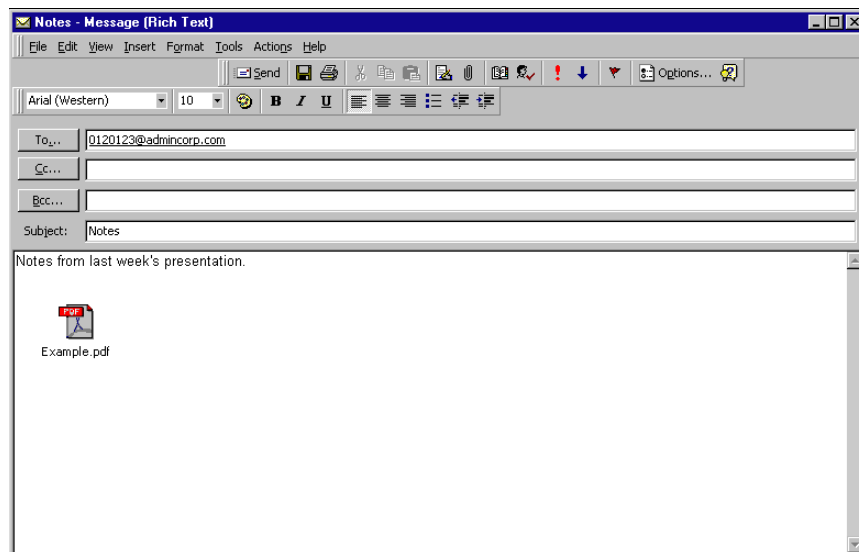
NOTE: The following illustrations depict the Microsoft Outlook e-mail application.

TO PRINT USING AN E-MAIL CLIENT

- 1 **Open your e-mail application.**
- 2 **Type the EX Print Server e-mail address in the To: line.**
- 3 **Type text in the Subject line or leave the Subject line blank.**
- 4 **Attach the file that you want to print.**

The attachment can be in any format the EX Print Server recognizes (PostScript, PDF, or TIFF).

NOTE: If your attachment exceeds the file size limitation set by your e-mail system administrator, the e-mail is not sent.



- 5 **Optionally, you can type text in the body of the message. The text is printed with the file.**

NOTE: HTML-formatted e-mail messages are not supported, and might not print as they appear on the remote workstation. Send e-mail messages in plain text format.

- 6 **Send the e-mail.**

The file is sent to the EX Print Server and the job is printed. After the EX Print Server receives the job, you are sent an e-mail notification that the print job was accepted. The e-mail provides a job identification (ID). Use the job IDs to manage jobs with e-mail commands (see [“Managing print jobs with e-mail commands”](#) on page 72). The e-mail notification indicates any current error at the digital press.

After the job is printed, you are sent a second e-mail notification that indicates the job printed successfully.

Managing print jobs with e-mail commands

You can manage your print jobs by submitting commands to the EX Print Server using e-mail. You can cancel a job, check job status, and get help on a job. When you send a command, the EX Print Server returns an e-mail response.

TO MANAGE PRINT JOBS WITH E-MAIL COMMANDS

1 In your e-mail application, type the EX Print Server e-mail address in the To: line.

2 Type one of the following commands in the Subject line:

To check the status of a job, type #JobStatus<job id> in the Subject line.

You receive a reply to your job status query. You can only get the status of the job if you sent the job or are an administrator.

To cancel a job, type #CancelJob<job id> in the Subject line.

You receive a notification indicating that the job has been cancelled and did not print to the EX Print Server. You can only cancel a job if you sent the job or are an administrator.

To get help, type #Help in the Subject line.

You receive an e-mail response that contains links that allow you to cancel jobs, check job status, and search and manage address books. Click any of the links to perform a command.

3 Send the e-mail to the EX Print Server.

Printing from a USB device

You can print files on a USB device to the EX Print Server. To do so, save PS, EPS, TIFF, and PDF files to the USB device and download them directly to the EX Print Server. You can print files that originated on Mac OS X or Windows computers.

You can print files automatically from a USB device to one of the standard print queues on the EX Print Server (Print, Hold, or Direct) or to published virtual printers (if supported). Verify with your administrator that these connections are published in Setup. For more information about Virtual Printers, see Command WorkStation Help.



Before you print files from a USB device, ask your administrator to configure the appropriate options. For more information about configuring the appropriate options, see [Configuration and Setup](#) or Configure Help.

Automatic printing

To print automatically to Print, Hold, or Direct queues, or to published virtual printers with the Print All setting, set up folders on your USB device with the names print, hold, direct, and the names of any published virtual printers. When you plug the USB device into a USB port on the EX Print Server, the files in those folders are sent automatically to the corresponding queues.

TO PRINT FILES FROM THE USB DEVICE

- 1 **Configure the USB printing options in Setup.**
- 2 **Create folders at the top (root) level of the USB device named print, hold, direct, and virtual printer.**
- 3 **Save the files (PS, EPS, TIFF, and PDF) from the user's computer to the USB device.**

Files copied to the print, hold, direct, or virtual printer folders are downloaded to the corresponding print connection on the EX Print Server automatically when you connect the USB device to the EX Print Server. Files copied to the root level of the USB device are downloaded to the Print queue.

- 4 **Remove the USB device from the computer and connect it to the USB connector on the EX Print Server.**

IMPORTANT

Make sure that the USB device is properly stopped before you disconnect it from the computer.

For the location of the USB port, see [Configuration and Setup](#).

FTP printing



If FTP Services are enabled on the EX Print Server, the EX Print Server is set up as an FTP server. You can send jobs to the EX Print Server using FTP printing. For more information about configuring FTP Services, see [Configure Help](#).

You can use any FTP client software. Before you use FTP printing, the FTP client software requires the following information (see your administrator):

- IP address or DNS name for the EX Print Server
- Directory or path to send the job to, such as the Print queue, Hold queue, or published Virtual Printers (if supported)

NOTE: You cannot print to the Direct connection using FTP printing.

- User name and password (if required)

You can send PostScript (PS), Tagged Image File Format (TIFF), and Portable Document Format (PDF) files to the EX Print Server. Encapsulated PostScript (EPS) files are not supported for FTP printing.

TO PRINT FILES TO THE EX PRINT SERVER USING THE FTP PROTOCOL

1 Connect to the EX Print Server with your FTP client software.

Folders corresponding to the Print queue and Hold queue are displayed. Folders for any published virtual printer are also displayed.

2 Navigate to the folder representing the print connection or published virtual printer.

3 Upload your job to the folder that you want.

After the job is printed, it is deleted from the EX Print Server.

Job Batching

Job Batching provides a way for the EX Print Server to send print jobs to the digital press to make sure the job can print (if the print job is overly complex), or print faster by minimizing cycle down times.

A batch job is a collection of jobs sent to the digital press as a single job. The batch job is shown as a single job in the digital press job list and accounting information. The EX Print Server can continue adding pages to an existing batch job, as long as the pages are processed and ready for printing.

Job Batching functionality is enabled or disabled by the administrator. For more information about configuring Job Batching, see [Configuration and Setup](#).

Cancelling batch jobs

When the EX Print Server cancels a job in a batch, either through an error or user intervention, it cancels that job and resends the remainder of the jobs from that batch as a new batch job in addition to any other queued batch jobs. This functionality maintains the ability to print jobs in the desired order, including user-defined changes such as cancel, and print next, and rush print.

Using Command WorkStation Print Next and Rush Print commands with batch jobs

Print Next and Rush Print commands in Command WorkStation cannot be applied to batch jobs. If you apply a Print Next command to a job that is not part of the batch job, the EX Print Server stops adding jobs to the batch job, and then prints the Print Next job after the current batch job finishes printing. If you apply a Rush Print command to a job that is not part of the batch job, the EX Print Server stops adding pages to the batch job at an appropriate place in the job, and then prints the Rush Print job after the current batch job finishes printing. The EX Print Server sends the remaining pages of the interrupted job (as necessary) and continues printing normally.

Accounting batch jobs

When the EX Print Server batches jobs together, it lists each original job while the digital press lists only the resulting batched job. This can create a discontinuity between the EX Print Server job list or job log, and the digital press job list or job log. The total media counts, however, remain consistent between the EX Print Server and the digital press.

Adobe PDF Print Engine (APPE)

The EX Print Server provides features of the Adobe PDF Print Engine (APPE), which is an additional interpreter that allows native PDF processing and rendering without the need for the EX Print Server to convert the job from PDF to PostScript. No special printer driver is required for printing APPE jobs, but the administrator must enable related settings in Setup. If APPE is not enabled, PDF files are processed with the PostScript interpreter of the EX Print Server. All PostScript files continue to be processed with the PostScript interpreter.

The APPE option is not available from the printer driver, but is included in Job Properties in Command WorkStation. After the administrator has enabled APPE as the default in Configure, you can enable or disable the APPE option in Job Properties on a per-job basis.

To enable the APPE workflow in the EX Print Server, see [Configuration and Setup](#).

Printing with the APPE workflow

You can print with the APPE workflow using one of the following methods:

- Command WorkStation

Import a job, or drag a job from your computer and drop it in the Job Center of Command WorkStation.



For information about using Command WorkStation, see Command WorkStation Help.

- Hot Folders

Configure a hot folder for APPE.

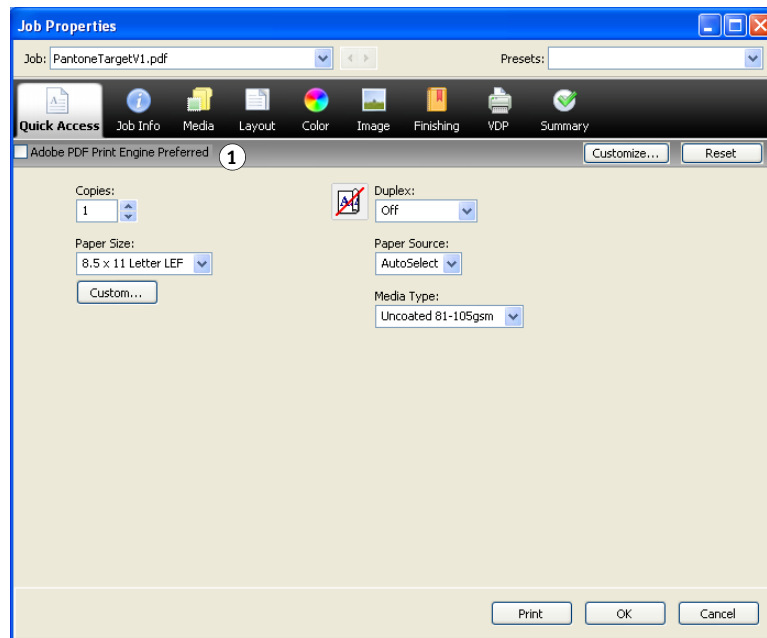


For information about using Hot Folders, see Hot Folders Help.

USING APPE WORKFLOW IN COMMAND WORKSTATION**1 Double-click a PDF job in the Held or Printed list, or select the job and do one of the following:**

- Right-click to select Properties.
- Choose Job Center > Properties.
- Choose Properties from the Actions menu.

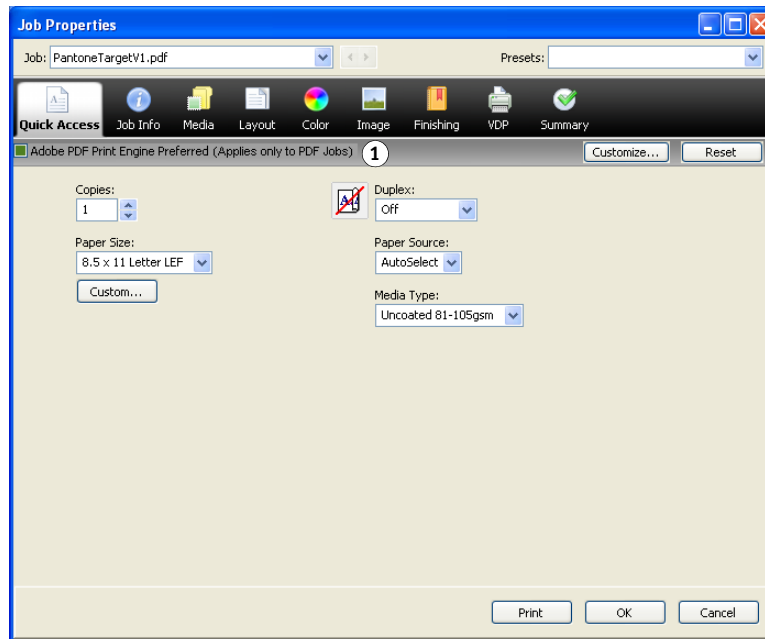
For information about printing multiple files, see [“Printing multiple files with APPE”](#) on page 78.

2 Select the Adobe PDF Print Engine Preferred check box.**1 Adobe PDF Print Engine Preferred check box****3 Specify the print option settings and click Print.**

Printing multiple files with APPE

If you open Job Properties for files of different file types, the Adobe PDF Print Engine Preferred option is displayed only if one of the selected files is a PDF. The print option name is shown as Adobe PDF Print Engine Preferred (Applies only to PDF jobs) and the check box indicates at least one of the PDF jobs selected has been processed through the APPE workflow.

- 1 Adobe PDF Print Engine Preferred (Applies only to PDF jobs) check box



For a multiple file selection containing non-PDF files, the Adobe PDF Print Engine Preferred option is not shown.

If a PDF file contains mixed page sizes when processed using APPE, the Paper Size option reflects the size of the first page in the PDF. If you override the size in Job Properties, all the pages in the PDF become the selected size.

TO ACCESS THE PROPERTIES OF MULTIPLE JOBS

- 1 Shift-click to select multiple, sequential jobs, or Ctrl-click to select multiple, non-sequential jobs, and then click Properties.

The Job Properties dialog box appears. Menus for each available print option are displayed.

- 2 After the multiple jobs open, specifying a value in the Job Properties dialog box applies it to all jobs.

The Summary tab allows a side-by-side comparison of the Job Properties for multiple jobs.

PRINT OPTIONS

This chapter describes printer drivers and PPD (PostScript Printer Description) files, EX Print Server print options, and where to set print options.

About printer drivers and printer description files

The EX Print Server receives files from computers on the network, processes (RIPs) the files, and then sends them to the digital press. Windows and Mac OS computers communicate with the EX Print Server by means of a printer driver and PPD files. The driver allows you to use special features of the EX Print Server from the Print dialog box.

A printer driver manages printing communication between your application and the printer. It interprets the instructions generated by the application, merges those instructions with printer-specific options you set, and then translates all information into Adobe PostScript, a language the printer understands. In other words, the printer driver writes a PostScript file based on your original file and the options you set from the Print dialog box.

A printer driver also allows you to select print options for your digital press. To do this, the printer driver must be matched with a PostScript Printer Description (PPD) file for your EX Print Server. A PPD file contains information about the features and capabilities of a particular device (for example, what paper sizes and media types are supported). The printer driver reads the information in the PPD file and presents the information to you in the form of options you select in the Print dialog box. The PPD file for the EX Print Server includes information about the features of both the digital press and the EX Print Server. For information about the specific print options for the EX Print Server, see the tables that begin on [page 82](#).

Setting print options

Print options give you access to the special features of your digital press and the EX Print Server. You can specify print options in these areas:

- Setup

Some settings are specified during Setup by the administrator. For information about the current default server settings, contact the administrator or the operator.

- Applications

With the printer drivers provided, you can specify job settings when you print a job.

For more information, see [“Defining and printing custom page sizes”](#) on page 36, and [page 67](#).

- Color Setup

Set the default CMYK/Grayscale Source, CMYK/Grayscale Processing Method, RGB/Lab Source, Separate RGB/Lab to CMYK Source, Output Profile, RGB/Lab Rendering Intent, Spot Color Matching, Gray (CMYK), Gray (RGB), Black Text and Graphics, and Black Overprint settings.

For information about using Color Setup, see [Color Printing](#).

- Hot Folders

Assign a group of print options to a Hot Folder. When you specify print options for a Hot Folder, the print options are assigned to all jobs sent through that Hot Folder. These print options override any default options.

For information, see Hot Folders Help.



- Overrides in Command WorkStation

To change job settings from Command WorkStation, double-click a job to display the Properties dialog box.

For more information, see Command WorkStation Help.



Print option override hierarchy

The override hierarchy is as follows:

- A user's printer driver settings override the EX Print Server Setup settings.
- Settings assigned to Hot Folders override the user's printer driver settings.
- Settings made from the job management tools (Command WorkStation Job Properties) override the user's printer driver settings.

Print options and default settings

If you do not use the printer driver interface to configure a particular option, the EX Print Server prints the job with the default setting. For options that the administrator configures, choosing Printer's default results in the EX Print Server printing the job with the factory default. For options that cannot be configured in Setup, the EX Print Server prints the job with a preconfigured Printer's default setting. When you select the printer driver for US, the default Document Size is Letter or for International, the default Document Size is A4. For more information, see the following tables.

To determine the current Setup defaults, print the Configuration page from Command WorkStation. For information about how to print a Configuration page, see [Configuration and Setup](#).

NOTE: A job uses the EX Print Server default settings (unless otherwise specified) at the time it is processed for printing, and not at the time it is sent to the EX Print Server Hold queue.

The print option tables are organized according to the printer driver icons (tabs). Use the following links for quick access:

Printer driver icon	See
Quick Access (shortcuts)	page 30 or page 66
Job Info	page 82
Media	page 84
Layout	page 86
Color	page 91
Image	page 95
Finishing	page 97
Variable Data Printing (VDP)	page 98
Stamping/Watermark	page 99

Job Info options

Option	Information
Copies	The maximum number of copies is 9999.
Print Range	<p>Specify the page range or odd/even pages to print.</p> <p>For VDP jobs, a range of Records can be selected for printing. For imposed VDP jobs, a range of Records & Sheets can be printed.</p> <p>For imposed jobs, a range of Sheet IDs can be selected for printing.</p> <p>This option is only accessible from Command WorkStation.</p>
Schedule Printing	<p>Specify to perform advance print scheduling based on date and time. If you select On, select the date and time for the print job.</p> <p>The job is printed based on the date and time set on the EX Print Server, not the client workstation.</p> <p>If multiple jobs are selected and defined with the same date and time setting, job order is based on alphabetic order of the file names.</p>
User Authentication: User Name	If User Authentication is enabled on the EX Print Server, specify your User Name to print a job. Type your user name or domain\user name for user authentication.
User Authentication: Password	If User Authentication is enabled on the EX Print Server, specify your User Password to print a job. Type your local password or domain password for user authentication.
User Authentication: Use Windows Login	<p>If you are logged on to your Windows computer, select Use Windows Login for user authentication.</p> <p>This option appears when you log on to your domain on your Windows computer.</p> <p>For more information, see Configuration and Setup.</p>
User Authentication: I'm a Guest	<p>Select On to allow guest printing. Guest printing must be set to On at the EX Print Server.</p> <p>In Command WorkStation, the management of jobs is determined by how you log on to the EX Print Server.</p>
Notes 1/Notes 2	Specify information about the job. This field has a 31-character (alphanumeric and special characters) limit.
Instructions	Specify instructions for the operator about the job. This field has a 127-character (alphanumeric and special characters) limit.
Print Queue Action	<p>Select the job action associated with a published queue.</p> <p>Select Print to send the file directly to printing.</p> <p>Select Print and Hold to save the raster file after printing.</p> <p>Select Process and Hold to RIP (process), but not print a job.</p> <p>This option is invalid if your job is sent to the Direct connection.</p>

Option	Information
Control Bar	<p>Specify On to print a Control Bar (for print job identification) in the margin.</p> <p>This option is available as part of the Fiery Graphic Arts Package, Premium Edition. For more information, see Fiery Graphic Arts Package.</p> <p>Printer's default reflects the setting specified in Color Setup in Command WorkStation.</p>
Progressives	<p>Specify On to enable the Progressives feature, a diagnostic tool used to show dry ink separations.</p> <p>This feature uses the Progressives values specified in Color Setup in Command WorkStation.</p> <p>This option is available as part of the Fiery Graphic Arts Package, Premium Edition. For more information, see Fiery Graphic Arts Package.</p> <p>NOTE: The Progressives and Postflight features cannot be used at the same time.</p>
Postflight	<p>Specify whether or not you want to use the Postflight feature, a diagnostic tool that allows you to analyze how data is processed by the EX Print Server.</p> <p>This option is available as part of the Fiery Graphic Arts Package, Premium Edition. For more information, see Fiery Graphic Arts Package.</p> <p>NOTE: The Progressives and Postflight features cannot be used at the same time.</p>

Media options

Option	Information
Paper Catalog	<p>Click Select to access the Paper Catalog utility, which retrieves all paper information from the digital press.</p> <p>For information about accessing Paper Catalog, see Utilities. For information about using Paper Catalog, see Command WorkStation Help.</p> <p>Access to Paper Catalog requires Two-Way Communication. For information about establishing Two-Way Communication, see printer driver Help.</p>
Paper Size	<p>Paper Size defines the size of the sheet of paper on which your job prints. It is the size of the physical sheet of paper in the digital press tray. To assign Paper Size, do one of the following:</p> <ul style="list-style-type: none">• Select the size from the available list. (SEF stands for Short Edge Feed; LEF stands for Long Edge Feed.)• Click Custom to select a non-standard paper size.• Select Same as Document Size to print one document page per sheet of paper. <p>The default size is Letter in the U.S. and A4 elsewhere. For more information, see page 109.</p>
Media Type	<p>Choose the media type for your print job.</p> <p>For information about media types and paper specifications, see the documentation that accompanies the digital press.</p>
Paper Source	<p>Specify the paper source that contains the paper to use for your print job.</p> <p>For information about setting your choice of media in Tray 5 (Bypass), see the documentation that accompanies your digital press.</p>
Tray Alignment	<p>Specify On to adjust the image on the page to achieve alignment on both sides of a page when printing duplex.</p> <p>For information about using Tray alignment, see Command WorkStation Help.</p>

Option	Information
Document Size	<p>Document Size is the page size defined in your application's Print setup (or Page setup) dialog box.</p> <p>In cases when printing one document page per sheet of paper, Document Size is usually the same as Paper Size. However, it may differ when printing booklets or imposing multiple document pages on a single sheet.</p> <p>Document Size may also differ from Paper Size when you use the Scale or Scale to Fit options, in which case the document page size is scaled at a given percent to fit a certain paper size.</p> <p>The Document Size option is Read Only under the Media tab. To change this option, click the Document Settings tab next to the Fiery Printing tab (Windows) or Print Setup. (SEF stands for Short Edge Feed; LEF stands for Long Edge Feed.)</p> <p>When you select Print from the application, the Document Settings tab does not appear, so the option cannot be changed.</p> <p>NOTE: The default is Letter in the U.S. and A4 elsewhere.</p> <p>For more information about Document size and Paper size, see page 119.</p> <p>For information about Scale and Scale to fit, see page 119.</p> <p>For information about printing custom page sizes, see page 36 and page 67.</p>
Mixed Media	<p>Use Mixed Media to specify different media types, paper source, and chapter-based finishing for pages, or ranges of pages, within a print job.</p> <p>For more information, see page 115.</p> <p>For information about using Mixed Media in Command WorkStation, see Utilities.</p>

Layout options

The Driver has four layout modes:

- Normal: use these options for printing standard documents, from 1 to 16 document pages per sheet ([page 86](#)).
- Gangup: use these options for speed printing imposition modes ([page 87](#)). For additional information, see [page 111](#).
- Booklet: use these options for printing documents in booklet layout ([page 88](#)). For additional information, see [page 101](#).
- Impose: use imposition layouts for custom printing, binding, and trimming ([page 90](#)).

Normal

Option	Information
Scale	Specify an increase or decrease in the scale of your print job. When using the manual Scale option, you cannot specify Scale to Fit. For more information, see page 119 .
Scale to Fit	Specify whether to scale your job to fit to a paper size. When using the Scale to Fit option, you cannot use the manual Scale option. For more information, see page 119 .
Duplex	Select Off for single-sided printing. Specify Head to Head or Head to Toe for duplex (double-sided) printing by specifying the orientation of printed images. For more information, see page 110 .
Rotate 180 (check box)	Specify On to rotate the pages of a job 180 degrees.
Flip	Specify Horizontal to have the common edge or spine along the top edge of the job.
Print Border	Select On to print borders around each page in your print job.
Pages per Sheet	Specify the number of document pages per sheet of paper for your print job. NOTE: This option is invalid if your job is sent to the Direct connection.
Page Order	Specify the layout direction when the Pages per sheet option is set to 2-up or greater.

Gangup options

Option	Information
Gangup	Select On to specify options for speed printing imposition modes.
Gang-up type	<p>Select Step & repeat to speed print a job by printing two document pages on each sheet. When the printed sheets are cut in half, the result is two complete sets of the same document.</p> <p>Select Cut & stack to speed print a job by printing two document pages side by side. When the printed sheets are cut in half and stacked together, the result is one complete set of the document (in faster printing time).</p> <p>For more information, see page 111.</p>
Paper Size	<p>Paper Size defines the size of the sheet of paper on which your job prints. It is the size of the physical sheet of paper in the digital press tray. To assign Paper Size, do one of the following:</p> <ul style="list-style-type: none"> • Select the size from the available list. (SEF stands for Short Edge Feed; LEF stands for Long Edge Feed.) • Choose Select From Paper Catalog to access a dynamic database that stores the media attributes of any paper available for printing from the EX Print Server. • Select Custom Paper Size to select a non-standard paper size. • Select Same as Document Size to print one document page per sheet of paper. <p>The default size is Letter in the U.S. and A4 elsewhere.</p> <p>For information about Paper size and Document size, see page 119.</p> <p>For information about printing custom page sizes, see page 36 and page 67.</p> <p>For information about accessing Paper Catalog, see Utilities. For information about using Paper Catalog, see Command WorkStation Help.</p>
Shrink to fit	<p>Shrink to fit automatically scales down or reduces the document page size to fit the imageable area of the selected paper size specified from the Paper size menu. Shrink to fit does not scale up or enlarge.</p> <p>When Shrink to fit is set to Off, page contents print at 100%.</p>
Increase gutter by 0/-50.0–50.0 mm (0.1 mm increments) 0/-1.969–1.969 in (.001 inch increments)	<p>Increase gutter by controls the amount of space between adjacent pages on a sheet to adjust for trimming or other finishing options.</p> <p>Specify a positive value to increase the amount of blank space between adjacent pages.</p> <p>Specify a negative value to decrease the amount of blank space between adjacent pages.</p>
Duplex	<p>Select Off for single-sided printing.</p> <p>Specify Head to Head for duplex (double-sided) printing.</p> <p>For more information, see page 110.</p>

Booklet options from the printer driver

The following table references the Booklet Maker print options accessible from the printer driver. For the Booklet Maker print options accessible from Command WorkStation Job Properties, see [“Booklet Maker in Job Properties”](#) on page 104.

NOTE: You can use the Booklet Maker Wizard to specify your booklet options by clicking Launch Wizard.

Option	Information
Booklet	Select On to specify options for printing documents in booklet layout. Click Launch Wizard to specify how to arrange the pages of the job in special layouts for folding or cutting after printing.
Booklet Type	<p>Booklet Type is a combination of binding method, which determines how the signatures of the booklet are folded and imposed, and binding edge, which determines the location of the spine of the booklet.</p> <p>For more information, see Booklet Maker Help.</p>
Paper size: Paper Size for 2-up	<p>Paper Size for 2-up defines the size of the sheet of paper (unfolded) on which a booklet is printed.</p> <p>To select a Paper size for a booklet, do one of the following:</p> <ul style="list-style-type: none"> • Select from the list of available sizes. (SEF stands for Short Edge Feed; LEF stands for Long Edge Feed.) • Choose Select From Paper Catalog to access a dynamic database that stores the media attributes of any paper available for printing from the EX Print Server. • Select Custom Paper Size to create a non-standard Paper size. • Select Same as Document Size to print one document page per sheet of paper. <p>The default Paper Size is Letter in the U.S. and A4 elsewhere.</p> <p>For information about Paper size and Document size in booklets, see page 109 and Booklet Maker Help.</p> <p>For information about accessing Paper Catalog, see Utilities. For information about using Paper Catalog, see Command WorkStation Help.</p> <p>For information about printing custom page sizes, see page 36 and page 67.</p>
Paper size: Shrink to fit	<p>Shrink to fit automatically scales down or reduces the document page size to fit the imageable area of the selected paper size specified from the Paper size menu. Shrink to fit does not scale up or enlarge.</p> <p>When Shrink to fit is set to Off, page content prints at 100%.</p> <p>For more information, see Booklet Maker Help.</p>
Subset Size: Number of sheets in a subset (Saddle)	<p>When Nested Saddle is selected, use this option to specify the number of sheets in each subset.</p> <p>This option appears only when Nested Saddle is selected.</p>

Option	Information
Page alignment: Centering Adjustment	<p>Align pages positions page content in relation to the center of one-half the paper size or the spine, the center of the sheet where the fold occurs.</p> <p>At the center positions page content in the center of <i>one-half</i> the specified paper size.</p> <p>At the spine aligns page content with the spine or center fold of your booklet.</p> <p>For more information, see Booklet Maker Help.</p>
Page alignment: Increase gutter by 0/-50.0–50.0 mm (0.1 mm increments) 0/-1.969–1.969 in (.001 inch increments)	<p>Increase gutter by controls the amount of space between adjacent pages to adjust for binding or other finishing options.</p> <p>Specify a positive value to increase the amount of blank space between adjacent pages.</p> <p>Specify a negative value to decrease the amount of blank space between adjacent pages.</p> <p>For more information, see Booklet Maker Help.</p>
Page alignment: Compensate creep	<p>Compensate creep for adjusts the position of the page content to counteract the shift that occurs when sheets are folded to create Saddle and Nested Saddle booklets.</p> <p>Select Plain when printing Saddle or Nested Saddle booklets with a large number of pages.</p> <p>Select Thick when printing Saddle or Nested Saddle booklets on heavyweight paper.</p> <p>For more information, see Booklet Maker Help.</p>
Cover: Content input	<p>Select Front & Back Separately to include cover content (individual pages in your document) as part of your booklet print job.</p> <p>Select Pre-Printed (use insert) to insert a pre-printed cover that will be added to the body pages from an inserter tray.</p> <p>For more information, see Booklet Maker Help.</p>
Cover: Front Cover	<p>When Front & Back Separately is selected, use the Front Cover option to define how the content of the front cover is printed.</p> <p>Select Print on outside to print only on the outside of the front cover (the inside of the front cover will be blank).</p> <p>Select Print on inside to print only on the inside of the front cover (the outside of the front cover will be blank).</p> <p>Select Print on both sides to print on both the inside and outside of the front cover.</p> <p>Select Do not print if you do not want any content printed on the front cover.</p> <p>When you add a cover, blank pages may be inserted depending on the allocation of pages to signatures. For more information, see Booklet Maker Help.</p>

Option	Information
Cover: Back Cover	<p>When Front & Back Separately is selected, use the Back Cover option to define how the content of the back cover is printed.</p> <p>Select Print on outside to print only on the outside of the back cover (the inside of the back cover will be blank).</p> <p>Select Print on inside to print only on the inside of the back cover (the outside of the back cover will be blank).</p> <p>Select Print on both sides to print on both the inside and outside of the back cover.</p> <p>Select Do not print if you do not want any content printed on the back cover.</p> <p>When you add a cover, blank pages may be inserted depending on the allocation of pages to signatures in the job. For more information, see Booklet Maker Help.</p>
Cover: Define Cover	<p>When Saddle is selected, click Define Cover to specify the following cover options: Booklet Cover Source, Color Mode, Media Type, and Media.</p>

Impose options

The Impose option is only accessible from Command WorkStation.

Option	Information
Impose	Select On to specify an imposition layout for the job.
Templates	<p>Specify an imposition layout template for the job.</p> <p>The available templates are Default Template, 1-up full Bleed, 2-up perfect, 2-up saddle, 3-up trifold brochure, 4-up gate fold, 4-up head to head, 4-up z fold.</p>

Color options

Option	Information
Color Mode	<p>Specify the color mode for the current print job.</p> <p>Select CMYK for a full-color document.</p> <p>Select Grayscale for a grayscale or black-and-white document.</p> <p>Choose Basic Settings to specify color print options and settings.</p> <p>Choose Expert Settings to edit other color print options and settings, including Black Overprint, Black Text and Graphics, Gray (CMYK), and Gray (RGB).</p> <p>For information about Expert Settings, see page 92.</p>
Auto Trapping	<p>Specify whether the job should automatically reduce white gaps for text and graphics.</p> <p>Setting this option to On may result in graphics or text surrounded with borders.</p> <p>For more information, see page 101.</p>
Composite overprint	<p>Select On to overprint objects that are specified in the source PostScript or PDF file.</p> <p>Design applications are typically set to knock out objects. To overprint, you must first change the settings in the <i>source</i> application. When the Composite Overprint option is then set to On, the overprinting commands specified in the source application take place, provided the output is composite and consistent with the separations output.</p> <p>For more information, see Color Printing.</p>
Combine separations	<p>When printing separations from supported desktop publishing applications:</p> <p>Select On to combine separations on a single page.</p> <p>Select Off to view separations as four individual black-and-white pages, each representing one color plate.</p> <p>For more information, see Color Printing.</p>
Substitute Colors	<p>Select On to use the Substitute Color Values defined in the Spot-On module.</p> <p>For more information, see Color Printing.</p>
2-Color print mapping	<p>Specify to replace spot colors with generic colors when you are creating a print job.</p> <p>This option is available as part of the Fiery Graphic Arts Package, Premium Edition.</p> <p>For more information, see Fiery Graphic Arts Package.</p>

Expert Settings options

To access the following options, click Expert Settings.

Expert Settings modes are as follows:

- Color Input: use these options for color printing ([page 92](#)).
- Gray & Black Processing: use these options for grayscale or black & white printing ([page 94](#)).
- Output: specify the output profile to use for printing document ([page 94](#)).

Color Input

Option	Information
CMYK/Grayscale Source	Specify the simulation goal to be used for the current print job. For more information, see Color Printing .
Use embedded profile when present (CMYK)	When this option is enabled, the EX Print Server ignores the CMYK/Grayscale Source option and uses the CMYK profile embedded in the print job as the CMYK source profile.
CMYK/Grayscale Processing Method	Specify the simulation method for CMYK print jobs. Select Full (Source GCR) for a more complete and accurate simulation. Full (Source GCR) applies colorimetric transformations that adjust hue as well as output density and produces output that maintains the same amount of black as the source document. Select Full (Output GCR) to apply the same simulation method as Full (Source GCR), except that the output produced contains a black amount determined by the Output Profile. Select Pure Primaries to use one-dimensional transfer curves to adjust density output of individual color channels. For more information, see Color Printing .
Paper Simulation	Specify to adjust the color according to the shade of the paper stock used as printable CMYK values in the output color space. This option is available as part of the Fiery Graphic Arts Package. For more information, see Fiery Graphic Arts Package .
RGB Source	Specify a source color space definition for printing RGB images, objects, and text. For more information, see Color Printing .
Use embedded profile when present (RGB)	When this option is enabled, the EX Print Server ignores the RGB Source option and uses the RGB profile embedded in the print job as the RGB source profile.

Option	Information
RGB/Lab Rendering Intent	<p>Specify a default CRD (color rendering dictionary) for color conversion when printing RGB images, objects, and text.</p> <p>Select Presentation to print files with artwork, graphics and text. The result is similar to Photographic, with well-rendered flesh tones and more saturated colors.</p> <p>Select Photographic to print photographs, including scanned and digital camera images. The result is less saturated than Presentation style.</p> <p>Select Relative Colorimetric when color matching is important, but you also want to print white as paper white. The white point transformation eliminates borders between blank spaces and white objects.</p> <p>Select Absolute Colorimetric when exact colors are required and visible borders are not distracting. There is no white point transformation.</p> <p>For more information, see Color Printing.</p>
Separate RGB/Lab to CMYK Source	<p>Select for RGB jobs when you want to simulate an output device other than the device to which you are printing.</p> <p>For more information, see Color Printing.</p>
Spot Color Matching	<p>Select Off to print specified PANTONE colors in your job using the current CMYK/Grayscale Source and CMYK/Grayscale Processing Method.</p> <p>Select On to activate the PANTONE Lookup Table. The EX Print Server prints specified PANTONE colors in your job by matching the CMYK print blend to the same color from the PANTONE library.</p> <p>For more information, see Color Printing.</p>
PDF/X Output Intent	<p>Specify On to enable the PDF/X Output Intent feature to use the embedded output intent for PDF/X compliant print jobs.</p> <p>To use PDF/X Output Intent, you must enable the Use Embedded Profile If Present (RGB) option.</p> <p>For information about the PDF/X Output Intent feature, see Color Printing.</p> <p>This option is only accessible from Command WorkStation.</p>

Gray & Black Processing

Option	Information
Gray (CMYK)	<p>Select these settings to print a CMYK job using black dry ink instead of process black.</p> <p>This option renders the selected object types (Text/Graphics or Text/Graphics/Images) in grayscale using black only, when C=M=Y=0 and K=n, where n is not zero. (Graphics refer to vector graphics; Images refer to raster images.)</p> <p>This option is designed to use black efficiently, by using only black dry ink (rather than four-color process black).</p> <p>For more information, see Color Printing.</p>
Gray (RGB)	<p>Select these settings to print an RGB job using black dry ink instead of process black.</p> <p>This option renders the selected object types (Text/Graphics or Text/Graphics/Images) in grayscale using black only, when R=G=B. (Graphics refer to vector graphics; Images refer to raster images.)</p> <p>This option is designed to use black efficiently, by using only black dry ink (rather than four-color process black).</p> <p>For more information, see Color Printing.</p>
Black Text and Graphics	<p>Select Normal to print black text and graphics as a four-color black using C, M, Y, and K dry ink, and to use normal PostScript rendering.</p> <p>Select Pure Black On to print black text and graphics as a one-color black, using black dry ink only.</p> <p>Select Rich Black On to print black text and graphics as richer looking black, by layering a small amount of Cyan dry ink underneath the black dry ink to make the black even darker.</p> <p>This option is automatically set to Pure Black On if the Black Overprint option is enabled.</p> <p>For more information, see Color Printing.</p>
Black Overprint (for pure black)	<p>Select Text to overprint black text.</p> <p>Select Text/Graphics to overprint black text and graphics.</p> <p>For more information, see Color Printing.</p>

Output

Option	Information
Default Output Profile	<p>Specify the output profile to use for the current print job.</p> <p>For information about output profiles, see Color Printing.</p>

Image options

For information about options specified in Setup, see [Configuration and Setup](#).

Option	Information
Image Smoothing	Select On to minimize pixilation when printing low-resolution images.
Brightness	Specify the image brightness for the printed document. Select 85% for a substantially lighter image, 115% for a substantially darker image, or use one of the settings in between.
Text/Graphics Enhancement	Specify to sharpen the edges of text or vector graphics.
Image Quality	Specify the type of image quality for the job. The Image Quality option affects the fineness of images in the job; there is a trade-off with processing speed.
Digital Press Mode	When printing graphics, specify one of the screens that are available on the digital press when printing a job. Specify Defined by Output Profile for the EX Print Server to look for the calibration set associated with the output profile set for a job, and the EX Print Server will use the Digital Press Mode setting that is associated with that calibration set. This ensures that the screen applied during calibration is the same screen applied for the job, so that the calibration adjustment is accurate. NOTE: For Mixed Media jobs, Digital Press Mode is automatically set to 200 Dot Rotated.
Text/Graphics Quality	Specify the type of text and graphics quality for the print job. The text/graphics quality affects the sharpness and fineness of text and graphics in the job, with a trade-off in processing speed. Select Normal for good quality, with faster processing speed. Select Best for the sharpest possible text and graphic edges, with slower processing speed.
Halftone Simulation	Specify a halftone screening method for your print job. Select Application Defined to use the screening set by the application. Select Newsprint if you want a look similar to that of a newspaper. Select User Defined 1-3 to use the screening set by the EX Print Server. The User Defined Screen 1-3 settings reflect the setting specified in EX Print Server Setup. For more information, see Fiery Graphic Arts Package .
Use maximum printer density	This option is designed to create solid, saturated colors. It is typically used to print text and graphics, not photographic images. Select On to print 100% C, M, Y (or R, G, B) at the maximum density that the digital press is capable of printing, regardless of calibration. C, M, Y (or R, G, B) values less than 100% still print at the calibrated density value.

Option	Information
Image Enhance: Apply Image Enhancement	Specify On to apply photo finishing enhancement to the job. The supported file formats are .pdf, .ps, .tiff, and .eps. For more information, see page 112 .
Image Enhance: Image Enhancement Range	Specify all pages, specific page(s) or sheets of the document to apply photo finishing enhancement.

Finishing options

Option	Information
Collation	<p>Specify how to output multiple-page/multiple-copy jobs.</p> <p>For more information, see page 108.</p>
Stapler Mode	<p>Specify the number of staples and their positions.</p> <p>For more information, see page 120.</p>
Output Destination	<p>Specify the output tray for the job.</p>
Offset Jobs	<p>Select On to offset (shift in output tray) the job.</p> <p>Printer's default reflects the setting specified in EX Print Server Setup.</p>
DFA Finishing	<p>Specify functional modes of your DFA device.</p> <p>For information, see the documentation that accompanies the DFA device.</p>
DFA Profile	<p>Specify a profile to control your DFA device behavior.</p> <p>For information, see the documentation that accompanies the DFA device.</p>
Output Delivery	<p>Specify the output delivery for the printed job.</p> <p>Select Face down - normal order or Face up - reverse order to print your document on the bottom of the sheet of paper (the document outputs from the digital press with the text facing down).</p> <p>Select Face up - normal order or Face down - reverse order to print your document on the top of the sheet of paper.</p> <p>For more information, see page 117.</p>
Image Shift	<p>Adjust an image for duplex printing by shifting the image horizontally, in the direction of paper travel, relative to the leading edge.</p> <p>For more information, see page 114.</p>

Variable Data Printing (VDP) options

The EX Print Server is compatible with the following variable data printing languages:

- FreeForm and FreeForm 2
- Personalized Print Markup Language (PPML)
- Creo Variable Print Specification (VPS)
- Xerox Variable Data Intelligent PostScript Printware (VIPP)

When creating VDP documents, the following settings for the master document and variable document must match:

- Color Mode
- Combine Separations
- Duplex
- Paper Size
- Stapler Mode

The following setting for the variable document overrides the corresponding settings in the master document:

- Media Type
- Output Destination
- Paper Source

Option	Information
Create Master	To create a FreeForm master from this job, specify a number to assign to the FreeForm master file. Command WorkStation allows you to select up to 100 FreeForm Masters. For more information, see Variable Data Printing .
Use Master	For variable data print jobs, specify a FreeForm master number to be used for the job. Command WorkStation allows you to select up to 100 FreeForm Masters. For more information, see Variable Data Printing .
Preview Master	Click to generate a low-resolution image of your master page.
Print Master	Use this option to verify or confirm your Master page. For more information, see Variable Data Printing . Printer's default reflects the setting specified in EX Print Server Setup.
Remove White PPT Background	Select On when using PowerPoint to create variable data in conjunction with FreeForm.

Option	Information
File Search Path	<p>Some PPML and other types of jobs do not contain all of the variable data job resources in a single file. In these cases, on a job per job basis, specify the location of the variable data job external resources so that the EX Print Server can access them.</p> <p>For more information, see Variable Data Printing.</p>
Define Record length	<p>This feature allows you to process a PDF or PostScript file like a variable data print job, and to apply record-based finishing.</p> <p>This option is used in connection with the Pages Per Record option.</p> <p>For more information, see Variable Data Printing.</p>
Pages Per Record	<p>Use this option to define record-based (rather than job-based) finishing, based on the number entered.</p> <p>This option is used with the Define Record Length option.</p> <p>For more information, see Variable Data Printing.</p>
Cache PDF and PS objects	<p>Specify On to cache PDF and PS objects, a feature that recognizes objects (text, images, vectors) within a PostScript or PDF file and caches the image, reducing the need to reRIP (re-process) image data for faster printing.</p> <p>For more information, see Variable Data Printing.</p> <p>This option is only accessible from Command WorkStation.</p>

Stamping/Watermark options

Option	Information
Watermarks	<p>Select standard text for your watermark from the pull-down menu.</p> <p>To create your own watermark, click New.</p> <p>To modify a standard watermark, select from the pull-down menu and click Edit.</p> <p>To remove a watermark from the list, select from the pull-down menu and click Delete.</p> <p>For more information about using watermarks, see printer driver Help.</p>
Print Watermarks: First Page Only	<p>Use this option to print watermarks on only the first page. For more information about using watermarks, see printer driver Help.</p>

Overriding print option settings

Print option settings that were specified in the printer driver can be overridden in Command WorkStation Job Properties.

TO OVERRIDE JOB PROPERTIES

- 1 In Command WorkStation, right-click a held job in the Job Center view.
- 2 Choose Properties from the pop-up menu.
- 3 Specify the print option settings, and then click Print.

You can override most print options in the printer driver and Command WorkStation Job Properties. Exceptions are listed in the following table:

Printer driver tab	Option	Driver Win	Driver Mac	CWS
JOB INFO	Print Range			X
	Print Queue Action	X	X	
	User Authentication: Username	X	X	
	User Authentication: Password	X	X	
	User Authentication: Use Windows Login	X		
	User Authentication: I'm a Guest	X		
LAYOUT: Normal	Flip	X	X	
EXPERT SETTINGS	PDF/X Output Intent			X
VARIABLE DATA PRINTING	Preview Master	X	X	
	Cache PDF and PS objects			X
STAMPING/WATERMARK	Watermarks	X	X	
	Print Watermarks: First Page Only	X	X	
ALL TABS	Adobe PDF Print Engine Preferred			X

Additional information

The following sections provide additional information about print options. For more information about options, see the tables that begin on [page 81](#).

Auto Trapping

Trapping is a technique to print some objects slightly larger or smaller than specified in an application, in order to prevent white edges around the objects. These white edges, or “halos,” can be caused by factors such as misregistration, the physical properties of the dry inks, and the stiffness of the media. The Auto Trapping feature provides you with advanced trapping settings and gives you full control over their values. For more information, see [Color Printing](#).

Booklet Maker

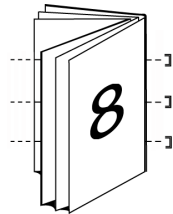
Booklet Maker is the imposition tool that allows you to quickly print documents in booklet format, without the need for more involved page imposition programs. Booklet Maker provides advanced settings, while streamlining the booklet-making process by displaying only the options and controls relevant to your selections. Booklet Maker is capable of imposing jobs from nearly any application.

Booklet Maker can be accessed in the printer driver when you print a job, or in Command WorkStation Job Properties, where you can modify a job's properties.

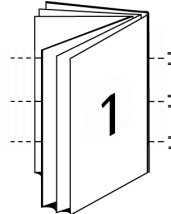
NOTE: Mixed media jobs and variable data jobs are not supported when using Booklet Maker.

The following booklet layouts are available:

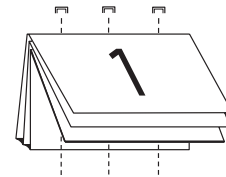
Saddle binding: In Saddle binding, signatures are folded together as a group, and then stapled or stitched along the center fold, which forms the spine of the booklet.



**Saddle
(left) binding**

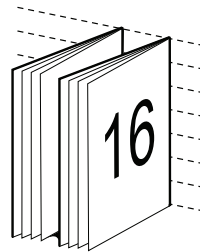


**Saddle
(right) binding**

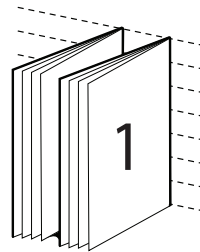


**Saddle
(top) booklet**

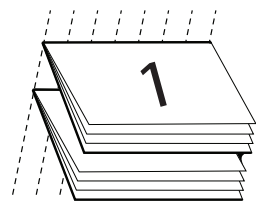
Nested Saddle binding: The Nested Saddle binding method combines saddle and perfect binding methods by stacking two or more saddles (also called “groups” or “subsets”) together along the common fold, then gluing them together at the fold to form the spine.



**Nested Saddle
(left) binding**

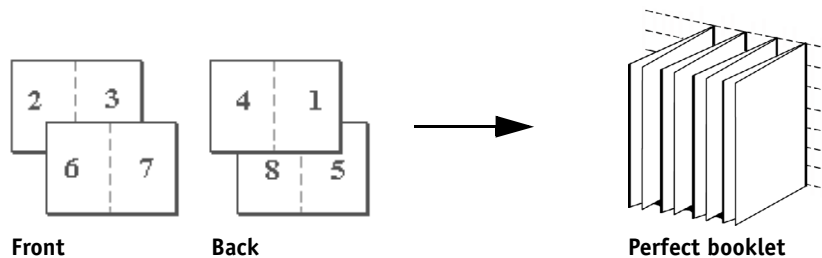


**Nested Saddle
(right) binding**



**Nested Saddle
(top) binding**

Perfect binding: In Perfect binding, separate folded pages are printed and stacked in booklet order. Finished pages are stitched adjacent to one another for trimming or gluing.



For Booklet Maker options and available settings, see the table that begins on [page 88](#).

For information about using Booklet Maker options, see Booklet Maker Help.



Booklet Maker in the printer driver

You can choose to work with Booklet Maker in the printer driver in two ways:

- Using the Booklet Maker wizard
Recommended for first-time or novice users
- Specifying settings in the main Booklet Maker dialog box
Recommended for experienced or advanced users

For Booklet Maker options and available settings in the printer driver, see the table that begins on [page 88](#).

To use Booklet Maker to print a booklet from the printer driver, use one of the following procedures.

TO ACCESS BOOKLET MAKER FROM THE WINDOWS PRINTER DRIVER

- 1 In your application, choose **File > Print**.
- 2 Select the **EX Print Server** as your printer, and then click **Properties**.
- 3 In the printer driver, click the **Layout** icon, and select the **Booklet** option.



For information about using Booklet Maker options, see Booklet Maker Help.

TO ACCESS BOOKLET MAKER FROM THE MAC OS X PRINTER DRIVER

- 1 In your application, choose **File > Print**.
- 2 Select the **EX Print Server** as your printer, and then choose **Fiery Features** from the drop-down list.
- 3 Click **Full Properties** in the **Quick Access** pane.
- 4 In the printer driver, click the **Layout** icon, and select the **Booklet** option.



For information about using Booklet Maker options, see Booklet Maker Help.

Booklet Maker in Job Properties

You can choose to work with Booklet Maker in Job Properties in two ways:

- Using the Booklet Maker wizard
Recommended for first-time or novice users
- Specifying settings in the main Booklet Maker dialog box
Recommended for experienced or advanced users

To access Booklet Maker from Command WorkStation Job Properties, use the following procedure.

TO ACCESS BOOKLET MAKER FROM COMMAND WORKSTATION

- 1 **Double-click your print job in the Held or Printed list, or right-click the job and select Properties.**
- 2 **Select the Layout icon in the Job Properties window.**
- 3 **Select the Booklet option.**
- 4 **Choose the Booklet Maker settings or click Launch Wizard to choose the settings graphically.**



For information about using Booklet Maker options, see Command WorkStation Help.

About Booklet Maker imposition

Imposition is the process of printing multiple pages on single sheets of paper. When the imposed sheets are folded together as signatures, the pages follow in sequential or reading order. Booklet Maker is designed for 2-up imposition, which imposes four individual pages from your document on a single sheet that is printed duplex.

The order in which pages are imposed is determined by the binding method you select.

Booklet Maker and Impose

Booklet Maker settings are supported by Impose, if enabled. You can open a job with Booklet Maker settings in Impose to preview the imposition layout or further modify the imposition layout, if necessary.

Impose translates and maps all Booklet Maker settings to Impose commands.

NOTE: When a job with Booklet Maker settings has been edited in the Impose window, the job can no longer be edited in Booklet Maker. Impose offers more settings that cannot be mapped to Booklet Maker settings.

For more information about Impose, see [Utilities](#).

Main Booklet Maker window

In the main Booklet Maker window, Booklet Maker dynamically displays all of the controls applicable to creating a booklet.

TO CREATE A BOOKLET

- 1 Select a Booklet Type: Saddle, Nested Saddle, or Perfect.
- 2 Select a binding edge: Left, Top, or Right.
- 3 Specify a Paper size.
- 4 Select Shrink to Fit, if required.
- 5 Specify Page Alignment.
- 6 Specify Creep compensation, if required.

Creep compensation is available for Saddle and Nested Saddle booklets.

- 7 Click Define Cover to specify cover settings, if you selected a Saddle booklet in [step 1](#).

NOTE: Cover settings are only available for Saddle booklets. For more information, see [“Adding a cover”](#) on page 106.

- 8 Click OK to save your settings, Cancel to cancel the job, or Print to print your job.

Booklet Maker wizard

In the Booklet Maker wizard, accessed by clicking Launch Wizard, the windows display the steps in the booklet-making process.

TO NAVIGATE THE WIZARD

- To advance from one window to the next, click Next.
- To return to previous windows, click Back.
- To cancel settings and exit Booklet Maker, click Cancel.

TO CREATE A BOOKLET USING THE WIZARD

- 1 Click Launch Wizard.
- 2 Specify the Booklet Type (binding method) and Binding edge, and then click Next.
- 3 If Saddle was selected for Booklet Type, specify cover and content settings, and then click Next.
- 4 Specify Paper Size for the body, and then click Next.

If Saddle was selected for Booklet Type, click Define Cover to specify the cover size and media settings.

If Nested Saddle was selected for Booklet Type, specify the number of sheets in a subset.

- 5 Specify Layout, such as page alignment and gutters, and then click Next.

If Saddle or Nested Saddle was selected for Booklet Type, specify Creep compensation.

- 6 View the settings summary.
- 7 Click Finish to save your booklet, Back to change any settings, or Cancel to cancel the job.

Adding a cover

Covers are an option for Saddle booklets only.

TO INSERT A PRE-PRINTED COVER

- 1 In the main Booklet Maker window, select Saddle for Booklet Type and a binding edge.
- 2 Specify the required settings for Paper Size and Page Alignment for the body of the booklet.
- 3 Choose Pre-Printed from the Cover Content input menu.
- 4 Click Define Cover to specify the cover size and media settings, and to specify the source tray from the Booklet Cover Source menu.
- 5 Click OK.

TO SPECIFY AN INLINE COVER

- 1 In the main Booklet Maker window, select Saddle for Booklet Type and a binding edge.
- 2 Specify the required settings for Paper Size and Page Alignment for the body of the booklet.
- 3 Choose Front & Back Separately from the Cover Content input menu.
- 4 Specify the Front Cover and Back Cover settings.
- 5 Click Define Cover to specify the cover size and media settings, and to specify the source tray from the Booklet Cover Source menu.
- 6 Click OK.

NOTE: When you print an inline cover with top-edge binding, the outside back cover automatically rotates 180 degrees to match the orientation of the front cover.

Cover options

For Saddle only, Booklet Maker includes two cover options, either pre-printed or inline, for which you can specify media. You can specify additional options for an inline cover.

- **Content Input:** Select from Front and Back Separately or Pre-Printed.
- **Front and Back Separately:** Select this option to specify an inline cover that prints the cover pages and body pages as a single job. Separate pages from your document are imposed on a single sheet that forms the cover of your booklet.

You can specify an inline cover when your original document includes the cover pages and/or cover artwork for your booklet. The cover content may be the first and last pages of your document, or the first two and last two pages of your document, or any combination.

If you select Front and Back Separately, you can specify the Front Cover and Back Cover options below.

- **Pre-Printed:** Select this option to insert a pre-printed cover that will be merged with the body pages of your booklet, which print separately.

If you select this option, the Front Cover and Back Cover options below are disabled.

- **Front Cover and Back Cover:** These options allow you to quickly decide whether your front and back covers print duplex, single-sided, or both sides blank, without needing to add blank pages in your original document.

With top-edge binding that includes a cover, the outside of the back cover automatically rotates 180 degrees to match the orientation of the front cover.

- **Define Cover:** Select this option to specify the cover size and media settings, such as Color Mode and Media Type for your cover pages, which may be trimmed. You can also specify the Booklet Cover Source tray for the cover media. This option is available for both pre-printed and inline covers.

Printing Booklet Maker jobs

Booklet Maker does not support jobs sent to the Direct queue. Booklet Maker print jobs must be sent to the Print queue or Hold queue.

TO CHANGE THE UNIT OF MEASUREMENT

- 1 In Command WorkStation, go to Edit > Preferences.
- 2 Click the Size tab.
- 3 Select the unit of measurement (millimeters, points, or inches).
- 4 Click OK.

Changes are not effective until the next time Command WorkStation is started.

Collation

Use this option to specify sorting options.

Collated: Copies of a complete job are sorted as 1-N, 1-N.

Uncollated: Copies of a complete job are sorted as 1,1, 2,2, 3,3.

NOTE: The Collation of Mixed Media and Variable Data Printing (VDP) jobs is handled differently. For mixed media jobs, copies of a complete job are sorted according to finishing set. For variable data printing jobs, copies of a complete job are sorted per record.







For more information about VDP, see [Variable Data Printing](#); and for information about Mixed Media, see [Utilities](#).

Document size and Paper size

Document size is the page size defined in your application's Print setup (or Page setup) dialog box. Paper size is the size of the actual sheet of paper on which your job is printed. It may be useful to think of Document size as digital *input* (the page size defined in your original document) and Paper size as the physical *output* (the actual size of the paper in the digital press tray).

In cases when you print one document page per sheet of paper, Document size is usually the same as the Paper size. However, Document size may differ from Paper size when you print booklets or impose multiple document pages on a single sheet.

The following illustrations show examples of possible relationships between Document size and Paper size. Note that the orientation of all pages shown is Landscape.

	Document size (input)	Paper size (output)
Document size is the same as Paper size. Scaling is 100%.	Letter 	Letter 
Tabloid Document size scaled to fit on Letter Paper size. Scaling is 50%.	Tabloid 11x17 	Letter 
A4 Document size scaled to fit on A3 Paper size. Scaling is 141%.	A4 	A3 

Document size may also differ from Paper size when using the Scale or Scale to Fit options. The Scale option reduces or enlarges the document page at a specified percent. The Scale to Fit option automatically reduces or enlarges the document image to fit the selected Paper size.

For information about Scale and Scale to Fit, see [page 119](#).



For information about Document size and Paper size in booklet printing, see Booklet Maker Help.

Duplex printing

To PRINT DUPLEX (DOUBLE-SIDED) PAGES

- 1 In your application, choose File > Print and do one of the following.

Mac OS X: Select the EX Print Server as your printer, choose Fiery Features from the drop-down list, click Full Properties in the Quick Access pane, and then select Normal on the Layout tab.

Windows: Select the EX Print Server as your printer, click Properties, and then click the Layout icon.
- 2 Choose one of the Duplex settings:

Head to Head: Prints the top of the image on Side 1 on the same edge of the page as the top of the image on Side 2.

Head to Toe: Prints the top of the image on Side 1 on the opposite edge of the page from the top of the image on Side 2.

The following table shows how the Duplex settings correspond to printed output.

	Head to Head	Head to Toe
Portrait	<div><div><div><div>●</div><div>■</div><div>▲</div><div>1</div></div><div><div>○</div><div>□</div><div>△</div><div>2</div></div></div></div>	<div><div><div><div>●</div><div>■</div><div>▲</div><div>1</div></div><div><div>2</div><div>▽</div><div>□</div><div>○</div></div></div></div>
Landscape	<div><div><div><div>●</div><div>■</div><div>▲</div><div>1</div></div><div><div>○</div><div>□</div><div>△</div><div>2</div></div></div></div>	<div><div><div><div>●</div><div>■</div><div>▲</div><div>1</div></div><div><div>2</div><div>▽</div><div>□</div><div>○</div></div></div></div>

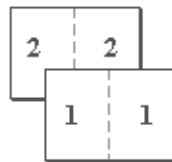
- 3 Print the job.

Gang-up printing

The EX Print Server includes two speed-printing options:

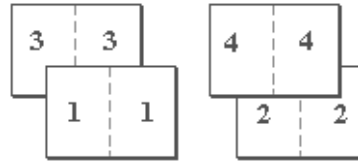
Step & repeat: Select this option to speed print a job so that the first page of your document is printed twice on the first sheet. The next sheet duplicates the data on the second page, the next sheet duplicates the data on the third page, and so on. When the printed sheets are cut in half, the result is two complete sets of the same document.

Single-sided



Front only

Duplex (double-sided)

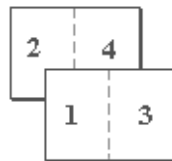


Front

Back

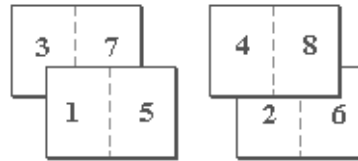
Cut & stack: Select this option to speed print a job so that when the sheets are stacked and cut from the central position, the job is numbered in order and separated as two stacks. The print order is such that when the sheets are cut in half, you can combine them to form a single complete set of the document, in faster printing time.

Single-sided



Front only

Duplex (double-sided)



Front

Back

For available options and settings, see the table on [page 87](#).

TO ACCESS GANG-UP PRINT FROM THE WINDOWS PRINTER DRIVER

- 1 In your application, choose File > Print.
- 2 Select the EX Print Server as your printer and click Properties.
- 3 In the printer driver, click the Layout icon and select the Gangup option.

TO ACCESS GANG-UP PRINT FROM THE MAC OS X PRINTER DRIVER

- 1 In your application, choose File > Print.
- 2 Select the EX Print Server as your printer and choose Fiery Features from the drop-down list.
- 3 Click Full Properties in the Quick Access pane.
- 4 In the printer driver, click the Layout icon and select the Gangup option.

Image Enhance

The Image Enhance feature lets you apply photo finishing enhancement to color images on specified pages or sheets of a job. This feature affects only photographic images, not graphics such as logos or charts. To enable this feature, select the Apply Image Enhancement option for a job and specify the pages or sheets to be affected. This option is located in the Image tab of the printer drivers and Command WorkStation Job Properties. You can customize Image Enhance settings from Command WorkStation.

Customizing Image Enhance settings

By default, the EX Print Server automatically optimizes the exposure, color, shadows, highlights, and sharpness of each image. You can customize the Image Enhance settings if the default settings do not provide satisfactory results. Custom settings allow you to set specific values for properties such as brightness and also allow you to enable red-eye correction.

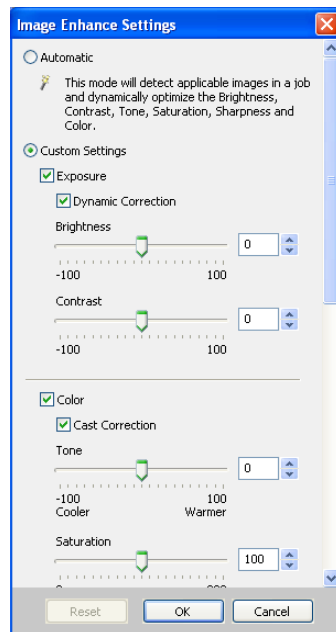
TO CUSTOMIZE THE IMAGE ENHANCE SETTINGS

- 1 In Command WorkStation, go to Device Center > Workflows > Image Enhance.

The current Image Enhance settings are shown.

- 2 Click Edit.

The Image Enhance Settings window appears.



- 3 Click Custom Settings, modify the settings as desired, and click OK.

The Image Enhance settings are described in the following sections.

Exposure

Select Exposure to enable the Dynamic Correction, Contrast, and Brightness controls.

If Dynamic Correction is selected, the EX Print Server analyzes each image and attempts to set the correct contrast and brightness, using separate values for contrast and brightness. Dynamic Correction attempts to fill the full dark to light range.

You can also specify Contrast and Brightness adjustments.

If Dynamic Correction is selected, Contrast and Brightness adjustments are applied in addition to the Dynamic Correction adjustments.

If Dynamic Correction is not selected, Contrast and Brightness adjustments are applied to the original image.

Color

Select Color to enable the Cast Correction, Tone, and Saturation controls.

If Cast Correction is selected, the EX Print Server analyzes each image and attempts to correct the color balance of the image.

You can also specify Tone and Saturation adjustments.

If Cast Correction is selected, Tone and Saturation adjustments are applied in addition to the Cast Correction adjustments. Color balance adjustments are applied, and then any Tone and Saturation adjustments are applied.

If Cast Correction is not selected, Tone and Saturation adjustments are applied to the original image.

Shadows & Highlights

Select Shadows & Highlights to enable the Auto Correction, Shadows, and Highlights controls.

If Auto Correction is selected, the EX Print Server analyzes each image and attempts to correct for shadows that are too dark and highlights that are too light.

You can also specify Shadows and Highlights enhancements manually. In this case, you must disable Auto Correction.

Sharpness

Select Sharpness to enable the Sharpness controls.

The Skin Sharpness control affects flesh tones in an image. The Non-skin Sharpness control affects the other colors in the image.

The range for each control is from -100 (softening) to 100 (sharpening).

Red-Eye Correction

Red-Eye is the condition in which a light source, usually a flash built into a camera, reflects from the retina in the subject's eye, causing a red pupil in the photo.

If Red-Eye Correction is selected, the EX Print Server analyzes the image and attempts to identify and correct the red-eye condition. You can adjust the size of the correction area using the Region control, where 100 corresponds to just the area of the red pupil.

Image Shift

Image Shift allows you to specify how much the image on each page should be shifted relative to the X (horizontal) and Y (vertical) axis. Moving the job content in this manner enables you to allow for various finishing options, such as stapling and binding. Image Shift prevents the image from being clipped.

NOTE: This option is available in the printer drivers or Command WorkStation.

NOTE: This option is effective only for jobs in which Pages per sheet is set to 1-up.

TO DEFINE IMAGE SHIFT FOR A PRINT JOB

- 1 In your application, choose **File > Print**, select the EX Print Server as your printer, and do one of the following.

Mac OS X: Choose **Fiery Features** from the drop-down list, click **Full Properties** in the Quick Access pane, and then click the **Finishing** icon.

Windows: Click **Properties**, and then click the **Finishing** icon.

- 2 Expand the **Image Shift** option and select the **Image Shift** check box.
- 3 Select the units of measurement.
- 4 Type the **Front** and **Back** image shift settings in the **X** and **Y** axis fields. You can also use the arrow buttons to shift the image settings.

NOTE: The maximum value for both X and Y axes is 999.99 points/13.89 inches/352.77 mm.

- 5 To align front and back images proportionately, select the **Align front and back images** check box.
- 6 Click **Apply** to save your settings, and then click **OK**.

Mixed Media

The Mixed Media feature allows you to define the chapter divisions of a print job and to print certain pages, or ranges of pages, on varying types of media. For example, you can use this option to add blank pages or to specify duplex pages within a single print job. You can also use Mixed Media to specify chapter-based finishing options, which treat each chapter as a separate finishing or duplexing set.



You can access Mixed Media from Command WorkStation or the printer driver. Instructions for accessing and using Mixed Media are provided in the Command WorkStation online Help. Features specific to the EX Print Server are described in [Utilities](#).

The following procedure describes how to access and print using Mixed Media from the printer driver.

TO ACCESS MIXED MEDIA FROM THE PRINTER DRIVER

- 1 In your application, choose **File > Print**, select the EX Print Server as your printer, and do one of the following.

Mac OS X: Choose **Fiery Features** from the drop-down list, click **Full Properties** in the **Quick Access** pane, and then click the **Media** icon.

Windows: Click **Properties**, and then click the **Media** icon.

- 2 Expand the **Mixed Media** option to specify settings.
- 3 Select from the following options:

Chapter Start Page(s): Use this option to designate chapter divisions, using comma-separated values (for example: 4,9,17) to designate the start of each new chapter.

NOTE: It is not necessary to type the first page; page numbers refer to the numbering of the original document.

Define Each Chapter As A Separate Finishing Set: Select this option to apply finishing options (such as stapling) or double-sided printing to each chapter created with the Chapter Start Page(s) option. For double-sided printing, using this option forces each starting page to use a right-side page, adding a preceding left-sided blank, if necessary.

NOTE: If you use the Chapter Start Page(s), Define Cover, or Define Each Chapter As A Finishing Set, *all* media specified in the Paper Size per chapter must share the same dimensions (for example, all Letter, all Tabloid, or all A4).

Define Cover: Use this option to assign page attributes (Color Mode, Duplex, Tab Shift, Media, Media Type, Paper Source, and Print on outside or inside) to front and back cover pages, and click OK.

New Page Range: Use this option to assign page attributes (Color Mode, Duplex, Tab Shift, Media, Media Type, Paper Size, and Paper Source) to specific pages, or ranges of pages. After you set page attributes, select Add Definition to save your settings, and then click Close to return to the Mixed Media dialog box.

New Insert: Use this option to assign page attributes (Media, Media Type, Paper Size, and Paper Source) to blank pages and click Insert. Click Close to return to the Mixed Media dialog box.

New Tab: Use this option to assign page attributes (Media Type, Paper Size, and Paper Source).

NOTE: New Tab is accessible only from Command WorkStation.

After you set the page attributes, specify the number of tabs to insert and click Insert. Click OK to save your tab settings.

4 Click Apply to save your settings and then click OK.

NOTE: You can save up to 100 different settings for the Selection List in the Mixed Media dialog box.

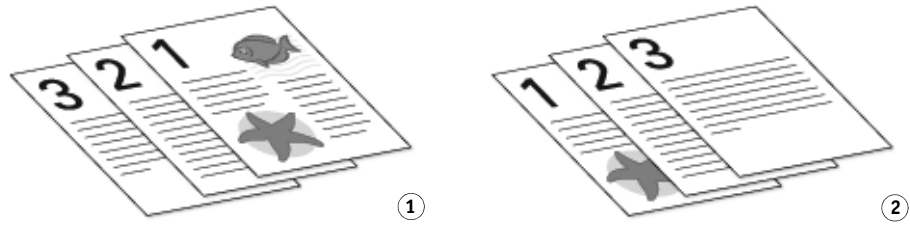
The way you define Mixed Media in the Windows and Mac OS X printer drivers is similar to the way you define it in Command WorkStation. For more information and detailed procedures, see [Utilities](#).

Output Delivery

Output Delivery allows you to specify how the stack of copies is delivered in the output tray.

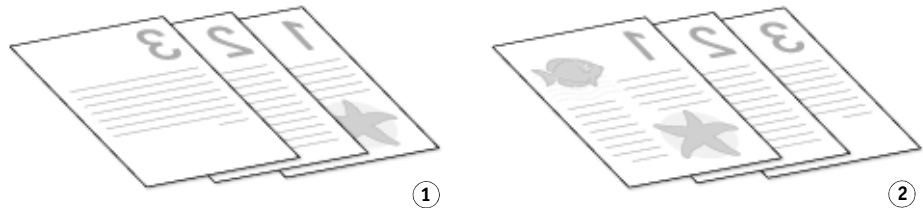
Select Face up for sheets delivered into the output tray with copies facing up, with Normal order for the first sheet on the top of the stack, or Reverse order for the first sheet on the bottom of the stack.

- 1 Face up - normal order
- 2 Face up - reverse order



Select Face down for sheets delivered into the output tray with copies facing down, with Normal order for the first sheet on the bottom of the stack, or Reverse order for the first sheet on the top of the stack.

- 1 Face down - normal order
- 2 Face down - reverse order



NOTE: When using a finisher that reverses the order of the stack, you can specify Reverse order so that when the stack is fed through the finisher, the pages are delivered in the correct order.

Paper Catalog

Paper Catalog is a system-based paper warehouse database that stores the attributes of any media that is available for printing from the EX Print Server.

The following procedure describes how to access Paper Catalog from the printer driver.

TO ACCESS PAPER CATALOG FROM THE PRINTER DRIVER

- 1 **Establish Two-Way Communication between your computer and the EX Print Server by entering the IP Address or DNS name in Properties.**



For information about establishing Two-Way Communication, see printer driver Help.

- 2 **In your application, choose File > Print, select the EX Print Server as your printer, and do one of the following.**

Mac OS X: Choose Fiery Features from the drop-down list, click Full Properties in the Quick Access pane, and then click the Media icon.

Windows: Click Properties, and then click the Media icon.

- 3 **Select the required media from the Paper Catalog pull-down menu.**
- 4 **Click Select to view the entire database and the full descriptions of paper attributes.**

For information about accessing Paper Catalog from Command WorkStation, see [Utilities](#).





For information about using Hot Folders, see [Utilities](#).

Scale

The operator can specify a scaling override in Command WorkStation, but the override is applied to any scaling value already set in the active job. For example, if a user sends a job with a scaling value of 50% and the operator specifies a Scale override of 300%, the job is printed at 150% of the original document size, that is, 50% of 300%.

Scale to Fit

The Scale to Fit option allows you to scale a job to a Paper size different from the Document size. When you set this option to On, the image is increased or reduced in size to fit the imageable area of the paper size you select from the Paper Size menu. When you set this option to Off, the original document size is printed without any scaling, even if you select a larger paper size.

	Document size Letter	Paper size 11x17
Scale to Fit set to On		
Scale to Fit set to Off		

Stapler Mode

Stapling is supported on the digital press when a finisher with stapling capabilities is installed.

NOTE: Page orientation, such as landscape and portrait, will affect the stapling output.

Off: Disables the stapler.

Front: The job is stapled with one staple in the left top corner of the page.

Rear: The job is stapled with one staple in the right top corner of the page.

Dual: The job is stapled with two staples along the left page edge.



For information about installing optional finishers, see printer driver Help.

User Authentication

If Users and Groups user authentication has been enabled in the EX Print Server Setup, you must enter a valid user name and password to send a print job to the EX Print Server. In Command WorkStation, the management of jobs is determined by how you have logged on to the EX Print Server.

For Mac OS X: Select the Job Info icon and type logon information in the User Name and Password fields.

Use Windows Login: Choose this option if you are already logged on to a Windows computer. Otherwise, type your Windows network logon information in the Username and Password fields.

Validate: Click to validate user authorization and to confirm printing privileges. To validate, Two-Way Communication must be activated. For information on establishing Two-Way Communication, see printer driver Help.

I'm a guest: Choose this option to activate guest printing privileges. By default, guest printing is permitted.

For information about enabling Users and Groups user authentication in the Configure WebTool, see [Configuration and Setup](#).

INDEX

Numerics

2-Color Print Mapping option 91

A

adding a non-English printer 25
 Adobe PDF Print Engine option 76
 APPE 76
 AppleTalk connection,
 Mac OS X 18, 22, 23
 Apply Image Enhancement
 option 96
 Auto Trapping option 91, 101
 automatic rotation 106

B

binding method 88
 binding options 105
 Black Overprint option 94
 Black Text and Graphics option 94
 Booklet layout mode 88
 Booklet Maker
 Back Cover option 90
 binding method 88
 Centering Adjustment option 89
 Cover Content option 89
 Creep compensation 89
 Define Cover option 90
 Front Cover option 89
 Gutter option 89
 Increase gutter by option 89
 Nested Saddle booklets 102
 Page Alignment 89
 Paper size 87
 Paper size for 2-up 88
 Settings 104
 Shrink to fit option 88
 Wizard 103, 104, 105
 Booklet option 101
 Booklet type, binding method 88
 Brightness option 95

C

Cache PDF and PS objects 99, 100
 CMYK mode 91
 CMYK/Grayscale Processing Method option 92
 CMYK/Grayscale Source option 92
 Collation option 97, 108
 Color mode 91
 Color print options, setting 32, 61
 Color Setup, job overrides 80
 Combine Separations option 91
 Command WorkStation, printing files from 26
 Composite Overprint option 91
 Control Bar 83
 Copies option 82
 cover
 inline 106
 pre-printed 106
 selecting media for 107
 Cover Content Input option 89
 cover settings 105, 106
 Create Master option 98
 Creep compensation 89
 custom page size, *see* defining a custom page size,
 printing a custom page size

D

Default Browser connection 16, 20
 Default Output Profile option 94
 default print options 29, 65
 Define Record Length 99
 defining a custom page size, Windows 67
 defining Image Shift 114
 DFA Finishing option 97
 DFA Profile option 97
 Digital Press Mode option 95
 Docs tab in WebTools 26, 58
 Document Size option 85
 Downloads tab in WebTools 11, 42
 Duplex (double-sided) option 87, 110
 Duplex option 86

duplex printing 104, 107
 duplex printing, *see* Duplex (double-sided)
 option

E

E-mail Service
 about 70
 Manage print jobs 72
 Expert Color Settings Advanced Edit dialog
 box 34, 63

F

Fiery Features 30
 Fiery Software Uninstaller Utility
 deleting 13
 installing and using 13
 on User Software DVD 9
 File port, saving files to 67
 File Search Path 99
 first-time use 103, 104
 Flip option 86
 FreeForm
 Preview Master option 100
 Print Master option 98
 FTP Printing 74

G

Gang-up print
 Cut & stack 111
 Gang-up type 87
 Gutter option 87
 Increase gutter by option 87
 Shrink to fit option 87
 Step & repeat 111
 Gang-up type 87
 Gangup layout mode 87
 Gray (CMYK) option 94
 Gray (RGB) option 94
 Grayscale mode 91
 gutters 87, 89

H

Halftone Simulation 95
 Hot Folders 26
 job overrides 80

I

I'm a Guest 82, 100, 120
 Image Enhance option 96, 112
 Image Enhance Range option 96
 Image Enhancement Range option 96
 Image Quality option 95
 Image Shift option 97
 Image Shift, defining 114
 Image Smoothing option 95
 Impose layout mode 90
 imposition 104
 installable options
 configuring 57
 configuring for Windows Vista 57
 viewing in printer drivers 40
 installing
 Job Monitor 69
 printer driver from User Software DVD 44
 printer drivers from server 43
 printer drivers using Point and Print 38
 virtual printers using Point and Print 47
 installing printer drivers 12
 Instructions field 31, 82
 IP Printer connection 17, 21
 IPP connection 55

J

Job Batching 75
 Job Info icon 60
 Job Monitor
 configuring connection 69
 installing 69
 on User Software DVD 9
 using 69
 job overrides
 2-Color Print Mapping option 91
 Apply Image Enhancement option 96
 Auto Trapping option 91
 Black Overprint option 94
 Black Text and Graphics option 94
 Brightness option 95
 CMYK/Grayscale Processing Method
 option 92
 CMYK/Grayscale Source option 92
 Collation option 97

- Combine Separations option 91
- Composite Overprint option 91
- DFA Finishing option 97
- DFA Profile option 97
- Digital Press Mode option 95
- Duplex option 86
- Image Enhancement Range option 96
- Image Quality option 95
- Image Shift option 97
- Image Smoothing option 95
- Media Type option 84
- Output Delivery option 117
- Output delivery option 97
- Paper Simulation option 92
- Paper Size option 109
- Print Queue Action option 82, 100
- print settings 80
- RGB/Lab Rendering Intent option 93
- RGB/Lab Source option 92
- Scale to Fit option 86
- Schedule Printing option 82
- Separate RGB/Lab to CMYK Source option 93
- Stapler Mode option 97
- Substitute Colors option 91
- Text/Graphics Enhancement option 95
- Text/Graphics Quality option 95
- Use embedded profile when present option 92
- Use maximum printer density option 95
- Use PDF/X Output Intent 93
- Use Windows Login option 82, 100

L

- Language folders 11
- Layout option, *see* Pages per sheet
- Line Printer Daemon - LPD 17, 21
- LPD/LPR connection, Mac OS X 24
- LPR connection 51

M

- Mac OS X
 - AppleTalk connection 18, 22, 23
 - Default Browser connection 16, 20
 - deleting printer driver files 13
 - Fiery Software Uninstaller utility 13
 - IP Printer connection 17, 21
 - Line Printer Daemon - LPD 17, 21

- LPD/LPR connection 24
- PPD 26
 - printer driver installation 10
 - printer driver setup 14
 - selecting printers 27

- Mac OS X applications, printing from 26
- Manage print jobs with e-mail commands 72
- managing print jobs 72
- measurement units
 - specifying 108
- Media Type option 84
- Mixed Media 85, 115

N

- Nested Saddle booklets 102
- Notes field 31, 60
- Notes option 82

O

- Offset Jobs option 97
- OSX Installer 11, 26
- Output Delivery option 117
- Output delivery option 97
- Output Destination option 97
- overrides, of job settings 80
- overriding Printer Setup settings 64

P

- Page Order option 86
- Page Setup dialog box 29
- Pages Per Record 99
- Pages per sheet option 86
- Paper Catalog 84, 118
- Paper Simulation option 92
- Paper Size option 84, 109
- Paper Source option 84
- Password 82, 100
- Perfect booklet setting 102
- Point and Print 38
- Postflight 83
- PostScript fonts 9
- PostScript Printer Description file, *see* PPDs
- PostScript printer driver
 - deleting 49
 - download using WebTools 42
 - installing from User Software DVD 44
 - installing using Point and Print 38
- PostScript printer drivers, explained 79

PPD
 Mac OS X 26
 overview 9
 Windows 45
 PPDs (PostScript printer description files)
 options 80
 Preview Master option 98, 100
 Print Border option 86
 Print dialog box 29
 Print Master option 98
 print options 59
 in Full Properties of Quick Access
 window 31
 setting 29
 Print Queue Action option 82, 100
 Print Range option 82
 printer default settings, where to set 80
 Printer Delete Utility 49
 on User Software DVD 9
 printer drivers
 downloading with WebTools 12
 installing 10
 setting up 14
 Printer Setup Utility 11
 printer, adding a non-English 25
 Printer's default 64
 printing
 from an application 59
 from Mac OS X applications 26
 to File port 67
 using an E-mail client 70
 printing a custom page size, Windows 67
 printing connections, supported types 50
 printing duplex pages 86
 Prntdrv.exe file 42
 Progressives 83
 Pure Black, *see* Black Text and Graphics

Q
 Quick Access window, customizing 30

R
 reading layout 104
 Remote Desktop
 enabling on client computer 41
 enabling on server 41
 Remove White PPT Background option 98

RGB/Lab Rendering Intent option 93
 RGB/Lab Source option 92
 Rich Black, *see* Black Text and Graphics
 RIPping 79
 Rotate 180 option 86
 rotatio, automatic 106

S

Scale option 86, 119
 Scale to Fit option 86, 119
 Schedule Printing option 82
 selecting printers, Mac OS X 27
 Separate RGB/Lab to CYMK
 Source option 93
 sheet 104
 Shrink to fit 87, 88
 single-sided printing 107
 SMB printing
 completing connection 50
 setup 39
 speed printing, *see* Gang-up print
 Spot Color Matching option 93
 Standard Booklet setting 102
 Stapler Mode option 97
 Step & repeat 111
 subset 106
 Substitute Colors option 91

T

TCP/IP connection 51
 Text/Graphics Enhancement option 95
 Text/Graphics Quality option 95
 top binding with a cover 107
 Tray Alignment option 84
 Two-Way Communication 36, 48, 67

U

USB device 73
 automatic printing 73
 printing files from 73
 Use embedded profile when
 present option 92
 Use Master option 98
 Use maximum printer density
 option 95
 Use PDF/X Output Intent 93
 Use Windows Login 120
 Use Windows Login option 82, 100

- User Authentication 60, 120
 - for Mac OS 120
 - I'm a Guest 120
 - Password 120
 - Password option 82, 100
 - password option 31
 - Use Windows Login 120
 - Use Windows Login option 82, 100
 - User Name option 82
 - user name option 31
 - Username 120
 - Username option 100
- User Software DVD, installing
 - printer driver files from 10, 11
- Username option 82, 100
- Users and Groups user
 - authentication 120

V

- Variable Data Printing
 - Define Record Length 99
 - Pages Per Record 99
- Variable Data Printing (VDP)
 - Cache PDF and PS objects 99, 100
 - Create Master option 98
 - Preview Master option 98, 100
 - Use Master option 98
- virtual printers
 - installing using Point and Print 47
 - setting up 47

W

- Watermarks option 99
 - First Page Only setting 99
- WebTools
 - Docs tab 26, 58
 - Downloads tab 11, 42
- Windows
 - IPP connection 55
 - LPR or Port 9100 connection 51
 - printer driver, installing
 - from User Software DVD 44
 - TCP/IP connection 51