

Fiery EX12/EX2000d

USER SOFTWARE INSTALLATION GUIDE



About the Documentation

This manual is part of a set of Fiery® documentation that includes the following manuals for users and system administrators:

- The *Quick Start Guide* summarizes the steps for configuring the Fiery and printing. It also describes how to access the online documentation.
- The *User Software Installation Guide* describes how to install software from the User Software CD to enable users to print to the Fiery, and also describes setting up printing connections to the Fiery.
- The *Configuration Guide* explains basic configuration and administration of the Fiery for the supported platforms and network environments. It also includes guidelines for setting up UNIX, Windows NT 4.0, and Novell NetWare servers to provide printing services to users.
- The *Printing Guide* describes the printing features of the Fiery for users who send jobs from their computers.
- The *Color Guide* provides information on managing the color output of the Fiery. It explains how to calibrate your Fiery and take advantage of the ColorWise® color management system, as well as features in ColorWise Pro Tools™.
- The *Fiery Color Reference* addresses concepts and issues associated with managing color output of the Fiery and outlines key workflow scenarios. In addition, it offers information on printing color documents from popular Microsoft Windows and Apple Mac OS applications.
- The *Job Management Guide* explains the functions of the Fiery client utilities, including EFI Command WorkStation™ and Fiery DocBuilder Pro™, and how you can use them to manage jobs and maintain color quality. This manual is intended for an operator or administrator, or a user with the necessary access privileges, who needs to monitor and manage job flow, perform color calibration, and troubleshoot problems that may arise.
- *Customer Release Notes* provide last-minute product information and workarounds for some of the problems you may encounter.

Copyright © 2002 Electronics For Imaging, Inc. All rights reserved.

This publication is protected by copyright, and all rights are reserved. No part of it may be reproduced or transmitted in any form or by any means for any purpose without express prior written consent from Electronics For Imaging, Inc., except as expressly permitted herein. Information in this document is subject to change without notice and does not represent a commitment on the part of Electronics For Imaging, Inc.

The software described in this publication is furnished under license and may only be used or copied in accordance with the terms of such license.

This product may be covered by one or more of the following U.S. Patents: 4,500,919, 4,837,722, 5,212,546, 5,343,311, 5,424,754, 5,467,446, 5,506,946, 5,517,334, 5,537,516, 5,543,940, 5,553,200, 5,615,314, 5,619,624, 5,625,712, 5,666,436, 5,760,913, 5,818,645, 5,835,788, 5,867,179, 5,959,867, 5,970,174, 5,982,937, 5,995,724, 6,002,795, 6,025,922, 6,041,200, 6,065,041, 6,112,665, 6,122,407, 6,134,018, 6,141,120, 6,166,821, 6,185,335, 6,201,614, 6,215,562, 6,219,659, 6,222,641, 6,224,048, 6,225,974, 6,226,419, 6,238,105, 6,239,895, 6,256,108, 6,269,190, 6,289,122, 6,292,270, 6,310,697, 6,327,047, 6,327,050, 6,327,052, RE36,947, D406,117, D416,550, D417,864, D419,185, D426,206, D439,851, D444,793

Trademarks

ColorWise, EDOX, EFI, Fiery, the Fiery logo, Fiery Driven and RIP-While-Print are registered trademarks of Electronics For Imaging, Inc. in the U.S. Patent and Trademark Office and/or certain other foreign jurisdictions.

The eBeam logo, the Electronics For Imaging logo, the Fiery Driven logo, the Splash logo, AutoCal, ColorCal, Command WorkStation, DocBuilder, DocBuilder Pro, DocStream, eBeam, EFI Color Profiler, EFI Production System, EFI ScanBuilder, Fiery X2, Fiery X2e, Fiery X2-W, Fiery X3e, Fiery X4, Fiery ZX, Fiery Z4, Fiery Z5, Fiery Z9, Fiery Z16, Fiery Z18, Fiery Document WorkStation, Fiery Downloader, Fiery Driver, Fiery FreeForm, Fiery Link, Fiery Prints, Fiery Print Calibrator, Fiery Production System, Fiery Scan, Fiery ScanBuilder, Fiery Spark, Fiery Spooler, Fiery WebInstaller, Fiery WebScan, Fiery WebSpooler, Fiery WebStatus, Fiery WebTools, NetWise, RIPChips, Splash, Velocity, Velocity Balance, Velocity Build, Velocity Design, Velocity Estimate, Velocity Scan, and VisualCal are trademarks of Electronics For Imaging, Inc.

All other terms and product names may be trademarks or registered trademarks of their respective owners, and are hereby acknowledged.

Legal Notices

APPLE COMPUTER, INC. ("APPLE") MAKES NO WARRANTIES, EXPRESS OR IMPLIED, INCLUDING WITHOUT LIMITATION THE IMPLIED WARRANTIES OF MERCHANTABILITY AND FITNESS FOR A PARTICULAR PURPOSE, REGARDING THE APPLE SOFTWARE. APPLE DOES NOT WARRANT, GUARANTEE, OR MAKE ANY REPRESENTATIONS REGARDING THE USE OR THE RESULTS OF THE USE OF THE APPLE SOFTWARE IN TERMS OF ITS CORRECTNESS, ACCURACY, RELIABILITY, CURRENTNESS, OR OTHERWISE. THE ENTIRE RISK AS TO THE RESULTS AND PERFORMANCE OF THE APPLE SOFTWARE IS ASSUMED BY YOU. THE EXCLUSION OF IMPLIED WARRANTIES IS NOT PERMITTED BY SOME STATES. THE ABOVE EXCLUSION MAY NOT APPLY TO YOU.

IN NO EVENT WILL APPLE, ITS DIRECTORS, OFFICERS, EMPLOYEES OR AGENTS BE LIABLE TO YOU FOR ANY CONSEQUENTIAL, INCIDENTAL OR INDIRECT DAMAGES (INCLUDING DAMAGES FOR LOSS OF BUSINESS PROFITS, BUSINESS INTERRUPTION, LOSS OF BUSINESS INFORMATION, AND THE LIKE) ARISING OUT OF THE USE OR INABILITY TO USE THE APPLE SOFTWARE EVEN IF APPLE HAS BEEN ADVISED OF THE POSSIBILITY OF SUCH DAMAGES. BECAUSE SOME STATES DO NOT ALLOW THE EXCLUSION OR LIMITATION OF LIABILITY FOR CONSEQUENTIAL OR INCIDENTAL DAMAGES, THE ABOVE LIMITATIONS MAY NOT APPLY TO YOU. Apple's liability to you for actual damages from any cause whatsoever, and regardless of the form of the action (whether in contract, tort [including negligence], product liability or otherwise), will be limited to \$50.

Restricted Rights Legends

For defense agencies: Restricted Rights Legend. Use, reproduction, or disclosure is subject to restrictions set forth in subparagraph (c)(1)(ii) of the Rights in Technical Data and Computer Software clause at 252.227.7013.

For civilian agencies: Restricted Rights Legend. Use, reproduction, or disclosure is subject to restrictions set forth in subparagraph (a) through (d) of the commercial Computer Software Restricted Rights clause at 52.227-19 and the limitations set forth in Electronics For Imaging's standard commercial agreement for this software. Unpublished rights reserved under the copyright laws of the United States.

Part Number: 45026392

FCC Information

WARNING: FCC Regulations state that any unauthorized changes or modifications to this equipment not expressly approved by the manufacturer could void the user's authority to operate this equipment.

Class B Declaration of Conformity

This equipment has been tested and found to comply with the limits for a class B digital device, pursuant to Part 15 of the FCC rules. These limits are designed to provide reasonable protection against harmful interference in a residential installation. This equipment generates, uses and can radiate radio frequency energy and if not installed and used in accordance with the instructions, may cause harmful interference to radio communications. However, there is no guarantee that interference will not occur in a particular installation.

If this equipment does cause harmful interference to radio or television reception, which can be determined by turning the equipment off and on, the user is encouraged to try to correct the interference by one or more of the following measures:

Reorient or relocate the receiving antenna.

Increase the separation between the equipment and receiver.

Connect the equipment into an outlet on a circuit different from that to which the receiver is connected.

Consult the dealer or an experienced radio/TV technician for help.

In order to maintain compliance with FCC regulations, shielded cables must be used with this equipment. Operation with non-approved equipment or unshielded cables is likely to result in interference to radio and TV reception. The user is cautioned that changes and modifications made to the equipment without the approval of manufacturer could void the user's authority to operate this equipment.

Industry Canada Class B Notice

This Class B digital apparatus complies with Canadian ICES-003.

Avis de Conformation Classe B de l'Industrie Canada

Cet appareil numérique de la Classe B est conforme à la norme NMB-003 du Canada.

RFI Compliance Notice

This equipment has been tested concerning compliance with the relevant RFI protection requirements both individually and on system level (to simulate normal operation conditions). However, it is possible that these RFI Requirements are not met under certain unfavorable conditions in other installations. It is the user who is responsible for compliance of his particular installation.

Dieses Gerät wurde sowohl einzeln als auch in einer Anlage, die einen normalen Anwendungsfall nachbildet, auf die Einhaltung der Funkentstörbestimmungen geprüft. Es ist jedoch möglich, dass die Funkentstörbestimmungen unter ungünstigen Umständen bei anderen Gerätekombinationen nicht eingehalten werden. Für die Einhaltung der Funkentstörbestimmungen einer gesamten Anlage, in der dieses Gerät betrieben wird, ist der Betreiber verantwortlich.

Compliance with applicable regulations depends on the use of shielded cables. It is the user who is responsible for procuring the appropriate cables.

Die Einhaltung zutreffender Bestimmungen hängt davon ab, dass geschirmte Ausführungen benutzt werden. Für die Beschaffung richtiger Ausführungen ist der Betreiber verantwortlich.

Software License Agreement

YOU SHOULD CAREFULLY READ THE FOLLOWING TERMS AND CONDITIONS BEFORE USING THIS SOFTWARE. IF YOU DO NOT AGREE TO THE TERMS AND CONDITIONS OF THIS AGREEMENT, DO NOT USE THE SOFTWARE. INSTALLING OR USING THE SOFTWARE INDICATES THAT YOU AGREE TO AND ACCEPT THE TERMS OF THIS AGREEMENT. IF YOU DO NOT AGREE TO ACCEPT THE TERMS OF THIS AGREEMENT YOU MAY RETURN THE UNUSED SOFTWARE FOR A FULL REFUND TO THE PLACE OF PURCHASE.

License

EFI grants you a non-exclusive license to use the software ("Software") and accompanying documentation ("Documentation") included with the Product. The Software is licensed, not sold. You may use the Software solely for your own customary business or personal purposes. You may not rent, lease, sublicense or lend the Software. You may, however, permanently transfer all of your rights under this Agreement to another person or legal entity provided that: (1) you transfer to the person or entity all of the Software and Documentation (including all copies, updates, upgrades, prior versions, component parts, the media and printed materials, and this Agreement); (2) you retain no copies of the Software and Documentation, including copies stored on a computer; and (3) the recipient agrees to the terms and conditions of this Agreement.

You may not make or have made, or permit to be made, any copies of the Software or portions thereof, except as necessary for backup or archive purposes in support of your use of the Software as permitted hereunder. You may not copy the Documentation. You may not attempt to alter, disassemble, decompiler, decrypt or reverse engineer the Software.

Proprietary Rights

You acknowledge that the Software is proprietary to EFI and its suppliers and that title and other intellectual property rights therein remain with EFI and its suppliers. Except as stated above, this Agreement does not grant you any right to patents, copyrights, trade secrets, trademarks (whether registered or unregistered), or any other rights, franchises or licenses in respect of the Software. You may not adopt or use any trademark or trade name which is likely to be similar to or confusing with that of EFI or any of its suppliers or take any other action which impairs or reduces the trademark rights of EFI or its suppliers.

Confidentiality

You agree to hold the Software in confidence, disclosing the Software only to authorized users having a need to use the Software as permitted by this Agreement and to take all reasonable precautions to prevent disclosure to other parties.

Remedies and Termination

Unauthorized use, copying or disclosure of the Software, or any breach of this Agreement will result in automatic termination of this license and will make available to EFI other legal remedies. In the event of termination, you must destroy all copies of the Software and all of its component parts. All provisions of this Agreement relating to disclaimers of warranties, limitation of liability, remedies, damages, and EFI's proprietary rights shall survive termination.

Limited Warranty and Disclaimer

EFI warrants to the original purchaser ("Customer") for thirty (30) days from the date of original purchase from EFI or its authorized retailer that the Software will perform in substantial conformance to the Documentation when the Product is used as authorized by EFI's specifications. EFI warrants the media containing the Software against failure during the above warranty period. EFI makes no warranty or representation that the Software will meet your specific requirements, that the operation of the Software will be uninterrupted or error free, or that all defects in the Software will be corrected. EFI makes no warranty, implied or otherwise, regarding the performance or reliability of any third party products (software or hardware) not provided by EFI. THE INSTALLATION OF ANY THIRD PARTY PRODUCTS OTHER THAN AS AUTHORIZED BY EFI WILL VOID THIS WARRANTY. IN ADDITION, USE, MODIFICATION, AND/OR REPAIR OF THE PRODUCT OTHER THAN AS AUTHORIZED BY EFI WILL VOID THIS WARRANTY.

EXCEPT FOR THE ABOVE EXPRESS LIMITED WARRANTY, EFI MAKES AND YOU RECEIVE NO WARRANTIES OR CONDITIONS ON THE SOFTWARE, EXPRESS, IMPLIED, STATUTORY, OR IN ANY OTHER PROVISION OF THIS AGREEMENT OR COMMUNICATION WITH YOU, AND EFI SPECIFICALLY DISCLAIMS ANY IMPLIED WARRANTY OR CONDITION OF MERCHANTABILITY OR FITNESS FOR A PARTICULAR PURPOSE OR NONINFRINGEMENT OF THIRD PARTY RIGHTS.

Limitation of Liability

TO THE MAXIMUM EXTENT PERMITTED BY LAW, EFI AND ITS SUPPLIERS SHALL NOT BE LIABLE FOR ANY DAMAGES, INCLUDING LOSS OF DATA, LOST PROFITS, COST OF COVER OR OTHER SPECIAL, INCIDENTAL, CONSEQUENTIAL OR INDIRECT DAMAGES ARISING FROM THE SALE, INSTALLATION, MAINTENANCE, USE, PERFORMANCE OR FAILURE OF THE SOFTWARE, HOWEVER CAUSED AND ON ANY THEORY OF LIABILITY. THIS LIMITATION WILL APPLY EVEN IF EFI HAS BEEN ADVISED OF THE POSSIBILITY OF SUCH DAMAGE. YOU ACKNOWLEDGE THAT THE PRICE OF THE PRODUCT REFLECTS THIS ALLOCATION OF RISK. BECAUSE SOME JURISDICTIONS DO NOT ALLOW THE EXCLUSION OR LIMITATION OF LIABILITY FOR CONSEQUENTIAL OR INCIDENTAL DAMAGES, THE ABOVE LIMITATION MAY NOT APPLY TO YOU.

Export Controls

You agree that you will not export or re-export the Software in any form in violation of any applicable laws or regulations of the United States or the country in which you obtained them.

U.S. Government Restricted Rights:

The Software and Documentation are provided with RESTRICTED RIGHTS. Use, duplication, or disclosure by the United States Government is subject to restrictions as set forth in subparagraph (c)(1)(ii) of the Rights in Technical Data and Computer Software clause at DFARS 252.227-7013 or subparagraphs (c)(1) and (2) of the Commercial Computer Software Restricted Rights at 48 CFR 52.227-19, as applicable.

General

The laws of the State of California govern this Agreement. You agree that this Agreement shall not be subject to the United Nations Convention on Contracts for the International Sale of Goods (1980). This Agreement is the entire agreement held between us and supersedes any other communications or advertising with respect to the Software. If any provision of this Agreement is held invalid, the remainder of this Agreement shall continue in full force and effect.

If you have any questions, please see EFI's web site at www.efi.com.

Electronics For Imaging
303 Velocity Way
Foster City, CA 94404

Contents

About the Documentation

Introduction

About this manual	xi
Specifications	xii
User software	xiv
Fiery WebTools	xvi
System requirements	xvi

Chapter 1: Installing User Software on a Windows Computer

Setting up PostScript printing with Windows 9x/Me	1-1
Installing the PostScript printer driver for Windows 9x/Me	1-2
Configuring installed options	1-4
Configuring installed options manually	1-4
Configuring installed options and updating print options settings automatically	1-6
Completing the Windows 9x/Me printer connection	1-9
Setting up SMB printing with Windows 9x/Me	1-12
Setting up IPP printing with Windows 9x/Me	1-14
Setting up PostScript printing with Windows NT 4.0 or Windows 2000/XP	1-15
Configuring installed options	1-22
Configuring installed options manually	1-22
Configuring installed options and updating print options settings automatically	1-25
Completing the Windows NT 4.0 or Windows 2000/XP printer connection	1-27
Setting up SMB printing on Windows NT 4.0 or Windows 2000/XP	1-34
Setting up IPP printing with Windows 2000/XP	1-36
Installing e-mail service	1-38
Installing Fiery utilities	1-42
Adobe Acrobat	1-43
PitStop	1-44

Using Fiery utilities for the first time	1-45
Configuring the connection for Command WorkStation	1-47
Configuring the connection for Fiery VDP Resource Manager	1-50
Configuring the connection for Fiery utilities	1-52
Installing color files from the User Software CD	1-54
Installing the ICM profiles on a Windows computer	1-55
Loading the monitor settings file	1-55
Loading the ICM copier device profile	1-57
Installing the printer description files for Windows	1-59

Chapter 2: Installing User Software on a Mac OS Computer

Setting up the Fiery as a PostScript printer	2-1
Setting up the Fiery in the Chooser	2-2
Installing Fiery software and fonts	2-5
Configuring a connection for ColorWise Pro Tools	2-6
Configuring a connection for Fiery Spooler	2-8
Configuring a connection for Fiery Downloader	2-10
Configuring the connection for Fiery VDP Resource Manager	2-12
Fonts	2-14
Installing color files from the User Software CD	2-15
Loading ICC profiles	2-16
Loading the monitor settings file	2-17
Loading the ICC copier profile	2-18

Chapter 3: Downloading Installers with Fiery WebTools

Setting up Fiery WebTools	3-1
Using the Fiery WebTools Installer	3-2

Chapter 4: Troubleshooting

On a Windows computer	4-1
Setting up printing on Windows NT 4.0 or Windows 2000/XP computers	4-1
Reinstalling the Adobe PostScript Printer Driver on Windows 9x/Me	4-1
Problems with the Fiery utilities on Windows 9x/Me, NT 4.0, or Windows 2000/XP	4-2
On a Mac OS computer	4-2
Setting up the Fiery in the Chooser	4-2

Index

Introduction

This manual describes how to install user software for the Fiery EX12/EX2000d Color Server™, and how to set up printing from Microsoft Windows and Apple Mac OS computers. For information about setting up network servers and clients to use the Fiery EX12/EX2000d Color Server, see the *Configuration Guide*. For general information on using the color copier, your computer, your application software, or your network, see the manuals that accompany those products.

NOTE: The term “Fiery” is used to refer to either the Fiery EX12/EX2000d Color Server. The Fiery EX12 supports the DocuColor 12 copier. The Fiery EX2000d supports the DocuColor 2000 copier. The name “Aero” is used in illustrations to represent the Fiery. The term “Windows 9x/Me” is used to represent Windows 95, Windows 98, and Windows Me.



This icon specifies information, features, or procedures that apply only to the Fiery EX12.



This icon specifies information, features, or procedures that apply only to the Fiery EX2000d.

The Fiery includes support for Fiery WebTools™ and software for Command WorkStation, which enables an operator to manage all jobs sent to the Fiery. Although it may not be the case at all sites, the documentation for this product assumes the presence of an operator who controls and manages jobs sent by users from remote workstations.

Additional connectivity or administrative features specific to the copier are described in the accompanying documentation.

About this manual

This manual covers the following topics:

- Installing printer files on Windows and Mac OS computers
- Setting up printing connections on Windows and Mac OS computers
- Installing Fiery utilities/other user software on Windows and Mac OS computers

Specifications

EX12

For the Fiery EX12:

- 866MHz CPU
- 256MB RAM
- 40GB hard disk drive
- Supports DocBuilder Pro (available as an option)
- Supports EFI Densitometer™ ED-100 (available as an option)
- Supports Pageflex™ Persona™ Variable Data package (available as an option)
- Supports PrintShop Mail™ Variable Data package (available as an option)
- Fiery WebTools, including WebSetup™ (Windows only), WebDownloader™, WebSpooler™, WebInstaller™, WebLink™, and WebScan™
- Fiery utilities, including Fiery Remote Scan, Fiery Delete Printer Utility, Fiery VDP Resource Manager, Fiery Downloader™, and Fiery Spooler™ (Mac OS only)

EX2000d

For the Fiery EX2000d:

- 1GHz Dual Intel Pentium III CPU
- 512MB RAM
- 60GB hard disk drive
- Supports DocBuilder Pro
- Supports EFI Densitometer ED-100
- Supports Pageflex Persona Variable Data package
- Supports PrintShop Mail Variable Data package
- Fiery WebTools, including WebSetup, WebDownloader, WebSpooler, WebInstaller, and WebLink
- Fiery utilities, including Fiery Printer Delete Utility, Fiery VDP Resource Manager, Fiery Downloader, and Fiery Spooler (Mac OS only)
- Supports the Fiery Advanced Controller Interface kit, which includes a monitor, a keyboard, and a mouse

NOTE: Fiery utilities can be installed on the Fiery from the User Software CD if the Fiery Advanced Controller Interface (FACI) kit is installed. Other applications are not supported and may cause system problems.

For the Fiery EX12 and Fiery EX2000d:

- An internal CD-ROM drive
- A 250MB ZIP drive for removable media
- Supports AppleTalk, TCP/IP, and IPX/SPX protocols simultaneously
- Supports Port 9100
- Supports twisted pair (Fast Ethernet 100BaseTX or Ethernet 10BaseT)
- Supports Adobe PostScript 3
- Includes 136 fonts (117 Adobe Type 1 PostScript and 19 TrueType)

In addition, two Adobe Multiple Master fonts are included and are used for font substitution in PDF files.

- Built-in ColorWise color management and NetWise™ networking management
- ColorWise Pro Tools
- Command WorkStation (Windows only) software
- Fiery Graphic Arts Package (available as an option)
- Supports Fiery FreeForm™
- Supports PowerForm™
- Supports Token Ring networking (available as an option)

See your copier representative for details.

- Supports Internet Printing Protocol (IPP) for Windows 98, Windows Me, and Windows 2000/XP
- Supports E-mail printing

User software

Fiery user software is provided on the User Software CD.

Adobe PostScript Printer Driver	Enables you to print to the Fiery from Windows 9x/Me, Windows NT 4.0, and Mac OS computers; also supports Fiery and PostScript 3 features. Windows 2000/XP users should use the Microsoft PostScript Printer Driver provided with those applications.
PostScript Printer Description (PPD) file	For use with the PostScript printer driver that allows the Fiery to appear in the Print and Page Setup dialog boxes of popular applications. The Fiery PPDs provide information about the Fiery and your particular copier model to the application and printer driver you are using.
PostScript Fonts (Mac OS only)	PostScript screen and printer fonts that correspond to the 136 PostScript printer fonts installed on the Fiery (126 Adobe Type 1 and 10 TrueType). For a complete list of PostScript fonts installed on the Fiery, see Appendix B of the <i>Printing Guide</i> .
Fiery Downloader	Enables you to print PostScript files, Encapsulated PostScript (EPS) files, TIFF files, and Portable Document Format (PDF) files directly to the Fiery without opening the application in which they were created. You can also use it to manage the printer fonts installed on the Fiery.
Fiery Spooler (Mac OS only)	Enables you to view the order and priority of print jobs, customize printer settings for jobs, delete jobs, and move jobs between queues. You can also use it to view job accounting information.
ColorWise Pro Tools	ICC-open color management and calibration tools; enables you to edit and download ICC profiles.
Fiery Remote Scan (Fiery EX12 only)	Plug-in modules for Photoshop that enable you to scan images from the copier directly into Photoshop.

Fiery VDP Resource Manager	Allows you to look for and delete global objects used in variable printing.
Fiery Printer Delete Utility	Finds Fiery printer drivers installed on your computer and allows you to delete them.
Command WorkStation (Windows only)	Enables the operator to control the Fiery functions from Windows 9x/Me and Windows NT 4.0/2000/XP computers. To use Command WorkStation, see the <i>Job Management Guide</i> .
PitStop software in the CStation folder (Windows only)	The PitStop Acrobat plug-in is for use with the Command WorkStation DocBuilder Pro feature. It offers you enhanced PDF editing and preflighting functions.
Fiery Graphic Arts Package (available as an option)	Includes Hot Folders, TIFF-IT converter, Calibrator, and Custom Halftones Calibration files.
Color management files	ICM (Windows) and ColorSync (Mac OS) color management files that enable you to maintain consistent color from your original artwork to the colors displayed on your monitor and then to the printed output.
Color reference files	Reference pages that you can print to view the range of colors available on your Fiery. For the most predictable color results, refer to these pages when defining colors in applications. For more information on color management, see the <i>Color Guide</i> .
Calibration files	Includes measurement files and targets that you can use with ColorWise Pro Tools.
MRJ (Mac OS only)	Mac OS Runtime for Java (MRJ) is required by all Java-based Fiery utilities. If MRJ is not detected when you install these utilities, the MRJ installer is automatically launched.

NOTE: You can install PostScript printer drivers and printer description files from the User Software CD or from the Fiery with the Installer WebTool. For instructions, see "Using the Fiery WebTools Installer" on page 32.

Fiery WebTools

Fiery WebTools allow you to manage your Fiery remotely from the Internet or from your company's intranet. You access Fiery WebTools from the Fiery WebTools home page.

NOTE: To confirm which WebTools are supported, see "Specifications" on page xii.

WebTool	Summary	For more information
Status	Shows you the jobs currently processing and printing.	See the <i>Printing Guide</i> .
WebSpooler	Allows you to view, manipulate, reorder, reprint, and delete jobs currently spooling, processing, or printing on the Fiery. It also allows you to view, print, and delete the Job Log.	See the <i>Job Management Guide</i> .
WebLink	Provides a link to another web page, provided you have a valid Internet connection.	See the <i>Printing Guide</i> and the <i>Configuration Guide</i> .
Installer	Allows you to download the Fiery Link installer and Fiery printer file installers directly from the server.	See Chapter 3.
WebDownloader	Allows you to download PostScript, EPS, and PDF files to the Fiery.	See the <i>Printing Guide</i> .
WebSetup (Windows only)	Allows you to modify the Fiery configuration (Setup) remotely. This function requires the Administrator password, if one has been set.	See the <i>Configuration Guide</i> .
WebScan	Allows you to view and print images that have been scanned to the copier.	See the <i>Printing Guide</i> .

System requirements

System requirements are described in detail in the printed *Quick Start Guide* provided in your media pack.

Chapter 1: Installing User Software on a Windows Computer

This chapter describes the procedures for installing software and setting up printing from a computer using a supported version of Windows. For Windows versions supported, see the *Quick Start Guide*.

The general steps for installing the software are as follows:

- Install the PostScript printer driver and corresponding printer driver files, and set up the printer driver to communicate with the Fiery.
- Install Fiery utilities.

EX12

For Fiery EX12: Fiery Graphic Arts Package (available as an option), EFI Fiery Mail Port, Fiery Remote Scan, Fiery Downloader, ColorWise Pro Tools, Fiery Printer Delete Utility, Fiery VDP Resource Manager, and Command WorkStation

EX2000d

For Fiery EX2000d: Fiery Graphic Arts Package (available as an option), EFI Fiery Mail Port, Fiery Downloader, ColorWise Pro Tools, Fiery Printer Delete Utility, Fiery VDP Resource Manager, and Command WorkStation

- Configure the connection for Fiery utilities.
- Install Adobe Acrobat 4.0 and PitStop software on the designated Windows computer(s).
- Copy additional files from the User Software CD as required.

In addition to using the User Software CD, you can download printer drivers from the Fiery with the Installer WebTool (if the administrator has enabled Internet access to the Fiery). For instructions, see “[Using the Fiery WebTools Installer](#)” on page 3-2. Once you download the printer files, the installation process is identical to installing from the User Software CD.

Setting up PostScript printing with Windows 9x/Me

To set up the Fiery as a PostScript printer, you must install the PostScript printer driver for Windows 9x/Me and the corresponding printer description files. You must also configure either a parallel connection for printing directly or a network connection for printing over the network.

If you are printing using SMB (Server Message Block), you can connect to the Fiery and install the printer drivers in a single procedure. For more information, see [“Setting up SMB printing with Windows 9x/Me”](#) on page 1-12.

Installing the PostScript printer driver for Windows 9x/Me

The following procedure describes installing the printer driver from the User Software CD or from the Installer WebTool. Subsequent procedures describe setting up the print connection.

NOTE: The following procedures use Windows 98 illustrations; Windows 95 and Windows Me differences are noted.

TO INSTALL THE POSTSCRIPT PRINTER DRIVER FOR WINDOWS 9X/ME

1. **Click Start, choose Settings, and then choose Printers.**
2. **In the Printers window, double-click the Add Printer icon and click Next.**
3. **Specify printing using a Local printer and click Next.**

This procedure describes the installation of a local printer. You can modify the connection later, according to your network type.

4. **In the dialog box displaying lists of manufacturers and printers, click Have Disk.**

The Install From Disk dialog box prompts you for the disk.

5. **If you are installing from the CD, type the name of the CD-ROM drive (for example, D:), and click Browse. Browse to English\Prntdrv\Ps_drvr\Win_9x_ME.**

If you are installing from the files you downloaded using the Installer WebTool, browse to prntdrv\Prntdrv\Ps_drvr\Win_9x_ME.

6. **Make sure “Oemsetup.inf” is selected and click OK.**

The path is copied to the Install From Disk dialog box.

1

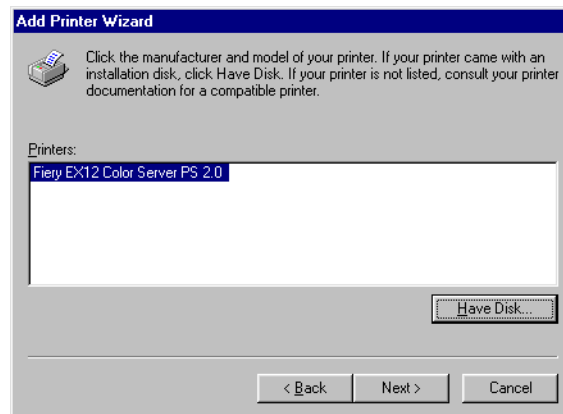
1-3 Setting up PostScript printing with Windows 9x/Me

7. Verify the path is correct and click OK.

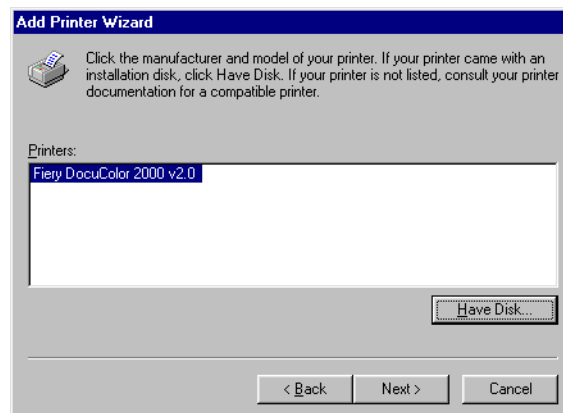


8. In the Printers box, select the Fiery as your printer and click Next.

Fiery EX12



Fiery EX2000d



9. Select the LPT1 port and click Next.

You will configure the port later, according to your network type.

10. Enter a name for the Fiery in the Printer Name box.

11. To make the Fiery the default printer, select Yes; if not, select No. Select OK (Windows 95) or Next (Windows 98/Me).

12. Select No to printing the test page and click Next (Windows 95) or Finish (Windows 98/Me).

The necessary files are installed to your computer.

Configuring installed options

After you have completed the printer driver installation, you must configure the Fiery for the options installed on the copier. This allows the Fiery to take advantage of the copier options. You can configure the options manually; or for TCP/IP network connections, you can use the Two-Way Communication feature to configure the options automatically.

Configuring installed options manually

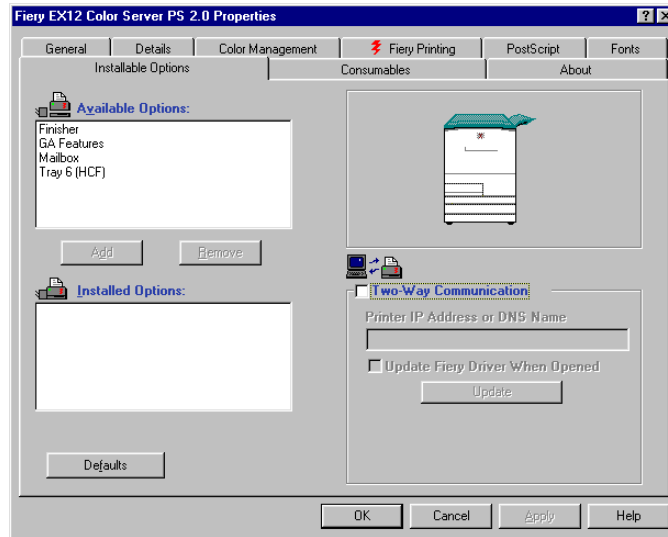
TO CONFIGURE OPTIONS MANUALLY FOR WINDOWS 9X/ME

1. Click Start, choose Settings, and then choose Printers.
2. Click the Fiery icon and choose Properties from the File menu.
3. For the Fiery EX12, select the Installable Options tab. For the Fiery EX2000d, select the Configuration tab.
4. Select an installed option from the Available Options list.
5. Click Add to move the option to the Installed Options list.

1

1-5 Configuring installed options

Fiery EX12



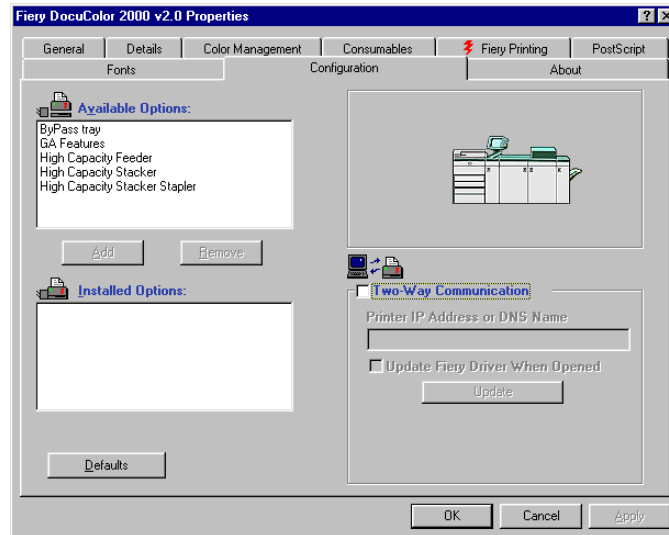
Fiery Advanced Controller Interface Kit—Not Installed, Installed

Finisher—Not Installed, Installed

GA Features—Not Installed, Installed

Mailbox—Not Installed, Installed

Tray 6 (HCF)—Not Installed, Installed

Fiery EX2000d

ByPass Tray—Not Installed, Installed

GA Features—Not Installed, Installed

High Capacity Feeder—Not Installed, Installed

High Capacity Stacker—Not Installed, Installed

High Capacity Stacker Stapler—Not Installed, Installed

6. Click Apply.

Configuring installed options and updating print options settings automatically

If you have a TCP/IP-enabled network, you can automatically update your printer driver to reflect the options currently installed on the copier. When the printer driver is first installed, the installable options have default settings that were set up in Fiery Setup or ColorWise Pro Tools. When you update the printer driver with the Two-Way Communication feature, you allow the Fiery to complete the actual setting.

1

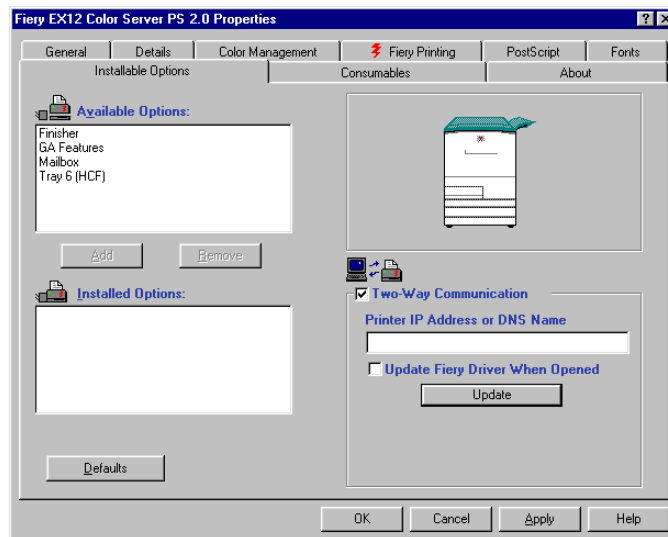
1-7 Configuring installed options

The Two-Way Communication feature also updates Expert Color Settings options to reflect the current color settings on the copier/printer. The Expert Color Settings option is located in the ColorWise print option bar of the Fiery printing tab of your printer driver. For more information, see the *Color Guide*.

TO CONFIGURE INSTALLED OPTIONS AND UPDATE PRINT OPTIONS SETTINGS AUTOMATICALLY FOR WINDOWS 9X/ME

1. Click Start, choose Settings, and then choose Printers.
2. In the Printers window, select the icon for the Fiery PostScript printer driver.
3. Choose Properties from the File menu.
4. Select the Installable Options tab.
5. Select Two-Way Communication.

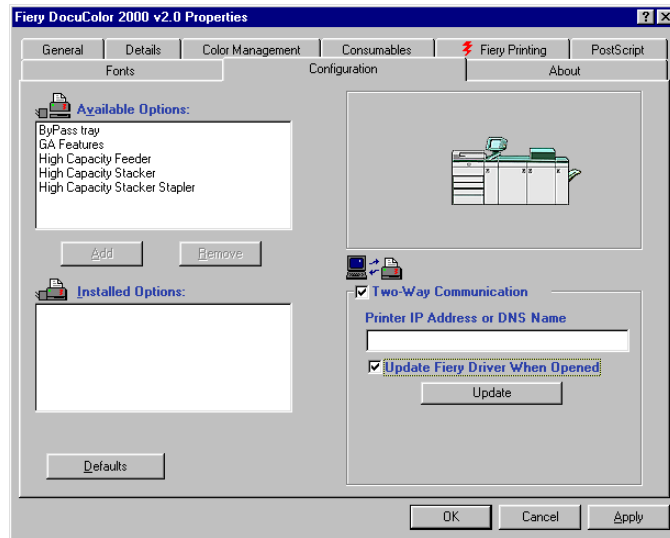
Fiery EX12



1

1-8 Installing User Software on a Windows Computer

Fiery EX2000d



6. Enter the Fiery IP address or DNS name.
7. Select the Update Fiery Driver When Opened option to allow the printer driver to display the printer's current default settings when you open it.
8. Click Update, and then click OK.

Completing the Windows 9x/Me printer connection

To print from Windows 9x/Me, you should already have set up network servers, if any, and set up the Fiery to accept print jobs from your computer.

To complete the Windows 9x/Me connection, you must configure a connection on each Windows computer for the network.

Completing the Windows 9x/Me IPX/SPX or IPX (Novell) connection

If you are printing through a Novell server, the Novell network and file server should be set up before you begin. The file server should be configured with a print server and print connection for the Fiery. For details, see your NetWare documentation and the *Configuration Guide*.

To print from Windows 9x/Me computers over IPX (Novell), you must first set up IPX/SPX protocols, and then configure the Fiery by choosing the IPX frame type and entering the settings for the port you use.

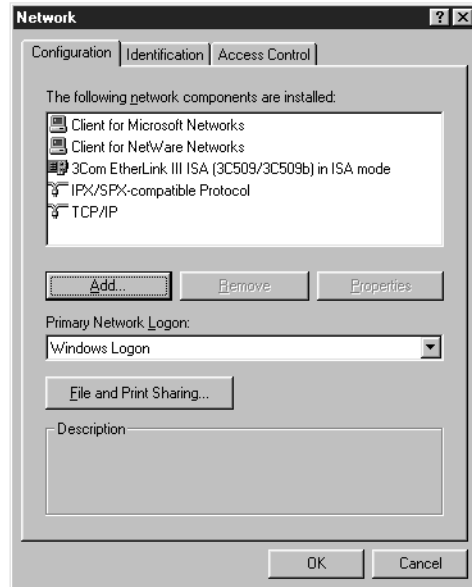
TO SELECT A FRAME TYPE FOR IPX/SPX PRINTING FOR WINDOWS 9x/ME

1. Click Start, choose Settings, and then choose Control Panel.
2. Double-click the Network icon.

Make sure that IPX/SPX-compatible Protocol is listed in the Installed Network Components section.

For instructions, see your Windows 9x/Me documentation or contact Microsoft Technical Support.

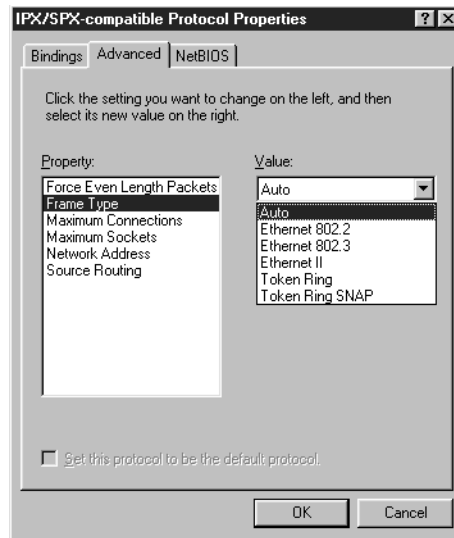
3. Double-click the IPX/SPX-compatible Protocol icon.



4. Click the Advanced tab.
5. Select Frame Type in the Property list.
6. In the Value menu, select the Frame Type that corresponds to the one set in Fiery Network Setup.

If necessary, print the Configuration page from the Fiery Control Panel to determine which Frame Type(s) are configured.

NOTE: Do not select Auto. Doing so may not select the Frame Type specified on the Fiery.



7. Click OK and close the Network Control Panel.
8. When prompted to restart your computer, click Yes.

TO SET UP A PORT FOR IPX (NOVELL) PRINTING WITH WINDOWS 9x/ME

1. Click Start, choose Settings, and then choose Printers.
2. Click the Fiery printer icon and choose Properties from the File menu.
3. Click the Details tab and click Add Port.
A list of connection options appears.
4. In the Add Port dialog box, specify the network path, or click Browse for a display of your network environment.
5. If you are using a NetWare file server, double-click the icon for the NetWare file server to use for printing to the Fiery.

6. Click the printer icon for the NetWare print queue you want to use, and click OK.

7. In the Add Port dialog box, verify that the network path is updated and click OK.

Your print jobs are transmitted to the specified print queue on the Novell file server. The Fiery polls the file server, and if jobs are present, they are transmitted to the Fiery.

8. To confirm the connection, click the General tab, click Apply, and then click Print Test Page.

If the test page prints successfully, you are ready to print from the computer.

Setting up SMB printing with Windows 9x/Me

SMB printing (also known as Windows or WINS printing) allows you to install the PostScript printer driver and printer description files on your computer from the Fiery using Point and Print, and print to a particular connection (Hold, Print, or Direct). To set up SMB printing, you must have the TCP/IP protocol and Client for Microsoft Networks installed.

Each connection (Hold, Print, or Direct) requires a new printer driver and printer description file. Repeat the procedure [“To set up SMB printing on Windows 9x/Me”](#) on page 1-12. If you install more than one printer, give each a descriptive name during printer driver installation, such as Aero-Print or Aero-Hold, so you can easily identify printers.

BEFORE YOU BEGIN

- **Configure the Fiery for SMB printing in Network Setup > Service Setup > Windows Setup.**

SMB printing is referred to as Windows Printing in Setup, on the Control Panel Map, and on the Configuration page.

TO SET UP SMB PRINTING ON WINDOWS 9X/ME

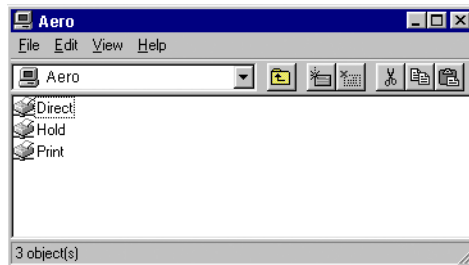
1. Double-click the Network Neighborhood icon to display your network environment.
2. Browse for the printer you want to print to.

Browse for the name entered in Network Setup > Service Setup > Windows Setup > Server Name. See the Configuration page for this information.

NOTE: You can also locate the printer using the Find feature on your Windows computer. Click Start, choose Find, and then choose Computer. Enter the name of the printer, and click Find Now.

If you are not able to locate your Fiery, see your network administrator.

3. **Double-click the name of the printer to display enabled print connections.**



4. **Double-click the name of the connection you want to print to.**
5. **Select Yes to install the PostScript printer driver and printer description file for the selected connection.**

NOTE: If the Point and Print Drivers option has been selected in Network Setup, the PostScript printer driver and printer driver files are automatically installed.

The Add Printer Wizard appears.

6. **Specify whether you print from MS-DOS based programs, and then click Next.**
7. **Enter a name for the Fiery in the Printer name box, and choose whether to make it the default printer. Click Next.**
8. **If you want to print a test page, choose Yes and click Finish.**

The necessary files are installed to your computer.

If the test page prints successfully, you are ready to print from the computer.

Setting up IPP printing with Windows 9x/Me

With Internet Printing Protocol (IPP), print jobs are sent to the Fiery over the Internet.

IPP printing is supported on Windows 2000/XP but can be enabled on Windows 9x/Me computers by installing the “wpnpins.exe” client file (available on the Windows Me CD or the Windows 2000 Server CD). For more information about obtaining and installing this client, contact the Microsoft Corporation or Microsoft Technical Support.

NOTE: The IPP setup procedures are performed after installing the appropriate printer drivers. See “[To install the PostScript printer driver for Windows 9x/Me](#)” on page 1-2.

NOTE: IPP printing is not supported on Windows 95.

BEFORE YOU BEGIN

1. **Prepare the Fiery for TCP/IP printing.**
2. **Make sure the Fiery is configured for IPP printing.**
For more information, see the *[Configuration Guide](#)*.
3. **Specify the printing destination on your computer.**

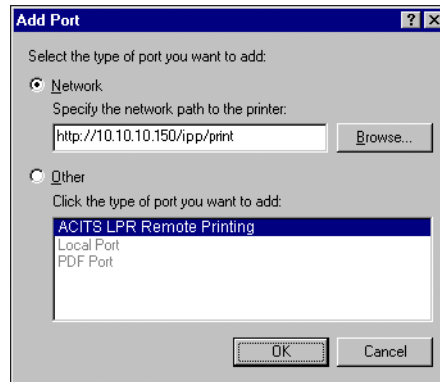
TO SET UP IPP PRINTING WITH WINDOWS 9X/ME

1. **Click Start, choose Settings, and then choose Printers.**
2. **In the Printers windows, right-click the icon for the Fiery PostScript printer driver and select Properties.**
3. **Select the Details tab and click Add Port.**

The Add Port dialog box appears.

4. Enter the network path for the printer.

The path for the printer is the IP address or the DNS name, followed by ipp, and then by the Fiery connection you want to print to (print, hold, or direct). Insert slashes between the elements, for example, `http://10.10.10.150/ipp/print`.

**5. Click OK.**

Setting up PostScript printing with Windows NT 4.0 or Windows 2000/XP

To set up the Fiery as a PostScript printer, you must install the PostScript printer driver for Windows NT 4.0 or Windows 2000/XP and the corresponding printer description files. You must also configure the print connection between the computer and the Fiery. If you are printing over a network, you must configure a network connection.

The following procedures describe the installation of a local printer. Adding a printer to a local system requires that you log in to your local Windows NT 4.0 computer (not the network server domain) and that you are a member of the Administrators group. The procedure for adding a network printer is similar to adding a port. See [“Completing the Windows NT 4.0 TCP/IP and LPR connection”](#) on page 1-27.

If you are printing using SMB on Windows NT 4.0, you can connect to the Fiery and install the printer drivers in a single procedure; see [page 1-34](#).

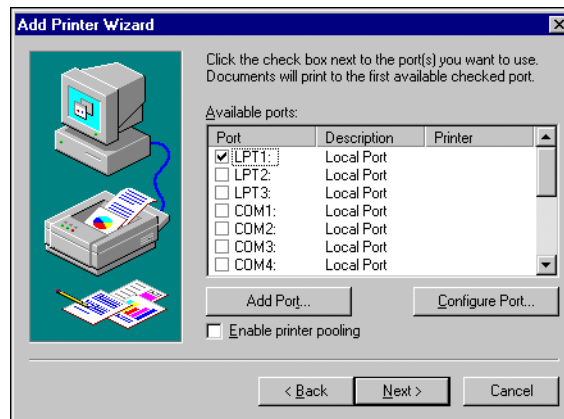
**TO INSTALL THE POSTSCRIPT PRINTER DRIVER FOR
WINDOWS NT 4.0**

1. If you are installing from the User Software CD, insert it into the CD-ROM drive.
2. Click **Start**, choose **Settings**, and then choose **Printers**.
3. Double-click **Add Printer**.
4. To install a printer locally, select **My Computer** and click **Next**.

My Computer is available if you logged in to a computer on which you have Administrator privileges. If it is not available, you can add a network printer. The procedure is similar to adding a port (see [page 1-28](#)).

5. Select **LPT1:** and click **Next**.

This is a general installation that works for the parallel port connection. You can add a network port later, according to your network type.



6. In the dialog box displaying lists of manufacturers and printers, click **Have Disk**.

The Install From Disk dialog box prompts you for the disk.

7. If you are installing from the CD, type the name of the CD-ROM drive (for example, D:\), and click **Browse**.

If you are installing from files you downloaded using the Installer WebTool, type the name of your hard disk drive (for example, C:\), and click **Browse**.

8. If you are installing from the CD, browse to the English\Prntdrv\Ps_drvr\Win_NT4x folder and click Open.

If you are installing from files you downloaded using the Installer WebTool, browse to the prntdrv\Prntdrv\Ps_drvr\Win_NT4x folder and click Open.

Make sure “Oemsetup.inf” or “Oemsetup” is selected.

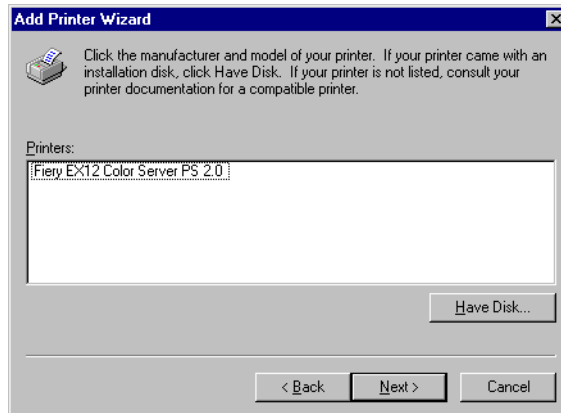
The path is copied to the Install From Disk dialog box.

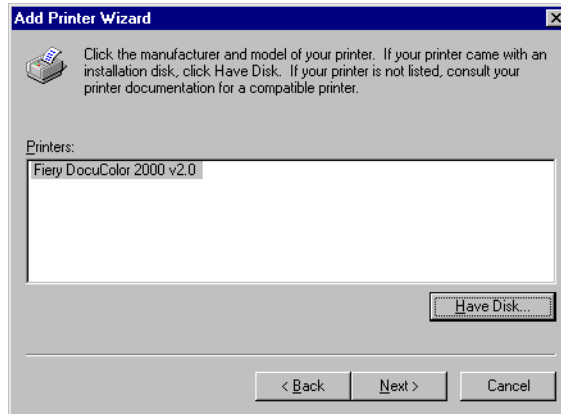
9. Verify that the path is correct and click OK.



10. In the Printers box, select the Fiery file and click Next.

Fiery EX12



Fiery EX2000d

11. **Type a name for the Fiery in the Printer name field and indicate whether you want to make it the default printer. Click Next.**

12. **Indicate whether you want the printer installed as a shared printer, and click Next.**

If you select Shared, enter a Share Name for the printer and select the operating systems used by client computers. For information on shared printers, see the [Configuration Guide](#).

13. **Click No to postpone printing a test page and click Finish.**

When installation is complete, the Printers window is displayed with an icon for the newly installed printer.

TO INSTALL THE POSTSCRIPT PRINTER DRIVER FOR WINDOWS 2000/XP

NOTE: The procedures for installing PostScript printer drivers on Windows 2000 and Windows XP are similar. Windows 2000 illustrations are used and differences noted in the text.

1. **On Windows 2000, click Start, choose Settings, and then choose Printers to display the Printers window.**

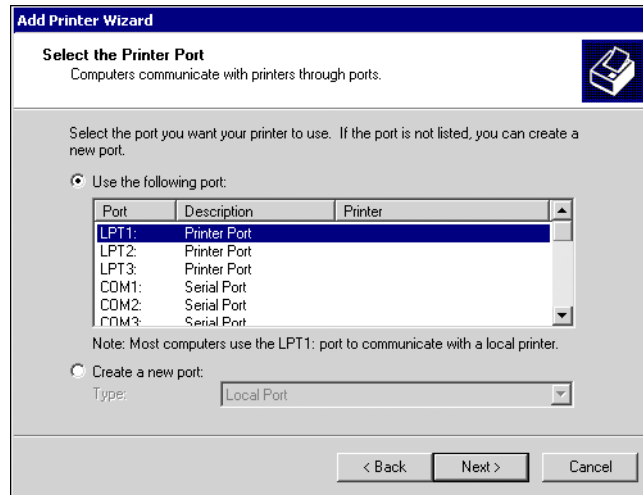
On Windows XP, click Start and choose Printer and Faxes.

2. **Double-click the Add Printer icon and click Next.**

3. Specify printing using a Local printer and click Next.

This procedure describes the installation of a local printer. You can modify the connection later, according to your network type.

4. Select LPT1: and click Next.



5. In the dialog box displaying lists of manufacturers and printers, click Have Disk.

The Install From Disk dialog box prompts you for the disk.

6. Type the name of the CD-ROM drive (for example, D:\) and click Browse. Browse to the English\Prntdrv\Ps_drvr\Win_2000 or English\Prntdrv\Ps_drvr\Win_XP folder.

If you are installing from the files you downloaded using the Installer, browse to prntdrv\Prntdrv\Ps_drvr\Win_2000 or prntdrv\Prntdrv\Ps_drvr\Win_XP and click Open.

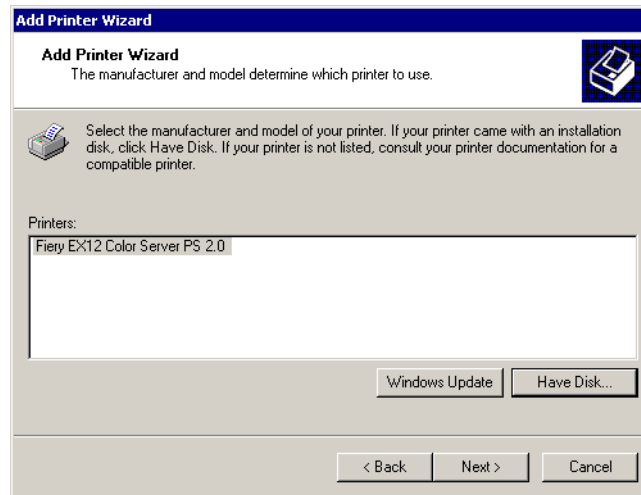
Make sure "Oemsetup.inf" or "Oemsetup" is selected and click Open.

7. Verify the path is correct and click OK.

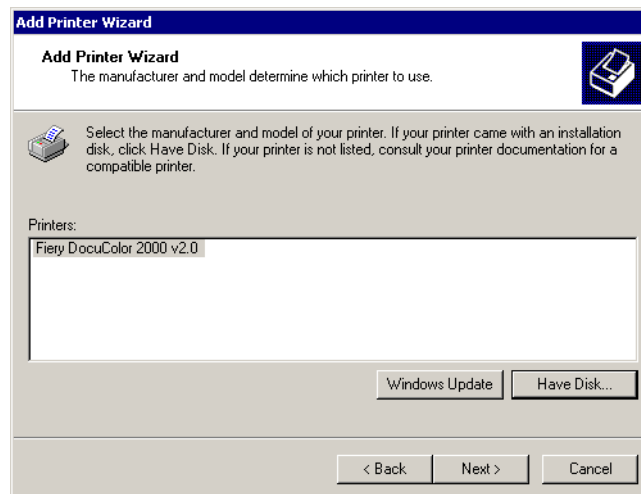
The path is copied to the Install From Disk dialog box.

8. In the Printers box, select the Fiery as your printer and click Next.

Fiery EX12

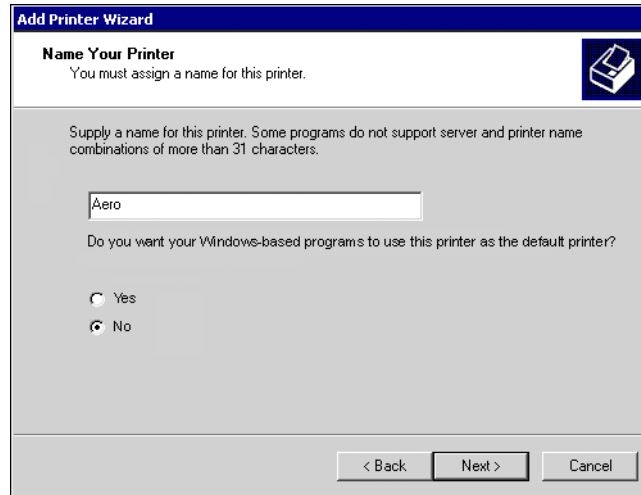


Fiery EX2000d



9. Type a name for the Fiery in the Printer name field.

This name will be used in the Printers and queue windows.

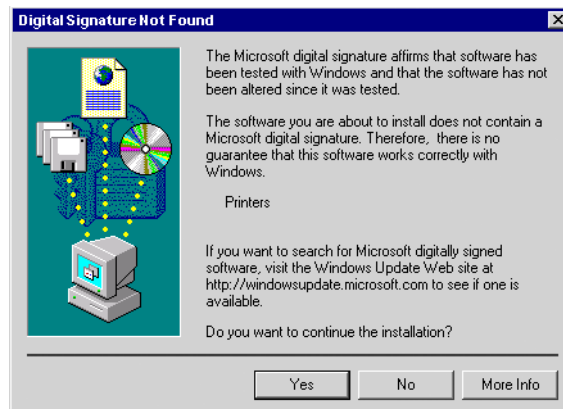


10. Follow the instructions in the remaining windows.

When asked whether to print a test page, choose No.

The necessary files are installed to your hard disk.

NOTE: The Digital Signature Not Found window indicates that the printer driver for Windows 2000 does not have a Microsoft digital signature. However, printing to the Fiery is processed correctly, so click Yes to continue with installation.



11. **If this is the first printer driver you are installing on the computer, you may be prompted to install files from the Windows 2000 CD. Insert the CD-ROM, browse to the win2000\english\i386 folder, and then click OK.**

When installation is complete, the Printers window appears with an icon for the newly installed printer. You will now need to configure the options installed on your copier.

Configuring installed options

After you have completed the printer driver installation, you need to tell the Fiery about the options installed on the copier. This allows the Fiery to take advantage of the copier options. You can configure the options manually; or for TCP/IP network connections, you can use the Two-Way Communication feature to configure the options automatically.

Configuring installed options manually

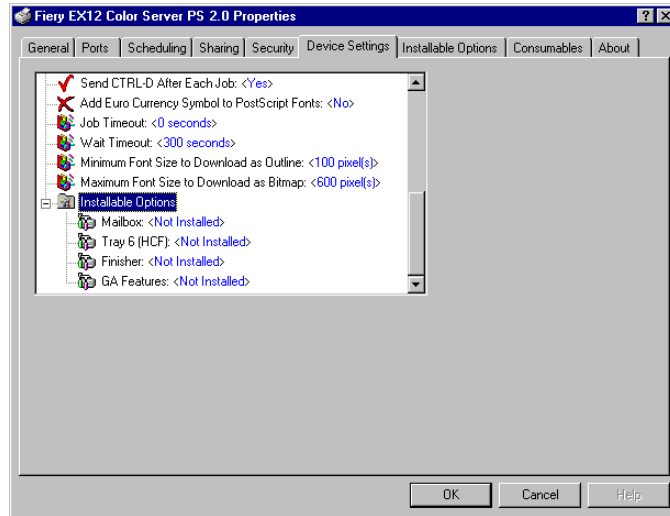
TO CONFIGURE INSTALLABLE OPTIONS ON THE FIERY FROM THE POSTSCRIPT PRINTER DRIVER FOR WINDOWS NT 4.0 OR WINDOWS 2000/XP

NOTE: Configuring installable options for Windows NT 4.0 and Windows 2000/XP is similar. The following procedure uses Windows NT 4.0 illustrations; Windows 2000/XP differences are noted.

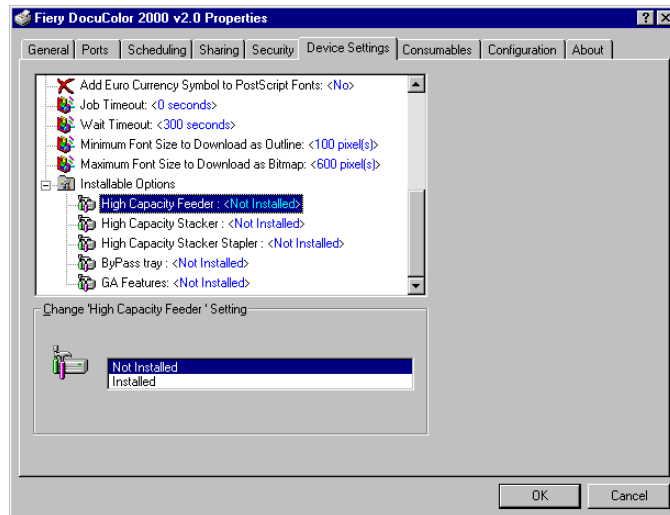
1. **On Windows 4.0/2000, click Start, choose Settings, and then choose Printers.**
On Windows XP, click Start and choose Printers and Faxes.
2. **Click the Fiery icon and choose Properties from the File menu.**

3. Click the Device Settings tab and scroll to Installable Options.

Fiery EX12



Fiery EX2000d



4. **Select an Installable Option and choose a setting.**

NOTE: Windows 2000/XP systems display installable options as a menu. You must first select the installable option to activate the menu.

EX12

For the Fiery EX12:

Mailbox—Not Installed, Installed

Tray 6 (HCF)—Not installed, Installed

GA Features—Not Installed, Installed

Finisher—Not Installed, Installed

EX2000d

For the Fiery EX2000d:

ByPass Tray—Not Installed, Installed

GA Features—Not Installed, Installed

High Capacity Feeder—Not installed, Installed

High Capacity Stacker—Not Installed, Installed

High Capacity Stacker Stapler—Not Installed, Installed

5. **Click OK to activate the current settings.**

You are ready for the instructions to connect to your network type (see [“Completing the Windows NT 4.0 or Windows 2000/XP printer connection”](#) on page 1-27).

Configuring installed options and updating print options settings automatically

If you have a TCP/IP-enabled network, you can automatically update your printer driver to reflect the options currently installed on the copier. When the printer driver is first installed, the installable options have default settings that were set up in Fiery Setup or ColorWise Pro Tools. When you update the printer driver with the Two-Way Communication feature, you allow the Fiery to complete the actual setting.

The Two-Way Communication feature also updates Expert Color Settings options to reflect the current color settings on the copier/printer. The Expert Color Settings option is located in the ColorWise print option bar of the Fiery printing tab of your printer driver. For more information, see the [Color Guide](#).

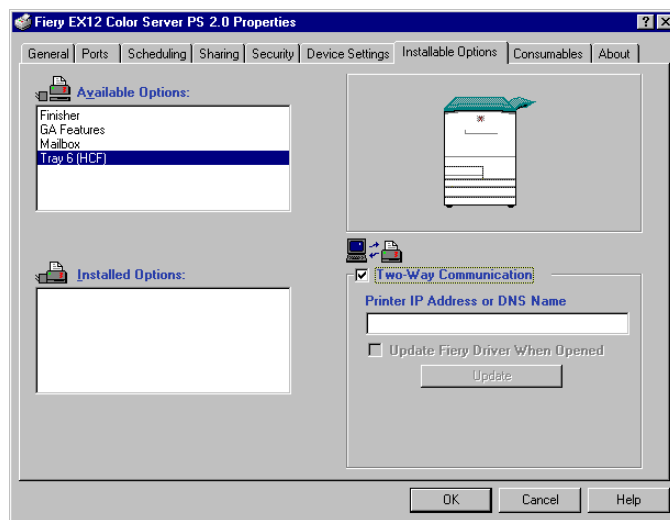
NOTE: Two-way communication is not supported on Windows 2000/XP.

SETTING UP TWO-WAY COMMUNICATION FOR POSTSCRIPT PRINTER DRIVERS FOR WINDOWS NT 4.0

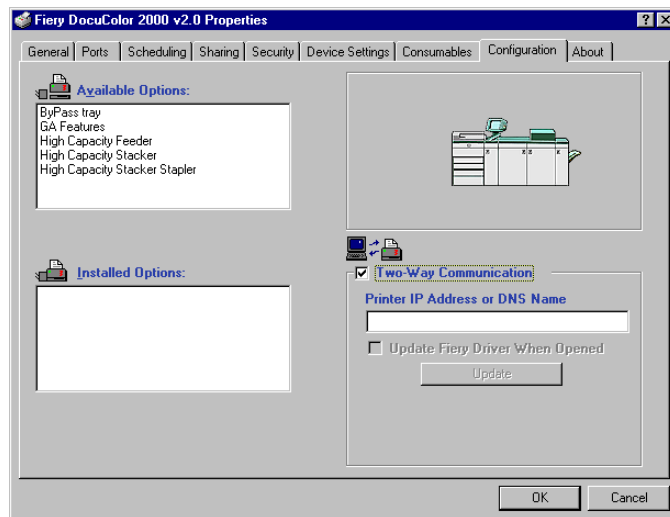
1. Click Start, choose Settings, and then choose Printers.
2. In the Printers window, select the icon for the Fiery PostScript printer driver.
3. Choose Properties from the File menu.
4. For the Fiery EX12, click the Installable Options tab. For the Fiery EX2000d, click the Configuration tab.

5. Select Two-Way Communication.

Fiery EX12



Fiery EX2000d



6. Enter the Fiery IP address or DNS name.

7. If you want your printer driver to display the current settings when opened, select the **Update Fiery Driver When Opened** option.
8. Click **Update**.
9. Click **OK**.

Completing the Windows NT 4.0 or Windows 2000/XP printer connection

To print from Windows NT 4.0 or Windows 2000/XP you must:

- Set up network servers, if any.
- Set up the Fiery to accept print jobs from your computer.
- Configure a port on each Windows NT 4.0 or Windows 2000/XP computer for the network type.

To do this	See
Configure the TCP/IP (LPR port) connection	“Completing the Windows NT 4.0 TCP/IP and LPR connection” on page 1-27
Configure the IPX (Novell) connection	“Completing the Windows NT 4.0 or Windows 2000/XP IPX (Novell) connection” on page 1-32

NOTE: The procedures for completing the printer connection for Windows NT 4.0 and Windows 2000/XP are similar. Windows NT 4.0 illustrations are used, with relevant Windows 2000/XP differences noted.

Completing the Windows NT 4.0 TCP/IP and LPR connection

After you have installed the PostScript printer driver and printer driver files, complete the setup for the TCP/IP and LPR connection as follows:

- Prepare the Fiery to accept print jobs using TCP/IP and LPR protocols.
For details, see the [Configuration Guide](#).
- Configure the computer for the TCP/IP connection.

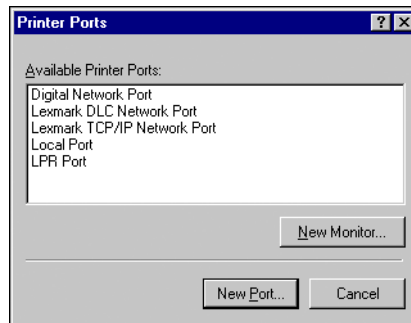
Before you continue, contact the system administrator for the IP address assigned to the Fiery, as well as the subnet mask and the gateway address, if they are used.

The TCP/IP protocol should already be installed on the Windows NT computer.

TO SET UP TCP/IP AND LPR PRINTING FOR WINDOWS NT 4.0

1. **Open the Properties dialog box for the Fiery, and click the Ports tab.**
2. **Click Add Port.**

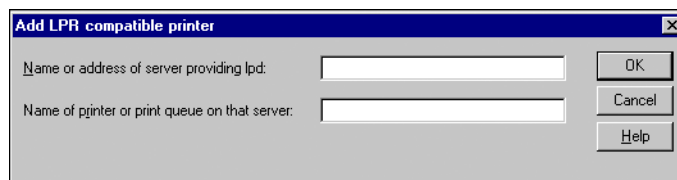
The available port types are displayed.



3. **Select LPR Port and click New Port.**

If the LPR port is not listed, install the TCP/IP network protocol and Microsoft TCP/IP printing software. See your Windows documentation.

4. **Enter the IP address of the Fiery.**



If your network uses Domain Name Services (DNS), enter the DNS name assigned to the Fiery instead of the IP address.

5. **Press Tab and type one of the following names, depending on the Fiery connection you want to print to.**

print
hold
direct

NOTE: This name is case-sensitive; type it *exactly* as shown.

6. **Click OK.**

The computer checks the address or DNS name you entered and notifies you if it cannot resolve the address.

7. **Click Close in the Printer Ports dialog box.**

The new port configuration is reflected in the Ports tab. You must now close the Printer Properties dialog box to verify the connection.

8. **Click OK to close the Printer Properties dialog box.**

9. **Reopen the Printer Properties dialog box.**

10. **Click the General tab and click Print Test Page.**

When you print, your PostScript files are transmitted over the LPR Port connection to the Fiery.

11. **Click OK to close the Printer Properties dialog box.**

Completing the Windows 2000/XP TCP/IP and LPR connection

Once you have installed the PostScript and printer driver files, complete the setup for the TCP/IP and LPR connection as follows:

- Prepare the Fiery to accept print jobs using TCP/IP and LPR protocols.
For details, see the *Configuration Guide*.
- Enable LPD or Port 9100 from the Fiery Control Panel.
For details, see the *Configuration Guide*.
- Configure the computer for the TCP/IP connection.

Before you continue, contact the system administrator for the IP address assigned to the Fiery, as well as the subnet mask and the gateway address, if they are used.

The TCP/IP protocol should already be installed on the Windows 2000/XP workstation.

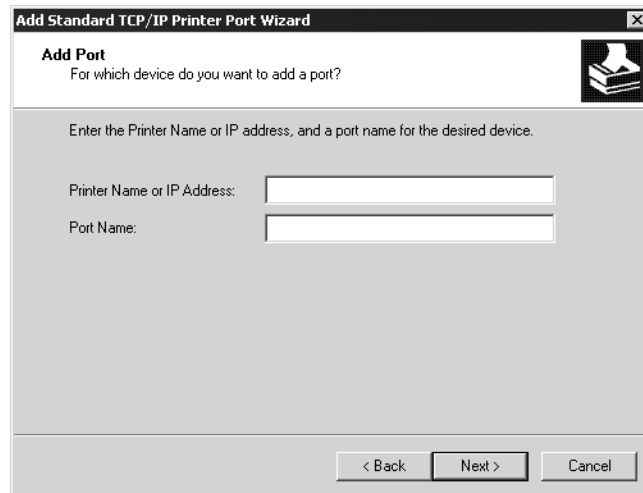
NOTE: You can also set up the LPR connection by installing Print Services for UNIX, which is supplied as an add-on Windows component with your Windows 2000 CD. For more information, see your Windows documentation.

TO SET UP TCP/IP AND LPR PRINTING FOR WINDOWS 2000/XP

1. **Open the Properties dialog box for the Fiery and click the Ports tab.**
2. **Click Add Port.**
3. **Select Standard TCP/IP Port for Available port types and click New Port.**
4. **Click Next.**

The Add Standard TCP/IP Printer Port Wizard dialog box appears.

5. **Enter the IP address of the Fiery.**



6. **Click Next.**

The device will be detected automatically.

7. **Click Finish to close the Add Standard TCP/IP Printer Port Wizard dialog box, and click Close in the Printer Ports dialog box.**

8. Click Configure Port in the Properties dialog box.

The Configure Standard TCP/IP Port Monitor dialog box appears.

9. If you have LPD printing enabled at the Fiery Control Panel, select LPR for Protocol and LPR Byte Counting Enabled under LPR Settings.

NOTE: You can also proceed without selecting LPR Byte Counting Enabled under LPR settings.

10. If you have Port 9100 printing enabled at the Fiery Control Panel, select Raw.

The port number 9100 automatically appears under Raw Settings. You can print to the printer connection selected for Port 9100 printing at the Fiery Control Panel.

The screenshot shows the 'Configure Standard TCP/IP Port Monitor' dialog box with the following settings:

- Port Settings** (selected tab)
- Port Name:** (empty text box)
- Printer Name or IP Address:** (empty text box)
- Protocol:** ☒ Raw, ☐ LPR
- Raw Settings:**
 - Port Number:** 9100
- LPR Settings:**
 - Queue Name:** (empty text box)
 - ☐ LPR Byte Counting Enabled
 - ☒ SNMP Status Enabled
 - Community Name:** public
 - SNMP Device Index:** 1

Buttons: OK, Cancel

11. Enter the name of the print connection.

For LPR, use print, hold, or direct.

For Port 9100, manually enter the following port numbers for each print connection under Raw Settings:

direct: 9100 (default) or 9101

print: 9102

hold: 9103

NOTE: Type the number *exactly* as shown.

12. Click OK to close the Configure Standard TCP/IP Port Monitor dialog box.

Completing the Windows NT 4.0 or Windows 2000/XP IPX (Novell) connection

Complete the setup for the IPX (Novell) connection as follows:

- Configure the Novell network and file server for handling Fiery print jobs. The file server should be configured with a print server and print connection for the Fiery. For details, see your NetWare documentation.
- Prepare the Fiery for IPX printing.
- Set up the IPX connection on the computer.

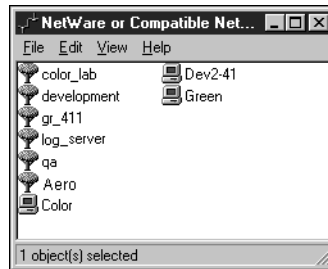
NetWare protocols (NWLink IPX/SPX Compatible Transport) and NetWare client services should already be installed on the Windows NT 4.0 or Windows 2000/XP computer.

TO SET UP IPX (NOVELL) PRINTING FOR WINDOWS NT 4.0 OR WINDOWS 2000/XP

1. **Double-click Network Neighborhood (Windows NT 4.0) or My Network Places (Windows 2000/XP).**

2. **Double-click NetWare or Compatible Network.**

A list of NetWare servers appears.



3. **Double-click the NetWare Tree or File Server on which the network administrator defined a print connection for the Fiery.**

You may have to log in to the file server to see the print connections.

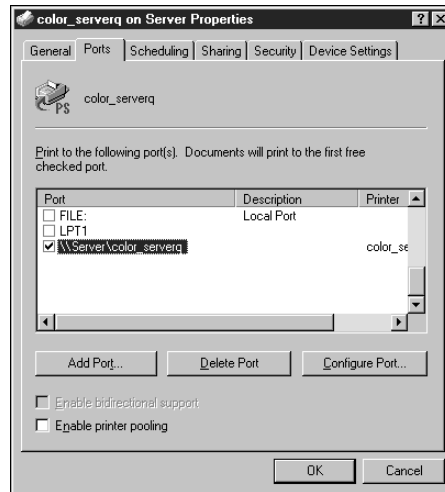
4. **Double-click the print connection defined for the Fiery.**

5. If the NetWare server does not have a suitable driver for the Fiery, you may be asked if you want to set up the printer on your computer. Click Yes.
6. Click OK to install the Fiery PostScript printer driver.
7. Follow the procedure that starts with [step 6 on page 1-16](#).

When installation is complete, a new printer window appears, with the name of the print queue on the NetWare server.

8. Choose Properties from the File menu and click the Ports tab.

Verify that the connection to the NetWare queue is listed and selected as a port for the Fiery.



9. Click the General tab and click Print Test Page.
10. In the printer Job Notes window, enter user and job identification information and click OK.

The Test Page remains listed in the queue window until it is printed.

The Fiery polls the NetWare server for print jobs in the print connection defined for the Fiery. When you print, your PostScript files are spooled to that connection and transmitted over the queue “port” to the Fiery.

Setting up SMB printing on Windows NT 4.0 or Windows 2000/XP

SMB printing (also known as Windows printing) allows you to install the PostScript printer driver and printer description files, and print from your computer to a particular print connection (Hold, Print, or Direct) on the Fiery. These instructions assume you have installed the TCP/IP protocol and Client for Microsoft Networks.

Each connection (Hold, Print, or Direct) requires a new printer driver and printer description file. To set up printing to a second or third print connection, repeat the procedure “[To set up SMB printing on Windows NT 4.0 or Windows 2000/XP](#)” on page 1-35. If you install more than one printer, give each a descriptive name during printer driver installation, such as Aero-Print or Aero-Hold, so you can easily identify printers.

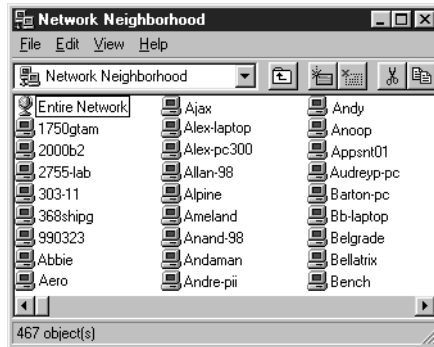
NOTE: To change printer defaults and configure installable options from Windows NT 4.0, you must log on as Administrator and use the password specified in Fiery Setup. If you log on as a User, you can install the printer driver through Point and Print, but you can not modify printer defaults and configure installable options.

NOTE: With Windows 2000/XP, you cannot install the driver and configure the printing connection to the Fiery in a single procedure. The printer driver must be installed from the User Software CD.

BEFORE YOU BEGIN

- **Configure the Fiery for SMB printing in Network Setup>Service Setup>Windows Setup.**

SMB printing is referred to as Windows Printing in Setup, on the Control Panel Map, and on the Configuration page. For more information, see the [Configuration Guide](#).

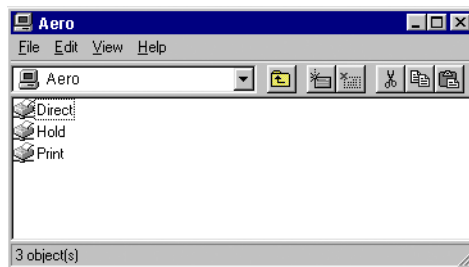
TO SET UP SMB PRINTING ON WINDOWS NT 4.0 OR WINDOWS 2000/XP**1. Double-click Network Neighborhood.****2. Browse for the printer you want to print to.**

The printer name you are browsing for is the name entered in Network Setup > Service Setup > Windows Setup > Server Name. See the Configuration page for this information.

The amount of network traffic determines the amount of time required for the Browse function.

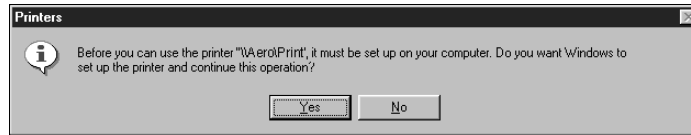
NOTE: You can also locate the printer with the Find feature on your Windows computer. Click Start, choose Find, and then choose Computer. Enter the name of the printer, and click Find Now.

If you are not able to locate your Fiery, see your network administrator.

3. Double-click the name of the Fiery to display enabled print connections.

4. Double-click the name of the connection you want to print to.

The Printers dialog box appears, asking whether you want to set up the printer.



5. Select Yes to complete the installation for the selected connection.

Windows NT 4.0 downloads the printer driver and printer description files from the Fiery to your computer and installation is complete.

Windows 2000 displays a dialog box telling you that the Fiery does not have the correct printer driver installed and asks if you want to install the driver on your local computer.

6. On Windows 2000, select OK, and then follow the procedure for installing printer drivers on [page 1-18](#), starting with [step 5](#).

Setting up IPP printing with Windows 2000/XP

With Internet Printing Protocol (IPP), print jobs are sent to the Fiery over the Internet.

IPP printing is supported directly for Windows 2000/XP computers. IPP printing is not supported on Windows NT 4.0.

NOTE: The IPP setup procedures are performed after installing the appropriate printer drivers (see [“To install the PostScript printer driver for Windows 2000/XP”](#) on [page 1-18](#)).

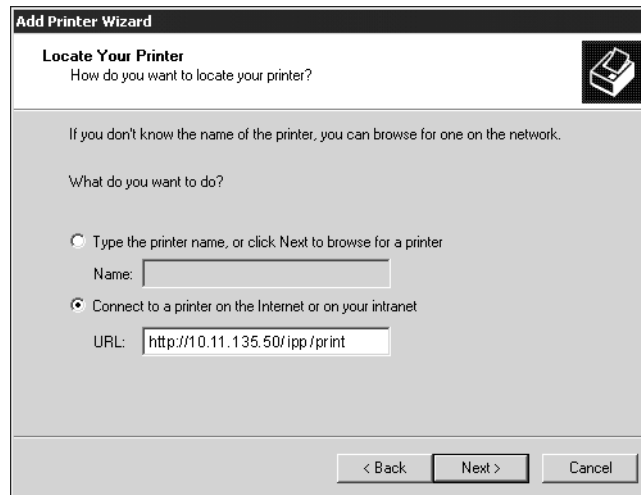
BEFORE YOU BEGIN

- 1. Prepare the Fiery for TCP/IP printing.**
- 2. Make sure the Fiery is configured for IPP printing in Network Setup > Service Setup > IPP Setup.**
- 3. Specify the printing destination on your computer.**

TO SET UP IPP PRINTING WITH WINDOWS 2000/XP

1. Click Start, choose Settings, and then choose Printers.
2. Double-click the Add Printer icon and click Next.
3. Select Network printer and click Next.
4. Select “Connect to a printer on the Internet or on your intranet.” Enter an IP address or computer name in the URL window.

The URL for the printer is the IP address, or DNS name, followed by “ipp” and the connection you want to print to (print, hold, or direct). Insert a slash between the elements.



5. Click Next.

The Connect to Printer window appears.

6. Click OK.

7. The Add Printer Wizard dialog box appears.

If you are installing the PostScript printer for Windows 2000/XP for the first time, follow the procedure described on [page 1-18](#).

If you have already installed the printer driver on your computer, choose Xerox for Manufacturers and Fiery EX12 or EX2000 Color Server for Printers, and then click OK.

8. Indicate whether you want to make the Fiery the default printer and click Next.

9. Click Finish.

Installing e-mail service

The e-mail service provides a method to print and control the Fiery remotely. Jobs are sent to the Fiery in the form of e-mail attachments. You can set up e-mail printing on Windows 9x/Me, Windows NT 4.0, or Windows 2000/XP by adding the EFI Fiery Mail Port software as a printer port.

To set up the Fiery for e-mail printing, see the *Configuration Guide*. After Setup has been performed, install the software from the User Software CD onto your Windows computer, and then add a port.

NOTE: The following procedures are basically the same for all Windows platforms. The illustrations shown are from Windows NT 4.0.

TO INSTALL THE E-MAIL PORT MONITOR ON WINDOWS 9X/ME, WINDOWS NT 4.0, OR WINDOWS 2000/XP

1. Open the EFI Fiery Mail Port folder on the User Software CD.

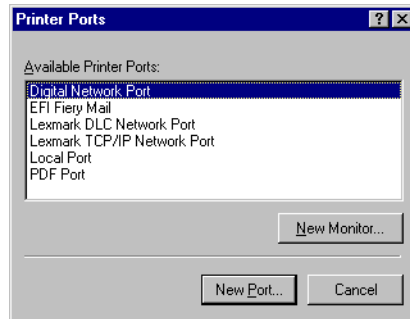
2. Double-click the Setup icon and follow the instructions.

When installation is complete, you are ready to configure the connection for the e-mail port monitor.

TO CONFIGURE THE CONNECTION FOR THE EFI FIERY MAIL PORT

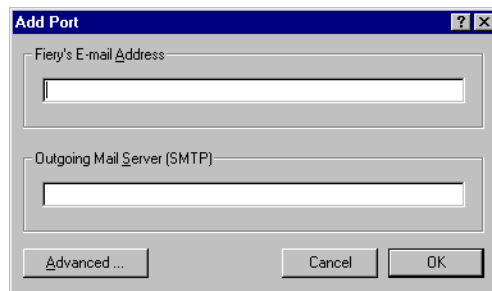
1. Click Start, choose Settings, and then choose Printers.
2. In the Printers window, double-click the Add Printer icon, and click Next.
3. Specify printing using a Local printer and click Next.
4. In the window displaying a list of ports, click Add Port.

The Printer Ports dialog box is displayed, with the EFI Fiery Mail port listed as one of the available ports.



5. Select EFI Fiery Mail and click New Port.

The Add Port dialog box appears.



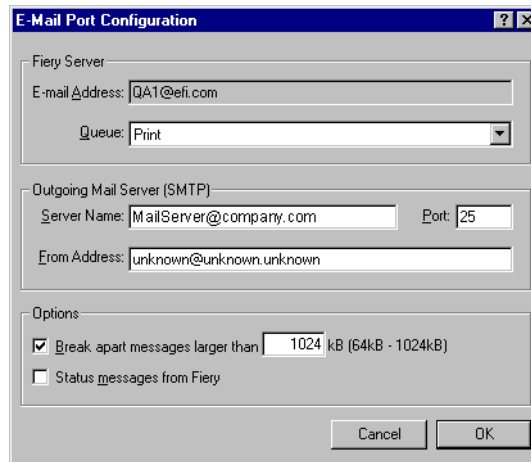
6. Enter the basic information required to set up the e-mail port.

Fiery's E-mail Address—Enter the e-mail address of the Fiery.

Outgoing Mail Server—Enter the name or IP address of the SMTP server for the port monitor to use.

7. Click Advanced.

The E-Mail Port Configuration dialog box appears.

The image shows a Windows-style dialog box titled "E-Mail Port Configuration". It has a blue title bar with a question mark icon and a close button. The dialog is divided into three sections. The first section, "Fiery Server", contains an "E-mail Address" text field with "QA1@efi.com" entered, and a "Queue" dropdown menu set to "Print". The second section, "Outgoing Mail Server (SMTP)", contains a "Server Name" text field with "MailServer@company.com", a "Port" text field with "25", and a "From Address" text field with "unknown@unknown.unknown". The third section, "Options", contains two checkboxes: "Break apart messages larger than" (checked) with a value of "1024" and a unit of "kB (64kB - 1024kB)", and "Status messages from Fiery" (unchecked). At the bottom right are "Cancel" and "OK" buttons.

8. Enter the following information.

For Fiery Server:

E-mail Address—The e-mail address of the Fiery.

Queue—The print connection on the Fiery that you want.

For Outgoing Mail Server (SMTP):

Server Name—The SMTP server to use.

From Address—The “from” address to insert in the e-mail.

For Options:

Break email messages larger than—The maximum size of a single e-mail message is displayed. If a job exceeds this size, it is split into multiple messages, each not exceeding this size.

Status messages from Fiery—When enabled, the Status option requests the Fiery to send status reports of the job via e-mail.

9. Click OK.

The Add Printer Wizard dialog box appears.



10. Click Next and follow the instructions for installing the printer driver for your Windows computer.

Installing Fiery utilities

From the User Software CD, you can install the following Fiery utilities:

- ColorWise Pro Tools
- Fiery Downloader
- Fiery Remote Scan
- Fiery Printer Delete Utility
- Fiery VDP Resource Manager
- Command WorkStation

Includes DocBuilder Pro and PitStop, a plug-in for Adobe Acrobat 4.0.

- Fiery Graphic Arts Package (available as an option)

The utilities must be separately installed on each user's computer. The installation of each utility is similar. Before you begin each installation, determine where you want to install each item on your hard disk. Otherwise, the software is placed by default in folders inside the Programs folder as described below:

- Command WorkStation, ColorWise Pro Tools, Fiery Graphic Arts Package—
Electronics For Imaging folder

If available, DocBuilder Pro is automatically installed with Command WorkStation. The Command WorkStation installer also installs the Java files necessary to use Fiery Setup from Command WorkStation. The Fiery Graphic Arts Package installer places a shortcut for Hot Folder on your Desktop.

NOTE: ColorWise Profiler is installed from the ColorWise Profiler CD. To access Profiler from ColorWise Pro Tools, install Profiler before installing ColorWise Pro Tools.

- Fiery Downloader—Fiery folder
- Fiery VDP Resource Manager—Fiery folder
- Fiery Printer Delete Utility—Fiery folder
- Fiery Remote Scan—Photoshop Plug-ins folder

The TWAIN Fiery Remote Scan Module installer automatically creates a folder named Twain_32 in the Windows folder on your hard disk, and then installs the Fiery Remote Scan plug-in module into the folder.

NOTE: Before installing the TWAIN Fiery Scan module, make sure the TWAIN plug-ins (installed with Adobe Photoshop) are located in the correct Photoshop\Plugins subfolder. If the TWAIN plug-ins have been deleted, you must reinstall Adobe Photoshop in order to use Fiery Scan.

TO INSTALL FIERY UTILITIES

1. **Open the appropriate folder for the software you want to install.**
2. **Double-click the Setup.exe icon.**
3. **Follow the instructions in the Setup dialog boxes to complete installation.**

Adobe Acrobat

In Command WorkStation, the DocBuilder Pro feature and PitStop software plug-in work with Adobe Acrobat. To use DocBuilder Pro, you must install Adobe Acrobat 4.0, the PitStop plug-in, and Command WorkStation.

NOTE: If Adobe Acrobat is installed after Command WorkStation, you may be required to restart Command WorkStation in order to use DocBuilder Pro.

For more information about Adobe Acrobat for Windows, see the Readme.pdf file on the Adobe Acrobat for DocBuilder Pro CD.

TO INSTALL ADOBE ADOBE ACROBAT

1. **Insert the Adobe Acrobat for DocBuilder Pro CD in the CD-ROM drive.**
2. **Double-click the AutoPlay.exe icon on the CD and follow the instructions.**

PitStop

PitStop is a plug-in for Adobe Acrobat 4.0 for use with DocBuilder Pro. You must first install Adobe Acrobat 4.0 as described in the previous section. PitStop software is included in the CStation folder on the User Software CD.

TO INSTALL PITSTOP

1. **On the User Software CD, double-click to open the CStation folder.**
2. **Double-click the PitStop folder, and double click the PitStop setup icon.**

The Welcome to Enfocus PitStop Setup dialog box appears,

3. **Click Next and then click Yes to the license agreement.**

The Information dialog box appears.

4. **Click Next.**

The Choose Destination Location dialog box appears.

PitStop will automatically select the correct location for installation.

5. **Click Next.**

Setup is complete.

6. **Click Finish.**

For more information, see the PitStop documentation in Adobe Acrobat under Help\Plug-in Help.

Using Fiery utilities for the first time

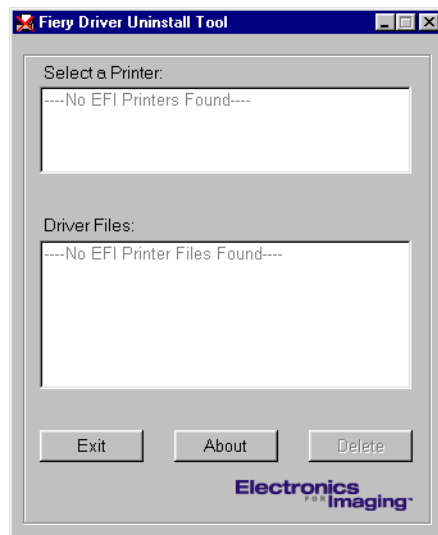
Before you can use most Fiery utilities, you must properly configure the connection to the Fiery. Configuration of the Fiery utilities is similar.

Fiery Printer Delete Utility is installed and used locally, so connection to the Fiery is not required before using the software.

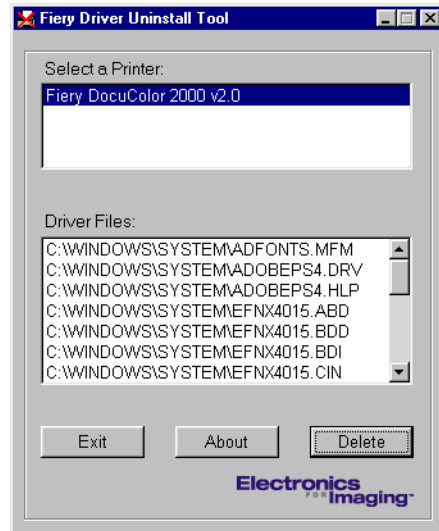
TO USE FIERY PRINTER DELETE UTILITY

1. Click **Start**, choose **Programs**, and then choose **EFI**.
2. Click **FieryPrinterDeleteUtility**.

The Fiery Driver Uninstall Tool dialog box appears.

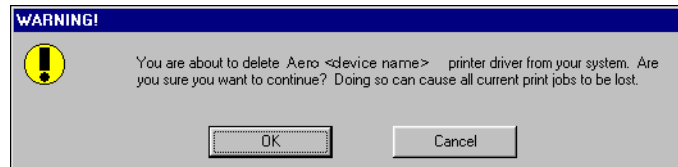


If any Fiery printer drivers are found on your computer, they are displayed.



3. To delete any of the displayed printers, select the printer name and click Delete.

A warning message appears.



4. Click OK to delete the selected printer driver.

A dialog box recommending that you restart your system appears after the printer driver is deleted.

5. Click OK to restart, or, to delete another printer driver, click Cancel to return to the Fiery Driver Uninstall Tool dialog box. Restart when you finish deleting printer drivers.

Configuring the connection for Command WorkStation

The first time you start Command WorkStation, you are prompted to configure the connection to the Fiery.

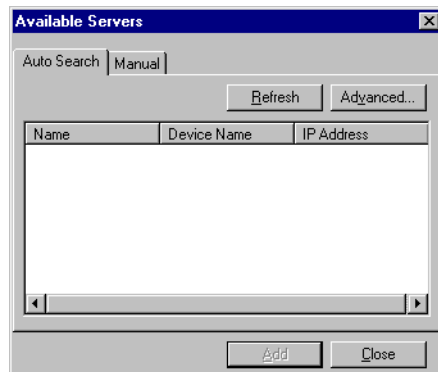
TO CONFIGURE THE CONNECTION FOR COMMAND WORKSTATION

- 1. Print a Configuration page.**

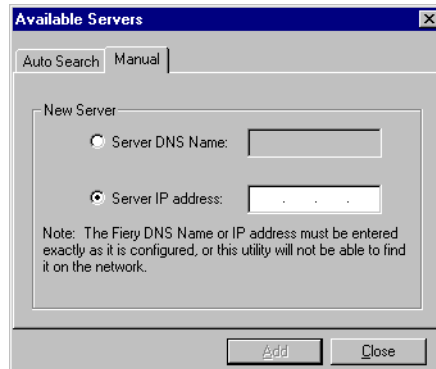
The information on this page helps you locate the Fiery if it is not on the same local subnet as your computer.

- 2. Start Command WorkStation.**

The Available Servers dialog box appears. All servers found in the local subnet are displayed.

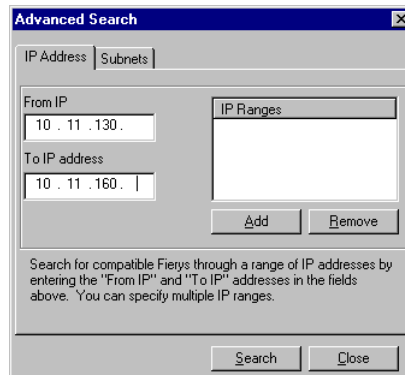


3. If no Fiery servers were found, click the Manual tab to search by DNS name or IP address. Click Add to add the server to the Available Servers list.

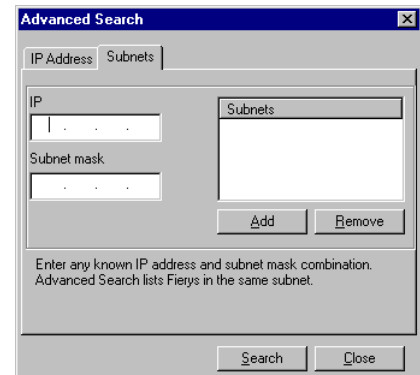


The 'Available Servers' dialog box has a title bar with a close button. It contains two tabs: 'Auto Search' and 'Manual'. The 'Manual' tab is selected. Under the 'New Server' section, there are two radio buttons: 'Server DNS Name:' and 'Server IP address:'. The 'Server IP address:' radio button is selected. Below these is a text field for the IP address. A note states: 'Note: The Fiery DNS Name or IP address must be entered exactly as it is configured, or this utility will not be able to find it on the network.' At the bottom are 'Add' and 'Close' buttons.

4. Click the Auto Search tab and then click Advanced to search by either a range of IP addresses or the IP address and subnet mask.



The 'Advanced Search' dialog box has a title bar with a close button. It contains two tabs: 'IP Address' and 'Subnets'. The 'IP Address' tab is selected. It has two text fields: 'From IP' (containing '10 . 11 . 130 .') and 'To IP address' (containing '10 . 11 . 160 .'). To the right is a large empty box labeled 'IP Ranges'. Below these are 'Add' and 'Remove' buttons. A note states: 'Search for compatible Fierys through a range of IP addresses by entering the "From IP" and "To IP" addresses in the fields above. You can specify multiple IP ranges.' At the bottom are 'Search' and 'Close' buttons.



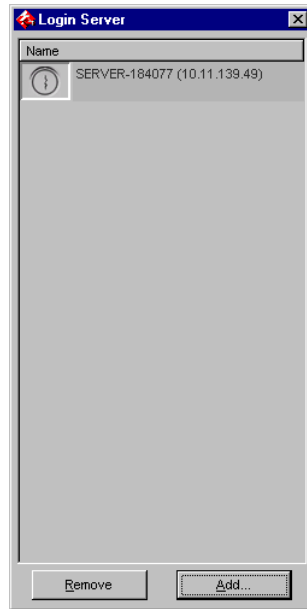
The 'Advanced Search' dialog box has a title bar with a close button. It contains two tabs: 'IP Address' and 'Subnets'. The 'Subnets' tab is selected. It has two text fields: 'IP' (containing '1 . . .') and 'Subnet mask' (containing '. . .'). To the right is a large empty box labeled 'Subnets'. Below these are 'Add' and 'Remove' buttons. A note states: 'Enter any known IP address and subnet mask combination. Advanced Search lists Fierys in the same subnet.' At the bottom are 'Search' and 'Close' buttons.

5. Click Search.

All available servers appear in the Available Servers list.

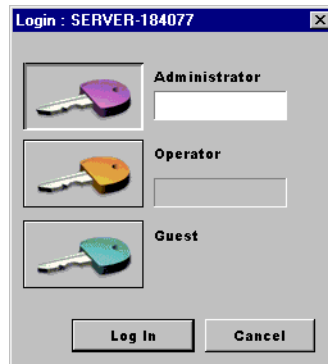
6. Select the Fiery server you want to use and click Add.

The selected Fiery server appears in the Login Server dialog box.



7. Click the server name.

The Log In dialog box appears.



8. Select Administrator, Operator, or Guest and click Log In.

Your computer is connected to the server.

To modify the connection to the Fiery, you must remove the server from the Login Server list and follow the procedure for configuring the connection.

Configuring the connection for Fiery VDP Resource Manager

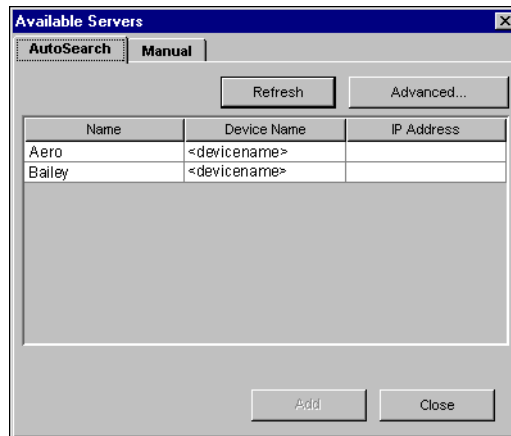
The Fiery VDP Resource Manager allows you to view and delete all global objects used in variable data printing.

TO CONFIGURE THE CONNECTION FOR FIERY VDP RESOURCE MANAGER**1. Click Start, choose Programs, and then click Fiery VDP Resource Manager in the Electronics For Imaging folder.**

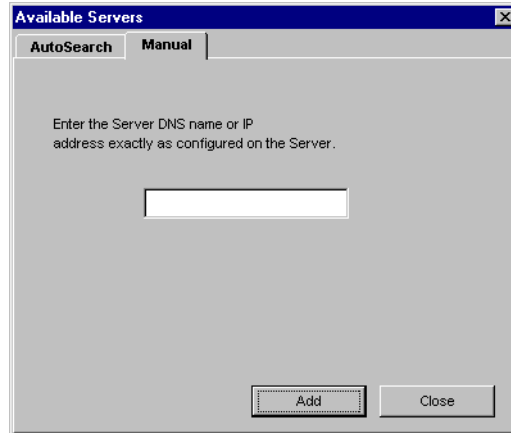
All servers you connected to previously are displayed. If no servers are displayed, you can locate and add them.

2. Choose Connect from the Server menu.

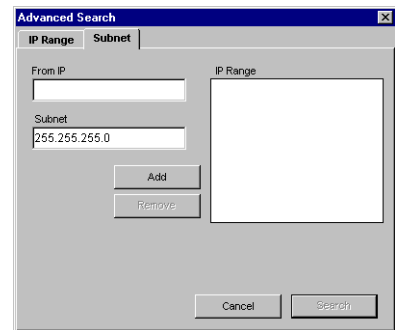
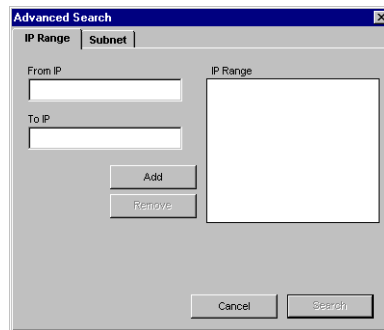
The Available Servers dialog box appears with all Fiery servers found in the subnet displayed.



3. Click the **Manual** tab to locate a Fiery server by its IP address. Enter the IP address and click **Add**.



4. Click the **Auto Search** tab and then click **Advanced** to search by either a range of IP addresses or the IP address and subnet mask.



5. Click **Add** and then click **Search**.

All VDP servers located will be displayed in the Available Servers dialog box.

6. Select the servers you want and click **Add**.

The selected servers are displayed in the list of VDP servers in the Fiery Variable Data Resource Manager dialog box.

Configuring the connection for Fiery utilities

The first time you launch one of the Fiery utilities, you must configure the connection to the Fiery. Similar configurations are used for all Fiery utilities (including Fiery Remote Scan), so any change in one configuration affects all the other connections.

BEFORE YOU BEGIN

- **Print the Configuration page from the Fiery Control Panel.**

This page contains information you need when configuring the connection, such as the IP address. For TCP/IP installations, you can use the DNS name of the Fiery instead of the IP address. Make sure the Fiery is already registered in a Domain Name Server (DNS) on your network. For more information, see your Windows system documentation.

TO CONFIGURE THE CONNECTION FOR FIERY UTILITIES

1. **Start the utility for which you want to configure a connection.**

For Fiery Remote Scan, start Photoshop.

For details, see the *Printing Guide*.

2. **If the No Servers Configured dialog box appears, click OK.**

If the Choose Printer Device dialog box appears, click Add.

3. **Enter the appropriate information for the Fiery.**

Nickname—Enter a name for the Fiery. This name does not have to match the actual Server Name of the Fiery.

NOTE: The nickname cannot contain any of the following seven characters:

[] _ " ' <space> <tab>

Protocol—Choose the type of network protocol you are using from the menu.

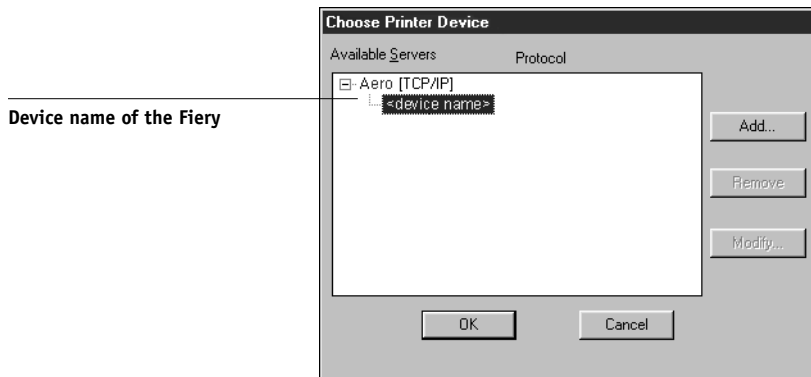
NOTE: Fiery utilities are not supported over IPX/SPX. Command WorkStation is supported on Windows computers over TCP/IP.

Server Name—Enter the IP address (or DNS name) of the Fiery.

New Device—Enter the name of the device the Fiery is connected to: DC12 or DC2000.

4. When you have entered all the information, click **Add**.
5. With the device name selected in the **Devices** list, click **OK**.

The Fiery appears in the list of available servers. The first line of the entry displays the nickname you gave the server, followed by the protocol you chose. The second line displays the device name.



6. With the device name selected in the list of **Available Servers**, click **OK** to begin using the utility.

Modifying the configuration

Edit the configuration whenever there is any change to your Fiery server or network, such as a server name or IP address. If you change Fiery Setup information, do so before reconfiguring the connection.

TO MODIFY THE CONFIGURATION

1. To edit information for a Fiery in the list of available servers, select the Fiery by its nickname and click **Modify**.
2. Make the necessary changes in the **Modify Server Settings** dialog box and click **OK**.
3. To add a new Fiery to the list of available servers, click **Add**. Configure the **Add New Server** dialog box as outlined in steps 3 through 5 in the previous procedure.
4. To remove a Fiery, select the Fiery by its nickname and click **Remove**.

NOTE: The nickname cannot be modified.

Installing color files from the User Software CD

You can copy additional color files from the User Software CD to your hard disk. Many of the files are PostScript files that you can download and print using Fiery Downloader.

Icm folder	ICM monitor settings file and a device profile specially designed for use with the Fiery and particular copier models. For instructions on installing, see “Installing the ICM profiles on a Windows computer” on page 1-55.
Clrfiles folder (inside the English folder)	<p>Cmyk.ps, an 11-page, letter-size PostScript file to use for reference when defining CMYK colors in applications.</p> <p>Pantone.ps, a 19-page, letter-size PostScript file that indicates the closest equivalent of PANTONE coated colors that the Fiery and your copier model can produce. The method used to print the Pantone.ps file differs depending on the Spot Color Matching setting. For more information, see the Printing Guide and the Color Guide.</p> <p>Rgb_01.doc, a file you can print from Microsoft Word 97 or later to view available RGB colors.</p> <p>Rgb_02.ppt, a file you can print from PowerPoint 6.0 or later to view available RGB colors.</p>
Calibrat folder (inside the English\Clrfiles folder)	Four PostScript files of color patches for obtaining measurements: Custom21.ps, Custom34.ps, Stand21.ps, and Stand34.ps. The numbers in the file names refer to the number of patches on the page. The Custom files allow you to download measurement patches that incorporate the copier’s current calibration set. The Standard files allow you to download standard measurement patches that bypass the copier’s current calibration set. For information on using these files, see the Color Guide .

NOTE: These files are provided for expert users and should not be used for day-to-day calibration.

Installing the ICM profiles on a Windows computer

The ICM profiles included in the Icm folder on the User Software CD are for use with ColorWise Pro Tools. You can also use the ICM profiles with applications that support ICC standards, such as Photoshop. For most ICC-aware applications, the files must be installed in a folder named Color in the System folder. For use with ColorWise Pro Tools, you can copy the files to a folder of your choice.

You can upload additional ICC profiles with the Profile Manager in ColorWise ProTools. For more information on uploading and using ICC profiles with ColorWise Pro Tools, see the [Color Guide](#).

TO INSTALL THE ICM PROFILES ON A WINDOWS COMPUTER

1. On the User Software CD, open the Icm folder.
2. If you are using Windows 9x/Me, copy the profiles to the Windows\System\Color folder on your hard disk.

If you are using Windows NT or Windows 2000/XP, copy the profiles to the Winnt\System32\Color folder on your hard disk.

NOTE: If a folder named “Color” does not exist in the Sytem32 folder, create one and install the profiles into it.

Loading the monitor settings file

The Efirgb.icm monitor settings file can be used in Photoshop, or other applications that support ICM profiles, to define a source color space for printing to the Fiery.

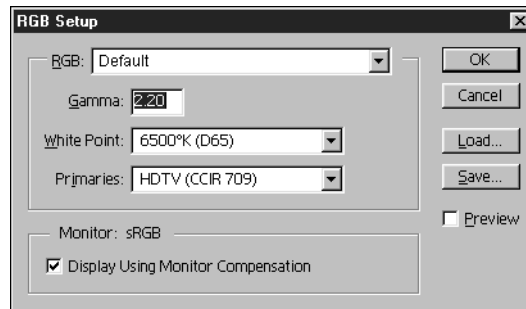
These instructions assume you have installed the ICM profiles included on the User Software CD. For more information, see the previous section.

NOTE: The internal name of an ICC profile may vary slightly from its file name.

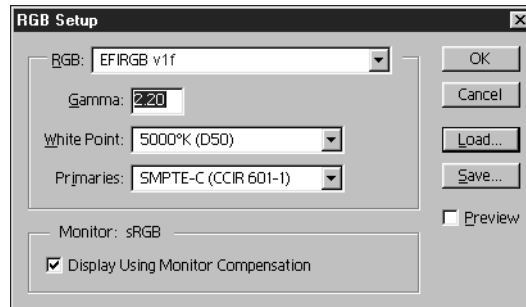
NOTE: If you use Fiery Remote Scan, install the monitor settings profile.

TO LOAD THE RGB WORKING SPACE PROFILE FOR PHOTOSHOP 5.X

1. **Start Photoshop.**
2. **Choose Color Settings from the File menu, and then choose RGB Setup from the Color Settings submenu.**
3. **In the RGB Setup dialog box, click Load.**



4. **For Windows 9x/Me, browse to the Windows\System\Color folder, select Efirgb.icm and click Load.**



For Windows NT 4.0 or Windows 2000/XP, browse to the Winnt\System32\Color folder, select Efirgb.icm, and click Load.

The Efirgb v1f file is displayed in the RGB menu of the RGB Setup dialog box.

5. **Click OK.**

For more information about ICM profiles, see your PhotoShop documentation.

Loading the ICM copier device profile

This ICM profile defines the target color space for printing to the copier.

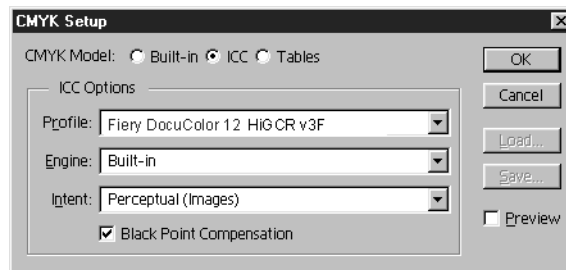
These instructions assume you have installed the ICM profiles included on the User Software CD. For more information, see [“Installing the ICM profiles on a Windows computer”](#) on page 1-55.

NOTE: The internal name of an ICC profile may vary slightly from its file name.

TO LOAD THE ICM COPIER DEVICE PROFILE IN PHOTOSHOP 5.X

1. **Start Photoshop.**
2. **Choose Color Settings from the File menu, and then choose CMYK Setup from the Color Settings submenu.**
3. **In the CMYK Setup dialog box, choose ICC as the CMYK color model.**
4. **Select the profile that corresponds to the Fiery from the Profile menu.**

NOTE: The following illustration shows a sample setting for Fiery EX12.



5. **Click OK.**

For more information about ICC profiles, see your PhotoShop documentation.

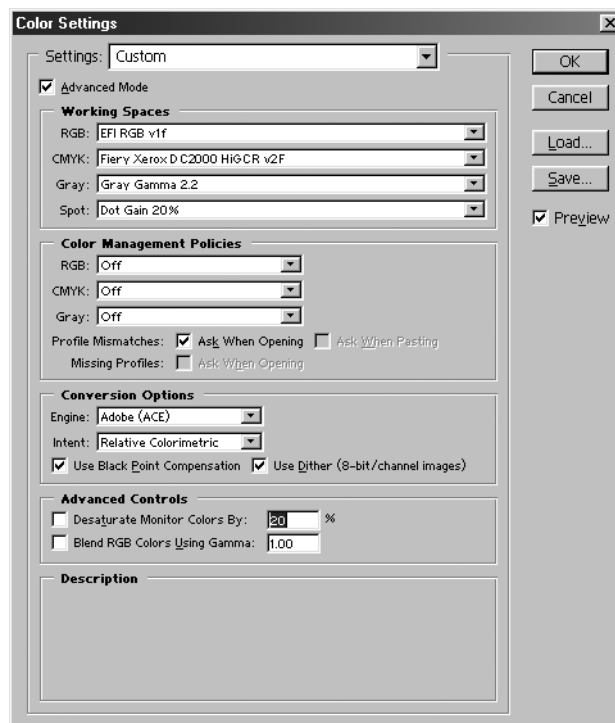
Loading monitor settings files and ICM device profiles in Photoshop 6.x

Once you have installed the Efirgb.icm monitor settings file and the ICM device profile for the Fiery, they can be loaded at the same time in Photoshop 6.x.

TO LOAD THE MONITOR SETTINGS FILE AND ICM DEVICE PROFILE IN PHOTOSHOP 6.X

1. Start Photoshop.
2. Choose Color Settings from the Edit menu, and select Advanced Mode in the Color Settings dialog box.
3. Choose EFI RGB v1f from the RGB menu.
4. Choose the profile that corresponds to the Fiery from the CMYK menu.

NOTE: The following illustration shows sample settings for Fiery EX2000d.



5. Click OK.

Installing the printer description files for Windows

The User Software CD contains printer description files for popular Windows applications. Pagemaker 6.5 does not support automatic installation of printer description files from the Printers Control Panel. To make the Fiery available in the Print and Page Setup dialog boxes of this application, copy printer description files to the appropriate location.

TO COPY THE PRINTER DESCRIPTION FILES

1. **On the User Software CD, open theEnglish\Prntdrv\Ps_drvr folder. Select the folder that corresponds to the system you are using.**

For Windows 9x/Me, select English\Prntdrv\Ps_drvr\Win_9x_ME.

For Windows NT 4.0, select English\Prntdrv\Ps_drvr\Win_NT4x.

For Windows 2000/XP, select English\Prntdrv\Ps_drvr\Win_2000/XP.

2. **Copy the printer description file for your Fiery to the appropriate location.**

If you use	Copy this file	To this location
PageMaker 5.0 or later	EF3X1011.ppd (Fiery EX12) Efnx4015.ppd (Fiery EX2000d)	For PageMaker 5.0, \ALDUS\USENGLSH\PPD4 For PageMaker 6.0, \PM6\RSRC\USENGLSH\PPD4 For PageMaker 6.5, \PM65\RSRC\USENGLSH\PPD4

Chapter 2: Installing User Software on a Mac OS Computer

The general steps for installing the Fiery user software and setting up printing on a Mac OS computer are:

- Install the PostScript printer driver and printer description file.
- Set up the Fiery in the Chooser.
- Install the Fiery utilities.

EX12

For Fiery EX12: Fiery Remote Scan, ColorWise Pro Tools, Fiery Downloader, Fiery VDP Resource Manager, and Fiery Spooler

EX2000d

For Fiery EX2000d: ColorWise Pro Tools, Fiery Downloader, Fiery VDP Resource Manager, and Fiery Spooler

- Configure the connection for Fiery utilities.
- Install the printer and screen fonts.
- Install the ColorSync profiles.
- Install additional color reference and application-specific files.

In addition to using the User Software CD, you can download printer drivers from the Fiery with the Installer WebTool (if the site administrator has enabled Internet access to the Fiery). For instructions, see [“Using the Fiery WebTools Installer”](#) on page 3-2.

Once you download the printer files, the installation process is identical to installing from the User Software CD.

Setting up the Fiery as a PostScript printer

To set up the Fiery as a PostScript printer, you must install the PostScript printer driver and the printer description file that corresponds to your copier. The PostScript printer driver and printer description files are provided on the User Software CD. Printer drivers provide a way to communicate information on print jobs between your applications, the Fiery, and any other PostScript printer connected to your computer.

When you install printer files from the User Software CD or printer files downloaded using the Installer WebTool, use the following procedures.

TO INSTALL THE ADOBEPS PRINTER DRIVER AND PRINTER DESCRIPTION FILE**1. Quit all open applications.**

After you have completed installation, restart your computer.

2. On the User Software CD, open the English: Printer Driver folder.

If you are installing from files you downloaded using the Installer WebTool, open the Printer Driver folder on your hard disk.

3. Double-click the AdobePS Installer icon.**4. Follow the on-screen instructions.**

The AdobePS Installer installs the Adobe PostScript printer driver, and the printer description file that corresponds to the Fiery.

NOTE: If you operate the Fiery in a copy shop, quick print shop, or service bureau, provide your customers with copies of the printer driver, printer description file, or ICC profiles you use for printing images, as well as any relevant documentation. This ensures that jobs they create and print to files are properly formatted for printing to the Fiery.

Setting up the Fiery in the Chooser

After you install the Adobe PostScript printer driver and printer description file (see [“Setting up the Fiery as a PostScript printer”](#) on page 2-1), you must set up the Fiery in the Chooser in order to take full advantage of its features. This section describes how to set up the Fiery with the AdobePS printer driver.

TO SET UP THE FIERY IN THE CHOOSER**1. Select Chooser from the Apple menu.**

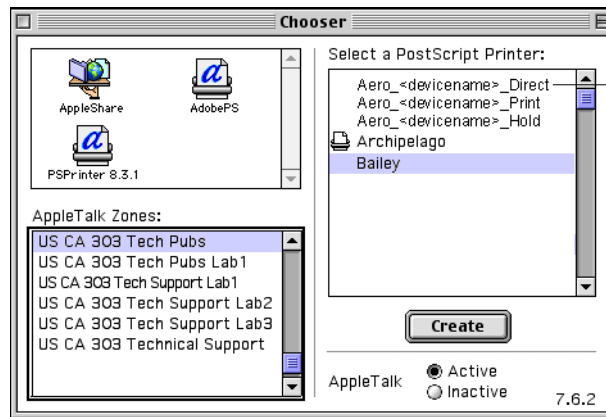
Make sure AppleTalk is set to Active.

2. Select the correct AppleTalk Zone, if necessary.

3. Click the AdobePS icon.

The Fiery appears in the Select a PostScript Printer list in the form of <server name>_<device name>_<print connection>. The device name (DC12 or DC2000) is the internal name of your copier.

NOTE: Only the print connections (Direct, Hold, and Print) that have been enabled in Setup appear in the Chooser.



Device name is
DC12 or DC2000

4. Select a Fiery connection from the “Select a PostScript Printer” list, and click Create.

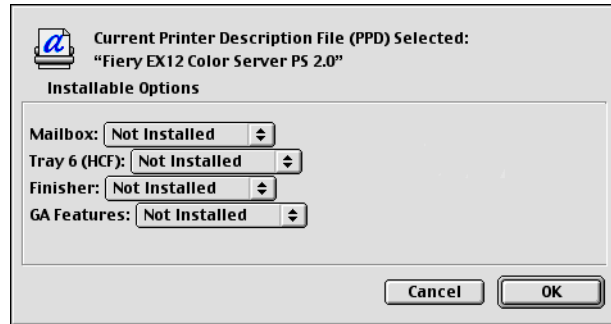
The AdobePS printer driver automatically selects the correct printer description file for your Fiery.

NOTE: You must set up each print connection separately. Repeat this step for all enabled connections.

5. Select the icon that appears next to the newly installed Fiery and click Setup.**6. Click Configure in the dialog box that appears.**

7. In the Installable Options dialog box, select the appropriate settings from the menus and click OK.

Fiery EX12



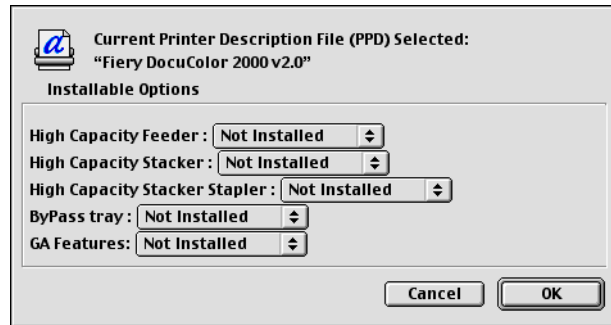
Mailbox—Not Installed, Installed

Tray 6 (HCF)—Not installed, Installed

Finisher—Not installed, Installed

GA Features—Not Installed, Installed

Fiery EX2000d



High Capacity Feeder—Not installed, Installed

High Capacity Stacker—Not installed, Installed

High Capacity Stacker Stapler—Not Installed, Installed

ByPass Tray—Not installed, Installed

GA Features—Not Installed, Installed

8. Close the Chooser.

Installing Fiery software and fonts

The Mac OS installers function essentially the same for each type of software. Before you begin each installation, determine where you want to install each item on your hard disk. Otherwise, the software is placed by default as follows:

- ColorSync profiles—ColorSync Profiles folder.

If you are using ColorSync 2.5, install the profiles into the ColorSync Profiles folder inside the System folder. If you are using an earlier version of ColorSync, install the profiles to the ColorSync Profiles folder inside the System:Preferences folder. The printer profile can be moved to a folder of your choice.

- Fiery Downloader, Fiery Spooler, ColorWise Profiler, and ColorWise Pro Tools—“Fiery F” folder

NOTE: ColorWise Profiler is installed separately from ColorWise Pro Tools. To access Profiler from ColorWise Pro Tools, you must install Profiler first.

- Fiery VDP Resource Manager—Electronics For Imaging folder
- Fiery Remote Scan—Photoshop Plug-Ins folder

The installer also creates a folder named TWAIN in your System folder:Preferences folder, and installs a Fiery Remote Scan module and Source Manager file into that folder.

- Fonts—System folder:Fonts folder

For instructions on installing Fonts, see “[Fonts](#)” on page 2-14.

TO INSTALL MAC OS SOFTWARE

1. **Insert the User Software CD in the CD drive and double-click the Installer icon of the item you want to install, then follow the instructions in the installer dialog boxes.**

2. **If prompted, click Quit to close the software installer.**

In order to use ColorWise Pro Tools, Fiery Link, or Fiery Spooler, you must have Mac OS Runtime for Java (MRJ) installed on your computer.

If you do not have the appropriate MRJ installed, the installer automatically initiates the MRJ installation process.

3. **To Install MRJ, follow the instructions in the installer dialog boxes.**

Configuring a connection for ColorWise Pro Tools

The first time you use ColorWise Pro Tools, you are prompted to configure a connection to the Fiery.

NOTE: ColorWise Pro Tools are supported only over TCP/IP networks.

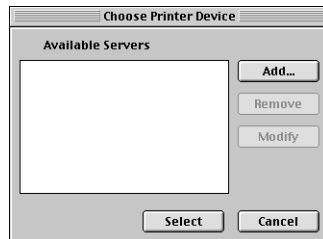
BEFORE YOU BEGIN

- **Print the Configuration page from the Control Panel and note the IP address of the Fiery.**

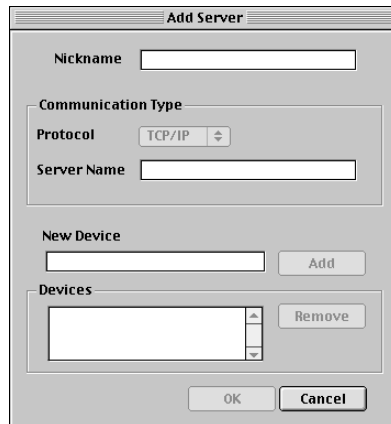
TO CONFIGURE A CONNECTION FOR COLORWISE PRO TOOLS

1. **Start the utility by double-clicking its icon.**

The Choose Printer Device dialog box appears.



2. **If you have previously configured a connection to the Fiery, you are ready to use ColorWise Pro Tools. If you have not configured a connection, click Add.**



3. Enter the appropriate information for the Fiery.

Nickname—Enter a name for the Fiery. It does not have to match the actual server name of the Fiery.

NOTE: The nickname cannot contain any of the following seven characters:
[] _ " ' <space> <tab>

Protocol—TCP/IP is the only supported network protocol, so no selection is necessary.

Server Name—Enter the IP address (or DNS or hosts name) of the Fiery.

New Device—Enter the name of the device the Fiery is connected to: DC12 or DC2000. This device name appears in the Printer Setup section of the Configuration page.

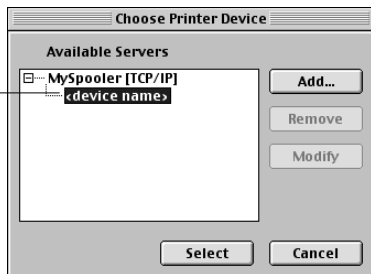
NOTE: The device name is case sensitive; enter it *exactly* as it appears here.

4. When you have added all the information, click Add.**5. With the device name selected in the Devices list, click OK.**

The Fiery appears in the list of available servers. The first line of the entry displays the nickname you gave the server, followed by the protocol. The second line displays the device name.

6. With the device name selected in the list of Available Servers, click Select to begin using ColorWise Pro Tools.

Device name of the Fiery
(DC12 or DC2000)



Modifying the configuration

Edit the configuration whenever there is any change in your original configuration, such as a change of IP address. Change the specific Fiery Setup information before using the following procedure to configure the connection.

TO MODIFY THE CONFIGURATION

1. To edit information for a Fiery in the list of available servers, select the Fiery by its nickname and click **Modify**. Edit information in the **Modify Server Settings** dialog box as necessary, and click **OK**.
2. To add a new Fiery to the list of available servers, click **Add**. Configure the **Add New Server** dialog box as outlined in steps 3 through 5 in the previous procedure.
3. To remove a Fiery from the list of available servers, select the Fiery by its nickname and click **Remove**.

Configuring a connection for Fiery Spooler

Before you begin, print a Configuration page from the Control Panel and note the IP address of the Fiery.

TO CONFIGURE THE CONNECTION FOR FIERY SPOOLER

1. Start the utility by double-clicking its icon.

The Chooser dialog box appears.

2. Click **Option**.
3. Click **Add**.
4. Enter the appropriate information for the Fiery.

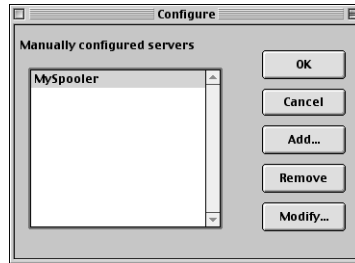
Name—Enter the IP address (or DNS name) of the Fiery.

New Device—Enter the name of the device that the Fiery is connected to: DC12 or DC2000. This device name appears in the Printer Setup section of the Configuration page.

5. When you have entered all the information, click **Add**.

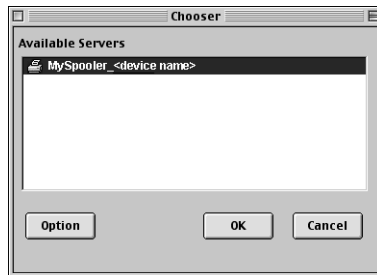
6. With the device name selected, click **OK**.

The Fiery appears in a list of configured servers.



7. Click **OK** in the **Configure** dialog box.

The Fiery appears in a list of available servers.



8. With the Fiery selected in the list of available servers, click **OK** to begin using Fiery Spooler.

Modifying the configuration

Edit the configuration whenever there is any change to your Fiery or network, such as an IP address or device change. Change the specific Fiery Setup information before configuring the connection.

TO MODIFY THE CONFIGURATION

1. In the Chooser dialog box, click **Option**.
2. To edit information for a Fiery, select the Fiery by its IP address or DNS name and click **Modify**. Edit information in the Settings dialog box as necessary, and click **OK**.
3. To add a new Fiery, click **Add**. Configure the Settings dialog box as outlined in steps 4 through 6 in the previous procedure.
4. To remove a Fiery, select the Fiery by its IP address or DNS name, and click **Remove**.

The list of available servers reflects the modifications you have made.

Configuring a connection for Fiery Downloader

When you start Fiery Downloader, you must specify the connection to the Fiery.

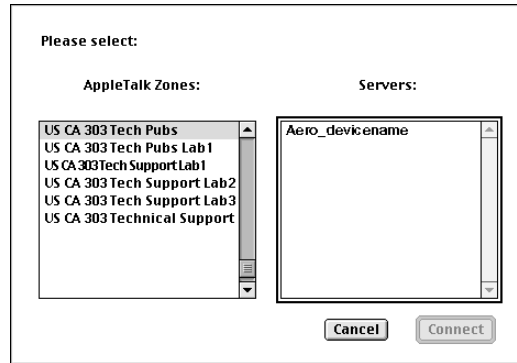
BEFORE YOU BEGIN

- Print the Configuration page from the Control Panel and note the AppleTalk zone of the Fiery.

TO SPECIFY A FIERY CONNECTION

1. Double-click the **Fiery Downloader** icon.
2. Select the **AppleTalk** zone in which the Fiery is located from the **AppleTalk Zones** list.

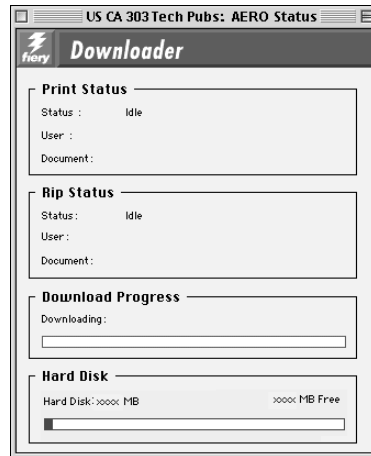
The available servers appear in the Servers list.



3. Select the Fiery in the Servers list.

4. Click Connect.

The Fiery Downloader dialog box appears.



For information on how to use Fiery Downloader, see the *Printing Guide*.

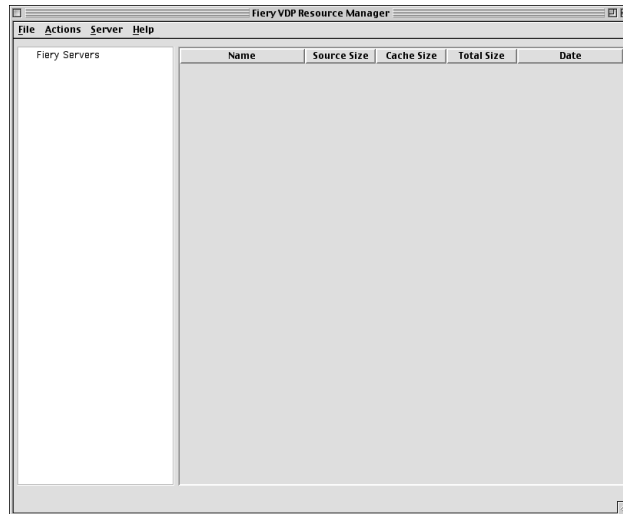
Configuring the connection for Fiery VDP Resource Manager

The Fiery VDP Resource Manager allows you to view and delete all global objects used in variable data printing.

TO CONFIGURE THE CONNECTION FOR FIERY VDP RESOURCE MANAGER

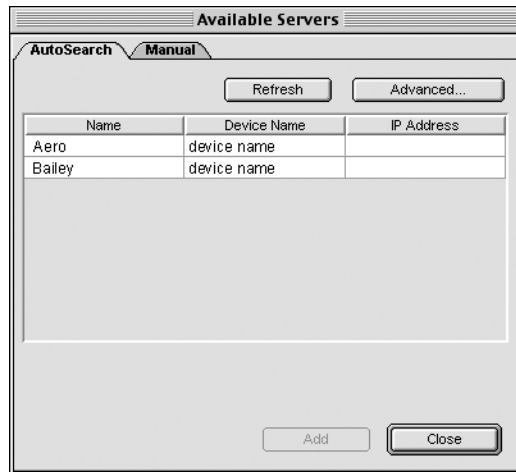
1. Click **Start**, choose **Programs**, and then click **Fiery VDP Resource Manager** in the **Electronics For Imaging** folder.

All servers you connected to previously are displayed. If no servers are displayed, you can locate and add them.

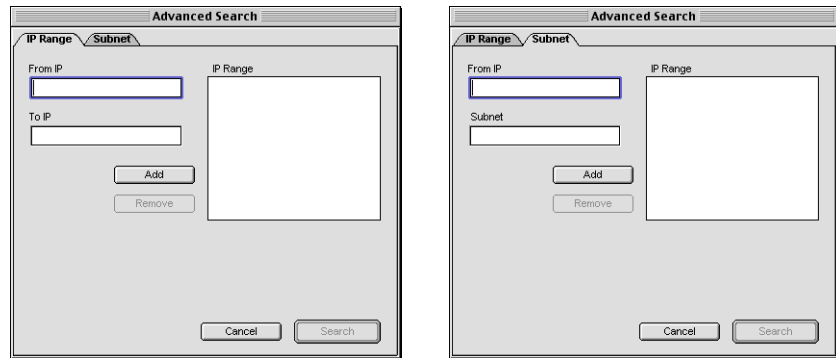


2. Choose Connect from the Server menu.

The Available Servers dialog box appears with all Fiery servers located in the subnet displayed.

**3. Click the Manual tab to locate a Fiery server by its IP address. Enter the IP address and click Add.**

4. Click the **Auto Search** tab and then click **Advanced** to search by either a range of IP addresses or the IP address and subnet mask.



5. Click **Add** and then click **Search**.

All VDP servers located appear in the Available Servers dialog box.

6. Select the servers you want and click **Add**.

The selected servers appear in the list of VDP servers in the Fiery Variable Data Resource Manager dialog box.

Fonts

The Fonts installer on the User Software CD includes screen and printer fonts that correspond to the 136 built-in PostScript printer fonts on the Fiery. The Font installer copies both kinds of fonts to the System:Fonts folder on your hard disk. To be available to applications, the screen fonts must remain in the System:Fonts folder. You can copy the printer fonts to a folder of your choice.

NOTE: In the System:Fonts folder, when displayed by Kind, screen fonts appear as type “Font Suitcase” and PostScript printer fonts appear as type “PostScript font”.

TO INSTALL SCREEN AND PRINTER FONTS

1. On the User Software CD, double-click the **Fonts** icon to start the Fonts installer.
2. Click **Install**.

By default, the fonts are installed to the System folder:Fonts folder on your hard disk. If you have any applications open, you must quit and restart them before the newly installed screen fonts are available.

Installing color files from the User Software CD

You can copy additional color files from the User Software CD to your hard disk. Many of the files are PostScript files you can download and print using Fiery Downloader.

The User Software CD contains the following color files:

ColorSync files (inside the ColorSync Folder)	If you are using ColorSync 2.5, install the profiles into the ColorSync Profiles folder inside the System folder. If you are using an earlier version of ColorSync, install the profiles to the ColorSync Profiles folder inside the System:Preferences folder. The printer profile can be moved to a folder of your choice.
Color Files folder (inside the English folder)	<p>CMYK Color Reference.ps, an 11-page, letter-size PostScript file to use for reference when defining CMYK colors in applications.</p> <p>PANTONE Book.ps, a 19-page, letter-size PostScript file that indicates the closest equivalent of PANTONE coated colors that the Fiery and your particular copier model can produce. The method used to print the PANTONE Book.ps file differs depending on the Spot Color Matching setting. For more information, see the <i>Printing Guide</i> and the <i>Color Guide</i>.</p> <p>RGB page 01, a file you can print from Microsoft Word 97 or later to view available RGB colors.</p> <p>RGB page 02, a file you can print from PowerPoint 6.0 or later to view available RGB colors.</p>
Calibration folder (inside Color Files folder)	<p>Four measurements files of color patches: custom21.ps, custom34.ps, standard21.ps and standard34.ps. The numbers in the file names refer to the number of patches on the page. The Custom files are provided to enable you to download measurement patches that override the copier's current calibration set. The Standard files are provided to enable you to download standard measurement patches that bypass the copier's current calibration set. For information on using these files, see the <i>Color Guide</i>.</p> <p>These files are provided for expert users and should not be used for day-to-day calibration.</p>

Loading ICC profiles

The ICC profiles installed are for use with ColorWise Pro Tools and applications that support ICC standards.

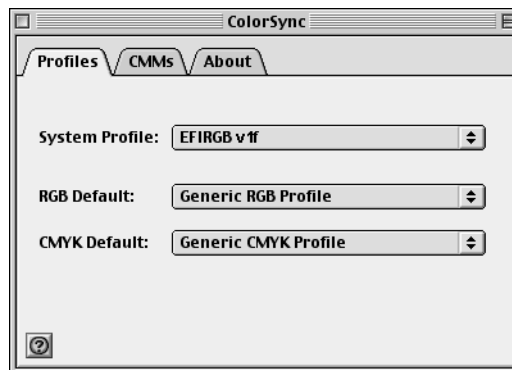
These instructions assume that you have already installed the ICC profiles included on the User Software CD. For more information, see [“Installing color files from the User Software CD”](#) on page 2-15.

NOTE: The internal name of an ICC profile may vary slightly from its file name.

The following procedure describes installing the ICC profiles with ColorSync 4.0. For more information about ColorSync, see your application’s documentation.

TO SET THE COLORSYNC SYSTEM PROFILE

1. Choose Control Panels:ColorSync from the Apple Menu.
2. Select EFIRGB ICC v1f from the System Profile list.



When selected as the ColorSync system profile, EFIRGB ICC v1f sets the optimal source color space for printing to the Fiery. The color space set by the EFIRGB ICC v1f profile is the same as that set by the EFIRGB setting of the RGB Source Profile print option.

NOTE: The RGB Source Profile print option setting overrides the ColorSync system profile setting.

3. Close the ColorSync dialog box.

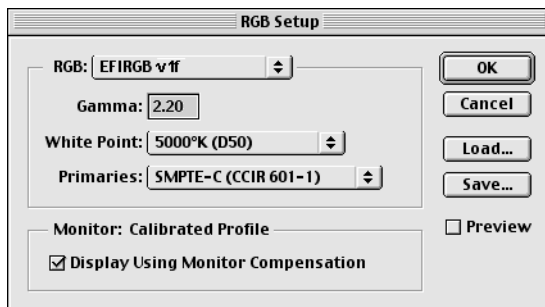
For more information about ICC profiles, see your PhotoShop documentation.

Loading the monitor settings file

The EFIRGB ICC monitor settings file can be used in Photoshop or other applications that support ICC profiles to define a source color space for printing to the Fieri.

TO LOAD THE MONITOR SETTINGS FILE IN PHOTOSHOP 5.X

1. Start Photoshop.
2. Choose Color Settings from the File menu, and choose RGB Setup from the Color Settings submenu.
3. In the RGB Setup dialog box, click Load.
4. Browse to the System: Preferences: ColorSync Profiles folder, select the EFIRGB ICC file, and then click Open.



NOTE: If you are using ColorSync 2.5, the ColorSync profile is located in System Folder:ColorSync Profiles.

The EFIRGB v1f file appears as the selection.

5. Click OK.

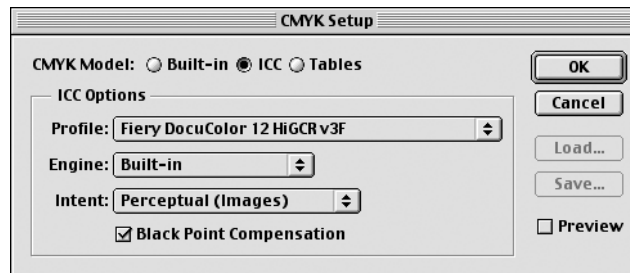
Loading the ICC copier profile

The ICC copier profile enables RGB-to-CMYK conversions that are specific to the kind of copier you are using.

TO LOAD THE ICC COPIER PROFILE IN PHOTOSHOP 5.X

1. Start Photoshop.
2. Choose Color Settings from the File menu, and choose CMYK Setup from the Color Settings submenu.
3. In the CMYK Setup dialog box, choose ICC as the CMYK color model.
4. Select the profile that corresponds to the Fiery from the Profile menu.

NOTE: The following illustration shows a setting for Fiery EX12.



5. Click OK.

For more information about ICC profiles, see your PhotoShop documentation.

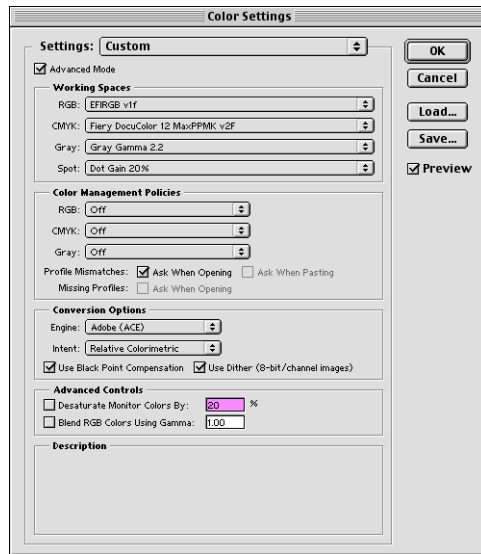
Loading the monitor settings file and the ICC device profile in Photoshop 6.x

In Photoshop 6.x, you can load the monitor settings file and the ICC device profile at the same time.

TO LOAD THE MONITOR SETTINGS FILE AND THE ICC DEVICE PROFILE IN PHOTOSHOP 6.X

1. Start Photoshop.
2. Choose Color Settings from the Edit menu and then choose Advanced Mode.
3. Choose EFI RGB v1f from the RGB menu.
4. Select the profile that corresponds to the Fiery from the CMYK menu.

NOTE: The following illustration shows a setting for Fiery EX12.



5. Click OK.

For more information, see your PhotoShop documentation.

Chapter 3: Downloading Installers with Fiery WebTools

Fiery WebTools allow you to manage your Fiery remotely from the Internet or from your company's intranet. The Fiery has its own home page, from which you can select a variety of functions, including Status, WebSpooler, WebLink, Installer, WebDownloader, WebSetup, and WebScan.

For more information on using Fiery WebTools, see the *Printing Guide*.

Setting up Fiery WebTools

In order for network users to access and use Fiery WebTools, you must set specific Fiery options in Network Setup and Printer Setup. You also must prepare each user's computer to communicate with the Fiery over the Internet or intranet.

For more information about Network Setup and Printer Setup, see the *Configuration Guide*.

TO SET UP CLIENT WORKSTATIONS TO USE FIERY WEBTOOLS

1. **Enable TCP/IP networking.**
2. **Make sure the workstation has a valid, unique IP address.**
3. **Make sure a supported Internet browser is installed on the computer.**
For more information on supported browsers, see the *Quick Start Guide*.
4. **Make sure Java is enabled in your Internet browser.**
For more information on setting up the Fiery and the network, see the *Configuration Guide*.

Using the Fiery WebTools Installer

The Installer WebTool allows you to download installers for printer drivers, user software, and user documentation directly from the Fiery to your computer.

TO DOWNLOAD PRINTER FILES, USER SOFTWARE, AND USER DOCUMENTATION WITH THE INSTALLER WEBTOOL

1. Start your Internet or intranet browser and enter the DNS name or IP address of the Fiery.

2. Select a login level, enter a password if required, and then click OK.

No password is required to log in as Guest. If the Administrator has configured Guest access, any user has full access to the Installer WebTool while logged in as Guest.

3. Click Installer.



4. Under the name of your operating system, click the name of the item you want to install.
5. For installation of user software or user documentation, follow the instructions in the dialog boxes.

6. For installation of printer drivers, continue with the following instructions.

A dialog box appears, prompting you to save the file to the location you choose.

For Windows computers, a dialog box appears, offering you the choice of running the program across the Internet or intranet or saving it to disk.

For Mac OS computers, a folder named Printer Drive is downloaded to the desktop in a BinHex-encoded, compressed format. If your Internet browser is equipped with an expander utility, such as StuffIt Expander, the folder will decode and decompress automatically.

7. For Windows computers, browse to the location where you want to save the Prntdrv.exe file and click Save.

For Mac OS computers, if the Printer Driver folder was not automatically decoded and decompressed, start the utility that will perform that function.

8. For Windows computers, double-click the Prntdrv.exe file, browse to the location where you want to install the folder, and click Next.

The folder is installed to the location you specified.

9. Install the appropriate printer driver for your operating system.

For instructions on installing the printer driver for	See
Windows 9x/Me	“To install the PostScript printer driver for Windows 9x/Me” on page 1-2
Windows NT 4.0	“To install the PostScript printer driver for Windows NT 4.0” on page 1-16
Windows 2000/XP	“To install the PostScript printer driver for Windows 2000/XP” on page 1-18
Mac OS	“Setting up the Fiery as a PostScript printer” on page 2-1

Chapter 4: Troubleshooting

This chapter provides troubleshooting tips.

On a Windows computer

Setting up printing on Windows NT 4.0 or Windows 2000/XP computers

If you have problems installing the Fiery with Windows NT 4.0 or Windows 2000/XP, try installing another PostScript printer (such as the Apple LaserWriter IIg), and then install the Fiery. Installing another printer ensures that all files are properly installed and available. For instructions, see your Windows documentation.

For additional information about problems you may encounter using the PostScript Printer Driver for Windows NT 4.0, see the Adobe README file (readmeNT.wri) included in English\Prntdrv\Ps_drvr\Win_NT4x on the User Software CD. For Windows 2000/XP, see your Windows 2000/XP documentation.

Reinstalling the Adobe PostScript Printer Driver on Windows 9x/Me

If you are reinstalling the Adobe PostScript Printer Driver, delete any previous versions and related files before installation.

For additional information about problems you may encounter using the Adobe Printer Driver for Windows 9x/Me, see the Adobe README file (readme9x.wri) included in English\Prntdrv\Ps_drvr\Win_9x on the User Software CD.

Problems with the Fiery utilities on Windows 9x/Me, Windows NT 4.0, or Windows 2000/XP

If you are experiencing problems with connections for the Fiery utilities, try the following:

1. **If you are using Windows 9x/Me, make sure the TCP/IP networking protocol is enabled.**
2. **If you are using Windows NT 4.0 or Windows 2000/XP, make sure the TCP/IP networking protocol is enabled.**
3. **Make sure the connection is configured correctly for your site.**

To check the current configuration, start a Fiery utility and choose Open from the File menu. Select the Fiery and click Modify to see current settings. If the settings are incorrect, you can change them in this dialog box.

On a Mac OS computer

Setting up the Fiery in the Chooser

If Auto-setup does not work and you are prompted to select the printer description file, select the appropriate Fiery file in your System:Extensions:Printer Descriptions folder, either “Fiery EX12 Color Server PS 2.0” or “Fiery DocuColor 2000d v2.0.”

Installing screen fonts

If you experience problems installing the PostScript screen fonts from the User Software CD to the System folder:Fonts folder, try the following:

1. **Quit all applications and close all windows.**
2. **Create a new folder and name it “Uninstalled Fonts.”**
This folder must be located outside of the System folder.
3. **Move fonts you are not using from the System folder:Fonts folder to the Uninstalled Fonts folder.**

4. **Install the fonts from the User Software CD to a folder called CD fonts. Copy the fonts to the System folder:Fonts folder.**
5. **Create aliases to the System folder:Fonts folder and the Uninstalled Fonts folder.**
6. **Place both aliases on your desktop.**
7. **When necessary, use the aliases to open both folders and move fonts between them.**

If you have any applications running, you must quit and restart them in order to view and use the newly installed fonts.

Alternatively, you can try combining fonts from multiple suitcases into a single suitcase.

Index

A

- Adobe Acrobat 1-43
 - installation 1-43
- Adobe Acrobat for DocBuilder Pro CD 1-43
- Adobe PageMaker for Windows *see*
 - PageMaker for Windows
- Adobe PostScript 3 fonts xiii
- Adobe PostScript printer driver, *see* PostScript printer driver
- Advanced Controller Interface kit xii
- AppleTalk
 - connecting to Mac OS 2-2

C

- cable, color server xiii
- Calibrat folder, for Windows users 1-54
- Calibration folder, for Macintosh users 2-15
- Chooser
 - selecting the server in 2-2
 - setting up color server in 4-2
- Clrfiles folder 1-54
- CMYK Color Reference.ps 2-15
- Cmyk_ref.ps 1-54
- Color Files folder 2-15
- Color Files folder, for Macintosh users 2-15
- color management files xiii, xv
- color reference files xv, 2-15
 - for Macintosh users 2-15
 - for Windows users 1-54
- color server, specifications xii, xiii
- ColorSync and ICM color management files xv
- ColorSync Profiles 2-5
- ColorWise color management files xiii
- ColorWise Pro Tools 1-42
 - configuring the connection to the Fierey (Mac OS) 2-6
 - (Windows) 1-45

installing for Mac OS 2-5

installing for Windows 1-42

Command WorkStation xi

configuring the connection 1-47

installing for Windows 1-42

Configuration page 1-12, 1-35, 1-52

connecting

Windows 2000/XP with TCP/IP 1-29

Windows NT 4.0 with TCP/IP 1-27

connection on Windows, configuring 1-52 to 1-53

Custom21.ps (Mac OS) 2-15

Custom21.ps (Windows) 1-54

Custom34.ps (Mac OS) 2-15

Custom34.ps (Windows) 1-54

D

- device name 1-53, 2-7, 2-8
 - Windows 2000/XP with TCP/IP 1-29
 - Windows NT 4.0 with TCP/IP 1-29
- DNS name 1-28, 1-52, 2-8
- DocBuilder Pro xii
- Domain Name Server, *see* DNS

E

- Efrgb.icc monitor settings file for Mac OS 2-16
- Efrgb.icm monitor settings file for Windows 1-55
- E-mail printing, installing 1-38
- EPS files xiv
- Ethernet 100BaseTX cable xiii
- Ethernet, SNAP frame type xiii

F

- Fast Ethernet 100BaseTX cable xiii
- Fast Ethernet 10BaseT cable xiii

- Fiery Downloader 1-42
 - EPS files xiv
 - installing for Mac OS 2-5
 - installing for Windows 1-42
 - overview xiv
 - PDF files xiv
- Fiery Scan
 - installer for Mac OS 2-5
 - installing (Mac OS) 2-5
- Fiery Spooler xiv
 - configuring the connection on
 - Mac OS 2-8 to 2-9
 - modifying the configuration
 - (Mac OS) 2-10
 - overview xiv
- Fiery TWAIN module
 - (Mac OS) 2-5
- Fiery utilities
 - configuring the connection on
 - Windows 1-52 to 1-53
 - installing for Mac OS 2-5
 - installing for Windows 1-42
 - problems on Windows 9x/Me,
 - Windows NT, or Windows 2000/XP 4-2
- Fiery WebSpooler
 - overview xvi
- Fiery WebTools
 - Installer xvi
 - Installer WebTool xv, 3-2 to 3-3
 - setting up 3-1
 - Status xvi
 - WebDownloader xvi
 - WebLink xvi
 - WebScan xvi
 - WebSetup xvi
 - WebSpooler xvi
- fonts
 - Adobe PostScript 3 xiii
 - installer for Mac OS 2-14
 - installing 2-14, 4-2

- Multiple Master xiii
- printer fonts 2-14
- screen fonts 2-14
- substituting in PDF files xiii
- TrueType xiii, xiv
- Fonts folder 4-3
- Frame Type option 1-10

I

- ICC device profile 2-18
 - loading in Photoshop 4.0
 - (Mac OS) 2-18
- ICC device profile, loading in Photoshop 6.x
 - (Mac OS) 2-19
- ICC monitor settings profile, specifying in
 - Photoshop (Mac OS) 2-17
- ICM and ColorSync color management
 - files xv
- Icm folder (Windows) 1-54
- Installable Options
 - specifying, from Mac OS printer
 - driver 2-4
 - specifying, from Windows 9x/Me printer
 - driver 1-4
 - specifying, from Windows NT printer
 - driver 1-23
- Installer WebTool, *see* Fiery WebTools
- installers
 - Mac OS 2-5
 - Windows 1-42
- installing
 - Adobe PostScript printer,
 - Windows 2000/XP 1-18 to 1-24
 - Adobe PostScript printer, Windows 9x/Me 1-2
 - Adobe PostScript printer,
 - Windows NT 4.0 1-16 to 1-18
 - Command WorkStation 1-42
 - Fiery Scan Plug-in (Mac OS) 2-5
 - Mac OS software 2-5
 - PostScript printer driver for Mac OS 2-2

- screen and printer fonts 2-14
- software for Mac OS 2-5
- software for Windows 1-42
- TWAIN module (Mac OS) 2-5
- internal name, for Windows NT 4.0 with TCP/IP 1-29
- IP address 1-53
- IPP printing setup
 - on Windows 2000/XP 1-36 to 1-38
 - on Windows 98 1-14 to 1-15
 - on Windows Me 1-14 to 1-15
- IPX
 - printing for Windows 2000/XP 1-33
 - printing for Windows NT 4.0 1-32 to 1-33
 - Windows NT 4.0 1-32
- IPX/SPX
 - Windows NT 1-32

J

- Java 1-42, 3-1

M

- Mac OS
 - copying color files 2-15
 - fonts 2-14
 - Installer WebTool 2-1
 - installing Fiery utilities 2-1, 2-5
 - installing software 2-5
 - troubleshooting 4-2
- monitor settings file, Mac OS 2-17

N

- NetWare client setup
 - Windows 9x/Me 1-32
 - Windows NT 1-32
- NetWare, network port with Windows 9x/Me 1-11

O

- Oemsetup.inf file 1-2, 1-17, 1-19

P

- PageMaker for Windows 1-59
- PANTONE Book.ps 2-15
- PANTONE.ps 1-54
- PDF files xiii, xiv
- Photoshop 5.0
 - loading the ICC device settings profile (Mac OS) 2-18
 - loading the ICC monitor settings file (Mac OS) 2-17
 - loading the ICM device profile (Windows) 1-57
 - loading the RGB working space profile (Windows) 1-56
- Photoshop 6.x
 - loading the ICC device settings profile (Mac OS) 2-19
 - loading the ICC monitor settings file (Mac OS) 2-19
 - loading the ICM device profile (Windows) 1-58
 - loading the ICM monitor settings file (Windows) 1-58
- PostScript
 - printing with Windows 1-1, 1-15
 - screen fonts xiv
- PostScript Level 3 xiii
- PostScript printer
 - setting up color server as 2-1 to 2-14
- PostScript Printer Description file, *see* PPD
- PostScript printer driver
 - for Mac OS 2-2
 - installing using WebTools 3-2 to 3-3
 - Windows 2000/XP 1-18 to 1-24
 - Windows 9x/Me
 - PostScript printer driver 1-2
 - Windows NT 4.0 1-16 to 1-18
- PostScript printing
 - Windows 9x/Me 1-1
- PowerPoint, RGB color reference file 2-15

PPD

- copying files for Windows applications 1-59
- overview xiv
- selecting the PPD in the Chooser 4-2
- Windows 9x/Me 1-3
- Windows 2000/XP 1-20
- Windows NT 4.0 1-17

Printer Driver, installable options

- Windows 9x/Me 1-4

printer drivers, *see* PostScript printer drivers

printing

- Windows 2000/XP 1-27
- Windows NT 4.0 1-27
- see also* PostScript printing

Prntdrv.exe file 3-3

R

- RGB page 01 2-15
- RGB page 02 2-15
- Rgb_01.doc 1-54
- Rgb_02.ppt 1-54

S

- screen fonts 2-14, 4-2
- SMB printing setup
 - on Windows 95/98/Me 1-12 to 1-13
 - on Windows NT 4.0 1-34 to 1-36
 - on Windows 2000 1-34 to 1-36
- specifications, color server xii, xiii
- Spooler, *see* Fiery Spooler
- Stand21.ps (Mac OS) 2-15
- Stand21.ps (Windows) 1-54
- Stand34.ps (Mac OS) 2-15
- Stand34.ps (Windows) 1-54
- Status WebTool, *see* Fiery WebTools

T

- thinnet cable xiii
- Token Ring networking, option xiii
- Token Ring, option xiii

troubleshooting

- Mac OS computers 4-2
- Windows computers 4-1

U

- Uninstalled Fonts folder 4-2
- unshielded twisted pair (UTP) cable xiii
- User Software CD
 - contents (Mac OS) 2-1
 - contents (Windows) 1-42
 - installing from, for Mac OS 2-2, 2-15
 - troubleshooting fonts 4-2

W

- WebDownloader WebTool, *see* Fiery WebTools
- WebScan xvi
- WebSetup WebTool, *see* Fiery WebTools
- Windows
 - copying color files 1-54
 - installing Fiery utilities 1-42
 - troubleshooting 4-1
- Windows 9x/Me
 - setting up PostScript printing 1-1
 - SMB printing 1-12 to 1-13
 - troubleshooting 4-1
- Windows 2000/XP
 - IPX 1-33
 - PostScript printer driver 1-18 to 1-24
 - printing requirements 1-27
 - troubleshooting 4-1
- Windows NT 4.0
 - IPX 1-32 to 1-33
 - IPX/SPX 1-32
 - PostScript printer driver 1-16 to 1-18
 - printing requirements 1-27
 - setting up PostScript printing 1-15
 - troubleshooting 4-1
- WINS Name Server 1-12, 1-35
- Word, RGB color reference file 2-15