



Fig. 1
Select **Machine Status**.

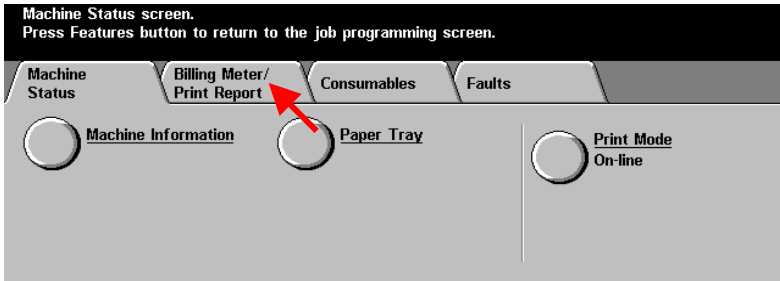


Fig. 2
Select **Billing Meter/Print Report**.

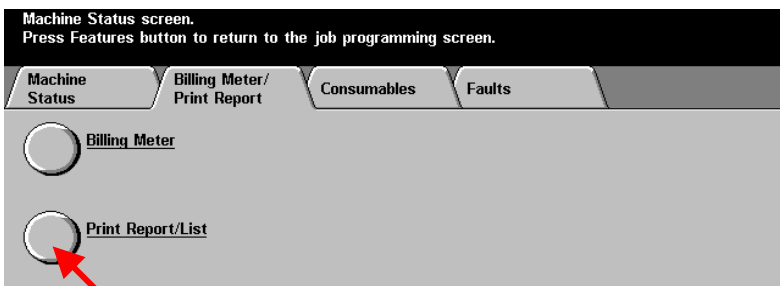


Fig. 3
Select **Print Report/List**.

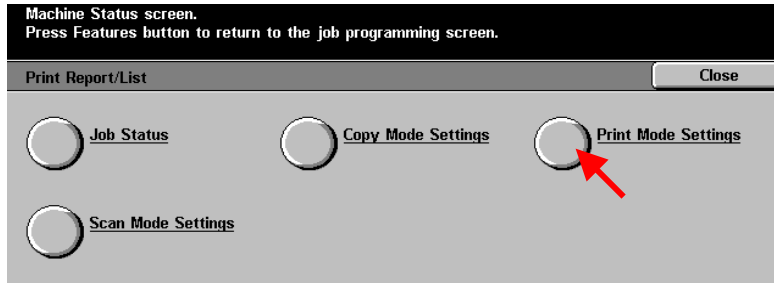


Fig. 4
Select **Print Mode Settings**.

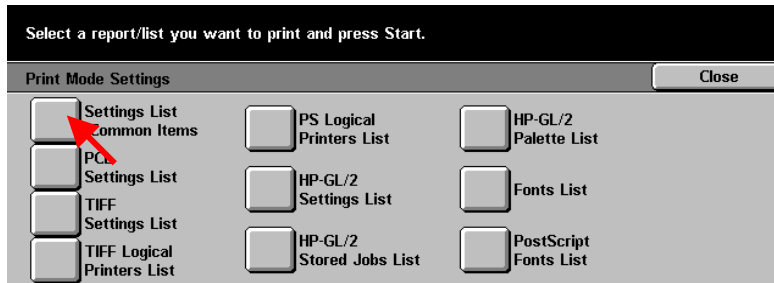


Fig. 5
Select **Settings List (Common Items)**.



Fig. 6
Press **Start**.

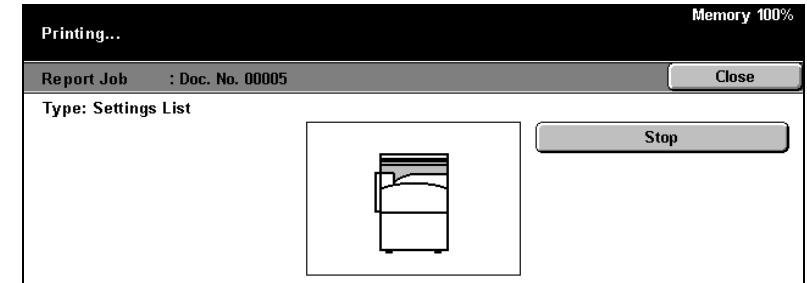


Fig. 7
The settings list is printing.

Note:
Please have a copy of your Settings List available when contacting Customer Support. This may speed up the support process.

DocuColor 2240 System Settings List

Date/Time : 11/05/2002 09:40 AM
Page : 1

System Settings

Machine Information		Image Quality	
Product Name	DocuColor 2240	Photo & Text Recognition	3 (Normal)
Serial Number	000090	Output Color Recognition	1 (Normal)
Product Code	CARRERA2	Photo Reproduction Level	2 (Normal)
ROM		Photo Image Quality	Image Quality
Standard+PostScript ROM	Ver. 2.40.8	Color Copy Auto Exposure	Off
Output Device ROM	Ver. 2.0.1	R/W Copy Auto Exposure	On
Input Device ROM	Ver. 8.35.1	Image Enhancement	On
UI Frame ROM	Ver. 2.100.2	Printing Priority	3rd
UI Control ROM	Ver. 2.0.9	Copy Job	4th
Machine Configuration		Copy Mode Settings	
Hard Disk		Basic Copying	
Total Size	9590.21MB	Paper Supply	
User Area	1918.04MB	2nd Button	Tray 1
Mailbox	1918.04MB	3rd Button	Tray 2
Page Memory	256MB	4th Button	Tray 3
Paper Tray		Reduce/Enlarge	
Tray 1		Tray 1	Reduce/Enlarge Preset 2
Tray 2		3rd Button	Reduce/Enlarge Preset 7
Tray 3 (High Capacity)		4th Button	
Tray 4 (High Capacity)		Copy Defaults	
Tray 5 (Bypass)		Output Color	Black
Output Device		Single Color - Color Selection	Real
Center Output Tray		Dual Color - Color Image	Yellow
Offset Output Module		Dual Color - B/W Image	Black
Finisher		Reduce/Enlarge	100%
Duplex Module		Paper Supply	Auto
Auto Document Feeder		2 Sided	1 -> 1 Sided
Maintenance		Output	Auto
Set Date/Time		Output Destination	Finisher Tray
Date Format	mm/dd/yyyy	Margin Shift - Side 1	No Shift
Time Format	12 Hour Clock	Margin Shift - Side 2	Mirror Shift
Time Zone	GMT +0.0	Border Erase - Top & Bottom	5 mm
Daylight Savings	Off	Border Erase - Left & Right	5 mm
Print Area	Normal	Center Erase	0 mm
Screen Defaults		Original Type - Auto/Full Color	Text & Photo (Half-tone)
Screen Default at Power On	Features	Original Type - Black	Text & Photo (Half-tone)
Features Screen Default	Copy	Auto Exposure	On
Reports		Lighter/Darker	Normal
Job History Report	Off	Contrast	Normal
2 Sided Report	1 Sided	Sharpness	Normal
Audio Tones		Color Saturation	Normal
Control Panel Select Tone	Normal	Color Shift	Normal
Control Panel Alert Tone	Normal	Color Balance - Yellow	Low:0 Mid:0 High:0
Machine Ready Tone@	Normal	Color Balance - Magenta	Low:0 Mid:0 High:0
Copy Job Complete Tone	Normal	Color Balance - Cyan	Low:0 Mid:0 High:0
Non-Copy Job Complete Tone	Normal	Color Balance - Black	Low:0 Mid:0 High:0
Print Tone	Normal	Original Orientation	Head to Top
Alert Tone	Off	Image Rotation	On during Auto
Low Toner Alert	Normal	Rotation Direction	Simple Position
Timers		Copy Control	
Auto Clear	60 seconds	Auto Paper Off	Tray 2
Auto Job Release	600 seconds	Memory Full Procedure	Cancel Job
Auto Print	10 seconds	Maximum Stored Pages	999
Low Power Mode Time-Out	25 minutes		
Sleep Mode Time-Out	Disabled		

Adobe, PostScript, PostScript 3, and the PostScript logo are trademarks of Adobe Systems Incorporated.



Quick Start Guide

Print Settings List



DocuColor 2240/1632

* Sample of Settings List

THE DOCUMENT COMPANY
XEROX