

Fiery Link is designed to provide you with up-to-date status on print jobs and connected servers. It tracks the status of your print jobs and alerts you to errors. For example, you can see how many print jobs are ahead of your job in the queue. Fiery Link also provides information about paper and dry ink levels. For example, you can ensure that the sorter output tray is empty before sending a job that will be sorted.

For information on installing and configuring Fiery Link, and on supported networking protocols, refer to the chapter *Installing the Fiery software for Windows and Macintosh*.

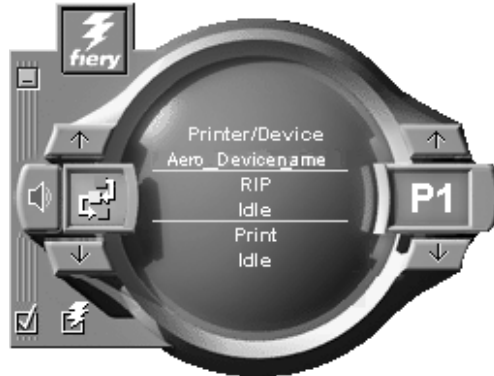
The Windows and Mac OS versions of Fiery Link are fundamentally the same; differences are noted in this section. Where both windows or dialog boxes are illustrated, the Windows version comes first, followed by the Mac OS version.

Fiery Link WebTools does not require any special access privileges.

To begin using Fiery Link:

1. Perform one of the following:
 - a. For Windows: Double-click the **Fiery Link** icon or select **Fiery Link** from the Start>Programs menu.
 - b. For Macintosh OS: Double-click your **hard drive** icon and double-click the **Fiery** folder.

The main Fiery Link window is displayed.



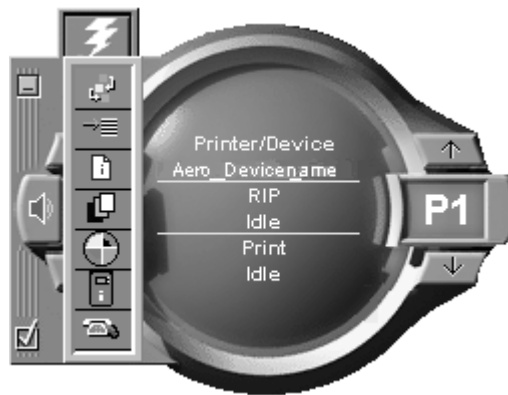
You can perform the following:

- Select the minus sign (-) to minimize the Fiery Link to the Tool Tray on the Taskbar (Windows only).
- Select the left up and down arrows to scroll through the Fiery Link tools.
- Note that the left display window indicates the selected Fiery Tool.
- Select the check mark to set preferences.
- Select the Fiery symbol to edit the My Fiery List.
- Select the right up and down arrows to scroll through the list of servers and print jobs.
- Note that the right display window indicates the selected server or print job.
- Press the Alt and F4 keys (Windows) or the Command and Q keys (Mac OS) to exit Fiery Link.

2. Select the currently selected server or print job to display the list of all connected servers or print jobs.










3. From this list, select the DocuColor 2006 or the job about which you want information.
4. Select the currently selected Fiery Link tool to display a list of all the tools (as shown below), and select a tool.



Fiery Link tools

Fiery Link includes the following tools that can be used to monitor a print job or a connected printer. Selecting the up and down arrows scrolls through the Tool List and opens each tool in turn in the Fiery Link window.

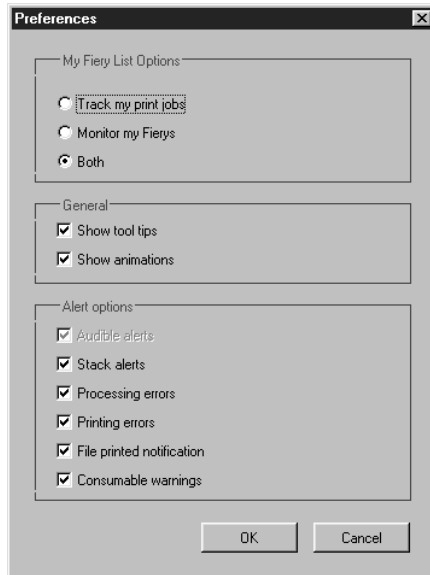
Icon	Tool	If a print job is selected	If a server is selected
	Status	Shows the job status and number of pages processed.	Shows the status of the server, including any error messages. You can make an error message disappear by selecting the Fiery Link window.
	Queue Position	Shows the number of jobs ahead of the selected job in the queue.	Shows the total number of active jobs queued to print.
	File Info	Displays the file name, when it was sent to the printer, the printer name, the number of pages, and number of copies.	Displays the printer name and connected device, total number of queued jobs, and the number of those jobs sent by the user.
	Input Trays (see below)	Shows paper levels in the paper trays of the selected printer	Shows paper levels in all trays of the printer.
	Dry Ink (see below)	Shows the levels of dry ink for the selected printer.	Shows the levels of dry ink for the printer.
	Fiery Info	Shows the model name, amount of memory, processor, and software version of the printer.	Shows the model name, amount of memory, processor, and software version of the printer.
	Support	Lists the contact names and information for the printer.	Lists the contact names and information for the printer.

Input Trays—An icon is used to represent the paper level in each tray. A red icon indicates the paper tray is empty, a yellow icon indicates the paper tray is less than half full, and a green icon indicates the paper tray is more than half full. Up and down arrows allow you to scroll through the available paper trays.

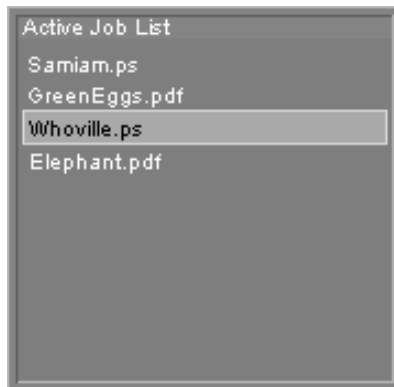
Dry Ink— The Dry Ink tool indicates the amount of dry ink in the printer. A warning is displayed if the Dry Ink is low.

Setting preferences

1. Select the Preferences check mark in the main window to view the Preferences dialog box.
2. Set the My Fiery List Options preferences:



- If **Track my print jobs** is selected and you select the current print job, the Active Job List window is displayed.



- If **Monitor my Fierys** is selected and you select the current DocuColor 2006, the Device List is displayed.



- If **Both** is selected and you select the current print job or current printer, both the Active Job List and the Device List windows are displayed.
3. Set the **General** and **Alert** option preferences for tracking print jobs, monitoring servers, or both:
 - Show/hide tool tips
 - Show/hide animations
 - Enable/disable audible alerts
 - Enable/disable stack alerts
 - Enable/disable processing error notification
 - Enable/disable printing error notification
 - Enable/disable file printed notification
 - Enable/disable consumable warnings notification

Using My Fiery List of Fiery Link

1. Select the **DocuColor 2006** button to access the My Fiery List.



2. Use My Fiery List to specify the printers you want to monitor using Fiery Link.
3. Access a menu from the Windows taskbar status area to get information about Fiery Link, set some Fiery Link options, or exit the application.
4. Right-click the Fiery Link icon in the Windows taskbar status area.



5. Select one of the options from the drop-down list.



Options with checkmarks are enabled.

6. Select **About Fiery Link** for version information.
7. Select **Always on Top** to enable or disable the option.

If this option is enabled, the Fiery Link window always appears on top of other open windows. If this option is disabled, the Fiery Link window may be hidden by other open windows.

8. Select **Dock Fiery Link** to enable or disable the option.

If this option is enabled, the Fiery Link window is automatically repositioned to either the far left or the far right side of your screen. If this option is disabled, you can position the Fiery Link window anywhere on the screen.

9. Select **Exit** to exit Fiery Link.