

12

Installing user software in a Macintosh OS environment

Use the following instructions to install software and set up printing in a Macintosh OS environment.



Your screens may vary from those illustrated in this chapter.

*Because the server is part of the printer unit, most references in this chapter are simply to the **printer**.*

General steps for installing the user software

- Install the Adobe PostScript printer driver and PPD file from the User Software CD.
- Set up the DocuColor 2006 in the Chooser.
- Install the printer and screen fonts.
- Install the ColorSync™ profiles.
- Copy additional color-reference and application-specific files from the User Software CD as needed.

In addition to using the User Software CD, you can download printer drivers with the Installer WebTool if the system administrator has enabled Internet access to the Fiery). For instructions, refer to the section *Using the Installer WebTool* in the chapter *Using the Fiery WebTools*.

After you download the printer files, the installation process is identical to installing from the User Software CD.

Setting up the DocuColor 2006 as a PostScript printer

To set up the DocuColor 2006 as a PostScript printer, install the PostScript printer description file (PPD) that corresponds to the printer. The PPD files are provided on the User Software CD.

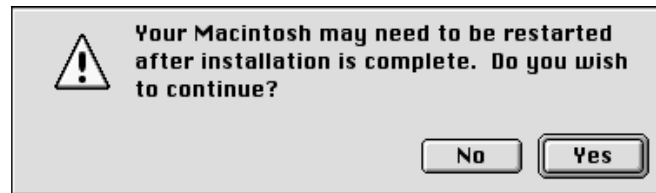
Printer drivers provide a way to communicate information on print jobs between your applications, the DocuColor 2006, and any other PostScript printer connected to your workstation.

Use the following procedures whether you are installing from the User Software CD or installing with printer files previously downloaded using the Installer WebTool.

Before you begin, print a Configuration Page for the printer. For specific procedures, refer to the chapter *Performing the setup from the Printer Control Panel*.

1. Perform one of the following:
 - Insert the User Software CD in your CD-ROM drive and open the **English: Printer Driver** folder.
 - To install from files you downloaded using the Installer WebTool, open the **Printer Driver** folder on your hard disk.
2. Double-click the **AdobePS 8.6 Installer** icon.

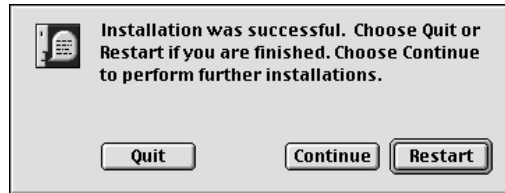
A Warning dialog box is displayed.



3. Select **Yes** to continue with the installation of the printer driver software and to confirm that your workstation must be restarted after installation.

The AdobePS Installer installs the Adobe PostScript printer driver, the PPD file that corresponds to your printer, and the Apple Chooser.

4. Select **Restart** when the installation is complete.



If you operate the DocuColor 2006 in a copy shop, quick print shop, or service bureau, you might want to provide copies of the printer driver, PPD file, any ICC profiles or separation tables used in conjunction with the image, and relevant documentation to customers. This ensures that jobs they create and print to files are properly formatted for printing.

Setting up the DocuColor 2006 in the Chooser

After you install the printer driver and ppd file, set up the DocuColor 2006 in the Chooser to take full advantage of its features.

1. Select **Chooser** from the Apple menu.
2. Ensure that AppleTalk is set to **Active**.
3. If necessary, select the **AppleTalk Zone** that contains your printer.
4. Select the **AdobePS** icon.

The DocuColor 2006 is displayed in the Select a PostScript Printer list in the form of <printer name>_<device name>_<print connection>. The device name is the internal name of your printer.



Only the print connections (Direct, Hold, and Print) that have been enabled in Setup are displayed in the Chooser.

5. Perform one of the following:
 - If Desktop printing is on, select a printer connection from the **Select a PostScript printer** list and select **Create**. A printer icon is created and displayed on the desktop.
 - If Desktop printing is not on, select the **Setup** button.

The Adobe PS printer driver automatically selects the correct PPD file for your DocuColor 2006.



You must set up each print connection separately. Repeat this step for all enabled connections.

6. Perform one of the following:
 - If Desktop printing is on, select the **printer icon** that is displayed on the desktop or select the **printer** in the Chooser list. Select the **Setup** button
 - If Desktop printing is not on, an icon is displayed next to the newly installed printer in the Chooser list. Select the **printer icon** and select the **Setup** button.
7. To configure the printer, double-click the **printer** from the PostScript Printer list. Select the **Configure** button and select available **options**. Select **OK** twice.
8. Close the **Chooser**.

Installing Fiery software and fonts

The Mac OS installers function essentially the same for each type of software. Before you begin each installation, determine where you want to install each item on your hard disk:

- Color Sync profiles are placed by default in the ColorSync profiles folder on your hard disk.

If you are using ColorSync 2.5 or later, the profiles are installed into the Color Sync Profiles folder inside the System folder. If you are using an earlier version of ColorSync, the profiles are installed to the ColorSync Profiles folder inside the System:Preference folder. The printer profile can be moved to a folder of your choice.

- Fonts are placed by default in the System:Fonts folder on the hard disk.

Installing Mac OS Software

1. On the User Software CD or your hard disk, double-click the Installer icon of the item you want to install.
2. Read the Software License Agree and select **Accept**.
3. Select **Install** to copy the item to the default location or navigate to a location in which to install the item.

Perform one of the following:

- For ColorSync Profiles, the ICC profiles are automatically installed into the ColorSync Profiles folder. Perform the steps in the appropriate section for *Loading profiles*.
- Specify a hard disk location for the Fiery Link software or the ColorWise Pro Tools software. Refer to the chapter *Installing the Fiery software for Windows and Macintosh*.

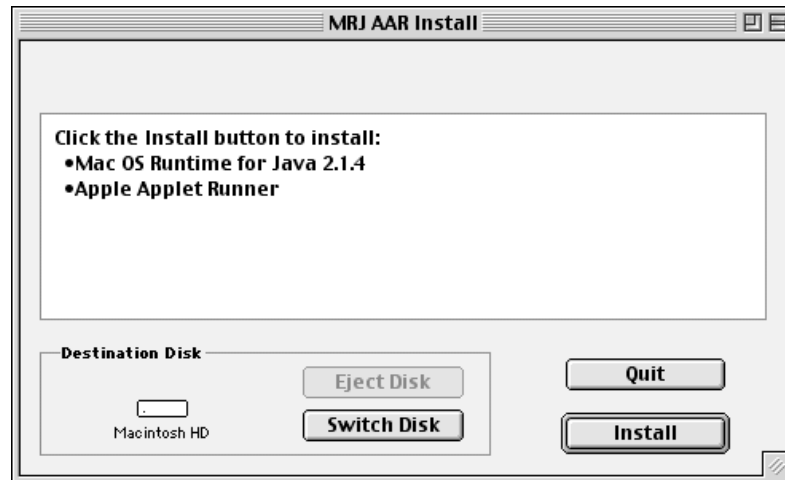
4. If prompted, select **Quit** to close the software installer.

In order to use ColorWise Pro Tools or Fiery Link, you must have Mac OS Runtime for Java (MRJ2.1.4) installed on your workstation. If you do not have MRJ installed, the ColorWise Pro Tools or Fiery Link installer automatically initiates the MRJ 2.1.4 installation process.

For more information about ColorWise Pro Tools, refer to the chapter *ColorWise Pro Tools*. For more information about Fiery Link, refer to the chapter *Installing the Fiery software for Windows and Macintosh*.

Installing Mac OS Runtime for Java

1. Read the Apple Computer, Inc. License Agreement and select **Agree** to install the software.
2. Select **Install**.



3. Select **Quit**.

You are now ready to configure the ColorWise Pro Tools connection to the printer.

Installing additional software

You can copy additional color files from the User Software CD to your hard disk. Many of the files are PostScript files that you can download and print using WebDownloader.

- **Color Files folder** (inside English folder)—CMYK Color Reference.ps, an 11-page, letter-size PostScript file to use for reference when defining CMYK colors in applications.

PANTONE Book.ps, a 19-page, letter-size PostScript file that indicates the closest equivalent of PANTONE coated colors that the printer can produce. The method used to print the PANTONE Book.ps file differs depending on the Spot Color Matching setting.

You can print **RGB page 01** from Microsoft Word 98 or later to view RGB colors. You can print **RGB page 02** from PowerPoint 6.0 or later to view available RGB colors.
- **Calibration folder** (inside Color Files folder)—Four PostScript measurements files of color patches: custom21.ps, custom34.ps, standard21.ps, and standard34.ps. The numbers in the file names refer to the number of patches on the page. The Custom files are provided to enable you to download measurement patches that incorporate the current calibration set of the printer. The Standard files are provided to enable you to download standard measurement patches that ignore the current calibration set for the printer.



These files are provided for expert users and should not be used for day-to-day calibration.

Loading profiles

The ICC profiles installed by the ColorSync installer are for use with ColorWise Pro Tools and applications that support Image Color Matching (ICM) standards. The following procedures assume you have already installed the ICC profiles included on the User Software CD. For more information, refer to the section *Installing Fiery Software and fonts* in this chapter.

The internal name of an ICC profile may vary slightly from its file name.

Setting the ColorSync System Profile

1. Select **Control Panels>ColorSync** from the Apple menu.
2. Select **EFIRGB ICC v1f** from the System Profile list.

When selected as the ColorSync system profile, EFIRGB ICC v1f sets the optimal source color space for printing to the Fiery. The color space set by the EFIRGB ICC v1f profile is the same as that set by the EFIRGB setting of the RGB Source Profile print option.



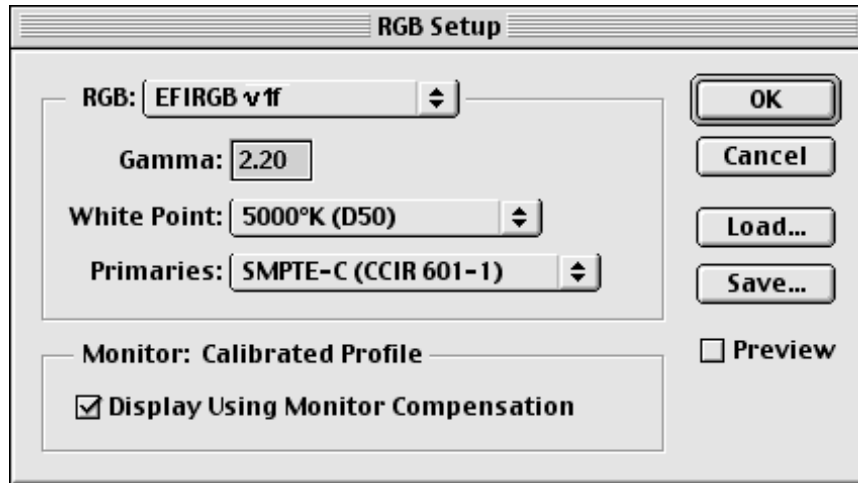
The RGB Source Profile print option setting overrides the ColorSync system profile setting.

3. Close the **ColorSync** window.

For more information about ICC profiles, refer to the application documentation.

Loading the monitor settings file using Photoshop 5.0

1. Launch **Photoshop**.
2. From the **File** menu, select **Color Settings** and **RGB Setup**.
3. In the RGB Setup dialog box, select **Load**.



4. Browse to the System:Preferences:ColorSync Profiles folder. Select the **Efirgb v1f** file and **Open**.

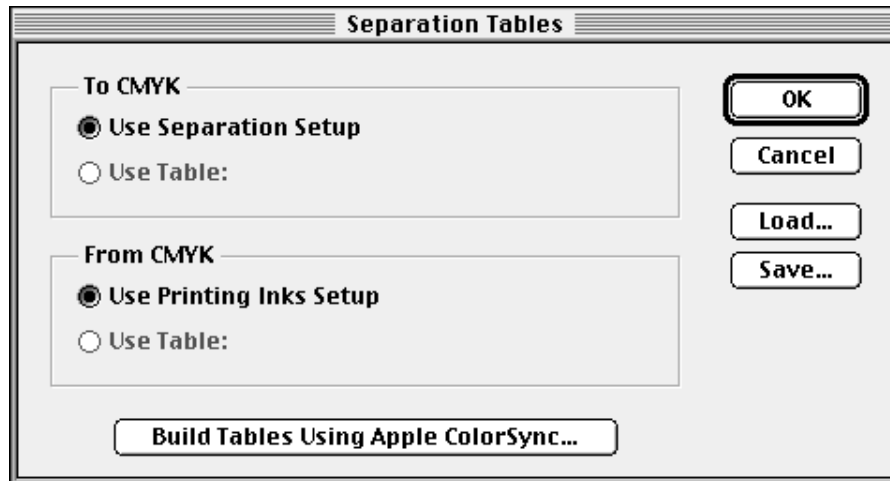
If you are using ColorSync 2.5 or later, ColorSync profiles are located in the System:ColorSync Profiles folder.

The **EFIRGB ICC v1f** file is displayed as the selection in the RGB drop-down list of the RGB Setup dialog box.

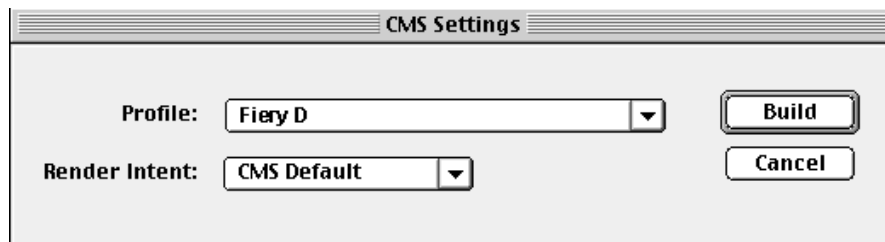
5. Select **OK**.

Loading the ICC printer profile in Photoshop 4.0

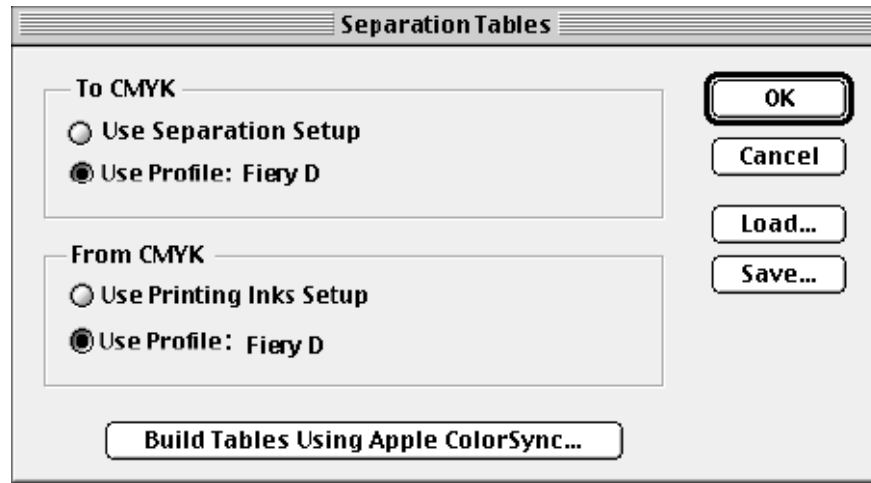
1. Launch **Photoshop**.
2. From the **File** menu, select **Color Settings** and **Separation Tables**.
3. Select **Build Tables Using Apple ColorSync**.



4. In the CMS Settings dialog box, select a profile and a render intent.



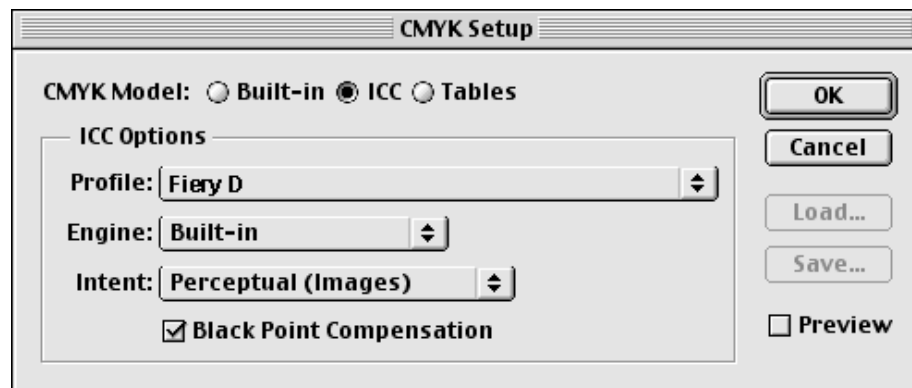
5. Select **Build**.



6. Select **OK**.

Loading the ICC printer profile in Photoshop 5.0

1. Launch **Photoshop**.
2. From the **File** menu, select **Color Settings** and **CMYK Setup**.
3. Select **ICC** as the CMYK color model.
4. In the CMYK Setup dialog box, select the profile that corresponds to the Fiery from the Profile drop-down list.



5. Select **OK**.

For more information about ICC profiles, refer to the application documentation.