

9

Installing user software in a Windows 95/98 environment

Use the following instructions to install software and set up printing from Windows 95/98 systems. Ensure that your printer is properly connect and configured for your network. For details, refer to the chapters *Connecting to the network* and *Performing the setup from the Printer Control Panel*

Use the contents of this chapter as follows:

- Depending on your configuration, use one of the following sections to install printer drivers and set up appropriate connections:
 - Parallel port printing
 - IPX/SPX printing
 - SMB printing
- Specify printer options with the section **Setting the printer options**.
- If necessary, refer to the section *Installing additional software for Windows 95/98*.

All necessary files are included on the User Software CD.

In addition to using the User Software CD, you can download printer drivers from the printer to your workstation with the Installer WebTool (if the system administrator has enabled Internet access to the printer). You can then install the drivers from your workstation. For instructions, refer to the section *Using the Installer WebTool* in the chapter *Using the Fiery WebTools*. After you download the printer files, the installation process is identical to installing from the User Software CD.

Overview of installation

Installing the DocuColor 2006 user software includes the following:

- Installing the PostScript or PCL printer driver and corresponding printer description files and setting up the printer driver to communicate with the printer through the Add Printer Wizard
- Setting the printer options
- Copying additional files from the User Software CD as needed

Do not install these files using the Installer WebTool.

Before you begin

1. If your system administrator has not already done so, connect the printer to the desired port on the workstation. For details, refer to the chapters *Connecting to the network* and *Performing the setup from the Printer Control Panel*.

If you are uncertain what type of network you have, contact your system administrator.

2. Print a configuration sheet at the printer to obtain the name of the printer and settings that will be used in the following procedures.

Installing PostScript or PCL print drivers

Although the procedures for Windows 95 or 98 installations are similar, they are not exactly alike. Ensure that you are using the correct procedures for your operating system.



If you have previously installed a print driver for the DocuColor 2006, perform the uninstall procedure before installing the new driver. For more information, refer to your Windows documentation.

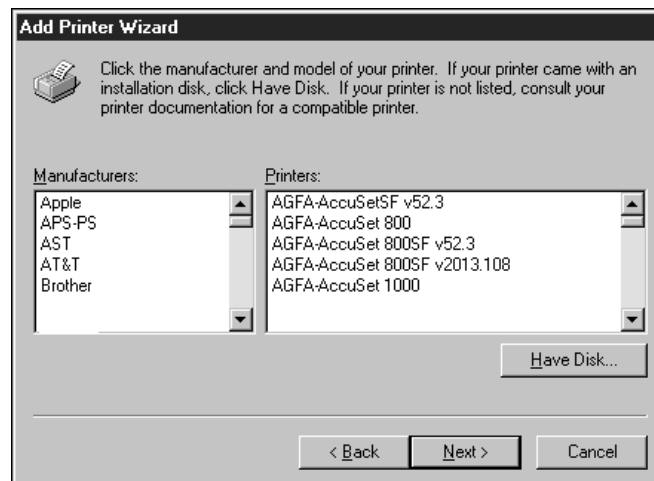
Before you begin, print a Configuration Page for the printer. For specific procedures, refer to the chapter *Performing the setup from the Printer Control Panel*.

Installing the PostScript or PCL print drivers (Windows 95/98)

1. Insert the User Software CD in your CD-ROM drive.
2. Select the **Start** button, **Settings**, and **Printers**.
3. Double-click the **Add Printer** icon to display the Add Printer Wizard. Select **Next**.
4. To install a printer locally, select the **Local printer** radio button and select **Next**.

Local printer is available if you logged in to a workstation on which you have Administrator privileges. If it is not available, add a network printer and follow the procedure for adding a port. Refer to the section *Completing the connection* in this chapter.

5. In the dialog box displaying lists of manufacturers and printers, select the **Have Disk** button.



The Install From Disk dialog box prompts you for the disk.

6. Perform one of the following:
 - If you are installing from the CD, select the CD-ROM drive (for example, D:\) from the drop-down box and select the **Browse** button.
 - If you are installing from files you downloaded using the Installer WebTool, type the name of your hard disk drive (for example, C:\) and select the **Browse** button.
7. Perform one of the following:
 - If you are installing from the CD, browse to one of the following folders:
 - For PostScript printing: **English\Prntdrv\PS_drvr\Win_9x**
 - For PCL printing: **English\Prntdrv\PCL_drvr\Win_9x**
 - If you are installing from files you downloaded using the Installer WebTool, browse to one of the following folders:
 - For PostScript printing: **Prntdrv\PS_drvr\Win_9x**
 - For PCL printing: **Prntdrv\PCL_drvr\Win_9x**

Select **OK** and ensure that the **oemsetup.inf** or **oemsetup** option is selected.

The path is copied to the Install From Disk dialog box.

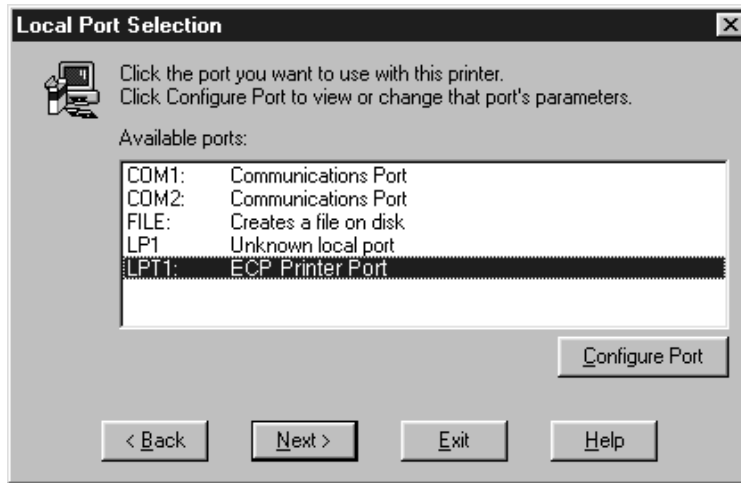
8. Verify the path is correct and select **OK**.

In the Printers box, select the **Xerox DocuColor 2006** option. Select **Next**.



*If you are adding a second printer or performing an upgrade, you will be asked if you want to keep the existing driver or replace it. Select **Replace existing driver** to ensure you are installing the latest version of the printer driver.*

9. Select **LPT1: ECP Printer Port** and Next.

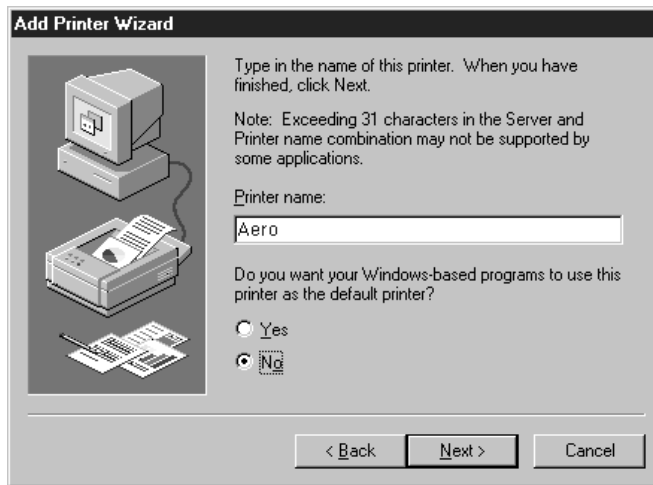


10. Using a maximum of 31 characters, enter a **name** for the printer or leave the default name in the Printer name box.

This name will be used in the Printers and queue windows.



Entering more than 31 characters may cause printing problems with some network applications.



11. If you want the DocuColor 2006 to be the default printer, select the **Yes** radio button; if not, select **No**. Select **Next**.
12. Select **No** in the next dialog box to postpone printing a test page and select **Finish**.

When installation is complete, the Printers window is displayed with an icon for the newly installed printer.

Completing the connection

To print from Windows 95/98, ensure the following tasks have been completed:

- Set up network servers, if any
- Set up the printer to accept print jobs from the workstation
- Configure a port on each Windows workstation for the network

Parallel port printing

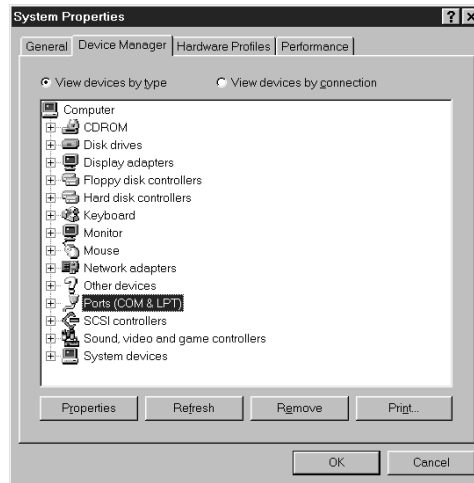
Although the procedures for preparing the parallel ports in Windows 95 or 98 are similar, they are not exactly alike, so ensure that you are using the correct procedures for your operating system.

To prepare the port for parallel port printing in Windows 95

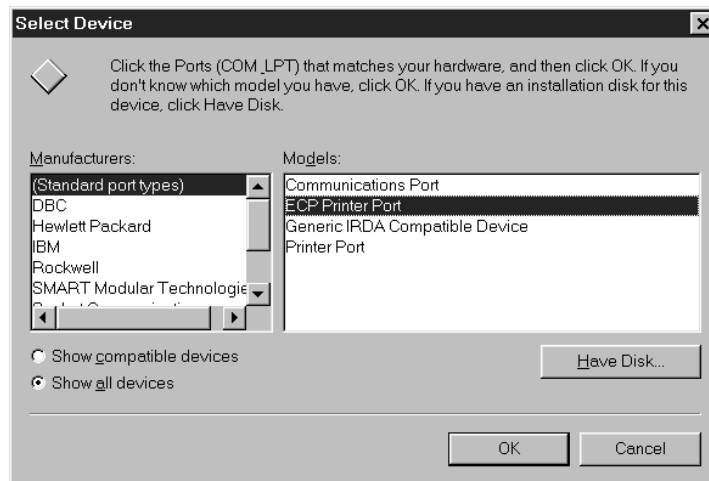
Perform this procedure in Windows 95 only if the LPT1 port is not currently set to ECP Printer Port.

1. Select the **Start** button, **Settings**, and **Control Panel**.
2. Double-click the **System** icon to display the System Properties window.
3. Select the **Device Manager** tab.

4. Double-click the **Ports** option.



5. Double-click the **ECP Printer Port (LPT1)** option.
6. In the (LPT1) Properties dialog box, select the **Driver** tab and the **Update Driver** option.
7. Select **No** when asked if you want windows to search for a driver. Select **Next**.
8. Select the **Show all hardware** radio button.
9. From the Manufacturers list, select the **(Standard port types)** option. From the Models list, select **ECP Printer Port** (not Printer Port). Select **OK** and **Finish**.



10. Select **OK** in the (LPT1) Properties dialog box.



You might need to insert the Windows 95 system CD to complete this step, depending on whether the required files are on the hard disk.

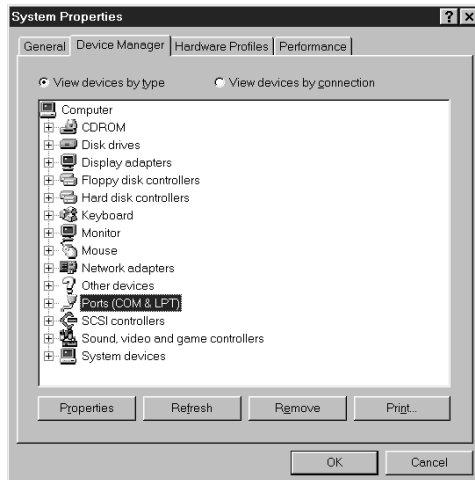
11. When prompted to restart the workstation, select the **Yes** button.

After Windows 95 restarts, complete the procedure described in the section *Setting up parallel port printing*.

To prepare the port for parallel port printing in Windows 98

Perform this procedure in Windows 98 only if the LPT1 port is not currently set to ECP Printer Port.

1. Select the **Start** button, **Settings**, and **Control Panel**.
2. Double-click the **System** icon to display the System Properties window.
3. Select the **Device Manager** tab.
4. Double-click the **Ports** option.



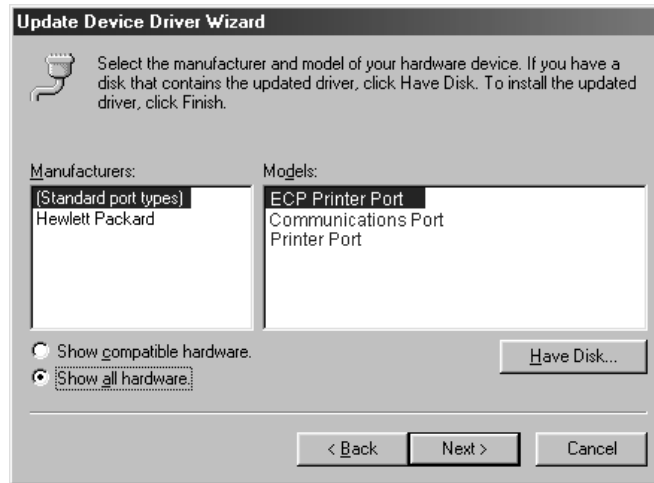
5. Double-click the **ECP Printer Port (LPT1)** option.
6. In the properties dialog box, select the **Driver** tab and then the **Update Driver** option. The Update Device Driver Wizard is displayed.
7. Select **Next**.



8. Select the **Display a list of all the drivers in a specific location, so you can select the driver you want** radio button and then select **Next**.



9. Select the **Show all hardware** radio button.



10. From the Manufacturers list, select **(Standard port types)**. From the Models list, select **ECP Printer Port** (not Printer Port). Select **Next**.
11. Select **Finish**.
12. When prompted to restart the workstation, select **Yes**.

After Windows 98 restarts, complete the procedure described in the section *Setting up parallel port printing*.

Setting up parallel port printing

1. Ensure that the printer is configured for parallel port printing. For more information, refer to the chapters *Connecting to the network* and *Performing the setup from the Printer Control Panel*.
2. To spool files directly to the printer, set **Port Timeout in Seconds** to **10**. To print directly to the DocuColor 2006, set **Port Timeout in Seconds** to **5**.

Setting this option to 10 seconds ensures that spooling is not interrupted due to timeout.

3. At the workstation, perform the following to change the BIOS settings:
 - a. Restart the workstation and press the key indicated on the monitor as soon as the workstation starts up. You may have to scroll through several screens to reach the parallel port settings.
 - b. Set Parallel Port Mode to **ECP**.
 - c. Save the changed setting and exit.
4. Select the **Start, Settings, and Printers**.
5. Select the **DocuColor 2006** printer icon and select **Properties** from the File menu.
6. Select the **Details** tab. In the Print to the following port drop down list, select **LPT1: (ECP Printer Port)**.



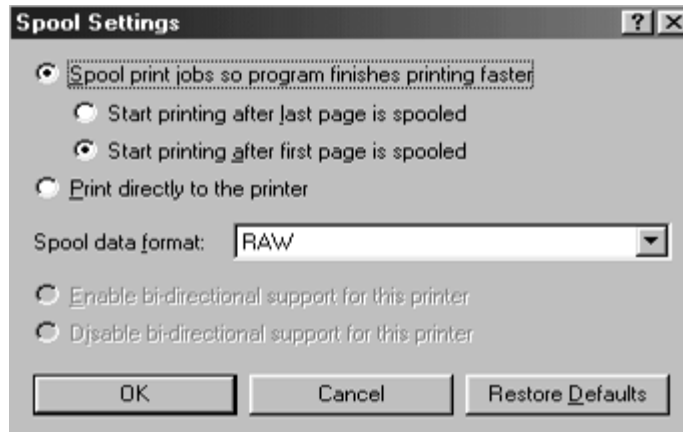
Check this selection carefully. It may read LPT1 (Printer Port), which is not equivalent to LPT1: (ECP Printer Port).

If this box does not read LPT1: (ECP Printer Port), change the port setting now, as described in the section *To prepare the port for parallel port printing* and then return to this step. You may need your Windows 95/98 system CD.

7. If you changed the selection in the **Print to the following port** menu, select **Apply**.

A Warning dialog box may be displayed, stating that fonts you downloaded to the previously select port may be lost. Select **OK**.

8. Select **Spool Settings**.



9. Select either **Spool print jobs so program finishes printing faster** or **Print directly to the printer**. The select you make depends on the action you took in step 3:
- If you set the Port Timeout in Seconds to 10, you can select either option; however, spooling is faster.
 - If you set the Port Timeout in Seconds to 5, select **Print directly to the printer**.
10. To confirm the connection, print a test page. Select the **General** tab in the Properties dialog box. Select the **Print Test Page** button and **OK**.

You are now ready to print from your applications through the parallel port.

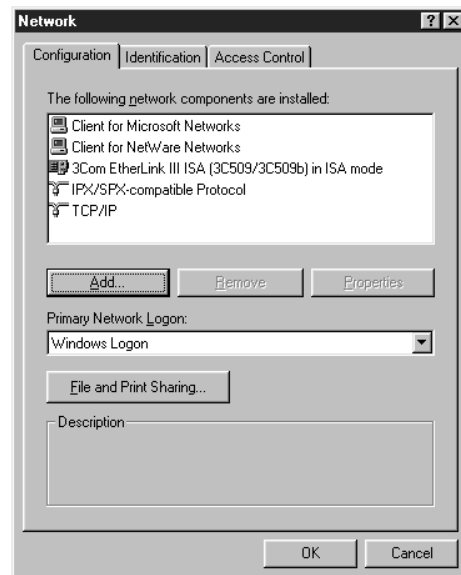
Setting up IPX/SPX printing with Windows 95/98

To print from Windows 95/98 workstations over IPX (Novell), you must first set up IPX/SPX protocols, and then configure the printer by selecting the IPX port type and entering the settings for the port you use.

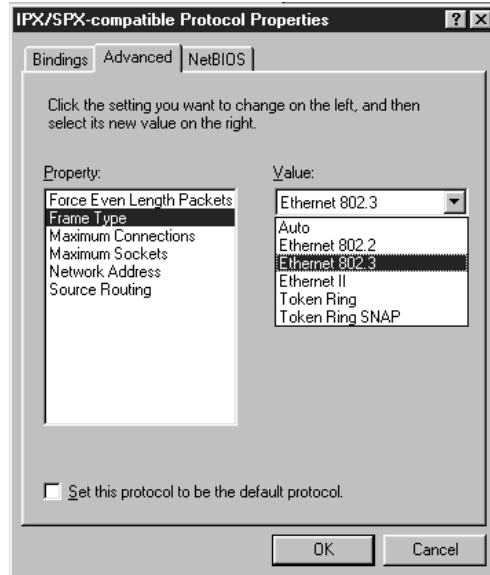
1. Select the **Start** button, **Settings**, and **Control Panel**.
2. Double-click the **Network** icon.

Ensure that an entry for IPX/SPX-compatible Protocol is listed in the Installed Network Components section. For additional information, refer to the Windows 95/98 documentation.

3. Double-click the **IPX/SPX-compatible Protocol** icon.



4. Select the **Advanced** tab.
5. In the Property list, select **Frame Type**.



6. In the Value drop-down list, select the **Frame Type** that corresponds to the one set during the DocuColor 2006 Network Setup.

If necessary, print the Configuration page from the Control Panel to check which Frame Type(s) are configured.

Do not select Auto because you may not be able to select the Frame Type specified on the DocuColor 2006.

7. Select **OK** to close the window.
8. When prompted to restart your workstation, select **Yes**.

9. Select **Start, Settings, and Printers**.
10. Right-click the **DocuColor 2006** icon and select **Properties**.
11. Select the **Details** tab and the **Add Port** button to display the Add Port dialog box.
12. Specify the network path or select the **Browse** button to display the network environment.

For NetWare file servers, double-click the icon of the server to use for printing to the DocuColor 2006. If you are unsure of which server to use, contact your system administrator.

13. Select the printer icon labeled with the NetWare print queue (direct, hold, or queue) you will use and select **OK**.
14. In the Add Port dialog box, verify that the network path is updated. Select **OK**.

Your print jobs are transmitted to the specified print queue on the Novell file server. The printer polls the file server, and if jobs are present, they are transmitted to the printer.

15. To confirm the connection, print a test page. Select the **General** tab in the Properties dialog box. Select the **Apply** button and the **Print Test Page** button.

Perform one of the following:

- Select **Yes** if the job printed normally.
- Select **No** if the page did not print or did not print correctly. Follow the troubleshooting wizard to diagnose and solve the problem.

When setup is complete, you are ready to print your jobs.

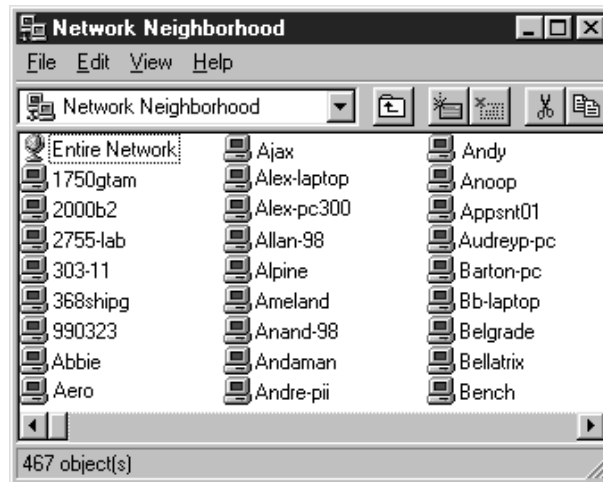
Setting up SMB printing on Windows 95/98

Use SMB or WINS printing if you do not have a Novell network. Printing by this method enables printing from a workstation to a particular print connection (Hold, Print, or Direct) on the DocuColor 2006. The following procedure assumes you have the TCP/IP protocol and Client for Microsoft Networks installed.

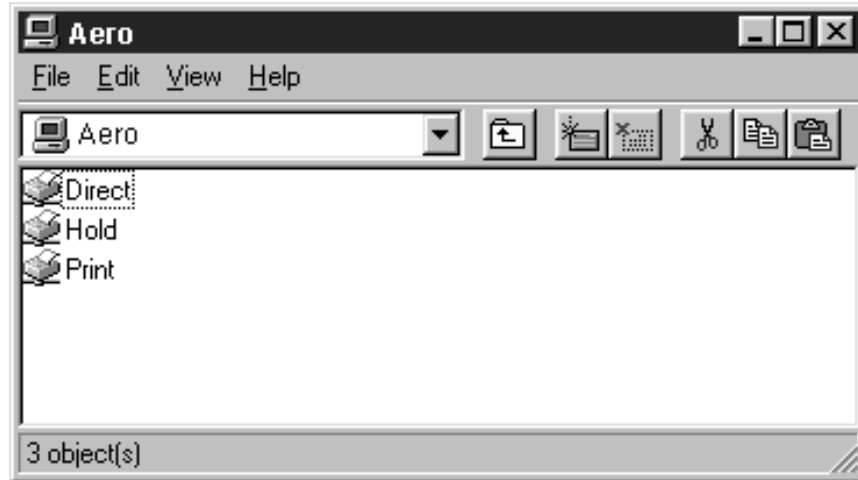
To set up printing to a second or third print connection. Repeat this procedure for each and assign each printer a descriptive name during the printer driver installation for subsequent identification purposes.

SMB printing is referred to as Windows Printing in Setup, on the Control Panel and on the Configuration page.

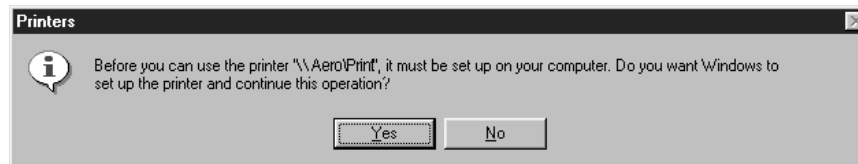
1. Ensure that the printer is configured for SMB printing. For more information, refer to the chapter *Performing the setup from the Printer Control Panel*.
2. At the workstation, double-click the **Network Neighborhood** icon to display your network environment.



3. Browse for the **printer name**. Refer to the Configuration page for this information. If you cannot locate your DocuColor 2006, see your system administrator.
4. Double-click the **name** of the printer to display enabled print connections.



5. Double-click the **name** of the desired printer connection.
The Printers dialog box is displayed, asking whether you would like to set up the printer.

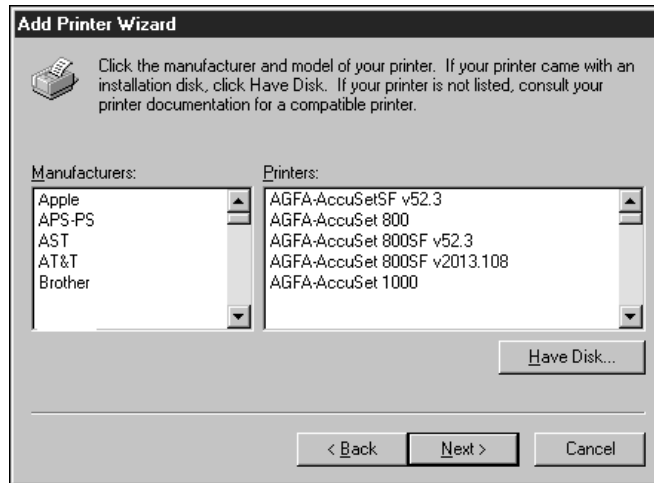


6. Select **Yes** to install the PostScript or PCL printer driver and printer description file for the selected connection.
The Add Printer Wizard is displayed.

7. Specify whether you will be printing from MS-DOS programs and select **Next**.

If you select **Yes**, you will be prompted to capture a printer port before proceeding with the installation. Refer to the Windows documentation for details.

8. In the dialog box displaying lists of manufacturers and printers, select the **Have Disk** button.



The Install From Disk dialog box prompts you for the disk.

9. Perform one of the following:
- If you are installing from the CD, select the CD-ROM drive (for example, D:\) from the drop-down box and select the **Browse** button.
 - If you are installing from files you downloaded using the Installer WebTool, type the name of your hard disk drive (for example, C:\) and select the **Browse** button.

10. Perform one of the following:

- If you are installing from the CD, browse to one of the following folders:
 - For PostScript printing: **English\Prntdrv\PS_drvr\Win_9x**
 - For PCL printing: **English\Prntdrv\PCL_drvr\Win_9x**
- If you are installing from files you downloaded using the Installer WebTool, browse to one of the following folders:
 - For PostScript printing: **Prntdrv\PS_drvr\Win_9x**
 - For PCL printing: **Prntdrv\PCL_drvr\Win_9x**

Select **OK** and ensure that the **oemsetup.inf** or **oemsetup** option is selected.

The path is copied to the Install From Disk dialog box.

11. Verify the path is correct and select **OK**.

In the Printers box, select the **Xerox DocuColor 2006** option. Select **Next**.

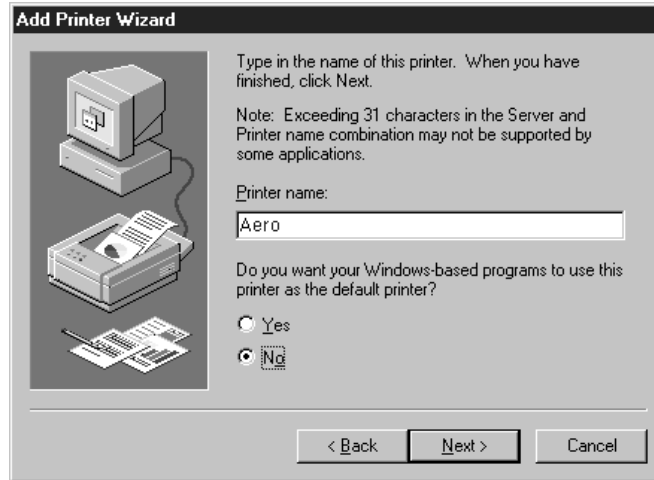


*If you are adding a second printer or performing an upgrade, you will be asked if you want to keep the existing driver or replace it. Select **Replace existing driver** to ensure you are installing the latest version of the printer driver.*

- Using a maximum of 31 characters, enter a name for the printer (or leave the default name) in the Printer name box. Indicate whether you want the printer to be your default. Select **Next**.



Entering more than 31 characters may cause printing problems with some network applications.



- Select **Yes** to print a test page and select **Finish**. The DocuColor 2006 will print a test page.

You are ready to print from your workstation.

Setting printer options

1. Select the **Start** button, **Settings**, and **Printers**.
2. Right-click the **DocuColor 2006** icon and select the **Properties** option.
3. Select the **Configuration** tab.
4. Highlight the option(s) installed on the printer and perform one of the following:
 - To add an option, select the desired **option** from the Available Options list and select the **Add** button.
 - **64** (default), **128**, **192**, **256**, **320**, **384** or **512 MB**
 - **A3 Oversize Tray**
 - **Duplex Unit**
 - **Optional 2-Tray Module**
 - To delete an option, select the desired **option** from the Installed Options list and select the **Remove** button.
5. Select **Apply** to activate the current settings, and then select **OK**.
6. Close the printer window.

Installing additional software for Windows 95/98

You can copy additional color files from the User Software CD to your hard disk. Many of the files are PostScript files that you can download and print using the WebDownloader.

- **ICM folder**—ICM monitor setting file and device profiles specially designed for use with this printer.
- **Clrfiles folder** (inside English folder)—Cmyk.ps, an 11-page, letter-size PostScript file to use for reference when defining CMYK colors in applications. Pantone.ps, a 19-page, letter-size PostScript file that indicates the closest equivalent of PANTONE coated colors that the printer can produce. The method used to print the Pantone.ps file differs depending on the Spot Color Matching setting.

You can print Rgb_01.doc from Microsoft Word 97 or later to view RGB colors. You can print Rgb_02.ppt from PowerPoint 6.0 or later to view available RGB colors.

- **Calibrat folder** (inside English/Clrfiles folder)—Four PostScript measurements files of color patches: Custom21.ps, Custom34.ps, Stand21.ps, and Stand34.ps. The numbers in the file names refer to the number of patches on the page. The Custom files are provided to enable you to download measurement patches that incorporate the current calibration set of the printer. The Standard files are provided to enable you to download standard measurement patches that ignore the current calibration set for the printer.



These files are provided for expert users and should not be used for day-to-day calibration.

Copying printer description files

The User Software CD contains printer description files for popular Windows applications. Pagemaker 5.0, 6.0, and 6.5 do not support automatic installation of printer description files from the Printer Control Panel. To make the DocuColor 2006 available in the Print and Page Setup dialog boxes of this application, copy printer description files to the appropriate location.

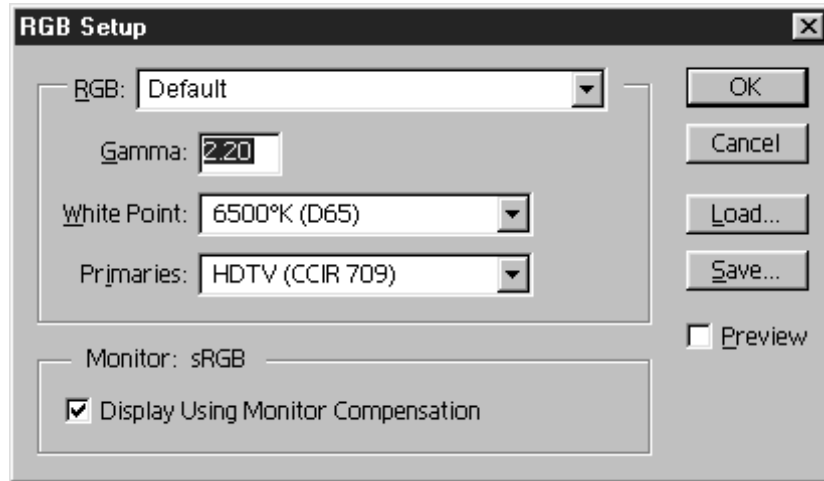
1. Insert the User Software CD in your CD-ROM drive. Open the **English\Prntdrv** folder.
2. Copy the printer description file to the appropriate location. For PageMaker 5.0 or later, copy the EF3X1D10.ppd to one of the following locations:
 - For PageMaker 5.0--\ALDUS\USEENGLISH\PPD4
 - For PageMaker 6.0--\PM6\RSRC\USEENGLISH\PPD4
 - For PageMaker 6.5--\ PM65\RSRC \USEENGLISH\PPD4

Installing the ICM profile

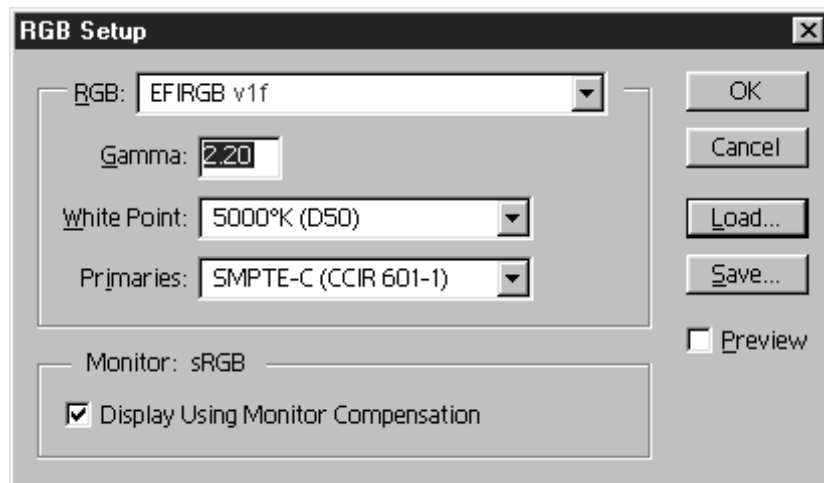
The Image Color Matching (ICM) profiles included in the lcm folder on the User Software CD are for use with ColorWise ProTools. They can also be used with applications that support ICC standards. For most ICC aware applications, the files must be installed into a folder named Color in the System folder. For use with ColorWise Pro Tools, the files can be copied to a folder of your choice.

Loading the working space profile using Photoshop 5.0

1. Launch **Photoshop**.
2. From the **File** menu, select **Color Settings** and **RGB Setup**.
3. In the RGB Setup dialog box, select the **Load** button.



4. Browse to the Windows\System\Color folder. Select the **Efirgb v1f** file and the **Load** button.



5. Select **OK**.

For more information about ICM profiles, refer to the application documentation.

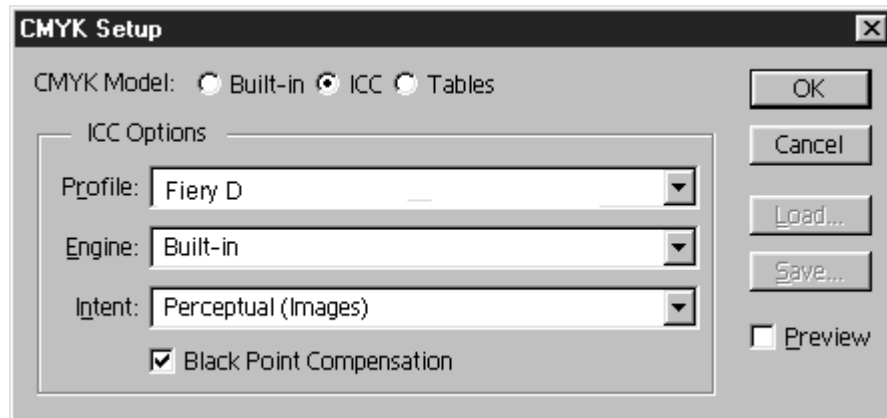
Loading the ICM profile

The ICM printer profile enables RGB-to-CMYK conversions that are specific to the printer you are using. The following procedure assumes that you have installed the ICM profiles included on the User Software CD.



The internal name of an ICM profile may vary slightly from its file name.

1. Launch **Photoshop**.
2. From the **File** menu, select **Color Settings** and **CMYK Setup**.
3. In the CMYK Setup dialog box, select the **ICC** radio button as the CMYK Model.
4. Select the profile that corresponds to the printer or the device you would like to simulate from the Profile drop-down menu.



5. Select **OK**.