

11

Installing user software in a Windows NT 4.0 environment

Use the following instructions to install software and set up printing from Windows NT 4.0. Ensure that your printer is properly connect and configured for your network. For details, refer to the chapters *Connecting to the network* and *Performing the setup from the Printer Control Panel*

Use the contents of this chapter as follows:

- Depending on your configuration, use one of the following sections to install printer drivers and set up appropriate connections:
 - Parallel port printing
 - TCP/IP and LPR printing
 - IPX printing
 - SMB printing
- Specify printer options with the section *Setting the printer options*.
- If necessary, refer to the section *Installing additional software for Windows NT 4.0*.

All necessary files are included on the User Software CD.

In addition to using the User Software CD, you can download printer drivers from the printer to your workstation with the Installer WebTool (if the system administrator has enabled Internet access to the printer). You can then install the drivers from your workstation. For instructions, refer to the section *Using the Installer WebTool* in the chapter *Using the Fiery WebTools*. After you download the printer files, the installation process is identical to installing from the User Software CD.

Overview of installation

Installing the DocuColor 2006 user software includes the following:

- Installing the PostScript or PCL printer driver and corresponding printer description files and setting up the printer driver to communicate with the printer through the Add Printer Wizard
- Setting the printer options
- Copying additional files from the User Software CD as needed

To print from over the network from a Windows NT 4.0 workstation, ensure the following tasks have been completed:

- Set up network servers, if any.
- Set up the printer to accept print jobs from the workstation.
- Configure a port on each Windows NT 4.0 workstation for the network type.

Before you begin

1. If your system administrator has not already done so, connect the printer to the desired port on the workstation. For details, refer to the chapters *Connecting to the network* and *Performing the setup from the Printer Control Panel*.

If you are uncertain what type of network you have, contact your system administrator.

2. Print a configuration sheet at the printer to obtain the name of the printer and settings that will be used in the following procedures.

Installing the user software for parallel port printing (Windows NT 4.0)

Use this procedure to install the printer. It prepares your system for local printing through the parallel port.

Before you begin, print a Configuration Page for the printer. For specific procedures, refer to the chapter *Performing the setup from the Printer Control Panel*.



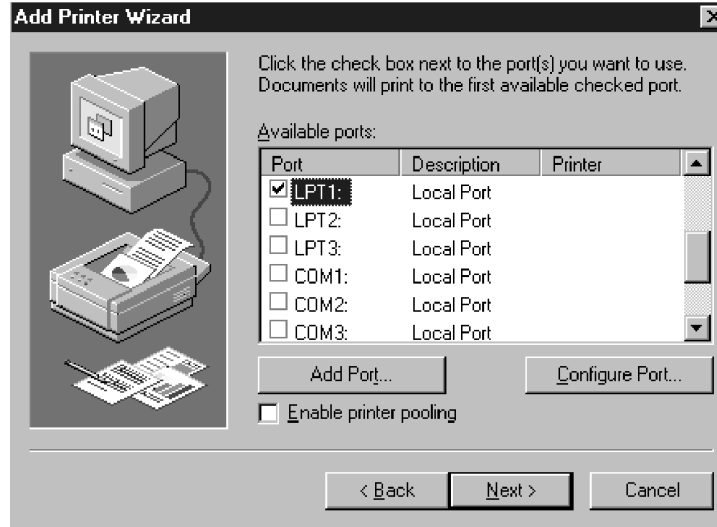
If you have previously installed a print driver for the DocuColor 2006, perform the uninstall procedure before installing the new driver. For more information, refer to your Windows documentation.

1. Insert the User Software CD in your CD-ROM drive.
2. Select **Start**, **Settings**, and **Printers**.
3. Double-click **Add Printer** to display the Add Printer wizard. Select **Next**.
4. To install a printer locally, select **My Computer** and select **Next**.

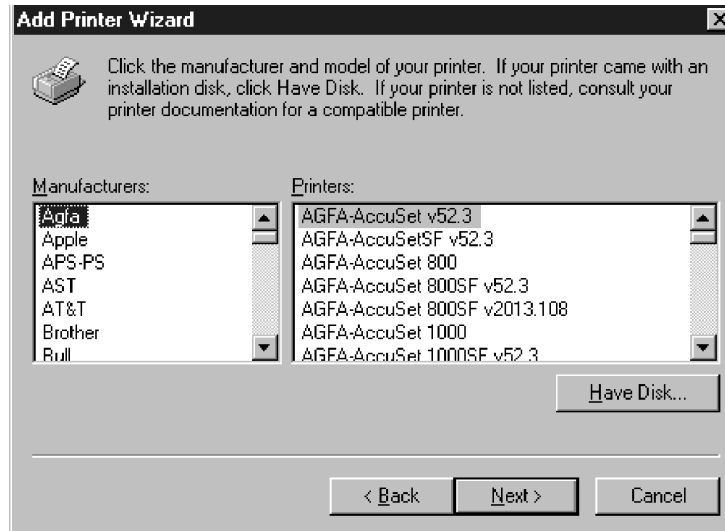
My Computer is available if you logged in to a workstation on which you have Administrator privileges. If it is not available, add a network printer and follow the procedure for adding a port. Refer to the section *Installing the user software for TCP/IP and LPR printing for Windows NT 4.0* in this chapter.

5. Select **LPT1** and **Next**.

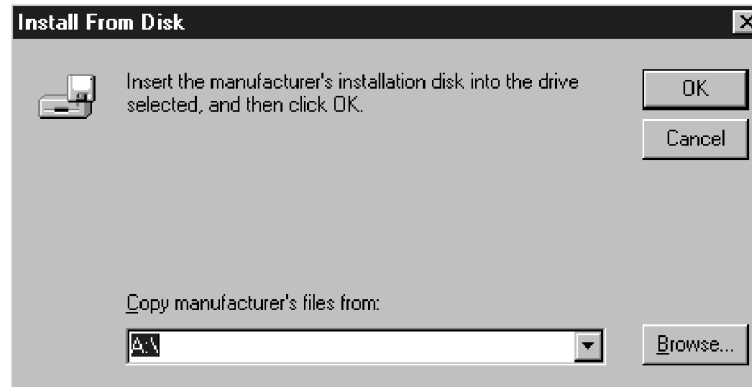
This is a general installation that works for the parallel port connection. You can add a network port later, according to your network type.



6. In the dialog box displaying lists of manufacturers and printers, select **Have Disk**.



The Install from Disk dialog box prompts you for the disk.

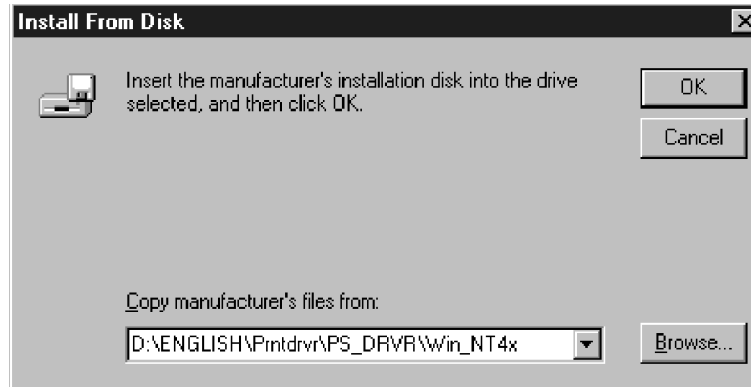


7. Perform one of the following:
 - If you are installing from the CD, select the CD-ROM drive (for example, D:\) from the drop-down box and select the **Browse** button.
 - If you are installing from files you downloaded using the Installer WebTool, type the name of your hard disk drive (for example, C:\) and select **Browse**.
8. Perform one of the following:
 - If you are installing from the CD, browse to one of the following folders:
 - For PostScript printing:
English\Prntdrv\PS_drvr\Win_NT4.x folder
 - For PCL printing:
English\Prntdrv\PCL_drvr\Win_NT4.x folder
 - If you are installing from files you downloaded using the Installer WebTool, browse to the **Prntdrv** folder.

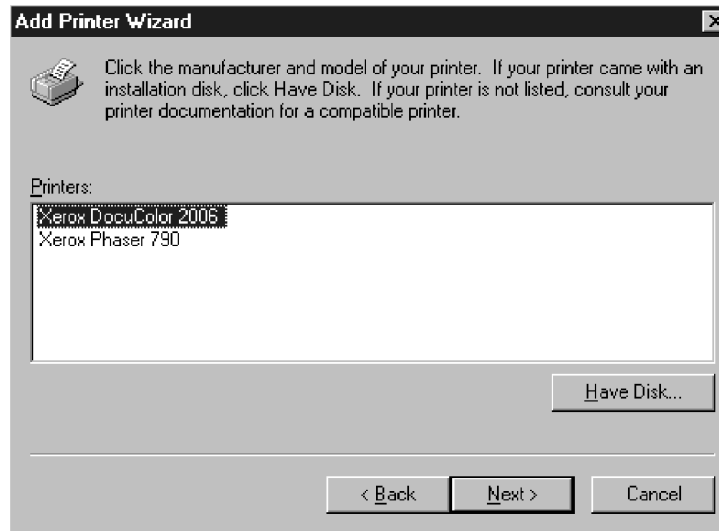
Select **OK** and ensure that **oemsetup.inf** or **oemsetup** is selected.

The path is copied to the Install from Disk dialog box.

9. Verify the path is correct and select **OK**.



10. In the Printers box, select the **Xerox DocuColor 2006** printer. Select **Next**.



11. Using a maximum of 31 characters, enter a **name** for the printer or leave the default name in the Printer Name box.

This name will be used in the Printers and queue windows.

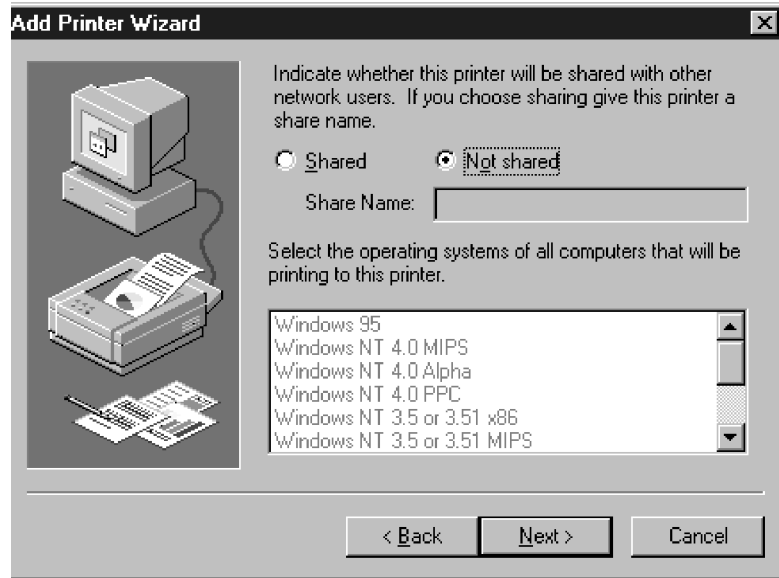


Entering more than 31 characters may cause printing problems with some network applications.



12. If you want the DocuColor 2006 to be the default printer, select **Yes**; if not, select **No**. Select **Next**.

13. Indicate whether you want the printer installed as a shared printer. If you select Shared, enter a Share Name for the printer (or leave the printer default name) and make selections from the list of operating systems used by client workstations. Select **Next**.

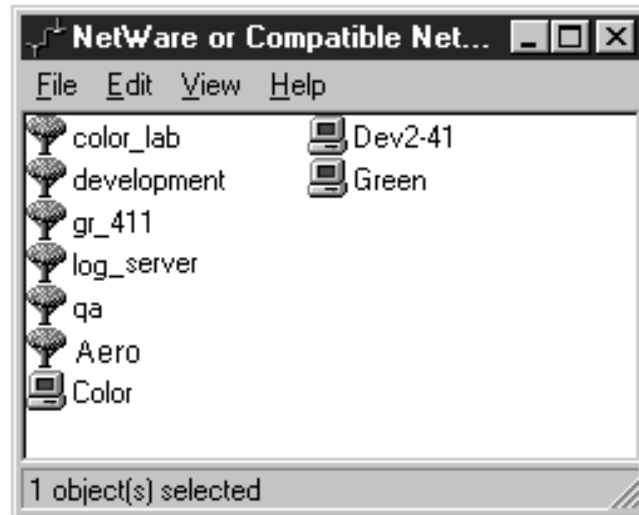


14. Select **Yes** in the next dialog box to postpone printing a test page and select **Finish**.

When installation is complete, the Printers window is displayed with an icon for the newly installed printer. When you select print, your files are transmitted over the parallel port connection to the printer.

Installing the user software for IPX printing (Windows NT 4.0)

1. Open the Windows NT **Network Neighborhood**.
2. Browse for your NetWare compatible network.
A list of NetWare servers is displayed.



3. Double-click the **File Server** or **NetWare Tree** that provides a print connection for the DocuColor 2006.

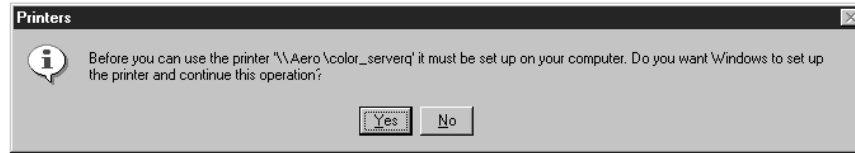


Check with your system administrator to ensure the printer is set up to accept this type of printing.

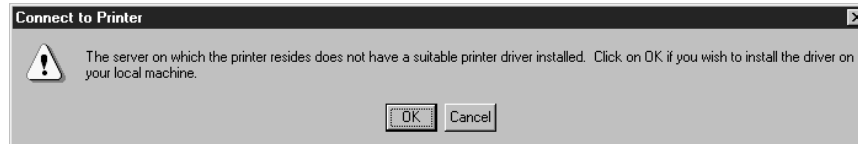
You may have to log in to the file server to view the print connections.

4. Double-click the **print connection** defined for the DocuColor 2006.

5. If the NetWare server does not have a suitable driver for the DocuColor 2006, you may be asked if you want to set up the printer on your workstation.



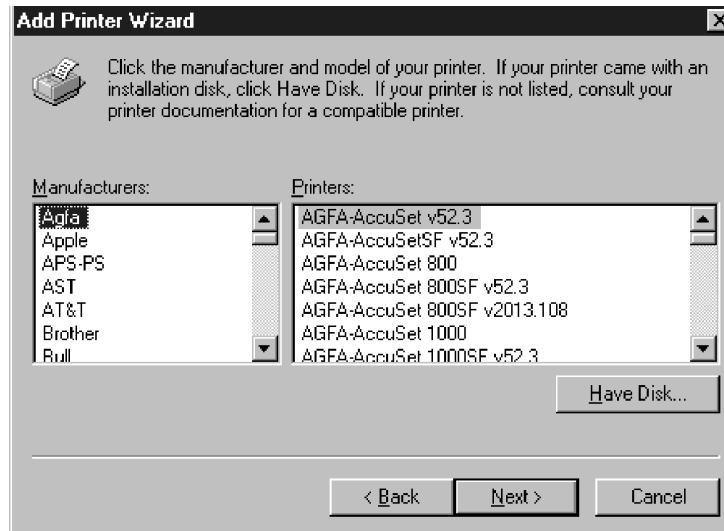
Select **Yes**.



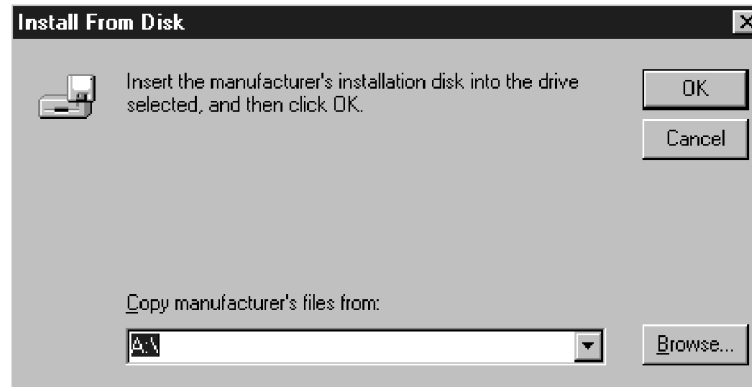
Select **OK**.

The Add Printer Wizard displays.

6. In the dialog box displaying lists of manufacturers and printers, select **Have Disk**.



The Install from Disk dialog box prompts you for the disk.

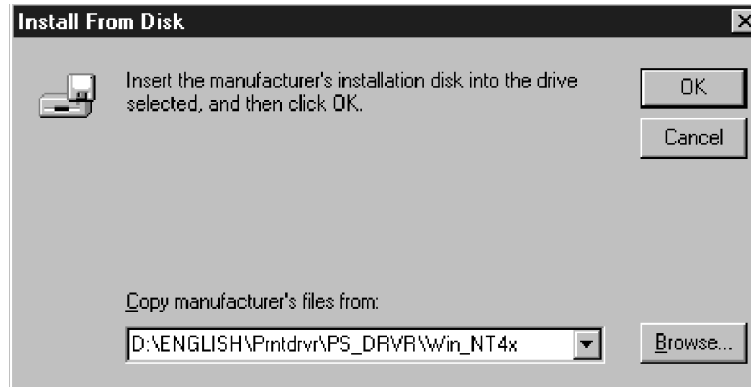


7. Perform one of the following:
 - If you are installing from the CD, select the CD-ROM drive (for example, D:\) from the drop-down box and select the **Browse** button.
 - If you are installing from files you downloaded using the Installer WebTool, type the name of your hard disk drive (for example, C:\) and select **Browse**.
8. Perform one of the following:
 - If you are installing from the CD, browse to one of the following folders:
 - For PostScript printing:
English\Prntdrv\PS_drvr\Win_NT4.x folder
 - For PCL printing:
English\Prntdrv\PCL_drvr\Win_NT4.x folder
 - If you are installing from files you downloaded using the Installer WebTool, browse to the **Prntdrv** folder.

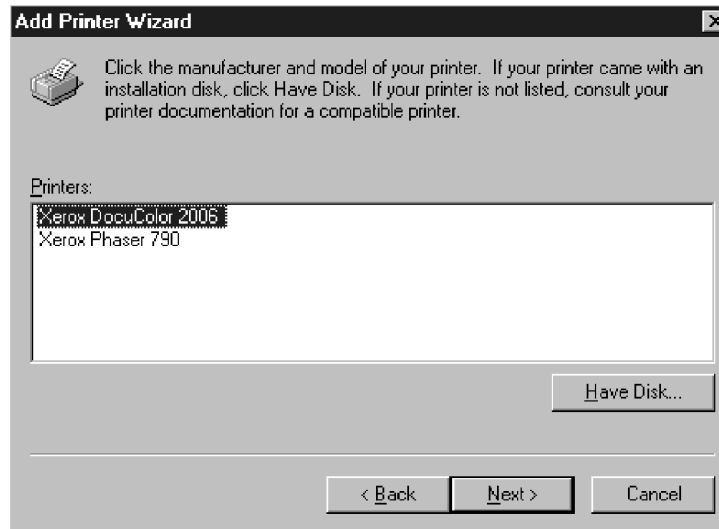
Select **OK** and ensure that **Oemsetup.inf** or **Oemsetup** is selected.

The path is copied to the Install from Disk dialog box.

9. Verify the path is correct and select **OK**.



10. In the Printers box, select the **Xerox DocuColor 2006** printer. Select **Next**.



11. Using a maximum of 31 characters, enter a **name** for the printer or leave the default name in the Printer Name box.

This name will be used in the Printers and queue windows.

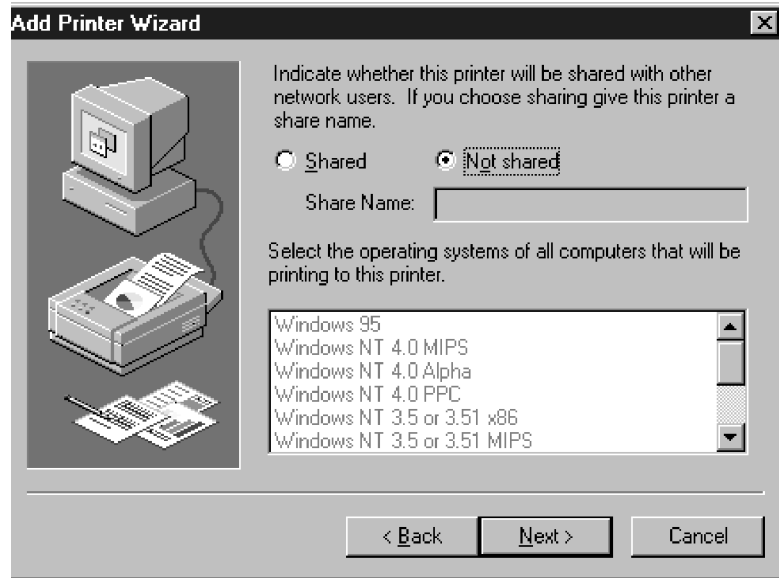


Entering more than 31 characters may cause printing problems with some network applications.



12. If you want the DocuColor 2006 to be the default printer, select **Yes**; if not, select **No**. Select **Next**.

13. Indicate whether you want the printer installed as a shared printer. If you select Shared, enter a Share Name for the printer (or leave the printer default name) and make selections from the list of operating systems used by client workstations. Select **Next**.



14. Select **Yes** in the next dialog box to postpone printing a test page and select **Finish**.

When installation is complete, the Printers window is displayed with an icon for the newly installed printer. When you select print, your files are transmitted over the IPX connection to the printer.

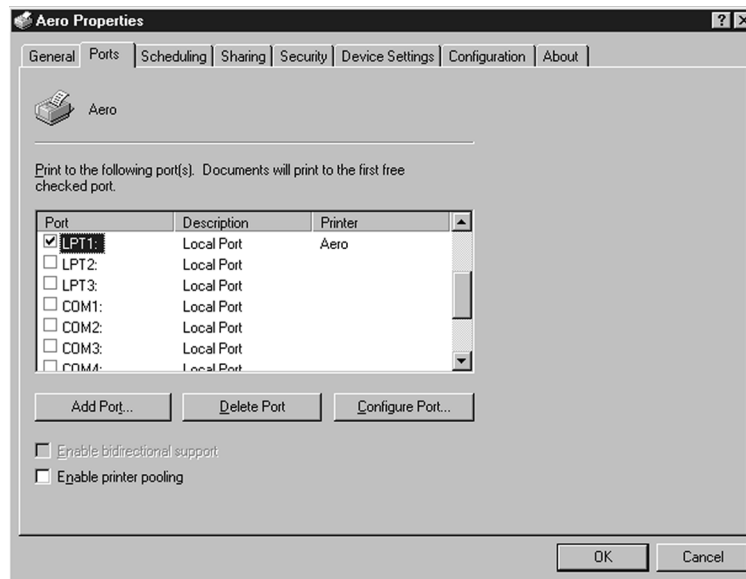
Installing the user software for TCP/IP and LPR printing for Windows NT 4.0

Before you continue, print a configuration sheet at the printer to obtain the IP address assigned to the DocuColor 2006, as well as the subnet mask and gateway address, if they are used.

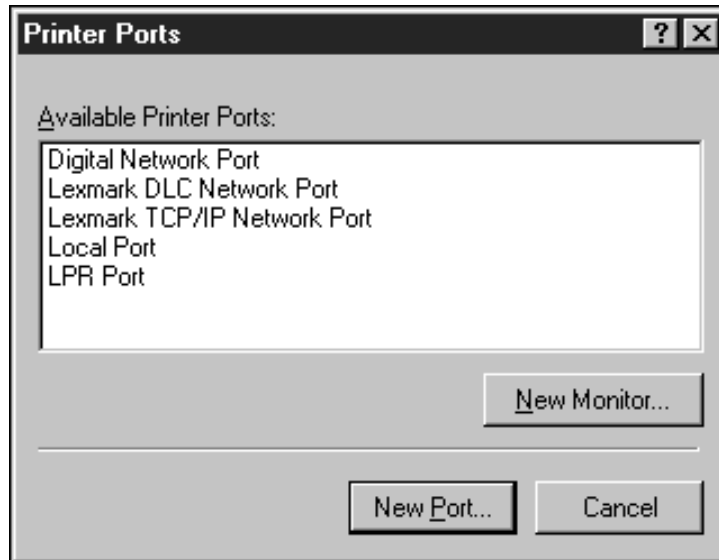
1. Perform steps 1-14 of the procedure *Installing the user software for parallel port printing* to install the printer driver.

When installation is complete, the Printers window is displayed with an icon for the newly installed printer.

2. Right-click the **DocuColor 2006** icon and select **Properties** to open the ppd window. Select the **Ports** tab to display the Ports properties.



3. Ensure that you are connected to LPT1 and select the **Add Port** option to display a list of available ports.

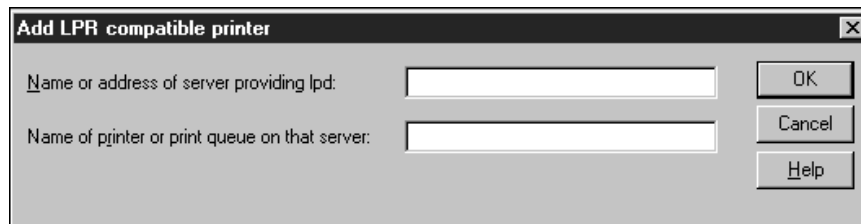


4. Select the **LPR Port** option and select the **New Port** button.



*If the LPR port is not listed, install the TCP/IP network protocol and Microsoft TCP/IP printing software. (Access the software through My Computer/Control Panels/Network/Services. Select the **Microsoft TCP/IP printing** icon.). Refer to your Windows NT documentation for details.*

5. Perform one of the following:
 - If your network uses IP addresses, enter the Ethernet TCP/IP **IP address** of the DocuColor 2006 in the Add LPR compatible printer dialog box.
 - If your network uses Domain Name Services (DNS), enter the DNS name assigned to the printer.



6. Press **Tab** and type one of the names listed below in lowercase letters. These names must be typed exactly as shown.
 - print (generally used)
 - hold
 - direct
7. Select **OK**. The workstation checks the address or DNS name that you entered and notifies you if it cannot resolve the address.
8. Select **Close** in the Printer Ports dialog box. The Ports property tab shows the new port configuration.
9. To confirm the connection, print a Windows NT 4.0 test page. Select the **General** tab and select the **Print Test Page** option.

When you print, your PostScript or PCL files are transmitted over the LPR Port connection to the printer. With setup complete, you are ready to print your jobs on the DocuColor 2006.
10. Select **OK** to close the Printer Properties dialog box.

Installing user software for SMB printing

Use SMB or WINS printing if you do not have a Novell network. Printing by this method enables printing from a workstation to a particular print connection (Hold, Print, or Direct) on the DocuColor 2006. The following procedure assumes you have the TCP/IP protocol and Microsoft TCP/IP Printing software installed on the Windows NT workstation.

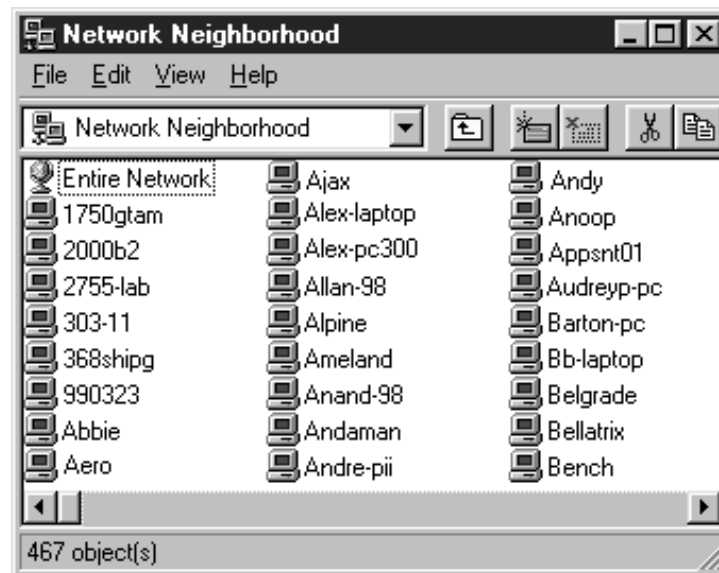
You must install a new printer for each additional connection. Repeat this procedure for each and assign each printer a descriptive name during the printer driver installation for easy identification later.



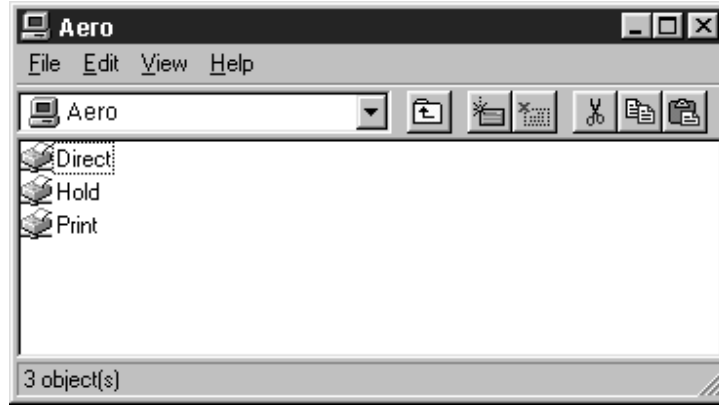
In WebSetup and on the Configuration Page, SMB printing is referred to as Windows Printing Service.

Before you continue, print a configuration sheet at the printer to obtain the IP address assigned to the DocuColor 2006, as well as the Subnet mask and gateway address, if they are used.

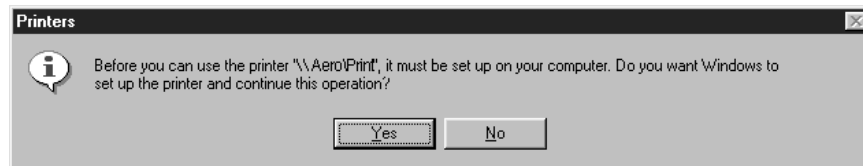
1. Ensure the printer is configured for SMB printing. For more information, refer to the chapter *Performing the setup from the Printer Control Panel*.
2. At your workstation, double-click the **Network Neighborhood** icon to display your network environment.



3. Browse for the **DocuColor 2006** printer.
If you cannot locate the printer, see your system administrator.
4. Double-click the **name** of the printer to display enabled print connections.



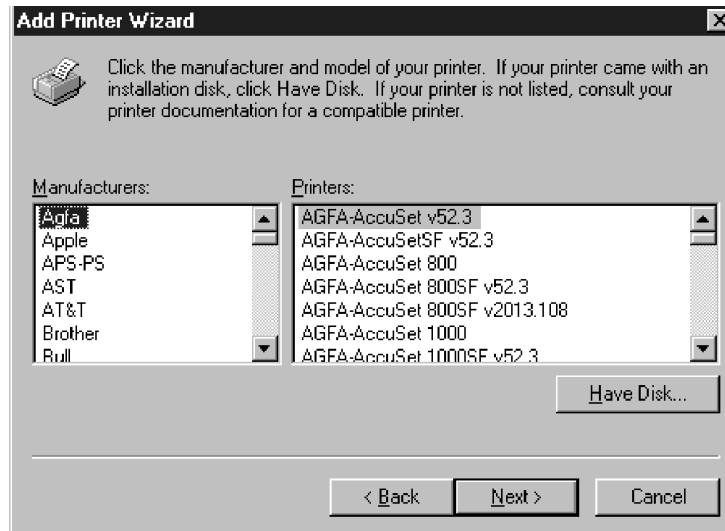
5. Double-click the **name** of the print connection.



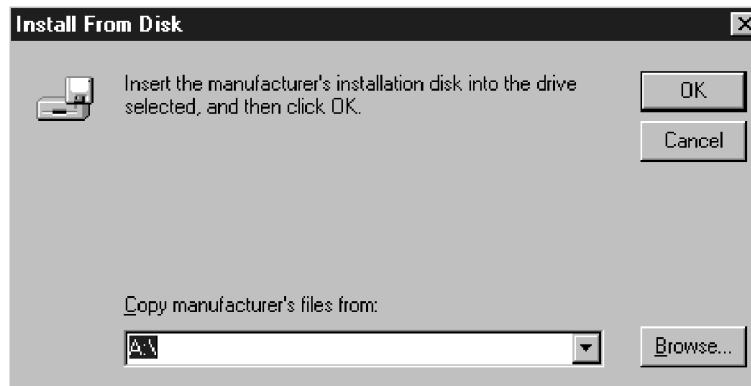
6. In the Printers dialog box, select **Yes** to install the PostScript or PCL printer driver and printer description file for the selected connection.

A message is displayed, indicating that the correct printer driver is not available.

7. Select **OK**.
8. In the dialog box displaying lists of manufacturers and printers, select **Have Disk**.



The Install from Disk dialog box prompts you for the disk.



9. Perform one of the following:
 - If you are installing from the CD, select the CD-ROM drive (for example, D:\) from the drop-down box and select the **Browse** button.
 - If you are installing from files you downloaded using the Installer WebTool, type the name of your hard disk drive (for example, C:\) and select **Browse**.

10. Perform one of the following:

- If you are installing from the CD, browse to one of the following folders:
 - For PostScript printing:
English\Prntdrv\PS_drvr\Win_NT4.x folder
 - For PCL printing:
English\Prntdrv\PCL_drvr\Win_NT4.x folder
- If you are installing from files you downloaded using the Installer WebTool, browse to the **Prntdrv** folder.

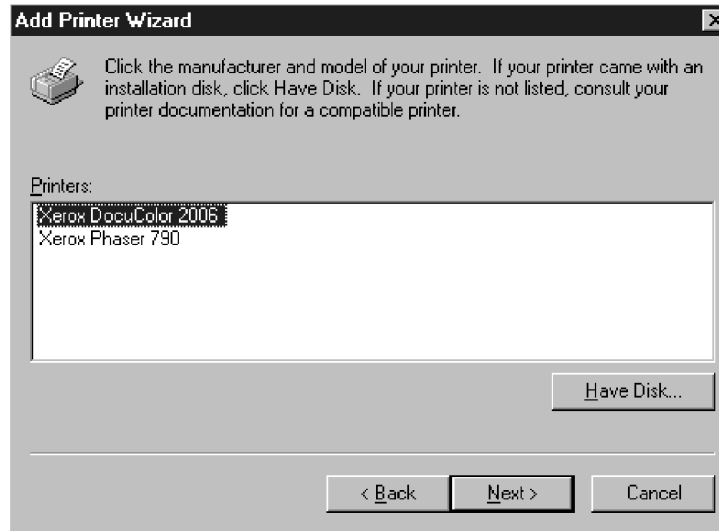
Select **OK** and ensure that **Oemsetup.inf** or **Oemsetup** is selected.

The path is copied to the Install from Disk dialog box.

11. Verify the path is correct and select **OK**.



12. In the Printers box, select the **Xerox DocuColor 2006** printer. Select **Next**.



13. Using a maximum of 31 characters, enter a **name** for the printer or leave the default name in the Printer Name box.

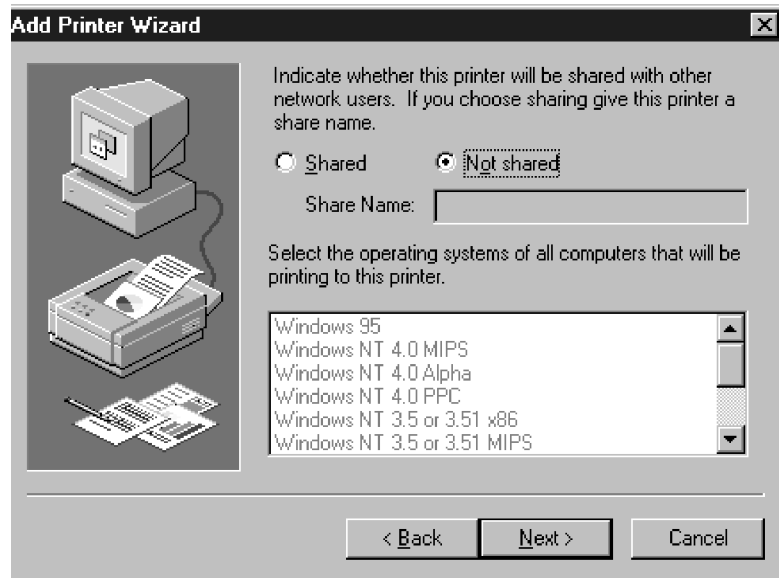
This name will be used in the Printers and queue windows.



Entering more than 31 characters may cause printing problems with some network applications.



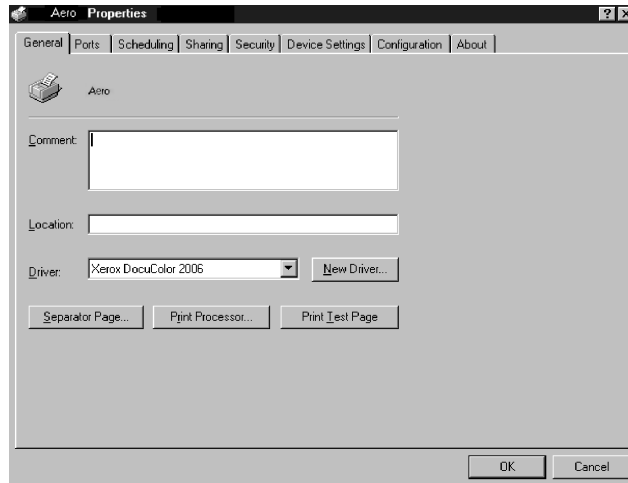
14. If you want the DocuColor 2006 to be the default printer, select **Yes**; if not, select **No**. Select **Next**.
15. Indicate whether you want the printer installed as a shared printer. If you select Shared, enter a Share Name for the printer (or leave the printer default name) and make selections from the list of operating systems used by client workstations. Select **Next**.



16. To confirm the connection, right-click the printer icon and select **Properties**. Select the **General** tab and **Print Test Page**. If the test page prints successfully, you are ready to print from your workstation.
17. Select **OK** to close the Printer Properties dialogue box.

Setting printer options

1. Select Start, Settings, and Printers.
2. Select the **DocuColor 2006** icon and select **Properties** from the File menu.



3. Select the **Configuration** tab, and scroll down to **Installable Options**.
4. Specify the options installed on the printer. Select an installable option and select the setting of **Installed** or **Not Installed**.
 - **64** (default), **128**, **192**, **256**, **320**, **384** or **512 MB**
 - **A3 Oversize Tray**
 - **Optional 2-Tray Module**
 - **Duplex Unit**
5. Select **Apply** to activate the current settings, and then select **OK**.

Installing additional software for Windows NT 4.0

You can copy additional color files from the User Software CD to your hard disk. Many of the files are PostScript files that you can download and print using WebDownloader.

- **ICM folder**—ICM monitor setting file and device profiles specially designed for use with the printer.
- **Clrfiles folder** (inside English folder)—Cmyk.ps, an 11-page, letter-size PostScript file to use for reference when defining CMYK colors in applications. Pantone.ps, a 19-page, letter-size PostScript file that indicates the closest equivalent of PANTONE coated colors that the printer can produce. The method used to print the Pantone.ps file differs depending on the Spot Color Matching setting.

You can print Rgb_01.doc from Microsoft Word 97 or later to view RGB colors. You can print Rgb_02.ppt from PowerPoint 6.0 or later to view available RGB colors.

- **Calibrat folder** (inside English/Clrfiles folder)—Four PostScript measurements files of color patches: Custom21.ps, Custom34.ps, Stand21.ps, and Stand34.ps. The numbers in the file names refer to the number of patches on the page. The Custom files are provided to enable you to download measurement patches that incorporate the current calibration set of the printer. The Standard files are provided to enable you to download standard measurement patches that ignore the current calibration set for the printer.



These files are provided for expert users and should not be used for day-to-day calibration.

Copying printer description files

The User Software CD contains printer description files for popular Windows applications. Pagemaker 5.0, 6.0, and 6.5 do not support automatic installation of printer description files from the Printer Control Panel. To make the DocuColor 2006 available in the Print and Page Setup dialog boxes of this application, copy printer description files to the appropriate location.

1. Insert the User Software CD in your CD-ROM drive. Open the **English\Prntdrv** folder.
2. Copy the printer description file for your printer to the appropriate location. For PageMaker 5.0 or later, copy the EF3x1D10.ppd to one of the following locations:
 - For PageMaker 5.0--\ALDUS\USEENGLISH\PPD4
 - For PageMaker 6.0--\PM6\RSRC\USEENGLISH\PPD4
 - For PageMaker 6.5--\ PM65\RSRC \USEENGLISH\PPD4

Installing the ICM profile

The Image Color Matching (ICM) profiles included in the lcm folder on the User Software CD are for use with ColorWise ProTools. They can also be used with applications that support ICC standards. For most ICC aware applications, the files must be installed into a folder named Color in the System folder. For use with ColorWise Pro Tools, the files can be copied to a folder of your choice.

Installing the ICM profile on Windows NT 4.0

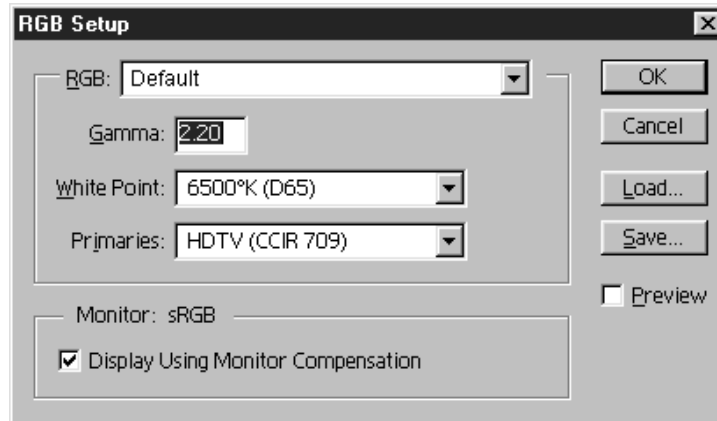
1. On the User Software CD, open the **lcm** folder.
2. Copy the **profiles** to the Windows NT\System32\Color folder.



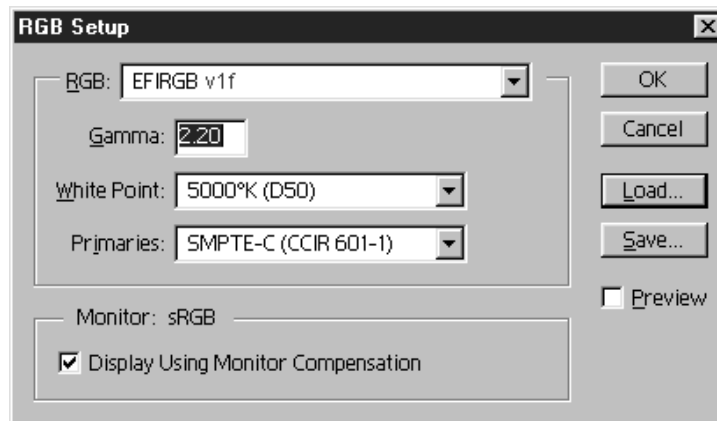
*If a folder named **Color** does not exist in the System32 folder, create one and install the profiles into it.*

Loading the working space profile using Photoshop 5.0

1. Launch Photoshop.
2. From the **File** menu, select **Color Settings** and **RGB Setup**.
3. In the RGB Setup dialog box, select **Load**.



4. Browse to the Windows NT\System32\Color folder. Select the **Efirgb v1f** file and **Open**.



5. Select **OK**.

For more information about ICM profiles, refer to the application documentation.

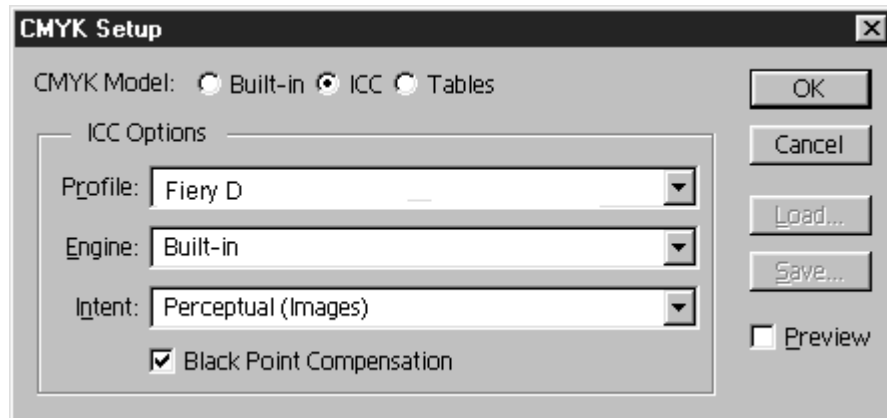
Loading the ICM profile

The ICM printer profile enables RGB-to-CMYK conversions that are specific to the printer you are using. The following procedure assumes that you have installed the ICM profiles included on the User Software CD.



The internal name of an ICM profile may vary slightly from its file name.

1. Launch **Photoshop**.
2. From the **File** menu, select **Color Settings** and **CMYK Setup**.
3. In the CMYK Setup dialog box, select **ICC** as the CMYK color model.
4. Select the profile that corresponds to the printer or the device you would like to simulate from the Profile drop-down box.



5. Select **OK**.