

CentreWare[®]

Printer Drivers Guide



For Windows
Release 5.59



July 27, 2004

Copyright © 2004 by Xerox Corporation. All rights reserved.

Printed in the United States of America.

XEROX[®], The Document Company[®], the digital X[®], CentreWare[®], and the identifying product names and numbers herein are trademarks of XEROX CORPORATION.

Other product names and images used in this guide may be trademarks or registered trademarks of their respective companies and are hereby acknowledged.

Table of Contents

Chapter 1	CentreWare Printer Drivers for Microsoft Windows	1-1
What's Included in this Release?	1-2
Printer Driver Overview	1-3
CentreWare Printer Drivers	1-4
Types of Printer Drivers	1-5
PostScript	1-5
PCL	1-5
Obtaining CentreWare Printer Drivers	1-6
CentreWare Printer Drivers CD	1-6
Downloading from the Web	1-7
Xerox DocuSP Printer PPD Files	1-7
CentreWare Printer Driver Applications	1-8
Xerox Printer Configuration Utility	1-8
Xerox Printer Installation Utility	1-8
Print Driver Documentation	1-9
CentreWare Printer Drivers Guide for Windows	1-9
Help	1-9
Internet Support	1-9
Telephone Support	1-10
Chapter 2	Installing Windows Printer Drivers	2-1
Requirements	2-2
Printer Drivers	2-2
Xerox Windows Driver Installer	2-2
Network Print Configurations	2-3
Installing Printer Drivers on Windows Networks	2-4
Direct Installation	2-5

Distributed Installation	2-11
Point and Print Installations	2-23
Installing Printer Drivers on Other Networks	2-24
Configuring Printer Drivers	2-24
Preconfiguring Default Driver Settings	2-24
Configuring Installable Options at the Workstation	2-27
Locating Installation Files on the CD	2-29
Uninstalling Windows Printer Drivers	2-30
For Windows NT	2-30
For Windows 2000/XP	2-30
Chapter 3 Getting the Most From Your Printer Driver	3-1
Driver Structure	3-2
Tabs	3-3
General Tabs	3-3
Default Tabs	3-4
Driver Help System	3-5
Chapter 4 Problem Solving	4-1
Troubleshooting a Problem	4-2
Index	INDEX-i



CentreWare Printer Drivers for Microsoft Windows

CentreWare is software that brings the power of your Xerox systems to your desktop. CentreWare provides you with total access, viewing, and control of any Xerox system from any connected desktop. CentreWare's interactive drivers make printing from the desktop simple to perform and easy to understand.

With this guide, administrators can install and configure CentreWare printer drivers and general users can increase their productivity using the Xerox system's printing options.

What's in this chapter:

- *What's Included in this Release?* 1-2
- *Printer Driver Overview* 1-3
- *Obtaining CentreWare Printer Drivers* 1-6
- *Xerox DocuSP Printer PPD Files* 1-7
- *CentreWare Printer Driver Applications* 1-8
- *Print Driver Documentation* 1-9
- *Telephone Support* 1-10

What's Included in this Release?

The CentreWare release of the DocuSP printer drivers supports the following features and hardware:

- Graphically enhanced PostScript and PCL printer drivers. You can select paper/output options, image options, layout and watermark options, cover options, inserts, and exception pages all within the printer driver.
- Xerox Printer Driver Installer. You can configure and install multiple printer drivers at the same time.
- Finisher - (optional on some models)

Printer Driver Overview

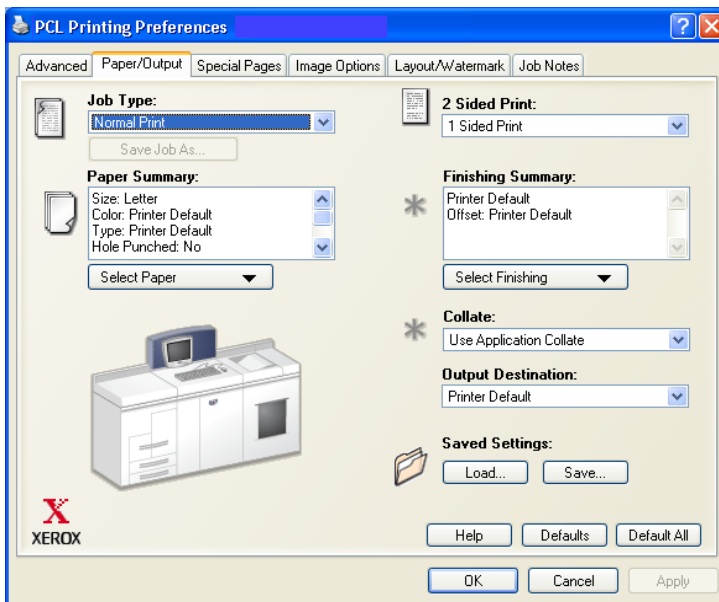
A printer driver makes documents created with specialized software applications (word processing, spreadsheets, graphics) compatible with a specific printer. Each type of printer requires unique commands to print correctly and to enable special features. For these reasons, different types of printers require their own printer drivers to operate correctly.

With CentreWare printer drivers, you can print from your workstation to a Xerox system in a network environment. CentreWare drivers contain a variety of feature options that you can use to customize your print jobs.

CentreWare Printer Drivers

CentreWare printer drivers display the feature options on tabs within the driver. These printer drivers are designed specifically for Xerox products. CentreWare drivers are available for Windows NT/2000/XP workstations.

NOTE: The driver graphic is representative. Driver options and mimics will vary slightly depending on the operating system and model.



Xerox Printer Driver

Types of Printer Drivers

The CentreWare printer drivers are available in PostScript 3, PCL 5c, PCL 5e, and PCL 6 (XL) printing formats.

NOTE: A PCL 6 (XL) driver for Windows NT is not available with this CentreWare release.

PostScript

PostScript gives you greater ability to scale and manipulate images; it offers more precision with high-end graphics. PostScript also provides you with different types of error-handling and font substitution options.

PCL

PCL (Printer Command Language) generally has fewer advanced features than PostScript. However, using PCL enables you to process most jobs faster.

Obtaining CentreWare Printer Drivers

CentreWare DocuSP printer drivers that support the Microsoft Windows NT/2000/XP environment are available for PostScript 3, PCL 5c, PCL 5e, and PCL 6 (XL). The drivers are available either on the *CentreWare Printer Drivers* CD or by download from the Xerox Web site.

NOTE: Windows NT drivers for PCL 6 (XL) are not available.

CentreWare Printer Drivers CD

The installation files for the Xerox system printer drivers are available on the *CentreWare Printer Drivers* CD.

For updates and additional information, check the Xerox Web site at www.xerox.com.

Downloading from the Web

Xerox system printer drivers can be downloaded from the Xerox Web site at www.xerox.com. The installation files for all Xerox system models are available from the Web site.

► To download printer drivers:

- 1 Access the Xerox Web site and click **Support & Drivers** at the top of the page.
- 2 Enter your Xerox product family in the Search text box and click **Search**.
- 3 From the list of Drivers and Downloads, find your Xerox system and click **Drivers & Downloads**.
- 4 Select the desired Operating System (Windows), and Language for the printer driver.
- 5 From the list of drivers, click the driver you want to download.
- 6 Read the End User License Agreement and click **Accept**.
- 7 Select **Save** from the *File Download* dialog.
- 8 Choose a location to download the file and click **Save**.
- 9 After the printer driver is downloaded, follow the instructions presented in Chapter 2, *Installing Windows Printer Drivers*, for installing drivers.

Xerox DocuSP Printer PPD Files

A PostScript Printer Description (PPD) file is a readable text file that provides a uniform approach to specifying special features for printer drivers that interpret PostScript.

Xerox provides PostScript PPDs for all of the Xerox system models. They are automatically installed with the PostScript printer drivers.

CentreWare Printer Driver Applications

The following applications are included on the *CentreWare Printer Drivers* CD:

- Xerox Printer Configuration Utility
- Xerox Printer Installation Utility

Xerox Printer Configuration Utility

The Xerox Printer Configuration Utility is for System Administrators who would like to set up standardized configuration files to enable users to install their printer drivers quickly and easily.

Xerox Printer Installation Utility

The Xerox Printer Installation Utility is for users who would like to modify the printer driver settings sent by the System Administrator before installing the drivers. System administrators may also use this utility to install printer drivers directly onto a PC or network server.

Print Driver Documentation

CentreWare Printer Drivers Guide for Windows

This guide is intended for administrators who install and configure CentreWare printer drivers and for users who want to know more information about printer drivers and their installation.

The *CentreWare Printer Drivers Guide* is available on the *CentreWare Printer Drivers* CD in electronic (PDF) format. If selected at the time of installation, the Drivers Guide is placed on the user's workstation at ... \ Program Files \ Xerox \ <Xerox System Name>.

An English version of Adobe Acrobat Reader is provided on the *CentreWare Printer Drivers* CD. This works on most workstations running a non-English version of Windows, except Windows 2000. You can download a reader for other languages from the Adobe Web site, www.adobe.com.

Help

The Help system is the primary source for information about using the printer drivers. You can access the Help system through the Help buttons in the drivers.

Internet Support

Visit Xerox on the Internet at www.Xerox.com. The Web site contains Xerox systems product information, product overviews and support, and the latest information about CentreWare printer driver releases.

Telephone Support

For additional assistance, you may contact the Xerox Welcome Center by telephone to speak with a Product Support Analyst. Locate your Xerox system serial number on the metal frame behind the front door, and record it in the space below before you make your call.

Xerox System Serial Number:

The Xerox Welcome Center telephone numbers are listed in the following table. If the Welcome Center telephone number for your country is not listed, it will be provided to you when your Xerox system is installed. For future reference, please record the telephone number in the space provided below.

Welcome Center Telephone Numbers:	
UNITED STATES	800-821-2797
UNITED STATES (TTY)	800-855-2880
CANADA	800-939-3769 (800-93-XEROX)



Installing Windows Printer Drivers

The CentreWare printer drivers support the special features and functions of Xerox systems, enabling fast, efficient printing from your desktop. Installation instructions for all current Windows environments are provided in this chapter.

What's in this chapter:

- *Requirements* 2-2
- *Direct Installation* 2-5
- *Distributed Installation* 2-11
- *Managing Configuration Files for Multiple User Groups* 2-21
- *Supported Driver Languages* 2-22
- *Point and Print Installations* 2-23
- *Configuring Printer Drivers* 2-24
- *Preconfiguring Default Driver Settings* 2-24
- *Configuring Installable Options at the Workstation* 2-27
- *Locating Installation Files on the CD* 2-29
- *Uninstalling Windows Printer Drivers* 2-30

Requirements

Printer Drivers

- The minimum hardware requirements for the CentreWare printer drivers vary based on the specific printer driver you are installing. At the most, you will need 14 MB of available hard disk space for any of the CentreWare Windows printer drivers.
- Internet Explorer 5.01 or higher installed on the workstation for NT, 2000, and XP drivers.

Xerox Windows Driver Installer

The Xerox Windows Driver Installer consists of two utilities: the Xerox Printer Configuration Utility and the Xerox Printer Installation Utility.

You must have Administrative privileges in Windows NT/2000/XP to install these utilities. The system on which you install the utilities must meet the following requirements:

- Internet Explorer 5.0 or higher
- Microsoft TCP/IP Printing installed and running to connect Peer To Peer in a Windows NT environment
- Service Pack 2 installed on Windows 2000 systems
- Service Pack 4 installed on Windows NT systems

Network Print Configurations

Peer To Peer

In a Peer To Peer environment, a printer driver is installed on a workstation that is connected to a printer. The printer driver resides only on the workstation. In this setup, workstation users maintain their own printer defaults and configurations, allowing different printer settings for each user.

Through a Network Print Server

In a network print server environment, a printer driver is installed on a server and shared with other servers and workstations on the network. The printer driver is downloaded to the workstation from the server. In this network setup, a Network Administrator generally maintains the printer defaults and configuration.

Installing Printer Drivers on Windows Networks

You have three ways to install a Xerox printer driver and other components in Windows environments.

Direct Installation

Use the Xerox Printer Installation Utility to install Xerox printer drivers quickly and easily for your network printers. If you are a system administrator or user who has the *CentreWare Printer Drivers* CD or knows the network location where the contents of the CD has been saved, you can configure settings for several printer drivers at one time and install the drivers directly onto a PC or print server.

Distributed Installation

Copy the contents of the *CentreWare Printer Drivers* CD to your network. (See *Locating Installation Files on the CD* on page 2-29.) Open the Xerox Printer Configuration Utility, set up a configuration file, and distribute a packet of installation files containing the configuration file to users to install the printer drivers on their PCs. (See *Distributed Installation* on page 2-11 to perform a distributed installation.)

Point and Print Installation

Copy the contents of the *CentreWare Printer Drivers* CD to your network. You can then install the drivers locally, modify the device settings and document settings (*Preconfiguring Default Driver Settings* on page 2-24) and copy them to the server for enterprise use (*Point and Print Installations* on page 2-23).

Direct Installation

With the Xerox Printer Installation Utility, you can configure and install printer drivers with a Peer To Peer connection or through a network print server connection.

You need administrator rights to run the Xerox Printer Installation Utility. To install drivers onto a network server you must run the Xerox Printer Installation Utility at the network server. You cannot install the drivers remotely.

Direct Installation with a Peer To Peer Connection

► **To configure and install printer drivers with a peer to peer connection:**

- 1 Insert the *CentreWare Printer Drivers* CD into the CD-ROM drive. The AutoRun program displays the available selections.

—or—

If the AutoRun is disabled on your workstation, open My Computer and double-click the CD-ROM drive. Double-click the *Setup.exe* file. The AutoRun program displays the available selections.

- 2 Chose a language and click **OK**.
- 3 Click **Print & Fax Drivers > Install Your Windows Print Driver**. The Xerox Printer Installation Utility opens.
- 4 Select a language on the *Welcome* tab to view the utility.

- 5 On the *Configuration* tab, select a language for your printer driver.

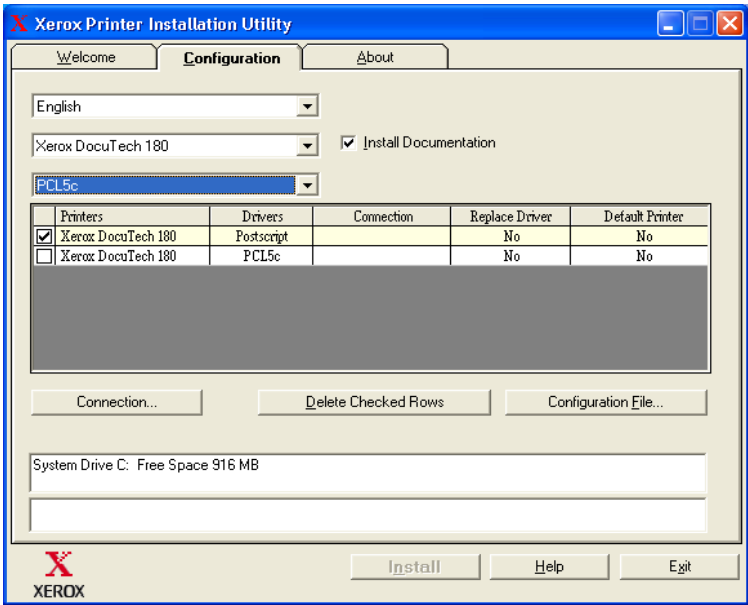


Figure 2-1: Xerox Printer Installation Utility, Configuration Tab

- 6 Select a printer model.
- 7 Choose one or more drivers. The printer and driver selections appear in the Configuration Information box.

- 8 Select **Install Documentation** to place the *CentreWare Printer Drivers Guide* on your workstation. The document is placed at ...\\Program Files\\Xerox\\<Xerox system name>.
- 9 Select a printer from the Information box. Or, select more than one printer of the same model if you want to install a PS and PCL driver for this printer.
- 10 Click **Connection....** The Connection dialog opens.

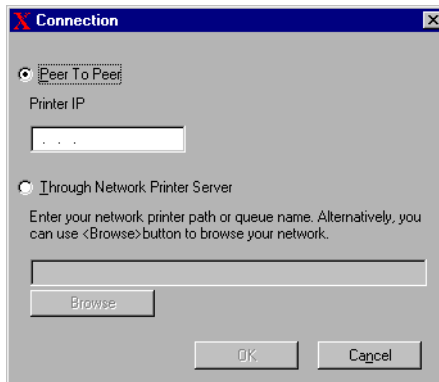


Figure 2-2: Connection Dialog. Peer To Peer Connection is selected.

- 11 Select **Peer to Peer**.
- 12 Enter the IP Address of your Xerox system and click **OK**.
The printer is configured with a Peer To Peer connection and the printer's IP address is added to the *Connection* column of the Configuration Information box.

NOTE: After the printer has been configured with a connection type, the printer's check box in the Configuration Information box is unchecked. You may select another printer to configure.

- 13 Make your *Replace Driver* and *Default Printer* selections. Click the cell to toggle between options.
- 14 Click **Install**. A message appears indicating when the installation is complete.

Direct Installation Through a Network Printer Server Connection

► To configure and install printer drivers through a network print server connection:

- 1 Insert the *CentreWare Printer Drivers* CD into the CD-ROM drive. The AutoRun program displays the available selections.
–or–
- 2 If the AutoRun is disabled on your workstation, open My Computer and double-click the CD-ROM drive. Double-click the *Setup.exe* file. The AutoRun program displays the available selections.
- 3 Chose a language and click **OK**.
- 4 Click **Print & Fax Drivers > Install Your Windows Print Driver**. The Xerox Printer Installation Utility opens.
- 5 Select a language on the *Welcome* tab to view the utility.
- 6 On the *Configuration* tab, select a language for your printer driver.

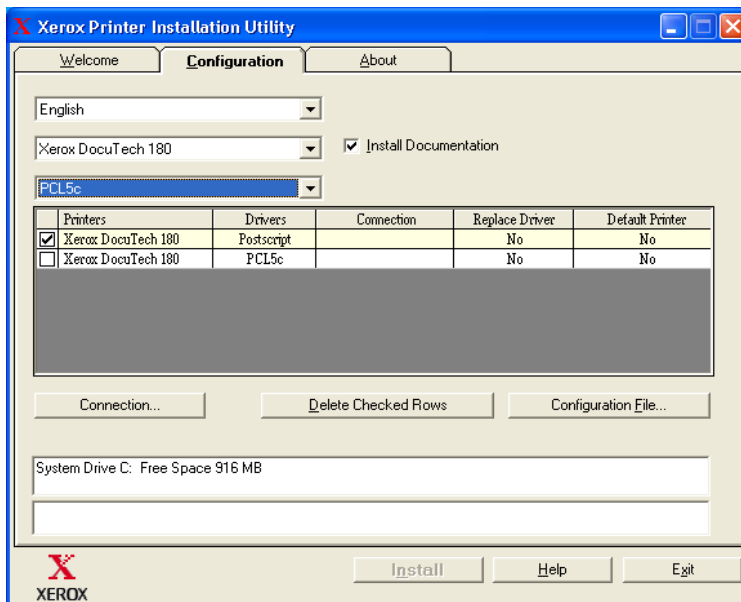


Figure 2-3: Xerox Printer Installation Utility, Configuration Tab

- 7 Select a printer model.
- 8 Choose one or more drivers. The printer and driver selections appear in the Configuration Information box.
- 9 Select **Install Documentation** to place the *CentreWare Printer Drivers Guide* on your workstation. The document is placed at ...\\Program Files\\Xerox\\<Xerox system name>.
- 10 Select a printer in the Information box.

NOTE: You may configure only one printer and driver at a time, for example DocuColor 8000 PostScript. After the printer has been configured with a connection type, the printer's check box in the Configuration Information box is unchecked. You may select another driver for the same printer and configure a connection or you may select another printer to configure.

- 11 Click **Connection....** The Connection dialog opens.

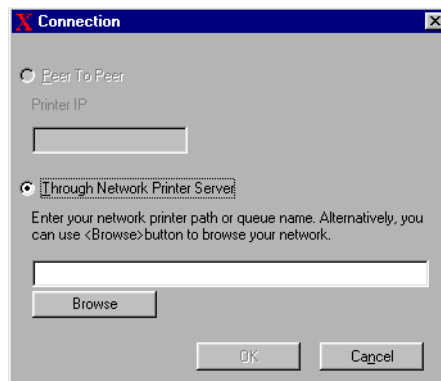


Figure 2-4: Connection Dialog. Through Network Printer Server is selected.

- 12 Select **Through Network Printer Server**.
- 13 Enter your network printer path or click **Browse** to browse to a shared printer. Click **OK**. The network path to the printer is added to the *Connection* column of the Configuration Information box and the printer is configured through the network print server.

NOTE: After the printer has been configured with a connection type, the printer's check box in the Configuration Information box is unchecked. You may select another driver for the same printer and configure a connection or you may select another printer to configure.

- 14 Make your *Replace Driver* and *Default Printer* selections. Click the cell to toggle between options.
- 15 Click **Install**. A message appears indicating when the installation is complete.

Distributed Installation

The Distributed Installation procedures are for system administrators who would like to set up standardized configuration files for users to install their printer drivers. Using the Xerox Printer Configuration Utility, you can customize the driver installation process to meet your organization's needs:

- **Use the Preconfigured File**—Xerox provides a preconfigured file with the Configuration Utility that contains standardized settings for all the drivers of each supported printer model.
- **Customize Driver Settings**—Using the Configuration Utility, you can specify your own default settings for each driver.
- **Manage Different User Groups**—By creating and saving different configuration files, you can consistently manage driver distribution to different user groups.

The Distributed Installation procedure has four components to it:

- 1 Copying files to the network
- 2 Configuring installation files
- 3 Distributing installation files
- 4 Installing printer drivers on a PC

Copying Files to the Network

To configure the installation packet that you send to users to install printer drivers on their PCs, the contents of the *CentreWare Printer Drivers* CD must be saved to a location on your network.

► To copy printer drivers:

- 1 Insert the *CentreWare Printer Drivers* CD into the CD-ROM drive.
- 2 Copy the contents of the *CentreWare Printer Drivers* CD to a location on your network.
- 3 Make the CD root directory folder sharable on the network.

Configuring Installation Files

The Xerox Printer Configuration Utility provides a simple way to set up a configuration file that you send to users as part of a packet of installation files. With the Xerox Printer Configuration Utility, you can select printer drivers for each supported printer model, set up a network connection for a printer, choose whether to replace drivers, and whether to make this printer the default printer. You also have the option to configure the printer driver in several languages at the same time.

To set up the Configuration File, you can either make your own selections, or use the *Preconfigured File* provided by Xerox.

Preconfigured File

Initially, this file is preconfigured by Xerox with all the drivers for each supported printer model, with *No* as the option for Replace Drivers, and with *No* as the option to make this printer the Default Printer.

When you click the *Preconfigured File* button and choose one of the XeroxPrintersToInstall[Language].xml files, the preconfigured settings for each printer model are added to the Configuration Information box. You may then:

- modify the preconfigured settings
- delete printers
- configure connection settings
- configure a silent installation
- choose to install documentation

For more information about the XeroxPrintersToInstall[Language].xml file and the supported printer driver languages, see *Supported Driver Languages* on page 2-22.

NOTE: Saving the file overwrites the preconfigured settings with your new settings.

Setting Up Connection Types

With the Xerox Printer Configuration Utility, you have the option to set up configuration files for multiple printers, which may have different connection types. For example, one printer may have a Peer To Peer connection and another printer may have a connection through a network printer server. The following configuration procedures describe first the procedures for a Peer To Peer connection and then for a Network Printer Server connection.

► To set up a configuration file:

- 1 Insert the *CentreWare Printer Drivers* CD into the CD-ROM drive. The AutoRun program opens.
- 2 Choose a language and click **OK**.
- 3 Click **Utilities > Xerox Printer Configuration Utility**. The Xerox Printer Configuration Utility opens.
- 4 Select a language on the *Welcome* tab to view the utility.

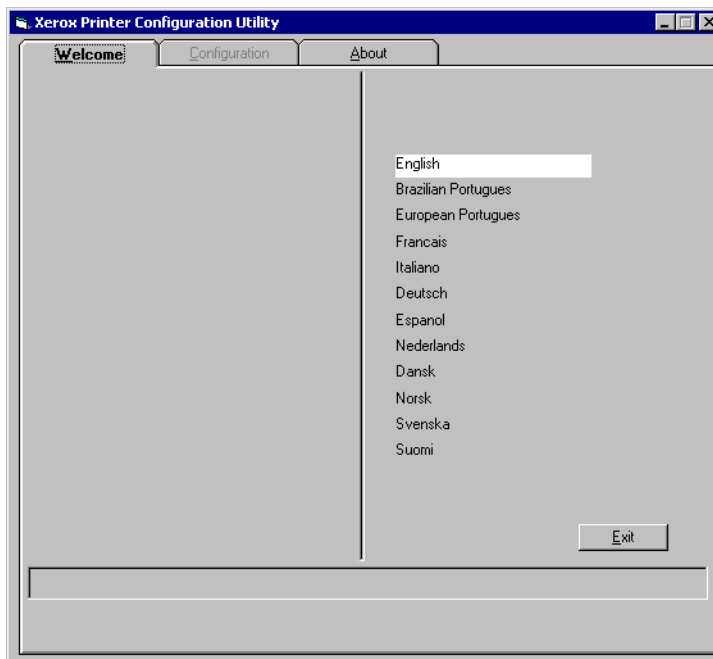


Figure 2-5: Xerox Printer Configuration Utility, Welcome Tab

- 5 On the *Configuration* tab, select one or more languages in which to configure a driver.

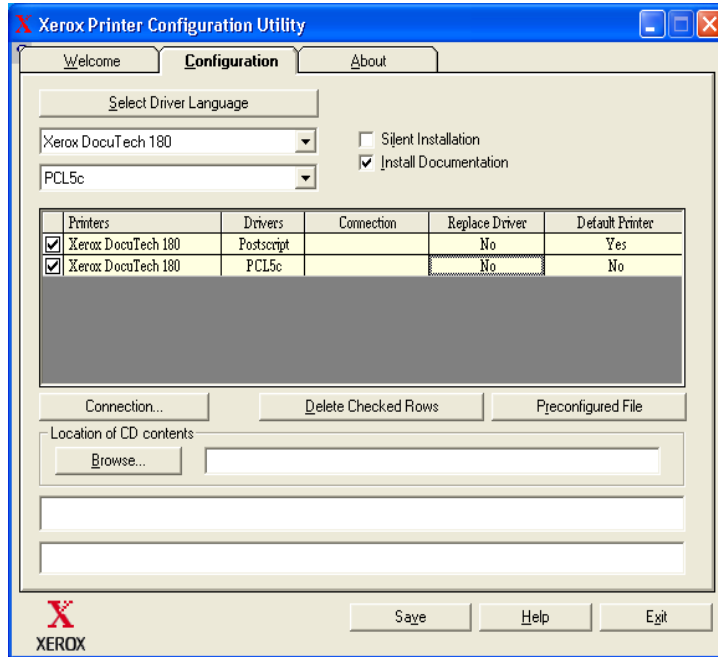


Figure 2-6: Xerox Printer Configuration Utility, Configuration Tab

- 6 Select a printer model.
- 7 Choose a driver. The printer model and driver information appear in the Configuration Information box.

You may choose other drivers for this printer and also select other printers and drivers at this time to add to the Configuration Information box.

- 8 Select from these options:
 - **Silent Installation**—Simplifies installation for the user. After the user opens the zip file you send containing the configuration and installation files and clicks the *Install.exe* file, the printer drivers are automatically installed on the user's workstation.
 - **Install Documentation**—Places the *CentreWare Printer Drivers Guide* on your workstation. The document is placed at ...\\Program Files\\Xerox\\<Xerox system name>.
- 9 Select a printer from the Information box.

NOTE: You may configure only one printer and driver at a time. After the printer has been configured with a connection type, the printer's check box in the Configuration Information box is unchecked. You may select another driver for the same printer and configure a connection or you may select another printer to configure.

- 10 Click **Connection....** The Connection dialog opens.

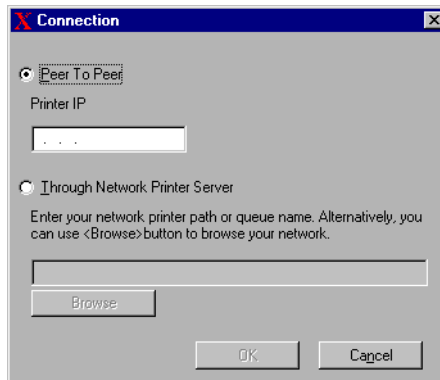


Figure 2-7: Connection Dialog. Peer To Peer Connection is selected.

Choose either a **Peer To Peer** or **Through Network Printer Server** connection and complete the associated dialogs.

Peer to Peer

- a) Select **Peer To Peer**
- b) Enter the IP Address of your Xerox system and click **OK**. The printer is configured with a Peer to Peer connection and the printer's IP address is added to the *Connection* column of the Configuration Information box.

NOTE: After the printer has been configured with a connection type, the printer's check box in the Configuration Information box is unchecked. You may select another printer to configure.

Through Network Printer Server

- a) Choose **Through Network Printer Server**.
- b) Enter the network printer path or click **Browse** to browse to a shared printer.
- c) Click **OK**. The network path to the printer is added to the *Connection* column of the Configuration Information box and the printer is configured through the network print server.

After the printer has been configured with a connection type, the printer's check box in the Configuration Information box is unchecked. You may select another driver for the same printer and configure a connection or you may select another printer to configure.

- 11 Make your *Replace Driver* and *Default Printer* selections. Click the cell to toggle between options.
- 12 Click **Browse** to open a Browse for Folder dialog and browse to the location of the printer driver files on the network.
- 13 Click **OK** to add the location of the printer driver files to the configuration file.
- 14 Click **Save** when you are ready to save the configuration file. A Save As dialog opens. Choose a different folder than the default folder, otherwise you will overwrite the default *Preconfigured File*.

If you are managing configuration files for multiple user groups, see *Managing Configuration Files for Multiple User Groups* on page 2-21.

- 15 Click **Save**. Your settings are saved to the XeroxPrintersToInstall[Language].xml file in the folder ...\\Packet.

If you have chosen to configure the driver in more than one language, save the configuration file for each language separately to the same Packet folder.

For more information about XeroxPrintersToInstall[Language].xml, see *Supported Driver Languages* on page 2-22.

Distributing Installation Files

When you have set up and saved your configuration file(s) to the *Packet* folder, you are ready to distribute printer driver installation packet to users. You may want to send one of the following notes depending on whether it will be a Silent Installation or User Installation.

Silent Installation - Note to User

I have attached a zip file that enables you to install printer drivers.

- 1 Save the file to a temporary folder or to a folder on the desktop.
- 2 Unzip the file.
- 3 Double-click the *Install.exe* file. The printer drivers install automatically.

User Installation - Note to User

I have attached a zip file that enables you to install printer drivers.

- 1 Save the file to a temporary folder or to a folder on the desktop.
- 2 Unzip the file.
- 3 Double-click the *XPIU.exe* file. The Xerox Printer Installation Utility opens.
- 4 On the *Welcome* tab, select a language to view the utility.
- 5 On the *Configuration* tab, select the language you want for your driver.
- 6 Click the **Help** button to open the Help system.
- 7 In the Table of Contents, open *How To Install a Xerox Printer Driver*.
- 8 Continue with the instructions in the procedure: *To install printer drivers using the configuration file defaults*.

Installing Printer Drivers on a PC

After you have received the printer driver installation zip file from your system administrator, there are two ways to install printer drivers on your PC:

- Silent Installation
- User Installation

Silent Installation

Your system administrator sends you a zip file containing the installation files to automatically install your printer drivers.

► To install printer drivers automatically:

- 1 Save the file to a temporary folder or to a folder on the desktop.
- 2 Unzip the file.
- 3 Double-click the *Install.exe* file. The printer drivers install automatically.

User Installation

Your system administrator sends you a zip file containing all the files you need to install your printer drivers. Included in these files is a configuration file with all your printer driver settings.

► To install printer drivers using the configuration file defaults:

- 1 Save the installation zip file your system administrator has sent you to a temporary folder or to a folder on the desktop.
- 2 Unzip the file and click *XPIU.exe*. The Xerox Printer Installation Utility opens.
- 3 Select a language on the *Welcome* tab to view the utility.
- 4 On the *Configuration* tab, select a language for your driver.
- 5 Click **Configuration File**.
- 6 Open *XeroxPrintersToInstall[Language].xml*. The printer drivers with the standardized settings preconfigured by the system administrator appear in the Configuration Information box. See *Supported Driver Languages* on page 2-22.
- 7 Click **Install**. The printer drivers are installed.

Managing Configuration Files for Multiple User Groups

To manage configuration files for different groups of users that use separate printers, you can create separate configuration files for each group.

► To manage configuration files for multiple user groups:

- 1 Follow the procedures to set up a configuration file for users. See *Configuring Installation Files* on page 2-13.
- 2 Save the file for a group of users to a specific folder for that group.
- 3 Return to the Information box, repeat the configuration process for the next group of users, and save the file to a different folder for that group.

For example, for Group A, save the configuration file to ...\\Group A \\ Packet \\ *XeroxPrintersToInstall[Language].xml*. For Group B, save the configuration file to ...\\Group B \\ Packet \\ *XeroxPrintersToInstall[Language].xml*.

NOTE: There is only one configuration file for each supported language *XeroxPrintersToInstall[Language].xml*. Do not change the name. If you do, the Xerox Printer Installation Utility will not recognize the file. Saving a file with the same name to a common folder overwrites the previous configuration settings.

Supported Driver Languages

You may configure the printer driver in several languages at the same time. Choose the *Select Drivers Language* button on the *Configuration* tab. A list of supported languages opens. Make your language selections.

When you save your settings on the *Configuration* tab, you will have a configuration file, *XeroxPrintersToInstall[Language].xml*, for each chosen language.

For example, *XeroxPrintersToInstallFRA.xml* is the configuration file for a driver configured in French or *XeroxPrintersToInstallITA.xml* for a driver configured in Italian.

If you choose a language to configure the driver, but that language is not found on a user's operating system, the driver defaults to English. The supported languages are listed below with a list of the language abbreviations that are used in the configuration file, *XeroxPrintersToInstall[Language].xml*.

Supported Languages and Abbreviations

ENU	English US	NLD	Dutch
FRA	French	ITA	Italian
DEU	German	PTB	Brazilian Portuguese
ESN	Spanish		

Point and Print Installations

This procedure assumes that a Xerox system on a network server has been installed with the appropriate CentreWare printer driver prior to performing Point and Print.

If you would like to standardize the device settings and document settings for the NT/2000/XP printer drivers, see *Preconfiguring Default Driver Settings* on page 2-24 before installation.

► To perform a Point and Print installation:

- 1 At the client workstation, access the desired network Xerox system through **Network Neighborhood** (NT) or **My Network Places** (2000/XP). Browse to your printer.
- 2 Do one of the following;
 - Double-click the Xerox system icon. At the prompt, select to install the printer driver.
—or—
 - Right-click the Xerox system icon. At the prompt, select to install the printer driver.
—or—
 - Click the Xerox system icon. Drag and drop the printer icon on the Printers folder. (not recommended)
- 3 The appropriate files for the selected Xerox system download to the client workstation.

Installing Printer Drivers on Other Networks

The Xerox Installer supports Windows networks. To install drivers on other networks use Microsoft's Add Printer Wizard.

Configuring Printer Drivers

To use the Xerox system printer drivers most effectively, you will need to configure the drivers to reflect options available on your Xerox system. You can configure the drivers in one of the following ways:

- Preconfigure standard *device* and *document* settings in the driver prior to distributing them for installation.
- Configure installable options directly at a workstation.

Preconfiguring Default Driver Settings

You may want to standardize the default settings for your Windows printer drivers before making them available for installation on individual workstations. There are two categories of driver settings that you can preconfigure:

- Device Settings—refers to installable options such as a High Capacity Feeder and Finisher.
- Document Settings—refers to document options such as portrait or landscape orientation and PostScript options.

This preconfiguration process involves copying the printer driver files from the *CentreWare Printer Drivers* CD to a server installation directory, installing a driver on a workstation, selecting the default device and document settings that you want to establish, saving those settings in the driver, and copying the configuration file to the installation directory on the server to overwrite the previous defaults.

NOTE: This process can be performed in both Windows and non-Windows network environments (such as NetWare), and should be performed initially on an individual workstation to minimize impact to the server or potential down-time. After the preconfiguration process is completed at the workstation the files are copied to the server.

► **To modify the driver default settings:**

- 1 At a workstation, insert the *CentreWare Printer Drivers* CD into the CD-ROM drive. The AutoRun program displays the available selections.

—or—

If the AutoRun is disabled on your workstation, open My Computer and double-click the CD-ROM drive. Double-click the *Setup.exe* file. The AutoRun program displays the available selections.

- 2 Chose a language and click **OK**.
- 3 Select **Browse CD** and browse to the printer driver files for your Xerox system. For information about the driver files, see *Locating Installation Files on the CD* on page 2-29.
- 4 Copy the printer driver files for your Xerox system to the driver installation directory on the server.
- 5 Install the printer driver files for your Xerox system to your workstation.

NOTE: For more information about installing the printer driver with the Xerox Printer Installation Utility, see *Direct Installation* on page 2-5. You may also use the Microsoft Add Printer Wizard.

- 6 On the desktop, select **Start > Settings > Printers** or **Start > Printers and Faxes** and right-click the printer.
- 7 Choose **Properties**.
- 8 Select the *Configuration* tab and choose the settings you want as your default settings.
- 9 Select the *Device Settings* tab and choose the settings you want as your default settings.

- 10 Expand the **Override/Restore Defaults** option on the *Device Settings* tab.
- 11 Select **Save Current Settings as Default**. A **Save** button appears.
- 12 Click **Save**. The configuration and device settings are saved as the default settings.
- 13 If you want to modify the default document settings, continue with the following steps. Otherwise, close the Properties dialog and continue with step 14.
 - a) Do one of the following:

For 2000/XP drivers, select the *General* tab and click **Printing Preferences**. The Printing Preferences dialog opens.

For NT drivers, close the Properties dialog. Right-click the printer and select **Document Defaults**.
 - b) Make your selections from the available tabs.
 - c) Select the *Advanced* tab.
 - d) Expand the **Override/Restore Defaults** option.
 - e) Select **Save Current Settings as Default**. A **Save** button appears.
 - f) Click **Save** to save each setting on every tab of the printer driver as the default setting.
- 14 Click **OK** to close the Printing Preferences dialog and the Properties dialog in 2000/XP or click **OK** to close the Document Defaults dialog in NT.
- 15 Copy the *driver filename.dyc* file created on your workstation in the
 \Windows\System32\Spool\Drivers\W32x86\3 directory (for XP),
 \WinNT\System32\Spool\Drivers\W32x86\3 directory (for 2000),
 \WinNT\System32\Spool\Drivers\W32x86\2 directory (for NT).
- 16 Paste the *driver filename.dyc* file from your workstation to the driver installation directory on the server to overwrite the *driver filename.dyc* file on the server with the new file that contains the preconfigured driver default settings.

Any drivers installed from this directory will now contain the default settings you selected.

Configuring Installable Options at the Workstation

You may want to configure installable options at a user workstation.

NOTE: You may need Administrator rights on the workstation to perform these steps.

► To configure the Installable Options at the workstation:

- 1 At the desktop, click **Start > Settings > Printers** or **Start > Printers and Faxes**.
- 2 Right-click the appropriate printer icon and select **Properties**.
- 3 Select the *Configuration (System Configuration)* tab.

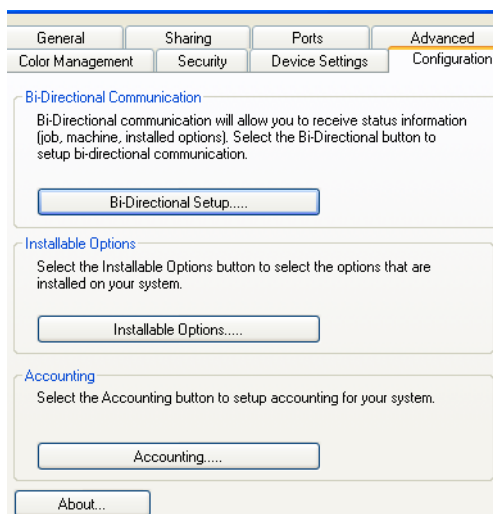


Figure 2-8: Configuration Tab on the Properties Dialog

- 4 Click **Installable Options** and select the options that are available on your Xerox system.

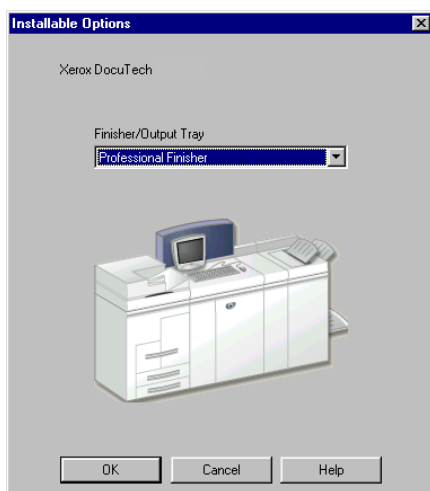


Figure 2-9: Installable Options Dialog

- 5 Click **OK** to save the settings and **OK** to close the Properties dialog.
- 6 Click **OK** to close the printer driver.

Locating Installation Files on the CD

The installation .inf files for Windows PostScript (PS) and PCL printer drivers are located in the *Drivers* folder of the *CentreWare Printer Drivers* CD. If you want to browse to, or access these files, locate the *Drivers* folder and open the *Windows* folder, as well as the folder for your particular Xerox system model, for example, *DC8000*.

The Xerox system model folder contains individual driver folders categorized by driver type—PS and PCL—and Windows operating system (NT, 2000, or XP). Therefore, the installation files (.inf) for a Windows 2000 PostScript driver for a DocuColor 8000 are located in:

```
...\Drivers \ Windows \ DC8000_5252_2045_2060_6060 \ PS_8000_W2K_XP \  
xdcps.inf
```

Uninstalling Windows Printer Drivers

NOTE: Before you uninstall CentreWare Windows printer drivers, ensure that the Xerox system you are deleting is not the default printer. If so, select another printer as the default.

For Windows NT

► To uninstall the Windows NT printer drivers:

- 1 At the desktop, click **Start > Settings > Printers**.
- 2 Right-click on the icon for the Xerox system you want to delete and select **Delete**.
- 3 A confirmation message appears. Click **Yes** to delete the printer driver.
- 4 Reboot the workstation.

For Windows 2000/XP

► To uninstall the Windows 2000 and XP printer drivers:

- 1 At the desktop, click **Start > Settings > Printers** or **Start > Printers and Faxes**.
- 2 Right-click on the icon for the Xerox system you want to delete and select **Delete**.
- 3 A confirmation message appears. Click **Yes** to delete the printer driver object.
- 4 Rebooting your workstation is recommended.
- 5 Open the Printers folder. **Start > Settings > Printers**.
- 6 Right-click in a blank area of the folder. A drop-down menu opens.
- 7 Select **Server Properties**. A *Properties* dialog opens.
- 8 Select the **Drivers** tab.
- 9 Select the printer driver you want to remove.
- 10 Select **Remove**. The printer driver is removed.
- 11 Reboot the workstation.



Getting the Most From Your Printer Driver

With the CentreWare printer drivers, you have an invaluable tool to save you time and increase your productivity. These drivers offer you over thirty-five feature options, depending on the type of driver and the installable finisher options, for you to choose how your document will look and print.

The Help system is the primary source for information about using the printer drivers. At any time, you can access the Help system through the Help buttons on the driver.

What's in this chapter:

- *Driver Structure* 3-2
- *Tabs* 3-3
- *Driver Help System* 3-5

Driver Structure

The driver arranges the features on six tabs: Paper/Output, Special Pages, Image Options, Layout/Watermark, Advanced, and Job Notes.

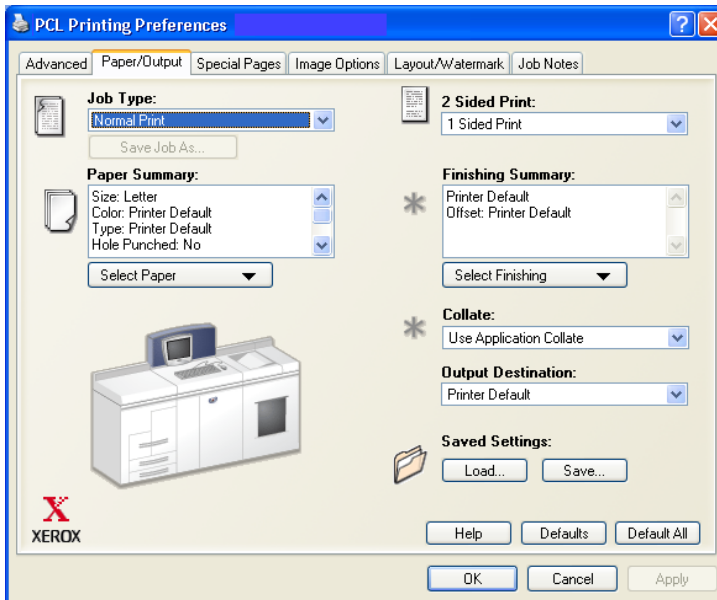


Figure 3-1: Printer Driver Interface

The features on the tabs are organized for your convenience with the most frequently used features available to you when you open the driver. Small icons are placed next to the features so that you can quickly find the features you want. Use the drop-down list or click the icon next to the feature to review the feature options.

Tabs

Features vary on the driver tabs depending on the driver type and installable options.

General Tabs

These driver tabs are accessed through your application's print dialog. Driver setting changes on these tabs apply to the open document and application, and are temporary.

The *Paper/Output* tab has the most frequently used features. For example, you can choose to print on two sides of the paper, select specific media on which to print, or hold your print job. The Paper/Output tab also presents the finishing options, which may include—depending on the type of finisher you have installed—collate, staple, or fold options.

The *Special Pages* tab has features for adding Covers, Inserts, and Exceptions (specifying media/page characteristics on a per-page basis).

The *Image Options* tab groups together those features that are related to image manipulation, such as Reduce/Enlarge, Lighten/Darken, or Mirror Image, a feature that flips the image from left to right, thereby reversing the image and all associated text.

The *Layout/Watermark* tab contains all features that relate to Booklet Layout and Watermarks.

The *Advanced* tab contains those features that infrequently change once set, such as custom paper size setup, TrueType Font options, Default Paper Sizes, and Xerox Job Ticket setup.

The *Job Notes* tab enables you to attach special transmission information and/or processing messages to a print job.

Default Tabs

These driver tabs are accessed through the Printers folder and may be available only with administrative rights. From the desktop select **Start > Settings > Printers and Faxes**. Right-click on your printer icon and select **Properties**.

The *Device Settings* tab on the Properties dialog contains features that relate to font settings and PostScript settings.

The *Configuration* tab provides access to setup options for Bi-Directional Communication, Installable Options, and Accounting.

You can modify the default settings by doing one of the following:

- For 2000/XP drivers, make your configuration, installable options, and device settings selections. Select the *General* tab and click **Printing Preferences**. The Printing Preferences dialog opens. Make your selections and then save the new default settings through the Override/Restore Defaults option on the *Advanced* tab.
- For NT drivers, make your configuration, installable options, and device settings selections. Save the new default settings through the Override/Restore Defaults option on the *Device Settings* tab. Close the Properties dialog. Right-click the printer and select **Document Defaults**. The Document Defaults dialog opens. Make your selections and then save the new default settings through the Override/Restore Defaults option on the *Advanced* tab.

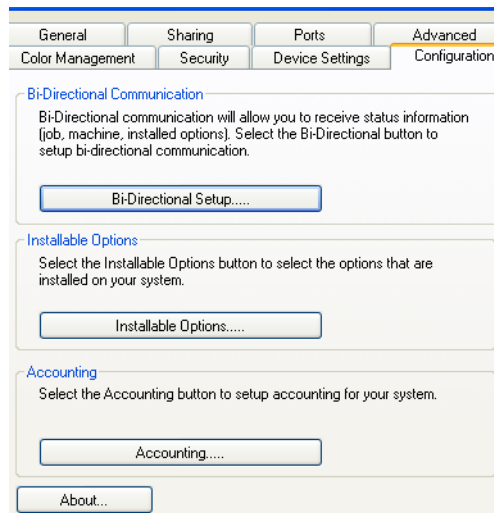


Figure 3-2: Configuration Tab on the Properties Dialog

Driver Help System

The Help system is the primary source for information about using the printer drivers. Each driver tab has a Help button for easy access to the Help system. Through this Help button you can call up information on any feature on that tab or any other tab.



Problem Solving

Application, device, and network errors can occur in a variety of printing situations. In many cases, simply restarting the application, the workstation, or the printer will resolve the problem. This chapter includes tips for troubleshooting a problem.

What's in this chapter:

- *Troubleshooting a Problem* 4-2

Troubleshooting a Problem

When a problem persists, document the error messages and gather information to define the problem. The following problem-solving procedures are recommended:

- Accurately define the problem. When, where, and how does the problem occur?
- Reproduce the problem. Can the problem be reproduced consistently or is it an intermittent problem?
- Ask other users if they have encountered the problem, and keep a log to track problem occurrences.
- Examine the data for trends and the common attributes that may be related to the problem. For example, does the problem occur only with a specific printer or on a specific workstation/network configuration?
- Review the product documentation, including the README files and problem solving topics, to see if any similar problems are documented.

If a cause and solution to the problem cannot be identified, call the Xerox Welcome Center to report the error information. Provide the support representative with the documentation that you have gathered to define the problem.

A

Adobe Acrobat Reader 1-9
Applications 1-8

C

CentreWare print drivers
 Applications 1-8
Configuring Installable Options
 Manually 2-24
Configuring Installation Files 2-13
Configuring printer drivers 2-24
Copying Files to the Network 2-12

D

Direct Installation
 Client/Server Connection 2-8
 Peer to Peer Connection 2-5
Distributed Installation
 Configuration File 2-14
 Configuring Installation Files 2-13
 Copying Files to the Network 2-12
 Distributing Installation Files 2-19
 Installing Printer Drivers on a PC 2-20
 Setting up Connection Types 2-14
 Silent Installation 2-20
 User Installation 2-20
Distributing Installation Files 2-19
 Silent Installation Note 2-19
 User Installation Note 2-19
Driver Help System
 About 3-5

Driver Structure 3-2

G

Getting the Most From Your Printer
 Driver 3-1

H

Help for print drivers 1-9

I

Installation Files
 Location on CD 2-29
Installer
 Requirements 2-2
Installing
 Direct Installation 2-4
 Distributed Installation 2-4
 Printer Drivers 2-4
 Printer Drivers on a PC 2-20

L

Languages
 Supported 2-22
Locating Installation Files on the CD 2-29

M

Managing Configuration Files for
 Multiple User Groups 2-21

P

PCL 1-5
Point and Print 2-23
PostScript 1-5
PPD Files
 DocuTech 1-7
Preconfigured File 2-13
Print drivers

Applications	1-8	X
Overview	1-3	Xerox Welcome Center 1-10
Printer Drivers		
Configuration	2-24	
Installing	2-4	
Requirements	2-2	
Tabs	3-3	
Problem Solving	4-1	
R		
Release		
What's New	1-2	
Requirements		
Installer	2-2	
Printer Drivers	2-2	
S		
Setting up Connection Types	2-14	
Silent Installation		
About	2-16	
Note	2-19	
Supported Driver Languages		
Abbreviations	2-22	
T		
Tabs		
Printer Drivers	3-3	
Troubleshooting a problem	4-2	
U		
Uninstalling		
Windows printer drivers	2-30	
User Installation Note	2-19	
W		
Welcome Centre	1-10	
What's New in this Release?	1-2	
Windows printer drivers		
Uninstalling	2-30	