

# ***Xerox DocuPrint NPS/ IPS***

***Guide to Using Page Description Languages***

721P90360  
Version 8.0  
October 2002

---

---

Xerox Corporation  
701 S. Aviation Boulevard  
El Segundo, CA 90245

©2002 by Xerox Corporation. All rights reserved.

Copyright protection claimed includes all forms and matters of copyrightable material and information now allowed by statutory or judicial law or hereinafter granted, including without limitation, material generated from the software programs which are displayed on the screen, such as icons, screen displays, looks, etc.

Printed in the United States of America.

Publication number: 721P90360

Xerox® and all Xerox products mentioned in this publication are trademarks of Xerox Corporation. Products and trademarks of other companies are also acknowledged.

Changes are periodically made to this document. Changes, technical inaccuracies, and typographic errors will be corrected in subsequent editions.

---

---

# Table of contents

<b>Safety</b>	<b>vii</b>
Laser safety	vii
Ozone information: U. S. only	viii
Operation safety: U. S.	viii
Operation safety: Europe	ix
Warning markings	ix
Electrical supply	x
Ventilation	x
Operator accessible areas	x
Maintenance	xi
Before cleaning your product	xi
CE mark: Europe only	xi
Radio and telecommunications equipment directive (Europe only)	xii
For further information	xiii
 <b>Introduction</b>	 <b>xv</b>
About this guide	xv
Contents	xv
Conventions	xvi
Related publications	xvii
Related information	xviii
PostScript publications	xviii
HP PCL 5 publications	xix
VIPP publications	xix
TIFF publications	xix
 <b>1. PostScript</b>	 <b>1-1</b>
Implementation-dependent operations	1-1
Floating-point arithmetic and math operators	1-1
Coordinate system default matrix	1-1
Fonts	1-2
Notes on PostScript fonts	1-3
Loading fonts	1-4
User-defined fonts	1-4
Type 1 fonts	1-4
Using Adobe Type 1 fonts instead of graphics	1-5
Producing Type 1 fonts for use with DocuPrint	1-6
Using a Type 1 font in a document	1-6

PostScript with embedded PDL commands . . . . .	1-7
PostScript language extensions . . . . .	1-7
System Dict . . . . .	1-8
User Dict . . . . .	1-8
Server Dict . . . . .	1-9
Status Dict . . . . .	1-10
Miscellaneous: IdleTime Dict, Printer Dict, and Execution Dict . . . . .	1-10
IdleTime Dictionary . . . . .	1-10
Printer Dictionary . . . . .	1-10
Execution Dictionary . . . . .	1-11
Nonstandard definitions . . . . .	1-11
Examples of nonstandard definitions . . . . .	1-11
Appearance consistency . . . . .	1-12
Printer resolution and resolution enhancement . . . . .	1-12
Printer imaging characteristics . . . . .	1-14
Font consistency . . . . .	1-16
Proprietary PostScript extensions . . . . .	1-16
Color differences on full color and highlight color printers . . . . .	1-17
Control-D as binary data and end-of-job . . . . .	1-17
Control-Z and superfluous errors . . . . .	1-18
Solution to control-Z and control-D problems . . . . .	1-18
Multiple jobs in one input file . . . . .	1-20
DocuPrint NPS/IPS implementation of PostScript Level 2 . . . . .	1-21
Simulated mixed plex . . . . .	1-21
Printer controller operations . . . . .	1-22
Scan conversion details . . . . .	1-23
Stroke . . . . .	1-23
Fill . . . . .	1-24
Shapes . . . . .	1-24
Zero-width lines (strokes) . . . . .	1-24
Curved shapes . . . . .	1-25
Images . . . . .	1-25
Image quality . . . . .	1-26
Rendering of color and gray values: transform function . . . . .	1-27
PostScript printer description (PPD) files . . . . .	1-28
Implementation limits . . . . .	1-29
File operators and standard devices . . . . .	1-31
Path limits . . . . .	1-31
PostScript VM limits . . . . .	1-31
SetCacheDevice . . . . .	1-32
Device orientation and setscreen operator . . . . .	1-32
PostScript storage object size limits . . . . .	1-33
Obsolete operators—banddevice, framedevice, renderbands . . . . .	1-33
Arc to Bezier conversion—pathforall . . . . .	1-33
Creating the necessary PostScript CCITT Group 3 and 4 . . . . .	1-34
Print performance related to image printing . . . . .	1-34

Scan order and rotation .....	1-35
Purpose .....	1-35
Considerations .....	1-38
Summary .....	1-40
Scan resolution and scaling .....	1-40
 <b>2. PCL 5.....</b>	<b>2-1</b>
Maintaining image quality .....	2-2
PCL 5 font support .....	2-4
PCL command support .....	2-6
PJT commands .....	2-6
PCL Copy command .....	2-6
PCL Duplex commands .....	2-9
PCL Job Separation command .....	2-10
PCL media selection .....	2-12
PCL Paper Source command (tray assignment) .....	2-12
Precedence in selecting media .....	2-13
PCL Output Bin command .....	2-14
..... PCL 5 coding recommendations	2-14
PCL 5c support .....	2-15
PCL 5c coding recommendations .....	2-16
PCL 5c functions not applicable to DocuPrint NPS/IPS .....	2-16
Driver recommendations for PCL 5c .....	2-17
Limitations for custom PCL 5c drivers .....	2-18
 <b>3. VIPP.....</b>	<b>3-1</b>
Functionality .....	3-2
Operating environment .....	3-3
VIPP line mode extension (XGFNub) .....	3-3
 <b>4. TIFF .....</b>	<b>4-1</b>



---

# Safety

---

## Laser safety

---

### WARNING

**Adjustments, use of controls, or performance of procedures other than those specified herein may result in hazardous light exposure.**

The Xerox DocuPrint printers are certified to comply with the performance standards of the U.S. Department of Health, Education, and Welfare for Class 1 laser products. Class 1 laser products do not emit hazardous radiation. The DocuPrint printers do not emit hazardous radiation because the laser beam is completely enclosed during all modes of customer operation.

The laser danger labels on the system are for Xerox service representatives and are on or near panels or shields that must be removed with a tool.

**DO NOT REMOVE LABELED PANELS OR PANELS NEAR LABELS. ONLY XEROX SERVICE REPRESENTATIVES HAVE ACCESS TO THESE PANELS.**

**DANGER**

**LASER RADIATION WHEN OPEN  
AVOID DIRECT EXPOSURE TO BEAM**

---

## Ozone information: U. S. only

---

This product produces ozone during normal operation. The amount of ozone produced depends on copy volume. Ozone is heavier than air. The environmental parameters specified in the Xerox installation instructions ensure that concentration levels are within safe limits. If you need additional information concerning ozone, call 1-800-828-6571 to request the Xerox publication 600P83222, *OZONE*.

---

## Operation safety: U. S.

---

Your Xerox equipment and supplies have been designed and tested to meet strict safety requirements. They have been approved by safety agencies, and they comply with environmental standards. Please observe the following precautions to ensure your continued safety.

### **WARNING**

**Improper connection of the equipment grounding conductor may result in risk of electrical shock.**

- Always connect equipment to a properly grounded electrical outlet. If in doubt, have the outlet checked by a qualified electrician.
- Never use a ground adapter plug to connect equipment to an electrical outlet that lacks a ground connection terminal.
- Always place equipment on a solid support surface with adequate strength for its weight.
- Always use materials and supplies specifically designed for your Xerox equipment. Use of unsuitable materials may result in poor performance and may create a hazardous situation.
- Never move either the printer or the printer controller without first contacting Xerox for approval.
- Never attempt any maintenance that is not specifically described in this documentation.
- Never remove any covers or guards that are fastened with screws. There are no operator-serviceable areas within these covers.
- Never override electrical or mechanical interlocks.



- Never use supplies or cleaning materials for other than their intended purposes. Keep all materials out of the reach of children.
- Never operate the equipment if you notice unusual noises or odors. Disconnect the power cord from the electrical outlet and call service to correct the problem.

If you need any additional safety information concerning the equipment or materials Xerox supplies, call Xerox Product Safety at the following toll-free number in the United States:

**1-800-828-6571**

For customers outside the United States, contact your local Xerox representative or operating company.

---

## Operation safety: Europe

---

This Xerox product and supplies are manufactured, tested and certified to strict safety regulations, electromagnetic regulations and established environmental standards.

Any unauthorised alteration, which may include the addition of new functions or connection of external devices, may impact the product certification.

Please contact your Xerox representative for more information.

---

## Warning markings

---

All warning instructions marked on or supplied with the product should be followed.



This WARNING alerts users to areas of the product where there is the possibility of personal damage.



This WARNING alerts users to areas of the product where there are heated surfaces, which should not be touched.

### Electrical supply

---

This product shall be operated from the type of electrical supply indicated on the product's data plate label. If you are not sure that your electrical supply meets the requirements, please consult your local power company for advice.



This product must be connected to a protective earth circuit. This product is supplied with a plug that has a protective earth pin. This plug will fit only into an earthed electrical outlet. This is a safety feature. Always connect equipment to a properly grounded electrical outlet. If in doubt, have the outlet checked by a qualified electrician.

To disconnect all electrical power to the product, the disconnect device is the power cord. Remove the plug from the electrical outlet.

### Ventilation

---

Slots and opening in the enclosure of the product are provided for ventilation. Do not block or cover the ventilation vents, as this could result in the product overheating.

This product should not be placed in a built-in installation unless proper ventilation is provided, please contact your Xerox representative for advice.

Never push objects of any kind into the ventilation vents of the product.

### Operator accessible areas

---

This product has been designed to restrict operator access to safe areas only. Operator access to hazardous areas is restricted with covers or guards, which would require a tool to remove. Never remove these covers or guards.

## **Maintenance**

---

Any operator product maintenance procedures will be described in the user documentation supplied with the product. Do not carry out any maintenance on the product, which is not described in the customer documentation.

## **Before cleaning your product**

---

Before cleaning this product, unplug the product from the electrical outlet. Always use materials specifically designated for this product, the use of other materials may result in poor performance and may create a hazardous situation. Do not use aerosol cleaners, they may be flammable under certain circumstances.

---

## **CE mark: Europe only**

---



January 1, 1995: Council Directive 73/23/EEC, amended by Council Directive 93/68/EEC, approximation of the laws of the member states related to low voltage equipment.

January 1, 1996: Council Directive 89/336/EEC, approximation of the laws of the member states related to electromagnetic compatibility.

March 9, 1999: Council Directive 99/5/EC, on radio equipment and telecommunications terminal equipment and the mutual recognition of their conformity.

A full declaration of conformity, defining the relevant directives and referenced standards, can be obtained from your Xerox representative.

In order to allow this equipment to operate in proximity to Industrial, Scientific and Medical (ISM) equipment, the external radiation for the ISM equipment may have to be limited or special mitigation measures taken.

This is a Class A product. In a domestic environment this product may cause radio frequency interference, in which case the user may be required to take adequate measures.

Shielded interface cables must be used with this product to maintain compliance with Council Directive 89/36/EEC.

---

## Radio and telecommunications equipment directive (Europe only)

---

### **Certification to 1999/5/EC Radio Equipment and Telecommunications Terminal Equipment Directive:**

This Xerox product has been self-certified by Xerox for pan-European single terminal connection to the analog public switched telephone network (PSTN) in accordance with Directive 1999/5/EC.

The product has been designed to work with the national PSTNs and compatible PBXs of the following countries:

Austria	Germany	Luxembourg	Sweden
Belgium	Greece	Netherlands	Switzerland
Denmark	Iceland	Norway	United Kingdom
Finland	Ireland	Portugal	
France	Italy	Spain	

In the event of problems, contact your local Xerox representative in the first instance.

This product has been tested to, and is compliant with, TBR21, a specification for terminal equipment for use on analog switched telephone networks in the European Economic area.

The product may be configured to be compatible with other country networks. Please contact your Xerox representative if your product needs to be reconnected to a network in another country. This product has no user-adjustable settings.

*NOTE: Although this product can use either loop disconnect (pulse) or DTMF (tone) signaling, it should be set to use DTMF signaling. DTMF signaling provides reliable and faster call setup.*

Modification or connection to external control software, or to external control apparatus not authorized by Xerox, invalidates its certification.

---

## **For further information**

---

For more information on Environment, Health and Safety in relation to this Xerox product and supplies, please contact the following customer help lines:

Europe:+44 1707 353434

USA:1 800 8286571

Canada:1 800 8286571



---

# Introduction

The *Xerox DocuPrint NPS/IPS Guide to Using PDL* describes how the PostScript and HP PCL 5 page description languages (PDLs), VIPP (formerly XGF), and the TIFF image format, are implemented on the Xerox DocuPrint NPS/IPS printers.

---

## About this guide

This document is for users who will be submitting PostScript, HP PCL 5, TIFF, and VIPP jobs to the DocuPrint NPS/IPS printers. These users should be familiar with the applications they are using to generate print jobs. This document is also for PostScript, HP PCL 5, and VIPP programmers who will be creating applications since it defines the features that are not supported. It is assumed that these programmers have a working knowledge of the language they are working in. For specific reference information, refer to the “Related information” section in this guide.

Before using this guide, become familiar with its contents and conventions.

---

## Contents

This section lists the contents of this guide:

- Chapter 1, “PostScript,” contains the information you need to use PostScript with your DocuPrint NPS/IPS printer.
- Chapter 2, “PCL 5,” provides information about how to use PCL 5 with your DocuPrint NPS/IPS printer.
- Chapter 3, “VIPP,” provides a description of Variable Data Intelligent PostScript PrintWare (formerly XGF) for use with your DocuPrint NPS/IPS.
- Chapter 4, “TIFF,” provides information you need to use TIFF applications with your DocuPrint NPS/IPS printer.

## Conventions

---

This guide uses the following conventions:

- **All caps and angle brackets:** Within procedures, the names of keys are shown in all caps within angle brackets (for example, press <ENTER>).
- **Angle brackets:** Variable information, or the position of a specified argument in the command syntax, appears in angle brackets (for example, List Fonts <Pattern>).
- **Bold:** Within procedures, text and numbers that you enter are shown in bold (for example, enter **privilege operator**).
- **The word “enter” within procedures:** The two-step process of keying in data and pressing <ENTER> (for example, enter **y**).
- **Italics:** Document and library names are shown in italics (for example, the *Xerox DocuPrint NPS/IPS Guide to Managing Print Jobs*).
- **Quotation marks:** Keywords you can enter as arguments appear in quotes (for example, “USLetter”).
- **Vertical bars:** Alternatives to specified arguments are separated by vertical bars (for example, Set Time <Time | Remote Host Name | IP Address>).



*NOTE: Notes are hints that help you perform a task or understand the text.*

### **CAUTION**

*Cautions alert you to an action that could damage hardware or software.*

### **WARNING**

**Warnings alert you to conditions that may affect the safety of people.**

---

## **Related publications**

---

The Xerox DocuPrint NPS/IPS documentation set includes the documents listed below.

*NOTE: For a list of IBM reference manuals for IPDS printing, refer to the Solutions Guide for IPDS Printing.*

- *Guide to Configuring and Managing the System*
- *Guide to Managing Print Jobs*
- *Guide to Performing Routine Maintenance*
- *Guide to Submitting Jobs from the Client*
- *Guide to Using Page Description Languages*
- *Installation Planning Guide*
- *System Overview Guide*
- *Troubleshooting Guide*
- *Solutions Guide for IPDS Printing*
- *Decomposition Service and Tools Guide*
- *Generic MICR Fundamentals Guide*
- *Glossary*
- *Master Index*
- *Customer Information Quick Reference Card*
- *Printer Controller Commands Quick Reference Card*
- *Operator Quick Reference Card*
- *Submitting your Jobs from Macintosh Quick Reference Card*

- *Submitting your Jobs from UNIX & DOS Quick Reference Card*
- *Submitting your Jobs from Windows NT 4.0 (QuickPrint) Quick Reference Card*
- *Submitting your Jobs Using Windows NT 4.0 Drivers Quick Reference Card*

The documentation set also includes an electronic version, the DocuPrint NPS/IPS Interactive Customer Documentation CD.

---

## Related information

---

You can locate additional information related to PostScript, HP PCL 5, VIPP, or TIFF in the publications listed in this section. For a complete list and description of available documentation, refer to the Xerox Documentation Catalog or contact the Xerox Documentation and Software Services at 1-800-445-5554 or [www.xdss.com](http://www.xdss.com) for ordering information in the United States. For customers outside the United States, contact your local Xerox operating company.

## PostScript publications

---

The following is a list of PostScript publications:

- *PostScript Language Reference Manual*, first edition, sixth printing, Addison-Wesley, April 1987, Adobe Systems, Incorporated
- *PostScript Language Reference Manual*, second edition, Addison-Wesley, January 1991, Adobe Systems, Incorporated. (This document defines both PostScript Level 1 and Level 2.)
- *Adobe Type 1 Font Format*, 1990, Adobe Systems, Incorporated
- *LaserWriter Reference*, Addison-Wesley, October 1988, Apple Computer, Incorporated
- *PostScript Language Program Design*, 1988, Adobe Systems, Incorporated
- *PostScript Language Tutorial and Cookbook*, 1986, Adobe Systems, Incorporated

- *PostScript Printer Description File Format Specification*, Version 4.2, March 29, 1994, Adobe Systems, Incorporated
- *Real World PostScript*, 1988, Addison-Wesley

## **HP PCL 5 publications**

---

The following is a list of HP PCL 5 publications:

- *Hewlett Packard Printer Job Language Technical Reference Manual*, September 1994
- *Hewlett Packard PCL 5 Printer Language Technical Reference Manual*, October 1992
- *Hewlett Packard PCL 5 Comparison Guide*, October 1997
- *Hewlett Packard PCL 5 Color Technical Reference Manual*, May 1996

## **VIPP publications**

---

The following is a list of VIPP publications:

- *Xerox Variable Data Intelligent PostScript PrintWare (VIPP) Reference Manual*
- *Xerox Variable Data Intelligent PostScript PrintWare (VIPP) Interactive Development Environment (IDE) 2001 User Guide*
- *Xerox Variable Data Intelligent PostScript PrintWare (VIPP) 2001 Quick Reference Card*
- *Xerox Variable Data Intelligent PostScript PrintWare (VIPP) 2001 Command Library*. Refer to [www.xerox.com/vippcommands](http://www.xerox.com/vippcommands)

## **TIFF publications**

---

The following is a list of TIFF publications:

- *Adobe TIFF specification, Revision 6.0*, June 3, 1993
- *Draft TIFF Technical Note 2*, March 17, 1995, Replacement TIFF/JPEG specification
- *Adobe PageMaker 6.0 TIFF Technical Notes*, September 14, 1995
- *TIFF-FX, RFC 2301*, November 1, 2000



---

# 1. PostScript

This chapter provides an overview of standard PostScript operations and guidelines for ensuring consistent printer output.

---

## Implementation-dependent operations

---

The following operations are implementation-dependent.

### Floating-point arithmetic and math operators

---

All PostScript floating-point arithmetic and math operators are implementation-dependent if you use very large or very small floating-point numbers. This is rarely a problem with PostScript masters generated by “real world” creators; that is, commercial PostScript creators such as Word or Excel. Handwritten test masters, however, can cause problems.

Some handwritten test masters print out the limits of floating point numbers and various floating-point operations. Because these values may vary based on the PostScript implementation, the test master output also varies, making these tests useless for testing consistency across different PostScript printers.

### Coordinate system default matrix

---

The PostScript current transformation matrix (CTM) controls the mapping of user coordinates to device coordinates. You can describe pages in your own coordinate system and let the PostScript software transform your requests into the device space. PostScript masters are device independent only when they do not use the actual CTM values. When a master needs CTM values, it becomes device-dependent. The occasional need for CTM values causes inconsistent output across different PostScript printers.

Some handwritten test masters print out CTM values. Since these values vary, depending on the device resolution and positioning, the test master output also varies, making these tests useless for consistency testing across different PostScript printers.

---

## Fonts

---

DocuPrint NPS/IPS is capable of processing any legal Type 0, Type 1, or Type 3 font. Fonts of any of these types may be included in a document when it is sent to DocuPrint. Type 0, Type 1 and Type 3 fonts may also be installed on the system using the font installation utility.

*NOTE: Only Type 0 OCF fonts are supported. Type 0 CID fonts are not supported, even when downloaded.*

**Type 1** DocuPrint NPS/IPS contains 51 PostScript Type 1 fonts listed in the following table. These fonts are standard Type 1 fonts licensed through Adobe Systems, Inc. However, because DocuPrint NPS/IPS may contain different versions of fonts than other PostScript devices, there could be slight differences in shapes of characters and the character sets of certain fonts.

**Table 1-1. Adobe Type1 PostScript fonts**

Font	Typeface
Courier	Courier, Bold, Oblique, BoldOblique
Helvetica	<ul style="list-style-type: none"><li>• Helvetica, Bold, Oblique, BoldOblique, Light, LightOblique, Black, BlackOblique</li><li>• Condensed, Condensed Oblique, Condensed Bold, Condensed BoldOblique</li><li>• Narrow, Narrow Bold, Narrow Oblique, Narrow BoldOblique</li></ul>
ITC Avant Garde Gothic	Book, BookOblique, Demi, DemiOblique
ITC Bookman	Demi, Demiltalic, Light, LightItalic
ITC Garamond	Light, LightItalic, Bold, BoldItalic
ITC Korinna	Korinna, KursivRegular, Bold, KursivBold
ITC Zapf Chancery	MediumItalic
ITC Zapf Dingbats	Medium
New Century Schoolbook	Roman, Bold, Italic, BoldItalic
Palatino	Roman, Bold, Italic, BoldItalic

**Table 1-1. Adobe Type1 PostScript fonts (Continued)**

Font	Typeface
Symbol	Medium
Times	Roman, Bold, Italic, BoldItalic

**Type 0** A set of Type 0 OCF Chinese fonts is also available from Xerox. These fonts are composite, “double-byte” fonts.

*NOTE: Type 0 fonts that you load on the printer controller must be either fonts purchased from Xerox, or fonts that meet specifications provided by Xerox. Each composite font is stored in its own subdirectory. Loading of Type 0 CID fonts is not supported.*

**Type 3** Type 3 fonts can be installed from a DOS-formatted floppy using the Install Fonts From Floppy command. Type 3 fonts will install only if:

- The fonts are in the floppy’s root directory.
- Each font is in a separate file.
- Each font file has a .ps extension.
- Each font file contains a “/FontName” definition with a unique name.

**MICR** For MICR systems, MICR PostScript E13B font is provided on diskette. These fonts are in Type 3 format. For more information, see the *Generic MICR Fundamentals Guide* and the “MICR printing” chapter in the *Guide to Configuring and Managing the System*.

### Notes on PostScript fonts

The DocuPrint PostScript interpreter does not use the “additional metrics” entry in a font dictionary.

PostScript font substitution error messages appear on the “JOB MESSAGES AND ERRORS” page only when the requested font is not present.

DocuPrint NPS/IPS uses Courier when a requested font is not available.

## Loading fonts

---

DocuPrint NPS/IPS accepts downloaded legal Type 0, 1 or 3 fonts through the standard means used on other PostScript devices for downloading fonts. Type 0, Type 1, or Type 3 fonts may be loaded permanently on the system by the system administrator using the font installation utility. This method ensures that the desired fonts are available on the system and saves time later by avoiding the repeated transfer of fonts through the network.

*NOTE: Only Type 0 OCF fonts are supported. Type 0 CID fonts are not supported.*

### CAUTION

*Downloading fonts with a PostScript file is discouraged because printer performance may be degraded significantly. Instead, install the desired fonts on the controller, then reference them from within the PostScript file.*

## User-defined fonts

---

User-defined fonts can contain bitmaps or define the shape of characters through PostScript operators (**lineto**, **curveto**, **fill**). User-defined bitmap fonts are not portable across different output devices. You may notice a marked difference in the quality of rendering for bitmap fonts as printed on different laser printers. The differences are attributable to device-dependent features such as resolution, shape of device pixels, and other characteristics. For further information on these characteristics, refer to “Scan conversion details” in this chapter.

## Type 1 fonts

---

Type 1 fonts are base fonts with character shapes defined by using specially encoded PostScript procedures. Because characters are drawn by PostScript procedures, many visual elements that are not associated with fonts can be represented as characters in a Type 1 font.

The multiple master font format is an extension of the Adobe Type 1 font format and is supported by DocuPrint NPS/IPS.



Refer to the *Adobe PostScript Language Reference Manual* for more information, and the Adobe Type 1 Font Format document for encoding information.

According to the *Adobe Type 1 Font Format*, a conforming Type 1 font program contains the following first line:

**%! FontType1 - *SpecVersion*. *Font Name* *FontVersion***

- *SpecVersion* is the version of the Adobe Type 1 Font format to which the font program conforms.
- *FontName* is the name of the font understood by the PostScript interpreter.
- *FontVersion* is the version number of the font program.

The first line of the Type 1 font, which is available by reading the header of the Type 1 font program, can aid in determining differences between fonts on PostScript devices.

### **Using Adobe Type 1 fonts instead of graphics**

---

One of the factors that can negatively impact performance on DocuPrint NPS/IPS is the use of small graphic images, logos, and signatures embedded in PostScript masters. When these graphic items are used on each page of a document, DocuPrint performance can be slowed down.

The Type 1 font capabilities of DocuPrint can handle commonly referenced, small or large graphic elements such as logos and signatures. You can install and remove any Adobe Type 1 font from a DocuPrint system using standard administrator commands in the DocuPrint printer controller. Fonts used only occasionally for a single job can be included in the PostScript master for the jobs that require them.

Using fonts for small graphic elements has the following advantages over using referenced content files:

- You do not need to perform the NFS setup required for referenced content files. DocuPrint can be used in a standard configuration.
- Visual elements stored as fonts can be easily rotated and scaled.
- Font characters are cached so that multiple uses of a visual element in a document are rendered quicker if the elements are taken from a font than if they are read from supplementary files.

- Including graphic images is easier when creating the document.

### **Producing Type 1 fonts for use with DocuPrint**

---

Third-party software for font editing and creation is available for most popular personal computing systems. With these programs, you can edit or produce outlines from a bitmap obtained by scanning existing line art.

Each graphical item that is referenced must be assigned to a character code in a font. You can incorporate many graphic elements in a single font by assigning each element to a different character code, or you can place each item in its own font.

Once created, you must save Type 1 fonts on an MS-DOS diskette as files with the .pfb extension. You can then load the fonts from diskette onto a DocuPrint system using the administrator **Install Fonts From Floppy** command.

### **Using a Type 1 font in a document**

---

When you create a document using a standard document editor, you enter the character that refers to the graphic image you want, assign the appropriate font to it, and size and place it to fit the document. If you are using Adobe Type Manager, the image is scaled and displayed.

The PostScript driver of the document editor selects the font using the PostScript operator **findfont** and scales the font using **scalefont**. Once the font is installed as current by the **setfont** operator, any **show** of a character images the figure associated with that character code.

For example, you can create a font containing a corporate logo, assigned to the character **a**. The following PostScript example shows how the specific size of the logo font is assigned a name within a master, and how the logo is placed on a page.

```
/Logo /XYZCorpLogos findfont 20 scalefont def
Logo setfont
50 50 moveto (a) show
```

---

## PostScript with embedded PJP commands

---

PostScript files created for some Hewlett-Packard printers and other compatible printers include PJP commands that specify the use of a PostScript interpreter. DocuPrint NPS/IPS can recognize a file as PostScript if it starts with code similar to the following:

**^[%-12345X@PJP ENTER LANGUAGE=POSTSCRIPT**

Other PJP commands can be included at the start of the job, but will be ignored.

*NOTE: PJP commands in locations other than at the start of the PostScript job will cause the job to be aborted.*

---

## PostScript language extensions

---

DocuPrint NPS/IPS emulates some, but not all, of the LaserWriter II NTX (containing version 47 of Adobe PostScript) product-specific functionality as noted in this section.

When unimplemented operators are encountered in the PostScript master, the standard error message “Undefined” appears on the job messages page.

This section contains PostScript dictionary entries that are defined in the LaserWriter II NTX. These PostScript definitions are not part of the PostScript language.

## System Dict

---

The following System Dictionary operators are implemented:

- `=print`      {dup type /stringtype ne {=string cvs}}
- `Run`      {dup == flush run}
- `error`      The common error handling routine used by all of the standard error handlers

The following System Dictionary operators are implemented:

- **ISOLatin1Encoding**

This is a 256-entry font encoding array based on the International Standards Organization Latin1 encoding vector.

- **eexec**

This is a decryption operator typically used for decoding Type 1 fonts. For a detailed description, refer to the Adobe Type 1 Font Format, version 1.1.

- **cexec**

The DocuPrint 1.5 **and higher cexec** implementation simply consumes and ignores the data fed to **cexec**. The **cexec** operator is used to download machine code patches. As such, **cexec** is Motorola 6800 cpu-dependent and is not completely implemented. DocuPrint NPS/IPS does not handle PostScript masters using **cexec**. Usage of **cexec** is typically hidden by the encryption of **eexec**.

LaserWriter defines other entries in the System Dictionary that are specific to its device characteristics, such as extra operators that deal with the hard disk. Such operators are not part of the standard as defined in the *PostScript Language Reference Manual*, second edition, and are not implemented on DocuPrint NPS/IPS.

## User Dict

---

User dictionary entries that are implemented include:

<b>cleardictstack</b>	{countdictstack 2 sub {end}repeat}
<b>startpage</b>	Prints a startup page
<b>start</b>	{{(Init.ps)run}}

DocuPrint implements print-level commands provided by the client print command. PostScript-level print commands are ignored.

The following operators, which are specific to the LaserWriter implementation of PostScript, are defined with null functionality in DocuPrint NPS/IPS.

<b>a4</b>	<b>legaltray</b>
<b>a4small</b>	<b>letter</b>
<b>a4tray</b>	<b>lettersmall</b>
<b>b5</b>	<b>lettertray</b>
<b>b5tray</b>	<b>note</b>
<b>legal</b>	

The DocuPrint NPS/IPS User Dictionary contains the following definitions of values and procedures that mimic the LaserWriter II NTX but are not used by DocuPrint:

<b>aa</b>	<b>xu</b>
<b>xs</b>	<b>xv</b>
<b>xt</b>	<b>xw</b>
<b>#copies</b>	

*NOTE: **#copies** may be used to set the number of copies prior to the first showpage of a job.*

## Server Dict

---

Server Dictionary operators that are implemented include:

<b>dexch</b>	<b>exitserver</b>
<b>exchdef</b>	<b>fontname</b>

With the exception of **exitserver** (see the “Printer controller” section of this chapter), these operators allow you to bypass the save or restore context around each PostScript job. These changes can be reset only by stopping and restarting job processing.

Server Dictionary entries that contain defined values and routines to mimic the LaserWriter, but are not used by DocuPrint, include:

<b>baud25</b>	<b>parity9</b>
<b>baud9</b>	<b>secretdict</b>
<b>execjob</b>	<b>setrealdevice</b>
<b>parity25</b>	

No other Server Dictionary operators defined in the LaserWriter are implemented in DocuPrint 1.5 and higher.

## Status Dict

---

The following Status Dictionary entries are implemented:

<b>checkpassword</b>	<b>product</b>
<b>dostartpage</b>	<b>revision</b>
<b>jobname</b>	<b>setpassword</b>
<b>jobstate</b>	<b>setmargins</b>
<b>jobsource</b>	<b>setdostartpage</b>
<b>idlefonts</b>	<b>setidlefonts</b>
<b>margins</b>	<b>setprintrname</b>
<b>printrname</b>	

The following Status Dictionary entries contain defined values or routines to mimic the LaserWriter but are not used by DocuPrint:

<b>defaulttimeouts</b>	<b>printererror</b>
<b>eerom</b>	<b>sccbatch</b>
<b>eescratch</b>	<b>sccinteractive</b>
<b>jobtimeout</b>	<b>setdefaulttimeouts</b>
<b>manualfeed</b>	<b>seteescratch</b>
<b>manualfeedtimeout</b>	<b>setjobtimeout</b>
<b>pagecount</b>	<b>setpagetype</b>
<b>pagestackorder</b>	<b>setsccbatch</b>
<b>pagetype</b>	<b>setscinteractive</b>
<b>prefeed</b>	<b>waittimeout</b>

## Miscellaneous: IdleTime Dict, Printer Dict, and Execution Dict

---

### IdleTime Dictionary

---

IdleTime Dictionary (\$IdleTimeDict) entries that are implemented include:

**dfltIdleArray**  
**needflush**

The following \$IdleTimeDict entries contain defined values or routines to mimic the LaserWriter II NTX, but are not used by DocuPrint:

<b>bmpl</b>	<b>ReadIdleFonts</b>
<b>boundsCheck</b>	<b>stopPred</b>
<b>exitWhenDone</b>	<b>ROMnames</b>
<b>idleA</b>	

### Printer Dictionary

---

Printer Dictionary (\$printerdict) entries that are implemented include:

<b>framelimit</b>	<b>width</b>
<b>height</b>	<b>xoffset</b>
<b>mtx</b>	<b>yoffset</b>

The following \$printerdict print command operators are defined with null functionality. DocuPrint implements print-level commands as provided by the DocuPrint Client print commands. PostScript-level print commands are ignored.

0	19
1	24
2	25
3	dopage
8	proc
9	setpage
18	

## Execution Dictionary

---

Execution Dictionary (execdict) entries that are implemented include:

checkquit	print
execdepth	quitflag
idleproc	stmtfile

## Nonstandard definitions

---

Commercial PostScript creators commonly use nonstandard (product-specific) definitions without encapsulating the definitions with an existence check. This check searches for the existence of a nonstandard definition and bypasses the definition if it is undefined.

## Examples of nonstandard definitions

---

The following two dictionaries and their operators are examples of nonstandard (product-specific) definitions.

Statusdict	Userdict
a4tray	a4
b5tray	a4small
checkpassword	b5
defaulttimeouts	legal
jobtimeout	letter
legaltray	lettersmall
lettertray	note
margins	
manualfeedtimeout	
pagecount	
prINTERname	
product	
revision	
sccbatch	
sccinteractive	
setdefaulttimeouts	
setjobtimeout	

**Statusdict**

**Userdict**

setmargins  
setpassword  
setprintrname  
setscbatch  
setscinteractive  
waittimeout

---

## Appearance consistency

---

To control the consistency of output between more than one printer, you must consider the following:

- Printer resolution and resolution enhancement
- Printer imaging characteristics
- Font consistency
- Proprietary Postscript extensions
- Color differences for full color and highlight color printers

The following sections provide guidelines for ensuring consistency between printers.

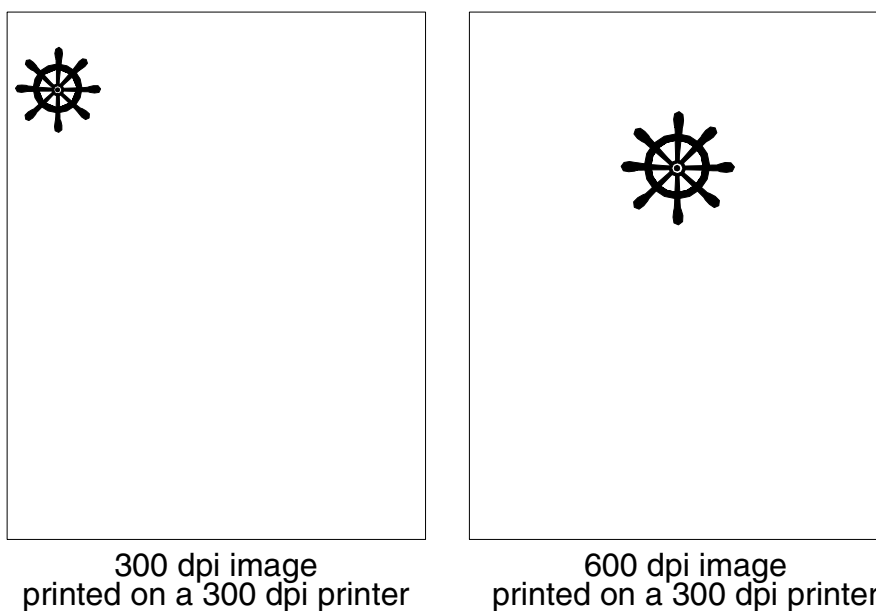
### Printer resolution and resolution enhancement

---

The most obvious reason for inconsistent output between two printing devices is that they have different resolutions. For example, a 600 by 600 dpi printer has much smoother looking fonts and curves than a 300 by 300 dpi device. For the same physical size (constant frequency) of halftone, you get four times the number of gray levels on a 600 by 600 dpi printer as on a 300 by 300 dpi device. If your document contains scalable fonts or simple line art generated at 600 dpi, the differences between printing it at 300 and 600 dpi are subtle.

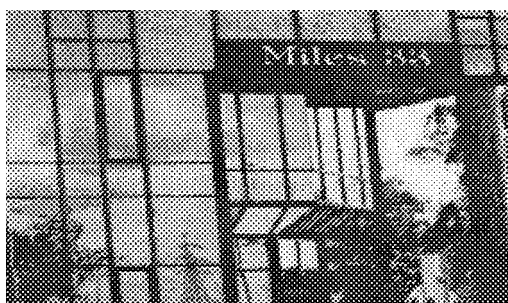
However, if your document contains bitmaps with a resolution of 600 dpi, printing it at 300 dpi causes a degradation in image quality. Figure 2-1 provides an example of a 300 dpi image and a 600 dpi image output on a 300 dpi printer. The 600 dpi image appears larger and in a different position on the page.





**Figure 1-1. 300 and 600 dpi image output**

In the following figure, the 600 dpi halftone is distorted and only a portion of the image appears.



**Figure 1-2. 300 dpi image output**



**Figure 1-3. 600 dpi image output**

To preserve image quality when printing on 300 dpi printers, regenerate the bitmaps at 300 dpi. The 600 dpi printers can accept jobs with resources in either 300 or 600 dpi. See “Maintaining image quality” in the “PCL5e” chapter for information about the recommended attribute settings to use when generating a document on your system.

Some manufacturers have added hardware imaging enhancements to 300 by 300 dpi printers that effectively boost the apparent dpi by micro-controlling the laser beam. The function is called post-enhancement because it is performed by the hardware after the PostScript interpreter has imaged into the frame buffer. The frame buffer is still only 300 by 300 dpi, but the hardware is controlling the laser beam to produce smoother edges.

Other manufacturers have added pre-enhancements that involve the PostScript interpreter. In these printers, the frame buffer is actually larger because the PostScript interpreter is effectively rendering at a higher resolution. The hardware performs some of the halftoning function to provide finer halftoning, resulting in picture output that looks smoother.

You can only accurately compare two different printers if both are using the same enhancement techniques or if all enhancement techniques are turned off.

### **Printer imaging characteristics**

---

Most xerographic printers do not image perfect circular dots with even dry ink distribution. The dry ink “spread” is typically Gaussian, with dry ink density being the greatest at the center of the dot and fading off toward the edges.

The terms “write-white” and “write-black” are broad generalizations. The specific print imaging characteristics of some products may not represent other products with the same write-white or write-black classification. For example, the HewlettPackard (HP) LaserJet and the LaserWriter II NTX use a write-black laser printer engine that uses the laser beam to “write” where dry ink should go. Therefore, single pixel dry ink dots are approximately round and are visible on an HP LaserJet. In contrast, write-white laser printer engines “write” the dry ink free areas, which can create single dots that have four concave sides.

It is important to distinguish the fast scan direction, which is the direction the laser beam moves across the page before jumping back to do the next line. Remember that a laser printer scans a page in a raster method, just like a television set. Fast scan directions are not the same for a LaserWriter and the Xerox engine.

In general, when turning on the same pixels, the write-white engine produces output that appears lighter than output produced by a write-black engine. Xerox device-parameterized PostScript interpreters are able to partially compensate for this by rendering thicker strokes and fonts. Device-dependent PostScript cannot be compensated for because it is sending user-created bit images instead of mathematical descriptions of the desired output.

- User-defined PostScript fonts—Some user-defined fonts use bitmaps that are tuned to write-black engines. These fonts appear light on certain write-white printers.
- Image data at output device resolution—PostScript image data that has a resolution matching the output device is typically transferred directly to the frame buffer with no modification. These images appear light on certain write-white printers.

Black lines on a color background print white—PostScript (or PCL) jobs that have black lines on a color background will print the lines with white borders. This is a characteristic of write-white printing.

- Single-pixel fills—Single isolated dots are visible on a LaserWriter but not on some write-white printers; therefore, single-pixel isolated fills in PostScript may not be visible on your product.

You may be able to correct the above situation by means of the Change Imager Parameters command. Set the FatScanConversion option to Yes. This should only be used if needed, because it may degrade performance.

*NOTE: When the **copypage** operator and darkening are used together either via the Thicken attribute or a Change Imager Parameters command, the data printed on every page generated by copypage becomes progressively darker.*

In addition to these PostScript issues, your output may not meet your expectations if your printer is not set within the Xerox print quality specification range. Please make sure your printer has been adjusted by a qualified technician.

### Font consistency

---

If you do not use exactly the same fonts on both printers, you cannot expect the output to look the same. The actual shape of the characters in any given font varies among different font manufacturers. In fact, different versions of a font from the same manufacturer may have different shapes and character sets.

Because some PostScript printers have fonts permanently installed, it is likely that newer models may have newer versions of the same fonts. The font rasterizer software may vary between printer models, also resulting in output differences.

### Proprietary PostScript extensions

---

Some PostScript printers contain proprietary PostScript extensions. In general, PostScript masters that use proprietary printer features may cause appearance inconsistencies between different PostScript printers.

### **Color differences on full color and highlight color printers**

---

The output of a job printed on a highlight color printer is likely to appear different from the output of the same job printed on a full color printer, even if the job uses only one color. This occurs because the color on the highlight printer is limited to the color toner used, plus black, whereas the full color printer toners can mix to produce millions of different colors. To adjust the output color in the job when printing on a different type of printer, you must change the application.

---

### **Control-D as binary data and end-of-job**

---

The fact that control-D can be a valid PostScript end-of-file (EOF) delimiter in one communications protocol and invalid in another creates a paradox for PostScript printers that must accept jobs created for either communications mode without any indication of which communications mode was used. The recommended solution is described in “Solution to control-Z and control-D problems.”

How PostScript jobs are delimited—separated from each other in a continuous stream of jobs—is not simple. Remember that the actual PostScript interpreter has no concept of a job. There is no PostScript job end operator. The job server, which is external to the interpreter, must make the job begin and job end determination and act accordingly. It does this by considering a PostScript job to be a simple byte stream input file. When end-of-file (EOF) is reached, the job server restores the PostScript state for the next input file (job).

The way input files—or jobs—are sent to a PostScript printer depends on the communications protocol used to transfer the PostScript document to a PostScript printer. For example, when a LaserWriter is connected to an Apple Macintosh over the AppleTalk serial communications channel, AppleTalk protocol encapsulates PostScript jobs as files. The LaserWriter AppleTalk software delimits PostScript jobs based on the AppleTalk file protocol. AppleTalk encapsulates files in its own high-level protocol. This allows AppleTalk to support transparent data transmission; that is, there are no byte codes reserved for AppleTalk communication functions. This means that all byte values are valid in a PostScript master.

This is not true when you are connecting an IBM PC to a LaserWriter over the LaserWriter asynchronous serial communications (RS232 or RS422). There is no high-level protocol, such as AppleTalk has, that delimits files, so the control-D character code (octal 004) was chosen to delimit input files. The LaserWriter asynchronous software handler strips out the control-Ds and sends an EOF to the PostScript job server. This prevents sending binary PostScript jobs (jobs where all byte codes are valid PostScript data) through the asynchronous serial communications port. In contrast, the LaserWriter can accept binary PostScript jobs over AppleTalk since it is data transparent.

---

### **Control-Z and superfluous errors**

---

Control-Z is not used by the LaserWriter RS232 asynchronous serial communications software; yet it often appears at the end of many PostScript masters and can pose problems.

Control-Zs appear at the end of many PostScript files created under the Microsoft Disk Operating System (MS-DOS). They cause errors on a LaserWriter, but this is usually unnoticed because the control-Z undefined command error occurs after the last page is printed. In addition, because the default error handling mode of the LaserWriter is to send the error back to the creator through the communications port, most users never see the error. This is not the case for PostScript products that have been configured to print a break page on every error.

Because the majority of the error messages caused by control-Z are superfluous, it is recommended that control-Zs used as end-of-files be ignored.

---

### **Solution to control-Z and control-D problems**

---

The recommended solution for the problems induced by control-D and control-Z is to include the following PostScript definitions. They can be loaded permanently, or prepended to jobs that have these problems. These definitions catch illegal uses of these control characters and also allow the legal uses (binary data) to pass through untouched.

```

(\004) cvn {} def      %ignore single ^D character
(\032) cvn {} def      %ignore single ^Z character
(\004\004) cvn {} def  %ignore ^D^D pattern
(\004\032) cvn {} def  %ignore ^D^Z pattern
(\032\004) cvn {} def  %ignore ^Z^D pattern
(\032\032) cvn {} def  %ignore ^Z^Z pattern
(\004\004\004) cvn {} def %ignore ^D^D^D pattern
(\004\004\032) cvn {} def %ignore ^D^D^Z pattern
(\004\032\004) cvn {} def %ignore ^D^Z^D pattern
(\004\032\032) cvn {} def %ignore ^D^Z^Z pattern
(\032\004\004) cvn {} def %ignore ^Z^D^D pattern
(\004\032\004) cvn {} def %ignore ^D^Z^D pattern
(\032\032\004) cvn {} def %ignore ^Z^Z^D pattern
(\032\032\032) cvn {} def %ignore ^Z^Z^Z pattern

%

%   The following code redefines PS operators and names
%   containing control
%   characters. Jobs containing the redefined commands will
%   run without
%   the undefined error. Additional lines may be added here as
%   needed.
%
(\004initgraphics) cvn {initgraphics} def      %remove ^D
(initgraphics\004) cvn {initgraphics} def      %remove ^D
(showpage\004) cvn {showpage} def              %remove ^D
% Examples of case sensitivity.
(sp\004) cvn {sp} def                          %remove ^D
(Sp\004) cvn {Sp} def                          %remove ^D
(SP\004) cvn {SP} def                          %remove ^D

```

The preceding definitions use the following rules:

- Isolated illegal characters.** If the illegal characters occur alone or only with some combination of other illegal characters, then the resulting token may be redefined as an empty PostScript procedure, as shown in this example:

```
(\004) cvn {} def
```

*NOTE: It is not desirable to redefine the token as null because this would leave a null object on the operand stack.*
- Illegal characters adjacent to legal characters.** If there is no white space character (as defined in the *PostScript Language Reference Manual*, second edition) between the illegal character or characters and legal PostScript characters, then that combination can be redefined to be the legal PostScript substring only, as shown in these examples:

(showpage\004) cvn {showpage} def

(sp\004) cvn {sp} def

*NOTE: It is not desirable to redefine a legal substring ABC as some other legal substring XYZ in the illegal token initialization file. For instance, although **showpage** frequently is redefined by PostScript code to be *sp* for brevity, it may seem to make sense to redefine **sp <control D>** as *showpage*. However, if the client application creating the PostScript defines *sp* to mean *show* rather than **showpage**, then to have **sp <control D>** initialized to mean **showpage** is an error.*

*Also, due to case sensitivity, some patterns may have to appear with the same case variety as in the PostScript jobs to be processed.*

*Because there may be an infinite number of character combinations, the system administrator is encouraged to redefine only known or suspect problem tokens.*

### **Multiple jobs in one input file**

---

Note that the above control-D handling does not perform true PostScript job encapsulation. Therefore, the following PostScript job situations may cause problems. All of these problems are due to having multiple PostScript jobs in one input file. If problems occur, break the concatenated masters into separate input files.

- Because control-Ds are not interpreted as end-of-job (EOJ), PostScript virtual memory (VM) is not restored before the next job. This means that the next job environment is not “clean,” which may or may not cause problems. PostScript VM may also run out since VM is not restored by control-D. Note that all Xerox PostScript products do restore VM at the end of their input file, so single PostScript jobs per input file are always handled correctly.
- Some of the PostScript jobs execute *exitserver*, which stays in effect until EOJ. Because the control-Ds are not interpreted as EOJ, subsequent non-*exitserver* job definitions become permanent, which could consume all of the PostScript VM or cause other PostScript problems.



- A job executes code that flushes the input data up to EOJ. Because the control-D is not interpreted as EOJ, it does not stop the flushing. Therefore, the rest of the PostScript jobs in the input file are ignored.

---

## DocuPrint NPS/IPS implementation of PostScript Level 2

---

DocuPrint NPS/IPS implements the PostScript Level 2 operators; it conforms to the PostScript Language as defined in the PostScript Language reference manuals.

DocuPrint does not support the following device-specific operators: **banddevice**, **framedevice**, and **renderbands** (device setup and output operators). These operators are device-specific.

- In PostScript Level 2, the LZWEncode, CCITTFaxEncode, and DCTEncode filter names are not supported with the **filter** operator.

*NOTE: The DCTDecode filter does not work correctly for all full color images.*

- Unlike the Adobe implementation of PS Level 2, the **setfileposition** operator is permitted on %stdin when the standard input comes from a file.
- The **charpath** operator is not supported with the PostScript Level 1 interpreter when used on type 3 fonts. However, this operator is supported with PostScript Level 2.

Due to support of mixed paper sizes, PostScript files that use the **clippath pathbbox** operators to determine the imageable area of the page will not image shift correctly. Image shifting will not occur by using the AdjustX and AdjustY system options nor the image shift document attributes: HorizontalImageShift, HorizontalImageShiftforBack, VerticalImageShift, VerticalImageShiftforBack, and the ExceptionPage image shift.

---

### Simulated mixed plex

---

For releases prior to 7.x, simulated mixed plex is supported using the standard PostScript Level 2 **/Duplex pagedevice** key. The **/Duplex** key is supported only with the PostScript Level 2 interpreter when the plex attribute value is "duplex." The **/Tumble** key is not supported.

The /Duplex key is not supported when used in a job with the MultiSet-specific pagedevice keys: /EndOfSet, /EndOfRun, and /Staple, which are also capable of simulating mixed plex.

For more information on mixed plex jobs, see the chapter “Mixed plex applications” in the *Guide to Managing Print Jobs*.

---

## Printer controller operations

---

The DocuPrint NPS/IPS printer controller operates as follows:

- PostScript stdout messages are printed on the “JOB MESSAGES AND ERRORS” page. DocuPrint PostScript prints error messages directed to %stderr on the “JOB MESSAGES AND ERRORS” page as well.
- PostScript font substitution error messages appear on the “JOB MESSAGES AND ERRORS” page only when the requested font is not present and is not one of the DocuPrint base 51 font set.
- DocuPrint does not emulate the serial communications handling aspects of the LaserWriter. Notably, DocuPrint syntactically treats control-D and control-Z as literal characters in ASCII strings and binary data, not as end-of-file delimiters. Also, DocuPrint does not strip high bits from character string data. Instead DocuPrint treats all input bytes as valid PostScript.
- DocuPrint handles ASCII or binary input transparently and does not require two input modes.
- DocuPrint wraps each PostScript document with a save and restore to ensure that documents are independent. DocuPrint NPS/IPS implements the exitserver operator to permit modifying PostScript virtual memory within a document, but not across documents.
- DocuPrint performs standard PostScript error handling when it encounters LaserWriter-specific operators that DocuPrint NPS/IPS does not implement. The error handling process produces a standard PostScript “undefined command” message and flushes the master to end-of-file.

---

## Scan conversion details

---

DocuPrint NPS/IPS uses the scan conversion rules to control the PostScript painting operators **stroke**, **fill**, **clip**, and **image**.

The scan conversion process and rules are not defined as part of the PostScript language. They are subject to variations depending on algorithms used in different PostScript printing devices to achieve the most accurate rendition possible. The sections below describe the stroke and fill operators.

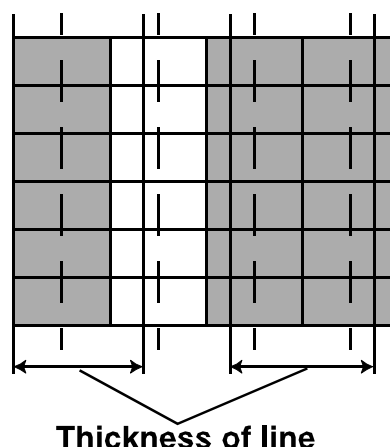
---

### Stroke

---

Stroke refers to painting a line that follows the current path, is centered on the path, and has sides parallel to the path segment. “Path” includes a thickness set by the operator **setlinewidth**.

DocuPrint NPS/IPS turns on any device pixels whose centers lie within the width of the path to be stroked. The pixels whose centers lie outside of the width of the path are turned off.



**Figure 1-4. Stroke function**

The top illustration above shows four columns of three pixels on the printing device. The dashed lines intersect at the center points of the device pixels or dots. The columns from left to right are designated as columns 1, 2, 3, and 4.

The lower illustration builds on the top illustration by adding two vertical line segments that will be stroked. The sides of the line to be stroked are indicated with solid bold lines. The line to right has its left side to the left of the center point of the third column of pixels and has its right side to the right of the center point of the fourth column. Because the center points of the third and fourth columns of pixels are within the thickness of this line, all six pixels are turned on (indicated in this picture by cross-hatching the pixels). Contrast this with the line on the first and second columns of pixels. Because the center point of the second column falls outside its boundaries, only the first column is turned on.

## Fill

---

The Fill function controls the shapes, zero-width lines, curved shapes, and image operators.

### Shapes

---

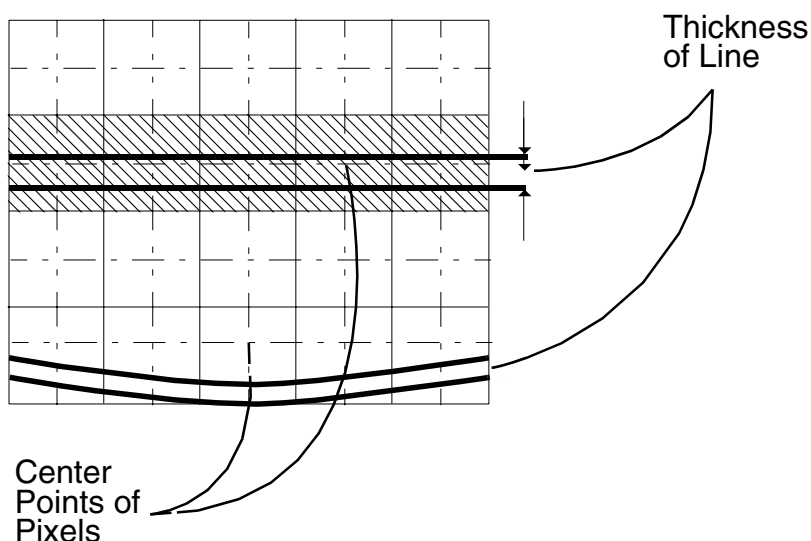
A shape is a path to be painted with the current color or with a pattern. To paint shapes, “insideness” computations need to be performed. These determine which pixels fall inside and outside the shape. During fill, the pixels whose centers lie within the inside boundaries of the shape are turned on. Those whose centers lie outside the shape are turned off.

Some PostScript creators describe long, very thin, rectangular fill regions in the masters (for example, boundaries of boxes or rules). DocuPrint selects some of those shapes and treats them as thin paths that are “stroked” to ensure that they are imaged (painted).

### Zero-width lines (strokes)

---

Zero-width lines are lines that have a line width set to zero by the PostScript master. These lines may not image. The best method is to specify the sizes of the hairline you want, such as .24 **setlinewidth** instead of 0 **setlinewidth**.



**Figure 1-5. Example illustrating fill function**

This illustration shows four rows of five pixels on the output device. The center points of the device pixels are at the cross sections of the dashed lines. The horizontal lines to be filled are indicated by two solid, bold line segments per horizontal line.

The horizontal line at the top contains the center points of the second row of pixels; therefore, the pixels are turned on by the imager. This is shown by cross hatching the pixels that are turned on. The horizontal line at the bottom of the picture does not contain the center points of the fourth row of pixels; therefore, no pixels are turned on, and the line is not visible.

### Curved shapes

The flatness parameter is used to set the accuracy with which curves are rendered on the output device. Because DocuPrint does not use curve flattening (conversion of curves to line segments) in graphic rendering, the parameter for the operator `setflat` has no effect on the smoothness of curves.

### Images

In DocuPrint, the region of the device space to be painted is determined according to the following rules:

- Scan Conversion paints only those pixels whose centers lie within the shape if:

- The resolution of the source image (sampled image) is higher than the device resolution. Scan Conversion paints those pixels whose centers lie within the shape.
- The resolution of the source image (sample image) is lower than the device space, and the scaling of source-image-to-device space is an integer multiple and rotation is in multiples of 90 degrees.
- Scan Conversion paints any pixel whose square region intersects the shape if the resolution of the source image is lower than that of device space, and the scaling between source image and device space is not an integer multiple.

This effect is noticeable when you are printing a sampled image with a resolution of less than 600 dpi on the printer at 600 dpi.

---

## Image quality

---

The output of DocuPrint NPS/IPS printers that use write-white technology can be superior to the output of many printers that use “write-black” technology; the difference appears in the following areas:

- Black regions are darker.
- Fonts of small point sizes are more readable.
- Single-pixel-wide white lines on a black background are visible.

*NOTE: The DocuPrint 92C NPS/IPS can produce a single-pixel line. However, because of the many variables involved, such as print density settings and line placement on the page, Xerox cannot guarantee the quality of these single-pixel lines. Specific questions regarding single-pixel line printing for your application should be directed to your Xerox service engineer.*

Some user-defined fonts use either outlines or bitmaps that are tuned to write-black printers. As a result, these fonts appear light on the Xerox DocuPrint printers. Character rasterization for fonts that use PostScript painting operators is subject to the scan conversion rules described earlier in this chapter.

It is often difficult to determine if a PostScript master uses user-defined fonts. To do so requires studying the master in detail, unless the creator has followed the standards suggested in the PostScript reference manual and specified the fonts used by the document in a PostScript comment format. An example of this format is:

```
%%DocumentFonts: { <fontname> ...}
```

```
%%DocumentSuppliedFonts:{ <fontname> ...}
```

However, if the character shapes seem poorly rasterized, user-defined fonts probably are contained in the master. When possible, use Type 1 fonts, which are rasterized through special techniques, for best output quality.

Note that the DocuPrint PostScript interpreter applies thickening to certain graphics-rendering operations. For example, outline fonts in the Type 1 format are subject to rasterization techniques that use thickening for best quality of text rendering on Xerox devices.

---

## Rendering of color and gray values: transform function

---

PostScript devices approximate source color values by a sampling and halftoning technique. These values can be modified by changing the output transfer function. The transfer function permits the correction of color (including gray) values to compensate for nonlinear color (and gray) level response in both an output device and the human eye.

The color levels presented to the **setcmykcolor**, **sethsbcolor**, **setrgbcolor**, and **setgray** operators and appearing as sampled data are not used directly, but are mapped through the current transfer functions. The resulting output consists of combinations of black and white on the DocuPrint monochrome printer, and black, white, and highlight color on the DocuPrint highlight color printers.

*NOTE: The internal default transfer function in DocuPrint cannot be bypassed. Currently, there is an internal table that is used for converting input requests for a color value to a different number that is used to set the output device color level.*

On the DocuPrint monochrome printers, PostScript masters that rely on the null transfer function (null transfer function is {} **settransfer**) do not overwrite the internal transfer function.

Furthermore, the operator **currenttransfer** returns what appears to be a null transfer function, that is, {}. However, the internal transfer function is not null. This achieves compatibility, because the xerography differs between DocuPrint and LaserWriter.

*NOTE: For DocuPrint monochrome printers only, provision is made for compatibility with pattern generation, as long as the spot function returns values of 0 or 1.*

When a gray value is presented to the **setgray** operator, DocuPrint NPS/IPS performs the following processes:

1. Computes the index by multiplying the gray value by 255.0 and rounding the result:  
$$\text{index} = \text{Round}(\text{gray} \times 255.0 + 0.5)$$
2. Sets the device gray value to the value in the transfer array at the which the index was calculated:

$$\text{device color} = \text{transferarray}[\text{index}]$$

*NOTE: **Settransfer** actually sets the transfer functions for all four color components (red, green, blue, and gray) to the same value. The **setcolortransfer** operator sets the transfer functions individually.*

---

## PostScript printer description (PPD) files

---

PostScript printer description files (PPD files) are readable text files that provide information about the special features of your printing device to the application program running on your host system. PPD files include information about page sizes, finishing features, and fonts, among other items.

PPD files are stored on a client workstation or PC where they can be parsed by applications. Some application programs supply PPD files for a variety of printers, rather than have you contact printer manufacturers to obtain one.

The DocuPrint PPD files provided with DocuPrint software conform to version 4.2 of Adobe PPD specifications. If your application software supports version 4.2 PPD files, the DocuPrint PPD files should be used when generating print documents from your application.



If your application does not support version 4.2 of the PPD specification, the Generic PPD file can be used. In the cases where using the LaserWriter PPD file results in PostScript code that contains operations not supported on DocuPrint, use the “NULL” PPD file that is available with some applications.

---

## Implementation limits

---

Features that are known to be device dependent (see the *Adobe PostScript Language Reference Manual*, 2nd edition, for a list) may differ from other implementations. These include performance, VM usage, certain kinds of shading and line thickness, some kinds of halftoning, resolution dependencies, and certain implementation limits.

The following table lists the implementation limits that are not defined in the PostScript standard, but are inherently different on PostScript devices.

**Table 1-2. Implementation limits**

Quantity	Limit	Description
integer	Largest: $2^{31}-1$ Smallest: $-2^{31}$	—
real	Largest: $10^{38}$ Smallest: $-10^{38}$	Actual values are slightly less than $10^{38}$ and slightly more than $-10^{38}$ .
array	65536 or $2^{16}$	Maximum length of an array
dict	65536 or $2^{16}$	Maximum capacity of a dictionary (key value pairs)
string	262144 or $2^{18}$	Maximum number of characters in a name
file	See “File operators and standard devices”	—
userdict	2000	Capacity of UserDict
operand stack	5000	Maximum depth of the operand stack
dict stack	50	Maximum depth of the dictionary stack
exec stack	250	Maximum depth of the execution stack
interpreter level	Variable	Maximum number of recursive invocation of the interpreter
save level	31	Maximum number of active saves
gsave level	31	Maximum number of active gsave
path	1500 See ”Path limits”	—
dash	65536	Maximum elements in dash pattern
VM	Approximately 4 megabytes	Maximum size of the virtual memory in bytes
systemdict	256	Maximum capacity of System Dict
errordict	28	Maximum capacity of Error Dict

## File operators and standard devices

---

When “%stdin” is the filename for the **file** operator, DocuPrint NPS/IPS does not create a new file object. For example, the following PostScript segment uses %stdin to open a file from the stdin device:

```
(%stdin) (r) file %
```

DocuPrint NPS/IPS returns the file object for %stdin created at initialization time, which is used for reading the PostScript master. Therefore, PostScript masters should avoid doing a **closefile** on %stdin because this action closes the file object that is used by the PostScript interpreter to read the PostScript master.

Although the use of the operator **file** on %stdin is common, other PostScript operators such as **closefile** are rarely used with the standard devices. Likewise, miscellaneous file operators such as **status** and **bytesavail** return different results when output is compared among different implementations of PostScript, due to differences in the implementation of file I/O.

## Path limits

---

The LaserWriter has a limit of 1500 path segments that can be defined in the current path. Any master that exceeds this limit generates a limitcheck error.

DocuPrint NPS/IPS uses a different scheme for representing paths in its internal memory than that used by the LaserWriter. Although the maximum number of path segments is larger than the LaserWriter's (in other words, masters that print on the LaserWriter also print on DocuPrint NPS/IPS without limitcheck error), it is difficult to state the exact limit, due to the different algorithm for storing rendered shapes in DocuPrint NPS/IPS.

## PostScript VM limits

---

DocuPrint simulates PostScript virtual memory (VM) limits (default=4 MBytes). When the PostScript VM limit is reached, it sends the PostScript error message “VMe=Error” to the “JOB AND ERROR MESSAGES” page. In rare cases when real VM runs out, the printer controller sequencer is automatically restarted and the job is held for either restart or cancellation by the operator.

## SetCacheDevice

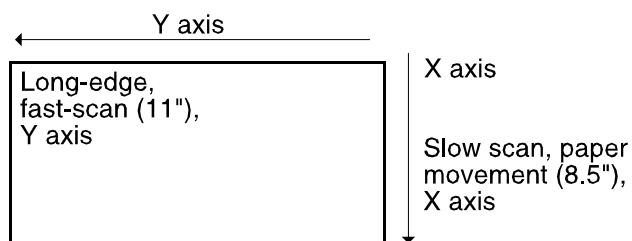
---

DocuPrint does not pad the bounding box of user-defined fonts. Emitters that depend on the PostScript interpreter for padding of the bounding box create PostScript masters that can result in blank pixels.

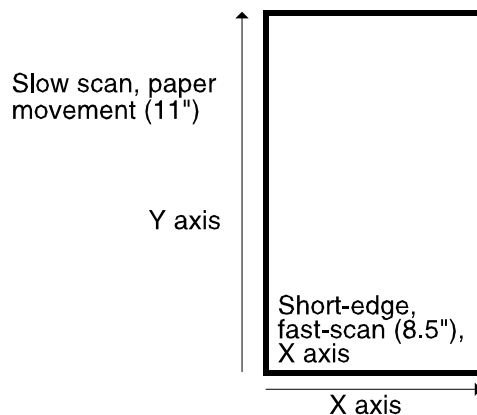
## Device orientation and setscreen operator

---

Due to differences between the device coordinate systems in DocuPrint NPS/IPS and those in the LaserWriter or a typical desktop printer, the use of the **setscreen** operator produces different results between printers.



**Figure 1-6. DocuPrint device coordinate**



**Figure 1-7. Typical desktop printer device coordinate**

## PostScript storage object size limits

---

The two main PostScript storage objects are the font cache and virtual memory (VM), which stores composite PostScript data structures such as the user and system dictionaries. The font cache, VM, and data structures in VM do not have standard sizes. Therefore, test masters that print out these object sizes are useless for testing consistency across different PostScript printers.

A small font cache size does not normally cause a PostScript master to fail; it should affect only performance.

Refer to the *PostScript Language Reference Manual* for typical memory limits for PostScript products. These limits should be considered minimum values.

## Obsolete operators—banddevice, framedevice, renderbands

---

The **banddevice**, **framedevice**, and **renderbands** operators are obsolete and should not be used. These operators were not meant to be included in page descriptions and were used only in certain implementations for device setup.

## Arc to Bezier conversion—pathforall

---

The **pathforall** operator returns the components of the current path. Path components **arc**, **arcn**, and **arcto** are converted to sequences of **curveto** components. The standard does not define the arc to Bezier (**curveto**) conversion algorithm. Therefore, different PostScript implementations may return different **pathforall** results.

*NOTE: All PostScript implementations should return the same equivalent path, but the path may be composed of a different number of **curveto** components. PostScript masters that depend on a particular arc to Bezier conversion algorithm may not be consistent across different PostScript printers.*

---

## Creating the necessary PostScript CCITT Group 3 and 4

---

You can embed an image that is compressed to CCITT group 4 specifications in the PostScript. You need to add several standard PostScript statements before the embedded image to provide the image parameters, and to properly use the FaxDecode filter.

Images use the PostScript **image**, **imagemask**, and **filter** (CCITTFaxDecode filter) operators. Refer to the *Adobe PostScript Language Reference Manual* for the proper syntax, specifically the sections on the **image** and **imagemask** operators, the FaxDecode filter, and transformation matrixes.

The source parameter of the CCITTFaxDecode **filter** operator should be set to **currentfile**, and the bit/sample parameter of the **image** operator should be 1 (for a binary image) because this method of submission uses an embedded CCITT compressed image. Either form of the **image** and **imagemask** operators can be used; however, DocuPrint does not support any functionality in the dictionary form that exceeds the functionality available through the non-dictionary form of the operators.

### Print performance related to image printing

---

Printing speed for CCITT G3/G4 documents is determined largely by the decompression and imaging time. The decompression time is correlated with the compression ratio (better compression means less time). The imaging time is correlated with the kind of scaling and rotation performed. Consequently, printing speed is dependent on the document characteristics.

Optimal performance for CCITT G3/G4 printing is obtained with a 1-to-1 scaling (for example, 300 dpi input resolution) and 0 degree rotation. DocuPrint software is optimized to provide good performance for the most frequently employed resolutions and rotations. For example: resolutions of 200 dpi [fax]; 240 dpi [IBM,etc.]; 400 dpi [extended fine fax]; and rotations of 0, 90, 180, or 270 degrees. Arbitrary scaling and/or rotation may impact performance.

Typical CCITT G3/G4 images have the fast scan direction along the short edge of the paper and DocuPrint images along the long edge of the paper. Therefore, in most cases, it is necessary to perform an image rotation of 90 degrees on the CCITT G3/G4 data.

It is beneficial to create and to store CCITT G3/G4 images with optimal scaling and rotation values for the target printer. These CCITT G3/G4 images, of reasonable compression ratios, typically print at or near rated printer speed.

## **Scan order and rotation**

---

A scanned or sampled image is defined as a rectangular array of sample values, each representing some color. In a PostScript program, such an image is represented by a sequence of sample values obtained by scanning the image rectangle in row or column order.

For any image, there are eight such sequences (four scan origin possibilities, with either a row or a column order choice for each). Any of these sequences may be used in a PostScript program as long as the image-to-user coordinate transformation matrix is prepared correctly.

## **Purpose**

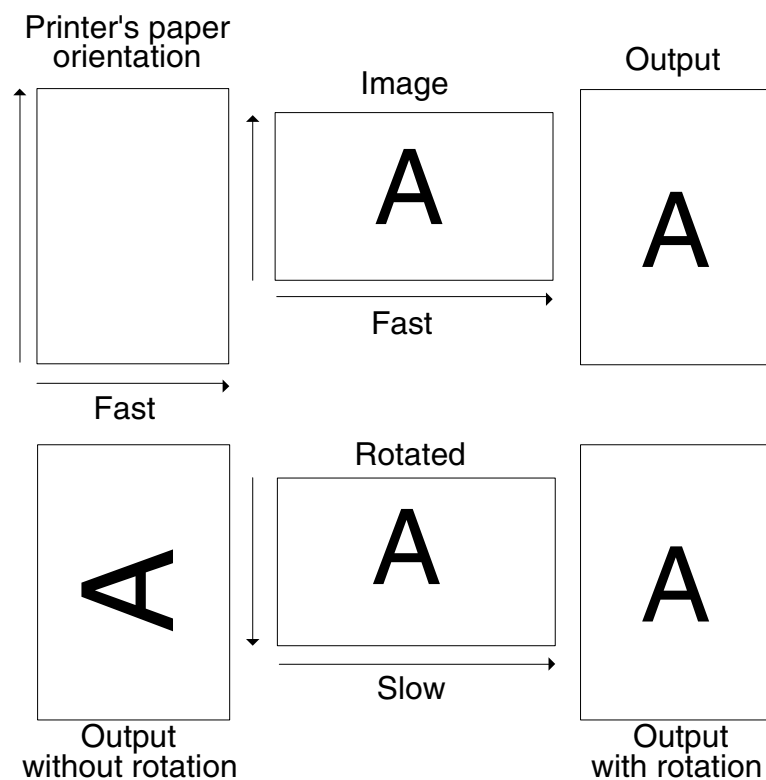
---

There is one sequence in each case that enables the fastest processing on DocuPrint NPS/IPS. You should know why there is a difference in speed depending on the order chosen, and how to choose the optimum order.

The laser scans the image area in a specific order relative to the paper to produce the output image. For DocuPrint, the fast laser scan direction is parallel to the long edge of the paper, and the slow laser scan direction is parallel to the short edge of the paper. The fast scan direction is in the direction of increasing y coordinates and the slow scan direction is in the direction of increasing x coordinates in the PostScript default user space, with the y axis corresponding to the long edge of the paper. Refer to the Adobe *PostScript Language Reference Manual* for more information.

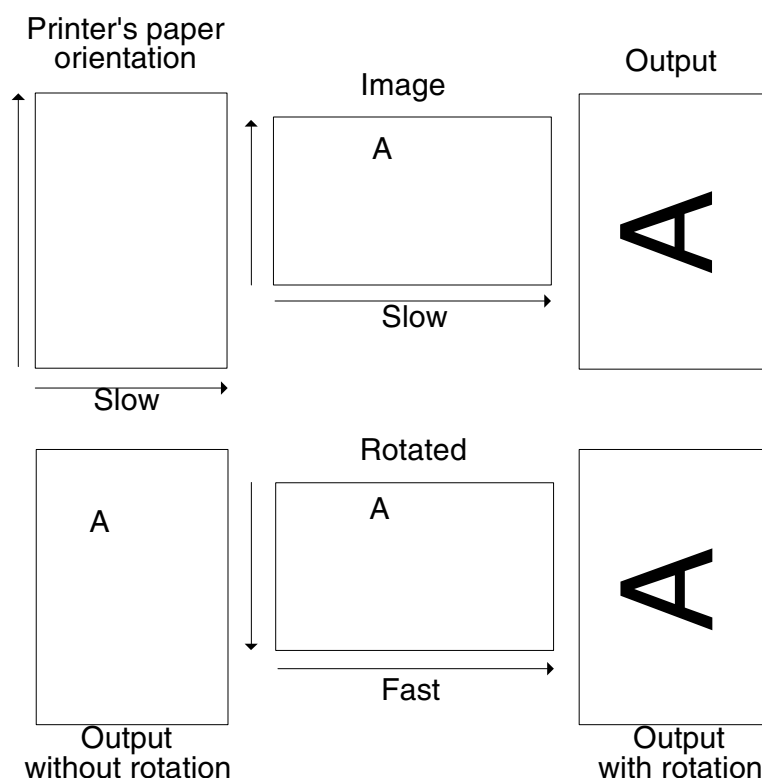
When an image is used in a document, it is placed in a specific orientation on a page. The orientation of fast and slow scan directions for the image relative to those for the entire output page is important. If the directions for the image do not match the directions for the page, extra processing must be done at the printer to reorder the image data.

The most time-consuming processing is rotation, shown in the figures below using US Letter paper size.



**Figure 1-8. Image orientation mismatch A**





**Figure 1-9. Image orientation mismatch B**

The scan order of an image relative to the content of the image is not important. It is important that the scan order of the image in the desired orientation is relative to the scan order of the page.

There are circumstances during which a transformation cannot be avoided by any ordering of image data (such as when the image sides are not parallel to the sides of the paper, or when the image is skewed), but for many cases, you can avoid a rotation by ensuring that the data in the image is in the correct order.

Ensuring optimum image data order is complicated by the fact that the rotations are not tied to the use of the **rotate** operator in a PostScript program, or to implied rotations in the image-to-user space transformation. The transformations in the figures above are automatically performed on data by DocuPrint NPS/IPS when required as part of rendering. The transformations specified in PostScript are part of a specification of the desired position of an image in terms of the default user coordinate system.

The following example shows the choice of row or column to describe an arbitrary one-dimensional slice of an image that depends on the viewpoint.

**Table 1. Image pixel sequence example**

<b>Image:</b> 00000000 00011000 00111100 01111110 00011000 00000000
<b>Sequence A</b> (origin top left, row scan order):  0 0 0 0 0 0 0 0 0 0 0 1 1 0 0 0 0 0 1 1 1 1 0 0 0 1 1 1 1 1 1 0 0 0 0 1 1 0 0 0 0 0 0 0 0 0 0 0
<b>Sequence B</b> (origin bottom right, column scan order):  0 0 0 0 0 0 0 0 1 0 0 0 0 0 1 1 0 0 0 1 1 1 1 0 0 1 1 1 1 0 0 0 1 1 0 0 0 0 1 0 0 0 0 0 0 0 0 0

Regardless of which scan order is chosen, the scan proceeds in one direction (called the fast scan direction) through each parallel slice in turn, progressing through the slices in a direction called the slow scan direction.

In sequence A, the fast scan direction is left to right and the slow scan direction is top to bottom. For sequence B, the fast scan direction is bottom to top, and the slow scan direction is right to left. The terms left, right, bottom, and top only have meaning based on the orientation of the image on the page.

When DocuPrint NPS/IPS executes a PostScript program, the principal product for each page is an image just like the images that can be incorporated into PostScript programs. The image data is transferred to the imaging hardware as a sequence of values in laser scan order.

---

### Considerations

The scan order of an image relative to the content of the image is not important. It is important that the scan order of the image in the desired orientation is relative to the scan order of the page.

There are circumstances when a transformation cannot be avoided by any ordering of image data (such as when the image sides are not parallel to the sides of the paper, or when the image is skewed), but for many cases a rotation can be avoided by ensuring that the data in the image is in the correct order.

Ensuring optimum image data order is complicated by the fact that the rotations are not tied to the use of the **rotate** operator in a PostScript program, or to implied rotations in the image-to-user space transformation. The transformations specified in PostScript are part of a specification of the desired position of an image in terms of the default user coordinate system.

DocuPrint NPS/IPS only performs an image rotation when one is required. Rotations of multiples of 90 degrees are optimized so that the impact is not too great.

Because the data is already aligned with the printing orientation, DocuPrint NPS/IPS does not perform any rotation of the image. In the default user coordinate system, a rotate operation is required.

Without the rotate operation, the PostScript specifies that the image be placed on the page with its left edge (fast scan dimension) parallel to the short edge of the paper. A 90 degree counterclockwise rotation of the coordinate system is needed to correctly specify the image orientation on the page.

It may be possible to arrange an appropriate order for the data by correctly arranging the original when a scan is performed. It is assumed that scanners produce data from a portrait scan in left-to-right (fast scan), top-to-bottom (slow scan) order.

By rotating the original 90 degrees clockwise, you can obtain data from the scanner with the fast scan direction bottom-to-top (relative to the original), and the slow scan direction left-to-right, matching the page scan directions for the correct output orientation. Alternatively, you can have the data reordered by a program before the PostScript master is created.

After determining that a certain scan orientation produces data in the optimum order for printing, you can scan an image and import it into an emitter. Some rotation may be necessary to place the image correctly.

If the emitter performs a rotation by manipulating the data, then the resulting PostScript master may have the data in the incorrect order. It is also possible that the emitter may not alter the data and change the transformations specified in PostScript so that the initial ordering is preserved.

## Summary

---

To minimize imaging time, make sure that no data transformations need to be performed at the printer. Order the image data so that the fast and slow scan directions match the output fast and slow scan directions when the image is in the correct orientation on the page. With the image data correctly ordered, arrange the PostScript transformations so that they specify the position and orientation of the image relative to the PostScript default image and user coordinate systems.

## Scan resolution and scaling

---

Just as rotation of an image is often required to produce correct output, scaling is also often required. To reduce imaging time, present the data so that scaling is not required; supply data for 300 dots per inch of output size in both dimensions.

Part of the image-to-user space transformation for any image is the scaling that takes image coordinates to physical coordinates in user space. DocuPrint splits the transformation into two parts. The **scale** operator is needed as part of the transformation from the unit square in user space (1 unit equals 1 point, which equals 1/72 inches) to the destination rectangle or parallelogram.

In the following example, the number of samples in each dimension is divided by the input resolution, giving the size of the image in inches, which is multiplied by 72 to obtain the size in points. The two computed values are used as scale factors to take the unit square to the size of the original image.

Table 1-3. **Scaling and resolution example**

<pre>/lines 3296 def  % lines in the image /bpl 2528 def   % bits per line /res 300.0 def  % spots per inch of image resolution . . . bpl res div 72 mul lines res div 72 mul scale</pre>
---

As with rotation, the image-to-user space transformation specifies the output size of the image, and internal scaling may or may not be required, depending on the data available. In the scaling and resolution example above, 300 samples per inch of output size were provided, and output scaling is not required.

Common cases of scaling are optimized to minimize the performance penalty. Refer to “Performance measurement” in the Troubleshooting Guide. Recognition of optimized cases is dependent upon precise scale values. For this reason, you should always have the scale values calculated by the PostScript code as shown in the examples. Optimized scaling works well with optimized rotations.

The following example illustrates the requirements for embedding and printing an image in a normal scan. This example uses the default PostScript user coordinate system. The image data is already in the correct order for that coordinate system, so the use of the rotate operator is not required. DocuPrint NPS/IPS performs an internal rotation of the image data in order to align it properly with the print scan ordering. Three hundred samples per square inch of output size is provided and scaling is not required.

Table 1-4. **PostScript with embedded image: normal scan order**

```
%!PS - Adobe - 3.0

% G4.example.ps
% Example using embedded CCITT group 4 (G4) data.
% Example using data in "normal" scan order, which has the fast scan
% direction left-to-right, and the slow scan direction top-to-bottom.
% Page size is roughly 8.5x11 (slightly clipped).
% Data has resolution of 300 spots per inch.
% Fast scan direction for the image is left-to-right across the page.
% Slow scan direction for the image is top-to-bottom down the page.
% This scan direction requires 90 degree internal rotation for DocuPrint.
% printers, although the PostScript code has no explicit rotation given.
/lines 3296 def % lines in the image
/bpl 2528 def % bits per line
/res 300.0 def % spots per inch of image resolution

/useMask true def % true => use imagemask, false => use image

save
```

Table 1-4. **PostScript with embedded image: normal scan order**

```
bpl res div 72 mul lines res div 72 mul scale
bpl lines useMask {false} {1} ifelse
[bpl 0 0 lines neg 0 lines]
currentfile
<<
  /Uncompressed false
  /K -1
  /EndOfLine false
  /EncodedByteAlign false
  /Columns bpl
  /Rows lines
  /EndOfBlock false
  /BlackIs1 true
>>

/CCITTFaxDecode filter useMask {imagemask} {image} ifelse
!!!! binary G4 data goes here !!!!
%%%%%%%%%% end of G4 data

restore
showpage

%%End of Example
```

The following example illustrates the requirements for embedding and printing an image in an enhanced scan. If a large number of images are to be printed, it is best to avoid the internal rotation. To do this, you must include the data in the order in which it is required, which means that the fast scan direction for the image is bottom-to-top, and the slow scan direction is left-to-right.

Table 1-5. **PostScript with embedded image: reordered data**

```

%! PS-Adobe-3.0
% G4.example.ps
% Example using embedded CCITT group 4 (G4) data.

% For optimal printing speeds, the scan data should be aligned with
% the printing orientation, which scans the long edge of the page.
% Fast scan direction for the image is bottom-to-top across the page.
% Slow scan direction for the image is left-to-right down the page.

% To get this data for a normal portrait oriented image, scan it as
% landscape with the original rotated 90 degrees clockwise. This can
% also be done as a post pass on the scan data.

% This scan direction requires no internal rotation for DocuPrint
% printers, although the PostScript code has a 90 degree rotation
% (counterclockwise) to compensate for the rotation performed in the
% scan step.

save

% Rotate to the printer orientation
clippath pathbbox % => 11x 11y urx ury
/maxY exch def
/maxX exch def
/minY exch def
/minX exch def
/centerX maxX minX add 0.5 mul def
/centerY maxY minY add 0.5 mul def
centerX centerY translate
90 rotate
centerY neg centerX neg translate

bpl res div 72 mul lines res div 72 mul scale

bpl lines useMask {false} {1} ifelse
[bpl 0 0 lines neg 0 lines]
currentfile

<<
  /Uncompressed false
  /K -1
  /EndOfLine false
  /EncodedByteAlign false
  /Columns bpl
  /Rows lines
  /EndOfBlock false
  /BlackIs1 true
>>

/CCITTFaxDecode filter useMask {imagemask} {image} ifelse

!!!! binary G4 data goes here !!!!
%%%%%%%%%% end of G4 data

restore
showpage
%%End of Example

```



Table 1-6. **Actual PostScript print**

```

%!PS-Adobe-3.0
%%Emulation: ccitt
%%LanguageLevel: 2
%%Requirements: duplex (off)
%%Requirements: numcopies (1)
%%Requirements: staples(none)
%%DocumentMedia: letter 612 792 75 white ()
%%DocumentMedia: white 612 792 75 white ()
%%EndComments
%%BeginSetup
<< /Duplex false /NumCopies 1
/PageSize [612.00 792.00]
>> setpagedevice
%%EndSetup
%%Page: 1 1
save
0.0000 792.0000 translate
612.4800 -792.0000 scale
/do_image { currentfile 80 string readline pop pop image { currentfile read { 37 eq { exit} if } { exit
} ifelse } loop } def
2552 3300 1
[2552 0 0 3300 0 0]
currentfile << /K -1 /Columns 2552 /Rows 3300 /BlackIs1 false >> /CCITTFaxDecode filter
do_image
%%CCITT G3/G4 Data

=====
CCITT G3/G4 Data
=====

%%%%%%%%%%%%%%
restore

%%PageTrailer
showpage

```



---

## 2. PCL 5

The DocuPrint NPS/IPS system supports the following functions for source documents:

- On monochrome systems, printing of PCL 5e masters containing PCL commands, HP-GL/2 commands, fonts, and data to be printed.
- On highlight color models, printing of PCL 5e monochrome or PCL 5c color masters containing PCL commands, HP-GL/2 commands, fonts, and data to be printed.

The DocuColor 2060 NPS/IPS supports only PCL5e monochrome printing. It does not support PCL 5c color printing.

Jobs can be submitted using the HP LaserJet 4 or LaserJet 4Si print drivers for monochrome printing with PCL 5e, or the HP Color LaserJet for highlight color printing with PCL 5c.

DocuPrint NPS/IPS supports most HP PCL commands, features, and fonts, including those for PCL (the printer control language) and HP-GL/2 (the vector graphics language). The implementation of PCL 5e on DocuPrint NPS/IPS emulates the HP LaserJet 4. The implementation of PCL 5c on DocuPrint NPS/IPS emulates the HP Color LaserJet. This chapter provides specific information about the support available.

Refer to your Hewlett Packard PCL 5 printer language publications for more information on PCL.

There is a DocuPrint NPS/IPS **Change PCL Parameters** command that allows you to configure your PCL printing environment. Refer to the *Guide to Configuring and Managing the System*, “Utility commands” for more information.

*NOTE: In PCL commands referenced in this chapter, the sign # is replaced by a number.*

---

## Maintaining image quality

---

DocuPrint 4050, 4090, 4850, and 4890 NPS/IPS provide a resolution of 300 dots per inch (dpi), and DocuPrint 92C, 96, 4635, 2060, and 180 NPS/IPS provide resolution of 600 dots per inch. If your PDL contains scalable fonts or simple vector graphics and line art generated at 600 dpi, the differences in printing at 300 or 600 dpi are subtle. However, if your PDL contains bitmaps with a resolution of 600 dpi, printing at 300 dpi causes a degradation in image quality. To preserve image quality, regenerate the bitmaps at the printer resolution of 300 dpi or regenerate them as simple line art. The 600 dpi printers can accept jobs with resources in either 300 or 600 dpi.

*NOTE: Though you can print documents containing 300 dpi bitmaps on a 600 dpi printer, there can be an impact on performance as the printer processes the image for 600 dpi printing.*

*NOTE: For PCL jobs, DocuPrint NPS/IPS supports 300 and 600 dpi printing only.*

To obtain the best image quality on the DocuPrint NPS/IPS, choose the correct printer setup attributes when generating a document on your personal computer.

Refer to the “Appearance Consistency” section in the “PostScript” chapter for more information on resolution.

The following table shows the recommended printer settings in order of preference:

- The recommended choice is listed in the 300 dpi vector graphics settings column. The print quality of an object that is created in HP-GL/2 mode is very consistent. Because the image is not a bitmap, the data is not skewed.
- The second choice is listed in the 600 dpi vector graphics settings column. Because you are using an image that is not a bitmap, the data will not be skewed and the differences would be difficult to detect.

- The last choice is listed in the 300 dpi raster graphics settings column. The print quality deteriorates if the image is a rasterized bitmap, which leaves some white space where the bits are not formulated.

**Table 2-1. PCL settings**

<b>Setting</b>	<b>300 dpi vector graphics</b>	<b>600 dpi vector graphics</b>	<b>300 dpi raster graphics</b>
Resolution	300	600	300
Page protection	OFF	OFF	OFF
Orientation	Portrait	Portrait	Portrait
Memory	2	2	2
Option... Graphics mode	HP-GL/2	HP-GL/2	RASTER
Option... Graphics quality	HIGH	HIGH	HIGH
Option... Halftoning	Photographic images	Photographic images	Photographic images
Option... Print quality	Printer default	Printer default	Printer default

Keep the following points in mind when preparing your images and setting print attributes:

- Page protection, orientation, and memory are not values that affect the image quality.
- Setting the graphics quality to HIGH allows for the best possible output.
- Setting print quality to printer default allows the printer to determine the best match for the job.
- The DocuPrint 92C NPS/IPS can produce a single-pixel line. However, because of the many variables involved, such as print density settings and line placement on the page, Xerox cannot guarantee the quality of these single-pixel lines. Specific questions regarding single-pixel line printing for your application should be directed to your Xerox service engineer.

---

## PCL 5 font support

---

DocuPrint supports most PCL 5 fonts. Table 1-2 lists the internal, HP LaserJet compatible fonts installed with the system:

- One bitmap font
- 45 scalable fonts:
  - 35 Intellifont FAIS typefaces
  - 10 TrueType typefaces

PCL fonts may be downloaded within a PCL job.

*NOTE: The DocuPrint NPS/IPS PCL 5e and 5c interpreters support use of downloaded PCL fonts or macros by setting the proper parameter using the **Change PCL Parameters** command. Refer to the *Guide to Configuring and Managing the System* chapter “Setting system defaults.”*

PCL Intellifont FAIS typefaces and PCL bitmap fonts may be permanently installed using the font installation utility.

PCL bitmap fonts must be in the PCL soft font format for HP LaserJet printers. A PCL bitmap font contains a font header and a set of character definitions. The PCL format 0 (zero) and format 20 font headers are supported for PCL bitmap fonts. Refer to your Hewlett Packard PCL 5 printer language publications for details on the font header and character descriptions.

Installation of other font types is not supported.

For MICR systems, a special DocuPrint NPS/IPS MICR font floppy is available. It contains the PCL bitmap font named E13B required for MICR applications. See the *Guide to Configuring and Managing the System* chapter on “MICR Printing” for more information. Refer also to the *Generic MICR Fundamentals Guide*.

*NOTE: Fonts installed using the “Install PCL Fonts from Floppy” command cannot be selected by font ID. They must be selected by characteristics.*

*Only fonts installed using this command can be deleted using the Delete Fonts command. PCL fonts installed with the system software cannot be deleted.*

Refer to the *Guide to Configuring and Managing the System* for information on loading fonts from floppy and from CD-ROM.

**Table 2-2. PCL 5 fonts installed with NPS/IPS software**

<b>Intellifont</b>	<b>Typeface</b>
CG Times	Medium, Italic, Bold, Bold Italic
Univers	Medium, Italic, Bold, Bold Italic
Univers Condensed	Medium, Italic, Bold, Bold Italic
Courier	Medium, Italic, Bold, Bold Italic
Letter Gothic	Medium, Italic, Bold
Albertus	Medium (semi-bold), Extra Bold
Antique Olive	Medium, Italic, Bold
Clarendon Condensed	Bold
Coronet	Medium Italic
Garamond	Antiqua (Medium), Kursiv (Italic), Halbfett (Bold), Kursiv Halbfett (Bold Italic)
Marigold	Medium
CG Omega	Medium, Italic, Bold, Bold Italic
<b>TrueType</b>	<b>Typeface</b>
Arial	Medium, Italic, Bold, Bold Italic
Times New Roman	Medium, Italic, Bold, Bold Italic
Symbol	Medium
Wingdings	Medium
<b>Bitmap</b>	<b>Typeface</b>
Line Printer	16.67 pitch/8.5 point medium

---

## PCL command support

---

The following sections explain the differences in processing and how DocuPrint NPS/IPS interprets various PCL commands.

### PJL commands

---

DocuPrint NPS/IPS does not support Printer Job Language (PJL) commands embedded within a job. When PJL commands are embedded within a PCL job, the job prints but the PJL commands are ignored.

*NOTE: PJL commands specifying the resolution of the job are ignored. This can cause a PCL job to be printed at an incorrect resolution. Use the DefaultResolution option or the virtual printer to specify the correct resolution.*

*NOTE: PCL files that contain PJL commands or Xerox Job Tickets in the middle of the files due to concatenation will not print. Such PCL files can also be created by use of certain applications such as Microsoft Access or Binder.*

### PCL Copy command

---

DocuPrint behavior with the PCL Copy command (<ESX>&l#X) differs slightly from the behavior of the HP LaserJet 4si or Color LaserJet. This section describes these differences.

If a document is printed as simplex, the behavior of the HP LaserJet 4si or Color LaserJet and the DocuPrint NPS/IPS is nearly identical, except that DocuPrint collates the copy output when one copy command is used to print copies of multiple output pages.

The following is an example for a 9 page document with a “3 copies” command on page 2, a “2 copies” command on pages 6 and 7, and a “1 copy” command on page 8:

**Table 2-3. PCL Copy command example**

DocuPrint NPS/IPS collated output - simplex		HP LaserJet output - simplex	
Sheet 1	PAGE 1, simplex command	Sheet 1	PAGE 1, simplex command
Sheet 2	PAGE 2, <ESC>&l3X (3 copies)	Sheet 2	PAGE 2, <ESC>&l3X (3 copies)



**Table 2-3. PCL Copy command example (Continued)**

<b>DocuPrint NPS/IPS collated output - simplex</b>		<b>HP LaserJet output - simplex</b>	
Sheet 3	PAGE 3, no copy command	Sheet 3	PAGE 2, <ESC>&l3X (3 copies)
Sheet 4	PAGE 4, no copy command	Sheet 4	PAGE 2, <ESC>&l3X (3 copies)
Sheet 5	PAGE 5, no copy command	Sheet 5	PAGE 3, no copy command
Sheet 6	PAGE 2, <ESC>&l3X (3 copies)	Sheet 6	PAGE 3, no copy command
Sheet 7	PAGE 3, no copy command	Sheet 7	PAGE 3, no copy command
Sheet 8	PAGE 4, no copy command	Sheet 8	PAGE 4, no copy command
Sheet 9	PAGE 5, no copy command	Sheet 9	PAGE 4, no copy command
Sheet 10	PAGE 2, <ESC>&l3X (3 copies)	Sheet 10	PAGE 4, no copy command
Sheet 11	PAGE 3, no copy command	Sheet 11	PAGE 5, no copy command
Sheet 12	PAGE 4, no copy command	Sheet 12	PAGE 5, no copy command
Sheet 13	PAGE 5, no copy command	Sheet 13	PAGE 5, no copy command
Sheet 14	PAGE 6, <ESC>&l2X (2 copies)	Sheet 14	PAGE 6, <ESC>&l2X (2 copies)
Sheet 15	PAGE 6, <ESC>&l2X (2 copies)	Sheet 15	PAGE 6, <ESC>&l2X (2 copies)
Sheet 14	PAGE 7, <ESC>&l2X (2 copies)	Sheet 14	PAGE 7, <ESC>&l2X (2 copies)
Sheet 15	PAGE 7, <ESC>&l2X (2 copies)	Sheet 15	PAGE 7, <ESC>&l2X (2 copies)
Sheet 16	PAGE 8, <ESC>&l1X (1 copy)	Sheet 16	PAGE 8, <ESC>&l1X (1 copy)
Sheet 17	PAGE 9, no copy command	Sheet 17	PAGE 9, no copy command

In addition, if the stapling attribute is set for the document on a DocuPrint equipped with a High-Capacity Stitcher/Stacker, pages 2, 3, 4, and 5 will be stapled together on all copies but pages 6 and 7 will not be stapled together because the copy command is given explicitly on each of pages 6 and 7. When the PCL Copy command is used on the DocuPrint, all of the pages cannot be stapled together automatically.

If the document is printed as duplex (refer to the “PCL Duplex command” section), the behavior differences between the HP LaserJet 4si and the DocuPrint are greater. The simplex issue in which DocuPrint copies are collated and HP LaserJet 4si copies are uncollated also applies to duplex printing. Additionally, the DocuPrint will blank the back side of the sheet and pull a new sheet if the copy command occurs on what is normally the back side of a sheet. However, the HP LaserJet 4si does not pull a new sheet of paper when the copy command appears on the back side of a sheet. Instead, the HP LaserJet 4si will place multiple copies of both the front and back sides of that sheet into the output, even though multiple copies are not requested for the front side.

The following is an example of the same job as shown above, printed as duplex:

**Table 2-4. Duplex PCL Copy command example**

DocuPrint NPS/IPS collated output - duplex		HP LaserJet 4si output - duplex	
Sheet 1	PAGE 1, duplex command	Sheet 1	PAGE 1, duplex command
Sheet 2	PAGE 2, <ESC>&l3X (3 copies)		PAGE 2, <ESC>&l3X (3 copies)
	PAGE 3, no copy command	Sheet 2	PAGE 1, duplex command
Sheet 3	PAGE 4, no copy command		PAGE 2, <ESC>&l3X (3 copies)
	PAGE 5, no copy command	Sheet 3	PAGE 1, duplex command
Sheet 4	PAGE 2, <ESC>&l3X (3 copies)		PAGE 2, <ESC>&l3X (3 copies)
	PAGE 3, no copy command	Sheet 4	PAGE 3, no copy command
Sheet 5	PAGE 4, no copy command		PAGE 4, no copy command
	PAGE 5, no copy command	Sheet 5	PAGE 3, no copy command
Sheet 6	PAGE 2, <ESC>&l3X (3 copies)		PAGE 4, no copy command
	PAGE 3, no copy command	Sheet 6	PAGE 3, no copy command
Sheet 7	PAGE 4, no copy command		PAGE 4, no copy command
	PAGE 5, no copy command	Sheet 7	PAGE 5, no copy command
Sheet 8	PAGE 6, <ESC>&l2X (2 copies)		PAGE 6, <ESC>&l2X (2 copies)
Sheet 9	PAGE 6, <ESC>&l2X (2 copies)	Sheet 7	PAGE 5, no copy command
Sheet 10	PAGE 7, <ESC>&l2X (2 copies)		PAGE 6, <ESC>&l2X (2 copies)
Sheet 11	PAGE 7, <ESC>&l2X (2 copies)	Sheet 8	PAGE 7, <ESC>&l2X (2 copies)
Sheet 12	PAGE 8, <ESC>&l1X (1 copy)		PAGE 8, <ESC>&l1X (1 copy)

**Table 2-4. Duplex PCL Copy command example (Continued)**

DocuPrint NPS/IPS collated output - duplex		HP LaserJet 4si output - duplex	
	PAGE 9, no copy command	Sheet 9	PAGE 9, no copy command

As with simplex, if the stapling attribute is set for the document on a DocuPrint equipped with a High-Capacity Stitcher/Stacker, pages 2, 3, 4 and 5 are stapled together on all copies, but pages 6 and 7 are not stapled together because the copy command is given explicitly on each of pages 6 and 7.

### **PCL Duplex commands**

The following table summarizes the behavior of a selection of PCL Duplex commands (<ESC>&l#S and <ESC>&a#G) with respect to blanking the back-sides of sheets.

*NOTE: These commands force new sheets to be pulled regardless of the value of the PlexChangesDynamic attribute.*

**Table 2-5. PCL Duplex commands**

	DocuPrint NPS/IPS (collated)	HP LaserJet 4si
Next-side command (<ESC>&a0G)	no new sheet	no new sheet
Front-side command (<ESC>&a1G)	forces new sheet	forces new sheet
Back-side command (<ESC>&a2G)	no new sheet	no new sheet
Simplex command (<ESC>&l0S)	forces new sheet	forces new sheet
Duplex command (<ESC>&l1S)	forces new sheet	forces new sheet
*Feed from upper tray (<ESC>&l1H)	forces new sheet	forces new sheet
*Feed from manual feeder (<ESC>&l2H)	forces new sheet	forces new sheet
*Feed from lower tray (<ESC>&l4H)	forces new sheet	forces new sheet
Number of copies command (<ESC>&l#X)	forces new sheet	no new sheet
Page Size command (<ESC>&l#A)	forces new sheet	forces new sheet

\*DocuPrint implements the Paper Source command by corresponding the number specified in the command to the correlating media in the media list of the Media document attribute. Therefore, the "Feed from upper tray" command specifies the first media in a media list in the document attribute and the "Feed from lower tray" command specifies the fourth media in a media list in the document attribute. Refer to the "PCL Paper Source command" section for more information.

For information on **mixed plex jobs**, see the chapter "Mixed plex applications" in the *Guide to Managing Print Jobs*.

---

### PCL Job Separation command

---

PCL uses the Job Separation command (<ESC>&l1T) to separate distinct portions of the output by offsetting a set of sheets in the output from a succeeding set of sheets.

There is a short description of the PCL Job Separation command in the HP documentation. This command is only supported on the HP LaserJet III Si. HP recommends that the Job Separation command be included at the end of each job. There is no mention of possible side effects when this practice is not followed.

This PCL Job Separation command description is based on the printing behavior observed on the HP LaserJet III Si. Job Separation toggles the output tray offset. It is primarily a printer hardware function. There were no observed page processing effects.

The PCL Job Separation command has these major features:

- The Job Separation command operates independent of all other PCL commands. This command is the only PCL command that changes the output tray offset.
- The Job Separation command toggles the output tray offset. The output tray offset is switched between two positions. This command does not set the output tray offset to a specific position.
- The Job Separation command sends a hardware command to toggle the output tray offset that is executed immediately.
- The Job Separation command takes effect on the current page that is being processed. It will be observed when this page is ejected.

- The output tray offset is retained between print jobs. This offset consistency cannot be guaranteed since there are ways to change the output tray offset between print jobs.

When a PCL Job Separation command is encountered on a page, DocuPrint NPS/IPS will offset that page from the previous page. If the job is printed duplex and the command is encountered on the backside of the page, DocuPrint NPS/IPS will not offset the current page. In this case, the next page will be offset. There are other conditions that result in different sets of paper being offset in the output tray.

The DocuPrint NPS/IPS currently provides consistent support of the PCL Job Separation command when it appears at the beginning of the print job section that should be offset. There are several recommendations to consider for the use of the PCL Job Separation command in DocuPrint NPS/IPS printing environments:

- Use DocuPrint NPS/IPS facilities for offsetting at the print job level.

Do not rely on the use of the Job Separation command at the end of every PCL job. Although this is the HP recommendation, a consistent offsetting of print jobs cannot be guaranteed. For example, actions such as resetting the HP LaserJet IIISi at the printer change the output tray offset. The printer does not keep track of the offset tray position under all conditions.

- The Job Separation command can be used within a print job to offset sections of the print job. (This feature is sometimes referred to as creating report offsets within a print job.) The recommended job structure is to insert PCL commands before the section that should be offset.

The sequence of PCL commands is a Printer Reset command, other PCL setup commands, and the Job Separation command. This PCL setup produces consistent results on the HP LaserJet IIISi and the Xerox DocuPrint NPS/IPS.

- Do not place the Job Separation command at the end of a page that starts a section with a new output tray offset. There are significantly different results when printing the same print job on the HP LaserJet IIISi and the Xerox DocuPrint NPS/IPS.
- Use a PCL copy count of 1 (one).

Inconsistent offsetting takes place when multiple copies are specified. Sheets in the printer output are not stacked with the desired offset.

### **PCL media selection**

---

There are three ways to specify media for a given page. You can use the PCL Page Size command (<Esc>&l#A), the PCL Paper Source command, or you can use the DocuPrint NPS/IPS ExceptionPages attribute.

### **PCL Paper Source command (tray assignment)**

---

PCL uses the Paper Source command (<Esc>&l#H) to specify the tray definition (# is a number from 0-6).

0=don't change paper source

1=feed paper from printer specific tray

2=feed paper from manual input

3=feed envelope from manual input

4=feed paper from lower tray

5=feed paper from optional paper source

6=feed paper from optional envelope

*NOTE: These are the documented values of HP printers. However, the DocuPrint NPS/IPS changes paper by media definition and not by tray definition.*

These numbers map directly to the media list set for the Media document attribute on the virtual printer or in the job submission so that if:

Media List: A4::blue,A4::white,A4::green,A4::yellow

then:

Esc&l1H selects A4:: blue

Esc&l2H selects A4:: white

Esc&l3H selects A4:: green

Esc&l4H selects A4:: yellow

“Media list” is the list of media assigned to the Media document attribute.

*NOTE: Refer to the Xerox DocuPrint NPS/IPS Guide to Managing Print Jobs for information on using virtual printers to create media lists.*

Tray assignments are independent so that if the trays are set as:

Tray 1: A4::white

Tray 2: A4::yellow

Tray 3: A4::blue

Tray 4: A4::green

then:

Esc &l1H selecting A4::blue will use Tray 3

Esc &l2H selecting A4::white will use Tray 1

Esc &l3H selecting A4::green will use Tray 4

Esc &l4H selecting A4::yellow will use Tray 2

When Esc&l0H is used at the start of the job, then media 1 is used, otherwise it uses the media previously selected.

*NOTE: If an HP LaserJet driver is used that does not support certain media (for example, manual or envelope feeders), it may be difficult to specify that media in the media list.*

### **Precedence in selecting media**

---

When more than one method of specifying media is used for the same page, the order of precedence used by the system to select the medium is:

1. ExceptionPages attribute
2. PCL Paper Source command
3. PCL Page Size command

If a given page has a media exception (that is, the ExceptionPages attribute) associated with it, the attribute determines the medium that the page uses, regardless of whether there is a Paper Source (tray selection) or Page Size specification.

If a given page does not have a media exception, but has both the Page Size and Paper Source specified, then the medium specified by the Paper Source command is checked against the media list. If the medium is of the appropriate size, it is used. If it is not of the appropriate size, then the Paper Source command specification is ignored.

If a given page has only a Page Size specification, it is used to identify the required medium in the media list. If no exact match is available, the medium closest in size is used. If there is more than one medium of the chosen size (differing in color or weight), the one appearing first in the media list is used.

If a given page contains only a Paper Source specification, this determines the medium for the page. The medium used is the  $n$ th medium in the media list, where  $n$  is the tray that has been specified in the Paper Source command. If the number of the tray specified in the Paper Source command is greater than the number of media in the media list, then the paper source command is ignored.

If none of three methods of specifying media is available for a given page, then the medium specified for the previous page is used, with two exceptions: an ExceptionPages specification is not used, and if the page is a first page, then the first medium in the media list is used.

For duplex jobs, the medium for the front side of a given sheet is the medium used for the sheet, regardless of the medium selected for the back side.

### **PCL Output Bin command**

---

PCL uses the Output Bin command (<Esc>&l#G) to select an output bin (where # is replaced by a number):

- When # = 1, then the Stacker Group will be 1.
- When # = 2, then the Stacker Group will be 2.

*NOTE: The NPS/IPS OutputBin attribute, if specified, overrides the PCL Output Bin command.*

### **PCL 5 coding recommendations**

---

When creating PCL 5 jobs, there are some general recommendations for optimal performance:

- Use PCL Fill Rectangle Area for horizontal and vertical lines and rectangles.
- Use HPGL for other synthetic graphics (curves, diagonal lines).



- Minimize raster usage (avoid translating fonts or lines into raster data); on fast (100Mbit) networks, send uncompressed data.
- Maximize use of internal scalable fonts.
- Define logos as fonts rather than raster graphics.
- Rotate rasters to align with printer edge feed, using the Raster Graphics Presentation Mode, if possible.
- Minimize switching between HPGL and PCL modes.
- Download resources outside of macros.

---

## PCL 5c support

---

This section provides specific information related to the DocuPrint NPS/IPS implementation of PCL 5c on the 4850, 4890, 92C. For more information on PCL 5c, see the *HP PCL 5 Color Technical Reference Manual*.

The DocuPrint NPS/IPS implementation of PCL 5c is tuned for optimal print quality on the 4850, 4890, 92C highlight color printers.

*NOTE: If the same document is printed with PostScript and with PCL 5c, the highlight color may not match exactly.*

When the DocuPrint NPS/IPS PCL 5c interpreter is installed on the highlight color printers, the decomposer can switch between highlight color and monochrome modes dynamically on a per-job basis. You can specify monochrome printing (that is, Executive Black mode) by setting the highlight color attribute to black. The PCL 5e interpreter is used for monochrome mode.

In general, PCL 5c jobs can be expected to have much larger file sizes than PCL 5e jobs because of the nature of the PCL 5c driver. This is not a function of DocuPrint NPS/IPS.

The default highlight color rendering algorithm, Automatic, is not recommended for use with PCL 5c jobs. Presentation and Pictorial rendering algorithms produce the best appearance. The ColorToHighlight algorithm is also supported for PCL 5c.

For PCL 5c jobs, the Thicken attribute has no effect.

User-defined dither patterns are ignored. The default highlight color dither pattern is used instead.

For highlight color printers, the NPS/IPS implementation of PCL5c is designed for a two-color (highlight color) context, whereas PCL logical operators are designed to work in a four-color CMYK/RGB context. As a result, a complex mapping model is employed to translate four colors into two-color output. In certain cases with logical operators, the correct mapping may be mathematically impossible, resulting in unexpected output.

### **PCL 5c coding recommendations**

---

When creating PCL 5c jobs, there are some color-related commands you should be aware of for optimal performance and print quality.

- Use the Simple Color command whenever possible; when greater color palette control is required, use Configure Image Data (short form) with either Device RGB or Device CMY color space.
- For defining gray shade fills:
  - Use RGB color values which provide a wider range of gray shades.
  - Alternatively, use the Built-in shade fills (Fill Rectangle Area with shade fill command or HPGL FT10); this is less than optimal.
- When using Configure Image Data (short form), use the Direct by Plane pixel encoding mode for optimal performance. The Direct by Pixel and Indexed by Pixel are the second and third recommended choices, respectively.
- Avoid using the following commands:
  - Logical Operation and HPGL MC
  - Fill Rectangle Area with user-defined pattern fill and HPGL FT11

### **PCL 5c functions not applicable to DocuPrint NPS/IPS**

---

The following PCL 5c functions are not applicable to NPS/IPS printers and, therefore, it is recommended that they not be included in PCL 5c jobs:

- Halftone Render Algorithms
- Download Dither Matrix

- Gamma Correction
- Color Lookup Tables
- Viewing Illuminant
- Driver Configuration

The following PCL 5c functions are not fully functional on the NPS/IPS printers and their usage is discouraged.

- Logical Operation – The highlight color print model is not fully compatible with the complete set of 256 logical operations. Use of logical operators, which either negate (NOT) or exclusive-or (XOR) the Destination or Texture, such as 90, will result in incorrect color output.
- HPGL Merge Control - This is the HPGL equivalent of the Logical Operation command.

### **Driver recommendations for PCL 5c**

---

This section identifies drivers that are recommended for the Windows 95 and the Windows NT 4.0 environments.

For Windows 95, the HP Color LaserJet 5/5M PCL 5C driver, version vF2.2 is recommended for the 4850 and 4890. For the driver Color Setup option, select Manual mode with the No Adjustment option to allow using device RGB Color Space in the document. An alternative driver for this environment is the Xerox DocuPrint C55 driver.

For Windows NT 4.0, the HP Color LaserJet 5/5M PCL 5C driver is recommended for the 4850 and 4890. For the driver Color Setup option, select Manual mode with the No Adjustment option to allow using device RGB Color Space in the document. For Graphic Mode, select HP-GL/2 mode for all the graphics in the document.

For the 92C printer, the recommended driver is the HP Color Laser Jet 4500. It is available from [www.hp.com](http://www.hp.com).

**Limitations for custom PCL 5c drivers**

---

If you write your own PCL 5c drivers, the following are recommended restrictions:

- Do not use Logical Operations that negate (NOT) either the Texture or Destination.
- Do not use Logical Operations that involve using XOR for Destination or Texture.
- Avoid using Logical Operation 136 in standalone mode. PCL 5C highlight color has been tailored to accommodate a special way of using the Logical Operator sequence (136, 90) generated by some applications. Therefore, using Logical Operation 136 may cause the output to print incorrectly.

---

## 3. VIPP

Variable Data Intelligent PostScript PrintWare, or VIPP, (formerly XGF) provides a facility for the easy integration of data, forms, and images from host applications to the PostScript environment.

VIPP offers the following benefits:

- Allows imaging and data processing applications to produce an easy-to-implement data stream that is PostScript-compliant.
- Provides access to optimal performance.
- Keeps applications independent of PostScript and printer evolution.
- Brings all the power of PostScript to production printing without requiring a heavy investment in PostScript training.
- Provides a cost effective solution for continuing to print host-based applications.

VIPP software is installed with the standard DocuPrint NPS/IPS system and provides PostScript macro definitions (XGF commands) to the PostScript interpreter. Normal PostScript jobs print as always, while jobs that include VIPP commands can take advantage of the power offered by VIPP.

The VIPP package provides the following two modes of operation:

- Native mode—Provides a set of easy-to-use operators bundled as a PostScript program that enables the quick development of host-based production printing applications.

- Line mode—Enables formatting and extensive print job control of host-supplied ASCII or EBCDIC data with minimal change for host applications. Line mode commands are modeled after Xerox LCDS commands, coupled with a growing list of third party tools available on the market today, enables the simple migration of LCDS print jobs to the PostScript environment. This capability is often needed when you are downsizing from a centralized IM shop to a client/server architecture. An adaptation to Line mode also allows formatting and job control of field delimited database files supplied from multiple hosts.

---

## Functionality

---

In native mode, an application program uses the following operators to control how data is placed on a page:

- Orientation (P, L, I, J)
- Font selection (scaling, color/gray level, and outline)
- Absolute placement coordinates
- Text alignment (left, right, and center)
- Rotation to any angle
- Linespacing
- PostScript forms merge (several per page; may be produced by virtually any PostScript emitter)
- Image merge (including TIFF header interpretation, scaling, rotation, and CCITT Group 3 and 4).
- Decomposition Service forms merge.

In line mode, you must place a job description ticket (JDT) call at the start of the data to initiate VIPP in line mode. The JDT describes the layout of the printed job and includes the following operators:

- Orientation
- Margins
- Characters per line (CPI) and lines per page (LPI)
- Font selection (including automatic scaling to required CPI/LPI)
- Font indexing

- Automatic frame and zebra generation
- Form merge
- Page numbering
- Cycle form (printing of data multiple times with different forms)
- Cycle feed (printing of data multiple times on different paper).

---

## Operating environment

---

VIPP is not a converter that takes source or other PDLs and translates them to PostScript. It is contained in the PostScript decomposer as a set of subroutines callable from within the PostScript language. VIPP is independent of the printer and level of PostScript being used, and supports the entire DocuPrint NPS/IPS family of products.

VIPP is supplied as a PostScript prologue that is loaded into the interpreter as part of startup. Each copy of the dictionary is licensed to a particular printer and functions only on that printer.

DocuPrint NPS/IPS supplies a demonstration license that allows printing of VIPP documents up to 200 pages in length, without a specific printer license. A license is required for longer documents.

---

## VIPP line mode extension (XGFNub)

---

The VIPP line mode extension (formerly called XGFNub) is a DocuPrint NPS/IPS (Version 1.4 and higher) extension that enables users to execute VIPP commands at the start of any VIPP document.

Multiple sets of commands may be enabled by the DocumentFormat attribute. To invoke a command set named xxx, just set the DocumentFormat attribute to “XGF/xxx.”

The following is an example of the extension used to execute the VIPP command (job1.jdt) STARTLM (command set named “job1”) at the front of the main data file:

1. Enter the following in the job 1 file `/usr/xgfc/mislib/job1.ini`:

```
%!  
% custom.ini  
(job1.jdt) STARTLM
```

2. Send the main data file to DocuPrint NPS/IPS to set the DocumentFormat attribute to “XGF/job1.” Refer to your DocuPrint NPS/IPS documentation for other methods to set the DocumentFormat attribute, (such as by using a virtual printer or by the `lpr -C` switch).

*NOTE: New sets of commands can be installed at any time by creating new files called `/usr/xgfc/mislib/xxx.ini`, where `xxx` is the name of the command set. The extension `.ini` is mandatory. Use all lower-case characters in place of `xxx`.*



---

## 4. TIFF

The DocuPrint NPS/IPS implementation of TIFF (Tagged Image File Format) is based on the Adobe TIFF specification. It supports the most commonly used TIFF features. For information, refer to the following publications.

- *Adobe TIFF specification, Revision 6.0*, June 3, 1993
- *Draft TIFF Technical Note 2*, March 17, 1995, Replacement TIFF/JPEG specification
- *Adobe PageMaker 6.0 TIFF Technical Notes*, September 14, 1995
- *TIFF-FX, RFC 2301*, November 1, 2000
- If you need information about support for specific TIFF features, contact your Xerox representative.

**Job submission** If the job submission method does not explicitly support TIFF as a document format, submit the files to a virtual printer with the DocumenFormat attribute set to TIFF.

**Orientation** The order in which the media dimensions are specified in the TIFF file has no impact on the resulting orientation. Use the Orientation attribute to control whether the logical top of the TIFF image is oriented along the long edge (landscape) or short edge (portrait).



## Symbols

#copies operator 1-9

%stdin 1-31

.pfb extension 1-6

## A

additional metrics entry 1-3

Adobe

    Type Manager 1-6

AppleTalk 1-17

arc-to-bezier conversion 1-33

ASCII input 1-22

asynchronous communications 1-18

## B

bezier 1-33

binary input 1-22

bitmaps 1-4, 1-14

bounding box padding 1-32

break page 1-18

## C

CCITT

    printing speed 1-34–1-35

    specifications 1-34

CE mark xi

character

    codes 1-6

    illegal 1-18–1-20

characteristics, image 1-15

charpath operator 1-21

Chinese fonts 1-3

collating, PCL Copy command 2-6

commands

    control-D 1-17–1-22

    control-Z 1-18–1-22

    Duplex, PCL 2-9

    LCDS 3-2

    PCL Copy 2-8–2-9

    PCL Paper Source 2-12

    PJL 2-6

    sets, installing 3-4

communications, asynchronous 1-18

components, curveto 1-33

compression

    quality 1-34

consistency

    font 1-16

control-D command 1-17–1-22

control-Z command 1-18–1-22

conventions xvi

conversion

    arc-to-bezier 1-33

    LCDS commands 3-2

coordinates

    device 1-1–1-2, 1-32

    user 1-1–1-2, 1-39–1-41

copypage 1-16

current transformation matrix (CTM) 1-1

curves 1-25, 1-33

curveto components 1-33

## D

data

    flushing 1-21

    placement operators 3-2–3-3

data base mode 3-2

    See also line mode

default

    font 1-3

    user coordinate system 1-39–1-41

definitions, nonstandard 1-11–1-12

delimiters, EOF 1-18–1-20

delimiting PostScript jobs 1-17–1-18

demo mode, VIPP 3-3

devices

    coordinates 1-1–1-2, 1-32

    dependent features 1-29–1-33

dictionary operators

    Execution 1-11

    IdleTime 1-10

    Printer 1-10–1-11

    Server 1-9

    Status 1-10

- System 1-8
- User 1-8–1-9
- documentation xvii
- double byte fonts 1-3
- drivers, PCL 5c 2-17
- dry ink distribution 1-14
- Duplex commands, PCL 2-9
- duplex printing 2-8
- E**
- EBCDIC 3-2
- eexec operator 1-8
- embedding images 1-34, 1-43
- engine
  - write-black 1-15–1-16, 1-26
  - write-white 1-15–1-16
- enhancement, resolution 1-12–1-16
- EOF delimiters 1-17–1-20
- error
  - limitcheck 1-31
  - undefined command 1-18
- Execution Dictionary operators 1-11
- exitserver operator 1-20, 1-22
- extensions, proprietary PostScript 1-16
- F**
- fast scan direction 1-35, 1-38
- fax resolution 1-34
- features, device dependent 1-29–1-33
- file
  - PPD 1-28–1-29
- file operator 1-31
- fill operator 1-24–1-26
- filter operator 1-21, 1-34
- floating-point operators 1-1
- flushing input data 1-21
- fonts
  - cache size 1-33
  - Chinese 1-3
  - consistency 1-16
  - creating 1-6
  - default 1-3
  - double byte 1-3
  - error messages 1-22
  - HP PCL 5 2-5
  - Intellifont 2-4
  - loading 1-4, 1-6
  - MICR 1-3, 2-4
  - selecting 2-4

- Type 0 1-3
  - installing 1-3
- Type 1
  - installing 1-2
  - using 1-5–1-8
- Type 3 1-3
  - installing 1-3
  - user-defined 1-4
- fonts, MICR 2-4
- full color vs. highlight color 1-17

- G**
- graphics
  - bitmap 1-5, 1-14
  - raster 2-3
  - vector 2-2
- gray values, rendering 1-27

- H**
- halftoning 1-12, 1-27
- handwritten test masters 1-1–1-2
- highlight color vs. full color 1-17
- HP PCL 5 fonts 2-5

- I**
- IdleTime Dictionary operators 1-10
- illegal characters, ignoring 1-18–1-20
- image
  - characteristics 1-15
  - coordinates, transforming 1-40
  - data
    - order, optimizing 1-35–1-40
  - embedding 1-34, 1-43
  - orientation 1-36
  - post-enhancement 1-14
  - pre-enhancement 1-14
  - quality, maintaining 1-12–1-16, 2-2–2-3
  - rendering 1-37
  - rotating 1-36–1-37
  - scaling 1-40–1-43
  - scanning 1-35–1-40
- implementation limits 1-30
- installing
  - command sets 3-4
  - Type 0 fonts 1-3
  - Type 1 fonts 1-2
  - Type 3 fonts 1-3
- Intellifont fonts 2-4
- ISOLatin1Encoding operator 1-8

**J**

job description ticket (JDT) 3-2

**L**

laser safety vii

LaserWriter 1-22

LCDS commands, converting 3-2

Level 2 operators 1-21

license, VIPP 3-3

limit

    path 1-31

    storage object size 1-33

    virtual memory 1-31

limitcheck error 1-31

line mode 3-2

line mode extension 3-3–3-4

lines, zero-width 1-24

loading fonts 1-4, 1-6

logos 1-5

**M**

mapping user coordinates 1-1–1-2

master, PostScript 1-27

math operators 1-1

media selection precedence, PCL 2-13

memory, virtual 1-20

messages

    font substitution error 1-22

    stdout 1-22

MICR font floppy 1-3, 2-4

mixed plex, simulated PostScript 1-21

multiple master font 1-4

**N**

native mode 3-1, 3-2

nonstandard definitions 1-11–1-12

**O**

operation safety, Europe ix, xi

operation safety, U. S. viii, ix

operators

    #copies 1-9

    charpath 1-21

    data placement 3-2–3-3

    dictionary

        Execution 1-11

        IdleTime 1-10

        Printer 1-10–1-11

        Server 1-9

        Status 1-10

        System 1-8

        User 1-8–1-9

    eexec 1-8

    exitserver 1-20, 1-22

    file 1-31

    fill 1-24–1-26

    filter 1-21, 1-34

    floating-point 1-1

    ISOLatin1Encoding 1-8

    obsolete 1-33

    pathforall 1-33

    PostScript Level 2 1-21

    rotate 1-37, 1-41

    scale 1-40

    SetCacheDevice 1-32

    setfileposition 1-21

    setflat 1-25

    setgray 1-28

    setlinewidth 1-23, 1-24

    setscreen 1-32

    stroke 1-23–1-24

optimized scaling 1-41

orientation 1-32, 1-36

ozone production information viii

**P**

padding, bounding box 1-32

Page Size command, PCL 2-12

Paper Source command, implementing 2-10

Paper Source command, PCL 2-12

path limits 1-31

pathforall operator 1-33

PCL

    drivers for 5c 2-17

PCL 5

    coding recommendations 2-14

    documentation xix

    resolution 2-2–2-3

PCL 5c

    coding recommendations 2-16

PCL 5c support 2-15

PCL commands, supported 2-6

PCL Copy command 2-8–2-9

PCL Paper Source command 2-12

PCL support

    full color 2-1

    highlight color 2-1

    monochrome 2-1

- PCL tray assignment 2-12
- pixels, painting 1-23–1-26
- PJL, commands 2-6
- plex, PostScript simulated mixed 1-21
- ports 1-18
- post-enhancement 1-14
- PostScript
  - comment format 1-27
  - documentation xviii
  - EOF delimiters 1-18–1-20
  - extensions, proprietary 1-16
  - fonts
    - listing 1-2
    - Type 1 1-2–1-6
  - jobs, delimiting 1-17–1-18
  - Level 2 operators 1-21
  - master 1-27
  - Printer Controller operations 1-22
  - printer description, see PPD
  - virtual memory 1-20, 1-31

- PPD
  - files 1-28–1-29
  - specifications 1-28
- pre-enhancement 1-14
- print
  - engine
    - write-black 1-15–1-16, 1-26
    - write-white 1-15–1-16
  - resolution, recommended 2-2–2-3
  - speed 1-34–1-35
- Printer Control Language, see PCL
- Printer Controller operations 1-22
- Printer Dictionary operators 1-10–1-11
- Printer Job Language, see PJL
- printing
  - duplex 2-8
- publications xvii

## R

- raster graphics 2-3
- rendering
  - gray 1-27
  - image 1-37
- resolution 1-26
  - enhancement 1-12–1-16
  - fax 1-34
  - PCL 5 2-2–2-3
- restore context, bypassing 1-9
- rotate operator 1-37, 1-41

- rotation, image 1-36–1-37
- RS232 port 1-18

## S

- safety
  - hotline numbers ix
  - laser vii
  - operation viii–xi
- save context, bypassing 1-9
- scale operator 1-40
- scaling 1-26, 1-34, 1-40–1-43
- scanning
  - conversion 1-23, 1-25
  - order 1-35–1-40
  - rotation 1-35–1-40
- serial port, asynchronous 1-18
- Server Dictionary operators 1-9
- SetCacheDevice operator 1-32
- setfileposition operator 1-21
- setflat operator 1-25
- setgray operator 1-28
- setlinewidth operator 1-23, 1-24
- setscreen operator 1-32
- simplex output 2-6
- slow scan direction 1-35, 1-38
- specifications
  - CCITT 1-34
  - PPD 1-28
- speed, printing 1-34–1-35
- stapling 2-7, 2-9
- Status Dictionary operators 1-10
- stdout message 1-22
- storage object size limits 1-33
- stroke operator 1-23–1-24
- System Dictionary operators 1-8

## T

- test masters, handwritten 1-1–1-2
- tokens, defining 1-19–1-20
- transforming user coordinates 1-40
- tray assignment, PCL 2-12
- tray assignments 2-13
- Tray definition, PCL 2-12
- Type 0 fonts 1-3
  - installing 1-3
- Type 1 fonts
  - creating 1-6
  - installing 1-2
  - loading 1-4, 1-6

- using 1-5–1-8
- Type 3 fonts 1-3
  - installing 1-3
- typefaces, *see* fonts

## **U**

- undefined command error 1-18
- user coordinate system
  - default 1-39–1-41
  - mapping 1-1–1-2
- User Dictionary operators 1-8–1-9
- user-defined fonts 1-4

## **V**

- vector graphics 2-2
- VIPP
  - benefits 3-1
  - demo mode 3-3
  - license 3-3
  - modes 3-1, 3-2
- virtual memory 1-20, 1-31

## **W**

- write-black engine 1-15–1-16, 1-26
- write-white engine 1-15–1-16

## **X**

- x axis 1-35
- XGFNub. *See* line mode extension

## **Y**

- y axis 1-35

## **Z**

- zero-width lines, imaging 1-24

