

Fiery X40 Color Server

PRINTING GUIDE

RELEASE COPY

8/7/00

This file contains material copyrighted by EFI. Xerox may not use, copy, or distribute this material except for internal purposes only. Under no circumstances can Xerox copy or distribute this material to anyone outside of Xerox without EFI's written consent.



Copyright © 2000 Electronics For Imaging, Inc. All rights reserved.

This publication is protected by copyright, and all rights are reserved. No part of it may be reproduced or transmitted in any form or by any means for any purpose without express prior written consent from Electronics For Imaging, Inc., except as expressly permitted herein. Information in this document is subject to change without notice and does not represent a commitment on the part of Electronics For Imaging, Inc.

The software described in this publication is furnished under license and may only be used or copied in accordance with the terms of such license.

Patents: 5,867,179; 5,835,788; 5,666,436; 5,553,200; 5,543,940; 5,537,516; 5,517,334; 5,506,946; 5,424,754; 5,343,311; 5,212,546; 4,941,038; 4,837,722; 4,500,919; D406,117

Trademarks

EFI, the EFI logo, Fiery, the Fiery logo, Fiery Driven, the Fiery Driven logo, EFICOLOR, ColorWise, and Rip-While-Print are trademarks registered in the U.S. Patent and Trademark Office. Fiery Z4, Fiery X4, Velocity, Command WorkStation, AutoCal, Starr Compression, Memory Multiplier, NetWise, and VisualCal are trademarks of Electronics For Imaging, Inc.

All Xerox product names mentioned in this publication are trademarks of the XEROX CORPORATION.

Adobe, the Adobe logo, Adobe Illustrator, PostScript, Adobe Photoshop, Adobe Separator, and Adobe PageMaker are trademarks of Adobe Systems Incorporated, registered in certain jurisdictions. EPS (Encapsulated PostScript) is a trademark of Altsys Corporation. Apple, the Apple logo, AppleShare, AppleTalk, EtherTalk, LaserWriter, and Macintosh are registered trademarks, and MultiFinder is a trademark of Apple Computer, Inc. Microsoft, MS, MS-DOS, and Windows are registered trademarks of Microsoft in the US and other countries. QuarkXPress is a registered trademark of Quark, Inc. Times, Helvetica, and Palatino are trademarks of Linotype AG and/or its subsidiaries. ITC Avant Garde, ITC Bookman, ITC Zapf Chancery, and ITC Zapf Dingbats are registered trademarks of International Typeface Corporation. Ethernet is a registered trademark of Xerox Corporation. UNIX is a registered trademark of UNIX System Laboratories, a wholly owned subsidiary of Novell, Inc. PANTONE is a registered trademark of Pantone, Inc. Matchprint is a trademark of Imation Corp.

All other terms and product names may be trademarks or registered trademarks of their respective owners, and are hereby acknowledged.

Legal Notices

APPLE COMPUTER, INC. ("APPLE") MAKES NO WARRANTIES, EXPRESS OR IMPLIED, INCLUDING WITHOUT LIMITATION THE IMPLIED WARRANTIES OF MERCHANTABILITY AND FITNESS FOR A PARTICULAR PURPOSE, REGARDING THE APPLE SOFTWARE. APPLE DOES NOT WARRANT, GUARANTEE, OR MAKE ANY REPRESENTATIONS REGARDING THE USE OR THE RESULTS OF THE USE OF THE APPLE SOFTWARE IN TERMS OF ITS CORRECTNESS, ACCURACY, RELIABILITY, CURRENTNESS, OR OTHERWISE. THE ENTIRE RISK AS TO THE RESULTS AND PERFORMANCE OF THE APPLE SOFTWARE IS ASSUMED BY YOU. THE EXCLUSION OF IMPLIED WARRANTIES IS NOT PERMITTED BY SOME STATES. THE ABOVE EXCLUSION MAY NOT APPLY TO YOU.

IN NO EVENT WILL APPLE, ITS DIRECTORS, OFFICERS, EMPLOYEES OR AGENTS BE LIABLE TO YOU FOR ANY CONSEQUENTIAL, INCIDENTAL OR INDIRECT DAMAGES (INCLUDING DAMAGES FOR LOSS OF BUSINESS PROFITS, BUSINESS INTERRUPTION, LOSS OF BUSINESS INFORMATION, AND THE LIKE) ARISING OUT OF THE USE OR INABILITY TO USE THE APPLE SOFTWARE EVEN IF APPLE HAS BEEN ADVISED OF THE POSSIBILITY OF SUCH DAMAGES. BECAUSE SOME STATES DO NOT ALLOW THE EXCLUSION OR LIMITATION OF LIABILITY FOR CONSEQUENTIAL OR INCIDENTAL DAMAGES, THE ABOVE LIMITATIONS MAY NOT APPLY TO YOU. Apple's liability to you for actual damages from any cause whatsoever, and regardless of the form of the action (whether in contract, tort [including negligence], product liability or otherwise), will be limited to \$50.

Restricted Rights Legends

For defense agencies: Restricted Rights Legend. Use, reproduction, or disclosure is subject to restrictions set forth in subparagraph (c)(1)(ii) of the Rights in Technical Data and Computer Software clause at 252.227.7013.

For civilian agencies: Restricted Rights Legend. Use, reproduction, or disclosure is subject to restrictions set forth in subparagraph (a) through (d) of the commercial Computer Software Restricted Rights clause at 52.227-19 and the limitations set forth in Electronics For Imaging, Inc.'s standard commercial agreement for this software. Unpublished rights reserved under the copyright laws of the United States.

Printed in the United States of America on recycled paper.

Part Number: 45016776

CE Mark

The CE marking applied to this product symbolises Rank Xerox's declaration of conformity with the following applicable directives of the European Union as of the dates indicated.

January 1, 1996—Council Directive 70/80/CCO amended by Council Directive 93/68/EEO. Approximation of the laws of the member states related to low voltage equipment.

January 1, 1996—Council Directive 59/336/EEC. Approximation of the laws of the member states related to electromagnetic compatibility.

A full declaration defining the relevant directives and referenced standards can be obtained from your Rank Xerox representative.

WARNING: In order to allow this equipment to operate in proximity to industrial, scientific, and Medical (ISM) equipment, the external radiation from ISM equipment may have to be limited or special migration measures taken.

FCC Information

WARNING: FCC Regulations state that any unauthorized changes or modifications to this equipment not expressly approved by the manufacturer could void the user's authority to operate this equipment.

This equipment has been tested and found to comply with the limits for a Class A digital device, pursuant to Part 15 of the FCC Rules. These limits are designed to provide reasonable protection against harmful interference when the equipment is operated in a commercial environment. This equipment generates, and uses, and can radiate radio frequency energy and, if not installed and used in accordance with the instruction manual, may cause harmful interference to radio communications. Operation of this equipment in a residential area is likely to cause interference in which case the user will be required to correct the interference at his own expense.

Industry Canada Class A Notice

This Class A digital apparatus complies with Canadian ICES-003.

Avis de Conformation Classe A d l'Industrie Canada

Cet appareil numérique de la Classe A est conforme à la norme NMB-003 du Canada.

Certificate by Manufacturer/Importer

This is to certify that the FC07 is shielded against radio interference in accordance with the provisions of VFG 243/1991. The German Postal Services have been advised that this device is being put on the market and that they have been given the right to inspect the series for compliance with the regulations.

Bescheinigung des Herstellers/Importeurs

Heirmit wird bescheinigt, dass der FC07 im Uebereinstimmung mit den Bestimmungen der VFG 243/1991 Funk-Entstort ist. Der Deutschen Bundespost wurde das Inverkehrbringen dieses Geraetes angezeigt und die Berechtigung zur Ueberpruefung der Serie auf Einhaltung der Bestimmungen eingeraumt.

RFI Compliance Notice

This equipment has been tested concerning compliance with the relevant RFI protection requirements both individually and on system level (to simulate normal operation conditions). However, it is possible that these RFI Requirements are not met under certain unfavorable conditions in other installations. It is the user who is responsible for compliance of his particular installation.

Dieses Geraet wurde einzeln sowohl als auch in einer Anlage, die einen normalen Anwendungsfall nachbildet, auf die Einhaltung der Funk-entstoerbestimmungen geprueft. Es ist jedoch moeglich, dass die Funk-enstoerbestimmungen unter unguenstigen Umstaenden bei anderen Geraetekombinationen nicht eingehalten werden. Fuer die Einhaltung der Funk-entstoerbestimmungen seigner gesamten Anlage, in der dieses Geraet betrieben wird, ist der Betreiber verantwortlich.

Compliance with applicable regulations depends on the use of shielded cables. It is the user who is responsible for procuring the appropriate cables.

Einhaltung mit betreffenden Bestimmungen kommt darauf an, dass geschirmte Ausfuehrungen gebraucht werden. Fuer die beschaffung richtiger Ausfuehrungen ist der Betreiber verantwortlich.

Software License Agreement

Before using the Software, please carefully read the following terms and conditions. BY USING THIS SOFTWARE, YOU SIGNIFY THAT YOU HAVE ACCEPTED THE TERMS OF THIS AGREEMENT. If you cannot or do not accept these terms, you may return the entire package within ten (10) days to the Distributor or Dealer from which you obtained them for a full refund.

Electronics for Imaging, Inc. grants to you a non-exclusive, non-transferable license to use the software and accompanying documentation ("Software") included with the ColorPASS you have purchased, including without limitation the PostScript software provided by Adobe Systems Incorporated.

You may:

- a. use the Software solely for your own customary business purposes and solely with the ColorPASS;
- b. use the digitally-encoded machine-readable outline and bitmap programs ("Font Programs") provided with the ColorPASS in a special encrypted format ("Coded Font Programs") to reproduce and display designs, styles, weights, and versions of letters, numerals, characters and symbols ("Typefaces") solely for your own customary business purposes on the display window of the ColorPASS or monitor used with the ColorPASS;
- c. use the trademarks used by Electronics for Imaging to identify the Coded Font Programs and Typefaces reproduced therefrom ("Trademarks"); and
- d. assign your rights under this Agreement to a transferee of all of your right, title and interest in and to the ColorPASS provided the transferee agrees to be bound by all of the terms and conditions of this Agreement.

You may not:

- a. make use of the Software, directly or indirectly, to print bitmap images with print resolutions of 600 dots per inch or greater, or to generate fonts or typefaces for use other than with the ColorPASS;
- b. make or have made, or permit to be made, any copies of the Software, Coded Font Programs, accompanying documentation or portions thereof, except as necessary for use with the ColorPASS unit purchased by you; provided, however, that under no circumstances may you make or have made, or permit to be made, any copies of that certain portion of the Software which has been included on the ColorPASS hard disk drive. You may not copy the documentation;
- c. attempt to alter, disassemble, decrypt or reverse engineer the Software, Coded Font Programs or accompanying documentation.
- d. rent or lease the Software.

Proprietary Rights

You acknowledge that the Software, Coded Font Programs, Typefaces, Trademarks and accompanying documentation are proprietary to Electronics For Imaging and its suppliers and that title and other intellectual property rights therein remain with Electronics For Imaging and its suppliers. Except as stated above, this Agreement does not grant you any right to patents, copyrights, trade secrets, trademarks (whether registered or unregistered), or any other rights, franchises or licenses in respect of the Software, Coded Font Programs, Typefaces, Trademarks or accompanying documentation. You may not adapt or use any trademark or trade name which is likely to be similar to or confusing with that of Electronics For Imaging or any of its suppliers or take any other action which impairs or reduces the trademark rights of Electronics For Imaging or its suppliers. The trademarks may only be used to identify printed output produced by the Coded Font Programs. At the reasonable request of Electronics For Imaging, you must supply samples of any Typeface identified with a trademark.

Confidentiality

You agree to hold the Software and Coded Font Programs in confidence, disclosing the Software and Coded Font Programs only to authorized users having a need to use the Software and Coded Font Programs as permitted by this Agreement and to take all reasonable precautions to prevent disclosure to other parties.

Remedies

Unauthorized use, copying or disclosure of the Software, Coded Font Programs, Typefaces, Trademarks or accompanying documentation will result in automatic termination of this license and will make available to Electronics For Imaging other legal remedies.

Limited Warranty And Disclaimer

Electronics For Imaging warrants that, for a period of ninety (90) days from the date of delivery to you, the Software under normal use will perform without significant errors that make it unusable. Electronics For Imaging's entire liability and your exclusive remedy under this warranty (which is subject to you returning the ColorPASS to Electronics For Imaging or an authorized dealer) will be, at Electronics For Imaging's option, to use reasonable commercial efforts to attempt to correct or work around errors, to replace the Software with functionally equivalent software, or to refund the purchase price and terminate this Agreement. Some states do not allow limitations on duration of implied warranty, so the above limitation may not apply to you.

Except for the above express limited warranty, Electronics For Imaging makes and you receive no warranties or conditions on the Products, express, implied, or statutory, and Electronics For Imaging specifically disclaims any implied warranty or condition of merchantability or fitness for a particular purpose.

For warranty service, please contact your authorized service/support center.

EXCEPT FOR THE ABOVE EXPRESS LIMITED WARRANTY, ELECTRONICS FOR IMAGING MAKES AND YOU RECEIVE NO WARRANTIES OR CONDITIONS ON THE SOFTWARE OR CODED FONT PROGRAMS, EXPRESS, IMPLIED, STATUTORY, OR IN ANY OTHER PROVISION OF THIS AGREEMENT OR COMMUNICATION WITH YOU, AND ELECTRONICS FOR IMAGING SPECIFICALLY DISCLAIMS ANY IMPLIED WARRANTY OR CONDITION OF MERCHANTABILITY OR FITNESS FOR A PARTICULAR PURPOSE. Electronics For Imaging does not warrant that the operation of the software will be uninterrupted or error free or that the Software will meet your specific requirements.

Limitation Of Liability

IN NO EVENT WILL ELECTRONICS FOR IMAGING OR ITS SUPPLIERS BE LIABLE FOR ANY DAMAGES, INCLUDING LOSS OF DATA, LOST PROFITS, COST OF COVER OR OTHER SPECIAL, INCIDENTAL, CONSEQUENTIAL OR INDIRECT DAMAGES ARISING FROM THE USE OF THE SOFTWARE, CODED FONT PROGRAMS OR ACCOMPANYING DOCUMENTATION, HOWEVER CAUSED AND ON ANY THEORY OF LIABILITY. THIS LIMITATION WILL APPLY EVEN IF ELECTRONICS FOR IMAGING OR ANY AUTHORIZED DEALER HAS BEEN ADVISED OF THE POSSIBILITY OF SUCH DAMAGE. YOU ACKNOWLEDGE THAT THE PRICE OF THE UNIT REFLECTS THIS ALLOCATION OF RISK. BECAUSE SOME STATES/JURISDICTIONS DO NOT ALLOW THE EXCLUSION OR LIMITATION OF LIABILITY FOR CONSEQUENTIAL OR INCIDENTAL DAMAGES, THE ABOVE LIMITATION MAY NOT APPLY TO YOU.

Export Controls

You agree that you will not export or re-export the Software or Coded Font Programs in any form without the appropriate United States and foreign government licenses. Your failure to comply with this provision is a material breach of this Agreement.

Government Use

Use, duplication or disclosure of the Software by the United States Government is subject to restrictions as set forth in subdivision (c) (1) (ii) of the Rights in Technical Data and Computer Software clause at DFARS 252.227-7013 or in subparagraphs (c) (1) and (2) of the Commercial Computer Software—Restricted Right Clause at 48 CFR 52.227-19, as applicable.

Third Party Beneficiary

You are hereby notified that Adobe Systems Incorporated, a California corporation located at 345 Park Avenue, San Jose, CA 95110-2704 ("Adobe") is a third-party beneficiary to this Agreement to the extent that this Agreement contains provisions which relate to your use of the Fonts, the Coded Font Programs, the Typefaces and the Trademarks licensed hereby. Such provisions are made expressly for the benefit of Adobe and are enforceable by Adobe in addition to Electronics For Imaging.

General

This Agreement will be governed by the laws of the State of California.

This Agreement is the entire agreement held between us and supersedes any other communications or advertising with respect to the Software, Coded Font Programs and accompanying documentation.

If any provision of this Agreement is held invalid, the remainder of this Agreement shall continue in full force and effect.

If you have any questions concerning this Agreement, please write to Electronics For Imaging, Inc., Attn: Licensing Dept. or see Electronics For Imaging's web site at www.efi.com.

Electronics For Imaging
303 Velocity Way
Foster City, CA 94404

Contents

Preface

About this manual	xii
About the documentation	xiii
How the Fiery X40 works	xiii
About printer drivers and PPDs	xiii
Non-imageable area	xiv
Toner reduction	xiv
Before you begin	xv

Chapter 1: Printing from Windows Computers

Printing from applications	1-1
Setting options and printing from Windows 95/98	1-2
Working with custom page sizes in Windows 95/98	1-15
Setting options and printing from Windows NT 4.0	1-17
Working with custom page sizes in Windows NT 4.0	1-21
Setting options and printing from Windows 2000	1-24
Working with custom page sizes in Windows 2000	1-28
Printing to the parallel port	1-31
Saving files to print at a remote location	1-31
Printing with Fiery Downloader or WebDownloader	1-32

Chapter 2: Printing from Mac OS Computers

Printing from applications	2-1
Selecting the Fiery X40 in the Chooser	2-1
Setting options and printing from Mac OS computers	2-3
Defining custom page sizes	2-6
Printing with Fiery Downloader or Fiery WebDownloader	2-8

Chapter 3: Printing from UNIX Workstations

Printing to the Fiery X40	3-1
---------------------------	-----

Chapter 4: Special Features

Printing variable data documents with FreeForm	4-1
How FreeForm works	4-1
Creating the master-elements document	4-2
Creating the variable-elements document	4-3
Combining the FreeForm Master with the variable-elements document	4-4
Using FreeForm	4-5
Printing simulations	4-9
Printing duplex pages	4-10

Chapter 5: Downloading Files and Fonts

Using Fiery Downloader	5-1
Printing with Fiery Downloader	5-4
Downloading and managing printer fonts	5-8

Chapter 6: Tracking and Managing Print Jobs

Fiery WebTools	6-1
Checking Fiery X40 status with the Status WebTool	6-2
Accessing information with WebLink	6-3
Downloading files with WebDownloader	6-3
Fiery Link	6-3
Fiery Link tools	6-5
Preferences	6-7
My Fiery List	6-9
Windows taskbar menu	6-9

Appendix A: Print Options

Where to set print options	A-1
Print options and override hierarchy	A-2
Default settings	A-2
More information about print options	A-10

Appendix B: Font List

PostScript printer fonts	B-1
Adobe Type 1 fonts	B-1
TrueType fonts	B-5

Appendix C: Troubleshooting

Maintaining optimal system performance	C-1
Troubleshooting	C-2
General printing problems	C-2
Problems with print quality	C-5
Problems with Fiery Downloader	C-6
Problems with Fiery WebTools	C-7

Index

Preface

The Fiery X40 Color Server™ enables you to use your color printer as a networked printer. You can use the Fiery X40 Color Server to print final documents or to proof jobs you will later print on an offset press. You send a print job to the Fiery X40 Color Server as you would to any other printer—you select it from the Printers dialog box on Microsoft Windows computers, or in the Chooser on Apple Mac OS computers—and then print from within any application.

The Fiery X40 includes Command WorkStation™ software, which enables an operator to manage all jobs sent to the Fiery X40. Some of the job management features of the Command WorkStation are also available from Fiery WebSpooler. Although it may not be the case at all sites, it is assumed that an operator controls and manages jobs sent by users from remote workstations. For information on the features of the Command WorkStation and Fiery WebSpooler, see the *Job Management Guide*.

About this manual

This manual is intended for those remote users who send jobs via the network or a parallel port connection between their workstation and the Fiery X40. It covers the following topics:

- Printing from a Windows computer
- Printing from a Mac OS computer
- Printing from UNIX
- Using special features, such as printing variable data documents, press simulations and duplex pages

- Downloading files and fonts using Fiery Downloader™
- Monitoring jobs and accessing information using Fiery WebTools™ and Fiery Link™
- Specifying and overriding job settings, a list of fonts installed on the Fiery X40, and troubleshooting information

About the documentation

This manual is part of a set of Fiery X40 documentation that includes the following manuals for users and system administrators:

- The *Configuration Guide* explains basic configuration and administration of the Fiery X40 for the supported platforms and network environments. It also includes guidelines for setting up UNIX, Windows NT, and NetWare servers to provide PostScript printing services to clients.
- *Getting Started* describes how to install software to enable users to print to the Fiery X40. Specifically, it describes installation of PostScript printer drivers, printer description files, and other user software provided on the User Software CD. It also explains how to connect each user to the network.
- The *Printing Guide* describes the printing features of the Fiery X40 for users who send jobs via remote workstations on the network or via a direct parallel port connection.
- The *Color Guide* provides information on managing the color output of your Fiery X40. It addresses concepts and issues associated with printing to the Fiery X40 and outlines key workflow scenarios. This manual explains how to calibrate your printer and take advantage of the ColorWise color management system, as well as features of ColorWise Pro Tools. In addition, the *Color Guide* offers information on printing from popular Windows and Mac OS applications.
- The *Job Management Guide* explains the functions of the Fiery X40 utilities, including the Command WorkStation, and how they can be used to manage jobs. This book is intended for an operator or administrator, or a user with the necessary access privileges, who needs to monitor and manage job flow and troubleshoot problems that may arise.
- *Release Notes* provide last-minute product information and workarounds for some of the problems you may encounter.

How the Fiery X40 works

The Fiery X40 receives files from computers on the network, processes (RIPs) those files, and then sends them to the printer's print engine for printing. Even with the Fiery X40 installed, you can still use the copier to make copies.

Windows and Mac OS computers communicate with the Fiery X40 by means of a PostScript printer driver and PostScript printer description (PPD) files. The driver enables you to use special features of the Fiery X40 from the Print dialog box.

About printer drivers and PPDs

A printer driver manages printing communication between your application software and the printer. It interprets the instructions generated by the application software, merges those instructions with printer-specific PPD options you specify, and translates all that information into PostScript, a language the printer understands. In other words, the printer driver writes a PostScript file based on your original file and the options you set from the Print dialog box.

A PPD file contains information about a particular device's features and capabilities (for example, what paper sizes and media types are supported). The printer driver reads the information in the PPD file and presents that information to you in the form of options you can choose from the Print dialog box. The PPD for the Fiery X40 includes information about the features of both the printer and the Fiery X40.

For information on the PPD options, see Appendix A, "Print Options."

Non-imageable area

The Fiery X40 non-imageable area for printer depends on the selected paper size.

Paper size	Leading edge	Trailing edge	Top edge	Bottom edge
Letter, A4, A3, ISO B5, 8x10	0.7 mm	0.7 mm	0.7 mm	0.7 mm
11x17, Legal, Legal 13, ISO B4, SEF A6, SEF Letter, SEF A4, SEF ISO B5, SEF 8x10, SEF 9x11, 9x12, Docupac	2.4 mm	2.4 mm	0.7 mm	0.7 mm
12x18	3.18 mm	3.18 mm	1.06 mm	1.06 mm

Toner reduction

The maximum toner density for the printer is 220%.

Before you begin

Before using the Fiery X40, follow these steps:

1. Confirm that the system administrator has completed Setup as described in the *Configuration Guide*.
2. Find out what printer defaults the administrator specified in Setup.
These default settings can affect the results of your print jobs. Check with your administrator or operator for information on these default settings.
3. Confirm that the user software is installed correctly on your workstation, as described in *Getting Started*.
4. Consult the *Color Guide* for information on print options and application features that affect color output.
5. Find out how your workstation is configured for printing on the network.

If your site has an operator who controls all printing, you may have access to the Hold queue only. In this case, all jobs you send are spooled to the Fiery X40 and held until the operator sends them to their next stage of processing.

You may also have access to the Print queue. If you send jobs to this queue, jobs spool to the Fiery X40 and proceed to RIP and print according to your job settings—unless someone (you, or an operator, for example) intervenes.

Lastly, you may have access to the Direct connection, which sends jobs straight to the server without spooling.

6. Find out whether the Fiery X40 is set up to use Fiery WebTools and what your access privileges are.

The administrator may or may not have enabled access to the server via the Internet (or an intranet). If access is enabled, a password may be required to utilize certain functions.

Chapter 1: Printing from Windows Computers

This chapter describes how to print to the Fiery X40 from Windows 95/98, Windows NT 4.0, and Windows 2000. You can print from a networked Windows computer or from a computer using Windows (SMB) printing, or from a Windows computer connected to the parallel port on the Fiery X40. If you plan to print files at another location, you should follow the procedures described in “Saving files to print at a remote location” on page 1-31.

Another way to print from a Windows computer is to download PostScript, Encapsulated PostScript (EPS), or Portable Document Format (PDF) files using Fiery Downloader or WebDownloader. Basic instructions are provided at the end of this chapter.

NOTE: For information on setting up the Windows environment for printing with Windows servers connected to the Fiery X40, see the *Configuration Guide*. For information on how to connect to the Fiery X40 over the network, install printer drivers, and install the Fiery utilities, see *Getting Started*.

Printing from applications

Once you have installed the Fiery X40 printer driver and set it to the proper port, as described in *Getting Started*, you can print directly from most Windows applications. Simply choose the Print command from within your application.

To achieve the best printing results from specific applications, see the *Color Guide*.

Setting options and printing from Windows 95/98

To print from Windows 95/98, use the Adobe PostScript printer driver for Windows 95/98. The driver is included with the Fiery X40 user software.

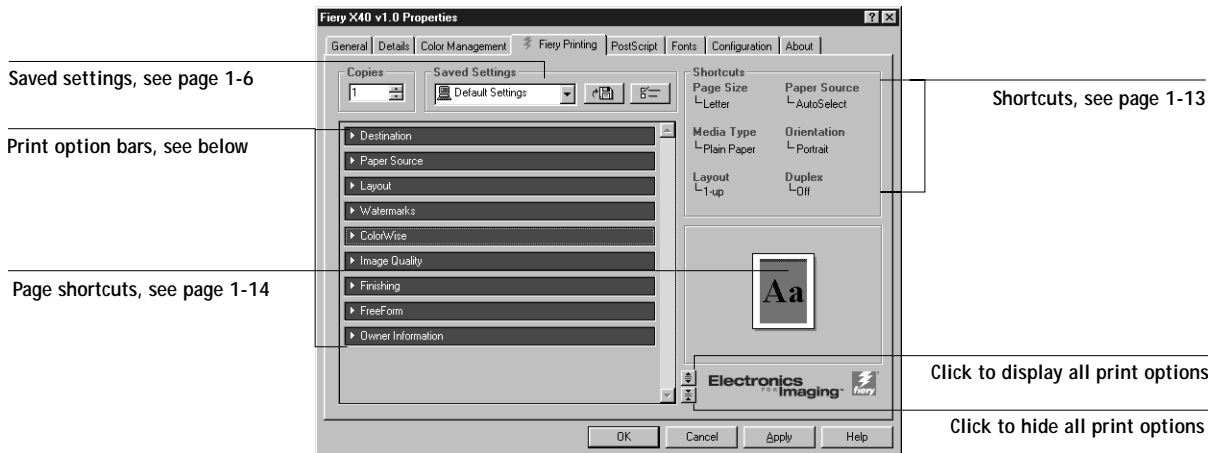
Once you have installed the Adobe PostScript printer driver and the PPD file, you can specify print settings for a particular job and print it to the Fiery X40.

To print from Windows 95/98 applications by connecting your computer to a print server via the network, one of the following is required: a NetWare server, a Windows NT server, a Windows 2000 server, or a UNIX server. For more information, see the *Configuration Guide*.

To print from Windows 95/98 applications without connecting to a print server, you can use SMB printing. For more information, see *Getting Started*.

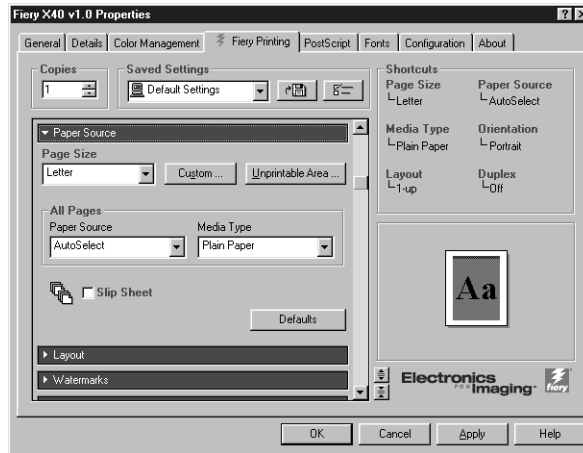
TO SET PRINT OPTIONS AND PRINT FROM WINDOWS 95/98 USING THE ADOBE POSTSCRIPT PRINTER DRIVER:

1. Click the Start button, point to Settings, and click Printers.
2. Select the icon for the Fiery X40 and choose Properties from the File menu.
3. Click the Fiery Printing tab.



The Fiery Printing tab serves as the control center for all frequently used printing functions.

4. Click the Paper Source print option bar.



In the Page Size area, specify the page size for the job.

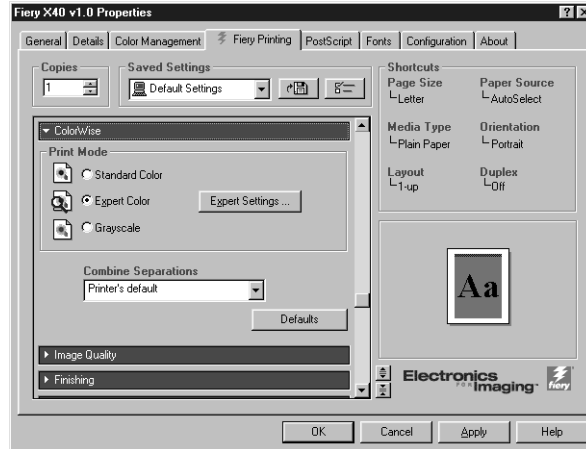
From the Paper Source pop-up menu, choose the paper tray for the job. For example, you can specify that the job should be printed on pages from the Bypass Tray.

In the Media Type area, specify the type of media to use for the job.

For more information on these and other print options, see Appendix A.

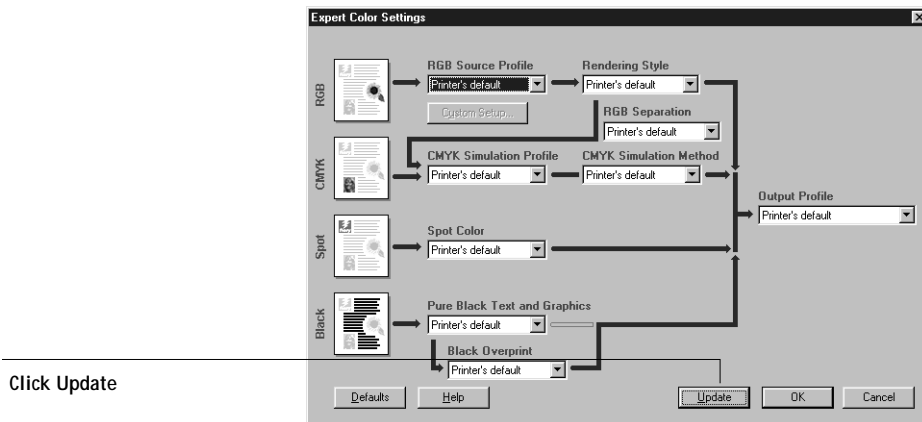
NOTE: If paper loaded in the selected tray is a different size, orientation, and/or media type than that of the job you are sending, the Fiery X40 displays an error message and the job might not print. You should then load the correct paper in the selected tray or cancel the job

5. Click the ColorWise print option bar.



In the Print Mode area, specify the color mode for the job. If you want to use any advanced color management features (such as Rendering Style), click Expert Settings.

6. In the Expert Color Settings dialog box, click Update to display the current Fiery X40 settings.



If the Update button does not appear, make sure that two-way communication is set up as described in *Getting Started*.

7. Specify the color settings for the print job, then click OK.

8. Click the Media, Layout, and Image Quality print option bars to specify the appropriate settings for the print job.

These print options are specific to the Fiery X40 and the printer. They override settings in Fiery X40 Printer Setup, but can be changed from Command WorkStation or Fiery WebSpooler. For information about these options and overrides, see Appendix A.

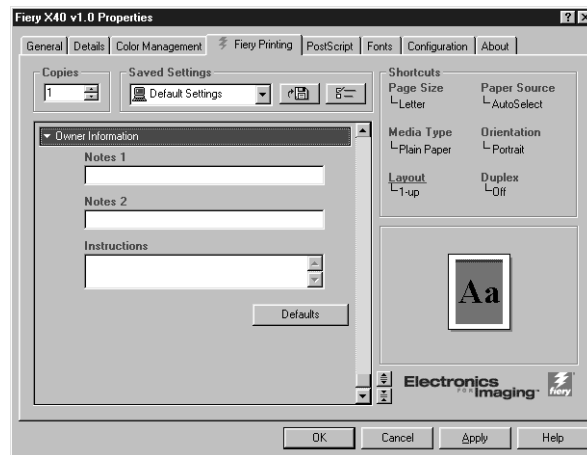
For information about these options and overrides, see Appendix A.

If you choose Printer's default, the job prints according to the settings entered during Setup, or the default settings. See Appendix A for more information.

NOTE: Some options listed in the printer driver could also be set from an application (for example, collation). In these cases, use the driver option to perform the function, rather than setting it from the application. The application may not set up the file properly for printing on the Fiery X40 and may also take longer to process.

NOTE: If you specify incompatible print settings, the Conflict dialog box may appear. Follow the on-screen instructions to resolve the conflict.

9. Click the Owner Information print option bar.



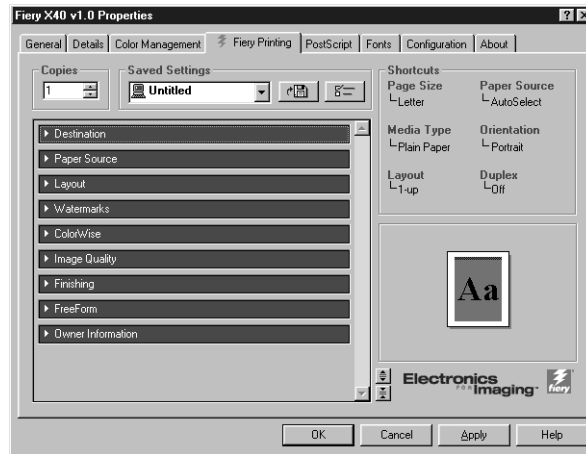
10. Enter text messages in the Notes 1 and Notes 2 areas.
Enter user and job identification information for accounting purposes, or whatever information is required at your site.
The information you enter in these areas can be viewed by the operator at the Command WorkStation and also appears in the Job Log. It *cannot* be edited or erased by the operator.
11. In the Instructions area, enter instructions to the operator about the job.
These instructions can be displayed at the Command WorkStation, but do not appear in the Job Log. These instructions *can* be edited by the operator.
12. Click OK.
13. From your application, choose Print.
Make sure the Fiery X40 is selected as your current printer.
14. Click OK.

Using saved settings

Print option settings can be saved on your hard disk so you can easily load specifically configured settings for a particular job. Settings files can also be shared over a network, using the Import and Export features.

TO CREATE SAVED SETTINGS:

1. Make sure that Default Settings appears in the Saved Settings pop-up menu.
2. If you are using the PostScript driver, configure the options from all the print option bars.



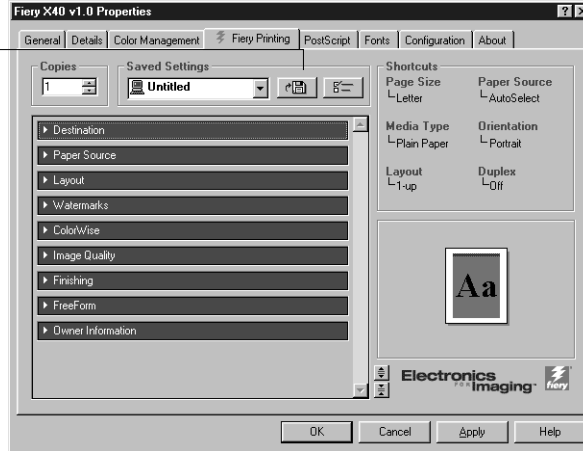
As soon as you change any settings, the Saved Settings menu displays **Untitled** instead of **Default Settings**.

1

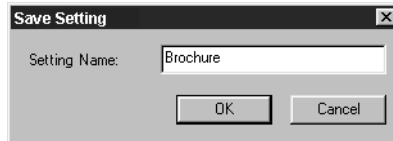
1-8 Printing from Windows Computers

3. Click the Disk button.

Click the Disk button



4. Using a maximum of 28 characters, enter a Settings Name and click OK.



The name appears in the Saved Settings pop-up menu.

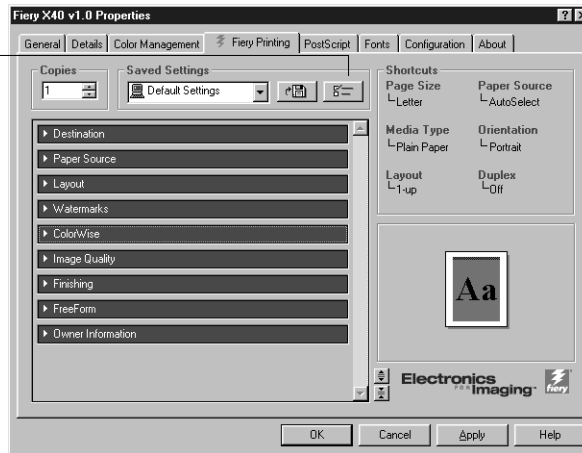
TO LOAD SAVED SETTINGS:

1. From the Fiery Printing tab, click in the Saved Settings pop-up menu.
2. Choose the settings you want to use.
The printer driver is automatically configured with the saved settings.

TO DELETE SAVED SETTINGS:

1. From the Fiery Printing tab, click the Settings button.

Click the Settings button



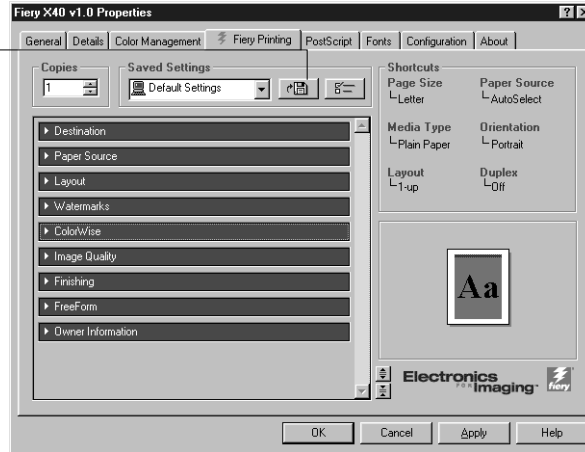
2. Select the settings you want to delete and click Delete.
3. Click Yes to confirm deletion, then click OK.

TO MODIFY SAVED SETTINGS:

1. From the Fiery Printing tab, click in the Saved Settings pop-up menu.
2. Choose the settings you want to modify.
The printer driver is automatically configured with the saved settings.

3. Configure your new settings from all the print option bars, then click the Disk button.

Click the Disk button



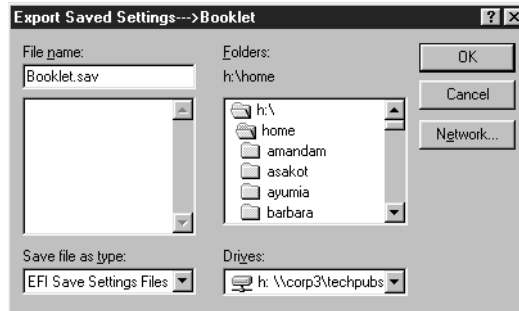
4. Click OK to save the modified settings.

TO EXPORT SAVED SETTINGS:

1. From the Fieri Printing tab, click in the Settings button.
2. Select the Saved Settings you want to export, then click Export.



3. Browse to the location where you want to save the file, enter a file name, then click OK.



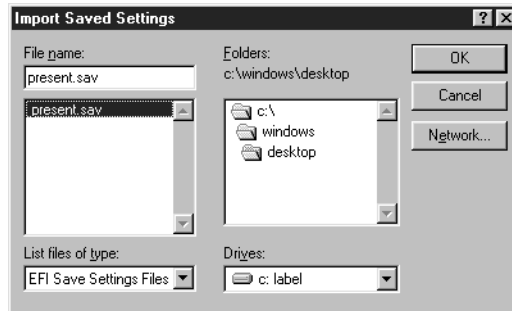
NOTE: The file name must include the .sav extension and can be up to eight characters long (not including the extension). The file name does not have to match the Settings Name.

4. Click OK in the Settings dialog box.

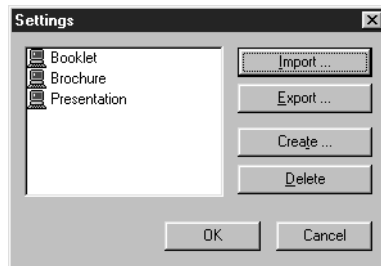
TO IMPORT SAVED SETTINGS:

1. From the Fiery Printing tab, click the Settings button.
2. Click the Import button.
3. Browse to the location of the saved settings file you want to import.

4. Select the file, then click OK.



5. Click OK in the Settings dialog box.



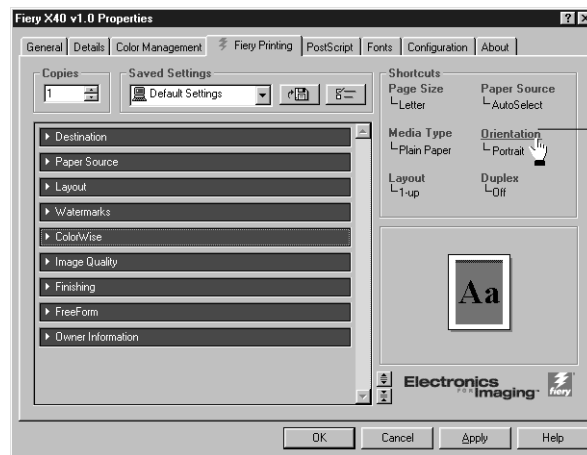
NOTE: When you import saved settings, they appear in the Saved Settings menu under their Settings Name, not the file name. In the example above, the file present.sav (file name) was imported, but it appears in the Saved Settings menu as Presentation (Settings Name).

Using Shortcuts

The Shortcuts section of the driver interface displays the current settings for some of the most common print options. You can access and change these settings quickly and easily using the Shortcuts. You can also access some page layout and finishing options by right-clicking the image of the page directly below Shortcuts.

TO SET PRINT OPTIONS USING SHORTCUTS:

1. From the Fiery Printing tab, place your cursor over the print option you want to set. When your cursor is directly over the print option name, the cursor turns into a hand and the option name is underlined; see the Orientation print option in the example below.

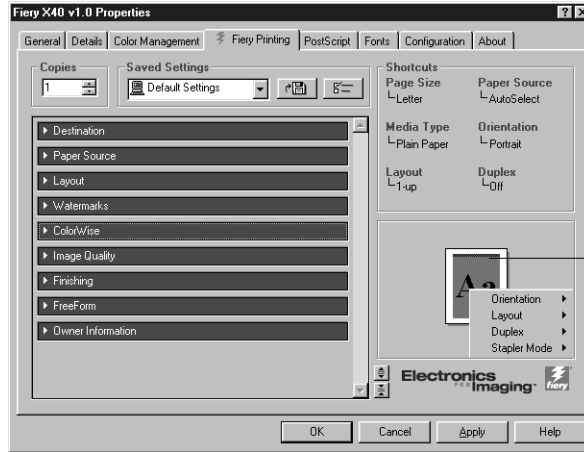


Selected print option

2. Click the selected print option and specify the appropriate settings. Alternatively, you can right-click the print option and specify the settings directly.
3. Click OK.

TO SET PRINT OPTIONS USING THE PAGE SHORTCUTS:

1. From the Fiery Printing tab, place your cursor over the page image and right-click.



Right-click the page image

2. Specify the appropriate settings for the print options.
3. Click OK.

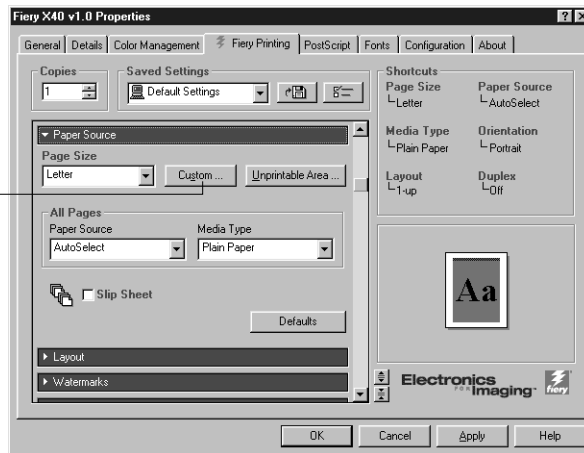
Working with custom page sizes in Windows 95/98

With custom page sizes, you define the page dimensions and the unprintable area of the page. You can save three different custom page sizes for easy use any time you print.

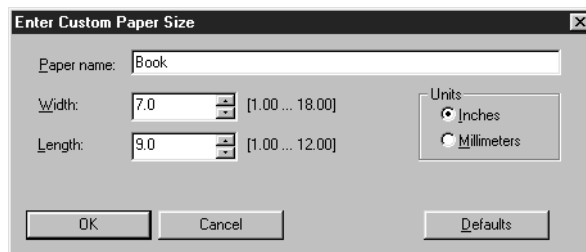
TO DEFINE A CUSTOM PAGE SIZE:

1. Click the Start button, point to Settings, and choose Printers.
2. Right-click the Fiery X40 icon, then choose Properties.
3. Click the Fiery Printing tab, then click the Paper Source print option bar.
4. Click the Custom button.

Click Custom



5. Enter the name and the dimensions of the page, then click OK.



The new custom page name appears in the Page Size pop-up menu.

6. To define the unprintable area of the custom page, click the Unprintable Area button, enter the desired information, then click OK.
7. Click OK.

After you define a custom page size, you can use it from within an application, without having redefine it each time you print.

TO PRINT A CUSTOM PAGE SIZE:

1. Choose Print from your application.
2. Make sure the Fiery X40 is selected as the printer, then click Properties.
3. Click the Fiery Printing tab, then click the Paper Source print option bar.
4. Select the custom page size from the Page Size pop-up menu.
5. Click OK and then click OK again to print the job.

Setting options and printing from Windows NT 4.0

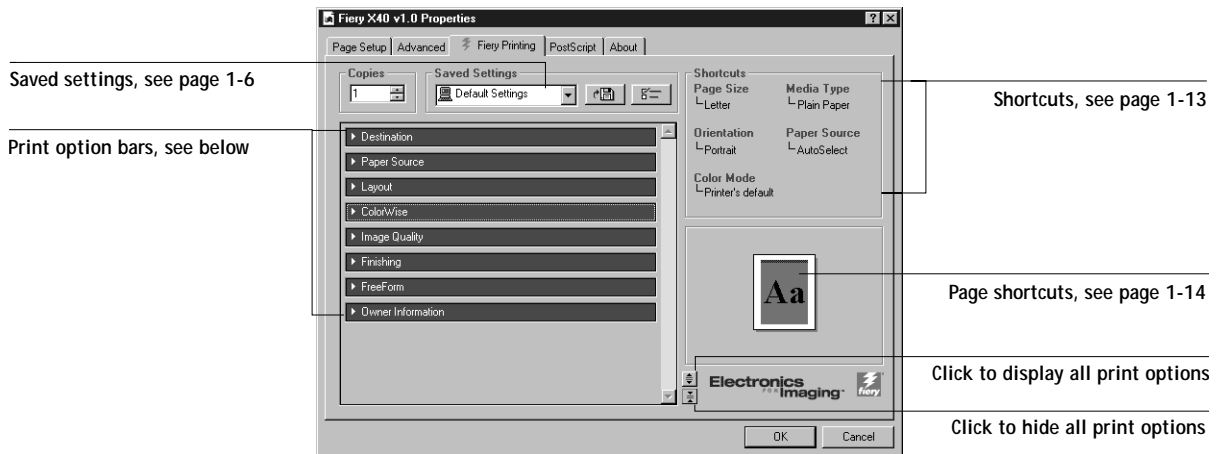
You can print from Windows NT 4.0 using the Adobe PostScript printer driver included on the User Software CD.

Once you have installed the Adobe PostScript printer driver and the PPD file, you can specify print options.

With the Adobe PostScript printer driver, you can set options on a job-by-job basis (see below), or establish default settings for all jobs printed from your computer to the Fiery X40 (see page 1-24).

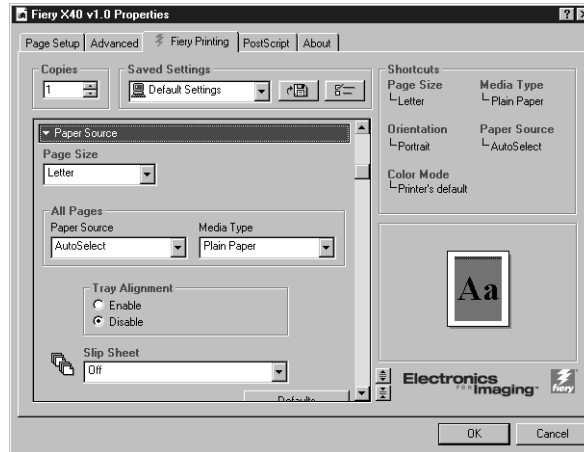
TO SET PRINT OPTIONS FOR A SPECIFIC WINDOWS NT 4.0 PRINT JOB USING THE POSTSCRIPT PRINTER DRIVER:

1. Choose Print in your application.
2. Make sure the Fiery X40 is selected as your printer and click Properties.
3. Click the Fiery Printing tab.



The Fiery Printing tab serves as the control center for all frequently used printing functions.

4. Click the Paper Source print option bar and specify the appropriate settings for the print job.



In the Page Size area, specify the page size for the job.

From the Paper Source pop-up menu, choose the paper tray for the job. For example, you can specify that the job should be printed on pages from Tray 1.

In the Media Type area, specify the type of media to use for the job.

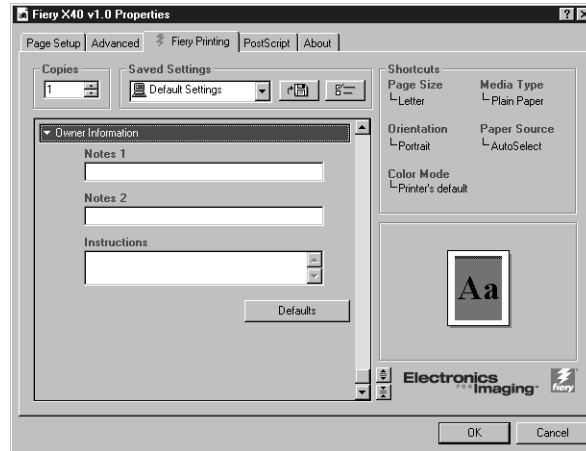
5. Click the Destination, Layout, ColorWise, Image Quality, Finishing, and FreeForm print option bars to specify the appropriate settings for the print job.

These print options are specific to the Fiery X40 and the printer. They override settings specified in Fiery X40 Printer Setup, but can be overridden from Command WorkStation using the job's Properties dialog box, or from Fiery WebSpooler or Fiery Spooler using the job's Override Print Settings dialog box. For information about these options and overrides, see Appendix A.

If you choose Printer's default, the job prints according to the settings entered during Setup, or the default settings. See Appendix A for more information.

NOTE: Some options listed in the printer driver could also be set from an application (for example, collation). In these cases, use the driver option to perform the function, rather than setting it from the application. The application may not set up the file properly for printing on the Fiery X40 and may also take longer to process.

6. Click the Owner Information print option bar.



7. Enter text messages in the Notes 1 and Notes 2 areas.

Enter user and job identification information for accounting purposes, or whatever information is required at your site.

The information you enter in these areas can be viewed by the operator in the job's Properties dialog box using Command WorkStation, and in the job's Override Print Settings dialog box using WebSpooler. When printing PostScript jobs, Notes 1 and Notes 2 information also appears in the Command WorkStation Job Log. This information *cannot* be edited or erased by the operator.

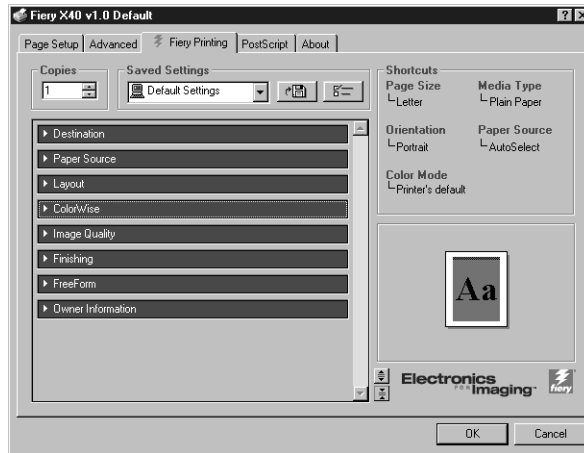
8. In the Instructions area, enter instructions to the operator about the job.

These instructions can be displayed in the job's Properties dialog box at the Command WorkStation, but they do not appear in the Command WorkStation, WebSpooler or Fiery Spooler Job Log. These instructions *can* be edited by the operator.

9. Click OK and then OK in the Print dialog box.

TO SET DEFAULT PRINT OPTIONS FOR ALL WINDOWS NT 4.0 JOBS USING THE POSTSCRIPT PRINTER DRIVER:

1. Click the Start button, point to Settings, and click Printers.
2. Right-click to select the Fiery X40 and choose Document Defaults.
3. Click the Fiery Printing tab.



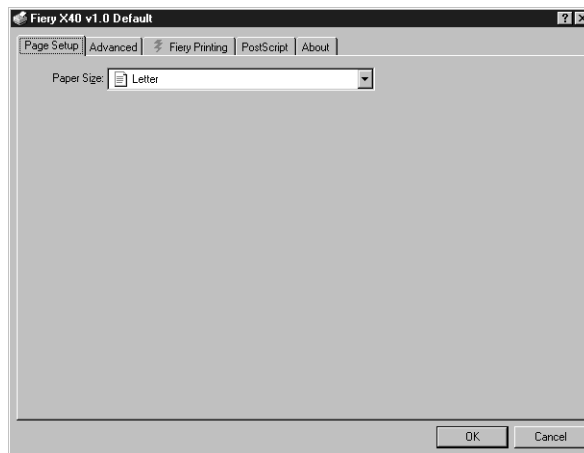
4. Specify the default settings for your print jobs as described starting on page 1-17.
5. Click OK.

Working with custom page sizes in Windows NT 4.0

With custom page sizes, you define the page dimensions and the unprintable area of the page.

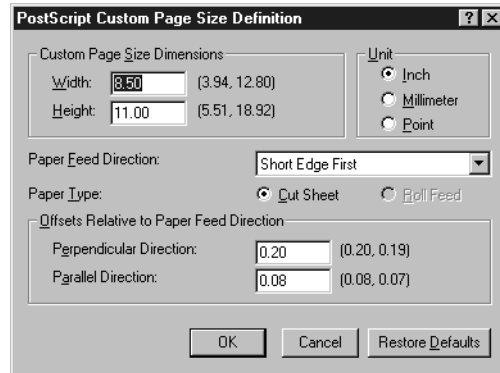
TO DEFINE A CUSTOM PAGE SIZE:

1. Click the Start button, point to Settings, and choose Printers.
2. Right-click the Fiery X40 icon, then choose Document Defaults.
3. Click the Fiery Printing tab and click the Paper Source print option bar.
4. Select Bypass Tray from the Paper Source menu.
5. Click the Page Setup tab, and click the Paper Size menu.



Select PostScript Custom Page Size.

6. Enter the dimensions of the page, then click OK.



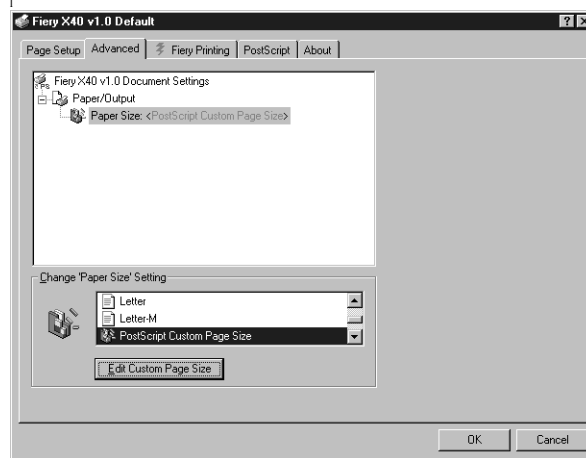
7. Click OK.

After you define a custom page size, you can use it from within an application, without having to redefine it each time you print.

TO EDIT A CUSTOM PAGE SIZE:

1. Click the Start button, point to Settings, and choose Printers.
2. Right-click the Fiery X40 icon, then choose Document Defaults.

3. Click the Advanced tab and select Paper Size.



Select PostScript Custom Page Size.

4. Click the Edit Custom Page Size button.
5. Edit the dimensions of the page and click OK.

TO PRINT A CUSTOM PAGE SIZE:

1. Choose Print from your application.
2. Make sure the Fiery X40 is selected as the printer, then click Properties.
3. In the Page Setup tab, click the Paper Source menu.
4. Select Manual Feed from the Page Size menu.
5. Click OK and then click OK again to print the job.

These print options are specific to the Fiery X40 and the printer. They override settings in Fiery X40 Printer Setup, but can be changed from Command WorkStation, Fiery WebSpooler, or Fiery Spooler. For information about these options and overrides, see Appendix A.

Setting options and printing from Windows 2000

You can print from Windows 2000 using the Microsoft printer driver included with your Windows 2000 system, and the PostScript PPD included on the User Software CD.

Once you have installed the printer driver and the PPD file, you can specify print options.

To print from Windows 2000 applications by connecting your computer to a print server via the network, one of the following is required: a NetWare server, a Windows NT server, a Windows 2000 server, or a UNIX server. For more information, see the *Configuration Guide*.

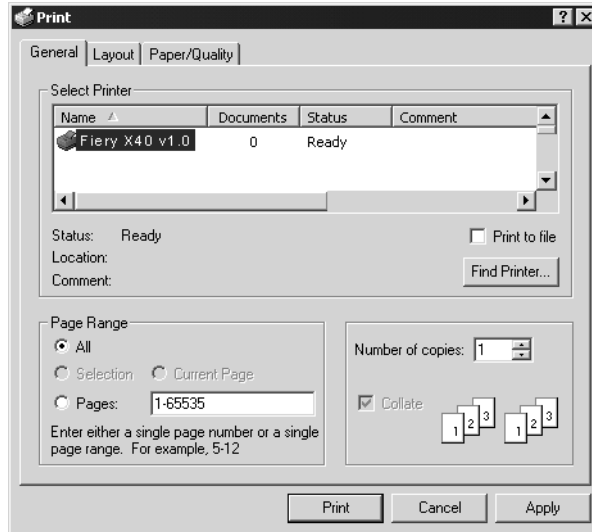
To print from Windows 2000 applications without connecting to a print server, you can use SMB printing. For more information, see the *Getting Started*.

TO SET PRINT OPTIONS FOR A WINDOWS 2000 PRINT JOB USING THE MICROSOFT POSTSCRIPT PRINTER DRIVER:

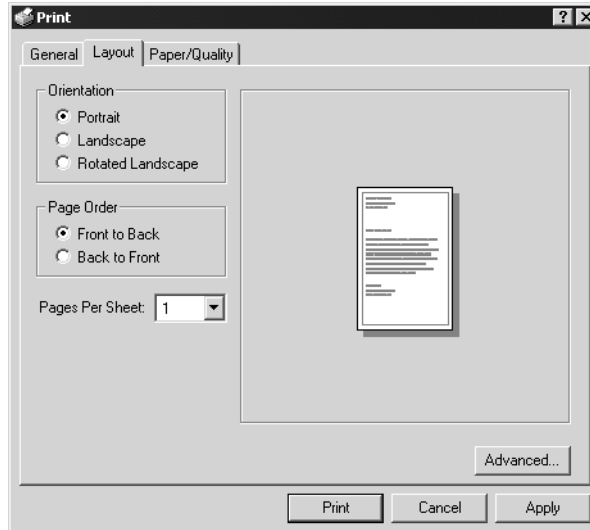
1. Choose Print in your application.

NOTE: The dialog box that appears may vary, depending on the application you are printing from.

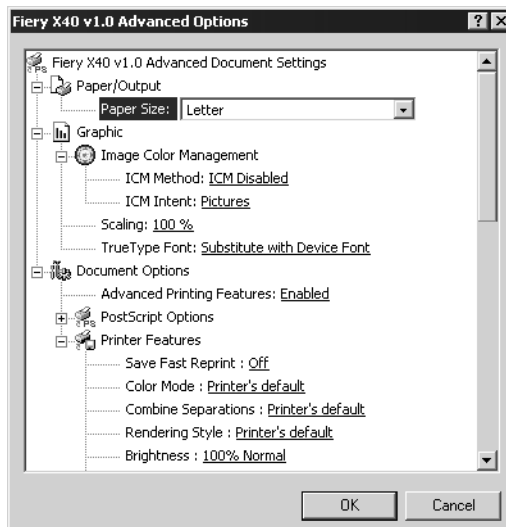
2. Make sure the Fiery X40 is selected as your printer.



3. Select print options from the Layout and Paper/Quality tabs.

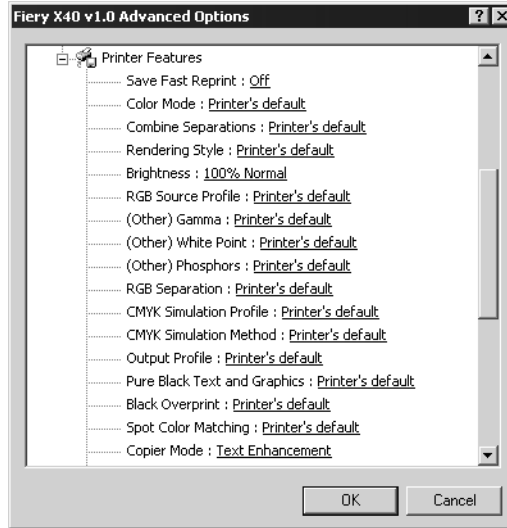


4. Click the Advanced button.



Select a setting from the Paper Size pop-up menus.

5. Scroll down to Printer Features, and select the appropriate settings for the print job.



These print options are specific to the Fiery X40 and the printer. They override settings in Fiery X40 Printer Setup, but can be changed from Command WorkStation, Fiery WebSpooler, or Fiery Spooler. For information about these options and overrides, see Appendix A.

If you choose Printer's default, the job prints according to the settings entered during Setup, or default settings.

NOTE: As you select print options, incompatible print settings appear with a caution icon next to their names. If you specify incompatible print settings the Incompatible Print Settings dialog box appears. Follow the on-screen instructions to resolve the conflict.

6. Click OK to close the Advanced Options dialog box.
7. Click OK to close the Document Properties dialog box
8. Click OK to Print.

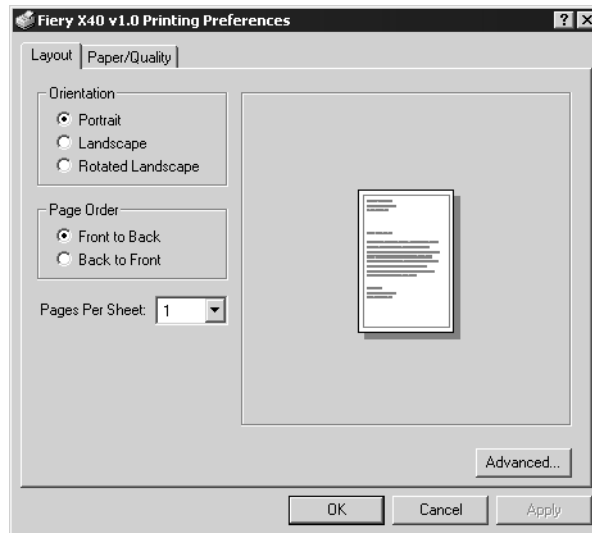
The job prints with the specified settings.

Working with custom page sizes in Windows 2000

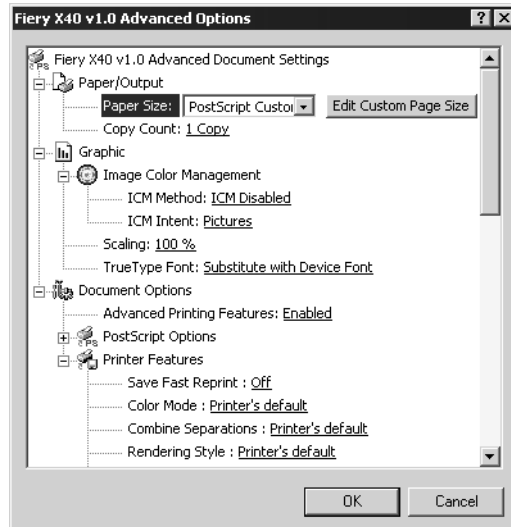
With a custom page size, you define the page dimensions and the unprintable area of the page. You can save a custom page size for easy use any time you print.

TO DEFINE A CUSTOM PAGE SIZE:

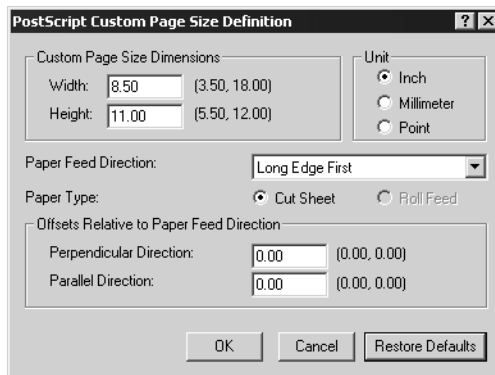
1. Click the Start button, point to Settings, and choose Printers.
2. Right-click the Fiery X40 icon, and choose Printing Preferences.



3. Click the Advanced button.



4. Select PostScript Custom Page Size from the Paper Size pop-up menu.
5. In the PostScript Custom Page Size Definition dialog box, specify options to define the custom page size.



Custom Page Size Dimensions—Specify the width and height of the print job.

Unit—Specify the unit of measurement for the print job.

Paper Feed Direction—Specify the paper feed direction of the print job.

Paper Type—Specify the type of paper for the print job.

Offsets Relative to Paper Feed Direction—Specify the offsets (margins) of the print job relative to the paper feed direction.

6. Click OK to close the Advanced Options dialog box.
7. Click OK to close the Printing Preferences dialog box.

After you define a custom page size, you can specify it from within an application, without having to redefine it each time you print.

TO PRINT A CUSTOM PAGE SIZE:

1. Choose Print from your application.
2. Right-click the Fiery X40 icon, and choose Printing Preferences.
3. Click the Advanced button.
4. Select PostScript Custom Page Size from the Paper Size pop-up menu.
5. Verify the custom page size settings. Click OK.
6. Click OK to close the Advanced Options dialog box.
7. Click OK to close the Printing Preferences dialog box.
8. Click Print.

Printing to the parallel port

The Fiery X40 has a parallel port that enables you to print most files directly from a Windows computer if your network administrator has connected the Windows computer's parallel port to the Fiery X40 parallel port.

NOTE: You cannot use Fiery Downloader through the parallel port.

TO PRINT FILES TO THE PARALLEL PORT:

1. Make sure the parallel port is enabled on the Fiery X40.
Check with your site administrator or operator to see whether printing to the parallel port is enabled. See *Getting Started* for information on setting up parallel port printing on your Windows computer.
2. Select the printer port that is connected to the Fiery X40 parallel port.
Select one of the local ports: LPT1, LPT2, or LPT3. For instructions, see your Windows documentation.
3. Print from within your application.

Saving files to print at a remote location

If you do not have the Fiery X40 and are preparing files to take to a service bureau or other location, print the final files to the File port (as opposed to one of the local ports). You can also print to the File port to create a file to download using Fiery Downloader or WebDownloader. For instructions on printing to the File port, see your Windows documentation.

Printing with Fiery Downloader or WebDownloader

Downloading files with Fiery Downloader or WebDownloader is generally faster than printing from application software. You can use Fiery Downloader or WebDownloader to print PostScript, EPS, or PDF files.

TO PRINT USING FIERY DOWNLOADER:

1. Create a PostScript, EPS, or PDF file. Specify the appropriate print options and include (embed) any necessary fonts that are not resident on the Fiery X40.

For a list of fonts resident on the Fiery X40, see Appendix B.

2. Launch Fiery Downloader and connect to the Fiery X40.

For instructions on setting up Fiery Downloader, see *Getting Started*.

3. Select the file(s) you want to download, and specify any necessary options.

4. Click Download File(s).

For details, see Chapter 5, “Downloading Files and Fonts.”

TO PRINT USING WEBDOWNLOADER:

1. Create a PostScript, EPS, or PDF file. Specify the appropriate print options and include (embed) any necessary fonts that are not resident on the Fiery X40.

For a list of fonts resident on the Fiery X40, see Appendix B.

2. Launch Fiery WebTools and click WebDownloader.

See “Fiery WebTools” on page 6-1 for information on how to access WebDownloader.

3. Select the queue and the file you want to download.

4. Click Download.

Chapter 2: Printing from Mac OS Computers

You can print to the Fiery X40 just as you would print to any other printer from any application software. First, select the Fiery X40 as the current printer in the Chooser, and then print the file from within the application.

Another way to print from a Mac OS computer is to download PostScript, Encapsulated PostScript (EPS), or Portable Document Format (PDF) files using Fiery Downloader or Fiery WebDownloader. Basic instructions are provided at the end of this chapter.

Printing from applications

Before you can print to the Fiery X40 from applications, you must select the Fiery X40 in the Chooser. Then, using the Adobe PostScript printer driver and the correct PostScript Printer Description file (PPD), you can control many Fiery X40 printing features by specifying job settings from print dialog boxes.

For information on achieving the best printing results from specific applications, see the *Color Guide*.

Selecting the Fiery X40 in the Chooser

Before you print a job, make sure the Fiery X40 is the currently selected printer.

NOTE: For information about setting up the Fiery X40 in the Chooser, see *Getting Started*.

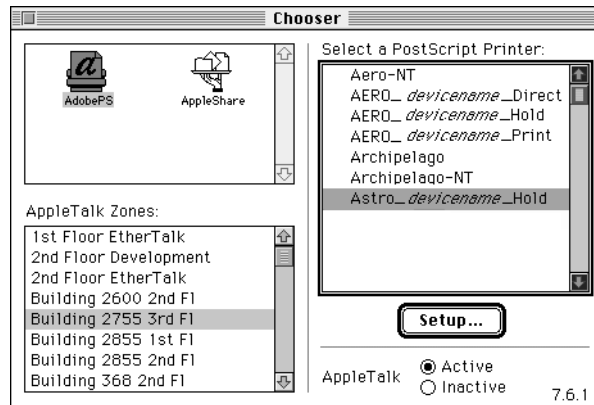
TO SELECT THE FIERY X40 AS THE CURRENT PRINTER:

1. Make sure the Fiery X40 is connected to the network and turned on.
2. Choose Chooser from the Apple menu.
3. Click the AdobePS icon to select it.

NOTE: Make sure AppleTalk is set to Active.

4. If your network is divided into zones, select the zone in which the Fiery X40 is located.
5. Select the Fiery X40 by <Server Name>_<Device Name>_<Queue Name> from the "Select a PostScript Printer" list.

The names of all supported printers in the zone appear in the scroll list on the right.



NOTE: If your system administrator has not enabled the connection to the Print queue or the Direct connection, the corresponding names will *not* appear in this list. For example, if your site has an operator who controls the flow of print jobs from the Command WorkStation, you may be able to print only to the Hold queue. See the *Configuration Guide* for more information on enabling printer connections.

6. Close the Chooser window.

The Fiery X40 remains selected as the current printer until you choose a new printer in the Chooser.

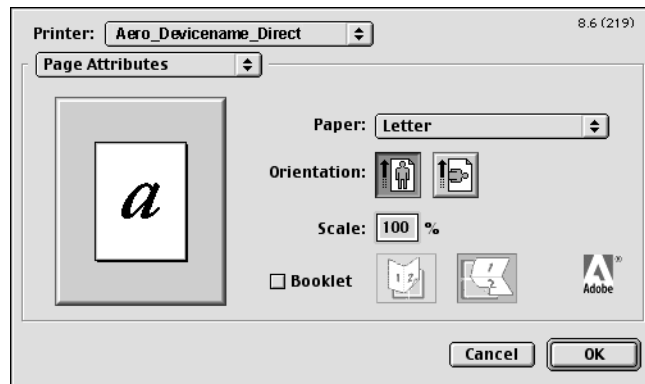
Setting options and printing from Mac OS computers

In Mac OS applications, print options are set from both the Page Setup dialog box and the Print dialog box. For details on specific print options, see Appendix A, “Print Options”

NOTE: Some default print options are set by the administrator during Setup. Check with the administrator or the operator for information on the current server default settings.

TO SET PRINT OPTIONS AND PRINT WITH THE ADOBEPS PRINTER DRIVER:

1. Open a file and choose Page Setup from the application's File menu.
2. In the dialog box that appears, specify the Page Attributes settings for your print job. Make sure to select the Fiery X40 as your printer.

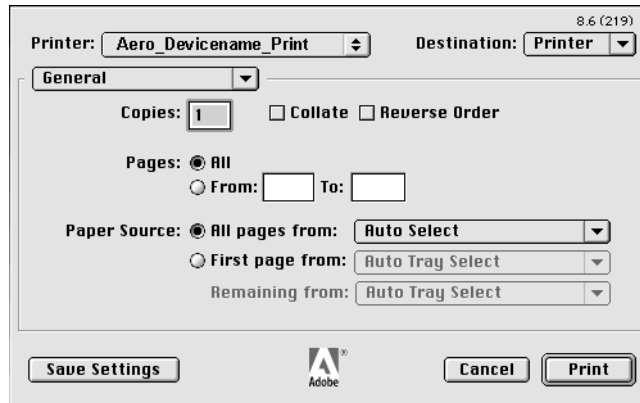


NOTE: Page Setup dialog boxes vary across applications.

3. Click OK.

4. Choose Print from the application's File menu.

Make sure the Fiery X40 is selected as your printer and specify settings for the print options displayed.



NOTE: Print dialog boxes vary across applications.

From the Paper Source pop-up menu, choose the paper tray for the job. For example, you can specify that the job should be printed on pages in Tray 1.

NOTE: If paper loaded in the selected tray is a different size, orientation, and/or media type than that of the job you are sending, the Fiery X40 displays an error message and the job will not print. You should then load the correct paper in the selected tray or cancel the job.

5. Go to Job Notes.

Choose Job Notes from
the pop-up menu

In the Notes 1 and Notes 2 areas, enter user and job identification information for accounting purposes, or whatever information is required at your site. These notes will appear in the Job Log; they can also be viewed by the operator at the Command WorkStation. These notes *cannot* be edited or erased by the operator.

In the Instructions area, enter instructions to the operator about the job. These instructions can be displayed at the Command WorkStation, but do not appear in the Job Log. These instructions can be edited by the operator.

6. Go to Printer Specific Options and specify the appropriate settings for your print job.

Choose Printer Specific
Options from the pop-up
menu

These print options are specific to the Fiery X40 and the printer. They override settings in Fiery X40 Printer Setup, but can be changed from Fiery WebSpooler. For information about these options and overrides, see Appendix A, “Print Options”.

For information about these options and overrides, see Appendix A, “Print Options”.

If you choose **Printer’s default**, the job prints according to the settings entered during Setup, or the default settings. See Appendix A, “Print Options” for more information.

Some PPD options can also be set from an application (for example, Reverse Order printing or collation). In these cases, use the PPD option to perform the function, rather than setting it from the application. The application may not set up the file properly for printing on the Fiery X40 and may also take longer to process.

7. If you want to make the new settings the default settings, click **Save Settings**.
8. Click **Print**.

NOTE: The Fiery X40 does not support printing the Cover Page from the AdobePS printer driver.

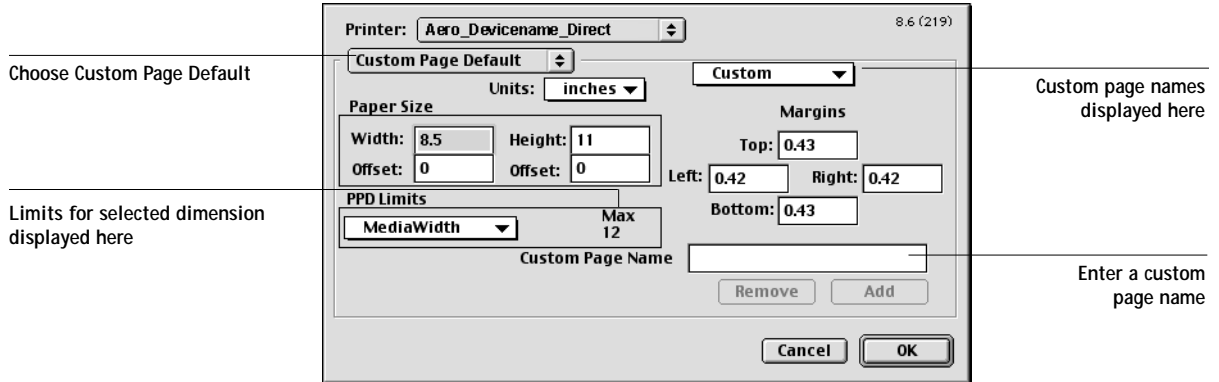
Defining custom page sizes

With custom page sizes, you define the page dimensions and margins. After you define a custom page size, you can use it from within an application, without having to redefine it each time you print.

TO DEFINE A CUSTOM PAGE SIZE:

1. Choose **Page Setup** from the application’s **File** menu
2. For **Paper**, choose **Custom**.

- From the pull-down menu under, choose Custom Page Default.



- Enter the page dimensions and margins.
You can view the minimum and maximum sizes by using the pull-down menu under PPD Limits.
- To save this custom page size, enter a name for it and click Add.
Saved custom page sizes appear in the menu of page sizes at the top right of the dialog box. To remove a saved custom page size, select it from the menu and click Remove.
- Click OK.

TO PRINT A CUSTOM PAGE SIZE:

- Choose Page Setup from the application's File menu
- For Paper, choose Custom.
- Click OK.
- Choose Print from your application's file menu.
Specify your printing options.
- Click Print.

Printing with Fiery Downloader or Fiery WebDownloader

Downloading files with Fiery Downloader or Fiery WebDownloader is generally faster than printing from an application. You can use Fiery Downloader or Fiery WebDownloader to print PostScript, EPS, or PDF files.

TO PRINT USING FIERY DOWNLOADER:

1. Create a PostScript, EPS, or PDF file. Specify the appropriate print options and include (embed) any necessary fonts that are not resident on the Fiery X40.

For a list of fonts resident on the Fiery X40, see Appendix B, “Font List”

2. Launch Fiery Downloader and connect to the Fiery X40.

For instructions on setting up Fiery Downloader, see *Getting Started*.

3. Select the file(s) you want to download, and specify any necessary options.

4. Click Download.

For details, see Chapter 5, “Downloading Files and Fonts.”

TO PRINT USING FIERY WEBDOWNLOADER:

1. Create a PostScript, EPS, or PDF file. Specify the appropriate print options and include (embed) any necessary fonts that are not resident on the Fiery X40.

For a list of fonts resident on the Fiery X40, see Appendix B, “Font List”

2. Launch Fiery WebTools and click on Fiery WebDownloader.

See “Fiery WebTools” on page 6-1 for information on how to access Fiery WebDownloader.

3. Select the queue and the file you want to download.

4. Click Download.

Chapter 3: Printing from UNIX Workstations

You can print to the Fiery X40 directly from UNIX workstations. Jobs printed to the Fiery X40 are sent to the Print or Hold queue and can be manipulated from the Command WorkStation or from Windows and Mac OS computers on the network using Fiery WebSpooler.

NOTE: If you print to the Hold queue, an operator must intervene from the Command WorkStation or Fiery WebSpooler for the job to print; jobs sent to the Hold queue are spooled to disk and held.

The queue name and Fiery X40 printer name are determined by your system administrator. Contact your system administrator for the names of your queues.

For information about setting up printing from TCP/IP, see your UNIX system documentation.

Printing to the Fiery X40

You can use UNIX commands to print PostScript and text files to the Fiery X40. In general, use basic print commands (`lpr`, `lpq`, `lprm`) to send print jobs to the Fiery X40. See UNIX manual pages or other documentation for information about UNIX commands.

NOTE: Only PostScript or text files can be printed from UNIX.

TO PRINT FROM UNIX:

- On a system running SunOS 4.1.x or another BSD-based variant, use the `lpr` command to send a job to the Fiery X40 as follows:

```
lpr <-Pprinter> <-#copies> <filename>
```

For example, if the Print queue of your Fiery X40 is named `print_Server`, your file is named `Sample`, and you want to print two copies, type:

```
lpr -Pprint_Server -#2 Sample
```

- On a system running Solaris 2.x or any System V implementation of UNIX, use the `lp` command to send a job to the Fiery X40 as follows:

```
lp -d <printername> {-n <copies>} <filename>
```

For example, if the Print queue of your Fiery X40 is named `print_Server`, your file is named `Sample`, and you want to print two copies, type:

```
lp -d print_Server -n 2 Sample
```

TO DISPLAY A LIST OF JOBS IN THE QUEUE:

- On a system running SunOS 4.1.x or another BSD-based variant, use the `lpq` command to see printer jobs in the queue as follows:

```
lpq <-Pprinter>
```

For example, if the Print queue of your Fiery X40 is named `print_Server`, type:

```
lpq -Pprint_Server
```

Your workstation displays the contents of the queue.

- On a system running Solaris 2.x or any System V implementation of UNIX, use the `lpstat` command to see printer jobs in the queue as follows:

```
lpstat -o <printername>
```

For example, if the Print queue of your Fiery X40 is named `print_Server`, type:

```
lpstat -o print_Server
```

Your workstation displays the contents of the queue.

TO REMOVE JOBS FROM THE QUEUE:

NOTE: Unless you log in as the root user, you can remove only your own jobs.

- On a system running SunOS 4.1.x or another BSD-based variant, use the `lprm` command to remove jobs from the queue as follows.

```
lprm <-Pprinter> <job #...>
```

You can use the `lpq` command to check the job number.

For example, to remove job number 123 from the Print queue of your Fiery X40 named `print_Server`, type:

```
lprm -Pprint_Server 123
```

The `lprm` command reports the names of any files it removes.

- On a system running Solaris 2.x or any System V implementation of UNIX, use the `cancel` command to remove jobs from the queue.

```
cancel <printername> <job ID>
```

For example, to remove job number 123 from the Print queue of your Fiery X40 named `print_Server`, type:

```
cancel print_Server 123
```


Chapter 4: Special Features

This chapter describes some of the special features supported by the Fiery X40 including:

- Printing variable data documents using FreeForm™

FreeForm is available as an optional upgrade. For more information, contact your authorized service/support technician.

- Printing simulations
- Printing duplex pages

Printing variable data documents with FreeForm

Variable data printing is typically used for direct-mail advertising or other targeted mailings. It involves combining a set of master elements that are common across copies of a document with a set of variable elements that change from copy to copy. An example is a brochure that greets customers by name and may include other personal information about the customer obtained from a marketing database. Background elements, illustrations, and text blocks that do not change across copies of the brochure comprise the master elements. The customer's name and other customer-specific information comprise the variable elements.

How FreeForm works

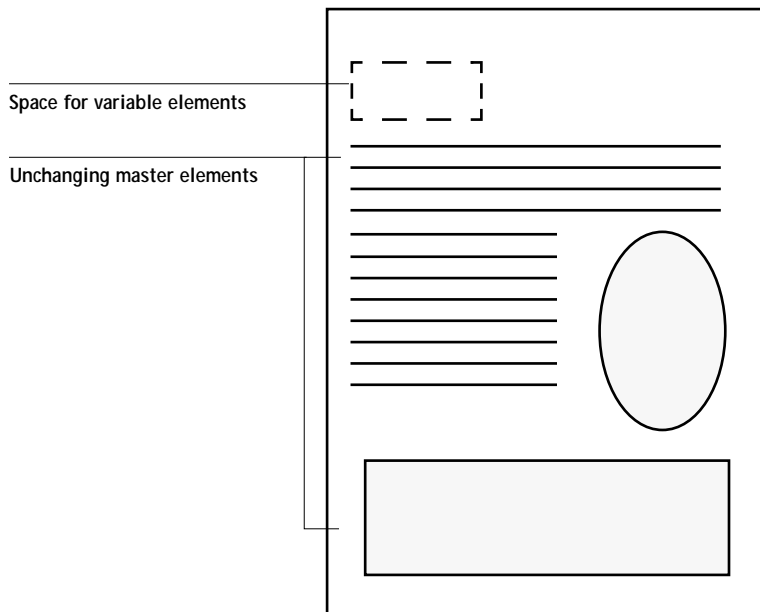
The basic premise of FreeForm variable data printing is that the master-element data for the job can be sent to the Fiery X40 and rasterized separately from the variable-element data. The master-element data is stored on the Fiery X40 in prerasterized form as a FreeForm Master, and can be used as often as needed with multiple sets of variable-element data. Because the FreeForm Master job is preRIPped and stored on the Fiery X40, the only RIP time required for variable data print jobs is the time needed to RIP the variable-element data. In fact, FreeForm Masters can be used for any fixed-element data that you might combine with different data from day to day. For example, a letterhead template can be stored as a FreeForm Master and used repeatedly as the background for different letter content (the variable-element data).

FreeForm allows you to create the master-element and variable-element documents using any application you wish. The two documents can be created using different applications, or even different computer platforms. To create the master-elements document, you can use a page layout or graphics application. To create the variable-elements document, you can use a word processing application that has a mail merge feature, a page layout application that supports scripting, or a database application.

FreeForm functions are controlled with two print options: Create Master and Use Master. You can set these options in the printer driver when you send a job, or you can instruct the operator to set them with job overrides from the Command WorkStation or Fiery WebSpooler.

Creating the master-elements document

Before you can use FreeForm, you must create a master-elements document and a variable-elements document. This includes creating the layout for the combined document as well as the elements themselves. In a page layout or graphics program, you arrange the master elements (text and graphics that do not change) on one or more pages, leaving space for the variable elements.



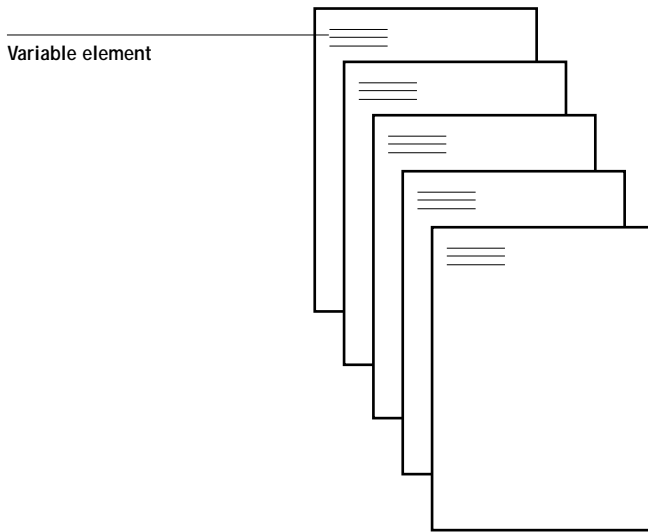
Master-elements document

When you have finalized the design of the master-elements document, print it to the Fiery X40 and specify that a FreeForm Master is to be created from the job (see page 4-6).

NOTE: Although the Fiery X40 can store up to 100 FreeForm Masters, the printer driver interface and Fiery WebSpooler allow you to select numbers 1 through 15 only. To create a FreeForm Master with a number greater than 15, the operator must set the Create Master and Use Master options and RIP the job from the Command WorkStation.

Creating the variable-elements document

You can create the variable-elements document with a word processing application that provides a mail merge function, a database application, or a page layout application that supports scripting. In all cases, information is taken from a list or database and merged into an existing document that is set up to accept the information. Each application has different controls for this function; see the application documentation for detailed instructions. Before the variable elements can be added to the master-elements document, they must be formatted to conform to the layout of the master-elements document. This is done by creating a document with the correct formatting and then adding the variable information in the appropriate places.

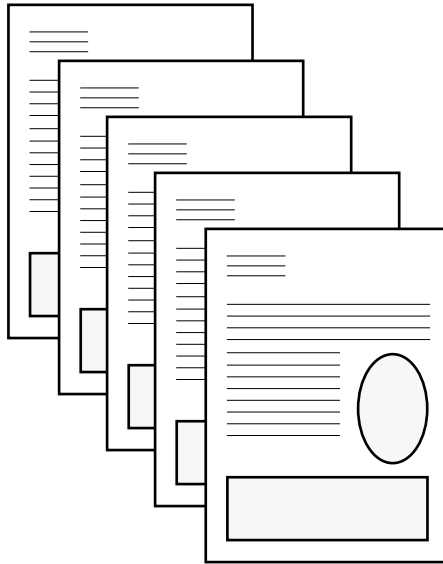


Variable-elements document

When you have created the variable-elements document, print it to the Fiery X40 and specify that it should be combined with the corresponding FreeForm Master.

Combining the FreeForm Master with the variable-elements document

When you print the variable-elements document to the Fiery X40, you specify the FreeForm Master created from your master-elements document with the Use Master print option. The Fiery X40 combines the raster data of the variable-elements document with the preRIPped FreeForm Master, creating a new raster data file. The merged raster file can be soft-proofed (before it is printed) in the Thumbnail windows of the Command WorkStation or Fiery WebSpooler.



Combined document

Using FreeForm

This section provides some suggestions to help you print variable data jobs correctly.

- Consult your administrator or operator on how FreeForm Master numbers are assigned at your site.

If FreeForm printing is used by a large number of users at your site, FreeForm Master numbers, or ranges of numbers, may be assigned to specific users or groups. Users can select only numbers 1 through 15 as print option settings. The operator can override FreeForm Master numbers and reassign them to numbers greater than 15 from the Command WorkStation. You may want the operator to assign all FreeForm Master numbers to avoid potential conflicts in the use of FreeForm Master numbers.

- Use the Job Notes and Instructions fields to communicate instructions about your job to the operator.

If you want to create or use a FreeForm Master number greater than 15, these fields can be used to tell the operator to override the appropriate job setting (Create Master or Use Master) and RIP the job from the Command WorkStation.

- Give your jobs unique and descriptive names.

Both you and the operator need to be able to easily identify your jobs if there are many jobs in the queues, the FreeForm Master numbers are reassigned, or you want to refer to another job in the Job Notes or Instructions fields.

- See Appendix A, “Print Options” for restrictions on print option settings when using FreeForm.

The following settings for the master-elements document and variable-elements document must match:

Color Mode

Combine Separations

N-up layout

Duplex

Page Size

Page Order

4

4-6 Special Features

The following settings for the variable-elements document override the corresponding settings in the master-elements document:

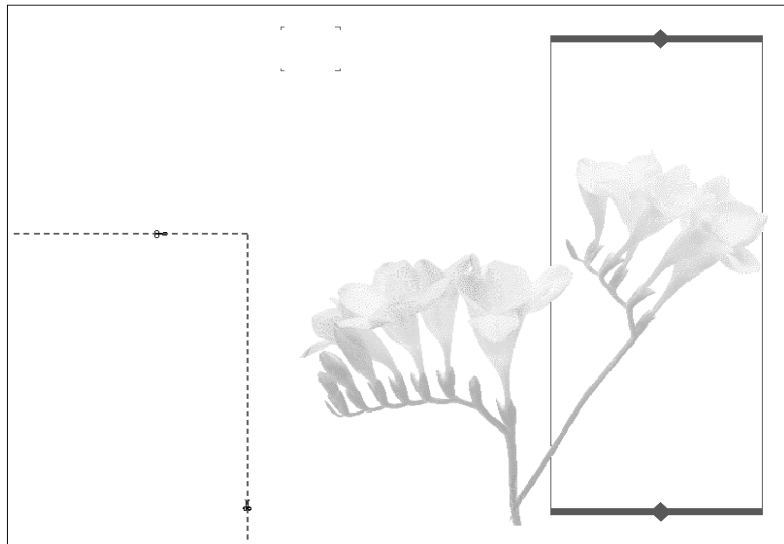
- Black Detection
- Collation
- Copier Mode
- Media Type
- Save Fast Reprint
- Slip Sheet
- Sorter
- Stapler Mode

TO PRINT VARIABLE DATA DOCUMENTS:

1. Create a master-elements document.

The master-elements document can comprise multiple pages.

The example below shows one page of a master-elements document for a tri-fold brochure which was created with a page layout application.



2. Print the master-elements document to the Fiery X40 with the Create Master print option set to one of the FreeForm Master numbers (1 through 15).

Or, set the Create Master option to None and instruct the operator to use overrides to create a FreeForm Master from this job.

3. Create the variable-elements document.

You can create the variable-elements document using a different file, a different application, or a different computer platform than was used to create the master-elements document, but some print options must be the same (see page 4-5 for details).

The example below shows one page of the variable-elements document for the tri-fold brochure. The data in this document can be as simple as a name and address, or as complex as multiple, full-color graphics and photographic elements.

Luis,

Thank you for expressing interest in the Garden Tea Rooms of San Francisco.


Our records indicate that you will be staying in the Hyatt Regency Hotel from December 12 to December 15, 1998.

Based on your request, we have included a coupon for a serving of Crumpets and Scones below, along with a map of the closest tea room to your hotel. We hope you enjoy your stay in the Bay Area.


Cheers!

Free Crumpets

This coupon entitles you, Luis Echevarria, to a complimentary serving of Scones at



THE KING GEORGE
334 Mason Street at Geary



Please present this coupon at the time of purchase. Offer expires: 12/31/99.

Garden Tea Rooms of San Francisco
23 Divisadero Boulevard
San Francisco, CA 94110

San Francisco Garden Tea Rooms

Luis Echevarria
Arlington, MA 01810

Luis
the information
you requested
is enclosed!

What could be nicer than a pot of hot tea with sandwiches and sweets in a lovely garden setting?

4. Print the variable-elements document to the Fiery X40 with the Use Master print option set to the appropriate FreeForm Master number.

The FreeForm Master number may be one you set yourself when you sent the master-elements document or it may be one that was assigned by the operator.

FreeForm Master numbers can be overridden from the Command WorkStation, or Fiery WebSpooler. Check with the operator to make sure that the FreeForm Master number you specify is the correct one for the FreeForm Master you want to use.

If you want to check the job before it prints, instruct the operator to RIP and Hold the job so that you can preview it from the Command WorkStation or Fiery WebSpooler.

The example below shows the FreeForm Master and variable-elements document combined. The variable data is simply overlaid on the master-elements document.

Danielle,

Thank you for expressing interest in the Garden Tea Rooms of San Francisco.

Our records indicate that you will be staying in the Saint Francis Hotel from September 12 to September 18, 1998.

Based on your request, we have included a coupon for a serving of Crumpets and Scones below, along with a map of the closest bus route to your hotel. We hope you enjoy your stay in the Bay Area.

Cheers!

Free Crumpets

This coupon entitles you, Danielle Abrams, to a complimentary serving of Scones at

THE PARK HYATT
333 Battery at Jones Street

THE PARK HYATT

Please present this coupon at the time of purchase. Offer expires: 12/31/99.

Garden Tea Rooms of San Francisco
23 Devonshire Boulevard
San Francisco, CA 94110

Danielle Abrams
23 Devonshire Blvd.
San Francisco, CA 94110

San Francisco Garden Tea Rooms

Danielle the information you requested is enclosed!

What could be nicer than a pot of hot tea with sandwiches and sweets in a lovely garden setting?

Printing simulations

You can use the Fiery X40 to proof offset press jobs or to simulate the output of other print devices by specifying settings for two print options: CMYK Simulation Profile and CMYK Simulation Method. These options affect CMYK data only.

The Fiery X40 provides CMYK Simulation targets for the major international press standards: SWOP, DIC, and Euroscale. You can also create, save, and import custom simulation profiles using ColorWise Pro Tools (see the *Color Guide*).

- When printing simulations on the Fiery X40, choose the CMYK Simulation Profile setting corresponding to the press standard for which the CMYK data was prepared, or choose a custom simulation profile.
- To simulate the color of a copy made from the copier glass, choose the Match Copy setting. This setting bypasses Fiery X40 calibration.

Use the CMYK Simulation Method print option to specify the quality of simulation desired: Quick or Full. For more information, see the *Color Guide*.

Printing duplex pages

You can use the Fiery X40 to print double-sided (duplex) pages.

TO PRINT DUPLEX PAGES:

1. When specifying print options, set Duplex to the desired setting.
Top-Top prints both sides using the same top edge; Top-Bottom prints the back side upside-down. See “Duplex” on page A-13 for more information.
2. Set other options and click OK.
3. Click Print.

Chapter 5: Downloading Files and Fonts

Fiery Downloader allows you to send PostScript, Encapsulated PostScript (EPS), and Portable Document Format (PDF) files directly to the Fiery X40 without using the application they were created in. It also enables you to manage printer fonts on the Fiery X40.

You can use Fiery Downloader from a remote workstation as well as from the Command WorkStation. Fiery Downloader requires a network connection you *cannot* use Fiery Downloader with the parallel port. For information on installing and configuring Fiery Downloader and on supported networking protocols, see *Getting Started*.

NOTE: The Windows and Mac OS versions of Fiery Downloader are fundamentally the same; differences are noted in this section. Where both windows or dialog boxes are illustrated, the Windows version comes first, followed by the Mac OS version.

You can also use the WebDownloader WebTool to download a PostScript, EPS or PDF file. See “Downloading files with WebDownloader” on page 6-3.

Using Fiery Downloader

You can use Fiery Downloader to:

- Print PostScript, EPS, and PDF files to the Fiery X40
- Check the status of the Fiery X40
- Manage the printer fonts stored on the Fiery X40 hard disk (this feature requires that the Direct connection is published on the Fiery X40)

NOTE: Fiery Downloader was designed specifically for the Fiery X40; you cannot use it with any other printer. You can use standard LaserWriter downloaders, such as the Adobe Font Downloader, with the Fiery X40.

TO VIEW INFORMATION WITH FIERY DOWNLOADER:

1. Double-click the Fiery Downloader icon or choose Fiery Downloader from the Start>Programs menu.
2. Select the Fiery X40 in the Chooser window, and click OK (Windows) or Connect (Mac OS).

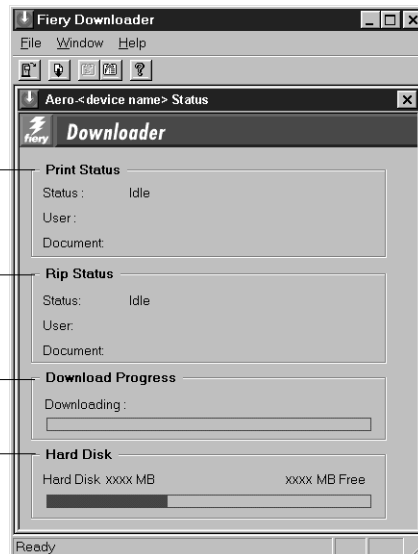
The Fiery Downloader Status window appears and you see the Fiery Downloader Toolbar, menus, and the status bar at the bottom of the screen.

Displays server status and user and document name of the job currently printing

Displays server status and user and document name of the job currently processing

Dynamically displays the progress of the job

Displays the amount of available disk space



Buttons for some menu functions appear in the Toolbar at the top of the window.



Open

Click to connect to a different Fiery X40.



Download

Click to download a file or font to the Fiery X40.



Status

If you are viewing the font list, click to display the status window for the current Fiery X40.



Font list

If you are viewing the status window, click to display a list of printer fonts on the Fiery X40 hard disk.



About Fiery
Downloader
(Windows only)

Click to view version information about Fiery Downloader.

You can click the font list button or choose Font List from the File menu to view font information in the window.

3. To select a different Fiery X40, choose Open from the File menu or click the Open button.
4. Select the Fiery X40 in the dialog box that appears, and click OK (Windows) or Connect (Mac OS).
5. To close the status window, choose Close from the File menu; to quit Fiery Downloader, choose Exit (Windows) or Quit (Mac OS) from the File menu.

Printing with Fiery Downloader

Printing files with Fiery Downloader is fast—generally faster than printing from within applications. If you regularly print large files, be sure to try printing with Fiery Downloader.

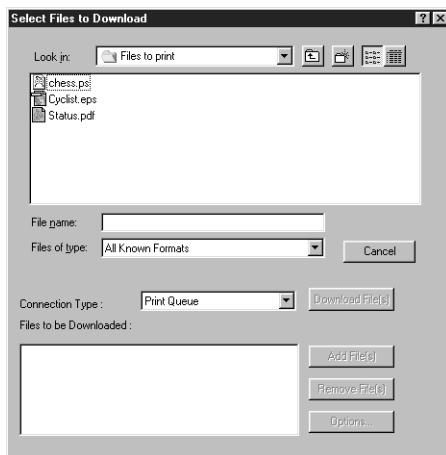
TO DOWNLOAD A FILE OR FONT WITH FIERY DOWNLOADER:

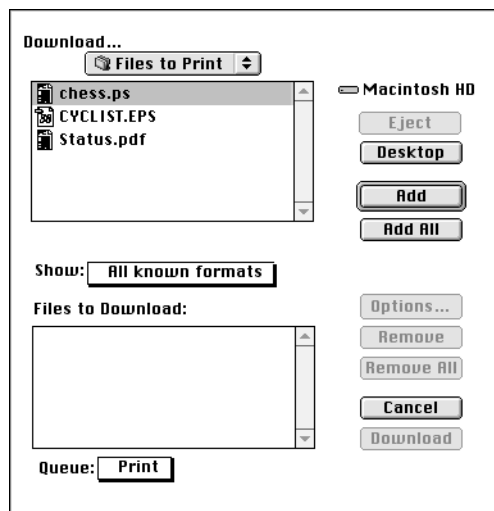
1. Use your application to generate a file.

You can save a PostScript or PDF file by selecting the appropriate option in the application's Print dialog box. With some applications, you can also save EPS files.

If you experience problems printing EPS files with Fiery Downloader, you can print the file directly from the application in which you created it.

2. Launch Fiery Downloader.
3. Choose Download from the File menu or click the Download button.





4. Choose the file type to display from the Files of type (Windows) or Show (Mac OS) menu.

You can leave this at the default All Known Formats or choose All Files. All Known Formats lists all files in formats supported by Fiery Downloader.

You can download files and fonts in the same batch. If the fonts are used by files in the same batch, the fonts should be downloaded first.

5. Choose the Connection Type (Windows) or Queue (Mac OS) to which you will download the files.

The options available to you in this menu depend on the setup at your site. The potential selections are Print Queue (Windows) or Print (Mac OS), Hold Queue (Windows) or Hold (Mac OS), and Direct Connection (Windows) or Direct (Mac OS). If your administrator has not enabled one or more of these connections, you cannot select it.

PDF files cannot be printed with the Direct connection. If you choose the Direct connection, the job is spooled to the Print queue and then printed. If the Print queue is not enabled, the job is spooled to the Hold queue and must be released for printing by the operator.

NOTE: To download fonts, you must use the Direct connection (make sure that the Direct connection is published on the Fiery X40). If you do not have access to the Direct connection, you must embed any special fonts used by the file in the file when you generate it.

6. Select the filename and click Add File(s) (Windows) or Add (Mac OS).

The File name field (Windows) displays the name of the selected file before you click Add.

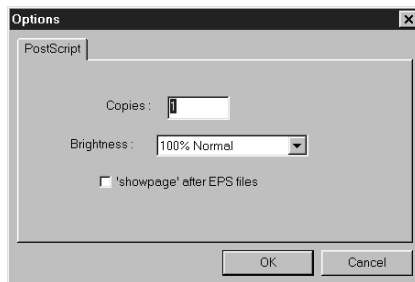
You can navigate to different drives and directories to select files to download. Click Add All (Mac OS) to add all files in a folder.

To select multiple sequential files (Windows), select the first file and then Shift-click the last file. Control-click to select multiple non-sequential files.

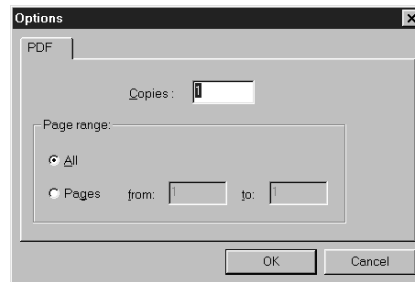
If you change your mind about a file, select the filename in the Files to Download list and click Remove File(s) (Windows) or Remove (Mac OS).

Click Remove All (Mac OS) to remove all files from the Files to Download list.

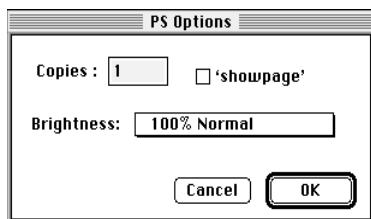
7. To change the attributes of a file to be downloaded, select it and click Options.



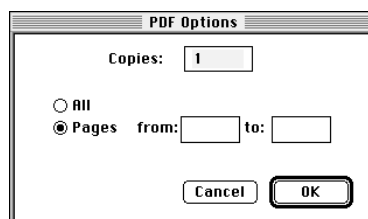
PostScript Options dialog box (Windows)



PDF Options dialog box (Windows)



PostScript Options dialog box (Mac OS)



PDF Options dialog box (Mac OS)

8. Specify the following information in the dialog box and click OK.

The options you set apply only to the selected file. You can set different options, or leave the default settings, for each file.

Copies—Specify the number of copies.

Brightness (PostScript and EPS files only)—Change the Brightness setting if a file appears to be too dark or too light. Choose 85% for a substantially lighter image, 115% for a substantially darker image, or one of the options in between.

NOTE: Some applications, including Adobe Photoshop, provide transfer functions that let you specify density settings for an image. If the file you are printing includes transfer functions, the Fiery Downloader Brightness option has no effect. For more information on using transfer functions, see the documentation for your application.

'showpage' after EPS files (Windows) or **'showpage'** (Mac OS) (PostScript and EPS files only)—In most cases, you do not need to use this option. Select the 'showpage' option only if an EPS file fails to print without it. This option adds a 'showpage' PostScript language command at the end of the print job. Some applications omit this necessary PostScript language command when they generate EPS files. Select this option when printing EPS files generated by these applications. If you select this option unnecessarily, extra blank pages may print.

If you experience problems printing EPS files with Fiery Downloader, you can print the file directly from the application in which you created it.

Page range (PDF files only)—Specify the page range you want to print.

9. Click **Download File(s)** (Windows) or **Download** (Mac OS).
10. To cancel downloading, press **Escape** (Windows) or **Command-.** (Mac OS).

Downloading and managing printer fonts

The Fiery X40 includes 136 PostScript fonts; for a complete list, see Appendix B “Font List.” In addition, two Adobe Multiple Master fonts are included and are used for font substitution in PDF files.

Before downloading a file that uses fonts not resident on the Fiery X40, you must download the fonts (unless the fonts are embedded in the file). To see what fonts are resident on the Fiery X40, choose Font List from the File menu or click the Font List button (see page 5-10).

You can download fonts only via the Direct connection. If you do not have access to the Direct connection, you must embed any special fonts used by the file in the file when you generate it.

The screen fonts that correspond to the printer fonts installed on the Fiery X40 are not automatically installed on your Windows system.

NOTE: You cannot use Fiery Downloader to download TrueType fonts. If you use TrueType fonts in Windows, you can print them by converting them to Adobe Type 1 fonts. To do this with the Adobe PS printer driver for Windows 95/98, click the Fonts tab and set up the Font Substitution Table as necessary. For Windows NT 4.0, go to the Advanced tab of the Fiery X40 Document Defaults dialog box, then select Graphic>TrueType Font>Download as Softfont.

Printer fonts and Mac OS screen fonts

Like all PostScript fonts, the fonts included with the Fiery X40 come in two forms: printer fonts and screen fonts. The printer fonts are installed permanently on the Fiery X40 hard disk. The screen fonts, which are included with the Fiery X40 user software, should be installed on your Mac OS computer. If you are using these fonts in documents you print on a LaserWriter, they are probably already installed. If not, you will need to install them yourself. For instructions, see *Getting Started*.

Occasionally, you may want to use Adobe Type 1 (Windows) or PostScript (Mac OS) fonts that are not included with the Fiery X40. If so, you will need to install both the screen fonts and the printer fonts on your computer. To do this, follow the instructions from the font manufacturer.

Downloading printer fonts to the Fiery X40

In general, each time you print from within a Mac OS application, the application automatically downloads any fonts used in your document that are not already installed on the Fiery X40, as long as the printer fonts are installed in your System Folder. These fonts remain in the Fiery X40 only until your document has printed. If you print the same document again, your application must download the fonts again.

If you regularly use one or more fonts from Windows or Mac OS applications that are not already installed in the Fiery X40, you can save time by downloading them to the Fiery X40 hard disk with Fiery Downloader. Fonts you download to the Fiery X40 hard disk remain installed until you remove them using Fiery Downloader, no matter how many times the Fiery X40 is turned off and on. You'll probably want to download fonts you use on a regular basis to the Fiery X40 hard disk.

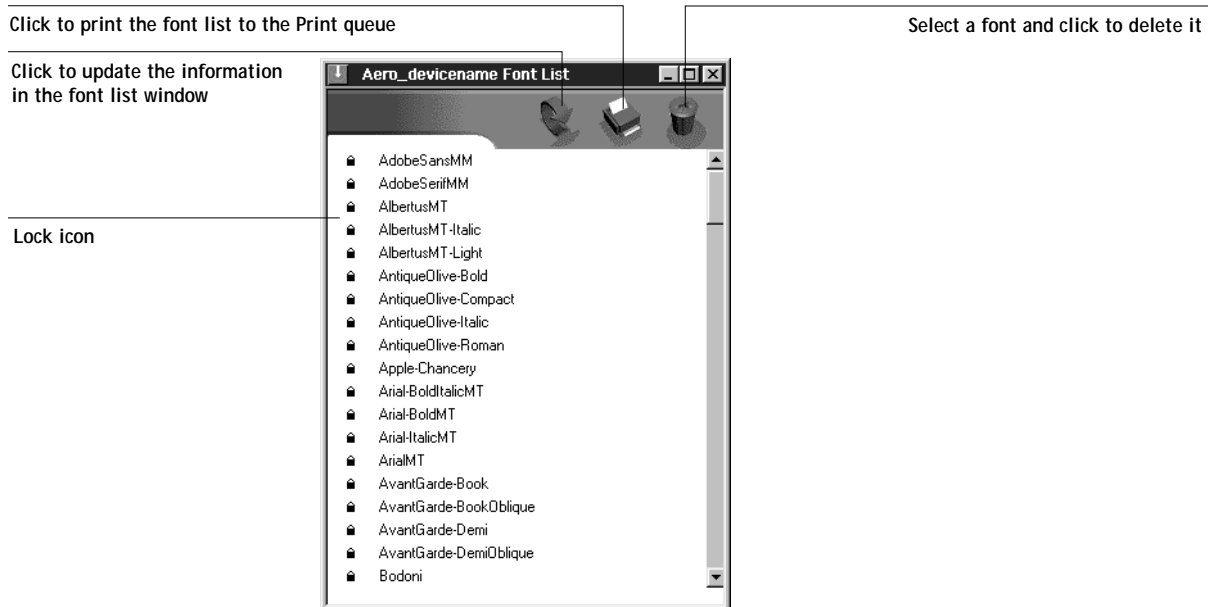
Before you download PostScript or EPS files with Fiery Downloader, make sure that all fonts included in your file are installed on the Fiery X40 or embedded in your file; otherwise the text in these fonts will not print correctly and may not print at all. For PDF files, font substitution occurs automatically for fonts not installed on the Fiery X40. Two multiple master fonts (a serif font and a sans serif font) stored on the Fiery X40 are used exclusively for substitution with PDF files.

TO VIEW FONT INFORMATION, UPDATE, PRINT, AND DELETE FONTS:

- Choose Font List from the File menu or click the Font List button.

NOTE: If the Direct connection is not published, you cannot view the font list or perform any of the tasks described in this procedure. See the *Configuration Guide* or talk to your administrator for information on how to publish the Direct connection.

The Font List window appears with Update, Print, and Delete buttons in the title bar. The printer fonts included with the Fiery X40 (resident fonts) are locked. Locked fonts appear with a lock icon next to the name and cannot be deleted.



Chapter 6: Tracking and Managing Print Jobs

Fiery X40 user software includes a variety of tools that allow you to track and manage print jobs. Access to some tools is controlled by your site administrator, but other tools are available to all users.

- The Command WorkStation and Fiery WebSpooler all provide the capability to view and control the flow of print jobs to the Fiery X40. If the administrator has set Administrator and Operator passwords in Setup, you need one of these passwords to perform most Command WorkStation and Fiery WebSpooler functions. For information on these tools and the access privileges needed to use them, see the *Job Management Guide*.
- The Status, WebLink, and WebDownloader Status and WebLink WebTools do not require any special access privileges. As long as the administrator has enabled Web Services in Setup and has provided users with the IP address of the Fiery X40, anyone can use these WebTools.

Fiery WebTools

Fiery WebTools reside on the Fiery X40's hard disk drive but can be accessed over the network from a variety of platforms. The Fiery X40 has a home page that lets you view server functions and manipulate jobs remotely. This chapter describes only the Status, WebLink, and WebDownloader Status and WebLink WebTools. For information on Fiery WebSpooler, see the *Job Management Guide*. For information on the Installer WebTool, see *Getting Started*. For information on WebSetup, see the *Configuration Guide*.

TO ACCESS FIERY WEBTOOLS:

1. Start up your Internet browser application.
See *Getting Started* for information about supported platforms and browsers.
2. Enter the IP address or the DNS name of the Fiery X40.
Check with the operator or administrator for this information.

3. If a Log In dialog box appears, select Guest and click OK.

The Log In dialog box appears only if the administrator has set a password. Guest access is sufficient to use the Status, WebLink, and WebDownloader Status and WebLink WebTools as described in this chapter.

4. When the Fiery X40 home page appears, click to select one of the Fiery WebTools. Move the cursor over the buttons to display information about the selections.

Checking Fiery X40 status with the Status WebTool

You can use the Status WebTool to see what jobs are currently processing and printing. To access the Status WebTool, point your browser to the Fiery X40 home page and click the Status button. The current RIP Status and Printer Status appear in the window.



To open a new browser window for the Status display, click Float. You can then close other browser windows and leave the Status window open to continue checking the status of the Fiery X40. As long as you keep the Status window open, it is dynamically updated.

To obtain more information about the status of jobs, use Fiery WebSpooler or the Command WorkStation, as described in the *Job Management Guide*.

Accessing information with WebLink

The WebLink button on the Fiery X40 home page provides a link to another web page or to multiple web pages, provided you have a valid Internet connection. The administrator at your site can set the WebLink destination. Check your Fiery X40 WebLink for any information available there.

Downloading files with WebDownloader

Using WebDownloader, you can send PostScript, Encapsulated PostScript (EPS), and Portable Document Format (PDF) files to the printer without first opening the file in an application.

TO DOWNLOAD A FILE WITH WEBDOWNLOADER:

1. Click the WebDownloader WebTool.
2. Select the destination.

You can download files to the Direct, Print, or Hold queue. Files sent to the Print queue are spooled in the printer's memory. Files sent to the Hold queue remain in memory until they are moved to the Print queue or are deleted.

3. Click Browse to search for the file, then select the file and click Open.
4. Click Download.

Fiery Link

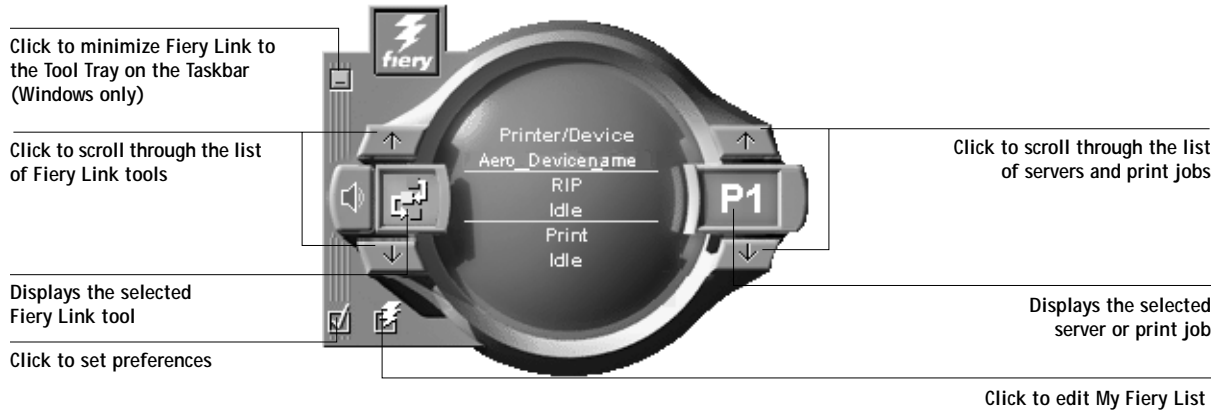
Fiery Link is designed to provide you with up-to-date status on print jobs and connected servers. It tracks the status of your print jobs and alerts you to errors. For example, you can see how many print jobs are ahead of your job in the queue. Fiery Link also provides information about paper and toner levels. For example, you can make sure the sorter output tray is empty before sending a job that will be sorted.

For information on installing and configuring Fiery Link and on supported networking protocols, see *Getting Started*.

NOTE: The Windows and Mac OS versions of Fiery Link are fundamentally the same; differences are noted in this section. Where both windows or dialog boxes are illustrated, the Windows version comes first, followed by the Mac OS version.

TO BEGIN USING FIERY LINK:

1. Double-click the Fiery Link icon or choose Fiery Link from the Start>Programs menu.
The main Fiery Link window appears.



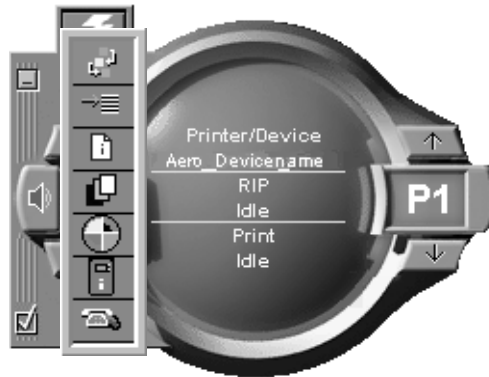
NOTE: To exit Fiery Link, press the Alt and F4 keys (Windows) or the Command and Q keys (Mac OS).

2. Click the currently selected server or print job to display the list of all connected servers or print jobs.




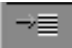
3. From this list, select the Fiery X40 or the job about which you want information.






4. Click the currently selected Fiery Link tool to display a list of all the tools (as shown below), and select a tool.



Fiery Link tools

Fiery Link includes the following tools that can be used to monitor a print job or a connected Fiery X40. Clicking the up and down arrows scrolls through the Tool List and opens each tool in turn in the Fiery Link window.

Icon:	Tool:	If a print job is selected:	If a server is selected:
	Status	Shows the job status and number of pages processed.	Shows the status of the server, including any error messages. You can make an error message disappear by clicking the Fiery Link window.
	Queue Position	Shows the number of jobs ahead of the selected job in the queue.	Shows the total number of active jobs queued to print on the server.

Icon:	Tool:	If a print job is selected:	If a server is selected:
	File Info	Displays the file name, when it was sent to the server, the target server, the number of pages, and number of copies.	Displays the server name and connected device, total number of queued jobs, and the number of those jobs sent by the user.
	Input Trays (see below)	Shows paper levels in all trays of the output device to which the job was printed.	Shows paper levels in all trays of the output device to which the server is connected.
	Toner (see below)	Shows the toner levels of the output device to which the job was printed.	Shows the toner levels of the output device to which the server is connected.
	Fiery Info	Shows the model name, amount of memory, processor, and software version of the target server.	Shows the model name, amount of memory, processor, and software version of the server.
	Support	Lists the contact names and information for the target server and the output device.	Lists the contact names and information for the server and the output device.

Input Trays

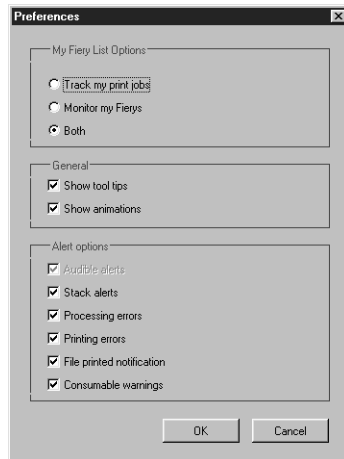
An icon is used to represent the paper level in each tray. A red icon indicates the paper tray is empty, a yellow icon indicates the paper tray is less than half full, and a green icon indicates the paper tray is more than half full. Up and down arrows allow you to scroll through the available paper trays.

Toner

You can see how much toner your printer has by clicking on the Toner tool. A warning appears if the printer is getting low on toner.

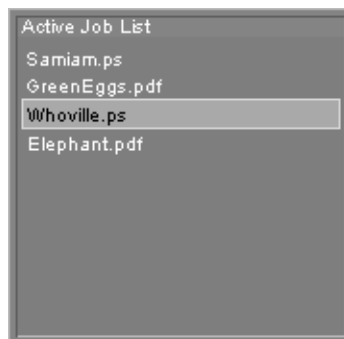
Preferences

Click the preferences checkbox in the main window to view the Preferences dialog box.



Setting the My Fieri List Options preferences

You can track print jobs, monitor Fieri X40 servers, or both. If you select Track my print jobs, then click the currently selected print job, the Active Job List window is displayed.



If you select Monitor my Fierys, then click the currently selected Fiery X40 server, the Device List is displayed.




If you select Both, then click the currently selected print job or Fiery X40 server, both the Active Job List and Device List are displayed.

Setting the General and Alert option preferences

You can set the following options for tracking print jobs, monitoring servers, or both:

- Show/hide tool tips
- Show/hide animations
- Enable/disable audible alerts
- Enable/disable stack alerts
- Enable/disable processing error notification
- Enable/disable printing error notification
- Enable/disable file printed notification
- Enable/disable consumable warnings notification


My Fiery List

Click the Fiery checkbox  in the main window to access the My Fiery List. You can use My Fiery List to specify the Fiery X40 servers you want to monitor using Fiery Link. For information on setting up and changing the My Fiery List, see *Getting Started*.

Windows taskbar menu

You can access a menu from the Windows taskbar status area to get information about Fiery Link, set some Fiery Link options, or exit the application.

TO ACCESS AND USE THE TASKBAR MENU:

1. Right-click the Fiery Link icon  in the Windows taskbar status area.
2. Choose one of the options from the pop-up menu.



Options with checkmarks are enabled.

3. Choose **About Fiery Link** for version information.
4. Choose **Always on Top** to enable or disable the option.
If this option is enabled, the Fiery Link window always appears on top of other open windows. If this option is disabled, the Fiery Link window may be hidden by other open windows.
5. Choose **Dock Fiery Link** to enable or disable the option.
If this option is enabled, the Fiery Link window is automatically repositioned to either the far left or the far right side of your screen. If this option is disabled, you can position the Fiery Link window anywhere on the screen.

Choose **Exit** to exit Fiery Link.

Appendix A: Print Options

Print options give you access to all the special features of your printer and Fiery X40. Print options can be specified in several places—in Fiery X40 Setup, from the printing application, from Fiery Downloader, from ColorWise Pro Tools, from the Command WorkStation, and from Fiery WebSpooler. The table in this appendix briefly describes each print option, gives its default setting, and provides information on any constraints or requirements in effect.

Where to set print options

- From the Control Panel

Some settings are specified during Setup by the administrator. For information on the current default server settings, print a Configuration page and check with the administrator or the operator.

- From applications

With the Adobe PostScript printer drivers, you can specify job settings when you print a job. See Chapter 1, “Printing from Windows Computers” and Chapter 2, “Printing from Mac OS Computers” for information about specifying job settings from applications.

- From Fiery Downloader

Only a few settings—Copies, Page Range (for PDF files only), and Brightness (for PostScript and EPS files only)—can be specified when printing jobs with Fiery Downloader. To change options in Fiery Downloader, select a job in the Files to be Downloaded (Windows) or Files to Download (Mac OS) list and click Options. For more information, see Chapter 5, “Downloading Files and Fonts.”

- From ColorWise Pro Tools

You can set the default RGB Source Profile, CMYK Simulation Profile, Output Profile, CMYK Simulation Method, and RGB Separation settings. See the *Color Guide* for more information on using ColorWise Pro Tools.

- From the job's Properties or Override Print Settings dialog box, available from Command WorkStation or Fiery WebSpooler

To change a job's settings from the Command WorkStation, double-click the job to display the Properties dialog box. To change job settings from Fiery WebSpooler, double-click a job to display the Override Print Settings dialog box. For more information, see the *Job Management Guide*.

Print options and override hierarchy

The override hierarchy is as follows:

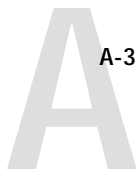
- Job settings made from the user's printer driver override the Fiery X40 Setup settings.
- Job settings made from Command WorkStation or Fiery WebSpooler override the user's printer driver settings.

Default settings

In the following table, underlined settings in the "Option and settings" column indicate default printer driver settings (PPD defaults). In other words, if you do not use the printer driver interface to configure a particular option, the Fiery X40 prints the job with the underlined setting.

For options that can be configured during Setup from the Control Panel, Command WorkStation, ColorWise Pro Tools, or WebSetup, choosing Printer's default results in the Fiery X40 printing the job with the Setup setting specified. For options that cannot be configured during Setup, the Fiery X40 prints the job with a pre-configured "Printer's default" setting. For more information, see the "Requirements, constraints, and information" column.

To find out about the current Setup defaults, print the Configuration page from the Command WorkStation or from the Fiery X40 Control Panel.



Option and settings: (Default setting is underlined)	Description:	Requirements, constraints, and information:
Black Detection <u>Off/On</u>	Select Off if your job consists of black-only text pages combined with a significant number of color pages. Select On if you are printing a predominantly black and white job.	Color Mode (Mac OS) or Print Mode (Windows) must be set to CMYK, Standard Color, or Expert Color . For more information, see page A-10.
Black Overprint <u>Printer's default/Off/On</u>	Select Off to print black text with knockouts. Select On to overprint black text.	The Printer's default setting reflects the setting specified in Fiery X40 Setup. For Windows 95/98, choose Expert Color as the Print Mode to access this option. If this option is set to On , the Combine Separations option must be set to Off . Setting this option to On automatically sets the Pure Black Text/Graphics option to On . For more information, see page A-10 and the <i>Color Guide</i> .
Brightness 85% Lightest/90% Lighter/ 95% Light/ <u>100% Normal</u> /105% Dark/ 110% Darker/115% Darkest	Select 85% for a substantially lighter image, 115% for a substantially darker image, or use one of the settings in between.	
CMYK Simulation Profile <u>SWOP-Coated</u> / DIC/Euroscale/Simulation-1/ Simulation-2/Simulation-3/ Simulation-4/Simulation-5/ Simulation-6/Simulation-7/ Simulation-8/Simulation-9/ Simulation-10/None/Match Copy	Specify the simulation goal to be used for the current print job.	The Printer's default setting reflects the setting specified in Fiery X40 Setup. This option can also be set from ColorWise Pro Tools. For Windows 95/98, choose Expert Color as the Print Mode to access this option. For more information, see page A-11 and the <i>Color Guide</i> .
CMYK Simulation Method <u>Quick/Full</u>	Select Quick to utilize one-dimensional transfer curves to adjust density output of individual color channels. Select Full to utilize four-dimensional transfer curves, which adjust for hue as well as density of individual color channels.	The Printer's default setting reflects the setting specified in Fiery X40 Setup. This option can also be set from ColorWise Pro Tools. For Windows 95/98, choose Expert Color as the Print Mode to access this option. For more information, see the <i>Color Guide</i> .



Option and settings: (Default setting is underlined)	Description:	Requirements, constraints, and information:
Collation <u>Off/On</u> (Windows 95/98 and Windows NT) <u>Collated</u> /Uncollated (Windows 2000 and Mac OS)	Specify how to output multiple-page/multiple-copy jobs.	For more information, see page A-11.
Color Mode <u>Printer's default</u> /CMYK/Grayscale (from the Mac OS driver and Windows 2000) OR Print Mode <u>Standard Color</u> /Expert Color/Grayscale (from the Windows 95/98 and Windows NT driver)	Specify the color or print mode for the current print job. Select CMYK, Standard Color, or Expert Color for a full-color document. Select Grayscale for a grayscale or black-and-white document.	The Printer's default setting reflects the setting specified in Fiery X40 Setup. For Windows95/98 and Windows NT, you must choose Expert Color as the Print Mode to set other color print options, including Pure Black Text/Graphics.
Combine Separations <u>Printer's default</u> /On/Off	When printing separations from a desktop publishing application: Select On to combine separations on a single page. Select Off to view separations as four individual black-and-white pages each representing one color plate.	Setting this option to Printer's default produces the same results as the Off setting. For more information, see page A-12.
Copier Mode <u>Photo/Map/Text Enhancement</u>	Select Photo if the file is a photograph. Select Map if the file contains detailed drawings and small text, such as might be found on a map. Select Text Enhancement if the file is mainly text.	
Copies <u>1</u> -999	Specify the number of copies of the job to print.	Do not enter a value greater than 999.
Create Master <u>None</u> /1-15	To create a FreeForm master from this job, specify a number to assign to the FreeForm master file.	See page 4-1 for more information. This option is selectable only if FreeForm is available.



Option and settings: (Default setting is underlined)	Description:	Requirements, constraints, and information:
Custom Output Direction <u>Printer's Default</u> /Long Edge First/ Short Edge First	Specify whether the short edge or long edge prints along the width of the media.	Setting this option to Printer's default produces the same result as the Long Edge First setting. This option is for use with custom page sizes only. See page A-13 for more information.
Duplex <u>Off</u> /Top-Top/Top-Bottom	Specify whether the job should print single-sided or double-sided (duplex), by specifying the orientation of printed images.	For more information on duplex printing, see page A-13.
Face-Down Printing <u>Printer's default</u> /No/Yes	Select No to print your document on the top of the paper. Select Yes to print your document on the bottom of the paper (i.e., the document will output from the printer with the text facing down).	
Instructions	Enter instructions to the operator about the job.	The Instructions field has a 128-character limit.
Media Type (Paper Type) <u>Plain Paper</u> /Heavy Weight Paper/ Transparency/Interleaved/ Opaque Film	Select Transparency if you will be printing on transparencies. Select Interleaved to print multiple transparency sheets with a blank, plain paper sheet inserted between each transparency.	
Mirror <u>Off</u> /On	Select On if you would like to print a mirror image of your document.	This option is only available from the Windows 95/98, Windows NT and Windows 2000 drivers.
Negative <u>Off</u> /On	Selecting this option to On prints a negative of the image by complementing the RGB values or reversing the black and white values.	This option is only available from the Windows 95/98 and Windows 2000 drivers.
Notes 1 and Notes 2	Enter special information about the job.	The Notes 1 and Notes 2 fields each have a 31-character limit.



Option and settings: (Default setting is underlined)	Description:	Requirements, constraints, and information:
Orientation <u>Portrait</u> /Landscape/Rotated	Specify the orientation of the document. Select Rotated if you want to rotate the pages of your job 180 degrees.	
(Other) Gamma <u>Printer's default</u> /1.0/1.2/1.4/1.6/ 1.8/2.0/2.2/2.4/2.6/2.8/3.0	Specify a source gamma value for printing RGB images, objects, and text.	Setting this option to Printer's default produces the same result as the 2.2 setting. To enable this option, RGB Source Profile must be set to Other. For more information, see the <i>Color Guide</i> .
(Other) Phosphors <u>Printer's default</u> /Hitachi EBU/ Hitachi-Ikegami/NTSC/ Radius Pivot/SMPTE/Trinitron	Specify a source phosphors value for printing RGB images, objects, and text.	Setting this option to Printer's default produces the same result as the SMPTE setting. To enable this option, RGB Source Profile must be set to Other. For more information, see the <i>Color Guide</i> .
(Other) White Point <u>Printer's default</u> /5000 K (D50)/ 5500 K/6500 K (D65)/7500 K/9300 K	Specify a source white point value for printing RGB images, objects, and text.	Setting this option to Printer's default produces the same result as the 5000 K (D50) setting. To enable this option, RGB Source Profile must be set to Other. For more information, see the <i>Color Guide</i> .
Output Profile <u>Printer's default</u> /Output-1/Output-2/ Output-3/Output-4/Output-5/ Output-6/Output-7/Output-8/ Output-9/Output-10	Specify the output profile to be used for the current print job.	The Printer's default setting reflects the setting specified in ColorWise Pro Tools. For Windows 95/98, choose Expert Color as the Print Mode to access this option. See page A-14 and the <i>Color Guide</i> for more information.



Option and settings: (Default setting is underlined)	Description:	Requirements, constraints, and information:
Page Order <u>Printer's default</u> /Forward/Reverse	Select Forward to print the pages of your job from first to last. Select Reverse to print the pages of your job from last to first.	Setting this option to Printer's default produces the same result as the Reverse setting. NOTE: If you set Page Order to Reverse and print a job with more than 1000 pages, or a job that is too large to be saved to the Fiery X40's memory and disk (based on currently available space), then the job may print in sections that have to be manually rearranged after printing. For example, if you print a 1500-page document in reverse order, the Fiery X40 might divide the job into two portions, first printing page 1000 to page 1, and then page 1500 to page 1001.
Paper Size (Page Size) <u>Letter</u> /A4/11x17/A3/12x18/Legal/ Legal 13/ISOB4/ISOB5/SEF A6/ SEF Letter/SEF A4/SEF ISOB5/ SEF 8x10/8x10/SEF 9x11/9x12/ DocuPac/A4-M/SEF A4-M/Letter-M/ SEF Letter-M/A3-M/11x17-M/ Custom page 1/Custom page 2/ Custom page 3	Specify the size of the paper on which to print the document.	
Paper Source <u>AutoSelect</u> /	Specify the source for the media on which to print the job.	This option is available from Mac OS, drivers only. For Windows drivers, use the Input Tray option.
Paper Source <u>AutoSelect</u> /Tray 1/Tray 2 Tray 3/Bypass Tray	Specify the paper tray to use for your job.	The AutoSelect setting automatically selects the tray containing the paper size specified for the job.
PowerForm <u>On</u> / <u>Off</u>	Select On when printing PowerPoint files to the Fiery X40.	Setting the PowerForm option to On can reduce the processing time for PowerPoint print jobs.



Option and settings: (Default setting is underlined)	Description:	Requirements, constraints, and information:
<u>Pure Black Text/Graphics</u> <u>Printer's default/Off/On</u>	Select <u>Off</u> to print black text and graphics as a four color black using C, M, Y, and K toner, and to use normal PostScript rendering. Select <u>On</u> to print black text and graphics as a one color black, using 100% black toner only.	The Printer's default setting reflects the setting specified in Fiery X40 Setup. For Windows 95/98, choose Expert Color as the Print Mode to access this option.
<u>Remove White PPT Background</u> <u>No/Yes</u>	Select <u>Yes</u> when using PowerPoint to create variable data in conjunction with FreeForm.	This option is selectable only if FreeForm is available.
<u>Rendering Style</u> <u>Printer's default/Photographic/</u> <u>Presentation/Relative Colorimetric/</u> <u>Absolute Colorimetric</u>	Specify a default color rendering dictionary (CRD) to be used when you print RGB images, objects, and text.	The Printer's default setting reflects the setting specified in Fiery X40 Setup. For Windows 95/98, choose Expert Color as the Print Mode to access this option. For more information, see page A-15.
<u>RGB Separation</u> <u>Printer's default/Output/Simulation</u>	Select <u>Output</u> for RGB jobs which you are printing to the final output device. Select <u>Simulation</u> for RGB jobs for which you want to simulate an output device that is not the device to which you are printing.	The Printer's default setting reflects the setting specified in Fiery X40 Setup. For Windows 95/98, choose Expert Color as the Print Mode to access this option.
<u>Save Fast Reprint</u> <u>Off/On</u>	Specify whether or not to save a job's raster data to disk after printing, so the data will be available later for reprinting (without reRIPping).	With Save Fast Reprint set to <u>On</u> , all print option settings, in addition to the Fiery X40 current calibration state, remain with the saved raster data each time the job is reprinted. To print the job with new print option settings and with new calibration data, you must remove raster and reRIP the job.
<u>Scale</u> <u>100%/25-400% (Windows 95/98)/</u> <u>1-1000% (Windows NT)</u>	Specify a scaling percentage for your print job.	
<u>Slip Sheet</u> <u>On/Off</u>	Specify whether to insert a slip sheet between copies of multiple-copy jobs.	



Option and settings: (Default setting is underlined)	Description:	Requirements, constraints, and information:
Sorter <u>Off</u> /On	Specify how to output multiple-page/multiple-copy jobs.	For more information, see page A-16.
Spot Color Matching <u>Printer's default</u> /Off/On	Select Off to print specified PANTONE colors in your job using the current CMYK Simulation and CMYK Simulation Method. Select On to activate the PANTONE Lookup Table. The Fiery X40 prints specified PANTONE colors in your job by matching the CMYK print blend to the same color from the PANTONE library.	The Printer's default setting reflects the setting specified in Fiery X40 Setup. For Windows 95/98, choose Expert Color as the Print Mode to access this option.
Stapler Mode <u>Off</u> /On	Specify whether or not to staple the job.	See page A-16 for more information.
Tray Alignment <u>Disable</u> /Enable	Select Enable align the trays of the printer for accurate duplex printing	You must first select Tray 1, Tray 2, Tray 3, or Bypass Tray from the Paper Source option.
Use Master <u>None</u> /1-15	For variable print jobs, specify a FreeForm master number to be used for the job.	See page 4-1 for more information. This option is selectable only if FreeForm is available.

More information about print options

The following sections provide additional information about print options. See the table above for information on the settings, requirements, and constraints in effect for these options.

Black Detection

Off—Select if your job consists of black-only text pages combined with a significant number of color pages. Doing so will prevent the printer from having to cycle down each time between printing the black only pages and color pages.

On—Select when you are printing a predominantly black and white job. The Fiery X40 speeds printing by sensing the data on each page of your job to detect any color information; if black is the only color detected on a page, the printer will print the page using only black toner and one print cycle instead of the four cycles necessary for color printing.

Black Overprint

When printing black text in combination with a color background or graphics, the text can be printed in one of two ways: either as part of the color background, or on top of the color background. Black Overprint allows you to choose a specific way to print the black text for such a job.

Off—Prints the black text with knockouts. The Fiery X40 first prints the color background with the black text areas 'knocked out' (no color is printed in the text areas); the black text is then printed in the knocked out area, filling in the areas not printed in color. The result is a flatter appearance for the black text.

On—Overprint the black text. Used in combination with the Pure Black Text/Graphics option, the Fiery X40 first prints the full color background, then lays the black text on top of the color background as 100% K toner. The result is a darker and glossier appearance for the black text. Overprinting also minimizes misregistration and 'haloing' problems.

CMYK Simulation Profile

CMYK Simulation Profile allows you to change the simulation goal for the current print job. As the job begins processing, the simulation goal selected in CMYK Simulation Profile is applied before printing.

NOTE: Choosing Printer's default results in the job being printed with the simulation goal currently set on the Fiery X40.

NOTE: If two-way communication is enabled, Simulation-1 through Simulation-10 do not appear in the Windows 95/98 driver. This driver displays all the custom simulations saved on the Fiery X40 by name. See *Getting Started* for information on setting up two-way communication.

None—Uses no simulation goal. Select this setting when the CMYK data for your job has already been separated for your specific printer (for example, when using the Color Management System built into your computer to convert the CMYK data to the printer's color space).

Match Copy—Uses no calibration or simulation goal. Select this setting when printing images imported with Fiery Scan (with the Color Conversion option set to Match Copy), or when you want to bypass Fiery X40 calibration and simulation.

For more information about simulation and calibration, see the *Color Guide*.

Collation

Use this option to specify sorting options.

Off (Windows 95/98 and Windows NT) or Uncollated (Windows 2000 and Mac OS)—Copies of a complete job are output, uncollated into the top tray.

On (Windows 95/98 and Windows NT) or Collated (Windows 2000 and Mac OS)—Copies of a complete job are collated and output into the top tray.

Combine Separations

The Combine Separations option specifies whether to combine color separations (created in desktop publishing applications such as QuarkXPress or Adobe PageMaker) on a single page to simulate printing on a press from film separations. It allows you to proof overprinting, trapping, and other four-color printing effects before having film separations created. It also enables you to combine Desktop Color Separations (DCS) format files to print them at full resolution instead of printing the low-resolution master file. Selecting the appropriate color rendering dictionary (CRD) setting for the type of image you are printing ensures optimal color output on the Fiery X40.

Your job must have been printed as color separations or DCS format when you printed it from your application. If you did not print the job in this manner, the Combine Separations option has no effect.

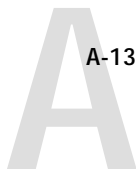
CMYK Simulation Method

Use the CMYK Simulation Method print option to specify the quality of simulation desired: **Quick** or **Full**. The **Quick** method corrects for only the density of colors (one-dimensional mapping) to the press goal. The **Full** method corrects for both density and hue (four-dimensional mapping).

Depending on image size and resolution, Full simulation may take more time than Quick simulation. TRI simulation performs a simulation in which CMYK data is converted to an intermediate three-component color space and then sent through a CRD for final color conversion.

Combine Separations

The Combine Separations option specifies whether to combine color separations created in desktop publishing applications on a single page to simulate printing on a press from film separations. It allows you to proof overprinting, trapping, and other four-color printing effects before having film separations created. It also enables you to combine Desktop Color Separations (DCS) format files to print them at full resolution instead of printing the low-resolution master file.



Your job must have been printed as color separations or DCS format when you printed it from your application. If you did not print the job in this manner, the Combine Separations option has no effect.

NOTE: This option is supported only for Adobe PageMaker and QuarkXPress.

Custom Output Direction

You can specify whether a custom page size job prints with the short edge first (SEF) or the long edge first (LEF) along the width of the media.

To specify the output direction of a standard page size, use the corresponding page size. Page sizes such as Letter and A4 print with the *long* edge first. Page sizes that have “SEF” as part of their names print with the *short* edge first.

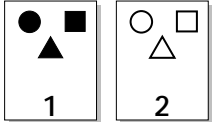
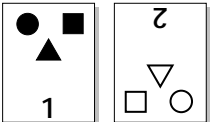

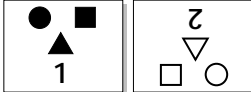
Duplex

If your printer has a duplexing unit, you can print with the Top-Top and Top-Bottom duplex settings.

TO PRINT DUPLEX PAGES USING A DUPLEXING UNIT:

1. Choose **Print** in your application, and locate the **Duplex** print option.
On Windows, duplex print options appear under the **Finishing** option bar in the PostScript printer drivers.
On Mac OS, duplex print options appear in the print dialog box's **Printer Specific Options** pane.
2. Choose one of the **Duplex** settings:
Top-Top —Prints the top of the image on side 1 on the same edge of the page as the top of the image on side 2.
Top-Bottom —Prints the top of the image on side 1 on the opposite edge of the page from the top of the image on side 2.
3. **Print the job.**

The following table shows how the Duplex settings correspond to printed output:

	Top-Top	Top-Bottom
Portrait		
Landscape		

Output Profile

Output-1 through Output-10—Uses a custom output profile. Before selecting this setting, you are required to download or create the output profile with ColorWise Pro Tools, then link it with one of the custom output profile names, e.g. Output-1.

NOTE: If two-way communication is enabled, Output-1 through Output-10 do not appear in the Windows 95/98 driver. This driver displays all the output profiles saved on the Fiery X40 by name. See *Getting Started* for information on setting up two-way communication.

For information on output color space and color management, see the *Color Guide*.

Rendering Style

Use this option to select a default color rendering dictionary (CRD) to be used when you print RGB images, objects, and text.

Photographic—Optimizes the range of colors on the Fiery X40 to produce the best results for photographic or bitmapped images.

Presentation—Optimizes the output of pure, saturated colors such as those used in business presentations.

Relative Colorimetric— Provides a close match to the CMYK device being simulated, regardless of the media being used.

Absolute Colorimetric— Provides the closest match to the CMYK device being simulated, including rendering the paper color as the background.

RGB Source Profile

This option is used to specify a source color space for RGB data.

EFIRGB—Optimal source space for printing to the Fiery X40. This setting provides consistent output across platforms.

sRGB (PC)—Specifies the source space of a generic Windows computer monitor.

Apple Standard—Specifies the source space of a Mac OS computer monitor.

Other—Allows you to specify a custom RGB source setting using the **(Other) Gamma**, **(Other) Phosphors**, and **(Other) White Point** print options.

Source-1 through Source-10—Uses a custom source profile. Before selecting this setting, you are required to download the source profile to the Fiery X40 with ColorWise Pro Tools, then link it with one of the custom source profile names, e.g. -Source-1.

NOTE: If two-way communication is enabled, Source-1 through Source-10 do not appear in the Windows 95/98 driver. This driver displays all the source profiles saved on the Fiery X40 by name. See *Getting Started* for information on setting up two-way communication.

For information on source color space and color management, see the *Color Guide*.



Scale

The operator can specify a scaling override from Fiery WebSpooler, but the override is applied to any scaling value already set in the active job. For example, if a user sends a job with a scaling value of 50% and the operator specifies a Scale override of 200%, the job is printed at 100% of the original document size, that is, 50% of 200%.

Sorter

Sorting is supported on copiers with a sorter unit attached.

Off—Copies of a complete job are output, uncollated, into the top tray.

On—Copies of a complete job are sorted and output into one of the output bins, arranged in page order.

Stapler Mode

Stapling is supported on copiers with a sorter/finisher unit attached.

Off—Disables the stapler.

On—Enables the stapler.

Appendix B: Font List

This appendix lists the built-in printer fonts included with your Fiery X40.

PostScript printer fonts

Listed below are the 136 built-in PostScript printer fonts on the Fiery X40. In addition to the fonts listed below, two Adobe Multiple Master fonts are included and are used for font substitution in PDF files.

NOTE: For Mac OS computers, install the corresponding screen fonts from the User Software CD. For instructions, see *Getting Started*.

Adobe Type 1 fonts

The Fiery X40 includes 126 Adobe Type 1 fonts:

- The Mac OS column lists the name as it appears on the Font menu on a Mac OS computer. For example, in most applications, to use “Bodoni-Bold,” choose Bodoni Bold from the Font menu.
- The Windows menu name is the name as it appears on the Font menu on a Windows computer. The style refers to the style that must be selected in the application to access the particular PostScript font. For example, to use “Bodoni-Bold,” choose Bodoni from the Font menu and Bold from the Style menu.

PostScript name:	Mac OS menu name:	Windows menu name, style:
AlbertusMT-Light	Albertus MT Lt	Albertus MT Lt
AlbertusMT	Albertus MT	Albertus MT
AlbertusMT-Italic	Albertus MT It	Albertus MT, Italic
AntiqueOlive-Roman	Antique Olive Roman	Antique Olive Roman
AntiqueOlive-Bold	Antique Olive Bold	Antique Olive Roman, Bold
AntiqueOlive-Italic	Antique Olive Italic	Antique Olive Roman, Italic
AntiqueOlive-Compact	Antique Olive Compact	Antique Olive Compact
Arial-BoldItalicMT	Arial Bold Italic	Arial, Bold Italic
Arial-BoldMT	Arial Bold	Arial, Bold
Arial-ItalicMT	Arial Italic	Arial, Italic
ArialMT	Arial	Arial
AvantGarde-Book	Avant Garde	AvantGarde
AvantGarde-Demi	Avant Garde Demi	AvantGarde, Bold
AvantGarde-BookOblique	Avant Garde BookOblique	AvantGarde, Italic



PostScript name:	Mac OS menu name:	Windows menu name, style:
AvantGarde-DemiOblique	Avant Garde DemiOblique	AvantGarde, Bold Italic
Bodoni	Bodoni	Bodoni
Bodoni-Bold	Bodoni Bold	Bodoni, Bold
Bodoni-Italic	Bodoni Italic	Bodoni, Italic
Bodoni-BoldItalic	Bodoni BoldItalic	Bodoni, Bold Italic
Bodoni-Poster	Bodoni Poster	Bodoni Poster
Bodoni-PosterCompressed	Bodoni PosterCompressed	Bodoni PosterCompressed
Bookman-Light	Bookman	Bookman
Bookman-Demi	Bookman Demi	Bookman, Bold
Bookman-LightItalic	Bookman LightItalic	Bookman, Italic
Bookman-DemiItalic	Bookman DemiItalic	Bookman, Bold Italic
Carta	Carta	Carta
Clarendon-Light	Clarendon Light	Clarendon Light
Clarendon	Clarendon	Clarendon
Clarendon-Bold	Clarendon Bold	Clarendon, Bold
CooperBlack	Cooper Black	Cooper Black
CooperBlack-Italic	Cooper Black Italic	Cooper Black, Italic
Copperplate-ThirtyThreeBC	Copperplate33bc	Copperplate33bc
Copperplate-ThirtyTwoBC	Copperplate32bc	Copperplate32bc
Coronet	Coronet	Coronet
Courier	Courier	Courier
Courier-Bold	Courier Bold	Courier, Bold
Courier-Oblique	Courier Oblique	Courier, Italic
Courier-BoldOblique	Courier BoldOblique	Courier, Bold Italic
Eurostile	Eurostile	Eurostile
Eurostile-Bold	Eurostile Bold	Eurostile Bold
Eurostile-ExtendedTwo	Eurostile ExtendedTwo	Eurostile ExtendedTwo
Eurostile-BoldExtendedTwo	Eurostile BoldExtendedTwo	Eurostile ExtendedTwo, Bold
GillSans	GillSans	GillSans
GillSans-Bold	GillSans Bold	GillSans, Bold
GillSans-Italic	GillSans Italic	GillSans, Italic
GillSans-BoldItalic	GillSans BoldItalic	GillSans, Bold Italic
GillSans-Light	GillSans Light	GillSans Light
GillSans-LightItalic	GillSans LightItalic	GillSans Light, Italic



PostScript name:	Mac OS menu name:	Windows menu name, style:
GillSans-Condensed	GillSans Condensed	GillSans Condensed
GillSans-BoldCondensed	GillSans BoldCondensed	GillSans Condensed, Bold
GillSans-ExtraBold	GillSans ExtraBold	GillSans ExtraBold
Goudy	Goudy	Goudy
Goudy-Bold	Goudy Bold	Goudy, Bold
Goudy-Italic	Goudy Italic	Goudy, Italic
Goudy-BoldItalic	Goudy BoldItalic	Goudy, Bold Italic
Goudy-ExtraBold	Goudy ExtraBold	Goudy ExtraBold
Helvetica	Helvetica	Helvetica
Helvetica-Bold	Helvetica Bold	Helvetica, Bold
Helvetica-Oblique	Helvetica Oblique	Helvetica, Italic
Helvetica-BoldOblique	Helvetica BoldOblique	Helvetica, Bold Italic
Helvetica-Narrow	Helvetica Narrow	Helvetica-Narrow
Helvetica-Narrow-Bold	Helvetica Narrow Bold	Helvetica-Narrow, Bold
Helvetica-Narrow-Oblique	Helvetica Narrow Oblique	Helvetica-Narrow, Italic
Helvetica-Narrow-BoldOblique	Helvetica Narrow BoldObl	Helvetica-Narrow, Bold Italic
Helvetica-Condensed	Helvetica Condensed	Helvetica Condensed
Helvetica-Condensed-Bold	Helvetica CondensedBold	Helvetica Condensed, Bold
Helvetica-Condensed-Oblique	Helvetica CondensedOblique	Helvetica Condensed, Italic
Helvetica-Condensed-BoldObl	Helvetica CondensedBoldObl	Helvetica Condensed, Bold Italic
HoeflerText-Ornaments	Hoefler Text Ornaments	Hoefler Text Ornaments
JoannaMT	Joanna MT	Joanna MT
JoannaMT-Bold	Joanna MT Bd	Joanna MT, Bold
JoannaMT-Italic	Joanna MT It	Joanna MT, Italic
JoannaMT-BoldItalic	Joanna MT Bd It	Joanna MT, Bold Italic
LetterGothic	Letter Gothic	Letter Gothic
LetterGothic-Bold	Letter Gothic Bold	Letter Gothic, Bold
LetterGothic-Slanted	Letter Gothic Slanted	Letter Gothic, Italic
LetterGothic-BoldSlanted	Letter Gothic BoldSlanted	Letter Gothic, Bold Italic
LubalinGraph-Book	Lubalin Graph	LubalinGraph
LubalinGraph-Demi	Lubalin Graph Demi	LubalinGraph, Bold
LubalinGraph-BookOblique	Lubalin Graph BookOblique	LubalinGraph, Italic
LubalinGraph-DemiOblique	Lubalin Graph DemiOblique	LubalinGraph, Bold Italic
Marigold	Marigold	Marigold



PostScript name:	Mac OS menu name:	Windows menu name, style:
MonaLisa-Recut	Mona Lisa Recut	Mona Lisa Recut
NewCenturySchlbk-Roman	New Century Schlbk	NewCenturySchlbk
NewCenturySchlbk-Bold	New Century Schlbk Bold	NewCenturySchlbk, Bold
NewCenturySchlbk-Italic	New Century Schlbk Italic	NewCenturySchlbk, Italic
NewCenturySchlbk-BoldItalic	New Century Schlbk BoldIt	NewCenturySchlbk, Bold Italic
Optima	Optima	Optima
Optima-Bold	Optima Bold	Optima, Bold
Optima-Italic	Optima Italic	Optima, Italic
Optima-BoldItalic	Optima BoldItalic	Optima, Bold Italic
Oxford	Oxford	Oxford
Palatino-Roman	Palatino	Palatino
Palatino-Bold	Palatino Bold	Palatino, Bold
Palatino-Italic	Palatino Italic	Palatino, Italic
Palatino-BoldItalic	Palatino BoldItalic	Palatino, Bold Italic
StempelGaramond-Roman	StempelGaramond Roman	StempelGaramond Roman
StempelGaramond-Bold	StempelGaramond Bold	StempelGaramond Roman, Bold
StempelGaramond-Italic	StempelGaramond Italic	StempelGaramond Roman, Italic
StempelGaramond-BoldItalic	StempelGaramond BoldItalic	StempelGaramond Roman, Bold Italic
Symbol	Symbol	Symbol
Tekton	Tekton	Tekton
Times-Roman	Times	Times
Times-Bold	Times Bold	Times, Bold
Times-Italic	Times Italic	Times, Italic
Times-BoldItalic	Times BoldItalic	Times, Bold Italic
TimesNewRomanPS-BoldMT	Times New Roman Bold	Times New Roman, Bold
TimesNewRomanPS-BoldItalicMT	Times New Roman Bold Italic	Times New Roman, Bold Italic
TimesNewRomanPS-ItalicMT	Times New Roman Italic	Times New Roman, Italic
TimesNewRomanPSMT	Times New Roman	Times New Roman
Univers-Extended	Univers Extended	Univers Extended
Univers-BoldExt	Univers BoldExt	Univers Extended, Bold
Univers-ExtendedObl	Univers ExtendedObl	Univers Extended, Italic
Univers-BoldExtObl	Univers BoldExtObl	Univers Extended, Bold Italic

PostScript name:	Mac OS menu name:	Windows menu name, style:
Univers-Light	Univers 45 Light	Univers 45 Light
Univers-Bold	Univers 65 Bold	Univers 45 Light, Bold
Univers-LightOblique	Univers 45 LightOblique	Univers 45 Light, Italic
Univers-BoldOblique	Univers 65 BoldOblique	Univers 45 Light, Bold Italic
Univers	Univers 55	Univers 55
Univers-Oblique	Univers 55 Oblique	Univers 55, Italic
Univers-CondensedBold	Univers 67 CondensedBold	Univers 47 CondensedLight, Bold
Univers-CondensedBoldOblique	Univers 67 CondensedBoldObl	Univers 47 CondensedLight, Bold Italic
Univers-Condensed	Univers 57 Condensed	Univers 57 Condensed
Univers-CondensedOblique	Univers 57 CondensedOblique	Univers 57 Condensed, Italic
ZapfChancery-MediumItalic	Zapf Chancery	ZapfChancery
ZapfDingbats	Zapf Dingbats	ZapfDingbats

TrueType fonts

The Fiery X40 includes 10 TrueType fonts:

PostScript name:	Mac OS menu name:	Windows menu name, style:
Apple-Chancery	Apple Chancery	Apple Chancery
Chicago	Chicago	Chicago
Geneva	Geneva	Geneva
HoeflerText-Black	Hoefler Text Black	Hoefler Text Black
HoeflerText-BlackItalic	Hoefler Text Black	Hoefler Text Black, Italic
HoeflerText-Italic	Hoefler Text	Hoefler Text, Italic
HoeflerText-Regular	Hoefler Text	Hoefler Text
Monaco	Monaco	Monaco
New York	New York	New York
Wingdings-Regular	Wingdings	Wingdings

Appendix C: Troubleshooting

This appendix provides troubleshooting tips.

Maintaining optimal system performance

The Fiery X40 does not require maintenance. Beyond the routine requirements of servicing and maintaining the printer and replenishing consumables there are a few things you can do to improve the overall performance of your system:

- Reduce unnecessary two-way communication.

If users notice that the server is frequently too busy to receive jobs, it may be because several users are running utilities that are updated often. Large numbers of remote users running Fiery Downloader or the Fiery WebTools may have a significant effect on Fiery X40 performance.

- Schedule the printing workload by checking job ticket information before printing.

Print jobs with the same output and paper specifications together to minimize paper changes. Also, print routine jobs while you prepare to print jobs with special instructions or special media.

- Reduce unnecessary server connections at the Command WorkStation.

If you use a second or third Fiery X40 on an occasional basis, performance will be improved if you log off when you are not using it.

- Avoid printing with the server “Disk full” warning.

If you see this warning, delete jobs from the Queues window that have been held for a long time and are not likely to be needed. Avoid this condition by deleting old jobs on a regular basis. The date associated with a job is the original date it was sent.



Troubleshooting

In case of problems, and before you call for service, check the guidelines in this section. If you are unable to resolve the problem, make a note of the error condition and contact your authorized service/support center.

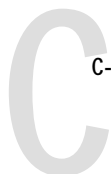
This section provides some troubleshooting guidelines should a problem arise. If you are unable to resolve a problem after referring to this section, contact your site operator or administrator. Also, make sure there are no applications installed on the Fiery X40, with the exception of the client utilities from the User Software CD. Applications other than the client utilities are not supported and can cause system problems.

General printing problems

If this happens:	Try this:
You cannot connect to the Fiery X40.	<ul style="list-style-type: none">• Make sure that the Fiery X40 is not being calibrated from the Control Panel. If the Fiery X40 is being calibrated from the Control Panel, you can select it in the Chooser, but you cannot connect to it. This insures that only one person is calibrating at any time and that print jobs do not use unexpected calibration.
You cannot select or view one of the queues.	<ul style="list-style-type: none">• Have your system administrator enable the queue in Setup.
You cannot connect to the Fiery X40 from a Windows computer with the Command WorkStation or Fiery utilities.	<ul style="list-style-type: none">• Make sure the connection is configured correctly. For instructions, see <i>Getting Started</i>.
Printing seems to take too long.	<ul style="list-style-type: none">• Print to a queue instead of to the Direct connection. When you print to a queue, the job is stored on the Fiery X40 until it can be processed and printed; when you print to the Direct connection, the job cannot be sent to the Fiery X40 until the previous job is finished processing, so you must wait longer to use your computer.



If this happens:	Try this:
One or more Media Type options are dimmed.	<ul style="list-style-type: none">• Select a Paper Source that supports the Media Type you are using. For information on requirements and constraints pertaining to special papers and transparencies, see Appendix A, "Print Options."
Fiery X40 doesn't respond to a Print command.	<ul style="list-style-type: none">• Has someone disconnected the printer by selecting Suspend Printing from the Functions menu? If the administrator or operator has selected Suspend Printing on the Fiery X40 Control Panel or Command WorkStation to interrupt printing, your print job will not resume until someone selects Resume Printing from the Functions menu on the Control Panel or clicks the function key on the Command WorkStation.• Did you select the Fiery X40 as the current printer? Before printing, you must select the Fiery X40 as the current printer from your Windows computer, Mac OS computer, or UNIX workstation.• Make sure that the printer is switched on. Someone may have turned the printer off, or the Automatic Power-Off or Power Saver mode function may have engaged. Even with the printer off, the Fiery X40 appears in the Chooser as long as the Fiery X40 itself is turned on.• If you are printing over an IPX (Novell) network, verify through the PCONSOLE utility that the job was sent to the Novell queue and that the queue is being used by the Fiery X40.• Make sure that the job does not contain a PostScript error. Check with the operator, or use Command WorkStation and Fiery WebSpooler to check the job's status. A job containing a PostScript error appears in red. To obtain information on the PostScript error, make sure the Print to PS Error option is set to Yes in Fiery X40 Setup. See the <i>Configuration Guide</i> for more information.



If this happens:	Try this:
Jobs sent to the parallel port do not print.	<ul style="list-style-type: none">• Ask the administrator to increase the parallel “Port Timeout in Seconds” on the Fiery X40 Control Panel.• Ask the administrator to change the Ignore EOF Character setting on the Fiery X40 Control Panel. If you will be printing ASCII format PostScript only, set Ignore EOF Character to No; if you will be printing Binary format PostScript, set it to Yes.• If you print using the DOS copy command, make sure to use the /b option when printing binary files.• Restart your Windows computer, enter BIOS setup, and if you have a BIOS setting for the parallel port, make sure that it is set to Compatible mode and not to Bi-Directional, ECP, EPP, or any other mode.• If you are using Windows 95/98, open the System Properties control panel, click the Device Manager tab, click Ports, double-click the parallel port you are using, and make sure that the driver selected is the standard Printer Port driver instead of the ECP Port, EPP Port, or any other driver. For information about changing this setting, see <i>Getting Started</i> and your Windows 95/98 documentation.
You cannot print with QuarkXPress 3.32 using the PSPrinter 8.6 driver on a Mac OS computer.	<ul style="list-style-type: none">• Remove the file called Balloon Help from your QuarkXPress application folder and relaunch QuarkXPress.



Problems with print quality

For information about printing with specific applications and about optimizing color output, see the *Color Guide*.

If this happens:	Try this:
Print settings for your job output do not match the settings you gave.	<ul style="list-style-type: none">• Make sure that you did not override the setting for the job in another place. For information about options and overrides, see Appendix A, “Print Options.”
You get poor printing results.	<ul style="list-style-type: none">• Does your application require one of Fiery X40’s printer description files? If you’re printing from Adobe PageMaker, make sure that the Fiery X40 printer description file is installed correctly. For information about installing these files, see <i>Getting Started</i>.• Make sure the system has been calibrated. For instructions, see the <i>Color Guide</i>.
Separations do not combine properly.	<ul style="list-style-type: none">• Make sure that the file was initially created as separations.• If you are printing separations or a DCS format file, set the Combine Separations print option to On. With Combine Separations On, all four colors will be printed on a single page; with Combine Separations Off, four black-and-white pages will print to simulate four single-color plates.
The registration or colors of an image are not what you expected.	<ul style="list-style-type: none">• Ask the operator to print a test page with the printer. The problem may be with the printer. If your test page shows that the printer is working properly, correct the problem within your application software. If the test page is wrong, your printer may need to be calibrated or adjusted in some other way.
Your printed file appears too dark.	<ul style="list-style-type: none">• Adjust the Brightness option. You can use the Brightness option when printing from an application or from Fiery Downloader to lighten your image whenever you print a PostScript or Encapsulated PostScript (EPS) file.
Color output is incorrect.	<ul style="list-style-type: none">• Check with the operator or administrator about the current calibration information. The printer may need to be recalibrated because it has been too long since it was calibrated or because it is using a different target.
Color file prints in black and white.	<ul style="list-style-type: none">• In the Color Matching dialog box, make sure that Color/Grayscale or ColorSync Color Matching or PostScript Color Matching is selected (not Black and White).• Make sure that the Print Mode print option is set to an option other than Grayscale.



If this happens:	Try this:
Desktop Color Separations (DCS) format images print incorrectly.	<ul style="list-style-type: none">• Make sure that you selected the correct options to send separations in the application's Print dialog box.• Make sure that you have the file for every layer of separation that you are printing.• Set the Combine Separations option to On. With Combine Separations On, all four colors will be printed on a single page; with Combine Separations Off, four black-and-white pages will print to simulate four single-color plates.
QuickDraw fill patterns print as solids.	<ul style="list-style-type: none">• Use the Adobe PostScript Printer driver (or the Apple LaserWriter 8.3 or later printer driver).

Problems with Fiery Downloader

If this happens:	Try this:
General problems	<ul style="list-style-type: none">• Make sure that you are using the latest version. If you are updating your Fiery X40 software, delete the previous version of Fiery Downloader from your Windows or Mac OS computer and install the latest version to insure full compatibility.• Make sure the connection is configured correctly. For instructions, see <i>Getting Started</i>.
You cannot connect to the Fiery X40 from Fiery Downloader.	<ul style="list-style-type: none">• Make sure that the Fiery X40 is not being calibrated from the Control Panel. If the Fiery X40 is being calibrated from the Control Panel, you can select it in the Chooser, but you cannot connect to it. This insures that only one person is calibrating the server at any time and that print jobs do not use unexpected calibration.



If this happens:	Try this:
You can't print an EPS file using Fiery Downloader.	<ul style="list-style-type: none">• Try printing using the 'showpage' after EPS files (Windows) or 'showpage' (Mac OS) option in the Download PostScript File dialog box. This option adds a showpage PostScript language command at the end of the print job. Certain applications omit this necessary PostScript language command when they generate EPS files. You'll need to select the Append Showpage option when printing EPS files generated by these applications. If you continue having difficulties printing an EPS file with Fiery Downloader, try printing the file from the application in which it was created.• Make sure the EPS file was saved <i>without</i> a preview image header. Preview image headers are useful when images are placed in documents with page layout applications, but they cause problems when images are downloaded directly.• Make sure that the job does not contain a PostScript error. Check with the operator, or use the Command WorkStation and Fiery WebSpooler to check the job's status. Jobs with a PostScript error appear with an Error icon.
You have problems downloading a font with Fiery Downloader.	<ul style="list-style-type: none">• Check with the administrator to make sure that the Direct connection is enabled. The Direct connection must be used to download fonts.
Extra blank page prints after a Fiery Downloader job.	<ul style="list-style-type: none">• Turn off the 'showpage' after EPS files (Windows) or 'showpage' (Mac OS) option. This option adds a special PostScript command that will cause an extra blank page to print if it is not needed.

Problems with Fiery WebTools

If this happens:	Try this:
You cannot connect to Fiery WebTools, or it takes a long time to connect.	<ul style="list-style-type: none">• Check with the administrator to make sure Web Services are enabled in Fiery X40 Setup.• Make sure you have the correct IP address or DNS name for the Fiery X40. Check with the administrator or print a Configuration page from the Fiery X40 Control Panel.• Clear the cache (Netscape Communicator) or history (Microsoft Internet Explorer).

Index

Numerics

2-sided printing, *see* Duplex option

A

Absolute Colorimetric rendering style

option A-15

Active Job List 6-7

Adobe Font Downloader, *see* Font

Downloader

Adobe Photoshop

transfer functions 5-7

Adobe Type 1 fonts B-1

Always on Top 6-9

B

Black Detection option A-3, A-10

Black Overprint option A-3, A-10

Brightness option A-1, A-3

BSD 3-2

C

calibration, bypassing 4-9

CMYK Simulation Method option 4-9, A-3, A-12

CMYK Simulation Profile option 4-9, A-3, A-11

Collate option A-4

Color Mode option A-4

color problems C-6

ColorWise Pro Tools 4-9

job overrides A-1

Combine Separations option A-4, A-12

Command WorkStation xi

managing print jobs 6-1

overriding FreeForm Master number 4-3

overriding Printer Setup settings 1-18

using Fiery Downloader from 5-1

Control Panel, overriding printer

settings 1-5, 1-23, 1-27, 2-6

Copier Mode option A-4

Copies option A-4

Create Master option 4-2

Custom Output Direction option A-13

Custom Paper Sizes

defining for Mac OS 2-6

defining for Windows 2000

computers 1-28

defining for Windows computers 1-15, 1-21, 1-28

Cyan-Magenta-Yellow-Black (color model), *see* CMYK

D

DCS (Desktop Color Separations) C-6

DCS (Desktop Color Separations) files A-12

default settings, *see* printer default settings

Device List 6-8

DIC simulation goal 4-9

Direct connection

access xv

downloading fonts 5-8

not in Chooser, Mac OS 2-2

required to download fonts C-7

Dock Fiery Link 6-9

Downloader, *see* Fiery Downloader

downloaders, LaserWriter 5-1

Duplex option 4-10, A-5, A-13

E

EPS (Encapsulated PostScript) files

downloading 5-1, 6-3

downloading from Mac OS 2-8

downloading from Windows 1-1, 1-32

problems downloading C-7

Euroscale simulation goal 4-9

F

Fiery Downloader

- Brightness option 5-7
- choosing a printer 5-3
- Command WorkStation 5-1
- Connection Type 5-5
- downloading file or font 5-4 to 5-7
- Download Progress bar 5-2
- Hard Disk area 5-2
- installing printer fonts 5-9
- job overrides A-1
- Mac OS 2-8
- PDF files 1-1
- printing from 5-4
- Print Status area 5-2
- problems with C-6
- Queue 5-5
- restriction with parallel port 1-31
- RIP Status area 5-2
- Toolbar 5-3
- using 5-1
- Windows 1-32

Fiery Link 6-3

- Active Job List 6-7
- Always on Top 6-9
- Device List 6-8
- Dock Fiery Link 6-9
- File Info tool 6-6
- Input Trays tool 6-6
- My Fiery List 6-4, 6-9
- preferences 6-4, 6-7
- Queue Position tool 6-5
- selecting a print job 6-4
- selecting a server 6-4
- Status tool 6-5
- Support tool 6-6
- Toner tool 6-6

Fiery Spooler

- overriding Printer Setup 1-18

Fiery WebTools

- accessing xv, 6-1, 6-2

home page 6-2

overview 6-3

problems with C-7

Status 6-2

WebDownloader 1-32, 2-8

WebLink 6-3

WebSpooler 1-18

File Info tool 6-6

File name entry field 5-6

File port, saving files to 1-31

Files of type menu (Windows) 5-5

Font Downloader 5-1

font list

- Adobe Type 1 B-1

- displaying 5-3, 5-10

- PostScript B-1 to B-5

- printing 5-3, 5-10

- TrueType B-5

Font List button 5-3

fonts

- Adobe Type 1 5-8, B-1

- downloading and managing 5-1, 5-6, 5-8

- installing 5-9

- PostScript 5-8

- printer fonts 5-8

- printer fonts on server 5-10

- screen fonts 5-8

- substitution with PDF files 5-9

- TrueType 5-8, B-5

Font Substitution Table 5-8

FreeForm

- Master number 4-3

- printing variable data documents 4-1

Full Simulation A-12

G

Gamma option A-6

H

Hold queue xv, 2-2

I

Input Trays tool 6-6
 installing printer fonts 5-9
 Instructions field 1-6, 1-19, 2-5
 Instructions option A-5

J

job overrides
 (Other) Gamma option A-6
 (Other) Phosphors option A-6
 (Other) White Point option A-6
 Black Detection option A-3, A-10
 Black Overprint option A-3, A-10
 Brightness option A-3
 CMYK Simulation Method option A-3
 CMYK Simulation Profile option A-3,
 A-11
 Collate option A-4
 Color Mode option A-4
 Combine Separations option A-4, A-12
 Copier Mode option A-4
 Copies option A-4
 Duplex option A-5, A-13
 Instructions option A-5
 Media Type option A-5
 Mirror option A-5
 Negative option A-5
 Orientation option A-6
 Output Profile option A-6
 Page Order option A-7
 Print Mode option A-4
 print settings A-2
 Pure Black Text Graphics option A-8
 Rendering Style option A-8, A-15
 RGB Separation option A-8
 Save Fast Reprint option A-8
 Slip Sheet option A-8
 Sorter option A-16
 Spot Color Matching option A-9
 Stapler Mode option A-16

L

landscape
 see short edge first
 LaserWriter printer, fonts installed on 5-8
 long edge first A-13
 lp command 3-2
 lpq command 3-1, 3-2, 3-3
 lpr command 3-1
 lprm command 3-1, 3-3
 lpstat command 3-2

M

Mac OS
 Paper Source menu 2-4
 PostScript printer setup 2-3 to 2-6
 Printer Specific Options menu 2-5
 printing 2-1
 screen fonts 5-8
 tray selection 2-4
 Mac OS 2-6
 Master documents (FreeForm) 4-1
 Match Copy
 CMYK Simulation option 4-9, A-11
 maximum toner density xiv
 Media Type menu
 Windows 95/98 1-3, 1-18
 Media Type option A-5
 Mirror option A-5
 My Fiery List 6-4, 6-9

N

Negative option A-5
 None, CMYK Simulation option A-11
 non-imageable area xiv
 Notes fields
 Mac OS 2-5
 Windows 95/98 1-6, 1-19

O

orientation A-13
 Orientation option A-6

- (Other) Gamma option A-6, A-15
- (Other) Phosphors option A-6, A-15
- (Other) White Point option A-6, A-15
- Output Profile option A-6
- overrides, of job settings A-2
- Owner Information 1-19

P

- Page Order option A-7
- Page Range option A-1
- Page Size menu
 - Windows 95/98 1-3, 1-18
- Paper Source menu
 - Mac OS 2-4
 - Windows 95/98 1-3, 1-18
- Paper Source option A-7
- parallel port
 - printing with 1-31
 - problems C-4
- PDF files
 - downloading 5-1, 6-3
 - downloading from Mac OS 2-8
 - downloading from Windows 1-1, 1-32
 - font substitution 5-9
- performance, optimizing C-1
- Phosphors option A-6
- Photographic rendering style option A-15
- Portable Document Format, *see* PDF files
- PostScript
 - downloading files 5-1, 6-3
 - downloading files from Mac OS 2-8
 - downloading files from Windows 1-32
 - font list B-1 to B-5
- PostScript printer description files, *see* PPDs
- PostScript printer drivers
 - explained xiii
 - Mac OS 2-1
 - Windows 2000 1-24
 - Windows 95/98 1-2
 - Windows NT 4.0 1-17

PPDs

- defined xiii
- PPDs (PostScript printer description files)
 - options A-2
 - setting print options with Mac OS 2-1
 - setting print options with Windows 2000 1-24
- Presentation rendering style option A-15
- press simulations 4-9
- Print command (Windows) 1-1
- printer default settings 2-6
 - Mac OS 2-6
 - specified by administrator in Setup xv
 - where to set A-1
 - Windows 95/98 1-5, 1-18
- printer's default settings
 - Windows 2000 1-27
- printer setup
 - Mac OS 2-3 to 2-6
 - settings 1-5, 1-23, 1-27, 2-6
 - Windows 2000 1-24 to 1-27
 - Windows 2000 1-24 to 1-27
 - Windows 95/98 1-2 to 1-17
 - Windows NT 4.0 1-17 to 1-31
- Printer Specific Options menu 2-5
- printing
 - duplex pages 4-10, A-5, A-13
 - font list 5-3
 - from Fiery Downloader 5-4
 - from WebDownloader 6-3
 - list of fonts 5-10
 - Mac OS 2-1
 - on the network xv
 - specifying trays A-7
 - to File port 1-31
 - to local port 1-31
 - troubleshooting C-2 to C-4
 - variable data documents 4-1
 - Windows 2000 1-24

- Windows 95/98 1-2
- Windows NT 4.0 1-17
 - with parallel port 1-31
- Print Mode option A-4
- print options
 - Mac OS 2-3 to 2-6
 - Windows 2000 1-24 to 1-27
 - Windows 95/98 1-2 to 1-17
 - Windows NT 4.0 1-17 to 1-31
- print quality, problems with C-5
- Print queue xv
- Pure Black Text Graphics option A-8

Q

- Queue Position Info tool 6-5
- queues, access to xv
- Quick Simulation A-12

R

- Relative Colorimetric rendering style
 - option A-15
- remote users xi
- Rendering Style option A-8, A-15
- RGB Separation option A-8
- RGB Source option A-15
- RIPping xiii
- R-paper size
 - see* short edge first

S

- Saved Settings 1-6
- Save Fast Reprint option A-8
- Scale option A-16
- setting print options
 - Windows 2000 1-24 to 1-27
- Shortcuts 1-13
- short edge first A-13
- Show menu (Mac OS) 5-5
- showpage after EPS files option 5-7
- simulations 4-9, A-12
 - Full method A-12
 - Quick method A-12

- Slip Sheet option A-8
- SMB printing 1-2, 1-24
- Solaris 2.x 3-2
- Sorter option A-16
- Spooler, *see* Fiery Spooler
- Spot Color Matching option A-9
- Stapler Mode option A-16
- Status tool 6-5
- Status WebTool, *see* Fiery WebTools
- SunOS 4.1.x 3-2
- Support tool 6-6
- SWOP-Coated simulation goal 4-9

T

- TCP/IP printing 3-1
- Toner tool 6-6
- Top-Bottom, duplex option A-13
- Top-Top, duplex option A-13
- Tray Alignment option A-9
- trays, printer A-7
- tray selection
 - Mac OS 2-4
- troubleshooting
 - color problems C-6
 - EPS files C-7
 - Fiery Downloader C-6
 - Fiery WebTools C-7
 - general printing problems C-2 to C-4
 - print quality C-5
- TrueType fonts B-5
- two-sided printing, *see* Duplex option

U

- UNIX
 - BSD (Berkeley Software Distribution)
 - variant of 3-3
 - displaying jobs in queue 3-2
 - printing with 3-1
 - removing jobs from queue 3-3
 - System V 3-2
- Use Master option 4-2

V

variable data printing 4-1

W

WebDownloader, *see* Fiery WebTools

WebLink, *see* Fiery WebTools

WebSpooler, *see* Fiery WebTools

WebTools, *see* Fiery WebTools

White Point option A-6

Windows 2000

printer's default settings 1-27

printing with 1-24

setting print options 1-24 to 1-27

Windows 95/98

Media Type 1-3, 1-18

Notes fields 1-6, 1-19

Page size area 1-3, 1-18

Paper Source menu 1-3, 1-18

PostScript printer driver 1-2

printer default settings 1-5, 1-18

printing with 1-2

setting print options 1-2 to 1-17

Windows NT 4.0

printing with 1-17

print options 1-17 to 1-31