

# Getting Started

FIERY ZX-40

**ELECTRONICS FOR IMAGING, INC.**



## Copyright © 1998 Electronics for Imaging, Inc. All rights reserved.

This publication is protected by copyright, and all rights are reserved. No part of it may be reproduced or transmitted in any form or by any means for any purpose without express prior written consent from Electronics for Imaging, Inc., except as expressly permitted herein. Information in this document is subject to change without notice and does not represent a commitment on the part of Electronics for Imaging, Inc.

The software described in this publication is furnished under license and may only be used or copied in accordance with the terms of such license.

Patents: 5,666,436; 5,553,200; 5,543,940; 5,537,516; 5,517,334; 5,506,946; 5,424,754; 5,343,311; 5,212,546; 4,941,038; 4,837,722; 4,500,919

### Trademarks

EFI, the EFI logo, Fiery, the Fiery logo, EFICOLOR, and Rip-While-Print are trademarks registered in the U.S. Patent and Trademark Office. Fiery ZX, Fiery LX, Fiery Driven, the Fiery Driven logo, Command WorkStation, AutoCal, Starr Compression, Memory Multiplier, ColorWise, NetWise, and VisualCal are trademarks of Electronics for Imaging, Inc.

All Xerox product names mentioned in this publication are trademarks of the XEROX CORPORATION.

Adobe, the Adobe logo, Adobe Illustrator, PostScript, Adobe Photoshop, Adobe Separator, and Adobe PageMaker are trademarks of Adobe Systems Incorporated, registered in certain jurisdictions. EPS (Encapsulated PostScript) is a trademark of Altsys Corporation. Apple, the Apple logo, AppleShare, AppleTalk, EtherTalk, LaserWriter, and Macintosh are registered trademarks, and MultiFinder is a trademark of Apple Computer, Inc. Microsoft, MS, MS-DOS, and Windows are registered trademarks of Microsoft in the US and other countries. QuarkXPress is a registered trademark of Quark, Inc. Times, Helvetica, and Palatino are trademarks of Linotype AG and/or its subsidiaries. ITC Avant Garde, ITC Bookman, ITC Zapf Chancery, and ITC Zapf Dingbats are registered trademarks of International Typeface Corporation. Ethernet is a registered trademark of Xerox Corporation. Farallon, PhoneNET PC, and PhoneNET Talk are trademarks of Farallon Computing, Inc. COPS and COPSTalk are trademarks of CoOperative Printing Solutions, Inc. NetWare and Novell are registered trademarks and Internetwork Packet Exchange (IPX) is a trademark of Novell, Inc. SyQuest is a registered trademark, in the United States and certain other countries, of SyQuest Technology, Inc. UNIX is a registered trademark of UNIX System Laboratories, a wholly owned subsidiary of Novell, Inc. PANTONE is a registered trademark of Pantone, Inc.

All other terms and product names may be trademarks or registered trademarks of their respective owners, and are hereby acknowledged.

### Legal Notices

**APPLE COMPUTER, INC. ("APPLE") MAKES NO WARRANTIES, EXPRESS OR IMPLIED, INCLUDING WITHOUT LIMITATION THE IMPLIED WARRANTIES OF MERCHANTABILITY AND FITNESS FOR A PARTICULAR PURPOSE, REGARDING THE APPLE SOFTWARE. APPLE DOES NOT WARRANT, GUARANTEE, OR MAKE ANY REPRESENTATIONS REGARDING THE USE OR THE RESULTS OF THE USE OF THE APPLE SOFTWARE IN TERMS OF ITS CORRECTNESS, ACCURACY, RELIABILITY, CURRENTNESS, OR OTHERWISE. THE ENTIRE RISK AS TO THE RESULTS AND PERFORMANCE OF THE APPLE SOFTWARE IS ASSUMED BY YOU. THE EXCLUSION OF IMPLIED WARRANTIES IS NOT PERMITTED BY SOME STATES. THE ABOVE EXCLUSION MAY NOT APPLY TO YOU.**

**IN NO EVENT WILL APPLE, ITS DIRECTORS, OFFICERS, EMPLOYEES OR AGENTS BE LIABLE TO YOU FOR ANY CONSEQUENTIAL, INCIDENTAL OR INDIRECT DAMAGES (INCLUDING DAMAGES FOR LOSS OF BUSINESS PROFITS, BUSINESS INTERRUPTION, LOSS OF BUSINESS INFORMATION, AND THE LIKE) ARISING OUT OF THE USE OR INABILITY TO USE THE APPLE SOFTWARE EVEN IF APPLE HAS BEEN ADVISED OF THE POSSIBILITY OF SUCH DAMAGES. BECAUSE SOME STATES DO NOT ALLOW THE EXCLUSION OR LIMITATION OF LIABILITY FOR CONSEQUENTIAL OR INCIDENTAL DAMAGES, THE ABOVE LIMITATIONS MAY NOT APPLY TO YOU.** Apple's liability to you for actual damages from any cause whatsoever, and regardless of the form of the action (whether in contract, tort [including negligence], product liability or otherwise), will be limited to \$50.

### Restricted Rights Legends

For defense agencies: Restricted Rights Legend. Use, reproduction, or disclosure is subject to restrictions set forth in subparagraph (c)(1)(ii) of the Rights in Technical Data and Computer Software clause at 252.227.7013.

For civilian agencies: Restricted Rights Legend. Use, reproduction, or disclosure is subject to restrictions set forth in subparagraph (a) through (d) of the commercial Computer Software Restricted Rights clause at 52.227-19 and the limitations set forth in Electronics for Imaging, Inc.'s standard commercial agreement for this software. Unpublished rights reserved under the copyright laws of the United States.

**Printed in the United States of America on recycled paper.**

**Part Number:** n/a

### **CE Mark**

The CE marking applied to this product symbolises Rank Xerox's declaration of conformity with the following applicable directives of the European Union as of the dates indicated.

January 1, 1996—Council Directive 70/80/CCO amended by Council Directive 93/68/EEO. Approximation of the laws of the member states related to low voltage equipment.

January 1, 1996—Council Directive 59/336/EEC. Approximation of the laws of the member states related to electromagnetic compatibility.

A full declaration defining the relevant directives and referenced standards can be obtained from your Rank Xerox representative.

**WARNING: In order to allow this equipment to operate in proximity to industrial, scientific, and Medical (ISM) equipment, the external radiation from ISM equipment may have to be limited or special migration measures taken.**

### **FCC Information**

WARNING: FCC Regulations state that any unauthorized changes or modifications to this equipment not expressly approved by the manufacturer could void the user's authority to operate this equipment.

### **Class B Declaration of Conformity**

This equipment has been tested and found to comply with the limits for a class B digital device, pursuant to Part 15 of the FCC rules. These limits are designed to provide reasonable protection against harmful interference in a residential installation. This equipment generates, uses and can radiate radio frequency energy and if not installed and used in accordance with the instructions, may cause harmful interference to radio communications. However, there is no guarantee that interference will not occur in a particular installation.

If this equipment does cause harmful interference to radio or television reception, which can be determined by turning the equipment off and on, the user is encouraged to try to correct the interference by one or more of the following measures:

Reorient or relocate the receiving antenna.

Increase the separation between the equipment and receiver.

Connect the equipment into an outlet on a circuit different from that to which the receiver is connected.

Consult the dealer or an experienced radio/TV technician for help.

In order to maintain compliance with FCC regulations, shielded cables must be used with this equipment. Operation with non-approved equipment or unshielded cables is likely to result in interference to radio and TV reception. The user is cautioned that changes and modifications made to the equipment without the approval of manufacturer could void the user's authority to operate this equipment.

### **Industry Canada Class B Notice**

This Class B digital apparatus meets all the requirements of the Canadian Interference-Causing Equipment Regulations.

### **Avis de Conformation Classe B de l'Industrie Canada**

Cet appareil numérique de la classe B respecte toutes les exigences du Règlement sur le matériel brouilleur du Canada.

### **Certificate by Manufacturer/Importer**

This is to certify that the FC07 is shielded against radio interference in accordance with the provisions of VFG 243/1991. The German Postal Services have been advised that this device is being put on the market and that they have been given the right to inspect the series for compliance with the regulations. Electronics for Imaging, Inc.

### **Bescheinigung des Herstellers/Importeurs**

Heirmit wird bescheinigt, dass der FC07 im Uebereinstimmung mit den Bestimmungen der VFG 243/1991 Funk-Entstort ist. Der Deutschen Bundespost wurde das Inverkehrbringen dieses Geraetes angezeigt und die Berechtigung zur Ueberpruefung der Serie auf Einhaltung der Bestimmungen eingeräumt. Electronics for Imaging, Inc.

### **RFI Compliance Notice**

This equipment has been tested concerning compliance with the relevant RFI protection requirements both individually and on system level (to simulate normal operation conditions). However, it is possible that these RFI Requirements are not met under certain unfavorable conditions in other installations. It is the user who is responsible for compliance of his particular installation.

Dieses Gerat wurde einzeln sowohl als auch in einer Anlage, die einen normalen Anwendungsfall nachbildet, auf die Einhaltung der Funk-entstoerbestimmungen geprueft. Es ist jedoch moeglich, dass die Funk-entstoerbestimmungen unter unguenstigen Umstaenden bei anderen Geratekombinationen nicht eingehalten werden. Fuer die Einhaltung der Funk-entstoerbestimmungen seigner gesamten Anlage, in der dieses Gerat betrieben wird, ist der Betreiber verantwortlich.

Compliance with applicable regulations depends on the use of shielded cables. It is the user who is responsible for procuring the appropriate cables.

Einhaltung mit betreffenden Bestimmungen kommt darauf an, dass geschirmte Ausfuehrungen gebraucht werden. Fuer die beschaffung richtiger Ausfuehrungen ist der Betreiber verantwortlich.

### **Software License Agreement**

Before using the Software, please carefully read the following terms and conditions. BY USING THIS SOFTWARE, YOU SIGNIFY THAT YOU HAVE ACCEPTED THE TERMS OF THIS AGREEMENT. If you cannot or do not accept these terms, you may return the entire package within ten (10) days to the Distributor or Dealer from which you obtained them for a full refund.

Electronics for Imaging, Inc. grants to you a non-exclusive, non-transferable license to use the software and accompanying documentation ("Software") included with the Fiery ZX you have purchased, including without limitation the PostScript<sup>®</sup> software provided by Adobe Systems Incorporated.

You may:

- a. use the Software solely for your own customary business purposes and solely with Fiery ZX;
- b. use the digitally-encoded machine-readable outline and bitmap programs ("Font Programs") provided with Fiery ZX in a special encrypted format ("Coded Font Programs") to reproduce and display designs, styles, weights, and versions of letters, numerals, characters and symbols ("Typefaces") solely for your own customary business purposes on the display window of the Fiery ZX or monitor used with Fiery ZX;
- c. use the trademarks used by Electronics for Imaging to identify the Coded Font Programs and Typefaces reproduced therefrom ("Trademarks"); and
- d. assign your rights under this Agreement to a transferee of all of your right, title and interest in and to Fiery ZX provided the transferee agrees to be bound by all of the terms and conditions of this Agreement.

You may not:

- a. make use of the Software, directly or indirectly, to print bitmap images with print resolutions of 600/720 dots per inch or greater, or to generate fonts or typefaces for use other than with Fiery ZX;
- b. make or have made, or permit to be made, any copies of the Software, Coded Font Programs, accompanying documentation or portions thereof, except as necessary for use with the Fiery ZX unit purchased by you; provided, however, that under no circumstances may you make or have made, or permit to be made, any copies of that certain portion of the Software which has been included on the Fiery ZX hard disk drive. You may not copy the documentation;
- c. attempt to alter, disassemble, decrypt or reverse engineer the Software, Coded Font Programs or accompanying documentation.
- d. rent or lease the Software.

### **Proprietary Rights**

You acknowledge that the Software, Coded Font Programs, Typefaces, Trademarks and accompanying documentation are proprietary to Electronics for Imaging and its suppliers and that title and other intellectual property rights therein remain with Electronics for Imaging and its suppliers. Except as stated above, this Agreement does not grant you any right to patents, copyrights, trade secrets, trademarks (whether registered or unregistered), or any other rights, franchises or licenses in respect of the Software, Coded Font Programs, Typefaces, Trademarks or accompanying documentation. You may not adapt or use any trademark or trade name which is likely to be similar to or confusing with that of Electronics for Imaging or any of its suppliers or take any other action which impairs or reduces the trademark rights of Electronics for Imaging or its suppliers. The trademarks may only be used to identify printed output produced by the Coded Font Programs. At the reasonable request of Electronics for Imaging, you must supply samples of any Typeface identified with a trademark.

### **Confidentiality**

You agree to hold the Software and Coded Font Programs in confidence, disclosing the Software and Coded Font Programs only to authorized users having a need to use the Software and Coded Font Programs as permitted by this Agreement and to take all reasonable precautions to prevent disclosure to other parties.

### **Remedies**

Unauthorized use, copying or disclosure of the Software, Coded Font Programs, Typefaces, Trademarks or accompanying documentation will result in automatic termination of this license and will make available to Electronics for Imaging other legal remedies.

### **Limited Warranty And Disclaimer**

Electronics for Imaging warrants that, for a period of ninety (90) days from the date of delivery to you, the Software under normal use will perform without significant errors that make it unusable. Electronics for Imaging's entire liability and your exclusive remedy under this warranty (which is subject to you returning Fiery ZX to Electronics for Imaging or an authorized dealer) will be, at Electronics for Imaging's option, to use reasonable commercial efforts to attempt to correct or work around errors, to replace the Software with functionally equivalent software, or to refund the purchase price and terminate this Agreement. Some states do not allow limitations on duration of implied warranty, so the above limitation may not apply to you.

Except for the above express limited warranty, Electronics for Imaging makes and you receive no warranties or conditions on the Products, express, implied, or statutory, and Electronics for Imaging specifically disclaims any implied warranty or condition of merchantability or fitness for a particular purpose.

For warranty service, please contact your authorized service/support center.

EXCEPT FOR THE ABOVE EXPRESS LIMITED WARRANTY, ELECTRONICS FOR IMAGING MAKES AND YOU RECEIVE NO WARRANTIES OR CONDITIONS ON THE SOFTWARE OR CODED FONT PROGRAMS, EXPRESS, IMPLIED, STATUTORY, OR IN ANY OTHER PROVISION OF THIS AGREEMENT OR COMMUNICATION WITH YOU, AND ELECTRONICS FOR IMAGING SPECIFICALLY DISCLAIMS ANY IMPLIED WARRANTY OR CONDITION OF MERCHANTABILITY OR FITNESS FOR A PARTICULAR PURPOSE. Electronics for Imaging does not warrant that the operation of the software will be uninterrupted or error free or that the Software will meet your specific requirements.

### **Limitation Of Liability**

IN NO EVENT WILL ELECTRONICS FOR IMAGING OR ITS SUPPLIERS BE LIABLE FOR ANY DAMAGES, INCLUDING LOSS OF DATA, LOST PROFITS, COST OF COVER OR OTHER SPECIAL, INCIDENTAL, CONSEQUENTIAL OR INDIRECT DAMAGES ARISING FROM THE USE OF THE SOFTWARE, CODED FONT PROGRAMS OR ACCOMPANYING DOCUMENTATION, HOWEVER CAUSED AND ON ANY THEORY OF LIABILITY. THIS LIMITATION WILL APPLY EVEN IF ELECTRONICS FOR IMAGING OR ANY AUTHORIZED DEALER HAS BEEN ADVISED OF THE POSSIBILITY OF SUCH DAMAGE. YOU ACKNOWLEDGE THAT THE PRICE OF THE UNIT REFLECTS THIS ALLOCATION OF RISK. BECAUSE SOME STATES/JURISDICTIONS DO NOT ALLOW THE EXCLUSION OR LIMITATION OF LIABILITY FOR CONSEQUENTIAL OR INCIDENTAL DAMAGES, THE ABOVE LIMITATION MAY NOT APPLY TO YOU.

### **Export Controls**

You agree that you will not export or re-export the Software or Coded Font Programs in any form without the appropriate United States and foreign government licenses. Your failure to comply with this provision is a material breach of this Agreement.

### **Government Use**

Use, duplication or disclosure of the Software by the United States Government is subject to restrictions as set forth in subdivision (c) (1) (ii) of the Rights in Technical Data and Computer Software clause at DFARS 252.227-7013 or in subparagraphs (c) (1) and (2) of the Commercial Computer Software—Restricted Right Clause at 48 CFR 52.227-19, as applicable.

### **Third Party Beneficiary**

You are hereby notified that Adobe Systems Incorporated, a California corporation located at 345 Park Avenue, San Jose, CA 95110-2704 ("Adobe") is a third-party beneficiary to this Agreement to the extent that this Agreement contains provisions which relate to your use of the Fonts, the Coded Font Programs, the Typefaces and the Trademarks licensed hereby. Such provisions are made expressly for the benefit of Adobe and are enforceable by Adobe in addition to Electronics for Imaging.

### **General**

This Agreement will be governed by the laws of the State of California.

This Agreement is the entire agreement held between us and supersedes any other communications or advertising with respect to the Software, Coded Font Programs and accompanying documentation.

If any provision of this Agreement is held invalid, the remainder of this Agreement shall continue in full force and effect.

If you have any questions concerning this Agreement, please write to Electronics for Imaging, Inc., Attn: Licensing Dept. or see Electronics for Imaging's web site at [www.efi.com](http://www.efi.com).

Electronics for Imaging, Inc.  
2855 Campus Drive  
San Mateo, CA 94403

# Contents

## Introduction

---

About the documentation	ix
Specifications	x
User software	xii
System requirements	xiii
Windows	xiii
Mac OS	xiv
UNIX (TCP/IP)	xv
Parallel port	xv
IPX (Novell)	xv
Command WorkStation	xv

## Installing user software on Windows computers

---

Downloading installers with the Fiery WebTools	1
Setting up printing with Windows 95	2
Completing the Windows 95 connection	6
Setting up printing with Windows 3.1x	17
Setting the Fiery ZX as the default printer with Windows 3.1x	18
Setting up printing with Windows NT 4.0	21
Completing the Windows NT 4.0 printer connection	26
Installing client utility software	32
Installing the Fiery Downloader	32
Installing Command WorkStation software	35
Configuring the connection to the server	36
Copying color files from the User Software CD	40
Installing Fiery Booklet Maker for QuarkXPress	41
Copying the printer description files for applications	42
Optional color management files	43
Photoshop color management files	43
Fiery ZX ICM profiles for Windows 95	46

## Installing user software on Mac OS computers

Installing printer files	47
Setting up the Fiery ZX in the Chooser	48
Installing screen fonts	49
Installing the Fiery Downloader	50
Copying color files from the User Software CD	51
Installing files for QuarkXPress	52
Optional color management files	53
Photoshop color management files	53
ColorSync profiles	56

## Downloading installers with Fiery WebTools

Setting up Fiery WebTools	59
Using the Installer WebTool	60

## Troubleshooting

On a Windows computer	63
On a Mac OS computer	63

## Index

## Introduction

This manual describes how to install the user software for the Fiery ZX-40 Color Server™ and set up printing from Windows computers and Mac™ OS™ computers. For information about setting up network servers and clients to use the Fiery ZX-40 Color Server, see the *Configuration Guide*. For general information on using the DocuColor 40, your computer, your application software, or your network, see the manuals that accompany those products.

**NOTE:** This manual uses the term “Fiery ZX” to refer to the Fiery ZX-40 Color Server.

The Fiery ZX includes Command WorkStation™ software, which enables an operator to manage all jobs sent to the Fiery ZX. Although it may not be the case at all sites, the documentation for this product assumes the presence of an operator who controls and manages jobs sent by users from remote workstations.

Your Fiery ZX includes a media pack containing:

- User Software CD
- System Software CD
- User Documentation CD
- Printed Release Notes (described below)
- Quick Start Notes

## About the documentation

This manual is part of the set of Fiery ZX documentation that includes the following manuals for users and system administrators:

- The *Configuration Guide* explains basic configuration and administration of the Fiery ZX for the supported platforms and network environments. It also includes guidelines for setting up UNIX, Windows NT, and NetWare servers to provide PostScript printing services to clients.
- *Getting Started* describes how to install software to enable users to print to the Fiery ZX. Specifically, it describes installation of PostScript printer drivers, printer description files, and other user software provided on the User Software CD. It also explains how to connect each user to the network.



- The *Printing Guide* describes the printing features of the Fiery ZX for users who send jobs via remote workstations on the network or via a direct parallel port connection.
- The *Color Guide* provides an introduction to the basics of color theory and printing to a Fiery ZX Color Server. It also includes practical color printing tips and application notes that explain how to print to the Fiery ZX from popular Windows and Mac OS applications.
- The *Job Management Guide* explains the functions of the Fiery ZX client utilities, including the Command WorkStation, and how they can be used to manage jobs and maintain color quality. This book is intended for an operator or administrator, or a user with the necessary access privileges, who needs to monitor and manage job flow, perform color calibration, and troubleshoot problems that may arise.
- *Release Notes* provide last-minute product information and workarounds for some of the problems you may encounter.

## Specifications

The Fiery ZX-40 Color Server has the following features:

- DEC Alpha 21164 CPU, 533 MHz, 256MB RAM (512MB upgrade option available)
- PRIME video interface board
- Internal 8GB hard disk drives (additional 4GB upgrade option available)
- Internal 12x rotational rate CD-ROM drive (read-only)
- Internal Iomega ZIP™ drive (storage capacity 100MB)
- Supports additional SCSI devices with an SCSI host adapter card
- Supports AppleTalk, TCP/IP, and IPX protocols simultaneously
- Supports parallel port communication
- Supports EtherTalk Phase 2
- Supports thinnet (thin coaxial Ethernet cable or 10Base2), thicknet (thick coaxial Ethernet cable or 10Base5), and unshielded twisted pair (Fast Ethernet 100BaseTX or Ethernet 10BaseT)
- Supports Token Ring networking with additional optional hardware

- Supports Adobe PostScript 3
- Includes 136 fonts (117 Adobe Type 1 PostScript and 19 TrueType)

In addition, two Adobe Multiple Master fonts are included and are used for font substitution in PDF files.

You can use the Fiery Downloader to download additional fonts.

- Built-in ColorWise™ color management and NetWise™ networking management
- Fiery WebTools
- Fiery Downloader client utility
- Command WorkStation software, including embedded versions of the Fiery Downloader and Fiery Print Calibrator

## User software

The Fiery ZX user software is provided on the User Software CD.

**NOTE:** Installers for printer files can also be downloaded from the Fiery ZX using Fiery WebTools (see page 60).

Adobe PostScript Printer Drivers (for Windows 95, Windows 3.1x, and Mac OS only) and PostScript Printer Description files (PPDs)	To print to the Fiery ZX. These drivers and PPDs support PostScript Level 3 and provide access to all special features of the DocuColor 40.
Screen Fonts (for Mac OS only)	Screen fonts for the 136 PostScript printer fonts installed on the Fiery ZX.
Fiery Downloader™ (For Windows 95, Windows NT 4.0, and Mac OS only)	Enables you to print PostScript files, Encapsulated PostScript (EPS) files, and Portable Document Format (PDF) files directly to the Fiery ZX without opening the application in which they were created. The Fiery Downloader also enables you to download printer fonts to the Fiery ZX.
Fiery Booklet Maker	An XTension for QuarkXPress that enables you to reorder pages automatically for proper booklet printing.

Color Reference Files	Reference pages that you can print to view the range of colors available with your Fiery ZX. For most predictable color results, refer to these pages when defining colors in applications.
Color Management Files	Profiles for use with the color management systems implemented in Mac OS and Windows operating systems, and Separation Tables and a monitor settings file for use with Adobe® Photoshop®.
Command WorkStation v3.2x	A software application that allows an operator to control Fiery ZX functions from a networked Windows NT 4.0 workstation. The Command WorkStation software includes embedded versions of the Fiery Downloader and Fiery Print Calibrator utilities.

## System requirements

Fiery ZX user software is provided on a CD. To install the user software on a Windows or Mac OS computer, the computer must be equipped with a CD-ROM drive (either built-in or external).

### Windows

To print to the Fiery ZX, you need:

- A Windows-based computer with an 80486, AMD, or Pentium processor
- Windows 95, Windows 3.1x, or Windows NT 4.0
- At least 4MB of RAM

To use the Fiery Downloader you also need:

- *Either* Windows 95 *or* Windows NT 4.0 with NT Service Pack 3
- At least 16MB of RAM

To use the Fiery WebTools, you also need:

- *Either* Netscape Communicator v4.0.3 with Java enabled *or* Microsoft Internet Explorer v3.0.2 with Java enabled

NOTE: Netscape and Microsoft continue to release frequent updates to their browsers. As support cannot be guaranteed for all versions, use the versions specified above for best results.

- A monitor that supports 16-bit color at a minimum resolution of 600 x 800
- A TCP/IP enabled network and the IP address or DNS name of the Fiery ZX
- Web Services enabled on the Fiery ZX

NOTE: The Fiery utilities and WebTools are supported with Windows 95 and Windows NT 4.0 only.

With Microsoft Windows 95, you also need:

- IPX/SPX or TCP/IP networking protocol installed
- Adobe PostScript Printer Driver for Windows version 4.2 or later (version 4.2.1 is included with the user software)

With Microsoft Windows 3.1x, you also need:

- IPX networking protocol installed
- IPX/SPX networking software for IPX/SPX communication
- MS-DOS version 5.0 or later
- Adobe PostScript Printer Driver for Windows version 3.0 or later (version 3.0.1 is included with the user software)

With Microsoft Windows NT 4.0 you also need:

- TCP/IP or AppleTalk networking protocol installed
- The Windows PostScript Printer Driver that came with your Windows NT 4.0 system software; however, some Fiery ZX printing features may not be available. For details, see the *Printing Guide*.

## Mac OS

To print to the Fiery ZX you need:

- A Mac OS-based computer
- At least 8MB of RAM
- EtherTalk installed
- Apple System software version 7.5 or later
- Adobe PostScript Printer Driver version 8.5 or later (version 8.5.1 is included with the user software)

To use the Fiery Downloader you also need:

- A Power Macintosh computer
- At least 16MB of RAM

To use the Fiery WebTools, you also need:

- Netscape Communicator v4.0.3 or later with Java enabled

**NOTE:** Netscape continues to release frequent updates to its browser. As support cannot be guaranteed for all versions, use the version specified above for best results.

- A TCP/IP enabled network and the IP address or DNS name of the Fiery ZX
- Web Services enabled on the Fiery ZX

## UNIX (TCP/IP)

To print to the Fiery ZX with a UNIX workstation, you need:

- A workstation with standard TCP/IP connectivity (for example, Sun SPARCstation or Silicon Graphics workstation with Solaris version 2.x or SunOS version 4.1.x software)
- TCP/IP printing software that conforms to RFC1179 (Berkeley lpd protocol)

## Parallel port

To print to the Fiery ZX using the parallel port, you need:

- A Windows-based computer with an 80486, AMD, or Pentium processor
- At least 4MB of RAM
- The parallel cable included with the Fiery ZX

The cable has a DB-25 male connector (that connects to the computer) on one end and a DB-25 female connector (that connects to the Fiery ZX) on the other.

## IPX (Novell)

To use the Fiery ZX with an IPX (Novell) network, you need:

- A Novell server
- Novell NetWare software version 4.x or 3.x
- Support for Ethernet SNAP, Ethernet II, Ethernet 802.3, Ethernet 802.2, Token Ring SNAP, or Token Ring

## Command WorkStation

To run the Command WorkStation application from a remote workstation, you need:

- A Windows-based computer with a 200 MHz Pentium processor
- Windows NT 4.0 with NT Service Pack 3
- TCP/IP networking protocol installed
- PCI VGA interface card
- At least 32MB of RAM
- At least 2MB of video RAM
- An 850MB IDE hard disk drive
- A 2x CD-ROM drive
- A 17" monitor that supports 16-bit color at a minimum resolution of 1024 x 768

## Installing user software on Windows computers

This chapter describes installing software and setting up printing from a Windows-based computer running Windows 95, Windows 3.1x, or Windows NT 4.0.

The general steps for installing the Fiery ZX software are:

- Install the Adobe PostScript Printer Driver (for Windows 95 and Windows 3.1x) or Windows printer driver (for Windows NT 4.0) and PostScript printer description (PPD) file, and set up the printer driver to communicate with the Fiery ZX (these procedures are specific to the version of Windows)
- Install the Fiery Downloader (for Windows 95 and Windows NT 4.0 only) and configure its connection to the Fiery ZX (page 32)
- Install the Command WorkStation (for Windows NT 4.0 only) and configure its connection to the Fiery ZX (page 35)
- Copy the color reference pages from the User Software CD to your hard drive (page 40)
- For QuarkXPress, copy the Fiery Booklet Maker XTension from the User Software CD to your QuarkXPress XTensions folder (page 41)
- For PageMaker or QuarkXPress, copy the PPD file to the appropriate location (page 41)
- For advanced users with special color management needs, install the optional color management files for Photoshop and Windows ICM (page 42)

### Downloading installers with the Fiery WebTools

The installers for Windows printer files that are available on the User Software CD can also be downloaded from the Fiery ZX using the Fiery WebTools (if the administrator has enabled Internet access to the server). For instructions on using the Fiery WebTools to download the printer files installers, see page 59.

You can use the procedures in this chapter whether you are using the User Software CD or an installer downloaded with the Fiery WebTools.

## Setting up printing with Windows 95

You can print to the Fiery ZX from a Windows 95 workstation over an IPX (Novell) network, with Windows native printing, or with the parallel port connection. In both cases you need to install the Adobe PostScript Printer Driver version 4.2.x for Windows 95 and the Fiery ZX PPD on your computer, and then set up the Fiery ZX to accept your print jobs.

The procedure for installing the Adobe PostScript printer driver is the same whether you are installing from the User Software CD or from installer files you downloaded with the Fiery WebTools.

**NOTE:** If you have problems setting up the Fiery ZX, install another PostScript printer (such as the Apple LaserWriter) and then install the Fiery ZX.

---

### TO INSTALL THE ADOBE POSTSCRIPT PRINTER DRIVER FOR WINDOWS 95:

1. If you are installing from the User Software CD, open the English\Instalrs\Ps\_drvr folder.

If you are installing from files you downloaded with Fiery WebTools, open the Prntdrv\Ps\_drvr folder on your hard disk.

2. Open the Win\_95 folder, and double-click the Setup.exe icon.  
Setup is the filename for the Adobe Installer.

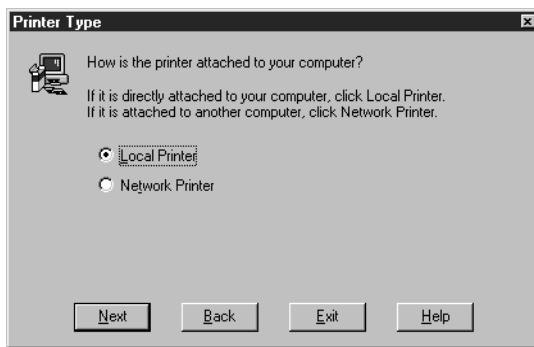


3. Click Read to view the README file. When you are finished, close the README file and click Next.

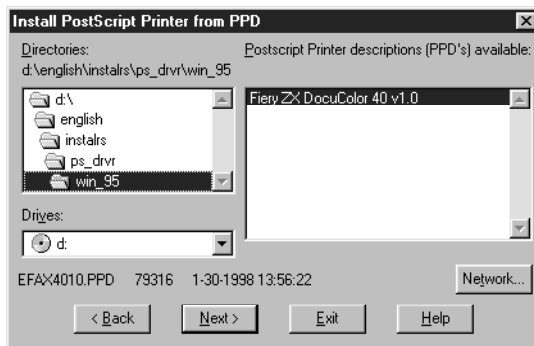


**NOTE:** The information in this file is not specific to the Fiery ZX. You can click Next to postpone reading this file and read it later.

4. If you are installing from the User Software CD, you may see an Install Setup Program dialog box offering you the option to copy the setup program to your hard disk. Make your choice and then click Next.
5. In the Printer Type dialog box, select Local Printer and click Next.

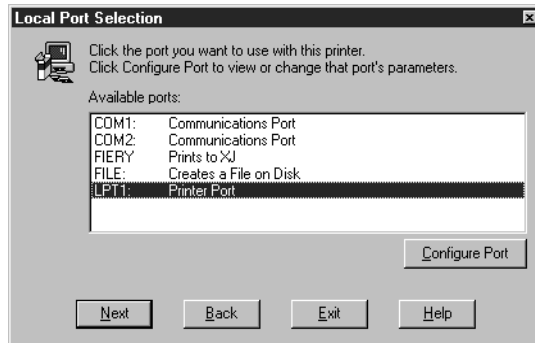


6. In the Install PostScript Printer from PPD dialog box, specify the drive (User Software CD or your hard drive) containing the Fiery ZX installer software, and browse to open the Ps\_drvr\Win\_95 folder.



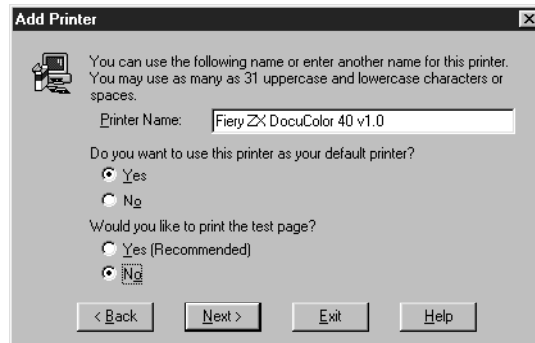
7. Select the Fiery ZX printer description file for your print device (in the Ps\_drvr\Win\_95 folder) and click Next.

8. In the Local Port Selection dialog box, select LPT1 for the port. You will configure the port later.

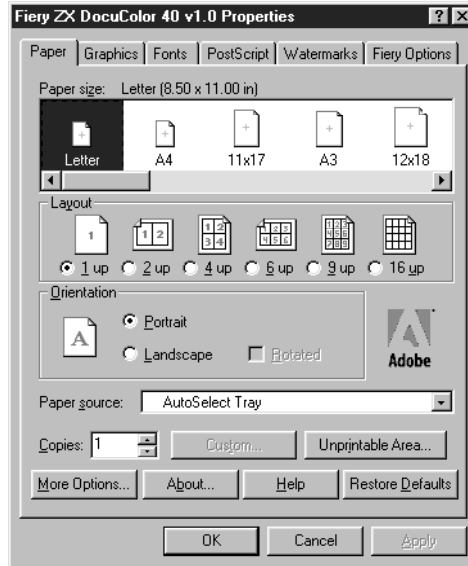


9. In the Add Printer dialog box, click Yes to use the Fiery ZX as the default printer, and click No to printing the test page. Click Next.

You will print the test page after you finish configuring the printer.

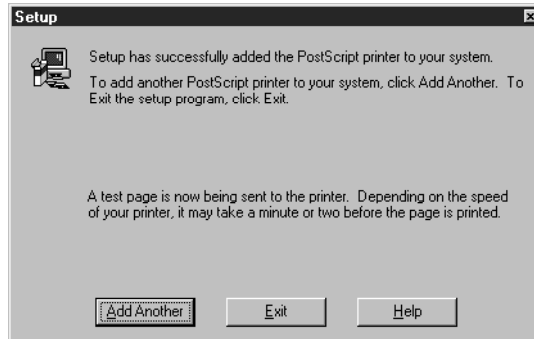


The Paper properties sheet for the Fiery ZX appears.



10. Click OK.

You are notified that Setup is complete.



11. Click Exit.

The icon for your newly installed printer appears in the Printers window.

## Completing the Windows 95 connection

To print from Windows 95 you need to:

- Set up network servers, if any
- Set up the Fiery ZX to accept print jobs from your computer
- Configure a port on each Windows 95 computer for the network or connection type

For this type of connection:	See:
Parallel	page 6
IPX/SPX or IPX (Novell)	page 10
SMB printing	page 13

## Completing the Windows 95 parallel port connection

Preparing a parallel port connection for Windows 95 requires specific BIOS settings on your computer, and specific port and printer settings for Windows 95. In addition, a change to one of the Fiery ZX Setup settings may be required if you choose to spool files to the Fiery ZX rather than print directly.

---

### TO PREPARE THE FIERY ZX AND YOUR COMPUTER FOR PARALLEL PORT PRINTING:

1. Connect the Fiery ZX to the parallel port on your computer.  
For instructions, see the *Configuration Guide*.
2. In Network Setup > Port Setup > Parallel Port Setup, set Enable Parallel Port to Yes.  
For more information about Fiery ZX Setup, see the *Configuration Guide*.
3. If you want to spool files to the Fiery ZX, set Port Timeout in Seconds to 10.

If you want to print directly to the Fiery ZX, set Port Timeout in Seconds to 5.  
Setting this option to 10 seconds ensures that spooling is not interrupted due to timeout.

4. In your computer's BIOS settings, set Parallel Port Mode to ECP.

To access the BIOS settings, restart the computer and press the key indicated on your monitor as soon as the computer starts up. You may have to scroll through several screens to reach the parallel port settings. After setting the Parallel Port Mode to ECP, save your changed setting and exit.

---

TO PREPARE THE PRINTER FOR PARALLEL PORT PRINTING:

1. Click the Start button, point to Settings, and click Printers.
2. Click the Fiery ZX printer icon and choose Properties from the File menu.
3. Click the Details tab, and in the Print to the following port pop-up menu, select LPT 1: (ECP Printer Port).

NOTE: Check this selection carefully. It may read LPT 1: (Printer Port), which is *not* equivalent to LPT 1: (ECP Printer Port).

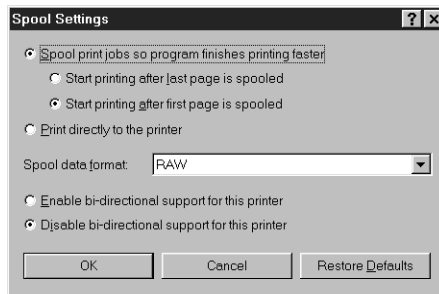
If this box does *not* read LPT 1: (ECP Printer Port), change the port setting now, as described in "To prepare the port for parallel port printing:" on page 8, and then return to this procedure. You may need your Windows 95 system CD.

4. If you changed the selection in the Print to the following port pop-up menu, click Apply.  
A Warning dialog box may appear, stating that fonts you downloaded to the previously selected port may be lost; click OK.
5. Click Spool Settings.

6. Select either “Spool print jobs so program finishes printing faster” or “Print directly to the printer”.

The selection you make depends on the action you took in step 3 on page 6:

- If you set the Port Timeout in Seconds to 10, you can select either option; however, spooling is faster.
- If you set the Port Timeout in Seconds to 5, select “Print directly to the printer”.



7. Select “Disable bi-directional support for this printer” and click OK.
  8. Click Apply.
- You are now ready to print from your applications to the Fiery ZX with the parallel port. To confirm the connection, print a Windows 95 test page.
9. Click the General tab.
  10. Click Print Test Page and click OK.

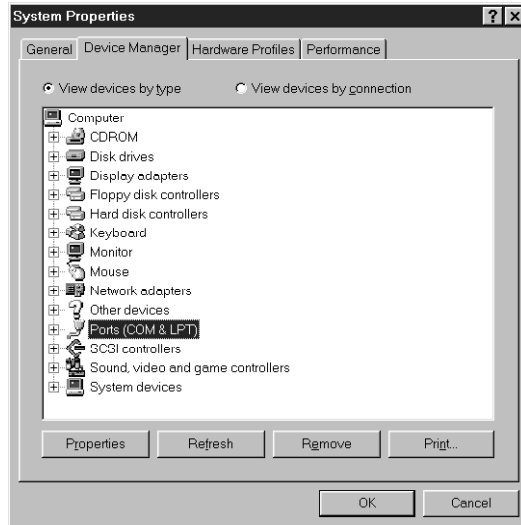
Perform the following procedure only if the LPT 1 port is *not* currently set to ECP Printer Port.

---

**TO PREPARE THE PORT FOR PARALLEL PORT PRINTING:**

1. Click the Start button, point to Settings, and click Control Panel.
2. Double-click System.  
The System Properties window appears.
3. Click the Device Manager tab.

4. Double-click Ports.

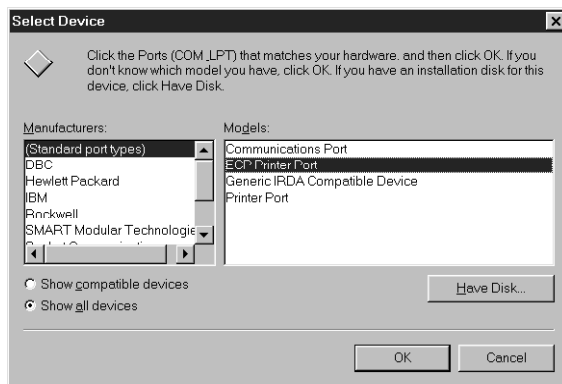


5. Double-click the port with (LPT1) in its name.

6. In the (LPT1) Properties dialog box click the Driver tab and then click Change Driver.

7. Select Show all devices.

8. From the Manufacturers list, select "(Standard port types)". From the Models list, select "ECP Printer Port" (*not* Printer Port). Click OK.



9. Click OK in the (LPT1) Properties dialog box.

NOTE: You might need to insert the Windows 95 system CD to complete this step depending on whether the required files are on your hard disk.

10. When prompted to restart the computer, click Yes.

After Windows 95 restarts, you can complete the procedure described in “To prepare the printer for parallel port printing:” on page 7.

### Completing the Windows 95 IPX/SPX or IPX (Novell) connection

If you are printing through a Novell server, before you begin, the Novell network and file server should be set up. The file server should be configured with a print server and print connection for the Fiery ZX. For details see your NetWare documentation and the *Configuration Guide*.

NOTE: You can also use the Fiery Downloader to print directly to the Fiery ZX from Windows 95 with IPX/SPX.

---

#### TO SET UP IPX/SPX PRINTING:

1. Open the Windows 95 Control Panel.
2. Double-click the Network icon.

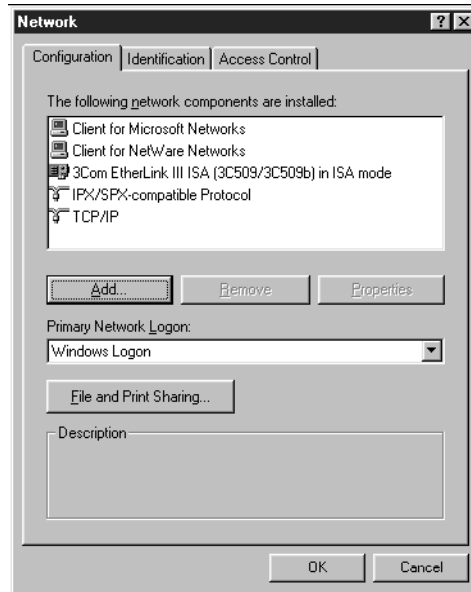
Make sure that IPX/SPX-compatible Protocol and TCP/IP protocol are both listed in the Installed Network Components section.

For instructions, see your Windows 95 documentation.

NOTE: You must enable TCP/IP printing to ensure that all files required for IPX/SPX will be installed. You can select it and click Remove after you set up IPX/SPX if you do not need to use the TCP/IP protocol.



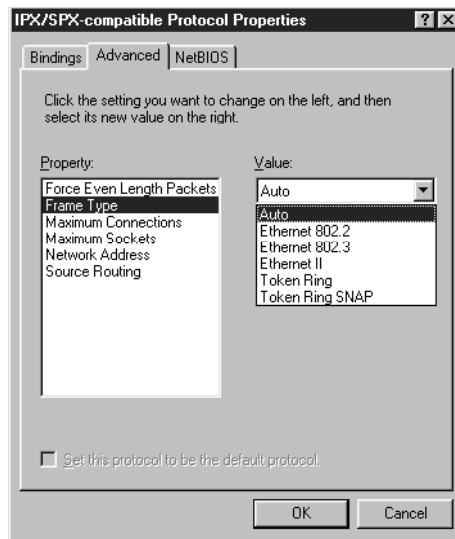
3. Double-click the IPX/SPX-compatible Protocol icon.



4. Click Advanced.
5. In the Property list, click Frame Type. In the Value pop-up menu, select the Frame Type that corresponds to the one set during Fiery ZX Network Setup.

If necessary, print the Configuration page to check which Frame Type(s) are configured.

**NOTE:** Do not select Auto. Doing so may not select the Frame Type specified on the Fiery ZX.



6. Click OK and close the Network Control Panel.

---

#### TO SET UP IPX (NOVELL) PRINTING WITH WINDOWS 95:

1. Click the Start button, point to Settings, and then click Printers.
2. Click the icon for the Fiery ZX and choose Properties from the File menu.
3. Choose the Details tab in the Properties window and click Add Port.  
A list of connection options is displayed.
4. In the Add Port dialog box, specify the network path, or click Browse for a display of your network environment.
5. If you are using a NetWare file server, double-click the icon of the NetWare file server you want to use for printing to the Fiery ZX and click OK.
6. Click the printer icon labeled with the NetWare print queue you will use and click OK.
7. In the Add Port dialog box, verify that the network path is updated and click OK.  
You are ready to print from the workstation.

Your print jobs will be transmitted to the specified print queue on the Novell file server. The printer will poll the file server and, if jobs are present, they will be transmitted to the Fiery ZX.

To confirm the connection, you can print a Windows 95 test page.

8. Click the General tab, and click Print Test Page.
9. Click OK.

### Completing the SMB printing connection

If you don't have a Novell network, you can print via SMB printing (also known as Windows printing or WINS printing). Printing by this method allows you to print from your computer to a particular queue (Hold, Print, or Direct) on the Fiery ZX.

To set up printing to a second or third queue, you must install a new printer for each queue and repeat the procedure "To set up SMB printing:" on page 15. If you install more than one printer, give each a descriptive name during printer driver installation, such as Astro-Print or Astro-Hold, so you can easily identify printers.

---

#### BEFORE YOU BEGIN:

1. Configure the Fiery ZX for SMB printing in Network Setup > Service Setup > Windows Setup.

For more information, see the *Configuration Guide*.

2. Print the Fiery ZX Configuration page.

You need information from the Configuration page to specify settings on your computer, such as the Server Name and IP address of the WINS Name Server.

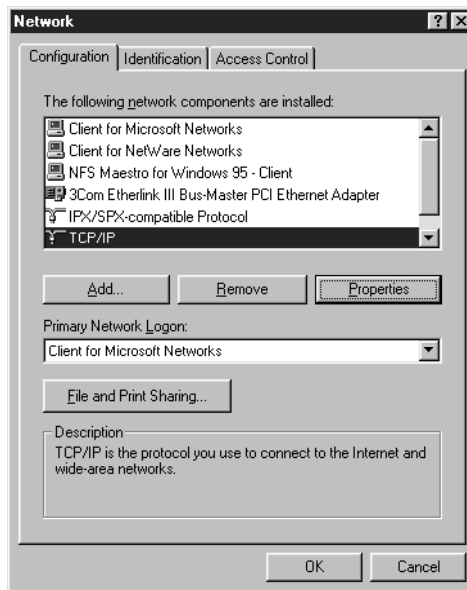
3. Save any documents in open programs.

You are prompted to restart Windows after this procedure, so be sure to save any documents.

---

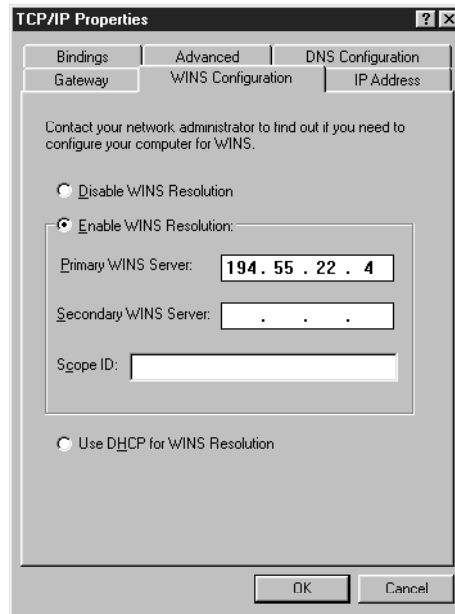
**TO PREPARE YOUR COMPUTER FOR SMB PRINTING:**

1. Click Start, choose Settings, and click Control Panel.
2. Double-click the Network icon.
3. Select TCP/IP and click Properties.



4. Click the WINS Configuration tab.

5. Select "Enable WINS Resolution" and enter the TCP/IP address of the WINS Name Server.



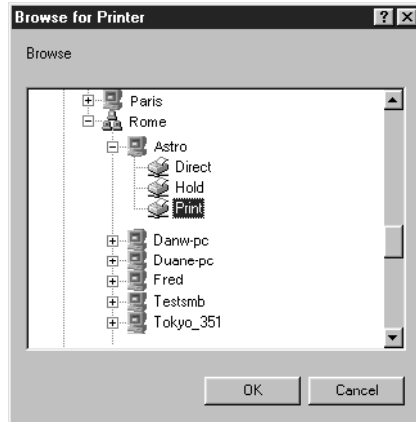
6. Click OK, and click OK at the Network dialog box.  
You are prompted to restart Windows. Click Yes, and when Windows restarts, continue with the following procedure.

---

#### TO SET UP SMB PRINTING:

1. Click the Start button, choose Settings, and click Printers.
2. Click the icon for the printer and choose Properties from the File menu.
3. Click the Details tab in the Properties window and click Add Port.  
A list of connection options is displayed.
4. In the Add Port dialog box, click Browse to display your network environment.

5. Expand the levels to locate your printer and the queue to which you want to print.



The printer name you are browsing for is the name entered in Network Setup > Service Setup > Enable Windows Printing > Server Name, not the Server Name entered in Server Setup. Refer to the Configuration page for this information.

The amount of network traffic determines the amount of time required for the Browse function.

6. Select the queue under the printer and click OK.
7. In the Add Port dialog box, verify that the network path is correct and click OK.
8. To confirm the connection, click the General tab in the Properties dialog box.
9. Click Print Test Page, and click OK.

If the test page prints successfully, you are ready to print from the computer.

## Setting up printing with Windows 3.1x

To print with Windows 3.1x, you need to install the Adobe PostScript Printer Driver v3.0.1 and the Fiery ZX PPD (printer description file) on your computer and then perform the set up procedures required for the Fiery ZX to accept your print jobs.

The procedure for installing the Adobe driver is the same whether you are installing from the User Software CD or from installer files you downloaded with the Fiery WebTools.

---

### TO INSTALL THE ADOBE POSTSCRIPT PRINTER DRIVER FOR WINDOWS 3.1X:

1. In the Main window, double-click the Control Panel icon.
2. Double-click the Adobe PostScript Printers icon.  
The Install PostScript Printer from PPD dialog box appears.
3. If you installing from the User Software CD, open the English\Instalrs\Ps\_drvr\Win\_31 folder.  
  
If you are installing from files you downloaded using the Fiery WebTools, open the Ps\_drvr\Win\_31 folder on your hard disk.
4. Select the Fiery ZX PPD from the Printer Descriptions available box and click Install.
5. Click OK when you are notified that the printer was successfully installed.

## Setting the Fiery ZX as the default printer with Windows 3.1x

You can specify the Fiery ZX as the default printer. Many Windows applications use the default printer when you choose the Print command.

---

### TO SET THE FIERY ZX AS THE DEFAULT PRINTER:

1. In the Control Panel window, double-click the Printers icon.
2. In the Printers window, select the Fiery ZX in the Installed Printers list box.
3. Click Set As Default Printer.

The Fiery ZX appears in the Default Printer area of the Printers window.

### Selecting a printer port with Windows 3.1x

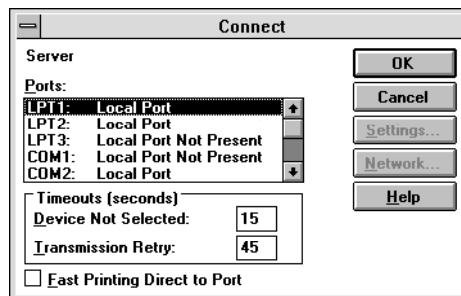
When you install a printer, Windows assigns it to a default printer port. If the Fiery ZX is connected to your computer through a network or you want to assign it to a different port, you need to change the port assignment. For information on which port to use, see your system administrator.

You can use this procedure to enable printing with the parallel port.

---

### TO SELECT A PRINTER PORT:

1. In the Control Panel window, double-click the Printers icon.
2. In the Printers window, select the Fiery ZX in the Installed Printers list box.
3. Click Connect.





4. Connect the Fiery ZX to the same port as your network.

For parallel printing, select the port (LPT1, LPT2, or LPT3) connected to your parallel cable.

To print to a file, select FILE port. Printing to a file is useful if the Fiery ZX is elsewhere or off-site. However, if you select the FILE port, you cannot print to a printer until you select a network or printer port. (In some applications, you can select the FILE port from the Print dialog box; this is preferable for temporary use since it doesn't require resetting the port in the Control Panel.)

5. Click OK.

The Printers window appears again, with the selected port next to the selected printer name in the Installed Printers list box.

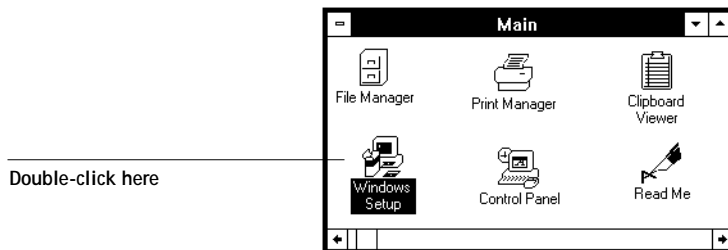
6. When you are finished, click OK and then click Close.

### Setting up IPX (Novell) printing with Windows 3.1x

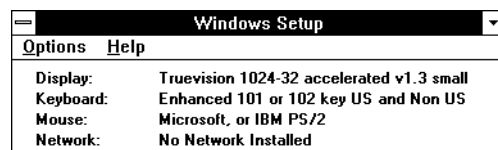
---

#### TO SET UP IPX (NOVELL) PRINTING FOR WINDOWS:

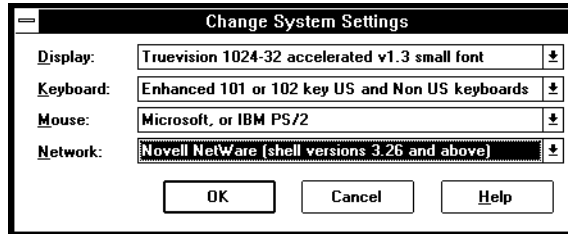
1. In the Main group of the Windows Program Manager, double-click the Windows Setup icon.



2. From the Options menu, choose Change System Settings.

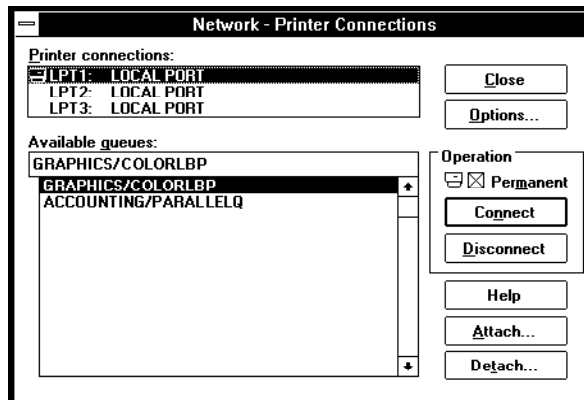


3. From the Network pop-up menu, choose Novell NetWare (shell versions 3.26 and above).



4. Click OK. When prompted, restart Windows.
5. In the Main group, double-click Control Panel, then double-click Printers.
6. In the Printers Control Panel window, click Connect to connect the printer to the appropriate port.
7. Select Network.

If you are printing to a file, select FILE. Printing to a file is useful if the printer is elsewhere or off-site. However, if you select the FILE port, you cannot print to a printer until you select a network or printer port. If you select Network, the next window depends on the NetWare client driver version.



8. If the Network Printer Connections dialog box is displayed, select the port in the Printer connections box.

9. In the Available queues list box, select the server and queue name that correspond to the Fiery ZX.
10. Click the Connect button and then click the Close button.  
The Connect dialog box is displayed with the network path to the printer.
11. Click OK in the Connect dialog box.  
The Printers window appears again, with the selected port next to the highlighted printer name in the Installed Printers list box.
12. Click Close in the Printers dialog box.

You are now ready to print to the Fiery ZX from Windows applications. When you select Print, jobs are routed to the print queue on the NetWare file server, and then transmitted to the Fiery ZX. The network administrator should verify the network connection by printing a test document from each networked computer that will use the Fiery ZX.

## Setting up printing with Windows NT 4.0

To set up Windows NT 4.0 printing, install the Windows NT PostScript printer driver and configure printing for your network type. Fiery ZX printer files support Intel-based Windows NT 4.0.

The procedure for installing the printer files is the same whether you are installing from the User Software CD or from installer files you downloaded with the Fiery WebTools.

---

### TO INSTALL THE FIERY ZX PPD AS A LOCAL PRINTER WITH THE WINDOWS NT 4.0 POSTSCRIPT PRINTER DRIVER:

1. Insert the User Software CD into the CD-ROM drive.
2. Click Start in the Windows NT taskbar, choose Settings, and then choose Printers.
3. Double-click Add Printer.

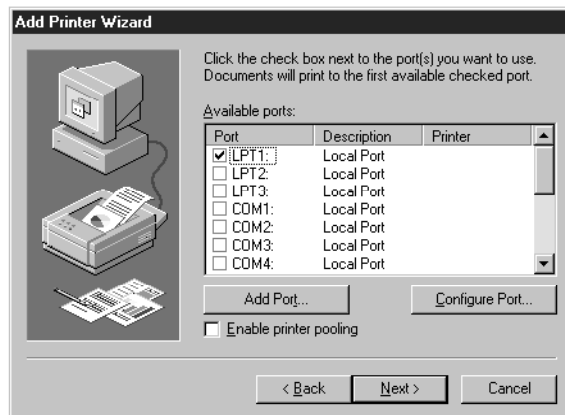
4. To install a printer locally, select **My Computer** and click **Next**.



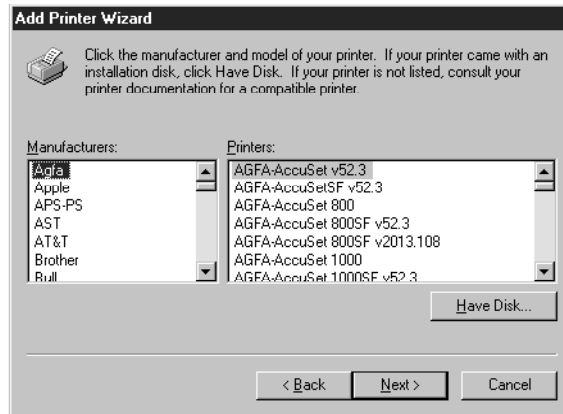
“My Computer” is available if you logged in to a computer on which you have Administrator privileges. If it is not available, you can add a network printer. The procedure is similar to adding a port (see page 28).

5. Select **LPT1:** and click **Next**.

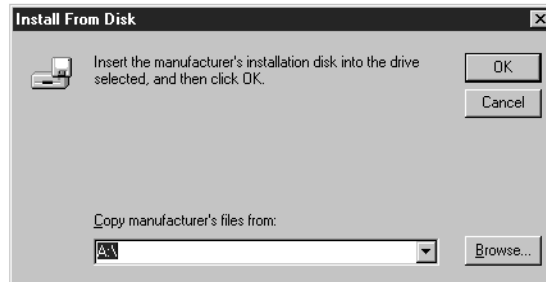
This is a general installation that works for the parallel port connection. You can add a network port later, according to your network type.



6. In the dialog box displaying lists of manufacturers and printers, click Have Disk.



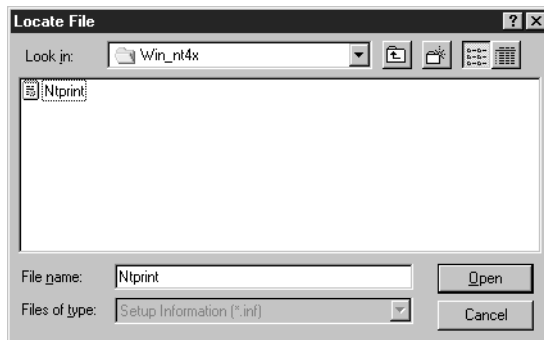
The Install from Disk dialog box prompts you for the disk.



7. If you are installing from the CD, browse to the English\Instalrs\P\_s\_drvr\Win\_nt4x folder and click Open.

If you are installing from the installer files you downloaded with the Installer WebTool, browse to the PrntdrvPrntrDrv\P\_s\_drvr\WIN\_NT4x folder and click Open.

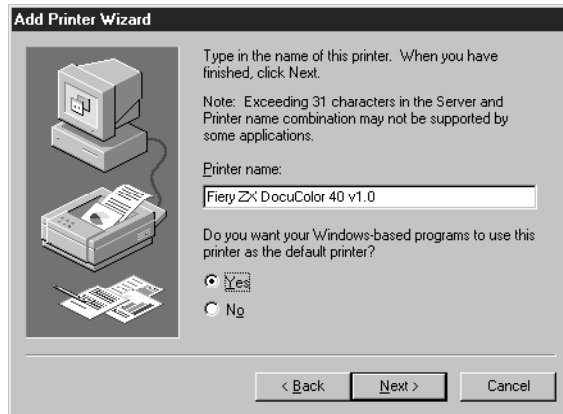
8. In the Locate File dialog box, navigate to the English\Instalrs\P\_s\_drvr\Win\_nt4x folder and open it.



9. With the Ntprint.inf file selected, click Open.  
The path is copied to the next dialog box.
10. In the Install from Disk dialog box, click OK to install the DocuColor 40 PPD from the path you chose.
11. Make sure that the Fiery ZX is selected in the Printers list, and click Next.



12. Using a maximum of 20 characters, enter a name for the Fiery ZX (or leave the default name) in the Printer name box, and choose whether you want it to be your default printer. Click Next.

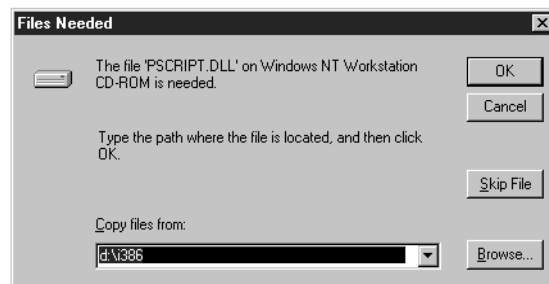


13. Indicate whether you want the printer installed as a shared printer. Click Next.  
If you select Shared, you must also enter a Share Name for the printer (or leave the default name) and make selections from the list of operating systems used by client workstations. For information on shared printers, see the *Configuration Guide*.
14. Click No in the next dialog box to postpone printing a test page, and click Finish.

---

#### TO COMPLETE INSTALLATION OF THE WINDOWS NT 4.0 POSTSCRIPT PRINTER DRIVER:

If the Files Needed dialog box appears, it prompts you to locate the Windows NT PostScript driver Pscript.dll.



1. If this is the first PostScript printer on your system:

- Eject the User Software CD and insert the Windows NT Installation CD.
- In the text field, type the name of the CD-ROM drive (for example, D:\), and click Browse.
- Browse to i386 (the folder containing the PostScript driver).

If you have already installed a PostScript printer on your system:

- In the text field, type the name of the hard drive (for example, C:\), and click Browse.
- Browse to winnt\system32\spool\drivers\w32x86 (the folder containing the PostScript driver).

2. Click OK, then click OK in the Files Needed dialog box.

When installation is complete, the Printers window appears with an icon for the newly installed printer.

3. Complete the printer connection according to your network type.

To do this:	See:
Configure the parallel connection	“Completing the Windows 4.0 parallel port connection” on page 27
Configure the TCP/IP (lpr port) connection	“Completing the Windows NT 4.0 TCP/IP connection” on page 27
Configure the IPX (Novell) connection	“Completing the Windows NT 4.0 IPX (Novell) connection” on page 30

## Completing the Windows NT 4.0 printer connection

To print from Windows NT 4.0 you need to:

- Set up network servers, if any.
- Set up the Fiery ZX to accept print jobs from your computer.
- Configure a port on each Windows NT computer for the network or connection type



### Completing the Windows 4.0 parallel port connection

The parallel port cable connects the Fiery ZX to a single computer.

Once you have installed the Windows NT PostScript printer driver and the Fiery ZX PPD, complete the setup for parallel port printing as follows.

---

#### TO SET UP PARALLEL PRINTING FOR WINDOWS NT 4.0:

1. Click the Start button, choose Settings, and then choose Printers.
2. Double-click the Fiery ZX icon and choose Properties from the Printer menu.  
In the Ports property sheet, confirm that LPT1 (Local Port) is checked.  
The Fiery ZX is ready to accept parallel print jobs from your computer, using the Windows NT PostScript printer driver and the Fiery ZX PPD.
3. Click the General tab and click Print Test Page.
4. Select the Sharing tab if you want to share the Fiery ZX with network users. Select Shared, and select a share name.  
Select the operating system or systems used by your network clients if you want to install a printer driver that those clients can download.
5. Click OK to exit the Printer Properties dialog box.

### Completing the Windows NT 4.0 TCP/IP connection

Once you have installed the Windows NT 4.0 PostScript driver and the Fiery ZX PPD, complete the setup for the TCP/IP and lpr connection as follows:

- Prepare the Fiery ZX to accept print jobs using TCP/IP and lpr protocols. (For details, see the *Configuration Guide*.)
- Configure the workstation for the TCP/IP connection.

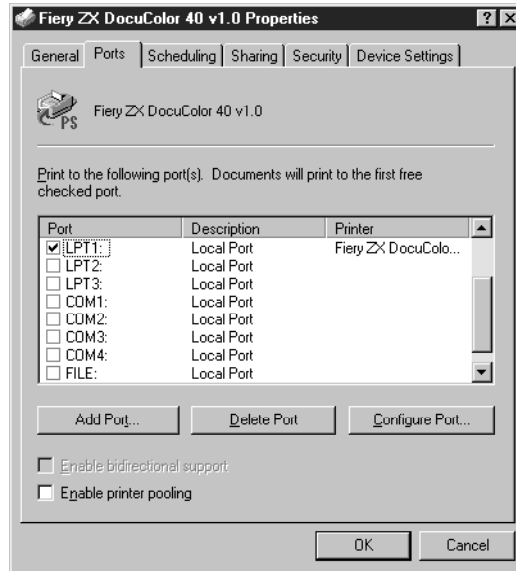
Before you continue, ask the system administrator for the IP address assigned to the Fiery ZX, as well as the subnet mask and the gateway address, if they are used.

The TCP/IP Protocol and Microsoft TCP/IP Printing software should already be installed on the Windows NT workstation.

---

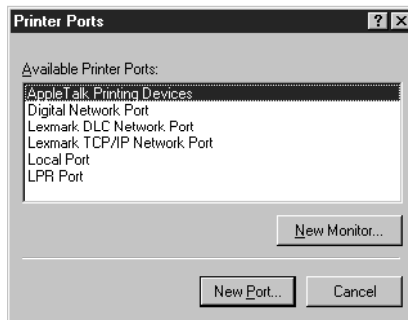
**TO SET UP TCP/IP AND LPR PRINTING FOR WINDOWS NT 4.0:**

1. Open the Properties dialog box for the Fiery ZX and click the Ports tab.



2. Click Add Port.

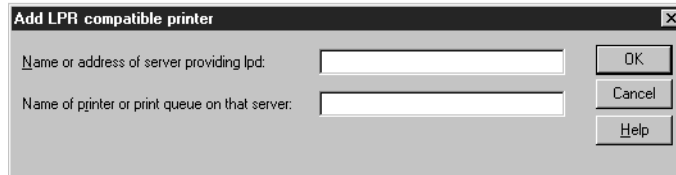
The available port types are displayed.



3. Select LPR Port and click New Port.

If the LPR port is not listed, install the TCP/IP protocols. See the *Configuration Guide* or your Windows NT documentation.

4. Enter the IP address of the Fiery ZX.



If your network uses Domain Name Services (DNS), enter the DNS name assigned to the Fiery ZX instead of the IP address.

5. Press Tab and type the internal name of the Fiery ZX.

This name can be simply the print queue name or it can be of the form `queue_devicename`. The name you enter must be one of the following:

print\_DocuColor  
hold\_DocuColor  
print  
hold

NOTE: This name is case sensitive; type it *exactly* as shown above.

6. Click OK.

The workstation checks the address or DNS name you entered and notifies you if it cannot resolve the address.

7. Click Close in the Printer Ports dialog box.

The new port configuration is reflected in the Ports tab. You should now print a test page to verify the connection.

8. Click the General tab and click Print Test Page.

When you print, your PostScript files are transmitted over the LPR Port connection to the Fiery ZX.

9. Click OK to exit the Printer Properties dialog box.

### Completing the Windows NT 4.0 IPX (Novell) connection

Complete the setup for the IPX (Novell) connection as follows:

- Configure the Novell network and file server for handling Fiery ZX print jobs. The file server should be configured with a print server and print connection for the Fiery ZX. For details, see your NetWare documentation.
- Prepare the Fiery ZX for IPX printing.
- Set up the IPX connection on the workstation.

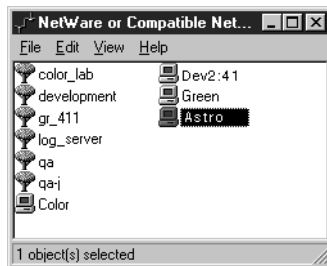
NetWare protocols (NWLink IPX/SPX Compatible Transport) and NetWare client services should already be installed on the Windows NT workstation.

---

#### TO SET UP IPX (NOVELL) PRINTING FOR WINDOWS NT 4.0:

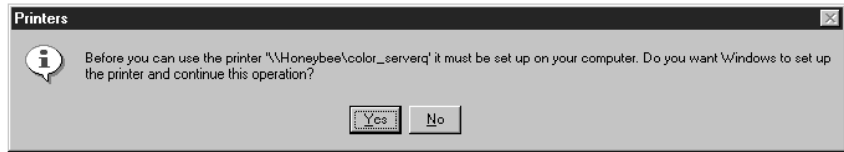
1. Double-click Network Neighborhood.
2. Double-click NetWare or Compatible Network.

A list of NetWare servers is displayed.



3. Double-click the NetWare Tree or File Server on which the network administrator defined a print connection for the Fiery ZX.  
You may have to log in to the file server as guest to see the print connections.
4. Double-click the print connection defined for the Fiery ZX.

If the NetWare server does not have a suitable driver for the Fiery ZX you may be asked if you want to set up the printer on your workstation.



5. Click Yes.

The Add Printer Wizard appears.

6. Specify if you print from MS-DOS programs and click Next.

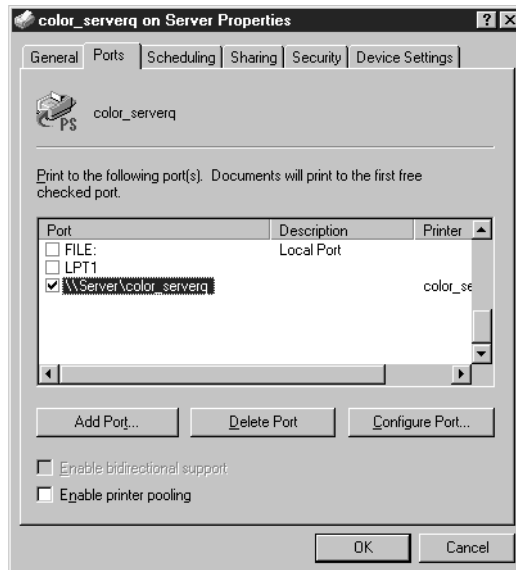
If you select Yes, you will need to capture a printer port before continuing.

7. Install the Fiery ZX PPD (start with step 6 on page 23).

When installation is complete, a new printer window appears, with the name of the print queue on the NetWare server.

8. Choose Properties from the Printer menu and click the Ports tab.

The NetWare queue you just connected to is listed and checked as a port for the Fiery ZX.



9. Click the General tab and click Print Test Page.

The Fiery ZX polls the NetWare server for print jobs in the print connection defined for the Fiery ZX. When you print, your PostScript files are spooled to that connection and transmitted over the queue “port” to the Fiery ZX.

The test page job is listed in the queue window until it is printed.

## Installing client utility software

The User Software CD includes software installers for the Fiery Downloader and the Command WorkStation. These client utilities must be separately installed on each client computer that will use them.

**NOTE:** The Command WorkStation software includes embedded versions of the Fiery Downloader and Fiery Print Calibrator utilities.

### Installing the Fiery Downloader

The Fiery Downloader allows you to print PostScript, EPS, and PDF files directly to the Fiery ZX without opening the originating application. The Fiery Downloader can also be used to download fonts to the Fiery ZX hard disk if the Direct connection is published.

The Fiery Downloader is not supported for Windows 3.1x or Windows NT 3.51.

---

**TO INSTALL THE FIERY DOWNLOADER:**

1. On the User Software CD, browse to the English\Instalrs\Download\Disk1 folder.
2. Double-click the Setup.exe icon.
3. Click Next in the Welcome dialog box.



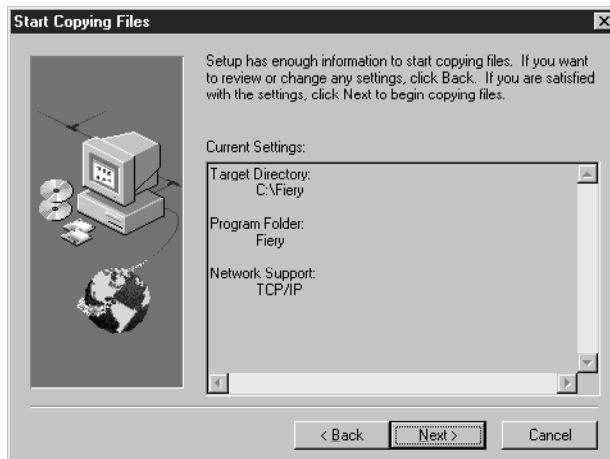
4. In the Choose Destination Location dialog box, click Next to install the Fiery Downloader in the default folder, or click Browse to select a different folder, and then click Next.



5. In the Select Program Folder dialog box click Next to install into the default Program Folder, or specify a different folder name, and then click Next.



6. In the Start Copying Files dialog box, verify the information and then click Next.



Information about installation progress appears on the screen.

7. Click OK when you are informed that installation is complete.

The first time you run the Fiery Downloader, you must configure the connection to the server as described on page 36.



## Installing Command WorkStation software

The Command WorkStation software installer is included on the User Software CD. In addition to the Command WorkStation application software, the installer installs Java files necessary to use Fiery Setup on the Command WorkStation. Before you begin this installation, determine the following:

Where do you want to install the software on your hard disk?

By default, the installer places the Command WorkStation software in a folder named “Cstation”, on the top level of your hard disk.

- What you want to name the Command WorkStation folder in the Windows\Start Menu\Programs folder?

By default, the installer names the folder “Command WorkStation”.

- Do you want to place a shortcut to the Command WorkStation application in your Windows\Start Menu\Programs\StartUp folder?

Placing a shortcut in the StartUp folder automatically launches the Command WorkStation application every time you restart your computer.

---

### TO INSTALL COMMAND WORKSTATION SOFTWARE:

1. On the User Software CD, double-click to open the English\Instalrs\CWS\Disk1 folders.
2. Double-click the Setup.exe icon.
3. Follow the instructions in the Setup dialog boxes to complete installation of Command WorkStation software.

Use the table below as a guide when installing Command WorkStation software. For specific instructions, read the information in each dialog box.

Name of dialog box:	Action:	When finished:
Welcome	Read the Setup program introduction.	Click Next.
Choose Destination Location	Specify a hard disk location for the installed Command WorkStation software.	Click Next.

Name of dialog box:	Action:	When finished:
Select Program Folder	Specify a folder name for the Command WorkStation software located in the Programs menu.	Click Next.
Start Copying Files	Verify the information in the Current Settings area.	Click Next.
Question	Indicate if you want to place a shortcut to the Command WorkStation application in your StartUp folder.	Click Yes or No.
Java (TM) Support	Indicate that you want to install Java files onto your hard disk. These files are necessary for using Fiery Setup on the Command WorkStation.	Click Yes.
Java (TM) Support	Read the License Agreement.	Click Yes.
Java (TM) Support	Acknowledge that the software installation is complete.	Click OK.
Java (TM) Support	Indicate that you want to restart your computer in order to use the Command WorkStation software	Click Yes.

The first time you use the Command WorkStation, you must configure the connection to the Fiery ZX as described in the following section.

### Configuring the connection to the server

Before you can use the Command WorkStation or the Fiery Downloader, you must configure the connection to the Fiery ZX. This procedure automatically edits a file named Efinl.ini that is created in your Windows folder the first time you launch any of the client utilities.

**NOTE:** The same configuration information (the Efinl.ini file) is used when connecting to Fiery Downloader, Fiery Print Calibrator, and the Command WorkStation, so any change affects the connection configuration of all three utilities.

---

**BEFORE YOU BEGIN:**

- If you are using IPX/SPX, print the Configuration page from the Control Panel and note the IPX address for the Fiery ZX.

In general, you should use the Ethernet IPX address. If you are connected through a Token Ring network, use the Token Ring IPX address.

- If you are using TCP/IP, print the Configuration page from the Control Panel and note the IP Address of the Fiery ZX.

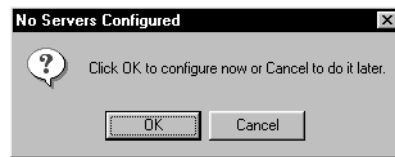
You can also set up a Domain Name Server (DNS) for the IP address of the Fiery ZX in the printcap file and use that name. See your Windows system documentation for information.

---

**TO CONFIGURE THE CONNECTION TO THE FIERY ZX:**

1. Launch the utility by choosing it from the Start\Programs menu.

If this is the first time you are using either the Fiery Downloader or the Command WorkStation on this computer, the following message is displayed.



2. Click OK.
3. In the Add New Server dialog box, enter the following information:

**Nickname**—Enter a name for the Fiery ZX. This name can be any name you wish; it does not have to match the actual Server Name of the Fiery ZX.

**NOTE:** The Nickname cannot contain the following seven characters:

[ ] \_ " ' <space> <tab>

**Protocol**—Select TCP/IP for the Command WorkStation. Select either TCP/IP or IPX for the Fiery Downloader.

**NOTE:** Fiery Setup from the Command WorkStation is supported over TCP/IP only.

**Server Name**—If you are using TCP/IP, enter the IP address or DNS name of the server. If you are using IPX/SPX, enter the Server Name exactly as it was defined during Setup (see the *Configuration Guide*). This entry is case sensitive.

**IPX Address**—If you selected IPX for the Protocol, enter the IPX address of the server.

**New Device**—Enter the device name: DocuColor. This device name appears in the Printer Setup section of the Configuration page.

The screenshot shows the 'Add New Server' dialog box with the following fields and controls:

- Nickname:
- Communication Type:
  - Protocol:
  - Server Name:
  - IPX Address:
- New Device:
- Devices:
- Buttons:

For TCP/IP networks

The screenshot shows the 'Add New Server' dialog box with the following fields and controls:

- Nickname:
- Communication Type:
  - Protocol:
  - Server Name:
  - IPX Address:
- New Device:
- Devices:
- Buttons:

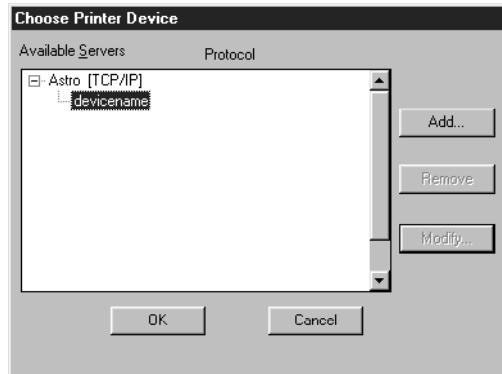
For IPX/SPX networks

4. When you have entered all the information, click **Add**.

The device name now appears in the Devices list.

## 5. Click OK.

The Fiery ZX entry appears in the list of available servers. The first line of the entry displays the nickname you gave the server, followed by the protocol you chose. The second line displays the device name.



## 6. With the device name selected, click OK to connect to the Fiery ZX.

To modify the configuration, select the server nickname and click Modify. To remove the configuration, select the server nickname and click Remove. To configure a connection to another server, click Add.

For information on using the Command WorkStation and the Fiery Print Calibrator, see the *Job Management Guide*. For information on using the Fiery Downloader, see the *Printing Guide*.

## Copying color files from the User Software CD

The color files included on the User Software CD let you see the range of colors the Fiery ZX can produce. You can be assured of predictable color results if you use the color reference pages when defining the colors you want to use in your document. For more information, see the *Color Guide*.

Also included are calibration files for expert users of Fiery Print Calibrator.

The Clrfiles folder contains the following files:

Color file(s):	Description:
CMYK_ref.ps	A PostScript file (11 letter-size pages) of CMYK color patches—download this file and refer to the printed output when defining CMYK colors in applications.
Rgb_01.doc Rgb_02.ppt	A Microsoft Word 6.0 file (Rgb_01.doc) and a PowerPoint 4.0 file (Rgb_02.ppt)—use these files to view the colors available in the standard palettes of RGB-based applications and to see how those colors print on the Fiery ZX.
Pantone.ps	The PANTONE Coated Color Reference Book—a downloadable PostScript file of color patches showing CMYK equivalents of PANTONE Coated colors. This file prints differently depending on the setting of the Spot Color Matching print option.
Calibrat (folder)	Four PostScript measurements files of color patches: Custom21.ps, Custom34.ps, Stand21.ps, and Stand34.ps. The numbers in the filenames refer to the number of patches on the page. The Custom files are provided to enable you to download measurement patches that incorporate the copier's current calibration set. The Standard files are provided to enable you to download standard measurement patches that ignore the copier's current calibration set. <b>NOTE:</b> These files are provided for expert users and should not be used for day-to-day calibration

## Installing Fiery Booklet Maker for QuarkXPress

If you will use the Fiery Booklet Maker XTension, you must copy it into the QuarkXPress XTensions folder.

NOTE: With Fiery Booklet Maker installed, QuarkXPress may take longer to start up; you should install it only if you will use it.

---

### TO INSTALL THE FIERY BOOKLET MAKER XTENSION:

1. On the User Software CD, open the English\Bklt\_mkr folder.
2. Copy the file Booklet.txt to a floppy disk.
3. Select the Booklet.txt file on the floppy disk and display its Properties. (Click the right mouse button and select Properties from the pop-up menu.)
4. In the Attributes section of the Properties dialog box, make sure that Read-only is *not* checked.
5. Click Apply and then OK.
6. From the floppy disk, copy the Booklet.txt file to the XTENSION folder in your QuarkXPress folder.

## Copying the printer description files for applications

The User Software CD contains printer description files for popular Windows applications. Some applications do not support automatic installation of printer description files from the Printers Control Panel. To make printer features available in the Print and Page Setup dialog boxes of these applications, copy the printer description file to the appropriate location.

You might want to provide copies of the printer description file to customers. This ensures that jobs they create and print to files are properly formatted for printing to the Fiery ZX.

**TO COPY THE PRINTER DESCRIPTION FILES:**

1. On the User Software CD, open the English\Instalrs\Pis\_drvr folder, and then open the Win\_95, Win\_31, or Win\_nt4x folder, depending on the version of Windows you are using.
2. Copy the printer description file for your Fiery ZX to the appropriate location.

If you use:	Copy this file:	To this location:
PageMaker 5.0 or later	Efax4010.ppd	For PageMaker 5.0, \ALDUS\USEENGLSH\PPD4 For PageMaker 6.0, \PM6\RSRC\USEENGLSH\PPD4 For PageMaker 6.5, \PM65\RSRC\USEENGLSH\PPD4
QuarkXPress 3.2 or later with Windows 3.1x or Windows 95	Efax4010.ppd	For QuarkXPress 3.1 or 3.2, the QuarkXPress home folder, usually \XPRESS For QuarkXPress 3.3 or later, the PDF folder, usually \XPRESS\PDF
QuarkXPress 3.2 or later with Windows NT 4.0	Efax4010.ppd	System folder

## Optional color management files

The built-in color management system of the Fiery ZX produces high-quality color output without the use of platform-specific or application-specific color management tools. For advanced users who need them for specialized purposes, optional color management files for Photoshop and for Windows ICM are provided on the User Software CD. Perform the following installation procedures only if you need to use these optional color management files. For information on Fiery ZX color management, see the *Color Guide*.

### Photoshop color management files

Included on the User Software CD are custom Separation Tables for the DocuColor 40 and a Calrgb.ams monitor settings file that defines the optimal source color space for printing to the Fiery ZX.



---

**TO PREPARE FOR LOADING THE PHOTOSHOP FILES**

1. On the User Software CD, open the Photoshp folder.

This folder contains the following files:

Calrgb.ams

Dc40p.ast

Dc40s.ast

2. Copy all the files in the Photoshp folder to the Photoshop application folder on your hard drive.
3. Launch Photoshop.

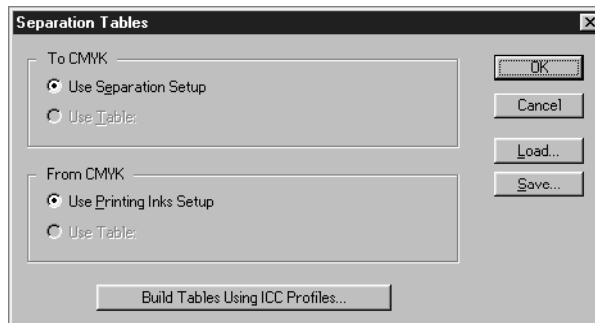
**Loading the Separation Tables**

The Separation Tables enable RGB-to-CMYK conversions within Photoshop that correspond to conversions performed by color rendering dictionaries on the Fierey ZX.

---

**TO LOAD THE SEPARATION TABLES:**

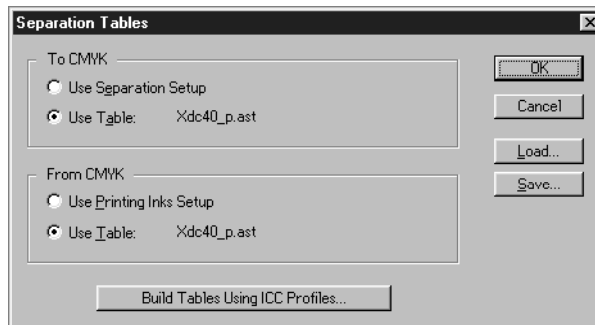
1. Perform the steps described in "To prepare for loading the Photoshop files" on page 43.
2. For Photoshop 4.0, from the File menu, choose Color Settings>Separation Tables.  
For Photoshop 3.0, from the File menu, choose Preferences>Separation Tables.
3. In the Separation Tables dialog box, click Load.



4. Browse to the Photoshop folder, select the appropriate file, and click Open (Photoshop 4.0) or OK (Photoshop 3.0).

Select the Dc40p.ast file for separating *photographic* RGB images to CMYK.  
Select the Dc40s.ast file for separating *solid color* RGB images to CMYK.

5. Verify that the file you selected appears after "Use Table:" in both places and click OK.



Separation tables remain loaded the next time you start Photoshop, unless you remove them.

### Loading the monitor settings file

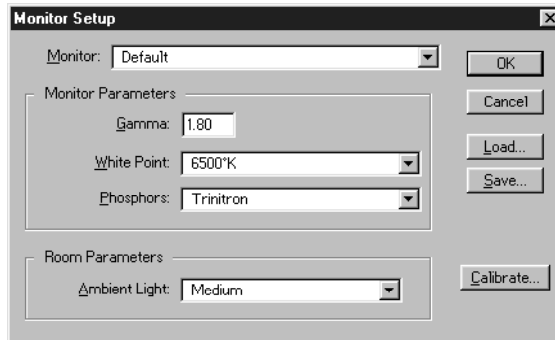
The Calrgb.ams monitor settings file for Photoshop defines the optimal source color space for use with the Fiery ZX. The color space defined by Calrgb.ams is the same as that defined by the EFIRGB setting of the RGB Source print option. The RGB Source setting overrides any monitor settings file you load in Photoshop, so if you use the EFIRGB setting (the default RGB Source setting), you do not need to load the Calrgb monitor settings file in Photoshop. If you use any setting other than EFIRGB, it overrides the Calrgb color space. For more information, see the *Color Guide*.

---

#### TO LOAD THE MONITOR SETTINGS FILE:

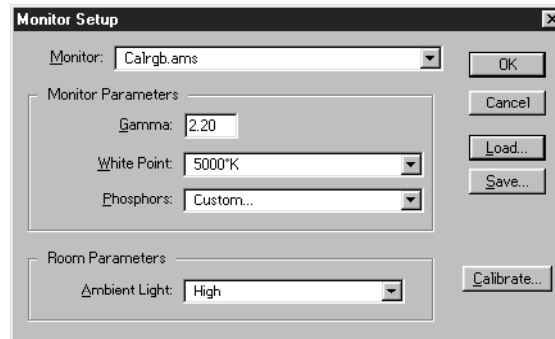
1. Perform the steps described in "To prepare for loading the Photoshop files" on page 43.
2. For Photoshop 4.0, from the File menu, choose Color Settings>Monitor Setup.  
For Photoshop 3.0, from the File menu, choose Preferences>Monitor Setup.

3. In the Monitor Setup dialog box, click Load.



4. Browse to your Photoshop folder, select the Calrgb.ams file, and click Open (Photoshop 4.0) or OK (Photoshop 3.0).

The Calrgb.ams file appears as the selection in the Monitor pop-up menu of the Monitor Setup dialog box.



5. Under Room Parameters, set Ambient Light to High and click OK.

## Fiery ZX ICM profiles for Windows 95

ICM profiles are provided for those who need them for specialized purposes. Install the Fiery ZX ICM profile only if you need to use it.

**NOTE:** The ICM profile should *not* be installed for printing with the Microsoft Office 97 suite of applications. If you print from Microsoft Office 97 with the ICM profile installed, JPEG, BMP, and TIFF images print incorrectly.

For information on color management, see the *Color Guide*.

---

**TO INSTALL THE ICM PROFILE:**

1. On the User Software CD, open the ICM folder.
2. Copy the Efax4010.icm file to the WINDOWS\SYSTEM\COLOR folder on your hard drive.
3. Open the WINDOWS\SYSTEM\COLOR folder on your hard drive and right-click to select the Efax4010.icm file.
4. Choose Install in Place from the menu that appears.

The icon of the Efax4010.icm file is now white, indicating that the ICM profile is installed.

## Installing user software on Mac OS computers

The general steps for installing the Fiery ZX user software and setting up printing on a Mac OS computer are:

- Install the printer files (Adobe® PostScript® Printer Driver version 8.5.1 and Fiery ZX PostScript printer description file), and set up the Fiery ZX in the Chooser (page 47)
- Install the screen fonts that correspond to the built-in printer fonts (page 50)
- Install the Fiery Downloader (page 50)
- Copy the color reference pages from the User Software CD to your hard drive (page 51)
- For QuarkXPress, copy the Fiery Booklet Maker XTension from the User Software CD to your QuarkXPress XTensions folder (page 53)
- For advanced users with special color management needs, install the optional color management files for Photoshop and ColorSync (page 53)

If you operate the Fiery ZX in a pay-for-print business, you should provide copies of the printer driver, printer description file, ColorSync profiles, Photoshop Separation Tables and monitor settings file, and relevant documentation to customers. This helps ensure that jobs they create are properly formatted for printing on the DocuColor 40.

## Installing printer files

The AdobePS 8.5 Installer automatically installs the Adobe PostScript Printer Driver v8.5.1, the printer description file for the DocuColor 40, and the Apple Chooser 7.5x (if you are using an earlier version).

The installer files are available on the User Software CD and can also be downloaded from the Fiery ZX using the Fiery WebTools (if the administrator has enabled Internet access to the server). For instructions on using the Fiery WebTools to download the installer files, see page 59.

You can use the following procedures whether you are using the User Software CD or the installer files downloaded with the Fiery WebTools.

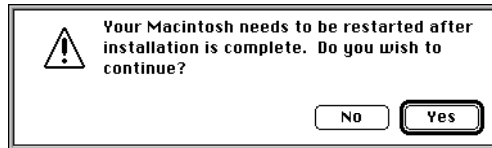
---

#### TO INSTALL THE ADOBEPS PRINTER DRIVER AND PPD FILES

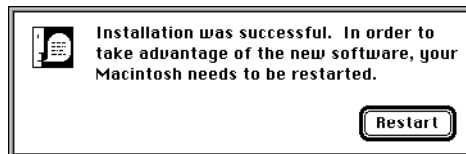
1. If you are installing from the User Software CD, open the Installers:Printer Driver folder.

If you are installing from files you downloaded with the Fiery WebTools, open the Printer Driver folder on your hard disk.

2. Double-click the AdobePS 8.5 Installer icon.  
A warning dialog box appears.
3. Click Yes to continue with installation of printer driver software, and to confirm that your computer must be restarted after installation.



4. Click Restart when installation is complete.



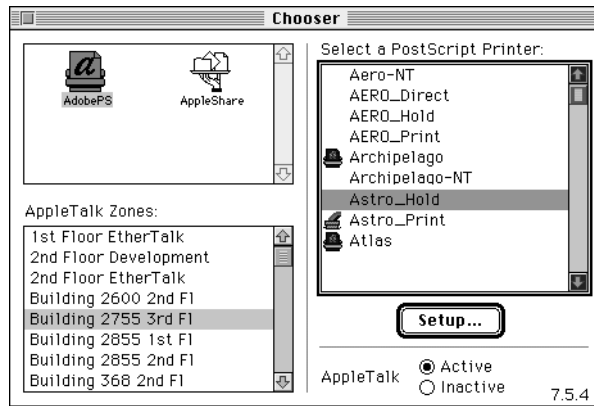
## Setting up the Fiery ZX in the Chooser

After you have installed the printer files, you need to set up the Fiery ZX in the Chooser.

---

### TO SET UP THE FIERY ZX IN THE CHOOSER

1. Select Chooser from the Apple menu.
2. Click the AdobePS icon.



3. Select the correct AppleTalk zone if necessary.
4. Select the name of your Fiery ZX.
5. Click Setup.

The Adobe PostScript Printer Driver automatically selects the correct printer description file (PPD) for your Fiery ZX.

**NOTE:** The Hold queue for the Fiery ZX is always enabled; the Print queue and the Direct connection may also be available. If more than one Fiery ZX print connection is available, you must perform step 4 and step 5 for each connection.

6. Close the Chooser window.

For more information on setting up the Fiery ZX in the Chooser, see the *Printing Guide*.

## Installing screen fonts

The User Software CD includes screen fonts that correspond to the 136 built-in printer fonts on the Fiery ZX (see Appendix B in the *Printing Guide*). To use these fonts in your documents, you must copy them from the User Software CD to your System Folder.

---

### TO INSTALL SCREEN FONTS

1. On the User Software CD, open the Fonts folder.
2. Copy the fonts that you want to install to the System Folder:Fonts folder on your hard disk.

If you have any applications open, you must quit and relaunch them before the newly installed screen fonts are available.

## Installing the Fiery Downloader

The Fiery Downloader allows you to print PostScript, EPS, and PDF files directly to the Fiery ZX without opening the originating application. The Fiery Downloader can also be used to download fonts to the Fiery ZX hard disk if the Direct connection is enabled.

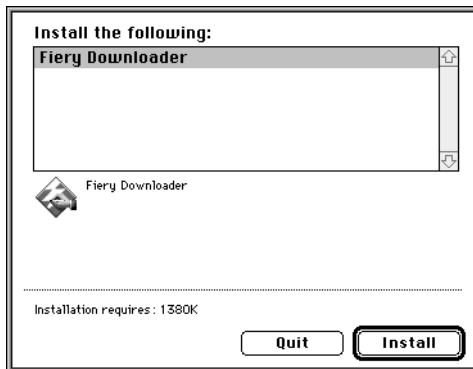
---

### TO INSTALL THE FIERY DOWNLOADER

1. Open the Installers:Fiery Downloader folder on the User Software CD.
2. Double-click the Fiery Downloader Installer icon.

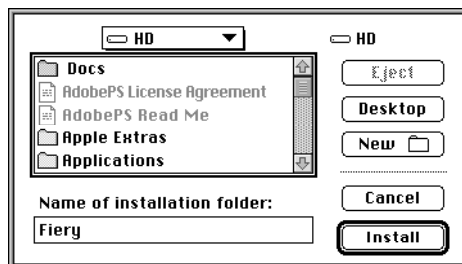


3. Click Install.



4. When prompted, specify where to install the Fiery Downloader and the folder name to use, and then click Install.

You can specify any name and location for this folder. You might want to put it in the same folder with your other utilities.



5. When the installation is complete, click Quit in the dialog box that appears.

## Copying color files from the User Software CD

The color files included on the User Software CD let you see the range of colors the Fiery ZX can produce. You can be assured of predictable color results if you use the color reference pages when defining the colors you want to use in your document. For more information, see the *Color Guide*.

Also included are calibration files for expert users of Fiery Print Calibrator.

The Color Files folder contains the following color reference files:

Color reference file(s):	Description:
CMYK Color Reference.ps	A PostScript file (11 letter-size pages) of CMYK color patches—download this file and refer to the printed output when defining CMYK colors in applications.
RGB page 01 RBG page 02	A Microsoft Word 6.0 file (RGB page 01) and a PowerPoint 4.0 file (RBG page 02)—use these files to view the colors available in the standard palettes of RGB-based applications and to see how those colors print on the Fiery ZX.
PANTONE Book.ps	The Pantone Coated Color Reference Book—a downloadable PostScript file of color patches showing CMYK equivalents of PANTONE Coated colors. This file prints differently depending on the setting of the Spot Color Matching print option.
Calibration (folder)	<p>Four PostScript measurements files of color patches: Custom21.ps, Custom34.ps, Standard21.ps, and Standard34.ps.</p> <p>The numbers in the filenames refer to the number of patches on the page.</p> <p>The Custom files are provided to enable you to download measurement patches that incorporate the copier's current calibration set. The Standard files are provided to enable you to download standard measurement patches that ignore the copier's current calibration set.</p> <p><b>NOTE:</b> These files are provided for expert users and should not be used for day-to-day calibration</p>

## Installing files for QuarkXPress

If you will use the Fiery Booklet Maker XTension, you must copy it into the QuarkXPress XTensions folder. If you use QuarkXPress version 3.1 or 3.2, you must copy the DocuColor 40 printer description (PPD) file into the QuarkXPress application folder.

**NOTE:** The following procedure assumes that you have installed the AdobePS printer driver and PPD file as described on page 47.

With Fiery Booklet Maker installed, QuarkXPress may take longer to start up. You should only install it if you intend to use it.

---

### TO INSTALL THE FIERY BOOKLET MAKER XTENSION

1. On the User Software CD, open the BookletMaker folder.
2. Copy the Fiery Booklet Maker XTension from the CD to the XTensions folder in your QuarkXPress folder.

---

### TO INSTALL THE PRINTER DESCRIPTION FILE FOR VERSION 3.2 OR 3.1

1. On your computer, open the System Folder:Extensions:Printer Descriptions folder and find the Fiery ZX PPD file.
2. For QuarkXPress version 3.1 or 3.2, copy the Fiery ZX PPD file into your QuarkXPress folder.

## Optional color management files

The built-in color management system of the Fiery ZX produces high-quality color output without the use of platform-specific or application-specific color management tools. For advanced users who need them for specialized purposes, optional color management files for Photoshop and for ColorSync are provided on the User Software CD. Perform the following installation procedures only if you need to use these optional color management files. For information on Fiery ZX color management, see the *Color Guide*.

## Photoshop color management files

The User Software CD includes custom Separation Tables for the DocuColor 40 and a Calibrated RGB monitor settings file that defines the optimal source color space for printing to the Fiery ZX.

---

### TO PREPARE FOR LOADING THE PHOTOSHOP FILES

1. On the User Software CD, open the Photoshop folder.

This folder contains the following files:

Calibrated RGB  
Fiery DocuColor 40.P  
Fiery DocuColor 40.S

2. Copy all the files in the Photoshop folder to the Photoshop application folder on your hard drive.
3. Launch Photoshop.

### Loading the Separation Tables

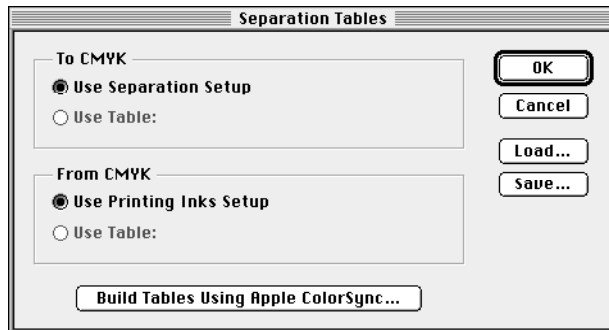
The Separation Tables enable RGB-to-CMYK conversions in Photoshop that correspond to conversions performed by color rendering dictionaries on the Fiery ZX.

---

### TO LOAD THE SEPARATION TABLES

1. Perform the steps described in “To prepare for loading the Photoshop files” on page 54.
2. For Photoshop 4.0, from the File menu, choose Color Settings>Separation Tables. For Photoshop 3.0, from the File menu, choose Preferences>Separation Tables.

3. In the Separation Tables dialog box, click Load.

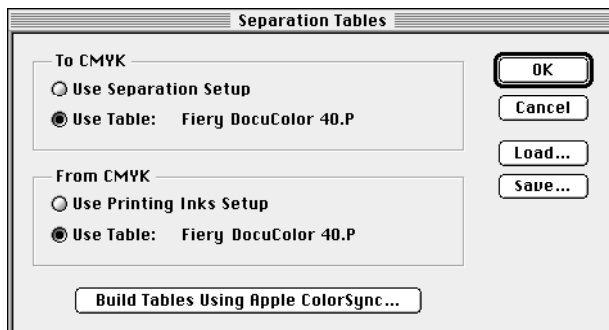


4. Browse to your Photoshop folder, select the appropriate Separation Table file, and click Open.

Select the Fiery DocuColor 40.P file for separating *photographic* RGB images to CMYK.

Select the Fiery DocuColor 40.S file for separating *solid color* RGB images to CMYK.

5. Verify that the file you selected appears after "Use Table:" in both places and click OK.



Separation tables remain loaded the next time you start Photoshop, unless you remove them.

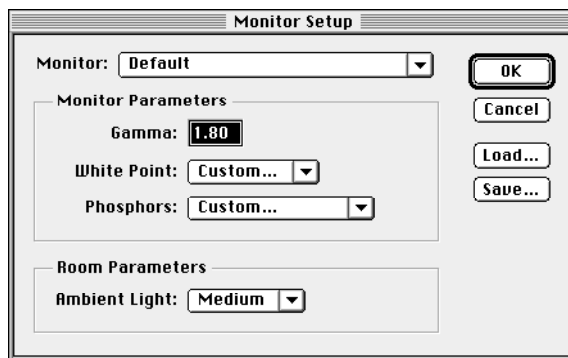
### Loading the monitor settings file

The Calibrated RGB monitor settings file for Photoshop defines the optimal source color space for use with the Fiery ZX. The color space defined by Calibrated RGB is the same as that defined by the EFIRGB setting of the RGB Source print option. The RGB Source setting overrides any monitor settings file you load in Photoshop, so if you use the EFIRGB setting (the default RGB Source setting), you do not need to load the Calibrated RGB monitor settings file in Photoshop. If you use any setting other than EFIRGB, it overrides the Calibrated RGB color space. For more information, see the *Color Guide*.

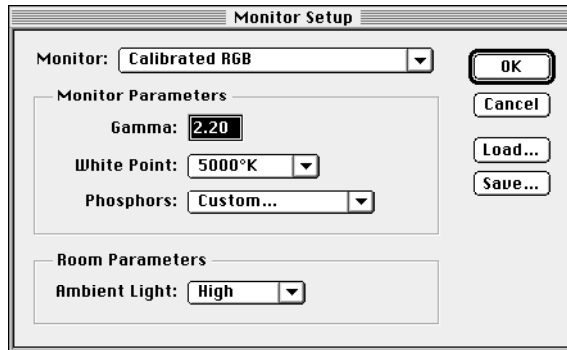
---

#### TO LOAD THE MONITOR SETTINGS FILE

1. Perform the steps described in “To prepare for loading the Photoshop files” on page 54.
2. For Photoshop 4.0, from the File menu, choose Color Settings>Monitor Setup. For Photoshop 3.0, from the File menu, choose Preferences>Monitor Setup.
3. In the Monitor Setup dialog box, click Load.



4. Browse to your Photoshop folder, select the Calibrated RGB file, and click Open. The Calibrated RGB file appears as the selection in the Monitor pop-up menu of the Monitor Setup dialog box.



5. Under Room Parameters, set Ambient Light to High and click OK.

## ColorSync profiles

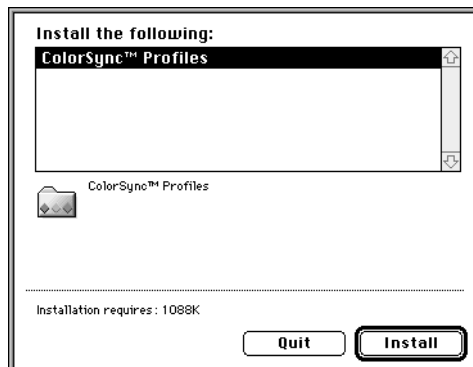
ColorSync profiles are provided for those who need them for specialized purposes. Install these profiles only if you need to use them. The following procedure installs two ColorSync profiles: a target profile named Fiery DocuColor 40 ICC and a ColorSync system profile named EFIRGB ICC.

For information on color management, see the *Color Guide*.

---

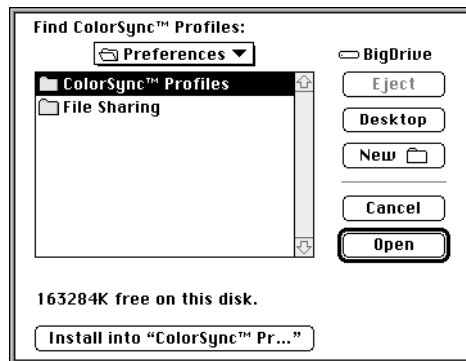
### TO INSTALL THE COLORSYNC PROFILES

1. On the User Software CD, open the Installers:ColorSync™ Profiles folder.
2. Double-click the ColorSync Profiles™ Installer icon.

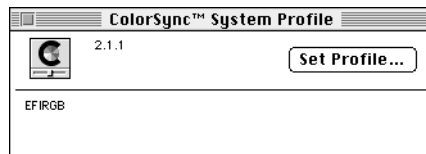


3. Click Install.
4. Browse to the ColorSync Profiles folder, located in the System:Preferences folder, and click Install into "ColorSync™ Profiles."

If there is no ColorSync Profiles folder in your Preferences folder, your system is probably not using ColorSync. Click Cancel and then Quit to quit the Installer.



5. From the Apple menu, choose Control Panels>ColorSync™ System Profile.
6. Click Set Profile.
7. From the list of ColorSync profiles, select EFIRGB ICC and click Select.



When selected as the ColorSync system profile, EFIRGB ICC sets the optimal source color space for printing to the Fiery ZX. The color space set by the EFIRGB ICC profile is the same as that set by the EFIRGB setting of the RGB Source print option. For more information, see the *Color Guide*.

**NOTE:** The RGB Source print option setting overrides the ColorSync system profile setting.

8. Close the ColorSync™ System Profile window.



## Downloading installers with Fiery WebTools

The Fiery WebTools allow you to manage your Fiery ZX-40 Color Server remotely via the Internet or your company's intranet. Using a browser application, you can access the Fiery ZX home page from which you are able to select from a variety of Fiery WebTools. One of these, Installer, allows you to download installers for the Fiery ZX printer files. These installers are identical to the ones on the User Software CD.

For more information on using the Fiery WebTools, see the *Printing Guide* and the *Job Management Guide*.

## Setting up Fiery WebTools

In order for network users to access and use the Fiery WebTools, you need to set certain Fiery ZX Setup options in Network Setup and Printer Setup. You also need to prepare each user's workstation to communicate with the Fiery ZX over the Internet or intranet.

---

### TO SET UP FIERY WEBTOOLS ON THE FIERY ZX:

1. In Network Setup>Port Setup>Ethernet Setup, set "Enable Ethernet" to Yes.
2. In Network Setup>Protocol Setup>TCP/IP Setup>Ethernet Setup, set "Enable TCP/IP for Ethernet" to Yes, and set a valid, unique IP Address for the Fiery ZX.
3. In Network Setup>Service Setup>Web Services Setup, set "Enable Web Services" to Yes.
4. Exit Network Setup, and select Yes at the Save Changes screen.
5. In Printer Setup, set "Publish Print Queue" to Yes.
6. Exit Printer Setup, and select Yes at the Save Changes screen.

---

**TO SET UP THE FIERY WEBTOOLS ON EACH USER'S WORKSTATION:**

1. Enable TCP/IP networking.
2. Make sure the workstation has a valid, unique IP address.
3. Make sure the workstation is installed with one of the following Internet browsers:
  - Windows 95 and Windows NT—*Either* Netscape Communicator v4.0.3 *or* Microsoft Internet Explorer v3.0.2
  - Mac OS—Netscape Communicator v4.0.3

NOTE: Netscape and Microsoft continue to release frequent updates to their browsers. As support cannot be guaranteed for all versions, use the versions specified above for best results.

4. Make sure Java is enabled in your Internet browser.

For more information on setting up the Fiery ZX and your network, see the *Configuration Guide*.

## Using the Installer WebTool

The Installer WebTool duplicates the printer file installers on the User Software CD, allowing you to easily download the current version of printer files from the Fiery ZX to your workstation.

---

**TO DOWNLOAD PRINTER FILES INSTALLERS**

1. Launch your browser application and enter the DNS name or IP address of the Fiery ZX.
2. Select a login level, enter a password if necessary, and click OK.

No password is required to log in as Guest. You have full access to the Installer WebTool when logged in as Guest.

3. Click the Installer button.

The Installer WebTool appears.



4. Under the name of your operating system, click "Printer Files".

For Windows computers, a dialog box appears, prompting you to save the file "Prntdrv.exe" to the location you choose.

For Mac OS computers, a folder named "Printer Driver" is downloaded to the desktop in a BinHex-encoded, compressed format. If your internet browser is equipped with an expander utility such as StuffIt Expander™, the folder will be decoded and decompressed automatically.

5. For Windows computers, browse to the location where you want to save the Prntdrv.exe file and click Save.

For Mac OS computers, if the Printer Driver folder was not automatically decoded and decompressed, launch a utility that will perform that function.

6. For Windows computers, double-click the Prntdrv.exe file, browse to the location where you want to install the Prntdrv folder, and click Next.

The Prntdrv folder is installed to the location you specified.

7. **Install the appropriate printer driver for your operating system.**

For instructions on installing the printer driver for Windows 95, see “Setting up printing with Windows 95” on page 2.

For Windows 3.1x, see “Setting up printing with Windows 3.1x” on page 17.

For Windows NT 4.0, see “Setting up printing with Windows NT 4.0” on page 21.

For Mac OS computers, see “Installing printer files” on page 47.

## Troubleshooting

This chapter provides troubleshooting tips.

### On a Windows computer

#### Setting up IPX (Novell) printing for Windows NT 4.0

If you have problems installing the Fiery ZX with Windows NT, try installing another PostScript printer (such as the Apple LaserWriter IIg), and then install the Fiery ZX. Installing another printer insures that all files are properly installed and available. For instructions, see your Windows NT documentation.

#### Installing the Adobe PostScript Printer Driver

If you are reinstalling the Adobe PostScript Printer Driver, delete any previous versions and related files before installing. Search for and delete all files named Efax\*. \* in the Windows\System folder and the Windows\System\Color folder. See the Adobe README file included with the printer driver for more information.

#### Problems connecting with the Fiery Downloader or Command WorkStation

1. If you are using the Fiery Downloader with Windows 95, make sure that IPX/SPX and TCP/IP networking protocols are both enabled.  
See “Completing the Windows 95 IPX/SPX or IPX (Novell) connection” on page 10.

2. Make sure that the connection to the Fiery ZX is configured correctly.

To check the current configuration, launch the utility, (for Fiery Downloader only, choose Open from the File menu), select the Fiery ZX entry in the Choose Printer Device window, and click Modify to see current settings. If the settings are incorrect, you can change them in this dialog box.

### On a Mac OS computer

#### Setting up the Fiery ZX in the Chooser

If auto-setup does not work and you are prompted to select the PPD, select the Fiery ZX file in your System Folder:Extensions:Printer Descriptions folder.

## Installing PostScript screen fonts

If you experience problems installing the PostScript screen fonts from the User Software CD to the System Folder:Fonts folder, try the following:

1. Quit all applications and close all windows.
2. Create a new folder and name it "Uninstalled Fonts".  
This folder must be located outside of the System Folder.
3. Move fonts that you are not using from the System Folder:Fonts folder to the Uninstalled Fonts folder.
4. Continue to copy fonts from the User Software CD to the System Folder:Fonts folder.
5. Create an alias to the System Folder:Fonts folder and to the Uninstalled Fonts folder.
6. Place both aliases on your desktop.
7. When necessary, use the aliases to open both folders and move fonts between them.  
If you have any applications running, you must quit and relaunch them in order to view and use the newly installed fonts.

Alternately, you can try combining fonts from multiple suitcases into a single suitcase.

# Index

## A

Adobe PageMaker for Windows, *see*  
PageMaker for Windows  
Adobe Photoshop, *see* Photoshop  
Adobe PostScript printer drivers, *see*  
PostScript printer drivers  
AppleTalk xiii  
supported by color server x

## B

Berkeley lpd protocol xiv  
BMP images 45  
Booklet Maker *see* Fiery Booklet Maker  
XTension

## C

Calibrated RGB file 56  
Calibrat folder 40  
calibration 40, 52  
Calibration folder 52  
CALRGB.AMS 45  
CD-ROM drive x  
Chooser, setting up server in 49, 63  
client setup  
Windows 3.1x 19  
Windows 95 10, 12  
client utilities, installing 32  
Clrfiles folder 40  
Color Files folder 52  
color management files xi, xii, 42  
color reference files xii  
CMYK 52  
CMYK\_ref.ps 40  
Pantone 52  
Pantone.ps 40  
RGB 52  
Rgb\_01.doc 40  
Rgb\_02.ppt 40  
color rendering dictionaries, *see* CRDs

color server

documentation set ix, x  
remote management 59  
specifications x

ColorSync

color management files 53  
profiles 57, 58

ColorWise color management files xi

Command WorkStation 32

configuring connection to server 37, 38  
defined xii  
installing 35  
system requirements xv

Configuration page 13, 16, 37

connection to server, configuring 37, 38

CRDs (color rendering dictionaries) 54

Custom21.ps 40, 52

Custom34.ps 40, 52

## D

DB-25 connector xv

device name 29, 38

Direct connection

required to download fonts 32

DNS name xiii, xiv

documentation set ix, x

Domain Name Server, *see* DNS

Downloader, *see* Fiery Downloader

## E

Efax4010.icm file 46

Efinl.ini file 36

EFIRGB ICC 58

EPS files xi, 32

Ethernet cable x

EtherTalk xiv

**F**

- Fast Ethernet 100BaseTX cable x
- Fiery Booklet Maker XTension
  - about xi
  - installing, Macintosh 53
  - installing, Windows 41
- Fiery Downloader xi
  - configuring connection to server 36, 37, 38
  - EPS files xi
  - included in Command WorkStation xii
  - installing, Mac OS 50
  - installing, Windows 95 32 to 34
  - installing, Windows NT 4.0 32 to 34
  - PDF files xi
- Fiery Print Calibrator 32, 36, 39, 40, 51
  - included in Command WorkStation xii
- Fiery utilities
  - Mac OS xiv
  - Windows xiii
- Fiery WebTools
  - downloading installers 1, 59
  - Installer xi, 24, 60, 61
  - installing the printer driver from 60
  - requirements for use, Windows xiii
  - setting up 59 to 60
  - system requirements xiv
- fonts
  - Adobe PostScript 3 xi
  - Adobe Type 1 xi
  - downloading requires Direct connection 32
  - installing 50, 64
  - Multiple Master xi
  - screen fonts xi, 50, 64
  - substituting in PDF files xi
  - TrueType xi

**I**

- ICM profile 45, 46
- Installers folder on User Software CD 50
- Installer WebTool, *see* Fiery WebTools
- installing
  - Adobe PostScript printer drivers 3, 4, 5
  - ColorSync profiles 57
  - Command WorkStation 35
  - Fiery Booklet Maker XTension 41
  - Fiery Downloader 32 to 34
  - ICM profile 46
  - screen fonts 50
- internal name 29
- Internet Explorer xiii
- Iomega Zip drive x
- IP address xiii, xiv, 13, 37
- IPX x, xiii
  - printing for Windows NT 4.0 30 to 32
  - system requirements xv
  - Windows 3.1x printing 19
  - Windows 95 10, 12
  - Windows 95 12
  - Windows NT 4.0 30
- IPX address 37
- IPX Address field 38
- IPX/SPX xiii
  - configuring the connection 37
  - Windows 95 10

**J**

- Java xiii, xiv, 35
- JPEG images 45

**L**

- LPR printing 28



**M**

- Mac OS
  - downloading installers 1
  - Power Macintosh xiv
  - system requirements xiv
- Microsoft Internet Explorer, *see* Internet Explorer xiii
- Microsoft Office 97, *see* Office 97
- monitor settings file
  - Calibrated RGB 56
  - CALRGB.AMS 44
  - Windows 45
- MS-DOS, versions required xiii

**N**

- Netscape Communicator xiii, xiv
- NetWare
  - network port with Windows 3.1x 20
  - network port with Windows 95 12
- NetWare client setup
  - Windows 95 12
- NetWise networking management xi
- New Device field 38
- Novell IPX, *see* IPX
- Ntprint.inf file 24

**O**

- Office 97 45

**P**

- PageMaker for Windows 42
- Pantone Book.ps 52
- Pantone Coated Color Reference Book 40, 52
- Paper properties sheet 5
- parallel port
  - supported by color server x
  - system requirements xv
  - Windows 95 7
  - Windows NT 4.0 27 to 30

- PDF files xi
  - printing 32
- Photoshop
  - color management files 53
  - installing files for Macintosh 54 to 57
  - loading files, Windows 42 to 45
  - monitor settings file 44, 45, 56
  - Separation Tables 43, 44, 54, 55, 56
- PostScript files, printing 32, 50
- PostScript printer driver
  - for Windows xiii
  - version 8.5 xiv
  - Windows xiii
  - Windows 3.1x 17
- PostScript printer drivers xi, xiii
  - Installer 47, 48
  - Mac OS 47
  - Windows 3.1x 17 to 21
  - Windows 95 2, 3, 4, 5
  - Windows 95 3
- PPDs (PostScript Printer Description files) xi, 48
  - copying 42
  - for Macintosh applications 53
- Printer Driver folder on User
  - Software CD 48
- printer drivers, *see* Postscript printer drivers, Windows NT printer drivers
- printer ports
  - default, Windows 3.1x 18, 19
- printing
  - PostScript files, EPS files, and PDF files 32, 50
  - setting up IPX for Windows 19
  - Windows 3.1x 17 to 21
  - Windows NT 4.0 26
- Print Test Page option 16
- Prntdrv.exe file 61

**Q**

QuarkXPress xi, 42  
 installing printer description files for 53

**R**

RAM x, xiv, xv  
 remote access 59  
*see also* Fiery Downloader, Fiery  
 WebTools

**S**

screen fonts, for Mac OS xi  
 SCSI devices x  
 Separation Tables, *see* Photoshop  
 Server Name 13  
 Server Name field 38  
 Silicon Graphics workstation xiv  
 SMB printing, *see* Windows 95  
 Solaris xiv  
 specifications, server x, xi  
 SunOS xiv  
 Sun SPARCstation xiv  
 System 7 xiv  
*see also* Mac OS  
 system requirements  
   Command WorkStation xv  
   IPX xv  
   Mac OS xiv  
   parallel port xv  
   UNIX xiv  
   Windows xii

**T**

TCP/IP xiii  
 configuring the connection 37  
 preparing server for printing 28  
 printing software conforming to  
   RFC1179 xiv  
 supported by color server x  
 test page 16

thicknet cable x  
 thinnet cable x  
 TIFF images 45  
 troubleshooting  
   Windows computers 63

**U**

UNIX workstations, requirements for  
   printing to color server xiv  
 unshielded twisted pair (UTP) cable x  
 User Software CD xi, 26, 32, 42  
 utilities, *see* client utilities, Fiery WebTools

**W**

WebTools, *see* Fiery WebTools  
 Windows  
   troubleshooting 63  
 Windows 3.1x  
   Adobe PostScript printer driver 17  
   PostScript printer driver 17 to 21  
   printing 17 to 21  
 Windows 95  
   parallel port 7  
   PostScript printer driver 3, 5  
   SMB printing 13 to 16  
   troubleshooting 63  
 Windows NT  
   installing printer drivers 21  
   troubleshooting 63  
 Windows NT 4.0  
   IPX 30 to 32  
   IPX connection 30  
   PostScript printer drivers 21  
   printing from parallel port 27 to 30  
   printing requirements 26  
   requirements xiii  
   setting up printing 21 to 26  
 Windows NT Installation CD 26  
 Windows system requirements xii  
 WINS Name Server 13, 16