

Printing Guide

FIERY ZX-40

ELECTRONICS FOR IMAGING, INC.



Copyright © 1998 Electronics for Imaging, Inc. All rights reserved.

This publication is protected by copyright, and all rights are reserved. No part of it may be reproduced or transmitted in any form or by any means for any purpose without express prior written consent from Electronics for Imaging, Inc., except as expressly permitted herein. Information in this document is subject to change without notice and does not represent a commitment on the part of Electronics for Imaging, Inc.

The software described in this publication is furnished under license and may only be used or copied in accordance with the terms of such license.

Patents: 5,666,436; 5,553,200; 5,543,940; 5,537,516; 5,517,334; 5,506,946; 5,424,754; 5,343,311; 5,212,546; 4,941,038; 4,837,722; 4,500,919

Trademarks

EFI, the EFI logo, Fiery, the Fiery logo, EFICOLOR, and Rip-While-Print are trademarks registered in the U.S. Patent and Trademark Office. Fiery ZX, Fiery LX, Fiery Driven, the Fiery Driven logo, Command WorkStation, AutoCal, Starr Compression, Memory Multiplier, ColorWise, NetWise, and VisualCal are trademarks of Electronics for Imaging, Inc.

All Xerox product names mentioned in this publication are trademarks of the XEROX CORPORATION.

Adobe, the Adobe logo, Adobe Illustrator, PostScript, Adobe Photoshop, Adobe Separator, and Adobe PageMaker are trademarks of Adobe Systems Incorporated, registered in certain jurisdictions. EPS (Encapsulated PostScript) is a trademark of Altsys Corporation. Apple, the Apple logo, AppleShare, AppleTalk, EtherTalk, LaserWriter, and Macintosh are registered trademarks, and MultiFinder is a trademark of Apple Computer, Inc. Microsoft, MS, MS-DOS, and Windows are registered trademarks of Microsoft in the US and other countries. QuarkXPress is a registered trademark of Quark, Inc. Times, Helvetica, and Palatino are trademarks of Linotype AG and/or its subsidiaries. ITC Avant Garde, ITC Bookman, ITC Zapf Chancery, and ITC Zapf Dingbats are registered trademarks of International Typeface Corporation. Ethernet is a registered trademark of Xerox Corporation. Farallon, PhoneNET PC, and PhoneNET Talk are trademarks of Farallon Computing, Inc. COPS and COPSTalk are trademarks of CoOperative Printing Solutions, Inc. NetWare and Novell are registered trademarks and Internetwork Packet Exchange (IPX) is a trademark of Novell, Inc. SyQuest is a registered trademark, in the United States and certain other countries, of SyQuest Technology, Inc. UNIX is a registered trademark of UNIX System Laboratories, a wholly owned subsidiary of Novell, Inc. PANTONE is a registered trademark of Pantone, Inc.

All other terms and product names may be trademarks or registered trademarks of their respective owners, and are hereby acknowledged.

Legal Notices

APPLE COMPUTER, INC. ("APPLE") MAKES NO WARRANTIES, EXPRESS OR IMPLIED, INCLUDING WITHOUT LIMITATION THE IMPLIED WARRANTIES OF MERCHANTABILITY AND FITNESS FOR A PARTICULAR PURPOSE, REGARDING THE APPLE SOFTWARE. APPLE DOES NOT WARRANT, GUARANTEE, OR MAKE ANY REPRESENTATIONS REGARDING THE USE OR THE RESULTS OF THE USE OF THE APPLE SOFTWARE IN TERMS OF ITS CORRECTNESS, ACCURACY, RELIABILITY, CURRENTNESS, OR OTHERWISE. THE ENTIRE RISK AS TO THE RESULTS AND PERFORMANCE OF THE APPLE SOFTWARE IS ASSUMED BY YOU. THE EXCLUSION OF IMPLIED WARRANTIES IS NOT PERMITTED BY SOME STATES. THE ABOVE EXCLUSION MAY NOT APPLY TO YOU.

IN NO EVENT WILL APPLE, ITS DIRECTORS, OFFICERS, EMPLOYEES OR AGENTS BE LIABLE TO YOU FOR ANY CONSEQUENTIAL, INCIDENTAL OR INDIRECT DAMAGES (INCLUDING DAMAGES FOR LOSS OF BUSINESS PROFITS, BUSINESS INTERRUPTION, LOSS OF BUSINESS INFORMATION, AND THE LIKE) ARISING OUT OF THE USE OR INABILITY TO USE THE APPLE SOFTWARE EVEN IF APPLE HAS BEEN ADVISED OF THE POSSIBILITY OF SUCH DAMAGES. BECAUSE SOME STATES DO NOT ALLOW THE EXCLUSION OR LIMITATION OF LIABILITY FOR CONSEQUENTIAL OR INCIDENTAL DAMAGES, THE ABOVE LIMITATIONS MAY NOT APPLY TO YOU. Apple's liability to you for actual damages from any cause whatsoever, and regardless of the form of the action (whether in contract, tort [including negligence], product liability or otherwise), will be limited to \$50.

Restricted Rights Legends

For defense agencies: Restricted Rights Legend. Use, reproduction, or disclosure is subject to restrictions set forth in subparagraph (c)(1)(ii) of the Rights in Technical Data and Computer Software clause at 252.227.7013.

For civilian agencies: Restricted Rights Legend. Use, reproduction, or disclosure is subject to restrictions set forth in subparagraph (a) through (d) of the commercial Computer Software Restricted Rights clause at 52.227-19 and the limitations set forth in Electronics for Imaging, Inc.'s standard commercial agreement for this software. Unpublished rights reserved under the copyright laws of the United States.

Printed in the United States of America on recycled paper.

Part Number: n/a

CE Mark

The CE marking applied to this product symbolises Rank Xerox's declaration of conformity with the following applicable directives of the European Union as of the dates indicated.

January 1, 1996—Council Directive 70/80/CCO amended by Council Directive 93/68/EEO. Approximation of the laws of the member states related to low voltage equipment.

January 1, 1996—Council Directive 59/336/EEC. Approximation of the laws of the member states related to electromagnetic compatibility.

A full declaration defining the relevant directives and referenced standards can be obtained from your Rank Xerox representative.

WARNING: In order to allow this equipment to operate in proximity to industrial, scientific, and Medical (ISM) equipment, the external radiation from ISM equipment may have to be limited or special migration measures taken.

FCC Information

WARNING: FCC Regulations state that any unauthorized changes or modifications to this equipment not expressly approved by the manufacturer could void the user's authority to operate this equipment.

Class B Declaration of Conformity

This equipment has been tested and found to comply with the limits for a class B digital device, pursuant to Part 15 of the FCC rules. These limits are designed to provide reasonable protection against harmful interference in a residential installation. This equipment generates, uses and can radiate radio frequency energy and if not installed and used in accordance with the instructions, may cause harmful interference to radio communications. However, there is no guarantee that interference will not occur in a particular installation.

If this equipment does cause harmful interference to radio or television reception, which can be determined by turning the equipment off and on, the user is encouraged to try to correct the interference by one or more of the following measures:

Reorient or relocate the receiving antenna.

Increase the separation between the equipment and receiver.

Connect the equipment into an outlet on a circuit different from that to which the receiver is connected.

Consult the dealer or an experienced radio/TV technician for help.

In order to maintain compliance with FCC regulations, shielded cables must be used with this equipment. Operation with non-approved equipment or unshielded cables is likely to result in interference to radio and TV reception. The user is cautioned that changes and modifications made to the equipment without the approval of manufacturer could void the user's authority to operate this equipment.

Industry Canada Class B Notice

This Class B digital apparatus meets all the requirements of the Canadian Interference-Causing Equipment Regulations.

Avis de Conformation Classe B de l'Industrie Canada

Cet appareil numérique de la classe B respecte toutes les exigences du Règlement sur le matériel brouilleur du Canada.

Certificate by Manufacturer/Importer

This is to certify that the FC07 is shielded against radio interference in accordance with the provisions of VFG 243/1991. The German Postal Services have been advised that this device is being put on the market and that they have been given the right to inspect the series for compliance with the regulations. Electronics for Imaging, Inc.

Bescheinigung des Herstellers/Importeurs

Heirmit wird bescheinigt, dass der FC07 im Uebereinstimmung mit den Bestimmungen der VFG 243/1991 Funk-Entstort ist. Der Deutschen Bundespost wurde das Inverkehrbringen dieses Geraetes angezeigt und die Berechtigung zur Ueberpruefung der Serie auf Einhaltung der Bestimmungen eingeräumt. Electronics for Imaging, Inc.

RFI Compliance Notice

This equipment has been tested concerning compliance with the relevant RFI protection requirements both individually and on system level (to simulate normal operation conditions). However, it is possible that these RFI Requirements are not met under certain unfavorable conditions in other installations. It is the user who is responsible for compliance of his particular installation.

Dieses Gerat wurde einzeln sowohl als auch in einer Anlage, die einen normalen Anwendungsfall nachbildet, auf die Einhaltung der Funk-entstoerbestimmungen geprueft. Es ist jedoch moeglich, dass die Funk-entstoerbestimmungen unter unguenstigen Umstaenden bei anderen Geratekombinationen nicht eingehalten werden. Fuer die Einhaltung der Funk-entstoerbestimmungen seigner gesamten Anlage, in der dieses Gerat betrieben wird, ist der Betreiber verantwortlich.

Compliance with applicable regulations depends on the use of shielded cables. It is the user who is responsible for procuring the appropriate cables.

Einhaltung mit betreffenden Bestimmungen kommt darauf an, dass geschirmte Ausfuehrungen gebraucht werden. Fuer die beschaffung richtiger Ausfuehrungen ist der Betreiber verantwortlich.

Software License Agreement

Before using the Software, please carefully read the following terms and conditions. BY USING THIS SOFTWARE, YOU SIGNIFY THAT YOU HAVE ACCEPTED THE TERMS OF THIS AGREEMENT. If you cannot or do not accept these terms, you may return the entire package within ten (10) days to the Distributor or Dealer from which you obtained them for a full refund.

Electronics for Imaging, Inc. grants to you a non-exclusive, non-transferable license to use the software and accompanying documentation ("Software") included with the Fiery ZX you have purchased, including without limitation the PostScript[®] software provided by Adobe Systems Incorporated.

You may:

- a. use the Software solely for your own customary business purposes and solely with Fiery ZX;
- b. use the digitally-encoded machine-readable outline and bitmap programs ("Font Programs") provided with Fiery ZX in a special encrypted format ("Coded Font Programs") to reproduce and display designs, styles, weights, and versions of letters, numerals, characters and symbols ("Typefaces") solely for your own customary business purposes on the display window of the Fiery ZX or monitor used with Fiery ZX;
- c. use the trademarks used by Electronics for Imaging to identify the Coded Font Programs and Typefaces reproduced therefrom ("Trademarks"); and
- d. assign your rights under this Agreement to a transferee of all of your right, title and interest in and to Fiery ZX provided the transferee agrees to be bound by all of the terms and conditions of this Agreement.

You may not:

- a. make use of the Software, directly or indirectly, to print bitmap images with print resolutions of 600/720 dots per inch or greater, or to generate fonts or typefaces for use other than with Fiery ZX;
- b. make or have made, or permit to be made, any copies of the Software, Coded Font Programs, accompanying documentation or portions thereof, except as necessary for use with the Fiery ZX unit purchased by you; provided, however, that under no circumstances may you make or have made, or permit to be made, any copies of that certain portion of the Software which has been included on the Fiery ZX hard disk drive. You may not copy the documentation;
- c. attempt to alter, disassemble, decrypt or reverse engineer the Software, Coded Font Programs or accompanying documentation.
- d. rent or lease the Software.

Proprietary Rights

You acknowledge that the Software, Coded Font Programs, Typefaces, Trademarks and accompanying documentation are proprietary to Electronics for Imaging and its suppliers and that title and other intellectual property rights therein remain with Electronics for Imaging and its suppliers. Except as stated above, this Agreement does not grant you any right to patents, copyrights, trade secrets, trademarks (whether registered or unregistered), or any other rights, franchises or licenses in respect of the Software, Coded Font Programs, Typefaces, Trademarks or accompanying documentation. You may not adapt or use any trademark or trade name which is likely to be similar to or confusing with that of Electronics for Imaging or any of its suppliers or take any other action which impairs or reduces the trademark rights of Electronics for Imaging or its suppliers. The trademarks may only be used to identify printed output produced by the Coded Font Programs. At the reasonable request of Electronics for Imaging, you must supply samples of any Typeface identified with a trademark.

Confidentiality

You agree to hold the Software and Coded Font Programs in confidence, disclosing the Software and Coded Font Programs only to authorized users having a need to use the Software and Coded Font Programs as permitted by this Agreement and to take all reasonable precautions to prevent disclosure to other parties.

Remedies

Unauthorized use, copying or disclosure of the Software, Coded Font Programs, Typefaces, Trademarks or accompanying documentation will result in automatic termination of this license and will make available to Electronics for Imaging other legal remedies.

Limited Warranty And Disclaimer

Electronics for Imaging warrants that, for a period of ninety (90) days from the date of delivery to you, the Software under normal use will perform without significant errors that make it unusable. Electronics for Imaging's entire liability and your exclusive remedy under this warranty (which is subject to you returning Fiery ZX to Electronics for Imaging or an authorized dealer) will be, at Electronics for Imaging's option, to use reasonable commercial efforts to attempt to correct or work around errors, to replace the Software with functionally equivalent software, or to refund the purchase price and terminate this Agreement. Some states do not allow limitations on duration of implied warranty, so the above limitation may not apply to you.

Except for the above express limited warranty, Electronics for Imaging makes and you receive no warranties or conditions on the Products, express, implied, or statutory, and Electronics for Imaging specifically disclaims any implied warranty or condition of merchantability or fitness for a particular purpose.

For warranty service, please contact your authorized service/support center.

EXCEPT FOR THE ABOVE EXPRESS LIMITED WARRANTY, ELECTRONICS FOR IMAGING MAKES AND YOU RECEIVE NO WARRANTIES OR CONDITIONS ON THE SOFTWARE OR CODED FONT PROGRAMS, EXPRESS, IMPLIED, STATUTORY, OR IN ANY OTHER PROVISION OF THIS AGREEMENT OR COMMUNICATION WITH YOU, AND ELECTRONICS FOR IMAGING SPECIFICALLY DISCLAIMS ANY IMPLIED WARRANTY OR CONDITION OF MERCHANTABILITY OR FITNESS FOR A PARTICULAR PURPOSE. Electronics for Imaging does not warrant that the operation of the software will be uninterrupted or error free or that the Software will meet your specific requirements.

Limitation Of Liability

IN NO EVENT WILL ELECTRONICS FOR IMAGING OR ITS SUPPLIERS BE LIABLE FOR ANY DAMAGES, INCLUDING LOSS OF DATA, LOST PROFITS, COST OF COVER OR OTHER SPECIAL, INCIDENTAL, CONSEQUENTIAL OR INDIRECT DAMAGES ARISING FROM THE USE OF THE SOFTWARE, CODED FONT PROGRAMS OR ACCOMPANYING DOCUMENTATION, HOWEVER CAUSED AND ON ANY THEORY OF LIABILITY. THIS LIMITATION WILL APPLY EVEN IF ELECTRONICS FOR IMAGING OR ANY AUTHORIZED DEALER HAS BEEN ADVISED OF THE POSSIBILITY OF SUCH DAMAGE. YOU ACKNOWLEDGE THAT THE PRICE OF THE UNIT REFLECTS THIS ALLOCATION OF RISK. BECAUSE SOME STATES/JURISDICTIONS DO NOT ALLOW THE EXCLUSION OR LIMITATION OF LIABILITY FOR CONSEQUENTIAL OR INCIDENTAL DAMAGES, THE ABOVE LIMITATION MAY NOT APPLY TO YOU.

Export Controls

You agree that you will not export or re-export the Software or Coded Font Programs in any form without the appropriate United States and foreign government licenses. Your failure to comply with this provision is a material breach of this Agreement.

Government Use

Use, duplication or disclosure of the Software by the United States Government is subject to restrictions as set forth in subdivision (c) (1) (ii) of the Rights in Technical Data and Computer Software clause at DFARS 252.227-7013 or in subparagraphs (c) (1) and (2) of the Commercial Computer Software—Restricted Right Clause at 48 CFR 52.227-19, as applicable.

Third Party Beneficiary

You are hereby notified that Adobe Systems Incorporated, a California corporation located at 345 Park Avenue, San Jose, CA 95110-2704 ("Adobe") is a third-party beneficiary to this Agreement to the extent that this Agreement contains provisions which relate to your use of the Fonts, the Coded Font Programs, the Typefaces and the Trademarks licensed hereby. Such provisions are made expressly for the benefit of Adobe and are enforceable by Adobe in addition to Electronics for Imaging.

General

This Agreement will be governed by the laws of the State of California.

This Agreement is the entire agreement held between us and supersedes any other communications or advertising with respect to the Software, Coded Font Programs and accompanying documentation.

If any provision of this Agreement is held invalid, the remainder of this Agreement shall continue in full force and effect.

If you have any questions concerning this Agreement, please write to Electronics for Imaging, Inc., Attn: Licensing Dept. or see Electronics for Imaging's web site at www.efi.com.

Electronics for Imaging, Inc.
2855 Campus Drive
San Mateo, CA 94403

Contents

Preface

About this manual	xii
About the documentation	xii
How the Fiery ZX works	xii
About PostScript printer drivers and PPDs	xiii
Supported paper sizes and resolutions	xiii
Before you begin	xiii

Chapter 1: Printing from Windows Computers

Printing from applications	1-1
Setting options and printing with Windows 95	1-1
Setting options and printing from Windows 3.1x	1-6
Setting options and printing from Windows NT 4.0	1-10
Printing to the parallel port	1-12
Saving files to print at a remote location	1-12
Using the Fiery Downloader to print	1-13

Chapter 2: Printing from Mac OS Computers

Printing from applications	2-1
Selecting the Fiery ZX in the Chooser	2-1
Setting print options and printing from Mac OS computers	2-4
Using the Fiery Downloader to print	2-9

Chapter 3: Printing from UNIX Workstations

Printing to the Fiery ZX	3-1
--------------------------	-----

Chapter 4: Special Features

Printing variable data documents	4-1
Printing simulations	4-2
Printing booklets	4-3
Printing duplex pages	4-11

Chapter 5: Downloading Files and Fonts

Using the Fiery Downloader	5-1
Printing with the Fiery Downloader	5-4
Downloading and managing printer fonts	5-7

Chapter 6: Tracking and Managing Print Jobs

Fiery WebTools	6-1
Checking Fiery ZX status with the Status WebTool	6-2
Accessing information with the WebLink WebTool	6-2

Appendix A: Print Options

Where to set print options	A-1
Print options and override hierarchy	A-2
More information about print options	A-7

Appendix B: Font List

PostScript printer fonts	B-1
Adobe Type 1 fonts	B-1
TrueType fonts	B-3

Appendix C: Troubleshooting

General printing problems	C-1
Problems with Fiery Downloader	C-5

Index

Preface

The Fiery ZX-40 Color Server enables you to use your color copier as a networked printer. You can use the Fiery ZX to print final documents or to proof jobs you will later print on an offset press. You send a print job to the Fiery ZX as you would to any other printer—you select it from the Windows Printers dialog box or Mac OS Chooser, and then print from within any application.

Your Fiery ZX-40 Color Server system includes Command WorkStation™ software that enables an operator to manage all jobs sent to the Fiery ZX. Some of the job management features of the Command WorkStation are also available from the Fiery WebSpooler. Although it may not be the case at all sites, the documentation for this product assumes the presence of an operator who controls and manages jobs sent by users from remote workstations. For information on the features of the Command WorkStation and the Fiery WebSpooler, see the *Job Management Guide*.

NOTE: This manual uses the term “Fiery ZX” to refer to the Fiery ZX-40 Color Server.

About this manual

This manual is intended for those remote users who send jobs via the network or via a direct parallel port connection between the Fiery ZX and a Windows computer. It covers the following topics:

- Printing from a Windows computer
- Printing from a Mac OS computer
- Printing from UNIX
- Using special features such as variable data printing, press simulation printing, booklet printing, and duplex printing
- Downloading files and fonts using the Fiery Downloader
- Monitoring jobs and accessing information using the Fiery WebTools
- Specifying and overriding job settings, examples of the printer fonts installed on the Fiery ZX, and troubleshooting information.

About the documentation

This manual is part of a set of Fiery ZX documentation that includes the following manuals for users and system administrators:

- The *Configuration Guide* explains basic configuration and administration of the Fiery ZX for the supported platforms and network environments. It also includes guidelines for setting up UNIX, Windows NT, and NetWare servers to provide PostScript printing services to clients.
- *Getting Started* describes how to install software to enable users to print to the Fiery ZX. Specifically, it describes installation of PostScript™ printer drivers, printer description files, and other user software provided on the Fiery ZX User Software CD. It also explains how to connect each user to the network.
- The *Printing Guide* describes the printing features of the Fiery ZX for users who send jobs via remote workstations on the network or via a direct parallel port connection.
- The *Color Guide* provides an introduction to the basics of color theory and printing to a Fiery ZX Color Server. It also includes practical color printing tips and application notes that explain how to print to the Fiery ZX from popular Windows and Mac OS applications.
- The *Job Management Guide* explains the functions of the Fiery ZX utilities, including the Command WorkStation, and how they can be used to manage jobs and maintain color quality. This book is intended for an operator or administrator, or a user with the necessary access privileges, who needs to monitor and manage job flow, perform color calibration, and troubleshoot problems that may arise.
- *Release Notes* provide last-minute product information and workarounds for some of the problems you may encounter.

How the Fiery ZX works

The Fiery ZX receives files from computers on the network, processes (RIPs) those files, and then sends them to the copier's print engine for printing. Even with the Fiery ZX installed, you can still use the copier to make copies.

When printing from an application, your Windows or Mac OS computer communicates with the Fiery ZX by means of a Adobe® PostScript® printer driver and a PostScript printer description file (PPD).

About PostScript printer drivers and PPDs

A PostScript printer driver is an application that manages printing communication between your application software and the printer. It interprets the instructions generated by the application software, merges those instructions with printer-specific PPD options you specify (see below), and translates all that information into PostScript, a language the printer understands. In other words, the printer driver writes a PostScript file based on your original file and the options you set from the Print dialog box.

A PPD file contains information about a particular device's features and capabilities (for example, what paper sizes and media types are supported). The PostScript printer driver reads the information in the PPD file and presents that information to you in the form of options you can choose from the Print dialog box. The PPD for the Fiery ZX includes information about the features of both the copier and the Fiery ZX-40 Color Server.

For information on the PPD options for your Fiery ZX, see Appendix A, "Print Options."

Supported paper sizes and resolutions

You can print all page sizes supported by the DocuColor 40 in Contone mode at 400 dpi in Full Color or Grayscale. Note that you can print on thick paper and transparencies only from the bypass tray. See the Xerox *Materials Usage Guide* for complete information about the page sizes supported.

Before you begin

Before using the Fiery ZX, follow these steps:

1. Confirm that the system administrator has completed Setup as described in the *Configuration Guide*.
2. Find out what printer defaults the administrator specified in Setup.
These default settings can affect the results of your print jobs. Check with your administrator or operator for information on these default settings.
3. Confirm that the user software is installed correctly on your workstation, as described in *Getting Started*.

4. Consult the *Color Guide* for information on print options and application features that affect color output.

5. Find out how your workstation is configured for printing on the network.

If your site has an operator who controls all printing, you may have access to the Hold queue only. In this case, all jobs you send are spooled to the Fiery ZX and held until the operator sends them to their next stage of processing.

You may also have access to the Print queue. If you send jobs to this queue, jobs spool to the Fiery ZX and proceed to RIP and print according to your job settings—unless someone (you, or an operator, for example) intervenes.

Lastly, you may have access to the Direct connection, which sends jobs straight to the server without spooling.

6. Find out whether the Fiery ZX is set up to use Fiery WebTools and what your access privileges are.

The administrator may or may not have enabled access to the server via the Internet (or an intranet).

Chapter 1: Printing from Windows Computers

This chapter describes how to print to the Fiery ZX from Windows 95, Windows 3.1x, and Windows NT™ 4.0.

You can print from a networked Windows computer, from a Windows computer using Windows (WINS) printing, or from a Windows computer connected to the parallel port on the Fiery ZX. If you plan to print files at another location, follow the procedures described in “Saving files to print at a remote location” on page 1-12.

For instructions on special printing features such as variable data printing and booklet printing, see Chapter 4, “Special Features.”

Another way to print from a Windows 95 or Windows NT 4.0 computer is to download PostScript, Encapsulated PostScript (EPS), or Portable Document Format (PDF) files using the Fiery Downloader. Basic instructions are provided at the end of this chapter; for details on using the Fiery Downloader, see Chapter 5.

NOTE: For information on setting up the Windows environment for printing with Windows servers connected to the Fiery ZX, see the *Configuration Guide*. For information on how to connect to the Fiery ZX over the network, install printer drivers, and install the Fiery Downloader, see *Getting Started*.

Printing from applications

Once you have installed the printer driver and set it to the proper port as described in *Getting Started*, you can print directly from most Windows applications. Simply choose the Print command from within your application.

To achieve the best printing results from specific applications, see the *Color Guide*.

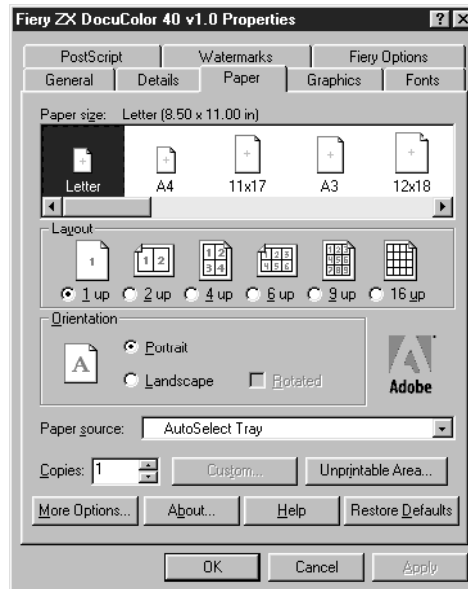
Setting options and printing with Windows 95

To print from Windows 95, use the Adobe PostScript Printer Driver for Windows version 4.2.x included with the Fiery ZX user software.

Once you have installed the Adobe PostScript printer driver and Fiery ZX PostScript Printer Description file (PPD), you can specify print settings. You can also change some of these settings for a particular job from within your application when you send it to the Fiery ZX. Before printing, make sure that the correct print options are set.

TO SET PRINT OPTIONS AND PRINT WITH THE ADOBE PS PRINTER DRIVER FROM WINDOWS 95:

1. Double-click the My Computer icon.
2. Double-click the Printers icon.
3. Select the icon for the Fiery ZX and choose Properties from the File menu.
4. Click the Paper tab.
5. Specify the appropriate settings for your print job.



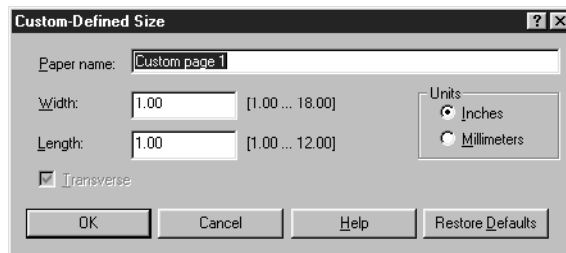
In the Paper size area, specify the page size for your job.

From the Paper Source pop-up menu, choose the paper tray for the job.

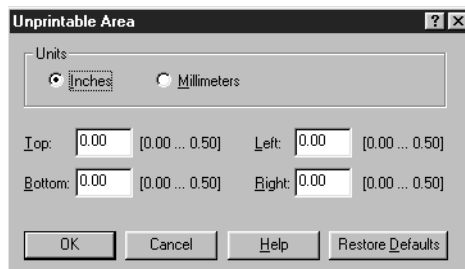
To specify a **Media Type**, click **More Options**. Choose from the **Paper type** pop-up menu and then click **OK**.

See **Appendix A** for information on the **Paper Source** and **Media Type** print options.

6. To use a standard paper size, make your selection and skip to step 11.
To define a custom paper size, scroll the **Paper size** bar to the right and select one of the three **Custom p+** paper sizes.
7. Click **Custom** to specify the dimensions of the custom paper size.
The minimum and maximum dimensions allowed by the printer driver are indicated inside brackets. You are notified if you enter an invalid dimension.
You can also give the custom paper size a name.

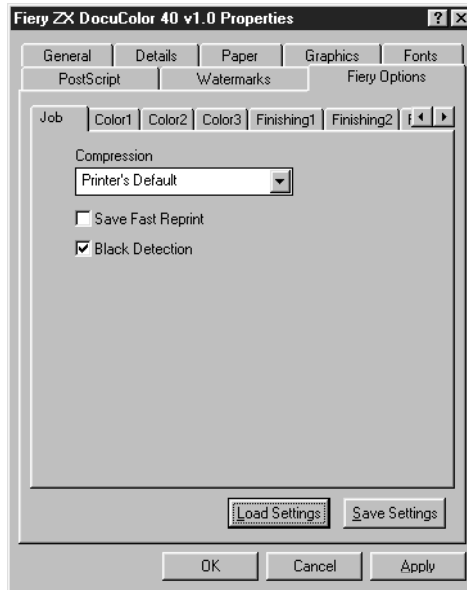


8. Set custom paper size dimensions and click **OK**.
9. Click **Unprintable Area** and enter margin values for the custom paper size.
The minimum and maximum values allowed by the printer driver are indicated inside brackets. You are notified if you enter an invalid entry.



10. Click **OK**.

11. Click the Fiery Options tab.



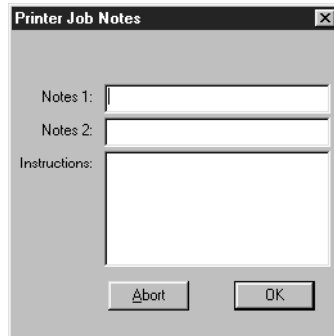
12. Click through Job, Color1, Color2, and so on, and specify the appropriate settings for your print job.

(Use the left and right arrows to the right of the tabs to display additional tabs.) These print options are specific to the Fiery ZX and the DocuColor 40. They override settings in Fiery ZX Printer Setup; the settings can also be changed in the Properties dialog box with the Command WorkStation, or in the Override Print Settings dialog box with the Fiery WebSpooler. For information about these options and overrides, see Appendix A, "Print Options."

If you choose Printer's default, the Fiery ZX prints with either the printer driver setting, or the information entered during Setup.

13. If you want to make the new settings your default settings, click Apply.
14. Click OK.

15. Choose Print in your application.
16. Click OK.



17. Enter text messages in the Notes 1 and Notes 2 areas.
Enter user and job identification information for accounting purposes, or whatever information is required at your site.
The notes you enter in these areas can be viewed from the Command WorkStation and the Fiery WebSpooler, and also appear in the Job Log. They cannot be edited or erased by the operator.
18. Enter instructions to the operator about the job in the Instructions area.
These instructions can be viewed from the Command WorkStation and the Fiery WebSpooler, but *do not* appear in the Job Log. They *can* be edited by the operator.
19. Click OK.

Saving and loading print option settings

Print option settings can be saved to a settings file on your hard disk. Saving a settings file enables you to easily load specifically configured settings for a particular job.

TO SAVE PRINT OPTION SETTINGS:

1. After specifying settings for print options in the Fiery Options tab, click Save Settings.
2. Name the settings file and browse to a location on your hard disk where you want to save the file.
3. Click OK.

The settings file is saved to the location you specified.

TO LOAD PRINT OPTION SETTINGS:

1. From the Fiery Options tab, click Load Settings.
2. Browse to the settings file.
3. Select the settings file from the list and click OK.

The print option settings in the Fiery Options tab are automatically configured with the saved settings.

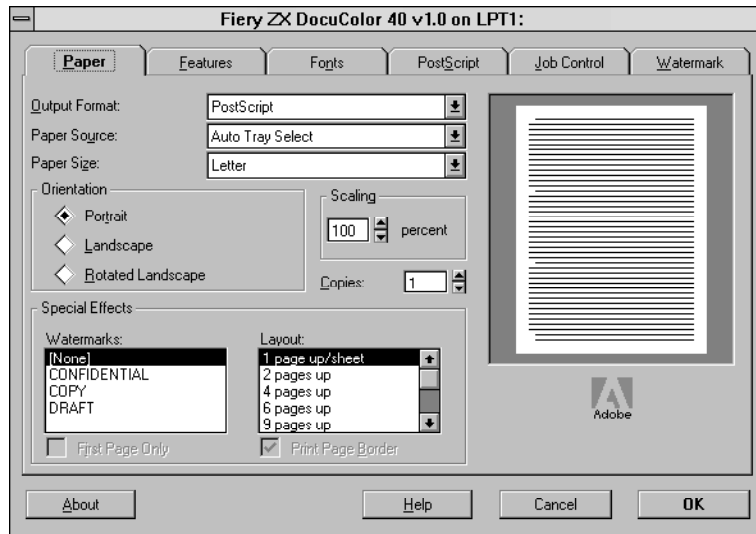
Setting options and printing from Windows 3.1x

To print from Windows 3.1x, use the Adobe PostScript Printer Driver version 3.0.1. The driver is included with the Fiery ZX user software, and uses all features of the Fiery ZX.

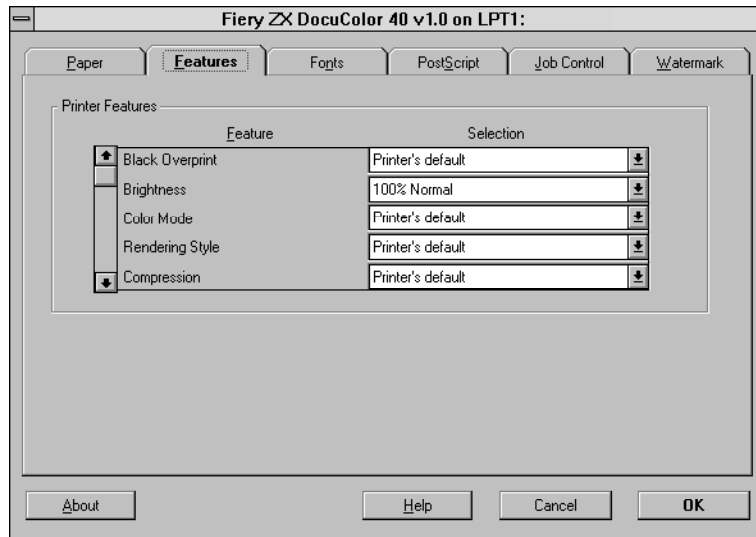
Once you have installed the Adobe PostScript printer driver and Fiery ZX PostScript Printer Description file (PPD), you can specify print settings. You can also change some of these settings for a particular job from within your application when you send it to the Fiery ZX. Before printing, make sure that the correct print options are set.

TO SET PRINT OPTIONS AND PRINT WITH THE ADOBEPS PRINTER DRIVER FROM WINDOWS 3.1X:

1. In the Main window, double-click the Control Panel icon.
2. Double-click the Printers icon.
3. In the Printers window, select the Fiery ZX in the Installed Printers box and click the Setup button.
4. Click the Paper tab.
5. Specify the appropriate settings for your print job.



6. Click the Features tab.



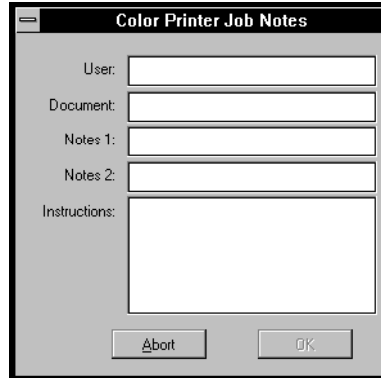
7. Specify the appropriate settings for your job and click OK.

These print options are specific to the Fiery ZX and the DocuColor 40 (you must scroll to see all the pop-up menus).

They override settings in Fiery ZX Printer Setup; the settings can also be changed in the Properties dialog box with the Command WorkStation, or in the Override Print Settings dialog box with the Fiery WebSpooler. For information about these options and overrides, see Appendix A, "Print Options."

If you choose Printer's default, the Fiery ZX prints with either the printer driver setting, or the information entered during Setup.

8. Choose Print in your application.



The image shows a dialog box titled "Color Printer Job Notes". It has a standard window title bar with a minus sign on the left. The dialog contains five input fields: "User:", "Document:", "Notes 1:", "Notes 2:", and "Instructions:". The "Instructions:" field is a larger text area. At the bottom of the dialog are two buttons: "Abort" and "OK".

9. If necessary, enter your name in the User area.

Once you enter your name in the User area, it appears automatically in this dialog box when you print subsequent jobs.

NOTE: This entry *cannot* be changed without deleting and reinstalling the printer.

10. Enter text messages in the Notes 1 and Notes 2 areas.

You can enter user and job identification information for accounting purposes, or whatever information is required at your site.

The notes you enter in these areas can be viewed from the Command WorkStation and the Fiery WebSpooler, and also appear in the Job Log. They cannot be edited or erased by the operator.

The notes you enter in the Notes 1 and Notes 2 areas are kept in memory and appear automatically in this dialog box when you print subsequent jobs. You can edit these notes if necessary for subsequent jobs.

11. Enter instructions to the operator about the job in the Instructions area.

These instructions can be viewed from the Command WorkStation and the Fiery WebSpooler, but *do not* appear in the Job Log. They *can* be edited by the operator.

The instructions you enter in the Instructions area are kept in memory and appear automatically in this dialog box when you print subsequent jobs. You can edit these instructions if necessary for subsequent jobs.

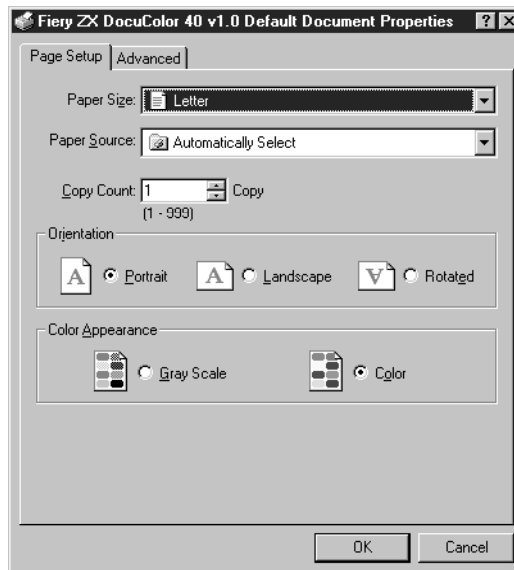
12. Click OK.

Setting options and printing from Windows NT 4.0

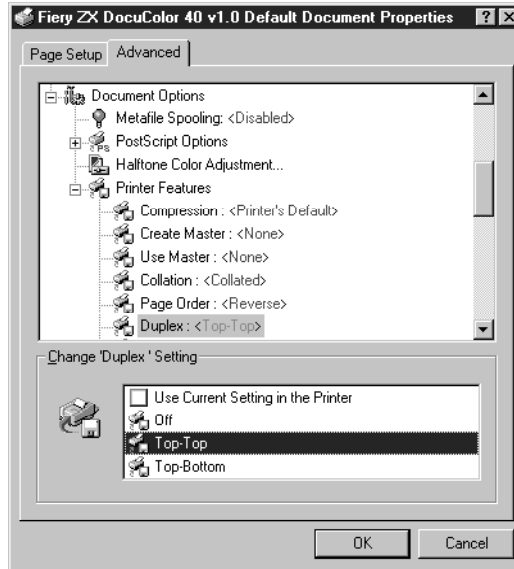
To print from Windows NT 4.0 use the Windows NT 4.0 PostScript Printer Driver included with Windows NT. Before printing, make sure that the correct print options are set.

TO SET PRINT OPTIONS AND PRINT WITH THE MICROSOFT POSTSCRIPT PRINTER DRIVER FROM WINDOWS NT 4.0:

1. Click the Windows NT Start button and choose Settings>Printers.
2. Right-click to select the Fiery ZX and choose Document Defaults.
3. Click the Page Setup tab.
4. Specify the appropriate settings for your print job.



5. Click the Advanced tab.



6. Under Document Options, select Printer Features and then select print options in the list.

The print options in the Printer Features list are specific to the Fiere ZX and the DocuColor 40. They override settings in Fiere ZX Printer Setup; the settings can also be changed in the Properties dialog box with the Command WorkStation, or in the Override Print Settings dialog box with the Fiere WebSpooler. For information about these options and overrides, see Appendix A, “Print Options.”

If you choose Printer's default, the Fiere ZX prints with either the printer driver setting, or the information entered during Setup.

7. Click OK.
8. Choose Print in your application.

Printing to the parallel port

The Fiery ZX has a parallel port that enables you to print most files directly from a Windows computer if your network administrator has connected the Windows computer's parallel port to the Fiery ZX parallel port.

NOTE: You cannot use the Fiery Downloader through the parallel port.

TO PRINT FILES TO THE PARALLEL PORT:

1. **Make sure the parallel port is enabled on your Fiery ZX.**
Check with your site administrator or operator to see whether printing to the parallel port is enabled. See *Getting Started* for information on setting up parallel port printing on your Windows computer.
2. **Select the printer port that is connected to the Fiery ZX parallel port.**
Select one of the local ports: LPT1, LPT2, or LPT3. For instructions, see your Windows documentation.
3. **Print from within your application.**
If you are printing a PostScript file in binary format (not ASCII), verify that the Network Setup option Ignore EOF Character is set to Yes. Check with your site administrator for this information.

Saving files to print at a remote location

If you do not have a Fiery ZX and are preparing files to take to a service bureau or other location, print your final files to the File port (as opposed to one of the local ports). You can also print to the File port to create a file to be downloaded using the Fiery Downloader. For instructions, see your Windows documentation.



Using the Fiery Downloader to print

Downloading files with the Fiery Downloader is generally faster than printing from application software. You can use the Fiery Downloader to print PostScript, EPS, or PDF files.

TO PRINT USING THE FIERY DOWNLOADER:

1. Create a PostScript, EPS, or PDF file. Specify the appropriate print options and include (embed) any necessary fonts that are not resident on the Fiery ZX.

For information on the fonts resident on the Fiery ZX, check with the operator. Also see Appendix B, “Font List.”

2. Start up the Fiery Downloader and connect to the Fiery ZX.
For instructions on setting up the Fiery Downloader, see *Getting Started*.
3. Select the file(s) you want to download, and specify any necessary options.
4. Click Download File(s).

For details, see Chapter 5, “Downloading Files and Fonts.”

Chapter 2: Printing from Mac OS Computers

You can print to the Fiery ZX just as you would print to any other printer from your application software. First, select the Fiery ZX as the current printer in the Chooser, and then print the file from within your application.

Another way to print from Mac OS computers is to download PostScript, Encapsulated PostScript (EPS), or Portable Document Format (PDF) files using the Fiery Downloader.

Printing from applications

Before you can print to the Fiery ZX from applications, you must select the Fiery ZX in the Chooser. Then, using the AdobePS 8.5.1 printer driver and the correct PostScript Printer Description file (PPD), you can control many Fiery ZX printing features by specifying job settings from print dialog boxes.

For information on achieving the best printing results from specific applications, see the *Color Guide*.

Selecting the Fiery ZX in the Chooser

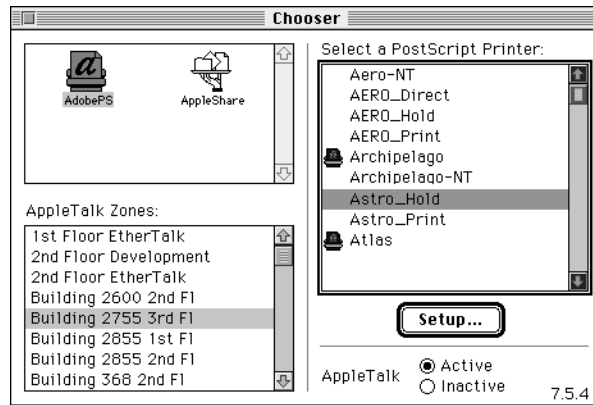
Before you print a job, make sure the Fiery ZX is the currently selected printer.

TO SELECT THE FIERY ZX AS THE CURRENT PRINTER:

1. Make sure the Fiery ZX is connected to your network and turned on.
2. Select Chooser from the Apple menu.
3. Click the AdobePS icon to select it.

4. If your network is divided into zones, select the zone in which the Fiery ZX is located.
5. Select the Fiery ZX in the list of printers that appears.

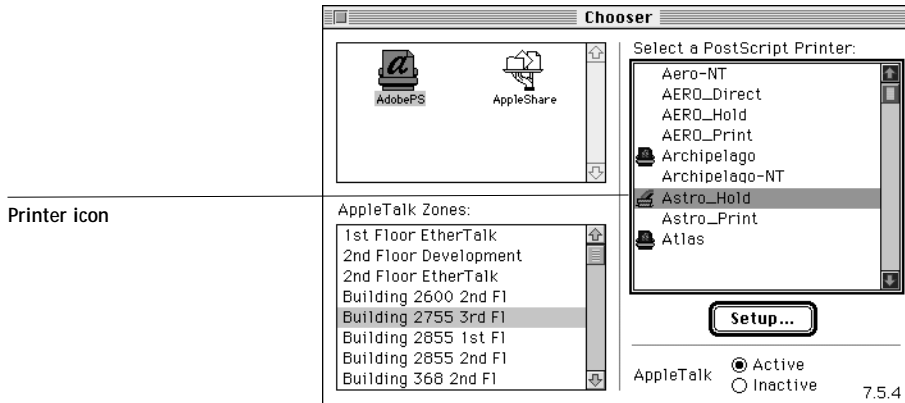
The names of all supported printers in the zone appear in the scroll list on the right.



NOTE: If your system administrator has not enabled the connection to the Print queue or the Direct connection, the corresponding printer connection will *not* appear in this list. For example, in the illustration above, only the Hold queue and the Print queue are enabled for the selected server. If your site has an operator who controls the flow of print jobs from the Command WorkStation, you may be able to print only to the Hold queue.

6. With the Fiery ZX selected, click Setup.

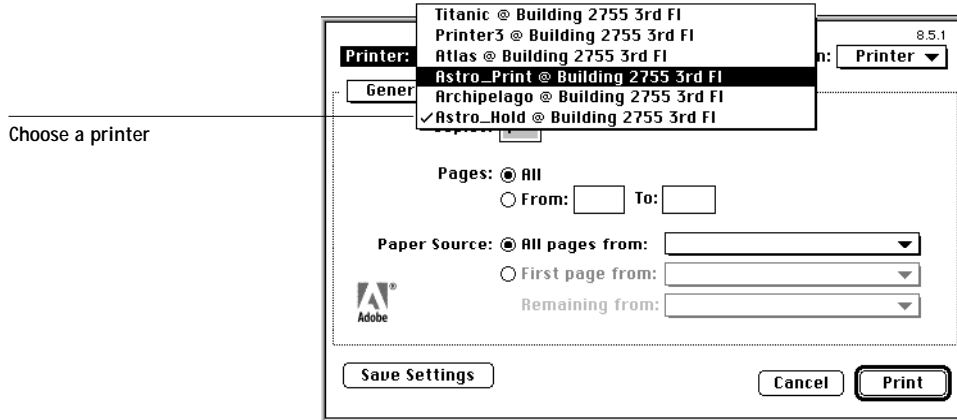
The Chooser automatically selects the correct PPD for the Fiery ZX. A printer icon appears to the left of the printer name, indicating that the printer has been matched with a PPD.



If the Chooser cannot find the correct PPD for the Fiery ZX, you are prompted to find and select the correct PPD. If you installed the AdobePS printer driver as described in *Getting Started*, the Fiery ZX PPD is located in the System Folder:Extensions:Printer Descriptions folder.

7. In the Chooser window, make sure that AppleTalk is set to Active and then close the Chooser window.

The Fiery ZX remains selected as the current printer until you choose a new printer in the Chooser. You can choose a different printer (or printer connection) from the Chooser or from the AdobePS print dialog box when you print (as shown below).



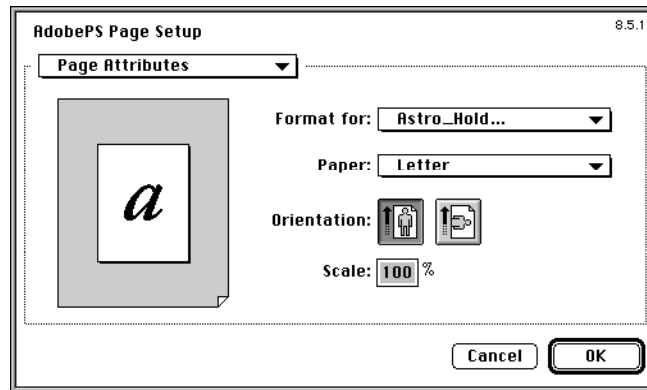
Setting print options and printing from Mac OS computers

In Mac OS applications, print options are set from both the Page Setup dialog box and the Print dialog box. For details, see Appendix A, “Print Options.”

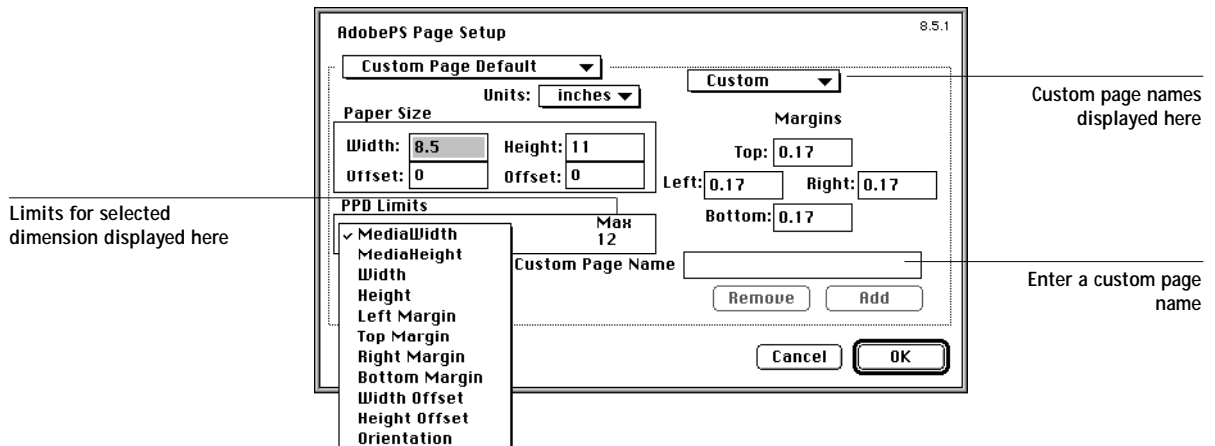
NOTE: Some default print options are set by the administrator during Setup. Check with the administrator or the operator for information on the current server default settings.

TO SPECIFY PRINT OPTIONS AND PRINT WITH THE ADOBEPS 8.5.1
PRINTER DRIVER:

1. Open the file you want to print and choose Page Setup from the application's File menu.
2. In the Page Setup>Page Attributes dialog box, specify settings for your print job.

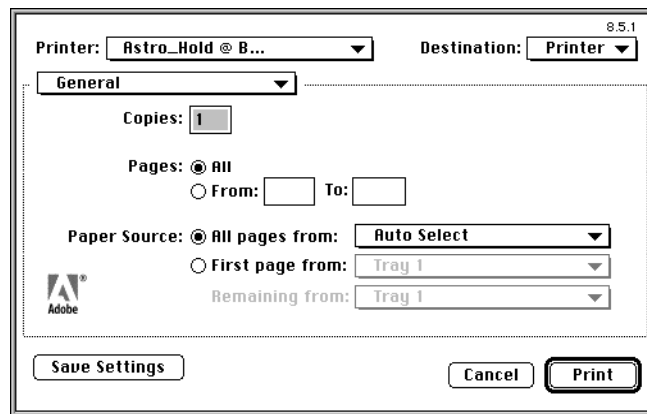


If you choose Custom as the paper size, you must also specify settings in the Page Setup>Custom Page Default dialog box.

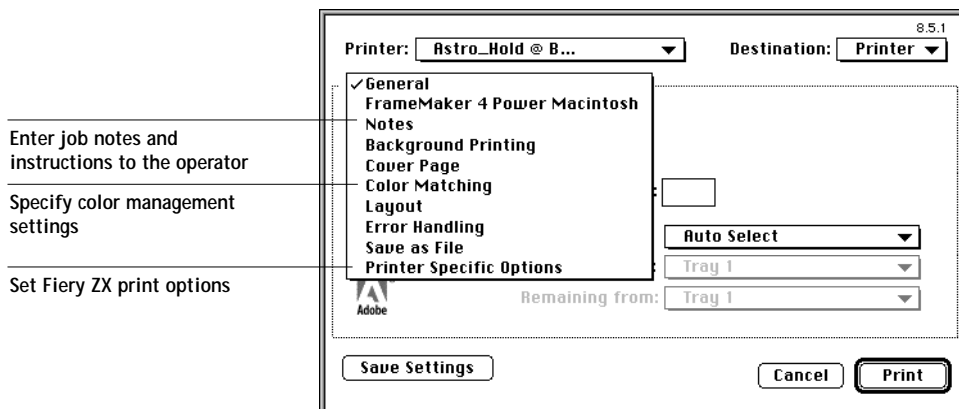


When you specify dimensions for a custom page size, the limits for various dimensions, as defined by the PPD, are displayed.

3. If you want to save this custom page size, enter a name for it and click Add.
Saved custom page sizes appear in the menu of page sizes at the top right of the dialog box. To remove a saved custom page size, choose it from the menu and click Remove.
4. Click OK.
5. Choose Print from the application's File menu.
Specify settings for the print options displayed.



6. Using the pop-up menu shown below, specify print options for your job.
Appropriate options for printing to the Fiery ZX are described in the following steps.
NOTE: Print dialog boxes vary across applications.



7. In the Print>Notes dialog box, enter job notes and instructions to the operator.

8.5.1

Printer: Astro_Hold @ B... Destination: Printer

Notes

Notes 1

Notes 2

Instructions

Save Settings Cancel Print

In the Notes 1 and Notes 2 areas, enter user and job identification information for accounting purposes, or whatever information is required at your site. These notes appear in the Job Log; they can also be displayed at the Command WorkStation. They *cannot* be edited or erased by the operator.

In the Instructions area, enter instructions to the operator about the job. They can be displayed at the Command WorkStation, but do not appear in the Job Log. They can be edited by the operator.

8. In the Print>Color Matching dialog box, specify color management settings.

8.5.1

Printer: Astro_Hold @ B... Destination: Printer

Color Matching

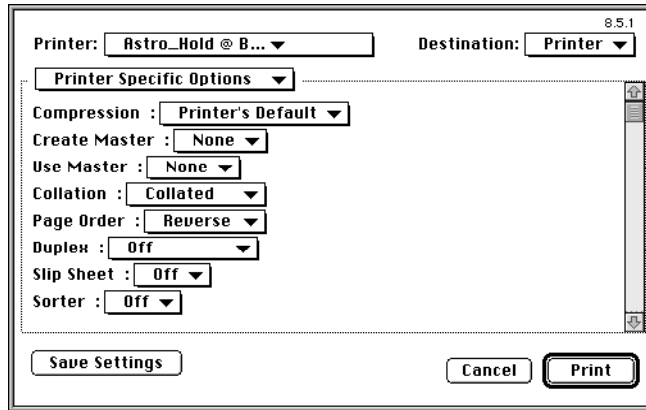
Print Color: PostScript Color Matc...

Printer Profile: Printer's Default

Save Settings Cancel Print

For most color print jobs you should use the settings shown above. For information on these options, see the *Color Guide*.

9. In the Print > Printer Specific Options dialog box, specify the appropriate settings for your print job.



These print options are specific to the Fiery ZX and the DocuColor 40 (you may need to scroll to see all the options). They override settings in Fiery ZX Setup; the settings can also be changed in the Properties dialog box from the Command WorkStation, or in the Override Print Settings dialog box from the Fiery WebSpooler. For information about these options and overrides, see Appendix A, "Print Options."

If you choose Printer's default, the Fiery ZX prints with either the printer driver setting, or the information entered during Setup.

Some PPD options are ones that could also be set from an application (for example, Reverse Order printing or Collation). In these cases, use the PPD option to perform the function, rather than setting it from the application. The application may not set up the file properly for printing and may also take longer to process.

10. If you want to make the new settings your default settings, click Save Settings.
11. Click Print.

Using the Fiery Downloader to print

Downloading files with the Fiery Downloader is generally faster than printing from application software. You can use the Fiery Downloader to print PostScript, EPS, or PDF files.

TO PRINT USING THE FIERY DOWNLOADER:

1. Create a PostScript, EPS, or PDF file. Specify the appropriate print options and include (embed) any necessary fonts that are not resident on the Fiery ZX.

For a list of fonts resident on the Fiery ZX, check with the operator or see Appendix B, “Font List.”

2. Start up the Fiery Downloader and connect to the Fiery ZX.
For instructions on setting up the Fiery Downloader, see *Getting Started*.
3. Select the file(s) you want to download, and specify any necessary options.
4. Click Download.

For details, see Chapter 5, “Downloading Files and Fonts.”

Chapter 3: Printing from UNIX Workstations

You can print to the Fiery ZX directly from UNIX. Jobs printed to the Fiery ZX are sent to the Print queue or Hold queue and can be manipulated from the Command WorkStation or from Windows and Mac OS computers on the network using the Fiery WebSpooler.

NOTE: If you print to the Hold queue, an operator must intervene from the Command WorkStation or the Fiery WebSpooler for the job to print; jobs sent to the Hold queue are spooled to disk and held.

The queue name and Fiery ZX printer name are established by your system administrator. Contact your system administrator for the names of your queues.

For information about setting up printing from TCP/IP, see your UNIX system documentation.

Printing to the Fiery ZX

You can use UNIX commands to print PostScript files and text files to the Fiery ZX. In general, the basic print commands (`lpr`, `lpq`, `lprm`) can be used to send print jobs to a Fiery ZX. See your UNIX manual pages or other documentation for information about UNIX commands.

NOTE: Only PostScript or text file formats can be printed from UNIX.

TO PRINT FROM UNIX:

- On a system running SunOS 4.1.x or another BSD-based variant, use the `lpr` command to send a job to the Fiery ZX as follows:

```
lpr <-Pprinter> <-#copies> <filename>
```

For example, if the Print queue of your Fiery ZX is named `print_Server`, your file is named `Sample`, and you want to print two copies, type:

```
lpr -Pprint_Server -#2 Sample
```

- On a system running Solaris 2.x or any System V implementation of UNIX, use the `lp` command to send a job to the Fiery ZX as follows:

```
lp -d <printrname> {-n <-#copies>} <filename>
```

For example, if the Print queue of your Fiery ZX is named `print_Server`, your file is named `Sample`, and you want to print two copies, type:

```
lp -d print_Server -n 2 Sample
```

TO DISPLAY A LIST OF JOBS IN THE QUEUE:

- On a system running SunOS 4.1.x or another BSD-based variant, use the `lpq` command to see printer jobs in the queue as follows:

```
lpq <-Pprinter>
```

For example, if the Print queue of your Fiery ZX is named `print_Server`, type:

```
lpq -Pprint_Server
```

Your workstation displays the contents of the queue.

- On a system running Solaris 2 or any System V implementation of UNIX, use the `lpstat` command to see printer jobs in the queue as follows:

```
lpstat -o <printrname>
```

For example, if the Print queue of your Fiery ZX is named `print_Server`, type:

```
lpstat -o print_Server
```

Your workstation displays the contents of the queue.

TO REMOVE JOBS FROM THE QUEUE:

NOTE: Unless you log in as the root user, you can remove only your own jobs.

- On a system running SunOS 4.1.x or another BSD-based variant, use the `lprm` command to remove jobs from the queue as follows.

```
lprm <-Pprinter> <job #...>
```

You can use the `lpq` command to check the job number.

For example, to remove job number 123 from the Print queue of your Fiery ZX named `print_Server`, type:

```
lprm -Pprint_Server 123
```

The `lprm` command reports the names of any files it removes.

- On a system running Solaris 2.x or any System V implementation of UNIX, use the `cancel` command to remove jobs from the queue.

```
cancel <printername> <job ID>
```

For example, to remove job number 123 from the Print queue of your Fiery ZX named `print_Server`, type:

```
cancel print_Server 123
```

Chapter 4: Special Features

This chapter describes some of the special features supported by the Fiery ZX including printing:

- Variable data documents using Fiery ZX FreeForm™
- Simulations
- Booklets using the Fiery Booklet Maker XTension for QuarkXPress
- Duplex pages

For general instructions on how to specify print option settings, see Chapters 1 and 2.

Printing variable data documents

FreeForm allows you to create and print variable data documents using any application you wish. FreeForm functions are set with two options when you print to the Fiery ZX: Create Master and Use Master. The master and variable elements of the document can be created using different applications, or even different computer platforms.

NOTE: FreeForm requires the ability to specify print option settings on a job-by-job basis and is therefore not supported with UNIX printing.

TO PRINT VARIABLE DATA DOCUMENTS:

1. Create a master document that contains the non-variable elements of the document.
Page layout applications support master pages that can be edited separately from body pages. If you wish, you can use the application's master pages for the master document elements, but it is not necessary.
The master document can comprise multiple pages.
2. Print the master document to the Fiery ZX with the Create Master print option set to one of the FreeForm Master bin numbers (1 through 15).

Although the Fiery ZX can store up to 100 FreeForm masters, the printer driver interface allows you to select bins 1 through 15 only. Using the Command WorkStation or the Fiery WebSpooler, the operator can override FreeForm Master bin numbers and reassign them to bin numbers greater than 15.

3. **Create the variable elements document.**

You can create the variable elements document using a different file, a different application, or a different computer platform than was used to create the master document, but the *page sizes must be the same for both documents*.

4. **Print the variable data document to the Fiery ZX with the Use Master print option set to the bin number you chose when you sent the master document (in step 2).**

FreeForm Master bin numbers can be overridden from the Command WorkStation or the Fiery WebSpooler. Check with the operator to make sure that the bin number you specify is the correct one for the FreeForm Master you want to use.

If you want to check the job before it prints, instruct the operator to RIP and then hold the job so that you can preview the rasterized data from the Command WorkStation or the Fiery WebSpooler.

Printing simulations

You can use the Fiery ZX to proof offset press jobs or to simulate the output of other print devices by specifying settings for two print options: CMYK Simulation and CMYK Simulation Method. These print options affect CMYK data only.

The Fiery ZX provides CMYK Simulation targets for the major international press standards: SWOP, DIC, and Euroscale. You can also create custom simulation targets using the Fiery Print Calibrator (see the *Job Management Guide*).

- When printing simulations on the Fiery ZX, choose the CMYK Simulation setting corresponding to the press standard for which the CMYK data was prepared, or choose a custom simulation target.
- To simulate the color of a copy made from the copier glass, choose the Match Copy setting. This setting bypasses Fiery ZX calibration.

Use the CMYK Simulation Method print option to specify the quality of simulation desired: Quick or Full. For more information, see the *Color Guide*.

Printing booklets

To generate a booklet or brochure, document pages must be grouped and arranged on printed sheets so that, when folded and stapled at the spine, the booklet pages appear in the correct order. This process of arranging document pages on printed sheets in preparation for printing is called “imposition.” The Fiery Booklet Maker XTension for QuarkXPress performs imposition automatically, based on settings you specify.

The Fiery Booklet Maker XTension allows you to define multiple printed sheet layouts. In addition:

- It compensates for creep automatically based on paper thickness, binding type, and number of pages per printed sheet.
- Bleed is determined by the current QuarkXPress setting.
- You can specify various press marks, and easily change the gaps between rows and columns of pages on a printed sheet.
- You can switch page orientation and preview thumbnails of the printed sheet layouts prior to printing.
- With Mac OS computers, you can also save booklet style settings and load them for use with other documents.

NOTE: The Windows and Mac OS versions of the Fiery Booklet Maker XTension are fundamentally the same; differences are noted in this chapter. Where a window or dialog box is illustrated, the Windows 95 version comes first, followed by the Mac OS version.

Make sure that the Fiery Booklet Maker XTension software is installed in the QuarkXPress XTension folder and that the correct Fiery ZX PPD file is installed in the QuarkXPress PDF folder.

TO SET UP A BOOKLET FOR PRINTING:

1. Launch QuarkXPress and open the document.
2. Choose **Printer Setup (Windows)** or **Page Setup (Mac OS)** from the **File** menu and choose the **Fiery ZX** printer file from the **Use PDF For: (Windows)** or **Printer Type (Mac OS)** menu.

With Windows computers, make sure the **Fiery ZX** is the currently selected default printer or choose it from the **Specific Printer** menu.

With the **AdobePS** printer driver for Mac OS computers, to find the **Printer Type** menu you must choose **QuarkXPress** from the pull-down menu at the top left of the **Page Setup** dialog box.

3. Click **OK**.
4. Choose **Print Booklet** from the **File** menu.

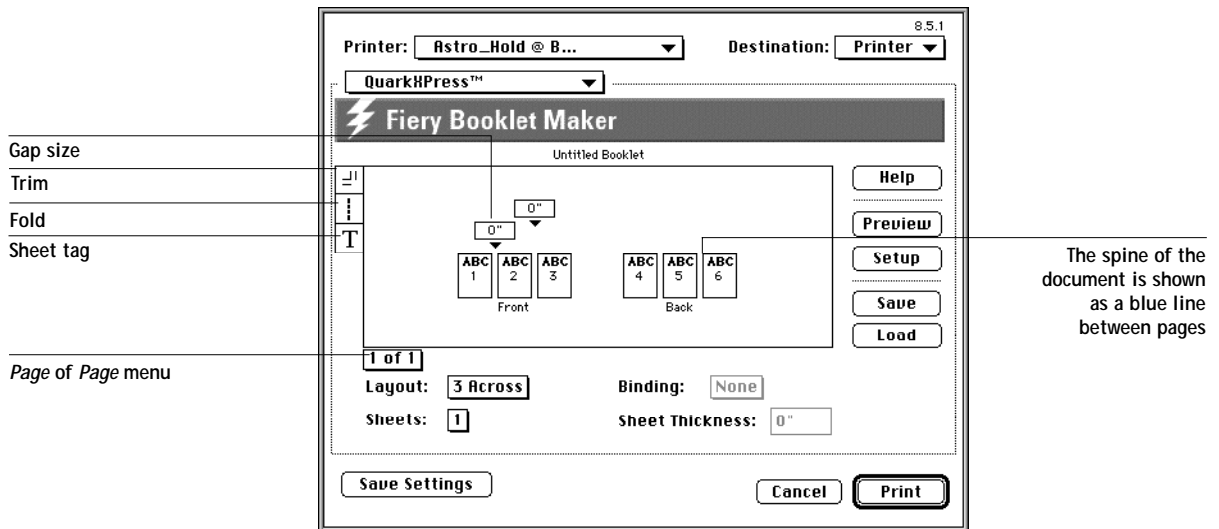
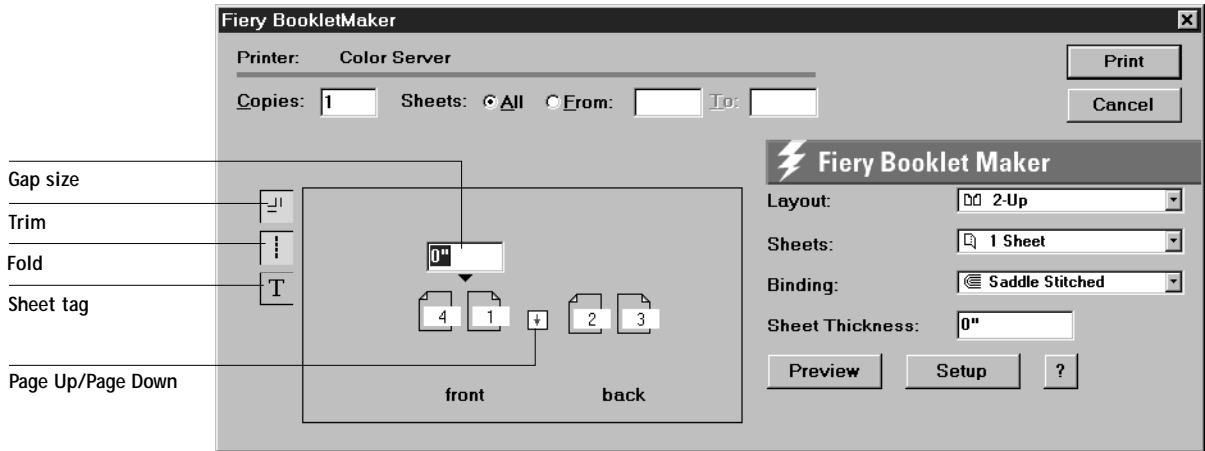
With Windows computers, specify standard print settings (such as number of copies and page range) in the top area; specify **Booklet Maker** settings in the bottom area.

With Mac OS computers, specify standard print settings (such as number of copies and page range) and then choose **QuarkXPress** from the pull-down menu at the top left of the dialog box to specify **Booklet Maker** settings.

Click **?** (Windows) or **Help** (Mac OS) at any time to view information about this dialog box.

4

4-5 Printing booklets



The layout of the front and back of the first printing sheet, as defined by the current settings, appears in the Print dialog box. Each page area on the sheet is numbered according to the current imposition order, so you can see how pages will be printed. These numbers are the current imposition order—not the document page numbers. If Binding is set to None, you can change the order (see step 11); if not, these numbers are set automatically to make sure that the booklet is printed correctly.

5. For Windows, use the Page Up/Page Down arrows to see the layout of the remaining sheets.
For Mac OS, use the *Page of Page* menu to see the layout of the remaining sheets.
6. Choose the layout you want on each side of each sheet from the Layout menu.
Choose 2 Up for standard printer's spreads, choose 2 Down for a calendar spread, choose 3 Across for tri-fold brochures, or choose 4 Up to print four pages per side of a sheet of paper.
7. Use the Sheets menu to specify the number of sheets per signature.
Signatures are the basic unit of publication production. A signature is defined as one or more sheets of printed pages folded as a single unit prior to binding and trimming. Folded signatures are then stacked (for perfect binding), or inserted between the others (for saddle stitching). The number of signatures created depends on the number of pages in the document—as many signatures as necessary are created to accommodate all the pages.
There is no provision for partial signatures. If there are not enough pages in the document to fill the created signature(s), blank pages are inserted.
8. To change the Gap size, select the value and change it.
The gap size is the amount of blank space between rows and between columns of pages on a sheet. It is used to provide space for the binding. It can be set between 0 to 12 inches.
9. For Mac OS, you can rotate all pages on a sheet of paper 180° by clicking the top of the page icon—Option click the page to rotate a single page on a sheet and Command-option click any page to return all pages to normal rotation.
10. Click any of the Printer Marks tools to display the corresponding printer's marks on your document.
The tools are:
Trim—Displays trim marks around 4 sides of the imposed area.
Fold—Displays fold marks at all intersections of imposed pages.
Sheet Tag—Displays the sheet number, job name, and date and time printed on each page.
NOTE: The Printer Marks tools are Off by default.

11. From the **Binding** menu, choose the type of binding to be used.

Choose **Saddle Stitched** if the document will be bound by staples in the center of the pages (gutter).

Choose **Perfect** if the document will be glued at the spine with each page folded in half and layered on top of the previous sheet.

Choose **None** if you want to define a custom imposition. This is useful for brochure and other “work and turn” printing. After you choose **None**, you can select and reenter the imposition order numbers. The numbers you enter must be the actual **Sheet** page numbers, as displayed in the **Sheet Layout** palette. If the signature style has multiple sheets, you must number each sheet individually. If you would like a blank page in the sheet definition, you can number it 0 (zero).

12. Specify a value from 0 to 72 points for the **Sheet Thickness** of the paper stock to be printed on.

If **Binding** is set to **None**, this option is dimmed.

This value, particularly in large booklets, helps to maintain consistent margins and gutters. Without it, images can be pulled into the gutter between pages as large booklets get thicker near the end (creep). For booklets of fewer than 15 sheets on standard paper, 0 (zero) is an acceptable **Sheet Thickness** value.

TO PREVIEW THE BOOKLET SETUP:

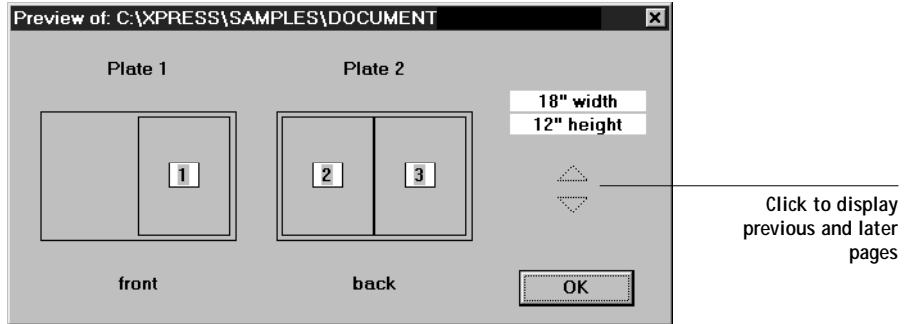
1. Click **Preview** to view the **Preview** window.

This window allows you to view the layout of pages and their position on printed sheets as currently specified. The layout of the first sheet in the document is displayed, with the page number indicated on each page.

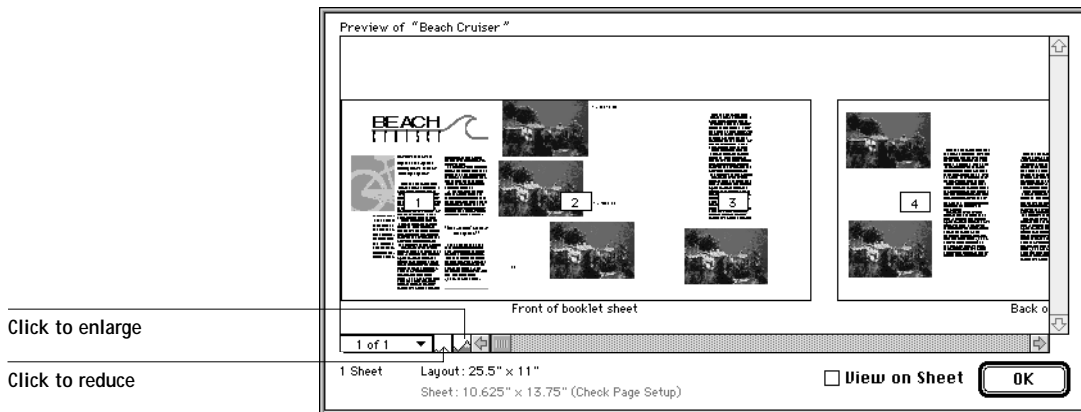
4

4-8 Special Features

For Windows, the sheet dimensions are displayed on the right side of the window.



For Mac OS, you can Option-Click the Preview button to see the layouts without thumbnail images of the pages to save time.



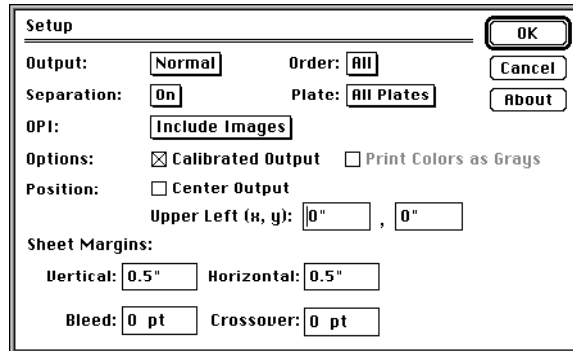
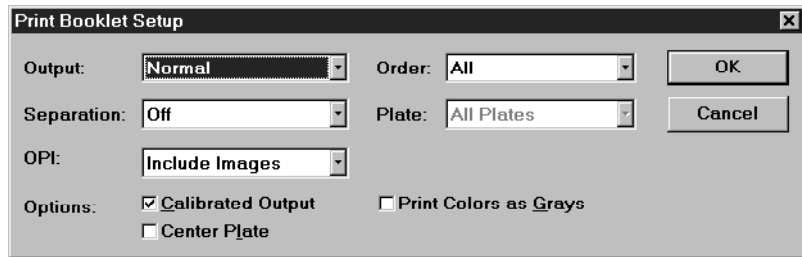
The number of sheets in the document and the sheet dimensions are displayed below the thumbnails.

2. You can also use the Sheet menu at the bottom of the window to view other sheets.
For Windows, you can use the up and down arrows on the right side of the window to display previous and later pages.
For Mac OS, click the Reduce or Enlarge icons to increase or decrease the sheet size represented. Click View on Sheet to see the front and back of each sheet.
3. When you are finished, click OK

TO PRINT THE BOOKLET:

1. Click Setup in the Print dialog box to open the (Print Booklet) Setup dialog box. Specify the appropriate settings.

Many of the features of this window are standard QuarkXPress features. See that documentation for additional information.



Output—Change the resolution of images in the document and increase printing speed. Choose **Normal** to print images at full-resolution (slowest), **Low Resolution** to print lower-resolution versions of pictures, or **Rough** to print empty boxes for images (fastest).

Separation—Choose **Off** to print all colors on each page or **On** to print each color on a different page to simulate 4-color separations. If Separation is set to **Off**, you can select the **Print Colors as Grays** option.

OPI—Control substitution of Open Prepress Interface (OPI) comments for TIFF and EPS images. Choose **Thin (Omit TIFF)**, **Light (Omit TIFF & EPS)**, or **Regular (Include Images)**. See your QuarkXPress documentation for more information.

Order—Specify whether you want to print All, Even, or Odd pages.

Plate—Choose the plates to be printed from All Plates, Black, Blue, Cyan, Green, Magenta, Red, Registration, and Yellow, as well as any additional spot colors defined in the document. If you choose All Plates, black plates are printed even if the pages on the plates do not contain black elements. Other color plates are printed only if necessary.

Calibrated Output —Select the calibration settings of the selected printer file, which is specified in the Printer Setup (Windows) or Page Setup (Mac OS) dialog box.

Print Colors as Grays—Print all colors in Grayscale.

Center Plate (Windows) or Center Output (Mac OS)—Center images on the page. Otherwise, images are positioned in the top-left corner. For Mac OS only, choose Upper Left to position images in the top-left corner and enter the distance to offset from the top and leading edges.

Sheet Margin (Mac OS only)—Enter values to specify how much space to leave around the pages. For Windows, the default QuarkXPress Bleed value is used.

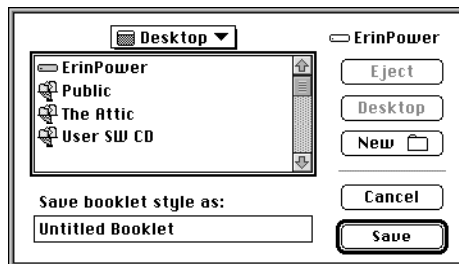
2. When you have set all the necessary options, click OK.

For Mac OS only, you can save these settings for future use (see below).

3. Click Print.

TO SAVE A BOOKLET STYLE (MAC OS ONLY):

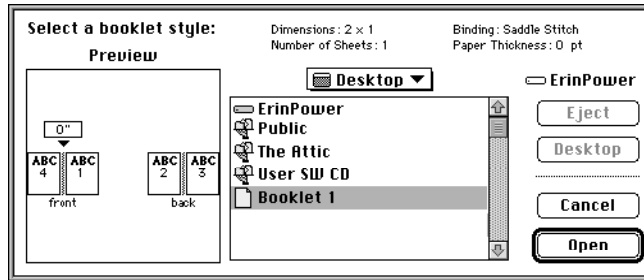
1. After setting booklet style options, click Save in the Booklet Maker area of the Print dialog box.
2. Enter a name for the booklet style and click Save.



TO LOAD A BOOKLET STYLE (MAC OS ONLY):

1. In the Booklet Maker portion of the main Print dialog box, click Load.
2. Select a saved booklet style and click Open.

A preview of the booklet layout appears on the left side of the window.



Printing duplex pages

You can use the Fiery ZX to print double-sided (duplex) pages.

TO PRINT DUPLEX PAGES:

1. When specifying print options, set Duplex to the desired setting.
Top-Top prints both sides using the same top edge; Top-Bottom prints the back side upside-down.
2. Set other options and click OK.
3. Click Print.

Chapter 5: Downloading Files and Fonts

The Fiery Downloader™ allows you to send PostScript, EPS, and PDF files directly to the Fiery ZX without using the application they were created in. It also enables you to manage printer fonts on the Fiery ZX.

You can use the Fiery Downloader from a remote workstation as well as from the Command WorkStation. Fiery Downloader requires a network connection—you *cannot* use the Fiery Downloader with the parallel port. For information on supported networking protocols, see *Getting Started*.

NOTE: The Windows and Mac OS versions of the Fiery Downloader are fundamentally the same; differences are noted in this chapter. Where a window or dialog box is illustrated, the Windows version comes first, followed by the Mac OS version.

Using the Fiery Downloader

You can use the Fiery Downloader to:

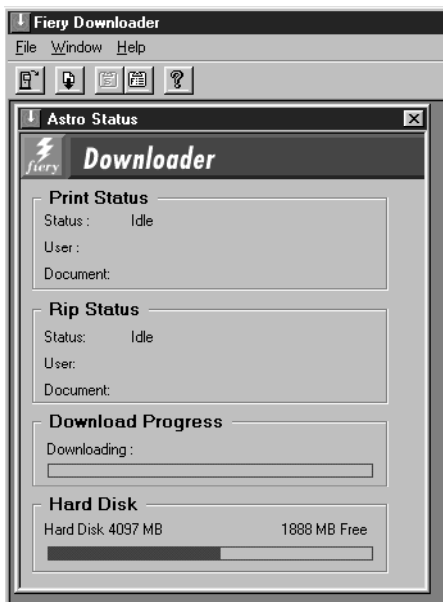
- Send PostScript, EPS, and PDF files to the Fiery ZX
- Check the status of the Fiery ZX
- Manage the PostScript printer fonts stored on the Fiery ZX hard disk (this feature requires use of the Direct connection)

NOTE: The Fiery Downloader was designed specifically for the Fiery ZX; you cannot use it with any other printer.

TO VIEW INFORMATION WITH THE FIERY DOWNLOADER:

1. Launch the Fiery Downloader.
2. Select the Fiery ZX in the Chooser window and click OK (Windows) or Connect (Mac OS).

The Fiery Downloader Status window appears and you see the Fiery Downloader Toolbar, menus, and the status bar at the bottom of the screen.



Buttons for some menu functions appear in the Toolbar at the top of the window:



Open

Click to connect to a different Fiery ZX.



Download

Click to download a file or font to the Fiery ZX.



Status

Click to display the Status window for the current Fiery ZX.



Font list

Click to display a list of printer fonts on the Fiery ZX hard disk.



About Fiery
Downloader

Click to view version information about the Fiery Downloader.

The Print Status area displays the server status and the user name and document name of the job currently printing.

The RIP Status area displays the server status and the user name and document name of the job currently processing.

The Download Progress bar displays the amount of a job processed when you download a job to the printer.

The Hard Disk region displays the amount of available disk space on the Fiery ZX.

You can click the Font list button or choose Font List from the File menu to view font information in the window.

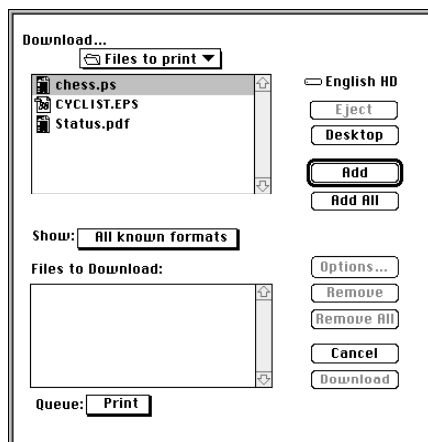
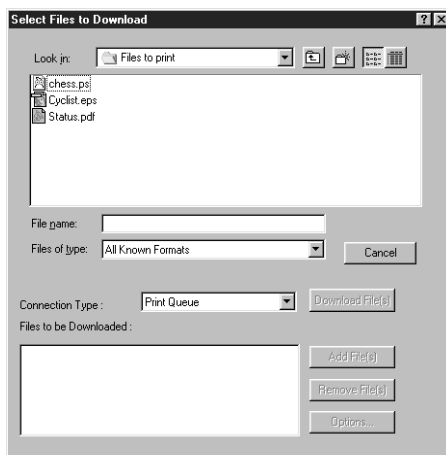
3. To select a different Fiery ZX, choose Open from the File menu or click the Open button.
4. Select the Fiery ZX in the dialog box that appears, and click OK (Windows) or Connect (Mac OS).
5. To close the connection to the Fiery ZX, make sure the Status window is active and choose Close from the File menu or click the close box in the Status window.
6. To quit the Fiery Downloader, choose Exit (Windows) or Quit (Mac OS) from the File menu.

Printing with the Fiery Downloader

Printing files with the Fiery Downloader is fast—generally faster than printing from within applications. If you regularly print large files, be sure to try printing with the Fiery Downloader.

TO DOWNLOAD A FILE OR FONT WITH THE FIERY DOWNLOADER:

1. Launch the Fiery Downloader.
2. Choose Download from the File menu or click the Download button.



3. Choose the file type to display from the Files of type (Windows) or Show (Mac OS) menu.

You can leave this at the default All Known Formats or choose All Files. All Known Formats lists all files in formats supported by the Fiery Downloader.

You can download files and fonts in the same batch. If the fonts are used by files in the same batch, the fonts should be downloaded first. Fonts can be downloaded via the Direct connection only.

4. Choose the Connection Type (Windows) or Queue (Mac OS) to which you will download the files.

The options available to you in this menu depend on the setup at your site. The potential selections are the Print queue, Hold queue, or Direct connection. If your administrator has not enabled one or more of these connections, you cannot select it.

PDF files cannot be printed with the Direct connection. If you choose the Direct connection, the job is spooled to the Print queue and then printed. If the Print queue is not enabled, the job is spooled to the Hold queue and must be released for printing by the operator.

To download fonts, you must use the Direct connection. If you do not have access to the Direct connection, you must embed any special fonts used by the file in the file when you generate it.

5. Select the filename and click Add File(s) (Windows) or Add (Mac OS).

The File name field (Windows) displays the name of the selected file before you click Add.

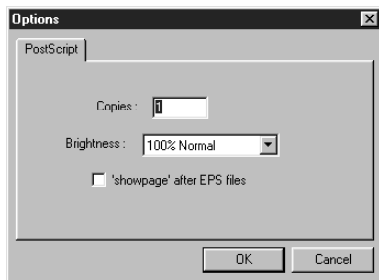
You can navigate to different drives and directories to select files to download. Click Add All (Mac OS) to add all files in a folder.

To select multiple sequential files, select the first file and then Shift-click the last file. Control-click to select multiple non-sequential files.

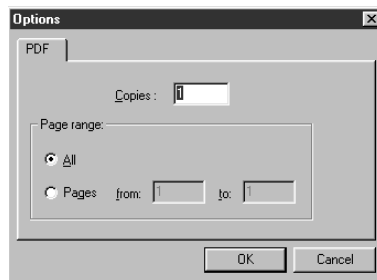
If you change your mind about a file, select the filename in the Files to Download list and click Remove File(s) (Windows) or Remove (Mac OS).

Click Remove All (Mac OS) to remove all files from the Files to Download list.

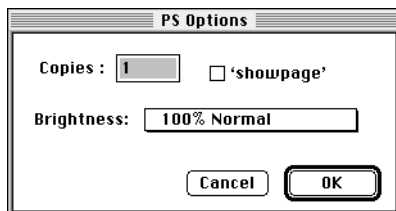
6. To change the attributes of a file to be downloaded, select it and click Options.



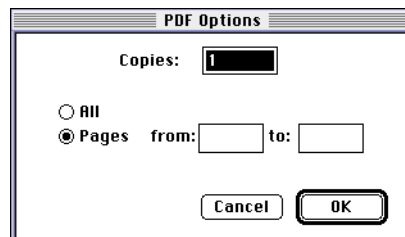
PostScript Options dialog box (Windows)



PDF Options dialog box (Windows)



PostScript Options dialog box (Mac OS)



PDF Options dialog box (Mac OS)

7. Specify the following information in the dialog box and click OK.

The options you set apply only to the selected file. You can set different options, or leave the default settings, for each file.

Copies—Specify the number of copies.

Brightness (PostScript and EPS files only)—Change the Brightness setting if a file appears to be too dark or too light. Choose 85% for a substantially lighter image, 115% for a substantially darker image, or one of the options in between.

NOTE: Some applications, including Adobe Photoshop, provide transfer functions that let you specify density settings for an image. If the file you are printing includes transfer functions, the Fiery Downloader Brightness option has no effect. For more information on using transfer functions, see the documentation for your application.

'showpage' after EPS files (Windows) or 'showpage' (Mac OS) (EPS files only)—In most cases, you do not need to use this option. Select the 'showpage' option only if an EPS file fails to print without it. This option adds a 'showpage' PostScript language command at the end of the print job. Some applications omit this necessary PostScript language command when they generate EPS files. Select this option when printing EPS files generated by these applications. If you select this option unnecessarily, extra blank pages may print.

If you experience problems printing EPS files with the Fiery Downloader, you can print the file directly from the application in which you created it.

Page Range (PDF files only)—Specify the page range you want to print.

8. Click Download File(s) (Windows) or Download (Mac OS).
9. To cancel downloading, press Escape (Windows) or Command-. (Mac OS).

Downloading and managing printer fonts

Before downloading a file that uses fonts not resident on the Fiery ZX, you must download the fonts (unless the fonts are embedded in the file). To see what fonts are resident on the Fiery ZX, use the Font List command (see page 5-9).

You can download fonts only via the Direct connection. If you do not have access to the Direct connection, you must embed any special fonts used by the file in the file when you generate it.

The screen fonts that correspond to the printer fonts installed on the Fiery ZX are not automatically installed on your Windows system.

NOTE: You cannot use the Fiery Downloader to download TrueType fonts. If you use TrueType fonts in Windows, you can print them by converting them to Adobe Type 1 fonts. To do this with the Adobe PS printer driver, click the Fonts tab and set up the Font Substitution Table as necessary.

Printer fonts and Mac OS screen fonts

Like all PostScript fonts, the fonts included with the Fiery ZX come in two forms: printer fonts and screen fonts. The printer fonts are installed permanently on the Fiery ZX hard disk. The screen fonts, which are included with the Fiery ZX user software, should be installed on your Mac OS computer. If you are using these fonts in documents you print on another printer, they are probably already installed. If not, you will need to install them yourself. For instructions, see *Getting Started*.

Occasionally, you may want to use Adobe Type 1 (Windows) or PostScript (Mac OS) fonts that are not included with the Fiery ZX. If so, you will need to install both the screen fonts and the printer fonts on your computer. To do this, follow the instructions from the font manufacturer.

Downloading printer fonts to the Fiery ZX

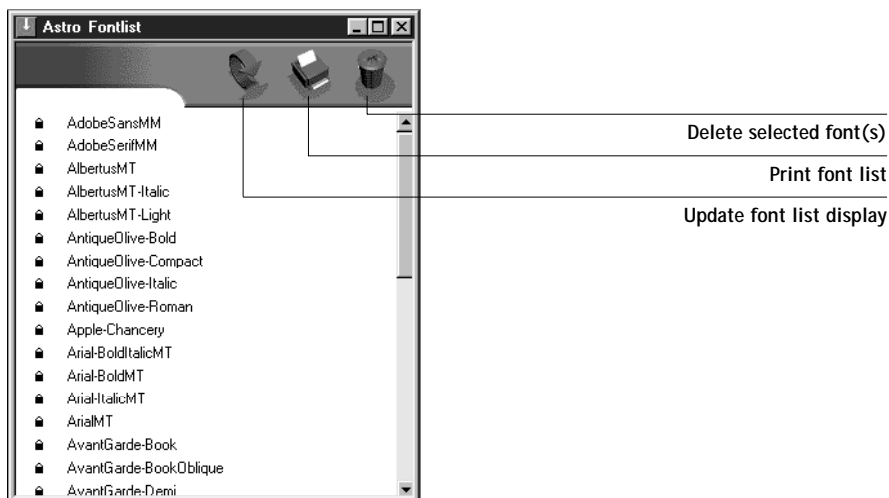
In general, each time you print from within a Mac OS application, the application automatically downloads any fonts used in your document that are not already installed on the Fiery ZX, as long as the printer fonts are installed in your System Folder. These fonts remain in the Fiery ZX only until your document has printed. If you print the same document again, your application must download the fonts again.

If you regularly use one or more fonts from Windows or Mac OS applications that are not already installed in the Fiery ZX, you can save time by downloading them to the Fiery ZX hard disk with the Fiery Downloader. Fonts you download to the Fiery ZX hard disk remain installed until they are removed no matter how many times the Fiery ZX is turned off and on. You'll probably want to download fonts you use on a regular basis to the Fiery ZX hard disk.

Before you download PostScript or EPS files with the Fiery Downloader, make sure that all fonts included in your file are installed in the Fiery ZX or embedded in your file; otherwise the text in these fonts will not print correctly and may not print at all. For PDF files, font substitution occurs automatically for fonts not installed on the Fiery ZX. Two multiple master fonts (a serif font and a sans serif font) stored on the Fiery ZX are used exclusively for substitution with PDF files.

TO VIEW FONT INFORMATION, UPDATE, PRINT, AND DELETE FONTS:

1. Choose Font List from the File menu or click the Font List button.



2. To refresh the font list display, click the Update icon.
3. To print the font list, click the Print icon.
4. To delete a font, select it in the font list and click the Delete icon. Shift-click to select multiple fonts. Ctrl-click to select multiple non-sequential fonts.

NOTE: The 136 printer fonts included with the Fiery ZX (resident fonts) are locked. Locked fonts appear with a lock icon next to the name and cannot be deleted.

Chapter 6: Tracking and Managing Print Jobs

Fiery ZX user software includes a variety of tools that allow you to track and manage print jobs. The particular tools, and the access privileges for them, that are available to you depend on the conditions implemented by your site administrator.

The Command WorkStation and the Fiery WebSpooler both provide the capability to view and control the flow of print jobs to the Fiery ZX. If the administrator has set Administrator and Operator passwords in Setup, you need one of these passwords to perform most Command WorkStation and Fiery WebSpooler functions. For information on these tools and the access privileges needed to use them, see the *Job Management Guide*.

The Status WebTool does not require any special access privileges. If the administrator has enabled Web Services in Setup and has provided you with the IP address of the Fiery ZX, you can use the Status WebTool to monitor the status of print jobs as they are rasterized and printed.

Fiery WebTools

Fiery WebTools reside on the Fiery ZX but can be accessed over the network from a variety of platforms. The Fiery ZX has a home page that lets remote users view server functions and manipulate jobs. For an overview of the Fiery WebTools and information on how to access them, see the *Job Management Guide*. This chapter describes only the Status and WebLink WebTools.

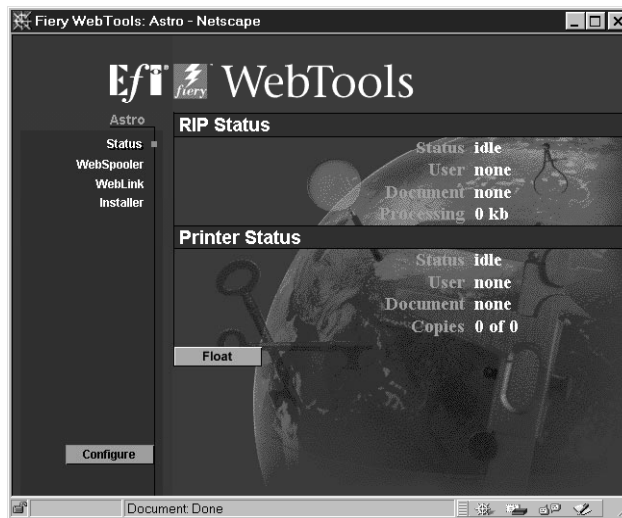
TO ACCESS THE FIERY WEBTOOLS:

1. Start up your Internet browser application.
See *Getting Started* for information about supported platforms and browsers.
2. Enter the IP address or the DNS name of the Fiery ZX.
Check with the operator or administrator for this information.
3. If a Log In dialog box appears, select Guest and click OK.
The Log In dialog box appears only if the administrator has set Administrator or Operator privileges. Guest access is sufficient to use the Status and WebLink WebTools as described in this chapter.

4. When the Fiery ZX home page appears, click to select one of the Fiery WebTools. Move the cursor over the buttons to display information about the selections.

Checking Fiery ZX status with the Status WebTool

You can use the Status WebTool to see what jobs are currently processing and printing. To access the Status WebTool, point your browser to the Fiery ZX home page and click Status. The current RIP Status and Printer Status appear in the window.



To open a new browser window for the Status display, click Float. You can then close other browser windows and leave the Status window open to continue checking the status of the Fiery ZX. As long as you keep the Status window open, it is dynamically updated.

To obtain more information about the status of jobs, use the Fiery WebSpooler or the Command WorkStation. For information about them, see the *Job Management Guide*.

Accessing information with the WebLink WebTool

The WebLink button on the Fiery ZX home page provides a link to another web page or to multiple web pages, provided you have a valid Internet connection. The administrator at your site can set the WebLink destination. Check your Fiery ZX WebLink for any information available there.

Appendix A: Print Options

Print options give you access to the special features of the DocuColor 40 and the Fiery ZX. Print options can be specified in several places—in Fiery ZX Setup, from the printing application, from the Fiery Downloader, from the Command WorkStation, or from the Fiery WebSpooler. The table in this appendix briefly describes each print option, gives its default setting, and provides information on any constraints or requirements in effect.

Where to set print options

- Some settings are specified during Setup by the administrator. For information on the current default settings, check with the operator or the administrator.

- From applications

With the Adobe PostScript printer drivers (included in your user software) and the Windows NT 4.0 printer driver, you can specify and override job settings when you print a job. See Chapter 1, “Printing from Windows Computers” and Chapter 2, “Printing from Mac OS Computers” for information about specifying job settings from applications.

NOTE: The job settings you specify can be overridden by the operator from the Command WorkStation or the Fiery WebSpooler.

- From the Fiery Downloader

Only a few settings—Page Range (for PDF files only), Copies, and Brightness—can be specified when printing jobs with the Fiery Downloader. To change options in the Fiery Downloader, select the job in the Files to be Downloaded (Windows) or Files to Download (Mac OS) list and click Options. For more information, see Chapter 5, “Downloading Files and Fonts”.

- Overrides from the Command WorkStation and Fiery WebSpooler

To change job settings from the Command WorkStation, double-click a job to display the Properties dialog box. To change job settings from the Fiery WebSpooler, double-click a job to display the Override Print Settings dialog box. For more information, see the *Job Management Guide*.

Print options and override hierarchy

In the following table, the default printer driver settings (PPD defaults) are underlined. The Printer's Default setting indicated that a default has been specified in Fiery ZX Setup. To find out about the current Setup defaults, print the Configuration page from the Command WorkStation or from the Fiery ZX Control Panel.

The override hierarchy is as follows:

- A user's printer driver settings override the Fiery ZX Setup settings.
- Settings made from the Command WorkStation or the Fiery WebSpooler override the user's printer driver settings.

Option and settings: (Default setting is underlined)	Description:	Requirements, constraints, and information:
Black Detection Off/ <u>On</u>	Specify whether the Fiery ZX should scan documents (On) before printing to detect black-only pages. Allows for accurate billing of black-and-white pages.	The Color Mode option must be set to CMYK to set this option to On.
Black Overprint <u>Printer's Default</u> /Off/On	Select Off to print black text with knockouts. Select On to overprint black text on colored backgrounds.	<p>If this option is set to On:</p> <ul style="list-style-type: none"> • The Pure Black Text/Graphics option must be set to On. • The Combine Separations option must be set to Off. • The Compression option must be set to On. <p>This option cannot be set to On when printing separations, only when printing composites.</p> <p>See the <i>Color Guide</i> for more information.</p>
Brightness 85% Lightest/90% Lighter/ 95% Light/ <u>100% Normal</u> /105% Dark/ 110% Darker/ 115% Darkest	Select 85% for a substantially lighter image, 115% for a substantially darker image, or one of the settings in between.	



Option and settings: (Default setting is underlined)	Description:	Requirements, constraints, and information:
CMYK Simulation <u>Printer's Default</u> /SWOP-Coated/DIC/ Euroscale/Custom-1/Custom-2/ Custom-3/Custom-4/Custom-5/None/ Match Copy	Select a CMYK simulation target to use for the current print job.	See the <i>Color Guide</i> for more information.
CMYK Simulation Method <u>Printer's Default</u> /Quick/Full	Select Quick to apply one-dimensional transfer curves that adjust output density. Select Full to apply four-dimensional transfer curves that adjust hue as well as output density.	See the <i>Color Guide</i> for more information.
Collation <u>Collated</u> /Uncollated	For multiple-copy, multiple-page job, specify whether or not to collate the job.	
Color Mode <u>CMYK</u> /Grayscale	Specify the color mode for the current print job. Select CMYK for a full-color document or Grayscale for a grayscale or black-and-white document.	
Combine Separations <u>Off</u> /On	When printing separations from a desktop publishing application: Select On to combine separations on a single page. Select Off to view separations as four individual black-and-white pages, each representing one color plate.	For more information, see page A-7.
Compression <u>Printer's Default</u> /On/Off	Select Off to disable compression for printing very complex images. This requires a significant amount of memory to process and print; however, images print faster with the best possible image quality. Select On to enable compression when printing multiple-page jobs that do not consist of complex pages.	
Copier Mode <u>Text Enhancement</u> /Photo/Map	Select Text Enhancement or Photo if the file is a photograph. Select Map if the file is a combination of text and photographs.	



Option and settings: (Default setting is underlined)	Description:	Requirements, constraints, and information:
Copies <u>1</u> - 999	Specify the number of copies of the job to print.	
Create Master <u>None</u> /1 - 15	To create a FreeForm master from this job, specify a number to assign to the FreeForm master file.	For more information, see page 4-1.
Duplex <u>Off</u> /Top-Top/Top-Bottom	Select Off for simplex (single sided) printing, select Top-Top for duplex (double sided) printing with both sides using the same top edge, or select Top-Bottom for duplex printing with the back side upside down.	If the Suspend Printing command is used during printing of a duplex job, printing cannot be resumed—the job must be resent.
Instructions	Use this field to enter instructions to the operator about the job (see also Notes 1 and Notes 2).	The instructions field has a 128-character limit.
Media Type (Paper Type) <u>Plain Paper</u> /Thick Paper/Transparency/ Interleaved/Opaque Film	Specify the type of media on which to print the job. Select Interleaved if you will be printing multiple transparencies with blank paper separators.	
Notes 1 and Notes 2	Use one or both of these fields to enter special information about the job (see also Instructions).	The Notes 1 and Notes 2 fields each have a 32-character limit.
(Other) Gamma <u>Printer's Default</u> /1.0/1.2/1.4/1.6/1.8/ 2.0/2.2/2.4/2.6/2.8/3.0	Specify a source gamma value for printing RGB images, objects, and text.	To enable this option, RGB Source must be set to Other. See the <i>Color Guide</i> for more information.
(Other) Phosphors <u>Printer's Default</u> /Hitachi EBU/ Hitachi-Ikegami/NTSC/Radius Pivot/ SMPTE/Trinitron	Specify a source monitor phosphors value for printing RGB images, objects, and text.	To enable this option, RGB Source must be set to Other. See the <i>Color Guide</i> for more information.
(Other) White Point <u>Printer's Default</u> /5000 K/5500 K/ 6500 K/7500 K/9300 K	Specify a source white point value for printing RGB images, objects, and text.	To enable this option, RGB Source must be set to Other. See the <i>Color Guide</i> for more information.



Option and settings: (Default setting is underlined)	Description:	Requirements, constraints, and information:
Page Order <u>Forward</u> / <u>Reverse</u>	Select Forward for front-to-back output or Reverse for back-to-front output.	
Page Range <u>All</u> / <u>Even</u> / <u>Odd</u> / <u>Range</u> (1-3, 5, 7)	Specify which pages of the document to print. To print a contiguous page range, specify the first and last page numbers of the range separated by a hyphen. To print non-contiguous pages, specify the page numbers using commas as separators.	For more information, see page A-7.
Paper Size <u>Letter</u> /A4/11 x 17/A3/12x18/Legal/ Legal 13/B4/B5/A6/SEF Letter/ SEF A4/SEF B5/SEF 8x10/8x10/9x11/ 9x12/Docupac/Custom 1/Custom 2/ Custom 3	Specify the size of the paper on which to print the document. Custom paper sizes can be defined with Mac OS or Windows 95 computers using the Adobe PostScript Printer Driver provided with your Fiery ZX user software.	For instructions on how to define custom paper sizes, see Chapters 2 and 3.
Paper Source <u>Auto Select</u> /Tray 1/Tray 2/Tray 3/ Bypass Tray	Specify the source for the media on which to print the job.	For more information, see page A-7.
Pure Black Text/Graphics <u>Printer's Default</u> /Off/On	Select Off to print black text and graphics as a four-color black using C, M, Y, and K toner, and to use normal PostScript rendering. Select On to print black text and graphics as one-color black using 100% black toner only.	If this option is set to On, Compression must be set to On. See the <i>Color Guide</i> for more information.
Rendering Style <u>Photographic</u> / <u>Presentation</u> /Solid Color	Specify a color rendering dictionary (CRD) to be used when you print RGB images, objects, and text.	The Color Mode option must be set to CMYK. The Rendering Style option has no effect on CMYK data. See page A-7 and the <i>Color Guide</i> for more information.
RGB Source <u>Printer's Default</u> /EFIRGB/sRGB (PC)/ Apple Standard/Other/Off	Specify a source color space definition for printing RGB images, objects, and text.	See page A-8 and the <i>Color Guide</i> for more information.
Save Fast Reprint <u>Off</u> /On	Specify whether or not to save a job's raster data to disk after printing, so the data will be available later for reprinting (without reRIPping).	If this option is set to On, Compression must be set to On.



Option and settings: (Default setting is underlined)	Description:	Requirements, constraints, and information:
Scale <u>100%</u> /200%/150%/75%/50%	Specify the percentage at which to print the job.	For more information, see page A-8.
Slip Sheet On/ <u>Off</u>	Specify whether to insert a slip sheet between copies of multiple-copy jobs.	
Sorter On/ <u>Off</u>	Specify whether or not to sort the job.	If the Suspend Printing command is used during printing of a sort job, printing cannot be resumed—the job must be resent. The Slip Sheet option must be set to Off to set this option to On.
Spot Color Matching <u>Printer's Default</u> /Off/On	Select <u>Off</u> to print specified PANTONE colors in your job using the current CMYK Simulation and CMYK Simulation Method. Select <u>On</u> to activate the PANTONE lookup tables to generate the copier's best CMYK matches of PANTONE library colors.	This option cannot be set to On when printing separations, only when printing composites. The On setting does not work with PANTONE blends, or with duotones, tritones, or quadtones in Photoshop, or with monochrome images specified with a spot color by QuarkXPress (recolored image option). See the <i>Color Guide</i> for more information.
Stapler <u>Off</u> /On	Specify whether or not to staple the job.	If the Suspend Printing command is used during printing of a staple job, printing cannot be resumed—the job must be resent. If this option set to On, the Compression option must be set to On.
Use Master <u>None</u> /1 - 15	For variable data print jobs, specify a FreeForm master number to be used for the job.	For more information, see page 4-1.



More information about print options

The following sections provide additional information about print options. See the table above for information on the settings, requirements, and constraints in effect for these options.

Combine Separations

The Combine Separations option specifies whether to combine color separations created in desktop publishing applications on a single page to simulate printing on a press from film separations. It allows you to proof overprinting, trapping, and other four-color printing effects before having film separations created. It also enables you to combine Desktop Color Separations (DCS) format files to print them at full resolution instead of printing the low-resolution master file.

Your job must have been printed as color separations or DCS format when you printed it from your application. If you did not print the job in this manner, the Combine Separations option has no effect.

NOTE: This option is supported only for Adobe PageMaker and QuarkXPress.

Page Range

The operator can specify a page range override, but this range applies only to the pages included in the active job. For example, if a user specifies Odd for Page Range in the original job, even if the operator specifies a Page Range override of All, only the odd pages of the original document are printed (“all” the odd pages).

Paper Source

If you choose the Auto Select setting, the copier prints from any tray containing the paper size needed for the job. This setting also allows the copier to automatically switch between trays, if the current tray becomes empty, while continuing to print.

Rendering Style

Use this option to select a default color rendering dictionary (CRD) to be used when you print RGB images, objects, and text.

Photographic—Optimizes the range of colors on the Fiery ZX to produce the best results for photographic or bitmapped images.

Presentation—Optimizes the output of pure, saturated colors such as those used in business presentations. It treats continuous tone images in the same way as the Photographic CRD does.

Solid Color—Most useful for printing spot colors such as those found in company logos or corporate charts and graphics. Provides the best color accuracy for images using PANTONE colors. This setting is recommended when the (Other) White Point option is set to anything other than Printer's Default.

For information on color rendering and color management, see the *Color Guide*.

RGB Source

This option is used to specify a source color space for RGB data.

EFI RGB—Optimal source space for printing to the Fiery ZX-40 Color Server. This setting provides consistent output across platforms.

sRGB (PC)—Specifies the source space of a generic Windows computer monitor.

Apple Standard—Specifies the source space of a Mac OS computer monitor.

Other—Allows you to specify a custom RGB source setting using the (Other) Gamma, (Other) Phosphors, and (Other) White Point print options.

For information on source color space and color management, see the *Color Guide*.

Scale

The operator can specify a scaling override, but the override is applied to the scaling value already set in the active job. For example, if a user sends a job with a scaling value of 50% and the operator specifies a Scale override of 200%, the job is printed at 100% of the original document size, that is, 50% of 200%.

Appendix B: Font List

This appendix lists the built-in printer fonts included with your Fiery ZX.

PostScript printer fonts

Listed below are the 136 built-in PostScript printer fonts on the Fiery ZX.

In addition to the fonts listed below, two Adobe Multiple Master fonts are included and are used for font substitution in PDF files.

NOTE: For Mac OS computers, install the corresponding screen fonts from the User Software CD. For instructions, see *Getting Started*.

Adobe Type 1 fonts

The Fiery ZX includes 117 Adobe Type 1 fonts:

- AlbertusMT, AlbertusMT-Italic, AlbertusMT-Light
- AntiqueOlive-Roman, AntiqueOlive-Bold, AntiqueOlive-Compact, AntiqueOlive-Italic
- AvantGarde-Book, AvantGarde-BookOblique, AvantGarde-Demi, AvantGarde-DemiOblique
- Bodoni, Bodoni-Bold, Bodoni-Italic, Bodoni-BoldItalic, Bodoni-Poster, Bodoni-PosterCompressed
- Bookman-Demi, Bookman-DemiItalic, Bookman-Light, Bookman-LightItalic
- Carta
- Clarendon, Clarendon-Bold, Clarendon-Light
- CooperBlack, CooperBlack-Italic
- Copperplate-ThirtyThreeBC, Copperplate-ThirtyTwoBC
- Coronet-Regular
- Courier, Courier-Bold, Courier-Oblique, Courier-BoldOblique
- Eurostile, Eurostile-Bold, Eurostile-ExtendedTwo, Eurostile-BoldExtendedTwo

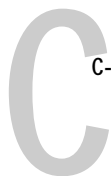


- GillSans, GillSans-Bold, GillSans-Italic, GillSans-BoldItalic, GillSans-Condensed, GillSans-BoldCondensed, GillSans-Light, GillSans-LightItalic, GillSans-ExtraBold
- Goudy, Goudy-Bold, Goudy-Italic, Goudy-BoldItalic, Goudy-ExtraBold
- Helvetica, Helvetica-Bold, Helvetica-BoldOblique, Helvetica-Condensed, Helvetica-Condensed-Bold, Helvetica-Condensed-BoldObl, Helvetica-Condensed-Oblique, Helvetica-Narrow, Helvetica-Narrow-Bold, Helvetica-Narrow-BoldOblique, Helvetica-Narrow-Oblique, Helvetica-Oblique
- JoannaMT, JoannaMT-Bold, JoannaMT-Italic, JoannaMT-BoldItalic
- LetterGothic, LetterGothic-Bold, LetterGothic-BoldSlanted, LetterGothic-Slanted
- LubalinGraph-Book, LubalinGraph-BookOblique, LubalinGraph-Demi, LubalinGraph-DemiOblique
- Marigold
- MonaLisa-Recut
- NewCenturySchlbk-Roman, NewCenturySchlbk-Bold, NewCenturySchlbk-Italic, NewCenturySchlbk-BoldItalic
- Optima, Optima-Bold, Optima-Italic, Optima-BoldItalic
- Oxford
- Palatino-Roman, Palatino-Bold, Palatino-Italic, Palatino-BoldItalic
- StempelGaramond-Roman, StempelGaramond-Bold, StempelGaramond-Italic, StempelGaramond-BoldItalic
- Symbol
- Tekton
- Times-Roman, Times-Bold, Times-Italic, Times-BoldItalic
- Univers, Univers-Bold, Univers-BoldExt, Univers-BoldExtObl, Univers-BoldOblique, Univers-Condensed, Univers-CondensedBold, Univers-CondensedBoldOblique, Univers-CondensedOblique, Univers-Extended, Univers-ExtendedObl, Univers-Light, Univers-LightOblique, Univers-Oblique
- ZapfChancery-MediumItalic
- ZapfDingbats

TrueType fonts

The Fiery ZX includes 19 TrueType fonts:

- Apple-Chancery
- ArialMT, Arial-BoldMT, Arial-ItalicMT, Arial-BoldItalicMT
- Chicago
- Geneva
- HoeflerText-Regular, HoeflerText-Black, HoeflerText-Italic, HoeflerText-BlackItalic, HoeflerText-Ornaments
- Monaco
- NewYork
- TimesNewRomanPSMT, TimesNewRomanPS-BoldMT, TimesNewRomanPS-ItalicMT, TimesNewRomanPS-BoldItalicMT
- Wingdings-Regular

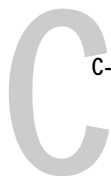


Appendix C: Troubleshooting

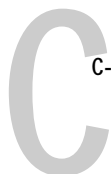
This section provides some troubleshooting guidelines should a problem arise. If you are unable to resolve a problem after referring to this section, contact your site operator or administrator.

General printing problems

If this happens:	Try this:
You cannot select or view one of the queues.	<ul style="list-style-type: none">• Have your system administrator enable the queue in Setup.
Printing ties up your computer for too long.	<ul style="list-style-type: none">• Print to a queue instead of to the Direct connection. When you print to a queue, the job is stored on the Fiery ZX until it can be processed and printed; when you print to the Direct connection, the job cannot be sent to the Fiery ZX until the previous job is finished processing, so you must wait longer to use your computer.
Special paper or transparency options are dimmed.	<ul style="list-style-type: none">• Select a Paper Source that supports the media type you are using.
Message requests a paper size that you don't have.	<ul style="list-style-type: none">• Cancel the job and do one of the following: If you are printing a PostScript file, ask the administrator to set the Convert Paper Sizes setting in PS Setup to convert the job to a paper size you do have. You can do this to convert between US and metric paper sizes. If you are printing a file from an application, change the page size in the Page Setup dialog box.
You cannot print with QuarkXPress 3.32 using the AdobePS 8.5.1 driver on a Mac OS computer.	<ul style="list-style-type: none">• Remove the file called Balloon Help from your QuarkXPress application folder and relaunch QuarkXPress.



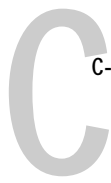
If this happens:	Try this:
<p>Fiery ZX doesn't respond to a Print command.</p>	<ul style="list-style-type: none">• Has someone disconnected the copier by selecting Suspend Printing from the Functions menu? <p>If the administrator or operator has selected Suspend Printing on the Fiery ZX Control Panel or Command WorkStation to interrupt printing (so that someone can make a color copy, for example), your print job will not resume until someone selects Resume Printing from the Functions menu on the Control Panel or from the Server menu at the Command WorkStation.</p>• Did you select the Fiery ZX as the current printer? <p>Before printing, you must select the Fiery ZX as the current printer from your Mac OS, Windows, or UNIX workstation.</p>• Make sure that the copier is switched on. <p>Someone may have turned the copier off, or the Automatic Power-Off or Power Saver mode function may have engaged. Even with the copier off, the Fiery ZX appears in the Chooser as long as the Fiery ZX itself is turned on.</p>• If you are printing over an IPX (Novell) network, verify through the PCONSOLE utility that the job was sent to the Novell queue and that the queue is being used by the Fiery ZX.• Make sure that the job does not contain a PostScript error. <p>Check with the operator, or use Fiery WebSpooler or the Command WorkStation to check the job's status. A job containing a PostScript error appears in red in the Fiery WebSpooler and Command WorkStation displays.</p>



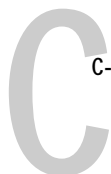
If this happens:	Try this:
<p>Jobs sent to the parallel port do not print.</p>	<ul style="list-style-type: none">• Review the procedures provided in <i>Getting Started</i> on how to prepare the Fiery ZX and your Windows 95 computer for parallel port printing. Also see your Windows 95 documentation.• Ask the administrator to increase the parallel "Port Timeout in Seconds" on the Fiery ZX Control Panel.• Ask the administrator to change the Ignore EOF Character setting on the Fiery ZX Control Panel. If you will be printing ASCII format PostScript only, set Ignore EOF Character to No; if you will be printing Binary format PostScript, set it to Yes.• If you print using the DOS copy command, make sure to use the /b option when printing binary files.• If the PostScript printer driver that you are using lets you select bidirectional communication, make sure that it is disabled. This is generally set from the Properties dialog box for the printer.

Problems with print quality

If this happens:	Try this:
<p>Print settings for your job output do not match the settings you gave.</p>	<ul style="list-style-type: none">• Make sure that you did not override the setting for the job in another place. For information about options and overrides, see Appendix A "Print Options."



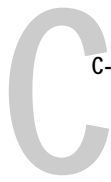
If this happens:	Try this:
You get poor printing results.	<ul style="list-style-type: none">• Does your application require one of Fiery ZX printer description files? If you're printing from an application such as Adobe Separator or PageMaker, MacroMedia FreeHand, or QuarkXPress, make sure that the Fiery ZX printer description file is installed correctly. For information about installing these files, see <i>Getting Started</i>.• Use a different Copier Mode option. For Fiery ZX-40 Color Server systems, the default Copier Mode setting is Text Enhancement. Try changing the setting to Photo and see if the results improve.• Make sure the system has been calibrated.• Try printing with Compression set to Off. In general, Compression increases processing speed without affecting print quality, so you should leave it on unless it affects the print quality of specific files.
Separations do not combine properly.	<ul style="list-style-type: none">• Make sure that the file was initially created as separations.• If you are printing separations or a DCS format file, set the Combine Separations print option to On. With Combine Separations On, all four colors will be printed on a single page; with Combine Separations Off, four grayscale pages will print to simulate four single-color plates.
The registration or colors of an image are not what you expected.	<ul style="list-style-type: none">• Ask the operator to print a test page or make a test copy with the copier. The problem may be with the copier. If your test page or copy show that the copier is working properly, correct the problem within your application software. If the test page or copy are wrong, your copier may need to be calibrated or adjusted in some other way.
Your printed file appears too dark.	<ul style="list-style-type: none">• Adjust the Brightness option. You can use the Brightness option when printing from an application or from the Fiery Downloader to lighten your image whenever you print a PostScript or Encapsulated PostScript (EPS) file.
Color output is incorrect.	<ul style="list-style-type: none">• Check with the operator or administrator about the current calibration information. The copier may need to be recalibrated because it has been too long since it was calibrated or because it is using a different target.
Color file prints in black and white.	<ul style="list-style-type: none">• In the Print Options dialog box, make sure that Color/Grayscale or ColorSync Color Matching or PostScript Color Matching is selected (not Black and White).• Make sure that the Color Mode selected for the job is CMYK and not Grayscale.



If this happens:	Try this:
Desktop Color Separations (DCS) format images print incorrectly.	<ul style="list-style-type: none">• Make sure that you selected the correct options to send separations in the application's Print dialog box.• Make sure that you have the file for every layer of separation that you are printing.• Set the Combine Separations option to On. This combines the high-resolution files for an image and prints them. With Combine Separations Off, the low-resolution master file will print.
QuickDraw fill patterns print as solids.	<ul style="list-style-type: none">• Use the Adobe PostScript Printer driver (or the Apple LaserWriter 8.3 or later printer driver).

Problems with Fiery Downloader

If this happens:	Try this:
General problems	<ul style="list-style-type: none">• Make sure that you are using the latest version. If you are updating your Fiery ZX to new system software, delete the previous versions of the Fiery Downloader utility from your Mac OS or Windows computer and install the latest versions to insure full compatibility.
You cannot connect to the Fiery ZX from the Fiery Downloader.	<ul style="list-style-type: none">• Make sure that the Fiery ZX is not being calibrated. If the Fiery ZX is being calibrated, you cannot connect to it. This insures that only one person is calibrating the server at any time and that print jobs do not use unexpected calibration.
You can't print an EPS file using the Fiery Downloader.	<ul style="list-style-type: none">• Try printing using the "Showpage" option in the Download PostScript File dialog box. The Showpage (after EPS files) option adds a showpage PostScript language command at the end of the print job. Certain applications omit this necessary PostScript language command when they generate EPS files. You'll need to select the Append Showpage option when printing EPS files generated by these applications. If you continue having difficulties printing an EPS file with the Fiery Downloader, try printing the file from the application in which it was created.• Make sure that the job does not contain a PostScript error. Check with the operator, or use Fiery WebSpooler or the Command WorkStation to check the job's status. A job containing a PostScript error appears in red in the Fiery WebSpooler and Command WorkStation displays.



If this happens:	Try this:
You have problems downloading a font with Fiery Downloader.	<ul style="list-style-type: none">• Check with the administrator to make sure that the Direct connection is enabled. The Direct connection must be used to download fonts. (Files can be downloaded via the Print or Hold queue.)
Extra blank page prints after a Fiery Downloader job.	<ul style="list-style-type: none">• Turn off the “Showpage (after EPS file)” option. This option adds a special PostScript command that will cause an extra blank page to print if it is not needed.

Index

Numerics

2-sided printing, *see* Duplex option

A

Adobe Photoshop, *see* Photoshop

Adobe PostScript Printer Driver, *see*

PostScript printer drivers

applications, setting print options from 2-8

B

Black Detection option A-2

Black Overprint option A-2

Booklet Maker XTension, *see* Fiery Booklet
Maker XTension

Brightness option A-1, A-2

in Fiery Downloader 5-6

C

calibration, bypassing 4-2

cancel command (UNIX) 3-3

capabilities of PostScript printer drivers 1-10

Chooser window (Mac OS), selecting color
server in 2-1 to 2-4

CMYK Simulation Method option 4-2, A-3

CMYK Simulation option 4-2, A-3

Match Copy setting 4-2

CMYK simulations 4-2

Collation option A-3

color, troubleshooting output C-4

Color Mode option A-3

color rendering dictionaries, *see* CRDs

color server

documentation xii

selecting as current printer 2-1

Combine Separations option A-3, A-7

Command WorkStation xi

capability to view and control the flow of
print jobs 6-1

overriding FreeForm Master bin
number 4-2

overriding Printer Setup settings 1-4,
1-8, 1-11, 2-8

overriding user job settings A-1
using Fiery Downloader from 5-1

compression C-4

Compression option A-3

Contone mode xiii

Copier Mode option A-3

Text Enhancement setting C-4

Copies option A-4

CRDs (color rendering dictionaries) A-5

Create Master option 4-1, A-4

Cyan-Magenta-Yellow-Black (color model),
see CMYK

D

DCS (Desktop Color Separations) files A-3,
A-7

default settings, *see* printer default settings

DIC press standard 4-2

Direct connection xiv, 5-5

not in Chooser (Mac OS) 2-2

required to download fonts 5-7, C-6

Downloader, *see* Fiery Downloader

Duplex option 4-11, A-4, A-6

E

end-of-file (EOF) character 1-12

EPS files 1-13, 2-9

printing problems C-5

Euroscale press standard 4-2

F

Fiery Booklet Maker XTension for

QuarkXPress 4-3 to 4-11

gap size 4-6

imposition process 4-3, 4-5

- Layout menu 4-6
- OPI menu 4-9
- Page menu 4-6
- Preview window 4-7
- Printer Marks tools 4-6
- rotating pages 4-6
- viewing pages 4-8
- Fiery Downloader 5-1 to 5-9
 - choosing a printer 5-3
 - Command WorkStation 5-1
 - Connection Type option 5-5
 - Copies option 5-6
 - downloading files or fonts 5-4 to 5-7
 - Font List option 5-3
 - Mac OS 2-9
 - printing from 5-4
 - restriction with parallel port 1-12
 - troubleshooting C-5 to C-6
 - using from remote workstation 5-1
 - Windows 95 1-1
 - Windows NT 4.0 1-1
- Fiery Print Calibrator 4-2
- Fiery WebTools 6-1 to 6-2
 - accessing xiv, 6-1, 6-2
 - home page 6-2
 - Status 6-1, 6-2
 - WebLink 6-2
 - WebSpooler xi, 1-4, 1-8, 1-11, 2-8, 6-1, A-1
- File port, saving files to 1-12
- font list
 - displaying 5-2
 - printing 5-2
- Font List option (Fiery Downloader) 5-3
- fonts
 - Adobe Type 1 5-7, 5-8, B-1 to B-2
 - downloading and managing 5-1, 5-5, 5-7, 5-8
 - list, displaying 5-9
 - locked 5-9
 - PostScript B-1 to B-3
 - printer fonts 5-8
 - screen fonts (Mac OS) 5-8
 - TrueType 5-7, B-3
- Font Substitution Table 5-7
- FreeForm 4-1, 4-2
 - Master bin number 4-2
 - masters A-4
 - printing variable data documents 4-1
- Full Color mode xiii
- G**
- Gamma option A-4
- gap size 4-6
- Grayscale mode xiii
- H**
- Hold queue xiv, 2-2, 5-5
- I**
- Instructions field 1-5, 1-9, 2-7, A-4
- J**
- Job Log 1-5, 1-9, 2-7
- job settings, *see* print options
- L**
- lock icon 5-9
- lp command 3-2
- lpq command 3-1, 3-2, 3-3
- lpr command 3-1
- lprm command 3-1, 3-3
- M**
- Mac OS
 - PostScript printer drivers 2-5 to 2-8
 - printing 2-1 to 2-9
 - printing with Fiery Downloader 2-9, 5-1 to 5-9
 - print options 2-4 to 2-8
- master documents (FreeForm) 4-1, 4-2
- Media Type option 1-3, A-4
- Microsoft PostScript printer driver, *see* PostScript printer drivers

N

Notes 1 and Notes 2 fields, *see* Notes fields

Notes fields A-4

Mac OS 2-7

Windows 3.1x 1-9

Windows 95 1-5

O

operator instructions A-4

OPI (Open Press Interface) menu 4-9

(Other) Gamma option A-4, A-8

(Other) Phosphors option A-4, A-8

(Other) White Point option A-4, A-8

P

Page menu 4-6

Page Order option A-5

Page Range option A-1, A-5, A-7

paper

Custom size setting 1-3, 2-5

standard sizes supported xiii

Paper Size option A-5

Paper Source option 1-2, A-5, A-7

parallel port

printing problems C-3

printing with 1-12

PDF files 1-13, 2-9, 5-1, 5-5

Phosphors option A-4

Photographic rendering style A-5, A-8

Photoshop transfer functions 5-6

Plain paper A-4

PostScript

downloading files, Mac OS 2-9

downloading files, Windows 1-13

downloading files with Fiery

Downloader 5-1

printing files from UNIX 3-1

PostScript Level 2

Windows NT 4.0 1-10

PostScript printer drivers xiii

for Mac OS 2-5 to 2-8

for Windows 3.1x 1-7 to 1-9

for Windows 95 1-1 to 1-5

for Windows NT 4.0 1-10 to 1-11

Microsoft PostScript printer driver for

Windows NT 4.0 1-10 to 1-11

PPD (PostScript Printer Description)

files xii, xiii, 1-2, 1-6, 2-3

defaults A-2

options 1-4, 2-8

Presentation rendering style A-5, A-8

press simulations 4-2

press standards 4-2

previewing jobs (Fiery Booklet Maker) 4-2

Preview window 4-7

Print Calibrator, *see* Fiery Print Calibrator

printer default settings xiii, A-1 to A-8

printer driver, *see* PostScript printer drivers

printer setup

with Adobe PostScript Printer Driver for

Windows 95 1-2

printing

booklets 4-3 to 4-10

duplex pages 4-11

font list 5-2

from Fiery Downloader 2-9, 5-1 to 5-9

from Windows applications 1-1

Mac OS 2-1 to 2-9

parallel port 1-12

saving files for printing at remote

location 1-12

specifying trays A-5

to File Port 1-12

to local port 1-12

troubleshooting C-1 to C-6

UNIX workstations 3-1 to 3-3

variable data documents 4-1, 4-2

Windows 3.1x 1-6 to 1-9

Windows 95 1-1 to 1-6

Windows 95 1-6

Windows NT 4.0 1-10 to 1-11

printing connections on the network xiv

print jobs, previewing with Fiery Booklet Maker 4-2

print options A-1 to A-8
 Mac OS 2-4 to 2-8
 settings 1-5, 1-6
 specific to color server 1-4
 Windows 3.1x 1-6 to 1-9
 Windows 95 1-1 to 1-6
 Windows NT 4.0 1-11
see also printer default settings

Print queue xiv, 5-5
 not in Chooser (Mac OS) 2-2
 Pure Black Text/Graphics option A-5

Q

QuarkXPress, printing problems C-1
 QuarkXPress XTension, *see* Fiery Booklet Maker XTension
 queues, access to xiv

R

remote access xi, 5-1
see also Fiery Downloader *and* Fiery WebTools
 Rendering Style option A-5
 RGB Source option A-5, A-8

S

Save Fast Reprint option A-5
 saving a booklet style (Macintosh only) with QuarkXPress 4-10
 Scale option A-6, A-8
 separations, printing A-3
 'showpage' after EPS files option 5-7
 signature (booklet printing) 4-6
 simulations 4-2, A-3
 Slip Sheet option A-6
 Solaris 2 3-3

Solid Color rendering style A-5
 Sorter option A-6
 Spot Color Matching option A-6
 Stapler option A-6
 Status WebTool, *see* Fiery WebTools
 SunOS 4 3-3
 Suspend Printing
 with Duplex jobs A-6
 Suspend Printing command A-4, A-6
 SWOP press standard 4-2

T

TCP/IP printing 3-1
 thick paper A-4
 transparency A-4
 trays, printer A-5, A-7
 troubleshooting
 color output C-4
 Fiery Downloader C-5 to C-6
 general printing problems C-1 to C-3
 problems with print quality C-3 to C-5
 two-sided printing, *see* Duplex option

U

UNIX
 BSD (Berkeley Software Distribution)
 variant of 3-3
 displaying jobs in queue with 3-2
 does not support FreeForm 4-1
 printing from 3-1 to 3-3
 removing jobs from queue with 3-3
 System V 3-3
 Use Master option 4-1, A-6
 user software xiii
 utilities, *see* Fiery Downloader *and* Fiery WebTools

V

variable data printing 4-1, 4-2

W

WebLink, *see* Fiery WebTools
WebSpooler, *see* Fiery WebTools
WebTools, *see* Fiery WebTools
White Point option A-4, A-8
Windows
 printing from applications 1-1
Windows 3.1x
 PostScript printer driver 1-7 to 1-9
 printing 1-6 to 1-9
 print options 1-6 to 1-9

Windows 95

 PostScript printer driver 1-1 to 1-5
 printing 1-1, 1-1 to 1-6
 print options 1-1 to 1-6

Windows NT 4.0

 PostScript printer driver 1-10 to 1-11
 printing 1-1, 1-10 to 1-11
 print options 1-11

Windows printing 1-1

WINS printing 1-1

X

XTension for QuarkXPress, *see* Fiery
 Booklet Maker XTension