

# ***Printing to Splash v4.0 From a Macintosh***

January 18, 1999

Splash Technology

Sunnyvale, California USA

## ***Trademarks and Copyright***

Splash and the Splash logo are trademarks of Splash Technology Inc. Apple, Macintosh, LaserWriter, and Apple-Talk are registered trademarks of Apple Computer, Inc. DocuColor is a trademark of Xerox, Incorporated. Novell NetWare is a trademark of Novell, Inc. Adobe, the Adobe logo, Adobe Illustrator, PostScript, Adobe Type Manager, Adobe PageMaker, and Adobe Photoshop are trademarks of Adobe Systems Incorporated, which may be registered in certain jurisdictions. QuarkXPress is a registered trademark of Quark, Inc. All other brand or product names are trademarks of their respective holders.

### ***Copyright © 1999 Splash Technology, Inc.***

PN: 0014715-0102 Last revised: January 18, 1999. Your rights of ownership are subject to the limitations and restrictions imposed by the copyright laws as outlined below.

**PROPRIETARY RIGHTS NOTICE.** The digitally encoded machine readable outline data for producing the type-faces provided as part of your laser printer is copyrighted © 1981 Linotype-Hell AG. Copyright © 1993 Adobe Systems Incorporated. All Rights Reserved. This data is the property of Linotype-Hell AG and Adobe Systems Incorporated and may not be reproduced, used, displayed, modified, disclosed or transferred without the express written approval of Linotype-Hell AG and Adobe Systems Incorporated.

It is against the law to copy, reproduce, or transmit including, without limitation, electronic transmission over any network any part of the manual or program except as permitted by the Copyright Act of the United States, Title 17, United States Code. Under the law, copying includes translation into another language or format. However, you are permitted by law to write the contents of the program into the machine memory of your computer so that the program may be executed. You are also permitted by law to make working copies of the program, solely for your own use, subject to the following restrictions: (1) Working copies must be treated in the same way as the original copy; (2) If you ever sell, lend, or give away the original copy of the program, all working copies must also be sold, lent, or given to the same person, or destroyed; (3) No copy (original or working) may be used while any other copy (original or working) is in use except within the terms of this license. The copyright notice that is on the original copy of the program must accompany any working copies of the program.

The above is not an inclusive statement of the restrictions imposed on you under the Copyright Act. For a complete statement of the restrictions imposed on you under the copyright laws of the United States of America, see Title 17, United States Code.

# ***Table of Contents***

<b>Introduction</b> .....	<b>5</b>
System Requirements .....	5
<b>Chapter 1 — Installing the Macintosh Client Software</b> .....	<b>7</b>
<b>Chapter 2 — Printing to Splash</b> .....	<b>9</b>
Before You Begin .....	9
Connecting to the Splash Server .....	10
LaserWriter 8 Notes .....	11
Connecting to Splash with the Adobe PS Printer .....	12
Connecting to Splash with the LaserWriter 8 Driver .....	13
Printing with the Adobe or LaserWriter 8 Driver .....	14
Choosing Page Setup Options .....	14
Choosing Print Options .....	17
Using the Splash Print Options .....	24
Setting Splash Color Options .....	24
Setting Splash Tray Options .....	27
Providing User Information .....	31
Setting Splash Extras Options .....	32
Creating a PostScript File .....	36
PostScript File Printing Notes .....	37
Splash Color Correction .....	37
Splash Color Correction Notes .....	39
Optional RGB Photographic Rendering Style Color Correction .....	40
Splash ICC (ColorSync) Profiles .....	41
Adobe Photoshop Color Separation Tables for Splash .....	41

<b>Chapter 3 — Checking the Splash Print Queue .....</b>	<b>43</b>
Using the Splash Status DA .....	44
Using the Splash Web Queue Manager .....	45
Splash Web Queue Manager Notes .....	52
<b>Chapter 4 — Application Notes .....</b>	<b>55</b>
General Application Notes .....	55
Bitmapped Fonts .....	55
Printing DCS Files .....	55
Printing Documents That Use Patterned Fills .....	56
Printing Gradient Fills .....	56
Printing Documents That Use Many Fonts .....	56
Printing Separations .....	56
Printing 12" x 18" Documents .....	56
Notes for Specific Applications .....	57
Adobe Illustrator Notes .....	57
Adobe PageMaker Notes .....	58
Adobe Photoshop Notes .....	59
Corel Draw Notes .....	60
Deneba Canvas Notes .....	61
MacroMedia FreeHand Notes .....	61
Microsoft Excel Notes .....	64
Microsoft Office Notes .....	64
Microsoft PowerPoint Notes .....	64
QuarkXPress Notes .....	64
<b>Index .....</b>	<b>67</b>

## ***Introduction***

The Splash Macintosh client software allows a Macintosh to use the Splash print features when you send documents to the Splash Server for printing on the Xerox DocuColor Pro. This on-line manual describes how to install the Splash client software and how to print documents to Splash.

### ***System Requirements***

The Splash Macintosh Client driver requires the following hardware and software:

- A Macintosh II or above, or Power Macintosh computer
- System 7.1 (or later)
- Networking hardware and software that allows the client Macintosh to connect to the Splash server computer



# Chapter 1

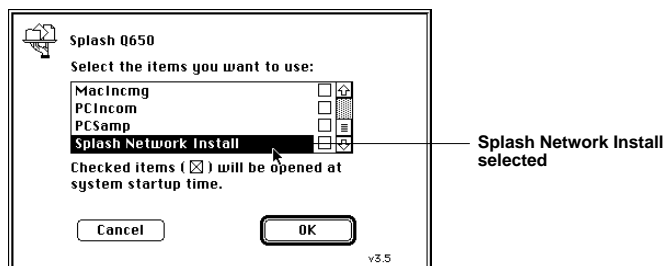
## Installing the Macintosh Client Software

This chapter describes how to install the Splash client software on a Macintosh. Install the Splash client software on each network Macintosh that will be used for printing to Splash.

*IMPORTANT: The Splash DC Series server is incompatible with software from other versions of Splash. Be sure to install the Splash DC Series client software on all Macintosh workstations that will print to the DocuColor Pro.*

To install the Macintosh client software:

1. Go to a Macintosh computer that is connected to the network and will be used for printing to the Splash Server.
2. Select the Chooser from the Apple menu.
3. In the lower-right corner of the Chooser window, click the Active button next to AppleTalk. If AppleTalk is not already active, a dialog box appears. Click OK.
4. In the Chooser window, select the Splash Server AppleTalk Zone (if your network has zones), then click the AppleShare icon. From the list of file servers, select the Splash Server.
5. Click OK. The File Server Connect dialog appears.
6. Click Guest, then click OK. The Splash Server folders appear.



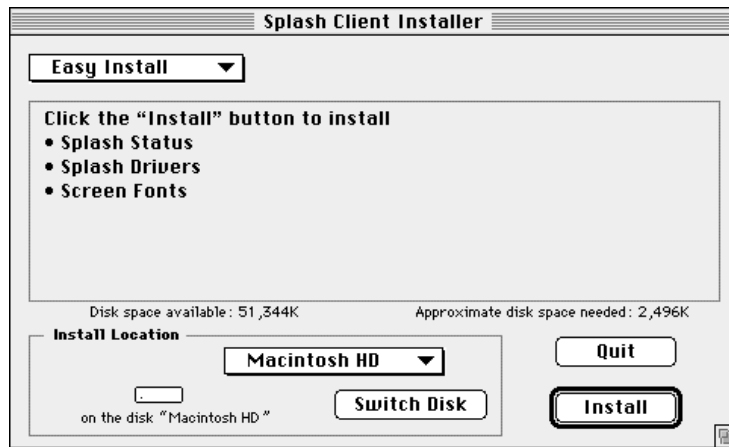
7. Select Splash Server Install and click OK.

8. Double-click the Splash DC Client Installer icon.



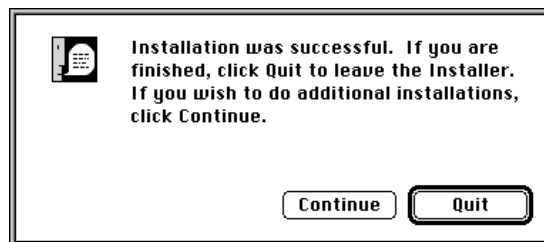
Splash Client Installer

9. The Easy Install dialog box appears.



10. Click Install. All Splash client software is installed over the network from the Splash Server computer.

When installation is complete, a message appears.



11. Click Quit to exit the Splash Installer. If you are using a PowerPC Macintosh, is not necessary to restart your Macintosh. You can begin to print to Splash from your applications right away. If you are using another Macintosh model, you will be prompted to restart your computer.

Repeat this install procedure for each Macintosh connected to your network that will print to Splash.

The Installer places a Splash Folder on the client Macintosh hard disk. This folder contains software files that you may need for printing to Splash.



## **Chapter 2**

### **Printing to Splash**

#### **Before You Begin**

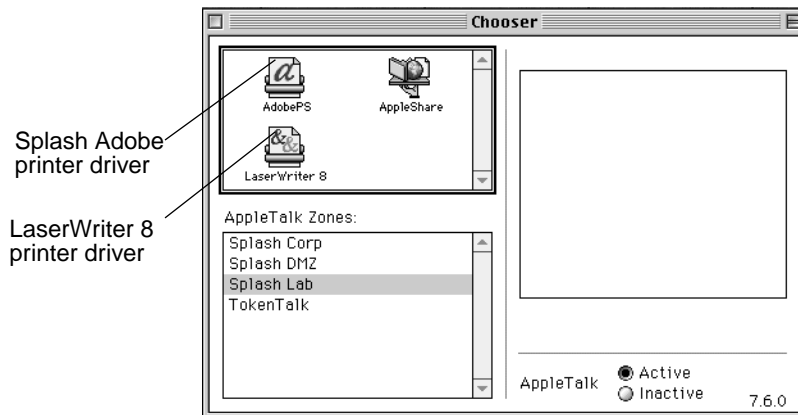
When you print, the Splash printer driver converts commands from your application into PostScript code. The Splash Server application converts the PostScript code into a pixel description of each page in your document and sends it to the DocuColor Pro. If your file is complex, the PostScript conversion takes more time. For best printing performance, follow these guidelines before you print:

- Be sure to install legal copies of all the screen and printer fonts you plan to use at both the client and Server machines. This ensures that fonts are downloaded to the printer only when necessary and prevents font substitution.
- If you want to place a portion of a large graphic in another file, copy the part you want to use into a new file, then import this new file. When you import an entire graphic, then crop it, the Server application must calculate the entire graphic, then eliminate the part you cropped, before sending the graphic to the printer.
- Delete small details in a large image before you scale the image to a smaller size. Even when these details become too small for the eye to decipher, they require the same amount of processing time as they do at full size.
- Delete unnecessary elements in a drawing; do not cover them with a white rectangle.
- When you print multiple copies, use the long-edge feed capability (such as Letter LEF or A4 LEF) to take advantage of the copier's higher throughput rate.
- Select the "Auto Grayscale Detection" checkbox (the default setting) when you print documents that have some all-grayscale or black and white pages. These pages will print up to six times faster. (See page 36 for information about this Splash print option.)

- When you print all-grayscale or black and white documents, select Grayscale for the Splash Color Model print feature to save an additional half-second per page over the default setting (Full Color). Be sure the “Auto Grayscale Detection” print option, is checked.
- For color documents, deselect the “Auto Grayscale Detection” checkbox to disable this print option. Color documents print faster when this option is disabled.
- If you have the optional Adobe Color Central Lite software installed, select the name for your Splash Server in the Chooser (originally set to Splash Server) instead of with the Splash Color Central queues for fastest printing.

## ***Connecting to the Splash Server***

Before you can print, you must connect your Macintosh to the Splash Server with the MacOS Chooser. You can print to a Splash Server using either the custom Splash PostScript Level 3 printer driver—based on the Adobe PostScript Printer driver version 8.5—or a LaserWriter 8 PostScript Level 2 printer driver, provided with your MacOS System software. (As this manual is being written, the current version is LaserWriter 8.5.1.) In most cases, you should use the Adobe PS driver as it has been customized for the Splash Server.



Splash provides printer description files (PPDs) for applications that use the Adobe PS Printer driver and LaserWriter 8 driver. The Splash printer description files let you select Splash print features when you print to Splash from Level 2 and Level 3 PostScript applications.

The PPDs for the Adobe Printer driver are installed automatically. To print to the LaserWriter 8 driver, open the Splash Folder and move the Splash LaserWriter 8 PPDs to the Printer Descriptions folder inside the System Folder/Extensions folder.

Do not use earlier versions of the LaserWriter driver (pre-LaserWriter 8). Earlier versions of the LaserWriter driver will work with Splash, but do not include the correct paper size information and do not allow you to use special Splash printing features like color correction.

**Note:** If you want to print from PageMaker, you must select the LaserWriter 8 printer driver and its corresponding PPD. See “Connecting to Splash with the LaserWriter 8 Driver” on page 13 for instructions.

### ***LaserWriter 8 Notes***

The following Splash print options are not available when you print to Splash with the LaserWriter 8 printer driver:

- Document Owner field
- Document Comment field
- Account Number

See page 31 for information about these Splash print options.

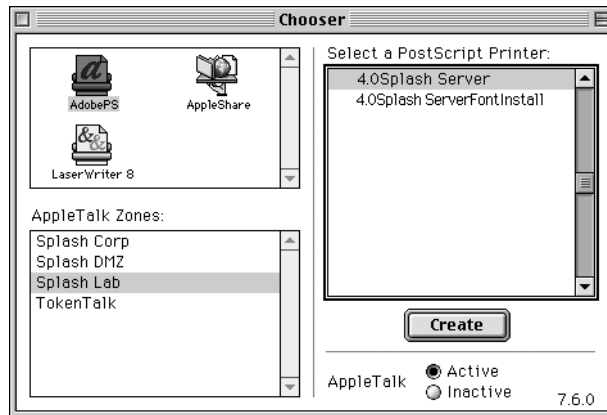
If you send a large print job to Splash from a Macintosh using the LaserWriter 8.4.x driver, and then attempt to cancel the job with the LaserWriter 8 driver, some pages of the canceled job may print.

If you use the Macintosh DeskTop Printer utility with the PPDs for the LaserWriter 8 driver selected, you cannot set Splash Options in the Print dialog box. Use the Adobe PS driver to access the Splash options.

## ***Connecting to Splash with the Adobe PS Printer***

To connect to the Splash Server with the Adobe PostScript Printer Driver:

1. Select Chooser from the Apple menu. The Chooser window appears.
2. Select the Adobe PS icon in the upper-left window in the Chooser, select the correct AppleTalk Zone for the Splash Server (if your network has zones), then select the Splash Server in the list of printers on the right.



3. Click Create.

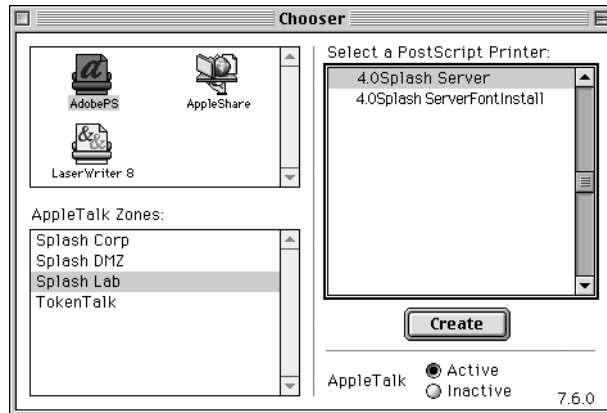
The Adobe PS driver automatically selects the Splash DocuColor printer description file. Setup is complete.

The connection to the Splash Server is complete. Your Macintosh will continue to print to the Splash Server until you open the Chooser again and select a different printer.

## ***Connecting to Splash with the LaserWriter 8 Driver***

To connect to the Splash Server with the LaserWriter 8 driver:

1. Select Chooser from the Apple menu. The Chooser window appears.
2. Select the LaserWriter 8 driver icon in the upper-left window in the Chooser, select the correct AppleTalk Zone for the Splash Server (if your network has zones), then select the Splash Server in the list of printers on the right.



3. Click Create. A dialog box appears.
4. Click Select PPD. The Chooser displays a list of printer description files.
5. Select the Splash DCPro PM v4.0 printer description file, then click Select.
6. Click OK. Setup is complete.

The connection to the Splash Server is complete. Your Macintosh will continue to print to the Splash Server until you open the Chooser again and select a different printer.

**Note:** If you want to use the Direct TCP/IP Printing feature of Macintosh OS 8.0, you must use the LaserWriter 8 printer driver. For information about this feature, see your MacOS 8 documentation

## ***Printing with the Adobe or LaserWriter 8 Driver***

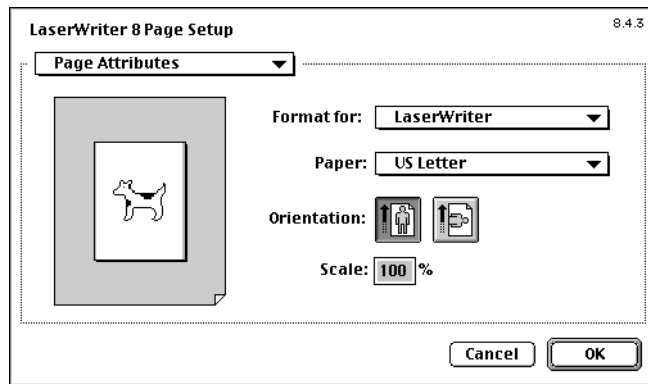
This section describes how to choose Page Setup and Print options when you print using the Adobe or LaserWriter 8 printer driver.

### ***Choosing Page Setup Options***

Always choose new Page Setup options after you use the Chooser to select a new printer. Even if you do not want to change any settings, you must still open the Page Setup dialog box, then click OK, to ensure that your file is formatted correctly for the new printer.

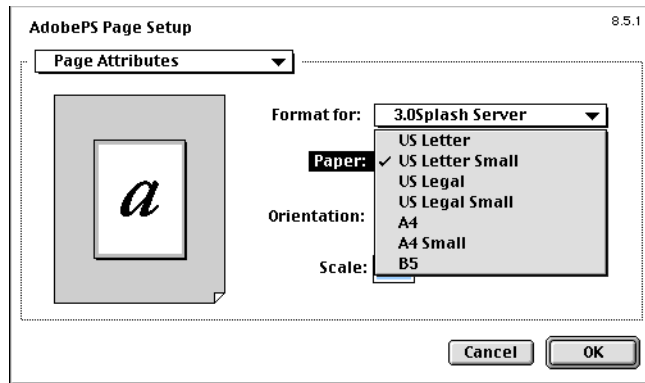
To choose Page Setup options when using the Adobe PS driver or LaserWriter 8 printer driver:

1. Open the file you want to print.
2. From the File menu within the application, choose Page Setup.  
The Page Setup dialog box appears:



3. Be sure that the Splash Server appears in the **Format for** menu.

4. In the **Paper** menu, choose the size of the paper or transparency film you want to use:



When a paper size has an LEF-suffix (Letter LEF, for example), the paper is loaded with the long edge of the sheet feeding from the tray. When a paper size has an SEF suffix (such as A4 SEF), the paper is loaded with the short edge of the sheet feeding from the tray.

The Splash Server prints all supported paper sizes and orientations at 400dpi in both directions. Paper sizes print with 4 mm margins at all edges.

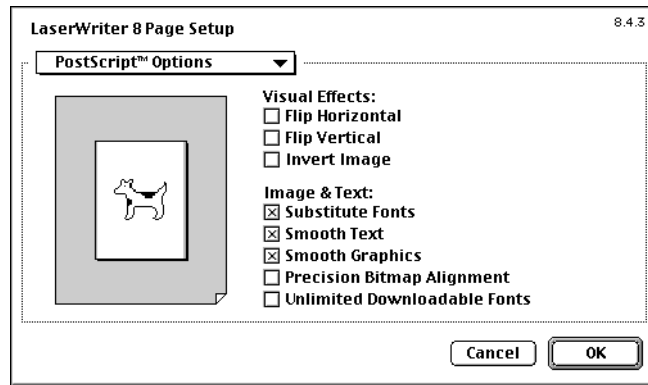
**Note:** If you select a page size that is not supported by the DocuColor Pro, an error message requesting A6 size paper appears regardless of the page size requested.

5. Click the portrait or landscape icon to choose an **Orientation**.



6. To enlarge or reduce the image, enter a value in the **Scale** text box. To increase the size of the image, type a value greater than 100%; to decrease the size of the image, enter a value less than 100%. The default value is 100%, which prints your images at full size. You can enlarge your image up to 400%, or reduce it to as small as 25% of your original image.

7. Choose **PostScript Options** in the menu in the upper-left corner of the LaserWriter 8 Page Setup dialog box to view more page setup options.



- Flip Horizontal reverses the image from left to right.
- Flip Vertical prints the image upside down.
- Invert Image prints the image in colors that are the inverse (opposite) of the actual colors.
- Substitute Fonts replaces the New York font with Times, Geneva with Helvetica, and Monaco with Courier, to produce higher-quality text.
- Smooth Text and Smooth Graphics reduce the jagged edges found in bitmapped text and graphics.
- Precision Bitmap Alignment reduces the size of the print by 4%. It will not print bitmapped images with an integer dot increase as will a 300 dpi printer engine. In general, this option should not be checked.
- Unlimited Downloadable Fonts is a LaserWriter option that has no effect on Splash PostScript printing.

To see page size information about the document, click on the page image on the left. Page dimensions appear in inches. Click again to see information in centimeters.

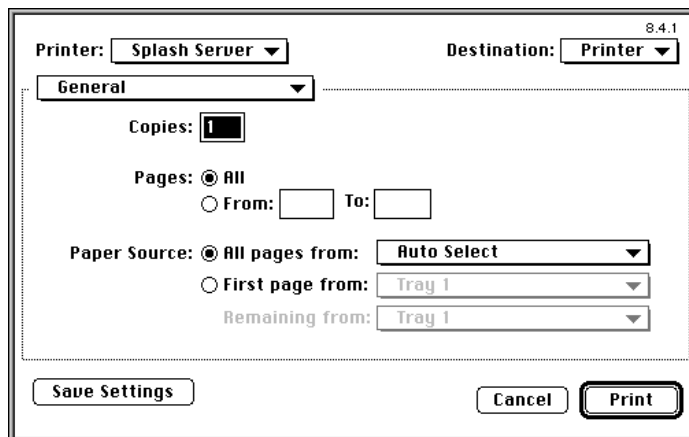
8. Click OK in the Page Setup dialog box to save your settings.



## Choosing Print Options

To print a file to the printer/copier using the Adobe PS or LaserWriter 8 driver:

1. From the File menu in your application, choose Print. The Print dialog box appears:



Your applications may have additional print options or may have fewer. See the user manual for your application for information about these options.

2. Select **Printer** as your print **Destination** to send your document to the Splash printer/copier.

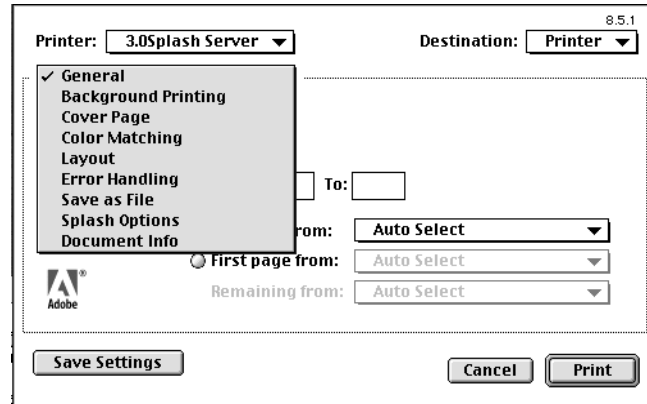
Choose **PostScript File** as an output destination if you want to save your document as a PostScript file.

3. By default, Splash prints one copy of every page in your file. To print more than one copy, type the number in the **Copies** box. To print a specific range of pages in the document, type the starting and ending page numbers in the From and To boxes, respectively.
4. Select **All pages from** under **Paper Source** to select the paper tray to use for the document and to enable automatic tray selection. To print to the copier's bypass tray, select **Bypass Tray** in the Paper Source menu and select the appropriate settings in the **Splash Tray Options** screen.

The First page from and Remaining from menus are LaserWriter options that have no effect on Splash PostScript printing.

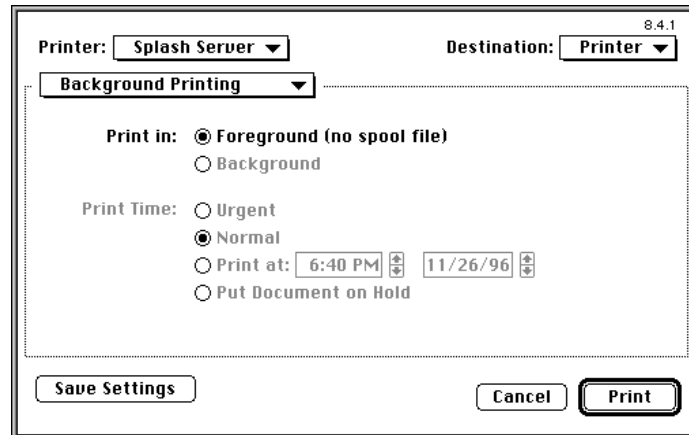
**Note:** For all applications except Adobe PageMaker 6, the First From and Remaining From pop-up menus contain two “AutoSelect” options. Select either option to activate the AutoSelect feature.

A menu in the upper-left corner of the dialog box allows you to view and select additional print options, including the Splash print options.



Your application may add other print options to the menu. Refer to your application’s manual for information about its print options.

5. Choose **Background Printing** to set options that control print spooling.



Adobe PS Printer and LaserWriter 8 offer both foreground and background printing. When Foreground is selected, the printer driver does not spool the file being printed. This can speed up print processing time for some applications.

**Note:** Some applications do not operate properly with Foreground selected. If you experience problems during printing, set this to Background printing.

6. Choose **Cover Page** to view cover page options.

8.4.1

Printer: **Splash Server** ▼ Destination: **Printer** ▼

**Cover Page** ▼

Print Cover Page:  None  
 Before Document  
 After Document

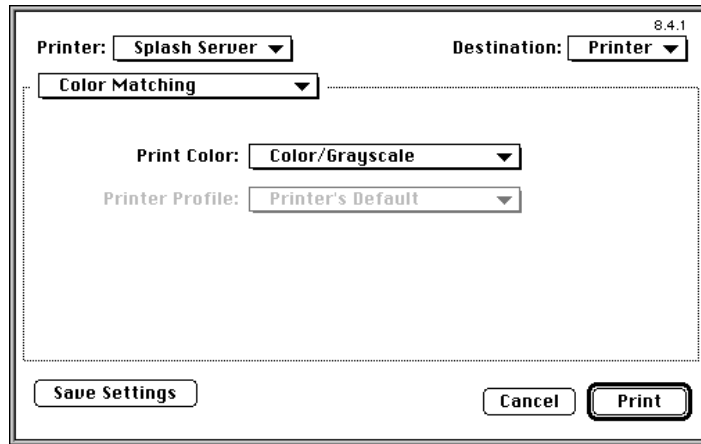
Cover Page Paper Source: **Same as document** ▼

**Save Settings** **Cancel** **Print**

The Cover Page option generates a page that lists your name, the application from which you are printing, the name of your file, the date and time of printing, the printer name, and the number of pages you are printing (not including the cover page). Use the default, None, when you do not want to print a cover page. Select Before Document to print a cover page before your file prints, or select After Document to print a cover page after your file prints. If desired you can select a different paper source for the cover page.

**Note:** If “Print Cover Page” is selected in the Splash Server application and you select the Cover Page option when you print, Splash prints two cover pages for the job.

7. Choose Color Matching to view color matching options.



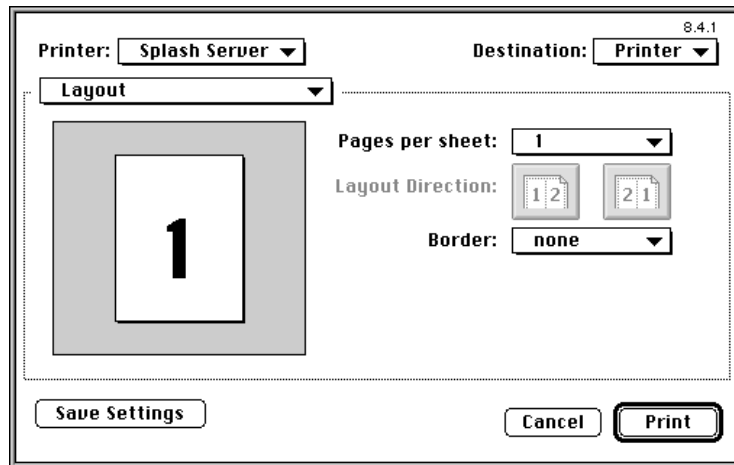
- Color/Grayscale in the Print Color pop-up menu prints color or grayscale images in their original form.

**Note:** If Splash RGB color correction is applied to the print job, the **Color/Grayscale** option produces the same results for the job. Splash color correction is applied for this selection.

- ColorSync Color Matching activates a ColorSync profile for RGB color correction. Unless you have a custom ColorSync profile for your monitor, you will achieve the best color correction results when you use Splash RGB color correction. If you use ColorSync color correction, be sure that Splash RGB color matching is disabled in the LaserWriter 8 print driver.
- PostScript Color Matching lets you use other PostScript Color Rendering Dictionaries (CRDs) to color correct RGB files. Be sure that Splash RGB color matching is disabled before you print a document with a third-party CRD to Splash.
- Black and White produces a monochrome (black-and-white, *not* grayscale) image, and is recommended only for printing true monochrome images.

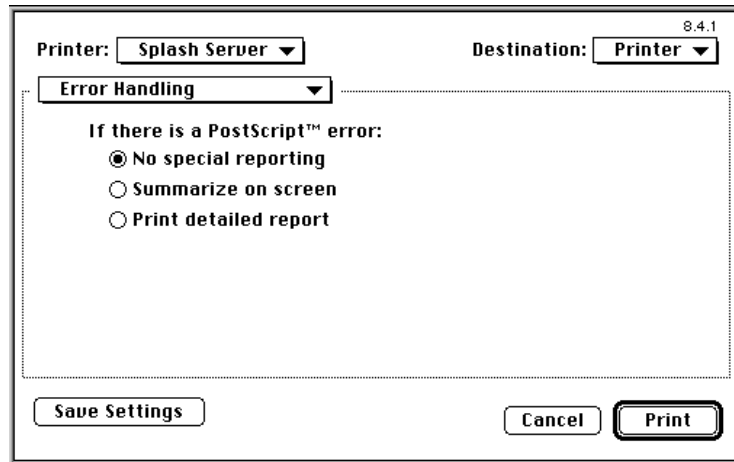
If you activate PostScript Color Matching or ColorSync Color Matching for the print job, select a Printer Profile in the menu.

8. Choose **Layout** to print one, two, four, six, nine, or sixteen pages from your file on a single sheet of paper.

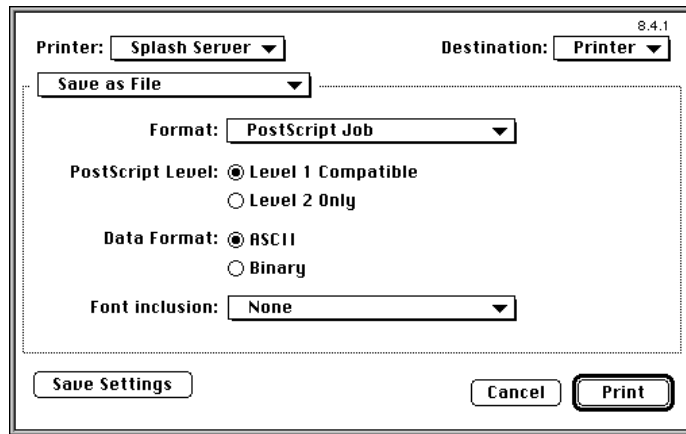


Choose the number of Pages per sheet. For two or more pages per sheet, select a Layout Direction. If desired, you can print a border around each page printed on a sheet.

9. Choose **Error Handling** for special PostScript error reporting options. No Special Reporting, the default setting, means no errors will be reported.

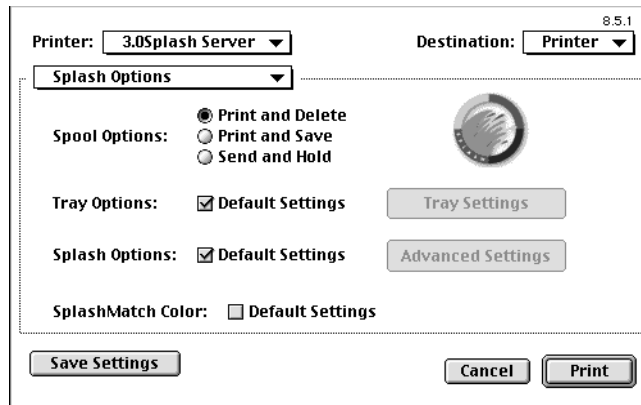


10. Choose **Save as File** to select options if you want to save the print output as a PostScript file instead of printing hardcopy at the printer/copier.

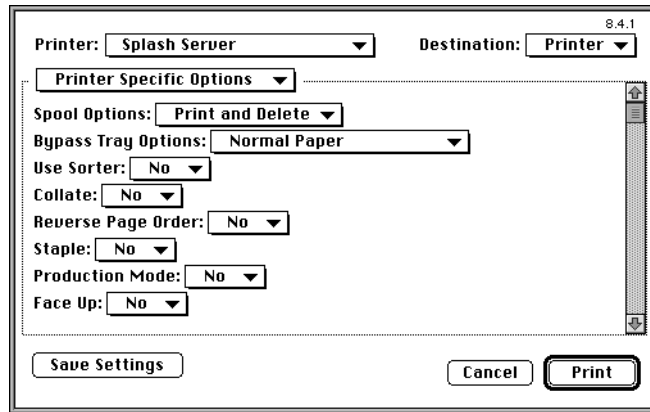


The Save as File options are applied when **PostScript File** is selected in the Destination pop-up menu (in the upper-right corner of the window). See “Creating a PostScript File” on page 36 for more information.

11. Choose **Splash Options** to view and select Splash print options.



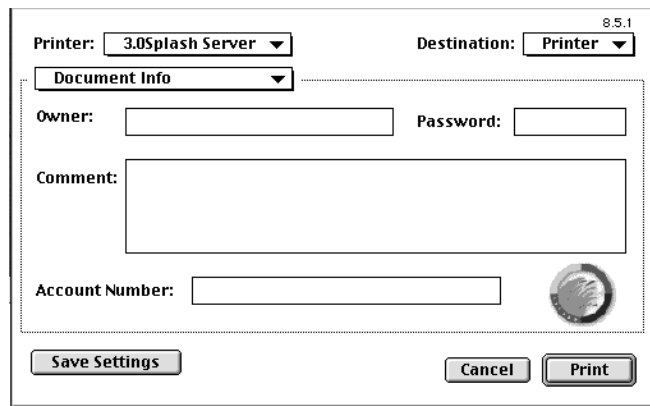
*Adobe PS Printer dialog box*



*LaserWriter dialog box*

See “Setting Splash Color Options” on page 24 for information about these print options.

12. Choose **Document Info** to select more Splash options.



See “Providing User Information” on page 31 for information about these print options.

13. When you have finished selecting options for the document, click **Print**.

## ***Using the Splash Print Options***

This section describes how to use the special print features of the Splash color print server. The options described in this section are available when you print to Splash with either the custom Splash driver or the LaserWriter 8 driver with the Splash printer description file selected.

### ***Setting Splash Color Options***

The Splash Color options let you set up the printer/copier for four-pass color printing or grayscale printing, with contone or halftone screening. You can also apply Splash color correction to your print job.

#### ***Color Model***

Select **Grayscale** or **Color** printing as a Color Model for your output. Grayscale images produce similar results with either mode; however, images process and print significantly faster in Grayscale mode than in Color mode.

#### ***Printer Mode***

This option switches printer output between **Contone** (full color) output and **Screened** output. When Screened is selected, Splash applies halftone screening to the color image. In certain circumstances (such as documents composed primarily of large areas of saturated color) halftone screening produces better results in the printed output.

The screening method used when “Screened” is selected is configured at the Splash Server. The default screening method is stochastic. See the *Splash DC Series v4.0 Set-Up Manual* for more information.

#### ***RGB Monitor Color Correction***

Splash RGB Monitor color correction gives you simple-to-use, accurate, and consistent results for:

- Documents with mixed EPS and TIFF file types
- Documents printed with either the Splash (PSPrinter 8.5) driver or the LaserWriter 8 driver with Calibrated Color/Grayscale selected for printing
- Documents created with all applications—both “pre-press” applications (such as QuarkXPress) and non-pre-press applications (such as Microsoft Word)



Splash uses advanced, proprietary techniques to accurately color correct mixed EPS, TIFF, PICT, and other “problem” page layout files that cannot be accurately corrected and printed by other CMS and RIP combinations.

To apply Splash RGB color correction to the print job, check **RGB Color Correction**, then select the appropriate RGB options from the pop-up menus.

Select a Rendering Style option that describes how the document was created:

- Choose **Graphics** for documents that were created with a computer graphics application. This option is designed to optimize printing of more saturated colors, such as those used in business presentation documents.
- Choose **Photographic** to match the colors of various photographic images created by a scanner. This is the best option to choose for proofing photographic material.

*Note:* The default Rendering Style is Photographic.

The **Gamma** and **Whitepoint** options adjust Splash color correction to simulate the monitor used to view and work with the document. For most purposes, choose **Normal (1.8)** for Gamma, and choose **Normal (D65)** for Whitepoint.

Gamma describes how a device reproduces tonal gradations. This setting applies to both the input device (such as a scanner) and the output device (such as a computer monitor or a printer). You can use this option to lighten or darken the RGB content of a particular document. The Gamma options are:

- Lightest (1.0)
- Light (1.4)
- Normal (1.8)
- Dark (2.2)
- Darkest (2.6)

Splash RGB color correction provides three standard whitepoint options. The options simulate various lighting conditions for proofing color documents. This option can be used to adjust the RGB content in a particular document relative to the whitepoint of the monitor. If flesh tones or red tones are too magenta, skies and other blues too cyan, and grass and greens too dark (almost bluish), change the Whitepoint selection from “Normal” to “More Blue.” If flesh tones and reds are too yellow, blues too purple, and greens too yellow, change the Whitepoint setting from “Normal” to “More Yellow.”

The Whitepoint options are:

- More Yellow (D50 Proofing)
- Normal (D65)
- More Blue (9300)

See page 37 for more information about Splash color correction.

### **CMYK Press Color Correction**

To apply Splash CMYK color correction to the print job, check **CMYK Press Color Correction**, then select the appropriate CMYK Press Profile option from the pop-up menu. The options are:

- **SWOP** simulates SWOP inks.
- **Euroscale** simulates Euroscale press inks.
- **Enhanced** prints vivid colors on your output. This profile is not intended for printing press proofs.
- **Custom1** through **Custom10** are customizable options. They are set with profiles located at the Splash Server. Ask your Splash Server administrator for information about the current settings for these options. These profiles can be edited to create a custom CMYK profile. See “Splash Color Correction” on page 37 for information about custom CMYK profiles for Splash.

### **Composite Spot Colors**

Splash can simulate PANTONE, Toyo, HKS, or DIC spot colors when you add them to your documents. You must print your documents in composite mode to use this feature.

Set the Composite Spot Color type (PANTONE, Toyo, DIC, HK, HN, HE, or HZ) in the Splash Server Preferences (see the *Splash DC Series v4.0 Set-Up Manual* for instructions). The **Composite Spot Colors** checkbox is checked by default at the printer driver. Splash produces output that simulates the spot color on a printing press.

**Note:** This feature supports only 100% (non-tinted) spot colors. For best results, do not mix regular press CMYK colors in the same document with spot colors when you use this feature. (Some press CMYK colors may be interpreted as spot colors.)

**Note:** If you print a document containing an unknown spot color, Splash will convert the file to the closest CMYK value available and print the job.

### ***Text Enhancement***

These Splash features, when enabled, improve the printing of text and line drawings. The text enhancement options include:

- **Dynamic Edge Smoothing**—enhanced printing of text and drawings that contain fine lines by smoothing lines and avoiding “jaggies.”
- **Black Overprints**—100% black overprint with no knockout of underlying colors. This prevents any “halo” effect when printing black on top of another color.
- **Alternative Black (Un-mixed)**—substitutes a pure (C=M=Y=0, K=100) black for any R=G=B black in the document. This prevents the buildup of toner on the page and alleviates any shadows created by mis-registered mixed black.

Text enhancement options are set to “On” or “Off” for a print job.

### ***Setting Splash Tray Options***

These options let you select the tray your job prints to, and tells the printer/copier how to sort or collate the printed job.

**Note:** Some applications let you print the first page of your document from one paper tray, and all remaining pages from another paper tray. This feature does not work when you print to the Splash Server. All pages print from the paper tray you select for page one.

### ***Tray Selection***

- Select **Automatic** to have the printer/copier search for the tray that contains the paper size you specified in the Splash Page Setup dialog box.
- Select **Tray 1**, **Tray 2**, or **Tray 3** to choose a specific tray (to print a document on letterhead or colored paper installed in a single tray, for example.)
- Select **Bypass Tray** to print your file on the paper or transparency film loaded in the Bypass (manual feed) tray.

Note the following when you print to the DocuColor Pro:

- Jobs printed to Splash that use the Tabloid Bleed and A3 Bleed page sizes always go to the top tray on the DocuColor Pro. The Face Down print option does not work with these page sizes. These jobs always print face up. If the DocuColor Pro is equipped with a sorter, Tabloid Bleed and A3 Bleed jobs printed on “Thick” paper type go to the top tray of the sorter.
- Jobs printed to Splash that use the bypass tray and any paper type except “Normal” always go to the top tray on the DocuColor Pro. The Face Down print option does not work with paper types other than normal; these jobs always print face up. If the DocuColor Pro is equipped with a sorter, jobs printed on “Thick” paper type go to the top tray of the sorter.
- Jobs printed to the DocuColor Pro bypass tray cannot use the Splash Duplex (double-side printing) commands. Splash supports only single-sided printing to the bypass tray.
- Jobs printed to Splash that use the A6 page size always go to the top tray on the DocuColor Pro. If the DocuColor Pro is equipped with a sorter, A6 jobs printed on “Thick” paper type go to the top tray of the sorter.

### ***Bypass Tray Options***

To print your job to the bypass tray on the printer/copier, select Bypass Tray under Tray Selection, then select a Bypass Tray option.

- Select **Normal Paper** to print on recommended paper (16 to 24 pound).
- Select **Transparency** to print on 60 to 105 gsm Xerox transparencies with a white leading edge. For information on recommended transparencies, refer to the manuals supplied with your printer/copier. The only page size you can use with this bypass tray option is either A4 LEF (A4L) or Letter LEF (LetterL), depending on the copier configuration.
- Select **Heavy Weight Paper** to print on paper that is heavier than 24 pound or 105 gsm. See the manuals supplied with your printer/copier for information on recommended heavyweight paper.

**Note:** You must select this option when you print to DocuPac page size.

- Select **Transparency Interleave** to have the printer insert blank sheets of paper between printed transparencies. The only page size you can use with this bypass tray option is either A4 LEF (A4L) or Letter LEF (LetterL), depending on the copier configuration. Ask your Splash system administrator for details.
- Select **Opaque Film** to print on opaque film. See the manuals supplied with your printer/copier for information on this option.

## **Paper Handling Options**

Use the Splash **Paper Handling** options to print collated documents.

- If the optional sorter is attached to the printer/copier, select the **Use Sorter** checkbox to put all copies of page 1 into bin 1, page 2 into bin 2, and so on. When the checkbox is not selected, Splash stacks all output pages on top of each other in the bin on the top of the copier.

If you print more than 50 copies of a job to the sorter, you will be prompted to remove the printed sheets to print additional pages. You may experience a “Tray Empty” message for a particular tray, even though the correct paper size is loaded in a different paper tray.

- If the DocuColor Pro finisher is connected to the copier, select both the “Staple” and the “Collate” options to staple the job at the DocuColor Pro.

**Notes:** Stapled print jobs must have “Collate” selected, even if you will print only one copy of the job. This is done automatically when the job is printed. With the Splash AdobePS driver, the Collate option is also selected here.

In general, “Collate” is automatically selected when you select “Staple.” If you are using the LaserWriter 8 printer driver, however, you must select “Collate” manually.

In addition, you must select the “Reverse Page Order” print option to cause page one to be the first page in the final output. Reverse Page Order can be set from some applications, or from the Splash Options when you print the job.

- Select the **Face Up** checkbox to print output to the paper tray with a face up orientation.

**Note:** The Face Up option is ignored when one of the Duplex printing options is selected, or when the “User Sorter” option is selected.

- Select the **Collate** checkbox to print all pages of copy 1, then all pages of copy 2, and so on. When “Use Sorter” is also selected, Splash sends each copy of a job to a different bin (copy 1 of all pages go into bin 1, copy 2 into bin 2, and so on). When “Use Sorter” is not selected, Splash sends all copies on top of each other in the bin on the top of the copier.
- Select the **Reverse Page Order** checkbox to print jobs starting with the last page of the document. Collated documents that are sent to the top bin of the copier end up face-up with page one on top.

**Notes:** If your application supports “Reverse Page Order” (sometimes called “reverse order” or “back-to-front”), select it in the application rather than here. If you do not, the page order may not print correctly.

If a sorter is connected to the copier and you want to print multiple collated copies, use the sorter.

Do not select “Reverse Page Order” for a separations print job.

Print jobs with “Reverse Page Order” selected do not use the Splash RIP While Receive feature.

If the optional finisher is connected to the copier, and you select the “Staple” option, you must select “Reverse Page Order” to cause page one to be the first page in the final output.

Note the following when you use the DocuColor Pro sorter for uncollated jobs:

- If there are more than 20 pages, Splash prints copies of the first 20 pages in the 20 bins and then an alert dialog appears at the Splash Server to advise you that the sorter bins are full. If the bins are cleared before the error timeout elapses, the job continues to print. If the bins are not cleared before the error timeout elapses, the job moves to the Error queue.
- If there are more than 50 copies in the job, Splash prints 50 copies of each page into the appropriate bin and then an alert dialog appears at the Splash Server to advise you that the sorter bins are full. If the bins are cleared before the error timeout elapses, the job continues to print. If the bins are not cleared before the error timeout elapses, the job moves to the Error queue.

Note the following when you use the DocuColor Pro sorter for collated jobs:

- If there are more than 50 pages, Splash prints the first 50 pages of each copy into the appropriate bin and then an alert dialog appears at the Splash Server to advise the operator that the sorter bins are full. If the bins are cleared before the error timeout elapses, the job continues to print. If the bins are not cleared before the error timeout elapses, the job moves to the Error queue.
- If there are more than 20 copies in the job, Splash prints the first 20 copies into the first 20 bins, and then an alert dialog appears at the Splash Server to advise you that the sorter bins are full. If the bins are cleared before the error timeout elapses, the job continues to print. If the bins are not cleared before the error timeout elapses, the job moves to the Error queue.

## ***Duplex***

The Splash **Duplex** options let you print output as single-sided or double-sided sheets.

- Select **No Duplex** to print the job as single-sided sheets.
- Select **Duplex Short Edge Binding** for printing double-sided sheets that will be bound along the short edge of the document.
- Select **Duplex Long Edge Binding** for printing double-sided sheets that will be bound along the long edge of the document.

The Duplex options control the rotation of the second side of each sheet. They do not affect the page margins.

*Note:* The Duplex options cannot be selected when the job will be printed to the DocuColor Pro bypass tray.

## ***Providing User Information***

When you print to Splash with the custom Splash driver you can enter identification information for your print job, if needed. (This feature is not available when you print to Splash with the LaserWriter 8 driver).

### ***Document Owner and Document Password***

These optional text fields allow you to enter your name and password, if needed. The text you enter here appears in the job information dialog box for the spool file at the Splash Server. If you do not enter your name, the job includes the network identification name for your Macintosh (from the Sharing Setup control panel). Contact your Splash system administrator to learn what information you need to provide in these fields.

### ***Document Comment***

An optional text field for any additional information about the print job. You can enter a maximum of 250 characters in this field. Contact your Splash system administrator to learn what information you need to provide in this field.

### ***Account Number***

An optional text field for any account number associated with the print job (up to 32 characters). Contact your Splash system administrator to learn what information you need to provide in this field.

## **Setting Splash Extras Options**

This section describes other Splash options you can apply to your print jobs.

### **Spool Options**

Splash provides three options for handling the PostScript spool file that is created when you print to Splash:

- **Print and Delete** automatically deletes the spool file after printing the job.
- **Print and Save** saves the spool file after printing. The job is transferred to the Hold queue with the message “*PostScript spool file saved as requested.*”
- **Send and Hold** sends the spool file directly to the Hold queue after it is received by the Splash Server.

Saving the spool file is useful when small quantities of the same file must be printed occasionally. You can change print options for the saved spool file before printing with the Splash Server application. See the *Splash DC Series v4.0 Set-Up Manual* for information.

**Note:** Saved spool files remain in the Hold queue until you delete them. To delete a spool file: select it in the Splash Server Hold queue, then press the Delete key, Choose Delete Job from the Jobs menu, or drag the spool file to the trash.

### **Separations**

Some applications, most notably page layout applications such as PageMaker and QuarkXPress, can produce “separations” as printed output. These are intended to be imaged on film imagesetters and thus each page is converted to one or more (usually four) output grayscale “pages.” If you print separations to a printer that does not have a special separations feature, you will get one grayscale page per color in the original page.

The Splash Server has the ability to re-composite these individual pages back into a single color page so a real proof (equivalent to the proof that would be produced from the films via conventional means) can be obtained. The primary benefit of separations is to show overprinted objects with proper colors and to make trapping visible.



The Splash **Separations** option prints a composite page from applications that support separations printing.

- Select **Automatic** to apply the Splash Separations feature to all your separations print jobs automatically. This default option supports CMYK plates plus any number of plates in PANTONE, Toyo, HKS, or DIC (if these press colors are supported by your separations application). This option supports separations generated by any application. When this option is selected, Splash supports the full range of PANTONE, Toyo, HKS, or DIC colors and tints in your documents.

*Note:* The Splash Separations feature does not accurately represent traps or overprints composed of a PANTONE, Toyo, HKS, or DIC color.

*Note:* Due to limitations in PageMaker and QuarkXpress, RGB graphics are converted to CMYK and therefore look similar. RGB images are converted to grayscale and appear as gray in the output.

- Select **None** to disable the Splash separations feature for a job.

The remaining separation options, **QuarkXPress 3.0 Style**, **QuarkXPress 4.0 Style**, **PageMaker Style**, **FreeHand Style**, and **Canvas Style** use a separations technique from version 1.0 of the Splash DC Series software. These options require that the separations job be made up of exactly four process-color plates. These options do not support additional PANTONE plates. If problems occur in the output when you print separations with “Automatic” selected, convert the colors in your document to four process plates then select the v1.0 separations option that matches your application.

#### **Separations Notes:**

The Splash Separations print feature supports printing of high-resolution DCS (Desktop Color Separation) files. To print a high-resolution proof of a DCS file, activate the separations feature within your application and in the Splash driver print options dialog box.

The Separations feature is not compatible with Adobe Separator separation jobs. To use separations with Adobe Illustrator (typically done with Adobe Separator), create an EPS and place it into either a QuarkXPress or PageMaker document.

Do not choose the Cover Page option in your application's print dialog box when you print a separations job to Splash. The cover page is interpreted as a color plate, which causes unexpected results in the separations job. (This problem does not occur when the Print Cover Page option is active for the Splash Server application.)

For best results, do not use the version 1.0 separation options for files with spot colors. Always choose "Automatic". If your job reports a PostScript error printing a CMYK-only file (no spot colors) with the "Automatic" separation option, try printing with one of the version 1.0 separation options.

If a separations document contains one or more spot colors, any spot colors that are not known by the system will be printed as black (or grayscale for tints). After printing, the job will error with the message "Document printed, but unknown spot color: *name*. Run Preflight report for more details." (*Name* is the name of the unknown spot color.)

If you use a v2.0-style CMYK color correction profile with a separations file, any black areas (including those created with CMY inks) will print using mainly black (K) toner. If you want the output to be closer to the original CMYK values for the purpose of retaining trapping, select a v1.0-style CMYK color correction profile for the job.

Memory usage for jobs that do not use "Automatic" separation option is shown in the Info panel of the Job Options dialog box on the Splash Server. If a job is cancelled during printing, memory usage is not displayed. If the job does not fit entirely within frame buffer memory on the Splash board, the information appears in red text.

### ***Original Image Type***

This sets printer/copier screening and filtering to optimize output based on the image type.

- Choose **Photographic** for photographic originals to optimize the output, using a 200-line screen at 400dpi. This is the best option to choose for color images.
- Choose **Text/Graphics/Line Art** to optimize the output of all other data types, including text and line art, using a 400-line screen.

**Note:** When “Text/Graphics/Line Art” (400-line screen) is used, even if color correction mode is selected, appropriate colors are not always printed. The colors printed sometimes differ from when “Photographic” is selected. For documents that emphasize the color image, choose “Photographic.” For documents that emphasize sharp lines (such as a map), choose “Text/Graphics/Line Art.”

For best results with Splash color correction, choose the “Photographic” option under Original Image Type. The “Text/Graphics/Line Art” option should be used only for documents that need to show crisp detail.

### ***Print Control Strip***

When the **Print Control Strip** checkbox is selected, Splash prints a set of color control patches on the edge of the output. This option can be configured to print either color patches or an EPS file or both. See the *Splash DC Series v4.0 Set-Up Manual* for more information.

**Note:** The control strip image will overwrite the job image if it occupies the same part of the page in the output.

### ***Print Progressives***

When the **Print Progressives** checkbox is selected, Splash prints up to four separate sheets for the print job. This print option is configured at the Splash Server to specify which color passes print on each sheet. This allows you to examine the result of each color pass for a four-color document. See the *Splash DC Series v4.0 Set-Up Manual* for more information.

**Note:** Do not choose the Cover Page option in your application’s print dialog box when you print a progressives job to the Splash Server. The cover page is interpreted as one of the progressives pages, which causes unexpected results in the job. (The problem does not occur when the Print Cover Page option is active for the Splash Server application.)

**Note:** If you are using progressives to create press proofs, for best results select one of the Splash v1.0-style one-dimensional CMYK Press Color Correction profiles for the print job (see “CMYK Press Color Correction” on page 26). Ask your Splash system administrator for information about the current CMYK profile settings. See the chapter “Calibrating With ColorCal” in the Splash Reference Manual for more information about CMYK Color Correction profiles.

### ***Auto Grayscale Detection***

Automatic Grayscale detection (enabled by default in the print driver) checks each page to see if a page has any color on it before printing. If there is no color detected on the page, the copier prints in single-pass grayscale mode, which speeds up printing, especially for multi-page documents that contain only some color pages. (This also reduces the cost of printing, as you are charged for fewer color pages.) Disable this feature for maximum printing performance when printing documents that have color on every page. (When active, this feature adds approximately one-half second to the printing of each color page.) To disable Automatic Grayscale Detection, deselect the **Auto Grayscale Detection** checkbox.

This feature is active when the Color Model (set in the Splash Color Options dialog box) is set to “Color.” The log file indicates the number of pages within the document that were printed in grayscale mode on the copier as a result.

**Note:** For fastest printing of an entirely black and white document, set the Color Model to Grayscale for the print job (see page 24).

### ***Save as TIFF***

Saves a rasterized 72, 200, or 400 dpi TIFF file. The TIFF file is placed in the TIFF Folder on the Splash Server computer. To activate this feature, check **Save As TIFF**, then choose a resolution from the pop-up menu.

**Note:** When Save As TIFF is selected, files are not printed, but are instead saved as files in the TIFF Folder within the Splash Folder on the Splash Server Macintosh. The TIFF Folder is pre-configured for network access by clients. This setup allows someone at a client machine to retrieve TIFF files from the TIFF Folder on the Splash Server, and to delete TIFF files from the folder once they have been copied to the client Macintosh.

**Note:** If you select a paper tray for a Save As TIFF job, the print job will cause an error at the Splash Server. Always select “Auto Tray Select” for Save As TIFF jobs.

### ***Creating a PostScript File***

The Drop Folder on the Server Macintosh lets you print files that are in text-based processed PostScript format, without the need to install a special PostScript file downloader on the Server or client Macintosh. While most PostScript downloaders will work with Splash, the Drop folder provides a more convenient “drag and drop” method for printing PostScript files. You can also print PDF, TIFF, and EPS files to

Splash with the Drop Folder. If you are at the Splash Server computer, you can print PDF, TIFF, EPS, and PostScript files by dragging them to the Waiting queue in the Splash Server window.

To create a PostScript file, choose the PostScript File option in the Print dialog box. (Use the custom Splash printer driver or the LaserWriter 8 driver with the Splash PPD selected when you create PostScript files. PostScript files created by other drivers may not print correctly.)

To print a PostScript file, place it in the Drop Folder, which is located in the Splash Folder on the Splash Server Macintosh, or drag it to the Waiting queue in the Splash Server application window. The Server application automatically moves the file to the Spool Folder.

- If the file can be printed, it is placed in the Waiting queue at the Splash Server.
- If the file cannot be printed, the spool job is transferred to the Error queue in the Splash Server window. The PostScript file is moved to the Unprintable Files folder in the Splash Folder. This folder is created in the Splash Folder the first time a file cannot be printed.

### ***PostScript File Printing Notes***

The Drop Folder is preconfigured for guest access on the Splash Server. For more information about Apple file sharing and how to set up a shared folder, refer to the *Macintosh User's Guide* included with your computer.

The PostScript Drop Folder on the Splash Server cannot print locked PostScript files. If a locked file is placed in the Drop Folder, it remains in the Drop Folder and does not print. Any PostScript files that are placed in the Drop Folder after the locked file, do not print until the locked file is removed from the Drop Folder or unlocked. To unlock a file, the file's owner must select the PostScript file's icon and then choose Get Info from the File menu. Uncheck the "Locked" option in the file information dialog box.

### ***Splash Color Correction***

Splash provides powerful, built-in color correction capabilities. With Splash color correction you can match your prints to the colors of the image on your display screen, and to process inks used on commercial printing presses.

Documents that use both RGB and CMYK graphics used to be a special problem for color proofing. Correcting color for one type of graphic affected the quality of the other. Now, with Splash mixed RGB/CMYK color correction, you get accurate, consistent color for both.

Splash color correction eliminates the color variation that occurs when you print a document as a PostScript file instead of to hard copy, and produces the same RGB color results for both TIFF and EPS files. And since color correction is applied by Splash (instead of by the application) any print job can be color corrected, whether you use a pre-press application such as QuarkXPress, or a less-complex application such as Microsoft Word.

CMYK color correction in v4.0 of the Splash DC Series is optimized for matching mixed press ink colors. Splash CMYK color correction automatically compensates for differences between toner and press ink colors to produce an accurate simulation of the selected press ink profile.

To ensure the closest possible color correction, use a display calibrator to compensate for the variations of your individual monitor, the lighting conditions in your office, and the whitepoint of your paper.

Two “identical” but uncalibrated monitors may display an image differently enough to exceed the ability of a color correction application to closely match them. In addition, the colors you see on your printed page are affected by the light that is reflecting off the toner and by the particular shade of white in your paper. If you do not calibrate your display, you may not be taking advantage of some significant benefits that your color correction application offers. Display calibrators can standardize the colors on your display and compensate for different lighting conditions and whitepoints.

If you prefer, you can disable Splash color correction and use a third-party color management system or ColorSync 2.5 to accomplish your screen-to-print or process ink-to-print color correction. (Color correction using a third-party color management system will increase processing time.)

The Splash ColorCal application calibrates the printer/copier output for best results with Splash color correction. ColorCal gives you consistent printing of colors over time, and ensures that RGB output matches a calibrated monitor and that CMYK output matches Press standards. See “Calibrating with Splash ColorCal” in the *Splash Reference* on-line manual for more information.

## ***Splash Color Correction Notes***

To achieve the best results with Splash DC Series color correction, note that:

- When both RGB and CMYK color correction are applied to a print job, any RGB colors in the document are mapped into the gamut of the CMYK color profile. RGB colors within the CMYK profile color gamut will match the RGB monitor settings (gamma and whitepoint), but RGB colors outside the CMYK profile color gamut may develop desaturation and hue shifts.
- If your document contains no CMYK data, or if the RGB colors are primarily out of the CMYK profile color gamut, be sure to turn off Splash CMYK color correction in the printer driver. If CMYK color correction is applied to these files, the RGB colors will be restricted to the CMYK profile color gamut and saturated colors may develop desaturation and hue shifts.

*IMPORTANT: MOST BUSINESS APPLICATION DOCUMENTS CONTAIN ONLY RGB DATA. CMYK COLOR CORRECTION SHOULD NORMALLY BE TURNED OFF FOR PRINTING THESE DOCUMENTS.*

- For best results with Splash color correction, set the Original Image Type print option to “Photographic” style. The alternative option, “Text/Graphics/Line Art” should be used only with grayscale documents or documents that need to show crisp line detail, such as a map.
- If you use QuarkXPress, you must disable EFICOLOR before you can print with Splash RGB color correction. To do this, remove either the “EfiColor Processor” file from the MacOS System folder, or the “EfiColor XTension” from the QuarkXPress application folder. (**Note:** Disabling EFICOLOR correction in the QuarkXPress application is *not* sufficient. QuarkXPress converts all RGB data to CMYK using EFICOLOR color correction, even if EFICOLOR is disabled in the application. You must remove one of the two EFICOLOR files to prevent EFICOLOR from interfering with Splash color correction.)

## ***Optional RGB Photographic Rendering Style Color Correction***

1. Open the Resources folder in the Splash Folder on the Server.
2. Rename the file “PhotoCRD.ps” to “PhotoCRDsave.ps” (or some other name to indicate that it should not be deleted).
3. Locate the file “PhotoCRD.ps” in the “3.x Compatibility” folder which is in the Splash Extra folder within the Splash Folder on the Splash Server.
4. Copy the “PhotoCRD.ps” file to the Resources folder in the Splash Folder.
5. Exit and then restart the Splash Server application to initialize the Server application with the new PhotoCRD.ps file.

After you complete the above procedure, when you print a file to the Splash Server with RGB color correction active and Photographic Rendering Style selected, the color output is closer to that produced by the Splash Power Series (v4.0) Servers, though saturated colors are flatter. This procedure does not affect Splash RGB Graphics Rendering Style color correction.

*IMPORTANT: For best results with this optional RGB rendering style, print with CMYK color correction turned off. Also, be sure to set the Pass Through profile to “Uncalibrated” with the Splash ColorCal application at the Server. (See the chapter “Calibrating with Splash ColorCal” in the Splash Reference on-line manual for instructions on how to do this.)*

Note that the optional RGB Photographic Rendering Style does not produce the best results for files that include saturated colors (such as those used in business or presentation graphics documents).

To return Splash RGB Photographic Rendering Style Color Correction to its original capabilities, rename the “PhotoCRD.ps” file in the Resources folder, change the name of the “PhotoCRDsave.ps” file back to “PhotoCRD.ps,” then restart the Server application.



## ***Splash ICC (ColorSync) Profiles***

Splash provides color profiles for use with Apple's ColorSync color management software. If desired, you can print to Splash using ColorSync with these profiles. (Be sure to disable Splash color correction in the print driver before printing with ColorSync color management.)

The Splash ColorSync profiles are located in the ColorSync™ Folder within the Splash Extras folder in the Splash Folder on the Splash Server. See the ColorSync documentation for instructions on how to use ColorSync.

For best results with ColorSync, be sure the Splash Pass Through profile is set to "Visual Standard" with the Splash ColorCal application. (See "Calibrating with Splash ColorCal" in the *Splash Reference* on-line manual for more information.)

## ***Adobe Photoshop Color Separation Tables for Splash***

Splash provides color separation tables that work with the Adobe Photoshop Separation Tables feature. The tables convert RGB images into separations for a printing press. (**Note:** These separation tables produce the same results as when you use Splash RGB color correction to create press separations.) The Splash color separation tables are located in the "Photoshop Separation Tables" folder within the Splash Extras folder in the Splash Folder on the Splash Server.

If you are working with RGB images in Adobe Photoshop and you need to create separations for press printing, follow these steps to use the Adobe Photoshop Separation Tables feature:

1. In the File menu, point to the Preferences option, then drag to choose "Separation Tables."
2. Click the Load button, then use the Open dialog box to locate and open the "Splash Separation Tables" folder.
3. Select a separation table: SWOP, Euroscale, and so on.

See the documentation provided with Adobe Photoshop for more information about how to use Adobe Photoshop Separation Tables.



## ***Chapter 3***

### ***Checking the Splash Print Queue***

The Splash Server provides two ways for you to check the status of jobs in the queues and view and change the Splash Server Preferences from a Macintosh client:

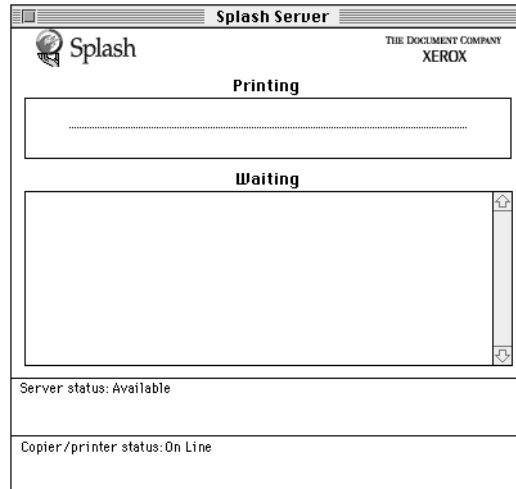
- The Splash Status DA is installed automatically with the Splash Macintosh Client software. Splash Status can be used from any Macintosh that is set up for printing to Splash.
- The Splash Web Queue Manager is an optional print queue manager. This option is available if the Splash Server is on a TCP/IP network and if Splash Web services are enabled at the Splash Server. This option requires that you install Netscape Navigator (v3.0 or later) or Microsoft Explorer (v3.0 or later) at the client computer.

This chapter describes how to use both of these Splash print queue status tools.

**Note:** You must set the “Owner Name” for your client Macintosh before using the Splash Status DA. To do so, choose Control Panels from the Apple menu, then choose Sharing Setup from the submenu that appears. Enter a name in the “Owner Name” field under Network Identity, then close the Sharing Setup control panel.

## Using the Splash Status DA

To check the print queue from a client Macintosh, select Splash Status from the Apple menu. The Splash Server window displays all the jobs in the print queue.



Printing information for the current job appears below the print job name.

To see detailed information on a job, double-click the job, or select the job and then choose Get Info from the File menu. The Info window appears:



If any errors occur on the job, this window displays them. The chapter “Splash Error Messages” in the *Splash Reference* on-line manual provides a list of error messages. To close this window, click the box in the upper left corner.

If the Remote Queue Management preferences are set in the Splash Server application to allow access (see the *Splash Set-up Manual* for instructions), you can place a job on hold, delete it, or move it up and down in the queue using commands in the Splash Status menu.

- To place a hold on a job, click the job to select it, then choose Hold from the Splash Status menu. To take the job off hold, click it, then choose Remove Hold from the Status menu.
- To make a job print sooner, click it, then choose Move Job Up from the Status menu. Each time you do this, the job moves up one place in the queue.
- To force a job to print later than other jobs, click it, then choose Move Job Down from the Status menu. Each time you do this, the job moves down one place in the queue.
- To cancel a print job, click it, then choose Delete from the Status menu.

The Status window displays information for the Splash Server that was selected in the Chooser at the time you opened the Status DA. If you select a different server while the Status window is open, you must close and then reopen the Status DA to display information for the new server.

*IMPORTANT: If the Splash Server stops running before you have quit the Server application (for example, if a system error causes the Splash Server to shut down unexpectedly), any changes made to the print queue are lost and must be re-entered from the Splash Server application.*

### **Using the Splash Web Queue Manager**

If the Splash Server is set up on an Internet or Intranet, and you have Netscape Navigator or Microsoft Explorer installed, you can connect to the Splash Server and remotely view and control the Server queues. The Splash Web Queue Manager lets you view and edit print commands for your jobs in the queue, temporarily halt your job from printing, or remove your job from the print queue. In addition, you can send graphics files such as TIFF and EPS, and text based PDF and PostScript files to the Splash Server for printing.

Before you can use the Splash Web Queue Manager:

- The Splash Web Queue Management option must be installed and enabled at the Splash Server.
- The client Macintosh must be running on a TCP/IP network (contact your network administrator for help with this).

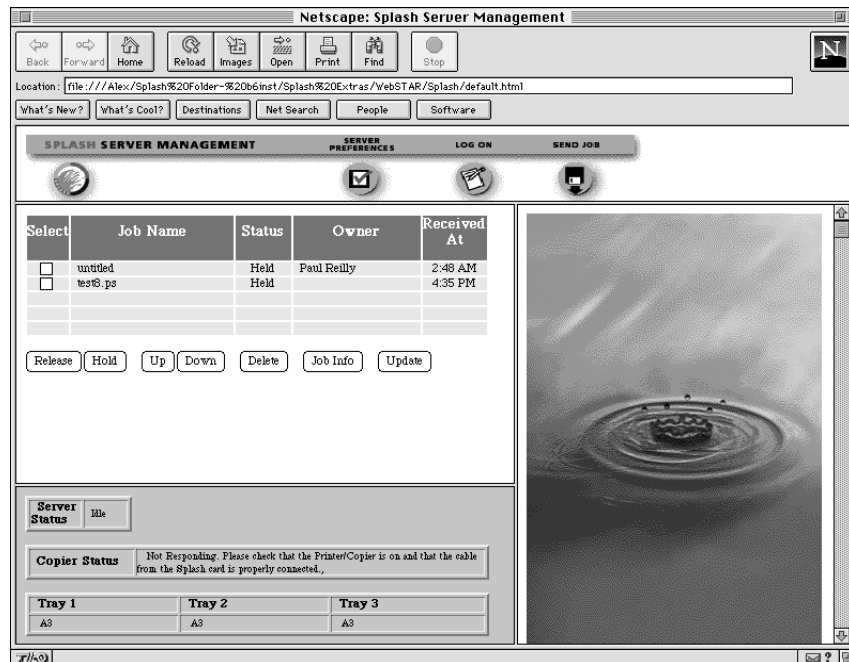
- Netscape Navigator (v3.0 or later) or Microsoft Explorer (v3.0 or later) must be installed on the client Macintosh.

**Note:** Microsoft Explorer versions 3.0 and earlier do not support sending files to the Splash Server for printing.

Contact your network administrator for help setting up your computer to use the local Intranet or Internet service. In addition, your administrator needs to provide you with the web address (URL) for the Splash Web Queue Manager.

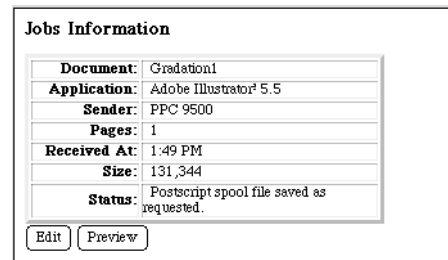
To use the Splash Web Queue Manager from a client Macintosh:

1. Open the web browser application (Netscape Navigator or Microsoft Explorer).
2. In the web browser, enter the web address for the Splash Server. (Contact your Splash administrator for this information.)
3. The Splash Web Queue Manager appears in the browser application window.



A list of print jobs waiting to print at the Splash Server appears on the left in the Web Queue Manager. Information about the Xerox or Fuji Xerox printer/copier appears at the bottom. If an error occurs at the copier, this information displays. (The chapter “Splash Error Messages” in the *Splash Reference* on-line manual provides a list of error messages.)

To view information for a print job, select the checkbox to the left of the job in the list, then click the Job Info button below the job list. Information for the selected print job appears on the right in the Splash Web Queue Manager.



The screenshot shows a window titled "Jobs Information" with a table of job details and two buttons at the bottom.

<b>Document:</b>	Gradation1
<b>Application:</b>	Adobe Illustrator® 5.5
<b>Sender:</b>	PPC 9500
<b>Pages:</b>	1
<b>Received At:</b>	1:49 PM
<b>Size:</b>	131,344
<b>Status:</b>	Postscript spool file saved as requested.

Buttons: Edit, Preview

If you select more than one job in the list, Splash provides information for each job you selected.

If the job has already been RIPPed, you can click the Preview button in the Job Information screen to view a preview image of the first page of the job if your Splash Server is configured to support this feature.

Click Server Preferences to view the default server preferences set for the Splash Server. If you are logged on as the Administrator, you can also change Preferences from this screen.

## ***Managing Print Jobs in the Queue***

If the Splash Server is configured to allow client computers to manage print jobs in the queue, you can use the Splash Web Queue Manager to place jobs on hold, delete them, or move jobs up and down in the queue.

Use the command buttons that appear under the print job list to manage jobs in the Splash queues.

Select	Job Name	Status	Owner	Received At
<input type="checkbox"/>	test	Error	Paul Reilly	3:50 PM
<input type="checkbox"/>	test	Error	Paul Reilly	3:48 PM
<input type="checkbox"/>	SplashDefault.html	Error	Paul Reilly	3:39 PM
<input type="checkbox"/>	test	Error	Paul Reilly	5:21 PM

- To place a hold on a job, select the checkbox to the left of the job, then click the Hold button below the print job list. To take the job off hold, select it, then click the Release button.
- To make a job print sooner, select it, then click the Up button. Each time you do this, the job moves up one place in the queue.
- To force a job to print later than other jobs, select it, then click the Down button. Each time you do this, the job moves down one place in the queue.
- To cancel a print job, select it, then click the Delete button.

The job list updates to show the revised Splash Server queue information.



If the Splash Server is configured to limit remote print queue management, the Splash Web Queue Manager asks you to log on when you attempt to make changes to jobs in the print queue.

**Security**

Name:

Password  
(optional):

Don't ask confirmation

Enter your user name and password, then click Register to complete logon. A message appears on the right to confirm your logon. The confirmation message tells you which jobs you have permission to manage with the Web Queue Manager.

**Note:** If you did not provide a user name and password when you originally sent the job, enter the “Owner” name that appears next to your print jobs in the Web Queue Manager job list.

## Editing Print Jobs in the Queue

To view and change the print options for a job listed in the Splash Web Queue Manager, select the checkbox to the left of the job, click the Job Info button, then click the Edit button that appears below the job information. The current print options for the job appear.

<b>Page Settings</b> <small>[ Pages Tray Color Extras Submit ]</small>	
Number Of Copies:	<input type="text" value="1"/>
Page Range:	<input checked="" type="radio"/> All <input type="radio"/> Odd <input type="radio"/> Even <input type="radio"/> Selected <small>Example: 3,5,10-20,25-</small>
Duplex:	<input type="text" value="No Duplex"/>
Paper Handling:	<input type="checkbox"/> Use Sorter <input type="checkbox"/> Collate <input type="checkbox"/> Reverse Page Order <input type="checkbox"/> Staple <input type="checkbox"/> Face Up
Paper Size Handling:	<input type="checkbox"/> Force Paper Size To: <input type="text" value="Letter LEF"/> <input type="checkbox"/> Scale To Paper Size
<b>Tray Settings</b> <small>[ Pages Tray Color Extras Submit ]</small>	
Tray Selection:	<input type="text" value="Automatic"/>
Bypass Tray Options:	<input type="text" value="Normal Paper"/>

Click “Pages,” “Tray,” “Color,” and “Extras” at the top of the editor to view and select Splash print options for the job. (See Chapter 2 for complete information about the Splash print options.)

When you have finished selecting print options, click “Submit” at the top of the editor, then click “Save Settings” to confirm your changes.

## Printing Graphics Files

With the Splash Web Queue Manager you can send graphics files such as PDF, TIFF, EPS, and PostScript files to the printer/copier for printing.

**Note:** Microsoft Explorer versions 3.0 and earlier do not support sending files to the Splash Server for printing.

To send a PDF, TIFF, EPS, or PostScript file to Splash:

1. Click “Send Job” in the Splash Web Queue Manager window. The Splash Web Queue Manager editor appears.
2. Select print options for the job. The Web Queue Manager editor appears.

**Send Job To Splash Color Server**

This page allows you to submit a job to the Splash Color Server.  
Your job can be a PostScript file, an EPS file, or a TIFF file. The following options will be applied to PostScript files only.  
After selecting the options click "Submit" in the tool bar to select and submit your file.

**Page Settings**  
[ Pages Tray Color Extras Submit]

Number Of Copies:

Page Range:  All  Odd  Even  Selected  
  
Example: 3,5,10-20,25-

Paper Handling:  Use Sorter  
 Collate  
 Reverse Page Order  
 Manual Duplex

Paper Size Handling:  Force Paper Size To:  
  
 Scale To Paper Size

**Tray Settings**  
[ Pages Tray Color Extras Submit]

Click “Pages,” “Tray,” “Color,” and “Extras” at the top of the editor to select Splash print options for the graphics file. (See Chapter 2 for complete information about the Splash print options.)

3. When you have finished selecting print options, click “Submit” at the top of the editor. Instructions on how to select the file to print appear.

**Submit**  
[ Pages Tray Color Extras Submit ]

Select the file to Spool to the Splash Server by clicking on the "Browse" Button.  
Select "Send" to send your file to the Splash Color Server.

Send this file:

4. Click Browse. A file selection dialog box appears. Select the file to print, then click OK in the dialog box.
5. Click “Send” to print the graphics file to the Splash Server.

The Splash Web Queue Manager transfers the file to the Drop Folder at the Splash Server. The Splash Server processes and prints the job.

### ***Splash Web Queue Manager Notes***

#### **Microsoft Internet Explorer 4.0**

If you are using Microsoft Internet Explorer version 4.0 as your browser, you cannot upload files to the Splash Server.

#### **Missing Privileges Dialog Box**

If you try to release a job that you do not have access privileges for, the Missing Privileges dialog box appears. Click the “Back” button in the Splash Web Queue Manager to close the error dialog and return to the Splash Web Queue Manager.

#### **Pipeline Buffer Server Preference Not Available**

The Pipeline Buffer Server Preference cannot be set through the Splash Web Queue Manager.

### **Some Frames Cover the Job Queue Frame in Internet Explorer**

With Microsoft's Internet Explorer, the Job Edit, Job Info, and Log On frames cover the Splash Print Queue frame. To restore the Print Queue frame, click the "Refresh" button.

### **Job Selection Checkmarks Disappear**

If you click to select a job in the Print Queue frame, and do not perform a command (such as Edit Job or Job Info), the checkmark disappears. This occurs because the server updates the Print Queue every so often. If no command is sent to the server, the server cannot tell that the job is selected at the client, so the checkmark is erased when the frame is refreshed.



## **Chapter 4**

### **Application Notes**

This section provides information about how to use specific Macintosh applications with a Splash Server. Read the Splash DC Series v4.0 Product Update Notice for additional information about using Macintosh applications with Splash.

#### **General Application Notes**

##### **Bitmapped Fonts**

If a Client Macintosh reports that a “bitmap is being created for the missing font since no printer font can be found,” it means that a font that is used in the file is not installed on either the Client or the Server Macintosh. The results in your printed output vary depending on the application you are using.

- QuarkXPress—Prints low-resolution bitmaps of missing fonts.
- Macromedia FreeHand—First line of type is substituted with Courier; the rest of the lines of type print as bitmaps. (Or, TimesRoman is substituted for first line of type, and the rest of the text is not printed.)
- Adobe Illustrator—Prints all type in TimesRoman.
- Adobe Photoshop—Prints bitmaps of missing fonts.
- Adobe PageMaker—The job is returned to the queue with an error.

To solve this problem, install the missing fonts on the Client machine. The fonts will then download to the server and print correctly.

##### **Printing DCS Files**

The Splash Separations print feature allows you to print proofs from DCS (Desktop Color Separation) files. To print a high-resolution proof of a DCS file, activate the separations feature within your application and in the Splash driver print options dialog box (see page 32 for instructions).

## ***Printing Documents That Use Patterned Fills***

When you print a document that includes patterned fills from Aldus Persuasion, Adobe Illustrator, or Macromedia FreeHand, select the LaserWriter 8 driver in the Chooser before you print the document.

## ***Printing Gradient Fills***

Documents that contain radial fills require extra time for Splash to process and print.

## ***Printing Documents That Use Many Fonts***

You may need to increase memory for the Splash Server application to print documents that use a large number of fonts.

## ***Printing Separations***

If you experience problems printing separations to Splash from Adobe PageMaker, Deneba Canvas, or FreeHand, install the Splash v2.1 custom printer driver to resolve the problem. This printer driver is based on Apple's LaserWriter 7 driver, and should not be used for regular printing to Splash. Many of the new Splash v4.0 print features cannot be used with this driver.

To install the Splash v2.1 custom printer driver, open the **Printer Drivers v2.1** folder in the Splash Extras folder within the Splash Folder on your computer's hard disk. Move the file **Splash v2.1** to the "Printer Descriptions" folder in the Extensions folder within the System Folder.

To print with the Splash v2.1 custom print driver, open the MacOS Chooser, select the **Splash v2.1** driver, then close the Chooser. When you print from your application, click the **Splash** button that appears in the Print dialog box, then select any Splash print options. Note that the Splash v4.0 print options are not available when you print with this driver.

## ***Printing 12" x 18" Documents***

The paper size 12" x 18" prints to the Bypass Tray only. If you attempt to print a 12" x 18" page using automatic or direct tray selection, this is ignored and Splash prompts you to insert paper in the Bypass Tray. For applications that can output crop marks and/or registration marks (such as QuarkXPress, PageMaker and FreeHand), the document must be printed with crop marks and registration marks off.



For applications such as PageMaker that provide a “center on imageable area” option, make sure this option is enabled for correct output.

In applications such as QuarkXPress or PageMaker that allow you to set a page size independent of the paper size selected for printing, use the standard A3 page size and set the margins to 0. Then, when you print the document, select the A3 Bleed on Oversize page size. For all other applications, select the full-bleed size in the Page Setup dialog box.

## ***Notes for Specific Applications***

### ***Adobe Illustrator Notes***

Each time you launch Adobe Illustrator you must select a page size in the Page Setup dialog box.

In grayscale, Adobe Illustrator prints 400 dpi for all sizes (up to A3), for all models of Splash.

The Paths section contains the setting for output device resolution. Splash is a 400 dpi device. Be sure to check the “Use printer's default screen” check box. This will eliminate any problems with blends printing incorrectly.

Both the Page Setup and Print dialog boxes are similar to Apple's standard dialog boxes. There are no unusual print options in either of these boxes. Simply select the proper page size and orientation. All Printer Effects should be disabled.

If you select an A3 portrait page size and a reduce/enlarge value of 200% or greater in page setup, you may get multiple copies when only one is selected.

The top and bottom margins are reversed when you print from Adobe Illustrator version 3.2.

### ***Printing Separations From Adobe Illustrator***

To print a separations document created with Adobe Illustrator, first save the document as an EPS file in Adobe Illustrator, then import the EPS file into QuarkXPress, Adobe PageMaker, Macromedia FreeHand (versions 3.1 and 5.0 only), or Deneba Canvas to print the separations document to Splash.

**Note:** Before you attempt to print an Adobe Illustrator separations document from Macromedia FreeHand 5.0, start the Macromedia FreeHand 5.0 application, choose Preferences from the File menu, then choose “Importing Exporting” in the pop-up menu in the Preferences dialog box. Make sure the “Convert Editable EPS when placed” option is checked.

### ***Adobe PageMaker Notes***

Under certain circumstances, Adobe PageMaker print jobs that are sent to a specific paper tray are moved to the Error queue and do not print. This occurs when no paper trays at the copier contain Letter or Letter LEF paper. To correct the problem, make sure at least one paper tray at the copier is loaded with Letter or Letter LEF paper.

When you use Option-P to print from Adobe PageMaker 4.2 or 5.0, unwanted white pixels can appear in some bitmapped images. When you print bitmapped images, use the regular Print command from the File menu. The regular Print command results in limited functionality in the Print dialog box. For example, the color model and color matching options cannot be set via the normal Print command in PageMaker 5.0. (Use Option-P to set color matching and model options.)

If an Adobe PageMaker 5 document contains high-resolution TIFF images, the TIFFs do not print properly to a Color Central Lite queue that is configured for APR (Automatic Picture Replacement). There are three ways to work around this problem:

- Use a low-res sample of the TIFF instead of the high-res TIFF in the document.
- Use an EPS image instead of a TIFF in the document.
- Print the PageMaker 5 document to a Color Central Lite queue that is not configured for APR.

If you are using PageMaker 6.0, RGB colors may not be created and printed as expected. Upgrade to PageMaker 6.5 to ensure RGB color matching between the monitor and print output.

Do not use the Splash Reverse Page Order print option when you print Adobe PageMaker 6.5 documents with the LaserWriter 8 driver. Use the custom Splash driver instead.

The LaserWriter 8.4.1 driver may cause unexpected results when you print from PageMaker 6.0. If this occurs, use the LaserWriter 8.3.x driver instead.

### ***Splash Print Options Not Available for Early Versions of PageMaker***

Adobe PageMaker application versions prior to v6.0 cannot apply Splash print options (such as color correction) to documents when you print to the DocuColor. Adobe PageMaker 6.0 supports all Splash print features.

### ***Adobe Photoshop Notes***

For the fastest and most accurate color correction when printing RGB or CMYK files from Adobe Photoshop, enable Splash RGB/CMYK color correction.

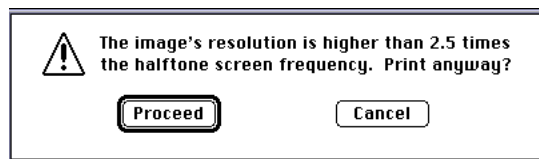
Splash provides color separation tables that work with the Adobe Photoshop Separation Tables feature. See “Adobe Photoshop Color Separation Tables for Splash” on page 41. The tables convert RGB images into separations for a printing press. (*Note:* These separation tables produce the same results as when you use Splash RGB color correction to create press separations.)

Adobe Photoshop is a powerful image editing application. Unfortunately, one of the drawbacks of Photoshop is the complexity involved in dealing with color PostScript output. There are many Preferences in Photoshop that should be set up before color correction and output are performed. These settings files will affect the color quality of the output, and should reflect the settings of the workstation on which the color work is being performed.

The Photoshop Monitor Setup is where information about the display should be entered. This will not only affect what is seen on screen, but will affect the output, therefore affecting screen-to-print matching. Consult the Photoshop User Guide for detailed instructions on monitor setup. In addition to the monitor setup, there are two preference settings for “Printing Inks” and “Separation Setup.” These settings are used when converting an image to CMYK, or using a CMYK image. These settings should reflect the type of separation in use.

### ***Print Dialog Box Notes***

When you choose Print from the File menu to print your job, Photoshop may display the following message:



Ignore this message. Click the Proceed button to display the Print dialog box. To prevent this message from displaying, choose Page Setup in the File menu in Adobe Photoshop, then click the Screens button. Make sure the “Use Printer’s Default Screen” checkbox is checked, then click OK.

Two items in the Adobe Photoshop Print dialog box may affect the color quality of the output.

- Encoding—Select “Binary.” Binary encoding is faster than ASCII.
- Print in—If the file is an RGB file, the option will be given to print in CMYK. Selecting CMYK will let Photoshop convert the file to CMYK before it is printed. It will use whatever settings are loaded into the Separation settings dialog box. If the file is already in CMYK, this option will not be available.

### ***Save as TIFF and Adobe Photoshop 3.0***

When you use the Splash Save as TIFF option with a long-edge feed paper orientation selected (LetterL, A4L, B5L, and so on), the page appears rotated when the TIFF is opened in Adobe Photoshop. This does not occur when short-edge feed paper orientations are used with Save as TIFF.

### ***Corel Draw Notes***

If you attempt to save a document as a TIFF with Corel Draw 5.0, the job generates an error at the Server with the message, “Can’t save as TIFF.”

To use the Splash Separations feature, you must have CorelDraw version 7.0 or later installed. Earlier versions of CorelDraw will print a black page for each separation plate.

## ***Deneba Canvas Notes***

There are several limitations associated with printing a separations document to Splash from the Canvas application:

- When you print a separations job to Splash, select the “Canvas Style” separations option. The “Automatic” option does not work with Canvas documents.
- To print a separations document to Splash with the “Canvas Style” separations option, use the custom Splash DocuColor printer driver for LaserWriter 7. The Canvas separations option does not work with the LaserWriter 8 printer driver.
- Certain Canvas separations documents that contain several complex PostScript operations, such as a combination of trapping, overprinting, and DCS recombination, result in an error at the Splash Server. These jobs return the error message “Error: undefined; OffendingCommand:” and the separations job does not print. This problem is caused by faulty PostScript code generation by Canvas.
- Multiple-page separations documents printed with the Splash DocuColor driver print the first page only.

Canvas documents that contain many complex gradients do not print all gradients correctly when the Splash “Screened” print option is enabled for the job. Some gradients print with a patterned fill and the gradients are heavily stepped. If the document contains multiple pages the problem is more pronounced on later pages.

## ***Macromedia FreeHand Notes***

When you use FreeHand, the paper size in the document setup, page setup, and print setup must all match. Use the Document Setup command to make sure the image is not off the page. If it appears off the page on screen, it will print off the page on the printer/copier. To change the print size and orientation, click the Change button in the print window.

### ***FreeHand 4.0***

There are several options available in the FreeHand Print Dialog box. These are similar to features in other publishing applications, and a detailed description can be found in the FreeHand User’s Guide.

“Print as:” selects printing a job as a composite file, or as color separations. When printing to Splash, select “Composite File.”

The window at the bottom of the Print dialog box describes the current printer setting, determined by the currently selected PPD. Click the Print... button at the bottom left to change the printer settings.

Click the Select PPD... button to change the information. The “Open PPD” dialog appears. Select “Splash DocuColor” from the window and click OK.

Once the Splash DocuColor PPD is selected, the DocuColor page sizes become available. Select the appropriate page size from the pull-down menu. Click OK to close this window.

In the Print dialog box, select “Output Options...”. Be sure “Convert RGB Tiff to CMYK” is unchecked. This will produce results inferior to Splash color correction.

### ***FreeHand 3.1 Notes***

To change the printer type from the currently selected Apple LaserWriter, click and hold down the pop-up menu titled “Printer Type.” A list of installed PPDs will be displayed. Select “Splash DocuColor” and release the mouse button. If “Splash DocuColor” doesn’t show up, consult the *Splash Set-Up Manual* for information on installing the PPD.

### **Optimized Screen**

The “Optimized Screen” pop-up menu in the Print dialog box refers to the screen resolution of the output device. While this doesn't affect the output quality of images on Splash, it will affect the quality of blends created in FreeHand. For the best results, use a resolution of 400 and a screen ruling of 200.

### ***FreeHand 7.0 Notes***

The “Automatic” Separations option does not work when you print a separations job to Splash with the LaserWriter 8.x driver. Splash prints one page for each separation plate in the document. Use the custom Splash driver to correctly print your separations document.

If you select 2-Up or 4-Up printing for a FreeHand document, the job prints the page borders only. The page contents do not print on the 2-up or 4-up job output.

If the printer/copier runs out of paper while printing a FreeHand document, Splash prompts you to add more paper to the tray, or cancel the print job. If you click the Cancel button to cancel the print job, FreeHand displays a second add paper mes-

sage and then prints an “Error” page once you add paper to the tray. If your print job specified multiple copies, FreeHand transfers the page count to the “Error” page. This results in multiple prints of the error message page.

If you encounter problems printing a job that uses the Splash Reverse Page Order option and the Print Selected Pages option, use the LaserWriter 8 driver instead of the custom Splash driver. If you print with the custom Splash driver, the last page of the job may not print.

With FreeHand 3.11, if you print an A3 size image with the Fit To Page option, Splash may print a blank sheet of paper.

The name “Tool Box” appears instead of the correct print job name in the print queue for FreeHand 3.1. This problem is caused by a design flaw in FreeHand.

### **FreeHand 7.x Grayscale Gradients Print With Stepping**

If your FreeHand 7 documents print grayscale gradients with stepping, follow these steps to resolve the problem:

1. In FreeHand, point to the Preferences command in the File menu, then choose Import/Output in the Preferences submenu.
2. Under “Name of UserPrep file,” type “SmoothRadsGrads.prp” then click OK.
3. Switch to the Macintosh Finder. (You do not need to quit the FreeHand application.)
4. In the FreeHand application folder, open the UserPrep Files folder.
5. Drag the file “SmoothRadsGrads.prp” into the FreeHand application folder (the .prp file must be in the same folder as the FreeHand application).
6. Return to the FreeHand application and print the file. (You do not need to restart FreeHand.) The grayscale document prints with smooth gradients.

### **FreeHand with LaserWriter 8.x Driver**

The n-up printing feature is not supported with FreeHand and the LaserWriter 8.x printer driver.

### ***Microsoft Excel Notes***

Due to a problem caused by Microsoft Excel PostScript generation, an Excel print job may return to the Splash print queue with an error, although the actual job successfully prints. If this happens, delete the errored job from the Splash queue.

### ***Microsoft Office Notes***

If you experience problems printing from Microsoft Office applications with the custom Splash driver, use the LaserWriter 8.3.x (or later) driver instead.

### ***Microsoft PowerPoint Notes***

PowerPoint documents that contain a large number of fonts on a single page (in excess of 35 fonts) do not print when you use the LaserWriter 8 driver and PPD. The job is not processed or printed by the Server and disappears from the print queue. Use the Adobe Splash DocuColor driver, or reduce the number of fonts on the page.

### ***QuarkXPress Notes***

#### ***Splash Reverse Page Order and QuarkXPress***

The Splash Reverse Page Order print option is supported for QuarkXPress print jobs that fit entirely in frame buffer memory. The Reverse Page Order option is also supported when the Use Collated Mini Sets option is enabled in the Splash Server Preferences.

**Note:** If the print job has an odd number of pages and the Splash “Duplex” print option is selected, select both the Splash “Reverse Page Order” option and the QuarkXPress “Back to Front” option to print the job correctly.

#### ***Landscape LEF Jobs Rotated***

When you print a job with Landscape orientation and an LEF paper size selected, the output is rotated 180 degrees. To avoid this, choose Options in the Page Setup dialog box then select “Flip Horizontal” and “Flip Vertical” under Visual Effects before you print the job.



***QuarkXPress 3.1 Print Job With LaserWriter 8 “Color Correction/Grayscale” Option Selected Causes Error***

If you print a QuarkXPress 3.1 document with the LaserWriter 8 driver, do not select the “Color Correction/Grayscale” print option. This option causes the job to return to the print queue with a PostScript error. Choose the “Color/Grayscale” print option instead. This problem does not occur with QuarkXPress 3.3.



# Index

## A

---

- Adobe Illustrator
  - bitmapped fonts 55
  - notes 57
  - separations 33
- Adobe PageMaker
  - auto page select 18
  - bitmapped fonts 55
  - notes 58
  - separations 33
- Adobe Photoshop
  - color separation tables 41
  - notes 59
  - printing bitmapped fonts 55
- Adobe Separator 33
- Automatic Grayscale Detection 9, 10, 36
- Automatic tray selection 27
- AutoSelect 18

## B

---

- Bitmapped fonts 55
- Bypass Tray 27

## C

---

- Canceling a print job 45, 48
- Choosing color correction 25
- Client Macintosh software installation 7

- CMYK Press color correction 26
- CMYK/RGB mixed color files 38
- Collate options 29, 31
- Color Central Lite 10
- Color correction
  - RGB 25
  - understanding Splash 37
- Color Model 10
- Color options 24
- Color printing 24
- Color separation tables for Adobe Photoshop 41
- ColorCal 38
- ColorSync color matching 20
- ColorSync profiles for Splash 41
- Composite Spot Colors 26
- Contone printing option 24
- Control strip 35
- Corel Draw notes 60
- Cover page, with separations printing 34
- Custom color correction 26

## D

---

- DCS files, printing 33, 55
- Deleting a print job 45, 48

Deneba Canvas  
notes 61  
separations 33

DIC spot colors 26

Direct TCP/IP 13

DocuPac 28

Drop folder 36

## **E**

---

EFICOLOR interferes with Splash color correction 40

Enable Separations 33

Enhanced color correction 26

Euroscale color correction 26

## **F**

---

Fonts

bitmapped 55  
printer fonts 9

FreeHand

bitmapped fonts 55  
notes 61  
separations 33

Full bleed printing 56

## **G**

---

Gamma options 25

Graphics rendering style 25

Graphics, printing 9

Grayscale detection 9, 10, 36

Grayscale printing 24, 36

## **H**

---

Heavy weight paper 28

HKS spot colors 26

Hold status for a print job 45, 48

## **I**

---

ICC color profiles 41

Installing Macintosh Client driver 7

## **L**

---

LaserWriter 8 driver

multiple tray feature 17  
Splash print options 17

Layout 21

LEF paper options 9

## **M**

---

Macintosh Client driver installation 7

Manual feed tray 28

Memory requirement (RAM) 5

More Blue whitepoint option 25

More Yellow whitepoint option 25

## **N**

---

Networking hardware and software 5

## **O**

---

Opaque film 28

Original Image Type 34

## **P**

---

Page ranges, printing 17

Page Setup, LaserWriter 8 14

PANTONE spot colors 26

Paper size, selecting 15

Paper Source 17

Pass Through profile 41

Photographic originals 34

Photographic rendering style 25

PostScript color matching 20

PostScript file, printing 36

Print Control Strip 35

Print job priority 45, 48

Printing

    large graphics 9

    sorter options 31

## **Q**

---

QuarkXPress

    bitmapped fonts 55

    separations 33

    Splash color correction 40

## **R**

---

RAM requirement 5

Required hardware and software 5

RGB color correction 24

RGB/CMYK mixed color files 38

## **S**

---

Save as TIFF 36

Save Spool File 32

Screened printing option 24

Separations 33

Sorter options 29, 31

Splash color options 24

Splash ColorCal 38

Splash Macintosh Client driver, installing 7

Splash Web Queue Manager 45

Spot colors 26

Stacker options 29, 31

SWOP color correction 26

System requirements 5

## **T**

---

Text Enhancement 27

Text/Graphics/Line Art originals 34

TIFF, save print job as 36

Toyo spot colors 26

Transparency 28

Transparency Interleave 28

## ***U***

---

Unlimited downloadable fonts 16

Unprintable Files folder 37

## ***V***

---

Visual Standard pass through profile 41

## ***W***

---

Web Queue Manager 45

Whitepoint options 25