

Fiery Network Controller for DocuColor 3535

CONFIGURATION GUIDE



About the Documentation

This manual is part of a set of Fiery Network Controller for DocuColor 3535™ documentation that includes the following manuals for users and system administrators:

- The *Quick Start Guide* summarizes the steps for configuring the Fiery Network Controller for DocuColor 3535 and printing. It also describes how to access the online documentation.
- The *User Software Installation Guide* describes how to install software from the User Software CD to enable users to print to the Fiery Network Controller for DocuColor 3535, and also describes setting up printing connections to the Fiery Network Controller for DocuColor 3535.
- The *Configuration Guide* explains basic configuration and administration of the Fiery Network Controller for DocuColor 3535 for the supported platforms and network environments. It also includes guidelines for setting up UNIX, Windows NT 4.0/2000, and Novell NetWare servers to provide printing services to users.
- The *Printing Guide* describes the printing features of the Fiery Network Controller for DocuColor 3535 for users who send jobs from their computers.
- The *Color Guide* provides information on managing the color output of the Fiery Network Controller for DocuColor 3535. It explains how to calibrate your Fiery Network Controller for DocuColor 3535 and take advantage of the ColorWise® color management system, as well as features in ColorWise Pro Tools™.
- The *Fiery Color Reference* addresses concepts and issues associated with managing color output of the Fiery Network Controller for DocuColor 3535 and outlines key workflow scenarios. In addition, it offers information on printing color documents from popular Microsoft Windows and Apple Mac OS applications.
- The *Job Management Guide* explains the functions of the job management utilities, including Command WorkStation™ and DocBuilder Pro™, and how you can use them to monitor and control jobs on the Fiery Network Controller for DocuColor 3535. This manual is intended for an operator or administrator, or a user with the necessary access privileges, who monitors and manages job flow, performs color calibration, and troubleshoots problems that may arise.
- *Customer Release Notes* provide last-minute product information and workarounds for some of the problems you may encounter.

Copyright © 2003 Electronics For Imaging, Inc. All rights reserved.

This publication is protected by copyright, and all rights are reserved. No part of it may be reproduced or transmitted in any form or by any means for any purpose without express prior written consent from Electronics For Imaging, Inc., except as expressly permitted herein. Information in this document is subject to change without notice and does not represent a commitment on the part of Electronics For Imaging, Inc.

The software described in this publication is furnished under license and may only be used or copied in accordance with the terms of such license.

This product may be covered by one or more of the following U.S. Patents: 4,500,919, 4,837,722, 5,212,546, 5,343,311, 5,424,754, 5,467,446, 5,506,946, 5,517,334, 5,537,516, 5,543,940, 5,553,200, 5,615,314, 5,619,624, 5,625,712, 5,666,436, 5,760,913, 5,818,645, 5,835,788, 5,867,179, 5,959,867, 5,970,174, 5,982,937, 5,995,724, 6,002,795, 6,025,922, 6,041,200, 6,065,041, 6,112,665, 6,122,407, 6,134,018, 6,141,120, 6,166,821, 6,185,335, 6,201,614, 6,215,562, 6,219,659, 6,222,641, 6,224,048, 6,225,974, 6,226,419, 6,238,105, 6,239,895, 6,256,108, 6,269,190, 6,289,122, 6,292,270, 6,310,697, 6,327,047, 6,327,050, 6,327,052, RE36,947, D406,117, D416,550, D417,864, D419,185, D426,206, D439,851, D444,793

Trademarks

ColorWise, EDOX, EFI, Fiery, the Fiery logo, Fiery Driven and RIP-While-Print are registered trademarks of Electronics For Imaging, Inc. in the U.S. Patent and Trademark Office and/or certain other foreign jurisdictions.

The eBeam logo, the Electronics For Imaging logo, the Fiery Driven logo, the PrintMe logo, the Splash logo, AutoCal, ColorCal, Command WorkStation, DocBuilder, DocBuilder Pro, DocStream, eBeam, EFI Color Profiler, EFI Production System, EFI ScanBuilder, Fiery X2, Fiery X2e, Fiery X2-W, Fiery X3e, Fiery X4, Fiery ZX, Fiery Z4, Fiery Z5, Fiery Z9, Fiery Z16, Fiery Z18, Fiery Document WorkStation, Fiery Downloader, Fiery Driver, Fiery FreeForm, Fiery Link, Fiery Prints, Fiery Print Calibrator, Fiery Production System, Fiery Scan, Fiery ScanBuilder, Fiery Spark, Fiery Spooler, Fiery WebInstaller, Fiery WebScan, Fiery WebSpooler, Fiery WebStatus, Fiery WebTools, NetWise, PrintMe, PrintMe Networks, Print Me. Everywhere You Go, RIPChips, Splash, Velocity, Velocity Balance, Velocity Build, Velocity Design, Velocity Estimate, Velocity Scan, and VisualCal are trademarks of Electronics For Imaging, Inc.

All other terms and product names may be trademarks or registered trademarks of their respective owners, and are hereby acknowledged.

Legal Notices

APPLE COMPUTER, INC. ("APPLE") MAKES NO WARRANTIES, EXPRESS OR IMPLIED, INCLUDING WITHOUT LIMITATION THE IMPLIED WARRANTIES OF MERCHANTABILITY AND FITNESS FOR A PARTICULAR PURPOSE, REGARDING THE APPLE SOFTWARE. APPLE DOES NOT WARRANT, GUARANTEE, OR MAKE ANY REPRESENTATIONS REGARDING THE USE OR THE RESULTS OF THE USE OF THE APPLE SOFTWARE IN TERMS OF ITS CORRECTNESS, ACCURACY, RELIABILITY, CURRENTNESS, OR OTHERWISE. THE ENTIRE RISK AS TO THE RESULTS AND PERFORMANCE OF THE APPLE SOFTWARE IS ASSUMED BY YOU. THE EXCLUSION OF IMPLIED WARRANTIES IS NOT PERMITTED BY SOME STATES. THE ABOVE EXCLUSION MAY NOT APPLY TO YOU.

IN NO EVENT WILL APPLE, ITS DIRECTORS, OFFICERS, EMPLOYEES OR AGENTS BE LIABLE TO YOU FOR ANY CONSEQUENTIAL, INCIDENTAL OR INDIRECT DAMAGES (INCLUDING DAMAGES FOR LOSS OF BUSINESS PROFITS, BUSINESS INTERRUPTION, LOSS OF BUSINESS INFORMATION, AND THE LIKE) ARISING OUT OF THE USE OR INABILITY TO USE THE APPLE SOFTWARE EVEN IF APPLE HAS BEEN ADVISED OF THE POSSIBILITY OF SUCH DAMAGES. BECAUSE SOME STATES DO NOT ALLOW THE EXCLUSION OR LIMITATION OF LIABILITY FOR CONSEQUENTIAL OR INCIDENTAL DAMAGES, THE ABOVE LIMITATIONS MAY NOT APPLY TO YOU. Apple's liability to you for actual damages from any cause whatsoever, and regardless of the form of the action (whether in contract, tort [including negligence], product liability or otherwise), will be limited to \$50.

Restricted Rights Legends

For defense agencies: Restricted Rights Legend. Use, reproduction, or disclosure is subject to restrictions set forth in subparagraph (c)(1)(ii) of the Rights in Technical Data and Computer Software clause at 252.227.7013.

For civilian agencies: Restricted Rights Legend. Use, reproduction, or disclosure is subject to restrictions set forth in subparagraph (a) through (d) of the commercial Computer Software Restricted Rights clause at 52.227-19 and the limitations set forth in Electronics For Imaging's standard commercial agreement for this software. Unpublished rights reserved under the copyright laws of the United States.

Part Number: 45029610

FCC Information

WARNING: FCC Regulations state that any unauthorized changes or modifications to this equipment not expressly approved by the manufacturer could void the user's authority to operate this equipment.

Class A Compliance

This equipment has been tested and found to comply with the limits for a Class A digital device, pursuant to Part 15 of the FCC Rules. These limits are designed to provide reasonable protection against harmful interference when the equipment is operated in a commercial environment. This equipment generates, and uses, and can radiate radio frequency energy and, if not installed and used in accordance with the instruction manual, may cause harmful interference to radio communications. Operation of this equipment in a residential area is likely to cause interference in which case the user will be required to correct the interference at his own expense.

Industry Canada Class A Notice

This Class A digital apparatus complies with Canadian ICES-003.

Avis de Conformation Classe A de l'Industrie Canada

Cet appareil numérique de la Classe A est conforme à la norme NMB-003 du Canada.

RFI Compliance Notice

This equipment has been tested concerning compliance with the relevant RFI protection requirements both individually and on system level (to simulate normal operation conditions). However, it is possible that these RFI Requirements are not met under certain unfavorable conditions in other installations. It is the user who is responsible for compliance of his particular installation.

Dieses Gerät wurde sowohl einzeln als auch in einer Anlage, die einen normalen Anwendungsfall nachbildet, auf die Einhaltung der Funkentstörbestimmungen geprüft. Es ist jedoch möglich, dass die Funkentstörbestimmungen unter ungünstigen Umständen bei anderen Gerätekombinationen nicht eingehalten werden. Für die Einhaltung der Funkentstörbestimmungen einer gesamten Anlage, in der dieses Gerät betrieben wird, ist der Betreiber verantwortlich.

Compliance with applicable regulations depends on the use of shielded cables. It is the user who is responsible for procuring the appropriate cables.

Die Einhaltung zutreffender Bestimmungen hängt davon ab, dass geschirmte Ausführungen benutzt werden. Für die Beschaffung richtiger Ausführungen ist der Betreiber verantwortlich.

Software License Agreement

YOU SHOULD CAREFULLY READ THE FOLLOWING TERMS AND CONDITIONS BEFORE USING THIS SOFTWARE. IF YOU DO NOT AGREE TO THE TERMS AND CONDITIONS OF THIS AGREEMENT, DO NOT USE THE SOFTWARE. INSTALLING OR USING THE SOFTWARE INDICATES THAT YOU AGREE TO AND ACCEPT THE TERMS OF THIS AGREEMENT. IF YOU DO NOT AGREE TO ACCEPT THE TERMS OF THIS AGREEMENT YOU MAY RETURN THE UNUSED SOFTWARE FOR A FULL REFUND TO THE PLACE OF PURCHASE.

License

EFI grants you a non-exclusive license to use the software ("Software") and accompanying documentation ("Documentation") included with the Product. The Software is licensed, not sold. You may use the Software solely for your own customary business or personal purposes. You may not rent, lease, sublicense or lend the Software. You may, however, permanently transfer all of your rights under this Agreement to another person or legal entity provided that: (1) you transfer to the person or entity all of the Software and Documentation (including all copies, updates, upgrades, prior versions, component parts, the media and printed materials, and this Agreement); (2) you retain no copies of the Software and Documentation, including copies stored on a computer; and (3) the recipient agrees to the terms and conditions of this Agreement.

You may not make or have made, or permit to be made, any copies of the Software or portions thereof, except as necessary for backup or archive purposes in support of your use of the Software as permitted hereunder. You may not copy the Documentation. You may not attempt to alter, disassemble, decompile, decrypt or reverse engineer the Software.

Proprietary Rights

You acknowledge that the Software is proprietary to EFI and its suppliers and that title and other intellectual property rights therein remain with EFI and its suppliers. Except as stated above, this Agreement does not grant you any right to patents, copyrights, trade secrets, trademarks (whether registered or unregistered), or any other rights, franchises or licenses in respect of the Software. You may not adopt or use any trademark or trade name which is likely to be similar to or confusing with that of EFI or any of its suppliers or take any other action which impairs or reduces the trademark rights of EFI or its suppliers.

Confidentiality

You agree to hold the Software in confidence, disclosing the Software only to authorized users having a need to use the Software as permitted by this Agreement and to take all reasonable precautions to prevent disclosure to other parties.

Remedies and Termination

Unauthorized use, copying or disclosure of the Software, or any breach of this Agreement will result in automatic termination of this license and will make available to EFI other legal remedies. In the event of termination, you must destroy all copies of the Software and all of its component parts. All provisions of this Agreement relating to disclaimers of warranties, limitation of liability, remedies, damages, and EFI's proprietary rights shall survive termination.

Limited Warranty and Disclaimer

EFI warrants to the original purchaser ("Customer") for thirty (30) days from the date of original purchase from EFI or its authorized retailer that the Software will perform in substantial conformance to the Documentation when the Product is used as authorized by EFI's specifications. EFI warrants the media containing the Software against failure during the above warranty period. EFI makes no warranty or representation that the Software will meet your specific requirements, that the operation of the Software will be uninterrupted or error free, or that all defects in the Software will be corrected. EFI makes no warranty, implied or otherwise, regarding the performance or reliability of any third party products (software or hardware) not provided by EFI. THE INSTALLATION OF ANY THIRD PARTY PRODUCTS OTHER THAN AS AUTHORIZED BY EFI WILL VOID THIS WARRANTY. IN ADDITION, USE, MODIFICATION, AND/OR REPAIR OF THE PRODUCT OTHER THAN AS AUTHORIZED BY EFI WILL VOID THIS WARRANTY.

EXCEPT FOR THE ABOVE EXPRESS LIMITED WARRANTY, EFI MAKES AND YOU RECEIVE NO WARRANTIES OR CONDITIONS ON THE SOFTWARE, EXPRESS, IMPLIED, STATUTORY, OR IN ANY OTHER PROVISION OF THIS AGREEMENT OR COMMUNICATION WITH YOU, AND EFI SPECIFICALLY DISCLAIMS ANY IMPLIED WARRANTY OR CONDITION OF MERCHANTABILITY OR FITNESS FOR A PARTICULAR PURPOSE OR NONINFRINGEMENT OF THIRD PARTY RIGHTS.

Limitation of Liability

TO THE MAXIMUM EXTENT PERMITTED BY LAW, EFI AND ITS SUPPLIERS SHALL NOT BE LIABLE FOR ANY DAMAGES, INCLUDING LOSS OF DATA, LOST PROFITS, COST OF COVER OR OTHER SPECIAL, INCIDENTAL, CONSEQUENTIAL OR INDIRECT DAMAGES ARISING FROM THE SALE, INSTALLATION, MAINTENANCE, USE, PERFORMANCE OR FAILURE OF THE SOFTWARE, HOWEVER CAUSED AND ON ANY THEORY OF LIABILITY. THIS LIMITATION WILL APPLY EVEN IF EFI HAS BEEN ADVISED OF THE POSSIBILITY OF SUCH DAMAGE. YOU ACKNOWLEDGE THAT THE PRICE OF THE PRODUCT REFLECTS THIS ALLOCATION OF RISK. BECAUSE SOME JURISDICTIONS DO NOT ALLOW THE EXCLUSION OR LIMITATION OF LIABILITY FOR CONSEQUENTIAL OR INCIDENTAL DAMAGES, THE ABOVE LIMITATION MAY NOT APPLY TO YOU.

Export Controls

You agree that you will not export or re-export the Software in any form in violation of any applicable laws or regulations of the United States or the country in which you obtained them.

U.S. Government Restricted Rights:

The Software and Documentation are provided with RESTRICTED RIGHTS. Use, duplication, or disclosure by the United States Government is subject to restrictions as set forth in subparagraph (c)(1)(ii) of the Rights in Technical Data and Computer Software clause at DFARS 252.227-7013 or subparagraphs (c)(1) and (2) of the Commercial Computer Software Restricted Rights at 48 CFR 52.227-19, as applicable.

General

The laws of the State of California govern this Agreement. You agree that this Agreement shall not be subject to the United Nations Convention on Contracts for the International Sale of Goods (1980). This Agreement is the entire agreement held between us and supersedes any other communications or advertising with respect to the Software. If any provision of this Agreement is held invalid, the remainder of this Agreement shall continue in full force and effect.

If you have any questions, please see EFI's web site at www.efi.com.

Electronics For Imaging
303 Velocity Way
Foster City, CA 94404

Contents

About the Documentation

Introduction

About this manual	xi
-------------------	----

Chapter 1: Connecting to the Network

Fiery on the network	1-1
Stages of installation on the network	1-2
Quick path to installation	1-4
Connecting network cable to the Fiery	1-10
Back view of the Fiery	1-10
Ethernet connection	1-11

Chapter 2: Setting up Network Servers

Fiery on a TCP/IP network with Windows NT 4.0/ 2000/XP	2-1
Tips for experts—Windows NT 4.0/2000/XP with TCP/IP	2-2
Configuring a Windows NT 4.0/2000 server to communicate with the Fiery	2-3
Fiery on a NetWare network	2-7
Tips for experts—IPX networks	2-8
Overview of IPX printing to the Fiery	2-8
Configuring a NetWare 4.x server for printing	2-9
Fiery on a NetWare 5.x network with NDPS	2-13
Tips for experts—NetWare 5.x networks	2-14
Fiery on a network with UNIX workstations	2-14
Tips for experts—UNIX workstations	2-15
Important note about the remote printer name	2-15
Setting up the Fiery on TCP/IP networks	2-16
Managing print jobs	2-18

Chapter 3: Preparing for Fiery Setup

Levels of access and control	3-1
Fiery print connections	3-1
Passwords	3-3
Fiery WebTools	3-4
Control level scenarios	3-6
About Setup	3-7
Network server setup requirements	3-8
Ensuring the copier connection	3-9

Chapter 4: Performing Setup from the Copier Control Panel

Fiery Setup from the Copier Control Panel	4-1
Safety warnings	4-2
Types of Setup screens	4-3
Accessing Setup Protocol options	4-3
Exit Setup	4-5

Chapter 5: Setting up the Fiery from a Windows Computer

Accessing Setup	5-1
Remote Fiery Setup	5-1
General Setup options	5-3
Support	5-4
Job Log Setup	5-5
Network Setup	5-6
Adapters/Ports	5-7
Protocols	5-8
Services	5-13
Windows print sharing with Server Message Block (SMB)	5-23

Printer Setup options	5-28
Printer connections	5-28
PS Setup	5-29
More Setup Options	5-31
Factory Defaults	5-31
Network Services	5-31
Setting up printing groups	5-32
Exiting Setup	5-33
PrintMe Setup options	5-34
Enable PrintMe	5-34
PrintMe Activation Code	5-35
Printing the Configuration page	5-35

Chapter 6: Configuring Fiery WebTools

Configuring the Fiery and clients for WebTools	6-1
Setting the WebLink destination	6-2

Chapter 7: Administering the Fiery

Administrator functions	7-1
Setting passwords	7-2
Passwords	7-3
Managing address books	7-5
Printing a Configuration page	7-7
Maintaining optimal Fiery performance	7-8
Shutting down and restarting the Fiery	7-9
Shutting down and restarting the Fiery	7-9
Restarting the Fiery	7-9

Appendix A: Troubleshooting

Troubleshooting the Fiery	A-1
Printer not found	A-1
Cannot connect to Fiery with Fiery utilities	A-3
Cannot connect to the Fiery with Command WorkStation	A-3

Index

Introduction

This manual is intended for anyone who is responsible for integrating the Fiery Network Controller for DocuColor 3535 into a business environment that includes networked personal computers. After setting up the Fiery Network Controller for DocuColor 3535 and client workstations, individual users can print to the Fiery Network Controller for DocuColor 3535 as a high-performance printer.

This manual describes how to set up network servers and clients to use the Fiery Network Controller for DocuColor 3535 and how to install user software and set up printing from Microsoft Windows and Apple Mac OS computers. For general information on using the copier, your computer, your software, or your network, see the manuals that accompany those products.

NOTE: The term “Fiery” is used to refer to the Fiery Network Controller for DocuColor 3535. The name “Aero” is used in illustrations to represent the Fiery. The term “Windows 9x” is used in this manual to represent Windows 95 and Windows 98.

The Fiery includes support for Fiery WebTools™ and software for Command WorkStation, which allow an operator to manage all jobs sent to the Fiery. Although it may not be the case at all sites, the documentation for this product assumes the presence of an operator who controls and manages jobs sent by users from remote workstations.

Any additional connectivity or administrative features specific to the copier are described in the *Printing Guide* or the *Customer Release Notes*.

About this manual

This manual covers the following topics:

- Basic configuration of the Fiery to support printing over AppleTalk, TCP/IP, and IPX (Novell) networks
- Administering network printing

- Configuring Novell and Microsoft Windows NT 4.0/2000 servers and UNIX systems to provide Fiery printing services
- Using the Fiery in mixed network environments

NOTE: The network guidelines in this book are not intended to replace the services of an experienced network engineer.

This manual is organized as follows:

- [Chapter 1](#) illustrates the supported network configurations and shows the network connectors on the Fiery.
- [Chapter 2](#) provides guidelines for setting up Windows network servers and UNIX systems for printing to the Fiery and for using Fiery WebTools.
- [Chapter 3](#) describes how to prepare for Fiery Setup, including planning system security through access levels.
- [Chapter 4](#) describes initial Fiery configuration (Setup) from the Copier Control Panel.
- [Chapter 5](#) describes Fiery Setup from a Windows computer.
- [Chapter 6](#) describes setting up the Fiery for Fiery WebTools.
- [Chapter 7](#) summarizes some administrative features of Fiery software that are available for IPX/SPX, TCP/IP, and AppleTalk networks, and offers troubleshooting hints.
- [Appendix A](#) describes issues that may occur in setting up the Fiery and offers solutions.

NOTE: Administrator features described in other manuals are summarized on [page 7-1](#).

Chapter 1: Connecting to the Network

This chapter summarizes the stages in setting up the Fiery, and includes diagrams that refer you to other chapters or other manuals for completing your installation. Check those references to find the information you need quickly.

Fiery on the network

When the Fiery is connected to a network, it behaves as a networked PostScript printer. The built-in Ethernet interface on the Fiery supports the following network protocols:

- AppleTalk
- TCP/IP (the lpd, lpr, nbt, and http protocols)

TCP/IP stands for Transmission Control Protocol/Internet Protocol. The lpd and lpr protocols are the standard TCP/IP printing protocols. The nbt (NetBios) protocol supports Windows (SMB) printing. The port 9100 is the printer server port number to publish print connections between the print server and a remote computer. The http (IPP) protocol is commonly used for Web pages on the Internet and on intranets.

- IPX/SPX (Novell)

IPX/SPX stands for Internetwork Packet Exchange/Sequenced Packet Exchange.

These protocols (rules that enable computers on a network to communicate with each other) are supported on Mac OS, Windows, and UNIX platforms and can run concurrently on the same cable. Workstations that use other protocols can print through a server that uses one of the protocols mentioned.

When you add the Fiery to a network, it is assumed that a network administrator has already installed a network cabling system and connected workstations and servers.

Stages of installation on the network

Installation can be performed by a network or printing administrator. The stages of a successful installation are:

- **Physically connecting the Fiery to a functioning network**

Prepare a network node for the Fiery—obtain cable, route it to the location where the Fiery will be installed, and attach the cable to the network interface. For details, see [page 3-9](#).

- **Configuring the network server**

When network servers are required, you must configure those servers to provide client access to the Fiery as a PostScript printer. For information on configuring network servers in Windows and UNIX network environments, see [Chapter 2](#).

- **Setting up the Fiery**

Configure the Fiery for your particular printing and network environment. First read [Chapter 2](#), and then see subsequent chapters for details.

- **Preparing client workstations for printing**

Install the files needed for printing, install additional user software, and connect the client to the Fiery over the network. These steps are described in the *User Software Installation Guide*, and some information is also provided in [Chapter 2](#).

- **Administering the Fiery**

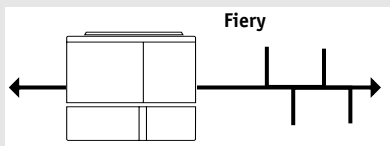
Monitor and maintain system performance and troubleshoot problems that arise. For details, see [Chapter 7](#) of this manual and the *Job Management Guide*.

1

1-3 Stages of installation on the network

Summary of Fiery network installation

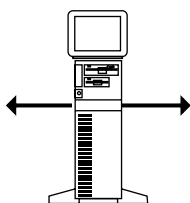
CONNECTION



Prepare a network node. Connect the Fiery to the network. If you use a computer running Command WorkStation software, connect it to the network.

SERVER CONFIGURATION

Network server

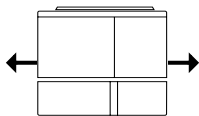


Configure UNIX, Windows NT 4.0/2000, and IPX (Novell) servers to specify Fiery print queues and Fiery users.

No special configuration of AppleShare servers is required.

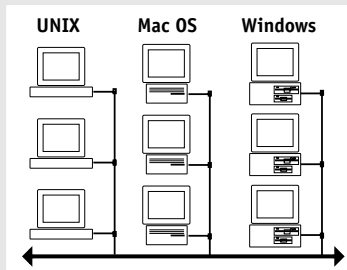
FIERY SETUP

Fiery



On the Fiery Copier Control Panel, configure Network Setup. From Command WorkStation or WebSetup, configure the remaining Setups.

CLIENT SETUP



At each computer from which users print to the Fiery:

- Install the appropriate printer files and connect to one or more queues.
- Install Fiery® utilities and an Internet browser for those computers that will use them.
- Verify the Fiery in the list of printers and run a test print.

Fiery available on the network

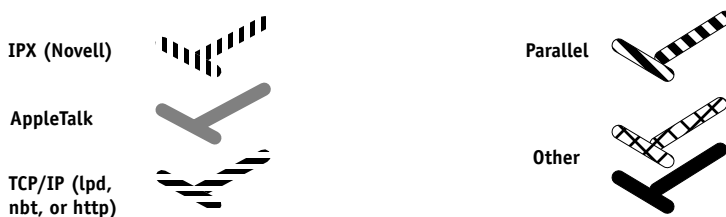
Quick path to installation

The diagrams on the following pages show typical systems you can use to print and run Fiery software from remote workstations. Find the page with your preferred platform and network type, and then look up the setup procedures referenced in the “Key to setup” in the upper-left corner of each diagram.

The diagrams describe devices that use the supported networking protocols. They are logical diagrams and are not intended to describe the physical arrangement (topology) of devices on the network. A variety of physical arrangements is possible with each logical arrangement. For example, twisted pair Ethernet networks commonly use a star configuration around a hub, rather than a bus arrangement. The design of physical networks is beyond the scope of this manual.

If your network uses more than one protocol or more than one type of workstation, combine the setups listed for each component of your system. Multiple protocols (shown in the diagrams as parallel lines) can run on the same cable. A solid connection from the Fiery with an arrow indicates that other supported network types can be operational at the same time.

The protocols used in these diagrams are indicated as follows:



Mac OS environment with AppleTalk

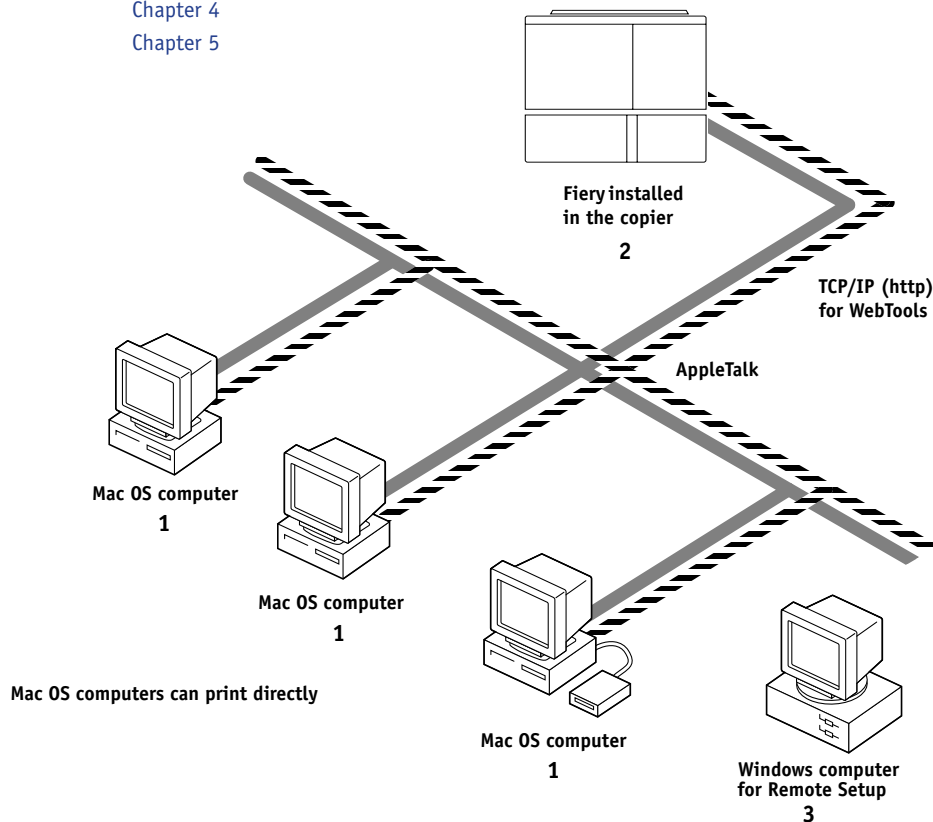
Key to setup:

- 1 Mac OS computer
- 2 Fiery Setup
- 3 Remote Fiery Setup

User Software Installation Guide

Chapter 4

Chapter 5



Printing on this network

Mac OS computers can print directly using the AppleTalk protocol.

For using Fiery Utilities

Fiery utilities can be used with the AppleTalk protocol. To use ColorWise Pro Tools and Fiery Link™, TCP/IP is required.

For using Fiery WebTools

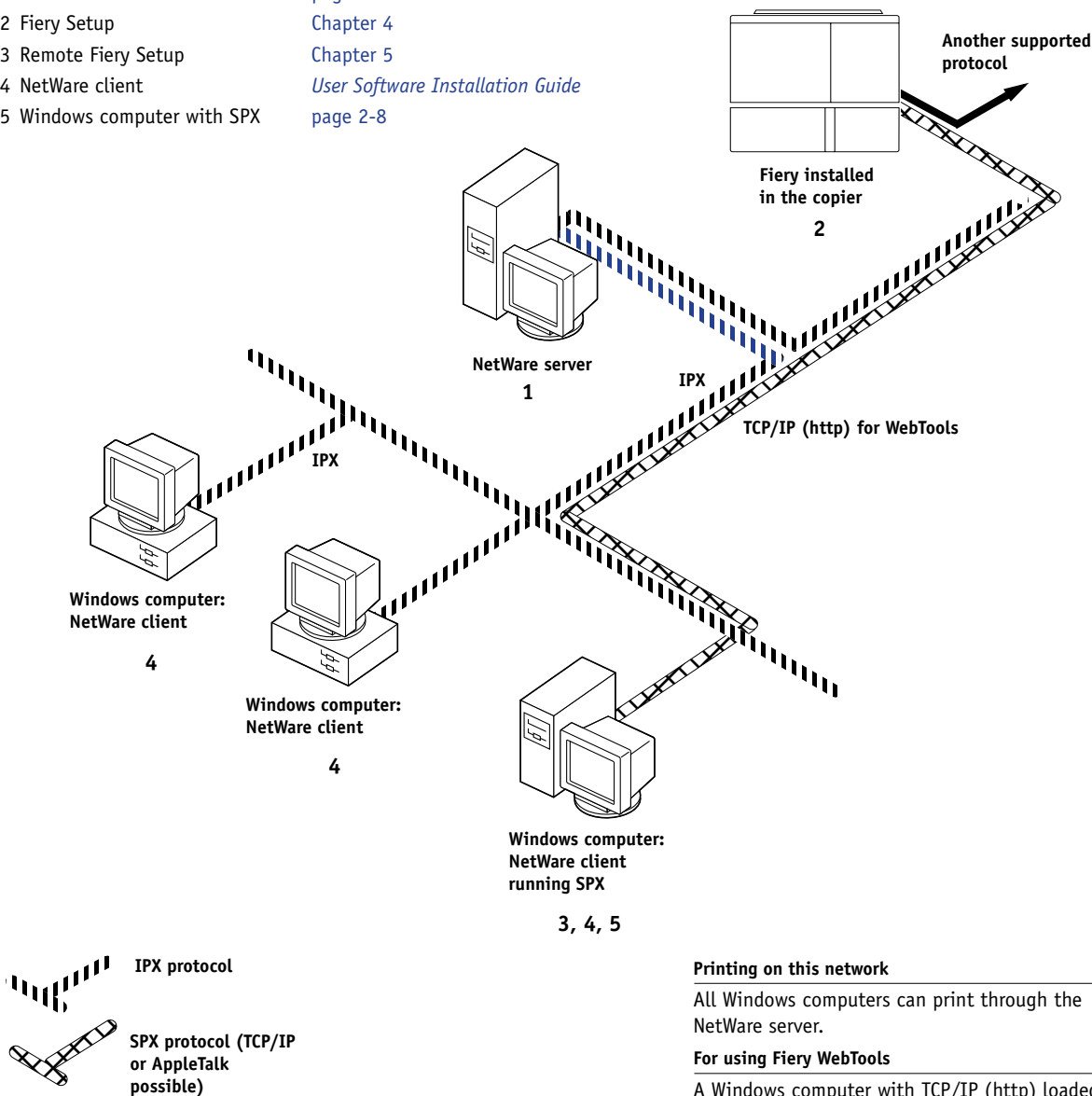
A Mac OS computer with TCP/IP (http) loaded.



Windows computers in a Novell environment

Key to setup:

- | | |
|-----------------------------|---|
| 1 NetWare server | page 2-13 |
| 2 Fiery Setup | Chapter 4 |
| 3 Remote Fiery Setup | Chapter 5 |
| 4 NetWare client | <i>User Software Installation Guide</i> |
| 5 Windows computer with SPX | page 2-8 |



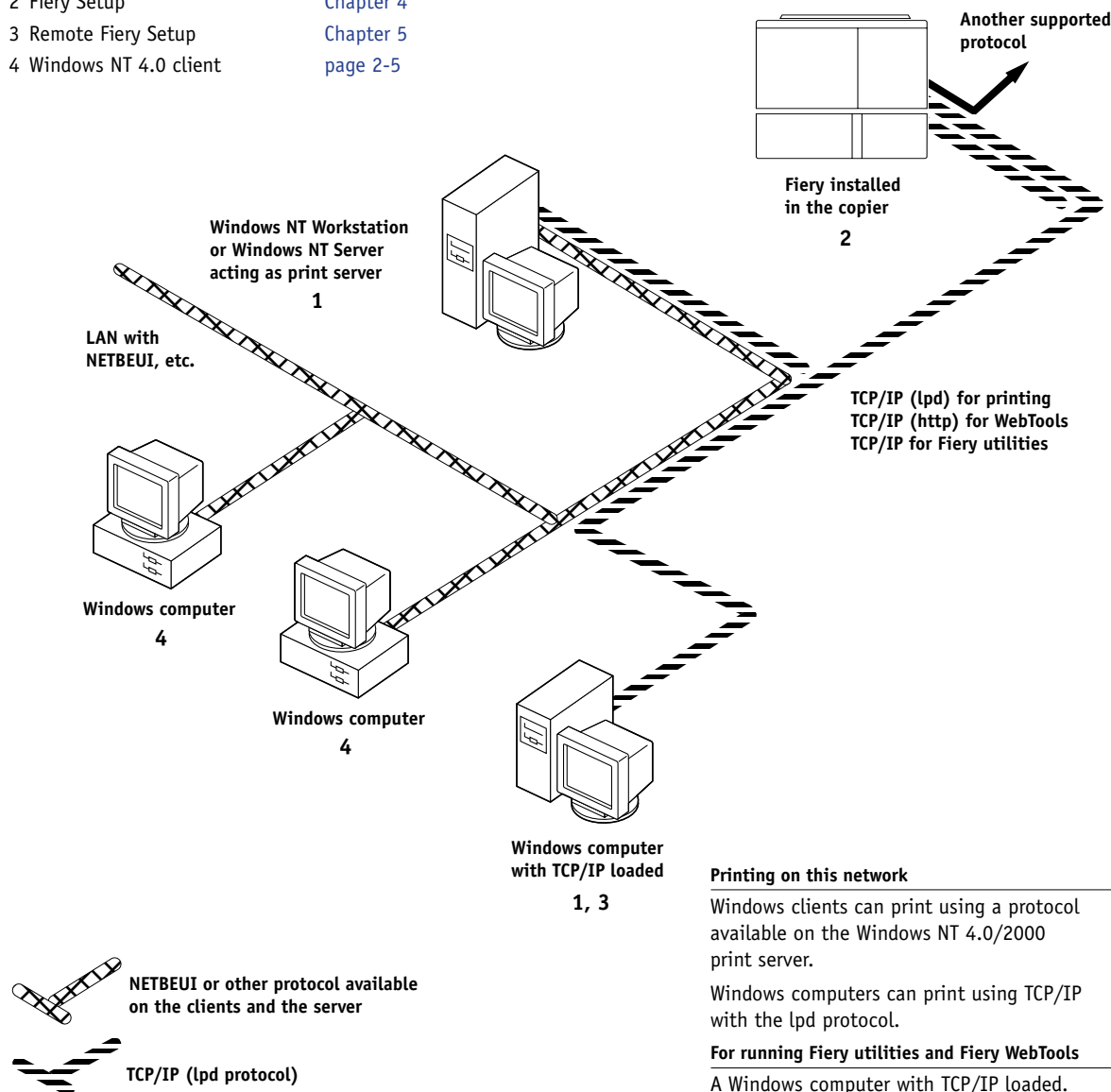
1

1-7 Quick path to installation

Windows NT 4.0/2000 Server environment

Key to setup:

- 1 Windows NT 4.0 Server [page 2-3](#)
- 2 Fiery Setup [Chapter 4](#)
- 3 Remote Fiery Setup [Chapter 5](#)
- 4 Windows NT 4.0 client [page 2-5](#)



Windows computers using Windows printing

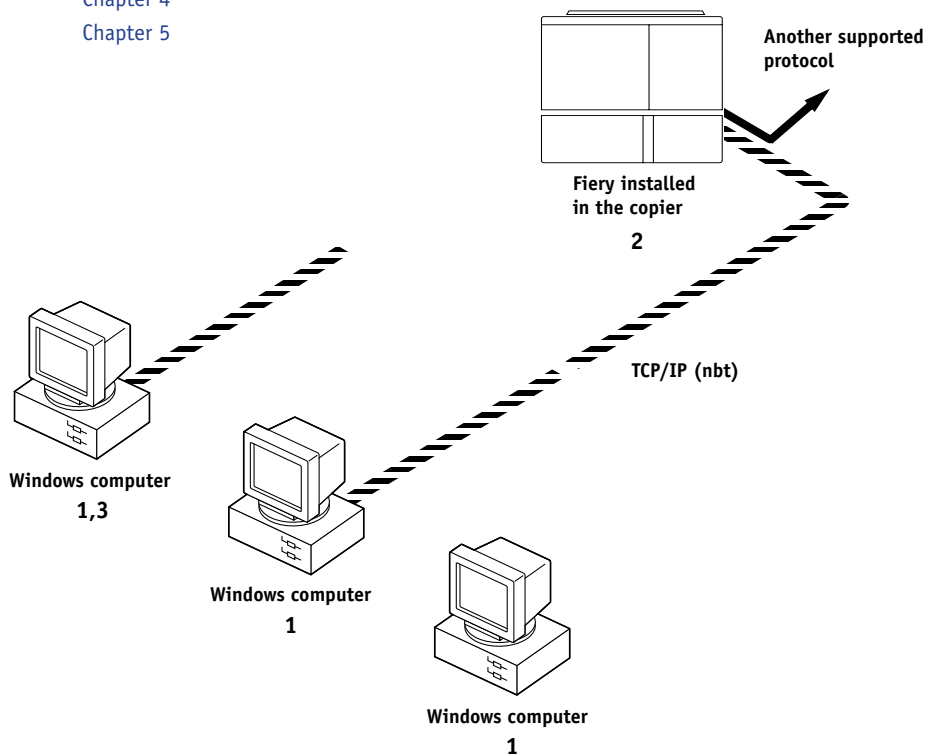
Key to setup:

- 1 Windows computer
- 2 Fiery Setup
- 3 Remote Fiery Setup

User Software Installation Guide

Chapter 4

Chapter 5



TCP/IP (nbt) protocol

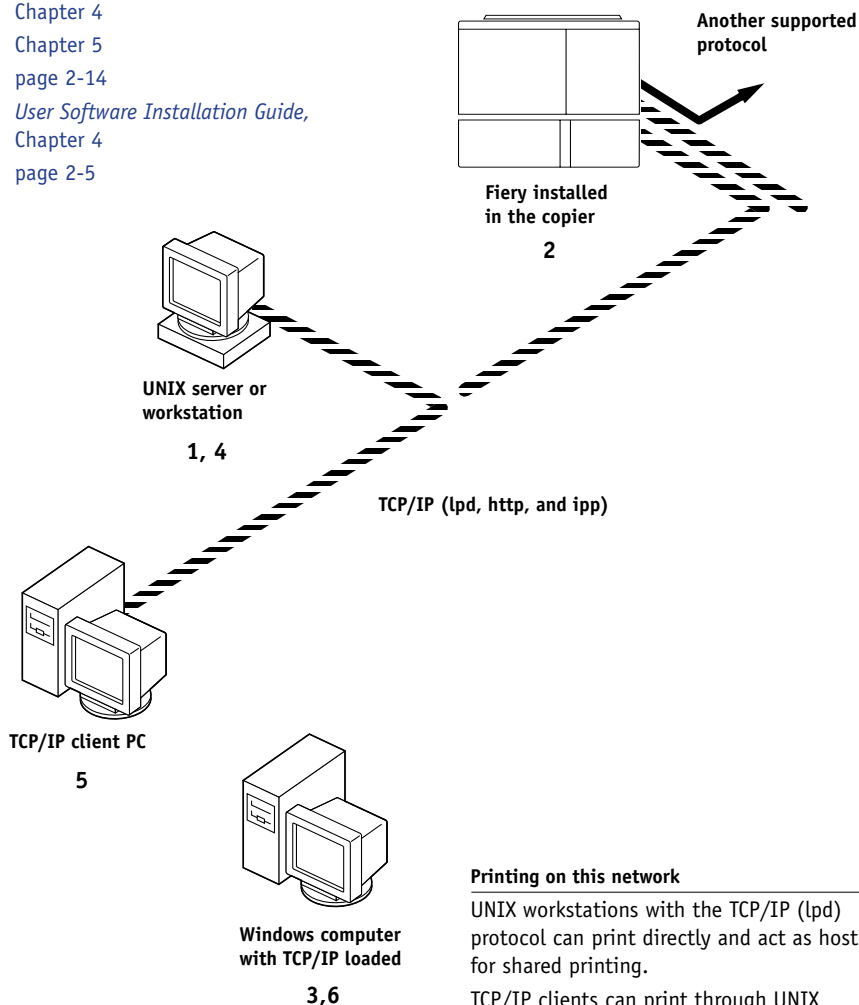
For Windows printing

Windows (SMB) printing enabled on the Fiery.
Windows NetBios and TCP/IP enabled on the computer.

UNIX workstations and Windows computers on a TCP/IP network

Key to setup:

- | | |
|-------------------------|---|
| 1 UNIX server/host | page 2-14 |
| 2 Fiery Setup | Chapter 4 |
| 3 Remote Fiery Setup | Chapter 5 |
| 4 UNIX workstation | page 2-14 |
| 5 TCP/IP client | <i>User Software Installation Guide,</i>
Chapter 4 |
| 6 Windows NT 4.0 client | page 2-5 |



Printing on this network

UNIX workstations with the TCP/IP (lpd) protocol can print directly and act as host for shared printing.

TCP/IP clients can print through UNIX server or directly; requires TCP/IP and the lpr print service loaded.

For running Fiery utilities and Fiery WebTools

Windows computers with TCP/IP loaded can use these applications.

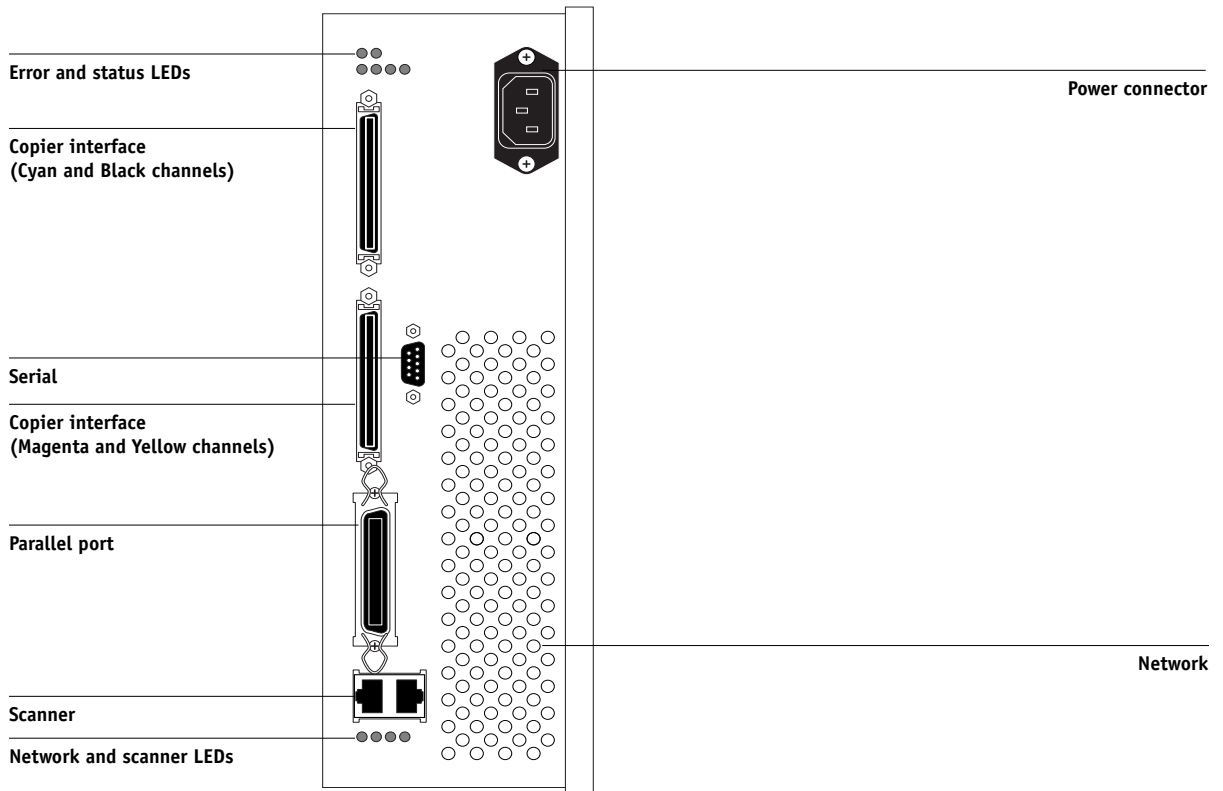


TCP/IP (lpd/lpr) protocol

Connecting network cable to the Fiery

In this section, the back panel of the Fiery is illustrated, followed by information for connecting to the Ethernet board.

Back view of the Fiery



Ethernet connection

For Ethernet connections, the Fiery supports cabling, defined as Category 5 for use with 100BaseT; or as Category 3, Category 4, or Category 5 for use with 10BaseT. The cable uses an 8-pin RJ-45 connector that plugs into the RJ-45 socket on the Fiery.

NOTE: The 100BaseT type supported by the Fiery is 100BaseTX, also known as Fast Ethernet. If an Ethernet hub is used, it must be a 100BaseTX hub. The term “100BaseT” is used to refer to 100BaseTX. All connection types are supported in half-duplex mode.

TO CONNECT TO THE ETHERNET BOARD

- **Connect the network cable to the RJ-45 connector on the back of the Fiery.**

You must use a Category 5 unshielded twisted pair cable network cable for 100BaseT.

Chapter 2: Setting up Network Servers

This chapter describes environments that typically include one or more network servers—Novell NetWare servers and Windows NT 4.0/2000 servers—that share printing to the Fiery. It describes setting up servers that use IPX/SPX or TCP/IP protocols for communicating with the Fiery. In addition, it includes guidelines for setting up direct communication from Windows NT 4.0/2000/XP workstations or UNIX workstations, where a network server is optional. This chapter also outlines the requirements for users to print to the Fiery and run Fiery utilities and Fiery WebTools.

The Fiery can accept jobs concurrently from NetWare, Windows NT 4.0/2000, and AppleShare servers, as well as jobs sent directly from Windows NT 4.0/2000/XP or UNIX workstations. Because AppleShare servers require no special configuration, they are not discussed in this chapter, except for use in a Windows NT 4.0/2000 environment (see “[Fiery on a TCP/IP network with Windows NT 4.0/ 2000/XP](#)” in the following section).

If your network is based on Windows NT 4.0/2000, proceed to the following section. For information on UNIX workstations, proceed to [page 2-14](#).

Fiery on a TCP/IP network with Windows NT 4.0/ 2000/XP

When a Windows NT 4.0/2000/XP computer is configured to connect to the Fiery using TCP/IP, it can print directly to the Fiery. If the computer shares the printer over the network, it is acting as a print server to Windows 9x/Me and Windows NT 4.0/2000/XP clients. Client computers print to the Fiery by printing to the Windows NT 4.0/2000 print server. You can then monitor and control printing at the Windows NT 4.0/2000 server computer.

Typical system combinations are:

- Print server running Windows NT 4.0/2000 Server; clients running Windows NT 4.0/2000/XP Workstation and Windows 9x/Me

With TCP/IP protocols loaded, you can run Fiery utilities and Fiery WebTools from a Windows computer.

The Windows NT 4.0/2000 server can also use AppleTalk protocols to print to the Fiery as an alternative to TCP/IP.

NOTE: When you create a printer to share with AppleTalk users, do not “capture” the printer. Capturing the printer forces all users to print to the server, rather than directly to the printer. If you capture the printer, Fiery print connections will not appear in the Mac OS Chooser.

Tips for experts—Windows NT 4.0/2000/XP with TCP/IP

Setting up printing from Windows NT 4.0/2000/XP using TCP/IP protocols is similar to setting up UNIX workstations with TCP/IP. When TCP/IP network connections are made from Windows NT 4.0/2000/XP workstations, note the following:

- **Make sure you have a valid IP address for the Fiery and any workstations that will print to it or run the Fiery utilities.**
- **In Fiery Setup, enable TCP/IP and enter the IP address, subnet mask, and gateway address for the Fiery.**

From your workstation, you can enter these addresses manually or use DHCP or BOOTP protocols to assign them dynamically.

- **Make sure the Fiery name and address are listed in a domain name server (DNS) or hosts name database used by your system.**
- **Make sure the system host table includes the correct internal name for the Fiery as a remote printer. For more information, see [page 2-15](#).**

- **For Windows NT 4.0/2000/XP, install the appropriate printer driver files on the Windows NT 4.0/2000 server.**

For more information, see the *User Software Installation Guide*.

- **Repeat the installation for all users who print to the Fiery.**

Each server and workstation running the Fiery utilities with TCP/IP also needs the TCP/IP protocol and the Fiery utility software.

Configuring a Windows NT 4.0/2000 server to communicate with the Fiery

To configure a Windows NT 4.0/2000 server to communicate with the Fiery, follow these general steps. More detail is provided in subsequent sections in this chapter and in your Microsoft documentation.

- **Load the TCP/IP network protocol on the server and configure it with an IP address, subnet mask, and gateway.**
- **Enter the host name of the Fiery in the host database used by your system (see [page 2-4](#)).**
- **Perform Fiery Setup.**
- **On the Windows NT 4.0/2000 server, create a printer for each Fiery print connection, install the appropriate printer drivers, and (optionally) share the printer on the network (see [page 2-5](#)).**
- **Enter the host name and remote printer name of the Fiery in the printer connection. For more information, see [page 2-15](#).**
- **If the Windows NT 4.0/2000 server is also a workstation, install Fiery utilities (see the *User Software Installation Guide*).**

Adding the Fiery to the TCP/IP network

If your TCP/IP network consists of Windows NT 4.0/2000 servers, and Windows NT 4.0/2000/XP clients, follow the procedures in this section. If the network also includes UNIX workstations, follow the procedures on [page 2-16](#).

TO ADD THE FIERY TO A TCP/IP NETWORK WITH A WINDOWS NT 4.0/2000 SERVER

- 1. Register the IP address of the Fiery in the host name database used by your system.**

For installations that do not have a network administrator or central host name database, add the Fiery to the hosts file on the Windows NT 4.0/2000 server. Also add it to the hosts file on any workstations that have TCP/IP loaded and will use the Fiery utilities.

The Windows NT 4.0/2000 hosts file provides compatibility with the UNIX hosts file. The hosts file is used as a local Domain Name Services (DNS) equivalent. It has the same format as the `/etc/hosts` file on UNIX servers. The format of the hosts entry is:

IP Address<TAB>host name<TAB>#comments

where <TAB> indicates that you press the Tab key.

To determine the IP address and server name of your system, print a Configuration page (see [page 7-7](#)).

NOTE: If the Fiery has already been defined in an `/etc/hosts` file or equivalent host name database on a UNIX workstation on your network, we recommend that you use the same host name here as you used for the name of the remote printer in the `/etc/printcap` file.

- 2. Perform Fiery Setup to support TCP/IP printing.**

Enter the options in Protocol Setup (IP address of the Fiery, subnet mask, and gateway address). If you select DHCP/BOOTP, we recommend that you configure the DHCP server to always supply the same IP address to Fiery.

Installing the Fiery as a shared printer

The first step in creating a printer is installing the printer driver files, which give your applications access to printer features. You can use the installation instructions in the *User Software Installation Guide* for every workstation that will print directly and independently to the Fiery. However, if you are an administrator running a Windows NT 4.0/2000 server or Windows NT 4.0/2000/XP computer, you can also create a printer and share it with clients on the network. This allows clients who do not have permission to establish an independent network connection to the Fiery to print through the server.

You can specify sharing of the printer during installation of the Fiery printer files. If you have not yet installed the Fiery printer files on the Windows NT 4.0/2000 print server computer, do so now, following the instructions in the *User Software Installation Guide*. During installation, enter the information necessary to share the Fiery.

If you have already installed the Fiery printer files on the computer you are using as a Windows NT 4.0/2000 print server, see your Windows documentation for information about sharing the Fiery.

If more than one Fiery print connection is published (for example, if both the Print queue and the Hold queue are published), you may want to create a printer for each print connection, so you and other users can print to each connection directly. When prompted to specify the printer name, enter a name that indicates the Fiery print connection.

Configuring clients of a Windows NT 4.0/2000 server

Each client of a Windows NT 4.0/2000 server is already using a network protocol to communicate with the server. Each client can print to the Fiery if it has been shared by a Windows NT 4.0/2000 server, or Windows NT 4.0/2000/XP computer. In that case, the client does not have to use the same network protocol to connect to the Windows NT 4.0/2000 server as the server uses to communicate with the Fiery.

TO CONNECT AND PRINT TO THE FIERY SHARED BY A WINDOWS NT 4.0 SERVER

- **For Windows 9x/Me clients: Before printing, double-click the Windows NT 4.0/2000 server icon in the Network Neighborhood window, and then double-click the printer name.**

You are prompted to set up the printer. When you choose to set it up, the Add Printer Wizard dialog box appears. Follow the procedures in the *User Software Installation Guide*.

- **For Windows NT 4.0 Workstation clients: Before printing, connect to the print server computer and select the Fiery. Right-click and choose Open.**

When prompted, click Yes to have Windows set up the printer.

- **For Windows 2000/XP clients: Before printing, install the printer driver with the User Software CD and configure the port.**

After clients have selected the printer, they can choose it from the Print Setup, Page Setup, or Print dialog box of their application. Clients can change printing options for their own job, but printer properties appear dimmed, and unavailable for changing. When a client chooses Print, the job is transmitted to the Windows NT 4.0/2000 print server, and from there to the selected print connection on the Fiery. The job is listed in the Print Manager on the client workstation, and the administrator can track it in the Fiery window in the Print Manager on the Windows NT 4.0/2000 print server.

Configuring Windows computers without a Windows NT 4.0/2000 server

If your network does not have a Windows NT 4.0/2000 server, Windows 9x/Me and Windows NT 4.0/2000/XP workstations can still print to the Fiery. This method of printing is called Windows, or SMB printing. In this type of network environment, computers running Windows 9x/Me and Windows NT 4.0/2000/XP Workstations operate in a peer-to-peer environment and communicate directly with the Fiery when users send print jobs.

Many of the prerequisites for setting up printing through a Windows NT 4.0/2000 server also apply to setting up Windows printing where a server is not present. The prerequisites are summarized in the following list. More details are available in your Microsoft documentation.

- **Print a Configuration page (see [page 7-7](#)).**
Use the information on this page to determine the current Fiery settings.
- **Load the TCP/IP network protocol on the computer (for Windows 9x/Me, load File and printer sharing for Microsoft Network. For Windows 2000/XP load Client for Microsoft Networks).**
- **Verify the Workgroup name of the computer in the Windows Network control panel.**
Make sure the Workgroup name is the same as the one listed in Fiery Setup.
- **For Windows 9x/Me, in the File and printer sharing for Microsoft Network Properties dialog box, specify Automatic or Enabled for Browse Master, and select Yes for LM Announce.**
- **For Windows 2000/XP, in the Client for Microsoft Networks Properties dialog box, configure the computer to allow file sharing, and then restart the computer.**
- **Ping the Fiery to verify TCP/IP communication is successful (see [page 2-17](#)).**

Fiery on a NetWare network

The NetWise™ features built into the Fiery support the following network operating environments:

- NetWare 4.x or 5.x—NDS (Novell Directory Services)
- NetWare 6.x—NDPS (Novell Distributed Print Services)
- Servers running NetWare 4.x or 5.x in bindery emulation mode

For Ethernet-based networks, the IPX/SPX protocol is supported.

NOTE: Setting up a NetWare environment correctly requires the presence and active cooperation of the Novell network administrator. You must have administrator privileges on the network to create new NDS or bindery objects.

The term “bindery server” is used to refer to a Novell file server running NetWare 4.x or 5.x in emulation mode. The term “NDS” is used to describe components of a NetWare operating system running NetWare 4.x or 5.x in native mode. NDPS is supported for a Novell server running NetWare 6.x in LPR mode, Qserver mode, and IPP mode.

NetWare clients print to the Fiery through the Novell network server. Server setup and client network setup are outlined in this chapter, client printing setup is described in the *User Software Installation Guide*, and printing is described in the *Printing Guide*.

The Fiery can receive print jobs from NetWare clients over Ethernet network topologies. During Fiery Setup, you select the frame type or types that will be used for communication between the Fiery and network servers. Frame type refers to the format of a communications packet; frame types are specified in a startup file when the NetWare server (or any other workstation) loads its network drivers.

Tips for experts—IPX networks

Setting up the Fiery is similar to setting up any other PostScript printer on the network.

The Fiery with IPX connections has the following characteristics:

- **A minimum connection to the Fiery consists of a NetWare file server, a NetWare print server, and a NetWare queue.**
- **A single directory tree and up to eight bindery servers can be configured simultaneously.**
- **The Fiery looks for print jobs on one NetWare print server per bindery server.**
- **Each print server can store jobs for any print connection on the Fiery.**

Overview of IPX printing to the Fiery

NetWare file servers support the creation of print queues, which are storage areas for print jobs. When a client on a remote computer decides to print, the job is directed to a print queue on the NetWare file server and spooled to the NetWare server disk, freeing up the client workstation.

You can give the NetWare queue names a specific extension corresponding to the Fiery print connection, as follows:

_print
_hold
_direct

NOTE: These extension names must be in English and in all lowercase letters.

You do not need to rerun Setup when you add or remove a NetWare queue; however, you should restart the Fiery after you create or remove a queue.

When the Fiery is configured to connect to a NetWare server, it polls the NetWare server for jobs in each of its queues. If jobs are found, they are automatically transferred over the network to the matching connection on the Fiery. For example, jobs from the NetWare queue with the _print extension are sent to the Fiery Print queue. While a job is processed and printed, a record of the job is being created. You can access the Job Log containing these records at any time.

Configuring a NetWare 4.x server for printing

The following sections explain how to set up a NetWare file server so networked users can print to the Fiery from their workstations, and the Fiery can obtain print jobs from the NetWare server.

For *each* NetWare file server that you configure, follow these general steps. More detail is provided in subsequent sections and in your NetWare documentation.

- Make sure the server is connected to a functioning IPX network.
- Log in as the Supervisor on a Windows computer connected to the NetWare file server.
- For NetWare 4.x installations, set up an NDS connection (see [page 2-11](#)).
- For NetWare 4.x in emulation mode, set the bindery context (see [page 2-12](#)).
- For NetWare 4.x in bindery emulation, set up a file server, print server, and print queue for the Fiery (see [page 2-12](#)).

With bindery services, you can route all Fiery print jobs through the same NetWare file server, or you can configure more than one file server to handle Fiery jobs.

The functions you perform on the Novell server, the Fiery, and the client workstation are summarized in the following tables. The first table applies to NDS connections, and the second to bindery connections. Complete the operations in the left column, then the center column, then the right column.

Configuring an NDS connection

Abbreviations:

FS = file server

PS = print server

PQ = print queue (on the NetWare server)

On NDS FS	In Setup from Command WorkStation or WebSetup	On client workstation
In NWAdmin: Create NDS PQs Create NDS printer and assign PQs Create PS and assign the printer Configure users of the PQs if needed	Port Setup Ethernet Setup Protocol Setup IPX/SPX Setup—select frame types Service Setup PServer Setup and NDS Setup Select Root Browse to select PS Specify PQ search root (optional) Set Polling Interval (15 second default)	Install user software. For printing: Connect client to PQs that you set up on the NetWare FS (associated with the PS selected in NDS Setup). For running Fiery utilities: Configure the connection to the Fiery.

Configuring a bindery connection

On Bindery FS	In Setup from Command WorkStation or WebSetup	On client workstation
In PCONSOLE: Select NetWare FS (up to 8) For each FS: Configure PS Configure PQ Configure users of the PQ if needed	Port Setup Ethernet Setup Protocol Setup IPX/SPX Setup—select frame types Service Setup PServer Setup and Bindery Setup Select FS (up to 8) Set Polling Interval	Install user software. For printing: Connect client to PQs that you set up on the NetWare FS (associated with the PS selected in Bindery Setup). For running Fiery utilities: Configure the connection to the Fiery.

Setting up an NDS connection

In NDS, all NetWare entities (objects) are organized in a hierarchical tree structure. Objects have a name, properties, and a context that defines the location of the object in the directory tree. For the Fiery, you are mainly concerned with defining a printer, a print server object, and one or more print queue objects. Objects are created in NetWare administrator programs such as PCONSOLE, NWAdmin, or NetWare Administrator.

The top-level tree object is known as the [Root] object. The name of the [Root] object is also the name of the tree. Below the [Root] are other objects: either containers (which consist of other objects) or leaf objects (which do not contain other objects). Access to objects is controlled by rights that are defined as properties of each object. Rights are established by network administrators.

Setting the NetWare 4.x bindery context

You can connect only one directory tree to the Fiery. If you need to connect additional NetWare 4.x servers, you can do so by using bindery emulation. You can connect up to eight bindery servers to the Fiery.

NOTE: The file server you select must not be in the same tree as the one you selected in NDS Setup.

In order to set up the NetWare 4.x server in bindery emulation mode for printing to the Fiery, the network administrator must do the following:

- Determine the Directory Services path to the container in which the print server and the print queue for the Fiery will be created.

The container defines the “bindery context” for your network structure.

- Edit the network startup file to set the bindery context.
- Activate the new bindery context.

Setting up a NetWare print queue for bindery

For NetWare 4.x in emulation mode, the NetWare print server and print queue for the Fiery are created and configured from NetWare Print Console (PCONSOLE), a NetWare utility that is stored in the NetWare PUBLIC directory.

As with NDS, you can create several NetWare entities on a Novell server, and then you can select them in Network Setup.

Setting up NetWare Windows clients for printing

Before setting up client workstations for printing, perform Network Setup, and verify that the settings reflect the entities you created in the NetWare administrator utilities (see [page 2-9](#)).

NOTE: For printing to the Fiery, connect all Windows clients to a NetWare server and permit them to connect to the Netware print server or servers on which you defined a NetWare print queue for the Fiery.

After the Novell server and the Fiery have been set up, client setup consists of:

- Installing the networking protocol, binding it to the network adapter card, and permitting the client to log in to the NetWare file server.

On Windows 9x/Me workstations, loading both the IPX/SPX-compatible protocol and the Client for NetWare Networks from the Network Control Panel.

On Windows NT 4.0/2000/XP workstations, installing Client Services for NetWare. Use the CSNW option in the Control Panel to set printing options and specify a preferred NetWare server.

- Setting up the Fiery as a PostScript printer by installing a PostScript printer driver and the Fiery PPD (PostScript printer description).
- Adding a network port and connecting the workstation to one or more NetWare queues that have been defined for the Fiery.
- Installing Fiery software.

For details, see the *User Software Installation Guide*.

Fiery on a NetWare 5.x network with NDPS

The Fiery supports printing over a NetWare 5.x network running either the TCP/IP protocols or the IPX protocol. For pure IP printing, the Fiery takes advantage of features in NDPS (Novell Distributed Print Services). For IPX printing, the Fiery supports the PServer service in Bindery emulation or through NDS (Novell Directory Services). For more information on IPX-based printing, see “[Fiery on a NetWare network](#)” on page 2-7.

NOTE: Setting up a NetWare environment correctly requires the presence and active cooperation of the Novell network administrator. You must have administrator privileges on the network to create new NDS or bindery objects.

Tips for experts—NetWare 5.x networks

Setting up the Fiery in an NDPS environment is similar to setting up any other PostScript printer on the network. When setting up the Fiery in such an environment, refer to the following information:

- **Make sure you have a valid IP address for the Fiery and for any workstations that will print to it or run Fiery utilities.**
- **In Fiery Setup, enable TCP/IP and enter the IP address, subnet mask, and gateway address for the Fiery. You can enter these manually or use DHCP or BOOTP protocols to assign the addresses dynamically.**
- **In Fiery Setup, make sure you have enabled LPD printing on the Fiery. You can ping the Fiery ([page 2-17](#)) to verify that TCP/IP communication is successful.**

For information about setting up NDPS, see your Novell Netware documentation.

Fiery on a network with UNIX workstations

When a UNIX workstation is configured with the lpd protocol and connected to the Fiery over a TCP/IP network, it can print directly to the Fiery.

Setting up UNIX workstations requires an administrator with root privileges. After the initial configuration, UNIX users simply submit print jobs to a named printer.

The job management tools, along with the other Fiery utilities and Fiery WebTools, are unavailable on the UNIX platform. A Windows or Mac OS computer on the same network as the UNIX computer that is set up to use TCP/IP for printing to the Fiery can use the job management tools to manage print jobs that originate from all workstations on the network.

Tips for experts—UNIX workstations

Setting up the Fiery in a UNIX environment has the same requirements as setting up any printer or new device:

- **A distinct IP address is required for the Fiery as well as for each workstation on the network.**
- **A name must be selected for the Fiery that goes with the IP address.**
- **The IP address of the Fiery must be registered for the network in a host database, and also on the Fiery itself.**
- **At least one print connection (Print or Hold) must be published.**

The following information applies especially to the Fiery:

- **The Fiery is a printer controller that understands lpd protocols.**
- **The Fiery has a remote printer name you must use in order to communicate with it successfully.**

For details, see the following section.

Important note about the remote printer name

Whichever UNIX system you use, the name used for the remote printer (or `rp` in the `/etc/printcap` file) in configuring the Fiery must be one of the following:

print
hold
direct

The remote printer name is also used when setting up your Windows NT 4.0/2000 Server or Windows NT 4.0/2000/XP Workstation to connect to the Fiery over TCP/IP. Type the remote printer name when you set up your Windows NT 4.0/2000 printer, as the “Name of printer or print queue on that (lpd host) server” in the Add LPR Compatible Printer dialog box.

For the Windows 2000/XP printer driver, type the remote printer name for Queue Name under LPR Settings in the Configure Standard TCP/IP Port Monitor dialog box.

Setting up the Fiery on TCP/IP networks

Every machine (host) on a TCP/IP network, including the Fiery, must have a unique 32-bit internet address (IP address). Contact your network administrator to obtain an address for the Fiery. Workstations on a TCP/IP network can print directly to the Fiery as a remote printer, or can print to a Windows NT 4.0/2000 server or UNIX workstation acting as a print server. Since the Fiery spools jobs and acts as a print server, there is no advantage in placing another print server between a workstation and the Fiery. If you choose to do so, however, there is no difference in setup except that a client machine does not have its own spooling area.

TO SET UP FIERY PRINTING ON UNIX SYSTEMS

1. **Specify the appropriate settings in Fiery Server Setup.**

2. **Specify the appropriate settings in Fiery Network Setup.**

Enter a valid IP address, subnet mask, and gateway address for the Fiery.

3. **Specify the appropriate settings in Fiery Printer Setup.**

Publish the Print queue and/or Hold queue.

TO SET UP TCP/IP FOR COMMUNICATION WITH THE FIERY

1. A superuser (with root login) must add the Fiery to the network's IP host table (DNS table) or other system database of network printers.
2. In the file or utility used by your network, specify the remote printer name, the print server protocol, the queue, and the spool file for the Fiery name you assigned.
3. Make the Fiery available as a printer to other network users.
4. To verify the TCP/IP connection, ping the IP address or the host name. From any computer on the network, at the command prompt, type:

ping <IP address>

Type the Fiery IP address assigned in Fiery Network Setup.

After the Fiery is set up as a network printer, you can also ping the name you gave to the Fiery:

ping <hostname>

The server should respond with a message such as:

Reply from <IP address> ...

Some systems will respond with a continuous display of output from the IP address. To stop the output, type Control-C. You can use the ping command at any time.

TO PRINT TO THE FIERY

- On a UNIX system running SunOS 4.x or other BSD-based variant, use the `lpr` command to send a job to the Fieri.
- On a UNIX system running Solaris 2.x or any System V implementation of UNIX, use the `lp` command to send a job to the Fieri.
- Windows NT 4.0/2000/XP users with the TCP/IP protocol loaded can send print jobs to the Fieri from their applications or from a command prompt.

When Windows NT 4.0/2000/XP users print from applications, they can set print options with the driver but not from the UNIX command line.

Managing print jobs

UNIX network administrators can use UNIX utilities for viewing the list of jobs, and for printing and removing jobs that are spooled on UNIX servers. If the network includes a Windows NT 4.0/2000/XP workstation that has TCP/IP protocols loaded, you can use Command WorkStation or Fieri Downloader[™] to download fonts and files.

You can also use the job management tools to manage jobs from remote workstations. For more information, see the *Job Management Guide*.

Even without the Fieri utilities, you can:

- Set up the Fieri to print a log of printed jobs automatically after every 55 jobs (see Job Log Setup on [page 5-5](#)).
- Print a Job Log manually at any time from the Command WorkStation Functions menu (see the *Job Management Guide*).

Chapter 3: Preparing for Fiery Setup

To prepare for printing at your site, you must do some initial Fiery configuration, or Setup, to specify the network environment and the kind of printing you will do. Before you perform Setup, you must decide the levels of access you will implement for your site. Administrators and operators must also understand how Fiery system software is structured in order to configure and use the Fiery system correctly.

Levels of access and control

When you configure the Fiery during Setup, you (as system administrator) implement a particular level of control by enabling or not enabling print connections, passwords, and access to Fiery WebTools. The level of control you implement can range from minimum to moderate to maximum—or none at all.

- Minimum control might be appropriate for a small site where anyone on the local network can control all printing and Fiery functions. Although there may be an administrator or operator charged with certain duties, all users have equal access to the system and job management tools.
- Maximum control might be appropriate for a high-volume printing environment where an administrator or operator controls the job flow and all printing; jobs sent by users are spooled (stored) to the Fiery disk until the operator decides it is time to print them. In addition, only the administrator and operator have access to job management tools. We recommend this level of control.

NOTE: The term “job management tools” is used in this manual to refer to Command WorkStation, Fiery Spooler™, and Fiery WebSpooler™.

Fiery print connections

The Fiery supports three print connections: Hold queue, Print queue, and Direct connection. These print connections can be enabled, or “published,” to users on the network when you configure Printer Setup. All published connections are constantly checked for the presence of jobs. The Print queue and Direct connection give remote users more direct access to the Fiery than the Hold queue. Therefore, do not publish the Print queue and the Direct connection in environments where maximum control is desired.

In addition, you can enable the Printed queue, which is a storage area for the most recent jobs from the Print queue. The Printed queue makes it convenient to reprint those jobs. Reprinting jobs in the Printed queue requires the job management tools.

To use the Fiery utilities, you must enable at least one of the print connections.

Hold queue

Jobs sent to the Hold queue are spooled to the Fiery hard disk for printing at a later time or for reprinting. Because the Hold queue is a storage place, jobs sent to it cannot proceed through the printing process until the operator intervenes using the job management tools (see the *Job Management Guide*).

Print queue

This is the standard Fiery queue. Jobs sent to the Print queue are processed and printed in the order they are received. Jobs prioritized by an operator with the job management tools and jobs sent via the Direct connection can take priority over jobs sent to the Print queue.

Direct connection

The Direct connection transmits jobs directly to the Fiery, but only when the Fiery is Idle. If the Fiery is busy, the job remains at the user workstation until the Fiery is ready. The job is then processed as soon as the previous job is finished and before the next queued job is processed.

Jobs sent to the Direct connection are not stored on the Fiery hard disk, and cannot be selected for reprinting, moving, or deletion. Therefore, the Direct connection provides a measure of security for sensitive files. Jobs sent to the Direct connection *do* appear in the Job Log, for accounting purposes.

NOTE: To download fonts to the Fiery, you must publish the Direct connection.

Passwords

You can implement passwords as a means of controlling access to Fiery functions. The Fiery allows you to set the following passwords in Setup:

- Administrator—remotely from Command WorkStation or Fiery WebSetup
- Operator—from Command WorkStation or Fiery WebSetup

NOTE: By default, *no* passwords are set on the Fiery. If you do not specifically set passwords, all users will have administrator privileges, which include access to important functions such as Setup (including setting passwords), and job control. We *strongly recommend* that you set *at least* an Administrator password to protect the Fiery from random or accidental changes to Setup.

Administrator privileges

Administrator control, which confers control of Setup, is the highest level of control, since the person who has access to Setup can control the printing and job management environment. Administrator privileges include publishing print connections, setting passwords, deleting fonts, controlling print jobs from the job management tools, overriding job settings, clearing the Fiery of all job data, performing calibration, defining default color profiles, and setting default values for print options.

When performing a function from the Copier Control Panel that prompts you for the Administrator password, you must enter it promptly. Otherwise, the Fiery Copier Control Panel returns to Idle, and you must start over again.

Operator privileges

Operator control includes control of print jobs from the job management tools, including the ability to override job settings.

Guest privileges (no password)

No password is needed for a user to log in as a Guest from the job management tools. A Guest can view the status of active jobs but cannot make changes to jobs or to the Fiery state.

Fiery WebTools

The Fiery supports Internet or intranet access from Windows and Mac OS computers with Fiery WebTools. To enable use of Fiery WebTools, you must do the following in Setup:

- Enable TCP/IP.
- Set an IP address, subnet mask, and gateway address for the Fiery.
- Enable Web Services.

For more information, see [Chapter 6](#).

You can set passwords to control access to WebTools features. If you do not specifically set these passwords, all users have access to all WebTools functions (see [page 3-3](#)).

Fiery WebTools include Status[™], WebSpooler[™], WebLink[™], WebScan[™], WebDownloader[™], WebSetup[™], Installer[™], and PrintMe[™].

Status

The Status WebTool provides you with current information on the jobs processing and printing on the Fiery. It is not affected by passwords. For more information, see the [Printing Guide](#).

WebSpooler

The WebSpooler interface is very similar to that of Command WorkStation. It allows remote users to preview, manipulate, reorder, reprint, and delete jobs currently spooling, processing, or printing on the Fiery. It also allows the administrator and operator to edit and merge jobs (Thumbnails A and B) and view, print, or delete the Job Log.

WebSpooler access can be controlled by setting an Operator password in Setup. If you set a password, only users with that password can manipulate jobs from WebSpooler. A user who does not have the password can still log in to WebSpooler as a Guest with view-only access (see [page 3-3](#)). For more information, see the [Job Management Guide](#).

WebLink

WebLink provides all users with a link to an address on the Internet. To change the WebLink Internet address, see [page 6-2](#). This function requires the Administrator password, if one has been set (see “[Passwords](#)” on page 3-3).

NOTE: If you do not set the Administrator password, any user can change the WebLink address, which affects all users. For this reason, we *strongly recommend* that you set an Administrator password.

WebScan

With WebScan, you can retrieve scanned documents from a computer on the Internet or your organization’s intranet. It is not affected by passwords. For more information, see the [Printing Guide](#).

WebDownloader

WebDownloader allows you to print PostScript, EPS, PDF, and TIFF files directly to the Fiery without first opening the file in an application. It is not affected by passwords.

WebSetup

WebSetup allows you to view and modify Fiery Setup options from a remote workstation. This function requires an Administrator password. For more information, see [Chapter 5](#).

NOTE: WebSetup is supported on Windows computers only.

Installer

The Installer WebTool allows users to download installers for printer drivers directly from the Fiery. It is not affected by passwords. For more information, see the [User Software Installation Guide](#).

PrintMe

PrintMe allows users to access and print their e-mail messages, Internet content, and other documents anytime, anywhere, from any device, to the Fiery.

NOTE: Jobs sent with a PrintMe account are only sent through the Fiery Direct connection.

For more information about PrintMe, go to www.printme.com.

Control level scenarios

Typical scenarios of access and control, ranging from minimum control to maximum control, are described in this section. Choose the scenario that best matches your site requirements, and refer to the corresponding number in the following table for guidance on how to configure your system for those requirements.

NOTE: We *strongly recommend* that you set *at least* an Administrator password to prevent unauthorized changes to system settings.

1. No designated administrator or operator (Minimum control—*not recommended*)

All users have equal access to all system functions including Setup, clearing the Fiery, deleting printer fonts, setting the WebLink address, performing calibration, printing to all Fiery print connections, and managing all jobs from the job management tools.

2. An administrator but no operator

Only an administrator can perform Setup, calibration, and other administrator functions, but all other system functions are accessible to all users, including printing to all Fiery print connections, and managing all jobs from the job management tools.

3. An administrator and an operator

Only an administrator can perform Setup, calibration, and other administrator functions, and only an operator or administrator can control jobs from the job management tools. Users can print to all Fiery print connections.

Use these settings in Setup	1 (Minimum)	2	3	4	5 (Maximum)
Enable Direct connection	√	√	√		
Enable Print queue	√	√	√	√	
Set an Administrator Password (<i>strongly recommended</i>)		√	√	√	√
Set an Operator password			√	√	√

About Setup

Setup configures the Fiery to communicate with other devices and manage print jobs. You must perform Setup the first time you turn on the Fiery after new system software is loaded, or any time Server software is reinstalled. An initial Setup using default settings is adequate for allowing users to print to the Fiery and use the WebTools. When your network or user printing environment changes, you can change Setup options accordingly.

You must first perform initial Setup of the Fiery at the Copier Control Panel. After the initial Setup, you must set the remaining Fiery Setup options from Command WorkStation or WebSetup.

If you do not configure the remaining Setups, the Fiery uses default settings. You need to make settings appropriate for the printing environment at your site.

Network server setup requirements

For Novell and Windows NT 4.0/2000 (using TCP/IP) networks, you must configure the network servers for printing to the Fiery *before* you configure Fiery network settings in Setup. For chapter references to information about network server Setup, see the diagrams in [Chapter 1](#).

To configure network settings in Setup, you must have a live network connection, so the Fiery can query the network for zones, servers, and server-based queues.

Whenever the configuration of the Fiery, the copier, or the network changes at your site, you can alter individual settings to correspond to the changed environment. Changing network or port settings may require that you make changes to other Setup options, as well.

NOTE: You must configure the Fiery with the correct Windows NT/2000 domain name. This is especially important for Windows printing, also known as SMB printing.

NOTE: The Fiery does not support the Windows 2000 Active Directory Service. When you use the Fiery in a Windows 2000 server environment, assign the Fiery to a Domain or Workgroup.

Ensuring the copier connection

Complete the following steps *before* you configure the Fiery and the workstations that will print to the Fiery. A service technician will have performed some initial installation.

TO PREPARE FOR FIERY CONFIGURATION

1. **Print a copier Test Page to verify the copier is functioning normally.**
2. **Turn off the copier and connect the interface cable from the copier to the Fiery.**
3. **To confirm this connection, turn on the copier and the Fiery, and print a Test Page from the Fiery Copier Control Panel.**
4. **With both the copier and the Fiery turned off, connect the network cable to the Fiery, as described in [Chapter 1](#).**

The network should already be installed and operational.

5. **Turn on the copier and then the Fiery.**

Proceed to Fiery Setup, beginning in Chapter 4.

Chapter 4: Performing Setup from the Copier Control Panel

Setup is required the first time the Fiery is turned on after new system software is loaded. In this initial Setup, you (or the service technician who loads the software) choose the language for Copier Control Panel menus and messages. If you do not configure a particular Setup option, the Fiery uses default settings. Make sure the settings are appropriate for the printing environment at your site.

Fiery Setup from the Copier Control Panel

Setup performed from the Copier Control Panel initially configures the Fiery to communicate with other devices and manage print jobs sent to it. Once you set up the following options, you must complete the remaining Fiery Setup options from Command WorkStation or WebSetup.

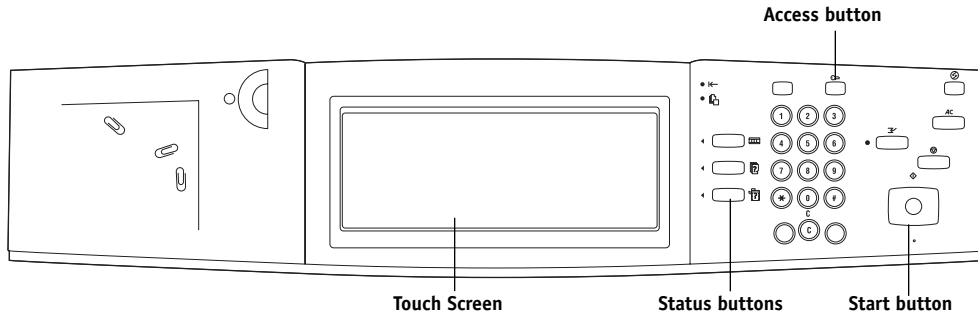
Copier Control Panel Setup provides these Network Setup options:

- Ethernet settings
- TCP/IP-Get IP address
- TCP/IP-Subnet Mask
- TCP/IP-Gateway address

The Copier Control Panel on the front of the Fiery allows you to set options and view information about jobs printed to the Fiery. It comprises the following parts:

- Touch Screen—shows status information and options for setting up the Fiery
- Tabs and buttons—menus, options, and settings

Copier Control Panel



Safety warnings

The Touch Screen is a liquid crystal display (LCD) made of glass, and it can break. Do not subject it to strong shocks.

If the Touch Screen breaks and the liquid crystal material leaks out, do not inhale, ingest, or touch it. If the material gets on your skin or clothing, wash it off with soap and water immediately.

Do not apply excessive pressure when you touch the Touch Screen. This will change the color of the Touch Screen.

Types of Setup screens

There are two types of Setup options:

Multiple choice questions

You are given choices (for example, a list of options from which to choose). Only one choice is displayed at a time. The currently selected (or default) value appears first.

Use the tabs and buttons to select the choices, and click OK or Next when the correct information is displayed.

Information entry options

You must specify the information for your site (for example, the IP address). Use the tabs and buttons to make your selection.

When you enter numbers, enter them using the Copier Control Panel key pad.

Accessing Setup Protocol options

TO ACCESS SETUP WHEN THE FIERY IS IDLE

1. **Make sure the Touch Screen on the Copier Control Panel reads Idle.**

If Printing or RiPPing appears, the Fiery is processing, and you must wait until the system finishes and reaches the Idle state.

2. **Press the Access button (key icon) on the Copier Control Panel.**

Enter your password, if the password is enabled.

3. **In the Touch Screen, press System Settings.**

4. **Press System Settings again.**

5. **Press Network Settings.**

6. **Press Protocol Settings.**

Press the Protocol Setup option you want to access.

When you have entered the settings, you must save the changes. You are usually prompted to do so. If you choose Save, your settings overwrite previous settings. If you choose Cancel, your previous settings are retained. If necessary, the Fiery restarts after you exit the Setup menu.

For each item you enable, you are prompted to enter settings for that item. Default values, where applicable, appear in this manual with square brackets.

Ethernet Settings

Auto/100Base/10Base-T [10Base-T]

Select Auto if your network environment is mixed or if you do not know the network speed. If you know the speed of the network to which the Fiery is attached, select it.

TCP/IP–Get IP Address

DHCP/BOOTP/Manual [DHCP]

Select the protocol over which the Fiery should search for its IP address. Both DHCP and BOOTP allow the Fiery to obtain the Ethernet IP address and Subnet Mask automatically.

Depending on your network, the Fiery might be assigned a different address after you restart the Fiery. With the DHCP setting, the Fiery can be assigned a different address even if it is not restarted. Make sure the network is already configured properly for the protocol you select.

TCP/IP–IP Address

DHCP (Address Required)

This option is only available if you have selected Manual from the previous option. Enter the IP address from the Copier Control Panel key pad and then click Next.

Enter the Fiery IP address for Ethernet. This IP address, unlike an IP address set automatically, remains the same if you restart the Fiery. You must change the default to a valid address for your network. For information about setting up printing with TCP/IP, see [Chapter 2](#).

**TCP/IP–Subnet Mask
DHCP (Address Required)**

This option lets you modify the subnet mask for printing with TCP/IP over Ethernet. To set the subnet mask, enter one of the following values:

- 255.0.0.0 if the IP address starts with a number less than 128
- 255.255.0.0 if the IP address starts with a number from 128 through 191
- 255.255.255.0 if the IP address starts with a number greater than 191

NOTE: Confirm the subnet mask setting with your network administrator before proceeding. In some cases, the required setting may be different from that listed.

**TCP/IP–Gateway Address
DHCP (Address Required)**

Use this option to set the gateway address for printing with TCP/IP. If your network uses a gateway, you must change the default to a correct gateway address for your network.

When you set an IP address, subnet mask, or gateway address for the Fiery during Setup, you can allow the Fiery to get these addresses automatically from a DHCP or BOOTP server. First, turn on or restart the Fiery and allow it to reach Idle. Make sure the DHCP or BOOTP server is running, and then perform Fiery Setup.

Exit Setup

Choose Save and Exit Setup when you have finished making Setup changes.

The Fiery restarts and any changes you saved during the Setup take effect.

Chapter 5: Setting up the Fiery from a Windows Computer

After you perform initial Network Setup from the Copier Control Panel, you must continue Setup options from a Windows computer.

Accessing Setup

In addition to using the Copier Control Panel, you must set up the Fiery remotely. You can perform remote Setup from a Windows computer using Command WorkStation or WebSetup.

To use the Setup applications (Command WorkStation or WebSetup), you must enter the Fiery Administrator password. This is set from Command WorkStation or WebSetup.

Remote Fiery Setup

Remote Setup is performed from a Windows computer using Command WorkStation or WebSetup.

TO ACCESS WEBSETUP

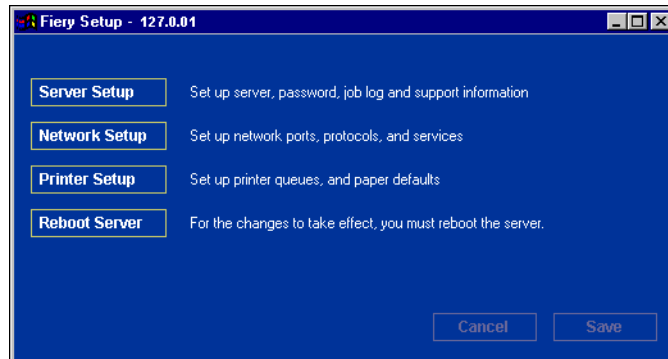
1. **Start your Internet browser and enter the IP address of the Fiery.**
2. **Click WebSetup.**

If a password has been set, log in as Administrator.

TO ACCESS SETUP FROM COMMAND WORKSTATION

1. **Start Command WorkStation.**
2. **Log on as Administrator.**
3. **Choose Setup from the Server menu.**

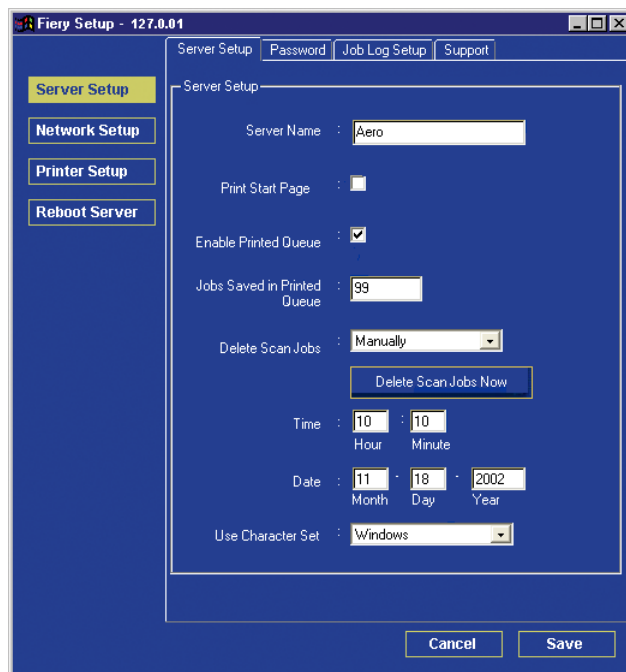
Regardless of how you access Setup remotely, the following dialog box appears.



NOTE: The remote Setup interface from Command WorkStation and WebSetup is identical. The Setup illustrations in this chapter are displayed from Command WorkStation.

General Setup options

You can specify Fiery system settings that affect all users, such as the name of the Fiery, system date and time, passwords, and Job Log printing.



Server Name—Specify a name for the Fiery. This is the name that appears in the Chooser on an AppleTalk network.

NOTE: Do not use the device name (DC3535) as the server name. If you have more than one Fiery, do not assign them the same name. Windows NT 4.0 does not support more than one computer with the same name in the same workgroup or domain.

Print Start Page—Specify whether the Fiery should print a start page when it is turned on or restarted. The Start Page displays information about the Fiery, including server name, current date and time, amount of memory installed, network protocols enabled, and print connections published.

Enable Printed Queue—Specify whether the Fiery should enable the Print queue.

Jobs Saved in Printed Queue—Specify how many jobs the Fiery should save in the Print queue.

Delete Scan Jobs—Specify how often to delete scan jobs from the Fiery hard disk. Choose Manually to delete scan jobs manually on a job-by-job basis. Click Delete Scan Jobs Now to delete all scan jobs immediately.

Date and Time—Specify the system date and time, which are recorded on the Job Log.

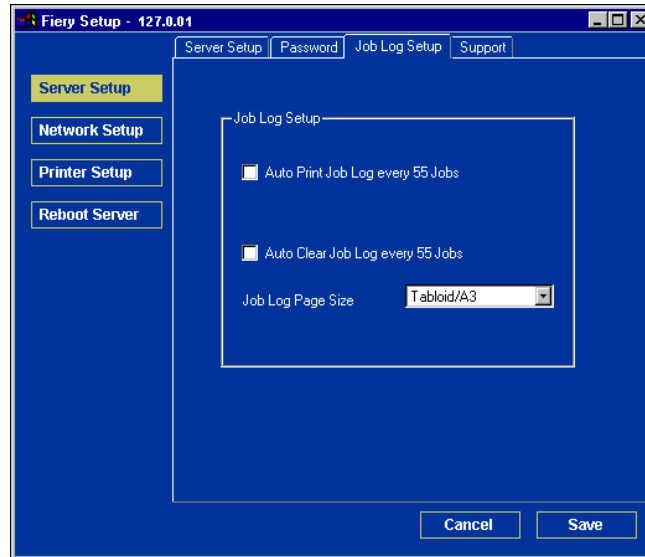
Use Character Set—Specify whether the Copier Control Panel and the job management tools should use the Macintosh, DOS, or Windows character set for displaying file names. This is important if a file name includes accented or composite characters (such as é or æ). For mixed-platform networks, select the setting that gives the best overall representation of the special characters you use.

Support

Enter names, phone numbers, and e-mail addresses of contact people at your organization who provide support for the Fiery and the copier. This option is available from the Support tab.

Job Log Setup

You can specify the Job Log settings from the Job Log Setup tab.



Auto Print Job Log Every 55 Jobs—Specify whether the Fiery prints the Job Log after every 55 jobs. The Job Log lists the last 55 jobs processed on the Fiery, with accounting information about each one, including user name, document name, time and date printed, number of pages, and other job information.

Auto Clear Job Log Every 55 Jobs—Specify whether the Fiery clears the Job Log after every 55 jobs. If you do not select this option, the Fiery saves a file containing a record of all jobs ever printed. Since this file takes up space on the Fiery hard disk, clearing the Job Log frees up additional disk space.

You can clear the Job Log manually at any time with the job management tools.

Job Log Page Size—Select a paper size for the printed Job Log.

Network Setup

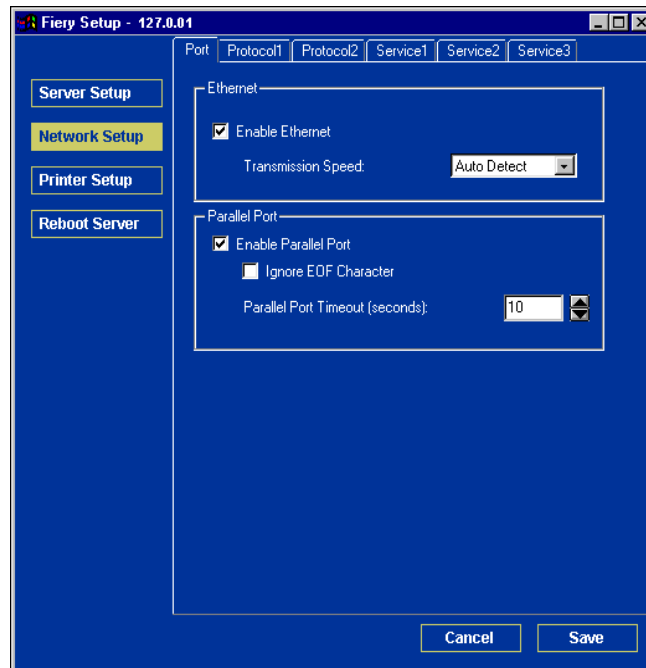
Network Setup configures the Fiery to receive print jobs over the networks used at your site. If the Fiery is configured to enable more than one protocol, it automatically switches to the correct protocol when it receives a print job. When two network ports are enabled, print jobs can be received over all ports at the same time.

You can view and specify the following network settings in Network Setup:

- Adapters and ports—view currently configured network adapters and port settings
- Protocols—including AppleTalk, IPX/SPX, and TCP/IP
- Print Services—including LPD printing (TCP/IP), NetWare printing (PServer), Windows print sharing (SMB), HTTP support (WWW), Internet Printing Protocol (IPP) printing, and Port 9100 printing
- E-mail Service—specify the Fiery E-mail Service

Adapters/Ports

You can view currently configured network adapters and port settings.



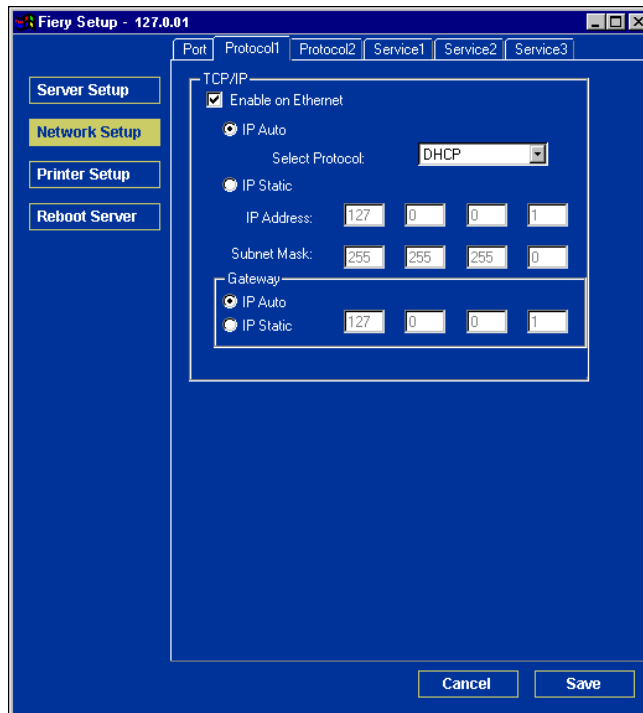
Ethernet (Port Setup)

Enable Ethernet—Select to connect the Fiery to an Ethernet network.

Transmission Speed—Choose Auto Detect if your network environment is mixed, or choose the speed of the network to which the Fiery is attached (10 Mbps or 100 Mbps).

Protocols

You can specify AppleTalk, IPX/SPX, and TCP/IP protocol settings for the Fiery. Specify these settings on the Protocol1 and Protocol2 tabs.



TCP/IP

Specify TCP/IP settings on the Protocol1 tab. The current settings for IP address, subnet mask, and default gateway address are displayed. For information about setting up printing with TCP/IP, see Chapter 2.

The Fiery requires a unique, valid IP address. You can set a static address or specify that the Fiery obtains the IP addresses automatically.

NOTE: If you specify the DHCP or BOOTP protocol, the Fiery restarts when you save your changes and exit Setup. Allow the Fiery to restart and return to Idle before printing a Configuration page or proceeding with any other operations.

To set the subnet mask, enter one of the following values:

255.0.0.0 if the IP address starts with a number less than 128

255.255.0.0 if the IP address starts with a number from 128 through 191

255.255.255.0 if the IP address starts with a number greater than 191

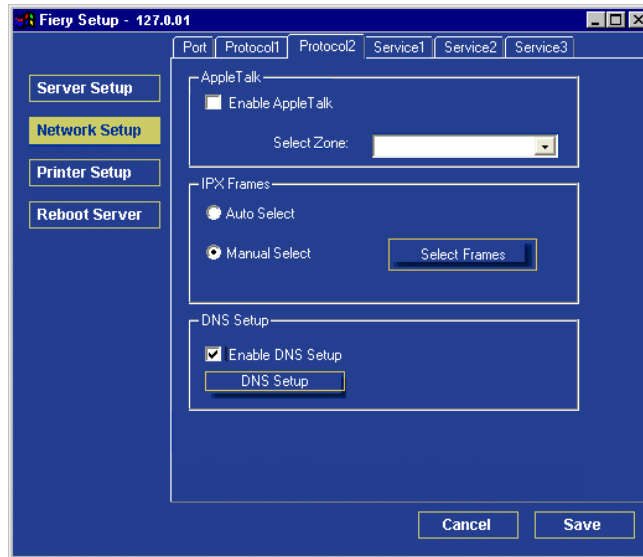
NOTE: Confirm the subnet mask setting with your network administrator before proceeding. In some cases, the required setting may be different from those listed.

If your TCP/IP network has a gateway and users outside the gateway plan to print to the Fiery using TCP/IP, enter the gateway address.

NOTE: The Fiery stores assigned IP addresses, even if you later disable TCP/IP. If you must assign the Fiery IP address to another device, first set the Fiery address to a null address.

AppleTalk

You can enable AppleTalk and display the AppleTalk zone on the Protocol2 tab.



Enable AppleTalk—Select to enable AppleTalk.

Select Zone—Select the AppleTalk zone.

Auto Select—Select to use the default IPX/SPX frame on the DNS.

Manually Select—Select to manually select the IPX/SPX frames on which to use the DNS.

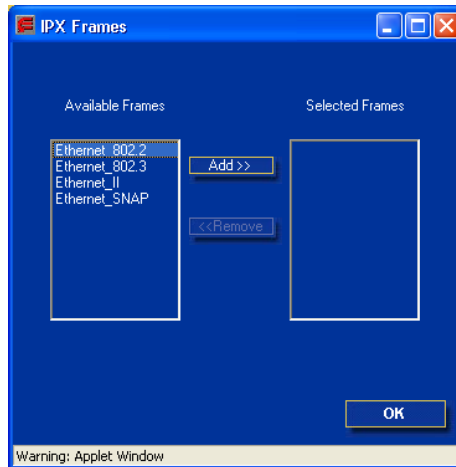
Select Frames—Select to specify the IPX/SPX frames on which to use the DNS.

Enable DNS Setup—Select to enable the DNS setup options.

DNS Setup—Select to allow the Fiery to resolve a name to an IP address.

IPX/SPX

You can enable IPX/SPX frames from the Protocol2 tab. The Fiery supports the following Ethernet frame types for IPX/SPX: Ethernet 802.2, Ethernet 802.3, Ethernet II, and Ethernet SNAP. You can also allow the Fiery to select the frame type automatically. Use this option to specify IPX/SPX frame types on which to use the DNS.

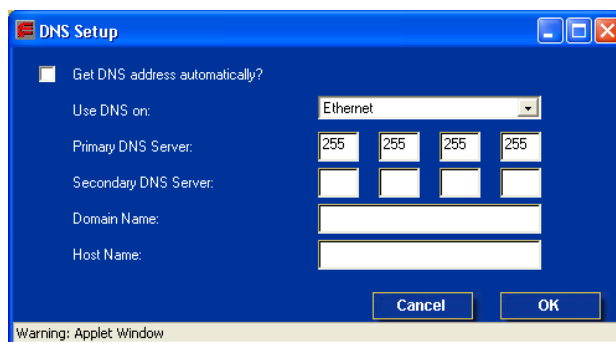


DNS Setup

You can enable DNS setup from the Protocol2 tab. DNS Setup allows the Fiery to resolve a name to an IP address.

NOTE: This option must be enabled to use PrintMe services. For more information, see [“PrintMe Setup options”](#) on page 5-34.

Use this option to specify the DNS host name (also known as the TCP/IP host name), which is the host name in Fiery Setup.



Get DNS Automatically—Select to allow the Fiery to resolve a name to an IP address automatically.

Use DNS on—Specify the IPX/SPX frame on which to use the DNS.

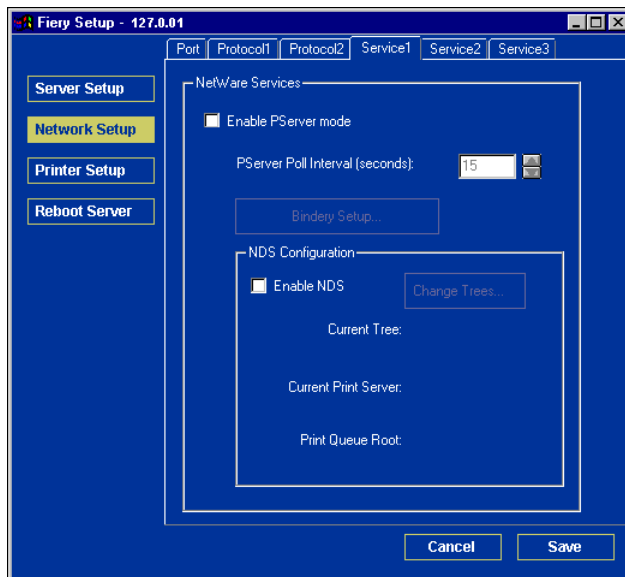
Primary DNS Server—Specify the IP address of the primary DNS server. This option only appears if you selected Get DNS address automatically.

Secondary DNS Server—Specify the IP address of the secondary DNS server. This option only appears if you did not select Get DNS address automatically.

Domain Name—Enter the DNS domain name.

Host Name—Enter the DNS host name of the Fiery.

Services



You can configure the following network services:

LPD Printing (TCP/IP)—Enable or disable LPD print services.

NetWare Printing (PServer)—Specify NDS and Bindery services (see [page 5-15](#)).

Windows Print Sharing (SMB)—Enable or disable SMB print services.

HTTP Support (WWW)—Enable or disable support for Fiery WebTools.

Port 9100—Enable or disable support for Port 9100 printing.

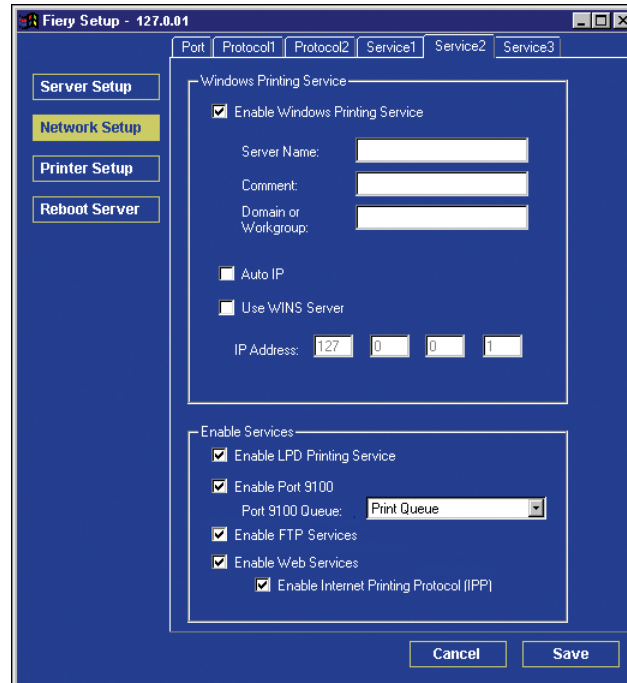
Parallel Port—Enable or disable support for parallel port printing

Internet Printing Protocol (IPP)—Enable or disable support for IPP printing

E-mail Service—Specify the Fiery E-mail Service.

LPD Printing

You can enable the printing services from the Service2 tab.



Enable Windows Print Services—Select to enable or disable Windows printing services.

Enable LPD Printing Services—Select to enable or disable LPD printing services.

Enable Port 9100—Select to enable or disable Port 9100 services.

Enable FTP Services—Select to enable or disable FTP services.

Enable Web Services—Select to enable or disable web services.

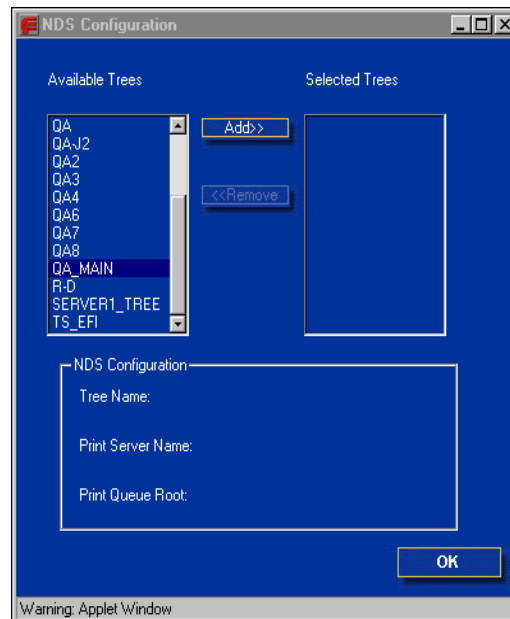
Enable Internet Printing Protocol (IPP)—Select to enable or disable Internet Printing Protocol.

NetWare Printing options

Use this option to specify NDS and Bindery services.

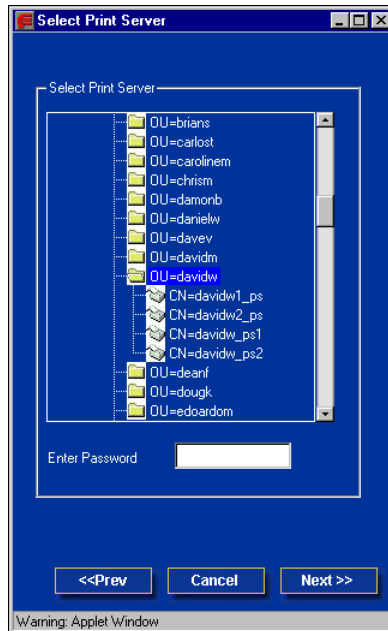
TO SPECIFY THE NDS TREE SETTING FROM REMOTE FIERY SETUP

1. Select Enable NDS and click Change Trees.
2. In the NDS Configuration dialog box that appears, double-click an NDS tree in the Available Trees list.

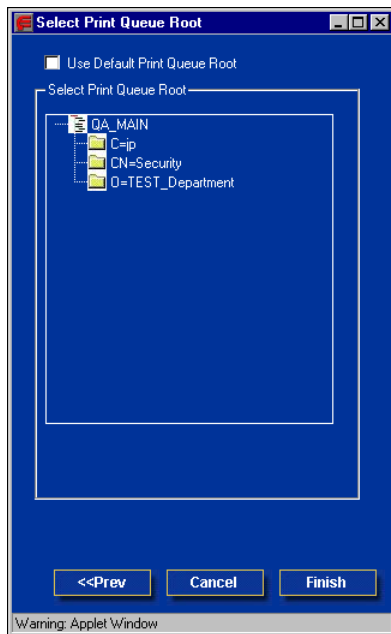


3. In the Select User Login window, select Use Default User Information or enter your password, and click Next.
4. Navigate to the NDS container, select it, and click Next.

If necessary, enter the password.

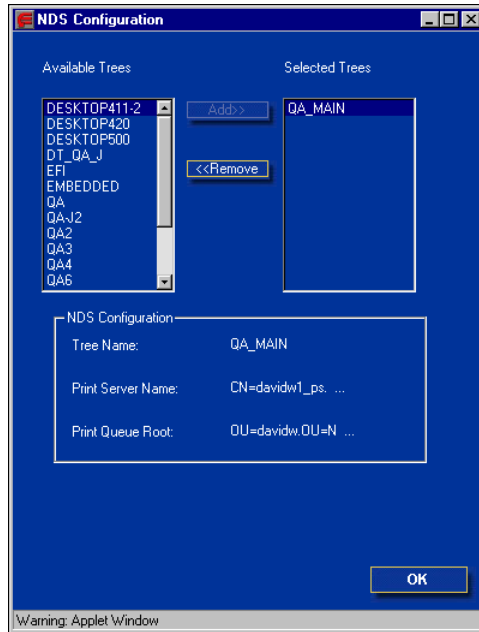


5. Select **Use Default Print Queue Root** or navigate to the **Print Queue Root** and click **Finish**.



6. Click OK.

The NDS Configuration dialog box appears, displaying information about the print server.

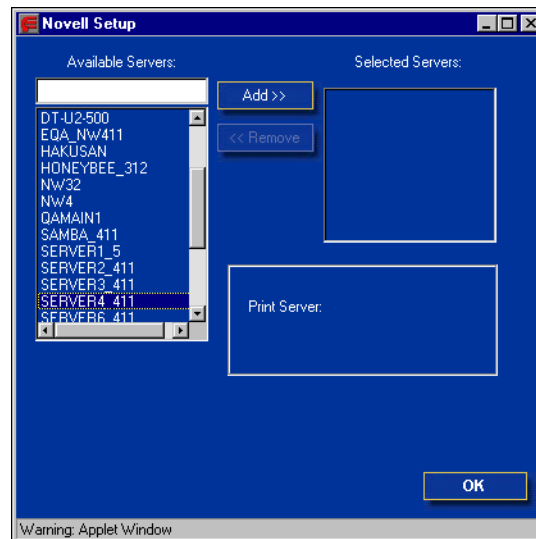


Bindery Setup

Use this option to specify Bindery services.

TO ADD BINDERY CONNECTIONS FROM REMOTE FIERY SETUP

1. Select Enable PServer mode from the Service1 tab.
2. Click Bindery Setup.
3. Select a file server from the Available Servers list.

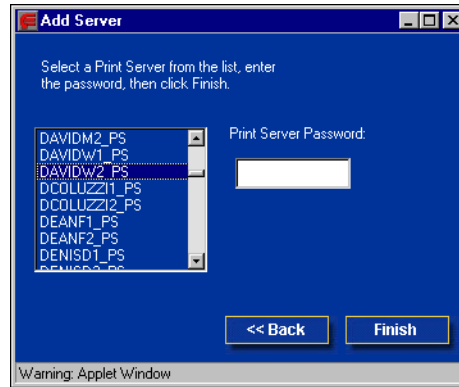


If the File Server User Name and Password dialog box appears, enter the appropriate user name and password to log on to the selected file server.

4. Select a print server from the list and click Finish.

If necessary, enter the appropriate password in the Print Server Password dialog box to log on to the selected file server.

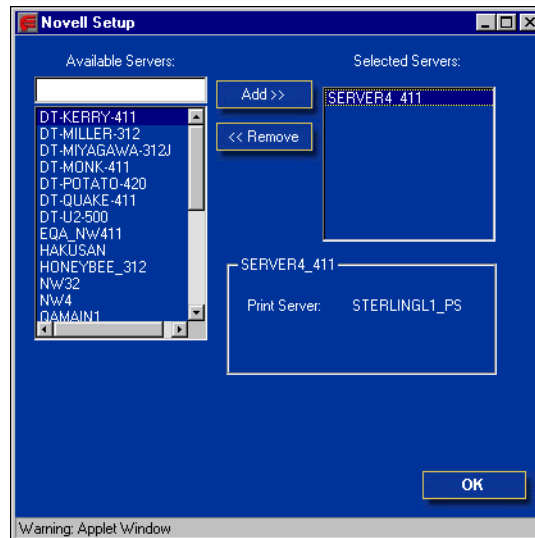
The name of the newly added server appears in the Selected Servers list.



5. When you finish adding servers, click Finish.

TO REMOVE BINDERY CONNECTIONS FROM REMOTE FIERY SETUP

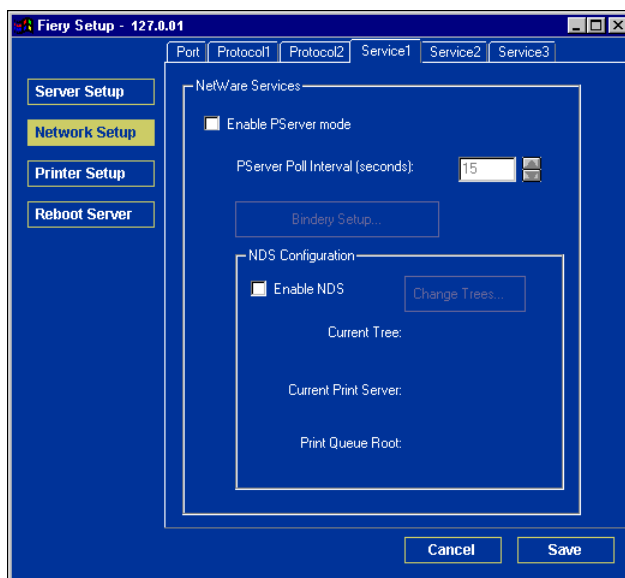
1. **Select Enable PServer mode from the Service1 tab.**
2. **Click Bindery Setup.**
The Novell Setup dialog box appears.
3. **Make your selection in the Selected Servers list.**



4. **With the file server selected in the Selected Servers list, click Remove.**
5. **Click OK.**

PServer Poll Interval

Specify the polling interval (in seconds) for NetWare printing.



Windows print sharing with Server Message Block (SMB)

To set up the Windows printing service, text fields may include uppercase letters, numerals, spaces, and the following characters:

- _ . ~ ! @ # \$ % ^ & () { } \ ' , "

NOTE: Lowercase letters are *not* allowed, except in the Comment field.

The screenshot shows the 'Fiery Setup - 127.0.0.1' window. On the left is a sidebar with buttons: 'Server Setup', 'Network Setup' (highlighted in yellow), 'Printer Setup', and 'Reboot Server'. The main area has tabs: 'Port', 'Protocol1', 'Protocol2', 'Service1', 'Service2', and 'Service3'. The 'Service1' tab is active, displaying the 'Windows Printing Service' configuration. It includes a checkbox for 'Enable Windows Printing Service' (checked), followed by text input fields for 'Server Name:', 'Comment:', and 'Domain or Workgroup:'. Below these are checkboxes for 'Auto IP' and 'Use WINS Server'. The 'IP Address' is shown as four separate input boxes with values '127', '0', '0', and '1'. A second section titled 'Enable Services' contains several checked checkboxes: 'Enable LPD Printing Service', 'Enable Port 9100' (with a dropdown menu showing 'Print Queue'), 'Enable FTP Services', 'Enable Web Services', and 'Enable Internet Printing Protocol (IPP)'. At the bottom right are 'Cancel' and 'Save' buttons.

Enable Windows Printing Service—Select to enable SMB (Server Message Block), the file and printer sharing protocol built into Windows. Enabling SMB lists the Fiery on the network so that Windows clients can print to a particular print connection (Hold, Print, or Direct) on the Fiery without any other networking software. For information on setting up a Windows client for Windows printing, see the *User Software Installation Guide*.

NOTE: Windows (SMB) printing runs over TCP/IP, so you must configure TCP/IP on the Fiery and any computers that use Windows printing.

Server Name—Enter the server name that will appear on the network. You can use the same name as the server name assigned to the Fiery (see [page 5-3](#)), or choose another name.

Comment—Enter information about the printer, up to 15 characters. These comments are listed in the Properties of the Fiery in Network Neighborhood. Lowercase letters are allowed in this field.

Domain or Workgroup—Enter the workgroup or domain where the Fiery should appear.

Auto IP—If you have already enabled IP Auto in Protocol Setup, and selected either DHCP or BOOTP as the protocol for obtaining an IP address, select this option to allow the Fiery to obtain the IP address automatically for the WINS Name Server. If you do not select this option, use the following two options to specify whether to use a WINS Name Server and its IP address.

Use WINS Server—Select to use a WINS name server. Broadcasts from SMB devices cannot be routed beyond their original network segment without a WINS name server. Setting up the WINS name server is outside the scope of this manual. To find out if a name server is available, contact your network administrator.

IP Address—Enter the IP address of the WINS name server.

LPD Printing Services

Enable LPD Printing Services—Enables or disables LPD printing services.

Port 9100 Printing Services

Enable Port 9100—Enables applications to open a TCP/IP socket to the Fiery at Port 9100 to download a print job.

Port 9100 Queue—Allows you to attach Port 9100 to any of the published Fiery print connections.

FTP Services

Enable FTP Services—Enables users to scan jobs from the Fiery to an FTP site.

HTTP Connection Support (WWW)

Enable Web Services—Select to make the WebTools available to users. TCP/IP must already be enabled on the Fiery and on users' computers. A Java-enabled Web browser and a valid IP address are required for each user. For details on supported browsers and workstation requirements, see the *User Software Installation Guide*.

Enable Internet Printing Protocol (IPP)—Select Yes to enable printing with the IPP. You must enable Web Services. For information on setting up users' computers to use IPP printing, see the *User Software Installation Guide*.

E-mail Service Setup

You can enable E-mail Service on the Service3 tab.

Fiery Setup - 127.0.01

Port Protocol1 Protocol2 Service1 Service2 Service3

Server Setup
Network Setup
Printer Setup
Reboot Server

E-mail Service

☒ E-mail Service Setup

☒ Enable Print via E-mail?

Incoming Mail Server:
10.11.136.36

Server Type:
POP3

Outgoing Mail Server:
10.11.136.36

Timeout: 60 Sec Polling Interval: 15 Sec Attachment Maximum Size: 1000 (KB)

Mailbox Account Name:

Fiery E-mail Address:

Password:

Verify Password:

Administrator E-mail Address:

Cancel Save

E-mail Service Setup—Enabling e-mail services is required for all e-mail client services.

Enable Print via E-mail—If selected, print jobs sent via e-mail are accepted. If this option is cleared, print jobs sent via e-mail are ignored.

Incoming Mail Server—Specify the IP address or server name that communicates the appropriate mail server and contact information to the Fiery.

Server Type—Specify the e-mail protocol used to communicate with the incoming mail server.

Outgoing Mail Server—Specify the IP address or server name that communicates the appropriate mail server and contact information to the Fiery.

NOTE: You must define both an Incoming and Outgoing mail server. If an Outgoing mail server is not defined, the E-mail Service assumes that the incoming and outgoing server names are the same.

Timeout (seconds)—Specify the maximum amount of time that will elapse as the Fiery attempts to connect to the mail server.

Polling Interval—Specify how often the Fiery checks the mail server for relevant e-mail.

Attachment Maximum Size—Specify the maximum file size of a scan for the Fiery to send as an attachment. If the scan file exceeds this maximum, the file is automatically sent as a URL.

Mailbox Account Name—Enter the mailbox name specified on the mail server. This name tells the Fiery client mail service which account contains e-mail messages for the Fiery.

NOTE: The account name entered in this field must first be specified on the mail server by the administrator.

Fiery E-mail Address—Enter the name of the e-mail account. For example, pat@test.com.

Password—Enter a password for accessing the mailbox account on the mail server.

Verify Password (remote Setup only)—Reenter your password.

Administrator E-mail Address—Enter the user name specified in Fiery setup.

The administrator authorizes a unique e-mail address to remotely administer e-mail services. If an error occurs while you are performing a scan to e-mail, E-mail Service sends an error message to the Administrator E-mail Address specified. The administrator can authorize additional administrator e-mail addresses from this e-mail address.

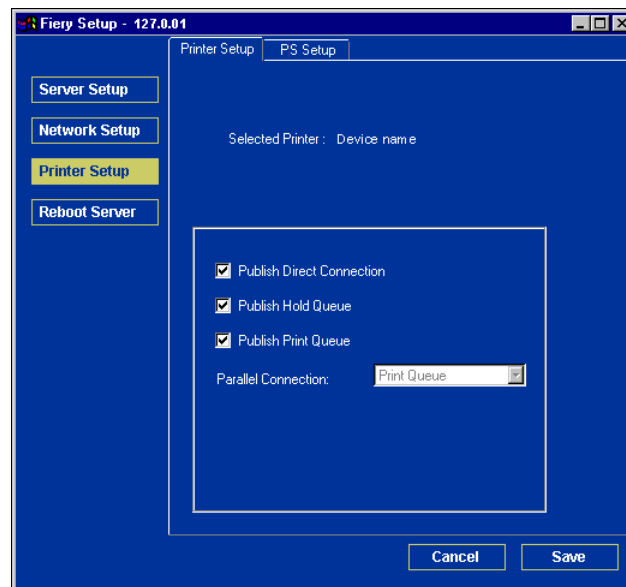
Printer Setup options

From this dialog box, you can access the Printer Setup and PS Setup tabs.

NOTE: In the following illustrations, “Device name” represents the model of the copier connected to the Fiery, which is DC3535.

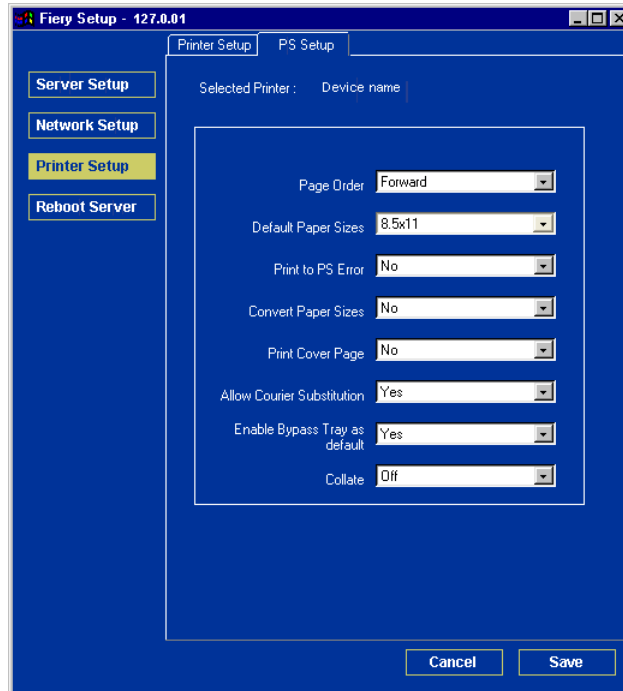
Printer connections

Specify whether to publish the Print queue, Hold queue, or Direct connection.



PS Setup

NOTE: In the following illustrations, “Device name” represents the model of the copier connected to the Fiery, which is DC3535.



Page Order—Specify the page order for printed output. Forward prints pages in the order received, so that the last page is on the top of the stack and the first page is on the bottom. Reverse prints jobs in reverse order, so the first page is on the top of the stack and the last page is on the bottom.

Default Paper Sizes—Specify whether to print on US paper sizes (for example, Letter, Legal, Tabloid), or Metric paper sizes (for example, A4 or A3) by default. When no paper size is defined within a PostScript file, jobs are printed on Letter-size paper if you select US, or A4 paper if you select Metric.

Print to PS Error—Specify whether the Fiery should print the available portion of a print job when it encounters a PostScript error. In general, this option should be No.

- When you choose No, the printing of the entire job is canceled when a PostScript error occurs, but the processed portion of the job and the PostScript error information are stored on the Fiery. You can view the job and the error information from the job management tools.
- When you choose Yes, the portion of the job processed before the error occurred is printed.

Convert Paper Sizes—Specify whether to convert paper sizes in documents automatically to the default paper sizes specified. For example, if you select Letter/11x17->A4/A3, a letter-size job is automatically printed on A4 paper. If you select No, the Fiery prints the job only if it finds a media source in the size specified by the job.

Print Cover Page—Specify whether the Fiery prints a cover page (job summary) at the end of each print job. If you choose Yes, each print job is followed by a page containing the name of the user who sent the job, the document name, the server name, the time the job was printed, the number of pages printed, and the status of the job. If a PostScript error occurs and the Print to PS Error option is set to Yes, the Cover Page lists the PostScript error message instead of the job status.

Allow Courier Substitution—Specify whether to substitute Courier for unavailable fonts. When you choose Off, jobs requiring fonts unavailable on the Fiery hard disk generate a PostScript error and do not print. This setting does not apply to PDF files; font substitution occurs automatically for PDF files.

Enable Bypass Tray as default—Specify if you want jobs sent to the Fiery output to the Bypass Tray by default.

Collate—Specify how to output multiple-page/multiple-copy jobs.

More Setup Options

More Setup Options allows you to make additional setup selections to the networks used at your site.

You can view and specify the following network settings in More Setup Options:

- **Factory Defaults**—clear all queued job and reset the Fiery Setup options to the factor defaults
- **Network Services**—enable FTP Services, Proxy Setup, and Printing Group

Factory Defaults

Factory Defaults clears all queued jobs and resets the Fiery Setup options to the factory defaults. Once the Fiery is reset, you select the language in which to display Setup menus and system messages.

Reboot server to factory settings—Select OK to reset the Fiery Setup options to the factory defaults. You are notified that the Fiery must be restarted for the new settings to take effect. You can restart now or later.

NOTE: Turn off the copier using the main power switch on the front. The copier Touch Screen displays a message stating that the copier is shutting down. Before restarting, wait approximately 30 seconds for the copier to turn off completely.

Network Services

Network Services enables FTP Services, Proxy Setup, and Printing Groups.

Enable FTP Services—Select to enable users to scan jobs from the Fiery to an FTP site.

Enable Proxy Setup—Select to enable the following proxy server setup options for security purposes when scanning to an FTP site. Selecting No returns you to the main Network Setup menu.

Proxy Server—Enter the IP address of the proxy server on your network. This option appears only if you have selected Yes to Enable Proxy Setup.

Proxy Port Number—Enter the port number of the proxy server on your network. This option appears only if you have selected Yes to Enable Proxy Setup. This port number must be entered at the Fiery when scanning jobs to a secure FTP site.

Proxy User Name—Enter the user name for the proxy server. This option appears only if you have selected Yes to Enable Proxy Setup.

Proxy Password—Enter the proxy password. Exit Network Setup to return to the main Network Setup menu.

Enable Printing Groups—Specify whether to enable printer groups for Member Printing. If you enable this option, you must use Command WorkStation to define user groups and passwords. Users must then enter their group name and password when they print.

Setting up printing groups

The Fiery administrator can arrange users into groups and allow members of a group to print only if they supply a password at print time. This method of printing is known as Printing Groups, or Member Printing.

This section describes how to set up groups and passwords. For more information about using the Printing Groups feature, see the *Printing Guide*.

NOTE: To change the Group Name or Group Password settings for a job that a user has already sent from the printer driver, use Command WorkStation, Fiery Spooler, or WebSpooler.

TO SET UP PRINTING GROUPS AND PASSWORDS

1. Choose **Printing Groups** from the **Command WorkStation Server** menu.
2. Click **Create**.
3. In the **Group Name** field, enter a group name for the printing group.
4. In the **Password** field, enter a password for the group, and reenter the password in the **Verify Password** field.
5. Click **Add** to move the new group into the window.

TO CHANGE PRINTING GROUPS AND PASSWORDS

1. Choose **Printing Groups** from the **Command WorkStation Server** menu.
2. Select the printing group name in the **Printing Groups Setup** dialog box and click **Modify**.
3. Make the necessary changes.
4. Click **OK**.

TO REMOVE PRINTING GROUPS AND PASSWORDS

1. Choose **Printing Groups** from the **Command WorkStation Server** menu.
2. Select the printing group name in the **Printing Groups Setup** dialog box and click **Remove**.
3. Click **OK**.

Exiting Setup

When you have finished specifying Setup options, click **OK** and close the Setup dialog box. You are notified that the Fiery must be restarted for the new settings to take effect. You can restart now or later. If **Command WorkStation** is running, the connection to the Fiery is lost and you must log on again when the server restarts.

NOTE: Turn off the copier using the main power switch on the front. The copier Touch Screen displays a message stating that the copier is shutting down. Before restarting, wait approximately 30 seconds for the copier to turn off completely.

After you have completed Setup and restarted the Fiery for the first time, install the user software for printing on remote workstations, as described in the [User Software Installation Guide](#). To confirm the network connection and your Setup, print a test job from a remote workstation.

PrintMe Setup options

PrintMe allows users to access and print their e-mail messages, Internet content, and other documents anytime, anywhere, from any device, to the Fiery.

NOTE: Jobs sent with a PrintMe account are only sent through the Fiery Direct connection.

For more information about PrintMe, go to www.printme.com.

TO ACCESS PRINTME SETUP OPTIONS

1. In the main Setup menu, choose **PrintMe Setup**.
2. Enter the options appropriate to the printing requirements at the site.
3. When you have finished, save changes.

Enable PrintMe

To enable PrintMe, you must first set up DNS. For information on DNS Setup, see [page 5-12](#).

Enable PrintMe—Select Yes to enable PrintMe, select Save, and exit Setup.

The Fiery restarts and acquires the 16-digit activation code required to proceed with PrintMe Setup. Immediately after the Fiery restarts, a PrintMe activation page is printed with the Fiery PrintMe activation code.

From any web enabled computer, go to www.printme.com and click Activate Stations. Enter the 16-digit activation code that was printed on the PrintMe confirmation page.

NOTE: We highly recommend that you enter your PrintMe activation code within an hour from the time it is printed. Your activation code may become invalid if you try to enter your code after this time elapses. If this happens, you must disable PrintMe in Setup, allow the Fiery to restart, and go through PrintMe Setup again to get a valid activation code.

PrintMe Activation Code

This displays the PrintMe activation code. If no activation code is available, PrintMe is not enabled. You must first enable PrintMe and follow the instructions on the preceding page.

Printing the Configuration page

The Configuration page lists the settings in effect for the current Setup. After you have performed Setup, print a Configuration page to confirm your settings. You can print the Configuration page from Command WorkStation or from the Copier Control Panel.

The other pages you can print from Command WorkStation include the Test Page, Job Log, color charts, and Font List. For information on these Fiery pages, see the *Job Management Guide*.

TO PRINT THE CONFIGURATION PAGE FROM COMMAND WORKSTATION

1. In Command WorkStation, choose **Print Pages from the Server** menu.
2. Click **Configuration**.
3. Click **Print**.

Post the current Configuration page near the server for quick reference. Users need the information on this page, such as the current printer default settings.

**TO PRINT THE CONFIGURATION PAGE FROM THE
COPIER CONTROL PANEL**

1. Press the Message Status button on the Copier Control Panel.
2. From the Touch Screen, click the Billing Meter/Print Report tab.
3. Press the Print Report/List button.
4. Press the Copy Mode Settings button.
5. Press the Settings List/Common Items button.
6. Press the Start button on the Copier Control Panel.

The Configuration page and the System Settings List are printed.

Chapter 6: Configuring Fiery WebTools

Fiery WebTools allow you to manage your Fiery remotely from the Internet or from your company's intranet. The Fiery has its own home page, from which you can select a variety of functions, including Status, WebSetup, WebSpooler, WebLink, Installer, and WebDownloader.

For more information on using Fiery WebTools, see the *Printing Guide*.

Configuring the Fiery and clients for WebTools

Fiery WebTools allow you to access many Fiery functions via the Internet (or intranet), providing additional flexibility in remote management.

TO SET UP WEBTOOLS ON THE FIERY

1. In **Fiery Network Setup**, enable **TCP/IP**.
2. Set a valid, unique IP address for the Fiery, and then set the subnet mask. Set a gateway address, if required.
3. In **Fiery Printer Setup**, confirm that the **Print queue** is published.

TO SET UP WEBTOOLS ON A COMPUTER

1. Enable **TCP/IP networking**.
2. Assign the workstation a valid, unique IP address and subnet mask, and a gateway address, if required.
3. Install an Internet browser that supports the **Java language and frames**.

Make sure Java is enabled. For more information on supported browsers and WebTools requirements, see the *User Software Installation Guide*.

TO ACCESS WEBTOOLS

1. **Start your Internet browser.**
2. **Enter the IP address or DNS name of the Fiery.**
3. **Press Enter.**

The Fiery home page appears.

4. **Click the name of a particular WebTool.**
5. **Click Configure to enable specific WebTools for users.**

Setting the WebLink destination

You can change the pre-set WebLink destination; this function requires the Administrator password, if one has been set.

TO CHANGE THE WEBLINK DESTINATION

1. **Start your Internet browser.**
2. **Enter the IP address or the DNS name of the Fiery.**
3. **Enter the Administrator password, if required, and click OK.**
4. **Press the Ctrl key (Windows) as you click WebLink.**

The Fiery home page appears.

The Update WebLink dialog box appears.

5. **Enter the new WebLink address (URL) and click OK.**

Chapter 7: Administering the Fiery

This chapter provides tips on managing Fiery printing.

Administrator functions

Administration features are included with the user software and are built into the Fiery. The following table describes where to find information on these features (page references refer to this manual).

For these operations	And these tasks	See
Setting up network servers	Setting up servers to manage and share printing services	This manual
Connecting and setting up the Fiery	Connecting the Fiery and performing Fiery Setup	This manual
	Setting up the Fiery to allow user access to WebTools	This manual <i>Customer Release Notes</i>
Setting up the printing environment	Setting printer defaults, including modes, imaging, paper size handling, error handling	Printer Setup, 5-28 Paper Setup, page 5-29 <i>Color Guide</i> <i>Printing Guide</i>
Setting up the job environment	Publishing the Direct connection, Print queue, or Hold queue to end users on various platforms	Printer Setup, Chapter 2, 5-28
Protecting integrity of users' jobs, maintaining consistency of Fiery settings	Setting the Administrator password	Passwords, page 7-2 Chapter 3
Setting up all new users	Setting up printing, including installing PostScript printer drivers and PPD files for the printer Installing optional user software Preparing users to access WebTools	This manual <i>Customer Release Notes</i>

For these operations	And these tasks	See
Getting users started with printing	Printing to the Fiery Setting job-specific options Using Fiery utilities	<i>Printing Guide</i> <i>Job Management Guide</i>
Controlling the job flow	Using WebTools, Command WorkStation and Fiery utilities and for managing job priorities, tracking current jobs, canceling jobs, printing jobs in the Hold queue, and reprinting from the Printed or Hold queue	<i>Printing Guide</i> <i>Job Management Guide</i> <i>Customer Release Notes</i>
Job accounting	Viewing, printing, and exporting the Job Log, user notes Setting automatic printing and clearing for the Job Log	<i>Job Management Guide</i>
Color management	Printing with CMYK simulations Printing color samples and swatch pages Installing color profiles	<i>Color Guide</i> <i>User Software Installation Guide</i>
Maintaining optimal Fiery performance	Tips Deleting jobs, clearing queues	page 7-8 <i>Job Management Guide</i>
Troubleshooting	Troubleshooting Fiery Setup	<i>Appendix A</i>

Setting passwords

You can set or change the Administrator password for the Fiery. Anyone with the Administrator password can modify the Setup options, and control the flow and order of print jobs with the job management tools.

When the Fiery is installed, there is no password. If you do not create an Administrator password, users are not required to enter a password to modify the Setup or use the administrator functions in the job management tools. If an Administrator password has been set previously, you are required to enter it when you run Setup.

Passwords

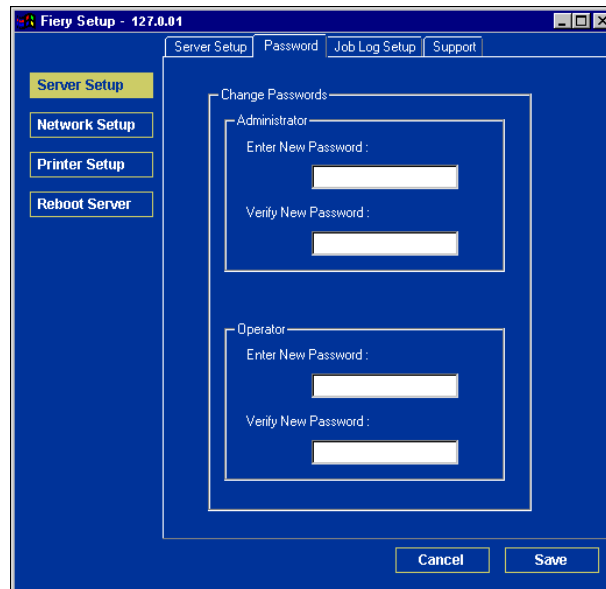
You can set, change, and remove passwords for the Fiery. These passwords, specific to the Server process, have different uses than the Windows NT Administrator and Operator passwords. Keep track of the passwords you set for each.

Administrator—Controls access to Setup; Administrator privileges also include Operator privileges.

Operator—Controls access to job management functions via the job management tools.

NOTE: For more information on Fiery passwords and the access privileges they allow, see [page 3-3](#).

By default, *no* passwords are set. If you do not specifically set passwords, all users will have access to important functions such as Setup (including setting passwords) and job control. We *strongly recommend* that you set at least an Administrator password to protect the Fiery from unauthorized changes to Setup.



TO SET OR CHANGE A PASSWORD

1. **Select the password you want to change.**
2. **Type the password in both the Enter New Password and Verify New Password fields.**

Passwords are case-sensitive and can be any combination of letters and numbers up to 19 characters. You must enter the password *exactly* the same way both times. The new password remains in effect until you change it.

TO REMOVE A PASSWORD

1. **Select the password you want to delete.**
2. **Delete the asterisks (*) in both the Enter New Password and Verify New Password fields.**

If you forget the Administrator password, contact your authorized service representative to reinstall Fiery system software. This clears the Administrator password and allows you to set a new one.

Managing address books

The E-mail Service feature allows an administrator to import a list of e-mail addresses to the Fiery by sending e-mail messages to the Fiery.

NOTE: E-mail messages can only be sent from an administrator account.

The Fiery supports the following address books:

- **User**—a generic address book used primarily for Scan to E-mail. This address book is used for outgoing e-mail only.
- **Admin**—includes users with administrative access. Administrative access allows you to modify the address book, get the current address book from the Fiery, and cancel or status any print job.
- **Print**—includes users who have print access. Only users whose e-mail addresses are in the Print address book are authorized to submit jobs via e-mail to the Fiery. Unauthorized users receive an e-mail reply that their job was not accepted by the Fiery for printing.

E-mail Service also allows the administrator to overwrite the address book, append new addresses, remove addresses, and retrieve current addresses on the Fiery.

When a print job is submitted via e-mail, the Fiery first checks the Print address book. If the user's e-mail address does not match any entry in the Print address book, the job will not print. Instead, the user will receive an e-mail stating that the print job was not accepted.

The default wildcard character "@" is stored in the Print address book. This allows any user to print to the Fiery until the administrator adds the first entry in the Print address book.

The administrator can manage the address books by sending an e-mail to the Fiery with command codes in the Subject and Message fields. The Fiery responds by e-mail to these commands with information about each request. When managing address books, see the following table.

Task	Administrator subject field	Administrator message field	Fiery e-mail response subject field	Fiery e-mail response message field
To retrieve a specific address book	#GetAddressBook <i>name of address book</i> For example: #GetAddressBook Admin		Address Book <i>name of address book</i> For example: Address Book Admin	List of addresses in the specified address book.
To add an address to an address book	#AddAddressTo <i>name of address book</i> For example: #AddAddressTo Print	name@domain or “display name” <name@domain>	Added to Address Book <i>name of address book</i> For example: Added to Address Book Print	List of addresses added to the address book. The Fiery also lists any addresses that cannot be added and includes the reason.
To clear an address book	#ClearAddressBook <i>name of address book</i> For example: #ClearAddressBook User		Address Book <i>name of address book</i> cleared or Address Book <i>name of address book</i> not cleared For example: Address Book User cleared	If the address book is not cleared, the reason is given.

Task	Administrator subject field	Administrator message field	Fiery e-mail response subject field	Fiery e-mail response message field
To delete an address from an address book	#DeleteAddressFrom <i>name of address book</i> For example: #DeleteAddressFrom User	name@domain or “display name” <name@domain>	Removed from Address Book <i>name of address book</i> For example: Removed from Address Book User	Deleted Address 1 Deleted Address 2 The Fiery also lists any addresses that cannot be deleted and includes the reason.
To receive help for Fiery e-mail services	#Help		RE: Help	Provides troubleshooting e-mail syntax.

Printing a Configuration page

The Configuration page lists all the settings in effect in the current Setup.

After you have finished running Setup, print a Configuration page to confirm your settings. You can print the Configuration page from Command WorkStation or from the Copier Control Panel (for details, see [page 5-35](#)).

After you make changes to Setup and choose Exit Setup, the Fiery restarts. This allows the Fiery to recognize the new settings and display them properly on the Configuration page. Allow the Fiery to restart and return to Idle before printing a Configuration page. In particular, the restart is necessary if you specified the DHCP or BOOTP protocol to obtain an IP address automatically for the Fiery.

Post the current Configuration page near the server for quick reference. Users need the information on this page, such as the current printer default settings.

Other pages you can print from Command WorkStation include the Test Page, Font List, and Job Log. For information on these pages, see the [Job Management Guide](#).

Maintaining optimal Fiery performance

The Fiery does not require maintenance. Beyond the obvious requirements of servicing and maintaining the copier and replenishing consumables, you can improve the overall performance of your system by doing the following:

- **Make the best use of your network connections**

Publish only connections that will be used; the Fiery constantly checks all published connections, even if they are inactive. Match the NetWare polling interval and the number of queues or connections to the demand for printing.

Review the published connections by printing a Configuration page. Eliminate the connections that are not being used. It is easy to re-establish them when needed.

- **Leave less urgent jobs to times when there is less network traffic or printing**

You can print recurring print jobs or jobs that are not urgent to the Hold queue. At low-traffic times, the administrator or a user of the job management tools with Operator privileges can move (or copy) all the Hold queue jobs to the Print queue for printing.

- **Reduce unnecessary Two-way Communication**

Large numbers of users running Fiery utilities, especially with frequent updates, may have a significant effect on Fiery performance.

- **Make sure you have adequate disk space on the Fiery**

Periodically review the list of jobs in the Hold queue, and the number of jobs being retained in the Printed queue.

An administrator can print or delete jobs that are in the Printed queue and Hold queue. Consider printing or offloading inactive jobs. If disk space on the Fiery is frequently low, you can disable the Printed queue (in Server Setup) and choose not to publish the Hold queue (in Printer Setup).

To move or remove queued jobs, use the job management tools. When you free up disk space by removing inactive jobs, new jobs are spooled and printed more quickly.

Shutting down and restarting the Fiery

Generally, you can leave the Fiery and the copier running all the time. This section describes how to shut down and restart the Fiery when necessary.

Shutting down and restarting the Fiery

You may need to shut down the Fiery for service, or restart the entire Fiery system. When you do so, fonts that have been downloaded to the hard disk are not deleted. Print jobs in the Hold queue, the Printed queue, and jobs that have been processed but not printed are not deleted; they will be available for printing when you restart the Fiery.

TO SHUT DOWN THE FIERY

- **Make sure the copier is not in use, and turn off the copier using the main power switch on the front.**

The copier Touch Screen displays a message stating that the copier is shutting down. Wait approximately 30 seconds for the copier to turn off completely.

Restarting the Fiery

Restarting the Fiery resets the Fiery system software, but does not restart the entire system. Network access to the Fiery is temporarily interrupted and all currently processing jobs are aborted.

TO RESTART THE FIERY

- **Turn off and then turn on the copier using the main power switch on the front.**

The copier Touch Screen displays a message stating that the copier is shutting down. Before restarting, wait approximately 30 seconds for the copier to turn off completely.

Appendix A: Troubleshooting

This chapter provides troubleshooting tips.

Troubleshooting the Fiery

Startup diagnostics are described in the *Installation and Service Guide* for service technicians. Contact your authorized service/support center if you see startup error messages on Command WorkStation or if the Fiery does not reach the Idle state.

Printer not found

Most failures to find a printer on the network are due to conflicting or missing name or address settings for the Fiery. You must enter names in specific places. The required names are:

- TCP/IP host name (also known as the DNS name), which is defined by your organization.

Enter the host name as the Server Name in Fiery Setup.

- Remote printer (internal machine) name. Use one of the following:

print
hold
direct

NOTE: If you change the DNS name (also known as the TCP/IP host name) of the Fiery, you must reconfigure one of the Fiery utilities on each workstation.

See the following table for the appropriate name.

In this location	For this item	IPX/SPX networks	TCP/IP networks	See
Server Setup	Server Name option	Administrator defines name	Administrator defines name	page 5-3
Windows NT hosts file	host name	—	DNS name (TCP/IP host name)	page 2-1
Windows NT setup for TCP/IP	lpd host name	—	DNS name (TCP/IP host name)	page 2-1
	Name of printer on lpd host machine	—	print or hold	
UNIX /etc/printcap file (BSD)	rp line	—	print or hold	page 2-14
Solaris	lpadmin queuename	—	print or hold	
NetWare administration utility	print queues (must be all lowercase and in English)	_direct _print _hold	—	page 2-7
Add New Server dialog box, when configuring a Fiery utility	New Device	Utilities are not supported over IPX/SPX.	DC3535	<i>User Software Installation Guide</i>
	Server Name	Utilities are not supported over IPX/SPX.	DNS name (TCP/IP host name)	

Cannot connect to Fiery with Fiery utilities

If users cannot connect to the Fiery, check the following:

- Fiery Setup—the appropriate network protocol must be enabled, with the correct parameters (for example, for TCP/IP, the IP address), and you must publish either the Print queue or Hold queue.

You can check these settings quickly by printing a Configuration page.

- On the client workstation—the appropriate network protocol(s) must be loaded, and your Windows directory should contain a configured Efinl.ini file.

Cannot connect to the Fiery with Command WorkStation

If there is a problem connecting to the Fiery, an error message is displayed.

The problem can occur when:

- The Fiery is initially turned on
- The Fiery restarts
- You have changed settings affecting the server address and have not reconfigured the connection to the server

If you see this problem, try the following solutions, in this order:

- A remote workstation running Fiery utilities or WebTools may be interfering by obtaining status information. If possible, close the remote application, and try to connect again.
- Restart the Command WorkStation software and try to connect again.
- Check the configuration of the connection and modify it, if necessary, or delete the Efinl.ini file and start over with the process of configuring the connection, as described in the *User Software Installation Guide*. For Windows 9x/Me, the Efinl.ini file is located in the \WINDOWS directory. For Windows NT 4.0/2000/XP, the Efinl.ini file is located in the \WINNT directory.
- Restart the Fiery.

For information on other error conditions, see the *Job Management Guide*.

Index

Numerics

- 100BaseT connector 1-11
- 10BaseT 1-11
- 8-pin RJ-45 connector 1-11

A

- access level scenarios 3-6
- access to network and software 3-1
- accessing Setup
 - from Copier Control Panel 4-1
 - from Windows computer 5-1
- Adapters/Ports information, Setup 5-7
- Add File Server, Bindery Setup 5-19
- administrator
 - functions 7-1 to 7-2
 - installing the server 1-2
 - managing print jobs 7-1
 - password 7-2
- Administrator E-mail Address option 5-27
- Administrator password
 - changing from Copier Control Panel 7-2
 - changing from Windows computer 7-4
 - for setting the WebLink destination 3-5, 6-2
 - privileges 3-3
- Allow Courier Substitution option 5-30
- AppleTalk 1-5
 - network diagram 1-5
 - protocol setup 5-8
 - server name 5-3
 - with Windows NT 2-2
- AppleTalk Setup
 - from Windows computer 5-10
- AppleTalk zone 5-10
- Attachment Maximum Size option 5-27
- Auto Clear Job Log Every 55 Jobs 5-5

- Auto Clear Job Log Every 55 Jobs
 - option 5-5
- Auto IP option 5-24
- Auto Print Job Log Every 55 Jobs option 5-5
- Auto Print Job Log Every 55 jobs option 5-5
- Auto Select option 5-10

B

- Bindery file servers
 - connecting 5-19
 - defined 2-8
 - emulation mode 2-7, 5-13
 - setting up context 2-12 to 2-13
- Bindery Setup
 - adding Bindery connections 5-19
 - on server 5-19
 - removing Bindery connections 5-21
- BOOTP protocol 4-5
- broken LCD 4-2

C

- changing
 - Administrator password 7-2, 7-4
 - host name or DNS name A-1
- characters
 - used on Copier Control Panel 5-4
- Chooser
 - AppleTalk 5-3
- choosing a Bindery Server to connect 5-19
- clearing the Job Log 5-5
- client setup
 - Fiery WebTools 6-1
 - network printing 2-5 to 2-6, 2-12 to 2-13
 - overview 1-2
- Collate option 5-30
- Command WorkStation xi, 5-2
 - problems connecting to server A-3

- Comment option, Windows printing 5-24
- Configuration page
 - printing 5-35, 7-7
 - troubleshooting connection problems A-3
- Configure button, Fiery WebTools 6-2
- configuring network clients
 - NetWare 2-12
 - Windows NT 2-5
- configuring network servers
 - NetWare 2-8, 2-9
 - UNIX 2-16
 - Windows NT 2-3
- configuring servers
 - from Windows computer 5-1 to 5-33
 - preparing for 3-9
- connecting
 - copier interface cable 3-9
 - network cable 1-10
- control levels
 - scenarios 3-6
 - setting 3-1
- Convert Paper Sizes option 5-30
- Copier Control Panel 4-1
 - accessing Setup 4-1
 - illustrated 4-1
 - Touch Screen 4-1
- Courier font, substitution with 5-30
- cover page, printing at end of job 5-30

D

- date, setting 5-4
- Default Paper Sizes option 5-29
- Delete Scan Jobs option 5-4
- destination, Fiery WebLink 6-2
- device name 5-3, 5-28, 5-29, A-2
- DHCP protocol 4-5
- diagrams of network setup 1-4 to 1-9

- Direct connection
 - described 3-1, 3-2
 - publishing 5-28
 - required for downloading fonts 3-2
- disk space 7-8
- DNS (Domain Name Server) 2-2, 2-4, A-1
- DNS Domain Name option 5-12
- DNS Host Name option 5-12
- DNS Setup 5-12
- DNS setup 5-12
- DNS Setup option 5-10
- Domain or Workgroup option, Windows printing 5-24
- downloading fonts, Direct connection requirement 3-2

E

- E-mail Service Setup option 5-26
- Enable AppleTalk option 5-10
- Enable Bypass Tray as default option 5-30
- Enable DNS Setup option 5-10
- Enable Ethernet option 5-7
- Enable FTP Services 5-31
- Enable FTP Services option 5-14
- Enable Internet Printing Protocol (IPP) option 5-14
- Enable IPP option 5-25
- Enable LPD option 5-14
- Enable LPD Printing Services option 5-14, 5-25
- Enable NDS option 5-15
- Enable Port 9100 option 5-14
- Enable Port 9100 Print Services option 5-25
- Enable Print via E-mail option 5-26
- Enable Printed Queue 5-3
- Enable Printing Groups option 5-32
- Enable PrintMe option 5-34
- Enable Proxy Setup 5-31
- Enable TCP/IP for Ethernet option 5-9
- Enable Web Services option 5-14, 5-25

- Enable Windows Print Services option 5-14
- Enable Windows Printing option 5-24
- enabling
 - Fiery WebTools 5-25
- Ethernet 1-11
 - frame types 5-11
 - network 2-8
- Ethernet Setup from remote Setup
 - Port Setup 5-7
- Ethernet Speed option 5-7
- exiting Setup, Copier Control Panel 4-5

F

- Factory Defaults 5-31
- Fiery DocuColor 3535
 - Copier Control Panel 4-2
- Fiery E-mail Address option 5-27
- Fiery WebDownloader, described 3-5
- Fiery WebLink 3-5
 - setting the destination 6-2
- Fiery WebSetup, described 3-5
- Fiery WebSpooler
 - described 3-4
- Fiery WebTools 6-1 to 6-2
 - enabling 5-25
 - enabling only certain WebTools 6-2
 - Installer 3-5
 - Status 3-4
- File Server 5-19, 5-20, 5-21
- File Server, Bindery 5-19
- font substitution 5-30
- frame types supported
 - IPX/SPX, Ethernet 5-11
- FTP Services 5-25

G

- General Setup options 5-4 to 5-5
- Get DNS Automatically option 5-12
- Guest privileges (no password) for
 - WebSpooler 3-4

H

- Hold queue 5-28
 - described 3-1, 3-2
- host name 2-2, 2-3, 2-4, A-1
 - database 2-2

I

- improving server performance 7-8
- Incoming Server option, E-mail Setup 5-26
- Installer WebTool, *see* Fiery WebTools
- installing server on network 1-2, 1-9
- Internet
 - accessing server with Fiery
 - WebTools 3-4
 - WebLink access 6-2
- IP address
 - for WINS Name Server 5-24
 - required for TCP/IP printing 2-16
- IP Address option 5-24
- IPX (Novell) 2-7 to 2-13
 - NDS (Novell Directory
 - Services) 2-11, 5-13
 - NetWare client setup 2-12
 - NetWare server setup 2-9
 - network diagram 1-6
 - overview of printing 2-8
 - setting up printing 2-9
 - tips for experts 2-8
- IPX/SPX
 - polling interval 5-22
- IPX/SPX frames
 - setup 5-11

J

- Java to support Internet browser 6-1
- Job Log
 - setting the page size used 5-5
- Job Log Page Size option 5-5
- Job Log Setup
 - from Windows computer 5-5

job management tools
 defined 3-1
 Jobs Saved in Printed Queue 5-4

L

LCD 4-2
 lpd (TCP/IP) 2-14
 printing 5-14
 setup summary 2-16 to 2-17
 LPD Printing Services 5-25

M

Mac OS computers
 on AppleTalk network 1-5
 with Windows NT 2-2
 Mailbox Account Name option 5-27
 maintaining server performance 7-8
 Manually Select option 5-10
 Member Printing 5-32
 More Setup Options 5-31
 Factory Defaults 5-31
 Network Services 5-31

N

naming the server A-1
 NDPS (Novell Distributed Print Services) 2-7, 2-13
 NDS (Novell Directory Services)
 2-11, 5-13
 defined 2-8
 NETBEUI 1-7
 NetWare
 Directory Services 5-13
 NDS (Novell Directory Services) 2-11
 NetWare Print Console 2-12
 NetWare Printing options 5-15
 NetWare, supported networking environments 2-7

network

AppleTalk 1-5
 cable 3-9
 installation diagrams 1-2 to 1-9
 installation summary 1-3
 IPX (Novell) 1-3, 1-4, 1-6
 lpd (TCP/IP) 1-3, 1-4, 1-9
 protocols supported 1-1
 using multiple protocols 1-4
 with Windows NT 1-7
 Network Services 5-31
 Network Setup
 from Windows computer 5-6 to 5-25
 NWAdmin 2-10

O

Operator password 3-4
 privileges 3-3
 Outgoing Mail Server option, E-mail Setup 5-27

P

Page Order option 5-29
 Paper Sizes option 5-29
 Password, E-mail Setup 5-27
 passwords 7-3
 Administrator privileges 3-3
 Administrator, changing 7-2
 Fiery WebTools 3-4
 for WebLink destination 3-5
 for WebSpooler 3-4
 Operator privileges 3-3
 setting 3-3
 PC compatibles
 on IPX (Novell) network 1-6
 on TCP/IP network 1-9
 PDF files, font substitution in 5-30
 Polling Interval
 E-mail Setup 5-27

- polling interval for NetWare print jobs 5-22
 - Port 9100 Printing Services 5-25
 - Port 9100 Queue option 5-25
 - Primary DNS Server option 5-12
 - Print Cover Page option 5-30
 - Print queue 3-2, 5-28
 - described 3-1, 3-2
 - Print Server
 - adding 5-20
 - selecting 5-20
 - Print Start Page 5-3
 - Print Start Page option 5-4
 - Print Start Page, printing 5-4
 - Print to PostScript Error option 5-30
 - Printed queue 3-2
 - printer
 - connection failure A-1
 - not found A-1
 - not in Chooser A-1
 - Printer Setup
 - from Windows computer 5-28
 - printing
 - Configuration page from Copier Control Panel 7-7
 - connections 3-1
 - reprinting previously printed jobs 3-2
 - start page at startup 5-4
 - printing connections 3-1
 - Printing Groups 5-32
 - printing groups
 - defining members of 5-32
 - defining passwords for 5-32
 - editing printing groups and passwords 5-33
 - removing printing groups and passwords 5-33
 - PrintMe Activation Code 5-35
 - PrintME, enabling 5-34
 - problems, *see* troubleshooting
 - protocols
 - network 1-1
 - setting up 5-8
 - See also* AppleTalk, IPX, IPX/SPX, TCP/IP
 - Proxy Password option 5-32
 - Proxy Port Number option 5-31
 - Proxy Server option 5-31
 - Proxy User Name option 5-32
 - PS Setup 5-29
 - Publish Direct Connection
 - option 5-28
 - Publish Hold Queue option 5-28
 - Publish Print Queue option 5-28
 - publishing connections,
 - overview 3-1
- ## Q
- queues
 - publishing 5-28
- ## R
- Reboot server to factory
 - settings option 5-31
 - reprinting jobs 3-2
 - restarting 7-9
 - RJ-45 connector 1-11
 - root login 2-17
- ## S
- safety 4-2
 - Secondary DNS Server
 - option 5-12
 - Select Frames option 5-10
 - Select Zone option 5-10
 - selecting
 - default paper size 5-29

server

- back view showing connectors 1-10
- Copier Control Panel 4-1
- display window 4-1, 4-2
- maintaining and improving
 - performance 7-8
- naming 5-3
- network installation summary 1-3
- power switch 1-10
- Setup, *see* Setup
- Server Name option 5-3
- Server Name option, Windows
 - printing 5-24
- Server Setup 3-7
 - exiting 5-33
 - from Windows computer 5-3
- Server Type option, E-mail Setup 5-26
- Service Setup options 5-13
- setting up NDS connection 2-11
- Setup 5-2
 - screen types 4-3
 - See also* Server Setup, Network
 - Setup, Printer Setup, PS Setup,
 - Job Log Setup
- setup access 5-2
- Setup from Copier Control Panel
 - accessing 4-1
 - summary 4-1
- shutting down 7-9
- SMB 5-23
- Status WebTool,
 - see* Fiery WebTools
- superuser 2-17
- Support option 5-4
- System Date option 5-4
- System Time option 5-4

T

TCP/IP

- adding server to network 2-4
- host name A-1
- http protocol 1-1
- lpd printing 5-14
- lpd protocol 1-1
- nbt protocol 1-1
- network diagram 1-9
- setting up printing from
 - Windows NT 2-2 to 2-6
- settings 5-9
 - with UNIX workstations 2-14
- time, setting 5-4
- Timeout option, E-mail Setup 5-27
- Touch Screen 4-1
- Transmission Speed (Ethernet) option 5-7
- troubleshooting
 - Command WorkStation connection
 - problems A-3
 - connection to printer fails A-1
 - Printer not found in the selection
 - list of Fiery utilities A-3
 - Printer not found—TCP/IP or IPX
 - networks A-1
- twisted pair cable 1-11

U

UNIX

- managing print jobs 2-18
- on TCP/IP network 1-9, 2-14
- printcap file A-2
- printing to server 2-18
- remote printer name A-2
- setting up printing to server 2-16
- tips for experts 2-15

- Use Character Set option 5-4
- Use DNS on option 5-12
- Use WINS Server option 5-24

V

- Verify Password option 5-27

W

- warning
 - display window breakage 4-2
- Web Services Setup 5-25
- WebDownloader,
 - see* Fiery WebDownloader
- WebLink, *see* Fiery WebLink
- WebSetup
 - access 5-1
- WebSetup, *see* Fiery WebSetup
- WebSpooler, *see* Fiery WebSpooler
- WebTools, *see* Fiery WebTools
- Windows 9x/Me
 - printing in Windows NT environment 2-6
- Windows computers, printing without
 - a Windows NT 4.0 server 2-6
- Windows NT
 - network environment 1-7
 - setting up Windows NT server 2-3
 - with TCP/IP 1-7, 1-9
- Windows print sharing, with
 - Server Message Block (SMB) 5-23
- Windows printing
 - 1-1, 2-6, 5-13, 5-24
 - domain issues 3-8
 - setting domain or workgroup 5-24

