

# **Fiery Network Controller for DocuColor 3535**

COLOR GUIDE



## About the Documentation

This manual is part of a set of Fiery Network Controller for DocuColor 3535™ documentation that includes the following manuals for users and system administrators:

- The *Quick Start Guide* summarizes the steps for configuring the Fiery and printing. It also describes how to access the online documentation.
- The *User Software Installation Guide* describes how to install software from the User Software CD to enable users to print to the Fiery, and also describes setting up printing connections to the Fiery.
- The *Configuration Guide* explains basic configuration and administration of the Fiery for the supported platforms and network environments. It also includes guidelines for setting up UNIX, Windows NT 4.0/2000, and Novell NetWare servers to provide printing services to users.
- The *Printing Guide* describes the printing features of the Fiery for users who send jobs from their computers.
- The *Color Guide* provides information on managing the color output of the Fiery. It explains how to calibrate your copier and take advantage of the ColorWise® color management system, as well as features in ColorWise Pro Tools™.
- The *Fiery Color Reference* addresses concepts and issues associated with managing color output of the Fiery and outlines key workflow scenarios. In addition, it offers information on printing color documents from popular Microsoft Windows and Apple Mac OS applications.
- The *Job Management Guide* explains the functions of the job management utilities, including Command WorkStation™ and DocBuilder Pro™, and how you can use them to monitor and control jobs on the Fiery. This manual is intended for an operator or administrator, or a user with the necessary access privileges, who monitors and manages job flow, performs color calibration, and troubleshoots problems that may arise.
- *Customer Release Notes* provide last-minute product information and workarounds for some of the problems you may encounter.

Copyright © 2003 Electronics For Imaging, Inc. All rights reserved.

This publication is protected by copyright, and all rights are reserved. No part of it may be reproduced or transmitted in any form or by any means for any purpose without express prior written consent from Electronics For Imaging, Inc., except as expressly permitted herein. Information in this document is subject to change without notice and does not represent a commitment on the part of Electronics For Imaging, Inc.

The software described in this publication is furnished under license and may only be used or copied in accordance with the terms of such license.

This product may be covered by one or more of the following U.S. Patents: 4,500,919, 4,837,722, 5,212,546, 5,343,311, 5,424,754, 5,467,446, 5,506,946, 5,517,334, 5,537,516, 5,543,940, 5,553,200, 5,615,314, 5,619,624, 5,625,712, 5,666,436, 5,760,913, 5,818,645, 5,835,788, 5,867,179, 5,959,867, 5,970,174, 5,982,937, 5,995,724, 6,002,795, 6,025,922, 6,041,200, 6,065,041, 6,112,665, 6,122,407, 6,134,018, 6,141,120, 6,166,821, 6,185,335, 6,201,614, 6,215,562, 6,219,659, 6,222,641, 6,224,048, 6,225,974, 6,226,419, 6,238,105, 6,239,895, 6,256,108, 6,269,190, 6,289,122, 6,292,270, 6,310,697, 6,327,047, 6,327,050, 6,327,052, RE36,947, D406,117, D416,550, D417,864, D419,185, D426,206, D439,851, D444,793

#### **Trademarks**

ColorWise, EDOX, EFI, Fiery, the Fiery logo, Fiery Driven and RIP-While-Print are registered trademarks of Electronics For Imaging, Inc. in the U.S. Patent and Trademark Office and/or certain other foreign jurisdictions.

The eBeam logo, the Electronics For Imaging logo, the Fiery Driven logo, the PrintMe logo, the Splash logo, AutoCal, ColorCal, Command WorkStation, DocBuilder, DocBuilder Pro, DocStream, eBeam, EFI Color Profiler, EFI Production System, EFI ScanBuilder, Fiery X2, Fiery X2e, Fiery X2-W, Fiery X3e, Fiery X4, Fiery ZX, Fiery Z4, Fiery Z5, Fiery Z9, Fiery Z16, Fiery Z18, Fiery Document WorkStation, Fiery Downloader, Fiery Driver, Fiery FreeForm, Fiery Link, Fiery Prints, Fiery Print Calibrator, Fiery Production System, Fiery Scan, Fiery ScanBuilder, Fiery Spark, Fiery Spooler, Fiery WebInstaller, Fiery WebScan, Fiery WebSpooler, Fiery WebStatus, Fiery WebTools, NetWise, PrintMe, PrintMe Networks, Print Me. Everywhere You Go, RIPChips, Splash, Velocity, Velocity Balance, Velocity Build, Velocity Design, Velocity Estimate, Velocity Scan, and VisualCal are trademarks of Electronics For Imaging, Inc.

All other terms and product names may be trademarks or registered trademarks of their respective owners, and are hereby acknowledged.

#### **Legal Notices**

**APPLE COMPUTER, INC. ("APPLE") MAKES NO WARRANTIES, EXPRESS OR IMPLIED, INCLUDING WITHOUT LIMITATION THE IMPLIED WARRANTIES OF MERCHANTABILITY AND FITNESS FOR A PARTICULAR PURPOSE, REGARDING THE APPLE SOFTWARE. APPLE DOES NOT WARRANT, GUARANTEE, OR MAKE ANY REPRESENTATIONS REGARDING THE USE OR THE RESULTS OF THE USE OF THE APPLE SOFTWARE IN TERMS OF ITS CORRECTNESS, ACCURACY, RELIABILITY, CURRENTNESS, OR OTHERWISE. THE ENTIRE RISK AS TO THE RESULTS AND PERFORMANCE OF THE APPLE SOFTWARE IS ASSUMED BY YOU. THE EXCLUSION OF IMPLIED WARRANTIES IS NOT PERMITTED BY SOME STATES. THE ABOVE EXCLUSION MAY NOT APPLY TO YOU.**

**IN NO EVENT WILL APPLE, ITS DIRECTORS, OFFICERS, EMPLOYEES OR AGENTS BE LIABLE TO YOU FOR ANY CONSEQUENTIAL, INCIDENTAL OR INDIRECT DAMAGES (INCLUDING DAMAGES FOR LOSS OF BUSINESS PROFITS, BUSINESS INTERRUPTION, LOSS OF BUSINESS INFORMATION, AND THE LIKE) ARISING OUT OF THE USE OR INABILITY TO USE THE APPLE SOFTWARE EVEN IF APPLE HAS BEEN ADVISED OF THE POSSIBILITY OF SUCH DAMAGES. BECAUSE SOME STATES DO NOT ALLOW THE EXCLUSION OR LIMITATION OF LIABILITY FOR CONSEQUENTIAL OR INCIDENTAL DAMAGES, THE ABOVE LIMITATIONS MAY NOT APPLY TO YOU.** Apple's liability to you for actual damages from any cause whatsoever, and regardless of the form of the action (whether in contract, tort [including negligence], product liability or otherwise), will be limited to \$50.

#### **Restricted Rights Legends**

For defense agencies: Restricted Rights Legend. Use, reproduction, or disclosure is subject to restrictions set forth in subparagraph (c)(1)(ii) of the Rights in Technical Data and Computer Software clause at 252.227.7013.

For civilian agencies: Restricted Rights Legend. Use, reproduction, or disclosure is subject to restrictions set forth in subparagraph (a) through (d) of the commercial Computer Software Restricted Rights clause at 52.227-19 and the limitations set forth in Electronics For Imaging's standard commercial agreement for this software. Unpublished rights reserved under the copyright laws of the United States.

**Part Number:** 45029617

**FCC Information**

WARNING: FCC Regulations state that any unauthorized changes or modifications to this equipment not expressly approved by the manufacturer could void the user's authority to operate this equipment.

**Class A Compliance**

This equipment has been tested and found to comply with the limits for a Class A digital device, pursuant to Part 15 of the FCC Rules. These limits are designed to provide reasonable protection against harmful interference when the equipment is operated in a commercial environment. This equipment generates, and uses, and can radiate radio frequency energy and, if not installed and used in accordance with the instruction manual, may cause harmful interference to radio communications. Operation of this equipment in a residential area is likely to cause interference in which case the user will be required to correct the interference at his own expense.

**Industry Canada Class A Notice**

This Class A digital apparatus complies with Canadian ICES-003.

**Avis de Conformation Classe A de l'Industrie Canada**

Cet appareil numérique de la Classe A est conforme à la norme NMB-003 du Canada.

**RFI Compliance Notice**

This equipment has been tested concerning compliance with the relevant RFI protection requirements both individually and on system level (to simulate normal operation conditions). However, it is possible that these RFI Requirements are not met under certain unfavorable conditions in other installations. It is the user who is responsible for compliance of his particular installation.

Dieses Gerät wurde sowohl einzeln als auch in einer Anlage, die einen normalen Anwendungsfall nachbildet, auf die Einhaltung der Funkstörbestimmungen geprüft. Es ist jedoch möglich, dass die Funkstörbestimmungen unter ungünstigen Umständen bei anderen Gerätekombinationen nicht eingehalten werden. Für die Einhaltung der Funkstörbestimmungen einer gesamten Anlage, in der dieses Gerät betrieben wird, ist der Betreiber verantwortlich.

Compliance with applicable regulations depends on the use of shielded cables. It is the user who is responsible for procuring the appropriate cables.

Die Einhaltung zutreffender Bestimmungen hängt davon ab, dass geschirmte Ausführungen benutzt werden. Für die Beschaffung richtiger Ausführungen ist der Betreiber verantwortlich.

**Software License Agreement**

YOU SHOULD CAREFULLY READ THE FOLLOWING TERMS AND CONDITIONS BEFORE USING THIS SOFTWARE. IF YOU DO NOT AGREE TO THE TERMS AND CONDITIONS OF THIS AGREEMENT, DO NOT USE THE SOFTWARE. INSTALLING OR USING THE SOFTWARE INDICATES THAT YOU AGREE TO AND ACCEPT THE TERMS OF THIS AGREEMENT. IF YOU DO NOT AGREE TO ACCEPT THE TERMS OF THIS AGREEMENT YOU MAY RETURN THE UNUSED SOFTWARE FOR A FULL REFUND TO THE PLACE OF PURCHASE.

**License**

EFI grants you a non-exclusive license to use the software ("Software") and accompanying documentation ("Documentation") included with the Product. The Software is licensed, not sold. You may use the Software solely for your own customary business or personal purposes. You may not rent, lease, sublicense or lend the Software. You may, however, permanently transfer all of your rights under this Agreement to another person or legal entity provided that: (1) you transfer to the person or entity all of the Software and Documentation (including all copies, updates, upgrades, prior versions, component parts, the media and printed materials, and this Agreement); (2) you retain no copies of the Software and Documentation, including copies stored on a computer; and (3) the recipient agrees to the terms and conditions of this Agreement.

You may not make or have made, or permit to be made, any copies of the Software or portions thereof, except as necessary for backup or archive purposes in support of your use of the Software as permitted hereunder. You may not copy the Documentation. You may not attempt to alter, disassemble, decompile, decrypt or reverse engineer the Software.

**Proprietary Rights**

You acknowledge that the Software is proprietary to EFI and its suppliers and that title and other intellectual property rights therein remain with EFI and its suppliers. Except as stated above, this Agreement does not grant you any right to patents, copyrights, trade secrets, trademarks (whether registered or unregistered), or any other rights, franchises or licenses in respect of the Software. You may not adopt or use any trademark or trade name which is likely to be similar to or confusing with that of EFI or any of its suppliers or take any other action which impairs or reduces the trademark rights of EFI or its suppliers.

**Confidentiality**

You agree to hold the Software in confidence, disclosing the Software only to authorized users having a need to use the Software as permitted by this Agreement and to take all reasonable precautions to prevent disclosure to other parties.

**Remedies and Termination**

Unauthorized use, copying or disclosure of the Software, or any breach of this Agreement will result in automatic termination of this license and will make available to EFI other legal remedies. In the event of termination, you must destroy all copies of the Software and all of its component parts. All provisions of this Agreement relating to disclaimers of warranties, limitation of liability, remedies, damages, and EFI's proprietary rights shall survive termination.

**Limited Warranty and Disclaimer**

EFI warrants to the original purchaser ("Customer") for thirty (30) days from the date of original purchase from EFI or its authorized retailer that the Software will perform in substantial conformance to the Documentation when the Product is used as authorized by EFI's specifications. EFI warrants the media containing the Software against failure during the above warranty period. EFI makes no warranty or representation that the Software will meet your specific requirements, that the operation of the Software will be uninterrupted or error free, or that all defects in the Software will be corrected. EFI makes no warranty, implied or otherwise, regarding the performance or reliability of any third party products (software or hardware) not provided by EFI. THE INSTALLATION OF ANY THIRD PARTY PRODUCTS OTHER THAN AS AUTHORIZED BY EFI WILL VOID THIS WARRANTY. IN ADDITION, USE, MODIFICATION, AND/OR REPAIR OF THE PRODUCT OTHER THAN AS AUTHORIZED BY EFI WILL VOID THIS WARRANTY.

EXCEPT FOR THE ABOVE EXPRESS LIMITED WARRANTY, EFI MAKES AND YOU RECEIVE NO WARRANTIES OR CONDITIONS ON THE SOFTWARE, EXPRESS, IMPLIED, STATUTORY, OR IN ANY OTHER PROVISION OF THIS AGREEMENT OR COMMUNICATION WITH YOU, AND EFI SPECIFICALLY DISCLAIMS ANY IMPLIED WARRANTY OR CONDITION OF MERCHANTABILITY OR FITNESS FOR A PARTICULAR PURPOSE OR NONINFRINGEMENT OF THIRD PARTY RIGHTS.

**Limitation of Liability**

TO THE MAXIMUM EXTENT PERMITTED BY LAW, EFI AND ITS SUPPLIERS SHALL NOT BE LIABLE FOR ANY DAMAGES, INCLUDING LOSS OF DATA, LOST PROFITS, COST OF COVER OR OTHER SPECIAL, INCIDENTAL, CONSEQUENTIAL OR INDIRECT DAMAGES ARISING FROM THE SALE, INSTALLATION, MAINTENANCE, USE, PERFORMANCE OR FAILURE OF THE SOFTWARE, HOWEVER CAUSED AND ON ANY THEORY OF LIABILITY. THIS LIMITATION WILL APPLY EVEN IF EFI HAS BEEN ADVISED OF THE POSSIBILITY OF SUCH DAMAGE. YOU ACKNOWLEDGE THAT THE PRICE OF THE PRODUCT REFLECTS THIS ALLOCATION OF RISK. BECAUSE SOME JURISDICTIONS DO NOT ALLOW THE EXCLUSION OR LIMITATION OF LIABILITY FOR CONSEQUENTIAL OR INCIDENTAL DAMAGES, THE ABOVE LIMITATION MAY NOT APPLY TO YOU.

**Export Controls**

You agree that you will not export or re-export the Software in any form in violation of any applicable laws or regulations of the United States or the country in which you obtained them.

**U.S. Government Restricted Rights:**

The Software and Documentation are provided with RESTRICTED RIGHTS. Use, duplication, or disclosure by the United States Government is subject to restrictions as set forth in subparagraph (c)(1)(ii) of the Rights in Technical Data and Computer Software clause at DFARS 252.227-7013 or subparagraphs (c)(1) and (2) of the Commercial Computer Software Restricted Rights at 48 CFR 52.227-19, as applicable.

**General**

The laws of the State of California govern this Agreement. You agree that this Agreement shall not be subject to the United Nations Convention on Contracts for the International Sale of Goods (1980). This Agreement is the entire agreement held between us and supersedes any other communications or advertising with respect to the Software. If any provision of this Agreement is held invalid, the remainder of this Agreement shall continue in full force and effect.

If you have any questions, please see EFI's web site at [www.efi.com](http://www.efi.com).

Electronics For Imaging  
303 Velocity Way  
Foster City, CA 94404



# Contents

## About the Documentation

### Introduction

<b>About this manual</b>	xi
<b>Key features of ColorWise</b>	xii

## Chapter 1: Fiery Color Management

<b>Managing color on the Fiery</b>	1-1
Combine Separations	1-5
Rendering styles	1-6
RGB Source Profile	1-7
RGB Separation	1-8
CMYK Simulation Profile	1-9
CMYK Simulation Method	1-10
Output profile	1-10
Pure Black Text/Graphics	1-11
Black Overprint	1-12
Spot Color Matching	1-13
<b>PostScript printer driver for Windows and Mac OS</b>	1-14
Setting color management print options for Windows	1-15
Adobe PostScript printer driver for Mac OS	1-16

## Chapter 2: Color Calibration

<b>An overview of calibration</b>	2-2
<b>Understanding calibration</b>	2-3
How calibration works	2-3
Scheduling calibration	2-4
Checking calibration status	2-5

<b>Using Calibrator</b>	2-6
Starting Calibrator	2-6
Expert Mode	2-8
Restoring default calibration measurements	2-10
Calibrating the Fiery with the DTP41	2-10
Calibrating the Fiery with the DTP32	2-15
<b>Using the EFI Spectrometer ES-1000 or EFI Densitometer ED-100</b>	2-17
Setting up the ES-1000	2-17
Setting up the ED-100	2-18
Calibrating the Fiery with the ES-1000 or ED-100	2-19
<b>Using AutoCal or ColorCal</b>	2-23
Calibrating with ColorWise Pro Tools and AutoCal or ColorCal	2-23
<b>Calibrating from the Xerox DocuColor 3535</b>	2-27

## Chapter 3: ColorWise Pro Tools

<b>Profile Manager</b>	3-2
Setting the default profiles	3-3
Downloading profiles	3-4
Editing profiles	3-6
Managing profiles	3-6
Defining profiles	3-7
<b>Color Editor</b>	3-10
Editing profiles	3-10
Undoing simulation edits	3-17
Adjusting gray balance	3-17
Checking edited profiles	3-21
<b>Color Setup</b>	3-22
Setting default ColorWise options	3-22



## Appendix A: Color Measurement Instruments

<b>Using the X-Rite DTP41 spectrophotometer</b>	A-1
Setting up the DTP41	A-1
Calibrating the DTP41	A-5
<b>Using the X-Rite DTP32 densitometer</b>	A-8
Setting up the DTP32	A-9
Calibrating the DTP32	A-11

## Appendix B: Importing Density Measurements

<b>Simple ASCII Import File Format (SAIFF)</b>	B-1
Example of 1D Status T density for EFI 34 patch page	B-2
Example of 1D Status T density for EFI 21 patch page	B-2
Example of 1D Status T density for an arbitrary page	B-3

## Index



## Introduction

This manual explains how to manage color output on the Fiery Network Controller for DocuColor 3535, and provides information on calibration and color profiles.

This manual is part of a set of documentation that includes manuals for users and system administrators. The other manuals are available at your site—refer to them for a complete description of your Fiery Network Controller for DocuColor 3535.

**NOTE:** The term “Fiery” is used in this manual to refer to the Fiery Network Controller for DocuColor 3535. The name “Aero” is used in illustrations to represent the Fiery. The term “Windows 9x” is used in this manual to represent Windows 98. The term “Windows” is used to refer to Windows 95, Windows 98, Windows Me, Windows NT 4.0, Windows 2000, and Windows XP wherever appropriate.

## About this manual

This manual is organized to supply you with key information about managing the color output of your Fiery.

- [Chapter 1](#) describes the Fiery print options and how to get the best color results.
- [Chapter 2](#) covers various methods of calibrating the Fiery.
- [Chapter 3](#) takes you through the features of ColorWise Pro Tools. ColorWise Pro Tools include Profile Manager, used to manage color profiles on the Fiery, and Color Editor, which allows you to customize simulation and output profiles.

- [Appendix A](#) provides information about color measurement instruments, available as separately purchased options.
- [Appendix B](#) describes the Simple ASCII File Format (SAIFF), which can be used to import toner density measurements from measurement devices.
- The *Fiery Color Reference* Glossary defines words in bold—for example, **output profile**—that appear throughout this manual. Color terms and concepts, such as “color space,” “spot color,” “gamut,” and “source profile,” are used throughout this manual. If you are new to desktop color, or if any terms are unfamiliar, check the Glossary.

## Key features of ColorWise

**ColorWise** is the **color management system (CMS)** built into the Fiery and designed to provide both casual and expert users with the best color output for a variety of purposes. The ColorWise default settings provide high-quality out-of-box color from many Windows and Mac OS applications. This allows casual users to achieve quality output without knowing about or changing any color settings on the Fiery.

For consistent color, calibrate the Fiery on a regular basis. ColorWise Pro Tools include an easy-to-use calibrator, which allows you to calibrate using either the scanning unit that is part of the copier or an optional **spectrophotometer** or **densitometer** (see [Chapter 2](#)).

ColorWise features allow you to modify printing results. Depending on your particular needs, you can:

- Set the behavior of **CMYK** printing to emulate **DIC**, **Euroscale**, and **SWOP** offset press standards.
- Match PANTONE and other **spot colors** for the best match when printed using four-color press conditions or when printed using presses with extra, custom plates.

- Select a **color rendering dictionary** (CRD), also called a rendering style, for **RGB** printing. CRDs allow for rich, saturated printing of **presentation graphics**; smooth, accurate printing of photographs; and relative or absolute colorimetric rendering for specialized needs.
- Define the source of incoming RGB color data for better screen matching and provide for better color conversion of RGB data with no source information.
- Define whether RGB data is converted into the full gamut of the copier or whether it is first converted into the gamut of another device, such as a press standard. This feature is helpful for making one device behave like another. It is also useful for evaluating the appearance of the RGB file under different printing conditions without having to reprocess the RGB data each time.

**ColorWise color management (ColorWise)** offers an open color architecture, allowing users to customize the Fiery to meet new printing needs as they arise. ColorWise supports **ICC profiles**, which are industry standard color profiles that describe the color behavior of a device. Downloading ICC profiles to the Fiery enables the Fiery to simulate a custom press (or another copier), as well as accurately print colors from a particular monitor or a scanner. In addition, you can create customized ICC profiles for the copier.

ColorWise also allows you to use any **Status T** densitometer by importing data in a standard file format (see [Appendix B](#)). In this case, it is important to note that the quality of the instrument used will determine the quality of the **calibration**.



## Chapter 1: Fiery Color Management

The following sections describe the options available from the **ColorWise** color management system and explain how to customize the color settings for your particular needs. They provide descriptions of the preset ColorWise default settings and cover additional options for users who need to customize ColorWise.

For information on **PostScript** Level 2 or 3 printer drivers, see [page 1-14](#). The section also contains information on the capabilities of printer drivers and instructions for setting color options with the PostScript drivers for Windows and Mac OS computers.

### Managing color on the Fiery

To modify Fiery printing behavior, do any of the following:

- Select ColorWise options for an individual print job using menus that appear in the printer driver.
- Select most ColorWise options as server defaults from the Color Setup application in ColorWise Pro Tools (see [page 3-22](#)). Defaults can also be set from Fiery Setup, as described in the *Configuration Guide*. These defaults will apply to all subsequent print jobs unless you override them.
- Select some ColorWise options, particularly default **ICC profile** settings and calibration options, from ColorWise Pro Tools. These options include default Simulation Profile (see [page 1-9](#)), Simulation Method (see [page 1-10](#)), Appear in Driver as (see [page 3-7](#)), default Source Profile (see [page 1-7](#)), RGB Separation (see [page 1-8](#)), and associated calibration set (see [page 2-4](#)).

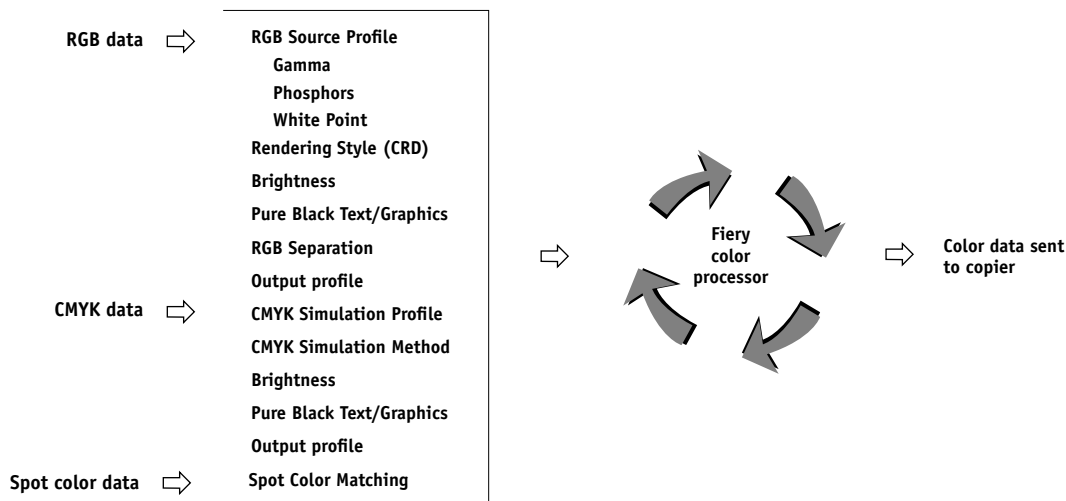
Applications can generate color data for the Fiery in many different **color spaces**. The most common type of color data produced from **office applications** is RGB, while prepress applications generally produce **CMYK** data. Desktop applications can also generate **spot colors**, such as PANTONE colors. To complicate matters, a single page may contain a mix of RGB, CMYK, and spot colors. The Fiery allows users to control the printing of these mixed-color documents with features that apply specifically to RGB, CMYK, or spot color data.

# 1

## 1-2 Fiery Color Management

Fiery color management generates CMYK data to be sent to the copier.

The following diagram illustrates the print options in the Fiery color management process that affect color data conversions. You can access these print options when you send a print job to the Fiery. Most of these options and settings are described in subsequent sections of this chapter.



RGB **Source Profile** is the only color option that applies strictly to RGB color data. The other options that affect RGB color also affect the more rarely used Lab, XYZ, and other calibrated color spaces.

**NOTE:** For users who are familiar with PostScript 3 color, RGB Source Profile affects all CIEBasedABC color spaces (if the source space is RGB). If you send CMYK data to the Fiery in CIEBasedDEFG format, for example, by choosing PostScript Color Management in Adobe Photoshop, the Fiery Rendering Style selection—which normally affects only RGB data—will also affect this CMYK data.



You can specify settings for the following options by selecting print options when you send a job to the Fiery. Some can also be set as defaults by the administrator during Fiery Setup or using ColorWise Pro Tools. Settings specified using print options override the defaults.

Fiery color print option	What it does
<b>Color Mode (Mac OS computers)</b> CMYK/Grayscale or <b>Print Mode (Windows computers)</b> Standard Color/Expert Color/Grayscale	Specifies the output color space of the job. Select CMYK, Standard Color, or Expert Color for a full-color document.
<b>Combine Separations</b> On/Off	Specifies whether to print separated CMYK data as a single, four-color composite document (see <a href="#">page 1-5</a> ).
<b>Rendering Style</b> Photographic/Presentation/Relative Colorimetric/Absolute Colorimetric (Default set at Setup or with ColorWise Pro Tools)	Applies a Fiery <b>color rendering dictionary</b> (CRD) to <b>RGB</b> data (see <a href="#">page 1-6</a> ), or to any incoming data with a PostScript <b>source color space</b> definition, including CMYK.
<b>Brightness</b> 85% Lightest to 115% Darkest	Performs a color adjustment on all <b>color channels</b> to make the printed output lighter or darker.
<b>RGB Source Profile</b> EFIRGB/sRGB (PC) /Apple Standard/Other/ Source 1-5/Off (Default set at Setup or with ColorWise Pro Tools)	Applies an RGB source space definition to RGB data (see <a href="#">page 1-7</a> ). If you choose the Other setting, you must also specify particular settings for Gamma, Phosphors, and White Point. See the corresponding options in this table. This option, along with Gamma, Phosphors, and White Point, only affects DeviceRGB or calibrated RGB color spaces.
<b>(Other) Gamma</b> 1.0/1.2/1.4/1.6/1.8/2.0/2.2/2.4/2.6/2.8/3.0 (Default set at Setup or with ColorWise Pro Tools)	Applies the specified <b>gamma</b> value to the RGB source space definition (see <a href="#">page 1-7</a> ). To use this print option, you must choose Other as the RGB Source Profile setting.
<b>(Other) Phosphors</b> Hitachi EBU/Hitachi-Ikegami/NTSC/ Radius Pivot/SMPTE/Trinitron (Default set at Setup or with ColorWise Pro Tools)	Applies the specified <b>phosphor</b> (monitor type) information to the RGB source space definition (see <a href="#">page 1-7</a> ). To use this print option, you must choose Other as the RGB Source Profile setting.

Fiery color print option	What it does
<b>(Other) White Point</b> 5000 K (D50)/5500 K/6500 K (D65)/ 7500 K/9300 K (Default set at Setup or with ColorWise Pro Tools)	Applies the specified <b>white point</b> value to the RGB source color space definition (see <a href="#">page 1-7</a> ). To use this print option, you must choose Other as the RGB Profile Source setting.
<b>RGB Separation</b> Output/Simulation (Default set at Setup or in ColorWise Pro Tools)	Determines which CMYK <b>color space</b> your original RGB data will be separated into—CMYK for the copier (Output) or CMYK for a specified simulation (Simulation) (see <a href="#">page 1-8</a> ).  <b>NOTE:</b> When RGB Separation is set to Simulation, RGB colors are affected by CMYK Simulation Profile and CMYK Simulation Method.
<b>CMYK Simulation Profile</b> SWOP-Coated/DIC/Euroscale/ Simulation 1-10/Match Copy/None (Default set at Setup or in ColorWise Pro Tools)	Adjusts CMYK color data to simulate an offset press standard or a custom color <b>gamut</b> defined at your site. The Match Copy setting bypasses Fiery calibration to match a copy made from the copier glass. Choosing None bypasses simulation (see <a href="#">page 1-9</a> ).  <b>NOTE:</b> Some of the Simulation settings have slightly different names depending on the model of copier.
<b>CMYK Simulation Method</b> Quick/Full (Source GCR)/Full (Output GCR) (Default in Setup or ColorWise Pro Tools)	Quick simulation applies one-dimensional transfer curves that adjust output density only. The Full simulations apply colorimetric transformations that adjust hue as well as output density (see <a href="#">page 1-10</a> ).
<b>Output Profile</b> Dot DCX+ (US)/Line DCX+ (US)/DOT ColoTech (Europe)/Line ColoTech (Europe)/Output 1-10 (Default set at Setup or in ColorWise Pro Tools)	The <b>output profile</b> is applied to all data in the print job (see <a href="#">page 1-10</a> ). User-defined output profiles can be downloaded to the Fiery using ColorWise Pro Tools (see <a href="#">Chapter 3</a> ).
<b>Pure Black Text/Graphics</b> On/Off (Default set at Setup or with ColorWise Pro Tools)	The On setting optimizes the quality of black text and line art output. (see <a href="#">page 1-11</a> ).
<b>Black Overprint</b> On/Off (Default set at Setup or with ColorWise Pro Tools)	The On setting overprints black text and text/graphics placed on colored backgrounds. Overprinting colored backgrounds eliminates white gaps and reduces halo effects or misregistration of colors. The On setting automatically activates the Pure Black Text/Graphics option (see <a href="#">page 1-11</a> ).

Fiery color print option	What it does
<b>Spot Color Matching</b> On/Off (Default in Setup or ColorWise Pro Tools)	The On setting enables Fiery-defined matching of spot colors to their best CMYK equivalents. Off instructs the Fiery to match color output to a CMYK combination specified by the source application for the document (see <a href="#">page 1-13</a> ).
<b>Text and Graphics Enhancement</b> On/Off	The On setting sharpens the edges of text and vector graphics.
<b>Screen Switching</b> On/Off	If you choose Off, all objects on the page will use a low-frequency screen. If you choose On, text will use a high-frequency screen and graphics and image objects will use a low-frequency screen.
<b>Image Smoothing</b> Automatic/Off/On/Below 90–300 ppi	The On setting enhances the print quality of low-resolution images.
<b>Sharpness</b> Softer/Normal/Sharper	This option enhances the sharpness and reduces jagged edges. To increase the sharpness for printing image data such as photographs, select Sharper. To print text or bitmap graphics, select Normal.
<b>Black Detection</b> On/Off	If your job consists of black-only text pages combined with a significant number of color pages, set this option to Off.
<b>Copier Mode</b> Photo/Map	Select Photo if the file is a photograph; select Map if the file is a combination of text and photographs.

Detailed explanations of how these and other settings affect your print jobs are provided in subsequent sections of this chapter.

## Combine Separations

The Combine Separations setting allows you to specify how to print separated CMYK data. The Combine Separations options are:

- **Off** prints each separation individually.
- **On** combines separations as a single, composite-color document, and automatically makes these settings for the following print options: Color Mode (CMYK), Rendering Style (None), Pure Black Text/Graphics (Off), Spot Color Matching (Off), and Black Overprint (Off).

For information about using the Combine Separations option with applications such as Adobe Photoshop, see the *Fiery Color Reference*.

## Rendering styles

The Rendering Style option specifies a CRD for color conversions. To control the appearance of images, such as prints from office applications or RGB photographs from Adobe Photoshop, select the appropriate Rendering Style. The Fiery allows you to select from the four rendering styles currently found in industry standard ICC profiles.

Fiery rendering style	Best used for	Equivalent ICC rendering style
<b>Photographic</b> —Typically results in less saturated output than presentation rendering when printing out-of-gamut colors. It preserves tonal relationships in images.	Photographs, including scans and images from stock photography CDs.	<b>Image, Contrast, and Perceptual</b>
<b>Presentation</b> —Creates saturated colors but does not match printed colors precisely to displayed colors. In-gamut colors such as flesh tones are rendered well; similar to the Photographic rendering style.	Artwork and graphs in presentations. In many cases, it can be used for mixed pages that contain both presentation graphics and photographs.	<b>Saturation, Graphics</b>
<b>Relative Colorimetric</b> —Provides white-point transformation between the source and destination white points. For example, the bluish gray of a monitor will map to neutral gray. You may prefer this style to avoid visible borders when <i>not</i> printing full-bleed.	Advanced use when color matching is important, but you prefer white colors in the document to print as paper white. It may also be used with PostScript color management to affect CMYK data for simulation purposes.	<b>Relative Colorimetric</b>
<b>Absolute Colorimetric</b> —Provides <i>no</i> white point transformation between the source and destination white points. For example, the bluish gray of a monitor will map to a bluish gray.	Situations when exact colors are needed and visible borders are not distracting. It may also be used with PostScript color management to affect CMYK data for simulation purposes.	<b>Absolute Colorimetric</b>

## RGB Source Profile

The RGB **source profile** setting allows you to define the characteristics of the RGB data in your document so the appropriate color conversion can occur on the Fiery. Commonly used monitor color spaces are available from the printer driver and from the ColorWise Pro Tools Profile Manager. For special needs, use ColorWise Pro Tools to download custom monitor or scanner profiles.

When you specify a setting other than None for the RGB Source Profile, the Fiery overrides **source color space** definitions or profiles that other color management systems may have specified. For example, if you specified a ColorSync System Profile on your Mac OS computer, the RGB Source Profile setting overrides it. In cases where you do *not* want this setting to override another specified source color space, choose the None setting.

When you specify a setting other than None for the RGB Source Profile—since the color space definitions are overridden—the output from the Fiery is consistent across platforms. The Fiery RGB Source Profile options are:

- **EFIRGB** specifies an EFI-defined color space recommended for users who have no detailed information about their RGB data.
- **sRGB (PC)** specifies the industry standard definition for a generic Windows computer monitor.
- **Apple Standard** specifies the definition of all standard Mac OS computer monitors.
- **Other** allows you to specify custom RGB source settings. If you choose Other as the RGB Source Profile setting, you must choose settings for the Gamma, Phosphors, and White Point options.
- **Sources 1-10** specify the definitions you download as RGB source profiles. For more information about downloading RGB source profiles, see [page 3-4](#).

If you are printing with the PostScript driver from a Windows computer and have two-way communication enabled, the name of each downloaded profile is represented in the RGB Source Profile setting menu. If you are printing with the AdobePS driver from a Mac OS computer, downloaded profiles appear as Source-1 through Source-10. For more information on two-way communication, see the *User Software Installation Guide*.

- **None** instructs the Fiery to allow the RGB sources you defined elsewhere, such as in the application, to be used. When you set RGB Source to None, the appearance of colors will *not* be independent of the file type. For example, RGB EPS files will look different from RGB TIFF files.

With RGB Source set to None, PostScript RGB data that contains a source color space definition is converted using the CRD specified by the Rendering Style option (see [page 1-6](#)). Non-PostScript RGB data and PostScript RGB data that does not contain a source color space definition are converted using a general **undercolor removal (UCR)** conversion method.

## RGB Separation

The RGB Separation option determines how RGB colors (as well as Lab and XYZ colors) are converted to CMYK. The name of this option is meant to be descriptive, since the option defines the color spaces that will be used by the Fiery to “separate” the RGB data into CMYK values.

The two choices available for this option determine whether RGB data is converted into the full gamut of the copier (**output**) or is first converted into the gamut of another digital printer or press standard (**simulation**). This feature is helpful for making one device behave like another for RGB data. For example, if a high-quality ICC profile is available for another print device, the copier can simulate the behavior of that device.

RGB Separation is also useful for prepress applications. For example, it allows you to experiment with the appearance of an RGB scan under different press printing conditions, without having to convert the RGB data to CMYK data for each condition. When the desired printing condition is found, convert the file to CMYK, using the same CMYK simulation profile you used during the experimentation.

**NOTE:** The RGB Separation print option should be used in conjunction with the Output Profile or CMYK Simulation Profile print options.

- **Output** converts all RGB colors into the CMYK color space of your copier (when set to the printer’s default), or a customized CMYK color space for your copier (when set to Output 1-10).
- **Simulation** converts all RGB colors into the CMYK color space for a specified simulation (select the desired simulation with the CMYK Simulation Profile print option).

## CMYK Simulation Profile

The CMYK Simulation Profile print option allows you to print press proofs or simulations. This setting specifies the offset press standard or other color printing device that you want to simulate. This option affects CMYK data only.

With the Windows printer drivers, you can also view an unlimited number of custom Full simulations created using ColorWise Pro Tools. On Mac OS computers, you can view up to 10 Full custom simulations. The number of custom simulations is limited by the disk space on the Fiery.

If you are printing with the PostScript driver from a Windows computer and have Two-Way Communication enabled, the name of each downloaded or custom profile is represented in the CMYK Simulation Profile setting menu. If you are printing with the AdobePS driver from a Mac OS computer, downloaded or custom profiles appear as Simulation-1 through Simulation-10. For more information on Two-Way Communication, see the *User Software Installation Guide*.

The None setting sends your original CMYK data to the copier in its calibrated state, without conversions to simulate another printer. This setting is not generally recommended, unless you want to bypass the conversion by ColorWise and use another color management system.

The CMYK Simulation Profile setting you specify depends on the press standard for which the CMYK data was separated.

- For images that were separated using a custom separation (such as a separation produced with an ICC profile), choose the corresponding profile on the Fiery with the CMYK Simulation Profile setting.
- For images that were separated for **SWOP**, choose SWOP as the CMYK Simulation Profile setting.

**NOTE:** To properly simulate a printed image that was separated through the use of an ICC profile, the same profile must be present on the Fiery. For more information about downloading ICC profiles to the Fiery, see “[Downloading profiles](#)” on page 3-4.

## CMYK Simulation Method

The CMYK Simulation Method allows you to define your preferred CMYK-to-CMYK conversion technique.

- **Quick** applies one-dimensional transfer curves to adjust output densities in the cyan, magenta, yellow, and black channels. This technique leads to pleasant color output from your copier because pure primary colors are not “contaminated” by other **colorants**. While it is the fastest simulation method and perfect for drafts, avoid using it for final documents that will be used as press proofs. Other techniques offer more color simulation accuracy, which is expected by proofing applications.
- **Full (Source GCR)** provides a complete and accurate simulation based on colorimetric transformations. Hues are preserved, even for primary colors. The (GCR) level that was specified in the original (source) document is also preserved. Full (Source GCR) is therefore an excellent simulation technique for the highest quality press proofing applications.
- **Full (Output GCR)** is also a complete and accurate simulation method based on colorimetric transformations. Hues are preserved, even for primary colors. With this method, the Gray Component Replacement (GCR) level that was specified in the original document is not preserved. Instead, all CMYK data is re-separated using the GCR level specified by the Output Profile. This simulation technique is similar to traditional ICC color matching methods and is appropriate for most documents designed for the press, but reproduced on your copier.

**NOTE:** When you specify On for Pure Black Text/Graphics, and specify Full (Output GCR) for CMYK Simulation Method, the black text and graphics in your document are printed with 100% black-only toner.

## Output profile

The output profile is applied to all data in the print job, so make sure the selected profile is the right one for your job. The default output profile consists of both a profile for your copier, describing its color characteristics, and a **calibration target** that describes the expected behavior of the copier.

The output profiles provided with the Fiery correspond to a screening method, and to the region for which the screen methods were developed (U.S. or Europe).



In certain cases, you may want to customize the default output profile using the ColorWise Pro Tools Color Editor to achieve particular color effects (see [page 3-10](#)). If you do so, the new customized output profile is applied to all data in the print job. Changing the output profile only does not affect its associated calibration target (since the target is based on a copier model). You can edit D-Max values of the calibration target separately (see [page 3-10](#)).

Use the ColorWise Pro Tools Profile Manager to download your own output profile to the Fiery (see [page 3-4](#)). Downloaded output profiles are at first associated with the calibration target that is tied to the default output profile. You can edit calibration target D-Max values separately.

If you are printing with the PostScript driver from a Windows computer and have enabled Two-Way Communication, the name of each downloaded or custom profile is represented in the Output Profile setting menu. If you are printing with the AdobePS driver from a Mac OS computer, downloaded or custom profiles appear as Output-1 through Output-10. For more information on Two-Way Communication, see the *User Software Installation Guide*.

## Pure Black Text/Graphics

The Pure Black Text/Graphics option affects the printout for black text and **vector graphics** on a page. Under most circumstances, leave this option set to On. When Pure Black Text/Graphics is on, black colors generated by applications are printed using 100 percent black-only toner (for example, RGB = 0, 0, 0; CMYK = 0%, 0%, 0%, 100%; or K = 100%). This means the black text and line art will not exhibit halftone **artifacts** and will not be misregistered, since there is only one toner used. In addition, this setting eliminates **blasting**. This option is automatically set to On when the Black Overprint option is set to On.

For some jobs, it is preferable to clear this option, for example, if the page includes **gradient** fills that use black. The following table describes the behavior of the Pure Black Text/Graphics option with black data defined in different color spaces.

**NOTE:** Use the Pure Black Text/Graphics option only when printing composites, not when printing separations.

Input black color	Pure Black Text/Graphics	
	On	Off
<b>RGB</b>	Prints 100% black	With the default profile, prints a rich black using all toners.
<b>CMYK</b>		Prints only with black toner, because CMYK simulations preserve the black channel. The actual amount of toner used depends on the current simulation and the calibration state of the copier.
<b>Spot</b>		Prints only with black toner, because spot color simulations preserve the black channel. The actual amount of toner used depends on the current simulation and the calibration state of the copier.

**NOTE:** PostScript applications (such as QuarkXPress) may convert elements defined as RGB = 0, 0, 0 to four-color CMYK black before sending the job to the Fiery. These elements are not affected by the Pure Black Text/Graphics option. For details, see the application notes. Also, black text and line art defined as RGB = 0, 0, 0 in office applications (such as Microsoft Word) are converted to single-color black (CMYK = 0%, 0%, 0%, 100%) by the Microsoft PostScript Level 3 driver for Windows 2000/XP. To print this single-color black at the maximum toner density of the copier, set the Pure Black Text/Graphics option to On.

## Black Overprint

The Black Overprint option allows you to specify whether or not black text—defined as RGB = 0, 0, 0, or as CMYK = 0%, 0%, 0%, 100%—overprints colored backgrounds.

- **On**—Black text overprints colored backgrounds, eliminating white gaps and reducing halo effects or misregistration of colors. Setting Black Overprint to On automatically activates the Pure Black Text/Graphics option.
- **Off**—Black text knocks out colored backgrounds.

**NOTE:** PostScript applications may perform their own black overprint conversions before sending the print job to the Fiery.

One example of how you might use this setting is with a page that contains black text on a light blue background. The background blue color is CMYK = 40%, 30%, 0%, 0% and the black text is CMYK = 0%, 0%, 0%, 100%.

- With Black Overprint On, the final text portions of the page are overprinted, or combined with the underlying colors. This results in CMYK = 40%, 30%, 0%, 100% for the color used for the text. There is no transition in the cyan and magenta toners, and the quality of the output is improved since it will not show artifacts near the edges of the text. The option also works with text defined in the RGB color space, that is RGB = 0, 0, 0.
- With Black Overprint Off, the border of the text is on an edge that has cyan and magenta toners on one side (outside the text) and black toner on the other side (inside the text). This transition may cause visible artifacts because of the practical limitations of the copier.

**NOTE:** If you set Black Overprint Style to Text/Graphics, setting Black Overprint to On allows black text or graphics to overprint colored backgrounds (see [page 1-12](#)).

## Spot Color Matching

The Spot Color Matching option provides automatic matching of spot colors with their best CMYK equivalents.

- **On**—The Fiery uses a built-in table to generate the closest CMYK matches of spot colors your copier can produce. (New tables are generated when you add new output profiles.)

**NOTE:** Spot colors not included in the built-in table are treated as CMYK.

- **Off**—The Fiery uses CMYK equivalents defined by the spot color manufacturer, such as PANTONE. These are the same CMYK equivalents used by applications that include spot color libraries.

For jobs that include spot colors, set Spot Color Matching to On unless you are printing press simulations. In that case, set Spot Color Matching to Off and choose the appropriate CMYK Simulation setting (see [page 1-9](#)).

For PDF jobs that include spot colors that are not included in the built-in table, setting Spot Color Matching to On retains the spot color originally specified. The Fiery references the built-in table to generate the closest CMYK matches of the original spot color.

**NOTE:** Use the Spot Color Matching option only when printing composites, not when printing separations.

### Spot Color Matching and the PANTONE Coated Color Reference

The PANTONE Coated Color Reference (described in the *Fiery Color Reference*) prints differently depending on the Spot Color Matching setting.

- **On**—The Fiery uses a built-in table to generate the best matches of the PANTONE colors that your copier can produce. The PANTONE number is printed below each swatch.
- **Off**—The Fiery prints swatches using the CMYK values recommended by Pantone, Inc. (and used by applications that provide PANTONE color libraries). The CMYK values used to generate the color, as well as the PANTONE number of the color, are printed below each swatch. These CMYK values are printed through the selected CMYK Simulation and Output Profile settings.

## PostScript printer driver for Windows and Mac OS

To access the printer driver options described in this section, choose Start>Settings>Printers, right-click the appropriate printer (**PPD**) name, and choose Properties (Windows 9x/Me), Document Defaults (Windows NT), or Printing Preferences (Windows 2000/XP) from the pop-up menu. To access the Mac OS driver options, choose Print from the File menu of your application. These settings are also accessible from the Print Setup or Page Setup dialog boxes of most applications.

For Windows computers, the Fiery driver interface allows you to save combinations of settings for later access. Additionally, you can choose different settings for individual jobs from the applications you use.

The printer driver writes a PostScript file containing the instructions generated by your application and the Fiery print options you chose. The printer driver sends the PostScript file to the Fiery. The Fiery then performs PostScript processing and color conversions and sends raster color data to the print device.

**NOTE:** The following illustrations and instructions do not apply to all applications. Many applications, such as Adobe PageMaker, Adobe Photoshop, Adobe Illustrator, QuarkXPress, and CorelDRAW, have other color management options in addition to those presented in the printer driver. For information on specific applications, see the *Fiery Color Reference*.

## Setting color management print options for Windows

This section explains how to set Fiery color print options with the Adobe PostScript Printer Driver for Windows. This driver is a PostScript 3 printer driver that takes full advantage of the color features of the Fiery. Before you proceed, complete the following procedures:

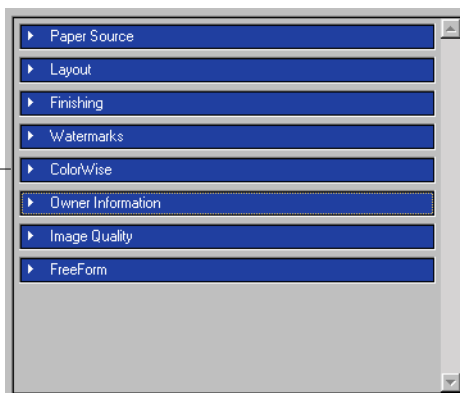
- Install the Adobe PostScript Printer Driver and the Fiery PPD (see the *User Software Installation Guide*).
- Set up the Fiery for printing (see the *Configuration Guide*).
- Install the ICC output profile for the Fiery on your Windows computer (see the *User Software Installation Guide*).

---

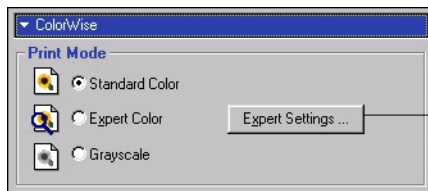
### TO SET PRINT OPTIONS FOR WINDOWS

1. Access the printer driver options, as described on [page 1-14](#).
2. Click the **Fiery Printing** tab, and choose settings from the **ColorWise** menu for the print options described on [page 1-3](#).

Choose ColorWise



### 3. Click Expert Settings.



Click Expert Settings to access additional ColorWise options

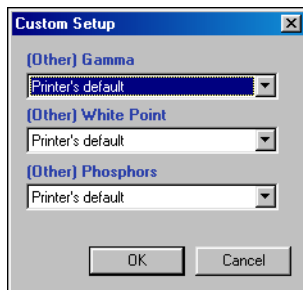
The Expert Color Settings flowchart appears. This window displays additional color settings for the Fiery. Each option includes a menu from which you select settings for your specific job.

### 4. Click Update to display the current Fiery settings.

If Update does not appear, make sure that Two-Way Communication is set up as described in the *User Software Installation Guide*.

### 5. To specify custom RGB source settings, select Other for the RGB Source Profile and click Custom Setup.

The Custom Setup dialog box allows you to specify custom RGB source settings (see page 1-7).



For most users, the default settings provide the right level of color control. For more information about individual print options, see page 1-3.

## Adobe PostScript printer driver for Mac OS

This section explains how to set color management print options with the AdobePS printer driver for Mac OS, a PostScript 3 driver that takes full advantage of the color features of the Fiery and allows you to save a set of print option settings.

Before you continue, complete the following procedures, as described in the *User Software Installation Guide*:

- Install the AdobePS printer driver and the Fiery PPD.
- Select the Fiery in the Chooser and set it up with the Fiery PPD.
- Install the ICC output profile for the Fiery on your Mac OS computer (see the *User Software Installation Guide*).

**NOTE:** The following illustrations and instructions do not apply to all applications. Many applications, such as Adobe PageMaker, Adobe Photoshop, Adobe Illustrator, QuarkXPress, and CorelDRAW, have other color management options in addition to those presented in the printer driver. For information on specific applications, see the *Fiery Color Reference*.

### Setting color management print options

Choose settings for color print options from the various panes of the AdobePS driver dialog box. To access the initial AdobePS dialog box, choose Print from the File menu of your application.

**NOTE:** The term “pane” is used to describe the different pages that appear in the driver dialog box when you make selections from the menu at the upper-left corner of the dialog box. Each pane presents a particular set of print options.

The AdobePS driver includes the following Color Matching options.

- **Color/Grayscale**—When this setting is used to print to the Fiery, ColorWise provides all color conversions on the Fiery. Typically, use this option when printing to the Fiery.
- **PostScript Color Matching**—Can be used with PostScript devices, such as the Fiery. It provides for color conversion using a color rendering dictionary (CRD) that is downloaded with the print job. This method requires that the file is saved as an EPS with PostScript Color Management selected.

**NOTE:** If you use the PostScript Color Matching option, the driver may, depending on the application in use, attach a CMYK source definition to the CMYK data in your document. In such a case, the CMYK data in the document is re-separated using a Fiery CRD. The destination color space for the CRD is determined by the RGB Separation print option. When RGB Separation is set to Simulation, CMYK

data is printed according to all specified CMYK Simulation Profile and CMYK Simulation Method settings. When RGB Separation is set to Output, CMYK data is converted to the selected output profile's CMYK color space.

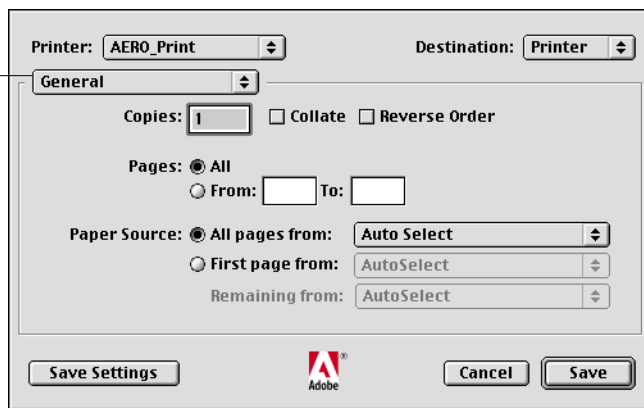
- **ColorSync Color Matching**—Provides for color conversion *on the host computer*. This option can be used with PostScript devices such as the Fiery, but it is intended for use with PostScript Level 1 devices. If you use this option, you must specify the Fiery ICC profile as the Printer Profile. ColorSync Color Matching is not a suggested color matching method because it does not work in conjunction with all applications and requires that you disable features of ColorWise on the Fiery.

---

#### TO SET FIERY COLOR MANAGEMENT OPTIONS

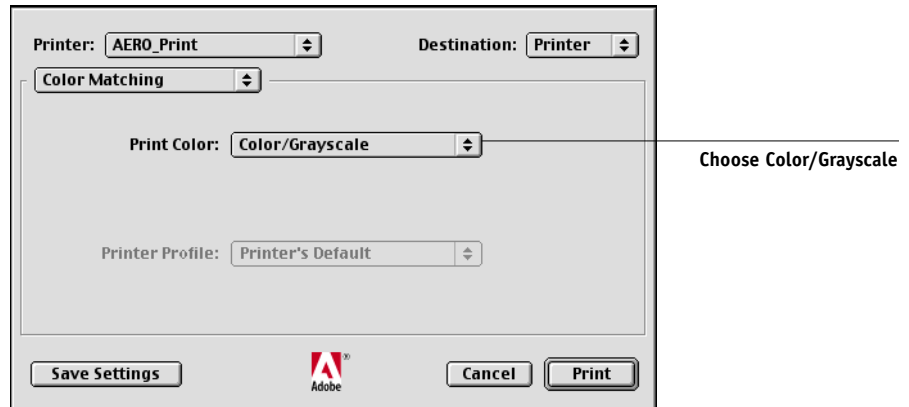
1. In the AdobePS Print dialog box, choose Color Matching from the menu.

Choose Color Matching

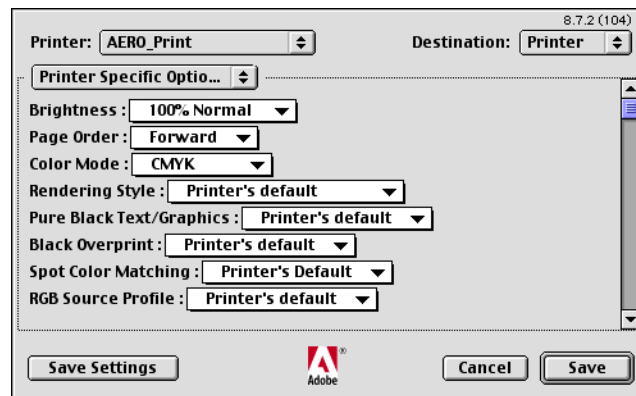




2. Choose Color/Grayscale from the Print Color menu.



3. In the Printer Specific Options menus, choose settings for the print options described on [page 1-3](#).



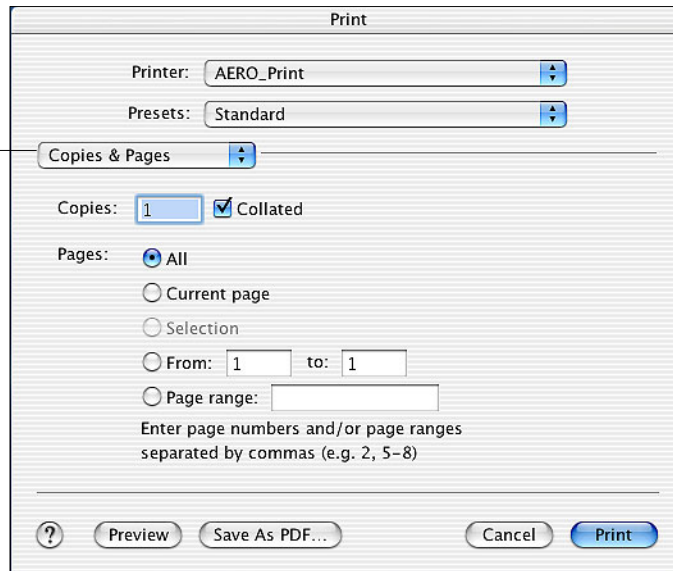
4. If these settings are used regularly, click Save Settings to save them for subsequent jobs.

---

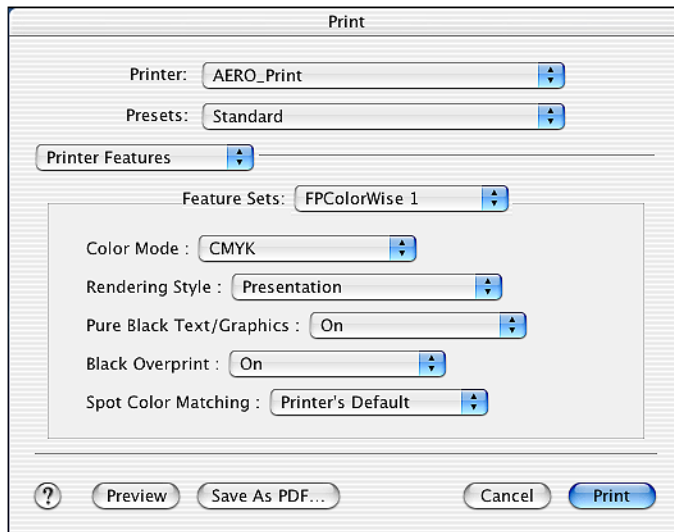
**TO SET FIERY COLOR MANAGEMENT OPTIONS FROM  
MAC OS X V10.2 OR LATER**

1. In the Print dialog box, choose Printer Features from the menu.

Choose Printer Features



2. In the Printer Features menus, choose settings for the print options described on [page 1-3](#).





## Chapter 2: Color Calibration

Calibrating the Fiery ensures consistent, reliable color output. This chapter explains how **calibration** works and provides instructions for all calibration procedures. You can calibrate the Fiery using ColorWise Pro Tools in combination with any of the following color measurement instruments, available as separately purchased options:

- X-Rite DTP41 automatic scanning spectrophotometer
- X-Rite DTP32 automatic scanning densitometer
- EFI Densitometer ED-100™ hand-held densitometer
- EFI Spectrometer ES-1000 hand-held spectrometer

By connecting the instrument to the serial port on your computer, you can quickly measure calibration color patches and download measurements to the Fiery. For information on setting up and operating the DTP41 and DTP32, see [Appendix A](#).

Another way to obtain measurements is by using the copier's built-in scanner as part of the AutoCal™ or ColorCal™ methods, which do not require the use of a measurement instrument and can be run from ColorWise Pro Tools.

For information on advanced calibration and simulation features available with ColorWise Pro Tools, such as editing profiles and creating custom profiles, see [Chapter 3](#). A format for inputting color measurements from other **densitometers** is described in [Appendix B](#).

**NOTE:** The procedures described in this chapter are fundamentally the same for Windows and Mac OS computers. The main differences are the interface cable and the port used to connect to the measurement instrument. The illustrations in this chapter describe the Windows version.

**NOTE:** The term *computer* is used to refer to any computer running ColorWise Pro Tools.

## An overview of calibration

Calibration generates curves that adjust for the difference between the actual toner densities (measurements) and the response expected by the output profile.

- Measurements represent the actual color behavior of the copier.
- Calibration sets are sets of measurements.
- A calibration target that describes the expected behavior of the copier is contained in each output profile.

After you have calibrated the Fiery, a calibration set is stored. This calibration set will be used when it is associated with an output profile. Every output profile has an associated calibration set. If you have not specified one, the calibration set associated with the default output profile is used.

If you change the calibration after a saved job has been processed (RIPped), you do not need to reprocess (reRIP) the job. The new calibration affects the job without needing to be reprocessed.

**NOTE:** Changing calibration has the potential to affect *all* jobs for *all* users, so consider limiting the number of people authorized to perform calibration. Set an Administrator password in Fiery Setup to control access to calibration (see the [Configuration Guide](#)).

## Understanding calibration

Although most users' needs are met by the default calibration set, the Fiery allows you to choose a calibration set to customize calibration for specialized jobs.

Calibration allows you to:

- Maximize the color reproduction capabilities of the Fiery.
- Ensure consistent color quality over time.
- Produce consistent output across Fiery servers.
- Achieve better color matches when reproducing **spot colors**, such as PANTONE colors or other **named color** systems.
- Optimize the Fiery for using ColorWise rendering styles (CRDs) and CMYK simulations, and for using ICC profiles.

### How calibration works

Success in obtaining satisfactory print quality from the Fiery depends on many factors. Among the most important are establishing and maintaining optimal toner densities. The **density** is the measure of the light absorbed by a surface. By carefully regulating toner densities, you obtain consistent printed color.

Even with a calibrated system, toner density is affected by service settings, humidity, and temperature; density also tends to drift over time. Regular measurement detects day-to-day variations in densities, and calibration corrects for them.

Calibration works by creating calibration curves on the Fiery that compensate for the difference between actual (measured) and desired (target) density values. These calibration curves are the graphic equivalent of transfer functions, which are mathematical descriptions of changes that will be made to the initial data. Transfer functions are often graphed as input or output curves.

The Fiery generates calibration curves after comparing measured values to the final target values for each of the four toner colors. The target values are based on the output profile specified.

## Measurements

Measurement files contain numerical values that correspond to the toner density produced by the copier when it prints solid cyan, magenta, yellow, and black, and graduated tints of those colors.

To create a measurement file, print a page of color patches. Then measure the patches using either a color measurement instrument connected to a computer on the network or, if it is available, the print device's scanner. The new measurements are automatically downloaded to the Fiery.

## Output profiles and calibration sets

Output profiles and calibration sets define desired calibration results. One or more output profiles and calibration sets are provided with the Fiery. When you calibrate the Fiery, select the calibration set that corresponds to the typical printing jobs at your site. This same calibration set can be associated with one or more output profiles. For more information on output profiles, see [page 1-10](#).

## Scheduling calibration

In general, you should calibrate the Fiery at least once a day, depending on the volume of print jobs. If it is very important to maintain consistent color, or if the copier is subject to wide fluctuations in temperature or humidity, calibrate every few hours. For optimal performance, calibrate whenever there is a noticeable change in print quality.

If you need to split a print job into two or more batches to be printed at different times, it is especially important to calibrate before printing each batch. You should also calibrate the Fiery after copier maintenance. However, because the copier may be less stable immediately after maintenance, wait until you have printed approximately 50 pages before you calibrate.

**NOTE:** Because printed output from the copier is very sensitive to changes in temperature and humidity, the copier should *not* be installed near a window or in direct sunlight, or near a heater or air conditioner. Paper is sensitive to climate changes as well. It should be stored in a cool, dry, stable environment, and reams should remain sealed until they are needed.



To monitor print quality, print the following color reference pages:

- Color Charts from Command WorkStation (see the *Job Management Guide*)
- Color reference pages included with the user software (see the *User Software Installation Guide*)

All these pages include fully saturated color patches and pale tints of cyan, magenta, yellow, and black. Images with skin tones offer a very good basis for comparison. Save and compare pages you printed at different times. If there is a noticeable change in appearance, calibrate the Fiery.

When you examine the Test Page, all color patches should be visible, even though they may be very faint in the five percent and two percent range. Each color's patch set should show uniform gradation from patch to patch as the color lightens from 100 percent to zero percent.

If the solid density patches (100% cyan, magenta, yellow, or black) look less saturated with time, show the pages to your copier service technician to determine whether adjusting the copier can improve output.

## Checking calibration status

To verify whether the Fiery is calibrated, which calibration set and output profile were used, and when the copier was last calibrated:

- Print a Configuration page or Test Page from Command WorkStation, or print a Configuration page from the Xerox DocuColor 3535.
- Select a calibration set in Calibrator—the last calibration and the user who performed it are displayed.

## Using Calibrator

ColorWise Pro Tools Calibrator allows you to calibrate the Fiery using the measurement method of your choice.

Changing the calibration has the potential to affect *all* jobs for *all* users, so consider limiting the number of people authorized to perform calibration. Set an Administrator password to control access to calibration (see the [Configuration Guide](#)).

**NOTE:** Multiple users can be connected to one Fiery with ColorWise Pro Tools, but only one user at a time can use Calibrator. An error message appears if you try to calibrate when another user is using ColorWise Pro Tools to calibrate.

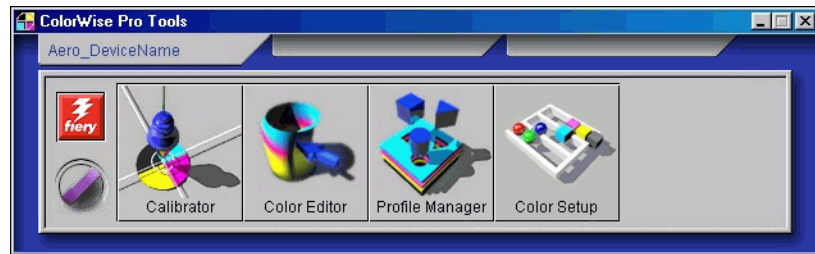
## Starting Calibrator

Start Calibrator from the ColorWise Pro Tools main window.

---

### TO CALIBRATE THE FIERY USING CALIBRATOR

1. Start ColorWise Pro Tools and connect to the Fiery.



For instructions on configuring the connection to the Fiery, see the [User Software Installation Guide](#).

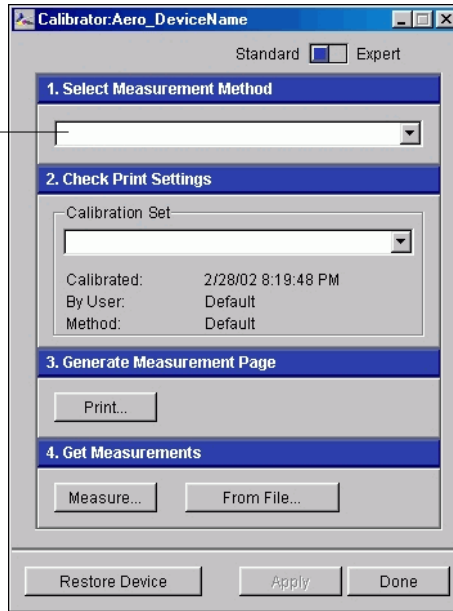
**NOTE:** If the connection to the Fiery from Command WorkStation (which also allows for access to ColorWise Pro Tools) is not established, you can start ColorWise Pro Tools independently of Command WorkStation.

2. Click Calibrator.

**3. Use the Calibrator window to perform the calibration method of your choice.**

Procedures for each calibration method are described in subsequent sections of this chapter.

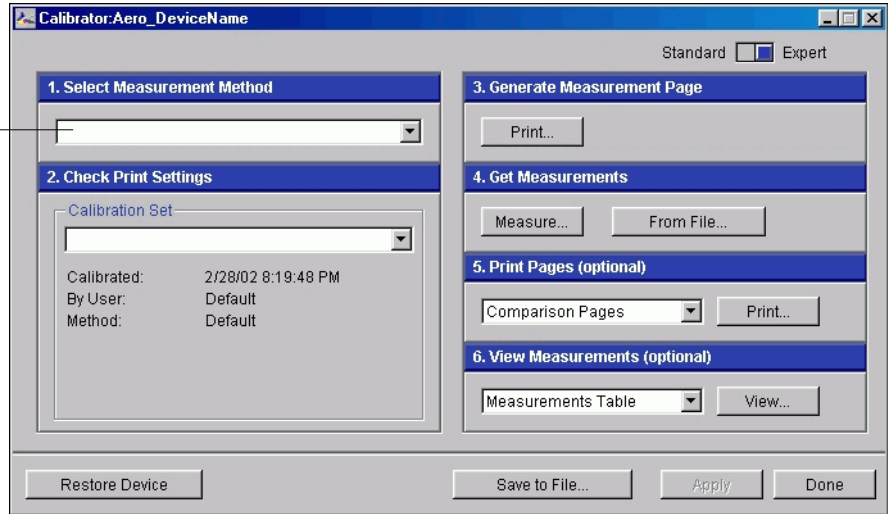
Calibration methods  
appear in this menu



## Expert Mode

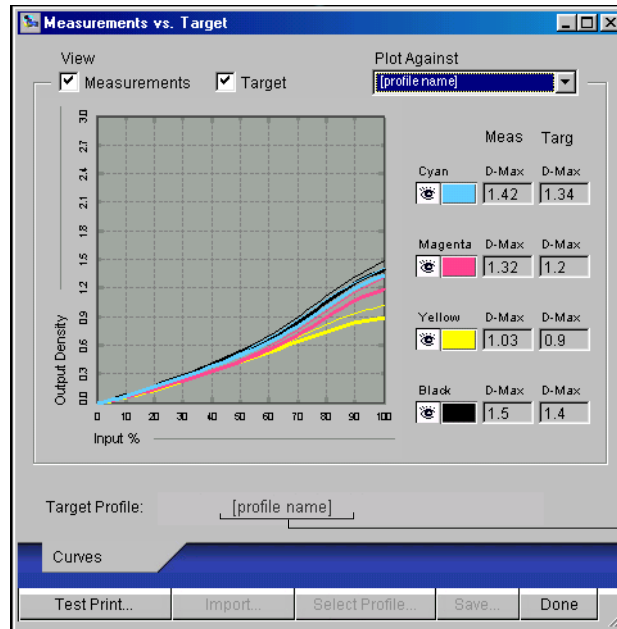
Calibrator provides two modes: Standard Mode and Expert Mode. You can perform all essential calibration tasks while in Standard Mode. Expert Mode offers two additional options: Print Pages and View Measurements.

Calibration methods  
appear in this menu



With the Print Pages option, print a calibration Comparison Page showing the results of the new measurements with any profile associated with the currently selected calibration set. You can also create a custom comparison page and save it as a PostScript or Encapsulated PostScript (EPS) file called CALIB.PS. Next, print the file to the Hold queue of the Fiery from your application, or download it to the Hold queue with Fiery Downloader. An additional way to create the CALIB.PS file is to rename any job in the Hold queue using Command WorkStation (see the [Job Management Guide](#)).

With the View Measurements option, you can view the current set of measurements as a table or graph that shows both the measurements and the target curves.



Output profile name  
appears here

When more than one profile uses the same target, an additional menu called Plot Against appears in the upper-right corner of the dialog box. It lists all output profiles that use that same calibration set. Selecting an output profile from this menu displays the target curves associated with that profile. If each output profile contains a unique calibration target, the curves displayed also change when you switch profiles.

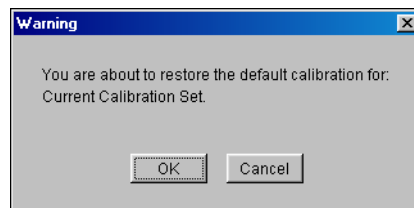
## Restoring default calibration measurements

Use the following procedure to return to default preset calibration measurements.

---

### TO RESTORE DEFAULT CALIBRATION MEASUREMENTS

1. In the main Calibrator window, click **Restore Device**.
2. Click **OK** to restore the preset default calibration set.



**NOTE:** Restore Device applies only to the currently selected calibration set.

## Calibrating the Fiery with the DTP41

Using the ColorWise Pro Tools Calibrator application and the DTP41 spectrophotometer, you can quickly measure color patches generated by the copier and automatically download these measurements to the Fiery.

**NOTE:** Before using ColorWise Pro Tools and the DTP41 to calibrate the Fiery, follow the instructions on [page A-5](#) for calibrating the DTP41 spectrophotometer.

---

**TO CALIBRATE THE FIERY USING THE DTP41****1. Start Calibrator.**

For instructions on starting Calibrator, see [page 2-6](#).

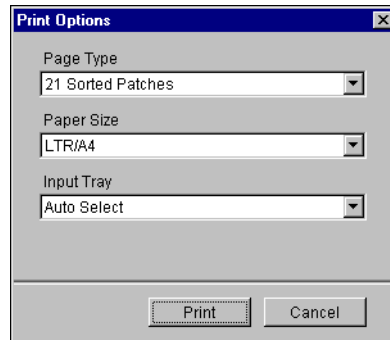
**2. Choose X-Rite DTP41 as the measurement method.****3. In the Check Print Settings pane, choose the desired calibration set.**

Choose the appropriate calibration set for the type of media you use most often.

**NOTE:** For this calibration to take effect, the calibration set must be associated with one or more output profiles. There is no need to make any new associations for the default calibration set, since it is already associated with the default output profile.

**4. In the Generate Measurement Page pane, click Print.**

The Print Options dialog box is displayed.

**5. Choose the appropriate options, and click Print.**

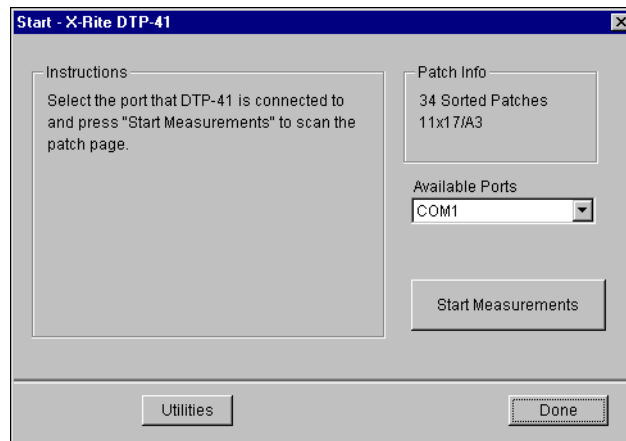
For Page Type, choose either 21 or 34 Sorted Patches.

Paper Size is automatically set to LTR/A4 for 21 Sorted Patches, or 11x17/A3 for 34 Sorted Patches.

For Input Tray, choose the paper source for printing the measurement page.

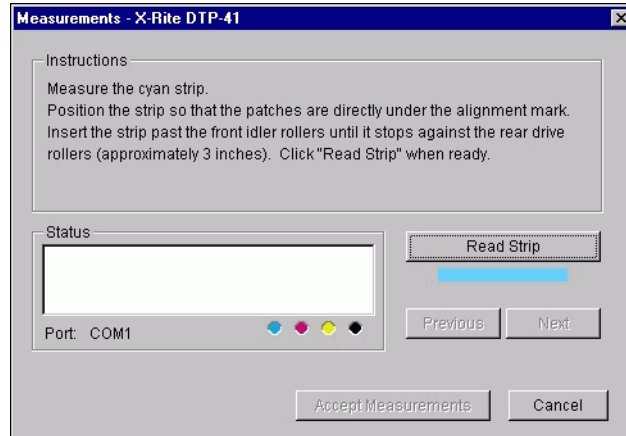
6. Retrieve the measurement page from the copier.
7. In the Get Measurements pane, click Measure.

The Measurement Options dialog box displays the specified Page Type and Paper Size options.
8. Click Measure.
9. If necessary, choose the appropriate COM port for the DTP41 from the Available Ports menu. Click Start Measurements.





10. Insert the measurement page into the DTP41, starting with the cyan strip.



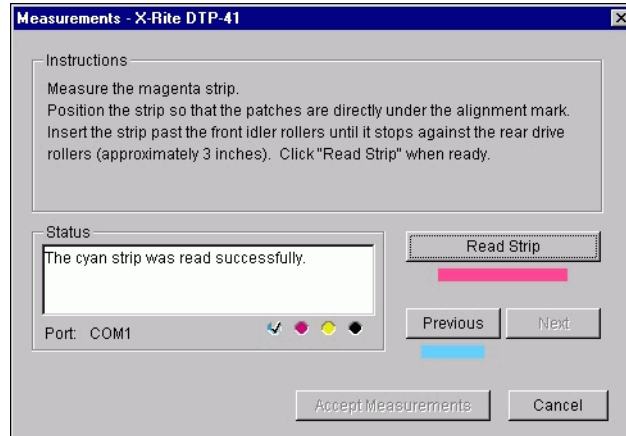
Follow the on-screen instructions to align the page properly.

11. Click **Read Strip**.

The DTP41 pulls the measurement page through automatically.

After the measurement page is read, Calibrator instructs you to insert and align the page again for the next color.

12. Repeat the measurement process for the magenta, yellow, and black strips.



A check mark appears on the circle of the color just read, and the Status field indicates the color was measured successfully.

Click Previous or Next to reverse or advance to another step in the measurement sequence.

13. When the Status field indicates that all four color strips have been read successfully, click Accept Measurements.
14. In the Measure dialog box, click OK.
15. Click Apply in the Calibrator window to implement the new calibration set.
16. Click OK in the Information dialog box.

This completes the Fiery calibration process.

## Calibrating the Fiery with the DTP32

Using the DTP32, you can quickly measure color patches and download these measurements to the Fiery using ColorWise Pro Tools Calibrator.

**NOTE:** Before using ColorWise Pro Tools and the DTP32 to calibrate the Fiery, follow the instructions on [page A-11](#) for calibrating the DTP32 densitometer.

---

### TO CALIBRATE THE FIERY USING THE DTP32

- 1. Start Calibrator.**

For instructions on starting Calibrator, see [page 2-6](#).

- 2. In the Select Measurement Method pane, choose X-Rite DTP32.**

- 3. In the Check Print Settings pane, choose the desired calibration set.**

If more than one option appears, choose the appropriate calibration set for the type of media you will use most often.

**NOTE:** For this calibration to take effect, the calibration set must be associated with one or more output profiles. The default calibration set is already associated with the default output profile, so there is no need to make any new associations.

- 4. In the Generate Measurement Page pane, click Print.**

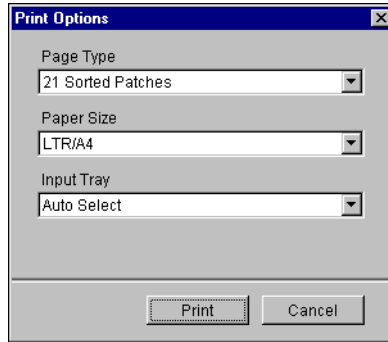
The Print Options dialog box appears.

- 5. Choose the appropriate options, and click Print.**

For Page Type, choose either 34 or 21 Sorted Patches.

Paper Size is automatically set to LTR/A4 for 21 Sorted Patches, or 11x17/A3 for 34 Sorted Patches.

For Input Tray, specify the paper source.



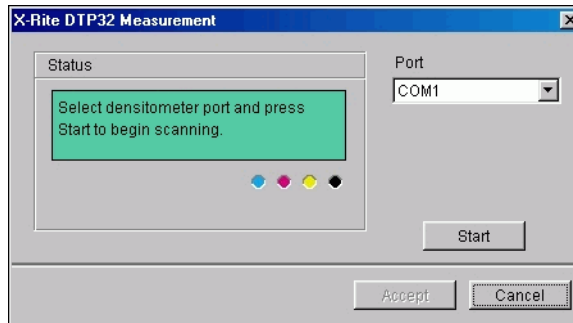
6. Retrieve the measurement page from the copier.
7. Click Measure in the Get Measurements pane.

The Measurement Options dialog box displays the specified Page Type and Paper Size options.

8. Click Measure.

In the dialog box that appears, follow the directions for feeding the measurement page through the X-Rite DTP32.

The Status field displays instructions for selecting the port and feeding the measurement page through the DTP32 four times, once for each color strip.



9. When the Status field indicates that the measurements were read successfully, click Accept.
10. Click OK in the Measure dialog box.
11. Click Apply in the Calibrator window to implement the new calibration set.
12. Click OK in the Information dialog box.

This completes the calibration process.

## Using the EFI Spectrometer ES-1000 or EFI Densitometer ED-100

The EFI Spectrometer ES-1000 is a hand-held **spectrophotometer** that measures the **spectral light** reflected from printed output and other colored materials. Since the ES-1000 accurately measures both the **density** and color of printed output, it is an effective tool for calibrating the Fiery.

The EFI Densitometer ED-100 is a hand-held instrument that measures the density of printed ink and toner. Like the DTP32, the ED-100 is a reflection **densitometer** that you can use to calibrate the Fiery.

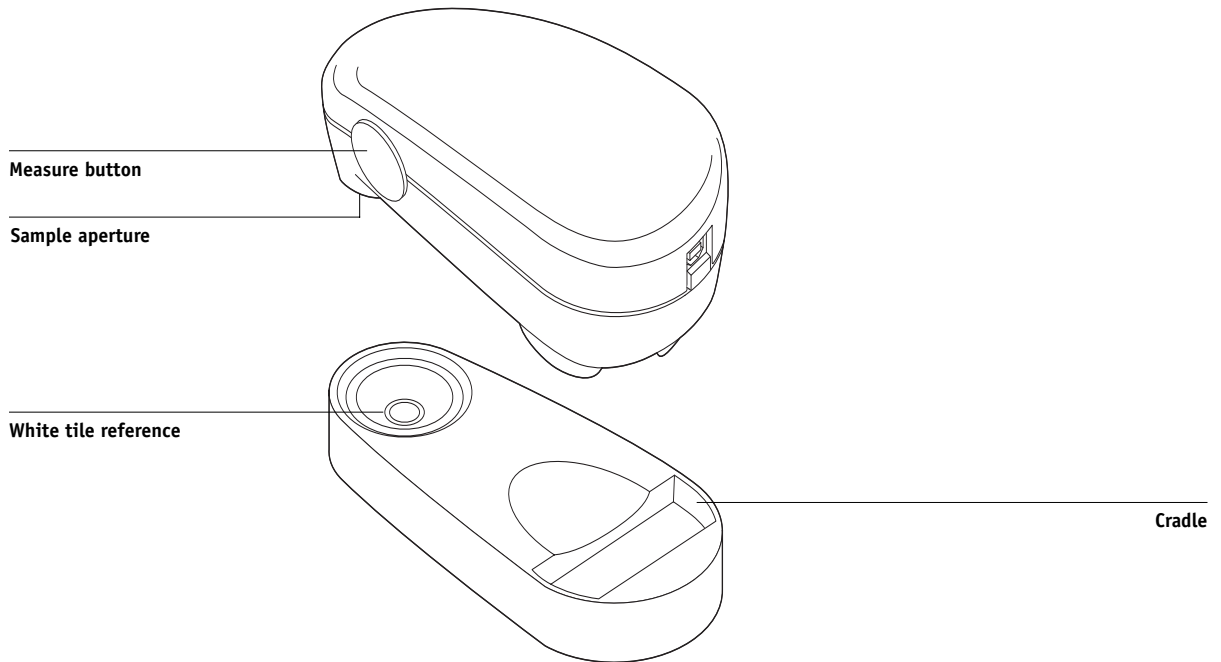
The ES-1000 and the ED-100 are available as separately purchased options.

### Setting up the ES-1000

To use the ES-1000 for calibration purposes, you must first set it up for use with your computer. For best results, you should also calibrate the ES-1000 itself using the white point calibration card that is included with the instrument.

For complete instructions on setting up and calibrating the ES-1000, see the documentation that is included with the instrument.

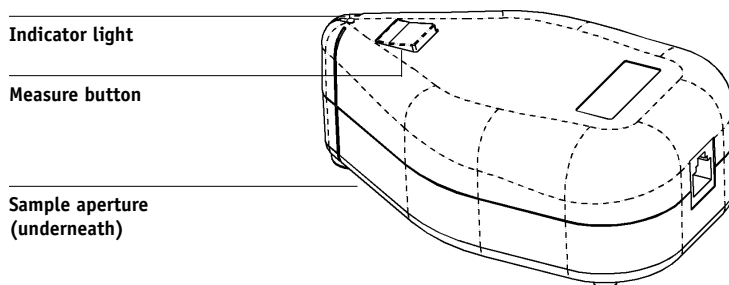
The following illustration shows the different parts of the ES-1000.



## Setting up the ED-100

To use the ED-100 for calibration purposes, you must first set it up for use with your computer. For complete instructions on setting up the ED-100, see the documentation that is included with the instrument.

The following illustration shows the components of the ED-100.



## Calibrating the Fiery with the ES-1000 or ED-100

You can use ColorWise Pro Tools in conjunction with the ES-1000 or ED-100 to calibrate the Fiery.

---

### TO CALIBRATE THE FIERY USING THE ES-1000 OR ED-100

**1. Start Calibrator.**

For instructions on starting Calibrator, see [page 2-6](#).

**2. Choose EFI Spectrometer ES-1000 or EFI Densitometer ED-100 as the measurement method.**

**3. In the Check Print Settings pane, choose the desired calibration set.**

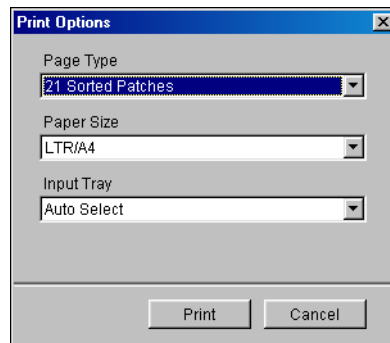
Choose the appropriate calibration set for the type of media you will use most often.

**NOTE:** For this calibration to take effect, the calibration set must be associated with one or more output profiles. There is no need to make any new associations for the default calibration set, since it is already associated with the default output profile.

**4. In the Generate Measurement Page pane, click Print.**

The Print Options dialog box appears.

**5. Choose the appropriate options and click Print.**



For Page Type, choose either 34 or 21 Sorted Patches, or 34 or 21 Randomized Patches. Sorted patches are printed on the page in the order of their hue and saturation levels. Randomized patches are printed on the page in random order, to help compensate for density inconsistencies on different areas of the page.

Paper Size is automatically set to LTR/A4 for 21 Patches, or 11x17/A3 for 34 Patches.

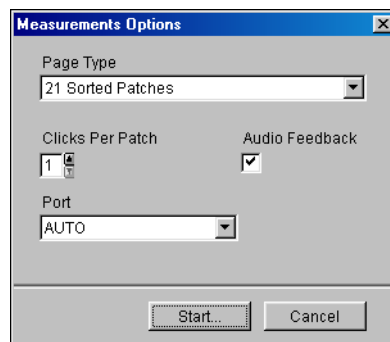
For Input Tray, specify the paper source for printing the measurement page.

**6. Retrieve the measurement page from the copier.**

**7. Click Measure in the Get Measurements pane.**

The Measurement Options dialog box appears.

**8. Choose the appropriate options, and then click Start.**



Page Type is automatically set to the measurement page type that you printed in [step 5](#).

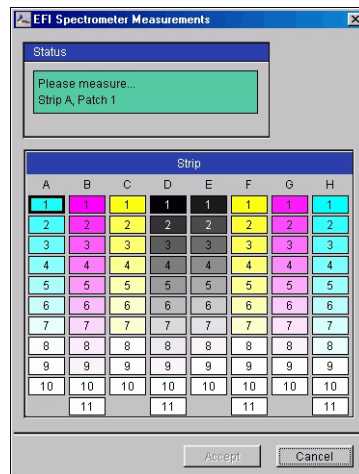
Click the arrow buttons next to the Clicks Per Patch field to choose the number of measurements you want to take for each patch on the page. When you choose multiple clicks, the average value of all measurements taken for the patch is returned to the Fiery. Multiple measurements are more accurate, but may take more time.

To hear a confirmation tone each time a measurement is recorded, select the Audio Feedback option. A single tone indicates a successful measurement; two tones indicate a measurement error. If you have specified multiple clicks per patch, the tone sounds after you take the final measurement.



If necessary, choose the appropriate COM port for the ES-1000 or ED-100 from the Port menu.

When you click Start, the Measurements window appears. Directions for measuring the patches appear in the Status area.

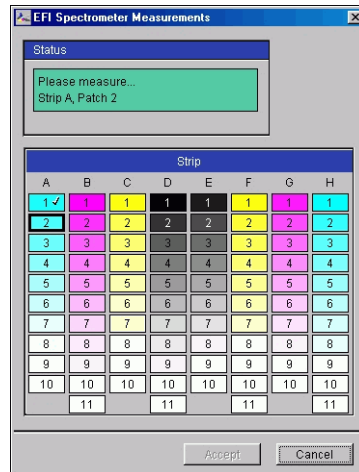


9. Place the ES-1000 or ED-100 over the specified patch on the Measurement Page, making sure to center the sample aperture over the patch. Press Measure to take the measurement.

**NOTE:** For a more accurate measurement, place several plain sheets of paper beneath the Measurement Page to block underlying colors from being read by the instrument.

If you have specified multiple clicks per patch, continue pressing Measure to take the required number of measurements. We recommend that you move the ES-1000 or ED-100 slightly after each measurement, while keeping the sample aperture within the patch.

When the patch has been measured successfully, a check mark appears in the patch preview in the Measurements window. The window identifies and highlights the next patch to be measured.



**10. Repeat [step 9](#) to measure each successive patch on the Measurement Page.**

Start with A1 and continue down Column A. When you have finished measuring all the patches in Column A, proceed to Column B in the same manner until all columns have been measured.

To retake a measurement, select the desired patch preview in the Measurements window and measure the patch on the page using the ES-1000 or ED-100.

**NOTE:** You must take the measurements in the order outlined in the Measurements window and on the measurement page.

- 11. When all the patches have been read successfully, click Accept.**
- 12. Click Apply in the Calibrator window to implement the new calibration set.**
- 13. Click OK in the Information dialog box.**

This completes the Fiery calibration process.

## Using AutoCal or ColorCal

AutoCal and ColorCal allow you to calibrate the Fiery without using an additional spectrophotometer or densitometer. Instead, these methods use the copier's built-in scanner to measure toner density values.

AutoCal is compatible with earlier Fiery servers. AutoCal and ColorCal have the following differences:

- Scanner calibration—ColorCal lets you calibrate the scanner (copier feeder) using the Kodak Color and Gray Scale strips. AutoCal lets you calibrate the copier using the Kodak Gray Scale strip; scanner calibration is not available.
- Measurement page—For ColorCal, square black-and-white and color patches are randomly printed on the ColorCal Measurement Page. This allows ColorCal to be less influenced by copier conditions, providing greater accuracy in color reproduction and calibration.

You can perform AutoCal or ColorCal calibration from ColorWise Pro Tools. For troubleshooting during the AutoCal procedure, see the *Job Management Guide*.

**NOTE:** To calibrate using AutoCal or ColorCal, you will need the Kodak Gray Scale strip included in the customer media pack that came with your Fiery.

## Calibrating with ColorWise Pro Tools and AutoCal or ColorCal

---

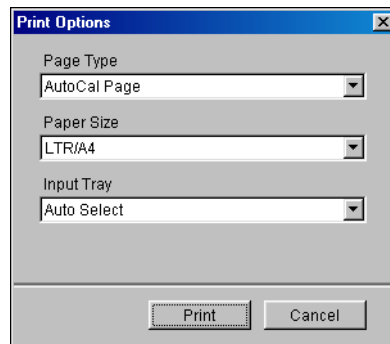
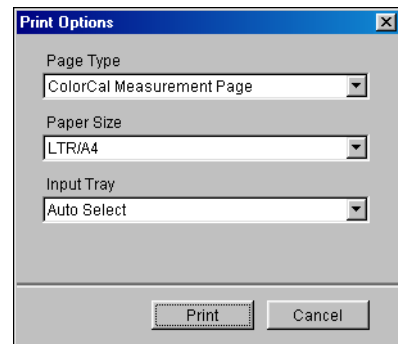
### TO PREPARE FOR CALIBRATION

1. On the Copier Control Panel, press the Access button (key icon).
2. Enter your password.
3. Choose Confirm.
4. Choose System Settings>System Settings>Scan Mode Setting>Others.
5. For Color\_space, select 1 (dRGB).
6. Choose Close until the System Settings screen appears. Then choose Exit.

---

**TO CALIBRATE WITH COLORWISE PRO TOOLS AND AUTOCAL OR COLORCAL**

1. **Start ColorWise Pro Tools (on your Mac OS or Windows computer).**
2. **Start Calibrator.**  
For instructions on starting Calibrator, see [page 2-6](#).
3. **In the Select Measurement Method pane, choose AutoCal or ColorCal.**
4. **In the Check Print Settings pane, choose the desired Calibration Set (Dot Screen or Line Screen).**
5. **Click Print in the Generate Measurement Page pane.**
6. **Choose the Input Tray to use for the measurement page and click Print.**

**AutoCal****ColorCal**

The Page Type is automatically set to AutoCal Page or ColorCal Measurement Page.  
The Paper Size is automatically set to LTR/A4.

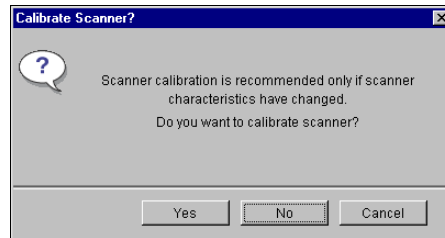
7. **Click OK when prompted.**

8. **Retrieve the Measurement Page from the copier.**

9. **Click Measure in the Get Measurements pane.**

If you chose the AutoCal method, skip to [step 18](#).

If you chose the ColorCal method, an alert message appears, asking if you want to calibrate the copier's scanner.



10. **If you are using ColorCal and want to calibrate the scanner, click Yes.**
11. **Choose the Input Tray to use for the scanner measurement page and click Print. Retrieve the scanner measurement page from the copier.**
12. **Place the Kodak Gray Scale strip, Kodak Color Control Patches strip, and scanner measurement page in the correct positions on the copier glass for scanner calibration.**

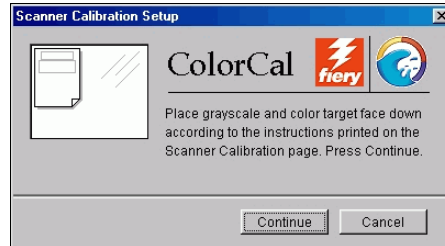
Place the Gray Scale strip face down on the copier glass so that it is centered along the top edge of the scanner measurement page. Then place the Color Scale strip face down on the copier glass so it is centered below the Gray Scale strip. Finally, place the scanner measurement page (second one printed) face down over the strips.

13. **From the Copier Control Panel, choose Menu > Scan > Job Template.**
14. **Choose ColorCal as the desired calibration template.**

Do not use the screen to edit the Template Description or make any other changes.

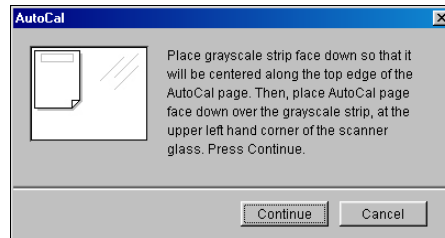
15. **Press the Xerox DocuColor 3535 Scan button (large green button).**

16. To perform the scanner calibration, click **Continue** in the ColorCal dialog box.

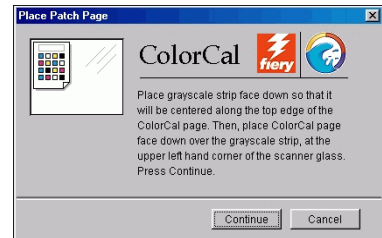


After the scanner is calibrated, another dialog box appears, prompting you to calibrate the Fiery.

17. Click **Measure** in the AutoCal or ColorCal Get Measurements pane.
18. Follow the directions in the dialog box for placing the Gray Scale strip and the AutoCal or ColorCal measurement page on the copier glass. Click **Continue**.



AutoCal



ColorCal

19. From the **Copier Control Panel**, choose **Menu > Scan > Job Template**.
20. Choose the desired calibration template: **AutoCal** or **ColorCal**.

Do not use the screen to edit the Template Description or make any other changes.

21. Press the Xerox DocuColor 3535 Scan button (large green button).
22. Click OK in the Calibrator Information dialog box.
23. Click Apply in the main Calibrator window to implement the new calibration set.
24. Click OK in the Information dialog box.

This completes the calibration process.

---

#### TO COMPLETE CALIBRATION

1. On the Copier Control Panel, press the Access button.
2. Enter your password.
3. Choose Confirm.
4. Choose System Settings>System Settings>Scan Mode Setting>Others.
5. For Color\_space, select 0 (sRGB).
6. Choose Close until the System Settings screen appears. Then choose Exit.

## Calibrating from the Xerox DocuColor 3535

You can also calibrate from the Copier Control Panel without using Calibrator. For more information, see your Xerox DocuColor 3535 documentation.

---

#### TO CALIBRATE USING XEROX DOCUCOLOR 3535 CALIBRATION

1. On the Copier Control Panel, press the Access button (key icon).
2. Enter your password.
3. Select Confirm.
4. Choose System Settings>System Settings>Common Settings>Image Quality Adjustment>Auto Gradation Adjustment.

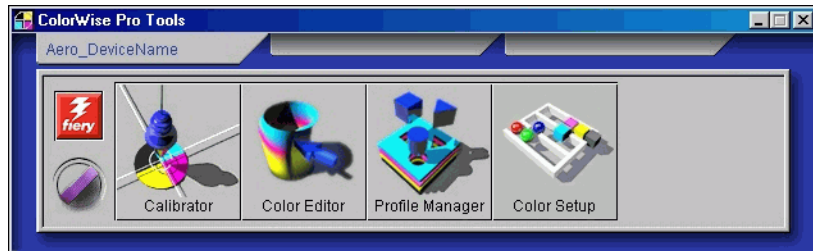
5. **In the Auto Gradation Adjustment screen, select the appropriate option:**
  - Print Job—to calibrate the Line Screen calibration set.
  - Network Controller 1 or Network Controller 2—to calibrate the Dot Screen calibration set.
6. **Follow the on-screen instructions to load the print media and press Start.**
7. **Follow the on-screen instructions to place the printed test pattern on the copier glass and press Start.**
8. **When the scanning and calibration is complete, choose Close until the System Settings screen appears.**
9. **Select Exit.**



## Chapter 3: ColorWise Pro Tools

Designed to give you flexible control of color printing, ColorWise Pro Tools include the following color management tools:

- Calibrator (see [Chapter 2](#))
- Color Editor
- Profile Manager
- Color Setup



ColorWise Pro Tools for Windows and Mac OS computers are fundamentally the same; differences are noted in this chapter. The windows and dialog boxes illustrated are the Windows versions. For information on installing and configuring a connection to ColorWise Pro Tools, see the [User Software Installation Guide](#).

**NOTE:** If the connection to the Fiery from Command WorkStation (which also allows for access to ColorWise Pro Tools) is not established, you can start ColorWise Pro Tools independently of Command WorkStation.

## Profile Manager

Profile Manager allows you to manage and edit ICC profiles. In the case of the Fiery, these profiles are divided into RGB Source, Simulation, and Output profiles:

- **RGB Source** contains all monitor profiles resident on the Fiery. RGB Source profiles are used to define the source color space for RGB colors processed by the Fiery.

**NOTE:** If you use Photoshop 6.x or 5.x, you can upload the profile for your selected working space to the Fiery and choose that as your RGB Source profile. For more information, see the *Fiery Color Reference*.

- **Simulation** contains printer profiles used to simulate another device on the Fiery.
- **Output** contains copier profiles that describe the copier. For more information on output profiles, see [page 1-10](#).

**NOTE:** Changing the Fiery default profiles affects *all* jobs for *all* users. Consider limiting the number of people authorized to use ColorWise Pro Tools by setting an Administrator password.

The following profiles are provided with the Fiery.

RGB Source:

- **sRGB (PC)**—source color space for a generic Windows computer monitor
- **Apple Standard**—standard source color space for Mac OS computer monitors with older versions of ColorSync
- **EFIRGB**—preset default setting for a Fiery

Simulation:

- **SWOP-Coated**—United States press standard
- **Euroscale**—European press standard
- **DIC**—Japanese press standard

In addition, one or more output profiles are provided with the Fiery.

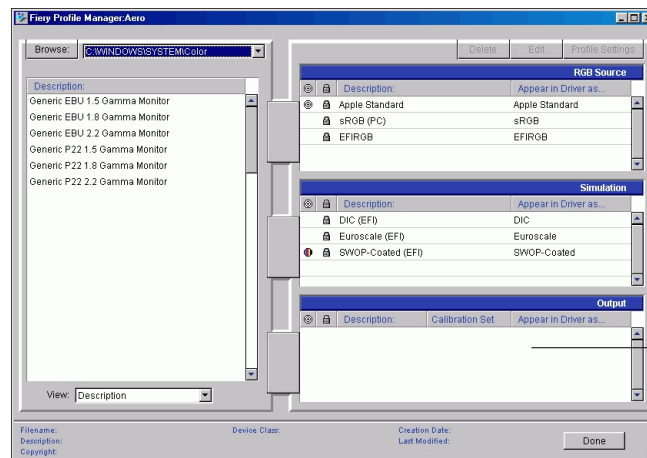
For more information about output profiles, see [page 1-10](#).

## Setting the default profiles

The default profiles are applied to all print jobs sent to the Fiery, unless you override them using print options. Therefore, the defaults should be the most commonly used profiles.

### TO SPECIFY A DEFAULT PROFILE

#### 1. Start ColorWise Pro Tools and click Profile Manager.



Output profiles  
appear here

The left side of the main Profile Manager window lists the ICC profiles in the default directory of your computer; the right side lists the three profiles on the Fiery.

The lock icon (🔒) to the left of a profile name indicates that the profile cannot be deleted and can be edited only if saved under a new name. Only Simulation and Output profiles can be edited.

A small icon to the left of a profile name indicates the default profile for each category (RGB Source, Simulation, and Output). If you designate a different profile as the default, the icon appears next to your designated profile. The icon indicating the default RGB Source and Output profiles looks like a target (🎯). The icon indicating the default Simulation profile changes in appearance depending on whether the default RGB Separation setting is set to Simulation (🌈) or Output (🖨️).

#### 2. Select the profile you want as the default for a profile type and click Profile Settings.

3. In the Profile Settings dialog box, click **Default** and click **Apply**.

4. Click **OK**.

In the main Profile Manager window, the target icon appears next to the new default profile you specified.

5. Repeat steps 2 through 4 for each type of profile.

If no default is set for RGB Source, the RGB Source print option is set to None. If no default profile is set for Simulation, the CMYK Simulation print option is set to None. For more information on print options, see [Chapter 1](#).

The Output profile always has a default profile. To change the Output default, select a preset profile you want as the default and click Profile Settings. Or create a new default under a new name by selecting a preset profile and specifying your choice of the calibration set in the Use Calibration Set menu and a new name in the Profile Description menu.

## Downloading profiles

The Fiery includes default profiles. You can download additional profiles from any computer connected to the Fiery.

---

### TO DOWNLOAD A PROFILE

1. Start ColorWise Pro Tools and click the Profile Manager.

The left side of the main Profile Manager windows lists the ICC profiles in the default location on your computer.

- **Windows 9x/Me**—Windows\System\Color
- **Windows NT 4.0**—Winnt\System32\Color
- **Windows 2000**—Winnt\System32\Spool\Drivers\Color
- **Windows XP**—Windows\System32\Spool\Drivers\Color
- **Mac OS**—System Folder: Preferences: ColorSync Profiles for ColorSync 2.0, and System Folder: ColorSync Profiles for ColorSync 2.5 or later

2. **If the desired profile does not appear, click Browse to go to a different directory. Browse to the directory containing the profile you want to download and click OK.**
3. **When the profile you want to download appears in the list in the main Profile Manager window, select it.**

If the profile is compatible with the Fiery, a green arrow indicates that the profile is available for downloading. Only output device profiles are downloadable to Simulation and Output. Only input device profiles are downloadable to RGB Source.



**NOTE:** On Windows computers, the profiles must have an extension of .icc or .icm to be listed. On Mac OS computers, the profiles must have a file type of “profile.”

*All ICC profiles in the selected directory on your computer are displayed in the list in the main Profile Manager window. However, because a profile is listed does not necessarily mean it can be downloaded to the Fiery.*

Simulation profiles should be profiles only for those devices you want the Fiery to match in terms of color output characteristics. Output profiles should be profiles only for the copier to which you print. Although you can download CMYK printer profiles as Simulation or Output, consider how they will be used. If you want the Fiery prints to look like another printer, download that profile as a Simulation. If you have a custom profile of the copier you print to, download that profile as an Output profile.

4. **Click the arrow to download the profile and click OK when the download is complete.**

The new profile now appears in the list of profiles on the right side of the Profile Manager main window.

For Windows 2000/XP and Mac OS computers, this profile must be associated with one of the predefined names (Source-1 through Source-10 for RGB Source, Simulation-1 through Simulation-10 for Simulation, or Output-1 through Output-10 for Output) or set as the default before it can be used. For Windows 9x/Me/NT computers, all profiles can appear in the printer driver by their profile descriptions (see [“Defining profiles”](#) on page 3-7).

**NOTE:** When an output profile is downloaded, it inherits the calibration target of the current default output profile.

## Editing profiles

You can customize the profiles on the Fiery to meet your specific needs and the characteristics of your copier using Color Editor, either directly or through Profile Manager. For more information on editing profiles, see “Color Editor” on page 3-10.

## Managing profiles

Profile Manager allows you to back up profiles to ensure that no custom profiles are lost when the Fiery software is updated. You can also upload a copy of a built-in Fiery profile to your workstation in order to use it with an ICC-aware application, such as Photoshop. Profile Manager also allows you to delete unwanted profiles.

**NOTE:** You can back up and delete only those profiles that appear in the main Profile Manager window *without* a lock icon next to them. Locked profiles cannot be deleted, but most can be backed up.

---

### TO BACK UP PROFILES

1. **Start ColorWise Pro Tools and click Profile Manager.**

2. **Select the profile on the Fiery to upload.**

The arrow in the middle of the Profile Manager window turns green and points to the left, indicating the profile is available for upload.

3. **Click the green arrow, choose a name and location for the profile, and click Save.**

The name will be the file name of the profile, but the profile description will be the original description, or the one you entered in the Profile Settings dialog box.

**NOTE:** When saving the profile on a Windows computer, include the extension .icm. If the extension is not included, additional dialog boxes appear.

4. **Click OK when you are notified that the profile was successfully uploaded.**

Delete profiles to ensure that the wrong profiles are not used, and to free up disk space on the Fiery (although profiles are small and do not take up much space).

---

**TO DELETE PROFILES FROM THE FIERY**

1. **Start ColorWise Pro Tools and click Profile Manager.**

2. **Select the profile you want to delete and click Delete.**

A Warning dialog box asks you to confirm the deletion.

**NOTE:** You cannot delete preset profiles, profiles that are currently set as default, or profiles that are linked to any of the predefined custom names, for example Simulation-1.

3. **Click Yes to delete the profile.**
4. **To delete a profile currently set as the default or associated with a custom name, click Profile Settings and clear the default option.**

### **Defining profiles**

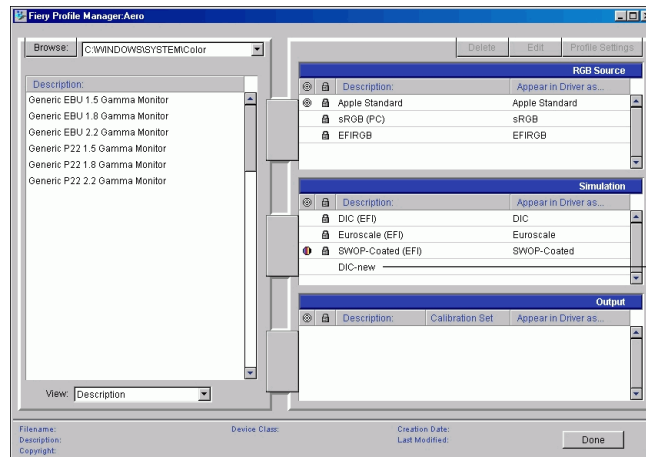
For Windows 2000/XP and Mac OS computers, before you apply any downloaded or edited profile to a print job, that profile must be linked to one of the predefined custom names, or you can set the profile as the default for all print jobs (see [“Setting the default profiles”](#) on page 3-3). Ten names are available for custom profiles—Source-1 through Source-10 for RGB Source, Simulation-1 through Simulation-10 for Simulation, or Output-1 through Output-10 for Output.

For Windows 9x/Me/NT computers, all profiles appear by their actual names in the printer driver. These fixed names are used in the printer driver, so you can select profiles per job even if your driver does not have the capability to obtain an updated list from the Fiery.

**NOTE:** A custom simulation profile is used to illustrate this procedure. The same steps apply for defining output profiles.

## TO DEFINE A CUSTOM SIMULATION PROFILE

1. Start ColorWise Pro Tools and click Profile Manager.



Custom profile  
created with  
Color Editor

For the purposes of this example, assume DIC-new is a custom simulation profile created with Color Editor and, as such, no information is displayed for DIC-new under the heading “Appear in Driver as.”

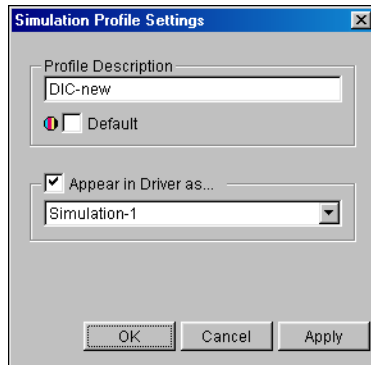
**NOTE:** You can define custom profiles only. Default profiles are predefined and cannot be changed.

2. Select DIC-new in the Simulation list, and click Profile Settings or double-click DIC-new.
3. Select the “Appear in Driver as” option, choose one of the predefined custom simulation names (Simulation-1 through Simulation-10) from the menu, and then click Apply.

**NOTE:** Choose a name that is not already linked with another simulation. You cannot define two profiles with the same name.

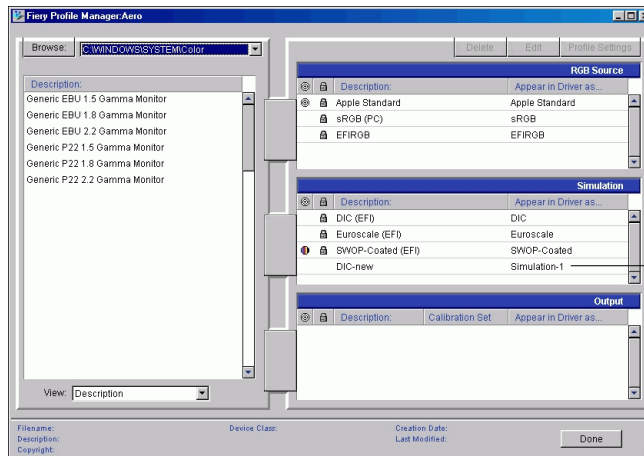


**NOTE:** Although you cannot delete a preset profile, you can use the name of a preset profile name for your edited profile when you select the “Appear in Driver as” option. This replaces the preset profile with your own profile.



In Profile Settings, you can also change profile descriptions for all non-locked profiles.

#### 4. Click OK.



**DIC-new will appear  
in driver as  
Simulation-1**

Simulation-1 now appears under the “Appear in Driver as” column for DIC-new. Choosing Simulation-1 from the CMYK Simulation option of the printer driver applies the DIC-new simulation to the print job.

If you do not define a custom simulation profile, your job will print with CMYK Simulation Profile set to None. If you do not define a custom RGB Source or Output profile, the default profile is used.

### Considerations for defining Output Profiles

The procedures for defining Output Profiles is similar to the preceding example for defining Simulations profiles. However, note these differences:

For output profiles, the predefined custom names are Output-1 through Output-10.

When you choose Profile Settings for an output profile, the Use Calibration Set options also appear. You must calibrate the Fiery with this calibration set before this option has any effect. If you have never measured for this calibration set, default measurements are used. For more information about calibration sets, see [page 2-3](#).

## Color Editor

Color Editor allows you to customize simulation and output profiles. Access Color Editor directly by clicking its icon in the ColorWise Pro Tools main window, or indirectly, through the Profile Manager.

### Editing profiles

Color Editor allows you to create custom profiles by editing existing simulation or output profiles and saving the changes as a new profile. Use Color Editor to fine-tune a profile on your Fiery to meet your exact specifications.

**NOTE:** You cannot edit source profiles; only simulation and output profiles can be customized.

Color Editor has two Edit Modes for editing output profiles:

- **Custom**—Edit output profiles and save customized versions of them.
- **% Density**—View the calibration target, which is one component of the output profile. You cannot make changes to the calibration target in this window, but you can import a new target (see [page 2-3](#)).

Color Editor also has several Edit Modes for editing simulations:

- **Master**—Create a custom *master* simulation that affects all print jobs to which it is applied, unless a linked simulation exists for the selected combination of simulation profile, simulation method, and output profile.
- **Quick, Full (Source GCR), or Full (Output GCR)**—Create custom *linked* simulations. Linked simulations affect the print job only if the corresponding simulation profile, simulation method, and output profile are selected. If you choose an output profile and simulation method for which you have created a custom linked simulation, that simulation is applied automatically to the job. If you choose a simulation method or output profile for which there is no custom linked simulation, the master simulation is automatically applied. For detailed information about simulation methods, see [page 1-10](#).

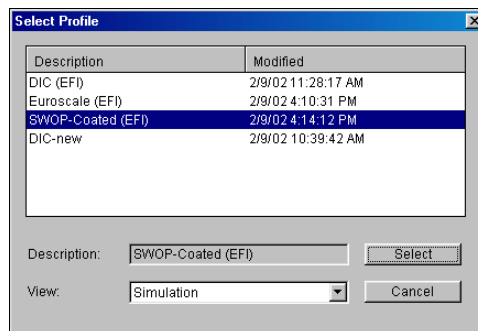
**NOTE:** If you made edits to a master simulation after you created a linked simulation, the edits are not applied to the linked simulation.

---

#### TO EDIT A SIMULATION PROFILE IN MASTER MODE OR AN OUTPUT PROFILE IN CUSTOM MODE

1. **Start ColorWise Pro Tools and click Color Editor.**
2. **Choose Simulation or Output from the View menu.**

Simulation lists the simulation profiles resident on the Fiery, and Output lists the output profiles resident on the Fiery.

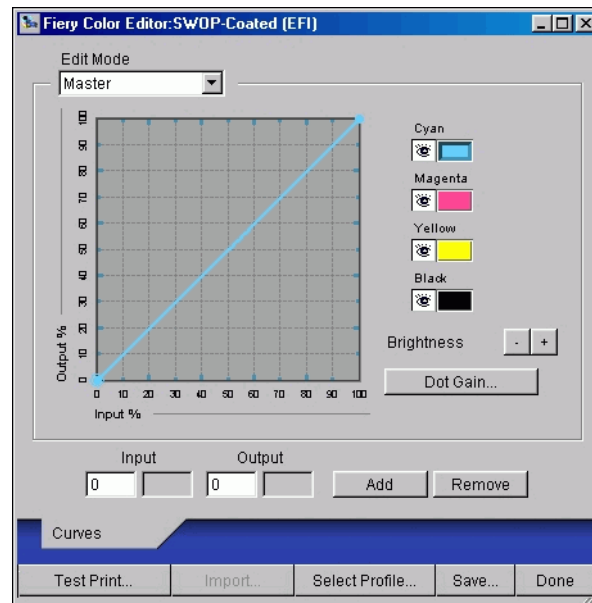


**3. Choose a profile to edit and click Select.**

Another method is to open the Profile Manager, select a profile, and then click Edit.

**4. For a simulation profile, choose Master from the Edit Mode menu. For an output profile, choose Custom from the Edit Mode menu.**

For instructions for using Quick, Full (Source GCR), or Full (Output GCR) mode, see [page 3-16](#).



You can use this dialog box to view or edit profiles. The graph allows you to view and manipulate color output values.

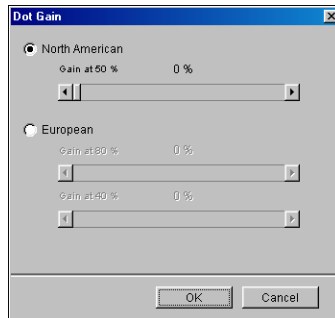
**NOTE:** When you edit an output profile in Custom mode, clicking Import at the bottom of the Color Editor window allows you to import a calibration target file (.trg) created on another Fiery using the previous version of ColorWise. The current version of ColorWise does not allow you to save a target separately; rather, it saves the target in conjunction with an output profile.

**5. Select the colors you want to edit by turning colors off and on.**

The eye icon to the left of each color indicates whether that color is visible on the graph and will be affected by changes to the curves, brightness, and dot gain controls. You can view and edit all four colors (cyan, magenta, yellow, and black) at once, or in any combination. Working with only one or two colors at a time allows you to fine-tune your adjustments. To turn off a color, click its Eye icon. In the following example, cyan and magenta are visible and can be edited.



**6. To adjust the dot gain value for simulating press output, click Dot Gain.**



Choose either the North American or European standard. Use the sliders to adjust to the desired Dot Gain:

- The range of values for North American at 50% input are from 0% to 50% gain on output.
- The range of values for European at 40% input are from 0% to 59% gain on output; the range of values for European at 80% input are from 0% to 20% gain on output.

If you use Dot Gain values, apply the settings first, so that the curves are deflected from their straight-line positions. Then make edits to the new curves. When you adjust Dot Gain values, all existing points on the curve are removed. A warning dialog box allows you to cancel Dot Gain settings before they are applied.

**7. Use the plus and minus buttons to adjust brightness.**

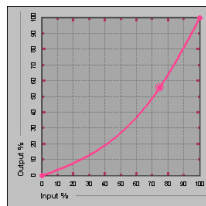
Changes to the brightness are reflected in the curve(s).

**8. To adjust the curves directly, click and drag points on the curve or enter numbers into the input and output boxes.**

The graph maps the input percentage to the output percentage. (These percentages refer to the size of the CMYK halftone dots.) The curve you selected appears, and points along the curve are marked so you can adjust them.

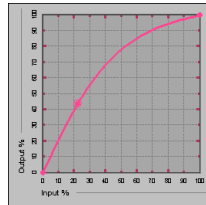
---

A curve with this shape makes a color appear lighter by reducing density in the midtones.



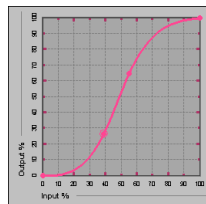
---

A curve with this shape makes a color appear darker by adding density in the midtones.



---

A curve with this shape increases contrast.



**NOTE:** You should adjust points in this way only *after* you have entered the Dot Gain and Brightness values.

For greater precision, type percentages in the Input and Output fields or use the arrow keys on the keyboard to adjust the curve. To use the arrow keys, you must first click the curve to establish an anchor point that serves as a reference.

**9. For an output profile, set maximum densities of the C, M, Y, and K channels.**

Enter the maximum densities, called D-Max values, of individual colors for profiles that support density settings. D-Max settings are not available when you edit Simulation profiles in Master mode.

**10. When you are finished, click Save and enter a name for the new profile.**

The new custom profile is saved to the Fieri with the new name. If you edit one of the press standard targets (for example, SWOP-Coated, DIC, or Euroscale), consider including the original name as part of the new target name (for example, DIC-new) to help you remember the source of the new target.

**NOTE:** Preset default profiles are locked and *must* be saved with a new name.

For Windows 2000/XP and Mac OS computers, custom profiles must be linked to one of the 10 predefined custom profile names (Simulation-1 through Simulation-10 for Simulation, or Output-1 through Output-10 for Output) to be accessible from the printer driver. Create as many custom profiles as you want, but a maximum of 10 are available from the printer driver at any one time. For information on linking custom profiles to the predefined custom profile names, see “[Defining profiles](#)” on page 3-7. If you are using the printer driver for Windows 9x/Me/NT computers, custom profiles will appear in the driver window without being associated with a predefined profile name.

If you set a custom profile as the default, you can access it from the printer driver *without* linking it to one of the predefined custom names. Select Printer’s default from the printer driver.

---

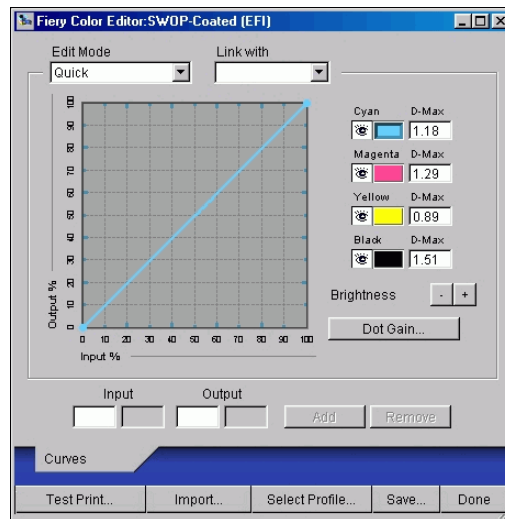
**TO EDIT A SIMULATION IN QUICK, FULL (SOURCE GCR),  
OR FULL (OUTPUT GCR) MODE**

1. **Start ColorWise Pro Tools and click Color Editor.**
2. **Choose Simulation from the View menu, select the simulation profile to edit, and then click Select.**

Another method is to open the Profile Manager, select a simulation profile, and click Edit.

3. **Choose Quick, Full (Source GCR), or Full (Output GCR) from the Edit Mode menu, and choose an output profile with which your edited simulation will be linked from the Link with menu.**

The edited simulation will be linked with the output profile you choose from the “Link with” menu.



**NOTE:** When editing a simulation profile in Quick mode, clicking Import at the bottom of the Color Editor window allows you to import a custom Quick Simulation created on another Fiery using the previous version of ColorWise. The current version of ColorWise does not allow you to save custom Quick or Full Simulations independently; rather, they are saved as components of the same profile.



4. **Edit and save the simulation, as described in steps 5 through 10 of the procedure starting on [page 3-13](#).**

For this new simulation to be automatically applied to a print job, the CMYK Simulation, Simulation Method, and Output Profile settings must be the same as those used when you edited the profile. If the Simulation Method is different or a different output profile is selected, the Master simulation is applied.

**NOTE:** A Simulation Profile can have a custom Master and one or more custom links—up to three links (Quick mode and the two Full modes) for each output profile on the system. For the CMYK Simulation Profile option in the printer driver, note that if you select a custom profile for which the output ink percentage is greater than 0 and the input ink percentage is 0, the Use Master print option will have no effect.

## Undoing simulation edits

You can undo the changes you made to simulations (master and linked) in the following ways:

- If you have not yet saved your edits, click Done on the Color Editor menu bar and do not save the changes.
- If you saved your edits under a new simulation name and want to delete all edits (in Master, Quick, and Full modes) to the simulation, see [page 3-7](#).

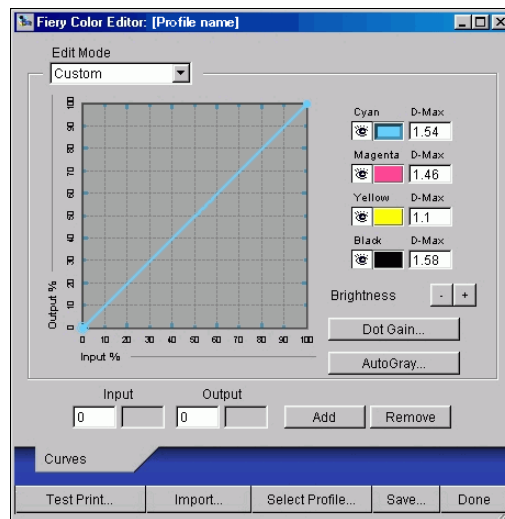
## Adjusting gray balance

The AutoGray feature allows you to use the copier's built-in scanner as a measurement device for adjusting the gray balance of output profiles. Gray balance refers to the quality of neutral gray tones in a profile. In many cases, gray tones may contain a bluish or reddish color cast. AutoGray helps shift these tones back toward neutral grays. If you are satisfied with the gray balance of the copier, you do not need to use AutoGray.

---

**TO CORRECT THE GRAY BALANCE OF AN OUTPUT PROFILE**

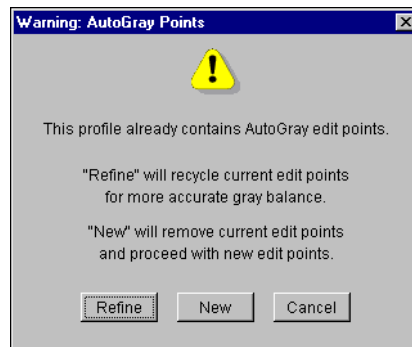
1. On the Copier Control Panel, press the Access button (key icon).
2. Enter your password.
3. Select Confirm.
4. Choose System Settings>System Settings>Scan Mode Setting>Others.
5. For Color\_space, select 1 (dRGB).
6. Choose Close until the System Settings screen appears and then choose Exit.
7. Start ColorWise Pro Tools (on your Mac OS or Windows computer).
8. Choose Output from the View menu.
9. Select a profile to edit and click Select, or open the Profile Manager, select a profile, and then click Edit.



10. Choose Custom from the Edit Mode menu.
11. Click AutoGray.

12. If the output profile contains no edit points, continue to step 14.

If the output profile contains edit points from a previous AutoGray session, choose an action from the following warning.

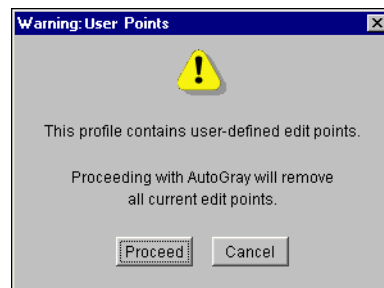


**Refine** reuses edit points from a previous session in an attempt to make them more accurate. Refine is optional; use it only if the gray balance in your test document still needs improvements after the first AutoGray session. If two Refine applications cannot fix the situation, it is probably because your test document is not correctly addressing the output profile, or because the output profile that you are editing does not adequately describe the actual copier and printing conditions. Clicking Refine more than twice is not recommended.

**New** starts a fresh AutoGray session by first removing all edit points from a previous session. We recommend clicking New when you have applied Refine more than twice.

13. If the output profile contains edit points that were entered by a user, click Proceed to remove the points and continue with the AutoGray adjustment.

Proceed starts a fresh AutoGray session by first removing all user edit points. This is because AutoGray cannot modify user-entered points.



14. **Click OK to confirm printing of the measurement page.**
15. **Retrieve the page from the copier.**
16. **Follow the directions in the dialog box for placing the Kodak Gray Scale strip and the AutoGray measurement page on the copier glass, and click Continue.**  
Messages display the progress of the gray balance adjustment.
17. **From the Copier Control Panel, select Menu > Scan > Job Template.**
18. **Choose the desired calibration template: AutoCal or ColorCal.**  
Do not use the screen to edit the Template Description or make any other changes.
19. **Press the DocuColor 3535 Scan button (large green button).**
20. **When the adjustment is complete, click OK (in Color Editor).**  
Color Editor displays the adjusted output profile curve. New edit points have been inserted by AutoGray to modify the gray balance, in much the same way an expert user would have done manually.
21. **To make edits to the output profile curve, click AutoGray again.**
22. **Choose Refine to fine-tune the curve, or New to acquire a new curve for editing.**  
For more information on these steps, see [page 3-19](#).
23. **On the Copier Control Panel, press the Access button.**
24. **Enter your password.**
25. **Select Confirm.**
26. **Choose System Settings > System Settings > Scan Mode Setting > Others.**
27. **For Color\_space, select 0 (sRGB).**
28. **Select Close until the System Settings screen is displayed.**
29. **Select Exit.**

## Checking edited profiles

To view a printed sample of a profile before you save it to the Fiery, print one of the following:

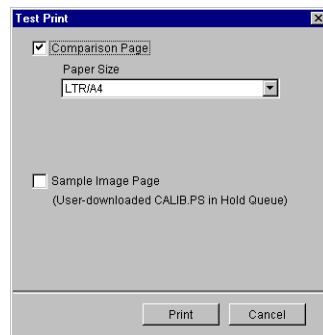
- Comparison Page provided with ColorWise Pro Tools, which shows a comparison of images and colored patches with and without edits
- User-defined CALIB.PS in the Hold queue

You can create a custom comparison page and save it as a PostScript or Encapsulated PostScript (EPS) file called CALIB.PS. Print the file to the Hold queue of the Fiery from your application, or download it to the Hold queue with Fiery Downloader (see [page 2-8](#)).

---

### TO CHECK A PROFILE

1. Click **Test Print** from the **Color Editor** window.



2. Select a page to print.
3. Specify a paper size (**Comparison Page only**).

For a Comparison Page, choose LTR/A4 or 11x17/A3 from the Paper Size menu.

4. Click **Print**.

## Color Setup

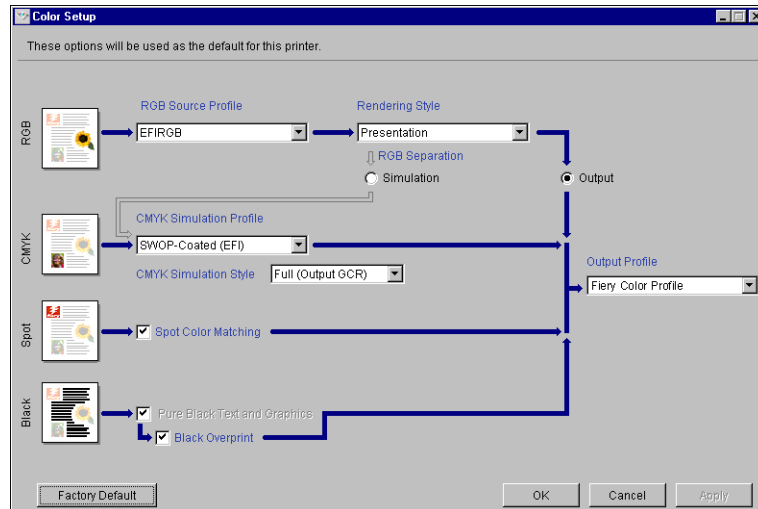
Use Color Setup to set the default ColorWise settings for the Fiery. To access Color Setup, click its icon in the ColorWise Pro Tools main window.

### Setting default ColorWise options

Color Setup allows you to configure the default color management settings for the Fiery. These settings are applied to all print jobs sent to the Fiery, unless a user overrides them for an individual job by changing settings in the printer driver. These default settings can also be overridden using Command WorkStation, Fiery Spooler, or Fiery WebSpooler. Color Setup maintains a connection to the Fiery, so changes made in Profile Manager appear automatically. In addition, the defaults set in Color Setup are automatically reflected in other Fiery tools that list default settings.

To reset the Fiery to its factory default settings, click Factory Default in the lower-left corner of the Color Setup window.

The options in Color Setup are arranged in a pattern representing the flow of color processing that takes place on the Fiery.



For those color options that offer multiple choices, make your selection from the menu that appears. For RGB Separation, select the radio button next to the option name. For other options, select a check box next to the option name. Once you have made your changes, you must click OK or Apply for the changes to take effect. Clicking OK sets the new defaults and closes the Color Setup window. Clicking Apply sets the new defaults and keeps the Color Setup window open. Clicking Cancel closes the Color Setup window without applying any changes to the default settings.

For most users, the factory defaults result in optimal color output.





## **Appendix A: Color Measurement Instruments**

This appendix explains how to set up and calibrate the following color measurement instruments, available as separately purchased options:

- X-Rite DTP41 automatic scanning spectrophotometer
- X-Rite DTP32 automatic scanning densitometer

### **Using the X-Rite DTP41 spectrophotometer**

ColorWise Pro Tools Calibrator supports the X-Rite DTP41 spectrophotometer, a device that measures density and color data. The DTP41 communicates directly with the Calibrator application in ColorWise Pro Tools, sending measurements to the Fiery automatically.

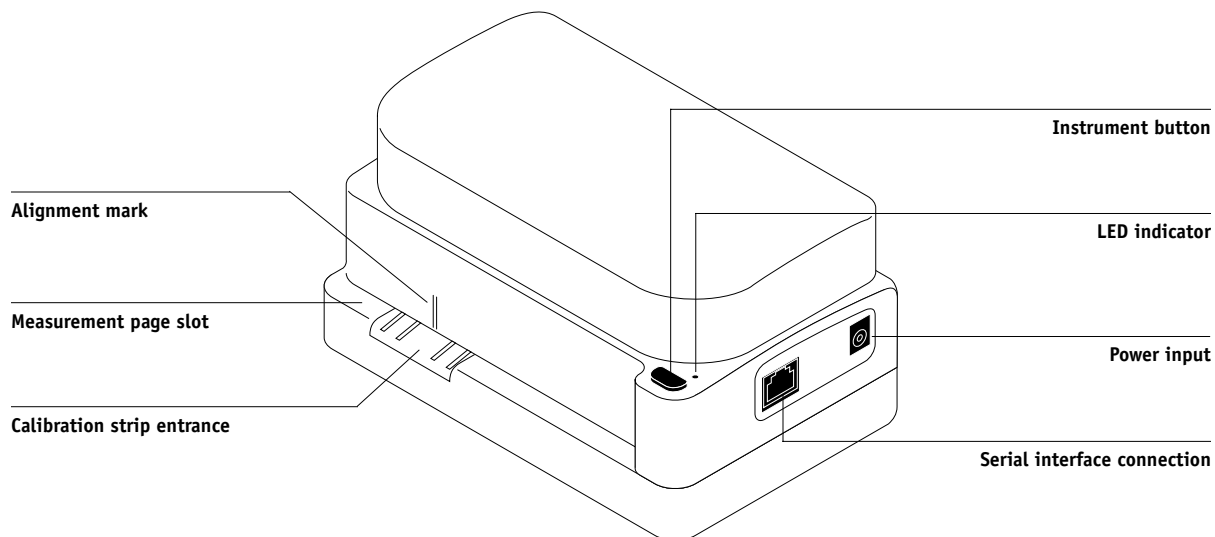
#### **Setting up the DTP41**

Before you calibrate the Fiery, you must connect, configure, and calibrate the spectrophotometer to prepare for measuring the printed patches. For additional information about setting up and using the DTP41, see the documentation included with the instrument.

---

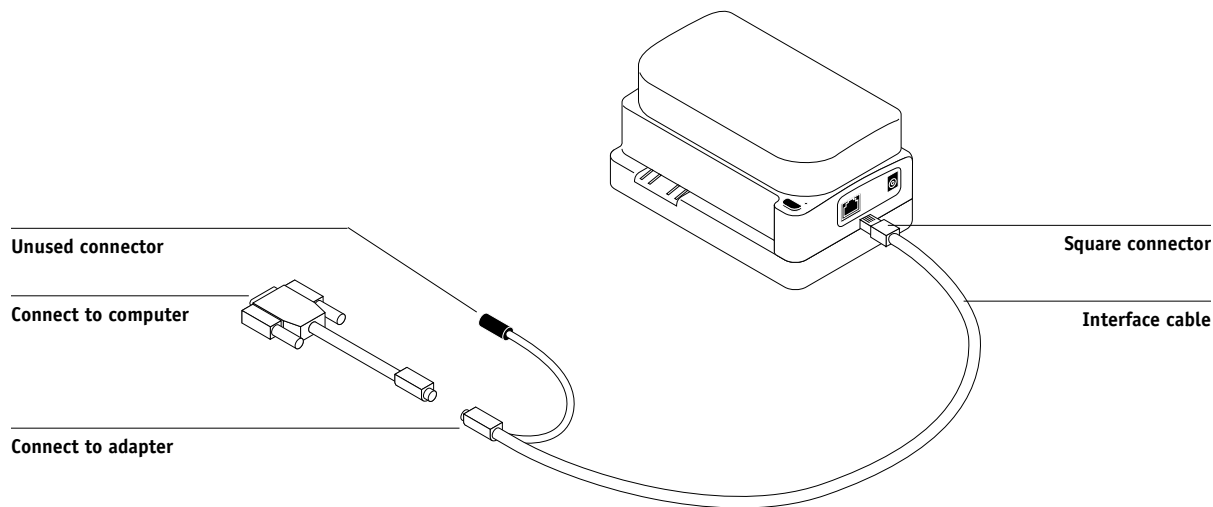
**TO CONNECT THE X-RITE DTP41 TO THE COMPUTER**

1. Turn off the computer.
2. Unpack the X-Rite DTP41 and remove the spacer from the measurement page slot.
3. Plug the square end of the interface cable (looks like a modular phone plug) into the serial interface connection on the side of the X-Rite DTP41.

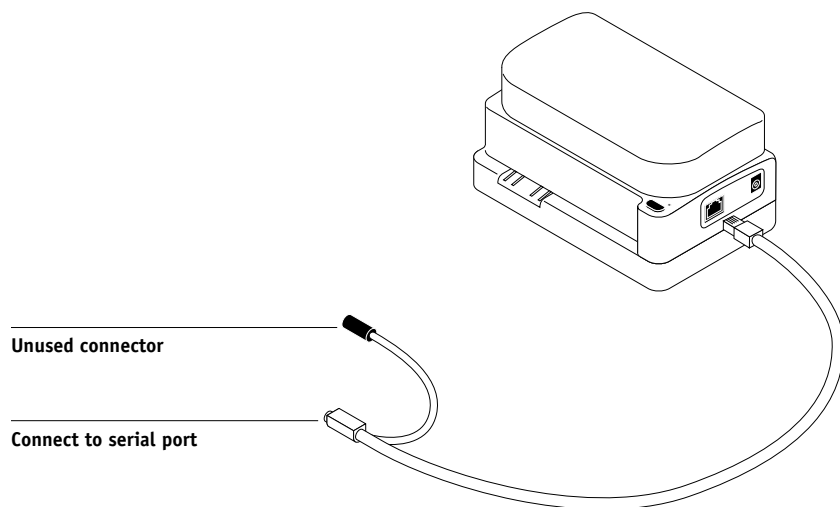


**4. Attach the connector to the computer.**

For a Windows computer, insert the 8-pin mini-DIN end of the interface cable into the 9-pin DB9 Connector cable adapter. Insert the 9-pin end into the COM1 or COM2 port on the computer and tighten the screws. If the available port on your computer is 25-pin, you must use the 8-pin-to-25-pin adapter.



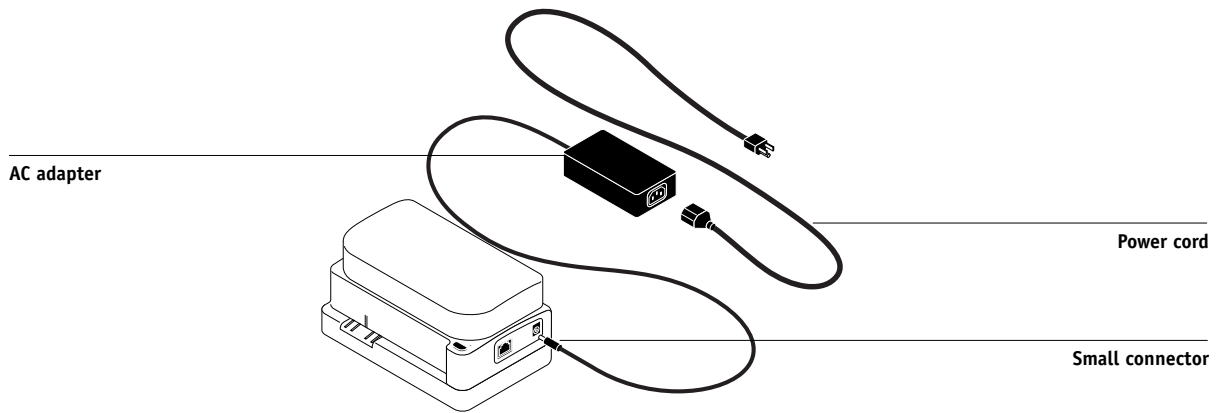
For a Mac OS computer, connect the 8-pin mini-DIN plug directly into the serial port of the computer.



**NOTE:** For Mac OS computers with a USB port (for example, an iMac), you need an adapter to connect the DTP41 to your computer. For information on supported adapters, see the X-Rite, Inc. web site ([www.x-rite.com](http://www.x-rite.com)).

**5. Use the AC adapter to provide power.**

Plug the small connector on the adapter cable into the power input of the X-Rite DTP41 and plug the AC adapter into the power cord. Plug the power cord into a wall outlet.



**6. Turn on the computer.**

**7. Calibrate the X-Rite DTP41 using ColorWise Pro Tools (see the following section).**

**8. Calibrate the Fiery using ColorWise Pro Tools and the DTP41 (see [page 2-10](#)).**

## Calibrating the DTP41

For the best color accuracy, calibrate the X-Rite DTP41 spectrophotometer every time you calibrate the Fiery. You can initiate the calibration sequence in ColorWise Pro Tools Calibrator as part of the process of Fiery calibration. The computer may also prompt you that it is necessary to calibrate the spectrophotometer.

Alternatively, you can initiate the DTP41 calibration process using the Instrument button on the DTP41. For more information on this method, see the documentation that came with the X-Rite DTP41.

Multiple users can be connected to one Fiery with ColorWise Pro Tools, but only one user at a time can use the Calibrator module. An error message appears if you try to calibrate when another user is already using ColorWise Pro Tools to calibrate.

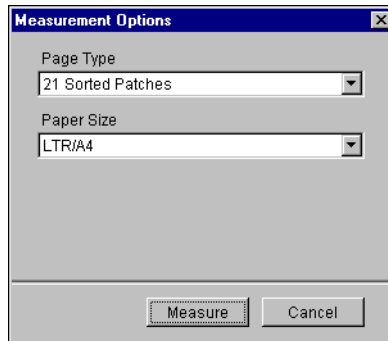
You will need the Color Reflection Reference strip that is included with the spectrophotometer. Remove the strip from its protective envelope, handling it by the edges only. Keep the strip free of dust and smudges and always store it in the protective envelope.

---

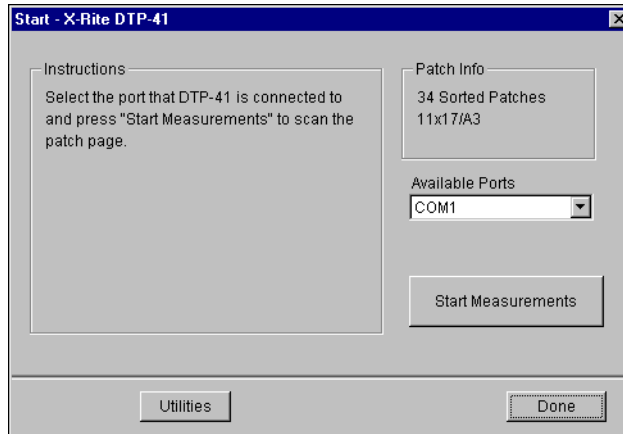
### TO CALIBRATE THE X-RITE DTP41

1. **Connect the spectrophotometer to the computer and turn on power (see [page A-2](#)).**
2. **Start Calibrator.**  
For instructions on starting Calibrator, see [page 2-6](#).
3. **Choose DTP41 as the measurement method.**

4. In the Get Measurements pane, click Measure.
5. In the Measurement Options dialog box, click Measure.

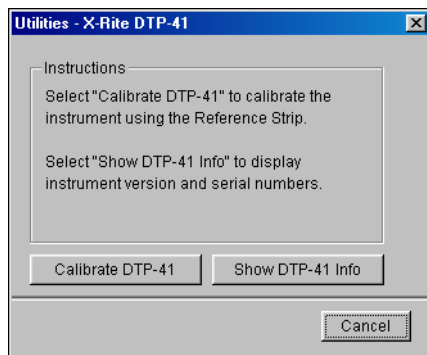


6. Choose the appropriate COM port for the DTP41 from the Available Ports menu.  
The Instructions area displays instructions for selecting the port.



**7. Click Utilities.**

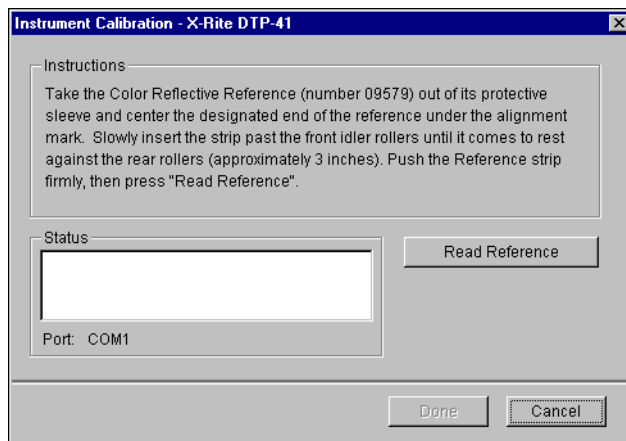
The Utilities dialog box appears.



To view version and serial number information, click Show DTP-41 Info, and then click Done.

**8. Click Calibrate DTP-41.**

The Instrument Calibration dialog box appears.



9. **If you have not already done so, remove the shipping spacer from the measurement page slot.**
10. **Insert the end of the Color Reflection Reference strip into the calibration strip entrance on the DTP41. Center the arrow on the strip below the alignment mark (see the diagram on [page A-2](#)), and slide the strip into the DTP41 until you feel the resistance of the feed mechanism.**
11. **Click Read Reference in the Instrument Calibration dialog box.**

The DTP41 pulls the calibration strip through automatically.

A message appears in the Status area when the calibration is finished.
12. **Click Done.**
13. **Close the Utilities window.**

This completes DTP41 calibration.

When the DTP41 requires calibration, your computer prompts you. When the prompt message appears, click Calibrate Now and follow the instructions, starting with [step 8 on page A-7](#).

After calibrating the DTP41, calibrate the Fiery (see [page 2-10](#)).

## Using the X-Rite DTP32 densitometer

ColorWise Pro Tools are designed to work with the X-Rite DTP32 reflection densitometer, which feeds color measurements to the Fiery automatically.

**NOTE:** Measurements from other densitometers can be input using a simple ASCII file format (see [Appendix B](#)).



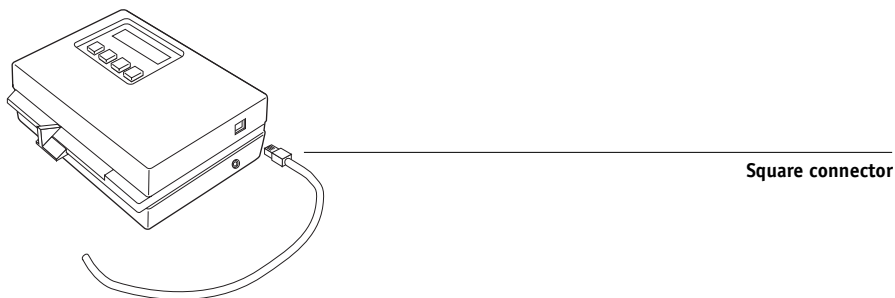
## Setting up the DTP32

Before you calibrate the Fiery using the X-Rite DTP32, you need to connect, configure, and calibrate the densitometer to prepare for measuring the printed patches (see “[Calibrating the DTP32](#)” on page A-11). For additional information about setting up and using the DTP32, see the separate documentation included with the densitometer.

---

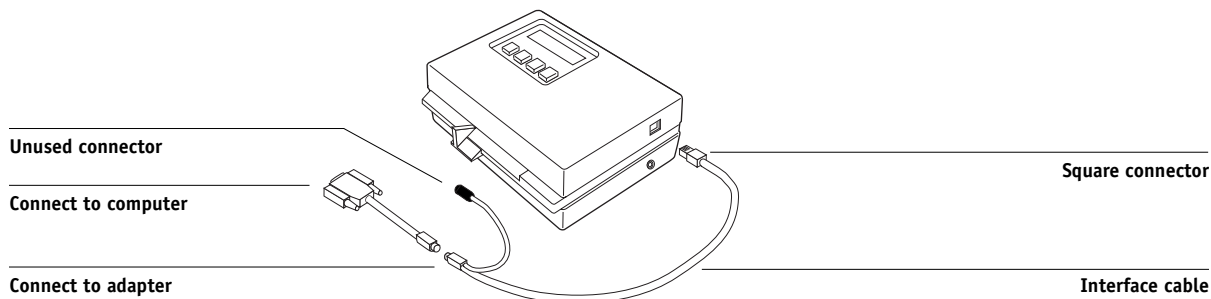
### TO CONNECT THE X-RITE DTP32 TO THE COMPUTER

1. Turn off the computer.
2. Plug the square end of the interface cable (looks like a modular phone plug) into the I/O port on the side of the X-Rite DTP32.

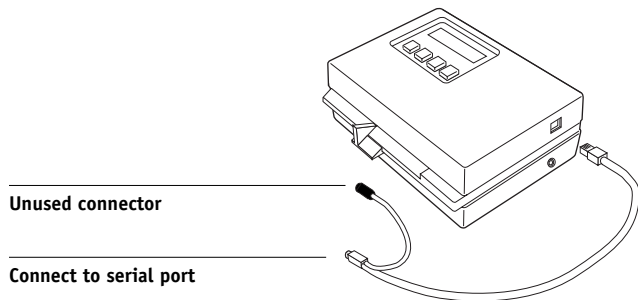


3. Attach the connector to the computer.

For a Windows computer, insert the 8-pin mini-DIN end of the interface cable into the 9-pin DB9 Connector cable adapter. Insert the 9-pin end into the COM1 or COM2 port on the computer and tighten the screws. If the available port on your computer is 25-pin, you must use the 8-pin-to-25-pin adapter.

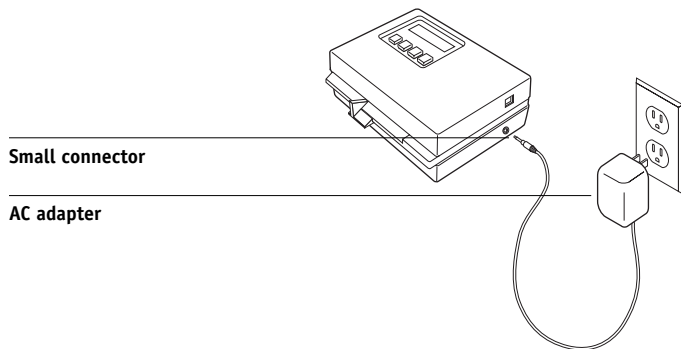


For a Mac OS computer, connect the 8-pin mini-DIN plug directly into the serial port of the computer.



**NOTE:** For Mac OS computers with a USB port (for example, an iMac), you need an adapter to connect the DTP32 to your computer. For information on supported adapters, see the X-Rite, Inc. web site ([www.x-rite.com](http://www.x-rite.com)).

4. Plug the small connector on the adapter cable into the side of the X-Rite DTP32 and plug the AC adapter into a wall outlet.



5. Turn on the computer.
6. Calibrate the DTP32 (see the following section).
7. Calibrate the Fiery using ColorWise Pro Tools and the DTP32 (see [page 2-15](#)).

## Calibrating the DTP32

You will need the black-and-white X-Rite Auto-Cal Strip included with the densitometer. Calibrating the densitometer does not require ColorWise Pro Tools.

---

### TO CALIBRATE THE X-RITE DTP32

1. **Connect the densitometer to the computer and supply power (see [page A-9](#)).**
2. **From the main menu on the X-Rite DTP32 display, press the p1 key once to reach p2.**
3. **Press the cal key.**  
Calibrating motor speed is displayed, followed by the words INSERT CAL STRIP.
4. **Insert the X-Rite Auto-Cal Strip into the 35mm slot on the front of the X-Rite DTP32—arrow end first—until it stops or the densitometer starts pulling the strip.**  
Reading appears momentarily, followed by the density values and CALIBRATION OK.  
The densitometer automatically returns to the MAIN MENU.  
If UNRECOGNIZABLE STRIP appears, repeat the process or try cleaning the strip (see the X-Rite DTP32 Operating Manual).
5. **Start ColorWise Pro Tools and calibrate the Fiery.**

Recalibrate the DTP32 at least once per month. For critical color, calibrate the densitometer every time you calibrate the Fiery. The DTP32 may also warn periodically that it requires calibration.



## Appendix B: Importing Density Measurements

This appendix describes Simple ASCII File Format, which can be used to import density measurements from measurement devices. To use your own measurement data from an alternate measurement instrument, record your individual readings in a text file and structure it as follows.

### Simple ASCII Import File Format (SAIFF)

This format describes **Status T** measurement data for import into the ColorWise Pro Tools Calibrator. The three possible file formats are:

- 1D Status T density for EFI 34 patch page
- 1D Status T density for EFI 21 patch page
- 1D Status T density for other pages (maximum of 256 patches per ink)

The file format is ASCII and has no tabs. A single space or multiple spaces are used as delimiters. Blank lines are not allowed. Each line in the file represents four patches (C, M, Y, K) of a specific ink value. Comments may be on any line in the file, and these lines start with a pound sign (#) followed by a space. A line with a pound sign followed by any character other than a space has been reserved. Comments must be on an entire line by themselves.

Each line of data contains five values. The first number is the sequential patch number (for EFI 34 and EFI 21 pages) or the ink value percentage (for other pages). The four values that follow are the density values of C, M, Y, and K of the corresponding patch. Lines are ordered either by increasing sequential patch numbers, or by increasing the ink percentage.

For Windows computers, the file extension must be .cm1. For Mac OS computers, the file type must be 'TEXT'.

Measurement data in EFI 34 and EFI 21 are paper-relative. For other pages, if the first line corresponds to zero ink value, the Calibrator assumes that the measurement data is absolute and adjusts it to become paper-relative by subtracting the density values of the first line from the remaining patches.

### Example of 1D Status T density for EFI 34 patch page

This file format is used to specify the Status T density measurements of the EFI 34 patch page. The value in the first column is the patch number. The first patch must be 1 and the last must be 34.

```

#!EFI 3
# EFI ColorWise 2.0 Data
type: 1DST34
# Cyan    Magent Yellow Black
1 0.0300 0.0400 0.0200 0.0400
2 0.0600 0.0700 0.0800 0.0700
3 0.1000 0.1000 0.1000 0.1000
(...more data...)
33 1.6700 1.3400 0.8900 1.6700
34 1.7200 1.4300 0.9300 1.7500

```

### Example of 1D Status T density for EFI 21 patch page

This file format is used to specify the Status T density measurements of the EFI 21 patch page. The value in the first column is the patch number. The first patch must be 1 and the last must be 21.

```

#!EFI 3
# EFI ColorWise 2.0 Data
type: 1DST21
# Cyan    Magent Yellow Black
1 0.0300 0.0400 0.0200 0.0400
2 0.0600 0.0700 0.0800 0.0700
3 0.1000 0.1000 0.1000 0.1000
(...more data...)
20 1.6700 1.3400 0.8900 1.6700
21 1.7200 1.4300 0.9300 1.7500

```

### Example of 1D Status T density for an arbitrary page

This file format is used to specify the Status T density measurements of a user-defined patch page. The value in the first column is the ink/toner percentage of the patch. The first percentage must be 0 and the last percentage must be 100. The percentages must increase in between.

```
#!EFI 3
# EFI ColorWise 2.0 Data
type: 1DST
# percent Cyan Magent Yellow Black
0.0000 0.0300 0.0400 0.0200 0.0400
0.3922 0.0600 0.0700 0.0800 0.0700
1.1765 0.1000 0.1000 0.1000 0.1000
(...more data...)
98.0000 1.6700 1.3400 0.8900 1.6700
100.0000 1.7200 1.4300 0.9300 1.7500
```





# Index

## A

Absolute Colorimetric rendering style 1-6  
Apple Standard setting, RGB Source Profile  
    option 3-2  
Apple Standard setting, RGB Source profile  
    option 1-7  
AutoCal calibration 2-24

## B

Black Detection option 1-5  
Black Overprint option 1-4, 1-12  
black text and line art 1-4, 1-11 to 1-13  
Brightness option 1-3

## C

CALIB.PS file 3-21  
calibration  
    AutoCal 2-23 to 2-27  
    bypassing 1-4  
    checking status 2-5  
    ColorCal 2-23 to 2-27  
    Comparison Page 2-8  
    curves 2-3, 2-9  
    DTP32 2-15  
    DTP41 2-11  
    ED-100 2-19  
    importing density measurements B-1 to  
        B-3  
    importing target file 3-12  
    measurement page 2-4  
    measurements 2-2  
    overview 2-2 to 2-5  
    patches 2-4  
    restoring defaults 2-10  
    scanner 2-25  
    scheduling 2-4  
    targets 2-2, 2-3  
    viewing measurements 2-9

## Calibrator

Expert Mode 2-8  
printing Comparison Page 2-8  
restoring defaults 2-10  
using 2-6 to 2-10  
viewing measurements 2-9

## CMYK Simulation Method

option 1-4, 1-10

## CMYK Simulation Profile option 1-4, 1-9

## Color Editor

AutoGray 3-18  
dot gain adjustment 3-13  
Edit Modes 3-11  
importing calibration target 3-12  
undoing simulation edits 3-17

## color management system (CMS) xii

## Color Mode option 1-3

color profiles, *see* ICC profiles

## Color Reference pages 2-5

color rendering dictionary  
    (CRD) xiii, 1-3, 1-6, 1-17

color rendering styles, *see* rendering styles

color separations, *see* separations

## Color Setup 3-22

color space 1-1, 1-3, 1-4

## ColorCal calibration 2-24

## ColorSync Color Matching option 1-18

## ColorWise

key features xii, 3-22  
print options 1-3 to 1-14, 3-22  
workflow diagram 1-2

## ColorWise Pro Tools

Calibrator 2-6 to 2-10  
checking calibration status 2-5  
Color Editor 3-10 to 3-21  
Color Setup 3-22  
Profile Manager 3-2 to 3-10

## Combine Separations option 1-3, 1-5

Comparison Page 2-8, 3-21  
 composites, printing 1-3, 1-5, 1-12, 1-14  
 Configuration page 2-5  
 Contrast ICC rendering style 1-6  
 custom simulations 1-9

## D

default color controls set in Setup 1-3  
 densitometer  
     DTP32 2-15 to 2-17, A-8 to A-11  
     ED-100 2-17 to 2-22  
 density values  
     about 2-3, 2-5  
     importing B-1 to B-3  
 DIC, CMYK Simulation option 3-2  
 dot gain values, adjusting 3-13  
 drivers, *see* printer drivers  
 DTP32  
     calibrating with 2-15  
     instrument calibration A-11  
     setup A-9  
 DTP41  
     calibrating with 2-11  
     instrument calibration A-5  
     setup A-2

## E

ED-100 2-18 to 2-19  
 EFI Densitometer, *see* ED-100  
 EFI Spectrometer, *see* ES-1000  
 EFIRGB, RGB Source Profile  
     option 1-7, 3-2  
 ES-1000 2-17  
 Euroscale, CMYK Simulation option 3-2

## F

Full (Output GCR) setting, CMYK  
     Simulation Method option 1-10  
 Full (Source GCR) setting, CMYK  
     Simulation Method option 1-10

## G

Gamma option 1-3  
 Graphics ICC rendering style 1-6  
 gray balance, correcting 3-18

## I

ICC profiles  
     backing up 3-6  
     default directory 3-4  
     defined xiii  
     defining 3-8  
     deleting 3-7  
     descriptions 3-2  
     downloading 3-4  
     editing 3-10 to 3-21  
     gray balance, correcting 3-18  
     rendering styles 1-6  
     setting defaults 3-3  
 Image ICC rendering style 1-6  
 Image Smoothing option 1-5

## M

Mac OS color management  
     options  
     1-16 to 1-19  
 Match Copy setting of CMYK  
     Simulation option 1-4  
 measurements page 2-4

## N

None setting, RGB Source  
     Profile option 1-8

## O

Other setting, RGB Source  
     Profile option 1-7  
 Output Profile option 1-4, 1-10  
 output profiles, calibration sets  
     for 2-3, 2-4, 3-10

**P**

- PANTONE Coated Color
  - Reference 1-14
- passwords
  - for calibration 2-2, 2-6
  - for profile management 3-2
- patches page 2-4
- Perceptual ICC rendering style 1-6
- Phosphors option 1-3
- Photographic rendering style 1-6
- PostScript color issues
  - 1-2, 1-8, 1-12, 1-13
- PostScript Color Management 1-17
- PostScript Color Matching
  - option 1-17
- PPD 1-15, 1-17
- Presentation rendering style 1-6
- Print Mode option 1-3
- print options
  - about 1-3 to 1-14
  - Mac OS 1-16 to 1-19
  - setting defaults 3-22
  - Windows 1-15 to 1-16
- printer drivers
  - Mac OS 1-16 to 1-19
  - two-way communication
    - 1-7, 1-9, 1-11
  - Windows 1-15 to 1-16
- Profile Manager
  - backing up profiles 3-6
  - defining profiles 3-8
  - deleting profiles 3-7
  - downloading profiles 3-4
  - setting defaults 3-3
- profiles, *see* ICC profiles
- Pure Black Text/Graphics
  - option 1-4, 1-11

**Q**

- Quick setting, CMYK Simulation
  - Method option 1-10

**R**

- Relative Colorimetric rendering style 1-6
- Rendering Style option 1-3
- rendering styles xiii, 1-2, 1-3, 1-6
- RGB images
  - defining source profiles for 1-7, 3-2
  - PostScript and non-PostScript
    - conversion 1-8
- RGB Separation option 1-4, 1-8
- RGB Source Profile option 1-2, 1-3, 1-7

**S**

- SAIFF format B-1 to B-3
- Saturation ICC rendering style 1-6
- scanner, calibrating 2-25
- Screen Switching option 1-5
- separations
  - printing 1-3, 1-5, 1-12, 1-14
  - target color space 1-4, 1-8
- Setup, default color controls set in 1-3
- Sharpness option 1-5
- simulations, custom 1-9
- Source 1-10 setting, RGB Source Profile
  - option 1-7
- spectrometer, *see* spectrophotometer
- spectrophotometer, DTP41 2-10 to
  - 2-14, A-1 to A-8
- Spot Color Matching option 1-5, 1-13
- spot colors, matching to CMYK
  - equivalents 1-13
- sRGB, RGB Source Profile option 1-7, 3-2
- Status T B-1
- SWOP setting, CMYK Simulation Profile
  - option 1-9, 3-2

## **T**

- targets, for calibration 2-3
- Test Page 2-5
- Text and Graphics Enhancement option 1-5
- transfer functions 2-3
- two-way communication 1-7, 1-9, 1-11

## **U**

- undercolor removal (UCR) 1-8

## **W**

- White Point option 1-4
- Windows color management options  
1-15 to 1-16