

Fiery Network Controller for DocuColor 3535

USER SOFTWARE INSTALLATION GUIDE



About the Documentation

This manual is part of a set of Fiery Network Controller for DocuColor 3535™ documentation that includes the following manuals for users and system administrators:

- The *Quick Start Guide* summarizes the steps for configuring the Fiery Network Controller for DocuColor 3535 and printing. It also describes how to access the online documentation.
- The *User Software Installation Guide* describes how to install software from the User Software CD to enable users to print to the Fiery Network Controller for DocuColor 3535, and also describes setting up printing connections to the Fiery Network Controller for DocuColor 3535.
- The *Configuration Guide* explains basic configuration and administration of the Fiery Network Controller for DocuColor 3535 for the supported platforms and network environments. It also includes guidelines for setting up UNIX, Windows NT 4.0/2000, and Novell NetWare servers to provide printing services to users.
- The *Printing Guide* describes the printing features of the Fiery Network Controller for DocuColor 3535 for users who send jobs from their computers.
- The *Color Guide* provides information on managing the color output of the Fiery Network Controller for DocuColor 3535. It explains how to calibrate your copier and take advantage of the ColorWise® color management system, as well as features in ColorWise Pro Tools™.
- The *Fiery Color Reference* addresses concepts and issues associated with managing color output of the Fiery Network Controller for DocuColor 3535 and outlines key workflow scenarios. In addition, it offers information on printing color documents from popular Microsoft Windows and Apple Mac OS applications.
- The *Job Management Guide* explains the functions of the job management utilities, including Command WorkStation™ and DocBuilder Pro™, and how you can use them to monitor and control jobs on the Fiery Network Controller for DocuColor 3535. This manual is intended for an operator or administrator, or a user with the necessary access privileges, who monitors and manages job flow, performs color calibration, and troubleshoots problems that may arise.
- *Customer Release Notes* provide last-minute product information and workarounds for some of the problems you may encounter.

Copyright © 2003 Electronics For Imaging, Inc. All rights reserved.

This publication is protected by copyright, and all rights are reserved. No part of it may be reproduced or transmitted in any form or by any means for any purpose without express prior written consent from Electronics For Imaging, Inc., except as expressly permitted herein. Information in this document is subject to change without notice and does not represent a commitment on the part of Electronics For Imaging, Inc.

The software described in this publication is furnished under license and may only be used or copied in accordance with the terms of such license.

This product may be covered by one or more of the following U.S. Patents: 4,500,919, 4,837,722, 5,212,546, 5,343,311, 5,424,754, 5,467,446, 5,506,946, 5,517,334, 5,537,516, 5,543,940, 5,553,200, 5,615,314, 5,619,624, 5,625,712, 5,666,436, 5,760,913, 5,818,645, 5,835,788, 5,867,179, 5,959,867, 5,970,174, 5,982,937, 5,995,724, 6,002,795, 6,025,922, 6,041,200, 6,065,041, 6,112,665, 6,122,407, 6,134,018, 6,141,120, 6,166,821, 6,185,335, 6,201,614, 6,215,562, 6,219,659, 6,222,641, 6,224,048, 6,225,974, 6,226,419, 6,238,105, 6,239,895, 6,256,108, 6,269,190, 6,289,122, 6,292,270, 6,310,697, 6,327,047, 6,327,050, 6,327,052, RE36,947, D406,117, D416,550, D417,864, D419,185, D426,206, D439,851, D444,793

Trademarks

ColorWise, EDOX, EFI, Fiery, the Fiery logo, Fiery Driven and RIP-While-Print are registered trademarks of Electronics For Imaging, Inc. in the U.S. Patent and Trademark Office and/or certain other foreign jurisdictions.

The eBeam logo, the Electronics For Imaging logo, the Fiery Driven logo, the PrintMe logo, the Splash logo, AutoCal, ColorCal, Command WorkStation, DocBuilder, DocBuilder Pro, DocStream, eBeam, EFI Color Profiler, EFI Production System, EFI ScanBuilder, Fiery X2, Fiery X2e, Fiery X2-W, Fiery X3e, Fiery X4, Fiery ZX, Fiery Z4, Fiery Z5, Fiery Z9, Fiery Z16, Fiery Z18, Fiery Document WorkStation, Fiery Downloader, Fiery Driver, Fiery FreeForm, Fiery Link, Fiery Prints, Fiery Print Calibrator, Fiery Production System, Fiery Scan, Fiery ScanBuilder, Fiery Spark, Fiery Spooler, Fiery WebInstaller, Fiery WebScan, Fiery WebSpooler, Fiery WebStatus, Fiery WebTools, NetWise, PrintMe, PrintMe Networks, Print Me. Everywhere You Go, RIPChips, Splash, Velocity, Velocity Balance, Velocity Build, Velocity Design, Velocity Estimate, Velocity Scan, and VisualCal are trademarks of Electronics For Imaging, Inc.

All other terms and product names may be trademarks or registered trademarks of their respective owners, and are hereby acknowledged.

Legal Notices

APPLE COMPUTER, INC. ("APPLE") MAKES NO WARRANTIES, EXPRESS OR IMPLIED, INCLUDING WITHOUT LIMITATION THE IMPLIED WARRANTIES OF MERCHANTABILITY AND FITNESS FOR A PARTICULAR PURPOSE, REGARDING THE APPLE SOFTWARE. APPLE DOES NOT WARRANT, GUARANTEE, OR MAKE ANY REPRESENTATIONS REGARDING THE USE OR THE RESULTS OF THE USE OF THE APPLE SOFTWARE IN TERMS OF ITS CORRECTNESS, ACCURACY, RELIABILITY, CURRENTNESS, OR OTHERWISE. THE ENTIRE RISK AS TO THE RESULTS AND PERFORMANCE OF THE APPLE SOFTWARE IS ASSUMED BY YOU. THE EXCLUSION OF IMPLIED WARRANTIES IS NOT PERMITTED BY SOME STATES. THE ABOVE EXCLUSION MAY NOT APPLY TO YOU.

IN NO EVENT WILL APPLE, ITS DIRECTORS, OFFICERS, EMPLOYEES OR AGENTS BE LIABLE TO YOU FOR ANY CONSEQUENTIAL, INCIDENTAL OR INDIRECT DAMAGES (INCLUDING DAMAGES FOR LOSS OF BUSINESS PROFITS, BUSINESS INTERRUPTION, LOSS OF BUSINESS INFORMATION, AND THE LIKE) ARISING OUT OF THE USE OR INABILITY TO USE THE APPLE SOFTWARE EVEN IF APPLE HAS BEEN ADVISED OF THE POSSIBILITY OF SUCH DAMAGES. BECAUSE SOME STATES DO NOT ALLOW THE EXCLUSION OR LIMITATION OF LIABILITY FOR CONSEQUENTIAL OR INCIDENTAL DAMAGES, THE ABOVE LIMITATIONS MAY NOT APPLY TO YOU. Apple's liability to you for actual damages from any cause whatsoever, and regardless of the form of the action (whether in contract, tort [including negligence], product liability or otherwise), will be limited to \$50.

Restricted Rights Legends

For defense agencies: Restricted Rights Legend. Use, reproduction, or disclosure is subject to restrictions set forth in subparagraph (c)(1)(ii) of the Rights in Technical Data and Computer Software clause at 252.227.7013.

For civilian agencies: Restricted Rights Legend. Use, reproduction, or disclosure is subject to restrictions set forth in subparagraph (a) through (d) of the commercial Computer Software Restricted Rights clause at 52.227-19 and the limitations set forth in Electronics For Imaging's standard commercial agreement for this software. Unpublished rights reserved under the copyright laws of the United States.

Part Number: 45029624

FCC Information

WARNING: FCC Regulations state that any unauthorized changes or modifications to this equipment not expressly approved by the manufacturer could void the user's authority to operate this equipment.

Class A Compliance

This equipment has been tested and found to comply with the limits for a Class A digital device, pursuant to Part 15 of the FCC Rules. These limits are designed to provide reasonable protection against harmful interference when the equipment is operated in a commercial environment. This equipment generates, and uses, and can radiate radio frequency energy and, if not installed and used in accordance with the instruction manual, may cause harmful interference to radio communications. Operation of this equipment in a residential area is likely to cause interference in which case the user will be required to correct the interference at his own expense.

Industry Canada Class A Notice

This Class A digital apparatus complies with Canadian ICES-003.

Avis de Conformation Classe A de l'Industrie Canada

Cet appareil numérique de la Classe A est conforme à la norme NMB-003 du Canada.

RFI Compliance Notice

This equipment has been tested concerning compliance with the relevant RFI protection requirements both individually and on system level (to simulate normal operation conditions). However, it is possible that these RFI Requirements are not met under certain unfavorable conditions in other installations. It is the user who is responsible for compliance of his particular installation.

Dieses Gerät wurde sowohl einzeln als auch in einer Anlage, die einen normalen Anwendungsfall nachbildet, auf die Einhaltung der Funkstörbestimmungen geprüft. Es ist jedoch möglich, dass die Funkstörbestimmungen unter ungünstigen Umständen bei anderen Gerätekombinationen nicht eingehalten werden. Für die Einhaltung der Funkstörbestimmungen einer gesamten Anlage, in der dieses Gerät betrieben wird, ist der Betreiber verantwortlich.

Compliance with applicable regulations depends on the use of shielded cables. It is the user who is responsible for procuring the appropriate cables.

Die Einhaltung zutreffender Bestimmungen hängt davon ab, dass geschirmte Ausführungen benutzt werden. Für die Beschaffung richtiger Ausführungen ist der Betreiber verantwortlich.

Software License Agreement

YOU SHOULD CAREFULLY READ THE FOLLOWING TERMS AND CONDITIONS BEFORE USING THIS SOFTWARE. IF YOU DO NOT AGREE TO THE TERMS AND CONDITIONS OF THIS AGREEMENT, DO NOT USE THE SOFTWARE. INSTALLING OR USING THE SOFTWARE INDICATES THAT YOU AGREE TO AND ACCEPT THE TERMS OF THIS AGREEMENT. IF YOU DO NOT AGREE TO ACCEPT THE TERMS OF THIS AGREEMENT YOU MAY RETURN THE UNUSED SOFTWARE FOR A FULL REFUND TO THE PLACE OF PURCHASE.

License

EFI grants you a non-exclusive license to use the software ("Software") and accompanying documentation ("Documentation") included with the Product. The Software is licensed, not sold. You may use the Software solely for your own customary business or personal purposes. You may not rent, lease, sublicense or lend the Software. You may, however, permanently transfer all of your rights under this Agreement to another person or legal entity provided that: (1) you transfer to the person or entity all of the Software and Documentation (including all copies, updates, upgrades, prior versions, component parts, the media and printed materials, and this Agreement); (2) you retain no copies of the Software and Documentation, including copies stored on a computer; and (3) the recipient agrees to the terms and conditions of this Agreement.

You may not make or have made, or permit to be made, any copies of the Software or portions thereof, except as necessary for backup or archive purposes in support of your use of the Software as permitted hereunder. You may not copy the Documentation. You may not attempt to alter, disassemble, decompile, decrypt or reverse engineer the Software.

Proprietary Rights

You acknowledge that the Software is proprietary to EFI and its suppliers and that title and other intellectual property rights therein remain with EFI and its suppliers. Except as stated above, this Agreement does not grant you any right to patents, copyrights, trade secrets, trademarks (whether registered or unregistered), or any other rights, franchises or licenses in respect of the Software. You may not adopt or use any trademark or trade name which is likely to be similar to or confusing with that of EFI or any of its suppliers or take any other action which impairs or reduces the trademark rights of EFI or its suppliers.

Confidentiality

You agree to hold the Software in confidence, disclosing the Software only to authorized users having a need to use the Software as permitted by this Agreement and to take all reasonable precautions to prevent disclosure to other parties.

Remedies and Termination

Unauthorized use, copying or disclosure of the Software, or any breach of this Agreement will result in automatic termination of this license and will make available to EFI other legal remedies. In the event of termination, you must destroy all copies of the Software and all of its component parts. All provisions of this Agreement relating to disclaimers of warranties, limitation of liability, remedies, damages, and EFI's proprietary rights shall survive termination.

Limited Warranty and Disclaimer

EFI warrants to the original purchaser ("Customer") for thirty (30) days from the date of original purchase from EFI or its authorized retailer that the Software will perform in substantial conformance to the Documentation when the Product is used as authorized by EFI's specifications. EFI warrants the media containing the Software against failure during the above warranty period. EFI makes no warranty or representation that the Software will meet your specific requirements, that the operation of the Software will be uninterrupted or error free, or that all defects in the Software will be corrected. EFI makes no warranty, implied or otherwise, regarding the performance or reliability of any third party products (software or hardware) not provided by EFI. THE INSTALLATION OF ANY THIRD PARTY PRODUCTS OTHER THAN AS AUTHORIZED BY EFI WILL VOID THIS WARRANTY. IN ADDITION, USE, MODIFICATION, AND/OR REPAIR OF THE PRODUCT OTHER THAN AS AUTHORIZED BY EFI WILL VOID THIS WARRANTY.

EXCEPT FOR THE ABOVE EXPRESS LIMITED WARRANTY, EFI MAKES AND YOU RECEIVE NO WARRANTIES OR CONDITIONS ON THE SOFTWARE, EXPRESS, IMPLIED, STATUTORY, OR IN ANY OTHER PROVISION OF THIS AGREEMENT OR COMMUNICATION WITH YOU, AND EFI SPECIFICALLY DISCLAIMS ANY IMPLIED WARRANTY OR CONDITION OF MERCHANTABILITY OR FITNESS FOR A PARTICULAR PURPOSE OR NONINFRINGEMENT OF THIRD PARTY RIGHTS.

Limitation of Liability

TO THE MAXIMUM EXTENT PERMITTED BY LAW, EFI AND ITS SUPPLIERS SHALL NOT BE LIABLE FOR ANY DAMAGES, INCLUDING LOSS OF DATA, LOST PROFITS, COST OF COVER OR OTHER SPECIAL, INCIDENTAL, CONSEQUENTIAL OR INDIRECT DAMAGES ARISING FROM THE SALE, INSTALLATION, MAINTENANCE, USE, PERFORMANCE OR FAILURE OF THE SOFTWARE, HOWEVER CAUSED AND ON ANY THEORY OF LIABILITY. THIS LIMITATION WILL APPLY EVEN IF EFI HAS BEEN ADVISED OF THE POSSIBILITY OF SUCH DAMAGE. YOU ACKNOWLEDGE THAT THE PRICE OF THE PRODUCT REFLECTS THIS ALLOCATION OF RISK. BECAUSE SOME JURISDICTIONS DO NOT ALLOW THE EXCLUSION OR LIMITATION OF LIABILITY FOR CONSEQUENTIAL OR INCIDENTAL DAMAGES, THE ABOVE LIMITATION MAY NOT APPLY TO YOU.

Export Controls

You agree that you will not export or re-export the Software in any form in violation of any applicable laws or regulations of the United States or the country in which you obtained them.

U.S. Government Restricted Rights:

The Software and Documentation are provided with RESTRICTED RIGHTS. Use, duplication, or disclosure by the United States Government is subject to restrictions as set forth in subparagraph (c)(1)(ii) of the Rights in Technical Data and Computer Software clause at DFARS 252.227-7013 or subparagraphs (c)(1) and (2) of the Commercial Computer Software Restricted Rights at 48 CFR 52.227-19, as applicable.

General

The laws of the State of California govern this Agreement. You agree that this Agreement shall not be subject to the United Nations Convention on Contracts for the International Sale of Goods (1980). This Agreement is the entire agreement held between us and supersedes any other communications or advertising with respect to the Software. If any provision of this Agreement is held invalid, the remainder of this Agreement shall continue in full force and effect.

If you have any questions, please see EFI's web site at www.efi.com.

Electronics For Imaging
303 Velocity Way
Foster City, CA 94404

Contents

About the Documentation

Introduction

About this manual	xi
Specifications	xii
User software	xiii
Fiery WebTools	xv
System requirements	xv

Chapter 1: Installing User Software on a Windows Computer

Setting up PostScript printing with Windows 9x/Me	1-1
Installing the PostScript printer driver for Windows 9x/Me	1-2
Configuring installed options	1-3
Completing the Windows 9x/Me printer connection	1-7
Setting up PostScript printing with Windows NT 4.0	1-14
Installing the PostScript printer driver for Windows NT 4.0	1-14
Configuring installed options	1-17
Completing the Windows NT 4.0 printer connection	1-20
Setting up PostScript printing with Windows 2000/XP	1-28
Installing the PostScript printer driver for Windows 2000/XP	1-28
Configuring installed options	1-32
Completing the Windows 2000/XP printer connection	1-35
Installing Fiery Mail Port	1-45
Installing Fiery utilities	1-50
Adobe Acrobat	1-52

Using Fiery utilities for the first time	1-53
Configuring the connection for Fiery utilities	1-53
Configuring the connection for Command WorkStation	1-55
Installing color files from the User Software CD	1-59
Installing the ICM profiles on a Windows computer	1-60
Loading the monitor settings file	1-60
Loading the ICM copier device profile	1-62
Installing the printer description files for Windows	1-63

Chapter 2: Installing User Software on a Mac OS Computer

Setting up the Fiery as a PostScript printer	2-1
Setting up Mac OS 9 printer drivers and printer description files	2-2
Setting up Mac OS X printer drivers and printer description files	2-4
Installing Fiery software and fonts	2-10
Installing MRJ on your computer	2-11
Configuring a connection for ColorWise Pro Tools	2-12
Configuring a connection for Fiery Spooler	2-15
Configuring a connection for Fiery Downloader	2-17
Fonts	2-19
Installing color files from the User Software CD	2-19
Loading ICC profiles	2-21
Loading the monitor settings file	2-22
Loading the ICC copier profile	2-23

Chapter 3: Downloading Installers with Fiery WebTools

Setting up Fiery WebTools	3-1
Using the Fiery WebTools Installer	3-2

Chapter 4: Troubleshooting

On a Windows computer	4-1
Setting up printing on Windows NT 4.0 or Windows 2000/XP computers	4-1
Reinstalling the Adobe PostScript Printer Driver on Windows 9x/Me	4-1
Problems with the Fiery utilities on Windows computers	4-1
On a Mac OS computer	4-2
Setting up the Fiery in the Chooser	4-2

Index

Introduction

This manual describes how to install user software for the Fiery Network Controller for DocuColor 3535, and how to set up printing from Microsoft Windows and Apple Mac OS computers. For information about setting up network servers and clients to use the Fiery Network Controller for DocuColor 3535, see the *Configuration Guide*. For general information on using the color copier, your computer, application software, or network, see the manuals that accompany those products.

NOTE: The term “Fiery” is used to refer to the Fiery Network Controller for DocuColor 3535. The name “Aero” is used in illustrations to represent the Fiery. The term “Windows 9x” is used to represent Windows 95 and Windows 98. The term “Windows” is used to refer to Windows 95, Windows 98, Windows Me, Windows NT 4.0, Windows 2000, and Windows XP wherever appropriate.

The Fiery includes support for Fiery WebTools™ and software for Command WorkStation. Fiery WebTools enables an operator to manage the Fiery remotely from the Internet or from your company’s intranet. Command WorkStation enables an operator to manage all jobs sent to the Fiery. Although it may not be the case at all sites, the documentation for this product assumes the presence of an operator who controls and manages jobs sent by users from remote workstations.

About this manual

This manual covers the following topics:

- Installing on Windows and Mac OS computers
- Setting up printing connections on Windows and Mac OS computers
- Installing Fiery® utilities/other user software on Windows and Mac OS computers

Specifications

- Intel Pentium III, 850 MHz CPU
- 256MB RAM
- 20GB hard disk drive
- Supports AppleTalk, TCP/IP, and IPX/SPX protocols simultaneously
- Supports Port 9100
- Supports twisted pair (Fast Ethernet 100BaseTX or Ethernet 10BaseT)
- Supports Adobe PostScript 3
- Includes 136 fonts (126 Adobe Type 1 PostScript and 10 TrueType)

In addition, two Adobe Multiple Master fonts are included and are used for font substitution in PDF files.

- Built-in ColorWise color management and NetWise™ networking management
- Fiery WebTools, including WebSetup™ (Windows only), Status™, WebSpooler™, WebLink™, Installer™, WebDownloader™, and WebScan™
- Fiery utilities, including Fiery Spooler™ (Mac OS only), Fiery Downloader™, Fiery Scan™, and Fiery Remote Scan™
- ColorWise Pro Tools
- Command WorkStation (Windows only) software
- Supports DocBuilder Pro (available as an option)
- Supports Color Profiler (available as an option)
- Supports EFI Densitometer™ ED-100 (available as an option)
- Supports Internet Printing Protocol (IPP) for Windows 98, Windows Me, and Windows 2000/XP
- Supports E-mail printing
- Supports PrintMe™
- Supports scanning to E-mail

User software

Fiery user software is provided on the User Software CD.

Adobe and Microsoft PostScript Printer Drivers	Enables you to print to the Fiery from Windows 9x/Me, Windows NT 4.0, and Mac OS computers; also supports Fiery and PostScript 3 features. Windows 2000/XP users should use the Microsoft PostScript Printer Driver provided with those operating systems. (For Windows 2000/XP, only the PPD file is provided.)
PostScript Printer Description (PPD) file	For use with the PostScript printer driver that allows the Fiery to appear in the Print and Page Setup dialog boxes of popular applications. The Fiery PPDs provide information about the Fiery and your particular copier model to the application and printer driver you are using.
PostScript fonts (Mac OS only)	PostScript screen and printer fonts that correspond to the PostScript printer fonts installed on the Fiery. For a complete list of PostScript fonts installed on the Fiery, see Appendix B of the <i>Printing Guide</i> .
Fiery Downloader	Enables you to print PostScript files, Encapsulated PostScript (EPS) files, TIFF files, and Portable Document Format (PDF) files directly to the Fiery without opening the application in which they were created. You can also use it to manage the printer fonts installed on the Fiery.
Fiery Spooler (Mac OS only)	Enables you to view the order and priority of print jobs, customize printer settings for jobs, delete jobs, and move jobs between queues. You can also use it to view job accounting information.

ColorWise Pro Tools	ICC-open color management and calibration tools; enables you to edit and download ICC profiles.
Fiery Scan, Fiery Remote Scan	Standalone application and plug-in modules for supported TWAIN-compliant application software that enable you to scan images from the copier directly into the application. Enables you to scan to E-mail, Mailbox, Disk, FTP, Internet Fax, and the Hold queue. To use Fiery Remote Scan, see the <i>Printing Guide</i> .
Command WorkStation (Windows only)	Enables the operator to control the Fiery functions from Windows computers. To use Command WorkStation, see the <i>Job Management Guide</i> .
Fiery Mail Port (Windows only)	Enables you to send jobs to the Fiery in the form of e-mail attachments by adding the Fiery Mail Port software as a printer port.
Color management files	ICM (Windows) and ColorSync (Mac OS) color management files that enable you to maintain consistent color from your original artwork to the colors displayed on your monitor and then to the printed output.
Color reference files	Reference pages that you can print to view the range of colors available on your Fiery. For the most predictable color results, refer to these pages when defining colors in applications. For more information on color management, see the <i>Color Guide</i> .
Calibration files	Includes measurement files and targets that you can use with ColorWise Pro Tools.
MRJ (Mac OS only)	Mac OS Runtime for Java (MRJ) is required by all Java-based Fiery utilities. If MRJ is not detected when you install these utilities, the MRJ installer automatically starts.

NOTE: You can install PostScript printer drivers and printer description files from the User Software CD or from the Fiery with the Installer WebTool. For instructions, see “Using the Fiery WebTools Installer” on page 3-2.

Fiery WebTools

Fiery WebTools allow you to manage your Fiery remotely from the Internet or from your company's intranet. You access Fiery WebTools from the Fiery WebTools home page.

NOTE: To find out which Fiery WebTools are supported, see “Specifications” on page xii.

Fiery WebTools	Summary	For more information
Status	Shows you the jobs currently processing and printing.	See the <i>Printing Guide</i> .
WebSpooler	Allows you to view, manipulate, reorder, reprint, and delete jobs currently spooling, processing, or printing on the Fiery. It also allows you to view, print, and delete the Job Log.	See the <i>Job Management Guide</i> .
WebLink	Provides a link to another web page defined by the administrator, provided you have a valid Internet connection.	See the <i>Printing Guide</i> and the <i>Configuration Guide</i> .
Installer	Allows you to download Fiery printer file installers directly from the server.	See Chapter 3.
WebDownloader	Allows you to download PostScript, EPS, and PDF files to the Fiery.	See the <i>Printing Guide</i> .
WebSetup (Windows only)	Allows you to modify the Fiery configuration (Setup) remotely. This function requires the Administrator password, if one has been set.	See the <i>Configuration Guide</i> .
WebScan	Allows you to view and print images that have been scanned to the copier.	See the <i>Printing Guide</i> .

System requirements

System requirements are described in detail in the printed *Quick Start Guide* provided in your media pack.

Chapter 1: Installing User Software on a Windows Computer

This chapter describes the procedures for installing software and setting up printing from a computer using a supported version of Windows. For the Windows versions supported, see the *Quick Start Guide*.

The general steps for installing the software are as follows:

- Install the PostScript printer driver and corresponding printer driver files and set up the printer driver to communicate with the Fiery.
- Install Fiery utilities and user software—Fiery Mail Port, Fiery Scan, Fiery Remote Scan, Fiery Downloader, ColorWise Pro Tools, and Command WorkStation.
- Configure the connection for Fiery utilities and user software.
- Copy additional files from the User Software CD as required.

In addition to using the User Software CD, you can download printer drivers from the Fiery with the Installer WebTool (if the administrator has enabled Internet access to the Fiery). For instructions, see “[Using the Fiery WebTools Installer](#)” on page 3-2. Once you download the printer files, the installation process is identical to installing from the User Software CD.

Setting up PostScript printing with Windows 9x/Me

To set up the Fiery as a PostScript printer, you must install the PostScript printer driver for Windows 9x/Me and the corresponding printer description files. You must also configure either a local connection for printing directly or a network connection for printing over the network.

If you are printing using SMB (Server Message Block), you can connect to the Fiery and install the printer drivers in a single procedure. For more information, see “[Setting up SMB printing with Windows 9x/Me](#)” on page 1-10.

Installing the PostScript printer driver for Windows 9x/Me

The following procedure describes installing the printer driver from the User Software CD or from the Installer WebTool. Subsequent procedures describe configuring installable options and setting up the printer connection.

NOTE: The following procedures display Windows 98 illustrations; Windows 95 and Windows Me differences are noted.

TO INSTALL THE POSTSCRIPT PRINTER DRIVER FOR WINDOWS 9x/ME

1. Click **Start**, choose **Settings**, and then choose **Printers**.
2. In the **Printers** window, double-click the **Add Printer** icon and click **Next**.
3. Specify printing using a **Local printer** and click **Next**.

This procedure describes the installation of a local printer. You can modify the connection later, according to your network type.

4. In the dialog box displaying lists of manufacturers and printers, click **Have Disk**.
The **Install From Disk** dialog box prompts you for the disk.
5. If you are installing from the User Software CD, insert it into the CD-ROM drive. Type the name of the CD-ROM drive (for example, **D:**), and click **Browse**. Browse to **English\Prntdrv\Ps_drvr\Win_9x_ME**.

If you are installing from the files you downloaded using the Installer WebTool, browse to **prntdrv\Prntdrv\Ps_drvr\Win_9x_ME**.

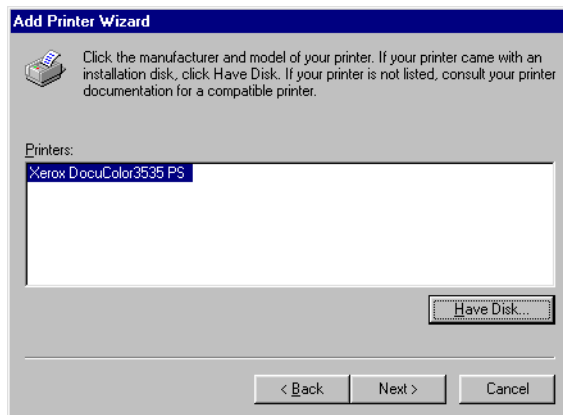
6. Make sure **"Oemsetup.inf"** is selected and click **OK**.

The path is copied to the **Install From Disk** dialog box.

7. Verify the path is correct and click **OK**.



8. Select the Fiery printer driver appropriate for your printer and click Next.



9. Select the LPT1 port and click Next.

You will configure the port later, according to your network type.

10. Enter a name for the Fiery.
11. To make the Fiery the default printer, select Yes; if not, select No and click OK (Windows 95) or Next (Windows 98/Me).
12. Select No to printing the Test Page and click Next (Windows 95) or Finish (Windows 98/Me).

The necessary PostScript files are installed to your computer.

Configuring installed options

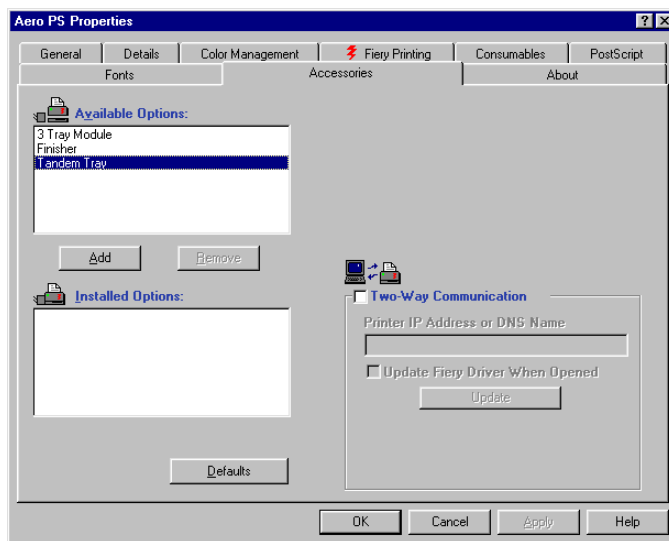
After you have completed the printer driver installation, you must configure the Fiery for the options installed on the copier. This allows the Fiery to take advantage of the copier options. You can configure the options manually. Or, for TCP/IP network connections, you can use the Two-Way Communication feature to configure the options automatically. For example, you can click the Two-Way Communications button to enter the IP address or DNS name of a networked printer.

Configuring installed options manually

The following procedure describes how to manually configure the Fiery for the options installed on the copier.

TO CONFIGURE OPTIONS MANUALLY FOR WINDOWS 9x/ME

1. Click Start, choose Settings, and then choose Printers.
2. Click the Fiery icon and choose Properties from the File menu.
3. Click the Accessories tab.
4. Select an installed option from the Available Options list.
5. Click Add to move the option to the Installed Options list.



Paper Deck Option—Not Installed, 3 Tray Module, Tandem Tray

Finisher Option—Not Installed, Finisher

6. Click Apply, and then click OK.

Configuring installed options and updating print options settings automatically

If you have a TCP/IP-enabled network, you can automatically update your printer driver to reflect the options currently installed on the copier. When the printer driver is first installed, the options have default settings that were set up in Fiery Setup or ColorWise Pro Tools. When you update the printer driver with the Two-Way Communication feature, you allow the Fiery to complete the actual setting.

The Two-Way Communication feature also updates Expert Color Settings options to reflect the current color settings on the Fiery. To access the Expert Color Settings options, click the Expert Settings tab in the ColorWise print option bar of the Fiery printing tab of your printer driver. For more information, see the *Color Guide*.

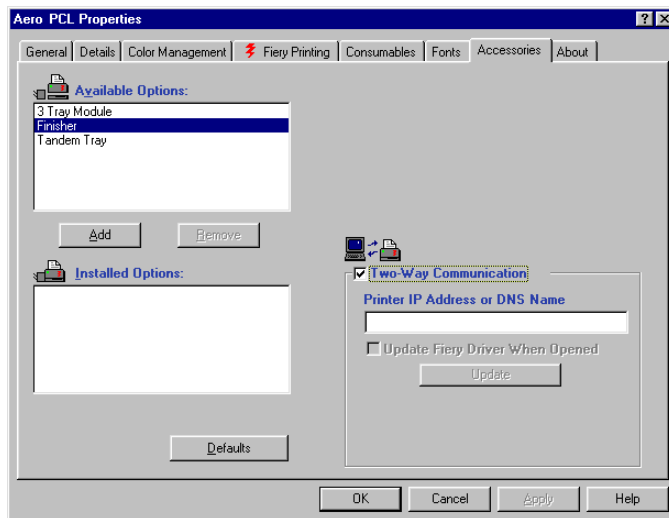
TO CONFIGURE INSTALLED OPTIONS AND UPDATE PRINT OPTIONS SETTINGS AUTOMATICALLY FOR WINDOWS 9x/ME

1. Click Start, choose Settings, and then choose Printers.
2. In the Printers window, select the icon for the Fiery PostScript printer driver.
3. Choose Properties from the File menu.
4. Click the Accessories tab.

1

1-6 Installing User Software on a Windows Computer

5. Select Two-Way Communication.



6. Type the Fiery IP address or DNS name.

7. To display the printer's current default settings when opened, select Update Fiery Driver When Opened.

8. Click Update, and then click OK.

Completing the Windows 9x/Me printer connection

To print from Windows 9x/Me, you must:

- Set up network servers, if any.
- Set up the Fiery to accept print jobs from your computer.
- Configure a port on each Windows 9x/Me computer for the network type.

To do this	See
Configure the IPX (Novell) connection	“Completing the Windows 9x/Me IPX/SPX or IPX (Novell) connection” on page 1-7.
Configure the SMB connection	“Setting up SMB printing with Windows 9x/Me” on page 1-10.
Configure the IPP connection	“Setting up IPP printing with Windows 9x/Me” on page 1-13.

Completing the Windows 9x/Me IPX/SPX or IPX (Novell) connection

If you are printing through a Novell server, the Novell network and file server should be set up before you begin. The file server should be configured with a print server and print connection for the Fiery. For details, see your NetWare documentation and the *Configuration Guide*.

To print from Windows 9x/Me computers over IPX (Novell), you must first set up IPX/SPX protocols, and then configure the Fiery by choosing the IPX frame type and entering the settings for the port you use.

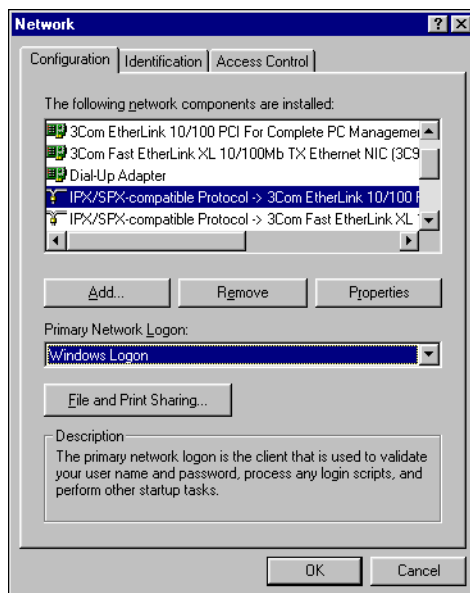
**TO SELECT A FRAME TYPE FOR IPX/SPX PRINTING
FOR WINDOWS 9X/ME**

1. Click Start, choose Settings, and then choose Control Panel.
2. Double-click the Network icon.

Make sure that IPX/SPX-compatible Protocol is listed in the installed network components pane.

For instructions, see your Windows 9x/Me documentation or contact Microsoft Technical Support.

3. Double-click the IPX/SPX-compatible Protocol icon.

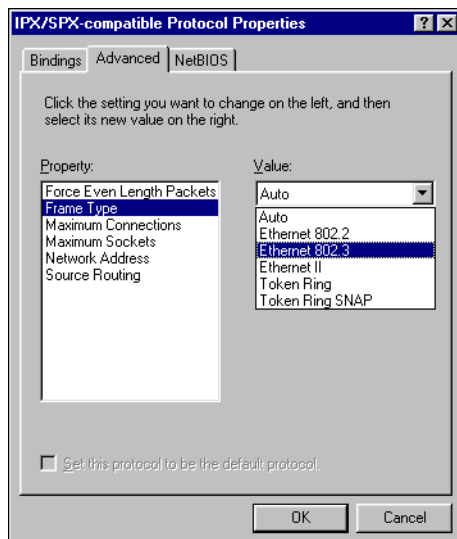


4. Click the Advanced tab.
5. Select Frame Type in the Property list.

6. In the Value menu, choose the Frame Type that corresponds to the one set in Fiery Network Setup.

If necessary, print the Configuration page from the Fiery Control Panel to determine which frame type(s) are configured.

NOTE: Do not select Auto. Doing so may not select the frame type specified on the Fiery.



7. Click OK and close the Network Control Panel.
8. When prompted to restart your computer, click Yes.

TO SET UP A PORT FOR IPX (NOVELL) PRINTING WITH WINDOWS 9x/ME

1. Click Start, choose Settings, and then choose Printers.
2. Click the Fiery printer icon and choose Properties from the File menu.

3. Click the Details tab and click Add Port.

A list of connection options appears.

4. In the Add Port dialog box, specify the network path or click Browse for a display of your network environment.

5. If you are using a NetWare file server, double-click the icon for the NetWare file server to use for printing to the Fiery.

6. Click the printer icon for the NetWare print queue you want to use, and then click OK.

7. In the Add Port dialog box, verify that the network path is updated and click OK.

Your print jobs are transmitted to the specified print queue on the Novell file server. The Fiery polls the file server, and if jobs are present, they are transmitted to the Fiery.

8. To confirm the connection, click the General tab, click Apply, and then click Print Test Page.

After the Test Page prints successfully, you are ready to print from the computer.

Setting up SMB printing with Windows 9x/Me

SMB printing (also known as Windows or WINS printing) allows you to install the PostScript printer driver and printer description files on your computer from the Fiery using Point and Print, and print to a particular connection (Hold, Print, or Direct). To set up SMB printing, you must have the TCP/IP protocol and Client for Microsoft Networks installed.

Each connection (Hold, Print, or Direct) requires a new printer driver and printer description file. Repeat the procedure [“To set up SMB printing on Windows 9x/Me”](#) for each connection. If you install more than one printer, give each a descriptive name during printer driver installation, such as Aero-Print or Aero-Hold, so you can easily identify printers.

BEFORE YOU BEGIN

- **Configure the Fiery for SMB printing from the WebSetup in WebSetup>Network Setup>Service 2>Enable Windows Print Services.**

SMB printing is referred to as Windows Printing in Setup, on the Configuration page.

TO SET UP SMB PRINTING ON WINDOWS 9X/ME

1. **Double-click the Network Neighborhood icon to display your network environment.**
2. **Browse for the printer you want to print to.**

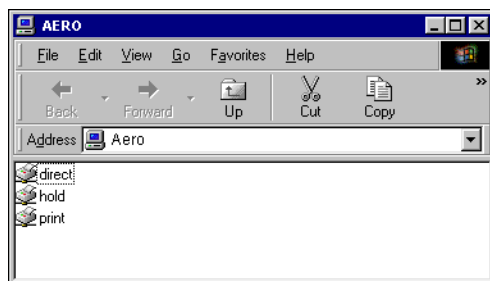
Browse for the name entered in Network Setup>Service Setup>Windows Setup>Server Name. For this information, see the Configuration page.

NOTE: You can also locate the printer using the Find feature on your Windows computer. Click Start, choose Search, and then choose For Files or Folders. On the left side, click Computers. Enter the name of the printer, and click Find Now.

If you are not able to locate your Fiery, contact your network administrator.

3. **Double-click the name of the printer to display enabled print connections.**

NOTE: For a description of each print connection, see the *Configuration Guide*.



4. **Double-click the name of the connection you want to print to.**

5. **Select Yes to install the PostScript printer driver and printer description file for the selected connection.**

The Add Printer Wizard dialog box appears.

6. **Specify whether you print from MS-DOS based programs and click Next.**

If you choose Yes, you must capture a printer port before proceeding with the installation. For details, see your Windows documentation.

7. **In the dialog box displaying lists of manufacturers and printers, click Have Disk.**

The Install From Disk dialog box prompts you for the disk.

8. **If you are installing from the User Software CD, insert it into the CD-ROM drive. Type the name of the CD-ROM drive (for example, D:\), and click Browse. Browse to English\Prntdrv\Ps_drvr\Win_9x_ME.**

If you are installing from the files you downloaded using the Installer WebTool, browse to prntdrv\Prntdrv\Ps_drvr\Win_9x_ME.

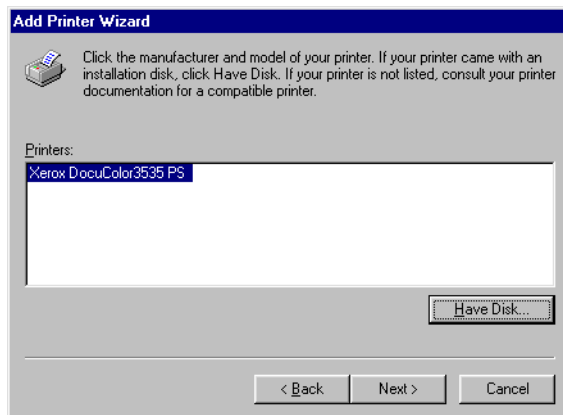
9. **Make sure "Oemsetup.inf" is selected and click OK.**

The path is copied to the Install From Disk dialog box.

10. **Verify the path is correct and click OK.**



11. Select the Fiery printer driver appropriate for your printer and click Next.



12. Type a name for the Fiery in the Printer name field and choose whether to make it the default printer. Click Next.
13. If you want to print a Test Page, choose Yes and click Finish.

The necessary files are installed to your computer.

If the Test Page prints successfully, you are ready to print from the computer.

Setting up IPP printing with Windows 9x/Me

With Internet Printing Protocol (IPP), print jobs are sent to the Fiery over the Internet.

IPP printing is supported on Windows 2000/XP but can be enabled on Windows 9x/Me computers by installing the “wpnpins.exe” client file (available on the Windows Me CD or the Windows 2000 Server CD). For more information about obtaining and installing this client, contact the Microsoft Corporation or Microsoft Technical Support.

NOTE: The IPP setup procedures are performed after installing the appropriate printer drivers. See “[To install the PostScript printer driver for Windows 9x/Me](#)” on page 1-2.

BEFORE YOU BEGIN

1. **Prepare the Fiery for TCP/IP printing.**
2. **Make sure the Fiery is configured for IPP printing.**
For more information, see the *Configuration Guide*.
3. **Specify the printing destination on your computer.**

TO SET UP IPP PRINTING WITH WINDOWS 9X/ME

1. **Click Start, choose Settings, and then choose Printers.**
2. **In the Printers windows, click the Fiery icon and choose Properties from the File menu.**
3. **Click the Details tab and click Add Port.**

The Add Port dialog box appears.

4. **Enter the network path for the printer.**

The path for the printer is the IP address or the DNS name, followed by ipp, and then by the Fiery connection you want to print to (print, hold, or direct). Insert slashes between the elements, for example, `http://10.10.10.150/ipp/print`.

5. **Click OK.**

Setting up PostScript printing with Windows NT 4.0

To set up the Fiery as a PostScript printer, you must install the PostScript printer driver for Windows NT 4.0 and the corresponding printer description files. You must also configure the print connection between the computer and the Fiery. If you are printing over a network, you must configure a network connection.

Installing the PostScript printer driver for Windows NT 4.0

The following procedures describe the installation of a local printer. Adding a printer to a local system requires that you log in to your local Windows NT 4.0 computer (not the network server domain) and that you are a member of the Administrators group. The procedure for adding a network printer is similar to adding a port. See “[Completing the Windows NT 4.0 TCP/IP and LPR connection](#)” on page 1-20.

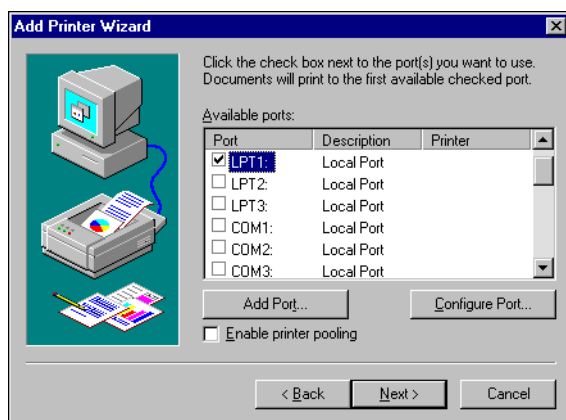
**TO INSTALL THE POSTSCRIPT PRINTER DRIVER
FOR WINDOWS NT 4.0**

1. Click Start, choose Settings, and then choose Printers.
2. Double-click Add Printer.
3. To install a printer locally, select My Computer and click Next.

My Computer is available if you logged in to a computer on which you have Administrator privileges. If it is not available, you can add a network printer. The procedure is similar to adding a port (see [page 1-21](#)).

4. Select LPT1: and click Next.

This is a general installation that works for the parallel port connection. You can add a network port later, according to your network type.



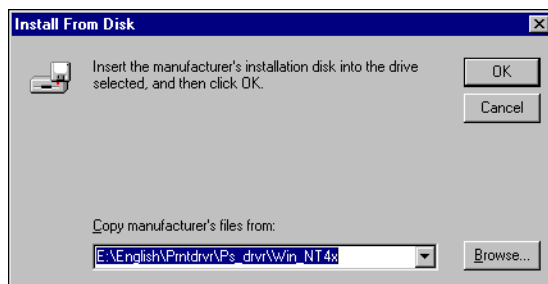
5. In the dialog box displaying lists of manufacturers and printers, click Have Disk.
The Install From Disk dialog box prompts you for the disk.
6. If you are installing from the User Software CD, insert it into the CD-ROM drive. Type the name of the CD-ROM drive (for example, D:\) and click Browse.
If you are installing from files you downloaded using the Installer WebTool, type the name of your hard disk drive (for example, C:\) and click Browse.
7. If you are installing from the CD, browse to the English\Prntdrv\Ps_drvr\Win_NT4x folder and click Open.

If you are installing from files you downloaded using the Installer WebTool, browse to the `prntdrv\Prntdrv\Ps_drvr\Win_NT4x` folder and click **Open**.

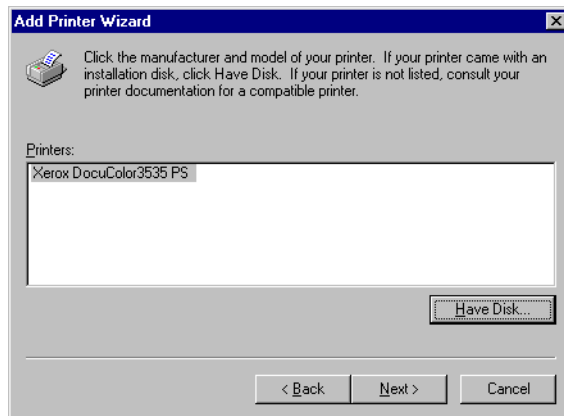
Make sure “Oemsetup.inf” or “Oemsetup” is selected.

The path is copied to the Install From Disk dialog box.

8. Verify that the path is correct and click **OK**.



9. In the Printers list, select the Fiery printer driver appropriate for your printer and click **Next**.



10. Type a name for the Fiery in the Printer name field and indicate whether you want to make it the default printer. Click **Next**.

11. **Indicate whether you want the printer installed as a shared printer, and click Next.**

If you select Shared, enter a Share Name for the printer and select the operating systems used by client computers. For information on shared printers, see the *Configuration Guide*.

12. **Click No to postpone printing a test page and click Finish.**

When installation is complete, the Printers window is displayed with an icon for the newly installed printer.

Configuring installed options

After you have completed the printer driver installation, you must configure the Fiery to reflect the options installed on the copier. This allows the Fiery to take advantage of the copier options. You can configure the options manually; or for TCP/IP network connections, you can use the Two-Way Communication feature to configure the options automatically.

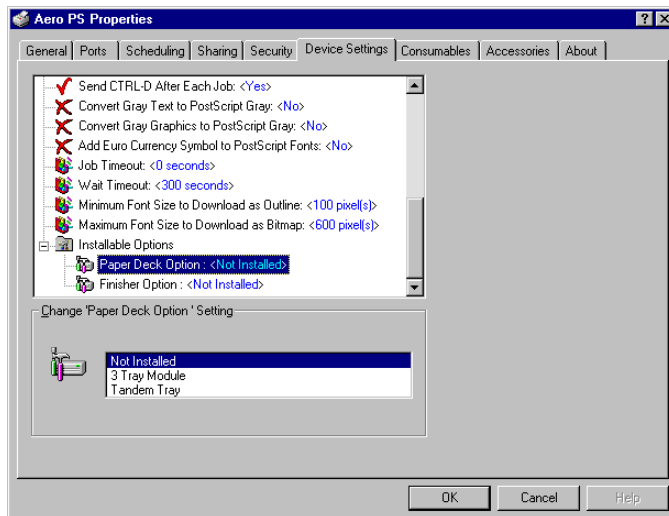
Configuring installed options manually

The following procedure describes how to manually configure the Fiery for the options installed on the copier.

TO CONFIGURE INSTALLABLE OPTIONS FROM THE POSTSCRIPT PRINTER DRIVER FOR WINDOWS NT 4.0

1. Click Start, choose Settings, and then choose Printers.
2. Click the Fiery icon and choose Properties from the File menu.

3. Click the **Device Settings** tab and scroll to **Installable Options**.



4. Select an **Installable Option** and choose a **setting**.

NOTE: Windows NT systems display installable options as a menu. You must select the installable option to activate the menu.

Paper Deck Option—Not Installed, 3 Tray Module, Tandem Tray

Finisher Option—Not Installed, Finisher

5. Click **OK** to activate the current settings.

You are ready to connect to your network type (see “[Completing the Windows NT 4.0 printer connection](#)” on page 1-20).

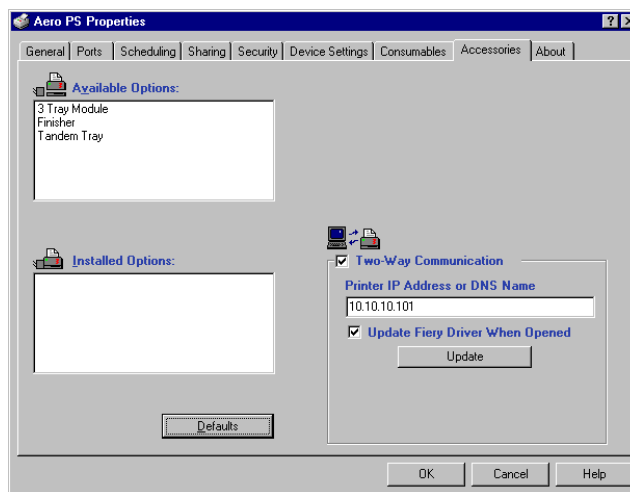
Configuring installed options and updating print options settings automatically

If you have a TCP/IP-enabled network, you can automatically update your printer driver to reflect the options currently installed on the Fiery. When the printer driver is first installed, the installable options have default settings that were set up in Fiery Setup or ColorWise Pro Tools. When you update the printer driver with the Two-Way Communication feature, you allow the Fiery to complete the actual setting.

The Two-Way Communication feature also updates Expert Color Settings options to reflect the current color settings on the Fiery. To access Expert Color Settings options, click the Expert Settings tab in the ColorWise print option bar of the Fiery printing tab of your printer driver. For more information, see the *Color Guide*.

TO SET UP TWO-WAY COMMUNICATION FOR POSTSCRIPT PRINTER DRIVERS FOR WINDOWS NT 4.0

1. Click Start, choose Settings, and then choose Printers.
2. In the Printers window, select the icon for the printer driver.
3. For PostScript, choose Properties from the File menu.
4. Click the Accessories tab.
5. Select Two-Way Communication.



6. Enter the Fiery IP address or DNS name.
7. If you want your printer driver to display the current settings when opened, select Update Fiery Driver When Opened.
8. Click Update.
9. Click OK.

Completing the Windows NT 4.0 printer connection

To print from Windows NT 4.0, you must:

- Set up network servers, if any.
- Set up the Fiery to accept print jobs from your computer.
- Configure a port on each Windows NT 4.0 computer for the network type.

To do this	See
Configure the TCP/IP (LPR port) connection	“Completing the Windows NT 4.0 TCP/IP and LPR connection” on page 1-20.
Configure the IPX (Novell) connection	“Completing the Windows NT 4.0 IPX (Novell) connection” on page 1-22.
Configure the SMB connection	“Setting up SMB printing on Windows NT 4.0” on page 1-25.

Completing the Windows NT 4.0 TCP/IP and LPR connection

After installing the PostScript printer driver and printer driver files, complete the setup for the TCP/IP and LPR connection by performing the following steps:

- Prepare the Fiery to accept print jobs using TCP/IP and LPR protocols.
For details, see the [Configuration Guide](#).
- Enable LPD from the Fiery Control Panel. For details, see the [Configuration Guide](#).
- Configure the computer for the TCP/IP connection.

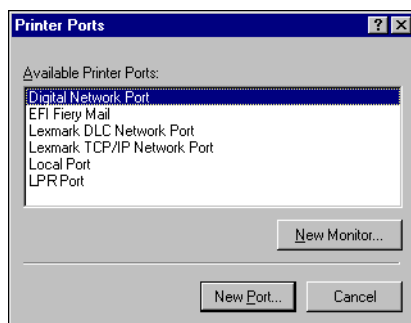
Before you continue, contact the system administrator for the IP address assigned to the Fiery, as well as the subnet mask and the gateway address, if they are used.

The TCP/IP protocol should already be installed on your Windows NT computer.

TO SET UP TCP/IP AND LPR PRINTING FOR WINDOWS NT 4.0

1. **Open the Properties dialog box for the Fiery and click the Ports tab.**
2. **Click Add Port.**

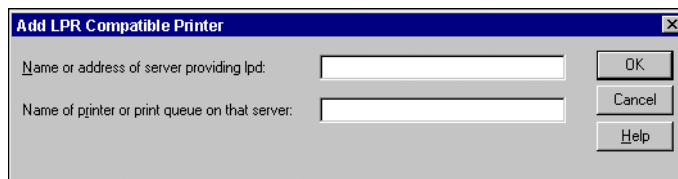
The available port types are displayed.



3. **Select LPR Port and click New Port.**

If the LPR port is not listed, install the TCP/IP network protocol and Microsoft TCP/IP printing software (see your Windows documentation).

4. **Type the IP address of the Fiery.**



If your network uses Domain Name Services (DNS), enter the DNS name assigned to the Fiery instead of the IP address.

5. **Type one of the following printer names, depending on the Fiery connection you want to print to.**

print
hold
direct

6. Click OK.

The computer checks the address or DNS name you entered and notifies you if it cannot resolve the address.

7. Click Close in the Printer Ports dialog box.

The new port configuration is reflected in the Ports tab. You must close the Printer Properties dialog box to verify the connection.

8. Click OK to close the Printer Properties dialog box.**9. Reopen the Printer Properties dialog box.****10. Click the General tab and click Print Test Page.**

When you print, your PostScript files are transmitted over the LPR Port connection to the Fiery.

11. Click OK to close the Printer Properties dialog box.**Completing the Windows NT 4.0 IPX (Novell) connection**

Complete the setup for the IPX (Novell) connection as follows:

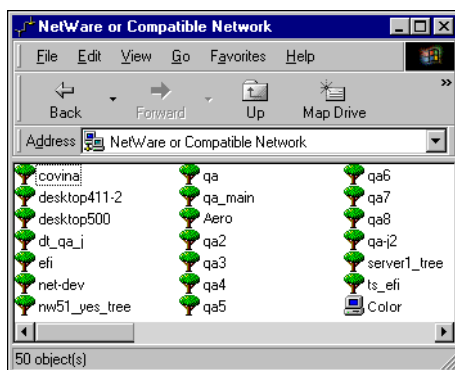
- Configure the Novell network and file server for handling Fiery print jobs. The file server should be configured with a print server and print connection for the Fiery. For details, see your NetWare documentation.
- Prepare the Fiery for IPX printing.
- Set up the IPX connection on the computer.

NetWare protocols (NWLink IPX/SPX Compatible Transport) and NetWare client services should already be installed on the Windows NT 4.0 computer.

TO SET UP IPX (NOVELL) PRINTING FOR WINDOWS NT 4.0

1. **Double-click Network Neighborhood.**
2. **Double-click NetWare or Compatible Network.**

A list of NetWare servers appears.

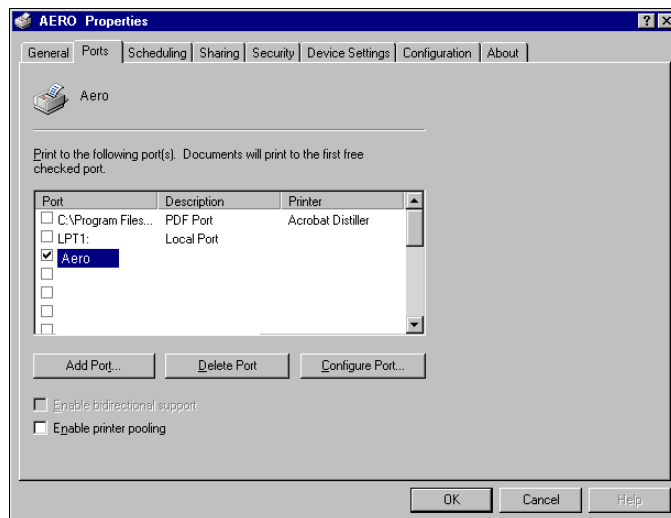


3. **Double-click the NetWare tree or file server on which the network administrator defined a print connection for the Fiery.**
You may have to log in to the file server to see the print connections.
4. **Double-click the print connection defined for the Fiery.**
5. **If the NetWare server does not have a suitable driver for the Fiery, you may be asked if you want to set up the printer on your computer. Click Yes.**
6. **Click OK to install the Fiery PostScript printer driver.**
7. **Follow steps 5 through 12 of the procedure on [page 1-15](#).**

When installation is complete, a new printer window appears, with the name of the print queue on the NetWare server.

8. Choose Properties from the File menu and click the Ports tab.

Verify that the connection to the NetWare queue is listed and selected as a port for the Fiery.

**9. Click the General tab and click Print Test Page.****10. In the printer Job Notes window, type user and job identification information and click OK.**

The Test Page remains listed in the queue window until it is printed.

The Fiery polls the NetWare server for print jobs in the print connection defined for the Fiery. When you print, your PostScript files are spooled to that connection and transmitted over the queue “port” to the Fiery.

Setting up SMB printing on Windows NT 4.0

SMB printing (also known as Windows printing) allows you to install the PostScript printer driver and printer description files, and print from your computer to a particular print connection (Hold, Print, or Direct) on the Fiery. These instructions assume you have installed the TCP/IP protocol and Client for Microsoft Networks.

Each connection (Hold, Print, or Direct) requires a new printer driver and printer description file. To set up printing to a second or third print connection, repeat the procedure “[To set up SMB printing on Windows NT 4.0](#)” on page 1-26. If you install more than one printer, give each a descriptive name during printer driver installation, such as Aero-Print or Aero-Hold, so you can easily identify printers.

NOTE: To change printer defaults and configure installable options from Windows NT 4.0, you must log on as Administrator and use the password specified in Fiery Setup. If you log on as a User, you can install the printer driver through Point and Print, but you cannot modify printer defaults and configure installable options.

BEFORE YOU BEGIN

- **Configure the Fiery for SMB printing from the Copier Control Panel in Run Setup>Network Setup>Service Setup>Windows Setup.**
- **Configure the Fiery for SMB printing from the WebSetup in WebSetup>Network Setup>Service 2>Enable Windows Print Services.**

SMB printing is referred to as Windows Printing in Setup on the Configuration page. For more information, see the [Configuration Guide](#).

TO SET UP SMB PRINTING ON WINDOWS NT 4.0

1. Double-click Network Neighborhood.



2. Browse for the printer you want to print to.

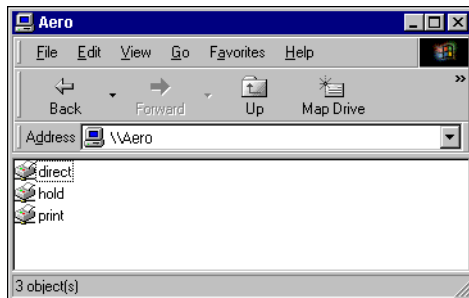
The printer name you are browsing for is the name entered in WebTools > WebSetup > Network Setup > Service Setup > Windows Setup > Server Name. For this information, see the Configuration page.

The amount of network traffic determines the amount of time required for the Browse function.

NOTE: You can also locate the printer with the Find feature on your Windows computer. Click Start, choose Find, and then choose Computer. Enter the name of the printer, and click Find Now.

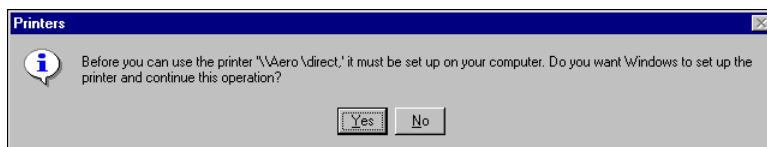
If you are not able to locate your Fiery, contact your network administrator.

3. Double-click the name of the Fiery to display enabled print connections.



4. Double-click the name of the connection you want to print to.

The Printers dialog box appears, asking whether you want to set up the printer.



5. Select Yes to complete the installation for the selected connection.

Windows NT 4.0 downloads the printer driver and printer description files from the Fiery to your computer and installation is complete.

If the server does not have a driver to install, use the following steps to finish the setup.

6. Click OK in the Connect to Printer dialog box.
7. In the dialog box displaying lists of manufacturers and printers, click Have Disk.

The Install From Disk dialog box prompts you for the disk.

8. If you are installing from the User Software CD, insert it into the CD-ROM drive. Type the name of the CD-ROM drive (for example, D:\) and click Browse.

If you are installing from files you downloaded using the Installer WebTool, type the name of your hard disk drive (for example, C:\) and click Browse.

9. If you are installing from the CD, browse to the English\Prntdrv\Ps_drvr\Win_NT4x folder and click Open.

If you are installing from files you downloaded using the Installer WebTool, browse to the prntdrv\Prntdrv\Ps_drvr\Win_NT4x folder and click Open.

Make sure “Oemsetup.inf” or “Oemsetup” is selected.

The path is copied to the Install From Disk dialog box.

10. Verify that the path is correct and click OK.



11. In the Printers list, select the appropriate printer and click OK.

Setting up PostScript printing with Windows 2000/XP

To set up the Fiery as a PostScript printer, you must install the PostScript printer driver for Windows 2000/XP and the corresponding printer description files. You must also configure the print connection between the computer and the Fiery. If you are printing over a network, you must configure a network connection.

Installing the PostScript printer driver for Windows 2000/XP

The following procedure describes installing the printer driver from the User Software CD or from the Installer WebTool. Subsequent procedures describe setting up the print connection.

The following procedures use Windows 2000 illustrations; Windows XP differences are noted.

**TO INSTALL THE POSTSCRIPT PRINTER DRIVER
FOR WINDOWS 2000/XP**

1. On Windows 2000, click **Start**, choose **Settings**, and then choose **Printers** to display the **Printers** window.

On Windows XP, click **Start** and choose **Printer and Faxes**.

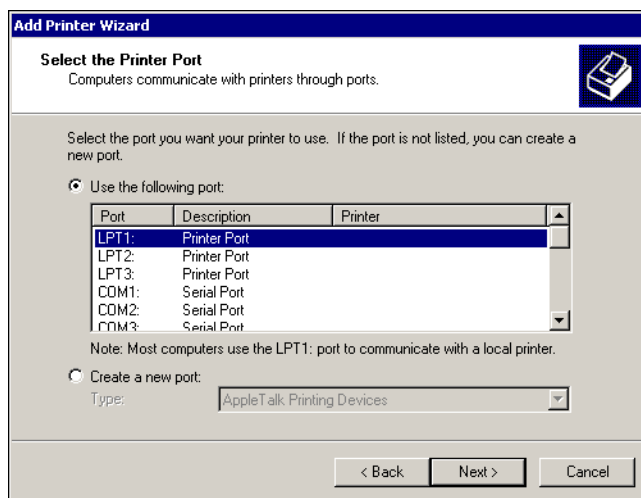
2. On Windows 2000, double-click the **Add Printer** icon and click **Next**.

On Windows XP, click **Add a printer** and click **Next**.

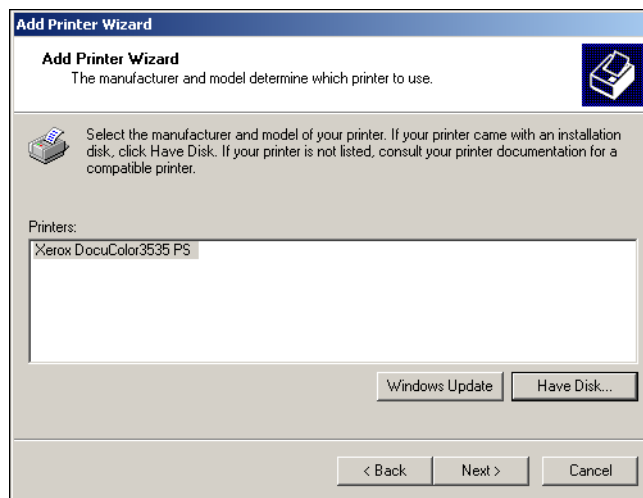
3. Specify printing using a **Local printer** and click **Next**.

This procedure describes the installation of a local printer. You can modify the connection later, according to your network type.

4. Select **LPT1:** and click **Next**.

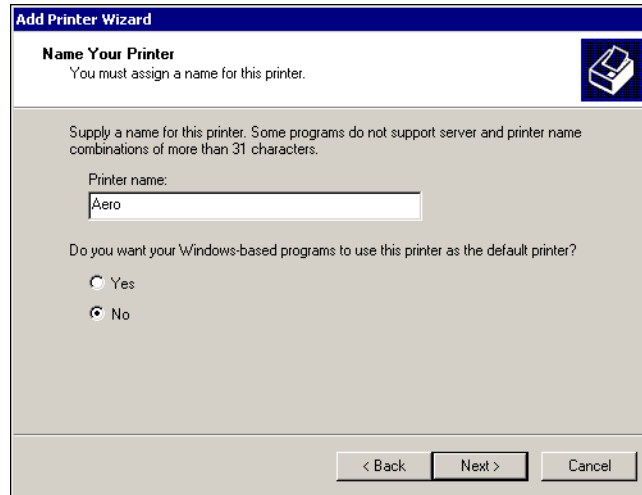


5. **In the dialog box displaying lists of manufacturers and printers, click Have Disk.**
The Install From Disk dialog box prompts you for the disk.
6. **If you are installing from the User Software CD, insert it into the CD-ROM drive.**
7. **Type the name of the CD-ROM drive (for example, D:\) and click Browse. Browse to the English\Prntdrv\Ps_drvr\Win_2000 or English\Prntdrv\Ps_drvr\Win_XP folder.**
If you are installing from the files you downloaded using the Installer, browse to prntdrv\Prntdrv\Ps_drvr\Win_2000 or prntdrv\Prntdrv\Ps_drvr\Win_XP and click Open.
Make sure “Oemsetup.inf” or “Oemsetup” is selected and click Open.
8. **Verify the path is correct and click OK.**
The path is copied to the Install From Disk dialog box.
9. **In the Printers box, select the Fiery printer driver appropriate for your printer and click Next.**



10. Type a name for the Fiery in the Printer name field.

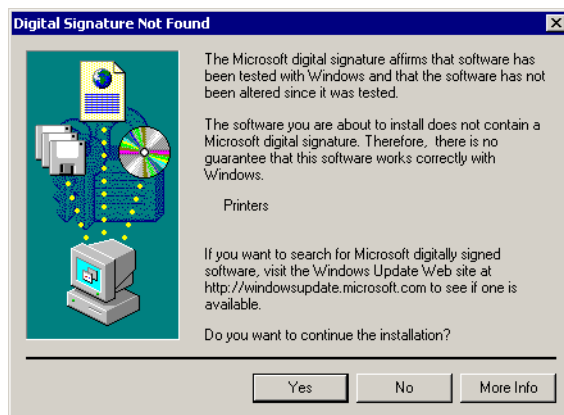
This name will be used in the Printers window and the queues window.

**11. Follow the instructions in the remaining dialog boxes.**

When asked whether to print a Test Page, select No.

The necessary files are installed to your hard disk.

NOTE: The Digital Signature Not Found dialog box indicates that the printer driver for Windows 2000 does not have a Microsoft digital signature. However, printing to the Fiery is processed correctly, so click Yes to continue with installation. For Windows XP, click Continue Anyway to continue with installation.



When installation is complete, the Printers window appears with an icon for the newly installed printer. You must now configure the options installed on your copier.

Configuring installed options

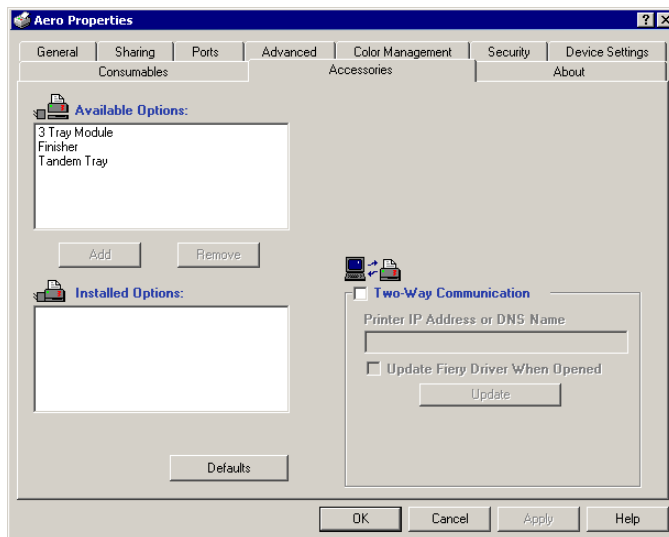
After you have completed the printer driver installation, you must configure the Fiery to reflect the options installed on the copier. This allows the Fiery to take advantage of the copier options. You can configure the options manually; or for TCP/IP network connections, you can use the Two-Way Communication feature to configure the options automatically.

Configuring installed options manually

The following procedure describes how to manually configure the Fiery for the options installed on the copier.

TO CONFIGURE INSTALLABLE OPTIONS ON THE FIERY FROM THE POSTSCRIPT PRINTER DRIVER FOR WINDOWS 2000/XP

1. On Windows 2000, click Start, choose Settings, and then choose Printers. On Windows XP, click Start, and choose Printers and Faxes.
2. Click the Fiery icon and choose Properties from the File menu.
3. Click the Accessories tab.
4. Select an installed option from the Available Options list.
5. Click Add to move the option to the Installed Options list.



Paper Deck Option—Not Installed, 3 Tray Module, Tandem Tray

Finisher Option—Not Installed, Finisher

You are ready to connect to your network type (see the next section “[Completing the Windows 2000/XP printer connection](#)”).

Configuring installed options and updating print options settings automatically

If you have a TCP/IP-enabled network, you can automatically update your printer driver to reflect the options currently installed on the Fiery. When the printer driver is first installed, the installable options have default settings that were set up in Fiery Setup or ColorWise Pro Tools. When you update the printer driver with the Two-Way Communication feature, you allow the Fiery to complete the actual setting.

The Two-Way Communication feature also updates Expert Color Settings options to reflect the current color settings on the Fiery. To access the Expert Color Settings options, click the Expert Settings tab in the ColorWise print option bar of the Fiery printing tab of your printer driver. For more information, see the *Color Guide*.

SETTING UP TWO-WAY COMMUNICATION FOR POSTSCRIPT PRINTER DRIVERS FOR WINDOWS 2000/XP

NOTE: The procedures for the PostScript printer drivers on Windows 2000 and XP are similar. The following procedure displays Windows 2000 illustrations using the PostScript printer driver. Differences are noted in the text.

1. **On Windows 2000, click Start, choose Settings, and then choose Printers.**
On Windows XP, click Start, and choose Printers and Faxes.
2. **In the Printers window, select the icon for the Fiery PostScript printer driver.**
3. **For the PostScript printer driver, choose Properties from the File menu.**
4. **Click the Accessories tab.**
5. **Select Two-Way Communication.**
6. **Enter the Fiery IP address or DNS name.**
7. **If you want your printer driver to display the current settings when opened, select the Update Fiery Driver When Opened option.**
8. **Click Update.**
9. **Click OK.**

Completing the Windows 2000/XP printer connection

To print from Windows 2000/XP, you must:

- Set up network servers, if any.
- Set up the Fiery to accept print jobs from your computer.
- Configure a port on each Windows 2000/XP computer for the network type.

To do this	See
Configure the TCP/IP (LPR port) connection	“Completing the Windows 2000/XP TCP/IP and Port 9100 or LPR connection” on page 1-35.
Configure the IPX (Novell) connection	“Completing the Windows 2000/XP IPX (Novell) connection” on page 1-38.
Configure the SMB connection	“Setting up SMB printing on Windows 2000/XP” on page 1-41.
Configure the IPP connection	“Setting up IPP printing with Windows 2000/XP” on page 1-43.

NOTE: The procedures for completing the printer connection for Windows 2000 and Windows XP are similar. Windows 2000 illustrations are used in the following procedure, with relevant Windows XP differences noted.

Completing the Windows 2000/XP TCP/IP and Port 9100 or LPR connection

Once you have installed the PostScript and printer driver files, complete the setup for the TCP/IP and LPR connection as follows:

- Prepare the Fiery to accept print jobs using TCP/IP and LPR protocols.
For details, see the [Configuration Guide](#).
- Enable LPD or Port 9100 from the Fiery Control Panel.
For details, see the [Configuration Guide](#).
- Configure the computer for the TCP/IP connection.

Before you continue, contact the system administrator for the IP address assigned to the Fiery, as well as the subnet mask and the gateway address, if they are used.

The TCP/IP protocol should already be installed on the Windows 2000/XP workstation.

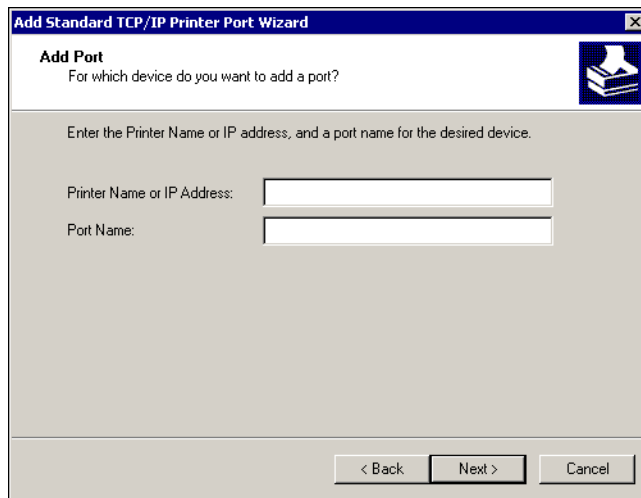
NOTE: You can also set up the LPR connection by installing Print Services for UNIX, which is supplied as an add-on Windows component with your Windows 2000/XP CD. For more information, see your Windows documentation.

TO SET UP TCP/IP AND PORT 9100 OR LPR CONNECTION FOR WINDOWS 2000/XP

1. **Open the Properties dialog box for the Fiery and click the Ports tab.**
2. **Click Add Port.**
3. **Select Standard TCP/IP Port for Available port types and click New Port.**
4. **Click Next.**

The Add Standard TCP/IP Printer Port Wizard dialog box appears.

5. **Type the IP address of the Fiery.**



Add Standard TCP/IP Printer Port Wizard

Add Port
For which device do you want to add a port?

Enter the Printer Name or IP address, and a port name for the desired device.

Printer Name or IP Address:

Port Name:

< Back Next > Cancel

6. Click Next.
7. Make sure that Generic Network Card is selected as Standard for Device Type and click Next.
8. Click Finish to close the Add Standard TCP/IP Printer Port Wizard dialog box and click Close in the Printer Ports dialog box.
9. Click Configure Port in the Properties dialog box.

The Configure Standard TCP/IP Port Monitor dialog box appears.

10. If you have LPD printing enabled at the Fiery Control Panel, select LPR for Protocol and LPR Byte Counting Enabled under LPR Settings.

NOTE: You can also proceed without selecting LPR Byte Counting Enabled under LPR settings.

11. If you have Port 9100 printing enabled at the Fiery Control Panel, select Raw.

The port number 9100 automatically appears under Raw Settings.

Configure Standard TCP/IP Port Monitor

Port Settings

Port Name: IP_10.10.123.45

Printer Name or IP Address: 10.10.123.45

Protocol

☒ Raw ☐ LPR

Raw Settings

Port Number: 9100

LPR Settings

Queue Name:

☐ LPR Byte Counting Enabled

☒ SNMP Status Enabled

Community Name: public

SNMP Device Index: 1

OK Cancel

12. Enter the name of the print connection.

For LPR, enter print, hold, or direct in the Queue Name field.

For Port 9100, you can manually enter the following port numbers for each print connection under Raw Settings:

direct: 9101

print: 9102

hold: 9103

13. Click OK to close the Configure Standard TCP/IP Port Monitor dialog box.**Completing the Windows 2000/XP IPX (Novell) connection**

Complete the setup for the IPX (Novell) connection as follows:

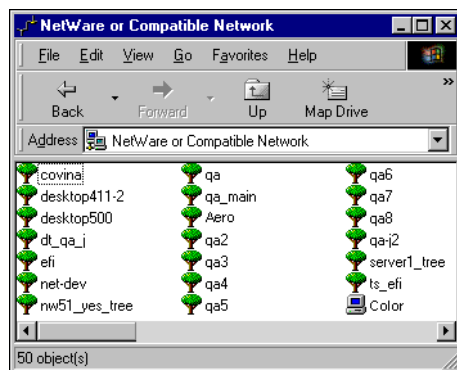
- Configure the Novell network and file server for handling Fiery print jobs. The file server should be configured with a print server and print connection for the Fiery. For details, see your NetWare documentation.
- Prepare the Fiery for IPX printing.
- Set up the IPX connection on the computer.

NetWare protocols (NWLink IPX/SPX Compatible Transport) and NetWare client services should already be installed on the Windows 2000/XP computer.

TO SET UP IPX (NOVELL) PRINTING FOR WINDOWS 2000/XP

1. **On Windows 2000, double-click My Network Places.
On Windows XP, click Start, and then click My Network Places.**
2. **Double-click NetWare or Compatible Network.**

A list of NetWare servers appears.

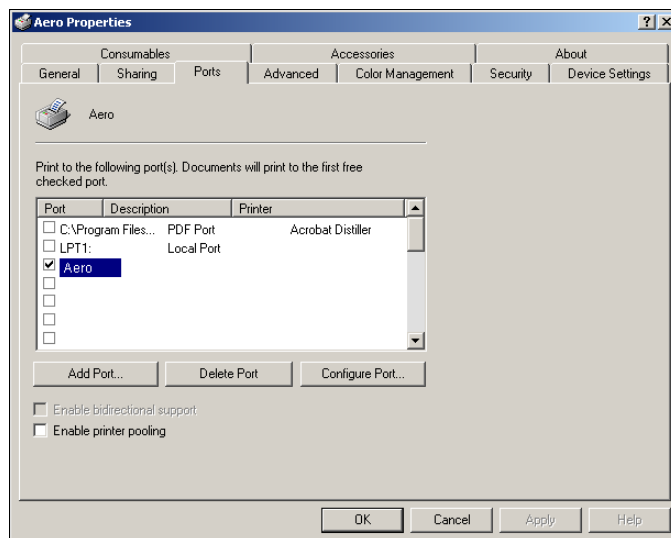


3. **Double-click the NetWare Tree or File Server on which the network administrator defined a print connection for the Fiery.**
You may have to log in to the file server to see the print connections.
4. **Double-click the print connection defined for the Fiery.**
5. **If the NetWare server does not have a suitable driver for the Fiery, you may be asked if you want to set up the printer on your computer. Click Yes.**
6. **Click OK to install the Fiery PostScript printer driver.**
7. **Follow the procedure that starts with [step 5](#) on [page 1-15](#).**

When installation is complete, a new printer window appears, with the name of the print queue on the NetWare server.

8. Choose Properties from the File menu and click the Ports tab.

Verify that the connection to the NetWare queue is listed and selected as a port for the Fiery.

**9. Click the General tab and click Print Test Page.****10. In the printer Job Notes field, type user and job identification information and click OK.**

The Test Page remains listed in the queue window until it is printed.

The Fiery polls the NetWare server for print jobs in the print connection defined for the Fiery. When you print, your PostScript files are spooled to that connection and transmitted over the queue “port” to the Fiery.

Setting up SMB printing on Windows 2000/XP

SMB printing (also known as Windows printing) allows you to install the printer driver and associated files, and print from your computer to a particular print connection (Hold, Print, or Direct) on the Fiery. These instructions assume you have installed the TCP/IP protocol and Client for Microsoft Networks.

Each connection (Hold, Print, or Direct) requires a new printer driver and printer description file. To set up printing to a second or third print connection, repeat the procedure, “[To set up SMB printing on Windows 2000/XP](#)”. If you install more than one printer, give each a descriptive name during printer driver installation, such as Aero-Print or Aero-Hold, so you can easily identify printers.

NOTE: With Windows 2000/XP, the printer driver must be installed from the User Software CD. You cannot use Point and Print to install the driver and configure the printing connection to the Fiery in a single procedure.

BEFORE YOU BEGIN

- **Configure the Fiery for SMB printing in Network Setup>Service Setup>Windows Setup.**
- **Configure the Fiery for SMB printing from the WebSetup in WebSetup>Network Setup>Service 2>Enable Windows Print Services.**

SMB printing is referred to as Windows Printing in Setup, on the Configuration page. For more information, see the [Configuration Guide](#).

TO SET UP SMB PRINTING ON WINDOWS 2000/XP

1. **Open My Network Places.**
2. **Browse for the printer you want to print to.**

The printer name you are browsing for is the name entered in Network Setup>Service Setup>Windows Setup>Server Name. For this information, see the Configuration page.

The amount of network traffic determines the amount of time required for the Browse function.

NOTE: You can also locate the printer using the Search feature on your Windows computer. Right-click My Network Places and click Search for Computers. Type the name of the printer and click Search Now.

If you are not able to locate your Fiery, contact your network administrator.

3. Double-click the name of the Fiery to display enabled print connections.

You must now create a printer port and install the printer driver from the User Software CD.

NOTE: You cannot use Point and Print to install the driver and configure the printing connection to the Fiery in a single procedure.

**4. On Windows 2000, click Start, choose Settings, and then choose Printers.
On Windows XP, click Start and choose Printers and Faxes.**

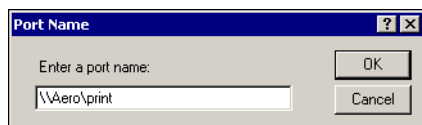
**5. On Windows 2000, double-click Add Printer and click Next.
On Windows XP, click Add a printer and click Next.**

6. Click Local Printer and click Next.

7. Click Create a New Port, choose Local Port from the menu, and then click Next.

8. In the Port Name dialog box, type the name of the Fiery, followed by the printing connection, and click OK.

Enter the port name as follows: \\Aero\print where Aero is the name of the Fiery and print is the printing connection.



9. In the dialog box displaying lists of manufacturers and printers, click Have Disk.

You will now install the printer driver from the User Software CD.

10. Insert the User Software CD into the CD-ROM drive. Type the name of the CD-ROM drive and browse to the English\Prntdrv\Ps_drvr\Win_2000 or English\Prntdrv\Ps_drvr\Win_XP folder.

11. Make sure "Oemsetup.inf" or "Oemsetup" is selected and click Open.

12. Verify the path is correct in the Install From Disk dialog box and click OK.
13. Type a name for the printer in the Printer Name field.
14. Follow the on-screen instructions to complete the installation.

For more information, see [“To install the PostScript printer driver for Windows 2000/XP”](#) on page 1-29.

Setting up IPP printing with Windows 2000/XP

With Internet Printing Protocol (IPP), print jobs are sent to the Fiery over the Internet.

IPP printing is supported directly for Windows 2000/XP computers. IPP printing is not supported on Windows NT 4.0.

NOTE: The IPP setup procedures are performed after installing the appropriate printer drivers (see [“To install the PostScript printer driver for Windows 2000/XP”](#) on page 1-29).

BEFORE YOU BEGIN

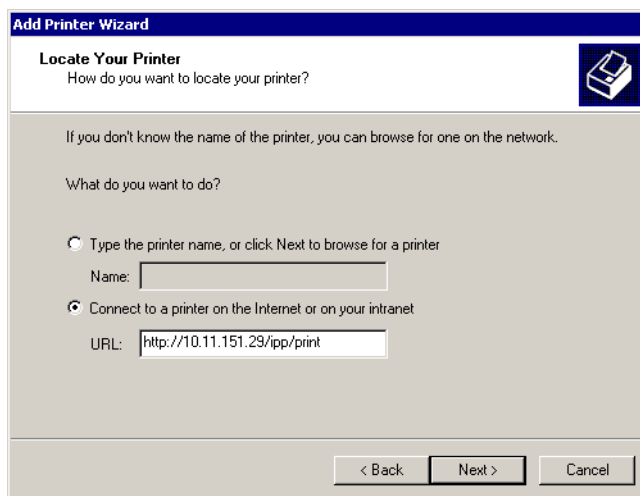
- Prepare the Fiery for TCP/IP printing.
- Make sure the Fiery is configured for IPP printing.
For more information, see the [Configuration Guide](#).
- Specify the printing destination on your computer.

TO SET UP IPP PRINTING WITH WINDOWS 2000/XP

1. On Windows 2000, click Start, choose Settings, and then choose Printers.
On Windows XP, click Start and choose Printers and Faxes.
2. On Windows 2000, double-click the Add Printer icon and click Next.
On Windows XP, click Add a printer and click Next.

3. **Select Network printer and click Next.**
4. **Select “Connect to a printer on the Internet or on your intranet.” Type an IP address or computer name in the URL field.**

The URL for the printer is the IP address or DNS name followed by “ipp” and the connection you want to print to (print, hold, or direct). Insert slashes between the different elements.



5. **Click Next.**
The Connect to Printer dialog box appears.
6. **Click OK.**
The Add Printer Wizard dialog box appears.
7. **If you are installing the PostScript printer for Windows 2000/XP for the first time, follow the procedure described on [page 1-29](#).**
If you have already installed the printer driver on your computer, choose the appropriate names from the Manufacturers and Printers lists and click OK.
8. **Indicate whether you want to make the Fiery the default printer and click Next.**
9. **Click Finish.**

Installing Fiery Mail Port

The E-Mail Service provides a method to print and control the Fiery remotely. Jobs are sent to the Fiery in the form of e-mail attachments. You can set up e-mail printing on Windows computers by adding the Fiery Mail Port software as a printer port.

To set up the Fiery for e-mail printing, see the *Configuration Guide*. After Setup has been performed, install the software from the User Software CD onto your Windows computer, and then add a port.

NOTE: Procedures are given for Windows 9x/Me and Windows NT 4.0/2000/XP. Procedures for Windows 2000/XP are similar to those for Windows NT 4.0.

TO INSTALL THE E-MAIL PORT MONITOR ON WINDOWS COMPUTERS

1. **Open the Fiery Mail Port folder on the User Software CD.**
2. **Double-click the Setup icon and follow the on-screen instructions.**

When installation is complete, you are ready to configure the connection for the e-mail port monitor.

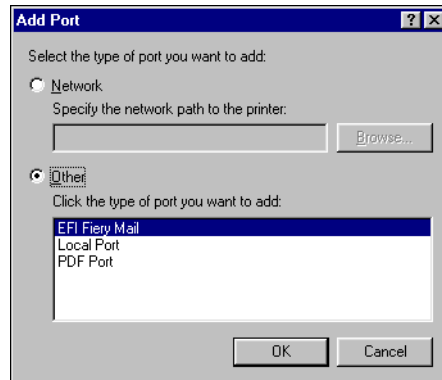
TO CONFIGURE THE CONNECTION FOR FIERY MAIL PORT ON WINDOWS 9x/ME

1. **Click Start, choose Settings, and then choose Printers.**
2. **In the Printers window, click the icon for the Fiery printer driver.**

For instructions on installing the printer driver, see “[Installing the PostScript printer driver for Windows 9x/Me](#)” on page 1-2.

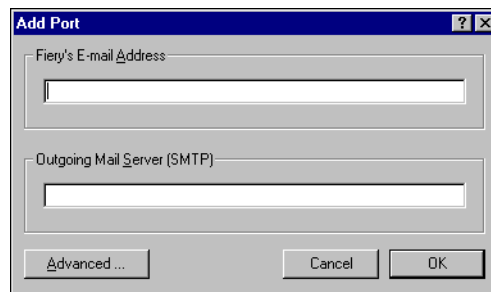
3. **Choose Properties from the File menu, and click the Details tab.**

4. Click Add Port.



5. Click Other and select Fiery Mail from the list of ports.

6. Click OK.



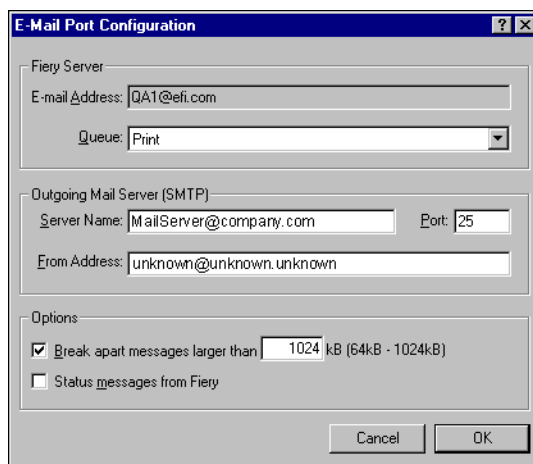
7. Enter the basic information required to set up the e-mail port.

Fiery's E-mail Address—Enter the e-mail address of the Fiery.

Outgoing Mail Server—Enter the name or IP address of the SMTP server for the port monitor to use.

8. Click Advanced.

The E-Mail Port Configuration dialog box appears.

The image shows a screenshot of the 'E-Mail Port Configuration' dialog box. It has a title bar with a question mark and a close button. The dialog is divided into three main sections: 'Fiery Server', 'Outgoing Mail Server (SMTP)', and 'Options'. In the 'Fiery Server' section, the 'E-mail Address' field contains 'QA1@efi.com' and the 'Queue' dropdown menu is set to 'Print'. The 'Outgoing Mail Server (SMTP)' section has a 'Server Name' field with 'MailServer@company.com', a 'Port' field with '25', and a 'From Address' field with 'unknown@unknown.unknown'. The 'Options' section has two checkboxes: 'Break apart messages larger than' (checked) and 'Status messages from Fiery' (unchecked). The 'Break apart' checkbox has a text field next to it showing '1024 kB (64kB - 1024kB)'. At the bottom right are 'Cancel' and 'OK' buttons.**9. Enter the following information.**

For Fiery Server:

E-mail Address—The e-mail address of the Fiery.

Queue—The print connection (print, hold, or direct) on the Fiery that you want.

For Outgoing Mail Server (SMTP):

Server Name—The SMTP server to use.

From Address—The “from” address to insert in the e-mail.

For Options:

Break apart messages larger than—The maximum size of a single e-mail message is displayed. If a job exceeds this size, it is split into multiple messages, each not exceeding this size, and is sent to the Fiery. The Fiery then automatically combines all split messages into the original single print job for printing.

Status messages from Fiery—When enabled, the Status option requests the Fiery to send status reports of the job via e-mail.

10. Click OK.

The name assigned to the Fiery Mail Port appears in the Details tab of the Fiery printer driver.

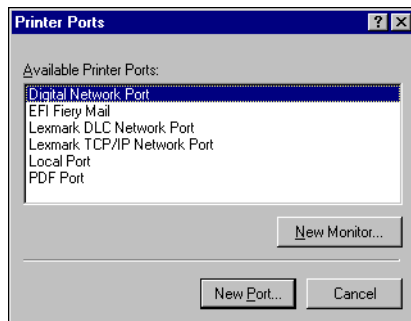
11. Click Apply, and then click OK.

The connection for the Fiery Mail Port has now been configured.

**TO CONFIGURE THE CONNECTION FOR THE FIERY MAIL PORT
ON WINDOWS NT 4.0/2000/XP**

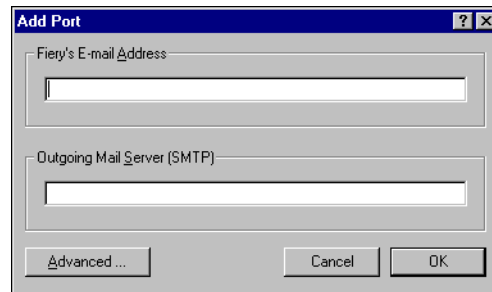
- 1. On Windows NT 4.0/2000, click Start, choose Settings, and then choose Printers.
On Windows XP, click Start and choose Printers and Faxes.**
- 2. On Windows NT 4.0/2000, in the Printers window, double-click the Add Printer icon
and click Next.
On Windows XP, in the Printers and Faxes window, click Add a printer and click Next.**
- 3. Specify printing using a Local printer and click Next.**
- 4. In the window displaying a list of ports, click Add Port.**

The Printer Ports dialog box appears, with the Fiery Mail port listed as one of the available ports.



5. **Select Fiery Mail and click New Port.**

The Add Port dialog box appears.

The 'Add Port' dialog box is shown. It has a title bar with a question mark and a close button. Inside, there are two text input fields: 'Fiery's E-mail Address' and 'Outgoing Mail Server (SMTP)'. At the bottom, there are three buttons: 'Advanced ...', 'Cancel', and 'OK'.

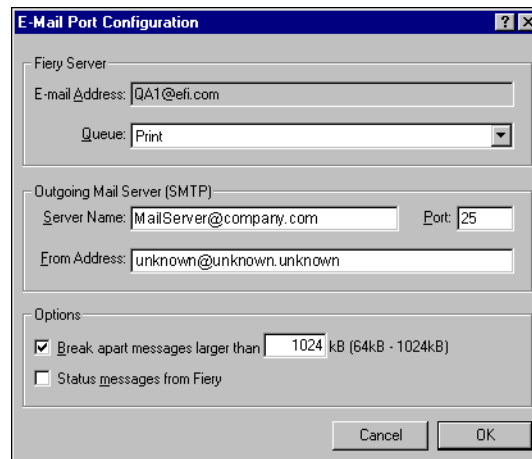
6. **Enter the basic information required to set up the e-mail port.**

Fiery's E-mail Address—Enter the e-mail address of the Fiery.

Outgoing Mail Server—Enter the name or IP address of the SMTP server for the port monitor to use.

7. **Click Advanced.**

The E-Mail Port Configuration dialog box appears.

The 'E-Mail Port Configuration' dialog box is shown. It has a title bar with a question mark and a close button. Inside, there are several sections: 'Fiery Server' with 'E-mail Address' (QA1@efi.com) and 'Queue' (Print); 'Outgoing Mail Server (SMTP)' with 'Server Name' (MailServer@company.com), 'Port' (25), and 'From Address' (unknown@unknown.unknown); and 'Options' with a checked box for 'Break apart messages larger than' (1024 kB) and an unchecked box for 'Status messages from Fiery'. At the bottom, there are 'Cancel' and 'OK' buttons.

8. Enter the following information:

For Fiery Server:

E-mail Address—The e-mail address of the Fiery.

Queue—The print connection on the Fiery that you want.

For Outgoing Mail Server (SMTP):

Server Name—The SMTP server to use.

From Address—The “from” address to insert in the e-mail.

For Options:

Break apart messages larger than—The maximum size of a single e-mail message is displayed. If a job exceeds this size, it is split into multiple messages, each not exceeding this size, and is sent to the Fiery. The Fiery then automatically combines all split messages into the original single print job for printing.

Status messages from Fiery—When enabled, the Status option requests the Fiery to send status reports of the job via e-mail.

9. Click OK.

The Add Printer Wizard dialog box appears.

10. Click Next and follow the instructions for installing the printer driver for your Windows computer.

Installing Fiery utilities

From the User Software CD, you can install the following Fiery utilities and user software:

- ColorWise Pro Tools
- Fiery Downloader
- Fiery Scan (TWAIN module)
- Fiery Remote Scan (TWAIN Fiery Scan Module and Application)

- Fiery Mail Port (see “[Installing Fiery Mail Port](#)” on page 1-45)
- Command WorkStation
- DocBuilder Pro (available as an option)

NOTE: Do not attempt to install DocBuilder Pro from the User Software CD (by starting the setup.exe from the DBPro folder); it is automatically installed when you install Command WorkStation. Installing DocBuilder Pro from the User Software CD can cause unpredictable results. In order to use DocBuilder Pro, you must install Acrobat 5.0.5 and the DocBuilder Pro dongle from the DocBuilder Pro option kit. To install Acrobat, see “[Adobe Acrobat](#)” on page 1-52.

The Fiery utilities must be separately installed on each user’s computer. The installation of each utility is similar. Before you begin each installation, determine where you want to install each item on your hard disk. Otherwise, the software is placed by default in the Fiery folder inside the Programs folder, except for the Fiery Remote Scan TWAIN plug-in module.

If available, Color Profiler is installed from the Color Profiler CD. To access Profiler from ColorWise Pro Tools, install Profiler before installing ColorWise Pro Tools. The Command WorkStation installer also installs the Java files necessary to use Fiery Setup from Command WorkStation.

To use Fiery software as well as WebTools on Windows XP, you must install the “msjavx86.exe” file in the Java VM folder on your computer. For more information on WebTools, see the *Job Management Guide* and the *Printing Guide*.

To install the software, you must have Service Pack 3 installed on your Windows 2000 computer, and Service Pack 1 installed on your Windows XP computer. If not, a warning message alerts you to install the Service Pack.

The TWAIN Fiery Scan and Fiery Remote Scan Module installer automatically creates a folder named Twain_32 in the Windows folder on your hard disk, and then installs the Fiery Remote Scan plug-in module into the folder.

NOTE: Before installing the TWAIN Fiery Scan or Fiery Remote Scan module, make sure the TWAIN plug-ins (installed with TWAIN-compliant application software) are located in the correct Plugins subfolder. If the TWAIN plug-ins have been deleted, you must reinstall the TWAIN-compliant application software in order to use Fiery Scan or Fiery Remote Scan.

You access the Fiery Scan or Fiery Remote Scan plug-in from the TWAIN-compliant software using the TWAIN module. For details, see the *Printing Guide*.

TO INSTALL FIERY UTILITIES

1. **Open the appropriate folder for the software you want to install.**
2. **Double-click the Setup.exe icon.**
3. **Follow the instructions in the Setup dialog boxes to complete installation.**

Adobe Acrobat

In Command WorkStation, the DocBuilder Pro feature (available as an option) works with Adobe Acrobat 5.0.5. If you purchase the DocBuilder Pro option, the Acrobat software is included on the Adobe Acrobat for DocBuilder Pro CD.

If an earlier version of Adobe Acrobat is already installed on your computer, version 5.0.5 will be installed in a separate folder. You do not need to uninstall earlier versions to use DocBuilder Pro, but you must install version 5.0.5.

NOTE: If Adobe Acrobat is installed after Command WorkStation, you may be required to restart Command WorkStation in order to use DocBuilder Pro.

For more information about Adobe Acrobat for Windows, see the Readme.pdf file on the Adobe Acrobat for DocBuilder Pro CD.

TO INSTALL ADOBE ACROBAT

1. **Insert the Adobe Acrobat CD in the CD-ROM drive.**
The Adobe Acrobat Welcome screen appears.
2. **Click Next and follow the on-screen instructions.**

Using Fiery utilities for the first time

Before you can use the newly installed software, you must configure the connection to the Fiery. Configuration of the Fiery utilities is similar.

Configuring the connection for Fiery utilities

The first time you start one of the Fiery utilities, you must configure the connection to the Fiery. Similar configuration is used for all Fiery utilities, so any change in one configuration affects all the other connections. Configuration for most Fiery utilities is described in the following procedure.

For configuration of specific Fiery utilities, see:

- “[Configuring the connection for Command WorkStation](#)” on page 1-55.

BEFORE YOU BEGIN

- **Print the Configuration page from the Fiery Control Panel.**

This page contains information you need when configuring the connection, such as the IP address. For TCP/IP installations, you can use the DNS name of the Fiery instead of the IP address. Make sure the Fiery is already registered in a Domain Name Server (DNS) on your network. For more information, see your Windows system documentation.

TO CONFIGURE THE CONNECTION FOR FIERY UTILITIES

1. **Start the utility for which you want to configure a connection.**

For Fiery Scan or Fiery Remote Scan, start the supported TWAIN-compliant software. For details, see the *Printing Guide*.

2. **If the No Servers Configured dialog box appears, click OK.**

If the Choose Printer Device dialog box appears, click Add.

3. **Enter the appropriate information for the Fiery.**

Nickname—Enter a name for the Fiery. This name does not have to match the actual Server Name of the Fiery.

NOTE: The nickname cannot contain any of the following seven characters:
[] _ " ' <space> <tab>

Protocol—Choose the type of network protocol you are using from the menu.

NOTE: Fiery utilities are not supported over IPX/SPX. Command WorkStation is supported on Windows computers over TCP/IP.

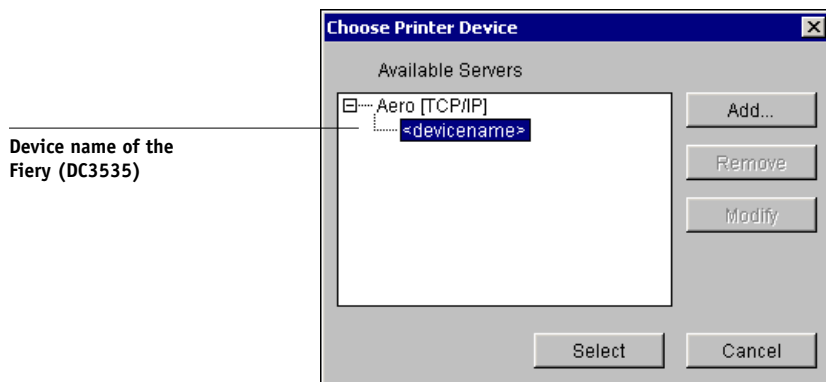
Server Name—Enter the IP address (or DNS name) of the Fiery.

New Device—Enter the name of the device the Fiery is connected to: DC3535.

NOTE: Type DC3535 exactly as shown; this term is case-sensitive.

4. When you have entered all the information, click **Add**.
5. With the device name (DC3535) selected in the **Devices** list, click **OK**.

The Fiery appears in the list of available servers. The first line of the entry displays the nickname you gave the server, followed by the protocol you chose. The second line displays the device name.



6. With the device name selected in the list of **Available Servers**, click **Select** to begin using the utility.

Modifying the configuration

Edit the configuration whenever there is any change to your Fiery server or network, such as a server name or IP address. If you change Fiery Setup information, do so before reconfiguring the connection.

TO MODIFY THE CONFIGURATION

1. To edit information for a Fiery in the list of available servers, select the Fiery by its nickname and click **Modify**.
2. Make the necessary changes in the **Modify Server Settings** dialog box and click **OK**.
3. To add a new Fiery to the list of available servers, click **Add**. Configure the **Add New Server** dialog box as outlined in steps 3 through 5 in the previous procedure.
4. To remove a Fiery, select the Fiery by its nickname and click **Remove**.

NOTE: The nickname cannot be modified.

Configuring the connection for Command WorkStation

The first time you start Command WorkStation, you are prompted to configure the connection to the Fiery.

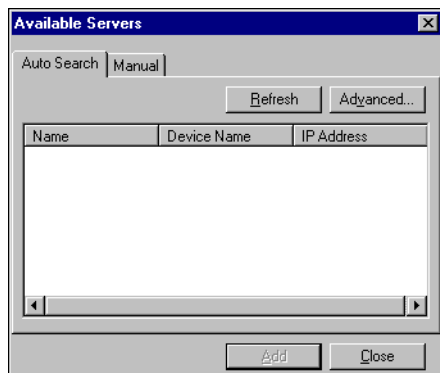
TO CONFIGURE THE CONNECTION FOR COMMAND WORKSTATION

1. **Print a Configuration page.**

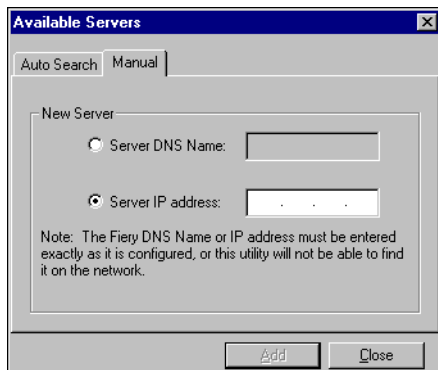
The information on this page helps you locate the Fiery, if it is not on the same local subnet as your computer.

2. **Start Command WorkStation.**

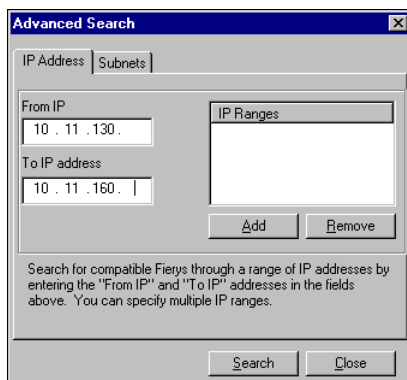
The **Available Servers** dialog box appears. All servers found in the local subnet are displayed.



3. If no Fiery servers were found, click the Manual tab to search by DNS name or IP address. Click Add to add the server to the Available Servers list.



4. Click the Auto Search tab and then click Advanced to search by either a range of IP addresses or the IP address and subnet mask.

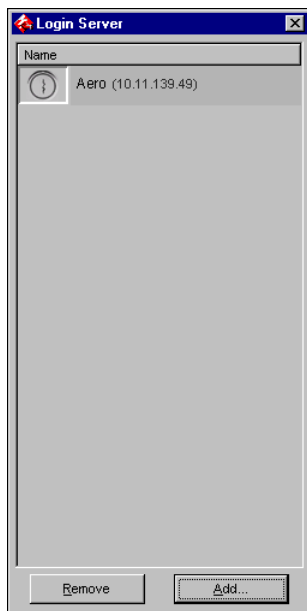


5. Click Search.

All available servers appear in the Available Servers list.

6. Select the Fiery server you want to use and click Add.

The selected Fiery server appears in the Login Server dialog box.



7. Click the server name.

The Log In dialog box appears.



8. Select Administrator, Operator, or Guest and click Log In.

Your computer is connected to the server.

Modifying the configuration

Edit the configuration whenever there is any change to your Fiery server or network, such as a server name or IP address. If you change Fiery Setup information, do so before reconfiguring the connection.

TO MODIFY THE CONFIGURATION

- 1. Start Command WorkStation.**

The Login Server window appears.

- 2. Select the Fiery server for which you want to modify the configuration, and click Remove.**

The Available Servers dialog box appears.

- 3. To add the modified Fiery server, follows steps 3 through 6 of the procedure, ["To configure the connection for Command WorkStation"](#) on page 1-55.**

To modify the connection to the Fiery, you must remove the server from the Login Server list and follow the procedure for configuring the connection.

Installing color files from the User Software CD

You can copy additional color files from the User Software CD to your hard disk. Many of the files are PostScript files that you can download and print using Fiery Downloader.

Icm folder ICM monitor settings file and a device profile specially designed for use with the Fiery and particular copier models. For instructions on installing, see [“Installing the ICM profiles on a Windows computer”](#) on page 1-60.

Clrfiles folder
(inside the
English folder) Cmyk.ps, an 11-page, letter-size PostScript file to use for reference when defining CMYK colors in applications.

Pantone.ps, a 19-page, letter-size PostScript file that indicates the closest equivalent of PANTONE coated colors that the Fiery and your copier model can produce. The method used to print the Pantone.ps file differs depending on the Spot Color Matching setting. For more information, see the [Printing Guide](#) and the [Color Guide](#).

Rgb_01.doc, a file you can print from Microsoft Word 97 or later to view available RGB colors.

Rgb_02.ppt, a file you can print from PowerPoint 6.0 or later to view available RGB colors.

Calibrat folder
(inside the
English\Clrfiles
folder) Four PostScript files of color patches for obtaining measurements: Custom21.ps, Custom34.ps, Stand21.ps, and Stand34.ps. The numbers in the file names refer to the number of patches on the page. The Custom files allow you to download measurement patches that incorporate the copier’s current calibration set. The Standard files allow you to download standard measurement patches that bypass the copier’s current calibration set. For information on using these files, see the [Color Guide](#).

NOTE: These files are provided for expert users and should not be used for day-to-day calibration.

Installing the ICM profiles on a Windows computer

The ICM profiles included in the Icm folder on the User Software CD are for use with ColorWise Pro Tools. You can also use the ICM profiles with applications that support ICC standards, such as Adobe Photoshop. For most ICC-aware applications, the files must be installed in a folder named Color in the System Folder. For use with ColorWise Pro Tools, you can copy the files to a folder of your choice.

You can upload additional ICC profiles with the Profile Manager in ColorWise ProTools. For more information on uploading and using ICC profiles with ColorWise Pro Tools, see the [Color Guide](#).

TO INSTALL THE ICM PROFILES ON A WINDOWS COMPUTER

1. On the User Software CD, open the Icm folder.
2. If you are using Windows 9x/Me, copy the profiles to the Windows\System\Color folder on your hard disk.

If you are using Windows NT or Windows 2000, copy the profiles to the Winnt\System32\Color folder on your hard disk.

NOTE: If a folder named “Color” does not exist in the System32 folder, create one and install the profiles into it.

If you are using Windows XP, right-click the profile you want and click Install Profile.

NOTE: The profiles are installed automatically to the Windows\System32\spool\drivers\color folder on your hard disk.

Loading the monitor settings file

The Efirgb.icm monitor settings file can be used in Photoshop, or other applications that support ICM profiles, to define a source color space for printing to the Fiery.

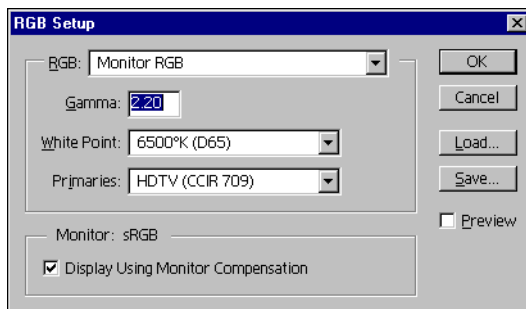
These instructions assume you have installed the ICM profiles included on the User Software CD. For more information, see the preceding section.

NOTE: The internal name of an ICC profile may vary slightly from its file name.

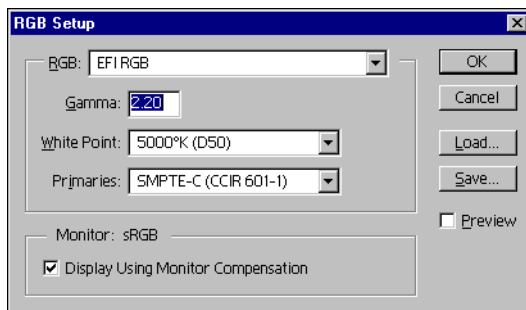
NOTE: If you use Fiery Remote Scan, install the monitor settings profile.

TO LOAD THE RGB WORKING SPACE PROFILE FOR PHOTOSHOP 5.X

1. Start Photoshop.
2. Choose Color Settings from the File menu and choose RGB Setup from the Color Settings submenu.
3. In the RGB Setup dialog box, click Load.



4. For Windows 9x/Me, browse to the Windows\System\Color folder, select Efirgb.icm, and then click Load.



For Windows NT 4.0 or Windows 2000, browse to the Winnt\System32\Color folder, select Efirgb.icm, and then click Load.

For Windows XP, browse to the Windows\System32\spool\driver\color folder, select Efirgb.icm, and then click Load.

The Efirgb v1f file is displayed in the RGB menu of the RGB Setup dialog box.

5. Click OK.

For more information about ICM profiles, see your Photoshop documentation.

Loading the ICM copier device profile

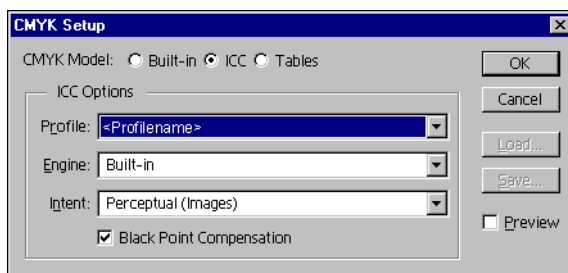
This ICM profile defines the target color space for printing to the copier.

These instructions assume you have installed the ICM profiles included on the User Software CD. For more information, see [“Installing the ICM profiles on a Windows computer”](#) on page 1-60.

NOTE: The internal name of an ICC profile may vary slightly from its file name.

TO LOAD THE ICM COPIER DEVICE PROFILE IN PHOTOSHOP 5.X

1. **Start Photoshop.**
2. **Choose Color Settings from the File menu and choose CMYK Setup from the Color Settings submenu.**
3. **In the CMYK Setup dialog box, choose ICC as the CMYK color model.**
4. **Select the profile that corresponds to the Fiery from the Profile menu.**



5. **Click OK.**

For more information about ICC profiles, see your Photoshop documentation.

Loading monitor settings files and ICM device profiles in Photoshop 7.x/6.x

Once you have installed the Efirgb.icm monitor settings file and the ICM device profile for the Fiery, they can be loaded at the same time in Photoshop 7.x/6.x.

**TO LOAD THE MONITOR SETTINGS FILE AND ICM DEVICE PROFILE
IN PHOTOSHOP 7.X/6.X**

1. **Start Photoshop.**
2. **Choose Color Settings from the Edit menu and select Advanced Mode in the Color Settings dialog box.**
3. **Choose EFI RGB from the RGB menu.**
4. **Choose the profile that corresponds to the Fiery from the CMYK menu.**
5. **Click OK.**

For more information, see your application's documentation.

Installing the printer description files for Windows

The User Software CD contains printer description files for popular Windows applications. Adobe Pagemaker 7.0, 6.x, and 5.0 do not support automatic installation of printer description files from the Printers or Printers and Faxes Control Panel. To make the Fiery available in the Print and Page Setup dialog boxes of this application, copy printer description files to the appropriate location.

TO COPY THE PRINTER DESCRIPTION FILES

1. **On the User Software CD, open the English\Prntdrv\Ps_drvr folder. Select the folder that corresponds to the system you are using.**

For Windows 9x/Me, select English\PRNTDRVR\Ps_drvr\Win_9x_ME.

For Windows NT 4.0, select English\PRNTDRVR\Ps_drvr\Win_NT4x.

For Windows 2000, select English\PRNTDRVR\Ps_drvr\Win_2000.

For Windows XP, select English\PRNTDRVR\Ps_drvr\Win_XP.

2. Copy the printer description file for your Fiery to the appropriate location.

If you use	Copy this file	To this location
PageMaker 5.0 or later	EF3X3322.ppd	For PageMaker 5.0, \ALDUS\USENGLSH\PPD4 For PageMaker 6.0, \PM6\RSRC\USENGLSH\PPD4 For PageMaker 6.5, \PM65\RSRC\USENGLSH\PPD4 For PageMaker 7.0, \PM7\RSRC\USENGLSH\PPD4

Chapter 2: Installing User Software on a Mac OS Computer

The general steps for installing the Fiery user software and setting up printing on a Mac OS computer are as follows:

- Install the PostScript printer driver and printer description file.
- Set up the Fiery in the Chooser.
- Install the Fiery utilities—Fiery Scan, Fiery Remote Scan, ColorWise Pro Tools, Fiery Downloader, and Fiery Spooler.
- Configure the connection for Fiery utilities.
- Install the printer and screen fonts.
- Install the ColorSync profiles.
- Install additional color reference and application-specific files.

In addition to using the User Software CD, you can download printer drivers from the Fiery with the Installer WebTool (if the site administrator has enabled Internet access to the Fiery). For instructions, see [page 3-2](#).

Once you download the printer files, the installation process is identical to installing from the User Software CD.

Setting up the Fiery as a PostScript printer

To set up the Fiery as a PostScript printer, you must install the PostScript printer driver and the printer description file that corresponds to your copier. The PostScript printer driver and printer description files are provided on the User Software CD. Printer drivers provide a way to communicate information on print jobs between your applications, the Fiery, and any other PostScript printer connected to your computer.

When you install printer files from the User Software CD or printer files downloaded using the Installer WebTool, use the following procedures.

Setting up Mac OS 9 printer drivers and printer description files

The following instructions are for Mac OS 9 and Mac OS X Classic Mode.

TO INSTALL THE ADOBEPS PRINTER DRIVER AND PRINTER DESCRIPTION FILE FOR MAC OS 9

1. **Quit all open applications.**

After you have completed installation, restart your computer.

2. **On the User Software CD, open the English:Printer Driver folder.**

If you are installing from files you downloaded using the Installer WebTool, open the Printer Driver folder on your hard disk.

3. **Double-click the AdobePS Installer icon.**

4. **Follow the on-screen instructions.**

The AdobePS Installer installs the Adobe PostScript printer driver, and the printer description file that corresponds to the Fiery.

NOTE: If you operate the Fiery in a copy shop, quick print shop, or service bureau, provide your customers with copies of the printer driver, printer description file, or ICC profiles you use for printing images, as well as any relevant documentation. This ensures that jobs they create and print to files are properly formatted for printing to the Fiery.

Setting up the Fiery in the Chooser

After you install the Adobe PostScript printer driver and printer description file (see [page 2-1](#)), you must set up the Fiery in the Chooser in order to take full advantage of its features. This section describes how to set up the Fiery with the AdobePS printer driver.

TO SET UP THE FIERY IN THE CHOOSER

1. **Select Chooser from the Apple menu.**

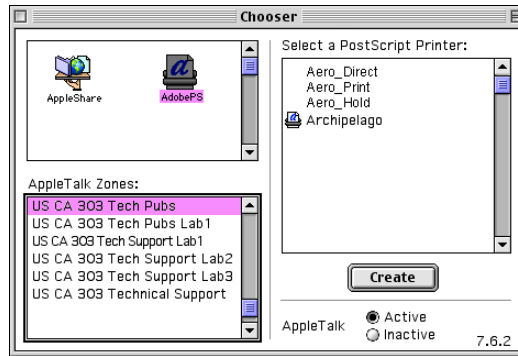
Make sure AppleTalk is set to Active.

2. **Select the correct AppleTalk Zone, if necessary.**

3. Click the AdobePS icon.

The Fiery appears in the Select a PostScript Printer list in the form of <server name>_<print connection>.

NOTE: Only the print connections (Direct, Hold, and Print) that have been enabled in Setup appear in the Chooser.



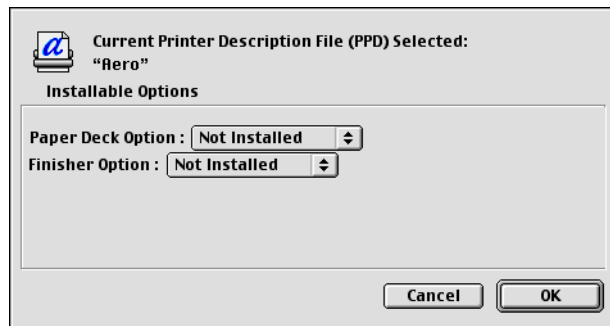
4. Select a Fiery connection from the “Select a PostScript Printer” list and click Create.

Select the correct printer description file for your printer.

NOTE: You must set up each print connection separately. Repeat this step for all enabled connections.

5. With the same printer selected, click Setup, and then click Configure.

6. In the Installable Options dialog box, select the appropriate settings from the menus and click OK.



Paper Deck Option—Not Installed, 3 Tray Module, Tandem Tray

Finisher Option—Not Installed, Finisher

7. Click OK to close options for the printer.
8. Close the Chooser.

Setting up Mac OS X printer drivers and printer description files

The following instructions are for Mac OS X v.10.2.1 and later Native mode.

The User Software CD contains the following software for Mac OS X inside the OSX folder:

- PPD Installer—this application installs the PostScript Printer Description files (PPDs) necessary to print from Mac OS X v.10.2.1.
- Language folders—these folders contain copies of the printer description files that will be installed by the PPD Installer. You do not need to open these folders or install them manually on your computer; the appropriate files will be installed by the PPD Installer.

TO INSTALL THE PRINTER DESCRIPTION FILES FOR MAC OS X

1. Quit all open applications.
2. Make sure that Print Center is not running on your computer.

Print Center updates the list of available printers when it restarts; if a printer description file is added while Print Center is running, you cannot select the associated printer model until you restart Print Center.
3. Insert the User Software CD into the CD-ROM drive.
4. Open the Printer Driver folder inside the OSX folder on the User Software CD.
5. Click the PPD Installer icon to start installing printer description files.
6. Follow the on-screen instructions.

The PPD Installer installs the printer description files that correspond to the Fiery.

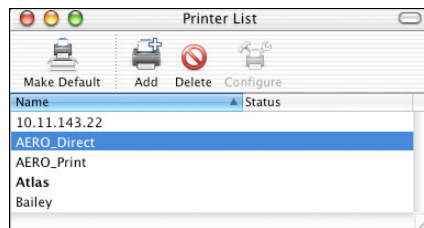
After you have completed installation, restart your computer.

Setting up the Fiery in the Print Center

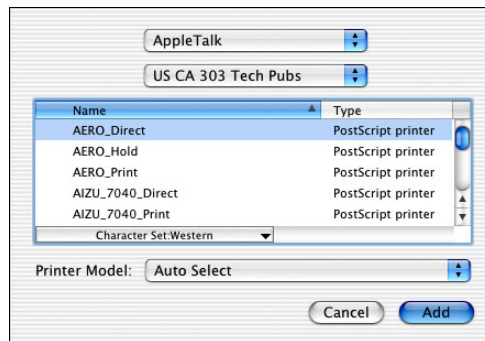
After you install the printer description files, you must set up the Fiery in the Print Center in order to take full advantage of its features. This section describes how to set up the Fiery and configure installable options. The PPD Installer installs all language files at the same time. The following procedures describe how to set up the Fiery on a system using either English or a non-English language.

TO SET UP THE FIERY IN THE PRINT CENTER ON AN ENGLISH SYSTEM

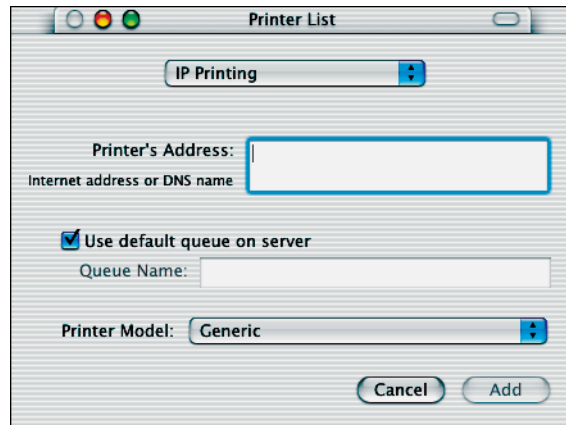
1. **Start Print Center by clicking the Print Center icon on the Dock. Alternatively, choose Applications from the Go menu, choose Utilities, and then click Print Center.**



2. **Click Add in the Printer List dialog box.**
3. **Choose AppleTalk or IP printing in the pop-up menu.**
4. **For AppleTalk, choose the AppleTalk Zone, and then choose the name of the Fiery. If the zone is not listed as the Default Zone, or one of the Recent Zones, select AppleTalk Network, select the zone, and click Choose.**



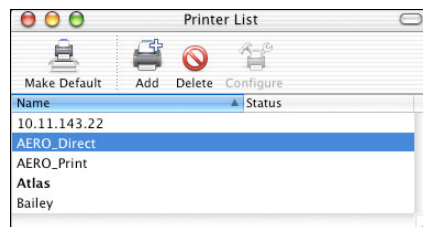
5. For IP Printing, choose IP Printing, and enter the IP address or DNS name for the Fiery in the Printer's Address field.



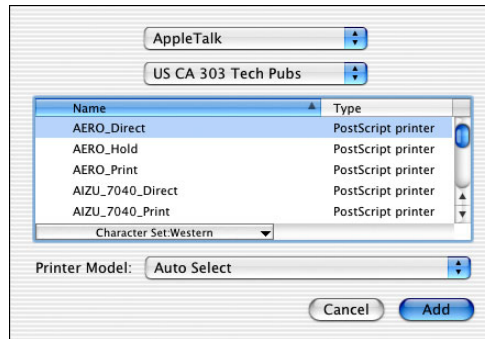
6. For Printer Model, select the appropriate manufacturer name, and then select the file for the Fiery PPD.
7. Click Add.

TO SET UP THE FIERY IN THE PRINT CENTER ON A NON-ENGLISH SYSTEM

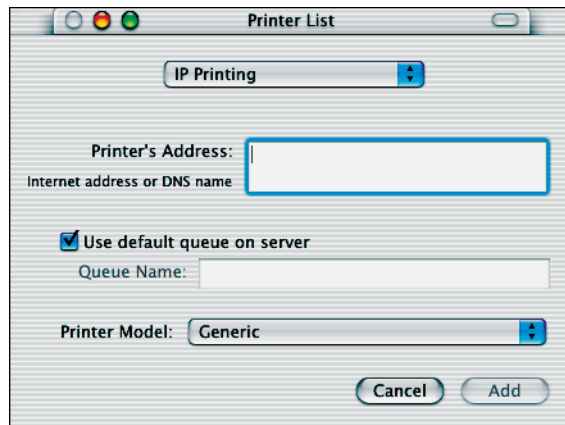
1. Start Print Center by clicking the Print Center icon on the Dock. Alternatively, choose Applications from the Go menu, choose Utilities, and then click Print Center.

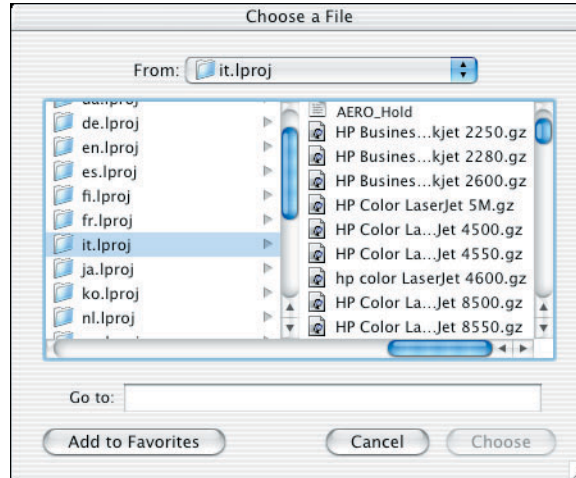


2. Click Add in the Printer List dialog box.
3. Choose AppleTalk or IP printing in the pop-up menu.
4. For AppleTalk, choose the AppleTalk Zone, and then choose the name of the Fiery. If the zone is not listed as the Default Zone, or one of the Recent Zones, select AppleTalk Network, select the zone, and click Choose.



5. For IP Printing, choose IP Printing, and enter the IP address or DNS name for the Fiery in the Printer's Address field.



6. For Printer Model, select Other.**7. In the Choose a File dialog box, select the appropriate language file from the left-hand column, and the Fiery name from the right-hand column.**

The following table explains which file name corresponds to your language.

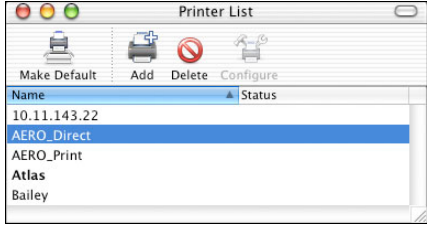
Language	File name
Dutch	nl.lproj
English	en.lproj
French	fr.lproj
German	de.lproj
Italian	it.lproj
Japanese	ja.lproj
Portuguese	pt.lproj
Spanish	es.lproj
Swedish	sv.lproj

NOTE: The location for these files is C:/System/Library/Printers/ PPDs/ Contents/ Resources, where C: is the name of your local hard drive, but do not use this path to select a file.

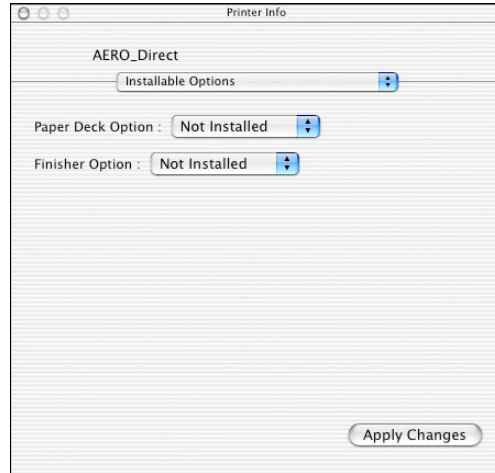
8. Click Choose.
9. Click Add in the Printer List window.

For more information about adding printers, see your Mac OS X documentation.

TO CONFIGURE INSTALLABLE OPTIONS

1. Start Print Center by clicking the Print Center icon.
Alternatively, you can select Applications from the Go menu, select Utilities, and then click Print Center.
2. Select your printer in the Printer List.

3. Choose Show Info from the Printer menu.
4. Choose Installable Options in the pop-up menu.

5. In the Printer Info dialog box, choose the appropriate settings.



Paper Deck Option—Not Installed, 3 Tray Module, Tandem Tray

Finisher Option—Not Installed, Finisher

6. Click Apply Changes.

Installing Fiery software and fonts

The Mac OS installers function essentially the same for each type of software. Before you begin each installation, determine where you want to install each item on your hard disk. Otherwise, the software is placed by default as follows:

- ColorSync profiles—ColorSync Profiles folder.

If you are using ColorSync 2.5, install the profiles into the ColorSync Profiles folder inside the System Folder. If you are using an earlier version of ColorSync, install the profiles to the ColorSync Profiles folder inside the System Folder: Preferences folder. The printer profile can be moved to a folder of your choice.

- Fiery Spooler, Fiery Downloader, Fiery Remote Scan, and ColorWise Pro Tools—"Fiery" folder.

NOTE: If you have the Color Profiler option, Color Profiler is installed by default in the "Fiery" folder. To access Profiler from ColorWise Pro Tools, you must install Profiler before installing ColorWise Pro Tools.

- Fiery Remote Scan—Supported TWAIN-compliant application software Plug-Ins folder
 - Fiery Scan—Supported TWAIN-compliant application software Plug-Ins folder
- The installer also creates a folder named TWAIN in your System folder: Preferences folder, and installs a Fiery Scan module and Source Manager file into that folder.
- Fonts—System Folder:Fonts folder.

For instructions on installing Fonts, see page 2-19.

TO INSTALL MAC OS SOFTWARE

1. **Insert the User Software CD-ROM into the CD drive and double-click the Installer icon of the item you want to install, then follow the instructions in the installer dialog boxes.**
2. **If prompted, click Quit to close the software installer.**

We recommend that you use the version of MRJ provided on the User Software CD with the Fiery software (MRJ 2.2.4).

The respective installer prompts the MRJ installation from the User Software CD.

If you have a newer version of MRJ (such as 2.2.5) already installed on your computer and experience some difficulty using the Fiery software, either remove or relocate the MRJ files currently installed and reinstall the version of MRJ 2.2.4 provided on the User Software CD, using the following procedures.

Installing MRJ on your computer

In order to use ColorWise Pro Tools or Fiery Spooler, you must have Mac OS Runtime for Java (MRJ) installed on your computer. If you do not have MRJ installed, the ColorWise Pro Tools or Fiery Spooler installer automatically starts the MRJ installation process.

TO INSTALL MAC OS RUNTIME FOR JAVA

1. **Open the MRJ folder on the User Software CD and double-click Installer.**
2. **Read the Apple Computer Inc. License Agreement and click Agree to install the software.**
3. **Click Install.**
Some files are installed.
4. **Click Quit.**

You are now ready to configure the ColorWise Pro Tools and Fiery Spooler connections to the Fiery.

TO UNINSTALL MAC OS RUNTIME FOR JAVA

1. **Locate the System Folder on your hard disk.**
2. **Inside the Extensions folder, locate MRJ Libraries and remove it or move it to another folder.**
NOTE: If you find the “MRJ Enabler” file under Extensions, remove it or move it to another folder.
3. **On Mac OS 8.6, locate the Apple Extras folder on your hard disk. On Mac OS 9.x, locate the Apple Extras folder inside the Applications folder on your hard disk.**
4. **Inside the Apple Extras folder, locate Mac OS Runtime for Java, and remove it or move it to another folder.**
5. **Restart your computer.**

Configuring a connection for ColorWise Pro Tools

The first time you use ColorWise Pro Tools, you are prompted to configure a connection to the Fiery.

NOTE: ColorWise Pro Tools are supported only over TCP/IP networks.

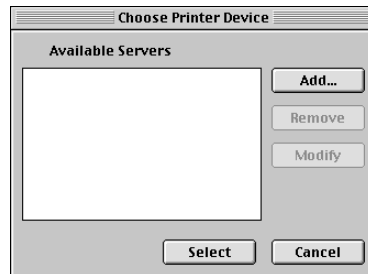
BEFORE YOU BEGIN

- **Print the Configuration page from the Control Panel and note the IP address of the Fiery.**

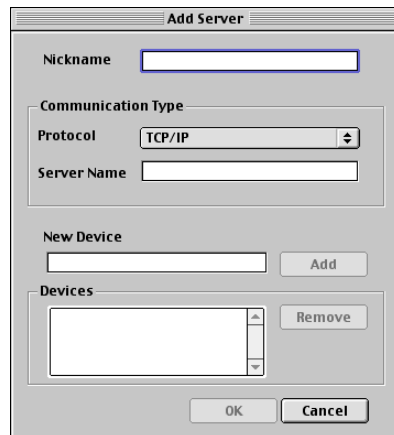
TO CONFIGURE A CONNECTION FOR COLORWISE PRO TOOLS

1. **Start the utility by double-clicking its icon.**

The Choose Printer Device dialog box appears.



2. **If you have previously configured a connection to the Fiery, you are ready to use ColorWise Pro Tools. If you have not configured a connection, click Add.**



3. **Enter the appropriate information for the Fiery.**

Nickname—Enter a name for the Fiery. It does not have to match the actual server name of the Fiery.

NOTE: The nickname cannot contain any of the following seven characters:
[] _ " ' <space> <tab>

Protocol—TCP/IP is the only supported network protocol, so no selection is necessary.

Server Name—Enter the IP address (or DNS or hosts name) of the Fiery.

New Device—Enter the name of the device the Fiery is connected to: DC3535.
This device name appears in the Printer Setup section of the Configuration page.

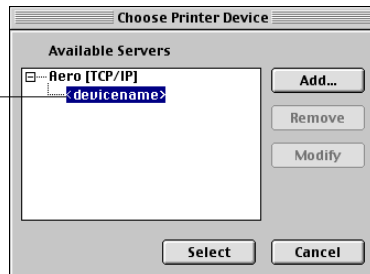
NOTE: The device name is case sensitive; enter it *exactly* as it appears here.

4. When you have added all the information, click **Add**.
5. With the device name selected in the **Devices** list, click **OK**.

The Fiery appears in the list of available servers. The first line of the entry displays the nickname you gave the server, followed by the protocol. The second line displays the device name.

6. With the device name selected in the list of **Available Servers**, click **Select** to begin using **ColorWise Pro Tools**.

Device name of the Fiery
(DC3535)



Modifying the configuration

Edit the configuration whenever there is any change in your original configuration, such as a change of IP address. Change the specific Fiery Setup information before using the following procedure to configure the connection.

TO MODIFY THE CONFIGURATION

1. To edit information for a Fiery in the list of available servers, select the Fiery by its nickname and click **Modify**. Edit information in the **Modify Server Settings** dialog box as necessary, and click **OK**.
2. To add a new Fiery to the list of available servers, click **Add**. Configure the **Add New Server** dialog box as outlined in steps 3 through 5 in the preceding procedure.
3. To remove a Fiery from the list of available servers, select the Fiery by its nickname and click **Remove**.

Configuring a connection for Fiery Spooler

Before you begin, print a Configuration page from the Control Panel and note the IP address of the Fiery.

TO CONFIGURE THE CONNECTION FOR FIERY SPOOLER

1. **Start the utility by double-clicking its icon.**

The Chooser dialog box appears.

2. **Click Option.**
3. **Click Add.**
4. **Enter the appropriate information for the Fiery.**

Name—Enter the IP address (or DNS name) of the Fiery.

New Device—Enter the name of the device that the Fiery is connected to: DC3535. This device name appears in the Printer Setup section of the Configuration page.

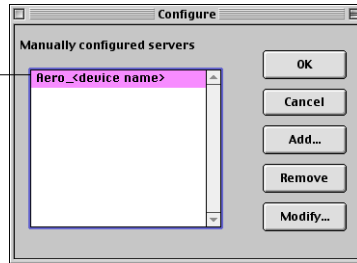
NOTE: Type DC3535 exactly as shown; this term is case-sensitive.

5. When you have entered all the information, click Add.

6. With the device name selected, click OK.

The Fiery appears in a list of configured servers.

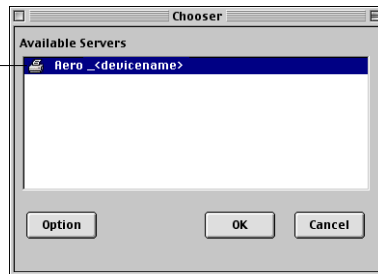
Fiery name and device name
(DC3535)



7. Click OK in the Configure dialog box.

The Fiery appears in a list of available servers.

Fiery name and device name



8. With the Fiery selected in the list of available servers, click OK to begin using Fiery Spooler.

Modifying the configuration

Edit the configuration whenever there is any change to your Fiery or network, such as an IP address or device change. Change the specific Fiery Setup information before configuring the connection.

TO MODIFY THE CONFIGURATION

1. In the Chooser dialog box, click **Option**.
2. To edit information for a Fiery, select the Fiery by its IP address or DNS name and click **Modify**. Edit information in the Settings dialog box as necessary, and click **OK**.
3. To add a new Fiery, click **Add**. Configure the Settings dialog box as outlined in steps 4 through 6 in the preceding procedure.
4. To remove a Fiery, select the Fiery by its IP address or DNS name, and click **Remove**.

The list of available servers reflects the modifications you have made.

Configuring a connection for Fiery Downloader

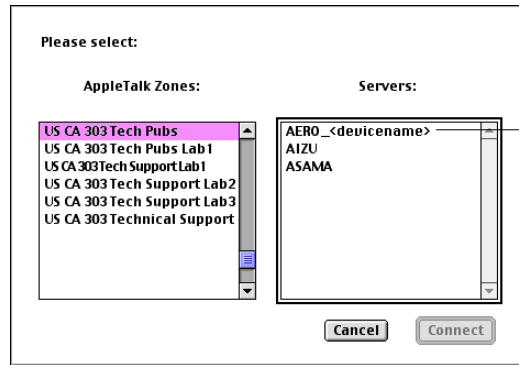
When you start Fiery Downloader, you must specify the connection to the Fiery.

BEFORE YOU BEGIN

- Print the Configuration page from the Control Panel and note the AppleTalk zone of the Fiery.

TO SPECIFY A FIERY CONNECTION

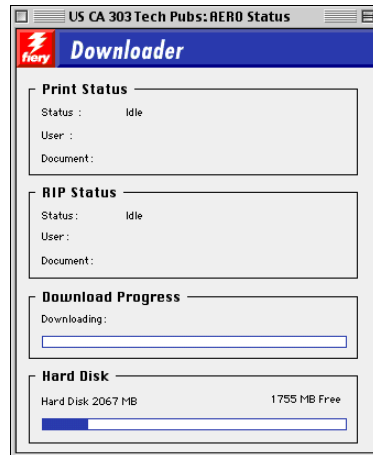
1. Double-click the Fiery Downloader icon.
2. Select the AppleTalk zone in which the Fiery is located from the AppleTalk Zones list.
The available servers appear in the Servers list.



Fiery name and device name
(DC3535)

3. Select the Fiery in the Servers list.
4. Click Connect.

The Fiery Downloader dialog box appears.



For information on how to use Fiery Downloader, see the *Printing Guide*.

Fonts

The Fonts installer on the User Software CD includes screen and printer fonts that correspond to the 136 built-in PostScript printer fonts on the Fiery. The Font installer copies both types of fonts to the System Folder:Fonts folder on your hard disk. To be available to applications, the screen fonts must remain in the System Folder:Fonts folder. You can copy the printer fonts to a folder of your choice.

NOTE: In the System Folder:Fonts folder, when displayed by Kind, screen fonts appear as type “Font Suitcase” and PostScript printer fonts appear as type “PostScript font.”

TO INSTALL SCREEN AND PRINTER FONTS

1. **On the User Software CD, double-click the Fonts icon to start the Fonts installer.**
2. **Click Install and restart your computer.**

By default, the fonts are installed to the System folder:Fonts folder on your hard disk.

If you have any applications open, you must quit and restart them before the newly installed screen fonts are available.

Installing color files from the User Software CD

You can copy additional color files from the User Software CD to your hard disk. Many of the files are PostScript files you can download and print using Fiery Downloader.

The User Software CD contains the following color files:

ICC profiles (inside the ColorSync folder)	Install the ICC profiles into the ColorSync Profiles folder inside the System Folder.
---	---

Color Files
folder (inside
the English
folder)

CMYK Color Reference.ps, an 11-page, letter-size PostScript file to use for reference when defining CMYK colors in applications.

PANTONE Book.ps, a 19-page, letter-size PostScript file that indicates the closest equivalent of PANTONE coated colors that the Fiery and your particular copier model can produce. The method used to print the PANTONE Book.ps file differs depending on the Spot Color Matching setting. For more information, see the *Printing Guide* and the *Color Guide*.

RGB page 01, a file you can print from Microsoft Word 97 or later to view available RGB colors.

RGB page 02, a file you can print from PowerPoint 6.0 or later to view available RGB colors.

Calibration
folder
(inside Color
Files folder)

Four measurements files of color patches: custom21.ps, custom34.ps, standard21.ps and standard34.ps. The numbers in the file names refer to the number of patches on the page. The Custom files are provided to allow you to download measurement patches that incorporate the copier's current calibration set. The Standard files are provided to allow you to download standard measurement patches that bypass the copier's current calibration set. For information on using these files, see the *Color Guide*.

These files are provided for expert users and should not be used for day-to-day calibration.

Loading ICC profiles

The ICC profiles installed are used with ColorWise Pro Tools and applications that support ICC standards.

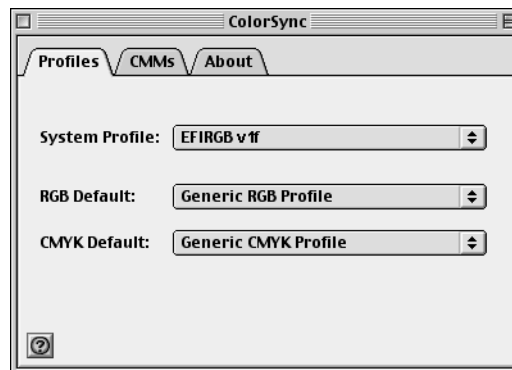
These instructions assume that you have already installed the ICC profiles included on the User Software CD inside the ColorSync folder. For more information, see “Installing color files from the User Software CD” on page 2-19.

NOTE: The internal name of an ICC profile may vary slightly from its file name.

The following procedure describes installing the ICC profiles with ColorSync 4.0. For more information about ColorSync, see your application’s documentation.

TO SET THE COLORSYNC SYSTEM PROFILE

1. Choose **Control Panels:ColorSync** from the **Apple Menu**.
2. Select **EFIRGB ICC v1f** from the **System Profile list**.



When selected as the ColorSync system profile, EFIRGB ICC v1f sets the optimal source color space for printing to the Fiery. The color space set by the EFIRGB ICC v1f profile is the same as that set by the EFIRGB setting of the RGB Source Profile print option.

NOTE: The RGB Source Profile print option setting overrides the ColorSync system profile setting.

3. **Close the ColorSync dialog box.**

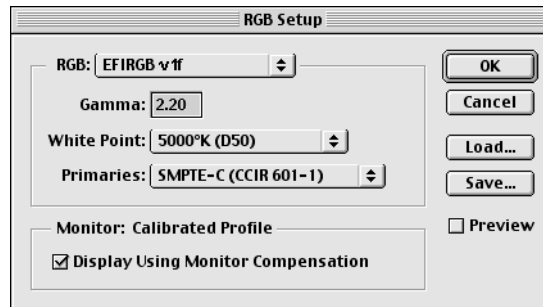
For more information about ICC profiles, see your Photoshop documentation.

Loading the monitor settings file

The EFIRGB ICC monitor settings file can be used in Photoshop or other applications that support ICC profiles to define a source color space for printing to the Fiery.

TO LOAD THE MONITOR SETTINGS FILE IN PHOTOSHOP 5.X

1. **Start Photoshop.**
2. **Choose Color Settings from the File menu, and choose RGB Setup from the Color Settings submenu.**
3. **In the RGB Setup dialog box, click Load.**
4. **Browse to the System Folder : Preferences: ColorSync Profiles folder, select the EFIRGB ICC file, and then click Open.**



NOTE: If you are using ColorSync 2.5, the ColorSync profile is located in System Folder:ColorSync Profiles.

The EFIRGB v1f file appears as the selection.

5. **Click OK.**

Loading the ICC copier profile

The ICC copier profile enables RGB-to-CMYK conversions that are specific to the kind of copier you are using.

TO LOAD THE ICC COPIER PROFILE IN PHOTOSHOP 5.X

1. **Start Photoshop.**
2. **Choose Color Settings from the File menu and choose CMYK Setup from the Color Settings submenu.**
3. **In the CMYK Setup dialog box, choose ICC as the CMYK color model.**
4. **Select the profile that corresponds to the Fiery from the Profile menu.**
5. **Click OK.**

For more information about ICC profiles, see your Photoshop documentation.

Loading monitor settings and the ICC device profile in Photoshop 7.x/6.x

In Photoshop 7.x and 6.x, you can load the monitor settings file and the ICC device profile at the same time.

TO LOAD THE MONITOR SETTINGS FILE AND THE ICC DEVICE PROFILE IN PHOTOSHOP 7.X/6.X

1. **Start Photoshop.**
2. **Choose Color Settings from the Edit menu and then choose Advanced Mode.**
3. **Choose EFI RGB from the RGB menu.**
4. **Choose the profile that corresponds to the Fiery from the CMYK menu.**
5. **Click OK.**

For more information, see your Photoshop documentation.

Chapter 3: Downloading Installers with Fiery WebTools

Fiery WebTools allow you to manage your Fiery remotely from the Internet or from your company's intranet. The Fiery has its own home page, from which you can select a variety of functions.

For more information on using Fiery WebTools, see the *Printing Guide*.

Setting up Fiery WebTools

In order for network users to access and use Fiery WebTools, you must set specific Fiery options in Network Setup and Printer Setup. You also must prepare each user's computer to communicate with the Fiery over the Internet or intranet.

For more information about Network Setup and Printer Setup, see the *Configuration Guide*.

TO SET UP CLIENT WORKSTATIONS TO USE FIERY WEBTOOLS

1. **Enable TCP/IP networking.**
2. **Make sure the workstation has a valid, unique IP address.**
3. **Make sure a supported Internet browser is installed on the computer.**
4. **Make sure Java is enabled in your Internet browser.**

For more information on supported browsers, see the *Quick Start Guide*.

For more information on setting up the Fiery and the network, see the *Configuration Guide*.

Using the Fiery WebTools Installer

The Installer WebTool allows you to download installers for printer drivers and user software directly from the Fiery to your computer.

TO DOWNLOAD PRINTER DRIVER USER SOFTWARE FILES WITH THE INSTALLER WEBTOOL

1. Start your Internet or intranet browser and enter the DNS name or IP address of the Fiery.
2. Select a login level, enter a password if required, and click OK.

No password is required to log in as Guest. If the Administrator has configured Guest access, any user has full access to the Installer WebTool while logged in as Guest.

3. Click Installer.



4. Under the name of your operating system, click the name of the item you want to install.
5. For installation of user software, follow the on-screen instructions.

6. For installation of printer drivers, continue with the following instructions.

A dialog box appears, prompting you to save the file to the location you choose.

For Windows computers, a dialog box appears, offering you the choice of running the program across the Internet or intranet or saving it to disk.

For Mac OS computers, a folder named Printer Driver is downloaded to the desktop in a BinHex-encoded, compressed format. If your Internet browser is equipped with an expander utility, such as StuffIt Expander, the folder decodes and decompresses automatically.

7. For Mac computers, proceed to [step 9](#). For Windows computers, browse to the location where you want to save the Prntdrv.exe file and click Save.

For Mac OS computers, if the Printer Driver folder did not automatically decode and decompress, start the utility that performs that function.

8. For Windows computers, double-click the Prntdrv.exe file, browse to the location where you want to install the folder, and click Next.

The folder is installed to the location you specified.

9. Install the appropriate printer driver for your operating system.

For instructions on installing the printer driver for	See
Windows 9x/Me	“To install the PostScript printer driver for Windows 9x/Me” on page 1-2.
Windows NT 4.0	“To install the PostScript printer driver for Windows NT 4.0” on page 1-15.
Windows 2000/XP	“To install the PostScript printer driver for Windows 2000/XP” on page 1-29.
Mac OS	“Setting up the Fiery as a PostScript printer” on page 2-1.

Chapter 4: Troubleshooting

This chapter provides troubleshooting tips.

On a Windows computer

Setting up printing on Windows NT 4.0 or Windows 2000/XP computers

For information about problems you may encounter using the PostScript Printer Driver for Windows NT 4.0/2000/XP, see the Adobe README file (readmeNT) included in English\Prntdrv\Ps_drvr\Win_NT4x on the User Software CD. For Windows 2000/XP, see your Windows 2000/XP documentation.

Reinstalling the Adobe PostScript Printer Driver on Windows 9x/Me

If you are reinstalling the Adobe PostScript Printer Driver, delete any previous versions and related files before installation.

For additional information about problems you may encounter using the Adobe Printer Driver for Windows 9x/Me, see the Adobe README file (readme9x.wri) included in English\PRNTDRVR\Ps_drvr\Win_9x_ME on the User Software CD.

Problems with the Fiery utilities on Windows computers

If you are experiencing problems with connections for the Fiery utilities, try the following:

1. **Make sure the TCP/IP networking protocol is enabled.**
2. **Make sure the connection is configured correctly for your site.**

To check the current configuration, start a Fiery utility and choose Open from the File menu. Select the Fiery and click Modify to see current settings. If the settings are incorrect, you can change them in this dialog box.

On a Mac OS computer

Setting up the Fiery in the Chooser

If Auto-setup does not work and you are prompted to select the printer description file, select the appropriate Fiery file in your System Folder : Extensions : Printer Descriptions folder, "Xerox DocuColor 3535 PS."

Installing screen fonts

If you experience problems installing the PostScript screen fonts from the User Software CD to the System Folder : Fonts folder, try the following:

1. **Quit all applications and close all windows.**
2. **Create a new folder and name it "Uninstalled Fonts."**
This folder must be located outside of the System Folder.
3. **Move fonts you are not using from the System Folder : Fonts folder to the Uninstalled Fonts folder.**
4. **Install the fonts from the User Software CD to a folder called CD fonts. Copy the fonts to the System Folder : Fonts folder.**
5. **Create aliases to the System Folder : Fonts folder and the Uninstalled Fonts folder.**
6. **Place both aliases on your desktop.**
7. **When necessary, use the aliases to open both folders and move fonts between them.**

If you have any applications running, you must quit and restart them in order to view and use the newly installed fonts.

Or, you can try combining fonts from multiple suitcases into a single suitcase.

Index

A

- Adobe Acrobat
 - for DocBuilder Pro 1-52
 - installation 1-52
- Adobe PageMaker for Windows *see* PageMaker for Windows
- Adobe PostScript printer driver, *see* PostScript printer driver
- AppleTalk
 - connecting to Mac OS 2-2, 2-5

C

- Calibrat folder, for Windows users 1-59
- Calibration folder, for Macintosh users 2-20
- Chooser
 - selecting the server in 2-2, 2-5
 - setting up color server in 4-2
- Clrfiles folder 1-59
- CMYK Color Reference.ps 2-20
- Cmyk_ref.ps 1-59
- Color Files folder 2-20
- Color Files folder, for Macintosh users 2-20
- color reference files 2-19
 - for Macintosh users 2-19
 - for Windows users 1-59
- ColorSync Profiles 2-10
- ColorWise Pro Tools 1-50
 - configuring the connection to the Fiery (Mac OS) 2-12
 - (Windows) 1-53
 - installing for Mac OS 2-10
 - installing for Windows 1-50
- Command WorkStation
 - configuring the connection 1-55
 - installing for Windows 1-51
- Configuration page 1-11, 1-26, 1-41, 1-53

connecting

- Windows 2000/XP with TCP/IP 1-35
- Windows NT 4.0 with TCP/IP 1-20
- connection on Windows, configuring 1-53 to 1-55
- Custom21.ps (Mac OS) 2-20
- Custom21.ps (Windows) 1-59
- Custom34.ps (Mac OS) 2-20
- Custom34.ps (Windows) 1-59

D

- device name 1-54, 2-14, 2-15
 - Windows 2000/XP with TCP/IP 1-21
 - Windows NT 4.0 with TCP/IP 1-21
- DNS name 1-21, 1-53, 2-15
- Domain Name Server, *see* DNS

E

- Efrgb.icc monitor settings file for Mac OS 2-21
- Efrgb.icm monitor settings file for Windows 1-60
- E-mail printing, installing 1-45, 1-51

F

- Fiery Downloader 1-50
 - installing for Windows 1-50
- Fiery Scan
 - installer for Mac OS 2-11
- Fiery Spooler
 - configuring the connection on Mac OS 2-15 to 2-16
 - modifying the configuration (Mac OS) 2-17
- Fiery TWAIN module (Mac OS) 2-11

- Fiery utilities
 - configuring the connection on
 - Windows 1-53 to 1-55
 - installing for Mac OS 2-10
 - installing for Windows 1-50
 - problems on Windows 4-1
- Fiery WebTools
 - Installer 3-2 to 3-3
 - setting up 3-1
- fonts
 - installer for Mac OS 2-19
 - installing 2-19, 4-2
 - printer fonts 2-19
 - screen fonts 2-19
- Fonts folder 4-2
- Frame Type option 1-8

I

- ICC device profile 2-23
 - loading in Photoshop 4.0
 - (Mac OS) 2-23
 - loading in Photoshop 6.x (Mac OS) 2-23
- ICC monitor settings profile, specifying in
 - Photoshop (Mac OS) 2-22
- Icm folder (Windows) 1-59
- Installable Options
 - specifying, from Mac OS 9x printer driver 2-3
 - specifying, from Windows 2000/XP printer driver 1-33
 - specifying, from Windows 9x/Me printer driver 1-4
 - specifying, from Windows NT printer driver 1-18
- installers
 - Mac OS 2-10
 - Windows 1-50
- installing
 - Adobe Acrobat 1-52
 - Adobe PostScript printer,
 - Windows 9x/Me 1-2

- Adobe PostScript printer,
 - Windows NT 4.0 1-15 to 1-17
- Command WorkStation 1-51
- Fiery Scan Plug-in (Mac OS) 2-11
- Mac OS software 2-11
- Microsoft PostScript printer,
 - Windows 2000/XP 1-29 to 1-33
- PostScript printer driver for Mac OS 2-2
- screen and printer fonts 2-19
- software for Mac OS 2-10
- software for Windows 1-50
- TWAIN module (Mac OS) 2-11
- internal name, for Windows NT 4.0 with
 - TCP/IP 1-21
- IP address 1-54
- IPP printing setup
 - on Windows 2000/XP 1-43 to 1-44
 - on Windows 98 1-13 to 1-14
 - on Windows Me 1-13 to 1-14
- IPX
 - printing for Windows 2000/XP 1-39 to 1-40
 - printing for Windows NT 4.0 1-24
 - Windows 2000/XP 1-38
 - Windows NT 4.0 1-22
- IPX/SPX
 - Windows 2000/XP 1-38
 - Windows NT 1-22

J

- Java 1-51, 3-1

M

- Mac OS 9
 - printer setup 2-2
- Mac OS X
 - printer setup 2-4
- Mac OS
 - copying color files 2-19
 - fonts 2-19
 - Installer WebTool 2-1
 - installing Fiery utilities 2-1, 2-10

- installing software 2-11
- troubleshooting 4-2
- monitor settings file, Mac OS 2-22

N

- NetWare client setup
 - Windows 9x/Me 1-10
 - Windows 2000/XP 1-38
 - Windows NT 1-22

O

- Oemsetup.inf
 - file 1-2, 1-12, 1-16, 1-28, 1-30

P

- PageMaker for Windows 1-64
- PANTONE Book.ps 2-20
- PANTONE.ps 1-59
- Photoshop 5.0
 - loading the ICC device settings profile (Mac OS) 2-23
 - loading the ICC monitor settings file (Mac OS) 2-22
 - loading the ICM device profile (Windows) 1-62
 - loading the RGB working space profile (Windows) 1-61
- Photoshop 6.x
 - loading the ICC device settings profile (Mac OS) 2-23
 - loading the ICC monitor settings file (Mac OS) 2-23
 - loading the ICM device profile (Windows) 1-63
 - loading the ICM monitor settings file (Windows) 1-63
- PostScript
 - printing from Mac OS 2-1 to 2-19
 - printing from Windows 1-1, 1-14, 1-28
- PostScript printer driver
 - for Mac OS 2-2
 - installing using WebTools 3-2 to 3-3
 - Windows 2000/XP 1-29 to 1-33

- Windows 9x/Me
 - PostScript printer driver 1-2
- Windows NT 4.0 1-15 to 1-17

PostScript printing

- Windows 9x/Me 1-1

- PowerPoint, RGB color reference file 2-20

PPD

- copying files for Windows applications 1-63
- selecting the PPD in the Chooser 4-2
- Windows 9x/Me 1-3, 1-13
- Windows 2000/XP 1-30
- Windows NT 4.0 1-16, 1-28

Printer Driver, installable options

- Windows 2000/XP 1-33
- Windows 9x/Me 1-4

- printer drivers, *see* PostScript printer drivers

Printer Info Options

- specifying, from Mac OSX printer driver 2-10

printer setup

- Mac OS 9 2-2
- Mac OS X 2-4

printing

- Windows 2000/XP 1-35
- Windows 9x/Me 1-7
- Windows NT 4.0 1-20
- see also* PostScript printing

- Prntdrv.exe file 3-3

R

- RGB page 01 2-20
- RGB page 02 2-20
- Rgb_01.doc 1-59
- Rgb_02.ppt 1-59

S

- screen fonts 2-19, 4-2

SMB printing setup

- on Windows 2000/XP 1-41 to 1-43
- on Windows 9x/Me 1-10 to 1-13
- on Windows NT 4.0 1-25 to 1-27

Stand21.ps (Mac OS) 2-20
Stand21.ps (Windows) 1-59
Stand34.ps (Mac OS) 2-20
Stand34.ps (Windows) 1-59

T

troubleshooting
 Mac OS computers 4-2
 Windows computers 4-1

U

Uninstalled Fonts folder 4-2
User Software CD
 contents (Mac OS) 2-1
 contents (Windows) 1-50
 installing from, for Mac OS 2-2, 2-19
 troubleshooting fonts 4-2

W

Windows
 copying color files 1-59
 installing Fiery utilities 1-50
 troubleshooting 4-1
Windows 9x/Me
 setting up PostScript printing 1-1
 SMB printing 1-10 to 1-13
 troubleshooting 4-1
Windows 2000/XP
 IPX 1-39 to 1-40
 IPX/SPX 1-38
 PostScript printer driver 1-29 to 1-33
 printing requirements 1-35
 setting up PostScript printing 1-28
 troubleshooting 4-1
Windows 9x/Me
 printing requirements 1-7
Windows NT 4.0
 IPX 1-24
 IPX/SPX 1-22
 PostScript printer driver 1-15 to 1-17
 printing requirements 1-20
WINS Name Server 1-11, 1-26, 1-41
Word, RGB color reference file 2-20