

***Fiery SI Color Server***

GETTING STARTED

**for Xerox digital copier printers**



Copyright © 1996 Electronics for Imaging, Inc. All rights reserved.

This publication is protected by copyright, and all rights are reserved. No part of it may be reproduced or transmitted in any form or by any means for any purpose without express prior written consent from Electronics for Imaging, Inc., except as expressly permitted herein. Information in this document is subject to change without notice and does not represent a commitment on the part of Electronics for Imaging, Inc.

The software described in this publication is furnished under license and may only be used or copied in accordance with the terms of such license.

#### **Trademarks Notice**

EFI, the EFI logo, Fiery, the Fiery logo, EFICOLOR and the EFICOLOR logo are trademarks registered in the U.S. Patent and Trademark Office. Fiery XI, Fiery XJe, Fiery XJ+, Fiery SI, Fiery Driven, the Fiery Driven logo, XJ RipChips, Rip-While-Print, Continuous Print, Command WorkStation, AutoCal, STARR Compression, and Memory Multiplier are trademarks of Electronics for Imaging, Inc.

Xerox 5760, 5765, 5790, 5750, MajestiK, Regal, and all Xerox product names mentioned in this publication are trademarks of the Xerox Corporation.

Adobe, the Adobe logo, Adobe Illustrator, PostScript, Adobe Photoshop, Adobe Separator, and Adobe PageMaker, are registered trademarks of Adobe Systems Incorporated, registered in certain jurisdictions. EPS (Encapsulated PostScript) is a trademark of Altsys Corporation. Apple, the Apple logo, AppleShare, AppleTalk, EtherTalk, LaserWriter, and Macintosh are registered trademarks, and MultiFinder is a trademark of Apple Computer, Inc. Microsoft, MS, MS-DOS, and Windows are registered trademarks of Microsoft in the US and other countries. QuarkXPress is a registered trademark of Quark, Inc. Times, Helvetica, and Palatino are trademarks of Linotype AG and/or its subsidiaries. ITC Avant Garde, ITC Bookman, ITC Zapf Chancery, and ITC Zapf Dingbats are registered trademarks of International Typeface Corporation. Ethernet is a registered trademark of Xerox Corporation. Farallon, PhoneNET PC, and PhoneNET Talk are trademarks of Farallon Computing, Inc. COPS and COPS Talk are trademarks of CoOperative Printing Solutions, Inc. NetWare and Novell are registered trademarks and Internetwork Packet Exchange (IPX) is a trademark of Novell, Inc. SyQuest is a registered trademark, in the United States and certain other countries, of SyQuest Technology, Inc. UNIX is a registered trademark of UNIX System Laboratories, a wholly owned subsidiary of Novell, Inc. PANTONE is a registered trademark of Pantone, Inc.

All other terms and product names may be trademarks or registered trademarks of their respective owners, and are hereby acknowledged.

#### **Legal Notices**

**APPLE COMPUTER, INC. ("APPLE") MAKES NO WARRANTIES, EXPRESS OR IMPLIED, INCLUDING WITHOUT LIMITATION THE IMPLIED WARRANTIES OF MERCHANTABILITY AND FITNESS FOR A PARTICULAR PURPOSE, REGARDING THE APPLE SOFTWARE. APPLE DOES NOT WARRANT, GUARANTEE, OR MAKE ANY REPRESENTATIONS REGARDING THE USE OR THE RESULTS OF THE USE OF THE APPLE SOFTWARE IN TERMS OF ITS CORRECTNESS, ACCURACY, RELIABILITY, CURRENTNESS, OR OTHERWISE. THE ENTIRE RISK AS TO THE RESULTS AND PERFORMANCE OF THE APPLE SOFTWARE IS ASSUMED BY YOU. THE EXCLUSION OF IMPLIED WARRANTIES IS NOT PERMITTED BY SOME STATES. THE ABOVE EXCLUSION MAY NOT APPLY TO YOU.**

**IN NO EVENT WILL APPLE, ITS DIRECTORS, OFFICERS, EMPLOYEES OR AGENTS BE LIABLE TO YOU FOR ANY CONSEQUENTIAL, INCIDENTAL OR INDIRECT DAMAGES (INCLUDING DAMAGES FOR LOSS OF BUSINESS PROFITS, BUSINESS INTERRUPTION, LOSS OF BUSINESS INFORMATION, AND THE LIKE) ARISING OUT OF THE USE OR INABILITY TO USE THE APPLE SOFTWARE EVEN IF APPLE HAS BEEN ADVISED OF THE POSSIBILITY OF SUCH DAMAGES. BECAUSE SOME STATES DO NOT ALLOW THE EXCLUSION OR LIMITATION OF LIABILITY FOR CONSEQUENTIAL OR INCIDENTAL DAMAGES, THE ABOVE LIMITATIONS MAY NOT APPLY TO YOU.** Apple's liability to you for actual damages from any cause whatsoever, and regardless of the form of the action (whether in contract, tort [including negligence], product liability or otherwise), will be limited to \$50.

#### **Restricted Rights Legends**

For defense agencies: Restricted Rights Legend. Use, reproduction, or disclosure is subject to restrictions set forth in subparagraph (c)(1)(ii) of the Rights in Technical Data and Computer Software clause at 252.227.7013.

For civilian agencies: Restricted Rights Legend. Use, reproduction, or disclosure is subject to restrictions set forth in subparagraph (a) through (d) of the commercial Computer Software Restricted Rights clause at 52.227-19 and the limitations set forth in Electronics for Imaging, Inc.'s standard commercial agreement for this software. Unpublished rights reserved under the copyright laws of the United States.

**Printed in the United States of America on recycled paper.**

**Part Number:** n/a

## **CE Mark**

The CE marking applied to this product symbolises Rank Xerox's declaration of conformity with the following applicable directives of the European Union as of the dates indicated.

January 1, 1996—Council Directive 70/80/CCO amended by Council Directive 93/68/EEO. Approximation of the laws of the member states related to low voltage equipment.

January 1, 1996—Council Directive 59/336/EEC. Approximation of the laws of the member states related to electromagnetic compatibility.

A full declaration defining the relevant directives and referenced standards can be obtained from your Rank Xerox representative.

**WARNING: In order to allow this equipment to operate in proximity to industrial, scientific, and Medical (ISM) equipment, the external radiation from ISM equipment may have to be limited or special migration measures taken.**

**WARNING: This is a Class A product. In a domestic environment this product may cause radio interference, in which case the user may be required to take adequate measures.**

## **FCC Information**

WARNING: FCC Regulations state that any unauthorized changes or modifications to this equipment not expressly approved by the manufacturer could void the user's authority to operate this equipment.

NOTE: This equipment has been tested and found to comply with the limits for a Class A digital device, pursuant to Part 15 of the FCC Rules. These limits are designed to provide reasonable protection against harmful interference when the equipment is operated in a commercial environment. This equipment generates, and uses, and can radiate radio frequency energy and, if not installed and used in accordance with the instruction manual, may cause harmful interference to radio communications. Operation of this equipment in a residential area is likely to cause interference in which case the user will be required to correct the interference at his own expense.

## **Industry Canada Class A Notice**

This digital apparatus does not exceed the Class A limits for radio noise emissions from digital apparatus as set out in the interference-causing equipment standard entitled, "Digital Apparatus" ICES-003 from Industry Canada.

## **Avis de Conformation Classe A d l'Industrie Canada**

Le présent appareil numérique n'émet pas de bruits radioélectriques dépassant les limites applicables aux appareils numériques de la Classe A prescrites dans la norme sur le matériel brouilleur, "Appareils Numériques" NMB-003 édictée par l'Industrie Canada.

## **Certificate by Manufacturer/Importer**

This is to certify that the FC07 is shielded against radio interference in accordance with the provisions of VFG 243/1991. The German Postal Services have been advised that this device is being put on the market and that they have been given the right to inspect the series for compliance with the regulations. Electronics for Imaging, Inc.

## **Bescheinigung des Herstellers/Importeurs**

Heirmit wird bescheinigt, dass der FC07 im Uebereinstimmung mit den Bestimmungen der VFG 243/1991 Funk-Entstort ist. Der Deutschen Bundespost wurde das Inverkehrbringen dieses Gerates angezeigt und die Berechtigung zur Ueberpruefung der Serie auf Einhaltung der Bestimmungen eingeräumt. Electronics for Imaging, Inc.

## **RFI Compliance Notice**

This equipment has been tested concerning compliance with the relevant RFI protection requirements both individually and on system level (to simulate normal operation conditions). However, it is possible that these RFI Requirements are not met under certain unfavorable conditions in other installations. It is the user who is responsible for compliance of his particular installation.

Dieses Gerat wurde einzeln sowohl als auch in einer Anlage, die einen normalen Anwendungsfall nachbildet, auf die Einhaltung der Funk-entstoerbestimmungen gepruengt. Es ist jedoch moeglich, dass die Funk-entstoerbestimmungen unter unguenstigen Umstaenden bei anderen Geratekombinationen nicht eingehalten werden. Fuer die Einhaltung der Funk-entstoerbestimmungen seigner gesamten Anlage, in der dieses Gerat betrieben wird, ist der Betreiber verantwortlich.

Compliance with applicable regulations depends on the use of shielded cables. It is the user who is responsible for procuring the appropriate cables.

Einhaltung mit betreffenden Bestimmungen kommt darauf an, dass geschirmte Ausführungen gebraucht werden. Fuer die beschaffung richtiger Ausführungen ist der Betreiber verantwortlich.

### **Software License Agreement**

Electronics for Imaging, Inc. grants to you a non-exclusive, non-transferable license to use the software and accompanying documentation ("Software") included with the Fiery SI Color Server you have purchased, including without limitation the PostScript<sup>®</sup> software provided by Adobe Systems Incorporated.

You may:

- a. use the Software solely for your own customary business purposes and solely with Fiery SI;
- b. use the digitally-encoded machine-readable outline and bitmap programs ("Font Programs") provided with Fiery SI in a special encrypted format ("Coded Font Programs") to reproduce and display designs, styles, weights, and versions of letters, numerals, characters and symbols ("Typefaces") solely for your own customary business purposes on the screen of the Fiery SI or Macintosh monitor used with Fiery SI;
- c. use the trademarks used by Electronics for Imaging to identify the Coded Font Programs and Typefaces reproduced therefrom ("Trademarks"); and
- d. assign your rights under this Agreement to a transferee of all of your right, title and interest in and to Fiery SI provided the transferee agrees to be bound by all of the terms and conditions of this Agreement.

You may not:

- a. make use of the Software, directly or indirectly, to print bitmap images with print resolutions of 600 dots per inch or greater, or to generate fonts or typefaces for use other than with Fiery SI;
- b. make or have made, or permit to be made, any copies of the Software, Coded Font Programs, accompanying documentation or portions thereof, except as necessary for use with the Fiery SI unit purchased by you; provided, however, that under no circumstances may you make or have made, or permit to be made, any copies of that certain portion of the Software which has been included on the Fiery SI hard disk drive. You may not copy the documentation;
- c. attempt to alter, disassemble, decrypt or reverse engineer the Software, Coded Font Programs or accompanying documentation.
- d. rent or lease the Software.

### **Proprietary Rights**

You acknowledge that the Software, Coded Font Programs, Typefaces, Trademarks and accompanying documentation are proprietary to Electronics for Imaging and its suppliers and that title and other intellectual property rights therein remain with Electronics for Imaging and its suppliers. Except as stated above, this Agreement does not grant you any right to patents, copyrights, trade secrets, trademarks (whether registered or unregistered), or any other rights, franchises or licenses in respect of the Software, Coded Font Programs, Typefaces, Trademarks or accompanying documentation. You may not adapt or use any trademark or trade name which is likely to be similar to or confusing with that of Electronics for Imaging or any of its suppliers or take any other action which impairs or reduces the trademark rights of Electronics for Imaging or its suppliers. The trademarks may only be used to identify printed output produced by the Coded Font Programs. At the reasonable request of Electronics for Imaging, you must supply samples of any Typeface identified with a trademark.

The MacApp software is proprietary to Apple Computer, Inc. and is licensed to Electronics for Imaging, Inc. for distribution only for use in combination with Fiery SI software utilities.

### **Confidentiality**

You agree to hold the Software and Coded Font Programs in confidence, disclosing the Software and Coded Font Programs only to authorized users having a need to use the Software and Coded Font Programs as permitted by this Agreement and to take all reasonable precautions to prevent disclosure to other parties.

### **Remedies**

Unauthorized use, copying or disclosure of the Software, Coded Font Programs, Typefaces, Trademarks or accompanying documentation will result in automatic termination of this license and will make available to Electronics for Imaging other legal remedies.

### **Limited Warranty And Disclaimer**

Electronics for Imaging warrants that, for a period of ninety (90) days from the date of delivery to you, the Software under normal use will perform without significant errors that make it unusable. Electronics for Imaging's entire liability and your exclusive remedy under this warranty (which is subject to you returning Fiery SI to Electronics for Imaging or an authorized dealer) will be, at Electronics for Imaging's option, to use reasonable commercial efforts to attempt to correct or work around errors, to replace the Software with functionally equivalent software, or to refund the purchase price and terminate this Agreement. Some states do not allow limitations on duration of implied warranty, so the above limitation may not apply to you.

Except for the above express limited warranty, Electronics for Imaging makes and you receive no warranties or conditions on the Products, express, implied, or statutory, and Electronics for Imaging specifically disclaims any implied warranty or condition of merchantability or fitness for a particular purpose.

For warranty service, please contact your authorized service/support center.

EXCEPT FOR THE ABOVE EXPRESS LIMITED WARRANTY, ELECTRONICS FOR IMAGING MAKES AND YOU RECEIVE NO WARRANTIES OR CONDITIONS ON THE SOFTWARE OR CODED FONT PROGRAMS, EXPRESS, IMPLIED, STATUTORY, OR IN ANY OTHER PROVISION OF THIS AGREEMENT OR COMMUNICATION WITH YOU, AND ELECTRONICS FOR IMAGING SPECIFICALLY DISCLAIMS ANY IMPLIED WARRANTY OR CONDITION OF MERCHANTABILITY OR FITNESS FOR A PARTICULAR PURPOSE. Electronics for Imaging does not warrant that the operation of the software will be uninterrupted or error free or that the Software will meet your specific requirements.

**Limitation Of Liability**

IN NO EVENT WILL ELECTRONICS FOR IMAGING OR ITS SUPPLIERS BE LIABLE FOR ANY DAMAGES, INCLUDING LOSS OF DATA, LOST PROFITS, COST OF COVER OR OTHER SPECIAL, INCIDENTAL, CONSEQUENTIAL OR INDIRECT DAMAGES ARISING FROM THE USE OF THE SOFTWARE, CODED FONT PROGRAMS OR ACCOMPANYING DOCUMENTATION, HOWEVER CAUSED AND ON ANY THEORY OF LIABILITY. THIS LIMITATION WILL APPLY EVEN IF ELECTRONICS FOR IMAGING OR ANY AUTHORIZED DEALER HAS BEEN ADVISED OF THE POSSIBILITY OF SUCH DAMAGE. YOU ACKNOWLEDGE THAT THE PRICE OF FERY SI XJ REFLECTS THIS ALLOCATION OF RISK. BECAUSE SOME STATES/JURISDICTIONS DO NOT ALLOW THE EXCLUSION OR LIMITATION OF LIABILITY FOR CONSEQUENTIAL OR INCIDENTAL DAMAGES, THE ABOVE LIMITATION MAY NOT APPLY TO YOU.

**Export Controls**

You agree that you will not export or re-export the Software or Coded Font Programs in any form without the appropriate United States and foreign government licenses. Your failure to comply with this provision is a material breach of this Agreement.

**Government Use**

Use, duplication or disclosure of the Software by the United States Government is subject to restrictions as set forth in subdivision (c) (1) (ii) of the Rights in Technical Data and Computer Software clause at DFARS 252.227-7013 or in subparagraphs (c) (1) and (2) of the Commercial Computer Software—Restricted Right Clause at 48 CFR 52.227-19, as applicable.

**Third Party Beneficiary**

You are hereby notified that Adobe Systems Incorporated, a California corporation located at 303 Almaden Blvd., San Jose, CA 95110 ("Adobe") is a third-party beneficiary to this Agreement to the extent that this Agreement contains provisions which relate to your use of the Fonts, the Coded Font Programs, the Typefaces and the Trademarks licensed hereby. Such provisions are made expressly for the benefit of Adobe and are enforceable by Adobe in addition to Electronics for Imaging.

**General**

This Agreement will be governed by the laws of the State of California.

This Agreement is the entire agreement held between us and supersedes any other communications or advertising with respect to the Software, Coded Font Programs and accompanying documentation.

If any provision of this Agreement is held invalid, the remainder of this Agreement shall continue in full force and effect.

If you have any questions concerning this Agreement, please write to Electronics for Imaging, Inc., Attn: Licensing Dept. or see Electronics for Imaging's web site at [www.efi.com](http://www.efi.com).

Electronics for Imaging, Inc.  
2855 Campus Drive  
San Mateo, CA 94403

# Contents

## Introduction

---

About the media pack	ix
About the documentation	ix
System requirements for Macintosh users	x
System requirements for Windows users	x
Networking requirements	xi
System requirements for UNIX users	xi
User software	xii

## Installing user software on a Macintosh computer

---

Installing Macintosh software	1
Moving files to the appropriate locations	3
Color reference pages	4
Installing files from the Color Files folder	5
Loading monitor setup and separation files	6
Setting up the Fiery SI as a PostScript printer	7
Setting up the Fiery SI in the Chooser	8

## Installing user software on a PC-compatible computer

---

Installation overview	9
Installing Windows software	10
Using the Windows installer	10
Completing installation for Windows 3.1x	14
Completing installation for Windows 95 and Windows NT	19
Configuring the Chooser list	19
Setting up the Fiery SI as a PostScript printer	26
Setting up printing with Windows 3.1x	26
Setting up printing with Windows 95	34
Setting up printing with Windows NT	40

---

Installing additional Windows files	45
Installing the EFICOLOR folder files	45
Loading the monitor settings file for Fiery XJ Scan	46
Installing the Color Reference pages	47

## Troubleshooting

---

On a Macintosh computer	49
On a Windows computer	49

## Index

## Introduction

This manual describes how to install the user software for the Fiery SI Color Server™ and set up printing from Macintosh and PC-compatible computers. For information on setting up network servers and clients to use the Fiery SI, see the *Administrator Guide*. For general information on using the color copier, your computer, your application software, or your network, see the manuals that accompany those products.

## About the media pack

Your Fiery SI includes a media pack containing:

- User Software CD—printer drivers, printer files, utilities, color reference files you can install directly onto Macintosh and PC-compatible computers
- Documentation set

## About the documentation

This manual is part of a set, which also includes the following manuals for users and system administrators:

- The *User Guide* describes how to set printing options and print to the Fiery SI. This manual describes how to use the software installed from the CD. It includes sections on printing from Macintosh and PC-compatible computers and UNIX workstations.
- The *Administrator Guide* explains basic configuration and administration of the Fiery SI for the supported platforms and network environments. It also includes guidelines for setting up UNIX, Windows NT, and NetWare servers to provide PostScript printing services to clients.
- *Release Notes* with information about changes in the current release of system and user software and guidelines for their use



## System requirements for Macintosh users

For installation of user software, you need A CD-ROM drive. This can be either an internal CD-ROM drive in your Macintosh or an external drive with the appropriate cable and software to run on your computer.

To use the Fiery SI with a Macintosh computer, you need:

- Any Macintosh computer in the Macintosh II, Quadra, Centris, Performa, or Power Macintosh families that has at least 4MB of RAM and EtherTalk® Phase 2 installed
- Apple System software version 7.0 or later
- Adobe® PostScript® Printer Driver version 8.0 or later, or Apple® LaserWriter® driver version 7.0 or later; and PPD (PostScript Printer Description) files

(The current version of the Adobe PostScript Printer Driver and the PPD files are included with the Fiery SI User Software.)

- To use Fiery XJ Scan™, Adobe Photoshop™ version 2.5 or later
- To use the paging feature of Fiery XJ Spooler, an alphanumeric pager and PageNOW! software version 1.5 or later. PageNOW! is available from Mark/Space Softworks: 1-800-799-1718. (United States and Canada only)

## System requirements for Windows users

For installation of user software, you need A CD-ROM drive. This can be either an internal CD-ROM drive in your PC or an external drive with the appropriate cable and software to run on your computer.

To use the Fiery SI with an IBM PC or compatible, you need:

- An IBM PC or compatible with an 80386, 80486, or Pentium processor and at least 4MB of RAM
- A mouse that is supported by Windows
- MS-DOS version 5.0 or later
- Microsoft® Windows version 3.1 or later, Windows 95, or Windows NT
- To use Fiery XJ Scan, Adobe Photoshop version 2.5 or later

- To print to the Fiery SI from Windows, you need to use a PostScript printer driver and PostScript Printer Description (PPD) file. These drivers and PPD files are included with the User Software. Use the Adobe PostScript Printer Driver for Windows version 3.0.1 with Windows 3.1x. Use version 4.1 with Windows 95. Windows 3.1x users can use the PostScript Printer Driver that came with the Windows3.1 system software; however, all Fiery SI printing features will not be available.
- To print from computers running Windows NT, you can use the PostScript driver delivered with the operating system, and the Fiery SI PPD file provided with the User Software.

## Networking requirements

For network use with Windows 3.x, you need:

- Farallon PhoneNET PC software version 3.1 or later (for AppleTalk) or COPSTalk for Windows version 1.2f or later (for AppleTalk); or SPX/IPX protocol (Novell), Ethernet, or Token Ring

For network use with Windows 95, you need:

- TCP/IP networking protocol or SPX/IPX networking protocol (Novell)

For network use with Windows NT, you need TCP/IP networking protocol

### IPX (Novell)

- With an IPX (Novell) network, you need a Novell file server running NetWare software version 3.11 or later that supports Frame Ethernet 802.3 or 802.2, or Ethernet II.

## System requirements for UNIX users

To use the Fiery SI with a UNIX workstation, you need:

- Workstations with Standard TCP/IP Ethernet connectivity supporting the lpr protocol in compliance with RFC 1179
- TCP/IP printing software that conforms to RFC1179 (Berkeley lpr protocol)

## User software

The User Software CD includes:

- |                                 |   |
|---------------------------------|---|
| Fiery XJ Scan™                  | A plug-in module for Photoshop that enables you to scan images from the copier directly into Photoshop.   |
| Fiery XJ Downloader™            | Enables you to print PostScript and Encapsulated PostScript files directly to the Fiery SI without using the application in which they were created. The Fiery XJ Downloader also enables you to manage the printer fonts installed on the Fiery SI.                                |
| Fiery XJ Spooler™               | Enables you to view the order and priority of print jobs, customize printer settings for jobs, delete jobs, and move jobs between queues. You can also use it to view job accounting information.   |
| Fiery XJ Print Calibrator™      | Enables you to keep your Fiery SI's colors at a consistent performance level across time.   |
| Adobe PostScript Printer Driver | Enables you to print to the Fiery SI and supports all special printing features and PostScript Level 2 features.  |
| Printer Files                   | Printer description files for popular applications that require them in order for the Fiery SI to appear in the application's Print and Page Setup dialog boxes. The Fiery SI printer description files provide information about the Fiery SI to applications and printer drivers. |
| Screen Fonts (Macintosh only)   | Installs screen fonts for the 39 PostScript printer fonts installed on the Fiery SI. For more information, see "Screen Fonts" on page 3.  |
| Color Reference                 | Enables you to print pages of reference pages so that you can view the range of colors available on your Fiery SI.  |

## Installing user software on a Macintosh computer

The general steps for installing the Fiery SI user software from the CD and setting up printing from a Macintosh computer are:

- Install the utilities and files.
- Move files to the appropriate locations.
- If you will be using Photoshop, install the EFICOLOR™ Separation Tables for your Fiery SI.
- Copy additional color reference files from the User Software CD as needed.
- If you will be using Fiery XJ Scan, load the monitor settings file.
- Install the Adobe PostScript Printer Driver.

## Installing Macintosh software

The Software Installer provides the following installation options:

- Utilities—Installs Fiery XJ Downloader, Fiery XJ Spooler, and Fiery XJ Print Calibrator.
- EFICOLOR—Installs the files used by Photoshop to ensure high color quality.
- Photoshop Plug-ins—Installs Fiery XJ Scan.
- Color Reference—Installs the CMYK and PANTONE color reference pages.
- Screen Fonts—Installs the screen fonts that correspond to the printer fonts installed on the Fiery SI hard disk.

---

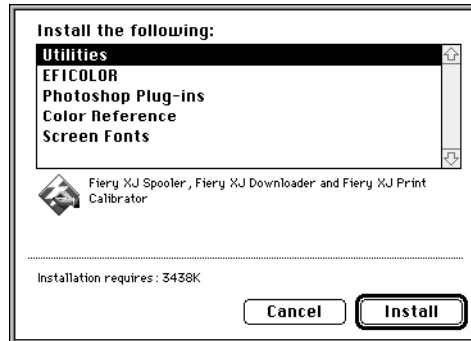
### TO INSTALL SOFTWARE:

1. If you are using an external CD-ROM drive, connect it to your Macintosh.
2. Insert the User Software CD or Disk 1.
3. Double-click to open the Installer folder.

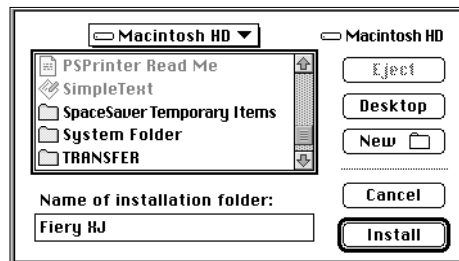
## 2 Installing user software on a Macintosh computer

4. Double-click the Installer icon.

The installer window displays a list of the items that can be installed and the amount of disk space required to install them.



5. Click to select the items you want to install. Command-click to select multiple non-adjacent items; shift-click to select multiple adjacent items.
6. Click Install.
7. When prompted, specify where to install the software and click Install.



8. If you are installing from disks, insert the remaining disks when prompted.
9. When the installation is complete, click OK in the dialog box that appears.
10. Move files to the appropriate locations as described next.

## Moving files to the appropriate locations

After you install the Fiery XJ software, some files must be moved to the correct location, and you might want to move others according to your Desktop structure.

### Utilities

You can put the Utilities folder containing the Fiery XJ Downloader, Fiery XJ Spooler, and Fiery XJ Print Calibrator wherever you like. You might want to keep them in the folder with your other utilities.

### Fiery XJ Scan

The following table indicates where to move the Fiery XJ Scan files in the Photoshop Plug-ins folder.

If you will be using:	Drag this file:	To this location:
Photoshop 2.5	Fiery XJ Scan	Plug-ins folder in the Adobe Photoshop folder
	Calibrated RGB	Adobe Photoshop folder
Photoshop 3.0	Fiery XJ Scan	Acquire/Export folder in the Plug-ins folder inside the Adobe Photoshop folder
	Calibrated RGB	Adobe Photoshop folder

### Screen Fonts

Regular, bold, italic, and bold italic versions of the following fonts are included with the Fiery SI: Courier, Times, Helvetica, Helvetica Condensed, Helvetica Narrow, ITC Avant Garde Gothic, Demi, ITC Bookman, New Century Schoolbook, and Palatino. Also included are ITC Zapf Chancery, ITC Symbol, and ITC Zapf Dingbats.

For every PostScript font you want to use in a document, you must install at least one point size of the screen font on your Macintosh. The more sizes and styles you install, the greater the variety of type your Macintosh can display clearly. Each point size and style occupies between 3K and 12K of disk space. It's usually a good idea to install at least the 10- and 12-point sizes of each font in the regular, bold, italic, and bold italic versions.

**NOTE:** If you have already been printing to a LaserWriter, most of the screen fonts supplied with the Fiery SI are probably already installed on your computer. If they are, you do not need to reinstall them.

You should install any screen fonts you want to use that are not already installed. If you use a font management utility such as Suitcase II or Font Juggler, follow the instructions included with the utility; if you don't use a font management utility, install the screen fonts as described in your Macintosh documentation by dragging the files to your System Folder.

### **Color reference pages**

There are two folders containing color reference pages for use with the Fiery SI:

- Color Reference folder you can install using the installer
- Color Files folder you can copy from the User Software CD (or disks)

### **Moving files in the Color Reference folder**

Put the Color Reference folder anywhere you like. It contains the following color reference pages:

- **CMYK Color Reference.ps**—A PostScript file of the CMYK Color Reference pages that you can download and print using the Fiery XJ Downloader or any other application that supports printing PostScript files.
- **Fiery Xerox 5760/65 Coated, Fiery Xerox 5760/65 Uncoated**—PostScript files of Pantone coated and uncoated colors for the MajestiK.
- **Fiery Xerox 5790 Coated, Fiery Xerox 5790 Uncoated**—PostScript files of Pantone coated and uncoated colors for the Regal.
- **Fiery Xerox 5750 Coated, Fiery Xerox 5750 Uncoated**—PostScript files of Pantone coated and uncoated colors for the 5750.

## Installing files from the Color Files folder

Copy the additional files that you want from the Color Files folder on the User Software CD to your hard disk. Many of the files are PostScript files that you can download and print using the Fiery XJ Downloader or any other application that supports printing PostScript files. You can put the Color Files folder anywhere you like. It contains several color reference pages:

- **Application Pages**—This folder contains RGB Color Reference, a folder containing files you can print from Microsoft Word 6.0 or later or PowerPoint 4.0 or later to view available RGB colors.
- **Colorcht.ps**—A PostScript version of the RGB, CMY, and PANTONE color charts that you can also print from the Fiery SI Control Panel.
- **Calibration Files**—This folder contains a sample measurements file that you can use with Fiery XJ Print Calibrator. It is for demonstration purposes and should not be used to calibrate your Fiery SI.

## Installing files from the EFICOLOR folder

Move the files in the EFICOLOR folder installed in the Fiery XJ folder as described in this section. They are required to insure proper colors when printing with the Fiery SI. The files in this folder are copier-specific.

---

### TO INSTALL FILES FROM THE EFICOLOR FOLDER:

1. Open the EFICOLOR folder inside the Fiery XJ folder.
2. Drag the file in the ColorSync 2.0 folder that corresponds to your copier to the ColorSync™ Profiles folder inside the Preferences folder inside your Macintosh System Folder.  
If this folder does not exist, create it. Make sure that you name it ColorSync™ Profiles. If the name does not match exactly, applications will not be able to locate the profiles.
3. Drag the file in the EFICOLOR 2.0 folder that corresponds to your copier to the ColorSync™ Profiles folder
4. If you use Adobe Photoshop, open the Separation Tables folder.  
Drag the Separation Tables that correspond to your copier into the Photoshop folder. The Separation Tables enable you to get the best possible CMYK separations.



5. If you use Adobe Photoshop, drag the Calibrated RGB file into the Adobe Photoshop folder.

You may have already installed this file if you installed Fiery XJ Scan.

## Loading monitor setup and separation files

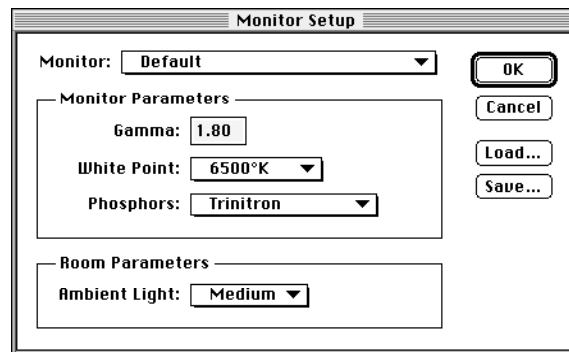
If you are using Adobe Photoshop, you should load the monitor setup file and the Separation Tables into Photoshop.

---

### TO LOAD MONITOR SETUP FILE AND SEPARATION TABLES:

1. Start the Photoshop application.
2. Choose Preferences from the File menu.
3. Choose Monitor Setup from the Preferences sub-menu.

The Monitor Setup dialog box appears. For information about this dialog box, see your Adobe Photoshop documentation.



4. In the Monitor Setup dialog box, click Load.
5. Open the Adobe Photoshop folder, select the Calibrated RGB file, and click Open.  
The Calibrated RGB file appears as the selection in the Monitor text box of the Monitor Setup dialog box.
6. Under Room Parameters, set Ambient Light to High.
7. Click OK to apply the settings.

8. Choose Preferences from the File menu, and choose Separation Tables from the submenu.
9. Click Load, and in the dialog box that appears, select the separation table you want to load. Click Open to load it.

The two separation tables are for Photographic (P) rendering and for Solid (S) color rendering. Photographic rendering is best for photographs and other images where tonal relationships are important. Solid color rendering is best when rendering individual colors accurately is more important than preserving tonal relationships.

When you click OK, the Separation Tables dialog box appears with the name of the separation table you loaded.

10. Click OK.

With the Calibrated RGB file and the separation table loaded, the EFICOLOR conversion will be used for all separations until you load a different monitor setup and separation table, even if you quit Photoshop and reopen it.

## Setting up the Fiery SI as a PostScript printer

To set up the Fiery SI as a PostScript printer, you must install the printer file (PPD) that corresponds to your printer and the Adobe PostScript Printer Driver (version 8.x supports PostScript Level 2) provided on the User Software CD.

Printer drivers provide a way to communicate information on print jobs between your applications and the Fiery SI (and any other PostScript printer connected to your computer).

---

### TO INSTALL THE PRINTER DRIVER:

1. Locate the Printer Files folder on the User Software CD.
2. Double-click the Installer icon.
3. Click OK in the welcome screen.

4. Click **Install** in the dialog box that appears.

This installs the Adobe PostScript Printer Driver, the printer description files that correspond to your copier, and the Apple Chooser 7.3 (if you are using an earlier version).

5. Click **OK** in the dialog box informing you that installation is complete.

If you operate the Fiery SI in a copy shop, quick print shop, or service bureau, you might want to provide copies of the printer driver, printer description files, and relevant documentation to customers. This ensures that jobs they create and print to files are properly formatted for printing to the Fiery SI.

### Setting up the Fiery SI in the Chooser

After you install the printer driver and printer description files, you need to set up the Fiery SI in the Chooser in order to take full advantage of its features. This section describes how to set up the Fiery SI with the Adobe PostScript Printer Driver.

---

#### TO SET UP THE FIERY SI IN THE CHOOSER:

1. Select **Chooser** from the **Apple** menu.
2. Click the **PSPrinter** icon.
3. Select the correct **AppleTalk** zone if necessary.
4. Select the name of your **Fiery SI**.
5. Click **Setup**.

The Adobe PostScript Printer Driver automatically selects the correct printer description file for your Fiery SI.

6. Close the **Chooser**.

## Installing user software on a PC-compatible computer

This chapter describes installing software and setting up printing from a PC-compatible computer running Windows 3.1x, Windows 95, or Windows NT.

### Installation overview

To use the Fiery XJ utilities with Windows 3.1x and AppleTalk, you must have PhoneNET PC or COPSTalk installed to communicate with AppleTalk.

**NOTE:** You may have to install or configure other programs or files before you can install the user software.

The general steps for installing the Fiery SI user software are:

- Install the utilities and files using the Installer.
- Move files to the appropriate locations as necessary.
- If you will be using the utilities with Windows 3.1x and AppleTalk, add commands to the AUTOEXEC.BAT file that enable you to select a Fiery SI from a Chooser-like window within each Fiery XJ utility.
- If you will be using the utilities with Windows and an IPX/SPX or TCP/IP network, configure the Chooser list. (This is sometimes done by your system administrator.)
- Install the PostScript Printer Driver you want to use.
- Set up the printer driver to communicate with the Fiery SI.
- If you will be using Adobe Pagemaker, move the printer description file for applications to the appropriate location.
- If you will be using Photoshop, install the EFICOLOR Separation Tables for your print device and the monitor setup file.
- If you will be using Fiery XJ Scan, load the monitor settings file.

## Installing Windows software

The Software Installer provides the following installation options:

- Utilities—Installs Fiery XJ Downloader, Fiery XJ Spooler, and Fiery XJ Print Calibrator.
- Photoshop Plug-ins—Installs Fiery XJ Scan.
- EFICOLOR—Copies to your hard drive the files used by ColorSync™ and Photoshop to ensure high color quality. Files in the EFICOLOR folder must be moved or installed to special locations after the Software Installer has been run.
- Color Reference—Installs the CMYK and PANTONE color reference pages.

## Using the Windows installer

---

### TO INSTALL SOFTWARE:

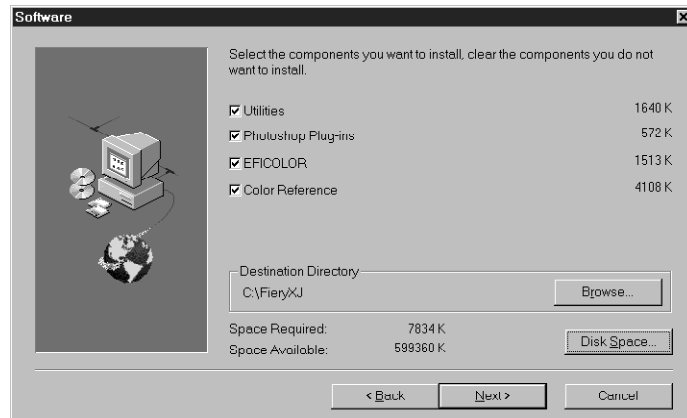
1. Insert the User Software CD or Disk 1 in your computer.
2. In the Windows 3.1x or NT File Manager, double-click the icon for the CD-ROM to display its contents. If you have Windows 95, open the My Computer window and double-click the icon for the CD drive .
3. Double-click to open the following folders: ENGLISH\INSTALLR\DISK1.
4. Double-click the SETUP (Windows 95) or SETUP.EXE (Windows NT or 3.1x) icon.



5. Click Next in the Welcome dialog box.



6. In the Software dialog box, select the items that you want to install and then click Next.

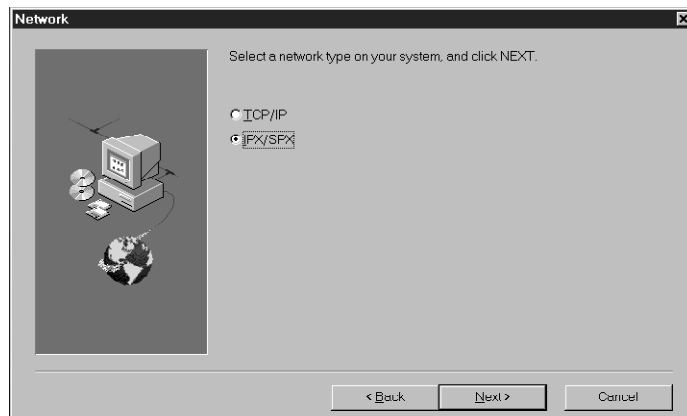


7. If you are installing the utilities, specify the name of the Program Folder in which to install them, or click Next to use the default name.



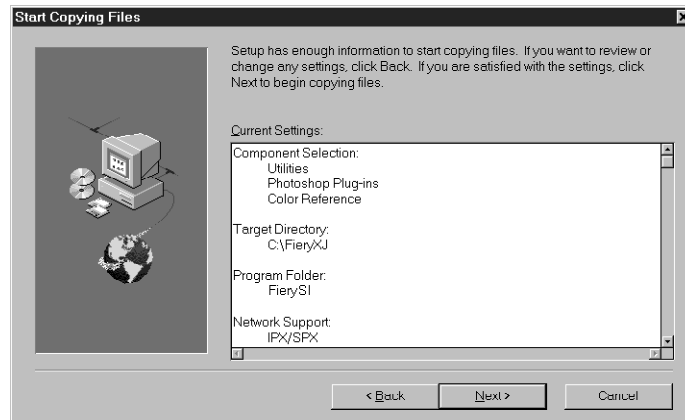
8. If you are prompted, specify the network type. Select IPX/SPX if you are using Windows 95; select TCP/IP if you are using Windows NT.

**NOTE:** This dialog box is not displayed if you are using Windows 3.1x; the implied network protocol is IPX/SPX.



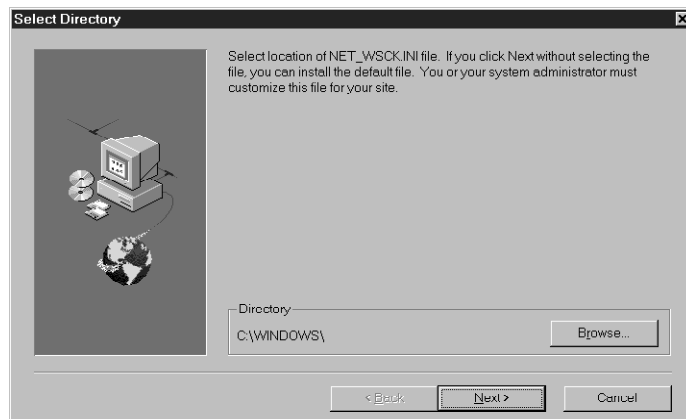
**NOTE:** The network protocol you choose here will become the default when you configure the utilities. If you choose TCP/IP (the default) and your network protocol is IPX/SPX, you need to do two things after the installation: delete the NET\_WSCK.DLL file from the System folder in your active Windows folder, and re-install the utilities, this time choosing IPX/SPX in the Network dialog box.

9. Verify the information in the Start Copying Files dialog box and then click Next.



The files are copied to your hard disk.

10. If you are prompted, click Browse or insert a floppy disk with a NET\_WSCK.INI file that has been customized for your site.





If you do not have a customized NET\_WSCK.INI file, you can use the default file. If you use the default file, make sure that you configure the Chooser list before you try to use the utilities. See “Configuring the Chooser list” on page 19 for instructions.

11. Click OK when you are informed that installation is complete.

## Completing installation for Windows 3.1x

After you install files on your PC, you need to perform the following procedures to use the utilities.

- Copy the files in the FierySI\PLUGINS directory to the appropriate locations. For instructions, see “Copying files to the appropriate locations:” on page 15.
- Copy the files in the FierySI\UTILS directory to the appropriate locations. (If you have older files that will be rewritten, rename or back them up.) For instructions, see “Copying files to the appropriate locations:” on page 15.
- If you will be using the utilities with PhoneNET PC or COPSTalk, modify the AUTOEXEC.BAT file. You can add commands to the AUTOEXEC.BAT file that enable you to select a Fiery SI in a Chooser window from within each utility. For instructions, see “To modify the AUTOEXEC.BAT file for Windows 3.1x and AppleTalk:” on page 16.
- If you will be using the utilities with PhoneNET PC and Windows 3.1x, edit the ABOTH.BAT file to run COMPAT.COM. ABOTH.BAT is a batch file that starts PhoneNET PC when you start your computer. For instructions, see “To edit the ABOTH.BAT file for Windows 3.1 with PhoneNET:” on page 18.
- If you will be using the utilities with Novell SPX/IPX, verify that you have the correct information in your Chooser List. For instructions, see “Configuring the Chooser list” on page 19.
- If you will be using the utilities with Novell SPX/IPX, verify that you have the correct information in your NET.CFG file. This file was installed as part of your installation of SPX/IPX. For instructions, see “To verify the information in the NET.CFG file for Windows 3.1 and IPX:” on page 16.

**COPYING FILES TO THE APPROPRIATE LOCATIONS:**

1. Copy the PLUGINS files to the following locations:

To use:	Drag these files:	To this location:
Fiery XJ Scan	XJSCAN.8BA	PLUGINS subdirectory of the Adobe Photoshop directory
	CALRGB.AMS	Adobe Photoshop directory

2. Open the UTILS folder.

This folder contains utility applications and folders that enable utilities to be used with AppleTalk and Novell (IPX/SPX) networks.

3. Delete the folder for the protocol that you will not use.

It is not necessary to delete this folder, but you will not need it.

4. If you are using AppleTalk, open the APPLTALK folder and move files to the following locations:

To use:	Drag these files:	To this location:
Any utility or plug-in	APPL_TSR.EXE APPLINIT.EXE	FierySI directory
	NET_APPL.DLL CTL3D.DLL	WINDOWS\SYSTEM directory,

5. If you are using the utilities with Novell IPX, open the IPXSPX folder and move files to the following:

From this location:	Drag these files:	To this location:
IPXSPX\SYSTEM	CTL3D.DLL	WINDOWS\SYSTEM
	NET_APPL.DLL	
	VIPX.386	
	LSL.COM	
	VNETWARE.386	

From this location:	Drag these files:	To this location:
	NWPOPUP.EXE	
	NETWARE.DRV	
	NWGDI.DLL	
	IPXODI.COM	

---

**TO VERIFY THE INFORMATION IN THE NET.CFG FILE FOR WINDOWS 3.1 AND IPX:**

- In the Link Driver section of the file, make sure that the Ethernet Frame Type matches what is set on your Fiery SI.  
You can print the Configuration page from the Fiery SI Control Panel to see the current setting.

---

**TO MODIFY THE AUTOEXEC.BAT FILE FOR WINDOWS 3.1X AND APPLE TALK:**

1. Make a backup copy of your AUTOEXEC.BAT file and give it a unique name.  
This file is usually stored in the C directory, at the root level.  
It is always a good idea to make a backup copy of your AUTOEXEC.BAT file before you change it.
2. Use a text editor to open the AUTOEXEC.BAT file.
3. After the network software commands or at the end of the file, add the following lines:  
C:\FierySI\APPL\_TSR.EXE  
C:\FierySI\APPLINIT.EXE  
If you are using PhoneNET PC, insert the lines after the CALL C:\PHONENET\ABOTH command.  
If you are using COPSTalk, insert the lines after the last of the following commands: COPSNODE, COPSLPT, COPSHARE, CSHARE. (The last three may not be present; they are optional.)  
If your system uses a drive letter other than C: or you named the FierySI directory something other than "FierySI," type the correct path for your system.

The APPL\_TSR line must precede the APPLINIT line.

4. Save the text file as AUTOEXEC.BAT.
5. Exit the text editor.
6. If you are working in Windows, exit Windows.
7. Press Ctrl+Alt+Del to reboot your computer.

---

**TO EDIT THE ABOTH.BAT FILE FOR WINDOWS 3.1 WITH PHONENET:**

1. Use a text editor to open the ABOTH.BAT file.  
ABOTH.BAT is stored in the directory in which PhoneNET PC software was installed (by default, the PHONENET directory).
2. Find the lines that read:  
REM Un-REM next two lines for backward compatibility  
REM LH C:\PHONENET\COMPAT  
REM if errorlevel 1 goto err  
If you installed PhoneNET PC in a directory other than C:\PHONENET, the second line will contain the directory name you chose instead of PHONENET.
3. Delete the word REM from the beginning of the second and third lines, so that they read:  
REM Un-REM next two lines for backward compatibility  
LH C:\PHONENET\COMPAT  
if errorlevel 1 goto err
4. Save the text file as ABOTH.BAT.
5. Exit the text editor.
6. If you are working in Windows, exit Windows.
7. Press Ctrl+Alt+Del to restart your computer.

## Completing installation for Windows 95 and Windows NT

To complete installation for Windows 95 or Windows NT, move the plug-ins files to the appropriate locations. Then make sure that the information in the Chooser list has been properly configured.

### Moving Windows 95 and Windows NT plug-ins to the appropriate locations

To use the Fiery XJ Scan plug-in, move the following files from the Plugins folder in the FierySI folder to the appropriate locations:

To use:	Drag these files:	To this location:
Fiery XJ Scan	XJ_SC_32.8BA	PLUGINS subdirectory of Photoshop directory
	CALRGB.AMS	Adobe Photoshop directory

## Configuring the Chooser list

If you are using Windows 95 or Windows 3.1x with an IPX/SPX network, or using Windows NT with a TCP/IP network, you must configure the Chooser list for your server.

**NOTE:** You should re-configure this file whenever there is a change to your Fiery SI server or network that impacts the information in the file.

---

### TO PREPARE TO EDIT THE CHOOSER LIST:

- If you are using IPX/SPX, print the Configuration page from the Control Panel. Use this page to determine the IPX address and server name.

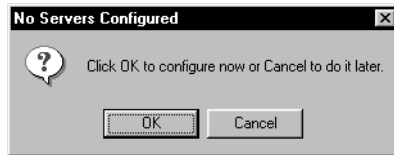
In general, you should use the Ethernet IPX address. If you are connected through a Token Ring network, use the Token Ring IPX address.
- If you are using TCP/IP, set up a Domain Name Server (DNS) for the IP address of the Fiery SI in the printcap file.

If your network does not support DNS servers, edit the HOSTS file in your WINDOWS directory and insert an IP address for the Fiery SI. (See your system documentation for information.) Then go to page 23, "To configure the Chooser list for TCP/IP networks:" for TCP/IP instructions.

---

**TO CONFIGURE THE CHOOSER LIST FOR IPX/SPX NETWORKS:**

1. Start up any of the utilities (Fiery XJ Downloader, Fiery XJ Spooler, or Fiery XJ Print Calibrator).
2. When the following dialog box appears, click OK.



3. In the Add New Server dialog box, enter a Server Name.  
The Server Name is indicated in the Server Setup section of the Configuration page. The server name is the name you entered for Server Name on the Fiery SI Control Panel if you are using IPX/SPX (Windows 95 or Windows 3.1).



4. Enter the IPX Address.  
The IPX address is indicated in the Network Setup section of the Configuration page.  
**NOTE:** The IPX address is a unique value associated with the Fiery SI hardware and Novell server connection and cannot be changed.

5. Enter the Device code for your copier in the New Device box

For a MajestiK copier, enter: 5760/65

For a Regal copier, enter: 5790

For a 5750 copier, enter: 5750

This device code appears in the Printer Setup section of the Configuration page.

6. When you have entered all the information, click Add.

**Add New Server**

Server

Name: Fiery SI

IPX Address: 00 00 FF FA 00 C0 85 22 0D 7A

New Device

device name: [ ] Add

Devices

[ ] Remove

Attended Printing

OK Cancel

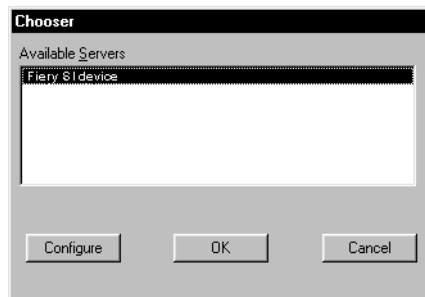


The device appears in the Devices list.



7. Click OK.

The server appears in the Chooser list of available servers.



8. To end the configuration process and begin using the utility, click OK.

**NOTE:** Configuring the Chooser list also customizes the NET\_WSCK.INI configuration file in your active Windows folder. This file is now ready to be copied to a floppy disk. You can insert the floppy disk containing the customized NET\_WSCK.INI file when you install the utilities on other workstations that will be used for printing to the Fiery SI (see step 10, page 13).

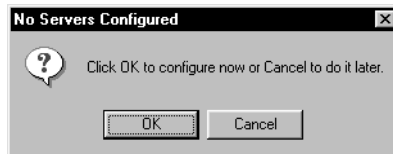
If you want to make changes to this configuration, or if you want to add another configuration, click **Configure**.

See “Setting up the Fiery SI as a PostScript printer” on page 26 to continue the installation process.

---

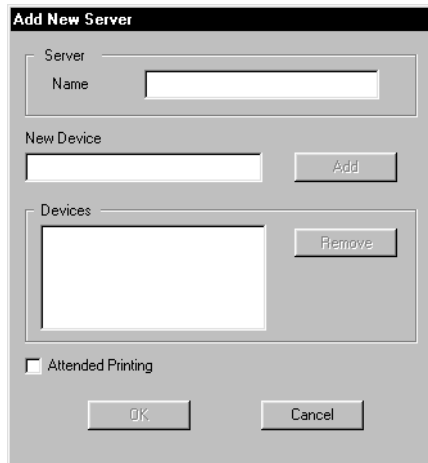
#### TO CONFIGURE THE CHOOSER LIST FOR TCP/IP NETWORKS:

1. Start up any of the utilities (Fiery XJ Downloader, Fiery XJ Spooler, or Fiery XJ Print Calibrator).
2. Click **OK** when the following message appears.



3. In the **Add New Server** dialog box, enter a DNS Name (or IP address) and a Device Code in the **New Device** box.

The server name is either the DNS name or the IP address for a Fiery SI server when you are using TCP/IP with Windows NT. The Server Name is indicated in the **Server Setup** section of the **Configuration** page. The IP address is indicated in the **Network Setup** section of the **Configuration** page.



The New Device code should be entered as one of the following:

For a MajestiK copier, enter: 5760/65

For a Regal copier, enter: 5790

For a 5750 copier, enter: 5750

This device code appears in the Printer Setup section of the Configuration page.

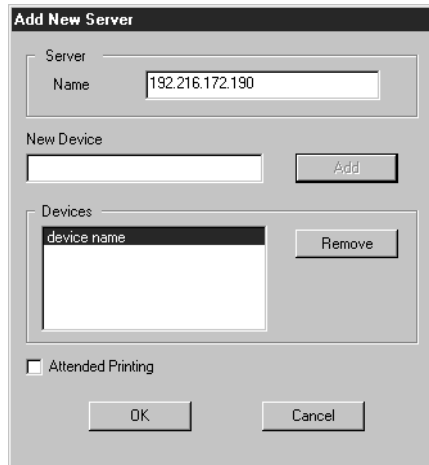
4. When you have entered all the information, click Add.



The screenshot shows a dialog box titled "Add New Server". It contains the following elements:

- Server Name:** A text box containing the IP address "192.216.172.190".
- New Device:** A section with a text box containing "device name" and an "Add" button.
- Devices:** A list box that is currently empty, with a "Remove" button to its right.
- Attended Printing:** A checkbox that is unchecked.
- Buttons:** "OK" and "Cancel" buttons at the bottom.

The device appears in the Devices list.

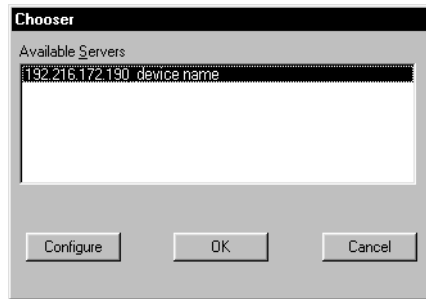


This screenshot shows the same "Add New Server" dialog box after the "Add" button has been clicked. The changes are:

- New Device:** The text box is now empty.
- Devices:** The list box now contains the text "device name".
- Attended Printing:** The checkbox remains unchecked.
- Buttons:** "OK" and "Cancel" buttons are still present at the bottom.

5. Click OK.

The server appears in the Chooser list of available servers.



6. To end the configuration process and begin using the utility, click OK.

**NOTE:** Configuring the Chooser list also customizes the NET\_WSCK.INI configuration file in your active Windows folder. This file is now ready to be copied to a floppy disk. You can insert the floppy disk containing the customized NET\_WSCK.INI file when you install the utilities on other workstations that will be used for printing to the Fiery SI (see step 10, page 13).

If you want to make changes to this configuration, or if you want to add another configuration, click Configure and go through the appropriate steps.

See "Setting up the Fiery SI as a PostScript printer" on page 26 to continue the installation process.

## Setting up the Fiery SI as a PostScript printer

To set up the Fiery SI as a PostScript printer, you need a PostScript printer driver and the appropriate Fiery SI printer description files. Printer drivers and procedures vary across Windows versions. These sections also include some information about network setup.

Consult the section that applies to your version of Windows.

- See “Setting up printing with Windows 3.1x” on page 26.
- See “Setting up printing with Windows 95” on page 34.
- See “Setting up printing with Windows NT” on page 40.

### Setting up printing with Windows 3.1x

If you are printing with Windows 3.1x, you can print with either the Adobe PostScript Printer Driver (version 3.0.1 included with User Software CD) or the standard Windows PostScript printer driver. To take advantage of PostScript Level 2 features in applications that support them, install the Adobe PostScript Printer Driver. If you use the Windows PostScript printer driver, you must install the PostScript Printer Description (PPD) file from the User Software CD.

---

#### TO INSTALL THE ADOBE POSTSCRIPT PRINTER DRIVER AND PPD FOR USE WITH WINDOWS 3.1X:

1. Start Windows and exit any applications that start automatically.
2. Insert the User Software CD in your PC.
3. In the Windows Program manager, choose Run from the File menu.
4. Click Browse.
5. Select the drive containing your User Software CD or Printer Files disk, open the ENGLISH\PRNTDRV\WIN\_31 folders, and select the SETUP.EXE file.
6. Click OK in the Browse and Run dialog boxes.
7. Click Skip to postpone reading the README file.

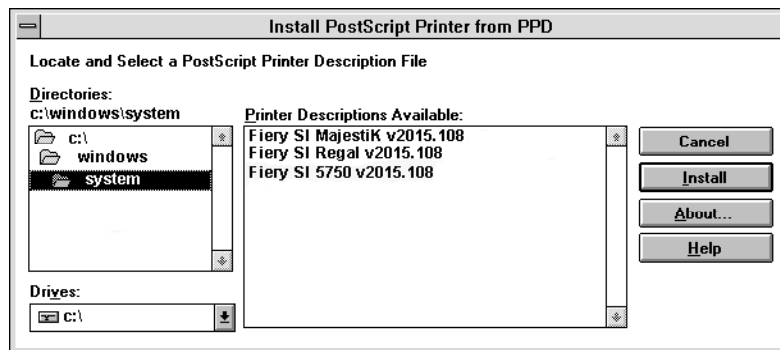
8. Click Continue to continue the installation procedure and follow the on-screen instructions.

9. Once the printer driver has been installed, click Restart to restart Windows.

The Adobe PostScript Printers dialog box appears when Windows restarts. If you do not see it, double-click the Adobe PostScript Printers icon in the Windows Program Manager Control Panel.

10. Select the Fiery SI printer file that corresponds to your device.

If you need to browse the User Software CD, look in ENGLISH\PRNTDRV\WIN\_31.



11. Click Install.
12. Click OK when you are notified that installation was successful.
13. Click Close when installation is complete.

---

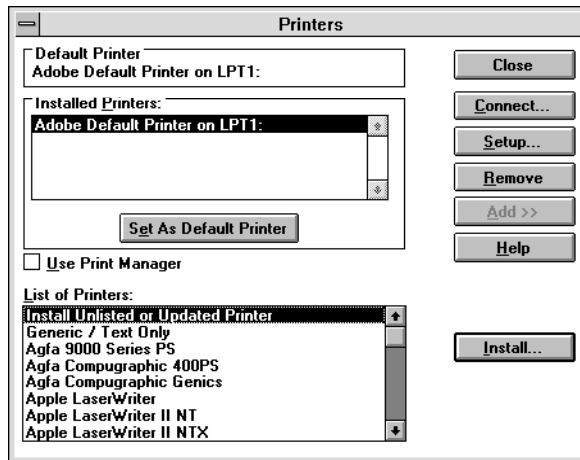
#### TO INSTALL THE PPD FILE FOR THE WINDOWS 3.1X PRINTER DRIVER:

1. In the Main group of the Program Manager, double-click the Control Panel icon.
2. In the Control Panel window, double-click the Printers icon.

The Printers window appears.

3. Click Add.

The Printers window expands to show available printers.



4. Make sure Install Unlisted or Updated Printer is selected and click Install.  
The Install Driver window appears.
5. Click Browse.  
The Browse window appears.
6. Under Drives, select the drive that represents the User Software CD or Printer Files disk and then double-click the ENGLISH\PRNTDRV\WIN\_31 directories.
7. Click OK in the Browse window, and click OK in the Install Driver window.  
The Add Unlisted or Updated Printer window appears.
8. Select your Fiery SI and click OK.  
The Fiery SI appears in the Printers window.
9. Click Install to display the Install Driver window again.
10. Click Browse and select the location of the PSCRIPT.DRV file (usually \WINDOWS\SYSTEM).  
This file is included on your Windows software disks.
11. Click OK in the Browse window, and click OK in the Install Driver window.

12. Close the Printers window.

### Setting the default printer with Windows 3.1x

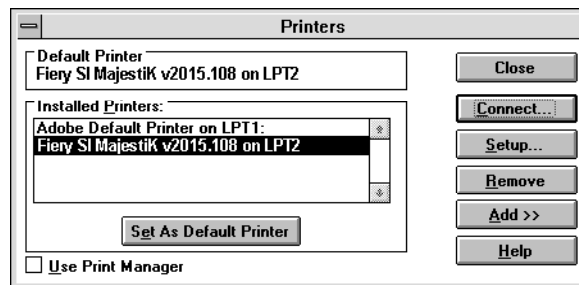
You can specify the Fiery SI as the default printer. Many Windows applications use the default printer when you choose the Print command.

---

#### TO SET THE DEFAULT PRINTER:

1. In the Control Panel window, double-click the Printers icon.  
The Printers window appears.
2. In the Printers window, select your Fiery SI in the Installed Printers list box.
3. Click Set As Default Printer.

The Fiery SI appears in the Default Printer area of the Printers window.



### Selecting a printer port with Windows 3.1x

When you install a printer, Windows assigns it to a default printer port. If the Fiery SI is connected to your computer through a network or you want to assign it to a different port, you need to change the port assignment. For information on which port to use, see your system administrator.

You can use this procedure to enable printing with the parallel port.

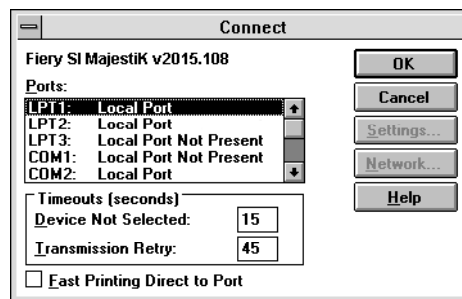


---

**TO SELECT A PRINTER PORT:**

1. In the Control Panel window, double-click the Printers icon.
2. In the Printers window, select the Fiery SI in the Installed Printers list box.
3. Click Connect.

The Connect window appears.



4. Connect the Fiery SI to the same port as your network.

For PhoneNET PC, select LPT1, LPT2, or LPT3.

For COPSTalk for Windows, select C:\winque.

For parallel printing, select the port (LPT1, LPT2, or LPT3) connected to your parallel cable.

To print to a file, select FILE. Printing to a file is useful if the Fiery SI is off-site.

However, if you select the FILE port, you cannot print to a printer until you select a network or printer port. (In some applications, you can select the FILE port from the Print dialog box; this is preferable for temporary use since it doesn't require resetting the port in the Control Panel.)

5. Click OK.

The Printers window appears again, with the selected port next to the highlighted printer name in the Installed Printers list box.

6. When you are finished, click OK and then click Close.

### Completing AppleTalk network setup for the Fiery SI with Windows 3.1x

The procedure for completing network setup is different for PhoneNet PC and COPSTalk for Windows.

---

#### TO COMPLETE NETWORK SETUP USING PHONENET PC:

1. Double-click the PhoneNET Chooser icon.
2. Select PostScript Printers, select an AppleTalk zone (if applicable), and select the Fiery SI from the list of printers.
3. Click Connect.
4. Make sure the port you chose when you installed the Fiery SI is selected.
5. Click Print PostScript and click Connect.

If you do not select Print PostScript, your print output will be in the form of PostScript commands.

6. Close the Chooser.

---

#### TO COMPLETE NETWORK SETUP USING COPSTALK:

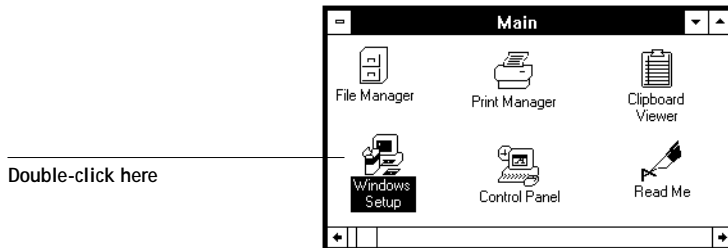
1. Double-click the WinChoose icon.
2. Select LaserWriter as the AppleTalk Type, select a zone (if applicable), and select the Fiery SI from the Devices list.
3. Close WinChoose.
4. If you are prompted to restart Windows, click Restart Now.

Some newly installed drivers and driver settings do not take effect until you restart Windows.

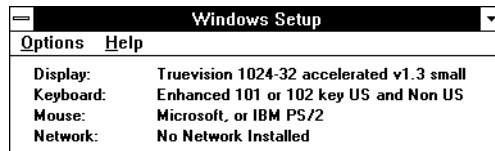
## Setting up IPX (Novell) printing with Windows 3.1x

### TO SET UP IPX (NOVELL) PRINTING FOR WINDOWS:

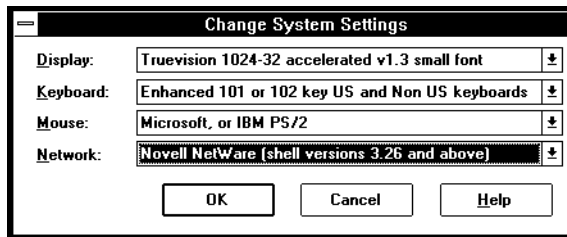
1. In the Main group of the Windows Program Manager, double-click the Windows Setup icon.



2. Choose Change System Settings from the Options menu.



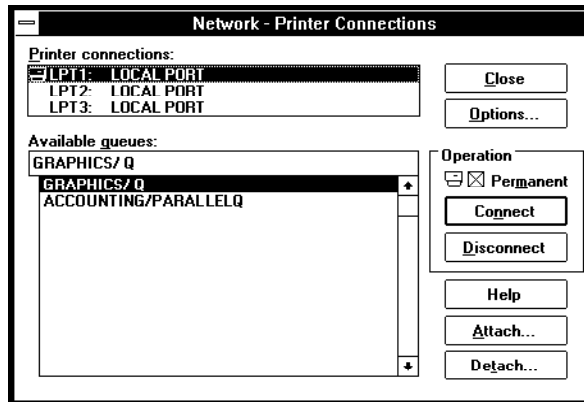
3. From the Network menu, choose Novell NetWare (shell version 3.26 and above) or (shell version 4.0 and above).



4. Click OK. When prompted, restart Windows.
5. In the Main group, double-click Control Panel, and then double-click Printers.
6. In the Printers Control Panel window, click Connect to connect the printer to the appropriate port.

## 7. Select Network.

If you are printing to a file, select FILE. Printing to a file is useful if the printer is elsewhere. However, if you select the FILE port, you cannot print to a printer until you select a network or printer port. If you select Network, the next window depends on the NetWare client driver version.



8. If the Network Printer Connections dialog box is displayed, select the port in the Printer connections box.
9. In the Available queues list box, select the server and queue name that correspond to the printer.
10. Click the Connect button and then click the Close button.
11. Click OK in the Connect dialog box.
12. Click Close in the Printers dialog box.
13. Click OK.

The Printers window appears again, with the selected port next to the highlighted printer name in the Installed Printers list box.

You or your network administrator should verify the network connection by printing a test document from each networked computer that will use the printer.

Continue to "Installing additional Windows files" on page 45 for information on copying the remaining files to your computer.

## Setting up printing with Windows 95

You can print to the printer from your Windows 95 workstation over the parallel port connection and over an IPX (Novell) network. In both cases you need to install a PostScript printer driver and the printer description file (PPD) on your computer, and set up the printer to accept your print jobs. The Adobe PostScript Printer Driver for Windows (version 4.1) is included with the user software.

---

### TO INSTALL THE FIERY SI WITH THE ADOBE POSTSCRIPT PRINTER DRIVER AND WINDOWS 95:

1. Print a copy of the Configuration page for your Fiery SI. This will help you through the installation process.

Before you run the Adobe installer, you should know whether you are installing a network or local printer; if it is a network printer, you need to know the path or queue name of the printer.

2. In the Windows 95 Explorer, select the User Software CD or Windows Printer Files disk, select the ENGLISH\PRNTDRV\W95\_41 folder, and double-click the SETUP.EXE icon. SETUP.EXE is the filename for the Adobe Installer.
3. Click Read or click Next to postpone reading the README file.
4. Continue the installation procedure and follow the on-screen instructions.
5. When installation is complete, click Add Another or Exit.

### Completing the Windows 95 parallel port connection

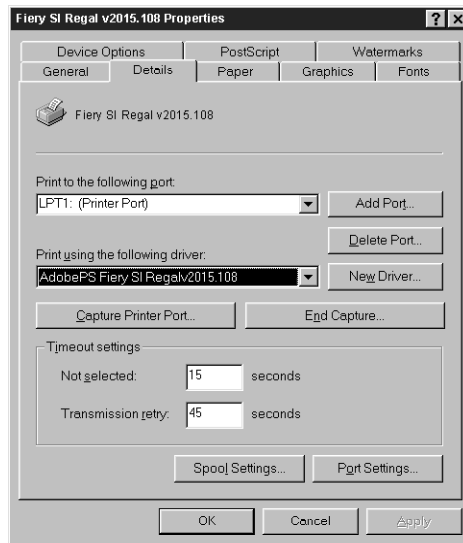
---

### TO SET UP PARALLEL PORT PRINTING FOR WINDOWS 95:

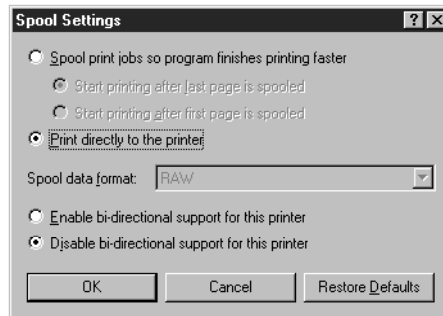
1. Click the Start button, point to Settings, and then click Printers.
2. Click the Fiery SI icon and choose Properties from the File menu. (Or right-click the Printer icon and left-click Properties.)

3. Click the Details tab.

The box “Print to the following port:” should say LPT1: (Printer Port).

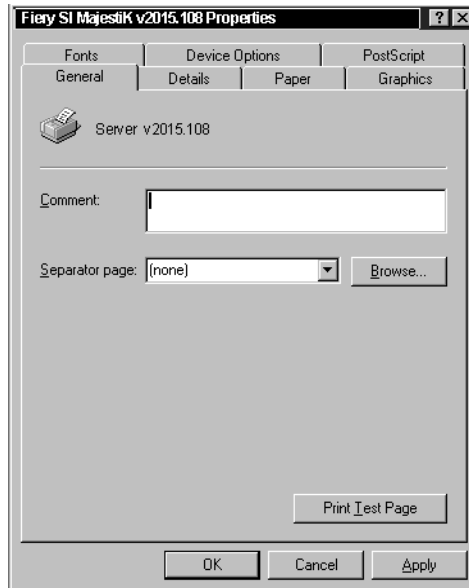


4. Click Spool Settings and select Print directly to the printer.



You are now ready to print from your applications to the printer with the parallel port.

5. To confirm the connection, you can print a Windows 95 test page. Click the General tab in the Properties dialog box.



6. Click Print Test Page and click OK.

When you select Print, your PostScript files will be transmitted over the parallel port connection to the Print queue, using the printer driver and the Fiery SI printer description file.

### Completing the Windows 95 IPX/SPX or IPX (Novell) connection

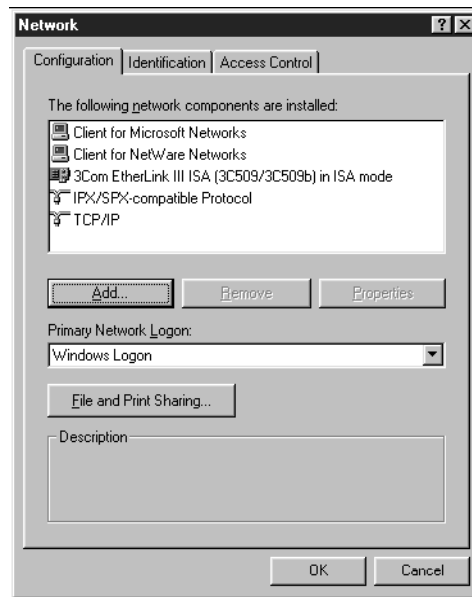
If you are printing through a Novell server, before you begin, the Novell network and file server should be set up. The file server should be configured with a print server and print queue for the printer. For details see your NetWare documentation and the *Administrator Guide*.

You can also print directly to the Fiery SI from Windows 95 with IPX/SPX.

---

#### TO SET UP IPX/SPX PRINTING:

1. Open the Windows 95 Control Panel.
2. Double-click the Network icon.



3. Make sure that IPX/SPX-compatible Protocol and TCP/IP protocol are both listed in the Installed Network Components section.  
See your Windows 95 documentation for instructions.

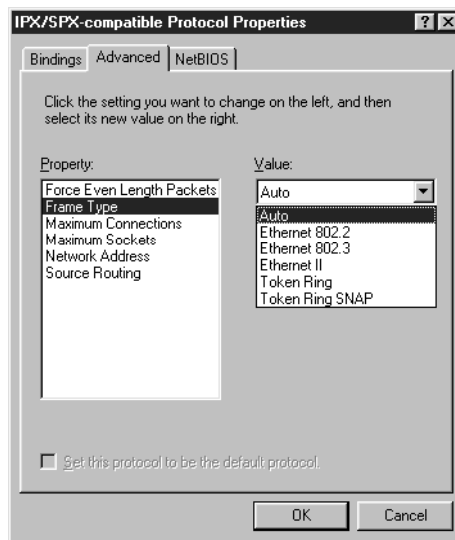


**NOTE:** You must enable TCP/IP printing to ensure that all files required for IPX/SPX will be installed. You can select it and click Remove after you set up IPX/SPX if you do not need to use the TCP/IP protocol.

4. Double-click the IPX/SPX-compatible Protocol icon.
5. Click Advanced.
6. In the Property list, click Frame Type and select the Frame Type that corresponds to the one set during Fiery SI Control Panel Setup.

Print the Configuration page from the Control Panel to see the Frame Type if necessary.

**NOTE:** Do not select Auto, this may not select the Frame Type specified on the Fiery SI.



7. Click OK and close the Network Control Panel.

---

**TO SET UP IPX (NOVELL) PRINTING WITH WINDOWS 95:**

1. Click the Start button, point to Settings, and then click Printers.
2. Click the icon for the printer and choose Properties from the File menu. (You can also hold down the right mouse button and drag down the pop-up menu to choose the Properties.)
3. Click the Details tab in the Properties window and click Add Port.  
A list of connection options is displayed.
4. In the Add Port dialog box, specify the network path, or click Browse for a display of your network environment.
5. If you are using a NetWare file server, double-click the icon of the NetWare file server you want to use for printing to the printer and click OK.
6. Click the printer icon labeled with the NetWare print queue you will use and click OK.
7. In the Add Port dialog box, verify that the network path is updated and click OK.  
You are ready to print from the workstation.  
Your print jobs will be transmitted to the specified print queue on the Novell file server. The printer will poll the file server, and if jobs are present, they will be transmitted to the Fiery SI.
8. To confirm the connection, you can print a Windows 95 test page. Click the General tab in the Properties dialog box.
9. Click Print Test Page.
10. Click OK.

## Setting up printing with Windows NT

To set up Windows NT printing, install the Windows NT PostScript printer driver and configure printing for your network type. Note that printer files support the Intel version of Windows NT.

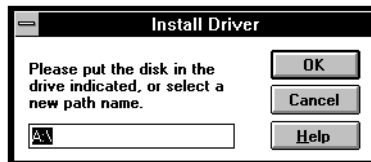
If your administrator has set up the Fiery SI on an NT server and shared it, you may not have to enter all the information described in this section. Any windows that are not necessary will not appear, and you can verify information that appears in other windows instead of typing in new information. For information about setting up and printing to the Fiery SI with a Windows NT server, see the *Administrator Guide*.

**NOTE:** If you have problems installing the Fiery SI with Windows NT, try installing another PostScript printer (such as the Apple LaserWriter IIg), and then install the Fiery SI. Installing another printer insures that all files are properly installed and available. For instructions, see your Windows NT documentation.

---

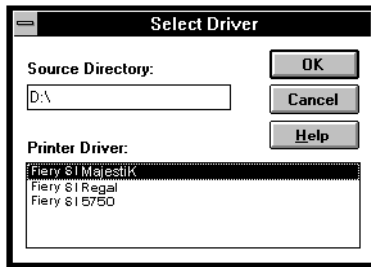
### TO INSTALL THE PRINTER FILE FOR A PARALLEL, TCP/IP, OR APPLE TALK CONNECTION FROM WINDOWS NT WORKSTATION:

1. In the Windows NT Print Manager window, choose Create Printer from the Printer menu.
2. In the Create Printer dialog box, scroll down the list of drivers and select Other. The Install Driver dialog box is displayed, prompting you to insert the disk.

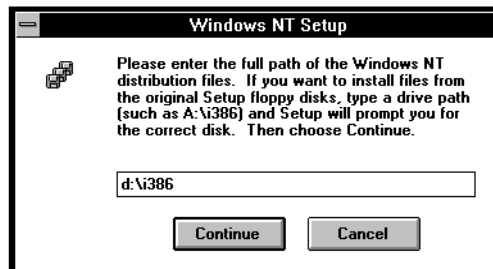


3. Browse the User Software CD to find \ENGLISH\PRNTDRV\WIN\_NT.

The Select Driver dialog box displays the name of the printer(s) for which there are printer description files on the disk.



4. Select the printer description file for your device and click OK.
5. In the Windows NT Setup dialog box, enter the path to your PostScript drivers, and then click Continue.



If you have already installed a PostScript printer, and the Windows NT system is on your c: drive, type the following path:

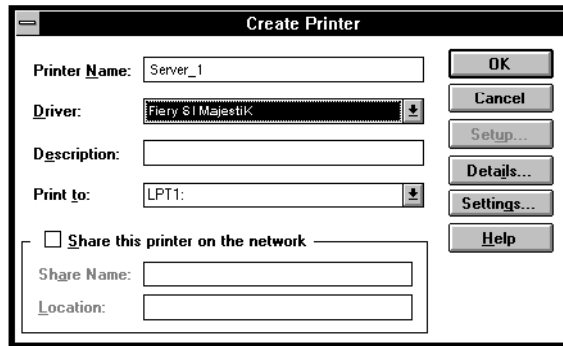
c:\winnt35\system32\spool\drivers\w32x86

If you have not already installed a PostScript printer, you will be prompted to insert your Windows NT system software CD or floppy disks. In that case, if the CD-ROM drive with your system CD is the d: drive, type the path:

d:\i386

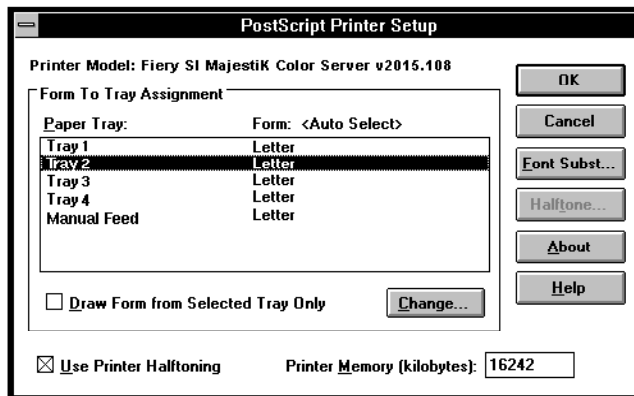
6. Enter a name for the Fiery SI in the Printer Name box in the Create Printer dialog box, and then click OK.

The Fiery SI model name is displayed in the Driver box.



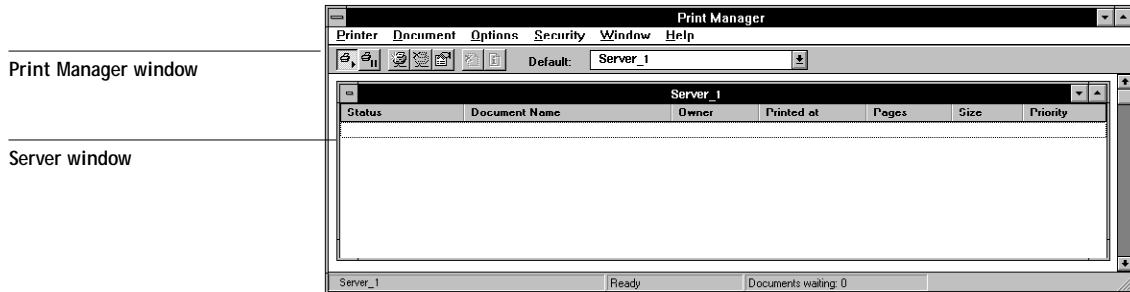
7. When the PostScript Printer Setup dialog box appears, click OK.

Even though the printer does not use halftoning, do not uncheck Use Printer Halftoning.



The printer now appears in its own Printer window in the Print Manager window.

8. In the Print Manager toolbar, select the printer as the Default printer.



9. Copy the printer description file and then connect the printer to a port or a network connection.

### Completing the Windows NT Workstation printer setup

---

#### TO SET UP PARALLEL PRINTING FOR WINDOWS NT WORKSTATION:

1. Double-click the printer icon in the Print Manager window and choose Properties from the Printer menu.

In the Printer Properties dialog box, confirm that LPT1 appears in the “Print to” box.

2. Click Details to check and configure the defaults. Since parallel port jobs are spooled on the printer, select Print Directly to Ports to bypass Windows NT Print Manager spooling. Click OK.
3. Click OK to exit the Printer Details dialog box.

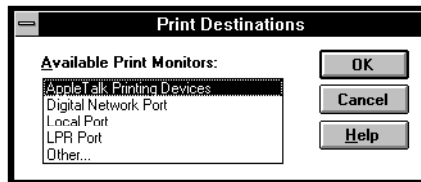
The printer is ready to accept parallel print jobs from your computer, using the Windows NT PostScript printer driver and the copier printer description file. When you select Print, your PostScript files will be transmitted over the parallel port connection to the Print queue. The network administrator should verify the parallel port connection by printing a simple document to LPT1, the designated port.

---

**TO SET UP TCP/IP AND LPR PRINTING FOR WINDOWS NT WORKSTATION:**

1. In the Main group, double-click the Print Manager icon.
2. With the Fiery SI window active, choose Properties from the Printer menu.
3. In the Print to list, scroll to Other.

The Print Destinations dialog box is displayed.



4. Select LPR Port and click OK.

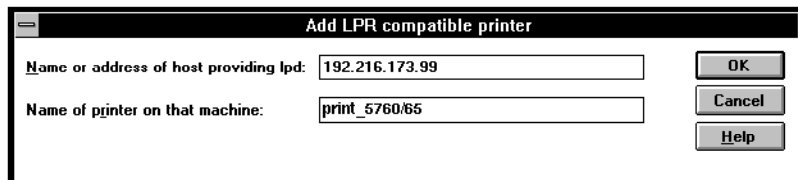
This option is available if you installed TCP/IP with the LPR printing protocol when you installed Windows NT. See your Windows NT documentation for information.

5. In the "Add LPR compatible printer" dialog box, enter the IP address or hostname of the Fiery SI in the Name or address region.

You can print the Configuration page to see the IP address.

6. In the Name of printer area, type the internal name of the printer in lowercase letters: *queue\_devicename*.

NOTE: This name must exactly match one of the following: print\_5760/65, hold\_5760/65, print\_5790, hold\_5790, print\_5750, hold\_5750.



7. Click OK. The Printer Properties dialog box shows the printer printing to *IP Address:QueueName*

8. Enter or verify the name of the printer in the Printer Name box in the Create Printer dialog, and then click OK.
9. Click OK.

You have configured your workstation to use TCP/IP to communicate with the printer. When you select Print, your PostScript files will be transmitted over the LPR Port connection to the queue set up on the server by your administrator. To verify the connection, print a test document from each networked computer that will use the printer.

## Installing additional Windows files

This section describes installing files that, for the most part, are common for all versions of Windows.

### Installing the EFICOLOR folder files

If you will be using Photoshop, you should install the EFICOLOR Separation Tables that correspond to your print device. The Separation Tables enable you to get the best possible CMYK separations.

---

#### TO INSTALL THE EFICOLOR FILES FOR PHOTOSHOP:

1. Open the EFICOLOR folder that was created in the FierySI folder when you installed software.
2. Drag the files corresponding to your copier from the TABLES folder to the Adobe Photoshop directory.
3. Drag the CALRGB.AMS file into the Adobe Photoshop folder.  
You may have already installed this file when you installed Fiery XJ Scan.
4. Start Photoshop.
5. Choose Separation Tables from the Preferences submenu of the File menu.
6. Click Load and browse to the location where you installed the Separation Tables. Locate the file that corresponds to your copier.



7. Select the Separation Tables and click Load.

File names are differentiated by a P or an S that indicates Photographic mode or Solid Color mode.

Files ending in "P.AST" are for printing in Photographic mode.

Files ending in "S.AST" are for printing in Solid Color mode.

The two separation tables are for Photographic (P) rendering and for Solid (S) color rendering. Photographic rendering is best for photographs and other images where tonal relationships are important. Solid color rendering is best when rendering individual colors accurately is more important than preserving tonal relationships.

8. Click OK to close the Separation Tables dialog box.

Separation Tables remain loaded the next time you start Photoshop, unless you remove them.

## Loading the monitor settings file for Fiery XJ Scan

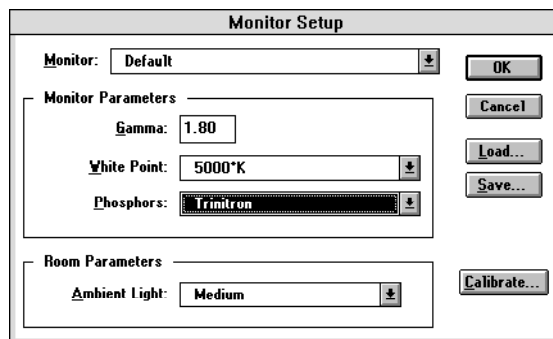
If you will be using Fiery XJ Scan, load the monitor settings file into Photoshop. You need to load this file only once.

---

### TO LOAD THE MONITOR SETTINGS FILE:

1. Start Photoshop.
2. Choose Monitor Setup from the Preferences submenu of the File menu.

The Monitor Setup dialog box appears. For information about this dialog box, see your Adobe Photoshop documentation.



3. In the Monitor Setup dialog box, click Load.
4. Open the Adobe Photoshop directory, select CALRGB.AMS, and click OK.  
The Calibrated RGB file appears as the selection in the Monitor list box of the Monitor Setup dialog box.
5. Under Room Parameters, set Ambient Light to High.
6. Click OK to close the Monitor Setup dialog box.

## Installing the Color Reference pages

There are two folders containing color reference pages for use with the Fiery SI:

- COLORREF folder that you can install from the installer
- CLRFILES folder that you can copy from the User Software CD

### Moving files in the COLORREF folder

Put the COLORREF folder that was installed in the FierySI folder anywhere you like. It contains the following color reference pages:

- CMYK\_REF.PS—A PostScript file of the CMYK Color Reference pages that you can download and print using the Fiery XJ Downloader or any other application that supports printing PostScript files.
- MAJSTK\_C.PS<sup>1</sup>, MAJSTK\_U.PS<sup>2</sup>—PostScript files of the PANTONE coated and uncoated colors for the MajestiK.  
REGAL\_C.PS, REGAL\_U.PS—PostScript files of the PANTONE coated and uncoated colors for the Regal.  
5750\_C.PS, 5750\_U.PS—PostScript files of the PANTONE coated and uncoated colors for the 5750.

### Installing files from the CLRFILES folder

There are additional sample color files in the CLRFILES folder on the User Software CD. You can put the CLRFILES folder anywhere you like. It contains several color reference pages:

---

1. Files ending in “C.PS” are for PANTONE coated colors.  
2. Files ending in “U.PS” are for PANTONE uncoated colors.

- APLPAGES—Contains RGB\_REF, a folder of sample application pages for Microsoft Word or PowerPoint.
- CALIB—Contains a sample measurements file that you can use with Fiery XJ Print Calibrator. It is for demonstration purposes and should not be used to calibrate your Fiery SI.
- COLORCHT—A PostScript version (COLORCHT.PS) of the RGB, CMY, and PANTONE color charts that you can print from the Fiery SI Control Panel.
- SAMPLES—For each device, contains a folder of sample images that you can download and print using the Fiery XJ Downloader or any other application that supports printing PostScript files.

## Copying the PPD for Adobe PageMaker

If you use Adobe PageMaker, you should copy the PostScript Printer Description file (PPD) to special locations in your PageMaker directory.

---

### TO COPY THE PRINTER DESCRIPTION FILES FROM THE CD:

1. Insert the User Software CD in your PC.
2. Double-click the ENGLISH\PRNTDRV directories.
3. Double-click the directory that matches your Windows system. Copy the printer description file for your Fiery SI to the appropriate location.

If you use:	Copy this file:	To this location:
PageMaker 5.0 or later	EFSIX203.PPD* or EFSIX303.PPD * or EFSIX503.PPD*	For PageMaker 5.0, \ALDUS\USEENGLISH\PPD4  For PageMaker 6.0, \PM6\RSRC\USEENGLISH\PPD4

\* The 203 version supports the MajestiK; the 303 version supports the Regal; 503 version supports the 5750.

## Troubleshooting

This section provides some suggestions in case you encounter problems while installing and setting up software.

### On a Macintosh computer

#### Installing Macintosh PostScript Printer Driver

- If the Printer Driver cannot autoselect the printer file, when prompted, open the System Folder:Extensions:Printer Descriptions folder and select the file that corresponds to your copier.

### On a Windows computer

Setting up IPX (Novell) printing for Windows NT Workstation

- Install the Apple LaserWriter IIg before you attempt to “add a printer” for the Fiery SI.

#### Installing Adobe PostScript Printer Driver

If you are re-installing the Adobe PostScript Printer Driver, you must delete any previous versions and related files from DOS before you can successfully install the driver. See the Adobe README file included with the Printer Driver for instructions.

### Problems with Windows and IPX/SPX

- If you are using Windows 95, make sure that SPX/IPX and TCP/IP networking protocols are both enabled.  
See “Completing the Windows 95 IPX/SPX or IPX (Novell) connection” on page 37 for information.
- Make sure that either the NET\_WIPX.DLL (Windows 95) or NET\_WSCK.DLL (Windows NT) file is in the SYSTEM directory.  
Make sure that only one file is installed in this directory and that it is the correct file for your system.
- Make sure that the NET\_WSCK.INI file is in the WINDOWS directory.

- Open the NET\_WSCK.INI file with a text editor and make sure that it is customized correctly for your site.

### Problems with Windows 3.x and SPX utilities

- Make sure that you installed the files in the UTILS\IPXSPX folder from the User Software CD or floppy disks.

For instructions, see “Completing installation for Windows 3.1x” on page 14. If you do not have the correct version of all Novell software installed, you may experience a blank screen with a blinking cursor.

If you install the files and still encounter the problem, try the following suggestions. If these suggestions do not help, contact Novell and request additional information about the “Black screen of death (BSOD)” problem. Information is also available on the WWW at <http://www.novell.com>

- If you are running a version of DOS Requestor earlier than version 1.20, or if you are running a version of VNETWARE.386 dated earlier than 8-17-94, you will need to add to the [386 Enh] section of SYSTEM.INI a TimerCriticalSection=10000 (or =1000) line.  
The VNETWARE.386 driver for the DOS Requestor 1.20 defaults to 1000, which better supports mobile products.
- Make sure that your system and memory management configurations are set up properly. Any I/O, memory, or IRQ conflicts may cause this problem.
- If you have a VTDA.386 file, replace it with the latest file (available from Microsoft Corporation or [WWW.MICROSOFT.COM](http://WWW.MICROSOFT.COM)).  
This file is not required for all systems. If it is required by your system, make sure that you have the correct version.
- If you have a WINSTART.BAT file, remove it.
- Virtualize the NIC's IRQ in the [VIPX] section of the System.ini if you use IBM LAN SUPPORT.
- If you are using Windows for Workgroups, you must also have the following files installed in your WINDOWS directory: NWCALLS.DLL, NWIPXSPX.DLL, NWLOCALE.DLL, MWNET.DLL, NWPSRV.DLL.

These files are part of your Novell client software and you can install them from your installation disks or contact Novell for information.

# Index

## A

ABOTH.BAT file 18  
Adobe Photoshop *x*  
Adobe PostScript printer driver  
    Macintosh 49  
    Windows 3.x 26  
    Windows 95 34  
ADOBEPS.DRV *see* Adobe PostScript  
    printer driver  
Aldus PageMaker for Windows 48  
AppleTalk  
    connecting to Macintosh 8  
    connecting to Windows 3.x 30  
APPLINIT.EXE file 15  
APPL\_TSR.EXE file 15  
AUTOEXEC.BAT file 16

## C

CALRGB.AMS file 15, 19  
Chooser list, configuring 19 to 25  
Color Reference pages  
    Macintosh 4  
    Windows 47  
configuring the Chooser list 19 to 25  
connecting  
    Macintosh by AppleTalk 8  
    Windows 3.x by AppleTalk 30  
    Windows 3.x by IPX (Novell) 32  
    Windows 3.x by parallel port 30  
    Windows 95 by IPX 37  
    Windows 95 by parallel port 34  
    Windows NT by parallel port 43  
    Windows NT by TCP/IP 44  
COPSTalk 31  
CTL3D.DLL file 15

## D

device code 24  
Device Name 21  
device name 21  
    Windows NT with TCP/IP 44

## E

EFICOLOR 45

## F

Fiery XJ Scan  
    Macintosh 3  
    monitor settings file, Windows 46  
    Windows 3.x 15  
Frame Type, IPX for Windows 95 38

## I

installing software  
    Macintosh 1  
    Windows 10  
internal name, for Windows NT with TCP/  
    IP 44  
IPX (Novell)  
    Windows 3.x printing 32  
    Windows 95 37, 39  
IPX address 20

## L

LaserWriter driver *x*  
LPR, Windows NT 44

## M

Macintosh  
    installing software 1  
    system requirements *x*  
    utilities 1  
monitor settings file  
    Windows 46  
monitor setup file  
    Macintosh 6

**N**

- NET\_APPL.DLL file 15
- NET.CFG file 16
- NetWare
  - network port with Windows 3.x 33
  - network port with Windows 95 39
- NetWare client setup
  - Windows 3.x 32
  - Windows 95 37, 39
- Novell (IPX) *see* IPX (Novell)

**P**

- PageNOW! paging software x
- parallel port
  - Windows 3.x 30
  - Windows 95 34
  - Windows NT 43
- PhoneNet PC 31
- printer description files
  - Windows 48
- PSCRIPT.DRV
  - Windows 3.x 27

**S**

- screen fonts, Macintosh 3
- Separation Tables
  - Macintosh 5
  - Windows 45
- system requirements
  - Macintosh x
  - Windows x

**T**

- TCP/IP, Windows NT 44

**U**

- utilities
  - installing Macintosh 1
  - installing Windows 10

**W**

- Windows
  - installing software 10
  - system requirements x
  - utilities 10
- Windows 3.x
  - Adobe PostScript printer driver 26
  - AppleTalk 15
  - parallel port 30
  - PostScript Printer Driver 27
  - SPX 15
- Windows 95
  - Adobe PostScript printer driver 34
  - IPX/SPX 37
  - parallel port 34
- Windows NT
  - parallel port 43
  - PostScript printer driver 40
  - TCP/IP 44