

# User Addendum for Fiery XJ+ Wide Format Option version 3.2

## Introduction

This document describes how to print to a plotter connected to the Fiery XJ+ Color Server.

The plotter option feature set differs from that of the copier in these ways:

- In Adobe Photoshop, the plotter does *not* support the Fiery XJ Scan or Fiery XJ Export plug-ins.
- Calibration can be performed *only* with a densitometer.
- The plotter supports custom paper sizes for Macintosh computers using the Adobe printer driver PSpriinter version 8.3 or later. Custom paper sizes are not supported for Windows computers.
- The color gamut for the VivagrafX XL plotter is greater than that for Xerox color copiers. Therefore, the plotter produces different results from Xerox color copiers, especially when printing blues and purples.

For more information about using the plotter, see your plotter documentation. For more information about installing and using the Fiery XJ+ Color Server, see your Fiery XJ+ documentation.

## Installing plotter software

This section describes how to install the user software specific to your plotter. You use the same CD that you used for installing the user software for your copier. For information about installing the files specific to the copier, see your *Getting Started* guide.

### Installing Macintosh software

Files specific to your plotter are contained in the Printer Driver and Color Files folders inside the Plotter Option folder on the User Software CD.

#### Adobe PostScript printer driver

The printer driver is probably already installed on your computer. However, to provide your computer with the PostScript Printer Description files (PPDs) specific to your plotter, install the driver from the Plotter Option:Printer Driver folder.

---

#### TO INSTALL THE PRINTER DRIVER AND PPDs FOR YOUR PLOTTER:

1. If you use the NetModem™ extension, disable it.
2. Open the Plotter Option:Printer Driver folder.
3. Double-click the Installer icon.
4. Follow the instructions on the screen.

## Color management and reference files

Color management and reference files include the ColorSync™ profile, EFICOLOR™ Color Management System profile, Photoshop separation tables and monitor settings, and PANTONE® reference pages with CMYK equivalents.

---

### TO INSTALL COLORSYNC™ PROFILES:

1. Open the Plotter Option:Color Files:Color Management:ColorSync™ Profiles Installer folder.
2. Double-click the ColorSync™ Profiles Installer icon.
3. When prompted for an installation folder, install into the ColorSync™ Profiles folder.  
If this folder doesn't exist, create one with the exact name ColorSync™ Profiles. For the ™ symbol, use Option-2.

---

### TO INSTALL THE EFICOLOR™ COLOR MANAGEMENT SYSTEM PROFILE:

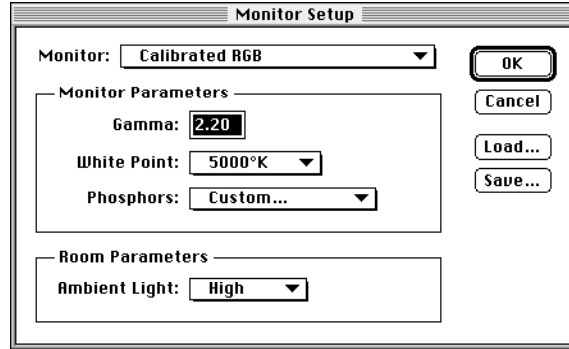
1. Open the Plotter Option:Color Files:Color Management:EFICOLOR 2.0 folder.
2. Copy the Fiery VivagrafX XL profile to the ColorSync™ folder in the Preferences folder inside your Macintosh System Folder.

---

### TO INSTALL PHOTOSHOP SEPARATION TABLES AND MONITOR SETTINGS:

1. Open the Plotter Option:Color Files:Color Management:Photoshop Separation Tables folder.
2. Copy the files to your Photoshop folder.  
Use Fiery VivagrafX XL.P for printing in Photographic mode.  
Use Fiery VivagrafX XL.S for printing in Solid Color mode.  
Use the Calibrated RGB monitor settings file for achieving accurate color rendering.
3. Start Photoshop.
4. Choose Separation Tables from the Preferences submenu of the File menu.
5. Click Load and locate the separation tables.
6. Select the appropriate separation table file and click Open.
7. Click OK.  
Separation tables remain loaded the next time you start Photoshop, unless you remove them.
8. Choose Monitor Setup from the Preferences submenu of the File menu.  
The Monitor Setup dialog box appears. For information about this dialog box, see the Adobe Photoshop documentation.
9. Click Load and locate the Calibrated RGB file.
10. Select the file and click Open.  
The Calibrated RGB file appears as the selection in the Monitor pop-up menu of the Monitor Setup dialog box.

11. Under Room Parameters, set Ambient Light to High and click OK.



---

**TO INSTALL PANTONE® REFERENCE PAGES:**

1. Open the Plotter Option:Color Files:Reference Pages:Pantone Pages folder.
2. Copy the coated and uncoated PostScript files to any folder on your computer.  
Each file is a 50-page, letter-size PostScript file. You can print these files with Fiery XJ Downloader.

### **Installing Windows software**

When installing the Fiery XJ+ user software on any Windows system, do not include any spaces in the name of the destination directory.

Files specific to your plotter are contained in the Prntdrv and Clrfiles folders inside the Plotter\English folder on the User Software CD.

#### **Adobe PostScript printer driver**

The printer driver is probably already installed on your computer. However, to provide your computer with the PostScript Printer Description files (PPDs) specific to your plotter, you must install the driver from the PLOTTER\ENGLISH\PRNTDRV folder. The printer driver installation is similar to the procedure you performed for the copier. For more information about installing a printer driver, see your *Getting Started* guide.

The color management profile EFXJX603.ICM is installed when you install the PostScript printer driver. Windows 95 users who install this file may notice that the icon color (gray or white) does not reliably reflect whether the file is installed or not.

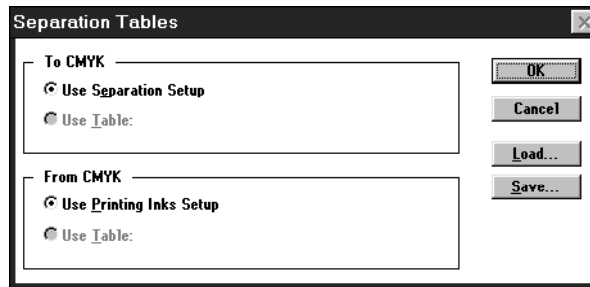
## Color management and reference files

You can install color management and reference files on your computer. These files include the Photoshop separation tables and monitor settings, and PANTONE® reference pages with CMYK equivalents.

---

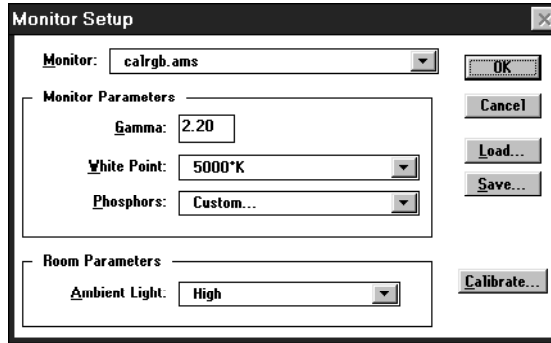
### TO INSTALL PHOTOSHOP SEPARATION TABLES AND MONITOR SETTINGS:

1. Open the PLOTTER\ENGLISH\CLRFILES\CLR\_MGMT\TABLES folder.
2. Copy the files to your Photoshop folder.  
Use VIVAXLP.AST for printing in Photographic mode.  
Use VIVAXLS.AST for printing in Solid Color mode.  
Use the CALRGB.AMS monitor settings file for achieving accurate color rendering.
3. Start Photoshop.
4. Choose Separation Tables from the Preferences submenu of the File menu.
5. Click Load.



6. Locate the appropriate separation table file and click Open.
7. Verify that the file you selected appears next to "Use Table:" area and click OK.  
Separation tables remain loaded the next time you start Photoshop, unless you remove them.
8. Choose Monitor Setup from the Preferences submenu of the File menu.  
The Monitor Setup dialog box appears. For information about this dialog box, see your Adobe Photoshop documentation.
9. Click Load and locate the Calrgb.ams file.
10. Select the file and click OK.  
The CALRGB.AMS file appears as the selection in the Monitor pop-up menu of the Monitor Setup dialog box.

11. Under Room Parameters, set Ambient Light to High and click OK.



---

**TO INSTALL PANTONE® REFERENCE PAGES:**

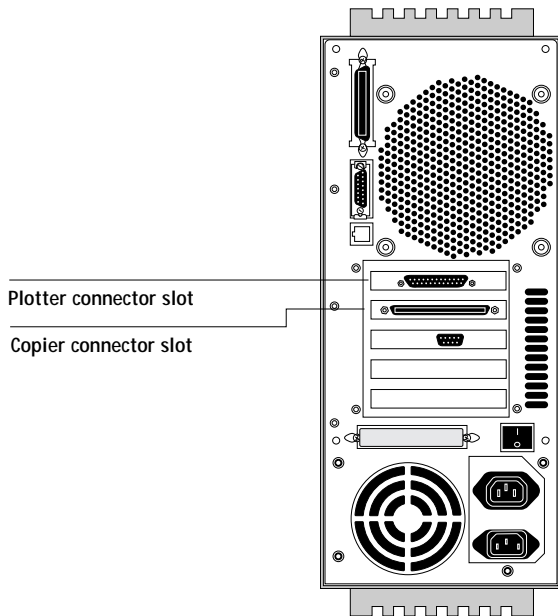
1. Open the PLOTTER\ENGLISH\CLRFILERS\REFERENC\PANTONE folder.
2. Copy the coated and uncoated PostScript files to any folder on your computer.  
VIVAXLC.PS is for coated color samples.  
VIVAXLU.PS is for uncoated color samples.  
Each file is a 50-page, letter-size PostScript file. You can print these files with Fierey XJ Downloader.

## Setup and specifications

This section describes the hardware setup, server setup options, and output specifications of the plotter.

### Hardware setup

The plotter interface cable should be connected to the back of the Fiery XJ+ in Slot 2 (above the copier connector slot).



### Hard disk size

Generally, for optimal performance, a 2GB hard disk is recommended. Printing is possible with smaller disk sizes. However, you might experience problems while printing, such as the Fiery XJ+ rebooting or the Fiery XJ+ message Disk full. In some situations, the Fiery XJ+ generates a PostScript error message and reboots. In other situations, no error message appears, and the job does not print. For information about reclaiming disk space on the Fiery XJ+ hard disk, see “Error messages” on page 21.

### Setup options

The following setup options do *not* appear during Printer Setup for the plotter:

- Enable Memory Multiplier
- Printer Mode
- Convert Paper Sizes
- Print Cover Page

The following setup option does *not* appear during Calibration Setup for the plotter:

- Calibration Method

### Runtime functions

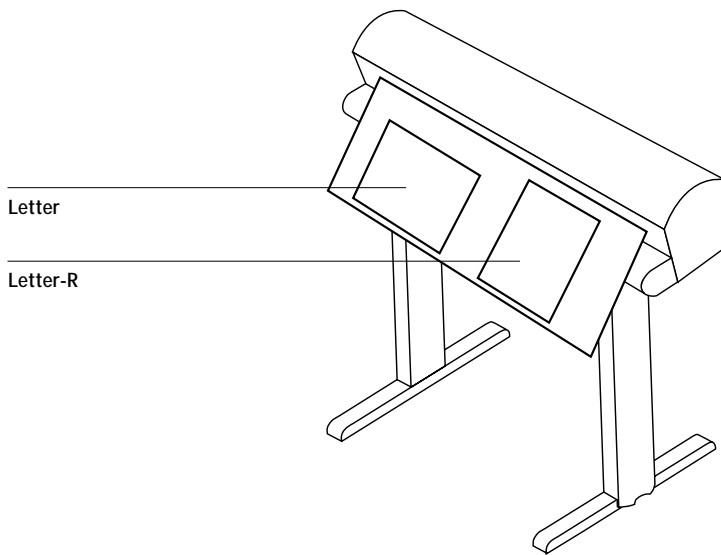
The Suspend Printing and Resume Printing commands do not appear with the plotter option.

## Paper sizes and resolution

The plotter option supports the following paper sizes at a resolution of 300 dots per inch (dpi).

- User-defined custom page sizes (only with Adobe PSPrinter version 8.3 or later for Macintosh)
- Letter (default) and Letter-R
- A4 and A4-R
- A3 and A3-R
- A2 and A2-R
- A1 and A1-R
- A0 and A0-R
- 11 x 17 and 11 x 17-R
- 17 x 22 and 17 x 22-R
- 22 x 34 and 22 x 34-R
- 34 x 44 and 34 x 44-R

NOTE: All paper sizes *not* ending in “R” are printed with the *long* edge along the width of the plotter’s paper. Paper sizes ending in “R” are rotated 90° clockwise, so the page is printed with the *short* edge along the width of the plotter’s paper.



## Plotter settings

To ensure optimal printing results with the Fiery XJ+, use the plotter settings specified in this section.

NOTE: For all plotter models, the Fiery XJ+ has been optimized for printing on high-gloss roll paper. Using this quality of paper is highly recommended for best printing results.

Before printing to the Fiery XJ+, plotters should be initialized to default factory settings. Refer to the plotter’s documentation for instructions on returning to the default settings. If the plotter has been modified (for example, during maintenance) and subsequently fails to function properly, restoring the unit to the default factory settings may correct the problem.

When you print to the plotter using the Fiery XJ+, nearly all aspects of the plotter's behavior are controlled through print options either from an application or as overrides in Fiery XJ utilities. Settings you make from the plotter's menu display have no effect.

The exception to this is the MARGINS= option, which you set from PAGE FORMAT on the plotter. The default setting is MARGINS=NORMAL. If you change this setting to EXPANDED, you decrease the margin allowance and increase the area of the image printed. No setting that you make from the Fiery XJ+ or from an application affects this image size setting.

### **Plotter firing rate**

The plotter manufacturer recommends a firing rate between 5000 Hz and 8000 Hz for reliable cartridge performance. See your plotter documentation for information on setting the firing rate.

### **Plotter memory allocation**

The recommended plotter memory configuration is the factory default setting (I/O = 128K, RAS = remaining). See your plotter documentation for information on returning the plotter to the factory default settings.

## **Networking issues**

### **Novell server name alert message**

If you connect to a Novell server with a name longer than 32 characters, the Fiery XJ+ displays an error message.

### **Novell Netware banner page**

If you change your copy count to print multiple copies, multiple banner pages may print. To avoid this problem, disable the Novell banner page option.

### **Frame type in Novell (IPX) networks**

When you set up the Fiery XJ+ for your IPX (Novell) network, make sure to select the correct frame type (Ethernet 802.3, Ethernet 802.2, or Ethernet II) for your network. The Fiery XJ+ does not automatically select the frame type that matches your network.

If you are using Windows 95, make sure the frame type selected in Windows 95 matches the one selected on the Fiery XJ+.

### **AUI-to-BNC adapter for thin Ethernet cabling**

If you turn on a Fiery XJ+ with a transceiver plugged into the back of the Fiery XJ+ before you have connected a network cable to the transceiver, the Fiery XJ+ hangs during start-up. For normal start-up, either attach the network cable to the BNC connector before turning on the Fiery XJ+ or unplug the transceiver from the Fiery XJ+.

### **Laptop computers**

With certain models of laptop computers (for example, IBM ThinkPad), you should always disconnect the parallel port cable before shutting down the computer.



# Custom paper sizes

## Macintosh computers

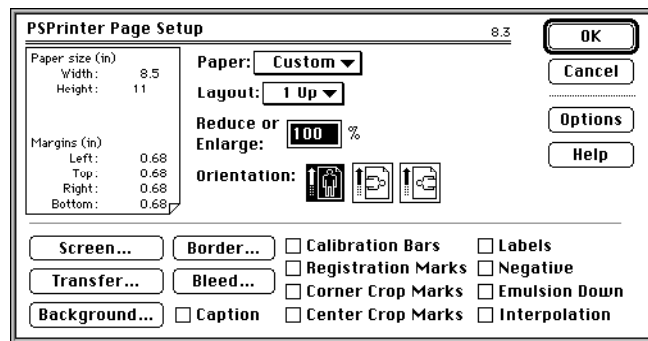
With Macintosh computers using Adobe PSPrinter 8.3 or later, you can use custom paper sizes.

---

### TO SET A CUSTOM PAPER SIZE:

1. Choose Page Setup from the File menu.
2. Choose Custom as a paper size.
3. Click the page icon in the top-left corner of the dialog box and enter the appropriate values for width, height, and margins.

The minimum size you can specify is 2"x 2". The maximum size you can specify is the width of the plotter's print area by the length of the paper roll.



4. Select any other printing options in the Page Setup dialog box and click OK.

## How the Job Log displays custom paper sizes

For custom paper size jobs, the Page Size values shown in the Job Log are displayed according to the following criteria.

- If the custom paper size dimensions (both width and length) are within a few points of a standard paper size that can be selected from the Page Setup dialog box, the standard paper size name is displayed. For example, a custom paper size defined as 8.5" by 11" (or plus or minus a few points of this value) is displayed in the Job Log as LTR.
- If the custom paper size is *not* within a few points of a standard paper size, the paper size dimensions are reported as the *nearest whole numbers*. For example, a custom paper size defined as 10.5" by 12.4" is displayed in the Job Log as 11 x 12. For all custom paper sizes, margins are included in the displayed paper size.

## Filenames and device names

The following names are specific to the plotter option.

	Macintosh	Windows
Color reference pages (Pantone)	Fiery VivagrafX XL Coated.PS Fiery VivagrafX XL Uncoated.PS	VIVAXLC.PS VIVAXLU.PS
Device name	VivaXL	VivaXL
Internal rp names (UNIX)	print_VivaXL hold_VivaXL	print_VivaXL hold_VivaXL
Calibration target	VivagrafX XL	VivagrafX XL
Pagemaker PPD	None	EFXJX103.PPD

## Printing options and PPD overrides

Option and settings (Underlined option is printer's default)	Description	Control Panel	Print dialog box	Print Options/ Print Features	Fiery XJ Downloader Options	Fiery XJ Spooler Overrides
<b>Auto Sheet Cut</b> <u>Off/On</u>	Specifies whether the plotter automatically cuts the media after printing each job.	No	No	Yes	No	Yes
<b>Brightness</b> <u>85% Lightest/90% Lighter/95% Light/100% Normal/105% Dark/110% Darker/115% Darkest</u>	Contrasts image brightness. <b>85%</b> produces a substantially lighter image; <b>115%</b> produces a substantially darker image.	No	No	Yes	Yes	Yes
<b>Calibration/Simulation</b> <u>Copier/DIC/Euroscale/Linear/SWOP-Coated</u>	Specifies the calibration target to use.	Yes	No	Yes	No	Yes
<b>Color Mode</b> <u>CMYK/Grayscale</u>	Specifies the color mode for the job.	Yes	No	Yes	No	Yes
<b>Copies</b>	Specifies the number of copies to print.	No	Yes	No	Yes	Yes
<b>Dry Time</b>	Regardless of the setting you choose, the plotter defaults to 0 minutes.	No	No	No	No	No
<b>Paper Size</b> <u>Letter/Letter-R/11x17/11x17-R/17x22/17x22-R/22x34/22x34-R/34x44/34x44-R/A4/A4-R/A3/A3-R/A2/A2-R/A1/A1-R/A0/A0-R/Custom*</u>	Specifies the paper size for the job.  *Custom paper size with Macintosh Adobe PSpriinter 8.3 only	No	Yes (Page Setup)	No	No	Yes *except Custom paper size
<b>Plot Mode</b>	Regardless of the setting you choose, the plotter defaults to 1 pass bidirectional.	No	No	No	No	No

Option and settings (Underlined option is printer's default)	Description	Control Panel	Print dialog box	Print Options/ Print Features	Fiery XJ Downloader Options	Fiery XJ Spooler Overrides
<b>Rendering Style</b> <u>Photographic</u> /Presentation/ Monitor/Solid Color	The <b>Photographic</b> CRD optimizes the range of colors on the Fiery XJ+ to produce the best results for photographic or bitmapped images. The <b>Presentation</b> CRD optimizes the output of pure, saturated colors such as those used in business presentations. The <b>Monitor</b> CRD simulates relative color values as viewed on a monitor as much as possible. Color saturation is reduced so that colors that are bright on screen and have high contrast with other colors (especially blues and greens) retain those qualities when printed. The <b>Solid Color</b> CRD is most useful for printing spot colors such as those found in company logos or corporate charts and graphs.	No	No	Yes	No	Yes
<b>RIP Mode</b> <u>Memory</u> /Disk	Specifies whether the image is RIPped to memory or to disk.	No	No	Yes	No	Yes
<b>Scaling</b>	Specifies the percentage reduction or magnification at which the image is to print.	No	Yes (Page Setup)	No	No	Yes

## Page orientation and enlargement

The Fiery XJ+ automatically rotates pages in order to minimize paper usage. See the following sections for diagrams showing how various page sizes are oriented on the page for 24", 36", and 50" plotters.

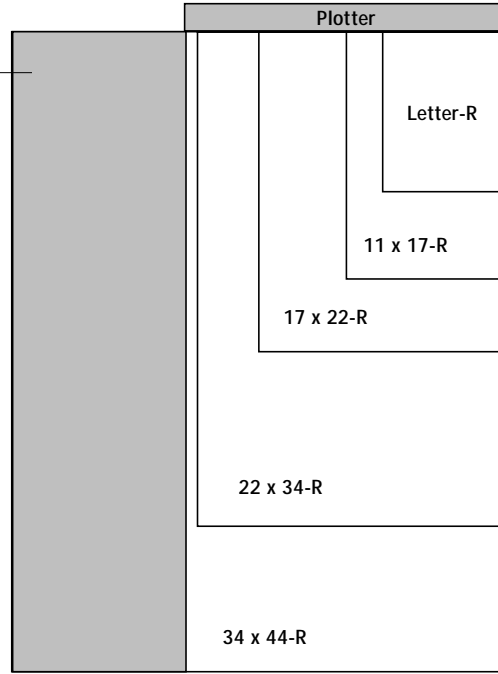
NOTE: Page sizes too large to fit on plotter paper are clipped. See individual diagrams for details.

## Enlargement

Enlargement		Original size			
		Letter	11 x 17	17 x 22	22 x 34
Final size	11 x 17	129%			
	17 x 22	200%	129%		
	22 x 34	258%	200%	129%	
	34 x 44	400%	258%	200%	129%

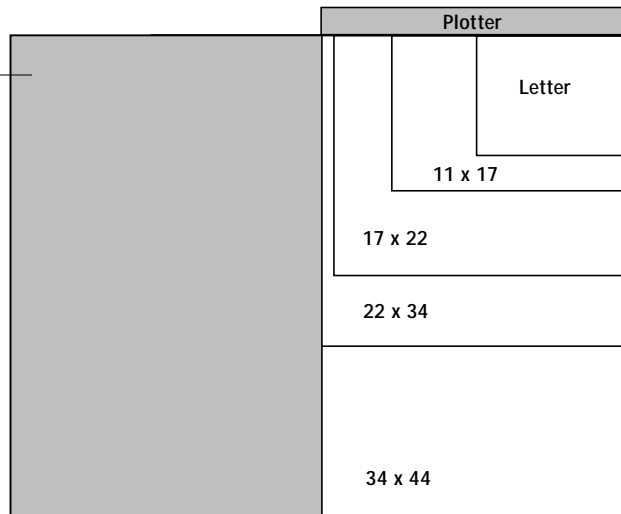
## Printing to the 24" plotter

Clipped area does not print:  
34" x 44"-R pages do not fit on  
a 24" plotter and are clipped



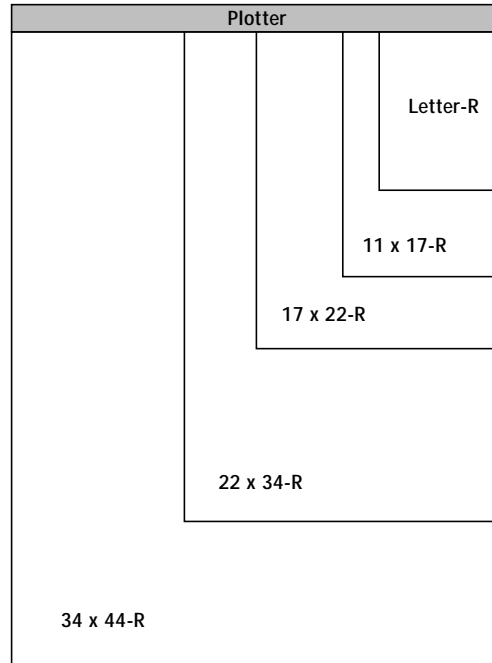
Leading edge of paper

Clipped area does not print:  
22" x 34" and 34" x 44" pages  
do not fit on a 24" plotter and  
are clipped



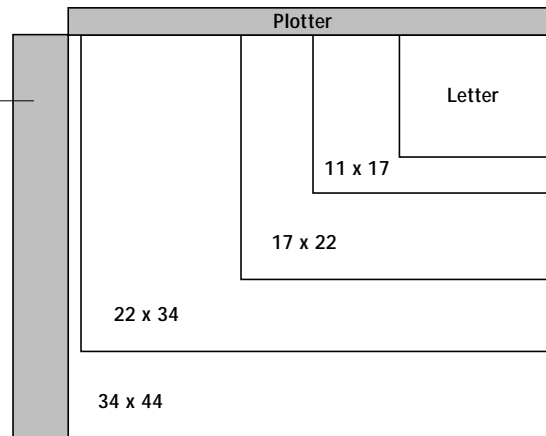
Leading edge of paper

## Printing to the 36" plotter



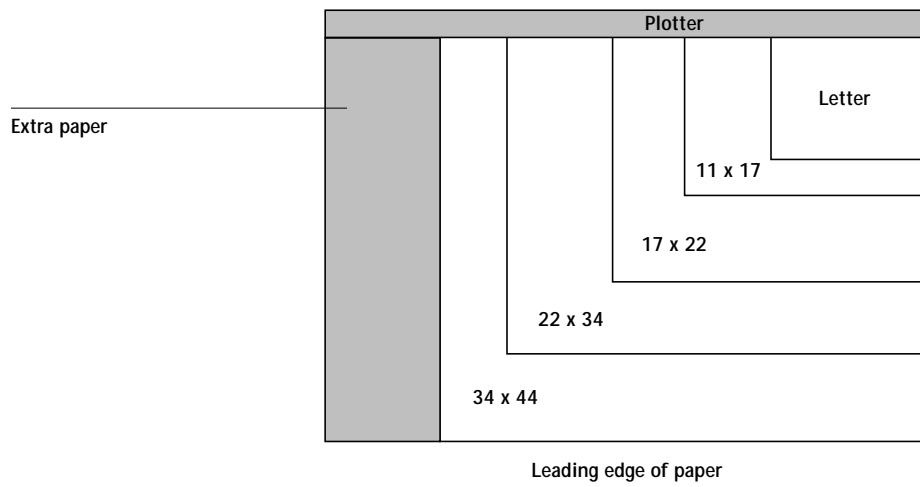
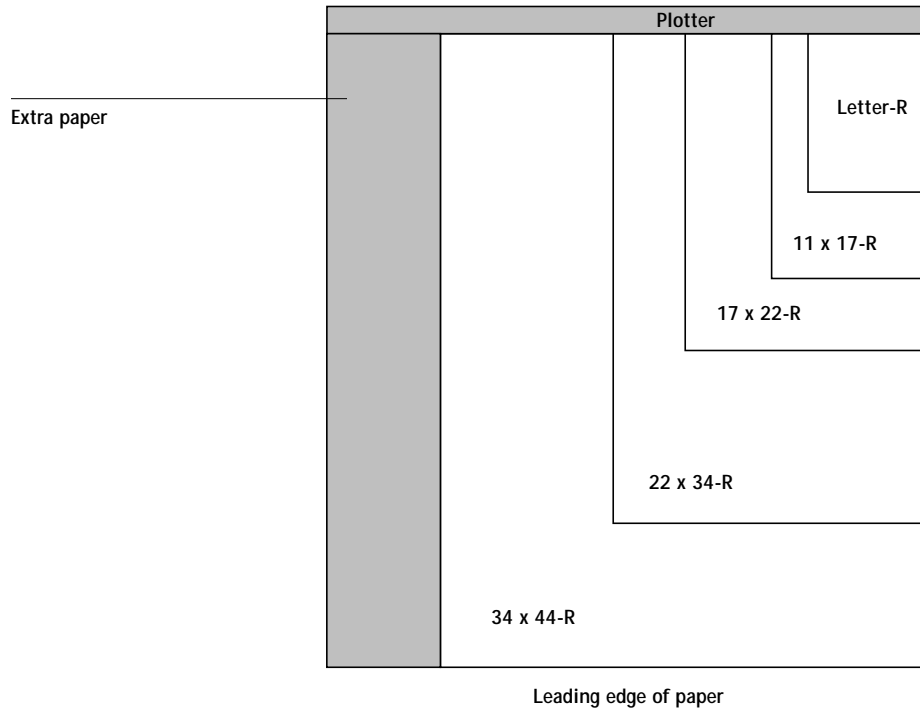
Leading edge of paper

Clipped area does not print:  
34" x 44" pages do not fit on  
a 36" plotter and are clipped



Leading edge of paper

## Printing to the 50" plotter



## Printing issues

### Job Log printing

You may experience a delay of up to 60 seconds after printing the Job Log while the Fiery XJ+ calculates the remaining white space but doesn't advance the paper.

### Dry Time and Plot Mode options

Regardless of the setting you choose, the plotter defaults to no dry time (zero minutes) and a plot mode of 1 pass bidirectional.

### Auto Sheet Cut delay

Depending on the paper size, if you set Auto Sheet Cut to On, the plotter waits before cutting the media. Generally, the larger the paper size, the longer the wait. Since a dry time cannot be set, this delay helps ensure the media is properly dried before cutting.

### Canceling jobs

To speed up canceling, when the Cancel Job screen is displayed on the Control Panel, press the top-right button repeatedly until the rotating star icon disappears. You must cut the paper before sending another job. This prevents the next job from printing on top of the previously printed area.

### Banding in complex jobs

When printing jobs that involve complex processing, you may notice small inconsistencies in an otherwise uniform color gradation. This is known as *banding*. To avoid banding, choose Print Options from your application and specify "Disk" as the RIP Mode.

### Image prints upside down

If you print a job in which the width is greater than its length, the job may print upside down (rotated 180°). The content and quality of the job are unaffected in these cases. However, if it is important that the job print as it appears on the screen, prepare the image by rotating it 180° in your application before printing.

### Rotated custom page jobs

When you define a custom page size (Macintosh only), or a PosterWorks paper size (Macintosh or Windows), with exactly the same dimensions as a standard non-R page size (Letter, A0, etc.), the job is rotated 90° and printed with the long edge along the width of the plotter's paper. To avoid this rotation, increase or decrease the definition of the custom page size by a small amount, for example, by .1 inch or 1mm. The dimensions of the defined page sizes are as follows:

- A0 = 841mm x 1189mm
- A1 = 594mm x 841mm
- A2 = 420mm x 594mm
- A3 = 297mm x 420mm
- A4 = 210mm x 297mm
- Letter = 8.5" x 11"
- Other page sizes in Page Setup shown in numbers without specified units are also in inches. For example, 11 x 17 = 11" x 17"



## Very large paper sizes and image resolution

For jobs with paper sizes of A1 or larger, set the resolution of images to 175 dpi or less. This helps prevent the Fiery XJ+ from running out of disk space, which may reboot the system automatically.

## Screening

The Fiery XJ+ uses an optimal error-diffusion screen. Any custom screen values specified from applications are ignored.

## Plotter interface disconnected

If the plotter interface cable is disconnected during printing, reboot the Fiery XJ+ and resend the print job.

## Plotter disrupted during printing

If the plotter is disrupted while an image is being printed from the Fiery XJ+, image quality may be degraded, although it may not be obvious. Disruptions occur when the Fiery XJ+ runs out of paper, or is turned off or reset while a job is processing. If this happens, resend the job.

## Plotter out of paper

---

### TO RESET THE PLOTTER WHEN IT RUNS OUT OF PAPER:

1. Press the RESET button on the plotter.
2. Press the SELECT button and then the LOAD button.
3. Load the new roll of paper and press the RESET button again.
4. Press the SELECT button.
5. If the job is printed incorrectly, cancel the job from the Fiery XJ+ Control Panel.
6. When the job has been canceled, press the RESET button on the plotter and the SELECT button.
7. Resend the job.

## Macintosh software issues

### PageMaker 5.0

If you are using PageMaker 5.0 on the Macintosh, you can specify Fiery XJ+ PPD selections by holding down the Option key when you select Print. You must also use the Option-Print dialog box if you want to enter information in the Job Notes fields. In some cases, the Option-Print dialog box may yield unexpected printing results. For example, documents with EPS and TIFF format files may print with the low-resolution image.

### QuickDraw GX

To use the Fiery XJ+ as a printer from a Macintosh computer with QuickDraw GX installed (Mac™ OS 7.5 or later), set up and print to the Fiery XJ+ as described in your Apple System Software documentation. You cannot, however, override Fiery XJ+ Setup options from the Print Options dialog box as you can from the Adobe PostScript Printer Driver.

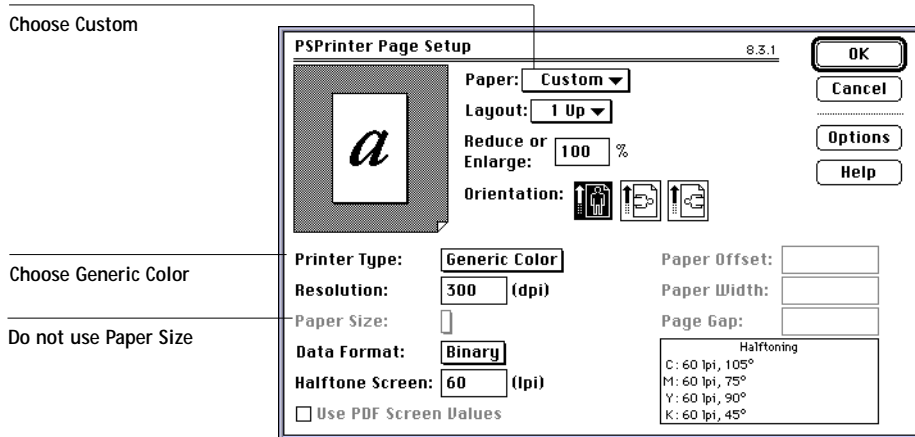
## QuarkXPress

Use this procedure for setting custom paper sizes.

---

### TO SET A CUSTOM PAPER SIZE IN QUARKXPRESS:

1. Open the Chooser.
2. Use the Setup button and select the correct PPD for the plotter.
3. In the PSpriinter Page Setup dialog box of QuarkXPress, set the Printer Type as Generic Color.  
This ensures the custom page size is printed correctly. Do *not* use the Paper Size menu.



For more information about setting a custom paper size, see “Custom paper sizes” on page 9.

## Macintosh and Windows software

### PosterWorks

When printing from PosterWorks, you need to specify additional print options.

---

#### TO PRINT FROM POSTERWORKS:

1. Select Level 2 in the Print dialog box and click the Options button next to it.  
The PostScript Level 2 Options and Optimizations dialog box is displayed.
2. Select "Use 'setpage' operators to set sheet size" in the "When printing to the device selected in the Chooser" area.
3. Click "Allow interpreter to process variable area" in the "Advanced PostScript Optimizations" area.
4. Make sure "RIP each panel exactly as shown" is selected.

#### Page rotation

When you define a PosterWorks paper size with exactly the same dimensions of a standard non-R page size (for example, Letter or A0), the job is rotated 90° and printed with the long edge along the width of the plotter's paper. For information about avoiding this rotation, "Rotated custom page jobs" on page 16.

Small custom-paper-size jobs printed from PosterWorks may print miscellaneous characters after the job finishes printing.

### Adobe Photoshop

For accurate color rendering, Photoshop users must load the monitor settings file provided with the Fiery XJ+ user software. For more information, see "Installing Macintosh software" on page 1 or "Installing Windows software" on page 3.

## Fiery XJ utilities

### Fiery XJ Print Calibrator

Make sure the Fiery XJ+ status is Idle before you use the Fiery XJ Print Calibrator to apply or remove calibration from the Fiery XJ+.

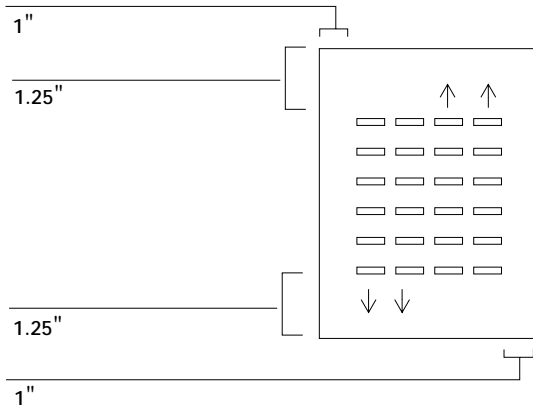
Because a plotter doesn't have a glass as the copier does, plotter calibration from the copier glass is not an option. With a densitometer, you can calibrate from either the Fiery XJ+ or from a computer networked to the Fiery XJ+.

### Densitometer port conflict with Macintosh computers

If you use applications such as Shiva NetModem or Netscape Navigator, they might be configured to use the same Macintosh port that your densitometer uses. To avoid problems, connect your densitometer to the Macintosh printer port.

### Measurement color patches for calibration with a densitometer

When cutting the measurement page from a roll of paper, leave the following margins: 1.25" top, 1.25" bottom, 1" left, and 1" right. This ensures the densitometer will be able to read the measurement data properly.



### Fiery XJ Downloader

#### Font List display

If your screen resolution is 640 x 480, the icons in the title bar may overlap the first time you display the Font List window. To display the icons correctly, you can either resize the Font List window or choose Cascade from the Windows menu.

#### IPX and TCP/IP

Jobs printed with the Fiery XJ Downloader over IPX or TCP/IP networks may indicate the user of the job as User unknown instead of the correct user name.

#### Downloading EPS Files

If you use Fiery XJ Downloader to print an EPS file, only a Letter-size portion of the file prints. Because EPS files contain no paper size information, the default paper size, Letter, is used.

## Error messages

Message	Additional information/corrective action
Chk plotter & cable	<p>There is a problem with the plotter, or with the power or cable connection.</p> <ul style="list-style-type: none"><li>• Make sure the plotter is turned on.</li><li>• Make sure the cable connection between the Fiery XJ+ and the plotter is secure.</li></ul> <p>The Fiery XJ+ will resume printing when the cable is securely connected to both the Fiery XJ+ and the plotter.</p> <ul style="list-style-type: none"><li>• Wait for the plotter to finish tasks such as drying or head alignment.</li></ul>
Disk full	<p>The Fiery XJ+ hard disk is full.</p> <ul style="list-style-type: none"><li>• Use the Fiery XJ Spooler to delete unnecessary jobs from the printed queue.</li><li>• Use the Fiery XJ Downloader to remove unnecessary fonts.</li><li>• Reduce the size of the print job within the application.</li><li>• Make the resolution of the image less than or equal to 300 dpi, which is the maximum resolution at which the plotter can print.</li><li>• Do not select “Disk” as the RIP Mode when selecting print options within the application.</li><li>• Use the Clear Server command from the Fiery XJ+ Control Panel. This clears all jobs from the Print, Hold, and Printed queues. It also clears the Job Log.</li><li>• To reduce disk space usage with future jobs, decrease the value for the setup option Jobs Saved in Printed Queue. This option is specified in Printer Setup on the Control Panel. See the <i>Administrator Guide</i> for more information.</li></ul>
The job does not print, or the Fiery XJ+ generates a PostScript error message and reboots.	<ul style="list-style-type: none"><li>• See the information for Disk full.</li></ul>

## Troubleshooting

In general, troubleshooting tips for the copier also apply to problems with the plotter. Refer to the Troubleshooting appendix of the *User Guide*.

Plotter-related problems are typically resolved by calibrating the plotter, aligning the heads, checking the ink cartridges and nozzles, and verifying that the plotter's settings are correct (see “Plotter settings” on page 7). If you get incorrect color results while printing from Photoshop, make sure you are using the appropriate calibration target and Separation Tables for the plotter.

