

Printing Guide

FIERY ZX-9

ELECTRONICS FOR IMAGING, INC.



Copyright © 1998 Electronics for Imaging, Inc. All rights reserved.

This publication is protected by copyright, and all rights are reserved. No part of it may be reproduced or transmitted in any form or by any means for any purpose without express prior written consent from Electronics for Imaging, Inc., except as expressly permitted herein. Information in this document is subject to change without notice and does not represent a commitment on the part of Electronics for Imaging, Inc.

The software described in this publication is furnished under license and may only be used or copied in accordance with the terms of such license.

Patents: 5,666,436; 5,553,200; 5,543,940; 5,537,516; 5,517,334; 5,506,946; 5,424,754; 5,343,311; 5,212,546; 4,941,038; 4,837,722; 4,500,919

Trademarks

EFI, the EFI logo, Fiery, the Fiery logo, EFICOLOR, and Rip-While-Print are trademarks registered in the U.S. Patent and Trademark Office. Fiery ZX, Fiery LX, Fiery Driven, the Fiery Driven logo, Command WorkStation, AutoCal, Starr Compression, Memory Multiplier, ColorWise, NetWise, and VisualCal are trademarks of Electronics for Imaging, Inc.

All Xerox product names mentioned in this publication are trademarks of the XEROX CORPORATION.

Adobe, the Adobe logo, Adobe Illustrator, PostScript, Adobe Photoshop, Adobe Separator, and Adobe PageMaker are trademarks of Adobe Systems Incorporated, registered in certain jurisdictions. EPS (Encapsulated PostScript) is a trademark of Altsys Corporation. Apple, the Apple logo, AppleShare, AppleTalk, EtherTalk, LaserWriter, and Macintosh are registered trademarks, and MultiFinder is a trademark of Apple Computer, Inc. Microsoft, MS, MS-DOS, and Windows are registered trademarks of Microsoft in the US and other countries. QuarkXPress is a registered trademark of Quark, Inc. Times, Helvetica, and Palatino are trademarks of Linotype AG and/or its subsidiaries. ITC Avant Garde, ITC Bookman, ITC Zapf Chancery, and ITC Zapf Dingbats are registered trademarks of International Typeface Corporation. Ethernet is a registered trademark of Xerox Corporation. Farallon, PhoneNET PC, and PhoneNET Talk are trademarks of Farallon Computing, Inc. COPS and COPSTalk are trademarks of CoOperative Printing Solutions, Inc. NetWare and Novell are registered trademarks and Internetwork Packet Exchange (IPX) is a trademark of Novell, Inc. SyQuest is a registered trademark, in the United States and certain other countries, of SyQuest Technology, Inc. UNIX is a registered trademark of UNIX System Laboratories, a wholly owned subsidiary of Novell, Inc. PANTONE is a registered trademark of Pantone, Inc.

All other terms and product names may be trademarks or registered trademarks of their respective owners, and are hereby acknowledged.

Legal Notices

APPLE COMPUTER, INC. ("APPLE") MAKES NO WARRANTIES, EXPRESS OR IMPLIED, INCLUDING WITHOUT LIMITATION THE IMPLIED WARRANTIES OF MERCHANTABILITY AND FITNESS FOR A PARTICULAR PURPOSE, REGARDING THE APPLE SOFTWARE. APPLE DOES NOT WARRANT, GUARANTEE, OR MAKE ANY REPRESENTATIONS REGARDING THE USE OR THE RESULTS OF THE USE OF THE APPLE SOFTWARE IN TERMS OF ITS CORRECTNESS, ACCURACY, RELIABILITY, CURRENTNESS, OR OTHERWISE. THE ENTIRE RISK AS TO THE RESULTS AND PERFORMANCE OF THE APPLE SOFTWARE IS ASSUMED BY YOU. THE EXCLUSION OF IMPLIED WARRANTIES IS NOT PERMITTED BY SOME STATES. THE ABOVE EXCLUSION MAY NOT APPLY TO YOU.

IN NO EVENT WILL APPLE, ITS DIRECTORS, OFFICERS, EMPLOYEES OR AGENTS BE LIABLE TO YOU FOR ANY CONSEQUENTIAL, INCIDENTAL OR INDIRECT DAMAGES (INCLUDING DAMAGES FOR LOSS OF BUSINESS PROFITS, BUSINESS INTERRUPTION, LOSS OF BUSINESS INFORMATION, AND THE LIKE) ARISING OUT OF THE USE OR INABILITY TO USE THE APPLE SOFTWARE EVEN IF APPLE HAS BEEN ADVISED OF THE POSSIBILITY OF SUCH DAMAGES. BECAUSE SOME STATES DO NOT ALLOW THE EXCLUSION OR LIMITATION OF LIABILITY FOR CONSEQUENTIAL OR INCIDENTAL DAMAGES, THE ABOVE LIMITATIONS MAY NOT APPLY TO YOU. Apple's liability to you for actual damages from any cause whatsoever, and regardless of the form of the action (whether in contract, tort [including negligence], product liability or otherwise), will be limited to \$50.

Restricted Rights Legends

For defense agencies: Restricted Rights Legend. Use, reproduction, or disclosure is subject to restrictions set forth in subparagraph (c)(1)(ii) of the Rights in Technical Data and Computer Software clause at 252.227.7013.

For civilian agencies: Restricted Rights Legend. Use, reproduction, or disclosure is subject to restrictions set forth in subparagraph (a) through (d) of the commercial Computer Software Restricted Rights clause at 52.227-19 and the limitations set forth in Electronics for Imaging, Inc.'s standard commercial agreement for this software. Unpublished rights reserved under the copyright laws of the United States.

Printed in the United States of America on recycled paper.

Part Number: n/a

CE Mark

The CE marking applied to this product symbolises Rank Xerox's declaration of conformity with the following applicable directives of the European Union as of the dates indicated.

January 1, 1996—Council Directive 70/80/CCO amended by Council Directive 93/68/EEO. Approximation of the laws of the member states related to low voltage equipment.

January 1, 1996—Council Directive 59/336/EEC. Approximation of the laws of the member states related to electromagnetic compatibility.

A full declaration defining the relevant directives and referenced standards can be obtained from your Rank Xerox representative.

WARNING: In order to allow this equipment to operate in proximity to industrial, scientific, and Medical (ISM) equipment, the external radiation from ISM equipment may have to be limited or special migration measures taken.

WARNING: This is a Class A product. In a domestic environment this product may cause radio interference, in which case the user may be required to take adequate measures.

FCC Information

WARNING: FCC Regulations state that any unauthorized changes or modifications to this equipment not expressly approved by the manufacturer could void the user's authority to operate this equipment.

NOTE: This equipment has been tested and found to comply with the limits for a Class A digital device, pursuant to Part 15 of the FCC Rules. These limits are designed to provide reasonable protection against harmful interference when the equipment is operated in a commercial environment. This equipment generates, and uses, and can radiate radio frequency energy and, if not installed and used in accordance with the instruction manual, may cause harmful interference to radio communications. Operation of this equipment in a residential area is likely to cause interference in which case the user will be required to correct the interference at his own expense.

Industry Canada Class A Notice

This digital apparatus does not exceed the Class A limits for radio noise emissions from digital apparatus as set out in the interference-causing equipment standard entitled, "Digital Apparatus" ICES-003 from Industry Canada.

Avis de Conformation Classe A de l'Industrie Canada

Le présent appareil numérique n'émet pas de bruits radioélectriques dépassant les limites applicables aux appareils numériques de la Classe A prescrites dans la norme sur le matériel brouilleur, "Appareils Numériques" NMB-003 édictée par l'Industrie Canada.

Certificate by Manufacturer/Importer

This is to certify that the FC07 is shielded against radio interference in accordance with the provisions of VFG 243/1991. The German Postal Services have been advised that this device is being put on the market and that they have been given the right to inspect the series for compliance with the regulations.

Bescheinigung des Herstellers/Importeurs

Heirmit wird bescheinigt, dass der FC07 im Uebereinstimmung mit den Bestimmungen der VFG 243/1991 Funk-Entstort ist. Der Deutschen Bundespost wurde das Inverkehrbringen dieses Geraetes angezeigt und die Berechtigung zur Ueberpruefung der Serie auf Einhaltung der Bestimmungen eingeraumt.

RFI Compliance Notice

This equipment has been tested concerning compliance with the relevant RFI protection requirements both individually and on system level (to simulate normal operation conditions). However, it is possible that these RFI Requirements are not met under certain unfavorable conditions in other installations. It is the user who is responsible for compliance of his particular installation.

Dieses Geraet wurde einzeln sowohl als auch in einer Anlage, die einen normalen Anwendungsfall nachbildet, auf die Einhaltung der Funk-entstoerbestimmungen gepruet. Es ist jedoch moeglich, dass die Funk-entstoerbestimmungen unter unguenstigen Umstaenden bei anderen Geraetekombinationen nicht eingehalten werden. Fuer die Einhaltung der Funk-entstoerbestimmungen seigner gesamten Anlage, in der dieses Geraet betrieben wird, ist der Betreiber verantwortlich.

Compliance with applicable regulations depends on the use of shielded cables. It is the user who is responsible for procuring the appropriate cables.

Einhaltung mit betreffenden Bestimmungen kommt darauf an, dass geschirmte Ausfuehrungen gebraucht werden. Fuer die beschaffung richtiger Ausfuehrungen ist der Betreiber verantwortlich.

Software License Agreement

Before using the Software, please carefully read the following terms and conditions. BY USING THIS SOFTWARE, YOU SIGNIFY THAT YOU HAVE ACCEPTED THE TERMS OF THIS AGREEMENT. If you cannot or do not accept these terms, you may return the entire package within ten (10) days to the Distributor or Dealer from which you obtained them for a full refund.

Electronics for Imaging, Inc. grants to you a non-exclusive, non-transferable license to use the software and accompanying documentation ("Software") included with the Fiery ZX you have purchased, including without limitation the PostScript[®] software provided by Adobe Systems Incorporated.

You may:

- a. use the Software solely for your own customary business purposes and solely with Fiery ZX;
- b. use the digitally-encoded machine-readable outline and bitmap programs ("Font Programs") provided with Fiery ZX in a special encrypted format ("Coded Font Programs") to reproduce and display designs, styles, weights, and versions of letters, numerals, characters and symbols ("Typefaces") solely for your own customary business purposes on the display window of the Fiery ZX or monitor used with Fiery ZX;
- c. use the trademarks used by Electronics for Imaging to identify the Coded Font Programs and Typefaces reproduced therefrom ("Trademarks"); and
- d. assign your rights under this Agreement to a transferee of all of your right, title and interest in and to Fiery ZX provided the transferee agrees to be bound by all of the terms and conditions of this Agreement.

You may not:

- a. make use of the Software, directly or indirectly, to print bitmap images with print resolutions of 600 dots per inch or greater, or to generate fonts or typefaces for use other than with Fiery ZX;
- b. make or have made, or permit to be made, any copies of the Software, Coded Font Programs, accompanying documentation or portions thereof, except as necessary for use with the Fiery ZX unit purchased by you; provided, however, that under no circumstances may you make or have made, or permit to be made, any copies of that certain portion of the Software which has been included on the Fiery ZX hard disk drive. You may not copy the documentation;
- c. attempt to alter, disassemble, decrypt or reverse engineer the Software, Coded Font Programs or accompanying documentation.
- d. rent or lease the Software.

Proprietary Rights

You acknowledge that the Software, Coded Font Programs, Typefaces, Trademarks and accompanying documentation are proprietary to Electronics for Imaging and its suppliers and that title and other intellectual property rights therein remain with Electronics for Imaging and its suppliers. Except as stated above, this Agreement does not grant you any right to patents, copyrights, trade secrets, trademarks (whether registered or unregistered), or any other rights, franchises or licenses in respect of the Software, Coded Font Programs, Typefaces, Trademarks or accompanying documentation. You may not adapt or use any trademark or trade name which is likely to be similar to or confusing with that of Electronics for Imaging or any of its suppliers or take any other action which impairs or reduces the trademark rights of Electronics for Imaging or its suppliers. The trademarks may only be used to identify printed output produced by the Coded Font Programs. At the reasonable request of Electronics for Imaging, you must supply samples of any Typeface identified with a trademark.

Confidentiality

You agree to hold the Software and Coded Font Programs in confidence, disclosing the Software and Coded Font Programs only to authorized users having a need to use the Software and Coded Font Programs as permitted by this Agreement and to take all reasonable precautions to prevent disclosure to other parties.

Remedies

Unauthorized use, copying or disclosure of the Software, Coded Font Programs, Typefaces, Trademarks or accompanying documentation will result in automatic termination of this license and will make available to Electronics for Imaging other legal remedies.

Limited Warranty And Disclaimer

Electronics for Imaging warrants that, for a period of ninety (90) days from the date of delivery to you, the Software under normal use will perform without significant errors that make it unusable. Electronics for Imaging's entire liability and your exclusive remedy under this warranty (which is subject to you returning Fiery ZX to Electronics for Imaging or an authorized dealer) will be, at Electronics for Imaging's option, to use reasonable commercial efforts to attempt to correct or work around errors, to replace the Software with functionally equivalent software, or to refund the purchase price and terminate this Agreement. Some states do not allow limitations on duration of implied warranty, so the above limitation may not apply to you.

Except for the above express limited warranty, Electronics for Imaging makes and you receive no warranties or conditions on the Products, express, implied, or statutory, and Electronics for Imaging specifically disclaims any implied warranty or condition of merchantability or fitness for a particular purpose.

For warranty service, please contact your authorized service/support center.

EXCEPT FOR THE ABOVE EXPRESS LIMITED WARRANTY, ELECTRONICS FOR IMAGING MAKES AND YOU RECEIVE NO WARRANTIES OR CONDITIONS ON THE SOFTWARE OR CODED FONT PROGRAMS, EXPRESS, IMPLIED, STATUTORY, OR IN ANY OTHER PROVISION OF THIS AGREEMENT OR COMMUNICATION WITH YOU, AND ELECTRONICS FOR IMAGING SPECIFICALLY DISCLAIMS ANY IMPLIED WARRANTY OR CONDITION OF MERCHANTABILITY OR FITNESS FOR A PARTICULAR PURPOSE. Electronics for Imaging does not warrant that the operation of the software will be uninterrupted or error free or that the Software will meet your specific requirements.

Limitation Of Liability

IN NO EVENT WILL ELECTRONICS FOR IMAGING OR ITS SUPPLIERS BE LIABLE FOR ANY DAMAGES, INCLUDING LOSS OF DATA, LOST PROFITS, COST OF COVER OR OTHER SPECIAL, INCIDENTAL, CONSEQUENTIAL OR INDIRECT DAMAGES ARISING FROM THE USE OF THE SOFTWARE, CODED FONT PROGRAMS OR ACCOMPANYING DOCUMENTATION, HOWEVER CAUSED AND ON ANY THEORY OF LIABILITY. THIS LIMITATION WILL APPLY EVEN IF ELECTRONICS FOR IMAGING OR ANY AUTHORIZED DEALER HAS BEEN ADVISED OF THE POSSIBILITY OF SUCH DAMAGE. YOU ACKNOWLEDGE THAT THE PRICE OF THE UNIT REFLECTS THIS ALLOCATION OF RISK. BECAUSE SOME STATES/JURISDICTIONS DO NOT ALLOW THE EXCLUSION OR LIMITATION OF LIABILITY FOR CONSEQUENTIAL OR INCIDENTAL DAMAGES, THE ABOVE LIMITATION MAY NOT APPLY TO YOU.

Export Controls

You agree that you will not export or re-export the Software or Coded Font Programs in any form without the appropriate United States and foreign government licenses. Your failure to comply with this provision is a material breach of this Agreement.

Government Use

Use, duplication or disclosure of the Software by the United States Government is subject to restrictions as set forth in subdivision (c) (1) (ii) of the Rights in Technical Data and Computer Software clause at DFARS 252.227-7013 or in subparagraphs (c) (1) and (2) of the Commercial Computer Software—Restricted Right Clause at 48 CFR 52.227-19, as applicable.

Third Party Beneficiary

You are hereby notified that Adobe Systems Incorporated, a California corporation located at 345 Park Avenue, San Jose, CA 95110-2704 ("Adobe") is a third-party beneficiary to this Agreement to the extent that this Agreement contains provisions which relate to your use of the Fonts, the Coded Font Programs, the Typefaces and the Trademarks licensed hereby. Such provisions are made expressly for the benefit of Adobe and are enforceable by Adobe in addition to Electronics for Imaging.

General

This Agreement will be governed by the laws of the State of California.

This Agreement is the entire agreement held between us and supersedes any other communications or advertising with respect to the Software, Coded Font Programs and accompanying documentation.

If any provision of this Agreement is held invalid, the remainder of this Agreement shall continue in full force and effect.

If you have any questions concerning this Agreement, please write to Electronics for Imaging, Inc., Attn: Licensing Dept. or see Electronics for Imaging's web site at www.efi.com.

Electronics for Imaging, Inc.
2855 Campus Drive
San Mateo, CA 94403

Contents

Preface

| | |
|---|------|
| How the Fiery ZX works | xi |
| About PostScript printer drivers and PPDs | xi |
| Before you begin | xii |
| About this manual | xiii |
| About the documentation | xiii |
| Supported paper sizes | xiv |
| Non-imageable area | xv |
| Toner reduction | xv |

Chapter 1: Printing from Windows Computers

| | |
|--|------|
| Printing from applications | 1-1 |
| Setting options and printing from Windows 95 | 1-1 |
| Setting options and printing from Windows 3.1x | 1-6 |
| Setting options and printing from Windows NT 4.0 | 1-9 |
| Printing to the parallel port | 1-11 |
| Saving files to print at a remote location | 1-12 |
| Using the Fiery Downloader to print | 1-12 |

Chapter 2: Printing from Mac OS Computers

| | |
|--|-----|
| Printing from applications | 2-1 |
| Selecting the Fiery ZX in the Chooser | 2-1 |
| Setting print options and printing from Mac OS computers | 2-2 |
| Using the Fiery Downloader to print | 2-5 |

Chapter 3: Printing from UNIX Workstations

| | |
|--------------------------|-----|
| Printing to the Fiery ZX | 3-1 |
|--------------------------|-----|

Chapter 4: Scanning Jobs

| | |
|--------------------------------------|-----|
| Scanning from the copier | 4-1 |
| Fiery Scan color conversion settings | 4-1 |
| Using Fiery Scan | 4-2 |

Chapter 5: Downloading Files and Fonts

| | |
|--|-----|
| The Fiery Downloader | 5-1 |
| Printing with the Fiery Downloader | 5-4 |
| Downloading and managing printer fonts | 5-8 |

Chapter 6: Tracking and Managing Print Jobs

| | |
|--|-----|
| Fiery WebTools | 6-1 |
| Checking Fiery ZX status with the Status WebTool | 6-2 |
| Accessing information with the WebLink WebTool | 6-2 |

Appendix A: Setting Print Options

| | |
|--------------------------------------|-----|
| Where to set print options | A-1 |
| Override hierarchy | A-2 |
| More information about print options | A-6 |

Appendix B: Font List

| | |
|--------------------------|-----|
| PostScript printer fonts | B-1 |
| Adobe Type 1 fonts | B-1 |
| TrueType fonts | B-3 |

Appendix C: Troubleshooting

| | |
|--|-----|
| Maintaining optimal system performance | C-1 |
| Troubleshooting | C-2 |
| General printing problems | C-2 |
| Problems with print quality | C-5 |
| Problems with the Fiery Downloader | C-7 |
| Problems with Fiery Scan | C-7 |

Index

Preface

The Fiery ZX-9 Color Server enables you to use your color copier as a networked printer. You can use the Fiery ZX to print final documents or to proof jobs you will later print on an offset press. You send a print job to the Fiery ZX as you would to any other printer—you select it from the Printers dialog box on Windows® computers, or in the Chooser on Mac® OS computers—and then print from within any application.

Your Fiery ZX-9 Color Server system includes Command WorkStation™ software, which enables an operator to manage all jobs sent to the Fiery ZX. Although it may not be the case at all sites, the documentation for this product assumes the presence of an operator who controls and manages jobs sent by users from remote workstations.

NOTE: This manual uses the term “Fiery ZX” to refer to the Fiery ZX-9 Color Server.

About this manual

This manual is intended for those remote users who send jobs via the network or via a parallel port connection between the Fiery ZX and a user’s workstation. It covers the following topics:

- Printing from a Windows computer
- Printing from a Mac OS computer
- Printing from UNIX
- Scanning images from the copier using Adobe® Photoshop® and the Fiery Scan™ plug-in
- Downloading files and fonts using Fiery Downloader™
- Specifying and overriding job settings, a list of fonts installed on the Fiery ZX, and troubleshooting information

About the documentation

This manual is part of a set of Fiery ZX documentation that also includes the following manuals for users and system administrators:

- The *Configuration Guide* explains basic configuration and administration of the Fiery ZX for the supported platforms and network environments. It also includes guidelines for setting up UNIX, Windows NT®, and Novell® NetWare® servers to provide PostScript printing services to clients.
- *Getting Started* describes how to install software to enable users to print to the Fiery ZX. Specifically, it describes installation of PostScript printer drivers, printer description files, and other user software provided on the User Software CD and Command WorkStation CD. It also explains how to connect each user to the network.
- The *Printing Guide* describes the printing features of the Fiery ZX for users who send jobs via remote workstations on the network or via a direct parallel port connection.
- The *Color Guide* provides an introduction to the basics of color theory and printing to a Fiery ZX Color Server. It also includes practical color printing tips and application notes that explain how to print to the Fiery ZX from popular Windows and Mac OS applications.
- The *Job Management Guide* explains the functions of the Fiery ZX client utilities, including the Command WorkStation, and how they can be used to manage jobs and maintain color quality. This book is intended for an operator or administrator, or a user with the necessary access privileges, who needs to monitor and manage job flow, perform color calibration, and troubleshoot problems that may arise.
- *Release Notes* provide last-minute product information and workarounds for some of the problems you may encounter.

How the Fiery ZX works

The Fiery ZX receives files from computers on the network, processes (RIPs) those files, and then sends them to the copier's print engine for printing. Even with the Fiery ZX installed, you can still use the copier to make copies.

When printing from an application, your Windows or Mac OS computer communicates with the Fiery ZX by means of an Adobe® PostScript® printer driver and a PostScript printer description file (PPD).

About PostScript printer drivers and PPDs

A PostScript printer driver is an application that manages printing communication between your application software and the printer. It interprets the instructions generated by the application software, merges those instructions with printer-specific PPD options you specify (see below), and translates all that information into PostScript, a language the printer understands. In other words, the printer driver writes a PostScript file based on your original file and the options you set from the Print dialog box.

A PPD file contains information about a particular device's features and capabilities (for example, what paper sizes and media types are supported). The PostScript printer driver reads the information in the PPD file and presents that information to you in the form of options you can choose from the Print dialog box. The PPD for the Fiery ZX includes information about the features of both the copier and the Fiery ZX Color Server.

For information on the PPD options for your Fiery ZX, see Appendix A, "Setting Print Options."

Supported paper sizes

The Fiery ZX supports printing at 400 dpi (dots per inch) on the following paper sizes:

- 8" x 10"
- Letter, Letter-R (8.5" x 11")
- Legal 13 (8.5" x 13")
- Legal (8.5" x 14")
- 9" x 12"
- Tabloid (11" x 17")
- B5, B5-R (182 mm x 257 mm)
- A4, A4-R (210 mm x 297 mm)

- Docupac (241 mm x 297 mm)
- B4 (257 mm x 364 mm)
- A3 (297 mm x 420 mm)

Before you begin

Before using the Fiery ZX, follow these steps:

1. Confirm that the system administrator has completed Setup as described in the *Configuration Guide*.
2. Find out what printer defaults the administrator specified in Setup.
These default settings can affect the results of your print jobs. Check with your administrator or operator for information on these default settings.
3. Confirm that the user software is installed correctly on your workstation, as described in *Getting Started*.
4. Consult the *Color Guide* for information on print options and application features that affect color output.
5. Find out how your workstation is configured for printing on the network.

If your site has an operator who controls all printing, you may have access to the Hold queue only. In this case, all jobs you send are spooled to the Fiery ZX and held until the operator sends them to their next stage of processing.

You may also have access to the Print queue. If you send jobs to this queue, jobs spool to the Fiery ZX and proceed to RIP and print according to your job settings—unless someone (you, or an operator, for example) intervenes.

Lastly, you may have access to the Direct connection, which sends jobs straight to the server without spooling.

6. Find out whether the Fiery ZX is set up to use the Fiery WebTools and what your access privileges are.

The administrator may or may not have enabled access to the server via the Internet (or an intranet). If access is enabled, a password may be required to perform job management with the Fiery WebSpooler.

Non-imageable area

The Fiery ZX non-imageable area for 5790 and 5799 color copiers is 8 mm on the leading edge and 3 mm on the trailing, near, and far edges.

Toner reduction

The Fiery ZX maximum toner density for 5790 and 5799 color copiers is 250%.

Chapter 1: Printing from Windows Computers

This chapter describes how to print to the Fiery ZX from Windows 95®, Windows 3.1x, and Windows NT 4.0.

You can print from a networked Windows computer, or from a Windows computer connected to the parallel port on the Fiery ZX. If you plan to print files at another location, you should follow the procedures described in “Saving files to print at a remote location,” page 1-12.

Another way to print from a Windows computer is to download PostScript files, Encapsulated PostScript (EPS) files, or Portable Document Format (PDF) files using the Fiery Downloader.

NOTE: For information on setting up the Windows environment for printing with Windows servers connected to the Fiery ZX, see the *Configuration Guide*. For information on how to connect to the Fiery ZX over the network, install printer drivers, and install the Fiery utilities, see *Getting Started*.

Printing from applications

Once you have installed the Fiery ZX printer driver and set it to the proper port as described in *Getting Started*, you should be able to print directly from most Windows applications. Simply choose the Print command from within your application.

To achieve the best printing results from specific applications, see the *Color Guide*.

Setting options and printing from Windows 95

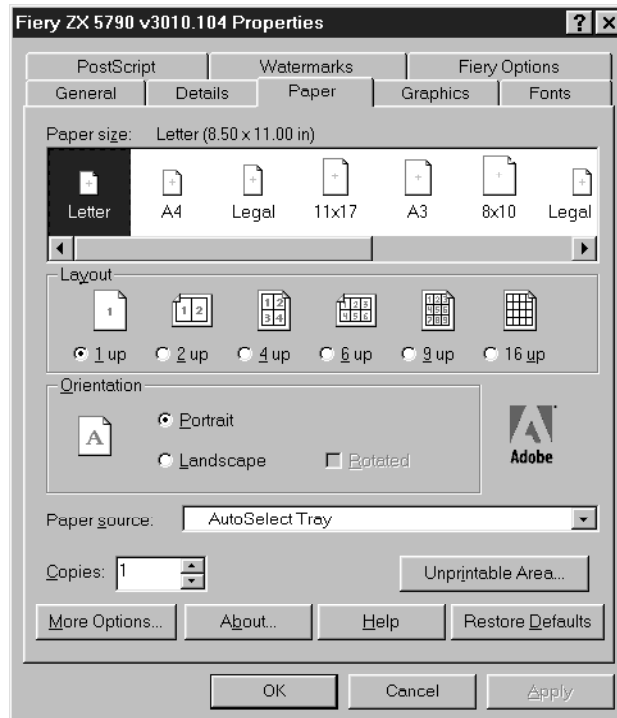
To print from Windows 95, use the Adobe PostScript printer driver for Windows 95. The driver is included with the Fiery ZX user software, and uses all features of the Fiery ZX.

Once you have installed the Adobe PostScript printer driver and Fiery ZX PostScript Printer Description file (PPD), you can select the printer settings you prefer. You can also change settings for a particular file when you print the file to the Fiery ZX. Before printing, make sure that the correct print options are set.

To print from Windows 95 applications over a network, you must be connected to a print server. This can be a Novell NetWare server, an NT server, or a UNIX server. For information about connecting a server to the Fiery ZX, see the *Configuration Guide*. Alternatively, you can print from Windows 95 without connecting to a print server via SMB printing. For information about setting up SMB printing, see *Getting Started*.

TO SET PRINT OPTIONS AND PRINT WITH THE ADOBEPS PRINTER DRIVER FROM WINDOWS 95:

1. Double-click the My Computer icon.
2. Double-click the Printers icon.
3. Select the icon for the Fiery ZX and choose Properties from the File menu.
4. Click the Paper tab.
5. Select the appropriate settings for your print job.

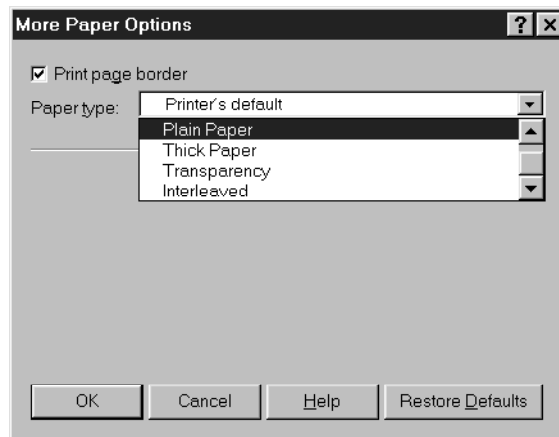


In the Paper size area, specify the page size that your job should print on.

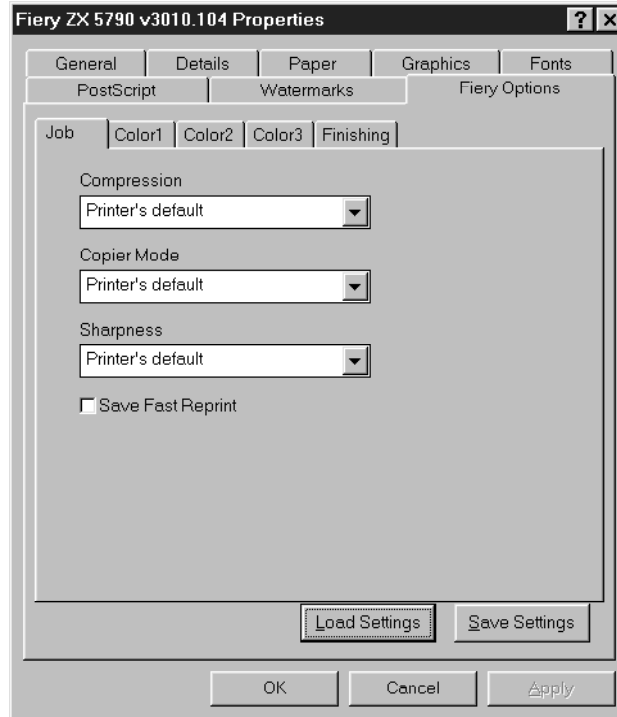
In the Paper source pop-up menu, specify the paper tray to use for the job. For example, you can specify that the job should be printed on pages in the Manual Feed tray. The Paper source selection is valid for the current job only.

NOTE: If paper loaded in the selected tray is a different size, orientation, and/or media type than that of the job you are sending, the Fiery ZX displays an error message and the job will not print. You should then load the correct paper in the selected tray or cancel the job.

6. To select a specific media type, click **More Options**.
7. In the Paper type pop-up menu, specify the type of media to use for the job and click **OK**.



8. Click the Fieri Options tab.



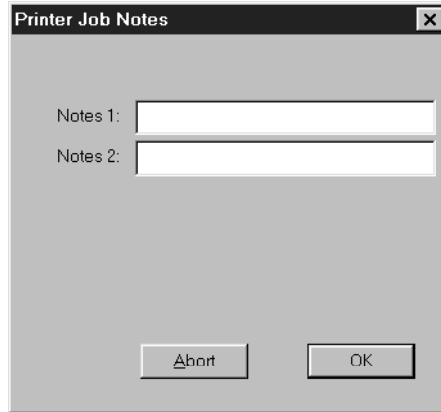
9. Click through the Job, Color1, Color2, Color3, and Finishing tabs, and select the appropriate settings for your print job.

These print options are specific to the Fieri ZX. They override settings in Fieri ZX Printer Setup; the settings can also be changed in the Properties dialog box with the Command WorkStation, or in the Override Print Settings dialog box with the Fieri WebSpooler or Fieri Spooler. For information about these options and overrides, see Appendix A, "Setting Print Options."

If you choose Printer's default, the Fieri ZX prints with either the default value for the server, or the information entered during Setup.

10. If you want to make the new settings your default settings, click Apply.
11. Click OK to activate the current settings.

12. From your application, choose Print.



13. Enter text messages in the Notes 1 and Notes 2 areas.

You can enter user and job identification information for accounting purposes, or whatever information is required at your site. These notes will appear in the Job Log.

14. Click OK to begin printing.

Saving and loading print option settings

Print option settings can be saved to a settings file on your hard disk. Saving a settings file enables you to easily load specifically configured settings for a particular job.

TO SAVE PRINT OPTION SETTINGS:

1. After configuring the options from the Job, Color1, Color2, Color3, and Finishing tabs, click Save Settings.
2. Name the settings file and browse to a location on your hard disk where you want to save the file.
3. Click OK.

The settings file is saved to the location you specified.

TO LOAD PRINT OPTION SETTINGS:

1. From the Fiery Options tab, click Load Settings.
2. Browse to the settings file.
3. Select the settings file from the list and click OK.

The options from the Job, Color1, Color2, Color3, and Finishing tabs are automatically configured with the saved settings.

Setting options and printing from Windows 3.1x

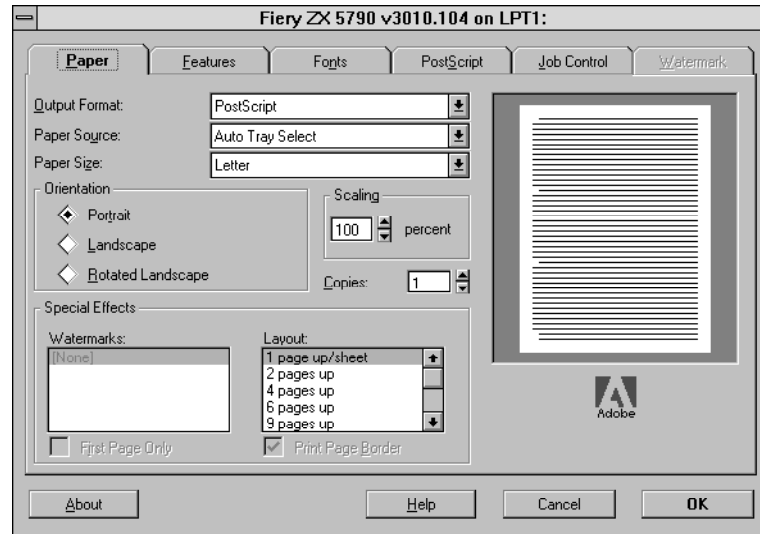
To print from Windows 3.1x, use the Adobe PostScript printer driver for Windows 3.1x. The driver is included with the Fiery ZX user software, and uses all features of the Fiery ZX.

Once you have installed the Adobe PostScript printer driver and Fiery ZX PostScript Printer Description file (PPD), you can select the printer settings you prefer. You can also change settings for a particular file when you print the file to the Fiery ZX. Before printing, make sure that the correct print options are set.

TO SET PRINT OPTIONS AND PRINT WITH THE ADOBEPS PRINTER DRIVER FROM WINDOWS 3.1X:

1. In the Main window, double-click the Control Panel icon.
2. Double-click the Printers icon.
3. In the Printers dialog box, select the Fiery ZX in the Installed Printers box and click the Setup button.
4. Click the Paper tab.

5. Select appropriate settings for your print job.

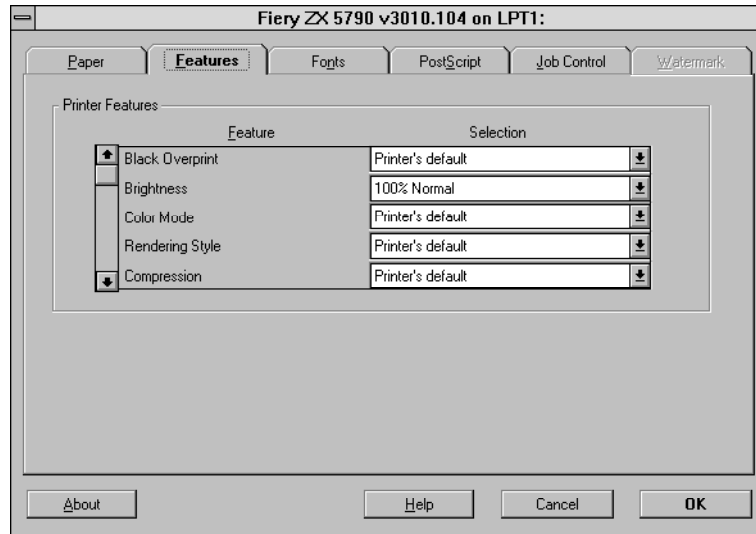


In the Paper Source pop-up menu, specify the paper tray to use for the job. For example, you can specify that the job should be printed on pages in the Manual Feed tray. The Paper Source selection is valid for the current job only.

In the Paper Size pop-up menu, specify the page size that your job should print on.

NOTE: If paper loaded in the selected tray is a different size, orientation, and/or media type than that of the job you are sending, the Fiery ZX displays an error message and the job will not print. You should then load the correct paper in the selected tray or cancel the job.

6. Click the Features tab.



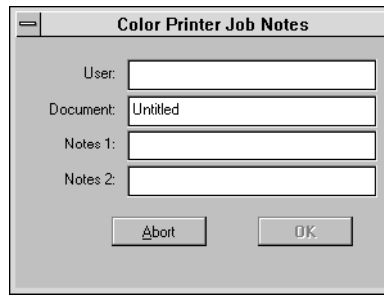
7. Select the appropriate settings for your job and click OK.

These print options are specific to the Fiery ZX (you must scroll to see all the pop-up menus). They override settings in Fiery ZX Printer Setup; the settings can also be changed in the Properties dialog box with the Command WorkStation, or in the Override Print Settings dialog box with the Fiery WebSpooler or Fiery Spooler. For information about these options and overrides, see Appendix A, "Setting Print Options."

If you choose Printer's default, the Fiery ZX prints with either the default value for the server, or the information entered during Setup.

8. Choose Print in your application.

The Color Printer Job Notes dialog box appears.



The image shows a Windows-style dialog box titled "Color Printer Job Notes". It has a standard title bar with a close button on the left. The dialog contains four text input fields arranged vertically. The first is labeled "User:" and is empty. The second is labeled "Document:" and contains the text "Untitled". The third is labeled "Notes 1:" and is empty. The fourth is labeled "Notes 2:" and is empty. At the bottom of the dialog are two buttons: "Abort" and "OK".

9. If necessary, enter your name in the User area.

Once you enter your name in the User area, it appears automatically in this dialog box when you print subsequent jobs.

NOTE: This entry *cannot* be changed without deleting and reinstalling the printer.

10. Enter text messages in the Notes 1 and Notes 2 areas.

You can enter user and job identification information for accounting purposes, or whatever information is required at your site. These notes will appear in the Job Log.

11. Click OK to begin printing.

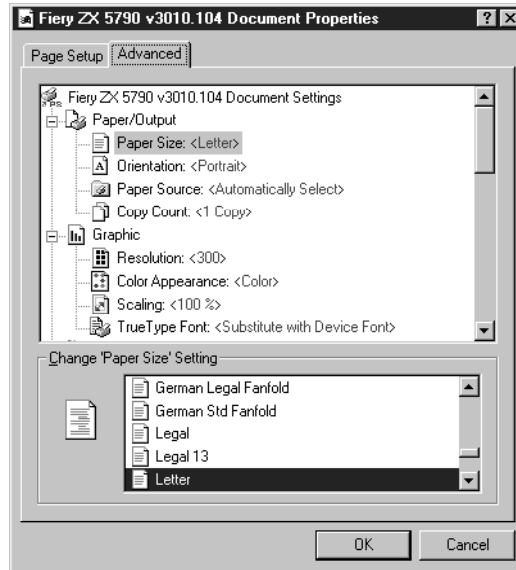
Setting options and printing from Windows NT 4.0

You can print from Windows NT 4.0 using the printer driver included with Windows NT.

TO SET PRINT OPTIONS AND PRINT WITH THE MICROSOFT POSTSCRIPT PRINTER DRIVER FROM WINDOWS NT 4.0:

1. Choose Print in your application and click Properties.
2. Click the Advanced tab.

3. Select the appropriate settings for your print job.



In the Paper Size menu, specify the page size that your job should print on.

In the Paper Source menu, specify the paper tray to use for the job. For example, you can specify that the job should be printed on pages in the Manual Feed tray. The Paper Source selection is valid for the current job only.

NOTE: If paper loaded in the selected tray is a different size, orientation, and/or media type than that of the job you are sending, the Fiery ZX displays an error message and the job will not print. You should then load the correct paper in the selected tray or cancel the job.

4. Scroll down to Printer Features, and select the appropriate settings for your print job.



These print options are specific to the Fiery ZX. They override settings in Fiery ZX Printer Setup; the settings can also be changed in the Properties dialog box with the Command WorkStation, or in the Override Print Settings dialog box with the Fiery WebSpooler or Fiery Spooler. For information about these options and overrides, see Appendix A, “Setting Print Options.”

If you choose Printer's default, the Fiery ZX prints with either the default value for the server, or the information entered during Setup.

5. Click OK, then click OK in the Print dialog box to begin printing.

Printing to the parallel port

The Fiery ZX has a parallel port that enables you to print most files directly from a Windows computer if your network administrator has connected the Windows computer's parallel port to the Fiery ZX parallel port.

NOTE: You cannot use the Fiery Downloader through the parallel port.

TO PRINT FILES TO THE PARALLEL PORT:

1. **Make sure the parallel port is enabled on your Fiery ZX.**
Check with your site administrator or operator to see whether printing to the parallel port is enabled. See *Getting Started* for information on setting up parallel port printing on your Windows computer.
2. **Select the printer port that is connected to the Fiery ZX parallel port.**
Select one of the local ports: LPT1, LPT2, or LPT3. For instructions, see your Windows documentation.
3. **Print from within your application.**

Saving files to print at a remote location

If you do not have a Fiery ZX and are preparing files to take to a service bureau or other location, print your final files to the File port (as opposed to one of the local ports). You can also print to the File port to create a file to be downloaded using the Fiery Downloader. For instructions, see your Windows documentation.

Using the Fiery Downloader to print

Downloading files with the Fiery Downloader is generally faster than printing from application software. You can use the Fiery Downloader to print PostScript files, EPS files, or PDF files.

TO PRINT USING THE FIERY DOWNLOADER:

1. **Create a PostScript file, EPS file, or PDF file. Specify the appropriate print options and include (embed) any necessary fonts that are not resident on the Fiery ZX.**
For a list of fonts resident on the Fiery ZX, see Appendix B, “Font List.”
2. **Start up the Fiery Downloader and connect to the Fiery ZX.**
For instructions on setting up the Fiery Downloader, see *Getting Started*.
3. **Select the file(s) you want to download, and specify any necessary options.**
4. **Click Download.**
For details, see Chapter 5, “Downloading Files and Fonts.”

Chapter 2: Printing from Mac OS Computers

You can print to the Fiery ZX just as you would print to any other printer from any application software. First, select the Fiery ZX as the current printer in the Chooser, and then print the file from within your application.

Another way to print from a Mac OS computer is to download PostScript files, Encapsulated PostScript (EPS) files, or Portable Document Format (PDF) files using the Fiery Downloader.

Printing from applications

Before you can print to the Fiery ZX from applications, you must select the Fiery ZX in the Chooser. Then, using the Adobe PostScript printer driver and the correct PostScript Printer Description file (PPD), you can control many Fiery ZX printing features by specifying job settings from print dialog boxes.

For information on achieving the best printing results from specific applications, see the *Color Guide*.

Selecting the Fiery ZX in the Chooser

Before you print a job, make sure the Fiery ZX is the currently selected printer.

TO SELECT THE FIERY ZX AS THE CURRENT PRINTER:

1. Make sure the Fiery ZX is connected to your network and turned on.
2. Choose Chooser from the Apple menu.
3. Click the AdobePS icon to select it.
4. If your network is divided into zones, select the zone in which the Fiery ZX is located.

5. Select the Fiery ZX by <Server Name>_<Device Name>_<Queue Name> from the “Select a PostScript Printer” list.

The names of all supported printers in the zone appear in the scroll list on the right.

NOTE: If your system administrator has not enabled the connection to the Print queue or the Direct connection, the corresponding name will *not* appear in this list. For example, if your site has an operator who controls the flow of print jobs from the Command WorkStation, you may be able to print only to the Hold queue.

6. Make sure that AppleTalk is set to Active, then click the close box to quit the Chooser. The Fiery ZX remains selected as the current printer until you choose a new printer in the Chooser.

Setting print options and printing from Mac OS computers

In Mac OS applications, print options are set from both the Page Setup dialog box and the Print Options dialog box. For details, see Appendix A, “Setting Print Options.”

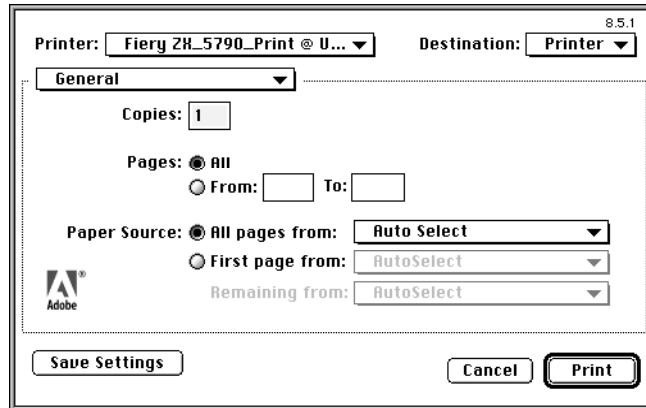
NOTE: Some default print options are set by the administrator during Setup. Check with the administrator or the operator for information on the current server default settings.

TO SET PRINT OPTIONS AND PRINT WITH THE ADOBEPS PRINTER DRIVER FROM MAC OS COMPUTERS:

1. Open the file you want to print from within the application.
2. Choose Page Setup from the application’s File menu.
The PSPrinter Page Setup dialog box appears.
3. In the Paper pop-up menu, specify the page size that your job should print on and click OK.

4. Choose Print from the application's File menu.

The Print dialog box appears.



NOTE: Print dialog boxes vary across applications.

If the Print dialog box lets you select from a pop-up menu of available printers, choose the Fiery ZX.

In the Paper Source pop-up menu, specify the paper tray to use for the job. For example, you can specify that the job should be printed on pages in the Manual Feed tray. The Paper Source selection is valid for the current job only.

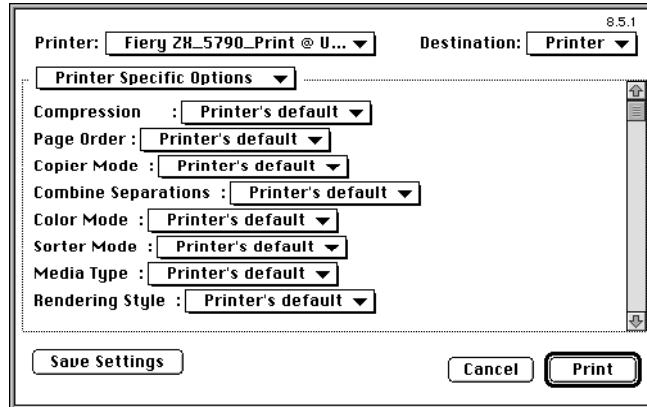
NOTE: If paper loaded in the selected tray is a different size, orientation, and/or media type than that of the job you are sending, the Fiery ZX displays an error message and the job will not print. You should then load the correct paper in the selected tray or cancel the job.

5. From the General pop-up menu, choose Job Notes.

In the Notes 1 and Notes 2 areas, enter user and job identification information for accounting purposes, or whatever information is required at your site. These notes will appear in the Job Log.

6. From the Job Notes pop-up menu, choose Printer Specific Options.

7. Select the appropriate settings for your print job.



These print options are specific to the Fieri ZX (you must scroll to see all the options). They override settings in Fieri ZX Printer Setup; the settings can also be changed in the Properties dialog box with the Command WorkStation, or in the Override Print Settings dialog box with the Fieri WebSpooler or Fieri Spooler. For information about these options and overrides, see Appendix A, “Setting Print Options.”

If you choose Printer’s default, the Fieri ZX prints with either the default value for the server, or the information entered during Setup.

Some PPD options are ones that could also be set from an application (for example, Reverse Order printing or Collation). In these cases, use the PPD option to perform the function, rather than setting it from the application. (The application may not set up the file properly for printing on the Fieri ZX and may also take longer to process.)

8. If you want to make the new settings your default settings, click Save Settings.
9. Click Print to begin printing your job.

Using the Fiery Downloader to print

Downloading files with the Fiery Downloader is generally faster than printing from application software. You can use the Fiery Downloader to print PostScript files, EPS files, or PDF files.

TO PRINT USING THE FIERY DOWNLOADER:

1. Create a PostScript file, EPS file, or PDF file. Specify the appropriate print options and include (embed) any necessary fonts that are not resident on the Fiery ZX.
For a list of fonts resident on the Fiery ZX, see Appendix B, “Font List.”
2. Start up the Fiery Downloader and connect to the Fiery ZX.
For instructions on setting up the Fiery Downloader, see *Getting Started*.
3. Select the file(s) you want to download, and specify any necessary options.
4. Click Download.

For details, see Chapter 5, “Downloading Files and Fonts.”

Chapter 3: Printing from UNIX Workstations

You can print to the Fiery ZX directly from UNIX. Jobs printed to the Fiery ZX are sent to the Print queue or Hold queue and can be manipulated from the Command WorkStation or from Windows and Mac OS computers on the network using the Fiery WebSpooler or Fiery Spooler.

NOTE: If you print to the Hold queue, someone such as an operator must intervene at the Command WorkStation or from the Fiery WebSpooler for the job to print; jobs sent to the Hold queue are spooled to disk and held.

The queue name and Fiery ZX printer name are established by your system administrator. Contact your system administrator for the names of your queues.

For information about setting up printing from TCP/IP, see your UNIX system documentation.

Printing to the Fiery ZX

You can use UNIX commands to print PostScript files and text files to the Fiery ZX. In general, the basic print commands (`lpr`, `lpq`, `lprm`) can be used to send print jobs to a Fiery ZX. See your UNIX manual pages or other documentation for information about UNIX commands.

NOTE: Only PostScript or text file formats can be printed from UNIX.

TO PRINT FROM UNIX:

- On a system running SunOS v4.1.x or another BSD-based variant, use the `lpr` command to send a job to the Fiery ZX as follows:

```
lpr <-Pprinter> <-#copies> <filename>
```

For example, if the Print queue of your Fiery ZX is named `print_Server`, your file is named `Sample`, and you want to print two copies, type:

```
lpr -Pprint_Server -#2 Sample
```

- On a system running Solaris v2.x or any System V implementation of UNIX, use the `lp` command to send a job to the Fiery ZX as follows:

```
lp -d <printername> {-n <#copies>} <filename>
```

For example, if the Print queue of your Fiery ZX is named `print_Server`, your file is named `Sample`, and you want to print two copies, type:

```
lp -d print_Server -n 2 Sample
```

TO DISPLAY A LIST OF JOBS IN THE QUEUE:

- On a system running SunOS v4.1.x or another BSD-based variant, use the `lpq` command to see printer jobs in the queue as follows:

```
lpq <-Pprinter>
```

For example, if the Print queue of your Fiery ZX is named `print_Server`, type:

```
lpq -Pprint_Server
```

Your workstation displays the contents of the queue.

- On a system running Solaris v2.x or any System V implementation of UNIX, use the `lpstat` command to see printer jobs in the queue as follows:

```
lpstat -o <printername>
```

For example, if the Print queue of your Fiery ZX is named `print_Server`, type:

```
lpstat -o print_Server
```

Your workstation displays the contents of the queue.

TO REMOVE JOBS FROM THE QUEUE:

NOTE: Unless you log in as the root user, you can remove only your own jobs.

- On a system running SunOS v4.1.x or another BSD-based variant, use the `lprm` command to remove jobs from the queue as follows.

```
lprm <-Pprinter> <job #...>
```

You can use the `lpq` command to check the job number.

For example, to remove job number 123 from the Print queue of your Fiery ZX named `print_Server`, type:

```
lprm -Pprint_Server 123
```

The `lprm` command reports the names of any files it removes.

- On a system running Solaris v2.x or any System V implementation of UNIX, use the `cancel` command to remove jobs from the queue.

```
cancel <printername> <job ID>
```

For example, to remove job number 123 from the Print queue of your Fiery ZX named `print_Server`, type:

```
cancel print_Server 123
```


Chapter 4: Scanning Jobs

This chapter describes how to scan images from the copier using the Fiery Scan plug-in for Adobe Photoshop.

NOTE: The Windows and Mac OS versions of Fiery Scan are fundamentally the same; differences are noted in this chapter. Where a window or dialog box is illustrated, the Windows version comes first, followed by the Mac OS version.

Scanning from the copier

With the Fiery Scan plug-in for Photoshop, you can scan an image from the copier directly into Photoshop on your computer.

The following requirements and constraints apply:

- Fiery Scan requires a network connection and cannot be used with the parallel port. For information on supported networking protocols, see *Getting Started*.
- The Fiery Scan (TWAIN) plug-in must be installed in the Photoshop Plug-ins folder.
- Photoshop's Monitor Setup must be currently using the Calrgb.ams (Windows) or Calibrated RGB (Mac OS) file. See *Getting Started* for information on loading this file.

Fiery Scan color conversion settings

Fiery Scan offers two color conversion choices for scanned data:

- Calibrated RGB creates an RGB scan optimized for printing using the Rendering Styles (CRDs) of the Fiery ZX, as well as for viewing on the monitor.
- Match Copy creates a CMYK scan that, when printed on the Fiery ZX (with the CMYK Simulation PPD option set to Match Copy), looks like a copy of the original.

Using Fiery Scan

With Fiery Scan, you first create a prescan of the image; then you can select part, or all, of the prescan for final scanning.

TO PRESCAN A DOCUMENT:

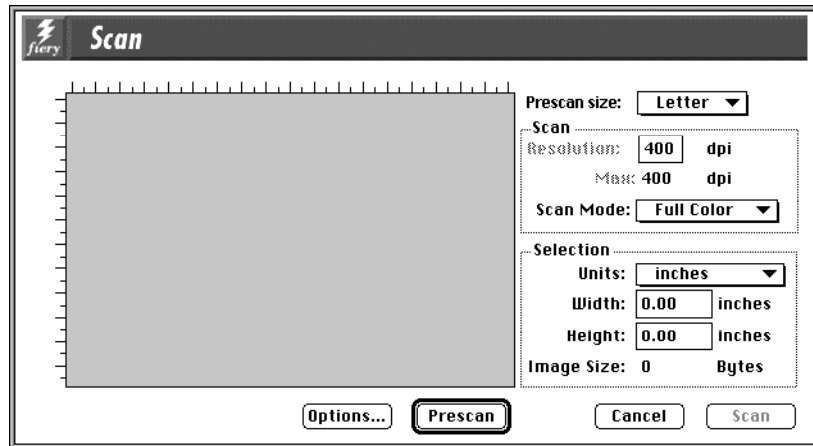
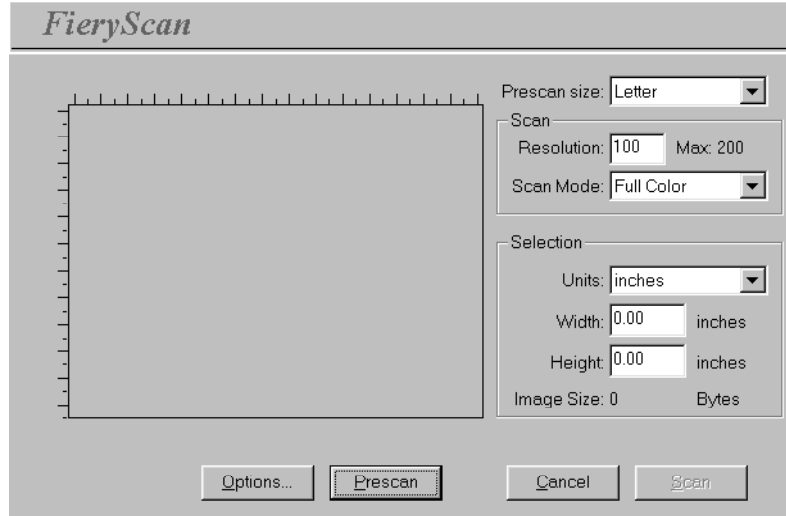
1. Place the original you want to scan on the copier glass.
2. Start the Photoshop application.
3. From the File menu, select either Import or Acquire.
The selection depends on which version of Photoshop you are using.
4. For Windows, select "Select TWAIN_32 Source" from the submenu.
For Mac OS, select "Fiery Twain Select" from the submenu.
5. Select Fiery Scan in the window that appears, and click Select (Windows) or OK (Mac OS).
6. From the File menu, select either Import or Acquire.
The selection depends on which version of Photoshop you are using.
7. For Windows, select "TWAIN_32" from the submenu.
For Mac OS, select "Fiery Twain Acquire" from the submenu.
8. Select the Fiery ZX in the Chooser window and click OK (Windows) or Connect (Mac OS).

If the Fiery ZX does not appear in the Windows Chooser list, you must configure the Chooser list to communicate with the Fiery ZX. For instructions, see *Getting Started*.

4

4-3 Scanning from the copier

9. Select the appropriate settings in the Fiery Scan dialog box.



Prescan size—Choose the paper size of the original from the pop-up menu.

Resolution—Specify a value for the resolution. Changing the resolution also changes the image's file size. The maximum resolution supported by the Fiery ZX appears in the dialog box.

Scan Mode (Full Color, Grayscale, or Black & White)—Specify the type of scan you want.

4

10. Click Prescan.

The prescan image appears on the left side of the dialog box.

TO SELECT OPTIONS AND COMPLETE THE SCAN:

1. Drag the cursor to select the area of the prescan image that you want to acquire, or enter the area to acquire in the Selection area.

In the Selection area, you can specify:

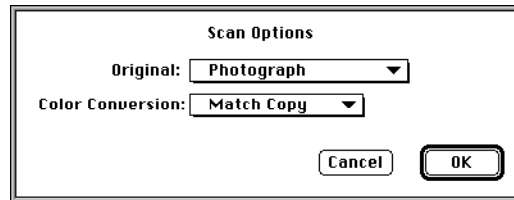
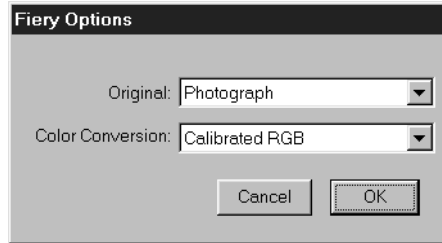
Units (inches, centimeters, picas, points, ciceros, or pixels)—Specify the ruler units that appear around the preview image.

Width and Height—Enter the width and height of the area to scan; or, select an area of the page with the selection marquee. If you use the marquee to select the scan area, the dimensions appear in these text boxes. If you do not specify a scan area, the default is to acquire the entire scan.

To select a portion of the image using the marquee, you can move the selection marquee around by positioning the Hand tool inside the marquee and dragging the marquee to a new location. You can change the size of the frame by clicking and dragging one of the handles on the corners of the selection frame. If you want to deselect the area you have selected, double-click anywhere.

The Fiery ZX scans at a maximum resolution that is dependent on the size of the selected area. When you select an area to be scanned, Fiery Scan displays the maximum resolution possible for that area. You can enter a dpi value which is less than the maximum resolution.

2. Click **Options**, and select the appropriate settings from the **Original** and **Color Conversion** pop-up menus.



Original—Select the resampling interpolation method to use. In general, you should choose **Photograph** if you are scanning a continuous tone photographic image and **Offset Print** or **Copy** if you are scanning a printed document. The **Offset Print** or **Copy** mode takes slightly more time but reduces moiré patterns in scans.

Color Conversion—Select the color conversion to use: **Calibrated RGB** or **Match Copy**. Use **Calibrated RGB** if you will print the image using a **Fiery ZX Rendering Style (CRD)**. Use **Match Copy** to match the colors in a copy made by the copier as closely as possible, assuming that you are going to print the image to the same copier, and you set the **CMYK Simulation PPD** option to **Match Copy**.

3. Select the appropriate settings and click **OK**.
4. Click **Scan** in the main window to acquire the scan.

You can press the **Esc** key (Windows) or **Command-.** keys (Mac OS) to cancel acquiring the scan.

When the scan is acquired, the scanned image is displayed in Photoshop.

Chapter 5: Downloading Files and Fonts

Fiery Downloader allows you to send PostScript files, EPS files, and PDF files directly to the Fiery ZX without using the application they were created in. It also enables you to manage printer fonts on the Fiery ZX.

You can use Fiery Downloader from a remote workstation as well as from the Command WorkStation. Fiery Downloader requires a network connection—you *cannot* use Fiery Downloader with the parallel port. For information on supported networking protocols, see *Getting Started*.

NOTE: The Windows and Mac OS versions of Fiery Downloader are fundamentally the same; differences are noted in this chapter. Where a window or dialog box is illustrated, the Windows version comes first, followed by the Mac OS version.

Fiery Downloader

You can use Fiery Downloader to:

- Print PostScript files, EPS files, and PDF files to the Fiery ZX
- Check the status of the Fiery ZX
- Manage the PostScript printer fonts stored on the Fiery ZX hard disk (this feature requires that Publish Direct Connection is set to Yes in Fiery ZX Printer Setup)

NOTE: Fiery Downloader was designed specifically for the Fiery ZX; you cannot use it with any other printer. You can also use standard LaserWriter downloaders, such as the Adobe Font Downloader, with the Fiery ZX.

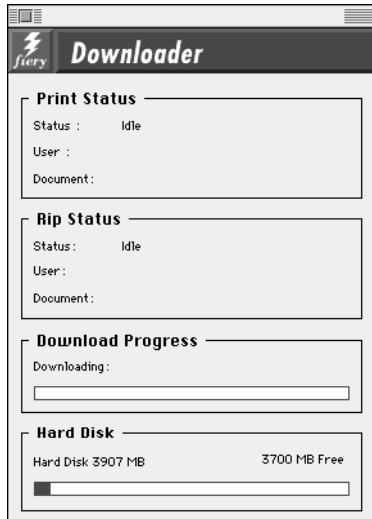
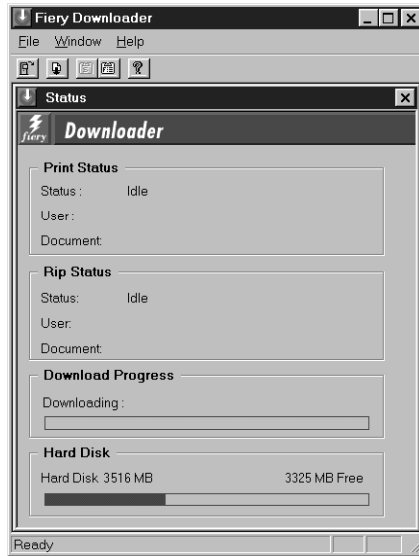
TO VIEW INFORMATION WITH FIERY DOWNLOADER:

1. Double-click the Fiery Downloader icon or choose Fiery Downloader from the Start > Programs menu.
2. Select the Fiery ZX in the Chooser window and click OK (Windows) or Connect (Mac OS).

5

5-2 Downloading Files and Fonts

The Fiery Downloader Status window appears and you see the Fiery Downloader Toolbar, menus, and the status bar at the bottom of the screen.



Buttons for some menu functions appear in the Toolbar at the top of the window. Click the button to perform the function. The buttons are:



Open

Click to connect to a different Fiery ZX.



Download

Click to download a file or font to the Fiery ZX.



Display status
window

Click to display the status window for the current
Fiery ZX.



Display font list

Click to display a list of printer fonts on the
Fiery ZX hard disk.



About the
Downloader
(Windows only)

Click to view version information about Fiery
Downloader.

The Print Status area displays the server status and the user name and document name of the job currently printing.

The RIP Status area displays the server status and the user name and document name of the job currently processing.

The Download Progress bar dynamically displays the progress of the job as it downloads to the Fiery ZX.

The Hard Disk area displays the amount of available disk space on the Fiery ZX.

You can click the Display Font List button or choose Font List from the File menu to view font information in the window.

3. To select a different Fiery ZX, choose Open from the File menu or click the Open button.
4. Select the Fiery ZX in the dialog box that appears, and click OK (Windows) or Connect (Mac OS).
5. To close the window, choose Close from the File menu; to close the application, choose Exit (Windows) or Quit (Mac OS) from the File menu.

Printing with the Fiery Downloader

Printing files with Fiery Downloader is fast—generally faster than printing from within applications. If you regularly print large files, be sure to try printing with Fiery Downloader.

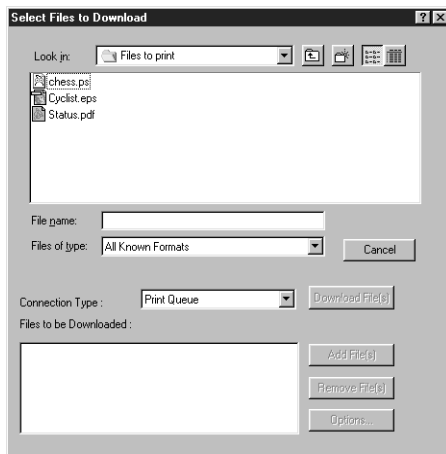
TO DOWNLOAD A FILE OR FONT WITH THE FIERY DOWNLOADER:

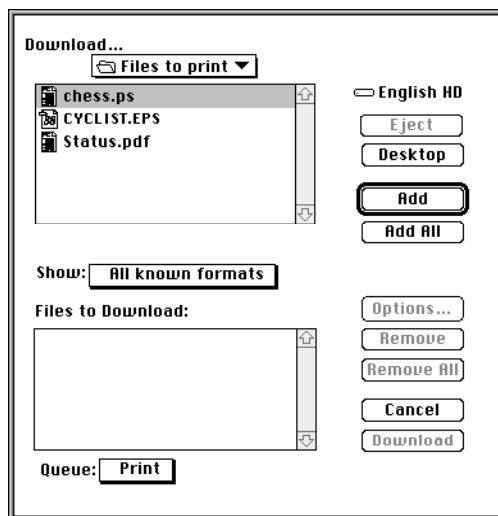
1. Use your application to generate a file.

You can save a PostScript or PDF file by selecting the appropriate option in the application's Print dialog box. With some applications, you can also save EPS files.

If you experience problems printing EPS files with the Fiery Downloader, you can print the file directly from the application in which you created it.

2. Double-click the Fiery Downloader icon or choose Fiery Downloader from the Start > Programs menu.
3. Choose Download from the File menu or click the Download button.





4. Select the file type to display in the Files of type (Windows) or Show (Mac OS) menu. You can leave this as the default, All Known Formats, or select All Files. All Known Formats lists all files in formats supported by Fiery Downloader; All Files lists all files. You can download files and fonts in the same batch. If the fonts are used by files in the same batch, the fonts should be downloaded before the files.
5. Select the Connection Type (Windows) or Queue (Mac OS) to which you will download the files.

The options available to you in this menu depend on the setup at your site. The potential selections are Print Queue (Windows) or Print (Mac OS), Hold Queue (Windows) or Hold (Mac OS), and Direct Connection (Windows) or Direct (Mac OS). If your administrator has not enabled one or more of these connections, you cannot select it.

PDF files cannot be printed with the Direct connection. If you select the Direct connection when downloading a PDF file, the job is spooled to the Print queue and then printed. If the Print queue is not enabled, the job is spooled to the Hold queue and must be released for printing by the operator.

To download fonts, you must use the Direct connection (make sure that Publish Direct Connection is set to Yes in Fiery ZX Printer Setup). If you do not have access to the Direct connection, you must embed any special fonts used by the file in the file when you generate it.

6. Select the filename and click **Add File(s)** (Windows) or **Add** (Mac OS).

The File name field (Windows) displays the name of the selected file before you click **Add**.

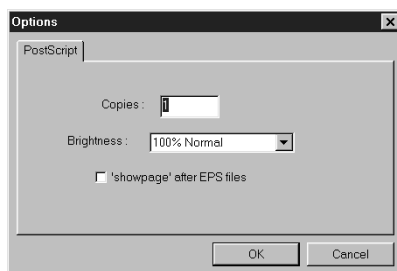
You can navigate to different drives and directories to select files to download. Click **Add All** (Mac OS) to add all files in a folder.

To select multiple sequential files, select the first file and then **Shift-click** the last file. **Control-click** to select multiple non-sequential files.

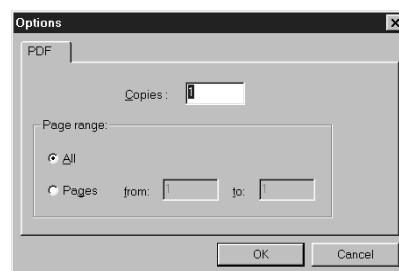
If you change your mind about a file, select the filename in the **Files to Download** list and click **Remove File(s)** (Windows) or **Remove** (Mac OS).

Click **Remove All** (Mac OS) to remove all files from the **Files to Download** list.

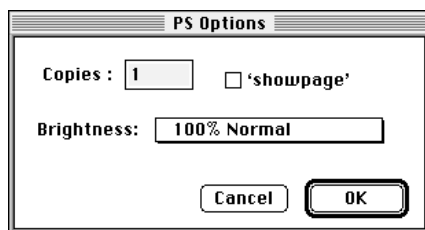
7. To change the attributes of a file to be downloaded, select it and click **Options**.



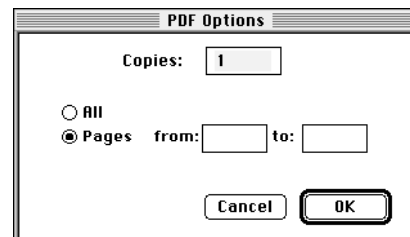
PostScript Options dialog box (Windows)



PDF Options dialog box (Windows)



PostScript Options dialog box (Mac OS)



PDF Options dialog box (Mac OS)

8. Specify the following information in the dialog box and click OK.

The options you set apply only to the selected file. You can set different options, or leave the default settings, for each file.

Copies—Specify the number of copies.

Brightness (PostScript and EPS files only)—Change the Brightness setting if a file appears to be too dark or too light. Select 85% for a substantially lighter image, 115% for a substantially darker image, or one of the options in between.

NOTE: Some applications, including Adobe Photoshop, provide transfer functions that let you specify density settings for an image. If the file you are printing includes transfer functions, the Fiery Downloader Brightness option has no effect. For more information on using transfer functions, see the documentation for your application.

'showpage' after EPS files (Windows) or 'showpage' (Mac OS) (PostScript and EPS files only)—In most cases, you do not need to use this option. Select the 'showpage' option only if an EPS file fails to print without it. This option adds a 'showpage' PostScript language command at the end of the print job. Some applications omit this necessary PostScript language command when they generate EPS files. Select this option when printing EPS files generated by these applications. If you select this option unnecessarily, extra blank pages may print.

If you experience problems printing EPS files with the Fiery Downloader, you can print the file directly from the application in which you created it.

Page range (PDF files only)—Specify the page range you want to print.

9. When you have selected all files and fonts, click **Download File(s) (Windows)** or **Download (Mac OS)**.
10. To cancel downloading, press **Escape (Windows)** or **Command-.** (Mac OS).

Downloading and managing printer fonts

The Fiery ZX includes 136 PostScript fonts; for a complete list, see Appendix B “Font List.” In addition, two Adobe Multiple Master fonts are included and are used for font substitution in PDF files.

NOTE: Publish Direct Connection must be set to Yes in Fiery ZX Printer Setup in order to download and manage fonts, and to view the font list.

Before downloading a file that uses fonts not resident on the Fiery ZX, you must download the fonts. To see what fonts are resident on the Fiery ZX, choose Font List from the File menu or click the Font List button (see page 5-10).

You can download fonts only via the Direct connection. If you do not have access to the Direct connection, you must embed any special fonts used by the file in the file when you generate it.

The screen fonts that correspond to the printer fonts installed on the Fiery ZX are not automatically installed on your Windows system.

NOTE: You cannot use the Fiery Downloader to download TrueType fonts. If you use TrueType fonts in Windows, you can print them by converting them to Adobe Type 1 fonts. To do this with the Adobe PS printer driver, click the Fonts tab and set up the Font Substitution Table as necessary.

Printer fonts and Mac OS screen fonts

Like all PostScript fonts, the fonts included with the Fiery ZX come in two forms: printer fonts and screen fonts. The printer fonts are installed permanently on the Fiery ZX hard disk. The screen fonts, which are included with the Fiery ZX user software, should be installed on your Mac OS computer. If you are using these fonts in documents you print on a LaserWriter, they are probably already installed. If not, you will need to install them yourself. For instructions, see *Getting Started*.

Occasionally, you may want to use Adobe Type 1 (Windows) or PostScript (Mac OS) fonts that are not included with the Fiery ZX. If so, you will need to install both the screen fonts and the printer fonts on your computer. To do this, follow the instructions from the font manufacturer.

Downloading printer fonts to the Fiery ZX

In general, each time you print from within a Mac OS application, the application automatically downloads any fonts used in your document that are not already installed on the Fiery ZX, as long as the printer fonts are installed in your System Folder. These fonts remain in the Fiery ZX only until your document has printed. If you print the same document again, your application must download the fonts again.

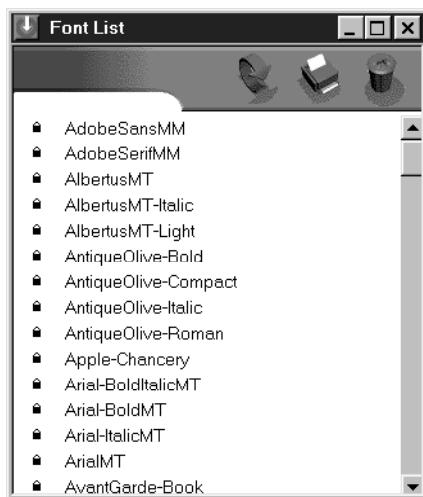
If you regularly use one or more fonts from Windows or Mac OS applications that are not already installed in the Fiery ZX, you can save time by downloading them to the Fiery ZX hard disk with the Fiery Downloader. Fonts you download to the Fiery ZX hard disk remain installed until you remove them using the Fiery Downloader, no matter how many times the Fiery ZX is turned off and on. You'll probably want to download fonts you use on a regular basis to the Fiery ZX hard disk.

Before you download PostScript or EPS files with the Fiery Downloader, make sure that all fonts included in your file are installed on the Fiery ZX or embedded in your file; otherwise the text in these fonts will not print correctly and may not print at all. For PDF files, font substitution occurs automatically for fonts not installed on the Fiery ZX. Two multiple master fonts (a serif font and a sans serif font) stored on the Fiery ZX are used exclusively for substitution with PDF files.

TO VIEW FONT INFORMATION, UPDATE, PRINT, AND DELETE FONTS:

- Choose Font List from the File menu or click the Font List button.

The Font List window appears with Update, Print, and Delete buttons in the title bar.



Update

Click to update the information in the font list window.



Print font list

Click to print the font list to the Print queue.



Delete

Select a font and click to delete it. Shift-click to select multiple fonts.

The 136 printer fonts included with the Fiery ZX (resident fonts) are locked. Locked fonts appear with a lock icon next to the name and cannot be deleted.

Chapter 6: Tracking and Managing Print Jobs

Fiery ZX user software includes a variety of tools that allow you to track and manage print jobs. The particular tools, and the access privileges for them, that are available to you depend on the conditions implemented by your site administrator.

The Command WorkStation, the Fiery WebSpooler, and the Fiery Spooler all provide the capability to view and control the flow of print jobs to the Fiery ZX. If the administrator has set Administrator and Operator passwords in Setup, you need one of these passwords to perform most Command WorkStation, Fiery WebSpooler, and Fiery Spooler functions. For information on these tools and the access privileges needed to use them, see the *Job Management Guide*.

The Status WebTool does not require any special access privileges. If the administrator has enabled Web Services in Setup and has provided you with the IP address of the Fiery ZX, you can use the Status WebTool to monitor the status of print jobs as they are rasterized and printed.

Fiery WebTools

Fiery WebTools reside on the Fiery ZX but can be accessed over the network from a variety of platforms. The Fiery ZX has a home page that lets remote users view server functions and manipulate jobs. For an overview of the Fiery WebTools and information on how to access them, see the *Job Management Guide*. This chapter describes only the Status WebTool and WebLink.

TO ACCESS THE FIERY WEBTOOLS:

1. Start up your Internet browser application.
See *Getting Started* for information about supported platforms and browsers.
2. Enter the IP address or the DNS name of the Fiery ZX.
Check with the operator or administrator for this information.
3. When the Fiery ZX home page appears, click to select one of the Fiery WebTools.
Move the cursor over the buttons to display information about the selections.

Checking Fiery ZX status with the Status WebTool

You can use the Status WebTool to see what jobs are currently processing and printing.

To access the Status WebTool, point your browser to the Fiery ZX home page and click the Status button. The current RIP Status and Printer Status appear in the window.



To open a new browser window for the Status display, click Float. You can then close other browser windows and leave the Status window open to continue checking the status of the Fiery ZX. As long as you keep the Status window open, it is dynamically updated.

To obtain more information about the status of jobs, use the Fiery WebSpooler, the Fiery Spooler, or the Command WorkStation. For information about them, see the *Job Management Guide*.

Accessing information with the WebLink WebTool

The WebLink button on the Fiery ZX home page provides a link to another web page or to multiple web pages, provided you have a valid Internet connection. The administrator at your site can set the WebLink destination. Check your Fiery ZX WebLink for any information available there.

Appendix A: Setting Print Options

Job settings give you access to all the special features of your copier and Fiery ZX. Job settings can be specified in several places—in Fiery ZX Setup, from the printing application, from the Fiery Downloader, from the Command WorkStation, from the Fiery WebSpooler, or from the Fiery Spooler. The table in this appendix briefly describes each print option, gives its default setting, and provides information on any constraints or requirements in effect.

Where to set print options

- Some settings are specified during Setup by the administrator. For information on the current default server settings, check with the administrator or the operator.

- From applications

With the Adobe PostScript printer drivers (included in your user software) and the Windows NT 4.0 printer driver, you can specify and override job settings when you print a job. See Chapter 1, “Printing from Windows Computers” and Chapter 2, “Printing from Mac OS Computers” for information about specifying job settings from applications.

- From the Fiery Downloader

Only a few settings—Page Range (for PDF files only), Copies, and Brightness—can be specified when printing jobs with the Fiery Downloader. To change options in the Fiery Downloader, select a job in the Files to be Downloaded (Windows) or Files to Download (Mac OS) list and click Options. For more information, see Chapter 5, “Downloading Files and Fonts”.

- Overrides from the Command WorkStation, from Fiery WebSpooler, and from the Fiery Spooler

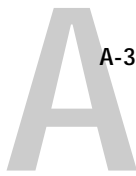
To change job settings from the Command WorkStation, double-click a job to display the Properties dialog box. To change job settings from Fiery WebSpooler and from the Fiery Spooler, double-click a job to display the Override Print Settings dialog box. For more information, see the *Job Management Guide*.

Override hierarchy

In the following table, the default printer driver settings (PPD defaults) are underlined. The override hierarchy is as follows:

- A user's printer driver settings override the Fiere ZX Setup settings.
- Settings made from the Command WorkStation, the Fiere WebSpooler, or the Fiere Spooler override the user's printer driver settings.

| Option and settings: (Printer's default is underlined) | Description: | Requirements, constraints, and information: |
|--|--|---|
| Black Overprint Off/On | Select Off to print black text with knockouts. Select On to overprint black text. | The default setting for printing reflects the Black Overprint setting specified in Fiere ZX Color Setup. The Black Overprint option is supported, provided that the Compression and Pure Black Text/Graphics options are set to On , and the Combine Separations option is set to Off . For more information, see page A-6. |
| Brightness 85% Lightest/90% Lighter/95% Light/ <u>100% Normal</u> /105% Dark/ 110% Darker/115% Darkest | Select 85% for a substantially lighter image, 115% for a substantially darker image, or one of the options in between. | |
| CMYK Simulation SWOP-Coated/DIC/Euroscale/ Custom-1/Custom-2/Custom-3/ Custom-4/Custom-5/ None/Match Copy | Specify the simulation goal to be used for the current print job. | The default setting for printing reflects the CMYK Simulation setting specified in Fiere ZX Color Setup. For more information, see page A-7. |
| CMYK Simulation Method Quick/Full | Select Quick to utilize one-dimensional transfer curves to adjust density output of individual color channels. Select Full to utilize four-dimensional transfer curves, which adjust for hue as well as density of individual color channels. | The default setting for printing reflects the CMYK Simulation setting specified in Fiere ZX Color Setup. |



| Option and settings: (Printer's default is underlined) | Description: | Requirements, constraints, and information: |
|---|---|---|
| Color Mode <u>CMYK/Grayscale</u> | Specify the color mode for the current print job. Select CMYK for a full-color document. Select Grayscale for a grayscale or black and white document. | The default setting for printing reflects the Color Mode setting specified in Fiery ZX PS Setup. |
| Combine Separations <u>On/Off</u> | When printing separations from a desktop publishing application: Select On to combine separations on a single page. Select Off to view separations as four individual black-and-white pages each representing one color plate. | For more information, see page A-8. |
| Compression <u>Off/On</u> | Select Off to disable compression for printing very complex images. Selecting Off requires a significant amount of memory to process and print; however, images print faster with the best possible image quality. Select On to enable compression when printing. Select this setting for multiple-page jobs that do not consist of complex images. | The default setting for printing reflects the Compression setting specified in Fiery ZX PS Setup. |
| Copier Mode <u>Photo/Map</u> | Select Photo if the file is a photograph. Select Map if the file contains detailed drawings and small text, such as might be found on a map. | |
| Copies | Specify the number of copies of the job to print. | |



| Option and settings: (Printer's default is underlined) | Description: | Requirements, constraints, and information: |
|---|--|---|
| Media Type <u>Plain Paper</u> /Thick Paper/ Transparency/Interleaved | Select Plain Paper if you will be printing on standard bond copier paper. Select Thick Paper if you will be printing on heavy paper stock. Select Transparency if you will be printing on a transparency. Select Interleaved if you will be printing multiple transparencies with blank paper separators. | For more information, see page A-8. |
| Notes 1 and Notes 2 | These fields appear in the Printer Job Notes dialog box (Windows) or Job Notes pop-up menu (Mac OS). Use them to enter special information about the job. | The Notes 1 and Notes 2 fields each have a 32-character limit. |
| Page Order <u>Forward</u> /Reverse | Select Forward to print the pages of your job from first to last. Select Reverse to print the pages of your job from last to first. | The default setting for printing reflects the Page Order setting specified in Fiery ZX PS Setup. To enable the Reverse setting, Compression must be set to On. |
| Pure Black Text/Graphics <u>Off</u> /On | Select Off to print black text and graphics as a four color black using C, M, Y, and K toner, and to use normal PostScript rendering. Select On to print black text and graphics as a one color black, using 100% K toner only. | The default setting for printing reflects the Pure Black Text/Graphics setting specified in Fiery ZX Color Setup. |
| Rendering Style <u>Photographic</u> /Presentation/Solid Color | Specify a default color rendering dictionary (CRD) to be used when you print RGB images, objects, and text. | The default setting for printing reflects the Default CRD setting specified in Fiery ZX Color Setup. For more information, see page A-8. |



| Option and settings: (Printer's default is underlined) | Description: | Requirements, constraints, and information: |
|---|---|---|
| RGB Source <u>EFIRGB/sRGB (PC)</u> /Apple Standard/ Other/Off | Specify a source color space definition for printing RGB images, objects, and text. Select <u>EFIRGB</u> , <u>sRGB (PC)</u> , or <u>Apple Standard</u> to set the gamma, white point, and phosphors values at preset levels. Select <u>Other</u> to make custom adjustments to gamma, phosphors, and white point values (see the following three print options). Select <u>Off</u> to disable any RGB source. | The default setting for printing reflects the RGB Source setting specified in Fiery ZX Color Setup. |
| (Other) Gamma 1.0/1.2/1.4/1.6/1.8/2.0/ <u>2.2</u> /2.4/2.6/2.8/3.0 | Specify a source gamma value for printing RGB images, objects, and text. | To enable this option, RGB Source must be set to <u>Other</u> . |
| (Other) White Point <u>5000 K (D50)</u> /5500 K/ 6500 K (D65)/7500 K/9300 K | Specify a source white point value for printing RGB images, objects, and text. | To enable this option, RGB Source must be set to <u>Other</u> . NOTE: This option is most effective with the Rendering Style option set to <u>Solid Color</u> . |
| (Other) Phosphors Hitachi EBU/Hitachi-Ikegami/NTSC/ Radius Pivot/ <u>SMPTE</u> /Trinitron | Specify a source phosphors value for printing RGB images, objects, and text. | To enable this option, RGB Source must be set to <u>Other</u> . |
| Save Fast Reprint <u>Off</u> /On | Specify whether or not to save a job's raster data to disk after printing, so the data will be available later for reprinting (without reRIPping). | |
| Sharpness Softer/ <u>Normal</u> /Sharper | Select <u>Softer</u> to decrease the clarity of the printed image. Select <u>Normal</u> to make no adjustment to the clarity of the printed image. Select <u>Sharper</u> to increase the clarity of the printed image. | |
| Sorter Mode <u>Off</u> /Collate/Sort | Specify how to output multiple-page/multiple-copy jobs. | For more information, see page A-9. |

| Option and settings: (Printer's default is underlined) | Description: | Requirements, constraints, and information: |
|---|---|--|
| <u>Spot Color Matching</u> Off/On | Select <u>Off</u> to print specified Pantone colors in your job using the current CMYK Simulation and CMYK Simulation Method. Select <u>On</u> to activate the Pantone Lookup Table. The Fiery ZX prints specified Pantone colors in your job by matching the correct Pantone color. | The default setting for printing reflects the Spot Color Matching setting specified in Fiery ZX Color Setup. For more information, see the <i>Color Guide</i> . |

More information about print options

The following sections provide additional information about print options. See the table above for information on the settings, requirements, and constraints in effect for these options.

Black Overprint

When printing black text in combination with a color background or graphics, the text can be printed in one of two ways: either as part of the color background, or on top of the color background. Black Overprint allows you to choose a specific way to print the black text for such a job.

Off—Prints the black text with knockouts. The Fiery ZX first prints the color background with the black text areas 'knocked out' (no color is printed in the text areas); the black text is then printed in the knocked out area, filling in the areas not printed in color. The result is a flatter appearance for the black text.

On—Overprint the black text. Used in combination with the Compression and Pure Black Text/Graphics options, the Fiery ZX first prints the full color background, then lays the black text on top of the color background as 100% K toner. The result is a darker and glossier appearance for the black text. Overprinting also minimizes misregistration and 'haloing' problems.

CMYK Simulation

CMYK Simulation allows you to change the simulation goal for the current print job *only*. As the job begins processing, the simulation goal selected in CMYK Simulation is applied before printing.

NOTE: Choosing Printer's default results in the job being printed with the simulation goal currently set on the Fiery ZX.

SWOP-Coated—Uses the United States press standard.

DIC—Uses the Japanese press standard.

Euroscale—Uses the European press standard.

Custom-1—Uses a custom simulation goal. Before selecting this setting, you are required to create a new simulation goal with Fiery Print Calibrator and name the simulation goal *exactly as follows*: Custom-1.

Custom-2—Uses a second custom simulation goal. Before selecting this setting, you are required to create a new simulation goal with Fiery Print Calibrator and name the simulation goal *exactly as follows*: Custom-2.

Custom-3—Uses a third custom simulation goal. Before selecting this setting, you are required to create a new simulation goal with Fiery Print Calibrator and name the simulation goal *exactly as follows*: Custom-3.

Custom-4—Uses a fourth custom simulation goal. Before selecting this setting, you are required to create a new simulation goal with Fiery Print Calibrator and name the simulation goal *exactly as follows*: Custom-4.

Custom-5—Uses a fifth custom simulation goal. Before selecting this setting, you are required to create a new simulation goal with Fiery Print Calibrator and name the simulation goal *exactly as follows*: Custom-5.

None—Uses no simulation goal. Select this setting when the CMYK data for your job has already been separated for your specific printer (for example, when using the Color Management System built into your computer to convert the CMYK data to the printer's color space).

Match Copy—Uses no calibration or simulation goal. Select this setting when printing images imported with Fiery Scan (with the Color Conversion option set to Match Copy), or when you want to bypass Fiery ZX calibration and simulation.

For more information about calibration, see the *Job Management Guide*.

Combine Separations

The Combine Separations option specifies whether to combine color separations (created in desktop publishing applications such as QuarkXPress or Adobe PageMaker) on a single page to simulate printing on a press from film separations. It allows you to proof overprinting, trapping, and other four-color printing effects before having film separations created. It also enables you to combine Desktop Color Separations (DCS) format files to print them at full resolution instead of printing the low-resolution master file. Selecting the appropriate color rendering dictionary (CRD) setting for the type of image you are printing ensures optimum color output on the Fiery ZX.

Your job must have been printed as color separations or DCS format when you printed it from your application. If you did not print the job in this manner, the Combine Separations option has no effect.

Media Type

The Media Type option allows you to select the type of media for loading into the manual feed tray.

Plain Paper—Standard bond paper from 16 lb to 28 lb (60 g/m² to 105 g/m²).

Thick Paper—Paper heavier than 28 lb, up to 90 lb Index (163 g/m²).

Transparency—Transparency sheets.

Interleaved—Multiple transparency sheets inserted with blank, plain paper separators. With Interleaved selected, the transparencies are fed from the bypass tray and the paper separators are fed from the paper tray.

Rendering Style

Use this option to select a default color rendering dictionary (CRD) to be used when you print RGB images, objects, and text.

Photographic—Optimizes the range of colors on the Fiery ZX to produce the best results for photographic or bitmapped images.

Presentation—Optimizes the output of pure, saturated colors such as those used in business presentations.

Solid Color—Most useful for printing spot colors such as those found in company logos or corporate charts and graphs.



Sorter Mode

Off—Disables the sorter.

Collate—Copies of a complete job are collated and output into the top tray.

Sort—Copies of a complete job are sorted and output into one of 20 bins, arranged in page order.

Sorter specifications

The sorter unit has one top output tray and 20 output bins; therefore, the maximum number of copies that can be sorted is 20. Sending 21 or more copies to the sorter results in the excess copies of the job being discarded. In order to print more than 20 copies you can resend the job, 20 copies at a time, from the Print dialog box, from the Command WorkStation, from Fiery WebSpooler, or from Fiery Spooler.

The maximum capacities of the top output tray and output bins are shown in the table below. If a print job exceeds the maximum capacity of a particular tray or bin, the Fiery ZX prints to the maximum capacity and then reports an error message. Once the paper is removed, the job resumes printing.

| Output bin | Paper size | Plain paper | Thick paper |
|------------------------|--------------------------|-------------|-------------|
| Sort (bins 1 to 20) | Letter/A4 LetterR/A4R | 50 | 25 |
| | Legal 11 x 17/A3 | 25 | 15 |

Appendix B: Font List

This appendix lists the built-in printer fonts included with your Fiery ZX.

PostScript printer fonts

Listed below are the 136 built-in PostScript printer fonts on the Fiery ZX. In addition to the fonts listed below, two Adobe Multiple Master fonts are included and are used for font substitution in PDF files.

NOTE: For Mac OS computers, install the corresponding screen fonts from the User Software CD. For instructions, see *Getting Started*.

Adobe Type 1 fonts

The Fiery ZX includes 117 Adobe Type 1 fonts:

- AlbertusMT, AlbertusMT-Italic, AlbertusMT-Light
- AntiqueOlive-Roman, AntiqueOlive-Bold, AntiqueOlive-Compact, AntiqueOlive-Italic
- AvantGarde-Book, AvantGarde-BookOblique, AvantGarde-Demi, AvantGarde-DemiOblique
- Bodoni, Bodoni-Bold, Bodoni-Italic, Bodoni-BoldItalic, Bodoni-Poster, Bodoni-PosterCompressed
- Bookman-Demi, Bookman-DemiItalic, Bookman-Light, Bookman-LightItalic
- Carta
- Clarendon, Clarendon-Bold, Clarendon-Light
- CooperBlack, CooperBlack-Italic
- Copperplate-ThirtyThreeBC, Copperplate-ThirtyTwoBC
- Coronet-Regular
- Courier, Courier-Bold, Courier-Oblique, Courier-BoldOblique
- Eurostile, Eurostile-Bold, Eurostile-ExtendedTwo, Eurostile-BoldExtendedTwo
- GillSans, GillSans-Bold, GillSans-Italic, GillSans-BoldItalic, GillSans-Condensed, GillSans-BoldCondensed, GillSans-Light, GillSans-LightItalic, GillSans-ExtraBold
- Goudy, Goudy-Bold, Goudy-Italic, Goudy-BoldItalic, Goudy-ExtraBold



- Helvetica, Helvetica-Bold, Helvetica-BoldOblique, Helvetica-Condensed, Helvetica-Condensed-Bold, Helvetica-Condensed-BoldObl, Helvetica-Condensed-Oblique, Helvetica-Narrow, Helvetica-Narrow-Bold, Helvetica-Narrow-BoldOblique, Helvetica-Narrow-Oblique, Helvetica-Oblique
- JoannaMT, JoannaMT-Bold, JoannaMT-Italic, JoannaMT-BoldItalic
- LetterGothic, LetterGothic-Bold, LetterGothic-BoldSlanted, LetterGothic-Slanted
- LubalinGraph-Book, LubalinGraph-BookOblique, LubalinGraph-Demi, LubalinGraph-DemiOblique
- Marigold
- MonaLisa-Recut
- NewCenturySchlbk-Roman, NewCenturySchlbk-Bold, NewCenturySchlbk-Italic, NewCenturySchlbk-BoldItalic
- Optima, Optima-Bold, Optima-Italic, Optima-BoldItalic
- Oxford
- Palatino-Roman, Palatino-Bold, Palatino-Italic, Palatino-BoldItalic
- StempelGaramond-Roman, StempelGaramond-Bold, StempelGaramond-Italic, StempelGaramond-BoldItalic
- Symbol
- Tekton
- Times-Roman, Times-Bold, Times-Italic, Times-BoldItalic
- Univers, Univers-Bold, Univers-BoldExt, Univers-BoldExtObl, Univers-BoldOblique, Univers-Condensed, Univers-CondensedBold, Univers-CondensedBoldOblique, Univers-CondensedOblique, Univers-Extended, Univers-ExtendedObl, Univers-Light, Univers-LightOblique, Univers-Oblique
- ZapfChancery-MediumItalic
- ZapfDingbats



TrueType fonts

The Fiery ZX includes 19 TrueType fonts:

- Apple-Chancery
- ArialMT, Arial-BoldMT, Arial-ItalicMT, Arial-BoldItalicMT
- Chicago
- Geneva
- HoeflerText-Regular, HoeflerText-Black, HoeflerText-Italic, HoeflerText-BlackItalic, HoeflerText-Ornaments
- Monaco
- NewYork
- TimesNewRomanPSMT, TimesNewRomanPS-BoldMT, TimesNewRomanPS-ItalicMT, TimesNewRomanPS-BoldItalicMT
- Wingdings-Regular

Appendix C: Troubleshooting

This appendix provides troubleshooting tips.

Maintaining optimal system performance

The Fiery ZX does not require maintenance. Beyond the routine requirements of servicing and maintaining the copier and replenishing consumables there are a few things you can do to improve the overall performance of your system:

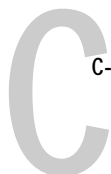
- Reduce unnecessary two-way communication.

If users notice that the server is frequently too busy to receive jobs, it may be because several users are running utilities that are updated often. Large numbers of remote users running the Fiery Downloader or the Fiery WebTools may have a significant effect on Fiery ZX performance.

- Schedule the printing workload by checking job ticket information before printing. Print jobs with the same output and paper specifications together to minimize paper changes. Also, print routine jobs while you prepare to print jobs with special instructions or special media.
- Reduce unnecessary server connections at the Command WorkStation. If you use a second or third Fiery ZX Color Server on an occasional basis, performance will be improved if you log off when you are not using it.
- Avoid printing with the server “Disk full” warning.

If you see this warning, delete jobs from the Queues window that have been held for a long time and are not likely to be needed. Avoid this condition by deleting old jobs on a regular basis. The date associated with a job is the original date it was sent.

Even when the disk is full, 128KB of disk space is reserved for printing a tabloid size job, but printing proceeds only when the oldest printed job is deleted from the Printed queue (Print area).



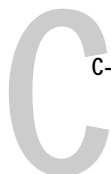
Troubleshooting

In case of problems, and before you call for service, check the guidelines in this section. If you are unable to resolve the problem, make a note of the error condition and contact your authorized service/support center.

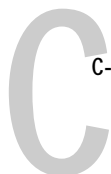
This section provides some troubleshooting guidelines should a problem arise. If you are unable to resolve a problem after referring to this section, contact your site operator or administrator.

General printing problems

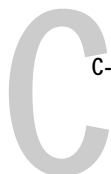
| If this happens: | Try this: |
|---|--|
| You cannot connect to a Fiery ZX. | <ul style="list-style-type: none">• Make sure that the Fiery ZX is not being calibrated. If the Fiery ZX is being calibrated, you can select it in the Chooser, but you cannot connect to it. This insures that only one person is calibrating the server at any time and that print jobs do not use unexpected calibration. |
| You cannot select or view one of the queues. | <ul style="list-style-type: none">• Have your system administrator enable the queue in Setup. |
| You cannot connect to the Fiery ZX from a Windows computer with the Command WorkStation or Fiery utilities. | <ul style="list-style-type: none">• Make sure the connection is configured correctly. For instructions, see <i>Getting Started</i>. |
| Printing seems to take too long. | <ul style="list-style-type: none">• Print to a queue instead of to the Direct connection. When you print to a queue, the job is stored on the Fiery ZX until it can be processed and printed; when you print to the Direct connection, the job cannot be sent to the Fiery ZX until the previous job is finished processing, so you must wait longer to use your computer. |
| Special paper or transparency options are dimmed. | <ul style="list-style-type: none">• Select a Paper Source that supports the media type you are using. for information on requirements and constraints pertaining to special papers and transparencies, see Appendix A, "Setting Print Options." |



| If this happens: | Try this: |
|---|---|
| <p>Fiery ZX doesn't respond to a Print command.</p> | <ul style="list-style-type: none">• Has someone disconnected the copier by selecting Suspend Printing from the Functions menu? If the administrator or operator has selected Suspend Printing on the Fiery ZX Control Panel or Command WorkStation to interrupt printing (so that someone can make a color copy, for example), your print job will not resume until someone selects Resume Printing from the Functions menu on the Control Panel or clicks the function key on the Command WorkStation.• Did you select the Fiery ZX as the current printer? Before printing, you must select the Fiery ZX as the current printer from your Windows computer, Mac OS computer, or UNIX workstation.• Make sure that the copier is switched on. Someone may have turned the copier off, or the Automatic Power-Off or Power Saver mode function may have engaged. Even with the copier off, the Fiery ZX appears in the Chooser as long as the Fiery ZX itself is turned on.• If you are printing over an IPX (Novell) network, verify through the PCONSOLE utility that the job was sent to the Novell queue and that the queue is being used by the Fiery ZX.• Make sure that the job does not contain a PostScript error. Check with the operator, or use the Fiery WebSpooler to check the job's status. In the Fiery WebSpooler, a job containing a PostScript error appears in red. |
| <p>Message requests a paper size that you don't have.</p> | <ul style="list-style-type: none">• Cancel the job and do one of the following: If you are printing a PostScript file, ask the administrator to set the Convert Paper Sizes setting in Printer Setup to convert the job to a paper size you do have. You can do this to convert between US and metric paper sizes. If you are printing a file from an application, change the page size in the Page Setup dialog box. |



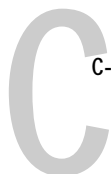
| If this happens: | Try this: |
|--|---|
| <p>Jobs sent to the parallel port do not print.</p> | <ul style="list-style-type: none">• Ask the administrator to increase the parallel “Port Timeout in Seconds” on the Fiery ZX Control Panel.• Ask the administrator to change the Ignore EOF Character setting on the Fiery ZX Control Panel. <p>If you will be printing ASCII format PostScript only, set Ignore EOF Character to No; if you will be printing Binary format PostScript, set it to Yes.</p>• If you print using the DOS copy command, make sure to use the /b option when printing binary files.• Restart your Windows computer, enter BIOS setup, and if you have a BIOS setting for the parallel port, make sure that it is set to Compatible mode and not to Bi-Directional, ECP, EPP, or any other mode.• If you are using Windows 95, open the System Properties control panel, click the Device Manager tab, click Ports, double-click the parallel port you are using, and make sure that the driver selected is the standard Printer Port driver instead of the ECP Port, EPP Port, or any other driver. <p>For information about changing this setting, see <i>Getting Started</i> and your Windows 95 documentation.</p>• If the PostScript Printer Driver that you are using lets you select bi-directional communication, make sure that it is disabled. <p>This is generally set from the Properties dialog box for the printer.</p> |
| <p>You cannot print with QuarkXPress 3.32 using the PSPrinter 8.3.1 driver on a Mac OS computer.</p> | <ul style="list-style-type: none">• Remove the file called Balloon Help from your QuarkXPress application folder and relaunch QuarkXPress. |



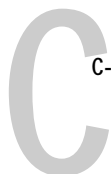
Problems with print quality

For information about printing with specific applications and about optimizing color output, see the *Color Guide*.

| If this happens: | Try this: |
|--|---|
| Print settings for your job output do not match the settings you gave. | <ul style="list-style-type: none">• Make sure that you did not override the setting for the job in another place. For information about options and overrides, see Appendix A, “Setting Print Options.” |
| You get poor printing results. | <ul style="list-style-type: none">• Does your application require one of Fiery ZX’s printer description files? If you’re printing from an application such as Adobe Separator or PageMaker, MacroMedia FreeHand, or QuarkXPress, make sure that the Fiery ZX printer description file is installed correctly. For information about installing these files, see <i>Getting Started</i>.• Make sure the system has been calibrated. For instructions, see the <i>Job Management Guide</i>.• Try printing with Compression set to Off. In general, Compression increases processing speed without affecting print quality, so you should leave it on unless it affects the print quality of specific files. |
| Separations do not combine properly. | <ul style="list-style-type: none">• Make sure that the file was initially created as separations.• If you are printing separations or a DCS format file, set the Combine Separations print option to On. With Combine Separations On, all four colors will be printed on a single page; with Combine Separations Off, four black-and white pages will print to simulate four single-color plates. |
| The registration or colors of an image are not what you expected. | <ul style="list-style-type: none">• Ask the operator to print a test page or make a test copy with the copier. The problem may be with the copier. If your test page or copy show that the copier is working properly, correct the problem within your application software. If the test page or copy are wrong, your copier may need to be calibrated or adjusted in some other way. |



| If this happens: | Try this: |
|--|--|
| Your printed file appears too dark. | <ul style="list-style-type: none">• Adjust the Brightness option. You can use the Brightness option when printing from an application or from the Fiery Downloader to lighten your image whenever you print a PostScript or Encapsulated PostScript (EPS) file. |
| Color output is incorrect. | <ul style="list-style-type: none">• Check with the operator or administrator about the current calibration information. The copier may need to be recalibrated because it has been too long since it was calibrated or because it is using a different target. |
| Color file prints in black and white. | <ul style="list-style-type: none">• In the Color Matching dialog box, make sure that Color/Grayscale or ColorSync Color Matching or PostScript Color Matching is selected (not Black and White).• Make sure that the Color Mode print option is set to CMYK and not Grayscale. |
| Desktop Color Separations (DCS) format images print incorrectly. | <ul style="list-style-type: none">• Make sure that you selected the correct options to send separations in the application's Print dialog box.• Make sure that you have the file for every layer of separation that you are printing.• Set the Combine Separations option to On. This combines the high-resolution files for an image and prints them. With Combine Separations Off, the low-resolution master file will print. |
| QuickDraw fill patterns print as solids. | <ul style="list-style-type: none">• Use the Adobe PostScript Printer driver (or the Apple LaserWriter 8.3 or later printer driver). |



Problems with the Fiery Downloader

| If this happens: | Try this: |
|---|--|
| General problems | <ul style="list-style-type: none">• Make sure that you are using the latest version. If you are updating your Fiery ZX to new system software, delete the previous version of the Fiery Downloader from your Windows or Mac OS computer and install the latest version to insure full compatibility.• Make sure the connection is configured correctly. For instructions, see <i>Getting Started</i>. |
| You can't print an EPS file using the Fiery Downloader. | <ul style="list-style-type: none">• Try printing using the 'showpage' after EPS files (Windows) or 'showpage' (Mac OS) option in the Download PostScript File dialog box. This option adds a showpage PostScript language command at the end of the print job. Certain applications omit this necessary PostScript language command when they generate EPS files. You'll need to select the Append Showpage option when printing EPS files generated by these applications. If you continue having difficulties printing an EPS file with the Fiery Downloader, try printing the file from the application in which it was created.• Make sure that the job does not contain a PostScript error. Check with the operator, or use the Command WorkStation, Fiery WebSpooler, or Fiery Spooler to check the job's status. Jobs with a PostScript error appear with an Error icon. |
| You have problems downloading a font with the Fiery Downloader. | <ul style="list-style-type: none">• Check with the administrator to make sure that the Direct connection is enabled. The Direct connection must be used to download fonts. |
| Extra blank page prints after a Fiery Downloader job. | <ul style="list-style-type: none">• Turn off the 'showpage' after EPS files (Windows) or 'showpage' (Mac OS) option. This option adds a special PostScript command that will cause an extra blank page to print if it is not needed. |

Problems with Fiery Scan

| If this happens: | Try this: |
|---|--|
| Fiery Scan main window does not appear after launching. | <ul style="list-style-type: none">• Check to see if the TWAIN module(s) installed by Adobe Photoshop are located in the correct Plugins subfolder. If not, reinstall Adobe Photoshop software. |

Index

A

Adobe Font Downloader, *see* Font Downloader
Adobe Photoshop, *see* Photoshop
AppleTalk 2-2

B

Black Overprint option A-2, A-6
Brightness option A-1, A-2
BSD 3-2

C

Calibrated RGB file for Mac OS 4-1
Calibrated RGB option 4-1, 4-5
Calrgb.ams file for Windows 4-1
CMYK Simulation Method option A-2
CMYK Simulation option A-2, A-7
color, problems C-6
Color Mode option A-3
Combine Separations option A-3, A-8
Command WorkStation xi
 capability to view and control the flow of
 print jobs 6-1
 overriding Printer Setup settings 1-4,
 1-8, 1-11
 using Fiery Downloader from 5-1
compression C-5
Compression option A-3
Connection Type option 5-5
Control Panel, printer settings
 overridden 1-11
Copier Mode option A-3

D

DCS (Desktop Color Separations) C-6
default setting, *see* printer default setting
DIC simulation goal A-7

Direct connection xii
 not in Chooser, Mac OS 2-2
 required to download fonts 5-8, C-7
Display Font List button 5-3
Downloader, *see* Fiery Downloader
downloaders, LaserWriter 5-1

E

EPS (Encapsulated PostScript) files
 downloading 5-1
 downloading from Mac OS 2-5
 downloading from Windows 1-12
 problems downloading C-7
EPS files
 downloading 1-1
Euroscale simulation goal A-7

F

Fiery Downloader
 Brightness option 5-7
 choosing a printer 5-3
 Command WorkStation 5-1
 downloading file or font 5-4 to 5-7
 Download Progress bar 5-3
 Hard Disk region 5-3
 installing printer fonts 5-9
 job overrides A-1
 Mac OS 2-5
 PDF files
 printing from 5-4
 Print Status area 5-3
 problems with C-7
 restriction with parallel port 1-11
 RIP Status area 5-3
 Toolbar 5-3
 using 5-1
 Windows 1-12

Fiery Scan plug-in for Photoshop
 color conversion options 4-1
 Original option 4-5
 prescanning 4-3
 problems with C-7
 restraints and constraints 4-1
 Fiery Spooler, overriding Printer Setup 1-4,
 1-8, 1-11
 Fiery WebTools
 accessing xiii, 6-1, 6-2
 home page 6-1
 overview 6-2
 Status 6-1, 6-2
 WebLink 6-2
 WebSpooler 1-4, 1-8, 1-11, 6-1
 File name entry field 5-6
 File port, saving files to 1-12
 Files of type menu (Windows) 5-5
 Font Downloader 5-1
 font list
 displaying 5-3, 5-10
 PostScript B-1 to B-3
 printing 5-3, 5-10
 Font List button 5-3
 fonts
 Adobe Type 1 5-8, B-1, B-2
 downloading and managing 5-1, 5-6,
 5-8
 installing 5-9
 PostScript 5-8
 printer fonts 5-8
 printer fonts on server 5-10
 screen fonts 5-8
 substitution with PDF files 5-9
 TrueType 5-8
 Font Substitution Table 5-8

G
 Gamma option A-5

H
 Hand tool 4-4
 Hold queue xii, 2-2

I
 installing printer fonts 5-9
 Interleaved option A-8

J
 job overrides
 (Other) Gamma option A-5
 (Other) Phosphors option A-5
 (Other) White Point option A-5
 Black Overprint option A-2, A-6
 Brightness option A-2
 CMYK Simulation Method option A-2
 CMYK Simulation option A-2, A-7
 Color Mode option A-3
 Combine Separations option A-3, A-8
 Compression option A-3
 Copier Mode option A-3
 Media Type option A-8
 Page Order option A-4
 print settings A-1
 Pure Black Text/Graphics option A-4
 Rendering Style option A-4, A-8
 RGB Source option A-5
 Save Fast Reprint option A-5
 Sharpness option A-5
 Sorter Mode option A-5, A-9
 Spot Color Matching option A-6

L
 LaserWriter printer, fonts installed on 5-8
 lp command 3-2
 lpq command 3-1, 3-2, 3-3
 lpr command 3-1
 lprm command 3-1, 3-3
 lpstat command 3-2

M

Mac OS
 Paper Source menu 2-3
 PostScript printer setup 2-2
 printer default settings 2-4
 Printer Specific Options menu 2-3
 printing 2-1 to 2-5
 screen fonts 5-8
 tray selection 2-3
 marquee 4-4
 Match Copy option 4-1, 4-5
 Match Copy simulation goal A-7
 Media Type option A-4, A-8

N

None simulation goal A-7
 Notes fields
 Mac OS 2-3
 Windows 3.1x 1-9
 Windows 95 1-5

O

(Other) Gamma option A-5
 (Other) Phosphors option A-5
 (Other) White Point option A-5
 overrides, of job settings A-1

P

Page Order option A-4
 Page Range option A-1
 paper, sizes supported xiv
 Paper Source menu
 Mac OS 2-3
 Windows 3.1x 1-7
 Windows 95 1-3
 Windows NT 4.0 1-10
 parallel port
 printing with 1-11
 problems C-4

PDF files

downloading 5-1
 downloading from Mac OS 2-5
 downloading from Windows 1-12
 font substitution 5-9
 performance, optimizing C-1
 Phosphors option A-5
 Photographic rendering style option A-8
 Photoshop, transfer functions 5-7
 Plain Paper option A-8
 Portable Document Format, *see* PDF files
 PostScript
 downloading files 5-1
 downloading files from Mac OS 2-5
 downloading files from Windows 1-12
 font list B-1 to B-3
 PostScript printer description files, *see* PPDs
 PostScript printer drivers
 Mac OS 2-1
 Windows 3.1x 1-6
 Windows 95 1-1
 PostScript printer setup
 Mac OS 2-2
 PPD (PostScript Printer Description) xi, xii
 options A-1
 PPDs 1-1, 1-6, 2-1
 prescan 4-2
 Prescan option 4-4
 Prescan Size option 4-3
 Presentation rendering style option A-8
 Print command (Windows) 1-1
 printer default settings A-1
 Mac OS 2-4
 specified by administrator in Setup xii
 Windows 95 1-4
 printer setup
 settings 1-11
 with Adobe PostScript Printer Driver for
 Windows 95 1-2 to 1-5
 with Microsoft PostScript Printer Driver
 for Windows NT 4.0 1-9

- Printer Specific Options menu 2-3
 - printing
 - font list 5-3
 - from Fiery Downloader 5-4
 - from Mac OS applications 2-1 to 2-5
 - list of fonts 5-10
 - on the network xii
 - to local port 1-12
 - troubleshooting C-2 to C-4
 - Windows 3.1x 1-6
 - Windows 95 1-1
 - Windows NT 4.0 1-9
 - with parallel port 1-11
 - print options
 - settings 1-5
 - specific to color server 1-4, 1-8, 1-11
 - Windows 3.1x 1-6 to 1-9
 - Windows 95 1-2 to 1-5
 - print quality
 - problems with C-5
 - Print queue xii
 - not in Chooser, Mac OS 2-2
 - Pure Black Text/Graphics option A-4
- Q**
- Queue option 5-5
 - queues, access to xii
- R**
- remote users xiii
 - Rendering Style option A-4, A-8
 - Resolution option 4-3
 - resolutions supported xiv
 - RGB Source option A-5
 - RIPping xi
- S**
- Save Fast Reprint option A-5
 - Scan Mode 4-3
 - scanning
 - from the copier 4-1
 - specifying height of area to be scanned 4-4
 - specifying units of scan area 4-4
 - specifying width of scan area 4-4
 - see also* Fiery Scan plug-in for Photoshop
 - Selection area 4-4
 - Sharpness option A-5
 - Show menu (Mac OS) 5-5
 - showpage after EPS files option 5-7
 - Solid Color rendering style option A-8
 - sorter capacity A-9
 - Sorter Mode option A-5, A-9
 - Spooler, *see* Fiery Spooler
 - Spot Color Matching option A-6
 - Status WebTool, *see* Fiery WebTools
 - SunOS v4.1.x 3-2
 - Sun Solaris v2.x 3-2
 - SWOP-Coated simulation A-7
- T**
- TCP/IP printing 3-1
 - Thick Paper option A-8
 - Transparency option A-8
 - tray selection
 - Mac OS 2-3
 - Windows 3.1x 1-7
 - Windows 95 1-3
 - Windows NT 4.0 1-10
 - troubleshooting C-2
 - general printing problems C-2 to C-4
 - TWAIN, *see* Fiery Scan plug-in for Photoshop
- U**
- UNIX
- BSD (Berkeley Software Distribution)
 - variant of 3-3
 - displaying jobs in queue with 3-2
 - printing with 3-1
 - removing jobs from queue with 3-3
 - System V 3-2

W

WebLink, *see* Fiery WebTools

WebSpooler, *see* Fiery WebTools

WebTools, *see* Fiery WebTools

White Point option A-5

Windows 3.1x

 Paper Source menu 1-7

 PostScript printer driver 1-6

 printing with 1-6

 print options 1-6 to 1-9

 tray selection 1-7

Windows 95

 Notes fields 1-5

 Paper Source menu 1-3

 PostScript printer driver 1-1

 printer default settings 1-4

 printing with 1-1

 tray selection 1-3

Windows NT 4.0

 Paper Source menu 1-10

 printing with 1-9

 tray selection 1-10

