



Fiery® EXP8000 Color Server

SERVER & CONTROLLER SOLUTIONS



Configuration and Setup

© 2005 Electronics for Imaging, Inc. The information in this publication is covered under *Legal Notices* for this product.

45049601
13 July 2005

CONTENTS

INTRODUCTION	7
Terminology and conventions	7
About this document	8
CONNECTING TO THE NETWORK	9
Fiery EXP8000 on the network	9
Stages of installation on the network	10
Summary of Fiery EXP8000 network installation	11
Network server setup requirements	12
Windows networks	12
NetWare networks	13
AppleTalk networks	13
UNIX networks	14
PREPARING FOR FIERY EXP8000 SETUP	15
Levels of access and control	15
Fiery EXP8000 print connections	15
Passwords	16
WebTools	17
Control level examples	18
E-mail viruses and E-mail printing	18
IP address filtering and port filtering	19
Secure Printing	19
Group Printing (Member Printing)	19

Connecting network cable to the Fiery EXP8000	20
Back view of the Fiery EXP8000	20
Ethernet connection	20
About Setup	21
Setup from a network computer	21
SETTING UP THE FIERY EXP8000 FROM A NETWORK COMPUTER	22
Accessing Setup	22
Local Setup from the Fiery EXP8000	22
Remote Setup	23
General/Server options	25
Network Setup	27
Adapters/Ports	27
Protocols	28
Security	29
Services	30
Printer Setup options	40
Printer connections	40
Job Batching Delay	40
VDP Search Path	40
PS Setup and Color Setup options	40
Exiting Setup	40
SETUP OPTION REFERENCE	41
PS/Color Setup options	41
CONFIGURING WEBTOOLS	45
Configuring the Fiery EXP8000 and clients for WebTools	45

ADMINISTERING THE FIERY EXP8000	46
Administrator functions	46
Setting passwords	47
Passwords from a network computer	48
Changing the Windows XP system password	48
Updating system software	49
Clearing the Fiery EXP8000	51
Saving and restoring Fiery EXP8000 configuration	52
Managing e-mail address books	53
FTP Printing	56
Setting up printing groups	56
Printing the Configuration page	57
Maintaining optimal Fiery EXP8000 performance	58
Shutting down, rebooting, and restarting the Fiery EXP8000	59
Shutting down the Fiery EXP8000	59
Rebooting or restarting the Fiery EXP8000	60
Burning a CD-RW	61
TROUBLESHOOTING	62
Troubleshooting the Fiery EXP8000	62
Safe Print	62
Runtime error messages	62
Cannot connect to Fiery EXP8000 with Fiery EXP8000 utilities	63
Cannot connect to the Fiery EXP8000 with Command WorkStation	64
INDEX	65

INTRODUCTION





This document describes how to set up network servers and user computers to use the Fiery EXP8000 Color Server so that users can print to it as a high-performance networked printer. For general information about using the digital press, your computer, your software, or your network, see the documentation that accompanies those products.



Setting up the network environment correctly requires the presence and active cooperation of the network administrator. Detailed instructions for configuring networks is beyond the scope of this document. For information, see the documentation that accompanies your network system.

Terminology and conventions

This document uses the following terminology and conventions.

Term or convention	Refers to
Aero	Fiery EXP8000 (in illustrations and examples)
Digital press	DocuColor 8000/7000 digital press
Fiery EXP8000	Fiery EXP8000 Color Server
Mac OS	Apple Mac OS X
Titles in <i>italics</i>	Other documents in this set
Windows	Microsoft Windows 2000, Windows XP, Windows Server 2003
	Topics for which additional information is available by starting Help in the software
	Tips and information
	Important information
	Important information about issues that can result in physical harm to you or others

About this document

This document covers the following topics:

- Network connectors on the Fiery EXP8000
- Information specific to the Fiery EXP8000 about setting up network servers

NOTE: For information about network servers, see the documentation that accompanies your network system.

- System security through access levels and passwords
- Setup of the Fiery EXP8000 with Configure or Command WorkStation, Windows Edition
- Setup of the Fiery EXP8000 to allow users to use WebTools
- Administration of the Fiery EXP8000
- Troubleshooting

Administrator functions described in other documentation are summarized on [page 46](#).

CONNECTING TO THE NETWORK

This chapter summarizes the stages in setting up the Fiery EXP8000.

Fiery EXP8000 on the network

When the Fiery EXP8000 is connected to a network, it behaves as a networked PostScript printer. The Fiery EXP8000 supports the following network protocols (rules that enable computers on a network to communicate with each other):

- AppleTalk
- TCP/IP, which also includes the BOOTP, DHCP, FTP, HTTP, IMAP, LPD, POP3, Port 9100, SMTP, and SNMP protocols
- IPX/SPX (Novell)

These protocols can run concurrently on the same cable. Computers that use other protocols can print through a server that uses one of the supported protocols mentioned. The Fiery EXP8000 is auto-sensing, and handles all connections simultaneously.

Stages of installation on the network

Installation can be performed by a network or printing administrator. The stages of a successful installation are:

1 Configuring the network environment

Configure network servers to provide users with access to the Fiery EXP8000 as a networked printer. For information about configuring network servers in Windows and UNIX network environments as they relate specifically to the Fiery EXP8000, see [page 12](#). For information about using your network, see the documentation that accompanies your network system.

2 Physically connecting the Fiery EXP8000 to a functioning network

Prepare a network node for the Fiery EXP8000. Obtain cable and attach the cable to the network connector of the Fiery EXP8000. For details, see [page 20](#).

3 Setting up the Fiery EXP8000

Configure the Fiery EXP8000 for your printing and network environment (see [Setting Up the Fiery EXP8000 from a Network Computer](#)).

4 Preparing user computers for printing

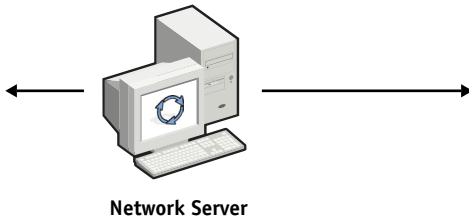
Install the files needed for printing, install user software, and connect the user computers to the network. The software installation is described in [Printing from Windows](#) and [Printing from Mac OS](#).

5 Administering the Fiery EXP8000

Monitor and maintain system performance and troubleshoot problems that may arise (see [Administering the Fiery EXP8000](#)).

Summary of Fiery EXP8000 network installation

Network server configuration



Configure network servers to specify Fiery EXP8000 print queues and Fiery EXP8000 users.

Connection



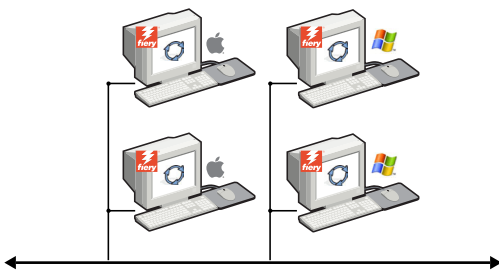
Prepare a network node. Connect the Fiery EXP8000 to the network. If you use the Fiery Advanced Controller Interface (FACI), connect it to the network.

Fiery EXP8000 Setup



Use the Configure WebTool or Command WorkStation, Windows Edition to configure the Fiery EXP8000.

Client computer setup



At each computer from which users print:

- Install the appropriate printer files and connect to one or more print connections.
- Install utilities and an Internet browser on computers where users will use them.
- Verify the Fiery EXP8000 in the list of printers and run a test print.

Fiery EXP8000 available on the network

Network server setup requirements

This section provides basic information about configuring the Fiery EXP8000 and using it on the network. It does not explain network functions for printing in general. Only information specific to the Fiery EXP8000 is presented. Setting up the network environment correctly requires the presence and active cooperation of the network administrator. Detailed instructions for configuring networks is beyond the scope of this manual. For information, see the documentation that accompanies your network system.

Configure the network and servers, and ensure that there is a live network connection *before* you configure Fiery EXP8000 network settings in Setup. This allows the Fiery EXP8000 to query the network for zones, servers, and server-based queues.

Whenever you change the configuration of the Fiery EXP8000, digital press, or network at your site, alter the settings to correspond to the changed environment. Changing network or port settings may require that you make changes to other Setup options, as well.

Windows networks

- **The Fiery EXP8000 requires a valid IP address, subnet mask, and gateway address.**

Enter these addresses manually or use DHCP or BOOTP protocols to assign them dynamically. Make sure the Fiery EXP8000 name and address are listed in a domain name server (DNS) or hosts name database used by your system.

If more than one Fiery EXP8000 print connection is published (for example, if both the Print queue and the Hold queue are published), consider creating a printer for each print connection, so that users can print to each connection directly.

- **Configure the Fiery EXP8000 with the correct Windows domain name.**

This is especially important for Windows printing, also known as SMB printing.

To use Microsoft Active Directory, you must assign the Fiery EXP8000 to a domain. If you assign the Fiery EXP8000 to a workgroup, you cannot use Active Directory.

NetWare networks

- **You must have administrator privileges on the network to create new NDS or bindery objects.**

For more information, see the documentation that accompanies your network server.

- **You can configure a single directory tree and up to eight bindery servers simultaneously.**
- **The Fiery EXP8000 looks for print jobs on one NetWare print server per bindery server.**

NetWare servers support the creation of print queues, which are storage areas for print jobs. When a client on a remote computer decides to print, the job is directed to a Print queue on the NetWare file server and spooled to the NetWare server disk, freeing up the client workstation.

Append one of the following suffixes that corresponds to the Fiery EXP8000 print connection to the end of the NetWare queue names as follows:

_print
_hold
_direct

NOTE: These suffix names must be in English and in all lowercase letters.

You do not need to perform Setup when you add or remove a NetWare queue. However, always restart the Fiery EXP8000 after you create or remove a queue that will be connected to the print server used by the Fiery EXP8000.

When the Fiery EXP8000 is configured to connect to a NetWare server, it polls the NetWare server for jobs in each of its queues. If jobs are found, they are automatically transferred over the network to the matching connection on the Fiery EXP8000. For example, jobs from the NetWare queue with the _print suffix are sent to the Fiery EXP8000 Print queue.

- **You can connect up to eight bindery servers to the Fiery EXP8000.**

NOTE: The NetWare bindery server you select must not be in the same tree as the one you selected in NDS Setup, if both NDS and bindery are used by the Fiery EXP8000.

AppleTalk networks

AppleShare servers require no special configuration.

UNIX networks

- When you configure a UNIX workstation with the lpr protocol and connect to the Fiery EXP8000 over a TCP/IP network, you can print directly to the Fiery EXP8000.
- Setting up UNIX workstations requires an administrator with root privileges. After the initial configuration, UNIX users submit print jobs to a named printer.
- The Fiery EXP8000 is a printer controller that understands lpr protocols.
- The Fiery EXP8000 has a remote printer name you must use in order to communicate with it successfully.

Regardless of the UNIX system you use, the name you use for the remote printer (or rp in the /etc/printcap file) in configuring the network for the Fiery EXP8000 must be one of the following:

print
hold
direct

Workstations on a TCP/IP network can print directly to the Fiery EXP8000 as a remote printer, or can print to a Windows 2000/Server 2003 server or UNIX workstation acting as a print server.

PREPARING FOR FIERY EXP8000 SETUP

To prepare for printing at your site, you must do some initial Fiery EXP8000 configuration (or “Setup”) to specify the network environment and the types of printing you do. Before you perform Setup, you must decide the levels of access to implement, such as passwords and other security features that the Fiery EXP8000 offers. Because many of these security features are interconnected, review the information in this chapter to plan for an effective security system, and then perform Setup accordingly.

Levels of access and control

When you configure the Fiery EXP8000 during Setup, you (as system administrator) implement a particular level of control by enabling these elements:

- Print connections
- Passwords
- Access to WebTools

Fiery EXP8000 print connections

The Fiery EXP8000 supports three print connections: Print queue, Hold queue, and Direct connection. You enable or “publish,” these print connections to users on the network when you configure Printer Setup. All published connections are constantly checked for the presence of jobs. The Print queue and Direct connection give remote users more direct access to the Fiery EXP8000 than the Hold queue. Therefore, do not publish the Print queue and the Direct connection in environments where maximum control is required.

In addition, you can enable the Printed queue, which is a storage area for the most recent jobs from the Print queue. The Printed queue allows you to reprint those jobs. In Setup, enable the Printed queue and specify the maximum number of jobs to retain in the queue (see [page 25](#)). To reprint jobs in the Printed queue, use the job management tools (Command WorkStation).

NOTE: To use the Fiery utilities and WebTools, you must enable at least one print connection.

Hold queue

Jobs sent to the Hold queue are spooled to the Fiery EXP8000 hard disk for printing at a later time or for reprinting. Because the Hold queue is a storage area, jobs sent to it cannot proceed through the printing process until the operator intervenes using the job management tools.

Print queue

The Print queue is the standard Fiery EXP8000 queue. Jobs sent to the Print queue are processed and printed in the order in which they are received. Jobs prioritized by an operator with the job management tools and jobs sent via the Direct connection take priority over jobs sent to the Print queue.

Direct connection

The Direct connection transmits jobs directly to the Fiery EXP8000, but only when the Fiery EXP8000 is Idle. If the Fiery EXP8000 is busy, the job remains at the user workstation until the Fiery EXP8000 is ready. The job is then processed as soon as the previous job is finished and before the next queued job is processed.

Jobs sent to the Direct connection are not stored on the Fiery EXP8000 hard disk, and cannot be selected for reprinting, moving, or deletion. Therefore, the Direct connection provides a measure of security for sensitive files. Jobs sent to the Direct connection *do* appear in the Job Log, for accounting purposes.

NOTE: To download fonts to the Fiery EXP8000, you must publish the Direct connection.

Passwords

Implement passwords as a means of controlling access to Fiery EXP8000 functions. The Fiery EXP8000 allows you to set the following passwords:

- Administrator
- Operator
- Windows system password

NOTE: The Administrator and Operator passwords are separate from the Windows system password.



By default, the Administrator password is set on the Fiery EXP8000, but the Operator password is not. We strongly recommend that you change the Administrator password to protect the Fiery EXP8000 from random or accidental changes to Setup. For more information, see [“Setting passwords”](#) on page 47.

Administrator privileges

Administrator control, which confers control of Setup, is the highest level of control because the person who has access to Setup can control the printing and job management environment. Administrator privileges include:

- Publishing print connections
- Setting passwords
- Deleting fonts
- Controlling print jobs from the job management tools
- Overriding job settings
- Clearing the Fiery EXP8000 of all job data
- Defining default color profiles
- Setting default settings for print options

Operator privileges

Operator control includes control of print jobs from the job management tools, including the ability to override job settings.

Guest privileges (no password)

A user does not need a password to log in as a Guest from the job management tools. A Guest can view the status of active jobs but cannot make changes to jobs or to the Fiery EXP8000 state.

WebTools

The Fiery EXP8000 supports Internet or intranet access with WebTools from Windows and Mac OS computers. To enable use of WebTools, see [“Configuring WebTools”](#) on page 45.

Home

Home provides you with current information about the jobs processing and printing on the Fiery EXP8000. To use this WebTool, you do not need a password. For more information, see [Utilities](#).

Print

Print allows you to print PostScript, EPS, PDF, and TIFF files directly to the Fiery EXP8000 without opening the file in an application. To use this WebTool, you do not need a password.

Configure


Configure allows you to view and modify Fiery EXP8000 options from a network computer. This function requires an Administrator password. For more information, see [Setting Up the Fiery EXP8000 from a Network Computer](#).

Downloads

Downloads allows users to download installers for printer drivers and other software directly from the Fiery EXP8000. To use this WebTool, you do not need a password. For more information, see [Printing from Windows](#), [Printing from Mac OS](#), and [Utilities](#).

Control level examples

The following table shows how print connections, passwords, and WebTool access are used together to create varying levels of security. The columns between Minimum Security and Maximum Security represent increasing levels of security.

Settings used in Configure	Minimum Security				Maximum Security
Enable Direct connection	✓	✓	✓		
Enable Print queue	✓	✓	✓	✓	
Enable Web Services	✓	✓	✓		
Set an Administrator Password (strongly recommended)		✓	✓	✓	✓
Set an Operator password			✓	✓	✓

E-mail viruses and E-mail printing

Because you can allow users to print file attachments in e-mail messages sent to the Fiery EXP8000, the Fiery EXP8000 accepts only valid attachments (for example, PostScript or PDF files). Typically, viruses transmitted via e-mail require execution by the receiver. Attachments that are not valid files are discarded by the Fiery EXP8000. Because file types such as .BAT, .VBS, and .EXE could launch harmful virus activity, the Fiery EXP8000 does not process these file types. The Fiery EXP8000 also ignores e-mails in RTF (Rich Text Format) or HTML (Hypertext Markup Language) format, and any included JavaScript code.

You can define a list of authorized e-mail addresses on the Fiery EXP8000. Any e-mail that the Fiery EXP8000 receives from an e-mail address not in the authorized list is deleted. For more information, see [page 53](#).

IP address filtering and port filtering

To restrict unauthorized connections to the Fiery EXP8000, you can permit only users whose IP addresses are within a defined range. Commands or jobs sent from unauthorized IP addresses are ignored by the Fiery EXP8000.

Secure Printing

This option allows the printing of highly sensitive or confidential files. A user printing a file with the printer driver assigns a password to the job. The user must then enter the password at the Fiery EXP8000 to print the job. For more information, see [Print Options](#).

Group Printing (Member Printing)

This feature allows you to define group names and passwords that users must enter in order to print a job. The user enters the group name and password from the printer driver, or from an override in Command WorkStation. The group name is included in the Job Log when the job is printed.

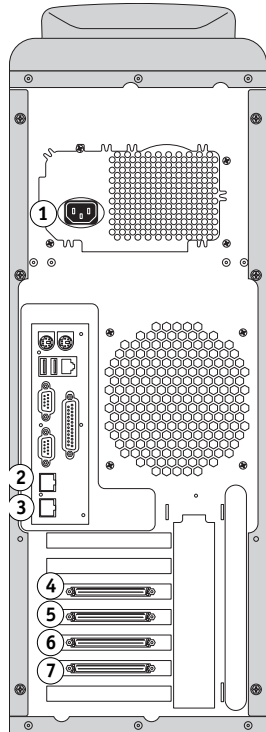
You can use this feature for accounting purposes and for limiting printing to users who have a valid group name and password. For more information, see [Print Options](#).

Connecting network cable to the Fiery EXP8000

This section includes an illustration of the Fiery EXP8000 back panel, and provides information about connecting the Fiery EXP8000 to the network.

Back view of the Fiery EXP8000

- 1 Power connector
- 2 Network connector (10/100/1000BaseT)
- 3 Not used
- 4 Printer interface (C)
- 5 Printer interface (M)
- 6 Printer interface (Y)
- 7 Printer interface (K)



Ethernet connection

For Ethernet connections, the Fiery EXP8000 supports Unshielded Twisted Pair UTP (Unshielded Twisted Pair) cabling for these network speeds:

- **10BaseT:** Category 3 or higher
- **100BaseT:** Category 5 or higher (4-pair/8-wire, short-length)
- **1000BaseT:** Category 5e or higher (4-pair/8-wire, short-length)

The cable uses an RJ-45 connector that plugs into the RJ-45 socket on the back of the Fiery EXP8000.

TO CONNECT TO THE ETHERNET BOARD

- Connect the network cable to the RJ-45 connector on the back of the Fiery EXP8000.

About Setup

Setup configures the Fiery EXP8000 to communicate with other devices and to manage print jobs. Perform Setup the first time you turn on the Fiery EXP8000 after new system software is loaded, or any time Server software is reinstalled. An initial Setup using default settings is adequate to allow users to print to the Fiery EXP8000 and use the WebTools. When your network or user printing environment changes, change the options accordingly.

NOTE: You cannot access Setup functions from Command WorkStation, Macintosh Edition.

Setup from a network computer

Local Setup

Local Setup refers to setting up the Fiery EXP8000 from the Fiery Advanced Controller Interface using Command WorkStation, Windows Edition.

Remote Setup

Remote Setup is the Setup method from a computer on the network using either the Configure WebTool or Command WorkStation, Windows Edition.

SETTING UP THE FIERY EXP8000 FROM A NETWORK COMPUTER

To specify network settings and print option default settings, you must perform Setup. To use any of the Setup applications, you must enter the Fiery EXP8000 Administrator password. When you finish making changes, see “[Exiting Setup](#)” on page 40.

Accessing Setup

You can set up the Fiery EXP8000 in these ways:

Local Setup: For systems with the FACL. Local Setup uses a Windows XP Embedded control panel, Fiery Server Setup.

Remote Setup: Performed from a network computer using the Configure WebTool or Command WorkStation, Windows Edition.



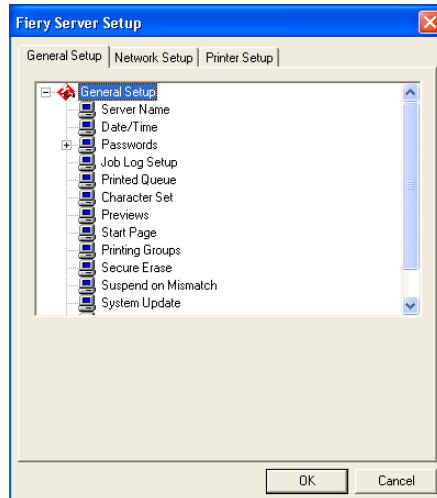
Both methods of Setup are similar. This chapter discusses primarily Local Setup. For information about Remote Setup options, see the online Help provided with the Configure WebTool.

Local Setup from the Fiery EXP8000

Access local Fiery EXP8000 Setup in any of the following ways:

- Right-click FieryBar on the Windows XP Embedded desktop and choose Set Up Fiery.
- Right-click the Fiery icon in the Windows XP Embedded taskbar and choose Set Up Fiery.
- Start Command WorkStation and choose Setup from the Server menu.

The Setup window appears.



You see the available settings only when you select the particular option. For example, to view or change the setting for the Character Set option, click Character Set. The available settings appear at the bottom of the window.

After making your selections in the window, click Apply, if it is present. When you finish, click OK to close the entire Setup window.



Remote Setup

Remote Setup is performed from a computer using the Configure WebTool or Command WorkStation, Windows Edition. Remote Setup is not supported for Command WorkStation, Macintosh Edition.

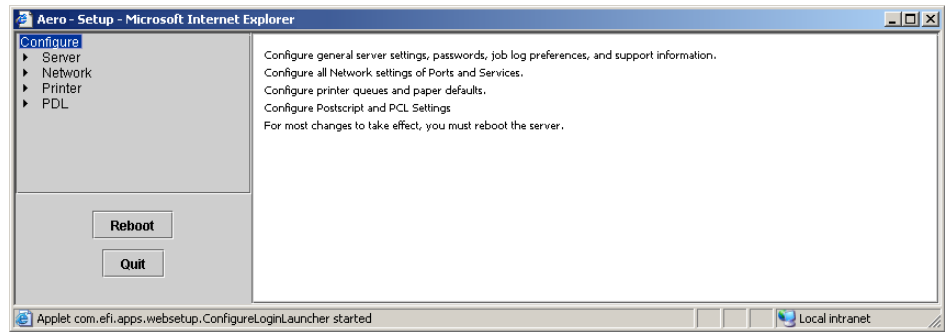
TO ACCESS CONFIGURE

- 1 Start your Internet browser and enter the IP address of the Fiery EXP8000.
- 2 Click the Configure tab on the Fiery EXP8000 home page.
- 3 Click Launch Configure.
- 4 Log on as Administrator with the appropriate password.

TO ACCESS SETUP FROM COMMAND WORKSTATION, WINDOWS EDITION

- 1 **Start Command WorkStation.**
- 2 **Log on as Administrator with the appropriate password.**
- 3 **Choose Setup from the Server menu.**

Regardless of the remote Setup method you use, the following dialog box appears.



The remote Setup interface for Command WorkStation and Configure is identical. For information about most remote Setup options, see the Online Help in Configure. Those not described in the Help are in this manual.

General/Server options

You can specify Fiery EXP8000 system settings that affect all users, such as the name of the Fiery EXP8000, system date and time, passwords, and Job Log printing.

General Setup | Network Setup | Printer Setup |

Server Name allows you to assign a name for the Fiery EXP8000. This name appears in the Chooser on an AppleTalk network.

NOTE: Do not use the device name (DC8000-DC7000) as the server name. If you have more than one Fiery EXP8000, do not assign them the same name.

Date and Time sets the system date and time of the Fiery EXP8000. Press Set and enter the correct date and time. You can also set the date and time automatically by specifying an Internet time server.

Passwords see [page 47](#).

Auto Print Job Log Every 55 Jobs specifies whether the Fiery EXP8000 prints the Job Log after every 55 jobs. The Job Log lists the last 55 jobs processed on the Fiery EXP8000, with accounting information about each one, including user name, document name, time and date printed, number of pages, and other job information.

Auto Clear Job Log Every 55 Jobs specifies whether the Fiery EXP8000 clears the Job Log after every 55 jobs. If you do not select this option, the Fiery EXP8000 saves a file containing a record of all jobs ever printed. Since this file takes up space on the Fiery EXP8000 hard disk, clearing the Job Log frees up additional disk space.

Password Protect Job Log requires users to enter the Administrator password before printing or deleting the Job Log.

Job Log Page Size selects a paper size for the printed Job Log.

Enable Printed Queue enables the Printed queue, a storage location on the Fiery EXP8000 hard disk for recently printed jobs. You can reprint jobs from the Printed queue without resending them to the Fiery EXP8000. If the Printed queue is not enabled, jobs are deleted from the Fiery EXP8000 hard disk immediately after they are printed.

Jobs Saved in Printed Queue specifies the number of jobs stored in the Printed queue. Jobs in the Printed queue take up space on the Fiery EXP8000 hard disk.

Use Character Set specifies whether the job management tools use the Macintosh, DOS, or Windows character set for displaying file names. This is important if a file name includes accented or composite characters (such as é or æ). For mixed-platform networks, select the setting that gives the best overall representation of the special characters you use.

Enable Previews While Processing specifies whether a preview thumbnail is displayed in Command WorkStation when a job is being processed. If you select Yes, the preview thumbnail is displayed in the Processing area of the Activity Monitor.

Start Page specifies whether the Fiery EXP8000 prints a start page when it is turned on or restarted. The Start Page displays information about the Fiery EXP8000, including server name, current date and time, amount of memory installed, network protocols enabled, and print connections published.

Printing Groups specifies whether to enable printer groups for Member Printing. If you enable this option, you must also define user groups and passwords in Command WorkStation. Users must then enter their group name in the Group Name option and their password in the Group Password option to print.

Secure Erase specifies whether the Fiery EXP8000 deletes files permanently, so that they cannot be recovered.

Suspend on Mismatch specifies whether the Fiery EXP8000 holds a job if the job cannot print because of missing resources or a color profile mismatch. While the job is suspended, other jobs continue to process and print.

System Update see [page 49](#).

Save/Restore Configuration see [page 52](#).

Support allows you to type names, phone numbers, and e-mail addresses of contact people at your organization who provide support for the Fiery EXP8000 and the digital press. In remote Setup, use the Support tab.

Network Setup

Network Setup configures the Fiery EXP8000 to receive print jobs over the networks used at your site. If the Fiery EXP8000 is configured to enable more than one protocol, it automatically switches to the correct protocol when it receives a print job. When two network ports are enabled, print jobs can be received over all ports at the same time.

You can view and configure the following network settings in Network Setup:

Ports allows you to view currently configured network port settings.

Protocols allows you to configure protocols, including AppleTalk, IPX/SPX, and TCP/IP.

Print Services allows you to configure services, including LPD printing (TCP/IP), NetWare printing (PServer), Windows print sharing (SMB), HTTP support (WWW), Internet Printing Protocol (IPP) printing, Port 9100 printing, E-mail Service, and FTP Service.

Adapters/Ports

In local Setup only, the installed network boards are displayed. You cannot change this information. From remote Setup, you can enable Ethernet. These options are described in the following section.



Ethernet (Port Setup)

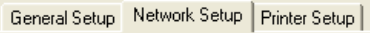
Enable Ethernet allows you to connect the Fiery EXP8000 to an Ethernet network.

Transmission Speed allows you to specify the speed of the network to which the Fiery EXP8000 is attached. Choose Auto Detect if your network environment is mixed.

When you select Auto Detect, make sure that the auto-negotiation settings for speed and duplex are configured for the network port to which the Fiery EXP8000 is connected. Similarly, when you select a different setting such as 100 Mbps Full-Duplex, make sure the same settings are configured for the network port.

NOTE: The 1 Gbps (gigabit per second) setting is full-duplex.

Protocols



You can change AppleTalk, IPX/SPX, and TCP/IP protocol settings for the Fiery EXP8000. When you click the Modify or Advanced button next to the setting, the system Windows XP control panel (Local Area Connection Properties) opens, where you complete the settings.

By default, the AppleTalk, IPX/SPX, and TCP/IP protocols are installed and enabled.

TO CHANGE PROTOCOL SETTINGS FROM LOCAL SETUP

- 1 Click Modify or Advanced next to the setting.**

The Local Area Connection Properties control panel opens.

- 2 Click the General tab.**

- 3 Select the protocol that you want to modify.**

Unless you have installed additional protocols, the choices are Efi Appletalk driver (for AppleTalk), NWLink IPX/SPX/NetBIOS Compatible Transport Protocol (for IPX/SPX), and Internet Protocol (for TCP/IP).

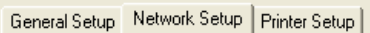
- 4 Click Properties and make your selections.**

NOTE: For more information, see the documentation that accompanies Microsoft Windows.

- 5 Click OK to close the Properties dialog box.**

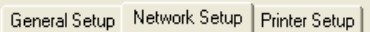
- 6 Click OK to close the Local Area Connection Properties control panel.**

AppleTalk



The current AppleTalk zone is displayed.

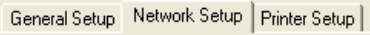
IPX/SPX



Use this option to specify IPX/SPX frame types.

The Fiery EXP8000 supports the following Ethernet frame types for IPX/SPX: Ethernet 802.2, Ethernet 802.3, Ethernet II, and Ethernet SNAP. You can also configure the Fiery EXP8000 to select the frame type automatically.

TCP/IP



Specify TCP/IP settings. The current settings for IP address, subnet mask, and default gateway address are displayed. For information about setting up printing with TCP/IP, see [“Network server setup requirements”](#) on page 12.

The Fiery EXP8000 requires a unique, valid IP address. You can set a static address or specify that the Fiery EXP8000 obtains the IP addresses automatically.

NOTE: If you specify the DHCP or BOOTP protocol, the Fiery EXP8000 restarts when you save your changes and exit Setup. Before printing a Configuration page or proceeding with any other operations, allow the Fiery EXP8000 to restart and return to Idle.

NOTE: Confirm the subnet mask setting with your network administrator before proceeding. In some cases, the required setting may be different from those listed.

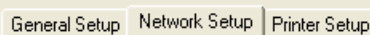
If your TCP/IP network has a gateway and users outside the gateway plan to print to the Fiery EXP8000 using TCP/IP, enter the gateway address.

NOTE: The Fiery EXP8000 stores assigned IP addresses, even if you later disable TCP/IP. If you must assign the Fiery EXP8000 IP address to another device, first set the Fiery EXP8000 address to a null address.

DNS

You can enable DNS Setup to allow the Fiery EXP8000 to resolve a name to an IP address.

Security



IP Filtering allows you to restrict unauthorized connections to the Fiery EXP8000. You can permit access to only users whose IP addresses are within a defined range of IP addresses. Commands or jobs sent from unauthorized IP addresses are ignored by the Fiery EXP8000.

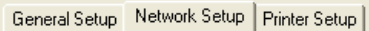
Port Blocking allows you to restrict unauthorized connections to the Fiery EXP8000 by authorizing network activity only to certain ports. Commands or jobs sent from unauthorized ports are ignored by the Fiery EXP8000.

Services

You can configure the following network services:

- NetWare Printing (PServer), including NDS and Bindery services
- LPD Printing (TCP/IP)
- Windows Print Sharing (SMB)
- SNMP Setup
- Web Services Support (support for WebTools)
- IPP Printing
- Port 9100
- E-mail Service
- FTP Service

NetWare Printing options

A screenshot showing three tabs in a light beige bar: 'General Setup', 'Network Setup', and 'Printer Setup'. The 'Printer Setup' tab is currently selected and highlighted with a darker beige background.

General Setup | Network Setup | Printer Setup |

The following procedures for setting up NetWare printing cover these topics:

- NDS Setup
- Bindery Setup
- Poll Interval

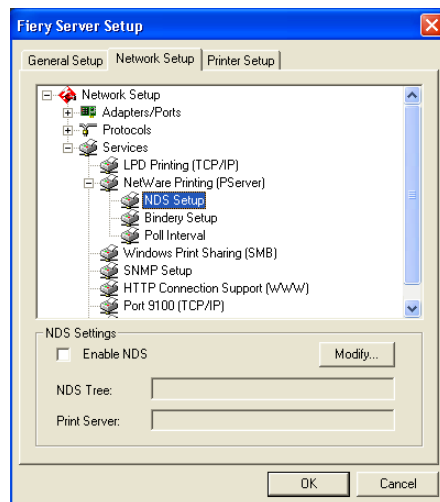
Setting up the Fiery EXP8000 for NDS printing

Only one NDS tree can be connected. To specify or change the NDS Tree, click Modify and specify settings in the NDS Print Server dialog box, as follows.

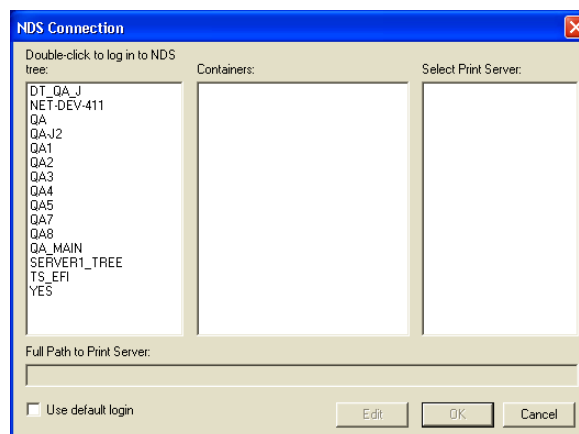
The currently selected NDS Tree and Print Server are displayed.

TO SPECIFY THE NDS TREE SETTING FROM LOCAL SETUP

1 Select Enable NDS and click Modify.

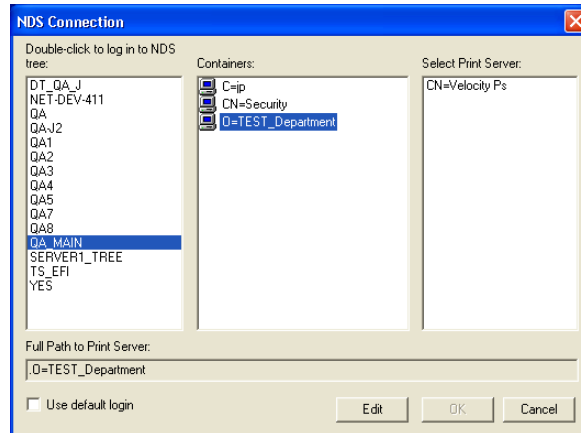


2 In the NDS Connection dialog box, double-click an NDS tree in the list on the left.

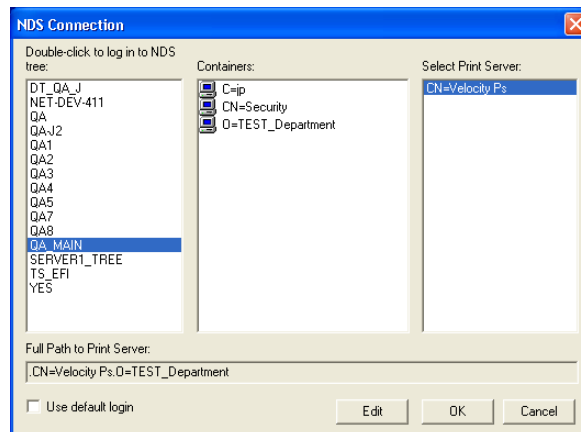


3 Navigate to the NDS container and click OK.

If necessary, enter the password.

4 Select a container from the Containers list.**5 Double-click a print server from the Select Print Server list.**

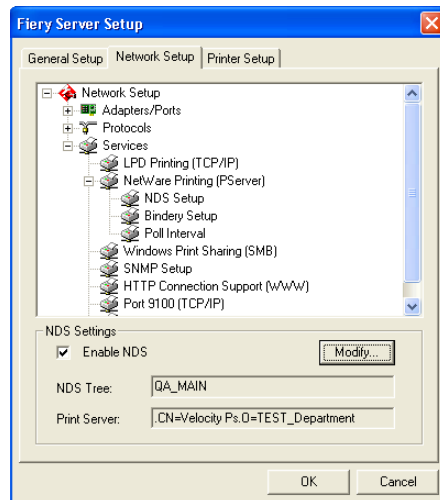
The full path to the print server appears.



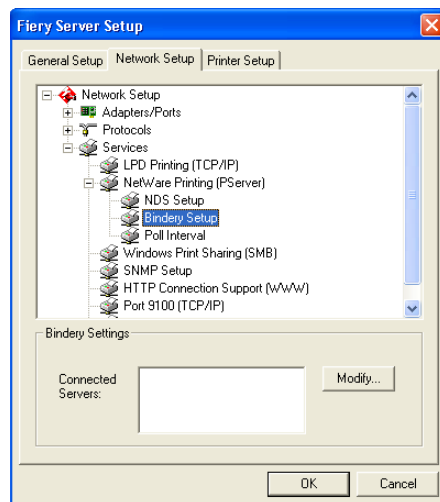
Another way to change the path is to click Edit and type the path to the print server.

6 Click OK.

The Server Setup dialog box appears, displaying the path to the selected print server on the Network Setup tab.

**Bindery Setup**

From the Network Setup tab in local Setup, specify Bindery services. The currently connected servers are displayed. A maximum of eight bindery servers can be connected.



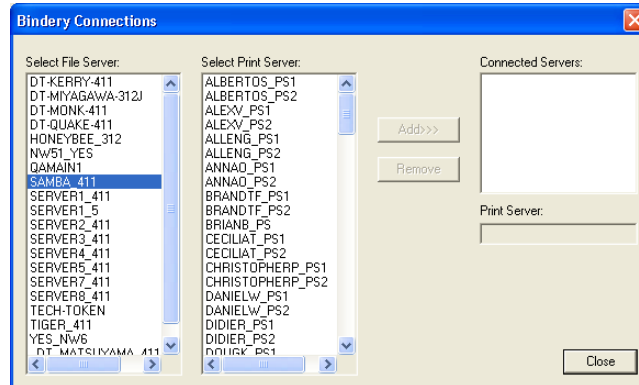
To add, remove, or change bindery connections, click Modify and specify settings in the Bindery Connections dialog box, as described in the following procedures.

TO ADD BINDERY CONNECTIONS FROM LOCAL SETUP

- 1 Click **Modify** in the Bindery Setup dialog box.

The Bindery Connections dialog box appears.

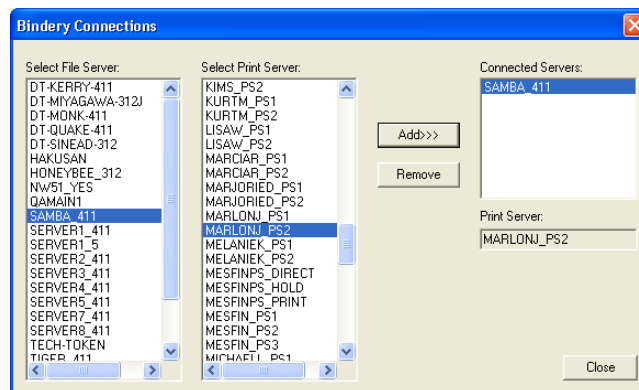
- 2 Select a file server from the **Select File Server** list.



If the File Server User Name and Password dialog box appears, type the appropriate user name and password to log on to the selected file server.

- 3 Select a print server from the **Select Print Server** list, and click **Add**.

The name of the newly added server appears in the **Connected Servers** list.



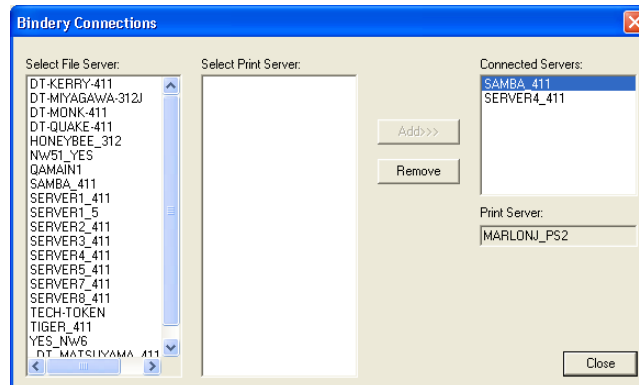
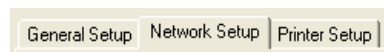
To add another server, repeat the preceding steps. You can connect a maximum of eight servers.

- 4 When you finish adding servers, click **Close**.

When you return to the Network Setup tab, the connected servers appear in the Bindery Settings area.

TO REMOVE BINDERY CONNECTIONS FROM LOCAL SETUP**1 Click Modify in the Bindery Setup dialog box.**

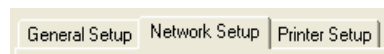
The Bindery Connections dialog box appears.

**2 Select a server from the Connected Server list and click Remove.****3 Click Close.****PServer Poll Interval**

Specify the polling interval (in seconds) for NetWare printing.

LPD Printing

Enable LPD Printing Service enables or disables LPD printing services.

Windows print sharing with Server Message Block (SMB)

Enable Windows Printing Service enables SMB (Server Message Block), the file and printer sharing protocol built into Windows. Enabling SMB lists the Fiery EXP8000 on the network so that Windows clients can print to a particular print connection (Print, Hold, or Direct) on the Fiery EXP8000 without any other networking software. For information about setting up a Windows computer for Windows printing, see [Printing from Windows](#).

NOTE: Windows (SMB) printing runs over TCP/IP, so you must configure TCP/IP on the Fiery EXP8000 and any computers that use Windows printing.

Server Name allows you to assign the server name that will appear on the network. You can use the same name as the server name assigned to the Fiery EXP8000 (see [page 25](#)), or choose another name.

Comment allows you to type information about the printer. These comments are listed in the Properties of the Fiery EXP8000 in Network Neighborhood.

Domain or Workgroup allows you to assign the workgroup or domain where the Fiery EXP8000 should appear.

Auto IP specifies whether to allow the Fiery to obtain the IP address automatically for the WINS Name Server if you have already enabled IP Auto in Protocol Setup, and selected either DHCP or BOOTP as the protocol for obtaining an IP address. If you do not select this option, use the following two options to specify whether to use a WINS Name Server and its IP address.

Use WINS Server specifies whether to use a WINS name server. Broadcasts from SMB devices cannot be routed beyond their original network segment without a WINS name server. Setting up the WINS name server is outside the scope of this manual. To find out if a name server is available, contact your network administrator.

IP Address allows you to assign the IP address of the WINS name server.

NOTE: After setting up the WINS name server settings, turn off and on the digital press for the settings to take effect. Make sure the status message on Command WorkStation reads Idle when you turn off and on the digital press.

SNMP Setup

General Setup | Network Setup | Printer Setup |

Enable SNMP to allow remote access to the Configure WebTool and other Fiery EXP8000 features.

TO CONFIGURE SNMP SETTINGS

- 1 To restore the Fiery EXP8000 to its original SNMP settings, click **Restore SNMP Configuration**.
- 2 Select **Enable SNMP**.
- 3 Select a **Security Level**:
 - **Minimum** corresponds to functionality in SNMP version 1
 - **Medium** offers more security for SNMP version 3
 - **Maximum** most secure setting for SNMP version 3
- 4 Specify the names for **Read Community** and **Write Community**.
- 5 To specify a user name that does not require authentication or encryption with the SNMP server, type the name in the **Unsecure User Name** field.
- 6 To specify a user name that requires authentication or encryption with the SNMP server, type the name in the **Secure User Name** field, and specify the following information:
 - **User Authentication Type** MD5 or SHA
 - **User Authentication Password** the password for reading MIB values based on the secure user name.
 - **User Privacy Type** type of encryption: DES or None
 - **User Privacy Password**

Web Services and IPP Printing

General Setup | Network Setup | Printer Setup |

Enable Web Services allows you to select whether to make the WebTools available to users (see [page 45](#)). TCP/IP must already be enabled on the Fiery EXP8000 and on users' computers. Each user must have a Java-enabled Web browser and a valid IP address. For information about supported browsers and workstation requirements, see [Welcome](#).

Enable IPP (Internet Printing Protocol) allows you to enable printing with the IPP. You must enable Web Services. For information about setting up users' computers to use IPP printing, see [Printing from Windows](#).

Port 9100 printing

General Setup | Network Setup | Printer Setup |

Enable Port 9100 enables applications to open a TCP/IP socket to the Fiery EXP8000 at Port 9100 to download a print job.

Port 9100 Queue allows you to attach Port 9100 to any of the published Fiery EXP8000 print connections.

FTP Services

General Setup | Network Setup | Printer Setup |

The FTP proxy that the Fiery EXP8000 supports uses the connection type “target_username@target_system_name / target_username@target_ip_address”. Other connection types may not work properly. For details, consult your network administrator.

Enable FTP Printing allows users to send jobs to an FTP server where other users can retrieve them.

Require Password for Printing requires a valid user name and password to print a document. The user name and password must be authorized in the Member Printing list in Command WorkStation.

Timeout (sec) allows you to specify the timeout.

Default FTP Queue specifies the print connection on the Fiery EXP8000 to which FTP jobs are sent. In addition to the standard print connections print and hold, published virtual printers are also listed.

E-mail/Internet Fax Service Setup

General Setup | Network Setup | Printer Setup |

Enable E-mail Services enables e-mail services (required for all e-mail/Internet Fax client services).

Enable Print via E-mail allows print jobs sent via e-mail/Internet Fax to be accepted. If this option is cleared, print jobs sent via e-mail/Internet Fax are ignored.

Incoming Mail Server allows you to assign the IP address or server name that communicates the appropriate mail server and contact information to the Fiery EXP8000.

Server Type specifies the e-mail protocol used to communicate with the incoming mail server.

Outgoing Mail Server allows you to assign the IP address or server name that communicates the appropriate mail server and contact information to the Fiery EXP8000.

NOTE: You must define both an Incoming and Outgoing mail server. If an Outgoing mail server is not defined, the E-mail Service assumes that the incoming and outgoing server names are the same.

Print via E-mail Destination specifies the print connection on the Fiery EXP8000 to which e-mail jobs are sent.

Connection Timeout (seconds) allows you to specify the maximum amount of time to elapse before the Fiery EXP8000 stops attempting to connect to the mail server.

Polling Interval (seconds) allows you to specify how often the Fiery EXP8000 checks the mail server for relevant e-mail.

Account Name allows you to type the mailbox name specified on the mail server. This name tells the client mail service which account contains e-mail messages for the Fiery EXP8000.

This is the internal name your network recognizes, which is not necessarily the same as User Name.

NOTE: The account name typed in this field must first be specified on the mail server by the administrator.

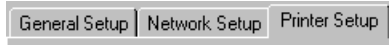
Fiery E-mail Address allows you to specify the name of the e-mail account. For example, pat@test.com.

Password allows you to assign a password for accessing the mailbox account on the mail server.

Administrator E-mail Address allows you to type the user name specified in Fiery EXP8000 Setup.

The administrator authorizes a unique e-mail address to remotely administer e-mail services. If an error occurs while you are sending a job to e-mail, E-mail Service sends an error message to the Administrator E-mail Address specified. The administrator can authorize additional administrator e-mail addresses from this e-mail address.

Printer Setup options



Printer Setup allows you to publish print connections and set other features of the Fiery EXP8000 related to default print settings.

Printer connections

Specify whether to publish the Print queue, Hold queue, or Direct connection.

Job Batching Delay

Use this option to specify the amount of time (in seconds) the server waits before batching jobs. This option is not available from remote Setup.

VDP Search Path

Use this option to specify the search path for objects used by variable data printing. You can set a global path for common objects, PPML (Personalized Print Markup Language), and VPS (Variable Print Specification).

PS Setup and Color Setup options

For information about these Setup options, see [“PS/Color Setup options”](#) on page 41.

Exiting Setup

When you finish specifying Setup options, click OK and close the Setup dialog box. You are notified that the Fiery EXP8000 must be restarted for the new settings to take effect. You can restart now or later. If Command WorkStation is running, the connection to the Fiery EXP8000 is broken and you must log on again when the Fiery EXP8000 restarts.

SETUP OPTION REFERENCE

This chapter describes the default settings that you can set for options in PS (PostScript) Setup and Color Setup. Depending on the Setup application that you use, not all options are available. For more information about these options, see *Print Options*.

PS/Color Setup options

To determine the current Setup defaults, print the Configuration page from Command WorkStation.

Option	Settings (default is underlined)	Description
Allow Courier Substitution	<u>Yes</u> , No	Specify whether to substitute Courier for fonts that are unavailable when you download files to the Fiery EXP8000, or when you print a document for which you do not have the corresponding printer font. If this option is set to No, jobs with fonts that are unavailable on the Fiery EXP8000 hard disk generate a PostScript error and do not print. This setting does not apply to PDF files; font substitution occurs automatically in PDF files.
Black Overprint	Off, Text, <u>Text & Graphics</u>	With this option set to Text or Text & Graphics, the final text or text/graphic portions of the page are overprinted, or combined with the underlying colors. The quality of the output is improved since it will not show artifacts near the edges of the text or text/graphics. With this option set to Off, the border of the text or text/graphics is on an edge that has cyan and magenta toners on one side (outside the text) and black toner on the other side (inside the text).
Black Text/Graphics	<u>Pure Black On</u> , Pure Black Off, Normal	This option optimizes black text and line art. The option also minimizes toner use for documents consisting of both color and black-only pages. With the setting Pure Black On, black text and line art are printed with black toner only. With the option Off, black text and line art are printed using all four colors of toner. For more information, see <i>Color Printing</i> .
Brightness	85% - 115%	Select the brightness of output.
CMYK Simulation Method	Quick, Full (Source GCR), <u>Full (Output GCR)</u>	Quick simulation assumes that the digital press toners match the printer's inks, and all changes affect only one color (C, M, Y, or K) at a time. Full (Source GCR) simulation allows for more flexibility in matching toner to ink and all changes interact to maintain a better color balance. Full (Output GCR) offers accurate proofing by providing a colorimetric conversion of all four plates. In this simulation method, the black (K) plate is mixed into the CMY plates, then re-separated based on the Output profile.

Option	Settings (default is underlined)	Description
CMYK Simulation Profile	SWOP-Coated (EFI), DIC (EFI), JMPA ver.2 (EFI), Japan Color 2001 type 1 (EFI), ISO Coated, ISO Uncoated, Toyo-Coated, Euroscale (EFI), Enterprise CMYK by Splash, Simulation-1 through Simulation-10, ColorWise Off, None (default is SWOP-Coated (EFI) in North America, Euroscale (EFI) elsewhere)	CMYK simulation allows color correction to simulate printed output on a commercial press, so that the Fiery EXP8000 output can be used for proofing. The SWOP-Coated standard is used in the United States, DIC in Japan, and Euroscale in Europe. Custom simulations are user defined and named. The simulations provided with the Fiery EXP8000 have the designation “EFI” after their names. If users create and load custom simulations on the Fiery EXP8000 with ColorWise Pro Tools, these also appear in the list of simulations. A custom simulation can be selected as the default simulation. For more information about custom simulations, see Color Printing .
Collation	<u>Collated</u> , Uncollated	Specify how to output multiple-page or multiple-copy jobs.
Convert Paper Sizes	<u>No</u> , Letter/Tabloid->A4/A3, A4/A3->Letter/Tabloid	Converts paper sizes in documents automatically to the default paper sizes specified. For example, if you select Letter/Tabloid->A4/A3, a letter size document is automatically printed on A4 paper.
Default Paper Sizes	US, Metric (default is US in the United States, Metric elsewhere)	Prints on US paper sizes (for example, Letter, Legal, 11x17), or Metric paper sizes (for example, A4 or A3) by default. When no page size is defined within a PostScript file, jobs are printed on Letter paper if you selected US; or A4 paper if you selected Metric.
DFA Finishing	<u>None</u> , Function 1, Function 2, Both	Specify functional modes of the DFA device.
DFA Profile	<u>None</u> , Profile 1-5	Specify a profile to control DFA device behavior.
Digital Press Mode	<u>200 Dot Rotated</u> , 200 Line Rotated, 150 Dot Rotated, 300 Dot Rotated, 600 Dot 90 deg Fixed, Stochastic, Auto	Specify the screen to use for your print job.
Duplex	<u>Off</u> , Head to Head, Head to Toe	Select Off for single-sided printing. Select Head to Toe for duplex (double-sided) printing with the back side upside down. Select Head to Head for duplex printing with both sides using the same top edge.
Face-Down Printing	<u>On</u> , Off	Specify whether to have printed output exit the digital press face-down.
Halftone options		See Graphic Arts Package .
Image Quality	Best, <u>Normal</u>	Specify the type of image quality to be used as the Fiery EXP8000 default. If you select Best, while image quality improves, processing time may become longer, and the size of the processed job may be larger.

Option	Settings (default is underlined)	Description
Image Smoothing	<u>Automatic</u> , Off, On, Below 90 ppi, Below 150 ppi, Below 200 ppi, Below 300 ppi	<p>Select On to minimize grainy output when printing low-resolution images. When you select On, Image Smoothing is applied to all images.</p> <p>Select Automatic to use smoothing only when it makes a visible difference. When the image is below 150 ppi, image smoothing is applied automatically.</p> <p>Select one of the “ppi” choices (pixels per inch) to apply image smoothing to those images whose effective resolution is below the specified ppi value.</p>
Offset Jobs	Yes, <u>No</u>	Specify whether to have jobs offset after they are printed. You must have a finisher installed.
Output Destination	Destination options vary according to the accessories installed.	Specify where to output the job.
Output Profile	<i>Default profile</i>	Specify the default output profile to use for printing. Additional profiles can be created and downloaded to the Fiery EXP8000 with ColorWise Pro Tools.
Page Order	<u>From 1 to N</u> , From N to 1	Select From 1 to N to print the pages of your job from first to last. Select From N to 1 to print the pages of your job from last to first.
Print Cover Page	Yes, <u>No</u>	Prints a cover page (job summary) at the end of each print job. If you select Yes, each print job is followed by a page containing the name of the user who sent the job, the document name, the server name, the time the job was printed, the number of pages printed, and the status of the job. If a PostScript error occurs and the Print to PS Error option is set to Yes, the cover page lists the PostScript error message instead of the job status.
Print Master	<u>Yes</u> , No	Select Yes to print a FreeForm master when created and printed to the Fiery EXP8000. The master is retained on the Fiery EXP8000 after printing unless deleted later. Select No only to process and hold a FreeForm master on the Fiery EXP8000.
Print to PS Error	Yes, <u>No</u>	Specify whether the Fiery EXP8000 should print the available portion of a print job when it encounters a PostScript error. Select Yes to print the portion of the job that was processed before the error occurred; select No to cancel the print job entirely when a PostScript error is encountered. Leave this option at No unless you encounter printing problems.
Rendering Style	Photographic, <u>Presentation</u> , Abs. Colorimetric, Rel. Colorimetric	The color rendering dictionary (CRD) defines how colors are converted from the RGB color space to device CMYK. Photographic, designed for images, retains the relative balance between colors to maintain the overall appearance of the image. Presentation, designed for bright colors, produces the saturated prints needed for most business presentations, but handles photographic images the same way as the Photographic CRD. Absolute Colorimetric provides the closest match to the CMYK device being simulated, including rendering the paper color as the background. Relative Colorimetric provides a close match to the CMYK device being simulated, regardless of the media used.

Option	Settings (default is underlined)	Description
RGB Separation	<u>Output</u> , Simulation	This option defines how the Fiery EXP8000 processes RGB jobs. Select Output for RGB jobs that you print to the final output device. Select Simulation to simulate an output device that is not the device to which you are printing.
RGB Source Profile	<u>EFIRGB</u> , sRGB (PC), Apple Standard, Adobe RGB (1998), ECI-RGB.Icc, Splash RGB D65, None	The RGB source is the color space used to control color for conversion from monitor to printed output. EFIRGB is based on the reference points used in the creation of the Fiery EXP8000 software. sRGB is based on an average of a large number of PC monitors. Apple Standard is the standard reference point for Apple's ColorSync software.
Scale to Fit	<u>On</u> , Off	Specify whether to scale a document size to a selected paper size if the document size is different from the paper size. With the Off setting, if the document size is larger than the selected paper size, the document is cropped to the paper size when printed.
Spot Color Matching	<u>On</u> , Off	With this option On, the Fiery EXP8000 uses an internal lookup table to print the best equivalents of PANTONE colors. With this option Off, PANTONE colors are printed using the CMYK values defined in the original applications. For more information, see Color Printing .
Stapler Mode	<u>Off</u> , Front, Rear, Dual	Indicate whether to staple the job, and where to apply the staple.
Tray Alignment	Enable, <u>Disable</u>	Specify whether to enable Tray Alignment. For more information, see Utilities .
Use Media Defined Profile	<u>On</u> , Off	Select Yes to allow the Fiery EXP8000 to select an Output Profile according to a media type specified for the job. It also allows multiple output profiles to be applied to a Mixed Media job according to specified media types. Select No to disable the feature, and a profile selected in the Output Profile option or in the ColorWise Pro Tools becomes the Fiery EXP8000 default Output Profile. For more information, see Color Printing .

CONFIGURING WEBTOOLS

WebTools allow you to manage your Fiery EXP8000 remotely from the Internet or from your company's intranet. The Fiery EXP8000 has its own home page, from which you can select the WebTool that you want to use.

For information about using WebTools, see [Utilities](#).

Configuring the Fiery EXP8000 and clients for WebTools

WebTools provide access to many Fiery EXP8000 functions via the Internet (or intranet), providing additional flexibility in remote management. After they are enabled, you can access the WebTools from a Windows or Mac OS computer.

TO SET UP WEBTOOLS ON THE FIERY EXP8000

- 1 In Fiery EXP8000 Network Setup, enable TCP/IP.
- 2 Set a valid, unique IP address, subnet mask, and gateway address (if required) for the Fiery EXP8000.
- 3 Enable Web Services.
- 4 In Fiery EXP8000 Printer Setup, confirm that the Print queue is published.

TO SET UP WEBTOOLS ON A COMPUTER

- 1 Enable TCP/IP networking.
- 2 Assign the workstation a valid, unique IP address, subnet mask, and gateway address, if required.
- 3 Install an Internet browser that supports the Java language and frames.

Make sure Java is enabled. For more information about supported browsers and WebTools requirements, see [Welcome](#).

TO ACCESS WEBTOOLS

- 1 Start your Internet browser and type the IP address of the Fiery EXP8000.
The Fiery EXP8000 home page appears.
- 2 Click the tab corresponding to the WebTool that you want to use.

ADMINISTERING THE FIERY EXP8000

This chapter provides tips on managing Fiery EXP8000 printing.

Administrator functions

Administration features are included with the user software and are built into the Fiery EXP8000. The following table describes where to find information about these features (page references refer to this manual).

For these tasks	See
Setting Administrator and Operator passwords	page 47
Setting the Windows XP system password	page 48
Updating system software	page 49
Clearing the Fiery EXP8000	page 51
Saving and restoring Fiery EXP8000 configuration settings	page 52
Managing address books for E-mail Printing	page 53
Printing a Configuration page	page 57
Maintaining optimal Fiery EXP8000 performance	page 58
Shutting down, rebooting, and restarting the Fiery EXP8000	page 59
Burning a CD-RW	page 61
Setting up network servers to manage and share printing services	Documentation for your network servers
Setting up network servers with information specific to the Fiery EXP8000	page 9
Connecting the Fiery EXP8000 to the network	page 20
Performing Fiery EXP8000 Setup	page 22
Setting up the Fiery EXP8000 to allow user access to WebTools	page 45

For these tasks	See
Setting printer default settings	page 41 Color Printing Printing from Windows Printing from Mac OS
Publishing the Direct connection, Print queue, or Hold queue to end users on various platforms	Printer Setup, page 9, and page 40
Setting up printing, installing PostScript printer drivers and PPD files, installing user software	Printing from Windows Printing from Mac OS
Troubleshooting Fiery EXP8000 Setup	Troubleshooting

Setting passwords

You can set or change the passwords for the Fiery EXP8000. Anyone with the Administrator password can modify the Setup options, and control the flow and order of print jobs with the job management tools.

Administrator allows you access to Setup. Administrator privileges also include Operator privileges.

Operator allows you access to job management functions of Command WorkStation.

For more information about Administrator and Operator passwords and the access privileges they allow, see [page 16](#).

Windows XP system password allows you access to the FACI.

When the Fiery EXP8000 is installed, the Administrator password is defined, but the Operator password is not. The Administrator password allows a user to modify the Setup, use the administrator functions in the job management tools, and run Setup. We *strongly recommend* that you set at least an Administrator password to protect the Fiery EXP8000 from unauthorized changes to Setup.



Keep track of the passwords that you set. To remove a password that you cannot remember, you must reinstall the system software.

Passwords from a network computer

You can change the Administrator and Operator passwords from Configure or Command WorkStation, Windows Edition.

TO SET OR CHANGE A PASSWORD

- 1 **Select the password that you want to change.**
- 2 **Type the password in both the Enter New Password and Verify New Password fields.**

Passwords are case-sensitive. You must type the password *exactly* the same way both times. The new password remains in effect until you change it.

For example, to change the Administrator password from Fiery.1 to Fiery.2, type “Fiery.2” in both areas and click Save.

TO REMOVE A PASSWORD

- 1 **Select the password that you want to delete.**
- 2 **Delete the asterisks (*) in both the Enter New Password and Verify New Password fields.**

Changing the Windows XP system password

The Fiery EXP8000 is set with a Windows XP system password. To ensure network security in your environment, the administrator must change the password.

TO CHANGE THE WINDOWS XP PASSWORD FOR THE FIERY EXP8000

- 1 **Press Ctrl+Alt+Delete on the Windows keyboard.**

The Windows Security dialog box appears.

NOTE: If you are using the Welcome screen on Windows XP, the Windows Task Manager dialog box appears. To access the Windows Security dialog box, you must disable the Welcome screen. From the Windows XP Control Panel, access User Accounts, select the Change the way users log on or log off option, and then clear the Use the Welcome screen option.

- 2 **In the Windows Security dialog box, click Change Password, and then type the following. For example, to change to “Fiery.2”:**

User name: administrator

Domain (Windows NT 4.0) or Log on to (Windows 2000/XP): \\Aero

Old Password: Fiery.1

New Password: Fiery.2

Confirm New Password: Fiery.2

- 3 **Click OK.**

The new password, Fiery.2, is now set.

Updating system software

The Fiery EXP8000 uses unique system software to receive and process jobs and send job data to the digital press. Resident on the Fiery EXP8000, system software processes and controls the spooling, rasterizing, and printing of jobs, as well as job accounting (the Job Log), storage, and retrieval.

You can check for system software updates from a secure site on the Internet. Updates to user software may also be available.

Although the Fiery EXP8000 system software is based on another operating system (such as Windows or UNIX), do not install third-party updates such as Microsoft Hot Fixes unless your authorized support center recommends that you do so.

TO CHECK FOR SOFTWARE UPDATES FROM WEBTOOLS

- 1 **Start the Configure WebTool.**
- 2 **Click Launch Configure.**
- 3 **Type the Administrator password and click OK.**
- 4 **Click Server > System Update.**
- 5 **Select Enable Automatic Update and choose a method for updating the Fiery EXP8000:**
 - **Notify when updates are available**
 - **Download updates and notify**
 - **Install updates** downloads and installs updates on the Fiery EXP8000 Specify the Day and Time to restart the Fiery EXP8000 automatically after the updates are downloaded.
- 6 **If you use a proxy server to connect through a firewall to the Update server, select Enable Proxy and enter the appropriate information:**
 - **Address** proxy server IP address
 - **Port** port used by the proxy server
 - **User** user name for accessing the proxy server
 - **Password** password for accessing the proxy server

TO CHECK FOR SOFTWARE UPDATES FROM LOCAL SETUP

- 1 **In Command WorkStation, right-click the FieryBar and select Set Up Fiery.**
- 2 **Type the Administrator password and click OK.**
- 3 **On the General Setup tab, click System Update.**
- 4 **Click Modify Settings.**

- 5 **Select Enable Automatic Update and choose a method for updating the Fiery EXP8000:**
 - **Notify when updates are available**
 - **Download updates and notify**
 - **Install updates** downloads and installs updates on the Print Server. Specify the Day and Time to restart the Print Server automatically after the updates are downloaded.
 - 6 **If you use a proxy server to connect through a firewall to the Update server, select Enable Proxy and enter the appropriate information:**
 - **Address** proxy server IP address
 - **Port** port used by the proxy server
 - **User** user name for accessing the proxy server
 - **Password** password for accessing the proxy server
-

TO CHECK FOR SOFTWARE UPDATES FROM THE WINDOWS START MENU

- 1 From the FACP, click the Start menu.
- 2 Choose Fiery > System Updates.
- 3 Select "Check for important system updates" and choose a method for updating the Fiery EXP8000.
- 4 If you use a proxy server to connect through a firewall to the Update server, click Proxy Settings and enter the appropriate information:
 - **Address** proxy server IP address
 - **Port** port used by the proxy server
 - **User** user name for accessing the proxy server
 - **Password** password for accessing the proxy server

Clearing the Fiery EXP8000

The Clear Server command allows you to clear all queued print jobs from the Fiery EXP8000 Print, Hold, and Printed queues. Jobs can also be deleted, either individually or as a group, using Command WorkStation. Clear Server also clears all jobs archived on the Fiery EXP8000 hard disk, the index of archived jobs, and all FreeForm masters.

TO CLEAR THE FIERY EXP8000

- **In Command WorkStation, choose Clear Server from the Server menu.**

Be sure to back up your original data on your own media at the same time you store and save data on the Fiery EXP8000 hard disk. Never damage the Fiery EXP8000 hard disk, and do not turn off the system while accessing the hard disk. For instructions on how to turn on and turn off the Fiery EXP8000, see [page 59](#).

If the Fiery EXP8000 hard disk or system software experiences technical difficulties, data stored and saved on the Fiery EXP8000 hard disk may be irretrievably lost. If problems with the hard disk occur, extended storage of the following data cannot be assured:

- Third-party fonts
- Print jobs
- Job notes and instructions
- Scanned image data
- Jobs edited with Impose
- Variable data documents
- E-mail Service Address Book
- Fiery EXP8000 configuration information (list of all the settings in effect for the current Setup)

Saving and restoring Fiery EXP8000 configuration

You can save the current configuration of the Fiery EXP8000 and restore it later, if necessary. The following settings are saved (if your Fiery EXP8000 supports them):

- Settings made in Setup (except Server Name)
- Impose templates saved in the default directory for these files on the Fiery EXP8000
- Address books
- Member printing groups
- Paper Catalog

TO BACK UP FIERY EXP8000 SETTINGS

- 1 On the General Setup tab, select **Save/Restore Configuration**.
- 2 Click **Save Configuration**.
- 3 In the dialog box that follows, accept the default file name or type a new name for the backup file.
- 4 Click **Save**.

TO RESTORE THE FIERY EXP8000 SETTINGS

- 1 On the General Setup tab, select **Save/Restore Configuration**.
- 2 Click **Restore Configuration**.
- 3 In the dialog box that follows, type the name of the file or select it from the list.
- 4 Click **Open**.

Managing e-mail address books

The E-mail Service feature allows you to import a list of e-mail/Internet Fax addresses to the Fiery EXP8000. To import the list of addresses, you send e-mail messages in a particular format to the Fiery EXP8000.

The list will be added to the address books. Users use the address books to send attachment files to a particular e-mail/Internet Fax address, and the administrator uses the address books to control access to E-mail Services.

NOTE: E-mail messages can be sent only from an administrator account.

The Fiery EXP8000 supports the following address books:

Admin includes users with administrative access. Administrative access allows you to modify the address book, get the current address book from the Fiery EXP8000, and cancel or status any print job.

Print includes users who have print access. Only users whose e-mail addresses are in the Print address book are authorized to submit jobs via e-mail to the Fiery EXP8000. Unauthorized users receive an e-mail reply that their job was not accepted by the Fiery EXP8000 for printing.

User includes users who have scanning access.

Fax is used for Scan to Internet FAX. This address book is used for sending scan files via Internet FAX to the Fiery EXP8000. You cannot send an e-mail to the Fiery EXP8000.

E-mail Service also allows the administrator to overwrite the address book, add new addresses, remove addresses, and retrieve current addresses on the Fiery EXP8000.

When a print job is submitted via e-mail, the Fiery EXP8000 first checks the Print address book. If the user's e-mail address does not match any entry in the Print address book, the job does not print. Instead, the user will receive an e-mail stating that the print job was not accepted.

The default wildcard character "@" is stored in the Print address book. This allows any user to print to the Fiery EXP8000 until the administrator adds the first entry in the Print address book.

The administrator can manage the address books by sending an e-mail to the Fiery EXP8000 with command codes in the Subject and Message fields. The Fiery EXP8000 responds by e-mail to these commands with information about each request. When managing address books, see the following table.

NOTE: To add or remove more than one address at a time, list the addresses on separate lines in the message field of the e-mail.

Task	Administrator subject field	Administrator message field	Fiery e-mail response subject field	Fiery e-mail response message field
To retrieve a specific address book	#GetAddressBook <i>name of address book</i> For example: #GetAddressBook Admin		Address Book <i>name of address book</i> For example: Address Book Admin	List of addresses in the specified address book
To add an address to an address book	#AddAddressTo <i>name of address book</i> For example: #AddAddressTo Print	name@domain or "display name" <name@domain>	Added to Address Book <i>name of address book</i> For example: Added to Address Book Print	List of addresses added to the address book The Fiery EXP8000 also lists any addresses that cannot be added and includes the reason.
To clear an address book	#ClearAddressBook <i>name of address book</i> For example: #ClearAddressBook User		Address Book <i>name of address book</i> cleared or Address Book <i>name of address book</i> not cleared For example: Address Book User cleared	If the address book is not cleared, the reason is given.
To delete an address from an address book	#DeleteAddressFrom <i>name of address book</i> For example: #DeleteAddressFrom User	name@domain or "display name" <name@domain>	Removed from Address Book <i>name of address book</i> For example: Removed from Address Book User	Deleted Address 1 Deleted Address 2 The Fiery EXP8000 also lists any addresses that cannot be deleted and includes the reason.
To receive help for Fiery EXP8000 e-mail services	#Help		RE: Help	Provides troubleshooting e-mail syntax

TO RETRIEVE AN ADDRESS BOOK FROM THE FIERY EXP8000

- 1 Start your e-mail application.**
- 2 Open a new message window.**
- 3 Type the e-mail address of your print server in the To line.**
- 4 Type the command of a specified address in the Subject line.**

For the User, type “#GetAddressBook User.” For the Administrator, type “#GetAddressBook Admin” or “#GetAddressBook Print.”

- 5 Send the message.**

The return message includes the addresses of the specified address book.

- 6 Copy the addresses as a text file or save the message for your records.**
-

TO RESTORE AN ADDRESS BOOK TO THE FIERY EXP8000

- 1 Start your e-mail application.**
- 2 Open a new message window.**
- 3 Type the e-mail address of your print server in the To line.**
- 4 Type the command of a specified address in the Subject line.**

For the User, type “#GetAddressTo User.” For the Administrator, type “#GetAddressTo Admin” or “#GetAddressTo Print.”

- 5 Copy the addresses retrieved and save it in the body of the e-mail.**

You can include nicknames. However, when a nickname or address is longer than one line, edit it to fit on one line.

- 6 Send the message.**
- 7 Review the returned message of notification, and confirm that the addresses were restored correctly.**

FTP Printing

After you set up FTP printing, you can specify the user name and password from Command WorkStation for FTP printing.

TO DEFINE A USER NAME AND PASSWORD FOR FTP PRINTING FROM COMMAND WORKSTATION

- 1 **Start Command WorkStation and connect to the Fiery EXP8000.**
- 2 **From the Server menu, choose Printing Groups.**
- 3 **Click Create.**
- 4 **Type the user name for Group Name, and the password for Password.**

This setting is available when you add a new user for FTP printing.

NOTE: A maximum of 100 users can be registered for FTP printing.

- 5 **Confirm the password for Verify Password.**
- 6 **Click Add and click OK.**

You are now able to print to an FTP server. You can modify or delete the user name and password registered.

Setting up printing groups

The Fiery EXP8000 administrator can arrange users into groups and allow members of a group to print only if they supply a password at print time. This method of printing is known as Printing Groups, or Member Printing.

This section describes how to set up groups and passwords. To change the Group Name or Group Password settings for a job that a user has already sent from the printer driver, use Command WorkStation. For more information about using the Printing Groups feature, see *Print Options*.

TO SET UP PRINTING GROUPS AND PASSWORDS

- 1 **In Command WorkStation, choose Printing Groups from the Server menu.**
- 2 **Click Create.**
- 3 **In the Group Name field, type a group name for the printing group.**
- 4 **In the Password field, type a password for the group, and retype the password in the Verify Password field.**
- 5 **Click Add to move the new group into the window.**

TO CHANGE PRINTING GROUPS AND PASSWORDS

- 1 In Command WorkStation, choose Printing Groups from the Server menu.
- 2 Select the printing group name in the Printing Groups Setup dialog box and click Modify.
- 3 Make the necessary changes.
- 4 Click OK.

TO REMOVE PRINTING GROUPS AND PASSWORDS

- 1 In Command WorkStation, choose Printing Groups from the Server menu.
- 2 Select the printing group name in the Printing Groups Setup dialog box and click Remove.
- 3 Click OK.

Printing the Configuration page

The Configuration page lists the settings in effect for the current Setup. After you have performed Setup, print a Configuration page to confirm your settings. Post the current Configuration page near the FierY EXP8000 for quick reference. Users need the information on this page, such as the current printer default settings.

TO PRINT THE CONFIGURATION PAGE FROM COMMAND WORKSTATION

- 1 In Command WorkStation, choose Print Pages from the Server menu.
- 2 Click Configuration.
- 3 Click Print.

Maintaining optimal Fiery EXP8000 performance

The Fiery EXP8000 does not require maintenance. Beyond the obvious requirements of servicing and maintaining the digital press and replenishing consumables, you can improve the overall performance of your system by doing the following:

- **Make the best use of your network connections.**

Publish only connections that will be used. The Fiery EXP8000 constantly checks all published connections, even if they are inactive. Match the NetWare polling interval and the number of queues or connections to the demand for printing.

Review the published connections by printing a Configuration page. Eliminate the connections that are not being used. It is easy to re-establish them when needed.

- **Leave less urgent jobs to times when there is less network traffic or printing.**

You can print recurring print jobs or jobs that are not urgent to the Hold queue. At low-traffic times, the administrator or a user of the job management tools with Operator privileges can move (or copy) all the Hold queue jobs to the Print queue for printing.

- **Reduce unnecessary network communication.**

Large numbers of users running Fiery utilities, especially with frequent updates, may have a significant effect on Fiery EXP8000 performance.

- **Make sure you have adequate disk space on the Fiery EXP8000.**

Periodically review the list of jobs in the Hold queue, and the number of jobs being retained in the Printed queue.

An administrator can print or delete jobs that are in the Printed queue and Hold queue. Consider printing or offloading inactive jobs. If disk space on the Fiery EXP8000 is frequently low, you can disable the Printed queue (in Server Setup) and choose not to publish the Hold queue (in Printer Setup).

To move or remove queued jobs, use the job management tools. When you free up disk space by removing inactive jobs, new jobs are spooled and printed more quickly.

Shutting down, rebooting, and restarting the Fiery EXP8000

Generally, you can leave the Fiery EXP8000 and the digital press running all the time. This section describes how to shut down, reboot, and restart the Fiery EXP8000 when necessary.

Shutting down the Fiery EXP8000

When you must shut down the Fiery EXP8000, fonts downloaded to the Fiery EXP8000 are not deleted. Jobs in the Print and Hold queues and jobs that have been processed but not printed are not deleted and are available for printing when you reboot or restart the Fiery EXP8000.

TO SHUT DOWN THE FIERY EXP8000

- 1 Ensure that the Fiery EXP8000 is not receiving, processing, or printing any files.**

If necessary, wait until Command WorkStation shows no processing or printing jobs in the Active Jobs window, or the Fiery Bar shows Idle in both the RIPping and Printing areas. If the system has just finished processing, wait at least five seconds after the system reaches Idle before beginning the shutdown procedure.

- 2 On the FACP, close all open applications except FieryBar.**
- 3 From the Windows Start menu, choose Shut Down.**
- 4 Choose Shut Down and click OK.**

Rebooting or restarting the Fiery EXP8000

Restarting the Fiery EXP8000 resets the Fiery EXP8000 system software, but does not reboot the entire system. Network access to the Fiery EXP8000 is temporarily interrupted and all currently processing jobs are terminated.

TO REBOOT THE FIERY EXP8000

1 Verify that the Fiery EXP8000 is not receiving, processing, or printing any files.

If necessary, wait until Command WorkStation shows no processing or printing jobs in the Active Jobs window, or the FieryBar shows Idle in both the RIPping and Printing areas.

2 Close all open applications except FieryBar.

3 Click Start in the Windows taskbar, and then choose Shut Down.

4 Select Restart and click OK.

Wait for the system to reboot.

5 The Log On to Windows dialog box appears. Type Administrator in the user name field, type the password, and then press Enter.

The password is case-sensitive and must be entered exactly.

6 Wait for FieryBar to appear on the monitor and reach Idle.

The Fiery EXP8000 takes approximately three minutes to power on and reach Idle.

TO RESTART THE FIERY EXP8000

1 Verify that the Fiery EXP8000 is not receiving, processing, or printing any files.

If necessary, wait until Command WorkStation shows no processing or printing jobs in the Active Jobs window, or FieryBar shows Idle in both the RIPping and Printing areas.

2 Close all open applications except FieryBar.

3 Right-click FieryBar and choose Restart Fiery from the menu that appears.

4 Click OK when the confirmation message appears.

Wait for the Fiery EXP8000 server software to close down and restart. You may need to wait one minute or more for the server software to restart. FieryBar displays the Exited status while the server software restarts.

Burning a CD-RW

The Fiery EXP8000 includes a DVD-ROM/CD-RW drive, which you can use to create, or *burn*, a CD.

To BURN A CD-RW

- 1 Drag and drop files onto the icon for the DVD-ROM/CD-RW drive.
- 2 Right-click the DVD-ROM/CD-RW drive icon and select Eject.

If you fill the CD-RW to capacity (approximately 650 MB), the burning process takes about 30 minutes.

TROUBLESHOOTING

This chapter provides troubleshooting tips.

Troubleshooting the Fiery EXP8000

Startup diagnostics are described in the documentation for service technicians. Contact your authorized service/support center if you see error messages while Command WorkStation is starting or if the Fiery EXP8000 does not reach the Idle state.

Safe Print

The Safe Print diagnostic feature allows the Fiery EXP8000 to detect any internal errors that arise as a result of a difference between the raster output of the internal RIP and the raster sent from the Fiery EXP8000 to the digital press. When such errors are detected, the Fiery EXP8000 does not print the job, and the error reported is an under-run.

Runtime error messages

For error messages related to canceling jobs and printing, including the Disk Full message and alerts to load media, see Command WorkStation Help.

For error messages related to the digital press, see the documentation that accompanies your digital press.

You can turn on PostScript error reporting as a print option from Mac OS applications.

Printer not found

Most failures to find a printer on the network are due to conflicting or missing name or address settings for the Fiery EXP8000. You must type names in specific places. The required names are:

- TCP/IP host name (also known as the DNS name), which is defined by your organization.
Type the host name as the Server Name in Fiery EXP8000 Setup.
- Remote printer (internal machine) name. Use one of the following:
print
hold
direct

NOTE: If you change the DNS name (also known as the TCP/IP host name) of the Fiery EXP8000, you must reconfigure one of the utilities on each workstation.

See the following table for the appropriate name.

In this location	For this item	IPX/SPX networks	TCP/IP networks	See
Server Setup	Server Name option	Administrator defines name	Administrator defines name	page 25
Windows hosts file	host name		DNS name (TCP/IP host name)	page 9
Windows setup for TCP/IP	lpd host name		DNS name (TCP/IP host name)	page 9
	Name of printer on lpd host machine		print or hold	
UNIX /etc/printcap file (BSD)	rp line		print or hold	page 14
Solaris	lpadmin queue name		print or hold	
NetWare administration utility	print queues (must be all lowercase and in English)	_direct _print _hold		page 13
Add New Server dialog box, when configuring a Fiery utility	New Device	Utilities are not supported over IPX/SPX	DC8000-DC7000	Utilities
	Server Name	Utilities are not supported over IPX/SPX	DNS name (TCP/IP host name)	

Cannot connect to Fiery EXP8000 with Fiery EXP8000 utilities

If users cannot connect to the Fiery EXP8000, check the following:

Fiery EXP8000 Setup: The appropriate network protocol must be enabled, with the correct parameters (for example, for TCP/IP, the IP address), and you must publish the Print queue or Hold queue.

Check these settings quickly by printing a Configuration page.

On the client computer: The appropriate network protocols must be loaded.

Cannot connect to the Fiery EXP8000 with Command WorkStation

If you encounter a problem connecting to the Fiery EXP8000, an error message is displayed.

The problem can occur when:

- The Fiery EXP8000 is initially turned on
- The Fiery EXP8000 restarts
- You have changed settings affecting the server address and have not reconfigured the connection to the server

If you experience this problem, try the following solutions, in this order:

- A remote workstation running utilities or WebTools may be interfering by obtaining status information. If possible, close the remote application, and try to connect again.
- Restart the Command WorkStation software and try to connect again.
- Restart the Fiery EXP8000.

INDEX

Numerics

1000BaseT 20
100BaseT 20
10BaseT 20

A

access level scenarios 18
access to network and software 15
accessing Setup
 from network computer 22
Add File Server, Bindery Setup 34
administrator
 functions 46 to 47
 installing the server 10
 managing print jobs 47
 password 47
Administrator password
 changing from network computer 48
 privileges 17
Allow Courier Substitution option 41
AppleTalk
 protocol setup 28
 server name 25
 Setup from network computer 28
 zone 28
authentication, SNMP 37
Auto Clear Job Log Every 55 Jobs option 25
Auto Print Job Log Every 55 Jobs option 25

B

Bindery file servers
 connecting 34
 emulation mode 30
Bindery Setup
 adding Bindery connections 34
 on server 33
 removing Bindery connections 35
Black Overprint option 41
Black Text/Graphics option 41

C

CD-RW, burning 61
changing
 Administrator password 47, 48
 host name or DNS name 62
characters
 used on Control Panel 25
Chooser, AppleTalk 25
choosing a Bindery Server to connect 34
Clear Server option 51
clearing the Job Log 25
client setup
 overview 10
 WebTools 45
CMYK Simulation Method option 41
CMYK Simulation Profile option 42
Command WorkStation
 problems connecting to server 64
 Setup from 22
Comment option, Windows printing 36
Configuration page
 printing 57
 troubleshooting connection problems 63
Configure (WebTool) 18
connected Novell servers, Bindery 34
connecting
 network cable 20
control levels
 scenarios 18
 setting 15
Control Panel
 Clear Server option 51
Convert Paper Sizes option 42
Courier font, substitution with 41
Cover Page option 43

D

date, setting 25
Default Paper Sizes option 42
device name 25, 63

- Direct connection
 - described 15, 16
 - publishing 40
 - required for downloading fonts 16
- disk space 58
- DNS (Domain Name Server) 12, 62
- Domain or Workgroup option, Windows
 - printing 36
- downloading fonts, Direct connection
 - requirement 16
- Downloads (WebTool) 18

E

- Enable Ethernet option 27
- Enable FTP Services 38
- Enable IPP option 37
- Enable LPD option 35
- Enable NDS option 31
- Enable Port 9100 Print Services option 38
- Enable Preview option 26
- Enable Print via E-mail option 38
- Enable Printed Queue option 25
- Enable Printing Groups option 26
- Enable TCP/IP for Ethernet option 29
- Enable Web Services option 37
- Enable Windows Printing option 35
- enabling
 - WebTools 37
- error messages 43
 - runtime 62
- Ethernet 20
 - frame types 28
- Ethernet Setup from remote Setup
 - Port Setup 27
- Ethernet Speed option 27
- E-mail Service Setup option 38

F

- FieryBar
 - accessing Setup 22
- File Server 34
- File Server, Bindery 34
- font substitution 41
- frame types supported
 - IPX/SPX, Ethernet 28
- FreeForm master, printing 43

G

- General Setup options 25

H

- Halftone options 42
- Hold queue 40
 - described 15, 16
- Home (WebTool) 17
- host name 12, 62
 - database 12

I

- improving server performance 58
- Incoming Server option, E-mail Setup 38
- installing color server on network 10
- Internet
 - accessing server with WebTools 17
- IP address
 - for WINS Name Server 36
- IPX (Novell)
 - NDS (Novell Directory Services) 30
 - overview of printing 13
- IPX/SPX
 - polling interval 35

J

- Java to support Internet browser 45
- Job Batching Delay 40
- Job Log
 - clearing jobs from 51
 - setting the page size used 25
- job management tools
 - deleting jobs with 51
- Jobs Saved in Printed Queue option 25

L

- lpd (TCP/IP) 14
 - printing 35

M

- maintaining server performance 58
- Member Printing 26
- Microsoft Active Directory 12

N

- naming the server 62
- NDS (Novell Directory Services) 30

- NDS Print Server 31
- NDS tree
 - browsing 31
- NetWare
 - Directory Services 30
- network
 - boards 27
 - installation summary 10, 11
 - IPX (Novell) 11
 - protocols supported 9
 - TCP/IP 11
- network installation summary 11
- Network Setup
 - from network computer 27 to 38

O

- Offset Jobs option 43
- Operator password
 - privileges 17
- Outgoing Mail Server option, E-mail Setup 38
- Output Profile option 43

P

- Page Order option 43
- paper size used by default 42
- Password Protect Job Log option 25
- Password, E-mail Setup 39
- passwords
 - Administrator privileges 17
 - Administrator, changing 47
 - Operator privileges 17
 - setting 16
- PDF files, font substitution in 41
- Polling Interval
 - E-mail Setup 39
- polling interval for NetWare print jobs 35
- Port 9100 printing 38
- Port 9100 Queue option 38
- Ports information Setup 27
- PostScript error 43
- Preview While Processing 26
- Print (WebTool) 17
- Print Master option 43
- Print queue 16, 40
 - described 15, 16
- Print Server
 - adding 34
 - selecting 32, 34

- Print Start Page option 26
- Print to PostScript Error option 43
- Print to PS Error option 43
- Printed queue 15
- printer
 - connection failure 62
 - not found 62
 - not in Chooser 62
- Printer Setup
 - from network computer 40
 - Printed queue options 25
- printing
 - connections 15
 - cover page for each job 43
 - reprinting previously printed jobs 15
 - start page at startup 26
- printing groups 56
 - defining members of 56
 - defining passwords for 56
 - editing printing groups and passwords 57
 - removing printing groups and passwords 57
- privacy, SNMP 37
- problems, *see* troubleshooting
- protocols
 - network 9
 - setting up 28
 - See also* AppleTalk, IPX, IPX/SPX, TCP/IP
- proxy server, updating system software 49, 50
- Publish Direct Connection option 40
- Publish Hold Queue option 40
- Publish Print Queue option 40
- publishing connections, overview 15
- pure black, setting default 41

Q

- queues
 - clearing all 51
 - publishing 40

R

- Read Community 37
- Rendering Style option 43
- reprinting jobs 15
- RGB Separation option 44
- RGB Source option 44
- RJ-45 connector 20

S

- Safe Erase 26
- selecting
 - default paper size 42
- server
 - back view showing connectors 20
 - maintaining and improving performance 58
 - naming 25
 - power switch 20
- Server Name option 25
- Server Name option, Windows printing 36
- Server Setup 21
 - exiting 40
 - from network computer 25
- Server Type option, E-mail Setup 38
- Service Setup options 30
- SNMP
 - authentication 37
 - encryption 37
 - privacy 37
 - Read Community 37
 - Write Community 37
- Spot Color Matching option 44
- Support option 26
- Suspend on Mismatch 26
- System Date option 25
- system settings
 - restore 52
 - saving 52
- system software, saving and restoring 26
- system software, updating 49
- System Time option 25
- System Update 26

T

- TCP/IP
 - host name 62
 - lpd printing 35
 - settings 29
 - with UNIX workstations 14
- terminology 7
- time, setting 25
- Timeout option, E-mail Setup 39
- Transmission Speed (Ethernet) option 27

troubleshooting

- Command WorkStation connection
 - problems 64
- connection to printer fails 62
- Printer not found in the selection list of
 - utilities 63
- Printer not found on TCP/IP or IPX
 - networks 62
- twisted pair cable 20

U

- UNIX
 - on TCP/IP network 14
 - printcap file 63
 - remote printer name 63
- updating system software 26
- Use Character Set option 25

V

- VDP Search Path 40

W

- Web Services Setup 37
- WebTools
 - enabling 37
 - Home 17
- Windows printing 35
 - domain issues 12
 - setting domain or workgroup 36
- WINS IP Address option 36
- Write Community 37