



Fiery® EXP8000 Color Server
SERVER & CONTROLLER SOLUTIONS



Graphic Arts Package

© 2005 Electronics for Imaging, Inc. The information in this publication is covered under *Legal Notices* for this product.

45049651
13 July 2005

CONTENTS

INTRODUCTION	9
Terminology and conventions	9
About this document	10
Graphic Arts Package, Premium Edition	11
Updating the status of Graphic Arts Package	12
Updating the status on Windows	12
Updating the status on Mac OS	13
Setting up your monitor and the monitor profile	14
PAPER SIMULATION WHITE POINT EDITING	15
Paper simulation workflow	15
Printing a job with default Paper Simulation	16
Paper Simulation print option	16
Paper Simulation White Point editing	17
Paper Simulation White Point dialog box	17
Editing Paper Simulation White Point	18
Printing with custom paper simulation values	22

SPOT-ON WITH NAMED COLORS	24
Using Spot-On	24
Starting Spot-On	24
Spot-On main window	26
Working with existing colors	27
Creating custom colors	29
Downloading custom color groups	30
Uploading custom color groups	31
Editing color values	32
Using a measurement instrument to target colors	36
Reverting default colors to factory settings	37
Saving changes and exiting Spot-On	37
SPOT-ON WITH SUBSTITUTE COLORS	38
Substitute Colors workflow	38
Creating a color for substitution	38
Defining the color values for a substitute color	41
Printing a job with a substitute color	44
Substitute Color dialog box	45
Principles for Substitute Colors	46
Tolerance range	46
Color substitution	47
Priority scheme	47
Uploading and downloading a substitute color group	48

COLOR SETUP FEATURES	49
ColorWise Pro Tools Color Setup features	49
Using Color Setup	50
Control Bar	51
Control Bar workflow	51
Printing with a default Control Bar	51
Control Bar pane	53
Printing with a custom Control Bar	58
Configurable Auto Trapping	59
Configurable Auto Trapping workflow	59
Printing with default Auto Trapping	59
Auto Trapping pane	60
Setting the Apply Auto Trapping option to On	61
Defining custom values for Auto Trapping	62
Printing with the configurable Auto Trapping feature	63
Progressives	63
Progressives workflow	64
Printing with default Progressives	64
Progressives pane	65
Specifying color channels	66
Printing with custom Progressives	66
Halftone Screens	67
Halftone screens workflow	67
Halftone Screen print option	67
Printing with a pre-defined halftone screen	68
Halftone Screens pane	69
Setting a custom Halftone Screen	70
Printing with custom Halftone Screens	70
Supported applications	70
Calibrating for custom halftone screens	71
Using Color Profiler for custom halftone screens	73

IMAGEVIEWER	74
Accessing ImageViewer	74
HOT FOLDERS FILTERS	76
About file conversion	76
Filters	77
Specifying filter settings for a Hot Folder	78
About PS->PDF Normalizer	79
Using the filters	80
Using the CT/LW to PostScript filter	80
Using the DCS 2.0 to PostScript filter	81
Using the EPS to PostScript filter	82
Using the ExportPS filter	83
Using the JPEG to PDF filter	84
Using the Microsoft Office filters	85
Using the PDF to PS filter	85
Using the PDF/X Preflight filter	86
Using the PDF2Go filter	87
Using the TIFF to PDF filter	88
Using the TIFF/IT to PostScript filter	89
POSTFLIGHT	91
About Postflight	92
Postflight Test Page	92
Postflight color-coded pages	92
Postflight reports	93
Postflight print option	95
Postflight workflow	95
Scenario 1: Diagnose an unexpected color	97
Scenario 2: Check the calibration status	99
Scenario 3: Check the quality of output profile	100
Scenario 4: Diagnose a color problem of a specific object	101





MULTIPLE PLATE SEPARATIONS	102
Multiple plate separations workflow	102
Combine Separations print option	103
Supported applications	103
INDEX	105

INTRODUCTION

This document explains the Graphic Arts Package features and how they work. Because of the flexibility of the controls Graphic Arts Package provides, users in any environment can benefit from the Graphic Arts Package features. Novice users can use the default settings to obtain optimal results. Expert users with specific needs and requirements in graphic arts and other markets can also obtain optimal results by customizing the settings.

Terminology and conventions

The documentation for the Fiery EXP8000 Color Server uses the following terminology and conventions.

Term or convention	Refers to
Aero	Fiery EXP8000 (in illustrations and examples)
Digital press	DocuColor 8000/7000 digital press
Fiery EXP8000	Fiery EXP8000 Color Server
Mac OS	Apple Mac OS X
Titles in <i>italics</i>	Other documents in this set
Windows	Microsoft Windows 2000, Windows XP, Windows Server 2003
	Topics for which additional information is available by starting Help in the software
	Tips and information
	Important information
	Important information about issues that can result in physical harm to you or others

About this document

This document describes the features that are available through the printer drivers or utilities such as ColorWise Pro Tools and Command WorkStation. The features are organized as follows:

- Features accessible from or used to set the values in ColorWise Pro Tools
 - **Paper Simulation White Point Editing** describes the white point editing feature with Color Editor.
 - **Spot-On with Named Colors** describes the features to manage named colors.
 - **Spot-On with Substitute Colors** describes the features to manage color substitution.
 - **Color Setup** describes the following features: Control Bar, Auto Trapping, Progressives, Halftone Screens.
- Features accessible from Command WorkStation
 - **ImageViewer** describes how to start the ImageViewer application.
- Features accessible from or used to set the values in utilities other than ColorWise Pro Tools and Command WorkStation
 - **Hot Folders Filters** describes the filters features.
- Other features
 - **Postflight** describes the Postflight feature and its workflow examples.
 - **Multiple Plate Separations** describes the combine separation feature for more than four plates.

Graphic Arts Package, Premium Edition

The following features are included in Graphic Arts Package, Premium Edition:

Feature	Where to set values or access	Print option name	See
Paper simulation white point editing	ColorWise Pro Tools Color Editor	Paper Simulation	Paper Simulation White Point Editing
Spot-On: named colors	ColorWise Pro Tools Spot-On	Spot Color Matching	Spot-On with Named Colors
Spot-On: color substitution	ColorWise Pro Tools Spot-On	Substitute Colors	Spot-On with Substitute Colors
Control bar	Fiery Server Setup	Control Bar	Color Setup Features
Configurable auto trapping	ColorWise Pro Tools Color Setup	Auto Trapping	Color Setup Features
Progressives	ColorWise Pro Tools Color Setup	Progressives	Color Setup Features
Halftone screening	ColorWise Pro Tools Color Setup	Halftone Screen	Color Setup Features
ImageViewer	Command WorkStation: ImageViewer		ImageViewer
Hot Folders file filters	Hot Folders		Hot Folders Filters
Postflight	Command WorkStation: ImageViewer	Postflight	Postflight
Multiple plate separations		Combine Separation	Multiple Plate Separations
	Graphic Arts Package	Graphic Arts Package, Premium Edition	To use Graphic Arts Package, Premium Edition features

Updating the status of Graphic Arts Package

The Fiery EXP8000 is shipped with Graphic Arts Package, Premium Edition. Before using the features, you must update the status of Graphic Arts Package on your computer.

Updating the status on Windows

Use the following procedure to update the status of Graphic Arts Package on a Windows computer.

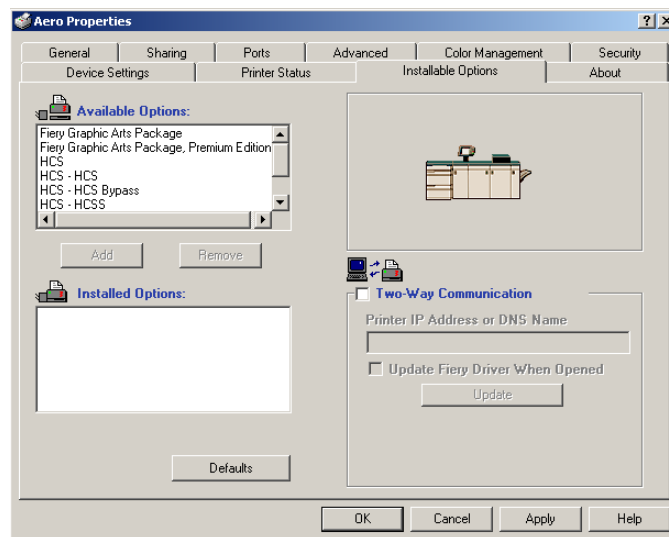
NOTE: Before updating the status on a Windows computer, you must install the printer driver. For information about installing the printer driver to a Windows computer, see [Printing from Windows](#).

TO UPDATE THE STATUS ON A WINDOWS COMPUTER

- 1 Click Start, choose Settings, and then choose Printers.
- 2 Right-click the Fiery EXP8000 and choose Properties.

The Properties dialog box appears.

- 3 Click the Installable Options tab.



- 4 Select the Two-Way Communication option.
- 5 Type the IP address or DNS name of the Fiery EXP8000 and click Update.

The Graphic Arts Package that is enabled at the Fiery EXP8000 appears in the Installed Options list.

NOTE: If you use the Point-and-Print method to install the printer driver and printer description file, you must enable the Two-Way Communication on the FACI monitor at the Fiery EXP8000 for each connection (print, hold, or direct) before you install them to your computer. For more information about Point and Print, see [Printing from Windows](#).

NOTE: Even though the Fiery Graphic Arts Package option appears in the Available Options area, the Fiery EXP8000 is shipped with this option as standard.

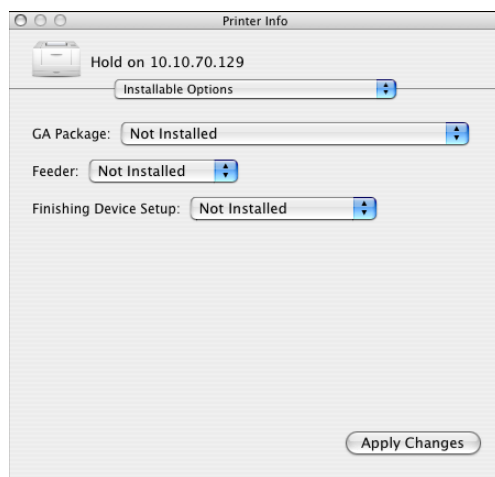
Updating the status on Mac OS

Use the following procedure to update the status of Graphic Arts Package on a computer running Mac OS X.

NOTE: Before updating the status of Graphic Arts Package on a computer running Mac OS X, install the printer driver. For information about installing the printer driver, see [Printing from Mac OS](#).

TO UPDATE THE STATUS ON A COMPUTER RUNNING MAC OS X

- 1 **Start Printer Setup Utility.**
- 2 **Select your printer in the Printer List.**
- 3 **Choose Show Info from the Printer menu.**
- 4 **Choose Installable Options in the Printer Info dialog box.**



- 5 **Choose the Graphic Arts Package from the GA Package menu.**
- 6 **Click Apply Changes.**
- 7 **Close the dialog box.**

Setting up your monitor and the monitor profile

Some Graphic Arts Package features require that a job be displayed with correct colors on your monitor.

The following features require the correct monitor display:

- Paper Simulation White Point editing (see [page 15](#))
- Spot-On Color Search (see [page 33](#))
- Spot-On Substitute Colors (see [page 38](#))
- ImageViewer previewing from Command WorkStation (see [page 74](#))

To display the colors correctly on your monitor, you must set up the monitor display according to the manufacturer's recommendations, and specify the correct monitor profile for your monitor.

Specify the following settings for the monitor display:

- At the monitor: Brightness, Contrast, and Temperature
- From the control panel of the operating system: Resolution, Refresh rate, and Number of colors

For more information about setting up your monitor and the monitor profile, see the documentation that accompanies the monitor.

NOTE: Some of the monitor profiles, including those for the Fiery Advanced Controller Interface (FACI) monitors, are installed when you install Command WorkStation.

PAPER SIMULATION WHITE POINT EDITING

Although an ICC profile contains a definition of “white,” the white may not always visually match the human eye, requiring a perceptual adjustment. The Paper Simulation White Point editing feature allows you to perceptually adjust the hue, brightness, and saturation of the simulated paper white defined in the ICC profile.

Paper simulation workflow

You can print a job with the Paper Simulation feature set to On from the printer driver without customizing paper simulation. Many jobs may print satisfactorily with the fixed default Paper Simulation setting. However, you can customize the paper simulation by editing the white point values with ColorWise Pro Tools Color Editor. After you customize the values, print the job with the custom paper simulation values from the printer driver by setting the Paper Simulation print option to On.

To print a job with the fixed Paper Simulation setting, use the procedure on [page 16](#). For more information about editing Paper Simulation White Point values and printing with custom paper simulation values, see [page 17](#).

Printing a job with default Paper Simulation

Use the following procedure to print a job with the fixed Paper Simulation value.

NOTE: The procedures for printing a job from a Mac OS or a Windows computer are similar.

TO PRINT A JOB WITH DEFAULT PAPER SIMULATION

- 1 **Choose Print from your application.**
- 2 **Select Fiery EXP8000 as your printer and click Properties.**

The Properties dialog box appears with the Fiery Printing tab selected.

- 3 **Click the ColorWise print option bar.**
- 4 **Click Expert Settings.**

The Expert Color Settings dialog box appears.

- 5 **Select Paper Simulation.**
- 6 **Click OK to close the Expert Color Settings dialog box.**
- 7 **Click OK to close the Properties dialog box.**
- 8 **Click Print.**

The job prints with the default Paper Simulation White Point setting.

Paper Simulation print option

The following values are available for the Paper Simulation print option:

- Off (Default)
- On

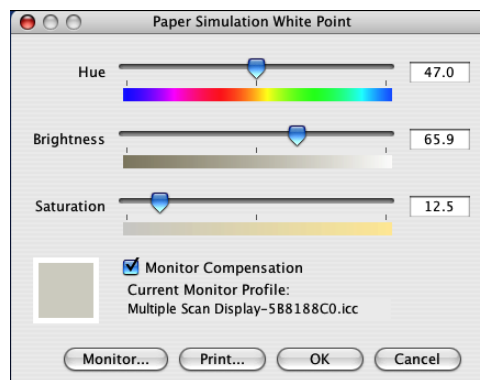
NOTE: If you have not edited the Paper Simulation White Point values with ColorWise Pro Tools Color Editor and select On for this option, your job is printed with the default Paper Simulation values. If you have edited them, your job is printed with the custom Paper Simulation values.

Paper Simulation White Point editing

Your job may print satisfactorily with the fixed Paper Simulation setting. However, you can customize the Paper Simulation setting by editing the Paper Simulation White Point values with ColorWise Pro Tools Color Editor.

Paper Simulation White Point dialog box

The Paper Simulation White Point dialog box displays Hue, Brightness, and Saturation sliders. A graphic under each slider displays the current setting. To adjust the settings, drag the slider left or right, or type a value in the editable text field to the right of the slider bar.



NOTE: The sliders do not show absolute values. The slider position and associated values are relative to the paper white definition in effect when you open the dialog box.

Hue

This setting allows you to change the hue of the Paper Simulation White Point. Specify a value between 0.0 and +359.9. If you specify a value greater than 359.9, it automatically changes to 359.9. If you specify a value less than 0.0, it automatically changes to 0.0.

Brightness

This setting allows you to change the brightness of the Paper Simulation White Point. Specify a value between 0.0 and 100.0 (inclusive). If you specify a value greater than 100.0, it automatically changes to 100.0. If you specify a value less than 0.0, it automatically changes to 0.0.

Saturation

This setting allows you to change the saturation of the Paper Simulation White Point. Specify a value between 0.0 and 100.0 (inclusive). If you specify a value greater than 100.0, it automatically changes to 100.0. If you specify a value less than 0.0, it automatically changes to 0.0.

Preview

This area in the lower-left corner of the dialog box displays a preview of the paper simulation color, surrounded by a white border for contrast. The preview is based on the monitor profile you specified next to Current Monitor Profile.

To preview the color correctly with your monitor, select the Monitor Compensation option, and then select the correct monitor profile for your monitor. For more information, see [page 20](#).

NOTE: To display the colors correctly with your monitor, you must set the monitor and monitor settings correctly. For more information, see [page 14](#).

Editing Paper Simulation White Point

To edit a custom profile, do the following:

- Select a CMYK Simulation Profile.
- Select Full (Output GCR) for a simulation method.
- Link the simulation profile to an output profile.

Use the following procedure to access the Paper Simulation White Point dialog box to edit the values.

NOTE: If Paper Simulation is set to On, and you have defined a substitute color as C=0, M=0, Y=0, K=0, the values defined in Substitute Colors override those for Paper Simulation. For information about Substitute Colors, see “[Spot-On with Substitute Colors](#)” on [page 38](#).

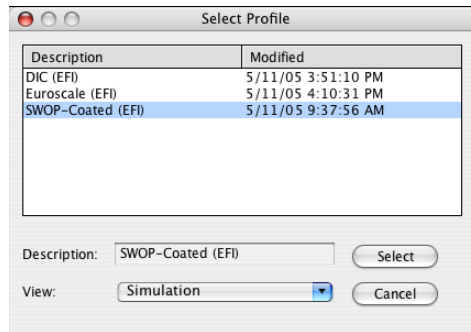
TO ACCESS THE PAPER SIMULATION WHITE POINT DIALOG BOX

1 Start ColorWise Pro Tools and connect to the Fiery EXP8000.

Start ColorWise Pro Tools from a stand-alone application or Command WorkStation, at your computer or at the monitor connected to the Fiery EXP8000.



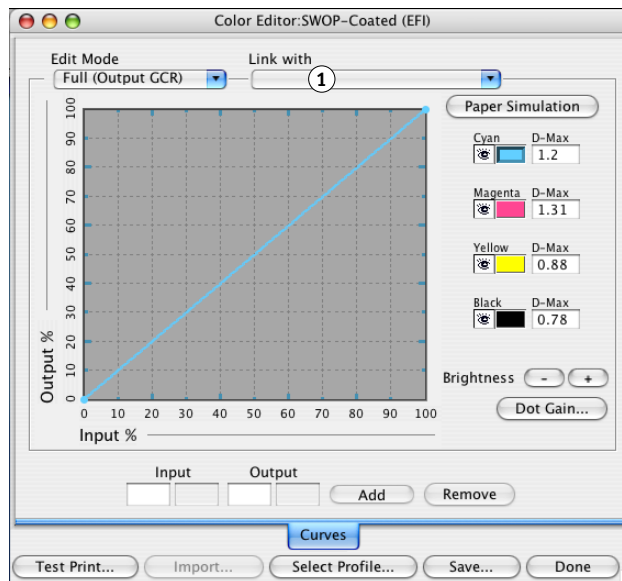
- 2 Click Color Editor.
- 3 Choose Simulation from the View menu.



NOTE: You can edit the white point values of simulation profiles only. You cannot edit those of output profiles.

- 4 Select a simulation profile and click Select.
- The Color Editor dialog box appears.
- 5 Select Full (Output GCR) in the Edit Mode menu.

1 Output profile

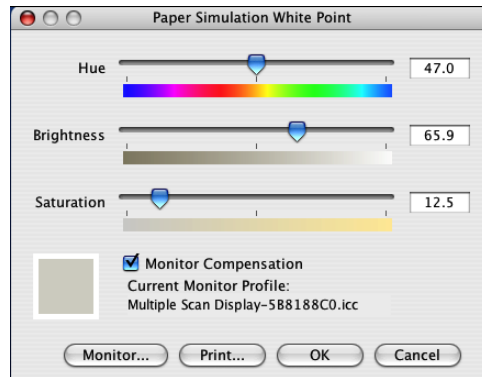


- 6 Select an output profile to link to the edited simulation profile.

NOTE: When you print a job with the edited simulation profile, you must select the same output profile you linked to here to realize the effect of the Paper Simulation White Point editing.

7 Click Paper Simulation.

The Paper Simulation White Point dialog box appears.

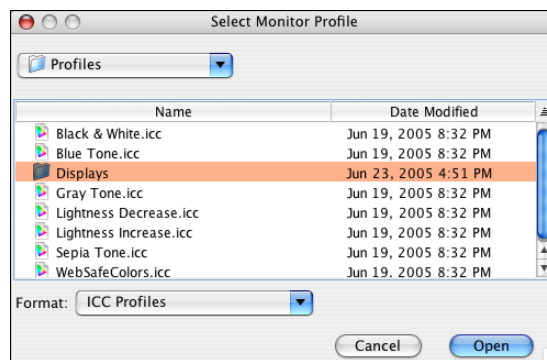


Use the following procedure to edit the Paper Simulation White Point values.

TO EDIT PAPER SIMULATION WHITE POINT VALUES

- 1 Select the Monitor Compensation option in the Paper Simulation White Point dialog box.**
- 2 Make sure that the correct monitor profile for your monitor is displayed next to Current Monitor Profile.**
- 3 If the correct monitor profile is not selected, click Monitor.**

The Select Monitor Profile dialog box appears.
- 4 Choose ICC Profiles from the Format menu.**



- 5 Select the monitor profile for your monitor and click Open.**

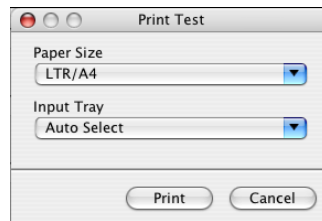
The Paper Simulation White Point dialog box appears.

6 Edit the Hue, Brightness, and Saturation values.

Edit the values by dragging the sliders or typing values in the text fields. For detailed information about the Paper Simulation White Point dialog box, see [page 17](#).

7 View the changes in the preview patch in the lower-left corner of the dialog box.**8 Click Print.**

The Print Test dialog box appears.

**9 Choose settings from the Paper Size and Input Tray menus and click Print.****10 Click OK to close the Paper Simulation White Point dialog box.****11 Click Save in the Color Editor dialog box.**

The Save dialog box appears.

12 Type a new name and click Save.**13 Quit Color Editor.**

Printing with custom paper simulation values

After you edit the paper simulation values in Color Editor, you can print a document with the custom paper simulation values from the printer driver. You can also override the setting with Command WorkStation.

NOTE: The procedures for printing a job from a Windows or Mac OS computer are fundamentally the same. The following procedure uses illustrations from a Mac OS computer.

Use the following procedure to print a job with the custom paper simulation values.

TO PRINT A JOB WITH EDITED PAPER SIMULATION VALUES

1 Choose Print in your application.

The print dialog box appears.

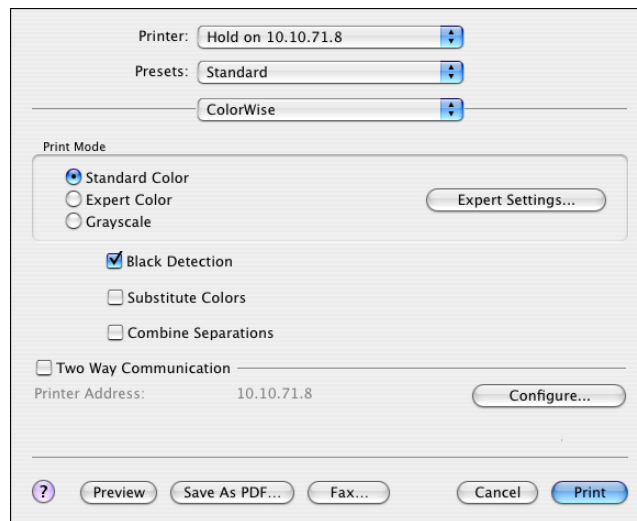
2 Mac OS X v10.3: Choose ColorSync from the Copies & Pages menu.

The ColorSync pane appears.

3 Choose In Printer from the Color Conversion menu.

4 Choose ColorWise from the Copies and Pages menu.

The ColorWise pane appears.

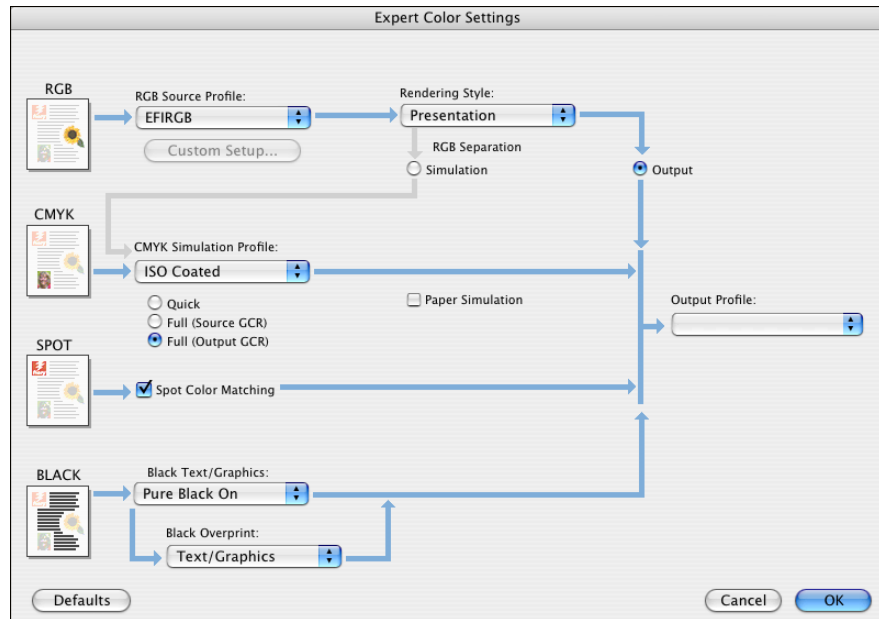


5 Select Two-Way Communication.

For information about enabling Two-Way Communication, see *Printing from Mac OS*.

6 Click Expert Settings in the Print Mode area.

The ColorWise Expert Settings dialog box appears.



7 Choose the custom simulation profile from the CMYK Simulation Profile menu.

Choose the simulation profile you saved after editing the Paper Simulation White Point values in the previous section.

8 Select the Full (Output GCR) option.

9 Select Paper Simulation.

10 Choose the output profile that you linked to the custom simulation profile from the Output Profile menu.

11 Click OK.

The ColorWise pane reappears.

12 Click Print.

The job is printed using your custom CMYK Simulation Profile with the edited White Point values.

SPOT-ON WITH NAMED COLORS

The Spot Color Matching print option automatically matches spot colors with their best CMYK equivalents so that spot colors can be simulated using the CMYK toner of the digital press. However, you may want to adjust the default CMYK equivalents to achieve a better match for your specific printing conditions.

Using Spot-On

Spot-On allows you to adjust and manage lists of spot colors and their CMYK equivalents. The matching lists of spot colors and CMYK values are known as Spot Color Dictionaries. Spot-On allows you to maintain multiple Spot Color Dictionaries for each output profile on the Fiery EXP8000.

NOTE: To use the Spot-On features with named colors, you must enable the Spot Color Matching print option. For more information, see [Color Printing](#).

NOTE: Spot colors identified by names are printed with their defined CMYK values. The edits to the output profile made with Color Editor do not affect how spot colors print. However, the edits to a job made with the color adjustment features in ImageViewer affect all colors in the job, including spot colors.

Starting Spot-On

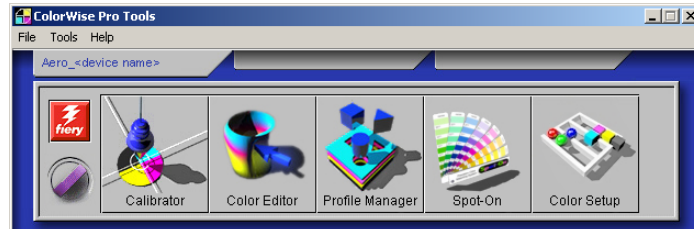
To use Spot-On, you must specify the output profile associated with the Spot Color Dictionary that you want to edit.

If you select Output profile X and redefine PANTONE 123 from 30%M to 50%M using Spot-On, you will get 50%M when you print a job with Output profile X. If you print a job with Output profile Y, you will get the original value. If you select Output profile X and create a custom color named “My Purple” and define it as 80C 40M, ColorWise automatically calculates the Lab values using Output profile X and creates new CMYK values for use with Output profile Y.

NOTE: The Fiery EXP8000 allows only one user to connect to Spot-On at a time.

TO START SPOT-ON

- 1 Start ColorWise Pro Tools and connect to the Fiery EXP8000.

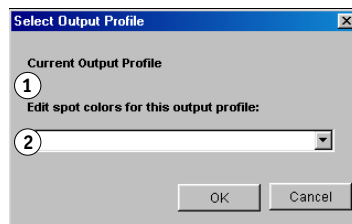


- 2 Click Spot-On.

The Select Output Profile dialog box appears.

- 3 Choose an output profile and click OK.

- 1 Current output profile
- 2 Output profiles to link



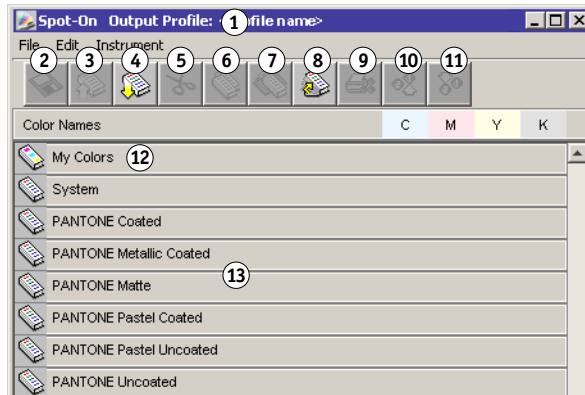
The Spot-On main dialog box appears. The CMYK values displayed in the dialog box are calculated with respect to the specified profile.

NOTE: When you print a job, choose the same output profile from the printer driver as the one that is selected in the Select Output Profile dialog box. Otherwise, color adjustments based on Spot-On have no effect.

Spot-On main window

The Spot-On main window lists color groups that represent libraries of spot colors on the Fiery EXP8000. Tool icons for working with colors appear at the top of the window.

- 1 Output profile
- 2 Save
- 3 Upload
- 4 Download
- 5 Cut
- 6 Copy
- 7 Paste
- 8 Close all
- 9 Print
- 10 Up
- 11 Down
- 12 Custom color group
- 13 Default color group



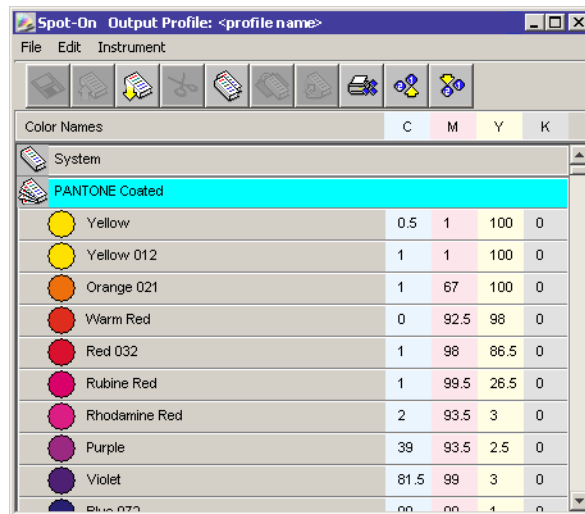
By default, the Fiery EXP8000 includes several PANTONE libraries along with a System library. The DIC, HKS, and TOYO libraries are also available. These factory default libraries appear marked with the default group icon ().

You can add custom color groups and colors to the Spot-On window (see [page 29](#)). Added groups appear marked with the custom group icon (). Both default and custom groups can be opened to display included colors.

TO OPEN AND CLOSE A COLOR GROUP

- 1 To open a color group, double-click the icon to the left of the group name.

When you open a group, all the colors in the group are displayed, and the group icon changes appearance.



- 2 To close a color group, click the icon to the left of the group name.
- 3 To close all the color groups in the list, choose Close All from the Edit menu.

Working with existing colors

Spot-On allows you to view and manage existing groups of colors on the Fiery EXP8000 and search for a particular color in the Spot-On list.

Color groups in the Spot-On window appear in the order of their priority. Highest priority is assigned to color groups at the top of the list. For instance, if two colors from two different color groups have the same name, the Fiery EXP8000 uses the color from the higher group and disregards the other color. By managing the priority of colors in this way, you can maintain several CMYK variants for the same spot color.

TO REARRANGE THE PRIORITY OF COLORS

- 1 To rearrange an entire color group, select the desired color group.
To rearrange an individual color, select the desired color.

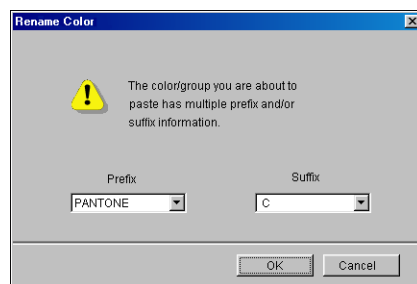
Individual spot colors are marked with circular color icons.

- 2 To move the selection up or down in the list, click the Up or Down icon in the toolbar.
- 3 To paste the selection in a different location in the list, click the Cut or Copy icon in the toolbar.

NOTE: The Cut operation is available only for custom colors.

- 4 Click the location in the list where you want to paste the cut or copied selection, and then click the Paste icon in the toolbar.

When you paste a default PANTONE color or group, a warning message appears, asking you to rename the selection because of the multiple prefixes and suffixes for the PANTONE colors and groups. Use the menus to choose the desired prefix and suffix for the new name, and then click OK. The pasted selection becomes a custom color or group with the specified name.



TO FIND A SPECIFIC COLOR

- 1 Choose Find from the Edit menu.

The Find dialog box appears.

- 2 Specify the name of the color that you want to find and click OK.

Spot-On searches for the specified color, starting from the top of the color list. Once located, the color appears selected in the color list.

- 3 To find additional colors based on the same search criteria, choose Find Again from the Edit menu.

Creating custom colors

Spot-On provides a number of default color groups in the color list. You can add your own custom spot colors and groups to the list.

TO ADD A NEW COLOR OR COLOR GROUP

- 1 **Select the location in the group or color list where you want the addition to be placed.**
- 2 **Choose New Group from the Edit menu to insert a new group, or choose New Color to insert a new color.**

A new color group entry or color entry appears as Untitled.

TO RENAME A CUSTOM COLOR OR GROUP

- 1 **Select the specific color or group that you want to rename.**
- 2 **Double-click the name of the color or group.**
- 3 **Type the new name exactly as it appears in the job, including uppercase and lowercase characters and spaces, as needed.**

This new name is supplied by the source application (such as Adobe Illustrator or QuarkXPress) to your PostScript job. If you do not have access to the source document, use Postflight to view the list of the exact color names used in your job. A Postflight Detailed Report prints all the named colors used in a document. For more information about Postflight, see [page 91](#).

NOTE: Default groups or colors (such as PANTONE) cannot be renamed.

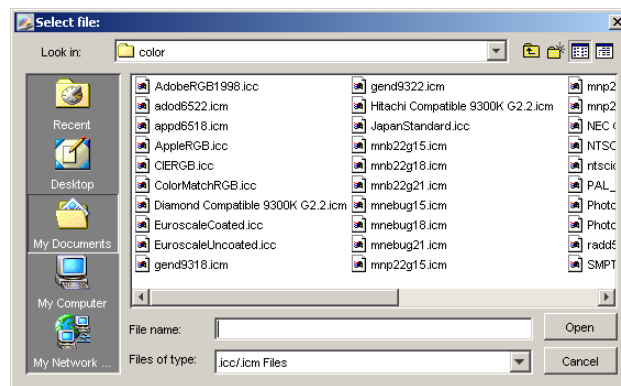
Downloading custom color groups

You can download custom color groups from your computer to the Fiery EXP8000. Downloaded groups are added as custom groups to the Spot-On color list and are immediately enabled for use on the Fiery EXP8000.

TO DOWNLOAD CUSTOM COLOR GROUPS

- 1 Select the location in the color list where you want to add the downloaded group.
- 2 Choose Download from the File menu.

The Select file dialog box appears.



NOTE: The supported file format for download is ICC Named Color Profile.

- 3 Locate and select the desired color group, and then click Open.

The downloaded group is added to the specified location in the Spot-On list. If you did not specify a location, the group is added to the top of the list.

If the downloaded group has the same name as an existing group in the list, you are prompted to rename the downloaded group.

Uploading custom color groups

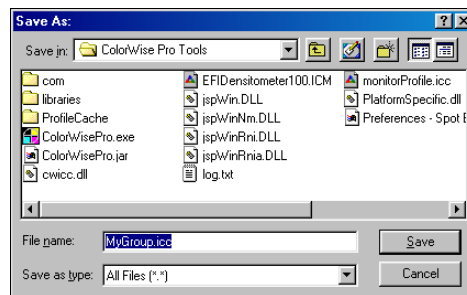
You can upload custom color groups from the Fiery EXP8000 to your computer as ICC files. The upload feature allows you to share a group by creating a local copy that can be downloaded to another Fiery EXP8000.

You must save a color group to the Fiery EXP8000 before you can upload it to your computer. To upload a factory default group, copy and paste the group as a new custom group, and then upload the group.

TO UPLOAD CUSTOM COLOR GROUPS

- 1 Select the name of the color group that you want to upload.
- 2 Choose Upload from the File menu.

The Save As dialog box appears.



- 3 Browse to the location where you want to save the file, name the file, and then click Save.

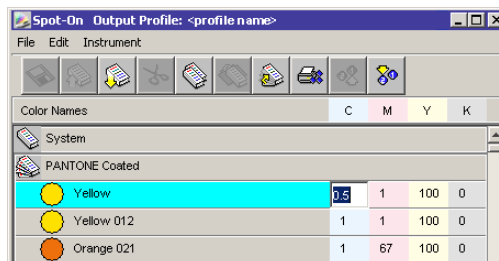
Editing color values

If an existing spot color is not printing as intended, edit the color values as needed to achieve your intended result. Edit color values by entering the exact CMYK values in the Spot-On main window or in the Set Center Patch Color dialog box, or using the Spot-On Color Search feature.

Use the following procedures to edit a named color by entering the exact CMYK values. To target a color using Spot-On Color Search, see [page 33](#).

TO EDIT A COLOR IN THE SPOT-ON MAIN WINDOW

- 1 Select the color you want to edit.
- 2 Double-click the value under C, M, Y, and K, and enter a new number for each color channel.



The edited color appears in the color list.

NOTE: The edited color is not saved until you choose Save from the File menu.

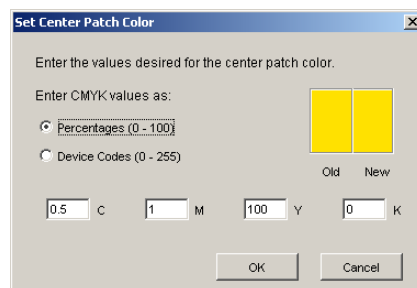
TO EDIT A COLOR IN THE SET CENTER PATCH COLOR DIALOG BOX

- 1 Select the color that you want to edit.
- 2 Double-click the color icon.

The Spot-On Color Search dialog box appears with the selected color in the center.

- 3 Click the center patch.

The Set Center Patch Color dialog box appears.



4 Indicate whether you want to enter CMYK values as percentages or Device Codes.

The Percentages option allows you to enter color values between 0 and 100%, in increments of 0.5. Values out of this range are rounded to the nearest whole or half percentage.

The Device Codes option allows you to enter color values between 0 and 255. This option reflects the full range of color values that the Fiery EXP8000 can reproduce and provides finer gradations of color than are possible with Percentages.

5 Enter the C, M, Y, and K values of your specific color in the appropriate fields.

Use the Tab key to move from field to field. As you enter each new value, the preview patch updates to reflect the old and new colors.

6 Click OK.

The new color is displayed in the center of the Spot-On Color Search dialog box.

7 Click OK.

The edited color appears in the color list of the Spot-On main window.

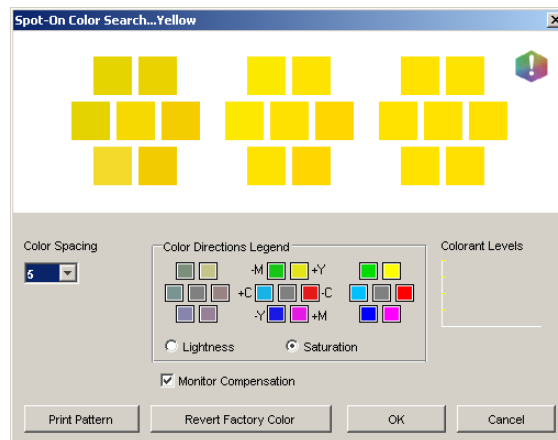
Use the following procedure to target a color using the Spot-On Color Search dialog box. Beginning with an approximate color in the Spot-On Color Search dialog box, adjust the hue, saturation, and lightness of the color until you achieve an acceptable match.

TO TARGET A COLOR USING SPOT-ON COLOR SEARCH

1 Select the color that you want to edit.

2 Double-click the color icon.

The Spot-On Color Search dialog box appears with the current color in the center.



- 3 **To update the center patch to a neighboring color that more closely matches the target, click the corresponding neighbor patch.**

Neighboring patches represent variations from the center patch and can be selected if they offer a closer match to the desired color. Clicking one of these patches updates the center patch to the new color and provides a new selection of neighboring colors. These patches are either lightness or saturation neighbors, depending on the option you choose in the following step.

NOTE: When you select certain colors, an exclamation point icon may appear in the upper-right corner of the dialog box. This icon indicates that one or more colorants have reached their maximum values.

- 4 **Use the following techniques to control how neighboring color patches are generated:**

Select Lightness or Saturation in the Color Directions Legend.

Lightness generates neighbor patches based on darker to lighter shades of the original color. This variation is displayed from left to right, with the original color remaining in the center of the middle group.

Saturation generates neighbor patches based on less saturated to more saturated variations of the original color. This variation is displayed from left to right, with the original color remaining in the center of the middle group.

Choose a setting from the Color Spacing menu to control the closeness of the neighbor patches.

A higher setting generates neighbor patches that differ more noticeably from the center color. As you get closer to your target color, reduce the color spacing to a smaller value.

Select Monitor Compensation to simulate how all the on-screen color patches will appear when printed on paper.

This simulation depends on the monitor profile configured for your monitor. To specify the monitor profile, choose Preferences from the Edit menu in the Spot-On main window.

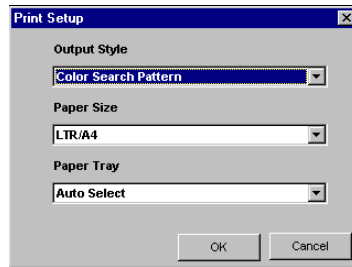
Make sure that you set your monitor according to the manufacturer's recommendations and select the correct monitor profile for your monitor (including the FACI monitor). For more information, see [page 14](#).

- 5 **Continue adjusting the color patch controls and clicking neighbor patches until the color you want appears in the center patch.**

- 6 **Click Print Pattern.**

NOTE: It is very difficult to accurately match spot colors on a monitor. Always print a test page to ensure the proper color match.

7 Choose the appropriate settings from the Output Style, Paper Size, and Paper Tray menus.



For Output Style, choose Color Search Pattern or Color Neighbor Pattern. Color Search Pattern prints patches with the same pattern displayed in the Color Search dialog box. Color Neighbor Pattern prints patches in a three column by eight row format.

For Paper Size, choose the size of the paper that you want to use for printing the patches.

For Paper Tray, specify the paper source for the paper that you want to use.

8 Click OK to print the patches.

The Print Pattern test page provides the following information:

- Center patch color CMYK value
- Color spacing
- Lightness or Saturation neighbors selected
- Output profile selected

The goal of Spot-On Color Search is to find the color values that make a printed color patch match a target, not its screen simulation of it. Printing a Print Pattern of neighbor color patches allows you to compare the printed patches to the color target. After you compare the printed patches and find the one that matches most closely, you can select the corresponding patch on-screen.

9 Select the desired target color in the Spot-On Color Search dialog box and click OK.

The edited color appears in the color list of the Spot-On main window.

Using a measurement instrument to target colors

If you have the EFI Spectrometer ES-1000, you can import measured color values directly into Spot-On. This feature allows you to target matches based on the actual colors of immediate objects, such as the red of a printed logo or the yellow of a packaging envelope.

TO IMPORT COLOR MEASUREMENTS INTO SPOT-ON

1 Install and set up the ES-1000 for use with your computer.

For installation and setup instructions, see the documentation that accompanies the instrument.

2 Choose Start from the Instrument menu.

The Choose Port dialog box appears.

3 For Instrument, choose the instrument that you will use to take measurements. For Port, choose the serial port connection of the instrument. Click OK.

4 Place the ES-1000 over the target color, making sure to center the sample aperture over the color. Press Measure to take the measurement.

The measured CMYK values are imported into Spot-On as follows:

- If an individual color is selected in the color list, it updates to the measured color.
- If a group is selected in the color list, a new color with the measured values is created within the group.
- If the Spot-On Color Search dialog box is open, the center patch updates with the measured values, and the neighbor patches update accordingly.
- If the Set Center Patch Color dialog box is open, the measured values are imported into the CMYK entry fields.

5 When you are finished taking color measurements, choose Stop from the Instrument menu.

Spot-On closes the connection to the instrument.

Reverting default colors to factory settings

You can revert default colors to their factory default settings. Revert all colors within a default color group, or revert one or more specific colors within a default color group, so that only those colors are reset to the factory default settings.

TO REVERT ALL COLORS WITHIN A DEFAULT COLOR GROUP TO FACTORY DEFAULTS

- 1 Click the icon to the left of the name of the group that you want to revert.
- 2 Choose Revert Group from the File menu.
A warning message appears.
- 3 Click OK.

TO REVERT SPECIFIC COLORS WITHIN A DEFAULT COLOR GROUP TO FACTORY DEFAULTS

- 1 Click the icon to the left of the name of the group that contains the colors you want to revert.
- 2 Select the colors that you want to revert to the factory defaults.
To select more than one color, Shift-click to select an adjacent color or Control-click to select a nonadjacent color.
- 3 Choose Revert Factory Color from the File menu.
A warning message appears.
- 4 Click OK.

Saving changes and exiting Spot-On

To enable your spot color matches for use with the Fiery EXP8000, save your edits before you exit Spot-On. This ensures that all your changes to Spot-On color definitions are stored on the Fiery EXP8000 and are available for use when printing documents that contain spot colors.

The following edits do not require saving to take effect:

- Rearranging the priority level of a color group
- Downloading a color group
- Clearing or deleting a color group

TO SAVE THE SPOT-ON COLOR LIST

- 1 Choose Save from the File menu.
- 2 Click Close in the upper-right corner of the Spot-On main window to exit the utility.

SPOT-ON WITH SUBSTITUTE COLORS

In addition to managing “named” colors (spot colors and custom colors), Spot-On allows you to create a list of “substitute” colors with Graphic Arts Package. These are colors that, when called for in a document by their RGB or CMYK values, are substituted with a different color having the CMYK values from the Spot-On color dictionary. This permits exact color control and overrides individual RGB and CMYK colors.

NOTE: Color substitutions affect only text, vector, and line art. They have no effect on raster images.

NOTE: When a color is defined as a substitute color, the settings for an RGB color (such as RGB Source, Rendering Style, and RGB Separation) or CMYK color (such as CMYK Simulation Profile, CMYK Simulation Method, and Paper Simulation) have no effect. The color is converted with a process similar to spot color conversion.

For information about managing named colors, see *Color Printing*.

Substitute Colors workflow

The Substitute Colors workflow involves defining the substitute color values with Spot-On, and then printing a document with the Substitute Colors print option set to On from the printer driver. You can also change the print option setting using Command WorkStation overrides.

NOTE: You cannot use the Substitute Colors and Postflight features at the same time. These print options are constrained from the printer driver.

Creating a color for substitution

Use the following procedure to add a new substitute color in a substitute group and specify the value-name for a color to substitute.

NOTE: A new substitute color can be added only to a substitute group.

TO ADD A NEW SUBSTITUTE COLOR AND SPECIFY THE VALUE-NAME FOR SUBSTITUTION

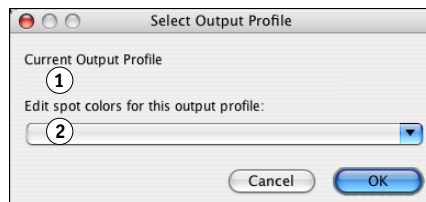
1 Start ColorWise Pro Tools and connect to the Fiery EXP8000.

NOTE: Start ColorWise Pro Tools from a stand-alone application or Command WorkStation, at your computer or at the monitor connected to the Fiery EXP8000.



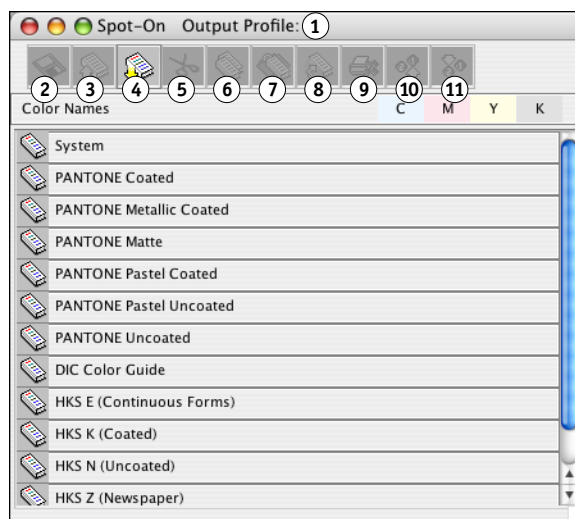
2 Click Spot-On.

The Select Output Profile dialog box appears.



3 Choose an output profile and click OK.

The Spot-On main dialog box appears.

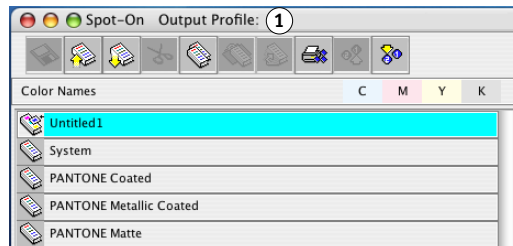


NOTE: When you print a job, choose the same output profile from the printer driver as the one that is selected in the Select Output Profile dialog box. Otherwise, color adjustments based on Spot-On have no effect.

- 4 Select the location in the group list where you want the addition to be placed.
- 5 Choose New Substitute Group from the Edit menu.

A new substitute group entry appears as Untitled.

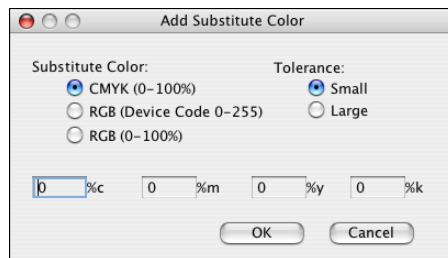
1 Output profile



- 6 Double-click Untitled and type a new name.
- 7 Select the substitute group and choose New Substitute Color from the Edit menu.

NOTE: If the substitute group already contains substitute colors, select the color above the location where you want to add a new substitute color.

The Add Substitute Color dialog box appears.



- 8 Select a color mode for the substitute color.
 - 9 Select a tolerance degree for the substitute color.
- For information about Tolerance, see pages 45 through 46.
- 10 Specify the values for the color that you want to substitute.
 - 11 Click OK.

The substitute color appears at the specified location.

Defining the color values for a substitute color

After you specify the original color to substitute, define CMYK values for the substitute color by typing the exact CMYK values in the Spot-On main window or Set Center Patch Color dialog box, or use Spot-On Color Search.

For instructions on defining a substitute color by typing the exact CMYK values, see the following sections. To define a substitute color in the Spot-On Color Search dialog box, see [page 43](#).

TO DEFINE A SUBSTITUTE COLOR IN THE SPOT-ON MAIN WINDOW

- 1 Start ColorWise Pro Tools and connect to the Fiery EXP8000.



- 2 Click Spot-On.

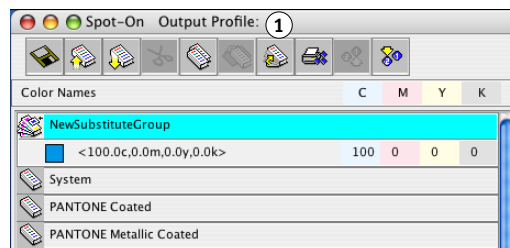
The Select Output Profile dialog box appears.

- 3 Choose an output profile and click OK.

The Spot-On main dialog box appears.

- 4 Select the color that you want to substitute.

1 Output profile



- 5 Double-click the value under C, M, Y, and K, and type a new number for each color channel.

The new values for the substitute color appear in the color list.

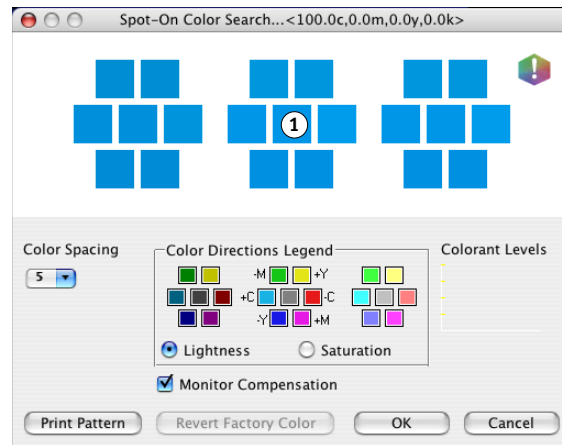
NOTE: The edited color is not saved until you choose Save from the File menu.

TO DEFINE A SUBSTITUTE COLOR IN SET CENTER PATCH COLOR

- 1 Select the color that you want to substitute.
- 2 Double-click the color icon.

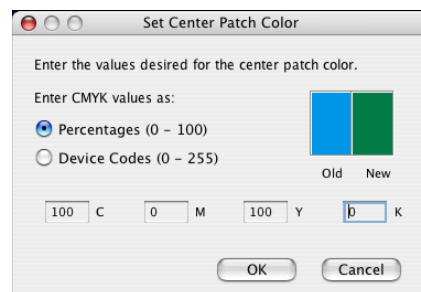
The Spot-On Color Search dialog box appears with the selected color in the center.

1 Center patch



- 3 Click the center patch.

The Set Center Patch Color dialog box appears.



- 4 Type values for each C, M, Y, and K color channel.

For information about using Set Center Patch Color, see [Color Printing](#).

- 5 Click OK.

The new color appears in the center in the Spot-On Color Search dialog box.

- 6 Click OK.

The new color appears in the color list of the Spot-On main window.

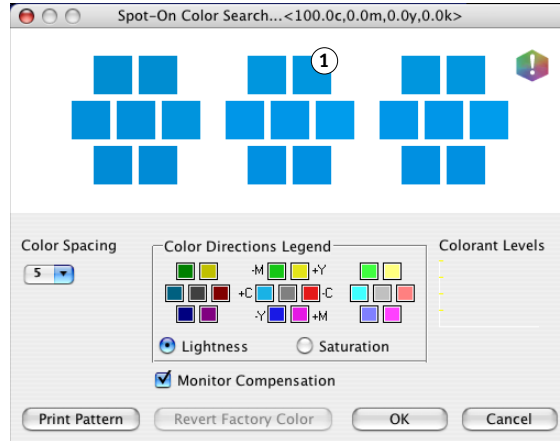
NOTE: The edited color is not saved until you choose Save from the File menu.

Use the following procedure to target a substitute color using the Spot-On Color Search dialog box.

TO DEFINE A SUBSTITUTE COLOR USING SPOT-ON COLOR SEARCH

- 1 **Select the color that you want to substitute.**
- 2 **Double-click the color icon.**

The Spot-On Color Search dialog box appears, displaying the current color in the center.

1 Neighboring patch


- 3 **Click neighboring patches until you find the color that you want to use for the substitution.**

For more information about using Spot-On Color Search, see [Color Printing](#).

- 4 **Click OK.**

The new substitute color appears in the color list of the Spot-On main window.

NOTE: The edited color is not saved until you choose Save from the File menu.

Printing a job with a substitute color

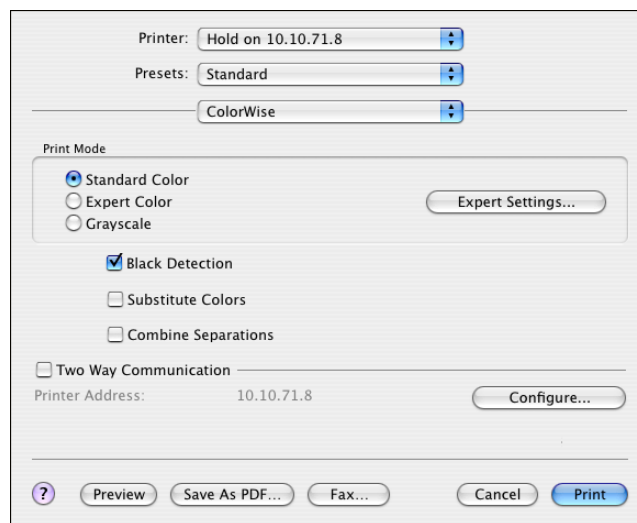
After you define CMYK values for substitution in Spot-On, you can print a document with the substitute color from the printer driver. You can also override the print option setting using Command WorkStation.

NOTE: The procedures for printing a job from a Mac OS and a Windows computer are similar.

TO PRINT A JOB WITH A SUBSTITUTE COLOR

- 1 **Open a document in your application.**
- 2 **Choose Print.**
- 3 **Choose ColorWise from the Copies and Pages menu.**

The ColorWise pane appears.

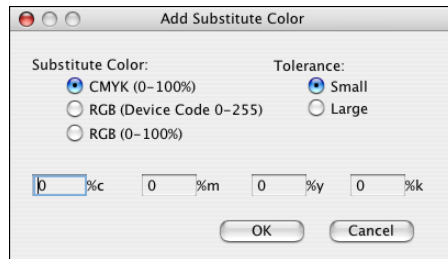


- 4 **Choose On from the Substitute Colors menu.**
- 5 **Click Print.**

The job is printed with the substitute you defined in Spot-On.

Substitute Color dialog box

You can define the color mode and tolerance range for a substitute color in the Add Substitute Color or Rename Substitute Color dialog box.



NOTE: The Add Substitute Color dialog box appears when you choose Edit>New Substitute Color after selecting a substitute color group in the list. The Rename Substitute Color dialog box appears when you double-click the bracketed section of a substitute color.

NOTE: The Add Substitute Color and Rename Substitute Color dialog boxes offer the same control in defining a substitute color.

- **Substitute Color:** Select the following color modes for a substitute color:
 - CMYK (0-100%)
 - RGB (Device Code 0-255)
 - RGB (0-100%)
- **Tolerance:** Select the following tolerance ranges for a substitute color:
 - Small (indicated in lowercase)
 - Large (indicated in uppercase)

To avoid entry errors, the Add Substitute Color and Edit Substitute Color dialog boxes display the values in the following predefined formats. The dialog boxes also display uppercase or lowercase characters and a “%” symbol, depending on the selections.

- **CMYK (0-100%) mode**
 - Small: <“0”%c, “0”%m, “0”%y, “0”%k>
 - Large: <“0”%C, “0”%M, “0”%Y, “0”%K>
- **RGB (Device Code 0-255) mode**
 - Small: <“0”r, “0”g, “0”b>
 - Large: <“0”R, “0”G, “0”B>
- **RGB (0-100%) mode**
 - Small: <“0”%r, “0”%g, “0”%b>
 - Large: <“0”%R, “0”%G, “0”%B>

Principles for Substitute Colors

In setting the values for Substitute Colors, keep in mind the following principles.

Tolerance range

The accuracy of the substitute color is affected by various elements, such as applications, operating systems, printer drivers, and distilling processes. To accommodate the “errors” that occur because of the rounding rules between the numbers entered by users and the numbers received by the Fiery EXP8000, the options of the small and large tolerance ranges are provided for color substitution.

The following table provides Small and Large substitution tolerance ranges for each color mode.

Color mode	Small tolerance range	Large tolerance range
CMYK (0-100%)	+/- 0.25%	+/- 0.5%
RGB (Device Code 0-255)	+/- 0.25	+/- 1
RGB (0-100%)	+/- 0.25%	+/- 0.5%

NOTE: Values for tolerance ranges are approximate.

- **CMYK (0-100%)**

- Small: A substitute color replaces any color that falls within the nearest +/- 0.25% of the color value entered.
- Large: A substitute color replaces any color that falls within the nearest +/- 0.5% of the color value entered.

- **RGB (Device Code 0-255)**

- Small: A substitute color replaces any color that falls within the nearest +/- 0.25 of the color value entered.
- Large: A substitute color replaces any color that falls within the nearest +/- 1 of the color value entered.

- **RGB (0-100%)**

- Small: A substitute color replaces any color that falls within the nearest +/-0.25% of the color value after scaling.
- Large: A substitute color replaces any color that falls within the nearest +/-0.5% of the color value after scaling.

Color substitution

A color substitution takes place when a substitute color is defined with a different set of CMYK values for the same value-name as the original color.

The following color examples show how a substitution works.

- **Original color:** <100, 0, 0, 0> for the CMYK values (cyan)
- **Substitute 1:** <0, 100, 100, 0> (red)
- **Substitute 2:** <100, 0, 100, 0> (green)

NOTE: In the examples, the extreme values and terms “red” and “green” are used for illustrative purposes only.

The following table shows color substitution with different sets of CMYK values assigned to the same original color.

	Substitution value-name	CMYK values	Before substitution	After substitution
Original color	—	<100, 0, 0, 0>	—	—
Substitute 1	<100.0c, 0.0m, 0.0y, 0.0k>	<0, 100, 100, 0>	cyan	red (see the following)
Substitute 2	<100.0c, 0.0m, 0.0y, 0.0k>	<100, 0, 100, 0>	cyan	green (see the following)

Substitute 1



Substitute 2



Priority scheme

If two substitute colors are defined with the same value-names, but with different sets of CMYK values and different tolerance ranges, Spot-On resolves the priority of substitution according to the order of color in the group.

Spot-On process color substitution is based on the order of color in the group. The color entries at the top of the list have priority over the colors at the bottom of the list. Spot-On scans the list from top to bottom and processes substitution in linear order. When a color is remapped, it is not overridden by any subsequent substitution call.

The following color examples show how the priority scheme works.

- **Original color:** <100, 0, 0, 0> for the CMYK values (cyan)
- **Substitute 3:** <0, 100, 100, 0> (red) with a small tolerance
- **Substitute 4:** <100, 0, 100, 0> (green) with a large tolerance

NOTE: In the examples, the extreme values and terms “red” and “green” are used for illustrative purposes only.

Order of the colors

- **Case 1:** Substitute 3 (red) is higher than Substitute 4 (green) in the list.
- **Case 2:** Substitute 4 (green) is higher than Substitute 3 (red) in the list.

The following table shows the scheme of priority when the same value-names are assigned to the original color with different sets of CMYK values and different tolerance ranges.

	Color order	Substitution value-name	CMYK values	Before substitution	After substitution
Original color			<100, 0, 0, 0>		
Case 1	Substitute 3	<100.0c, 0.0m, 0.0y, 0.0k>	<0, 100, 100, 0>	cyan	red (see the following)
	Substitute 4	<100.0C, 0.0M, 0.0Y, 0.0K>	<100, 0, 100, 0>		
Case 2	Substitute 4	<100.0C, 0.0M, 0.0Y, 0.0K>	<100, 0, 100, 0>	cyan	green (see the following)
	Substitute 3	<100.0c, 0.0m, 0.0y, 0.0k>	<0, 100, 100, 0>		

Case 1



Case 2



Substitute 3 and Substitute 4 have the same value-names, but depending on their order in the list, Spot-On produces different results.

- In Case 1, Substitute 3 is given higher priority because it is higher in the list. Subsequently, substitution with Substitute 4 takes place because its tolerance range is larger.
- In Case 2, Substitute 4 is given higher priority because it is higher in the list. No subsequent substitution with Substitute 3 takes place because its tolerance range is smaller.

Uploading and downloading a substitute color group

Like named color groups, you can upload or download a substitute color group as an ICC profile. The substitute color definitions are saved with private tags as part of an ICC profile, allowing you to export the Substitution Group definitions between multiple print servers. However, Substitution Group definitions are recognized only by a Fiery EXP8000 with Graphic Arts Package enabled.

COLOR SETUP FEATURES

With Graphic Arts Package, Premium Edition, ColorWise Pro Tools Color Setup offers the following customizable features, in addition to the Color Process Flow feature:

- Control Bar
- Auto Trapping
- Progressives
- Halftone Screens

For information about Color Process Flow, see [Color Printing](#).

The ColorWise Pro Tools applications for Windows and Mac OS computers are similar.

ColorWise Pro Tools Color Setup features

Access the Control Bar, Auto Trapping, and Progressives features from Color Setup.

For information about these features, see the following sections:

- Control Bar (see [page 51](#))
- Auto Trapping (see [page 59](#))
- Progressives (see [page 63](#))
- Halftone Screens (see [page 67](#))

Using Color Setup

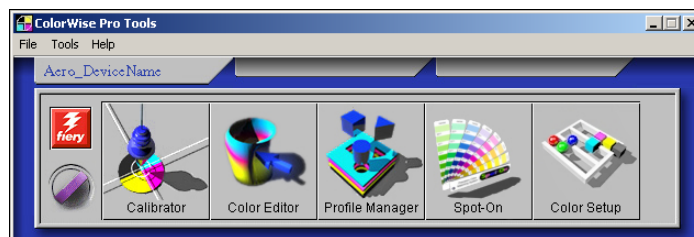
Use the following procedure to start Color Setup.

NOTE: For information about installing ColorWise Pro Tools and configuring a connection, see *Color Printing*.

TO START COLOR SETUP

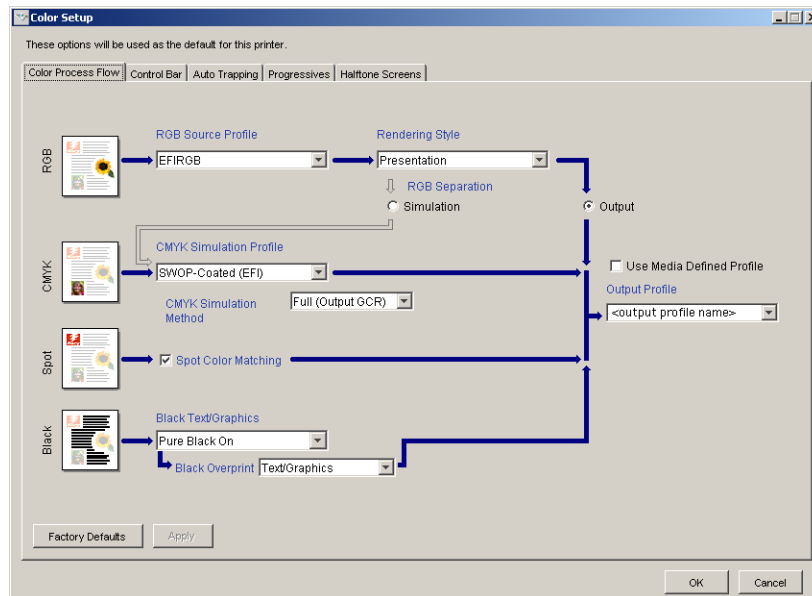
1 Start ColorWise Pro Tools and connect to the Fiery EXP8000.

NOTE: Start ColorWise Pro Tools from a stand-alone application or Command WorkStation, at your computer or at the monitor connected to the Fiery EXP8000.



2 Click Color Setup.

The Color Setup main window appears with the Color Process Flow tab selected.



Control Bar

Control Bar allows you to add a static color bar and dynamic job information to each printed page at the user-defined location. The feature can be set as a server default or overridden on a per-job basis.

The default Control Bar is designed to fit the Fiery EXP8000's default paper size, Letter /A4, or larger. You can create Control Bars for other paper sizes.

NOTE: If a Control Bar does not fit on the page, it will be clipped.

NOTE: If a background color is defined as “white” for a user-defined Control Bar, it must be defined in the CMYK color space for the Paper Simulation feature to take effect. For more information about Paper Simulation, see [page 15](#).

Control Bar workflow

The default Control Bar provides a color bar and dynamic job information. Print a job with the default Control Bar by setting the Control Bar print option to On from the printer driver. Many jobs print satisfactorily with the default Control Bar, but if you require your own color bars, create them by defining custom values in the Control Bar Definition dialog box. After you define a custom Control Bar in the Control Bar pane in Color Setup, you can print a job with the custom Control Bar from the printer driver.

To print a job with the default Control Bar, see the following section. For information about the Control Bar pane, see [page 53](#). To create your own Control Bars, see [page 54](#). To print a job with a custom Control Bar, see [page 58](#).

Printing with a default Control Bar

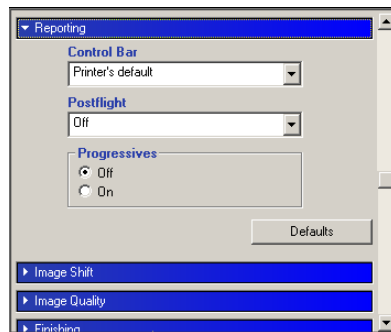
Print a job with the default Control Bar by setting the Control Bar print option to On from the printer driver.

TO PRINT A JOB WITH THE DEFAULT CONTROL BAR

- 1 Choose Print from your application.**
- 2 Select Fiery EXP8000 as your printer and click Properties.**

The Properties dialog box appears, with the Fiery Printing tab selected.

- 3 Click the Reporting print option bar.**



- 4 Choose On from the Control Bar menu.**
- 5 Click OK.**
- 6 Click Print.**

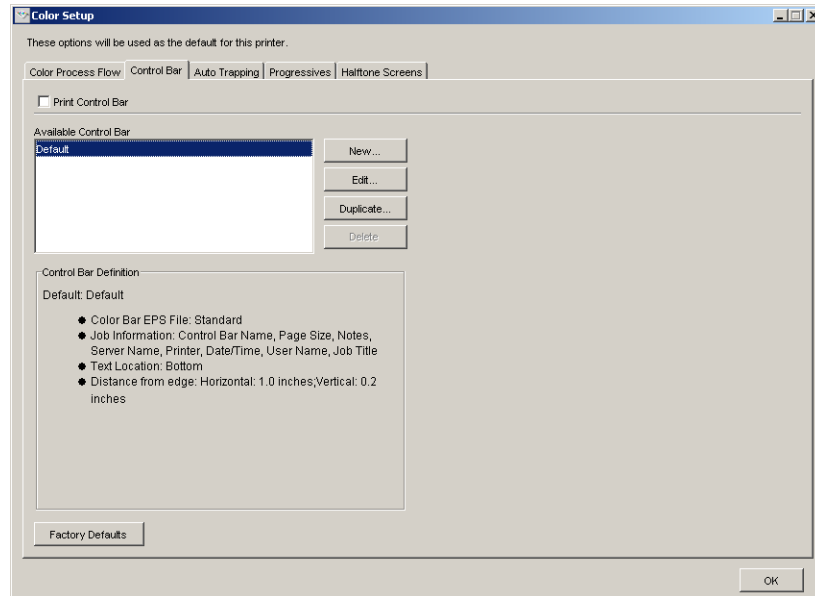
The job is printed with the default Control Bar.

- 1 Job information**
- 2 Static color bar**



Control Bar pane

Access the Control Bar pane by clicking the Control Bar tab in the ColorWise Pro Tools Color Setup dialog box (see [page 54](#)).



The Control Bar tab allows you to do the following:

- Set the Print Control Bar option to On (see the following section).
- View the definition of a Control Bar (see [page 54](#)).
- Define a new Control Bar (see [page 54](#)).
- Edit a Control Bar (see [page 57](#)).
- Duplicate a Control Bar (see [page 57](#)).
- Delete a Control Bar (see [page 58](#)).
- Restore the factory default values (see [page 58](#)).

Setting the Print Control Bar option to On

Selecting the Print Control Bar option sets the Printer's Default value to On. If this option is selected, a Control Bar is printed on all pages sent to the Fiery EXP8000 when Printer's default is selected from the printer driver or with Command WorkStation.

Viewing the definition of a Control Bar

Selecting a Control Bar in the Available Control Bar list allows you to view the settings information in the Control Bar Definition area. With this feature, you can identify the Control Bar without opening the Control Bar Definition dialog box.

The following information is displayed in the Control Bar Definition area:

- Color Bar EPS File
- Job Information
- Text Location
- Distance from edge

Defining a new Control Bar

When you open the Control Bar pane for the first time, only the default Control Bar is available in the Control Bar Definition dialog box. You can create a custom Control Bar that better fits your needs.

Use the following procedure to access the Control Bar pane and create a new Control Bar.

TO CREATE A CUSTOM CONTROL BAR

- 1 **Start ColorWise Pro Tools and connect to the Fiery EXP8000.**
- 2 **Click Color Setup.**
- 3 **Click the Control Bar tab.**
- 4 **Click New in the Control Bar pane.**

The Control Bar Definition dialog box appears.

- 5 **Define the values for each option.**

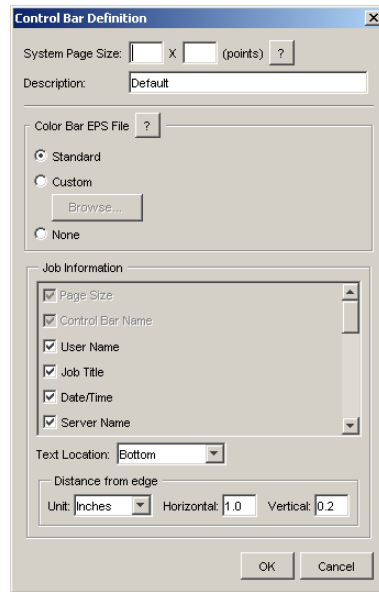
For information about Control Bar options, see [“Defining a new Control Bar”](#) on page 54.

- 6 **Click OK.**

A custom Control Bar is created.

The Control Bar Definition dialog box

The explanation of each section in the Control Bar Definition dialog box is as follows:



NOTE: The Control Bar Definition dialog box is displayed when you click New in the Color Setup dialog box.

NOTE: Each field of this dialog box initially displays the value from the Control Bar that is currently set as default, except for the System Page Size.

- **System Page Size:** A System Page Size label with two numbers is printed with each Control Bar. These numbers are the exact numbers to enter when creating a custom Control Bar. Every page produced by the Fiery EXP8000 has a System Page Size. These two numbers represent the width and height of the page, in points, as processed by the system. The page sizes that are not defined use the Default system Control Bar.

To find the System Page Size for a job, see a previously printed Control Bar on a document using the targeted paper size and orientation.

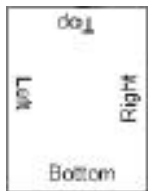
- **Description:** This field allows you to add a one-line description of the custom Control Bar for your future reference.
- **Control Bar EPS File:** This option allows you to select the following:
 - Standard: (provided as a default)
 - Custom: (user-designed EPS)
 - None: (no EPS file is required)

The EPS file contains a color bar and any logo or static information you want to include on the page.

- **Job Information:** The options vary, but typically the following information is available:
 - Page Size
 - Control Bar Name
 - User Name
 - Job Title
 - Date/Time
 - Server Name
 - Printer
 - Calibration Date/Time
 - Output Profile
 - RGB Source Profile
 - RGB Separation
 - Rendering Style
 - CMYK Simulation Profile
 - CMYK Simulation Method
 - Paper Simulation
 - Spot Color Matching
 - Pure Black Text/Graphics
 - Black Overprint
 - Group Name
 - Notes
 - Instructions

- **Text Location:** This menu allows you to choose the location in which you want the job information printed on the page:
 - Bottom
 - Left
 - Top
 - Right

For the location and orientation of the job information, see the following illustration.



- **Distance from the edge:** This text field allows you to define the distance from the lower-left corner at which you want the job information to begin printing. The settings to define are as follows:
 - **Units:** Choose inches, millimeters, or points from the Units menu.
 - **Horizontal:** Type the value.
 - **Vertical:** Type the value.

Editing a Control Bar

You can edit all of the values in the Control Bar Definition dialog box, with the exception of System Page Size, which appears dimmed.

The System Page Size for the default Control Bar refers to different system page sizes. For other Control Bars, values are displayed in the text field.

NOTE: To display the Control Bar Definition dialog box for editing, select a Control Bar in the Available Control Bar list, and then click Edit.

Duplicating a Control Bar

When you duplicate a Control Bar, all the values of the original Control Bar are displayed. You can edit and save the duplicate as a custom Control Bar.

If you edit and save a Control Bar as a custom Control Bar, you must change the System Page Size values. No two Control Bars can use the same values. If you try to save the custom Control Bar without changing the System Page Size values, a warning message appears.

Because a Control Bar is not a part of a job, a document can be printed with one Control Bar and then with another one if the Control Bar definition has changed. To keep the Control Bar and reuse it later, you must save the changes as a custom Control Bar.

NOTE: To display the Control Bar Definition dialog box for duplicating, select a Control Bar in the Available Control Bar list and click Duplicate.

Deleting a Control Bar

You can delete a Control Bar from the list in the Available Control Bar dialog box. You are prompted to confirm the deletion.

NOTE: You cannot delete the default Control Bar.

Restoring the factory default values

The Control Bar Definition dialog box allows you to delete all user-defined Control Bars and restore the default Control Bar to its original state by clicking Factory Defaults.

Printing with a custom Control Bar

The procedure to print a job with a custom Control Bar is basically the same as to print with the default Control Bar (see [page 51](#)). Use the following procedure to print with a custom Control Bar.

TO PRINT A JOB WITH A CUSTOM CONTROL BAR

- 1 **Choose Print from your application.**
- 2 **Select Fiery EXP8000 as your printer and click Properties.**

The Properties dialog box appears with the Fiery Printing tab selected.

- 3 **Click the Reporting print option bar.**
- 4 **Choose On from the Control Bar menu.**

NOTE: Selecting On from the printer driver affects the current job only. If you selected Print Control Bar in the Control Bar pane, selecting Printer's Default has the same effect as On. Selecting Print Control Bar in the Control Bar pane sets the default value to On for all jobs.

- 5 **Click OK.**
- 6 **Click Print.**

The job is printed with the Control Bar specified in the Control Bar Definition dialog box.

Configurable Auto Trapping

Trapping is a technique where some objects are printed slightly larger or smaller than you have specified in an application, in order to prevent white edges around the objects. These white edges, or “hollows,” can be caused by factors, such as misregistration, the physical properties of the toners, and the stiffness of the media.

The configurable Auto Trapping feature provides you with advanced trapping settings and gives you full control over their values. The Fiery EXP8000 is shipped with values that are optimized for a Fiery-driven print device using regular paper, but if these values do not provide the results necessary for the media that you use, modify the values to meet your requirements.

Configurable Auto Trapping workflow

The fixed values are set as default for Auto Trapping. The Fiery EXP8000 applies these fixed values when you set Auto Trapping to On, with generally good results. However, to customize the values for Auto Trapping, define the values in the Auto Trapping pane in Color Setup. After you define the values, print a job with Auto Trapping set to On from the printer driver.

Printing with default Auto Trapping

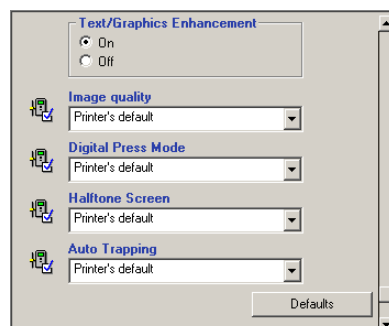
You can print a job with default Auto Trapping by setting the Auto Trapping print option to On from the printer driver.

TO PRINT A JOB WITH DEFAULT AUTO TRAPPING

- 1 Choose Print from your application.
- 2 Select Fiery EXP8000 as your printer and click Properties.

The Properties dialog box appears with the Fiery Printing tab selected.

- 3 Click the Image Quality print option bar.



4 Choose **On** from the **Auto Trapping** menu.

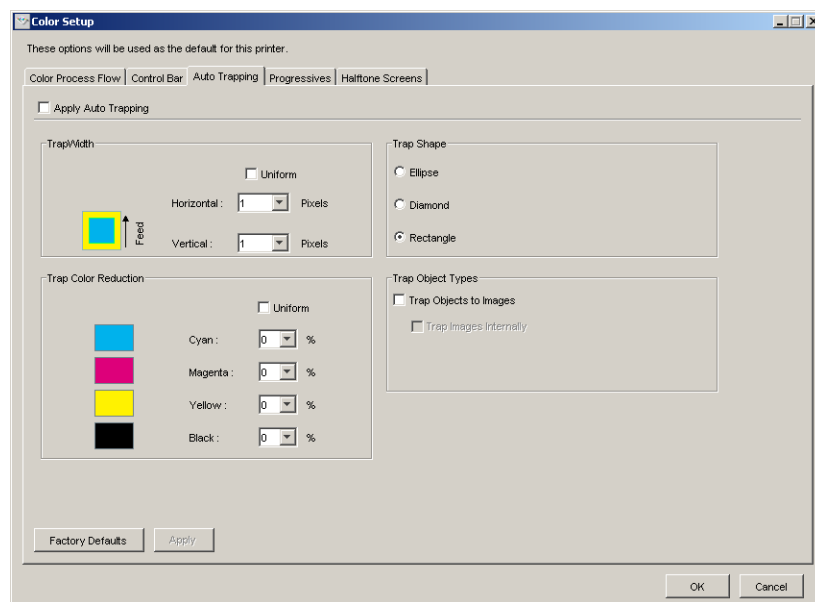
5 Click **OK**.

6 Click **Print**.

The job is printed with the default Auto Trapping values.

Auto Trapping pane

Access the Auto Trapping pane by clicking the Auto Trapping tab in the ColorWise Pro Tools Color Setup dialog box (see [page 62](#)).



The settings in the Auto Trapping pane allow you to perform the following tasks:

- Set the Apply Auto Trapping option to On (see the following section).
- Specify the trap width (see [page 61](#)).
- Specify the trap color reduction (see [page 61](#)).
- Specify the trap shape (see [page 62](#)).
- Specify the trap object types (see [page 62](#)).
- Restore the factory default values (see [page 62](#)).

Setting the Apply Auto Trapping option to On

When you select the Apply Auto Trapping option, you set the Printer's default value to On. When you select Printer's default from the printer driver, the configured auto trapping is applied to all jobs sent to the Fiery EXP8000.

Specifying Trap Width

Trap Width values determine how thick the trapped areas are. Specify the following values:

- **Horizontal:** Defines the horizontal thickness of the trapped areas (0-10 pixels).
- **Vertical:** Defines the vertical thickness of the trapped areas (0-10 pixels).

When you select the Uniform option, the horizontal and vertical Trap Width values are the same. If the values were set before you selected Uniform, the higher of the two values is used for both.

A small bitmap image in the lower-left corner of the Trap/Width pane provides a dynamic visual example of the selected values.

Specifying Trap Color Reduction

Trap Color Reduction values determine how intense the trapping effect is. The values entered reflect the percent reduction of the toner in the trap. You can enter values for the following color channels:

- **Cyan:** Defines the trap reduction in cyan (0-100%).
- **Magenta:** Defines the trap reduction in magenta (0-100%).
- **Yellow:** Defines the trap reduction in yellow (0-100%).
- **Black:** Defines the trap reduction in black (0-100%).

A 100% reduction results in no toner intensity applied to the trap. A 0% reduction results in full toner intensity.

When you select the Uniform option, all four Trap Color Reduction values are the same. If the values were set before you selected Uniform, the highest value is used for all.

A small bitmap image to the left of each color in the Trap Color Reduction pane provides dynamic visual examples of the selected values.

Specifying Trap Shape

Trap Shape represents how a single pixel appears when trapped against a contrasting background. With elements bigger than one pixel, the shape, or part of the shape, is only visible at the corners of objects. Select any of the following shapes:

- Ellipse
- Diamond
- Rectangle

Specifying Trap Object Types

When no option is selected in the Trap Object Types area, only trapping of objects (text and graphics) against objects is applied. Select any of the following:

- **Trap Objects to Images:** Auto trapping is applied to boundary areas between objects and images.
- **Trap Images Internally:** Auto trapping is applied to every individual pixel of an image.

This option is available only when you select Trap Objects to Images. If the Trap Objects to Images option is cleared, the Trap Images Internally option appears dimmed.

Restoring Factory Defaults

Click Factory Defaults to delete all user-defined settings for Auto Trapping and restore the factory default settings.

Defining custom values for Auto Trapping

Use the following procedure to select the Auto Trapping settings and define custom values.

TO DEFINE AUTO TRAPPING VALUES

- 1 **Start ColorWise Pro Tools and connect to the Fiery EXP8000.**
- 2 **Click Color Setup.**
- 3 **Click the Auto Trapping tab.**
- 4 **Define a value for each option in the Auto Trapping pane.**

For information about the options in the Auto Trapping pane, see [page 60](#).

- 5 **Click Apply.**

The defined Auto Trapping values are applied.

Printing with the configurable Auto Trapping feature

After you define the Auto Trapping values, print a job with the Auto Trapping feature by setting the Auto Trapping print option to On from the printer driver. You can change the setting for this print option using Command WorkStation.

NOTE: If the Auto Trapping values are changed, reRIPping is required to print a job with the new values.

Use the procedure on [page 52](#) to print a job with custom Auto Trapping values from the printer driver.

NOTE: Selecting On from the printer driver affects the current job only. Selecting Apply Auto Trapping in the Auto Trapping pane in Color Setup sets the default value for all jobs, and allows you to select Printer's default from the printer driver.

The job is printed with the Auto Trapping values defined in the Auto Trapping pane.

Progressives

The term “Progressives” refers to printing variations in a multi-color document. The variations may use from one to all of the available color channels in a print device. The majority of printing processes that involve more than one or two colorants apply the colorants sequentially. Traditionally, progressives are the intermediate states after some and before all colorants have been applied. The Progressives feature is more flexible, because it allows you to choose which color is printed, using up to four sheets per original document page.

NOTE: The Progressives feature is designed to show you the toner separations used by the job on the print device. The feature is not intended to be used to proof for another non-Fiery driven print device.

NOTE: Progressives show the separations that the Fiery EXP8000 sends to the print device, not the separations contained in the job source file.

NOTE: Progressives is a “reporting” feature. It is not designed to be used with production features such as VDP and Imposition. Progressives is offered for diagnostic situations. With high volume applications or production environments, use Progressives only on the individual pages that need testing.

Progressives workflow

You can inspect the result of each channel with the default values for color channels in Progressives. However, if you must customize the selection of color channels or number of sheets to print, you can do so by specifying the color channels in the Progressives pane in Color Setup. After specifying the color channels, print a job with the customized Progressives by setting the print option to On from the printer driver.

NOTE: You cannot use the Progressives and Postflight features at the same time. A constraint is set for these print options from the printer driver.

NOTE: Clearing plates in ImageViewer does not have an effect on a Progressives job printed from ImageViewer. It prints with the values specified in the Progressives pane. For more information, see “[ImageViewer](#)” on page 74.

Printing with default Progressives

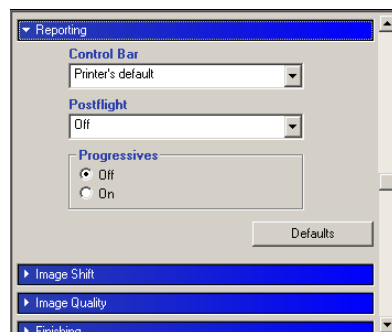
Print a job with default Progressives by setting the Progressives print option to On from the printer driver.

TO PRINT A JOB WITH DEFAULT PROGRESSIVES

- 1 Choose Print from your application.
- 2 Select Fiery EXP8000 as your printer and click Properties.

The Properties dialog box appears with the Fiery Printing tab selected.

- 3 Click the Reporting print option bar.

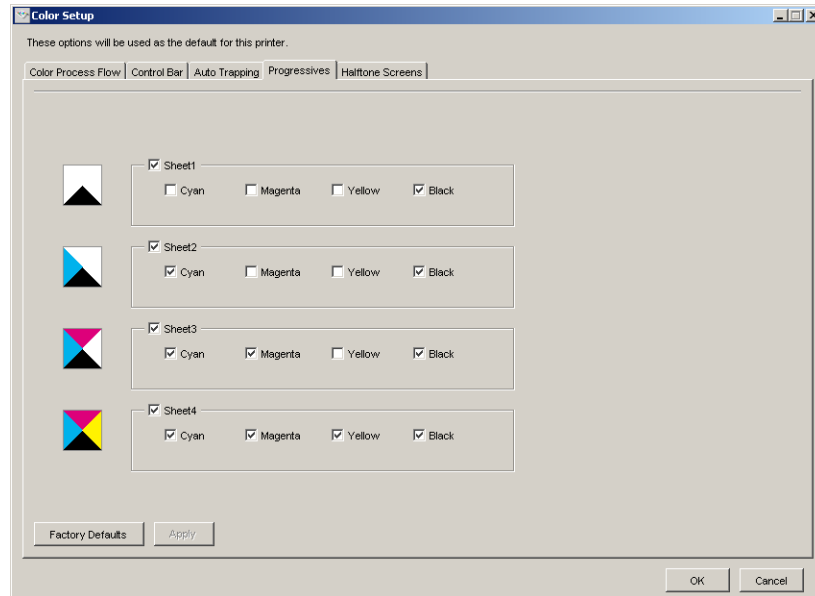


- 4 Select On in the Progressives area.
- 5 Click OK.
- 6 Click Print.

The job is printed with the default Progressives.

Progressives pane

Access the Progressives pane by clicking the Progressives tab in ColorWise Pro Tools Color Setup. For more information about accessing the pane, see the procedure on [page 70](#).



The settings in the Progressives pane allow you to do the following:

- Specify sheets (1-4) and colors per sheet to print (see the following section).
- Restore the factory default values (see [page 66](#)).

Specifying sheets and colors

At least one colorant (Cyan, Magenta, Yellow, or Black) must be selected for each sheet and at least one sheet must be selected.

Small bitmap images to the left of each row dynamically change to reflect your selections.

Restoring Factory Defaults

Clicking Factory Defaults allows you to delete all user-defined settings for the Progressives feature and restore the default settings.

Factory default values are set as follows:

- Sheet 1: Black
- Sheet 2: Black + Cyan
- Sheet 3: Black + Cyan + Magenta
- Sheet 4: Black + Cyan + Magenta + Yellow

These selections are arbitrary, independent of the source job and the printing order of the digital press. With this selection, the first sheet includes the black plate only, because it is often the most important plate when looking at separations. The other colors are added in a “progressive” order.

When you return to the Progressives tab, the set of selections you last made is displayed.

The colors included do not have to represent the actual sequence applied by the digital press, which provides more flexibility for analyzing the image composition.

Specifying color channels

Use the following procedure to access the Progressives pane and specify color channels.

TO ACCESS THE PANE AND SPECIFY COLOR CHANNELS

- 1 **Start ColorWise Pro Tools and connect to the Fiery EXP8000.**
- 2 **Click Color Setup.**
- 3 **Click the Progressives tab.**
- 4 **Specify the color channels in the Progressives pane.**

For information about the options in the Progressives pane, see [page 65](#).

- 5 **Click Apply.**

The specified color channels are applied.

Printing with custom Progressives

After specifying the color channels, print a job with custom Progressives by setting the Progressives print option to On from the printer driver.

NOTE: Alternatively, you can send a job with a default Progressives and change the print option setting using Command WorkStation.

Use the same procedure on [page 64](#) to print a job with the custom Progressives feature from the printer driver. The printed job reflects the Progressives settings you defined in the Progressives pane.

Halftone Screens

When proofing, we recommend that you print in Contone mode, which uses the best color in the Fiery system. For advanced proofing purposes, Graphic Arts Package offers user-controlled halftone generation. Halftoned proofs simulate, with reasonable accuracy, the final dots imaged on films or plates for offset printing. The halftone screening feature allows you to define the custom screening functions applied to your print job.

Halftone screens workflow

You can select pre-set halftone screens to print jobs with good results. When you must customize the values for a halftone screen, define a custom halftone in your application or at Color Setup, and then select the screen in the Halftone Screen print option from the printer driver.

For information about the Halftone Screen print option and the procedure to print with the pre-defined halftone screens, see the following section. For information about the Halftone Screens pane and the procedure to specify custom halftone screen values, see [page 69](#).

Halftone Screen print option

Access the halftone screening feature through the Halftone Screen print option. Choose from the following commands:

- **Printer's default:** Uses the pre-defined device contone, unless a job contains an application specified halftone screen.
- **Application Defined:** Uses a pre-defined halftone screen specified in an application. For information about the supported applications, see [page 70](#).
- **Contone:** Uses the pre-defined device contone.
- **Newsprint:** Uses a pre-defined halftone screen that looks and feels like a newspaper.
- **User Defined Screen1/2/3:** Applies a user-defined halftone screen based on the settings in ColorWise Pro Tools Color Setup.

NOTE: Use Newsprint and User Defined Screen1/2/3 with all applications, including Microsoft Office.

Printing with a pre-defined halftone screen

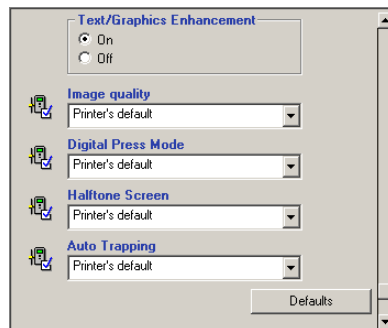
Use the following procedure to print a job with a pre-defined default halftone screen from the printer driver.

TO PRINT A JOB WITH A DEFAULT HALFTONE SCREEN

- 1 Choose **Print** from your application.
- 2 Select **Fiery EXP8000** as your printer and click **Properties**.

The Properties dialog box appears with the Fiery Printing tab selected.

- 3 Click the **Image Quality** option bar.



- 4 Choose a pre-defined halftone screen from the **Halftone Screen** menu.

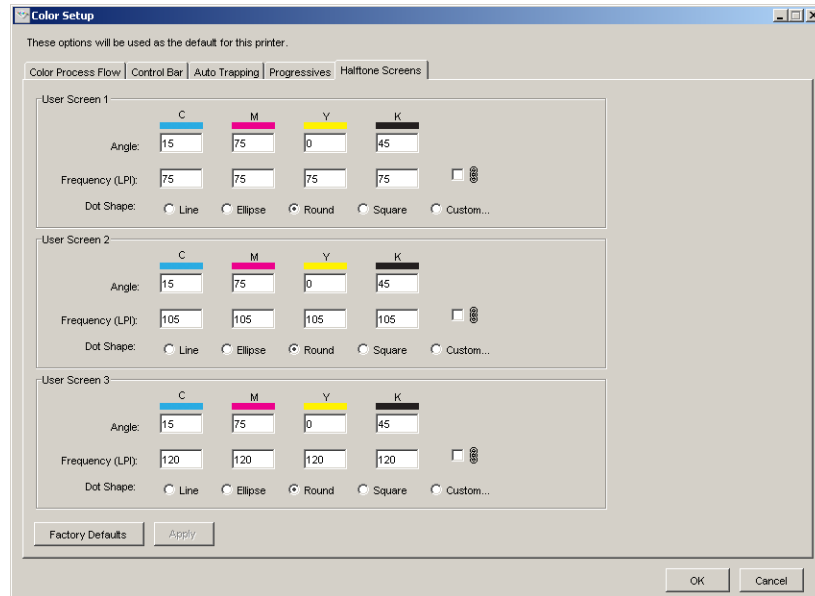
For more information, see [page 67](#).

- 5 Click **OK** to close the Properties dialog box.
- 6 Click **Print**.

The job is printed to the Fiery EXP8000 with the pre-defined halftone screen.

Halftone Screens pane

You can define three custom halftone screens in the Halftone Screens tab.



For each of these screens, you can define the following values:

Angle

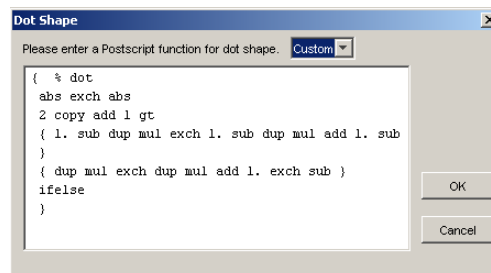
Type a number (from 0-360) for each color: Cyan, Magenta, Yellow, and Black.

Frequency (LPI)

Type a number (typically between 40 and 200) for each color: Cyan, Magenta, Yellow, and Black. Select the check box next to the link icon to make the values for Frequency (LPI: lines per inch) the same for all four channels. Frequency refers to the number of rows of spots that combine to form a halftone dot.

Dot Shape

Select a PostScript function for dot shape. When you select Custom, the Dot Shape dialog box appears. This dialog box provides a text field in which you type a PostScript function. When this dialog box first opens, it reflects the last custom-defined dot shape.



Setting a custom Halftone Screen

Use the following procedure to access the Halftone Screens pane and specify a custom halftone screen.

TO ACCESS THE HALFTONE SCREENS PANE AND SPECIFY A CUSTOM HALFTONE SCREEN

- 1 **Start ColorWise Pro Tools and connect to the Fiery EXP8000.**
- 2 **Click Color Setup.**
- 3 **Click the Halftone Screens tab.**
- 4 **Specify the angle, frequency, and dot shape for a custom halftone screen.**

For information about the options in the Halftone Screens pane, see [page 69](#).

- 5 **Click Apply.**

The specified settings for Angle, Frequency, and Dot Shape are applied to the custom halftone screen.

Printing with custom Halftone Screens

After specifying the halftone screen values for User Screen 1, User Screen 2, or User Screen 3, select a corresponding custom screen name from the printer driver. Use the same procedure on [page 68](#) to print a job with a custom halftone screen.

NOTE: Alternatively, you can send a job with a default halftone screen and change the print option setting using Command WorkStation.

The printed job reflects the settings you defined in the Halftone Screens pane.

Supported applications

The following applications have been tested with Mac OS and Windows for compatibility with the Application Defined setting in the Halftone Screen print option. Other applications should work as well, as long as they use standard PostScript conversions on halftone screen definitions and the parameters used in the definitions are kept within the physical limitations of the digital press.

- Adobe Acrobat 6
- Adobe Illustrator 8, 9, and 10
- Adobe InDesign 1.5, 2, and CS
- Adobe PageMaker 6.5 and 7
- Macromedia FreeHand 9, 10, and MX
- QuarkXPress 4.1, 5, and 6

Calibrating for custom halftone screens

When color quality is important, make sure that the Fiery EXP8000 is calibrated for the particular halftone screen you use. Changing a halftone screen usually modifies the color response of the digital press.

The best color is achieved when an Output profile that is associated with the appropriate calibration response is selected at print time. However, when custom halftones are specified, the Fiery EXP8000 does not have adequate information about the resulting color response. For this reason, achieving good color with custom halftone screens is often possible only when you perform custom halftone calibration and use a profile based on this custom halftone.

Use the following procedure to calibrate the Fiery EXP8000 for custom halftone screens.

TO CALIBRATE THE FIERY EXP8000 FOR CUSTOM HALFTONE SCREENS

1 Prepare the measurement instrument you use for calibration.

For information about supported measurement instruments, see [Color Printing](#).

2 On the User Software and Documentation DVD, open the folder that contains the custom halftone calibration files.

The folder locations for Macintosh and Windows are as follows:

Mac OS: Mac Color Files: Calibration Files: Halftone Calibration Files: Photoshop or Other Applications

Windows: Windows Color Files\Calibration Files\Halftone Calibration Files\Photoshop or Other Applications

The folder contains images of the measurement pages for various instruments and page sizes. If you print halftone screens only from Adobe Photoshop, open the Photoshop folder; otherwise, open the Other Applications folder.

NOTE: When opening or printing these files, never “color-manage” using PostScript Color Management or ICC profiles that provide color conversions.

3 From Photoshop, open the image file that corresponds to your instrument and page size. From other applications, open a blank document and place the EPS file that matches your instrument and page size.

The images were prepared for the final sheet page size. If you are placing an image, do so without using margins. Ignore warnings that the image may be clipped.

NOTE: If you use these measurement pages with the Fiery EXP8000 standard screens, make sure to properly set the PPD print option (Digital Press Mode) that controls the screen.

4 Print the measurement page using your custom halftone and other print option settings.

This page is now the custom calibration measurement page.

You must print this measurement page with the CMYK Simulation Profile print option set to ColorWise Off, which produces an uncalibrated page.

NOTE: To calibrate your digital press, you must print CMYK patches in the raw state of the printer. Except for the Output Profile print option, the ColorWise print options are irrelevant and are ignored.



To increase the speed and reliability of the calibration, print your measurement page, with the appropriate print option settings, to a PostScript file. The next time you calibrate, download this PostScript file. Retaining this file in the Hold queue of the Fiery EXP8000 speeds up the calibration process.

5 Start ColorWise Pro Tools Color Editor and open any Output profile.

NOTE: You can select any Output profile because you will be printing the measurement page with the CMYK Simulation Profile set to ColorWise Off. With this setting, color conversions using Output profile will not occur.



For information about Color Editor, see ColorWise Pro Tools Help.

6 Save this Output profile under a new name descriptive of your custom halftone screen.

7 Use ColorWise Pro Tools Profile Manager to associate this Output profile with an appropriate Calibration Set.

Even though the CMYK Simulation Profile print option is set to ColorWise Off, it is important to associate the appropriate Calibration Set to the Output profile because its measurement is used for calibration.



For information about Profile Manager, see ColorWise Pro Tools Help.

8 Use ColorWise Pro Tools Calibrator to perform the calibration.

NOTE: Do not use the Print button to generate the measurement page in Calibrator. Use the measurement page that you printed in [step 4](#).

For information about Calibrator, see [Color Printing](#).

Using Color Profiler for custom halftone screens

For optimal color, creating a custom profile may be necessary. Even though you must calibrate often (once a day), you need to perform the following custom profile creation only once.

TO CREATE A PROFILE FOR A CUSTOM HALFTONE SCREEN

- 1 **Calibrate the printer using the previous procedure.**
- 2 **Use Color Profiler to print the calibration measurement page with the same halftone screen setting that you used to calibrate.**

NOTE: Color Profiler is provided as an option.

NOTE: Use the same Output profile as the one that was saved during calibration, and print the Profiler patches with the CMYK Simulation Profile print option set to None.

- 3 **Use ColorWise Pro Tools Profile Manager to set the profile that was saved during calibration as the System Default profile.**

This is necessary because downloaded profiles take their calibration targets from the System Default profile.

- 4 **Download the profile that you just created to the Output area.**

Make this profile the new default. Verify that it is associated with the Calibration Set that applies to your custom halftone.

IMAGEVIEWER

ImageViewer allows you to soft proof and adjust colors in a job before it is printed. You can use the preview in ImageViewer to verify job placement, orientation, and content, as well as general color accuracy. If the job contains halftone screened settings, the preview shows a composite view of all separations at the dot level. You can choose to display the plate data for each process color independently or in combination with the other colors, allowing inspection of individual plate data or a combination of any range of plates.

Accessing ImageViewer

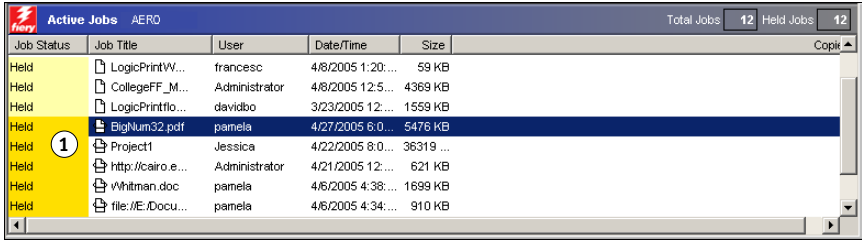
Start ImageViewer from either the Actions menu or Preview window of Command WorkStation.

TO START IMAGEVIEWER FROM THE ACTIONS MENU

- 1 In the Active Jobs window of Command WorkStation, select the job that you want to preview.

NOTE: ImageViewer recognizes only jobs that show processed/held (dark yellow) status. Processed/held jobs are also indicated by the raster job icon (page icon ringed with a halo).

1 Processed/held job



Job Status	Job Title	User	Date/Time	Size
Held	LogicPrintW...	francesc	4/8/2005 1:20:...	59 KB
Held	CollegeFF_M...	Administrator	4/8/2005 12:5:...	4369 KB
Held	LogicPrintflo...	davidbo	3/23/2005 12:...	1559 KB
Held	BigNum32.pdf	pamela	4/27/2005 6:0:...	5476 KB
Held	Project1	Jessica	4/22/2005 8:0:...	36319 ...
Held	http://cairo.e...	Administrator	4/21/2005 12:...	621 KB
Held	vWhitman.doc	pamela	4/6/2005 4:38:...	1699 KB
Held	file://E:/Docu...	pamela	4/6/2005 4:34:...	910 KB

- 2 If needed, choose Process and Hold from the Actions menu to move the job to processed/held status.
- 3 To start ImageViewer, do one of the following:
 - Choose Launch EFI ImageViewer from the Actions menu.
 - Right-click the selected job and choose Launch EFI ImageViewer from the menu that appears.

The ImageViewer main window appears.

TO START IMAGEVIEWER FROM THE PREVIEW WINDOW

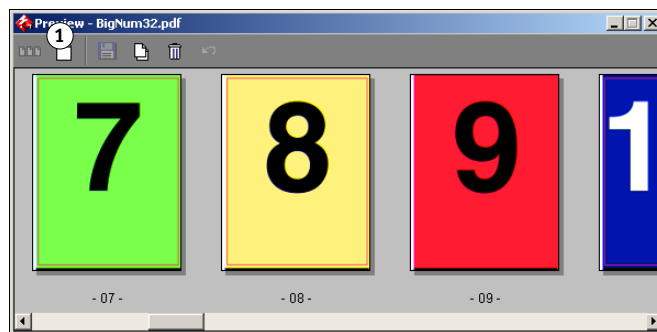
- 1 In the Active Jobs window of Command WorkStation, select the job that you want to preview.

NOTE: ImageViewer recognizes only jobs that show processed/held (dark yellow) status.

- 2 If needed, choose Process and Hold from the Actions menu to move the job to processed/held status.
- 3 Choose Preview from the Actions menu.

Page thumbnails appear in the Preview window.

- 1 Click for full-screen preview



- 4 To start ImageViewer, do one of the following:

- Select the thumbnail of the page that you want to soft proof, and click the Full-Screen Preview button.
- Double-click the thumbnail of the page that you want to soft proof.

The ImageViewer main window appears.



For information about using the ImageViewer application, see ImageViewer Help.

HOT FOLDERS FILTERS

This chapter describes how to configure the Hot Folders filters to convert various files to PostScript or PDF (Portable Document Format), or to preflight certain files.

For information about operating systems that support Hot Folders, see [Welcome](#).
For information about installing the Hot Folders application, see [Utilities](#).



For information about using the Hot Folders application, see Hot Folders Help.

About file conversion

Hot Folders filters allow you to convert certain file formats to PostScript or PDF or to preflight files for conformity. File conversion and preflighting take place on your computer within Hot Folders, which saves Fiery EXP8000 resources. You can print files directly from Hot Folders filters without starting the application from which they were created.

Two types of filters are available: Exclusive and Non-exclusive. A Hot Folder configured with an Exclusive filter processes the defined file type(s). No other file formats, including the default file formats, are processed. When you select an Exclusive filter, you disable all other filters.

Non-exclusive filters allow Hot Folders to accept multiple default file formats, such as PostScript, PDF, TIFF, and EPS. Non-exclusive filters can also be used with other Non-exclusive filters.

When you configure an Exclusive filter to a Hot Folder, the Hot Folder icon changes, and is renamed to reflect the Exclusive filter.

- 1 Hot folder with Exclusive filter (Windows)
- 2 Standard Hot Folder (Windows)
- 3 Hot Folder with Exclusive filter (Mac OS)
- 4 Standard Hot Folder (Mac OS)



Filters

The following table describes the available filters and indicates whether the filter is Exclusive or Non-exclusive:

Filter name	Type of filter	Description	See
CT/LW to PostScript	Exclusive	Converts multiple CT (Contone), LW (Line Work), or FP (Final Page) files into a single combined PostScript file. CT/LW files are files that contain information about photographic imagery, line art images, or text and lines from drawings. Together, CT and LW files determine the final output that will appear.	page 80
DCS 2.0 to PostScript	Exclusive	Converts DCS 2.0 files to pre-separated PostScript files, with one separation per page. Developed by QuarkXPress, the DCS 2.0 file is a picture format definition for electronic color separations. This filter accepts: Single/Multiple file DCS, No composite Single/Multiple file DCS with grayscale composite Single/Multiple file DCS with color composite	page 81
EPS to PostScript	Exclusive	Converts EPS files to PostScript files and provides options for scaling and positioning the output.	page 82
ExportPS	Exclusive	Processes ExportPS files and converts them to PostScript or PDF files. Developed by Creo-Scitex, the ExportPS file is a PostScript raster output.	page 83
JPEG to PDF	Non-exclusive	Converts JPEG files to PDF files and provides options for scaling and positioning of the output.	page 84
Microsoft Excel	Non-exclusive	Converts Microsoft Excel files to PostScript files.	page 84
Microsoft Publisher	Non-exclusive	Converts Microsoft Publisher files to PostScript files.	page 84
Microsoft PowerPoint	Non-exclusive	Converts Microsoft PowerPoint files to PostScript files.	page 84
Microsoft Word	Non-exclusive	Converts Microsoft Word files to PostScript files.	page 84
PDF to PostScript	Non-exclusive	Converts PDF files to PostScript files.	page 84
PDF/X Preflight	Exclusive	Indicates if the PDF job meets PDF/X specifications. This filter allows PDF/X-1a or PDF/X3-compliant jobs to be downloaded to the Fiery EXP8000.	page 86
PDF2Go	Exclusive	Processes PDF2Go files and converts them to PostScript or PDF files. Developed by Creo-Scitex, the PDF2Go file is a PDF output that contains PDF layers or rasterized CT and LW, each with a different resolution.	page 87

Filter name	Type of filter	Description	See
TIFF to PDF	Non-exclusive	Converts TIFF files to PDF files and provides options for scaling and positioning of the output. This filter accepts all TIFF files up to TIFF 6.0.	page 88
TIFF/IT to PostScript	Exclusive	Converts TIFF/IT to pre-separated PostScript files, with one separation per page. TIFF/IT-p1 is a common file format for the transfer of final print job data from one print platform to another. It is a widely used format for prepress preparation in traditional printing environments.	page 89

Specifying filter settings for a Hot Folder

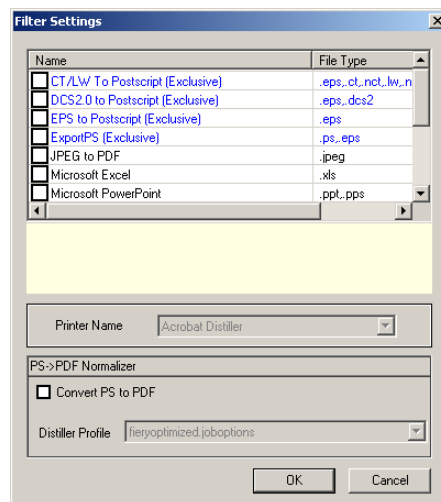
After specifying the filter settings and options for your Hot Folder, drag and drop the proper file formats onto your Hot Folder to begin the conversion process.

Open the Filter Settings dialog box from the Folder Properties dialog box.

TO SELECT A FILTER SETTING

- 1 From the Hot Folders Control Panel, select the Hot Folder and click Properties.
- 2 Select Filter Settings and click Define.

The Filter Settings dialog box appears, allowing you to select the filter and configure the settings.



For Windows, filters are color-coded. Exclusive filters are blue and Non-exclusive filters are black. For Mac OS, Exclusive and Non-exclusive filters are indicated after the filter type names.

3 Select the filter that you want to use for the Hot Folder.

If you select an Exclusive filter, you cannot select any other filter.

4 Right-click or double-click the filter name and select Properties.

For more information, see [“Using the filters”](#) on page 80.

5 To convert all PostScript files to PDF automatically, select Convert PS to PDF and a job option from the Distiller Profile menu in the PS->PDF Normalizer pane.

For information about PS->PDF Normalizer, see the following section.

6 Click OK.

About PS->PDF Normalizer

The PS->PDF Normalizer feature offers the Convert PS to PDF option.

NOTE: The Convert PS to PDF option is available only when Adobe Acrobat Distiller is installed on the same system as the Hot Folders application. For more information about installing Acrobat Distiller, see [Utilities](#).

Convert PS to PDF

Although many filters output PostScript by default, this option allows you to further convert PostScript to PDF. This is a global setting that affects all PostScript files for a particular Hot Folder. This setting affects all PostScript output from all filters.

Since Convert PS to PDF affects all PostScript output files, turning on this setting may not be suitable in certain printing workflows.

For example: Both the DCS 2.0 and TIFF/IT filters output pre-separated PostScript files, one separation file per page. In order to print these pre-separated files as a composite image, you must select the Combine Separation option in the Job Settings. However, the Combine Separation feature accepts only the PostScript type files. Selecting the Convert PS to PDF option results in printing multiple grayscale pages, instead of a composite color page of an image.

Distiller Profile

This menu displays all the available Distiller job options. This setting is used to control the quality of the PostScript to PDF conversion. The Hot Folders application retrieves the job options from the location set by Distiller. If you create and save your custom Distiller job options elsewhere, the custom job options must be manually copied to the Distiller\Settings folder.

Using the filters

Certain filters provide extra user control and conversion settings. To access these settings, right-click or double-click the Plugin Name in the Filter Settings dialog box.

This section describes each filter and its optional settings.

NOTE: The procedures for using the filters from a Mac OS or a Windows computer are similar. The following procedures use illustrations from a Windows computer.

Using the CT/LW to PostScript filter

The CT/LW filter accepts multiple CT (Contone) and LW (Line Work) files and an FP (Final Page) file. It determines the page dimensions of the combined file based on the FP, LW, and CT files, in that order. Spot colors are converted to process CMYK using conversion values specified in the CT/LW files. The combined file is a single RLE compressed CMYK image, and you can specify the resolution.

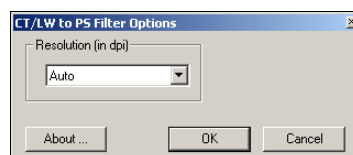
When you drag and drop your CT, LW, or FP files, your output is a single PostScript file.

NOTE: Some CT/LW files may include a “.” (period) at the beginning of the file name, indicating that they are hidden files. Make sure you turn on Show Hidden Files in your folder settings. For more information, see the documentation that accompanies your system. In order to ensure that all files, including hidden files, are copied and processed, drop the entire CT/LW page folder containing all the necessary files.

TO USE THE CT/LW TO POSTSCRIPT FILTER

- 1 Follow steps 1-4 in [“Specifying filter settings for a Hot Folder”](#) on page 78.

The CT/LW Filter Options dialog box appears.



- 2 Choose the final resolution (Auto, 200, 400, or 600) for your image.

NOTE: Choose Auto to use the device resolution of the digital press.

- 3 Click OK.

Using the DCS 2.0 to PostScript filter

The DCS 2.0 (Desktop Color Separation) to PostScript filter accepts DCS 2.0 files and outputs a single pre-separated PostScript file.

This filter accepts the following DCS 2.0 files:

- Single/Multiple DCS files, no composite
- Single/Multiple DCS files with grayscale composite
- Single/Multiple DCS files with color composite

The DCS 2.0 filter has no configurable options; however, you must follow these guidelines to convert your DCS 2.0 job:

- Enable the Combine Separations print option. For more information about setting print options, see *Print Options*.
- Make sure that you have necessary multiple files for a DCS 2.0 job and in one folder. If a file is missing, the filter fails to process and an error message appears.
- If multiple files for a DCS 2.0 job are stored in a folder, you may place the entire folder in the Hot Folder.
- If you download a DCS 2.0 job using the Download command, all files may be inside a folder. You must download the entire folder.

NOTE: If you configure the DCS 2.0 to PostScript filter, the Imposition feature is not available.

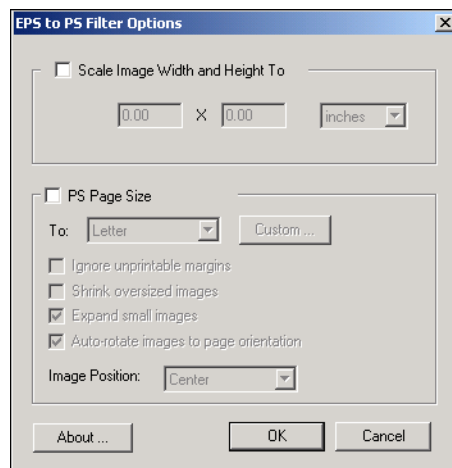
Using the EPS to PostScript filter

The EPS to PostScript filter accepts all EPS files. This filter gives you the flexibility to force changes in the final dimensions and page size of a file.

TO USE THE EPS TO POSTSCRIPT FILTER

- 1 Follow steps 1 through 4 in “To select a filter setting” on page 78.

The EPS to PostScript Filter Options dialog box appears.



- 2 Specify the following options:

Scale Image Width and Height To: Select this option to scale all EPS files to the desired image size. Choose inches or millimeters from the pulldown menu, and then enter the values.

PS Page Size: Select this option to print all EPS files to the page size that you specify. Choose a page size from the menu or click Custom and specify a custom page size in the Enter Custom Paper Size dialog box.

When this option is selected, you can:

- Ignore unprintable margins to print the image to the entire page size.
- Shrink oversized images to fit proportionately.
- Expand small images to fit proportionately.
- Automatically rotate images to the page orientation.
- Set the position of the image to Top-Left, Top-Right, Center, Bottom-Right, or Bottom-Left.

- 3 Click OK.

Using the ExportPS filter

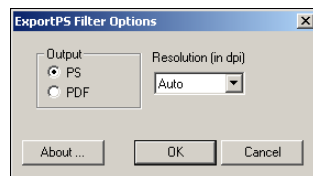
ExportPS was developed by Creo-Scitex as an option to their Brisque print workflow. ExportPS translates Brisque jobs into portable, raster PostScript or EPS output that can be processed on the digital press.

The ExportPS filter processes the ExportPS file by rendering and resampling it to the resolution of the digital press. You can choose the output to be PostScript or PDF.

TO USE THE EXPORTPS FILTER

- 1 Follow steps 1 through 4 in “To select a filter setting” on page 78.

The ExportPS Filter Options dialog box appears.



- 2 Specify the following options:

Output (PS or PDF): Select the final output.

Resolution (Auto, 200, 400, or 600): Choose the final resolution of the output. Choose Auto to use the device resolution of the digital press.

- 3 Click OK.

Using the JPEG to PDF filter

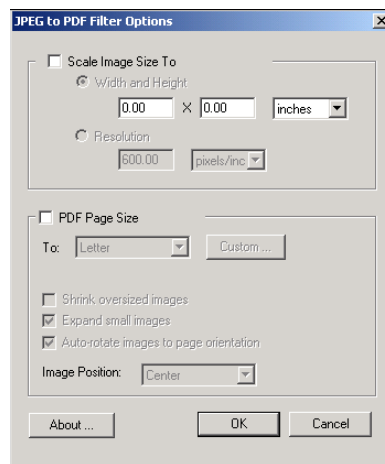
The JPEG to PDF filter accepts all standard JPEG files. In addition to allowing you to convert JPEG files automatically without opening them from the application from which they were created, the JPEG to PDF filter allows you to change the final page size of print jobs and adjust the resolution.

This filter is Non-exclusive, so you can download basic file formats. For more information about Non-exclusive filters, see [“About file conversion”](#) on page 76.

TO USE THE JPEG TO PDF FILTER

- 1 Follow steps 1 through 4 in [“To select a filter setting”](#) on page 78.

The JPEG to PDF Filter Options dialog box appears.



- 2 Specify the following options:

Scale Image Size To: Select this option to scale all JPEG files to the desired image size or resolution. Select Width and Height, choose inches or millimeters from the pulldown menu, and enter the values for the image size. Choose Resolution, choose pixels/inch or pixels/cm, and enter the value for the resolution.

PDF Page Size: Select this option to print all JPEG files to the page size that you specify. Choose a page size from the menu or click Custom and specify a custom page size in the Enter Custom Paper Size dialog box.

When this option is selected, you can:

- Shrink oversized images to fit proportionately.
- Expand small images to fit proportionately.
- Automatically rotate images to the page orientation.
- Set the position of the image to Top-Left, Top-Right, Center, Bottom-Right, or Bottom-Left.

3 Click OK.

Using the Microsoft Office filters

The Microsoft Office filters accept the following Microsoft Office files and output PostScript files:

- Microsoft Excel
- Microsoft Publisher
- Microsoft PowerPoint
- Microsoft Word

The Microsoft Office filters have no configurable options; however, you must have the following version for each application, and have a PostScript printer or Acrobat Distiller installed to convert the files to PostScript files.

- Microsoft Excel 2000
- Microsoft Publisher 2002
- Microsoft PowerPoint 2000
- Microsoft Word 2000

Using the PDF to PS filter

The PDF to PS filter accepts PDF files and output PostScript files.

NOTE: This filter converts all files to PostScript Level 3 files.

Using the PDF/X Preflight filter

PDF/X (PDF Exchange) Preflight is a subset of Adobe PDF designed specifically for prepress data interchange. It defines how applications that read and create PDF/X files should behave.

Two PDF/X standards are commonly used:

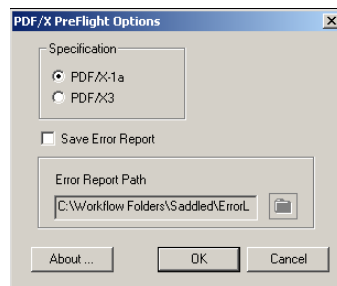
- **PDF/X-1a standard:** This addresses blind exchanges to verify that files contain only CMYK (and/or spot colors), with no RGB or device independent (color-managed) data.
- **PDF/X3:** This standard meets all the requirements of a PDF/X-1a, but contains device independent (color-managed) data.

The PDF/X Preflight filter allows you to verify that a PDF document is PDF/X-compliant with either the PDF/X-1a or PDF/X3 standard. If the PDF file is not PDF/X-compliant, the job fails to process and an error report appears.

TO USE THE PDF/X PREFLIGHT FILTER

- 1 Follow steps 1 through 4 in “To select a filter setting” on page 78.

The PDF/X Preflight Options dialog box appears.



- 2 Specify the following options:

Specifications (PDF/X-1a or PDF/X3): Select to verify PDF/X-1a or PDF/X3 compliance.

Save Error Report: Select to generate an error report for failed jobs.

Error Report Path: Browse to select an error report location.

- 3 Click OK.

Using the PDF2Go filter

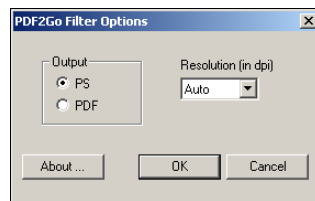
PDF2Go is a PDF output developed by Creo-Scitex as an option to their Brisque workflow. It usually contains PDF layers of rasterized CT and LW job pages, each with a different resolution, in one PDF file.

The PDF2Go filter processes the PDF2Go file by rendering and re-sampling it to the resolution of the digital press. You can choose PostScript or PDF output.

TO USE THE PDF2GO FILTER

- 1 Follow steps 1 through 4 in “To select a filter setting” on page 78.

The PDF2Go Filter Options dialog box appears.



- 2 Specify the following options:

Output (PS or PDF): Select the final output.

Resolution (Auto, 200, 400 or 600): Choose the final resolution of the output. Choose Auto to use the device resolution of the digital press.

- 3 Click OK.

Using the TIFF to PDF filter

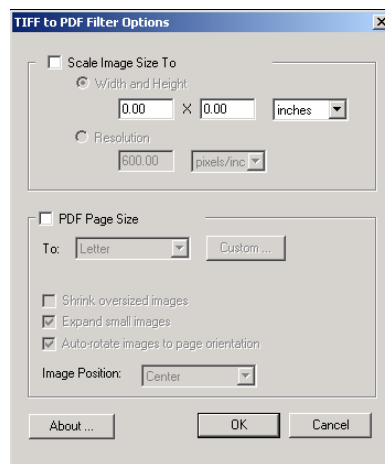
The TIFF to PDF filter accepts TIFF files up to TIFF 6.0. In addition to allowing you to convert TIFF files automatically without opening them from the application from which they were created, the TIFF to PDF filter allows you to change the final page size of print jobs and adjust the resolution.

This filter is Non-exclusive, so you can download basic file formats. For more information about Non-exclusive filters, see [“About file conversion”](#) on page 76.

TO USE THE TIFF TO PDF FILTER

- 1 Follow steps 1 through 4 in [“To select a filter setting”](#) on page 78.

The TIFF to PDF Filter Options dialog box appears.



- 2 Specify the following options:

Scale Image Size To: Select this option to scale all TIFF files to the desired image size or resolution. Select Width and Height, choose inches or millimeters from the pulldown menu, and enter the values for the image size. Choose Resolution, choose pixels/inch or pixels/cm, and enter the value for the resolution.

PDF Page Size: Select this option to print all TIFF files to the page size that you specify. Choose a page size from the menu or click Custom and specify a custom page size in the Enter Custom Paper Size dialog box.

When this option is selected, you can:

- Shrink oversized images to fit proportionately.
- Expand small images to fit proportionately.
- Automatically rotate images to the page orientation.
- Set the position of the image to Top-Left, Top-Right, Center, Bottom-Right, or Bottom-Left.

- 3 Click OK.

Using the TIFF/IT to PostScript filter

TIFF/IT (Tagged Image File Format/Image Technology) is a common TIFF standard. The TIFF/IT-p1 file format usually consists of three files. All TIFF/IT-p1 files contain an FP (Final Page) file. The FP file includes page dimension and position required subfiles, such as CT (Contone) and LW (Line Work) files. CT files contain all photographic imagery. LW files contain high resolution data, such as line art images, text, or lines from drawings.

TIFF/IT-p1 files may also include MP (Monochrome Picture), HC (High resolution Contone), BL (Binary Line), or BP (Binary picture) files.

When you drag and drop your TIFF/IT-p1 files, your output is a pre-separated PostScript with one separation per page.

Follow these guidelines to convert your TIFF/IT-p1 job:

Enable the Combine Separations print option. For more information about setting print options, see [Print Options](#).

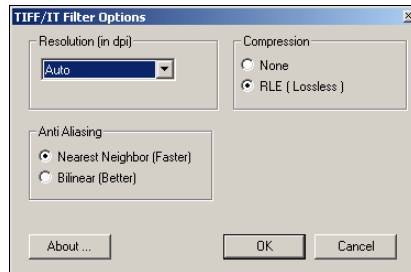
- Make sure that you have all the necessary files for the TIFF/IT-p1 job. You must place all of the files in the Hot Folder at the same time. If there is a file missing, the job will not process and you will receive an error.
- If the multiple files for the TIFF/IT-p1 job are stored in a folder, you may place the entire folder in the Hot Folder.
- If you download the TIFF/IT-p1 job using the Download command, all files may be inside a folder and the entire folder maybe downloaded.

NOTE: The imposition feature is not available if you configure the TIFF/IT to PostScript filter.

TO USE THE TIFF/IT TO POSTSCRIPT FILTER

- 1 Follow steps 1 through 4 in “To select a filter setting” on page 78.

The TIFF/IT Filter Options dialog box appears.



- 2 Specify the following options:

Resolution (Auto, 200, 400, or 600): Choose the final resolution of the PostScript output. Select Auto to use the device resolution of the digital press.

Compression (None or RLE Lossless): Select if you want compression for your PostScript output.

Anti-Aliasing (Nearest Neighbor Faster or Bilinear Better): Select how you want to partially fill the edge pixel by choosing the Anti-Aliasing method for your PostScript output.

- 3 Click OK.

POSTFLIGHT

The Postflight feature helps you determine why some printed jobs may not deliver expected color. Acting as a diagnostic and training tool for all users, it provides helpful global and object-specific information about how a job is actually received and processed by Fiery EXP8000.

Use Postflight to troubleshoot color problems with a previously printed job or as a preventive measure. You can print the original document (or RIPped and previewed) with all objects (images, graphics, and text) color-coded. A report explains what color spaces are used in the job and what print options affect those spaces. The report also provides information about the printing environment, such as calibration date, time, and method. Print a Test Page to verify the condition of the printing environment.

Postflight is a powerful analysis tool that enumerates in its reports not only those color spaces that are used by visible objects, but any color space called by a job. This can be very useful in diagnosing puzzling situations that may require correction. For example: using one specific combination of a printer driver, an OS, and a desktop publishing application emitting separations for plates, you *might* find that: 1) the Postflight color-coded pages show the Cyan, Magenta, and Yellow separations in the “DeviceGray” color space, while the Black separation is shown in the “DeviceCMYK” color space; 2) the Postflight report enumerates: DeviceGray, DeviceCMYK and DeviceRGB. What once required a PostScript expert to decipher can now be interpreted in minutes using Postflight reports: the Cyan, Magenta, and Yellow pages are defined in “DeviceGray”, the Black page is using the “K” channel of DeviceCMYK, and the job is calling for the RGB color space, without applying it on any user-visible object.

About Postflight

When the Postflight print option is set to values other than Off, it provides the following information to help you identify possible problems: Postflight Test Page, Postflight color-coded pages, and Postflight reports.

Postflight Test Page

You can print the Postflight Test Page alone or in combination with the color-coded pages. The Test Page is printed using the exact same media and global settings (such as calibration) as your job. However, color objects on this page are printed independently of the user-specified source color definitions (such as CMYK simulation and RGB).

If the color on this page is not accurate, the problem lies with the printing environment (such as the calibration, output profile, or print device).

If the color on this page prints correctly but objects in your job do not print in expected colors, it is likely that the problem lies with the color setting specific to these objects. Problems with objects can be: wrong color values for text and graphics, bad quality images, or out-of-gamut colors.

Postflight color-coded pages

With this option, Postflight prepares a color-coded version of the original document that displays each object with a color corresponding to the color space that the Fiery EXP8000 received for the object.

The colors used to represent the color spaces for objects are as follows:

- Gray objects: Gray
- CMYK objects: Cyan
- RGB objects: Red
- Device-Independent objects: Indigo
- Spot color objects: Yellow

By reviewing the colors for all objects, you can identify the print option settings that affect the color conversion of the objects and make appropriate modifications.

Postflight reports

You can print two types of reports on color-coded pages, either alone or combined with the color-coded document. These reports are printed on the Fiery EXP8000 default paper size (Letter for US, A4 for metric) and use the default calibrated color mode.

Choose from the following two types of Postflight reports:

- **Detailed Report** includes detailed static information with advice on possible procedures and values. An icon identifies the “detailed” information areas of the report.
- **Concise Report** includes only job-specific information. This option is good for advanced users who do not want the instructions which may seem redundant to them.

Detailed and Concise Reports

The reports provide a document header with information (such as job name, date and time printed, and user name), a ColorWise global settings page, and object-specific settings pages. All pages include the job name, postflight date/time, and pagination in the bottom margin.

- **ColorWise global settings page** provides information that affects every object in a job, such as Calibration Set, the date the Fiery EXP8000 was calibrated, and the method used for calibration.
- **Object-specific settings pages** provide a list of the settings that were used to process every object in each color space, thus suggesting the locations to correct problems. For example, if you see a problem with an object that is displayed in Cyan in a color-coded page, review the settings listed in the CMYK Objects page and try changing those settings.
- **Spot colors page** lists all spot colors.

For spot colors, the Postflight report lists the colors that are used in a job. It also indicates whether these colors are defined in the Fiery EXP8000. When a spot color is defined in the Fiery EXP8000, a patch is printed next to the color name. When a color is not defined in the Fiery EXP8000, a white patch with an X is printed.

Important notes on Postflight reports

The main purpose of Postflight is to help you detect, diagnose, and prevent color-related problems. In contrast to generic preflight software, which attempts to predict how a job would be processed, a postflighted job is fully processed by the Fiery EXP8000, allowing accurate reporting on the settings how the job was handled.

This Postflight feature is especially useful in cases where a workflow that was used to submit a job inadvertently converts colors. This conversion happens with some printer drivers, printing options, and conversions to PDF.

This report focuses on color processing and does not list every printing option that affects your job. For more information about the ColorWise print options, see [Color Printing](#).

NOTE: Postflight reports list only those color spaces that were submitted to the Fiery EXP8000 with your job. You may occasionally find that a job produces a Postflight report that includes information about color spaces that you cannot locate in the job's color-coded pages. This occurs when an object in the color space is used in the job but is masked by another object, when an object is very light (for example, 0% of a spot color), or when the specific application or printer driver asks the Fiery EXP8000 to process a particular color space but does not use it for user-visible objects.

NOTE: A Postflight report contains only one page on global settings, and it can include only one Test Page; therefore Postflight cannot describe an entire job accurately unless all pages are printed with the same options and on the same media. This is the case, for instance, with Mixed Media jobs, because they can use multiple output profiles, up to one profile per media in the job. If the page range is set to the pages that use one media only, Postflight produces reliable results for the specified range.

NOTE: Postflight is a “reporting” feature that is designed for diagnostic purposes. It is not designed to be used with production features such as VDP and Imposition. For high-volume applications in production environments, use Postflight only on the individual pages that need testing.

Postflight print option

Access the Postflight feature through the Postflight print option. You can select a single component or all components for the Postflight information.

The following values are available for the Postflight print option:

- Off (Default)
- Detailed Report Only
- Concise Report Only
- Test Page Only
- Color-Coded Pages Only
- All Components (Color-Coded document pages, Test Page, and Detailed Report)

NOTE: Select a portion of a job to print the Postflight pages by selecting the appropriate page range of a job from the printer driver.

Postflight workflow

The default settings in the ColorWise print options are such that in most cases you should not have to change them. However, there may be times when you receive unexpected colors for your job. Postflight is a procedure performed after you print a document and receive unexpected or inadequate color. If you have access to Command WorkStation, Postflight also helps you catch color problems before you actually print. Postflight processes your job and collects information about the color objects throughout. The information is then displayed in Color-Coded document pages, a Test Page, and a Concise or Detailed Report.

NOTE: The background defined in the Paper Simulation is not indicated as a CMYK object in the Postflight reports. For more information about Paper Simulation, see [page 15](#).

NOTE: You cannot use Postflight at the same time that you use the following features: Progressives, Substitute Colors, and Combine Separations. Constraints are set for these print options from the printer driver.

The following scenarios show how Postflight can be helpful to users who demand high color quality.

To diagnose an unexpected color (see [page 97](#))

Use Postflight to diagnose unexpected color in a job, or determine which printing or calibration settings apply to a job.

To check the calibration status prior to printing a job (see [page 99](#))

Consider the following before printing a job:

- The Fiery EXP8000 may include many Calibration Sets. Which Calibration Set applies to my job?
- When was the Fiery EXP8000 last calibrated?
- Which instrument was used for the last calibration?

To check the quality of the output profile (see [page 100](#))

If you are considering using a new paper for which you do not have a custom profile, or if you suspect that the output profile for your print device may not precisely describe its color behavior, check your output profile by printing the Postflight Test Page.

To diagnose a color problem of a specific object (see [page 101](#))

When experts have verified that the calibration is correct and that the global settings, including the output profile, are correct, but the color of a specific object is still not as intended, you can print a color-coded document and diagnose the problem.

The detailed procedures of these scenarios are described in the following sections.

NOTE: For each of the following procedures, instead of printing the report to the Fiery EXP8000, you can also send it to the Hold queue of the Fiery EXP8000 and preview the information (of a job with raster data) in ImageViewer. For more information about ImageViewer, see “[ImageViewer](#)” on page 74. To view the color of a job correctly, you must set your monitor and monitor profile correctly. For more information about the monitor and monitor profiles, see [page 14](#).

NOTE: The procedures for printing a job from a Windows and a Mac OS computer are similar.

Scenario 1: Diagnose an unexpected color

Use the following procedure to print a job with Postflight set to Off.

TO PRINT A JOB

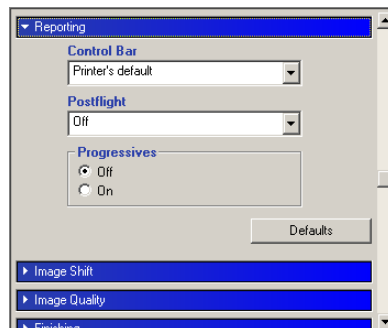
- 1 Open a job from your application.
- 2 Choose Print.
- 3 Select Fiery EXP8000 as your printer and click Properties.

The Properties dialog box appears with the Fiery Printing tab selected.

- 4 Click each option bar, and specify the values for the print options.



- 5 Click the Reporting print option bar.



- 6 Choose Off from the Postflight menu.
- 7 Click OK to close the Properties dialog box.
- 8 Click Print.

The job is printed to the Fiery EXP8000.

After you print a job, use the following procedure to diagnose an unexpected color and print the job with edited color settings.

TO DIAGNOSE AN UNEXPECTED COLOR AND PRINT WITH EDITED COLOR SETTINGS

1 Click the Reporting print option bar.

2 Choose All Components from the Postflight menu.

For information about the components of Postflight, see [page 92](#).

3 Click OK to close the Properties dialog box.

4 Click Print.

Postflight Test Page, color-coded document pages, and Postflight Reports are printed.

5 Review all Postflight pages.

For information about the Postflight pages, see [page 92](#).

6 Make appropriate changes based on all Postflight pages.

For more information about the changes, see the following section.

7 Choose Off from the Postflight menu.

8 Click OK.

9 Click Print.

The job with the edited color settings is printed to the Fiery EXP8000.

10 Return to Step 1, if needed.

Repeat the steps until you get satisfactory color results.

Making changes

After reviewing the Postflight information, determine what changes are necessary and apply the changes. Depending on your printing environment, the condition of the print device, and the color settings, possible changes are as follows:

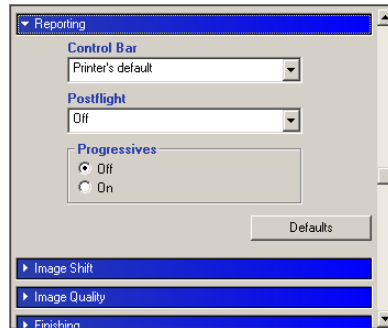
- Correct problems with the print device (see the documentation that accompanies the print device).
- Calibrate the Fiery EXP8000 (see [Color Printing](#)).
- Edit the colors of the output profile with Color Editor (see [Color Printing](#)).
- Change the default settings in the Color Process Flow tab in Color Setup (see [Color Printing](#)).
- Change the job specific print option settings using Command WorkStation overrides.

Scenario 2: Check the calibration status

Use the following procedure to check the calibration status prior to printing a job.

TO CHECK THE CALIBRATION STATUS AND PRINT WITH THE OPTIMUM CALIBRATION CONDITION

- 1 Click the Reporting print option bar.



- 2 If you have not printed the Detailed Report, choose Detailed Report Only from the Postflight menu.

If you have printed the Detailed Report and are familiar with the content, choose Concise Report Only.

For information about Postflight reports, see [page 93](#).

- 3 Click OK.
- 4 Click Print.

The Detailed Report or Concise Report page is printed.

- 5 Review the information in the ColorWise global settings page.
- 6 Perform calibration, if needed.

If service has been performed on the print device since the last calibration, or calibration has not been performed, perform calibration using the Calibration Set specified in the Postflight report.

For more information about Calibration Set, see [Color Printing](#).

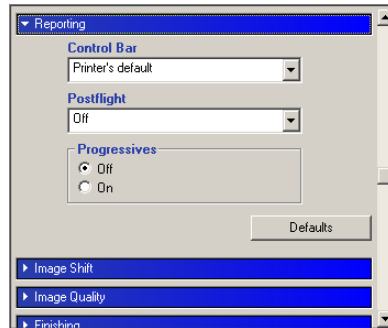
- 7 Choose Off from the Postflight menu.
- 8 Click OK.
- 9 Click Print.
- 10 The job is printed to the newly calibrated Fiery EXP8000.

Scenario 3: Check the quality of output profile

Use the following procedure to check the quality of the output profile of the print device.

TO CHECK THE QUALITY OF OUTPUT PROFILE AND PRINT WITH THE OPTIMUM OUTPUT PROFILE

- 1 Click the Reporting print option bar.



- 2 Choose Test Page Only from the Postflight menu.

For information about Postflight Test Page, see [page 92](#).

- 3 Click OK.

- 4 Click Print.

Postflight Test Page is printed to the Fiery EXP8000.

- 5 Review the quality of the color on the Postflight Test Page.

NOTE: Make sure this page was printed with the same media and print option settings as the job.

- 6 Review the instructions on the Postflight Test Page.

- 7 Edit the color of the output profile, or create a profile, if needed.

It may be necessary to customize the output profile or create one to get optimal results on the media the job is using.

- 8 Choose Off from the Postflight menu.

- 9 Click OK.

- 10 Click Print.

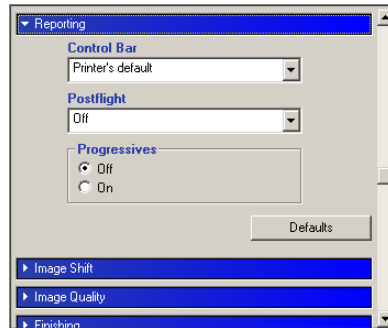
The job is printed to the Fiery EXP8000 with the edited or newly created output profile.

Scenario 4: Diagnose a color problem of a specific object

Use the following procedure to diagnose a color problem.

TO DIAGNOSE A COLOR PROBLEM OF A SPECIFIC OBJECT AND PRINT WITH THE EDITED COLOR SETTINGS

- 1 Click the Reporting print option bar.



- 2 Choose Color-Coded Page Only from the Postflight menu.

For information about Postflight color-coded pages, see [page 92](#).

- 3 Click OK.
- 4 Click Print.

Postflight color-coded pages are printed to the Fiery EXP8000.

NOTE: Alternatively, you can send the Postflight color-coded pages to the Hold queue of the Fiery EXP8000 and preview them using ImageViewer. To preview the pages using ImageViewer, make sure that your monitor is set up according to the manufacturer's recommendations and that the correct monitor profile is specified for your monitor. For information about monitor profiles, see [page 14](#).

- 5 Review the Postflight color-coded pages.
- 6 Make changes to the color settings, if needed.

For information about the ColorWise print options for various color spaces, see [Color Printing](#).

NOTE: Use the Color-Coded Pages Only setting to send a job to another print device that has a specific color-space requirement. For example, a document targeted to a CMYK-only press must have only Cyan-colored objects.

- 7 Choose Off from the Postflight menu.
- 8 Click OK.
- 9 Click Print.

The job is printed to the Fiery EXP8000 with the edited color settings.

MULTIPLE PLATE SEPARATIONS

The Multiple Plate Separations feature allows you to combine the multiple pre-separated color plates of a PostScript job into a composite color print. It supports: Cyan, Magenta, Yellow, Black, and one or more spot colors.

The results of combining the multiple plates are predictable and accurate, regardless of the original application used. This feature also fully supports DCS 2.0 file formats when included in a PostScript print job from a page layout application.

Multiple plate separations workflow

Use the following procedure to print a composite color print from the printer driver.

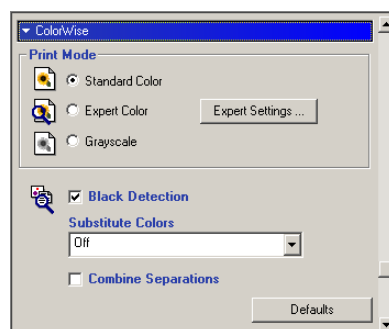
NOTE: The procedures for printing a composite color print from a Windows and a Mac OS computer are similar.

TO PRINT A COMPOSITE COLOR PRINT

- 1 **Open a color-separated document in a supported application.**
- 2 **Choose Print.**
- 3 **Select Fiery EXP8000 as your printer and click Properties.**

The Properties dialog box appears with the Fiery Printing tab selected.

- 4 **Click the ColorWise print option bar.**



- 5 **Select Combine Separations.**
- 6 **Click Print.**

A composite color print is printed to the Fiery EXP8000.

Combine Separations print option

Access the Multiple Plates Separations feature through the Combine Separations print option from the printer driver.

The following values are available for the Combine Separations print option:

- Off (Default)
- On

Supported applications

The following applications have been tested with Mac OS and Windows for compatibility with the Multiple Plates Separations feature:

- Adobe Acrobat 6
- Adobe Illustrator 8, 9, 10, and CS
- Adobe InDesign 1.5, 2, and CS
- Adobe PageMaker 6.5 and 7
- Macromedia FreeHand 9, 10, and MX
- QuarkXPress 4.1, 5, and 6

INDEX

A

Auto Trapping
 about 59
 Apply Auto Trapping option 61
 Color Setup 49
 configurable 59
 default 59
 defining 62
 factory defaults 62
 Image Quality print option bar 59
 pane 60
 printing 63
 tab 60, 62
 trap color reduction 61
 trap object types 62
 trap shape 62
 trap width 61
 workflow 59

B

Brightness, Paper Simulation 17

C

Color Setup
 Auto Trapping 49, 62
 Color Process Flow 49
 Control Bar 49
 Progressives 49
 starting 50
 Combine Separation
 print option 103
 Control Bar
 about 51
 Color Setup 49
 Control Bar Definition dialog box 54
 Control Bar EPS File 55
 creating 54
 default control bar 52
 defining 54
 definitions 54
 deleting 58

Distance from the edge 57
 duplicating 57
 editing 57
 factory defaults 58
 Job Information 56
 pane 53
 Print Control Bar option 54
 print option 51
 printing 58
 Reporting print option 52
 System Page Size 55
 tab 53
 Text Location 57
 workflow 51
 CT/LW to PS Filter
 about 80, 85
 configuring 80, 85

D

DCS 2.0 to PS Filter
 about 81, 85
 configuring 81, 85

E

EPS to PS Filter
 about 82
 configuring 82
 ES-1000, importing measurements with 36
 Exclusive filters 76
 ExportPS Filter
 about 83
 configuring 83

F

file conversion
 about 76
 File Filters
 about 77
 configuring 80
 selecting settings 78
 specifying 78

G

Graphic Arts Package, Premium Edition
features 11

H

Halftone Screen
angle 69
Application Defined 67
calibrating 71
Contone 67
Dot Shape 69
Image Quality option bar 68
LPI (screen frequency) 69
Mac Color Files folder 71
Newsprint 67
print option 67
printing 68
User Screen 67
Windows Color Files folder 71
workflow 67
Halftone Screens tab 69
Hot Folders
about 76
File Filters 76
Hue, Paper Simulation 17

I

ImageViewer
accessing 74

J

JPEG to PDF Filter
about 84
configuring 84

L

Lightness, Spot-On 34

M

monitor compensation
Paper Simulation 20
Spot-On 34
monitor profile, specifying 14
monitor, setting up 14
Multiple plate separations
workflow 102

N

Non-exclusive filters 76

O

output profile
Control Bar 56
Paper Simulation 18, 19, 23
Postflight 96, 98, 100
Spot-On 24, 25, 35, 39, 41

P

Paper Simulation
Brightness 17
fixed values 16
Full (Output GCR) 19, 23
Hue 17
monitor compensation 20
output profile 19
preview 18
print option 16
printing 22
Saturation 17
Save 21
simulation profile 19, 23
white point editing 17
workflow 15
Paper Simulation White Point
dialog box 17
editing 18
PDF/X Preflight Filter
about 86
configuring 86
PDF2GO Filter
about 87
configuring 87
Postflight
about 92
accurate reporting 94
calibration status 96, 99
color problems 96, 101
color-coded pages 92, 101
ColorWise global settings page 93
ColorWise print options 94
Concise Report 93, 99
Detailed Report 99
diagnosing 98
global settings page 99
Hold queue 101
ImageViewer 101
information 98
making changes 98
monitor profile 101

- named colors 29
- Object-specific settings pages 93
- Paper Simulation 95
- print option 95
- quality of output profile 96, 100
- Reporting print option
 - bar 97, 98, 99, 100, 101
- reports 93
- Spot colors 93
- Test Page 92, 100
- unexpected colors 96, 97
- vs. Combine Separations 95
- vs. Progressives 95
- vs. Substitute Colors 95
- workflow 95
- Preview, Paper Simulation 18
- Progressives
 - color channels 66, 70
 - Color Setup 49
 - default 64
 - factory defaults 66
 - pane 65, 66, 70
 - print option 64
 - printing 66
 - Reporting print option bar 64
 - sheets and colors 65
 - tab 65
 - workflow 64

S

- Saturation
 - Paper Simulation 17
 - Spot-On 34
- Spot Color Dictionaries 24
- spot colors, matching to CMYK equivalents 24
- Spot-On 24
 - adding color 29
 - Color Spacing 34
 - downloading color group 30
 - editing 32
 - Set Center Patch Color 32
 - Spot-On Color Search 33
 - Spot-On main window 32
 - ES-1000 36
 - factory defaults 37

- Lightness 34
- main window 26
- monitor compensation 34
- named colors 24
- output profile 25, 39, 41
- rearranging color group 28
- renaming color 29
- RGB or CMYK values 38
- Saturation 34
- Spot Color Matching 24
- substitute colors 38
- uploading color group 31
- using measurement instruments 36
- Substitute Colors
 - accuracy 46
 - adding substitute colors 40, 45
 - CMYK (0-100%) mode 45
 - color substitution 47
 - defining 41
 - Set Center Patch Color 42
 - Spot-On Color Search 43
 - Spot-On main window 41
 - downloading substitute groups 48
 - new 38
 - new substitute group 40
 - principles 46
 - printing 44
 - priority scheme 47
 - renaming substitute colors 45
 - RGB (0-100%) mode 45
 - RGB (Device Code 0-255) mode 45
 - tolerance 45
 - tolerance range 46
 - uploading substitute groups 48
 - vs. Postflight 38
 - workflow 38

T

- terminology 9
- TIFF to PDF Filter
 - about 88
 - configuring 88
- TIFF/IT to PS Filter
 - about 89
 - configuring 89
- Two-Way Communication 12

