



**Fiery® EXP8000 Color Server**  
SERVER & CONTROLLER SOLUTIONS



## Printing from Windows

© 2005 Electronics for Imaging, Inc. The information in this publication is covered under *Legal Notices* for this product.

45049608  
13 July 2005

# CONTENTS

<b>INTRODUCTION</b>	<b>5</b>
Terminology and conventions	5
About this document	6
Setting up printing	6
User software	7
System requirements	7
<b>INSTALLING PRINTER DRIVERS</b>	<b>8</b>
Installing printer drivers by Point and Print	8
Downloading printer drivers using WebTools	10
Downloading printer drivers from the Fiery EXP8000	12
Installing printer drivers	12
Installing and connecting to a virtual printer	15
<b>SETTING UP PRINTING CONNECTIONS</b>	<b>16</b>
Printing connections	16
Completing the SMB printing connection	16
Completing TCP/IP and LPR printing connections	17
Completing IPX (Novell) connections	20
Completing IPP connections	22
<b>CONFIGURING INSTALLABLE OPTIONS</b>	<b>24</b>
Configuring installable options manually	24
Configuring installed options and updating print options settings automatically	26

<b>PRINTING UTILITIES</b>	28
Configuring the connection for Job Monitor	28
Installing printing utilities	30
Using Printer Delete Utility	30
Configuring the connection for Mail Port	31
Using E-mail Service	33
How E-mail Service works	34
Printing using an e-mail client	34
Job Control	36
Printing using Mail Port	37
<b>PRINTING</b>	38
Printing from applications	38
Setting options and printing	38
Accessing print options without opening print option bars	44
Defining and printing custom page sizes	45
Saving files to print at a remote location	48
<b>INDEX</b>	49





## INTRODUCTION

This document describes how to install the printer drivers and printer description files for the Fiery EXP8000 Color Server and how to set up printing from Microsoft Windows computers. It also describes several printing utilities and how to print to the Fiery EXP8000 Color Server. For information about setting up network servers and clients to use the Fiery EXP8000 Color Server, see *Configuration and Setup*. For general information about using the digital press, your computer, application software, or your network, see the documentation that accompanies those products.

The Fiery EXP8000 Color Server supports the DocuColor 8000/7000 digital press.

### Terminology and conventions

This document uses the following terminology and conventions.

Term or convention	Refers to
Aero	Fiery EXP8000 (in illustrations and examples)
Digital press	DocuColor 8000/7000 digital press
Fiery EXP8000	Fiery EXP8000 Color Server
Titles in <i>italics</i>	Other documents in this set
Windows	Microsoft Windows 2000, Windows XP, Windows Server 2003
	Topics for which additional information is available by starting Help in the software
	Tips and information
	Important information
	Important information about issues that can result in physical harm to you or others

The Fiery EXP8000 includes support for WebTools, which allow you to download printer drivers and printer description files to your desktop for installation on your Windows computer.

## About this document

This document covers the following topics:

- Installing printer files on Windows computers
- Setting up printing connections on Windows computers
- Installing Fiery EXP8000 printing utilities
- Printing from Windows computers

## Setting up printing

The following table lists the procedures for installing printer drivers and setting up the printing connections for each Windows platform supported by the Fiery EXP8000.

Action	Windows 2000/XP/Server 2003
Installing printer drivers	<a href="#">“Installing printer drivers by Point and Print”</a> on page 8 <a href="#">“Downloading printer drivers using WebTools”</a> on page 10 <a href="#">“Downloading printer drivers from the Fiery EXP8000”</a> on page 12 <a href="#">“Installing printer drivers”</a> on page 12 <a href="#">“Installing and connecting to a virtual printer”</a> on page 15
Setting up SMB printing	<a href="#">“Completing the SMB printing connection”</a> on page 16
Setting up TCP/IP printing	<a href="#">“Completing TCP/IP and LPR printing connections”</a> on page 17
Setting up IPX/SPX or IPX (Novell) printing	<a href="#">“Completing IPX (Novell) connections”</a> on page 20
Setting up IPP printing	<a href="#">“Completing IPP connections”</a> on page 22

## User software

Fiery EXP8000 user software for setting up printing is provided on the User Software and Documentation DVD.

Adobe PostScript Printer Driver	Supports Fiery EXP8000 and PostScript 3 features.  Windows 2000/XP/Server 2003 users use the PostScript Printer Driver provided with those operating systems.
PostScript Printer Description (PPD) file	Provides information about the Fiery EXP8000 and your particular digital press model to your application and printer driver.
Job Monitor	Allows you to monitor the status of connected Fiery EXP8000 servers and print jobs sent to them.  Automatically installed when the printer driver is installed on a Windows computer.
Mail Port	Allows you to send jobs to the Fiery EXP8000 in the form of e-mail attachments by adding the Mail Port software as a printer port.

**NOTE:** You can also download PostScript printer drivers and printer description files from the Fiery EXP8000 over the network or using WebTools. For instructions, see [“Downloading printer drivers using WebTools”](#) on page 10.

## System requirements

For detailed system requirements, see [Welcome](#).

## INSTALLING PRINTER DRIVERS

This chapter describes the procedures for installing printer drivers on a computer using a supported version of Windows. For the Windows versions supported, see [“Terminology and conventions”](#) on page 5. Installing printer drivers and printer description files is the first step in setting up the Fiery EXP8000 as a PostScript printer.

Install printer drivers as follows:

- From the Fiery EXP8000 through Point and Print using SMB printing.
- From WebTools, by downloading the printer driver files before installing the printer driver. For instructions, see [“Downloading printer drivers using WebTools”](#) on page 10.
- From the Fiery EXP8000 by downloading the printer driver files over the network before installing the printer driver. For instructions, see [“Downloading printer drivers from the Fiery EXP8000”](#) on page 12.
- From the User Software and Documentation DVD.

**NOTE:** WebTools is available if the administrator has enabled Internet access to the Fiery EXP8000.

If a Fiery EXP8000 printer driver is already installed, you must uninstall it before you install a new one. See [“Using Printer Delete Utility”](#) on page 30.

### Installing printer drivers by Point and Print

SMB printing (also known as Windows or WINS printing) allows you to install PostScript printer drivers and printer description files on your computer from the Fiery EXP8000 using Point and Print, and print to a particular connection (Print queue, Hold queue, or Direct connection). To set up SMB printing, you must install the TCP/IP protocol and Client for Microsoft Networks on your computer.

Each connection (Print queue, Hold queue, or Direct connection) requires a separate installation. Repeat the procedure for each connection.

When you install the printer driver using Point and Print, you cannot configure installable options manually. Installable options must be configured by the Fiery EXP8000 administrator. The installed options are displayed in the printer driver when you enable Two-Way Communication. For more information about configuring installable options, see [Configuring Installable Options](#).



---

**BEFORE YOU BEGIN**

- Ask your network administrator for the IP address or name of the Fiery EXP8000 on the network.
- Configure the Fiery EXP8000 for SMB printing.

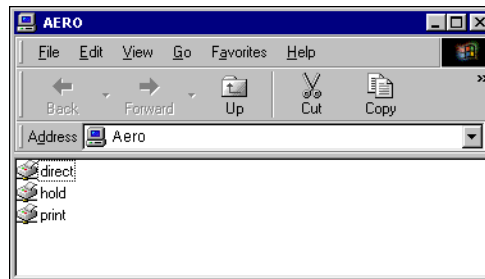
SMB printing is referred to as Windows Printing in Setup and on the Configuration page (see [Configuration and Setup](#)).

---

**TO SET UP SMB PRINTING ON WINDOWS COMPUTERS**

- 1 Right-click **Network Neighborhood** or **My Network Places**, and select **Find Computer** or **Search for Computers**.
- 2 Type the name or the IP address of the Fiery EXP8000 and click **Search Now**.  
If you cannot locate the Fiery EXP8000, contact your network administrator.
- 3 Double-click the name of the Fiery EXP8000 to display enabled print connections.

**NOTE:** For a description of each print connection, see [Configuration and Setup](#).



- 4 Double-click the connection that you want to set up (**Direct**, **Hold**, or **Print**).  
The files are installed on your computer.
- 5 **Windows 2000:** Click **Start**, choose **Settings**, and then choose **Printers**.  
**Windows XP:** Click **Start** and choose **Printer and Faxes**.  
**Windows Server 2003:** Click **Start**, choose **Control Panel**, and then choose **Printers and Faxes**.  
The printer is displayed in the **Printers** or **Printers and Faxes** window.
- 6 Right-click the Fiery EXP8000 icon and choose **Properties**.
- 7 Click **Print Test Page** on the **General** tab.  
If the Test Page prints successfully, you are ready to print from the computer.
- 8 Repeat the previous steps for the other connections that you want to set up.

## Downloading printer drivers using WebTools

WebTools allows you to download installers for printer drivers to your computer directly from the Fiery EXP8000.

Download the printer driver files from the Fiery EXP8000 using WebTools and then follow the procedure “[Installing printer drivers](#)” on page 12. Before you download the printer driver files, you must set specific Fiery EXP8000 options in Network Setup and Printer Setup. You also must prepare each client computer to communicate with the Fiery EXP8000 over the Internet or intranet.

For more information about Network Setup and Printer Setup, see [Configuration and Setup](#).

For more information about setting up and launching WebTools, see [Utilities](#).

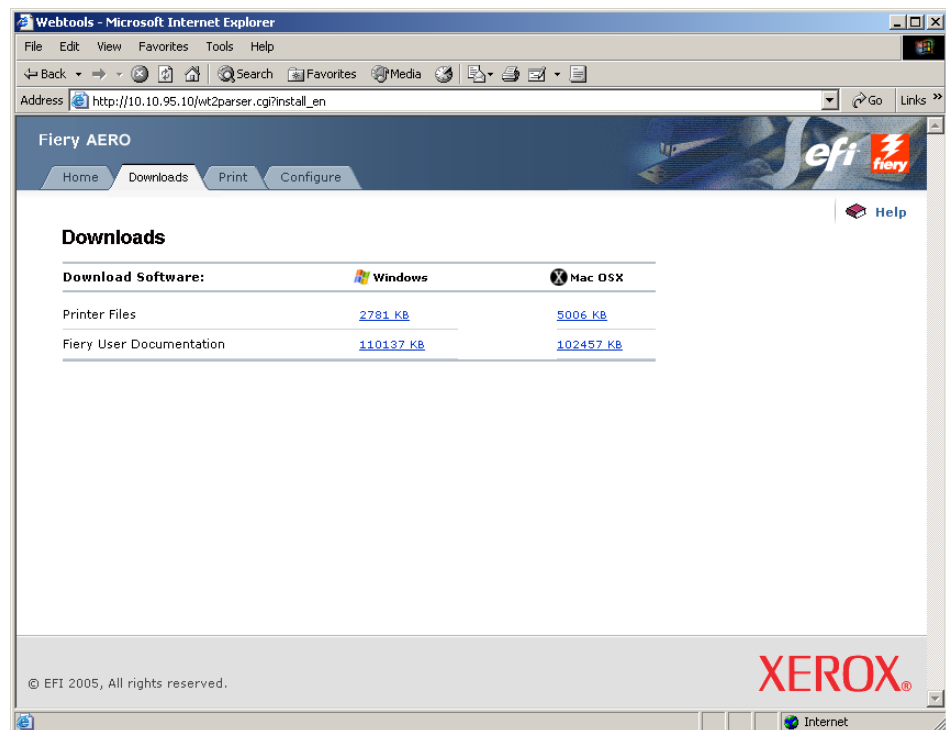
---

### TO DOWNLOAD PRINTER DRIVER FILES WITH WEBTOOLS

- 1 **Start your Internet or intranet browser and type the DNS name or IP address of the Fiery EXP8000.**
- 2 **Select a login level, type a password, if required, and then click OK.**

No password is required to log in as a guest. If the administrator has configured guest access, any user has full access to the Downloads tab while logged in as a guest.

- 3 **Click the Downloads tab.**



**4 Click the link for the item that you want to install.**

For Windows printer drivers, click the Printer Files link under the Windows heading.

**5 If a dialog box prompts you to either open the file or save it to disk, choose to save it to disk.****6 Browse to the location where you want to save the PRNTDRVE.EXE file and click Save.**

The file is downloaded from the Fiery EXP8000. This compressed file is an archive that contains multiple files.

**7 Double-click the PRNTDRVE.EXE file to extract the files.**

Depending on your operating system, you may be prompted to select a location to extract the files to.

Follow the instructions for your operating system to install the printer driver. The procedures are the same as for installing from the DVD, except that after you click Have Disk, you browse to the location where you extracted the files rather than to the DVD.

**For instructions on installing  
the printer driver for****See**

---

Windows 2000/XP/Server 2003

[“To install the printer driver for Windows 2000/XP/  
Server 2003” on page 13](#)

---

## Downloading printer drivers from the Fiery EXP8000

Download printer drivers files to your computer directly from the Fiery EXP8000 over the network and then install them following the procedures in the following section.

**To download printer driver files from the Fiery EXP8000**

- 1 Right-click Network Neighborhood or My Network Places, and select Find Computer or Search for Computers.**
- 2 Type the name of the Fiery EXP8000 or the IP address and click Search Now.**  
If you cannot locate your Fiery EXP8000, contact your network administrator.
- 3 Double-click the name of the Fiery EXP8000.**  
The enabled print connections are displayed along with a folder called FieryUserSW.
- 4 Double-click the FieryUserSW folder and browse to the English\Prntdrv\Ps\_drvr folder.**
- 5 Copy the Win\_2K\_XP folder to your desktop.**

Follow the instructions for your operating system to install the printer driver. The procedures are the same as for installing from the DVD, except that after you click Have Disk, browse to the Win\_2K\_XP folder on you desktop rather than to the DVD.

For instructions on installing the printer driver for	See
Windows 2000/XP/Server 2003	<a href="#">“To install the printer driver for Windows 2000/XP/Server 2003” on page 13</a>

## Installing printer drivers

The following procedures describe installing the printer driver from the User Software and Documentation DVD or from printer driver files downloaded from the Fiery EXP8000.

To install the printer driver on a Windows Server 2003 computer, select the same PPD file as for Windows 2000 and Windows XP, described in the following procedure.

To use the printer driver on Windows 2000/XP/Server 2003, you must select the following options in the Advanced tab of the printer driver after installation is complete:

- Spool print documents
- Start printing immediately
- Print spooled documents first

Clear the following option:

- Enable advanced printing features

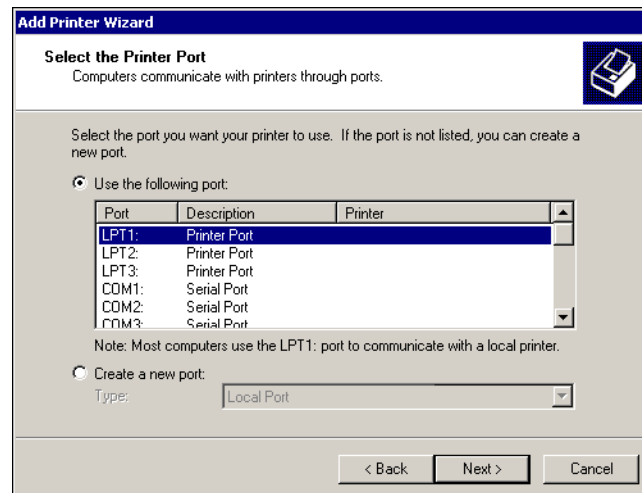
**NOTE:** The following procedures use Windows 2000 illustrations.

**TO INSTALL THE PRINTER DRIVER FOR WINDOWS 2000/XP/SERVER 2003**

- 1 **Windows 2000:** Click Start, choose Settings, and then choose Printers.  
**Windows XP:** Click Start and choose Printer and Faxes.  
**Windows Server 2003:** Click Start, choose Control Panel, and then choose Printers and Faxes.
- 2 **Windows 2000/XP:** Double-click the Add Printer icon and click Next.  
**Windows Server 2003:** Choose Add a printer and click Next.
- 3 **Specify printing using a local printer, clear the “Automatically detect and install my Plug and Play printer” box, and click Next.**

This procedure describes the installation of a local printer. You can modify the connection later, according to your network type.

- 4 **Select LPT1: and click Next.**



- 5 **Click Have Disk in the dialog box displaying lists of manufacturers and printers.**

The Install From Disk dialog box prompts you for the disk.

- 6 **Insert the User Software and Documentation DVD into the DVD drive, type the name of the DVD drive (for example, D:\), and click Browse. Browse to the English\Prntdrv\Ps\_drvr\Win\_2K\_XP folder.**

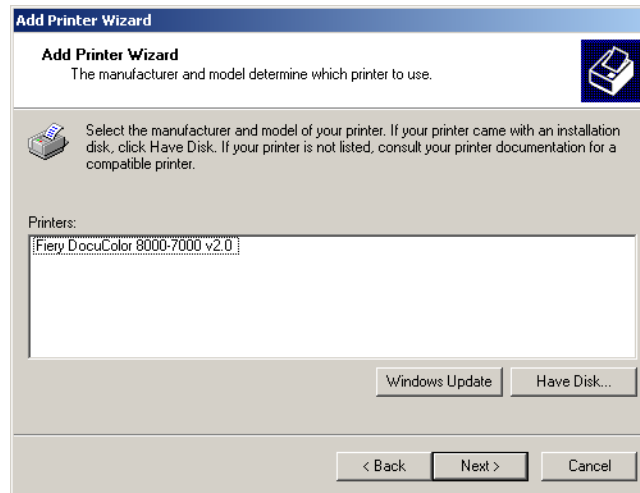
If you are installing from the files you downloaded from the Fiery EXP8000 over the network or using WebTools, browse to prntdrv\Prntdrv\Ps\_drvr\Win\_2K\_XP and click Open.

- 7 **Make sure that Oemsetup.inf or Oemsetup is selected and click Open.**

The path is copied to the Install From Disk dialog box.

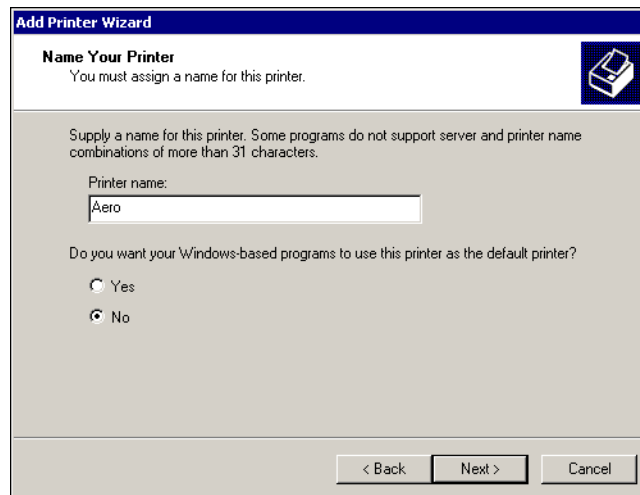
- 8 **Verify that the path is correct and click OK.**

- 9 In the Printers box, select the Fiery EXP8000 as your printer and click Next.



- 10 Type a name for the Fiery EXP8000 in the Printer name field, indicate whether you want to make it the default printer, and click Next.

This name is used in the Printers window and the queues window.



- 11 Follow the on-screen instructions.

Choose not to print a Test Page and not to share this printer. At the last screen, click Finish.

The necessary files are installed on your hard disk. When installation is complete, the Printers window appears with an icon for the newly installed printer.

Now you are ready to set up a connection to the server. See [Setting Up Printing Connections](#).

## Installing and connecting to a virtual printer



A virtual printer allows you to print to the Fiery EXP8000 using a predefined set of job settings. You do not have to set print options manually. Before you can print to a virtual printer, the administrator must create and configure the virtual printer using Command WorkStation. Once the virtual printer is set up, you can install the printer driver and printer description files on your computer from the Fiery EXP8000 using Point and Print.

For more information about setting up virtual printers, see Command WorkStation Help.

When you install the printer driver using Point and Print, you cannot configure installable options manually. Installable options must be configured by the Fiery EXP8000 administrator. The installed options are displayed in the printer driver when you enable Two-Way Communication. For more information, see [Configuring Installable Options](#).

---

### TO SET UP A VIRTUAL PRINTER ON WINDOWS COMPUTERS

- 1 **Right-click Network Neighborhood or My Network Places, and select Find Computer or Search for Computers.**

- 2 **Type the name of the Fiery EXP8000 or the IP address and click Search Now.**

If you cannot locate your Fiery EXP8000, contact your network administrator.

- 3 **Double-click the name of the Fiery EXP8000 to display enabled print connections.**

Virtual printers are listed along with the Print queue, Hold queue, and Direct connection (if those connections are enabled). Virtual printers usually have names that indicate the type of job they are set up for.

- 4 **Right-click the virtual printer that you want and choose Connect.**

The files are installed on your computer.

- 5 **Windows 2000: Click Start, choose Settings, and then choose Printers.**

**Windows XP: Click Start and choose Printer and Faxes.**

**Windows Server 2003: Click Start, choose Control Panel, and then choose Printers and Faxes.**

The virtual printer is displayed in the Printers or Printers and Faxes window.

You can print to a virtual printer just as you would print to the Fiery EXP8000, as described in [Printing](#). Depending on how the virtual printer is configured, you may not be able to set some print options.

## SETTING UP PRINTING CONNECTIONS

To print from Windows computers, you or the administrator must perform the following tasks:

- Set up network servers, if any.
- Set up the Fiery EXP8000 to accept print jobs from your computer.
- Configure a port on each Windows computer for the network type.

### Printing connections

The Fiery EXP8000 supports the following printing connections:

- SMB
- TCP/IP and LPR
- IPX/SPX or IPX (Novell)
- IPP

### Completing the SMB printing connection

If your network does not have a Windows server, Windows computers can still print to the Fiery EXP8000. This method of printing is SMB printing (also known as Windows or WINS printing). When users send print jobs, computers running Windows operate in a peer-to-peer environment and communicate directly with the Fiery EXP8000.

Enabling SMB printing allows the Fiery EXP8000 to be listed on the network, so that Windows clients can print to a particular print connection (Print queue, Hold queue, or Direct connection) on the Fiery EXP8000 without using other networking software. Windows printing runs via TCP/IP. You must configure TCP/IP on the Fiery EXP8000 and on all computers that use SMB printing.

Once you enable SMB printing on the Fiery EXP8000, you can set up the Windows or SMB connection and install the printer driver in one procedure. For more information, see [“Installing printer drivers by Point and Print”](#) on page 8.



## Completing TCP/IP and LPR printing connections

**NOTE:** TCP/IP printing is different from a TCP/IP connection. Setting up TCP/IP printing and configuring your computer for TCP/IP connection are two separate steps.

Once you have installed the PostScript and printer driver files, complete the setup for the TCP/IP and LPR connection as follows:

- Prepare the Fiery EXP8000 to accept print jobs using TCP/IP and LPR protocols.  
For details, see [Configuration and Setup](#).
- Enable LPD or Port 9100 on the Fiery EXP8000. For details, see [Configuration and Setup](#).
- Configure the computer for the TCP/IP connection.

Before you complete the following procedure, contact your system administrator for the IP address assigned to the Fiery EXP8000, the subnet mask, and the gateway address, if required.

The TCP/IP protocol should already be installed on the Windows 2000/XP/Server 2003 computer.

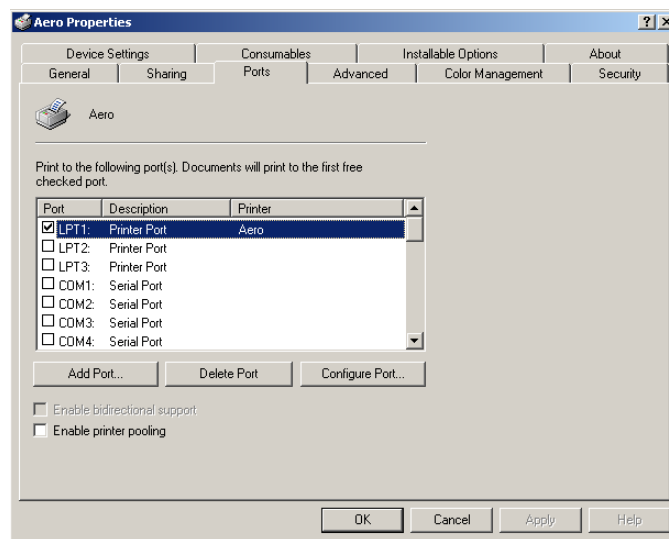
**NOTE:** You can also set up the LPR connection by installing Print Services for UNIX, which is supplied as an add-on Windows component with Windows 2000/XP/Server 2003. For more information, see the documentation that accompanies Microsoft Windows.

---

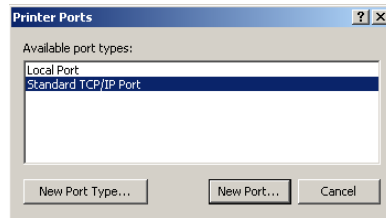
### TO SET UP TCP/IP AND PORT 9100 OR LPR CONNECTION FOR WINDOWS 2000/XP/SERVER 2003

**NOTE:** The following procedures use Windows 2000 illustrations.

- 1 Click **Start**, choose **Settings**, and then choose **Printers**.
- 2 Right-click the Fiery EXP8000 icon and choose **Properties**.
- 3 Click the **Ports** tab.

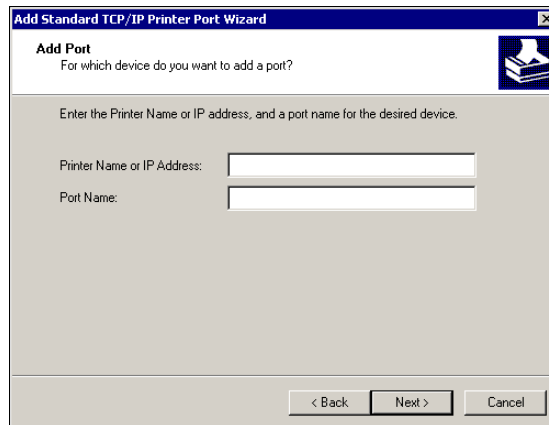


- 4 Click **Add Port**.
- 5 Select **Standard TCP/IP Port** from the list of Available port types and click **New Port Type**.



The Add Standard TCP/IP Printer Port Wizard dialog box appears.

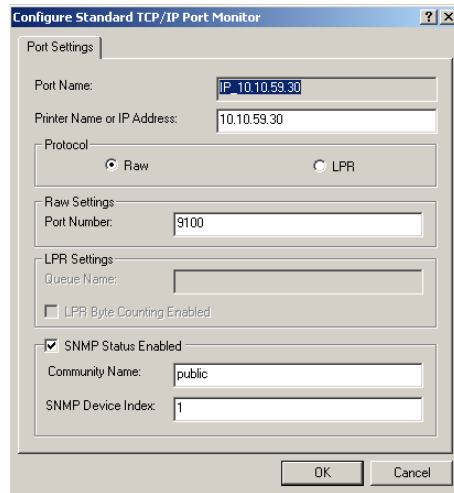
- 6 Click **Next**.
- 7 Type the IP address of the Fiery EXP8000.



- 8 Click **Next**.
- 9 Make sure that **Generic Network Card** is selected as **Standard for Device Type** and click **Next**.
- 10 Click **Finish** to close the Add Standard TCP/IP Printer Port Wizard dialog box, and then click **Close** in the Printer Ports dialog box.

**11 Click Configure Port in the Ports tab of the Properties dialog box.**

The Configure Standard TCP/IP Port Monitor dialog box appears.

**12 If LPD printing is enabled on the Fiery EXP8000, select LPR in the Protocol area and LPR Byte Counting Enabled in the LPR Settings area.**

**NOTE:** You can also proceed without selecting LPR Byte Counting Enabled.

**If Port 9100 printing is enabled on the Fiery EXP8000, select Raw in the Protocol area.**

The port number 9100 automatically appears in the Raw Settings area. This is the default port number. You can print to the printer connection selected for Port 9100 printing on the Fiery EXP8000.

To specify a specific port number, see the following step.

**13 Type the name of the print connection.**

For LPR, type print or hold for Queue Name. The Direct connection is not supported for LPR printing.

For Port 9100, type the following port numbers for each print connection in the Raw Settings area:

Fiery EXP8000 default: 9100

direct: 9101

print: 9102

hold: 9103

**NOTE:** Type the number *exactly* as shown.

**14 Click OK to close the Configure Standard TCP/IP Port Monitor dialog box.**

## Completing IPX (Novell) connections

Complete the setup for the IPX (Novell) connection as follows:

- Configure the Novell network and file server for handling Fiery EXP8000 print jobs. Configure the file server with a print server and print connection for the Fiery EXP8000. For details, see the documentation that accompanies NetWare.
- Prepare the Fiery EXP8000 for IPX printing.
- Set up the IPX connection on the computer.

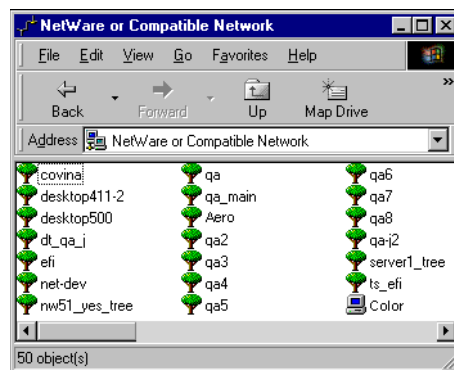
Before you begin, install NetWare protocols (NWLink IPX/SPX Compatible Transport) and NetWare client services on the Windows 2000/XP/Server 2003 computer.

---

### TO SET UP IPX (NOVELL) PRINTING FOR WINDOWS 2000/XP/SERVER 2003

- 1 Windows 2000: Double-click My Network Places.**  
**Windows XP: Click Start and click My Network Places.**  
**Windows Server 2003: Click Start, choose Explorer, and then click My Network Places.**
- 2 Double-click NetWare or Compatible Network.**

A list of NetWare servers appears.



- 3 Double-click the NetWare tree or file server for which the network administrator defined a print connection for the Fiery EXP8000.**

You may have to log on to the file server to see the print connections.

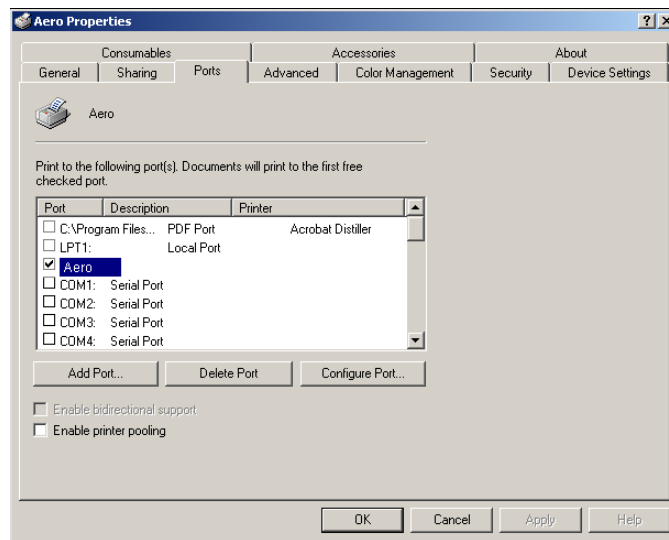
- 4 Double-click the print connection defined for the Fiery EXP8000.**
- 5 If the NetWare server does not have a suitable driver for the Fiery EXP8000, you are asked if you want to set up the printer on your computer. Click Yes.**
- 6 Click OK to install the Fiery EXP8000 PostScript printer driver.**

- 7 Follow [step 6](#) through [step 11](#) of the procedure “[To install the printer driver for Windows 2000/XP/Server 2003](#)” on [page 13](#).

When installation is complete, a new printer window appears, with the name of the print queue on the NetWare server.

- 8 **Choose Properties from the File menu and click the Ports tab.**

Verify that the connection to the NetWare queue is listed and selected as a port for the Fiery EXP8000.



- 9 **Click the General tab and click Print Test Page.**
- 10 **In the printer Job Notes field, type user and job identification information, and then click OK.**

The Test Page remains listed in the queue window until it is printed.

The Fiery EXP8000 polls the NetWare server for print jobs in the print connection defined for the Fiery EXP8000. When you print, your PostScript files are spooled to that connection and transmitted over the queue “port” to the Fiery EXP8000.

## Completing IPP connections

With Internet Printing Protocol (IPP), print jobs are sent to the Fiery EXP8000 over the Internet.

**NOTE:** The IPP setup procedures are performed after installing the appropriate printer drivers (see [Installing Printer Drivers](#)).

Before you begin, perform the following tasks:

- Make sure the Fiery EXP8000 is configured for TCP/IP printing and IPP printing.  
For more information, see [Configuration and Setup](#).
- Specify the printing destination on your computer.

---

### TO SET UP IPP PRINTING WITH WINDOWS 2000/XP/SERVER 2003

- 1 **Windows 2000:** Click Start, choose Settings, and then choose Printers.  
**Windows XP:** Click Start and choose Printers and Faxes.  
**Windows Server 2003:** Click Start, choose Control Panel, and then choose Printers and Faxes.
- 2 **Windows 2000/XP:** Double-click the Add Printer icon and click Next.  
**Windows Server 2003:** Choose Add a printer and click Next.
- 3 Select Network printer and click Next.
- 4 Select Connect to a printer on the Internet or on your intranet. Type an IP address or computer name in the URL field.

The path for the printer is the IP address or DNS name followed by ipp/print (for the Print queue) or ipp/hold (for the Hold queue). Insert slashes between the elements, for example, http://10.10.10.150/ipp/print.

**NOTE:** The URL for the printer is not case-sensitive.

The screenshot shows the 'Add Printer Wizard' dialog box with the title bar 'Add Printer Wizard'. The main heading is 'Locate Your Printer' with the subtext 'How do you want to locate your printer?'. There is a printer icon in the top right corner. The text 'If you don't know the name of the printer, you can browse for one on the network.' is displayed. Below this, the question 'What do you want to do?' is followed by two radio button options. The first option is 'Type the printer name, or click Next to browse for a printer' with a text field labeled 'Name:'. The second option is selected: 'Connect to a printer on the Internet or on your intranet', with a text field labeled 'URL:' containing the text 'http://10.11.151.29/ipp/print'. At the bottom, there are three buttons: '< Back', 'Next >', and 'Cancel'.

**5 Click Next.**

The Connect to Printer dialog box appears.

**6 Click OK.**

The Add Printer Wizard dialog box appears.

**7 If you are installing the PostScript printer for the first time, follow the procedure [“To install the printer driver for Windows 2000/XP/Server 2003”](#) on page 13.**

If you already installed the printer driver on your computer, choose the appropriate names from the Manufacturers and Printers lists and click OK.

**8 Indicate whether you want to make the Fiery EXP8000 the default printer and click Next.**

**9 Click Finish.**

## CONFIGURING INSTALLABLE OPTIONS

After you complete the printer driver installation, you must configure the Fiery EXP8000 for the options installed on the digital press to allow the Fiery EXP8000 to take advantage of the digital press options. Configure the options manually, or for TCP/IP network connections, use the Two-Way Communication feature to configure the options automatically.

### Configuring installable options manually

The following procedures describe how to manually configure the Fiery EXP8000 for the options installed on the digital press. The procedures for all Windows platforms are similar. Any differences are noted in the text. The installable options are listed in the following table.

Installable option	Selections
Feeder	Not Installed, SFM
GA Package	Not Installed, Graphic Arts Package, Graphic Arts Package, Premium Edition
Finishing Device Setup	Not Installed, HCS, HCSS, HCS Bypass, HCS - HCS, HCS - HCSS, HCS - HCS Bypass

For more information about the print settings that use these options, see [Print Options](#).

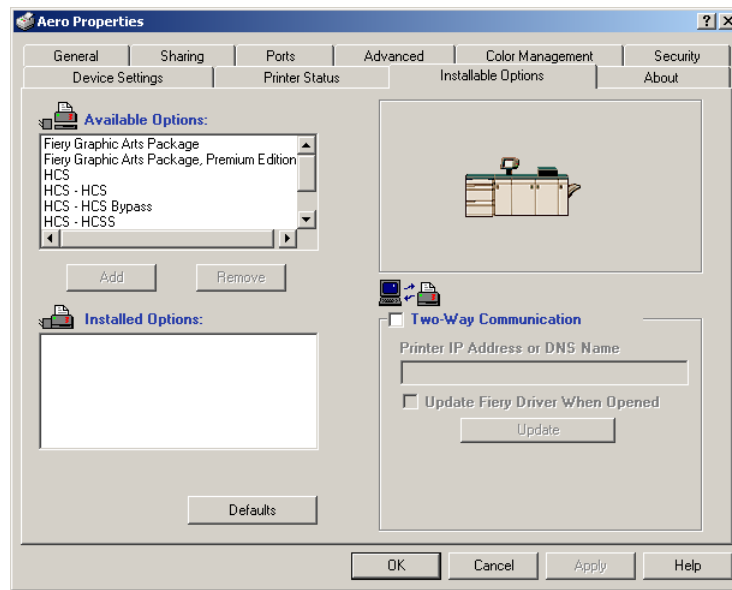
**NOTE:** Although Graphic Arts Package, Premium Edition and Graphic Arts Package are shown as options, the Fiery EXP8000 is shipped with Graphic Arts Package, Premium Edition already installed.

When you configure installable options manually, be sure to match the actual configuration of the Fiery EXP8000 and digital press. Otherwise, the print options shown in the printer driver may not match the print options actually available.



**TO CONFIGURE OPTIONS MANUALLY**

- 1 **Windows2000:** Click Start, choose Settings, and then choose Printers.  
**Windows XP:** Click Start and choose Printers and Faxes.  
**Windows Server 2003:** Click Start, choose Control Panel, and then choose Printers and Faxes.
- 2 In the Printers window, select the Fiery EXP8000 printer driver icon.
- 3 Choose Properties from the File menu.
- 4 Click the Installable Options tab.
- 5 Select an installable option from the Available Options list.
- 6 Click Add to move the option to the Installed Options list.



- 7 Click OK.

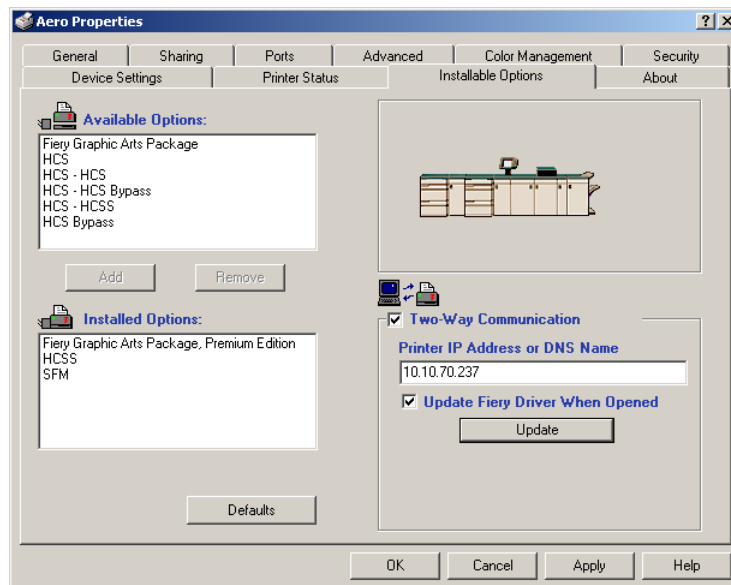
## Configuring installed options and updating print options settings automatically

If you enabled a TCP/IP network, you can automatically update your printer driver to reflect the options currently installed on the digital press. When the printer driver is first installed, the options reflect the default settings that were set up in Fiery EXP8000 Setup or ColorWise Pro Tools. When you update the printer driver using the Two-Way Communication feature, you allow the printer driver to retrieve the settings from the Fiery EXP8000.

The Two-Way Communication feature also updates the ColorWise print options in Expert Color Settings to reflect the current color settings on the Fiery EXP8000. For more information about ColorWise print options, see [Color Printing](#).

### TO ENABLE TWO-WAY COMMUNICATION

- 1 **Windows 2000:** Click Start, choose Settings, and then choose Printers.  
**Windows XP:** Click Start and choose Printers and Faxes.  
**Windows Server 2003:** Click Start, choose Control Panel, and then choose Printers and Faxes.
- 2 In the Printers window, select the Fiery EXP8000 printer driver icon.
- 3 Choose Properties from the File menu.
- 4 Click the Installable Options tab.
- 5 Select Two-Way Communication.



- 6 Type the Fiery EXP8000 IP address or DNS name.

- 7 **Select Update Fiery Driver When Opened to display the printer's current default settings when the printer driver is opened.**

- 8 **Click Update.**

**NOTE:** To confirm that Two-Way Communication is enabled, click the About tab and check that the Fiery EXP8000 name and other server information are displayed.

- 9 **Select Enable E-mail Notification to receive e-mail notification after your job has been printed, and type the e-mail address to which an e-mail notification is sent.**

You will receive e-mail notification of any errors that occur during printing.

**NOTE:** Enable E-mail Notification is displayed only if E-mail Service is enabled at Setup. For more information, see *Configuration and Setup*.

- 10 **Click the Advanced tab and clear Enable Advanced Printing Features.**
- 11 **Click OK.**

## PRINTING UTILITIES

You can install the following printing utilities from the User Software and Documentation DVD or from the Fiery EXP8000 over the network:

- Job Monitor
- Printer Delete Utility
- Mail Port

**NOTE:** Job Monitor is automatically installed when you install the printer driver on your computer. To use Job Monitor, you must enable it in the printer driver. (For more information, see [“Configuring the connection for Job Monitor”](#) on page 28.)

### Configuring the connection for Job Monitor

Use Job Monitor to monitor the status of Fiery EXP8000 servers and view information about the print jobs sent to them.



For information about using Job Monitor, see Job Monitor Help.

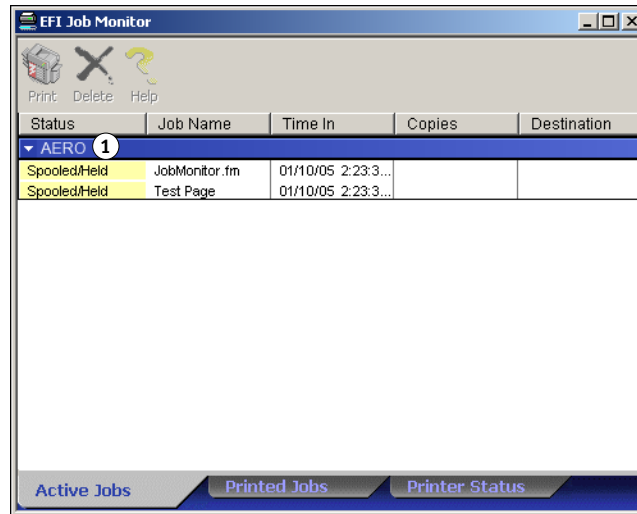
---


#### TO CONFIGURE THE CONNECTION TO FIERY EXP8000 SERVERS

- 1 **Windows 2000:** Click Start, choose Settings, and then choose Printers.  
**Windows XP:** Click Start and choose Printer and Faxes.  
**Windows Server 2003:** Click Start, choose Control Panel, and then choose Printer and Faxes.
- 2 In the Printers window, select the Fiery EXP8000 PostScript printer driver icon.
- 3 Choose Properties from the File menu.
- 4 Click the Advanced tab, and clear the Enable advanced printing features option.
- 5 Click the Printer Status tab.

**6 Click Launch Job Monitor.**

Job Monitor opens a utility window and establishes a connection to the Fiery EXP8000. If you have installed and configured printer drivers for more than one digital press, Job Monitor automatically establishes connections to all the Fiery EXP8000 servers.

**1 Server****7 Click Update in the Printer Status tab.****8 Click OK to close the Properties window.**

The Job Monitor icon (  ) appears on the desktop and in the Windows taskbar of your computer.

## Installing printing utilities

All installation of user software on a Windows computer is done through the Master Installer. The procedures in *Utilities* describe installing from the User Software and Documentation DVD or the network.

## Using Printer Delete Utility

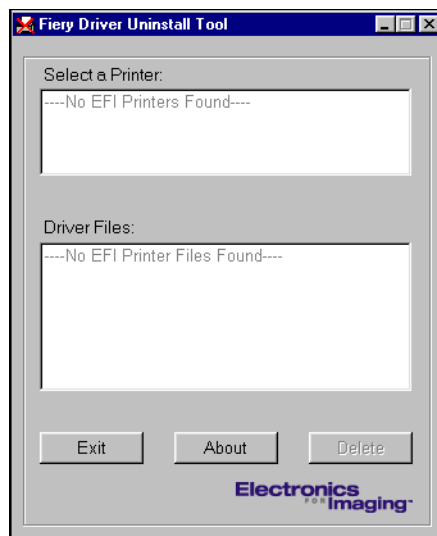
Printer Delete Utility is installed and used locally, so you do not need to connect to the Fiery EXP8000 before you use the software.

---

### TO USE PRINTER DELETE UTILITY

- 1 Click **Start**, choose **Programs**, and then choose **Fiery**.
- 2 Click **FieryPrinterDeleteUtility**.

The Fiery Driver Uninstall Tool dialog box appears. Any Fiery EXP8000 printer drivers found on your computer are listed.



- 3 To delete a printer, select the printer name and click **Delete**.
- 4 Click **OK** to delete the selected printer driver.
- 5 Click **OK** to restart, or, to delete another printer driver, click **Cancel** to return to the Fiery Driver Uninstall Tool dialog box. When you finish deleting printer drivers, restart your computer.

## Configuring the connection for Mail Port

The Mail Port allows you to print to and control the Fiery EXP8000 remotely. Jobs are sent to the Fiery EXP8000 in the form of e-mail attachments. Set up e-mail printing on Windows computers by adding the Mail Port software as a printer port.

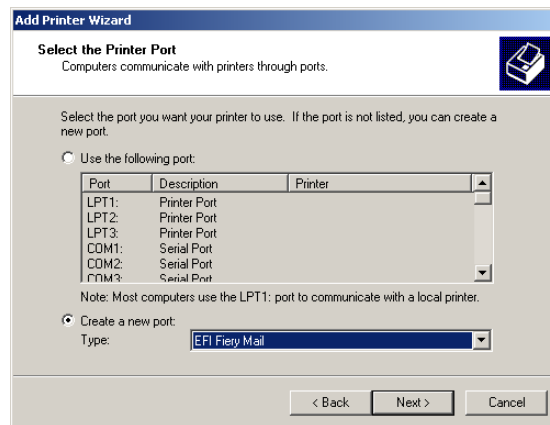
You must set up E-mail Service on the Fiery EXP8000 to use Mail Port. To set up E-mail Service, see *Configuration and Setup*. After you set up E-mail Service, install the Mail Port from the User Software and Documentation DVD onto your Windows computer, and then add a port.

**NOTE:** The following procedures are similar for all Windows platforms.

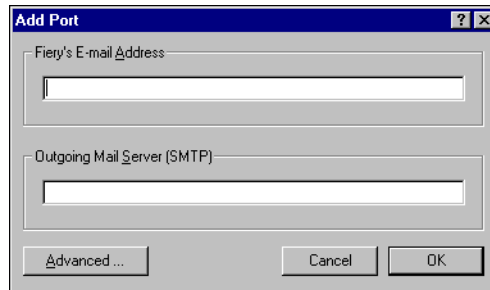
---

### TO CONFIGURE THE CONNECTION FOR THE MAIL PORT

- 1 Windows 2000:** Click Start, choose Settings, and then choose Printers.  
**Windows XP:** Click Start and choose Printers and Faxes.  
**Windows Server 2003:** Click Start, choose Control Panel, and then choose Printers and Faxes.
- 2 Windows 2000:** In the Printers window, double-click the Add Printer icon and click Next.  
**Windows XP:** In the Printers and Faxes window, click Add a printer and then click Next.  
**Windows Server 2003:** Click Start, choose Add a Printer, and then click Next.
- 3 Specify printing using a Local printer and click Next.**
- 4 Select Create a New Port, choose EFI Fiery Mail from the Type menu, and click Next.**



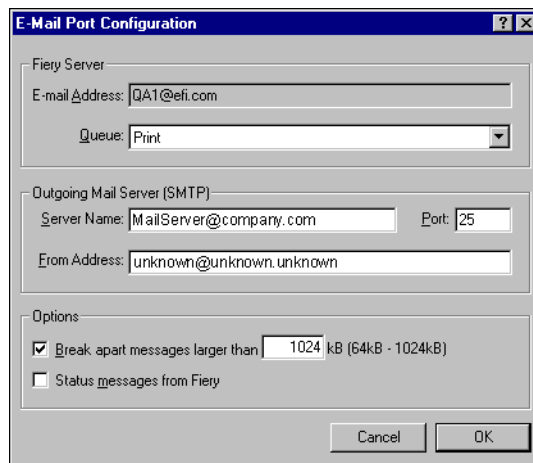
5 In the Add Port dialog box, type the basic information required to set up the e-mail port.

The 'Add Port' dialog box has a title bar with a question mark and a close button. It contains two text input fields: 'Fiery's E-mail Address' and 'Outgoing Mail Server (SMTP)'. At the bottom, there are three buttons: 'Advanced ...', 'Cancel', and 'OK'.

- **Fiery's E-mail Address:** Type the e-mail address of the Fiery EXP8000.
- **Outgoing Mail Server:** Type the name or IP address of the SMTP server for the port to use.

6 Click Advanced.

The E-Mail Port Configuration dialog box appears.

The 'E-Mail Port Configuration' dialog box has a title bar with a question mark and a close button. It is divided into three sections. The 'Fiery Server' section contains an 'E-mail Address' field with 'QA1@efi.com' and a 'Queue' dropdown menu set to 'Print'. The 'Outgoing Mail Server (SMTP)' section contains a 'Server Name' field with 'MailServer@company.com', a 'Port' field with '25', and a 'From Address' field with 'unknown@unknown.unknown'. The 'Options' section has two checkboxes: 'Break apart messages larger than' (checked) with a value of '1024' and 'Status messages from Fiery' (unchecked). At the bottom are 'Cancel' and 'OK' buttons.

7 Type the following information.

For Fiery Server:

- **E-mail Address:** The e-mail address you entered for the Fiery EXP8000 is shown here.
- **Queue:** Type the print connection on the Fiery EXP8000 that you want.

For Outgoing Mail Server (SMTP):

- **Server Name:** Type the SMTP server to use.
- **From Address:** Type the "from" address to insert in the e-mail.



For Options:

- **Break apart messages larger than:** If you select this option, specify the maximum size of a single e-mail message. If a job exceeds this size, it is split into multiple messages, each not to exceed this size, and then is sent to the Fiery EXP8000. The Fiery EXP8000 automatically combines all split messages into the original single print job for printing.
- **Status messages from Fiery:** If you select this option, the Fiery EXP8000 sends status reports of jobs printed via e-mail.

**8 Click OK.**

The Add Printer Wizard dialog box appears.

**9 Click Next and follow the on-screen instructions for installing the printer driver for your Windows computer.**

## Using E-mail Service

E-mail Service allows you to control the Fiery EXP8000 using your current e-mail infrastructure and to print to remote locations and bypass firewalls. E-mail Service is not application-specific. You can use any e-mail infrastructure.

With E-mail Service, you can submit jobs to the Fiery EXP8000 as e-mail attachments.

Use E-mail Service to do the following:

- Print and manage print jobs using an e-mail client.
- Print using the Mail Port.
- Scan using Scan to E-mail.

## How E-mail Service works

To set up E-mail Service, see *Configuration and Setup*.

To print with an e-mail client, you send a file as an e-mail attachment. E-mail Service extracts the file and sends it to the Fiery EXP8000. The attachment can be in any format the Fiery EXP8000 recognizes (PostScript, PDF, or TIFF).

**NOTE:** E-mail Service does not process files with .vbs, .exe, or .bat extensions.

To print through Mail Port, you must first set up Mail Port as described in “[Configuring the connection for Mail Port](#)” on page 31. Then, when you print from an application and select the printer connected to the Mail Port., the print job is sent to the Fiery EXP8000 via e-mail.

E-mail Service supports Scan to E-mail, a feature that allows you to scan a document and send it to an e-mail address as an attachment or URL. For more information about Scan to E-mail, see *Utilities*.

The Fiery EXP8000 supports internal address books. Administrators can retrieve, add, delete, and clear addresses from the address books by sending requests via e-mail. For more information about address books, see *Configuration and Setup*.

### Printing using an e-mail client

You can submit print jobs to the Fiery EXP8000 in the form of an e-mail attachment using your e-mail application. When you send an e-mail with an attachment, E-mail Service extracts the file and sends it to the Fiery EXP8000 Print queue. The file format must be one supported by the Fiery EXP8000.

By default, anyone can print with an e-mail client, unless the Print address book has been set up by the administrator. If the Print address book has been set up and your e-mail address is not in it, you cannot send files to the Fiery EXP8000 via e-mail. For more information about address books, see *Configuration and Setup*.

**NOTE:** The Hold queue and Direct connection are not supported by the e-mail client feature.

**NOTE:** The following illustrations depict the Microsoft Outlook e-mail application.

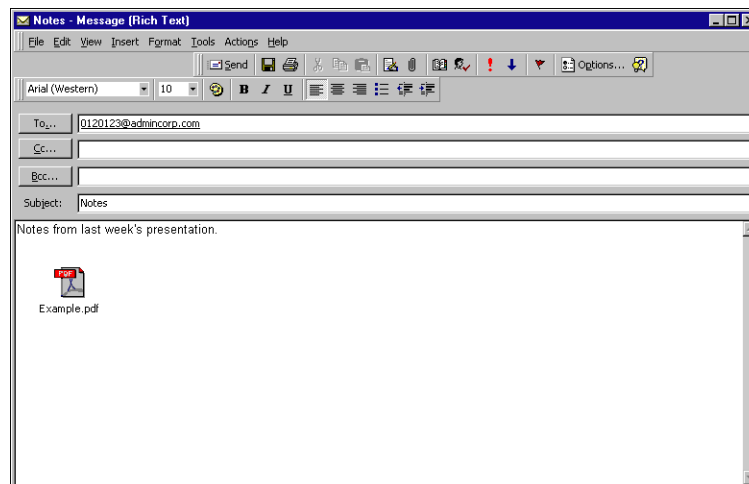
---

**TO PRINT USING AN E-MAIL CLIENT**

- 1 **Open your e-mail application.**
- 2 **Type the Fiery EXP8000 e-mail address in the To: line.**
- 3 **Type text in the Subject line or leave the Subject line blank.**
- 4 **Attach the file that you want to print.**

The attachment can be in any format the Fiery EXP8000 recognizes (PostScript, PDF, or TIFF).

**NOTE:** If your attachment exceeds the file size limitation set by your e-mail system administrator, the e-mail is not sent.



- 5 **Optionally, you can type text in the body of the message. That text is printed with the file.**

**NOTE:** HTML-formatted e-mail messages are not supported, and they may not print as they appear on the remote workstation. Send e-mail messages in plain text format.

- 6 **Send the e-mail.**

The file is sent to the Fiery EXP8000 and the job is printed. After the Fiery EXP8000 receives the job, you are sent an e-mail notification that the print job was accepted. The e-mail provides a job identification (ID). Use the job IDs to manage jobs with Job Control (see the following section). The e-mail notification indicates any current error at the digital press.

Once the job has been printed, you are sent a second e-mail notification that indicates the job printed successfully.

**NOTE:** If you send a TIFF file that was compressed using G3MH or G4MMR, the file is printed correctly but no e-mail notifications are sent.

Use Job Control to see if your job printed successfully.

## Job Control

You can manage your print jobs by submitting commands to the Fiery EXP8000 via e-mail. You can cancel a job, check job status, and get help on a job. Once you send a command, the Fiery EXP8000 returns an e-mail response.

---

### TO MANAGE PRINT JOBS WITH JOB CONTROL

- 1 In your e-mail application, type the Fiery EXP8000 e-mail address in the **To:** line.
- 2 Type one of the following Job Control commands in the **Subject** line:

**To check the status of a job, type #JobStatus<job id> in the Subject line.**

You receive a reply to your job status query. You can only get the status of the job if you sent the job or are an administrator.

**To cancel a job, type #CancelJob<job id> in the Subject line.**

You receive a notification indicating that the job has been cancelled and did not print to the Fiery EXP8000. You can only cancel a job if you sent the job or are an administrator.

**To get help, type #Help in the Subject line.**

You receive an e-mail response that contains links that allow you to cancel jobs, check job status, and search and manage address books. Click any of the links to perform a Job Control command.

## Printing using Mail Port

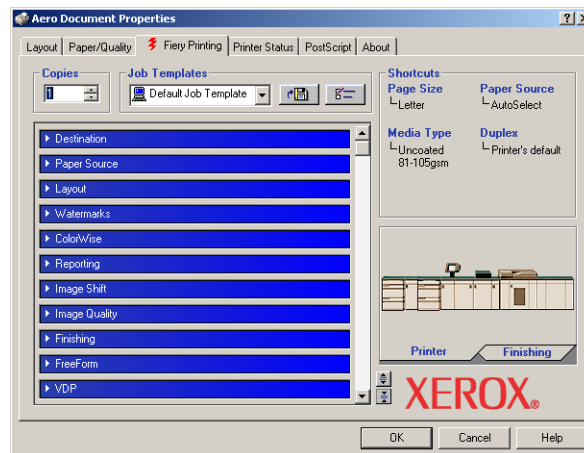
Once you set up Mail Port, print via e-mail in the same manner as any other printing method. No additional steps are necessary.

**NOTE:** The Direct connection is not supported when you print with Mail Port.

---

### TO PRINT USING MAIL PORT

- 1 Choose Print in your application.
- 2 Make sure the Fiery EXP8000 is selected as your printer and you have installed the Mail Port for the Fiery EXP8000.
- 3 Click Properties.
- 4 Click the Fiery Printing tab.



- 5 Set the print options and click OK.

To set options using the printer driver, see “[Setting options and printing](#)” on page 38.

- 6 Click OK again to send your job to the Fiery EXP8000.

If the attachment exceeds the file size limitation set in your application, the attachment is broken into several messages.

## PRINTING

This chapter describes printing to the Fiery EXP8000. You can print from a networked Windows computer or a computer using Windows (WINS) printing. You can also print to a file so that it can be printed at a remote location (see [“Saving files to print at a remote location”](#) on page 48). In addition to these methods, you can download certain types of files to the Fiery EXP8000 using Downloader (see [Utilities](#)), and print documents using Hot Folders (an option) (see [Utilities](#)) and E-mail Services (see [“Using E-mail Service”](#) on page 33).

For information about setting up the Windows environment for printing with Windows servers connected to the Fiery EXP8000, see [Configuration and Setup](#). For information about connecting to the Fiery EXP8000 over the network, see [Setting Up Printing Connections](#). For information about installing printer drivers, see [Installing Printer Drivers](#).

### Printing from applications

After you install the Fiery EXP8000 printer driver and configure the proper port, you can print directly from most Windows applications. Set the print options for the job and choose Print from your application.

To achieve optimal printing results from specific applications, see [Color Printing](#) and [Fiery Color Reference](#).

### Setting options and printing

To print from all Windows platforms, install the corresponding PostScript printer driver. For instructions, see [Installing Printer Drivers](#). The drivers are included on the User Software and Documentation DVD and on the Fiery EXP8000.

On Windows 2000/XP/Server 2003, be sure to configure the options in the Advanced tab of the printer driver after installation is complete, as described on [page 12](#).

Once you install the printer driver and printer description files, you can specify print settings for a particular job and print it to the Fiery EXP8000. You can also set default print settings using the driver.

If you print to a virtual printer, you may not be able to set some print options, depending on how the virtual printer is configured.

To print from Windows applications on a computer connected to a print server, the print server must be a Novell NetWare, Windows 2000/Server 2003, or UNIX server. For more information, see [Configuration and Setup](#).

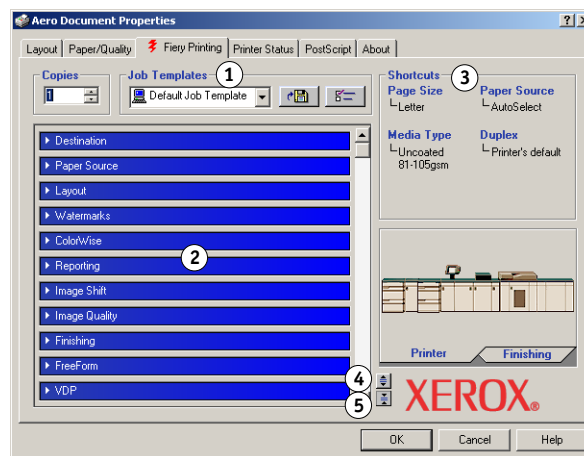
The following procedures explain how to use the printer driver to specify print options. For information about specific print options, see [Print Options](#).

**NOTE:** The following procedures use Windows 2000 illustrations.

#### TO SET PRINT OPTIONS FOR A SPECIFIC WINDOWS PRINT JOB USING THE PRINTER DRIVER

- 1 Choose Print in your application.
- 2 Select the Fiery EXP8000 as your printer and click Properties.
- 3 Click the Fiery Printing tab.

- 1 Job Templates, see online help
- 2 Print option bars
- 3 Shortcuts, see online help
- 4 Click to display all print options
- 5 Click to hide all print options

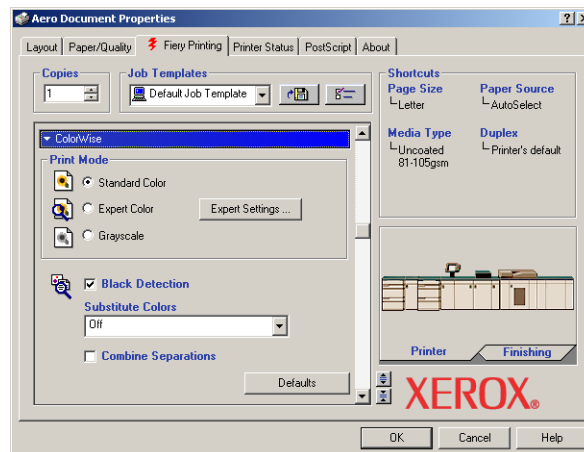


The Fiery Printing tab serves as the control center for all frequently used printing functions.

**NOTE:** For a complete list of print options, see [Print Options](#).

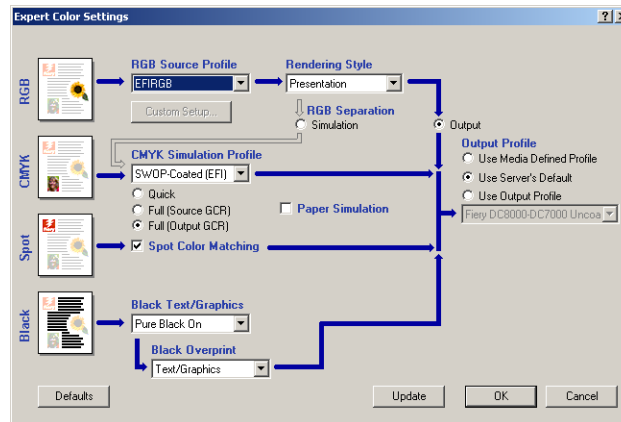
- 4 Click the ColorWise print option bar and specify the color profile options for the job.

In the Print Mode area, select a color mode for the job. To use advanced color management features, such as Rendering Style, click Expert Settings and proceed to [step 5](#). Otherwise, proceed to [step 7](#).

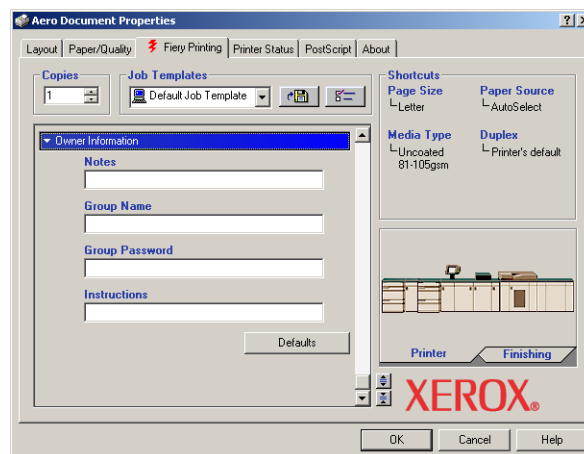


- 5 In the Expert Color Settings dialog box, click Update to display the current Fiery EXP8000 settings.

If the Update button does not appear, make sure that the Two-Way Communication option is selected, as described in “Configuring installed options and updating print options settings automatically” on page 26.



- 6 Specify the color settings for the print job and click OK.
- 7 Click the Owner Information print option bar.
- 8 Type an account name in the Group Name field.



The Group Name appears in the Job Log. The account name is defined by your administrator for managing purposes. For the account name, consult the administrator.



### 9 Type a password in the Group Password field.

The Group Password appears in the Job Log, but it is encrypted. The password is defined by your administrator for managing purposes. For the password, consult the administrator.

When the account name and password you typed match those defined by the administrator, your job is printed. Otherwise, an error is generated, and your job is placed in the Printed queue.

The administrator or operator can edit the Group Name and Group Password from the Command WorkStation Job Properties dialog box. The Group Name appears in the job's Notes 2 field in the Job Log.

**NOTE:** Group Name and Group Password options are not available when you print to the Direct connection.

### 10 Type information in the Notes field.

The information you type in the this field can be viewed and edited by the operator in Command WorkStation and also appears in the Job Log.

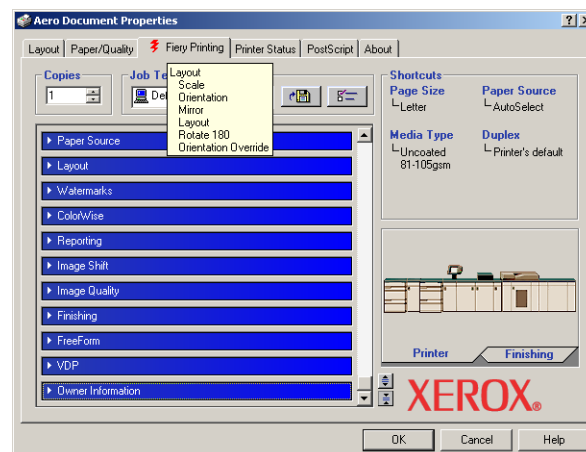
For more information about Command WorkStation, see [Utilities](#).

### 11 In the Instructions field, type instructions to the operator about the job.

These instructions are displayed in Command WorkStation, but do not appear in the Job Log. These instructions can be edited by the operator.

### 12 Click the remaining print option bars to specify the appropriate settings for the print job and click OK.

To quickly locate a print option, move the cursor slowly over the print option bars. A popup message appears for each print option bar that displays the print options available.



These print options are specific to the Fiery EXP8000 and the digital press. They override settings specified in Fiery EXP8000 Printer Setup, but can be overridden from Command WorkStation. For information about these options and overrides, see [Print Options](#). For more information about Command WorkStation, see [Utilities](#).

Some print options are available only if a particular installable option has been configured. For information about configuring installable options, see [Configuring Installable Options](#).

If you choose Printer's default, the job prints according to the settings specified in Setup. For more information, see [Print Options](#).

**NOTE:** If you specify incompatible print settings, the Conflict dialog box provides instructions to resolve the conflict.

### 13 From your application, click OK to send your print job.

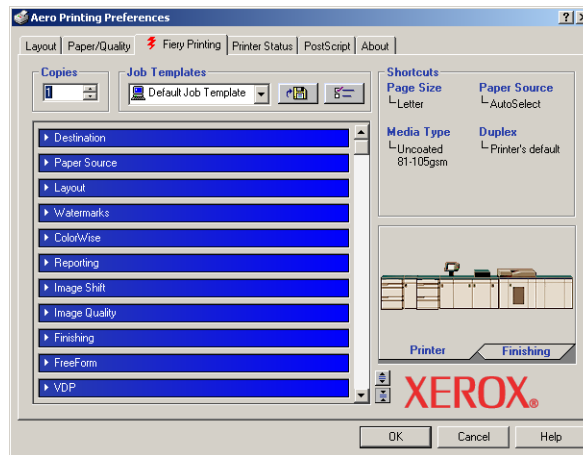
Make sure that the Fiery EXP8000 is selected as your current printer.

**NOTE:** Some print options that are selectable from an application or Adobe PS printing features are similar to print options that are specific to the Fiery EXP8000 and the digital press. In these cases, use the print options specific to the Fiery EXP8000 and the digital press. These options appear in the Fiery Printing tab. The application or Adobe PS printer driver may not set up the file properly for printing on the Fiery EXP8000, resulting in unexpected printing errors and longer processing time.

**NOTE:** With the E-mail Notification feature enabled in the printer driver as described in “[To enable Two-Way Communication](#)” on page 26, you receive an e-mail notification after your job is printed or when a printing error occurs.

**TO SET DEFAULT PRINT OPTIONS FOR WINDOWS PRINT JOBS USING THE ADOBE OR MICROSOFT POSTSCRIPT PRINTER DRIVER**

- 1 **Windows 2000:** Click Start, choose Settings, and then choose Printers.  
**Windows XP:** Click Start and choose Printers and Faxes.  
**Windows Server 2003:** Click Start, choose Control Panel, and then choose Printers and Faxes.
- 2 Right-click the Fiery EXP8000 icon and choose Printing Preferences.
- 3 If the Fiery Printing tab is not displayed, click it.



- 4 Specify the default settings for your print job, as described on [page 39](#).
- 5 Click OK to close the dialog box.

## Accessing print options without opening print option bars

You can also access and change the print option settings by right-clicking the print option bars. When you right-click a print option bar, a list of print options appears, and you can change settings in the list for your print job.

### TO ACCESS PRINT OPTIONS WITHOUT OPENING PRINT OPTION BARS

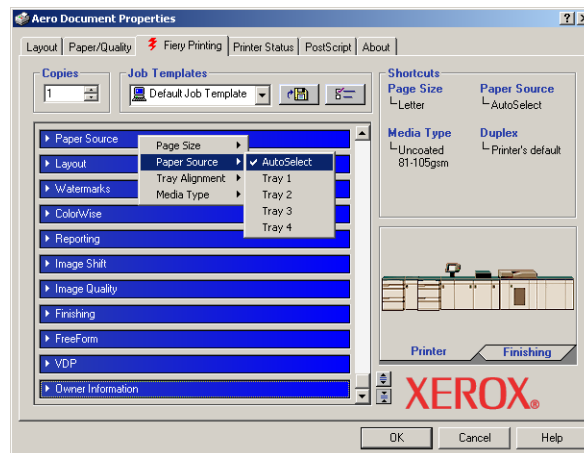
**1 Open the Fiery Printing tab.**

**2 Right-click a print option bar.**

A list of the print options appears.

**3 Click or move and hold the cursor over an option to which you want to make a change.**

Available settings appear.

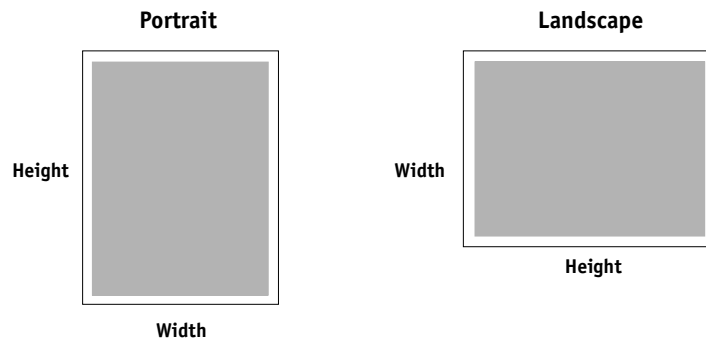


**4 Click a setting.**

**NOTE:** For the text-field options, such as Group Name and Notes, you must click and open the print option bars to access them.

## Defining and printing custom page sizes

With custom page sizes, you define the dimensions of a printed page. After you define a custom page size, you can use it from within an application without redefining it each time you print. When you create custom page sizes, specify Width dimensions to correspond with the shorter side of your job and specify Height dimensions to correspond with the longer side of your job. Set custom page sizes in this way, regardless of the orientation settings in the application.



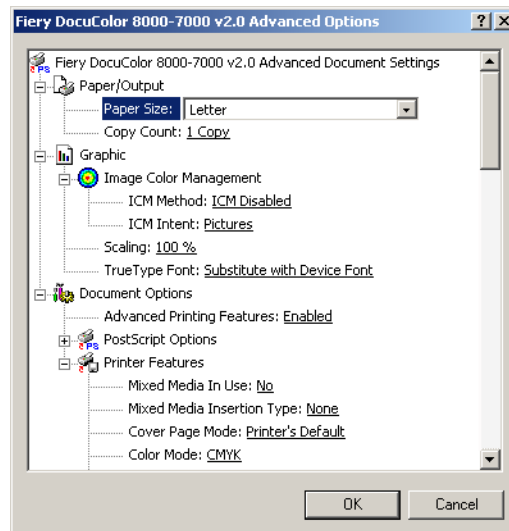
**NOTE:** Custom page sizes are not supported with Imposition jobs.

When you define or edit a custom page size, or print your job on a custom page size in the Windows 2000/XP/Server 2003 PostScript printer driver, use the following procedures.

**NOTE:** Windows 2000/XP/Server 2003 have a similar interface when setting options and printing. The following procedures use Windows 2000 illustrations with Windows XP/Server 2003 differences noted.

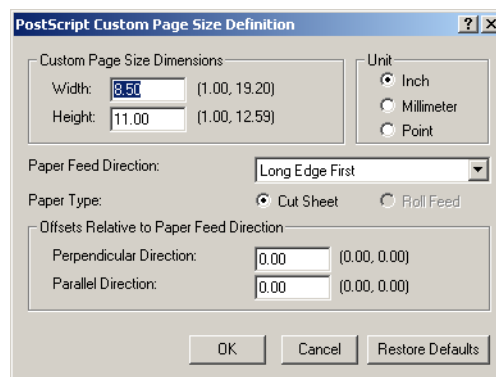
**TO DEFINE A CUSTOM PAGE SIZE WITH THE WINDOWS 2000/XP/SERVER 2003 POSTSCRIPT PRINTER DRIVER**

- 1 **Windows 2000:** Click Start, choose Settings, and then choose Printers.  
**Windows XP:** Click Start and choose Printer and Faxes.  
**Windows Server 2003:** Click Start, choose Control Panel, and then choose Printers and Faxes.
- 2 Right-click the Fiery EXP8000 PS icon and choose Printing Preferences.
- 3 Click the Paper/Quality tab.
- 4 Click Advanced.



- 5 **Choose PostScript Custom Page Size from the Paper Size menu.**

The PostScript Custom Page Size Definition dialog box appears.



**6 Specify options to define the custom page size.**

**Custom Page Size Dimensions:** Specify the width and height of the print job.

**Unit:** Select a unit of measurement for the print job.

**Paper Feed Direction:** Choose the paper feed direction of the print job.

**Paper Type:** Only the Cut Sheet option is available.

**Offsets Relative to Paper Feed Direction:** Specify the offsets (margins) of the print job relative to the paper feed direction.

**7 Click OK to close the PostScript Custom Page Size Definition dialog box.**

**8 Click OK to close the Advanced Options dialog box.**

**9 Click OK to close the Printing Preferences dialog box.**

You can now specify the custom page size from an application.

**NOTE:** Access the Paper/Quality tab only for defining or editing custom page sizes. Set up the rest of the print options on the Fiery Printing tab.

---

**TO EDIT A CUSTOM PAGE SIZE WITH THE WINDOWS 2000/XP/SERVER 2003 POSTSCRIPT PRINTER DRIVER**

- 1 Windows 2000:** Click Start, choose Settings, and then choose Printers.  
**Windows XP:** Click Start and choose Printer and Faxes.  
**Windows Server 2003:** Click Start, choose Control Panel, and then choose Printers and Faxes.

**2 Right-click the Fiery EXP8000 icon and choose Printing Preferences.**

**3 Click the Paper/Quality tab.**

**4 Click Advanced.**

**5 Choose PostScript Custom Page Size from the Paper Size menu.**

The PostScript Custom Page Size Definition dialog box appears. If it does not appear, click Edit Custom Page Size.

**6 Edit the settings as described on [page 47](#) and click OK.**

---

**TO PRINT A CUSTOM PAGE SIZE WITH THE WINDOWS 2000/XP/SERVER 2003 POSTSCRIPT PRINTER DRIVER**

- 1 Choose Print from your application.**
- 2 Select the Fiery EXP8000 as the printer and click Properties.**
- 3 Click the Fiery Printing tab and then click the Paper Source print option bar.**
- 4 Choose PostScript Custom Page Size from the Paper Size menu.**
- 5 Click the Layout print option bar and select a setting from Orientation, according to the way the custom size paper is loaded.**
- 6 Click OK, and then click OK again to print the job.**

## **Saving files to print at a remote location**

If you do not have a Fiery EXP8000 onsite and are preparing files to take to a service bureau or other location, print the final files to the File port (as opposed to one of the local ports). You can also print to the File port to create a file to download using Downloader. For instructions on printing to the File port, see the documentation that accompanies Microsoft Windows.



# INDEX

## C

- ColorWise print options 26
- custom page size, *see* defining a custom page size, printing a custom page size

## D

- default print options 43
- defining a custom page size
  - Windows 2000/XP 45
- Downloads tab in WebTools 10

## E

- E-mail Notification 27
- E-mail Service
  - about 34
  - Job Control 36

## F

- Feeder 24
- File port, saving files to 48
- Finishing Device Setup 24

## G

- GA Package 24
- Graphic Arts Package 24
- Group Name field 40
- Group Password field 41

## I

- installable options
  - configuring from printer driver 25
  - updating automatically 26
- installing
  - Job Monitor 28
  - printer drivers from server 12
  - printer drivers using Point and Print 8
  - printing utilities 28
  - virtual printers using Point and Print 15
  - Windows 2000/XP/Server 2003 printer driver 13
- Instructions field 41

## IPP connection

- Windows 2000/XP/Server 2003 22

## IPX connection

- Windows 2000/XP/Server 2003 20

## J

- Job Control 36
- Job Monitor 7
  - configuring server connection 28
  - installing 28

## L

- LPD printing
  - Windows 2000/XP/Server 2003 19
- LPR connection
  - Windows 2000/XP/Server 2003 17

## M

- Mail Port 7
  - configuring 31
- managing print jobs 36

## N

- Notes field 41
- Novell NetWare client setup
  - Windows 2000/XP/Server 2003 20

## O

- Oemsetup.inf file 13
- overriding Printer Setup settings 42
- Owner Information 40

## P

- Point and Print 8, 15
- Port 9100 printing, Windows 2000/XP/Server 2003 19
- PostScript Printer Description file, *see* PPD
- PostScript printer driver
  - deleting 30
  - download using WebTools 10
  - installing 12
  - installing using Point and Print 8

**PPD**

- overview 7
- Windows 2000/XP/Server 2003 14
- print options 39
- Printer Delete Utility 30
- Printer's default 42
- printing
  - from an application 39
  - to File port 48
  - using an E-mail client 34
- printing a custom page size
  - Windows 2000/XP 47
- printing connections, supported types 16
- printing utilities, installing 28
- Prntdrvr.exe file 11

**S**

- SFM 24
- SMB printing
  - completing connection 16
  - setup 9

**T**

- TCP/IP connection
  - Windows 2000/XP/Server 2003 17
- Two-Way Communication 26, 40

**V**

- virtual printer
  - installing using Point and Print 15
  - setup 15

**W**

- WebTools Downloads 10
- Windows 2000/XP/Server 2003
  - IPP connection 22
  - IPX connection 20
  - LPR or Port 9100 connection 17
  - printer driver, installing 13
  - TCP/IP connection 17