

# P1202 Macintosh Installation

<b>P1202 MACINTOSH INSTALLATION</b> .....	<b>1</b>
<b>MACINTOSH SYSTEMS WITH USB</b> .....	<b>2</b>
<b>MACINTOSH SYSTEMS WITHOUT USB</b> .....	<b>6</b>
<b>APPENDIX A</b> .....	<b>9</b>
INSTALLING THE POSTSCRIPT OPTION .....	9
<b>APPENDIX B</b> .....	<b>10</b>
UPGRADING PRINTER FIRMWARE .....	10
<b>APPENDIX C</b> .....	<b>11</b>
INSTALLING THE SERIAL/LOCALTALK OPTION .....	11
<b>APPENDIX D</b> .....	<b>12</b>
README.TXT .....	12
<b>APPENDIX E</b> .....	<b>13</b>
INSTALLING THE POSTSCRIPT PPD FILE .....	13
<b>APPENDIX F</b> .....	<b>14</b>
LANGUAGE CODES .....	14

## Macintosh Systems WITH USB

### Minimum requirements:

- Mac OS v 8.6 – for upgrade information visit iMac website.
- LaserWriter driver v 8.6.5
- USB Cable
- P1202 PostScript 2 option (P/N 97N00952) – please see the section entitled, **Appendix A “Installing PostScript Option”**
- P1202 firmware level must be greater than or equal to OS version 1.20 07-16-1999, if it’s not then please refer to the section entitled, **Appendix B “Upgrading Printer Firmware”**. To check your firmware level – please see following section, “Printing a Configuration Sheet”.

### Printing a Configuration Sheet:

1. Power on the printer. When the *Ready* LED is solid GREEN, hold down the *Control Button* until all LED’s are flashing, then release.
2. The printer will print a Configuration Sheet the OS firmware level is located on the lower left hand corner of the sheet. If the firmware level is lower than 1.20, you must upgrade the firmware on the printer, please see section entitled “Upgrading Printer Firmware”.

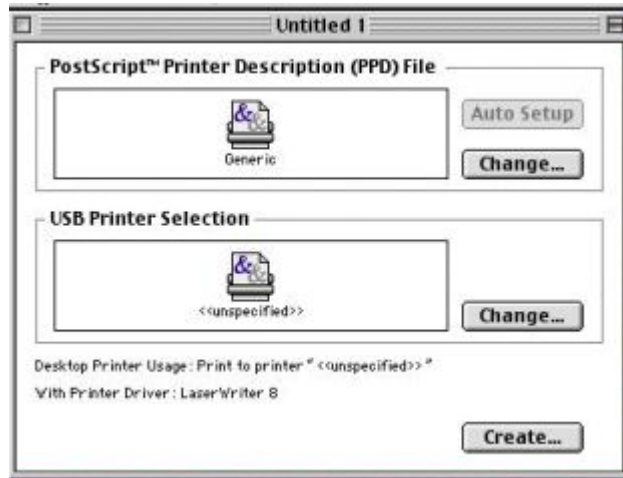
### Installation Instructions:

Mac OS v 8.6 contains the application, “Desktop Printer Utility” this program is used to set up the P1202 on an iMac or other Apple computer that has USB capability.

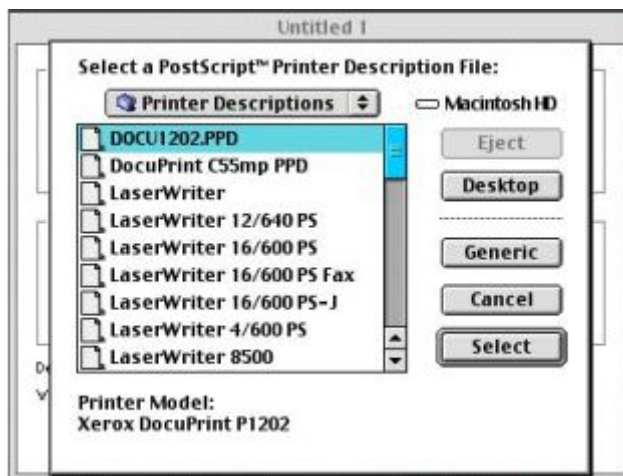
1. Power off the **Macintosh and DocuPrint P1202**. Connect the **DocuPrint P1202** to the Mac computer via a **USB** cable.
2. After it has been connected, power on the **DocuPrint P1202** then power on the Macintosh.
3. Once booted, run the application **Desktop Printer Utility**. If this is not located on your desktop already, go to the file menu and select **Find**; type in **Desktop Printer Utility** and then click on the **Find** radio button.
4. Under the **New Desktop Printer** dialog box there is a place for selecting the driver. This area simply should read “**With LaserWriter 8**”.
5. Select the **Printer (USB)** option under the **Create Desktop...** dialog



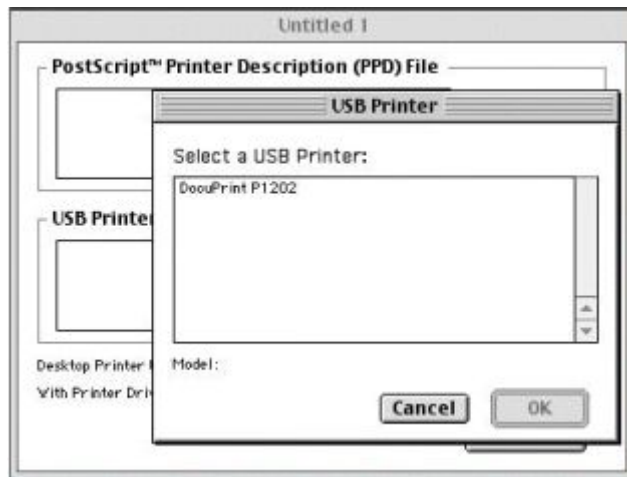
6. Click on the **OK** radio button.
  
7. This opens a new dialog box, which is basically separated into two items. The top section being the appropriate PostScript Printer Definition (PPD) file. The bottom is the selection of the appropriate USB connected printer. Under the heading of **PostScript Printer Definition (PPD) file** click on the **CHANGE...** radio button.



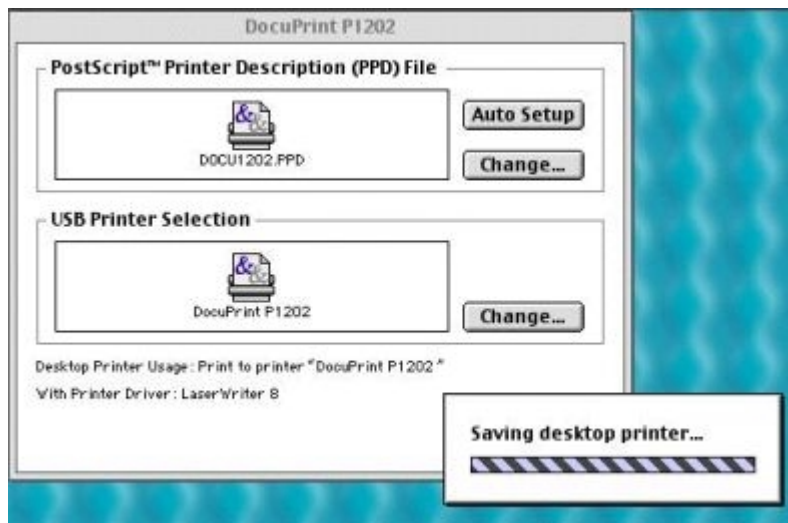
8. A second dialog window will appear, select the **DOCU1202.PPD** file from the list. Click on **Select**. This will close this dialog window, and return you to the dialog window in step 7. *(The ppd has to have been previously copied to the System Folder/Extensions/Printer Descriptions folder. If you need to load the PPD, please refer to Appendix E.)*



9. In the bottom half of the window under the heading **USB Printer Selection** click on the **CHANGE...** radio button. The following dialog box will open, select the **DocuPrint P1202** printer. Click on **OK**.



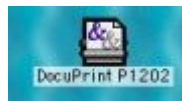
10. After both the PostScript Printer Definition (PPD) file and the printer are selected click on the **CREATE...** radio button.



11. A new window appears allowing you to name your new desktop USB printer and allowing you to also select the destination of the printer (default is on the desktop). Under **save desktop printer as:** type in the name of your desktop printer and click on the **SAVE** radio button.



12. You will now see on your desktop a new printer icon with the name that was previously specified. This is your new USB **DocuPrint P1202** printer on the Macintosh.



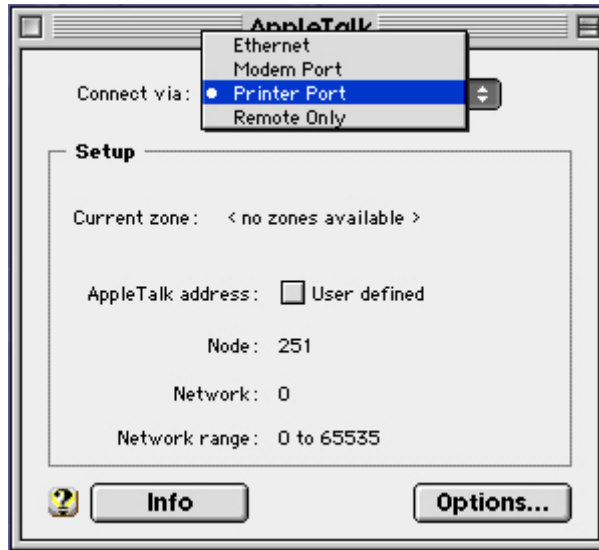
## Macintosh Systems WITHOUT USB

### Minimum requirements:

- Mac OS v 7.0
- LaserWriter driver v 7
- P1202 PostScript 2 option (P/N 97N00952) – please see the section entitled, **Appendix A “Installing PostScript Option”**
- P1202 Serial/LocalTalk option (P/N 97N0053) – please see the section entitled **Appendix C “Installing Serial/LocalTalk Option”**

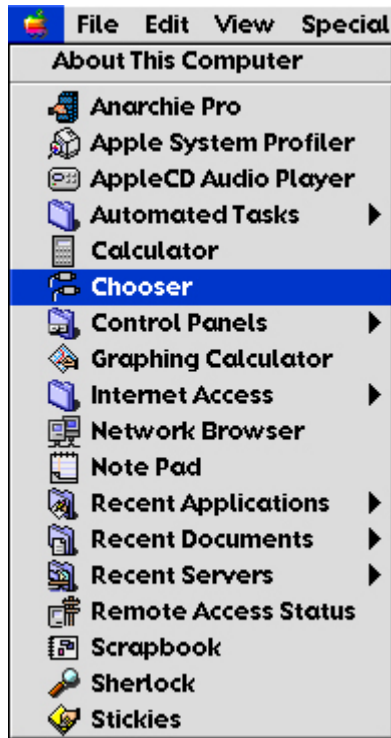
### Installation:

1. Power off the Macintosh and DocuPrint P1202. Connect the DocuPrint P1202 to the Macintosh via **LocalTalk** cable.
2. Insert the **Xerox DocuPrint P1202 CD-ROM** shipped with your printer into your CD-ROM drive.
3. Open the CD-ROM icon.
4. Open the **XX** folder (where **XX** indicates the language code\*), then open the **PS** folder, and then the **Mac** folder.
5. Drag and drop the **docu1202.ppd** file to the **Printer Descriptions** folder located in the **System Folder/Extensions**.
6. Go to **Control Panels** in the **Apple Menu** and depending on the version of the OS select either **AppleTalk Control panel** or **Network Control Panel** and make sure that **AppleTalk** is directed to the correct port. (i.e. printer port)

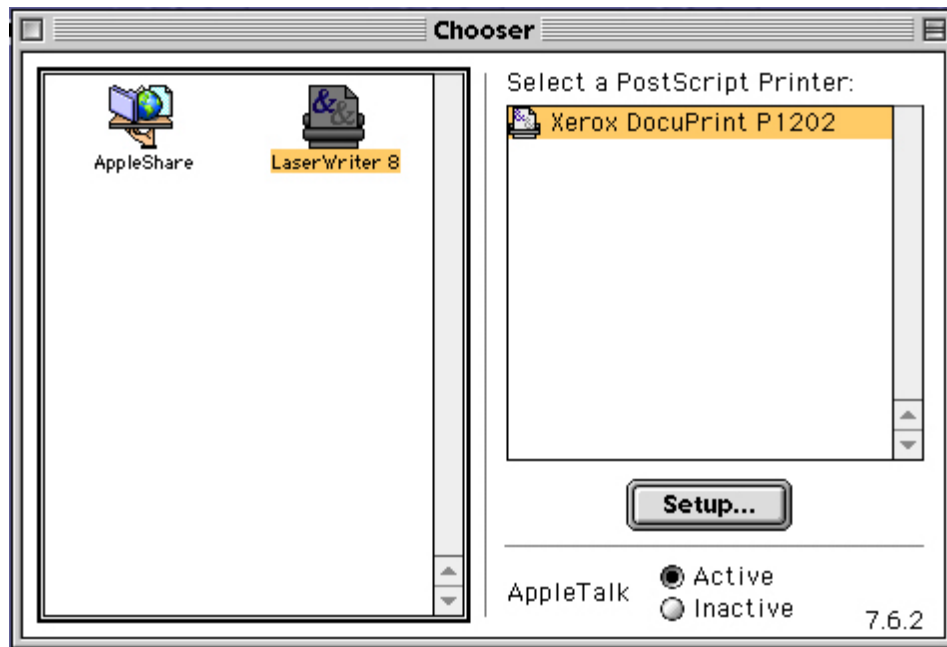


7. Close **AppleTalk** or **Network** control panel and select the **Save** radio button when asked if you would like to save configuration.

8. Go to **Apple Menu** and select **Chooser**.

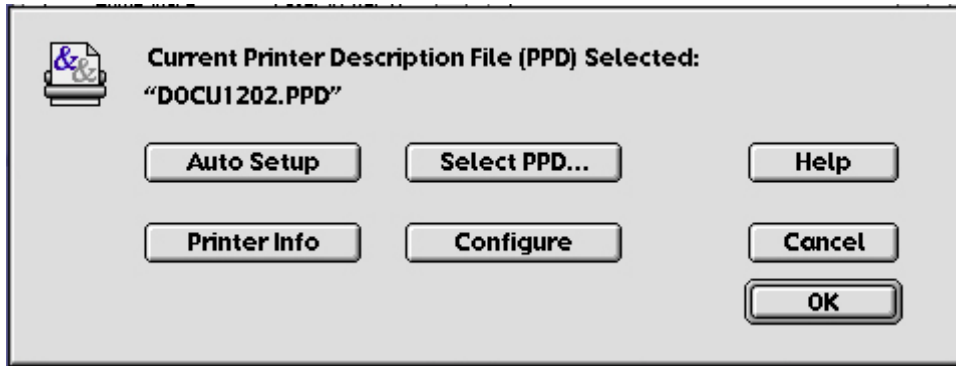


9. Click on **LaserWriter8** (provided with your Macintosh). The name of the printer should appear in the right hand side of *Chooser* (**Xerox DocuPrint P1202**).



10. Click on the **Xerox DocuPrint P1202** printer.

11. Click on the **Create** button. The **docu1202.ppd** file will be selected automatically.  
*Note: If auto setup does not complete successfully, click **Select PPD** and choose **docu1202.ppd**.*



12. Close the **Chooser**. Your current printer is now the **DocuPrint P1202**.



For further help please refer to the DocuPrint P1202 Reference Guide, available on your CD in PDF format.

To access the PDF file:

1. Insert CD into CD-ROM drive.
2. Open the CD-ROM icon.
3. Open the **Docs** folder.
4. Select the appropriate Reference Guide, *XX\_P1202R.pdf*, where XX indicates the language code\*.
5. Refer to "Additional Printer Setup Information" → "Installing Optional Software" → "Installing the PostScript PPD" → "Macintosh Installation"

*\*Please see Appendix F in this document for the Language code list.*



## Appendix A Installing the PostScript Option

1. To install the PostScript option, first power off the P1202 unit.
2. Remove the control panel board.
3. Remove the metal plate.
4. Locate the PostScript SIMM slot (the first slot as you face the printer) and the memory SIMM slot (the second slot as you face the printer) on the controller board. *They are not interchangeable.*
5. Install the memory SIMM into the second slot labeled “DRAM”
6. Push back on the SIMM until it clicks into place.
7. Install the PostScript SIMM into the first slot labeled “PS2”.
8. Push back on the SIMM until it clicks into place.
9. Make sure the SIMMs are completely seated in the slot and secured in place by the metal clips.
10. Reinsert the metal plate.
11. Replace the controller board cover.
12. Reconnect the power cord and turn on the power.
13. To ensure that the installation was successful, print a Configuration Sheet. To print the Configuration Sheet, first wait until the printer is Ready, then hold the Control Button down until all LEDs are flashing, then release. Once the Configuration Sheet has printed, verify that the PS SIMM is installed and that the RAM size has increased to 12MB. If not, then try re-installing the option.

**Note:** The complete installation instructions can be found in the Reference Guide located on the CD in PDF format.

To access the PDF file:

1. Insert the CD into the CD-ROM drive.
2. Open the CD-ROM icon.
3. Open the **Docs** folder.
4. Select the appropriate Reference Guide, XX\_P1202R.pdf, where XX indicates the language code\*\*.
5. Refer to “Printer Options” → “Memory and PostScript SIMMs”

\*\* Please see Appendix F in this document for the Language code list.

## Appendix B Upgrading Printer Firmware

### Minimum Requirements:

- **PC running Windows 3.1x, Win 95, Win 98 or Win NT 4.0 – firmware upgrade cannot be performed via Macintosh platform.**
- Parallel connection
- IEEE 1284 compliant parallel cable

### Instructions:

1. Please read the 'ReadMe.txt' file carefully, it can be viewed and printed from [ftp://ftp.xerox.com/pub/DocuPrint\\_p1202/readme.txt](ftp://ftp.xerox.com/pub/DocuPrint_p1202/readme.txt). The ReadMe.txt is also contained in **Appendix D** of this document for your convenience.
2. Download firmware from Xerox website at [ftp://ftp.xerox.com/pub/DocuPrint\\_p1202/up\\_p1202.exe](ftp://ftp.xerox.com/pub/DocuPrint_p1202/up_p1202.exe)
3. Once you have read the 'ReadMe.txt' thoroughly, proceed with the firmware upgrade.
4. If you are unable to perform the upgrade or if you experience a problem with the upgrade process, please contact your local support hotline for further assistance.

## Appendix C

### Installing the Serial/LocalTalk Option

1. To install the Serial/LocalTalk, first power off the P1202 unit.
2. Remove the control panel board.
3. Remove the metal plate.
4. Unplug the two connectors from the control panel.
5. Remove the three screws that secure the controller board, and remove the controller board from the printer. Unpack the Serial/LocalTalk card; avoid touching its contact pins.
6. Align the connector on the Serial/LocalTalk card with the connector on the controller board. Push the card firmly into the connector until it is completely inserted in place. The two connectors should fit snugly together.
7. Now, slide the controller board back into the printer.
8. Insert the control board in place, and tighten the screws.
9. Reconnect the two connectors that were removed in Step 4.
10. Reinsert the metal plate.
11. Replace the control board cover.
12. Reconnect the power cord.
13. To ensure that the installation was successful, print a Configuration Sheet. To print the Configuration Sheet, first wait until the printer is Ready, then hold the Control Button down until all LEDs are flashing, then release. Once the Configuration Sheet has printed, verify that the Serial/LocalTalk Option is installed.

**Note:** The complete installation instructions can be found in the Reference Guide located on the CD in PDF format.

To access the PDF file:

1. Insert the CD into the CD-ROM drive.
2. Open the CD-ROM icon.
3. Open the **Docs** folder.
4. Select the appropriate Reference Guide, XX\_P1202R.pdf, where XX indicates the language code\*\*.
5. Refer to “Printer Options” → “Serial/LocalTalk Card”

\*\* Please see Appendix F in this document for the Language code list.

## Appendix D ReadMe.txt

### Minimum Requirements:

- PC running Windows 3.1x, 95, 98 or NT 4.0
- IEEE Parallel Cable
- Downloaded file, up\_p1202.exe, from the Xerox web site at:  
[ftp://ftp.xerox.com/pub/DocuPrint\\_p1202/up\\_p1202.exe](ftp://ftp.xerox.com/pub/DocuPrint_p1202/up_p1202.exe)

### Windows 95 and 98:

1. Use the Windows Explorer or My Computer to locate the upgrade files.
2. Double-click on up\_p1202.exe
3. Wait until all lights on the printer's front panel go off (approx. 1 min.).
4. Power the printer OFF and ON.
5. Close the MS-DOS Command Prompt window.

### Windows NT 4.0:

1. Use the Windows Explorer or My Computer to locate the upgrade files.
2. Double-click on up\_p1202.exe
3. Wait until all lights on the printer's front panel go off (approx. 1 min.).
4. Power the printer OFF and ON.
5. The MS-DOS Command Prompt window should automatically close. If it does not, then close the MS-DOS Command Prompt manually.

### Windows 3.1x:

1. Use the File Manager to locate the upgrade files.
2. Double-click on up\_p1202.exe
3. After clicking on setup, the batch file upgrade.bat will execute. Your screen resolution will adjust to full-size text mode and you will see a "copy" command on your screen.
4. Wait until all lights on the printer's front panel go off (approx. 1 min.).
5. Power the printer OFF and ON.
6. After the batch file completes execution, your computer's screen should return to the normal Microsoft Windows desktop.

### DOS:

1. You need to obtain a copy of PKWARE's PKZip v2.04g or greater.
2. Go to the directory where the upgrade files are located. At the command prompt type: pkunzip up\_p1202.exe
3. To upgrade the firmware, type: upgrade
4. Wait until all lights on the printer's front panel go off (approx. 1 min.).
5. Power the printer OFF and ON.

## Appendix E

### Installing the PostScript PPD File

#### Installing the PPD from the P1202 CD ROM:

1. Insert the Xerox DocuPrint P1202 CD-ROM shipped with your
2. printer into your CD-ROM drive.
3. Open the CD-ROM icon.
4. Open the XX folder (where XX indicates the language code
5. See **Appendix F** for language codes) open the PS folder and then the Mac folder.
6. Drag and drop the docu1202.ppd file to the Printer Descriptions. Folder located in the *System Folder/Extensions/Printer Descriptions folder*
7. Depending on the method being used to print see *Macintosh Systems With USB* (p.2) or *Macintosh Systems Without USB* (p.6)

#### Installing the PPD from the Xerox Web page:

1. Go to the Xerox Web page <http://www.xerox.com>
2. Under **Get help fast** select **Get Drivers and Utilities**
3. Under **Product** select **Xerox DocuPrint P1202**
4. Under **Operating System** Choose **Macintosh 8**
5. Under **Language** choose the language you want.
6. After all of your selections are made click on **GO**
7. Click on the PPD. The file is in a Macintosh compression format.
8. Download the compressed PPD file to the Macintosh desktop
9. After the download is complete double click on the compressed file.
10. The program will ask you where to extract this file. The destination should be on the Macintosh hard drive the *System Folder/Extensions/Printer Descriptions folder*.
11. Depending on the method being used to print see *Macintosh Systems With USB* or *Macintosh Systems Without USB* (page 2 or 3 of this instruction set)

## Appendix F Language Codes

Code	Language
BG	Bulgarian
CS	Czech
DA	Danish
DE	German
EL	Greek
EN	English
ES	Spanish
ET	Estonian
FI	Finnish
FR	French
HU	Hungarian
IT	Italian
LT	Lithuanian
LV	Latvian
NL	Dutch
NO	Norwegian
PL	Polish
PT	Portuguese
RO	Romanian
RU	Russian
SH	Croatian
SK	Slovak
SL	Slovenian
SV	Swedish
TR	Turkish
ZH	Chinese