



Xerox EX7750
SERVER & CONTROLLER SOLUTIONS



Printing Guide

About the Documentation

This manual is part of a set of Xerox EX7750 documentation that includes the following manuals for users and system administrators. Most are available as Acrobat PDF (Portable Document Format) files on the User Documentation CD.

- The *Quick Start Guide* summarizes the steps for configuring the Xerox EX7750 and printing. It also describes how to access the Adobe Acrobat PDF files on User Documentation CD.
- The *User Software Installation Guide* describes how to install software from the User Software CD and to enable users to print to the Xerox EX7750.
- The *Configuration Guide* explains basic configuration and administration of the Xerox EX7750 for the supported platforms and network environments. It also includes guidelines for setting up network servers to provide printing services to users.
- The *Printing Guide* describes the printing features of the Xerox EX7750 for users who send jobs from their computers.
- The *Color Guide* provides information on managing the color output of the Xerox EX7750. It explains how to take advantage of the ColorWise® color management system, as well as features in ColorWise Pro Tools.
- The *Fiery Color Reference* addresses concepts and issues associated with managing color output of the Xerox EX7750. In addition, it offers information on printing color documents from popular Microsoft Windows and Apple Mac OS applications.
- The *Job Management Guide* explains the functions of the job management utilities, and how you can use them to monitor and control jobs on the Xerox EX7750. This manual is intended for a user with the necessary access privileges who monitors and manages job flow, and troubleshoots problems that may arise.
- *Customer Release Notes* provide last-minute product information and workarounds for some of the problems you may encounter.

Copyright © 2004 Electronics for Imaging, Inc. All rights reserved.

This product documentation is protected by copyright, and all rights are reserved. No part of it may be reproduced or transmitted in any form or by any means for any purpose without express prior written consent from Electronics for Imaging, Inc. ("EFI"), except as expressly permitted herein. Information in this document is subject to change without notice and does not represent a commitment on the part of EFI.

This product documentation is provided in conjunction with the EFI software ("Software") and any other EFI product described in this documentation. The Software is furnished under license and may only be used or copied in accordance with the terms of the Software License Agreement set forth below.

Patents

This product may be covered by one or more of the following U.S. Patents:

4,716,978, 4,828,056, 4,917,488, 4,941,038, 5,109,241, 5,170,182, 5,212,546, 5,260,878, 5,276,490, 5,278,599, 5,335,040, 5,343,311, 5,398,107, 5,424,754, 5,442,429, 5,459,560, 5,467,446, 5,506,946, 5,517,334, 5,537,516, 5,543,940, 5,553,200, 5,563,689, 5,565,960, 5,583,623, 5,596,416, 5,615,314, 5,619,624, 5,625,712, 5,640,228, 5,666,436, 5,745,657, 5,760,913, 5,799,232, 5,818,645, 5,835,788, 5,859,711, 5,867,179, 5,940,186, 5,959,867, 5,970,174, 5,982,937, 5,995,724, 6,002,795, 6,025,922, 6,035,103, 6,041,200, 6,065,041, 6,112,665, 6,116,707, 6,122,407, 6,134,018, 6,141,120, 6,166,821, 6,173,286, 6,185,335, 6,201,614, 6,215,562, 6,219,155, 6,219,659, 6,222,641, 6,224,048, 6,225,974, 6,226,419, 6,238,105, 6,239,895, 6,256,108, 6,269,190, 6,271,937, 6,278,901, 6,279,009, 6,289,122, 6,292,270, 6,299,063, 6,310,697, 6,321,133, 6,327,047, 6,327,050, 6,327,052, 6,330,071, 6,330,363, 6,331,899, 6,340,975, 6,341,017, 6,341,018, 6,341,307, 6,347,256, 6,348,978, 6,356,359, 6,366,918, 6,369,895, 6,381,036, 6,400,443, 6,429,949, 6,449,393, 6,476,927, 6,490,696, 6,501,565, 6,519,053, 6,539,323, 6,543,871, 6,546,364, 6,549,294, 6,549,300, 6,550,991, 6,552,815, 6,559,958, 6,572,293, 6,590,676, 6,606,165, 6,633,396, 6,636,326, 6,643,317, 6,647,149, 6,657,741, 6,662,199, 6,678,068, 6,707,563, 6,741,262, 6,748,471, 6,753,845, 6,757,436, 6,757,440, RE33,973, RE36,947, D341,131, D406,117, D416,550, D417,864, D419,185, D426,206, D439,851, D444,793.

Trademarks

Auto-Count, ColorCal, ColorWise, Command WorkStation, DocBuilder Pro, EDOX, EFI, Fiery, the Fiery logo, Fiery Driven, the Fiery Driven logo, Fiery Spark, MicroPress, OneFlow, Printcafe, PrinterSite, PrintMe, Prograph, Proteus, RIP-While-Print, Splash, and Spot-On are registered trademarks of Electronics for Imaging, Inc. in the U.S. Patent and Trademark Office and/or certain other foreign jurisdictions. Bestcolor is a registered trademark of Best GmbH in the U.S. Patent and Trademark Office.

ADS, AutoCal, Balance, Build, Digital StoreFront, DocStream, Fiery Link, Fiery Prints, FreeForm, Hagen, Intelligent Device Management, Logic, PrintFlow, PrintSmith, PrintSmith Site, PSI, PSI Flexo, RIPChips, Scan, SendMe, VisualCal, WebTools, the EFI logo, the Fiery Prints logo, and Essential to Print are trademarks of Electronics for Imaging, Inc. Best, the Best logo, Colorproof, PhotoXposure, Remoteproof, and Screenproof are trademarks of Best GmbH.

All other terms and product names may be trademarks or registered trademarks of their respective owners, and are hereby acknowledged.

Legal Notifications

APPLE COMPUTER, INC. ("APPLE") MAKES NO WARRANTIES, EXPRESS OR IMPLIED, INCLUDING WITHOUT LIMITATION THE IMPLIED WARRANTIES OF MERCHANTABILITY AND FITNESS FOR A PARTICULAR PURPOSE, REGARDING THE APPLE SOFTWARE. APPLE DOES NOT WARRANT, GUARANTEE, OR MAKE ANY REPRESENTATIONS REGARDING THE USE OR THE RESULTS OF THE USE OF THE APPLE SOFTWARE IN TERMS OF ITS CORRECTNESS, ACCURACY, RELIABILITY, CURRENTNESS, OR OTHERWISE. THE ENTIRE RISK AS TO THE RESULTS AND PERFORMANCE OF THE APPLE SOFTWARE IS ASSUMED BY YOU. THE EXCLUSION OF IMPLIED WARRANTIES IS NOT PERMITTED BY SOME STATES. THE ABOVE EXCLUSION MAY NOT APPLY TO YOU.

IN NO EVENT WILL APPLE, ITS DIRECTORS, OFFICERS, EMPLOYEES OR AGENTS BE LIABLE TO YOU FOR ANY CONSEQUENTIAL, INCIDENTAL, OR INDIRECT DAMAGES (INCLUDING DAMAGES FOR LOSS OF BUSINESS PROFITS, BUSINESS INTERRUPTION, LOSS OF BUSINESS INFORMATION, AND THE LIKE) ARISING OUT OF THE USE OR INABILITY TO USE THE APPLE SOFTWARE, EVEN IF APPLE HAS BEEN ADVISED OF THE POSSIBILITY OF SUCH DAMAGES. BECAUSE SOME STATES DO NOT ALLOW THE EXCLUSION OR LIMITATION OF LIABILITY FOR CONSEQUENTIAL OR INCIDENTAL DAMAGES, THE ABOVE LIMITATIONS MAY NOT APPLY TO YOU. Apple's liability to you for actual damages from any cause whatsoever, and regardless of the form of the action (whether in contract, tort [including negligence], product liability, or otherwise), will be limited to \$50.

PANTONE® Colors displayed in the Software or in the documentation may not match PANTONE-identified standards. Consult current PANTONE Color Publications for accurate color. PANTONE® and other Pantone, Inc. trademarks are the property of Pantone, Inc. © Pantone, Inc., 2001. Pantone, Inc. is the copyright owner of PANTONE color data and/or software.

This product includes software developed by the Apache Software Foundation (www.apache.org).

FCC Information

WARNING: FCC Regulations state that any unauthorized changes or modifications to this equipment not expressly approved by the manufacturer could void the user's authority to operate this equipment.

Refer to the Class Compliance sticker affixed to the back of your Fiery (or, in the case of embedded systems, to the sticker affixed to the print engine) to identify the appropriate classification (A or B, below) for this product.

Class A Compliance

This equipment has been tested and found to comply with the limits for a Class A digital device, pursuant to Part 15 of the FCC Rules. These limits are designed to provide reasonable protection against harmful interference when the equipment is operated in a commercial environment. This equipment generates, uses, and can radiate radio frequency energy and, if not installed and used in accordance with the instruction manual, may cause harmful interference to radio communications. Operation of this equipment in a residential area is likely to cause interference, in which case the user will be required to correct the interference at his own expense.

Industry Canada Class A Notice

This Class A digital apparatus complies with Canadian ICES-003.

Avis de Conformation Classe A de l'Industrie Canada

Cet appareil numérique de la Classe A est conforme à la norme NMB-003 du Canada.

Class B Declaration of Conformity

This equipment has been tested and found to comply with the limits for a Class B digital device, pursuant to Part 15 of the FCC rules. These limits are designed to provide reasonable protection against harmful interference in a residential installation. This equipment generates, uses, and can radiate radio frequency energy and, if not installed and used in accordance with the instructions, may cause harmful interference to radio communications. However, there is no guarantee that interference will not occur in a particular installation.

If this equipment does cause harmful interference to radio or television reception, which can be determined by turning the equipment off and on, the user is encouraged to try to correct the interference by one or more of the following measures:

Reorient or relocate the receiving antenna.

Increase the separation between the equipment and receiver.

Connect the equipment into an outlet on a circuit different from that to which the receiver is connected.

Consult the dealer or an experienced radio/TV technician for help.

In order to maintain compliance with FCC regulations, shielded cables must be used with this equipment. Operation with non-approved equipment or unshielded cables is likely to result in interference to radio and TV reception. The user is cautioned that changes and modifications made to the equipment without the approval of the manufacturer could void the user's authority to operate this equipment.

Industry Canada Class B Notice

This Class B digital apparatus complies with Canadian ICES-003.

Avis de Conformation Classe B de l'Industrie Canada

Cet appareil numérique de la Classe B est conforme à la norme NMB-003 du Canada.

RFI Compliance Notice

This equipment has been tested concerning compliance with the relevant RFI protection requirements both individually and on a system level (to simulate normal operation conditions). However, it is possible that these RFI Requirements are not met under certain unfavorable conditions in other installations. It is the user who is responsible for compliance of his particular installation.

Dieses Gerät wurde sowohl einzeln als auch in einer Anlage, die einen normalen Anwendungsfall nachbildet, auf die Einhaltung der Funktstörbestimmungen geprüft. Es ist jedoch möglich, dass die Funktstörbestimmungen unter ungünstigen Umständen bei anderen Gerätekombinationen nicht eingehalten werden. Für die Einhaltung der Funktstörbestimmungen einer gesamten Anlage, in der dieses Gerät betrieben wird, ist der Betreiber verantwortlich.

Compliance with applicable regulations depends on the use of shielded cables. It is the user who is responsible for procuring the appropriate cables.

Die Einhaltung zutreffender Bestimmungen hängt davon ab, dass geschirmte Ausführungen benützt werden. Für die Beschaffung richtiger Ausführungen ist der Betreiber verantwortlich.

CE Marking (Declaration of Conformity)

This product complies with the following EU directives: 89/336/EEC, 73/23/EEC, and 93/68/EEC directives. This declaration is valid for the area of the European Union.

SOFTWARE LICENSE AGREEMENT

PLEASE READ THIS SOFTWARE LICENSE AGREEMENT ("LICENSE AGREEMENT") CAREFULLY. THIS LICENSE AGREEMENT IS A LEGAL AGREEMENT BETWEEN YOU AND ELECTRONICS FOR IMAGING, INC. ("EFI") REGARDING THE EFI SOFTWARE ("SOFTWARE"). BY INSTALLING, COPYING OR OTHERWISE USING THE SOFTWARE, YOU AGREE TO BE BOUND BY THIS LICENSE AGREEMENT. IF YOU DO NOT AGREE, DO NOT INSTALL, COPY, OR OTHERWISE USE THE SOFTWARE AND YOU MAY RETURN THE UNUSED SOFTWARE, WITH PROOF OF PAYMENT, FOR A FULL REFUND TO THE PLACE OF PURCHASE WITHIN THIRTY (30) DAYS OF THE PURCHASE DATE.

License

EFI grants you a limited, non-exclusive license to use the Software solely in accordance with the terms and conditions of this License Agreement, solely as specified in the EFI product documentation, and solely with the product(s) specified in the EFI product documentation ("Product(s)").

The term "Software" as used in this License Agreement shall mean the EFI software and all documentation, downloads, on-line materials, bug fixes, patches, releases, release notes, updates, upgrades, technical support materials, and information regarding the EFI software. The terms and conditions of this License Agreement shall apply to and govern your use of any such item to the extent that EFI does not provide a separate or additional written license agreement for such item.

The Software is licensed, not sold. You may use the Software solely for the purposes described in the EFI product documentation. You may not rent, lease, sublicense, lend, or otherwise distribute the Software or use the Software in any time sharing, service bureau, or similar arrangement.

You may not make or have made, or permit to be made, any copies of the Software or portions thereof, except one (1) backup or archive copy for the purposes permitted in this License Agreement; provided, however, that under no circumstances may you make or have made, or permit to be made, any copies of any portion of the Software that is included on any portion of the controller board or hardware of a product. You agree not to localize, translate, disassemble, decompile, decrypt, reverse engineer, discover the source code of, modify, create derivative works of, or in any way change any part of the Software.

Intellectual Property Rights

You acknowledge and agree that all rights, title, and interest, including all intellectual property rights, in and relating to the Software, all EFI Products, and all copies, modifications, and derivative works thereof, are solely owned by and shall remain with EFI and its suppliers. Except for the express limited license granted in this License Agreement, no right or license of any kind is granted. You receive no rights or license under any patents, copyrights, trade secrets, trademarks (whether registered or unregistered), or other intellectual property. You agree not to adopt, register, or attempt to register any EFI trademark or trade name or any confusingly similar mark, URL, internet domain name, or symbol as your own name or the name of your affiliates or products, and agree not to take any other action which impairs or reduces the trademark rights of EFI or its suppliers.

Confidentiality

The Software is confidential, proprietary information of EFI and you may not distribute or disclose the Software. You may, however, permanently transfer all of your rights under this License Agreement to another person or legal entity provided that: (1) such a transfer is authorized under all applicable export laws and regulations, including the laws and regulations of the United States, including the United States Export Administration Regulations; (2) you transfer to the person or entity all of the Software (including all copies, updates, upgrades, media, printed documentation, and this License Agreement); (3) you retain no copies of the Software, including no backup, archival, or other copies, however stored; and (4) the recipient agrees to all of the terms and conditions of this License Agreement.

Termination

Unauthorized use, copying, or disclosure of the Software, or any breach of this License Agreement will result in automatic termination of this license and will make available to EFI other legal remedies. In the event of termination, you must destroy all copies of the Software and all component parts thereof. All provisions of this License Agreement relating to confidentiality of the Software, disclaimers of warranties, limitation of liability, remedies, damages, governing law, jurisdiction, venue, and EFI's intellectual property rights shall survive any termination of this license.

Limited Warranty and Disclaimer

EFI warrants that the Software, if used as specified in the EFI product documentation, will perform substantially in accordance with the EFI product documentation for a period of ninety (90) days from the date of receipt. EFI makes no warranty or representation that the Software will meet your specific requirements, that the operation of the Software will be uninterrupted, secure, fault-tolerant, or error free, or that all defects in the Software will be corrected. EFI makes no warranty, implied or otherwise, regarding the performance or reliability of any other Products or services or any third party products (software or hardware) or services. THE INSTALLATION OF ANY THIRD PARTY PRODUCTS OTHER THAN AS AUTHORIZED BY EFI WILL VOID THIS

WARRANTY. USE, MODIFICATION, AND/OR REPAIR OF THE SOFTWARE OR AN EFI PRODUCT OTHER THAN AS AUTHORIZED BY EFI WILL VOID THIS WARRANTY. FURTHER, THIS LIMITED WARRANTY IS VOID IF A PROBLEM WITH THE SOFTWARE ARISES FROM ACCIDENT, ABUSE, MISAPPLICATION, ABNORMAL USE, VIRUS, WORM, OR SIMILAR CIRCUMSTANCE.

TO THE MAXIMUM EXTENT PERMITTED BY APPLICABLE LAW, EXCEPT FOR THE EXPRESS LIMITED WARRANTY SET FORTH ABOVE ("LIMITED WARRANTY"), EFI MAKES AND YOU RECEIVE NO REPRESENTATIONS OR WARRANTIES RELATING TO THE SOFTWARE, ANY PRODUCT AND/OR ANY SERVICES, WHETHER EXPRESS, IMPLIED, STATUTORY, OR IN ANY OTHER PROVISION OF THIS AGREEMENT OR ANY OTHER COMMUNICATION. EFI SPECIFICALLY DISCLAIMS ALL IMPLIED WARRANTIES, REPRESENTATIONS, AND CONDITIONS, INCLUDING THOSE OF SECURITY, MERCHANTABILITY, FITNESS FOR A PARTICULAR PURPOSE AND NONINFRINGEMENT OF THIRD PARTY RIGHTS. THERE IS NO WARRANTY OR REPRESENTATION THAT THE OPERATION OF THE SOFTWARE AND/OR ANY PRODUCT WILL BE UNINTERRUPTED, FAULT-TOLERANT, SECURE, OR ERROR-FREE. TO THE MAXIMUM EXTENT PERMITTED BY APPLICABLE LAW, YOUR SOLE AND EXCLUSIVE REMEDY, AND THE ENTIRE LIABILITY OF EFI AND ITS SUPPLIERS, RELATING TO ANY AND ALL SOFTWARE, PRODUCTS, SERVICES, AND/OR APPLICABLE WARRANTIES SHALL BE, AT EFI'S OPTION, (1) TO REPAIR OR REPLACE THE SOFTWARE THAT DOES NOT MEET THE LIMITED WARRANTY; OR (2) PROVIDE A REFUND OF THE PRICE PAID (IF ANY) FOR THE SOFTWARE THAT DOES NOT MEET THE LIMITED WARRANTY. EXCEPT AS PROVIDED IN THIS SECTION, EFI AND ITS SUPPLIERS SHALL PROVIDE NO REFUNDS, RETURNS, EXCHANGES, OR REPLACEMENTS.

Limitation of Liability

TO THE MAXIMUM EXTENT PERMITTED BY APPLICABLE LAW, YOU AGREE THAT THE ENTIRE LIABILITY OF EFI AND ITS SUPPLIERS FOR ALL CLAIMS RELATED TO ANY SOFTWARE, PRODUCT, SERVICES, AND/OR THIS LICENSE AGREEMENT, REGARDLESS OF THE FORM OF ACTION (WHETHER IN CONTRACT, TORT, UNDER STATUTE, OR OTHERWISE), SHALL BE LIMITED TO THE AMOUNT PAID BY YOU, IF ANY, FOR THE EFI SOFTWARE. YOU AGREE THAT SUCH AMOUNT IS SUFFICIENT TO SATISFY THE ESSENTIAL PURPOSE OF THIS LICENSE AGREEMENT AND THAT SUCH A LIABILITY IS A FAIR AND REASONABLE ESTIMATE OF ANY LOSS AND DAMAGE LIKELY TO BE SUFFERED IN THE EVENT OF ANY WRONGFUL ACT OR OMISSION BY EFI AND/OR ITS SUPPLIERS. TO THE MAXIMUM EXTENT PERMITTED BY APPLICABLE LAW, IN NO EVENT SHALL EFI AND ITS SUPPLIERS BE LIABLE FOR COST OF PROCUREMENT OF SUBSTITUTE SOFTWARE, PRODUCTS OR SERVICES, LOST PROFITS OR DATA, THIRD PARTY CLAIMS, OR ANY SPECIAL INDIRECT, RELIANCE, CONSEQUENTIAL, EXEMPLARY, PUNITIVE, OR INCIDENTAL DAMAGES, HOWEVER CAUSED AND ON ANY THEORY OF LIABILITY, RELATED TO ANY SOFTWARE, PRODUCT, SERVICES AND/OR THIS LICENSE AGREEMENT. THIS LIMITATION SHALL APPLY EVEN IF EFI AND ITS SUPPLIERS HAVE BEEN ADVISED OF THE POSSIBILITY OF SUCH DAMAGES. YOU AGREE THAT THE PRICE OF THE EFI SOFTWARE REFLECTS THIS ALLOCATION OF RISK. YOU ACKNOWLEDGE AND AGREE THAT THE FOREGOING LIMITATIONS OF LIABILITY AND DISCLAIMERS FORM AN ESSENTIAL ELEMENT OF THIS LICENSE AGREEMENT, WITHOUT WHICH EFI WOULD NOT HAVE LICENSED THE EFI SOFTWARE TO YOU.

BECAUSE SOME JURISDICTIONS DO NOT ALLOW SOME OR ALL OF THE EXCLUSIONS AND/OR LIMITATIONS OF LIABILITY HEREIN, SOME OR ALL OF THE ABOVE EXCLUSIONS AND LIMITATIONS MAY NOT APPLY TO YOU.

You are hereby notified that Adobe Systems Incorporated, a Delaware corporation located at 345 Park Avenue, San Jose, CA 95110-2704 ("Adobe") is a third-party beneficiary to this License Agreement to the extent that this License Agreement contains provisions which relate to your use of any software, font programs, typefaces, and/or trademarks licensed or supplied by Adobe. Such provisions are made expressly for the benefit of Adobe and are enforceable by Adobe in addition to EFI. ADOBE WILL HAVE NO LIABILITY WHATSOEVER TO YOU FOR ANY ADOBE SOFTWARE OR TECHNOLOGY LICENSED HEREUNDER.

Export Restrictions

The Software and EFI Products are subject to the export laws and regulations of the United States, including the United States Export Administration Regulations. The license granted to you herein is conditioned upon your compliance with all applicable export laws and regulations, including the export laws and regulations of the United States. You represent and agree that you will not use, disclose, distribute, transfer, export, or re-export any portion of the Software or any EFI Product in any form in violation of any applicable export laws and regulations, including the export laws and regulations of the United States.

U.S. Government Restricted Rights

Use, duplication, or disclosure of the Software by the United States Government is subject to restrictions as set forth in FAR 12.212 or DFARS 227.7202-3 - 227.7202-4 and, to the extent required under U.S. federal law, the minimum restricted rights as set out in FAR 52.227-14, Restricted Rights Notice (June 1987) Alternate III(g)(3) (June 1987) or FAR 52.227-19 (June 1987). To the extent any technical data is provided pursuant to the Agreement, such data is protected per FAR 12.211 and DFARS 227.7102-2 and to the extent explicitly required by the U.S. Government, is subject to limited rights as set out in DFARS 252.227.7015 (November 1995) and DFARS 252.227-7037 (September 1999). In the event that any of the above referenced agency regulations are modified or superseded, the subsequent equivalent regulation shall apply. The name of the Contractor is Electronics for Imaging, Inc.

Governing Law and Jurisdiction

The rights and obligations of the parties related to this License Agreement will be governed in all respects by the laws of the State of California exclusively, as such laws apply to contracts between California residents performed entirely within California. The United Nations Convention on Contracts for the International Sale of Goods and any other similar convention does not apply to this License Agreement. For all disputes related to the Software, Products, Services, and/or this License Agreement, you consent to the exclusive personal jurisdiction and venue of the state courts in San Mateo County, California and the federal court for the Northern District of California.

General

This Agreement is the entire agreement held between us and supersedes any other communications or advertising with respect to the Software, Products, Services, and any other subject matter covered by this License Agreement. If any provision of the License Agreement is held invalid, such provision shall be deemed modified to the extent necessary to be enforceable and the other provisions in this License Agreement shall continue in full force and effect.

If you have any questions, see the EFI web site at www.efi.com.

Electronics for Imaging, Inc.
303 Velocity Way
Foster City, CA 94404
USA

Contents

About the Documentation

Introduction

About this manual	xiii
-------------------	------

Chapter 1: Printing from Windows Computers

Printing from applications	1-1
Setting options and printing from Windows computers	1-1
Using job templates	1-9
Using Shortcuts	1-13
Customizing Print Option Shortcuts	1-14
Defining and printing custom page sizes	1-15
Working with custom page sizes in Windows PCL printer driver	1-16
Working with custom page sizes in Windows 2000/XP PostScript printer driver	1-18
Viewing the printer's status	1-22
Saving files to print at a remote location	1-23

Chapter 2: Printing from Mac OS Computers

Printing from applications with Mac OS 9 or later, or Mac OS X Classic	2-1
Selecting the EX7750 in the Chooser	2-1
Setting options and printing from Mac OS 9 or later, or Mac OS X Classic	2-3
Defining custom page sizes	2-7
Printing from applications with Mac OS X	2-9
Setting options and printing from Mac OS X	2-9
Defining custom page sizes	2-15

Chapter 3: Printing from UNIX Workstations

Printing to the EX7750	3-1
------------------------	-----

Chapter 4: Downloading Files and Fonts

Using Fiery Downloader or WebDownloader	4-1
Downloading printer fonts	4-4
Managing printer fonts	4-9

Chapter 5: Printing Variable Data Documents

About variable data printing	5-1
Printing variable data documents with FreeForm	5-2
How FreeForm works	5-2
Creating the master document	5-3
Creating the variable document	5-4
Combining the FreeForm master with the variable document	5-5
Using FreeForm	5-7
Printing variable data documents with FreeForm 2	5-11

Chapter 6: Tracking and Monitoring Jobs

Accessing Fiery WebTools	6-1
Checking EX7750 status with Status	6-3
Accessing information with WebLink	6-4
Job Monitor	6-4

Chapter 7: Using Fiery E-mail Service

How Fiery E-mail Service works	7-1
Printing using an E-mail Client	7-2
Job Control	7-4
Printing using the E-mail Port Monitor	7-4

Appendix A: Print Options

About printer drivers and printer description files	A-1
Where to set print options	A-2
Print option override hierarchy	A-3
Default settings	A-3
More about print options	A-13
Booklet Maker	A-13
Collate	A-15
Creep Adjustments	A-15
Duplex	A-15
Mixed Media	A-17

Appendix B: Font List

PostScript printer fonts	B-1
Adobe Type 1 fonts	B-1
TrueType fonts	B-6
PCL printer fonts	B-6

Appendix C: Troubleshooting

Maintaining optimal system performance	C-1
Troubleshooting	C-2
General printing problems	C-2
Problems with print quality	C-4
Problems with Fiery Downloader	C-5
Problems with Fiery WebTools	C-6

Index

This page is intentionally blank.

Introduction

The Xerox EX7750 is used to print final documents or proof jobs that will be printed later on an offset press. You can send a print job to the Xerox EX7750 as you would to any other printer—select it from the Printers dialog box on Microsoft Windows computers, or in the Chooser on Apple Mac OS computers, and then print from within any application.

NOTE: The term “EX7750” is used in this manual to refer to the Xerox EX7750. The term “printer” is used to refer to the Phaser 7750. The name “Aero” is used in illustrations to represent the EX7750. The term “Windows” is used to refer to Windows 2000 and Windows XP, wherever appropriate. Illustrations of Windows software may not necessarily reflect the version of Windows that you use.

Although it may not be the case at all sites, it is assumed that an operator controls and manages jobs sent by users from remote workstations. For information about the features of Command WorkStation/Command WorkStation LE and Fiery Spooler, see the *Job Management Guide*.

About this manual

This manual is intended for remote users who send jobs via the network and the EX7750. It covers the following topics:

- Printing from a Windows computer
- Printing from a Mac OS computer
- Printing from a UNIX workstation
- Downloading files and fonts using Fiery Downloader and Fiery WebDownloader

- Printing variable data documents
- Monitoring jobs and accessing information using Fiery WebTools™ and Job Monitor
- Printing using the Fiery E-mail Service
- Specifying and overriding job settings, generating a list of fonts installed on the EX7750, and troubleshooting information

Chapter 1: Printing from Windows Computers

This chapter describes printing to the EX7750 from Windows computers. You can print from a networked Windows computer or a computer using Windows (WINS) printing. You can also print to a file so that it can be printed at a remote location (see “[Saving files to print at a remote location](#)” on page 1-23). In addition to these methods, you can download files to the EX7750 using Fiery Downloader (see [Chapter 4](#)), and print documents using Fiery E-mail Services (see [Chapter 7](#)).

NOTE: For information about setting up the Windows environment for printing with Windows servers connected to the EX7750, see the [Configuration Guide](#). For information about connecting to the EX7750 over the network, installing printer drivers, and installing Fiery® utilities, see the [User Software Installation Guide](#).

Printing from applications

Once the EX7750 printer driver is installed and set to the proper port, as described in the [User Software Installation Guide](#), you can print directly from most Windows applications. Set the print options for the job and choose the Print command from within your application.

Setting options and printing from Windows computers

To print from Windows computers, install the corresponding PostScript printer driver or PCL printer driver. The drivers are included in the EX7750 User Software CD. For information about how to install the printer driver, see the [User Software Installation Guide](#).

Once the printer driver and a corresponding printer description file are installed, you can specify print settings for a particular job and print it to the EX7750. You can also set default print settings using the driver.

To print from Windows applications by connecting your computer to a print server via the network, a Novell NetWare, Windows 2000, or UNIX server is required. For more information, see the [Configuration Guide](#).

To print from Windows applications without connecting to a print server, you can use Server Message Block (SMB) printing. For more information, see the [User Software Installation Guide](#).

The following procedures explain how to use the driver to specify print options. For information about specific print options, see [Appendix A](#).

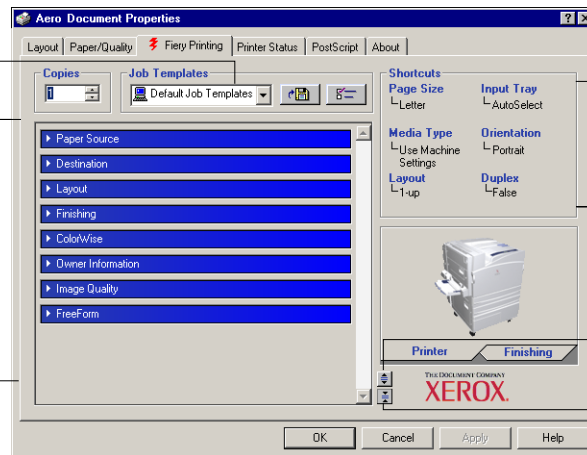
NOTE: The following procedures use Windows 2000 illustrations. The interface may vary slightly depending on whether you are using the PostScript or PCL driver. Major differences are noted.

TO SET PRINT OPTIONS FOR A SPECIFIC WINDOWS PRINT JOB USING THE PCL OR POSTSCRIPT PRINTER DRIVER

1. Choose **Print** in your application.
2. Select the **EX7750 PS or PCL** as your printer and click **Properties**.
3. Click the **Fiery Printing** tab.

Job Templates, see [page 1-9](#)

Print option bars, see below



Shortcuts, see [page 1-13](#)

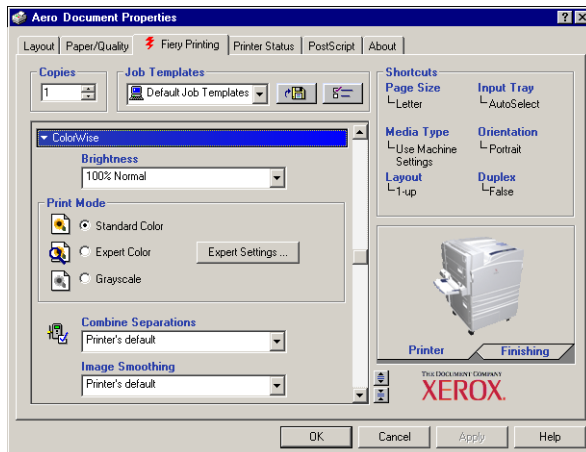
Click to display all print options

Click to hide all print options

The Fiery Printing tab serves as the control center for all frequently used printing functions.

NOTE: Supported tabs and print options may vary between Windows 2000/XP PostScript and PCL drivers. For a complete list of print options, see [Appendix A](#).

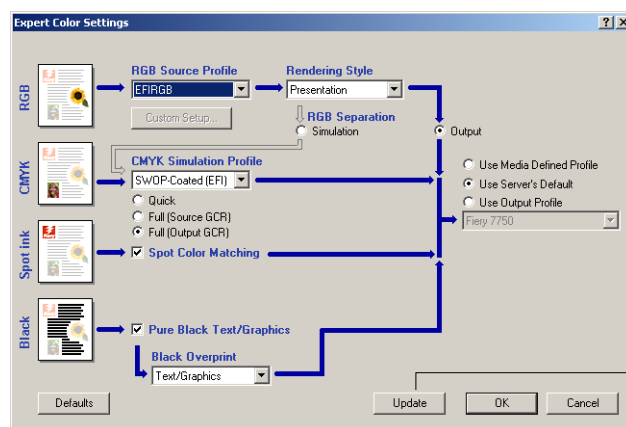
4. Click the ColorWise (PostScript) or Color Settings (PCL) print option bar.



In the Print Mode area, specify the color mode for the job. To use advanced color management features, such as Rendering Style, click Expert Settings and proceed to [step 5](#); otherwise, skip to [step 7](#).

NOTE: Expert Settings is not supported for the PCL driver.

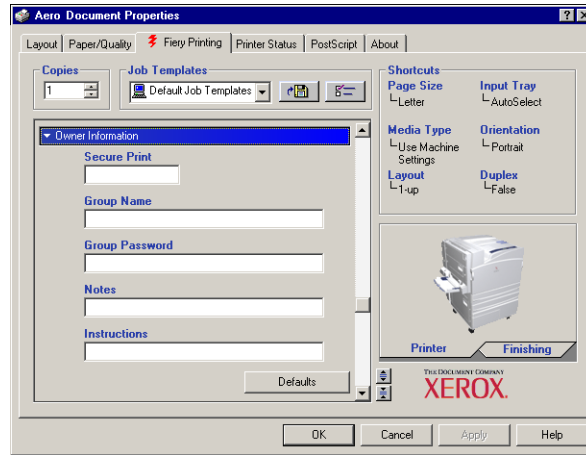
5. In the Expert Color Settings dialog box, click Update to display the current EX7750 settings.



Click Update

If the Update button does not appear, make sure Two-Way Communication is set up, as described in the *User Software Installation Guide*.

6. Specify the color settings for the print job and click OK.
7. Click the Owner Information print option bar.



8. Enter a password in the Secure Print field if you are sending a secure print job.
Your job is held at the EX7750. To print your job, enter the password at the Control Panel on the EX7750.
9. Enter an account name in the Group Name field.
The Group Name appears in the job management tools Job Log. The account name is defined by your administrator for managing purposes. Consult the administrator for the account name.
10. Enter a password in the Group Password field.
The Group Password appears in the job management tools Job Log, but it is encrypted. The password is defined by your administrator for managing purposes. Consult the administrator for the password.

When the account name and password you entered match those defined by the administrator, your job is printed. Otherwise, an error is generated, and your job is placed in the printed queue.

The administrator or operator can edit the Group Name and Group Password from the Command WorkStation/Command WorkStation LE Job Properties dialog box. The Group Name appears in the job's Notes 2 field in the job management tools Job Log.

NOTE: Group Name and Group Password options are not available when printing to the Direct connection.

11. Enter text messages in the Notes field.

The information you enter in the Notes field can be viewed by the operator at the job management tools and also appears in the Job Log. It *cannot* be edited or erased by the operator.

For more information about the job management tools, see the [Job Management Guide](#).

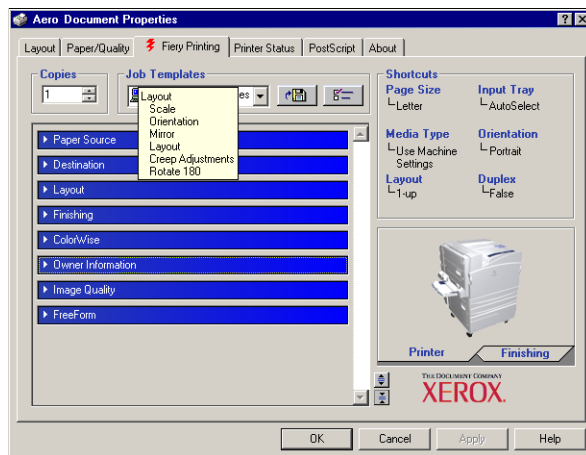
12. In the Instructions field, enter instructions to the operator about the job and click OK.

These instructions can be displayed in Command WorkStation/Command WorkStation LE, but do not appear in the Job Log. These instructions *can* be edited by the operator.

For more information about the job management tools, see the [Job Management Guide](#).

13. Click the remaining print option bars to specify the appropriate settings for the print job and click OK.

To quickly find a print option you are looking for, move the cursor slowly over the print option bars. A menu appears for each print option bar, which displays print options available under that print option bar.



These print options are specific to the EX7750 and the printer. They override settings specified in EX7750 Printer Setup, but can be overridden from the job management tools.

For information about these options and overrides, see [Appendix A](#).

For information about configuring installable options, see the *User Software Installation Guide*.

For more information about job management tools, see the *Job Management Guide*.

If you choose Printer's default, the job prints according to the settings specified in Setup. For more information, see [Appendix A](#).

NOTE: If you specify incompatible print settings, the Conflict dialog box provides instructions to resolve the conflict.

14. From your application, click OK twice to send your print job.

Make sure the EX7750 is selected as your current printer.

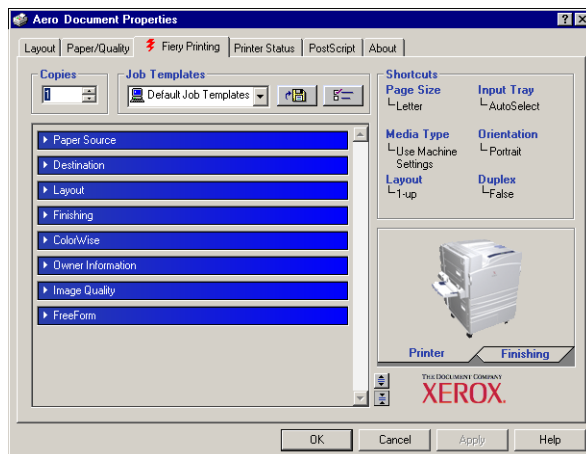
NOTE: Some options listed in the printer driver can also be set from an application (for example, collation or Reverse Order). In these cases, use the driver option to perform the function, rather than setting it from the application. The application might not set up the file properly for printing on the EX7750, which might cause an unexpected printing error and longer processing time.

NOTE: With the E-mail Notification feature enabled in the printer driver as described in the *User Software Installation Guide*, you can receive an e-mail notification after your job is printed or when a printing error occurs. The feature also requires that the Fiery Mail Port is installed and the Status messages from Fiery option is selected in the E-Mail Port Configuration dialog box. For more information about installing and configuring the Fiery Mail Port, see the *User Software Installation Guide*.

TO SET DEFAULT PRINT OPTIONS FOR WINDOWS PRINT JOBS USING THE PCL OR POSTSCRIPT PRINTER DRIVER

- 1. Click Start.**
- 2. For Windows 2000, choose Settings and then Printers.
For Windows XP, choose Printers and Faxes.**
- 3. Right-click the EX7750 PS or PCL icon and choose Printing Preferences.**

The Fiery Printing tab appears. If it does not, click the Fiery Printing tab.



4. Specify the default settings for your print job, as described on [page 1-2](#).
5. Click OK to close the dialog box.

Accessing print options without opening print option bars

In the previous procedures, you accessed the EX7750 print options by opening the print option bars. You can also access and change the print option settings by right-clicking the print option bars. When you right-click a print option bar, a list of print options within the print option bar appears, and you can change settings in the list for your print job.

TO ACCESS PRINT OPTIONS WITHOUT OPENING PRINT OPTION BARS

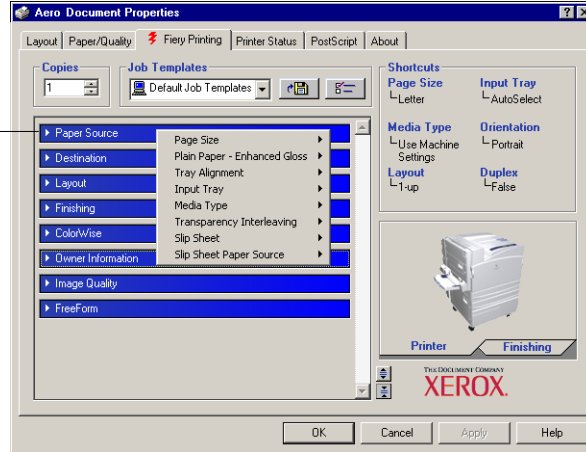
1. Open the Fiery Printing tab.
2. Right-click a print option bar.

1

1-8 Printing from Windows Computers

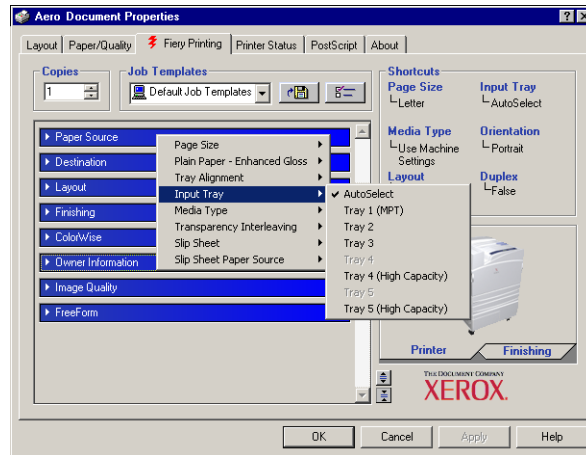
A list of print options within the print option bar appears.

Right-click the Paper Source print option bar



3. Click or move and hold the cursor over an option to which you want to make a change.

Available settings appear.



4. Click a setting.

NOTE: For the text-field options such as Group Name and Notes, you must click and open the print option bars to access them.

Using job templates

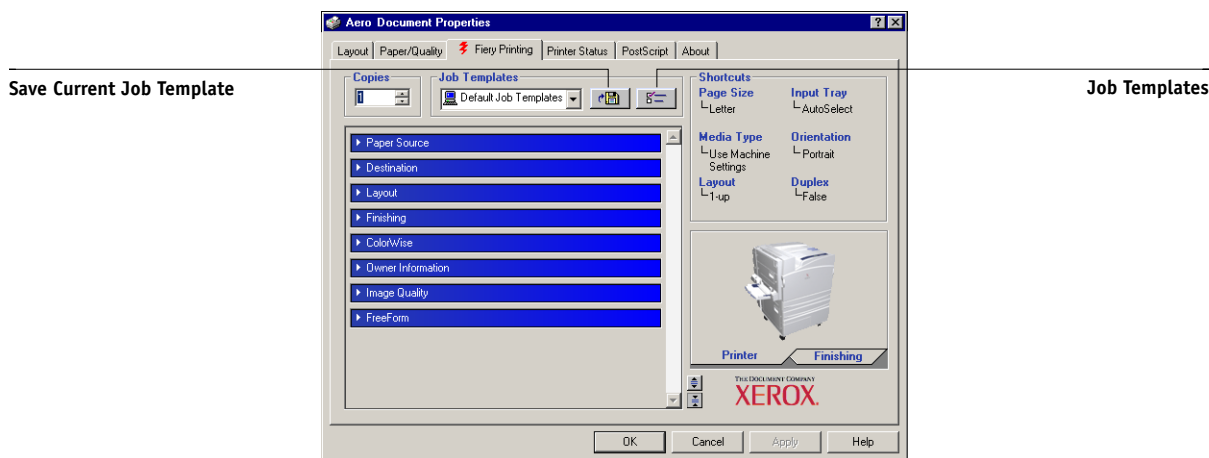
You can save print option settings to your hard disk so you can easily load specifically configured settings for a particular job as a template. You can also share templates over a network, using the Import and Export features.

NOTE: Although the user interface differs slightly, the following procedures are the same for both PCL and PostScript printer drivers.

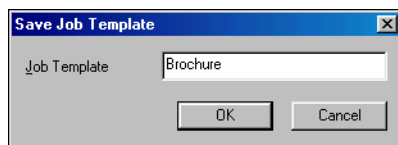
TO CREATE A JOB TEMPLATE

1. **Make sure that Default Job Template appears in the Job Templates menu, and then configure options from the print option bars.**

As soon as you change any settings, the Job Templates menu displays Untitled instead of Default Job Template.



2. **Click the Save Current Job Template button.**
3. **Enter a Job Template name and click OK.**



The name appears in the Job Templates menu.

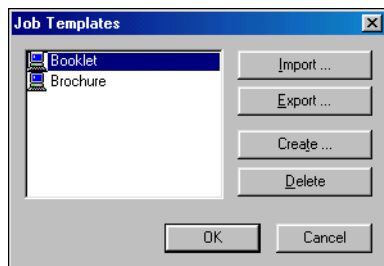
TO LOAD JOB TEMPLATES

1. From the Fiery Printing tab, click the Job Templates menu.
2. Choose the settings you want to use for your template.

The options are automatically configured.

TO DELETE JOB TEMPLATES

1. From the Fiery Printing tab, click the Job Templates button.
2. Choose the templates you want to delete and click Delete.



3. Click Yes to confirm the deletion and click OK.

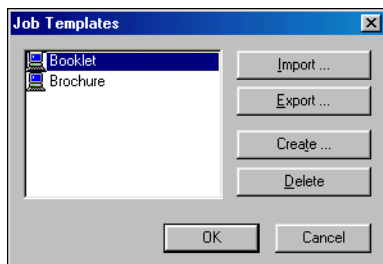
TO MODIFY JOB TEMPLATES

1. From the Fiery Printing tab, click the Job Templates menu.
2. Choose the template you want to modify and click OK.

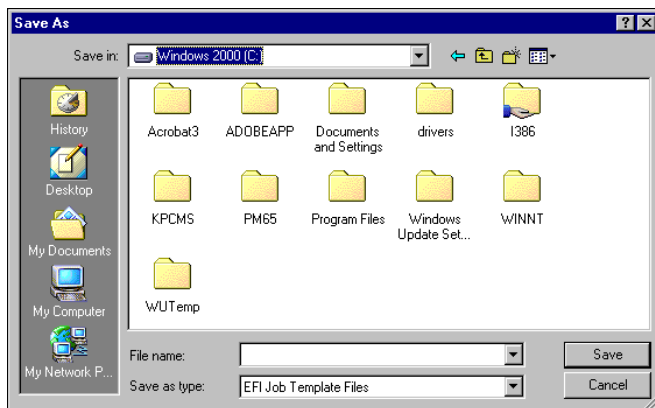
The options are automatically configured with the currently saved settings.
3. Configure your new settings from the print option bars and click the Save Current Job Template button.
4. Click OK to save the modified template.

TO EXPORT SAVED TEMPLATES

1. From the Fiery Printing tab, click the Job Templates button.
2. Choose the template you want to export and click Export.



3. Browse to the location in which to save the file, enter a file name, and then click Save.

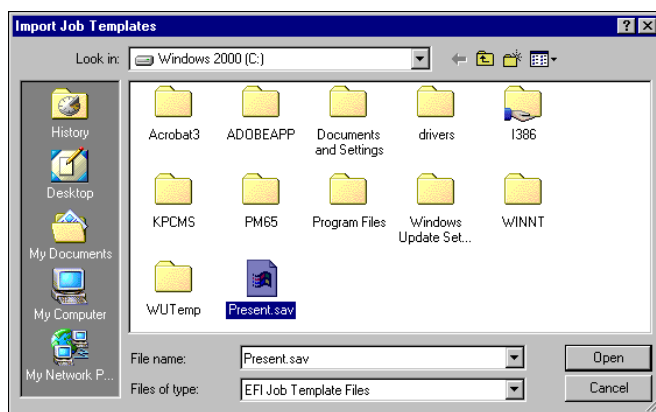


NOTE: The file name must include the .sav extension and can be up to eight characters (not including the extension). The file name does not have to match the Job Template name.

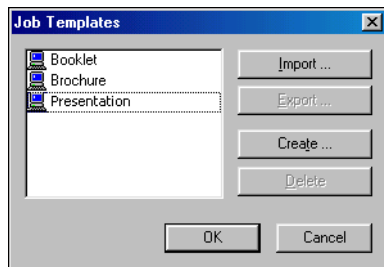
4. Click OK in the Job Template dialog box.

TO IMPORT SAVED TEMPLATES

1. From the Fiery Printing tab, click the Job Templates button.
2. Click Import.
3. Browse to the location of the saved template file you want to import.
4. Select the file and click Open.



5. Click OK in the Job Templates dialog box.

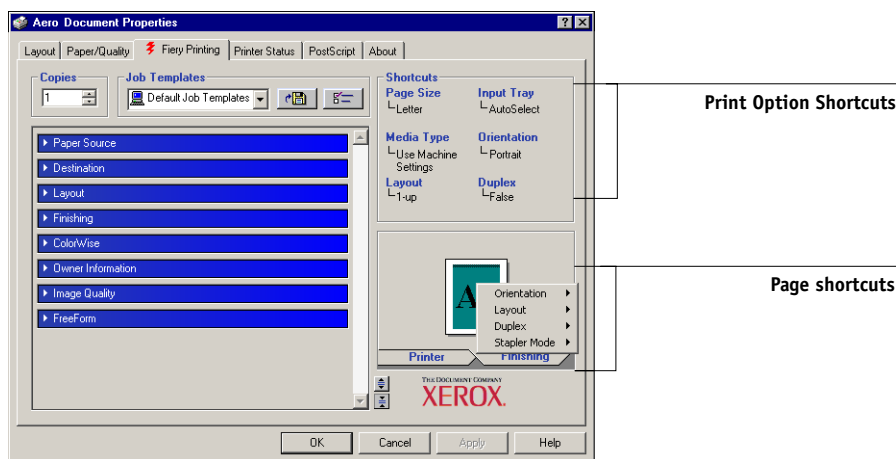


NOTE: When you import job templates, they appear in the Job Templates menu under the Job Template, not the file name. In the preceding examples, the file present.sav (file name) was imported, but it appears in the Job Templates menu as Presentation (Template Name).

Using Shortcuts

The Shortcuts area of the printer driver interface displays the current settings for some of the most commonly used print options. Access and change these settings quickly and easily using the Shortcuts. You can also access some page layout and finishing options by right-clicking the image of the page directly below Shortcuts.

NOTE: Although the user interface differs slightly, the following procedures are the same for both PCL and PostScript printer drivers.



TO SET PRINT OPTIONS USING PRINT OPTION SHORTCUTS

1. From the Fieri Printing tab, position your cursor over the print option you want to set.

The cursor changes into a hand.

2. Click the selected print option and specify the appropriate settings.

The print option bar in which the selected print option is located opens, and the print option is highlighted. Alternatively, you can right-click the print option and click your selection from the menu that appears.

3. Click **Apply** to make the new settings the default.
4. Click **OK**.

TO SET PRINT OPTIONS USING THE PAGE SHORTCUTS

1. From the Fiery Printing tab, click the Page icon, position your cursor over the page image, and then right-click.
2. Specify the appropriate settings for the print options.
3. Click Apply to make the new settings the default.
4. Click OK.

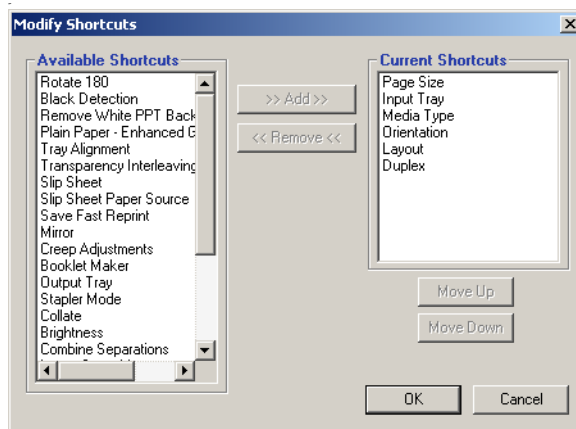
Customizing Print Option Shortcuts

You can customize the Print Option Shortcuts area so that you have easy access to most frequently used print options.

TO CUSTOMIZE THE PRINT OPTION SHORTCUTS AREA

1. Click Shortcuts in the Print Option Shortcuts area.

The Modify Shortcuts dialog box appears.



2. Select an option to remove from the Current Shortcuts list and click Remove. Or double-click an option to remove in the Current Shortcuts list.

The maximum number of the print options that can be displayed is six.

3. Select an option you want to add from the Available Shortcuts list and click Add. Or double-click an option you want to add in the Current Shortcuts list.

The new option item appears at the bottom of the Current Shortcuts list.

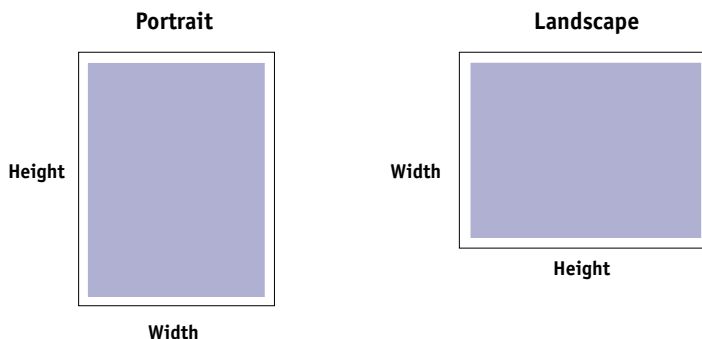
4. To change the order of the Current Shortcuts, select an option in the Current Shortcuts list and click Move Up or Move Down.

5. Click OK to close the Modify Shortcuts dialog box.

The Print Option Shortcuts area is customized.

Defining and printing custom page sizes

With custom page sizes, you can define the dimensions of a printed page. After you define a custom page size, you can use it from within an application without redefining it each time you print. When you create custom page sizes, specify Width dimensions to correspond with the shorter side of your job and specify Height dimensions to correspond with the longer side of your job. Set custom page sizes this way, regardless of the orientation settings in the application.



NOTE: Custom page sizes are not supported with Imposition jobs.

NOTE: Custom page sizes for Windows 2000/XP cannot be set using the Fiery Printing tab. For more information, see [“Working with custom page sizes in Windows 2000/XP PostScript printer driver”](#) on page 1-18.

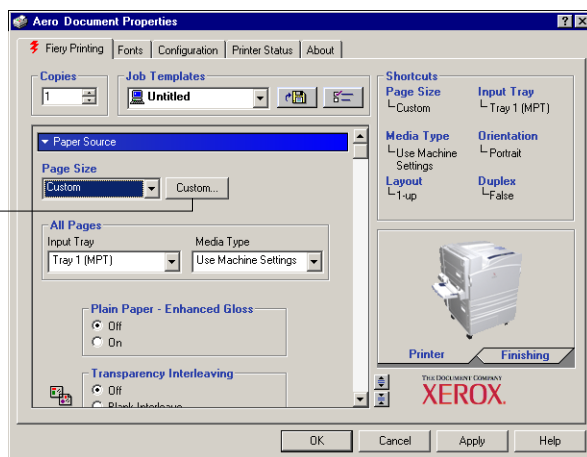
Working with custom page sizes in Windows PCL printer driver

With custom page sizes, you can define the dimensions of a printed page. After you define a custom page size, you can use it from within an application without redefining it each time you print.

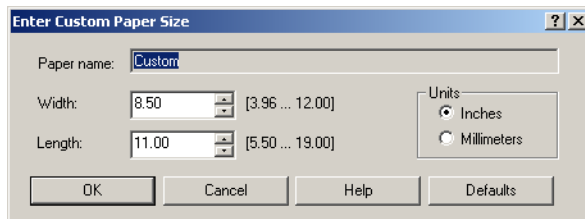
TO DEFINE A CUSTOM PAGE SIZE WITH WINDOWS PCL PRINTER DRIVERS

1. Click Start.
2. For Windows 2000, choose Settings and then Printers.
For Windows XP, choose Printers and Faxes.
3. Right click the EX7750 PCL icon and choose Printing Preferences.
4. Click the Fiery Printing tab and click the Paper Source print option bar.
5. Select Custom from the Page Size print option and click Custom.

Click Custom



6. Specify options to define the custom page size.



Width—Enter the width of the print job.

Length—Enter the length of the print job.

Units—Select a unit of measurement for the print job.

7. Click OK to close the Enter Custom Paper Size window.
8. Click OK to close the EX7750 printer driver.

TO EDIT A CUSTOM PAGE SIZE WITH WINDOWS PCL PRINTER DRIVERS

1. Click Start.
2. For Windows 2000, choose Settings and then Printers.
For Windows XP, choose Printers and Faxes.
3. Right click the EX7750 PCL icon and choose Printing Preferences.
4. Click the Fiery Printing tab and click the Paper Source print option bar.
5. Select Custom from the Page Size print option and click Custom.
6. Enter the new options to define the custom page size.

Width—Enter the width of the print job.

Length—Enter the length of the print job.

Units—Select a unit of measurement for the print job.
7. Click OK to close the Enter Custom Paper Size window.
8. Click OK to close the EX7750 printer driver.

TO PRINT A CUSTOM PAGE SIZE WITH WINDOWS PCL DRIVERS

1. Choose Print from your application.
2. Select the EX7750 PCL icon as the printer and click Properties.
3. Click the Fiery Printing tab, and then click the Paper Source print option bar.
4. From the Input Tray menu, choose the paper tray that contains the custom-size paper for the job.

The Input Tray selection is valid for the current job only.

5. Select Custom from the Page Size menu.
6. Click OK and then click OK again to print the job.

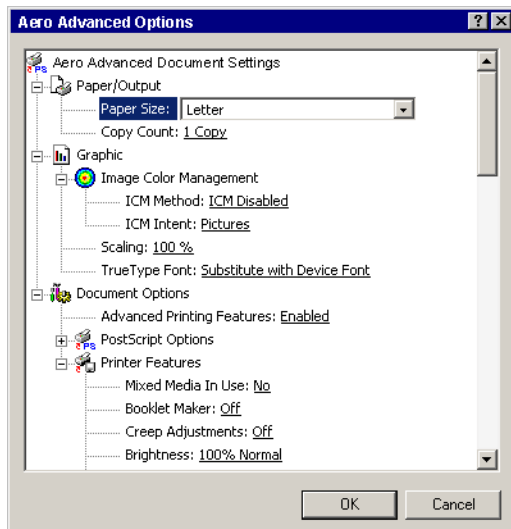
Working with custom page sizes in Windows 2000/XP PostScript printer driver

With custom page sizes, you can define the dimensions of a printed page. After you define a custom page size, you can use it from an application without redefining it each time you print.

NOTE: Windows 2000/XP have a similar interface when setting options and printing. The following procedures use Windows 2000 illustrations with Windows XP differences noted.

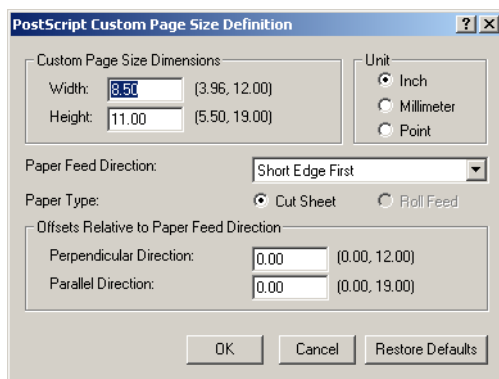
TO DEFINE A CUSTOM PAGE SIZE WITH THE WINDOWS 2000/XP POSTSCRIPT PRINTER DRIVER

1. Click Start.
2. For Windows 2000, choose Settings and then Printers.
For Windows XP, click Printers and Faxes.
3. Right-click the EX7750 PS icon and choose Printing Preferences.
4. Click the Paper/Quality tab.
5. Click Advanced.



6. Choose **PostScript Custom Page Size** from the **Page Size** menu.

The PostScript Custom Page Size Definition dialog box appears.



7. Specify options to define the custom page size.

Custom Page Size Dimensions—Enter the width and height of the print job.

Unit—Select a unit of measurement for the print job.

Paper Feed Direction—Choose the paper feed direction of the print job.

Paper Type—Only the Cut Sheet option is available.

Offsets Relative to Paper Feed Direction—Enter the offsets (margins) of the print job relative to the paper feed direction.

8. Click **OK** to close the **PostScript Custom Page Size Definition** dialog box.

9. Click **OK** to close the **Advanced Options** dialog box.

10. Click **OK** to close the **Printing Preferences** dialog box.

You can now specify the custom page size from an application.

NOTE: Access the Paper/Quality tab only for defining or editing custom page sizes. Set up the rest of the print options in the Fiery Printing tab.

TO EDIT A CUSTOM PAGE SIZE WITH THE WINDOWS 2000/XP POSTSCRIPT PRINTER DRIVER

1. Click Start.
2. For Windows 2000, choose Settings and then Printers.
For Windows XP, click Printers and Faxes.
3. Right-click the EX7750 PS icon and choose Printing Preferences.
4. Click the Paper/Quality tab.
5. Click Advanced.
6. Choose PostScript Custom Page Size from the Paper Size menu.

The PostScript Custom Page Size Definition dialog box appears. If it does not appear, click Edit Custom Page Size.

7. Edit the settings, as described on [page 1-20](#), and click OK.

TO PRINT A CUSTOM PAGE SIZE WITH THE WINDOWS 2000/XP POSTSCRIPT PRINTER DRIVER

1. Click the Fiery Printing tab, and then click the Paper Source print option bar.
2. From the Input Tray menu, choose the paper tray that contains the custom-size paper for the job.
The Input Tray selection is valid for the current job only.
3. Select PostScript Custom Page Size from the Page Size option.
4. Click the Layout print option bar and select a setting from Orientation according to the way the custom size paper is loaded.
5. Click OK and then click OK again to print the job.

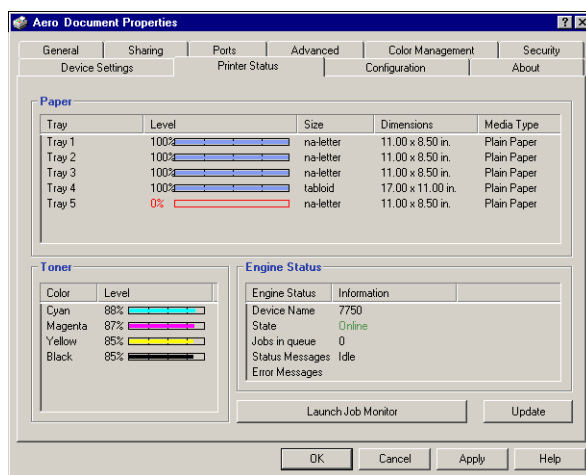
Viewing the printer's status

View the status of the printer's consumables from the printer driver.

TO VIEW THE STATUS OF THE PHASER 7750 CONSUMABLES

1. Choose **Print** in your application.
2. Select the **EX7750 PS or PCL** as your printer and click **Properties**.
3. Click the **Printer Status** tab and **Update**.

The Two-Way Communication feature must be enabled. For information, see [User Software Installation Guide](#).



Paper

Tray—Displays the drawer name.

Level—Displays the amount of paper remaining in the specified drawer.

Size—Displays the size of paper in the specified drawer.

Dimensions—Displays the dimensions of the paper in the specified drawer in inches or millimeters.

Media Type—Displays the type of media loaded in the specified drawer.

Toner

Color—Displays the color of toners.

Level—Displays the amount of toner remaining, in increments of one percent. The amount displayed is roughly calculated and may not match the exact amount of toner remaining.

Engine Status

This area displays the current status of the Phaser 7750.

Saving files to print at a remote location

If you do not have a EX7750 onsite, and are preparing files to take to a service bureau or other location, print the final files to the File port (as opposed to one of the local ports). You can also print to the File port to create a file to download using Fiery Downloader. For instructions on printing to the File port, see your Windows documentation.

This page is intentionally blank.

Chapter 2: Printing from Mac OS Computers

You can print to the EX7750 just as you would print to any other printer from any application. If you are using Mac OS 9 or later, or Mac OS X Classic, select the EX7750 as the current printer in the Chooser, and then print the file from within the application. If you are using Mac OS X, you can choose the printer and print the file from within the application.

Another way to print from a Mac OS computer is to download PostScript (PS), Encapsulated PostScript (EPS), Tagged Image File Format (TIFF), or Portable Document Format (PDF) files using Fiery Downloader. For the versions of TIFF and PDF supported, see the *User Software Installation Guide*. For details on using Fiery Downloader, see [Chapter 4](#).

Printing from applications with Mac OS 9 or later, or Mac OS X Classic

Before you can print to the EX7750 from applications, you must select the EX7750 in the Chooser. Then, using the Adobe PostScript printer driver and the correct printer description file, you can control many EX7750 printing features by specifying job settings from print dialog boxes.

To achieve the best printing results from specific applications, see the *Color Guide* and the *Fiery Color Reference*.

Selecting the EX7750 in the Chooser

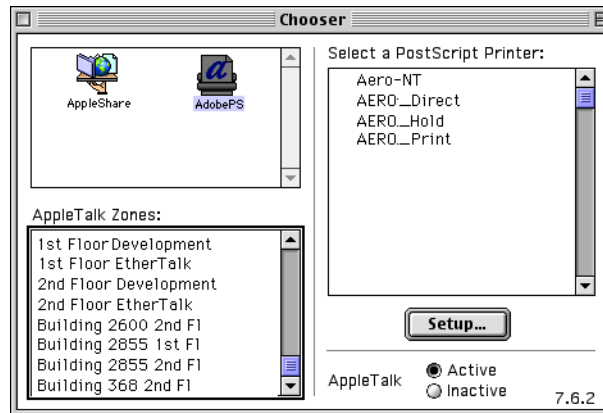
Before you print a job, make sure the EX7750 is the currently selected printer.

NOTE: For information about setting up the EX7750 in the Chooser, see the *User Software Installation Guide*.

TO SELECT THE EX7750 AS THE CURRENT PRINTER

1. Make sure the EX7750 is connected to the network and turned on.
2. Select Chooser from the Apple menu.
3. Click the AdobePS icon to select it.
NOTE: Make sure AppleTalk is set to Active.
4. If your network is divided into zones, select the zone in which the EX7750 is located.
5. Select the EX7750 by <Server Name>_<Queue Name>_ from the “Select a PostScript Printer” list.

The names of all supported printers in the zone appear.



NOTE: If your system administrator has not enabled the connection to the Print queue or the Direct connection, the corresponding names will *not* appear in this list. For example, if your site has an operator who controls the flow of print jobs from Command WorkStation/Command WorkStation LE, you may be able to print only to the Hold queue. For more information on enabling print connections, see the [*Configuration Guide*](#).

6. Close the Chooser window.

The EX7750 remains selected as the current printer until you select a new printer in the Chooser.

Setting options and printing from Mac OS 9 or later, or Mac OS X Classic

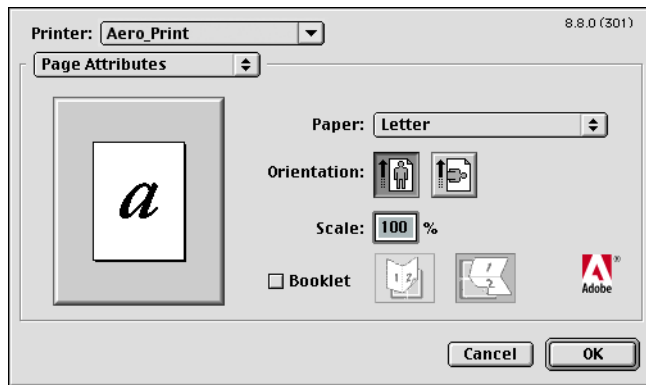
In Mac OS applications, print options are set from both the Page Setup dialog box and the Print dialog box. For details on specific print options, see [Appendix A](#).

NOTE: Some default print options are set by the administrator during Setup. Contact the administrator or the operator for information on the current server default settings.

TO SET PRINT OPTIONS AND PRINT WITH THE ADOBEPS PRINTER DRIVER

1. Open a file and choose Page Setup from the application's File menu.
2. Choose Page Attributes in the dialog box that appears.

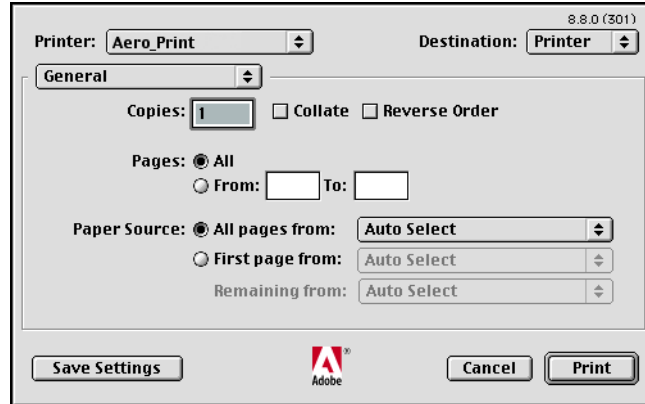
Select the EX7750 as your printer.



NOTE: Page Setup dialog boxes vary across applications.

3. Select the Page settings for your print job.
4. Click OK.
5. Choose Print from the application's File menu.

6. Select the EX7750 as your printer and specify settings for the print options displayed.



NOTE: Print dialog boxes vary across applications.

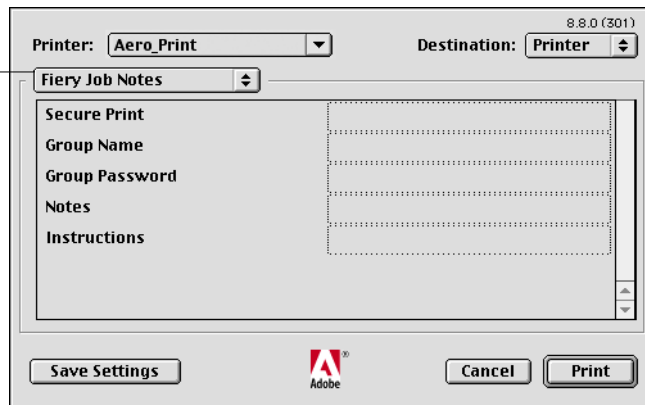
From the Paper Source menu, choose the paper tray for the job. For example, you can specify that the job be printed on paper in Tray 1.

The Paper Source selection is valid for the current job only.

NOTE: If paper loaded in the selected tray is a different size, orientation, or paper type than that of the job you are sending, the EX7750 displays an error message and the job fails to print. Load the correct paper into the selected tray or cancel the job.

7. Choose Fiery Job Notes.

Choose Fiery Job Notes



Enter user and job identification information for managing purposes, or whatever information is required at your site.

8. Enter a password in the Secure Print field if you are sending a secure print job.

Your job is held at the EX7750. To print your job, enter the password at the Control Panel on the EX7750.

9. Enter an account name in the Group Name field.

The Group Name appears in Command WorkStation/Command WorkStation LE and Fiery Spooler, and also appears in the Job Log.

10. Enter a password in the Group Password field.

The Group Password appears in the job management tools Job Log, but it is encrypted. The password is defined by your administrator for managing purposes. Consult the administrator for the password.

When the account name and password you entered match those defined by the administrator, your job is printed. Otherwise, an error is generated, and your job is placed in the printed queue.

The administrator or operator can edit the Group Name and Group Password from the Command WorkStation/Command WorkStation LE or Fiery Spooler Properties window.

NOTE: Group Name and Group Password options are not available when printing to the Direct connection.

11. Enter text messages in the Notes field.

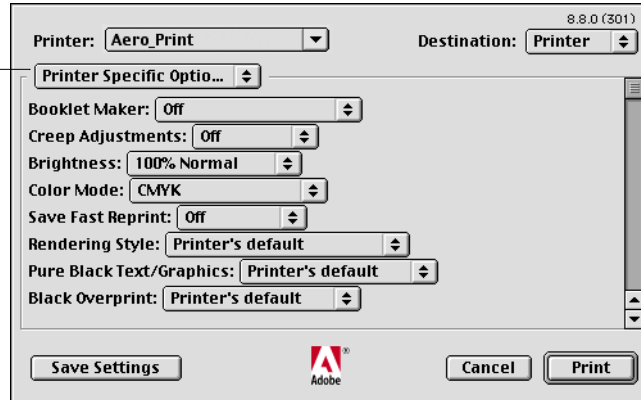
The information you enter in the Notes field can be viewed by the operator in Command WorkStation/Command WorkStation LE and also appears in the Job Log. It *cannot* be edited or deleted by the operator.

12. In the Instructions area, enter instructions to the operator about the job.

These instructions can be displayed in Command WorkStation, but do not appear in the Job Log. These instructions *can* be edited by the operator.

13. Choose Printer Specific Options and specify the appropriate settings for your print job.

Choose Printer Specific Options



These print options are specific to the EX7750 and the printer; you may have to scroll to see all the options. They override settings in EX7750 Printer Setup, but can be changed from Command WorkStation/Command WorkStation LE or Fiery Spooler. If you choose Printer's default, the job prints according to the settings specified in Setup.

For more information about these options and overrides, see [Appendix A](#).

Some print options, including Soft Collate, Soft Reverse Order, and Manual Duplex that are selectable from an application or Adobe PS printing, are similar to the print options available from the Printer Specific Options menu. In these cases, specify the print option from the Printer Specific Options menu. The application or Adobe PS printer driver may not set up the file properly for printing on the EX7750, which may cause an unexpected printing error and longer processing time.

NOTE: If you specify incompatible print settings, a dialog box might appear. Follow the on-screen instructions to resolve the conflict.

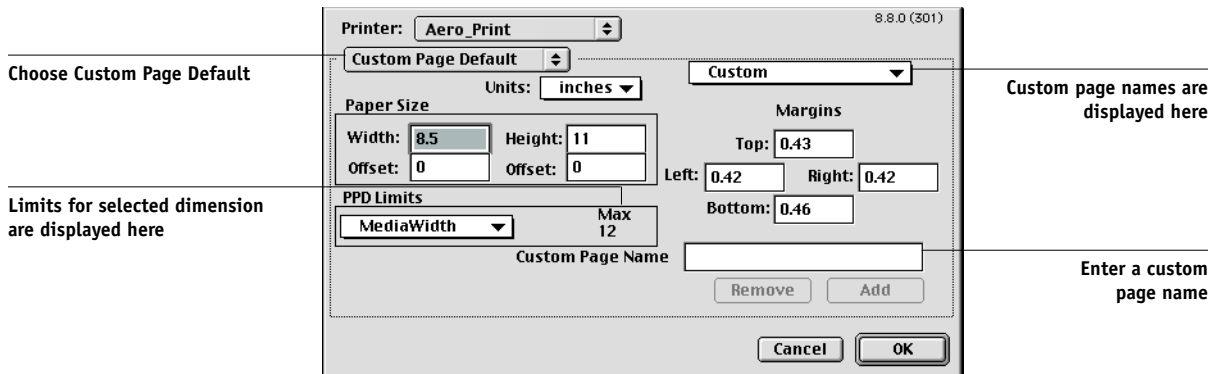
14. To make the new settings the default settings, click **Save Settings**.
15. Click **Print**.

Defining custom page sizes

With custom page sizes, you can define page dimensions and margins. After you define a custom page size, you can use it from within an application without redefining it each time you print.

TO DEFINE A CUSTOM PAGE SIZE

1. Choose Page Setup from the application's File menu.
2. For Paper, choose Custom.
3. Choose Custom Page Default.



4. Enter the page dimensions and margins.
5. To view the minimum and maximum sizes, click the PPD Limits menu.

If you enter invalid sizes, an error message appears. Click Cancel and enter sizes specified within the PPD Limits.

6. To save this custom page size, enter a name and click Add.

Saved custom page sizes appear in the menu of page sizes in the upper-right corner of the dialog box. To remove a saved custom page size, choose it from the menu and click Remove.

7. Click OK.

TO EDIT A SAVED CUSTOM PAGE SIZE

1. Choose **Page Setup** from the application's **File** menu.
2. Choose **Custom Page Default**.
3. Select the **Custom Page Size** name.
4. Edit the page dimensions and margins.
5. Click **Add**.
6. Replace the existing **Custom Page** name and click **OK**.

TO PRINT A CUSTOM PAGE SIZE

1. Load one of the paper trays with custom-size paper.
2. Choose **Page Setup** from the application's **File** menu.
3. Choose **Custom** or the **Custom Page Size** name from the **Paper** menu and click **OK**.
4. Choose **Print** from your application's **File** menu.

Specify your printing options.

From the **Paper Source** menu, choose the paper tray that contains the custom-size paper for the job.

The **Paper Source** selection is valid for the current job only.

5. Click **Print**.

Printing from applications with Mac OS X

After you install the EX7750 printer description files using the PPD Installer, you can print directly from most Mac OS X applications. For more information about installing printer description files with the PPD Installer see, the *User Software Installation Guide*.

To achieve the best printing results from specific applications, see the *Color Guide* and the *Fiery Color Reference*.

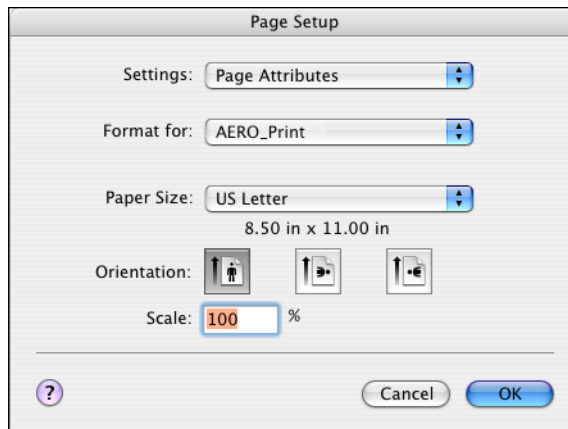
Setting options and printing from Mac OS X

In Mac OS X applications, print options are set from both the Page Setup dialog box and the Print dialog box. For details on specific print options, see [Appendix A](#).

NOTE: Some default print options are set by the administrator during Setup. Contact the administrator or the operator for information on the current server default settings.

**TO SET PRINT OPTIONS AND PRINT WITH THE POSTSCRIPT
PRINTER DRIVER**

1. Open a file and choose **Page Setup** from the application's **File** menu.
2. In the dialog box that appears, choose **Page Attributes** for Settings and the **EX7750** for Format as your printer.

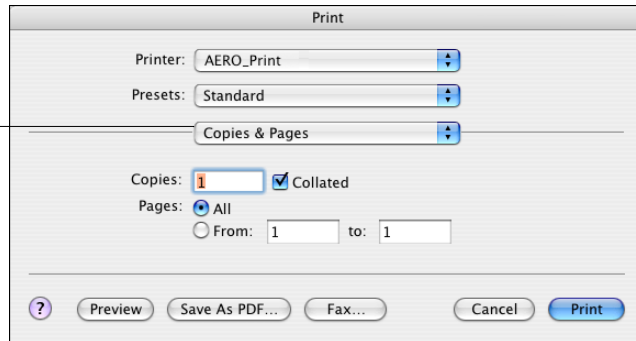


3. Select the **Page** settings for your print job.
4. Click **OK**.
5. Choose **Print** from the application's **File** menu.

6. Select the EX7750 as your printer and choose an option category from the menu that appears.

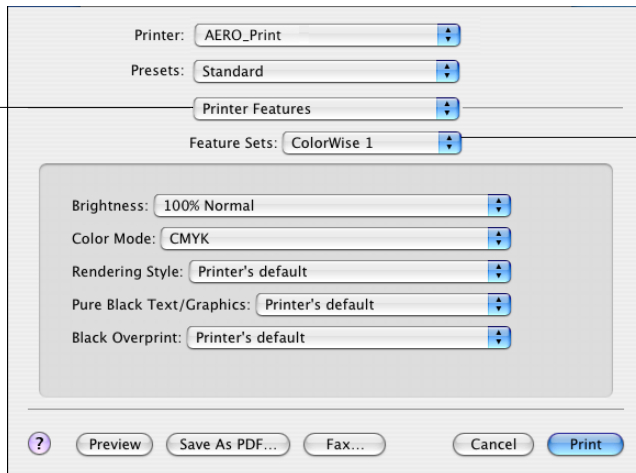
You can change the print option settings for each category.

Choose print categories



7. Choose Printer Features and specify the appropriate settings for your job.

Choose Printer Features



Choose a specific
Feature Set category

These print options are specific to the EX7750 and the printer; to see all the options, choose specific Feature Set categories. They override settings in EX7750 Printer Setup, but can be changed from Command WorkStation/Command WorkStation LE or Fiery Spooler.

If you choose Printer's default, the job prints according to the settings specified in Setup.

For more information about these options and overrides, see [Appendix A](#).

Some print options, including Soft Collate, Soft Reverse Order, and Manual Duplex that are selectable from an application or the PostScript printer driver, are similar to the print options available from the Printer Features menu. In these cases, specify the print option from the Printer Features menu. The application or the PostScript printer driver may not set up the file properly for printing on the EX7750, which may cause an unexpected printing error and longer processing time.

You can set some print options from an application (for example, Reverse Order Printing or Collation). In these cases, use the print option to perform the function, rather than setting it from the application. The application may not set up the file properly for printing on the EX7750, which may cause longer processing time.

NOTE: If you select an invalid setting or combination of settings when printing a document, no error message appears. For example, you may be able to select duplex printing on transparency media. Invalid settings and combinations will be ignored by the EX7750.

8. Choose Fiery Job Notes.

The screenshot shows a Mac OS X print dialog box. At the top, there are two dropdown menus: 'Printer:' set to 'AERO_Print' and 'Presets:' set to 'Standard'. Below these is a section titled 'Fiery Job Notes' with a dropdown arrow. Under this section, there are five checkboxes, all of which are checked: 'Secure Print', 'Group Name', 'Group Password', 'Notes', and 'Instructions'. Each checkbox is followed by a text input field. At the bottom of the dialog, there are several buttons: a help button (question mark icon), 'Preview', 'Save As PDF...', 'Fax...', 'Cancel', and a highlighted 'Print' button.

9. Enter a password in the Secure Print field if you are sending a secure print job.

Your job is held at the EX7750. To print your job, enter the password at the Control Panel on the EX7750.

10. Enter an account name in the Group Name field.

The Group Name appears in Command WorkStation/Command WorkStation LE and Fiery Spooler, and also appears in the Job Log.

11. Enter a password in the Group Password field.

The Group Password appears in the job management tools Job Log, but it is encrypted. The password is defined by your administrator for managing purposes. Consult the administrator for the password.

When the account name and password you entered match those defined by the administrator, your job is printed. Otherwise, an error is generated, and your job is placed in the printed queue.

The administrator or operator can edit the Group Name and Group Password from the Command WorkStation/Command WorkStation LE or Fiery Spooler Properties window.

NOTE: Group Name and Group Password options are not available when printing to the Direct connection.

12. Enter text messages in the Notes area.

Enter user and job identification information for managing purposes, or whatever information is required at your site.

13. In the Instructions area, enter instructions to the operator about the job.

These instructions can be displayed in Command WorkStation/Command WorkStation LE, but do not appear in the Job Log. These instructions *can* be edited by the operator.

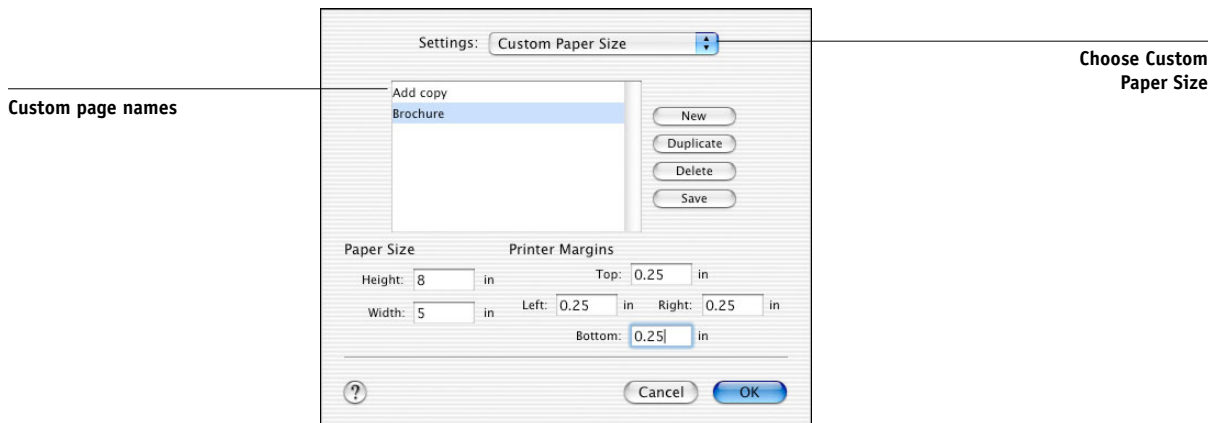
14. Click Print.

Defining custom page sizes

With custom page sizes you can define page dimensions and margins. After you define a custom page size, you can use it from within an application without redefining it each time you print.

TO DEFINE A CUSTOM PAGE SIZE

1. Choose Page Setup from the application's File menu.
2. For Settings, choose Custom Paper Size.



3. Click New and enter a name for the custom page size.
4. Enter the page dimensions and margins.
5. Click Save.
6. Click OK to exit.

TO EDIT A SAVED CUSTOM PAGE SIZE

1. Choose Page Setup from the application's File menu.
2. For Settings, choose Custom Paper Size.
3. Select the Custom Page Size name.
4. Edit the page dimensions and margins.
5. Replace the existing Custom Page name by clicking on it.
6. Click Save.
7. Click OK to exit.

TO DELETE A CUSTOM PAGE SIZE

1. Choose Page Setup from the application's File menu.
2. For Settings, choose Custom Paper Size.
3. Click the Custom Paper Size name.
4. Click Delete.
5. Click OK to exit.

TO MAKE A COPY OF THE CUSTOM PAGE SIZE

1. Choose Page Setup from the application's File menu.
2. For Settings, choose Custom Paper Size.
3. Click the Custom Paper Size name.
4. Click Duplicate.
5. Click OK to exit.

Chapter 3: Printing from UNIX Workstations

You can print to the EX7750 directly from UNIX workstations. Jobs printed to the EX7750 are sent to the Print or Hold queues and can be manipulated from Command WorkStation/Command WorkStation LE, or from Windows and Mac OS computers on the network using Fiery Spooler.

NOTE: If you print to the Hold queue, an operator must intervene from Command WorkStation/Command WorkStation LE or Fiery Spooler for the job to print; jobs sent to the Hold queue are spooled to disk and held.

For more information about using Command WorkStation/Command WorkStation LE or Fiery Spooler, see the *Job Management Guide*.

The queue name and EX7750 printer name are determined by your system administrator. Contact your system administrator for the names of your queues.

For information about setting up printing from TCP/IP, see your UNIX system documentation.

Printing to the EX7750

You can use UNIX commands to print PostScript and text files to the EX7750. In general, use basic print commands (lpr, lpq, lprm) to send print jobs to the EX7750. For information about UNIX commands, see the UNIX manual pages or other documentation.

NOTE: Only PostScript and ASCII text files can be printed from UNIX.

TO PRINT FROM UNIX

- **On a system running SunOS 4.1.x or another BSD-based variant, use the `lpr` command to send a job to the EX7750, as follows:**

```
lpr <-Pprinter> <-#copies> <filename>
```

For example, if the Print queue of your EX7750 is named `print_Server`, your file is named `Sample`, and you want to print two copies, type:

```
lpr -Pprint_Server -#2 Sample
```

- **On a system running Solaris 2.x or any System V implementation of UNIX, use the `lp` command to send a job to the EX7750, as follows:**

```
lp -d <printername> -n <copies> <filename>
```

For example, if the Print queue of your EX7750 is named `print_Server`, your file is named `Sample`, and you want to print two copies, type:

```
lp -d print_Server -n 2 Sample
```

TO DISPLAY A LIST OF JOBS IN THE QUEUE

- **On a system running SunOS 4.1.x or another BSD-based variant, use the `lpq` command to see printer jobs in the queue, as follows:**

```
lpq <-Pprinter>
```

For example, if the Print queue of your EX7750 is named `print_Server`, type:

```
lpq -Pprint_Server
```

Your workstation displays the contents of the queue.

- **On a system running Solaris 2.x or any System V implementation of UNIX, use the `lpstat` command to see printer jobs in the queue, as follows:**

```
lpstat -o <printername>
```

For example, if the Print queue of your EX7750 is named `print_Server`, type:

```
lpstat -o print_Server
```

Your workstation displays the contents of the queue.

TO REMOVE JOBS FROM THE QUEUE

NOTE: Unless you log in as the root user, you can remove only your own jobs.

- **On a system running SunOS 4.1.x or another BSD-based variant, use the `lprm` command to remove jobs from the queue, as follows:**

```
lprm <-Pprinter> <job #...>
```

You can use the `lpq` command to check the job number.

For example, to remove job number 123 from the Print queue of your EX7750 named `print_Server`, type:

```
lprm -Pprint_Server 123
```

The `lprm` command reports the names of any files it removes.

- **On a system running Solaris 2.x or any System V implementation of UNIX, use the `cancel` command to remove jobs from the queue.**

```
cancel <printername> <job ID>
```

For example, to remove job number 123 from the Print queue of your EX7750 named `print_Server`, type:

```
cancel print_Server 123
```

This page is intentionally blank.

Chapter 4: Downloading Files and Fonts

Fiery Downloader and WebDownloader allow you to send PostScript (PS), Encapsulated PostScript (EPS), Tagged Image File Format (TIFF), and Portable Document Format (PDF) files directly to the EX7750 without using the application in which the files were created. These utilities also allow you to manage printer fonts on the EX7750.

NOTE: For the versions of TIFF and PDF supported, see the *User Software Installation Guide*.

You can use Fiery Downloader or WebDownloader from a remote workstation. Fiery Downloader and Fiery WebDownloader require a network connection. For information about installing and configuring Fiery Downloader and WebDownloader on supported networking protocols, see the *User Software Installation Guide*.

NOTE: The Windows and Mac OS versions of Fiery Downloader and WebDownloader are fundamentally the same; differences are noted in this chapter. Where both windows or dialog boxes are illustrated, the Windows version comes first, followed by the Mac OS version.

You can also download files and fonts by using the Import feature in Command WorkStation/Command WorkStation LE. For more information, see the *Job Management Guide*.

Using Fiery Downloader or WebDownloader

You can use Fiery Downloader and/or Fiery WebDownloader to do the following:

- Check the status of the EX7750.

NOTE: This function is not available using WebDownloader, but is available through the Status WebTool.

- Print PostScript, EPS, TIFF, and PDF files to the EX7750. For the versions of TIFF and PDF supported, see the *User Software Installation Guide*.
- Manage the printer fonts stored on the EX7750 hard disk (this feature requires that the Direct connection be published on the EX7750).

NOTE: Fiery Downloader and WebDownloader are designed specifically for the EX7750; you cannot use them with any other printer.

TO VIEW INFORMATION WITH FIERY DOWNLOADER

1. Double-click the Fiery Downloader icon or choose Fiery Downloader from the Start > Programs menu.
2. Select the EX7750 in the Chooser window and click OK (Windows) or Connect (Mac OS).

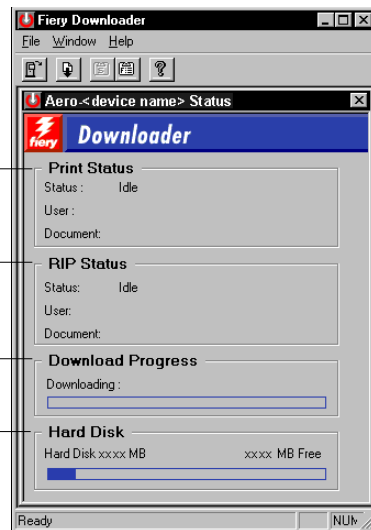
The Fiery Downloader Status window appears, displaying the Fiery Downloader toolbar, menus, and status bar.

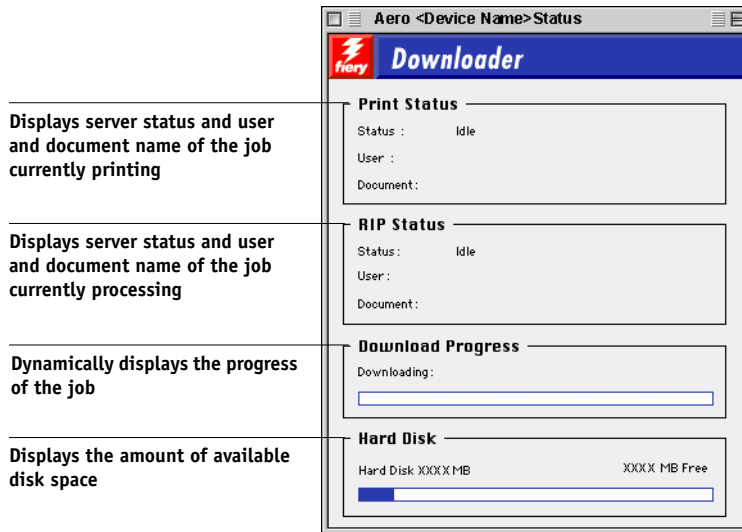
Displays server status and user and document name of the job currently printing

Displays server status and user and document name of the job currently processing

Dynamically displays the progress of the job

Displays the amount of available disk space





Buttons for some menu functions appear in the toolbar at the top of the window.



Open

Click to connect to a different EX7750.



Download

Click to download a file or font to the EX7750.



Status

If you are viewing the Font List, click to display the status window for the current EX7750.



Font List

If you are viewing the status window, click to display a list of printer fonts on the EX7750 hard disk.



About Fiery
Downloader
(Windows only)

Click to view version information about Fiery Downloader.

3. To view font information in the window, choose **Font List** from the **File** menu, or click the **Font List** button.
4. To select a different EX7750, choose **Open** from the **File** menu or click the **Open** button.

5. Select the EX7750 in the dialog box that appears and click **OK (Windows)** or **Connect (Mac OS)**.
6. To close the Fiery Downloader dialog box, choose **Close** from the **File** menu.
7. To quit Fiery Downloader, choose **Exit (Windows)** or **Quit (Mac OS)** from the **File** menu.

Downloading printer fonts

You can download a variety of file types, as well as fonts, to the EX7750. You can specify a limited number of print option settings for the files you download.

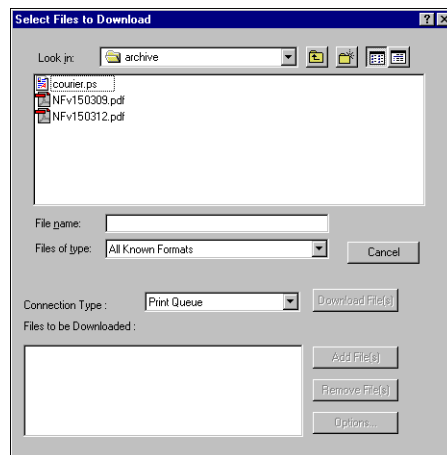
TO DOWNLOAD A FILE OR FONT WITH FIERY DOWNLOADER

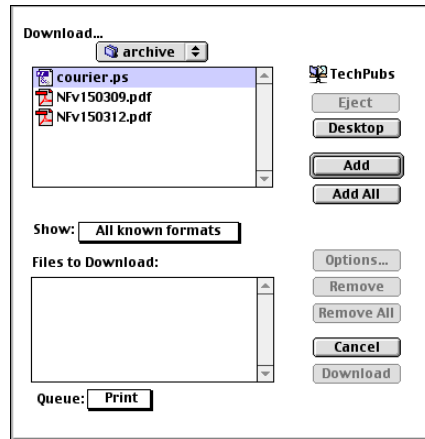
1. Use your application to generate a file.

You can save a PostScript or PDF file by selecting the appropriate option in the application's Print dialog box. With some applications, you can also save EPS and TIFF files.

If you experience problems printing EPS files with Fiery Downloader, print the file directly from the application in which you created it.

2. Start Fiery Downloader.
3. Choose **Download** from the **File** menu or click the **Download** button.





4. Choose the file type to display from the Files of type (Windows) or Show (Mac OS) menu.

All Known Formats lists all files in formats supported by Fiery Downloader.

You can download files and fonts in the same batch. If the fonts are used by files in the same batch, the fonts download first.

5. Choose the Connection Type (Windows) or Queue (Mac OS) to which you will download the files.

The options available depend on the setup at your site. The potential selections are Print Queue (Windows) or Print (Mac OS), Hold Queue (Windows) or Hold (Mac OS), and Direct Connection (Windows) or Direct (Mac OS). If your administrator has not enabled one or more of these connections, you cannot select it.

You cannot print PDF or TIFF files with the Direct connection. If you choose the Direct connection, the job is spooled to the Print queue and then printed. If the Print queue is not enabled, the job is spooled to the Hold queue and must be released for printing by the operator.

NOTE: To download fonts, you must use the Direct connection (make sure the Direct connection is published on the EX7750). If you do not have access to the Direct connection, you must embed any special fonts used by the file in the file when you generate it.

6. Select the file name and click Add File(s) (Windows) or Add (Mac OS).

The File name field (Windows) displays the name of the selected file before you click Add.

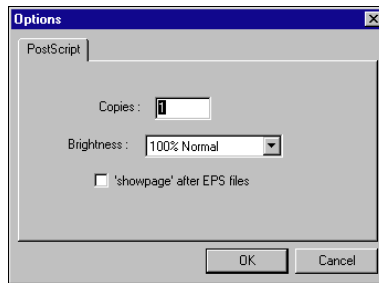
You can navigate to different drives and directories to select files to download. Click Add All (Mac OS) to add all files in a folder.

To select multiple sequential files (Windows), select the first file and then Shift-click the last file. Control-click to select multiple non-sequential files.

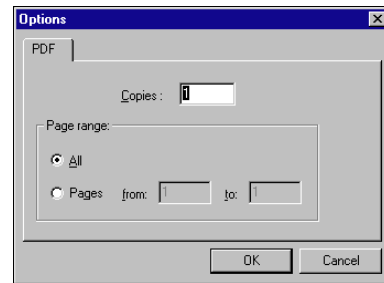
To remove a file, select the file name in the Files to Download list and click Remove File(s) (Windows) or Remove (Mac OS).

Click Remove All (Mac OS) to remove all files from the Files to Download list.

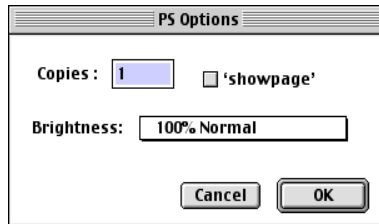
7. To change the attributes of a file to be downloaded, select it and click Options.



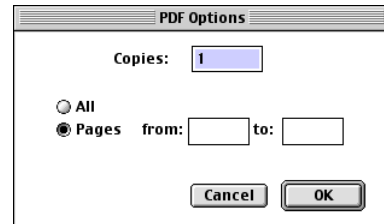
PostScript Options dialog box
(Windows)



PDF Options dialog box
(Windows)



PostScript Options dialog box
(Mac OS)



PDF Options dialog box
(Mac OS)

8. Specify the following information in the dialog box and click OK.

The options you set apply only to the selected file. You can set different options, or leave the default settings, for each file.

Copies—Enter the number of copies.

Brightness (PostScript and EPS files only)—Change the Brightness setting if a file appears to be too dark or too light. Choose 85% for a substantially lighter image, 115% for a substantially darker image, or one of the options in between.

NOTE: Some applications, including Adobe Photoshop, provide transfer functions that allow you to specify density settings for an image. If the file you are printing includes transfer functions, the Fiery Downloader Brightness option has no effect. For more information on using transfer functions, see the documentation for your application.

‘showpage’ after EPS files (Windows) or **‘showpage’** (Mac OS) (PostScript and EPS files only)—In most cases, you do not need to use this option. Select the ‘showpage’ option only if an EPS file fails to print without it. This option adds a ‘showpage’ PostScript language command at the end of the print job. Some applications omit this necessary PostScript language command when they generate EPS files. Select this option when printing EPS files generated by these applications. If you select this option unnecessarily, extra blank pages may print.

If you experience problems printing EPS files with Fiery Downloader, you can print the file directly from the application in which you created it.

Page range (PDF files only)—Specify the page range you want to print.

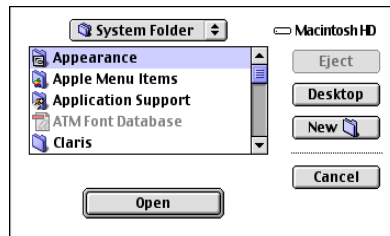
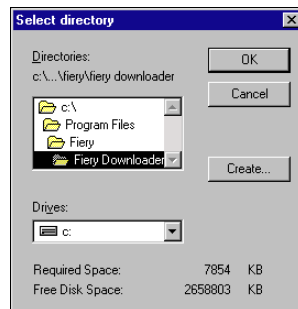
9. **Click Download File(s) (Windows) or Download (Mac OS).**
10. **To cancel downloading, press Escape (Windows) or Command- (Mac OS).**

TO CREATE A FONT BACKUP

1. **Start Fiery Downloader.**
2. **Choose Back up fonts from the File menu.**

This will back up all the user fonts on the EX7750.

3. **Browse to the location in which to save the fonts.**



You can create a new directory by clicking Create (Windows) or New Folder (Mac).

4. **Click OK.**

The font backup file is saved.

TO RESTORE FONTS

1. **Start Fiery Downloader.**
2. **Choose Restore fonts from the File menu.**
3. **Open the font backup file from the saved location, and click OK (Windows) or Select this folder (Mac).**

This replaces all the user fonts on the EX7750.

TO DOWNLOAD FILES OR FONTS USING WEBDOWNLOADER

1. **Create a PostScript, EPS, TIFF, or PDF file.**

Specify the appropriate print options, and include (embed) any necessary fonts that are not resident on the EX7750. For a list of fonts resident on the EX7750, see [Appendix B](#).
2. **Start Fiery WebTools and click WebDownloader. For more information on accessing Fiery WebTools, see [page 6-1](#).**
3. **Select the print connection and the file you want to download.**

Managing printer fonts

The EX7750 includes 136 PostScript fonts and 81 PCL fonts; for a complete list, see [Appendix B](#). In addition, two Adobe Multiple Master fonts are included and used for font substitution in PDF files.

Before downloading a file that uses fonts not resident on the EX7750, you must download the fonts (unless the fonts are embedded in the file). To see what fonts are resident on the EX7750, choose Font List from the File menu or click the Font List button (see [page 4-11](#)).

In general, if you print from a Mac OS application, the application automatically downloads any fonts used in your document that are not already installed on the EX7750, as long as the printer fonts are installed in your System Folder. These fonts remain in the EX7750 only until your document has printed. If you print the same document again, your application must download the fonts again.

Before you download PostScript, TIFF, or EPS files with Fiery Downloader, make sure all fonts included in your file are installed on the EX7750 or embedded in your file; otherwise, the text in these fonts does not print correctly or may not print at all.

For PDF files, font substitution occurs automatically for fonts not installed on the EX7750. Two multiple master fonts (a serif font and a sans serif font) stored on the EX7750 are used exclusively for substitution with PDF files.

Downloading printer fonts to the EX7750

If you regularly use one or more fonts that are not already installed in the EX7750, you can save time by downloading them to the EX7750 hard disk with Fiery Downloader. Fonts you download to the EX7750 hard disk remain installed until you remove them using Fiery Downloader, no matter how many times the EX7750 is turned off and on. Consider downloading fonts you use on a regular basis to the EX7750 hard disk.

For Adobe Type 1 fonts, download just the printer font (Mac OS) or .PFB file (Windows). You do not need to download the screen font (Mac OS) or .PFM file (Windows).

You can download fonts only via the Direct connection. If you do not have access to the Direct connection, you must embed any special fonts used by the file when you generate it.

Before downloading fonts, turn off Member Printing. For information about Member Printing and printing groups, see the *Configuration Guide*.

Downloaded fonts are available for printing immediately. You do not have to reboot the server.

Adobe Type 1 fonts on Mac OS

The Adobe Type 1 fonts included with the EX7750 come in two forms: printer fonts and screen fonts. Install the screen fonts included with the EX7750 user software on your Mac OS computer. For more information, see the *User Software Installation Guide*.

Adobe Type 1 fonts on Windows

The .PFM files that correspond to the Adobe Type 1 fonts installed on the EX7750 are automatically downloaded to your Windows system from the server.

TO VIEW FONT INFORMATION, UPDATE, PRINT, AND DELETE FONTS

- **Choose Font List from the File menu or click the Font List button.**

NOTE: If the Direct connection is not published, you cannot view the Font List or perform any of the tasks described in this procedure. For information about how to publish the Direct connection, see the [Configuration Guide](#) or consult your administrator.

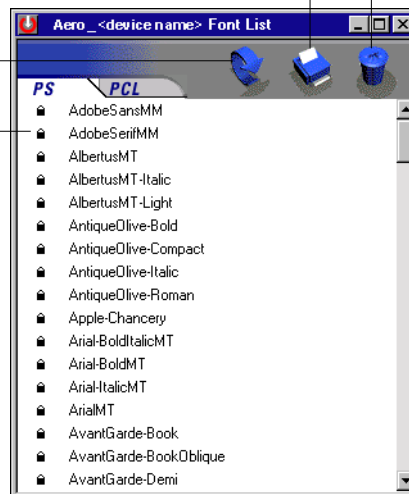
The Font List dialog box includes Update, Print, and Delete buttons. The printer fonts included with the EX7750 (resident fonts) are locked. Locked fonts appear with a Lock icon next to the name and cannot be deleted.

Click to print the Font List to the Print queue

Select a font and click here to delete it

Click to update the information in the Font List

Lock icon



This page is intentionally blank.

Chapter 5: Printing Variable Data Documents

This chapter describes the variable data printing features supported by the EX7750, including:

- Background information about variable data printing
- Printing variable data documents using FreeForm™ and FreeForm 2

About variable data printing

Variable data printing is typically used for direct-mail advertising or other targeted mailings. It involves combining a set of master elements that are common across copies of a document with a set of variable elements that change from copy to copy. An example is a brochure that greets customers by name and may include other personal information about the customer obtained from a marketing database. Background elements, illustrations, and text blocks that do not change across copies of the brochure comprise the master elements. The customer's name and other customer-specific information comprise the variable elements.

The FreeForm feature allows you to use print options to define and store master-element documents—called FreeForm masters—on the EX7750. You can send a variable-element job to the EX7750 with instructions to combine the job with a particular FreeForm master.

NOTE: The FreeForm print options are not available in the PCL printer driver.

The FreeForm 2 feature allows you to assign specific page rules of a FreeForm master to each page of a variable job. To use FreeForm 2, you must create and print the variable job in a popular variable data printing application, such as PrintShop Mail.

You cannot use the following print options and settings when printing variable data:

- Combine Separations to On
- Optimize Power Point to On

For more information, see [Appendix A](#).

Printing variable data documents with FreeForm

In FreeForm variable data printing, you can use print options to define master documents and assign them to variable data jobs sent to the EX7750.

How FreeForm works

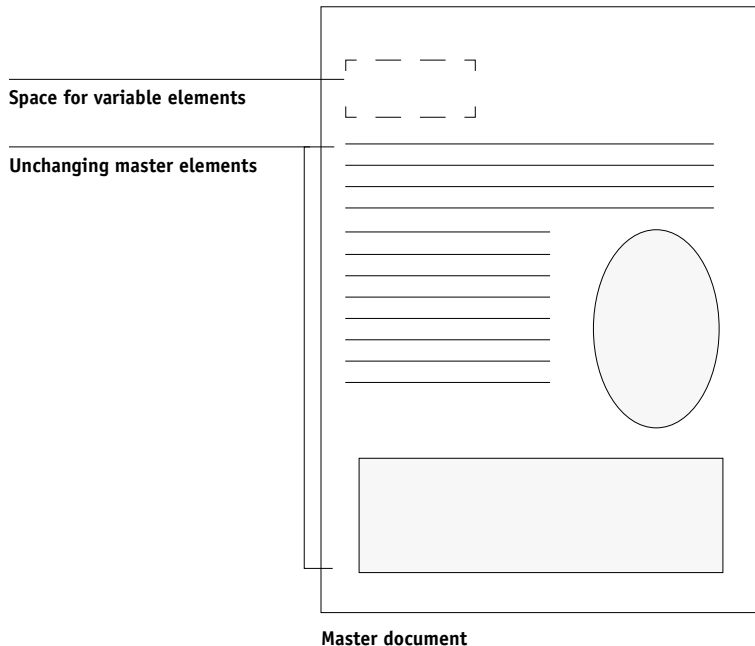
The basic premise of FreeForm variable data printing is that the master-element data for the job can be sent to the EX7750 and rasterized separately from the variable-element data. The master-element data is stored on the EX7750 in rasterized form as a FreeForm master, and can be used as often as needed with multiple sets of variable-element data. Because the FreeForm master job is preRIPped and stored on the EX7750, the only RIP time required for variable data print jobs is the time needed to RIP the variable-element data. You can use FreeForm masters for any fixed-element data you might combine with different data from day to day. For example, a letterhead template can be stored as a FreeForm master and used repeatedly as the background for different letter content (the variable-element data).

FreeForm allows you to create the master and variable documents using any application. You can create the two documents using different applications or computer platforms. To create the master document, you can use a page layout or graphics application. To create the variable document, you can use a word processing application that has a mail merge feature, a page layout application that supports scripting, or a database application.

FreeForm functions are controlled with two print options: Create Master and Use Master. You can set these options in the printer driver when you send a job, or instruct the operator to set them with job overrides from Command WorkStation/Command WorkStation LE or Fiery Spooler. You can also use Command WorkStation/Command WorkStation LE to monitor and manage all the FreeForm masters stored on the EX7750. For more information, see the *Job Management Guide*.

Creating the master document

Before you can use FreeForm, you must create a master document and a variable document. This includes creating the layout for the combined document, as well as the elements themselves. In a page layout or graphics program, you arrange the master elements (text and graphics that do not change) on one or more pages, leaving space for the variable elements.



When you have finalized the design of the master document, print it to the EX7750 and specify that a FreeForm master be created from the job (see [page 5-8](#)).

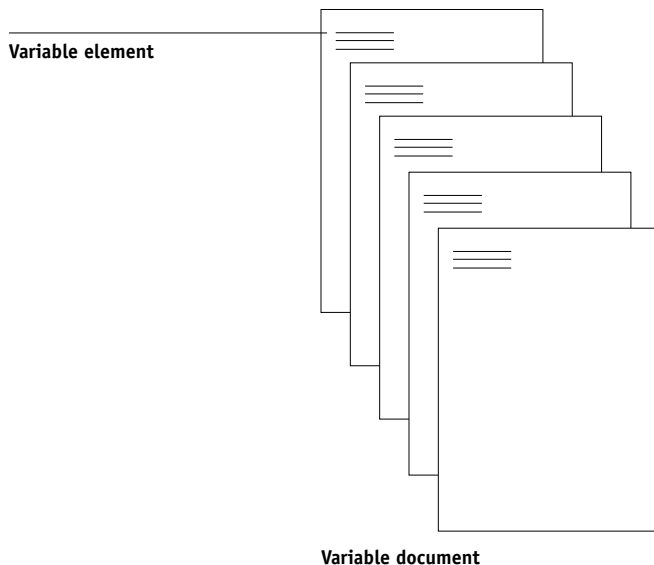
NOTE: Although the EX7750 can store up to 100 FreeForm masters, the printer driver interface and Fiery Spooler allow you to select numbers 1 through 15 only. To create a FreeForm master with a number greater than 15, the operator must set the Create Master and Use Master options and RIP the job from Command WorkStation/Command WorkStation LE.

Creating the variable document

You can create the variable document with a word processing application that provides a mail merge function, a database application, or a page layout application that supports scripting. In all cases, information is taken from a list or database and merged into an existing document that is set up to accept the information. Each application has different controls for this function; for detailed instructions, see the application documentation.

Before the variable elements can be added to the master document, they must be formatted to conform to the layout of the master document. To do this, you create a document with the correct formatting, and then add the variable information in the appropriate places.

For efficient variable data printing, create a variable document that has significantly more pages than its corresponding FreeForm master.

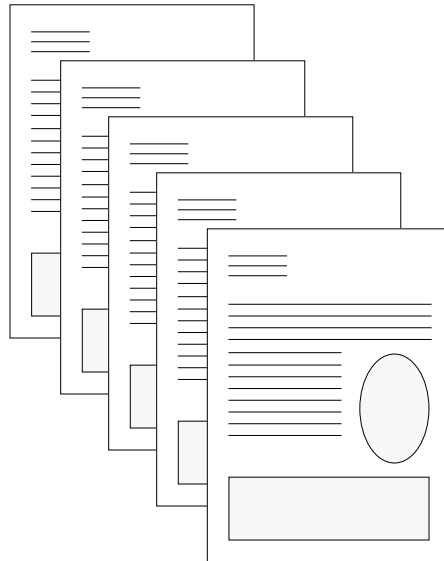


When you have created a variable document, print it to the EX7750 and specify that it be combined with the corresponding FreeForm master (see [page 5-9](#)).

Combining the FreeForm master with the variable document

When you print a variable document to the EX7750, you specify the FreeForm master created from your master document with the Use Master print option. The EX7750 combines the raster data of the variable document with the already RIPped FreeForm master, creating a new raster data file. The merged raster file can be soft-proofed (before it is printed) in the thumbnail windows of Command WorkStation/Command WorkStation LE or Fiery Spooler.

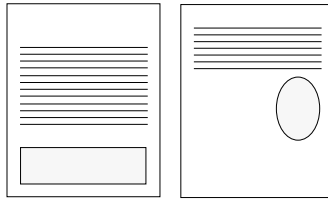
For more information about soft-proofing and the thumbnail windows of Command WorkStation/Command WorkStation LE, see the *Job Management Guide*.



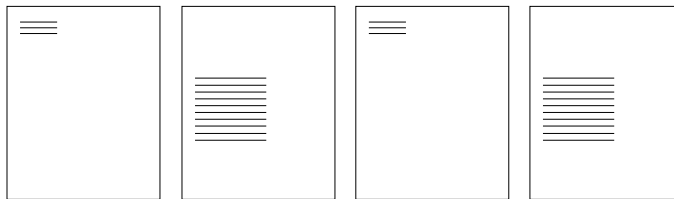
Combined document

A master document can include more than one page. When you print a variable document and specify a FreeForm master that contains multiple pages, the variable pages are combined with the master pages in a cyclical fashion. The following example illustrates how a variable document combines with a two-page master document.

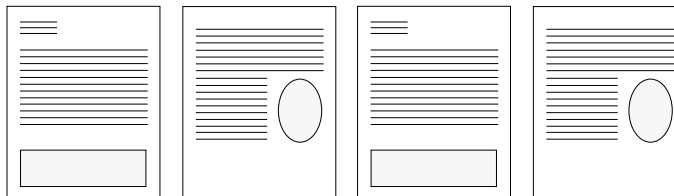
Pages 1 and 2 of the variable document are combined with pages 1 and 2, respectively, of the master document. The cycle of master pages then starts over, and pages 3 and 4 of the variable document are combined respectively with pages 1 and 2, again, of the master document. This pattern continues for each subsequent set of pages in the variable document.



Multiple-page master document



Variable document



Combined document

Using FreeForm

This section provides some suggestions to help you print variable data jobs correctly.

- Consult your administrator or operator on how FreeForm master numbers are assigned at your site.

If FreeForm printing is used by a large number of users at your site, FreeForm master numbers, or ranges of numbers, can be assigned to specific users or groups. Users can select only numbers 1 through 15 as print option settings. The operator can override FreeForm master numbers and reassign them to numbers greater than 15 from Command WorkStation/Command WorkStation LE. You may want the operator to assign all FreeForm master numbers to avoid potential conflicts in the use of FreeForm master numbers.

- Use the Job Notes and Instructions fields to communicate instructions about your job to the operator.

If you want to create or use a FreeForm master number greater than 15, these fields can be used to tell the operator to override the appropriate job setting (Create Master or Use Master) and RIP the job from Command WorkStation/Command WorkStation LE.

- Give your jobs unique and descriptive names.

Both you and the operator must be able to easily identify your jobs if there are many jobs in the queues, the FreeForm master numbers are reassigned, or you want to refer to another job in the Job Notes or Instructions fields.

- For restrictions on print option settings when using FreeForm, see [Appendix A](#).

The following settings for the master document and variable document must match:

Color Mode

Combine Separations

Page Size

The following settings for the variable document might override the corresponding settings in the master document:

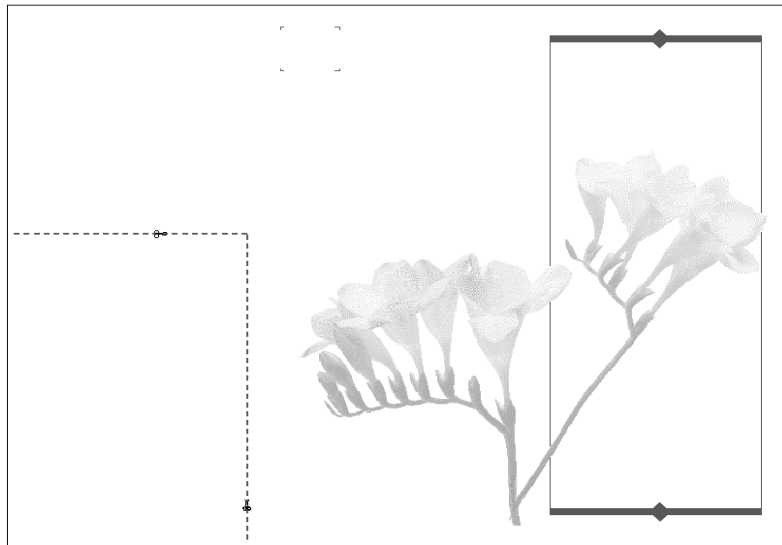
- Duplex
- Media Type
- Paper Source (Input Tray)
- Save Fast Reprint
- Black Detection
- Stapler Mode
- Slip Sheet

NOTE: The Long Edge Binding print option of the Duplex setting has no effect when printing using FreeForm.

TO PRINT VARIABLE DATA DOCUMENTS

1. Create a master document.

The following example shows one page of a master document for a tri-fold brochure that was created with a page layout application.



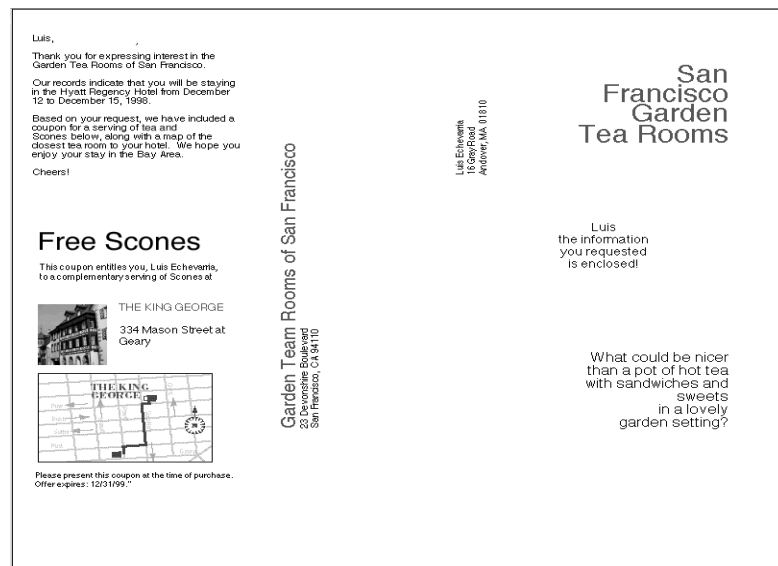
2. **Print the master document to the EX7750 with the Create Master print option set to one of the FreeForm Master numbers (1 through 15).**

Or, set the Create Master option to None and instruct the operator to use overrides to create a FreeForm master from this job.

3. **Create the variable document.**

You can create the variable document using a different file, a different application, or a different computer platform than was used to create the master document, but some print options must be the same (for details see [page 5-7](#)).

The following example shows one page of the variable document for the tri-fold brochure. The data in this document can be as simple as a name and address, or as complex as multiple, full-color graphics and photographic elements.



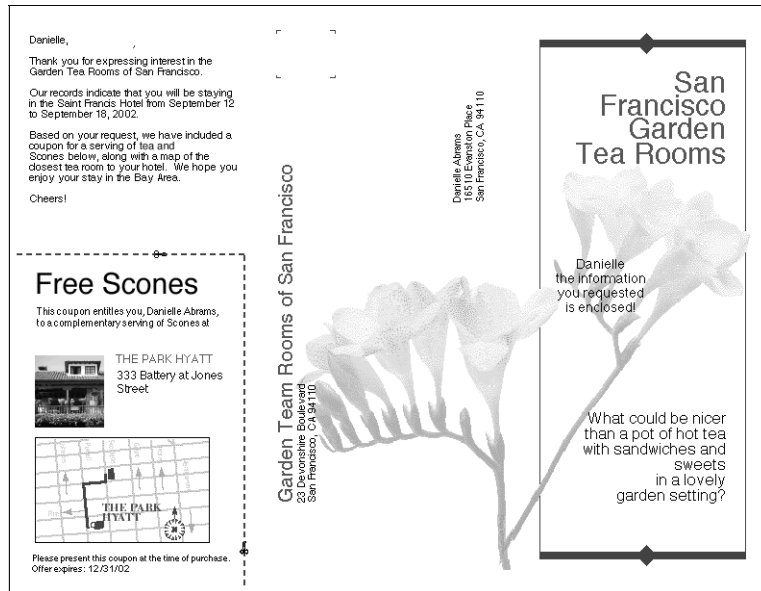
4. **Print the variable document to the EX7750 with the Use Master print option set to the appropriate FreeForm master number.**

The FreeForm master number may be one you set when you sent the master document, or one that was assigned by the operator.

FreeForm master numbers can be overridden from Command WorkStation/Command WorkStation LE or Fiery Spooler. Check with the operator to make sure that the FreeForm master number you specify is the correct one for the FreeForm master you want to use.

If you want to check the job before it prints, instruct the operator to RIP and Hold the job so you can preview it from Command WorkStation/Command WorkStation LE or Fiery Spooler.

The following example shows the FreeForm master and variable document combined. The variable data is simply overlaid on the master document.



Printing variable data documents with FreeForm 2

Freeform 2 extends the functionality of variable data documents using a third-party application that supports FreeForm 2, such as PrintShop Mail, which allows you to create and print variable data documents.

To print a variable data job using FreeForm 2, first open the variable document in the third-party application. The third-party application provides FreeForm 2 features that allow you to assign a specific page of a FreeForm master to each page of the variable document.

Freeform 2 enables you to specify page conditions that determine rules for individual Master pages. These rules, described by if and then statements in each Master page, allow you to skip or print pages within a Master file. For more information about creating page conditions, see the documentation that came with the third-party printing software.

For instructions on creating a variable data job or printing variable data jobs using FreeForm 2 and the third-party variable data printing software, see the documentation that came with the third-party printing software.

FreeForm 2 also provides the option to delete a specified FreeForm master from the EX7750 hard disk after its corresponding variable job has been successfully RIPped and printed. You can set this feature in a third-party application that supports the clearing of FreeForm masters. For more information about deleting FreeForm masters, see the documentation that accompanies the third-party printing software.

This page is intentionally blank.

Chapter 6: Tracking and Monitoring Jobs

EX7750 user software includes a variety of tools that allow you to track and manage print jobs. Access to some tools is controlled by your site administrator, but other tools are available to all users.

- Command WorkStation/Command WorkStation LE and Fiery Spooler provide the capability to view and control the flow of print jobs to the EX7750. If the administrator has set Administrator and Operator passwords in Setup, you must have one of these passwords to perform most Command WorkStation/Command WorkStation LE and Fiery Spooler functions. For information about these tools and the access privileges needed to use them, see the *Job Management Guide*.
- WebTools do not require any special access privileges. As long as the administrator has enabled Web Services in Setup and provided users with the IP address of the EX7750, anyone can use them.

Accessing WebTools

WebTools reside on the EX7750's hard disk, but can be accessed over the network from a variety of platforms. The EX7750 home page allows you to view server functions and manipulate jobs remotely. This chapter describes only the Status and WebLink selections in the WebTools menu.

For information about Fiery Spooler, see the *Job Management Guide*. For information about the Installer, see the *User Software Installation Guide*. For information about WebSetup, see the *Configuration Guide*. For information about WebDownloader, see [Chapter 4](#).

TO ACCESS WEBTOOLS**1. Start your Internet browser.**

For information about supported platforms and browsers, see the *User Software Installation Guide*.

2. Type the IP address or the DNS name of the EX7750.

For this information, contact the operator or administrator.

3. If a Log In dialog box appears, select Guest and click OK.

The Log In dialog box appears only if the administrator has set a password. Guest access is sufficient to use Status and WebLink, as described in this chapter.

4. When the EX7750 home page appears, click to select one of the WebTools.

Move the cursor over the buttons to display information about the selections.

Checking EX7750 status with Status

You can use Status to see what jobs are currently processing and printing. To access Status, open the EX7750 home page and click Status. The current RIP Status and Printer Status appear in the window.

NOTE: For best results, use WebTools at the recommended resolution. For more information, see System Requirements in the *Quick Start Guide*.



To open a new browser window for the Status display, click Float. You can then close other browser windows and leave the Status window open to continue checking the status of the EX7750. As long as you keep the Status window open, it is dynamically updated.

To obtain more information about the status of jobs, use Fiery Spooler or Command WorkStation/Command WorkStation LE, as described in the *Job Management Guide*.

Accessing information with WebLink

WebLink on the EX7750 home page provides a link to another web page, provided you have a valid Internet connection. The administrator at your site can set the WebLink destination. Check your EX7750 WebLink for any available information.

Job Monitor

Job Monitor allows you to track the status of jobs sent to the EX7750. In addition, Job Monitor tracks the status of consumable materials on the EX7750 and alerts you to any errors that interfere with printing. If you have more than one EX7750, you can use Job Monitor to monitor all of them at the same time.

To access Job Monitor, you must install the Windows printer driver for EX7750, as described in the *User Software Installation Guide*.

NOTE: Job Monitor is available only on Windows computers.

If you select Run at Windows startup in the Job Monitor Preferences dialog box, Job Monitor automatically starts in the background each time you start your Windows computer. For information about how to access the Job Monitor Preferences dialog box, see the Job Monitor Help file after starting the utility.

If Job Monitor does not start automatically or has been exited, use the following procedure.

TO MANUALLY START JOB MONITOR

1. **For Windows 2000, click Start, choose Settings, and then choose Printers. For Windows XP, click Start and choose Printers and Faxes.**
2. **Right-click the EX7750 icon, and then choose Properties.**
3. **Click the Printer Status tab, and then click the Launch Job Monitor button.**

You can also double-click the Job Monitor shortcut on the desktop to start the utility.

Job Monitor opens a utility window on the screen and establishes a connection to the EX7750. If you have installed and configured printer drivers for more than one EX7750, Job Monitor automatically establishes connections to all.

After you start the utility, an icon for Job Monitor appears in the Windows taskbar.

For more information about Job Monitor, see Job Monitor Help. To access Job Monitor Help, click Help in the Tool bar.



This page is intentionally blank.

Chapter 7: Using Fiery E-mail Service

The Fiery E-mail Service allows you to remotely print to and control the EX7750 using your current e-mail infrastructure. It allows you to print to remote locations and bypass firewalls. With Fiery E-mail Service, you can submit jobs to the EX7750 as e-mail attachments.

You can use Fiery E-mail Service in the following ways:

- Print using an E-mail Client
- Print using the EX7750 E-Mail Port Monitor

How Fiery E-mail Service works

In order to use the E-mail services, you must set up Fiery E-mail Service as described in the *Configuration Guide*.

To print with an E-mail Client, you send a file as an e-mail attachment, and Fiery E-mail Service extracts the file and sends it to the EX7750. The e-mail attachment must be a PS or PDF file.

To print using the Fiery E-mail Port Monitor, you must print to a printer connected to the Fiery E-mail Port Monitor. If you have the E-mail Port Monitor set up, your print job is e-mailed to the EX7750 when you choose Print from an application. For more information about setting up the E-mail Port Monitor, see the *User Software Installation Guide*. The EX7750 also supports internal address books. Administrators can retrieve, add, delete, and clear addresses from the address books by sending requests via e-mail. For more information about address books, see the *Configuration Guide*.

NOTE: Fiery E-mail Service will not process .vbs, .exe, or .bat extensions.

Printing using an E-mail Client

You can submit print jobs to the EX7750 in the form of an e-mail attachment using your e-mail application. When you send an e-mail with an attachment, Fiery E-mail Service extracts the file and sends it to the EX7750 Print queue. The file format must be one supported by the EX7750.

By default, anyone can print with an E-mail Client, unless the Print address book has been set up by the Administrator. If your e-mail address is not in the Print address book, you cannot send files to the EX7750 via e-mail. For more information about address books, see the *Configuration Guide*.

NOTE: The Direct and Hold queues are not supported by the E-mail Client feature.

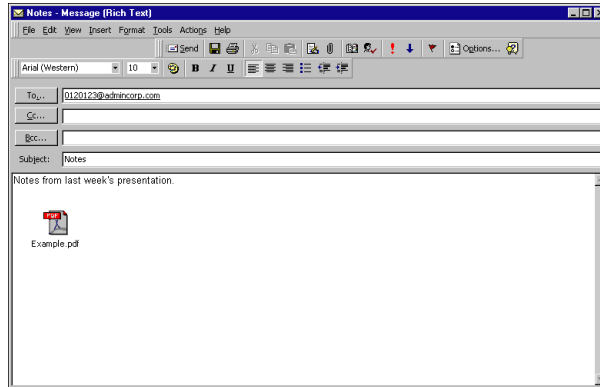
NOTE: The illustrations in the following procedure depict Microsoft Outlook E-mail.

TO PRINT USING AN E-MAIL CLIENT

1. **Open your e-mail application.**
2. **Enter the EX7750 e-mail address in the To: line.**
3. **Enter text in the Subject line or leave the Subject line blank.**
4. **Attach the file you want to print in the body of the e-mail.**

You can enter a additional text in the body of the message, if necessary. The text will also be printed.

NOTE: If your attachment exceeds the file size limitation set by your e-mail system administrator, the e-mail will not be sent.



5. Click Send.

The file is sent to the EX7750 and the job is printed. After the EX7750 receives the job, you receive an e-mail notification that the print job was accepted. The e-mail notification also provides a job identification (ID), which allows you to manage jobs with Job Control (see the following section). The e-mail notification indicates any current error at the printer.

Once the job has been printed, you receive a second e-mail notification that indicates the job printed successfully.

To check the status of your job, use Job Control to see if the job printed successfully.

Job Control

This feature allows you to manage print jobs by submitting commands to the EX7750 via e-mail. You can cancel a job, check job status, and inquire help on a job. Once you send a command, the EX7750 returns an e-mail response.

TO MANAGE PRINT JOBS WITH JOB CONTROL

1. In your e-mail application, enter the EX7750 e-mail address in the **To:** line.
2. Enter one of the following Job Control commands in the **Subject** line.

To check the status of a job, enter #JobStatus<job id> in the Subject line.

You will receive an e-mail response to your job status query. You can only inquire about the status of the job if you sent the job or are an administrator.

To cancel a job, enter #CancelJob<job id> in the Subject line.

You will receive an e-mail response indicating that the job has been cancelled and will not print to the EX7750. You can only cancel the job if you sent the job or are an administrator.

To inquire help, enter #Help in the Subject line.

You will be sent an e-mail response that contains the links that allow you to cancel jobs, check job status, and search and manage address books. Click any of the links to perform a Job Control command.

Printing using the E-mail Port Monitor

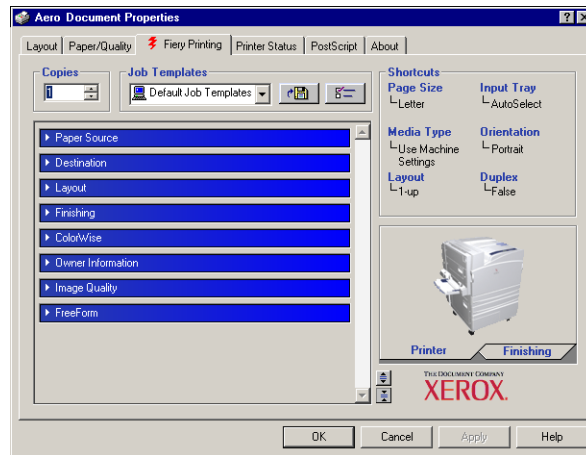
Once you set up the E-mail Port Monitor, you can print using Fiery E-mail Service in the same manner as any other printing method. No additional steps are necessary.

NOTE: The E-mail Port Monitor is only supported on Windows.

NOTE: The Direct connection is not supported when printing with E-mail Port Monitor.

TO PRINT USING THE FIERY E-MAIL PORT MONITOR

1. Choose Print in your application.
2. Make sure the EX7750 is selected as your printer and you have set up the E-mail Port Monitor for the EX7750.
3. Click Properties.
4. Click the Fieri Printing tab.



5. Set the print options and click OK.

Your job is sent to the EX7750.

To set options using the printer driver, see [“Setting options and printing from Windows computers”](#) on page 1-1.

NOTE: If the attachment exceeds the file size limitation set in your application, the attachment may be broken into several smaller messages.

This page is intentionally blank.

Appendix A: Print Options

Print options give you access to the special features of your printer and EX7750. Print options can be specified in several places—in EX7750 Setup, or from the printing application, Fiery Downloader, ColorWise Pro Tools, Command WorkStation/Command WorkStation LE, or Fiery Spooler. The table in this appendix briefly describes each print option and its default setting, and provides information on any constraints or requirements in effect.

About printer drivers and printer description files

The EX7750 receives files from computers on the network, processes (RIPs) them, and then sends them to the printer. Windows and Mac OS computers communicate with the EX7750 by means of a printer driver and printer description (PPD) files. Windows computers can also communicate with the EX7750 by means of a Printer Control Language (PCL) printer driver and PDD files (the PCL equivalent of PPD files). Both drivers enable you to use special features of the EX7750 from the Print dialog box.

A printer driver manages printing communication between your application and the printer. It interprets the instructions generated by the application, merges those instructions with printer-specific options you specify, and translates all information into PostScript or PCL, a language the printer understands. In other words, the printer driver writes a PostScript or PCL file based on your original file and the options you set from the Print dialog box.

NOTE: A printer driver also allows you to select print options for your printer. To do this, the printer driver must be matched with a PPD/PDD file for your EX7750. A PPD/PDD file contains information about the features and capabilities of a particular device (for example, what paper sizes and paper types are supported). The printer driver reads the information in this file and presents that information to you in the form of options you can choose from the Print dialog box. The PPD/PDD for the EX7750 includes information about the features of both the printer and the EX7750. For information about the specific print options for the EX7750, see the table on [page A-2](#).

Where to set print options

- During Setup

Some settings are specified by the administrator during Setup. For information on the current default server settings, contact the administrator or the operator.

- From applications

With the Adobe PostScript printer drivers, you can specify job settings when you print a job. For information about specifying job settings from applications, see [Chapters 1 and 2](#).

- From Fiery Downloader

Only a few settings—Copies, Page Range (for PDF files only), and Brightness (for PostScript and EPS files only)—can be specified when printing jobs with Fiery Downloader. To change options in Fiery Downloader, select a job in the Files to be Downloaded (Windows) or Files to Download (Mac OS) list and click Options. For more information, see [Chapter 4](#).

- From ColorWise Pro Tools

You can set the default CMYK Simulation Profile, CMYK Simulation Method, RGB Source Profile, RGB Separation, Output Profile, Rendering Style, Spot Color Matching, Pure Black Text/Graphics, and Black Overprint settings. For more information about using ColorWise Pro Tools, see the [Color Guide](#).

- Overrides from Command WorkStation/Command WorkStation LE and Fiery Spooler

To change job settings from Command WorkStation/Command WorkStation LE, double-click a job to display the Properties dialog box. To change job settings from Fiery Spooler, double-click a job to display the Override Print Settings dialog box. For more information, see the [Job Management Guide](#).

Print option override hierarchy

The override hierarchy is as follows:

- A user's printer driver settings override the EX7750 Setup and ColorWise Pro Tools settings.
- Settings made from Command WorkStation/Command WorkStation LE or Fiery Spooler override the user's printer driver settings.

Default settings

In the following table, underlined settings in the Option and settings column indicate default printer driver settings (PPD defaults). If you do not use the printer driver interface to configure a particular option, the EX7750 prints the job with the underlined setting.

For options that can be configured in Setup from the Control Panel, Command WorkStation/Command WorkStation LE, WebSetup, or ColorWise Pro Tools, choosing Printer's default results in the EX7750 printing the job with the Setup setting specified. For options that cannot be configured in Setup, the EX7750 prints the job with a pre-configured Printer's default setting. For more information, see the Requirements, constraints, and information column.

To determine the current Setup defaults, print the Configuration page from Command WorkStation/Command WorkStation LE or the EX7750 Control Panel.

Option and settings (default setting is underlined)	Description	Requirements, constraints, and information
Auto Trapping <u>Printer's default</u> /On/Off	Specify whether the job should automatically trap text and graphics independently of their application.	The Printer's default setting reflects the setting specified in EX7750 Setup. This option is not supported for PCL.
Black Detection <u>On/Off</u>	Select Off if your job consists of black-only text pages combined with a significant number of color pages. Select On if you are printing a predominantly black and white job.	Color Mode must be set to CMYK, Standard Color, or Expert Color. This option is not available for PCL printing.
Black Overprint <u>Printer's default</u> / Off / Text / Text/Graphics	Select Off to print black text and graphics with knockouts. Select Text to overprint black text. Select Text/Graphics to overprint black text and graphics.	The Printer's default setting reflects the setting specified in EX7750 Setup. For Windows, choose Expert Color as the Color Mode to access this option. If this option is set to Text or Text/Graphics, the Combine Separations option must be set to Off. Setting this option to Text or Text/Graphics automatically sets the Pure Black Text/Graphics option to On. For more information, see the Color Guide . This option is not available for PCL printing.
Booklet Maker <u>Off</u> /Standard Booklet/ Right Binding/Perfect/ Double Print/Speed Print	Specify to arrange the pages of your job in special layouts for folding or cutting after printing.	The Duplex unit must be installed. For booklet jobs, the Page Size print option setting must match the paper size setting on the printer. If the settings do not match, the booklet will be printed at the wrong size. This option is not supported for PCL. For more information, see page A-13 .
Brightness 85% Lightest/90% Lighter/95% Light/ <u>100% Normal</u> /105% Dark/ 110% Darker/115% Darkest	Select 85% for a substantially lighter image, 115% for a substantially darker image, or use one of the settings in between.	This option is not supported for PCL.

Option and settings (default setting is underlined)	Description	Requirements, constraints, and information
CMYK Simulation Method <u>Printer's default</u> /Quick/Full (Source GCR)/Full (Output GCR)	<p>Select Quick to use one-dimensional transfer curves to adjust density output of individual color channels.</p> <p>Select Full (Source GCR) for a more complete and accurate simulation by applying colorimetric transformations that adjust hue as well as output density. This option produces output that maintains the same amount of black as the source document.</p> <p>Select Full (Output GCR) to apply the same simulation method as Full (Source GCR), except that the output produced contains a black amount determined by the output profile.</p>	<p>The Printer's default setting reflects the setting specified in EX7750 Setup. For Windows, choose Expert Color as the Color Mode to access this option. For more information, see the Color Guide.</p> <p>This option is not supported for PCL.</p>
CMYK Simulation Profile <u>Printer's default</u> /SWOP-Coated/DIC/Euroscale/Simulation-1/Simulation-2/Simulation-3/Simulation-4/Simulation-5/Simulation-6/Simulation-7/Simulation-8/Simulation-9/Simulation-10/None/Match Copy	<p>Specify the simulation goal to be used for the current print job.</p>	<p>The Printer's default setting reflects the setting specified in EX7750 Setup. For Windows, choose Expert Color as the Color Mode to access this option. For more information, see the Color Guide.</p> <p>This option is not supported for PCL.</p>
Collate <u>Off/On</u>	<p>Specify how to output multiple-page/multiple-copy jobs.</p>	<p>For more information, see page A-15.</p>
Color Mode <u>CMYK/Grayscale</u> (from the Mac OS driver) or Print Mode <u>Standard Color/Expert Color/Grayscale</u> (from the Windows drivers) or <u>Printer's default</u> /CMYK/Grayscale (from the PCL driver)	<p>Specify the color mode for the current print job.</p> <p>Select CMYK, Standard Color, or Expert Color for a full-color document.</p> <p>Select Grayscale for a grayscale or black-and-white document.</p>	<p>The options differ depending on which driver you use.</p> <p>For Windows, you must choose Expert Color to set other color print options, including Pure Black Text/Graphics. Expert Color is not supported for Windows PCL.</p> <p>The Printer's default setting reflects the setting specified in EX7750 Setup.</p>



Option and settings (default setting is underlined)	Description	Requirements, constraints, and information
Combine Separations <u>Printer's default</u> /Off/On	When printing separations from supported desktop publishing applications: Select On to combine separations on a single page. Select Off to view separations as four individual black-and-white pages, each representing one color plate.	The Printer's default setting reflects the setting specified in EX7750 Setup. This option is not available for PCL printing. For more information, see the Color Guide .
Copier Mode <u>Printer's default</u> /Photo/Map	Specific modes produce optimum results with certain files. Choose the mode best suited for your job: Photo works best if the file is a photograph. Map works best with text or data with thin lines.	This option is not available in the PCL printer driver.
Copies <u>1</u> -999	Specify the number of copies of the job to print.	Do not enter a value greater than 999.
Create Master <u>None</u> /1-15	To create a FreeForm master from this job, specify a number to assign to the FreeForm master file.	For more information, see page 5-2 . Command WorkStation/Command WorkStation LE allows you to select up to 100 FreeForm Masters. This option is not supported for PCL.
Creep Adjustments <u>Off</u> /Normal/Thick	Use this option to adjust images that may shift from the center of the sheet in booklet print jobs.	Creep can occur when booklet jobs have a large number of pages or when booklet jobs are printed on thick media. For more information, see page A-15 . This option is not supported for PCL.
Duplex <u>Off</u> /Long Edge Binding/Short Edge Binding/Manual	Select Off for simplex (single-sided) printing. Select Short Edge Binding for duplex (double-sided) printing with both sides using the same top edge. Select Long Edge Binding for duplex printing with the back side upside down	The Duplex unit must be installed. For more information on duplex printing, see page A-15 .



Option and settings (default setting is underlined)	Description	Requirements, constraints, and information
Group Name	If Printing Groups is enabled, the EX7750 administrator has assigned users to print groups, and passwords to each group. Enter the appropriate Group Name for the print job.	
Group Password	If Printing Groups is enabled, the EX7750 administrator has assigned users to print groups, and passwords to each group. Enter the appropriate Group Password for the print job.	
Image Smoothing <u>Printer's default</u> /Automatic/Off/On/ Below 90 ppi/Below 150 ppi/Below 200 ppi/Below 300 ppi	Select On to minimize grainy output when printing low-resolution images.	The Printer's default setting reflects the setting specified in EX7750 Setup. This option is effective only for images having a resolution of 100 pixels per inch (ppi) or below. If you create an EPS file in Adobe Photoshop, the settings specified from Photoshop will take effect. This option is not supported for PCL.
Input Tray <u>AutoSelect</u> /Tray 1 (MPT)/Tray 2/ Tray 3/Tray 4/ Tray 4 (High Capacity)/Tray 5/ Tray 5 (High Capacity)	Specify the paper tray to use for your print job. NOTE: Specify the paper tray in this printing option rather than in the application you are printing from.	The AutoSelect setting automatically selects the tray containing the paper size specified for the job.
Instructions	Enter instructions for the operator about the job.	
Media Type <u>Use Machine Settings</u> /Plain Paper/ Heavy Plain Paper/Transparency/ Thin Card Stock/ Thick Card Stock/Envelope/ Labels/Letterhead/Photo Paper	Specify the media type to use for the entire job.	
Mixed Media <u>Off</u> / (define mixed media)	Click Define to specify paper types to use for specific pages.	For more information, see page A-17 . This option is not supported for PCL.



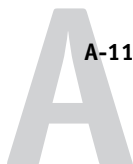
Option and settings (default setting is underlined)	Description	Requirements, constraints, and information
Notes	Enter information about the job.	The Notes field has a 32-character limit.
Optimize PowerPoint <u>Printer's default</u>/Off/On	Select On when printing PowerPoint files to the EX7750.	Selecting On can reduce the processing time for PowerPoint print jobs. The Printer's default setting produces the same result as the Off setting. When using this option, you must turn off all other FreeForm print options. This option is not available in the PCL printer driver.
Orientation <u>Portrait</u>/Landscape	Specify the orientation of the document. Select Landscape to rotate the pages of a landscape-oriented job 180 degrees.	
(Other) Gamma <u>Printer's default</u>/1.0/1.2/1.4/1.6/ 1.8/2.0/2.2/2.4/2.6/2.8/3.0	Specify a source gamma value for printing RGB images, objects, and text.	Setting this option to Printer's default produces the same result as the 2.2 setting. To enable this option, RGB Source Profile must be set to Other. For more information, see the Color Guide . This option is not supported for PCL.
(Other) Phosphors <u>Printer's default</u>/Hitachi EBU/ Hitachi-Ikegami/NTSC/ Radius Pivot/SMPTE/Trinitron	Specify a source phosphors value for printing RGB images, objects, and text.	The Printer's default setting produces the same result as the SMPTE setting. To enable this option, RGB Source Profile must be set to Other. For more information, see the Color Guide . This option is not supported for PCL.
(Other) White Point <u>Printer's default</u>/5000 K (D50)/ 5500 K/6500 K (D65)/7500 K/9300 K	Specify a source white point value for printing RGB images, objects, and text.	The Printer's default setting produces the same result as the 5000K setting. To enable this option, RGB Source Profile must be set to Other. For more information, see the Color Guide . This option is not supported for PCL.



Option and settings (default setting is underlined)	Description	Requirements, constraints, and information
Output Profile <u>Use Server's Default (Printer's default)</u> /Use Media Defined Profiles/ Output-1/Output-2/Output-3/ Output-4/Output-5/Output-6/ Output-7/Output-8/Output-9/ Output-10	Specify the output profile to use for the current print job. Select Use Media Defined Profiles for Mixed Media jobs.	The Use Server's Default or Printer's default setting reflects the setting specified in ColorWise Pro Tools. For Windows, choose Expert Color as the Color Mode to access this option. For more information, see the Color Guide . This option is not supported for PCL.
Output Tray <u>Top Output Tray</u> /Finisher Output Tray	Specify the tray for the job output.	
Page Size Letter/Letter-R/Legal/Tabloid/ Tabloid Extra/Executive/Statement/ Statement-R/US Folio/#10 Envelope/ A7 Envelope/A4/A4-R/A3/SRA3/A5-R/ A6/ISO B5/B4 JIS/B5 JIS/B5-R JIS/ DL Envelope/C4 Envelope/ C5 Envelope/C6 Envelope/B5 Envelope/ PostScript Custom Page Size	Specify the size of the paper on which to print the document.	Letter (US) or A4 (International) is displayed as the default page size depending on the printer driver you installed.
Plain Paper-Enhanced Gloss <u>Off</u> /On	Specify whether you want a glossy finish when printing to plain paper.	
Print Master <u>Printer's default</u> /Yes/No	When you create a Master page from an application and set this option to Yes, the Master file is printed. If the option is set to No, the Master file is not printed.	The Printer's default setting reflects the setting specified in EX7750 Setup. This option is selectable only if Create Master is enabled. This option is not supported for PCL.
Pure Black Text/Graphics <u>Printer's default</u> /Off/On	Select Off to print black text and graphics as a four-color black using C, M, Y, and K toner, and to use normal PostScript rendering. Select On to print black text and graphics as a one-color black, using 100% black toner only.	The Printer's default setting reflects the setting specified in EX7750 Setup. For Windows, choose Expert Color as the Print Mode to access this option. This option is automatically set to On if the Black Overprint option is set to On. For more information, see the Color Guide . This option is not supported for PCL.



Option and settings (default setting is underlined)	Description	Requirements, constraints, and information
Remove White PPT Background <u>No/Yes</u>	Select On when using PowerPoint to create variable data in conjunction with FreeForm.	This option is also available from Command WorkStation/Command WorkStation LE or Fiery Spooler. This option is not supported for PCL.
Rendering Style <u>Printer's default</u> /Photographic/ Presentation/Relative Colorimetric/ Absolute Colorimetric	Specify a default color rendering dictionary (CRD) to use when you print RGB images, objects, and text.	The Printer's default setting reflects the setting specified in EX7750 Setup. For Windows, choose Expert Color as the Color Mode to access this option. For more information, see the Color Guide .
RGB Separation <u>Printer's default</u> /Output/Simulation	Select Output for RGB jobs you are printing to the final output device. Select Simulation for RGB jobs for which you want to simulate an output device other than to the device you are printing.	The Printer's default setting reflects the setting specified in EX7750 Setup. For Windows, choose Expert Color as the Color Mode to access this option. This option is not supported for PCL.
RGB Source Profile <u>Printer's default</u> /EFIRGB/sRGB (PC)/ Apple Standard/Other/Source-1/ Source-2/Source-3/Source-4/Source-5/ Source-6/Source-7/Source-8/Source-9/ Source-10/None	Specify a source color space definition for printing RGB images, objects, and text.	The Printer's default setting reflects the setting specified in EX7750 Setup. For Windows, choose Expert Color as the Color Mode to access this option. For more information, see the Color Guide . This option is not supported for PCL.
Rotate 180 <u>Yes/No</u>	Specify if you want to rotate the pages of your job 180 degrees.	Depending on the application you are using, your landscape job might print with the incorrect orientation; if this occurs, or if you select a Stapler Mode (other than Off) and the staple is inserted in the wrong place, select Yes.



Option and settings (default setting is underlined)	Description	Requirements, constraints, and information
Save Fast Reprint <u>Off</u> /On/RIP only	Specify whether to save a job's raster data to disk after printing, so the data will be available later for reprinting (without reRIPping).	With this option set to On, all print option settings remain with the saved raster data each time the job is reprinted. To print the job with new print option settings, you must remove the raster data and reRIP the job. This option is not available in the PCL printer driver.
Screen Switching <u>On</u> /Off	If you choose Off, all objects on page will use a low-frequency screen. If you choose On, text will use a high-frequency screen and graphics and image objects will use a low-frequency screen.	This option is not supported for PCL.
Secure Print	Assign a password to the job for secure printing. Your job is held at the EX7750. To print your job, enter the password at the Control Panel on the EX7750.	This option field has a 10-character limit. This option is not available in the PCL printer driver.
Sharpness Sharpest/Sharper/Sharp/Sharpbit/ <u>Normal</u> /Softbit/Soft/Softer/Softest/ None	Change the Sharpness setting to alter the results of a print. The comparative degree interprets the level of the clarity. Select Normal to render a slight sharpness. Select None to use no sharpness.	This option is not available in the PCL printer driver.
Slip Sheet <u>On</u> /Off	Specify whether to insert a slip sheet between copies of multiple-copy jobs.	
Slip Sheet Paper Source <u>AutoSelect</u> /Tray 1 (MPT)/Tray 2/ Tray 3/Tray 4/ Tray 4 (High Capacity)/Tray 5/ Tray 5 (High Capacity)	Specify the paper tray to use for the slip sheet.	

Option and settings (default setting is underlined)	Description	Requirements, constraints, and information
Spot Color Matching <u>Printer's default</u> /Off/On	Select Off to print specified PANTONE colors in your job using the current CMYK Simulation and CMYK Simulation Method. Select On to activate the PANTONE Lookup Table. The EX7750 prints specified PANTONE colors in your job by matching the CMYK print blend to the same color from the PANTONE library.	The Printer's default setting reflects the setting specified in EX7750 Setup. For Windows, choose Expert Color as the Color Mode to access this option. For more information, see the Color Guide . This option is not supported for PCL.
Stapler Mode <u>Off</u> /Front/Rear/Dual	Specify whether and where to staple the job.	
Transparency Interleaving <u>Off</u> /Blank Interleave	Select Blank Interleave to print multiple transparency sheets separated by blank, plain paper pages.	
Tray Alignment <u>Printer's default</u> /Enable/Disable	Specify if you want to enable tray alignment.	If this option is set to Enable, the Input Tray option cannot be set to AutoSelect at the printer. For more information, see the Job Management Guide . This option is not supported for PCL.
Use Master <u>None</u> /1-15	For variable data print jobs, specify a FreeForm master number to be used for the job.	For more information, see page 5-2 . Command WorkStation/Command WorkStation LE allows you to select up to 100 FreeForm Masters. This option is not supported for PCL.

More about print options

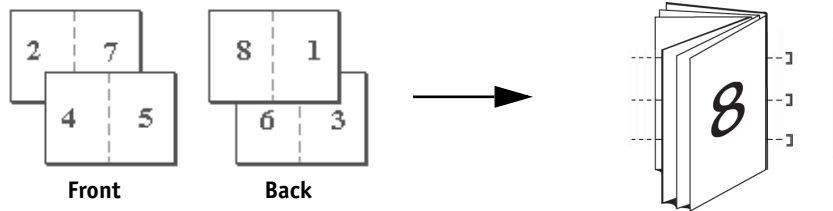
The following sections provide additional information about print options. For more information on the settings, requirements, and constraints in effect for these options, see the preceding table.

Booklet Maker

Use this option to arrange the pages of your print job in special layouts for folding or cutting after printing.

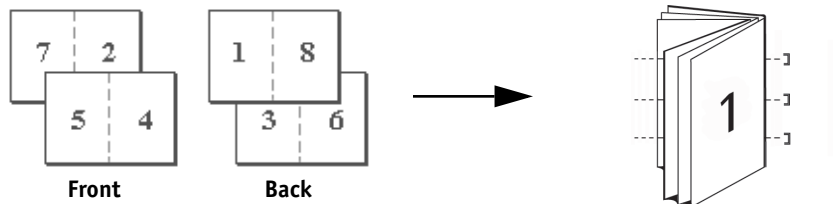
Off—The job is printed without any imposition features.

Standard Booklet—Choose this setting to print entire documents that are folded and stacked in booklet order.



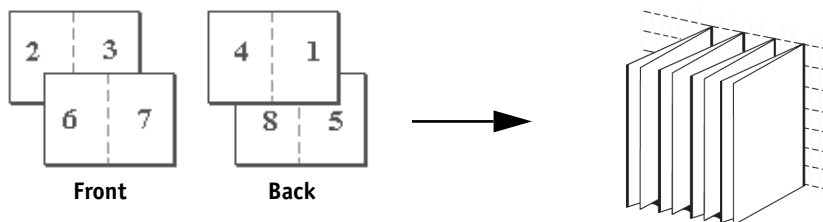
You can also adjust the image shifting that may occur when printing booklet jobs by using the Creep Adjustments option. For more information, see [page A-15](#).

Right Binding—Choose this setting to print entire documents that are folded and stacked in booklet order. The booklet is opened from left to right.



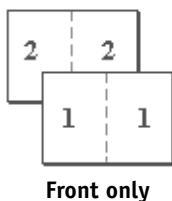
As in Standard Booklet, you can also adjust the image shifting that may occur when printing right binding booklet jobs by using the Creep Adjustment option. For more information, see [page A-15](#).

Perfect—Choose this setting to print separate folded pages that are stacked in booklet order.

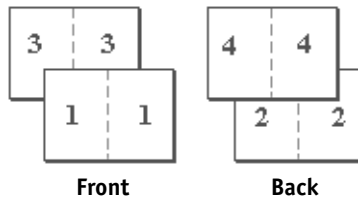


Double Print—Choose this setting to print a job so that the first page data is duplicated on the first sheet. The next page will have the second page data duplicated, and so forth.

Single-sided

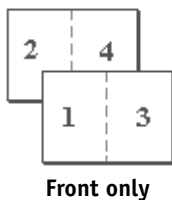


Duplex

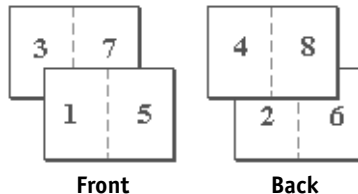


Speed Print—Choose this setting to speed print a job so that when the sheets are stacked and cut from the central position, the job is numbered in order and separated as two stacks.

Single-sided



Duplex



Collate

Use this option to specify sorting options.

Off—Copies of a complete job are output, uncollated, into the top tray.

On—Copies of a complete job are collated and output into the top tray.

Creep Adjustments

Use this option to adjust images that may shift from the center of the sheet in booklet print jobs. Creep can occur when booklet jobs have a large number of pages or when booklet jobs are printed on thick media.

NOTE: To use this option, the Booklet Maker option must be set to Standard Booklet or Right Binding, and the Duplex option must be set to Top-Top.

Duplex

All duplex printing features are available only with Plain Paper media type.

TO PRINT DUPLEX PAGES

- 1. Choose Print in your application and locate the Duplex print option.**

The location of EX7750 print options varies, depending on the printer driver you are using.

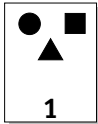
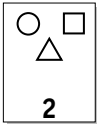
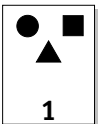
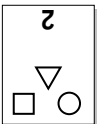
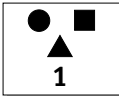
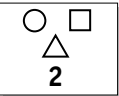
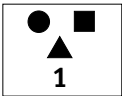
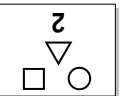
- 2. Choose one of the Duplex settings:**

Short Edge Binding—Prints the top of the image on Side 1, on the same edge of the page as the top of the image on Side 2.

Long Edge Binding—Prints the top of the image on Side 1, on the opposite edge of the page from the top of the image on Side 2.

Manual—Prints from Tray 1 (MPT).

The following table shows how the Duplex settings correspond to printed output:

	Short Edge Binding	Long Edge Binding
Portrait	 	 
Landscape	 	 

TO PRINT DUPLEX PAGES MANUALLY

1. Choose Print in your application, and locate the Duplex print option.

The location of EX7750 print options varies, depending on the printer driver you are using.

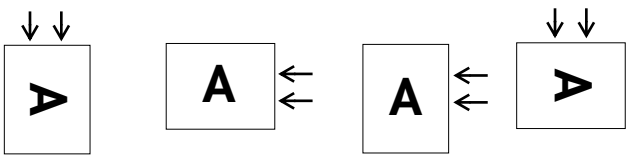
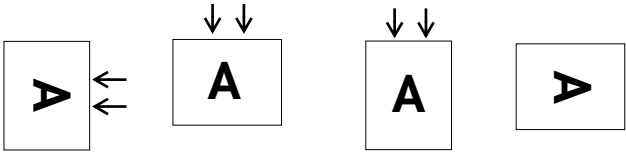
2. Set the Duplex option to Manual.

3. Print the job.

Make sure there is paper in Tray 1 (MPT). After the first side prints, the “Place printed pages face down in Bypass tray” message appears in the EX7750 display window.

4. Remove the pages from the output tray and flip them as shown below.

In either the Short Edge Binding or Long Edge Binding row, find the illustration that shows how the pages look in the output tray. Before you place the pages in Tray 1 (MPT), flip them along the edge indicated by the arrows.

For Short Edge Binding output	
For Long Edge Binding output	

NOTE: For jobs imposed using Fiery Imposition, *always* flip the pages along the long edge of the page.

5. Place the pages in Tray 1 (MPT), then use the line selection button to choose OK in the EX7750 display window.

Mixed Media

With the Mixed Media feature, you can print ranges of pages on different media. You specify the Mixed Media print option when you print the job with the EX7750 printer driver for Windows. For example, you can use this option to specify a different paper type for the cover, add blank pages, and specify duplex pages within a single print job from the printer driver.

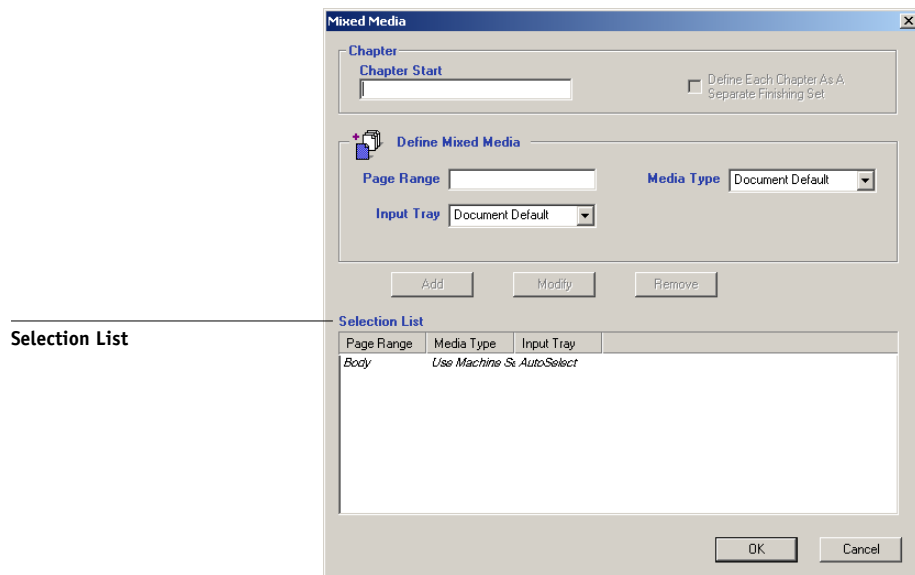
The following procedure describes this printing method.

NOTE: The Mixed Media print option is not available in the Mac OS printer driver.

TO PRINT USING MIXED MEDIA ON WINDOWS COMPUTERS

1. Choose **Print** in your application and click **Properties**.
2. Click the **Fiery Printing** tab.
3. Click the **Paper Source** print option bar, and then click **Define**.

The Mixed Media dialog box appears.



4. For each page range, enter the page numbers and specify the options for that range.

You can choose your specifications from the following options:

Chapter Start—If this page range starts a new chapter, enter the starting page number in the Chapter Start field. If necessary, a blank page will be inserted before this page to ensure that the chapter starts on a right-hand page.

Page Range—Enter a page number or the range of page numbers. Use a hyphen to define a range of sequential pages. For example, 1-3 prints the first three pages on a particular paper type. If all the pages in multiple ranges use the same paper type, you can combine ranges with a comma; for example, 4-5, 9-10.

NOTE: You cannot combine a single page with page ranges.

MediaType—Select the media type.

Before printing, make sure the specified media type is loaded in the specified paper source.

Input Tray—Select the input tray from the list of supported trays.

NOTE: If options are not specified for page(s) that fall between specified pages or page ranges in the Selection List, those page(s) are printed with the Body specifications. The Body specifications are the print options settings for all documents currently selected for the printer driver.

5. Click Add.

Your specifications appear in the Selection List.

6. Repeat steps 4 and 5 for each page or page range you want to print with mixed media options.

You can move the order of the print job by clicking the page or page range selection in the Selection List.

TO MODIFY MIXED MEDIA SETTINGS

- 1. Choose Print in your application and click Properties.**
- 2. Click the Fiery Printing tab.**
- 3. Click the Paper Source print option bar, and then click Define.**

The Mixed Media dialog box appears.
- 4. Select the item you want to modify in the Selection List.**
- 5. Specify the new settings as described on [page A-18](#).**
- 6. Click Modify.**
- 7. Click OK.**



TO DELETE MIXED MEDIA SETTINGS

1. **Choose Print in your application and click Properties.**
2. **Click the Fiery Printing tab.**
3. **Click the Paper Source print option bar, and then click Define.**
The Mixed Media dialog box appears.
4. **Select the item you want to delete in the Selection List.**
5. **Click Remove.**
6. **Click OK.**

Appendix B:
Font List

This appendix lists the built-in printer fonts included with your EX7750.

PostScript printer fonts

The following table lists the 136 built-in PostScript printer fonts and 81 PCL fonts on the EX7750. In addition to these fonts, two Adobe Multiple Master fonts are included and used for font substitution in PDF files.

NOTE: For Mac OS computers, install the corresponding screen fonts from the User Software CD. For instructions, see the *User Software Installation Guide*.

Adobe Type 1 fonts

The EX7750 includes 126 Adobe Type 1 fonts:

- The Mac OS column lists the name as it appears on the Font menu on a Mac OS computer. For example, in most applications, to use “Bodoni-Bold,” choose Bodoni Bold from the Font menu.
- The Windows menu name is the name as it appears on the Font menu on a Windows computer. The style refers to the style that must be selected in the application to access the particular PostScript font. For example, to use “Bodoni-Bold,” choose Bodoni from the Font menu and Bold from the Style menu.

PostScript name	Mac OS menu name	Windows menu name, style
AlbertusMT-Light	Albertus MT Lt	Albertus MT Lt
AlbertusMT	Albertus MT	Albertus MT
AlbertusMT-Italic	Albertus MT It	Albertus MT, Italic
AntiqueOlive-Roman	Antique Olive Roman	Antique Olive Roman
AntiqueOlive-Bold	Antique Olive Bold	Antique Olive Roman, Bold
AntiqueOlive-Italic	Antique Olive Italic	Antique Olive Roman, Italic
AntiqueOlive-Compact	Antique Olive Compact	Antique Olive Compact
Arial-BoldItalicMT	Arial Bold Italic	Arial, Bold Italic
Arial-BoldMT	Arial Bold	Arial, Bold
Arial-ItalicMT	Arial Italic	Arial, Italic

PostScript name	Mac OS menu name	Windows menu name, style
ArialMT	Arial	Arial
AvantGarde-Book	Avant Garde	AvantGarde
AvantGarde-Demi	Avant Garde Demi	AvantGarde, Bold
AvantGarde-BookOblique	Avant Garde BookOblique	AvantGarde, Italic
AvantGarde-DemiOblique	Avant Garde DemiOblique	AvantGarde, Bold Italic
Bodoni	Bodoni	Bodoni
Bodoni-Bold	Bodoni Bold	Bodoni, Bold
Bodoni-Italic	Bodoni Italic	Bodoni, Italic
Bodoni-BoldItalic	Bodoni BoldItalic	Bodoni, Bold Italic
Bodoni-Poster	Bodoni Poster	Bodoni Poster
Bodoni-PosterCompressed	Bodoni PosterCompressed	Bodoni PosterCompressed
Bookman-Light	Bookman	Bookman
Bookman-Demi	Bookman Demi	Bookman, Bold
Bookman-LightItalic	Bookman LightItalic	Bookman, Italic
Bookman-DemiItalic	Bookman DemiItalic	Bookman, Bold Italic
Carta	Carta	Carta
Clarendon-Light	Clarendon Light	Clarendon Light
Clarendon	Clarendon	Clarendon
Clarendon-Bold	Clarendon Bold	Clarendon, Bold
CooperBlack	Cooper Black	Cooper Black
CooperBlack-Italic	Cooper Black Italic	Cooper Black, Italic
Copperplate-ThirtyThreeBC	Copperplate33bc	Copperplate33bc
Copperplate-ThirtyTwoBC	Copperplate32bc	Copperplate32bc
Coronet	Coronet	Coronet
Courier	Courier	Courier
Courier-Bold	Courier Bold	Courier, Bold
Courier-Oblique	Courier Oblique	Courier, Italic
Courier-BoldOblique	Courier BoldOblique	Courier, Bold Italic
Eurostile	Eurostile	Eurostile
Eurostile-Bold	Eurostile Bold	Eurostile Bold
Eurostile-ExtendedTwo	Eurostile ExtendedTwo	Eurostile ExtendedTwo

PostScript name	Mac OS menu name	Windows menu name, style
Eurostile-BoldExtendedTwo	Eurostile BoldExtendedTwo	Eurostile ExtendedTwo, Bold
GillSans	GillSans	GillSans
GillSans-Bold	GillSans Bold	GillSans, Bold
GillSans-Italic	GillSans Italic	GillSans, Italic
GillSans-BoldItalic	GillSans BoldItalic	GillSans, Bold Italic
GillSans-Light	GillSans Light	GillSans Light
GillSans-LightItalic	GillSans LightItalic	GillSans Light, Italic
GillSans-Condensed	GillSans Condensed	GillSans Condensed
GillSans-BoldCondensed	GillSans BoldCondensed	GillSans Condensed, Bold
GillSans-ExtraBold	GillSans ExtraBold	GillSans ExtraBold
Goudy	Goudy	Goudy
Goudy-Bold	Goudy Bold	Goudy, Bold
Goudy-Italic	Goudy Italic	Goudy, Italic
Goudy-BoldItalic	Goudy BoldItalic	Goudy, Bold Italic
Goudy-ExtraBold	Goudy ExtraBold	Goudy ExtraBold
Helvetica	Helvetica	Helvetica
Helvetica-Bold	Helvetica Bold	Helvetica, Bold
Helvetica-Oblique	Helvetica Oblique	Helvetica, Italic
Helvetica-BoldOblique	Helvetica BoldOblique	Helvetica, Bold Italic
Helvetica-Narrow	Helvetica Narrow	Helvetica-Narrow
Helvetica-Narrow-Bold	Helvetica Narrow Bold	Helvetica-Narrow, Bold
Helvetica-Narrow-Oblique	Helvetica Narrow Oblique	Helvetica-Narrow, Italic
Helvetica-Narrow-BoldOblique	Helvetica Narrow BoldObl	Helvetica-Narrow, Bold Italic
Helvetica-Condensed	Helvetica Condensed	Helvetica Condensed
Helvetica-Condensed-Bold	Helvetica CondensedBold	Helvetica Condensed, Bold
Helvetica-Condensed-Oblique	Helvetica CondensedOblique	Helvetica Condensed, Italic
Helvetica-Condensed-BoldObl	Helvetica CondensedBoldObl	Helvetica Condensed, Bold Italic
HoeflerText-Ornaments	Hoefler Text Ornaments	Hoefler Text Ornaments

PostScript name	Mac OS menu name	Windows menu name, style
JoannaMT	Joanna MT	Joanna MT
JoannaMT-Bold	Joanna MT Bd	Joanna MT, Bold
JoannaMT-Italic	Joanna MT It	Joanna MT, Italic
JoannaMT-BoldItalic	Joanna MT Bd It	Joanna MT, Bold Italic
LetterGothic	Letter Gothic	Letter Gothic
LetterGothic-Bold	Letter Gothic Bold	Letter Gothic, Bold
LetterGothic-Slanted	Letter Gothic Slanted	Letter Gothic, Italic
LetterGothic-BoldSlanted	Letter Gothic BoldSlanted	Letter Gothic, Bold Italic
LubalinGraph-Book	Lubalin Graph	LubalinGraph
LubalinGraph-Demi	Lubalin Graph Demi	LubalinGraph, Bold
LubalinGraph-BookOblique	Lubalin Graph BookOblique	LubalinGraph, Italic
LubalinGraph-DemiOblique	Lubalin Graph DemiOblique	LubalinGraph, Bold Italic
Marigold	Marigold	Marigold
MonaLisa-Recut	Mona Lisa Recut	Mona Lisa Recut
NewCenturySchlbk-Roman	New Century Schlbk	NewCenturySchlbk
NewCenturySchlbk-Bold	New Century Schlbk Bold	NewCenturySchlbk, Bold
NewCenturySchlbk-Italic	New Century Schlbk Italic	NewCenturySchlbk, Italic
NewCenturySchlbk-BoldItalic	New Century Schlbk BoldIt	NewCenturySchlbk, Bold Italic
Optima	Optima	Optima
Optima-Bold	Optima Bold	Optima, Bold
Optima-Italic	Optima Italic	Optima, Italic
Optima-BoldItalic	Optima BoldItalic	Optima, Bold Italic
Oxford	Oxford	Oxford
Palatino-Roman	Palatino	Palatino
Palatino-Bold	Palatino Bold	Palatino, Bold
Palatino-Italic	Palatino Italic	Palatino, Italic
Palatino-BoldItalic	Palatino BoldItalic	Palatino, Bold Italic
StempelGaramond-Roman	StempelGaramond Roman	StempelGaramond Roman
StempelGaramond-Bold	StempelGaramond Bold	StempelGaramond Roman, Bold

PostScript name	Mac OS menu name	Windows menu name, style
StempelGaramond-Italic	StempelGaramond Italic	StempelGaramond Roman, Italic
StempelGaramond-BoldItalic	StempelGaramond BoldItalic	StempelGaramond Roman, Bold Italic
Symbol	Symbol	Symbol
Tekton	Tekton	Tekton
Times-Roman	Times	Times
Times-Bold	Times Bold	Times, Bold
Times-Italic	Times Italic	Times, Italic
Times-BoldItalic	Times BoldItalic	Times, Bold Italic
TimesNewRomanPS-BoldMT	Times New Roman Bold	Times New Roman, Bold
TimesNewRomanPS-BoldItalicMT	Times New Roman Bold Italic	Times New Roman, Bold Italic
TimesNewRomanPS-ItalicMT	Times New Roman Italic	Times New Roman, Italic
TimesNewRomanPSMT	Times New Roman	Times New Roman
Univers-Extended	Univers Extended	Univers Extended
Univers-BoldExt	Univers BoldExt	Univers Extended, Bold
Univers-ExtendedObl	Univers ExtendedObl	Univers Extended, Italic
Univers-BoldExtObl	Univers BoldExtObl	Univers Extended, Bold Italic
Univers-Light	Univers 45 Light	Univers 45 Light
Univers-Bold	Univers 65 Bold	Univers 45 Light, Bold
Univers-LightOblique	Univers 45 LightOblique	Univers 45 Light, Italic
Univers-BoldOblique	Univers 65 BoldOblique	Univers 45 Light, Bold Italic
Univers	Univers 55	Univers 55
Univers-Oblique	Univers 55 Oblique	Univers 55, Italic
Univers-CondensedBold	Univers 67 CondensedBold	Univers 47 CondensedLight, Bold
Univers-CondensedBoldOblique	Univers 67 CondensedBoldObl	Univers 47 CondensedLight, Bold Italic
Univers-Condensed	Univers 57 Condensed	Univers 57 Condensed

PostScript name	Mac OS menu name	Windows menu name, style
Univers-CondensedOblique	Univers 57 CondensedOblique	Univers 57 Condensed, Italic
ZapfChancery-MediumItalic	Zapf Chancery	ZapfChancery
ZapfDingbats	Zapf Dingbats	ZapfDingbats

TrueType fonts

The EX7750 includes 10 TrueType fonts:

PostScript name	Mac OS menu name	Windows menu name, style
Apple-Chancery	Apple Chancery	Apple Chancery
Chicago	Chicago	Chicago
Geneva	Geneva	Geneva
HoeferText-Black	Hoefer Text Black	Hoefer Text Black
HoeferText-BlackItalic	Hoefer Text BlackItalic	Hoefer Text Black, Italic
HoeferText-Italic	Hoefer Text Italic	Hoefer Text, Italic
HoeferText-Regular	Hoefer Text	Hoefer Text
Monaco	Monaco	Monaco
New York	New York	New York
Wingdings-Regular	Wingdings	Wingdings

PCL printer fonts

The following 81 PCL fonts are resident on the Fiery:

- Albertus Medium, Albertus Extra Bold
- Antique Olive, Antique Olive Bold, Antique Olive Italic
- Arial, Arial Bold, Arial Italic, Arial Bold Italic
- CG Omega, CG Omega Bold, CG Omega Italic, CG Omega Bold Italic, CG Times, CG Times Bold, CG Times Italic, CG Times Bold Italic

- Clarendon Condensed
- Coronet
- Courier, Courier Bold, Courier Italic, Courier Bold Italic, CourierPS, CourierPS Bold, CourierPS Oblique, CourierPS Bold Oblique
- Garamond Antiqua, Garamond Halbfett, Garamond Kursiv, Garamond Kursiv Halbfett
- Helvetica, Helvetica Bold, Helvetica Oblique, Helvetica Bold Oblique, Helvetica Narrow, Helvetica Narrow Oblique, Helvetica Narrow Bold, Helvetica Narrow Bold Oblique
- ITC Avant Garde Gothic Book, ITC Avant Garde Gothic Demi, ITC Avant Garde Gothic Book Oblique, ITC Avant Garde Gothic Demi Oblique, ITC Bookman Light, ITC Bookman Demi, ITC Bookman Light Italic, ITC Bookman Demi Italic, ITC Zapf Chancery Medium Italic, ITC Zapf Dingbats
- Letter Gothic, Letter Gothic Bold, Letter Gothic Italic
- Line Printer (a bitmap font)
- Marigold
- New Century Schoolbook Roman, New Century Schoolbook Bold, New Century Schoolbook Italic, New Century Schoolbook Bold Italic
- Palatino Roman, Palatino Bold, Palatino Italic, Palatino Bold Italic
- Symbol, SymbolPS
- Times New, Times New Bold, Times New Italic, Times New Bold Italic, Times Roman, Times Bold, Times Italic, Times Bold Italic
- Univers Medium, Univers Bold, Univers Italic, Univers Bold Italic, Univers Medium Condensed, Univers Bold Condensed, Univers Medium Condensed Italic, Univers Bold Condensed Italic
- Wingdings

This page is intentionally blank.

Appendix C: Troubleshooting

This appendix provides troubleshooting tips.

Maintaining optimal system performance

The EX7750 does not require maintenance. Beyond the routine requirements of servicing and maintaining the printer and replenishing consumables, you can improve the overall performance of your system by doing the following:

- Check job ticket information carefully before printing.

Print jobs with the same output and paper specifications together, to minimize paper changes. Also, print routine jobs while you prepare to print jobs with special instructions or special media.

- Reduce unnecessary server connections to Command WorkStation/Command WorkStation LE.

If you use a second or third EX7750 on an occasional basis, you can improve performance by logging off when those systems are not in use.

- Avoid printing with the EX7750 “Disk full” warning.

If you see this warning, delete jobs that are not likely to be reused. Avoid this condition by deleting old jobs on a regular basis. The date associated with a job is the original date it was sent.



Troubleshooting

This section provides troubleshooting guidelines for possible problems. If you are unable to resolve a problem after referring to this section, contact your site operator or administrator. Also, make sure there are no applications installed on the EX7750, with the exception of the EX7750 utilities from the User Software CD. Applications other than the EX7750 utilities are not supported and can cause system problems.

General printing problems

If this happens	Try this
You cannot connect to the EX7750.	<ul style="list-style-type: none">• Make sure the EX7750 is not being calibrated from the Control Panel. If the EX7750 is being calibrated from the Control Panel, you can select it in the Chooser, but you cannot connect to it. This ensures that only one person is calibrating the EX7750 at any time and that print jobs do not use unexpected calibration.
You cannot select or view one of the queues.	<ul style="list-style-type: none">• Request that your system administrator enable the queue in Setup.
You cannot connect to the EX7750 from a Windows computer with Command WorkStation or the Fiery utilities.	<ul style="list-style-type: none">• Make sure the connection is configured correctly. For instructions, see the <i>User Software Installation Guide</i>.
Printing seems to take too long.	<ul style="list-style-type: none">• Print to a queue instead of to the Direct connection. When you print to a queue, the job is stored on the EX7750 until it can be processed and printed; when you print to the Direct connection, the job cannot be sent to the EX7750 until the previous job is finished processing, so you must wait longer to use your computer.



If this happens	Try this
One or more Media Type options are dimmed.	<ul style="list-style-type: none">• Select a Paper Source that supports the media type you are using. For information about requirements and constraints pertaining to special papers and transparencies, see Appendix A.
The EX7750 does not respond to a Print command.	<ul style="list-style-type: none">• Make sure the printer was not disconnected. If the administrator or operator has selected Suspend Printing on the EX7750 Control Panel or Command WorkStation/Command WorkStation LE to interrupt printing, your print job will not resume until someone selects Resume Printing from the Functions menu on the Control Panel or clicks the function key on Command WorkStation/Command WorkStation LE.• Make sure the EX7750 is selected as the current printer. Before printing, you must select the EX7750 as the current printer from your Windows computer, Mac OS computer, or UNIX workstation.• Make sure the printer is switched on. Someone may have turned the printer off, or the Power Saver mode function may have engaged. Even with the printer off, the EX7750 appears in the Chooser as long as the EX7750 itself is turned on.• If you are printing over an IPX (Novell) network, verify through the PCONSOLE utility that the job was sent to the Novell queue and that the queue is being used by the EX7750.• Make sure the job does not contain a PostScript error. Contact the operator, or use Fiery Spooler to check job status. In Fiery Spooler, a job containing a PostScript error appears in red. To obtain information on the PostScript error, make sure the Print to PS Error option is set to Yes in EX7750 Setup. For more information, see the Configuration Guide.
You cannot print with QuarkXPress 3.32 using the PSpriinter 8.7.2 driver on a Mac OS computer.	<ul style="list-style-type: none">• Remove the file called Balloon Help from your QuarkXPress application folder and restart QuarkXPress.



Problems with print quality

For information about printing with specific applications and optimizing color output, see the *Color Guide*.

If this happens	Try this
Print settings for your job output do not match the settings you gave.	<ul style="list-style-type: none">• Make sure you did not override the settings for the job in another place. For information about options and overrides, see Appendix A.
You have poor printing results.	<ul style="list-style-type: none">• Check if your application requires one of the EX7750's printer description files. Your application may require the EX7750 PPD. If you print from Adobe PageMaker, make sure the EX7750 PPD is installed correctly. For information about installing this file, see the <i>User Software Installation Guide</i>.• Make sure the system has been calibrated. For instructions, see the <i>Color Guide</i>.
The registration or colors of an image are not what you expected.	<ul style="list-style-type: none">• Ask the operator to print a Test Page with the printer. The problem may be with the printer. If your Test Page shows that the printer is working properly, correct the problem within your application. If the Test Page is wrong, your printer may need to be adjusted.
Your printed file appears too dark.	<ul style="list-style-type: none">• Adjust the Brightness option. You can use the Brightness option when printing from an application or from Fiery Downloader to lighten your image whenever you print a PostScript or Encapsulated PostScript (EPS) file.
Color file prints in black and white.	<ul style="list-style-type: none">• In the Color Matching dialog box, make sure that Color/Grayscale, or ColorSync Color Matching or PostScript Color Matching is selected (not Black and White).• Make sure the Color Mode print option is set to an option other than Grayscale.
Desktop Color Separations (DCS) format images print incorrectly.	<ul style="list-style-type: none">• Make sure you selected the correct options to send separations in the application's Print dialog box.• Make sure you have the file for every layer of separation that you are printing.• Set the Combine Separations option to On. This combines the high-resolution files for an image and prints them. With Combine Separations Off, the low-resolution master file will print.
QuickDraw fill patterns print as solids.	<ul style="list-style-type: none">• Use the Adobe PostScript Printer driver (or the Apple LaserWriter 8.3 or later printer driver).



Problems with Fiery Downloader

If this happens	Try this
General problems.	<ul style="list-style-type: none">• Make sure you are using the latest version. If you are updating your EX7750 to new system software, delete the previous version of Fiery Downloader from your Windows or Mac OS computer and install the latest version to ensure full compatibility.• Make sure the connection is configured correctly. For instructions, see the <i>User Software Installation Guide</i>.
You cannot print an EPS file using Fiery Downloader.	<ul style="list-style-type: none">• Try printing using the 'showpage' after EPS files (Windows) or 'showpage' (Mac OS) option in the Download PostScript File dialog box. This option adds a showpage PostScript language command at the end of the print job. Certain applications omit this necessary command when they generate EPS files. You must select the Append Showpage option when printing EPS files generated by these applications. If you continue having difficulties printing an EPS file with Fiery Downloader, try printing the file from the application in which it was created.• Make sure the EPS file was saved <i>without</i> a preview image header. Preview image headers are useful when images are placed in documents with page layout applications, but they cause problems when images are downloaded directly.• Make sure the job does not contain a PostScript error. Contact the operator or use Command WorkStation/Command WorkStation LE or Fiery Spooler to check the job's status. Jobs with a PostScript error appear with an Error icon.
You have problems downloading a font with Fiery Downloader.	<ul style="list-style-type: none">• Check with the administrator to make sure that the Direct connection is enabled. The Direct connection must be used to download fonts.
An extra blank page prints after a Fiery Downloader job.	<ul style="list-style-type: none">• Turn off the 'showpage' after EPS files (Windows) or 'showpage' (Mac OS) option. This option adds a special PostScript command that will cause an extra blank page to print if it is not necessary.



Problems with Fiery WebTools

If this happens	Try this
General problems.	<ul style="list-style-type: none">• Clear the history (Microsoft Internet Explorer).

Index

A

Adobe Photoshop
 transfer functions 4-7
Adobe Type 1 fonts B-1

B

Black Detection option A-4
Brightness option A-2, A-4
BSD 3-2

C

CMYK Simulation Method option A-5
CMYK Simulation Profile option A-5
Collate option A-5
Color Mode option A-5
ColorWise Pro Tools
 job overrides A-2
Combine Separations option A-6
Command WorkStation/Command
 WorkStation LE
 overriding FreeForm Master number 5-3
Create Master option 5-2
Creep Adjustment option A-6
Custom Page Sizes
 defining for Windows 2000/XP 1-18
 defining for Windows PCL 1-16
 printing with Windows 2000/XP 1-21
Custom Paper Sizes
 defining for Mac OS 2-7

D

DCS (Desktop Color Separations) C-4
Direct connection
 downloading fonts 4-10
 not in Chooser, Mac OS 2-2
 required to download fonts C-5
Duplex option A-6, A-15, A-16

E

EPS (Encapsulated PostScript) files
 downloading 4-1
 problems downloading C-5

F

Fiery Downloader
 Brightness option 4-7
 choosing a printer 4-4
 Connection Type 4-5
 Download Progress bar 4-2, 4-3
 downloading file or font 4-4 to 4-7
 Hard Disk area 4-2, 4-3
 installing printer fonts 4-10
 job overrides A-2
 Print Status area 4-2, 4-3
 problems with C-5
 Queue 4-5
 RIP Status area 4-2, 4-3
 Toolbar 4-3
 using 4-1
Fiery E-mail Service
 about 7-1
 Job Control 7-4
 managing print jobs 7-4
 printing using an E-mail client 7-2
 printing using the E-mail Port
 Monitor 7-4
File name entry field 4-6
File port, saving files to 1-23
Files of type menu (Windows) 4-5
font list
 Adobe Type 1 B-1
 displaying 4-3, 4-11
 PostScript B-1 to B-6
 printing 4-3, 4-11
 TrueType B-6
Font List button 4-3

fonts

- Adobe Type 1 B-1
- downloading and managing 4-1, 4-5
- installing 4-10
- printer fonts on server 4-11
- substitution with PDF files 4-10
- TrueType B-6

FreeForm

- Master number 5-3

G

- Gamma option A-8
- Group Name field 1-4
- Group Password field 1-4, 2-5, 2-13

H

- Hold queue 2-2

I

- installing printer fonts 4-10
- Instructions field 1-5, 2-5, 2-14

J

- job management tools
 - overriding Printer Setup settings 1-5
- Job Monitor
 - launching 6-5
 - starting 6-5
- job overrides
 - (Other) Gamma option A-8
 - (Other) Phosphors option A-8
 - (Other) White Point option A-8
 - Black Detection option A-4
 - Brightness option A-4
 - CMYK Simulation Method option A-5
 - CMYK Simulation Profile option A-5
 - Collate option A-5
 - Color Mode option A-5
 - Combine Separations option A-6
 - Creep Adjustment option A-6
 - Duplex option A-6, A-15
 - print settings A-2

- Pure Black Text Graphics option A-9
- Rendering Style option A-10
- RGB Source option A-10
- Slip Sheet option A-11
- Spot Color Matching option A-12
- Stapler Mode option A-12

L

- lp command 3-2
- lpq command 3-1, 3-2, 3-3
- lpr command 3-1, 3-2
- lprm command 3-1, 3-3
- lpstat command 3-2

M

- Mac OS
 - Notes fields 2-5
 - Paper Source menu 2-4, 2-8
 - PostScript printer setup 2-3 to 2-6
 - Printer Specific Options menu 2-6
 - printing 2-1
 - screen fonts 4-10
 - tray selection 2-4, 2-8
- Mac OS X
 - Notes fields 2-14

N

- Notes field 1-5
- Notes fields
 - Mac OS 2-5
 - Mac OS X 2-14
 - Windows 1-5

O

- (Other) Gamma option A-8
- (Other) Phosphors option A-8
- (Other) White Point option A-8
- overrides, of job settings A-2

P

- Page Range option A-2
- Paper Source menu
 - Mac OS 2-4, 2-8

- PCL printer description files A-1
- PCL printer drivers
 - Windows 1-1
- PDF files
 - downloading 4-1
 - font substitution 4-10
- performance, optimizing C-1
- Phosphors option A-8
- PostScript
 - downloading files 4-1
 - font list B-1 to B-6
- PostScript printer description files, *see* PPDs
- PostScript printer drivers
 - explained A-1
 - Mac OS 2-1
 - Windows 1-1
- PPDs (PostScript printer description files)
 - options A-2
 - setting print options with Mac OS 2-1
- Print command (Windows) 1-1
- print options
 - Mac OS 2-3 to 2-6
 - Windows 1-2 to 1-6
- print quality, problems with C-4
- Printer Control Language, *see* PCL
- printer default settings
 - where to set A-2
 - Windows 1-6
- printer setup
 - Mac OS 2-3 to 2-6
 - Windows 1-2 to 1-6
- Printer Specific Options menu 2-6
- printing
 - duplex pages A-15, A-16
 - font list 4-3
 - Mac OS 2-1
 - to File port 1-23
 - troubleshooting C-2 to C-3
 - Windows 1-1
- Pure Black Text Graphics option A-9

R

- Rendering Style option A-10
- RGB Separation option A-10
- RGB Source option A-10
- RIPping A-1
- Rotate 180 option A-10

S

- Shortcuts 1-13
- Show menu (Mac OS) 4-5
- showpage after EPS files option 4-7
- Slip Sheet option A-11
- SMB printing 1-2
- Solaris 2.x 3-2
- Spot Color Matching option A-12
- Stapler Mode option A-12
- SunOS 4.1.x 3-2

T

- TCP/IP printing 3-1
- tray selection
 - Mac OS 2-4, 2-8
 - Windows 1-18, 1-21
- troubleshooting
 - EPS files C-5
 - Fiery Downloader C-5
 - general printing problems C-2 to C-3
 - print quality C-4
 - WebTools C-6
- TrueType fonts B-6

U

- UNIX
 - BSD (Berkeley Software Distribution)
 - variant of 3-3
 - displaying jobs in queue 3-2
 - printing with 3-1
 - removing jobs from queue 3-3
 - System V 3-2
- Use Master option 5-2

W

WebLink, *see* WebTools

WebTools

- accessing 6-1

- home page 6-2

- overview 6-4

- problems with C-6

- WebLink 6-4

White Point option A-8

Windows

- Notes fields 1-5

- PCL printer driver 1-1

- PostScript printer driver 1-1

- printer default settings 1-6

- printing with 1-1

- setting print options 1-2 to 1-6

- tray selection 1-18, 1-21