



Elixir PrintDriver

for AFP

User Guide

*June 1999
Version 4.00*

Elixir Technologies Corporation
P.O. Box 1559
Ojai, CA 93024

Copyright © 1999 by Elixir Technologies Corporation.
All rights reserved.

June 1999
Version 4.00
Printed in the United States of America

Trademarks and Service Marks/Company:

Adobe Type Manager/Adobe Systems Incorporated
Ami Pro/Lotus Development Corporation
Elixir/Elixir Technologies Corporation
HP, LaserJet+/Hewlett Packard Company
IBM, Personal Computer, AT, AFP, and all other IBM
products mentioned in this publication are trademarks
of International Business Machines.
LapLink/Travelling Software, Inc.
Logitech/Logitech, Inc
MS-DOS, Word, Windows/Microsoft Corporation

All other product names and trade names used herein
are trademarks of their respective owners.

Copyright protection claimed includes all forms and
matters of copyrightable material and information now
allowed by statutory or judicial law or hereinafter
granted, including without limitation, material gener-
ated from the software programs which is displayed
on the screen such as icons, screen display looks,
etc.

Changes are periodically made to this document.
Changes, technical inaccuracies, and typographic er-
rors will be corrected in subsequent editions.

Table of contents

1. Introduction	1-1
Supported applications	1-1
PrintDriver overview	1-2
Printing and AFP printers	1-2
The PrintDriver solution	1-2
Customer support	1-3
Elixir Web site support	1-4
Elixir training	1-4
Hardware and software requirements	1-5
Hardware	1-5
Software	1-5
Who should use this guide	1-6
Conventions	1-6
Display conventions	1-6
Typographical conventions	1-6
Mouse operations	1-7
On-line Help	1-8
Using Online documentation	1-9
Accessing online guides	1-10
Navigating in online guides	1-11
Word find	1-11
Page scrolling	1-12
Zoom in/out	1-12
Printing online guides	1-13

Organization of this guide	1-13
Before installing	1-14
Release notes	1-15
Product Registration	1-15
Elixir Product Registration screen	1-16
Using the internet	1-16
Registering as a new customer via the internet	1-17
Downloading via the internet to a non-Elixir PC	1-18
Contacting Elixir (no internet connection)	1-19
Soft key customers running Windows for Workgroups 3.1 or 3.11	1-20
Installation	1-20
Installing Elixir applications	1-21
Full installation	1-22
Custom installation	1-23
Adding applications	1-24
Adding newly licensed applications	1-24
2. Elixir PrintDriver basics	2-1
PrintDriver design	2-1
Accessing the Main Setup dialog box	2-1
PrintDriver setup	2-3
Job Print Ticket	2-3
PrePrint options	2-7
OGL options	2-7
OGL extended options	2-8
AFPDS options	2-11
Text services	2-13
Image services	2-16
Font mapping	2-18
Font table	2-19
Color services	2-19

Font generation	2-22
Font import services	2-25
Default Settings	2-25
Error messages	2-29
3. Font options	3-1
Overview of font options	3-1
Converting TrueType and ATM fonts	3-2
Font Generation	3-3
Mapping TrueType and ATM fonts	3-7
Editing the mapping table	3-8
Using the mapping table	3-10
Using AFP or Elixir format fonts	3-10
Font directories	3-12
AFP fonts	3-12
Elixir fonts	3-12
Font Import Services	3-12
Font install options	3-13
Importing fonts	3-14
Using previously imported fonts	3-15
Importing Elixir fonts	3-16
Importing AFP fonts	3-17
Installing fonts in Windows	3-18
Editing the font description	3-19
Editing multiple font descriptions	3-21
Deleting fonts	3-21
Selecting Elixir PrintDriver fonts in Windows	3-22
Using Elixir fonts with other drivers	3-22
4. Using Elixir PrintDriver	4-1
Creating a print file	4-1
Setting options in PrintDriver	4-1
Selecting PrintDriver	4-1

<u>Selecting fonts</u>	<u>4-2</u>
<u>TrueType and Adobe Type Manager fonts</u>	<u>4-3</u>
<u>Imported AFP and Elixir format fonts</u>	<u>4-3</u>
<u>Adding lines, boxes and shapes</u>	<u>4-3</u>
<u>Adding images</u>	<u>4-4</u>
<u>Embedding bit-mapped images</u>	<u>4-4</u>
<u>Referencing images</u>	<u>4-4</u>
<u>Starting the conversion</u>	<u>4-5</u>
<u>Uploading files to an AFP printer</u>	<u>4-7</u>
<u>5. File transfer</u>	<u>5-1</u>
<u>PC-to-MVS host file transfer</u>	<u>5-1</u>
<u>Installation</u>	<u>5-2</u>
<u>Pre-transfer considerations</u>	<u>5-2</u>
<u>Downloading files</u>	<u>5-2</u>
<u>Downloading with IBM 3270 or IRMA FT/3270</u>	<u>5-2</u>
<u>Downloading with IRMA FT/TSO</u>	<u>5-2</u>
<u>Converting Fonts</u>	<u>5-2</u>
<u>Input directory information</u>	<u>5-4</u>
<u>Uploading files</u>	<u>5-4</u>
<u>Uploading with IBM 3270 or IRMA FT/3270</u>	<u>5-4</u>
<u>Uploading with IRMA FT/TSO</u>	<u>5-4</u>
<u>Fonts</u>	<u>5-5</u>
<u>Output directory information</u>	<u>5-5</u>
<u>Using IBM 3270 or IRMA FT/3270</u>	<u>5-5</u>
<u>Downloading AFP font files</u>	<u>5-6</u>
<u>Uploading object-format AFP files</u>	<u>5-6</u>
<u>Uploading text files</u>	<u>5-7</u>
<u>Using IRMA FT/TSO</u>	<u>5-7</u>

<u>Downloading AFP font files</u>	<u>5-7</u>
<u>Converting the file to VB format</u>	<u>5-8</u>
<u>Parameters for downloading AFP font files</u>	<u>5-8</u>
<u>Parameters for uploading text files</u>	<u>5-8</u>
<u>Downloading files</u>	<u>5-9</u>
<u>Uploading files with FT/TSO</u>	<u>5-9</u>
<u>Parameters for uploading object-format AFP files</u>	<u>5-10</u>
<u>Uploading the file with FT/TSO</u>	<u>5-11</u>
<u>Converting the host file to VBM format</u>	<u>5-11</u>
<u>Converting FB to VBM format</u>	<u>5-12</u>
<u>PC-to-IBM AS/400 file transfer</u>	<u>5-13</u>
<u>Creating a host library and file</u>	<u>5-13</u>
<u>Create a PC file descriptor file and path</u>	<u>5-13</u>
<u>Uploading files</u>	<u>5-18</u>
<u>Processing uploaded files</u>	<u>5-21</u>
<u>Fonts</u>	<u>5-21</u>
<u>Page segments</u>	<u>5-21</u>
<u>Overlays</u>	<u>5-21</u>
<u>FORMDEFs</u>	<u>5-22</u>
<u>AFPDS</u>	<u>5-22</u>
<u>Transferring files using the Desktop</u>	<u>5-22</u>
<u>A. Limitations and solutions</u>	<u>A-1</u>
<u>Reverse text</u>	<u>A-1</u>
<u>Rotated text</u>	<u>A-1</u>
<u>Color text strings</u>	<u>A-2</u>
<u>Underlined text</u>	<u>A-2</u>
<u>Typographers quotes</u>	<u>A-2</u>
<u>Supported applications</u>	<u>A-3</u>

TABLE OF CONTENTS

Application compatibility	A-3
Graphics	A-6
Font support	A-6
White objects on black objects	A-6
B. Operational and error messages	B-1
C. Text mapping	C-1
Mapping files	C-1
Country Keyboard maps	C-1
Default code page	C-2
Glossary	GLOSSARY-1
Index	INDEX-1

1.

Introduction

This user guide describes Elixir PrintDriver for AFP Windows edition, one of many Elixir products that support the development of *Advanced Function Printing* (AFP) data streams and page printing resources in a personal computer environment.

Elixir PrintDriver is a tool that allows you to convert a Windows-based document into AFP format simply by selecting [Print] from a supported Windows application with Elixir PrintDriver set as the printer. The document is then ready for transferring and printing on a high-speed AFP printer.

Supported applications

Elixir PrintDriver supports the following applications:

- Microsoft Word 6.0, 7.0, and 97
- Corel WordPerfect 6.1, 7.0, and 8.0
- Corel Ventura 5.0 and 7.0
- Lotus Ami Pro 3.0 and 3.1 and WordPro96
- Adobe PageMaker 5.0 and 6.5
- Write (Windows 3.11, 95, and NT)
- Adobe FrameMaker 5.0, and 5.5

Elixir PrintDriver may also be used with other applications, however, it has not been fully tested for compatibility. We are continuing to test other software packages and will add to this list in future releases.

See the "Limitations and solutions" appendix for information about using PrintDriver with supported applications.

PrintDriver overview

The following section provides a brief overview of AFP printing and Elixir PrintDriver.

Printing and AFP printers

Previously, creating and editing documents for printing on AFP printers was the responsibility of applications personnel working on mainframe computers who defined elements using *Overlay Generation Language* (OGL), a language that describes the location of line, shape, text and image elements as well as page size and layout.

Limitations to this approach are:

- Defining and revising an OGL document is complicated and time-consuming.
- Changes to the document are not apparent when adding OGL statements.
- The completed OGL file must be compiled and proof printed on the high-speed printer.

The PrintDriver solution

With Elixir PrintDriver, anyone who can use a Windows application such as Microsoft Word or Ami Pro, can convert a Windows-based document into AFP printer format directly from a Windows application menu.

The user installs PrintDriver, accesses it as one of the standard print drivers in Windows, composes a document in a Windows-based documentation package, and selects the [Print] option.

Elixir PrintDriver generates OGL, OVE, AFPDS, AFP bounded or unbounded fonts, page segments and Elixir format forms, and saves each resource in a separate directory providing easy access for transfer to a host environment or AFP printer.

Customer support

If you have purchased your Elixir product directly from Elixir Technologies then contact the support center for your region at the number listed below.

- **North and South America:**
+1 805 641 5900 ext. 3
- **Asia Pacific**
+92 (0) 51 206182
- **Europe**
+420 2 2431 13877

The U.S.A. Elixir Customer Support Center provides telephone technical assistance for Elixir users Monday through Friday from 6:30 a.m. to 5:00 p.m. Pacific Standard Time.

If you have any problems running or using Elixir Print-Driver or associated Elixir applications, contact the support center in your region for help. An Elixir product specialist will answer your call and ask for the following information:

- your name, organization, telephone number and address.
- the name and version number of the Elixir application.
- a complete description of the problem, including any error messages displayed on your monitor or printed at your printer.

You can contact Elixir support by accessing the Elixir World Wide Web page (and selecting [Contact Support]) at <http://www.elixir.com>. Please complete the question form.

Elixir Web site support

The Elixir Web site at <http://www.elixir.com> offers the following resources:

- Raise a question for Elixir Support.
- Find answers in the list of Frequently Asked Questions.
- Review the latest Tips and Techniques for increasing productivity using Elixir software.
- Download new releases and the latest patches.
- View Release Notes for the latest available features.
- Learn in the user newsgroup how others are using Elixir products.
- Sign up for an Elixir Learning Program.

Elixir training

Elixir Technologies Corporation offers training for the full range of Windows-based products. For more information, contact:

<p>Elixir Learning (805) 641-5900 ext. 6</p>
--

Hardware and software requirements

The following sections describe hardware and software requirements for running Elixir PrintDriver.

Hardware

Recommended PC configuration: Pentium (or 100% compatible), with at least 133 MHz processor (or the fastest commercially available processor); 32 MB RAM, 500+ MB hard drive, one CD-ROM drive.

Additional hardware requirements:

- any monitor with driver software supporting Windows in VGA or SVGA.
- any Windows compatible mouse.

Optional requirements

- Any PC-to-mainframe or communications board that supports binary file transfers (such as IBM PC3270, IRMA FT/3270, or AS/400 PC communications packages).
- One or more of the following peripheral devices:
 - AFP printer
 - HP LaserJet II or compatible PCL 4 printer (HP PCL 4 is the format supported), or PostScript compatible

Software

Software requirements: Microsoft Windows 95, Windows 98, or Windows NT 4.0 or later.

While we make every effort to ensure the proper operation of our software, some problems cannot be resolved due to differences in the operating systems.

Who should use this guide

This guide is intended for users familiar with Windows and with AFP printer and font management operations.

Users should be familiar with PC peripherals and have access to reference manuals for PC software and hardware, and for the AFP printer(s) used.

Conventions

This section describes the following:

- display conventions
- typographical conventions
- mouse operations.

Display conventions

Elixir PrintDriver adheres to Microsoft Windows conventions for using menus, menu commands, dialog boxes, command buttons, icons, and a mouse. See your Windows manual for more information.

Typographical conventions

The following typographic conventions are used throughout this guide.

- Keystrokes are shown enclosed in `< >`(angle brackets). For example, `<Enter>`.
- Key combinations are denoted by a plus sign between keys. For example, `<Shift> + <F1>` indicates to simultaneously press the `<Shift>` and the `<F1>` keys.
- Menu titles are shown in **bold**. Menu options are enclosed in `[]` (square brackets). For example,

Pull down the **File** menu and select `[Print]`.

- Command buttons that you press are also enclosed in [] (square brackets). For example,

Click on [Job Print Ticket].

- Commands, options, actions, and parameters that require description are shown in bold followed on the next line by the description. For example:

drive

Specify the output drive for the resources.

- Steps in a procedure are shown in numbered bold paragraphs. For example:

1. Click on [Job Print Ticket] in the Main Setup dialog box.

Comments relating to a step (such as this paragraph) are shown in regular text following the bold paragraph.

- Commands you enter at the DOS prompt are shown in larger text. Within DOS commands, variable names are shown in italics. For example:

CD \ELIXIR <Enter>

Mouse operations

You can perform most operations in Elixir applications by using the mouse. The terminology is similar to other Windows-based applications.

Most operations are performed using the left mouse button.

The following mouse-related terms are used in this guide:

click

to momentarily press and release the left mouse button once.

double-click

to click the left mouse button twice in rapid succession.

object

a selectable item on the screen.

open

to point and double-click on an object. The effect of this operation depends on the object.

point

to move the mouse to position the screen pointer on an area of the screen.

select

to point to an object and click the left mouse button. This usually highlights the object.

On-line Help

Elixir software uses the Microsoft Windows Help program to provide on-line Help for Elixir PrintDriver functions.

For more information about Windows Help, select the [How to Use Help] option in the **Help** menu, or see your Microsoft Windows documentation.

The Help files included with your Elixir software include graphics which were created using screen drivers with large fonts. If you use a screen driver with small fonts, the Help file graphics may not display clearly. For optimum graphics display, use a screen driver that uses large fonts (also called 8514 fonts).

Using on-line Help

You can access on-line Help by clicking on the [Help] button in a dialog box to view an associated Help topic.

Note: In Windows 95 and Windows NT you can click the right mouse button on an option in a dialog box to display Help about that option.

Help pop-ups and jumps

Within Help topic text, words or phrases underlined in green are pop-ups or jumps. When you click on a pop-up topic, a box displays within the current Help topic with additional information. When you click on a jump, a different, associated Help topic displays.

Help hypergraphics

Hypergraphics are special graphics within Help files that contain "hot spots". Hot spots are either pop-up topics or jumps. Hypergraphics in Elixir Help are most commonly dialog boxes with option hot spots (pop-up definitions).

Move the cursor over a hypergraphic until a hand displays, then click on this hot spot to display a pop-up topic, or a "jump". To close a pop-up topic, click the mouse button. To return to the original Help topic from a jump, click on <Back> in the Help file menu.

Searching for a different topic

If you want to jump to a Help topic that is not displayed on your screen, click on the [Contents] button at the top of the Help screen to display a list of available topics and make your selection. You can also click on the [Search] button at the top of the screen and select a related topic.

Using Online documentation

This section describes how to use PDF online documentation, including navigating through the online guides and printing the guides. Acrobat Reader is provided with the online documentation. Information about using the Acrobat Exchange program is included for users who have licenses for that program.

Accessing online guides

The PDF online documentation is copied to the drive:\Elixir\help\pdf directory during the installation. If you didn't choose to copy the PDF online documentation during the installation, you can view a complete list of the files by clicking on the Windows [Start] button and selecting Programs>Elixir Applications>Elixir PrintDriver for AFP. Once the application is launched, click on the Help menu and select Release Notes. Wordpad displays a current list of supporting documents and the directories where they can be found on CD-ROM.

When the appropriate PDF file is accessed the Acrobat Reader program is launched and the List of Online Guides is displayed. Click on a guide to view its table of contents and jump to individual chapters.

The following list of PDF files and associated document names are installed in the drive:\Elixir\help\pdf directory.

- StartAFP.pdf - Getting Started User Guide
- DeskAFP.pdf - Elixir Desktop and Converters for AFP User Guide
- FormAFP.pdf - ElixirForm User Guide
- FontAFP.pdf - ElixirFont User Guide
- ImageAFP.pdf - ElixirImage User Guide
- PdAFP.pdf - Elixir PrintDriver for AFP User Guide
- PdNT.pdf - Elixir PrintDriver for NT User Guide
- AppAFP.pdf - Elixir AppBuilder for AFP User Guide
- Transfmr.pdf - Elixir Transformer Suite User Guide
- Viewer.pdf - ElixirViewer User Guide
- Elxscan.pdf - ElixScan User Guide

Navigating in online guides

After loading a PDF document in Acrobat Reader or Exchange program (as described above), you can navigate through the online guide by clicking on the following:

TOC chapter titles - jumps to the beginning of the chapter indicated.

[Next Page] or [Previous Page] in the Toolbar - jumps to the next or previous page of the online guide (alternatively, you can use the <Page Up> and <Page Down> keys).

[Go Back] in the Toolbar - returns to your previous location.

[First Page] in the Toolbar - returns to the opening screen of the online guide.

Word find

This option finds a key word or phrase in the current document.

To use Word Find in a document:

1. **Click on the [Find] icon in the Toolbar.**
2. **Enter the desired search text and click on [Find].**

The Acrobat Find dialog box closes and the first occurrence of the text is highlighted.

3. **To find more occurrences of the same text, click on the [Find] icon in the Toolbar and then click on [Find Again] in the Find dialog box.**

Page scrolling

You can move a document on the screen to view portions of it not visible in the window, or read a document which contains article threads by clicking the mouse to scroll through the document without using the scroll bar.

To move a document on the screen for viewing (functional only when the document displays wider than the document window):

- 1. Click on the [Hand] icon in the Toolbar.**
- 2. Hold down the mouse button and drag the cursor in the desired direction.**

To follow the flow of text in a document that contains article threads (automatic text flows):

- 1. Click on the [Hand] icon in the Toolbar.**
- 2. If the document contains article threads, a down arrow displays on the Hand icon.**
- 3. Position the hand-shaped cursor over a paragraph and click on the paragraph to begin reading.**
- 4. Continue clicking to follow the flow of text.**

Zoom in/out

To magnify the size of the page display, click on the Zoom icon in the Toolbar, then click in the Work area. Each click resizes the view by a factor of two.

To reduce the size of the page display, click on the Zoom icon in the Toolbar, then hold down the <Ctrl> key and click in the Work area.

You can also click on the [%] button at the bottom of the screen and select a zoom percentage from the pop-up list.

Printing online guides

You can print individual chapters or an entire book to PostScript or HP printers:

1. **Open the file.**
2. **Select File>Print.**

The Print dialog box displays.

3. **Select your printing options and click on [OK].**

Organization of this guide

This user guide contains the following chapters and appendices:

Chapter 1, "Introduction," provides an introduction to PrintDriver, describes the contents of this user guide and explains the installation process.

Chapter 2, "Elixir PrintDriver basics," describes how to set the options and defaults when using Elixir PrintDriver.

Chapter 3, "Font options," describes how to convert and map TrueType and ATM fonts, and how to import AFP and Elixir format fonts for use in a Windows document.

Chapter 4, "Using Elixir PrintDriver," describes how to create a document in a Windows application and print to a file using Elixir PrintDriver.

Chapter 5, "File transfer," describes how to upload files from your PC to a host environment for processing and subsequent delivery to AFP printers.

Appendix A, "Limitations and solutions," describes limitations of PrintDriver and provides solutions to some common problems.

Appendix B, "Operational and error messages," lists all the operational and error messages issued by PrintDriver.

Appendix C, "Text mapping," provides a list of country keyboard mapping files and default code pages.

Glossary.

Index.

Before installing

Caution: If you have a previous version of Elixir PrintDriver installed on your computer, make sure it is not set as the default printer when you install the new version.

- Complete the software licensing process (See the "Product Registration" section).
- If you want to view and edit resources created by Elixir PrintDriver, make sure you install Elixir PrintDriver on the same drive as your Elixir Desktop
- Backup your .EXE and .DLL files before installing.
- If you plan to use any other Elixir products with Elixir PrintDriver, make sure you know the drive where they are installed. This is the drive where you must install Elixir PrintDriver.
- To avoid any possible conflicts, exit all other applications while installing Elixir PrintDriver.

Release notes

Release notes appear at the beginning of the Elixir software install process, so that you can review each entry before performing the complete installation. Once the software is installed, release notes can be accessed from the Help menu of the application. Release notes are formatted for viewing in Notepad or Wordpad. They have a *txt* file extension and are found in the *drive:\ELIXIR \RELNOTES* directory.

Product Registration

Elixir products no longer require ElixiKey hardware devices attached to your parallel port. Elixir products now utilize soft key technology. This new licensing process validates your license agreement with Elixir and places a file (password.epw if an Elixir customer, or License.dat if a Xerox customer) on your workstation.

Version 4.00 implements Elixir's new licensing process and discontinues use of the current hard keys. All customers must register/re-register software license(s) by using the Elixir registration program provided with the software.

Each product installed is assigned to a specific pc. This pc number, your customer number, and password are required. This information is provided when you purchase Elixir software or when you upgrade to version 4.00 of Elixir products.

If you are an Elixir customer, registration can be completed automatically if you have an internet connection on your workstation. If you are a Xerox customer you must contact Xerox to register your products.

This section describes the registration process for those customers who have purchased their Elixir products from Elixir Technologies.

The following scenarios describe the registration process for Elixir customers. Xerox Corporation will provide a separate document that describes registering your products with Xerox.

- you are a new customer and will use Soft Key registration
- you are an existing customer and will change to Soft Key registration

Elixir Product Registration screen

Make your selections according to your needs and go to the appropriate section for further procedures.

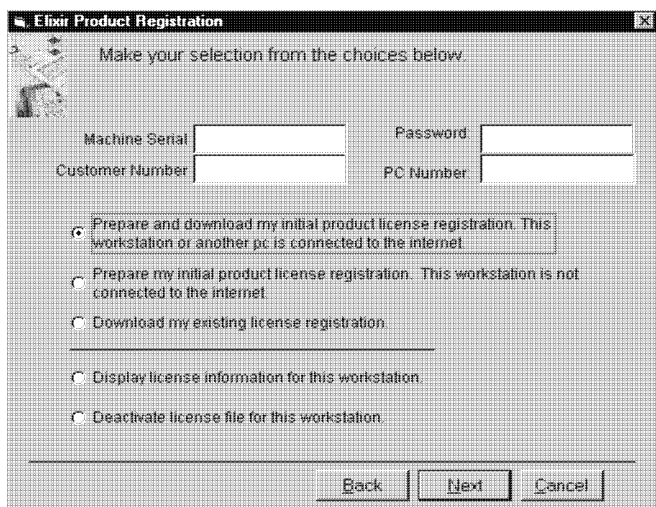
The image shows a Windows-style dialog box titled "Elixir Product Registration". Inside the dialog, there is a small icon of a person on the left and the text "Make your selection from the choices below." at the top. Below this, there are four input fields arranged in a 2x2 grid: "Machine Serial", "Password", "Customer Number", and "PC Number". Underneath the input fields is a list of five radio button options. The first option, "Prepare and download my initial product license registration. This workstation or another pc is connected to the internet", is selected. The other options are "Prepare my initial product license registration. This workstation is not connected to the internet", "Download my existing license registration.", "Display license information for this workstation.", and "Deactivate license file for this workstation.". At the bottom right of the dialog are three buttons: "Back", "Next", and "Cancel".

Figure 2-1. Elixir Product Registration screen

Using the internet

You can register and download all registration files via the Elixir Product Registration program. There are two ways to register your products using the Internet:

- download the product registration file directly to the Elixir PC via the Internet (see "Registering as a new customer via the internet")

- download the product registration file to another machine and move it to the Elixir PC (see "Downloading via the internet to a non-Elixir PC")

Registering as a new customer via the internet

You will receive a "Customer Activation Letter" with your product(s) ordered. The registration process should be completed before installing your software. The installation CD will launch and install the Registration Program.

To install the registration program on your Elixir PC:

- 1. In the Software Registration screen, click on [Next].**
- 2. Select the drive and click on [Next].**
- 3. In the Start Registration Process screen, click on [Install].**

The password file will be installed and your system configured.

To complete registration:

- 1. In the Elixir Product Registration "Welcome" screen, select [Next].**

Your machine serial number displays.

- 2. Enter your customer number (from Activation Letter), then click on [Next].**
- 3. Enter your password and the PC number you want to register, then click on [Next].**
- 4. Select [Prepare and download my initial product license registration. This workstation or another pc is connected to the internet] from the Registration Option menu, then click on [Next].**
- 5. In the Download Password screen, click on [Yes].**

The system displays your customer information and you must verify that it is correct.

- 6. When the screen displays the registration information, click on [Save]. You may also print this screen for reference or to send to Elixir.**

The application installation process will begin, see the "Installation" section.

Downloading via the internet to a non-Elixir PC

You will receive a "Customer Activation Letter" with your product(s) ordered. The registration process should be completed before installing your software. The installation CD will launch and install the Registration Program.

To install the registration program on your Elixir PC:

- 1. In the Software Registration screen, click on [Next].**
- 2. Select the drive and click on [Next].**
- 3. In the Start Registration Process screen, click on [Install].**

The password file will be installed and your system configured.

To complete registration:

- 1. In the Elixir Product Registration "Welcome" screen, select [Next].**

Your machine serial number displays.

- 2. Enter your customer number (from Activation Letter), then click on [Next].**
- 3. Enter your password and the PC number you want to register, then click on [Next].**

4. Select [Prepare and download my initial product license registration. This workstation or another pc is connected to the internet] from the Registration Option menu, then click on [Next].
5. In the Download Password screen, click on [No].
6. In the How to Contact Elixir screen, click on [Print] and take the printout to the pc connected to the internet.
7. Access the Elixir Web site at <http://www.elixir.com>. and click on [Product Registration].
8. In the Customer Information screen, enter your Customer Number and Password, then click on [Submit Form].
9. In the Elixir Customer Menu, click on [Download a New License File].
10. In the Customer Information screen, enter your PC Number and Machine Serial Number, then click on [Submit Form].
11. In the Elixir Technologies screen, click on [Click here to download your password].
12. Save the *password.epw* file to diskette and copy it to your Elixir PC in the \ELIXIR directory.

The application installation process will begin, see the "Installation" section.

Contacting Elixir (no internet connection)

If you have no internet access at your site you must contact Elixir and provide the serial number of the pc where you will install the Elixir software. Elixir will provide a registration file (*password.epw*) that you must copy to the Elixir pc.

Copy the *password.epw* file to \Elixir and start the installation.

Select [Prepare my initial product license registration. This workstation is not connected to the Internet] from the Registration Option menu, then click on [Next].

The application installation process will begin, see the "Installation" section.

Soft key customers running Windows for Workgroups 3.1 or 3.11

Since Windows 3.1/3.11 does not have internet capability, you must contact Elixir to obtain your password file. After installation of Elixir software, the installation program verifies that the operating system is 3.1 or 3.11, runs *passwd16.exe*, and provides your machine serial number.

To complete registration:

- 1. Enter your customer number, password and PC number, then print out a copy of this screen.**
- 2. Fax, email, or mail Elixir the display printout. Elixir will generate a password.epw file and send it to you on diskette.**
- 3. Load the password.epw file in the \ELIXIR directory.**

The application installation process will begin, see the "Installation" section.

Installation

This section describes how to install Elixir software using the [Full] and [Custom] options. Installing additional Elixir applications to an existing version is also explained.

Note: The software registration process must be completed (See the "Product Registration" section).

For information about starting Elixir applications after installation, refer to the "Introduction" chapter.

During installation, the log file, XWIN.log, is created in the *drive:\Elixir* directory. XWIN.log contains a list of all directories and files copied or created, including information pertinent to the installation. It can be accessed, using Notepad or Wordpad.

If you have any problems running Elixir software after installation, refer to the "Troubleshooting" section of the *Elixir Getting Started Guide* for more information.

Installing Elixir applications

Elixir provides a simple, interactive procedure for installing Elixir applications.

During installation you can select [Full] or [Custom] installation.

- Selecting a [Full] installs all Elixir applications and demonstration files on the same drive. If you have a previous version of Elixir software, this option overwrites the existing version.
- Selecting a [Custom] installation allows you to choose the Elixir applications and options (such as Elixir demonstration files) you want installed, as well as where you want certain options installed. For example, You may want the PDF documentation in a different directory than the application.

You can also install Elixir program files (required to run Elixir), and data files (files that you create or files such as the Elixir demonstration files), in separate drives and directories.

Full installation

To begin installation:

You can quit installation at any time, by pressing the <Esc> key.

- 1. Close all active applications.**
- 2. Insert the CD in your CD-ROM drive.**
- 3. In the "Welcome" screen, click on [Next].**

The Release Notes? screen displays.

- 4. Select [Read Release Notes Now] to display them in Wordpad (or Notepad), or click on [Next] to proceed with the installation.**

The Product Selection screen displays.

- 5. Select the applications you want to install and click on [Next].**

The Selected Products screen displays.

- 6. Verify the listed applications and click on [Next]. If you need to delete or add to the list, click on [Back] and reselect.**
- 7. Verify your user information and click on [Next].**
- 8. In the Select Install Type screen, select [Full] and click on [Next].**
- 9. Select the drive on which you want Elixir software installed, then click on [Next].**
- 10. Select the Programs Folder in which you want Elixir software installed (Elixir Applications is the default), then click on [Next].**

11. In the **Backup Replaced Files** screen, click on **[Yes]**, if you want to make back-up copies of all files replaced during installation and select the directory where the back-up files will be placed. Then click on **[Next]**.
12. In the **Start Copying Files** screen, click on **[Install]**.

Installation begins.
13. Once installation is complete, click on **[Exit Installer]**.

Custom installation

To begin installation:

You can quit installation at any time, by pressing the <Esc> key.

1. **Close all active applications.**
2. **Insert the CD in your CD-ROM drive.**
3. In the **"Welcome"** screen, click on **[Next]**.

The Release Notes? screen displays.

4. **Select [Read Release Notes Now] to display them in Wordpad (or Notepad), or click on [Next] to proceed with the installation.**

The Product Selection screen displays.

5. **Select the applications you want to install and click on [Next].**

The Selected Products screen displays.

6. **Verify the listed applications and click on [Next]. If you need to delete or add to the list, click on [Back] and reselect.**
7. **Verify your user information and click on [Next].**

8. In the **Select Install Type** screen, select **[Custom]** and click on **[Next]**.
9. In the **Configuration Only?** screen:
 - Selecting **[Yes]** allows you to load Configuration, Program, and Data files into any resident directory.
 - Selecting **[No]** allows you to deselect options you do not wish installed.
10. Select the **Programs Folder** in which you want **Elixir software** installed (**Elixir Applications** is the default), then click on **[Next]**.
11. In the **Backup Replaced Files** screen, click on **[Yes]**, if you want to make back-up copies of all files replaced during installation and select the directory where the back-up files will be placed. Then click on **[Next]**.
12. In the **Start Copying Files** screen, click on **[Install]**.

Installation begins.
13. Once installation is complete, click on **[Exit Installer]**.

Adding applications

If you did not install all of the Elixir options while performing the Custom installation procedure, you can do so at any time by following the steps described in the "Custom installation" section of this chapter.

Adding newly licensed applications

If you purchase additional Elixir products, Elixir will update your password file. You can access the Product Registration program from your program group and re-download your initial product registration password file to activate your new products.

2. Elixir PrintDriver basics

This chapter describes Elixir PrintDriver and how to set up the options and default settings.

PrintDriver design

Elixir PrintDriver provides you with a series of easy-to-use dialog boxes to set up your print job options, select your output format and specify the directories for your resources. You can display a dialog box by clicking on a button in the Main Setup dialog box. See the "Accessing the Main Setup dialog box" section in this chapter for more information.

If a dialog box displays a [Help] button, you can click on this button to display information about any option in that box, or to access the comprehensive on-line Help program provided with Elixir PrintDriver. For more information about on-line Help, see the "Introduction" chapter.

Accessing the Main Setup dialog box

You can access the Main Setup dialog box from the Control Panel in the Windows Program Manager.

From the Control Panel:

- 1. Double-click on the Printers icon.**

The Printers dialog box displays.

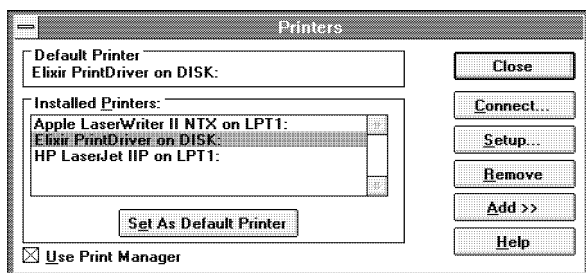


Figure 2-1. Printers dialog box

2. Select [Elixir PrintDriver on DISK].
3. Click on [Setup].

The Main Setup dialog box displays.

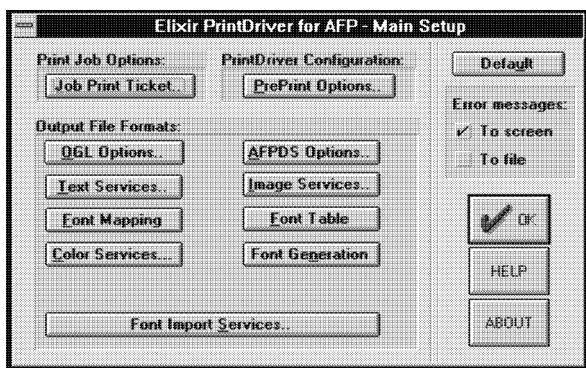


Figure 2-2. Main Setup dialog box

You can also access the Main Setup dialog box from the [Printer Setup] option within some applications. See your application manual for details.

PrintDriver setup

From the Main Setup dialog box, you can control the Print Job Options, PrintDriver Configuration and Output File Formats.

Job Print Ticket

The options in the Job Print Ticket dialog box control the overall printing parameters for the print job. To select the print job options, click on [Job Print Ticket]. The Job Print Ticket dialog box displays.

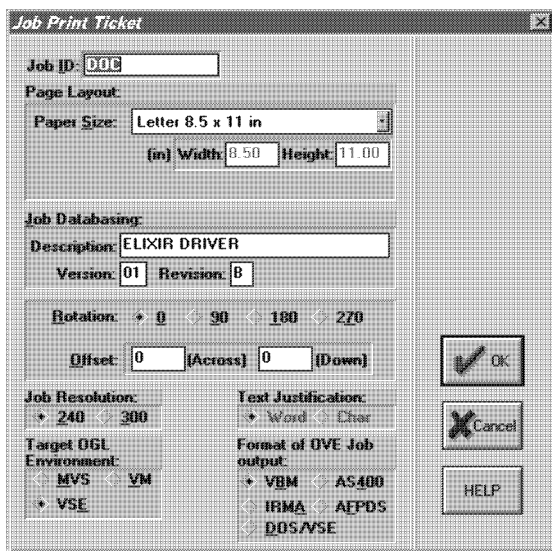


Figure 2-3. Job Print Ticket dialog box

The Job Print Ticket dialog box contains the following options:

Job ID

Specify a name for each file produced by Elixir Print-Driver. Files output to AFPDS format retain the Job ID name. Files output to Elixir (.ELX), .OVE, or .OGL formats use the following naming conventions. Note that the first page retains the original Job ID name.

- For Job IDs ending in letters: the last character of the output file name is replaced by the page number for files 2 to 9 pages in length, the last two characters are replaced by the page number for files 10 to 99 pages in length, the last three characters are replaced by the page number for files 100-999 pages in length, and the last four characters are replaced by the page number for files 1000-9999 pages in length.

For example, for Job ID "ABCDEF", a file named "ABCDEF" is generated for page 1, "ABCDE2" is generated for page 2, "ABCD10" is generated for page 10, "ABC100" is generated for page 100, and "AB1000" is generated for page 1000.

- For Job IDs ending in numbers: the last two characters of the output file name are replaced by an "X" and the page number for files 2 to 9 pages in length, the last three characters are replaced by an "X" and the page number for files 10 to 99 pages in length, the last four characters are replaced by an "X" and the page number for files 100-999 pages in length, and the last five characters are replaced by an "X" and the page number for files 1000-9999 pages in length.

For example, for Job ID "123456", a file named "1234556" is generated for page 1, "1234X2" is generated for page 2, "123X10" is generated for page 10, "12X100" is generated for page 100, and "1X1000" is generated for page 1000.

Paper size

Select the paper size. Click on the scroll arrow to display the selections. For custom sizes, select [Custom Format] and specify the [Width] and [Height] options.

Note that if you are using PageMaker, you must always select [Custom Format] and specify the page [Height] and [Width].

Make sure the paper size setting in the application is the same as the setting in the Job Print Ticket dialog box before conversion.

Description

Enter a short description of the print job to include with the OGL file. See the "OGL Extended Options" section in this chapter for more information.

Version/Revision

This option allows you to keep track of revisions made to a document when you output to Elixir (.ELX) format.

- Specify the primary version of the document in the version window (Maximum two characters).
- Specify the revision or modification identifier in the revision window. (Maximum one character).

To display the version and revision characters of the .ELX file in ElixirForm, pull down the **Options** menu and select [Page Databasing].

Rotation

Select the degree of rotation for the output document, depending on your printer:

- **IBM AFP cutsheet printers and continuous form (Group 3) printers**

Portrait source document with text going across the page, select [0].

Portrait source document with text going back across the page, select [180].

Landscape source document with text going down the page, select [90].

Landscape source document with text going up the page, select [270].

To print a portrait source document in tumble mode, select [0] rotation and specify [Duplex] [Tumble] in the FORMDEF.

- **IBM AFP continuous form printers (3800)**

Portrait source document with printer set up for Narrow Forms, select [0].

Portrait source document with printer set up for Wide Forms, select [90].

Landscape source document with printer set up for Narrow Forms, select [90] or [270].

Landscape source document with printer set up for Wide Forms, select [0].

Offset

Select the number of dots to shift the output. Negative values are allowed.

- [Across] shifts the output right by the specified number of dots for a portrait orientation and shifts output down for landscape orientation.
- [Down] shifts the output down by the specified number of dots for a portrait orientation and shifts output right for landscape orientation.

Job resolution

Specify [240] dpi or [300] dpi, depending on your printer.

When proof-printing 240 dpi generated fonts on an HP (a 300 dpi printer), the print quality is not as high as 300 dpi generated fonts.

Target OGL environment

This option controls the DDNAME/FILETYPE options that are written to the OGL when the fonts or page segments are called out.

- Select [MVS] for Elixir PrintDriver to look in \ELIXIR\FONTS\MAPS\DEFAULT.FAM (for fonts) or \ELIXIR\PICS\MAPS\DEFAULT.SAM (for page segments) and use the MVS_default-ddname parameter when building the font/page segment list at the beginning of the OGL.
- Select [VM] for Elixir PrintDriver to use the VM_default_filetype parameter.
- Select [VSE] for Elixir PrintDriver to ignore the DEFAULT.FAM and DEFAULT.SAM files for DDNAME and FILETYPE.

Format of job output

Select the format for the print job output:

- [VBM] produces variable-blocked-machine format files for uploading to an MVS host using IBM 3270 or IRMA FT/3270.
- [AS400] produces 1024 byte blocked machine format files for uploading to an AS/400 using IBM PC support/client support.

Note that when you select this option, you cannot output to OGL format.

- [IRMA] produces fixed-length record files for uploading to an MVS host using IRMA FT/TSO.
- [AFPDS] produces pure AFPDS files with no special formatting.
- [DOS/VSE] creates AFP-format files for uploading to a DOS/VSE host using IBM 3270 or IRMA FT/3270.

PrePrint options

The PrePrint Options dialog box displays the selected options when you are ready to print your finished document. See the "Using Elixir PrintDriver" chapter for more information about the PrePrint dialog box.

OGL options

To specify the directories for source OGL and to select extended OGL options, click on [OGL Options]. The Source OGL Options dialog box displays.

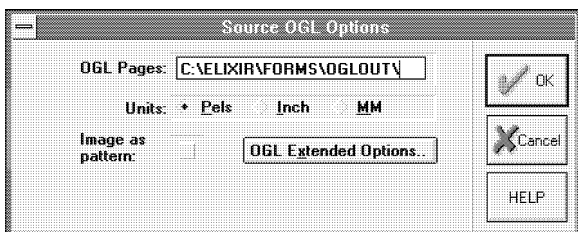


Figure 2-4. Source OGL Options dialog box

The Source OGL Options dialog box contains the following options:

OGI Pages

Specify the directory for output OGI pages. The default is *drive:\ELIXIR\FORMS\OGLOUT*.

Units

Select the unit of measurement for the resolution of all the resources produced by Elixir PrintDriver: fonts, images and forms.

Image as pattern

Select this option to write images as OGI pattern statements and embed them in the document. If you do not select this option, images are converted as separate page segments.

OGI extended options

From the Source OGI Options dialog box, click on [OGI Extended Options]. The OGI Extended Options dialog box displays.

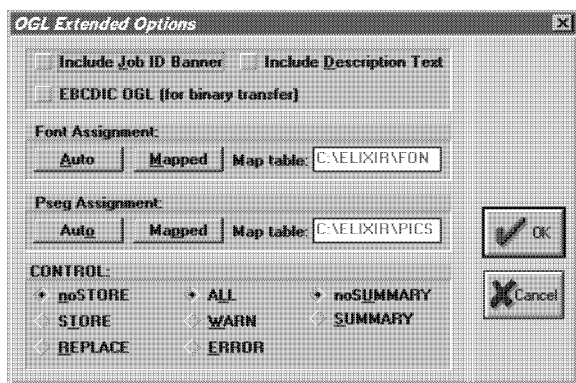


Figure 2-5. OGI Extended Options dialog box

The OGI Extended Options dialog box contains the following options:

Include job ID banner

The job ID banner contains the Job ID specified in the Job Print Ticket dialog box. Select this option if you want to include a job ID banner in the file conversion.

Include Description Text

Select this option if you want to include the information entered in the [Job Databasing] option in the Job Print Ticket dialog box. This specialized comment is included after the Job ID banner.

EBCDIC OGL (for binary transfer)

Select the format for the OGL:

- Select this option to generate OGL in EBCDIC format which can be transferred directly to the host system with no translation.
- Deselect this option to generate OGL in ASCII format which is then translated to EBCDIC format by your file-transfer utility during upload as a text file.

Font Assignment

Select the font assignment:

- Select [Auto] to map fonts from their coded font names without the Xn prefix.
- Select [Mapped] to map font names using the mapping table specified in the [Map Table] option.

Note that you can use this table to assign individual DDNAMES to fonts.

The default mapping table is DEFAULT.FAM and is stored in *drive*:\ELIXIR\FONTS\MAPS. You can use any ASCII editor to edit this file.

If you want to use another mapping file, back-space over the current file name and enter a new name.

Pseg assignment

Select the page segment assignment:

- Select [Auto] to map page segment image names from external file names to six-character internal names without the 'S1' prefix.
- Select [Mapped] to map pseg names using the mapping table specified in the [Map Table] option.

Note that you can use this table to assign

DDNAMES to psecs.

The default mapping table is DEFAULT.SAM and is stored in *drive:\ELIXIR\PICS\MAPS*. You can use any ASCII editor to edit this file.

If you want to use another mapping file, backspace over the current file name and enter a new name.

Once compiled, the psecs are stored inside the overlay.

Control

Build the CONTROL statement to use in OGL source files.

Document storage:

- Select [noSTORE] if you do not want the document stored in a library.
- Select [STORE] to store the document in a library.
- Select [REPLACE] to store the document in a library and replace any existing document with the same name.

Messages:

- Select [ALL] to view every message the system generates while processing your document.
- Select [WARN] to view only the warning messages generated as a result of your document's processing.
- Select [ERROR] to view only the error messages generated as a result of OGL/370 processing.

Summary display:

- Select [noSUMMARY] if you do not want the summary to display as part of the source listing.

- Select [SUMMARY] to display a statistical summary as part of the source listing.

AFPDS options

To select options for AFPDS, click on [AFPDS Options]. The Page and Document Options dialog box displays.

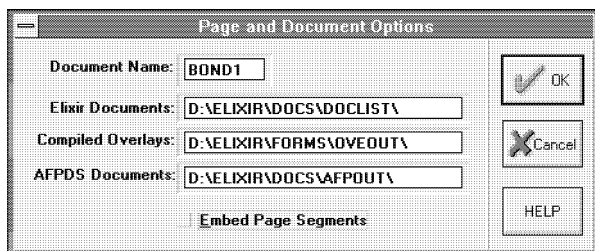


Figure 2-6. Page and Document Options dialog box.

The Page and Document Options dialog box contains the following options:

Document name

Displays the document name. The default is the same as the Job ID.

Elixir documents

Specify the directory for Elixir documents if you are using other Elixir software packages. This is the directory for the .DAT file containing references to each page contained in a document. The default directory is *drive:\ELIXIR\DOCS\DOCLIST*.

Compiled overlays

Specify the directory for compiled overlays. The default directory is *drive:\ELIXIR\FORMS\OVEOUT*.

AFPDS documents

Specify the directory for AFPDS documents. The default directory is *drive:\ELIXIR\DOCS\AFPOUT*.

Embed page segments

This option is only valid for OVE and AFPDS out. If you generate OGL, all page segments will be separate files.

- Select this option to include converted page segments within the data stream.
- Deselect this option to include only a reference to the page segment in the data stream. Note that if this option is deselected, each page segment generated by Elixir PrintDriver must exist in your host page segment library.

The default is deselected.

Text services

Windows uses the standard ANSI character set, also known as Windows Latin 1, and translates all keyboard entries as ANSI code characters. A character set is a group of unique symbols that has an associated code page. Symbols are letters, numerals, punctuation marks, and other special characters such as non-printing spaces, tabs, and graphics.

Make sure you set up the options in the Text Services dialog box before you convert any fonts using Elixir PrintDriver. To check the default selections, select [Text Services]. The Text Services dialog box displays.

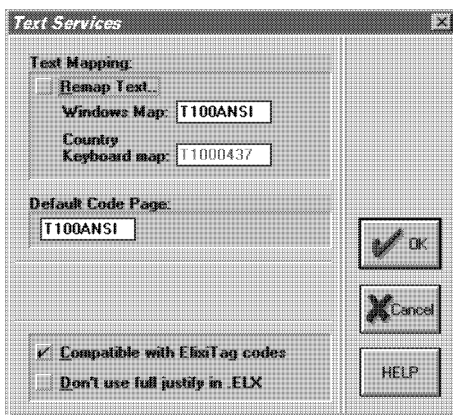


Figure 2-7. Text Services dialog box.

The Text Services dialog box contains the following options:

Remap text

The [Remap Text] option in the Text Services dialog box allows you to map the Windows ANSI character set to any other character set (such as Elixir's older GEM based software character set, which uses DOS code pages 437 or 850) or to an existing AFP code page.

- To remap text, select this option and specify a Windows map, country keyboard map, and default code page.
- To use the entire Windows ANSI character set to convert to AFP fonts, deselect this option, specify the T100ANSI code page in the [Default Code Page] option, and specify the C0ANSI GCID mapping list in the Font Generation Prompt dialog box.

Because OGLs are ASCII files that are translated by file transfer software when sent to the host, this mapping may cause different characters to print when you convert it to OGL format. Some file transfer packages may allow you to edit the translation table.

To edit the converted forms in ElixirForm for AFP, make sure you deselect the [Keyboard Mapping] option in the Text/Fonts Options dialog box in ElixirForm.

See the "Text mapping" appendix for a list of Country Keyboard Mapping files and Default Code Pages.

Note that when you make any changes to the [Remap Text] option, you must regenerate all fonts in your document and reload those fonts on the printer.

Windows Map

The [Windows Map] is a mapping file which defines a list of code points and associated GCIDs to the Windows character set.

Most users should use T100ANSI. If you are using the Eastern European version of Windows, you should use T10EEURO.

Country Keyboard Map

The [Country Keyboard Map] is a mapping file that assigns GCIDs to code points which correspond to the country keyboard you are using. Enter the name of your DOS code page. See the "Text mapping" appendix for a list of country keyboard map file names.

If the "Match not found, char *n*" error message displays during conversion, edit the country keyboard mapping file and code page to include any missing characters. For more information, see the "Operational and error messages" appendix.

Default Code Page

The [Default Code Page] is the Elixir representation of the host T1 code page member and is used to assign host (EBCDIC) code points to GCIDs. This file is essential in the conversion of outputs to EBCDIC format, and is used whether [Remap Text] is selected or not.

Compatible with ElixirTag codes

If you are a DocuTag or DataMerge user and are using ElixirTag to enter datatags in Windows applications, select [Compatible with ElixirTag codes] to instruct PrintDriver that the last character in the font will be used to denote datatags. When this option is deselected, the last character in the font can be used as a text character in documents.

Don't use full justify in .ELX

Use this option for more efficient output when converting to .OGL.

If you have a fully justified paragraph in your application and this option is selected, a full line of text is used as one text statement producing less text statements in the .OGL. This makes it easier to read and edit if required.

If you have a fully justified paragraph in your application and this option is deselected, the .OGL contains one text statement for each word or character.

Image services

To specify a directory and select options for images, click on [Image Services]. The Image Services dialog box displays.

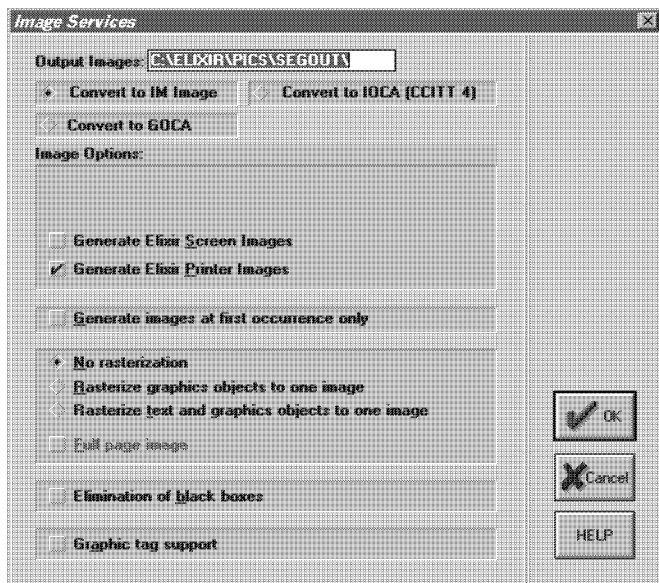


Figure 2-8. Image Services dialog box

The Image Services dialog box contains the following options:

Output Images

Specify the output directory for images in your document. The default directory is `drive:\ELIXIR\PICS\SEGOUT`.

Convert to IM image

Select this option to convert the image to an IM image.

Convert to IOCA (CCITT 4)

Select this option to optimally compress images using IOCA CCITT 4 compression. Note that IOCA CCITT 4 compression may not be compatible with some printers. Check your printer manual.

Convert to GOCA

Select this option to convert images to GOCA format.

Generate Elixir Screen Images

Select this option if you want to generate Elixir screen images (.LW8). These images can be used with ElixirForm software only.

Generate Elixir Printer Images

Select this option to generate Elixir printer images (.LP3) that can be converted into other formats such as .PCX or .TIF using Elixir Desktop for AFP. You can edit these images using ElixirImage for AFP software.

Generate images at first occurrence only Use this option only if you are using the same image in the same position throughout the document. For example, if you have a header with an image that is repeated throughout the document and you do not have any other images within the document, you can use this option.

Do not use this option if your document contains different images on different pages.

No Rasterization

Select this option if you do not want to convert all objects on the page to one complete image. Each supported graphic (.TIF, .BMP and .PCX) is converted into a separate graphic.

Rasterize graphics objects to one image

Select this option to convert all graphical objects (lines, boxes, dotted lines etc.) to one complete image instead of individual objects. This option is useful if your document contains any unsupported objects, such as rotated text or too many graphics, or if you want to manage many objects as one image.

Rasterize text and graphics objects to image

Select this option to convert each page (lines, text and graphical objects) to one page segment (.seg). Note that all graphical elements must be in a supported format: PCX, TIF or BMP. This option is useful if your document contains any unsupported fonts and objects.

Full page image

When this option is deselected, full page images generate for each page of the Windows application document, with all redundant white space surrounding the image removed. When selected, each page graphic has the same identical starting point of 0, 0. Select this option when smaller graphic files would be an advantage.

Elimination of black boxes

Selecting this option forces Elixir PrintDriver to convert all boxes in a Windows application to lines. (Previous versions converted the box portions to individual solid black boxes.)

Graphic tag support

When selected and images have been referenced in the windows application as \$\$filename, PrintDriver will recognize that an external graphic is to be used. When deselected, the \$\$filename will print as a text string.

Font mapping

Elixir PrintDriver allows you to map TrueType and ATM fonts to AFP fonts using a font mapping table. Information about editing the font mapping table is described in the "Font options" chapter.

If you want to use the font mapping table when you print your document, click on [Font Mapping]. The Font Mapping services dialog box displays.

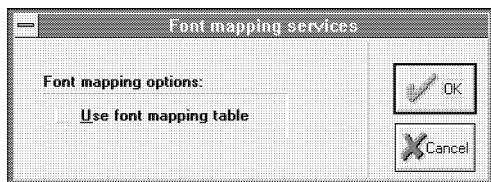


Figure 2-9. Font Mapping services dialog box

The Font Mapping services dialog box contains the following option:

Use font mapping table

Select this option to use the font mapping table or de-select this option if you do not want to use the font mapping table.

See the "Font options" chapter for more information.

Font table

When you convert TrueType or ATM fonts using Elixir PrintDriver, the converted fonts are assigned a two-digit prefix. Click on [Font Table] to view the prefixes assigned to converted TrueType and ATM fonts in the TTFONTS.NAM file. The Font name table dialog box displays.

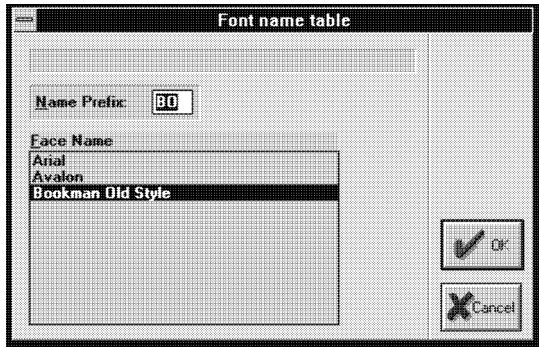


Figure 2-10. Font name table dialog box.

For more information about converting TrueType and ATM fonts, see the "Font options" chapter.

Color services

To select the color option for your document, click on [Color Services]. The Color Services dialog box displays.

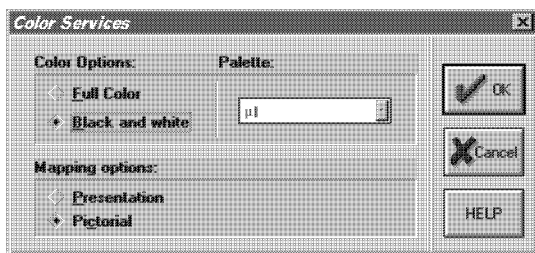


Figure 2-11. Color Services dialog box

The Color Services dialog box contains the following options:

Color Options

The use of color in your document is determined by the printer you use for printing the final document:

- Select [Full Color] to use color in your document.
- Select [Black and White] to use only black and white in your document.

Palette

Select [Black & White] - used for all non-color AFP devices, [Full Color] - for multiple color AFP devices, or [Highlight] - for single color (plus black) AFP devices.

[Full Color]: An 8-color AFP palette (matching the standard OCA color space) is provided for applying color to all drawing elements. In addition, color can be applied to the 64 OGL Standard and Screen shades when used in boxes, paths and circles. Multiple colors can be used within a single form and printed on an AFP device that can handle multiple colors. A single color can also be used for any form element and sent to an AFP device that handles single (i.e. highlight) colors.

Images whose properties are set to Highlight color (in ElixirImage) can have color applied when loaded in Full Color mode using the Background Color setting in the Image toolbox. Color can be applied to the black pixels in Black & White images using the Foreground Color setting. Full Color images, while they can be used in ElixirForm, cannot currently be converted to AFP page segment. Multi-color images (for example, a 3-color company logo) can be simulated by creating a Highlight color image for each color plane and superimposing them on top of each other in ElixirForm.

[HighLight]: Special color palettes and shading patterns have been provided for users of Xerox's IPS line of highlight color printers. When creating forms for these devices, set the [Color Mode] option in the Page Properties dialog to [Highlight] and choose the desired color palette. Color from these palettes can be applied to all drawing elements, and shades applied to those objects that support them - boxes, paths and circles.

Note: OGL Standard and Screen shade patterns cannot be used in Highlight color mode. They are only available in Black & White and Full Color modes. You can use these shades in color on a highlight color IPS printer if you set the form's color mode to Full Color.

The form's color palette controls the color for all objects used in the form, including images whose properties are set to Highlight color in ElixirImage. This palette will be used for the image if the form is converted to an AFP overlay and the Embed Page Segments option is selected. Images can also have color applied when converting from Elixir LP3 format to AFP page segment (see section 1.9 Using color in an AFP environment). In this case, the page segment will exist as a self-contained file and the color applied to the image at conversion will be the color used at print time (i.e. the color palette used in ElixirForm will not affect the color used for the image).

Mapping Options

Select [Presentation] if you are converting PCX or TIFF files composed of line art or graphics without gray scales, or [Pictorial] if you are converting PCX or TIFF files composed of high-grade graphics such as scanned photographs or graphics with gray scales.

The default is [Pictorial].

Font generation

When you print a document containing TrueType or ATM fonts, and AFP versions have not been previously generated, the Font Generation Prompt dialog box displays.

To preview this dialog box before you print your document, click on [Font Generation]. The Font Generation Prompt dialog box displays.

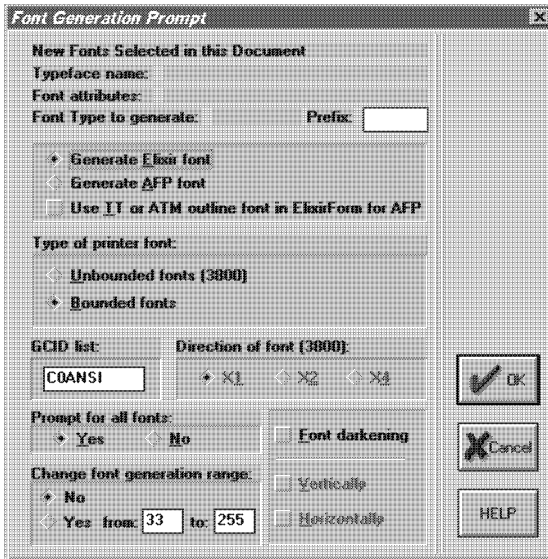


Figure 2-12. Font Generation Prompt dialog box

The Font Generation Prompt dialog box contains the following options:

Typeface name

This option is not valid when previewing this dialog box from the Main Setup dialog box. See the "Font options" chapter for information about using this option when converting TrueType and ATM fonts.

Font attributes

This option is not valid when previewing this dialog box from the Main Setup dialog box. See the "Font options" chapter for information about using this option when converting TrueType and ATM fonts.

Font type to generate

This option is not valid when previewing this dialog box from the Main Setup dialog box. See the "Font options" chapter for information about using this option when converting TrueType and ATM fonts.

Changing the prefix

This option is not valid when previewing this dialog box from the Main Setup dialog box. See the "Font options" chapter for information about using this option when converting TrueType and ATM fonts.

Select the font generation

Select the type of font to generate:

- Select [Generate Elixir Font] to generate Elixir fonts so that you can view and edit the document using ElixirForm for AFP software and convert the document using Elixir Desktop and Converters for AFP.
- Select [Generate AFP Font] to generate AFP fonts so that you can print your document on an AFP printer. Note that Elixir fonts are also generated when you select this option.
- Select [Use TT or ATM outline font in ElixirForm] to view the document in ElixirForm using the same TT or ATM fonts used in the original Windows application.

Type of printer font

Select the type of printer font:

- Select [Unbounded Box Fonts] if you have an IBM 3800 printer.

- Select [Bounded Box Fonts] if you have an IBM 3812, 3816, 3820, 3825, 3827, 3835, or 3900 printer.

GCID list

The GCID (Graphic Character IDentifier) is the identifier associated with each character in an AFP font. The GCID list displays the current GCID mapping file name. This option allows you to specify the name of a custom GCID map that is referenced when converting non-AFP fonts to AFP fonts. The default is C0ANSI.

When using the custom code page T100ANSI.COD (converting from AFPDS or OVE formats), you should use the C0ANSI GCID list.

Direction of font

Specify the direction of unbounded fonts: [X1] (across); [X2](down); or [X4] (up). Note that this option is grayed out when [Bounded Fonts] is selected.

Prompt for all fonts

Select if you want to display the Font Generation Prompt dialog box for all ungenerated fonts:

- Select [YES] if you want the dialog box to display for each ungenerated (or regenerating) font.
- Select [NO] if you do not want the dialog box to display for each ungenerated (or regenerating) font. When you select this option, the dialog box appears only for fonts with no prefix assigned. For all other fonts, the default settings are used.

Font darkening

Select this option to add a dot to fonts generated by Elixir PrintDriver. This option is useful for printing at 240 dpi or if the quality of the printed fonts is too faint.

Select [Horizontal] to add a dot horizontally, select [Vertical] to add a dot vertically or select both options to add a dot horizontally and vertically.

Change font generation range

This option allows you to specify the character range in a font. For example, you may want to generate only numbers or only lower case letters.

To specify a range of fonts, select [Yes], backspace over the numbers in the windows, and enter the numbers that correspond to the font's decimal position in the Windows ANSI character set. For example, if you want to generate only numbers, enter 48 to 57. If you want to generate only lower case letters, enter 97 to 122. See your Windows guide for character tables.

If you do not want to change the range of fonts displayed in the window, select [No].

Font import services

Elixir PrintDriver allows you to create text in your Windows document using AFP fonts, Elixir format fonts, TrueType fonts, and/or Adobe Type Manager fonts.

If you want to use AFP or Elixir format fonts, you must import the fonts into Elixir PrintDriver, generate Windows versions and install the fonts into Windows.

For a full description of how to generate fonts for Elixir PrintDriver and install them into Windows, see the "Font options" chapter.

Default Settings

Click on [Default] to reset all directories and options to the default settings. The following table shows a list of options and the default setting for that option, within each dialog box.

Main Setup dialog box

Error messages	to screen
----------------	-----------

Job Print Ticket dialog box

Job ID	DOC
Paper size	Letter 8.5 x 11 in
Description	ELIXIR DRIVER
Version	01
Revision	B
Rotation	0
Offset	0 (across and down)
Job resolution	240 dpi

Text Justification	Word
Target OGL environment	VSE
Format of job environment	VBM

PrePrint Options dialog box

Job ID	DOC
Elixir pages	selected
	elixir\forms\elixir\demo
Source OGL	deselected
	elixir\docs\oglout
Object OVE	deselected
	elixir\docs\oveout
AFPDS	deselected
	elixir\docs\afpout
Regenerate fonts	deselected
Show conversion status	selected
Print chapters	deselected

OGL Options dialog box

OGL pages	elixir\forms\oglout
Units	Pels
Image as pattern	deselected

OGL Extended Options dialog box

Include Job ID banner	deselected
Include description text	deselected
EBCDIC OGL	deselected
Font assignment	Auto
Pseg assignment	Auto
Control	noSTORE, ALL, noSummary

AFPDS (Page and Document) Options dialog box

Document name	DOC
Elixir documents	elixir\docs\doclist
Compiled overlays	elixir\forms\oveout
AFPDS documents	elixir\docs\afpout
Embed page segments	deselected

Text Services dialog box

Remap text	deselected
Windows Map	T100ANSI
Country keyboard map	T1000437
Default code page	T100ANSI
Compatible with ElixirTag codes	selected
Don't use full justify in .ELX	deselected

Image Services dialog box

Output images	<i>drive:\elixir\pics\segout</i>
Conversion	convert to IM image
Generate Elixir screen images	deselected
Generate Elixir printer images	selected
Generate images at first occurrence only	deselected
No rasterization	selected
Rasterize graphics objects to one image	deselected
Rasterize text and graphics objects to one image	deselected
Full page image	deselected
Elimination of black boxes	deselected
Graphic tag support	deselected

Font Mapping dialog box

Use font mapping table	deselected
---------------------------	------------

Font Table dialog box

The list of font names in this dialog box is not affected when you click on [Default].

Color Services dialog box

Color options	Black and white
Mapping options	Pictorial
Palette	Black & White

Font Generation dialog box

Generate Elixir font	selected
Generate AFP font	deselected
Use TT or ATM outline font in ElixirForm	deselected
Type of printer font	Bounded fonts
GCID list	C0ANSI
Direction of font	X1
Prompt for all fonts	Yes
Font darkening	deselected
Change font generation range	No
Range	from 33 to 255

Font Import Services dialog box

Any font lists in this dialog box are deleted.

Error messages

Elixir PrintDriver allows you to run a print job with or without dialog box interruptions.

To screen

When you select this option, dialog boxes, error messages, and the status of the job display on the screen.

To file

Use this option when you are processing print jobs in batch mode. When you select this option, the print job runs without any interruptions and all messages, including conversion errors, are written to the file *drive:\ELIXIR\PDERR.LOG*. You can view the error messages in this file using a text editor.

Note that all fonts must be generated before you can use this option. If you have ungenerated fonts in your document, the Font Generation prompt dialog box displays and interrupts the print job.

This chapter provides details on the three methods of creating text in your Windows document for subsequent printing on an AFP printer.

Overview of font options

Before you can print a Windows document on an AFP printer, you must ensure that the fonts in your document are in AFP format. You can do this in one of three ways:

- Create text in your document using TrueType and ATM fonts, and convert your fonts to AFP format using the Font Generation Prompt dialog box.

See the "Converting TrueType and ATM fonts" section in this chapter for more information.

- Create text in your document using TrueType and ATM fonts, and use the Elixir PrintDriver mapping table to map your fonts to AFP format fonts.

See the "Mapping TrueType and ATM fonts" section in this chapter for more information.

- Import AFP and Elixir format fonts onto your PC, and install them into your Windows application using the Elixir PrintDriver font import services.

See the "Importing AFP and Elixir format fonts" section in this chapter for more information.

Note that at the beginning of each section there is a step-by-step overview of how to use each option and references to sections providing more detailed information.

Converting TrueType and ATM fonts

If you are using TrueType and/or ATM fonts in your document, when you select [Print], Elixir PrintDriver displays the Font Generation Prompt dialog box and allows you to specify options for generating AFP and/or Elixir versions of each font.

Note that the Font Generation Prompt dialog box displays only if the fonts have not been previously generated or if the [Regenerate Fonts] option in the PrePrint dialog box is selected

When using this option to convert your TrueType and ATM fonts, make sure the [Use Font Mapping Table] option in the Font Services dialog box is deselected. See the "Using the font mapping table" section in this chapter for more information.

To generate AFP and/or Elixir versions of fonts from TrueType and ATM fonts:

- 1. Create the text in your document by selecting any available TrueType and ATM fonts from the font list in your Windows application.**
- 2. Select [Print] with [Elixir PrintDriver on Disk] selected as the printer.**

If there are fonts in the document that have not been previously generated by Elixir PrintDriver, or if the [Regenerate Fonts] option in the PrePrint dialog box is selected, the Font Generation Prompt dialog box displays.

See the "Font Generation" section in this chapter for detailed information

- 3. Specify options in the Font Generation Prompt dialog box and click on [OK].**

Elixir PrintDriver generates the font and, unless otherwise specified, the Font Generation Prompt dialog box displays for the next ungenerated font.

When all the fonts are generated, Elixir PrintDriver generates the print files in the specified directories.

Note that once you have generated the AFP version of a font, you do not have to regenerate it for subsequent print jobs. You may want to create a document containing all of the typefaces and point sizes you use, and then "print" the document using Elixir PrintDriver, to generate AFP versions of each font. Subsequent printing of documents containing these fonts are faster as the AFP fonts have already been generated.

Font Generation

The Font Generation Prompt dialog box allows you to specify options for generating AFP and Elixir versions of the TrueType and ATM fonts in your document.

You may want to display the Font Generation Prompt dialog box for a font that was previously generated if you generated only Elixir fonts and you now want to generate AFP fonts, or if you made a change to the keyboard mapping in the Text Services dialog box.

To regenerate a font that was previously generated, select [Regenerate Fonts] in the PrePrint dialog box before printing. Note that you cannot change the prefix of a font that has already been generated.

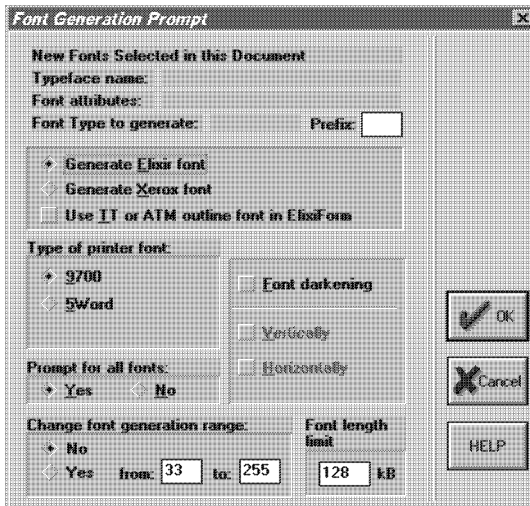


Figure 3-1. Font Generation Prompt dialog box

The Font Generation Prompt dialog box contains the following options:

Typeface name

This option is not valid when previewing this dialog box from the Main Setup dialog box. See the "Font options" chapter for information about using this option when converting TrueType and ATM fonts.

Font attributes

This option is not valid when previewing this dialog box from the Main Setup dialog box. See the "Font options" chapter for information about using this option when converting TrueType and ATM fonts.

Font type to generate

This option is not valid when previewing this dialog box from the Main Setup dialog box. See the "Font options" chapter for information about using this option when converting TrueType and ATM fonts.

Changing the prefix

This option is not valid when previewing this dialog box from the Main Setup dialog box. See the "Font options" chapter for information about using this option when converting TrueType and ATM fonts.

Select the font generation

Select the type of font to generate:

- Select [Generate Elixir Font] to generate Elixir fonts so that you can view and edit the document using ElixirForm for AFP software and convert the document using Elixir Desktop for AFP.
- Select [Generate AFP Font] to generate AFP fonts so that you can print your document on an AFP printer. Note that Elixir fonts are also generated when you select this option.
- Select [Use TT or ATM outline font in ElixirForm] to view the document in ElixirForm using the same TT or ATM fonts used in the original Windows application.

Type of printer font

Select the type of printer font:

- Select [Unbounded box fonts] if you have an IBM 3800 printer.
- Select [Bounded box fonts] if you have an IBM 3812, 3816, 3820, 3825, 3827, 3835, or 3900 printer.

GCID list

The GCID (Graphic Character IDentifier) is the identifier associated with each character in an AFP font. The GCID list displays the current GCID mapping file name. This option allows you to specify the name of a custom GCID map that is referenced when converting non-AFP fonts to AFP fonts. The default is COANSI.

When using the custom code page T100ANSI.COD (converting from AFPDS or OVE formats), you should use the COANSI GCID list.

Direction of font

Specify the direction of unbounded fonts: [X1] (across); [X2](down); or [X4] (up). Note that this option is grayed out when [Bounded Fonts] is selected.

Prompt for all fonts

Select if you want to display the Font Generation Prompt dialog box for all ungenerated fonts:

- Select [YES] if you want the dialog box to display for each ungenerated (or regenerating) font.
- Select [NO] if you do not want the dialog box to display for each ungenerated (or regenerating) font. When you select this option, the dialog box appears only for fonts with no prefix assigned. For all other fonts, the default settings are used.

Font darkening

Select this option to add a dot to fonts that are generated by Elixir PrintDriver. This option is useful when printing on 87xx, 97xx or 40xx range of production printers when the quality of the printed fonts are too faint.

Select [Horizontal] to add a dot horizontally, (the default for portrait fonts) select [Vertical] to add a dot vertically (the default for landscape fonts) or select both options to add a dot horizontally and vertically.

Prompt for all fonts

Select if you want to display the Font Generation Prompt dialog box:

- Select [YES] if you want the dialog box to display for each ungenerated (or regenerating) font.
- Select [NO] if you do not want the dialog box to display for each ungenerated (or regenerating) font. When you select this option, the dialog box appears only for fonts with no prefix assigned. For all other fonts, the default settings are used.

Change font generation range

This option allows you to specify the character range in a font. For example, you may want to generate only numbers or only lower case letters.

To specify a range of fonts, select [Yes], backspace over the numbers in the windows, and enter the numbers that correspond to the font's decimal position in the Windows ANSI character set. For example, if you want to generate only numbers, enter 48 to 57. If you want to generate only lower case letters, enter 97 to 122. See your Windows guide for character tables.

If you do not want to change the range of fonts displayed in the window, select [No].

Mapping TrueType and ATM fonts

Elixir PrintDriver provides a mapping table which allows you map the TrueType and ATM fonts in your document to AFP versions of the fonts.

To map TrueType and ATM fonts to AFP fonts:

1. **Create your document using any available TrueType and/or ATM fonts from the font list in your Windows application.**

2. **Using a text editor, edit the font mapping table to include the fonts you have in your document.**

The font mapping table is named FMAPAFP.FMP and is stored in *drive:\ELIXIR\DESKTOP\SYSTEM*.

See the "Editing the font mapping table" section in this chapter.

3. **Select the [Use Font Mapping Table] option in the Font Mapping Services dialog box.**

See the "Using the font mapping table" section in this chapter.

4. **Select [Print] with Elixir PrintDriver set as your printer.**

Elixir PrintDriver replaces all occurrences of a TrueType or ATM font with the AFP font it is mapped to in the font mapping table.

Editing the mapping table

Use any text editor to edit the font mapping table, *drive:\ELIXIR\DESKTOP\SYSTEM\FMAPAFP.FMP*, to contain the names of the TrueType and ATM fonts in your document, the font attributes and the AFP fonts they are mapped to.

When editing the mapping table, note the following:

- All the fonts in your document must be listed in the font mapping table. If your document contains fonts that are not listed in the table, Elixir PrintDriver uses the Font Generation Prompt dialog box to generate the fonts.

See the "Converting TrueType and ATM fonts" section in this chapter for information about the Font Generation Prompt dialog box.

- To ensure correct text placement, make sure that AFP fonts have the same character metrics as the Windows fonts they are mapped to.

- Always add an additional blank line (carriage return and line feed) to the end of the list.
- Make sure that you have Elixir screen versions of all AFP fonts that are in the mapping table. Elixir screen fonts are stored in `drive:\ELIXIR\FONTS\SCREEN\DEMO`.

The following table shows an example of the font mapping table.

%%Elixir_Font_Services_Table: 1.0 September 1993

%keyidx,DOSFILE,Logical Internal name,External TypeFace name,
%LSize,PtSize,Bold,ItalObq,Weight, Width,Dir,Rot,FontName

%-----

```
fmap=1,None,Arial,None,None,10,None,None,Med,None,0,0,X0H2100C;
fmap=2,None,Arial,None,None,10,None,None,Bold,None,0,0,X0H4100C;
fmap=3,None,Helv,None,None,10,None,None,Med,None,0,0,X0H2100C;
fmap=4,None,Helv,None,None,12,None,None,Med,None,0,0,X0H210BC;
(insert blank line here)
```

You can use an ASCII editor to edit the file as follows. Note that only the seven bold positions above are relevant.

Keyidx

Assign a unique number for the font, for example `FMAP = [number]` where *number* is a unique number.

Logical Internal Name

Enter the font name, for example [Arial].

PtSize

Enter the point size, for example [10] .

ItalObq

Enter [Italic] if the font is italic or [None] if it is not italic.

Weight

Enter the weight of the font, [Bold] or [Med].

Dir

Specify the direction of the font, [0], [90], [180] or [270].

FontName

Enter the file name of the mapped font, for example [XOH2100C].

Using the mapping table

To use the font mapping table to map your TrueType and ATM fonts to AFP fonts:

1. **Click on [Font Mapping] in the Main Setup dialog box.**

The Font Mapping dialog box displays.

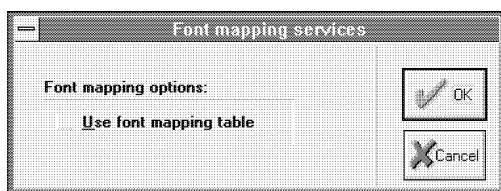


Figure 3-2. Font Mapping services dialog box

2. **Select [Use Font Mapping Table].**
3. **Click on [OK].**

When you print your document, Elixir PrintDriver maps all occurrences of a TrueType or ATM font to the AFP font specified in the font mapping table.

Note that if this option is deselected when you print your document, Elixir PrintDriver generates AFP versions of all TrueType and ATM fonts using the Font Generation Prompt dialog box. See the "Converting TrueType and ATM fonts" section in this chapter for information about the Font Generation Prompt dialog box.

Using AFP or Elixir format fonts

Using Elixir PrintDriver's Font Import Services, you can import AFP and Elixir format fonts and use them to create the text in your document by selecting them directly from the font list in the Windows application.

To import AFP or Elixir format fonts:

- 1. Make sure the fonts are downloaded onto your PC into the correct directories.**

See the "Font directories" section in this chapter for more information.

- 2. Click on [Font Import Services] in the Main Setup dialog box.**

See the "Font import services" section in this chapter for more information.

The Font Installer dialog box displays.

- 3. Click on [Font Install Options], specify the install options and click on [OK].**

See the "Font install options" section in this chapter for more information.

- 4. Click on [Import Fonts], select the import options and click on [OK].**

See the "Importing fonts" section in this chapter for more information.

- 5. From the Font Installer dialog box, [Add] the fonts for use with Elixir PrintDriver, and click on [OK].**

See the "Installing fonts in Windows" section for more information.

- 6. Create your document by selecting the imported fonts from the font list in your Windows application.**

When you select [Print] with [Elixir PrintDriver on Disk] set as the printer, Elixir PrintDriver generates the specified outputs ready for printing on an AFP printer.

Font directories

AFP and Elixir fonts must be in the correct directories on your PC before you can import them for use in your document.

AFP fonts

AFP fonts must be downloaded into one of the following directories on your PC:

- *drive:\ELIXIR\FONTS\I38IN* for unbounded box fonts
- *drive:\ELIXIR\FONTS\AFPIN* for bounded box fonts.

See the "File transfer" chapter for information about downloading fonts.

Elixir fonts

If you are an Elixir Desktop and Converters for AFP user, Elixir PrintDriver allows you to import your Elixir format fonts from *drive:\ELIXIR\FONTS\ELIXIR*. Make sure any Elixir format fonts you want to use in your document are in this directory.

Font Import Services

To use the AFP and Elixir format fonts, you must import them into Elixir PrintDriver, and generate Elixir screen and Windows screen fonts using the font import services.

To access the font import services, click on [Font Import Services] in the Main Setup dialog box. The Font Installer dialog box displays.

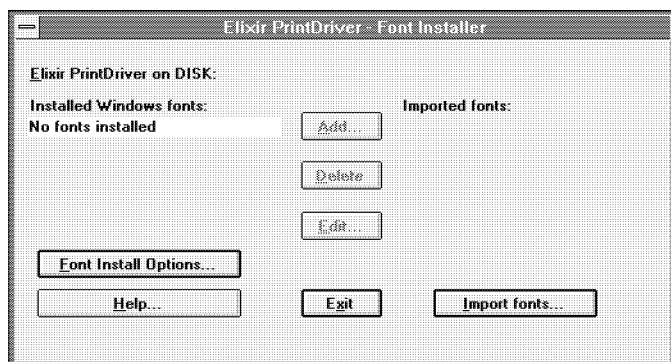


Figure 3-3. Font Installer dialog box

The Font Installer dialog box allows you set up the font install options and to import the fonts. Make sure you set the font install options before importing fonts.

Font install options

The Font Install Options dialog box allows you to select options for generating Windows screen versions of AFP and Elixir format fonts. Elixir PrintDriver needs Windows screen versions to format the document correctly.

To set the font install options:

1. Click on [Font Install Options] in the Font Installer dialog box.

The Font Install Options dialog box displays.

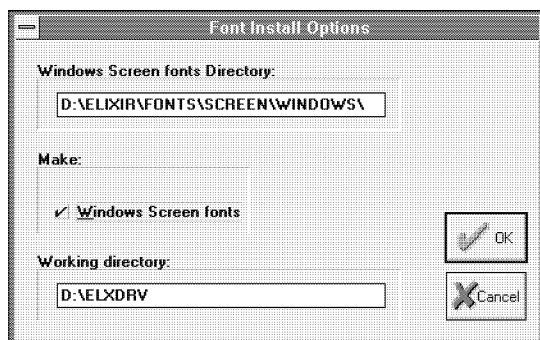


Figure 3-4. Font Install Options dialog box

2. **Specify an existing directory for Windows screen fonts.**

The default directory is *drive:\ELIXIR\FONTS\SCREEN\WINDOWS*.

3. **Select [Windows Screen Fonts].**

4. **Specify a working directory.**

The default directory is *drive:\ELXDRV*

5. **Click on [OK].**

The Font Installer dialog box displays.

Importing fonts

To import fonts, click on [Import fonts] in the Font Installer dialog box. The Import Fonts dialog box displays.

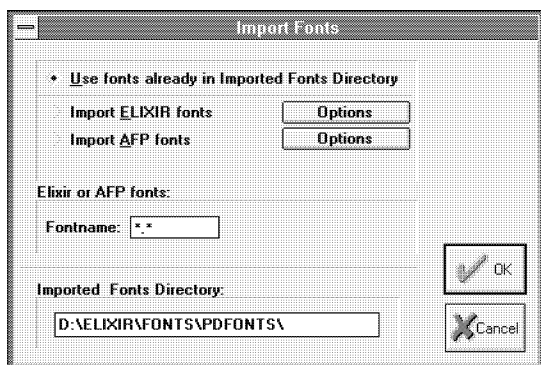


Figure 3-5. Import Fonts dialog box

From the Import Fonts dialog box, you can select the following:

- Use fonts previously imported into the imported fonts directory.
- Import Elixir fonts.
- Import AFP fonts.

Using previously imported fonts

To use fonts previously imported in the specified imported fonts directory:

1. In the **[Imported Fonts Directory]** text box, specify the directory where the previously imported fonts are contained.

The **[Imported Fonts Directory]** must be an existing directory. The default directory is *drive:\ELIXIR\FONTS\PDFONTS*.

2. Select **[Use fonts already in Imported Fonts Directory]**.
3. Click on **[OK]**.

The list of fonts in the imported fonts directory displays in the Font Installer dialog box.

Importing Elixir fonts

To import Elixir fonts from *drive:\ELIXIR\FONTS\ELIXIR:*

1. In the **[Imported Fonts Directory]** text box, specify a directory for imported Elixir fonts .

The **[Imported Fonts Directory]** must be an existing directory. The default directory is *drive:\ELIXIR\FONTS\PDFONTS*.

2. Select **[Import Elixir fonts]**.
3. Click on **[Options]**.

The Options dialog box displays.

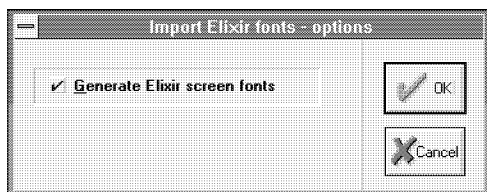


Figure 3-6. Import Elixir Fonts Options dialog box

4. **Make sure the [Generate Elixir screen fonts] option is selected.**

The default is selected. Deselect this option only if the Elixir screen font already exists in *drive:\ELIXIR\FONTS\SCREEN\DEMO*.

5. **Click on [OK].**
6. **Specify the Elixir font name in the [Fontname] window.**

DOS wild cards are allowed.

7. **Click on [OK].**

The fonts in *drive:\ELIXIR\FONTS\ELIXIR* are imported into the specified directory and display in the Font Installer dialog box.

Importing AFP fonts

To import AFP fonts:

1. **In the [Imported Fonts Directory] text box, specify a directory for imported AFP fonts .**

The [Imported Fonts Directory] must be an existing directory. The default directory is *drive:\ELIXIR\FONTS\PDFONTS*.

2. **Select [Import AFP fonts].**
3. **Click on [Options].**

The Import AFP fonts - Options dialog box displays.

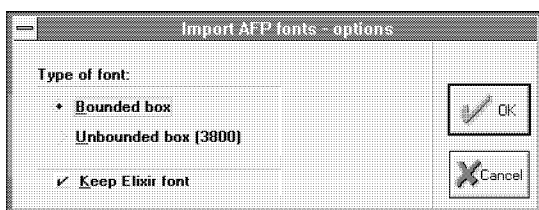


Figure 3-7. Import AFP fonts - options dialog box

4. Make the following selections in the Import AFP Fonts - Options dialog box:

Type of Font

Select [Bounded box] to import bounded fonts from *drive:\ELIXIR\FONTS\AFPIN* or select [Unbounded box (3800)] to import unbounded fonts from *drive:\ELIXIR\FONTS\I38IN*.

Keep Elixir Font

Select this option if you want to keep the Elixir Fonts used to generate the screen fonts.

5. Click on [OK].

6. Specify the AFP font name in the [Fontname] window.

DOS wildcards are allowed.

7. Click on [OK].

Elixir PrintDriver imports the fonts into the specified directory. The status of the conversion displays in the message area at the bottom of the Font Installer dialog box.

If a font was previously imported, a message displays giving you the option to cancel the conversion. Select [Yes] to cancel the conversion or select [No] to continue with the conversion.

Installing fonts in Windows

When the conversion is complete, the fonts imported into the specified directory display in the Font Installer dialog box.

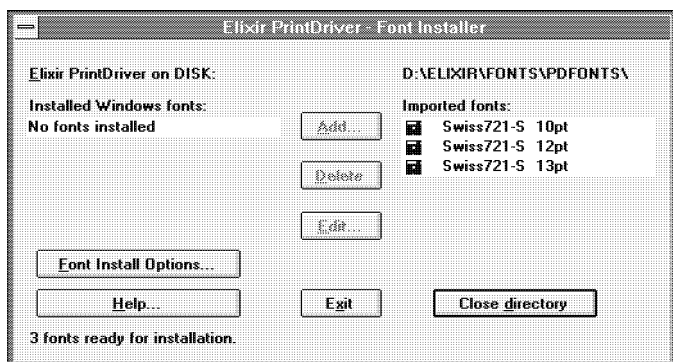


Figure 3-8. Imported fonts display.

You can now install these fonts into Elixir PrintDriver.

1. **Highlight the font or fonts from the list of imported fonts in the Font Installer dialog box.**
2. **Click on [Add].**

Elixir PrintDriver installs the Windows screen fonts.

When the conversion is complete, a dialog box displays the message that new Windows screen fonts are installed.

3. **Click on [OK].**

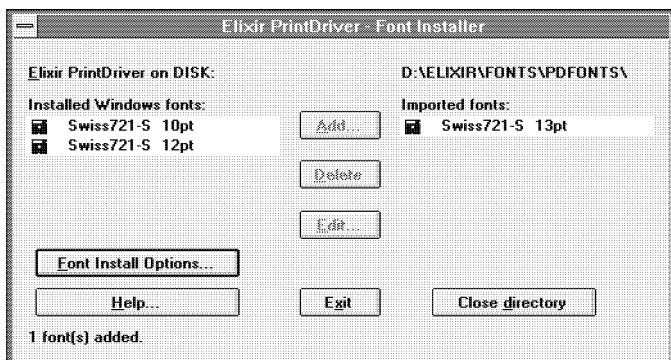


Figure 3-9. Two fonts installed in Windows.

The installed font(s) are now available for use in your Windows document when you select Elixir PrintDriver as the printer for your document. See the "Using Elixir PrintDriver" chapter for information on how to select these fonts in your document.

Editing the font description

Elixir PrintDriver allows you to edit the descriptive information stored with each screen font to match the description of the original font.

To edit a font description:

1. **Select the font name in the list of fonts installed in Windows.**
2. **Click on [Edit].**

The Edit dialog box displays.

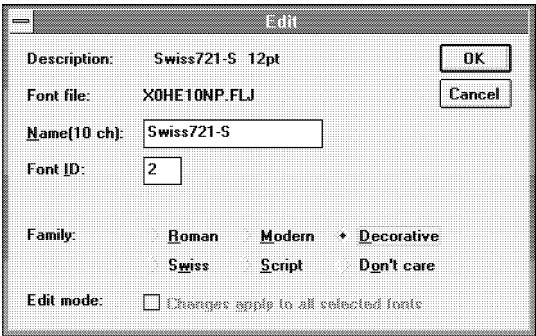


Figure 3-10. Edit dialog box

The Edit dialog box contains the following options.

Description

The description box displays the name and the point size of the font. Note that the description is informational only and cannot be changed.

Font file

The font file displays the source printer font used to generate the screen font. Note that the font file information is informational only and cannot be changed.

Name

Specify a new name for the screen font.

Font ID

Specify the sequence in which the screen font appears to Elixir PrintDriver.

Family

Select a descriptive family name to manage the screen font. If you select [Don't Care], Elixir PrintDriver uses the information stored in the font header.

Edit mode

Select this option to apply the changes to all selected fonts.

3. Click on [OK].**Editing multiple font descriptions**

To edit the description of multiple fonts:

- 1. Select the fonts you want to edit in the installed fonts list.**
- 2. Click on [Edit].**
- 3. Edit the first font as described above.**
- 4. Click on [Next] to scroll through and edit the next selected font.**
- 5. Click on [OK] after you have edited the last font.**

Deleting fonts

When you delete a font, it is removed from the current list. If you want to re-install the font at a later time, you must re-load the fonts from the Imported Fonts directory. See the "Importing Fonts" section in this chapter for information on using fonts previously imported in the specified imported fonts directory:

To delete a font from the list of fonts installed in Windows:

- 1. Select the font.**
- 2. Click on [Delete].**
- 3. Click on [OK] to remove the corresponding fonts as prompted.**

The font is removed from the list of installed fonts.

Selecting Elixir PrintDriver fonts in Windows

The fonts you installed using Elixir PrintDriver are now available for use in your Windows document when you select Elixir PrintDriver as the printer for your document.

You can select these fonts from your Windows application just as you would select any other font installed in Windows. See the "Using Elixir PrintDriver" chapter for information on selecting fonts and creating a document.

Using Elixir fonts with other drivers

If you want to use Elixir fonts with other drivers, for example HP, refer to your printer user guide for information about importing fonts.

4. Using Elixir PrintDriver

The following chapter describes how to create a document in a Windows application and generate print files for transferring to an AFP printer. See the "Introduction" chapter for supported applications.

Creating a print file

Elixir PrintDriver allows you to convert Windows based documents into AFP format ready for printing on AFP high-speed printers. You can add text and tables, draw shapes and import images into your document using the standard features available in Windows applications.

If you are creating a document on one PC and converting it on another, make sure the fonts used to create the document are present on both PCs.

Setting options in PrintDriver

This chapter assumes you have already set up PrintDriver options as described in the "Elixir PrintDriver basics" chapter.

Selecting PrintDriver

The format of a document created using 240 dpi fonts changes if it is created using 300 dpi fonts. Therefore, you must select Elixir PrintDriver as the printer for the document and select the correct job resolution before you compose your document to assure correct formatting of your document. See the "Elixir PrintDriver basics" chapter for information about the job resolution option.

You must also select the PrintDriver as the printer for the document if you want to select imported AFP and Elixir format fonts directly from the font selector in your application.

You can install Elixir PrintDriver software on any machine without the ElixiKey for the purpose of composing a document. However, you can only convert your document to AFP format on the machine where the ElixiKey is attached.

See the "Font options" chapter for information on importing AFP and Elixir format fonts.

See the "Introduction" chapter for information on the ElixiKey.

To select Elixir PrintDriver for the document:

- 1. Access the list of installed printers using the Printer Setup option in your application.**

See your application documentation for information on how to access the Printer dialog box. (The example in figure 4-1 shows the dialog box from Ami Pro v.3.11.)

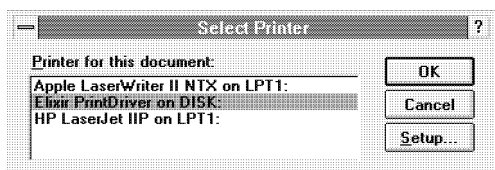


Figure 4-1. Ami Pro Select Printer dialog box

- 2. Select [Elixir PrintDriver on DISK] from the list of printers.**
- 3. Click on [OK].**

Selecting fonts

When you add text to your document, you can select TrueType fonts, Adobe Type Manager (ATM) fonts, imported AFP fonts or Elixir format fonts.

If you want to select imported AFP and Elixir format fonts for use in your document, make sure you select Elixir PrintDriver as the printer for the document.

TrueType and Adobe Type Manager fonts

To use TrueType or ATM fonts already installed on your PC, select the font name, point size and style from the file selector in your Windows application and enter text from the keyboard. See your Windows application manual for information on selecting fonts.

For TrueType and ATM fonts to print on an AFP printer, AFP format versions of each font must be generated. Elixir PrintDriver does this for you when you convert your document by selecting [Print] with the Elixir PrintDriver set as the printer. You can also set up a font mapping table to map your TrueType and ATM fonts to AFP fonts. See the "Font Options" chapter for more information on setting up your font options.

Imported AFP and Elixir format fonts

Before you can use AFP or Elixir format fonts in your document, you must import them into PrintDriver, generate Elixir and Windows screen format fonts and install them into Windows using the PrintDriver font installer. See the "Font options" chapter for information on importing and installing AFP and Elixir format fonts.

When AFP or Elixir format fonts are installed into Windows, you can select the fonts by their individual font names from the font selector in your Windows application, and enter text from the keyboard. See your Windows application's guide for information on selecting fonts.

Adding lines, boxes and shapes

Elixir PrintDriver allows you to print lines, boxes and shapes. Use the tools available in your Windows application to create these elements in your document.

Some Windows applications may output lines, boxes and shapes as graphics. See the "Limitations and solutions" appendix for specific product information.

Adding images

Elixir PrintDriver allows you to add images to your document by placing the image on the page, or by referencing an Elixir (.LP3) image that is on your PC.

Embedding bit-mapped images

To embed a .PCX, .TIF or .BMP image in your document, follow the instructions in your Windows-application manual. Elixir PrintDriver converts these images to page segments.

Referencing images

You can place an image reference in your document by entering `$$filename`, where *filename* is the name of an Elixir (.LP3) graphic which is in *drive:\ELIXIR\PICS\PRINTER*. Note that you must also have the corresponding *.TXT file in *drive:\ELIXIR\TEXTS*.

If you do not have an Elixir (.LP3) version of your graphic, embed the PCX, TIF or BMP image in the document and convert the document using Elixir PrintDriver. This will create an .LP3 and .TXT file which you can then reference in subsequent documents.

When PrintDriver converts your file, the upper left-hand corner of the referenced graphic is placed on the page where the filename reference displays. Make sure there is enough space for the graphic to display.

Starting the conversion

When you select [Print] from your application with PrintDriver selected as the printer for the document, the PrePrint dialog box displays the configuration for the print job as specified in the output file format dialog boxes. This allows you to check or to change the configuration without going back to the Main Setup dialog box.

You can view the current PrintDriver configuration at any time, by clicking on the [PrePrint Options] button in the Main Setup dialog box.

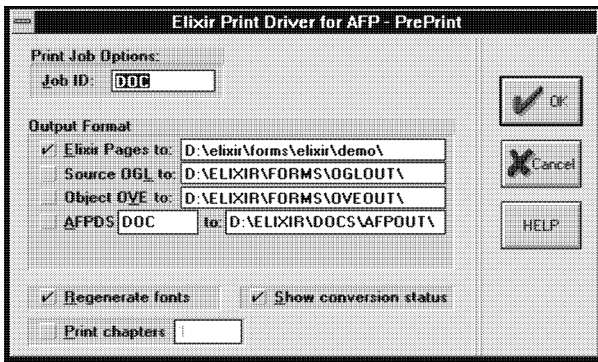


Figure 4-2. PrePrint dialog box

To change a selection, insert the cursor in the box and type a new path or job ID. Any changes will be reflected in the original setup dialog box for that option.

Job ID

Specify the output file name up to six characters. The default is the Job ID entered in the Job Print Ticket dialog box. See the "Elixir PrintDriver basics" chapter for information on the number of characters that should be used for specific documents.

Output Format

Specify the output or outputs for the print job and specify the directory for storing the resource. If you are using other Elixir products, we recommend that you keep the default directories.

- Select [Elixir Pages] to generate files in Elixir format which you can view and edit using ElixirForm for AFP software. If you are not using other Elixir products, you should deselect this option to conserve disk space.

The default directory for Elixir Pages is *drive:\ELIXIR\FORMS\ELIXIR\DEMO*

- Select [Source OGL] to generate disk print files in Overlay Generation Language. The default directory for Source OGL is *drive:\ELIXIR\FORMS\OGL\OUT*. These files must be compiled on your host system before printing.
- Select [Object OVE] to generate disk print files in object OVE. The default directory for Object OVE is *drive:\ELIXIR\FORMS\OVE\OUT*. These files are ready for printing on the host.
- Select [AFPDS] to generate disk print files for multiple page documents. The default directory for AFPDS is *drive:\ELIXIR\DOCS\AFPOUT*. These files are ready for printing on the host.

Regenerate fonts

When you select [Regenerate fonts], the Font Generation Prompt dialog box displays the settings for fonts previously generated in your document. This allows you to change previously selected settings. For example, you may already have a 240 dpi version of a font and you want to make a 300 dpi version.

The default setting is deselected.

Note: To avoid overwriting existing fonts created by Elixir PrintDriver you can disable the regeneration of fonts by editing the \Windows\WIN.INI and add the following line to the [Elixir PrintDriver,DISK] section.

ELX_REGEN_PSW=0

To return this feature to its default state, change the 0 to 1.

Show conversion status

When this option is selected, the status of the conversion displays. If you are converting a PageMaker file, make sure this option is deselected.

Print chapters

If your file contains multiple files or chapters, select this option and specify the number of chapters in the window. For example, to print a Master Document or PUB file containing nine chapters, select the option and specify 9 in the window.

Click on [OK] to accept the configuration. PrintDriver generates the print files in the specified directories.

See the "Font options" chapter if you are using True-Type or ATM fonts, and AFP versions have not been generated.

Uploading files to an AFP printer

See the "File transfer" chapter for information on how to upload your files from your PC to a host computer for printing on an AFP printer.

This chapter describes procedures for transferring files between your PC and an MVS host computer, and between your PC and an AS/400 computer using a PC-to-host file transfer package.

PC-to-MVS host file transfer

You can use any host-to-PC file transfer package that allows binary file transmission to transfer AFP font files between an MVS host and your PC.

Elixir has tested and verified the performance of the following file transfer packages:

- IBM 3270 (recommended)
- IRMA FT/3270 (recommended)
- IRMA FT/TSO

Binary file transfer ensures that ASCII to EBCDIC translation does not occur. This requirement is necessary because all files (except OGL files) generated on your PC by Elixir PrintDriver are in EBCDIC format.

The above packages also allow you to transfer source OGL files produced by Elixir PrintDriver to an MVS host. Since source files created by Elixir PrintDriver are in ASCII format, source file uploading requires conversion to EBCDIC.

Procedures for transferring files with the IBM 3270 and IRMA FT/3270 packages are similar and described in a single section.

Procedures for transferring files with IRMA FT/TSO are described in a separate section.

Installation

To use any of the above file transfer packages, first install the appropriate PC card, the PC file transfer software, and the host-resident software.

Contact your company's technical support staff if you are not sure whether all components installed correctly.

Pre-transfer considerations

The following sections describe setup procedures on the MVS host and on your PC before you start downloading or uploading files.

Downloading files

Note the following before downloading files to your PC from a host.

Downloading with IBM 3270 or IRMA FT/3270

To download AFP font files (all except OGL files) using the 3270 packages, first copy the files to a dataset with the following DCB attributes:

RECFM = VBM
LRECL = 8205
BLKSIZE = 8209

Downloading with IRMA FT/TSO

To download AFP font files using FT/TSO, first copy the files to a dataset with a variable-blocked (VB) record format.

Converting Fonts

Elixir PrintDriver for AFP converts bounded box and standard unbounded box AFP fonts.

Each AFP bounded box and unbounded box font consists of the following three files,

- Coded font file
- Code page file
- Character set file

You must download each file to one of the following directories on your PC:

- Unbounded box fonts to \ELIXIR\FONTS\I38IN.
- Bounded box fonts to \ELIXIR\FONTS\AFPIN

The coded font file contains the code page file name and the character set file name. The first two characters of a coded font file name are as follows:

- If the AFP font is a bounded box font, the first two characters are X0.
- If the AFP font is an unbounded box font, the first two characters range from X1 - X4.

The code page file is a table file that assigns hexadecimal positions to each character in the character set file. The code page file name starts with T1. You can use one code page file for multiple character set files.

The character set file contains the bitmap font characters. The first two characters of a character set file name are as follows:

- For a bounded box font, the first two characters are C0.
- For an unbounded box font, the first two characters range from C1 - C4.

Input directory information

The following table shows the directories to which you download AFP font files for use with PrintDriver:

<i><u>File type</u></i>	<i><u>Extension</u></i>	<i><u>Input directory</u></i>
Font	.240 or .300	\ELIXIR\FONTS\I38IN (unbounded box fonts)
Font	.240 or .300	\ELIXIR\FONTS\AFPIN (bounded box fonts)

AFP font file names are not given extensions. You may want to add a .240 or .300 extension as shown above to differentiate between font files in environments that use both resolutions.

Uploading files

Note the following before uploading files from your PC to an MVS host.

Uploading with IBM 3270 or IRMA FT/3270

IBM 3270 and IRMA FT/3270 do not create host datasets as part of the file transfer procedure. To upload object-format AFP files (all except OGL files) you are first required to allocate a host dataset with the following DCB parameters:

RECFM=VBM
LRECL=8205
BLKSIZE=8209

Uploading with IRMA FT/TSO

IRMA FT/TSO requires that your object-format AFP files (all except OGL files) be fixed-length record files. To generate the correct fixed-length record files, select IRMA as the output format in the Job Print Ticket dialog box. Once on the host, the files break up into VBM format by using IEBGENER (see the "Using IRMA FT/TSO" section in this chapter).

Fonts

If you have modified the bit-maps of characters in a font and have not modified code page files or coded font files, it is only necessary to upload the character set file to your host computer.

Output directory information

The following table shows the default directory to which each AFP file is written after conversion by Elixir PrintDriver:

<i><u>File Type</u></i>	<i><u>Extension</u></i>	<i><u>Output directory</u></i>
Font	*.240 or .300	\ELIXIR\FONTS\I38OUT (unbounded box fonts)
Font	*.240 or .300	\ELIXIR\FONTS\AFPOUT (bounded box fonts)
AFPDS	.AFP	\ELIXIR\DOCS\AFPOUT
Overlay	.OVE	\ELIXIR\FORMS\OVEOUT
Page segment	.SEG	\ELIXIR\PICS\SEGOUT

* The .240 or .300 font file extension is normally stripped when the font file is transferred to the printer.

Using IBM 3270 or IRMA FT/3270

The file transfer procedure is determined by the type of file you want to upload or download:

- Source text files such as .OGL files
- Object-format AFP files such as multi-page AFPDS, one-page overlays (OVE), AFP fonts, or page segment images

Object-format AFP files are not readable, and are stored in datasets with the following DCB specifications:

RECFM=VBM
LRECL=8205
BLKSIZE=8209

Downloading AFP font files

To download an AFP font file from a host computer, enter the following command at the DOS prompt:

```
RECEIVE    [path]pcfilename    'hostfilename'  
<Enter>
```

This downloads the font file *hostfilename* to the PC file *pcfilename*. A DOS directory path before *pcfilename* is optional. For convenience, you may want to specify the input directory path for the type of file you are downloading.

Uploading object-format AFP files

To upload an AFP object-format file to your host using one of the 3270 file transfer packages, follow these steps:

1. **Allocate a dataset on the host with the following DCB specifications:**

**DCB=(LRECL=8205,BLKSIZE=8209,
RECFM=VBM)**

2. **Enter the following command at the DOS prompt:**

```
SEND    [path]pcfilename    'hostfilename'  
CRLF <Enter>
```

This uploads the object-format file *pcfilename* to the host dataset *hostfilename*. A DOS directory path before *pcfilename* is optional.

Uploading text files

To upload a text file (such as a source OGL file), follow these steps:

1. **Allocate a dataset on your host with the following DCB parameters:**

**DCB=(LRECL=255,
BLKSIZE=3000,RECFM=VB)**

2. **Enter the following command at the DOS prompt:**

**SEND [path]pcfilename 'hostfilename'
ASCII CRLF <Enter>**

This uploads the text file *pcfilename* to the host dataset *hostfilename*. A DOS directory path before *pcfilename* is optional.

The ASCII parameter specifies that the file be converted from ASCII to EBCDIC.

The CRLF parameter specifies that records in the PC file are delimited by carriage return/line feed combinations.

Using IRMA FT/TSO

This section describes how to use IRMA FT/TSO to move text files (such as OGL source) and AFP object-format files between a PC and a host computer.

Downloading AFP font files

As FT/TSO cannot download VBM format files, downloading AFP font files requires you first convert the files to variable blocked (VB) format before downloading.

Converting the file to VB format

Use IEBGENER to convert AFP font files from VBM to VB format.

Parameters for downloading AFP font files

To download an AFP font file (in VB format), set the FT/TSO parameters using the following values:

Block size:	8209
Record size:	8205
Record format:	VB
Line numbers:	Position: 0 Length: 0
Code table:	STD
Transfer mode:	BINARY
Expand tabs:	NO
Truncate spaces:	NO
U/L case:	ASIS
Space units:	TRKS
Primary QTY:	1
Secondary QTY:	2

Parameters for uploading text files

For uploading text files (such as OGL), use the following sample FT/TSO parameter values. Note that since host text files may be stored in datasets with different DCB parameters, you may be required to change the parameters to match the exact text file DCB parameters.

Block size:	3000
Record size:	255
Record format:	VB
Line numbers:	Position: 0 Length: 0
Code table:	STD
Transfer mode:	TEXT
Expand tabs:	NO
Truncate spaces:	NO
U/L case:	ASIS
Space units:	TRKS
Primary QTY:	1
Secondary QTY:	2

Downloading files

To download files with FT/TSO, follow these steps:

1. **Change the current directory to the directory which contains the FT/TSO file transfer software.**
2. **At the DOS prompt, type:**

FTTSO <Enter>
3. **At the PC file name prompt, enter the name of a PC file to which you want to download the host file and press <Tab>.**

Optionally, precede the name of the file with the DOS directory path for the appropriate Elixir input directory for the type of AFP file you are downloading.

4. **At the dataset name prompt, enter the name of the host dataset you want to download and press <Tab>.**
5. **Enter the appropriate transfer type.**

A transfer type is a collection of file transfer parameters that you can store and name. For details, refer to your FT/TSO documentation.

6. **Press <F3> to download a file from the host to the PC.**

Uploading files with FT/TSO

FT/TSO cannot transfer variable-length record files in binary mode. To upload a variable-length file, follow these steps:

1. **Create the file as a fixed-blocked (FB) format file by selecting [IRMA] as the output format in the Job Print Ticket dialog box.**
2. **Upload the file.**
3. **Convert the uploaded file to VBM format using IEBGENER.**

Elixir PrintDriver uses a default block size of 8209 for files formatted for a host dataset. Some files such as IBM Core fonts may require a larger block size. If a block length error message displays during conversion, you may need to increase the default block size for Elixir PrintDriver.

To change the block size, use an ASCII editor to modify the \ELIXIR\DESKTOP\SYSTEM\AFP.INI file Irma_block_length parameter value for all conversions (OVE, font, and Pseg). IBM recommends a block size of 12288 for font resources under new PSF versions. The AFP.INI file is similar to the following:

```
%%Elixir_ AFP_Configuration:2.10 August1993
%%Target_environment=MVS
Irma_block_length=8209
```

Parameters for uploading object-format AFP files

To upload an object-format AFP file (in FB format), set the FT/TSO parameters using the following values:

Block size:	Irma_block_length value (AFP.INI file)
Record size:	same as above block size
Record format	FB
Line numbers:	Position: 0 Length: 0
Code table:	STD
Transfer mode:	BINARY
Expand tabs:	NO
Truncate spaces:	NO
U/L case:	ASIS
Space units:	TRKS
Primary QTY:	1
Secondary QTY:	2

Uploading the file with FT/TSO

To send files with FT/TSO, follow these steps:

- 1. Change the current directory to the directory which contains the FT/TSO file transfer software.**
- 2. At the DOS prompt, type:**

FTTSO <Enter>

3. At the PC file name prompt, enter the name of the PC file you want to upload and press <Tab>.

Optionally, precede the name of the file with the DOS directory path containing the AFP file you want to upload.

4. At the dataset name prompt, enter the name of the host dataset to which the PC file is to be uploaded and press <Tab>.
5. Enter the appropriate transfer type.

The transfer type you specify depends on whether you are transferring AFP object files, like page segment images or .OVE format forms, or text files like OGL format forms.

A transfer type is a collection of file transfer parameters that you can store and name. For details, refer to your FT/TSO documentation.

6. Press <F1> to upload the file from the PC to the host.

Converting the host file to VBM format

After uploading an FB file, use IEBGENER to convert the file to VBM format.

In the IEBGENER JCL job, specify the SYSUT1 and SYSUT2 (input and output) DCB parameters as follows if you created the file by selecting the [IRMA] output format option:

```
DCB=(LRECL=blocksize-4,BLKSIZE=blocksize,RECFM=VBM)
```

When you configure the DCB parameters as above, the MVS system catalog views the AFP dataset as a VBM file (instead of an FB file, the RECFM initially assigned to the file).

The target host library (SYS1.FONTLIB or user-defined) to which the resources are copied after the IEBGENER copy must have a block size that matches that of the Irma_block_length value in the AFP.INI file, and a record length equal to the block size minus 4.

Most font libraries installed for PSF version 2 have a block size of 12288 and a record size of 12284.

The following section provides a sample JCL to perform this procedure.

Converting FB to VBM format

Use the following JCL to convert a fixed-block file to VBM format. This conversion is necessary if you want to upload a file using IRMA FT/TSO.

The JCL specifies a VBM record format on both the SYSUT1 and SYSUT2 steps of the IEBGENER.

```
//LOADSEG JOB (8200,Z200-Z20001),'LYNN 7-1994',CLASS=A,
//          MSGCLASS=J,NOTIFY=00D42D,USER=00D42D,PRTY=4
//*
//* JCL TO CONVERT FB FILE TO VBM FORMAT
//*
//STEP1      EXEC PGM=IEBGENER
//SYSPRINT   DD SYSOUT=*
//SYSUT1     DDDSN=ELIXIR.PSEG.UPLOAD (S1TEST),DISP=SHR,
//           DCB=(RECFM=VBM,LRECL=8205,BLKSIZE=8209)
//SYSUT2     DD DSN=SYS1.PSEGLIB (S1TEST),DISP=SHR,
//           DCB=(RECFM=VBM,LRECL=8205,BLKSIZE=8209)
//SYSIN      DD DUMMY
```

PC-to-IBM AS/400 file transfer

This section describes how to upload your files to an AS/400 computer. The steps involved are as follows:

- Specify [AS400] as the output format in the appropriate dialog boxes
- Create an AS/400 library and file to which converted files will be uploaded. Note the distinction between files on a PC and on an AS/400 - a PC file is analogous to an AS400 member; an AS/400 file is a second-level descriptor for a member as follows - library/file(member)

- Create a PC File Descriptor File on your PC
- Upload files to the AS/400
- Process uploaded files for use by the OS/400 operating system.

Creating a host library and file

To create a library and file on an AS/400 host, enter CRTPF on the AS/400 console keyboard. Executing this command displays screens in which you enter information about the library and file name you want to create. Specify the following:

- The library name and file name you want to create
- Record length = 1024
- Record Format Level Check NO

Press <Enter> to confirm the creation of the file and library you specified.

Create a PC file descriptor file and path

You create a PCFDF (which you can use whenever you transfer files) by downloading an AS/400 file to your PC using PC Support. Change the current directory to the directory in which PC Support is installed and enter the following command:

PCSMENU <Enter>

This command displays the PC Support main menu.

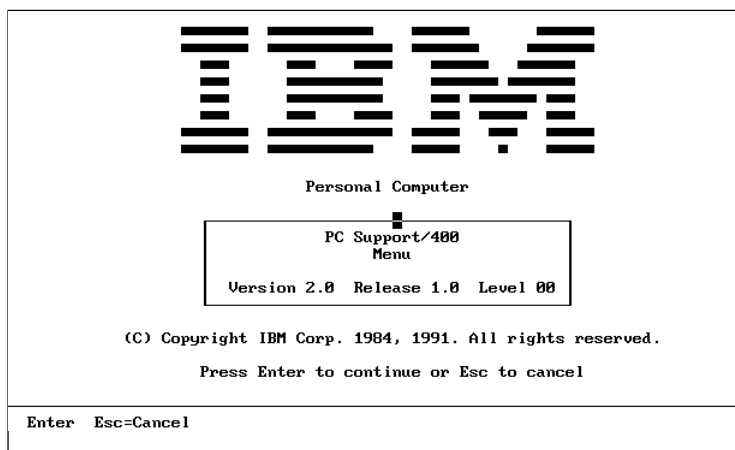


Figure 5-1. PC Support/400 menu

Press <Enter>.

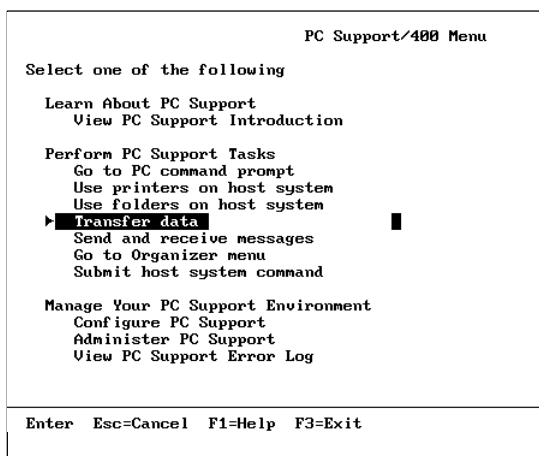


Figure 5-2. PC Support first menu

- Select [Transfer data] and press <Enter>.

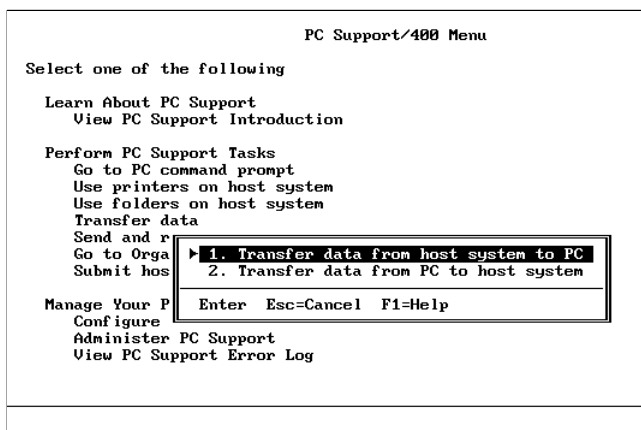


Figure 5-3. File transfer direction window

- Select [1. Transfer data from host system to PC] and press <Enter> to display the AS/400 System to PC Transfer screen, from which you can create a transfer request.

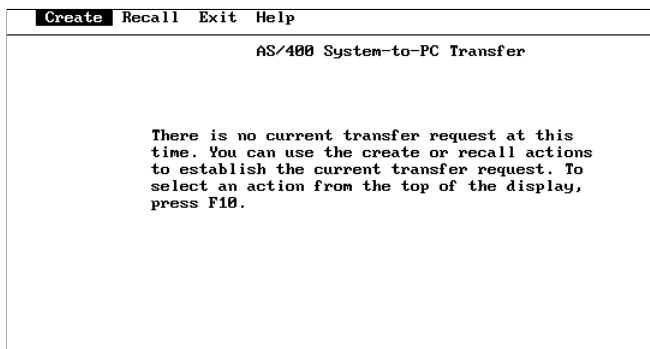


Figure 5-4. AS/400 System to PC Transfer screen

- Select [Create] and press <Enter>.

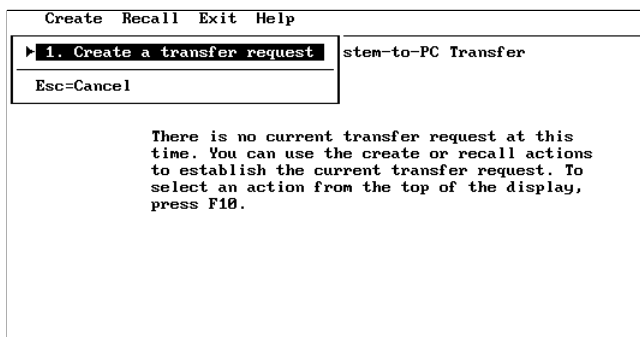


Figure 5-5. Create transfer request window

- Press <Enter>.

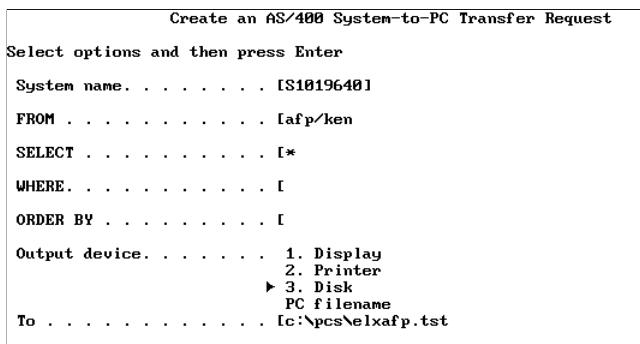


Figure 5-6. System-to-PC Transfer Request screen

Specify the following on the above screen:

- **FROM:** *libraryname/filename*
(*libraryname* and *filename* are the library name and file name you created on the AS/400.)
- **Output device:** [3. Disk]
- **To:** *drive:\path\pcfilename*

drive: - is the drive on which you want to transfer the AS/400 file (which is empty)

path - is the full path to the directory in which you want to create a PCFDF

pcfilename - is the stem name of the PCFDF you want to create

- Press <Page Down>.

```

                                Modify an AS/400 System-to-PC Transfer Request

Select options and then press Enter

old file . . . . . 1. Yes
                   ▶ 2. No

PC file type . . . . . 1. ASCII text
                       2. DOS random
                       3. BASIC sequential
                       4. BASIC random
                       5. DIF(TM)
                   ▶ 6. No conversion
                       7. DOS random type 2

Show format of
transferred data . . . . . 1. Display
                           2. Print
                   ▶ 3. None

Save transfer

```

Figure 5-7. Transfer Request screen

Select [No conversion] for **PC file type**. Press <F5> to save your selections and download the empty AS/400 file to the drive and directory you specified.

```

Create  Modify  Run  Recall  Save  Exit  Help

                                AS/400 System-to-PC Transfer

To select an action shown above, first press F10.

System name. . . . . : S1019640
FROM . . . . . : afp/ken
SELECT . . . . . : *
WHERE. . . . . :
ORDER BY . . . . . :
Output device. . . . . : Disk
To . . . . . : c:\pcs\elxafp.tst

0 record(s) written to disk file
0 record(s) had data that could not be translated

```

Figure 5-8. System-to-PC Transfer screen

An ASCII PCFDF with the stem name you specified and .FDF extension generates in the PC directory you specified. The file contains the following lines:

```

PCFDF
PCFT 6
PCFL AS/400filename 10 1024

```

Uploading files

You are now ready to upload AFP-format files to your AS/400 computer.

Make sure you specify the [AS400] option in the Job Print Ticket dialog box .

To upload files, invoke PC Support on your PC , select Transfer Data, then select Transfer Data from PC to host as shown in figures A-1, A-2, and A-3, and press <F10> to display the Create a PC to AS/400 transfer request screen.

```

                                Create a PC-to-AS/400 System Transfer Request
Select options and then press Enter

System name. . . . . [S1019640]

TO . . . . . I

From . . . . . [I:\QIWSFLR\

Use PC file
description. . . . . ▶ 1. Yes
                      2. No

Description
file name. . . . . I

Create AS/400
objects. . . . . 1. Yes, create member
                  2. Yes, create file and member
                  ▶ 3. No, replace existing member
  
```

Figure 5-9. PC to AS/400 Transfer Request screen

Specify the following values on the transfer screen:

- **TO:** *libname/filename*

libname and *filename* are the library name and file name you created on the AS/400.

- **From:** *drive:\path\pcfilename*

drive: - is the drive which contains the file(s) to be uploaded

path - is the full path to the directory containing the file(s) to be uploaded

pcfilename - is the name(s) of the file(s) to be uploaded

- **Use PC File Description** [Yes]

- **Descriptionfilename:** *drive:\path\pcfilename.fdf*

drive - is the drive which contains the PCFDF

path - is the full path to the directory containing the PCFDF

pcfilename - is the name of the PCFDF with .FDF extension

- **Create AS/400 objects:** [1. Yes, create member]

Press <Enter>.

```

                                Modify a PC-to-AS/400 System Transfer Request

Select options and then press Enter

System name. . . . . [S1019640]

TO . . . . . [afp/fonts(c0he24np)
               PC filename
From . . . . . [a:\c0he24np.fnt

Use PC file
description. . . . . ▶ 1. Yes
                   2. No

Description
file name. . . . . [c:\pcs\fonts.FDF

Create AS/400
objects. . . . . 1. Yes, create member
                2. Yes, create file and member
                ▶ 3. No, replace existing member

Enter  Esc=Cancel  F1=Help  F3=Exit  F4=Prompt  F5=Run

```

Figure 5-10. PC-to-host Transfer Request screen

Press <F5> to start the transfer.

```

                                Run a PC-to-AS/400 System Transfer Request

System name. . . . . [S1019640]

TO . . . . . [afp/fonts(c0he24np)
From . . . . . [a:\c0he24np.fnt

Use PC file
description. . . . . ▶ 1. Yes
                   2. No

0400 - IWS2023: Data already exists in member C0HE24NP of AS/400 file
          FONTS in library AFP. Recovery . . . : If you continue, the data
          in the member will be replaced.
          Press Enter to continue operation or press Esc to cancel.

Enter  Esc=Cancel  F1=Help

```

Figure 5-11. Run Transfer screen

If an AS/400 member with the same name in the library and file already exists, the program prompts you for overwrite confirmation.

After files upload, the number of records transferred displays.

Create	Modify	Run	Recall	Save	Exit	Help
PC-to-AS/400 System Transfer						
To select an action shown above, first press F10.						
System name. : S1019640						
TO : afp/fonts(c0he24np)						
From : a:\c0he24np.fnt						
Use PC file description. : Yes						
Description file name. : c:\pcs\fonts.FDF						
53 record(s) successfully sent to the AS/400 System						
Esc=Cancel						

Figure 5-12. Transfer confirmation screen

Processing uploaded files

After uploading AFP files to an AS/400, the files must be converted by an OS/400 operating system utility to a format that is usable by the OS/400 operating system, as described in the following sections:

Fonts

To convert a font, enter the following command:

```
CRTFNTRSC  FNTRSC(QFNTCPL/filename)  FILE  
(libname/filename)
```

filename

is the name of the coded font, code page, or character set sent to the AS/400. All three components of a font must be converted using the CRTFNTRSC command.

libname

is the name of the AS/400 library containing the font resources.

Page segments

To convert a page segment image, enter the following command:

C RTPAGSEG *filename*

filename

is the name of the page segment created on the AS/400.

Overlays

To convert an overlay, enter the following:

C RTOVL *filename*

filename

is the name of the overlay created on the AS/400.

FORMDEFs

To convert a FORMDEF, enter the following:

C RTFORMDF *filename*

filename

is the name of the FORMDEF created on the AS/400.

AFPDS

To convert and print AFPDS (single or multi-page AFP documents), enter the following command:

P RTAFPDTA FILE (*libname/filename*) **DEV**(*printer-name*) **FIDELITY** (*ABSOLUTE)

filename

is the name of the AFPDS dataset to be converted and printed.

libname

is the library containing the AFP file.

FIDELITY(*ABSOLUTE)

specifies that you want the file printed exactly as is.

printername

is the logical name of the printer as specified on the AS/400.

Note that you must configure the printer on the AS/400 as an AFP print device.

Transferring files using the Desktop

If you are also an Elixir Desktop user, see your *Elixir Desktop for AFP user guide* for information on how to use the Elixir **Loader** menu to upload and download files.

A. Limitations and solutions

This chapter describes limitations of PrintDriver and provides some solutions to common problems.

Reverse text

If you want to use reverse text in a document, you can import it as a rasterized graphic such as a .TIF or .PCX file or you can import reverse fonts from Elixir-Font to create the reverse text. See the "Font options" chapter for information about importing fonts.

Rotated text

Elixir PrintDriver does not support rotated text as text statements. If you want to use rotated text in your document, you can import it as a rasterized graphic such as a .PCX or .TIF file, or select the [Convert graphical objects to image] option in the Image Services dialog box when you convert your document. Note that when you select this option, all elements except standard text are converted to images.

Color text strings

If your printer supports color printing and you want to use color ATM text in your document, add the following information to your ATM.INI file:

```
[Colors]  
PrintColorGraphics=OFF
```

Underlined text

Elixir PrintDriver allows you to use underlined text in your document. However, Elixir PrintDriver converts the underline as line draw statements. If you want to edit the underlined text, you must do so in the original documentation package. To edit the text using Elixir-Form, you can remove the line element, edit the text and then redraw a new line under the edited text.

Typographers quotes

Typographers quotes (right and left quote marks) are not common in most AFP code pages. Therefore, if you want to use them, you should do one of the following:

- Make sure the option for typographical quotes in your application is not selected.
- Use a code page that includes typographers quotes, such as the Elixir custom code page T1LATIN1.
- Edit the code page you use to include typographers quotes.

Supported applications

The Elixir PrintDriver has been tested with the following applications:

- Microsoft Word 6.0, 7.0, and 97
- Corel WordPerfect 6.1, 7.0, and 8.0
- Corel Ventura 5.0 and 7.0
- Lotus Ami Pro 3.0 and 3.1 and WordPro96
- Adobe PageMaker 5.0 and 6.5
- Write (Windows 3.11, 95, and NT)
- Adobe FrameMaker 5.0, and 5.5

Application compatibility

The following section describes limitations specific to certain Windows applications.

Ami Pro 3.x

Imported Elixir fonts may display as symbols on your screen. To view correctly, change viewing mode to [STANDARD].

If you want to use Elixir fonts in your document, you must install them from the Printer Setup option within Ami Pro. To access the Printer Setup menu:

- 1. Pull down the File menu.**
- 2. Select [Printer Setup...]**

The Select Printer dialog displays.
- 3. Select [Elixir PrintDriver on Disk].**
- 4. Click on [Setup].**

The Main Setup dialog box displays.

Continue to install fonts as described in the "Font options" chapter.

Make sure you do not save individual .SAM files with an associated printer if they are contained in a master document.

CorelDRAW!

CorelDRAW! graphics are output as draw paths. If you want to use a CorelDRAW! graphic, export the graphic as a .PCX or .TIF file and import the file into a document in another application.

PageMaker

All graphics files in a PageMaker document must be embedded.

Use the [Composite] selection when printing a document. Do not use the [Color separation] option.

Converting PageMaker 5.0 documents using Elixir PrintDriver must have the option [Show Conversion Status] deselected for the conversion to run correctly. PageMaker 6.0 or 6.5 do not have this limitation and can be run with the [Show Conversion Status] on.

When specifying the paper size in the Job Print Ticket dialog box, use the [Custom Format] option. PageMaker does not recognize the preset default sizes.

Ventura Publisher 4.1

Not supported in this release.

Word

The [Background printing] option in Word conflicts with Elixir PrintDriver operation. Make sure this option in the Options dialog box is deselected. Note that the default is selected.

To deselect this option:

1. Pull down the File menu.

2. Select [Print].

The Print dialog box displays.

3. Click on [Options].

The Option dialog box displays.

4. Deselect the [Background printing] option.

WordPerfect 5.x to 6.0 conversion of images

When converting files from 5.X to 6.0, the 6.0 conversion process adds a black box underneath all images. Elixir PrintDriver converts both elements, with the black box overriding the image in the resulting file.

Delete the black box in all images while in WordPerfect 6.0 prior to converting with Elixir PrintDriver.

WordPerfect 6.0

WordPerfect 6.0 does not allow Elixir PrintDriver to select output to [Disk]. You should install the patch for WordPerfect 6.0a. If you must use this application before the patch is installed, change the printer setting from Elixir PrintDriver on DISK to Elixir PrintDriver on LPT1. However, this is only a temporary solution as it may clog up network print spools.

To change the printer setting:

1. **Click on the Control Panel in Windows.**
2. **Click on the Printers icon.**
3. **Select [Elixir PrintDriver on DISK].**
4. **Click on [Connect].**
5. **In the Ports window, select LPT1.**
6. **Click on [OK].**

Note that the file still prints to DISK and not to LPT1.

Graphics

Elixir PrintDriver can convert the following bit-mapped graphics formats (other formats may convert, but are not supported):

- .PCX
- .TIF #1
- .TIF #2
- .TIF #4
- .TIF #5 (black and white only)

- .TIF #32771
- .TIF #32773
- .BMP (within a document only)

If you want to use a graphic that is not .PCX or .TIF format, copy it to the Clipboard, save it as a .TIF or .PCX file and then import it into your document.

Font support

Elixir PrintDriver cannot convert [Tms Rmn] or [Helv] system fonts. Replace all occurrences of [Tms Rmn] with the TrueType [Times New Roman] font or the ATM [Times] font. Replace all occurrences of [Helv] with the TrueType [Arial] or ATM [Helvetica] font.

Elixir PrintDriver can convert only TrueType or ATM fonts.

White objects on black objects

Elixir PrintDriver does not support placing white objects on top of black objects; all objects are transparent on the AFP printer. For example, you cannot place a white box on top of a black line.

If you want to place white objects on top of black objects, create the object using a graphics editor, save the file as a .PCX, BMP, or .TIF file, and then import the graphics file into your document.

If you want to use reverse video text; for example, white text in a black box, either import it as a .PCX, BMP, or .TIF, or create the font using ElixirFont and import it for use with PrintDriver. Make sure you deselect the [Variable space enabled] option in the code page to prevent white space between words. See the "Font options" chapter for information about importing fonts.

B. Operational and error messages

This appendix lists all the operational and error messages issued by Elixir PrintDriver. These messages display in message dialog boxes. Some dialog box messages require the user to enter a response such as [Yes] ,[No] or [Continue].

Messages appear in alphabetical order and are shown in bold. Explanations for messages are given below the message in normal text.

Can't allocate memory.

Unable to allocate more memory as needed. Close any applications you are not working with and try the operation again. If you receive the same memory error again, close further applications or exit and restart Windows.

Can't convert elixir screen font:...

Insufficient disk space or missing directory. Check that the directory exists on the specified drive.

Can't convert print driver font:...

Insufficient disk space or missing directory. Check that the directory exists on the specified drive.

Can't convert Windows screen font:...

Insufficient disk space or missing directory. Check that the directory exists on the specified drive.

Can't create CMD file.

Insufficient disk space or missing directory. Check that the directory exists on the specified drive.

Can't create dir:...

The directory either already exists, is invalid, or there is not enough room on the hard drive.

Can't create elixir font.

Insufficient disk space or missing directory. Check that the directory exists on the specified drive.

Can't create image file.

Image may be too large. Reduce the size of the image then create the image file again.

Can't create object box.

Not enough memory available. Close any applications you are not working with and try the operation again. If you receive the same memory error again, close further applications, or exit and restart Windows.

Can't create object circle.

Not enough memory available. Close any applications you are not working with and try the operation again. If you receive the same memory error again, close further applications, or exit and restart Windows.

Can't create object font.

Not enough memory available. Close any applications you are not working with and try the operation again. If you receive the same memory error again, close further applications, or exit and restart Windows.

Can't create object line.

Not enough memory available. Close any applications you are not working with and try the operation again. If you receive the same memory error again, close further applications, or exit and restart Windows.

Can't create object path.

Not enough memory available. Close any applications you are not working with and try the operation again. If you receive the same memory error again, close further applications, or exit and restart Windows.

Can't create object text.

Not enough memory available. Close any applications you are not working with and try the operation again. If you receive the same memory error again, close further applications, or exit and restart Windows.

Can't create object text - for font.

Not enough memory available. Close any applications you are not working with and try the operation again. If you receive the same memory error again, close further applications, or exit and restart Windows.

Can't create screen image file.

The image file may be too large. Reduce the size of the image and then create the screen image file.

Can't export AFP font:...

Insufficient disk space, missing font or missing directory. Check that the directory and the font exist on the specified drive.

Can't find Elixir font:...

Make sure the font exists in
\ELIXIR\FONTS\ELIXIR\.

Can't find file:...

File name is missing or invalid.

Can't find TTFONT.NAM file.

Make sure the TTFONT.NAM file exists in
\ELIXIR\FONTS\MAPS\. If not, reinstall the software.

Can't find AFP font:

Make sure the font exists in the appropriate directory. Check documentation for correct directories.

Can't generate Elixir font.

Insufficient disk space or missing directory. Check that the directory exists on the specified drive.

Can't generate list of images.

Not enough memory available. Close any applications you are not working with and try the operation again. If you receive the same memory error again, close further applications, or exit and restart Windows.

Can't import AFP font:...

Insufficient disk space, missing font or missing directory. Check that the directory and the font exist on the specified drive.

Can't open keyboard map file (.KMP).

Missing or invalid .KMP file name. Check the correct mapping file is selected Text Services dialog box.

Can't open LBCONV library.

.DLL library is missing, corrupt, or the path is missing. Make sure that ELIXIR is in your path and that the file exists in *drive:\ELIXIR*.

Can't read keyboard mapping table (.KMP).

Missing or invalid .KMP file name. Check the correct mapping file is selected in Text Services dialog box.

Can't store object line.

Not enough memory available. Close any applications you are not working with and try the operation again. If you receive the same memory error again, close further applications, or exit and restart Windows.

Can't store object.

Not enough memory available. Close any applications you are not working with and try the operation again. If you receive the same memory error again, close further applications, or exit and restart Windows.

Can't store object font.

Not enough memory available. Close any applications you are not working with and try the operation again. If you receive the same memory error again, close further applications, or exit and restart Windows.

Can't store text object - for font.

Not enough memory available. Close any applications you are not working with and try the operation again. If you receive the same memory error again, close further applications, or exit and restart Windows.

Can't switch to Elixir system disk.

Windows system error or wrong specification of drive. Check that the specified drive is the drive where Elixir is installed.

Cannot concatenate image file.

The image file may be too large. Reduce the size of the image and then retry the operation.

Cannot write new prefix of font.

Make sure the TTFONT.NAM file exists in \ELIXIR\FONTS\MAPS\. If not, reinstall the software.

Error protection key.

You must have the correct ElixiKey installed to perform this file conversion. If you connect the correct key and you still have this error, try rearranging the order of any keys you have attached.

File write error.

Insufficient disk space or missing directory. Check that the directory exists on the specified drive.

Match not found, char *n*

(where *n* is a number representing a hex position). A Windows character is missing from the Elixir code page. To correct this error, you can use the T100ANSI code page or you can edit the code page and Country Keyboard Map to accept the missing characters. Both procedures are explained below. Note that if you use the T100ANSI code page, you can convert to Elixir, OVE, or AFPDS only.

To use the T100ANSI code page:

1. **From the Main Setup dialog box, click on [Text Services].**

The Text Services dialog box displays.

2. **Deselect the [Remap Text] option.**
3. **In the [Default Code Page] option, specify T100ANSI.**
4. **Click on [OK].**
5. **From the Main Setup dialog box, click on [Font Generation] .**

The Font Generation Prompt dialog box displays.

6. **In the [GCID list] option, specify C0ANSI.**
7. **Click on [OK].**

If you want to edit your file in ElixirForm, make sure you select [NONE] as the [Keyboard Mapping] option in the Text and Font Options dialog box. See your *ElixirForm User Guide* for more information.

To edit the Country Keyboard Map and code page:

1. **Note the hex position specified in the error message, for example 96.**
2. **Note the Windows Map, Country Keyboard Map, and Default Code Page.**

This is specified in the Text Services dialog box.

3. **Search for the hex position not found in the Windows mapping file, for example *drive:\ELIXIR\FONTS\MAPS\T100ANSI.KMP* and make a note of the GCID it is mapped to, for example SS680000=96.**

You can use any text editor to view this file.

4. **Find an empty character space by viewing the Country Keyboard Map or the font.**

Locate your Country Keyboard (code page) table in an MS-DOS manual. The standard United States (English) code page is 437. Note which spaces are available for characters. For example, in code page 437, spaces are available starting at decimal position 176 (hex b0).

ElixirFont users can also view the font with the missing characters and note any empty spaces. These are usually assigned to positions B0 through DA. Do not use decimal 1 - 31.

5. **Edit the Country Keyboard Map in *drive:\ELIXIR\FONTS\MAPS* so that the GCID is mapped to an empty character space. For example, SS680000=B0.**

You can use any text editor to edit the Country Keyboard Mapping file you are using, for example, T1000437.KMP.

6. **Save the file with a new file name, for example, T1CST437.KMP.**

This prevents overwriting the file when you reinstall Elixir software at a later date.

7. **Edit the GCID list that corresponds to the .KMP file you edited to include the same changes.**

The GCID list is stored in ELIXIR\FONTS\ELIXIR with a .GL1 extension, for example C0000437.GL1. Map using the decimal place instead of the hex position, for example char_id = 176, SS680000.

8. **Save the file with a new file name, for example, C0CST437.GL1.**

This prevents overwriting the file when you reinstall Elixir software at a later date.

9. **Check the default code page to see if the characters have been mapped.**

The code page is stored in ELIXIR\FONTS\ELIXIR with a .COD extension, for example T1V10037.COD.

10. **If the character is not mapped, add another character line at the bottom of the code page, for example
char = 191, SS680000, VALID, PRINTED, INCREMENTED, 30;**

You can use hex positions 30 -3f. 40 and above are taken.

11. In the Text Services dialog box, select [Remap text] and specify the new file Country Keyboard Map, for example, T1CST437, and the new Default Code Page, for example, T1CST037.
12. In the Font Generation Prompt dialog box, specify the new GCID list, for example, C0CST437.
13. In the PrePrint dialog box, select [Regenerate Fonts].

No memory for conversion.

Not enough memory available. Close any applications you are not working with and try the operation again. If you receive the same memory error again, close further applications, or exit and restart Windows.

Open output page - elx file failed.

Insufficient disk space or missing directory. Check that the directory exists on the specified drive.

Prefix is already used. Enter new prefix

Prefix is already in use. Select a different prefix.

PrintDriver cannot use vector font:...please change font to TrueType, device or ATM fonts.

PrintDriver does not support vector fonts. If error persists after you have replaced the vector fonts, remove them from the font list.

The name is too long for the amount of segments that this form is generating.

Shorten the job ID name. (See "Too many pages. Too long job id" error message.)

Too many fonts in page.

Number of fonts on the page exceeds the AFP printer limitation. See your AFP printer user guide for information about limitations.

Too many lines for AFP printer.

Number of lines on the page exceeds the AFP printer limitation. See your AFP printer user guide for information about limitations.

Too many pages. Too long job id.

Shorten the job ID name:

- Single page documents: use up to 6 characters.
- 2-9 page documents: use up to 5 characters .
- 10-99 page documents: use up to 4 characters.
- 100-999 page documents: use up to 3 characters.
- 1000-9999 page documents: use up to 2 characters.

Writing page to disk failed.

An error occurred when writing a page to disk. Check disk space.

C.

Text mapping

This appendix provides information for users who need to change the Country Keyboard Mapping file and Default Code Page in the Text Services dialog box.

Mapping files

If you need to change the default Country Keyboard Map file and the Default Code Page, choose the file that most closely meets your needs and insert the stem name in the Text Services dialog box.

Country Keyboard maps

The following is a list of .KMP files provided with Elixir PrintDriver.

<u>.KMP</u>	<u>Description</u>
T100ANSI.KMP	Windows ANSI
T1000437.KMP	Personal Computer for US English, UK English, and European languages using the IBM character set.
T1000850.KMP	PC Multilingual 1 for IBM PC multinational keyboards
T1000852.KMP	Latin 2 - Slavic
T1000855.KMP	Cyrillic
T1000857.KMP	Latin 5
T1000860.KMP	Portugal
T1000861.KMP	Iceland

T1000862.KMP	Hebrew
T1000863.KMP	Canadian French
T1000864.KMP	Arabic
T1000865.KMP	Nordic
T1000869.KMP	Greek

Default code page

The following is a list of default code pages:

T1V10037	US and Canada
T1000420	Arabic Bilingual
T1000424	Hebrew
T1000870	Latin 2 Multilingual
T1000875	Greece
T1000905	Latin 3 Multilingual
T1001025	Cyrillic Multilingual
T1001026	Latin 5 EBCDIC
T1D0BASE	DCF Rel 2 Compatibility
T100ANSI	Windows ANSI
T1V10273	Austria, Germany
T1V10274	Belgium
T1V10275	Brazil
T1V10277	Denmark, Norway
T1V10278	Finland, Sweden
T1V10280	Italy
T1V10282	Portugal

T1V10284	Spain, Latin America
T1V10285	United Kingdom
T1V10297	France
T1V10500	International #5
T1V10871	Iceland

Glossary

This glossary contains a list of the basic terminology that you may find in this manual.

Application: Any program you run on your PC.

Arrow: An arrow-shaped screen pointer used for selecting objects.

Button (on the screen): An area on the screen that causes a response when you click on it. For example, an [OK] button that accepts your entries when you click on it in a dialog box.

Click, on an item: To momentarily press and release the left mouse button with the screen pointer on an item.

Close: To exit from a window, dialog box, or an application.

Close box: A small white box at the left of a window header and at the left of the menu bar.

Command button: A button in a dialog box that confirms or cancels an action when you click on it. The [Cancel] button cancels the command. The [OK] button confirms and executes the command and saves the information you specified in a dialog box.

Cursor: An "I"-shaped screen pointer used when entering text.

Deselect: To cause one or more selected (highlighted) icons or elements to not be selected any more.

Dialog box: A rectangular box that displays and requests information. You enter information in fields in the dialog box, and normally confirm your entries by clicking on an [OK] button or by pressing <Enter>.

Directory: A list of hard disk or diskette contents.

DOS: Disk Operating System, the collection of programs that gives control of a PC's resources to the user.

Double-click: To press the left mouse button twice in rapid succession, normally to open an icon.

Drag: To click on an item and move the item with the mouse while holding down the left mouse button.

Drag and drop: Used to copy an object as follows: click on an item on the screen, hold down the left mouse button, move the mouse to move the screen pointer to an icon, and release the mouse button.

Drop: To release the mouse button after dragging an item to an icon.

Extension: The period and three characters following a file name. An extension identifies the type of information in a file. For example, .ELX indicates an Elixir format form file.

Fast Keys: See Keyboard shortcuts.

File filter: The use of DOS wildcard characters to display only those files with selected name characteristics in a window or dialog box. For example, to display only files that begin with ABC in a directory of many files you could enter ABC*.*. See also, *Wildcard character*.

File name: The name of a file. PrintDriver uses DOS file naming conventions. DOS file names consist of a base (stem) name containing up to eight characters and an extension of up to three characters.

Format: To prepare a diskette so it can hold information. Formatting a diskette erases the information on the diskette.

Form elements: The individual lines, shapes, images, and text that compose a form.

Grayed options: Grayed options are menu options you cannot choose because they do not apply to your current selection. Also called dimmed options.

Highlighted: A highlighted option appears darkened on the screen, and indicates that it is selected.

Icon: A small, roughly rectangular-shaped symbol that represents an application, a file, a folder, a function, or a peripheral device.

Importing files: The process of copying non-Elixir format files from different storage media (such as a hard disk, a diskette, or tape) to the appropriate Elixir input folder or to the work area.

Kerning: Adjusting the spacing between characters to make certain letters appear better fitted together and more attractive on the page.

Keyboard shortcut: Also called Fast keys. A special one- or two-key combination that allows you to execute an option without using the mouse.

Landscape: The orientation of a page or the fonts, logos, or images on a page. A landscape page is narrower on the sides than on the top. See the definition of *portrait* for a figure describing the orientation of fonts on pages.

Menu: A list of options from which you make a selection to perform an action. A menu displays when you select a menu title from the menu bar or from a window header, or when you click on an option.

Menu bar: The horizontal bar displayed at the top of the screen from which you access pull-down menus.

Menu titles: Text that identifies a menu, displayed in a window header or on the menu bar.

Message area: A bar just below the menu bar that displays error messages or information about the activity you are performing.

Mouse button: A button on the top of the mouse.

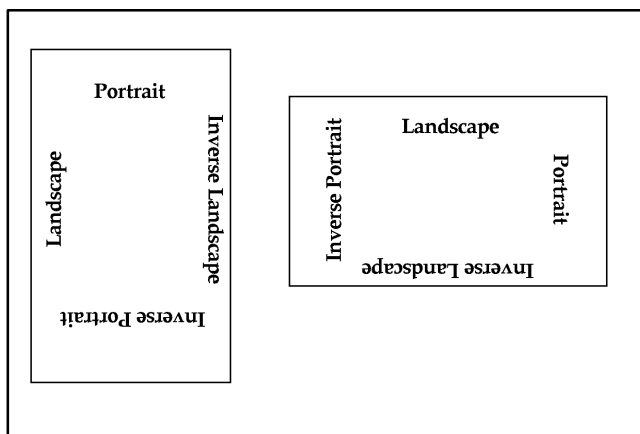
Multi-select: Selecting more than one file or icon by shift-clicking on them.

Option: A word or phrase in a menu or dialog box that you can select.

Peripheral (device): A printer, scanner, or tape drive connected to your PC.

Point: To move the mouse so the screen pointer (in most cases an arrow) rests on the desired item.

Portrait: The orientation of a page, or the fonts, logos, or images on a page. A portrait page is narrower on top than on the side (like pages in this book). See the following figure for the orientation of fonts on pages.



Orientation of fonts on Portrait (left) and Landscape pages

Pull-down menu: See *menu*.

Raster graphics: Pictures composed of bit maps, where each element of the picture is a dot defined as black or white.

Run: To execute or start an application.

Screen pointer: A pointer shaped like an arrow that displays on the screen, and which you can move by rolling the mouse on a flat surface.

Screen version: The version of a color or font composed such that its appearance on a screen display is as close as possible to its appearance when printed.

Scroll: To move a directory list in a window so you can view different parts of the list.

Scroll bar: A bar displayed on the right side of some windows used for scrolling. The scroll bar contains a scroll arrow, [+] and [-] buttons, and a slider bar that moves within the scroll box.

Select: To click on an object, menu option, or form element. A selected item appears highlighted.

Shift-click: To click on an object while holding down the <Shift> key. Usually used to select multiple elements.

Slider bar: A bar in the scroll box at the side of some windows that scrolls items in the window when you drag it up and down.

Utilities: Special-purpose applications with which you can perform functions from the DOS prompt.

Wildcard character: A character in a file name, usually an asterisk (*), that specifies a matching set. For example, *.EXE represents all files that end with the .EXE extension.

Window: A rectangular area on your screen in which you view information, such the contents of a folder. All windows contain a window header. Some windows have scroll bars along the right side.

Window header: The top of a window that displays the DOS directory corresponding to the window contents. Some window headers also show a close box and a number of menu titles with pull-down menus.

Glossary

This glossary contains a list of the basic terminology that you may find in this manual.

Application: Any program you run on your PC.

Arrow: An arrow-shaped screen pointer used for selecting objects.

Button (on the screen): An area on the screen that causes a response when you click on it. For example, an [OK] button that accepts your entries when you click on it in a dialog box.

Click, on an item: To momentarily press and release the left mouse button with the screen pointer on an item.

Close: To exit from a window, dialog box, or an application.

Close box: A small white box at the left of a window header and at the left of the menu bar.

Command button: A button in a dialog box that confirms or cancels an action when you click on it. The [Cancel] button cancels the command. The [OK] button confirms and executes the command and saves the information you specified in a dialog box.

Cursor: An "I"-shaped screen pointer used when entering text.

Deselect: To cause one or more selected (highlighted) icons or elements to not be selected any more.

Dialog box: A rectangular box that displays and requests information. You enter information in fields in the dialog box, and normally confirm your entries by clicking on an [OK] button or by pressing <Enter>.

Directory: A list of hard disk or diskette contents.

DOS: Disk Operating System, the collection of programs that gives control of a PC's resources to the user.

Double-click: To press the left mouse button twice in rapid succession, normally to open an icon.

Drag: To click on an item and move the item with the mouse while holding down the left mouse button.

Drag and drop: Used to copy an object as follows: click on an item on the screen, hold down the left mouse button, move the mouse to move the screen pointer to an icon, and release the mouse button.

Drop: To release the mouse button after dragging an item to an icon.

Extension: The period and three characters following a file name. An extension identifies the type of information in a file. For example, .ELX indicates an Elixir format form file.

Fast Keys: See Keyboard shortcuts.

File filter: The use of DOS wildcard characters to display only those files with selected name characteristics in a window or dialog box. For example, to display only files that begin with ABC in a directory of many files you could enter ABC*.*. See also, *Wildcard character*.

File name: The name of a file. PrintDriver uses DOS file naming conventions. DOS file names consist of a base (stem) name containing up to eight characters and an extension of up to three characters.

Format: To prepare a diskette so it can hold information. Formatting a diskette erases the information on the diskette.

Form elements: The individual lines, shapes, images, and text that compose a form.

Grayed options: Grayed options are menu options you cannot choose because they do not apply to your current selection. Also called dimmed options.

Highlighted: A highlighted option appears darkened on the screen, and indicates that it is selected.

Icon: A small, roughly rectangular-shaped symbol that represents an application, a file, a folder, a function, or a peripheral device.

Importing files: The process of copying non-Elixir format files from different storage media (such as a hard disk, a diskette, or tape) to the appropriate Elixir input folder or to the work area.

Kerning: Adjusting the spacing between characters to make certain letters appear better fitted together and more attractive on the page.

Keyboard shortcut: Also called Fast keys. A special one- or two-key combination that allows you to execute an option without using the mouse.

Landscape: The orientation of a page or the fonts, logos, or images on a page. A landscape page is narrower on the sides than on the top. See the definition of *portrait* for a figure describing the orientation of fonts on pages.

Menu: A list of options from which you make a selection to perform an action. A menu displays when you select a menu title from the menu bar or from a window header, or when you click on an option.

Menu bar: The horizontal bar displayed at the top of the screen from which you access pull-down menus.

Menu titles: Text that identifies a menu, displayed in a window header or on the menu bar.

Message area: A bar just below the menu bar that displays error messages or information about the activity you are performing.

Mouse button: A button on the top of the mouse.

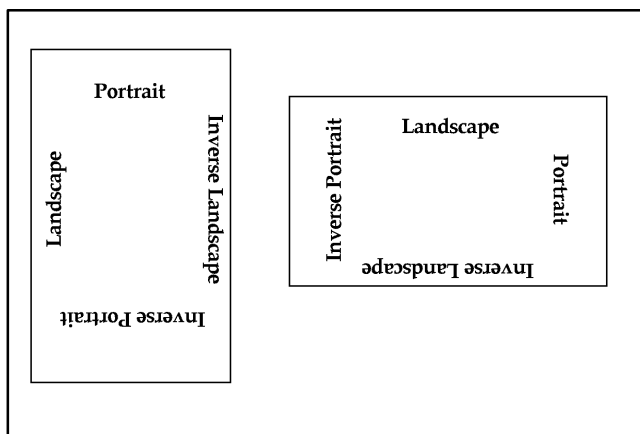
Multi-select: Selecting more than one file or icon by shift-clicking on them.

Option: A word or phrase in a menu or dialog box that you can select.

Peripheral (device): A printer, scanner, or tape drive connected to your PC.

Point: To move the mouse so the screen pointer (in most cases an arrow) rests on the desired item.

Portrait: The orientation of a page, or the fonts, logos, or images on a page. A portrait page is narrower on top than on the side (like pages in this book). See the following figure for the orientation of fonts on pages.



Orientation of fonts on Portrait (left) and Landscape pages

Pull-down menu: See *menu*.

Raster graphics: Pictures composed of bit maps, where each element of the picture is a dot defined as black or white.

Run: To execute or start an application.

Screen pointer: A pointer shaped like an arrow that displays on the screen, and which you can move by rolling the mouse on a flat surface.

Screen version: The version of a color or font composed such that its appearance on a screen display is as close as possible to its appearance when printed.

Scroll: To move a directory list in a window so you can view different parts of the list.

Scroll bar: A bar displayed on the right side of some windows used for scrolling. The scroll bar contains a scroll arrow, [+] and [-] buttons, and a slider bar that moves within the scroll box.

Select: To click on an object, menu option, or form element. A selected item appears highlighted.

Shift-click: To click on an object while holding down the <Shift> key. Usually used to select multiple elements.

Slider bar: A bar in the scroll box at the side of some windows that scrolls items in the window when you drag it up and down.

Utilities: Special-purpose applications with which you can perform functions from the DOS prompt.

Wildcard character: A character in a file name, usually an asterisk (*), that specifies a matching set. For example, *.EXE represents all files that end with the .EXE extension.

Window: A rectangular area on your screen in which you view information, such the contents of a folder. All windows contain a window header. Some windows have scroll bars along the right side.

Window header: The top of a window that displays the DOS directory corresponding to the window contents. Some window headers also show a close box and a number of menu titles with pull-down menus.

Index

A

- Acrobat Reader, documentation, 1-9
- AFPDS options, 2-11
- application compatibility, A-3
- AS/400 file transfer, 5-13
- ATM fonts, 4-3, A-6

B

- before installing, 1-14
- boxes, 4-3

C

- color services, 2-19
- conventions
 - display, 1-6
 - mouse, 1-7
 - typographical, 1-6
- converting FB to VBM format, 5-12
- converting fonts, 5-2
- converting TT/ATM fonts, 3-2
- country keyboard map, C-1
- creating a print file, 4-1
- customer support, 1-3

D

- default code page, C-2
- default installation
 - first time, 1-22

- default settings, 2-25
- defaults

- AFPDS options, 2-27
 - color services, 2-28
 - extended OGL options, 2-27
 - font generation, 2-28
 - font import, 2-28
 - font mapping, 2-28
 - font table, 2-28
 - image services, 2-27
 - job print ticket, 2-26
 - main setup, 2-26
 - OGL options, 2-26
 - preprint options, 2-26
 - text services, 2-27
- deleting fonts, 3-21
- Desktop
 - installation, 1-20
- documentation
 - accessing, 1-10
 - Acrobat Reader, 1-9
 - directory, 1-10
 - navigating, 1-11
 - printing, 1-13
 - scrolling, 1-12
 - using, 1-9
 - word find, 1-11
 - zoom in/out, 1-12
- downloading files
 - AFP fonts, 5-6
 - host-to-PC, 5-2

E

editing multiple fonts,
3-21
Elixir Desktop file transfer,
5-22
Elixir training, 1-4
error messages, 2-29,
B-1

F

file transfer, 5-1
FMAPAFP.FMP file, 3-7
font generation, 2-22,
3-3
font import services,
2-25, 3-12
font install options, 3-13
font mapping, 2-18
font mapping table, 3-7
font options, 3-1
font support, A-6
font table, 2-19
fonts
 AFP, 3-12, 4-3
 ATM, 4-3
 deleting, 3-21
 directories, 3-12
 downloading AFP,
 3-12
 editing, 3-19
 Elixir, 3-12, 4-3
 importing, 3-14, 4-3
 importing AFP, 3-17
 importing Elixir, 3-16
 install options, 3-13
 TrueType, 4-3
 Windows fonts, 3-18

G

graphic formats supported,
A-6

H

hardware requirements,
1-5
help, on-line, 1-8

I

IBM 3270, 5-5
image services, 2-16
images, 4-4
importing AFP fonts,
3-17, 4-3
importing Elixir fonts,
3-16, 4-3
importing fonts, 3-10,
3-14
installation
 before installing,
 1-14
 custom, 1-23
 default, 1-22, 1-23
 first time installation,
 1-21
IRMA FT/3270, 5-5

J

job print ticket, 2-3

L

licensing software, 1-15
lines, 4-3

M

main setup, 2-3
 accessing, 2-1
 AFPDS options,
 2-11
 color services, 2-19
 font generation,
 2-22, 3-3
 font import services,
 2-25, 3-12
 font mapping, 2-18
 font table, 2-19
 image services,
 2-16
 job print ticket, 2-3

- OGL extended options, 2-8
- OGL options, 2-7
- text services, 2-13

mapping files, C-1

mouse operations, 1-7

O

OGL extended options, 2-8

OGL options, 2-7

on-line documentation

- accessing, 1-10
- Acrobat Reader, 1-9
- directory, 1-10
- navigating, 1-11
- printing, 1-13
- scrolling, 1-12
- using, 1-9
- zoom in/out, 1-12

on-line help, 1-8

operational messages, B-1

P

PC-to-MVS host file transfer, 5-1

PrintDriver

- defaults, 2-25
- design, 2-1
- main setup, 2-3
- overview, 1-2
- selecting, 4-1

printing, 4-5

- documentation, 1-13

R

registering software, 1-15

requirements

- hardware, 1-5
- software, 1-5

reverse text, A-1

S

selecting fonts, 3-22, 4-2

selecting PrintDriver, 4-1

setting defaults, 2-25

shapes, 4-3

software, 1-5

software registration, 1-15

support, customer, 1-3

supported applications, 1-1, A-3

T

text mapping, C-1

text services, 2-13

TrueType, A-6

TrueType fonts, 4-3

TT/ATM conversion, 3-2

U

uploading files, 4-7

- object-format AFP files, 5-6
- PC-to-MVS, 5-4
- text files, 5-7

W

word find, 1-11

X

XWIN.log

- installation, 1-21

Z

zoom in/out, 1-12