
Elixir PrintDriver User Guide

Publication #720P22852
June 1999
Version 4.00

Elixir Technologies Corporation
P.O. Box 1559
Ojai, CA 93024

Copyright © 1999 by Elixir Technologies Corporation.
All rights reserved. Prepared by Elixir Technologies
Corporation for exclusive publication by Xerox
Corporation.

Publication #720P22852

June 1999
Version 4.00
Printed in the United States of America

Xerox®, 2700, 3700, 4045, 4050, 4075, 4135, 4235,
4650, 4700, 4850, 4890, 8700, 8790, 9700, 9790,
XES, UDK, FRM, FSL, and all Xerox products men-
tioned in this publication are trademarks of Xerox
Corporation.

Trademarks and Service Marks/Company:
Adobe Type Manager/Adobe Systems Incorporated
Ami Pro/Lotus Development Corporation
Bitstream/Bitstream, Inc.
Elixir/Elixir Technologies, Inc.
HP, LaserJet II/Hewlett Packard Company
IBM, Personal Computer AT, PS/2, and all IBM prod-
ucts mentioned in this publication/International Busi-
ness Machines
MS-DOS, MS-WORD, Windows/Microsoft Corpora-
tion
Sigma L-View/Sigma Designs, Inc.
Wyse/Wyse Technology

All other product names and trade names used herein
are trademarks of their respective owners.

Copyright protection claimed includes all forms and
matters of copyrightable material and information now
allowed by statutory or judicial law or hereinafter
granted, including without limitation, material gener-
ated from the software programs which are displayed
on the screen such as icons, screen display looks,
etc.

Changes are periodically made to this document.
Changes, technical inaccuracies, and typographic er-
rors will be corrected in subsequent editions.

Table of contents

1. Introduction	1-1
Supported applications	1-1
Elixir PrintDriver overview	1-1
Printing and Xerox printers	1-2
The Elixir PrintDriver solution	1-2
Customer support	1-3
Xerox customer support center	1-3
Elixir customer support centers	1-3
Elixir Web site support	1-4
Who should use this guide	1-5
System requirements	1-5
Hardware	1-5
Software	1-6
Conventions	1-6
Display conventions	1-7
Typographical conventions	1-7
Mouse operations	1-8
On-line Help	1-9
Organization of this guide	1-10
PC configuration	1-11
AUTOEXEC.BAT file	1-11
WIN.INI file	1-12
Using Elixir PrintDriver with ElixSys Desktop	1-12
Before installing	1-13

Release notes	1-13
Product Registration	1-14
Elixir Product Registration screen	1-15
Using the internet	1-15
Registering as a new customer via the internet	1-16
Downloading via the internet to a non-Elixir PC	1-17
Contacting Elixir (no internet connection)	1-18
Soft key customers running Windows for Workgroups 3.1 or 3.11	1-19
Installation	1-19
Installing Elixir applications	01-21
Full installation	1-21
Custom installation	1-22
Adding applications	1-23
Adding newly licensed applications	1-23
2. Elixir PrintDriver basics	2-1
Elixir PrintDriver design	2-1
Accessing the Main Setup dialog box	2-1
Elixir PrintDriver setup	2-3
Job Print Ticket	2-3
PrePrint options	2-6
FSL/FRM options	2-6
META options	2-8
Color services	2-10
Image services	2-12
Font mapping	2-16
Text services	2-16
Country Keyboard Maps	2-19
Font table	2-21
Font generation	2-22
Font import services	2-25

<u>Default settings</u>	<u>2-25</u>
<u>Error messages</u>	<u>2-28</u>
3. Font options	3-1
<u>Overview of font options</u>	<u>3-1</u>
<u>Converting TrueType and ATM fonts</u>	<u>3-2</u>
<u>Font generation</u>	<u>3-3</u>
<u>Mapping TrueType and ATM fonts</u>	<u>3-7</u>
<u>Editing the mapping table</u>	<u>3-8</u>
<u>Using the mapping table</u>	<u>3-9</u>
<u>Using Xerox or Elixir format fonts</u>	<u>3-10</u>
<u>Font directories</u>	<u>3-11</u>
<u>Xerox fonts</u>	<u>3-11</u>
<u>Elixir fonts</u>	<u>3-11</u>
<u>Font Import Services</u>	<u>3-12</u>
<u>Font install options</u>	<u>3-12</u>
<u>Importing fonts</u>	<u>3-13</u>
<u>Using previously imported fonts</u>	<u>3-14</u>
<u>Importing Elixir fonts</u>	<u>3-15</u>
<u>Importing Xerox fonts</u>	<u>3-16</u>
<u>Installing fonts in Windows</u>	<u>3-17</u>
<u>Editing the font description</u>	<u>3-19</u>
<u>Editing multiple font descriptions</u>	<u>3-21</u>
<u>Deleting fonts</u>	<u>3-22</u>
<u>Selecting Elixir PrintDriver fonts in Windows</u>	<u>3-22</u>
<u>Using Elixir fonts with other drivers</u>	<u>3-22</u>
4. Using Elixir PrintDriver	4-1
<u>Creating a print file</u>	<u>4-1</u>
<u>Setting options in Elixir PrintDriver</u>	<u>4-1</u>
<u>Selecting Elixir PrintDriver</u>	<u>4-1</u>
<u>Selecting fonts</u>	<u>4-2</u>

TrueType and Adobe Type Manager fonts	4-3
Imported Xerox and Elixir format fonts	4-3
Adding lines, boxes and shapes	4-3
Adding graphics	4-4
Embedding bit-mapped graphics	4-4
Referencing graphics	4-4
Starting the conversion	4-5
Uploading files to a Xerox printer	4-10
5. Moving and printing files	5-1
Moving online Xerox-labeled files	5-2
Configuring the file transfer package	5-2
Uploading files to the host	5-2
Uploading Xerox-labeled files with IBM 3270 or IRMA FT/3270	5-3
Uploading text files with IBM 3270 or IRMA FT/3270	5-4
Uploading files with IRMA FT/TSO	5-4
Downloading files from the host to the printer	5-6
Uploading the ENDFILE.END file	5-8
Preparing the JCL	5-8
Using the HOSTCOPY utility	5-9
Using the DJDE FILE command	5-12
Moving and printing online metacode files	5-13
Uploading metacode files to the host	5-14
Uploading with IBM 3270 or IRMA FT/3270	5-14

Uploading with IRMA FT/TSO	5-15
Setting up online default JSL	5-16
Using the METSTA.JSL or METSTC.JSL	5-18
Setting up Elixir online JSL	5-18
Preparing online black and white JSL	5-19
Preparing online color JSL	5-22
Compiling the JSLs on the printer	5-25
Copying metacode files to the printer	5-26
Copying files from the host using a JCL file	5-26
Copying files using a Data- Ware card	5-27
Moving and printing offline metacode	5-28
Preparing offline ELIXIR.JSL	5-28
ELIXIR.JSL	5-29
Preparing offline ELIXIC.JSL	5-31
ELIXIC.JSL	5-31
Using tape to move files	5-35
Uploading with 871	5-37
Printing offline Xerox-labeled files	5-37
Using diskettes to move files	5-37
Using tape to move files	5-38
Offline control files	5-38
Mounting the tape	5-38
Compiling FSL files	5-39
Printing FRM files	5-39
SPUR	5-39
6. Stand-alone utilities	6-1
Using the utilities	6-1
ElixirDisk	6-2
XDIR	6-4

XFORMAT	6-5
XCPY	6-5
Copying from hard disk to Xerox-format diskette	6-5
Copying from Xerox-format diskette to hard disk	6-7
XDEL	6-9
DISP	6-10
DSK2TAP	6-11
HPEDIT	6-12
IC	6-13
MAKEKRNE	6-15
MET2871	6-15
METACOMP	6-16
PACK	6-17
SHOWBLOK	6-18
SPUR	6-18
STRIP	6-20
TAP2DSK	6-21
A. Limitations and solutions	A-1
Supported applications	A-1
Application compatibility	A-2
Reverse text	A-4
Rotated text	A-5
Font orientation	A-5
Circles and diagonal lines	A-5
Color text strings	A-6
Underlined text	A-6
Typographers quotes	A-6
Graphics formats	A-7
Using large fonts	A-7
Font support	A-8
White objects on black objects	A-8
Converting colored text	A-8

Default output directories	A-9
B. VP297 and HP2XRX compatibility	B-1
C. Operational and error messages	C-1
Glossary	GLOSSARY-1
Index	INDEX-1

1.

Introduction

This user guide describes Elixir PrintDriver for Xerox. Elixir PrintDriver is a tool that allows you to convert a Windows-based document into production printer format simply by selecting [Print] from a supported Windows application with Elixir PrintDriver set as the printer. The document is then ready for transferring and printing on a Xerox production printer.

Supported applications

Elixir PrintDriver supports the following applications:

- Microsoft Word 6.0, 7.0, and 97
- Corel WordPerfect 6.1, 7.0, and 8.0
- Corel Ventura 5.0 and 7.0
- Lotus Ami Pro 3.0 and 3.1 and WordPro96
- Adobe PageMaker 5.0 and 6.5
- Write (Windows 3.11 and 95)
- Adobe FrameMaker 5.0, and 5.5

See the "Limitations and solutions" appendix for more information about using Elixir PrintDriver with supported applications.

Elixir PrintDriver overview

The following section provides a brief overview of Xerox printing and Elixir PrintDriver.

Printing and Xerox printers

Previously, creating and editing documents for printing on Xerox production printers was the responsibility of applications personnel working on main-frame computers who defined elements using Forms Source Language (FSL), a language that describes the location of line, shape, text and image elements as well as page size and layout.

Limitations to this approach are:

- Defining and revising an FSL document is complicated and time-consuming.
- Changes to the document are not apparent when adding FSL statements.

The completed FSL file must be compiled and proof printed on the high-speed printer.

The Elixir PrintDriver solution

With Elixir PrintDriver, anyone who can use a supported Windows application such as Microsoft Word or Lotus Ami Pro, can convert a Windows-based document into production printer format directly from a Windows application menu.

The user installs Elixir PrintDriver, accesses it as one of the standard print drivers in Windows, composes a document in a Windows-based documentation package, and selects the [Print] option.

Elixir PrintDriver generates FSL, FRM, Metacode, and Elixir formats, and saves each resource in a separate directory providing easy access for transfer to a host environment or Xerox printer.

Customer support

Elixir customer support centers provide telephone technical assistance for Elixir users during business hours.

If you have any problems running or using Elixir applications, call your customer support center telephone number in your area for help. When calling, you will be asked for the following information:

- your name, organization, telephone number, and address
- the name and version number of the Elixir application
- a complete description of the problem, including any error messages displayed on your monitor or printed on your printer.

Xerox customer support center

If you have purchased your Elixir product directly from Xerox Corporation then you should contact the Xerox customer support center telephone number provided by Xerox.

For future reference, please record your Xerox customer support number below.

Xerox customer support center telephone

Elixir customer support centers

If you have purchased your Elixir product directly from Elixir Technologies then contact the support center for your region.

- **North and South America**
+1 805 641 5900 ext. 3

- **Asia Pacific**
+92 (0) 51 206182
- **Europe**
+420 2 2431 13877

The U.S.A. Elixir Customer Support Center provides telephone technical assistance for Elixir users Monday through Friday from 6:30 a.m. to 5:00 p.m. Pacific Standard Time.

You can contact Elixir support by accessing the Elixir World Wide Web page (and selecting [Contact Support]) at <http://www.elixir.com>. Please complete the question form.

Elixir Web site support

The Elixir Web site at <http://www.elixir.com> offers the following resources:

- Raise a question for Elixir Support.
- Find answers in the list of Frequently Asked Questions.
- Review the latest Tips and Techniques for increasing productivity using Elixir software.
- Download new releases and the latest patches.
- View Release Notes for the latest available features.
- Learn in the user newsgroup how others are using Elixir products.
- Sign up for an Elixir Learning Program.

Who should use this guide

This guide is intended for users familiar with Windows and with Xerox printer and font management operations.

Users should be familiar with PC peripherals and have access to reference manuals for PC software and hardware and for the Xerox printer(s) used.

System requirements

The following sections describe the hardware and software requirements for running the ElixSys Desktop, ElixForm, ElixFont and ElixGraphics.

Hardware

Recommended PC configuration: Pentium (or 100% compatible), with at least 133 MHz processor (or the fastest commercially available processor); 32 MB RAM, 500+ MB hard drive, one CD-ROM drive.

Additional requirements:

- any monitor with driver software supporting Windows in VGA or SVGA
- 5.25-inch 1.2 MB diskette drive for XCPY utilities
- any Windows compatible mouse

One of the following devices, for communicating with Xerox printers:

- Any PC-to-mainframe or communications board that supports binary file transfers (such as IBM PC3270, IRMA FT/3270, or AS/400 PC communications packages).

- Any 9-track, 1600 or 6250 bpi tape drive with a Overland TX-8 controller card (such as the Qualstar with the Overland TX-8 controller card).
- For users with compatible PCs, you can transfer files between your PC and Xerox production printer. Refer to the *ElixirSys Desktop User Guide*.
- One or more of the following optional peripheral devices:
 - Xerox production or distributed printer
 - HP LaserJet IV or compatible PCL 4 printer. (HP PCL 4 is the format supported), or PostScript compatible
 - Any digital scanner and associated software with ability to create .PCX or .TIF images at 300 x 300 dpi.

Software

Software requirements: Microsoft Windows 95, Windows 98 or Windows NT 4.0 or later.

While we make every effort to ensure the proper operation of our software, some problems cannot be resolved due to differences in the operating systems.

Conventions

This section describes the following:

- display conventions
- typographical conventions
- mouse operations.

Display conventions

Elixir PrintDriver adheres to Microsoft Windows conventions for using menus, menu commands, dialog boxes, command buttons, icons, and a mouse. See your Windows manual for more information.

Typographical conventions

The following typographic conventions are used throughout this guide.

- Keystrokes are shown enclosed in < > (angle brackets). For example, <Enter>.
- Key combinations are denoted by a plus sign between keys. For example, <Shift> + <F1> indicates to simultaneously press the <Shift> and the <F1> keys.

- Menu titles are shown in **bold**. Menu options are enclosed in [] (square brackets). For example,

Pull down the **File** menu and select [Print].

- Command buttons that you press are also enclosed in [] (square brackets). For example,

Click on [Job Print Ticket].

- Commands, options, actions, and parameters that require description are shown in bold followed on the next line by the description. For example:

drive

Specify the output drive for the resources.

- Steps in a procedure are shown in numbered bold paragraphs. For example:

1. **Click on [Job Print Ticket] in the Main Setup dialog box.**

Comments relating to a step (such as this paragraph) are shown in regular text following the bold paragraph.

- Commands you enter at the DOS prompt are shown in larger text. Within DOS commands, variable names and keys you press are shown in italics. For example:

CD \ELIXIR <Enter>

Mouse operations

You can perform most operations in Elixir applications by using the mouse. The terminology is similar to other Windows-based applications.

Most operations are performed using the left mouse button.

The following mouse-related terms are used in this guide:

click

to momentarily press and release the left mouse button once.

double-click

to click the left mouse button twice in rapid succession.

object

a selectable item on the screen.

open

to point and double-click on an object. The effect of this operation depends on the object.

point

to move the mouse to position the screen pointer on an area of the screen.

select

to point to an object and click the left mouse button. This usually highlights the object.

On-line Help

Elixir software uses the Microsoft Windows Help program to provide on-line Help for Elixir PrintDriver functions.

For more information about Windows Help, select the [How to Use Help] option in the **Help** menu, or see your Microsoft Windows documentation.

The Help files included with your Elixir software include graphics which were created using screen drivers with large fonts. If you use a screen driver with small fonts, the Help file graphics may not display clearly. For optimum graphics display, use a screen driver that uses large fonts.

Using on-line Help

You can access on-line Help by clicking on the [Help] button in a dialog box to view an associated Help topic.

Note: In Windows 95 you can click the right mouse button on an option in a dialog box to display Help about that option.

Help pop-ups and jumps

Within Help topic text, words or phrases underlined in green are pop-ups or jumps. When you click on a pop-up topic, a box displays within the current Help topic with additional information. When you click on a jump, a different, associated Help topic displays.

Help hypergraphics

Hypergraphics are special graphics within Help files that contain "hot spots." Hot spots are either pop-up topics or jumps. Hypergraphics in Elixir Help are most commonly dialog boxes with option hot spots (pop-up definitions).

Move the cursor over a hypergraphic until a hand displays, then click on this hot spot to display a pop-up topic, or a "jump." To close a pop-up topic, click the mouse button. To return to the original Help topic from a jump, click on <Back> in the Help file menu.

Searching for a different topic

If you want to jump to a Help topic that is not displayed on your screen, click on the [Contents] button at the top of the Help screen to display a list of available topics and make your selection. You can also click on the [Search] button at the top of the screen and select a related topic.

Organization of this guide

This user guide contains the following chapters and appendices:

Chapter 1, "Introduction," provides an introduction to Elixir PrintDriver, describes the contents of this user guide and explains the installation process.

Chapter 2, "Elixir PrintDriver basics," describes how to set the options and defaults for using Elixir PrintDriver.

Chapter 3, "Font options," describes how to convert and map TrueType and ATM fonts, and how to import and map Xerox and Elixir format fonts for use in a Windows document.

Chapter 4, "Using Elixir PrintDriver," describes how to create a document in a Windows application and print to a file using Elixir PrintDriver.

Chapter 5, "Moving and printing files," describes how to upload files from your PC to a host environment for processing and subsequent delivery to Xerox printers.

Chapter 6, "Stand-alone utilities," describes how to use the stand-alone utilities provided with Elixir PrintDriver.

Appendix A, "Limitations and solutions," describes limitations of Elixir PrintDriver and provides solutions to some common problems.

Appendix B, "VP297 and HP2XRX compatibility," contains information about upgrading to Elixir PrintDriver for VP297 and HP2XRX users.

Appendix C, "Operational and error messages," lists all the operational and error messages issued by Elixir PrintDriver.

Glossary.

Index.

PC configuration

During installation, Elixir PrintDriver modifies the AUTOEXEC.BAT and the WIN.INI files on your PC.

AUTOEXEC.BAT file

In order for Elixir PrintDriver to run, *drive*:\ELIXIR must be in the path statement of your AUTOEXEC.BAT file where *drive* is the drive you are installing Elixir PrintDriver on. For example, if the AUTOEXEC.BAT file contains the following line:

```
PATH C:\;C:\DOS;D:\UTILS
```

the PATH statement must be modified to read as follows:

```
PATH drive:\ELIXIR;C:\;C:\DOS;D:\UTILS
```

drive

is the hard disk drive where Elixir PrintDriver is installed.

If you do not modify your file, and you do not have Elixir in your path, Elixir PrintDriver displays a message after installation. Click on [Yes] if you want Elixir PrintDriver to update your path.

See the "Installation" section for more information.

Before any modifications are made to your AUTOEXEC.BAT file, PrintDriver makes a backup copy of the original AUTOEXEC.BAT file and names it AUTOEXEC.001. If AUTOEXEC.001 already exists, it names it AUTOEXEC.002 or the next consecutive number.

Remember to re-boot your PC after any changes.

WIN.INI file

Each time you install Elixir PrintDriver, modifications are made to the WIN.INI file on your computer. Before the changes are made, Elixir PrintDriver makes a backup copy of the original WIN.INI file and names it WIN.1. If WIN.1 already exists, it names it WIN.2 or the next consecutive number.

Using Elixir PrintDriver with ElixSys Desktop

If you already have an ElixSys Desktop or ElixSys Desktop for HighLight Color on your PC, please note the following:

- If you have an Elixir PrintDriver Option ElixiKey and you also connect your ElixSys Desktop or ElixSys Desktop for HighLight Color ElixiKey, you can output files to production printer and Elixir formats. See the ElixiKey section in this chapter for more information about ElixiKeys.
- If you want to view and edit resources created by Elixir PrintDriver, make sure you install Elixir PrintDriver on the same drive as your ElixSys Desktop or ElixSys Desktop for HighLight Color.
- Backup your .EXE and .DLL files before installing.
- If you custom installed ElixSys Desktop or ElixSys Desktop for HighLight Color on a drive other than *drive:\ELIXIR*, replace *drive:\ELIXIR* with your custom program directory whenever you see *drive:\ELIXIR* mentioned in this guide.

Before installing

- Complete the software licensing process (See the "Product Registration" section).
- If you plan to use other Elixir products with Elixir PrintDriver to view or edit resources, make sure you know the drive where they are installed. This is the drive where you must install Elixir PrintDriver.

Caution: If you have a previous version of Elixir PrintDriver installed on your computer, make sure it is not set as the default printer when you install the new version.

- You may want to use the File Manager in Windows to make a backup copy of your diskettes prior to installation.
- To avoid any possible conflicts, exit all other applications while installing Elixir PrintDriver.

Release notes

Release notes appear at the beginning of the Elixir software install process, so that you can review each entry before performing the complete installation. Once the software is installed, release notes can be accessed from the Help menu of the application. Release notes are formatted for viewing in Notepad or Wordpad. They have a *txt* file extension and are found in the *drive:\ELIXIR \RELNOTES* directory.

Product Registration

Elixir products no longer require ElixiKey hardware devices attached to your parallel port. Elixir products now utilize soft key technology. This new licensing process validates your license agreement with Elixir and places a file (password.epw if an Elixir customer, or License.dat if a Xerox customer) on your workstation.

Version 4.00 implements Elixir's new licensing process and discontinues use of the current hard keys. All customers must register/re-register software license(s) by using the Elixir registration program provided with the software.

Each product installed is assigned to a specific pc. This pc number, your customer number, and password are required. This information is provided when you purchase Elixir software or when you upgrade to version 4.00 of Elixir products.

If you are an Elixir customer, registration can be completed automatically if you have an internet connection on your workstation. If you are a Xerox customer you must contact Xerox to register your products.

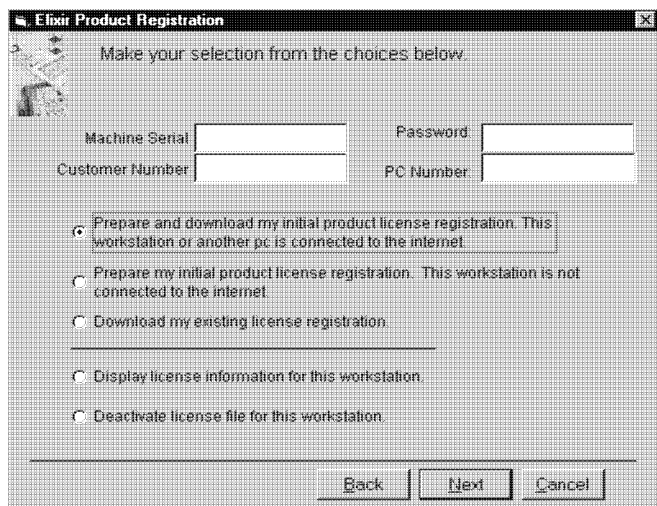
This section describes the registration process for those customers who have purchased their Elixir products from Elixir Technologies.

The following scenarios describe the registration process for Elixir customers. Xerox Corporation will provide a separate document that describes registering your products with Xerox.

- you are a new customer and will use Soft Key registration
- you are an existing customer and will change to Soft Key registration

Elixir Product Registration screen

Make your selections according to your needs and go to the appropriate section for further procedures.



The screenshot shows a Windows-style dialog box titled "Elixir Product Registration". Inside, it says "Make your selection from the choices below." There are four input fields: "Machine Serial", "Password", "Customer Number", and "PC Number". Below these are five radio button options. The first option is selected and highlighted with a dashed border. At the bottom are three buttons: "Back", "Next", and "Cancel".

Make your selection from the choices below.

Machine Serial: Password:
Customer Number: PC Number:

☒ Prepare and download my initial product license registration. This workstation or another pc is connected to the internet.
☐ Prepare my initial product license registration. This workstation is not connected to the internet.
☐ Download my existing license registration.

☐ Display license information for this workstation.
☐ Deactivate license file for this workstation.

Back Next Cancel

Figure 2-1. Elixir Product Registration screen

Using the internet

You can register and download all registration files via the Elixir Product Registration program. There are two ways to register your products using the Internet:

- download the product registration file directly to the Elixir PC via the Internet (see "Registering as a new customer via the internet")
- download the product registration file to another machine and move it to the Elixir PC (see "Downloading via the internet to a non-Elixir PC")

Registering as a new customer via the internet

You will receive a "Customer Activation Letter" with your product(s) ordered. The registration process should be completed before installing your software. The installation CD will launch and install the Registration Program.

To install the registration program on your Elixir PC:

1. **In the Software Registration screen, click on [Next].**
2. **Select the drive and click on [Next].**
3. **In the Start Registration Process screen, click on [Install].**

The password file will be installed and your system configured.

To complete registration:

1. **In the Elixir Product Registration "Welcome" screen, select [Next].**

Your machine serial number displays.

2. **Enter your customer number (from Activation Letter), then click on [Next].**
3. **Enter your password and the PC number you want to register, then click on [Next].**
4. **Select [Prepare and download my initial product license registration. This workstation or another pc is connected to the internet] from the Registration Option menu, then click on [Next].**
5. **In the Download Password screen, click on [Yes].**

The system displays your customer information and you must verify that it is correct.

- 6. When the screen displays the registration information, click on [Save]. You may also print this screen for reference or to send to Elixir.**

The application installation process will begin, see the "Installation" section.

Downloading via the internet to a non-Elixir PC

You will receive a "Customer Activation Letter" with your product(s) ordered. The registration process should be completed before installing your software. The installation CD will launch and install the Registration Program.

To install the registration program on your Elixir PC:

- 1. In the Software Registration screen, click on [Next].**
- 2. Select the drive and click on [Next].**
- 3. In the Start Registration Process screen, click on [Install].**

The password file will be installed and your system configured.

To complete registration:

- 1. In the Elixir Product Registration "Welcome" screen, select [Next].**

Your machine serial number displays.

- 2. Enter your customer number (from Activation Letter), then click on [Next].**
- 3. Enter your password and the PC number you want to register, then click on [Next].**

4. Select [Prepare and download my initial product license registration. This workstation or another pc is connected to the internet] from the Registration Option menu, then click on [Next].
5. In the Download Password screen, click on [No].
6. In the How to Contact Elixir screen, click on [Print] and take the printout to the pc connected to the internet.
7. Access the Elixir Web site at <http://www.elixir.com>. and click on [Product Registration].
8. In the Customer Information screen, enter your Customer Number and Password, then click on [Submit Form].
9. In the Elixir Customer Menu, click on [Download a New License File].
10. In the Customer Information screen, enter your PC Number and Machine Serial Number, then click on [Submit Form].
11. In the Elixir Technologies screen, click on [Click here to download your password].
12. Save the *password.epw* file to diskette and copy it to your Elixir PC in the \ELIXIR directory.

The application installation process will begin, see the "Installation" section.

Contacting Elixir (no internet connection)

If you have no internet access at your site you must contact Elixir and provide the serial number of the pc where you will install the Elixir software. Elixir will provide a registration file (*password.epw*) that you must copy to the Elixir pc.

Copy the *password.epw* file to \Elixir and start the installation.

Select [Prepare my initial product license registration. This workstation is not connected to the Internet] from the Registration Option menu, then click on [Next].

The application installation process will begin, see the "Installation" section.

Soft key customers running Windows for Workgroups 3.1 or 3.11

Since Windows 3.1/3.11 does not have internet capability, you must contact Elixir to obtain your password file. After installation of Elixir software, the installation program verifies that the operating system is 3.1 or 3.11, runs *passwd16.exe*, and provides your machine serial number.

To complete registration:

- 1. Enter your customer number, password and PC number, then print out a copy of this screen.**
- 2. Fax, email, or mail Elixir the display printout. Elixir will generate a password.epw file and send it to you on diskette.**
- 3. Load the password.epw file in the \ELIXIR directory.**

The application installation process will begin, see the "Installation" section.

Installation

This section describes how to install Elixir software using the [Full] and [Custom] options. Installing additional Elixir applications to an existing version is also explained.

Note: The software registration process must be completed (See the "Product Registration" section).

For information about starting Elixir applications after installation, refer to the "Introduction" chapter.

During installation, the log file, XWIN.log, is created in the *drive:\Elixir* directory. XWIN.log contains a list of all directories and files copied or created, including information pertinent to the installation. It can be accessed, using Notepad or Wordpad.

If you have any problems running Elixir software after installation, refer to the "Troubleshooting" section of the *Elixir Getting Started Guide* for more information.

Installing Elixir applications

Elixir provides a simple, interactive procedure for installing Elixir applications.

During installation you can select [Full] or [Custom] installation.

- Selecting a [Full] installs all Elixir applications and demonstration files on the same drive. If you have a previous version of Elixir software, this option overwrites the existing version.
- Selecting a [Custom] installation allows you to choose the Elixir applications and options (such as Elixir demonstration files) you want installed, as well as where you want certain options installed. For example, You may want the PDF documentation in a different directory than the application.

You can also install Elixir program files (required to run Elixir), and data files (files that you create or files such as the Elixir demonstration files), in separate drives and directories.

Full installation

To begin installation:

You can quit installation at any time, by pressing the <Esc> key.

1. **Close all active applications.**
2. **Insert the CD in your CD-ROM drive.**
3. **In the "Welcome" screen, click on [Next].**

The Release Notes? screen displays.

4. **Select [Read Release Notes Now] to display them in Wordpad (or Notepad), or click on [Next] to proceed with the installation.**

The Product Selection screen displays.

5. **Select the applications you want to install and click on [Next].**

The Selected Products screen displays.

6. **Verify the listed applications and click on [Next]. If you need to delete or add to the list, click on [Back] and reselect.**
7. **Verify your user information and click on [Next].**
8. **In the Select Install Type screen, select [Full] and click on [Next].**
9. **Select the drive on which you want Elixir software installed, then click on [Next].**
10. **Select the Programs Folder in which you want Elixir software installed (Elixir Applications is the default), then click on [Next].**

11. In the **Backup Replaced Files** screen, click on **[Yes]**, if you want to make back-up copies of all files replaced during installation and select the directory where the back-up files will be placed. Then click on **[Next]**.
12. In the **Start Copying Files** screen, click on **[Install]**.

Installation begins.
13. Once installation is complete, click on **[Exit Installer]**.

Custom installation

To begin installation:

You can quit installation at any time, by pressing the <Esc> key.

1. **Close all active applications.**
2. **Insert the CD in your CD-ROM drive.**
3. In the **"Welcome"** screen, click on **[Next]**.

The Release Notes? screen displays.

4. **Select [Read Release Notes Now] to display them in Wordpad (or Notepad), or click on [Next] to proceed with the installation.**

The Product Selection screen displays.

5. **Select the applications you want to install and click on [Next].**

The Selected Products screen displays.

6. **Verify the listed applications and click on [Next]. If you need to delete or add to the list, click on [Back] and reselect.**
7. **Verify your user information and click on [Next].**

8. **In the Select Install Type screen, select [Custom] and click on [Next].**
9. **In the Configuration Only? screen:**
 - Selecting [Yes] allows you to load Configuration, Program, and Data files into any resident directory.
 - Selecting [No] allows you to deselect options you do not wish installed.
10. **Select the Programs Folder in which you want Elixir software installed (Elixir Applications is the default), then click on [Next].**
11. **In the Backup Replaced Files screen, click on [Yes], if you want to make back-up copies of all files replaced during installation and select the directory where the back-up files will be placed. Then click on [Next].**
12. **In the Start Copying Files screen, click on [Install].**

Installation begins.
13. **Once installation is complete, click on [Exit Installer].**

Adding applications

If you did not install all of the Elixir options while performing the Custom installation procedure, you can do so at any time by following the steps described in the "Custom installation" section of this chapter.

Adding newly licensed applications

If you purchase additional Elixir products, Elixir will update your password file. You can access the Product Registration program from your program group and re-download your initial product registration password file to activate your new products.

2. Elixir PrintDriver basics

This chapter describes Elixir PrintDriver and how to set up the options and default settings.

Elixir PrintDriver design

Elixir PrintDriver provides you with a series of easy-to-use dialog boxes to set up your print job options, select your output format and specify the directories for your resources. You can display a dialog box by clicking on a button in the Main Setup dialog box. See the "Accessing the Main Setup dialog box" section in this chapter for more information.

If a dialog box displays a [Help] button, you can click on this button to display information about any option in that box, or to access the comprehensive on-line Help program provided with Elixir PrintDriver. For more information about on-line Help, see the "Introduction" chapter.

Accessing the Main Setup dialog box

You can access the Main Setup dialog box from the Control Panel in the Windows Program Manager.

From the Control Panel:

1. **Double-click on the Printers icon.**

The Printers dialog box displays.

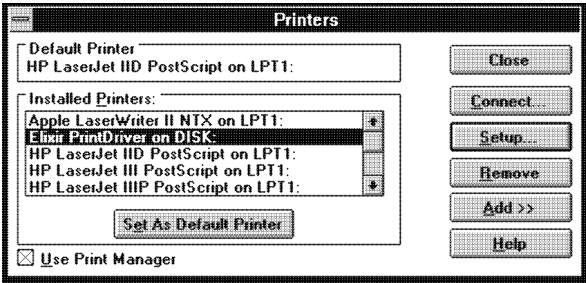


Figure 2-2. Printers dialog box

2. Select [Elixir PrintDriver on DISK].
3. Click on [Setup].

The Main Setup dialog box displays.

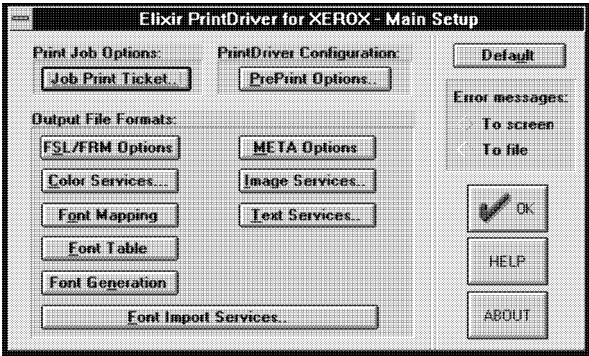


Figure 2-3. Main Setup dialog box

You can also access the Main Setup dialog box from the [Printer Setup] option within some applications. See your application manual for details.

Elixir PrintDriver setup

From the Main Setup dialog box, you can control the Print Job Options, PrintDriver Configuration and Output File Formats.

Job Print Ticket

The options in the Job Print Ticket dialog box control the overall printing parameters for the print job. To select the print job options, click on [Job Print Ticket]. The Job Print Ticket dialog box displays.

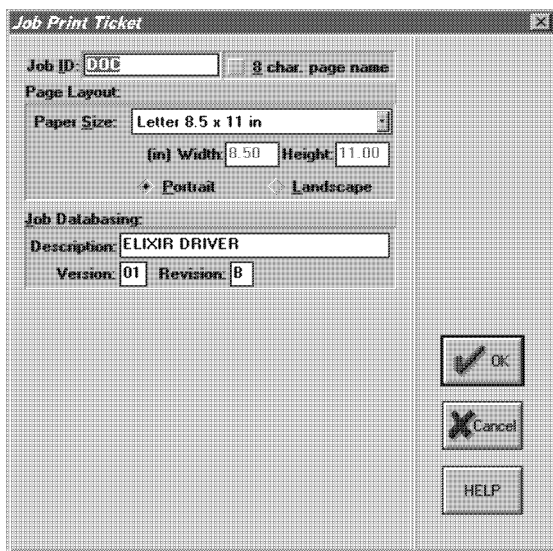


Figure 2-4. Job Print Ticket dialog box

The Job Print Ticket dialog box contains the following options;

Job ID

Specify a name for each file produced by Elixir PrintDriver. Files output to metacode retain the Job ID name. Files output to .ELX, .FSL, or .FRM use the following naming conventions. Note that the first page retains the Job ID name.

- For Job IDs ending in letters: the last character of the output file name is replaced by the page number for files 2 to 9 pages in length, the last two characters are replaced by the page number for files 10 to 99 pages in length, the last three characters are replaced by the page number for files 100-999 pages in length, and the last four characters are replaced by the page number for files 1000-9999 pages in length.

For example, for Job ID "ABCDEF", a file named "ABCDEF" is generated for page 1, "ABCDE2" is generated for page 2, "ABCD10" is generated for page 10, "ABC100" is generated for page 100, and "AB1000" is generated for page 1000.

- For Job IDs ending in numbers: the last two characters of the output file name are replaced by an "X" and the page number for files 2 to 9 pages in length, the last three characters are replaced by an "X" and the page number for files 10 to 99 pages in length, the last four characters are replaced by an "X" and the page number for files 100-999 pages in length, and the last five characters are replaced by an "X" and the page number for files 1000-9999 pages in length.

For example, for Job ID "123456", a file named "123456" is generated for page 1, "1234X2" is generated for page 2, "123X10" is generated for page 10, "12X100" is generated for page 100, and "1X1000" is generated for page 1000.

If the [H2XRX/VP297 naming convention] option in the Text Services dialog box is selected, Elixir PrintDriver does not use the "X". See the [H2XRX/VP297 naming convention] option in this chapter for more information.

8 char. page name

Select this option to use 8 characters for .ELX, .DAT and metacode file names. When you select this option, the [HP2XRX/VP297 Naming Convention] option in the Text Services dialog box is also selected. See the "Text Services" section in this chapter for more information about the HP2XRX/VP297 naming convention.

Note that when you select this option, you cannot output to .FSL or .FRM format.

Paper Size

Select the paper size and orientation, [Portrait] or [Landscape]. Click on the scroll arrow to display the paper sizes. For custom sizes, specify the [Height] and, [Width].

When selecting the paper size, note the following:

- The dimensions for a B5 page may vary in different applications. When you select B5 as the paper size in the Job Print Ticket, Elixir PrintDriver outputs the page as 7.17 inches x 10.12 inches which is compatible with Xerox printers.
- If you are using PageMaker, you must always select [Custom format] and specify the page size and orientation.
- Make sure the paper size and page orientation settings in the application are the same as the settings in the Job Print Ticket dialog box before conversion.
- Only the 41xx range of production printers support custom page sizes.
- All pages in a file must have the same orientation.

Orientation

Select the orientation of the page: [Portrait] or [Landscape].

Description

Enter a short description of the print job to include with the file. (Optional.)

Version/Revision

This option allows you to keep track of revisions made to a document when you output to Elixir (.ELX) format. (Optional.)

- Specify the primary version of the document in the version window (Maximum two characters).
- Specify the revision or modification identifier in the revision window. (Maximum one character).

To display the version and revision characters of the .ELX file in Elixiform, pull down the **Options** menu and select [Page Databasing].

PrePrint options

The PrePrint Options dialog box displays the selected options when you are ready to print your finished document. See the "Using Elixir PrintDriver" chapter for more information about the PrePrint dialog box.

FSL/FRM options

To specify .FSL and .FRM options, click on [FSL/FRM Options]. The Xerox FSL/FRM Page Options dialog box displays.

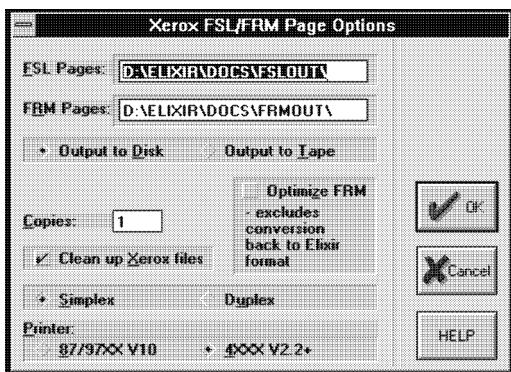


Figure 2-5. Xerox FSL/FRM Page Options dialog box

If you want to use Elixir PrintDriver with other Elixir products, use the default directories.

Note that the directories for .FSL and .FRM pages are the same for both color and black and white.

The Xerox FSL/FRM Page Options dialog box contains the following options:

FSL Pages

Specify the directory for output .FSL pages. The default directory is *drive:\ELIXIR\DOCS\FSLOUT*.

FRM Pages

Specify the directory for output .FRM pages. The default directory is *drive:\ELIXIR\DOCS\FRMOUT*.

Output

Select [Output to Disk] to output to disk. Select [Output to tape] to output to an attached tape unit.

Copies

Specify how many copies of the .FSL and .FRM documents you want to generate in the CMD file. The default is 1. Note that if you are sampling or compiling an .FRM or .FSL, only one copy is printed.

Clean up Xerox files

Check this option to produce a command file to delete all job elements on the printer, including .FRM, .IMG, .MSC, and the command files after printing.

Optimize FRM

Select this option to reduce the size of the file and the text placement statements at the printer. Note that if you use this option, you can convert the file to Elixir format using the ElixSys Desktop or ElixSys Desktop for Highlight color but you cannot edit the converted text.

Simplex/Duplex

Select [Simplex] to print on one side of a page and [Duplex] to print on both sides of a page.

Printer

Select the output printer's system format: Select [87/97XX V10] if you are using 8700 or 9700 series printers or [4XXX] for any other production printer. The default is [4XXX].

META options

To specify the options for metacode output, click on [META Options]. The Metacode Converter Options dialog box displays.

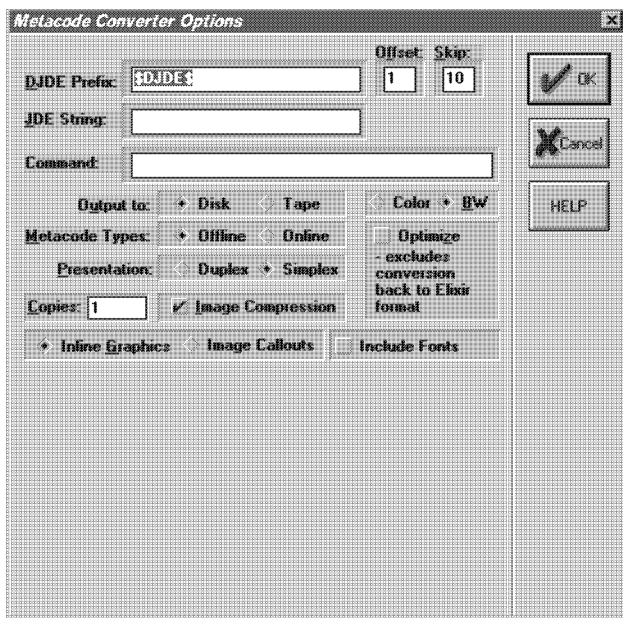


Figure 2-6. Metacode Converter Options dialog box

The Metacode Converter Options dialog box contains the following options:

DJDE prefix

Specify the Dynamic Job Descriptor Entry (DJDE) prefix up to 50 characters. The default is \$DJDE\$.

Offset

Specify the number of characters or spaces present before the first character of the DJDE string.

Skip

Specify the total number of characters or spaces to skip before reading a command.

JDE string

Specify the Job Descriptor Entry you want to use from the Elixir JSL. You can use up to 6 characters. The default JDE is DFAULT.

Command

You can input instructional messages that display when the operator runs the job at the printer.

Output to

Select [Disk] to output to disk or [Tape] to output to an attached tape unit. The default is [Disk].

Metacode types

Select [Off-line] for tape or [On-line] for host connected.

Color option

Select [Color] for color or [BW] for black and white.

If you select [Color] and your printer does not support it, your file will print in black and white.

Note that when you change the color option in this dialog box, the color option in the Color Services dialog box also changes so that both options are the same. See the "Color Services" section in this chapter for more information.

Presentation

Select [Duplex] to print on both sides of the paper or [Simplex] to print on one side of the paper.

Copies

Specify the number of copies you want to generate.

Image compression

Select this option to compress duplicate lines, blank lines and white space.

Optimize

Select this option to reduce the size of the file and the text placement statements at the printer. Note that if you use this option, you can convert the file to Elixir format using the ElixirSys Desktop or ElixirSys Desktop for Highlight color but you cannot edit the converted text.

Inline Graphics/Image Callouts

When you generate a metacode file, you can either embed graphics in the metacode file or call images (.IMG) on the printer.

- Select [Inline Graphics] to generate metacode with the DJDE GRAPHIC= command which embeds graphics in the metacode file.

Use this option if you have embedded graphics in your document or if you want to embed a previously created Elixir graphic (LP3) into your document.

- Select [Image Callouts] to generate metacode with the DJDE IMAGE= command which pulls referenced graphics in the document from the printer disk.

Use this option if you have graphics referenced in your document or if you have a graphic in your document but only want to reference it in the metacode..

Include Fonts

When selected, font resources used by this application will be included in the metacode file.

If you are an Elixir PageHandler user, see your *Elixir PageHandler User Guide* for additional options in this dialog box.

Color services

To select the color options for your document, click on [Color Services]. The Color Services dialog box displays.

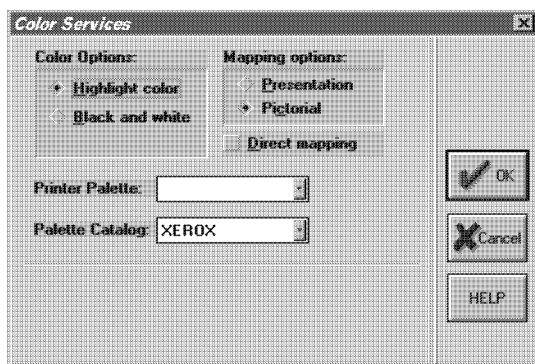


Figure 2-7. Color Services dialog box

The Color Services dialog box contains the following options:

Color options

The use of color in your document is determined by the printer you use for printing the final document. If you select color and your printer does not support it, your file will print in black and white.

Note that when you change the color option in this dialog box, the color option in the Metacode Converter Options dialog box also changes so that both options are the same. See the "META options" section in this chapter for more information.

- Select [Highlight color] to use highlight color in your document for printing on a 4850 or 4890 printer. When you select this option, you must also specify the [Printer Palette] and [Printer Catalog] options.
- Select [Black and white] to use only black and white in your document for printing on any of the supported Xerox printers.

Note that if you select black and white, all jobs are printed in black and white. You can override this option by selecting the [Highlight color output] option in the PrePrint dialog box when you print your job. See the "Using Elixir PrintDriver" chapter for more information about the PrePrint dialog box.

Mapping options

Select [Presentation] if you are converting .PCX or .TIF files composed of line art or graphics without gray scales, or [Pictorial] if you are converting .PCX or .TIF files composed of high-grade graphics such as scanned photographs or graphics with gray scales.

The default is [Pictorial].

Direct mapping

Select to convert full color graphics based on the high-light color chosen. For example a graphic containing red, green, and blue will be converted to full red for the red, green and blue portions. When deselected, and red is selected as the highlight color, only the red portion will be converted to red, all other colors will be shades of gray.

Printer palette

Select [RED], [GREEN], or [BLUE].

Printer catalog

Select [XEROX] or [XEROX1]. If you select [XEROX1], you can then select from the following highlight colors: red, blue, green, cyan, magenta, cardinal, royal, violet, brown, ruby or gray. Note that only red, green and blue are supported for graphics.

Image services

To specify a directory and select options for images, click on [Image services]. The Image Services dialog box displays.

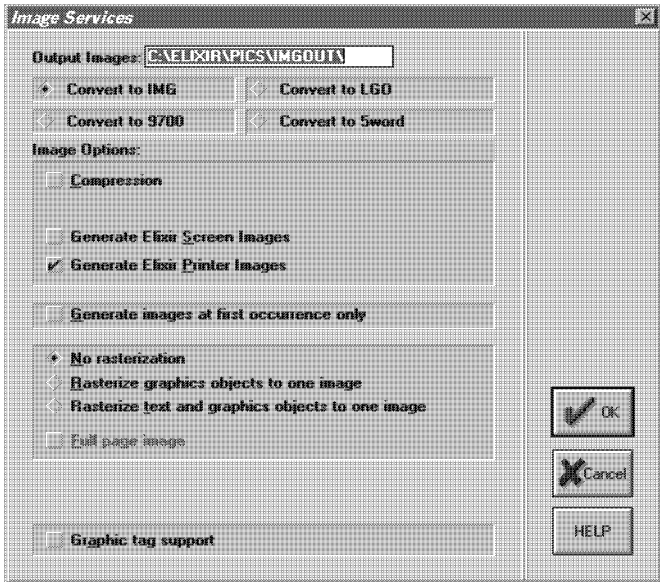


Figure 2-8. Image Services dialog box

The Image Services dialog box contains the following options:

Output Images

Specify the output directory for images in your document. The default directory changes when you select the type of conversion: .IMG, .LGO or 9700 font. Note that when you select [Convert to 9700 font] you cannot change the default directory.

Convert to IMG

Select [Convert to IMG] to convert graphics to .IMG (image) format. Note that you must have a GHO or GVG option card on your printer. The default directory is *drive:\ELIXIR\PICS\IMGOUT*.

Convert to LGO

Select [Convert to LGO] to convert graphics to .LGO (logo) format. Note that an .LGO is limited to an area approximately 2 x 2 inches. The default directory is *drive:\ELIXIR\PICS\LGOUT*.

Convert to 9700 font

Select [Convert to 9700 font] to convert graphics to tiles in a 9700 font with the same name as the document. Note that the font file should not exceed 128k.

The default directory is *drive:\ELIXIR\FONTS\X97OUT* and cannot be edited.

Convert to 5Word font

Select [Convert to 5Word font] to convert graphics to tiles in a 5Word font with the same name as the document. Note that the font file should not exceed 390k (approximately 30.5 square inches for a black and white image and 14.4 square inches for a highlight color image).

The default directory is *drive:\ELIXIR\FONTS\FN6OUT* and cannot be edited.

Compression

Check this box to optimally compress images for .FSL .FRM and metacode.

Generate Elixir Screen Images

Check this option if you want to generate Elixir screen images (.LW8). These images can only be used with Elixiform software (which can also view LP3 images).

Generate Elixir Printer Images

Check this option to generate Elixir printer images (.LP3) that can be converted into other formats such as .PCX, .BMP or .TIF using ElixiSys Desktop or ElixiSys Desktop for HighLight Color. You can use ElixiGraphics to edit these images.

Generate images at first occurrence only

Use this option only if you are using the same image in the same position throughout the document. For example, if you have a header with an image that is repeated throughout the document and you do not have any other images within the document, you can use this option.

Do not use this option if your document contains different images on different pages.

No Rasterization

Select this option if you do not want to convert all objects on the page to one complete image. Each supported graphic (.TIF, .BMP and .PCX) is converted into a separate graphic.

Rasterize graphics objects to one image

Select this option to convert all the graphical objects (lines, boxes, images, dotted lines etc.) to one complete image instead of individual objects. This option is useful if your document contains unsupported objects, such as rotated text or too many graphics, or if you get the error message "Too many lines for Xerox printer".

Rasterize text and graphics objects to image

Select this option to convert each page (lines, text and graphical objects) to one complete image. Note that all graphical elements must be in a supported format: PCX, TIF or BMP. This option is useful if your document contains any unsupported fonts and objects.

Full page image

When this option is deselected, full page images generate for each page of the Windows application document, with all redundant white space surrounding the image removed. When selected, each page graphic has the same identical starting point of 0, 0. Select this option when smaller graphic files would be an advantage.

Graphic tag support

When selected, and when images have been referenced in the windows application as \$\$filename, Print-Driver will recognize that an external graphic is to be used. When deselected, the \$\$filename will print as a text string.

Font mapping

Elixir PrintDriver allows you to map TrueType and ATM fonts to Xerox fonts using a font mapping table. Information about editing the font mapping table is described in the "Font options" chapter.

If you want to use the font mapping table when you print your document, click on [Font Mapping]. The Font Mapping services dialog box displays.

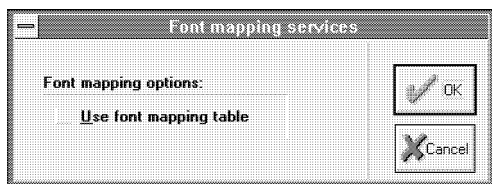


Figure 2-9. Font Mapping services dialog box

The Font Mapping services dialog box contains the following option:

Use font mapping table

Select this option to use the font mapping table or de-select this option if you do not want to use the font mapping table.

See the "Font options" chapter for more information.

Text services

Text Services allows mapping from one character set to another. Make sure you set up the options in the Text Services dialog box before you convert any fonts using Elixir PrintDriver. To check the default selections, select [Text Services]. The Text Services dialog box displays.

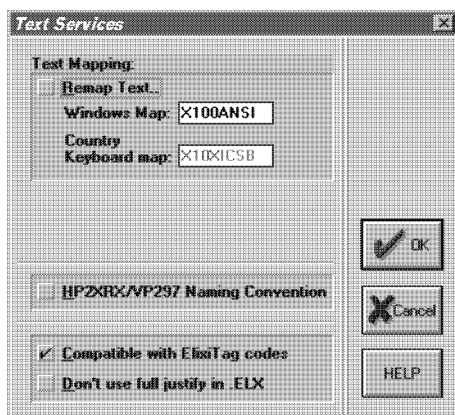


Figure 2-10. Text Services dialog box

The Text Services dialog box contains the following options:

Remap text

When this option is selected, you can map the Windows ANSI character set to any other character set (such as Elixir's older GEM based software character set which uses DOS code pages 437 or 850) or to other existing character sets.

A character set, or code page, is a unique set of characters. Windows uses the standard ANSI character set, also known as Windows Latin 1, and translates all keyboard entries as ANSI code characters. DOS in the United States uses the 437 character set. Other systems or countries may use other character sets.

When this option is deselected, all characters in the Windows character set are converted without remapping to another character set.

The default is deselected.

To remap text to other character sets, you need to specify a Windows Map and a Country Keyboard Map reflecting the character set.

Note that when you make any changes to the [Remap Text] option, you must regenerate all fonts in your document and reload those fonts on the printer.

- **Windows Map**

The [Windows Map] is a mapping file which defines the characters in the Windows character set and their position (in hex) in the character set.

Most users should use X100ANSI. If you are using the Eastern European version of Windows, you should use X10EEURO.

- **Country Keyboard Map**

The [Country Keyboard Map] is a mapping file that assigns positions corresponding to the country keyboard you want to map them to.

If [Remap Text] is selected, you may get the “Match not found, char n” error message during conversion since not all characters in the Windows ANSI character set are present in other character sets. You can edit the country keyboard mapping file to include any missing characters. For more information see the “Operational and error messages” appendix. You should not get this error if [Remap Text] is deselected.

Note: If you edit your document in any Elixir Forms application, for example Elixiform, and the [Remap Text] option was deselected when you converted it using Elixir PrintDriver, specify [None] for the [Keyboard Mapping] option in the Elixir Forms application. If [Remap Text] was selected when you converted your document, you must select the same keyboard mapping used with Elixir PrintDriver.

See your Elixir Forms application user guide for information about the [Keyboard Mapping] option.

Country Keyboard Maps

The following is a list of .KMP files provided with Elixir PrintDriver.

<u>.KMP</u>	<u>Description</u>
X1000437.KMP	Personal Computer for US English, UK English, and European languages using the IBM character set.
X1000850.KMP	PC Multilingual 1 for IBM PC multinational keyboards
X100ANSI.KMP	Windows ANSI
X10EEURO.KMP	European Windows
X10XICSB.KMP	Xerox International Character Set - B
X1EBCDIC.KMP	IBM host (EBCDIC)

HP2XRX/VP297 Naming Convention

This option is for users who have upgraded from HP2XRX or VP297 software to Elixir PrintDriver but want to continue using the HP2XRX or VP297 naming convention for job IDs.

When this option is deselected, Elixir PrintDriver replaces the last numeric characters with an "X" and the page number, as described in the Job ID section in this chapter.

When this option is selected, Elixir PrintDriver replaces the last characters with the page number only, and does not add an "X" before the page number.

Note: When you use this naming convention, you may overwrite other pages if your job ID is numeric.

The following example shows how a four page document with job ID "123123" is numbered when this option is selected. Note that the first page always uses the original Job ID name.

Page 1	123123
Page 2	123122
Page 3	123123
Page 4	123124

By using the HP2XRX/VP297 naming convention with this job ID, page three overwrites page one. If this document contained more than 21 pages, page 22 would overwrite page 2, page 23 would overwrite page 3 and so on.

To ensure unique naming for each page, use only alphabetic characters or deselect this option. If you want to use this option, make sure you choose your job ID carefully.

The default is deselected.

Compatible with ElixTag codes

If you are a DocuTag or DataMerge user and are using ElixTag to enter datatags in Windows applications, select [Compatible with ElixTag codes] to instruct PrintDriver that the last character in the font ('y dieresis') will be used to denote datatags. When this option is deselected, the last character in the font can be used as a text character in documents.

Don't use full justify in .ELX

Use this option for more efficient output when converting to .FSL.

If you have a fully justified paragraph in your application and this option is selected, Elixir PrintDriver produces less text statements in the .FSL making it easier to read and edit if required.

If you have a fully justified paragraph in your application and this option is deselected, the .FSL contains one text statement for each word or character.

Font table

When you convert TrueType or ATM fonts using Elixir PrintDriver, the converted fonts are assigned a two-character prefix. Click on [Font Table] to view the prefixes assigned to converted TrueType and ATM fonts in the TTFONTS.NAM file. The Font name table dialog box displays.

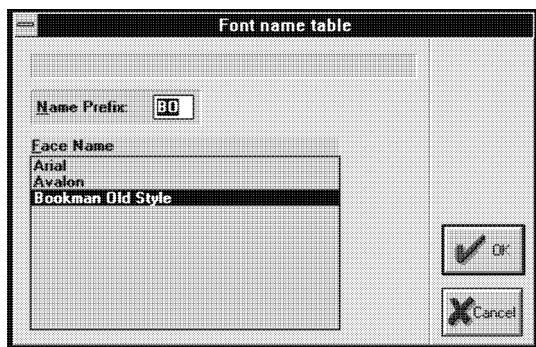


Figure 2-11. Font name table dialog box

To edit the prefix of a converted font:

- 1. Select a face name from the list.**

The currently assigned prefix displays in the [Name Prefix] window.

- 2. Click in the [Name Prefix] window and backspace over the current prefix.**

- 3. Enter a new 2 digit prefix for that font.**

If the new prefix is already in use by another font, you are prompted to enter another 2 character prefix.

For more information about converting TrueType and ATM fonts, see the "Font options" chapter.

Font generation

When you print a document containing TrueType or ATM fonts, and Xerox versions have not been previously generated, the Font Generation Prompt dialog box displays.

To preview this dialog box before you print your document, click on [Font Generation]. The Font Generation Prompt dialog box displays.

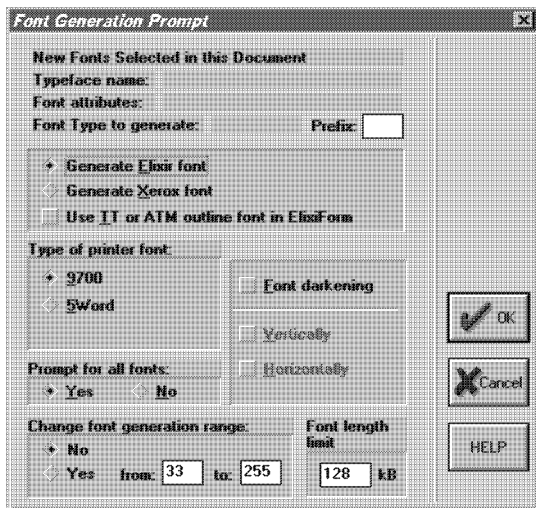


Figure 2-12. Font Generation Prompt dialog box

The Font Generation Prompt dialog box contains the following options:

Typeface name

This option is not valid when previewing this dialog box from the Main Setup dialog box. See the "Font options" chapter for information about using this option when converting TrueType and ATM fonts.

Font attributes

This option is not valid when previewing this dialog box from the Main Setup dialog box. See the "Font options" chapter for information about using this option when converting TrueType and ATM fonts.

Font type to generate

This option is not valid when previewing this dialog box from the Main Setup dialog box. See the "Font options" chapter for information about using this option when converting TrueType and ATM fonts.

Changing the prefix

This option is not valid when previewing this dialog box from the Main Setup dialog box. See the "Font options" chapter for information about using this option when converting TrueType and ATM fonts.

Select the font generation

Select the type of font to generate:

- Select [Generate Elixir Font] to generate Elixir fonts so that you can view and edit the document using Elixiform and convert the document using Elixiform Desktop or Elixiform Desktop for High-Light Color.
- Select [Generate Xerox Font] to generate Xerox fonts so that you can print your document on a Xerox printer. Note that Elixir fonts are also generated when you select this option.
- Select [Use TT or ATM outline font in Elixiform] to view the document in Elixiform using the same TT or ATM fonts used in the original Windows application.

Type of printer font

Select the type of printer font:

- Select [9700] to output fonts to *drive:\ELIXIR\FONTS\X97OUT*

Note that 9700 font files are limited to 128 KB (or 64 KB for older Xerox printers).

- Select [5Word] to output fonts to *drive:\ELIXIR\FONTS\FN6OUT*

Note that 5Word font files have no size limit and are compatible with 41xx, 46xx, and 48xx Xerox printers.

Font darkening

Select this option to add a dot to fonts that are generated by Elixir PrintDriver. This option is useful when printing on 87xx, 97xx or 40xx range of production printers when the quality of the printed fonts are too faint.

Select [Horizontal] to add a dot horizontally, (the default for portrait fonts) select [Vertical] to add a dot vertically (the default for landscape fonts) or select both options to add a dot horizontally and vertically.

Prompt for all fonts

Select if you want to display the Font Generation Prompt dialog box:

- Select [YES] if you want the dialog box to display for each ungenerated (or regenerating) font.
- Select [NO] if you do not want the dialog box to display for each ungenerated (or regenerating) font. When you select this option, the dialog box appears only for fonts with no prefix assigned. For all other fonts, the default settings are used.

Change font generation range

This option allows you to specify the character range in a font. For example, if you are using a font larger than 24 points, you can limit the font range in order to keep the file size below the printer's maximum file size. Note that the maximum file size for 9700 font files is 128 KB (or 64 KB for older Xerox printers). If you do not limit the font range and the file exceeds the printer limit, Elixir PrintDriver truncates the font automatically.

If your printer supports 5Word fonts, this is unnecessary. Supported 5Word printers are 41xx, 46xx, and 48xx.

To specify a range of fonts, select [Yes], backspace over the numbers in the windows, and enter the numbers that correspond to the font's decimal position in the Windows ANSI character set. For example, if you want to generate only numbers, enter 48 to 57. If you want to generate only lower case letters, enter 97 to 122. See your Windows guide for character tables.

If you do not want to change the range of fonts displayed in the window, select [No].

See the "Limitations and Solutions" appendix for information about using large font sizes.

Font length limit

Specify the font length limit for the printer you are using. If you are converting large fonts and a small font length is selected, Elixir PrintDriver truncates the font at the size specified. All other characters exceeding the limit are removed from the font.

Font import services

Elixir PrintDriver allows you to create text in your Windows document using your choice of Xerox fonts, Elixir format fonts, TrueType fonts, and/or Adobe Type Manager fonts.

If you want to use Xerox or Elixir format fonts, you must import the fonts into Elixir PrintDriver, generate Windows versions and install the fonts into Windows.

For a full description of how to generate fonts for Elixir PrintDriver and install them into Windows, see the "Font options" chapter.

Default settings

Click on [Default] to reset all directories and options to the default settings. The following table shows a list of options and the default setting for that option, within each dialog box .

Main Setup dialog box

Error messages	To screen
----------------	-----------

Job Print Ticket dialog box

Job ID	DOC
8 char page name	deselected
Paper size	Letter 8.5 x 11 in
Orientation	Portrait
Description	ELIXIR DRIVER
Version	01
Revision	B

PrePrint dialog box

Job ID	DOC
Document name	DOC
Elixir pages	selected elixir\forms\elixir\demo
Source FSL	deselected elixir\docs\fslout
Object FRM	deselected elixir\docs\frmout
META	elixir\docs\metaout
Regenerate fonts	deselected
Show conversion status	selected
Highlight color output	deselected
Print chapters	deselected

FSL/FRM Options dialog box

FSL Pages	elixir\docs\fslout
FRM Pages	elixir\docs\frmout
Output	to disk
Copies	1
Clean up Xerox files	selected
Optimize FRM	deselected
Presentation	simplex
Printer	4xxx v2.2+

META Options dialog box

DJDE prefix	\$DJDE\$
Offset	1
Skip	10
Output to	disk
Color mode	BW
Metacode Types	offline
Optimize	deselected
Presentation	Simplex
Copies	1
Image compression	selected
Inline Graphics	deselected
Image Callouts	deselected
Include Fonts	deselected

Color Services dialog box

Color options	Black and white
Mapping options	Pictorial
Direct mapping	deselected
Printer palette	(form dependent)
Printer catalog	Xerox

Image Services dialog box

Output Images	elixir\pics\imgout
Conversion	convert to IMG
Compression	deselected
Generate Elixir Screen Images	deselected
Generate Elixir Printer Images	selected
Generate images at first occurrence only	deselected
No rasterization	selected
Rasterize graphics objects to one image	deselected
Rasterize text and graphics objects to one image	deselected
Full page image	deselected
Elimination of black boxes	deselected
Graphic tag support	deselected

Font Mapping dialog box

Use font mapping table	deselected
---------------------------	------------

Text Services dialog box

Remap text	deselected
Windows Map	X100ANSI
Country keyboard map	X10X1CSB
HP2XRX/VP297	
Naming Convention	deselected
Compatible with	
ElixirTag codes	selected
Don't use full justify	
in .ELX	deselected

Font Table dialog box

The list of font names in this dialog box is not affected when you click on [Default].

Font Generation dialog box

Generate Elixir font	selected
Generate Xerox font	deselected
Use TT or ATM outline	
font in ElixirForm	deselected
Type of printer font	9700
Font darkening	deselected
Prompt for all fonts	Yes
Change font	
generation range	No, from 33 to 255
Font length limit	128kB

Font Import Services dialog box

Any font lists in this dialog box are deleted.

Error messages

Elixir PrintDriver allows you to run a print job with or without dialog box interruptions.

To screen

When you select this option, dialog boxes, error messages, and the status of the job display on the screen.

To file

Use this option when you are processing print jobs in batch mode. When you select this option, the print job runs without any interruptions and all messages, including conversion errors, are written to the file *drive:\ELIXIR\PDERR.LOG*. You can view the error messages in this file using a text editor.

Note that all fonts must be generated before you can use this option. If you have ungenerated fonts in your document, the Font Generation prompt dialog box displays and interrupts the print job.

This chapter provides details on the three methods of creating text in your Windows document for subsequent printing on a Xerox production printer.

Overview of font options

Before you can print a Windows document on a Xerox production printer, you must ensure that the fonts in your document are in Xerox format. You can do this in one of three ways:

- Create text in your document using TrueType and ATM fonts, and convert your fonts to Xerox format using the Font Generation Prompt dialog box.

See the "Converting TrueType and ATM fonts" section in this chapter for more information.

- Create text in your document using TrueType and ATM fonts, and use the Elixir PrintDriver mapping table to map your fonts to Xerox format fonts.

See the "Mapping TrueType and ATM fonts" section in this chapter for more information.

- Import Xerox and Elixir format fonts onto your PC, and install them into your Windows application using the Elixir PrintDriver font import services.

See the "Importing Xerox and Elixir format fonts" section in this chapter for more information.

Note that at the beginning of each section there is a step-by-step overview of how to use each option and references to sections providing more detailed information.

Converting TrueType and ATM fonts

If you are using TrueType and/or ATM fonts in your document, when you select [Print], Elixir PrintDriver displays the Font Generation Prompt dialog box and allows you to specify options for generating Xerox and/or versions of each font.

Note that the Font Generation Prompt dialog box displays only if the fonts have not been previously generated or if the [Regenerate Fonts] option in the PrePrint dialog box is selected

When using this option to convert your TrueType and ATM fonts, make sure the [Use Font Mapping Table] option in the Font Services dialog box is deselected. See the "Using the font mapping table" section in this chapter for more information.

To generate Xerox and/or Elixir versions of fonts from TrueType and ATM fonts:

- 1. Create the text in your document by selecting any available TrueType and ATM fonts from the font list in your Windows application.**
- 2. Select [Print] with [Elixir PrintDriver on Disk] selected as the printer.**

If there are fonts in the document that have not been previously generated by Elixir PrintDriver, or if the [Regenerate Fonts] option in the PrePrint dialog box is selected, the Font Generation Prompt dialog box displays.

See the "Font Generation" section in this chapter for detailed information

3. Specify options in the Font Generation Prompt dialog box and click on [OK].

Elixir PrintDriver generates the font and, unless otherwise specified, the Font Generation Prompt dialog box displays for the next ungenerated font.

When all the fonts are generated, Elixir PrintDriver generates the print files in the specified directories.

Note that once you have generated the Xerox version of a font, you do not have to regenerate it for subsequent print jobs. You may want to create a document containing all of the typefaces and point sizes you use, and then "print" the document using Elixir PrintDriver, to generate Xerox versions of each font. Subsequent printing of documents containing these fonts are faster as the Xerox fonts have already been generated.

Font generation

The Font Generation Prompt dialog box allows you to specify options for generating Xerox and Elixir versions of the TrueType and ATM fonts in your document.

You may want to display the Font Generation Prompt dialog box for a font that was previously generated if you generated only Elixir fonts and you now want to generate Xerox fonts, or if you made a change to the keyboard mapping in the Text Services dialog box.

To regenerate a font that was previously generated, select [Regenerate Fonts] in the PrePrint dialog box before printing. Note that you cannot change the prefix of a font that has already been generated.

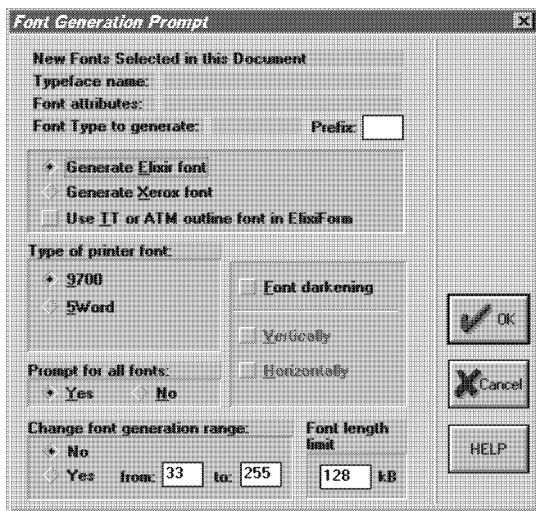


Figure 3-1. Font Generation Prompt dialog box.

The Font Generation Prompt dialog box contains the following options:

Typeface name

This option is not valid when previewing this dialog box from the Main Setup dialog box. See the "Font options" chapter for information about using this option when converting TrueType and ATM fonts.

Font attributes

This option is not valid when previewing this dialog box from the Main Setup dialog box. See the "Font options" chapter for information about using this option when converting TrueType and ATM fonts.

Font type to generate

This option is not valid when previewing this dialog box from the Main Setup dialog box. See the "Font options" chapter for information about using this option when converting TrueType and ATM fonts.

Changing the prefix

This option is not valid when previewing this dialog box from the Main Setup dialog box. See the "Font options" chapter for information about using this option when converting TrueType and ATM fonts.

Select the font generation

Select the type of font to generate:

- Select [Generate Elixir Font] to generate Elixir fonts so that you can view and edit the document using Elixiform and convert the document using Elixiform Desktop or Elixiform Desktop for High-Light Color.
- Select [Generate Xerox Font] to generate Xerox fonts so that you can print your document on a Xerox printer. Note that Elixir fonts are also generated when you select this option.
- Select [Use TT or ATM outline font in Elixiform] to view the document in Elixiform using the same TT or ATM fonts used in the original Windows application.

Type of printer font

Select the type of printer font:

- Select [9700] to output fonts to *drive:\ELIXIR\FONTS\X97OUT*

Note that 9700 font files are limited to 128 KB (or 64 KB for older Xerox printers).

- Select [5Word] to output fonts to *drive:\ELIXIR\FONTS\FN6OUT*

Note that 5Word font files have no size limit and are compatible with 41xx, 46xx, and 48xx Xerox printers.

Font darkening

Select this option to add a dot to fonts that are generated by Elixir PrintDriver. This option is useful when printing on 87xx, 97xx or 40xx range of production printers when the quality of the printed fonts are too faint.

Select [Horizontal] to add a dot horizontally, (the default for portrait fonts) select [Vertical] to add a dot vertically (the default for landscape fonts) or select both options to add a dot horizontally and vertically.

Prompt for all fonts

Select if you want to display the Font Generation Prompt dialog box:

- Select [YES] if you want the dialog box to display for each ungenerated (or regenerating) font.
- Select [NO] if you do not want the dialog box to display for each ungenerated (or regenerating) font. When you select this option, the dialog box appears only for fonts with no prefix assigned. For all other fonts, the default settings are used.

Change font generation range

This option allows you to specify the character range in a font. For example, if you are using a font larger than 24 points, you can limit the font range in order to keep the file size below the printer's maximum file size. Note that the maximum file size for 9700 font files is 128 KB (or 64 KB for older Xerox printers). If you do not limit the font range and the file exceeds the printer limit, Elixir PrintDriver truncates the font automatically.

If your printer supports 5Word fonts, this is unnecessary. Supported 5Word printers are 41xx, 46xx, and 48xx.

To specify a range of fonts, select [Yes], backspace over the numbers in the windows, and enter the numbers that correspond to the font's decimal position in the Windows ANSI character set. For example, if you want to generate only numbers, enter 48 to 57. If you want to generate only lower case letters, enter 97 to 122. See your Windows guide for character tables.

If you do not want to change the range of fonts displayed in the window, select [No].

See the "Limitations and Solutions" appendix for information about using large font sizes.

Font length limit

Specify the font length limit for the printer you are using. If you are converting large fonts and a small font length is selected, Elixir PrintDriver truncates the font at the size specified. All other characters exceeding the limit are removed from the font.

Mapping TrueType and ATM fonts

Elixir PrintDriver provides a mapping table which allows you map the TrueType and ATM fonts in your document to Xerox versions of the fonts.

To map TrueType and ATM fonts to Xerox fonts:

- 1. Create your document using any available TrueType and/or ATM fonts from the font list in your Windows application.**
- 2. Using a text editor, edit the font mapping table to include the fonts you have in your document.**

The font mapping table is named FMAPXRX.FMP and is stored in *drive:\ELIXIR\DESKTOP\SYSTEM*.

See the "Editing the font mapping table" section in this chapter.

- 3. Select the [Use Font Mapping Table] option in the Font Mapping Services dialog box.**

See the "Using the font mapping table" section in this chapter.

- 4. Select [Print] with Elixir PrintDriver set as your printer.**

Elixir PrintDriver replaces all occurrences of a TrueType or ATM font with the Xerox font it is mapped to in the font mapping table.

Editing the mapping table

Use any text editor to edit the font mapping table, *drive:\ELIXIR\DESKTOP\SYSTEM\FMAPXRX.FMP*, to contain the names of the TrueType and ATM fonts in your document, the font attributes and the Xerox fonts they are mapped to.

When editing the mapping table, note the following:

- All the fonts in your document must be listed in the font mapping table. If your document contains fonts that are not listed in the table, Elixir PrintDriver uses the Font Generation Prompt dialog box to generate the fonts.

See the "Converting TrueType and ATM fonts" section in this chapter for information about the Font Generation Prompt dialog box.

- To ensure correct text placement, make sure that Xerox fonts have the same character metrics as the Windows fonts they are mapped to.
- Always add an additional blank line (carriage return and line feed) to the end of the list.
- Make sure that you have Elixir screen versions of all Xerox fonts that are in the mapping table. Elixir screen fonts are stored in *drive:\ELIXIR\FONTS\SCREEN\DEMO*.

The following table shows an example of the font mapping table.

%%Elixir_Font_Services_Table: 1.0 September 1993

%keyidx,DOSFILE,Logical Internal name,External TypeFace name,
%LSize,PtSize,Bold,ItalObq,Weight,Width,Dir,Rot,FontName

```
%-----
fmap=0,None,Arial,None,None,8,None,None,Med,None,0,P,HE08NP;
fmap=1,None,Arial,None,None,12,None,None,Bold,None,0,P,HE12BP;
fmap=2,None,Helv,None,None,10,None,None,Bold,None,0,P,HE10BP;
fmap=3,None,Helv,None,None,12,None,None,Bold,None,0,P,HE12BP;
(insert blank line here)
```

You can use an ASCII editor to edit the file as follows. Note that only seven positions are relevant.

Keyidx

Assign a unique number for the font, for example FMAP = [number] where *number* is a unique number.

Logical Internal Name

Enter the font name, for example [Arial].

PtSize

Enter the point size, for example [8] .

ItalObq

Enter [Italic] if the font is italic or [None] if it is not italic.

Weight

Enter the weight of the font, [Bold] or [Med].

Rot

Specify the rotation of the font, [P] for portrait or [L] for landscape.

FontName

Enter the file name of the mapped font, for example [HE08NP].

Using the mapping table

To use the font mapping table to map your TrueType and ATM fonts to Xerox fonts:

1. **Click on [Font Mapping] in the Main Setup dialog box.**

The Font Mapping dialog box displays.

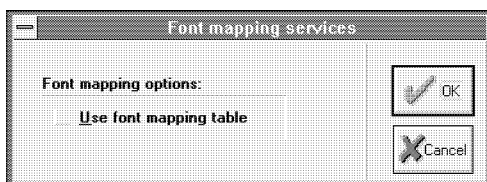


Figure 3-2. Font Mapping Services dialog box.

2. Select [Use Font Mapping Table].**3. Click on [OK].**

When you print your document, Elixir PrintDriver maps all occurrences of a TrueType or ATM font to the Xerox font specified in the font mapping table.

Note that if this option is deselected when you print your document, Elixir PrintDriver generates Xerox versions of all TrueType and ATM fonts using the Font Generation Prompt dialog box. See the "Converting TrueType and ATM fonts" section in this chapter for information about the Font Generation Prompt dialog box.

Using Xerox or Elixir format fonts

Using Elixir PrintDriver's Font Import Services, you can import Xerox and Elixir format fonts and use them to create the text in your document by selecting them directly from the font list in the Windows application.

To import Xerox or Elixir format fonts:

1. Make sure the fonts are downloaded onto your PC into the correct directories.

See the "Font directories" section in this chapter for more information.

2. Click on [Font Import Services] in the Main Setup dialog box.

See the "Font import services" section in this chapter for more information.

The Font Installer dialog box displays.

3. Click on [Font Install Options], specify the install options and click on [OK].

See the "Font install options" section in this chapter for more information.

4. **Click on [Import Fonts], select the import options and click on [OK].**

See the "Importing Fonts" section in this chapter for more information.

5. **From the Font Installer dialog box, [Add] the fonts for use with Elixir PrintDriver, and click on [OK].**

See the "Installing fonts in Windows" section for more information.

6. **Create your document by selecting the imported fonts from the font list in your Windows application.**

When you select [Print] with [Elixir PrintDriver on Disk] set as the printer, Elixir PrintDriver generates the specified outputs ready for printing on a Xerox production printer.

Font directories

Xerox and Elixir fonts must be in the correct directories on your PC before you can import them for use in your document.

Xerox fonts

Xerox fonts must be downloaded into one of the following directories on your PC:

- *drive:\ELIXIR\FONTS\X97IN* for 9700 fonts
- *drive:\ELIXIR\FONTS\FN6IN* for 5Word fonts

See the "Stand-alone utilities" chapter for information on using ElixiDisk to download your files.

Elixir fonts

If you are an ElixSys Desktop or ElixSys Desktop for HighLight Color user, Elixir PrintDriver allows you to import your Elixir format fonts from *drive:\ELIXIR\FONTS\ELIXIR*. Make sure any Elixir format fonts you want to use in your document are in this directory.

Font Import Services

To use the Xerox and Elixir format fonts, you must import them into Elixir PrintDriver, and generate Elixir screen and Windows screen fonts using the font import services.

To access the font import services, click on [Font Import Services] in the Main Setup dialog box. The Font Installer dialog box displays.

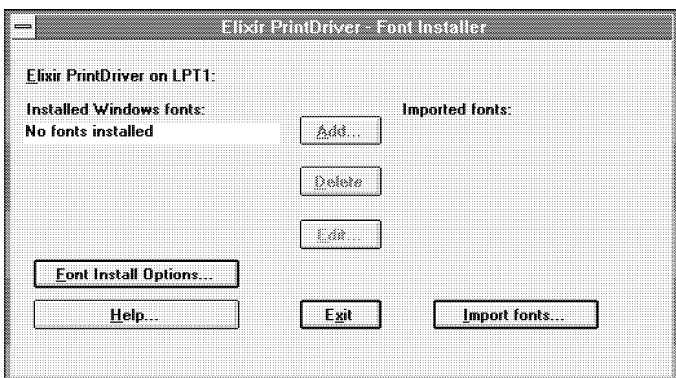


Figure 3-3. Font Installer dialog box

The Font Installer dialog box allows you set up the font install options and to import the fonts. Make sure you set the font install options before importing fonts.

Font install options

The Font Install Options dialog box allows you to select options for generating Windows screen versions of Xerox and Elixir format fonts. Elixir PrintDriver needs Windows screen versions to format the document correctly.

To set the font install options:

1. **Click on [Font Install Options] in the Font Installer dialog box.**

The Font Install Options dialog box displays.

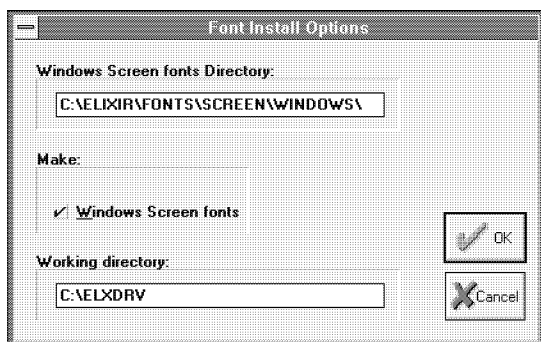


Figure 3-4. Font Install Options dialog box

2. Specify an existing directory for Windows screen fonts.

The default directory is *drive:\ELIXIR\FONTS\SCREEN\WINDOWS*.

3. Select [Windows Screen Fonts].

4. Specify a working directory.

The default directory is *drive:\ELXDRV*

5. Click on [OK].

The Font Installer dialog box displays.

Importing fonts

To import fonts, click on [Import Fonts] in the Font Installer dialog box. The Import Fonts dialog box displays.

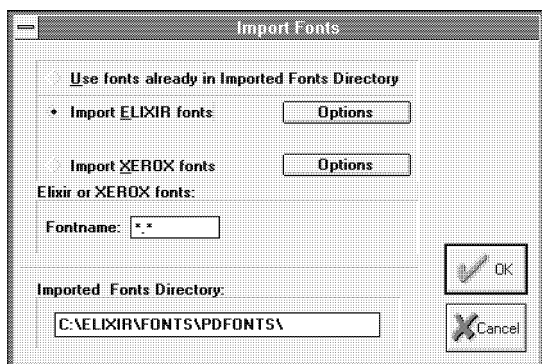


Figure 3-5. Import Fonts dialog box

From the Import Fonts dialog box, you can select the following:

- Use fonts previously imported into the imported fonts directory.
- Import Elixir fonts.
- Import Xerox fonts.

Using previously imported fonts

To use fonts previously imported in the specified imported fonts directory:

1. **In the [Imported Fonts Directory] text box, specify the directory where the previously imported fonts are contained.**

The [Imported Fonts Directory] must be an existing directory. The default directory is *drive:\ELIXIR\FONTS\PDFONTS*.

2. **Select [Use Fonts Already In Imported Fonts Directory].**
3. **Click on [OK].**

The list of fonts in the imported fonts directory displays in the Font Installer dialog box.

Importing Elixir fonts

To import Elixir fonts from
drive:\ELIXIR\FONTS\ELIXIR:

1. In the [Imported Fonts Directory] text box, specify a directory for imported Elixir fonts .

The [Imported Fonts Directory] must be an existing directory. The default directory is *drive:\ELIXIR\FONTS\PDFONTS*.

2. Select [Import Elixir fonts].
3. Click on [Options].

The Options dialog box displays.

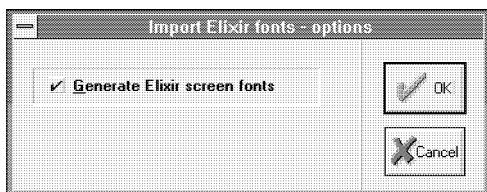


Figure 3-6. Import Elixir Fonts Options dialog box

4. Make sure the [Generate Elixir Screen Fonts] option is selected.

The default is selected. Deselect this option only if the Elixir screen font already exists in *drive:\ELIXIR\FONTS\SCREEN\DEMO*.

5. Click on [OK].
6. Specify the Elixir font name in the [Fontname] window.

DOS wild cards are allowed.

7. Click on [OK].

The fonts in *drive:\ELIXIR\FONTS\ELIXIR* are imported into the specified directory and display in the Font Installer dialog box.

Importing Xerox fonts

To import Xerox fonts:

1. In the [Imported Fonts Directory] text box, specify a directory for imported Xerox fonts .

The [Imported Fonts Directory] must be an existing directory. The default directory is *drive:\ELIXIR\FONTS\PDFONTS*.

2. Select [Import Xerox fonts].
3. Click on [Options].

The Import Xerox Fonts - Options dialog box displays.

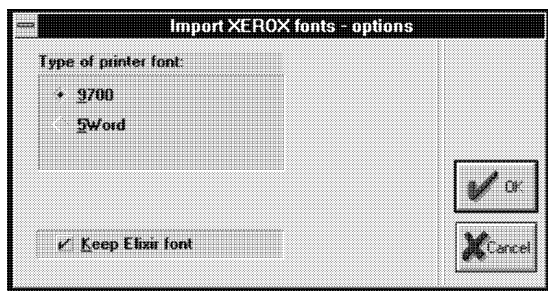


Figure 3-7. Import Xerox Fonts Options dialog box

4. Make the following selections in the Import Xerox Fonts - Options dialog box:

Type of Printer Font:

Select [9700] to import fonts from *drive:\ELIXIR\FONTS\X97IN*, or select [5Word] to import fonts from *drive:\ELIXIR\FONTS\FN6IN*.

Keep Elixir Font

Select this option if you are an ElixirSys Desktop or ElixirSys Desktop for HighLight Color user and want to keep the Elixir font used to generate the screen font. If you do not want to keep the Elixir font, you may want to deselect this option to preserve disk space.

5. **Click on [OK].**
6. **Specify the Xerox font name in the [Fontname] window.**

DOS wild cards are allowed.

7. **Click on [OK].**

Elixir PrintDriver imports the fonts into the specified directory.

The status of the conversion displays in the message area at the bottom of the Font Installer dialog box.

If a font was previously imported, a message displays giving you the option to cancel the conversion. Select [Yes] to cancel the conversion or select [No] to continue with the conversion.

Note that the point size information in the window may not correspond to the actual point size of the font as described in the name of the font. For example, the font HE07NP is a 7 point font but shows a point size of 9 points.

This is because many fonts do not contain sufficient header information to describe the exact point size, so Elixir PrintDriver may display a point size of up to 2.5 points bigger than the actual font.

The actual point size of the font remains the same as the original font, as described in the font name.

Installing fonts in Windows

When the conversion is complete, the fonts imported into the specified directory display in the Font Installer dialog box.

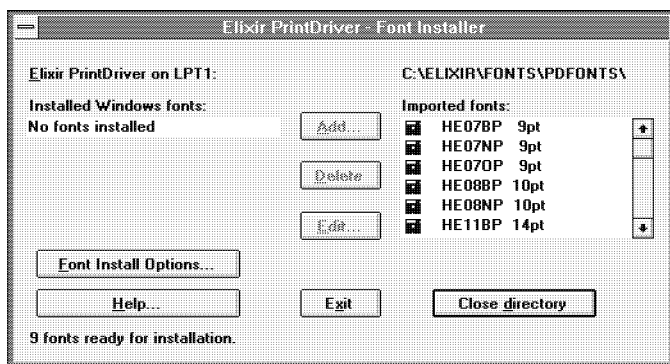


Figure 3-8. Font Installer dialog box

You can now install these fonts for use with Elixir PrintDriver.

1. **Highlight the font or fonts from the list of imported fonts in the Font Installer dialog box.**
2. **Click on [Add].**

Elixir PrintDriver installs the Windows screen fonts.

When the conversion is complete, a dialog box displays the message that new Windows screen fonts are installed.

3. **Click on [OK].**

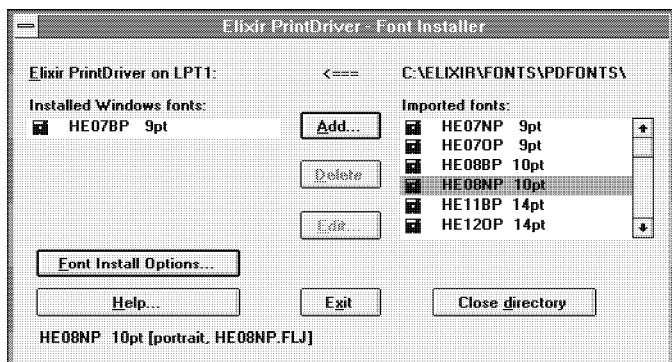


Figure 3-9. One font installed

The installed font(s) are now available for use in your Windows document when you select [Elixir PrintDriver on DISK] as the printer for your document. See the "Using Elixir PrintDriver" chapter for information on how to select these fonts in your document.

Editing the font description

Elixir PrintDriver allows you to edit the descriptive information stored with each screen font to match the description of the original font.

To edit the font description:

1. **Select the font name in the list of fonts installed in Windows.**
2. **Click on [Edit].**

The Edit dialog box displays.

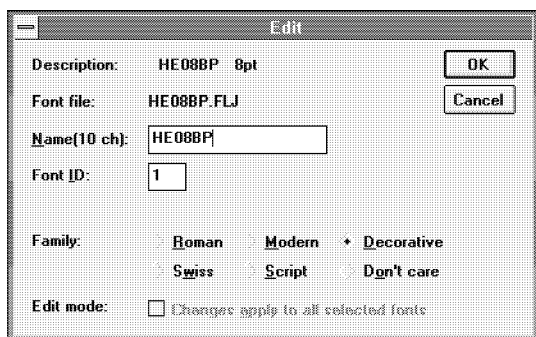


Figure 3-10. Edit dialog box

The Edit dialog box contains the following options.

Description

This option displays the name and point size of the font. Note that the description is informational only and cannot be changed.

Font file

This option displays the name of the file containing the source printer font used to generate the screen font. Note that the font file is informational only and cannot be changed.

Name

Specify a new name for the screen font.

Font ID

Specify the sequence in which the screen font appears to Elixir PrintDriver. Make sure that no other font installed in Elixir PrintDriver uses the same number.

Family

Select a family name that describes the general look of the font and determines how the installer generates the file for the font.

- Select [Roman] for serif fonts with variable character widths such as Tms Rmn.

- Select [Swiss] for sans serif fonts with variable character widths such as Helv.
- Select [Modern] for serif or sans serif fonts with non-proportional character widths, such as Pica, Elite, and Courier.
- Select [Script] for cursive fonts.
- Select [Decorative] for Old English fonts.
- Select [Don't Care] for Elixir PrintDriver to use the information stored in the font header.

Edit mode

Select this option to apply the changes to all selected fonts.

3. Click on [OK].**Editing multiple font descriptions**

To edit the description of multiple fonts:

- 1. Select the fonts you want to edit in the installed fonts list.**
- 2. Click on [Edit].**
- 3. Edit the first font description as described above.**
- 4. Click on [Next] to scroll through and edit the next selected font.**
- 5. Click on [OK] after you have edited the last font.**

Deleting fonts

When you delete a font, it is removed from the current list. If you want to re-install the font at a later time, you must re-load the fonts from the Imported Fonts directory. See the "Importing Fonts" section in this chapter for information on using fonts previously imported in the specified imported fonts directory:

To delete a font from the list of fonts installed in Windows:

- 1. Select the font.**
- 2. Click on [Delete].**
- 3. Click on [OK] to remove the corresponding fonts as prompted.**

The font is removed from the list of installed fonts.

Selecting Elixir PrintDriver fonts in Windows

The fonts installed using Elixir PrintDriver are now available for use in your Windows application when you select Elixir PrintDriver as the printer for your document.

You can select these fonts by font name from your Windows application just as you would select any other font installed in Windows. See the "Using Elixir PrintDriver" chapter for information on selecting fonts and creating a document.

Using Elixir fonts with other drivers

If you want to use Elixir fonts with other drivers, for example HP, refer to your printer user guide for information about importing fonts.

4. Using Elixir PrintDriver

The following chapter describes how to create a document in a Windows application and generate print files ready for transferring to a Xerox printer. See the "Introduction" chapter for a list of supported applications.

Creating a print file

Elixir PrintDriver allows you to convert Windows based documents into Xerox format ready for printing on Xerox production printers. You can add text and tables, draw shapes and import images into your document using the standard features available in Windows applications.

If you are creating a document on one PC and converting the same document on another PC, make sure the fonts used to create the document are present on both PCs.

Setting options in Elixir PrintDriver

This chapter assumes you have already set up the Elixir PrintDriver options as described in the "Elixir PrintDriver basics" chapter.

Selecting Elixir PrintDriver

You must select Elixir PrintDriver as the printer for the document before you compose your document. This assures correct formatting of your document and allows you to select any imported Xerox and Elixir format fonts directly from the font selector in your application.

See the "Font options" chapter for information on importing Xerox and Elixir format fonts.

You can install Elixir PrintDriver software on any machine without the ElixiKey for the purpose of composing a document. However, you can only convert your document to Xerox format on the machine where the ElixiKey is attached.

See the "Introduction" chapter for information on ElixiKeys.

To select Elixir PrintDriver for the document:

1. **Access the list of installed printers using the printer setup option in your application.**

See your application documentation for information on how to access the Printer dialog box. (The example in figure 4-1 shows the dialog box from Ami Pro 3.1.)

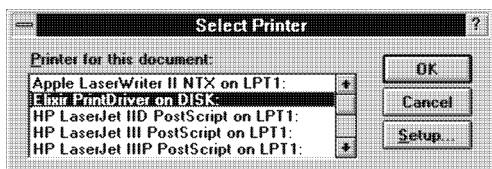


Figure 4-1. Ami Pro Select Printer dialog box

2. **Select [Elixir PrintDriver on DISK] from the list of printers**
3. **Click on [OK].**

Selecting fonts

When you add text to your document, you can use TrueType fonts, Adobe Type Manager (ATM) fonts, imported Xerox fonts or imported Elixir format fonts.

Make sure you select Elixir PrintDriver as the printer for the document if you want to select imported Xerox fonts or imported Elixir format fonts for use in your document.

TrueType and Adobe Type Manager fonts

To use TrueType or ATM fonts already installed on your PC, select the font name from the file selector in your Windows application and enter text from the keyboard. See your Windows application guide for information on selecting fonts.

For TrueType and ATM fonts to print on a Xerox printer, Xerox versions of each font must be generated. Elixir PrintDriver does this for you when you convert your document by selecting [Print] with the Elixir PrintDriver set as the printer. You can also set up a font mapping table to map your TrueType and ATM fonts to Xerox fonts. See the "Font Options" chapter for more information on setting up your font options.

Imported Xerox and Elixir format fonts

Before you can use Xerox or Elixir format fonts in your document, you must import them into Elixir PrintDriver, generate Elixir and Windows screen format fonts and install them into Windows using the Elixir PrintDriver font installer. See the "Font options" chapter for information on importing and installing Xerox and Elixir format fonts.

When the Xerox or Elixir format fonts are installed into Windows, you can select the fonts from the font selector in your Windows application, and enter text from the keyboard. See your Windows application guide for information on selecting fonts.

Xerox fonts have four orientations. If you select a font that is landscape, inverse or inverse portrait, it is displayed on the screen as a portrait font. However, when you print your document, the font will print with the original orientation.

Adding lines, boxes and shapes

Elixir PrintDriver allows you to print lines, boxes and shapes. Use the tools available in your Windows application to create these elements in your document.

Circles and diagonal lines are not supported on Xerox printers. If you want to use a circle or diagonal line in your document, use the [Rasterize graphics objects to image] option in the Image Services dialog box. For information about this option, see the "Elixir Print-Driver basics" chapter.

Some Windows applications may output lines, boxes and shapes as graphics. See the "Limitations and solutions" appendix for specific product information.

Adding graphics

Elixir PrintDriver allows you to add graphics to your document by placing the graphic on the page, or by referencing an Elixir (.LP3) graphic that is on your PC.

Embedding bit-mapped graphics

To embed a .PCX, .TIF or .BMP graphic in your document, follow the instructions in your Windows-application manual.

Referencing graphics

You can place a graphics reference in your document by entering `$$filename` where *filename* is the name of an Elixir (.LP3) graphic which is in `drive:\ELIXIR\PICS\PRINTER`. Note that you must also have the corresponding *.TXT file in `drive:\ELIXIR\TEXTS`.

If you do not have an Elixir (.LP3) version of your graphic, embed the PCX, TIF or BMP image in the document and convert the document using Elixir Print-Driver. This will create an .LP3 and .TXT file which you can then reference in subsequent documents.

When PrintDriver converts your file, the upper left-hand corner of the referenced graphic is placed on the page where the filename reference displays. Make sure there is enough space for the graphic to display.

If you are referencing graphics, make sure you select [Image Callout] in the Metacode Options dialog box when you generate the metacode file.

See the "Elixir PrintDriver basics" chapter for information on generating metacode with embedded or referenced graphics.

Starting the conversion

When you select [Print] from your application with Elixir PrintDriver selected as the printer for the document, the PrePrint dialog box displays the configuration for the print job as specified in the output file format dialog boxes. This allows you to check or to change the configuration without going back to the Main Setup dialog box.

You can view the current Elixir PrintDriver configuration at any time, without selecting [Print], by clicking on [PrePrint Options] in the Main Setup dialog box.

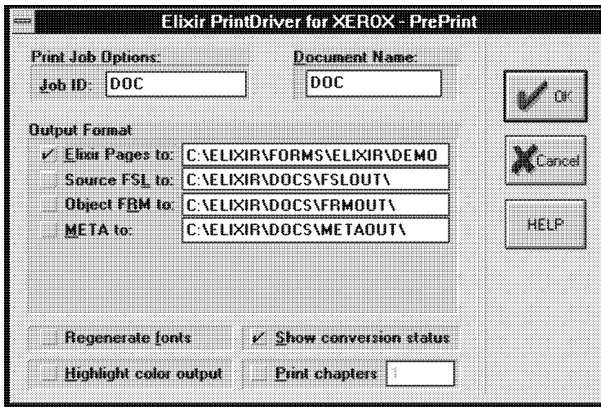


Figure 4-2. PrePrint dialog box

To change a selection, insert the cursor in the box and type a new path or job ID. Any changes will be reflected in the original setup dialog box for that option.

The PrePrint dialog box contains the following options:

Job ID

Specify the output file name up to 6 characters. The default is the Job ID entered in the Job Print Ticket dialog box. See the "Elixir PrintDriver basics" chapter for detailed information about entering a Job ID.

Document Name

Specify up to 6 characters for the metacode file name. If you selected the [8 char. page name] in the Job Print Ticket dialog box, you can specify up to 8 characters. The default document name is the same as the [Job ID] option in the Job Print Ticket dialog box.

Output Format

Specify the output or outputs for the print job and specify the directory for storing the resource. If you are using other Elixir products, we recommend that you keep the default directories. Note that if you are outputting to metacode, .FSL and .FRM, make sure the output directories are not all the same. Each resource must output to its own directory.

- Select [Elixir Pages] to generate files in Elixir format which you can view and edit using Elixiform software. If you are not using other Elixir products, you should deselect this option to conserve disk space.

The default directory for Elixir Pages is *drive:\ELIXIR\FORMS\ELIXIR\DEMO*

- Select [Source FSL] to generate disk print files in Forms Source Language. The default directory for Source FSL is *drive:\ELIXIR\DOCS\FSLOUT*.

You must compile .FSL files on your production printer to obtain print files (.FRM).

- Select [Object FRM] to generate disk print files in object FRM. These files are ready for printing and do not need to be compiled on the printer.

The default directory for Object FRM is *drive:\ELIXIR\DOCS\FRMOUT*

Printing .FRM files

You can print .FRM files using the "SAM" command on your production printer. If more than one page is being printed, enter the following at the printer console:

@filename

where *filename* is the stem name (file name without extension) of the Xerox command file (.CMD) created by Elixir PrintDriver. The .CMD file contains commands to print all individual pages that make up the original document.

The .CMD stem name is derived from the [Document Name] option in the PrePrint dialog box according to the following rules:

- For print file names with six or more characters (excluding extension), the stem name consists of the first six characters.
- For print file names with less than six characters (excluding the extension), the stem name consists of all the characters of the file name.
- Select [META] to generate metacode files for multiple page documents. Make sure you specify the metacode options in the Metacode Converter Options dialog box. For more information about this dialog box, see the "Elixir PrintDriver basics" chapter.

The default directory for metacode is *drive:\ELIXIR\DOCS\METAOUT*

Printing color metacode jobs

To properly process color metacode jobs, you may want to recompile the ONLINE (ELIXIR.ONL) or OFFLINE (ELIXIC.JSL) JSL at the printer (the line XMP=REPORT has been added).

Start OFFLINE color metacode jobs by adding the current highlight color to the start command. For example, to print a red color metacode job, enter

STA RED,ELIXIR

instead of

STA ,ELIXIR

For more information, see the "Moving and printing files" chapter.

Regenerate fonts

When you select [Regenerate fonts], the Font Generation Prompt dialog box displays the settings for fonts previously generated in your document. This allows you to change previously selected settings. For example, you may already have 9700 fonts and now want to make 5word fonts also.

Note that you do not need to regenerate fonts that were previously generated.

The default setting is deselected.

Note: To avoid overwriting existing fonts created by Elixir PrintDriver you can disable the regeneration of fonts by editing the \Windows\WIN.INI and add the following line to the [Elixir PrintDriver,DISK] section.

ELX_REGEN_PSW=0

To return this feature to its default state, change the 0 to 1.

Show conversion status

When this option is selected, the status of the conversion displays. If you are converting a PageMaker file, make sure this option is deselected.

Highlight color output

Select this option to use highlight color in your document, for printing on a 4850 or 4890 printer or deselect this option to print in black and white on any of the supported Xerox printers. You can specify the default color option in the Color Services dialog box. For more information about this dialog box, see the "Elixir PrintDriver basics" chapter.

Note that if you select [Highlight color output] and your printer does not support color, your file will print in black and white.

Print chapters

If your file contains multiple files or chapters, select this option and specify the number of chapters in the window. For example, to print a Master Document or PUB file containing nine chapters, select the option and specify 9 in the window.

For subsequent print jobs, make sure you reset this option to specify the correct number of chapters.

If you are an Elixir PageHandler user, see your *Elixir PageHandler User Guide* for additional options in this dialog box.

Click on [OK] to accept the configuration. Elixir PrintDriver generates the print files in the specified directories.

If you are using TrueType or ATM fonts that have not been previously generated and you are not using the Font Mapping table, the Font Generation Prompt dialog box displays. See the "Font Options" chapter for more information about generating or mapping TrueType or ATM fonts.

Uploading files to a Xerox printer

See the "Moving and printing files" chapter for information on how to upload your files from your PC to a host computer for printing on a Xerox production printer.

5. Moving and printing files

This chapter describes how to use several popular file transfer packages to transfer files between your PC and a host computer running the IBM MVS operating system.

Files for printing on channel-attached Xerox production printers can be stored on a host computer.

When you transfer FSL, FRM or metacode files to the printer for printing, you must also transfer any .LGO, .IMG or .FNT files referenced in your documents. Note that metacode files have the .IMG files embedded.

FRM, FSL, logo, image, and font files are also referred to as Xerox-labeled files, because the files contain 128-byte Xerox headers (or labels).

In an offline environment, tape and Xerox-format diskettes are used to move files. In an online environment, PC/host file transfer packages are used to move files. Supported file transfer packages include the IBM 3270, IRMA FT/3270, and IRMA FT/TSO.

Elixir currently provides the following five sets of JSL in the *drive:\ELIXIR* directory:

- ELXONL.JSL = Black and white online metacode
- ELXONC.JSL = Color online metacode
- METSTA.JSL = Black and white online metacode
- METSTC.JSL = Color or black and white online metacode
- ELIXIR.JSL = Black and white offline metacode
- ELIXIC.JSL = Color offline metacode
- ELIX2.JSL = FRM and FSL

Moving online Xerox-labeled files

The following sections describe how to transfer Xerox-labeled files from a PC (through an IBM host running MVS) to a production printer.

To upload FSL files, first run the PACK utility on the files to convert them to Xerox 128-byte format (see the "Stand-alone utilities" chapter for information on the PACK utility).

- 1. To move online Xerox-labeled files, you need to do the following: Configure one of the supported file transfer utilities.**
- 2. Upload the files to the MVS host.**
- 3. Download all files from the host computer to your production printer using either the HOSTCOPY utility or the DJDE FILE command in the Job JSL.**

The above steps are described in the following sections.

Configuring the file transfer package

To upload Xerox-labeled files from your PC to an MVS host, we recommend one of the following file transfer packages: IBM 3270, IRMA FT/3270, or IRMA FT/TSO.

Make sure the card for the appropriate file transfer package is installed on your PC, and that the corresponding file transfer software is installed both on your PC and on the MVS host.

Uploading files to the host

The following sections describe how to upload Xerox-labeled files and text files from your PC to an MVS host using IBM 3270, IRMA FT/3270, and IRMA FT/TSO.

Uploading Xerox-labeled files with IBM 3270 or IRMA FT/3270

The IBM 3270 and IRMA FT/3270 file transfer packages are similar. Both require that you first prepare the host for receiving Xerox-labeled files by allocating a dataset with the following DCB specifications:

DCB=(LRECL=128,BLKSIZE=128,RECFM=FB)

This specifies a Xerox-labeled file with a record length of 128 bytes, block length of 128 bytes, and fixed-block (FB) record format.

Upload a Xerox-labeled file by typing the following command at the DOS prompt:

```
SEND      [path]pcfilename      'hostfilename'  
<Enter>
```

path

is the optional DOS pathname

pcfilename

is the name of the Xerox-labeled file on your PC, including extension.

hostfilename

is the host dataset receiving the file (hostfilename *must* be enclosed in single quotes).

'hostfilename' can refer to either a physical sequential or a partitioned dataset.

For example, if transferring to a physical sequential dataset, 'hostfilename' may be as follows:

'CM.EIO.DATA.UPLOAD'

If transferring to a partitioned dataset, 'hostfilename' can include the stem name of the files being transferred, enclosed in parentheses, as part of the dataset name as follows:

'CM.EIO.DATA.UPLOAD(filename)'

Uploading text files with IBM 3270 or IRMA FT/3270

To upload a text file, first allocate a dataset on your host with the following DCB parameters:

DCB=(LRECL=255,BLKSIZE=3000,RECFM=VB)

Add the ASCII and EBCDIC statements to the end of SEND and RECEIVE commands, respectively, for .FSL files only.

To send a text file to an MVS host, type the following command from the DOS prompt.

SEND [*path*]*pcfilename* '*hostfilename*' ASCII
<Enter>

This command uploads the Xerox-labeled file *pcfilename* to the host dataset *hostfilename*. A DOS directory path before *pcfilename* is optional. The ASCII parameter at the end of the command string translates the file from ASCII to EBCDIC.

Note that to download a text file from the host, you type the following command:

RECEIVE [*path*]*pcfilename* '*hostfilename*'
EBCDIC <Enter>

This command downloads the Xerox-labeled file *hostfilename* to the PC file *pcfilename*. A DOS directory path before *pcfilename* is optional. The EBCDIC parameter at the end of the command string translates the file from EBCDIC to ASCII.

Uploading files with IRMA FT/TSO

The following section describes how to select the transfer parameters and upload files using IRMA FT/TSO.

To start IRMA FT/TSO, type: **FTTSO** <Enter> at the DOS prompt. The IRMA FT/TSO screen displays.

IRMAlink FT/TSO Ver. 1.10 Copyright 1984 Digital Communications Associates							
PC filename:							
Data set name:							
Transfer type: XEROX							
Function Keys <table border="1"> <tr> <td>1</td> <td>2 Help</td> </tr> <tr> <td>3</td> <td>4 Ers Inp</td> </tr> <tr> <td>5 Save Type</td> <td>6 Ers EOF</td> </tr> </table>	1	2 Help	3	4 Ers Inp	5 Save Type	6 Ers EOF	Transfer Parameters Block size: 128 Transfer Record size: 128 Expands Record format: FIXED Truncate s U/L Line numbers - Volume s Position: 0 Space
1	2 Help						
3	4 Ers Inp						
5 Save Type	6 Ers EOF						

Figure 5-1. FT/TSO transfer parameters

To select the transfer parameters:

1. Use the <Tab> key to move the cursor into the data entry field following [Transfer type:]
2. Type a name under which you want to save the file transfer parameters (described in step 4). The example in figure 5-1 shows XEROX.
3. Press <F5>

The **Transfer parameters** menu displays in the bottom right corner of the screen.

4. Use the <Tab> key to move between transfer parameter fields and enter the following values:

Xerox-labeled files:

Block size:	128
Record size:	128
Record format:	FB
Line numbers:	Position: 0 Length: 0
Code table:	STD
Transfer mode:	BINARY
Expand TABs:	NO
Truncate spaces:	NO
U/L case:	ASIS
Space Units:	TRKS
Primary qty:	1
Secondary qty:	2

Text files

To transfer text files, you must use different values for some parameters. Since text files may be stored on host computers in datasets with different DCB parameters, you must tailor the transfer parameters to match the text file DCB parameters used at your site. Listed below are some typical values used for transferring text files:

Block size:	3000
Record size:	255
Record format:	VB
Line numbers:	Position: 0 Length: 0
Code table:	STD
Transfer mode:	TEXT
Expand tabs:	NO
Truncate spaces:	NO
U/L case:	ASIS
Space units:	TRKS
Primary QTY:	1
Secondary QTY:	2

To upload the files:

- 1. Enter the name of the PC file you want to upload and press <Tab>.**

Optionally, precede the file name with a DOS directory path.

- 2. Enter the name of the host dataset to which you want to upload the file and press <Tab>.**
- 3. Enter the appropriate transfer type.**
- 4. Press <F1> to upload the file.**

Downloading files from the host to the printer

This section describes how to download files from the host computer to the production printer using either the HOSTCOPY utility or the DJDE FILE= command.

Using the HOSTCOPY utility involves the following steps:

1. **Upload the ENDFILE.END file.**
2. **Prepare the JCL.**
3. **Make sure all of the files used in the job are resident on the printer.**
4. **Reboot the printer.**
5. **Download the files using HOSTCOPY.**
6. **Reboot the printer again.**
7. **Start the print job.**

Using the FILE command involves the following steps:

1. **Upload the ENDFILE.END file.**
2. **Prepare the JCL.**
3. **Add the DJDE FILE= statement to the data file.**

The files are dynamically downloaded at print time.

The advantages of using the FILE command rather than HOSTCOPY to download files are:

- Using the FILE command frees up disk space on the printer.
- Files do not have to be resident on the printer, therefore an additional level of security can be maintained.
- Using the DJDE FILE= command does not require switching the printer from production mode to HOSTCOPY mode and saves valuable printer time.
- Files are downloaded during print time assuring the current and correct versions of the files are used. When using HOSTCOPY, it is important to check that all files resident on the printer and used for the job are the correct versions.

Uploading the ENDFILE.END file

After uploading Xerox-labeled PC files, upload the ENDFILE.END file (copied to the *drive*:\\ELIXIR directory during installation) to the host. Use the procedure described in the "Uploading with IBM 3270 or IRMA FT/3270" section of this chapter.

Preparing the JCL

After uploading Xerox-labeled files and the ENDFILE.END file to the host, use the IBM IEBGENER utility to build a JCL dataset for sending the files to a channel-attached printer.

An example of a JCL dataset is given below. Modify the JCL to include the names of the files you want to send to the printer.

```
-----  
//00D42DA      JOB      (8200,Z200-Z20001),'LARACEY  
7-1994',CLASS=A  
//MSGCLASS=J,NOTIFY=00D42D,USER=00D42D,PRTY=4  
/* JOBPARM L=9999  
/*  
/* JCL to send a Xerox-labeled file to a 9700 series printer  
/*  
//XR9700 OUTPUT DEST=R269  
/*  
/* This step copies the file UN110E.FNT  
/* to the Xerox printer's output destination  
/* class  
/*  
//STEP1 EXEC PGM=IEBGENER  
//SYSPRINT D SYSOUT=*  
//SYSUT1 DD UNIT=DISK,DISP=OLD,  
//DSN=00D42D.0Z200.UN110E.FNT.DATA,  
//DCB=(LRECL=128,BLKSIZE=128,RECFM=FB)  
//SYSUT2 DD SYSOUT=O  
/*  
/* This step copies the ENDFILE.END file  
/* to the Xerox printer's output destination  
/* class to terminate the HOSTCOPY procedure  
/*  
//STEP2 EXEC PGM=IEBGENER  
//SYSPRINT D SYSOUT=*  
//SYSUT1 DD UNIT=DISK,DISP=OLD,  
//DSN=00D42D.0Z200.ENDFILE.END.DATA,  
//DCB=(LRECL=128,BLKSIZE=128,RECFM=FB)  
//SYSUT2 DD SYSOUT=O  
//OUTPUT=*.XR9700  
//SYSIN DD DUMMY  
/*  
-----
```

Using the HOSTCOPY utility

If you are using the HOSTCOPY utility to download files, you must place the printer in HOSTCOPY mode and download the files.

Placing the printer in HOSTCOPY mode

To place a channel-attached, production printer in HOSTCOPY mode, follow these steps:

1. Type:

OFFLINE <Enter>

to switch the printer to offline.

2. Press the printer BOOT button.

The printer console displays the following:

READY
\$

3. At the \$ prompt, enter:

BD <Enter>

The printer console displays a command menu with the following system prompt:

ENTER COMMAND

4. Enter the following command:

HOSTCOPY <Enter>

The following message displays:

*SYSGEN RUNNING FOR HOSTCOPY ONLY*THIS IS A FILE COPYING PROCEDURE,
NOT A SYSGEN CONTINUE OR ABORT? EN-
TER 'C' OR 'A'

5. Enter:

C <Enter>

The printer displays the following message:

WAITING TO READ FILES FROM HOST

The printer is now in HOSTCOPY mode and ready to accept files from the host.

Copying Xerox-labeled files to the printer

After placing the printer in HOSTCOPY mode, run the JCL job to send the Xerox-labeled and ENDFILE.END files to your printer.

Note that ENDFILE.END must be the last file you send to the printer.

The following message displays at the printer console indicating that files are being received:

CREATING FILE XXXXXX.YYY

xxxxxx

is the file stemname.

yyy

is the file extension.

When the printer detects the ENDFILE.END file, the following message displays:

END OF TAPE FOUND
IS ANOTHER TAPE TO BE SENT? Y OR N

If you want to send more files, type **Y <Enter>**.

If you are done transferring files, type **N <Enter>**.

The printer displays the following:

VARY OFFLINE AT HOST, THEN ENTER C

Enter C to stop the copy-to-printer operation.

Reboot the printer.

The Xerox-labeled files are now installed on the production printer.

Using the DJDE FILE command

If you are using the DJDE FILE= command to download the files, you must embed the commands in the dataset. The FILE command causes files to be dynamically downloaded to the printer at print time. The command syntax is as follows:

FILE=*filename, filetype* [[,*f*][,*s*][,*n*]]

filename

is a one- to six-character file name.

filetype

is a three character file symbol for the appropriate file; LGO, IMG, FSL, FNT, or FRM.

f

is C (for card-image format) or L (for tape format, the default).

s

is D (to delete files after printing) or P (to keep the files after printing, the default).

n

is the maximum number of card-images (default = 120).

After adding the FILE command to your print stream using a utility such as IEBGENER, enter a START command at the printer console to run the print job. Each resource will be downloaded to the printer.

See your Xerox Laser Printing System Reference Manual for more information.

Moving and printing online metacode files

The following section describes how to move and print online metacode files.

To print online metacode files:

1. **Upload the file to the host.**
2. **Set up the metacode online JSL on the printer.**

You can set up the default online JSL or you can copy and compile the METSTA.JSL or METSTC.JSL.

3. **Set up the Elixir online JSL.**
4. **Compile the JSLs on the printer.**
5. **Copy the file to your printer.**

The fixed blocked online metacode file has the following format for each 540 byte block:

Bytes 0 to 3 - Block length (hex).

Bytes 4 to 7 - Length of first metacode record (hex).

Bytes 8 to n - First metacode record, where n is 7 plus the length specified in bytes 4 to 7.

Bytes $n + 1$ to 540 - The remainder of each 540 byte block consists of a series of four byte record descriptor words followed by a corresponding metacode record.

The record descriptor words specify the length of each metacode record. The end of each 540 byte block may be padded with hex zeros.

Uploading metacode files to the host

To upload metacode files from your PC to an MVS host, use a file transfer package such as IBM 3270, IRMA FT/3270, or IRMA FT/TSO.

Make sure the card for the appropriate file transfer package is installed on your PC, and that the corresponding file transfer software is installed on both your PC and the MVS host.

Uploading with IBM 3270 or IRMA FT/3270

The IBM 3270 and IRMA FT/3270 file transfer packages require that you first prepare the host for receiving metacode files by allocating a data set with the following DCB specifications:

DCB=(LRECL=540,BLKSIZE=540,RECFM=FB)

This specifies a file with a record length of 540 bytes, block length of 540 bytes, and fixed-block (FB) record format.

You then upload a metacode file by typing the following command at the DOS prompt:

```
SEND      [path]pcfilename      'hostfilename'  
<Enter>
```

path

is the optional DOS path

pcfilename

is the name of the metacode file on your PC, including extension.

hostfilename

is the host dataset receiving the file (hostfilename must be enclosed in single quotes).

'hostfilename' can refer to either a physical sequential or a partitioned dataset.

For example, if transferring to a physical sequential dataset, 'hostfilename' may be as follows:

'CM.EIO.DATA.UPLOAD'

If transferring to a partitioned dataset, 'hostfilename' can include the stem name of the files being transferred, enclosed in parentheses, as part of the dataset name as follows:

'CM.EIO.DATA.UPLOAD(filename)'

Uploading with IRMA FT/TSO

Use the following procedure to upload a Xerox-format file with IRMA FT/TSO:

Type **FTTSO** <Enter> at the DOS prompt to start the FT/TSO file transfer software and display the IRMA FT/TSO screen shown in the previous figure.

Change the file transfer parameters as follows:

1. **Use the <Tab> key to move the cursor into the data entry field following [Transfer type:].**
2. **Type a name under which you want to save Xerox-labeled file transfer parameters (described in step 4). The example in the previous figure shows XEROX.**
3. **Press <F5>**

The **Transfer Parameters** menu displays in the bottom right corner of the screen.

4. **Use the <Tab> key to move the cursor between transfer parameter fields and enter the following values:**

Block size:	540
Record size:	540
Record format:	FB
Line numbers:	Position: 0 Length: 0
Code table:	STD
Transfer mode:	BINARY
Expand TABs:	NO
Truncate spaces:	NO
U/L case:	ASIS
Space units:	TRKS
Primary qty:	1
Secondary qty:	2

To upload files with IRMA FT/TSO:

- 1. Enter the name of the PC file you want to upload and press <Tab>**

Optionally, precede the file name with a DOS directory path.

- 2. Enter the name of the host dataset to which you want to upload and press <Tab>.**
- 3. Enter the appropriate transfer type for sending Xerox-labeled files (binary).**
- 4. Press <F1> to upload the file.**

Setting up online default JSL

The following is an example of an online default JSL file. The default JSL used at your installation will be different. The bold text represents changes or additions that must be made to ensure compatibility with Elixir generated online metacode.

To ensure that no other jobs referencing this default JSL are affected by these changes, you may want to copy the default JSL to a new name prior to making these edits. For documentation purposes, we will continue to refer this file as the default JSL.

DFAULT:JDL

```

VFU1: VFU      ASSIGN=(1,1),TOF=1,BOF=66;
PDEDFT:      PDE BEGIN=(1,.5),PMODE=LANDSCAPE,
              FONTS=(LO112B);
              ACCT USER=NONE;
              VOLUME HOST=IBMONL,CODE=EBCDIC;
              IDEN PREFIX=' $DJDE$',SKIP=10,
              OFFSET=1,OPRINFO=NO;
              RECORDLENGTH=200;
TBAN1:TABLE CON=(' START JOB',' START STC',' START TSU');
TBAN2: TABLE CON=(' END JOB',' END STC',' END TSU');
CBAN1: CRITERIA CONSTANT=(3,9,EQ,TBAN1);
CBAN2: CRITERIA CONSTANT=(4,8,EQ,TBAN2);
RAXT:      TABLE CONSTANT=X`1111111111111111';
ROFT:  TABLE CONSTANT=X`1212121212121212';
RSTK:  TABLE CONSTANT=X`1313131313131313';
RAX:  CRITERIA CONSTANT=(1,8,EQ,RAXT);
ROF:  CRITERIA CONSTANT=(1,8,EQ,ROFT);
RST:  CRITERIA CONSTANT=(1,8,EQ,RSTK);
RSTACK TEST=RST,DELIMITER=YES;
BANNER
TEST=(CBAN1,OR,CBAN2),HCOUNT=1,
      TOUNT=1, HJOBNO=(13,4);
      LINE DATA=(0,400),VFU=VFU1,FCB=IGNORE,
      UCSB=IGNORE,FONTINDEX=(0,ZERO);
OUTPUT GRAPHICS=YES,PURGE=YES,
      OFFSET=NONE,
      DUPLEX=YES,FORMAT=PDEDFT;
DFLT: JDE;
END;

```

Make sure that the following statements are correctly specified in your default JSL:

- JDL on the first line must be the same name as the compiled default JSL currently on your printer. If you renamed your default JSL, use that name here.
- **CODE=EBCDIC**
- **OPRINFO=NO**
- **RSTK: TABLE CONSTANT=X`1313131313131313';**
- **RST: CRITERIA CONSTANT=(1,8,EQ,RSTK);**

- RSTACK TEST=RST,DELIMITER=YES;

To print .IMG files:

- Specify GRAPHICS = YES in the OUTPUT statement
- Ensure that a graphics handling option is installed on your printer.

Using the METSTA.JSL or METSTC.JSL

To use the METSTA.JSL (black and white) or METSTC.JSL (color or black and white), copy and compile it on the printer. See "Compiling the JSLs on the printer".

Setting up Elixir online JSL

Elixir PrintDriver includes two online JSL files, ELXONC.JSL for color and ELXONL.JSL for black and white. These JSL files include JDE commands for running color jobs and also for standard, legal and A4 paper size. If you want to add additional JDE commands, you can edit the JSL files using one of two methods:

- Load JSL "as is" onto the printer and edit from the printer console
- or
- Edit the JSL on the PC using an ASCII text editor and then load it onto the printer.

Note that if you edit the JSL on your PC, you must do the following:

1. **Run the STRIP.EXE utility against the file using the -strip parameter to remove the trailing spaces and line numbers.**
2. **Edit and save the file.**

3. **Run the STRIP.EXE utility against the file using the -pad parameter to add trailing spaces and line numbers.**
4. **Load and compile the JSL files on your Xerox printer.**

When switching between online and offline meta-code jobs, the appropriate Elixir JSL files need to be recompiled.

Preparing online black and white JSL

The ELXONL.JSL file listed below is supplied with Elixir PrintDriver and is copied to the *drive:\ELIXIR* directory during installation as an example of a black and white online Elixir .JSL file. This file and the default online JDL file, format the online metacode printout.

ELXONL.JSL

The following is a listing of the ELXONL.JSL provided with Elixir PrintDriver. The bold text represents changes or additions that must be made to ensure compatibility with Elixir generated online metacode and your default JSL.

-
ELIXIR: JDL

VFELX: VFU ASSIGN=(1,1),ASSIGN=(12,255),TOF=1,
 BOF=255;
PDELX: PDE BEGIN=(0,0),PMODE=POR,
 FONTS=(UN104B);
RAXT: TABLE CONSTANT=X`11111111111111111111`;
ROFT: TABLE CONSTANT=X`12121212121212121212`;
RSTK: TABLE CONSTANT=X`13131313131313131313`;
RAX: CRITERIA CONSTANT=(1,8,EQ,RAXT);
ROF: CRITERIA CONSTANT=(1,8,EQ,ROFT);
RST: CRITERIA CONSTANT=(1,8,EQ,RSTK);
 VOLUME HOST=IBMONL,LABEL=NONE,
 CODE=NONE;
 LINE DATA=(0,400),VFU=VFELX,
 PCCTYPE=IBM3211,OVERPRINT=PRINT,
 MARGIN=0,FCB=IGNORE;
 OUTPUT GRAPHICS=YES,PURGE=YES,
 OFFSET=NONE,
 DUPLEX=YES,FORMAT=PDELX;
ACCT USER=NONE;
RAUX TEST=RAX;
ROFFSET TEST=ROF;
RSTACK TEST=RST,DELIMITER=YES;
 IDEN PREFIX=X`5BC4D1C4C55B`,SKIP=10,
 OFFSET=1,OPRINFO=NO;
 RECORD LENGTH=1032;
DFLT: JDE;
END;

Make sure that the following statements are correctly specified in ELXONL.JSL:

- JDL on the first line must be ELIXIR
- HOST=IBMONL
- CODE=NONE
- DATA=(0,N) (where N is 200 or greater and equals the value specified in the default JSL)
- PREFIX=X`5BC4D1C4C55B` (see below)
- OFFSET=a, SKIP=b (see below)

- GRAPHICS=YES (if a graphics handling option is installed and .IMG files are used - otherwise, NONE).

Initially, the IDEN statement in the ELXONL.JSL file contains the following values:

```
PREFIX=X'5BC4D1C4C55B'  
OFFSET=1  
SKIP=10
```

Modify the above values as described below:

PREFIX is the EBCDIC hexadecimal representation of the PREFIX parameter specified for IDEN in the default online JCL file (shown as \$DJDE\$ in the default online JCL listing). The value specified for the PREFIX= statement in your ELXONL.JSL must be specified in EBCDIC hexadecimal notation and must exactly match the values specified in your default JSL.

The maximum length of the PREFIX is 20 characters. If it is less than 20 characters, it is padded out with spaces. This will not affect the printing of the meta-code file.

Set OFFSET and SKIP to the values specified in the default JSL on your printer (shown as 1 and 10 in the default JSL example). OFFSET is the leading number of space characters before the \$DJDE\$ Prefix string. SKIP is the total number of characters specified before the beginning of DJDE control characters, including leading spaces.

For example, if PREFIX = \$DJDE\$, SKIP=10, and OFFSET=1, specify the \$DJDE\$ Prefix String in the Setup menu as follows:

```
b$DJDE$bbb
```

where each b is one space character.

Preparing online color JSL

The ELXONC.JSL file listed below is an abbreviated version of the JSL file supplied with Elixir PrintDriver. This file is copied to the *drive*:\ELIXIR directory during installation as an example of a highlight color online Elixir .JSL file. The supplied version of the JSL also includes jobs for the new highlight colors and additional page sizes. This file and the default online JDL file format the online metacode printout.

ELXONC.JSL

In the following example, the bold text represents changes or additions that must be made to ensure compatibility with Elixir generated online metacode and your default JSL.

ELIXIR: JDL

VFELX: VFU ASSIGN=(1,1),ASSIGN=(12,255),TOF=1,
BOF=255;

PDELX: PDE BEGIN=(0,0),PMODE=POR,
FONTS=(UN104B);

RED1: IDR ICATALOG=XEROX,
PALETTE='PICTORIAL',
ILIST = ('BLACK','RED');

BLUE1: IDR ICATALOG=XEROX,
PALETTE='PICTORIAL',
ILIST = ('BLACK','BLUE');

GREEN1: IDR ICATALOG=XEROX,
PALETTE='PICTORIAL',
ILIST = ('BLACK','GREEN');

RAXT: TABLE CONSTANT=X' 1111111111111111';

ROFT: TABLE CONSTANT=X' 1212121212121212';

RSTK: TABLE CONSTANT=X' 1313131313131313';

RAX: CRITERIA CONSTANT=(1,8,EQ,RAXT);

ROF: CRITERIA CONSTANT=(1,8,EQ,ROFT);

RST: CRITERIA CONSTANT=(1,8,EQ,RSTK);

**VOLUME HOST=IBMONL,LABEL=NONE,CODE=NONE;
LINE DATA=(0,400),VFU=VFELX,**

PCCTYPE=IBM3211,OVERPRINT=PRINT,

MARGIN=0,FCB=IGNORE;

OUTPUT GRAPHICS=YES,PURGE=YES,
OFFSET=NONE,
DUPLEX=YES,FORMAT=PDELX,
XMP=REPORT;

ACCT USER=NONE;

RAUX TEST=RAX;

ROFFSET TEST=ROF;

RSTACK TEST=RST,DELIMITER=YES;

IDEN PREFIX=X' 5BC4D1C4C55B',SKIP=10,

OFFSET=1,OPRINFO=NO;

RECORD LENGTH=1032;

DFLT: JDE;

RED: JOB;

OUTPUT IDR=RED1,IRESULT=BLACK,XMP=REPORT;
ABNORMAL ERROR=CONTINUE,
IMISMATCH=CONTINUE,ISUBSTITUTE=ANY;

BLUE: JOB;

OUTPUT

IDR=BLUE1,IRESULT=BLACK,XMP=REPORT;

ABNORMAL ERROR=CONTINUE,
IMISMATCH=CONTINUE,ISUBSTITUTE=ANY;

```
GREEN: JOB;  
      OUTPUTIDR=GREEN1,IRESULT=BLACK,  
      XMP=REPORT;  
      ABNORMAL ERROR=CONTINUE,  
      IMISMATCH=CONTINUE,ISUBSTITUTE=ANY;  
END;  
-----
```

Make sure that the following statements are correctly specified in ELXONC.JSL:

- JDL on the first line must be ELIXIR
- HOST=IBMONL
- CODE=NONE
- DATA=(0,N) (where N is 200 or greater and equals the value specified in the default JSL)
- PREFIX=X'5BC4D1C4C55B' (see below)
- OFFSET=a, SKIP=b (see below)
- GRAPHICS=YES (if a graphics handling option is installed and .IMG files are used - otherwise, NONE).

Initially, the IDEN statement in the ELXONC.JSL file contains the following values:

```
PREFIX=X'5BC4D1C4C55B'  
OFFSET=1  
SKIP=10
```

Modify the above values as described below:

PREFIX is the EBCDIC hexadecimal representation of the PREFIX parameter specified for IDEN in the default online JCL file (shown as \$DJDE\$ in the default online JCL listing). The value specified for the PREFIX= statement in your ELXONC.JSL must be specified in EBCDIC hexadecimal notation and must exactly match the values specified in your default JSL.

The maximum length of the PREFIX is 20 characters. If it is less than 20 characters, it is padded out with spaces. This will not affect the printing of the meta-code file.

Set OFFSET and SKIP to the values specified in the default JSL on your printer (shown as 1 and 10 in the default JSL example). OFFSET is the leading number of space characters before the \$DJDE\$ Prefix string. SKIP is the total number of characters specified before the beginning of DJDE control characters, including leading spaces.

For example, if PREFIX = \$DJDE\$, SKIP=10, and OFFSET=1, specify the \$DJDE\$ Prefix String in the Setup menu as follows:

b\$DJDE\$bbb

where each b is one space character.

Compiling the JSLs on the printer

Before running your print job, compile the JSLs at the printer.

Compile the edited default online JSL, METSTA.JSL, or METSTC.JSL, and the Elixir online JSL at the printer. Run the compiling command PDL, followed by the JSL file name.

- Elixir color online JSL compile example:

PDL ELXONC.JSL <Enter>

- METSTA.JSL example:

PDL METSTA.JSL <Enter>

Copying metacode files to the printer

To print metacode files, place the printer online and prepare the printer to receive the files by typing:

STA ,DFAULT <Enter> (for Elixir and default on-line JSLs)

or

STA ,METSTA <Enter> (black and white)

or

STA ,METSTC <Enter> (color)

Then, either run the JCL job for copying files from your host to the printer or use a DataWare card to copy files directly from the PC to the printer.

Note that if you want to use a paper size that is not listed in the supplied Elixir JSL, you can either edit the JSL to include the paper size or perform a mini-sysgen on the printer to support the appropriate paper size.

Copying files from the host using a JCL file

The following is an example of a JCL file:

```
-----  
//00D42DA          JOB          (8200,Z200-Z20001),`LARACEY  
7-1994',CLASS=A,  
//MSGCLASS=J,NOTIFY=00D42D,USER=00D42D,PRTY=4  
/* JOBPARM L=9999  
/*  
/* JCL TO SEND ELIXIR ONLINE METACODE TO 9790 AND  
9700  
/*  
//XR9700 OUTPUT DEST=R269  
//STEP1 EXEC PGM=IEBGNER  
//SYSPRINT DD SYSOUT=*  
//SYSUT1DDUNIT=DISK,DISP=OLD,  
//DSN=00D42D.0Z200.IM5816.MET.DATA,  
//DCB=(LRECL=536,BLKSIZE=540,RECFM=VBM)  
//SYSUT2 DD SYSOUT=O,  
// OUTPUT=*.XR9700  
//SYSIN DD DUMMY
```

//*

Note that the fixed block file created by Elixir Print-Driver contains nearly all the attributes of a variable-blocked machine (VBM) file. However, in an IBM MVS host environment, the metacode file must be converted to VBM format by coding the DCB parameter for the input (SYSUT1) file as follows:

DCB=(LRECL=536, BLKSIZE=540, RECFM=VBM).

Note also that the VBM format requires the record length to be four bytes less than the block size.

Specifying the DCB parameters, as described previously, causes the MVS system catalog to view the on-line metacode dataset as a VBM file instead of an FB file, which was the record format specified when the file was uploaded. The IEBGENER utility then treats the dataset as a VBM file, and sends each variable length record within the file down the channel to the printer.

Note that online metacode can be delivered to printers attached to host computers with operating environments other than MVS. It is up to the user to determine the correct upload procedure for their environment, as well as a means of delivering the metacode records to the printer.

In VM and DOS environments, you will have to write your own EXEC or equivalent utility to extract each variable length metacode record from the 540 byte blocks of metacode records contained within the on-line metacode dataset.

Copying files using a DataWare card

The DataWare PC interface card connects a PC directly to a Xerox production printer using bus and tag connectors.

The DataWare PC interface card allows you to send online metacode files and Xerox files with 128-byte header records generated by Elixir PrintDriver to your Xerox printer.

To use the DataWare card, add the following device driver in your PC CONFIG.SYS file.

DEVICE=CHANNEL.SYS *unit address*

unit

is the DataWare I/O port you are using (0 - 3), normally 0.

address

is the hexadecimal value of the address of the printer on the I/O channel (between 0 and FE), normally 0F.

Make sure you specify the full DOS pathname for CHANNEL.SYS in your CONFIG.SYS file (for example, C:\DATAWARE\CHANNEL.SYS 0 0F).

For proper DataWare card operation, other parameters may be required in the CONFIG.SYS file. For details, see your DataWare documentation.

To copy files to the printer through the DataWare card, type the following at the PC:

COPY /B [*path*] *filename* ;CHAN <Enter>

filename

can be any Elixir-generated online metacode file or a Xerox file with a 128-byte header record.

path

is the optional fully-qualified DOS directory search path for filename.

Moving and printing offline metacode

This section describes how to move and print offline metacode files using tape.

Preparing offline ELIXIR.JSL

The ELIXIR.JSL file listed below is supplied with Elixir PrintDriver and is copied to *drive*:\ELIXIR during installation.

ELIXIR.JSL

The following pages list the ELIXIR.JSL file provided with Elixir PrintDriver, required for printing black and white offline metacode on Xerox printers. The bold text represents critical fields that must exactly match the entries specified in Elixir PrintDriver prior to generation of offline metacode.

```

ELIXIR: SYSTEM;
PCCXPS:  PCC
INITIAL=TOF,DEFAULT=(IGN,PSP0),
ASSIGN=(X'31',IGN,SK1PSP0);
VFXPS1:  VFU    ASSIGN=(1,1),TOF=1,BOF=255;
PDFLT:   PDE BEGIN=(0,0),PMODE=POR,FORMAT=(UN104B);

RAXT:          TABLE  CONSTANT=X'1111111111111111';
ROFT:          TABLE  CONSTANT=X'1212121212121212';
RSTK:  TABLE  CONSTANT=X'1313131313131313';
RT:    TABLE  CONSTANT=A'$RAUX$';

RAX:  CRITERIA          CONSTANT=(1,8,EQ,RAXT);
ROF:  CRITERIA          CONSTANT=(1,8,EQ,ROFT);
RST:  CRITERIA          CONSTANT=(1,8,EQ,RSTK);
RC:   CRITERIA          CONSTANT=(1,6,EQ,RT);

VOLUME HOST=IBMOS,LABEL=NONE,CODE=NONE;
LINE
DATA=(1,400),VFU=VFXPS1,PCCTYPE=PCCXPS,
OVERPRINT=PRINT,MARGIN=0;
OUTPUT GRAPHICS=YES,PURGE=YES,
    DUPLEX=YES,FORMAT=PDFLT;
ACCT  USER=NONE;
RAUX  TEST=RAX;
ROFFSET TEST=ROF;
RDELETE TEST=ROF;
IDEN
PREFIX=(X'2024444A444524202020'),OFFSET=1,
    SKIP=10,OPRINFO=NO;
BLOCK  LENGTH=1032,OFFSET=0,LTHFLD=2,
    PREAMBLE=4;
RECORDSTRUCTURE=VB,LENGTH=1028,LTHFLD=2,
    PREAMBLE=4;
DFLT:  JDE;
END;

```

Make sure that the following statements are correctly specified in ELIXIR.JSL

- Set the IDEN PREFIX statement in ELIXIR.JSL to match the PREFIX string used for Dynamic Job Descriptor Entries (DJDs) at your site.

The value you specify for the [\$DJDE\$ Prefix String] option in the Elixir PrintDriver Meta Options dialog box must also match this value.

- PREFIX=(X`2024444A4445242020`) (see below)
- OFFSET=a, SKIP=b (see below)
- GRAPHICS=YES (if a graphics handling option is installed and .IMG files are used - otherwise, NONE).

Initially, the IDEN statement in the ELIXIR.JSL file contains the following values:

```
PREFIX=(X'2024444A4445242020')  
OFFSET=1  
SKIP=10
```

Modify the above values as described below:

PREFIX is the ASCII hexadecimal representation of the PREFIX parameter specified to match the prefix string used for Dynamic Job Descriptor Entries (DJDE) at your site.

The maximum length of the PREFIX is 20 characters. If it is less than 20 characters, it is padded out with spaces. This will not affect the printing of the meta-code file.

Set OFFSET and SKIP values to match the offset and skip values used for Dynamic Job Descriptor Entries (DJDE) at your site. OFFSET is the leading number of space characters before the \$DJDE\$ Prefix string. SKIP is the total number of characters specified before the beginning of DJDE control characters, including leading spaces.

For example, if PREFIX = \$DJDE\$, SKIP=10, and OFFSET=1, specify the \$DJDE\$ Prefix String in the Setup menu as follows:

b\$DJDE\$bbb

where each b is one space character.

Preparing offline ELIXIC.JSL

The ELIXIC.JSL file listed below is an abbreviated version of the JSL file supplied with Elixir PrintDriver. This file is copied to the *drive:\ELIXIR* directory during installation as an example of a highlight color offline Elixir JSL file. The supplied version of the JSL also includes jobs for the new highlight colors and additional page sizes.

ELIXIC.JSL

The following pages list the ELIXIC.JSL file provided with Elixir PrintDriver, required for printing highlight color offline metacode on Xerox printers. The bold text represents critical fields that must exactly match the entries specified in Elixir PrintDriver prior to generation of offline metacode.

```
ELIXIR: SYSTEM;
PCCXPS: PCC
INITIAL=TOF,DEFAULT=(IGN,PSP0),
ASSIGN=(X'31',IGN,SK1PSPO);
VFXPS1: VFU ASSIGN=(1,1),TOF=1,BOF=255;
PDFLT: PDE BEGIN=(0,0),PMODE=POR,FORMAT=(UN104B);
  RED1: IDR ICATALOG=XEROX,
        PALETTE='PICTORIAL',
        ILIST = ('BLACK','RED');
  BLUE1: IDR ICATALOG=XEROX,
        PALETTE='PICTORIAL',
        ILIST = ('BLACK','BLUE');
  GREEN1: IDR ICATALOG=XEROX,
        PALETTE='PICTORIAL',
        ILIST = ('BLACK','GREEN');
RAXT: TABLE CONSTANT=X'1111111111111111';
ROFT: TABLE CONSTANT=X'1212121212121212';
RSTK: TABLE CONSTANT=X'1313131313131313';
RT: TABLE CONSTANT=A$RAUX$;
RAX: CRITERIA CONSTANT=(1,8,EQ,RAXT);
ROF: CRITERIA CONSTANT=(1,8,EQ,ROFT);
RST: CRITERIA CONSTANT=(1,8,EQ,RSTK);
RC: CRITERIA CONSTANT=(1,6,EQ,RT); VOLUME
    HOST=IBMOS,LABEL=NONE,CODE=NONE;
    LINE
DATA=(1,400),VFU=VFXPS1,PCCTYPE=PCCXPS,
OVERPRINT=PRINT,MARGIN=0;
  OUTPUT GRAPHICS=YES,PURGE=YES,
    DUPLEX=YES,FORMAT=PDFLT;
  ACCT USER=NONE;
  RAUX TEST=RAX;
  ROFFSET TEST=ROF;
  RDELETE TEST=ROF;
  IDEN PREFIX=(X'2024444A444524202020'),OFFSET=1,
    SKIP=10, OPRINFO=NO;
  BLOCK LENGTH=1032,OFFSET=0,LTHFLD=2,
    PREAMBLE=4;
  RECORDSTRUCTURE=VB,LENGTH=1028,LTHFLD=2,
    PREAMBLE=4;

DFLT: JDE;
RED: JOB;
  OUTPUT IDR=RED1,IRESULT=BLACK;
  ABNORMAL ERROR=CONTINUE,IMISMATCH=CON-
TINUE, ISUBSTITUTE=ANY;
BLUE: JOB;
  OUTPUT IDR=BLUE1,IRESULT=BLACK;
  ABNORMAL ERROR=CONTINUE,IMISMATCH=CON-
TINUE, ISUBSTITUTE=ANY;
```

```

GREEN: JOB;
      OUTPUT  IDR=GREEN1,IRESULT=BLACK;
ABNORMAL ERROR=CONTINUE, IMISMATCH=CONTINUE,
      ISUBSTITUTE=ANY;
RLEG:  JOB;
      OUTPUT  IDR=RED1, IRESULT=BLACK,
      PAPERSIZE=USLEGAL;
      ABNORMAL ERROR=CONTINUE,IMISMATCH=CON-
TINUE,      ISUBSTITUTE=ANY
BLEG:  JOB;
      OUTPUT  IDR=BLUE1, IRESULT=BLACK,
      PAPERSIZE=USLEGAL;
      ABNORMAL ERROR=CONTINUE,IMISMATCH=CON-
TINUE,      ISUBSTITUTE=ANY
GLEG:  JOB;
      OUTPUT  IDR=GREEN1, IRESULT=BLACK,
      PAPERSIZE=USLEGAL;
      ABNORMAL ERROR=CONTINUE,IMISMATCH=CON-
TINUE,      ISUBSTITUTE=ANY
RA4: JOB;
      OUTPUT  IDR=RED1, IRESULT=BLACK,
      PAPERSIZE=A4;
      ABNORMAL ERROR=CONTINUE,IMISMATCH=CON-
TINUE,      ISUBSTITUTE=ANY
BA4: JOB;
      OUTPUT  IDR=BLUE1, IRESULT=BLACK,
      PAPERSIZE=A4;
      ABNORMAL ERROR=CONTINUE,IMISMATCH=CON-
TINUE,      ISUBSTITUTE=ANY
GA4:JOB;
      OUTPUT  IDR=GREEN1, IRESULT=BLACK,
      PAPERSIZE=A4;
      ABNORMAL ERROR=CONTINUE,IMISMATCH=CON-
TINUE,      ISUBSTITUTE=ANY
END;

```

All lines after the DFLT: JDE; statement must be added at the end of all .JSL files when preparing the JSL for printing on highlight color printers or printing on USLEGAL and A4 paper sizes.

Make sure that the following statements are correctly specified in ELIXIC.JSL

- Set the IDEN PREFIX statement in ELIXIC.JSL to match the PREFIX string used for Dynamic Job Descriptor Entries (DJDEs) at your site.

The value you specify for the [\$DJDE\$ Prefix String] option in the Elixir PrintDriver Meta Options dialog box must also match this value.

- PREFIX=(X`2024444A444524202020') (see below)
- OFFSET=a, SKIP=b (see below)
- GRAPHICS=YES (if a graphics handling option is installed and .IMG files are used - otherwise, NONE).

Initially, the IDEN statement in the ELIXIC.JSL file contains the following values:

```
PREFIX=(X'2024444A444524202020')
OFFSET=1
SKIP=10
```

Modify the above values as described below:

PREFIX is the ASCII hexadecimal representation of the PREFIX parameter specified to match the prefix string used for Dynamic Job Descriptor Entries (DJDE) at your site.

The maximum length of the PREFIX is 20 characters. If it is less than 20 characters, it is padded out with spaces. This will not affect the printing of the meta-code file.

Set OFFSET and SKIP values to match the offset and skip values used for Dynamic Job Descriptor Entries (DJDE) at your site. OFFSET is the leading number of space characters before the \$DJDE\$ Prefix string. SKIP is the total number of characters specified before the beginning of DJDE control characters, including leading spaces.

For example, if PREFIX = \$DJDE\$, SKIP=10, and OFFSET=1, specify the \$DJDE\$ Prefix String in the Setup menu as follows:

b\$DJDE\$bbb

where each b is one space character.

Using tape to move files

Set the [Output to:] option in the Elixir PrintDriver Meta Options dialog box to TAPE and run Elixir PrintDriver. Metacode generated by Elixir PrintDriver is written to tape.

Mount the tape and type one of the following commands followed by <Enter> at the console:

<i>Command</i>	<i>to print...</i>
STA DFLT,ELIXIR	
STA RED,ELIXIR	letter size using red toner
STA BLUE,ELIXIR	letter size using blue toner
STA GREEN,ELIXIR	letter size using green toner
STA CYAN,ELIXIR	letter size using cyan toner
STA MAGEN,ELIXIR	letter size using magenta toner
STA CARDN,ELIXIR	letter size using cardinal toner
STA ROYAL,ELIXIR	letter size using royal toner
STA VIOLET,ELIXIR	letter size using violet toner
STA BROWN,ELIXIR	letter size using brown toner
STA RUBY,ELIXIR	letter size using ruby toner

STA GRAY,ELIXIR	letter size using gray toner
STA RLEG,ELIXIR	legal size using red toner
STA BLEG,ELIXIR	legal size using blue toner
STA GLEG,ELIXIR	legal size using green toner
STA CYLEG,ELIXIR	legal size using cyan toner
STA MAGLEG,ELIXIR	legal size using magenta toner
STA CARLEG,ELIXIR	legal size using cardinal toner
STA ROYLEG,ELIXIR	legal size using royal toner
STA VIOLEG,ELIXIR	legal size using violet toner
STA BRLEG,ELIXIR	legal size using brown toner
STA RUBLEG,ELIXIR	legal size using ruby toner
STA GRLEG,ELIXIR	legal size using gray toner
STA RA4,ELIXIR	A4 size using red toner
STA BA4,ELIXIR	A4 size using blue toner
STA GA4,ELIXIR	A4 size using green toner
STA CYA4,ELIXIR	A4 size using cyan toner
STA MAGA4,ELIXIR	A4 size using magenta toner
STA CARA4,ELIXIR	A4 size using cardinal toner
STA ROYA4,ELIXIR	A4 size using royal toner
STA VIOA4,ELIXIR	A4 size using violet toner
STA BRA4,ELIXIR	A4 size using brown toner
STA RUBA4,ELIXIR	A4 size using ruby toner

STA GRA4,ELIXIR	A4 size using gray toner
-----------------	--------------------------

To print offline black-and-white metacode, enter the following command:

STA DFLT,ELIXIR <Enter>

Note also that when changing paper sizes, you must perform a Mini-Sysgen on the printer to support the appropriate paper size.

Uploading with 871

Use the following procedure to upload a Xerox-format file with an 871 device. The MET2871 utility reformats metacode files for correct processing through an 871 device that connects a mainframe computer and a Xerox printer.

MET2871 *filename* <Enter>

filename

is the full pathname of the file you want to upload including the extension.

Issue the command from the directory in which MET2871 is located (*drive*:\ELIXIR).

Printing offline Xerox-labeled files

This section describes how to move and print FSL, FRM, and other Xerox-labeled files using tape and diskettes.

Using diskettes to move files

To print offline files created by Elixir PrintDriver on your PC hard disk, use Elixidisk to copy the files to a Xerox production format diskette, then copy the diskette files to the printer hard disk. Print the files as described in the "Printing FRM files" section. Refer to the "Stand-alone utilities" chapter for further information about Elixidisk.

Using tape to move files

To print offline FRM, FSL, and other Xerox-labeled files written to tape, follow these steps:

1. **Set the [Output to:] option in the Meta Options dialog box to TAPE and run Elixir PrintDriver.**

If you have already created offline files on your disk drive, use the DSK2TAP utility (supplied with Elixir PrintDriver) to copy the disk files to tape. Refer to the "Stand-alone utilities" chapter for further information about DSK2TAP.

2. **Make sure you have the compiled ELIXIR.JSL and ELIX2.JSL offline control files on the printer.**
3. **Mount the tape containing the files.**
4. **At the console, type:**

COP TAP REA LAB ALL <Return>

5. **Compile FSL files, if any.**
6. **Print the files.**

Offline control files

The ELIXIR.JSL and ELIX2.JSL files are supplied with Elixir PrintDriver and are copied to the *drive:\ELIXIR* directory during installation.

Make sure you compile ELIXIR.JSL and ELIX2.JSL after copying them to your printer (the compiled files have .JDL extensions).

Mounting the tape

Mount the tape containing the Xerox-labeled files and type the following command to copy all files from tape to the printer disk:

COP TAP REA LAB ALL <Enter>

Compiling FSL files

If you are printing .FSL files, compile them into FRM format on your printer (or use the ElixSys Desktop or ElixSys Desktop for HighLight Color to convert FSL files to FRM format on your PC).

Printing FRM files

To print FRM files, first load the Xerox printer command files (.CMD and .MSC), created by Elixir PrintDriver for each FRM file, on the printer.

Note that each Xerox printer command file stem name is derived from the print file you convert according to the following rules:

- For print file names with six or more characters (excluding the extension), the stem name consists of the first (left) six characters.
- For print file names with less than six characters (excluding the extension), the stem name consists of all the characters of the file name.

After loading Xerox printer command files on the printer, print FRM files by entering the following at the printer console:

```
@xxxxxx
```

where xxxxxx is the stem name (file name without extension) of the Xerox printer command files created by Elixir PrintDriver.

SPUR

You can send online metacode files and Xerox files with 128-byte headers to a Xerox printer through the Spur device by using the Elixir SPUR utility.

See the "Stand-alone utilities" chapter for more information about the SPUR interface.

6. Stand-alone utilities

This chapter describes the Elixir stand-alone batch utilities provided with Elixir PrintDriver. These utilities are copied to the *drive*:\ELIXIR directory during installation (*drive*: is the drive on which you install Elixir PrintDriver).

Each time you install or reinstall Elixir software, existing utilities are overwritten with new ones. If you want to keep older versions of the utilities, back up the .EXE and .COM files in your *drive*:\ELIXIR directory before installation.

Using the utilities

The parameters required to run each utility display on your screen when you enter only the utility name from the *drive*:\ELIXIR directory.

Most of the utilities accept DOS wildcard characters (see your DOS documentation for instructions on the proper use of wildcards). When using wildcards, specify only the desired file or files.

For optional utility parameters enclosed in brackets [], enter the appropriate parameters for the option as described in the Usage section of the utility, or leave them blank if you want to use the default (the default is listed first in the list following the parameter).

When specifying utilities, either do not specify parameters (to use the default for each parameter) or specify all the parameters. *You cannot skip parameters.*

If you have ElixSys Desktop or ElixSys Desktop for HighLight Color, all utilities are tied into Desktop operations through dialog boxes (although not all utility options are available from the Desktop dialog boxes).

Application-specific utilities must be run on the command line using the DOS pull-down menu or the Dispatcher icon. See the "Accessing DOS files and applications" chapter in your *ElixSys Desktop User Guide* for more information.

ElixiDisk

Elixir supports the following standard transfer options:

- host upload/download
- tape transfer
- direct PC-to-printer connection via a channel card or SPUR device

For users with compatible PCs, the ElixiDisk utilities provide an additional option. If the ElixiDisk utilities are not supported by your PC (see the conditions listed on the next page), use one of the standard transfer options listed above.

ElixiDisk consists of the XCPY, XDEL, XDIR, and XFORMAT utilities. These utilities perform the following:

- display directory information about Xerox-format diskettes
- format diskettes for use on a production printer
- copy files between Xerox-format diskettes and the hard drive on your PC
- delete files from Xerox-format diskettes.

You can format only low-density 5.25-inch diskettes to Xerox-format. This formatting makes the diskette readable only on Xerox production printers. All production printer floppy formats except for the 4075 printer format are supported. No distributed printer floppy formats are supported.

Elixidisk runs on most IBM and compatible PCs with the following conditions:

- Elixidisk utilities that read and write floppy diskettes used for carrying data to and from the x9700 printers function on most compatible PCs. Elixidisk utilities may not function on PCs with motherboard BIOS chips that contain implementations that prohibit operation, however.
- Elixidisk operates with any Xerox standard format file, that is, one divided into 512-byte blocks with or without tape headers.
- Elixidisk is not compatible with the ROM BIOS on some PCs (for example, the Compaq DeskPro), and may not operate correctly if the ROM BIOS on your PC is dated 1987 or earlier. Use a PC utility program (such as Norton Utilities) to check your BIOS date.
- External disk drives are not supported.

Elixidisk utilities may not be supported by the IBM PS/2. PS/2 users can copy files to the host using a supported PC-to-mainframe communications package.

Elixidisk utilities are provided as originally packaged, and may not run with all PCs or configurations due to manufacturer changes in initial hardware or software. Elixir continues to provide support for Elixidisk utilities but cannot guarantee their operation with all systems and configurations.

XDIR

XDIR displays a directory of files for Xerox 40XX, 41XX, 46XX, 87XX, or 97XX diskettes.

Usage XDIR *drive:filename*

drive

is the diskette drive specification (A: or B:)

filename

is any six-character file name with a three-character extension. Wildcards are allowed.

**Directory
information**

drive:\ELIXIR directory if you have not specified *drive:\ELIXIR* in a DOS PATH= statement.

Example 1 To display a list of all files with .FNT extensions on a Xerox-format diskette, type the following commands from *drive:*

CD \ELIXIR <Enter>

The current directory changes to *drive:\ELIXIR*.

Then type:

XDIR A: *.FNT <Enter>

XDIR displays all files on your Xerox-format diskette with .FNT extensions.

Example 2 To display a list of all files on a Xerox-format diskette, from *drive:*, type:

CD \ELIXIR <Enter>

The current directory changes to *drive:\ELIXIR*.

Then type:

XDIR A: <Enter>

XDIR displays a list of all the files on your Xerox-format diskette.

XFORMAT

XFORMAT formats any low-density DOS diskette into Xerox XXX, 87XX, or 97XX format.

Usage XFORMAT *drive:* <Enter>

drive:

is the drive specification (a: or b:).

**Directory
information**

Run XFORMAT from the *drive:*\ELIXIR directory if you have not specified *drive:*\ELIXIR in your DOS PATH= statement.

Example To format a low-density diskette in drive A: into Xerox-format, type:

XFORMAT A: <Enter>

Elixidisk utilities are provided as originally packaged, and may not run with all PCs or configurations due to manufacturer changes in initial hardware or software. Elixir continues to provide support for Elixidisk utilities but cannot guarantee their operation with all systems and configurations.

XCPY

The XCPY command allows you to:

- copy Xerox standard format files from your PC hard disk to a Xerox-format diskette
- copy Xerox standard format files from Xerox-format diskettes to your PC hard disk.

Copying from hard disk to Xerox-format diskette

Use XCPY to copy Xerox standard format files from a PC hard disk to a Xerox-format diskette.

Usage XCPY [*drive1:*] [*path1*] *filename* *drive2:* <Enter>

drive1:

is the source drive. If not specified, the DOS drive from which you run XCPY is considered the default source drive and is the drive on which XCPY searches for files.

path1:

is the DOS directory path that indicates the location on *drive1*: in which files specified by *filename* are located.

To write FRM, FSL, and 5Word format fonts to a Xerox-format diskette, you must specify the full path to the output directory:

- Forms (FRM) *drive*:\ELIXIR\DOCS\FRMOUT
- Forms (FSL) *drive*:\ELIXIR\DOCS\FSLOUT
- 5Word fonts *drive*:\ELIXIR\FONTS\FN6OUT

Note that these directories are specific to Elixir PrintDriver.

If [*path1*] is not specified, XCPY searches the Elixir default directories for a file. The following are Elixir default directories for the resource types indicated:

- Fonts (FNT) *drive*:\ELIXIR\FONTS\X97OUT
- Forms (FRM) *drive*:\ELIXIR\FORMS\FRMOUT
- Forms (FSL) *drive*:\ELIXIR\FORMS\FSLOUT
- Logos (LGO) *drive*:\ELIXIR\PICS\LGOOUT
- Images (IMG) *drive*:\ELIXIR\PICS\IMGOUT

XCPY searches for all other Xerox file types (such as .MSC) in the directory and drive from which XCPY is invoked.

filename

is any six-character file name and three-character extension production printers recognize, such as .FNT, .LGO, .FSL, .FRM, and .MSC. Wildcards are allowed, except in file name extensions.

drive2

is the destination drive, and must be specified.

Note: *drive1*: can be any drive specification between A: and Z:; *drive2*: must be either A: or B:.

**Directory
information**

Run XCPY from the *drive:\ELIXIR* directory if you have not specified *drive:\ELIXIR* in a DOS PATH= statement.

Example 1 To copy all files with .FNT extensions from the *drive:\ELIXIR\FONTS* directory to a Xerox-format diskette in the B: drive, type:

```
XCPY \ELIXIR\FONTS\X97OUT\*.FNT B:
<Enter>
```

XCPY copies all files with .FNT extensions in the *drive:\ELIXIR\FONTS* directory to the Xerox-format diskette in the B: drive.

Example 2 To copy LOGO1.LGO from your PC to a Xerox-format diskette in the A: drive, type:

```
XCPY LOGO1.LGO A: <Enter>
```

XCPY searches the default directories for .LGO format files, and the *drive:\ELIXIR\PICS\LG00OUT* directory for the LOGO1.LGO file. It then copies the file to the Xerox-format diskette in the A: drive.

Copying from Xerox-format diskette to hard disk

Usage

```
XCPY [drive1:]filename drive2:[path2]<Enter>
```

drive1

is the source diskette drive.

filename

is any six-character file name and three-character extension production printers recognize, such as .FNT, .LGO, .FSL, .FRM, IMG, and .MSC. Wildcards are allowed, except in file extensions.

drive2

is the destination drive, and must be specified.

drive2 can be any drive specification between A: and Z:; *drive1* must be either A: or B:.

path2

can be specified when copying files from a Xerox-format diskette to your hard drive.

To copy FRM, FSL, and 5Word format fonts to your PC, you must specify the full path to the input directory:

- Form (FRM) *drive*:\ELIXIR\DOCS\FRMIN
- Form (FSL) *drive*:\ELIXIR\DOCS\FSLIN
- 5Word font *drive*:\ELIXIR\FONTS\FN6IN

Note that these directories are specific to Elixir PrintDriver.

If you do not specify *path2*, XCPY searches the following Elixir default directories:

- Fonts (FNT) *drive*:\ELIXIR\FONTS\X97IN
- Forms (FRM) *drive*:\ELIXIR\FORMS\FRMIN
- Forms (FSL) *drive*:\ELIXIR\FORMS\FSLIN
- Logos (LGO) *drive*:\ELIXIR\PICS\LGOIN
- Images (IMG) *drive*:\ELIXIR\PICS\IMGIN

All other Xerox file types (such .MSC) are placed in the directory and drive from which XCPY is invoked.

**Directory
information**

Run XCPY from the *drive*:\ELIXIR directory if you have not specified *drive*:\ELIXIR in your DOS PATH= statement.

Example 1

To copy all files with .FNT extensions from a Xerox-format diskette in the B: drive to the \FONTS\PRODFONT directory on your D: drive, type:

```
XCPY B:*.FNT D:\FONTS\PRODFONT <Enter>
```

Example 2

To copy LOGO1.LGO from a Xerox-format diskette in the A: drive to the .LGO format input forms directory on your C: drive, type:

```
XCPY A: LOGO1.LGO C:<Enter>
```

XCPY copies LOGO1.LGO from the Xerox-format diskette in the A: drive to the default .LGO input directory (C:\ELIXIR\PICS\LGOIN).

ElixiDisk utilities are provided as originally packaged, and may not run with all PCs or configurations due to manufacturer changes in initial hardware or software. Elixir continues to provide support for ElixiDisk utilities but cannot guarantee their operation with all systems and configurations.

XDEL

The XDEL command deletes files on a Xerox 4XXX, 87XX, or 97XX diskette.

Usage *XDEL drive:filename <Enter>*

drive

is the diskette drive specification (A: or B:).

filename

is any six-character file name and three character extension. Wildcards are allowed.

**Directory
information**

Run XDEL from the *drive:\ELIXIR* directory if you have not specified *drive:\ELIXIR* in your DOS PATH= statement.

Example To delete all files with .LGO extensions on a Xerox-format diskette in drive A:, type:

*XDEL A: *.LGO <Enter>*

XDEL deletes all files with .LGO extensions on the Xerox-format diskette in the A: drive.

ElixiDisk utilities are provided as originally packaged, and may not run with all PCs or configurations due to manufacturer changes in initial hardware or software. Elixir continues to provide support for ElixiDisk utilities but cannot guarantee their operation with all systems and configurations.

DISP

The DISP utility displays the contents of a file on your screen in hexadecimal, ASCII, and screen character format. This information is helpful for debugging files.

Usage `DISP` *filename* [*count*][*pausing*][*display*]
 `<Enter>`

filename

is any file name, including path and extension.

count

is the number of characters displayed per line. The default is 15.

pausing

specify whether or not to pause after displaying a screen of data: PAUSE or NOPAUSE.

display

specify the display: BOTH, ASCII, EBCDIC, or HEX

Directory information

Run DISP from the *drive*:\ELIXIR directory, if you have not specified *drive*:\ELIXIR in your DOS PATH= statement.

Example

To display the contents of the file NEW.FNT in the *drive:\ELIXIR\FONTS\X97OUT* directory, type:

1. CD \ELIXIR <Enter>

The current directory changes to \ELIXIR.

2. DISP *drive:\ELIXIR\FONTS\X97OUT\NEW.FNT*
<Enter>

The contents of NEW.FNT displays.

Press <Enter> to continue to the next screen, press
<S> to stop and any key for the next file.

DSK2TAP

DSK2TAP copies files from the PC hard disk to an attached tape drive unit. Elixir supports tape drive units that use the Overland tape controller. The Qualstar 9 track 1600 or 6250 bpi model is recommended. Make sure the appropriate hardware and software is installed on your PC.

DSK2TAP always creates files with 128-byte headers, except metacode files, which do not have headers.

Usage DSK2TAP filename <Enter>

filename

is any DOS file name, including the file extension. Wildcards are allowed.

**Directory
information**

Run DSK2TAP from the directory in which files to be copied reside, and precede the DSK2TAP command with *drive:\ELIXIR*. (The full command is *drive:\ELIXIR\DSK2TAP filename* if you have not specified *drive:\ELIXIR* in your DOS PATH= statement).

Example 1 To copy all files named FORM1 located in the *drive:\ELIXIR\DOCS\FRMOUT* directory of the hard disk to the tape drive, type:

CD \ELIXIR\DOCS\FRMOUT

<Enter>

The current directory changes to *drive:\ELIXIR\DOCS\FRMOUT*.

Then type:

*drive:\ELIXIR\DSK2TAP FORM1.**
 <Enter>

DSK2TAP copies all files with the stem name FORM1 to tape.

Example 2 To copy all fonts from the \ELIXIR\FONTS\X97OUT directory to the tape drive, type:

```
CD \ELIXIR\FONTS\X97OUT <Enter>
```

The current directory changes to drive:\ELIXIR\FONTS\X97OUT.

Then type:

```
drive:\ELIXIR\DSK2TAP *.FNT  
<Enter>
```

This copies all .FNT files from the current directory to the tape drive.

HPEDIT

The HPEDIT utility allows editing of PCL font files.

Usage HPEDIT *filename* [SYMBOL=]
[POINT] [STYLE] [WEIGHT] [TYPEFACE]
<Enter>

filename

is the file name or filepath of the source font. Wild cards are allowed.

symbol=

where symbol set

1 = ROMAN-8, 2 = PC-8,

3 = PC-8 (D/N), 4 = ISO.

point=

is the point size in tenths.

style=

where style 1 = UPRIGHT, 2 = ITALIC

weight

is the strokeweight between -7 and 7.

typeface

where typeface is one of the following letters:

A) Presentations
B) Cooper Black
C) Courier
D) Palantino
E) Elixir
F) Black Bondini Condensed
G) Letter Gothic
H) Helvetica
I) ITC Garamond
J) Gothic
K) Micrographics
L) Line Printer
M) Swiss Condensed
N) Coronet Bold
O) Optima
P) Prestige
Q) Zaph Dingbats
R) Broadway
S) Century Schoolbook
T) Time Roman
U) University Roman
V) Avante Garde
W) Futura
Z) Zorich Roman

Directory information

Run HPEDIT from the *drive:/ELIXIR* directory using the desktop dispatcher or at the DOS prompt.

IC

The IC utility converts graphic formats.

Usage *IC sourcefile [in format]
 [out format] [-options] <Enter>*

sourcefile

is the file name or filepath of the source image. Wild cards are allowed.

in format

is the name of the source image format (Elixir, Pseg, PCX, TIF).

out format

is the name of the target image format (Elixir, Pseg, GOCAPSEG, PCX, TIF, Screen).

-Caaa

is the name of color or color id.

1=Blue, 2=Red, 3=Pink, 4=Green, 5=Cyan, 6=Yellow

Default: 0=Presentation process default

-Dnnn

is the output resolution in dpi (240 or 300).

-Faaa

is the record format for output options(VBM, AS400, IRMA, OS2, MODCA)

-Wa

is the selection for removing white space.

N=white space not removed

Y=white space removed

-Rnnn

is the selection to rotate pages in degrees.

-Xnnn

is the horizontal offset in pels.

-Ynnn

is the vertical offset in pels.

-Saaa

is the selection for monitor type (VGA, SuperVGA, Sigma, WYSE).

**Directory
information**

Run IC from the *drive:/ELIXIR* directory using the desktop dispatcher or at the DOS prompt.

MAKEKRNE

The MAKEKRNE utility allows Elixir PrintDriver users to create .KRN files (for use in Elixir PageHandler) from Elixir font (.HDR) files. The .KRN files are written to the *drive:\ELIXIR\FONTS\SCREEN* directory.

Usage MAKEKRNE *filename.HDR* <Enter>

filename

is the full pathname of the Elixir font file (.HDR). Wild-cards are allowed.

**Directory
information**

Run MAKEKRNE from the directory in which the input file resides. If you have not specified *drive:\ELIXIR* in a DOS PATH= statement, precede the MAKEKRNE command with *drive:\ELIXIR*.

MET2871

The MET2871 utility reformats metacode files for correct processing through an 871 device that connects a mainframe computer and a Xerox printer.

Usage MET2871 *filename.ext* <Enter>

filename

is the full pathname of the file for conversion.

.ext

is the file extension.

**Directory
information**

Issue the command from the directory in which MET2871 is located (*drive:\ELIXIR*).

METACOMP

You can use this utility if you did not select [Image Compression] in Elixir PrintDriver's Metacode Converter Options dialog box.

The METACOMP utility compresses .IMG format graphics in metacode files generated by Elixir PrintDriver.

Usage METACOMP *filename* [PARTIAL | FULL] <Enter>

filename

is the offline or online metacode file name, including file extension. Wildcards are not allowed.

PARTIAL

compresses duplicate lines and blank (null) lines in an .IMG file.

FULL

compresses duplicate lines, blank (null) lines, and optimizes for white space in an .IMG file.

After processing with METACOMP, the file will have a .CMP extension.

**Directory
information**

You must execute the command from the directory in which files to be compressed reside using the full command:

drive:\ELIXIR\METACOMP filename [PARTIAL | FULL].

PACK

The PACK utility converts .JSL, .FSL, and other ASCII format files to standard-labeled Xerox-format files. PACK places a standard Xerox header on the ASCII file, strips off text beyond column 80, and packs data into 512-byte blocks. PACK also converts Xerox-format files to 80-byte record length ASCII format.

Usage **PACK** *filename.ext* [*convert*] <Enter>

filename.ext

is the 80-byte record format file name which must include the extension. Wildcards are allowed.

convert

BLOCK (the default) converts 80-byte record length ASCII format files to Xerox-format files (128-byte header followed by 512-byte blocks of data). UNBLOCK converts Xerox-format files from 512-byte blocks to ASCII.

**Directory
information**

Run PACK from the directory in which files to be converted reside, using the full command, for example C:\ELIXIR\PACK *filename.ext* BLOCK. If you have specified a PATH=*drive*:\ELIXIR statement, you do not need to specify *drive*:\ELIXIR\ in the command.

SHOWBLOK

The SHOWBLOK utility displays information about any ElixiKeys attached to your PC and the Elixir applications you are authorized to run.

Usage SHOWBLOK <Enter>

**Directory
information**

Run SHOWBLOK from the \ELIXIR directory. If you have not specified *drive:\ELIXIR* in your DOS PATH= statement, precede the SHOWBLOK command with *drive:\ELIXIR*.

Example

To use SHOWBLOK to determine the ElixiKeys present on your PC, change the current directory to *drive:* then type:

1. CD \ELIXIR <Enter>

The current directory changes to *drive:\ELIXIR*.

2. SHOWBLOK <Enter>

If the ElixiFont and ElixiGraphics applications and keys are installed on your PC, a message similar to the following displays on your screen:

```
ELIXIFONT BLOCK PRESENT  
ELIXIGRAPHICS BLOCK PRESENT
```

SPUR

The Spur device connects a PC to a Xerox production printer using bus and tag connectors.

Online metacode files and Xerox files with 128-byte headers are sent to a Xerox printer through the Spur device by using the Elixir SPUR utility.

SPUR utility

The SPUR utility prepares online metacode files or Xerox standard labeled files for transmission through the SPUR device to a production printer. This utility inserts control codes in files enabling file transfer via the Spur device.

Usage SPUR *filename* [*header*] [*sequence*] <Enter>

filename

is any DOS filename including file extension. Wild-cards are not allowed.

header

is the Xerox header format: specify PRN to send filename through your PC parallel port to the Spur device, or DISK to write filename to disk (in the same directory as filename) and name it SPUR.OUT.

sequence

inserts escape sequences in the SPUR interface device output stream: USA or PPC. Specify the correct parameter, depending on your type of SPUR device (SPURPPC or SPURUSA).

Directory information

Run SPUR from the directory in which the input file resides. If you have not specified *drive*:\ELIXIR in a DOS PATH= statement, precede the SPUR command with *drive*:\ELIXIR\.

Example To send the Xerox-128 byte header file XPAU10.FNT located in the *drive*:\ELIXIR\FONTS\X97OUT directory directly to the SPUR device, type:

```
CD \ELIXIR\FONTS\X97OUT <Enter>
```

The current directory changes to *drive*:\ELIXIR\FONTS\X97OUT

Then type:

```
\ELIXIR\SPUR XPAU10.FNT PRN <Enter>
```

SPUR inserts control codes the SPUR device requires to send the file directly to your printer (which should be in HOSTCOPY mode).

Using SPUR for online metacode files

If you are copying online metacode files to the printer, make sure your default and ELIXIR.JSL files are coded correctly. The printer should be online and waiting to receive data before you begin the copy operation. For details on configuring your printer in an online environment, see your production printer reference manual.

Using SPUR for Xerox 128-byte header files

If you are copying a Xerox 128-byte header file to the printer, make sure the printer is in HOSTCOPY mode before you begin the copy operation. For further details on the HOSTCOPY mode, see your production printer reference manual.

STRIP

The STRIP utility adds or removes a Xerox header to files.

Usage **STRIP** *filename* [*headerformat*]
 [KEEPNAME][**-STRIP**][**-PAD**] <Enter>

filename

is any DOS file name including the file extension. Wildcards are allowed.

headerformat

specify the Xerox header format: NONE, 128, or 512.
NONE does not add a Xerox header.
128 adds a 128-byte Xerox header.
512 adds a 512-byte Xerox header.

KEEPNAME

keeps the original file header name.

-STRIP

strips line numbers and trailing spaces from text files.

-PAD

pads line numbers and trailing spaces to text files.

**Directory
information**

Run STRIP from the directory in which the input files reside. If you have not specified *drive:\ELIXIR* in a DOS PATH= statement, precede the STRIP command with *drive:\ELIXIR*.

Example To place 512-byte headers on all .FRM files in the *drive:\ELIXIR\FORMS\FRMOUT* directory, type:

```
CD \ELIXIR\FORMS\FRMOUT <Enter>
```

The current directory changes to *drive:\ELIXIR\FORMS\FRMOUT*.

Then type:

```
\ELIXIR\STRIP *.FRM 512 <Enter>
```

The STRIP utility places 512-byte header records on all files with .FRM extensions in the *drive:\ELIXIR\FORMS\FRMOUT* directory.

TAP2DSK

The TAP2DSK utility copies files from a tape drive unit to a PC hard disk. It also allows you to display a list of all tape files on your screen.

You cannot use TAP2DSK to copy Xerox metacode files.

Usage TAP2DSK [*filename*] DIR <Enter>

filename

is any DOS file name including the file extension. Wildcards are allowed.

DIR

is used only when you want to display the tape directory.

TAP2DSK searches the directory for files with the specified extension. The following is the default directories TAP2DSK uses for files:

- Fonts (FNT) *drive:\ELIXIR\FONTS\X97IN*
- To copy 5Word format files from a tape drive unit to your PC hard disk, you must specify the full path to the input directory:
drive:\ELIXIR\FONTS\FN6IN.

**Directory
information**

Run TAP2DSK from the *drive:\ELIXIR* directory, unless you have specified *drive:\ELIXIR* in your DOS PATH= statement.

Example 1 For a listing of all files on a tape, type:

TAP2DSK *.* <Enter>

TAP2DSK displays a list of files on the tape.

Example 2 To copy all .FSL forms from a tape to your PC hard disk, type:

TAP2DSK *.FSL <Enter>

All files on the tape with .FSL extensions are copied to the *drive:\ELIXIR\FORMS\FSLIN* directory.

A. Limitations and solutions

This chapter describes limitations of Elixir PrintDriver and provides some solutions to common problems.

Supported applications

Elixir PrintDriver has been tested with the following applications:

- Microsoft Word 6.0, 7.0, and 97
- Corel WordPerfect 6.1, 7.0, and 8.0
- Corel Ventura 5.0 and 7.0
- Lotus Ami Pro 3.0 and 3.1 and WordPro96
- Adobe PageMaker 5.0 and 6.5
- Write (Windows 3.11 and 95)
- Adobe FrameMaker 5.0, and 5.5

Elixir PrintDriver may also be used with other applications, however, it has not been fully tested for compatibility.

We are continuing to test other software packages and will add to this list in future releases.

Application compatibility

The following section describes limitations specific to certain Windows applications.

Ami Pro 3.x

Imported Elixir fonts may display as symbols on your screen. To view correctly, change viewing mode to [STANDARD].

If you want to use Elixir fonts in your document, you must install them from the [Printer Setup] option within Ami Pro. To access the Printer Setup menu:

- 1. Pull down the File menu.**
- 2. Select [Printer Setup...]**

The Select Printer dialog displays.

- 3. Select [Elixir PrintDriver on DISK].**
- 4. Click on [Setup].**

The Main Setup dialog box displays.

Continue to install fonts as described in the "Font options" chapter.

Make sure you do not save individual .SAM files with an associated printer if they are contained in a master document.

Corel Ventura 4.2

If your color graphics do not convert in color, locate the file dither.vp, rename it, then rerun the file through Elixir PrintDriver. After conversion, rename the file back to dither.vp.

CorelDRAW!

CorelDRAW! graphics are output as draw paths. If you want to use a CorelDRAW! graphic, export the graphic as a .PCX or .TIF file and import the file into a document in another application.

PageMaker

All graphics files in a PageMaker document must be embedded.

Use the [Composite] selection when printing a document. Do not use the [Color separation] option.

Converting PageMaker 5.0 documents using Elixir PrintDriver must have the option [Show Conversion Status] deselected for the conversion to run correctly. PageMaker 6.0 or 6.5 do not have this limitation and can be run with the [Show Conversion Status] on.

When specifying the paper size in the Job Print Ticket dialog box, use the [Custom Format] option. PageMaker does not recognize the preset default sizes.

Ventura Publisher 4.1

Not supported in this release.

Word

The [Background printing] option in Word conflicts with Elixir PrintDriver operation. Make sure this option in the Options dialog box is deselected. Note that the default for this option is selected.

To deselect this option:

- 1. Pull down the File menu.**
- 2. Select [Print].**

The Print dialog box displays.

- 3. Click on [Options].**

The Option dialog box displays.

- 4. Deselect the [Background printing] option.**

WordPerfect 5.x to 6.0 conversion of images

When converting files from 5.X to 6.0, the 6.0 conversion process adds a black box underneath all images. Elixir PrintDriver converts both elements, with the black box overriding the image in the resulting file.

Delete the black box in all images while in WordPerfect 6.0 prior to converting with Elixir PrintDriver.

WordPerfect 6.0

WordPerfect 6.0 does not allow Elixir PrintDriver to select output to [Disk]. You should install the patch for WordPerfect 6.0a. If you do not have the patch installed, you can change the printer setting from Elixir PrintDriver on DISK to Elixir PrintDriver on LPT1. However, this is only a temporary solution as it may clog up network print spools.

To change the printer setting:

1. **Click on the Control Panel in Windows.**
2. **Click on the Printers icon.**
3. **Select [Elixir PrintDriver on DISK].**
4. **Click on [Connect].**
5. **In the Ports window, select LPT1.**
6. **Click on [OK].**

Note that the file still prints to DISK and not to LPT1.

Reverse text

If you want to use reverse text in a document, you can import it as a rasterized graphic such as a .TIF, .BMP or .PCX file, or you can import reverse fonts from Elixifont or reversed 9700 and Elixir fonts to create the reverse text. See the "Font options" chapter for information about importing fonts.

Rotated text

Elixir PrintDriver does not support rotated text as text statements. If you want to use rotated text, select the [Rasterize graphics objects to image] option in the Image Services dialog box before you convert your document. Note that when you select this option, all elements except standard text are converted to images.

Font orientation

Xerox fonts have four orientations. However, all imported fonts display on the screen as portrait fonts, regardless of the original orientation. When you print your document, the font will print with the original orientation.

Circles and diagonal lines

Circles and diagonal lines are not supported on Xerox printers. To use a circle or diagonal line in your document, select the [Rasterize graphics objects to image] option in the Image Services dialog box before you convert your document. Note that when you select this option, all elements except standard text are converted to images.

Alternatively, you can import the circle or diagonal line as a .TIF, .BMP or .PCX graphic.

Color text strings

If your printer supports color printing and you want to use color ATM text in your document, add the following information to your ATM.INI file:

```
[Colors]  
PrintColorGraphics=OFF
```

Underlined text

Elixir PrintDriver allows you to use underlined text in your document. However, Elixir PrintDriver converts the underline as line draw statements. If you want to edit the underlined text, you must do so in the original documentation package. To edit the text using Elixir Form, you can remove the line element, edit the text and then redraw a new line under the edited text.

Typographers quotes

If the [Remap Text] option is selected, make sure the option for Typographical Quotes in your application is deselected (see your Windows application documentation), or edit your keyboard mapping file (.KMP) to include the typographical quotes (see the "Match not found" section in the "Operational and error message" appendix).

Graphics formats

Elixir PrintDriver can only convert the following types of graphics:

- .PCX
- .TIF #1
- .TIF #2
- .TIF #4
- .TIF #5 (black and white only)
- .TIF #32771
- .TIF #32773
- .BMP (within a document only)

If you want to use a graphic that is not .PCX, .BMP or .TIF format, copy it to the clipboard, save it as a .TIF, .BMP or .PCX file then import it into your document.

Using large fonts

If you are using a font that is approximately larger than 24 points, Elixir PrintDriver automatically truncates the font unless you specify a limited font range in the Font Generation Prompt dialog box, or import the text as a graphic. Note that if your printer supports 5Word fonts, this is not necessary. Supported 5Word printers are 41xx, 46xx, and 48xx.

- To limit the font range, use the [Font Generation Range] option in the Font Generation Prompt dialog box to specify a smaller range of characters.

Note that Xerox printers support font file sizes up to 128K. Check your Xerox printer manual for the maximum font file size for your printer.

See the "Font options" chapter for information on using the [Font Generation Range] option.

- To import text as a graphic, enter the text into a windows graphics editor, for example PC Paintbrush, save the file as a .PCX file and place this graphics file into your document.

Font support

Elixir PrintDriver cannot convert [Tms Rmn] or [Helv] system fonts. Replace all occurrences of [Tms Rmn] with the TrueType [Times New Roman] font or the ATM [Times] font. Replace all occurrences of [Helv] with the TrueType [Arial] or ATM [Helvetica] font.

Elixir PrintDriver can convert only TrueType or ATM fonts.

White objects on black objects

Elixir PrintDriver does not support placing white objects on top of black objects. For example, you cannot place a white box on top of a black line.

If you want to place white objects on top of black objects, create the object using a graphics editor, save the file as a .PCX, .BMP or .TIF file and then import the graphics file into your document.

If you want to use a reverse video text, for example, white text in a black box, either import it as a .PCX, .BMP or .TIF, or create the font using ElixiFont and import it for use with Elixir PrintDriver. See the "Font options" chapter for information about importing fonts.

Converting colored text

When converting a document with multi-color text, all the colored text converts to the selected highlight color.

For example, if you convert a document containing red, blue and green text with [Green] selected as the highlight color, all the colored text is converted to the green.

Default output directories

When converting to metacode, FSL and FRM, make sure the output directories are not all the same. Each resource must output to its own directory.

ElixirKeys and file transfer utilities

ElixirKeys may not be completely transparent when using PC-to-PC file transfer utilities which use a parallel port interface (such as LapLink). If you are using a parallel port PC file transfer package, first disconnect any ElixirKeys.

OS/2 setup (dual-booted with DOS) and ElixirKey

In some cases, an OS/2-DOS dual-booted system does not recognize the Elixir PrintDriver ElixirKey. To correct this, use the following procedure within OS/2:

1. **Right-click on the Printer icon and select [Open], then [Setting].**

The Printer Settings dialog box opens and displays the physical name of the printer.

2. **Select [Output options] and click on LPT1 twice.**
3. **Select the [Share access] option and click on [OK].**
4. **Exit, reboot, and rerun OS/2.**

The program should now recognize the Elixir Print-Driver ElixirKey.

B. VP297 and HP2XRX compatibility

The following appendix contains information about upgrading to Elixir PrintDriver from VP297 or HP2XRX.

With Elixir PrintDriver you can convert documents from any of the supported Windows applications to Xerox format. However, you can use only TrueType, ATM, or Xerox fonts in your document (Bitstream fonts are not supported).

To use Elixir PrintDriver with existing documents containing Bitstream fonts:

- 1. Click on Control Panel in Windows.**
- 2. Click on the [Fonts] icon.**
- 3. Select [TrueType].**
- 4. Select [Enable TrueType Fonts].**
- 5. Click on [OK].**

This allows you to see and use only TrueType fonts in your application.

All Bitstream fonts in the document default to a similar TrueType font.

To ensure accurate results, we recommend that all existing documents used with HP2XRX or VP297 are re-converted using Elixir PrintDriver.

Note that HP2XRX and VP297 should still be used for documents in non-Windows applications.

C. Operational and error messages

This appendix lists all the operational and error messages issued by Elixir PrintDriver. These messages display in message dialog boxes. Some dialog box messages require the user to enter a response such as [Yes] ,[No] or [Continue].

Messages appear in alphabetical order and are shown in bold. Explanations for messages are given below the message in normal text.

Cannot concatenate image file.

The image file may be too large. Reduce the size of the image and then retry the operation.

Cannot find TAGS.TAG file

Missing file or missing directory. Check that the file and directory exist on the specified drive.

Cannot open *.TAG file.

Missing file or missing directory. Check that the file and directory exist on the specified drive.

Cannot open screen font file name

Missing screen font. Use Elixir PrintDriver to regenerate the font and create the screen font.

Cannot open TAGS.TAG file.

Missing file or missing directory. Check that the file and directory exist on the specified drive.

Cannot write BMP file

Check that you have sufficient disk space.

Cannot write DM.CFG

DM.CFG is the DataMerge configuration file. Make sure the DM.CFG file exists in your Elixir directory. If not, reinstall the software.

Cannot write DT.CFG

DT.CFG is the DocuTag configuration file. Make sure the DT.CFG file exists in your Elixir directory. If not, reinstall the software.

Cannot write LP3 file

Check that you have sufficient disk space and that the .LP3 file you are writing to exists.

Cannot write PH.CFG

PH.CFG is the PageHandler configuration file. Make sure the PH.CFG file exists in your Elixir directory. If not, reinstall the software.

Cannot write new prefix of font.

Make sure the TTFONT.NAM file exists in \ELIXIR\FONTS\MAPS\. If not, reinstall the software.

Can't allocate memory.

Unable to allocate more memory as needed. Close any applications you are not working with and try the operation again. If you receive the same memory error again, close further applications or exit and restart Windows.

Can't convert elixir screen font:...

Insufficient disk space or missing directory. Check that the directory exists on the specified drive.

Can't convert image to font.

Insufficient disk space or missing directory. Check that the directory exists on the specified drive.

Can't convert image to font - 9700.

Insufficient disk space or missing directory. Check that the directory exists on the specified drive.

Can't convert image to LGO

Insufficient disk space or missing directory. Check that the directory exists on the specified drive.

Can't convert print driver font:...

Insufficient disk space or missing directory. Check that the directory exists on the specified drive.

Can't convert Windows screen font:...

Insufficient disk space or missing directory. Check that the directory exists on the specified drive.

Can't create BATCH file for winexe

Insufficient disk space.

Can't create CMD file.

Insufficient disk space or missing directory. Check that the directory exists on the specified drive.

Can't create dir:...

The directory either already exists, is invalid, or there is not enough room on the hard drive.

Can't create elixir font.

Insufficient disk space or missing directory. Check that the directory exists on the specified drive.

Can't create image file.

Image may be too large. Reduce the size of the image then create the image file again.

Can't create IMG file.

Insufficient disk space or missing directory. Check that the directory exists on the specified drive.

Can't create IMG file header.

Insufficient disk space or missing directory. Check that the directory exists on the specified drive.

Can't create MSC file.

Insufficient disk space or missing directory. Check that the directory exists on the specified drive.

Can't create object box.

Not enough memory available. Close any applications you are not working with and try the operation again. If you receive the same memory error again, close further applications, or exit and restart Windows.

Can't create object circle.

Not enough memory available. Close any applications you are not working with and try the operation again. If you receive the same memory error again, close further applications, or exit and restart Windows.

Can't create object font.

Not enough memory available. Close any applications you are not working with and try the operation again. If you receive the same memory error again, close further applications, or exit and restart Windows.

Can't create object line

Not enough memory available. Close any applications you are not working with and try the operation again. If you receive the same memory error again, close further applications, or exit and restart Windows.

Can't create object logo

Not enough memory available. Close any applications you are not working with and try the operation again. If you receive the same memory error again, close further applications, or exit and restart Windows.

Can't create object path.

Not enough memory available. Close any applications you are not working with and try the operation again. If you receive the same memory error again, close further applications, or exit and restart Windows.

Can't create object text.

Not enough memory available. Close any applications you are not working with and try the operation again. If you receive the same memory error again, close further applications, or exit and restart Windows.

Can't create object text - for font.

Not enough memory available. Close any applications you are not working with and try the operation again. If you receive the same memory error again, close further applications, or exit and restart Windows.

Can't create image file

The image file may be too large. Reduce the size of the image and then create the screen image file.

Can't create screen image file.

The image file may be too large. Reduce the size of the image and then create the screen image file.

Can't export XEROX font:...

Insufficient disk space, missing font or missing directory. Check that the directory and the font exist on the specified drive.

Can't find Elixir font:...

Make sure the font exists in
 \ELIXIR\FONTS\ELIXIR\.

Can't find file:...

File name is missing or invalid.

Can't find file DT.EXE

Make sure the file DT.EXE is in *drive*:\ELIXIR.

Can't find file PH.EXE

Make sure the file PH.EXE is in *drive*:\ELIXIR.

Can't find TTFONT.NAM file.

Make sure the TTFONT.NAM file exists in
 \ELIXIR\FONTS\MAPS\. If not, reinstall the software.

Can't find XEROX font:

Make sure the font exists in the appropriate directory. Check documentation for correct directories.

Can't generate elixir font.

Insufficient disk space or missing directory. Check that the directory exists on the specified drive.

Can't generate images - file error

Insufficient disk space or missing directory. Check that the directory exists on the specified drive.

Can't generate list of boxes.

Not enough memory available. Close any applications you are not working with and try the operation again. If you receive the same memory error again, close further applications, or exit and restart Windows.

Can't generate list of images.

Not enough memory available. Close any applications you are not working with and try the operation again. If you receive the same error again, close further applications, or exit and restart Windows.

Can't import XEROX font:...

Insufficient disk space, missing font or missing directory. Check that the directory and the font exist on the specified drive.

Can't load fonts from c:\elixir\fonts\screen\demo

Missing screen fonts. Use Elixir PrintDriver to regenerate fonts and create screen fonts.

Can't open *.DAT file

Missing or corrupt .DAT file or missing directory. Check the directory and file exists.

Can't open keyboard map file (.KMP).

Missing or invalid .KMP file name. Check the correct mapping file is selected in the Elixir PrintDriver Text Services dialog box.

Can't open LBCONV library.

.DLL library is missing, corrupt, or the path is missing. Make sure that ELIXIR is in your path and that the file exists in *drive:\ELIXIR*.

Can't output to tape

There is a problem with the tape device. Check your tape drive.

Can't rasterize graphics

Not enough memory available. Close any applications you are not working with and try the operation again. If you receive the same error again, close further applications, or exit and restart Windows.

Can't read keyboard mapping table (.KMP).

Missing or invalid .KMP file name. Check the correct mapping file is selected in the Elixir PrintDriver Text Services dialog box.

Can't store object line.

Not enough memory available. Close any applications you are not working with and try the operation again. If you receive the same error again, close further applications, or exit and restart Windows.

Can't store logo object.

Not enough memory available. Close any applications you are not working with and try the operation again. If you receive the same memory error again, close further applications, or exit and restart Windows.

Can't store object.

Not enough memory available. Close any applications you are not working with and try the operation again. If you receive the same memory error again, close further applications, or exit and restart Windows.

Can't store object font.

Not enough memory available. Close any applications you are not working with and try the operation again. If you receive the same memory error again, close further applications, or exit and restart Windows.

Can't store text object - for font.

Not enough memory available. Close any applications you are not working with and try the operation again. If you receive the same memory error again, close further applications, or exit and restart Windows.

Can't switch to Elixir system disk.

Windows system error or wrong specification of drive. Check that the specified drive is the drive where Elixir is installed.

Can't find TTFONT.NAM file

Missing file or directory. Check that the file exists in *drive:\ELIXIR\FONTS\MAPS*. If not, reinstall your software.

Circle is not implemented - it is converted to rectangle.

Circles are not supported on Xerox printers. To use a circle in your document, import it into the document as an image.

Could not open file!

Missing file or missing directory. Check that the file and directory exist on the specified drive.

Enter new prefix. 2 alphabetic chars!

The prefix is too long or contains non-alphabetic characters. Enter a new prefix containing two alphabetic characters.

Error protection key.

You must have the correct ElixKey installed to perform this file conversion. If you connect the correct key and you still have this error, try rearranging the order of any keys you have attached.

File write error.

Insufficient disk space or missing directory. Check that the directory exists on the specified drive.

Font:... is being truncated at position:...

Font limit has been reached. The specified font is being truncated at the specified position.

Glyph too large

The glyph exceeds the limit of 32700 bytes

Image exceeds size limit for 9700 fonts.

The image is too big for 9700 format. The limit for 9700 format is 60k.

Image exceeds size limit for LGO

The image is too big for LGO format.

Match not found, char *n*

(where *n* is a number representing a hex position).
A Windows character is missing from the character set (.KMP file) you are mapping to in the Text Services dialog box.

1. **Make a note of the hex position specified in the error message, for example 91.**
2. **Use any text editor, such as Notepad, to open and view the Windows mapping file**
drive:\ELIXIR\FONTS\MAPS\X100ANSI.KMP
3. **Search for the hex position not found and make a note of the character it is mapped to, for example Quoteleft = 91.**
4. **Exit the X100ANSI.KMP file.**
5. **Open and view the Country Keyboard mapping file you are using, for example,**
***drive:\ELIXIR\FONTS\MAPS\X1000437.KMP* for U.S. users.**

If you are not sure which Country Keyboard mapping file you are using, see the Text Services dialog box or refer to the "Elixir PrintDriver basics" chapter.

6. **Make sure the missing character, for example Quoteleft, is not listed in the Country Keyboard mapping file.**
7. **Search for a character that is not used by Elixir fonts.**

These characters begin with "box" or "fill" and are usually assigned to positions B0 through DA, for example fill25=B0. Do not delete characters that do not start with box or fill.

8. **Delete the unused character name, for example fill25, and enter the missing character name, for example Quoteleft.**

9. **Repeat the above procedure for each missing character.**
10. **Pull down the File menu and select [Save as] to save the file with a new file name.**

This will avoid overwriting the file when you reinstall Elixir software at a later date.

11. **In the Text Services dialog box, select [Remap text] and enter the new file name in the [Country Keyboard Map] option.**
12. **Make sure [Regenerate Fonts] is selected in the PrePrint dialog box and reconvert your document.**

The characters are mapped according to the new Country Keyboard mapping file.

No memory for conversion.

Not enough memory available. Close any applications you are not working with and try the operation again. If you receive the same memory error again, close further applications, or exit and restart Windows.

Open output page - elx file failed.

Insufficient disk space or missing directory. Check that the directory exists on the specified drive.

Prefix is already used. Enter new prefix

Prefix for font is already in use. Specify a different prefix.

PrintDriver cannot use vector font:...please change font to TrueType, device or ATM fonts.

Replace vector font. If error persists, remove it from the font list.

Screen font file could not be opened: *filename*

Missing screen font. Use Elixir PrintDriver to regenerate the font and create the screen font.

Tape driver is not loaded.

Your CONFIG.SYS file does not contain an entry for loading the specified tape driver, or the entry it contains is incorrect. Check your CONFIG.SYS file for this entry and ensure that the file and path names are correct.

The name is too long for the amount of segments that this form is generating.

Shorten the job ID name. (See "Too many pages. Too long job id" error message.)

Too many fonts in page.

Number of fonts on the page exceeds the Xerox printer limitation of 16 fonts per form.

Too many lines for XEROX printer.

Number of lines on the page exceeds the Xerox printer limitation. See your Xerox printer user guide for information about limitations.

Too many pages. Too long job id.

Shorten the job ID name:

- Single page documents: use up to 6 characters.
- 2-9 page documents: use up to 5 characters .
- 10-99 page documents: use up to 4 characters.
- 100-999 page documents: use up to 3 characters.
- 1000-9999 page documents: use up to 2 characters.

Too many texts in page=1

Number of text blocks on the page exceeds the Xerox printer limitation. Select the [Optimize] option in the FSL/FRM Page Options dialog box for FRM and in the Metacode Converter Options dialog box for metacode.

Unresolved conv 43

Your version of the file DRVCONV.DLL is from a previous release of Elixir PrintDriver. Delete all previous versions of the software before re-installing this release of the software.

Writing page to disk failed.

An error occurred when writing a page to disk. Check disk space.

Xerox font exceeds length limit. Specify new font range.

The font generated exceeds the limit specified in the Font Generation Prompt dialog box. Specify a new font range.

Glossary

This glossary contains a list of the basic terminology this manual uses.

Application: Any program you run on your PC.

Boxed text: Text on a form that is bound by a column with a set height and width.

Button (on the screen): An area on the screen that causes a response when you click on it. For example, an [OK] button that accepts your entries when you click on it in a dialog box.

Click, on an item: To momentarily press and release the left mouse button with the screen pointer on an item.

Close: To exit from a window, dialog box, or application.

Close box: A small white box at the left of a window header and at the left of the menu bar. Double-clicking a close box on a window header closes the window. Clicking a close box on the menu bar exits the Desktop.

Command button: A button in a dialog box that confirms or cancels an action when you click on it. The [Cancel] button cancels the command. The [OK] button confirms and executes the command and saves the information you specified in a dialog box.

Cursor: An "I"-shaped screen pointer used when entering text in the form work area or in a dialog box.

Dialog box: A rectangular box that displays and requests information. You enter information in fields in the dialog box, and normally confirm your entries by clicking on an [OK] button or by pressing <Enter>.

Directory: A list of hard disk or diskette contents.

DOS: Disk Operating System, the collection of programs that gives control of a PC's resources to the user.

Double-click: To press the left mouse button twice in rapid succession, usually to open an icon.

Drag: To click on an item and move the item with the mouse while holding down the left mouse button.

Drag and drop: Used to copy an object as follows: click on an item on the screen, hold down the left mouse button, move the mouse to move the screen pointer to an icon, and release the mouse button.

Drop: To release the mouse button after dragging an item to an icon.

Extension: The period and three characters following a file name. An extension identifies the type of information in a file. For example, .ELX indicates an Elixir format form file.

Fast Keys: See Keyboard shortcuts.

File name: The name of a file. The PrintDriver uses DOS file naming conventions. DOS file names consist of a base (stem) name containing up to eight characters and an extension of up to three characters. Xerox centralized printer file names consist of a stem name of up to six characters and an extension of up to three characters.

Format: To prepare a diskette so it can hold information. Formatting a diskette erases the information on the diskette.

Grayed options: Grayed options are menu options you cannot choose because they do not apply to your current selection. Also called dimmed options.

Gray scale color: A gray shade (color) used for box fills and borders, lines, and text, which is composed of a combination of RGB (Red, Green, and Blue) values that display as gray and print as a gray shade (for example GRAY_6) on a printer.

Gray shade: See *Gray scale color*.

Head to head: In duplex printing, when the page top is printed in the same position on both sides of the page.

Head to toe: In duplex printing, when the top of one side of the page is printed in the same position as the bottom of the other side of the page.

Highlight color: Pure red, green, or blue colors. Also called hues.

Highlighted: A highlighted option appears darkened on the screen, and indicates that it is selected.

Hue: Pure red, green, or blue colors. Also called high-light colors.

Icon: A small, roughly rectangular-shaped symbol that represents an application, a command, a file, a folder, or a peripheral device.

Inverse Landscape: The orientation of fonts, logos, or images on a page. See the definition for **portrait** for a figure describing the orientation of fonts on pages.

Inverse Portrait: The orientation of fonts, logos, or images on a page. See the definition for **portrait** for a figure describing the orientation of fonts on pages.

Kerning: The process of adjusting the spacing between certain character pairs to enhance readability and to visually equalize the spacing among all characters within a line. The amount of space added or subtracted between certain character pairs is dependent upon the font and point size.

Landscape: The orientation of a page or the fonts, logos, or images on a page. A landscape page is narrower on the sides than on the top. See the definition of **portrait** for a figure describing the orientation of fonts on pages.

Menu: A list of options from which you make a selection to perform an action. A menu displays when you select a menu title from the menu bar or from a window header, or when you click on an option.

Menu bar: The horizontal bar displayed at the top of the Desktop from which you access pull-down menus.

Menu titles: Text that identifies a menu, displayed in a window header or on the menu bar.

Message area: A bar that displays error messages or information about the activity you are performing.

Metacode: The 9700 printer series Xerox-format print stream.

Mouse button: A button on the top of the mouse.

Multi-select: Selecting more than one file or icon by shift-clicking on them.

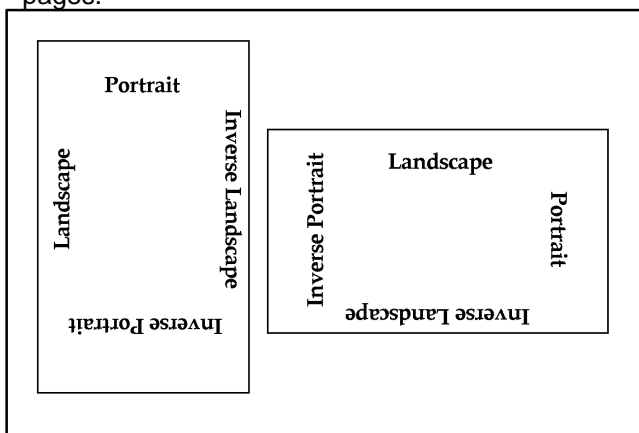
Option: A word or phrase in a menu that you can select.

Peripheral (device): A printer, scanner, or tape drive connected to your PC.

Point: To move the mouse so the screen pointer (in most cases an arrow) rests on the desired item.

Portrait: The orientation of a page; or the fonts, logos, or images on a page. A portrait page is narrower on top than on the side (like pages in this book). See the following figure for the orientation of fonts on

pages.



Orientation of fonts on Portrait (left) and Landscape pages

Printer icon: An icon representing a proof printer connected to your PC.

Printer palette: An ASCII text file resident on a printer that contains up to 99 ink names (colors). Each color is described by its combination of highlight color toners (pure red, blue, or green) and values for the density of black ink and white (paper color) which define the shade and tint of each color.

Pull-down menu: See *menu*.

Raster graphics: Pictures composed of bit maps, where each element of the picture is a dot defined as black or white.

Replaceable parameter: A parameter (usually %1) used in commands to represent a selected file name. The selected file name replaces the parameter during certain operations.

Run: To execute or start an application.

Screen pointer: A pointer shaped like an arrow that displays on the screen, and which you can move by rolling the mouse on a flat surface.

Screen version: The version of a color or font composed such that its appearance on a screen display is as close as possible to its appearance when printed. For example, gray scale colors have RGB values for screen versions of the color that best approximate the color when printed.

Scroll: To move a directory list in a window so you can view different parts of the list.

Scroll bar: A bar displayed on the right side of some windows used for scrolling. The scroll bar contains a scroll arrow, [+] and [-] buttons, and a slider bar that moves within the scroll box.

Select: To click on an object, menu option, or form element. A selected item appears highlighted.

Shade: The property of a color based upon the density of black ink dots mixed with the pure color (red, blue, or green). The higher the density of black dots, the darker the color. Not related to "shades of gray" on distributed printers.

Shift-click: To click on an object while holding down the <Shift> key. Usually used to select multiple elements.

Slider bar: A bar in the scroll box at the side of some windows that scrolls items in the window when you drag it up and down.

Tint: The property of a color based upon the density of color toner dots (pixels) applied to the paper during printing. The lower the density of the color pixels, the lighter the intensity of the color. 100% density corresponds to a pure color, and 0% corresponds to white. For example, sparsely spaced red pixels would appear as the color pink on a page.

UDK: (User Defined Key) a substitute escape character defined by a user for specific print jobs

Unselect: To cause one or more selected (highlighted) icons or elements to not be selected any more. The quickest way to do this is to click on another area of the work area.

Utilities: Special-purpose applications with which you can perform functions from the DOS prompt. For example, the ElixirDisk utilities allows you to read, write, and format Xerox printer format diskettes.

Wildcard character: A character in a file name, usually an asterisk (*), that specifies a matching set. For example, *.EXE represents all files that end with the .EXE extension.

Window: A rectangular area on your screen in which you view information, such the contents of a folder. All windows contain a window header. Some windows have scroll bars along the right side.

Window header: The top of a window that displays the DOS directory corresponding to the window contents. Some window headers also show a close box and a number of menu titles with pull-down menus.

Xerox-labeled files: Files containing 128-byte Xerox headers, or labels.

XES: (Xerox Escape Sequences) The data stream format recognized by Xerox distributed printers (such as 2700, 3700, 4045, 4235, and 4700).

Index

A

- adding
 - boxes, 4-3
 - images, 4-4
 - lines, 4-3
 - shapes, 4-3
- application compatibility, A-2
- ATM fonts, 4-3
- AUTOEXEC.BAT file, 1-12

B

- before installing, 1-14
- boxes, 4-3

C

- color services, 2-10
- compiling FSL files, 5-39
- configuration, PC, 1-12
- conventions
 - display, 1-7
 - mouse, 1-9
 - typographical, 1-7
- copying files
 - DSK2TAP, 6-11
 - to the printer, 5-11, 5-26
 - XCPY, 6-5
- creating a print file, 4-1
- customer support, 1-3

D

- DataWare card, 5-27
- default installation
 - first time, 1-21
- default settings, 2-25
- defaults
 - color services, 2-27
 - font generation, 2-28
 - font import, 2-28
 - font mapping, 2-27
 - font table, 2-28
 - FSL/FRM options, 2-26
 - image services, 2-27
 - job print ticket, 2-26
 - main setup, 2-25
 - META options, 2-27
 - preprint options, 2-26
 - text services, 2-28
- deleting files, XDEL, 6-9
- deleting fonts, 3-22
- Desktop
 - installation, 1-20
- DISP, 6-10
- displaying file contents, 6-10
- DJDE file= command, 5-7, 5-12
- downloading files, 5-6
- DSK2TAP, 6-11

E

- editing fonts, 3-19
- editing multiple fonts, 3-21
- ElixirDisk utilities, 6-2

Elixir applications
 system require-
 ments, 1-5
Elixir Web site support,
1-5
ElixiSys Desktop, 1-13
ElixiTag codes, 2-20
error messages, 2-28,
C-1

F

file transfer, 5-1
file transfer packages,
5-2
FMAPXRX.FMP file, 3-7
font import services,
3-12
font install options, 3-12
font options, 3-1
fonts
 install options, 3-12
 ATM, 4-3
 deleting, 3-22
 directories, 3-11
 downloading Xerox,
 3-11
 editing, 3-19
 Elixir, 3-11, 4-3
 font generation,
 2-22, 3-3
 font import services,
 2-25, 3-12
 font mapping, 2-16
 font table, 2-21
 importing, 3-13, 4-3
 importing Elixir,
 3-10, 3-15
 importing Xerox,
 3-10, 3-16
 install options, 3-12
 mapping table, 3-9
 mapping TT/ATM,
 3-7
 TrueType, 4-3
 Windows fonts, 3-17
 Xerox, 3-11, 4-3
formatting diskettes, 6-5

FSL/FRM options, 2-6

H

help, on-line, 1-9
hostcopy mode, 5-6
HOSTCOPY utility, 5-9
HP2XRX compatibility,
B-1
HPEDIT utility, 6-12

I

IC utility, 6-13
image services, 2-12
images in documents,
2-14, 4-4
importing Elixir fonts,
3-10, 3-15, 4-3
importing Xerox fonts,
3-10, 3-16, 4-3
installation
 before installing,
 1-14
 custom, 1-22
 default, 1-21, 1-22
 first time installation,
 1-21
IRMA
 FT/3270, 5-2, 5-3
 FT/TSO, 5-2

J

JCL
 example, 5-26
 preparing, 5-8
job ID
 using 8 characters,
 2-4
job print ticket, 2-3
JSL, 5-1
 compiling, 5-25
 editing, 5-18
 ELIXIC, 5-31
 ELIXIR, 5-28
 ELXONC, 5-22
 ELXONL, 5-19

METSTA, 5-13, 5-18
 METSTC, 5-13,
 5-18
 setting up, 5-16

L

licensing software, 1-14
 lines, 4-3

M

main setup, 2-3
 accessing, 2-1
 color services, 2-10
 font generation,
 2-22, 3-3
 font import services,
 2-25, 3-12
 font mapping, 2-16
 font table, 2-21
 FSL/FRM options,
 2-6
 image services,
 2-12
 job print ticket, 2-3
 metacode options,
 2-8
 text services, 2-16
 MAKEKRNE, 6-15
 master documents, 4-9
 memory requirements,
 1-7
 MET2871, 6-15
 metacode
 color, 4-7
 copying to the
 printer, 5-26
 types, 2-9
 uploading files, 5-14
 metacode options, 2-8
 METACOMP, 6-16
 mouse operations, 1-9
 moving files, 5-2
 using diskettes, 5-37
 using tape, 5-35,
 5-38

N

naming convention
 job id, 2-4
 using 8 characters,
 2-4

O

offline metacode
 moving, 5-28
 preparing, 5-28
 printing, 5-28, 5-37
 offline control files, 5-38
 on-line help, 1-9
 online metacode
 moving, 5-13
 printing, 5-13
 operational messages,
 C-1
 OS/2 setup, A-9

P

PACK, 6-17
 path statement, 1-12
 PC configuration, 1-12
 PrintDriver
 defaults, 2-25
 design, 2-1
 main setup, 2-3
 overview, 1-1
 selecting, 4-1
 printer operator com-
 mand, 2-9
 printing, 4-5
 printing FRM files, 4-7,
 5-39
 PUB files, 4-9

R

registering software,
 1-14
 Release notes, 1-3
 requirements

- hardware, 1-6
- software, 1-7
- system, 1-5

S

- selecting fonts, 3-22, 4-2
- selecting PrintDriver, 4-1
- setting defaults, 2-25
- shapes, 4-3
- SHOWBLOK, 6-18
- software registration, 1-14
- software requirements, 1-7
- SPUR, 5-39, 6-19
- STRIP, 6-20
- support, customer, 1-3, 1-4
- Support, Web site, 1-5
- supported applications, 1-1, A-1
- system requirements, 1-5

T

- tag support, 2-15, 2-20
- TAP2DSK, 6-21
- text services, 2-16
- TrueType fonts, 4-3
- TT/ATM conversion, 3-2

U

- uploading files, 5-2
 - endfile.end, 5-8
 - metacode, 5-14
 - text, 5-4
 - with 871, 5-37
 - Xerox-labeled, 5-3
- utilities
 - DISP, 6-10
 - DSK2TAP, 6-11
 - HPEDIT, 6-12
 - IC, 6-13
 - MAKEKRNE, 6-15
 - MET2871, 6-15

- METACOMP, 6-16
- PACK, 6-17
- SHOWBLOCK, 6-18
- SPUR, 6-19
- STRIP, 6-20
- TAP2DSK, 6-21
- using, 6-1
- XCPY, 6-5
- XDEL, 6-9
- XDIR, 6-4
- XFORMAT, 6-5

V

- VP297 compatibility, B-1

W

- WIN.INI file, 1-13
- Windows
 - installing fonts, 3-17
 - mapping text, 2-17

X

- XCPY, 6-5
- XDEL, 6-9
- XDIR, 6-4
- Xerox-labeled files, 5-2
 - printing, 5-37
 - uploading, 5-2
- XFORMAT, 6-5
- XWIN.log
 - installation, 1-20