

Elixir

Elixir PrintDriver

for NT

User Guide

June 1999
Version 4.00

Elixir Technologies Corporation
P.O. Box 1559
Ojai, CA 93024

Copyright © 1999 by Elixir Technologies Corporation.
All rights reserved.

June 1999
Version 4.00
Printed in the United States of America

Trademarks and Service Marks/Company:

Adobe Type Manager/Adobe Systems Incorporated
Ami Pro/Lotus Development Corporation
Elixir/Elixir Technologies Corporation
HP, LaserJet+/Hewlett Packard Company
IBM, Personal Computer, AT, AFP, and all other IBM
products mentioned in this publication are trademarks
of International Business Machines.
LapLink/Travelling Software, Inc.
Logitech/Logitech, Inc
MS-DOS, Word, Windows/Microsoft Corporation

All other product names and trade names used herein
are trademarks of their respective owners.

Copyright protection claimed includes all forms and
matters of copyrightable material and information now
allowed by statutory or judicial law or hereinafter
granted, including without limitation, material gener-
ated from the software programs which is displayed
on the screen such as icons, screen display looks,
etc.

Changes are periodically made to this document.
Changes, technical inaccuracies, and typographic er-
rors will be corrected in subsequent editions.

Table of contents

1. Introduction	1-1
Supported applications	1-1
PrintDriver overview	1-2
Printing and AFP printers	1-2
The PrintDriver solution	1-2
Customer support	1-3
Elixir Web site support	1-4
Elixir training	1-5
Hardware and software requirements	1-5
Hardware	1-5
Software	1-6
Who should use this guide	1-6
Conventions	1-6
Display conventions	1-7
Typographical conventions	1-7
Mouse operations	1-8
On-line Help	1-9
Using Online documentation	1-10
Accessing online guides	1-10
Navigating in online guides	1-12
Word find	1-12
Page scrolling	1-13
Zoom in/out	1-13
Printing online guides	1-14

<u>Organization of this guide</u>	<u>1-14</u>
<u>Using PrintDriver with Elixir Desktop</u>	<u>1-15</u>
<u>Before installing</u>	<u>1-16</u>
<u>Release notes</u>	<u>1-16</u>
<u>Product Registration</u>	<u>1-17</u>
<u>Elixir Product Registration screen</u>	<u>1-18</u>
<u>Using the internet</u>	<u>1-18</u>
<u>Registering as a new customer via the internet</u>	<u>1-19</u>
<u>Downloading via the internet to a non-Elixir PC</u>	<u>1-20</u>
<u>Contacting Elixir (no internet connection)</u>	<u>1-21</u>
<u>Soft key customers running Windows for Workgroups 3.1 or 3.11</u>	<u>1-22</u>
<u>Installation</u>	<u>1-22</u>
<u>Installing Elixir applications</u>	<u>1-23</u>
<u>Full installation</u>	<u>1-24</u>
<u>Custom installation</u>	<u>1-25</u>
<u>Adding applications</u>	<u>1-26</u>
<u>Adding newly licensed applications</u>	<u>1-26</u>
<u>Activating the Elixir PrintDriver</u>	<u>1-27</u>
<u>Adding the Elixir PrintDriver to your system</u>	<u>1-27</u>
<u>Checking installation</u>	<u>1-28</u>
<u>Checking the Services</u>	<u>1-28</u>
<u>2. Elixir PrintDriver basics</u>	<u>2-1</u>
<u>Elixir PrintDriver design</u>	<u>2-1</u>
<u>Accessing the PrintDriver setup dialog box</u>	<u>2-1</u>
<u>Elixir PrintDriver setup</u>	<u>2-2</u>
<u>PrePrint options</u>	<u>2-2</u>
<u>META setup</u>	<u>2-2</u>
<u>AFPDS setup</u>	<u>2-6</u>
<u>FSL/FRM (Xerox only)</u>	<u>2-8</u>

<u> OGL Setup (AFP only)</u>	<u>2-9</u>
<u> OGL extended options</u>	<u>2-11</u>
<u> Image services</u>	<u>2-13</u>
<u> Text services</u>	<u>2-14</u>
<u> Color Services (Xerox only)</u>	<u>2-17</u>
<u> Font generation</u>	<u>2-18</u>
<u> Font Mapping</u>	<u>2-19</u>
<u> Messages to file</u>	<u>2-20</u>
<u>3. Font options</u>	<u>3-1</u>
<u> Overview of font options</u>	<u>3-1</u>
<u> Converting TrueType and ATM fonts</u>	<u>3-2</u>
<u> Font Generation</u>	<u>3-3</u>
<u> Mapping TrueType and ATM fonts</u>	<u>3-4</u>
<u> Editing the AFP font mapping table</u>	<u>3-4</u>
<u> Editing the Xerox font mapping table</u>	<u>3-7</u>
<u> Using the mapping table</u>	<u>3-9</u>
<u>4. Using Elixir PrintDriver</u>	<u>4-1</u>
<u> Creating a print file</u>	<u>4-1</u>
<u> Setting options in Elixir PrintDriver</u>	<u>4-1</u>
<u> Selecting Elixir PrintDriver</u>	<u>4-1</u>
<u> Selecting fonts</u>	<u>4-2</u>
<u> Adding lines, boxes and shapes</u>	<u>4-3</u>
<u> Adding graphics</u>	<u>4-3</u>
<u> Embedding bit-mapped graphics</u>	<u>4-3</u>
<u> Referencing graphics</u>	<u>4-4</u>
<u> Starting the conversion</u>	<u>4-4</u>
<u> Uploading files to a production printer</u>	<u>4-5</u>
<u>5. File transfer (Xerox)</u>	<u>5-1</u>
<u> Moving online Xerox-labeled files</u>	<u>5-2</u>
<u> Configuring the file transfer package</u>	<u>5-2</u>

<u>Uploading files to the host</u>	<u>5-2</u>
<u>Uploading Xerox-labeled files with IBM 3270 or IRMA FT/3270</u>	<u>5-3</u>
<u>Uploading files with IRMA FT/TSO</u>	<u>5-4</u>
<u>Downloading files from the host to the printer</u>	<u>5-5</u>
<u>Uploading the ENDFILE.END file</u>	<u>5-6</u>
<u>Preparing the JCL</u>	<u>5-6</u>
<u>Using the HOSTCOPY utility</u>	<u>5-7</u>
<u>Using the DJDE FILE command</u>	<u>5-10</u>
<u>Moving and printing online metacode files</u>	<u>5-11</u>
<u>Uploading metacode files to the host</u>	<u>5-12</u>
<u>Uploading with IBM 3270 or IRMA FT/3270</u>	<u>5-12</u>
<u>Uploading with IRMA FT/TSO</u>	<u>5-13</u>
<u>Setting up default online JSL</u>	<u>5-14</u>
<u>Using the METSTA.JSL or METSTC.JSL</u>	<u>5-16</u>
<u>Setting up Elixir online JSL</u>	<u>5-16</u>
<u>Preparing online black and white JSL</u>	<u>5-17</u>
<u>Preparing online color JSL</u>	<u>5-20</u>
<u>Compiling the JSLs on the printer</u>	<u>5-23</u>
<u>Copying metacode files to the printer</u>	<u>5-23</u>
<u>Copying files from the host using a JCL file</u>	<u>5-24</u>
<u>Copying files using a DataWare card</u>	<u>5-25</u>
<u>Moving and printing offline metacode</u>	<u>5-26</u>
<u>Preparing offline ELIXIR.JSL</u>	<u>5-26</u>

<u>ELIXIR.JSL</u>	<u>5-26</u>
<u>Preparing offline ELIXIC.JSL</u>	<u>5-29</u>
<u>ELIXIC.JSL</u>	<u>5-29</u>
<u>Uploading with 871</u>	<u>5-34</u>
<u>Printing offline Xerox-labeled files</u>	<u>5-34</u>
<u>Using diskettes to move .MET files</u>	<u>5-35</u>
<u>Using tape to move files</u>	<u>5-35</u>
<u>Offline control files</u>	<u>5-36</u>
<u>Mounting the tape</u>	<u>5-36</u>
<u>Compiling FSL files</u>	<u>5-36</u>
<u>Printing FRM files</u>	<u>5-36</u>
<u>SPUR</u>	<u>5-37</u>
<u>6. File transfer (AFP)</u>	<u>6-1</u>
<u>PC-to-MVS host file transfer</u>	<u>6-1</u>
<u>Installation</u>	<u>6-2</u>
<u>Pre-transfer considerations</u>	<u>6-2</u>
<u>Uploading with IBM 3270 or IRMA FT/3270</u>	<u>6-2</u>
<u>Uploading with IRMA FT/TSO</u>	<u>6-2</u>
<u>Output directory information</u>	<u>6-3</u>
<u>Using IBM 3270 or IRMA FT/3270</u>	<u>6-3</u>
<u>Uploading text files</u>	<u>6-4</u>
<u>Using IRMA FT/TSO</u>	<u>6-5</u>
<u>Uploading files with FT/TSO</u>	<u>6-5</u>
<u>Parameters for uploading object-format AFP files</u>	<u>6-6</u>
<u>Uploading the file with FT/TSO</u>	<u>6-6</u>
<u>Converting the host file to VBM format</u>	<u>6-7</u>
<u>Converting FB to VBM format</u>	<u>6-8</u>
<u>PC-to-IBM AS/400 file transfer</u>	<u>6-8</u>
<u>Creating a host library and file</u>	<u>6-9</u>
<u>Create a PC file descriptor file and path</u>	<u>6-9</u>

<u>Uploading files</u>	6-11
<u>Processing uploaded files</u>	6-12
<u>Fonts</u>	6-12
<u>Page segments</u>	6-13
<u>Overlays</u>	6-13
<u>AFPDS</u>	6-13
<u>7. Elixir utilities</u>	7-1
<u>Using the utilities</u>	7-2
<u>ElixDisk Utilities (Xerox only)</u>	7-2
<u>XDIR</u>	7-3
<u>XCPY</u>	7-5
<u>Copying from hard disk to Xerox-format diskette</u>	7-5
<u>XDEL</u>	7-7
<u>Limitations/Conditions</u>	7-7
<u>DISP</u>	7-9
<u>DSK2TAP</u>	7-10
<u>HPEDIT</u>	7-11
<u>IC</u>	7-12
<u>MAKEKRNE</u>	7-14
<u>MET2871</u>	7-14
<u>METACOMP</u>	7-15
<u>PACK</u>	7-15
<u>SHOWBLOK</u>	7-16
<u>SPUR</u>	7-17
<u>SPUR utility</u>	7-17
<u>Using SPUR for online metacode files</u>	7-18
<u>Using SPUR for Xerox 128-byte header files</u>	7-18
<u>STRIP</u>	7-19
<u>A. Limitations and solutions</u>	A-1
<u>Application compatibility</u>	A-1
<u>Reverse text</u>	A-3

<u>Rotated text</u>	<u>A-3</u>
<u>Xerox font orientation</u>	<u>A-3</u>
<u>Circles and diagonal lines</u>	<u>A-3</u>
<u>Color text strings</u>	<u>A-4</u>
<u>Underlined text</u>	<u>A-4</u>
<u>Typographers quotes</u>	<u>A-4</u>
<u>Graphics formats</u>	<u>A-5</u>
<u>Using large fonts</u>	<u>A-5</u>
<u>Font support</u>	<u>A-6</u>
<u>White objects on black objects</u>	<u>A-6</u>
<u>Converting multi-color graphics (Xerox)</u>	<u>A-7</u>
<u>Converting colored text (Xerox)</u>	<u>A-7</u>
<u>B. Operational and error messages</u>	<u>B-1</u>
<u>C. AFP Text mapping</u>	<u>C-1</u>
<u>Mapping files</u>	<u>C-1</u>
<u>Country Keyboard maps</u>	<u>C-1</u>
<u>Default code page</u>	<u>C-2</u>
<u>Glossary</u>	<u>GLOSSARY-1</u>
<u>Index</u>	<u>INDEX-1</u>

1. Introduction

This user guide describes Elixir PrintDriver for NT edition, one of many Elixir products that support the conversion of Windows application documents to AFPDS (IBM's *Advanced Function Printing* (AFP) datas-stream), Xerox metacode, and Elixir pages.

There are two Elixir PrintDriver for NT products. Elixir PrintDriver (NT) for Xerox and Elixir PrintDriver (NT) for AFP.

Elixir PrintDriver is a tool that allows you to convert a Windows-based document into AFPDS and metacode formats simply by selecting [Print] from a supported Windows application with Elixir PrintDriver set as the printer. The document is then ready for transferring and printing on a high-speed AFP or Xerox printer.

Supported applications

Elixir PrintDriver supports the following applications:

- Microsoft Word 7.0 and 97
- Corel WordPerfect 7.0 and 8.0
- Corel Ventura 7.0
- Lotus Ami Pro 3.0 and 3.1
- Adobe PageMaker 5.0 and 6.5
- Lotus WordPro96
- Adobe FrameMaker 5.0 and 5.5

Elixir PrintDriver may also be used with other applications, however, it has not been fully tested for compatibility. We are continuing to test other software packages and will add to this list in future releases.

See the "Limitations and solutions" appendix for information about using PrintDriver with supported applications.

PrintDriver overview

The following section provides a brief overview of AFP and Xerox printing and Elixir PrintDriver.

Printing and AFP printers

Previously, creating and editing documents for printing on AFP or Xerox printers was the responsibility of applications personnel working on mainframe computers who defined elements using *Overlay Generation Language* (OGL) or Forms Source Language (FSL). These languages describe the location of line, shape, text and image elements as well as page size and layout.

Limitations to this approach are:

- Defining and revising an OGL/FSL document is complicated and time-consuming.
- Changes to the document are not apparent when adding OGL/FSL statements.
- The completed OGL/FSL file must be compiled and proof printed on the high-speed printer.

The PrintDriver solution

With Elixir PrintDriver, anyone who can use a Windows application such as Microsoft Word or Ami Pro, can convert a Windows-based document into AFP or Xerox printer format directly from a Windows application menu.

The user installs PrintDriver, depending on the product purchased, composes a document in a Windows-based documentation package, and selects the [Print] option.

Elixir PrintDriver generates:

Xerox fonts, IMG, LGO, FSL, FRM, and metacode

AFP bounded and unbounded fonts, OVE, OGL, AFPDS, and PSEGS

Elixir format fonts, images, and forms

Elixir PrintDriver saves each resource in a separate directory providing easy access for transfer to a host environment, Xerox printer, or AFP printer.

Customer support

If you have purchased your Elixir product directly from Elixir Technologies then contact the support center for your region at the number listed below.

- **North and South America:**
+1 805 641 5900 ext. 3
- **Asia Pacific**
+92 (0) 51 206182
- **Europe**
+420 2 2431 13877

The U.S.A. Elixir Customer Support Center provides telephone technical assistance for Elixir users Monday through Friday from 6:30 a.m. to 5:00 p.m. Pacific Standard Time.

If you have any problems running or using Elixir PrintDriver or associated Elixir applications, contact the support center in your region for help. An Elixir product specialist will answer your call and ask for the following information:

- your name, organization, telephone number and address.
- the name and version number of the Elixir application.
- a complete description of the problem, including any error messages displayed on your monitor or printed at your printer.

You can contact Elixir support by accessing the Elixir World Wide Web page (and selecting [Contact Support]) at <http://www.elixir.com>. Please complete the question form.

Elixir Web site support

The Elixir Web site at <http://www.elixir.com> offers the following resources:

- Raise a question for Elixir Support.
- Find answers in the list of Frequently Asked Questions.
- Review the latest Tips and Techniques for increasing productivity using Elixir software.
- Download new releases and the latest patches.
- View Release Notes for the latest available features.
- Learn in the user newsgroup how others are using Elixir products.
- Sign up for an Elixir Learning Program.

Elixir training

Elixir Technologies Corporation offers training for the full range of Windows-based products. For more information, contact:

<p>Elixir Learning (805) 641-5900 ext. 6</p>
--

Hardware and software requirements

The following sections describe hardware and software requirements for running Elixir PrintDriver.

Hardware

Recommended PC configuration: Pentium (or 100% compatible), with at least 133 MHz processor (or the fastest commercially available processor); 32 MB RAM, 500+ MB hard drive, one CD-ROM drive.

Additional hardware requirements:

- any monitor with driver software supporting Windows in VGA or SVGA.
- any Windows compatible mouse.

Optional requirements

- Any PC-to-mainframe or communications board that supports binary file transfers (such as IBM PC3270, IRMA FT/3270, or AS/400 PC communications packages).
- For users with compatible PCs, the ElixirDisk utilities described in the "Stand-alone utilities" chapter also allow transferring Xerox metacode files between your PC and Xerox production printers.

Due to hardware and BIOS differences, PS/2 systems and some IBM-compatible PCs do not support this function.

- AFP or Xerox production printer
- Tape unit for offline Xerox transfers

Software

Software requirements: Microsoft Windows NT 4.0 or later.

While we make every effort to ensure the proper operation of our software, some problems cannot be resolved due to differences in the operating systems.

Who should use this guide

This guide is intended for users familiar with Windows and with AFP or Xerox printer and font management operations.

Users should be familiar with PC peripherals and have access to reference manuals for PC software and hardware, and for the AFP or Xerox printer(s) used.

Conventions

This section describes the following:

- display conventions
- typographical conventions
- mouse operations.

Display conventions

Elixir PrintDriver adheres to Microsoft Windows conventions for using menus, menu commands, dialog boxes, command buttons, icons, and a mouse. See your Windows manual for more information.

Typographical conventions

The following typographic conventions are used throughout this guide.

- Keystrokes are shown enclosed in < >(angle brackets). For example, <Enter>.
- Key combinations are denoted by a plus sign between keys. For example, <Shift> + <F1> indicates to simultaneously press the <Shift> and the <F1> keys.

- Menu titles are shown in **bold**. Menu options are enclosed in [] (square brackets). For example,

Pull down the **File** menu and select [Print].

- Command buttons that you press are also enclosed in [] (square brackets). For example,

Click on [Job Print Ticket].

- Commands, options, actions, and parameters that require description are shown in bold followed on the next line by the description. For example:

drive

Specify the output drive for the resources.

- Steps in a procedure are shown in numbered bold paragraphs. For example:

1. **Click on [Resources] in the Conversion Properties dialog box.**

Comments relating to a step (such as this paragraph) are shown in regular text following the bold paragraph.

- Commands you enter at the DOS prompt are shown in larger text. Within DOS commands, variable names are shown in italics. For example:

CD \ELIXIR <Enter>

Mouse operations

You can perform most operations in Elixir applications by using the mouse. The terminology is similar to other Windows-based applications.

Most operations are performed using the left mouse button.

The following mouse-related terms are used in this guide:

click

to momentarily press and release the left mouse button once.

double-click

to click the left mouse button twice in rapid succession.

object

a selectable item on the screen.

open

to point and double-click on an object. The effect of this operation depends on the object.

point

to move the mouse to position the screen pointer on an area of the screen.

select

to point to an object and click the left mouse button. This usually highlights the object.

On-line Help

Elixir software uses the Microsoft Windows Help program to provide on-line Help for Elixir PrintDriver functions.

For more information about Windows Help, select the [How to Use Help] option in the **Help** menu, or see your Microsoft Windows documentation.

The Help files included with your Elixir software include graphics which were created using screen drivers with large fonts. If you use a screen driver with small fonts, the Help file graphics may not display clearly. For optimum graphics display, use a screen driver that uses large fonts (also called 8514 fonts).

Using on-line Help

You can access on-line Help by clicking on the [Help] button in a dialog box to view an associated Help topic, or click the right mouse button on an option in a dialog box to display Help about that option.

Help pop-ups and jumps

Within Help topic text, words or phrases underlined in green are pop-ups or jumps. When you click on a pop-up topic, a box displays within the current Help topic with additional information. When you click on a jump, a different, associated Help topic displays.

Help hypergraphics

Hypergraphics are special graphics within Help files that contain "hot spots". Hot spots are either pop-up topics or jumps. Hypergraphics in Elixir Help are most commonly dialog boxes with option hot spots (pop-up definitions).

Move the cursor over a hypergraphic until a hand displays, then click on this hot spot to display a pop-up topic, or a "jump". To close a pop-up topic, click the mouse button. To return to the original Help topic from a jump, click on <Back> in the Help file menu.

Searching for a different topic

If you want to jump to a Help topic that is not displayed on your screen, click on the [Contents] button at the top of the Help screen to display a list of available topics and make your selection. You can also click on the [Search] button at the top of the screen and select a related topic.

Using Online documentation

This section describes how to use PDF online documentation, including navigating through the online guides and printing the guides. Acrobat Reader is provided with the online documentation. Information about using the Acrobat Exchange program is included for users who have licenses for that program.

Accessing online guides

The PDF online documentation is copied to the drive:\Elixir\help\pdf directory during the installation. If you didn't choose to copy the PDF online documentation during the installation, you can view a complete list of the files by clicking on the Windows [Start] button and selecting Programs>Elixir Applications>Elixir PrintDriver for AFP. Once the application is launched, click on the Help menu and select Release Notes. Wordpad displays a current list of supporting documents and the directories where they can be found on CD-ROM.

When the appropriate PDF file is accessed the Acrobat Reader program is launched and the List of Online Guides is displayed. Click on a guide to view its table of contents and jump to individual chapters.

The following list of PDF files and associated document names are installed in the drive:\Elixir\help\pdf directory.

- StartAFP.pdf - AFP Getting Started Guide
- StartXRX.pdf - Getting Started User Guide

- DeskAFP.pdf - Elixir Desktop and Converters for AFP User Guide
- DeskXRX.pdf - ElixSys Desktop User Guide
- FormAFP.pdf - ElixirForm User Guide
- FormXRX.pdf - ElixForm User Guide
- FontAFP.pdf - ElixirFont User Guide
- FontXRX.pdf - ElixFont User Guide
- ImageAFP.pdf - ElixirImage User Guide
- GraphXRX.pdf - ElixGraphics User Guide
- PdAFP.pdf - Elixir PrintDriver for AFP User Guide
- PDXRX.pdf - Elixir PrintDriver User Guide
- PdNT.pdf - Elixir PrintDriver for NT User Guide
- PHXRX.pdf - PageHandler User Guide
- DTAG.pdf - DocuTag User Guide
- DMerge.pdf - DataMerge User Guide
- AppVIPP.pdf - Elixir AppBuilder for VIPP User Guide
- AppAFP.pdf - Elixir AppBuilder for AFP User Guide
- Transfmr.pdf - Elixir Transformer Suite User Guide
- Viewer.pdf - ElixirViewer User Guide
- Elxscan.pdf - ElixiScan User Guide

Navigating in online guides

After loading a PDF document in Acrobat Reader or Exchange program (as described above), you can navigate through the online guide by clicking on the following:

TOC chapter titles - jumps to the beginning of the chapter indicated.

[Next Page] or [Previous Page] in the Toolbar - jumps to the next or previous page of the online guide (alternatively, you can use the <Page Up> and <Page Down> keys).

[Go Back] in the Toolbar - returns to your previous location.

[First Page] in the Toolbar - returns to the opening screen of the online guide.

Word find

This option finds a key word or phrase in the current document.

To use Word Find in a document:

- 1. Click on the [Find] icon in the Toolbar.**
- 2. Enter the desired search text and click on [Find].**

The Acrobat Find dialog box closes and the first occurrence of the text is highlighted.

- 3. To find more occurrences of the same text, click on the [Find] icon in the Toolbar and then click on [Find Again] in the Find dialog box.**

Page scrolling

You can move a document on the screen to view portions of it not visible in the window, or read a document which contains article threads by clicking the mouse to scroll through the document without using the scroll bar.

To move a document on the screen for viewing (functional only when the document displays wider than the document window):

- 1. Click on the [Hand] icon in the Toolbar.**
- 2. Hold down the mouse button and drag the cursor in the desired direction.**

To follow the flow of text in a document that contains article threads (automatic text flows):

- 1. Click on the [Hand] icon in the Toolbar.**
- 2. If the document contains article threads, a down arrow displays on the Hand icon.**
- 3. Position the hand-shaped cursor over a paragraph and click on the paragraph to begin reading.**
- 4. Continue clicking to follow the flow of text.**

Zoom in/out

To magnify the size of the page display, click on the Zoom icon in the Toolbar, then click in the Work area. Each click resizes the view by a factor of two.

To reduce the size of the page display, click on the Zoom icon in the Toolbar, then hold down the <Ctrl> key and click in the Work area.

You can also click on the [%] button at the bottom of the screen and select a zoom percentage from the pop-up list.

Printing online guides

You can print individual chapters or an entire book to PostScript or HP printers:

1. **Open the file.**
2. **Select File>Print.**

The Print dialog box displays.

3. **Select your printing options and click on [OK].**

Organization of this guide

This user guide contains the following chapters and appendices:

Chapter 1, "Introduction," provides an introduction to PrintDriver, describes the contents of this user guide and explains the installation process.

Chapter 2, "Elixir PrintDriver basics," describes how to set the options and defaults when using Elixir PrintDriver.

Chapter 3, "Font options," describes how to convert and map TrueType and ATM fonts, and how to import AFP, Xerox, and Elixir format fonts for use in a Windows document.

Chapter 4, "Using Elixir PrintDriver," describes how to create a document in a Windows application and print to a file using Elixir PrintDriver.

Chapter 5, "File transfer," describes how to upload files from your PC to a host environment for processing and subsequent delivery to AFP or Xerox printers.

Chapter 6, "Stand-alone utilities," describes how to use the stand-alone utilities provided with Elixir PrintDriver.

Appendix A, "Limitations and solutions," describes limitations of PrintDriver and provides solutions to some common problems.

Appendix B, "Operational and error messages," lists all the operational and error messages issued by PrintDriver.

Appendix C, "Text mapping," provides a list of country keyboard mapping files and AFP default code pages.

Glossary

Index

Using PrintDriver with Elixir Desktop

If you already have Elixir Desktop on your PC, please note the following:

- If you have a PrintDriver Option ElixiKey and you also connect your Elixir Desktop ElixiKey, you can output files to production printer and other formats. See the ElixiKey section in this chapter for more information about ElixiKeys.
- If you want to view and edit resources created by Elixir PrintDriver, make sure you install Elixir PrintDriver on the same drive as your Elixir Desktop
- Backup your .EXE and .DLL files before installing.
- If you custom installed Elixir Desktop on a drive other than *drive*:\ELIXIR, replace *drive*:\ELIXIR with your custom program directory whenever you see *drive*:\ELIXIR mentioned in this guide.

Before installing

Complete the software licensing process (See the "Product Registration" section).

Log on to your NT system as the local administrator (not the network administrator) so that you can

activate and start the Elixir PrintDriver you install after the software.

If you plan to use any other Elixir products with Elixir PrintDriver, make sure you know the drive where they are installed. This is the drive where you must install Elixir PrintDriver.

Caution: If you have a previous version of Elixir PrintDriver installed on your computer, make sure it is not set as the default printer when you install the new version.

To avoid any possible conflicts, exit all other applications while installing Elixir PrintDriver.

Release notes

Release notes appear at the beginning of the Elixir software install process, so that you can review each entry before performing the complete installation. Once the software is installed, release notes can be accessed from the Help menu of the application. Release notes are formatted for viewing in Notepad or Wordpad. They have a *txt* file extension and are found in the *drive:\ELIXIR \RELNOTES* directory.

Product Registration

Elixir products no longer require ElixKey hardware devices attached to your parallel port. Elixir products now utilize soft key technology. This new licensing process validates your license agreement with Elixir and places a file (password.epw if an Elixir customer, or License.dat if a Xerox customer) on your workstation.

Version 4.00 implements Elixir's new licensing process and discontinues use of the current hard keys. All customers must register/re-register software license(s) by using the Elixir registration program provided with the software.

Each product installed is assigned to a specific pc. This pc number, your customer number, and password are required. This information is provided when you purchase Elixir software or when you upgrade to version 4.00 of Elixir products.

If you are an Elixir customer, registration can be completed automatically if you have an internet connection on your workstation. If you are a Xerox customer you must contact Xerox to register your products.

This section describes the registration process for those customers who have purchased their Elixir products from Elixir Technologies.

The following scenarios describe the registration process for Elixir customers. Xerox Corporation will provide a separate document that describes registering your products with Xerox.

- you are a new customer and will use Soft Key registration
- you are an existing customer and will change to Soft Key registration

Elixir Product Registration screen

Make your selections according to your needs and go to the appropriate section for further procedures.

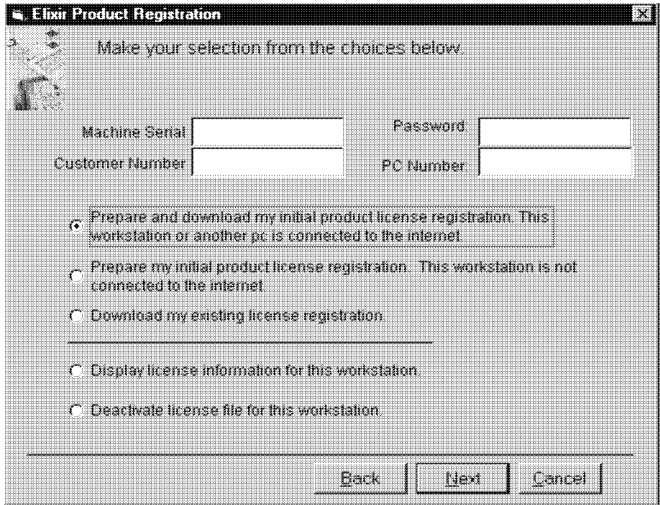


Figure 2-1. Elixir Product Registration screen

Using the internet

You can register and download all registration files via the Elixir Product Registration program. There are two ways to register your products using the Internet:

- down load the product registration file directly to the Elixir PC via the Internet (see "Registering as a new customer via the internet")
- download the product registration file to another machine and move it to the Elixir PC (see "Down-loading via the internet to a non-Elixir PC")

Registering as a new customer via the internet

You will receive a "Customer Activation Letter" with your product(s) ordered. The registration process should be completed before installing your software. The installation CD will launch and install the Registration Program.

To install the registration program on your Elixir PC:

- 1. In the Software Registration screen, click on [Next].**
- 2. Select the drive and click on [Next].**
- 3. In the Start Registration Process screen, click on [Install].**

The password file will be installed and your system configured.

To complete registration:

- 1. In the Elixir Product Registration "Welcome" screen, select [Next].**

Your machine serial number displays.

- 2. Enter your customer number (from Activation Letter), then click on [Next].**
- 3. Enter your password and the PC number you want to register, then click on [Next].**
- 4. Select [Prepare and download my initial product license registration. This workstation or another pc is connected to the internet] from the Registration Option menu, then click on [Next].**
- 5. In the Download Password screen, click on [Yes].**

The system displays your customer information and you must verify that it is correct.

- 6. When the screen displays the registration information, click on [Save]. You may also print this screen for reference or to send to Elixir.**

The application installation process will begin, see the "Installation" section.

Downloading via the internet to a non-Elixir PC

You will receive a "Customer Activation Letter" with your product(s) ordered. The registration process should be completed before installing your software. The installation CD will launch and install the Registration Program.

To install the registration program on your Elixir PC:

- 1. In the Software Registration screen, click on [Next].**
- 2. Select the drive and click on [Next].**
- 3. In the Start Registration Process screen, click on [Install].**

The password file will be installed and your system configured.

To complete registration:

- 1. In the Elixir Product Registration "Welcome" screen, select [Next].**

Your machine serial number displays.

- 2. Enter your customer number (from Activation Letter), then click on [Next].**
- 3. Enter your password and the PC number you want to register, then click on [Next].**
- 4. Select [Prepare and download my initial product license registration. This workstation or another pc is connected to the internet] from the Registration Option menu, then click on [Next].**

5. In the Download Password screen, click on [No].
6. In the How to Contact Elixir screen, click on [Print] and take the printout to the pc connected to the internet.
7. Access the Elixir Web site at <http://www.elixir.com>. and click on [Product Registration].
8. In the Customer Information screen, enter your Customer Number and Password, then click on [Submit Form].
9. In the Elixir Customer Menu, click on [Download a New License File].
10. In the Customer Information screen, enter your PC Number and Machine Serial Number, then click on [Submit Form].
11. In the Elixir Technologies screen, click on [Click here to download your password].
12. Save the *password.epw* file to diskette and copy it to your Elixir PC in the \ELIXIR directory.

The application installation process will begin, see the "Installation" section.

Contacting Elixir (no internet connection)

If you have no internet access at your site you must contact Elixir and provide the serial number of the pc where you will install the Elixir software. Elixir will provide a registration file (*password.epw*) that you must copy to the Elixir pc.

Copy the *password.epw* file to \Elixir and start the installation.

Select [Prepare my initial product license registration. This workstation is not connected to the Internet] from the Registration Option menu, then click on [Next].

The application installation process will begin, see the "Installation" section.

Soft key customers running Windows for Workgroups 3.1 or 3.11

Since Windows 3.1/3.11 does not have internet capability, you must contact Elixir to obtain your password file. After installation of Elixir software, the installation program verifies that the operating system is 3.1 or 3.11, runs *passwd16.exe*, and provides your machine serial number.

To complete registration:

- 1. Enter your customer number, password and PC number, then print out a copy of this screen.**
- 2. Fax, email, or mail Elixir the display printout. Elixir will generate a password.epw file and send it to you on diskette.**
- 3. Load the password.epw file in the \ELIXIR directory.**

The application installation process will begin, see the "Installation" section.

Installation

This section describes how to install Elixir software using the [Full] and [Custom] options. Installing additional Elixir applications to an existing version is also explained.

Note: The software registration process must be completed (See the "Product Registration" section).

For information about starting Elixir applications after installation, refer to the "Introduction" chapter.

During installation, the log file, XWIN.log, is created in the *drive:\Elixir* directory. XWIN.log contains a list of all directories and files copied or created, including information pertinent to the installation. It can be accessed, using Notepad or Wordpad.

If you have any problems running Elixir software after installation, refer to the "Troubleshooting" section of the *Elixir Getting Started Guide* for more information.

Installing Elixir applications

Elixir provides a simple, interactive procedure for installing Elixir applications.

During installation you can select [Full] or [Custom] installation.

- Selecting a [Full] installs all Elixir applications and demonstration files on the same drive. If you have a previous version of Elixir software, this option overwrites the existing version.
- Selecting a [Custom] installation allows you to choose the Elixir applications and options (such as Elixir demonstration files) you want installed, as well as where you want certain options installed. For example, You may want the PDF documentation in a different directory than the application.

You can also install Elixir program files (required to run Elixir), and data files (files that you create or files such as the Elixir demonstration files), in separate drives and directories.

Full installation

To begin installation:

You can quit installation at any time, by pressing the <Esc> key.

1. **Close all active applications.**
2. **Insert the CD in your CD-ROM drive.**
3. **In the "Welcome" screen, click on [Next].**

The Release Notes? screen displays.

4. **Select [Read Release Notes Now] to display them in Wordpad (or Notepad), or click on [Next] to proceed with the installation.**

The Product Selection screen displays.

5. **Select the applications you want to install and click on [Next].**

The Selected Products screen displays.

6. **Verify the listed applications and click on [Next]. If you need to delete or add to the list, click on [Back] and reselect.**
7. **Verify your user information and click on [Next].**
8. **In the Select Install Type screen, select [Full] and click on [Next].**
9. **Select the drive on which you want Elixir software installed, then click on [Next].**
10. **Select the Programs Folder in which you want Elixir software installed (Elixir Applications is the default), then click on [Next].**

- 11. In the Backup Replaced Files screen, click on [Yes], if you want to make back-up copies of all files replaced during installation and select the directory where the back-up files will be placed. Then click on [Next].**
- 12. In the Start Copying Files screen, click on [Install].**

Installation begins.
- 13. Once installation is complete, click on [Exit Installer].**

Custom installation

To begin installation:

You can quit installation at any time, by pressing the <Esc> key.

- 1. Close all active applications.**
- 2. Insert the CD in your CD-ROM drive.**
- 3. In the "Welcome" screen, click on [Next].**

The Release Notes? screen displays.
- 4. Select [Read Release Notes Now] to display them in Wordpad (or Notepad), or click on [Next] to proceed with the installation.**

The Product Selection screen displays.
- 5. Select the applications you want to install and click on [Next].**

The Selected Products screen displays.
- 6. Verify the listed applications and click on [Next]. If you need to delete or add to the list, click on [Back] and reselect.**
- 7. Verify your user information and click on [Next].**

8. **In the Select Install Type screen, select [Custom] and click on [Next].**
9. **In the Configuration Only? screen:**
 - Selecting [Yes] allows you to load Configuration, Program, and Data files into any resident directory.
 - Selecting [No] allows you to deselect options you do not wish installed.
10. **Select the Programs Folder in which you want Elixir software installed (Elixir Applications is the default), then click on [Next].**
11. **In the Backup Replaced Files screen, click on [Yes], if you want to make back-up copies of all files replaced during installation and select the directory where the back-up files will be placed. Then click on [Next].**
12. **In the Start Copying Files screen, click on [Install].**

Installation begins.
13. **Once installation is complete, click on [Exit Installer].**

Adding applications

If you did not install all of the Elixir options while performing the Custom installation procedure, you can do so at any time by following the steps described in the "Custom installation" section of this chapter.

Adding newly licensed applications

If you purchase additional Elixir products, Elixir will update your password file. You can access the Product Registration program from your program group and re-download your initial product registration password file to activate your new products.

Activating the Elixir PrintDriver

To activate the Elixir PrintDriver, you must add it to your system.

Adding the Elixir PrintDriver to your system

To add the Elixir PrintDriver on your system:

1. **Click on the [Start] button, select [Settings] and [Printers].**
2. **In the Printers dialog box double-click on [Add Printer].**

The Add Printer Wizard dialog box displays.

3. **Select [My Computer], then click on [Next].**

The Port Name dialog box displays.

Note: If [Disk] does not exist, click on [Add Port]. In the list of Available Printer Ports, select "Local Port" and then click on [New Port]. In the Port Name dialog, enter [Disk] and then click on [OK]. Close the Printer ports dialog to return to the Port selection dialog box. Ensure that the new port disk is selected and click on [Next].

4. **Select [Disk] and click on [Next].**

The Add Printer Wizard dialog box displays with lists of manufacturers and printer names.

5. **Click on [Have Disk] and specify the following directory in the Install From Disk dialog box, then click on [OK].**

C:\ELIXIR\PDNT

Note: If you have installed Windows NT under a directory other than WINNT, substitute that directory name in the above command.

The Add Printer Wizard dialog box displays listing the PrintDrivers. Select ELXPRINT.INF

6. **Select the dpi of the printer you are using for production printing (240/300/600 dpi for AFPDS or 300 dpi for metacode), then click on [Next].**

Note: If you use both 240 and 300 dpi, you must repeat this printer installation process, selecting the desired additional printer definition.

7. **In the Add Printer Wizard dialog box (showing the PrintDriver you selected), select [Replace existing driver], then click on [Next].**
8. **In the Add Printer Wizard dialog box (asking if you would like your Windows-based programs to use this printer as the default printer), select [No].**
9. **In the Add Printer Wizard dialog box (asking if you would like the PrintDriver shared), select [Not shared], then click on [Next].**
10. **In the Add Printer Wizard dialog box (asking if you would like to print a test page), select [No], then click on [Finish].**

Checking installation

You can check that Elixir PrintDriver is installed by clicking on the Start button and selecting Settings/Printers. [Elixir PrintDriver on DISK] displays in the list of installed printers.

Checking the Services

To check that the Elixir PrintDriver is started:

1. **Click on the [Start] button, select [Settings] and [Control Panel].**
2. **In the Control Panel dialog box select [Services]**
3. **The Elixir PrintDriver should be started (automatic). If not started, in the Services dialog box select the Elixir Driver, then click on [Startup].**

4. In the **Service/Elixir Driver** dialog box select **[Automatic]** as the **Startup Type**.
5. In the **Log On As:** section, select **[System Account]** and check **[Allow Service to Interact with Desktop]** , then click on **[OK]**.
6. In the **Services** dialog box select the **Elixir Driver**, then click on **[Start]**.

The Status in the Services dialog box changes to Started.

2. Elixir PrintDriver basics

This chapter describes Elixir PrintDriver and how to set up the options and default settings.

Elixir PrintDriver design

Elixir PrintDriver provides you with a series of easy-to-use dialog boxes to set up your print job options, select your output format and specify the directories for your resources. You can display a dialog box by clicking on a button in the PrintDriver setup dialog box. See the "Accessing the PrintDriver setup dialog box" section in this chapter for more information.

If a dialog box displays a [Help] button, you can click on this button to display information about any option in that box, or to access the comprehensive on-line Help program provided with Elixir PrintDriver. For more information about on-line Help, see the "Introduction" chapter.

Accessing the PrintDriver setup dialog box

You can access the Elixir PrintDriver setup dialog box in two ways:

Double-click on \ELIXIR\PDNT\UKDIALOG.EXE

or

1. **Click on the [Start] button, select [Settings] and [Printers].**
2. **In the Printers dialog box double-click on the Elixir PrintDriver.**

The Elixir PrintDriver NT 4.0-(240/300 dpi) Properties dialog box displays.

3. Click on the **Advanced** tab and highlight **Elixir PrintDriver NT-(240/300 dpi) Document Settings**.
4. Click on **[About Elixir PrintDriver]**.

The Elixir PrintDriver setup dialog box displays.

Elixir PrintDriver setup

From the Elixir PrintDriver setup dialog box, you can control the PrintDriver Configuration and Output File Formats.

PrePrint options

The PrePrint Options dialog box displays the default output directories for:

- Elixir, AFPDS, OGL, and OVE (AFP only)
If AFPDS is selected, OGL and OVE are grayed out).
- Elixir, FSL, and FRM (Xerox only)

You can redirect the output options as necessary.

META setup

To specify the options for metacode output, click on **[META Setup]**. The Conversion Properties dialog box displays and contains the following options:

**DJDE
prefix**

Specify the Dynamic Job Descriptor Entry (DJDE) prefix up to 50 characters. The default is \$DJDE\$.

**DJDE
Offset**

Specify the number of characters or spaces present before the first character of the DJDE string.

DJDE**Skip**

Specify the total number of characters or spaces to skip before reading a command.

Color Settings

Select [Color] for HighLight color or [BW] for black and white.

If you select [Color] and your printer does not support it, your file will print in black and white.

Presentation

Select [Duplex] to print on both sides of the paper or [Simplex] to print on one side of the paper.

Metacode Type

Select [Off-line] for tape, [On-line] for host connected, or [XNS/DISK] copying the .MET file to a diskette.

Text Justification

[Inter-Word] justifies text by adding or deleting spaces between words.

[Inter-Character] justifies text by adding or deleting spaces between characters. Note that selecting [InterWord] reduces complexity so that forms print faster, while selecting [InterChar] may make the form more readable but print slower.

[Optimize] select this option to reduce the size of the file and the text placement statements at the printer. Note that if you use this option, you can convert the file to Elixir format using the ElixSys Desktop or ElixSys Desktop for Highlight color but you cannot edit the converted text.

[Ignore Kerning]

Xerox production printers do not support left kerning. When converting Elixir forms to metacode (if supported by the product you are using), the left-kerned fonts are individually positioned on the print output. Note that deselecting this option results in files that may be too large for your production printer. Check your production printer manual for font size limitations.

OTEXT

Click to open the Output Messages for Operator dialog box. You can input instructional messages that display when the operator runs the job at the printer.

Resources

Click to open the Metacode Resources dialog box.

Color

Select a Palette Catalog Name (XEROX or XEROX1) and a Printer Palette Name (color options display according to the catalog chosen).

Fonts

- **Include Fonts**
Select [Always] to download fonts each time you print. Select [Only used] to download only fonts used in your document. Select [Never] to use only those fonts resident on the printer (no fonts are downloaded).
- **Font Type:** select [9700] or [5Word].

Images on Page

- **Format:** Select [IMG] or [Fonts] (to tile the image into a font).
- **Download Options:** Select [Embed Always] to include the image within the data stream (for IMG only). Not selecting this option includes only a reference to the image. Select [Use Graphics on Printer] if you have already loaded your graphics onto the printer's disk. Select [Download Graphics] to download (searches the \PICS directory) the graphics to the printer.
- Select [Delete after Job] to delete the image from the printer's disk after use, or leave unselected to save the image on the printer's disk.
- Selecting [Image Compression] compresses duplicate and blank lines and optimizes for white space.

Copies

Specify the number of copies you want to generate.

JDE

Specify the Job Descriptor Entry you want to use from the Elixir JSL. You can use up to 6 characters. The default JDE is DFAULT.

Feed Direction

When generating forms greater than 14.33" high for a cut sheet printer (4135/4635) environment, selecting the [ShortEdge] option will produce an output form in the correct orientation for those printers.

Select the [LongEdge] option for continuous feed printers (377CF and 430CF) and paper sizes up to 17" x 17".

Select [Default] when:

- both dimensions are less than or equal to 14.33" - no rotation change will occur (long edge)
- using opposite resources (short edge) when one dimension is greater than 14.33"

AFPDS setup

To specify the options for AFPDS output, click on [AFPDS Setup]. The Conversion Properties dialog box displays and contains the following options:

Text Justification

[Inter-Word] justifies text by adding or deleting spaces between words.

[Inter-Character] justifies text by adding or deleting spaces between characters. Note that selecting [InterWord] reduces complexity so that forms print faster, while selecting [InterChar] may make the form more readable but print slower.

Resolution

Specify [240 Pels] or [300 R-Units], depending on your installation.

Rotate Pages

Select the degree of rotation for the output document, depending on your printer:

- **IBM AFP cutsheet printers and continuous form (Group 3) printers**

Portrait source document with text going across the page, select [0].

Portrait source document with text going back across the page, select [180].

Landscape source document with text going down the page, select [90].

Landscape source document with text going up the page, select [270].

To print a portrait source document in tumble mode, select [0] rotation and specify [Duplex] [Tumble] in the FORMDEF.

- **IBM AFP continuous form printers (3800)**

Portrait source document with printer set up for Narrow Forms, select [0].

Portrait source document with printer set up for Wide Forms, select [90].

Landscape source document with printer set up for Narrow Forms, select [90] or [270].

Landscape source document with printer set up for Wide Forms, select [0].

Record Format

Select the format for the output:

- [VBM] produces variable-blocked-machine format files for uploading to an MVS host using IBM 3270 or IRMA FT/3270.
- [AS400] produces 1024 byte blocked machine format files for uploading to an AS/400 using IBM PC support/client support.
- [IRMA] produces fixed-length record files for uploading to an MVS host using IRMA FT/TSO.

- [AFPDS] produces pure AFPDS files with no special formatting.
- Select [VSE] for Elixir PrintDriver to ignore the DEFAULT.FAM and DEFAULT.SAM files for DDNAME and FILETYPE.

Floating offsets

Select the number of dots to shift the output. Negative values are allowed.

- [Horizontal] shifts the output right by the specified number of dots for a portrait orientation and shifts output down for landscape orientation.
- [Vertical] shifts the output down by the specified number of dots for a portrait orientation and shifts output right for landscape orientation.

Resource

Click to open the AFPDS Resources dialog box.

Fonts

- **Include Fonts**
Select [Always] to download fonts each time you print. Select [Only used] to download only fonts used in your document. Select [Never] to use only those fonts resident on the printer (no fonts are downloaded).
- **Font Type:** select [Bounded] if you have an IBM 3812, 3816, 3820, 3825, 3827, 3835, or 3900 printer. Select [Unbounded] if you have an IBM 3800 printer.

Images

- **Include Images:** Select [Always] to include the image within the data stream. Not selecting this option includes only a reference to the image. Select [Never] if you have already loaded your graphics onto the printer's disk.

- Image Compression compresses duplicate and blank lines and optimizes for white space. Select [IOCA] optimally compress images using IOCA CCITT 4 compression. Note that IOCA CCITT 4 compression may not be compatible with some printers. Check your printer manual. Select [GOCA Raw] to convert images to GOCA format.

FSL/FRM (Xerox only)

Click on [FSL/FRM] to select options for these formats. The FSL/FRM Setup dialog box displays and contains the following options:

Printer

Select the output printer's system format: Select [87/97XX V10] if you are using 8700 or 9700 series printers or [4XXX V2.2+] for any other production printer. The default is [87/97XX V10].

Optimize - FRM - excludes conversion back to Elix format

Select this option to reduce the size of the file and the text placement statements at the printer. Note that if you use this option, you can convert the file to Elixir format using the ElixSys Desktop or ElixSys Desktop for Highlight color but you cannot edit the converted text.

OGL Setup (AFP only)

Click on [OGL Setup] to select options for this format. The OGL Setup dialog box displays and contains the following options:

Units

Select the unit of measurement for the resolution of all the resources produced by Elixir PrintDriver: fonts, images and forms.

Target Environment

This option controls the DDNAME/FILETYPE options that are written to the OGL when the fonts or page segments are called out.

- Select [MVS] for Elixir PrintDriver to look in \ELIXIR\FONTS\MAPS\DEFAULT.FAM (for fonts) or \ELIXIR\PICS\MAPS\DEFAULT.SAM (for page segments) and use the MVS_default-ddname parameter when building the font/page segment list at the beginning of the OGL.
- Select [VM] for Elixir PrintDriver to use the VM_default_filetype parameter.
- Select [VSE] for Elixir PrintDriver to ignore the DEFAULT.FAM and DEFAULT.SAM files for DDNAME and FILETYPE.

Rotate Pages

Select the degree of rotation for the output document, depending on your printer:

- **IBM AFP cutsheet printers and continuous form (Group 3) printers**

Portrait source document with text going across the page, select [0].

Portrait source document with text going back across the page, select [180].

Landscape source document with text going down the page, select [90].

Landscape source document with text going up the page, select [270].

To print a portrait source document in tumble mode, select [0] rotation and specify [Duplex] [Tumble] in the FORMDEF.

- **IBM AFP continuous form printers (3800)**

Portrait source document with printer set up for Narrow Forms, select [0].

Portrait source document with printer set up for Wide Forms, select [90].

Landscape source document with printer set up for Narrow Forms, select [90] or [270].

Landscape source document with printer set up for Wide Forms, select [0].

Floating Offsets

Select the number of pels to shift the output. Negative values are allowed.

- [Horizontal] shifts the output right by the specified number of pels for a portrait orientation and shifts output down for landscape orientation.
- [Vertical] shifts the output down by the specified number of pels for a portrait orientation and shifts output right for landscape orientation.

OGL extended options

From the Source OGL Options dialog box, click on [OGL Extended Options]. The OGL Extended Options dialog box displays and contains the following options:

Include job ID banner

The job ID banner contains the Job ID specified in the Job Print Ticket dialog box. Select this option if you want to include a job ID banner in the file conversion.

Include Description Text

Select this option if you want to include the information entered in the [Job Databasing] option in the Job Print Ticket dialog box. This specialized comment is included after the Job ID banner.

EBCDIC OGL (for binary transfer)

Select the format for the OGL:

- Select this option to generate OGL in EBCDIC format which can be transferred directly to the host system with no translation.
- Deselect this option to generate OGL in ASCII format which is then translated to EBCDIC format by your file-transfer utility during upload as a text file.

Font Assignment

Select the font assignment:

- Select [Auto] to map fonts from their coded font names without the Xn prefix.
- Select [Mapped] to map font names using the mapping table specified in the [Map Table] option.

Note that you can use this table to assign individual DDNAMES to fonts.

The default mapping table is DEFAULT.FAM and is stored in *drive*:\ELIXIR\FONTS\MAPS. You can use any ASCII editor to edit this file.

If you want to use another mapping file, back-space over the current file name and enter a new name.

Pseg assignment

Select the page segment assignment:

- Select [Auto] to map page segment image names from external file names to six-character internal names without the 'S1' prefix.
- Select [Mapped] to map pseg names using the mapping table specified in the [Map Table] option.

Note that you can use this table to assign DDNAMES to psegs.

The default mapping table is DEFAULT.SAM and is stored in *drive*:\ELIXIR\PICS\MAPS. You can use any ASCII editor to edit this file.

If you want to use another mapping file, back-space over the current file name and enter a new name.

Once compiled, the psegs are stored inside the overlay.

Control

Build the CONTROL statement to use in OGL source files.

Document storage:

- Select [noSTORE] if you do not want the document stored in a library.
- Select [STORE] to store the document in a library.
- Select [REPLACE] to store the document in a library and replace any existing document with the same name.

Messages:

- Select [ALL] to view every message the system generates while processing your document.
- Select [WARN] to view only the warning messages generated as a result of your document's processing.
- Select [ERROR] to view only the error messages generated as a result of OGL/370 processing.

Summary display:

- Select [noSUMMARY] if you do not want the summary to display as part of the source listing.
- Select [SUMMARY] to display a statistical summary as part of the source listing.

Image services

To select options for supported images (PCX, TIF, or BMP), click on [Image services]. The Image Services dialog box displays and contains the following options:

Rasterize as single image

If this option is deselected, each image will convert separately.

Select to convert objects to images, Then:

Select [All graphic objects] to convert all the graphical objects (lines, boxes, images) to a single image instead of individual objects. This option is useful if your document contains rotated text, a large number of graphics on a page, or unsupported image types.

Select [Each page] to convert an entire page to a single image (including lines, text, and images). Note that all graphical elements must be in a supported format: PCX, TIF or BMP.

Compression to (Xerox only)

Check this box to optimally compress images for .FSL .FRM and metacode.

Image parameters (AFP only)

Select a compression format:

- Select [IOCA CCITT 4] to compress images using IOCA CCITT 4 compression. Note that IOCA CCITT 4 compression may not be compatible with some printers. Check your printer manual.
- Select [IOCA] to convert images to IOCA format.
- Select [GOCA Raw] to convert images to GOCA format.

Graphic tag support

Select if, in your Windows application, you marked the location of .LP3 tags by adding tag position marker (%%n).

Text services

Make sure you set up the options in the Text Services dialog box before you convert any fonts using Elixir PrintDriver. To check the default selections, select [Text Services]. The Text Services dialog box displays and contains the following options:

Text Mapping

Remap Text

Note: When you make any changes to the [Remap Text] option, you must regenerate all fonts in your document and reload those fonts on the printer.

When this option is selected, you can map the Windows ANSI character set to any other character set or to other existing character sets.

A character set, or AFP code page, is a unique set of characters. Windows uses the standard ANSI character set, also known as Windows Latin 1, and translates all keyboard entries as ANSI code characters. DOS in the United States uses the 437 character set. Other systems or countries may use other character sets.

When this option is deselected, all characters in the Windows character set are converted without remapping to another character set.

The default is deselected.

To remap text to other character sets, you need to specify a Windows Map and a Country Keyboard Map reflecting the character set.

Text Mapping

Windows Map

The [Windows Map] is a mapping file which defines the characters in the Windows character set and their position (in hex) in the character set.

Most users should use T100ANSI (AFP) or X100ANSI (Xerox). If you are using the Eastern European version of Windows, you should use T/X10EEURO.

Text Mapping

Country Keyboard Map

The [Country Keyboard Map] is a mapping file that assigns positions corresponding to the country keyboard you want to map them to.

If [Remap Text] is selected, you may get the “Match not found, char n” error message during conversion since not all characters in the Windows ANSI character set are present in other character sets. You can edit the country keyboard mapping file to include any missing characters. You should not get this error if [Remap Text] is deselected.

Note: If you edit your document in any Elixir Forms application, for example Elixiform, and the [Remap Text] option was deselected when you converted it using Elixir PrintDriver, specify [None] for the [Keyboard Mapping] option in the Elixir Forms application. If [Remap Text] was selected when you converted your document, you must select the same keyboard mapping used with Elixir PrintDriver.

Country Keyboard Maps

The following is a list of .KMP files provided with Elixir PrintDriver without the prefix (T for AFP, X for Xerox).

<u>.KMP</u>	<u>Description</u>
100ANSI.KMP	Windows ANSI
1000437.KMP	Personal Computer for US English, UK English, and European languages using the IBM character set.
1000850.KMP	PC Multilingual 1 for IBM PC multinational keyboards
10EEURO.KMP	European Windows
10XICSB.KMP	Xerox International Character Set - B
1EBCDIC.KMP	IBM host (EBCDIC)

Default Code Page

The [Default Code Page] is the Elixir representation of the host T1 code page member and is used to assign host (EBCDIC) code points to GCIDs. This file is essential in the conversion of outputs to EBCDIC format, and is used whether [Remap Text] is selected or not.

Tags

Tag Support

Select if, in your Windows application, you marked the location of data tags by adding tag position marker (%n). The external tag attribute file ([Tag File]) lists the .TAG files that specify the attributes associated with each tag position marker.

Tags

Elixitag Support

Select if, in your Windows application, you used Elixitag to generate data tags.

Use TT or ATM outline font in Form

Select if you want to view the TT/ATM fonts in your document when opened in the Elixir Forms application.

8 Char Job ID

Select if you want to use up to eight characters to name ELX job ID's.

Color Services (Xerox only)

The use of color in your document is determined by the printer you use for printing the final document. If you select color and your printer does not support it, your file will print in black and white.

- Select [Highlight color] to use highlight color in your document for printing on a 4850 or 4890 printer. When you select this option, you must also specify the [Printer Palette Name] and [Printer Catalog Name] options.
- Select [Black and white] to use only black and white in your document for printing on any of the supported Xerox printers.

Printer Catalog Name

Select [XEROX] or [XEROX1]. If you select [XEROX1], you can then select from the following highlight colors: red, blue, green, cyan, magenta, cardinal, royal, violet, brown, ruby or gray. Note that only red, green and blue are supported for graphics.

Printer Palette Name

Select [RED], [GREEN], or [BLUE].

Font generation

When you print a document containing TrueType or ATM fonts, and Xerox or AFP versions have not been previously generated, the Font Generation dialog box displays.

To preview this dialog box before you print your document, click on [Font Generation]. The Font Generation dialog box displays.

The Font Generation dialog box contains the following options:

Select [Generate Elixir Raster Font] if you prefer to use Elixir fonts to view and edit the document in Elixiform (part of the Elixir Desktop). You can also view and edit the document using TrueType fonts.

Note: Disabling regeneration of fonts - Certain Windows products allow you to customize TrueType and ATM fonts, such as expanding or contracting them. To avoid overwriting previously generated fonts that were not created using customizing features you can disable regeneration of these fonts. To do so edit WIN.INI (in Windows sub-directory) by adding the following line to the [Elixir PrintDriver,DISK] section of the WIN.INI: ELX_REGEN_PSW=0. When this line is present, the option to regenerate fonts will no longer be active.

Generation Range (Xerox-only)

This option allows you to specify the character range in a font. For example, if you are using a font larger than 24 points, you can limit the font range in order to keep the file size below the printer's maximum file size. Note that the maximum file size for 9700 font files is 128 KB (or 64 KB for older Xerox printers). If you do not limit the font range and the file exceeds the printer limit, Elixir PrintDriver truncates the font automatically.

If your printer supports 5Word fonts, this is unnecessary. Supported 5Word printers are 41xx, 46xx, and 48xx.

To specify a range of fonts, backspace over the numbers in the windows, and enter the numbers that correspond to the font's decimal position in the Windows ANSI character set. For example, if you want to generate only numbers, enter 48 to 57. If you want to generate only lower case letters, enter 97 to 122. See your Windows guide for character tables.

GCID list (AFP only)

The GCID (Graphic Character Identifier) is the identifier associated with each character in an AFP font. The GCID list displays the current GCID mapping file name. This option allows you to specify the name of a custom GCID map that is referenced when converting non-AFP fonts to AFP fonts. The default is C0ANSI.

Font Mapping

If you want to use the font mapping table when you print your document, click on [Font Mapping]. The Font Mapping dialog box displays.

The Font Mapping dialog box contains the following option:

Use font mapping table

Elixir PrintDriver provides mapping tables which allows you to map the TrueType and ATM fonts in your document to Xerox/AFP versions of the fonts, rather than convert them.

Select this option to use the font mapping table or de-select this option if you do not want to use the font mapping table.

The font mapping tables are named FMAPXRX.FMP (Xerox) and FMAPAFP.FMP (AFP), and are stored in *drive:\ELIXIR\DESKTOP\SYSTEM*.

Information about editing the font mapping table is described in the "Font options" chapter.

Messages to file

Select this option to send error messages to *drive:\Elixir\pderr.log*. No error messages will appear during during conversion.

3.

Font options

This chapter provides details on the three methods of creating text in your Windows document for subsequent printing on Xerox or AFP production printers.

Overview of font options

Before you can print a Windows document on a production printer, you must ensure that the fonts in your document are in Xerox or AFP format. You can do this in one of two ways:

- Create text in your document using TrueType and ATM fonts, and convert your fonts to the proper format using the Font Generation dialog box.

See the "Converting TrueType and ATM fonts" section in this chapter for more information.

- Create text in your document using TrueType and ATM fonts, and use the Elixir PrintDriver mapping table to map your fonts to the proper format fonts.

See the "Mapping TrueType and ATM fonts" section in this chapter for more information.

Note that at the beginning of each section there is a step-by-step overview of how to use each option and references to sections providing more detailed information.

Converting TrueType and ATM fonts

If you are using TrueType and/or ATM fonts in your document, when you select [Print], Elixir PrintDriver displays a dialog box that allows you to specify options (click on [Setup] and [Font Generation]) for generating versions of each font.

When using this option to convert your TrueType and ATM fonts, make sure the [Use Font Mapping Table] option in the Font Mapping dialog box is deselected. See the "Mapping TrueType and ATM fonts" section in this chapter for more information.

To generate Xerox, AFP, and/or Elixir versions of fonts from TrueType and ATM fonts:

- 1. Create your document by selecting any available TrueType and ATM fonts from the font list in your Windows application.**
- 2. Select [Print] with [Elixir PrintDriver on Disk] selected as the printer.**

If there are fonts in the document that have not been previously generated by Elixir PrintDriver, the Font Generation dialog box displays.

See the "Font Generation" section in this chapter for detailed information

- 3. Specify options in the Font Generation dialog box and click on [OK].**

Elixir PrintDriver generates the font and, unless otherwise specified, the Font Generation dialog box displays for the next ungenerated font.

When all the fonts are generated, Elixir PrintDriver generates the print files in the specified directories.

Font Generation

The Font Generation dialog box allows you to specify options for generating Xerox/AFP and Elixir versions of the TrueType and ATM fonts in your document.

You may want to display the Font Generation dialog box for a font that was previously generated if you generated only Elixir fonts and you now want to generate Xerox/AFP fonts, or if you made a change to the keyboard mapping in the Text Services dialog box.

The Font Generation dialog box contains the following options:

[Generate Elixir Raster Font]

Select this option if you prefer to use Elixir fonts to view and edit the document in Elixiform (part of the Elixir Desktop). You can also view and edit the document using TrueType fonts.

Generation Range

This option allows you to specify the character range in a font. For example, you may want to generate only numbers or only lower case letters.

To specify a range of fonts, backspace over the numbers in the windows, and enter the numbers that correspond to the font's decimal position in the Windows ANSI character set. For example, if you want to generate only numbers, enter 48 to 57. If you want to generate only lower case letters, enter 97 to 122. See your Windows guide for character tables.

GCID list (AFP only)

The GCID (Graphic Character Identifier) is the identifier associated with each character in an AFP font. The GCID list displays the current GCID mapping file name. This option allows you to specify the name of a custom GCID map that is referenced when converting non-AFP fonts to AFP fonts. The default is COANSI.

Mapping TrueType and ATM fonts

Elixir PrintDriver provides a mapping table which allows you map the TrueType and ATM fonts in your document to Xerox/AFP versions of the fonts.

To map TrueType and ATM fonts to AFP/Xerox fonts:

- 1. Create your document using any available TrueType and/or ATM fonts from the font list in your Windows application.**
- 2. Using a text editor, edit the font mapping table to include the fonts you have in your document.**

See the "Editing the (AFP/Xerox) font mapping table" section in this chapter.

- 3. Select the [Use Font Mapping Table] option in the Font Mapping dialog box.**

Note that if this option is deselected when you print your document, Elixir PrintDriver generates Xerox/AFP versions of all TrueType and ATM fonts using the Font Generation dialog box. See the "Converting TrueType and ATM fonts" section in this chapter for information about the Font Generation dialog box.

- 4. Select [Print] with Elixir PrintDriver set as your printer.**

Elixir PrintDriver replaces all occurrences of a TrueType or ATM font with the Xerox/AFP font it is mapped to in the font mapping table.

Editing the AFP font mapping table

Use any text editor to edit the font mapping table, *drive:\ELIXIR\DESKTOP\SYSTEM\FMAPAFP.FMP*, to contain the names of the TrueType and ATM fonts in your document, the font attributes and the AFP fonts they are mapped to.

When editing the mapping table, note the following:

- All the fonts in your document must be listed in the font mapping table. If your document contains fonts that are not listed in the table, Elixir PrintDriver uses the Font Generation dialog box to generate the fonts.

See the "Converting TrueType and ATM fonts" section in this chapter for information about the Font Generation dialog box.

- To ensure correct text placement, make sure that AFP fonts have the same character metrics as the Windows fonts they are mapped to.
- Always add an additional blank line (carriage return and line feed) to the end of the list.
- Make sure that you have Elixir screen versions of all AFP fonts that are in the mapping table. Elixir screen fonts are stored in *drive:\ELIXIR\FONTS\SCREEN\DEMO*.

The following table shows an example of the font mapping table.

%%Elixir_Font_Services_Table: February 23 - 1995

%keyidx,DOSFILE,Logical Internal name,External TypeFace name,
%LSize,PtSize,Bold,ItalObq,Weight,Width,Dir,Rot,FontName

fmap=1, None, **Helvetica**, None, None, **10**, None, **None**, **Med**, None, 0, **0**,
X0H2100C

fmap=2, None, **Helvetica**, None, None, **12**, None, **None**, **Med**, None, 0, **0**,
X0H210BC

fmap=3, None, **Helvetica**, None, None, **12**, None, **Italic**, **Med**, None, 0, **0**,
X0H310BC

fmap=4, None, **Helvetica**, None, None, **12**, None, **None**, **Bold**, None, 0, **0**,
X0H410BC

fmap=5, None, **Helvetica**, None, None, **12**, None, **Italic**, **Bold**, None, 0, **0**,
X0H510BC

fmap=6, None, **Helvetica**, None, None, **16**, None, **None**, **Med**, None, 0, **0**,
X0H210FC

fmap=7, None, **Helvetica**, None, None, **16**, None, **None**, **Bold**, None, 0, **0**,
X0H410FC

fmap=8, None, **Times New Roman**, None, None, **8**, None, **None**, **Med**, None,
0, **0**, **X0N2108C**

fmap=9, None, **Times New Roman**, None, None, **8**, None, **Italic**, **Bold**, None,
0, **0**, **X0N5108C**

fmap=10, None, **Times New Roman**, None, None, **12**, None, **None, Med**, None, 0, **0, X0N210BC**

fmap=11, None, **Times New Roman**, None, None, **12**, None, **Italic, Med**, None, 0, **0, X0N310BC**

fmap=12, None, **Times New Roman**, None, None, **12**, None, **None, Bold**, None, 0, **0, X0N410BC**

fmap=13, None, **Times New Roman**, None, None, **12**, None, **Italic, Bold**, None, 0, **0, X0N510BC**

fmap=14, None, **Courier**, None, None, **8**, None, **None, Bold**, None, 0, **0, X044108C**

fmap=15, None, **Courier**, None, None, **8**, None, **Italic, Bold**, None, 0, **0, X045108C**

fmap=16, None, **Courier**, None, None, **12**, None, **None, Med**, None, 0, **0, X04210BC**

fmap=17, None, **Courier**, None, None, **12**, None, **Italic, Med**, None, 0, **0, X04310BC**

fmap=18, None, **Courier**, None, None, **12**, None, **None, Bold**, None, 0, **0, X04410BC**

fmap=18, None, **Courier**, None, None, **12**, None, **Italic, Bold**, None, 0, **0, X04510BC**

(insert blank line here)

You can use an ASCII editor to edit the file as follows. Note that only the seven bold positions above are relevant.

Keyidx

Assign a unique number for the font, for example FMAP = *[number]* where *number* is a unique number.

Logical Internal Name

Enter the font name, for example [Arial].

PtSize

Enter the point size, for example [10] .

ItalObq

Enter [Italic] if the font is italic or [None] if it is not italic.

Weight

Enter the weight of the font, [Bold] or [Med].

Dir

Specify the direction of the font, [0], [90], [180] or [270].

FontName

Enter the file name of the mapped font, for example [XOH2100C].

Editing the Xerox font mapping table

Use any text editor to edit the font mapping table, *drive:\ELIXIR\DESKTOP\SYSTEM\FMAPXRX.FMP*, to contain the names of the TrueType and ATM fonts in your document, the font attributes and the Xerox fonts they are mapped to.

When editing the mapping table, note the following:

- All the fonts in your document must be listed in the font mapping table. If your document contains fonts that are not listed in the table, Elixir PrintDriver uses the Font Generation dialog box to generate the fonts.

See the "Converting TrueType and ATM fonts" section in this chapter for information about the Font Generation dialog box.

- To ensure correct text placement, make sure that Xerox fonts have the same character metrics as the Windows fonts they are mapped to.
- Always add an additional blank line (carriage return and line feed) to the end of the list.
- Make sure that you have Elixir screen versions of all Xerox fonts that are in the mapping table. Elixir screen fonts are stored in *drive:\ELIXIR\FONTS\SCREEN\DEMO*.

The following table shows an example of the font mapping table.

```
%%Elixir_Font_Services_Table: 1.0 September 1993
```

```
%keyidx,DOSFILE,Logical Internal name,External TypeFace name,  
%LSize,PtSize,Bold,ItalObq,Weight,Width,Dir,Rot,FontName
```

```
%-----  
fmap=0,None,Arial,None,None,8,None,None,Med,None,0,P,HE08NP;  
fmap=1,None,Arial,None,None,12,None,None,Bold,None,0,P,HE12BP;  
fmap=2,None,Helv,None,None,10,None,None,Bold,None,0,P,HE10BP;  
fmap=3,None,Helv,None,None,12,None,None,Bold,None,0,P,HE12BP;  
(insert blank line here)
```

You can use an ASCII editor to edit the file as follows. Note that only seven positions are relevant.

Keyidx

Assign a unique number for the font, for example FMAP = [number] where *number* is a unique number.

Logical Internal Name

Enter the font name, for example [Arial].

PtSize

Enter the point size, for example [8] .

ItalObq

Enter [Italic] if the font is italic or [None] if it is not italic.

Weight

Enter the weight of the font, [Bold] or [Med].

Rot

Specify the rotation of the font, [P] for portrait or [L] for landscape.

FontName

Enter the file name of the mapped font, for example [HE08NP].

Using the mapping table

To use the font mapping table to map your TrueType and ATM fonts to AFP/Xerox fonts:

1. Click on [Font Mapping] in the Elixir PrintDriver setup dialog box.

The Font Mapping dialog box displays.

2. Select [Use Font Mapping Table].

3. Click on [OK].

When you print your document, Elixir PrintDriver maps all occurrences of a TrueType or ATM font to the AFP/Xerox font specified in the font mapping table.

Note that if this option is deselected when you print your document, Elixir PrintDriver generates AFP/Xerox versions of all TrueType and ATM fonts using the Font Generation dialog box. See the "Converting TrueType and ATM fonts" section in this chapter for information about the Font Generation dialog box.

4. Using Elixir PrintDriver

The following chapter describes how to use Elixir PrintDriver to generate print files ready for transferring to a Xerox or AFP printer. See the "Introduction" chapter for a list of supported applications.

Creating a print file

Elixir PrintDriver allows you to convert Windows based documents into Xerox or AFP format ready for printing on production printers. You can add text and tables, draw shapes and import images into your document using the standard features available in Windows applications.

If you are creating a document on one PC and converting the same document on another PC, make sure the fonts used to create the document are present on both PCs.

Setting options in Elixir PrintDriver

This chapter assumes you have already set up the Elixir PrintDriver options as described in the "Elixir PrintDriver basics" chapter.

Selecting Elixir PrintDriver

You must select Elixir PrintDriver as the printer for the document before you compose your document. This assures correct formatting of your document and allows you to select any imported Xerox and Elixir format fonts directly from the font selector in your application.

See the "Font options" chapter for information on importing Xerox and Elixir format fonts.

Note for AFP users only: The format of a document created using 240 dpi fonts changes if it is created using 300 dpi fonts. Therefore, you must select Elixir PrintDriver as the printer for the document and select the correct job resolution before you compose your document to assure correct formatting of your document. See the "Elixir PrintDriver basics" chapter for information about the job resolution option.

You can install Elixir PrintDriver software on any machine without the ElixKey. However, you can only setup PrintDriver options and convert documents on the machine where the ElixKey is attached.

See the "Introduction" chapter for information on ElixKeys.

To select Elixir PrintDriver for the document:

- 1. Access the list of installed printers using the printer setup option in your application.**

See your application documentation for information on how to access the Printer dialog box. Select [Elixir PrintDriver on DISK] from the list of printers

- 2. Select [Elixir PrintDriver on DISK] from the list of printers**
- 3. Click on [OK].**

Selecting fonts

To use TrueType or ATM fonts already installed on your PC, select the font name from the file selector in your Windows application and enter text from the keyboard. See your Windows application guide for information on selecting fonts.

For TrueType and ATM fonts to print on a Xerox/AFP printer, Xerox/AFP versions of each font must be generated. Elixir PrintDriver does this for you when you convert your document by selecting [Print] with the Elixir PrintDriver set as the printer. You can also set up a font mapping table to map your TrueType and ATM fonts to Xerox/AFP fonts. See the "Font Options" chapter for more information on setting up your font options.

Adding lines, boxes and shapes

Elixir PrintDriver allows you to print lines, boxes and shapes. Use the tools available in your Windows application to create these elements in your document.

Circles and diagonal lines are not supported on Xerox printers. If you want to use a circle or diagonal line in your document, select the [Graphics] option in the Image Services dialog box so that all graphical objects become a single image. For information about this option, see the "Elixir PrintDriver basics" chapter.

Some Windows applications may output lines, boxes and shapes as graphics. See the "Limitations and solutions" appendix for specific product information.

Adding graphics

Elixir PrintDriver allows you to add graphics to your document by placing the graphic on the page, or by referencing an Elixir (.LP3) graphic that is on your PC.

Embedding bit-mapped graphics

To embed a .PCX, .TIF or .BMP graphic in your document, follow the instructions in your Windows-application manual.

Referencing graphics

You can place a graphics reference in your document by entering `$$filename` where *filename* is the name of an Elixir (.LP3) graphic which is in `drive:\ELIXIR\PICS\PRINTER`.

If you do not have an Elixir (.LP3) version of your graphic, embed the PCX, TIF or BMP image in the document and convert the document using Elixir PrintDriver. This will create an .LP3 and .TXT file which you can then reference in subsequent documents.

When PrintDriver converts your file, the upper left-hand corner of the referenced graphic is placed on the page where the filename reference displays. Make sure there is enough space for the graphic to display.

If you are referencing graphics in a metacode file, make sure you select the appropriate [Image on Page] option in the metacode Conversion Properties/Resources dialog box before you generate the metacode file.

See the "Elixir PrintDriver basics" chapter for information on generating metacode with embedded or referenced graphics.

Starting the conversion

When you select [Print] from your application with Elixir PrintDriver selected as the printer for the document, the Elixir PrintDriver dialog box displays. This allows you to check or to change the configuration prior to starting your conversion. See the "Elixir PrintDriver basics" chapter for configuration options.

Click on [Start conversion] to create your print file.

Uploading files to a production printer

See the appropriate file transfer chapter for information on how to upload your files from your PC to a host computer for printing on a production printer.

5. File transfer (Xerox)

This chapter describes how to use several popular file transfer packages to transfer files between your PC and a host computer running the IBM MVS operating system.

Files for printing on channel-attached Xerox production printers can be stored on a host computer.

When you transfer FSL, FRM, or metacode files to the printer for printing, you must also transfer any resources referenced in your documents.

FRM, FSL, logo, image, and font files are also referred to as Xerox-labeled files, because the files contain 128-byte Xerox headers (or labels).

In an offline environment, tape and Xerox-format diskettes are used to move files. In an online environment, PC/host file transfer packages are used to move files. Supported file transfer packages include the IBM 3270, IRMA FT/3270, and IRMA FT/TSO.

Elixir currently provides the following sets of JSL in the *drive:\ELIXIR* directory:

- ELXONL.JSL = Black and white online metacode
- ELXONC.JSL = Color online metacode
- METSTA.JSL = Black and white online metacode
- METSTC.JSL = Color or black and white online metacode
- ELIXIR.JSL = Black and white offline metacode
- ELIXIC.JSL = Color offline metacode
- ELIX2.JSL = FRM and FSL

Moving online Xerox-labeled files

The following sections describe how to transfer Xerox-labeled files from a PC (through an IBM host running MVS) to a production printer.

To move online Xerox-labeled files, you need to do the following:

- 1. Configure one of the supported file transfer utilities.**
- 2. Upload the files to the MVS host.**
- 3. Download all files from the host computer to your production printer using either the HOSTCOPY utility or the DJDE FILE command in the Job JSL.**

The above steps are described in the following sections.

Configuring the file transfer package

To upload Xerox-labeled files from your PC to an MVS host, we recommend one of the following file transfer packages: IBM 3270, IRMA FT/3270, or IRMA FT/TSO.

Make sure the card for the appropriate file transfer package is installed on your PC, and that the corresponding file transfer software is installed both on your PC and on the MVS host.

Uploading files to the host

The following sections describe how to upload Xerox-labeled files from your PC to an MVS host using IBM 3270, IRMA FT/3270, and IRMA FT/TSO.

Uploading Xerox-labeled files with IBM 3270 or IRMA FT/3270

The IBM 3270 and IRMA FT/3270 file transfer packages are similar. Both require that you first prepare the host for receiving Xerox-labeled files by allocating a dataset with the following DCB specifications:

```
DCB=(LRECL=128,BLKSIZE=128,RECFM=FB)
```

This specifies a Xerox-labeled file with a record length of 128 bytes, block length of 128 bytes, and fixed-block (FB) record format.

Upload a Xerox-labeled file by typing the following command at the DOS prompt:

```
SEND    [path]pcfilename    'hostfilename'
<Enter>
```

path

is the optional DOS pathname

pcfilename

is the name of the Xerox-labeled file on your PC, including extension.

hostfilename

is the host dataset receiving the file (hostfilename *must* be enclosed in single quotes).

'hostfilename' can refer to either a physical sequential or a partitioned dataset.

For example, if transferring to a physical sequential dataset, 'hostfilename' may be as follows:

```
'CM.EIO.DATA.UPLOAD'
```

If transferring to a partitioned dataset, 'hostfilename' can include the stem name of the files being transferred, enclosed in parentheses, as part of the dataset name as follows:

```
'CM.EIO.DATA.UPLOAD(filename)'
```


Uploading files with IRMA FT/TSO

The following section describes how to select the transfer parameters and upload files using IRMA FT/TSO.

To start IRMA FT/TSO, type: **FTTSO** <Enter> at the DOS prompt. The IRMA FT/TSO screen displays.

To select the transfer parameters:

- 1. Use the <Tab> key to move the cursor into the data entry field following [Transfer type:]**
- 2. Type a name under which you want to save the file transfer parameters (described in step 4).**
- 3. Press <F5>**

The **Transfer parameters** menu displays in the bottom right corner of the screen.

- 4. Use the <Tab> key to move between transfer parameter fields and enter the following values:**

Xerox-labeled files:

Block size:	128
Record size:	128
Record format:	FB
Line numbers:	Position: 0 Length: 0
Code table:	STD
Transfer mode:	BINARY
Expand TABs:	NO
Truncate spaces:	NO
U/L case:	ASIS
Space Units:	TRKS
Primary qty:	1
Secondary qty:	2

To upload the files:

- 1. Enter the name of the PC file you want to upload and press <Tab>.**

Optionally, precede the file name with a DOS directory path.

2. **Enter the name of the host dataset to which you want to upload the file and press <Tab>.**
3. **Enter the appropriate transfer type.**
4. **Press <F1> to upload the file.**

Downloading files from the host to the printer

This section describes how to download files from the host computer to the production printer using either the HOSTCOPY utility or the DJDE FILE= command.

Using the HOSTCOPY utility involves the following steps:

1. **Upload the ENDFILE.END file.**
2. **Prepare the JCL.**
3. **Make sure all of the files used in the job are resident on the printer.**
4. **Reboot the printer.**
5. **Download the files using HOSTCOPY.**
6. **Reboot the printer again.**
7. **Start the print job.**

Using the FILE command involves the following steps:

1. **Upload the ENDFILE.END file.**
2. **Prepare the JCL.**
3. **Add the DJDE FILE= statement to the data file.**

The files are dynamically downloaded at print time.

The advantages of using the FILE command rather than HOSTCOPY to download files are:

- Using the FILE command frees up disk space on the printer.

- Files do not have to be resident on the printer, therefore an additional level of security can be maintained.
- Using the DJDE FILE= command does not require switching the printer from production mode to HOSTCOPY mode and saves valuable printer time.
- Files are downloaded during print time assuring the current and correct versions of the files are used. When using HOSTCOPY, it is important to check that all files resident on the printer and used for the job are the correct versions.

Uploading the ENDFILE.END file

After uploading Xerox-labeled PC files, upload the ENDFILE.END file (copied to the *drive:\ELIXIR* directory during installation) to the host. Use the procedure described in the "Uploading with IBM 3270 or IRMA FT/3270" section of this chapter.

Preparing the JCL

After uploading Xerox-labeled files and the ENDFILE.END file to the host, use the IBM IEBGENER utility to build a JCL dataset for sending the files to a channel-attached printer.

An example of a JCL dataset is given below. Modify the JCL to include the names of the files you want to send to the printer.

```
-----  
//00D42DA      JOB      (8200,Z200-Z20001),'LARACEY  
7-1994',CLASS=A  
//MSGCLASS=J,NOTIFY=00D42D,USER=00D42D,PRTY=4  
/* JOBPARM L=9999  
//*  
/* JCL to send a Xerox-labeled file to a 9700 series printer  
//*  
//XR9700 OUTPUT DEST=R269  
//*  
/* This step copies the file UN110E.FNT  
/* to the Xerox printer's output destination  
/* class  
//*
```

```

//STEP1 EXEC PGM=IEBGENER
//SYSPRINT D SYSOUT=*
//SYSUT1 DD UNIT=DISK,DISP=OLD,
//DSN=00D42D.0Z200.UN110E.FNT.DATA,
//DCB=(LRECL=128,BLKSIZE=128,RECFM=FB)
//SYSUT2 DD SYSOUT=O
//*
/* This step copies the ENDFILE.END file
/* to the Xerox printer's output destination
/* class to terminate the HOSTCOPY procedure
/*
//STEP2 EXEC PGM=IEBGENER
//SYSPRINT D SYSOUT=*
//SYSUT1 DD UNIT=DISK,DISP=OLD,
//DSN=00D42D.0Z200.ENDFILE.END.DATA,
//DCB=(LRECL=128,BLKSIZE=128,RECFM=FB)
//SYSUT2 DD SYSOUT=O
//OUTPUT=*.XRX9700
//SYSIN DD DUMMY
/*

```

Using the HOSTCOPY utility

If you are using the HOSTCOPY utility to download files, you must place the printer in HOSTCOPY mode and download the files.

Placing the printer in HOSTCOPY mode

To place a channel-attached, production printer in HOSTCOPY mode, follow these steps:

1. Type:

OFFLINE <Enter>

to switch the printer to offline.

2. Press the printer BOOT button.

The printer console displays the following:

```

READY
$

```

3. At the \$ prompt, enter:

BD <Enter>

The printer console displays a command menu with the following system prompt:

ENTER COMMAND

4. Enter the following command:

HOSTCOPY <Enter>

The following message displays:

```
*SYSGEN RUNNING FOR HOSTCOPY ONLY*THIS IS A FILE COPYING PROCEDURE, NOT A SYSGEN CONTINUE OR ABORT? ENTER 'C' OR 'A'
```

5. Enter:

C <Enter>

The printer displays the following message:

WAITING TO READ FILES FROM HOST

The printer is now in HOSTCOPY mode and ready to accept files from the host.

Copying Xerox-labeled files to the printer

After placing the printer in HOSTCOPY mode, run the JCL job to send the Xerox-labeled and ENDFILE.END files to your printer.

Note that ENDFILE.END must be the last file you send to the printer.

The following message displays at the printer console indicating that files are being received:

CREATING FILE XXXXXX.YYY

xxxxxx
is the file stemname.

yyy
is the file extension.

When the printer detects the ENDFILE.END file, the following message displays:

```
END OF TAPE FOUND
IS ANOTHER TAPE TO BE SENT? Y OR N
```

If you want to send more files, type **Y** <Enter>.

If you are done transferring files, type **N** <Enter>.

The printer displays the following:

```
VARY OFFLINE AT HOST, THEN ENTER C
```

Enter C to stop the copy-to-printer operation.

Reboot the printer.

The Xerox-labeled files are now installed on the production printer.

Using the DJDE FILE command

If you are using the DJDE FILE= command to download the files, you must embed the commands in the dataset. The FILE command causes files to be dynamically downloaded to the printer at print time. The command syntax is as follows:

```
FILE=filename, filetype [[,f][,s][,n]
```

filename

is a one- to six-character file name.

filetype

is a three character file symbol for the appropriate file; LGO, IMG, or FNT.

f

is C (for card-image format) or L (for tape format, the default).

s

is D (to delete files after printing) or P (to keep the files after printing, the default).

n

is the maximum number of card-images (default = 120).

After adding the FILE command to your print stream using a utility such as IEBGENER, enter a START command at the printer console to run the print job. Each resource will be downloaded to the printer.

See your Xerox Laser Printing System Reference Manual for more information.

Moving and printing online metacode files

The following section describes how to move and print online metacode files.

To print online metacode files:

1. **Upload the file to the host.**
2. **Set up the metacode online JSL on the printer.**

You can set up the default online JSL or you can copy and compile the METSTA.JSL or METSTC.JSL.

3. **Set up the Elixir online JSL.**
4. **Compile the JSLs on the printer.**
5. **Copy the file to your printer.**

The fixed blocked online metacode file has the following format for each 540 byte block:

Bytes 0 to 3 - Block length (hex).

Bytes 4 to 7 - Length of first metacode record (hex).

Bytes 8 to n - First metacode record, where *n* is 7 plus the length specified in bytes 4 to 7.

Bytes $n + 1$ to 540 - The remainder of each 540 byte block consists of a series of four byte record descriptor words followed by a corresponding metacode record.

The record descriptor words specify the length of each metacode record. The end of each 540 byte block may be padded with hex zeros.

Uploading metacode files to the host

To upload metacode files from your PC to an MVS host, use a file transfer package such as IBM 3270, IRMA FT/3270, or IRMA FT/TSO.

Make sure the card for the appropriate file transfer package is installed on your PC, and that the corresponding file transfer software is installed on both your PC and the MVS host.

Uploading with IBM 3270 or IRMA FT/3270

The IBM 3270 and IRMA FT/3270 file transfer packages require that you first prepare the host for receiving metacode files by allocating a data set with the following DCB specifications:

DCB=(LRECL=540,BLKSIZE=540,RECFM=FB)

This specifies a file with a record length of 540 bytes, block length of 540 bytes, and fixed-block (FB) record format.

You then upload a metacode file by typing the following command at the DOS prompt:

```
SEND [path]pcfilename 'hostfilename'  
<Enter>
```

path

is the optional DOS path

pcfilename

is the name of the metacode file on your PC, including extension.

hostfilename

is the host dataset receiving the file (hostfilename must be enclosed in single quotes).

'hostfilename' can refer to either a physical sequential or a partitioned dataset.

For example, if transferring to a physical sequential dataset, 'hostfilename' may be as follows:

'CM.EIO.DATA.UPLOAD'

If transferring to a partitioned dataset, 'hostfilename' can include the stem name of the files being transferred, enclosed in parentheses, as part of the dataset name as follows:

'CM.EIO.DATA.UPLOAD(filename)'

Uploading with IRMA FT/TSO

Use the following procedure to upload a Xerox-format file with IRMA FT/TSO:

Type **FTTSO** <Enter> at the DOS prompt to start the FT/TSO file transfer software and display the IRMA FT/TSO screen shown in the previous figure.

Change the file transfer parameters as follows:

1. **Use the <Tab> key to move the cursor into the data entry field following [Transfer type:].**
2. **Type a name under which you want to save Xerox-labeled file transfer parameters (described in step 4).**
3. **Press <F5>**

The **Transfer Parameters** menu displays in the bottom right corner of the screen.

4. **Use the <Tab> key to move the cursor between transfer parameter fields and enter the following values:**

Block size:	540
Record size:	540
Record format:	FB
Line numbers:	Position: 0 Length: 0
Code table:	STD
Transfer mode:	BINARY
Expand TABs:	NO
Truncate spaces:	NO
U/L case:	ASIS
Space units:	TRKS
Primary qty:	1
Secondary qty:	2

To upload files with IRMA FT/TSO:

- 1. Enter the name of the PC file you want to upload and press <Tab>**

Optionally, precede the file name with a DOS directory path.

- 2. Enter the name of the host dataset to which you want to upload and press <Tab>.**
- 3. Enter the appropriate transfer type for sending Xerox-labeled files (binary).**
- 4. Press <F1> to upload the file.**

Setting up default online JSL

The following is an example of an default online JSL file. The default JSL used at your installation will be different. The bold text represents changes or additions that must be made to ensure compatibility with Elixir generated online metacode.

To ensure that no other jobs referencing this default JSL are affected by these changes, you may want to copy the default JSL to a new name prior to making these edits. For documentation purposes, we will continue to refer this file as the default JSL.

```

-----
DFAULT:JDL
VFU1: VFU    ASSIGN=(1,1),TOF=1,BOF=66;
PDEDFT:      PDE BEGIN=(1,5),PMODE=LANDSCAPE,
              FONTS=(LO112B);
              ACCT USER=NONE;
              VOLUME HOST=IBMONL,CODE=EBCDIC;
              IDEN PREFIX=`$DJDE$`,SKIP=10,
              OFFSET=1,OPRINFO=NO;
              RECORDLENGTH=200;
TBAN1:TABLE CON=(`START JOB`,`START STC`,`START TSU`);
TBAN2: TABLE CON=(`END JOB`,`END STC`,`END TSU`);
CBAN1: CRITERIA CONSTANT=(3,9,EQ,TBAN1);
CBAN2: CRITERIA CONSTANT=(4,8,EQ,TBAN2);
RAXT:      TABLE CONSTANT=X`11111111111111111111`;
ROFT:      TABLE CONSTANT=X`12121212121212121212`;
RSTK: TABLE CONSTANT=X`13131313131313131313`;
RAX:      CRITERIA CONSTANT=(1,8,EQ,RAXT);
ROF:      CRITERIA CONSTANT=(1,8,EQ,ROFT);
RST: CRITERIA CONSTANT=(1,8,EQ,RSTK);
RSTACK TEST=RST,DELIMITER=YES;
BANNER
TEST=(CBAN1,OR,CBAN2),HCOUNT=1,
      TOUNT=1, HJOBNO=(13,4);
      LINE DATA=(0,400),VFU=VFU1,FCB=IGNORE,
      UCSB=IGNORE,FONTINDEX=(0,ZERO);
OUTPUT GRAPHICS=YES,PURGE=YES,
      OFFSET=NONE,
      DUPLEX=YES,FORMAT=PDEDFT;
DFLT: JDE;
END;
-----

```

Make sure that the following statements are correctly specified in your default JSL:

- JDL on the first line must be the same name as the compiled default JSL currently on your printer. If you renamed your default JSL, use that name here.
- **CODE=EBCDIC**
- **OPRINFO=NO**
- **RSTK: TABLE CONSTANT=X`13131313131313131313`;**
- **RST: CRITERIA CONSTANT=(1,8,EQ,RSTK);**

- RSTACK TEST=RST,DELIMITER=YES;

To print .IMG files:

- Specify GRAPHICS = YES in the OUTPUT statement
- Ensure that a graphics handling option is installed on your printer.

Using the METSTA.JSL or METSTC.JSL

To use the METSTA.JSL (black and white) or METSTC.JSL (color or black and white), copy and compile it on the printer. See "Compiling the JSLs on the printer".

Setting up Elixir online JSL

Elixir PrintDriver includes two online JSL files, ELXONC.JSL for color and ELXONL.JSL for black and white. These JSL files include JDE commands for running color jobs and also for standard, legal and A4 paper size. If you want to add additional JDE commands, you can edit the JSL files using one of two methods:

- Load JSL "as is" onto the printer and edit from the printer console

or
- Edit the JSL on the PC using an ASCII text editor and then load it onto the printer.

Note that if you edit the JSL on your PC, you must do the following:

1. **Run the STRIP.EXE utility against the file using the -strip parameter to remove the trailing spaces and line numbers.**
2. **Edit and save the file.**
3. **Run the STRIP.EXE utility against the file using the -pad parameter to add trailing spaces and line numbers.**

4. Load and compile the JSL files on your Xerox printer.

When switching between online and offline meta-code jobs, the appropriate Elixir JSL files need to be recompiled.

Preparing online black and white JSL

The ELXONL.JSL file listed below is supplied with Elixir PrintDriver and is copied to the *drive:\ELIXIR* directory during installation as an example of a black and white online Elixir .JSL file. This file and the default online JDL file, format the online metacode printout.

ELXONL.JSL

The following is a listing of the ELXONL.JSL provided with Elixir PrintDriver. The bold text represents changes or additions that must be made to ensure compatibility with Elixir generated online metacode and your default JSL.

```

-----
-
ELIXIR: JDL
VFELX: VFU    ASSIGN=(1,1),ASSIGN=(12,255),TOF=1,
        BOF=255;
PDELX: PDE BEGIN=(0,0),PMODE=POR,
        FONTS=(UN104B);
RAXT:  TABLE  CONSTANT=X`1111111111111111111';
ROFT:  TABLE  CONSTANT=X`121212121212121212';
RSTK:  TABLE  CONSTANT=X`131313131313131313';
RAX:   CRITERIA CONSTANT=(1,8,EQ,RAXT);
ROF:   CRITERIA CONSTANT=(1,8,EQ,ROFT);
RST:   CRITERIA CONSTANT=(1,8,EQ,RSTK);
VOLUME HOST=IBMONL,LABEL=NONE,
CODE=NONE;
LINE DATA=(0,400),VFU=VFELX,
        PCCTYPE=IBM3211,OVERPRINT=PRINT,
        MARGIN=0,FCB=IGNORE;
OUTPUT GRAPHICS=YES,PURGE=YES,
        OFFSET=NONE,
        DUPLEX=YES,FORMAT=PDELX;
ACCT USER=NONE;
RAUX TEST=RAX;
ROFFSET TEST=ROF;

```

```

RSTACK TEST=RST,DELIMITER=YES;
IDEN PREFIX=X`5BC4D1C4C55B',SKIP=10,
OFFSET=1,OPRINFO=NO;
RECORD LENGTH=1032;
DFLT: JDE;
END;
-----

```

Make sure that the following statements are correctly specified in ELXONL.JSL:

- JDL on the first line must be ELIXIR
- HOST=IBMONL
- CODE=NONE
- DATA=(0,N) (where N is 200 or greater and equals the value specified in the default JSL)
- PREFIX=X`5BC4D1C4C55B' (see below)
- OFFSET=a, SKIP=b (see below)
- GRAPHICS=YES (if a graphics handling option is installed and .IMG files are used - otherwise, NONE).

Initially, the IDEN statement in the ELXONL.JSL file contains the following values:

```

PREFIX=X`5BC4D1C4C55B'
OFFSET=1
SKIP=10

```

Modify the above values as described below:

PREFIX is the EBCDIC hexadecimal representation of the PREFIX parameter specified for IDEN in the default online JCL file (shown as \$DJDE\$ in the default online JCL listing). The value specified for the PREFIX= statement in your ELXONL.JSL must be specified in EBCDIC hexadecimal notation and must exactly match the values specified in your default JSL.

The maximum length of the PREFIX is 20 characters. If it is less than 20 characters, it is padded out with spaces. This will not affect the printing of the meta-code file.

Set OFFSET and SKIP to the values specified in the default JSL on your printer (shown as 1 and 10 in the default JSL example). OFFSET is the leading number of space characters before the \$DJDE\$ Prefix string. SKIP is the total number of characters specified before the beginning of DJDE control characters, including leading spaces.

For example, if PREFIX = \$DJDE\$, SKIP=10, and OFFSET=1, specify the \$DJDE\$ Prefix String in the Setup menu as follows:

b\$DJDE\$bbb

where each b is one space character.

Preparing online color JSL

The ELXONC.JSL file listed below is an abbreviated version of the JSL file supplied with Elixir PrintDriver. This file is copied to the *drive:\ELIXIR* directory during installation as an example of a highlight color online Elixir .JSL file. The supplied version of the JSL also includes jobs for the new highlight colors and additional page sizes. This file and the default online JDL file format the online metacode printout.

ELXONC.JSL

In the following example, the bold text represents changes or additions that must be made to ensure compatibility with Elixir generated online metacode and your default JSL.

-
ELIXIR: JDL
VFELX: VFU ASSIGN=(1,1),ASSIGN=(12,255),TOF=1,
 BOF=255;
PDELX: PDE BEGIN=(0,0),PMODE=POR,
 FONTS=(UN104B);
RED1: IDR ICATALOG=XEROX,

```

        PALETTE='PICTORIAL',
        ILIST = ('BLACK','RED');
BLUE1: IDR ICATALOG=XEROX,
        PALETTE='PICTORIAL',
        ILIST = ('BLACK','BLUE');
GREEN1: IDR ICATALOG=XEROX,
        PALETTE='PICTORIAL',
        ILIST = ('BLACK','GREEN');
RAXT: TABLE CONSTANT=X'111111111111111111';
ROFT: TABLE CONSTANT=X'1212121212121212';
RSTK: TABLE CONSTANT=X'1313131313131313';
RAX: CRITERIA CONSTANT=(1,8,EQ,RAXT);
ROF: CRITERIA CONSTANT=(1,8,EQ,ROFT);
RST: CRITERIA CONSTANT=(1,8,EQ,RSTK);
VOLUME HOST=IBMONL,LABEL=NONE,CODE=NONE;
LINE DATA=(0,400),VFU=VFELX,

PCCTYPE=IBM3211,OVERPRINT=PRINT,
MARGIN=0,FCB=IGNORE;
OUTPUT GRAPHICS=YES,PURGE=YES,
OFFSET=NONE,
DUPLEX=YES,FORMAT=PDELX,
XMP=REPORT;
ACCT USER=NONE;
RAUX TEST=RAX;
ROFFSET TEST=ROF;
RSTACK TEST=RST,DELIMITER=YES;
IDEN PREFIX=X'5BC4D1C4C55B',SKIP=10,
OFFSET=1,OPRINFO=NO;
RECORD LENGTH=1032;
DFLT: JDE;
RED: JOB;
OUTPUT IDR=RED1,IRESULT=BLACK,XMP=REPORT;
ABNORMAL ERROR=CONTINUE,
IMISMATCH=CONTINUE,ISUBSTITUTE=ANY;
BLUE: JOB;
OUTPUT
IDR=BLUE1,IRESULT=BLACK,XMP=REPORT;
ABNORMAL ERROR=CONTINUE,
IMISMATCH=CONTINUE,ISUBSTITUTE=ANY;
GREEN: JOB;
OUTPUTIDR=GREEN1,IRESULT=BLACK,
XMP=REPORT;
ABNORMAL ERROR=CONTINUE,
IMISMATCH=CONTINUE,ISUBSTITUTE=ANY;
END;
-----

```

Make sure that the following statements are correctly specified in ELXONC.JSL:

- JDL on the first line must be ELIXIR
- HOST=IBMONL
- CODE=NONE
- DATA=(0,N) (where N is 200 or greater and equals the value specified in the default JSL)
- PREFIX=X'5BC4D1C4C55B' (see below)
- OFFSET=a, SKIP=b (see below)
- GRAPHICS=YES (if a graphics handling option is installed and .IMG files are used - otherwise, NONE).

Initially, the IDEN statement in the ELXONC.JSL file contains the following values:

```
PREFIX=X'5BC4D1C4C55B'  
OFFSET=1  
SKIP=10
```

Modify the above values as described below:

PREFIX is the EBCDIC hexadecimal representation of the PREFIX parameter specified for IDEN in the default online JCL file (shown as \$DJDE\$ in the default online JCL listing). The value specified for the PREFIX= statement in your ELXONC.JSL must be specified in EBCDIC hexadecimal notation and must exactly match the values specified in your default JSL.

The maximum length of the PREFIX is 20 characters. If it is less than 20 characters, it is padded out with spaces. This will not affect the printing of the meta-code file.

Set OFFSET and SKIP to the values specified in the default JSL on your printer (shown as 1 and 10 in the default JSL example). OFFSET is the leading number of space characters before the \$DJDE\$ Prefix string. SKIP is the total number of characters specified before the beginning of DJDE control characters, including leading spaces.

For example, if PREFIX = \$DJDE\$, SKIP=10, and OFFSET=1, specify the \$DJDE\$ Prefix String in the Setup menu as follows:

b\$DJDE\$bbb

where each b is one space character.

Compiling the JSLs on the printer

Before running your print job, compile the JSLs at the printer.

Compile the edited default online JSL, METSTA.JSL, or METSTC.JSL, and the Elixir online JSL at the printer. Run the compiling command PDL, followed by the JSL file name.

- Elixir color online JSL compile example:

PDL ELXONC.JSL <Enter>

- METSTA.JSL example:

PDL METSTA.JSL <Enter>

Copying metacode files to the printer

To print metacode files, place the printer online and prepare the printer to receive the files by typing:

STA ,DFAULT <Enter> (for Elixir and default online JSLs)

or

STA ,METSTA <Enter> (black and white)

or

STA ,METSTC <Enter> (color)

Then, either run the JCL job for copying files from your host to the printer or use a DataWare card to copy files directly from the PC to the printer.

Note that if you want to use a paper size that is not listed in the supplied Elixir JSL, you can either edit the JSL to include the paper size or perform a minisysgen on the printer to support the appropriate paper size.

Copying files from the host using a JCL file

The following is an example of a JCL file:

```
-----  
//00D42DA      JOB      (8200,Z200-Z20001),`LARACEY  
7-1994',CLASS=A,  
//MSGCLASS=J,NOTIFY=00D42D,USER=00D42D,PRTY=4  
/* JOBPARM L=9999  
/*  
/* JCL TO SEND ELIXIR ONLINE METACODE TO 9790 AND  
9700  
/*  
//XR9700 OUTPUT DEST=R269  
//STEP1 EXEC PGM=IEBGENER  
//SYSPRINT DD SYSOUT=*  
//SYSUT1DDUNIT=DISK,DISP=OLD,  
//DSN=O0D42D.0Z200.IM5816.MET.DATA,  
//DCB=(LRECL=536,BLKSIZE=540,RECFM=VBM)  
//SYSUT2 DD SYSOUT=O,  
// OUTPUT=*.XR9700  
//SYSIN DD DUMMY  
/*  
-----
```

Note that the fixed block file created by Elixir Print-Driver contains nearly all the attributes of a variable-blocked machine (VBM) file. However, in an IBM MVS host environment, the metacode file must be converted to VBM format by coding the DCB parameter for the input (SYSUT1) file as follows:

DCB=(LRECL=536, BLKSIZE=540, RECFM=VBM).

Note also that the VBM format requires the record length to be four bytes less than the block size.

Specifying the DCB parameters, as described previously, causes the MVS system catalog to view the on-line metacode dataset as a VBM file instead of an FB file, which was the record format specified when the file was uploaded. The IEBGENER utility then treats the dataset as a VBM file, and sends each variable length record within the file down the channel to the printer.

Note that online metacode can be delivered to printers attached to host computers with operating environments other than MVS. It is up to the user to determine the correct upload procedure for their environment, as well as a means of delivering the metacode records to the printer.

In VM and DOS environments, you will have to write your own EXEC or equivalent utility to extract each variable length metacode record from the 540 byte blocks of metacode records contained within the on-line metacode dataset.

Copying files using a DataWare card

The DataWare PC interface card connects a PC directly to a Xerox production printer using bus and tag connectors.

The DataWare PC interface card allows you to send online metacode files and Xerox files with 128-byte header records generated by Elixir PrintDriver to your Xerox printer.

To use the DataWare card, add the following device driver in your PC CONFIG.SYS file.

`DEVICE=CHANNEL.SYS unit address`

unit

is the DataWare I/O port you are using (0 - 3), normally 0.

address

is the hexadecimal value of the address of the printer on the I/O channel (between 0 and FE), normally 0F.

Make sure you specify the full DOS pathname for CHANNEL.SYS in your CONFIG.SYS file (for example, C:\DATAWARE\CHANNEL.SYS 0 0F).

For proper DataWare card operation, other parameters may be required in the CONFIG.SYS file. For details, see your DataWare documentation.

To copy files to the printer through the DataWare card, type the following at the PC:

```
COPY /B [ path] filename ;CHAN <Enter>
```

filename

can be any Elixir-generated online metacode file or a Xerox file with a 128-byte header record.

path

is the optional fully-qualified DOS directory search path for filename.

Moving and printing offline metacode

This section describes how to move and print offline metacode files using tape.

You can copy Xerox metacode to and from any 9-track, 1600 BPI tape drive using the Overland TX-8 controller card. The tape devices supported are the Qualstar 1052 and the Qualstar 1260.

Preparing offline ELIXIR.JSL

The ELIXIR.JSL file listed below is supplied with Elixir PrintDriver and is copied to *drive*:\ELIXIR during installation.

ELIXIR.JSL

The following pages list the ELIXIR.JSL file provided with Elixir PrintDriver, required for printing black and white offline metacode on Xerox printers. The bold text represents critical fields that must exactly match the entries specified in Elixir PrintDriver prior to generation of offline metacode.

```

ELIXIR: SYSTEM;
PCCXPS: PCC
INITIAL=TOF,DEFAULT=(IGN,PSP0),
ASSIGN=(X'31',IGN,SK1PSP0);
VFXPS1: VFU ASSIGN=(1,1),TOF=1,BOF=255;
PDFLT: PDE BEGIN=(0,0),PMODE=POR,FORMAT=PDFLT,
        FONTS=(UN104B);

RAXT: TABLE CONSTANT=X'1111111111111111';
ROFT: TABLE CONSTANT=X'1212121212121212';
RSTK: TABLE CONSTANT=X'1313131313131313';
RT: TABLE CONSTANT=A'$RAUX$';

RAX: CRITERIA CONSTANT=(1,8,EQ,RAXT);
ROF: CRITERIA CONSTANT=(1,8,EQ,ROFT);
RST: CRITERIA CONSTANT=(1,8,EQ,RSTK);
RC: CRITERIA CONSTANT=(1,6,EQ,RT);

VOLUME HOST=IBMOS,LABEL=NONE,CODE=NONE;
LINE
DATA=(1,400),VFU=VFXPS1,PCCTYPE=PCCXPS,
OVERPRINT=PRINT,MARGIN=0;
OUTPUT GRAPHICS=YES,PURGE=YES,
        DUPLEX=YES,FORMAT=PDFLT;
ACCT USER=NONE;
RAUX TEST=RAX;
ROFFSET TEST=ROF;
RDELETE TEST=ROF;
IDEN
PREFIX=(X'2024444A4445242020'),OFFSET=1,
        SKIP=10, OPRINFO=NO;
BLOCK LENGTH=1032,OFFSET=0,LTHFLD=2,
        PREAMBLE=4;
RECORDSTRUCTURE=VB,LENGTH=1028,LTHFLD=2,
        PREAMBLE=4;

DFLT: JDE;
END;

```

-

Make sure that the following statements are correctly specified in ELIXIR.JSL

- Set the IDEN PREFIX statement in ELIXIR.JSL to match the PREFIX string used for Dynamic Job Descriptor Entries (DJDEs) at your site.

The value you specify for the [`$DJDE$ Prefix String`] option in the Elixir PrintDriver Meta Options dialog box must also match this value.

- PREFIX=(X`2024444A444524202020') (see below)
- OFFSET=a, SKIP=b (see below)
- GRAPHICS=YES (if a graphics handling option is installed and .IMG files are used - otherwise, NONE).

Initially, the IDEN statement in the ELIXIR.JSL file contains the following values:

```
PREFIX=(X'2024444A444524202020')
OFFSET=1
SKIP=10
```

Modify the above values as described below:

PREFIX is the ASCII hexadecimal representation of the PREFIX parameter specified to match the prefix string used for Dynamic Job Descriptor Entries (DJDE) at your site.

The maximum length of the PREFIX is 20 characters. If it is less than 20 characters, it is padded out with spaces. This will not affect the printing of the meta-code file.

Set OFFSET and SKIP values to match the offset and skip values used for Dynamic Job Descriptor Entries (DJDE) at your site. OFFSET is the leading number of space characters before the `$DJDE$ Prefix string`. SKIP is the total number of characters specified before the beginning of DJDE control characters, including leading spaces.

For example, if PREFIX = \$DJDE\$, SKIP=10, and OFFSET=1, specify the \$DJDE\$ Prefix String in the Setup menu as follows:

b\$DJDE\$bbb

where each b is one space character.

Preparing offline ELIXIC.JSL

The ELIXIC.JSL file listed below is an abbreviated version of the JSL file supplied with Elixir PrintDriver. This file is copied to the *drive*:\ELIXIR directory during installation as an example of a highlight color offline Elixir JSL file. The supplied version of the JSL also includes jobs for the new highlight colors and additional page sizes.

ELIXIC.JSL

The following pages list the ELIXIC.JSL file provided with Elixir PrintDriver, required for printing highlight color offline metacode on Xerox printers. The bold text represents critical fields that must exactly match the entries specified in Elixir PrintDriver prior to generation of offline metacode.

```

ELIXIR: SYSTEM;
PCCXPS: PCC
INITIAL=TOF,DEFAULT=(IGN,PSP0),
ASSIGN=(X'31',IGN,SK1PSP0);
VFXPS1: VFU ASSIGN=(1,1),TOF=1,BOF=255;
PDFLT: PDE BEGIN=(0,0),PMODE=POR, FONTS=(UN104B);
RED1: IDR ICATALOG=XEROX,
      PALETTE='PICTORIAL',
      ILIST = ('BLACK','RED');
BLUE1: IDR ICATALOG=XEROX,
        PALETTE='PICTORIAL',
        ILIST = ('BLACK','BLUE');
GREEN1: IDR ICATALOG=XEROX,
          PALETTE='PICTORIAL',
          ILIST = ('BLACK','GREEN');
RAXT: TABLE CONSTANT=X'1111111111111111';
ROFT: TABLE CONSTANT=X'1212121212121212';
RSTK: TABLE CONSTANT=X'1313131313131313';
RT: TABLE CONSTANT=A'$RAUX$';
RAX: CRITERIA CONSTANT=(1,8,EQ,RAXT);

```


FILE TRANSFER (XEROX)

ROF: CRITERIA CONSTANT=(1,8,EQ,ROFT);
RST: CRITERIA CONSTANT=(1,8,EQ,RSTK);
RC: CRITERIA CONSTANT=(1,6,EQ,RT); VOLUME
HOST=IBMOS,LABEL=NONE,CODE=NONE;
LINE
DATA=(1,400),VFU=VFXPS1,PCCTYPE=PCCXPS,
OVERPRINT=PRINT,MARGIN=0;
OUTPUT GRAPHICS=YES,PURGE=YES,
DUPLEX=YES,FORMAT=PDFLT;
ACCT USER=NONE;
RAUX TEST=RAX;
ROFFSET TEST=ROF;
RDELETE TEST=ROF;
IDEN PREFIX=(X'2024444A444524202020'),OFFSET=1,
SKIP=10, OPRINFO=NO;
BLOCK LENGTH=1032,OFFSET=0,LTHFLD=2,
PREAMBLE=4;
RECORDSTRUCTURE=VB,LENGTH=1028,LTHFLD=2,
PREAMBLE=4;

DFLT: JDE;
RED: JOB;
OUTPUT IDR=RED1,IRESULT=BLACK;
ABNORMAL ERROR=CONTINUE,IMISMATCH=CON-
TINUE, ISUBSTITUTE=ANY;
BLUE: JOB;
OUTPUT IDR=BLUE1,IRESULT=BLACK;
ABNORMAL ERROR=CONTINUE,IMISMATCH=CON-
TINUE, ISUBSTITUTE=ANY;
GREEN: JOB;
OUTPUT IDR=GREEN1,IRESULT=BLACK;
ABNORMAL ERROR=CONTINUE, IMISMATCH=CONTINUE,
ISUBSTITUTE=ANY;
RLEG: JOB;
OUTPUT IDR=RED1, IRESULT=BLACK,
PAPERSIZE=USLEGAL;
ABNORMAL ERROR=CONTINUE,IMISMATCH=CON-
TINUE, ISUBSTITUTE=ANY
BLEG: JOB;
OUTPUT IDR=BLUE1, IRESULT=BLACK,
PAPERSIZE=USLEGAL;
ABNORMAL ERROR=CONTINUE,IMISMATCH=CON-
TINUE, ISUBSTITUTE=ANY
GLEG: JOB;
OUTPUT IDR=GREEN1, IRESULT=BLACK,
PAPERSIZE=USLEGAL;
ABNORMAL ERROR=CONTINUE,IMISMATCH=CON-
TINUE, ISUBSTITUTE=ANY
RA4: JOB;
OUTPUT IDR=RED1, IRESULT=BLACK,
PAPERSIZE=A4;

```

      ABNORMAL ERROR=CONTINUE,IMISMATCH=CON-
TINUE,          ISUBSTITUTE=ANY
BA4: JOB;
      OUTPUT  IDR=BLUE1, IRESULT=BLACK,
              PAPERSIZE=A4;
      ABNORMAL ERROR=CONTINUE,IMISMATCH=CON-
TINUE,          ISUBSTITUTE=ANY
GA4:JOB;
      OUTPUT  IDR=GREEN1, IRESULT=BLACK,
              PAPERSIZE=A4;
      ABNORMAL ERROR=CONTINUE,IMISMATCH=CON-
TINUE,          ISUBSTITUTE=ANY
END;
-----
-

```

All lines after the DFLT: JDE; statement must be added at the end of all .JSL files when preparing the JSL for printing on highlight color printers or printing on USLEGAL and A4 paper sizes.

Make sure that the following statements are correctly specified in ELIXIC.JSL

- Set the IDEN PREFIX statement in ELIXIC.JSL to match the PREFIX string used for Dynamic Job Descriptor Entries (DJDEs) at your site.

The value you specify for the [\$DJDE\$ Prefix String] option in the Elixir PrintDriver Meta Options dialog box must also match this value.

- PREFIX=(X'2024444A444524202020') (see below)
- OFFSET=a, SKIP=b (see below)
- GRAPHICS=YES (if a graphics handling option is installed and .IMG files are used - otherwise, NONE).

Initially, the IDEN statement in the ELIXIC.JSL file contains the following values:

```

PREFIX=(X'2024444A444524202020')
OFFSET=1
SKIP=10

```

Modify the above values as described below:

PREFIX is the ASCII hexadecimal representation of the PREFIX parameter specified to match the prefix string used for Dynamic Job Descriptor Entries (DJDE) at your site.

The maximum length of the PREFIX is 20 characters. If it is less than 20 characters, it is padded out with spaces. This will not affect the printing of the meta-code file.

Set OFFSET and SKIP values to match the offset and skip values used for Dynamic Job Descriptor Entries (DJDE) at your site. OFFSET is the leading number of space characters before the \$DJDE\$ Prefix string. SKIP is the total number of characters specified before the beginning of DJDE control characters, including leading spaces.

For example, if PREFIX = \$DJDE\$, SKIP=10, and OFFSET=1, specify the \$DJDE\$ Prefix String in the Setup menu as follows:

b\$DJDE\$bbb

where each b is one space character.

<i>Command</i>	<i>to print...</i>
STA DFLT,ELIXIR	
STA RED,ELIXIR	letter size using red toner
STA BLUE,ELIXIR	letter size using blue toner
STA GREEN,ELIXIR	letter size using green toner
STA CYAN,ELIXIR	letter size using cyan toner
STA MAGEN,ELIXIR	letter size using magenta toner
STA CARDN,ELIXIR	letter size using cardinal toner
STA ROYAL,ELIXIR	letter size using royal toner

STA VIOLET,ELIXIR	letter size using violet toner
STA BROWN,ELIXIR	letter size using brown toner
STA RUBY,ELIXIR	letter size using ruby toner
STA GRAY,ELIXIR	letter size using gray toner
STA RLEG,ELIXIR	legal size using red toner
STA BLEG,ELIXIR	legal size using blue toner
STA GLEG,ELIXIR	legal size using green toner
STA CYLEG,ELIXIR	legal size using cyan toner
STA MAGLEG,ELIXIR	legal size using magenta toner
STA CARLEG,ELIXIR	legal size using cardinal toner
STA ROYLEG,ELIXIR	legal size using royal toner
STA VIOLEG,ELIXIR	legal size using violet toner
STA BRLEG,ELIXIR	legal size using brown toner
STA RUBLEG,ELIXIR	legal size using ruby toner
STA GRLEG,ELIXIR	legal size using gray toner
STA RA4,ELIXIR	A4 size using red toner
STA BA4,ELIXIR	A4 size using blue toner
STA GA4,ELIXIR	A4 size using green toner
STA CYA4,ELIXIR	A4 size using cyan toner
STA MAGA4,ELIXIR	A4 size using magenta toner
STA CARA4,ELIXIR	A4 size using cardinal toner
STA ROYA4,ELIXIR	A4 size using royal toner

STA VIOA4,ELIXIR	A4 size using violet toner
STA BRA4,ELIXIR	A4 size using brown toner
STA RUBA4,ELIXIR	A4 size using ruby toner
STA GRA4,ELIXIR	A4 size using gray toner

To print offline black-and-white metacode, enter the following command:

STA DFLT,ELIXIR <Enter>

Note also that when changing paper sizes, you must perform a Mini-Sysgen on the printer to support the appropriate paper size.

Uploading with 871

Use the following procedure to upload a Xerox-format file with an 871 device. The MET2871 utility reformats metacode files for correct processing through an 871 device that connects a mainframe computer and a Xerox printer.

MET2871 *filename* <Enter>

filename

is the full pathname of the file you want to upload including the extension.

Issue the command from the directory in which MET2871 is located (*drive:\ELIXIR*).

Printing offline Xerox-labeled files

This section describes how to move and print Xerox-labeled files using tape and diskettes.

Using diskettes to move .MET files

Normally, metacode files are too large to copy to a Xero-formatted diskette. For large offline metacode files, use tape to transfer the files to the printer. See "Using tape to move files" for details.

For smaller metacode files, you can use the *Metacode Type* [XNS/DISK] option in the Conversion Properties dialog box. See the "META setup (Xerox 300dpi only)" section in chapter 2, "Elixir PrintDriver basics".

To print offline files created by Elixir PrintDriver (using the [XNS/DISK] option) on your PC hard disk, use Elixidisk to copy the files to a Xerox production format diskette, then copy the diskette files to the printer hard disk. Refer to the "Stand-alone utilities" chapter for further information about Elixidisk.

Using tape to move files

To print offline Xerox-labeled files written to tape, follow these steps:

1. **Set the [Output to:] option in the Meta Options dialog box to TAPE and run Elixir PrintDriver.**

If you have already created offline files on your disk drive, use the DSK2TAP utility (supplied with Elixir PrintDriver) to copy the disk files to tape. Refer to the "Stand-alone utilities" chapter for further information about DSK2TAP.

2. **Make sure you have the compiled ELIXIR.JSL and ELIX2.JSL offline control files on the printer.**
3. **Mount the tape containing the files.**
4. **At the console, type:**

```
COP TAP REA LAB ALL <Return>
```
5. **Compile FSL files, if any**
6. **Sample the files.**

Offline control files

The ELIXIR.JSL and ELIX2.JSL files are supplied with Elixir PrintDriver and are copied to the *drive:\ELIXIR* directory during installation.

Make sure you compile ELIXIR.JSL and ELIX2.JSL after copying them to your printer (the compiled files have .JDL extensions).

Mounting the tape

Mount the tape containing the Xerox-labeled files and type the following command to copy all files from tape to the printer disk:

```
COP TAP REA LAB ALL <Enter>
```

Compiling FSL files

If you are printing .FSL files, compile them into FRM format on your printer (or use the ElixSys Desktop or ElixSys Desktop for HighLight Color to convert FSL files to FRM format on your PC).

Printing FRM files

To print FRM files, first load the Xerox printer command files (.CMD and .MSC), created by Elixir PrintDriver for each FRM file, on the printer.

Note that each Xerox printer command file stem name is derived from the print file you convert according to the following rules:

- For print file names with six or more characters (excluding the extension), the stem name consists of the first (left) six characters.
- For print file names with less than six characters (excluding the extension), the stem name consists of all the characters of the file name.

After loading Xerox printer command files on the printer, print FRM files by entering the following at the printer console:

@xxxxxx

where xxxxxx is the stem name (file name without extension) of the Xerox printer command files created by Elixir PrintDriver.

SPUR

You can send online metacode files and Xerox files with 128-byte headers to a Xerox printer through the Spur device by using the Elixir SPUR utility.

See the "Stand-alone utilities" chapter for more information about the SPUR interface.

6. File transfer (AFP)

This chapter describes procedures for transferring files between your PC and an MVS host computer, and between your PC and an AS/400 computer using a PC-to-host file transfer package.

PC-to-MVS host file transfer

You can use any host-to-PC file transfer package that allows binary file transmission to transfer AFP font files between an MVS host and your PC.

Elixir has tested and verified the performance of the following file transfer packages:

- IBM 3270 (recommended)
- IRMA FT/3270 (recommended)
- IRMA FT/TSO

Binary file transfer ensures that ASCII to EBCDIC translation does not occur. This requirement is necessary because all files (except OGL files) generated on your PC by Elixir PrintDriver are in EBCDIC format.

The above packages also allow you to transfer source OGL files produced by Elixir PrintDriver to an MVS host. Since source files created by Elixir PrintDriver are in ASCII format, source file uploading requires conversion to EBCDIC.

Procedures for transferring files with the IBM 3270 and IRMA FT/3270 packages are similar and described in a single section.

Procedures for transferring files with IRMA FT/TSO are described in a separate section.

Installation

To use any of the above file transfer packages, first install the appropriate PC card, the PC file transfer software, and the host-resident software.

Contact your company's technical support staff if you are not sure whether all components installed correctly.

Pre-transfer considerations

The following sections describe setup procedures on the MVS host and on your PC before you start uploading files.

Uploading with IBM 3270 or IRMA FT/3270

IBM 3270 and IRMA FT/3270 do not create host datasets as part of the file transfer procedure. To upload object-format AFP files (except OGL files) you are first required to allocate a host dataset with the following DCB parameters:

```
RECFM=VBM  
LRECL=8205  
BLKSIZE=8209
```

Uploading with IRMA FT/TSO

IRMA FT/TSO requires that your object-format AFP files (all except OGL files) be fixed-length record files. To generate the correct fixed-length record files, select IRMA as the output format in the Job Print Ticket dialog box. Once on the host, the files break up into VBM format by using IEBGENER (see the "Using IRMA FT/TSO" section in this chapter).

Output directory information

The following table shows the default directory to which each AFP file is written after conversion by Elixir PrintDriver:

<u>File Type</u>	<u>Extension</u>	<u>Output directory</u>
Font	*.240 or .300	\ELIXIR\FONTS\I38OUT (unbounded box fonts)
Font	*.240 or .300	\ELIXIR\FONTS\AFPOUT (bounded box fonts)
AFPDS	.AFP	\ELIXIR\DOCS\AFPOUT
Overlay	.OVE	\ELIXIR\FORMS\OVEOUT
Page segment	.SEG	\ELIXIR\PICS\SEGOUT

* The .240 or .300 font file extension is normally stripped when the font file is transferred to the printer.

Using IBM 3270 or IRMA FT/3270

The file transfer procedure is determined by the type of file you want to upload:

- Source text files such as .OGL files
- Object-format AFP files such as multi-page AFPDS, one-page overlays (OVE), AFP fonts, or page segment images

Object-format AFP files are not readable, and are stored in datasets with the following DCB specifications:

```
RECFM=VBM
LRECL=8205
BLKSIZE=8209
```

To upload an AFP object-format file to your host using one of the 3270 file transfer packages, follow these steps:

- 1. Allocate a dataset on the host with the following DCB specifications:**

**DCB=(LRECL=8205,BLKSIZE=8209,
RECFM=VBM)**

2. Enter the following command at the DOS prompt:

**SEND [path]pcfilename 'hostfilename'
CRLF <Enter>**

This uploads the object-format file *pcfilename* to the host dataset *hostfilename*. A DOS directory path before *pcfilename* is optional.

Uploading text files

To upload a text file (such as a source OGL file), follow these steps:

1. Allocate a dataset on your host with the following DCB parameters:

**DCB=(LRECL=255,
BLKSIZE=3000,RECFM=VB)**

2. Enter the following command at the DOS prompt:

**SEND [path]pcfilename 'hostfilename'
ASCII CRLF <Enter>**

This uploads the text file *pcfilename* to the host dataset *hostfilename*. A DOS directory path before *pcfilename* is optional.

The ASCII parameter specifies that the file be converted from ASCII to EBCDIC.

The CRLF parameter specifies that records in the PC file are delimited by carriage return/line feed combinations.

Using IRMA FT/TSO

This section describes how to use IRMA FT/TSO to upload text files (such as OGL source) and AFP object-format files.

Uploading files with FT/TSO

FT/TSO cannot transfer variable-length record files in binary mode. To upload a variable-length file, follow these steps:

1. **Create the file as a fixed-blocked (FB) format file by selecting [IRMA] as the output format in the Job Print Ticket dialog box.**
2. **Upload the file.**
3. **Convert the uploaded file to VBM format using IEBGENER.**

Elixir PrintDriver uses a default block size of 8209 for files formatted for a host dataset. Some files such as IBM Core fonts may require a larger block size. If a block length error message displays during conversion, you may need to increase the default block size for Elixir PrintDriver.

To change the block size, use an ASCII editor to modify the \ELIXIR\DESKTOP\SYSTEM\AFP.INI file Irma_block_length parameter value for all conversions (OVE, font, and Pseg). IBM recommends a block size of 12288 for font resources under new PSF versions. The AFP.INI file is similar to the following:

```
%%Elixir_AFP_Configuration:2.10 August1993
%%Target_environment=MVS
Irma_block_length=8209
```

Parameters for uploading object-format AFP files

To upload an object-format AFP file (in FB format), set the FT/TSO parameters using the following values:

Block size:	Irma_block_length value (AFP.INI file)
Record size:	same as above block size
Record format	FB
Line numbers:	Position: 0 Length: 0
Code table:	STD
Transfer mode:	BINARY
Expand tabs:	NO
Truncate spaces:	NO
U/L case:	ASIS
Space units:	TRKS
Primary QTY:	1
Secondary QTY:	2

Uploading the file with FT/TSO

To send files with FT/TSO, follow these steps:

- 1. Change the current directory to the directory which contains the FT/TSO file transfer software.**
- 2. At the DOS prompt, type:**

FTTSO <Enter>
- 3. At the PC file name prompt, enter the name of the PC file you want to upload and press <Tab>.**

Optionally, precede the name of the file with the DOS directory path containing the AFP file you want to upload.

- 4. At the dataset name prompt, enter the name of the host dataset to which the PC file is to be uploaded and press <Tab>.**
- 5. Enter the appropriate transfer type.**

The transfer type you specify depends on whether you are transferring AFP object files, like page segment images or .OVE format forms, or text files like OGL format forms.

A transfer type is a collection of file transfer parameters that you can store and name. For details, refer to your FT/TSO documentation.

6. Press <F1> to upload the file from the PC to the host.

Converting the host file to VBM format

After uploading an FB file, use IEBGENER to convert the file to VBM format.

In the IEBGENER JCL job, specify the SYSUT1 and SYSUT2 (input and output) DCB parameters as follows if you created the file by selecting the [IRMA] output format option:

```
DCB=(LRECL=blocksize-4,BLKSIZE=blocksize,RECFM=VBM)
```

When you configure the DCB parameters as above, the MVS system catalog views the AFP dataset as a VBM file (instead of an FB file, the RECFM initially assigned to the file).

The target host library (SYS1.FONTLIB or user-defined) to which the resources are copied after the IEBGENER copy must have a block size that matches that of the Irma_block_length value in the AFP.INI file, and a record length equal to the block size minus 4. Most font libraries installed for PSF version 2 have a block size of 12288 and a record size of 12284.

The following section provides a sample JCL to perform this procedure.

Converting FB to VBM format

Use the following JCL to convert a fixed-block file to VBM format. This conversion is necessary if you want to upload a file using IRMA FT/TSO.

The JCL specifies a VBM record format on both the SYSUT1 and SYSUT2 steps of the IEBGENER.

```
//LOADSEG JOB (8200,Z200-Z20001),'LYNN 7-1994',CLASS=A,  
//      MSGCLASS=J,NOTIFY=00D42D,USER=00D42D,PRTY=4  
//*  
//* JCL TO CONVERT FB FILE TO VBM FORMAT  
//*  
//STEP1      EXEC PGM=IEBGENER  
//SYSPRINT  DD SYSOUT=*  
//SYSUT1    DDDSN=ELIXIR.PSEG.UPLOAD (S1TEST),DISP=SHR,  
//          DCB=(RECFM=VBM,LRECL=8205,BLKSIZE=8209)  
//SYSUT2    DD DSN=SYS1.PSEGLIB (S1TEST),DISP=SHR,  
//          DCB=(RECFM=VBM,LRECL=8205,BLKSIZE=8209)  
//SYSIN     DD DUMMY
```

PC-to-IBM AS/400 file transfer

This section describes how to upload your files to an AS/400 computer. The steps involved are as follows:

- Specify [AS400] as the output format in the appropriate dialog boxes
- Create an AS/400 library and file to which converted files will be uploaded. Note the distinction between files on a PC and on an AS/400 - a PC file is analogous to an AS400 member; an AS/400 file is a second-level descriptor for a member as follows - library/file(member)
- Create a PC File Descriptor File on your PC
- Upload files to the AS/400
- Process uploaded files for use by the OS/400 operating system.

Creating a host library and file

To create a library and file on an AS/400 host, enter CRTPF on the AS/400 console keyboard. Executing this command displays screens in which you enter information about the library and file name you want to create. Specify the following:

- The library name and file name you want to create

- Record length = 1024
- Record Format Level Check NO

Press <Enter> to confirm the creation of the file and library you specified.

Create a PC file descriptor file and path

You create a PCFDF (which you can use whenever you transfer files) by downloading an AS/400 file to your PC using PC Support. Change the current directory to the directory in which PC Support is installed and enter the following command:

PCSMENU <Enter>

This command displays the PC Support main menu.

1. Press <Enter>.

The PC Support first menu displays.

2. Select [Transfer data] and press <Enter>.

The File transfer direction window displays.

3. Select [1. Transfer data from host system to PC] and press <Enter> to display the AS/400 System to PC Transfer screen, from which you can create a transfer request.

4. Select [Create] and press <Enter>.

The Create transfer request window displays.

5. Press <Enter>.

The System-to-PC Transfer Request screen displays.

6. Specify the following on the above screen:

- **FROM:** *libraryname/filename*

(libraryname and filename are the library name and file name you created on the AS/400.)

- **Output device:** [3. Disk]

- **To:** *drive:\path\pcfilename*

drive: - is the drive on which you want to transfer the AS/400 file (which is empty)

path - is the full path to the directory in which you want to create a PCFDF

pcfilename - is the stem name of the PCFDF you want to create

7. Press <Page Down>.

The Transfer Request screen displays.

8. Select [No conversion] for [PC file type]. Press <F5> to save your selections and download the empty AS/400 file to the drive and directory you specified.

In the System-to-PC Transfer screen, an ASCII PCFDF with the stem name you specified and .FDF extension generates in the PC directory you specified. The file contains the following lines:

```
PCFDF
PCFT 6
PCFL AS/400filename 10 1024
```

Uploading files

You are now ready to upload AFP-format files to your AS/400 computer.

Make sure you specify the [AS400] option in the Job Print Ticket dialog box .

To upload files, invoke PC Support on your PC , select Transfer Data, then select Transfer Data from PC to host , and press <F10> to display the Create a PC to AS/400 transfer request screen.

1. Specify the following values on the transfer screen:

- **TO:** *libname/filename*

libname and *filename* are the library name and file name you created on the AS/400.

- **From:** *drive:\path\pcfilename*

drive: - is the drive which contains the file(s) to be uploaded

path - is the full path to the directory containing the file(s) to be uploaded

pcfilename - is the name(s) of the file(s) to be uploaded

- **Use PC File Description** [Yes]

- **Descriptionfilename:**

drive:\path\pcfilename.fdf

drive: - is the drive which contains the PCFDF

path - is the full path to the directory containing the PCFDF

pcfilename - is the name of the PCFDF with .FDF extension

- **Create AS/400 objects:** [1. Yes, create member]

2. Press <Enter>.**3. Press <F5> to start the transfer.**

The Run Transfer screen displays.

If an AS/400 member with the same name in the library and file already exists, the program prompts you for overwrite confirmation.

After files upload, the number of records transferred displays on the Transfer confirmation screen.

Processing uploaded files

After uploading AFP files to an AS/400, the files must be converted by an OS/400 operating system utility to a format that is usable by the OS/400 operating system, as described in the following sections:

Fonts

To convert a font, enter the following command:

```
CRTFNTRSC FNTRSC(QFNTPCPL/filename) FILE  
(libname/filename)
```

filename

is the name of the coded font, code page, or character set sent to the AS/400. All three components of a font must be converted using the CRTFNTRSC command.

libname

is the name of the AS/400 library containing the font resources.

Page segments

To convert a page segment image, enter the following command:

```
CRTPAGSEG filename
```

filename

is the name of the page segment created on the AS/400.

Overlays

To convert an overlay, enter the following:

```
CRTOVL filename
```

filename

is the name of the overlay created on the AS/400.

AFPDS

To convert and print AFPDS (single or multi-page AFP documents), enter the following command:

PRTAFPDTA FILE (*libname/filename*) DEV(*printer-name*) FIDELITY (*ABSOLUTE)

filename

is the name of the AFPDS dataset to be converted and printed.

libname

is the library containing the AFP file.

FIDELITY(*ABSOLUTE)

specifies that you want the file printed exactly as is.

printername

is the logical name of the printer as specified on the AS/400.

Note that you must configure the printer on the AS/400 as an AFP print device.

7. Elixir utilities

This chapter describes the Elixidisk (Xerox only) and stand-alone batch utilities provided with Elixir Print-Driver for NT. These utilities are copied to the *drive:\ELIXIR* directory during installation (*drive:* is the drive on which you install Elixir PrintDriver).

You can install the into a custom directory you created specifically for this purpose (by clicking on the Browse button in the Select Destination Directory dialog box and selecting the directory). The default install copies these utilities to the *drive:\ELIXIR* directory (*drive:* is the drive on which you install Elixir software).

If you installed these files in a custom subdirectory, substitute the name of that directory for *drive:\ELIXIR* in all cases given in this document.

Note: Diskettes must be Xerox-formatted prior to use with the Elixidisk utilities.

This chapter provides information on the following:

- General information
- Elixidisk utilities (XDIR, XCPY, and XDEL)
- Limitations/Conditions
- DISP
- DSK2TAP
- MAKEKRNE
- MET2871
- METACOMP
- PACK
- SHOWBLOK
- SPUR
- STRIP
- TAP2DSK

Using the utilities

Note: All utilities must be run on a DOS command line.

The parameters required to run each utility display on your screen when you enter only the utility name from the *drive:\ELIXIR* directory.

Most of the utilities accept DOS wildcard characters (see your DOS documentation for instructions on the proper use of wildcards). When using wildcards, specify only the desired file or files.

For optional utility parameters enclosed in brackets [], enter the appropriate parameters for the option as described in the Usage section of the utility, or leave them blank if you want to use the default (the default is listed first in the list following the parameter).

When specifying utilities, either do not specify parameters (to use the default for each parameter) or specify all the parameters. *You cannot skip parameters.*

Elixidisk Utilities (Xerox only)

Elixidisk consists of the XDIR, XCPY, and XDEL utilities. These utilities perform the following:

- XDIR displays directory information about Xerox-format diskettes
- XCPY copies files between Xerox-format diskettes and the hard drive on your PC
- XDEL delete files from Xerox-format diskettes.

For users with compatible PCs, the Elixidisk utilities provide an additional option. If the Elixidisk utilities are not supported by your PC (see the "Limitations/Conditions" section), use one of the standard transfer options listed above.

ElixDisk runs on most IBM and compatible PCs with the following conditions:

- ElixDisk utilities that read and write floppy diskettes used for carrying data to and from the x9700 printers function on most compatible PCs. ElixDisk utilities may not function on PCs with motherboard BIOS chips that contain implementations that prohibit operation, however.
- ElixDisk operates with any Xerox standard format file, that is, one divided into 512-byte blocks with or without tape headers.
- ElixDisk is not compatible with the ROM BIOS on some PCs (for example, the Compaq DeskPro), and may not operate correctly if the ROM BIOS on your PC is dated 1987 or earlier. Use a PC utility program (such as Norton Utilities) to check your BIOS date.
- External disk drives are not supported.

ElixDisk utilities may not be supported by the IBM PS/2. PS/2 users can copy files to the host using a supported PC-to-mainframe communications package.

ElixDisk utilities are provided as originally packaged, and may not run with all PCs or configurations due to manufacturer changes in initial hardware or software. Elixir continues to provide support for ElixDisk utilities but cannot guarantee their operation with all systems and configurations.

XDIR

XDIR displays a directory of files for Xerox 4XXX, 87XX, or 97XX diskettes.

Usage **XDIR** *drive*: [*filename*] [-HIGH] [-LOW] <Enter>

drive

is the diskette drive specification (A: or B:)

filename

is any six-character file name with a three-character extension. Wildcards are allowed.

-HIGH

Indicates that the diskette is formatted at high-density.

-LOW

Indicates that the diskette is formatted at low-density.

Directory information

If Elixir is specified in your path statement, then run XDIR from any directory. If *drive:\ELIXIR* directory is not in the path, the directory path information must be provided when XDIR is run.

Example 1

To display a list of all files with .FNT extensions on a Xerox-format diskette, type the following commands from *drive*:

1. CD \ELIXIR <Enter>

The current directory changes to *drive:\ELIXIR*.

2. XDIR A: *.FNT -LOW <Enter>

XDIR displays all files on your Xerox-format low-density diskette with .FNT extensions.

Example 2

To display a list of all files on a Xerox-format diskette, from *drive*:, type:

1. CD \ELIXIR <Enter>

The current directory changes to *drive:\ELIXIR*.

2. XDIR A:-LOW <Enter>

XDIR displays a list of all the files on your low-density Xerox-format diskette.

XCPY

The XCPY command allows you to:

- copy Xerox standard format files from your PC hard disk to a Xerox-format diskette
- copy Xerox standard format files from Xerox-format diskettes to your PC hard disk.

Copying from hard disk to Xerox-format diskette

To use XCPY to copy Xerox standard format files from a PC hard disk to a Xerox-format diskette, type:

Usage **XCPY** [*drive1:*] [*path1*] *filename* *drive2:* [*path2*] [*-HIGH*] [*-LOW*] <Enter>

drive1:

is the source drive. If not specified, the DOS drive from which you run XCPY is the default source drive and is the drive on which XCPY searches for files.

path1:

is the optional DOS directory path that indicates the location on *drive1:* in which files specified by *filename* reside.

When writing files from your hard disk to a Xerox-format diskette, XCPY searches the \ELIXIR directory for a file if you did not specify *path1*.

To write 5Word format fonts to a Xerox-format diskette, you must specify the path to the *drive:\ELIXIR* directory.

XCPY searches for all other Xerox file types (such as .MSC) in the directory and drive from which you invoke XCPY.

filename

is any six-character file name and three-character extension recognized by production printers, such as .FNT, .LGO, .JSL, and metacode extensions. Wildcards are allowed, except in file name extensions.

drive2

is the destination drive, and must be specified.

path2

is the optional destination path, if *drive1* is a floppy diskette.

drive1: can be any drive specification between A: and Z:; *drive2*: must be either A: or B:.

Multiple volume copies are now supported. When a disk is full, you are prompted for another disk.

-HIGH

Indicates that the diskette is formatted at high-density.

-LOW

Indicates that the diskette is formatted at low-density.

information Directory
Run XCPY from the *drive:\ELIXIR* directory if you have not specified *drive:\ELIXIR* in a DOS PATH= statement.

Example 1 To copy all files with .FNT extensions from the *drive:\ELIXIR* directory to a Xerox-format diskette in the B: drive, from *drive:*, type:

XCPY \ELIXIR*.FNT B: -LOW <Enter>

XCPY copies all files with .FNT extensions in the *drive:\ELIXIR* directory to the low-density Xerox-format diskette in the B: drive.

Example 2 To copy FORM1.MET from your PC to a Xerox-format diskette in the A: drive, type:

XCPY FORM1.MET A: -LOW <Enter>

XCPY searches the \ELIXIR directory for the FORM1.MET file. It then copies the file to the Xerox-format diskette in the A: drive.

XDEL

The XDEL command deletes files on a Xerox 4XXX, 87XX, or 97XX diskette.

Usage **XDEL** *drive:filename* [-HIGH] [-LOW] <Enter>

drive

is the diskette drive specification (A: or B:).

filename

is any six-character file name and three character extension. Wild cards are allowed.

-HIGH

Indicates that the diskette is formatted at high-density.

-LOW

Indicates that the diskette is formatted at low-density.

Directory information

If Elixir is specified in your path statement, then run XDEL from any directory. If *drive:\ELIXIR* directory is not in the path, the directory path information must be provided when XDEL is run.

Example

To delete all files with .LGO extensions on a Xerox-format diskette in drive A:, type:

XDEL A: *.LGO -LOW <Enter>

XDEL deletes all files with .LGO extensions on the low-density Xerox-format diskette in the A: drive.

Limitations/Conditions

ElixDisk runs on most IBM and compatible PCs with the following conditions:

- ElixDisk utilities that read and write floppy diskettes carry data to and from the 9700 printers function on most compatible PCs. ElixDisk is not compatible with the ROM BIOS on some PCs (for example, the Compaq DeskPro), and may not operate correctly if the ROM BIOS on your PC is dated 1987 or earlier. Use a PC utility program (such as Norton Utilities) to check your BIOS date.

- The Elixidisk utilities operate with any Xerox standard format file, that is, one divided into 512-byte blocks with or without tape headers.
- External disk drives are not supported.
- Elixidisk utilities may not be supported by the IBM PS/2. PS/2 users can copy files to the host using a supported PC-to-mainframe communications package.
- If you are an Elixisys Desktop user, when accessing or copying files to or from Xerox 9700 format diskettes from within the Elixisys Desktop System Diskette dialog box, the Elixidisk utilities must access the diskette at a hardware level that Windows may not allow (the utilities must directly access the real (BIOS) memory area, while Windows makes only virtual memory available for these utilities).

Due to these restrictions, Elixir cannot guarantee the results of Xerox 9700 diskette operations from the Desktop. If you experience problems accessing or copying files to or from a Xerox 9700 format diskette, you should use the Elixidisk utilities from the DOS command line.

CAUTION: Elixidisk utilities are provided as originally packaged and may not run with all PCs or configurations due to manufacturer changes in initial hardware or software. Elixir continues to provide support for Elixidisk utilities but cannot guarantee their operation with all systems and configurations.

DSK2TAP

DSK2TAP copies files from the PC hard disk to an attached tape drive unit. Elixir supports tape drive units that use the Overland tape TX8 controller. The Qualstar 9 track 1600 or 6250 bpi model is recommended. Make sure the appropriate hardware and software is installed on your PC.

DSK2TAP always creates files with 128-byte headers, except metacode files, which do not have headers.

Usage DSK2TAP filename <Enter>

filename

is any DOS file name, including the file extension. Wildcards are allowed.

Directory information

Run DSK2TAP from the directory in which files to be copied reside, and precede the DSK2TAP command with *drive:\ELIXIR*. (The full command is *drive:\ELIXIR\DSK2TAP filename* if you have not specified *drive:\ELIXIR* in your DOS PATH= statement).

Example 1 To copy all files named *.MET located in the *drive:\ELIXIR\DOCS\METAOUT* directory of the hard disk to the tape drive, type:

1. **CD \ELIXIR\DOCS\METAOUT**

<Enter>

The current directory changes to *drive:\ELIXIR\DOCS\METAOUT*.

2. ***drive:\ELIXIR\DSK2TAP *.MET***

<Enter>

DSK2TAP copies all files with the extension .MET to tape.

Example 2 To copy all fonts from the *\ELIXIR\FONTS\X97OUT* directory to the tape drive, type:

1. CD \ELIXIR\FONTS\X97OUT <Enter>

The current directory changes to *drive:\ELIXIR\FONTS\X97OUT*.

2. *drive:\ELIXIR\DSK2TAP *.FNT*

<Enter>

This copies all .FNT files from the current directory to the tape drive.

MAKEKRNE

The MAKEKRNE utility allows Elixir PrintDriver users to create .KRN files (for use in Elixir PageHandler) from Elixir font (.HDR) files. The .KRN files are written to the *drive:\ELIXIR\FONTS\SCREEN* directory.

Usage MAKEKRNE *filename.HDR* <Enter>

filename

is the full pathname of the Elixir font file (.HDR). Wildcards are allowed.

Directory information

Run MAKEKRNE from the directory in which the input file resides. If you have not specified *drive:\ELIXIR* in a DOS PATH= statement, precede the MAKEKRNE command with *drive:\ELIXIR*.

MET2871

The MET2871 utility reformats metacode files for correct processing through an 871 device that connects a mainframe computer and a Xerox printer.

Usage MET2871 *filename.ext* <Enter>

filename

is the full pathname of the file for conversion.

.ext
is the file extension.

**Directory
information**

Issue the command from the directory in which MET2871 is located (*drive:\ELIXIR*).

METACOMP

You can use this utility if you did not select [Image Compression] in Elixir PrintDriver's Metacode Converter Options dialog box.

The METACOMP utility compresses .IMG format graphics in metacode files generated by Elixir PrintDriver.

Usage METACOMP *filename* [PARTIAL | FULL] <Enter>

filename

is the offline or online metacode file name, including file extension. Wildcards are not allowed.

PARTIAL

compresses duplicate lines and blank (null) lines in an .IMG file.

FULL

compresses duplicate lines, blank (null) lines, and optimizes for white space in an .IMG file.

After processing with METACOMP, the file will have a .CMP extension.

**Directory
information**

You must execute the command from the directory in which files to be compressed reside using the full command:

drive:\ELIXIR\METACOMP filename [PARTIAL | FULL].

PACK

The PACK utility converts .JSL and other ASCII format files to standard-labeled Xerox-format files. PACK places a standard Xerox header on the ASCII file, strips off text beyond column 80, and packs data into 512-byte blocks. PACK also converts Xerox-format files to 80-byte record length ASCII format.

Usage `PACK filename.ext [convert] <Enter>`

filename.ext

is the 80-byte record format file name which must include the extension. Wildcards are allowed.

convert

BLOCK (the default) converts 80-byte record length ASCII format files to Xerox-format files (128-byte header followed by 512-byte blocks of data). UNBLOCK converts Xerox-format files from 512-byte blocks to ASCII.

Directory information

Run PACK from the directory in which files to be converted reside, using the full command, for example `C:\ELIXIR\PACK filename.ext BLOCK`. If you have specified a `PATH=drive:\ELIXIR` statement, you do not need to specify `drive:\ELIXIR\` in the command.

SHOWBLOK

The SHOWBLOK utility displays information about any ElixirKeys attached to your PC and the Elixir applications you are authorized to run.

Usage `SHOWBLOK <Enter>`

Directory information

Run SHOWBLOK from the `\ELIXIR` directory. If you have not specified `drive:\ELIXIR` in your `DOS PATH=` statement, precede the SHOWBLOK command with `drive:\ELIXIR\`.

Example To use SHOWBLOK to determine the ElixKeys present on your PC, change the current directory to *drive:* then type:

1. **CD \ELIXIR <Enter>**

The current directory changes to *drive:\ELIXIR*.

2. **SHOWBLOK <Enter>**

If the ElixFont and ElixGraphics applications and keys are installed on your PC, a message similar to the following displays on your screen:

```
ELIXIFONT BLOCK PRESENT
ELIXIGRAPHICS BLOCK PRESENT
```

SPUR

The Spur device connects a PC to a Xerox production printer using bus and tag connectors.

Online metacode files and Xerox files with 128-byte headers are sent to a Xerox printer through the Spur device by using the Elixir SPUR utility.

SPUR utility

The SPUR utility prepares online metacode files or Xerox standard labeled files for transmission through the SPUR device to a production printer. This utility inserts control codes in files enabling file transfer via the Spur device.

Usage SPUR *filename [header] [sequence] <Enter>*

filename

is any DOS filename including file extension. Wildcards are not allowed.

header

is the Xerox header format: specify PRN to send filename through your PC parallel port to the Spur device, or DISK to write filename to disk (in the same directory as filename) and name it SPUR.OUT.

sequence

inserts escape sequences in the SPUR interface device output stream: USA or PPC. Specify the correct parameter, depending on your type of SPUR device (SPURPPC or SPURUSA).

Directory information

Run SPUR from the directory in which the input file resides. If you have not specified *drive*:\ELIXIR in a DOS PATH= statement, precede the SPUR command with *drive*:\ELIXIR\.

Example

To send the Xerox-128 byte header file XPAU10.FNT located in the *drive*:\ELIXIR\FONTS\X97OUT directory directly to the SPUR device, type:

1. CD \ELIXIR\FONTS\X97OUT <Enter>

The current directory changes to
drive:\ELIXIR\FONTS\X97OUT

**2. \ELIXIR\SPUR XPAU10.FNT PRN
<Enter>**

SPUR inserts control codes the SPUR device requires to send the file directly to your printer (which should be in HOSTCOPY mode).

Using SPUR for online metacode files

If you are copying online metacode files to the printer, make sure your default and ELIXIR.JSL files are coded correctly. The printer should be online and waiting to receive data before you begin the copy operation. For details on configuring your printer in an online environment, see your production printer reference manual.

Using SPUR for Xerox 128-byte header files

If you are copying a Xerox 128-byte header file to the printer, make sure the printer is in HOSTCOPY mode before you begin the copy operation. For further details on the HOSTCOPY mode, see your production printer reference manual.

STRIP

The STRIP utility adds or removes a Xerox header to files.

Usage STRIP *filename* [*headerformat*]
[KEEPNAME][**-STRIP**][**-PAD**] <Enter>

filename

is any DOS file name including the file extension. Wildcards are allowed.

headerformat

specify the Xerox header format: NONE, 128, or 512. NONE does not add a Xerox header. 128 adds a 128-byte Xerox header. 512 adds a 512-byte Xerox header.

KEEPNAME

keeps the original file header name.

-STRIP

strips line numbers and trailing spaces from text files.

-PAD

pads line numbers and trailing spaces to text files.

Directory information

Run STRIP from the directory in which the input files reside. If you have not specified *drive:\ELIXIR* in a DOS PATH= statement, precede the STRIP command with *drive:\ELIXIR*.

Example

To place 512-byte headers on all .FNT files in the *drive:\ELIXIR\FONTS\X97OUT* directory, type:

1. **CD \ELIXIR\FONTS\X97OUT <Enter>**

The current directory changes to *drive:\ELIXIR\FONTS\X97OUT*.

2. **\ELIXIR\STRIP *.FNT 512 <Enter>**

The STRIP utility places 512-byte header records on all files with .FNT extensions in the *drive:\ELIXIR\FONTS\X97OUT* directory.

A. Limitations and solutions

This chapter describes limitations of Elixir PrintDriver and provides some solutions to common problems.

Application compatibility

The following section describes limitations specific to certain Windows applications.

Ami Pro 3.x

Imported Elixir fonts may display as symbols on your screen. To view correctly, change viewing mode to [STANDARD].

If you want to use Elixir fonts in your document, you must install them from the [Printer Setup] option within Ami Pro. To access the Printer Setup menu:

- 1. Pull down the File menu.**
- 2. Select [Printer Setup...]**
The Select Printer dialog displays.
- 3. Select [Elixir PrintDriver on DISK].**
- 4. Click on [Setup].**

The Main Setup dialog box displays.

Continue to install fonts as described in the "Font options" chapter.

Make sure you do not save individual .SAM files with an associated printer if they are contained in a master document.

CorelDRAW!

CorelDRAW! graphics are output as draw paths. If you want to use a CorelDRAW! graphic, export the graphic as a .PCX, .BMP, or .TIF file and import the file into a document in another application.

PageMaker

All graphics files in a PageMaker document must be embedded.

Use the [Composite] selection when printing a document. Do not use the [Color separation] option.

Word 6.0, 95, 97

The [Background printing] option in Word conflicts with Elixir PrintDriver operation. Make sure this option in the Options dialog box is deselected. Note that the default for this option is selected.

To deselect this option:

- 1. Pull down the File menu.**
- 2. Select [Print].**

The Print dialog box displays.

- 3. Click on [Options].**

The Option dialog box displays.

- 4. Deselect the [Background printing] option.**

Reverse text

If you want to use reverse text in a document, you can import it as a rasterized graphic such as a .TIF or .PCX file, or you can import reverse fonts from Elixir-Font or reversed 9700 and Elixir fonts to create the reverse text. See the "Font options" chapter for information about importing fonts.

Rotated text

Elixir PrintDriver does not support rotated text as text statements. If you want to use rotated text, select the [Graphics] option in the Image Services dialog box before you convert your document. Note that when you select this option, all elements except standard text are converted to images.

Xerox font orientation

Xerox fonts have four orientations. However, all imported fonts display on the screen as portrait fonts, regardless of the original orientation. When you print your document, the font will print with the original orientation.

Circles and diagonal lines

Circles and diagonal lines are not supported on most Xerox printers. To use a circle or diagonal line in your document, select the [Graphics] option in the Image Services dialog box before you convert your document. Note that when you select this option, all elements except standard text are converted to images.

Color text strings

If your printer supports color printing and you want to use color ATM text in your document, add the following information to your ATM.INI file:

```
[Colors]  
PrintColorGraphics=OFF
```

Underlined text

Elixir PrintDriver allows you to use underlined text in your document. However, Elixir PrintDriver converts the underline as line draw statements. If you want to edit the underlined text, you must do so in the original documentation package. To edit the text using Elixir-Form, you can remove the line element, edit the text and then redraw a new line under the edited text.

Typographers quotes

If the [Remap Text] option is selected, make sure the option for Typographical Quotes in your application is deselected (see your Windows application documentation), or edit your keyboard mapping file (.KMP) to include the typographical quotes (see the "Match not found" section in the "Operational and error message" appendix).

Graphics formats

Elixir PrintDriver can only convert the following types of graphics:

- .PCX
- .TIF #1
- .TIF #2
- .TIF #4
- .TIF #5 (black and white only)
- .TIF #32771
- .TIF #32773
- .BMP (within a document only)
- .WMF

If you want to use a graphic that is not .PCX or .TIF format, copy it to the clipboard, save it as a .TIF or .PCX file then import it into your document.

Windows Meta Files (.WMF) are now converted via Elixir PrintDriver when [Graphics] is selected in the Image Services dialog box.

Note: Opaque white .WMF objects are not currently supported.

Using large fonts

If you are using a font that is larger than 24 points, Elixir PrintDriver automatically truncates the font unless you specify a limited font range in the Font Generation Prompt dialog box, or import the text as a graphic. Note that if your printer supports 5Word fonts, this is not necessary. Supported 5Word printers are 41xx, 46xx, and 48xx.

- To limit the font range, use the [Font Generation Range] option in the Font Generation Prompt dialog box to specify a smaller range of characters.

Note that Xerox printers support font file sizes up to 128K. Check your Xerox printer manual for the maximum font file size for your printer.

See the "Font options" chapter for information on using the [Font Generation Range] option.

- To import text as a graphic, enter the text into a windows graphics editor, for example PC Paintbrush, save the file as a .PCX file and place this graphics file into your document.

Font support

Elixir PrintDriver cannot convert [Tms Rmn] or [Helv] system fonts. Replace all occurrences of [Tms Rmn] with the TrueType [Times New Roman] font or the ATM [Times] font. Replace all occurrences of [Helv] with the TrueType [Arial] or ATM [Helvetica] font.

Elixir PrintDriver can convert only TrueType or ATM fonts.

White objects on black objects

Elixir PrintDriver does not support placing white objects on top of black objects. For example, you cannot place a white box on top of a black line.

If you want to place white objects on top of black objects, create the object using a graphics editor, save the file as a .PCX or .TIF file and then import the graphics file into your document.

If you want to use a reverse video text, for example, white text in a black box, either import it as a .PCX or .TIF, or create the font using Elixifont and import it for use with Elixir PrintDriver. See the "Font options" chapter for information about importing fonts.

Converting multi-color graphics (Xerox)

When converting a document with multi-color graphics, only the selected highlight color is converted to color. All other colors convert to black.

For example, if you convert a document containing a red, blue and green colored graphic with [RED] selected as the highlight color, only the red parts of the graphic convert as red, and the blue and green parts of the graphic convert as black.

Converting colored text (Xerox)

When converting a document with multi-color text, all the colored text converts to the selected highlight color.

For example, if you convert a document containing red, blue and green text with [Green] selected as the highlight color, all the colored text is converted to the green.

B. Operational and error messages

This appendix lists all the operational and error messages issued by Elixir PrintDriver. These messages display in message dialog boxes. Some dialog box messages require the user to enter a response such as [Yes] ,[No] or [Continue].

Messages appear in alphabetical order and are shown in bold. Explanations for messages are given below the message in normal text.

Cannot concatenate image file

The image file may be too large. Reduce the size of the image and then retry the operation.

Cannot find TAGS.TAG file

Missing file or missing directory. Check that the file and directory exist on the specified drive.

Cannot open *.TAG file

Missing file or missing directory. Check that the file and directory exist on the specified drive.

Cannot open screen font file name

Missing screen font. Use Elixir PrintDriver to regenerate the font and create the screen font.

Cannot open TAGS.TAG file

Missing file or missing directory. Check that the file and directory exist on the specified drive.

Cannot write BMP file

Check that you have sufficient disk space.

Cannot write DM.CFG

DM.CFG is the DataMerge configuration file. Make sure the DM.CFG file exists in your Elixir directory. If not, reinstall the software.

Cannot write DT.CFG

DT.CFG is the DocuTag configuration file. Make sure the DT.CFG file exists in your Elixir directory. If not, reinstall the software.

Cannot write LP3 file

Check that you have sufficient disk space and that the .LP3 file you are writing to exists.

Cannot write new prefix of font

Make sure the TTFONT.NAM file exists in \ELIXIR\FONTS\MAPS\. If not, reinstall the software.

Can't allocate memory

Unable to allocate more memory as needed. Close any applications you are not working with and try the operation again. If you receive the same memory error again, close further applications or exit and restart Windows.

Can't convert elixir screen font

Insufficient disk space or missing directory. Check that the directory exists on the specified drive.

Can't convert image to font

Insufficient disk space or missing directory. Check that the directory exists on the specified drive.

Can't convert image to font - 9700

Insufficient disk space or missing directory. Check that the directory exists on the specified drive.

Can't convert image to LGO

Insufficient disk space or missing directory. Check that the directory exists on the specified drive.

Can't convert print driver font

Insufficient disk space or missing directory. Check that the directory exists on the specified drive.

Can't convert Windows screen font

Insufficient disk space or missing directory. Check that the directory exists on the specified drive.

Can't create BATCH file for winexe

Insufficient disk space.

Can't create dir

The directory either already exists, is invalid, or there is not enough room on the hard drive.

Can't create elixir font

Insufficient disk space or missing directory. Check that the directory exists on the specified drive.

Can't create image file

Image may be too large. Reduce the size of the image then create the image file again.

Can't create IMG file

Insufficient disk space or missing directory. Check that the directory exists on the specified drive.

Can't create IMG file header

Insufficient disk space or missing directory. Check that the directory exists on the specified drive.

Can't create object box

Not enough memory available. Close any applications you are not working with and try the operation again. If you receive the same memory error again, close further applications, or exit and restart Windows.

Can't create object circle

Not enough memory available. Close any applications you are not working with and try the operation again. If you receive the same memory error again, close further applications, or exit and restart Windows.

Can't create object font

Not enough memory available. Close any applications you are not working with and try the operation again. If you receive the same memory error again, close further applications, or exit and restart Windows.

Can't create object line

Not enough memory available. Close any applications you are not working with and try the operation again. If you receive the same memory error again, close further applications, or exit and restart Windows.

Can't create object logo

Not enough memory available. Close any applications you are not working with and try the operation

again. If you receive the same memory error again, close further applications, or exit and restart Windows.

Can't create object path

Not enough memory available. Close any applications you are not working with and try the operation again. If you receive the same memory error again, close further applications, or exit and restart Windows.

Can't create object text

Not enough memory available. Close any applications you are not working with and try the operation again. If you receive the same memory error again, close further applications, or exit and restart Windows.

Can't create object text - for font

Not enough memory available. Close any applications you are not working with and try the operation again. If you receive the same memory error again, close further applications, or exit and restart Windows.

Can't create screen image file

The image file may be too large. Reduce the size of the image and then create the screen image file.

Can't export AFP font

Insufficient disk space, missing font or missing directory. Check that the directory and the font exist on the specified drive.

Can't export XEROX font

Insufficient disk space, missing font or missing directory. Check that the directory and the font exist on the specified drive.

Can't find AFP font

Make sure the font exists in the appropriate directory. Check documentation for correct directories.

Can't find Elixir font

Make sure the font exists in
\\ELIXIR\FONTS\ELIXIR\.

Can't find file

File name is missing or invalid.

Can't find file DT.EXE

Make sure the file DT.EXE is in *drive*:\ELIXIR.

Can't find TTFONT.NAM file

Make sure the TTFONT.NAM file exists in \ELIXIR\FONTS\MAPS\. If not, reinstall the software.

Can't find XEROX font

Make sure the font exists in the appropriate directory. Check documentation for correct directories.

Can't generate Elixir font

Insufficient disk space or missing directory. Check that the directory exists on the specified drive.

Can't generate images - file error

Insufficient disk space or missing directory. Check that the directory exists on the specified drive.

Can't generate list of boxes

Not enough memory available. Close any applications you are not working with and try the operation again. If you receive the same memory error again, close further applications, or exit and restart Windows.

Can't generate list of images

Not enough memory available. Close any applications you are not working with and try the operation again. If you receive the same memory error again, close further applications, or exit and restart Windows.

Can't import AFP font

Insufficient disk space, missing font or missing directory. Check that the directory and the font exist on the specified drive.

Can't open keyboard map file (.KMP)

Missing or invalid .KMP file name. Check the correct mapping file is selected Text Services dialog box.

Can't open LBCONV library

.DLL library is missing, corrupt, or the path is missing. Make sure that ELIXIR is in your path and that the file exists in *drive*:\ELIXIR.

Can't read keyboard mapping table (.KMP)

Missing or invalid .KMP file name. Check the correct mapping file is selected in Text Services dialog box.

Can't store logo object

Not enough memory available. Close any applications you are not working with and try the operation again. If you receive the same memory error again, close further applications, or exit and restart Windows.

Can't store object line

Not enough memory available. Close any applications you are not working with and try the operation again. If you receive the same memory error again, close further applications, or exit and restart Windows.

Can't store object

Not enough memory available. Close any applications you are not working with and try the operation again. If you receive the same memory error again, close further applications, or exit and restart Windows.

Can't store object font

Not enough memory available. Close any applications you are not working with and try the operation again. If you receive the same memory error again, close further applications, or exit and restart Windows.

Can't store text object - for font

Not enough memory available. Close any applications you are not working with and try the operation again. If you receive the same memory error again, close further applications, or exit and restart Windows.

Can't switch to Elixir system disk

Windows system error or wrong specification of drive. Check that the specified drive is the drive where Elixir is installed.

Cannot concatenate image file

The image file may be too large. Reduce the size of the image and then retry the operation.

Cannot write new prefix of font

Make sure the TTFONT.NAM file exists in \ELIXIR\FONTS\MAPS\. If not, reinstall the software.

Circle is not implemented - it is converted to rectangle

Circles are not supported on Xerox printers. To use a circle in your document, import it into the document as an image.

Could not open file

Missing file or missing directory. Check that the file and directory exist on the specified drive.

Enter new prefix. 2 alphabetic chars

The prefix is too long or contains non-alphabetic characters. Enter a new prefix containing two alphabetic characters.

Error protection key

You must have the correct ElixKey installed to perform this file conversion. If you connect the correct key and you still have this error, try rearranging the order of any keys you have attached.

File write error

Insufficient disk space or missing directory. Check that the directory exists on the specified drive.

Font:... is being truncated at position

Font limit has been reached. The specified font is being truncated at the specified position.

Glyph too large

The glyph exceeds the limit of 32700 bytes

Image exceeds size limit for 9700 fonts

The image is too big for 9700 format. The limit for 9700 format is 60k.

Image exceeds size limit for LGO

The image is too big for LGO format.

(AFP) Match not found, char *n*

(where *n* is a number representing a hex position).
A Windows character is missing from the Elixir code page. To correct this error, you can use the T1LATIN1 code page or you can edit the code page and Country Keyboard Map to accept the missing characters.

(Xerox) Match not found, char *n*

(where *n* is a number representing a hex position).
A Windows character is missing from the character set (.KMP file) you are mapping to in the Text Services dialog box.

- 1. Make a note of the hex position specified in the error message, for example 91.**
- 2. Use any text editor, such as Notepad, to open and view the Windows mapping file
*drive:\ELIXIR\FONTS\MAPS\X100ANSI.KMP***
- 3. Search for the hex position not found and make a note of the character it is mapped to, for example Quoteleft = 91.**
- 4. Exit the X100ANSI.KMP file.**
- 5. Open and view the Country Keyboard mapping file you are using, for example,
drive:\ELIXIR\FONTS\MAPS\X1000437.KMP for U.S. users.**

If you are not sure which Country Keyboard mapping file you are using, see the Text Services dialog box or refer to the "Elixir PrintDriver basics" chapter.

- 6. Make sure the missing character, for example Quoteleft, is not listed in the Country Keyboard mapping file.**
- 7. Search for a character that is not used by Elixir fonts.**

These characters begin with "box" or "fill" and are usually assigned to positions B0 through DA, for example fill25=B0. Do not delete characters that do not start with box or fill.

8. **Delete the unused character name, for example fill25, and enter the missing character name, for example Quoteleft.**
9. **Repeat the above procedure for each missing character.**
10. **Pull down the File menu and select [Save as] to save the file with a new file name.**

This will avoid overwriting the file when you reinstall Elixir software at a later date.

No memory for conversion.

Not enough memory available. Close any applications you are not working with and try the operation again. If you receive the same memory error again, close further applications, or exit and restart Windows.

Open output page - elx file failed

Insufficient disk space or missing directory. Check that the directory exists on the specified drive.

Prefix is already used. Enter new prefix

Prefix is already in use. Select a different prefix.

PrintDriver cannot use vector font:...please change font to TrueType, device or ATM fonts

PrintDriver does not support vector fonts. If error persists after you have replaced the vector fonts, remove them from the font list.

Screen font file could not be opened: *filename*

Missing screen font. Use Elixir PrintDriver to regenerate the font and create the screen font.

Tape driver is not loaded

Your CONFIG.SYS file does not contain an entry for loading the specified tape driver, or the entry it contains is incorrect. Check your CONFIG.SYS file for this entry and ensure that the file and path names are correct.

The name is too long for the amount of segments that this form is generating

Shorten the job ID name. (See "Too many pages. Too long job id" error message.)

Too many fonts in page

Number of fonts on the page exceeds the AFP printer

limitation. See your AFP printer user guide for information about limitations.

Too many lines for AFP/Xerox printer

Number of lines on the page exceeds the AFP printer limitation. See your AFP printer user guide for information about limitations.

Too many pages. Too long job id

Shorten the job ID name:

- Single page documents: use up to 6 characters.
- 2-9 page documents: use up to 5 characters .
- 10-99 page documents: use up to 4 characters.
- 100-999 page documents: use up to 3 characters.
- 1000-9999 page documents: use up to 2 characters.

Too many texts in page=1

Number of text blocks on the page exceeds the Xerox printer limitation. Select the [Optimize] option in the FSL/FRM Page Options dialog box for FRM and in the Metacode Converter Options dialog box for metacode.

Unresolved conv 43

Your version of the file DRVCONV.DLL is from a previous release of Elixir PrintDriver. Delete all previous versions of the software before re-installing this release of the software.

Writing page to disk failed

An error occurred when writing a page to disk. Check disk space.

Xerox font exceeds length limit. Specify new font range

The font generated exceeds the limit specified in the Font Generation Prompt dialog box. Specify a new font range.

C. AFP Text mapping

This appendix provides information for users who need to change the Country Keyboard Mapping file and Default Code Page in the Text Services dialog box.

Mapping files

If you need to change the default Country Keyboard Map file and the Default Code Page, choose the file that most closely meets your needs and insert the stem name in the Text Services dialog box.

Country Keyboard maps

The following is a list of .KMP files provided with Elixir PrintDriver.

<u>.KMP</u>	<u>Description</u>
T1000437.KMP	Personal Computer for US English, UK English, and European languages using the IBM character set.
T1000850.KMP	PC Multilingual 1 for IBM PC multinational keyboards
T1000852.KMP	Latin 2 - Slavic
T1000855.KMP	Cyrillic
T1000857.KMP	Latin 5
T1000860.KMP	Portugal
T1000861.KMP	Iceland
T1000862.KMP	Hebrew

T1000863.KMP Canadian French

T1000864.KMP Arabic

T1000865.KMP Nordic

T1000869.KMP Greek

Default code page

The following is a list of default code pages:

T1V10037 US and Canada

T1000420 Arabic Bilingual

T1000424 Hebrew

T1000870 Latin 2 Multilingual

T1000875 Greece

T1000905 Latin 3 Multilingual

T1001025 Cyrillic Multilingual

T1001026 Latin 5 EBCDIC

T1D0BASE DCF Rel 2 Compatibility

T1LATIN1 Windows ANSI

T1V10273 Austria, Germany

T1V10274 Belgium

T1V10275 Brazil

T1V10277 Denmark, Norway

T1V10278 Finland, Sweden

T1V10280 Italy

T1V10282 Portugal

T1V10284 Spain, Latin America

T1V10285	United Kingdom
T1V10297	France
T1V10500	International #5T1V10871 Iceland

Glossary

This glossary contains a list of the basic terminology that you may find in this manual.

Application: Any program you run on your PC.

Arrow: An arrow-shaped screen pointer used for selecting objects.

Boxed text: Text on a form that is bound by a column with a set height and width.

Button (on the screen): An area on the screen that causes a response when you click on it. For example, an [OK] button that accepts your entries when you click on it in a dialog box.

Click, on an item: To momentarily press and release the left mouse button with the screen pointer on an item.

Close: To exit from a window, dialog box, or an application.

Close box: A small white box at the left of a window header and at the left of the menu bar.

Command button: A button in a dialog box that confirms or cancels an action when you click on it. The [Cancel] button cancels the command. The [OK] button confirms and executes the command and saves the information you specified in a dialog box.

Cursor: An "I"-shaped screen pointer used when entering text.

Deselect: To cause one or more selected (highlighted) icons or elements to not be selected any more.

Dialog box: A rectangular box that displays and requests information. You enter information in fields in the dialog box, and normally confirm your entries by clicking on an [OK] button or by pressing <Enter>.

Directory: A list of hard disk or diskette contents.

DOS: Disk Operating System, the collection of programs that gives control of a PC's resources to the user.

Double-click: To press the left mouse button twice in rapid succession, normally to open an icon.

Drag: To click on an item and move the item with the mouse while holding down the left mouse button.

Drag and drop: Used to copy an object as follows: click on an item on the screen, hold down the left mouse button, move the mouse to move the screen pointer to an icon, and release the mouse button.

Drop: To release the mouse button after dragging an item to an icon.

Extension: The period and three characters following a file name. An extension identifies the type of information in a file. For example, .ELX indicates an Elixir format form file.

Fast Keys: See Keyboard shortcuts.

File filter: The use of DOS wildcard characters to display only those files with selected name characteristics in a window or dialog box. For example, to display only files that begin with ABC in a directory of many files you could enter ABC*.*. See also, *Wildcard character*.

File name: The name of a file. PrintDriver uses DOS file naming conventions. DOS file names consist of a base (stem) name containing up to eight characters and an extension of up to three characters.

Format: To prepare a diskette so it can hold information. Formatting a diskette erases the information on the diskette.

Form elements: The individual lines, shapes, images, and text that compose a form.

Grayed options: Grayed options are menu options you cannot choose because they do not apply to your current selection. Also called dimmed options.

Gray scale color: A gray shade (color) used for box fills and borders, lines, and text, which is composed of a combination of RGB (Red, Green, and Blue) values that display as gray and print as a gray shade (for example GRAY_6) on a printer.

Gray shade: See *Gray scale color*.

Head to head: In duplex printing, when the page top is printed in the same position on both sides of the page.

Head to toe: In duplex printing, when the top of one side of the page is printed in the same position as the bottom of the other side of the page.

Highlight color: Pure red, green, or blue colors. Also called hues.

Highlighted: A highlighted option appears darkened on the screen, and indicates that it is selected.

Hue: Pure red, green, or blue colors. Also called highlight colors.

Icon: A small, roughly rectangular-shaped symbol that represents an application, a file, a folder, a function, or a peripheral device.

Importing files: The process of copying non-Elixir format files from different storage media (such as a hard disk, a diskette, or tape) to the appropriate Elixir input folder or to the work area.

Inverse Landscape: The orientation of fonts, logos, or images on a page. See the definition for **portrait** for a figure describing the orientation of fonts on pages.

Inverse Portrait: The orientation of fonts, logos, or images on a page. See the definition for **portrait** for a figure describing the orientation of fonts on pages.

Kerning: The process of adjusting the spacing between certain character pairs to enhance readability and to visually equalize the spacing among all characters within a line. The amount of space added or subtracted between certain character pairs is dependent upon the font and point size.

Keyboard shortcut: Also called Fast keys. A special one- or two-key combination that allows you to execute an option without using the mouse.

Landscape: The orientation of a page or the fonts, logos, or images on a page. A landscape page is narrower on the sides than on the top. See the definition of *portrait* for a figure describing the orientation of fonts on pages.

Menu: A list of options from which you make a selection to perform an action. A menu displays when you select a menu title from the menu bar or from a window header, or when you click on an option.

Menu bar: The horizontal bar displayed at the top of the screen from which you access pull-down menus.

Menu titles: Text that identifies a menu, displayed in a window header or on the menu bar.

Message area: A bar just below the menu bar that displays error messages or information about the activity you are performing.

Mouse button: A button on the top of the mouse.

Multi-select: Selecting more than one file or icon by shift-clicking on them.

Option: A word or phrase in a menu or dialog box that you can select.

Peripheral (device): A printer, scanner, or tape drive connected to your PC.

Point: To move the mouse so the screen pointer (in most cases an arrow) rests on the desired item.

Portrait: The orientation of a page, or the fonts, logos, or images on a page. A portrait page is narrower on top than on the side (like pages in this book).

Printer icon: An icon representing a proof printer connected to your PC.

Printer palette: An ASCII text file resident on a printer that contains up to 99 ink names (colors). Each color is described by its combination of highlight color toners (pure red, blue, or green) and values for the density of black ink and white (paper color) which define the shade and tint of each color.

Pull-down menu: See *menu*.

Raster graphics: Pictures composed of bit maps, where each element of the picture is a dot defined as black or white.

Replaceable parameter: A parameter (usually %1) used in commands to represent a selected file name. The selected file name replaces the parameter during certain operations.

Run: To execute or start an application.

Screen pointer: A pointer shaped like an arrow that displays on the screen, and which you can move by rolling the mouse on a flat surface.

Screen version: The version of a color or font composed such that its appearance on a screen display is as close as possible to its appearance when printed.

Scroll: To move a directory list in a window so you can view different parts of the list.

Scroll bar: A bar displayed on the right side of some windows used for scrolling. The scroll bar contains a scroll arrow, [+] and [-] buttons, and a slider bar that moves within the scroll box.

Select: To click on an object, menu option, or form element. A selected item appears highlighted.

Shade: The property of a color based upon the density of black ink dots mixed with the pure color (red, blue, or green). The higher the density of black dots, the darker the color. Not related to "shades of gray" on distributed printers.

Shift-click: To click on an object while holding down the <Shift> key. Usually used to select multiple elements.

Slider bar: A bar in the scroll box at the side of some windows that scrolls items in the window when you drag it up and down.

Tint: The property of a color based upon the density of color toner dots (pixels) applied to the paper during printing. The lower the density of the color pixels, the lighter the intensity of the color. 100% density corresponds to a pure color, and 0% corresponds to white. For example, sparsely spaced red pixels would appear as the color pink on a page.

UDK: (User Defined Key) a substitute escape character defined by a user for specific print jobs

Unselect: To cause one or more selected (highlighted) icons or elements to not be selected any more. The quickest way to do this is to click on another area of the work area.

Utilities: Special-purpose applications with which you can perform functions from the DOS prompt.

Wildcard character: A character in a file name, usually an asterisk (*), that specifies a matching set. For example, *.EXE represents all files that end with the .EXE extension.

Window: A rectangular area on your screen in which you view information, such the contents of a folder. All windows contain a window header. Some windows have scroll bars along the right side.

Window header: The top of a window that displays the DOS directory corresponding to the window contents. Some window headers also show a close box and a number of menu titles with pull-down menus.

Xerox-labeled files: Files containing 128-byte Xerox headers, or labels.

XES: (Xerox Escape Sequences) The data stream format recognized by Xerox distributed printers (such as 2700, 3700, 4045, 4235, and 4700).

A

Acrobat Reader, documentation, 1-10
Adobe Type Manager
 fonts, 4-3, A-6
AFP mapping files, C-1
AFPDS options, 2-6
application compatibility, A-1
AS/400 file transfer, 6-8
ATM/TT font mapping, 3-4
ATM/TT fonts, 2-17
ATM fonts, 4-3, A-6

B

before installing, 1-16
boxes, 4-3
BPSD tag position
 marker, 2-17

C

circles, A-3
color options, 2-3, 2-17
 black and white, 2-17
 HighLight color, 2-17
color services
 black and white, 2-17
 HighLight color, 2-17
color text, A-3
coloring text, A-4

compiling FSL files, 5-36

composing documents, 4-1

- adding boxes, 4-3
- adding lines, 4-3
- adding shapes, 4-3
- adding text, 4-2
- importing images, 4-3
- selecting fonts, 4-2

Control statement, 2-12

conventions

- display, 1-7
- typographical, 1-7

converting

- FB to VBM format, 6-8
- multi-color graphics, A-7
- to VBM format, 6-7

converting TT/ATM
 fonts, 3-2

copies, 2-5

copying files

- to tape, 7-10
- to the printer, 5-9, 5-23
- using XCPY, 7-5

Country Keyboard map, 2-15, C-1

creating documents, 4-1

customer support, 1-3

D

DataWare card, 5-25

default code page, 2-16, C-2

default installation

- first time, 1-24

Description text, 2-11

- Desktop
 - installation, 1-22
- diagonal lines, A-3
- DISP utility, 7-9
- displaying file contents, 7-9
- DJDE, 2-2
- DJDE file= command, 5-5, 5-10
- documentation
 - accessing, 1-10
 - Acrobat Reader, 1-10
 - directory, 1-10
 - navigating, 1-12
 - printing, 1-14
 - scrolling, 1-13
 - using, 1-10
 - word find, 1-12
 - zoom in/out, 1-13
- downloading files
 - from host, 5-5
 - with HOSTCOPY, 5-5
- DSK2TAP utility, 7-10
- duplex printing, 2-3
- setup, 5-2
- using diskettes, 5-35
- using tape, 5-35
- Xerox, 5-1
- Xerox-labeled files, 5-2
- floating offsets, 2-7
- font
 - 240 dpi, 4-2
 - 300 dpi, 4-2
 - Adobe Type Manager, 4-3
 - mapping table, 2-19
 - options, 3-1
 - TrueType, 4-3
- Font assignment, 2-11
- font generation, 2-18, 3-3
- font generation range, 2-18, 3-3
- font mapping table, 2-19
- font mapping table, editing, 3-4, 3-7
- font options, 3-1
- font support, A-6
- fonts, large, A-5

E

- ElixirDisk utilities, 7-2
- Elixir Desktop, 1-15
- Elixir training, 1-5
- Elixir utilities, 7-1
- error messages, 2-20, B-1

F

- file transfer
 - AFP, 6-1
 - AFP setup, 6-2
 - AS/400, 6-8
 - offline metacode, 5-26
 - online metacode, 5-11
 - packages, 5-2, 5-12
 - PC-to-MVS host, 6-1

G

- graphics
 - formats, A-5
 - multi-color, A-7

H

- hardware, 1-5
- Help, 1-9
- Help, on-line, 1-9
- Help menu, 1-9
- HighLight color, 2-17
- HighLight color graphics, A-7
- HOSTCOPY mode, 5-5
- HOSTCOPY utility, 5-7
- HPEDIT utility, 7-11

I

IBM 3270, 6-3
IC utility, 7-12
image services, 2-8, 2-9,
2-13
images, adding to a
document #
Installation
 before installing,
 1-16
 checking, 1-28
installation
 custom, 1-25
 default, 1-24, 1-25
 first time installation,
 1-23
IRMA
 3270, 6-3
 FT/3270, 5-2, 5-3,
 5-12
 FT/TSO, 5-2, 5-4,
 5-13, 6-5

J

JCL
 example, 5-24
 preparing, 5-6
JDE string, 2-5
Job ID banner, 2-11
Job ID name, 2-17
JSL, 5-1
 compiling, 5-23
 editing, 5-16
 ELIXIC, 5-1, 5-29
 ELIXIR, 5-1, 5-26
 ELXONC, 5-1, 5-20
 ELXONL, 5-1, 5-17
 setting up, 5-14

L

large fonts, A-5
licensing software, 1-17
limitations
 AmiPro, A-1
 circles/diagonal
 lines, A-3

color text, A-4
CoreIDRAW, A-2
font orientation, A-3
font support, A-6
graphics formats,
A-5
large fonts, A-5
multi-color graphics,
A-7
multi-color text, A-7
PageMaker, A-2
reverse text, A-3
rotated text, A-3
underlined text, A-4
white/black objects,
A-6
Word 6.0, A-2
limitations/conditions,
7-7
lines, 4-3
LP3 tag position marker,
2-14

M

MAKEKRNE utility, 7-14
mapping files, AFP, C-1
messages to file, 2-20
MET2871 utility, 7-14
metacode
 copying to the
 printer, 5-23
 offline, 5-26
 online, 5-11
 options, 2-2
 OTEXT, 2-4
 resources, 2-4
 types, 2-3
 uploading files, 5-12
METACOMP utility, 7-15
mouse operations, 1-8
moving files
 using diskettes, 5-35
 using tape, 5-35
MVS host, 5-12

O

- offline metacode
 - moving, 5-26
 - preparing, 5-26
 - printing, 5-26, 5-34
 - tape transfer, 5-26
- offline control files, 5-36
- offset, 2-3
- OGL extended options, 2-11
- on-line documentation
 - accessing, 1-10
 - Acrobat Reader, 1-10
 - directory, 1-10
 - navigating, 1-12
 - printing, 1-14
 - scrolling, 1-13
 - using, 1-10
 - zoom in/out, 1-13
- on-line Help, 1-9
- online metacode
 - moving, 5-11
 - printing, 5-11
- operational messages, B-1
- optimization, 2-3, 2-5, 2-9
- OTEXT, 2-4
- output printer, 2-9

P

- PACK utility, 7-15
- PC-to-MVS host file transfer, 5-1, 6-1
- presentation, 2-3
- PrintDriver
 - AFP printers, 1-2
 - AFPDS options, 2-6
 - basics, 2-1
 - design, 2-1
 - image services, 2-8, 2-9, 2-13
 - limitations, A-1

- metacode options, 2-2
- overview, 1-2
- PrePrint options, 2-2
- selecting, 4-1
- setting defaults, 2-2
- setup, 2-1
- solutions, A-1
- supported applica-tions, 1-1
- text services, 2-14
- using, 4-1

- printer catalog, 2-17
- printer palette, 2-18
- printer setup, 4-2
- printing, 4-4
 - documentation, 1-14
 - FRM files, 5-36
- PSeg assignment, 2-12

R

- rasterize graphics, 2-13
- record format, 2-7
- registering software, 1-17
- Release notes, 1-16
- remap text, 2-14
- requirements
 - hardware, 1-5
 - software, 1-6
- resolution, 2-6
- resource output, A-3
- resources, 2-8
- reverse text, A-3
- rotated text, A-3

S

- selecting fonts, 4-2
- setting defaults, 2-2
- setup
 - accessing, 2-1
- shapes, 4-3
- SHOWBLOK utility, 7-16
- simplex printing, 2-3
- skip, 2-3

software, 1-6
 software registration,
 1-17
 SPUR, using, 5-37
 SPUR utility, 7-17
 STRIP utility, 7-19
 support, customer, 1-3
 supported applications,
 1-1

T

tag position marker,
 2-17
 tape transfer, 5-26
 text justification, 2-6
 text mapping, AFP, C-1
 text services, 2-14
 training, 1-5
 TrueType fonts, 4-3, A-6
 typographers quotes,
 A-4

U

underlined text, A-4
 Uploading files
 text files, 6-4
 uploading files, 5-2
 endfile.end, 5-6
 IBM 3270, 6-2
 IRMA FT/3270, 6-2
 IRMA FT/TSO, 6-2
 metacode, 5-12
 object-format AFP
 files, 6-3
 to AS/400, 6-11
 with 871, 5-34
 with FT/TSO, 6-5
 Xerox-labeled, 5-3
 utilities
 DISP, 7-9
 DSK2TAP, 7-10
 HPEDIT, 7-11
 IC, 7-12
 limitations, 7-7
 MAKEKRNE, 7-14
 MET2871, 7-14

METACOMP, 7-15
 PACK, 7-15
 SHOWBLOCK, 7-16
 SPUR, 7-17
 STRIP, 7-19
 using, 7-2
 XCPY, 7-5
 XDEL, 7-7
 XDIR, 7-3

W

Windows applications
 LP3 tag position
 markers, 2-14
 tag position mark-
 ers, 2-17
 Windows map, 2-15
 word find, 1-12

X

XCPY utility, 7-5
 XDEL utility, 7-7
 XDIR utility, 7-3
 Xerox-labeled files
 printing, 5-34
 uploading, 5-2, 5-4
 Xerox font orientation,
 A-3
 XWIN.log
 installation, 1-23

Z

zoom in/out, 1-13