

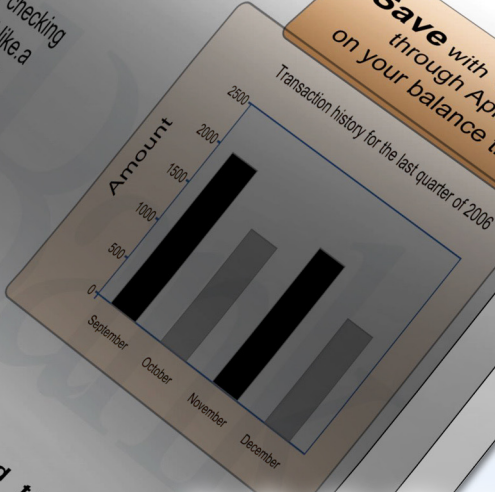
Elixir

Greg Jones
8807 Bergen Dr.
Ventura, CA 93101-2312



Dear Greg,
Save money with your Municipal Water Credit Union Card by transferring the balances from some of your other higher rate credit card accounts. The attached check can be used to consolidate your accounts make purchases or deposit directly into your checking account. The attached check can be used just like a personal check. Just be sure to use it before April 30, 2007.

Save with **0% APR***
through April 2007
on your balance transfers



Act Now - take advantage of this limited time offer

DesignPro Tools for Xerox Getting Started Guide

will apply to transferred balances as long as you maintain your account in accordance with your Cardholder Agreement.
For the following services:
Phone Banking
Service 0800 1234567890
www.ABank.com

Elixir Technologies Corporation
721 East Main Street
Ventura, CA 93001

Copyright ©2008 by Elixir Technologies Corporation.
All rights reserved.
DP200801V300

All product names and trade names used herein are trademarks of their respective owners.

To report any errors you might find, please send a note to errata@elixir.com. Please note: e-mails are used to correct future versions of this guide and may not receive an individual reply. For technical support, please see “[Customer Support](#)” on page 10.

Contents

Chapter 1: Introduction	5
DesignPro Tools Overview.....	5
Associated DesignPro Tools Applications and Utilities.....	6
About This User Guide.....	7
Who Should Use this Guide?.....	7
Related Guides.....	8
Conventions.....	8
Typographic Conventions.....	8
Symbolic Conventions.....	9
Getting the Answers You Need.....	10
Customer Support.....	10
Elixir Web Site.....	11
Elixir Training.....	11
Product Help.....	12
Release Notes.....	12
Chapter 2: Installation	13
System Requirements.....	13
Software Requirements.....	13
Hardware Requirements.....	14
Installing DesignPro Tools.....	14
Select Components.....	20
Complete DesignPro Tools Installation, Continued.....	21
Registering DesignPro Tools.....	27
Preparing and Downloading Initial Product License from the Internet.....	30
Downloading Existing Product License from the Internet.....	32
Viewing the Product License Information.....	32
Deactivating the Product License File.....	33
Continuing the Installation.....	34
Upgrading DesignPro Tools.....	36
Modifying DesignPro Tools.....	44
Repairing DesignPro Tools.....	51
Uninstalling DesignPro Tools.....	58

Installing DesignPro Tools in Silent Mode	63
Upgrading DesignPro Tools in Silent Mode	68
Modifying DesignPro Tools in Silent Mode	71
Repairing DesignPro Tools in Silent Mode.....	74
Uninstalling DesignPro Tools in Silent Mode	77

Chapter 3: Configuration 81

Understanding Virtual Folders	82
Adding Virtual Folders.....	84
Removing Virtual Folders	86

Chapter 4: Quick Start 87

Understanding the Design	87
Opening Form Editor.....	89
Setting Page Properties	90
Adding an Image.....	91
Adding Text.....	95
Saving as an Elixir Form.....	98
Importing Text.....	99
Editing Text.....	103
Adding Images	105
Drawing a Box	107
Drawing a Line.....	110
Saving as a Xerox Form.....	111
Previewing Your Work	114
Using PrintDriver to Create Forms.....	115
Creating a Form from MS Word Document	115
Using Content from a Windows Application.....	121
Making Modifications to a Printed Form.....	121
Removing an Existing Image.....	123
Adding a New Image	123
Print Preview.....	125
Saving the Form.....	125

Index 127

Chapter I:

Introduction

Welcome to the *DesignPro Tools for Xerox Getting Started Guide*. This guide is designed to get you up and running with DesignPro Tools. This guide provides the following:

- Default installation, including installation of the system software and system configuration.
- DesignPro Tools Quick Start exercises, which will lead you through a few exercises for hands-on experience with DesignPro Form Editor and Elixir PrintDriver Pro.
- Once you are ready to start working, the Quick Start exercise leads you through a few exercises for hands-on experience with the DesignPro Form Editor and Elixir PrintDriver Pro.

In the Quick Start chapter, you will create and edit forms.

This chapter defines who should use this guide, describes the guides within the DesignPro Tools documentation set, and provides Elixir Customer Support and training information.

DesignPro Tools Overview

DesignPro Tools provides a Windows-based, visual design environment for the rapid and cost-effective creation of resources for the Xerox print environment. DesignPro Tools supports integrated resource editors that make it easy to create and edit the forms, fonts and images needed for Xerox printing.

Associated DesignPro Tools Applications and Utilities

DesignPro Tools for Xerox employs integrated applications and utilities to provide advanced functionality for creating resources such as documents, forms, fonts and images for Xerox jobs. Each application helps you create or modify one or more of these necessary resources in a simple environment.

Following are the DesignPro Tools for Xerox applications:

- **DesignPro Manager:** a Windows Explorer-based file management tool for resources used in editing and creating forms, graphics and fonts. It is also a central launching area for the DesignPro Editors, Converters and other utilities.
- **DesignPro Form Editor:** a page layout tool for creating and editing forms using native Xerox, Windows or Elixir resources. Forms can be saved to Xerox, Adobe and Elixir formats.
- **DesignPro Graphics Editor:** a bitmap editor that prepares scanned images for printing. Images can be tiled into fonts to speed the printing process. Uses native Xerox, Windows or Elixir resources for bitmap editing.
- **DesignPro Font Editor:** a bitmap font editor used to create and edit all Xerox fonts. Easy to use editing tools give you precise control over font design, including resizing, pixel editing, filtering and special effects. Outline fonts can also be opened, edited and saved as a bitmap Elixir or Xerox font.
- **Elixir PrintDriver Pro:** a utility for “printing” Windows documents into forms. Windows documents can be opened in their original format and printed into forms using the Elixir PrintDriver Pro. All supported formats can be created using the Elixir PrintDriver Pro.
- **Elixir Scout:** a system service that watches directories for a file or an event to perform a number of actions like launching an executable (EXE or COM), running a batch file (BAT or CMD), or selecting a process (DLL).
- **Elixir Viewer:** displays printstream and resource files.

About This User Guide

This guide introduces you to DesignPro Tools. It provides assistance with system installation and configuration and provides a few exercises to help you feel confident in the use of DesignPro Tools.

This guide is divided into four chapters:

Chapter 1: Introduction

Provides a general introduction to DesignPro Tools and the DesignPro Tools Getting Started Guide.

Chapter 2: Installation

Includes system requirements, registering, and installing your software.

Chapter 3: Configuration

Introduces the concept of virtual folders and leads you through an exercise in setting up virtual folders in the DesignPro Manager.

Chapter 4: Quick Start

Leads you through the DesignPro Form Editor and Elixir PrintDriver Pro using a set of sample forms.

Who Should Use this Guide?

This guide is for anyone who needs to create and edit resources for a Xerox printing environment. This includes Xerox users and print bureaus hosting a Xerox printing environment.

This guide assumes you are already familiar with Microsoft Windows operations, printer and font management operations and PC peripherals. You should also have access to reference manuals for PC software and hardware, including any printers you are using for the design and print process.

Related Guides

If you require further information about a specific topic or wish to obtain product background information, reference the following resources, all of which are part of the DesignPro Tools for Xerox documentation package.

- *DesignPro Tools Manager for Xerox User Guide*
- *DesignPro Tools Form Editor for Xerox User Guide*
- *DesignPro Tools Font Editor for Xerox User Guide*
- *DesignPro Tools Graphics Editor for Xerox User Guide*
- *DesignPro Tools for Xerox Migration Guide*

Conventions

Elixir products adhere to Microsoft Windows conventions for using menus, menu commands, dialogs, command buttons, icons, and mouse. See your Windows manual for more information.

This guide uses the following typographic and symbolic conventions to identify special information.

Typographic Conventions

The typographic conventions used in this guide are given below:

Convention	Information Type/Example
Bold type	Text for you to enter. Field names, windows, toolbars, buttons, and workspace areas within a task step. <i>Example:</i> select an item from the List of Used Fonts . <i>Example:</i> click the Options tab. <i>Example:</i> use rules set by the Start on option. <i>Example:</i> select the Text tool. <i>Example:</i> click OK to save settings.
<i>Italic type</i>	References to other documents and books. <i>Example:</i> refer to the <i>DesignPro Tools Form Editor for Xerox User Guide</i> .

Symbolic Conventions

Look for the following symbols as you read through this guide to identify special information.



The **Note** symbol calls your attention to additional information.



The **Tip** symbol highlights a helpful tip.



The **Shortcut** symbol calls your attention to an easier way of accomplishing a task.



The **Warning** symbol warns you of problems you might encounter.

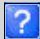


The **Migrating Users** symbol provides notes and tips for anyone migrating from a previous version of Opus.



The **Question** symbol refers you to the online help for more information.

To open online help:

- From the **Help** menu, select **Help Topics**, or
- Click  in an open dialog.

Getting the Answers You Need

Elixir Technologies provides you with multiple ways to learn and use DesignPro Tools:

- [Customer Support](#) (page 10)
- [Elixir Web Site](#) (page 11)
- [Elixir Training](#) (page 11)
- [Product Help](#) (page 12)
- [Release Notes](#) (page 12)

Customer Support

If you purchased this product directly from Elixir Technologies, you can contact the Customer Support Center for your region at the number listed below.



If you have purchased this product from some other source, please contact the authorized support representative from that source. Elixir provides customer support for products purchased directly from Elixir.

North and South America:

- +1 805 641 5900 ext. 3
Monday - Friday, 7:00 am to 4:00 pm Pacific Standard Time; if closed, press 2 to reach Elixir's extended Support coverage.
- ELX_support@elixir.com

Asia Pacific:

- Asia_support@elixir.com

Europe:

- +44 (0) 207 993-4811
Monday - Friday, 6:00 am to 4:00 pm Central European Time
- +1 805 641 5900 ext. 3
Monday - Friday, 4:00 pm to 2:00 am Central European Time
- Europe_support@elixir.com

An Elixir Product Specialist will take your call and ask for the following information:

- Your name, organization, telephone number and address.
- Elixir product name and version number.
- A complete description of the problem, including any error messages printed or displayed on your monitor.

Elixir Web Site

You can obtain product support from the Elixir web page at www.elixir.com.

Select **Support** to:

- Ask a question of Elixir Support.
- Download the latest product releases and patches.
- View the latest product Release Notes.
- Sign up for Elixir Training.
- Renew your product license.


Elixir Training

Elixir Technologies offers training for its full-range of Windows-based products. For more information, contact Elixir Learning at +1 805 641 5900, ext. 4.

Product Help

Elixir software uses the Microsoft Windows Help program to provide online help for all product functions.

This online tool includes step-by-step procedures that you can follow as you work.

- **Context-Sensitive Help** can be activated from within the software for certain dialogs by clicking  in the top right corner of a dialog.
- **Online Help** can be opened from any component from the **Help** menu by selecting **Contents**.

Release Notes

Release Notes display at the start of product installation so you can review them before beginning the installation process. Once installation completes, you can access Release Notes from the product CD at *drive:\Relnotes*. There are two formats of the Release Notes file: *Relnotes.pdf* and *Relnotes.txt*. The TXT file can be viewed using either Notepad or WordPad. The PDF file can be viewed using Acrobat Reader.

Chapter 2:

Installation

In this chapter...

- [System Requirements](#)
- [Installing DesignPro Tools](#)
- [Installing DesignPro Tools in Silent Mode](#)

This chapter guides you through the installation and registration processes of DesignPro Tools for Xerox. It describes the system requirements necessary to install and run DesignPro Tools on your computer.

This chapter also describes procedures for upgrading to, repairing and uninstalling DesignPro Tools version 3.00.

System Requirements

The minimum system requirements for running DesignPro Tools are:

Software Requirements

To run DesignPro Tools, you need one of the following operating systems installed on your computer:

- Windows XP with Service Pack 1.0a or higher.
- Windows 2000 Professional with Service Pack 3.0 or higher.
- Windows NT 4.0 with Service Pack 6.0a or higher.

The application also requires Internet Explorer 5.5 or above.



Internet Explorer 5.5 is required whether or not you have an Internet connection.

Hardware Requirements

You need the following minimum hardware specifications to run DesignPro Tools on your computer:

- Processor: 350 MHz Pentium required, Pentium III or higher recommended.
- RAM: 128 MB required, 256 MB recommended.
- Hard disk space: 10 GB (with 650 MB free space for Windows 2000 or Windows NT, and 1.5 GB free space for Windows XP).
- VGA or SVGA monitor that supports 1024 x 768 screen resolution or higher.

Installing DesignPro Tools

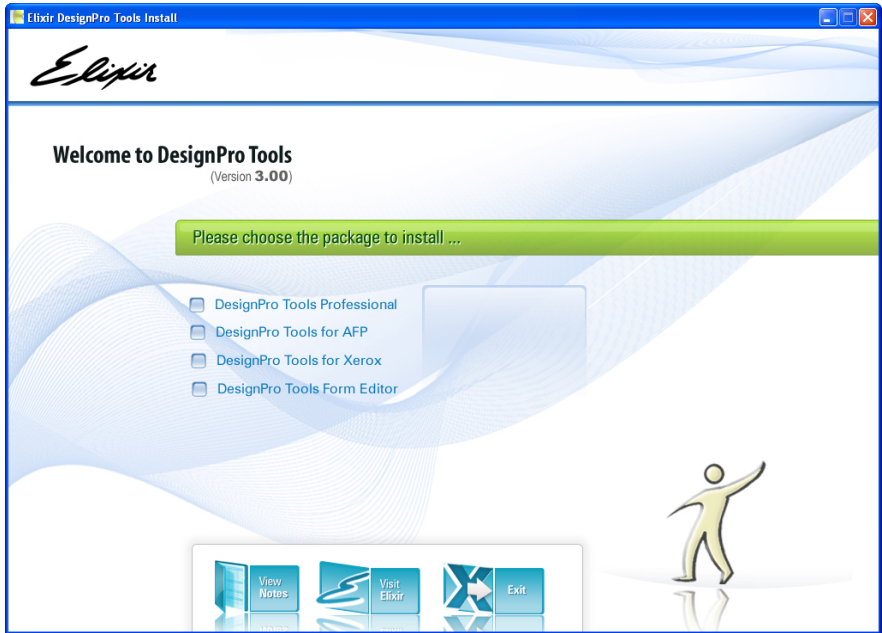
This section provides instructions for installing DesignPro Tools for Xerox.



It is highly recommended that you close all programs before you install or uninstall any software.

To install DesignPro Tools:

- 1 Insert the DesignPro Tools CD into your CD-ROM drive.
If your computer is set up to automatically run a CD, the Welcome to DesignPro Tools screen displays.



The Welcome to DesignPro Tools screen.

If your computer is not set up to automatically run a CD, you will need to run the installation manually:

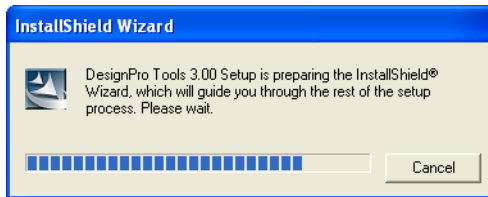
- 2 From the **Start** menu, select **Run**.
- 3 Type **drive:\Setup.exe** (replace drive with the letter of your CD-ROM drive) and click **OK**.

The Welcome to DesignPro Tools screen displays.

4 Select **DesignPro Tools for Xerox**.

This selection installs the Xerox version of DesignPro Tools. If you want to install both the AFP and Xerox versions, select DesignPro Tools Professional.

The DesignPro Tools setup prepares the InstallShield Wizard.



The Setup initializes.

The DesignPro Tools for Xerox Wizard displays.



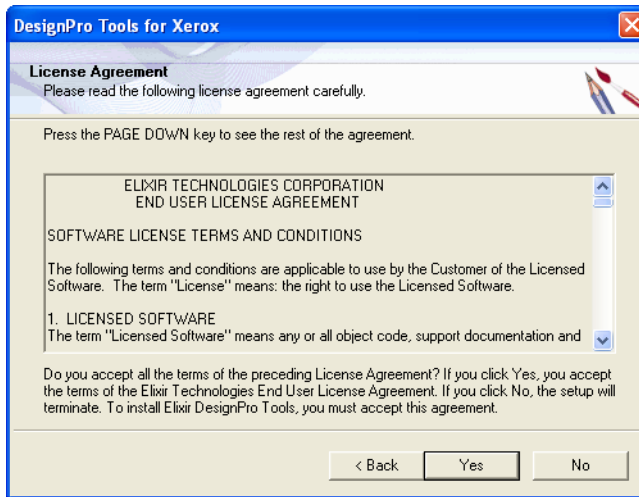
The DesignPro Tools for Xerox Wizard.

5 Select **Run Password Registration Process**.

If selected, the password registration process runs automatically after the installation.

6 Click **Next**.

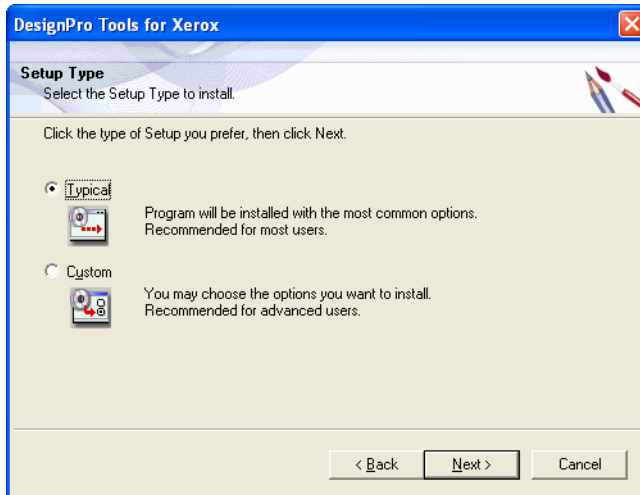
The License Agreement dialog displays.



Read the License Agreement carefully before proceeding.

7 Read the License Agreement carefully.

-
- 8** If you agree, click **Yes**.
The Setup Type dialog displays.

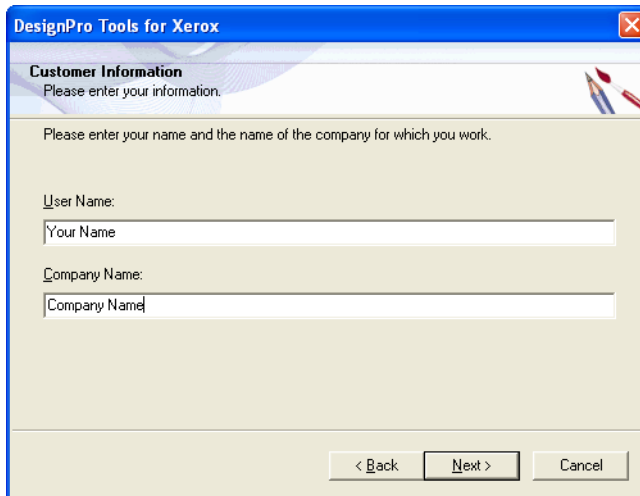


Choose the type of setup you prefer in the Setup Type dialog.

- 9** As appropriate, select one of the following:
- **Typical**
Installs all services and components; displays the Customer Information dialog.
 - **Custom**
Allows custom setup components selection; displays the Customer Information dialog and then Select Components dialog.
- 10** Click **Next**.

For specific options on selecting Custom components, see [“Select Components”](#) on page 20.

The Customer Information dialog displays.



The screenshot shows a dialog box titled "DesignPro Tools for Xerox" with a close button (X) in the top right corner. The dialog has a header section with the title "Customer Information" and the instruction "Please enter your information." Below this, there is a sub-instruction: "Please enter your name and the name of the company for which you work." There are two text input fields: the first is labeled "User Name:" and contains the text "Your Name"; the second is labeled "Company Name:" and contains the text "Company Name". At the bottom of the dialog, there are three buttons: "< Back", "Next >", and "Cancel".

Enter your information and continue.

- 11** In the **User Name** entry box, enter your name.
- 12** In the **Company Name** entry box, enter your company's name.

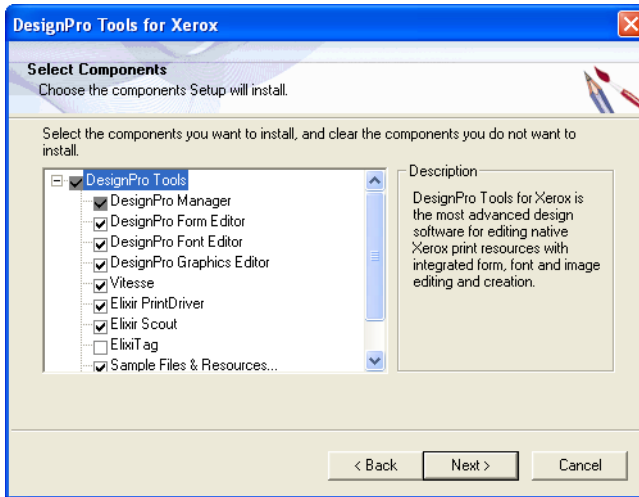


These entries are pre-filled using the default information from your PC. You can change this information if needed.

- 13** Click **Next**.

Select Components

The Select Components dialog displays if Custom was selected from the Setup Type dialog in step 9. This dialog lists all available services and components.



Selecting DesignPro Tool components to install.

14 Select required services and components, then click **Next**.



You can also install Elixir PrintDriver Pro and Elixir Scout components separately. To do so, insert the DesignPro Tools CD into your CD-ROM drive. From the **Start** menu, select **Run**. Enter one of the following:

- **Drive:\PrintDrv\Setup.exe** to install Elixir PrintDriver Pro (replace drive with the letter of your CD-ROM drive).

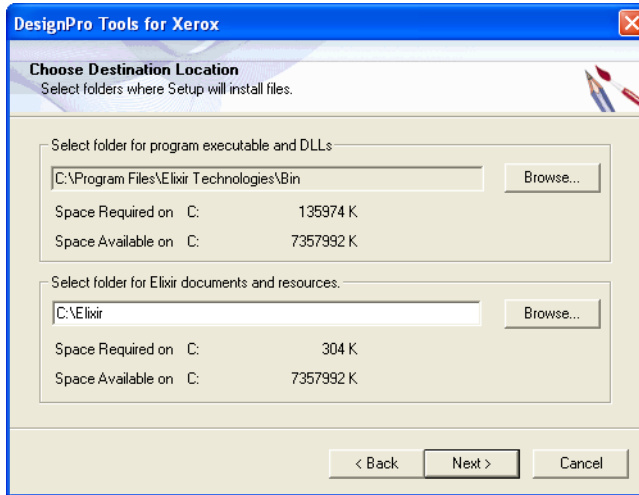
or

- **Drive:\Scout\Setup.exe** to install Elixir Scout Manager (replace drive with the letter of your CD-ROM drive).

Click **OK** to install the specified component.

Complete DesignPro Tools Installation, Continued

The Choose Destination Location dialog displays.



Setting the DesignPro Tools installation location.

- 15** Browse to select the folder for DesignPro Tools executables and DLLs if you want to change the default directory.



The default path for DesignPro Tools application files is different than the Elixir Application Suite directory path. This allows you to run both applications at the same time. For more information on migrating from Elixir Application Suite, refer to *DesignPro Tools for Xerox Migration Guide*.

- 16** Browse to select the folder for Elixir documents and resources, if you want to change the default directory.

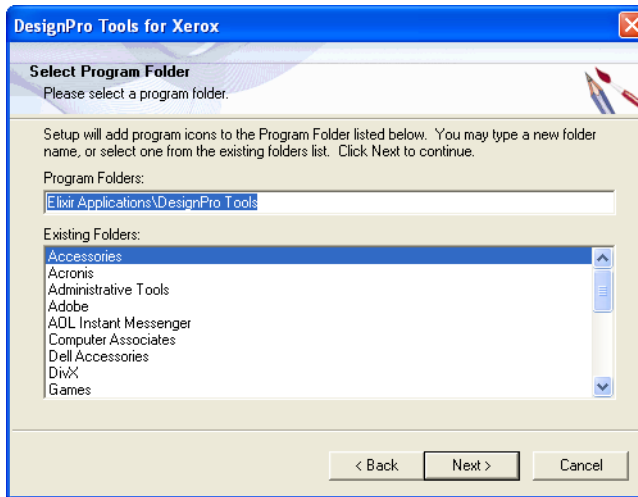


If you are currently using Elixir Application Suite, you can choose from one of the two folder configurations:

- You can use your existing directory structure; existing resource folders will be kept intact.
- You can create a new directory structure by browsing to a new directory location other than *drive:\Elixir*.

17 Click **Next**.

The Select Program Folder dialog displays with Elixir Applications\DesignPro Tools set as the default folder for placing application shortcuts.



Selecting the Program Folder for DesignPro Tools



In this dialog, you can either create a new Program folder for DesignPro Tools shortcuts or select from the existing folders listed.

18 Click **Next**.

The Log on As dialog displays.



Using system logon information.

By default, the Log on as System Account option is selected and all fields are unavailable. Proceeding with these settings will use your PC's log on information.



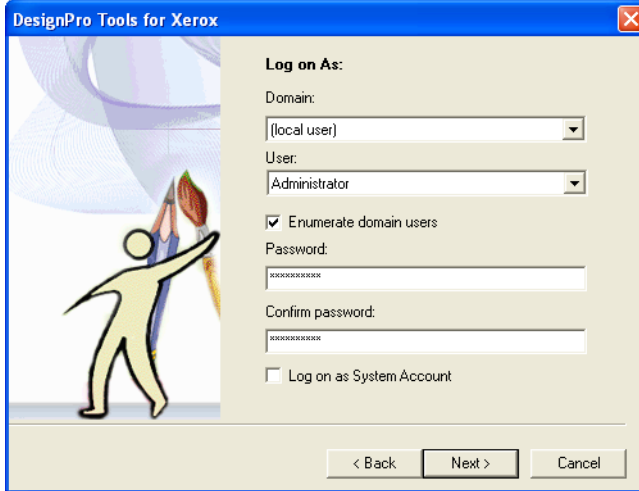
The Log on As dialog does not display when installing Elixir PrintDriver Pro only. However, in Window NT the Log on As dialog displays when installing Elixir PrintDriver Pro.



You will need to change the default log on settings if you want to log on using a different login ID (other than the one you are currently logged on with). Logging on with a local machine/domain account will restrict DesignPro Tools use to authorized users only.

To customize the log on options, uncheck the Log on as System Account option and enter your information in the available fields.

19 Uncheck **Log on as System Account**.



Adding logon information.

20 Specify your domain from the **Domain** drop-down list.

21 Enter your User ID in the **User** entry box.

If you would like a list of users within a chosen domain, select **Enumerate Domain Users**. Then select a User ID from the drop-down list. This should be the User ID that you would want to use when logging onto the PC to work with DesignPro Tools.



If DesignPro Tools is installed using one login ID, and then you log on with another ID, you will need to create a new profile using the Profile Editor. A new default profile is not automatically created for new users.

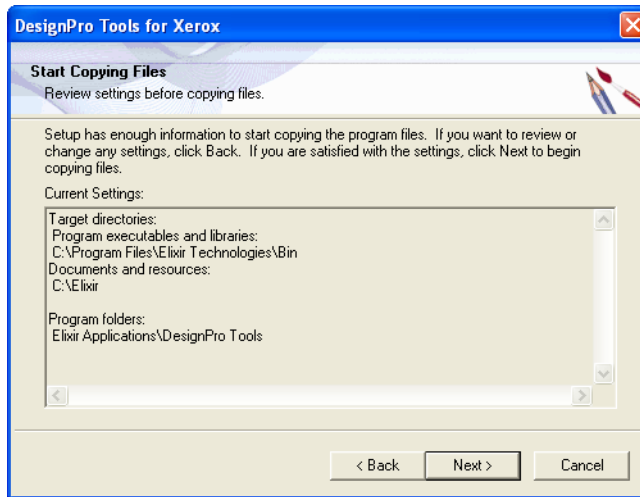
22 Enter your password in the **Password** entry box.

This should be the same password used to log on.

23 Enter your password again in the **Confirm Password** entry box.

24 Click Next.

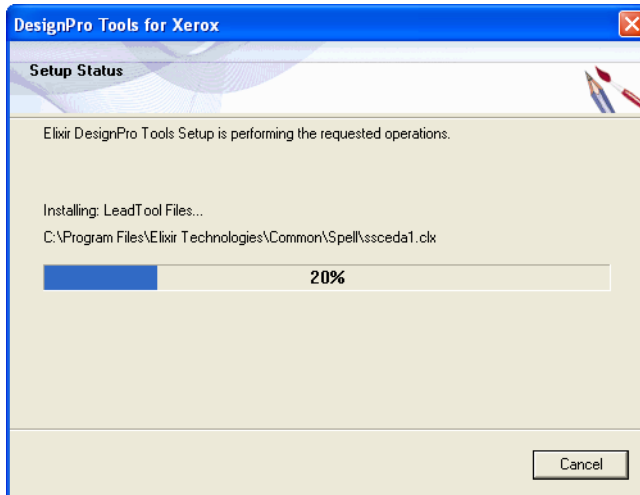
The Start Copying Files dialog displays with the current setting details.



Review the Current Settings details before starting the installation.

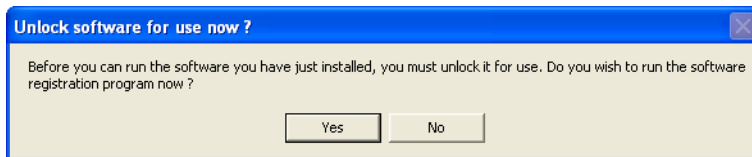
The wizard confirms your settings before it starts copying DesignPro Tools files. If you need to make any changes to these settings, click **Back**.

-
- 25** If you agree with the settings, click **Next**.
The Setup Status dialog displays with the installation's progress.



DesignPro Tools installs.

Once the installation completes, you will be prompted to unlock DesignPro Tools for use.



Starting the software registration process as part of the installation.

- 26** Click **Yes**.



This dialog only displays if **Run Password Registration Process** is selected at the start of the installation process.



If you want to run registration as a separate process, click **No**. When you are ready to register, open the **Start** menu and select **Programs, Elixir Applications, DesignPro Tools, Product Registration**.

Registering DesignPro Tools

Elixir Technologies Corporation provides licenses to use purchased copies of DesignPro Tools. The easiest method for unlocking your software is using the Internet. Connect to the Internet at this point to start the registration process.

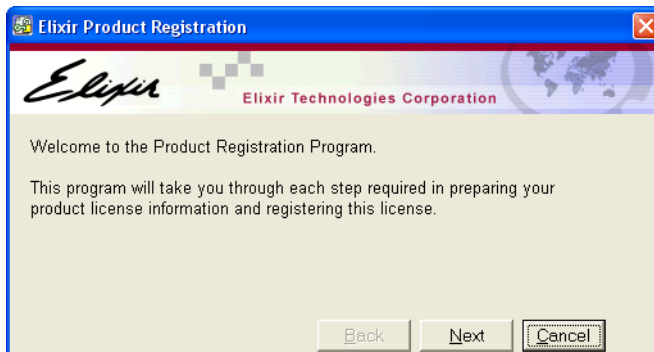


You can continue with the registration process even if you are not connected to the Internet. Other options for registering are given in the last dialog of registration.



If you are not registering as part of the installation process, product registration is available in the DesignPro Tools program folder. When you are ready to register, open the **Start** menu and select **Programs, Elixir Applications, DesignPro Tools, Product Registration**.

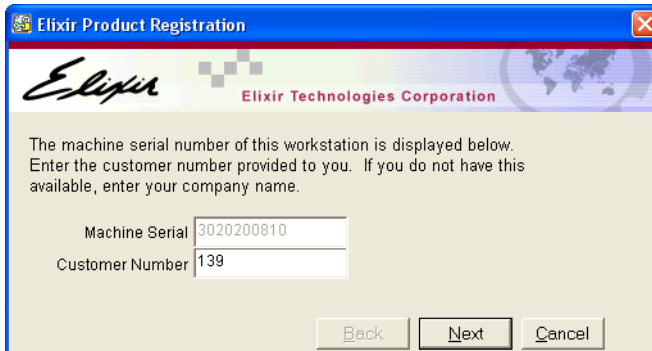
The Elixir Product Registration dialog displays.



The Product Registration process begins.

27 Click **Next**.

The registration process continues.

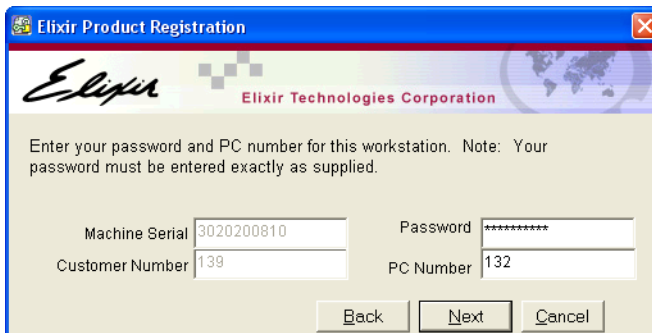


The Machine Serial number is automatically obtained from your PC.



Every computer has a unique, system-generated Machine Serial number. This dialog only requires the Customer Number provided with your Customer Activation Letter.

28 In the Customer Number entry box, enter your Customer Number and click **Next**.



Enter your password and PC Number from the Customer Activation Letter sent with your software.

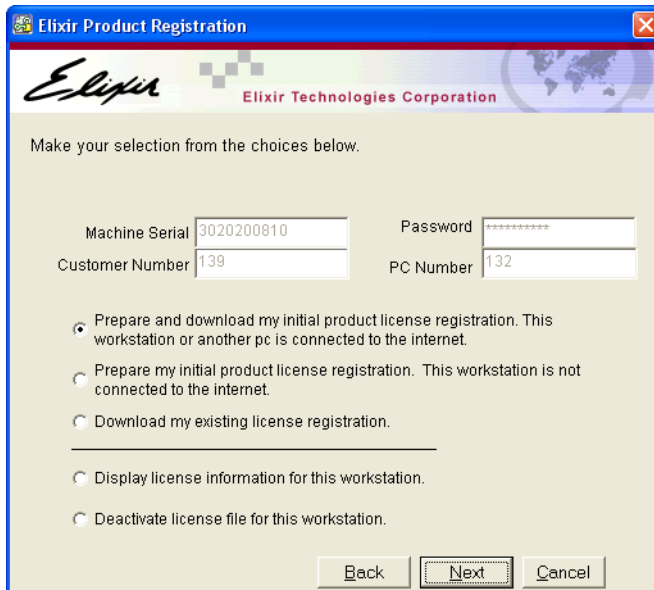
29 Type in your Password and PC Number.



Elixir Technologies creates specific software registrations based on the unique combination of Customer Number, PC Number, and Password. This information is provided in the Customer Activation Letter.

30 Click **Next**.

The dialog displays a selection of registration choices.



The screenshot shows the "Elixir Product Registration" dialog box. The title bar is blue with the Elixir logo and "Elixir Technologies Corporation". The main area is light beige and contains the text "Make your selection from the choices below." Below this are four input fields: "Machine Serial" (3020200810), "Password" (masked with asterisks), "Customer Number" (139), and "PC Number" (132). There are five radio button options for registration methods. At the bottom are "Back", "Next", and "Cancel" buttons.

Select a method for initial product registration.

You can select one of the following from this dialog:

- Download the Product License via Internet:
 - See [“Preparing and Downloading Initial Product License from the Internet”](#) on page 30.
 - See [“Downloading Existing Product License from the Internet”](#) on page 32.
- Prepare the Product License if Not Connected to the Internet:
Contact [“Customer Support”](#) on page 10 for assistance.

-
- View the Product License:
See [“Viewing the Product License Information”](#) on page 32.
 - Deactivate the Product License:
See [“Deactivating the Product License File”](#) on page 33.

Preparing and Downloading Initial Product License from the Internet

31 Select **Prepare and download my initial product license registration. This workstation or another pc is connected to the internet.**

The Registration wizard communicates your licensing information with Elixir Technologies using your Internet connection.



You will need to connect to the Internet before continuing with the registration process.

32 Click **Next**.

The Download Password dialog prompts if the PC is connected to the Internet.



33 In the Download Password dialog, click one of the following options:

Option	Result
Yes	The license information downloads and displays in the dialog.
No	<p>If your PC or another PC available is not connected to the Internet, you can contact “Customer Support” on page 10 for getting the product license.</p> <p>The Elixir Product Specialist will ask for the following information:</p> <ul style="list-style-type: none">■ Your name, customer number, organization, telephone number and address.■ Elixir product name and version number.■ Your machine serial and PC number.

Clicking Yes displays the following dialog:

Unlock codes	Qty	Expire	Product Name
CFFJCCEIFLEFA	59	05/2005	Universal

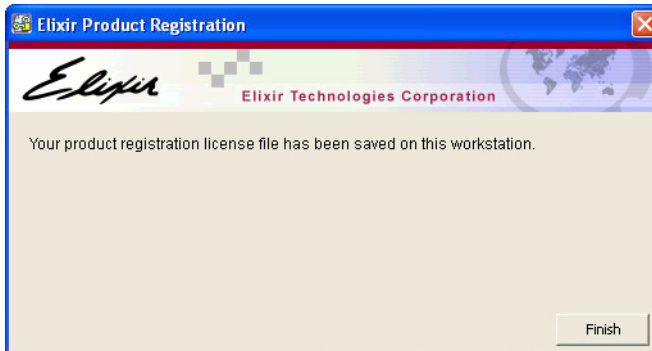
The license information downloads and displays in the Elixir Product Registration dialog on clicking Yes.



Make sure the product information listed is correct. If you have any questions or concerns, contact [“Customer Support”](#) on page 10 for assistance.

34 Click **Save**.

The Elixir Product Registration dialog displays.



Your product registration process is complete.

35 Click **Finish** to save the license file Password.epw at
drive:\Program Files\Elixir Technologies\Bin.

Downloading Existing Product License from the Internet

If you are already a licensed user and want to renew your product license, request Customer Support for license renewal and select **Download My Existing License Registration** from the dialog. If you are connected to the Internet, the updated license file will download at *drive:\Program Files\Elixir Technologies\Bin*.

Viewing the Product License Information

To view information regarding the existing product license on your machine:

36 Select **Display License Information for This Workspace**, and then click **Next**.

The information provided by your selected license key or license server is displayed in the Elixir Product Registration dialog. The information includes the Machine Serial, Customer Number, Password, PC Number, Unlock Codes, Qty, Expire, Product Name, Version, and PC Unlock Code.

37 Click **Print** to print the information for future reference.

The print command is sent to the default printer set on your machine.

38 Perform any of the following steps in the dialog:

- Click **Back** to modify the information in the Elixir Product Registration dialog.
Or
- Click **Save** to save the product license file Password.epw at *drive:\Program Files\Elixir Technologies\Bin*.
Upon saving the file, the Product Registration Wizard confirms that the license is saved on your machine.



Make sure that the product information listed is correct. If you have any questions or concerns, contact “[Customer Support](#)” on page 10 for assistance.

39 Click **Finish** to exit the Product Registration Wizard.

Deactivating the Product License File

If you select **Deactivate License File for This Workspace** from the **Elixir Product Registration** dialog, the license and your customer password is permanently disabled from your machine.



It is recommended to contact “[Customer Support](#)” on page 10 if you want to deactivate the license from your machine.

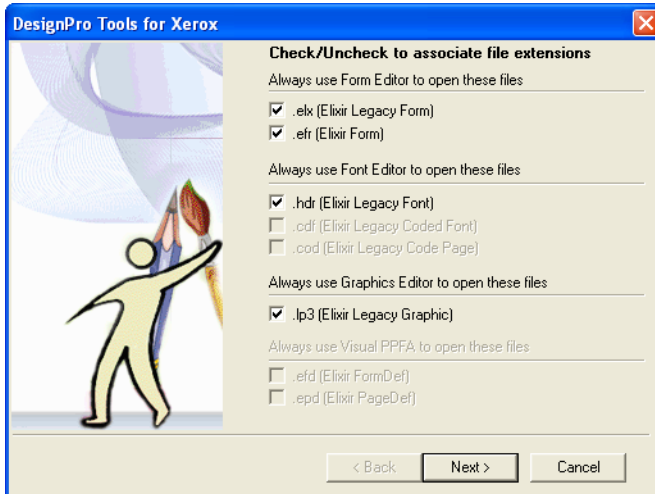


After the registration process completes, if an earlier version of Elixir Application Suite is detected on your system, you are given an option to place the resources at the location where Elixir Application Suite resources are already located.

Continuing the Installation

The installation process continues.

The Check/Uncheck to associate file extensions dialog displays.

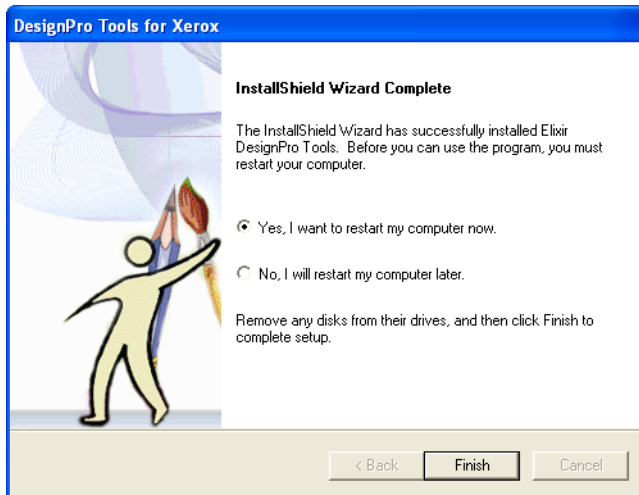


Creating file extension associations.

- 40** Select any file extensions you wish to associate with a DesignPro Tools editor.

41 Click **Next**.

The InstallShield Wizard Complete dialog displays.



The installation is complete.

42 Select **Yes, I want to restart my computer now**.

43 Click **Finish**.

The installation completes and the computer restarts.



If you do not receive a prompt to restart your PC, you may choose whether or not to restart. The installation completes without restarting. However, it is recommended that you restart your computer after any software installation or upgrade.

44 Once the computer has restarted, you may remove the CD from the CD-ROM drive.

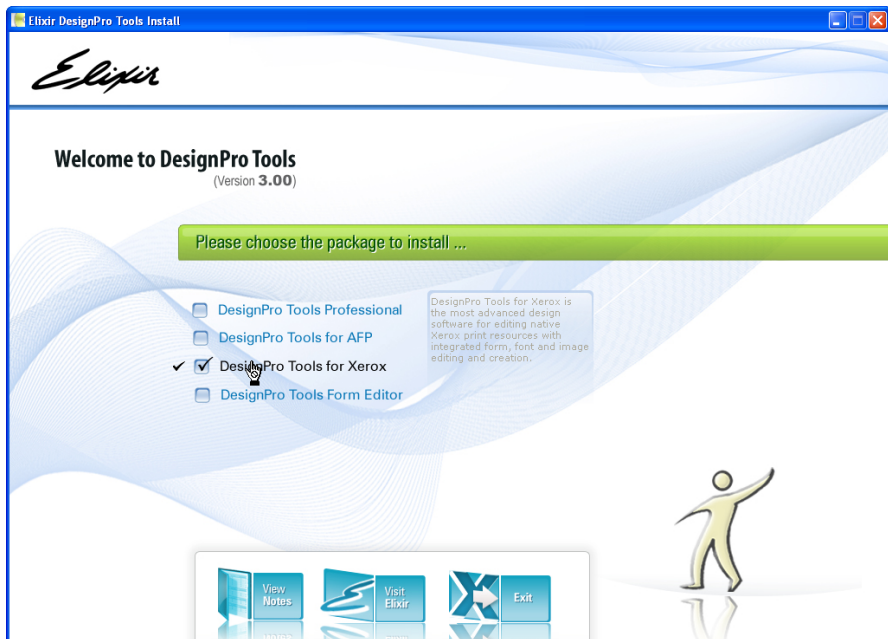
Upgrading DesignPro Tools

To upgrade an earlier installation of DesignPro Tools to DesignPro Tools 3.00, you can run the Update process.



Make sure you close all open programs before repairing or modifying a software application.

- 1 Insert the DesignPro Tools CD into your CD-ROM drive.
If your computer is set up to automatically run a CD, the Welcome to DesignPro Tools screen displays.



The Welcome to DesignPro Tools screen.

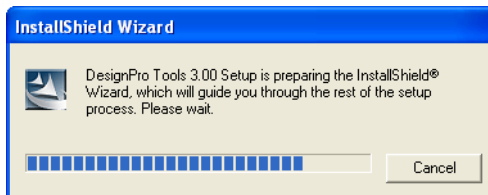


If your PC is not set up to automatically run CDs, open the **Start** menu and select **Run**. Type **drive:\Setup.exe** (replace drive with the letter of your CD-ROM drive) and click **OK**.

2 Click **DesignPro Tools for Xerox**.

This selection will update the Xerox version of DesignPro Tools. If you want to update both the AFP and Xerox versions, click DesignPro Tools Professional.

The DesignPro Tools setup prepares the InstallShield Wizard.

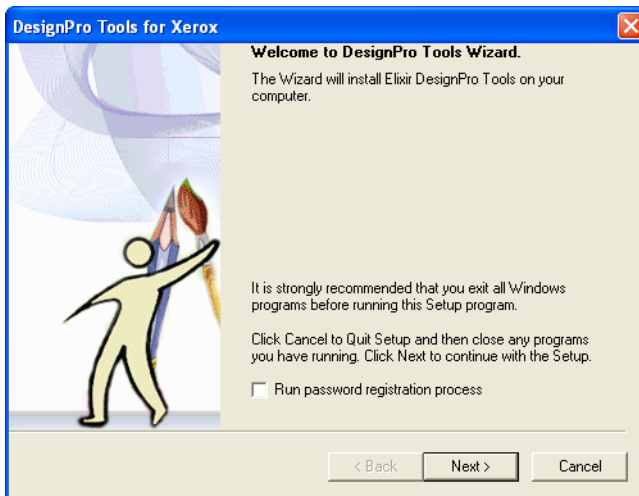


The Setup initializes.



To upgrade an earlier installation, the installation program searches for a previously installed version of the software.

The DesignPro Tools for Xerox Wizard displays.

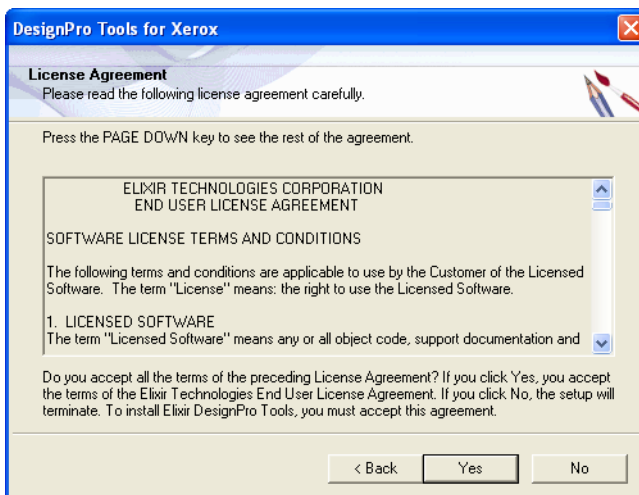


The DesignPro Tools for Xerox dialog.

You do not need to check the Run Password Registration Process option.

3 Click **Next**.

The License Agreement dialog displays.

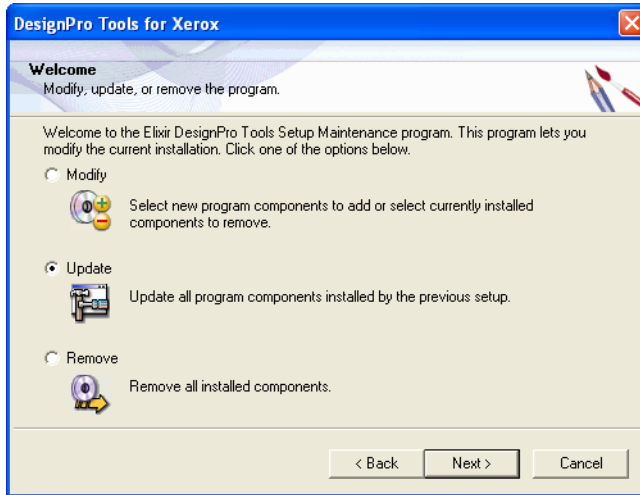


Read the License Agreement carefully before proceeding.

4 Read the License Agreement carefully.

5 If you agree, click **Yes**.

The installation program searches for a previously installed version of the software. If an earlier version of DesignPro Tools is found on your system, the install automatically displays the Welcome dialog with the Modify, Update, and Remove options.



The DesignPro Tools install detects an installed version of DesignPro Tools.

The **Modify** option:

- Uninstalls components from the present application.
- Installs components not previously installed.

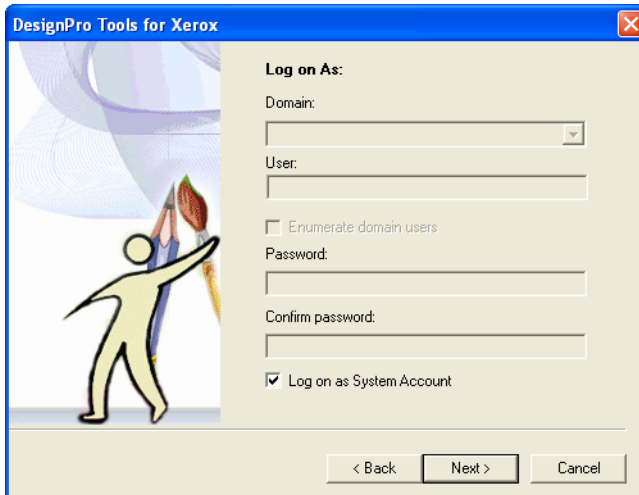
The **Update** option:

- Upgrades the installed version of DesignPro Tools to 3.00.

The **Remove** option:

- Removes all installed components of DesignPro Tools.

-
- 6 Select **Update** and click **Next**.
The Log on As dialog displays.



Using system log on information.

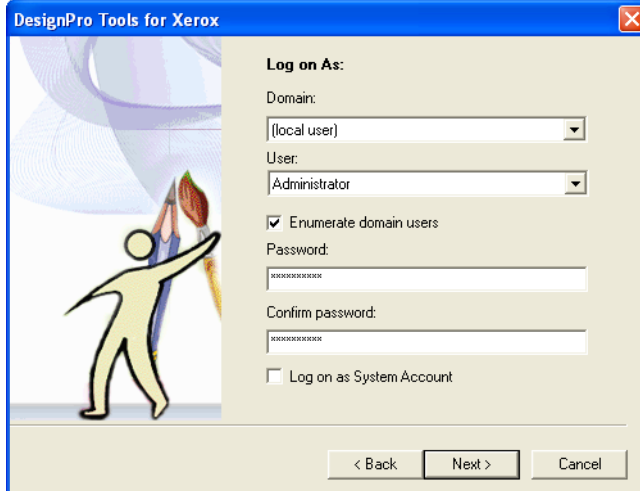
By default, the Log on as System Account option is selected and all fields are unavailable. Proceeding with these settings will use your PC's log on information.



You will need to change the default log on settings if you want to log on using a different login ID (other than the one you are currently logged on with). Logging on with a local machine/domain account will restrict DesignPro Tools use to authorized users only.

To customize the log on options, uncheck the Log on as System Account option and enter your information in the available fields.

7 Uncheck **Log on as System Account**.

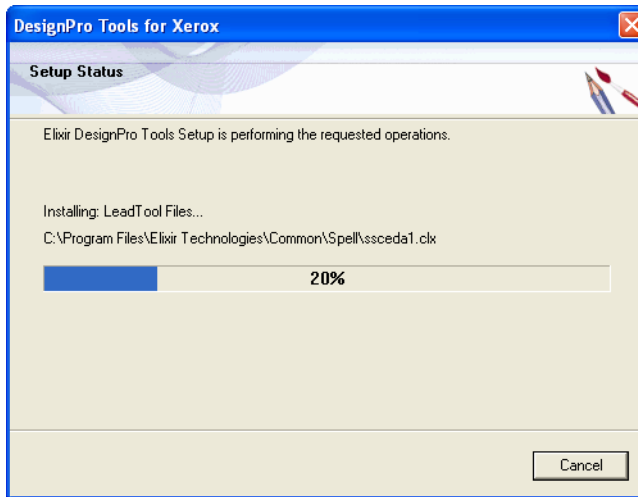


Adding logon information.

- 8** Specify your domain from the **Domain** drop-down list.
- 9** Enter your User ID in the **User** entry box.
Selecting this option generates a list of users within the chosen domain. Then select a User ID from the drop-down list. This should be the User ID that you want to use when logging onto the PC to work with DesignPro Tools.
- 10** Enter your password in the **Password** entry box.
This should be the same password used to log on to your domain.
- 11** Enter your password again in the **Confirm Password** entry box.

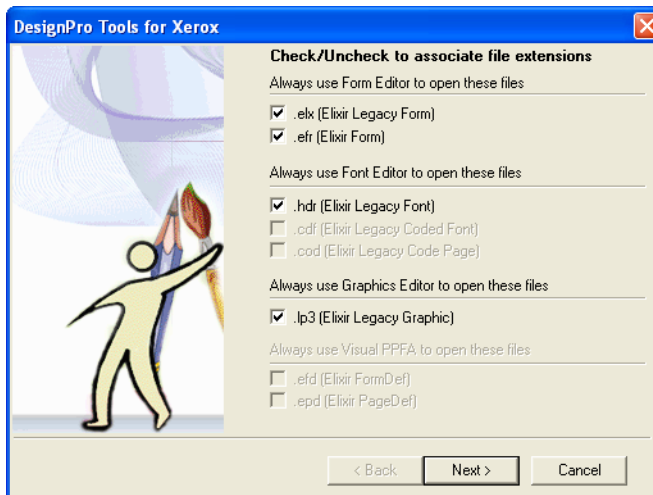
12 Click Next.

The wizard performs the requested operation and updates the software to version 3.00. The upgrade status displays in the Setup Status dialog.



The Install updates the application.

Once the update procedure is complete, the Check/Uncheck to associate file extensions dialog displays.

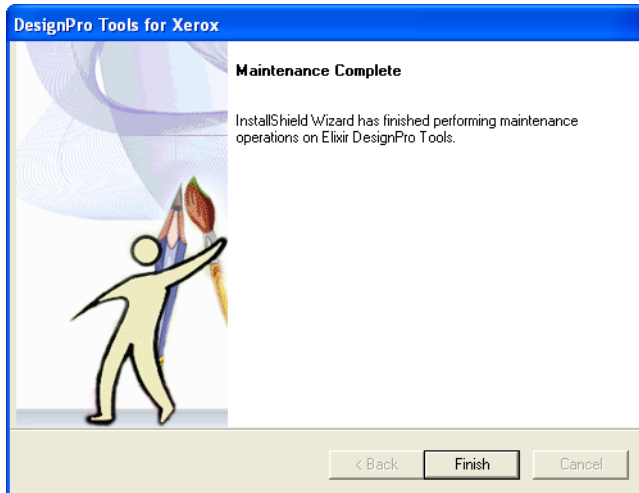


Creating file extension associations.

13 Select any file extensions you wish to associate with a DesignPro Tools editor.

14 Click **Next**.

The Maintenance Complete dialog displays.



Maintenance is complete.

15 Click **Finish**.

The DesignPro Tools update process completes. The Welcome to DesignPro Tools screen displays.

16 Click **Exit** to close the Welcome to DesignPro Tools screen.



If you do not receive a prompt to restart your PC, you may choose whether or not to restart. The maintenance completes without restarting. However, it is recommended that you restart your computer after any software installation or upgrade.

Modifying DesignPro Tools

To add or remove DesignPro Tools program components, you can run the Modify process.



Make sure you close all open programs before repairing or modifying a software application.

- 1 Insert the DesignPro Tools CD into your CD-ROM drive.
If your computer is set up to automatically run a CD, the Welcome to DesignPro Tools screen displays.



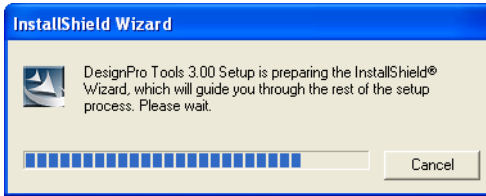
The Welcome to DesignPro Tools screen.



If your PC is not set up to automatically run CDs, open the **Start** menu and select **Run**. Type **drive:\Setup.exe** (replace drive with the letter of your CD-ROM drive) and click **OK**

2 Click **DesignPro Tools for Xerox**.

This selection will update the Xerox version of DesignPro Tools. If you want to update both the AFP and Xerox versions, click DesignPro Tools Professional. The DesignPro Tools setup prepares the InstallShield Wizard.



The Setup initializes.



To upgrade an earlier installation, the installation program searches for a previously installed version of the software.

The DesignPro Tools for Xerox Wizard displays.

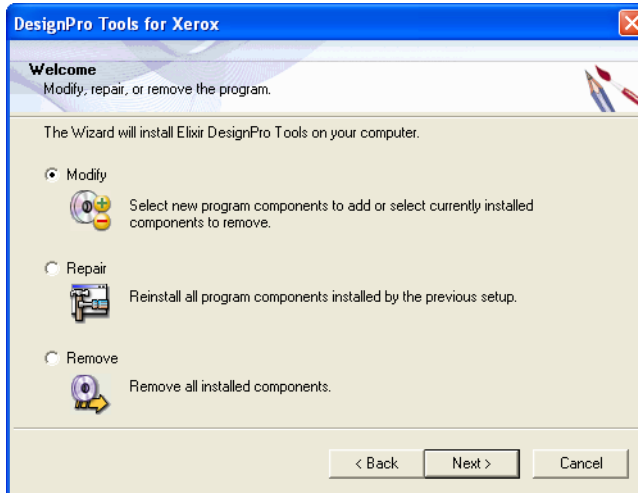


The DesignPro Tools for Xerox Wizard.

You do not need to check the Run Password Registration Process option.

3 Click **Next**.

The installation program searches for a previously installed version of the software. If DesignPro Tools 3.00 is found on your system, the install automatically displays the Welcome dialog with the Modify, Repair, and Remove options.



The DesignPro Tools install detects an installed version of DesignPro Tools.

The **Modify** option:

- Uninstalls components from the present application.
- Installs components not previously installed.

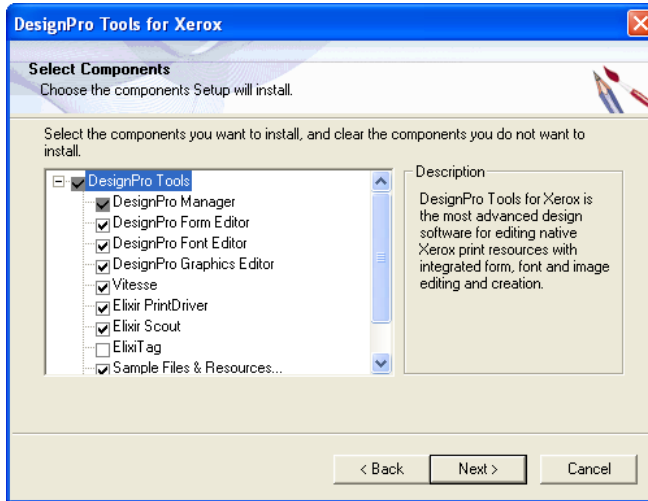
The **Repair** option:

- Repairs or refreshes damaged or missing files of the presently installed application.

The **Remove** option:

- Removes all installed components of DesignPro Tools.

-
- 4** Select **Modify** and click **Next**.
The Component Selection Dialog displays.

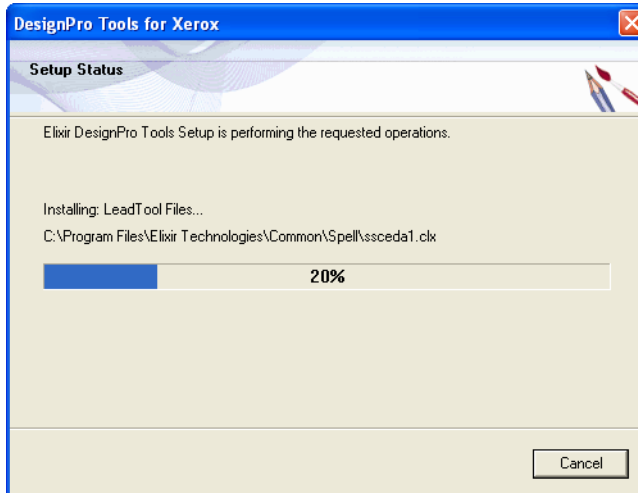


Selecting DesignPro Tool components to install.

Select all components you wish to install.

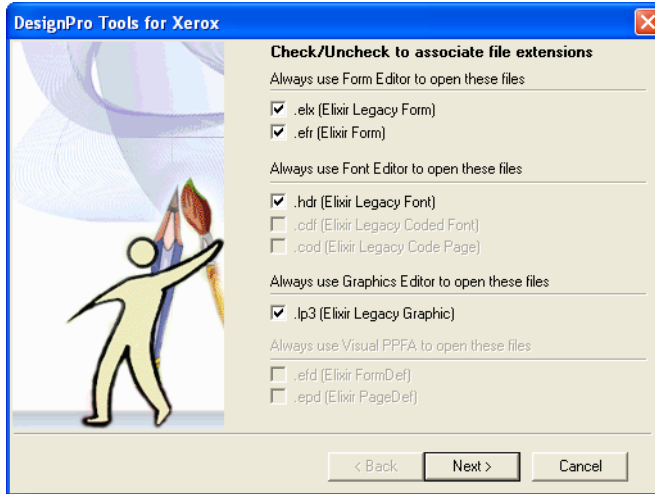
5 Click **Next**.

The wizard performs the requested operation and modifies the software to include only the selected components. The modification status displays in the Setup Status dialog.



The Install modifies the application.

Once the modification procedure completes, the Check/Uncheck to associate file extensions dialog displays.

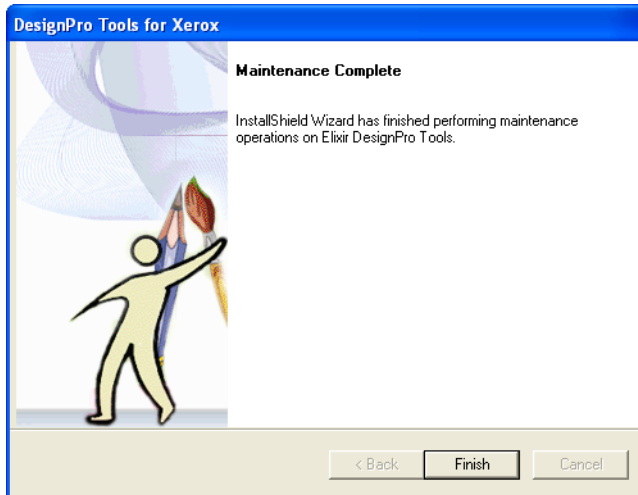


Creating file extension associations.

- 6 Select any file extensions you wish to associate with a DesignPro Tools editor.

7 Click **Next**.

The Maintenance Complete dialog displays.



Maintenance is complete.

8 Click **Finish**.

The DesignPro Tools modifying process completes. The Welcome to DesignPro Tools screen displays.

9 Click **Exit** to close the Welcome to DesignPro Tools screen.



If you do not receive a prompt to restart your PC, you may choose whether or not to restart. The maintenance completes without restarting. However, it is recommended that you restart your computer after any software installation.

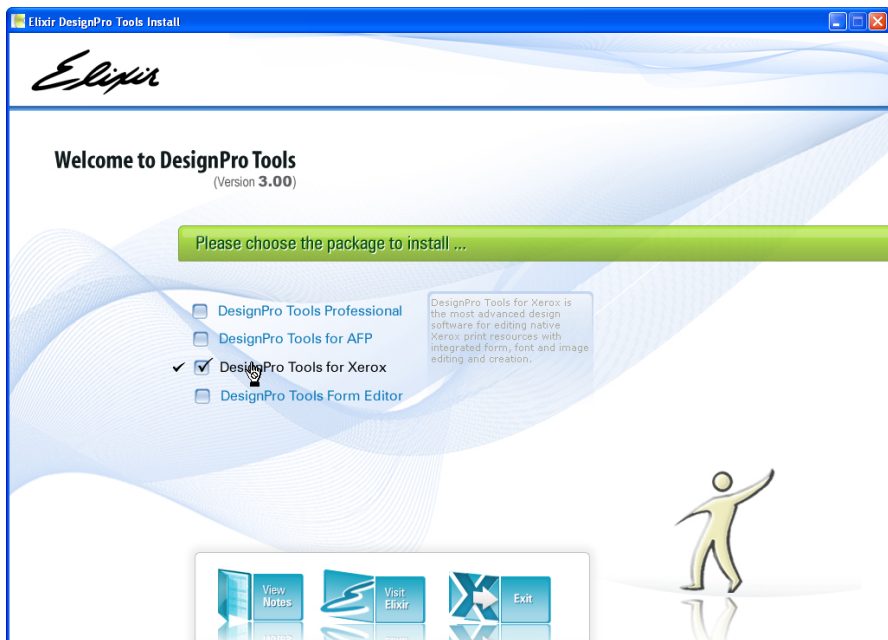
Repairing DesignPro Tools

To repair DesignPro Tools or to reinstall missing or damaged files, you can run the Repair process.



Make sure you close all open programs before repairing or modifying a software application.

- 1 Insert the DesignPro Tools CD into your CD-ROM drive.
If your computer is set up to automatically run a CD, the Welcome to DesignPro Tools screen displays.



The Welcome to DesignPro Tools screen.

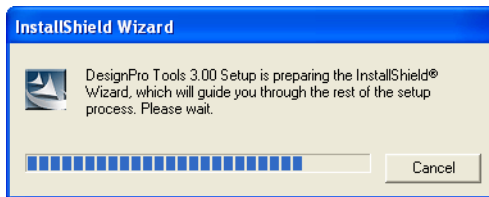


If your PC is not set up to automatically run CDs, open the **Start** menu and select **Run**. Type **drive:\Setup.exe** (replace drive with the letter of your CD-ROM drive) and click **OK**.

2 Click **DesignPro Tools for Xerox**.

This selection repairs the Xerox version of DesignPro Tools. If you want to repair both the AFP and Xerox versions, select DesignPro Tools Professional.

The DesignPro Tools setup prepares the repairing wizard.



The Setup initializes.

The DesignPro Tools for Xerox Wizard displays.

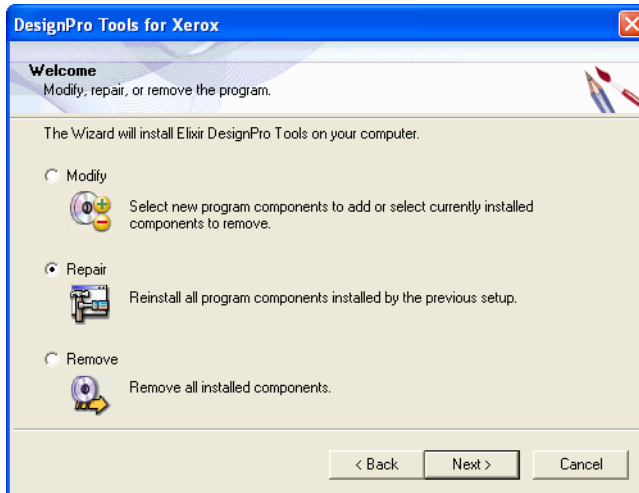


The DesignPro Tools for Xerox Wizard.

You do not need to check the Run Password Registration Process option.

3 Click **Next**.

The installation program searches for a previously installed version of the software. If DesignPro Tools 3.00 is found on your system, the install automatically displays the Welcome dialog with the Modify, Repair, and Remove options.



The DesignPro Tools install detects an installed version of DesignPro Tools.

The **Modify** option:

- Uninstalls components from the present application.
- Installs components not previously installed.

The **Repair** option:

- Repairs or refreshes damaged or missing files of the presently installed application.

The **Remove** option:

- Removes all installed components of DesignPro Tools.

-
- 4** Select **Repair** and click **Next**.
The Log on As dialog displays.



Using system log on information.

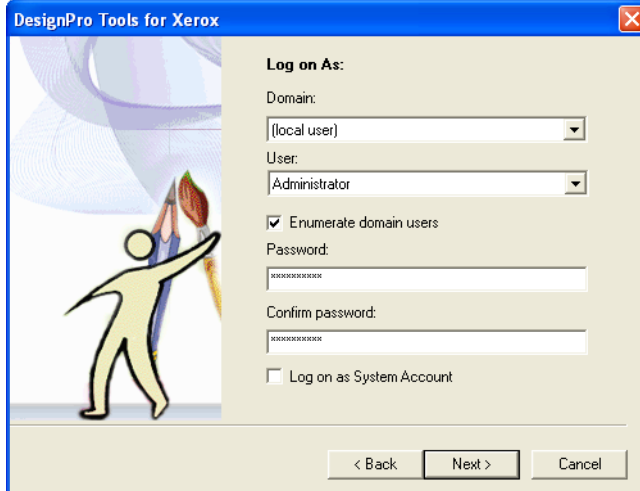
By default, the Log on as System Account option is selected and all fields are unavailable. Proceeding with these settings will use your PC's log on information.



You will need to change the default log on settings if you want to log on using a different login ID (other than the one you are currently logged on with). Logging on with a local machine/domain account will restrict DesignPro Tools use to authorized users only.

To customize the log on options, you will uncheck the Log on as System Account option and enter your information in the available fields:

5 Uncheck **Log on as System Account**.



Adding log on information.

6 Specify your domain from the **Domain** drop-down list.

7 Enter your User ID in the **User** entry box.

If you would like a list of users within a chosen domain, select **Enumerate domain users**. Then select a User ID from the drop-down list. This should be the User ID that you want to use when logging onto the PC to work with DesignPro Tools.

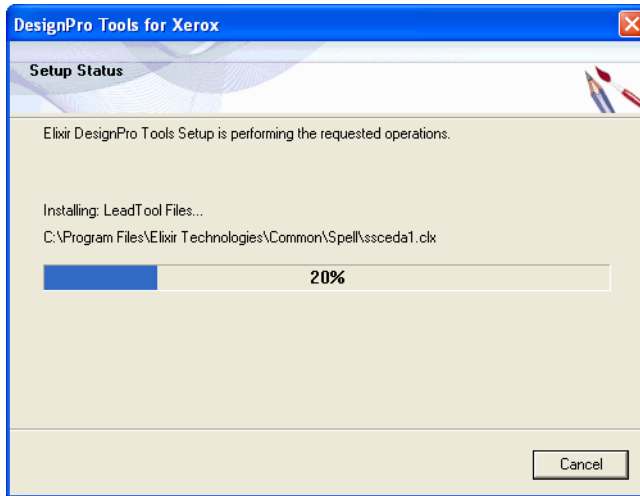
8 Enter your password in the **Password** entry box.

This should be the same password used to log on to your domain.

9 Enter your password again in the **Confirm Password** entry box.

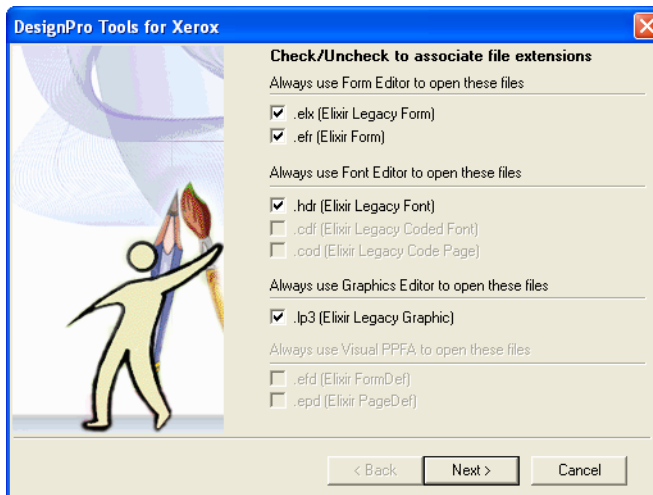
10 Click **Next**.

The wizard performs the requested operation and repairs the damaged files or reinstalls the software. The maintenance status displays in the Setup Status dialog.



The Install repairs the application.

Once the repair procedure completes, the Check/Uncheck to associate file extensions dialog displays.

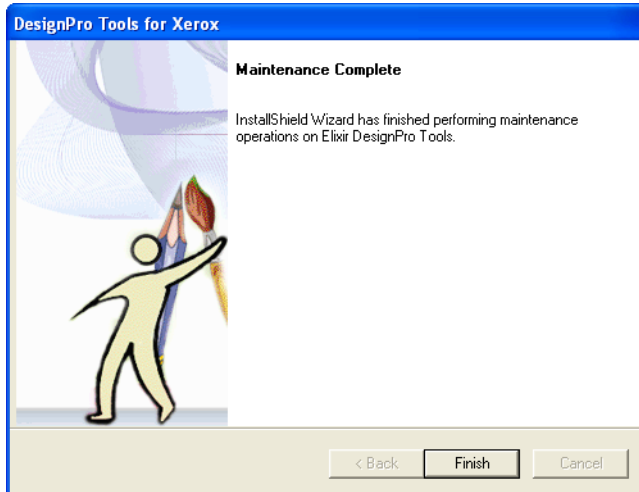


Creating file extension associations.

11 Select any file extensions you wish to associate with a DesignPro Tools editor.

12 Click **Next**.

The Maintenance Complete dialog displays.



Maintenance is complete.

13 Click **Finish**.

The DesignPro Tools repair process completes. The Welcome to DesignPro Tools screen displays.

14 Click **Exit** to close the Welcome to DesignPro Tools screen.



If you do not receive a prompt to restart your PC, you may choose whether or not to restart. The maintenance completes without restarting. However, it is recommended that you restart your computer after any software installation.

Uninstalling DesignPro Tools

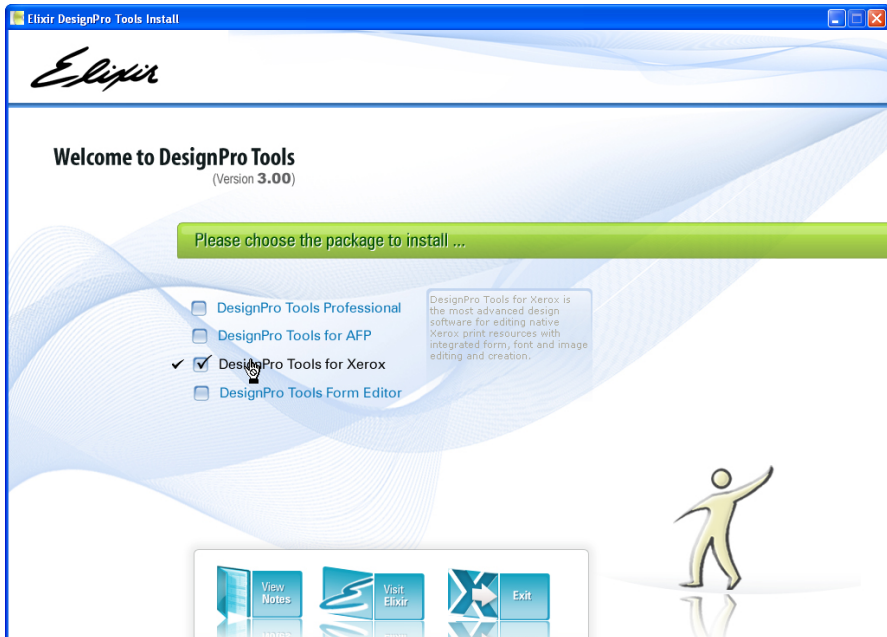
To uninstall DesignPro Tools, you will run the Remove process.



Prior to removing DesignPro Tools, close all open programs.

To uninstall DesignPro Tools:

- 1 Insert the DesignPro Tools CD into your CD-ROM drive.
If your computer is set up to automatically run a CD, the Welcome to DesignPro Tools screen displays.



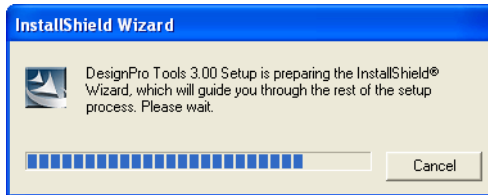
The Welcome to DesignPro Tools screen.



If your PC is not set up to automatically run CDs, open the **Start** menu and select **Run**. Type **drive:\Setup.exe** (replace drive with the letter of your CD-ROM drive) and click **OK**.

2 Click **DesignPro Tools for Xerox**.

The DesignPro Tools setup prepares the InstallShield Wizard.



The Setup initializes.

The DesignPro Tools for Xerox Wizard displays.

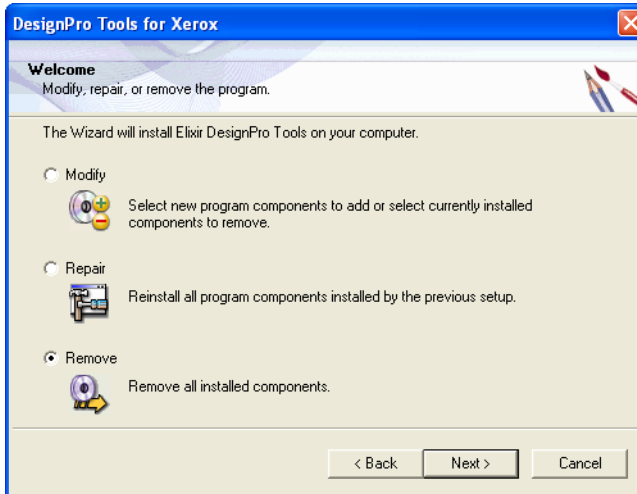


The DesignPro Tools for Xerox Wizard.

You do not need to check the Run Password Registration Process option.

3 Click **Next**.

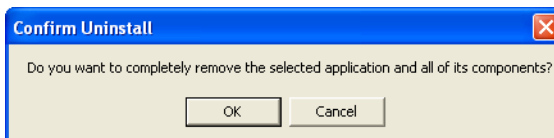
The installation program searches for a previously installed version of the software. If a previous version of DesignPro Tools is found on your system, the install automatically displays the Welcome dialog with the Modify, Repair, and Remove options.



Select Remove to uninstall all DesignPro Tools software components.

4 Select **Remove** and click **Next**.

The Confirm Uninstall dialog displays.

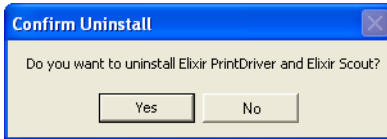


Confirming the uninstall request.

Confirming this option will remove all installed components of DesignPro Tools.

5 Click **OK**.

The Confirm Uninstall dialog displays.

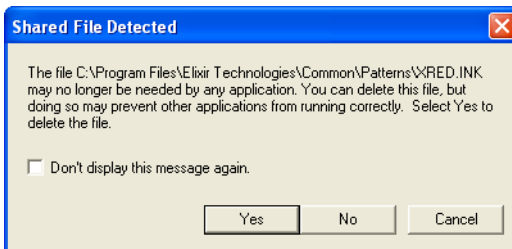


Confirming the uninstall process for Elixir PrintDriver and Elixir Scout.

Confirming this option will also remove Elixir PrintDriver, Elixir Scout and utilities of the DesignPro Tools software package.

6 Click **Yes**.

The Setup Status dialog displays and begins removing DesignPro Tools.
The Shared File Detected dialog displays.



*The Shared *.dll files are detected.*

Shared DLL files are detected that may no longer be needed in any application.

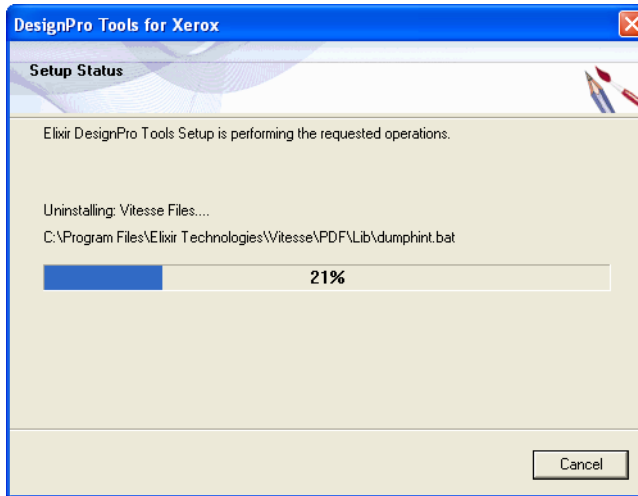


It is recommended to remove these shared files with the software.

7 Select **Don't display this message again**.

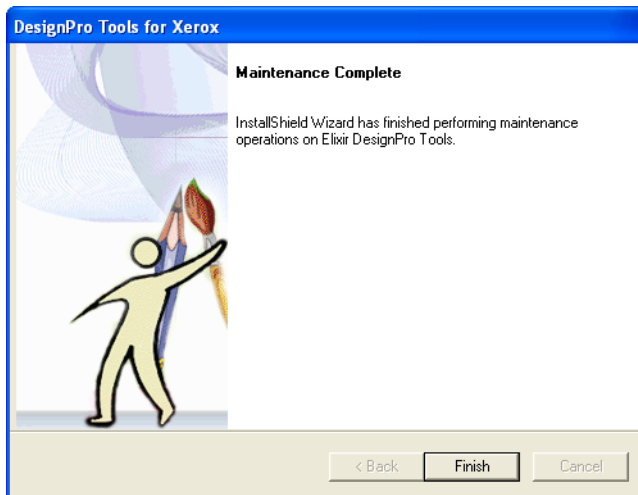
8 Click **Yes**.

The DesignPro Tools Setup removes all components. The Setup Status dialog displays the progress.



The Setup Status displays the uninstall progress.

Once all DesignPro Tools application files are removed from your computer, the wizard displays the Maintenance Complete dialog.



DesignPro Tools is removed from your computer.

9 Click **Finish**.

DesignPro Tools is uninstalled from your PC. The Welcome to DesignPro Tools screen displays.

10 Click **Exit** to close the **Welcome to DesignPro Tools** screen.



DesignPro Tools resource folders are not removed with the application files.



If you do not receive a prompt to restart your PC, you may choose whether or not to restart. The uninstall process completes without restarting. However, it is recommended that you restart your computer after any software is installed.

Installing DesignPro Tools in Silent Mode

DesignPro Tools now provides the silent installation feature. This is a two step process; first the installation process is carried out in Record mode. The installation process is run once to capture the necessary installation and configuration parameters that will be provided in an ISS file.



An ISS file contains a set of parameters that represent installation and configuration specifications.

Secondly the installer is run on a machine in Silent mode. The installer picks up the installation and configuration specifications from the ISS file. Silent installation results in the exact installation and configuration specifications being used on all machines.

You can also use the silent installation feature to run such procedures as upgrading to, repairing, modifying, and uninstalling using DesignPro Tools version 3.00.



Only user accounts with administrative rights can perform install related tasks.



Prior to installing DesignPro Tools, close all open programs.

To install DesignPro Tools for Xerox in Record mode:

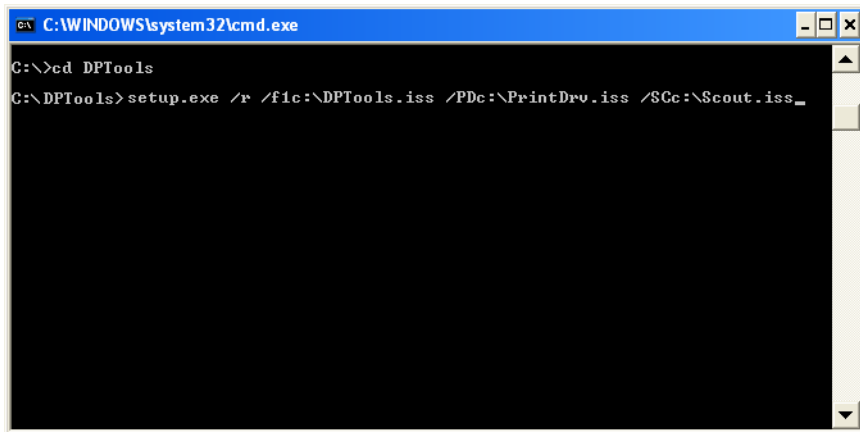
- 1 Insert the DesignPro Tools CD into your CD-ROM drive.
- 2 Open the Command Prompt.
- 3 Change the directory to **drive:\DPTools**
Replace drive with the letter of your CD-ROM drive.
- 4 Enter **Setup.exe /r /f1drive:\DPTools.iss /PDdrive:\PrintDrv.iss /SCdrive:\Scout.iss**

The /r or -r switch is used to run the install in Record mode and /f1 or -f1 switch specifies the ISS file (DPTools.iss). Specify the directory where the ISS file created is to be placed. If an ISS file is not specified, then Setup.iss file is created by default and is placed in the *drive:\Windows* Directory.

For PrintDriver and Scout, separate ISS files are used. The /PD or -PD switch specifies the PrintDriver ISS file (PrintDrv.iss) and /SC or -SC switch specifies the Scout ISS file (Scout.iss). Specify the directory where the ISS files are to be placed. If a directory is not provided, then these files are placed on the system's root drive.



The ISS files used for installing can not be used for any other procedures such as upgrading to, modifying, repairing and uninstalling of DesignPro Tools.



```
C:\WINDOWS\system32\cmd.exe
C:\>cd DPTools
C:\DPTools>setup.exe /r /f1c:\DPTools.iss /PDC:\PrintDro.iss /SCc:\Scout.iss_
```

Installing DesignPro Tools for Xerox in Record mode.

5 Press **[Enter]**.

The DesignPro Tools setup prepares the InstallShield Wizard and the installation process runs. For more information on the installation process, refer to “[Installing DesignPro Tools](#)” on page 14.

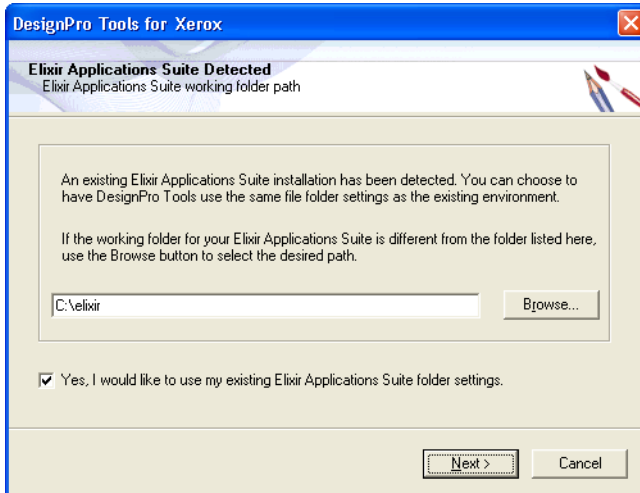
DesignPro Tools always prompts to restart the machine after the completion of installation in Record mode. Once the installation is complete the next step is to unlock DesignPro Tools for use. For more information, refer to “[Registering DesignPro Tools](#)” on page 27.

Once the installation process is complete, the DesignPro Tools is installed on the system and the ISS files created are placed in the directory specified in step 4.



You can also run the installation process using the sample batch file `DPTRecordMode_Inst.bat` provided with the install. Run the batch file to install DesignPro Tools in Record mode; the ISS files created are placed by default in the system's root drive.

Elixir Application Suite Detection dialog always appear during installation in Record mode even in the absence of Elixir Application Suite. This ensures that the Elixir Application Suite settings can be saved on machines where Elixir Application Suite is detected during installation in Silent mode.



Elixir Application Suite Detection dialog always appear during installation in Record mode even in the absence of Elixir Application Suite.



ElixITag is supported by MS Word 2000 or higher. However, ElixITag utility is installed in Record mode in the absence of MS Word 2000 or higher. This enables the ElixITag utility to be installed on a machine where MS Word 2000 or higher is detected during installation in Silent mode.

To install DesignPro Tools for Xerox in Silent mode:

- 1 Insert the DesignPro Tools CD into your CD-ROM drive.
- 2 Open the Command Prompt.
- 3 Change the directory to **drive:\DPTools**
Replace drive with the letter of your CD-ROM drive.

4 Enter **Setup.exe /s /f1drive:\DPTools.iss /PDdrive:\PrintDrv.iss /SCdrive:\Scout.iss**

The /s or -s switch is used to run the install in Silent mode and /f1 or -f1 switch specifies the ISS file (DPTools.iss). Specify the directory where you have placed the ISS file.

For PrintDriver and Scout, separate ISS files are used. The /PD or -PD switch specifies the PrintDriver ISS file (PrintDrv.iss) and /SC or -SC specifies Scout ISS file (Scout.iss). Specify the directory where you have placed the PrintDriver and Scout ISS files.



Sample ISS files (Setup.iss, PrintDrv.iss, and Scout.iss) for installing DesignPro Tools in Silent mode are provided with the install. These files are placed in their respective program folders (DPTools, PrintDrv, and Scout) in the CD-ROM. When using these sample files, you do not need to carry out the installation in Record mode.

To install DesignPro Tools in Silent mode using the sample ISS files, place the ISS files on a local drive and carry out steps 2 to 4 mentioned above.



The sample files provided with the install only allow you to install DesignPro Tools Professional using the Typical installation mode.

```
C:\WINDOWS\system32\cmd.exe
C:\>\cd DPTools
C:\DPTools>setup.exe /s /f1c:\DPTools.iss /PDc:\PrintDrv.iss /SCc:\Scout.iss_
```

Installing DesignPro Tools for Xerox in Silent mode.

The installation runs in Silent mode.



You can also run the installation process in Silent mode using the batch file `DPTSilentMode_Inst.bat` provided with the install.

To install DesignPro Tools using the batch file, place the sample ISS files (`Setup.iss`, `PrintDrv.iss`, and `Scout.iss`) provided with the install on the system's root drive and run the batch file. DesignPro Tools is installed on the system.



Messages generated during the Silent mode installation are logged in the `Install.log` file. The log file is placed in the `drive:\Program Files\Elixir Technologies\Bin` Directory.

Upgrading DesignPro Tools in Silent Mode

To upgrade DesignPro Tools for Xerox in Record mode:

- 1 Insert the DesignPro Tools CD into your CD-ROM drive.
- 2 Open the Command Prompt.
- 3 Change the directory to **drive:\DPTools**
Replace drive with the letter of your CD-ROM drive.



Only user accounts with administrative rights can perform install related tasks.



Prior to upgrading DesignPro Tools, close all open programs.

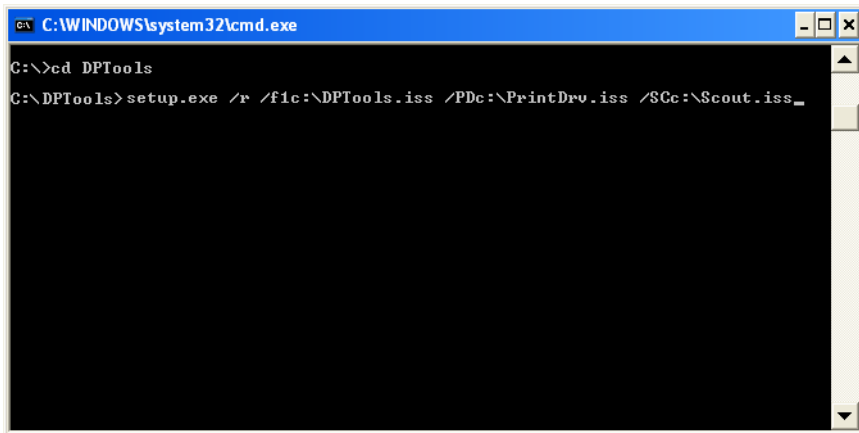
4 Enter **Setup.exe /r /f1drive:\DPTools.iss /PDdrive:\PrintDrv.iss /SCdrive:\Scout.iss**

The /r or -r switch is used to run the install in Record mode and /f1 or -f1 switch specifies the ISS file (DPTools.iss). Specify the directory where the ISS file created is to be placed. If an ISS file is not specified then Setup.iss file is created by default and is placed in the *drive:\Windows* Directory.

For PrintDriver and Scout, separate ISS files are used. The /PD or -PD switch specifies the PrintDriver ISS file (PrintDrv.iss) and /SC or -SC switch specifies the Scout ISS file (Scout.iss). Specify the directory where the ISS files are to be placed. If a directory is not provided, then these files are placed on the system's root drive.



The ISS file used for upgrading can not be used for any other procedures such as repairing, modifying, installing and uninstalling of DesignPro Tools.



```
C:\WINDOWS\system32\cmd.exe
C:\>cd DPTools
C:\DPTools>setup.exe /r /f1c:\DPTools.iss /PDc:\PrintDrv.iss /SCc:\Scout.iss_
```

Upgrading DesignPro Tools for Xerox in Record mode.

5 Press **[Enter]**.

The DesignPro Tools setup prepares the InstallShield Wizard and the upgrading process runs. For more information on the upgrading process, refer to [“Upgrading DesignPro Tools”](#) on page 36.

DesignPro Tools always prompts to restart the machine after the completion of maintenance in Record mode.

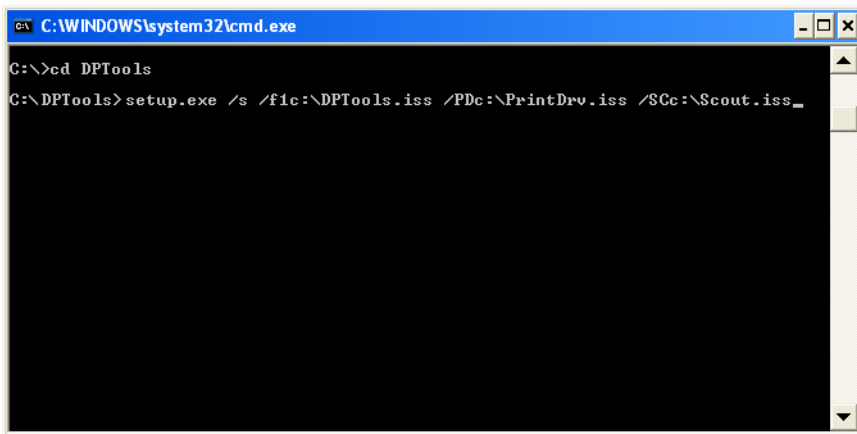
To upgrade DesignPro Tools for Xerox in Silent mode:

- 1 Open the Command Prompt.
- 2 Change the directory to **drive:\DPTools**
Replace drive with the letter of your CD-ROM drive.
- 3 Enter **Setup.exe /s /f1drive:\DPTools.iss /PDdrive:\PrintDrv.iss /
SCdrive:\Scout.iss**



The /s or -s switch is used to run the install in Silent mode and /f1 or -f1 switch specifies the ISS file (DPTools.iss). You also need to specify the directory where you have placed the ISS file.

For PrintDriver and Scout, separate ISS files are used. The /PD or -PD switch specifies the PrintDriver ISS file (PrintDrv.iss) and /SC or -SC specifies Scout ISS file (Scout.iss). Specify the directory where you have placed the PrintDriver and Scout ISS files.



```
C:\WINDOWS\system32\cmd.exe
C:\>\>cd DPTools
C:\DPTools>setup.exe /s /f1c:\DPTools.iss /PDc:\PrintDrv.iss /SCc:\Scout.iss_
```

Upgrading DesignPro Tools for Xerox in Silent mode.

The upgrading process runs in Silent mode.

Modifying DesignPro Tools in Silent Mode

To modify DesignPro Tools for Xerox in Record mode:

- 1 Insert the DesignPro Tools CD into your CD-ROM drive.
- 2 Open the Command Prompt
- 3 Change the directory to **drive:\DPTools**
Replace drive with the letter of your CD-ROM drive.



Only user accounts with administrative rights can perform install related tasks.



Prior to modifying DesignPro Tools, close all open programs.

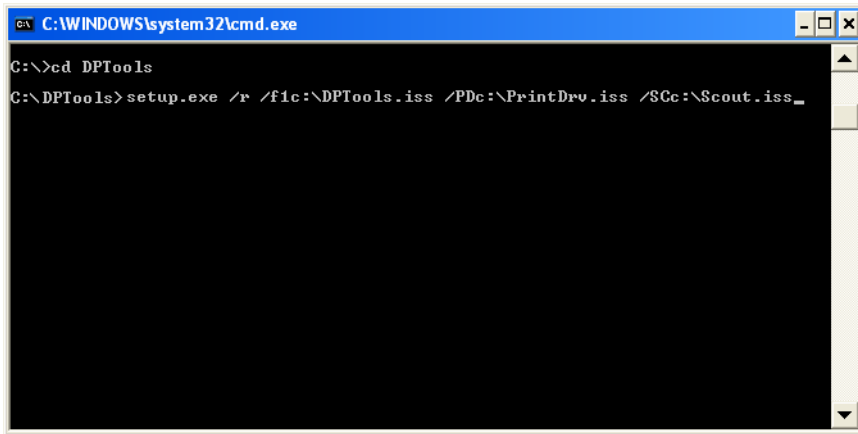
- 4 Enter **Setup.exe /r /f1drive:\DPTools.iss /PDdrive:\PrintDrv.iss /SCdrive:\Scout.iss**

The /r or -r switch is used to run the install in Record mode and /f1 or -f1 switch specifies the ISS file (DPTools.iss). Specify the directory where the ISS file created is to be placed. If an ISS file is not specified then Setup.iss file is created by default and is placed in the *drive:\Windows* Directory.

For PrintDriver and Scout, separate ISS files are used. The /PD or -PD switch specifies the PrintDriver ISS file (PrintDrv.iss) and /SC or -SC switch specifies the Scout ISS file (Scout.iss). These files are placed on the system's root drive. Specify the directory where the ISS files are to be placed. If a directory is not provided, then these files are placed on the system's root drive.



The ISS files used for modifying can not be used for any other procedures such as repairing, upgrading, installing and uninstalling of DesignPro Tools.



```
C:\WINDOWS\system32\cmd.exe
C:\>cd DPTools
C:\DPTools>setup.exe /r /f1c:\DPTools.iss /PDc:\PrintDrv.iss /SCc:\Scout.iss_
```

Modifying DesignPro Tools for Xerox in Record mode.

5 Press **[Enter]**.

The DesignPro Tools setup prepares the InstallShield Wizard and the modification process runs. For more information on the modification process, refer to [“Modifying DesignPro Tools”](#) on page 44.

DesignPro Tools always prompts to restart the machine after the completion of maintenance in record mode.

To modify DesignPro Tools for Xerox in Silent mode:

- 1** Insert the DesignPro Tools CD into your CD-ROM drive.
- 2** Open the Command Prompt.
- 3** Change the directory to **drive:\DPTools**
Replace drive with the letter of your CD-ROM drive.
- 4** Enter **Setup.exe /s /f1drive:\DPTools.iss /PDdrive:\PrintDrv.iss /SCdrive:\Scout.iss**



The /s or -s switch is used to run the install in Silent mode and /fl or -fl switch specifies the ISS file (DPTools.iss). you also need to specify the directory where you have placed the ISS file.

For PrintDriver and Scout, separate ISS files are used. The /PD or -PD switch specifies the PrintDriver ISS file (PrintDrv.iss) and /SC or -SC specifies Scout ISS file (Scout.iss). Specify the directory where you have placed the PrintDriver and Scout ISS files.

```
C:\WINDOWS\system32\cmd.exe
C:\>cd DPTools
C:\DPTools>setup.exe /s /flc:\DPTools.iss /PDc:\PrintDrv.iss /SCc:\Scout.iss_
```

Modifying DesignPro Tools for Xerox in Silent mode.

The modification process runs in Silent mode.

Repairing DesignPro Tools in Silent Mode

To repair DesignPro Tools for Xerox in Record mode:

- 1 Insert the DesignPro Tools CD into your CD-ROM drive.
- 2 Open the Command Prompt.
- 3 Change the directory to **drive:\DPTools**
Replace drive with the letter of your CD-ROM drive.



Only user accounts with administrative rights can perform install related tasks.



Prior to repairing DesignPro Tools, close all open programs.

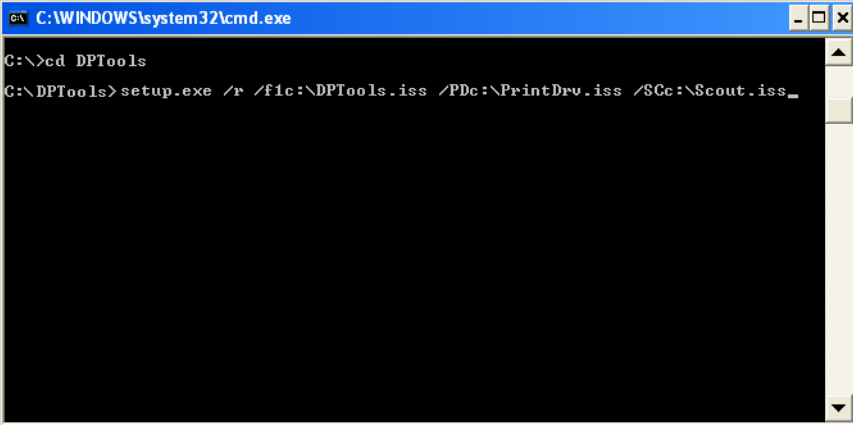
- 4 Enter **Setup.exe /r /f1drive:\DPTools.iss /PDdrive:\PrintDrv.iss /SCdrive:\Scout.iss**

The /r or -r switch is used to run the install in Record mode and /f1 or -f1 switch specifies the ISS file (DPTools.iss). Specify the directory where the ISS file created is to be placed. If an ISS file is not specified, then Setup.iss file is created by default and is placed in the *drive:\Windows* Directory.

For PrintDriver and Scout, separate ISS files are used. The /PD or -PD switch specifies the PrintDriver ISS file (PrintDrv.iss) and /SC or -SC switch specifies the Scout ISS file (Scout.iss). Specify the directory where the ISS files will be placed. If a directory is not provided, then these files are placed on the system's root drive.



The ISS files used for repairing can not be used for any other procedures such as upgrading to, modifying, installing and uninstalling of DesignPro Tools.



```
C:\WINDOWS\system32\cmd.exe
C:\>cd DPTools
C:\DPTools>setup.exe /r /f1c:\DPTools.iss /PDc:\PrintDro.iss /SCc:\Scout.iss_
```

Repairing DesignPro Tools for Xerox in Record mode.

5 Press **[Enter]**.

The DesignPro Tools setup prepares the InstallShield Wizard and the repairing process runs. For more information on the repairing process, refer to [“Repairing DesignPro Tools”](#) on page 51.

DesignPro Tools always prompts to restart the machine after the completion of maintenance in Record mode.

To repair DesignPro Tools for Xerox in Silent mode:

- 1** Insert the DesignPro Tools CD into your CD-ROM drive.
- 2** Open the Command Prompt.
- 3** Change the directory to **drive:\DPTools**
Replace drive with the letter of your CD-ROM drive.

4 Enter **Setup.exe /s /f1drive:\DPTools.iss /PDdrive:\PrintDrv.iss /SCdrive:\Scout.iss**



The /s or -s switch is used to run the install in Silent mode and /f1 or -f1 switch specifies the ISS files (DPTools.iss). You also need to specify the directory where you have placed the ISS file.

For PrintDriver and Scout, separate ISS files are used. The /PD or -PD switch specifies the PrintDriver ISS file (PrintDrv.iss) and /SC or -SC specifies Scout ISS file (Scout.iss). Specify the directory where you have placed the PrintDriver and Scout ISS files.

A screenshot of a Windows command prompt window. The title bar reads "C:\WINDOWS\system32\cmd.exe". The command prompt shows the following text:

```
C:\>\>cd DPTools
C:\>DPTools> setup.exe /s /f1c:\DPTools.iss /PDc:\PrintDrv.iss /SCc:\Scout.iss_
```

Repairing DesignPro Tools for Xerox in Silent mode.

The repairing process runs in Silent mode.

Uninstalling DesignPro Tools in Silent Mode

To uninstall DesignPro Tools for Xerox in Record mode:

- 1 Insert the DesignPro Tools CD into your CD-ROM drive.
- 2 Open the Command Prompt.
- 3 Change the directory to **drive:\DPTools**
Replace drive with the letter of your CD-ROM drive.



Only user accounts with administrative rights can perform install related tasks.



Prior to removing DesignPro Tools, close all open programs.

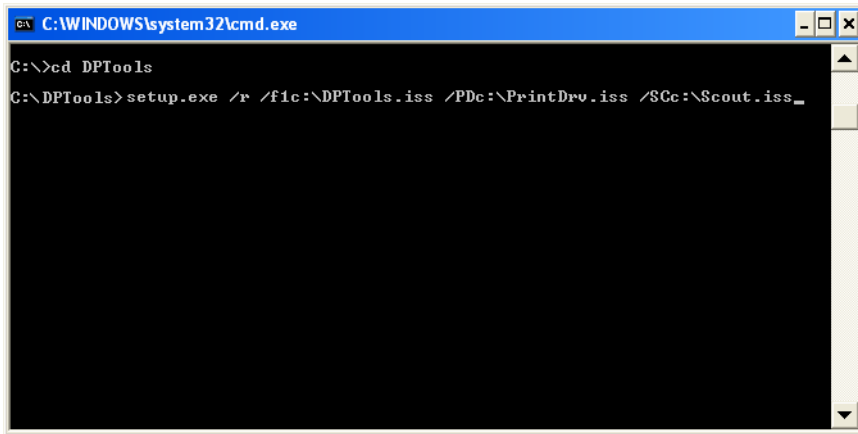
- 4 Enter **Setup.exe /r /f1drive:\DPTools.iss /PDdrive:\PrintDrv.iss /SCdrive:\Scout.iss**

The /r or -r switch is used to run the install in Record mode and /f1 or -f1 switch specifies the ISS file (DPTools.iss). Specify the directory where the ISS file created is to be placed. If an ISS file is not specified, then Setup.iss file is created by default and is placed in the *drive:\Windows* Directory.

For PrintDriver and Scout, separate ISS files are used. The /PD or -PD switch specifies the PrintDriver ISS file (PrintDrv.iss) and /SC or -SC switch specifies the Scout ISS file (Scout.iss). Specify the directory where the ISS files will be placed. If a directory is not provided, then these files are placed on the system's root drive.



The ISS files used for uninstalling can not be used for any other procedures such as upgrading to, modifying, installing and repairing of DesignPro Tools.



```
C:\WINDOWS\system32\cmd.exe
C:\>cd DPTools
C:\DPTools>setup.exe /r /f1c:\DPTools.iss /PDc:\PrintDrv.iss /SCc:\Scout.iss_
```

Uninstalling DesignPro Tools for Xerox in Record mode.

5 Press **[Enter]**.

The DesignPro Tools setup prepares the InstallShield Wizard and the uninstalling process runs. For more information on the uninstalling process, refer to “[Uninstalling DesignPro Tools](#)” on page 58.

DesignPro Tools always prompts to restart the machine after the completion of uninstall process in Record mode.



You can also run the uninstall process using the sample batch file DPTRecordMode_Uninst.bat provided with install. Run the batch file to uninstall DesignPro Tools in Record mode; the ISS files created are placed on the system's root drive.

To uninstall DesignPro Tools for Xerox in Silent mode:

- 1** Insert the DesignPro Tools CD into your CD-ROM drive.
- 2** Open the Command Prompt.
- 3** Change the directory to **drive:\DPTools**
Replace drive with the letter of your CD-ROM drive.

4 Enter **Setup.exe /s /f1drive:\DPTools.iss /PDdrive:\PrintDrv.iss /SCdrive:\Scout.iss**

The /s or -s switch is used to run the install in Silent mode and /f1 or -f1 switch the specifies ISS file (DPTools.iss). Specify the directory where you have placed the ISS file. If a Log file is not specified then Setup.log is created and is placed at the directory specified in the ISS file.

For PrintDriver and Scout, separate ISS files are used. The /PD or -PD switch specifies the PrintDriver ISS file (PrintDrv.iss) and /SC or -SC specifies Scout ISS file (Scout.iss). Specify the directory where you have placed the PrintDriver and Scout ISS files.



Sample ISS files (DPTools_Uninst.iss, PrintDrv_Uninst.iss, and Scout_Uninst.iss) for uninstalling DesignPro Tools in Silent mode are provided with the install. These files are placed in their respective program folders (DPTools, PrintDrv, and Scout) in the CD-ROM. When using these sample files, you do not need to carry out the uninstallation process in Record mode.

To uninstall DesignPro Tools in Silent mode using the sample ISS files, place the ISS files on a local drive and carry out steps 2 to 4 mentioned above.



The sample files provided with the install only allow you to uninstall DesignPro Tools Professional.

```
C:\WINDOWS\system32\cmd.exe
C:\>\cd DPTools
C:\DPTools>setup.exe /s /f1c:\DPTools.iss /PDc:\PrintDrv.iss /SCc:\Scout.iss_
```

Uninstalling DesignPro Tools for Xerox in Silent mode.

The uninstall process runs in Silent mode.



You can also run the uninstallation process in Silent mode using the sample batch file `DPTSilentMode_Uninst.bat` provided with the install.

To uninstall DesignPro Tools using the batch file, place the ISS files (`DPTools_Uninst.iss`, `PrintDrv_Uninst.iss`, and `Scout_Uninst.iss`) provided with the install on the system's root drive and run the batch files.

Chapter 3:

Configuration

In this chapter...

- [Understanding Virtual Folders](#)
- [Adding Virtual Folders](#)
- [Removing Virtual Folders](#)

In this chapter, you will configure DesignPro Tools for your environment. Configuration involves setting up virtual folders, which are used to organize, manage, and maintain resources.

A resource is a file used for printing. A resource can be, but is not limited to, forms, fonts, or images. Each resource can exist in several different formats. For example, an image might be scanned and saved as a BMP, then later saved as an IMG. At some point, you might want to convert the original image into another format for a different application. DesignPro Tools offers an effective way of managing all of these resources in the form of virtual folders.

In addition, system parsers, writers and editors use virtual folders for locating resources. When a form is opened in the Form Editor, the system parsers search the virtual folder paths for fonts and images used in the form. If the resources are not located in the defined virtual folders, the form opens with errors.

A folder structure supporting all file types is created during the Elixir software installation. You can designate additional folders for each file type to work within your current workflow.

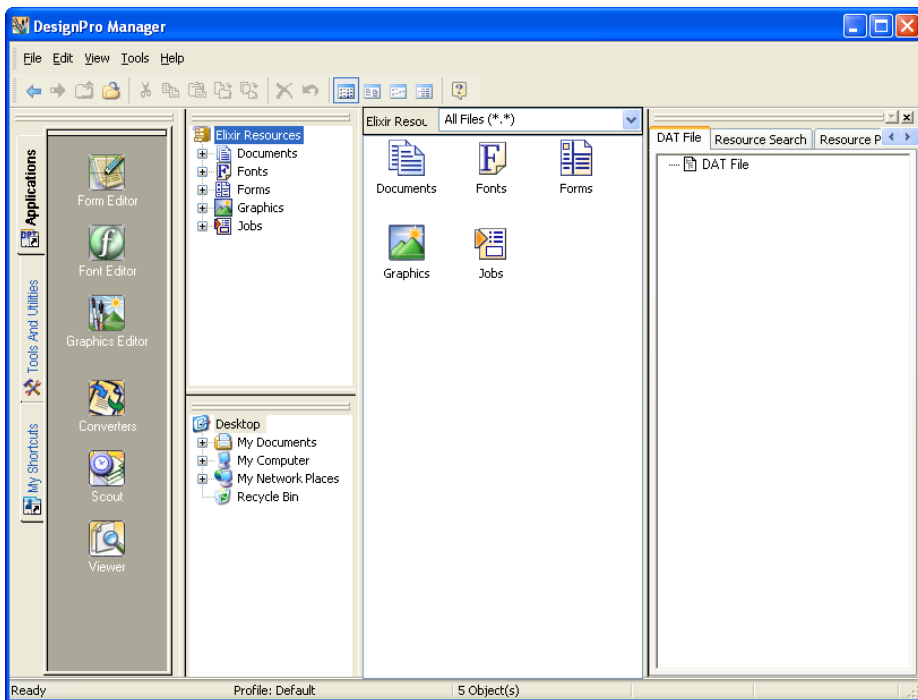
Understanding Virtual Folders

Virtual folders are an abstract representation of the physical file folder structure underlying DesignPro Tools. Displayed as a tree structure in the Manager, virtual folders are organized by resource type, then resource format. At the lowest level of each branch, one or more folders are listed, each representing a physical location on a mapped drive.

You will start by reviewing the virtual folders that are available by default in the Manager.

From the **Start** menu, select **All Programs, Elixir Applications, DesignPro Tools, DesignPro Manager**.

The Manager opens:

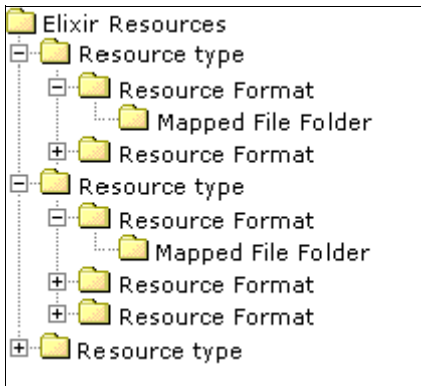


Notice the hierarchy underneath the Elixir Resources node. These are virtual folders, or file locations for resources.

Manager displays three panes similar to Windows Explorer: the top left pane is the Resource Tree, displaying the virtual folder tree; the bottom left pane is the Explorer tree, displaying the physical folders; and the right pane displays the contents of the folder selected in either of the panes on the left side. The root of the virtual folder tree, named Elixir Resources, is at the same level in the hierarchy as the Desktop root node of the physical Explorer tree. The Manage window, that provides various options for packaging and searching the Elixir resources, appears at the right most corner.

Notice that there are default locations for Documents, Fonts, Forms, Graphics, and Jobs. Each of these resource type folders contains the supported resource format folders.

Underneath the resource format folders (FRM, FSL, etc.), there are additional named file folders, representing a physical location on your drive or network. These names are automatically generated; however, you can change these names according to your environment specifications. Placing your cursor over the named folder displays the absolute path of the virtual folder references.




The virtual folder structure.

Adding Virtual Folders

You may wish to add more folders for each resource type, depending on your organization's current workflow. You can map the same physical folder to several resource formats. Folders are not restricted to just one resource format.

To add physical folders to the virtual folder structure:

- 1 Expand the folder structure and select a resource type.
For example, to map a new folder for Xerox FRM files, expand the Forms and Xerox Forms folders by using the + (plus) sign  next to the folder names.
- 2 Right-click a resource format node where you would like to map a new folder, and select **Map New Folder** from the pop-up menu.
The Browse for Folder dialog displays.



Browse to a new physical location.

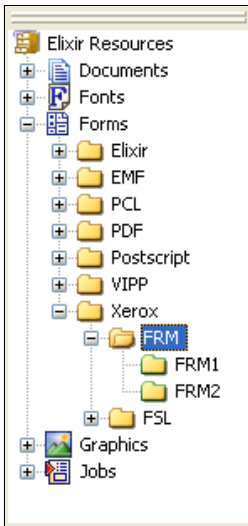
- 3 Browse to select a folder and click **OK**.



You are selecting an existing physical folder location. This physical location will be mapped to a virtual folder.

The physical folder is mapped to the virtual folders tree structure and a folder entry displays under the selected node. The folder is automatically named according to the selected resource format. For example, if you mapped the new folder on the FRM resource format, the folder will be named FRM2.

You can rename the recently mapped folder by typing in a new name. To rename the folder at a later stage, you can right-click the folder and select Rename from the pop-up menu.



A new folder is added to the virtual folders tree.

Changes in the virtual folders are posted as profile entries to the SystemData.ini file, and multiple profile files can be created to allow custom combinations of resource paths. If you have multiple customers or projects that require separate collections of resources, you can create individual profiles for each collection of resources and activate those profiles during resource editing sessions.

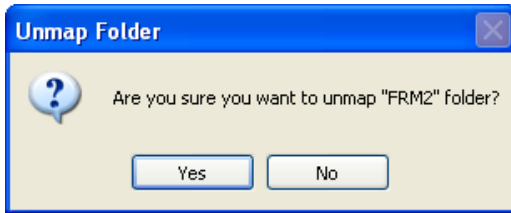


A profile is a part of the SystemData.ini file, which stores your preferences for using DesignPro Tools. The profile specifically determines where and how resources are opened, referenced, and saved

Removing Virtual Folders

To remove a virtual folder:

- 1 Right-click a mapped folder and select **Unmap Folder** from the pop-up menu. The Unmap Folder dialog confirms your action.



The Unmap Folder message box.

- 2 Click **Yes**.
The folder is no longer mapped as a virtual folder.



This action does not delete the folder or any of the folder's files. Unmapping a folder only removes the folder reference from the active profile in DesignPro Tools and removes the selected node from the virtual folder tree

Chapter 4:

Quick Start

In this chapter...

- [Understanding the Design](#)
- [Opening Form Editor](#)
- [Using PrintDriver to Create Forms](#)

Quick Start is designed to introduce you to key areas of DesignPro Tools, so you can start building your own forms and resources as soon as possible. This chapter guides you through building two forms:

- A simple marketing letter created using Form Editor.
- A loan letter created using PrintDriver.

Once the forms are complete, you will print preview the forms directly on your PC. Then you can print to a desktop printer, or transfer the files to your Xerox printer for production printing.

Understanding the Design

Central Commercial Bank (CCB) offers highly personalized banking services to their clients. Once a month, they send out letters to new clients to introduce their products and services.

CCB needs a letter containing static text and graphic elements. You will add the static text and graphic elements to a new form.

To create the first form, a marketing letter for Central Commercial Bank, you will:

- Use graphics, drawing objects and text to create a form.
- Print preview the design.
- Save the resources for transferring to the printer.



This form uses many object properties. For information on a specific property or function, refer to the *DesignPro Tools Online Help*.



Central Commercial Bank

Dear

Welcome to Central Commercial Bank! I think you will be pleased with our level of service and the many banking opportunities we provide.

Our customer service center is available 24 hours a day, 7 days a week. Our phone numbers and website address are listed below for easy reference.

You can also sign up for an Internet account, which gives you access to our online banking facilities day and night. All you need to do is call us, and we will set up an account for you...it is that easy!

Thank you again for choosing Central Commercial!

Sincerely,

Roger Miller
Vice President, Customer Affairs

Central Commercial Bank
3585 N. High Street
Ventura, CA 93001

www.CentralComBank.com

Ventura County: 805-221-5000
Santa Barbara County: 805-661-5000

Elsewhere in California: 800-222-5001
Outside California: 877-222-5001

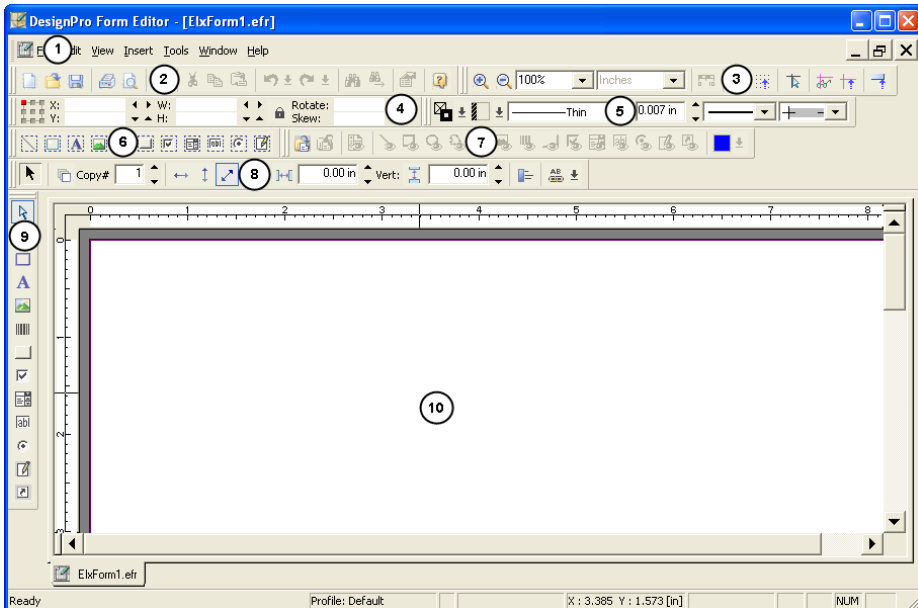
The completed Central Commercial Bank form.

Opening Form Editor

To create the CCB form, you will use the Form Editor.

From the **Start** menu, select **All Programs, Elixir Applications, DesignPro Tools, DesignPro Form Editor.**

The Form Editor opens:

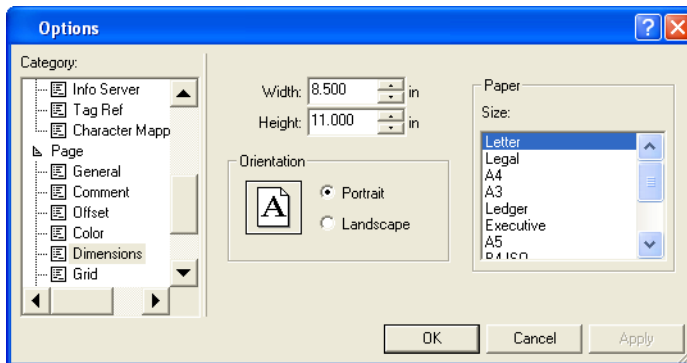


The Form Editor. 1. Menu bar. 2. Standard toolbar. 3. Zoom toolbar. 4. Position and Dimension toolbar. 5. Common Attributes toolbar. 6. Filter toolbar. 7. Form template toolbar. 8. Select toolbox. 9. Tools toolbar. 10. Design Area.

Setting Page Properties

When you launch Form Editor, a new form opens with the Form Editor. Before adding objects to the page, you will verify the page settings.

- 1 From the **File** menu, select **Properties**.
The Options dialog displays. This dialog can also be opened by selecting Options from the Tools menu.
- 2 Scroll down to view the **Page** sub-categories.
- 3 Select the **Dimensions** sub-category and verify the following settings:
 - Width: **8.50 in**
 - Height: **11.00 in**
 - Orientation: **Portrait**



Setting Page properties in the Options dialog.



This guide uses inches as the default unit of measurement. If you want to use a unit of measurement other than the default, select the **Ruler** category and select your preference from the **Units** drop-down list.

- 4 Click **Apply**, and then click **OK**.
Keep the default value for all other settings.

Adding an Image

Form Editor can insert Xerox images into a form. You can also insert Windows formats, such as BMPs and TIFFs, directly into the form without any pre-conversion.



If you decide to use an image format other than Xerox, you will need to save the image to Xerox format before transferring the image to the printer. This can be done when saving the form to the Xerox format. You do not have to convert each resource separately.




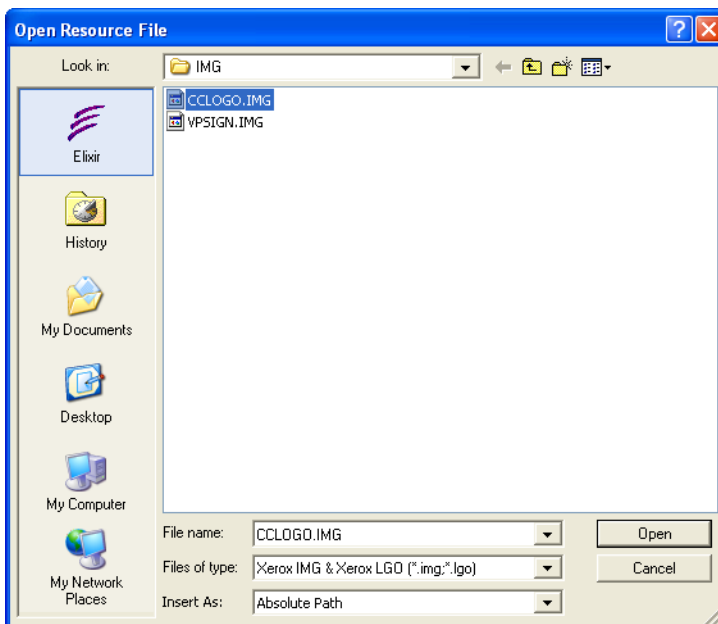
DesignPro Tools can use native Xerox resources directly in a resource editor. You can use the Elixir version while editing, then save as Xerox before transferring the finished resource to the printer.

The first element on the form is the CCB logo. You will insert and position the image on the page.



You can close the **Manage** window to create more space in the Design Area.

-
- 5 On the **Tools** toolbar, click .
The Open Resource File dialog displays.



The Open Resource File dialog.

- 6 In the **Files of Type** drop-down list, select **Xerox IMG & Xerox LGO (*.img, *.lgo)**.

The path updates to *drive:\Elixir\Pics\Img* if the Elixir icon is selected in the left pane. If the Elixir icon is not selected, you can either click the Elixir icon or browse to the correct directory path.



When the Elixir icon is selected in the left pane of the dialog, the path automatically updates to the specified profile's directory for the selected Files of type. For example, the default profile lists *drive:\Elixir\Pics\Img* as the directory for Xerox IMG & Xerox LGO images.

- 7 Select **CCLOGO.IMG**.
- 8 In the **Insert As** drop-down list, select **Embedded**.
This option embeds resources into the form.

9 Click **Open**.

A rectangle using the selected image dimensions displays in the Design Area. This rectangle helps visually place the image.



Rectangle using the selected image dimensions.



Resources can be located anywhere on your local drives or network. You can use the default directories provided, or build your own directory structure using virtual folders.



The Xerox architecture allows a maximum of six characters for resource names.

10 Place the image in the upper left corner of the Design Area by clicking once.

A bounding rectangle displays around the CCB Logo. Once you click in the Design Area, the rectangle is replaced by handles at the top, bottom, and sides of the image.

The position coordinates and the size of the image display on the **Position and Dimension** toolbar. These coordinates represent the top-left corner of the image.

The handles around the logo indicate that the image is selected. You can change the position of the image by clicking and dragging or by entering the exact coordinates in the Position and Dimension toolbar.

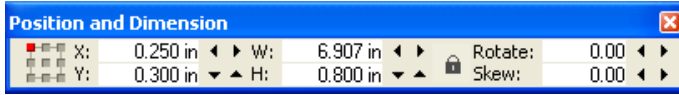


The CCB design has a mockup that includes positioning coordinates. Throughout this exercise, each object has a position assigned. You can specify the exact coordinates for each object as provided, or you can create the form by matching them visually to the form mockup at the beginning of the chapter.

11 In the **Position and Dimension** toolbar, specify the following:

- X: **0.25 in**
- Y: **0.30 in**

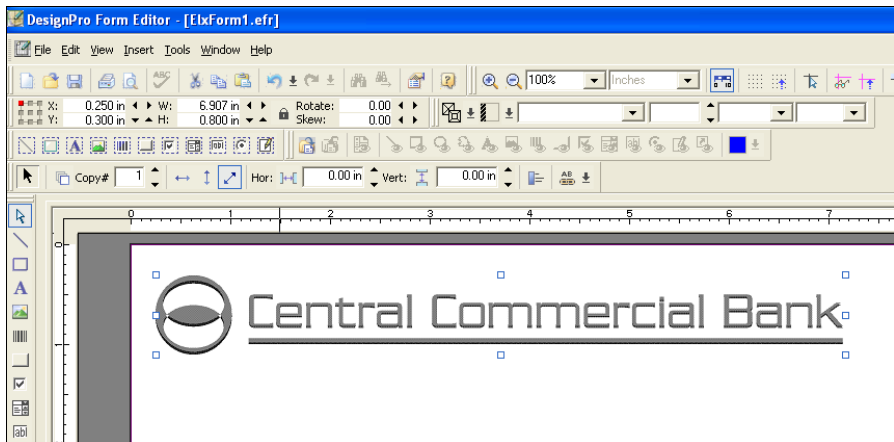
Use the **Enter** key to apply the coordinates. You have repositioned the CCB Logo.



The **Position and Dimension** toolbar. Type in the entry boxes to change the location of a selected object. X is the horizontal coordinate, Y is the vertical coordinate, W is the object width, and H is the object height.



You can move objects incrementally using the arrows on the **Position and Dimension** toolbar. You can also click and drag to position images.



The CCB logo displays in the Design Area.

Adding Text

Many Xerox production printers use bitmap fonts. In this exercise, you will use an outline font and convert it to a Xerox bitmap font when saving the form.





A bitmap font contains pictures or bitmaps of each character.

A bitmap font only contains one family, style and point size per font. For example, Times New Roman 12 point bold and Times New Roman 10 point bold are two separate fonts. DesignPro Tools uses the following font types:

- True Type fonts
- Adobe Type Manager (ATM) fonts
- Elixir legacy fonts (for previous Elixir Application Suite users)
- Xerox fonts

For the CCB form, you will use the CCB corporate font, Arial 11 point normal. This is the default font used for Form Editor so you do not need to add a font for this form. You can start adding text to the form using the default font.

12 On the **Tools** toolbar, click .

The cursor changes to .

13 Click in the Design Area.

The cursor blinks in the Design Area.

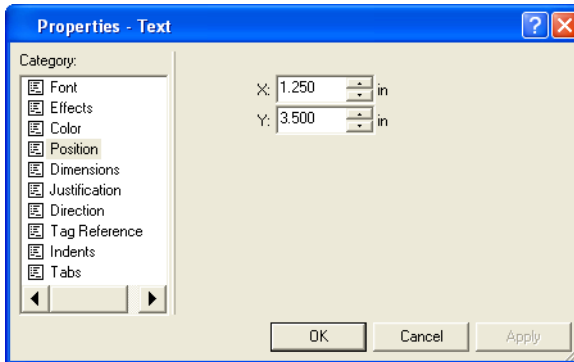
14 Enter **Dear**.

-
- 15** Right-click the text in the Design Area, and select **Properties** from the pop-up menu. The Properties - Text dialog displays.



The Form Editor provides object-sensitive property dialogs. To access the property dialog for an object, right-click the object in the Design Area and select **Properties** from the pop-up menu.

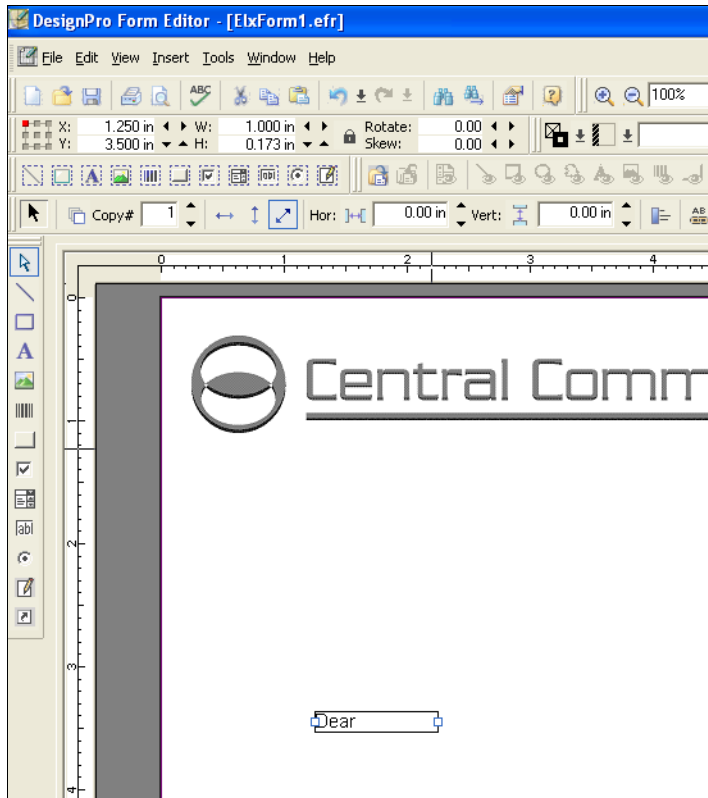
- 16** Select the **Position** category and specify the following:
- X: **1.25 in**
 - Y: **3.50 in**



Position can be changed in the object's property dialog from the Position and Dimension toolbar, or by clicking and dragging the object to a new location in the Design Area.

- 17 Click **Apply**, and then click **OK**.

The text moves to the specified location. You have added the first text string to the Design Area.



The first text object is positioned on the form.

- 18 Click .

This completes the text object insertion process and exits the text mode. You can also click in an empty portion of the Design Area, or select any other tool to complete the text object insertion and to exit text edit mode.



It is important that you exit the text mode when you are finished with a text object. If you stay in the edit mode, subsequent text that you type will display with the current selected text object.

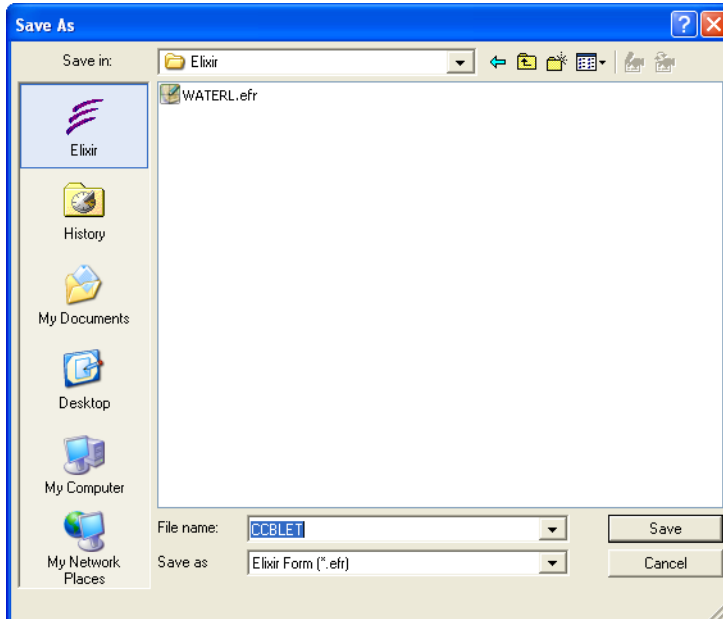
Saving as an Elixir Form

It is a good idea to save your work often. You will now, save your form.

You have two options for saving a form: **Save** and **Save As**. The **Save** option saves the form with its current name, whereas the **Save As** option enables you to change the name of the form. Since the form is currently untitled, it does not matter which option you use.

- 19 From the **File** menu, select **Save**.

The Save As dialog opens.



The Save As dialog.

- 20 In the **Save As** drop-down list, select **Elixir Form (*.efr)**.

You can also save your form as a source or compiled Xerox form. For this exercise, you are initially using the Elixir format. The Elixir format is useful for retaining all formatting elements, as it supports a richer feature set than the Xerox format. You will save this form to the Xerox Object Format later in this exercise.

- 21 From the left pane, select **Elixir** if it is not already selected.

The path automatically updates to *drive:\Elixir\Forms\Elixir*, the default profile's directory for Elixir forms.

22 In the **File Name** entry box, enter **CCBLET**.

23 Click **Save** to save the form.

Importing Text

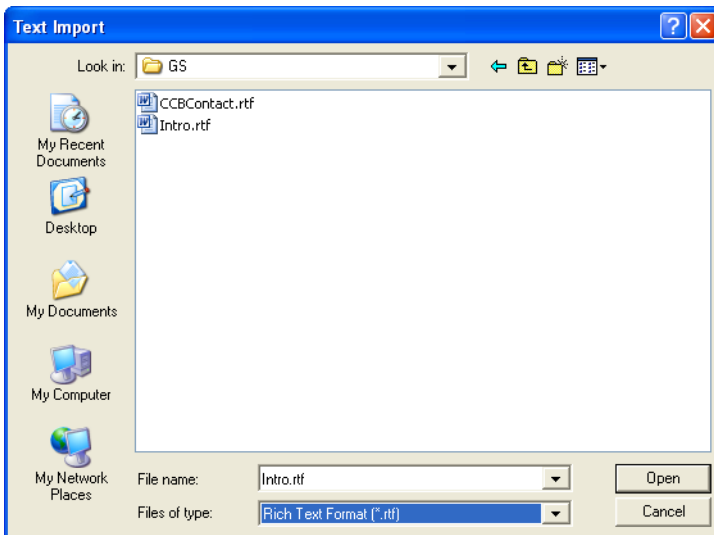
Many forms are text-intensive. In order to avoid extensive typing in the Form Editor, you can create text files using word processing applications such as MS Word, WordPerfect, Notepad, or any software that can export either a TXT or RTF format file. Form Editor can import TXT and RTF files and place them in the Design Area.

Now you will import the body of the letter using an RTF file.

24 From the **Edit** menu, select **Import Text**.


The Text Import dialog displays.

25 In the **Files of Type** drop-down list, select **Rich Text Format (*.rtf)**.



The Intro.rtf file selected in the Text Import dialog.

-
- 26** Browse to select *drive:\Elixir\Gs\Intro.rtf* and click **Open**.

The cursor changes to , with an attached rectangle representing the text area.

- 27** Position the text rectangle underneath ‘Dear’ in the Design Area and click once to place the imported text.

The Intro.rtf text displays in the Design Area with a text box around the inserted text. The fonts and margins of the RTF file import with the text.



You can also draw a text box before typing text, which you can resize later to match your requirements.


- 28** In the **Position and Dimension** toolbar, specify the following coordinates and size:

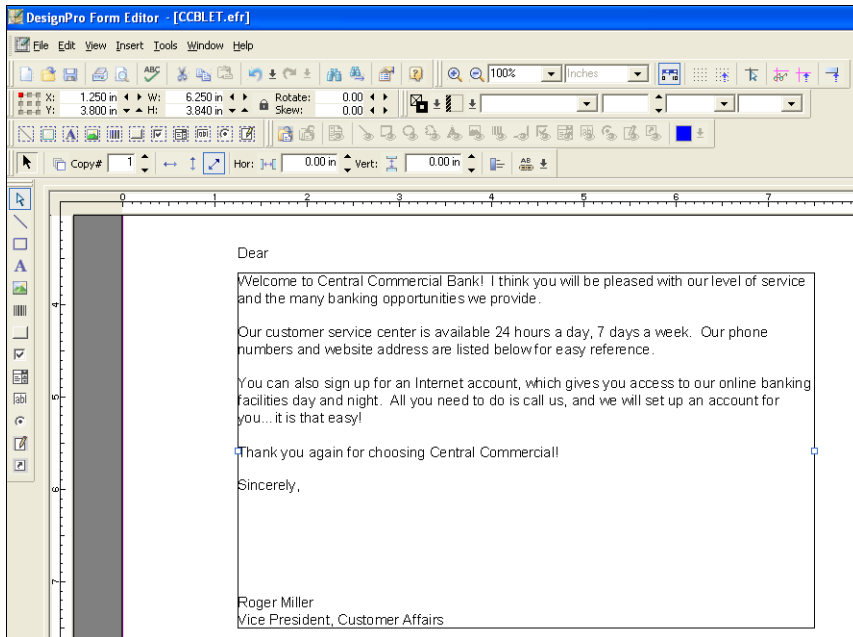
- X: **1.25 in**
- Y: **3.80 in**
- W: **6.25 in**



Use the **Enter** key to apply your settings for each coordinate to the text object.

- 29** On the **Tools** toolbar, click .

-
- 30** On the **Text Attributes** toolbox, click , even if it is already selected.
The text justifies to the left side.



The Intro.rtf text is imported and positioned.

You have repositioned and resized the text for the body of the letter. Note that the text automatically wraps to the next line when the line reaches the end of the text box.

- 31** Click .

The text object import is complete.

The next step is to import the bank contact information and place it at the bottom of the letter.

- 32** Scroll to the bottom of the page.
- 33** From the **Edit** menu, select **Import Text**.
The Text Import dialog displays.

- 34 In the **Files of Type** drop-down list, select **Rich Text Format (*.rtf)**.
- 35 Browse to select **drive:\Elixir\Gs\CCBContact.rtf** and click **Open**.
- 36 Click at the bottom of the document under the body of the letter to import the text.

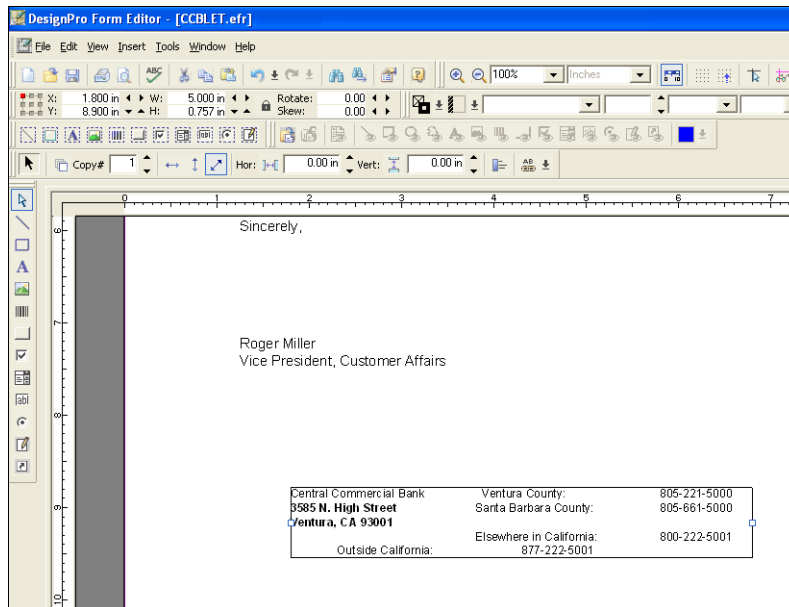


Form Editor imports Rich Text Files with embedded formatting and font information. Therefore, the imported RTF file displays with all of the formatting applied in its original editor.

- 37 Specify the following in the **Position and Dimension** toolbar:

- X: **1.80 in**
- Y: **8.90 in**
- W: **5.00 in**

The CCBContact text moves to the specified coordinates in the Design Area.



The CCBContact RTF file is imported and positioned in the Design Area.



The coordinates and positions were obtained using a ruler on the original mockup. When designing your own forms, you may need to measure a mockup, or simply judge what looks best when placing text and other objects on the page.

Editing Text

In the CCBCContact text, notice that ‘Central Commercial Bank’ uses a normal style, but the address directly below is bold. You will edit the text directly in the form and make all of these text lines bold.


All of the fonts associated with the RTF are imported with the file. You will select the text and apply the new font.



In the Elixir Application Suite, right-clicking an object allows you to edit the object’s properties in the toolbox. In DesignPro Tools, toolbox properties are editable for any selected object. Right-clicking an object opens a pop-up menu from which the object’s properties dialog can be opened.

To edit text, double-click the text block in the Design Area and start editing.

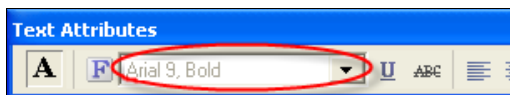
- 38** Double-click anywhere in the CCBCContact text box to open it for editing.

The cursor changes to .

- 39** Highlight **Central Commercial Bank** in the text box.

- 40** In the Font Style drop-down list, select **Arial 9, Bold**.

The Arial 9, Bold and Arial 9 fonts imported with the RTF file. The highlighted text changes according to the selected font style.



The Font Style drop-down list is on the Text Attributes toolbox.

-
- 41** Using the arrow keys, move the cursor to the end of ‘Central Commercial Bank’ and press the **Delete** key five times on your keyboard.

This deletes the extra space and aligns the rest of the text correctly.

- 42** Using your arrow keys, move the cursor to the beginning of the line that contains ‘Outside California’.



Avoid using the **Enter** key to maintain the formatting of your imported text. The **Enter** key adds lines to the text.

- 43** Select **Arial 9, Bold** from the Font Style drop-down list.

- 44** Enter **www.CentralComBank.com**.

The text formatting is complete.

Central Commercial Bank	Ventura County:	805-221-5000
3585 N. High Street	Santa Barbara County:	805-661-5000
Ventura, CA 93001	Elsewhere in California:	800-222-5001
www.CentralComBank.com	Outside California:	877-222-5001

The text is now correct.

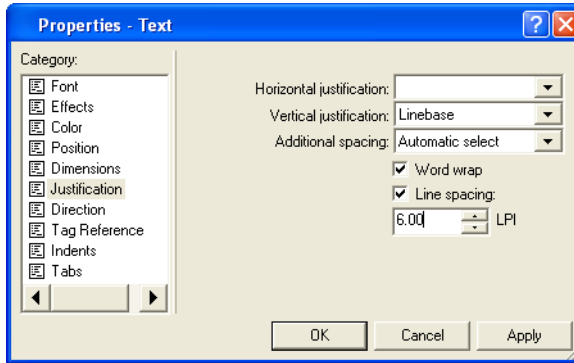
You have completed inserting and editing text on your form. Now you will format the text to fill more vertical space on the page by changing the line spacing.

- 45** Right-click the CCBCContact text in the Design Area and select **Properties** from the pop-up menu.

The Properties – Text dialog displays.

46 Select the **Justification** category and specify the following properties:

- Line spacing: **Selected**
- LPI: **6.00**



Setting line spacing in the Properties – Text dialog.

47 Click **Apply**, and then click **OK**.

The text justifies accordingly, adding more space between each line of text.

Central Commercial Bank	Ventura County:	805-221-5000
3585 N. High Street	Santa Barbara County:	805-661-5000
Ventura, CA 93001		
	Elsewhere in California:	800-222-5001
www.CentralComBank.com	Outside California:	877-222-5001

The line spacing changes as specified.

Adding Images

The basic layout of the form is complete with respect to the text. Next, you will add the signature to the letter. Once again, you will use a Xerox IMG for the image.

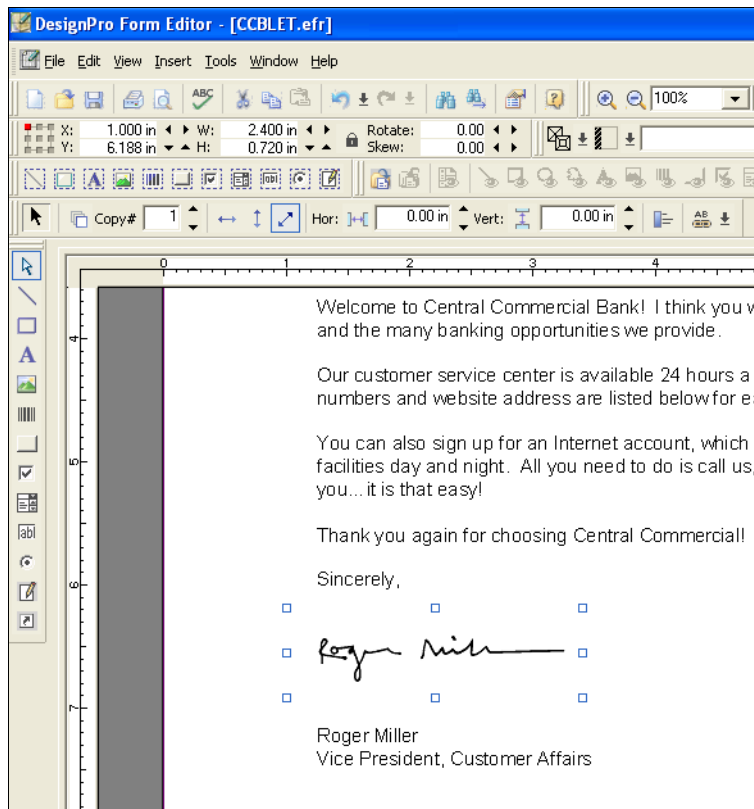
48 On the **Tools** toolbar, click .

The Open Resource File dialog displays.

49 In the **Files of Type** drop-down list, select **Xerox IMG & Xerox LGO (*.img, *.lgo)**, if it is not already selected.

The Open Resource File dialog automatically displays the DesignPro Tools default directory for Xerox images: *drive:\Elixir\Pics\Img*.


-
- 50 In the **Insert As** drop-down list, select **Embedded** if it is not already selected.
 - 51 Select **VPSIGN.IMG** and click **Open**.
A rectangle with the signature's dimensions displays in the Design Area.
 - 52 Click to place the image between 'Sincerely' and 'Roger Miller'.
The position and dimension coordinates of the image display in the Position and Dimension toolbar. This object does not need to be placed precisely so you will not enter specific coordinates.




The signature adds to the form.


Drawing a Box

Next you will create two boxes to frame the CCBCContact text. These boxes will separate the bank contact information visually from the body of the letter.

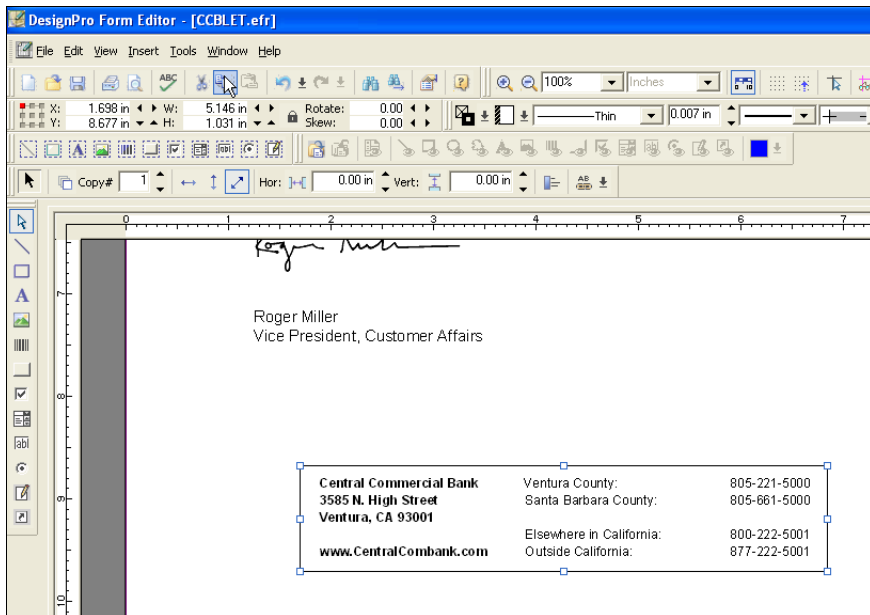
- 53** On the **Tools** toolbar, click .

The Box toolbox displays and the cursor changes to .



Make sure the Square Lock  is not selected on the Box toolbox. The Square Lock draws only squares, where the dimensions of all four sides are equal. This form needs a rectangle.

- 54** Click and drag to draw a Box around the CCBCContact text in the Design Area.



The rectangle displays around the text.

- 55** Right-click the Box and select **Properties** from the pop-up menu.
The Properties – Box dialog displays.

56 Select the **Position** category and specify the following coordinates:

- X: **1.50 in**
- Y: **8.60 in**



Click **Apply** at any time to see your changes take effect.

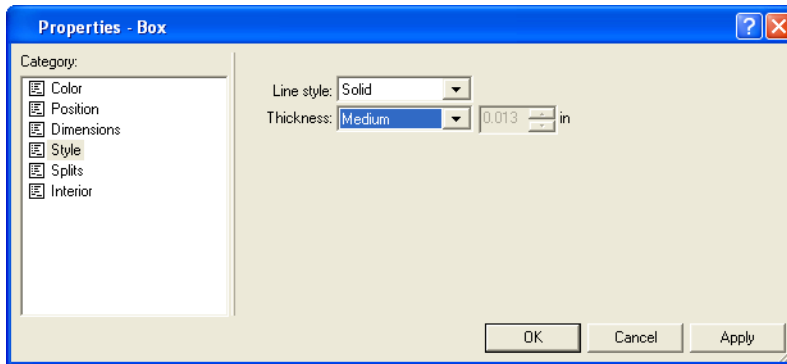
57 Select the **Dimensions** category and specify the following:

- W: **5.40 in**
- H: **1.15 in**

58 Select the **Style** category and specify the line thickness:

- Thickness: **Medium**

At 100% magnification, you will not see a visible difference between Thin and Medium. To see the thickness change, use the Zoom tool to zoom in on the Box.



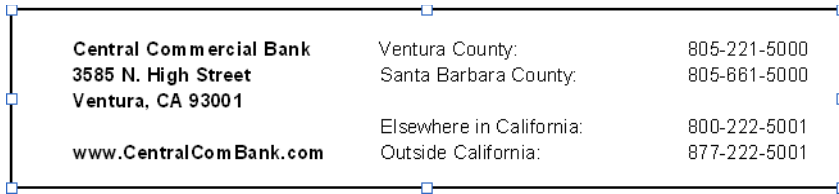
Setting line thickness.

The default system setting for unit of measurement is inches. If you select Custom Thickness, then enter a value using another unit. The entry box automatically converts it to the system's unit of measurement.



The object-sensitive property dialog in Form Editor provides design properties for any selected object in the Design Area.

59 Click **Apply**, and then click **OK**.



The rectangle displays around the text.

Now you will create a second Box that is slightly larger than the first one.


60 Right-click the first Box and select **Copy**.

61 Right-click in the Design Area and select **Paste**.

A second Box pastes in the Design Area.

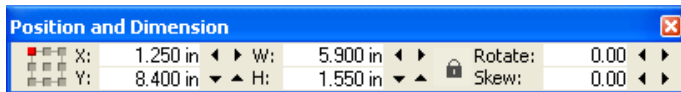


If you want to draw more than one object at a time, double-click the tool. Otherwise, the system resets to the Select Mode tool after adding each object.

For example, if you want to draw two boxes, double-click . You can also use copy and paste to continue creating boxes.

62 Select the new rectangle and set the following specifications in the **Position and Dimension** toolbar:

- X: **1.25 in**
- Y: **8.40 in**
- W: **5.90 in**
- H: **1.55 in**

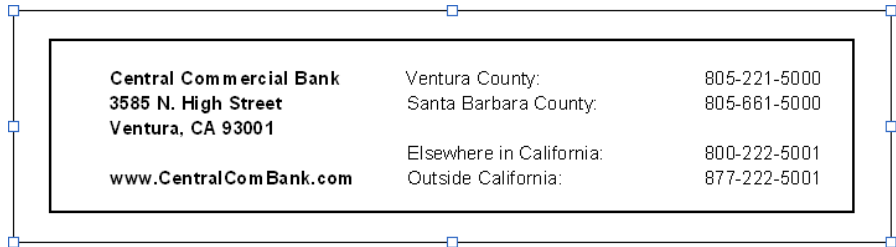


The Position and Dimension toolbar.

- 63** On the **Common Attributes** toolbar, select **Thin** in the Custom Line Thickness drop-down list.



The Common Attributes toolbox.




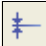
The boxes are complete.

Drawing a Line

The form also requires one horizontal line in the middle of the CCBCContact text.

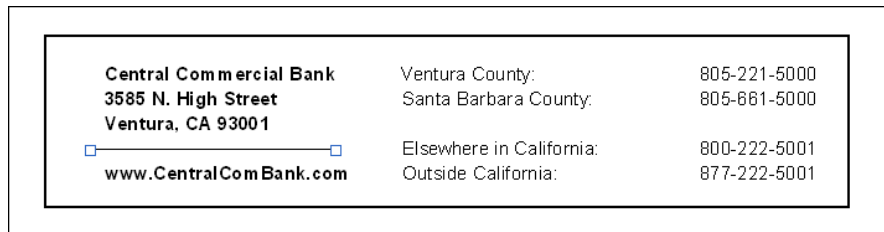
- 64** On the **Tools** toolbar, click .

The cursor changes to .

- 65** On the **Line** toolbox, click .

You can now draw horizontal lines only.

- 66** Click and drag to draw a horizontal line between 'Ventura, CA 93001' and 'www.CentralComBank.com' in the Design Area.



The line drawn within the text box.

67 In the **Position and Dimension** toolbar, specify the following coordinates:

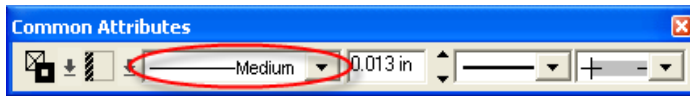
- X: **1.80 in**
- Y: **9.36 in**
- W: **1.65 in**

The line is positioned and resized based on the specified coordinates.



You can also draw the line freehand instead of using coordinates.

68 In the Line Thickness drop-down list, select **Medium**.



Selecting the line thickness in the Common Attributes toolbox.

69 Use **Ctrl + S** to save the form.

The form is complete.

Saving as a Xerox Form

Now you will save the form and all of its resources to the Xerox format. You will need the form in the Xerox format when printing.

70 From the **File** menu, select **Save As**.

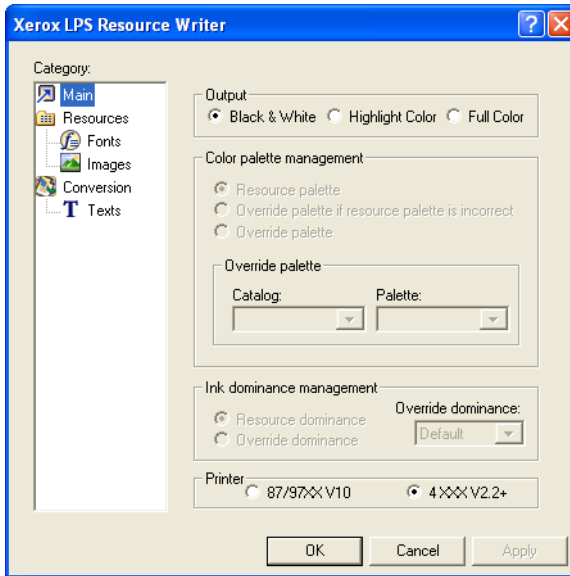
The Save As dialog displays.

71 In the **Save As** drop-down list, select **Xerox Form Object (*.frm)**.

The path updates to *drive:\Elixir\Forms\Frm*, if the Elixir icon is selected in the left pane. The Edit Property Settings and Restore default settings buttons become available in the Save As dialog.

72 Click **Edit Property Settings**.

The Xerox LPS Resource Writer dialog displays.



Xerox LPS Resource Writer Properties dialog.

73 Specify the following properties:

- Main category
Output: **Black & White**
- Resources category
Target directory: **Default (from Profile Server)**
- Fonts category
Export fonts: **Checked**
Font encoding: **System code page**
Font format: **5 Word**
Font orientation: **Portrait**

Since the images are already in IMG format, you will not export them.

74 Click **Apply** and then click **OK** to close the dialog.

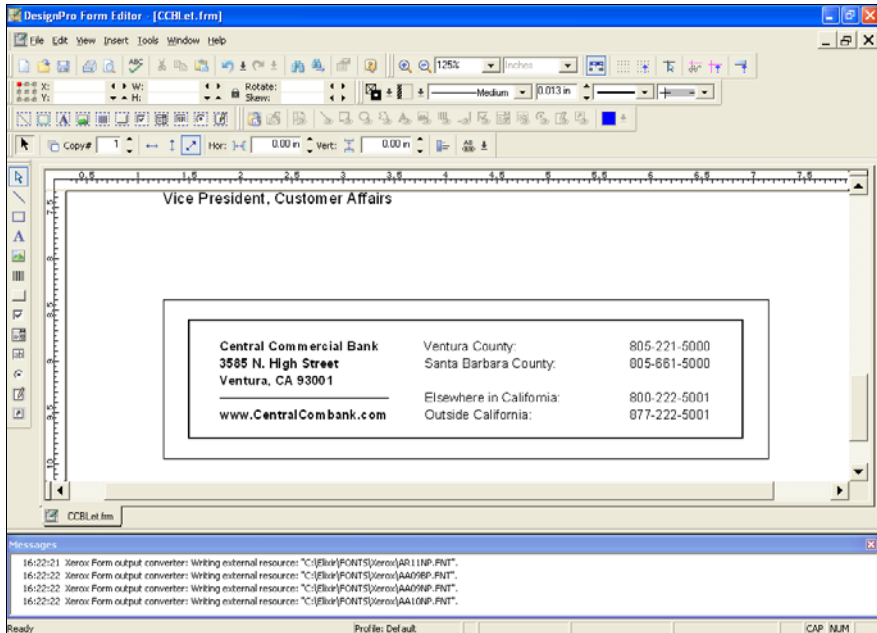
75 In the **File Name** entry box, verify the name: **CCBLet**.

76 Click **Save**.

You return to the Design Area. The form and its resources save to the required format.

77 Click **OK**.

The Design Area displays.



The Messages window displays any messages generated by the saving process.



To clear the messages in the **Messages** window, use the shortcut keys **Ctrl + D**.

78 From the **File** menu, select **Close**.

The form closes.

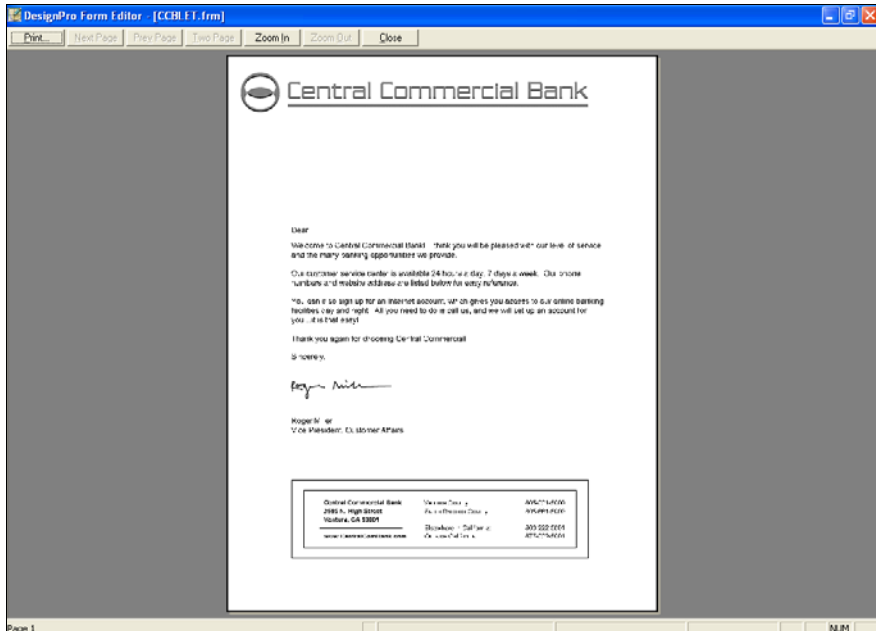
79 From the **File** menu, select **Open**.

The form opens in the Design Area.

Previewing Your Work

Now that the form is complete, you will proof your work. You can preview the form using Print Preview, and then print to a desktop printer from the preview screen or from the Form Editor Design Area.

80 From the **File** menu, select **Print Preview**.



Previewing how your form will look when printed.

81 If you have an attached desktop printer, click **Print**.

82 Select a printer and click **OK**.
The form prints to your desktop printer.

83 Click **Close** to close the print preview.

84 From the **File** menu, select **Close**.

The form closes.



For more information regarding DesignPro Tools and the settings used in this guide, please reference the *DesignPro Tools Form Editor for Xerox User Guide*.

You have completed the first Quick Start exercise. You can leave the Form Editor open for the next exercise.

Using PrintDriver to Create Forms

The PrintDriver significantly reduces the time required to create forms by printing forms directly from a source application. It is an interactive tool that uses the Windows Print function to create forms and documents in ElixirDoc, FRM, FSL, PostScript, PCL, PDF, ElixirGDF, Image, and VIPP formats. PrintDriver creates documents using tools you are familiar with, such as MS Word, and then exports them to formats supported by DesignPro Tools.

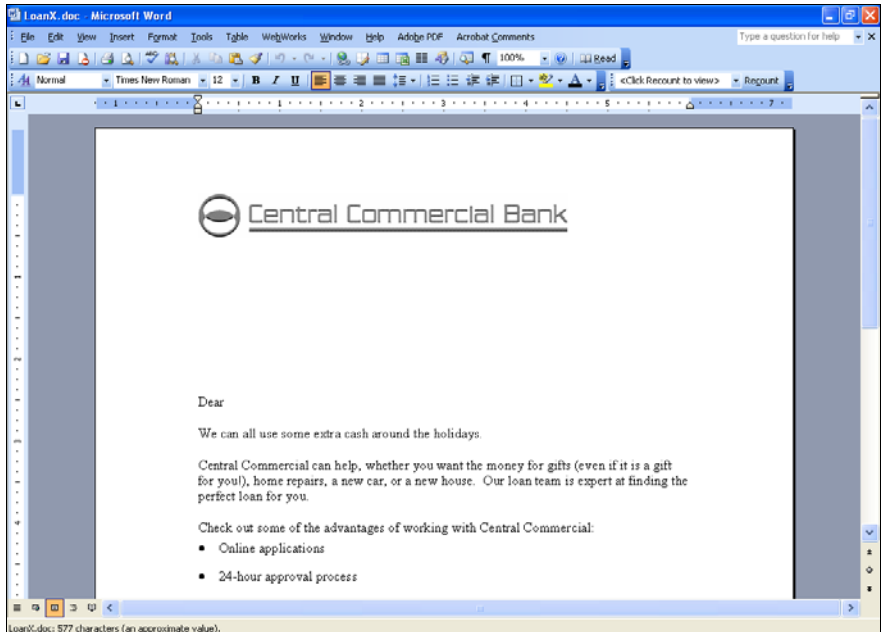
In this section, you will use PrintDriver to “print” a Microsoft Word document into an EFR form. You will then open the form in the Form Editor, make a few modifications, and save the edited file.

Creating a Form from MS Word Document

Creating a form using the PrintDriver Pro is very simple. The PrintDriver option is available in all of your Windows application **Print** dialogs. It displays in the Printer Name list as Elixir PrintDriver Pro. For this exercise, you will open a DOC file in Microsoft Word and select PrintDriver as your printer.

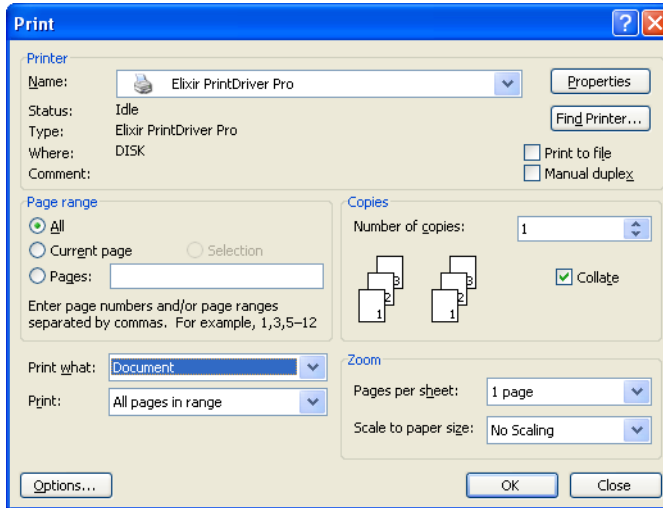
CCB's marketing department just completed a mockup for their loan letter in Microsoft Word. For this exercise, you will open the MS Word document and print it to an Elixir form. Then you will replace the logo used by the team with the approved print-ready CCB logo.

- 1 Open **Microsoft Word**.
- 2 From the **File** menu, select **Open**.
The Open dialog displays.
- 3 Browse to open *drive:\Elixir\Gs\LoanX.doc*.



LoanX.doc opens in MS Word.

-
- 4 From the **File** menu, select **Print**.
The Print dialog opens.

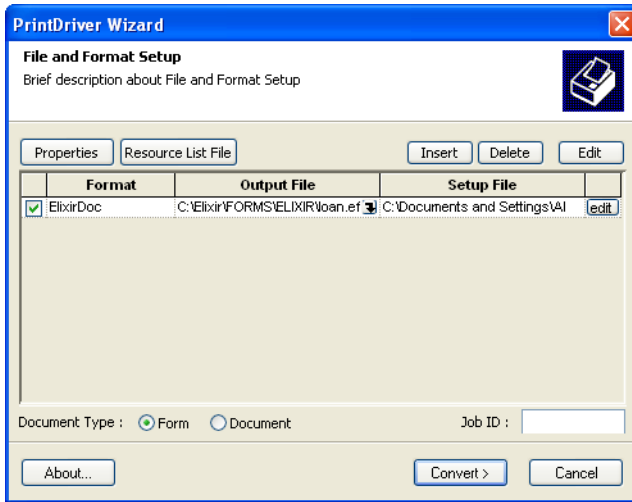


Printing from Microsoft Word.

- 5 In the Printer Name drop-down list, select **Elixir PrintDriver Pro**.

6 Click **OK**.

After a moment, the PrintDriver Wizard displays. This dialog allows you to convert your Word document into one or many output formats.



The PrintDriver Wizard.



If the PrintDriver Wizard doesn't display, then you may need to change some Print Driver settings.

- Browse to the directory *drive:\Program Files\Elixir Technologies\Bin* and double-click **PrintDriverOptionsAppU.exe**. The **PrintDriver Options** dialog opens.
- Click on the **Options** tab, and then make sure that the **Autorun (No Windows, Messages to Log File)** option is unchecked, and the **Show 'File and Format' Setup at Start** and **Show Result Dialog Always** options are checked. Click **OK** to close the dialog.


7 Select **Form** as the **Document Type**.

8 Specify the following settings in the first output row:

- **Format: ElixirDoc**

This will print the Word document to the Elixir format. The name and path of the output file depend on the selected Format. In this case, *drive:\Elixir\Forms\Elixir* is the target directory path for the EFR. The extension EFR will create an Elixir form with an automatically generated filename.

- **Output File: *drive:\Elixir\Forms\Elixir\Loan.efr***

The default DesignPro Tools path for the Elixir format forms is already selected. You can change this selection by clicking on Output File and clicking  to browse for another location.

- **Setup File: *drive:\Documents and Settings\All Users\Application Data\Elixir Technologies\DesignPro Tools\elxdrv.epm***

This is the default EPM file used for PrintDriver, created at the time of conversion. You can click the Setup File entry box and  to browse for an existing EPM file.

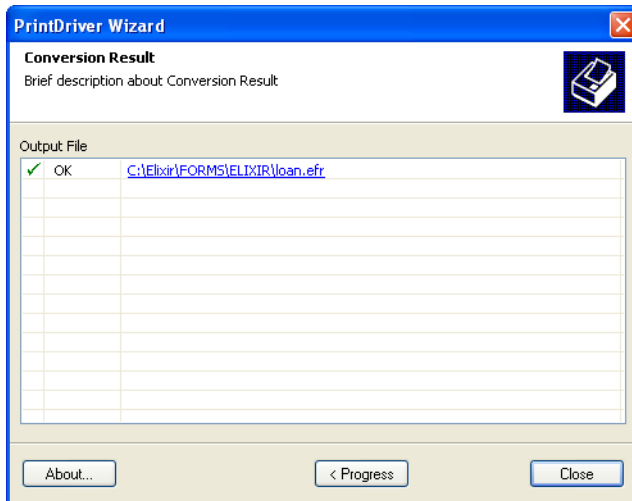


To view the EPM files properties, click **Edit**.

An EPM file stores settings for conversions. For more information on EPM files, see the *DesignPro Tools Online Help*.

9 Click **Convert**.

The Conversion Result dialog displays. You have successfully converted the Word document into an Elixir form.



The document has converted to an Elixir Form.



Notice the file name is a link. If you click this link, the form will open in a new Form Editor session.

Since you already have a Form Editor session open, you will return to the Form Editor and open the form there.

10 Click **Close**.



To view the messages generated during conversion, click the **Progress** button.

11 Close Microsoft Word.

Using Content from a Windows Application

Now you will open the converted document in the Form Editor, and make changes to the newly created form.

PrintDriver automatically generates a filename for each file it creates, if you do not name the file in the **PrintDriver Wizard**. Each new filename increments alphabetically to avoid file overwrite. The first form file created is Da1.efr. Subsequent files are automatically incremented and named Da2.efr, Da3.efr, etc. The system will continue to increment through the alphabet indefinitely.



It is recommended that you periodically rename or delete all files converted by PrintDriver. Please note that the system will continue to increment the filenames, even though you may have deleted all of the previously converted files.

Making Modifications to a Printed Form

Next, you will open the Form Editor and change the logo in the new form, which is named loan.efr. You will see that the Elixir form and the original Word document are identical.

I2 Switch back to the Form Editor.

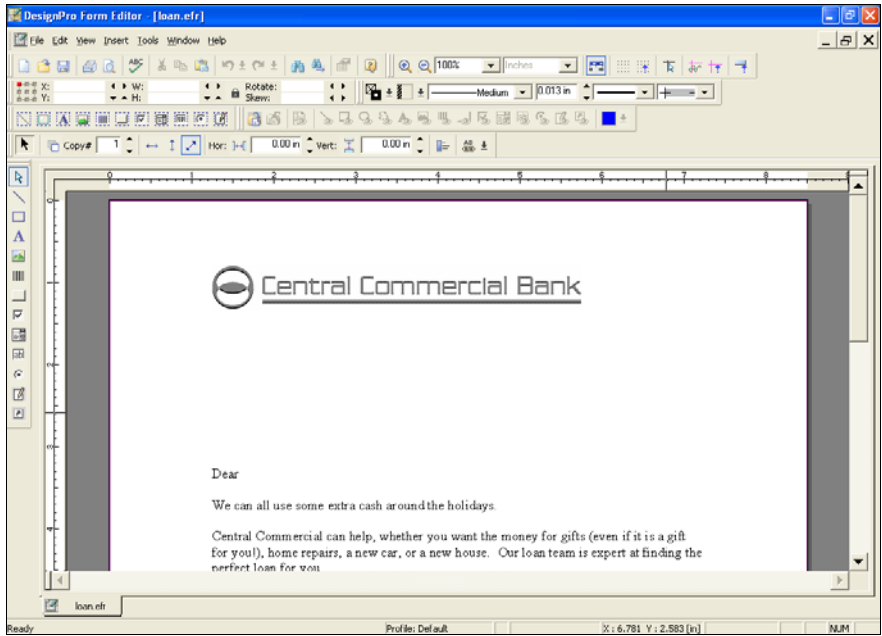
The Form Editor should be open from the previous exercise.

I3 From the **File** menu, select **Open**.

I4 In the **Files of Type** drop-down list, select **Elixir Form (*.EFR)**.

If the Elixir icon is selected in the left pane, the directory path automatically updates to *drive:\Elixir\Forms\Elixir*.

-
- 15** Select **Loan.efr** and click **Open**.
Loan.efr opens in the Design Area.



The file after converting to the Elixir format.

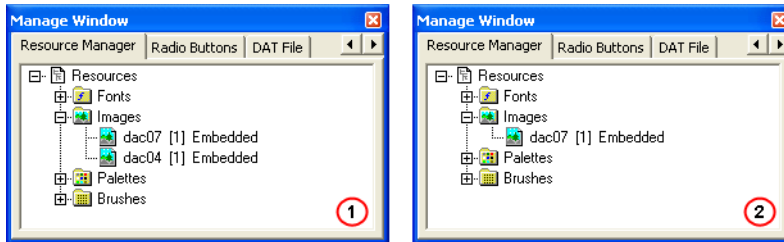
Removing an Existing Image

When creating the mockup, the marketing group used their version of the CCB logo. You will replace it with the print-ready version.

The following steps take you through removing the existing logo from the form.


- 16** Select the CCB logo and press **Delete** on your keyboard.

The logo deletes from the overlay, and the associated image reference is also removed from the Resource Manager in the Manage window.




The Resource Manager in the Message window displays the references of all the images present in the overlay. (1) The reference of CCB logo is being displayed in the Resource Manager under the Images node. (2) The Resource Manager after the CCB logo is deleted from the overlay.



To open the Resource Manager, from the **View** menu, select **Manage Window**. In the Manage window, click  to navigate the tabs and select the **Resource Manager** tab.

Adding a New Image

You will add the CCB Logo as the final step to complete the form.

- 17** On the **Tools** toolbar, click .

The Open Resource File dialog opens.

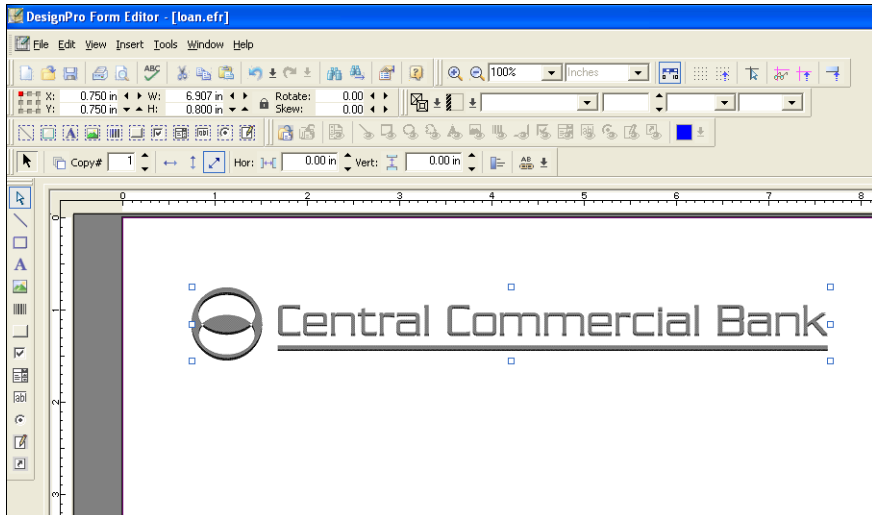
- 18** In the **Files of Type** drop-down list, select **Xerox IMG & Xerox LGO** (*.img;*.lgo).

The path updates to *drive:\Elixir\Pics\Img* if the Elixir icon is selected in the left pane of the dialog.

-
- 19 Make sure **Embedded** is selected in the **Insert As** drop-down list.
 - 20 Select **CCLOGO.IMG** and click **Open**.
 - 21 Place the logo using the following coordinates:
 - X: **0.75 in**
 - Y: **0.75 in**The new image will also be listed in the Resource Manager.



Use the **Position and Dimension** toolbar or the **Properties – Image** dialog to place the image with the precise coordinates.

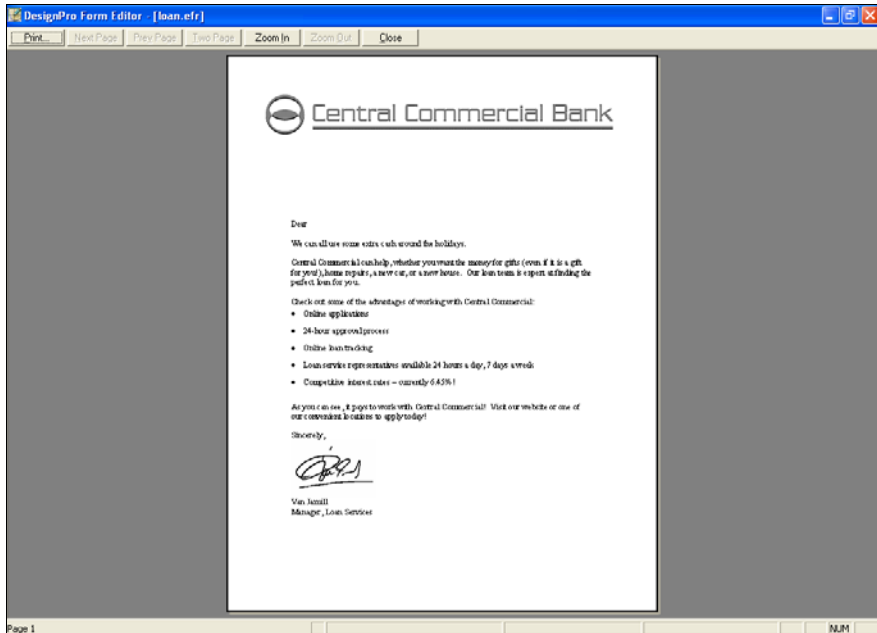


The form has been updated and is complete.

Print Preview

You can proof your work using Print Preview or by printing the file to a local or network desktop printer.

22 From the **File** menu, select **Print Preview**.



Zooming in to view the completed form.

23 When you are finished reviewing the form, click **Close**.

Saving the Form

Now that your design is complete, you will save the form.

24 From the **File** menu, select **Save**.

The form is saved in the Elixir format and the form is complete.

25 From the **File** menu, select **Exit**.

You have completed the Quick Start forms.

Index

A

adding

- boxes 107
- images 91, 105, 123
- lines 110
- text 95
- virtual folders 84

- Adobe Type Manager (ATM) fonts 95
- associations, file extensions 34, 42, 49, 56

B

- bitmap fonts 95

BMP 91

boxes

- copying 109
- drawing 107
- Insert Box tool 107
- lines 108
- properties 107

- Browse For Folder dialog 84

C

Central Commercial Bank

- design 88
- form 88

- Check/Uncheck to associate file extensions dialog 34, 42, 49, 56

- Choose Destination Location dialog 21

- Common Attributes toolbar 110, 111

configuration 81

conventions 8

- symbolic 9
- typographic 8

- copying boxes 109

- Customer Information dialog 19

- customer numbers 28

- customer support 10

D

default locations

- documents 83

- fonts 83

- forms 83

- images 83

- jobs 83

deleting

- images 123

- DesignPro Font Editor, description 6

- DesignPro Form Editor, description 6

- DesignPro Graphics Editor, description 6

DesignPro Manager

- description 6

- opening 82

DesignPro Tools

- DesignPro Font Editor 6

- DesignPro Form Editor 6

- DesignPro Graphics Editor 6

- DesignPro Manager 6

- Editors 81

- Elixir PrintDriver Pro 6, 115

- Elixir Scout 6

- Elixir Viewer 6

- fonts, supported 95

- installing 14

- introduction 5

- modifying 44

- modifying the install 46, 53

- native resources 91

- parsers 81

- registering 27

- repairing 51

- resources 81

- silent modifying 71

- silent repairing 74

- silent uninstalling 77

- silent upgrading 68

- uninstalling 58

- updating the install 39

- upgrading 36

- writers 81

dialogs

- Browse For Folder 84

-
- Check/Uncheck to associate file extensions [34](#),
[42](#), [49](#), [56](#)
 - Choose Destination Location [21](#)
 - Customer Information [19](#)
 - DesignPro Tools Wizard [16](#), [38](#), [45](#), [52](#), [59](#)
 - Elixir Product Registration [27](#)
 - License Agreement [17](#), [38](#)
 - Log On As [23](#), [40](#), [54](#)
 - Maintenance Complete [43](#), [50](#), [57](#), [62](#)
 - Open Resource File [92](#)
 - Options [90](#)
 - Print [117](#)
 - PrintDriver Wizard [118](#)
 - Properties – Box [108](#)
 - Properties – Text [96](#), [105](#)
 - Save As [98](#)
 - Select Program Folder [22](#)
 - Setup Status [26](#), [42](#), [48](#), [56](#), [62](#)
 - Setup Type [18](#)
 - Shared File Detected [61](#)
 - Start Copying Files [25](#)
 - Text Import [99](#)
 - Welcome [60](#)
 - Xerox LPS Resource Writer Properties [112](#)
- directory structure [81](#)
- DLLs
- installing [21](#)
 - shared [61](#)
- DOC [115](#)
- documentation
- online [12](#)
- domains [24](#), [41](#), [55](#)
- drawing
- boxes [107](#)
 - lines [110](#)
 - rules [110](#)
- E**
- editing
- forms [121](#)
 - text [103](#)
- EFR [98](#), [115](#), [122](#)
- Elixir
- Application Suite [103](#)
 - forms [121](#)
 - PrintDriver Pro [115](#)
 - resources [21](#), [95](#), [98](#)
 - Scout, uninstalling [61](#)
- Elixir PrintDriver Pro
- description [6](#), [115](#)
 - uninstalling [61](#)
- Elixir Product Registration dialog [27](#)
- Elixir Scout, description [6](#)
- Elixir Viewer, description [6](#)
- Elixir web site [11](#)
- embedded resources [92](#)
- extensions
- BMP [91](#)
 - DOC [115](#)
 - EFR [98](#), [115](#), [122](#)
 - FRM [111](#)
 - IMG [92](#), [105](#), [123](#)
 - LGO [92](#), [123](#)
 - RTF [99](#)
 - TIF [91](#)
 - TXT [99](#)
- F**
- file extension associations [34](#), [42](#), [49](#), [56](#)
- file management [6](#)
- folder structures [81](#)
- Font Editor See DesignPro Font Editor
- fonts
- Adobe Type Manager (ATM) [95](#)
 - bitmap [95](#)
 - default [95](#)
 - Elixir legacy [95](#)
 - embedded in RTFs [102](#)
 - outline [95](#)
 - True Type [95](#)
 - Xerox [95](#)
- Form Editor [91](#), [121](#)
- fonts [95](#)
- Form Editor See DesignPro Form Editor
- formatting embedded in RTFs [102](#)
- forms [98](#)
- images [91](#)
 - modifying [121](#)
 - saving [98](#), [125](#)
- FRM [111](#)

G

Graphics Editor See DesignPro Graphics Editor
guides
 related 8

H

hardware requirements 14
 hard disk space requirements 14
 monitor requirements 14
 processor requirements 14
 screen resolution requirements 14

Help

customer support 10

help

context-sensitive 12
Elixir web site 11
online help 12
related guides 8
release notes 12

I

images

adding 105, 123
deleting 123
IMG 105
inserting 91, 105
LGO 105
placing 106
Xerox 105

IMG 92, 105, 123

importing

images 91
text 99

Insert Box tool 107

Insert Image tool 92, 105

Insert Line tool 110

Insert Text tool 95

inserting

boxes 107
images 91, 105
lines 110
text 95

installing 14

modify 39, 46, 53
remove 39, 46, 53

repair 53

uninstall 39, 46, 53

update 39, 46

Internet Explorer 14

introduction

DesignPro Tools 5

J

justification 105

L

legacy fonts 95

LGO 92, 123

License Agreement dialog 17, 38

line spacing 105

lines

drawing 110
horizontal 110
properties 111
styles 108
thickness 108

Log On As dialog 23, 40, 54

M

machine serial numbers 28

Maintenance Complete dialog 43, 50, 57, 62

Manage window 123

Manager See DesignPro Manager

mapping

virtual folders 84

margins, imported with RTF 100

Microsoft Word 115

modifying DesignPro Tools 44

MS Word See Microsoft Word

N

naming conventions, Elixir PrintDriver Pro forms
121

native resources 91

O

Open Resource File dialog 92

opening

DesignPro Form Editor 89

DesignPro Manager 82

operating systems 13

Options dialog [90](#)
outline fonts [95](#)

P

page properties [90](#)
parsers [81](#)
Password.epw [32](#)
PC numbers [29](#)
physical folders [82](#)
Position and Dimension toolbar [94](#)
Print dialog [117](#)
print preview [114](#), [125](#)
PrintDriver Wizard [118](#)
product license
 downloading existing license from Internet [32](#)
 preparing and downloading initial license from Internet [30](#)
 viewing [32](#)
profiles
 multiple [85](#)
 relation to virtual folders [85](#)
program folders [22](#)
proof printing [114](#), [125](#)
properties
 accessing [103](#)
 boxes [107](#)
 lines [111](#)
 pages [90](#)
 text [96](#), [104](#)
 Xerox LPS Resource Writer [112](#)
Properties – Box dialog [108](#)
Properties – Text dialog [96](#), [105](#)

R

rectangles [107](#)
registration
 deactivating the product license file [33](#)
 DesignPro Tools [27](#)
 downloading existing product license from the Internet [32](#)
 downloading initial product license from the Internet [30](#)
 run password registration process [16](#), [38](#), [45](#), [52](#), [59](#)
 using the Internet [30](#)
 viewing the product license information [32](#)

related guides [8](#)
release notes [12](#)
removing
 DesignPro Tools [60](#)
 software [60](#)
 virtual folders [86](#)
repairing DesignPro Tools [51](#)
requirements
 hardware [14](#)
 software [13](#)
 system [13](#)
Resource Manager [123](#)
resources [81](#)
 defining default paths [21](#)
 Elixir formats [91](#)
 embedded [92](#)
 file naming convention [93](#)
 forms [91](#), [98](#), [121](#)
 images [91](#), [105](#)
 legacy fonts [95](#)
 native [91](#)
 organizing using profiles [85](#)
 virtual folders [83](#)
 Xerox [91](#), [93](#)
Rich Text Format files [99](#), [102](#)
RTF [99](#), [102](#)
 fonts [102](#)
 margins [100](#)

S

Save As dialog [98](#)
saving
 as a Xerox form [111](#)
 as an Elixir form [98](#)
 forms [125](#)
Select Mode tool [97](#)
Select Program Folder dialog [22](#)
serial numbers [28](#)
Setup Status dialog [26](#), [42](#), [48](#), [56](#), [62](#)
Setup Type dialog [18](#)
Shared File Detected dialog [61](#)
silent mode
 modifying DesignPro Tools [71](#)
 repairing DesignPro Tools [74](#)
 uninstalling DesignPro Tools [77](#)
 upgrading DesignPro Tools [68](#)

- software requirements [13](#)
 - Internet Explorer [14](#)
 - Windows 2000 service pack [13](#)
 - Windows NT service pack [13](#)
 - Windows XP service pack [13](#)

- squares [107](#)
- Start Copying Files dialog [25](#)
- support [10](#)
- supported
 - operating systems [13](#)
- system
 - parsers [81](#)
 - requirements [13](#)
 - writers [81](#)

T

- text
 - adding [95](#)
 - editing [103](#)
 - importing [99](#)
 - inserting [95](#)
 - justification [105](#)
 - line spacing [105](#)
 - properties [96](#), [104](#)
 - selecting [103](#)
- Text Attributes toolbox [103](#)
- Text Import dialog [99](#)
- TIFF [91](#)
- toolbars
 - Common Attributes [110](#), [111](#)
 - Position and Dimension [94](#)
- toolboxes
 - Text Attributes [103](#)
- tools
 - Insert Box [107](#)
 - Insert Image [91](#), [92](#), [105](#)
 - Insert Line [110](#)
 - Insert Text [95](#)
 - Select Mode [97](#)
- training [11](#)
- True Type fonts [95](#)
- TXT [99](#)
- Typographic Conventions [8](#)

U

- uninstalling DesignPro Tools [58](#)

- unmapping virtual folders [86](#)
- upgrading DesignPro Tools [36](#)
- utilities
 - Elixir PrintDriver Pro [115](#)

V

- Viewer See Elixir Viewer
- virtual folders
 - adding [84](#)
 - and profiles [85](#)
 - definition [82](#)
 - organization [82](#)
 - removing [86](#)

W

- Welcome dialog [60](#)
- Welcome to DesignPro Tools screen [58](#)
- Who Should Use this Guide? [7](#)
- Windows
 - 2000 [13](#)
 - NT [13](#)
 - XP [13](#)
- windows
 - Manage [123](#)

X

- Xerox
 - fonts [95](#)
 - images [105](#)
 - IMG format [92](#)
 - printing environments [7](#)
 - resource filenames [93](#)
 - saving forms [111](#)
- Xerox LPS Resource Writer dialog [112](#)

